

Data Path : Z:\VOASRV\HPCHEM1\MSVOA F\DATA\VF052019\
 Data File : VF062673.D
 Acq On : 20 May 2019 21:04
 Operator : FY/SY
 Sample : K2905-14RE
 Misc : 4.94g/5mL/MSVOA F/SOIL
 ALS Vial : 25 Sample Multiplier: 1

Instrument :
 MSVOA_F
 ClientSampleId :
 GIS-3-4FTRE

Quant Time: May 21 02:03:06 2019
 Quant Method : Z:\VOASRV\HPCHEM1\MSVOA_F\METHODS\82F051619S.M
 Quant Title : SW846 8260
 QLast Update : Fri May 17 05:49:09 2019
 Response via : Initial Calibration

| Internal Standards | R.T. | QIon | Response | Conc | Units | Dev(Min) |
|----------------------------|-------|------|----------|-------|-------|----------|
| 1) Pentafluorobenzene | 5.07 | 168 | 739181 | 50.00 | ug/l | 0.00 |
| 34) 1,4-Difluorobenzene | 5.79 | 114 | 1244089 | 50.00 | ug/l | 0.00 |
| 63) Chlorobenzene-d5 | 9.93 | 117 | 903299 | 50.00 | ug/l | 0.01 |
| 72) 1,4-Dichlorobenzene-d4 | 12.62 | 152 | 436926 | 50.00 | ug/l | 0.00 |

System Monitoring Compounds

| | | | | | | |
|---------------------------|-------|-----|----------|--------|--------|------|
| 33) 1,2-Dichloroethane-d4 | 5.05 | 65 | 186958 | 35.79 | ug/l | 0.01 |
| Spiked Amount | | | | 50.000 | | |
| | | | Recovery | = | 71.58% | |
| 35) Dibromofluoromethane | 4.32 | 113 | 361527 | 37.98 | ug/l | 0.00 |
| Spiked Amount | | | | 50.000 | | |
| | | | Recovery | = | 75.96% | |
| 50) Toluene-d8 | 7.72 | 98 | 758643 | 33.38 | ug/l | 0.00 |
| Spiked Amount | | | | 50.000 | | |
| | | | Recovery | = | 66.76% | |
| 62) 4-Bromofluorobenzene | 11.51 | 95 | 262469 | 30.45 | ug/l | 0.00 |
| Spiked Amount | | | | 50.000 | | |
| | | | Recovery | = | 60.90% | |

Target Compounds

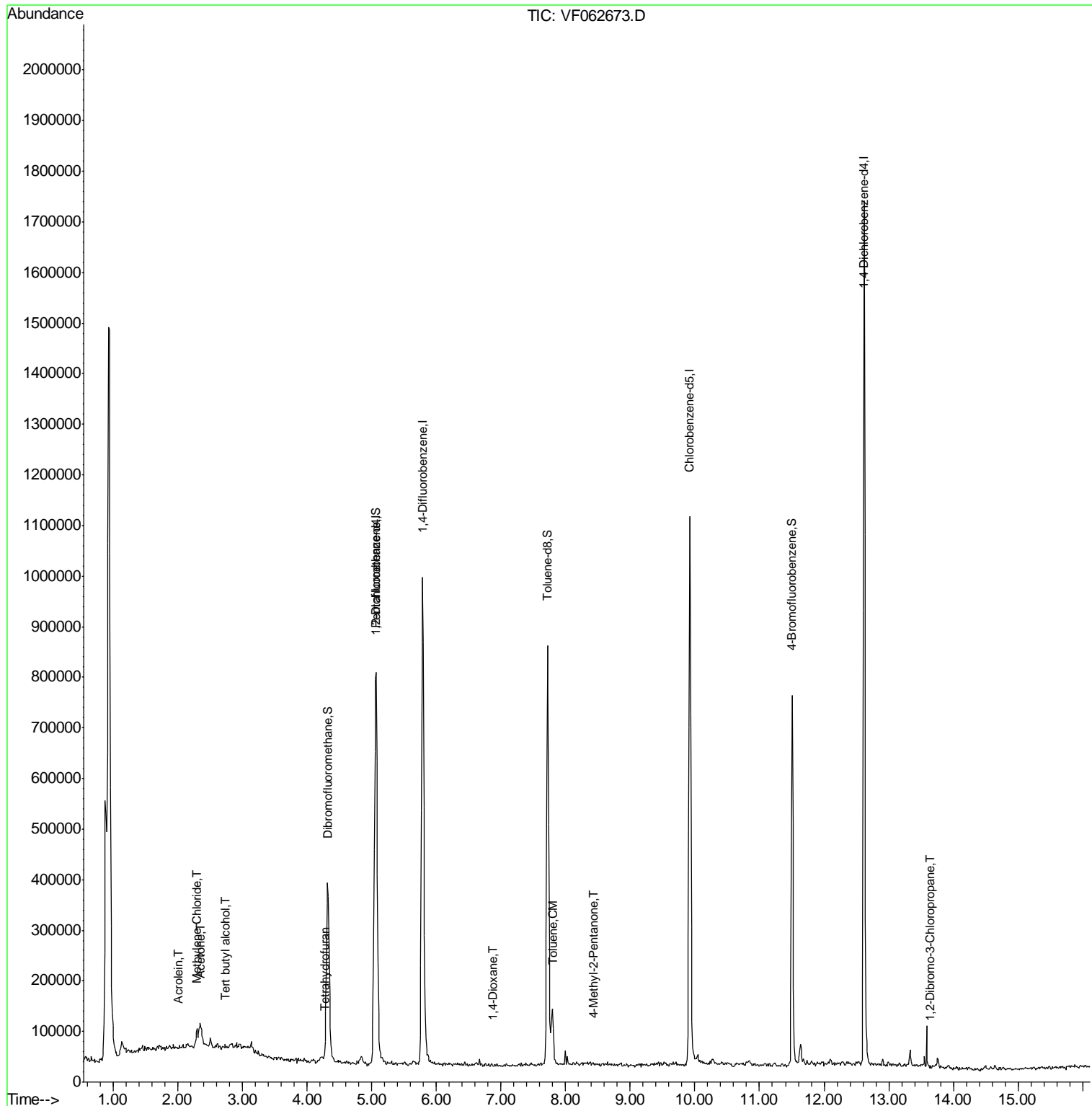
| | | | | | Qvalue | |
|--------------------------------|-------|----|-------|-----------|--------|----|
| 11) Tert butyl alcohol | 2.72 | 59 | 652 | 1.891 | ug/l # | 1 |
| 13) Acrolein | 2.00 | 56 | 1186 | 3.295 | ug/l | 83 |
| 16) Acetone | 2.36 | 43 | 29484 | 21.757 | ug/l # | 86 |
| 20) Methylene Chloride | 2.29 | 84 | 16343 | 2.406 | ug/l | 91 |
| 29) Tetrahydrofuran | 4.26 | 42 | 1520 | 1.297 | ug/l # | 30 |
| 49) 1,4-Dioxane | 6.88 | 88 | 83 | 1.839 | ug/l # | 1 |
| 51) 4-Methyl-2-Pentanone | 8.43 | 43 | 4628 | 1.004 | ug/l | 94 |
| 52) Toluene | 7.79 | 92 | 64591 | 3.546 | ug/l | 93 |
| 59) 2-Hexanone | 9.64 | 43 | 2332 | Below Cal | | 78 |
| 74) N-amyl acetate | 11.47 | 43 | 1165 | Below Cal | # | 56 |
| 92) 1,2-Dibromo-3-Chloropropan | 13.65 | 75 | 1017 | 1.332 | ug/l # | 1 |

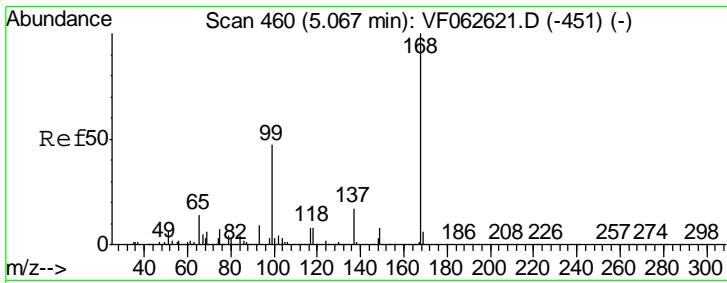
(#) = qualifier out of range (m) = manual integration (+) = signals summed

Data Path : Z:\VOASRV\HPCHEM1\MSVOA F\DATA\VF052019\
 Data File : VF062673.D
 Acq On : 20 May 2019 21:04
 Operator : FY/SY
 Sample : K2905-14RE
 Misc : 4.94µ/5mL/MSVOA F/SOIL
 ALS Vial : 25 Sample Multiplier: 1

Instrument :
 MSVOA_F
 Client Sampled :
 GIS-3-4FTRE

Quant Time: May 21 02:03:06 2019
 Quant Method : Z:\VOASRV\HPCHEM1\MSVOA_F\METHODS\82F051619S.M
 Quant Title : SW846 8260
 QLast Update : Fri May 17 05:49:09 2019
 Response via : Initial Calibration

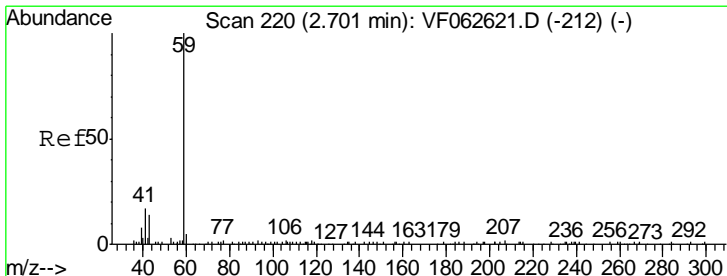
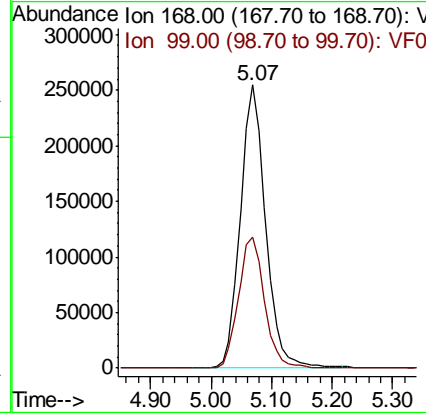
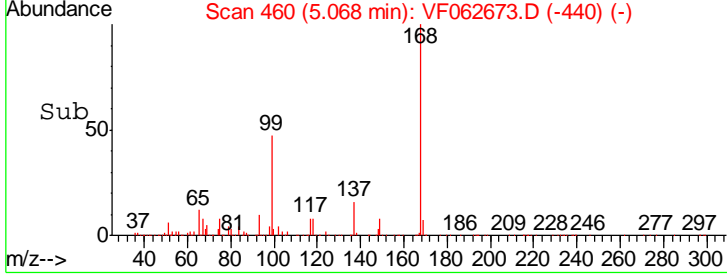
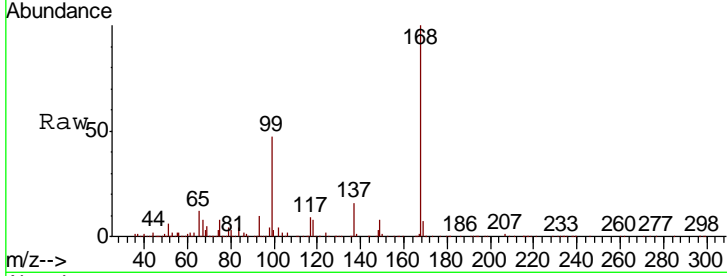




#1
 Pentafluorobenzene
 Concen: 50.000 ug/l
 RT: 5.07 min Scan# 460
 Delta R.T. 0.00 min
 Lab File: VF062673.D
 Acq: 20 May 2019 21:04

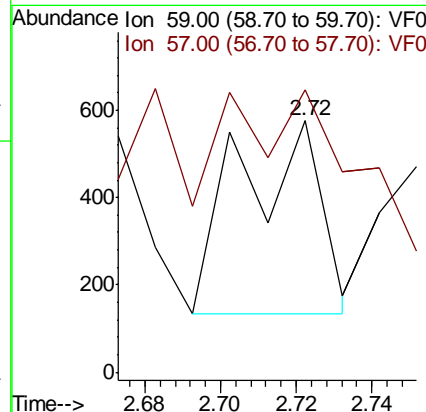
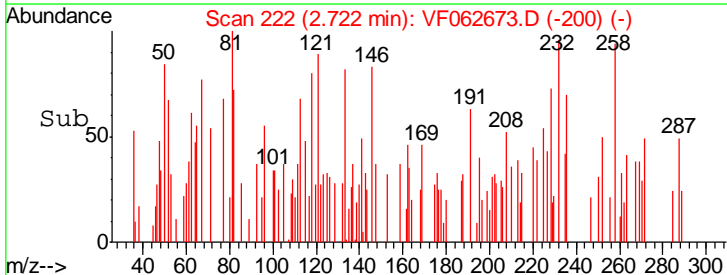
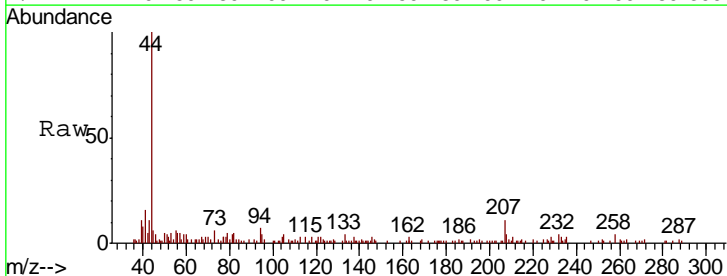
Instrument : MSVOA_F
 ClientSampleId : GIS-3-4FTRE

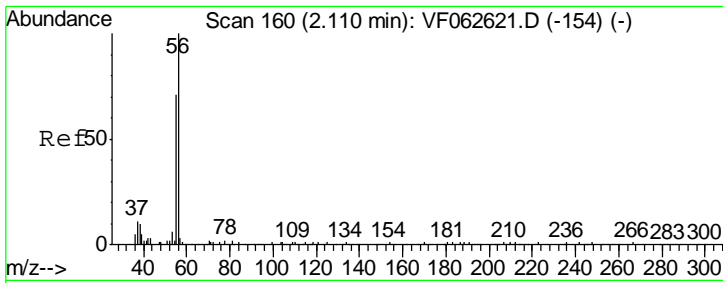
| Tgt Ion | Resp | Lower | Upper |
|---------|------|-------|-------|
| 168 | 100 | | |
| 99 | 46.5 | 37.8 | 56.8 |



#11
 Tert butyl alcohol
 Concen: 1.891 ug/l
 RT: 2.72 min Scan# 222
 Delta R.T. 0.02 min
 Lab File: VF062673.D
 Acq: 20 May 2019 21:04

| Tgt Ion | Resp | Lower | Upper |
|---------|-------|-------|-------|
| 59 | 100 | | |
| 57 | 112.3 | 9.3 | 13.9# |

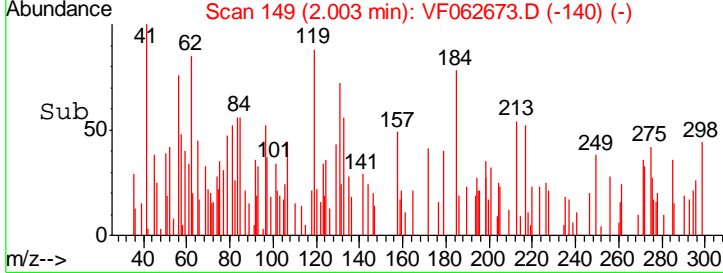
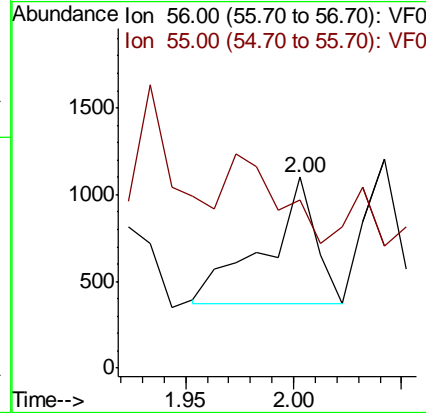
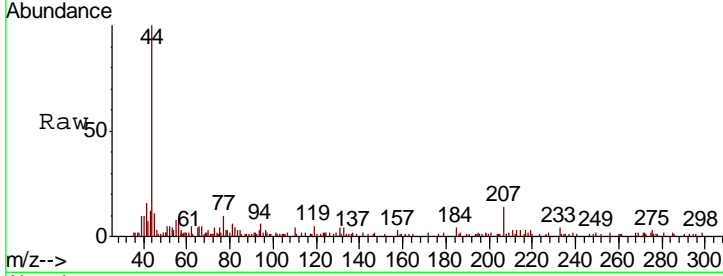




#13
 Acrolein
 Concen: 3.295 ug/l
 RT: 2.00 min Scan# 149
 Delta R.T. -0.11 min
 Lab File: VF062673.D
 Acq: 20 May 2019 21:04

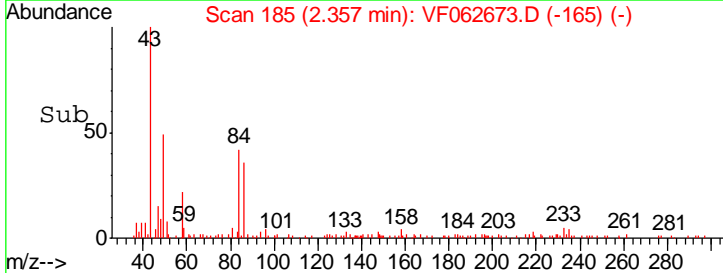
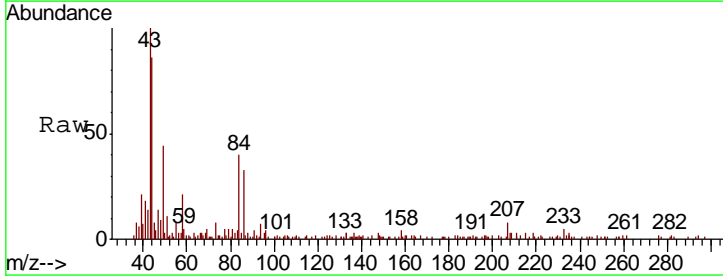
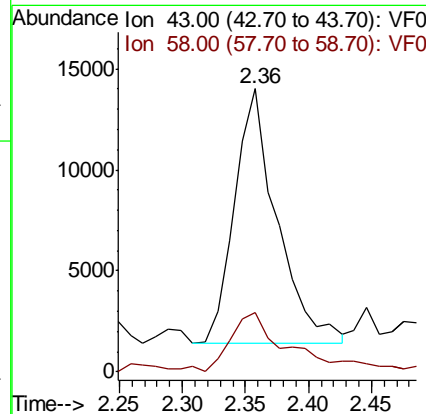
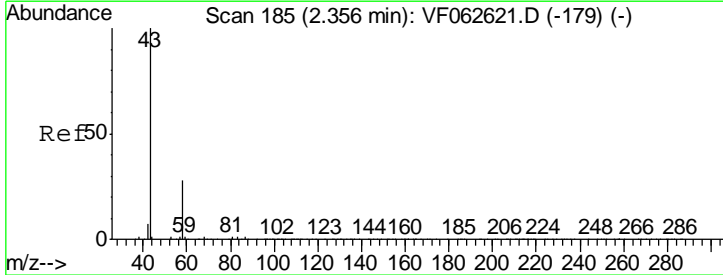
Instrument :
 MSVOA_F
ClientSampled :
 GIS-3-4FTRE

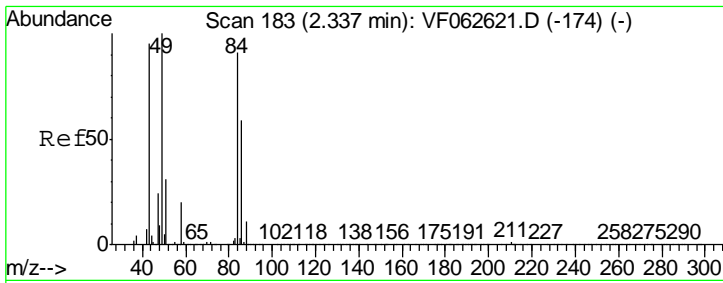
| Tgt Ion | Resp | Lower | Upper |
|---------|------|-------|-------|
| 56 | 1186 | | |
| 55 | 88.3 | 59.4 | 89.0 |



#16
 Acetone
 Concen: 21.757 ug/l
 RT: 2.36 min Scan# 185
 Delta R.T. 0.00 min
 Lab File: VF062673.D
 Acq: 20 May 2019 21:04

| Tgt Ion | Resp | Lower | Upper |
|---------|-------|-------|-------|
| 43 | 29484 | | |
| 58 | 20.8 | 22.6 | 33.8# |

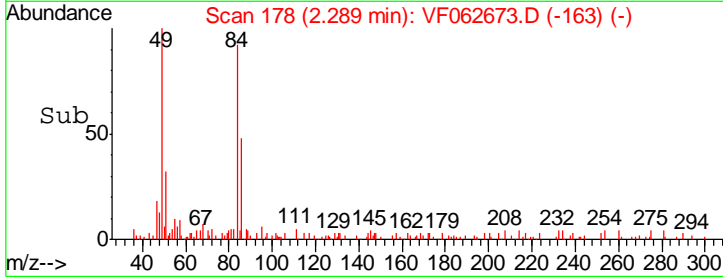
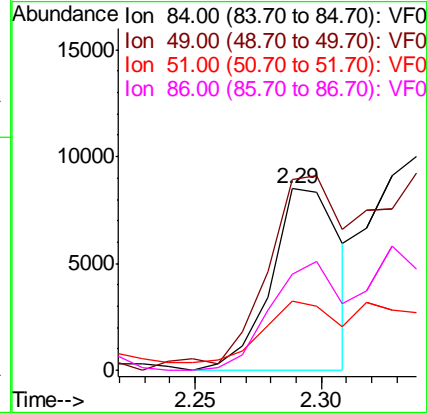
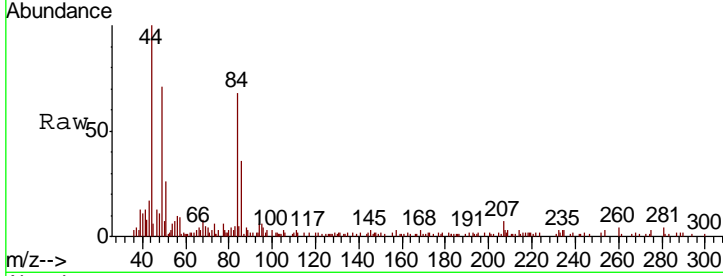




#20
 Methylene Chloride
 Concen: 2.406 ug/l
 RT: 2.29 min Scan# 178
 Delta R.T. -0.05 min
 Lab File: VF062673.D
 Acq: 20 May 2019 21:04

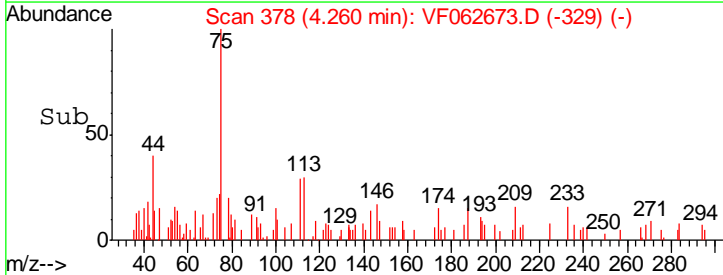
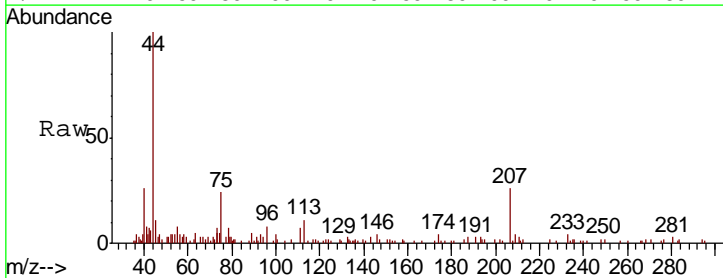
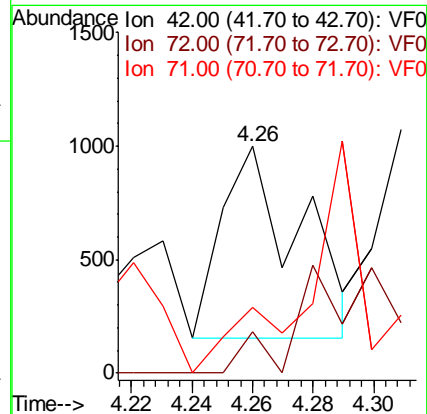
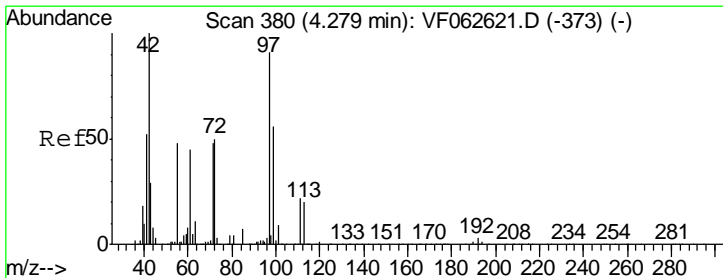
Instrument :
 MSVOA_F
 ClientSampled :
 GIS-3-4FTRE

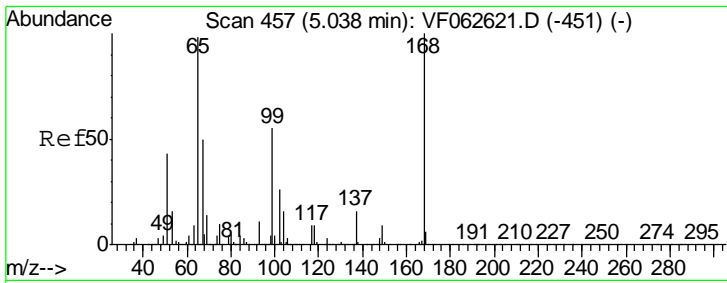
| Tgt Ion | Resp | Lower | Upper |
|---------|-------|-------|-------|
| 84 | 16343 | | |
| 49 | 105.0 | 89.8 | 134.8 |
| 51 | 38.5 | 28.4 | 42.6 |
| 86 | 52.7 | 52.6 | 79.0 |



#29
 Tetrahydrofuran
 Concen: 1.297 ug/l
 RT: 4.26 min Scan# 378
 Delta R.T. -0.02 min
 Lab File: VF062673.D
 Acq: 20 May 2019 21:04

| Tgt Ion | Resp | Lower | Upper |
|---------|------|-------|-------|
| 42 | 1520 | | |
| 72 | 0.0 | 38.2 | 57.2# |
| 71 | 0.0 | 35.8 | 53.6# |

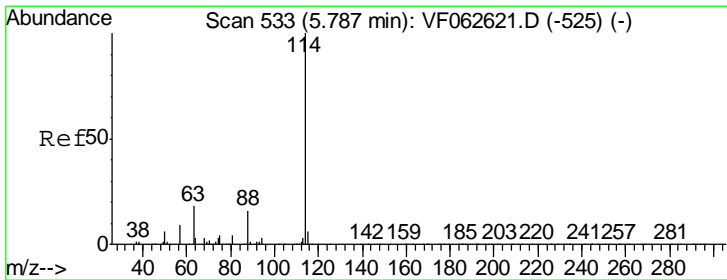
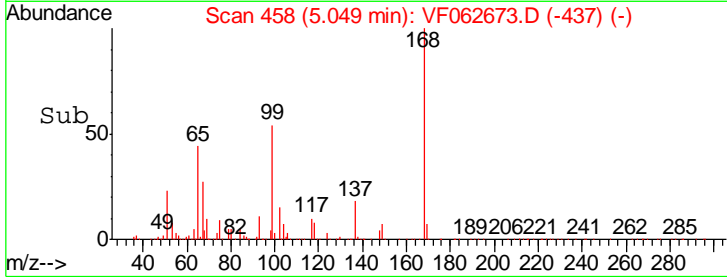
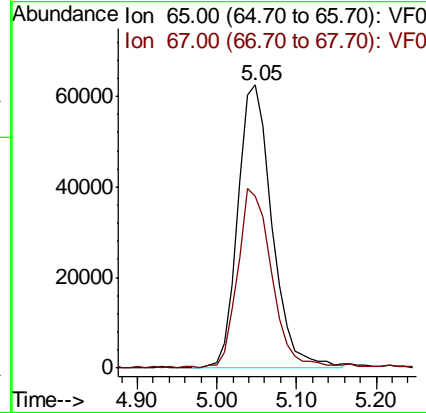
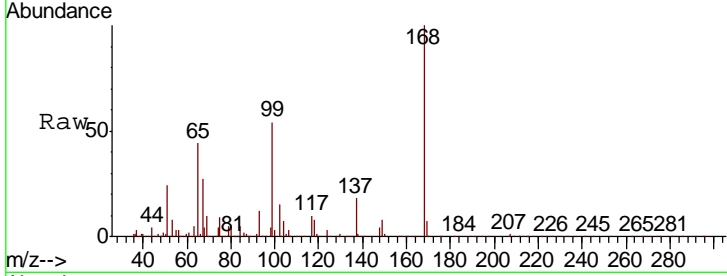




#33
 1,2-Dichloroethane-d4
 Concen: 35.792 ug/l
 RT: 5.05 min Scan# 458
 Delta R.T. 0.01 min
 Lab File: VF062673.D
 Acq: 20 May 2019 21:04

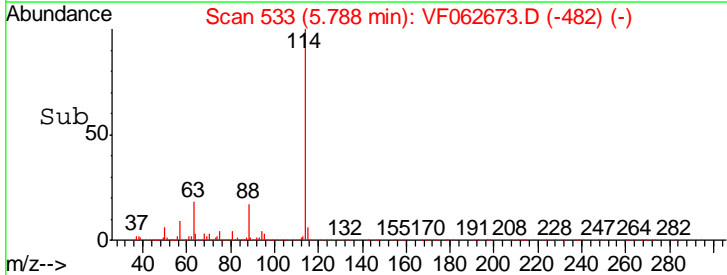
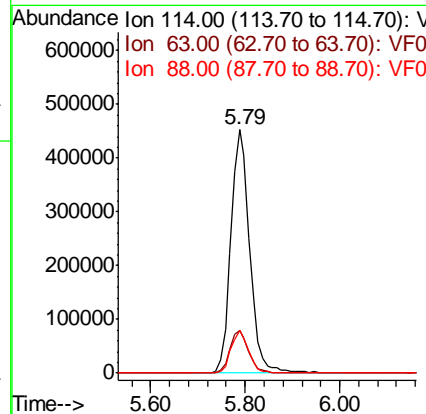
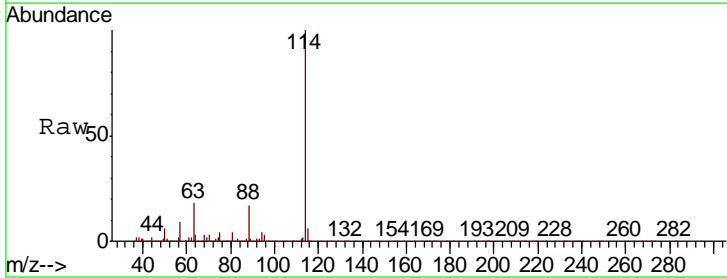
Instrument :
 MSVOA_F
 ClientSampled :
 GIS-3-4FTRE

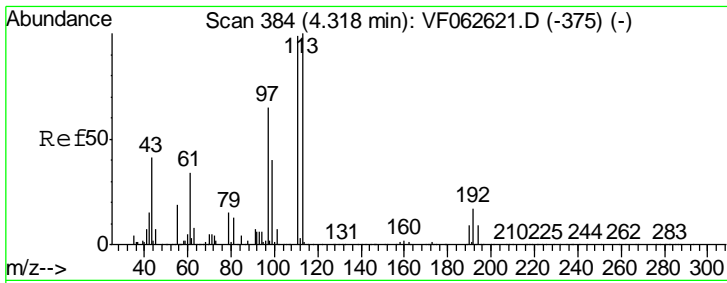
| Tgt Ion | Resp | Lower | Upper |
|---------|------|-------|-------|
| 65 | 100 | | |
| 67 | 60.8 | 0.0 | 117.6 |



#34
 1,4-Difluorobenzene
 Concen: 50.000 ug/l
 RT: 5.79 min Scan# 533
 Delta R.T. 0.00 min
 Lab File: VF062673.D
 Acq: 20 May 2019 21:04

| Tgt Ion | Resp | Lower | Upper |
|---------|------|-------|-------|
| 114 | 100 | | |
| 63 | 17.8 | 0.0 | 35.4 |
| 88 | 17.3 | 0.0 | 32.4 |

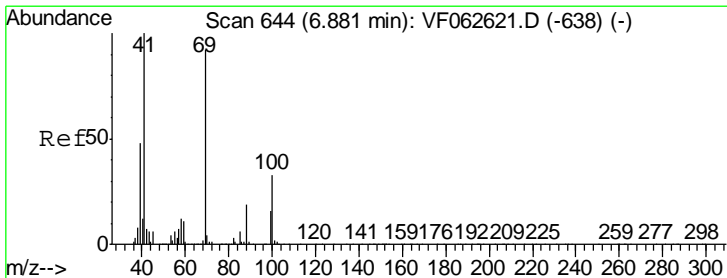
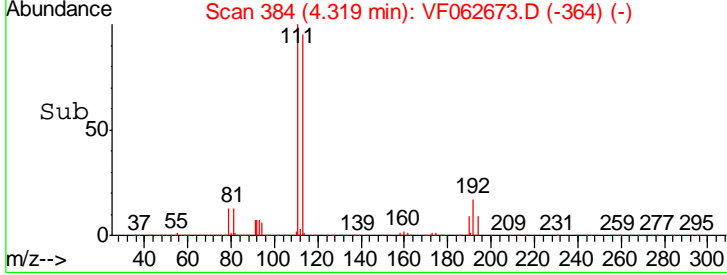
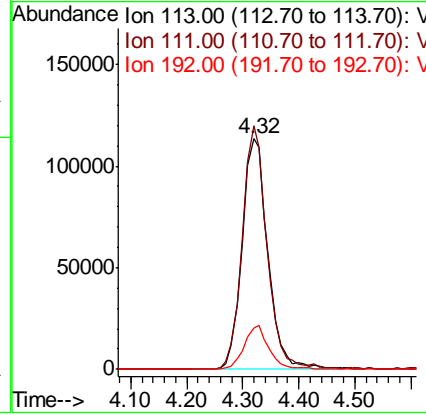
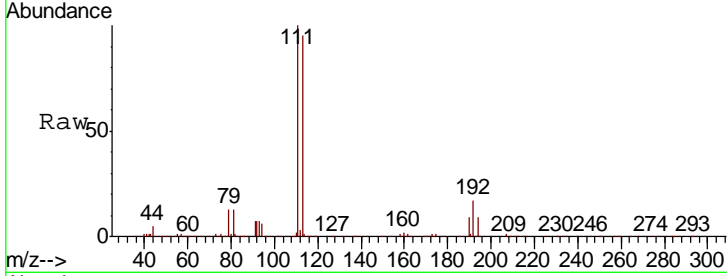




#35
 Dibromofluoromethane
 Concen: 37.976 ug/l
 RT: 4.32 min Scan# 384
 Delta R.T. 0.00 min
 Lab File: VF062673.D
 Acq: 20 May 2019 21:04

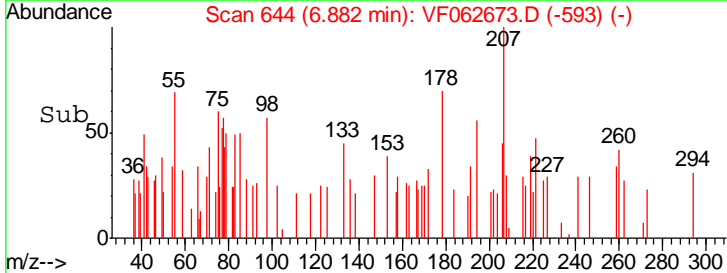
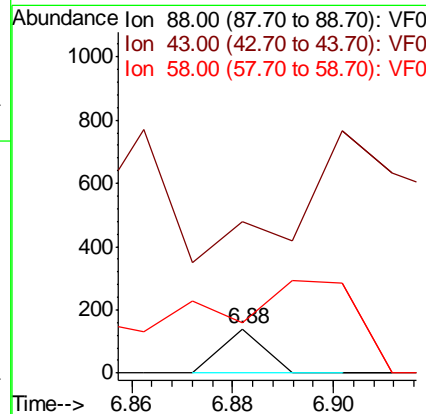
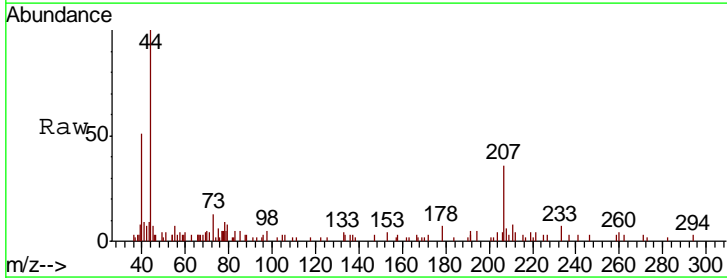
Instrument : MSVOA_F
 ClientSampled : GIS-3-4FTRE

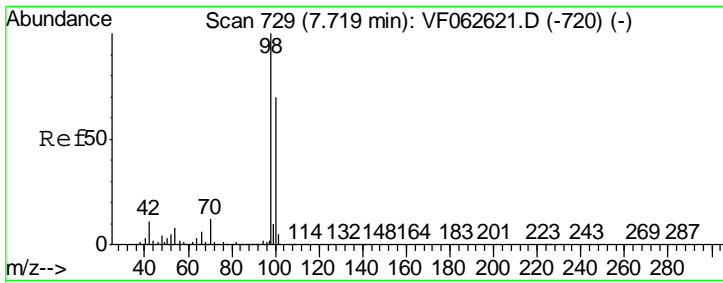
| Tgt Ion | Resp | Lower | Upper |
|---------|--------|-------|-------|
| 113 | 361527 | | |
| 113 | 100 | | |
| 111 | 105.6 | 79.4 | 119.2 |
| 192 | 18.0 | 13.4 | 20.2 |



#49
 1,4-Dioxane
 Concen: 1.839 ug/l
 RT: 6.88 min Scan# 644
 Delta R.T. 0.00 min
 Lab File: VF062673.D
 Acq: 20 May 2019 21:04

| Tgt Ion | Resp | Lower | Upper |
|---------|-------|-------|-------|
| 88 | 83 | | |
| 88 | 100 | | |
| 43 | 343.6 | 30.0 | 45.0# |
| 58 | 113.6 | 51.1 | 76.7# |

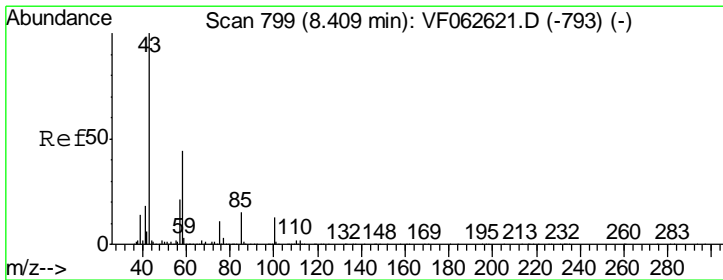
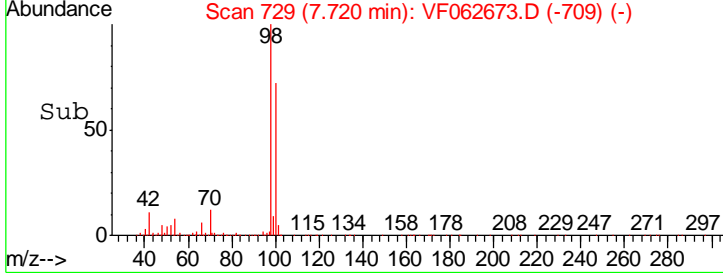
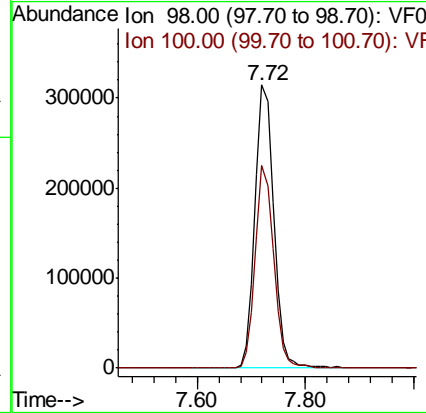
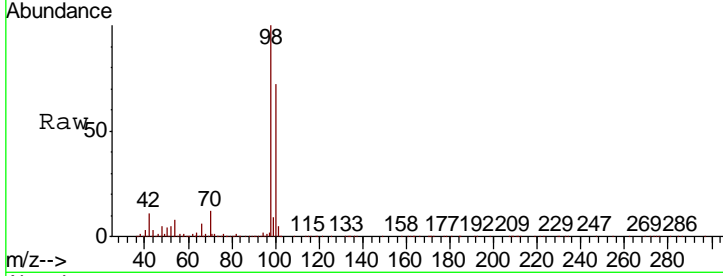




#50
 Toluene-d8
 Concen: 33.377 ug/l
 RT: 7.72 min Scan# 729
 Delta R.T. 0.00 min
 Lab File: VF062673.D
 Acq: 20 May 2019 21:04

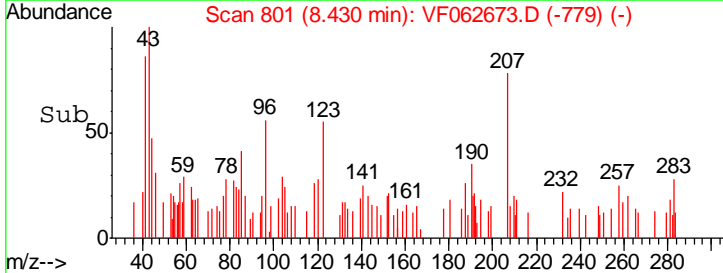
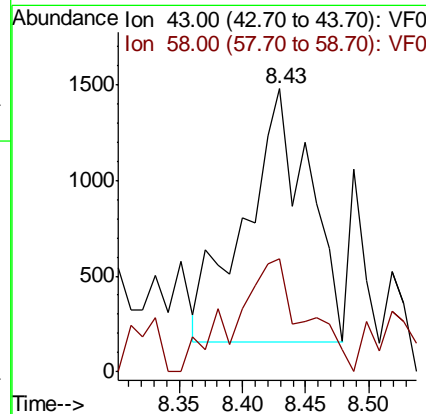
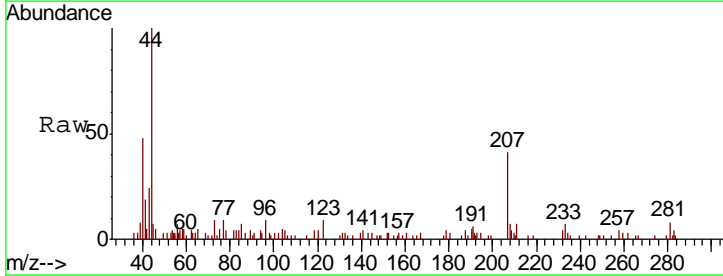
Instrument :
 MSVOA_F
ClientSampled :
 GIS-3-4FTRE

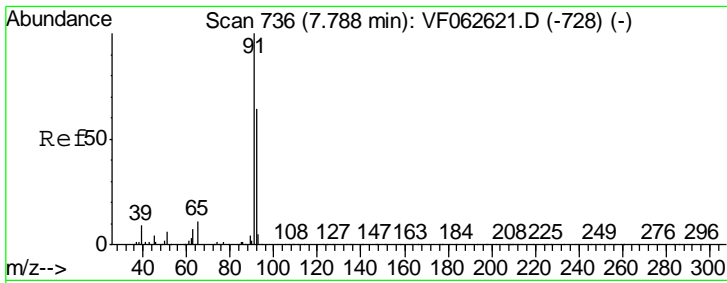
Tgt Ion: 98 Resp: 758643
 Ion Ratio Lower Upper
 98 100
 100 71.8 56.2 84.2



#51
 4-Methyl-2-Pentanone
 Concen: 1.004 ug/l
 RT: 8.43 min Scan# 801
 Delta R.T. 0.02 min
 Lab File: VF062673.D
 Acq: 20 May 2019 21:04

Tgt Ion: 43 Resp: 4628
 Ion Ratio Lower Upper
 43 100
 58 39.8 34.9 52.3

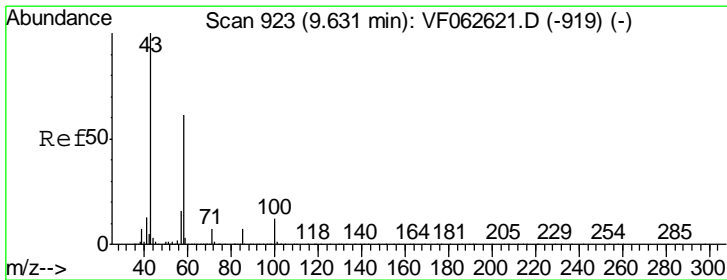
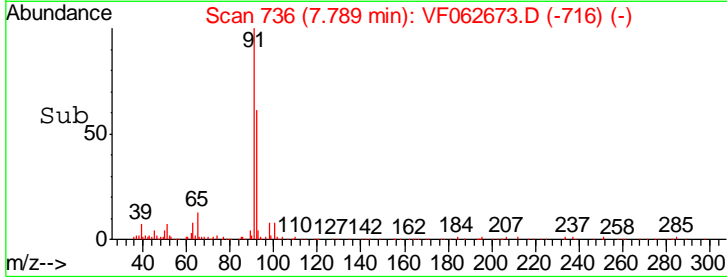
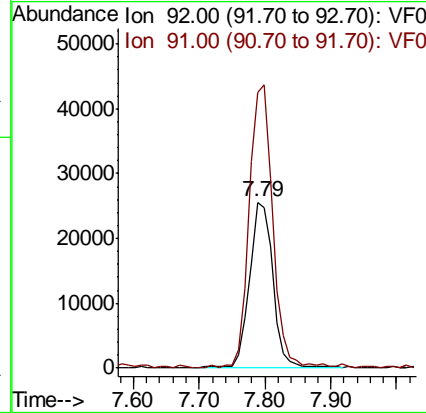
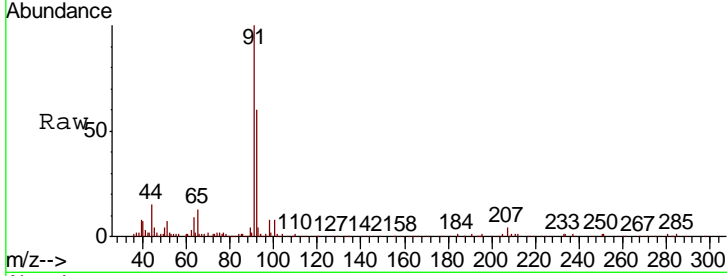




#52
 Toluene
 Concen: 3.546 ug/l
 RT: 7.79 min Scan# 736
 Delta R.T. 0.00 min
 Lab File: VF062673.D
 Acq: 20 May 2019 21:04

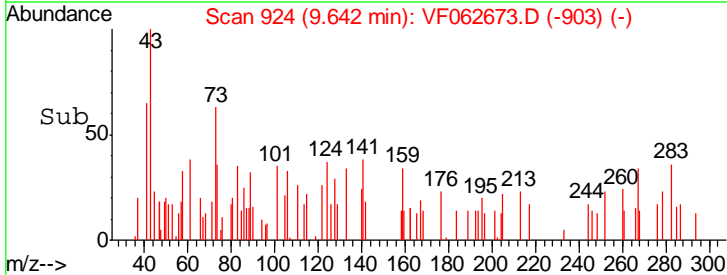
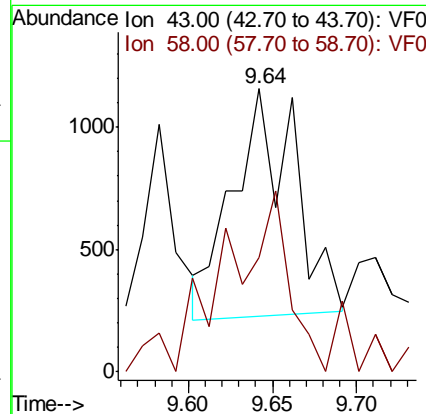
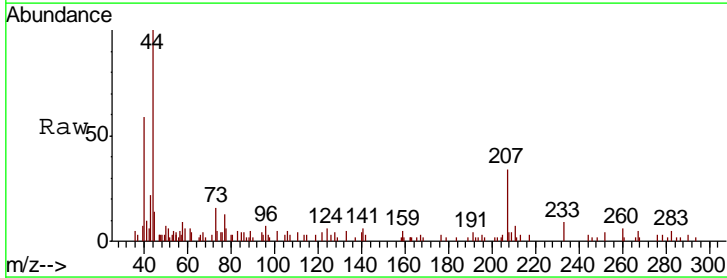
Instrument :
 MSVOA_F
 ClientSampleID :
 GIS-3-4FTRE

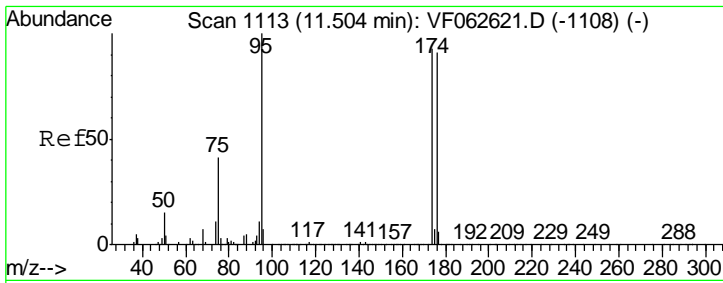
| Tgt Ion | Resp | Lower | Upper |
|---------|-------|-------|-------|
| 92 | 64591 | | |
| 92 | 100 | | |
| 91 | 165.6 | 125.4 | 188.0 |



#59
 2-Hexanone
 Concen: Below Cal
 RT: 9.64 min Scan# 924
 Delta R.T. 0.01 min
 Lab File: VF062673.D
 Acq: 20 May 2019 21:04

| Tgt Ion | Resp | Lower | Upper |
|---------|------|-------|-------|
| 43 | 2332 | | |
| 43 | 100 | | |
| 58 | 40.5 | 28.1 | 84.4 |

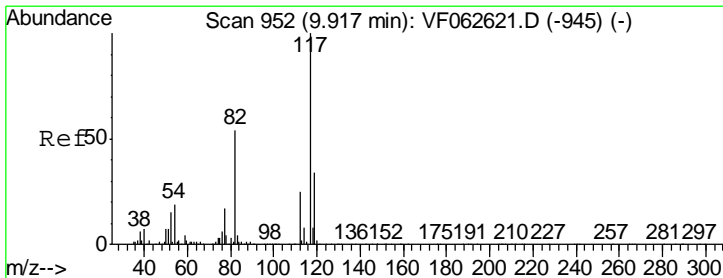
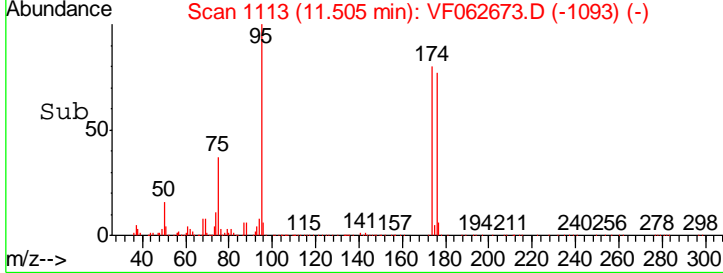
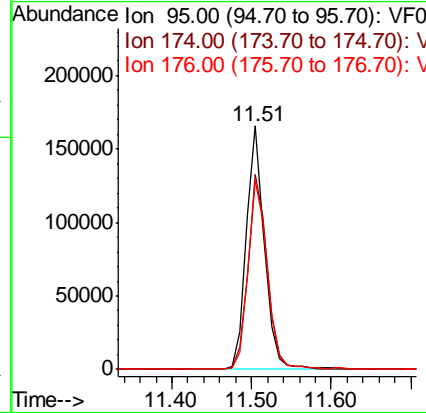
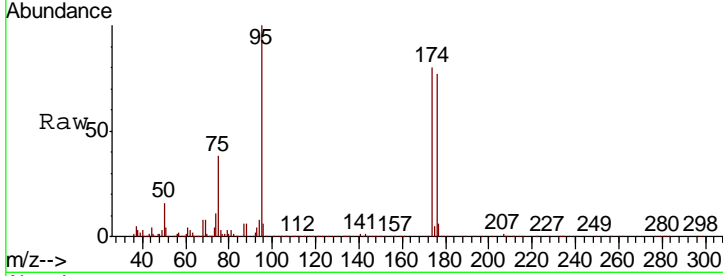




#62
 4-Bromofluorobenzene
 Concen: 30.447 ug/l
 RT: 11.51 min Scan# 1113
 Delta R.T. 0.00 min
 Lab File: VF062673.D
 Acq: 20 May 2019 21:04

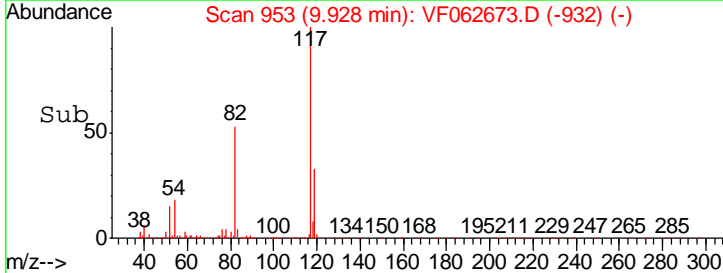
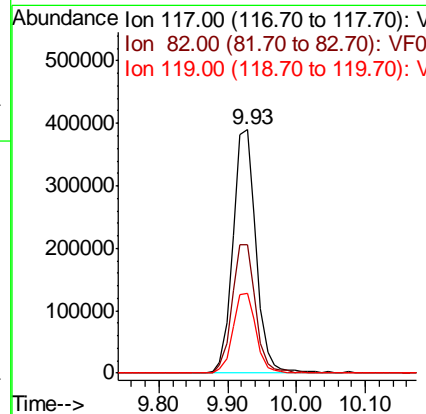
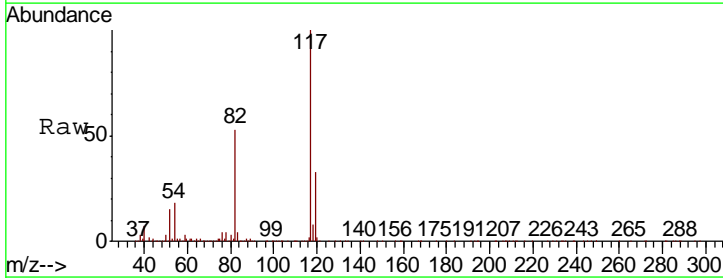
Instrument :
 MSVOA_F
 ClientSampled :
 GIS-3-4FTRE

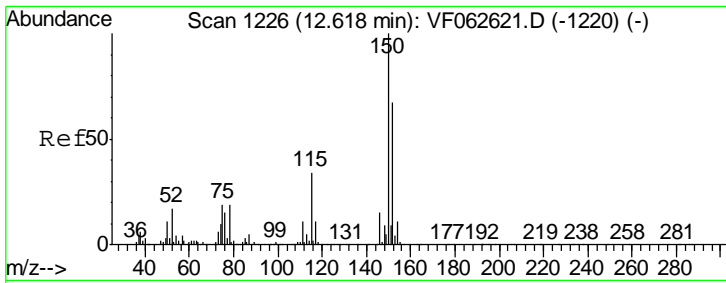
| Tgt Ion | Resp | Lower | Upper |
|---------|------|-------|-------|
| 95 | 100 | | |
| 174 | 80.1 | 0.0 | 185.6 |
| 176 | 77.2 | 0.0 | 182.4 |



#63
 Chlorobenzene-d5
 Concen: 50.000 ug/l
 RT: 9.93 min Scan# 953
 Delta R.T. 0.01 min
 Lab File: VF062673.D
 Acq: 20 May 2019 21:04

| Tgt Ion | Resp | Lower | Upper |
|---------|------|-------|-------|
| 117 | 100 | | |
| 82 | 52.6 | 43.3 | 64.9 |
| 119 | 32.9 | 27.4 | 41.0 |

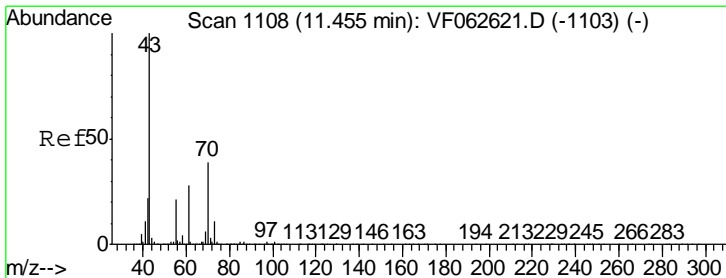
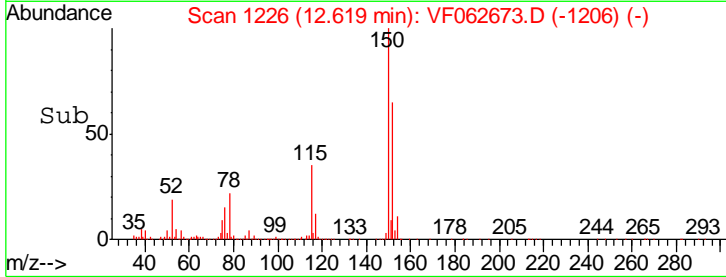
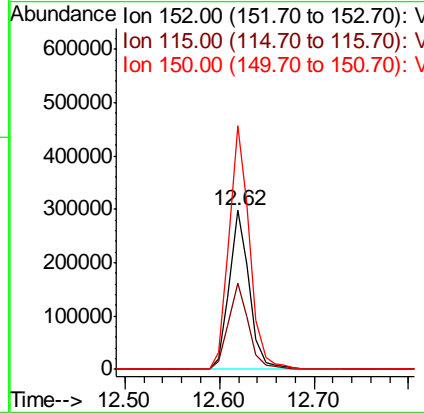
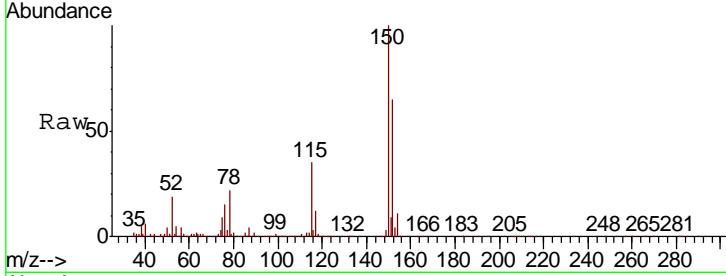




#72
 1,4-Dichlorobenzene-d4
 Concen: 50.000 ug/l
 RT: 12.62 min Scan# 1226
 Delta R.T. 0.00 min
 Lab File: VF062673.D
 Acq: 20 May 2019 21:04

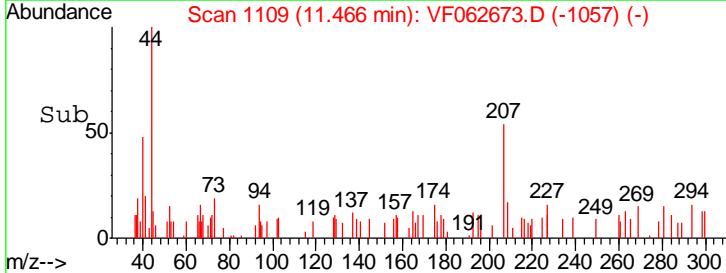
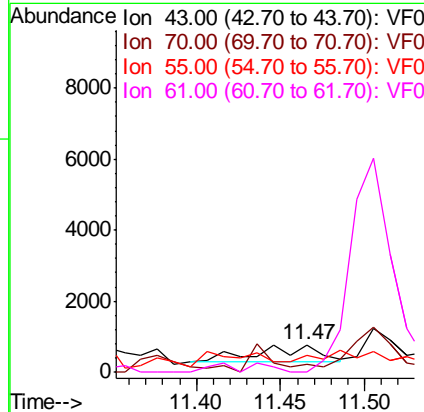
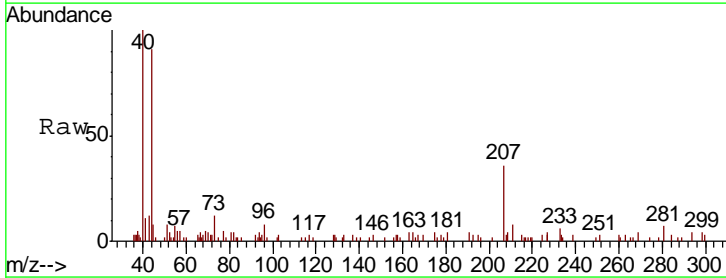
Instrument :
 MSVOA_F
 ClientSampleId :
 GIS-3-4FTRE

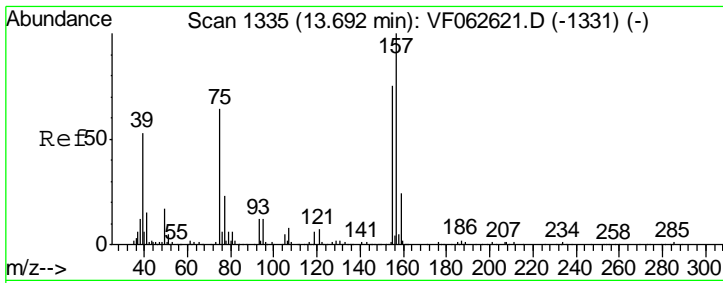
| Tgt Ion | Resp | Lower | Upper |
|---------|-------|-------|-------|
| 152 | 100 | | |
| 115 | 54.3 | 25.2 | 75.6 |
| 150 | 153.4 | 0.0 | 306.2 |



#74
 N-amyl acetate
 Concen: Below Cal
 RT: 11.47 min Scan# 1109
 Delta R.T. 0.01 min
 Lab File: VF062673.D
 Acq: 20 May 2019 21:04

| Tgt Ion | Resp | Lower | Upper |
|---------|------|-------|-------|
| 43 | 100 | | |
| 70 | 28.9 | 30.9 | 46.3# |
| 55 | 58.9 | 17.0 | 25.4# |
| 61 | 0.0 | 22.6 | 34.0# |





#92
 1,2-Dibromo-3-Chloropropane
 Concen: 1.332 ug/l
 RT: 13.65 min Scan# 1331
 Delta R.T. -0.04 min
 Lab File: VF062673.D
 Acq: 20 May 2019 21:04

Instrument : MSVOA_F
 ClientSampleId : GIS-3-4FTRE

| Tot Ion | Resp | Lower | Upper |
|---------|------|-------|--------|
| 75 | 1017 | | |
| 75 | 100 | | |
| 155 | 33.7 | 58.1 | 174.3# |
| 157 | 0.0 | 77.8 | 233.4# |

