

Data Path : Z:\VOASRV\HPCHEM1\MSVOA_F\DATA\VF070318\
 Data File : VF059410.D
 Acq On : 3 Jul 2018 14:22
 Operator : VA/AP
 Sample : J3774-06RE
 Misc : 5.32g/5mL/MSVOA-F/SOIL
 ALS Vial : 8 Sample Multiplier: 1

Instrument :
 MSVOA_F
 ClientSampleId :
 SB-6(2-4)RE

Quant Time: Jul 04 00:10:42 2018
 Quant Method : Z:\VOASRV\HPCHEM1\MSVOA_F\METHODS\82F062518S.M
 Quant Title : SW846 8260
 QLast Update : Tue Jun 26 08:45:17 2018
 Response via : Initial Calibration

Internal Standards	R.T.	QIon	Response	Conc	Units	Dev(Min)
1) Pentafluorobenzene	5.02	168	525	50.00	ug/l	0.00
34) 1,4-Difluorobenzene	5.73	114	652	50.00	ug/l	-0.03
63) Chlorobenzene-d5	9.89	117	445	50.00	ug/l	-0.02
72) 1,4-Dichlorobenzene-d4	12.61	152	157	50.00	ug/l	-0.02

System Monitoring Compounds

33) 1,2-Dichloroethane-d4	5.03	65	148	21.82	ug/l	0.02
Spiked Amount	50.000		Recovery	=	43.64%	
35) Dibromofluoromethane	4.26	113	209	43.87	ug/l	-0.02
Spiked Amount	50.000		Recovery	=	87.74%	
50) Toluene-d8	7.67	98	230	19.50	ug/l	-0.03
Spiked Amount	50.000		Recovery	=	39.00%	
62) 4-Bromofluorobenzene	11.49	95	417	62.67	ug/l	-0.02
Spiked Amount	50.000		Recovery	=	125.34%	

Target Compounds

						Qvalue
2) Dichlorodifluoromethane	1.02	85	69	14.385	ug/l #	8
3) Chloromethane	1.05	50	103	31.964	ug/l #	41
4) Vinyl Chloride	1.28	62	75	23.645	ug/l #	1
5) Bromomethane	1.30	94	134	75.878	ug/l #	4
6) Chloroethane	1.41	64	176	110.166	ug/l #	45
7) Trichlorofluoromethane	1.47	101	59	9.406	ug/l #	16
8) Diethyl Ether	1.62	74	76	47.256	ug/l #	1
11) Tert butyl alcohol	2.61	59	65	143.944	ug/l #	66
12) 1,1-Dichloroethene	1.71	96	86	27.785	ug/l #	1
13) Acrolein	2.05	56	66	311.263	ug/l #	10
14) Allyl chloride	2.16	41	151	25.989	ug/l #	64
15) Acrylonitrile	3.07	53	67	84.256	ug/l #	9
16) Acetone	2.34	43	223	126.606	ug/l #	65
17) Carbon Disulfide	1.91	76	157	21.564	ug/l #	71
18) Methyl Acetate	2.42	43	141	45.962	ug/l #	61
19) Methyl tert-butyl Ether	2.53	73	72	6.236	ug/l #	63
20) Methylene Chloride	2.26	84	70	12.922	ug/l #	1
21) trans-1,2-Dichloroethene	2.40	96	65	19.686	ug/l #	1
22) Diisopropyl ether	2.91	45	85	6.606	ug/l #	37
23) Vinyl Acetate	3.28	43	146	17.818	ug/l #	79
24) 1,1-Dichloroethane	3.06	63	156	19.556	ug/l #	90
25) 2-Butanone	4.44	43	62	27.774	ug/l #	59
26) 2,2-Dichloropropane	3.81	77	75	13.631	ug/l #	62
27) cis-1,2-Dichloroethene	3.69	96	107	21.345	ug/l	1
28) Bromochloromethane	3.76	49	88	26.752	ug/l #	6
29) Tetrahydrofuran	4.21	42	61	63.305	ug/l #	1
30) Chloroform	4.11	83	88	7.620	ug/l #	18
31) Cyclohexane	3.77	56	76	14.543	ug/l #	13
32) 1,1,1-Trichloroethane	4.23	97	143	16.921	ug/l #	21
36) 1,1-Dichloropropene	4.40	75	60	10.534	ug/l #	44
37) Ethyl Acetate	4.24	43	88	23.363	ug/l #	26
39) Methylcyclohexane	5.54	83	65	12.878	ug/l #	15
40) Benzene	4.80	78	89	7.047	ug/l #	15
41) Methacrylonitrile	4.86	41	406	208.967	ug/l #	71

Data Path : Z:\VOASRV\HPCHEM1\MSVOA_F\DATA\VF070318\
 Data File : VF059410.D
 Acq On : 3 Jul 2018 14:22
 Operator : VA/AP
 Sample : J3774-06RE
 Misc : 5.32g/5mL/MSVOA-F/SOIL
 ALS Vial : 8 Sample Multiplier: 1

Instrument :
 MSVOA_F
 ClientSampleId :
 SB-6(2-4)RE

Quant Time: Jul 04 00:10:42 2018
 Quant Method : Z:\VOASRV\HPCHEM1\MSVOA_F\METHODS\82F062518S.M
 Quant Title : SW846 8260
 QLast Update : Tue Jun 26 08:45:17 2018
 Response via : Initial Calibration

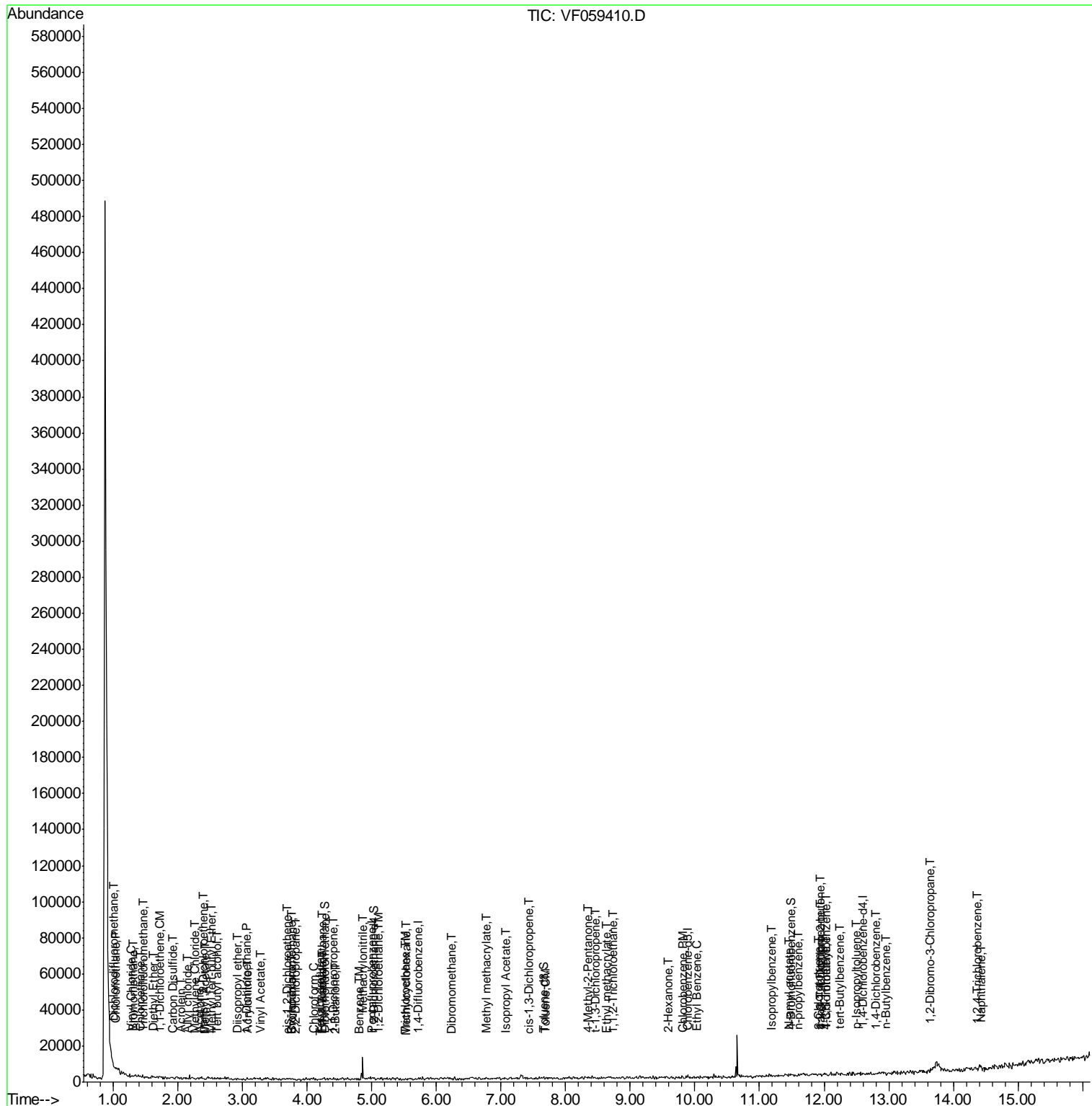
Internal Standards	R.T.	QIon	Response	Conc	Units	Dev(Min)
42) 1,2-Dichloroethane	5.11	62	86	11.654	ug/l	83
43) Isopropyl Acetate	7.08	43	148	31.195	ug/l #	52
44) Trichloroethene	5.53	130	109	25.161	ug/l	1
46) Dibromomethane	6.23	93	87	27.781	ug/l #	4
48) Methyl methacrylate	6.78	41	77	24.216	ug/l #	11
51) 4-Methyl-2-Pentanone	8.34	43	279	79.379	ug/l #	39
52) Toluene	7.70	92	111	11.746	ug/l #	1
53) t-1,3-Dichloropropene	8.45	75	95	13.748	ug/l #	43
54) cis-1,3-Dichloropropene	7.42	75	91	12.124	ug/l #	64
55) 1,1,2-Trichloroethane	8.73	97	106	28.890	ug/l #	13
56) Ethyl methacrylate	8.65	69	71	15.621	ug/l #	1
59) 2-Hexanone	9.58	43	62	7.059	ug/l #	30
65) Chlorobenzene	9.82	112	64	7.761	ug/l #	42
67) Ethyl Benzene	10.04	91	83	5.933	ug/l #	44
73) Isopropylbenzene	11.18	105	64	6.997	ug/l #	51
74) N-amyl acetate	11.46	43	170	51.218	ug/l #	33
76) 1,2,3-Trichloropropane	11.96	75	174	99.858	ug/l #	39
78) n-propylbenzene	11.61	91	71	6.464	ug/l #	52
79) 2-Chlorotoluene	11.93	91	134	19.967	ug/l #	40
80) 1,3,5-Trimethylbenzene	12.04	105	60	7.489	ug/l #	28
81) trans-1,4-Dichloro-2-buten	11.96	75	174	167.777	ug/l #	14
82) 4-Chlorotoluene	12.04	91	82	11.408	ug/l #	38
83) tert-Butylbenzene	12.24	119	80	9.983	ug/l #	31
86) p-Isopropyltoluene	12.50	119	74	8.302	ug/l #	50
88) 1,4-Dichlorobenzene	12.79	146	70	15.446	ug/l #	24
89) n-Butylbenzene	12.95	91	78	8.620	ug/l #	29
92) 1,2-Dibromo-3-Chloropropan	13.64	75	87	169.900	ug/l #	1
93) 1,2,4-Trichlorobenzene	14.37	180	70	20.550	ug/l #	12
95) Naphthalene	14.44	128	70	9.822	ug/l #	69

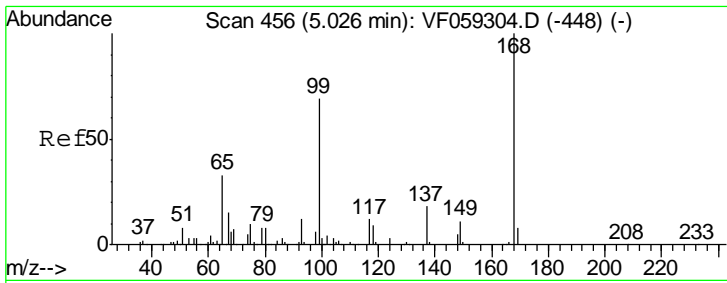
(#) = qualifier out of range (m) = manual integration (+) = signals summed

Data Path : Z:\VOASRV\HPCHEM1\MSVOA_F\DATA\VF070318\
Data File : VF059410.D
Acq On : 3 Jul 2018 14:22
Operator : VA/AP
Sample : J3774-06RE
Misc : 5.32g/5mL/MSVOA-F/SOIL
ALS Vial : 8 Sample Multiplier: 1

Instrument :
MSVOA_F
Client Sampled :
SB-6(2-4)RE

Quant Time: Jul 04 00:10:42 2018
Quant Method : Z:\VOASRV\HPCHEM1\MSVOA_F\METHODS\82F062518S.M
Quant Title : SW846 8260
QLast Update : Tue Jun 26 08:45:17 2018
Response via : Initial Calibration

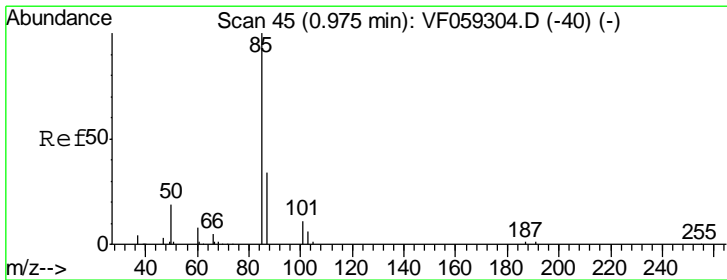
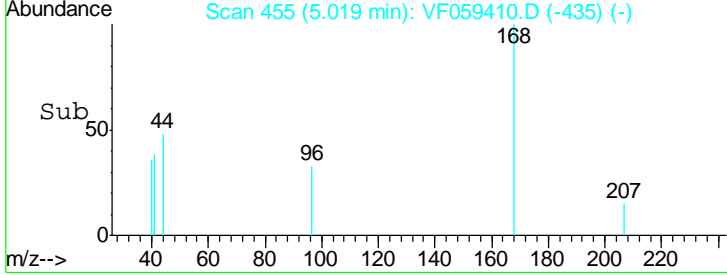
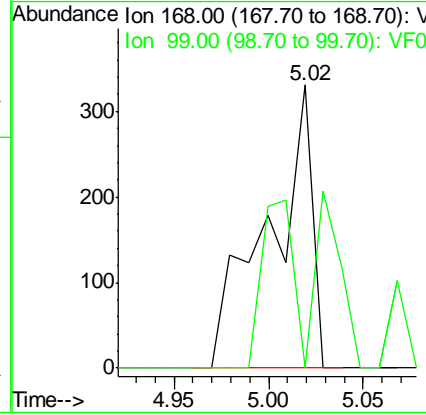
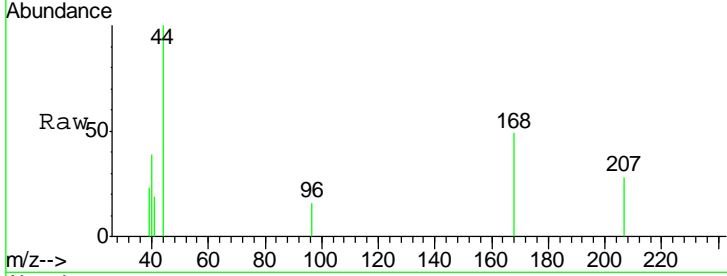




#1
 Pentafluorobenzene
 Concen: 50.000 ug/l
 RT: 5.02 min Scan# 455
 Delta R.T. -0.01 min
 Lab File: VF059410.D
 Acq: 3 Jul 2018 14:22

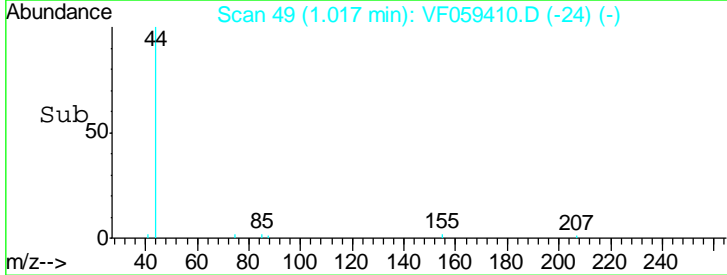
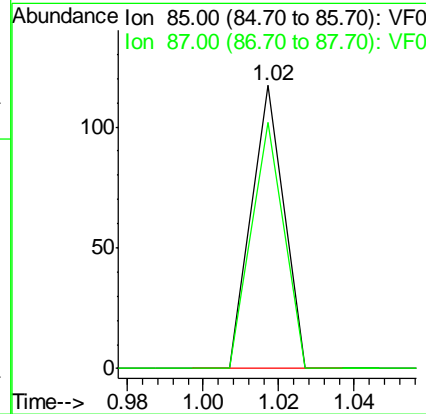
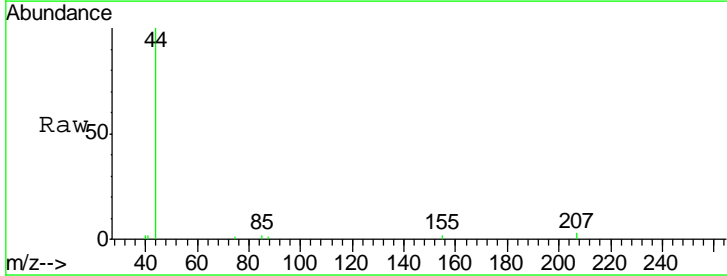
Instrument :
 MSVOA_F
ClientSampled :
 SB-6(2-4)RE

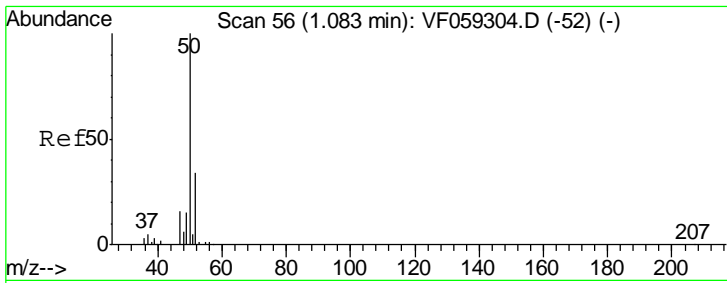
Tgt Ion: 168 Resp: 525
 Ion Ratio Lower Upper
 168 100
 99 0.0 54.9 82.3#



#2
 Dichlorodifluoromethane
 Concen: 14.385 ug/l
 RT: 1.02 min Scan# 49
 Delta R.T. 0.04 min
 Lab File: VF059410.D
 Acq: 3 Jul 2018 14:22

Tgt Ion: 85 Resp: 69
 Ion Ratio Lower Upper
 85 100
 87 87.2 17.1 51.3#

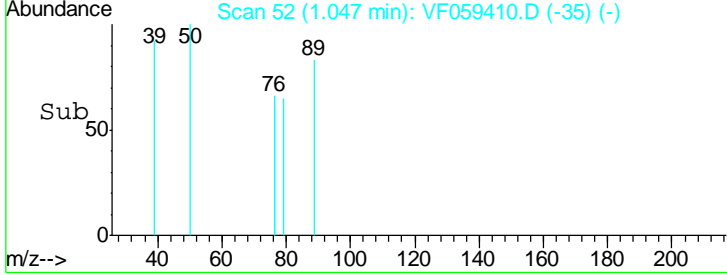
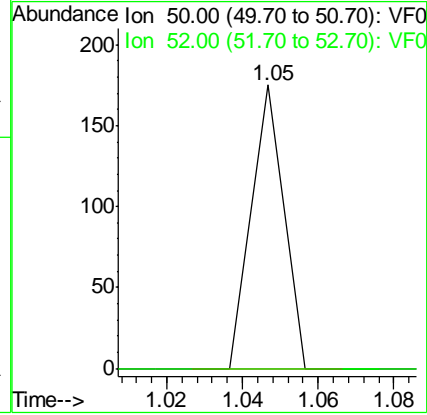
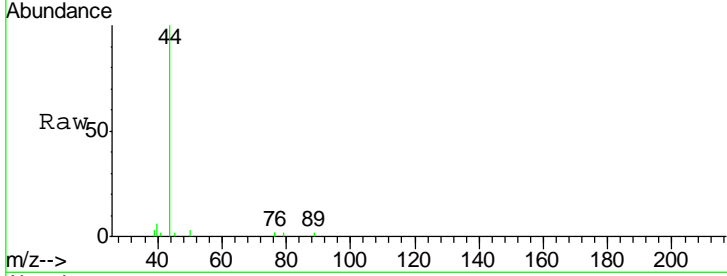




#3
 Chloromethane
 Concen: 31.964 ug/l
 RT: 1.05 min Scan# 52
 Delta R.T. -0.04 min
 Lab File: VF059410.D
 Acq: 3 Jul 2018 14:22

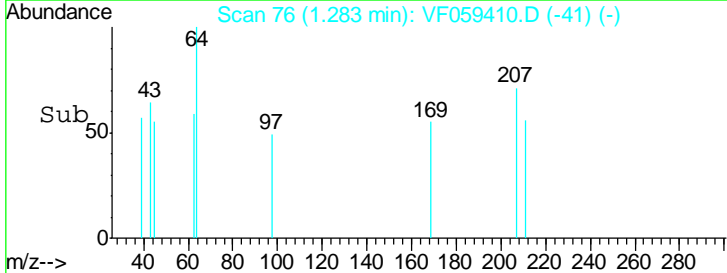
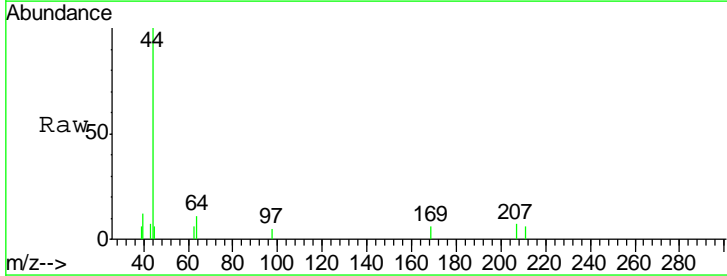
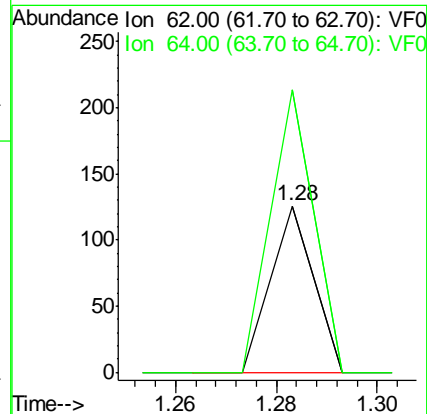
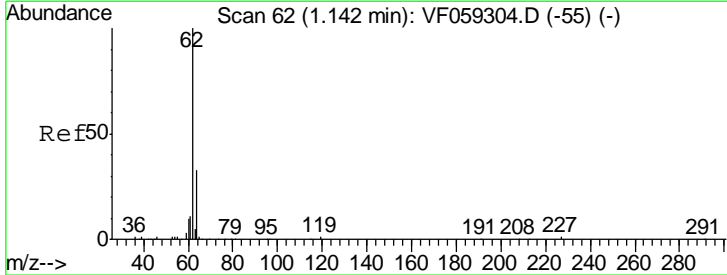
Instrument :
 MSVOA_F
 ClientSampled :
 SB-6(2-4)RE

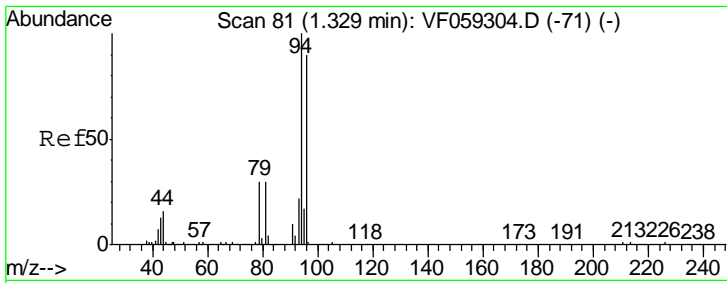
Tgt Ion: 50 Resp: 103
 Ion Ratio Lower Upper
 50 100
 52 0.0 26.7 40.1#



#4
 Vinyl Chloride
 Concen: 23.645 ug/l
 RT: 1.28 min Scan# 76
 Delta R.T. 0.14 min
 Lab File: VF059410.D
 Acq: 3 Jul 2018 14:22

Tgt Ion: 62 Resp: 75
 Ion Ratio Lower Upper
 62 100
 64 169.8 26.3 39.5#

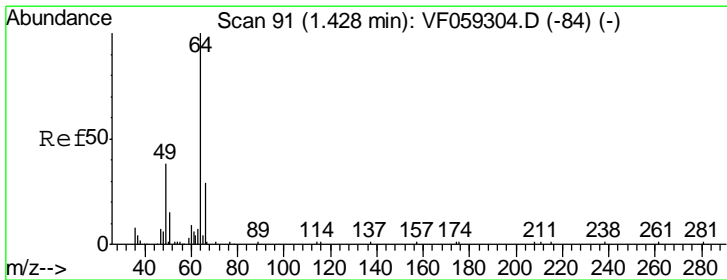
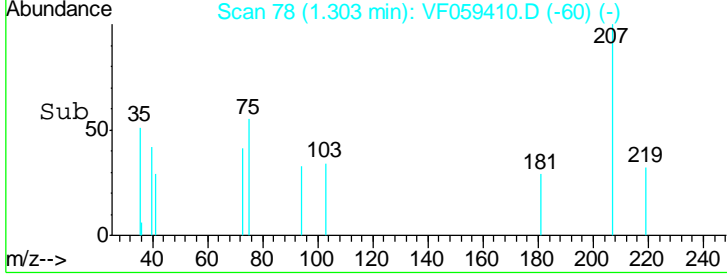
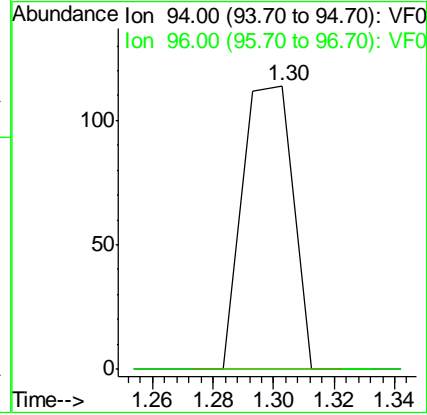
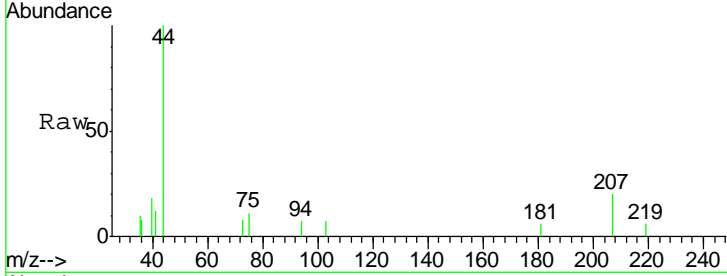




#5
 Bromomethane
 Concen: 75.878 ug/l
 RT: 1.30 min Scan# 78
 Delta R.T. -0.03 min
 Lab File: VF059410.D
 Acq: 3 Jul 2018 14:22

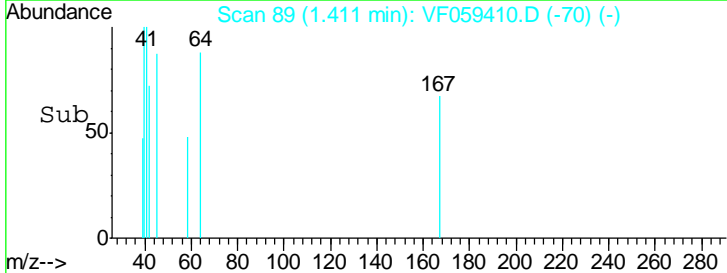
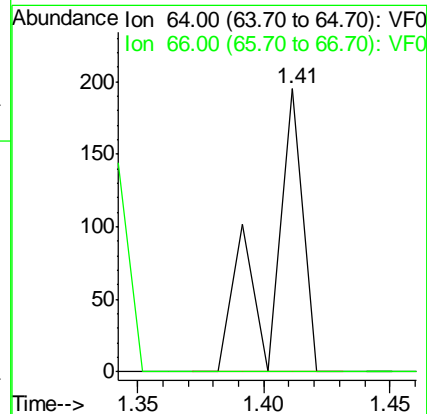
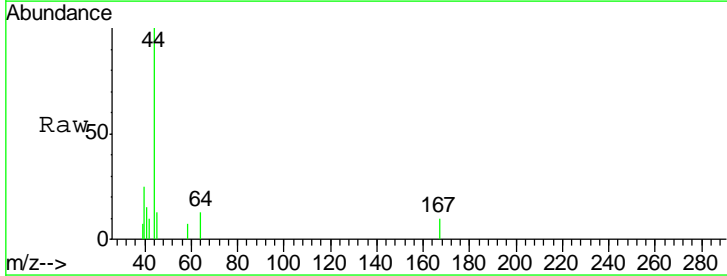
Instrument :
 MSVOA_F
ClientSampled :
 SB-6(2-4)RE

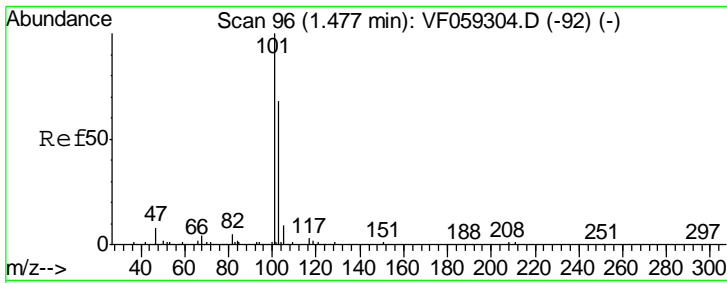
Tgt Ion: 94 Resp: 134
 Ion Ratio Lower Upper
 94 100
 96 0.0 73.4 110.0#



#6
 Chloroethane
 Concen: 110.166 ug/l
 RT: 1.41 min Scan# 89
 Delta R.T. -0.02 min
 Lab File: VF059410.D
 Acq: 3 Jul 2018 14:22

Tgt Ion: 64 Resp: 176
 Ion Ratio Lower Upper
 64 100
 66 0.0 23.9 35.9#

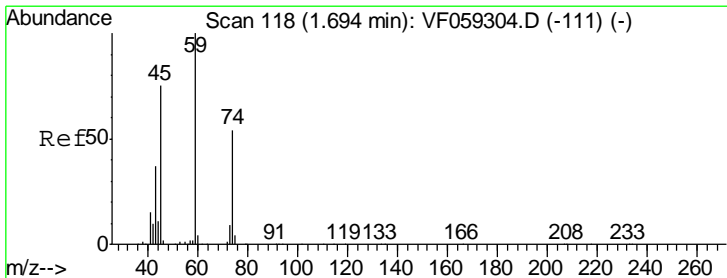
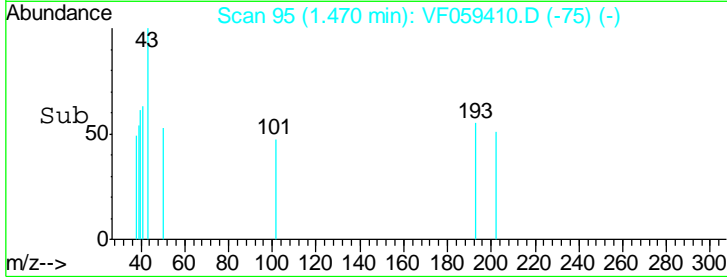
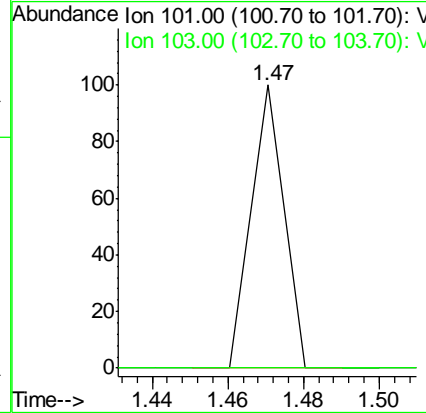
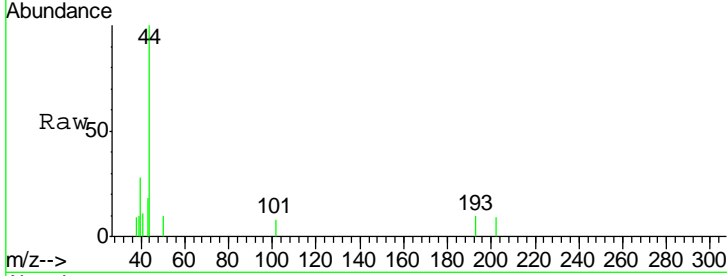




#7
 Trichlorofluoromethane
 Concen: 9.406 ug/l
 RT: 1.47 min Scan# 95
 Delta R.T. -0.01 min
 Lab File: VF059410.D
 Acq: 3 Jul 2018 14:22

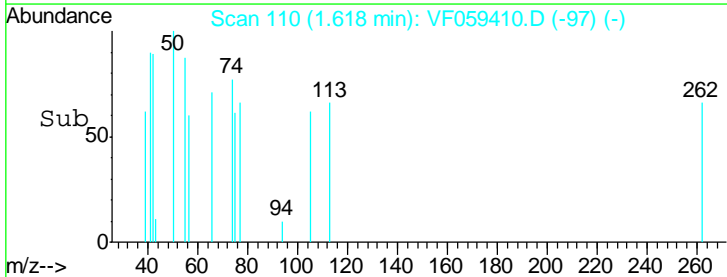
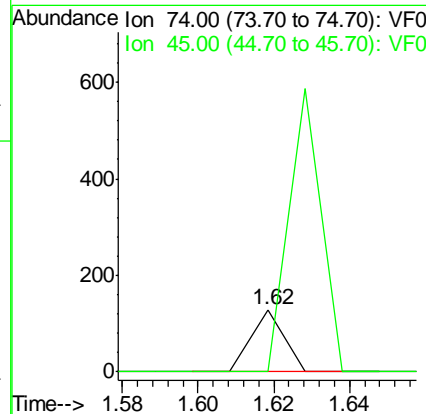
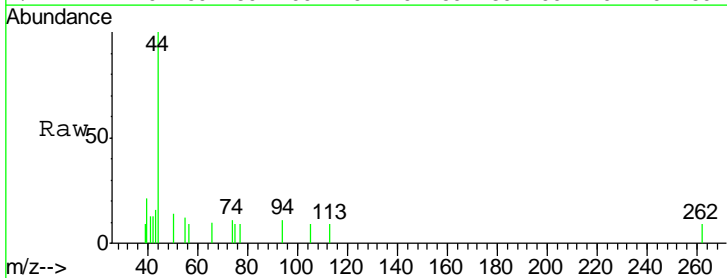
Instrument :
 MSVOA_F
ClientSampled :
 SB-6(2-4)RE

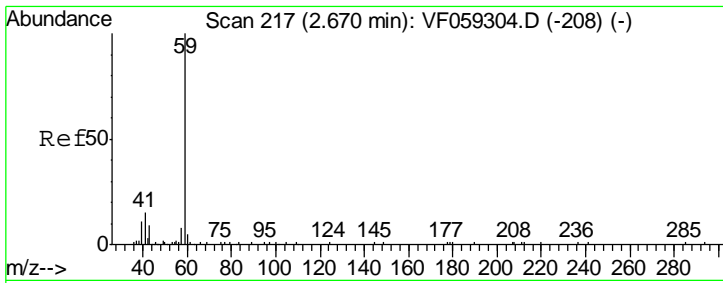
Tgt Ion: 101 Resp: 59
 Ion Ratio Lower Upper
 101 100
 103 0.0 54.2 81.2#



#8
 Diethyl Ether
 Concen: 47.256 ug/l
 RT: 1.62 min Scan# 110
 Delta R.T. -0.08 min
 Lab File: VF059410.D
 Acq: 3 Jul 2018 14:22

Tgt Ion: 74 Resp: 76
 Ion Ratio Lower Upper
 74 100
 45 0.0 70.0 210.0#

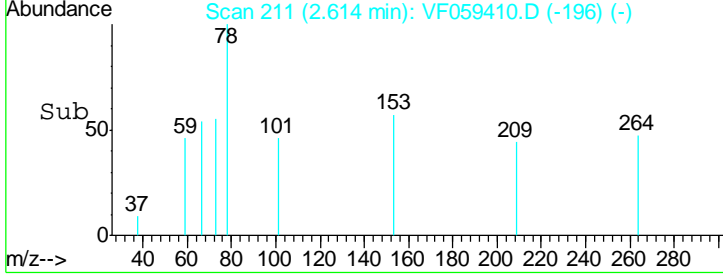
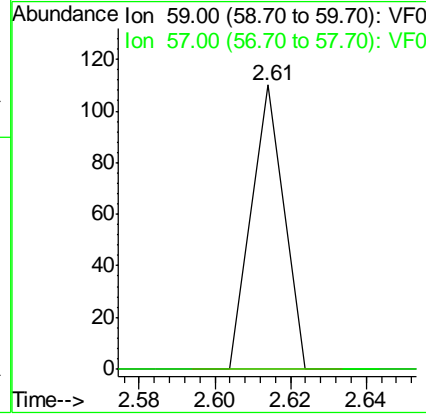
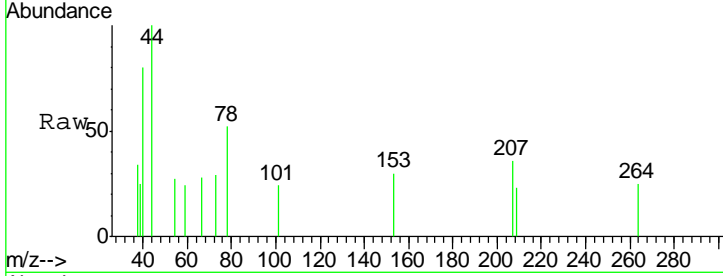




#11
 Tert butyl alcohol
 Concen: 143.944 ug/l
 RT: 2.61 min Scan# 211
 Delta R.T. -0.06 min
 Lab File: VF059410.D
 Acq: 3 Jul 2018 14:22

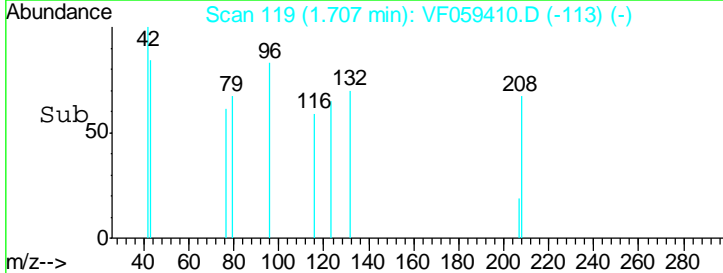
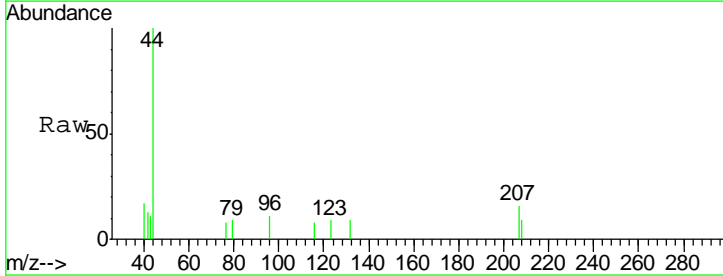
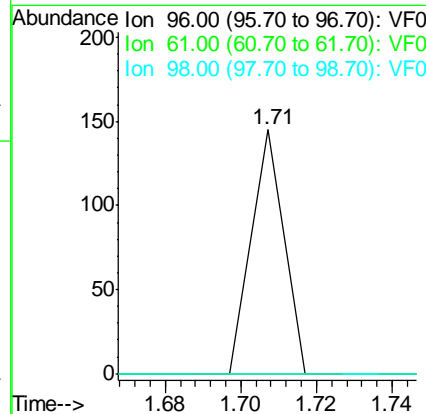
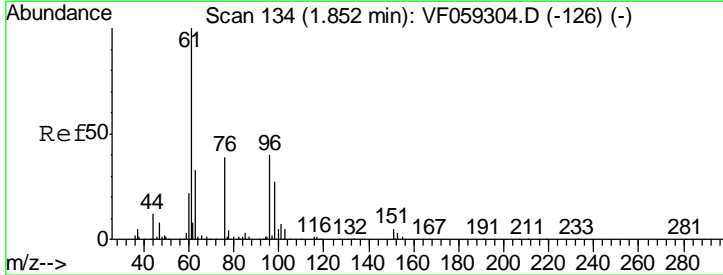
Instrument :
 MSVOA_F
ClientSampled :
 SB-6(2-4)RE

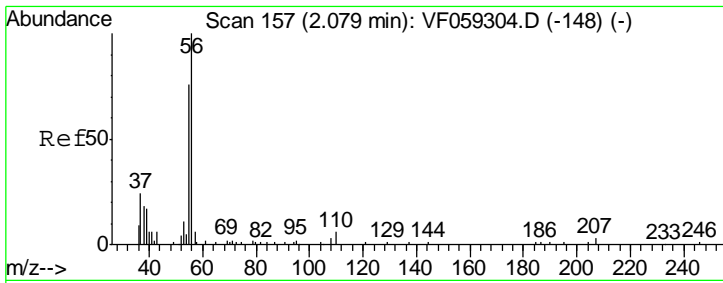
Tgt Ion	Resp	Lower	Upper
59	100		
57	0.0	11.0	16.4#



#12
 1,1-Dichloroethene
 Concen: 27.785 ug/l
 RT: 1.71 min Scan# 119
 Delta R.T. -0.14 min
 Lab File: VF059410.D
 Acq: 3 Jul 2018 14:22

Tgt Ion	Resp	Lower	Upper
96	100		
61	0.0	201.1	301.7#
98	0.0	53.9	80.9#

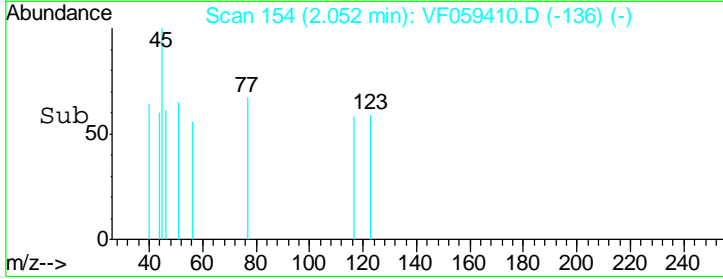
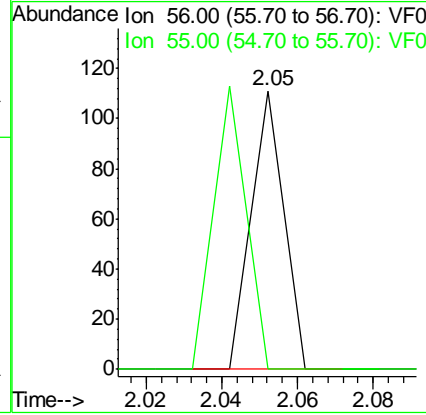
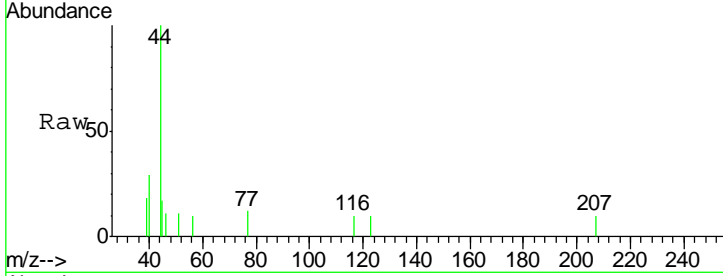




#13
 Acrolein
 Concen: 311.263 ug/l
 RT: 2.05 min Scan# 154
 Delta R.T. -0.03 min
 Lab File: VF059410.D
 Acq: 3 Jul 2018 14:22

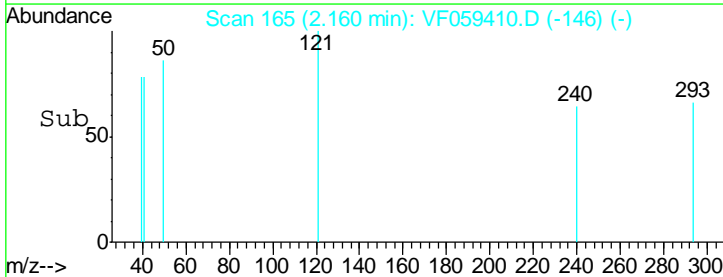
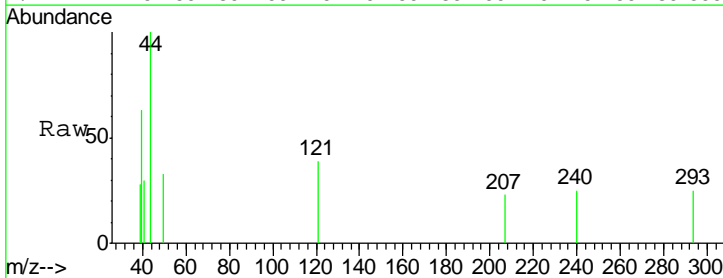
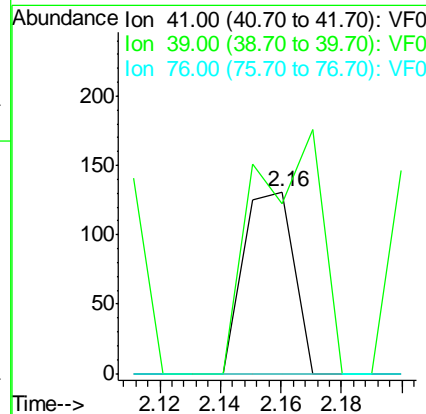
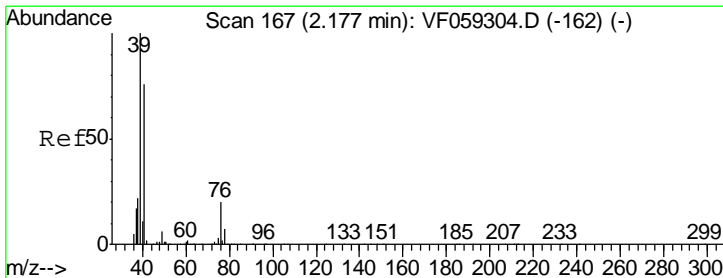
Instrument :
 MSVOA_F
 ClientSampled :
 SB-6(2-4)RE

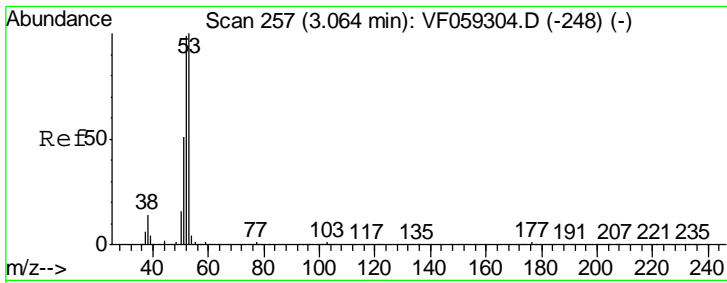
Tgt Ion: 56 Resp: 66
 Ion Ratio Lower Upper
 56 100
 55 0.0 62.4 93.6#



#14
 Allyl chloride
 Concen: 25.989 ug/l
 RT: 2.16 min Scan# 165
 Delta R.T. -0.02 min
 Lab File: VF059410.D
 Acq: 3 Jul 2018 14:22

Tgt Ion: 41 Resp: 151
 Ion Ratio Lower Upper
 41 100
 39 93.1 105.6 158.4#
 76 0.0 21.6 32.4#

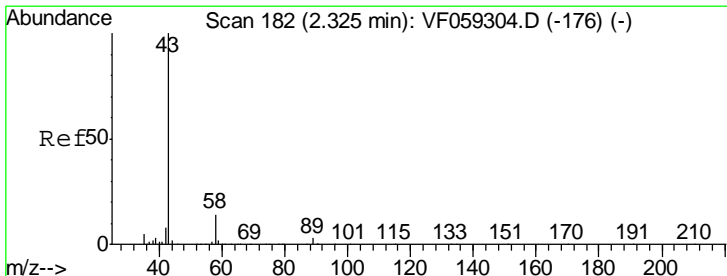
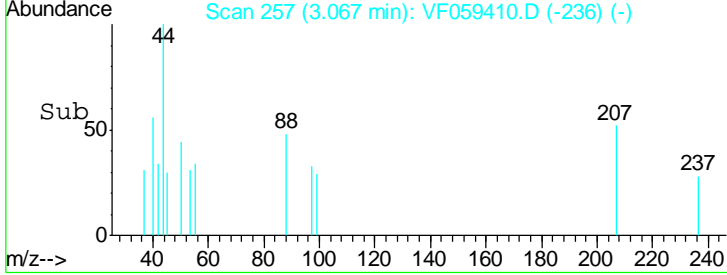
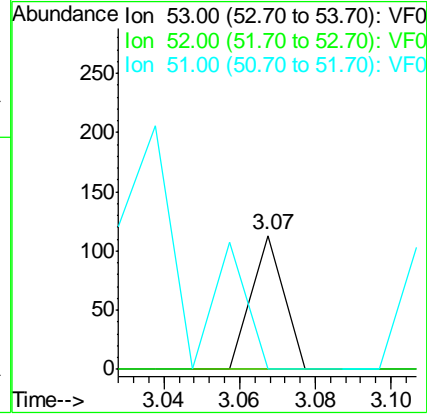
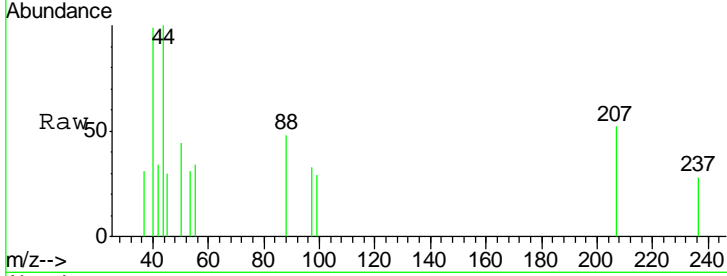




#15
 Acrylonitrile
 Concen: 84.256 ug/l
 RT: 3.07 min Scan# 257
 Delta R.T. 0.00 min
 Lab File: VF059410.D
 Acq: 3 Jul 2018 14:22

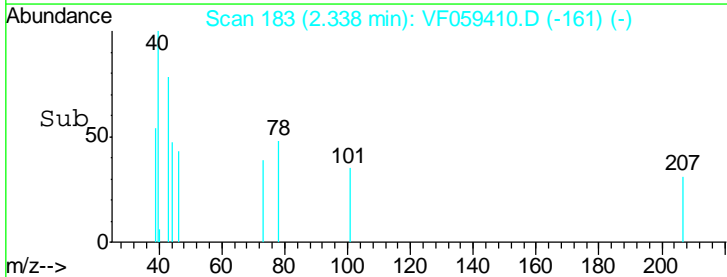
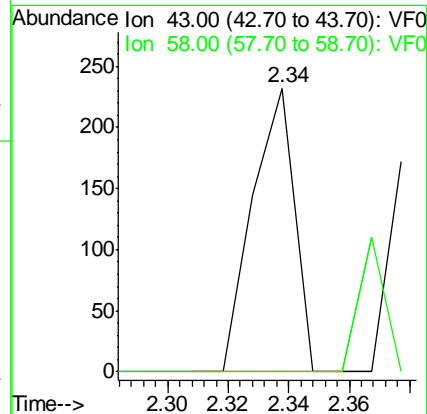
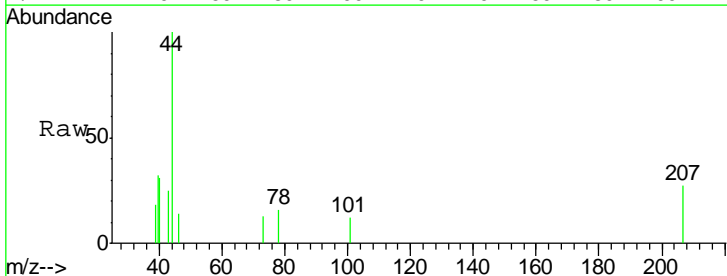
Instrument :
 MSVOA_F
 ClientSampled :
 SB-6(2-4)RE

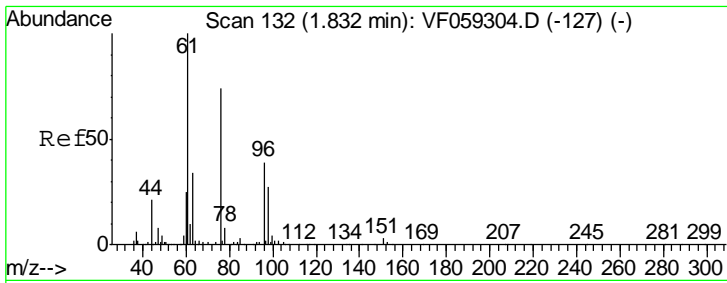
Tgt Ion	Resp	Lower	Upper
53	100		
52	0.0	79.2	118.8#
51	0.0	40.9	61.3#



#16
 Acetone
 Concen: 126.606 ug/l
 RT: 2.34 min Scan# 183
 Delta R.T. 0.01 min
 Lab File: VF059410.D
 Acq: 3 Jul 2018 14:22

Tgt Ion	Resp	Lower	Upper
43	100		
58	0.0	11.4	17.0#

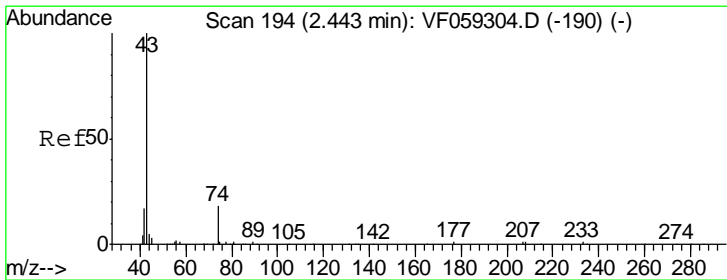
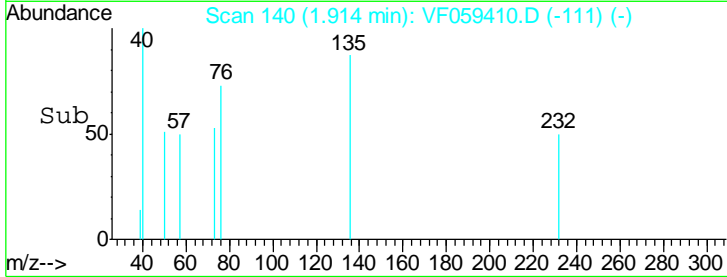
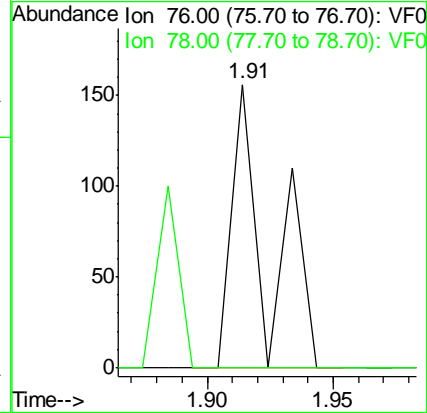
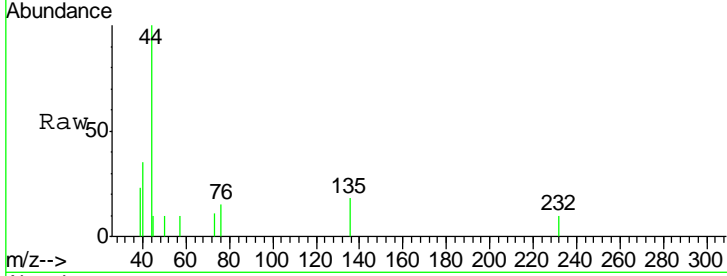




#17
 Carbon Disulfide
 Concen: 21.564 ug/l
 RT: 1.91 min Scan# 140
 Delta R.T. 0.08 min
 Lab File: VF059410.D
 Acq: 3 Jul 2018 14:22

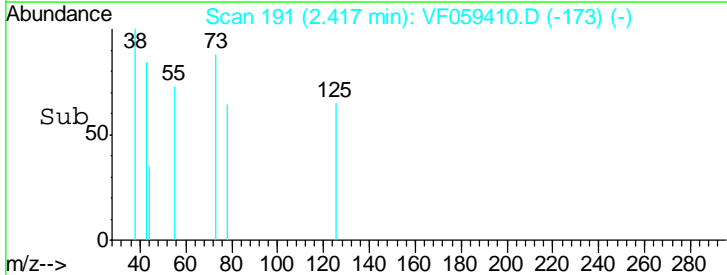
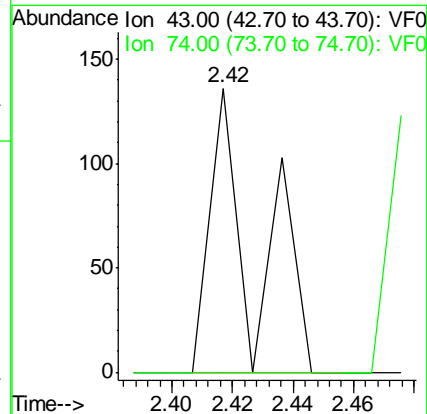
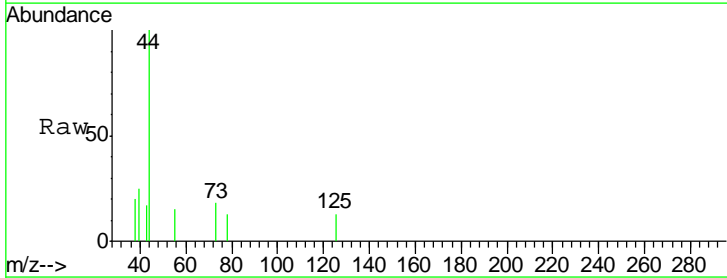
Instrument :
 MSVOA_F
 ClientSampled :
 SB-6(2-4)RE

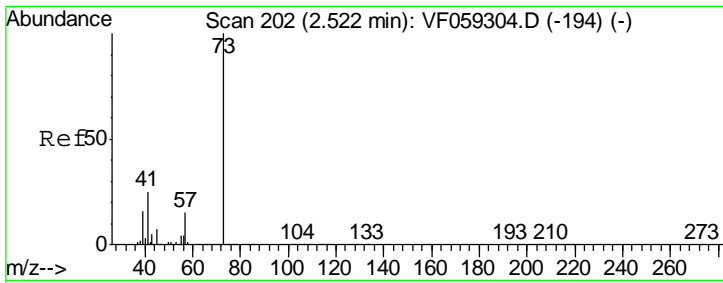
Tgt Ion: 76 Resp: 157
 Ion Ratio Lower Upper
 76 100
 78 0.0 8.9 13.3#



#18
 Methyl Acetate
 Concen: 45.962 ug/l
 RT: 2.42 min Scan# 191
 Delta R.T. -0.03 min
 Lab File: VF059410.D
 Acq: 3 Jul 2018 14:22

Tgt Ion: 43 Resp: 141
 Ion Ratio Lower Upper
 43 100
 74 0.0 13.3 19.9#

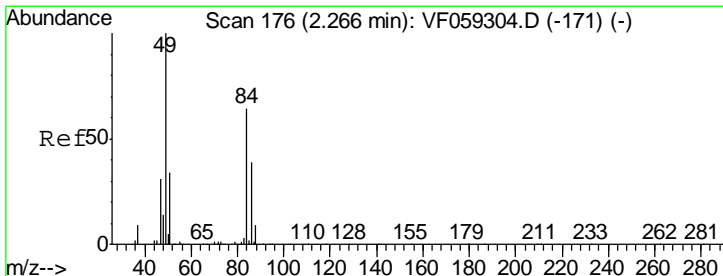
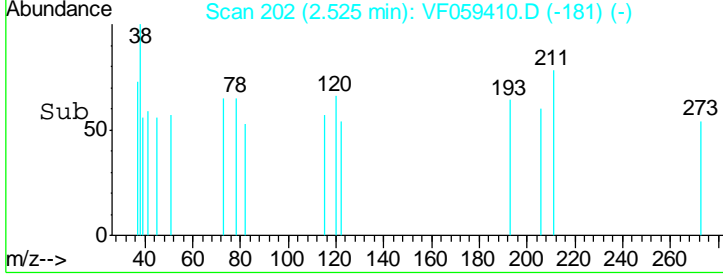
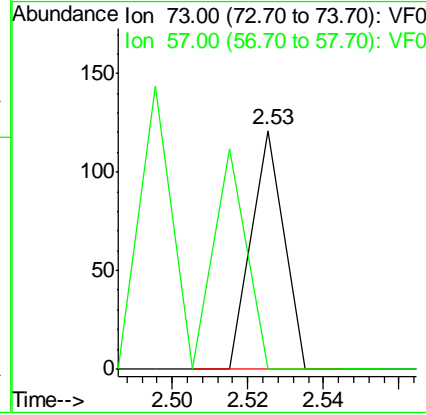
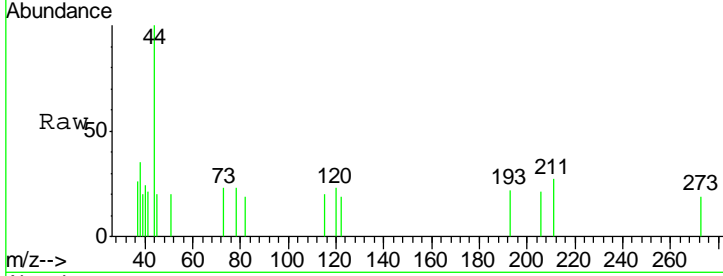




#19
 Methyl tert-butyl Ether
 Concen: 6.236 ug/l
 RT: 2.53 min Scan# 202
 Delta R.T. 0.00 min
 Lab File: VF059410.D
 Acq: 3 Jul 2018 14:22

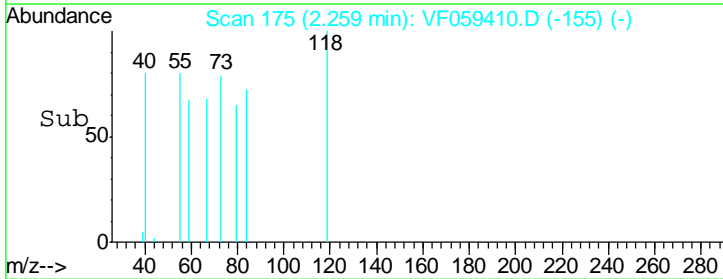
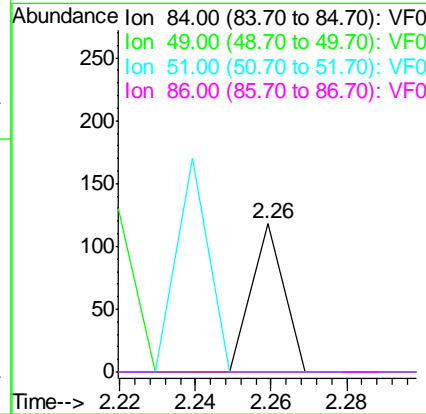
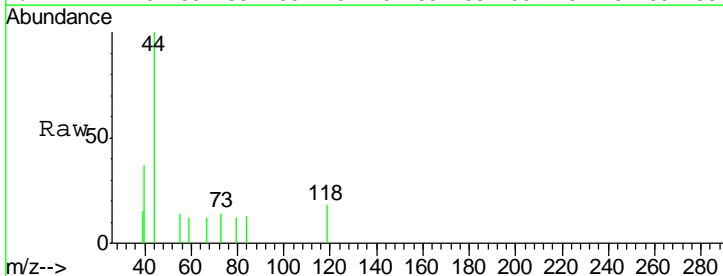
Instrument :
 MSVOA_F
 ClientSampled :
 SB-6(2-4)RE

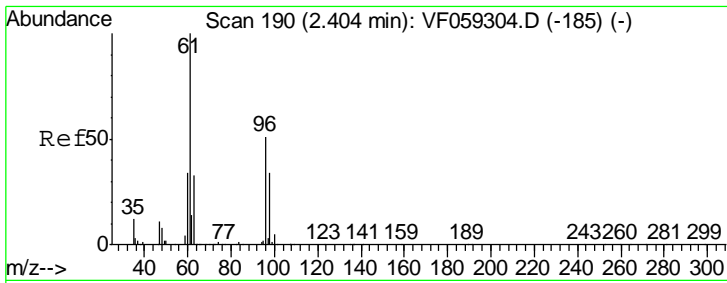
Tgt Ion: 73 Resp: 72
 Ion Ratio Lower Upper
 73 100
 57 0.0 12.3 18.5#



#20
 Methylene Chloride
 Concen: 12.922 ug/l
 RT: 2.26 min Scan# 175
 Delta R.T. -0.01 min
 Lab File: VF059410.D
 Acq: 3 Jul 2018 14:22

Tgt Ion: 84 Resp: 70
 Ion Ratio Lower Upper
 84 100
 49 0.0 126.5 189.7#
 51 0.0 42.9 64.3#
 86 0.0 48.6 73.0#

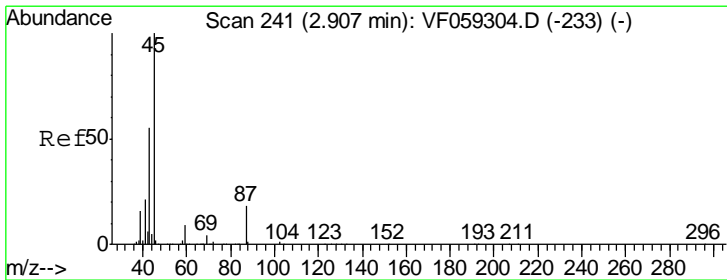
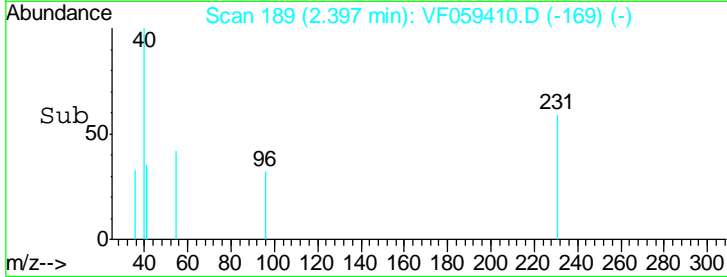
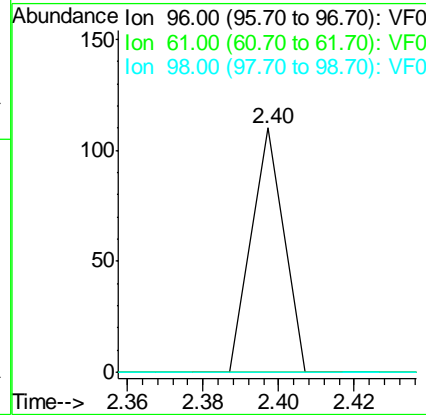
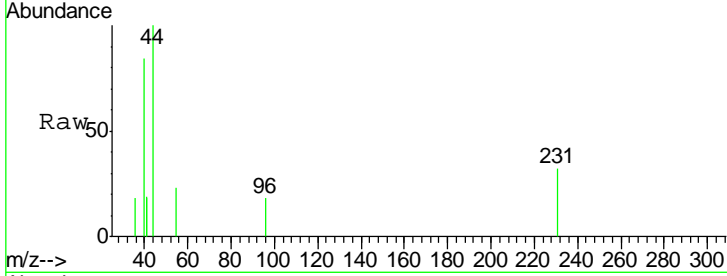




#21
 trans-1,2-Dichloroethene
 Concen: 19.686 ug/l
 RT: 2.40 min Scan# 189
 Delta R.T. -0.01 min
 Lab File: VF059410.D
 Acq: 3 Jul 2018 14:22

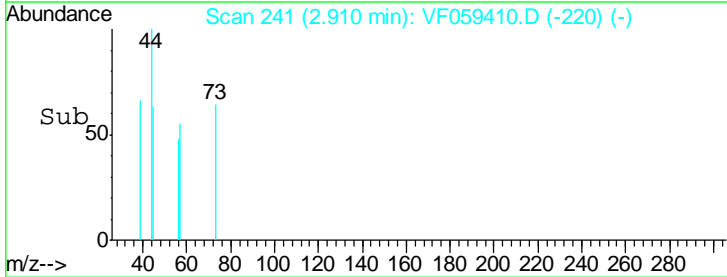
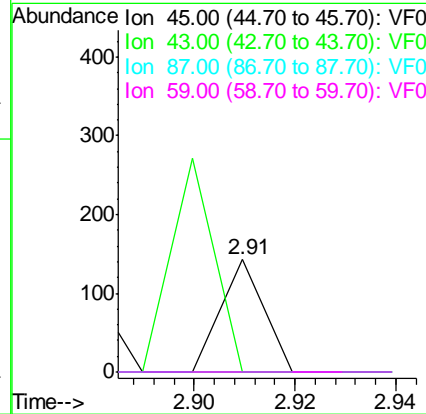
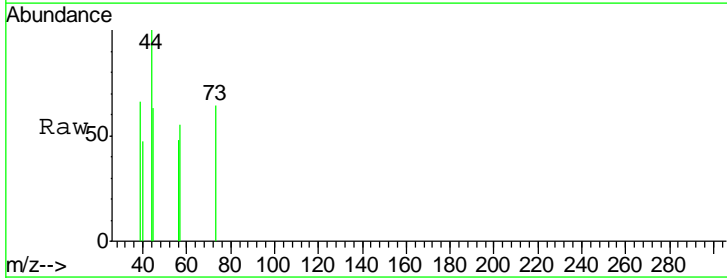
Instrument :
 MSVOA_F
 ClientSampled :
 SB-6(2-4)RE

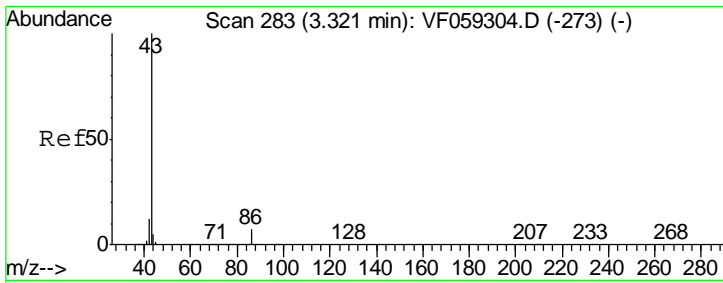
Tgt Ion	Resp	Lower	Upper
96	100		
61	0.0	157.4	236.2#
98	0.0	53.7	80.5#



#22
 Diisopropyl ether
 Concen: 6.606 ug/l
 RT: 2.91 min Scan# 241
 Delta R.T. 0.00 min
 Lab File: VF059410.D
 Acq: 3 Jul 2018 14:22

Tgt Ion	Resp	Lower	Upper
45	100		
43	0.0	44.6	66.8#
87	0.0	14.3	21.5#
59	0.0	7.5	11.3#

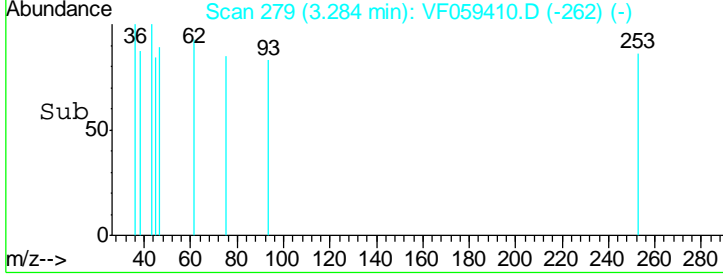
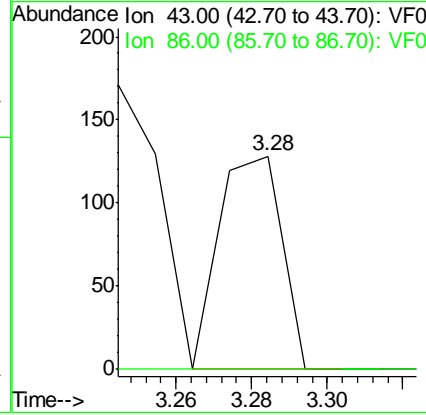
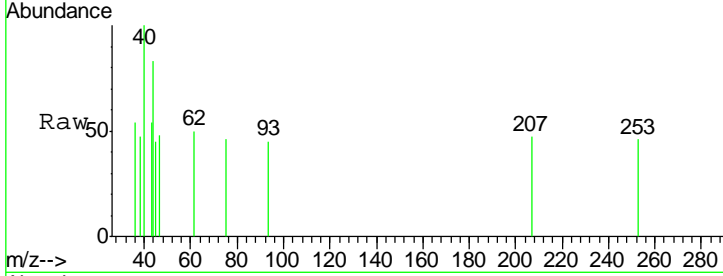




#23
 Vinyl Acetate
 Concen: 17.818 ug/l
 RT: 3.28 min Scan# 279
 Delta R.T. -0.04 min
 Lab File: VF059410.D
 Acq: 3 Jul 2018 14:22

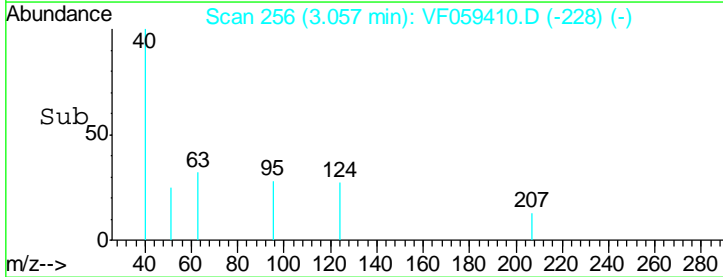
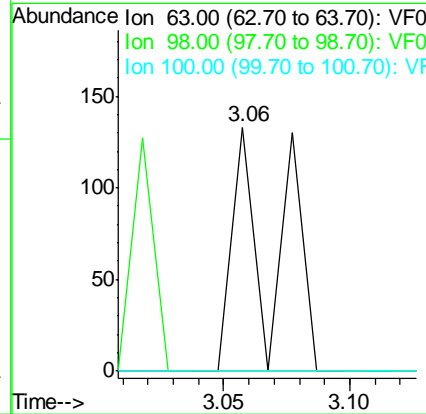
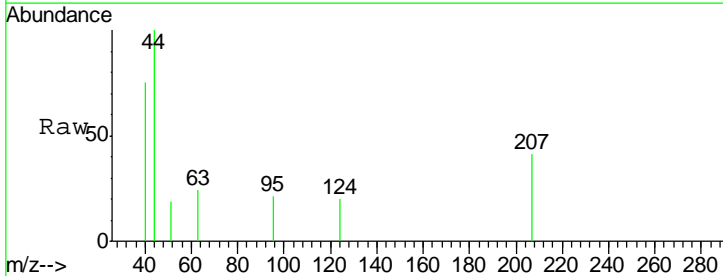
Instrument :
 MSVOA_F
ClientSampled :
 SB-6(2-4)RE

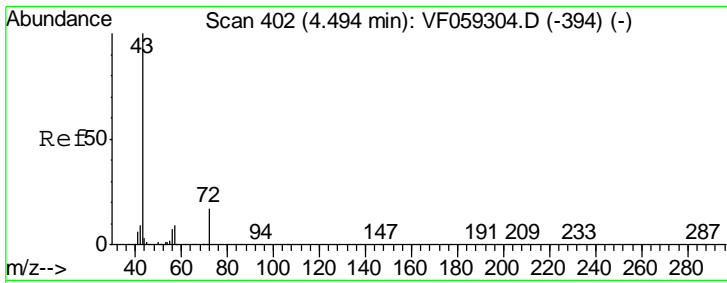
Tgt Ion	Resp	Lower	Upper
43	100		
86	0.0	5.8	8.6#



#24
 1,1-Dichloroethane
 Concen: 19.556 ug/l
 RT: 3.06 min Scan# 256
 Delta R.T. 0.07 min
 Lab File: VF059410.D
 Acq: 3 Jul 2018 14:22

Tgt Ion	Resp	Lower	Upper
63	100		
98	0.0	2.0	6.0#
100	0.0	1.3	3.9#

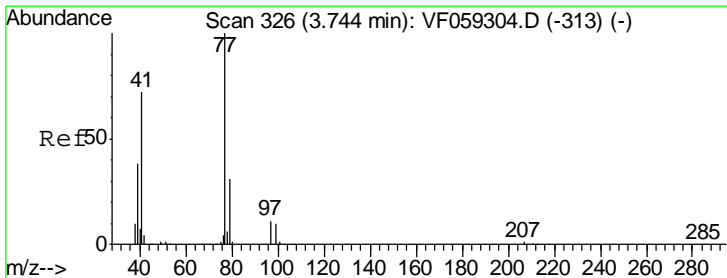
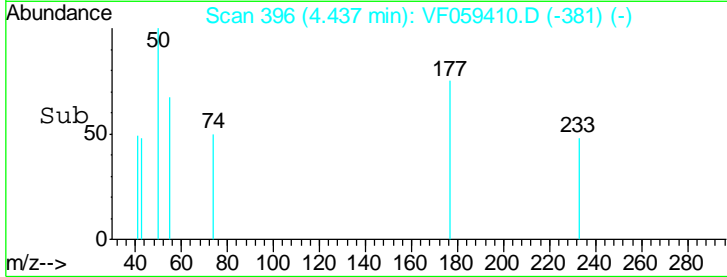
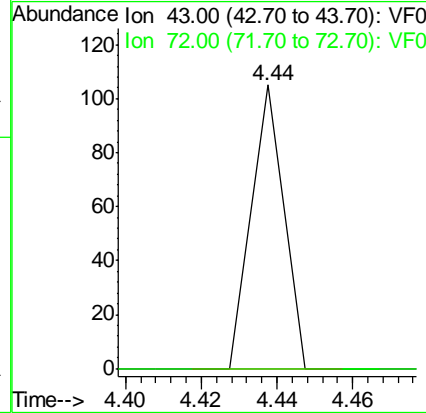
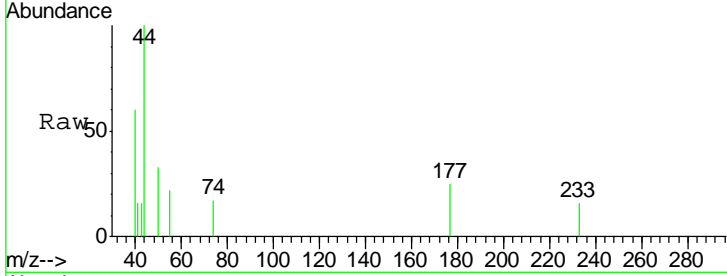




#25
 2-Butanone
 Concen: 27.774 ug/l
 RT: 4.44 min Scan# 396
 Delta R.T. -0.06 min
 Lab File: VF059410.D
 Acq: 3 Jul 2018 14:22

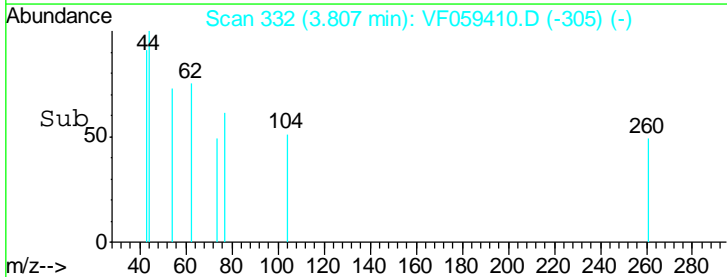
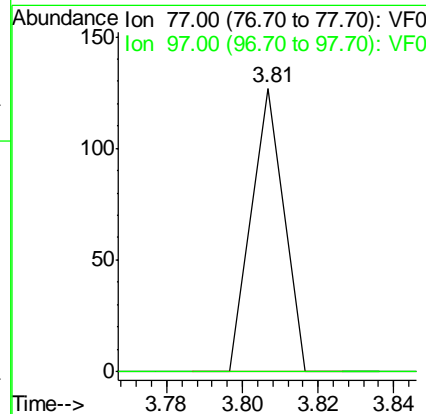
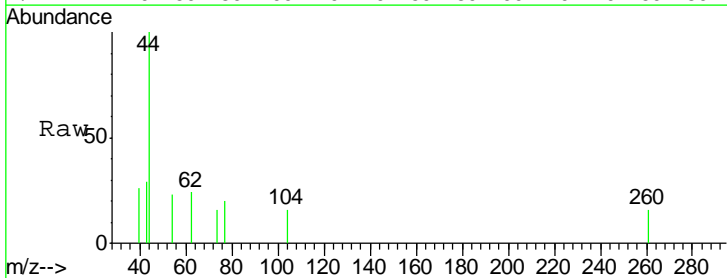
Instrument :
 MSVOA_F
 ClientSampled :
 SB-6(2-4)RE

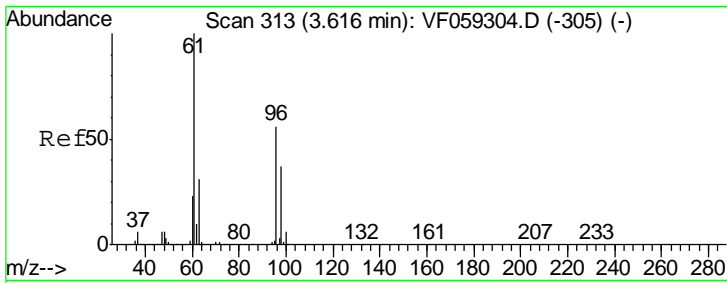
Tgt Ion: 43 Resp: 62
 Ion Ratio Lower Upper
 43 100
 72 0.0 14.4 21.6#



#26
 2,2-Dichloropropane
 Concen: 13.631 ug/l
 RT: 3.81 min Scan# 332
 Delta R.T. 0.06 min
 Lab File: VF059410.D
 Acq: 3 Jul 2018 14:22

Tgt Ion: 77 Resp: 75
 Ion Ratio Lower Upper
 77 100
 97 0.0 8.0 23.8#

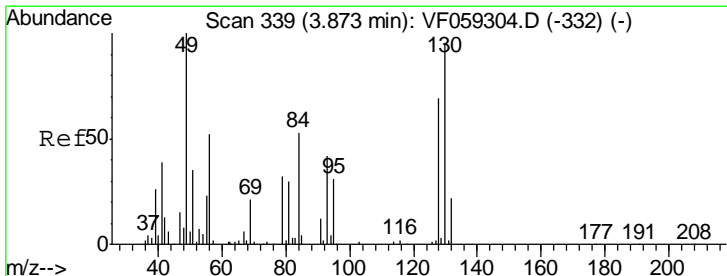
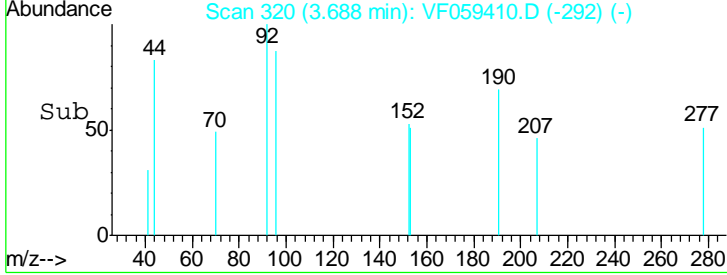
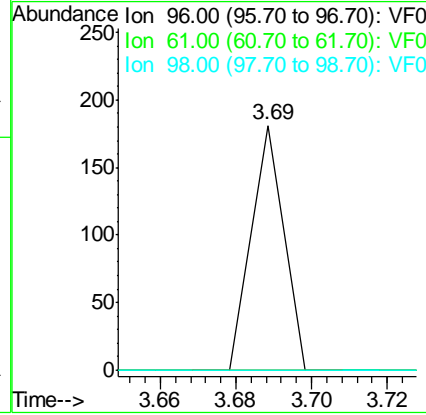
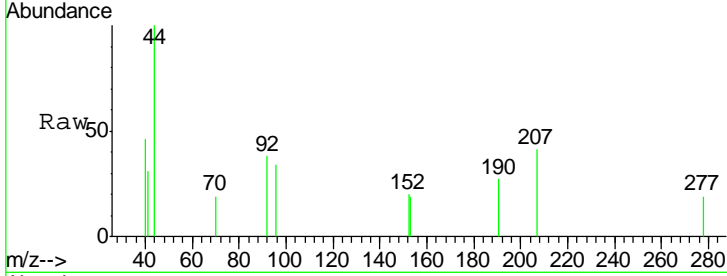




#27
 cis-1,2-Dichloroethene
 Concen: 21.345 ug/l
 RT: 3.69 min Scan# 320
 Delta R.T. 0.07 min
 Lab File: VF059410.D
 Acq: 3 Jul 2018 14:22

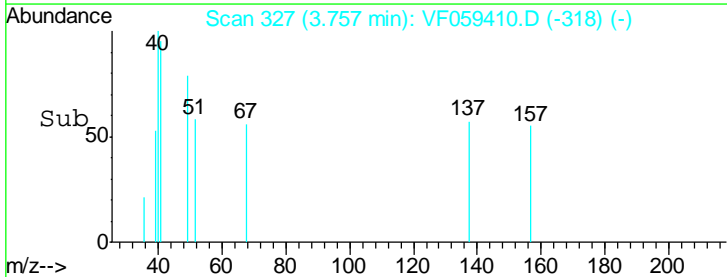
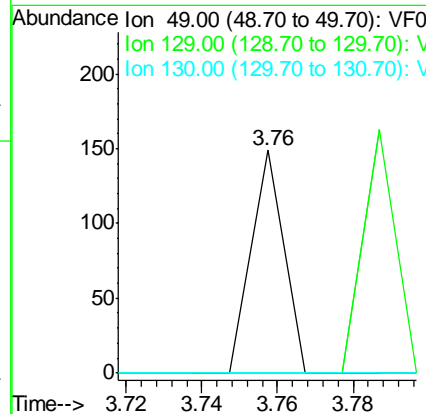
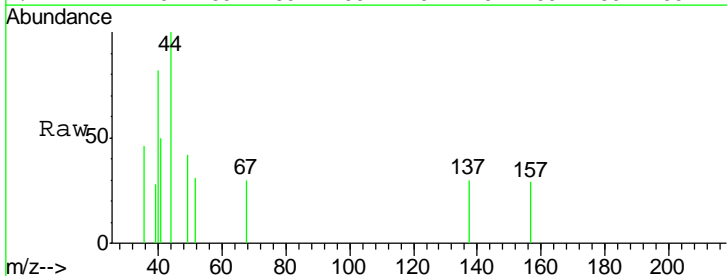
Instrument :
 MSVOA_F
 ClientSampled :
 SB-6(2-4)RE

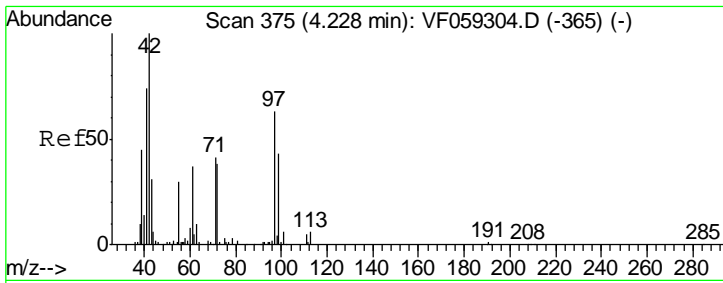
Tgt Ion	Resp	Lower	Upper
96	107		
96	100		
61	0.0	0.0	355.4
98	0.0	0.0	131.0



#28
 Bromochloromethane
 Concen: 26.752 ug/l
 RT: 3.76 min Scan# 327
 Delta R.T. -0.11 min
 Lab File: VF059410.D
 Acq: 3 Jul 2018 14:22

Tgt Ion	Resp	Lower	Upper
49	88		
49	100		
129	0.0	0.0	6.4
130	0.0	75.1	112.7#

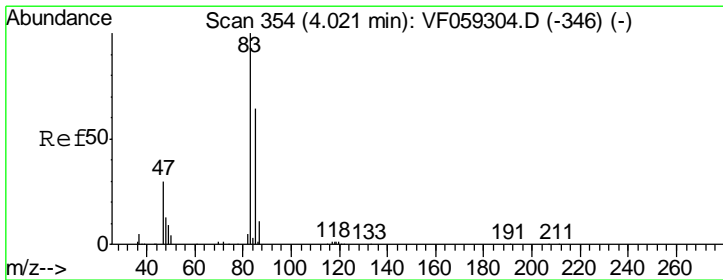
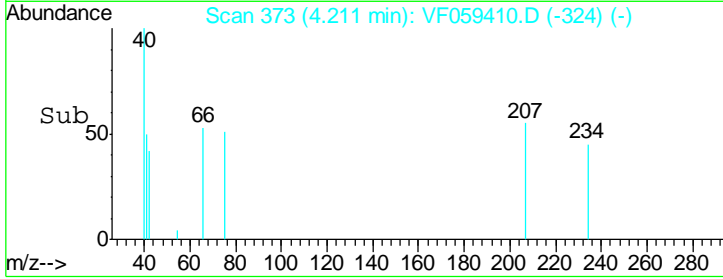
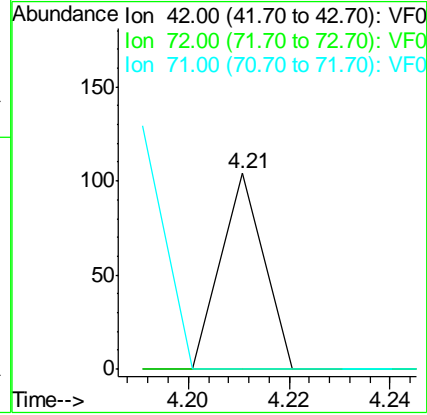
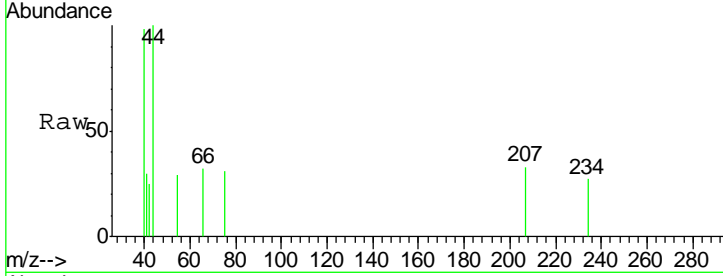




#29
 Tetrahydrofuran
 Concen: 63.305 ug/l
 RT: 4.21 min Scan# 373
 Delta R.T. -0.02 min
 Lab File: VF059410.D
 Acq: 3 Jul 2018 14:22

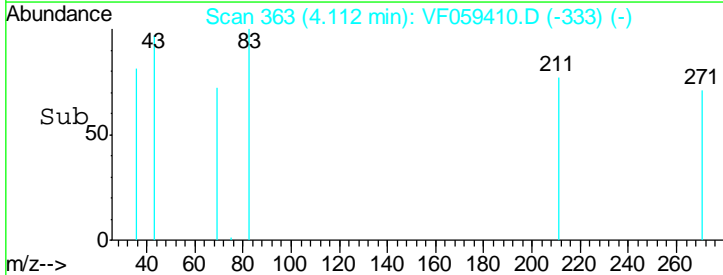
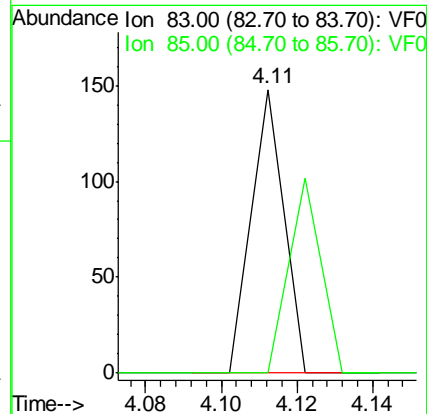
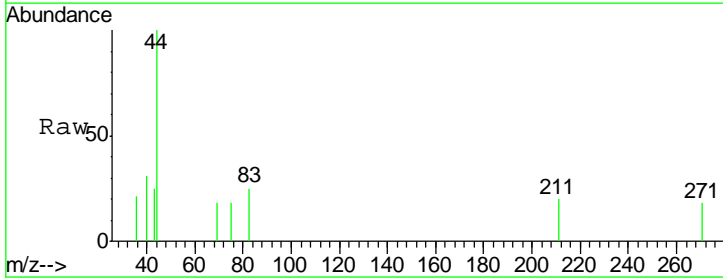
Instrument :
 MSVOA_F
 ClientSampled :
 SB-6(2-4)RE

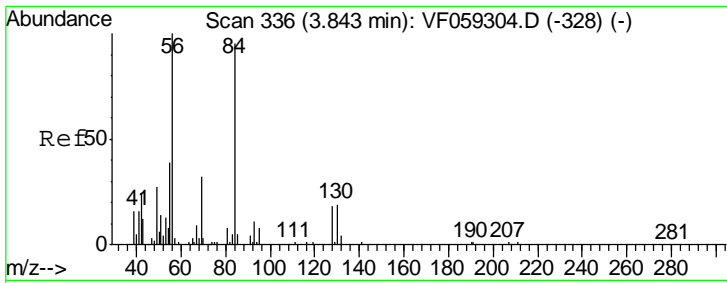
Tgt Ion	Resp	Lower	Upper
42	100		
72	0.0	30.5	45.7#
71	124.6	32.5	48.7#



#30
 Chloroform
 Concen: 7.620 ug/l
 RT: 4.11 min Scan# 363
 Delta R.T. 0.09 min
 Lab File: VF059410.D
 Acq: 3 Jul 2018 14:22

Tgt Ion	Resp	Lower	Upper
83	100		
85	0.0	51.3	76.9#

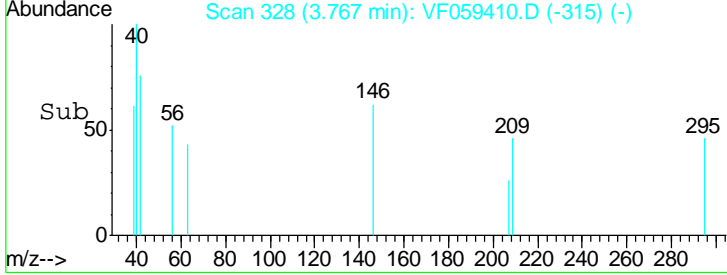
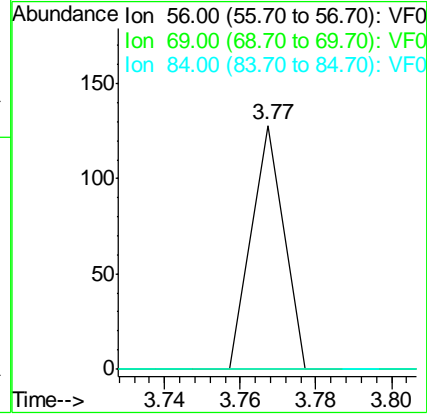
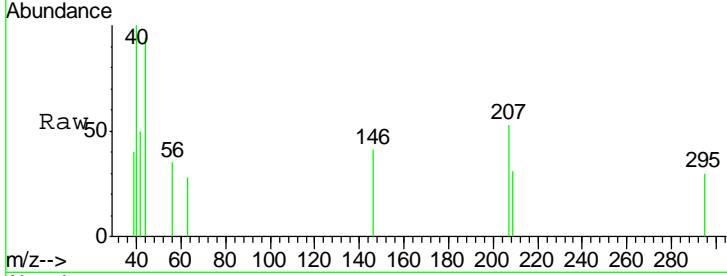




#31
 Cyclohexane
 Concen: 14.543 ug/l
 RT: 3.77 min Scan# 328
 Delta R.T. -0.08 min
 Lab File: VF059410.D
 Acq: 3 Jul 2018 14:22

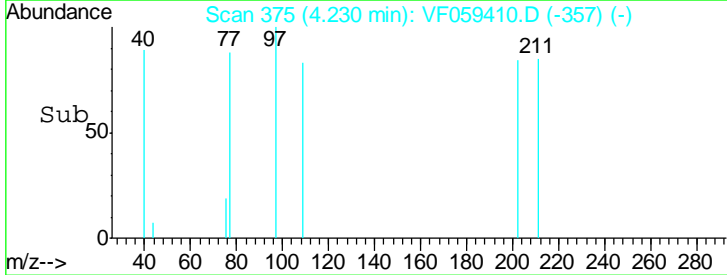
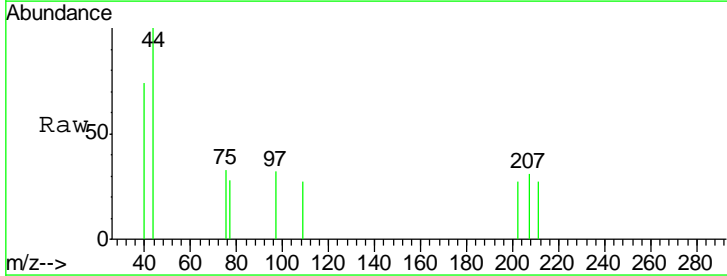
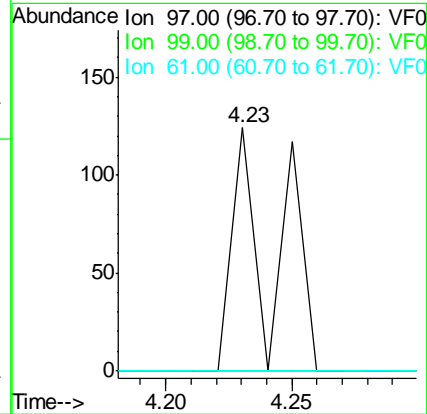
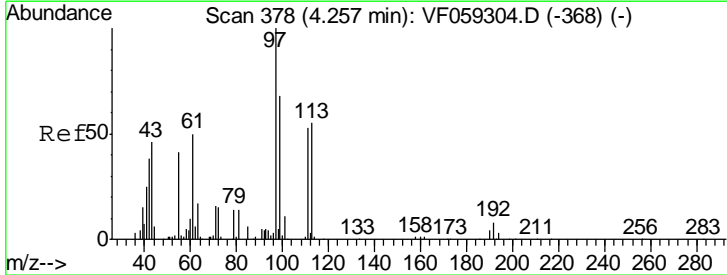
Instrument :
 MSVOA_F
 ClientSampled :
 SB-6(2-4)RE

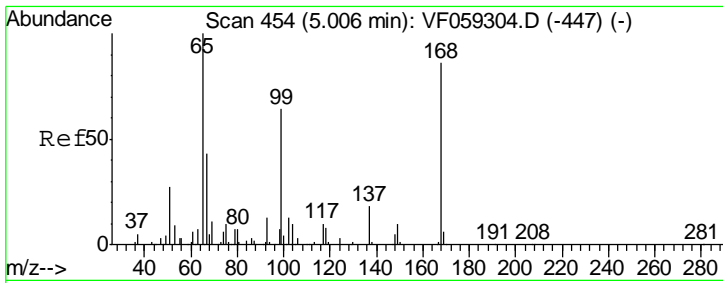
Tgt Ion	Resp	Lower	Upper
56	100		
69	0.0	25.8	38.8#
84	0.0	75.6	113.4#



#32
 1,1,1-Trichloroethane
 Concen: 16.921 ug/l
 RT: 4.23 min Scan# 375
 Delta R.T. -0.03 min
 Lab File: VF059410.D
 Acq: 3 Jul 2018 14:22

Tgt Ion	Resp	Lower	Upper
97	100		
99	0.0	54.1	81.1#
61	0.0	41.2	61.8#

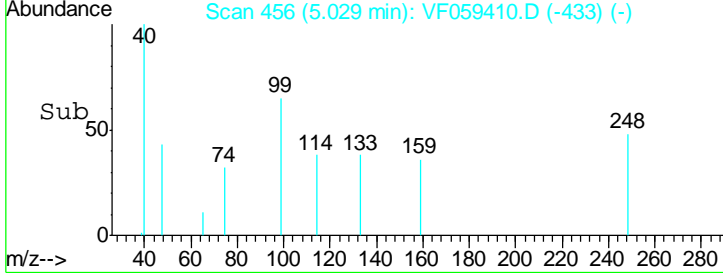
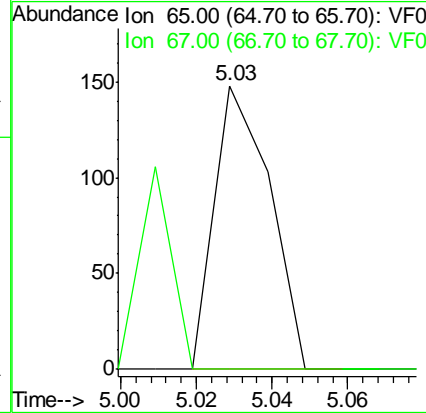
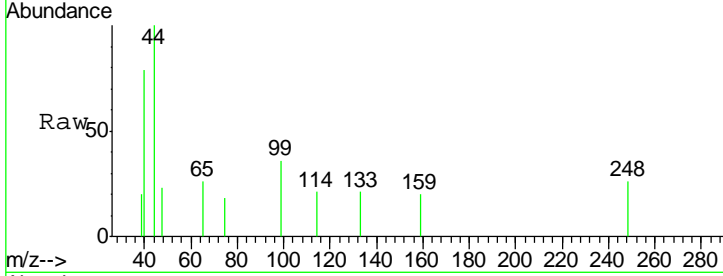




#33
 1,2-Dichloroethane-d4
 Concen: 21.819 ug/l
 RT: 5.03 min Scan# 456
 Delta R.T. 0.02 min
 Lab File: VF059410.D
 Acq: 3 Jul 2018 14:22

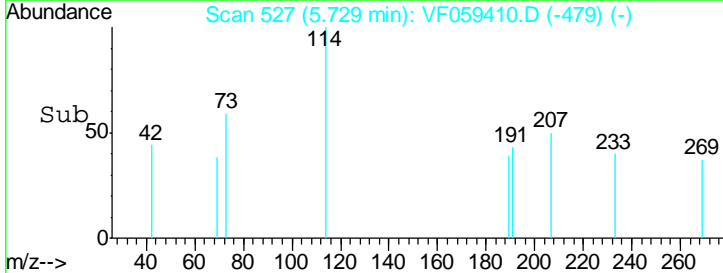
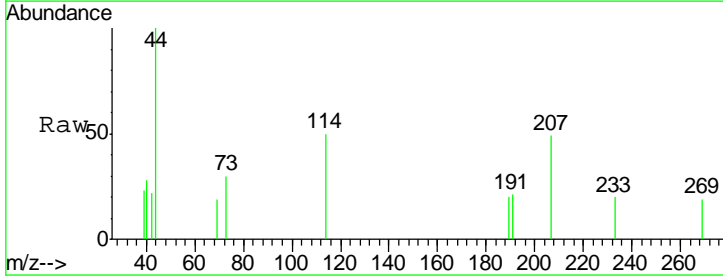
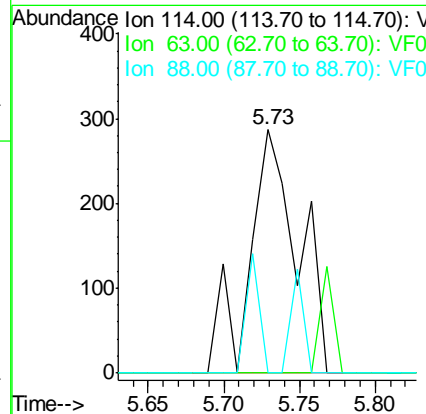
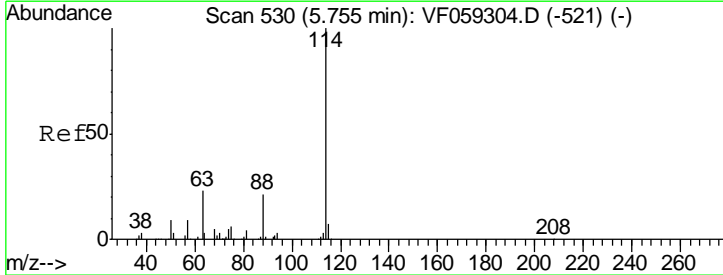
Instrument :
 MSVOA_F
ClientSampled :
 SB-6(2-4)RE

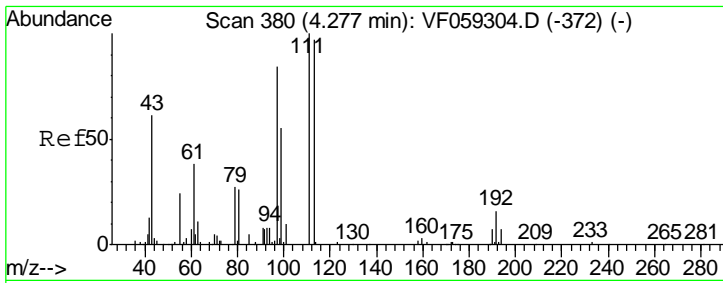
Tgt Ion	Resp	Lower	Upper
65	100		
67	0.0	0.0	96.8



#34
 1,4-Difluorobenzene
 Concen: 50.000 ug/l
 RT: 5.73 min Scan# 527
 Delta R.T. -0.03 min
 Lab File: VF059410.D
 Acq: 3 Jul 2018 14:22

Tgt Ion	Resp	Lower	Upper
114	100		
63	0.0	0.0	45.8
88	0.0	0.0	41.2

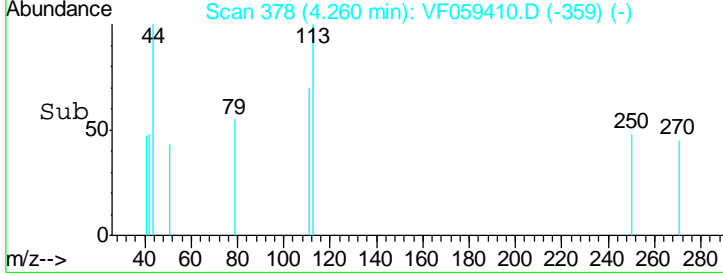
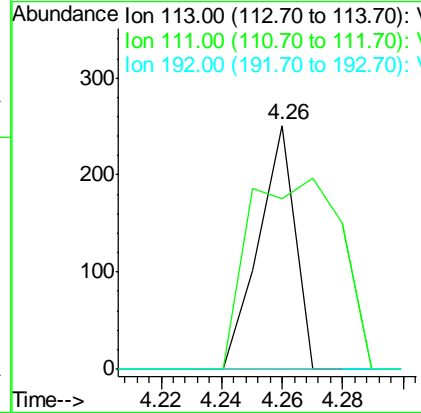
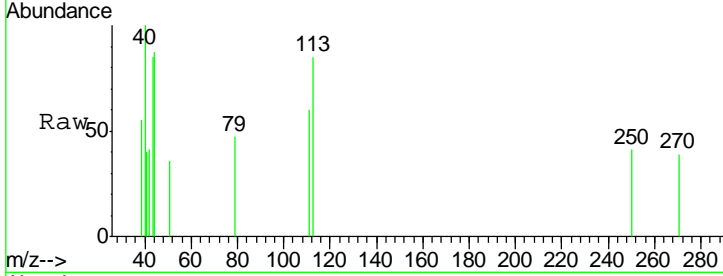




#35
 Dibromofluoromethane
 Concen: 43.871 ug/l
 RT: 4.26 min Scan# 378
 Delta R.T. -0.02 min
 Lab File: VF059410.D
 Acq: 3 Jul 2018 14:22

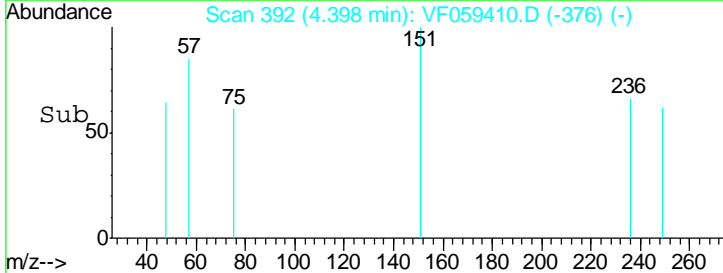
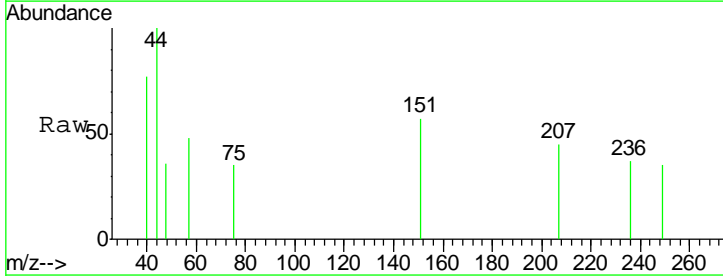
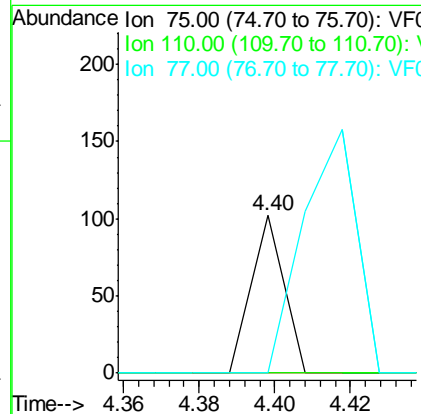
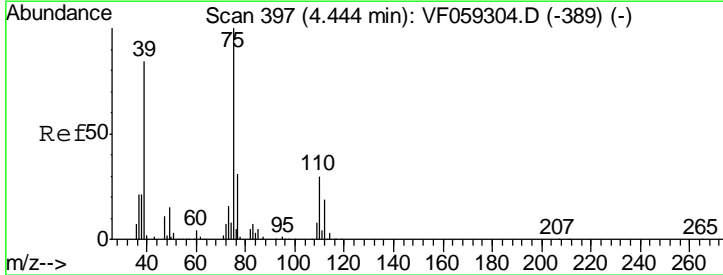
Instrument :
 MSVOA_F
ClientSampled :
 SB-6(2-4)RE

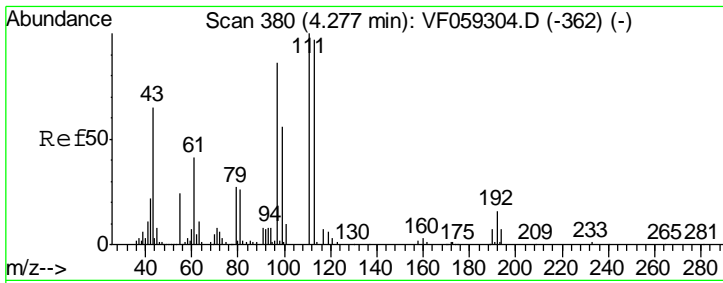
Tgt Ion	Resp	Lower	Upper
113	100		
111	70.1	82.1	123.1#
192	0.0	13.0	19.6#



#36
 1,1-Dichloropropene
 Concen: 10.534 ug/l
 RT: 4.40 min Scan# 392
 Delta R.T. -0.05 min
 Lab File: VF059410.D
 Acq: 3 Jul 2018 14:22

Tgt Ion	Resp	Lower	Upper
75	100		
110	0.0	14.8	44.4#
77	0.0	25.2	37.8#

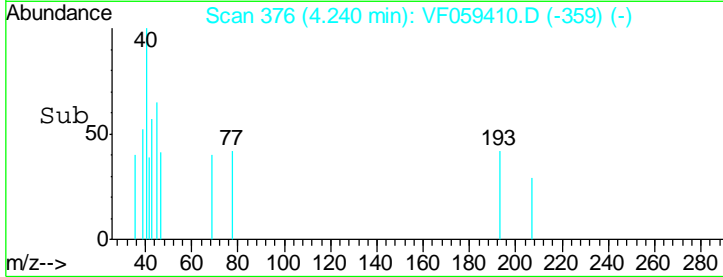
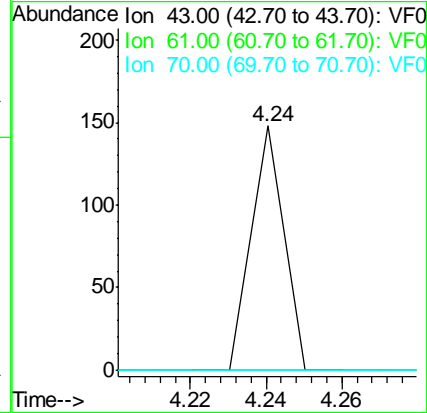
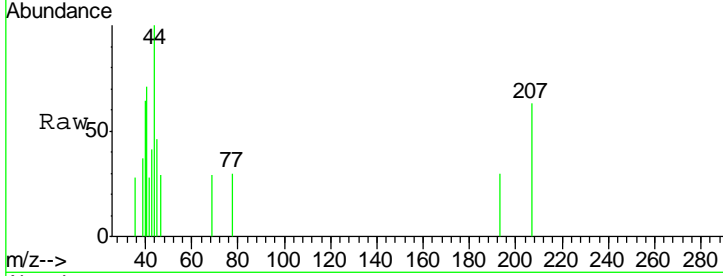




#37
 Ethyl Acetate
 Concen: 23.363 ug/l
 RT: 4.24 min Scan# 376
 Delta R.T. -0.04 min
 Lab File: VF059410.D
 Acq: 3 Jul 2018 14:22

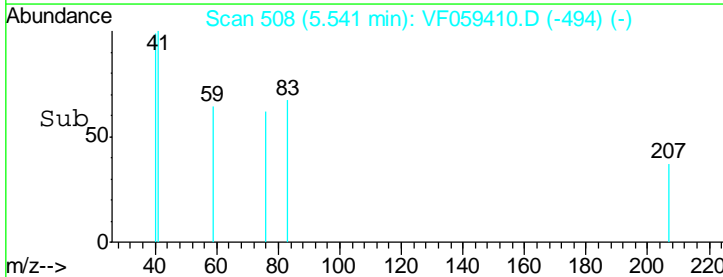
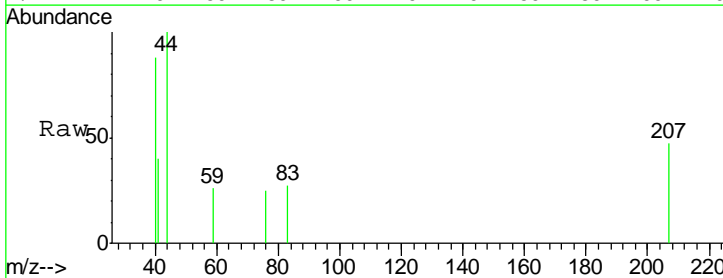
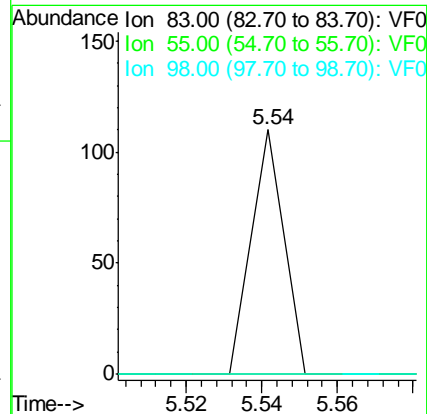
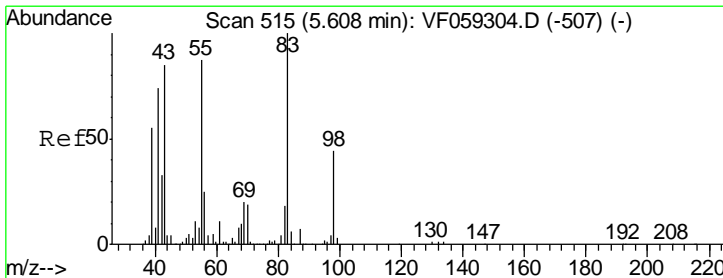
Instrument :
 MSVOA_F
 ClientSampled :
 SB-6(2-4)RE

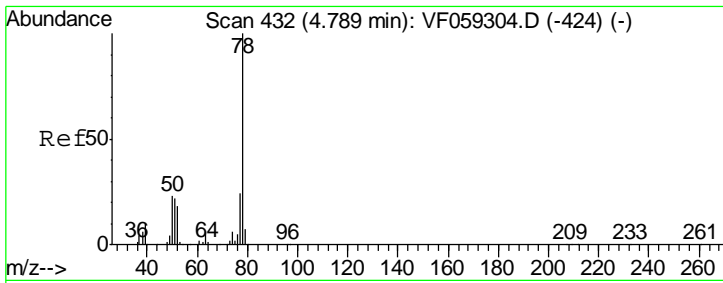
Tgt Ion	Resp	Lower	Upper
43	100		
61	0.0	50.1	75.1#
70	0.0	6.2	9.4#



#39
 Methylcyclohexane
 Concen: 12.878 ug/l
 RT: 5.54 min Scan# 508
 Delta R.T. -0.07 min
 Lab File: VF059410.D
 Acq: 3 Jul 2018 14:22

Tgt Ion	Resp	Lower	Upper
83	100		
55	0.0	69.2	103.8#
98	0.0	35.0	52.6#

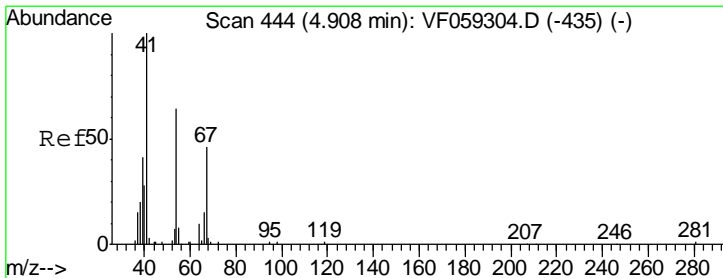
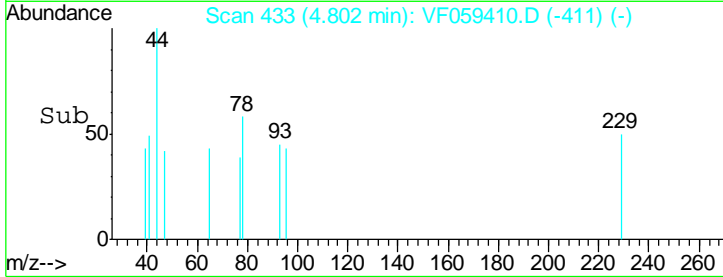
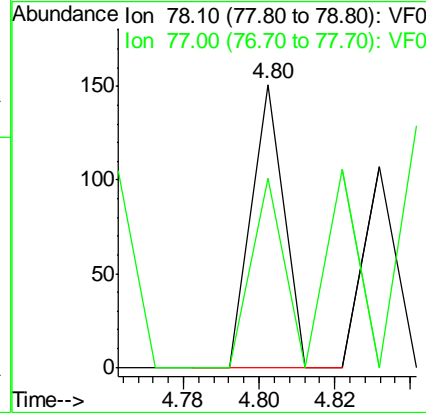
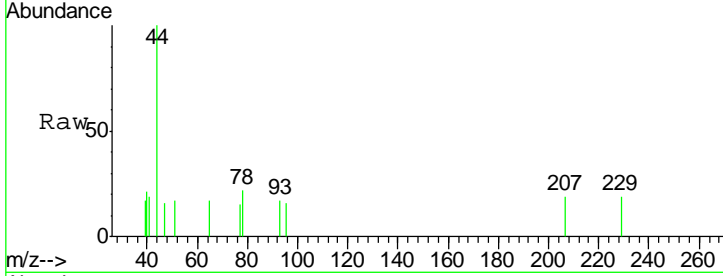




#40
Benzene
Concen: 7.047 ug/l
RT: 4.80 min Scan# 433
Delta R.T. 0.01 min
Lab File: VF059410.D
Acq: 3 Jul 2018 14:22

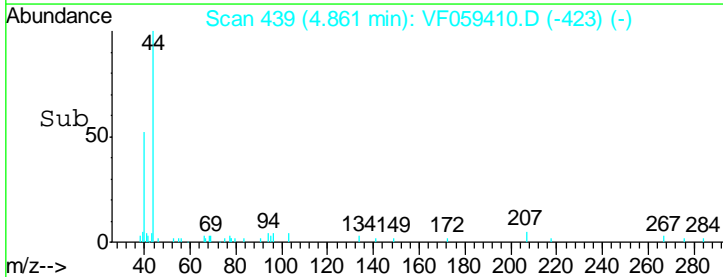
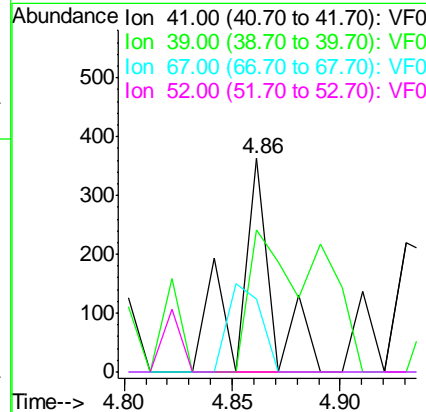
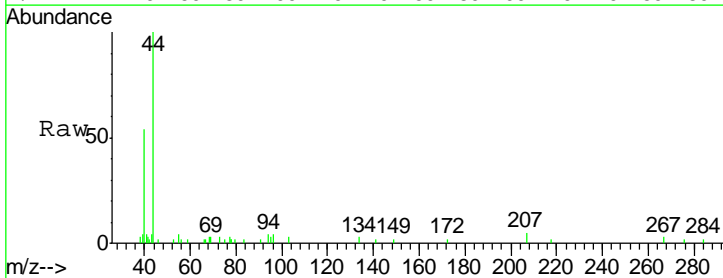
Instrument :
MSVOA_F
ClientSampled :
SB-6(2-4)RE

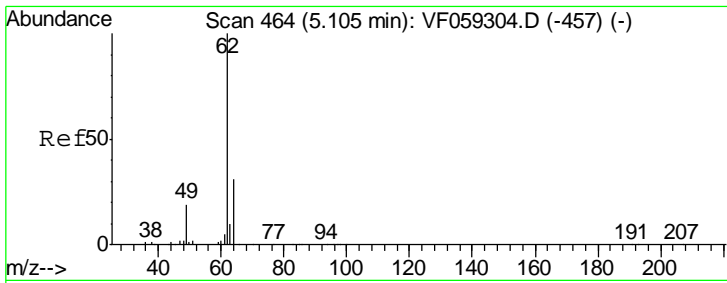
Tgt Ion: 78 Resp: 89
Ion Ratio Lower Upper
78 100
77 66.9 19.6 29.4#



#41
Methacrylonitrile
Concen: 208.967 ug/l
RT: 4.86 min Scan# 439
Delta R.T. -0.05 min
Lab File: VF059410.D
Acq: 3 Jul 2018 14:22

Tgt Ion: 41 Resp: 406
Ion Ratio Lower Upper
41 100
39 66.7 50.0 75.0
67 34.2 37.0 55.6#
52 0.0 37.1 55.7#

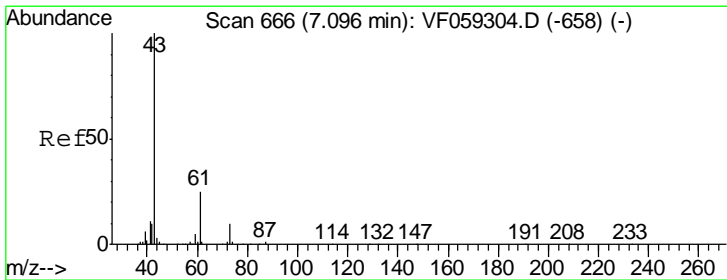
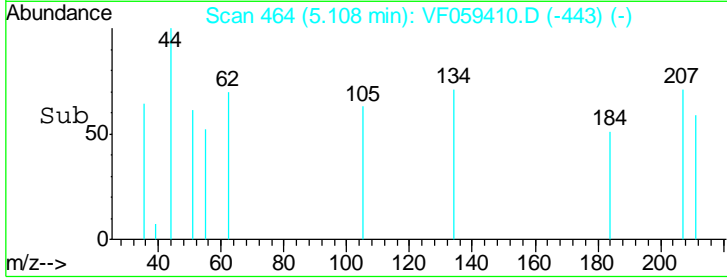
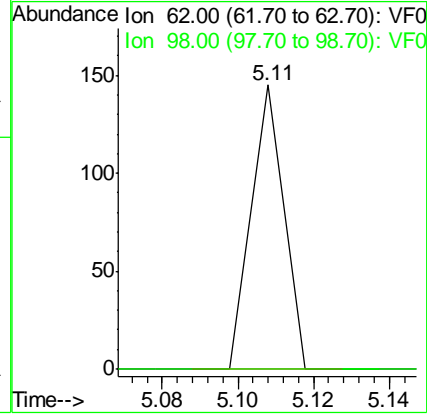
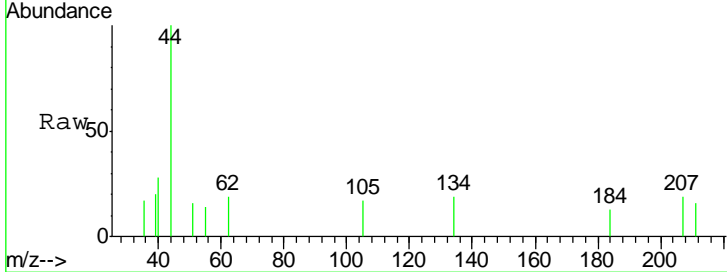




#42
 1,2-Dichloroethane
 Concen: 11.654 ug/l
 RT: 5.11 min Scan# 464
 Delta R.T. 0.00 min
 Lab File: VF059410.D
 Acq: 3 Jul 2018 14:22

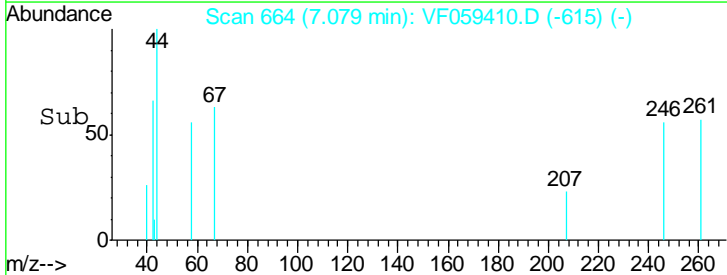
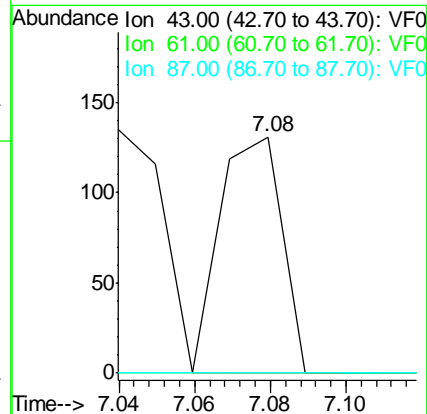
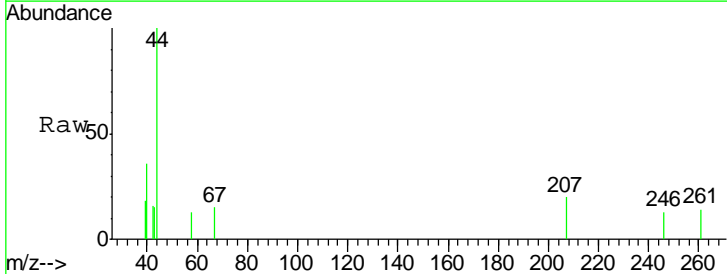
Instrument :
 MSVOA_F
 ClientSampled :
 SB-6(2-4)RE

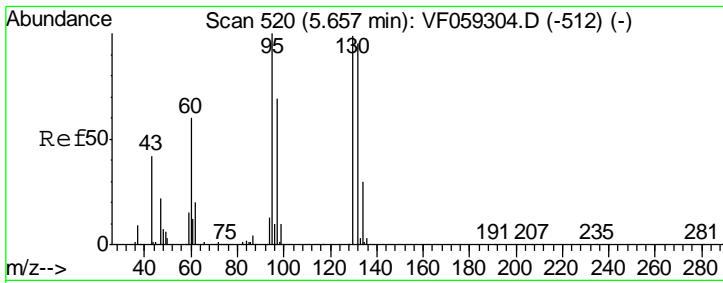
Tgt Ion	Resp	Lower	Upper
62	100	0.0	11.4
98	0.0	0.0	11.4



#43
 Isopropyl Acetate
 Concen: 31.195 ug/l
 RT: 7.08 min Scan# 664
 Delta R.T. -0.02 min
 Lab File: VF059410.D
 Acq: 3 Jul 2018 14:22

Tgt Ion	Resp	Lower	Upper
43	100	0.0	148
61	0.0	19.7	29.5#
87	0.0	0.5	0.7#

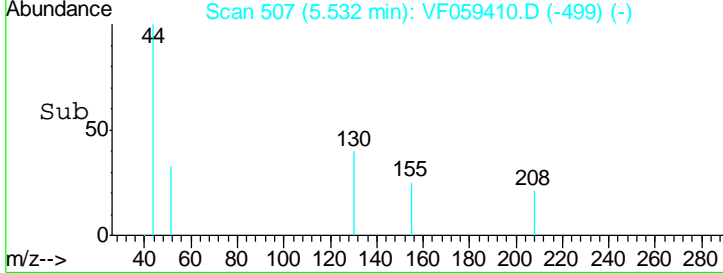
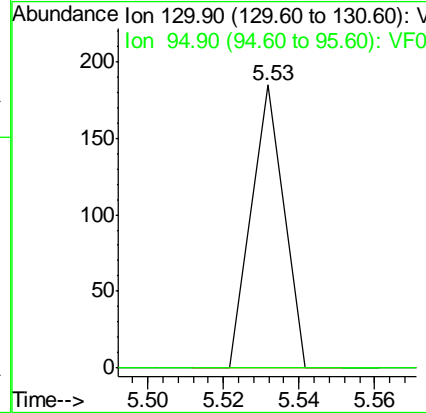
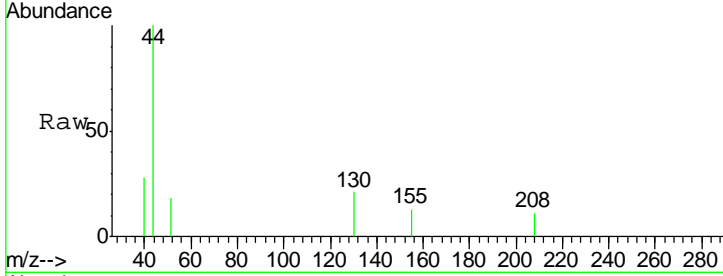




#44
 Trichloroethene
 Concen: 25.161 ug/l
 RT: 5.53 min Scan# 507
 Delta R.T. -0.13 min
 Lab File: VF059410.D
 Acq: 3 Jul 2018 14:22

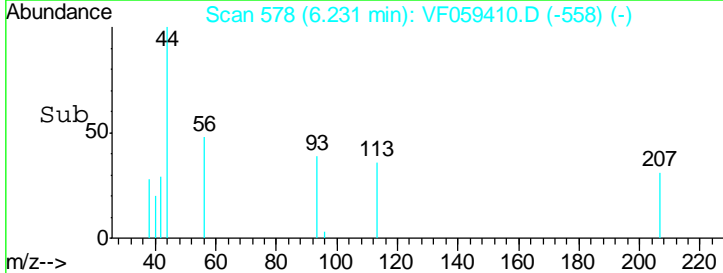
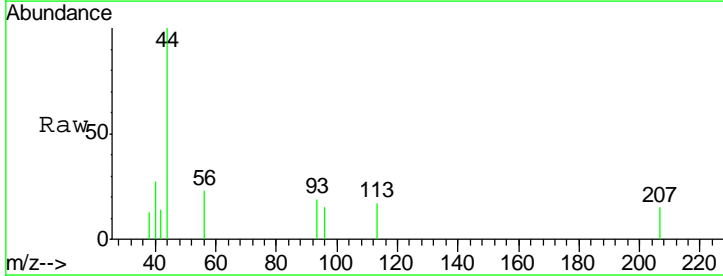
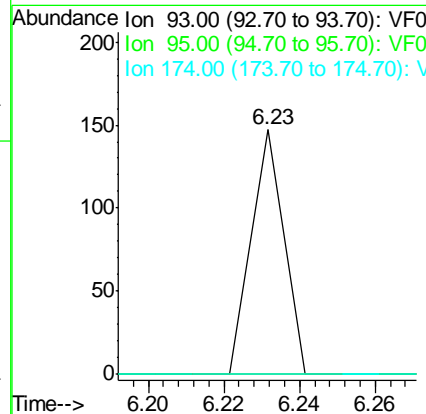
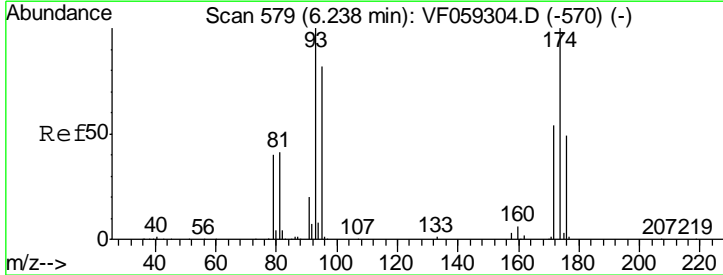
Instrument :
 MSVOA_F
ClientSampled :
 SB-6(2-4)RE

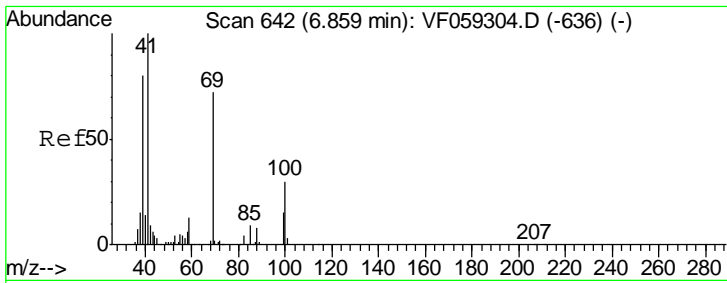
Tgt Ion: 130 Resp: 109
 Ion Ratio Lower Upper
 130 100
 95 0.0 0.0 202.4



#46
 Dibromomethane
 Concen: 27.781 ug/l
 RT: 6.23 min Scan# 578
 Delta R.T. -0.01 min
 Lab File: VF059410.D
 Acq: 3 Jul 2018 14:22

Tgt Ion: 93 Resp: 87
 Ion Ratio Lower Upper
 93 100
 95 0.0 65.6 98.4#
 174 0.0 80.0 120.0#

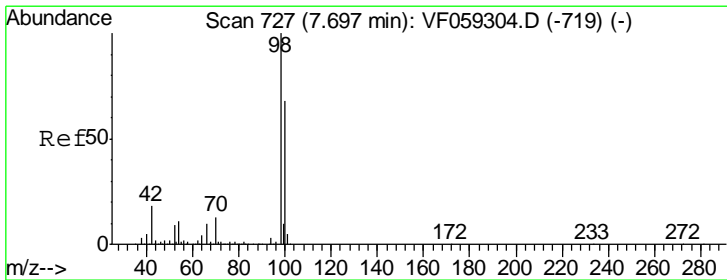
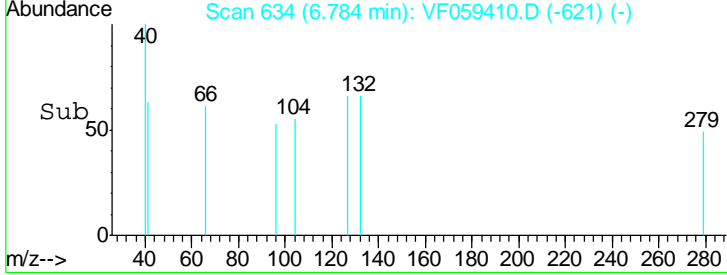
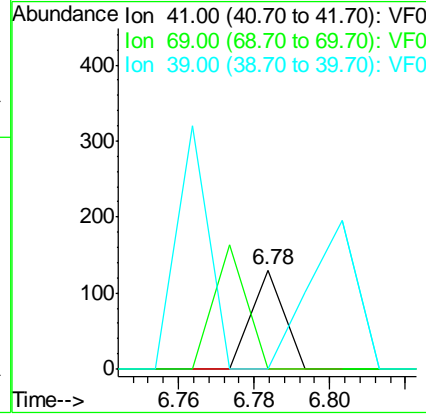
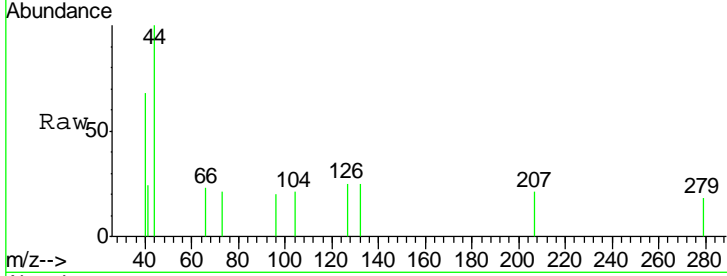




#48
 Methyl methacrylate
 Concen: 24.216 ug/l
 RT: 6.78 min Scan# 634
 Delta R.T. -0.08 min
 Lab File: VF059410.D
 Acq: 3 Jul 2018 14:22

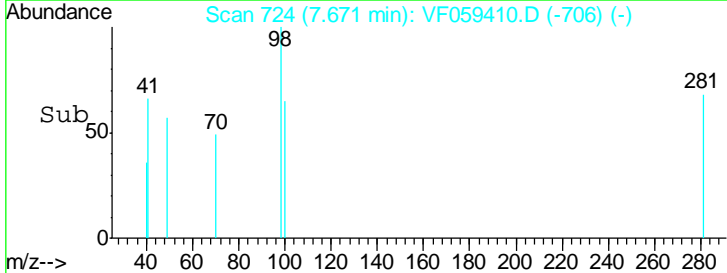
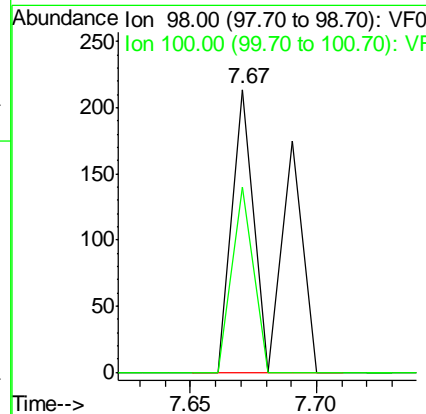
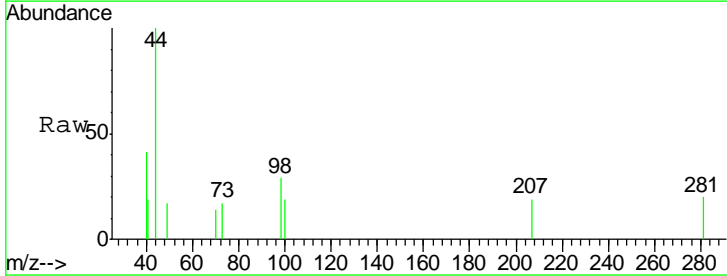
Instrument :
 MSVOA_F
 ClientSampled :
 SB-6(2-4)RE

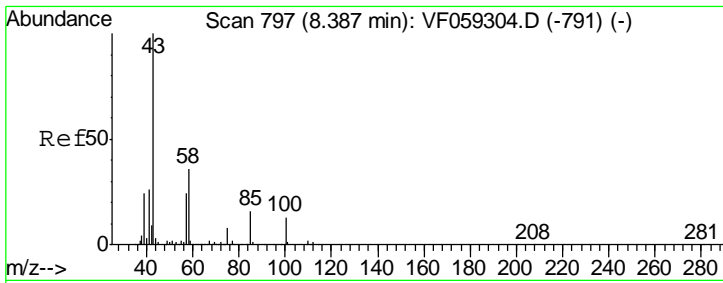
Tgt Ion	Resp	Lower	Upper
41	100		
69	0.0	57.3	85.9#
39	0.0	64.4	96.6#



#50
 Toluene-d8
 Concen: 19.500 ug/l
 RT: 7.67 min Scan# 724
 Delta R.T. -0.03 min
 Lab File: VF059410.D
 Acq: 3 Jul 2018 14:22

Tgt Ion	Resp	Lower	Upper
98	100		
100	65.4	54.6	82.0

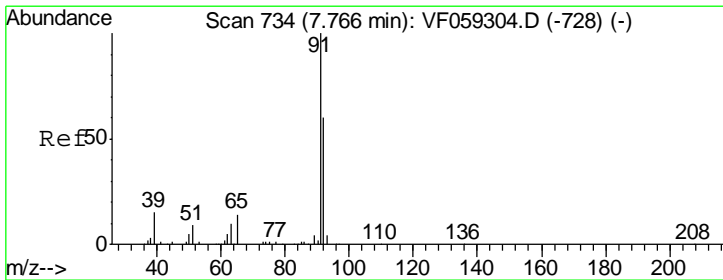
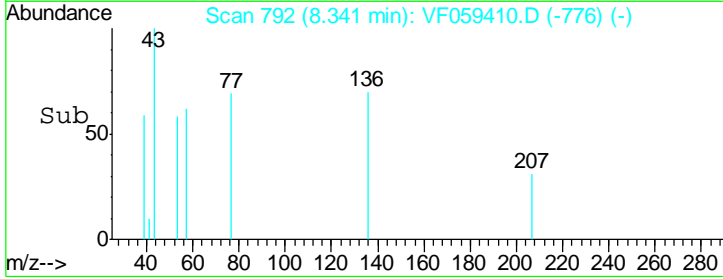
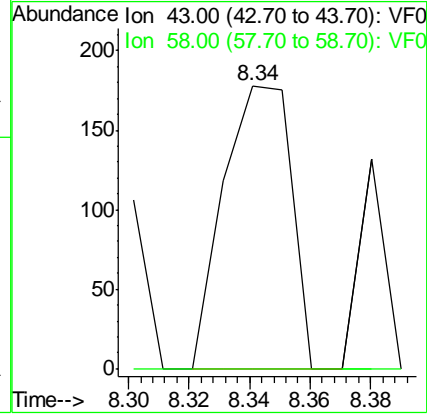
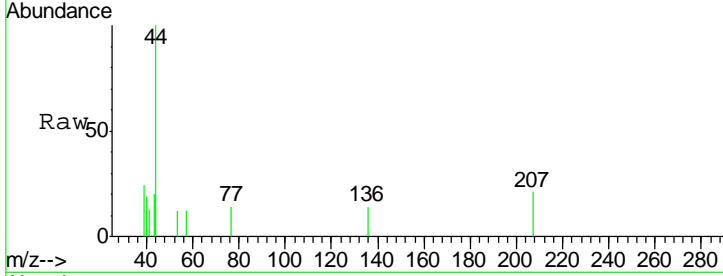




#51
 4-Methyl-2-Pentanone
 Concen: 79.379 ug/l
 RT: 8.34 min Scan# 792
 Delta R.T. -0.05 min
 Lab File: VF059410.D
 Acq: 3 Jul 2018 14:22

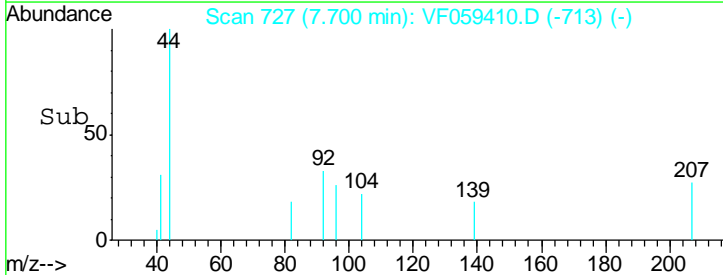
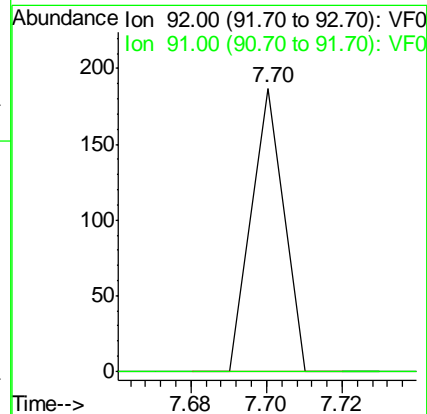
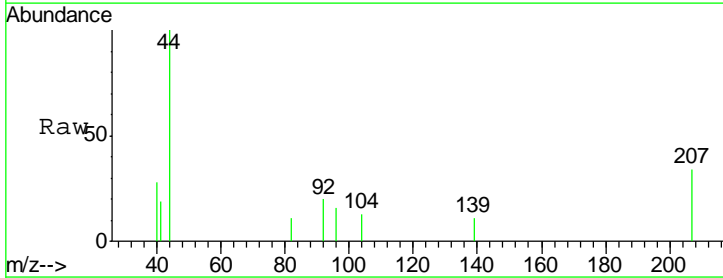
Instrument :
 MSVOA_F
 ClientSampled :
 SB-6(2-4)RE

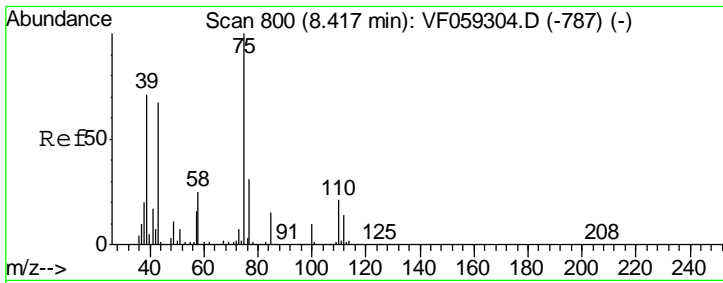
Tgt Ion: 43 Resp: 279
 Ion Ratio Lower Upper
 43 100
 58 0.0 28.4 42.6#



#52
 Toluene
 Concen: 11.746 ug/l
 RT: 7.70 min Scan# 727
 Delta R.T. -0.07 min
 Lab File: VF059410.D
 Acq: 3 Jul 2018 14:22

Tgt Ion: 92 Resp: 111
 Ion Ratio Lower Upper
 92 100
 91 0.0 132.8 199.2#

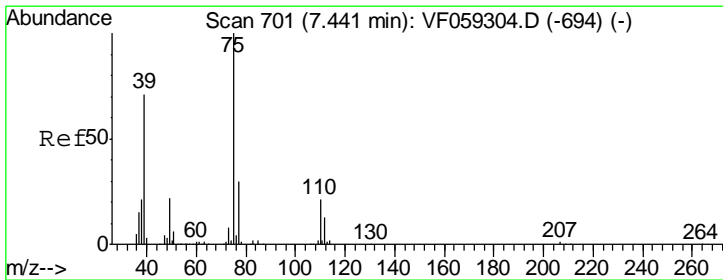
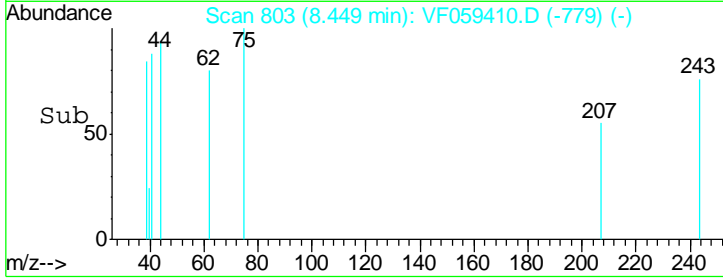
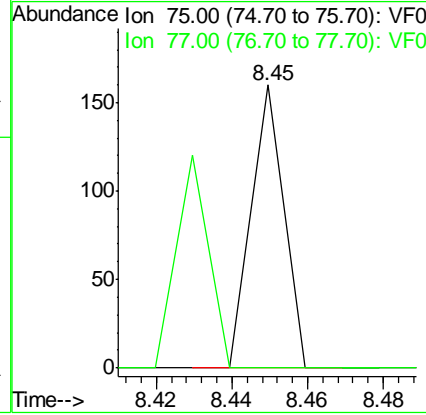
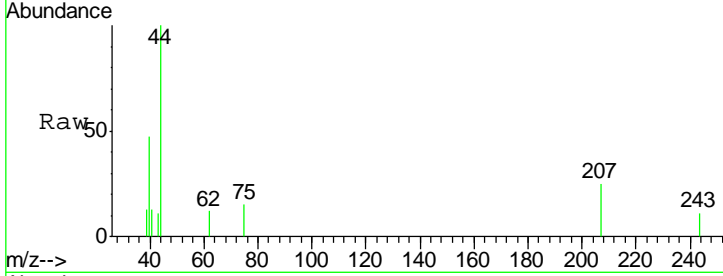




#53
 t-1,3-Dichloropropene
 Concen: 13.748 ug/l
 RT: 8.45 min Scan# 803
 Delta R.T. 0.03 min
 Lab File: VF059410.D
 Acq: 3 Jul 2018 14:22

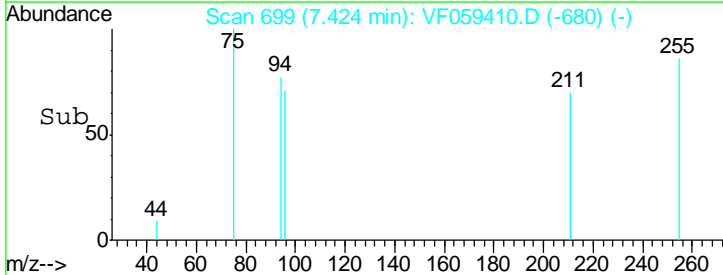
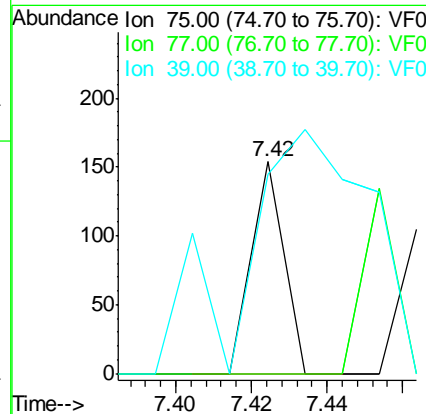
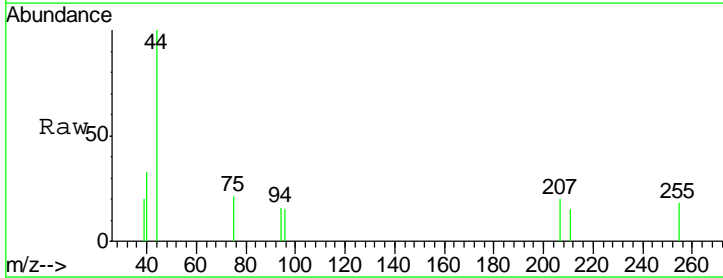
Instrument :
 MSVOA_F
 ClientSampled :
 SB-6(2-4)RE

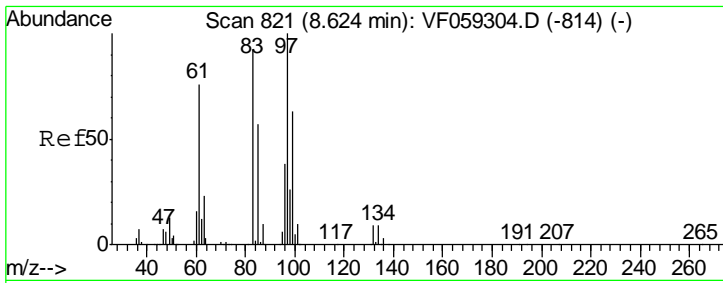
Tgt Ion: 75 Resp: 95
 Ion Ratio Lower Upper
 75 100
 77 0.0 25.3 37.9#



#54
 cis-1,3-Dichloropropene
 Concen: 12.124 ug/l
 RT: 7.42 min Scan# 699
 Delta R.T. -0.02 min
 Lab File: VF059410.D
 Acq: 3 Jul 2018 14:22

Tgt Ion: 75 Resp: 91
 Ion Ratio Lower Upper
 75 100
 77 0.0 24.3 36.5#
 39 94.2 57.2 85.8#

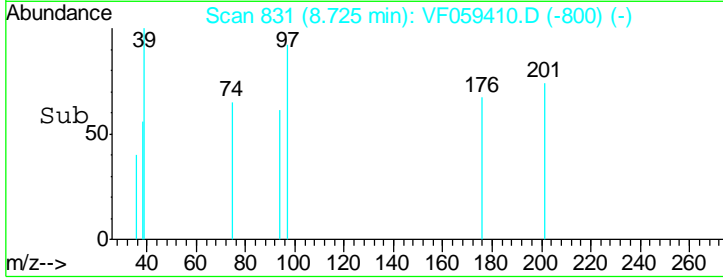
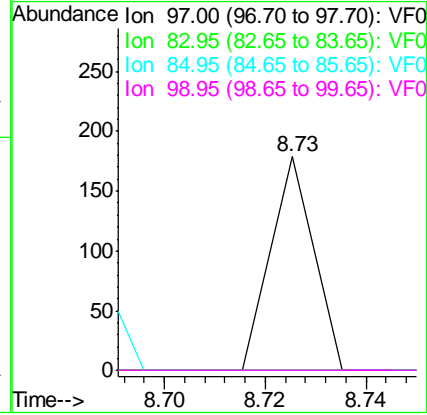
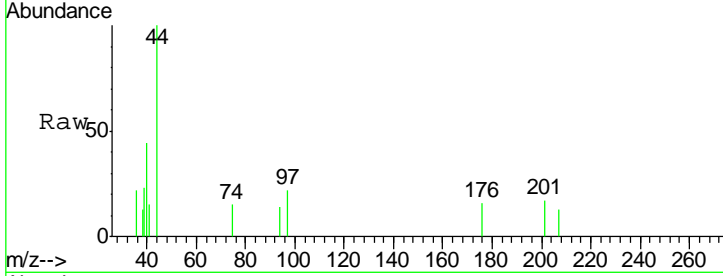




#55
 1,1,2-Trichloroethane
 Concen: 28.890 ug/l
 RT: 8.73 min Scan# 831
 Delta R.T. 0.10 min
 Lab File: VF059410.D
 Acq: 3 Jul 2018 14:22

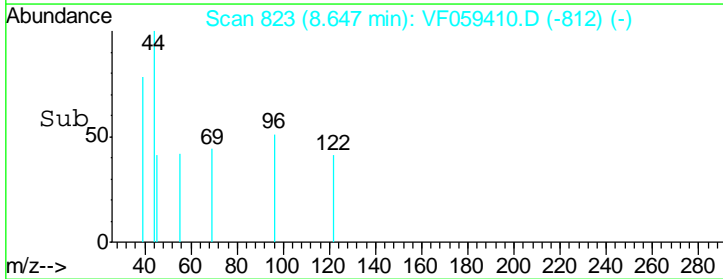
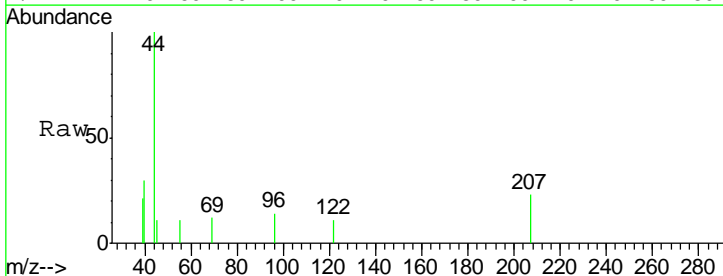
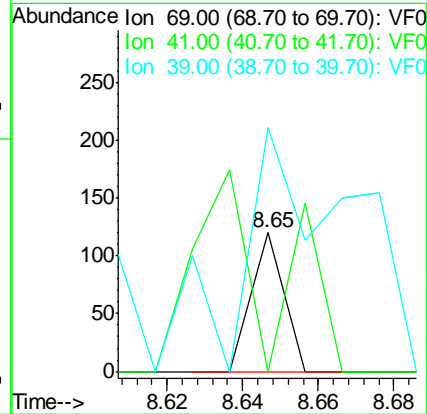
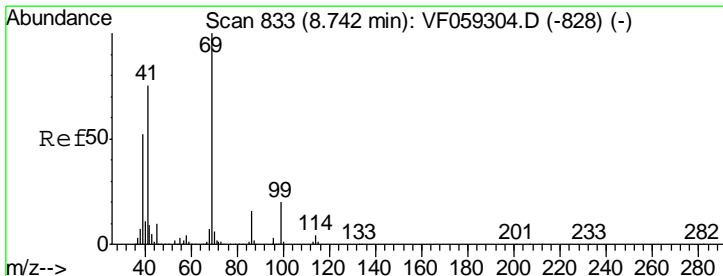
Instrument :
 MSVOA_F
 ClientSampled :
 SB-6(2-4)RE

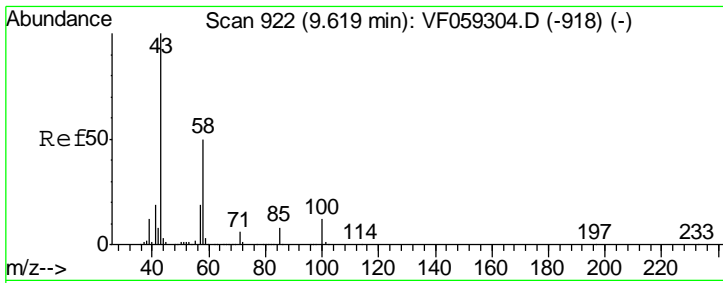
Tgt Ion	Resp	Lower	Upper
97	106		
83	0.0	73.8	110.8#
85	0.0	45.5	68.3#
99	0.0	50.7	76.1#



#56
 Ethyl methacrylate
 Concen: 15.621 ug/l
 RT: 8.65 min Scan# 823
 Delta R.T. -0.10 min
 Lab File: VF059410.D
 Acq: 3 Jul 2018 14:22

Tgt Ion	Resp	Lower	Upper
69	71		
41	0.0	60.3	90.5#
39	175.8	42.2	63.4#

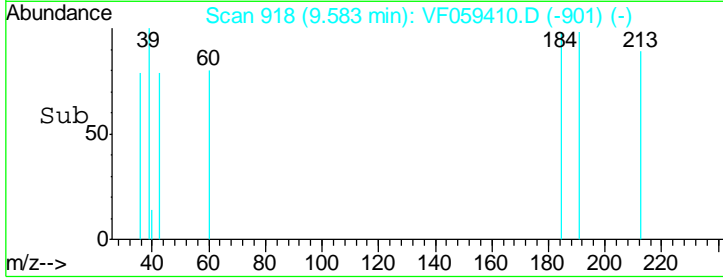
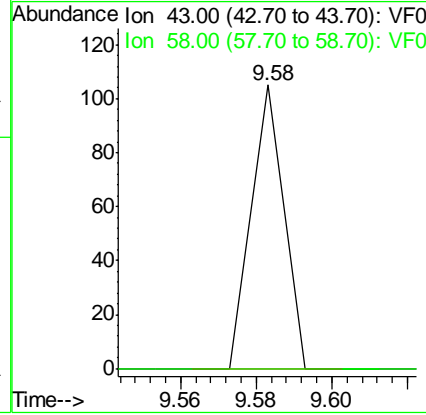
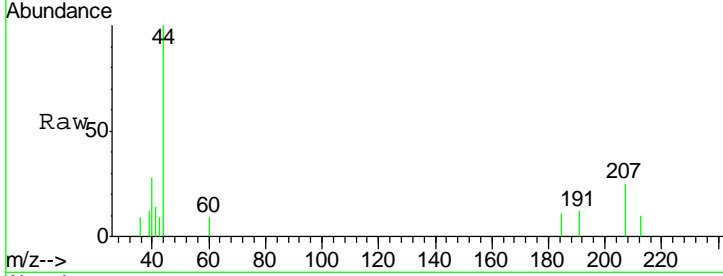




#59
 2-Hexanone
 Concen: 7.059 ug/l
 RT: 9.58 min Scan# 918
 Delta R.T. -0.04 min
 Lab File: VF059410.D
 Acq: 3 Jul 2018 14:22

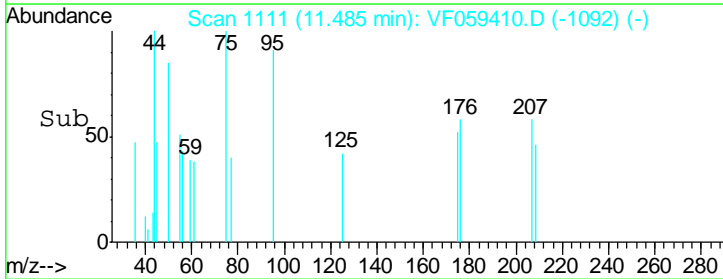
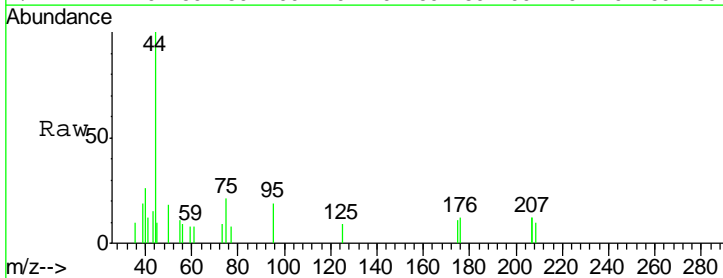
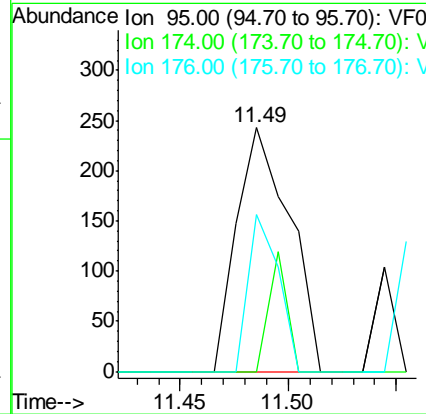
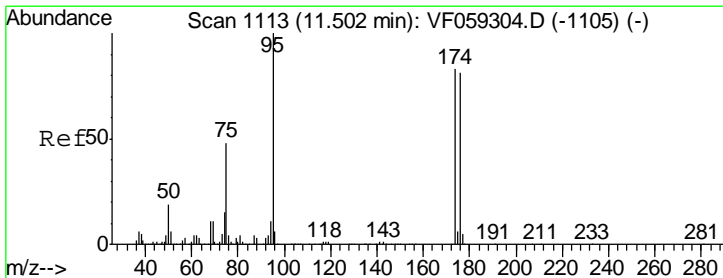
Instrument :
 MSVOA_F
 ClientSampleId :
 SB-6(2-4)RE

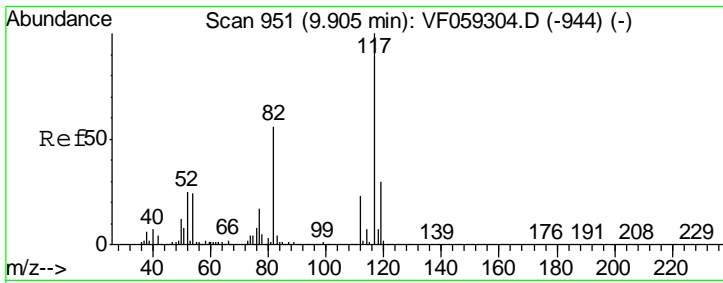
Tgt Ion: 43 Resp: 62
 Ion Ratio Lower Upper
 43 100
 58 0.0 23.3 69.9#



#62
 4-Bromofluorobenzene
 Concen: 62.674 ug/l
 RT: 11.49 min Scan# 1111
 Delta R.T. -0.02 min
 Lab File: VF059410.D
 Acq: 3 Jul 2018 14:22

Tgt Ion: 95 Resp: 417
 Ion Ratio Lower Upper
 95 100
 174 0.0 0.0 165.2
 176 64.2 0.0 161.0

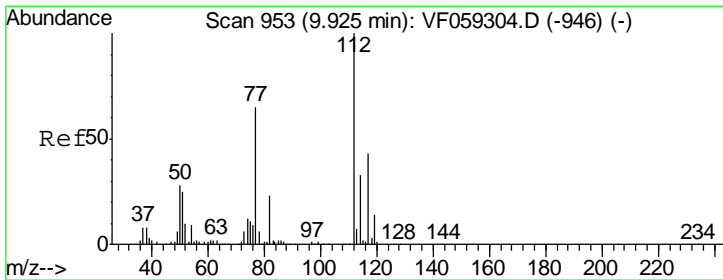
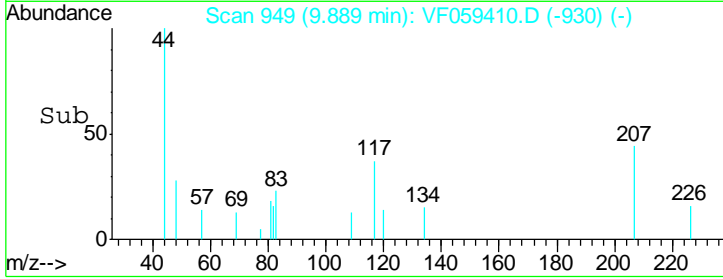
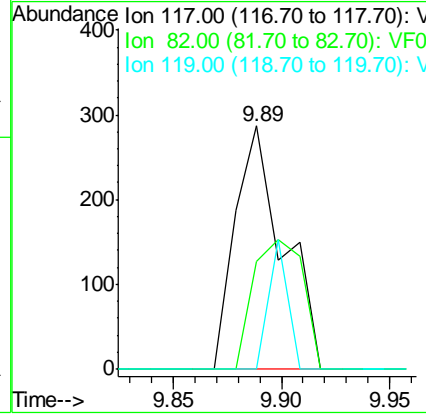
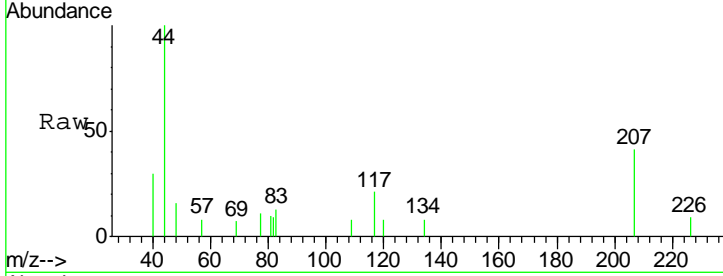




#63
 Chlorobenzene-d5
 Concen: 50.000 ug/l
 RT: 9.89 min Scan# 949
 Delta R.T. -0.02 min
 Lab File: VF059410.D
 Acq: 3 Jul 2018 14:22

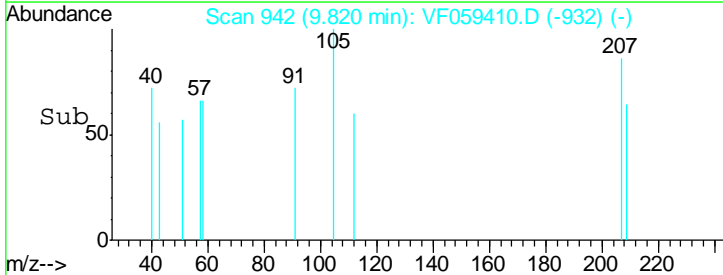
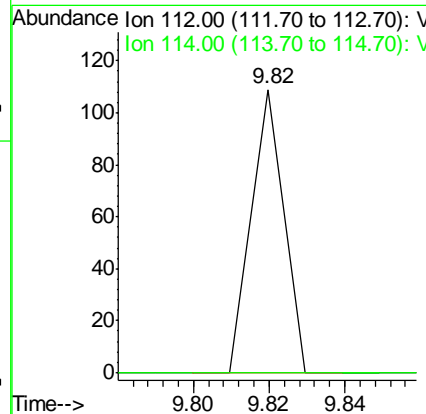
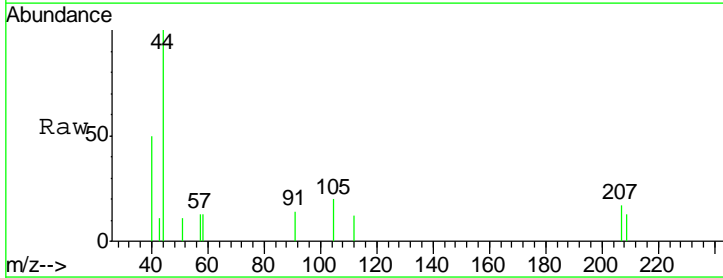
Instrument :
 MSVOA_F
 ClientSampled :
 SB-6(2-4)RE

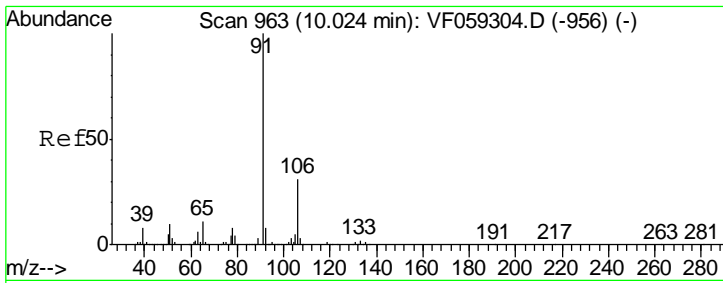
Tgt Ion	Resp	Lower	Upper
117	100		
82	44.3	44.6	66.8#
119	0.0	24.1	36.1#



#65
 Chlorobenzene
 Concen: 7.761 ug/l
 RT: 9.82 min Scan# 942
 Delta R.T. -0.11 min
 Lab File: VF059410.D
 Acq: 3 Jul 2018 14:22

Tgt Ion	Resp	Lower	Upper
112	100		
114	0.0	26.5	39.7#

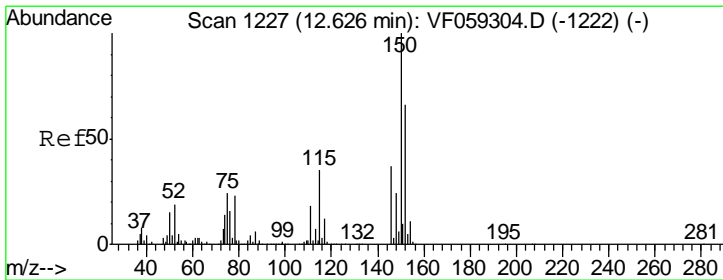
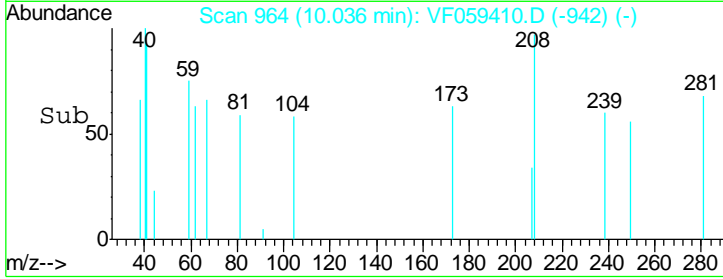
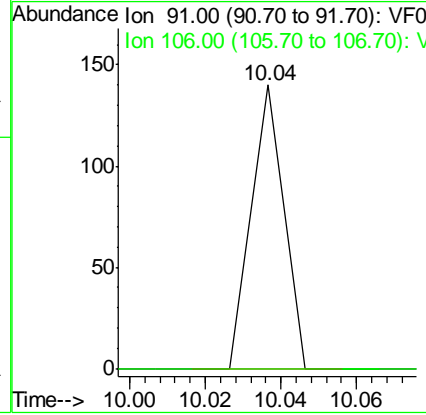
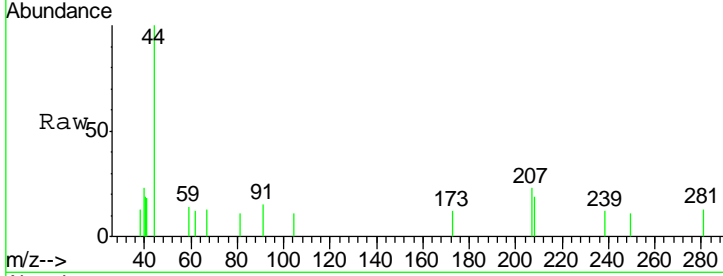




#67
 Ethyl Benzene
 Concen: 5.933 ug/l
 RT: 10.04 min Scan# 964
 Delta R.T. 0.01 min
 Lab File: VF059410.D
 Acq: 3 Jul 2018 14:22

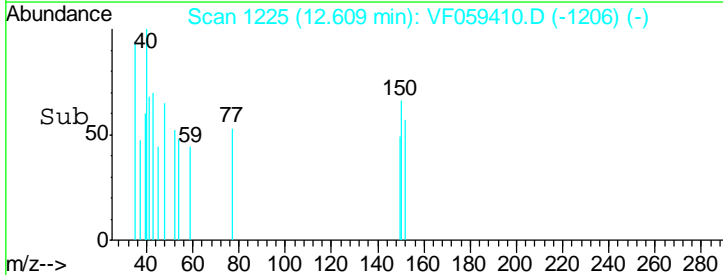
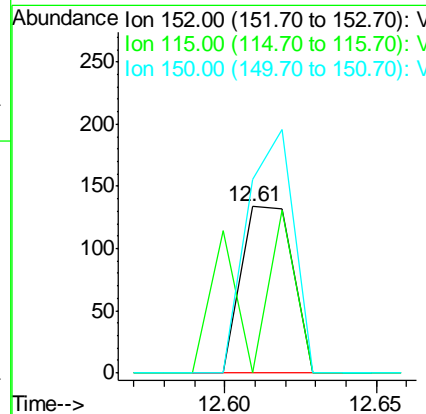
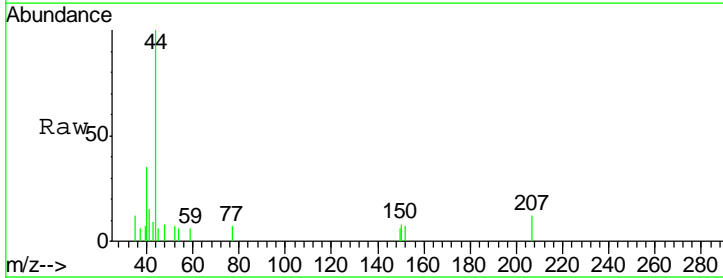
Instrument :
 MSVOA_F
 ClientSampled :
 SB-6(2-4)RE

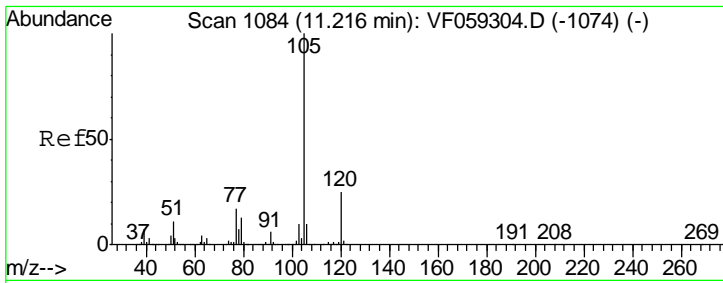
Tgt Ion: 91 Resp: 83
 Ion Ratio Lower Upper
 91 100
 106 0.0 24.8 37.2#



#72
 1,4-Dichlorobenzene-d4
 Concen: 50.000 ug/l
 RT: 12.61 min Scan# 1225
 Delta R.T. -0.02 min
 Lab File: VF059410.D
 Acq: 3 Jul 2018 14:22

Tgt Ion: 152 Resp: 157
 Ion Ratio Lower Upper
 152 100
 115 0.0 27.1 81.3#
 150 116.4 0.0 305.2

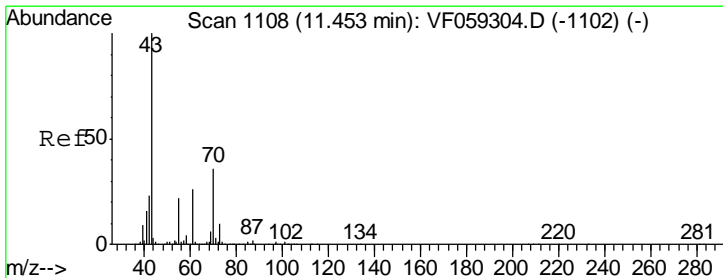
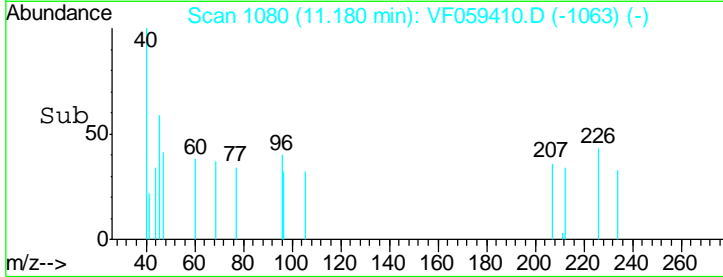
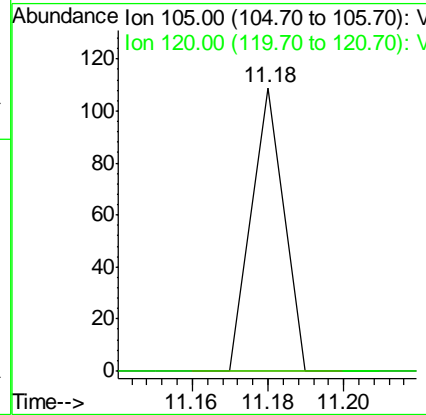
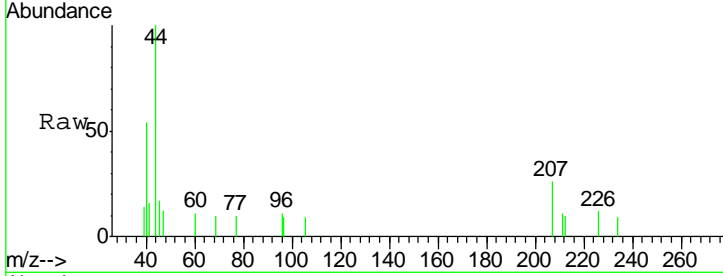




#73
 Isopropylbenzene
 Concen: 6.997 ug/l
 RT: 11.18 min Scan# 1080
 Delta R.T. -0.04 min
 Lab File: VF059410.D
 Acq: 3 Jul 2018 14:22

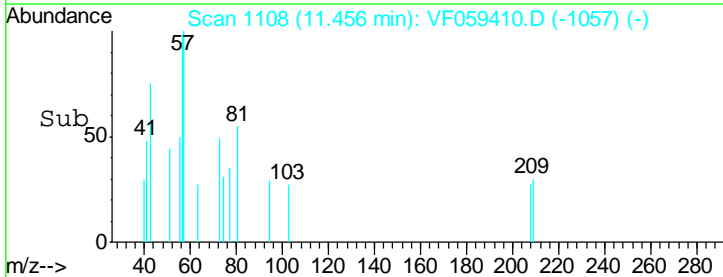
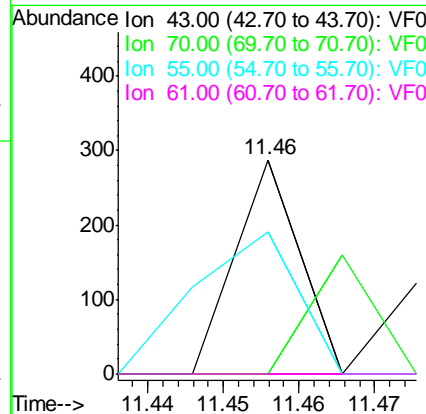
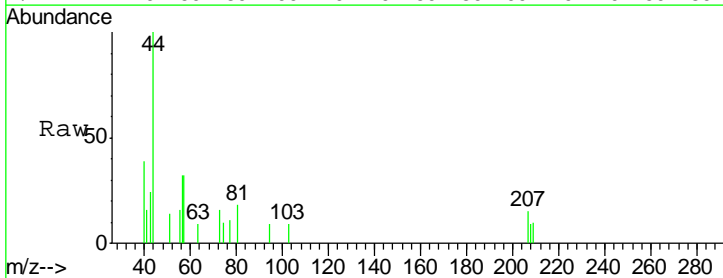
Instrument :
 MSVOA_F
 ClientSampled :
 SB-6(2-4)RE

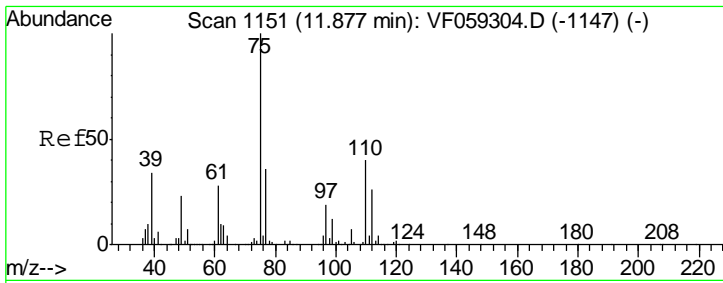
Tgt Ion	Resp	Lower	Upper
105	100		
120	0.0	12.3	36.8#



#74
 N-amyl acetate
 Concen: 51.218 ug/l
 RT: 11.46 min Scan# 1108
 Delta R.T. 0.00 min
 Lab File: VF059410.D
 Acq: 3 Jul 2018 14:22

Tgt Ion	Resp	Lower	Upper
43	100		
70	0.0	28.8	43.2#
55	66.2	17.4	26.0#
61	0.0	21.1	31.7#

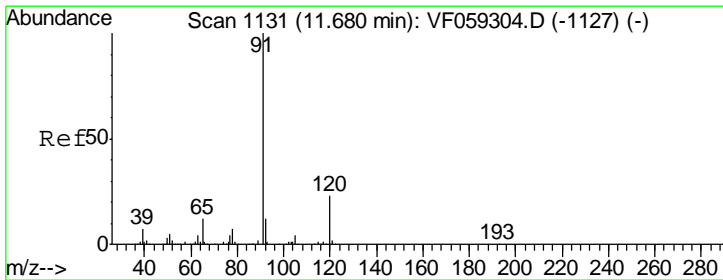
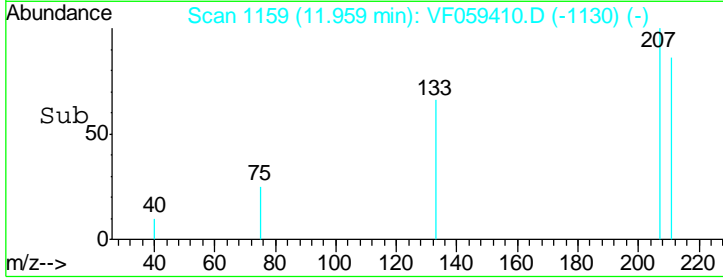
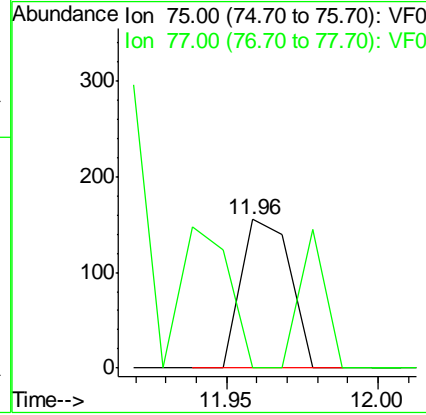
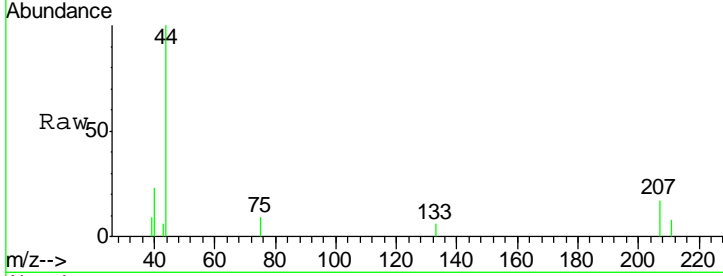




#76
 1,2,3-Trichloropropane
 Concen: 99.858 ug/l
 RT: 11.96 min Scan# 1159
 Delta R.T. 0.08 min
 Lab File: VF059410.D
 Acq: 3 Jul 2018 14:22

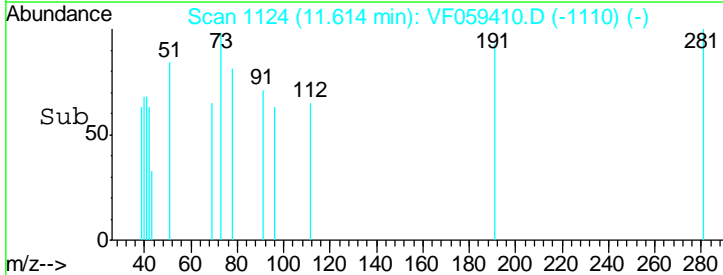
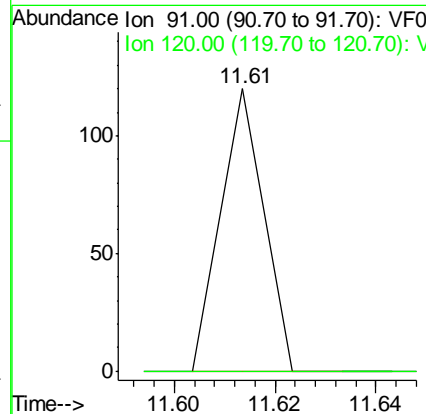
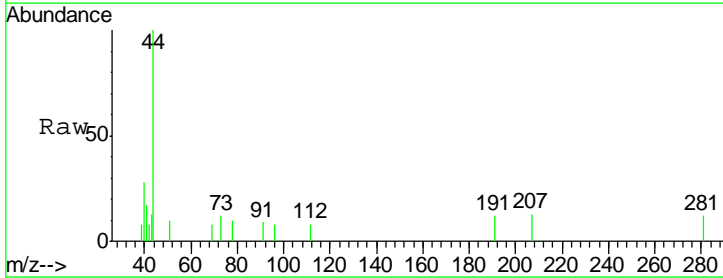
Instrument : MSVOA_F
 ClientSampled : SB-6(2-4)RE

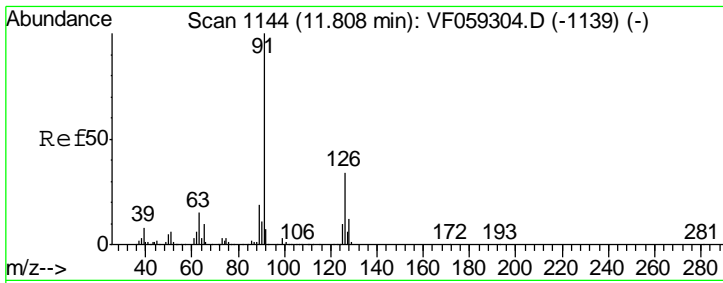
Tgt Ion: 75 Resp: 174
 Ion Ratio Lower Upper
 75 100
 77 0.0 18.0 54.0#



#78
 n-propylbenzene
 Concen: 6.464 ug/l
 RT: 11.61 min Scan# 1124
 Delta R.T. -0.07 min
 Lab File: VF059410.D
 Acq: 3 Jul 2018 14:22

Tgt Ion: 91 Resp: 71
 Ion Ratio Lower Upper
 91 100
 120 0.0 11.7 35.0#

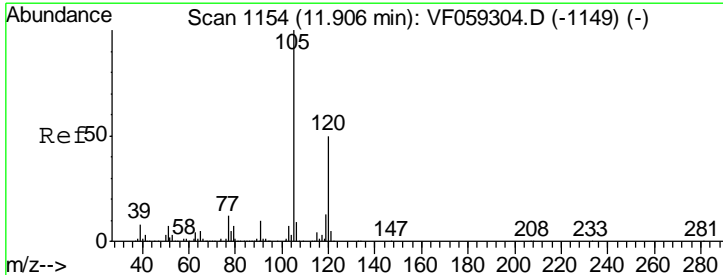
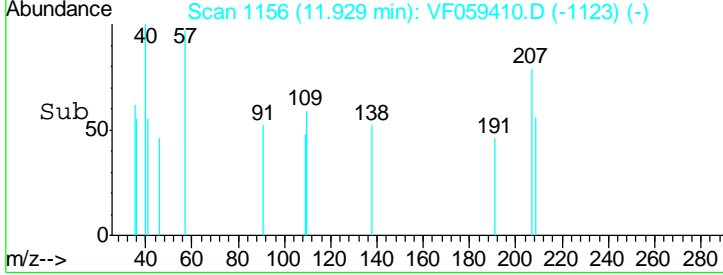
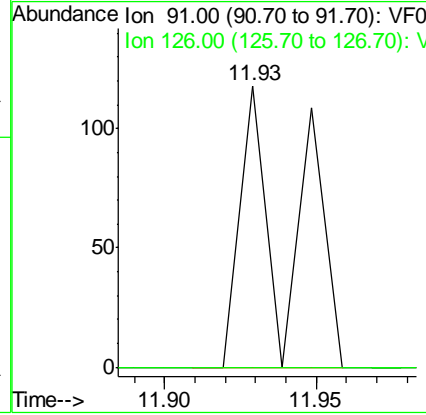
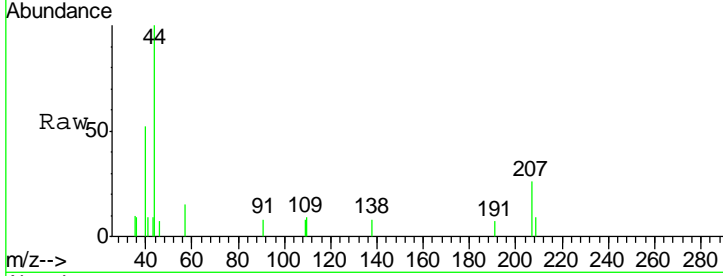




#79
 2-Chlorotoluene
 Concen: 19.967 ug/l
 RT: 11.93 min Scan# 1156
 Delta R.T. 0.12 min
 Lab File: VF059410.D
 Acq: 3 Jul 2018 14:22

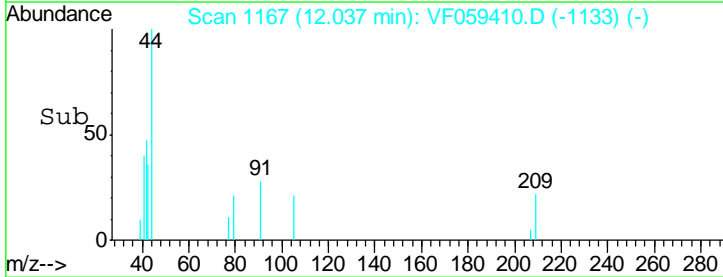
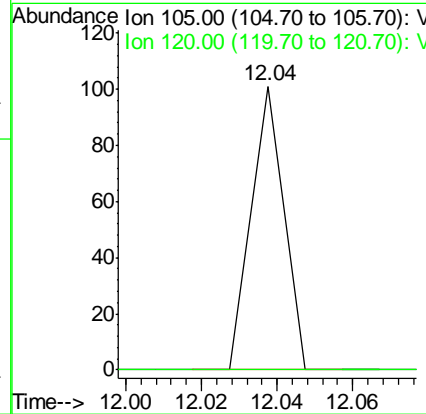
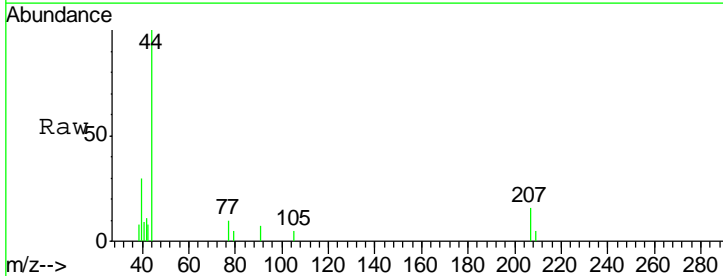
Instrument : MSVOA_F
 ClientSampled : SB-6(2-4)RE

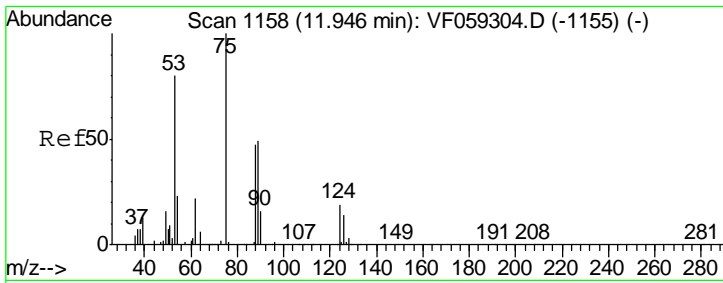
Tgt Ion: 91 Resp: 134
 Ion Ratio Lower Upper
 91 100
 126 0.0 17.2 51.5#



#80
 1,3,5-Trimethylbenzene
 Concen: 7.489 ug/l
 RT: 12.04 min Scan# 1167
 Delta R.T. 0.13 min
 Lab File: VF059410.D
 Acq: 3 Jul 2018 14:22

Tgt Ion: 105 Resp: 60
 Ion Ratio Lower Upper
 105 100
 120 0.0 24.9 74.7#

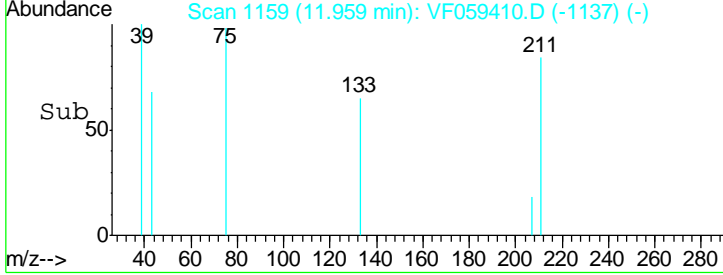
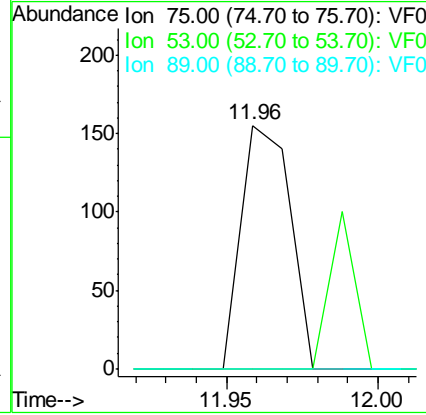
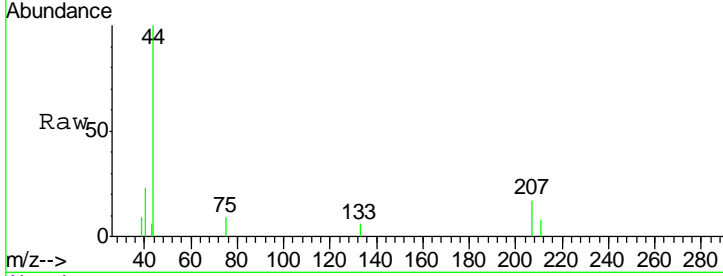




#81
 trans-1,4-Dichloro-2-butene
 Concen: 167.777 ug/l
 RT: 11.96 min Scan# 1159
 Delta R.T. 0.01 min
 Lab File: VF059410.D
 Acq: 3 Jul 2018 14:22

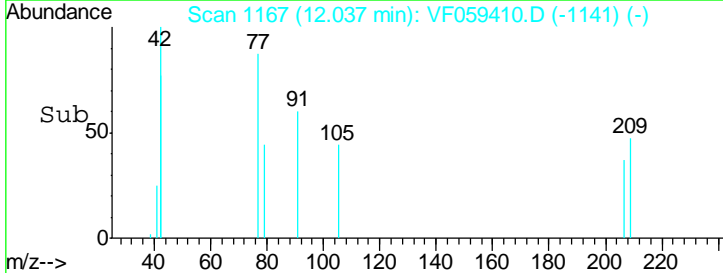
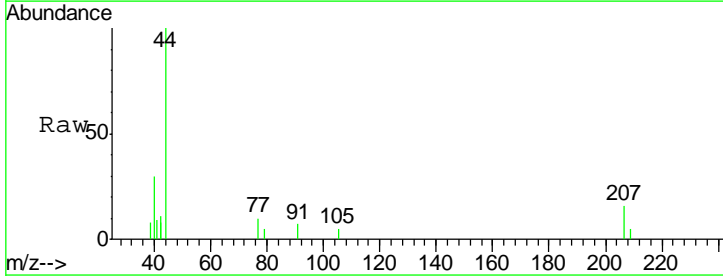
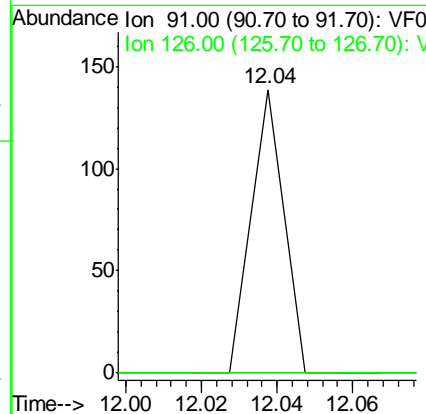
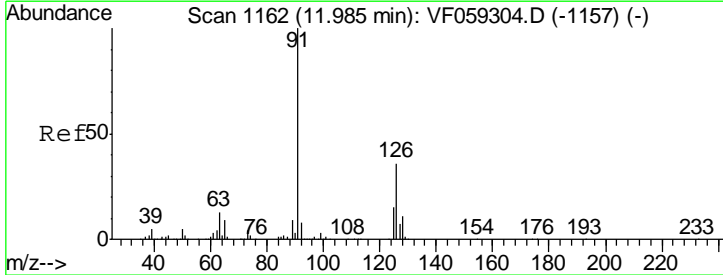
Instrument : MSVOA_F
 ClientSampled : SB-6(2-4)RE

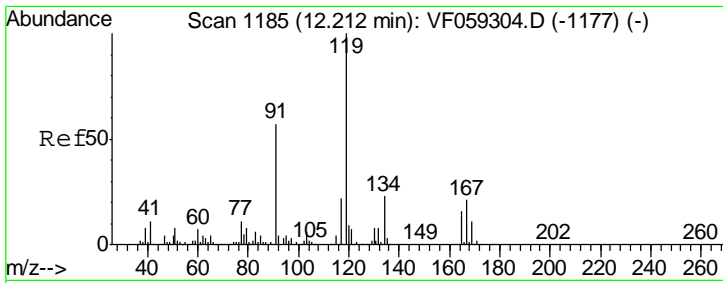
Tgt Ion	Resp	Lower	Upper
75	100		
53	0.0	68.8	103.2#
89	0.0	42.0	63.0#



#82
 4-Chlorotoluene
 Concen: 11.408 ug/l
 RT: 12.04 min Scan# 1167
 Delta R.T. 0.05 min
 Lab File: VF059410.D
 Acq: 3 Jul 2018 14:22

Tgt Ion	Resp	Lower	Upper
91	100		
126	0.0	18.2	54.6#

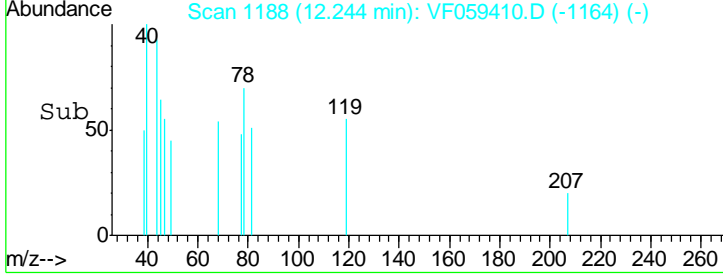
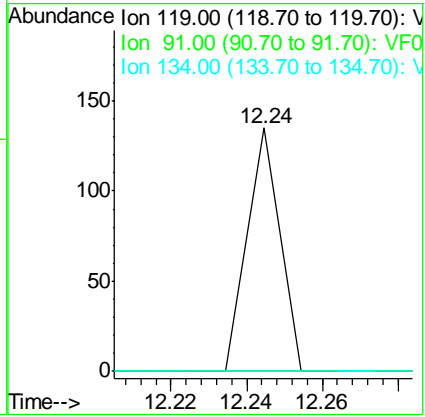
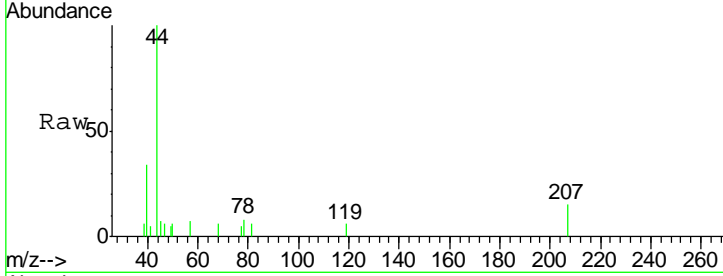




#83
 tert-Butylbenzene
 Concen: 9.983 ug/l
 RT: 12.24 min Scan# 1188
 Delta R.T. 0.03 min
 Lab File: VF059410.D
 Acq: 3 Jul 2018 14:22

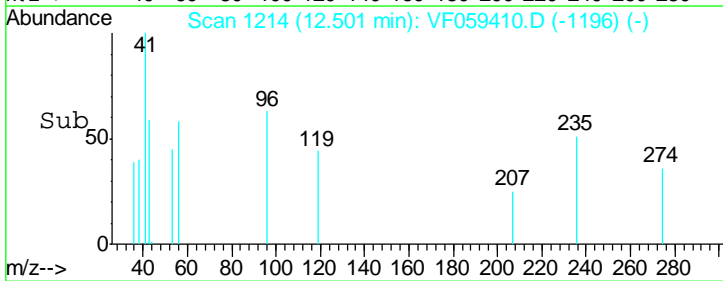
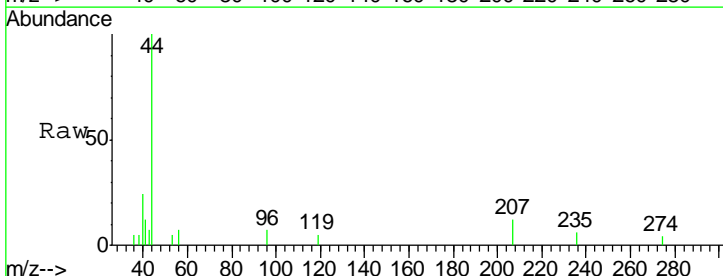
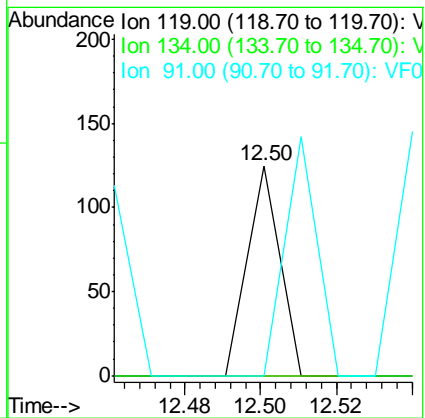
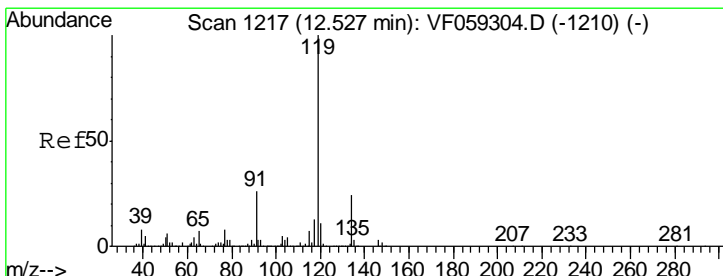
Instrument : MSVOA_F
 ClientSampled : SB-6(2-4)RE

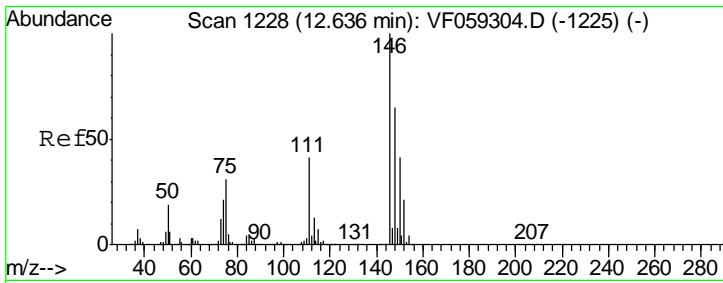
Tgt Ion	Resp	Lower	Upper
119	100		
91	0.0	28.4	85.2#
134	0.0	11.7	35.1#



#86
 p-Isopropyltoluene
 Concen: 8.302 ug/l
 RT: 12.50 min Scan# 1214
 Delta R.T. -0.03 min
 Lab File: VF059410.D
 Acq: 3 Jul 2018 14:22

Tgt Ion	Resp	Lower	Upper
119	100		
134	0.0	12.2	36.4#
91	0.0	12.9	38.6#

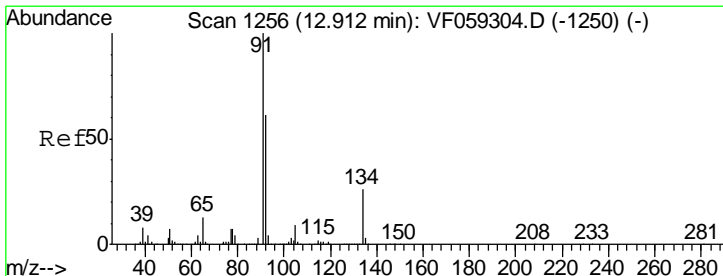
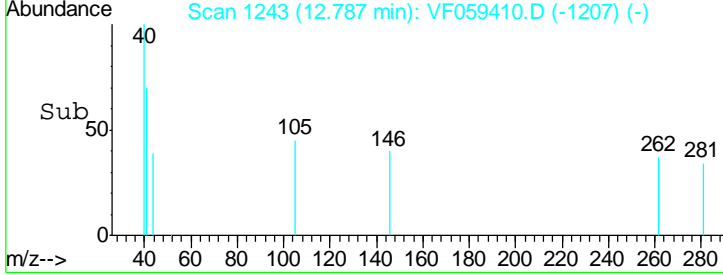
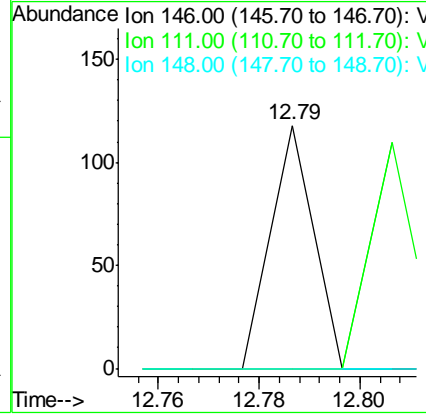
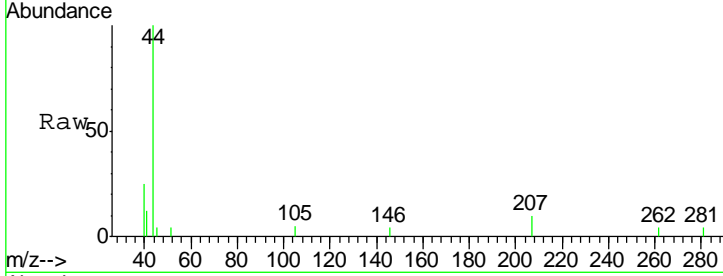




#88
 1,4-Dichlorobenzene
 Concen: 15.446 ug/l
 RT: 12.79 min Scan# 1243
 Delta R.T. 0.15 min
 Lab File: VF059410.D
 Acq: 3 Jul 2018 14:22

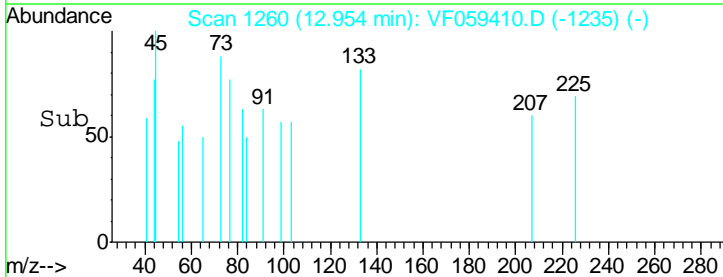
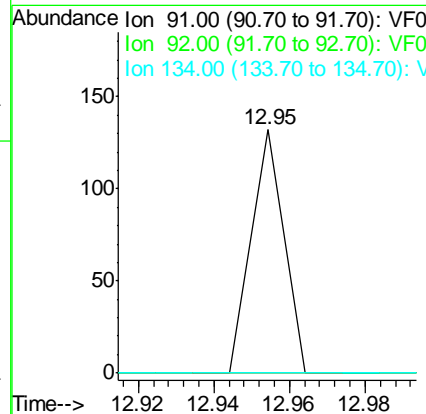
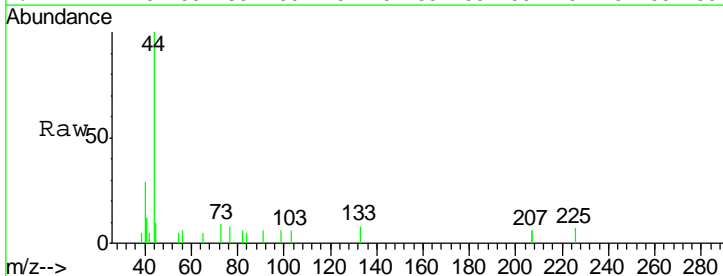
Instrument : MSVOA_F
 ClientSampled : SB-6(2-4)RE

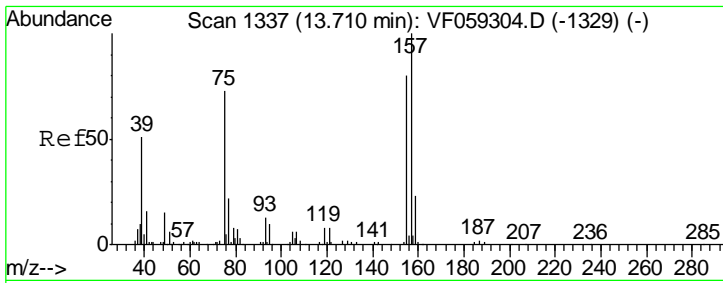
Tgt Ion	Resp	Lower	Upper
146	100		
111	0.0	20.7	62.1#
148	0.0	32.8	98.3#



#89
 n-Butylbenzene
 Concen: 8.620 ug/l
 RT: 12.95 min Scan# 1260
 Delta R.T. 0.04 min
 Lab File: VF059410.D
 Acq: 3 Jul 2018 14:22

Tgt Ion	Resp	Lower	Upper
91	100		
92	0.0	30.3	91.0#
134	0.0	12.9	38.7#

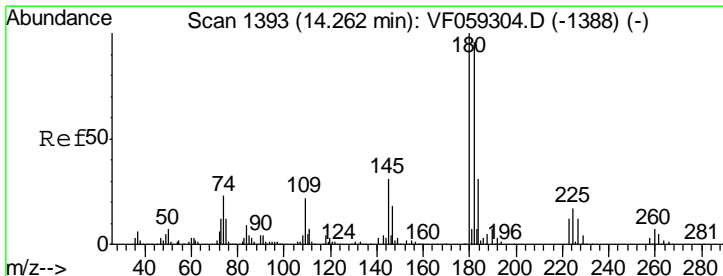
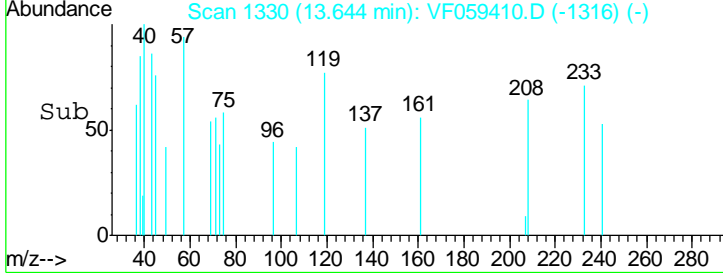
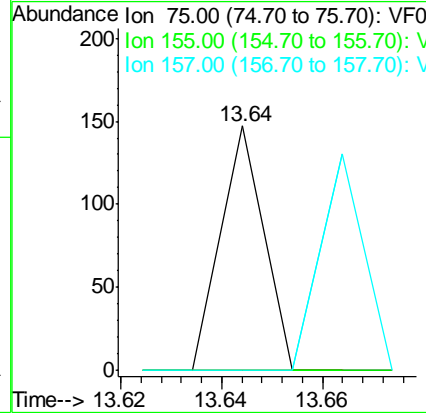
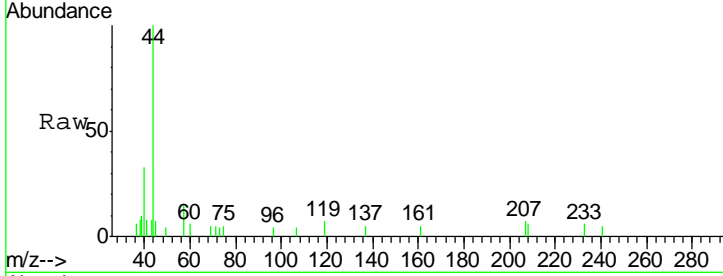




#92
 1,2-Dibromo-3-Chloropropane
 Concen: 169.900 ug/l
 RT: 13.64 min Scan# 1330
 Delta R.T. -0.07 min
 Lab File: VF059410.D
 Acq: 3 Jul 2018 14:22

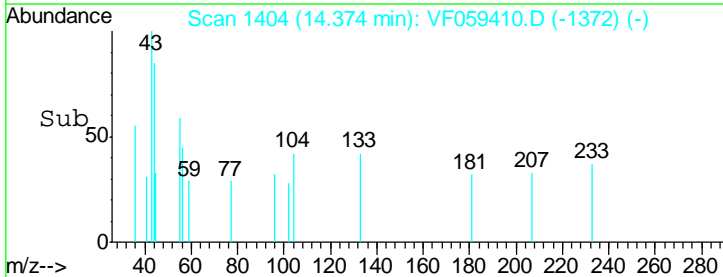
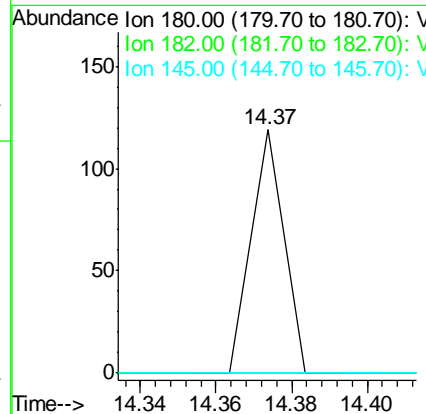
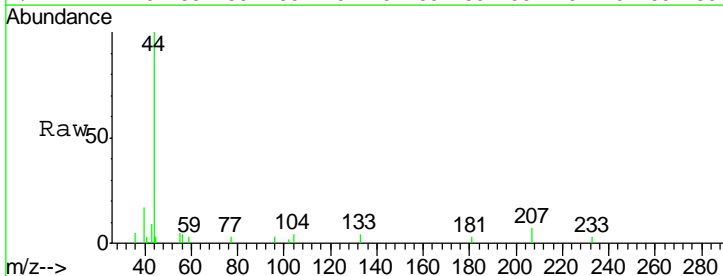
Instrument :
 MSVOA_F
 ClientSampled :
 SB-6(2-4)RE

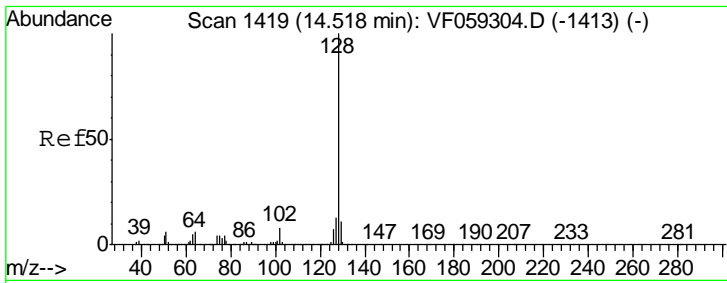
Tgt Ion	Resp	Lower	Upper
75	100		
155	0.0	54.6	163.8#
157	0.0	68.7	205.9#



#93
 1,2,4-Trichlorobenzene
 Concen: 20.550 ug/l
 RT: 14.37 min Scan# 1404
 Delta R.T. 0.11 min
 Lab File: VF059410.D
 Acq: 3 Jul 2018 14:22

Tgt Ion	Resp	Lower	Upper
180	100		
182	0.0	48.1	144.3#
145	0.0	15.3	45.8#





#95
 Naphthalene
 Concen: 9.822 ug/l
 RT: 14.44 min Scan# 1411
 Delta R.T. -0.08 min
 Lab File: VF059410.D
 Acq: 3 Jul 2018 14:22

Instrument :
 MSVOA_F
ClientSampled :
 SB-6(2-4)RE

Tgt Ion	Ratio	Lower	Upper
128	100		
127	0.0	10.1	15.1#
129	0.0	8.8	13.2#

