

Data Path : Z:\VOASRV\HPCHEM1\MSVOA F\DATA\VF070318\
 Data File : VF059415.D
 Acq On : 3 Jul 2018 16:40
 Operator : VA/AP
 Sample : J3245-17
 Misc : 6.16g/5mL/MSVOA-F/SOIL
 ALS Vial : 13 Sample Multiplier: 1

Instrument :
 MSVOA_F
 ClientSampleId :
 CL-01-062918-A

Integration Parameters: RTEINT.P

Integrator: RTE
 Smoothing : ON Filtering: 5
 Sampling : 1 Min Area: 3 % of largest Peak
 Start Thrs: 0.2 Max Peaks: 100
 Stop Thrs : 0 Peak Location: TOP

If leading or trailing edge < 100 prefer < Baseline drop else tangent >
 Peak separation: 5

Method : Z:\VOASRV\HPCHEM1\MSVOA_F\METHODS\82F062518S.M
 Title : SW846 8260

Signal : TIC

peak #	R.T. min	first scan	max scan	last scan	PK TY	peak height	corr. area	corr. % max.	% of total
1	1.094	56	57	62	rVB	19007	20266	1.69%	0.301%
2	1.360	79	84	86	rBV5	7245	19440	1.63%	0.289%
3	2.267	171	176	177	rBV5	8374	18082	1.51%	0.269%
4	2.316	177	181	188	rVB6	13860	43647	3.65%	0.648%
5	2.444	191	194	198	rBV5	6219	19547	1.63%	0.290%
6	4.189	364	371	373	rBV2	14028	48379	4.05%	0.719%
7	4.258	373	378	387	rVB2	167888	501286	41.92%	7.447%
8	5.007	446	454	466	rBV2	360641	1195919	100.00%	17.767%
9	5.736	522	528	540	rBV	348796	916716	76.65%	13.619%
10	7.678	718	725	735	rBV	386627	909734	76.07%	13.516%
11	8.556	812	814	816	rBV	19747	15435	1.29%	0.229%
12	9.886	943	949	956	rBV	490272	1078643	90.19%	16.025%
13	11.483	1107	1111	1122	rBV	468611	791530	66.19%	11.759%
14	11.621	1122	1125	1128	rVV	12825	22995	1.92%	0.342%
15	11.720	1131	1135	1138	rVB	18115	25501	2.13%	0.379%
16	12.607	1222	1225	1234	rVB	688278	1022158	85.47%	15.186%
17	13.750	1334	1341	1349	rBV2	33833	65727	5.50%	0.976%
18	14.499	1414	1417	1422	rBV2	8216	15984	1.34%	0.237%

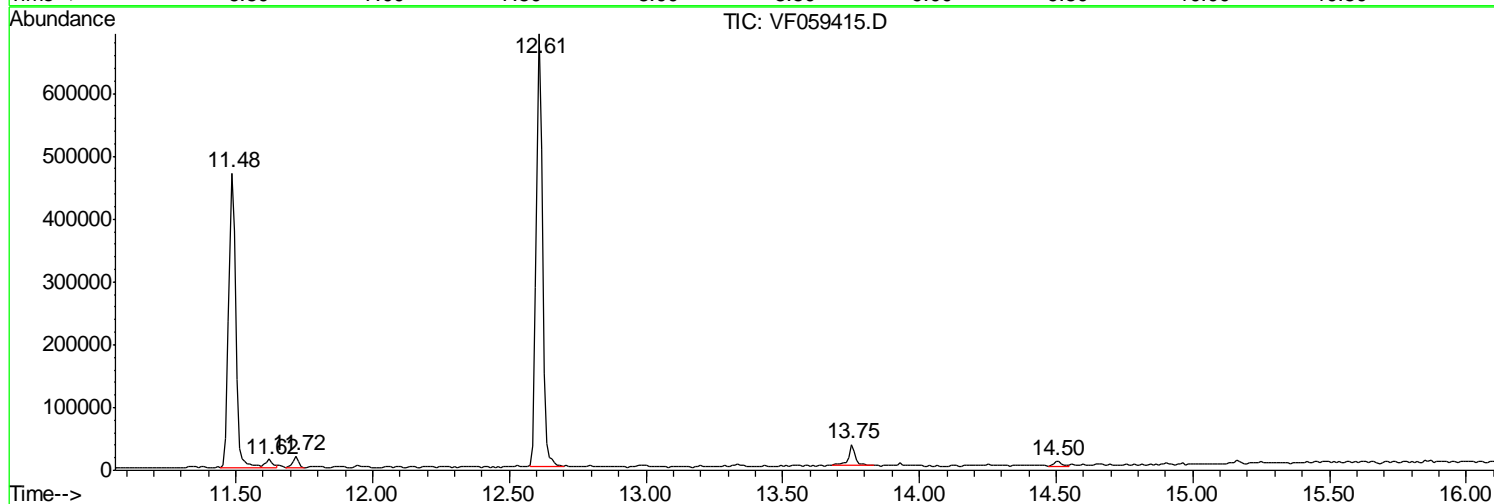
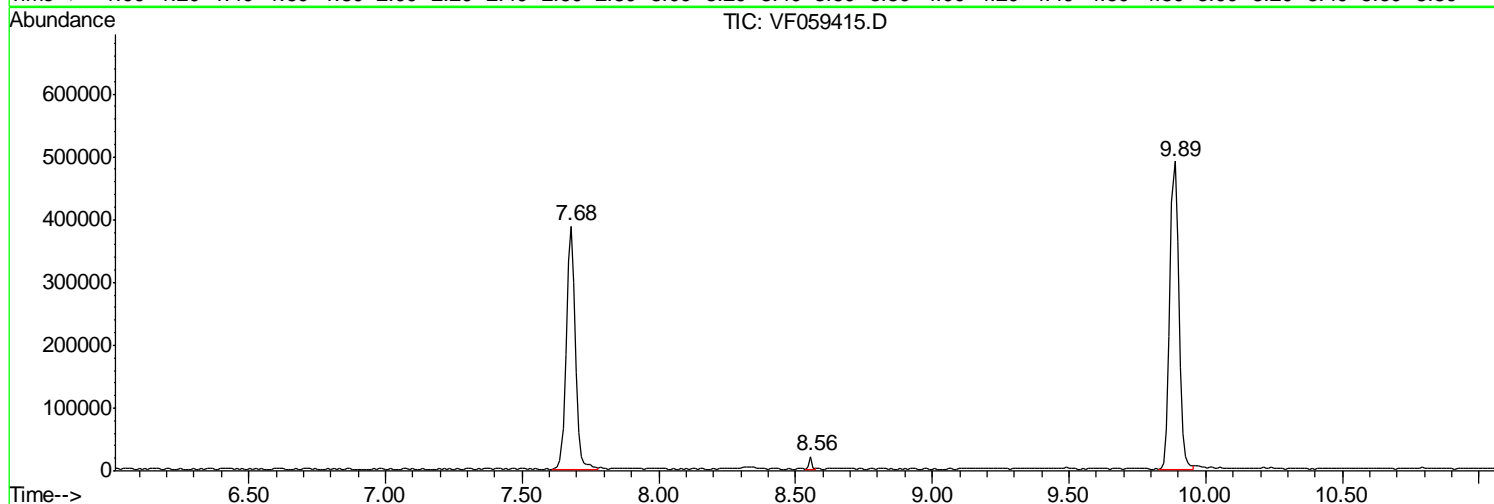
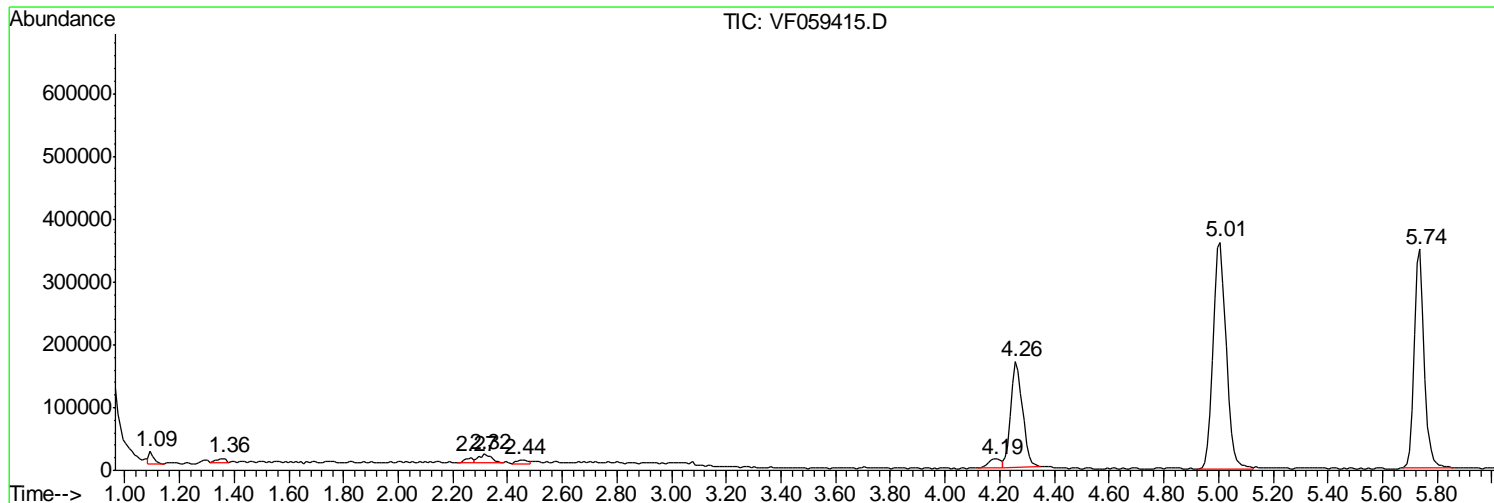
Sum of corrected areas: 6730989

Data Path : Z:\VOASRV\HPCHEM1\MSVOA F\DATA\VF070318\
 Data File : VF059415.D
 Acq On : 3 Jul 2018 16:40
 Operator : VA/AP
 Sample : J3245-17
 Misc : 6.16µ/5mL/MSVOA-F/SOIL
 ALS Vial : 13 Sample Multiplier: 1

Instrument :
 MSVOA_F
 ClientSampleId :
 CL-01-062918-A

Quant Method : Z:\VOASRV\HPCHEM1\MSVOA_F\METHODS\82F062518S.M
 Quant Title : SW846 8260

TIC Library : C:\DATABASE\NIST11.L
 TIC Integration Parameters: LSCINT.P



Data Path : Z:\VOASRV\HPCHEM1\MSVOA_F\DATA\VF070318\
Data File : VF059415.D
Acq On : 3 Jul 2018 16:40
Operator : VA/AP
Sample : J3245-17
Misc : 6.16g/5mL/MSVOA-F/SOIL
ALS Vial : 13 Sample Multiplier: 1

Instrument :
MSVOA_F
ClientSampleId :
CL-01-062918-A

Quant Method : Z:\VOASRV\HPCHEM1\MSVOA_F\METHODS\82F062518S.M
Quant Title : SW846 8260

TIC Library : C:\DATABASE\NIST11.L
TIC Integration Parameters: LSCINT.P

No Library Search Compounds Detected

Data Path : Z:\VOASRV\HPCHEM1\MSVOA_F\DATA\VF070318\
Data File : VF059415.D
Acq On : 3 Jul 2018 16:40
Operator : VA/AP
Sample : J3245-17
Misc : 6.16g/5mL/MSVOA-F/SOIL
ALS Vial : 13 Sample Multiplier: 1

Instrument :
MSVOA_F
ClientSampleId :
CL-01-062918-A

Quant Method : Z:\VOASRV\HPCHEM1\MSVOA_F\METHODS\82F062518S.M
Quant Title : SW846 8260

TIC Library : C:\DATABASE\NIST11.L
TIC Integration Parameters: LSCINT.P

TIC Top Hit name	RT	EstConc	Units	Response	--Internal Standard--			
					#	RT	Resp	Conc
