

Data Path : Z:\VOASRV\HPCHEM1\MSVOA F\DATA\VF071818\  
 Data File : VF059525.D  
 Acq On : 18 Jul 2018 21:16  
 Operator : VA/AP  
 Sample : J4012-01RE  
 Misc : 5.04µ/5mL/MSVOA F/SOIL  
 ALS Vial : 10 Sample Multiplier: 1

Instrument :  
 MSVOA\_F  
 ClientSampleId :

Quant Time: Jul 19 01:35:35 2018  
 Quant Method : Z:\VOASRV\HPCHEM1\MSVOA\_F\METHODS\82F071718S.M  
 Quant Title : SW846 8260  
 QLast Update : Wed Jul 18 04:09:10 2018  
 Response via : Initial Calibration

Internal Standards	R.T.	QIon	Response	Conc	Units	Dev(Min)
1) Pentafluorobenzene	0.00	168	0	0.00	µg/l	-5.05
34) 1,4-Difluorobenzene	5.50	114	63	50.00	µg/l	-0.29
63) Chlorobenzene-d5	9.29	117	65	50.00	µg/l	-0.64
72) 1,4-Dichlorobenzene-d4	0.00	152	0	0.00	µg/l	-12.64

## System Monitoring Compounds

33) 1,2-Dichloroethane-d4	5.17	65	61	0.00	µg/l	0.14
Spiked Amount	50.000		Recovery	=	0.00%	
35) Dibromofluoromethane	0.00	113	0	0.00	µg/l	
Spiked Amount	50.000		Recovery	=	0.00%	
50) Toluene-d8	7.45	98	62	45.11	µg/l	-0.28
Spiked Amount	50.000		Recovery	=	90.22%	
62) 4-Bromofluorobenzene	10.90	95	62	85.99	µg/l	-0.62
Spiked Amount	50.000		Recovery	=	171.98%	

## Target Compounds

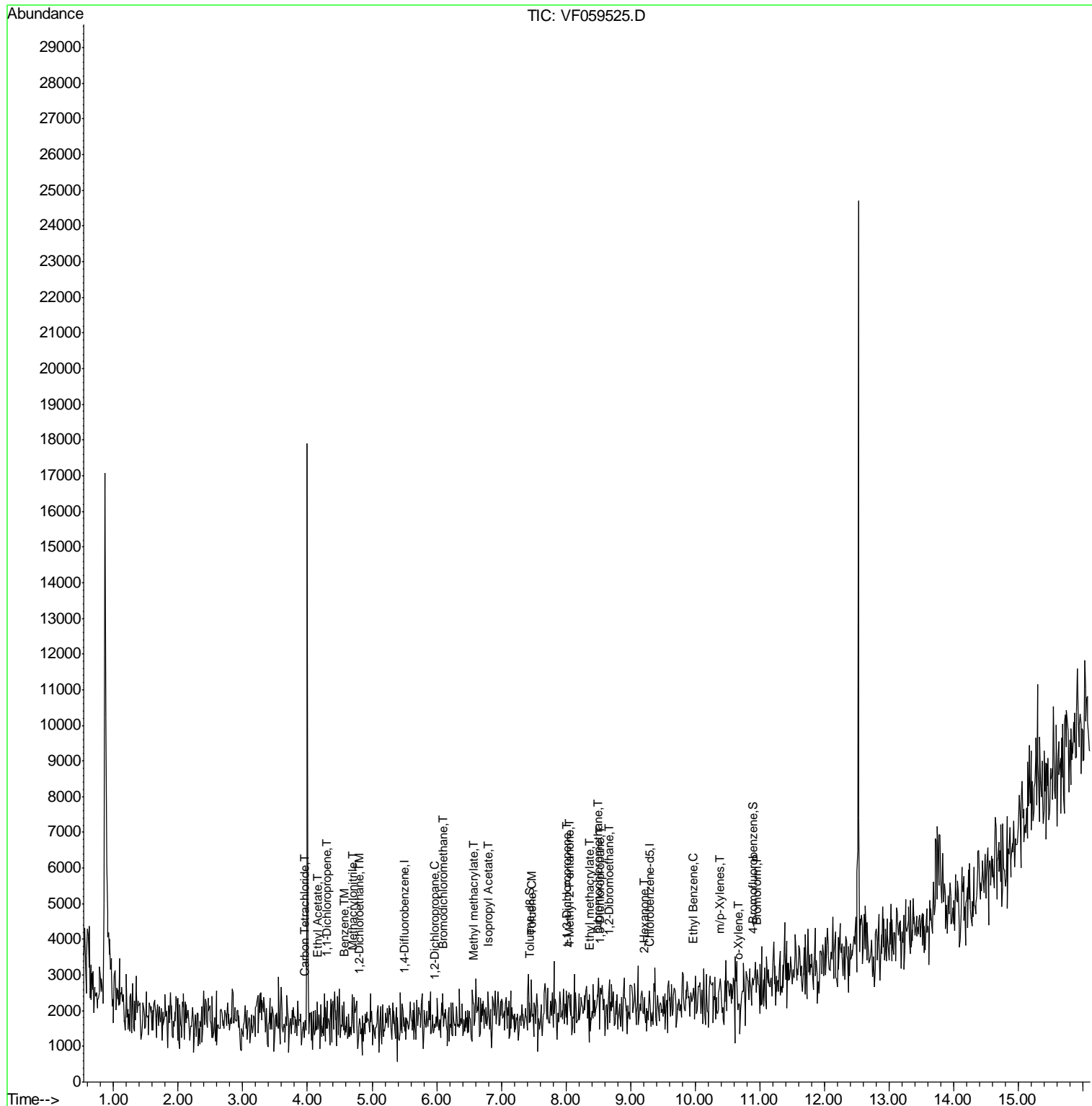
						Qvalue
36) 1,1-Dichloropropene	4.31	75	73	115.766	µg/l #	45
37) Ethyl Acetate	4.16	43	149	489.084	µg/l #	41
38) Carbon Tetrachloride	3.96	117	130	179.897	µg/l #	12
40) Benzene	4.58	78	70	57.220	µg/l #	51
41) Methacrylonitrile	4.70	41	108	597.229	µg/l #	50
42) 1,2-Dichloroethane	4.81	62	64	79.646	µg/l	85
43) Isopropyl Acetate	6.79	43	321	708.418	µg/l #	51
45) 1,2-Dichloropropane	5.97	63	76	223.824	µg/l #	42
47) Bromodichloromethane	6.11	83	85	106.787	µg/l #	25
48) Methyl methacrylate	6.58	41	88	271.927	µg/l #	13
49) 1,4-Dioxane	6.32	88	70	Below Cal	#	1
51) 4-Methyl-2-Pentanone	8.04	43	75	233.502	µg/l #	40
52) Toluene	7.47	92	75	84.532	µg/l #	1
53) t-1,3-Dichloropropene	8.02	75	72	98.338	µg/l #	43
56) Ethyl methacrylate	8.37	69	76	178.270	µg/l #	31
57) 1,3-Dichloropropane	8.53	76	62	101.996	µg/l #	42
59) 2-Hexanone	9.22	43	119	490.220	µg/l #	30
60) Dibromochloromethane	8.50	129	76	131.180	µg/l #	12
61) 1,2-Dibromoethane	8.68	107	157	368.066	µg/l #	2
67) Ethyl Benzene	9.97	91	158	72.815	µg/l #	45
68) m/p-Xylenes	10.39	106	74	96.624	µg/l #	1
69) o-Xylene	10.68	106	62	76.026	µg/l #	1
71) Bromoform	10.96	173	67	173.718	µg/l #	27

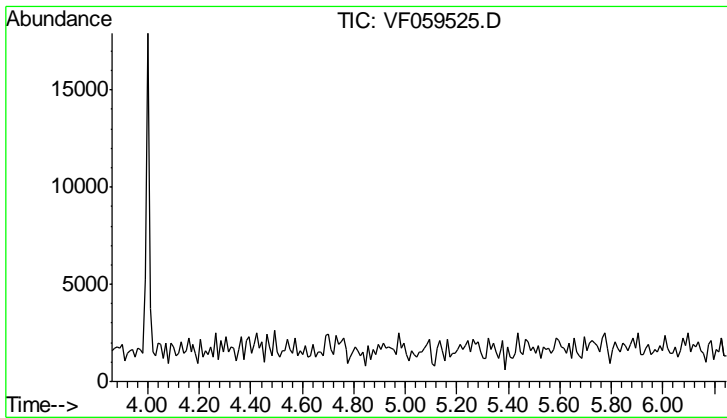
(#) = qualifier out of range (m) = manual integration (+) = signals summed

Data Path : Z:\VOASRV\HPCHEM1\MSVOA F\DATA\VF071818\  
 Data File : VF059525.D  
 Acq On : 18 Jul 2018 21:16  
 Operator : VA/AP  
 Sample : J4012-01RE  
 Misc : 5.04µ/5mL/MSVOA F/SOIL  
 ALS Vial : 10 Sample Multiplier: 1

Instrument :  
 MSVOA\_F  
 ClientSampled :

Quant Time: Jul 19 01:35:35 2018  
 Quant Method : Z:\VOASRV\HPCHEM1\MSVOA\_F\METHODS\82F071718S.M  
 Quant Title : SW846 8260  
 QLast Update : Wed Jul 18 04:09:10 2018  
 Response via : Initial Calibration

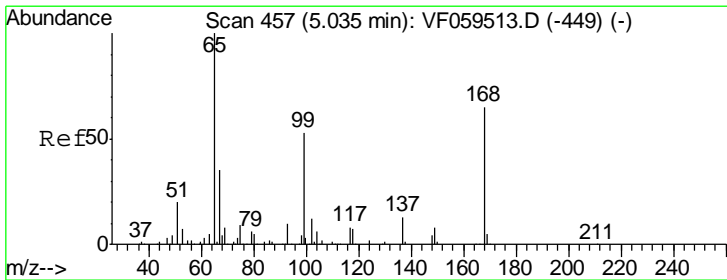
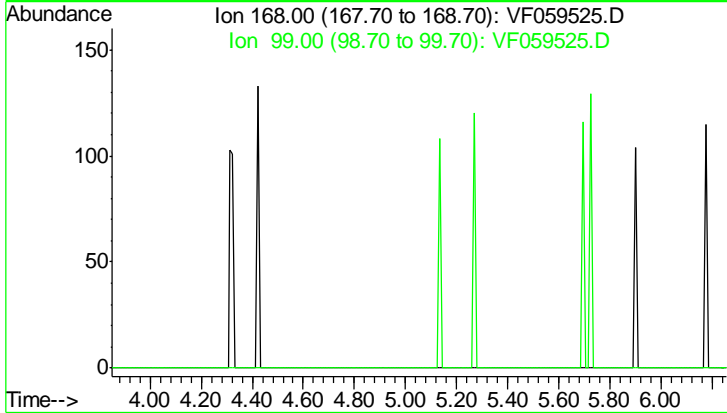




#1  
 Pentafluorobenzene  
 Concen: 0.000 ug/l  
 Expected RT: 5.05 min  
 Lab File: VF059525.D  
 Acq: 18 Jul 2018 21:16

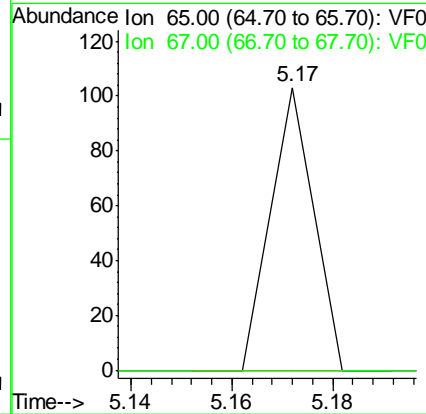
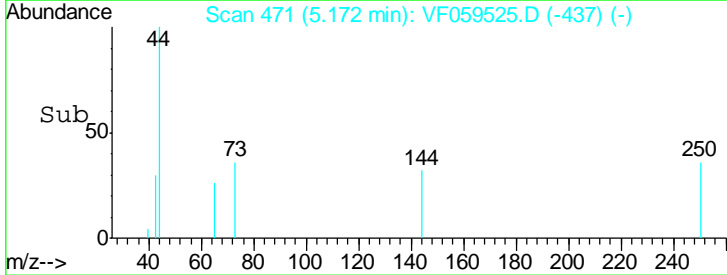
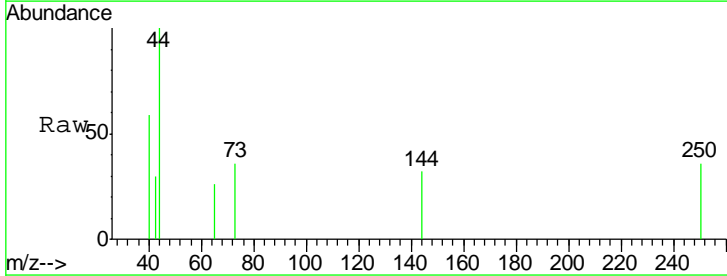
Instrument : MSVOA\_F  
 ClientSampled :

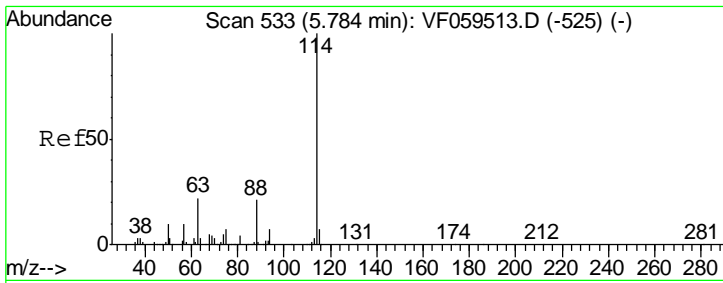
Tgt Ion: 168  
 Sig Exp Ratio  
 168 100  
 99 72.0



#33  
 1,2-Dichloroethane-d4  
 Concen: 0.000 ug/l  
 RT: 5.17 min Scan# 471  
 Delta R.T. 0.14 min  
 Lab File: VF059525.D  
 Acq: 18 Jul 2018 21:16

Tgt Ion: 65 Resp: 61  
 Ion Ratio Lower Upper  
 65 100  
 67 0.0 0.0 91.2

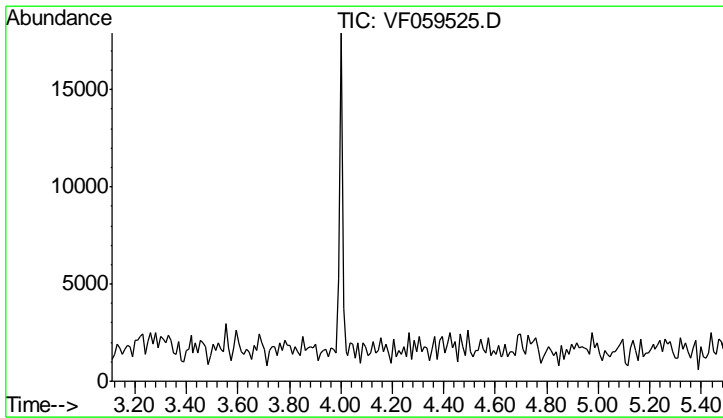
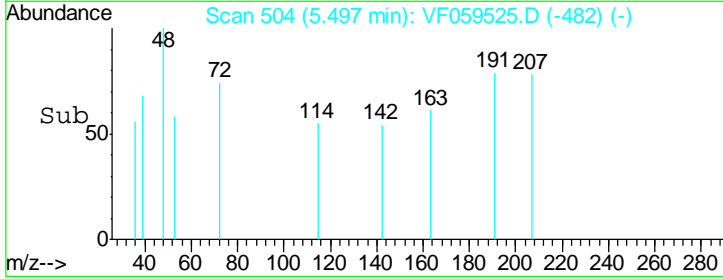
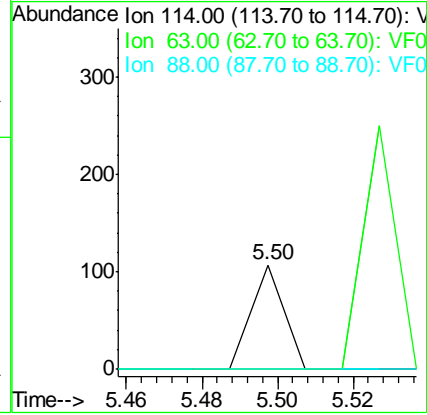
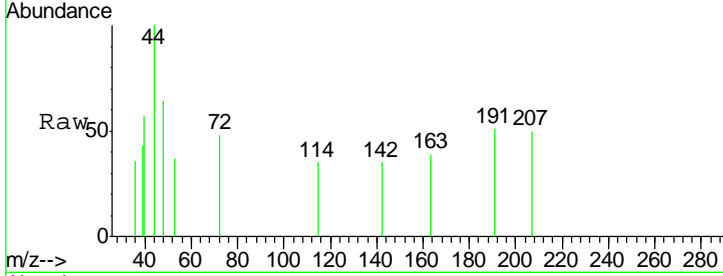




#34  
 1,4-Difluorobenzene  
 Concen: 50.000 ug/l  
 RT: 5.50 min Scan# 504  
 Delta R.T. -0.29 min  
 Lab File: VF059525.D  
 Acq: 18 Jul 2018 21:16

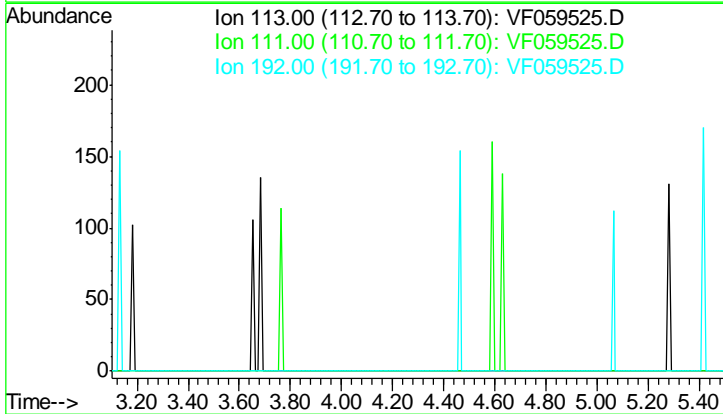
Instrument :  
 MSVOA\_F  
 ClientSampled :

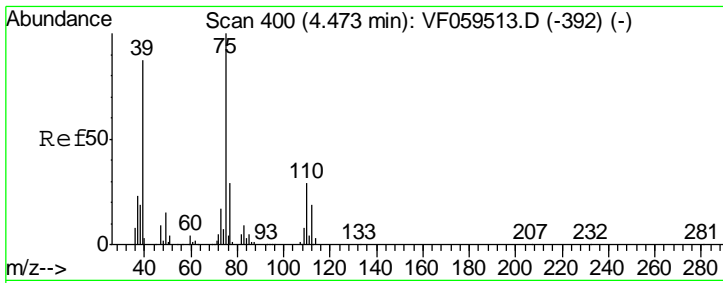
Tgt Ion	Resp	Lower	Upper
114	100		
63	0.0	0.0	44.8
88	0.0	0.0	42.6



#35  
 Dibromofluoromethane  
 Concen: 0.000 ug/l  
 Expected RT: 4.31 min  
 Lab File: VF059525.D  
 Acq: 18 Jul 2018 21:16

Tgt Ion	Exp Ratio
113	100
111	100.4
192	16.4

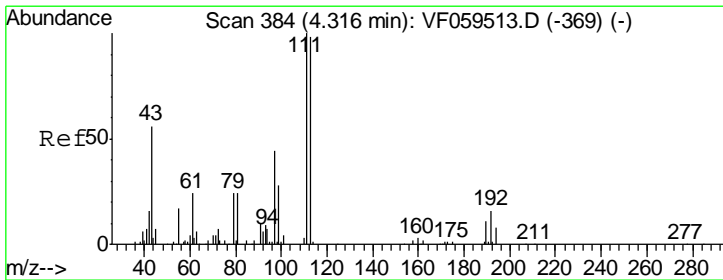
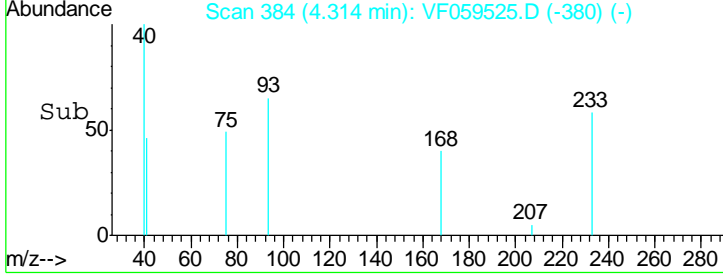
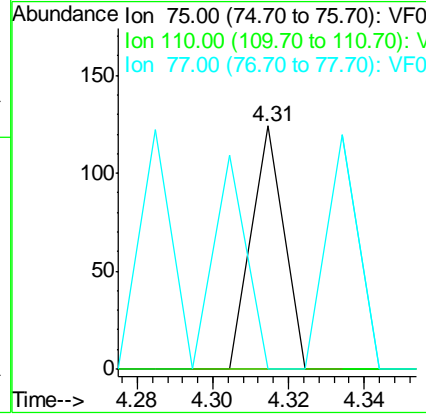
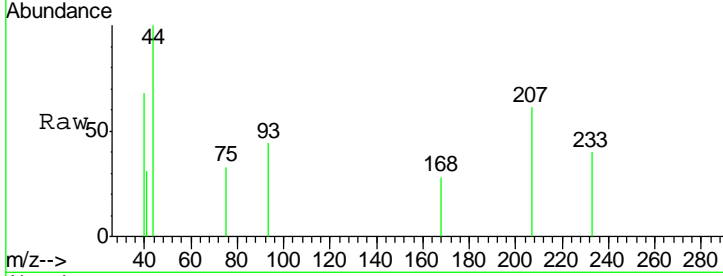




#36  
 1,1-Dichloropropene  
 Concen: 115.766 ug/l  
 RT: 4.31 min Scan# 384  
 Delta R.T. -0.16 min  
 Lab File: VF059525.D  
 Acq: 18 Jul 2018 21:16

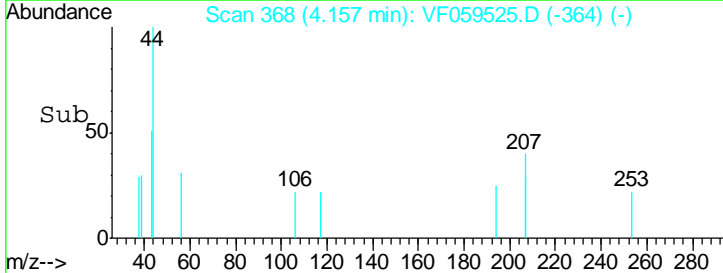
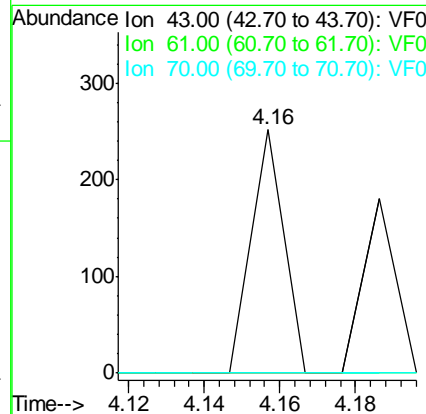
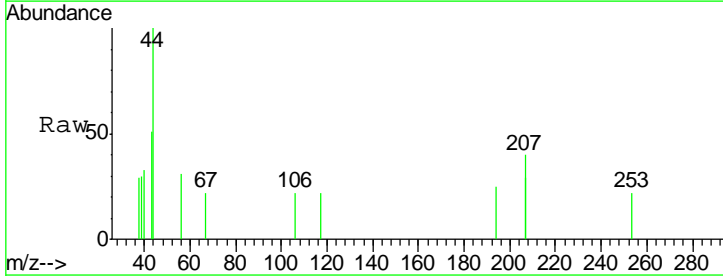
Instrument :  
 MSVOA\_F  
 ClientSampled :

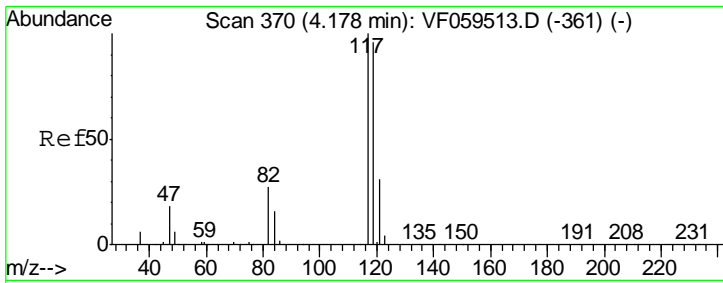
Tgt Ion	Resp	Lower	Upper
75	100		
110	0.0	14.6	43.8#
77	0.0	23.7	35.5#



#37  
 Ethyl Acetate  
 Concen: 489.084 ug/l  
 RT: 4.16 min Scan# 368  
 Delta R.T. -0.16 min  
 Lab File: VF059525.D  
 Acq: 18 Jul 2018 21:16

Tgt Ion	Resp	Lower	Upper
43	100		
61	0.0	33.7	50.5#
70	0.0	7.4	11.0#

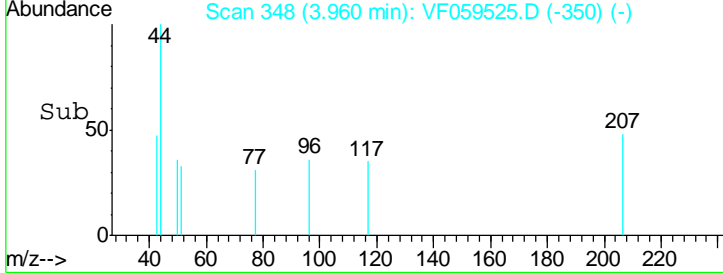
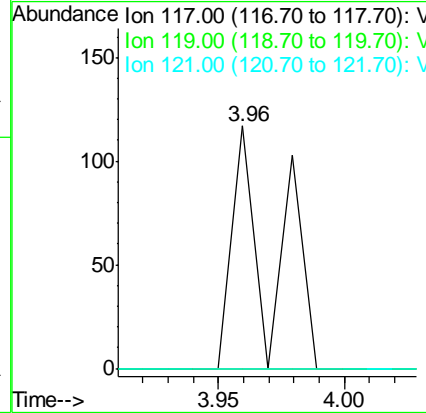
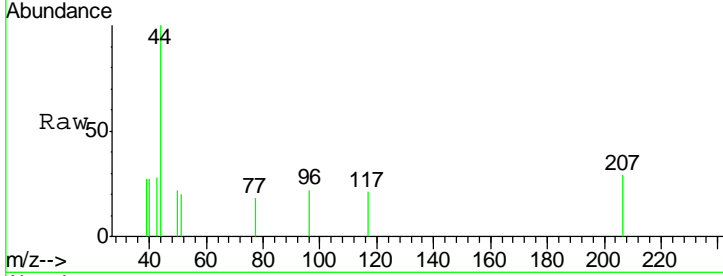




#38  
 Carbon Tetrachloride  
 Concen: 179.897 ug/l  
 RT: 3.96 min Scan# 348  
 Delta R.T. -0.22 min  
 Lab File: VF059525.D  
 Acq: 18 Jul 2018 21:16

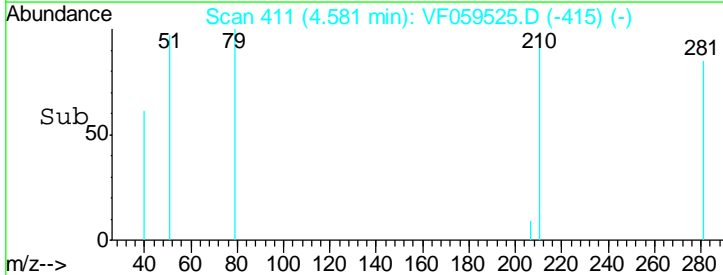
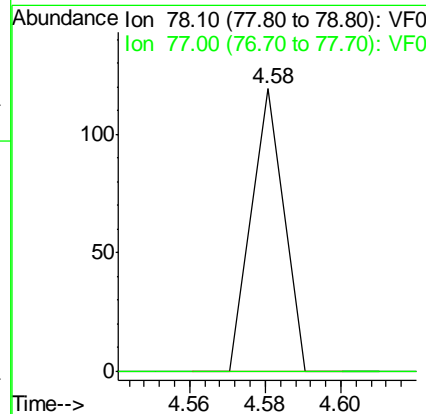
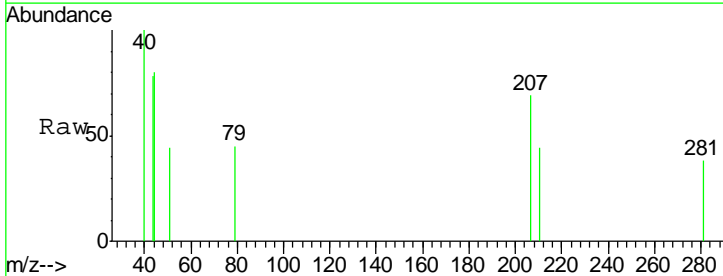
Instrument :  
 MSVOA\_F  
 ClientSampled :

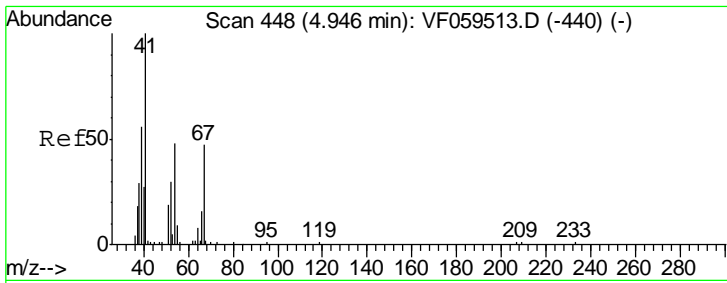
Tgt Ion	Resp	Lower	Upper
117	130		
119	0.0	77.6	116.4#
121	0.0	24.9	37.3#



#40  
 Benzene  
 Concen: 57.220 ug/l  
 RT: 4.58 min Scan# 411  
 Delta R.T. -0.24 min  
 Lab File: VF059525.D  
 Acq: 18 Jul 2018 21:16

Tgt Ion	Resp	Lower	Upper
78	70		
77	0.0	19.4	29.0#

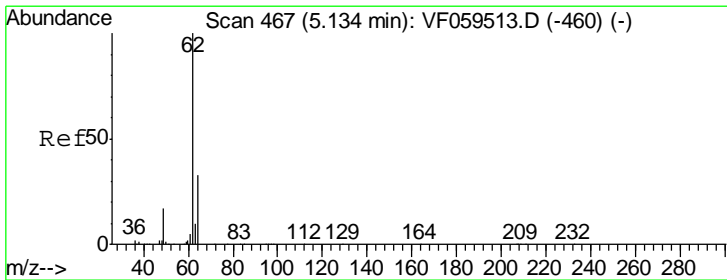
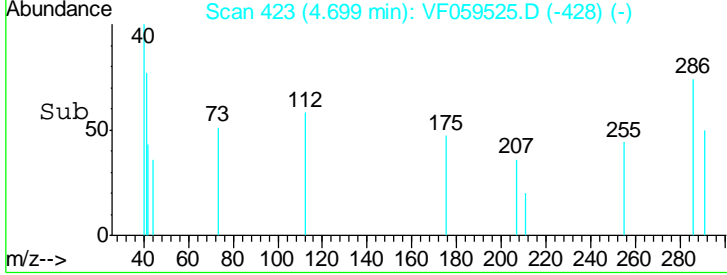
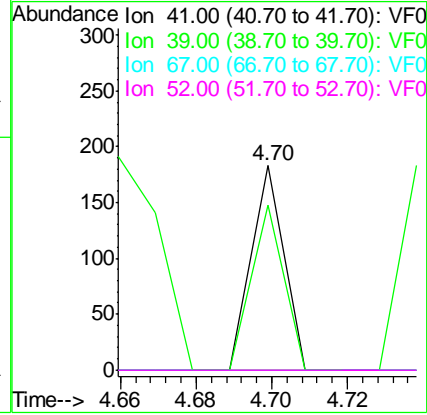
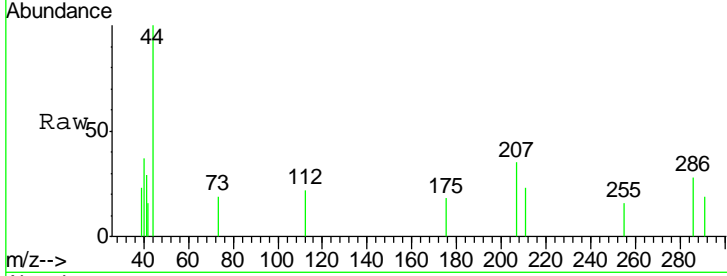




#41  
 Methacrylonitrile  
 Concen: 597.229 ug/l  
 RT: 4.70 min Scan# 423  
 Delta R.T. -0.25 min  
 Lab File: VF059525.D  
 Acq: 18 Jul 2018 21:16

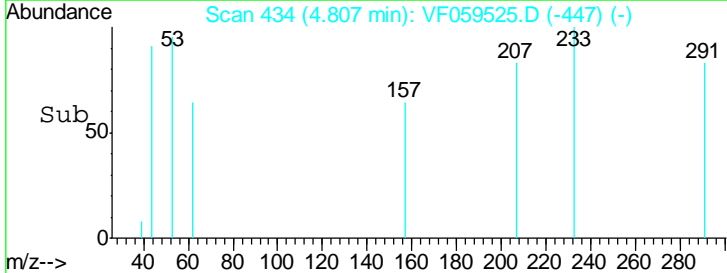
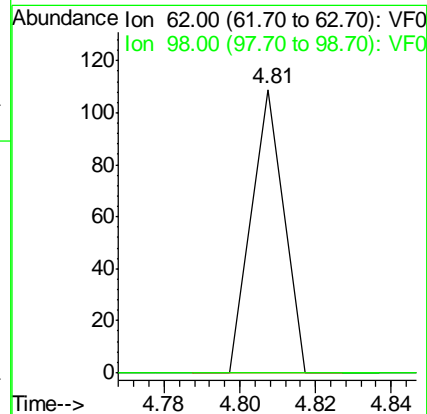
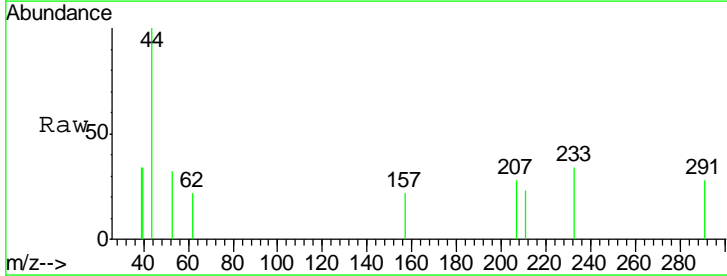
Instrument :  
 MSVOA\_F  
 ClientSampled :

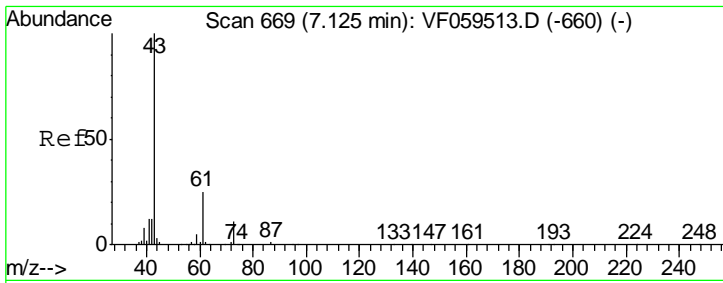
Tgt Ion	Resp	Lower	Upper
41	108		
39	80.9	49.4	74.0#
67	0.0	37.4	56.2#
52	0.0	32.1	48.1#



#42  
 1,2-Dichloroethane  
 Concen: 79.646 ug/l  
 RT: 4.81 min Scan# 434  
 Delta R.T. -0.33 min  
 Lab File: VF059525.D  
 Acq: 18 Jul 2018 21:16

Tgt Ion	Resp	Lower	Upper
62	64		
98	0.0	0.0	9.6

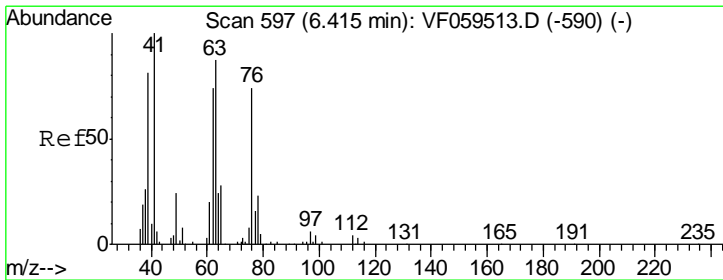
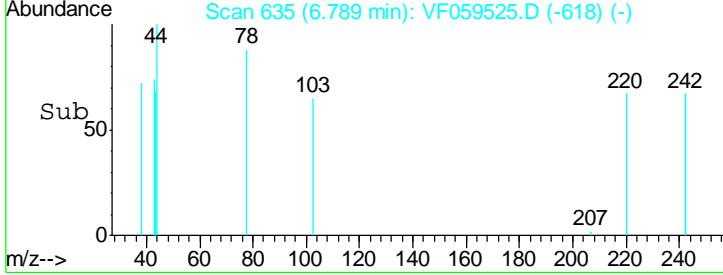
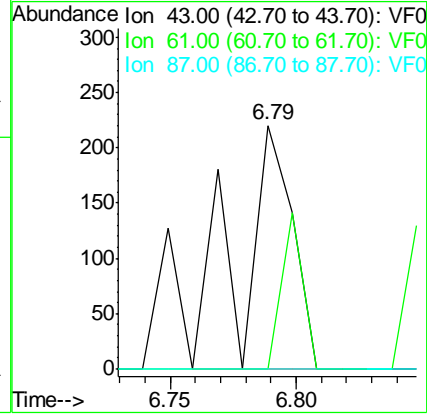
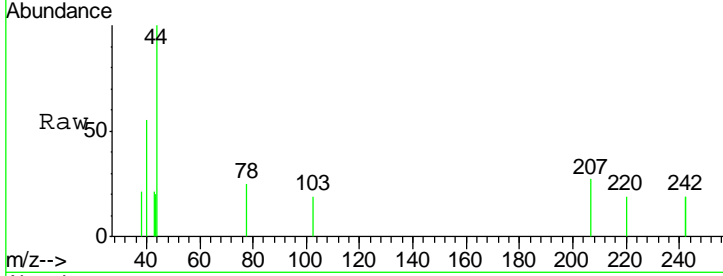




#43  
 Isopropyl Acetate  
 Concen: 708.418 ug/l  
 RT: 6.79 min Scan# 635  
 Delta R.T. -0.34 min  
 Lab File: VF059525.D  
 Acq: 18 Jul 2018 21:16

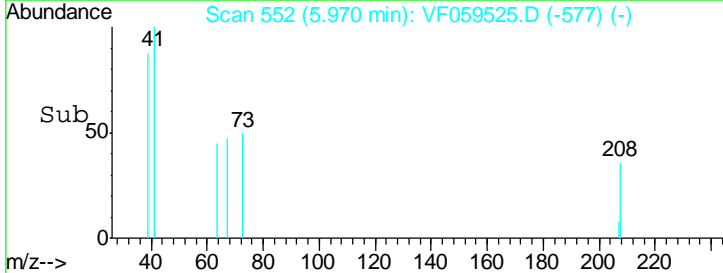
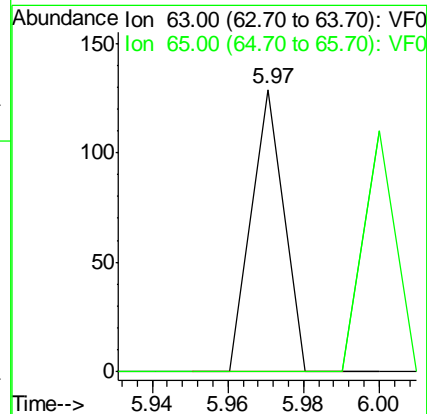
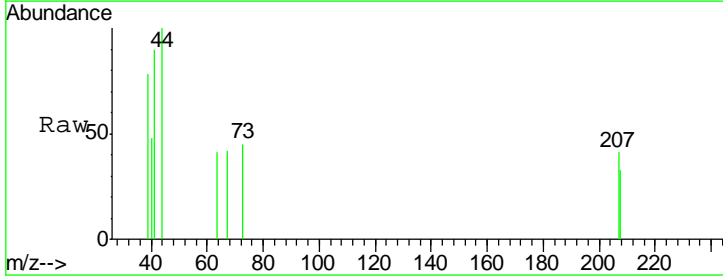
Instrument :  
 MSVOA\_F  
 ClientSampled :

Tgt Ion	Resp	Lower	Upper
43	100		
61	0.0	20.3	30.5#
87	0.0	0.4	0.6#

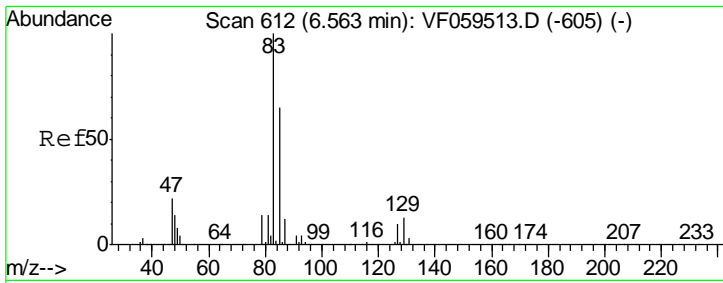


#45  
 1,2-Dichloropropane  
 Concen: 223.824 ug/l  
 RT: 5.97 min Scan# 552  
 Delta R.T. -0.44 min  
 Lab File: VF059525.D  
 Acq: 18 Jul 2018 21:16

Tgt Ion	Resp	Lower	Upper
63	100		
65	0.0	26.1	39.1#



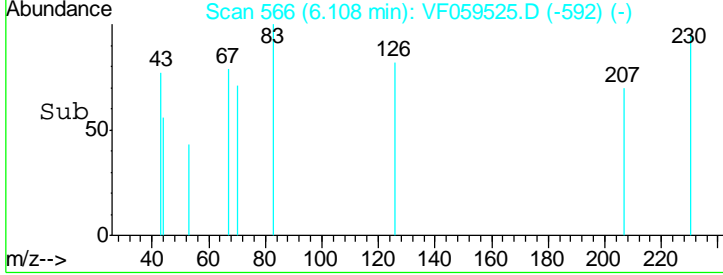
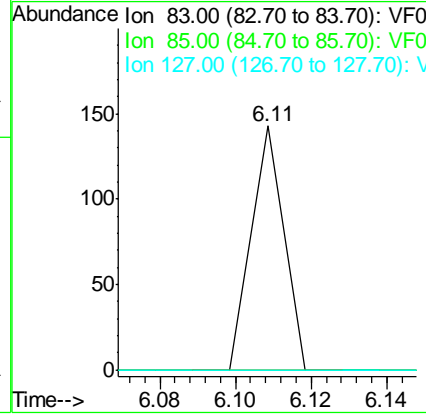
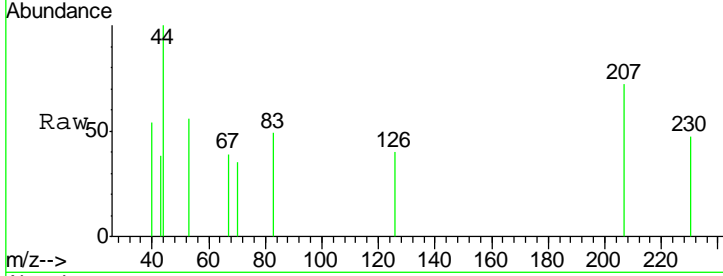




#47  
 Bromodichloromethane  
 Concen: 106.787 ug/l  
 RT: 6.11 min Scan# 566  
 Delta R.T. -0.45 min  
 Lab File: VF059525.D  
 Acq: 18 Jul 2018 21:16

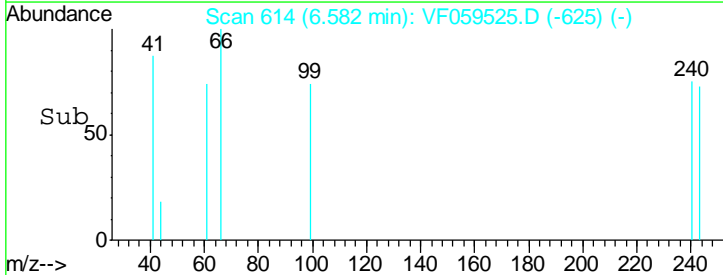
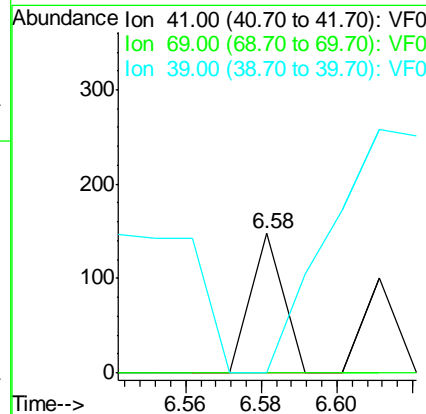
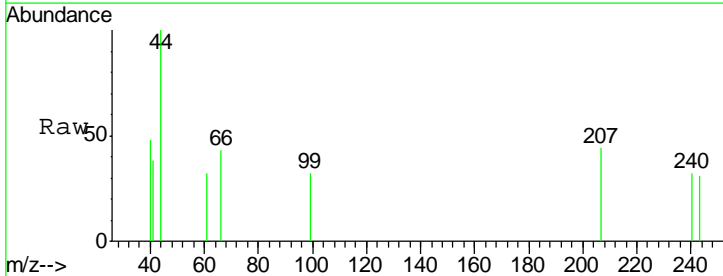
Instrument :  
 MSVOA\_F  
 ClientSampled :

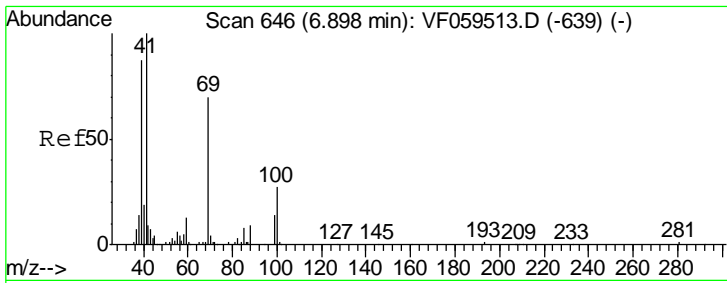
Tgt Ion	Resp	Lower	Upper
83	100		
85	0.0	52.4	78.6#
127	0.0	8.2	12.4#



#48  
 Methyl methacrylate  
 Concen: 271.927 ug/l  
 RT: 6.58 min Scan# 614  
 Delta R.T. -0.31 min  
 Lab File: VF059525.D  
 Acq: 18 Jul 2018 21:16

Tgt Ion	Resp	Lower	Upper
41	100		
69	0.0	51.3	76.9#
39	0.0	65.3	97.9#

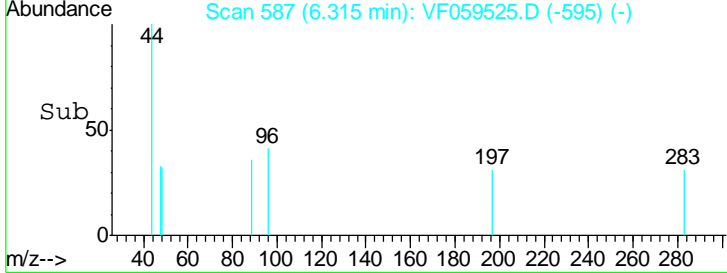
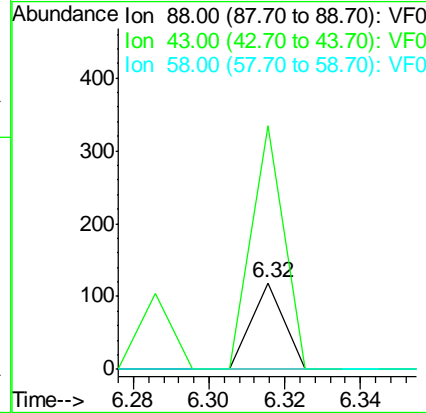
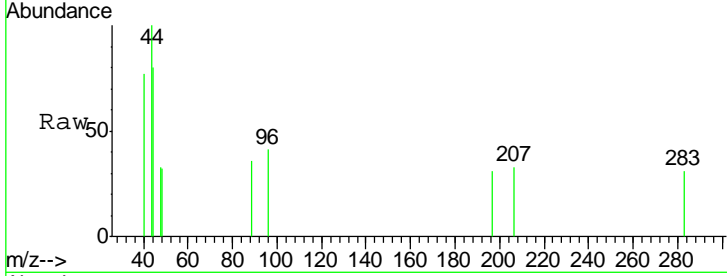




#49  
 1,4-Dioxane  
 Concen: Below Cal  
 RT: 6.32 min Scan# 587  
 Delta R.T. -0.58 min  
 Lab File: VF059525.D  
 Acq: 18 Jul 2018 21:16

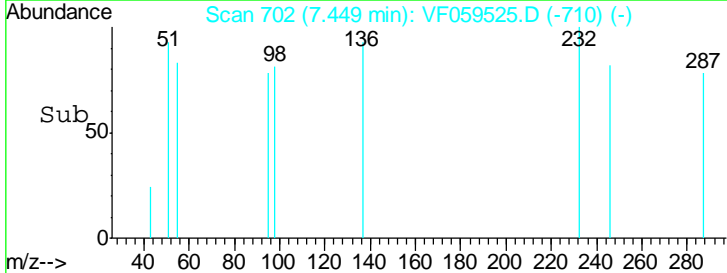
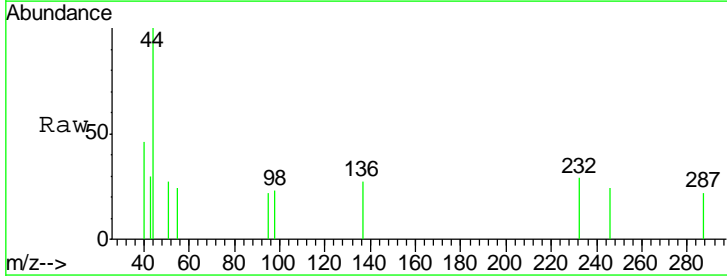
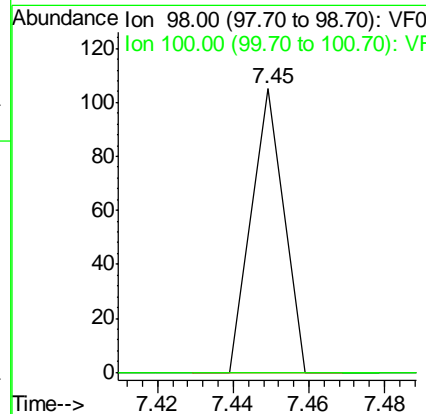
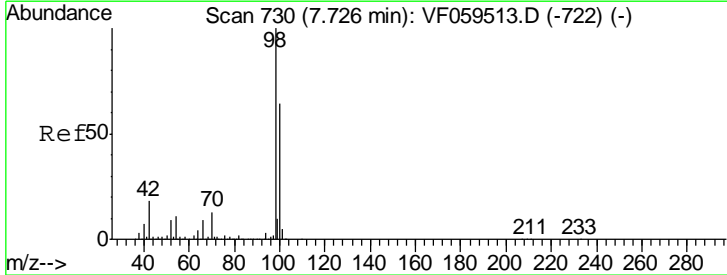
Instrument :  
 MSVOA\_F  
 ClientSampled :

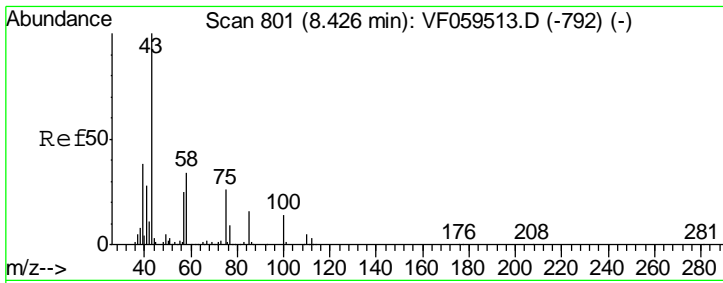
Tgt Ion	Resp	Lower	Upper
88	100		
43	280.7	64.8	97.2#
58	0.0	44.1	66.1#



#50  
 Toluene-d8  
 Concen: 45.110 ug/l  
 RT: 7.45 min Scan# 702  
 Delta R.T. -0.28 min  
 Lab File: VF059525.D  
 Acq: 18 Jul 2018 21:16

Tgt Ion	Resp	Lower	Upper
98	100		
100	0.0	50.9	76.3#

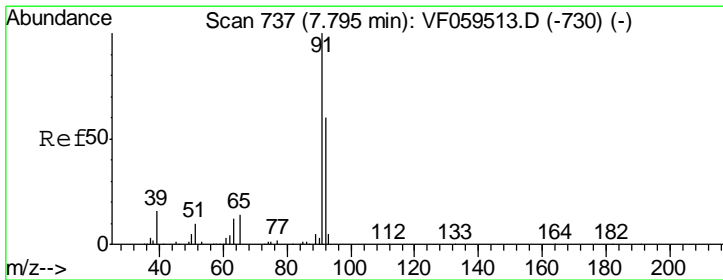
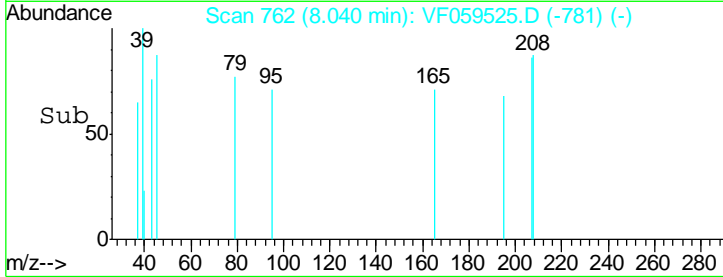
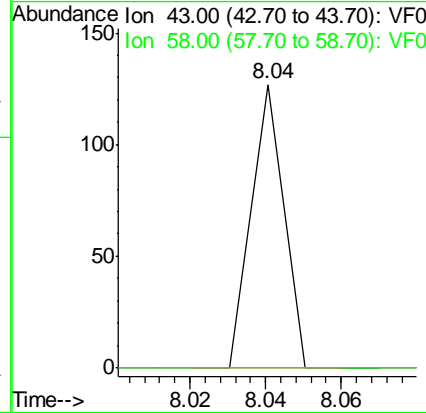
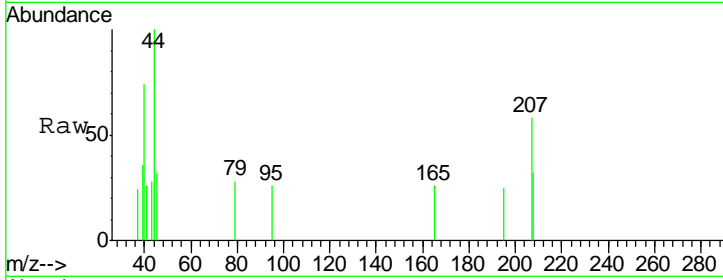




#51  
 4-Methyl-2-Pentanone  
 Concen: 233.502 ug/l  
 RT: 8.04 min Scan# 762  
 Delta R.T. -0.39 min  
 Lab File: VF059525.D  
 Acq: 18 Jul 2018 21:16

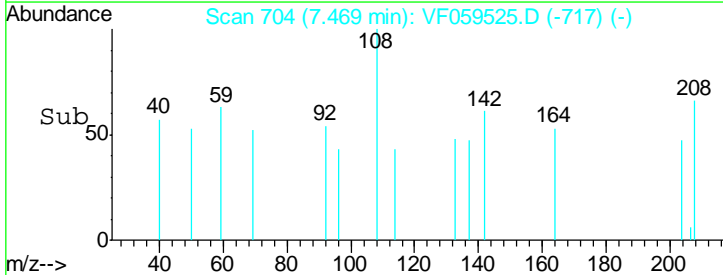
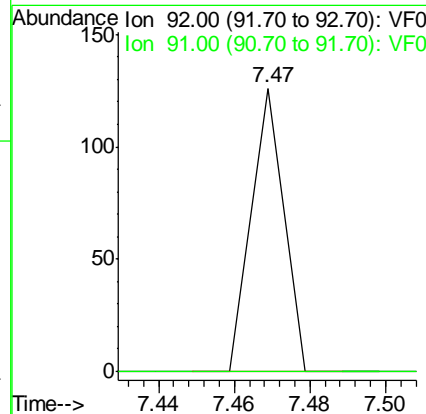
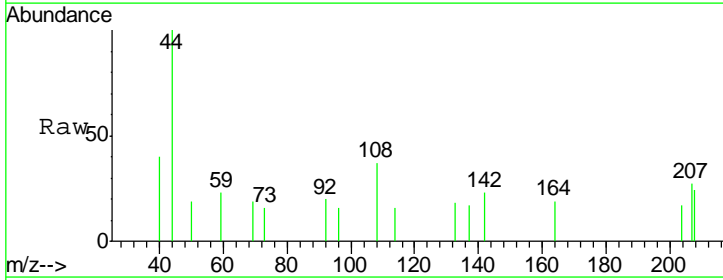
Instrument :  
 MSVOA\_F  
 ClientSampled :

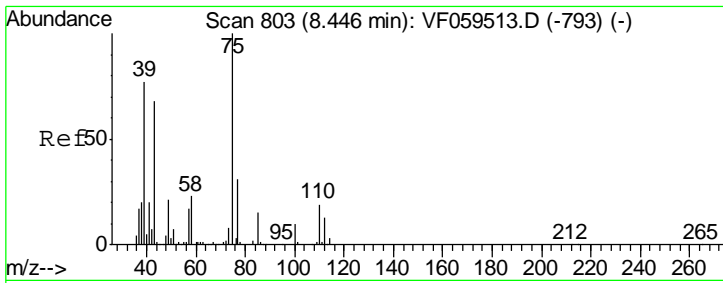
Tgt Ion	Resp	Lower	Upper
43	100		
58	0.0	27.4	41.2#



#52  
 Toluene  
 Concen: 84.532 ug/l  
 RT: 7.47 min Scan# 704  
 Delta R.T. -0.33 min  
 Lab File: VF059525.D  
 Acq: 18 Jul 2018 21:16

Tgt Ion	Resp	Lower	Upper
92	100		
91	0.0	134.2	201.4#

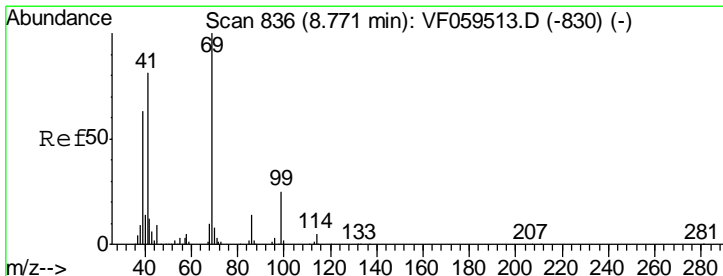
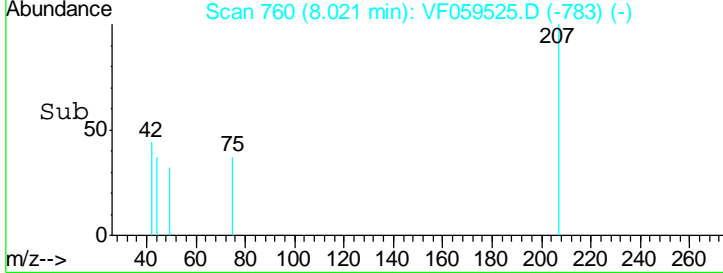
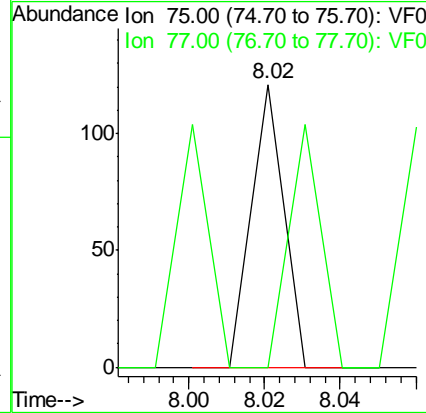
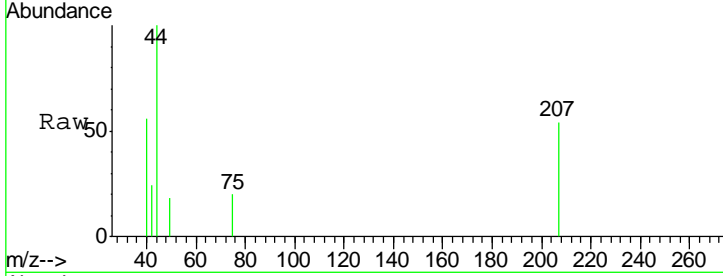




#53  
 t-1,3-Dichloropropene  
 Concen: 98.338 ug/l  
 RT: 8.02 min Scan# 760  
 Delta R.T. -0.42 min  
 Lab File: VF059525.D  
 Acq: 18 Jul 2018 21:16

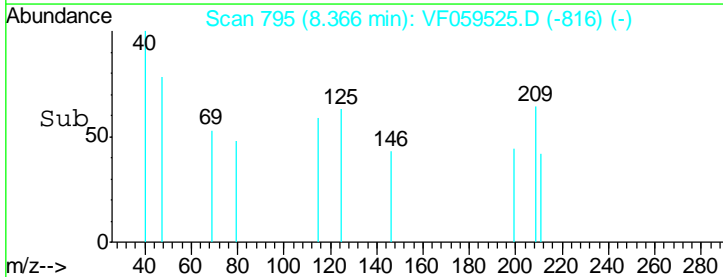
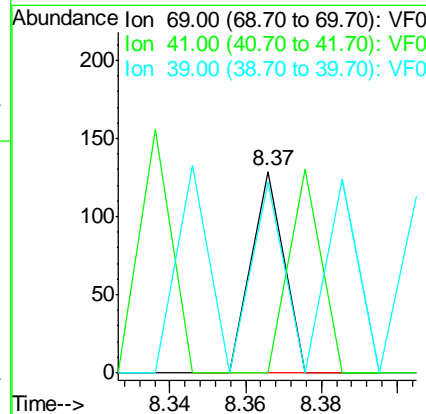
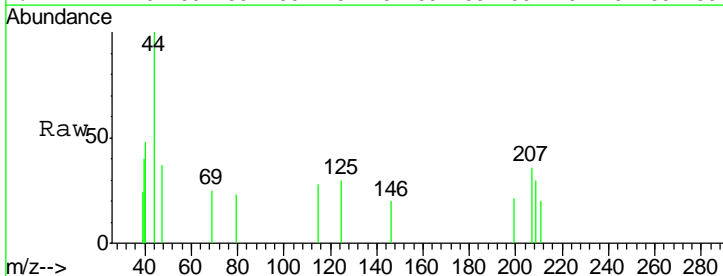
Instrument :  
 MSVOA\_F  
 ClientSampled :

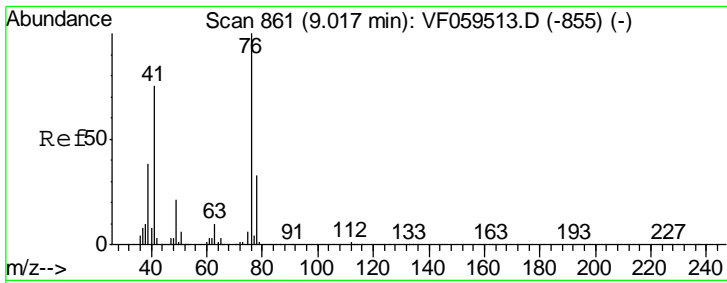
Tgt Ion	Resp	Lower	Upper
75	100		
77	0.0	25.3	37.9#



#56  
 Ethyl methacrylate  
 Concen: 178.270 ug/l  
 RT: 8.37 min Scan# 795  
 Delta R.T. -0.41 min  
 Lab File: VF059525.D  
 Acq: 18 Jul 2018 21:16

Tgt Ion	Resp	Lower	Upper
69	100		
41	0.0	65.4	98.2#
39	94.6	51.0	76.4#

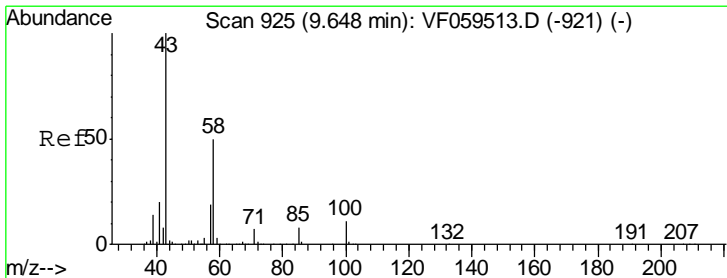
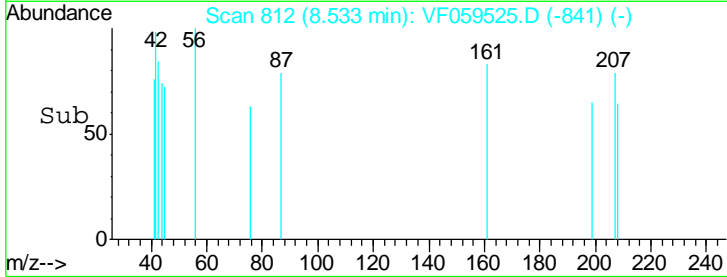
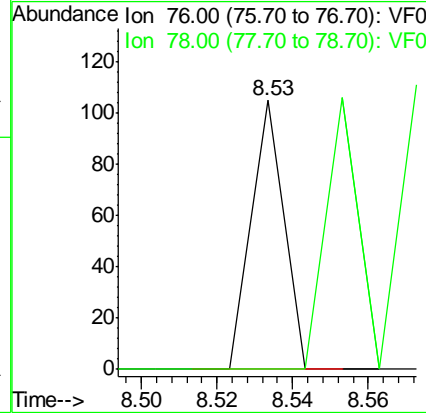
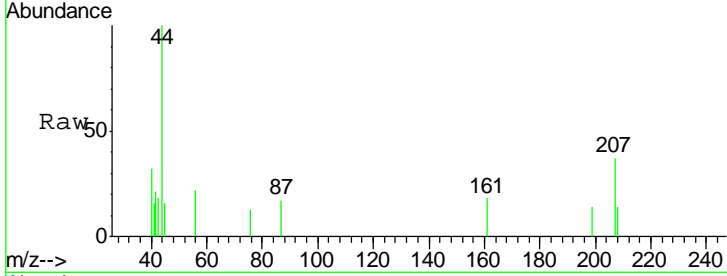




#57  
 1,3-Dichloropropane  
 Concen: 101.996 ug/l  
 RT: 8.53 min Scan# 812  
 Delta R.T. -0.48 min  
 Lab File: VF059525.D  
 Acq: 18 Jul 2018 21:16

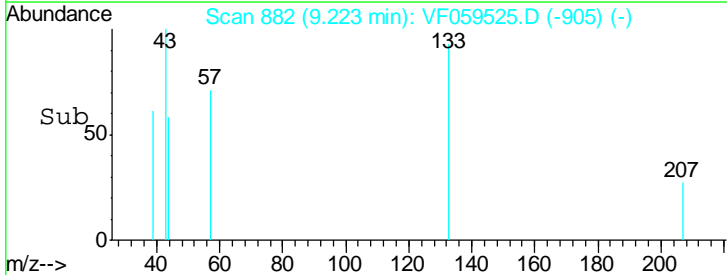
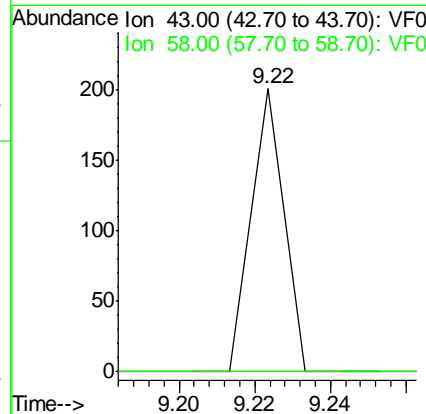
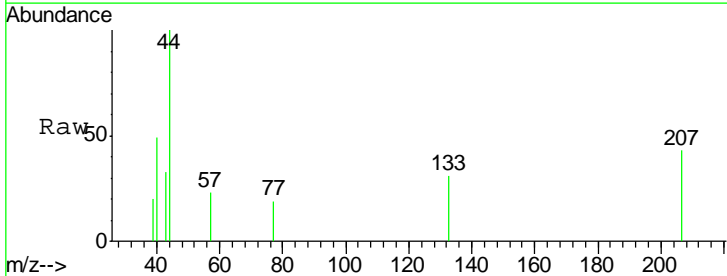
Instrument :  
 MSVOA\_F  
 ClientSampled :

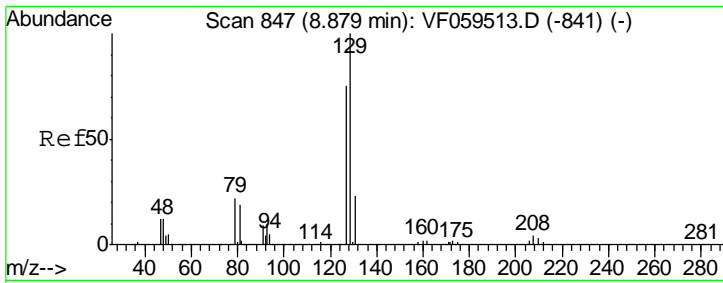
Tgt Ion	Resp	Lower	Upper
76	100		
78	0.0	26.4	39.6#



#59  
 2-Hexanone  
 Concen: 490.220 ug/l  
 RT: 9.22 min Scan# 882  
 Delta R.T. -0.42 min  
 Lab File: VF059525.D  
 Acq: 18 Jul 2018 21:16

Tgt Ion	Resp	Lower	Upper
43	100		
58	0.0	23.3	69.9#

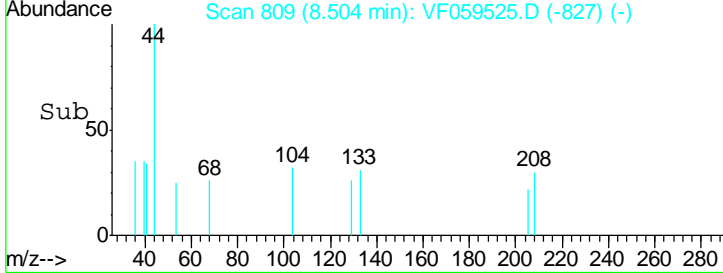
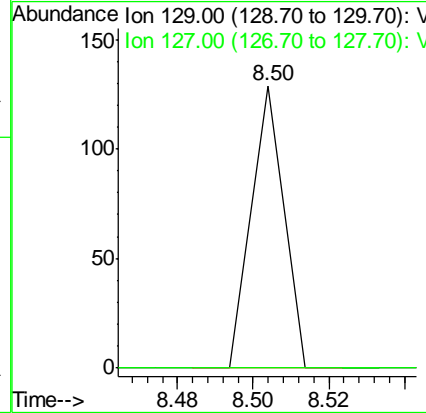
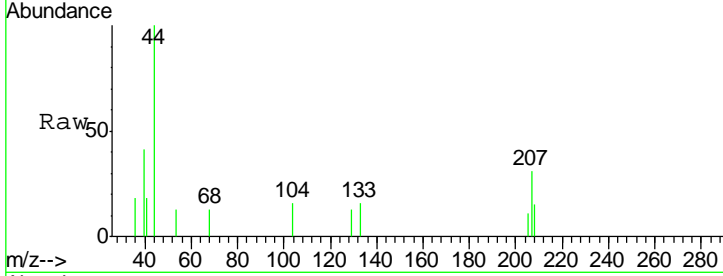




#60  
 Dibromochloromethane  
 Concen: 131.180 ug/l  
 RT: 8.50 min Scan# 809  
 Delta R.T. -0.38 min  
 Lab File: VF059525.D  
 Acq: 18 Jul 2018 21:16

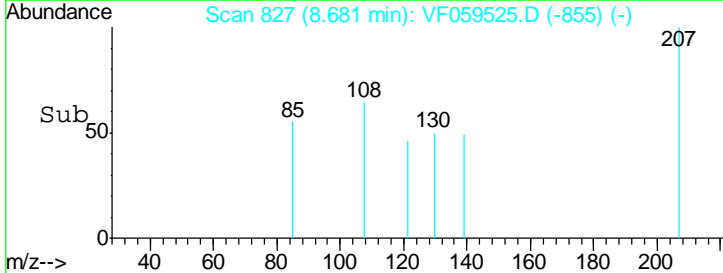
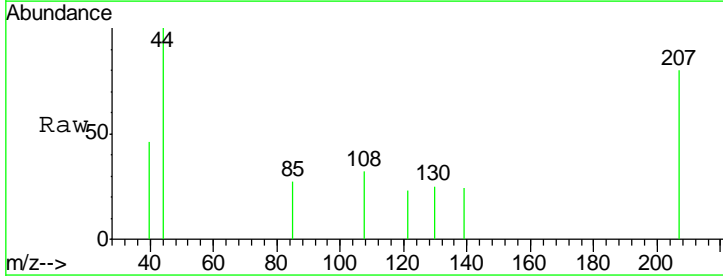
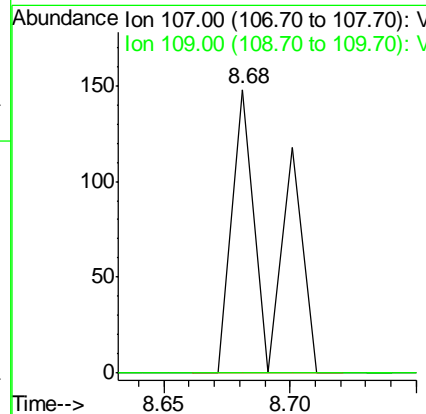
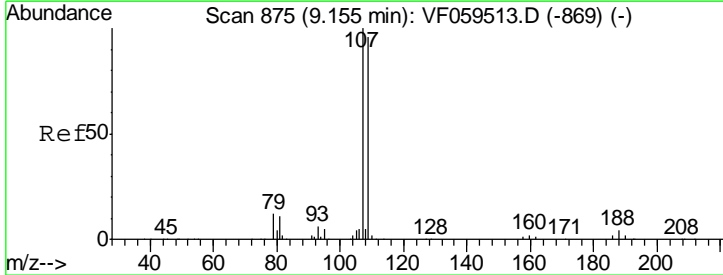
Instrument :  
 MSVOA\_F  
 ClientSampled :

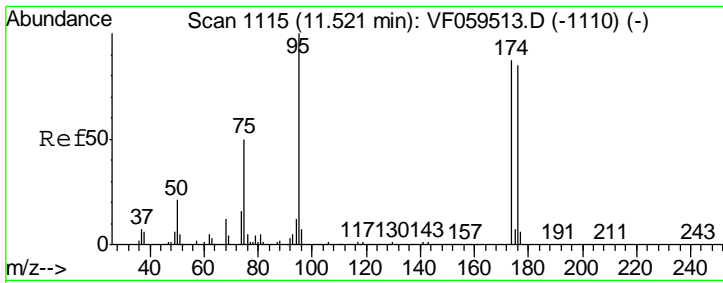
Tgt Ion:129 Resp: 76  
 Ion Ratio Lower Upper  
 129 100  
 127 0.0 37.6 112.8#



#61  
 1,2-Dibromoethane  
 Concen: 368.066 ug/l  
 RT: 8.68 min Scan# 827  
 Delta R.T. -0.47 min  
 Lab File: VF059525.D  
 Acq: 18 Jul 2018 21:16

Tgt Ion:107 Resp: 157  
 Ion Ratio Lower Upper  
 107 100  
 109 0.0 76.5 114.7#

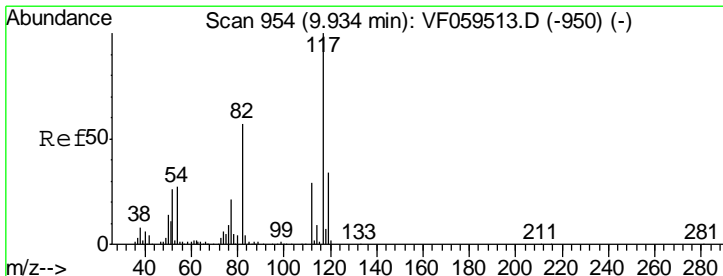
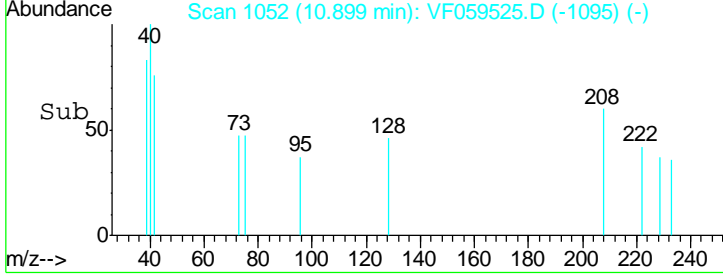
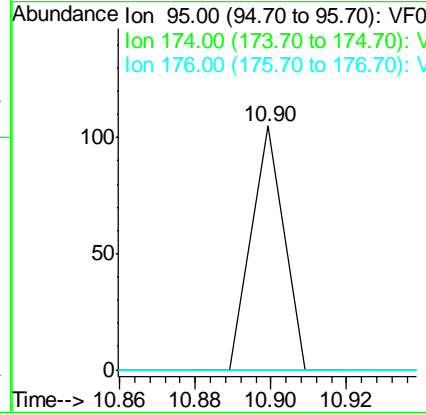
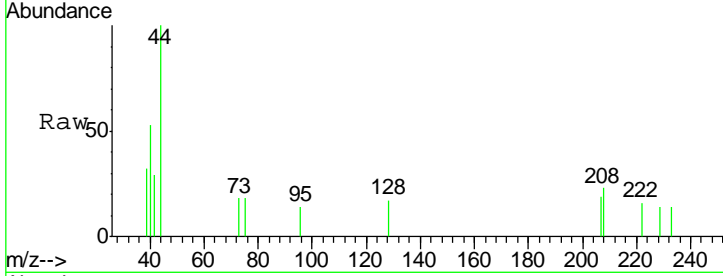




#62  
 4-Bromofluorobenzene  
 Concen: 85.990 ug/l  
 RT: 10.90 min Scan# 1052  
 Delta R.T. -0.62 min  
 Lab File: VF059525.D  
 Acq: 18 Jul 2018 21:16

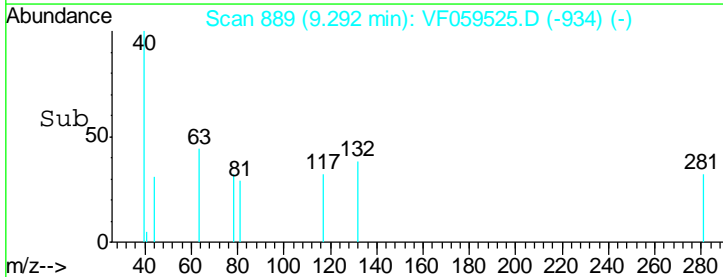
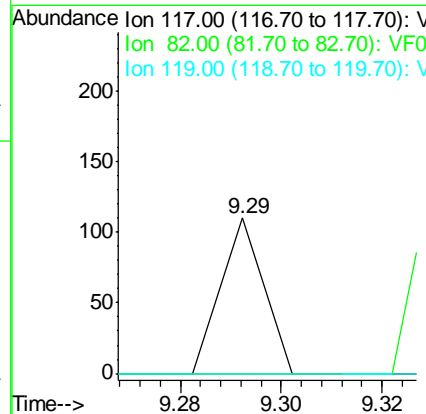
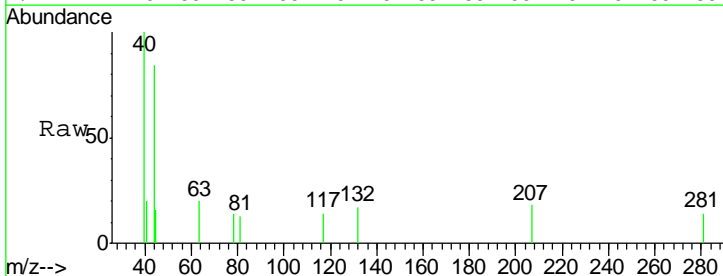
Instrument : MSVOA\_F  
 ClientSampled :

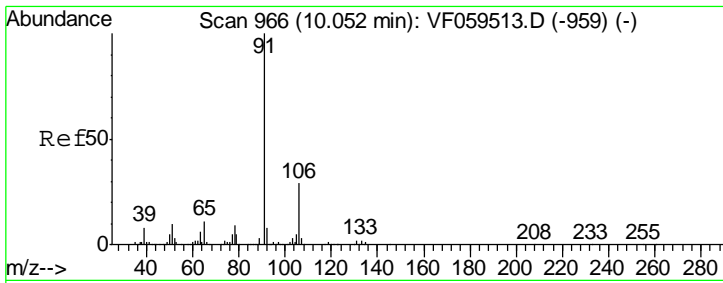
Tgt Ion	Resp	Lower	Upper
95	100		
174	0.0	0.0	174.4
176	0.0	0.0	169.4



#63  
 Chlorobenzene-d5  
 Concen: 50.000 ug/l  
 RT: 9.29 min Scan# 889  
 Delta R.T. -0.64 min  
 Lab File: VF059525.D  
 Acq: 18 Jul 2018 21:16

Tgt Ion	Resp	Lower	Upper
117	100		
82	0.0	46.1	69.1#
119	0.0	27.2	40.8#

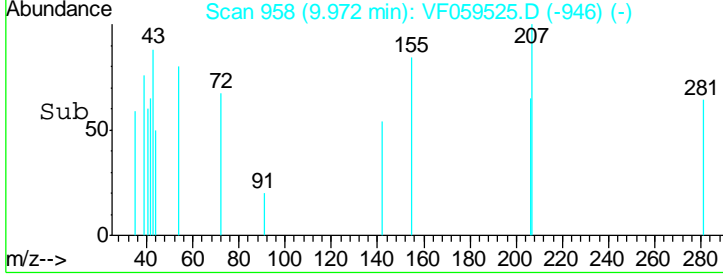
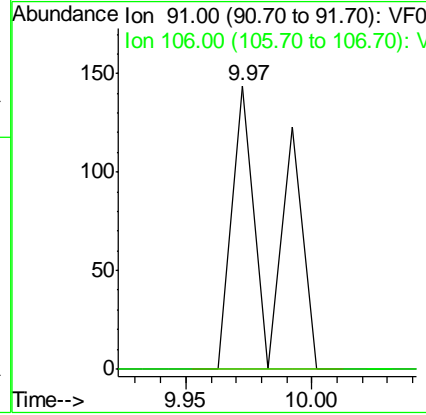
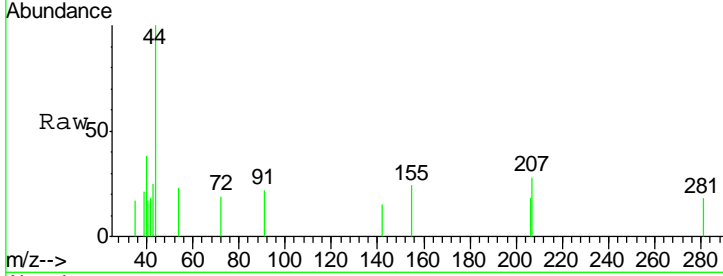




#67  
Ethyl Benzene  
Concen: 72.815 ug/l  
RT: 9.97 min Scan# 958  
Delta R.T. -0.08 min  
Lab File: VF059525.D  
Acq: 18 Jul 2018 21:16

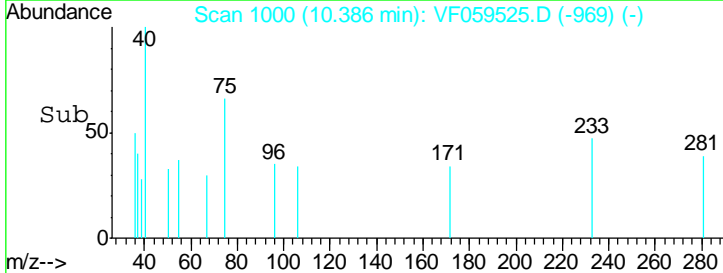
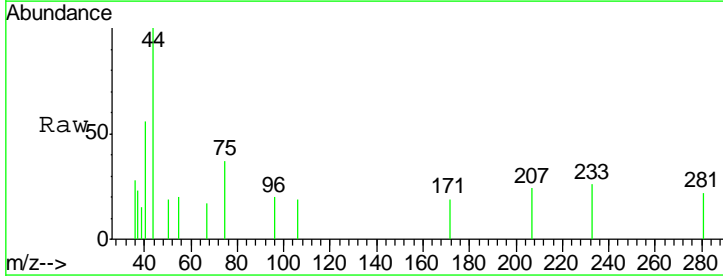
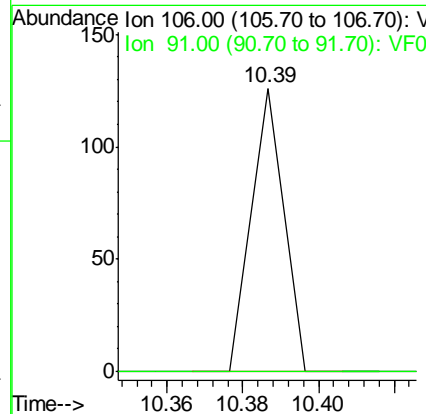
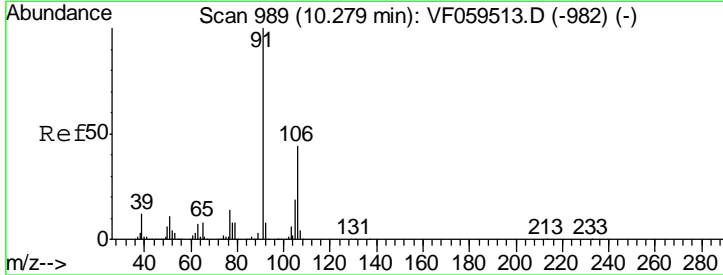
Instrument :  
MSVOA\_F  
ClientSampled :

Tgt Ion: 91 Resp: 158  
Ion Ratio Lower Upper  
91 100  
106 0.0 23.4 35.2#

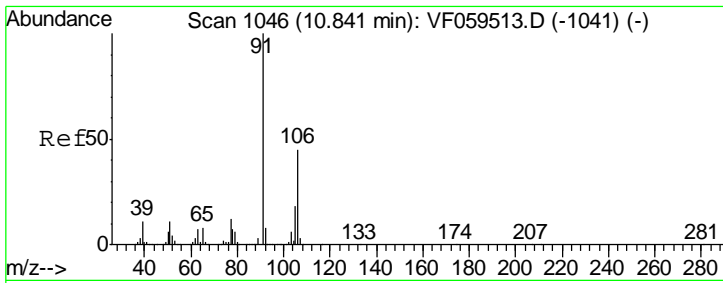


#68  
m/p-Xylenes  
Concen: 96.624 ug/l  
RT: 10.39 min Scan# 1000  
Delta R.T. 0.11 min  
Lab File: VF059525.D  
Acq: 18 Jul 2018 21:16

Tgt Ion: 106 Resp: 74  
Ion Ratio Lower Upper  
106 100  
91 0.0 181.0 271.4#



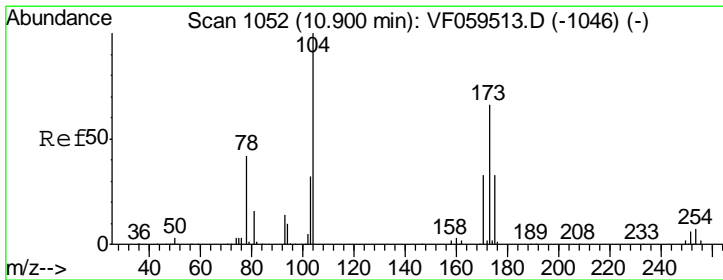
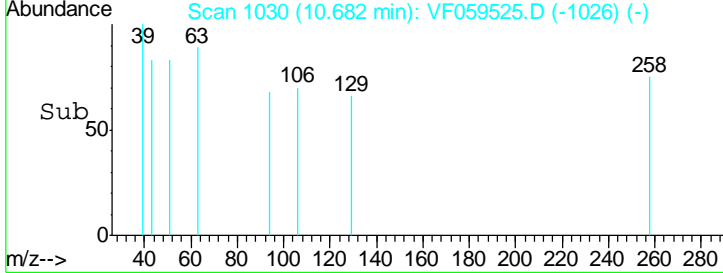
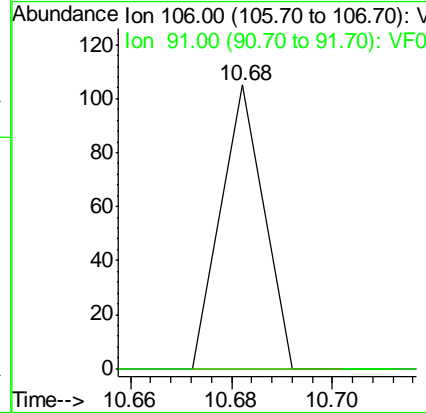
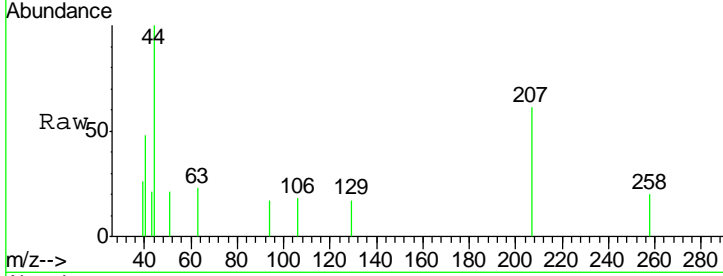




#69  
 o-Xylene  
 Concen: 76.026 ug/l  
 RT: 10.68 min Scan# 1030  
 Delta R.T. -0.16 min  
 Lab File: VF059525.D  
 Acq: 18 Jul 2018 21:16

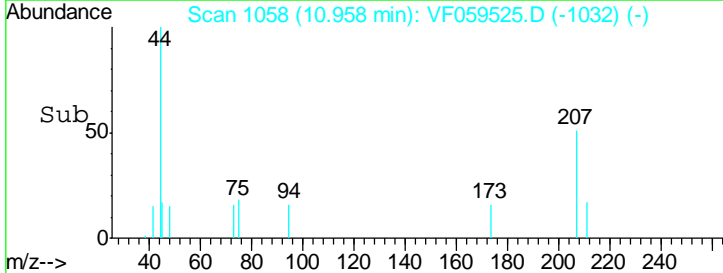
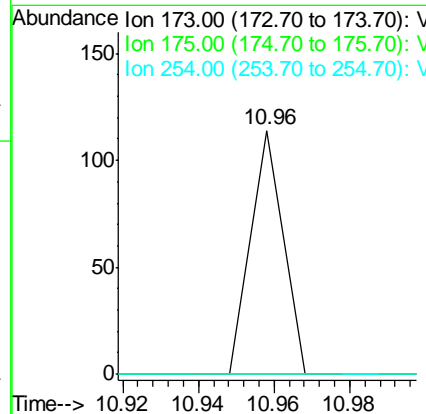
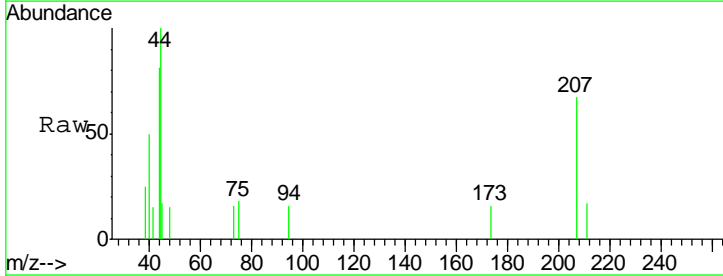
Instrument : MSVOA\_F  
 ClientSampled :

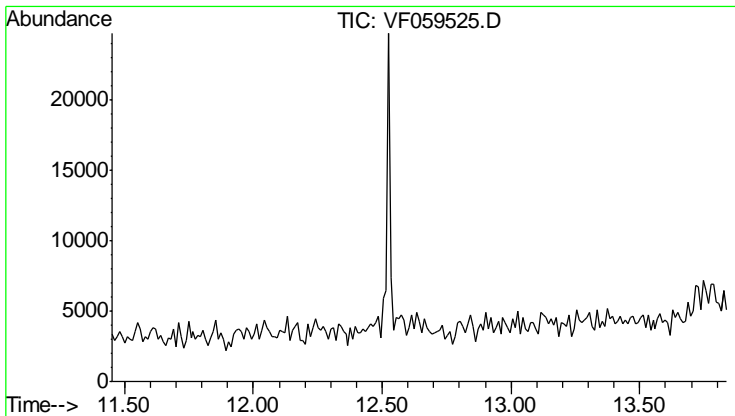
Tgt Ion	Resp	Lower	Upper
106	100		
91	0.0	112.3	336.9#



#71  
 Bromoform  
 Concen: 173.718 ug/l  
 RT: 10.96 min Scan# 1058  
 Delta R.T. 0.06 min  
 Lab File: VF059525.D  
 Acq: 18 Jul 2018 21:16

Tgt Ion	Resp	Lower	Upper
173	100		
175	0.0	25.3	75.8#
254	0.0	0.0	0.0





#72  
 1,4-Dichlorobenzene-d4  
 Concen: 0.000 ug/l  
 Expected RT: 12.64 min  
 Lab File: VF059525.D  
 Acq: 18 Jul 2018 21:16

Instrument :  
 MSVOA\_F  
 ClientSampled :

Tot Ion:	152
Sig	Exp Ratio
152	100
115	55.5
150	159.2

