

Data Path : Z:\VOASRV\HPCHEM1\MSVOA F\DATA\VF071818\
 Data File : VF059523.D
 Acq On : 18 Jul 2018 20:21
 Operator : VA/AP
 Sample : J3826-03
 Misc : 5.99g/5mL/MSVOA F/SOIL
 ALS Vial : 8 Sample Multiplier: 1

Instrument :
 MSVOA_F
 ClientSampled :
 OK-01-071618

Integration Parameters: RTEINT.P

Integrator: RTE
 Smoothing : ON Filtering: 5
 Sampling : 1 Min Area: 3 % of largest Peak
 Start Thrs: 0.2 Max Peaks: 100
 Stop Thrs : 0 Peak Location: TOP

If leading or trailing edge < 100 prefer < Baseline drop else tangent >
 Peak separation: 5

Method : Z:\VOASRV\HPCHEM1\MSVOA_F\METHODS\82F071718S.M
 Title : SW846 8260

Signal : TIC

peak #	R.T. min	first scan	max scan	last scan	PK TY	peak height	corr. area	corr. % max.	% of total
1	1.102	56	58	62	rVB2	12870	16818	1.39%	0.266%
2	1.368	79	85	88	rBV6	7072	20348	1.69%	0.321%
3	2.265	173	176	178	rVV3	12545	24199	2.01%	0.382%
4	2.304	178	180	191	rVB10	12691	41985	3.48%	0.663%
5	2.462	191	196	201	rBV8	5260	18734	1.55%	0.296%
6	4.177	363	370	372	rBV3	10653	29421	2.44%	0.465%
7	4.276	372	380	393	rVB	178249	531426	44.06%	8.392%
8	5.015	447	455	469	rBV2	359895	1206273	100.00%	19.049%
9	5.744	523	529	542	rBV	355128	977450	81.03%	15.436%
10	7.696	721	727	739	rBV	339640	837665	69.44%	13.228%
11	8.406	795	799	804	rVB7	4470	12957	1.07%	0.205%
12	9.904	945	951	960	rBV	448475	1006286	83.42%	15.891%
13	11.186	1078	1081	1082	rBV2	8460	12988	1.08%	0.205%
14	11.501	1109	1113	1119	rVV	405305	669253	55.48%	10.569%
15	11.639	1123	1127	1130	rVB	8346	19540	1.62%	0.309%
16	12.625	1223	1227	1235	rVV	529599	805245	66.75%	12.716%
17	13.009	1262	1266	1270	rVB6	7252	15118	1.25%	0.239%
18	13.768	1338	1343	1352	rVB4	13202	32359	2.68%	0.511%
19	14.261	1390	1393	1398	rVB3	8904	17290	1.43%	0.273%
20	14.517	1416	1419	1424	rBV2	13312	20855	1.73%	0.329%
21	14.665	1429	1434	1438	rBV4	9099	16148	1.34%	0.255%

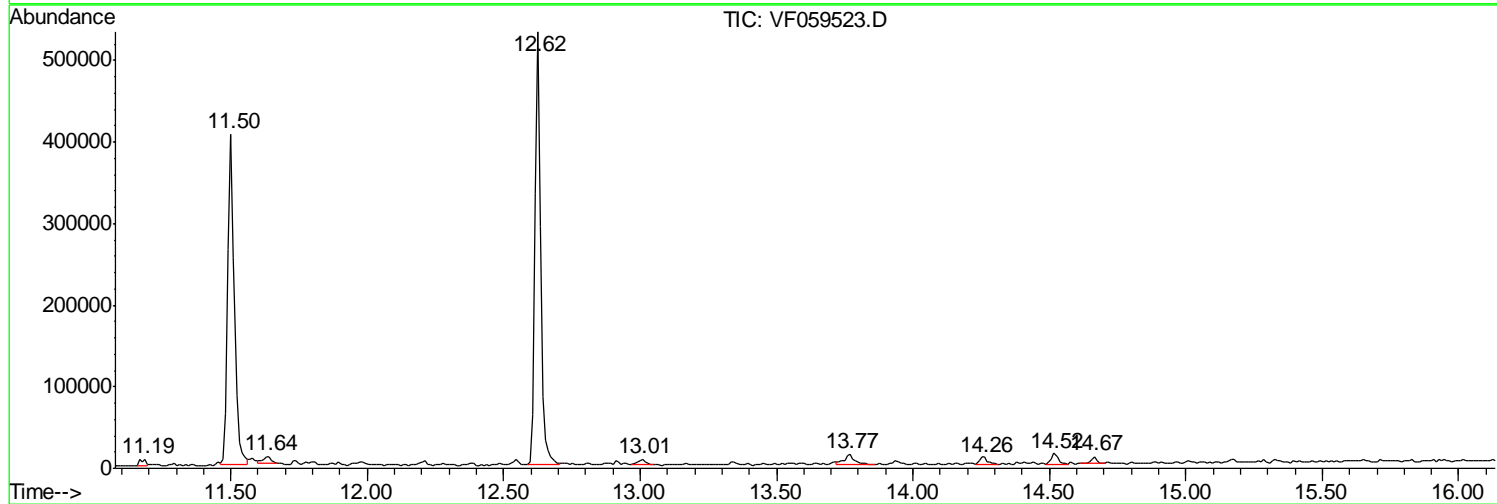
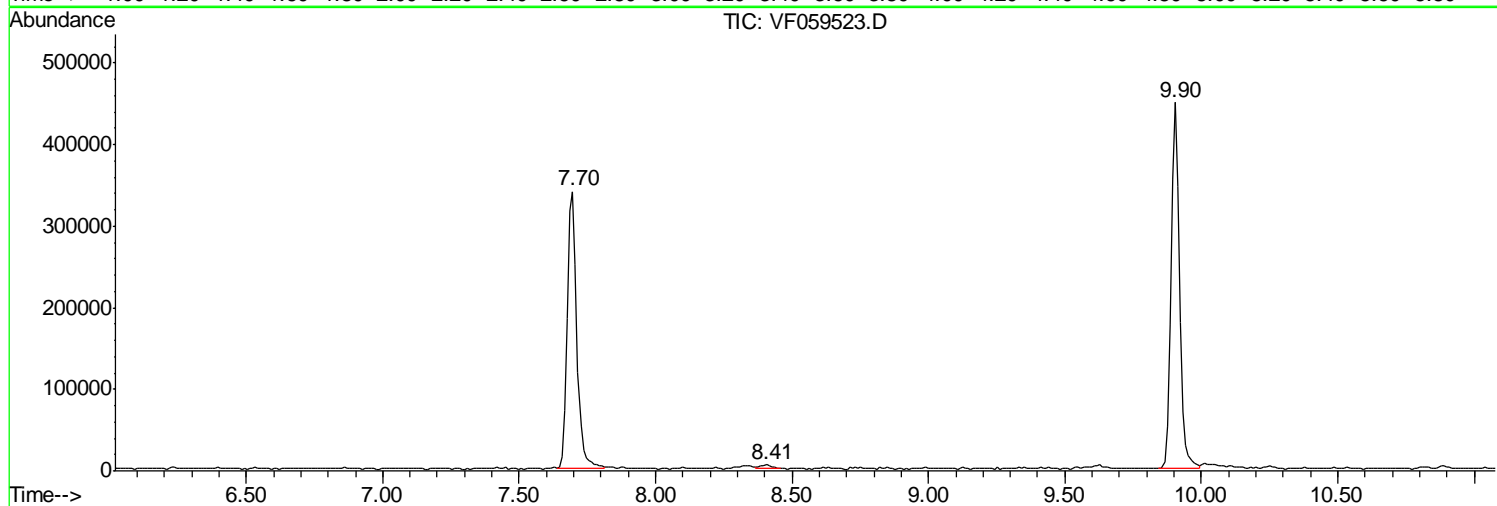
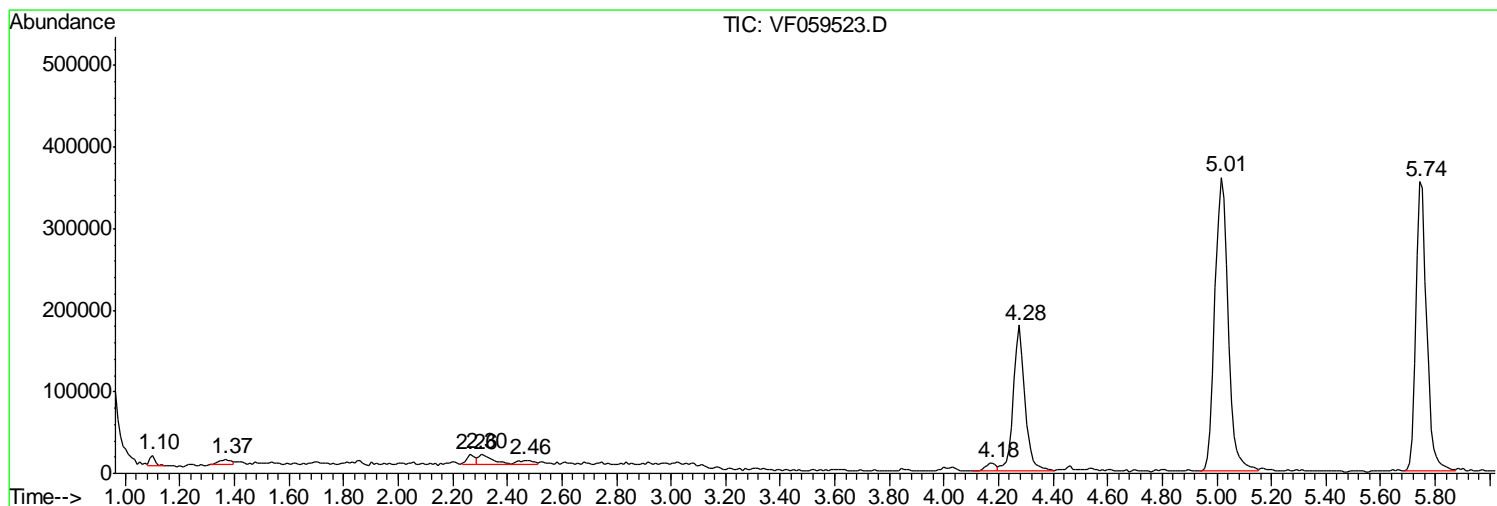
Sum of corrected areas: 6332358

Data Path : Z:\VOASRV\HPCHEM1\MSVOA F\DATA\VF071818\
 Data File : VF059523.D
 Acq On : 18 Jul 2018 20:21
 Operator : VA/AP
 Sample : J3826-03
 Misc : 5.99µ/5mL/MSVOA F/SOIL
 ALS Vial : 8 Sample Multiplier: 1

Instrument :
 MSVOA_F
 ClientSampleId :
 OK-01-071618

Quant Method : Z:\VOASRV\HPCHEM1\MSVOA_F\METHODS\82F071718S.M
 Quant Title : SW846 8260

TIC Library : C:\DATABASE\NIST11.L
 TIC Integration Parameters: LSCINT.P



Data Path : Z:\VOASRV\HPCHEM1\MSVOA_F\DATA\VF071818\
Data File : VF059523.D
Acq On : 18 Jul 2018 20:21
Operator : VA/AP
Sample : J3826-03
Misc : 5.99g/5mL/MSVOA_F/SOIL
ALS Vial : 8 Sample Multiplier: 1

Instrument :
MSVOA_F
ClientSampleId :
OK-01-071618

Quant Method : Z:\VOASRV\HPCHEM1\MSVOA_F\METHODS\82F071718S.M
Quant Title : SW846 8260

TIC Library : C:\DATABASE\NIST11.L
TIC Integration Parameters: LSCINT.P

No Library Search Compounds Detected

Data Path : Z:\VOASRV\HPCHEM1\MSVOA_F\DATA\VF071818\
Data File : VF059523.D
Acq On : 18 Jul 2018 20:21
Operator : VA/AP
Sample : J3826-03
Misc : 5.99g/5mL/MSVOA_F/SOIL
ALS Vial : 8 Sample Multiplier: 1

Instrument :
MSVOA_F
ClientSampleId :
OK-01-071618

Quant Method : Z:\VOASRV\HPCHEM1\MSVOA_F\METHODS\82F071718S.M
Quant Title : SW846 8260

TIC Library : C:\DATABASE\NIST11.L
TIC Integration Parameters: LSCINT.P

TIC Top Hit name	RT	EstConc	Units	Response	--Internal Standard--			
					#	RT	Resp	Conc
