

Data Path : Z:\VOASRV\HPCHEM1\MSVOA F\DATA\VF072018\
 Data File : VF059601.D
 Acq On : 21 Jul 2018 00:38
 Operator : VA/AP
 Sample : J4057-01RE
 Misc : 5.04µ/5mL/MSVOA F/SOIL
 ALS Vial : 96 Sample Multiplier: 1

Instrument :
 MSVOA_F
 ClientSampleId :
 LS-SOIL-1RE

Quant Time: Jul 23 09:24:42 2018
 Quant Method : Z:\VOASRV\HPCHEM1\MSVOA_F\METHODS\82F071718S.M
 Quant Title : SW846 8260
 QLast Update : Wed Jul 18 04:09:10 2018
 Response via : Initial Calibration

Internal Standards	R.T.	QIon	Response	Conc	Units	Dev(Min)
1) Pentafluorobenzene	5.04	168	159529	50.00	µg/l	0.00
34) 1,4-Difluorobenzene	5.76	114	226254	50.00	µg/l	-0.02
63) Chlorobenzene-d5	9.92	117	167533	50.00	µg/l	0.00
72) 1,4-Dichlorobenzene-d4	12.63	152	68769	50.00	µg/l	0.00

System Monitoring Compounds

33) 1,2-Dichloroethane-d4	5.03	65	101815	41.04	µg/l	0.00
Spiked Amount				50.000		
			Recovery	=		82.08%
35) Dibromofluoromethane	4.30	113	94100	48.02	µg/l	0.00
Spiked Amount				50.000		
			Recovery	=		96.04%
50) Toluene-d8	7.71	98	147222	29.83	µg/l	-0.02
Spiked Amount				50.000		
			Recovery	=		59.66%
62) 4-Bromofluorobenzene	11.51	95	72919	28.16	µg/l	0.00
Spiked Amount				50.000		
			Recovery	=		56.32%

Target Compounds

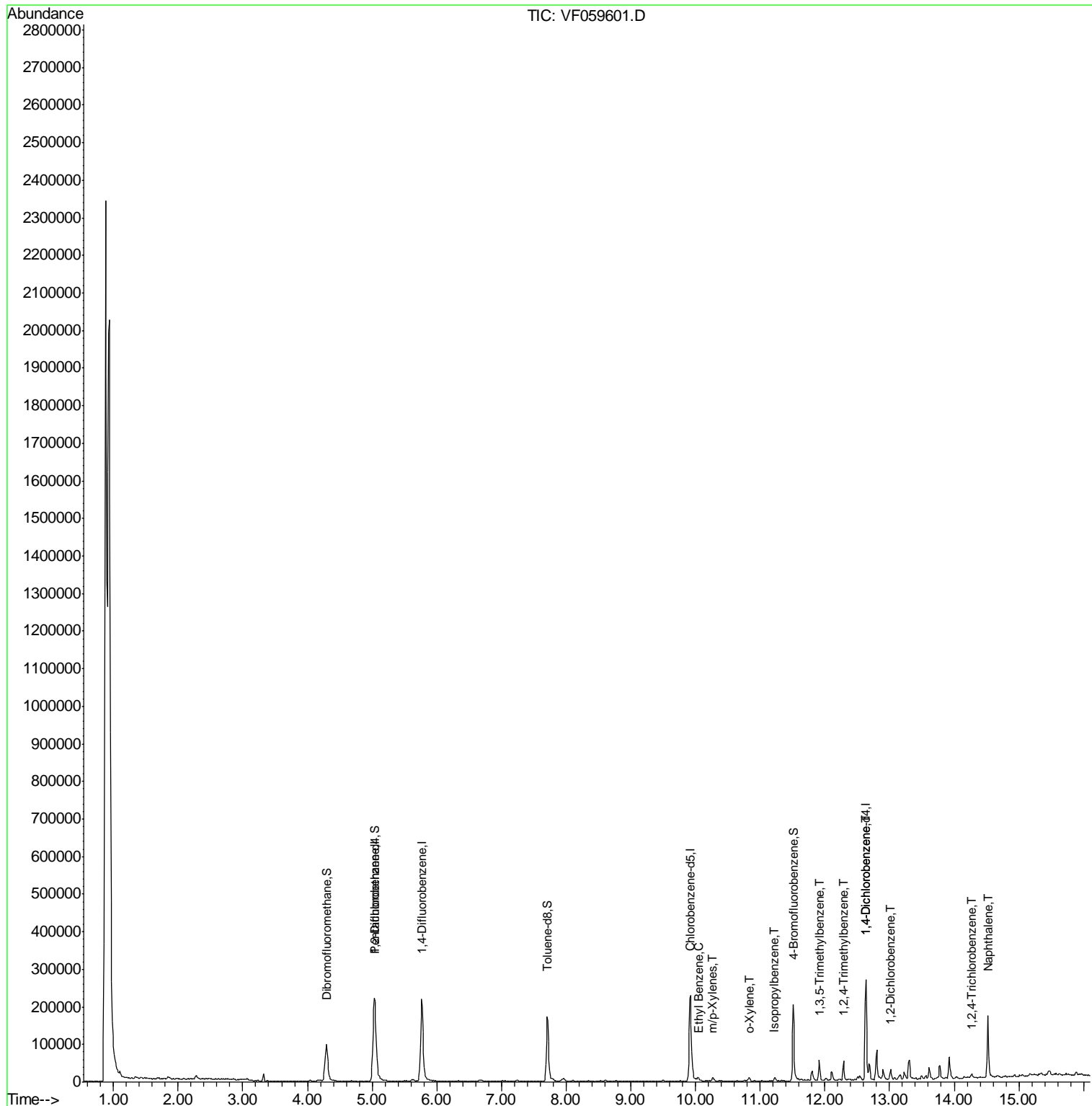
						Qvalue
67) Ethyl Benzene	10.04	91	6676	1.19	µg/l	97
68) m/p-Xylenes	10.27	106	2429	1.23	µg/l	82
69) o-Xylene	10.84	106	2576	1.23	µg/l	80
73) Isopropylbenzene	11.23	105	6189	1.43	µg/l	94
80) 1,3,5-Trimethylbenzene	11.92	105	28511	7.84	µg/l	94
84) 1,2,4-Trimethylbenzene	12.29	105	27507	7.35	µg/l	99
88) 1,4-Dichlorobenzene	12.64	146	5106	2.48	µg/l	80
91) 1,2-Dichlorobenzene	13.02	146	9410	4.72	µg/l	94
93) 1,2,4-Trichlorobenzene	14.27	180	2571	2.12	µg/l	78
95) Naphthalene	14.53	128	125811	49.94	µg/l	99

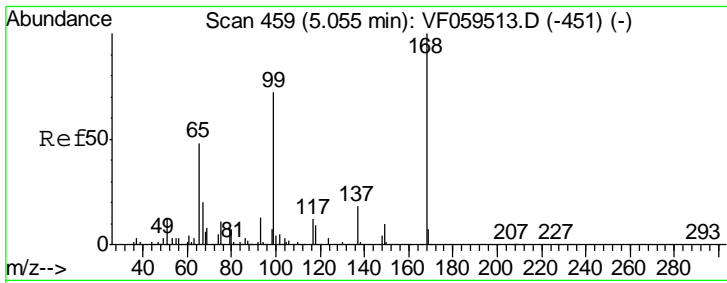
(#) = qualifier out of range (m) = manual integration (+) = signals summed

Data Path : Z:\VOASRV\HPCHEM1\MSVOA F\DATA\VF072018\
 Data File : VF059601.D
 Acq On : 21 Jul 2018 00:38
 Operator : VA/AP
 Sample : J4057-01RE
 Misc : 5.04µ/5mL/MSVOA F/SOIL
 ALS Vial : 96 Sample Multiplier: 1

Instrument :
 MSVOA_F
 ClientSampleId :
 LS-SOIL-1RE

Quant Time: Jul 23 09:24:42 2018
 Quant Method : Z:\VOASRV\HPCHEM1\MSVOA_F\METHODS\82F071718S.M
 Quant Title : SW846 8260
 QLast Update : Wed Jul 18 04:09:10 2018
 Response via : Initial Calibration

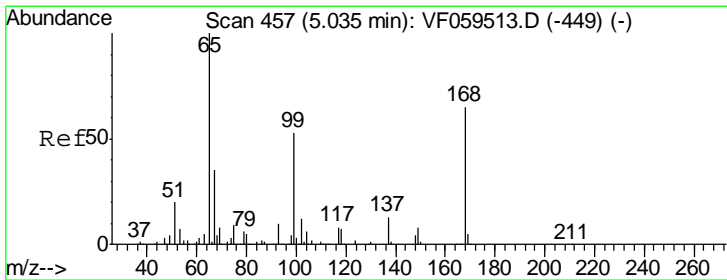
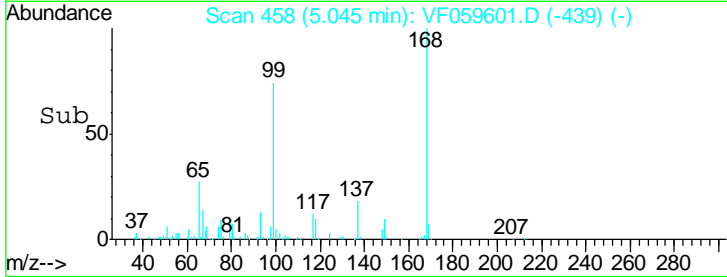
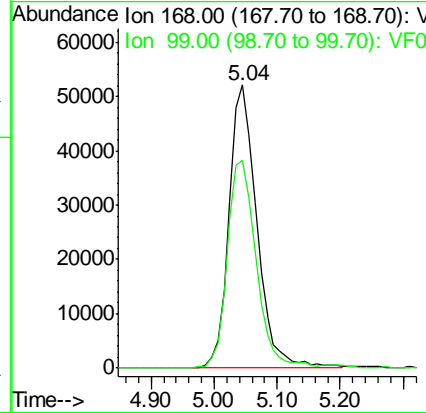
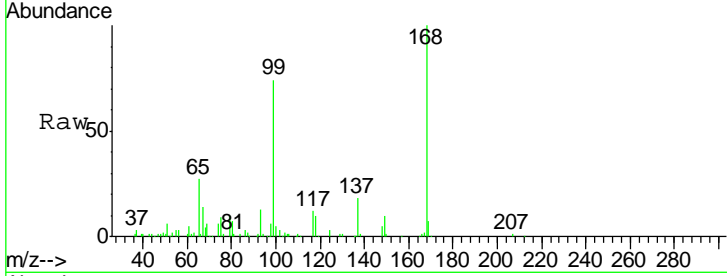




#1
 Pentafluorobenzene
 Concen: 50.00 ug/l
 RT: 5.04 min Scan# 458
 Delta R.T. -0.01 min
 Lab File: VF059601.D
 Acq: 21 Jul 2018 00:38

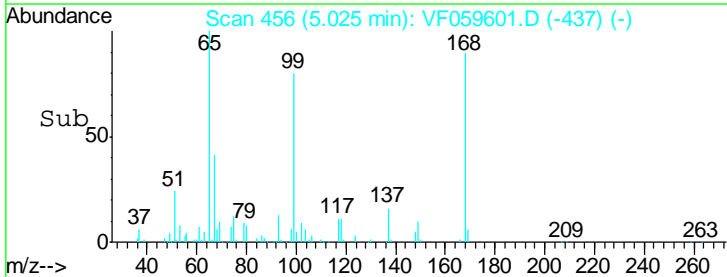
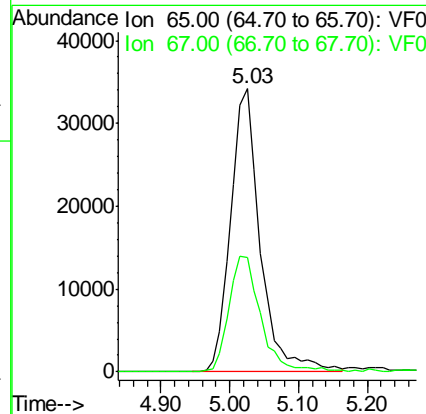
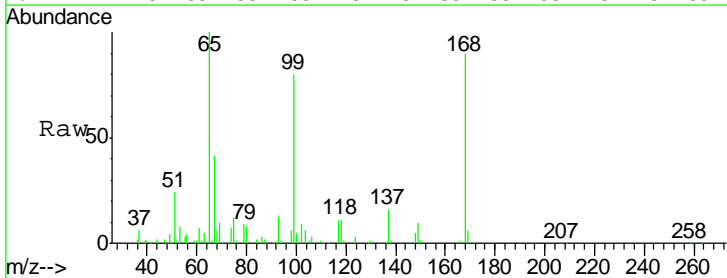
Instrument :
 MSVOA_F
ClientSampled :
 LS-SOIL-1RE

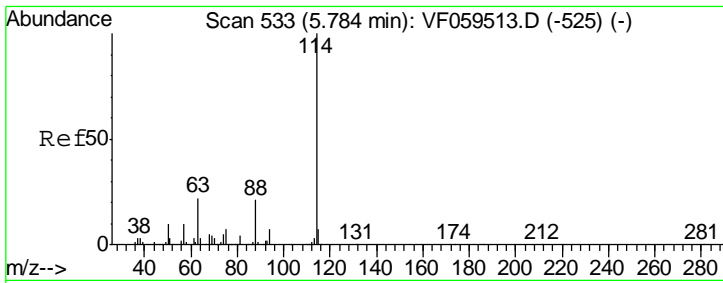
Tgt Ion	Resp	Lower	Upper
168	100		
99	73.6	57.6	86.4



#33
 1,2-Dichloroethane-d4
 Concen: 41.04 ug/l
 RT: 5.03 min Scan# 456
 Delta R.T. -0.01 min
 Lab File: VF059601.D
 Acq: 21 Jul 2018 00:38

Tgt Ion	Resp	Lower	Upper
65	100		
67	40.6	0.0	91.2

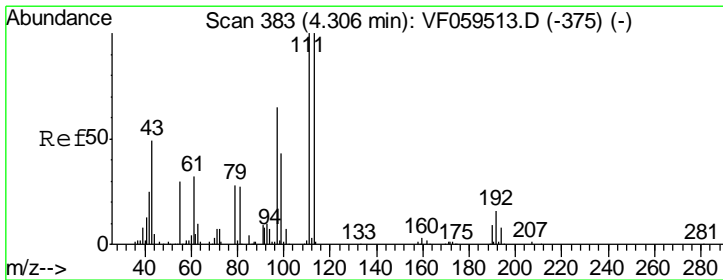
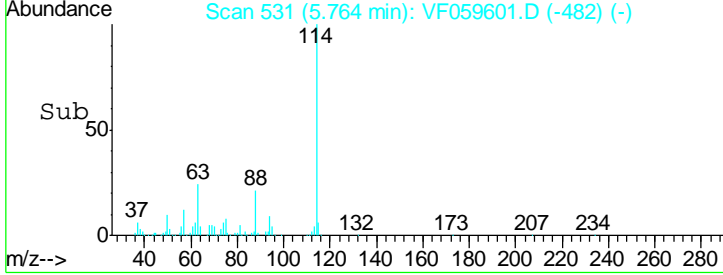
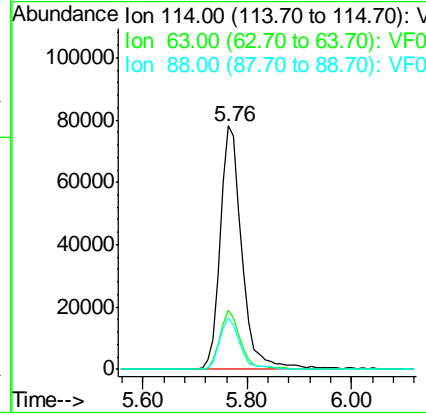
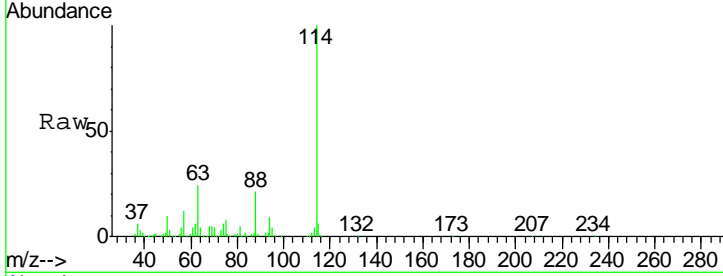




#34
 1,4-Difluorobenzene
 Concen: 50.00 ug/l
 RT: 5.76 min Scan# 531
 Delta R.T. -0.02 min
 Lab File: VF059601.D
 Acq: 21 Jul 2018 00:38

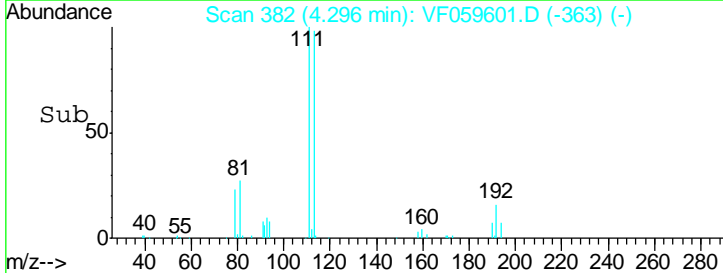
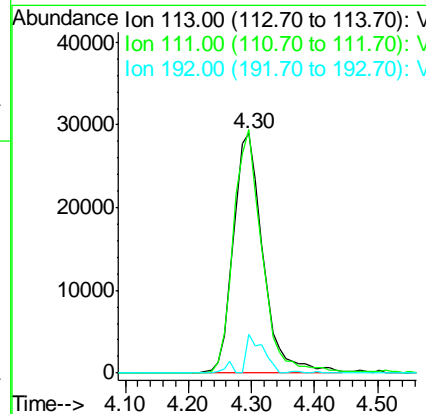
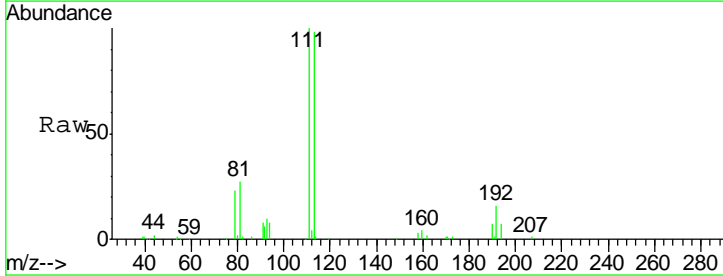
Instrument :
 MSVOA_F
 ClientSampled :
 LS-SOIL-1RE

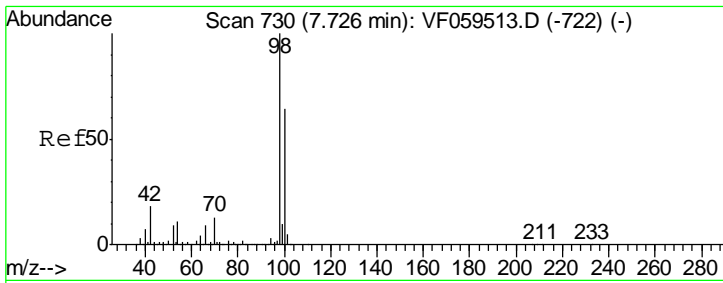
Tgt Ion	Resp	Lower	Upper
114	226254		
63	24.3	0.0	44.8
88	21.1	0.0	42.6



#35
 Dibromofluoromethane
 Concen: 48.02 ug/l
 RT: 4.30 min Scan# 382
 Delta R.T. -0.01 min
 Lab File: VF059601.D
 Acq: 21 Jul 2018 00:38

Tgt Ion	Resp	Lower	Upper
113	94100		
111	101.7	80.3	120.5
192	16.0	13.1	19.7

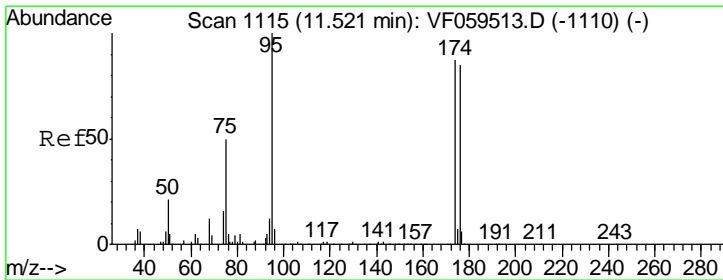
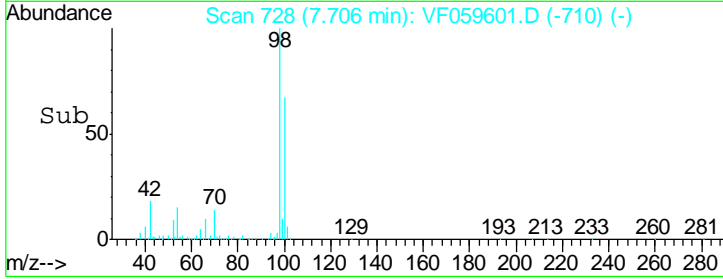
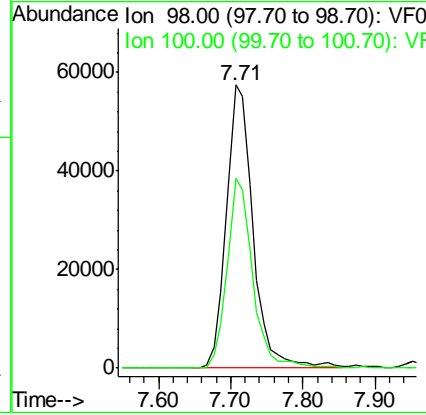
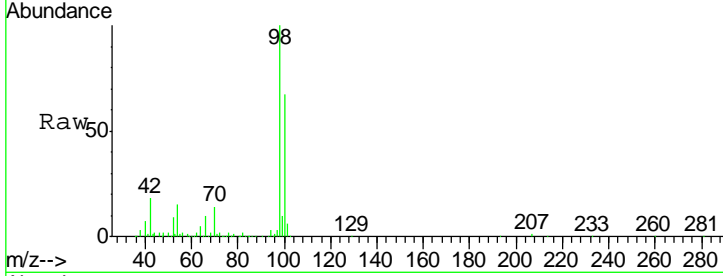




#50
 Toluene-d8
 Concen: 29.83 ug/l
 RT: 7.71 min Scan# 728
 Delta R.T. -0.02 min
 Lab File: VF059601.D
 Acq: 21 Jul 2018 00:38

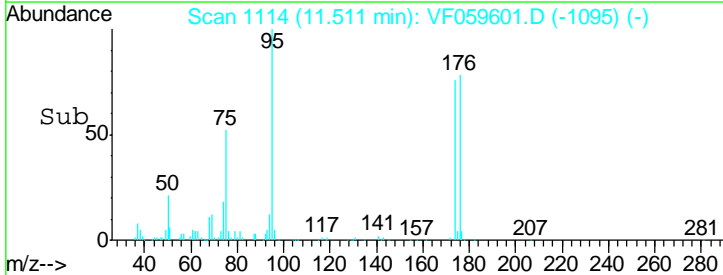
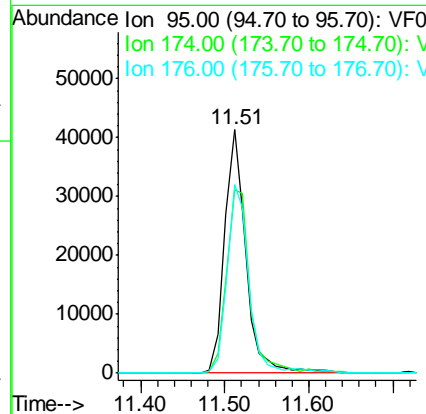
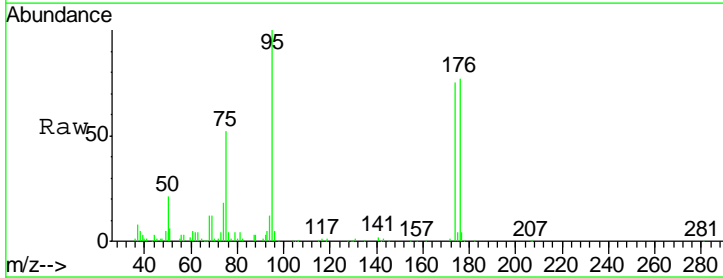
Instrument :
 MSVOA_F
ClientSampled :
 LS-SOIL-1RE

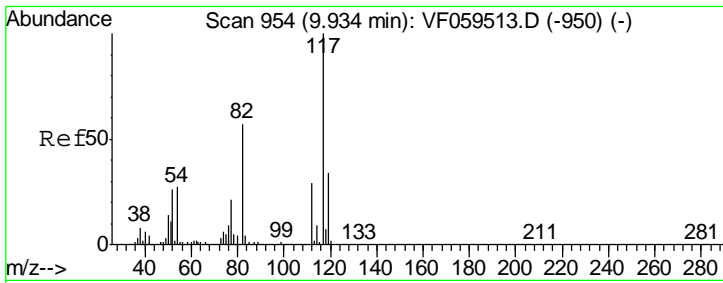
Tgt Ion: 98 Resp: 147222
 Ion Ratio Lower Upper
 98 100
 100 67.1 50.9 76.3



#62
 4-Bromofluorobenzene
 Concen: 28.16 ug/l
 RT: 11.51 min Scan# 1114
 Delta R.T. -0.01 min
 Lab File: VF059601.D
 Acq: 21 Jul 2018 00:38

Tgt Ion: 95 Resp: 72919
 Ion Ratio Lower Upper
 95 100
 174 75.4 0.0 174.4
 176 77.4 0.0 169.4

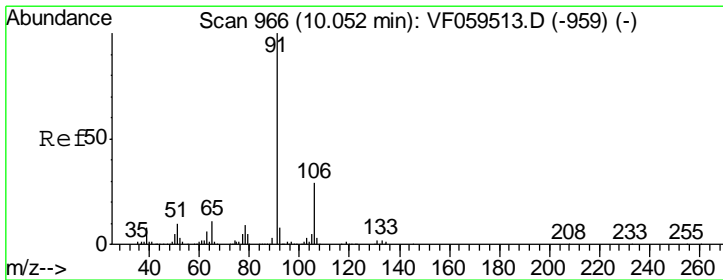
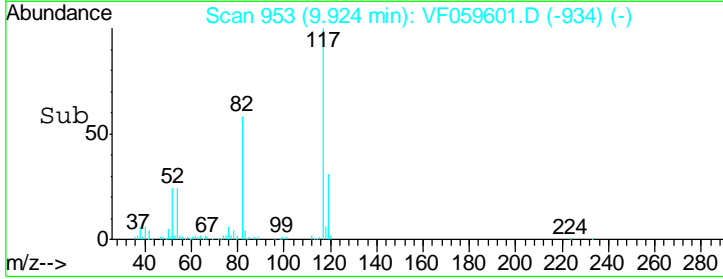
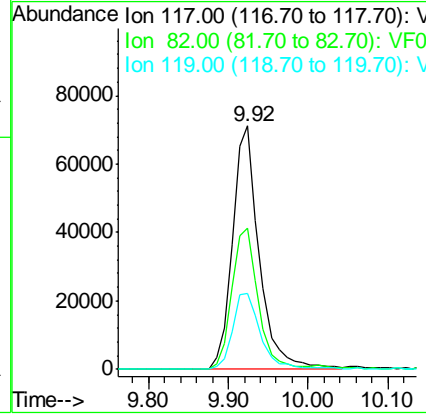
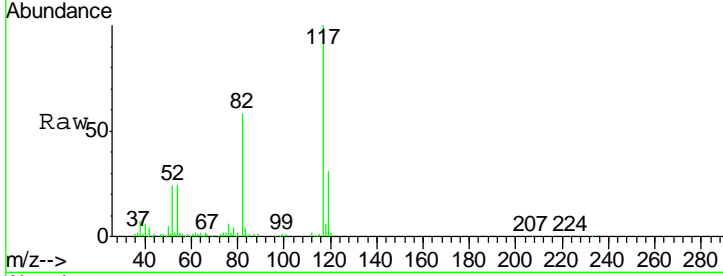




#63
 Chlorobenzene-d5
 Concen: 50.00 ug/l
 RT: 9.92 min Scan# 953
 Delta R.T. -0.01 min
 Lab File: VF059601.D
 Acq: 21 Jul 2018 00:38

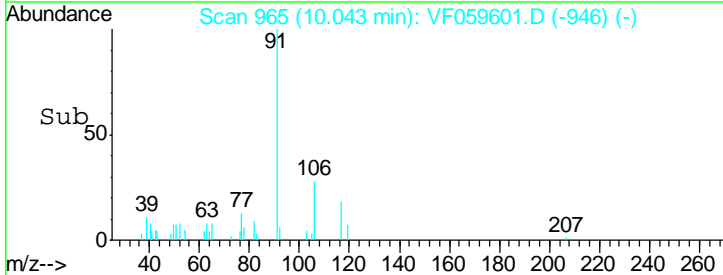
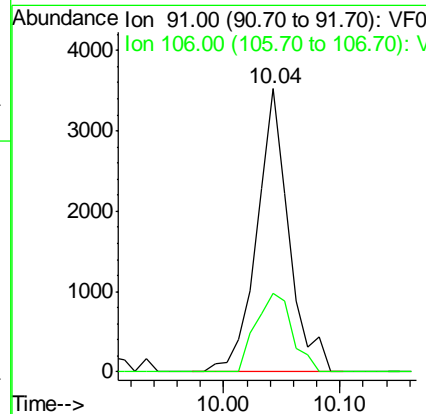
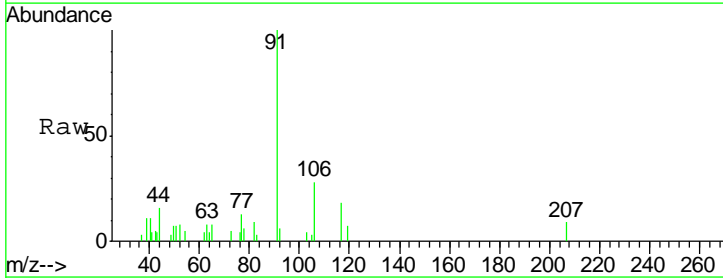
Instrument :
 MSVOA_F
ClientSampled :
 LS-SOIL-1RE

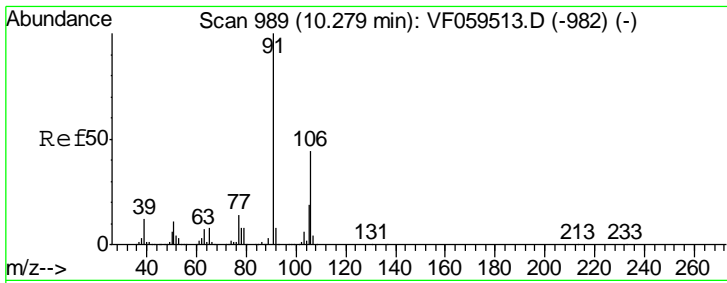
Tgt Ion	Resp	Lower	Upper
117	167533		
82	58.0	46.1	69.1
119	31.1	27.2	40.8



#67
 Ethyl Benzene
 Concen: 1.19 ug/l
 RT: 10.04 min Scan# 965
 Delta R.T. -0.01 min
 Lab File: VF059601.D
 Acq: 21 Jul 2018 00:38

Tgt Ion	Resp	Lower	Upper
91	6676		
106	27.7	23.4	35.2

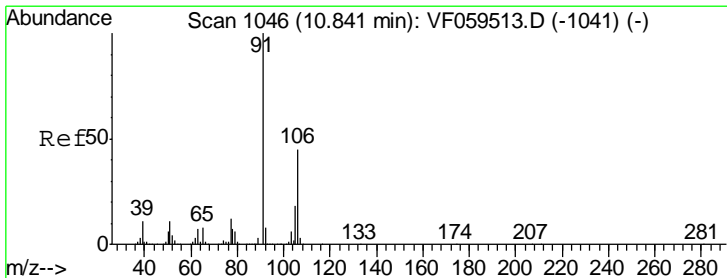
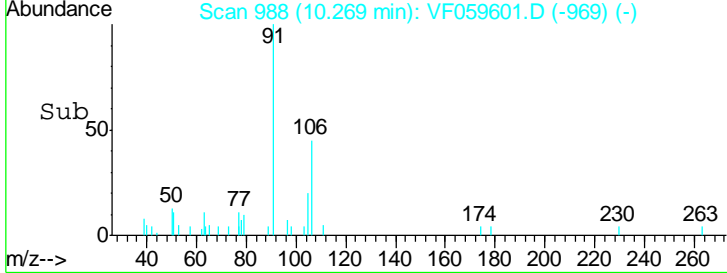
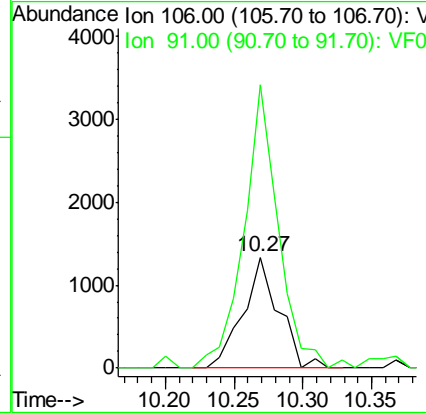
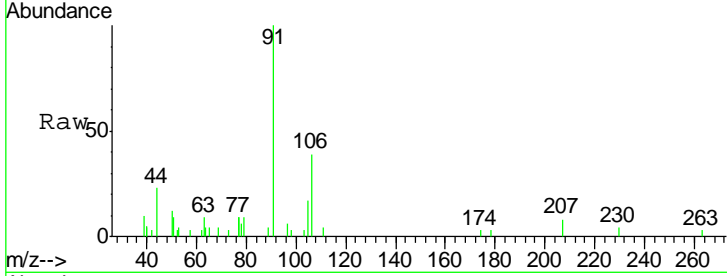




#68
 m/p-Xylenes
 Concen: 1.23 ug/l
 RT: 10.27 min Scan# 988
 Delta R.T. -0.01 min
 Lab File: VF059601.D
 Acq: 21 Jul 2018 00:38

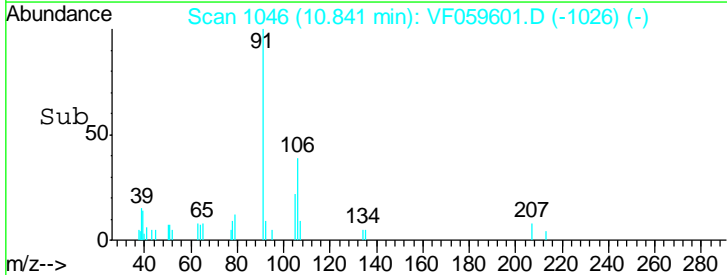
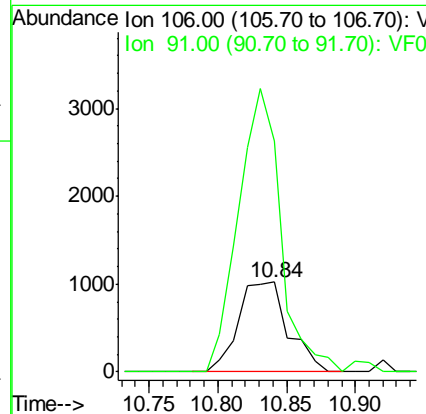
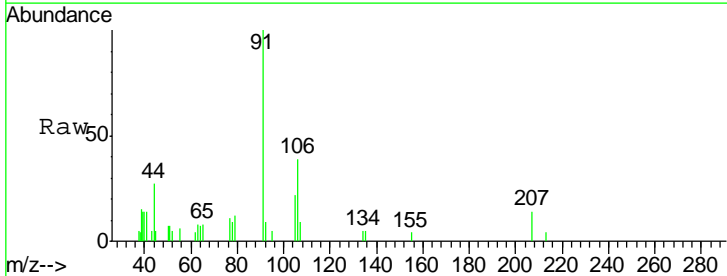
Instrument :
 MSVOA_F
 ClientSampled :
 LS-SOIL-1RE

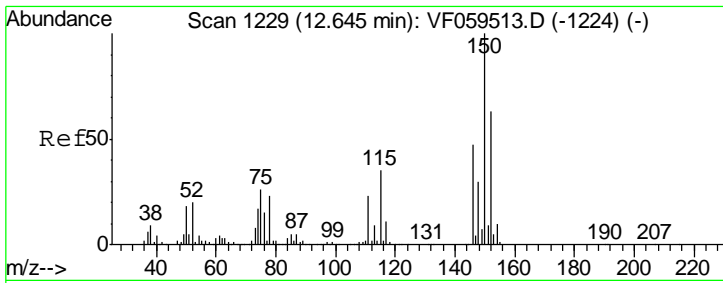
Tgt Ion:106 Resp: 2429
 Ion Ratio Lower Upper
 106 100
 91 255.0 181.0 271.4



#69
 o-Xylene
 Concen: 1.23 ug/l
 RT: 10.84 min Scan# 1046
 Delta R.T. -0.00 min
 Lab File: VF059601.D
 Acq: 21 Jul 2018 00:38

Tgt Ion:106 Resp: 2576
 Ion Ratio Lower Upper
 106 100
 91 257.8 112.3 336.9

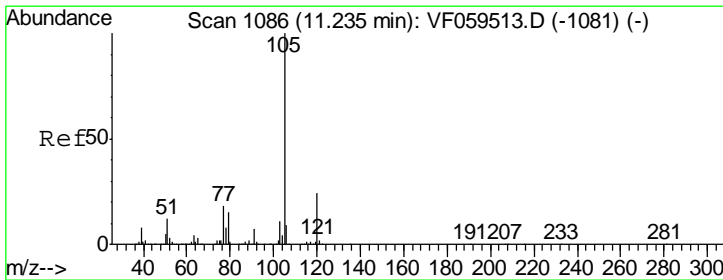
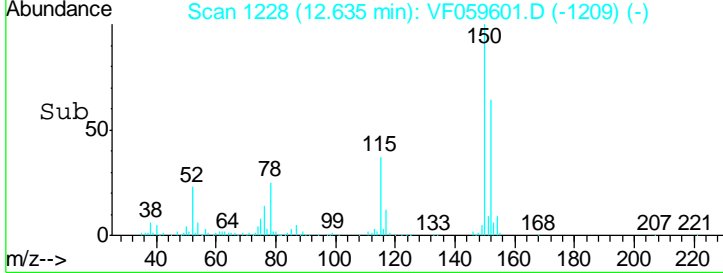
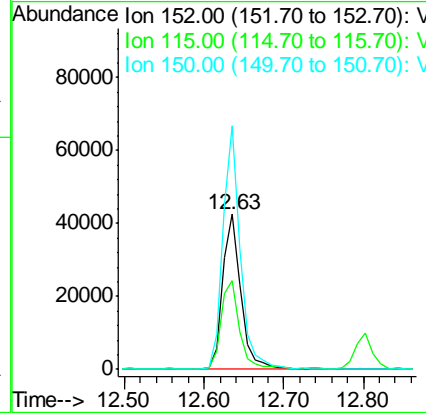
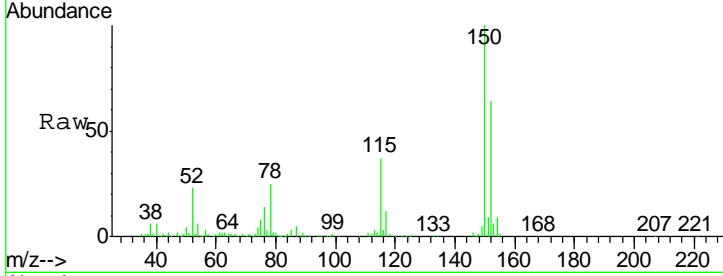




#72
 1,4-Dichlorobenzene-d4
 Concen: 50.00 ug/l
 RT: 12.63 min Scan# 1228
 Delta R.T. -0.01 min
 Lab File: VF059601.D
 Acq: 21 Jul 2018 00:38

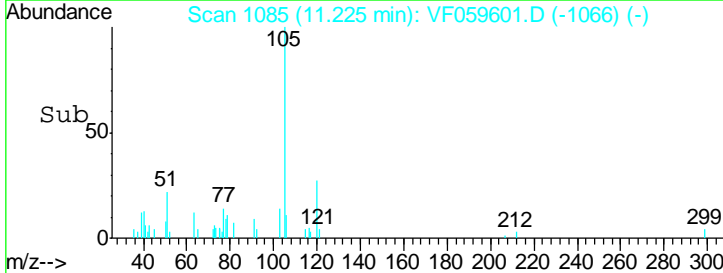
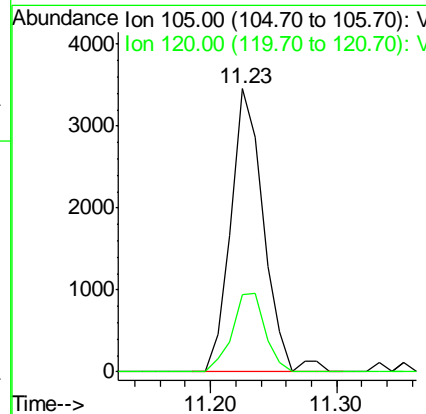
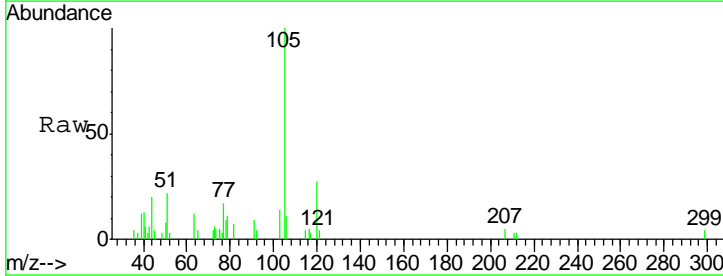
Instrument :
 MSVOA_F
 ClientSampled :
 LS-SOIL-1RE

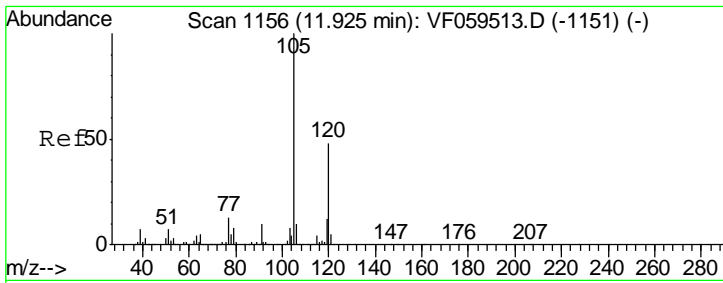
Tgt Ion	Resp	Lower	Upper
152	100		
115	57.6	27.8	83.3
150	157.1	0.0	318.4



#73
 Isopropylbenzene
 Concen: 1.43 ug/l
 RT: 11.23 min Scan# 1085
 Delta R.T. -0.01 min
 Lab File: VF059601.D
 Acq: 21 Jul 2018 00:38

Tgt Ion	Resp	Lower	Upper
105	100		
120	27.2	12.0	36.0

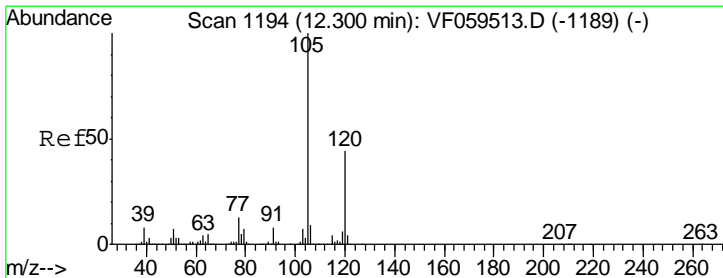
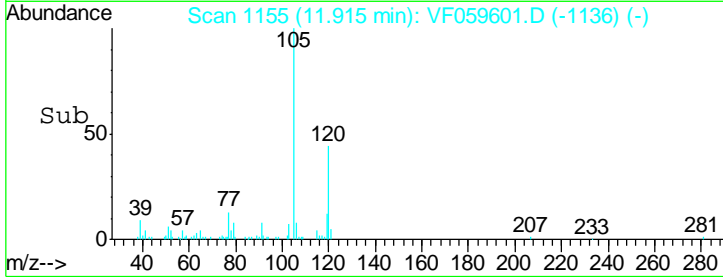
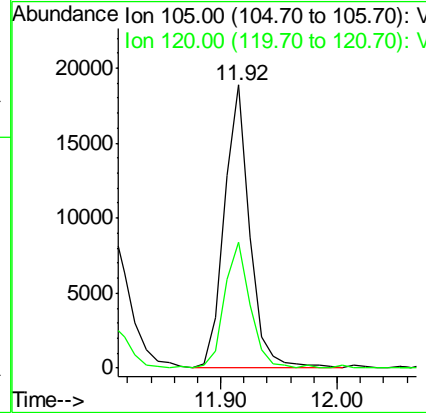
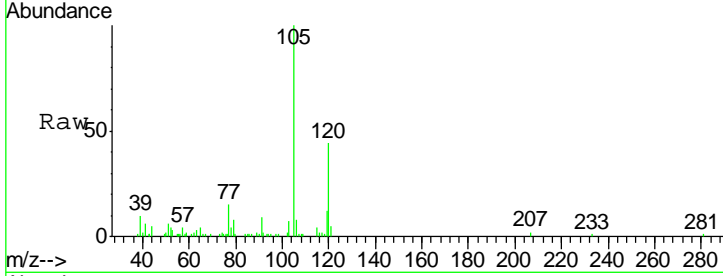




#80
 1,3,5-Trimethylbenzene
 Concen: 7.84 ug/l
 RT: 11.92 min Scan# 1155
 Delta R.T. -0.01 min
 Lab File: VF059601.D
 Acq: 21 Jul 2018 00:38

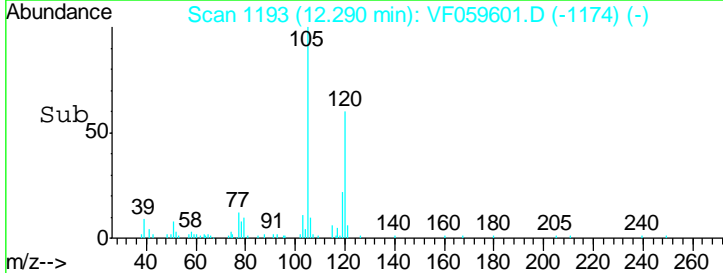
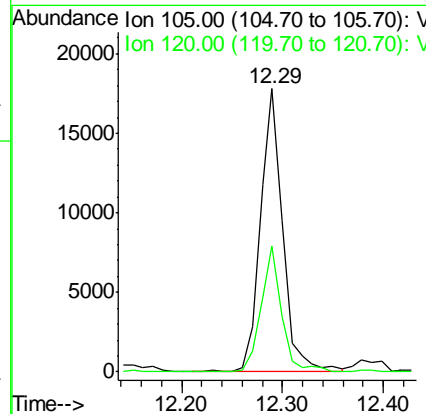
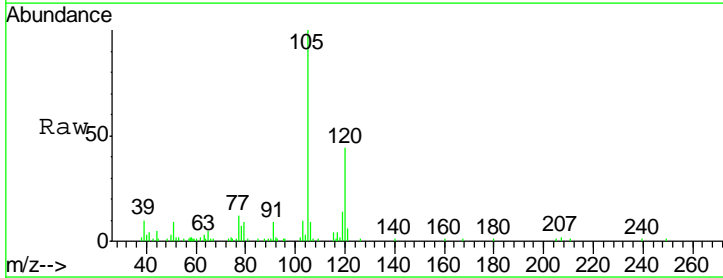
Instrument : MSVOA_F
 ClientSampled : LS-SOIL-1RE

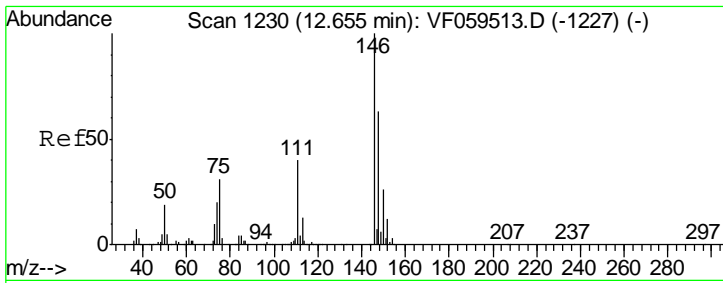
Tgt Ion	Resp	Lower	Upper
105	100		
120	44.4	24.1	72.4



#84
 1,2,4-Trimethylbenzene
 Concen: 7.35 ug/l
 RT: 12.29 min Scan# 1193
 Delta R.T. -0.01 min
 Lab File: VF059601.D
 Acq: 21 Jul 2018 00:38

Tgt Ion	Resp	Lower	Upper
105	100		
120	44.5	22.5	67.5

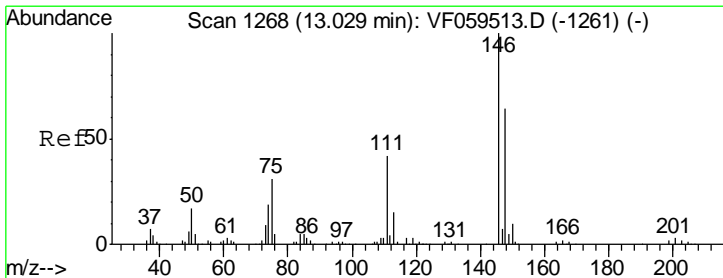
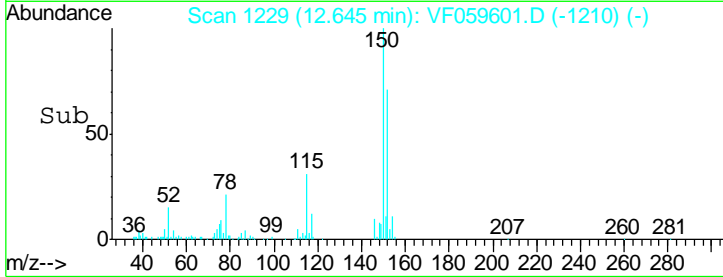
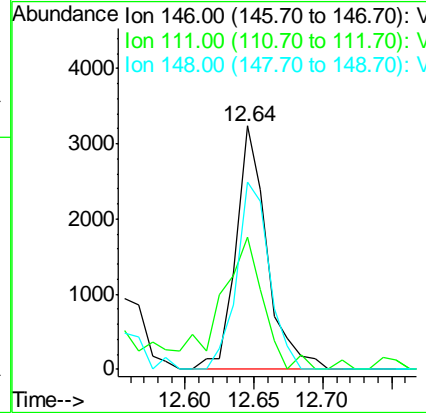
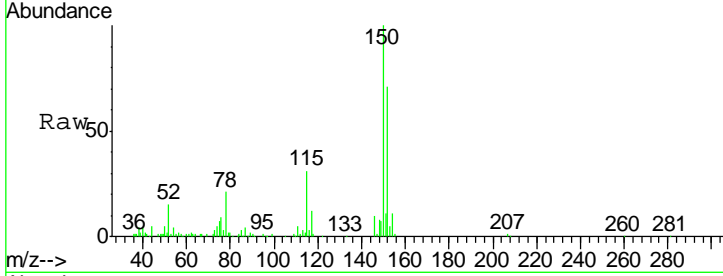




#88
 1,4-Dichlorobenzene
 Concen: 2.48 ug/l
 RT: 12.64 min Scan# 1229
 Delta R.T. -0.01 min
 Lab File: VF059601.D
 Acq: 21 Jul 2018 00:38

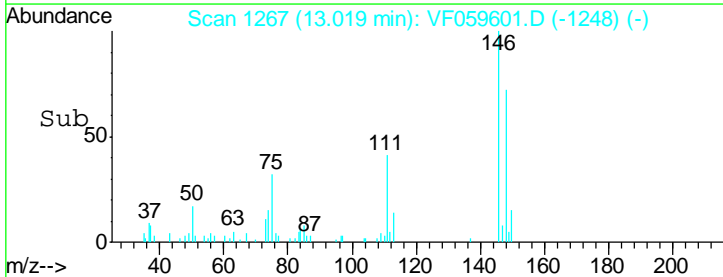
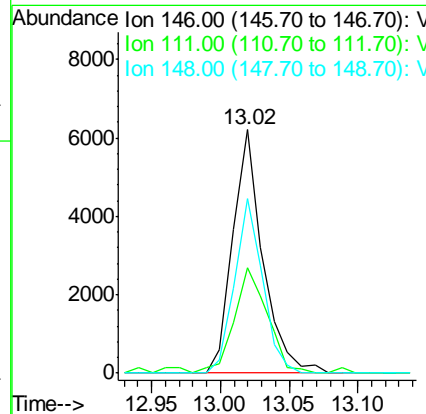
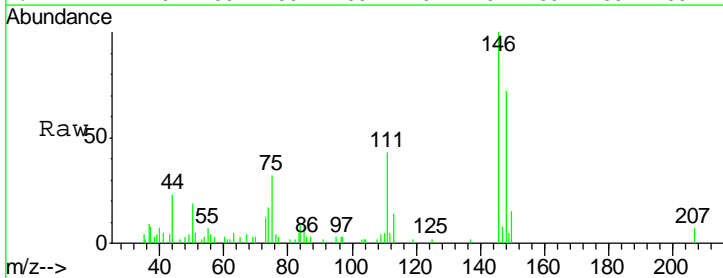
Instrument :
 MSVOA_F
 ClientSampled :
 LS-SOIL-1RE

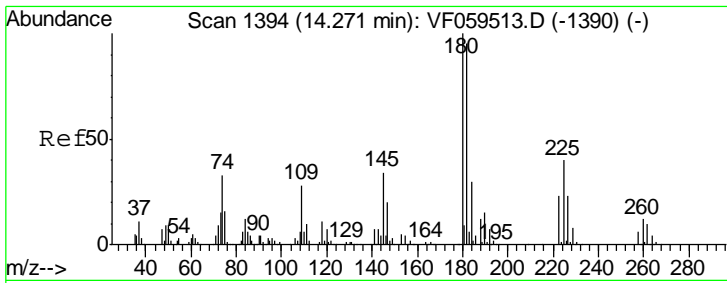
Tgt Ion	Resp	Lower	Upper
146	5106		
111	54.1	20.0	59.9
148	77.1	31.5	94.5



#91
 1,2-Dichlorobenzene
 Concen: 4.72 ug/l
 RT: 13.02 min Scan# 1267
 Delta R.T. -0.01 min
 Lab File: VF059601.D
 Acq: 21 Jul 2018 00:38

Tgt Ion	Resp	Lower	Upper
146	9410		
111	43.1	21.1	63.1
148	71.5	32.3	96.8

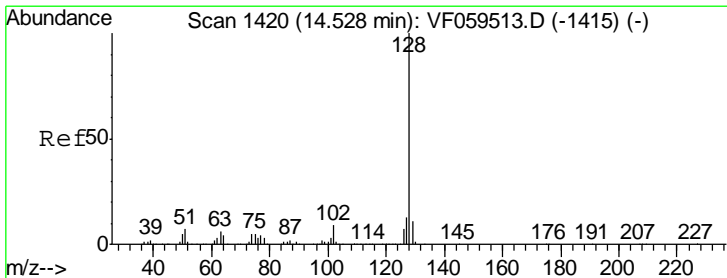
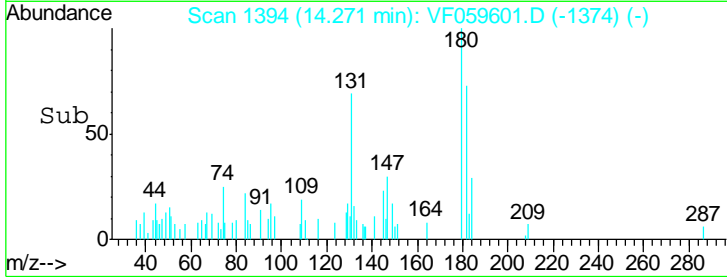
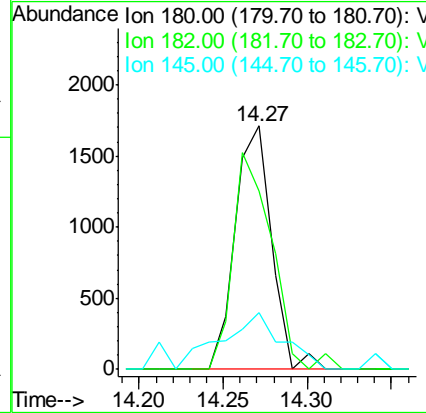
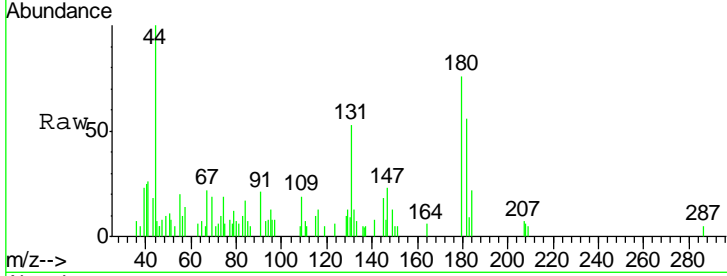




#93
 1,2,4-Trichlorobenzene
 Concen: 2.12 ug/l
 RT: 14.27 min Scan# 1394
 Delta R.T. -0.00 min
 Lab File: VF059601.D
 Acq: 21 Jul 2018 00:38

Instrument : MSVOA_F
 ClientSampled : LS-SOIL-1RE

Tgt Ion	Resp	Lower	Upper
180	100		
182	73.1	47.5	142.5
145	23.2	17.3	51.7



#95
 Naphthalene
 Concen: 49.94 ug/l
 RT: 14.53 min Scan# 1420
 Delta R.T. -0.00 min
 Lab File: VF059601.D
 Acq: 21 Jul 2018 00:38

Tgt Ion	Resp	Lower	Upper
128	100		
127	13.2	10.2	15.2
129	10.9	9.0	13.4

