

Data Path : Z:\VOASRV\HPCHEM1\MSVOA F\DATA\VF073118\  
 Data File : VF059744.D  
 Acq On : 1 Aug 2018 9:12  
 Operator : VA/AP  
 Sample : J3823-01  
 Misc : 6.10µ/5mL/MSVOA F/SOIL  
 ALS Vial : 100 Sample Multiplier: 1

Instrument :  
 MSVOA\_F  
 ClientSampleId :  
 NB-08-073018-A

Integration Parameters: RTEINT.P

Integrator: RTE  
 Smoothing : ON  
 Sampling : 1  
 Start Thrs: 0.2  
 Stop Thrs : 0

Filtering: 5  
 Min Area: 3 % of largest Peak  
 Max Peaks: 100  
 Peak Location: TOP

If leading or trailing edge < 100 prefer < Baseline drop else tangent >  
 Peak separation: 5

Method : Z:\VOASRV\HPCHEM1\MSVOA\_F\METHODS\82F073018S.M  
 Title : SW846 8260

Signal : TIC

peak #	R.T. min	first scan	max scan	last scan	PK TY	peak height	corr. area	corr. % max.	% of total
1	2.275	174	177	180	rBV3	9587	24966	2.31%	0.143%
2	2.314	180	181	186	rVB4	6585	13742	1.27%	0.079%
3	4.197	365	372	375	rBV2	5902	20776	1.92%	0.119%
4	4.296	375	382	394	rVB	156719	495938	45.87%	2.837%
5	5.035	446	457	470	rBV2	260826	924210	85.49%	5.287%
6	5.764	525	531	544	rBV	243121	615498	56.93%	3.521%
7	7.706	721	728	739	rBV	335787	783080	72.43%	4.479%
8	9.914	946	952	962	rBV	306826	662069	61.24%	3.787%
9	10.249	984	986	994	rVB2	17363	23175	2.14%	0.133%
10	11.511	1110	1114	1121	rBV	398683	654926	60.58%	3.746%
11	11.748	1134	1138	1140	rVV2	10035	16305	1.51%	0.093%
12	11.797	1140	1143	1151	rVB	36210	78449	7.26%	0.449%
13	11.915	1151	1155	1158	rBV	18945	31799	2.94%	0.182%
14	12.073	1168	1171	1172	rBV	16970	24936	2.31%	0.143%
15	12.103	1172	1174	1177	rVB	28401	45116	4.17%	0.258%
16	12.290	1189	1193	1198	rVB	128583	180275	16.68%	1.031%
17	12.379	1198	1202	1208	rBV4	12263	35258	3.26%	0.202%
18	12.457	1208	1210	1211	rBV2	9348	11161	1.03%	0.064%
19	12.507	1211	1215	1217	rVV2	23825	45147	4.18%	0.258%
20	12.536	1217	1218	1223	rVB2	20382	28056	2.60%	0.160%
21	12.635	1223	1228	1231	rBV	415933	690939	63.91%	3.952%
22	12.684	1231	1233	1237	rVB	103986	156265	14.45%	0.894%
23	12.802	1242	1245	1247	rBV2	71908	123858	11.46%	0.708%
24	12.842	1247	1249	1251	rBV	55337	74152	6.86%	0.424%
25	12.881	1251	1253	1260	rVB3	141132	363839	33.65%	2.081%
26	13.000	1263	1265	1268	rBV4	24354	49835	4.61%	0.285%
27	13.078	1270	1273	1277	rVB	79198	111144	10.28%	0.636%
28	13.167	1277	1282	1285	rBV	115108	280432	25.94%	1.604%
29	13.226	1285	1288	1290	rBV	126932	179696	16.62%	1.028%
30	13.305	1291	1296	1300	rVB3	75205	232382	21.50%	1.329%
31	13.364	1300	1302	1305	rBV3	28072	63981	5.92%	0.366%
32	13.404	1305	1306	1309	rVB2	34360	37062	3.43%	0.212%
33	13.453	1309	1311	1313	rBV2	58065	73947	6.84%	0.423%
34	13.492	1313	1315	1319	rVB2	70294	114531	10.59%	0.655%

Data Path : Z:\VOASRV\HPCHEM1\MSVOA F\DATA\VF073118\  
 Data File : VF059744.D  
 Acq On : 1 Aug 2018 9:12  
 Operator : VA/AP  
 Sample : J3823-01  
 Misc : 6.10µ/5mL/MSVOA F/SOIL  
 ALS Vial : 100 Sample Multiplier: 1

Instrument :  
 MSVOA\_F  
 ClientSampleID :  
 NB-08-073018-A

Integration Parameters: RTEINT.P  
 Integrator: RTE  
 Smoothing : ON  
 Sampling : 1  
 Start Thrs: 0.2  
 Stop Thrs : 0  
 Filtering: 5  
 Min Area: 3 % of largest Peak  
 Max Peaks: 100  
 Peak Location: TOP

If leading or trailing edge < 100 prefer < Baseline drop else tangent >  
 Peak separation: 5

Method : Z:\VOASRV\HPCHEM1\MSVOA\_F\METHODS\82F073018S.M  
 Title : SW846 8260

35	13.561	1319	1322	1324	rBV2	99172	133001	12.30%	0.761%
36	13.611	1324	1327	1329	rBV	136586	216832	20.06%	1.240%
37	13.650	1329	1331	1333	rVB	52860	63652	5.89%	0.364%
38	13.680	1333	1334	1335	rBV	23205	19056	1.76%	0.109%
39	13.709	1335	1337	1340	rVB2	39837	41371	3.83%	0.237%
40	13.768	1340	1343	1347	rBV2	520329	853233	78.92%	4.881%
41	13.828	1347	1349	1352	rVB3	67445	120584	11.15%	0.690%
42	13.877	1352	1354	1356	rBV	87369	130619	12.08%	0.747%
43	13.916	1356	1358	1362	rVB3	446554	761712	70.46%	4.357%
44	13.985	1362	1365	1367	rVB2	127002	211595	19.57%	1.210%
45	14.035	1367	1370	1373	rBV	316239	457461	42.31%	2.617%
46	14.113	1375	1378	1379	rBV	72257	93785	8.68%	0.536%
47	14.143	1379	1381	1384	rVB	115418	140027	12.95%	0.801%
48	14.212	1384	1388	1392	rBV7	215227	581912	53.83%	3.329%
49	14.281	1392	1395	1398	rVB3	210564	316629	29.29%	1.811%
50	14.330	1398	1400	1401	rVB	41925	39797	3.68%	0.228%
51	14.360	1401	1403	1406	rVB3	82940	95768	8.86%	0.548%
52	14.419	1406	1409	1411	rBV3	49211	74982	6.94%	0.429%
53	14.478	1412	1415	1417	rBV2	192396	316933	29.32%	1.813%
54	14.518	1417	1419	1422	rBV3	489590	633559	58.60%	3.624%
55	14.626	1427	1430	1431	rVV3	78181	108119	10.00%	0.618%
56	14.656	1431	1433	1437	rVB2	152656	229152	21.20%	1.311%
57	14.803	1445	1448	1451	rVB	581911	775817	71.76%	4.438%
58	14.892	1452	1457	1458	rBV2	76728	149542	13.83%	0.855%
59	14.932	1458	1461	1462	rBV2	106995	158759	14.69%	0.908%
60	15.010	1467	1469	1471	rVB3	94276	121737	11.26%	0.696%
61	15.060	1471	1474	1480	rBV2	339717	695262	64.31%	3.977%
62	15.178	1483	1486	1489	rBV	762721	1081087	100.00%	6.184%
63	15.237	1489	1492	1494	rVV2	143857	267476	24.74%	1.530%
64	15.267	1494	1495	1498	rVV2	43019	60435	5.59%	0.346%
65	15.306	1498	1499	1501	rVV2	43610	61183	5.66%	0.350%
66	15.346	1501	1503	1506	rVV2	66267	111891	10.35%	0.640%
67	15.415	1506	1510	1513	rVB3	128544	318624	29.47%	1.823%
68	15.631	1530	1532	1534	rVB2	60517	76428	7.07%	0.437%
69	15.671	1534	1536	1538	rVB	49181	55851	5.17%	0.319%
70	15.710	1538	1540	1545	rVB	139116	280875	25.98%	1.607%
71	15.789	1545	1548	1551	rBV3	45418	72562	6.71%	0.415%

Data Path : Z:\VOASRV\HPCHEM1\MSVOA F\DATA\VF073118\  
Data File : VF059744.D  
Acq On : 1 Aug 2018 9:12  
Operator : VA/AP  
Sample : J3823-01  
Misc : 6.10µ/5mL/MSVOA F/SOIL  
ALS Vial : 100 Sample Multiplier: 1

Instrument :  
MSVOA\_F  
ClientSampleId :  
NB-08-073018-A

Integration Parameters: RTEINT.P  
Integrator: RTE  
Smoothing : ON Filtering: 5  
Sampling : 1 Min Area: 3 % of largest Peak  
Start Thrs: 0.2 Max Peaks: 100  
Stop Thrs : 0 Peak Location: TOP

If leading or trailing edge < 100 prefer < Baseline drop else tangent >  
Peak separation: 5

Method : Z:\VOASRV\HPCHEM1\MSVOA\_F\METHODS\82F073018S.M  
Title : SW846 8260

72	15.848	1551	1554	1557	rBV	146856	220208	20.37%	1.260%
73	16.016	1568	1571	1574	rBV5	29162	67811	6.27%	0.388%

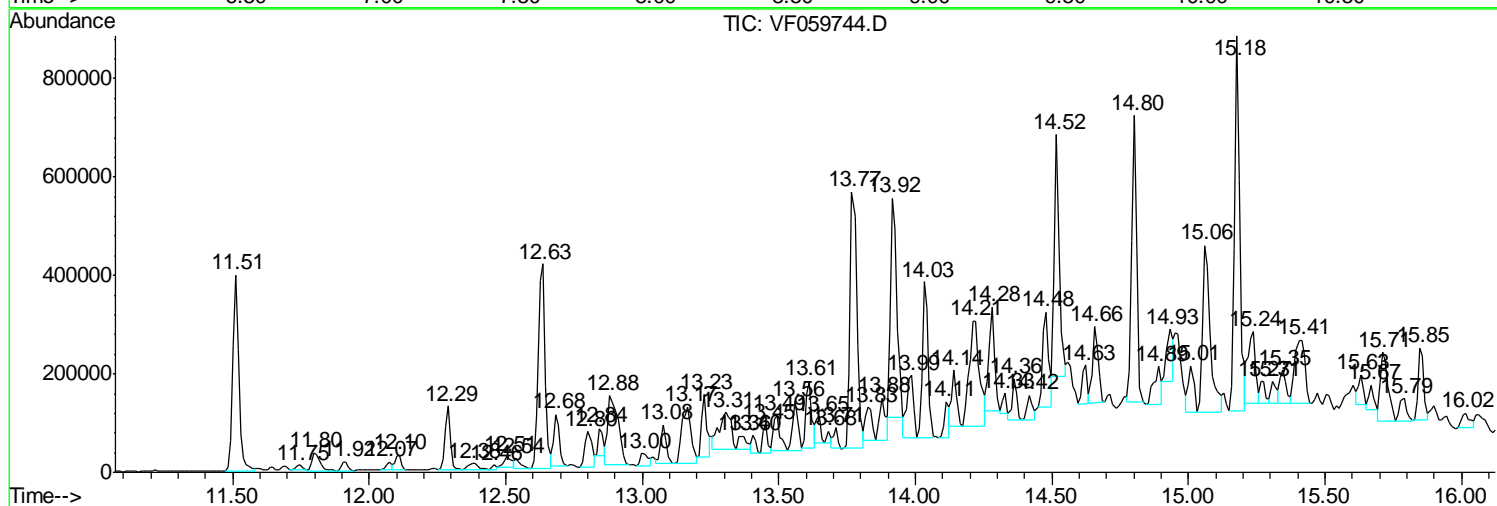
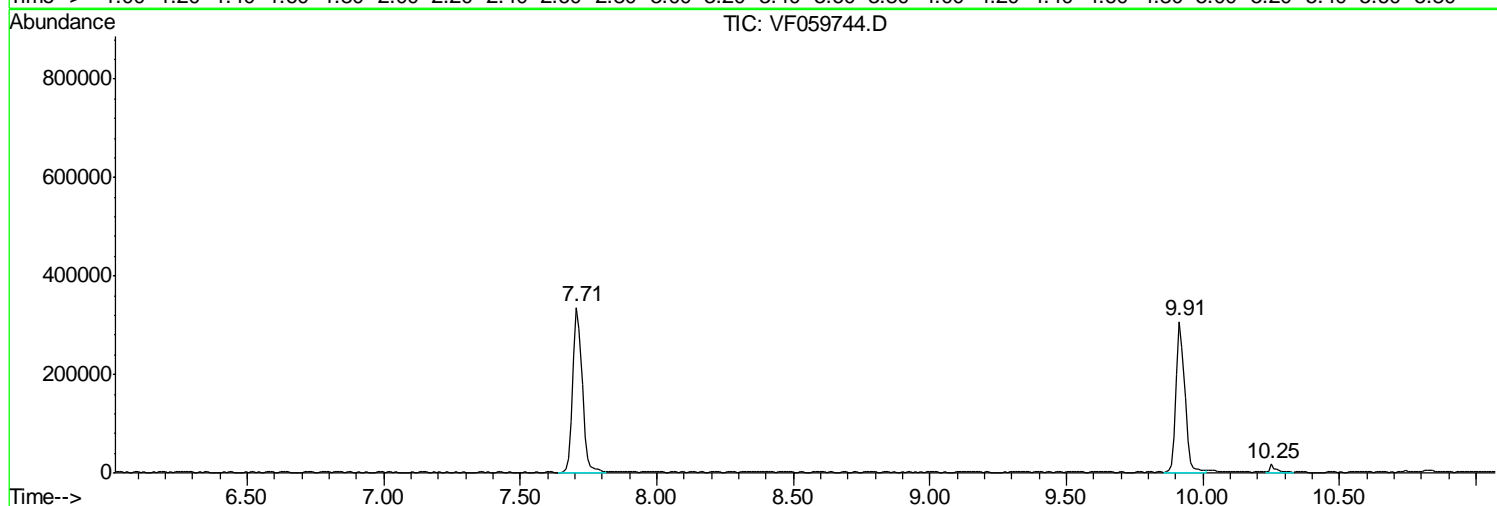
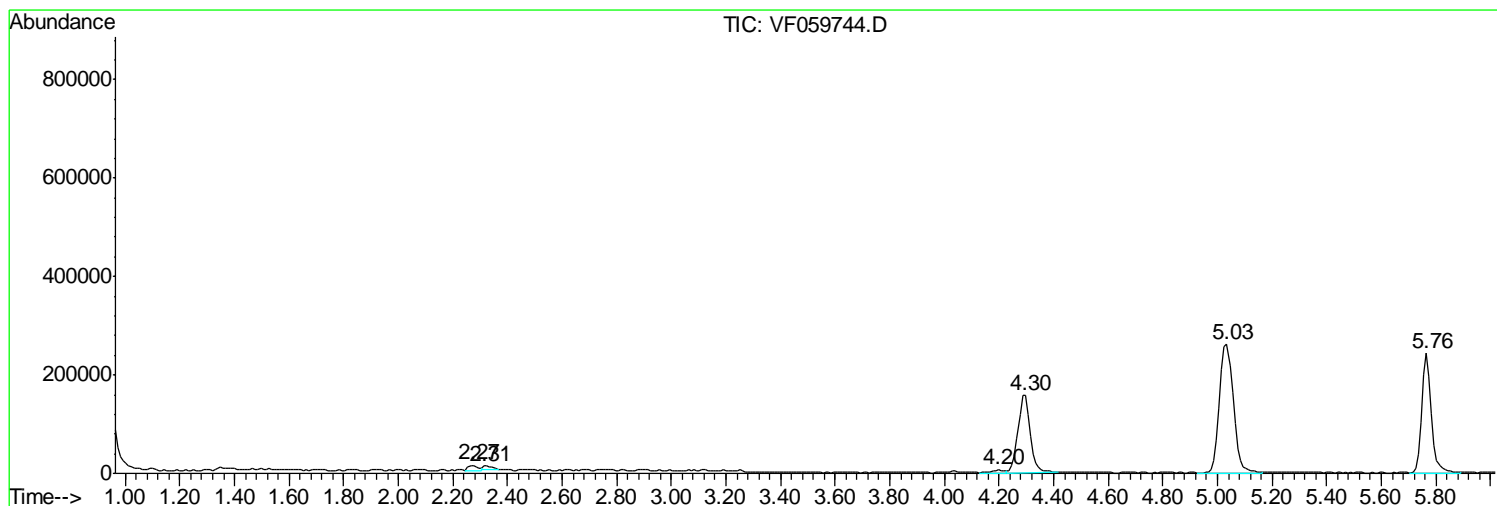
Sum of corrected areas: 17482272

Data Path : Z:\VOASRV\HPCHEM1\MSVOA F\DATA\VF073118\  
 Data File : VF059744.D  
 Acq On : 1 Aug 2018 9:12  
 Operator : VA/AP  
 Sample : J3823-01  
 Misc : 6.10µ/5mL/MSVOA F/SOIL  
 ALS Vial : 100 Sample Multiplier: 1

Instrument :  
 MSVOA\_F  
 ClientSampleId :  
 NB-08-073018-A

Quant Method : Z:\VOASRV\HPCHEM1\MSVOA\_F\METHODS\82F073018S.M  
 Quant Title : SW846 8260

TIC Library : C:\DATABASE\NIST11.L  
 TIC Integration Parameters: LSCINT.P



Data Path : Z:\VOASRV\HPCHEM1\MSVOA F\DATA\VF073118\  
 Data File : VF059744.D  
 Acq On : 1 Aug 2018 9:12  
 Operator : VA/AP  
 Sample : J3823-01  
 Misc : 6.10µ/5mL/MSVOA F/SOIL  
 ALS Vial : 100 Sample Multiplier: 1

Instrument :  
 MSVOA\_F  
 ClientSampleID :  
 NB-08-073018-A

Quant Method : Z:\VOASRV\HPCHEM1\MSVOA\_F\METHODS\82F073018S.M  
 Quant Title : SW846 8260

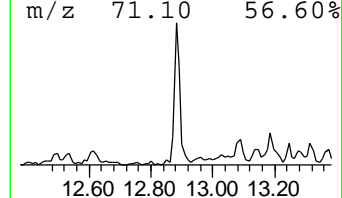
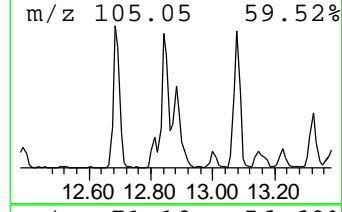
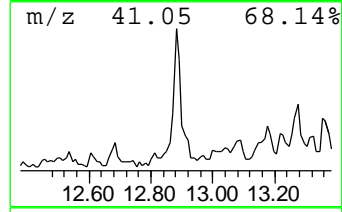
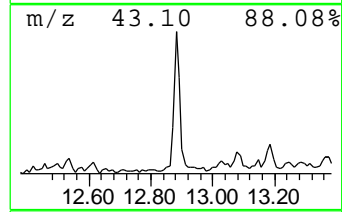
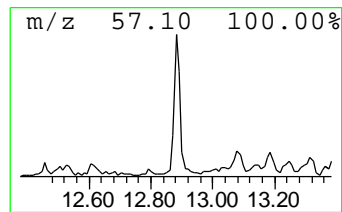
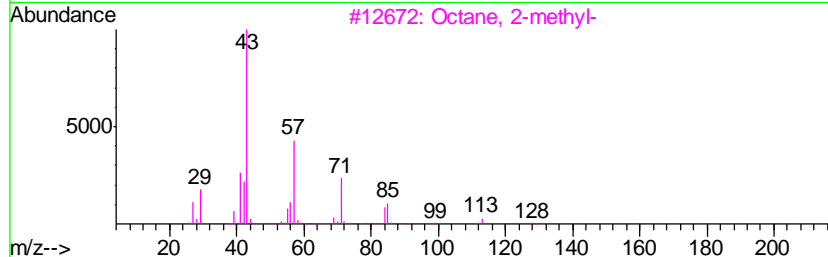
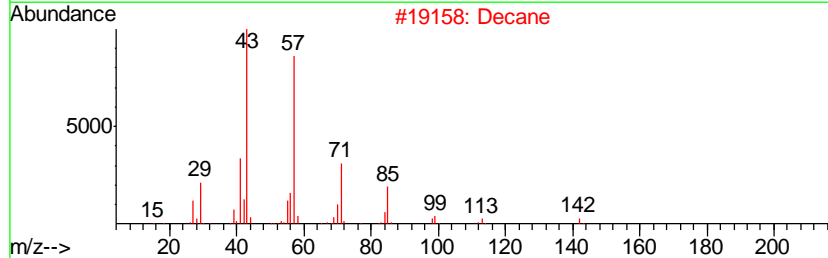
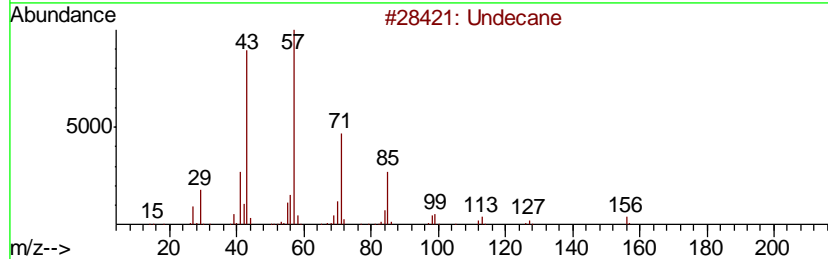
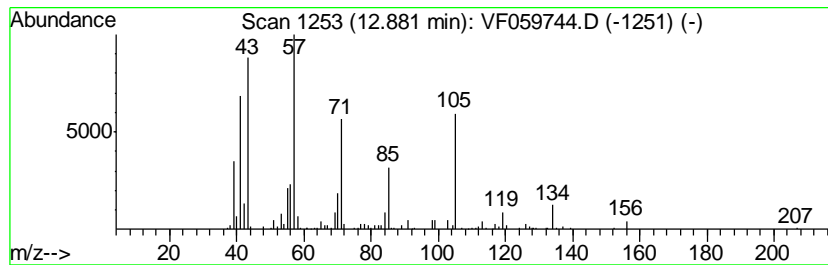
TIC Library : C:\DATABASE\NIST11.L  
 TIC Integration Parameters: LSCINT.P

\*\*\*\*\*  
 Peak Number 1 Undecane Concentration Rank 9

R.T.	EstConc	Area	Relative to ISTD	R.T.
12.88	26.33 ug/l	363839	1,4-Dichlorobenzene-d4	12.63

Hit#	of	Tentative ID	MW	MolForm	CAS#	Qual
1	5	Undecane	156	C11H24	001120-21-4	70
2		Decane	142	C10H22	000124-18-5	59
3		Octane, 2-methyl-	128	C9H20	003221-61-2	58
4		Hexadecane	226	C16H34	000544-76-3	53
5		Tridecane, 3-methyl-	198	C14H30	006418-41-3	53



Data Path : Z:\VOASRV\HPCHEM1\MSVOA F\DATA\VF073118\  
 Data File : VF059744.D  
 Acq On : 1 Aug 2018 9:12  
 Operator : VA/AP  
 Sample : J3823-01  
 Misc : 6.10α/5mL/MSVOA F/SOIL  
 ALS Vial : 100 Sample Multiplier: 1

Instrument :  
 MSVOA\_F  
 ClientSampleID :  
 NB-08-073018-A

Quant Method : Z:\VOASRV\HPCHEM1\MSVOA\_F\METHODS\82F073018S.M  
 Quant Title : SW846 8260

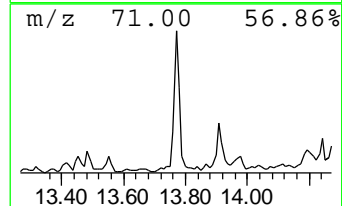
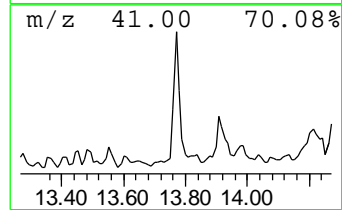
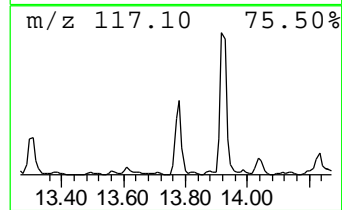
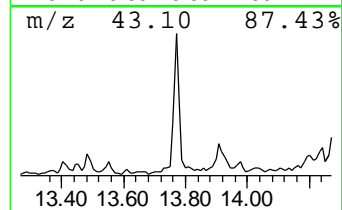
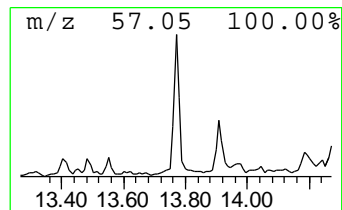
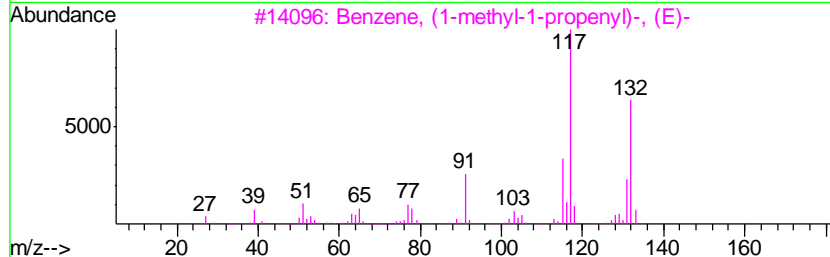
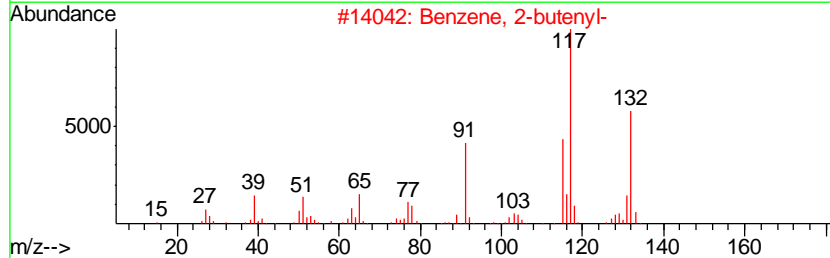
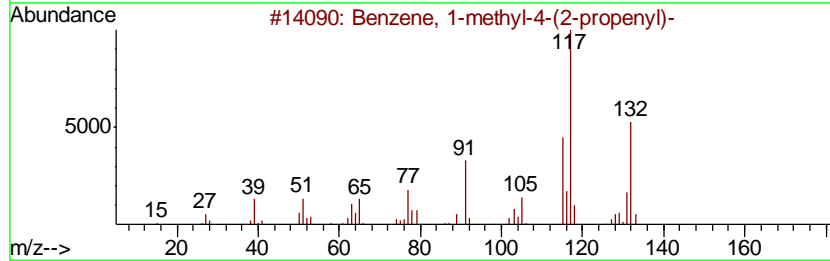
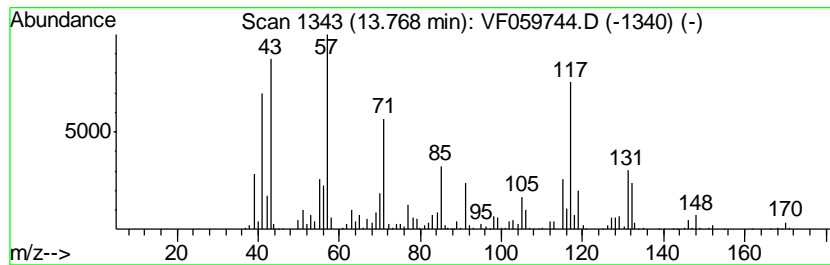
TIC Library : C:\DATABASE\NIST11.L  
 TIC Integration Parameters: LSCINT.P

\*\*\*\*\*  
 Peak Number 2 Benzene, 1-methyl-4-(2-prop... Concentration Rank 2

R.T.	EstConc	Area	Relative to ISTD	R.T.
13.77	61.74 ug/l	853233	1,4-Dichlorobenzene-d4	12.63

Hit#	of	Tentative ID	MW	MolForm	CAS#	Qual
1	5	Benzene, 1-methyl-4-(2-propenyl)-	132	C10H12	003333-13-9	90
2		Benzene, 2-butenyl-	132	C10H12	001560-06-1	55
3		Benzene, (1-methyl-1-propenyl)-, ...	132	C10H12	000768-00-3	55
4		(E)-1-Phenyl-1-butene	132	C10H12	001005-64-7	55
5		1-Phenyl-1-butene	132	C10H12	000824-90-8	50



Data Path : Z:\VOASRV\HPCHEM1\MSVOA F\DATA\VF073118\  
 Data File : VF059744.D  
 Acq On : 1 Aug 2018 9:12  
 Operator : VA/AP  
 Sample : J3823-01  
 Misc : 6.10µ/5mL/MSVOA F/SOIL  
 ALS Vial : 100 Sample Multiplier: 1

Instrument :  
 MSVOA\_F  
 ClientSampleId :  
 NB-08-073018-A

Quant Method : Z:\VOASRV\HPCHEM1\MSVOA\_F\METHODS\82F073018S.M  
 Quant Title : SW846 8260

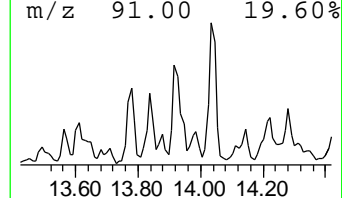
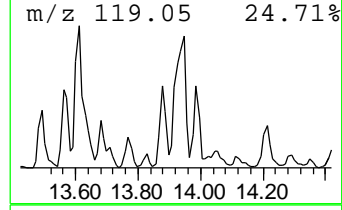
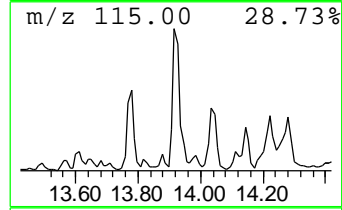
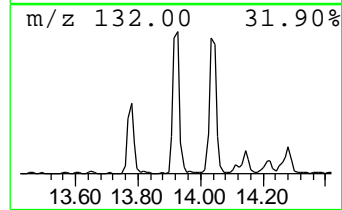
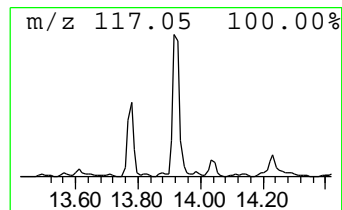
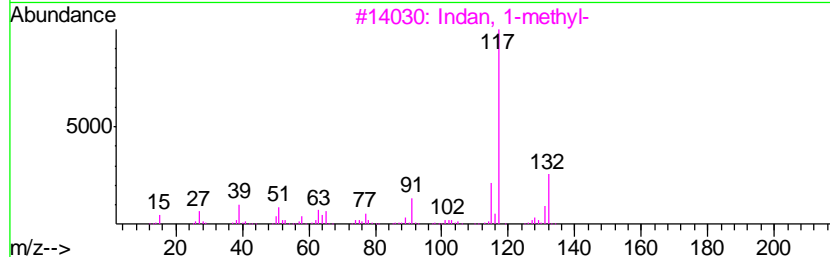
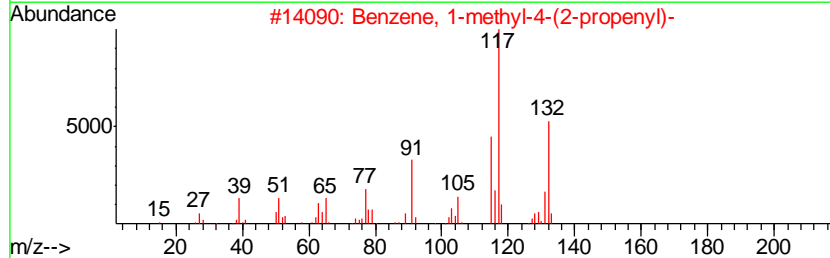
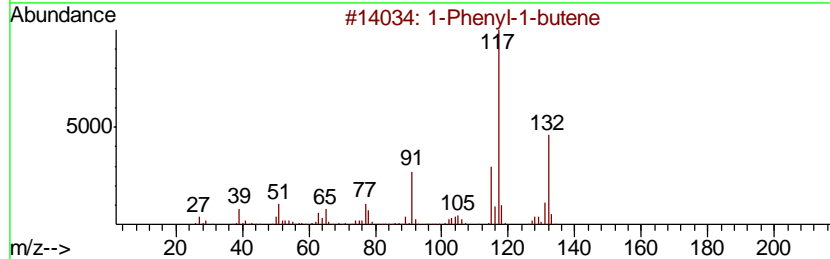
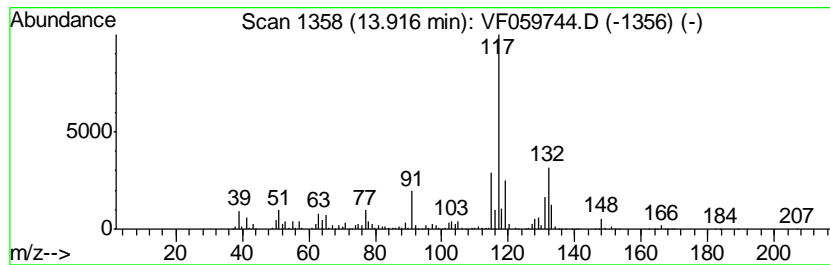
TIC Library : C:\DATABASE\NIST11.L  
 TIC Integration Parameters: LSCINT.P

\*\*\*\*\*  
 Peak Number 3 1-Phenyl-1-butene Concentration Rank 4

R.T.	EstConc	Area	Relative to ISTD	R.T.
13.92	55.12 ug/l	761712	1,4-Dichlorobenzene-d4	12.63

Hit#	of	Tentative ID	MW	MolForm	CAS#	Qual
1	5	1-Phenyl-1-butene	132	C10H12	000824-90-8	80
2		Benzene, 1-methyl-4-(2-propenyl)-	132	C10H12	003333-13-9	78
3		Indan, 1-methyl-	132	C10H12	000767-58-8	76
4		Benzene, 1-ethenyl-4-ethyl-	132	C10H12	003454-07-7	76
5		Benzene, 2-butenyl-	132	C10H12	001560-06-1	72



Data Path : Z:\VOASRV\HPCHEM1\MSVOA F\DATA\VF073118\  
 Data File : VF059744.D  
 Acq On : 1 Aug 2018 9:12  
 Operator : VA/AP  
 Sample : J3823-01  
 Misc : 6.10α/5mL/MSVOA F/SOIL  
 ALS Vial : 100 Sample Multiplier: 1

Instrument :  
 MSVOA\_F  
 ClientSampleID :  
 NB-08-073018-A

Quant Method : Z:\VOASRV\HPCHEM1\MSVOA\_F\METHODS\82F073018S.M  
 Quant Title : SW846 8260

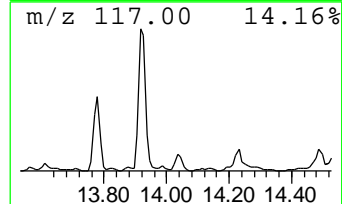
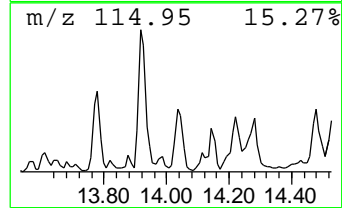
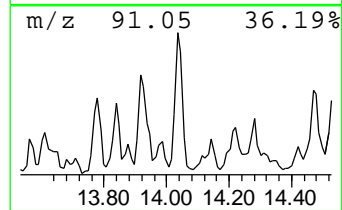
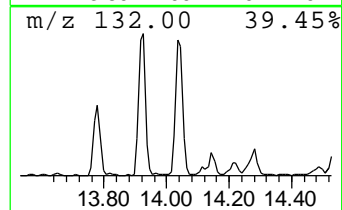
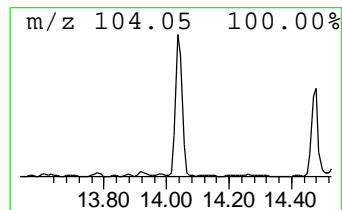
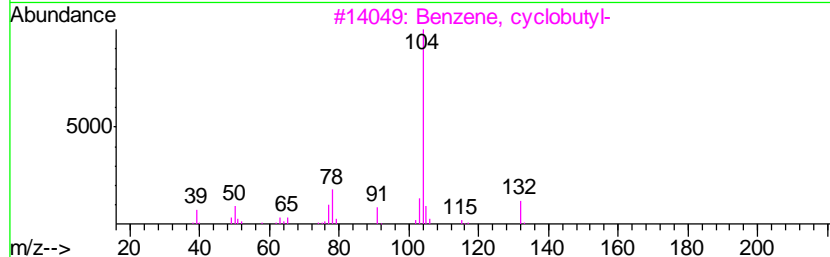
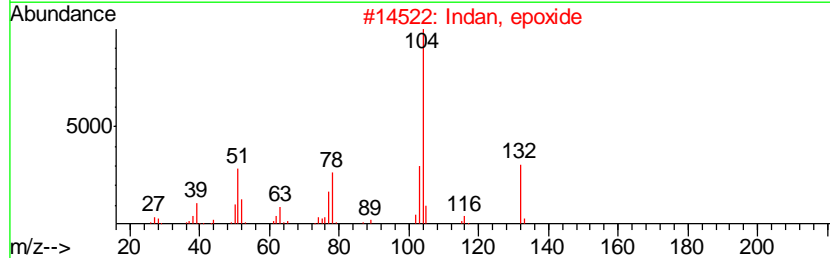
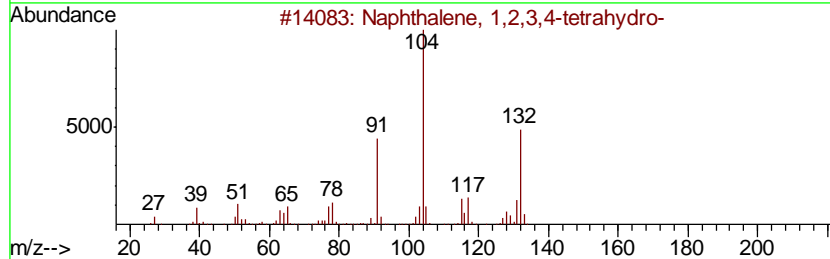
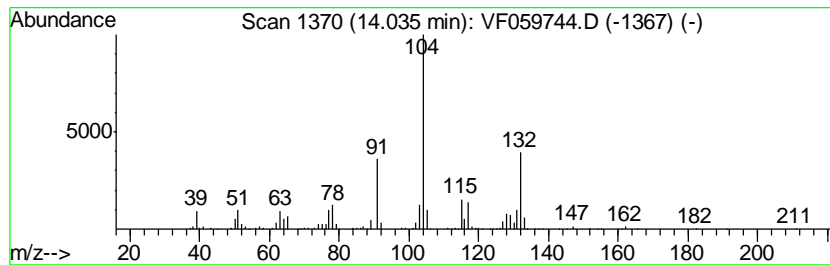
TIC Library : C:\DATABASE\NIST11.L  
 TIC Integration Parameters: LSCINT.P

\*\*\*\*\*  
 Peak Number 4 Naphthalene, 1,2,3,4-tetrahydro... Concentration Rank 8

R.T.	EstConc	Area	Relative to ISTD	R.T.
14.03	33.10 ug/l	457461	1,4-Dichlorobenzene-d4	12.63

Hit#	of	Tentative ID	MW	MolForm	CAS#	Qual
1	5	Naphthalene, 1,2,3,4-tetrahydro-	132	C10H12	000119-64-2	97
2		Indan, epoxide	132	C9H8O	000768-22-9	62
3		Benzene, cyclobutyl-	132	C10H12	004392-30-7	59
4		2H-Inden-2-one, 1,3-dihydro-	132	C9H8O	000615-13-4	53
5		2-Methylbenzyl cyanide	131	C9H9N	022364-68-7	49





Data Path : Z:\VOASRV\HPCHEM1\MSVOA F\DATA\VF073118\  
 Data File : VF059744.D  
 Acq On : 1 Aug 2018 9:12  
 Operator : VA/AP  
 Sample : J3823-01  
 Misc : 6.10µ/5mL/MSVOA F/SOIL  
 ALS Vial : 100 Sample Multiplier: 1

Instrument :  
 MSVOA\_F  
 ClientSampleID :  
 NB-08-073018-A

Quant Method : Z:\VOASRV\HPCHEM1\MSVOA\_F\METHODS\82F073018S.M  
 Quant Title : SW846 8260

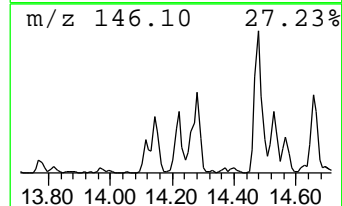
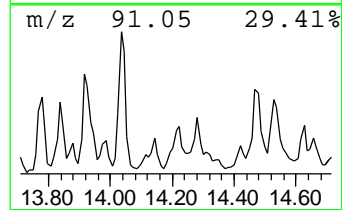
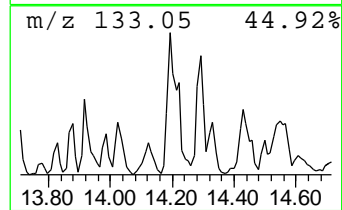
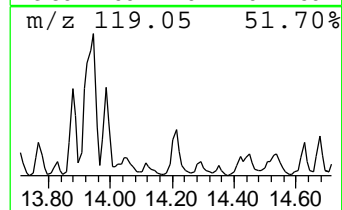
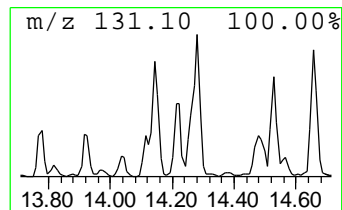
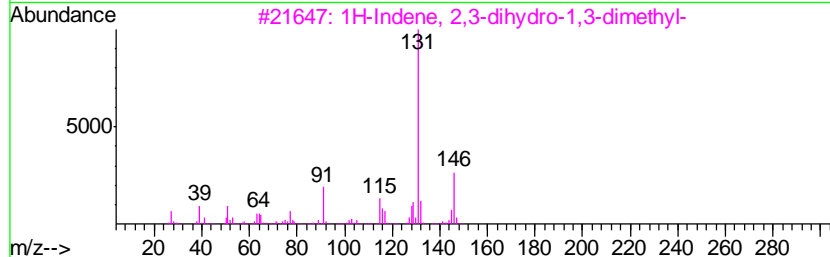
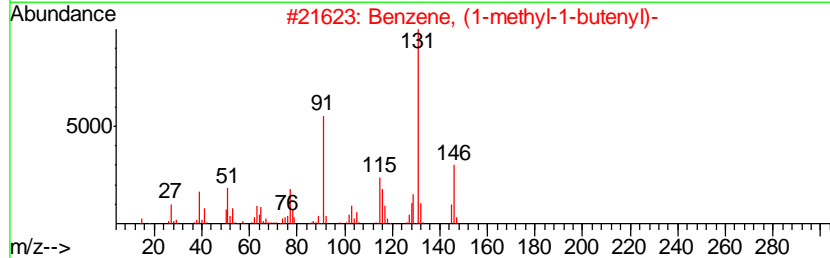
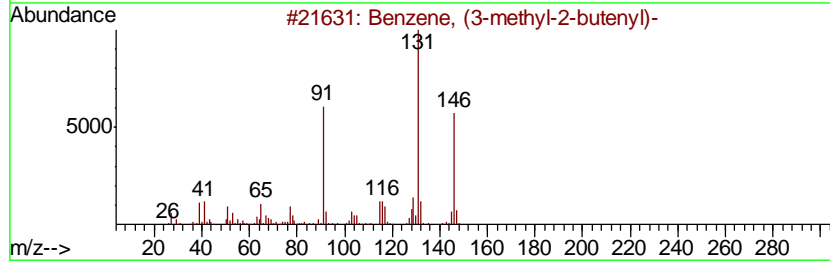
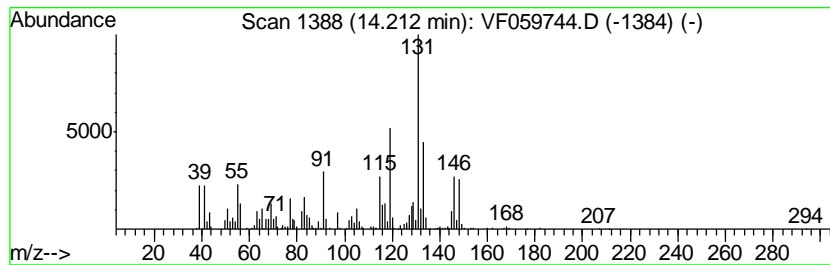
TIC Library : C:\DATABASE\NIST11.L  
 TIC Integration Parameters: LSCINT.P

\*\*\*\*\*  
 Peak Number 5 Benzene, (3-methyl-2-butenyl)- Concentration Rank 7

R.T.	EstConc	Area	Relative to ISTD	R.T.
14.21	42.11 ug/l	581912	1,4-Dichlorobenzene-d4	12.63

Hit#	of	Tentative ID	MW	MolForm	CAS#	Qual
1	5	Benzene, (3-methyl-2-butenyl)-	146	C11H14	004489-84-3	91
2		Benzene, (1-methyl-1-butenyl)-	146	C11H14	053172-84-2	90
3		1H-Indene, 2,3-dihydro-1,3-dimet...	146	C11H14	004175-53-5	87
4		2,2-Dimethylindene, 2,3-dihydro-	146	C11H14	020836-11-7	78
5		1H-Indene, 2,3-dihydro-1,2-dimet...	146	C11H14	017057-82-8	78



Data Path : Z:\VOASRV\HPCHEM1\MSVOA F\DATA\VF073118\  
 Data File : VF059744.D  
 Acq On : 1 Aug 2018 9:12  
 Operator : VA/AP  
 Sample : J3823-01  
 Misc : 6.10α/5mL/MSVOA F/SOIL  
 ALS Vial : 100 Sample Multiplier: 1

Instrument :  
 MSVOA\_F  
 ClientSampleID :  
 NB-08-073018-A

Quant Method : Z:\VOASRV\HPCHEM1\MSVOA\_F\METHODS\82F073018S.M  
 Quant Title : SW846 8260

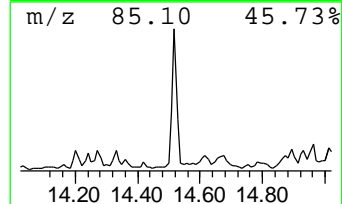
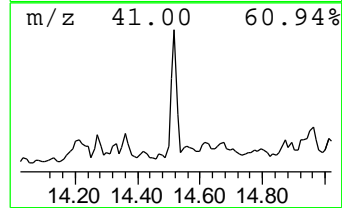
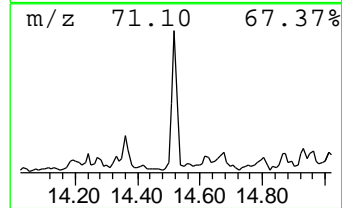
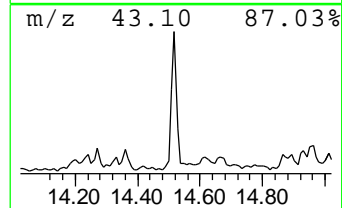
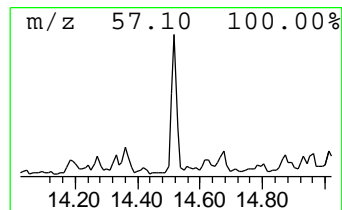
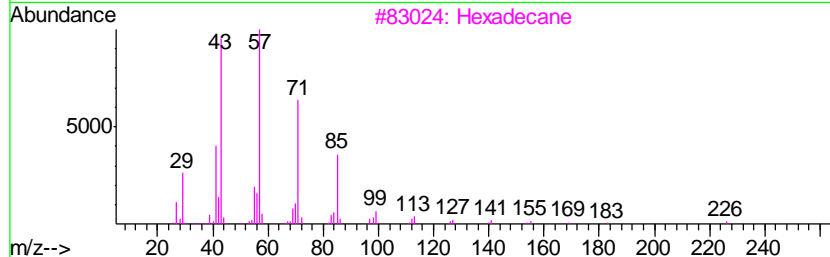
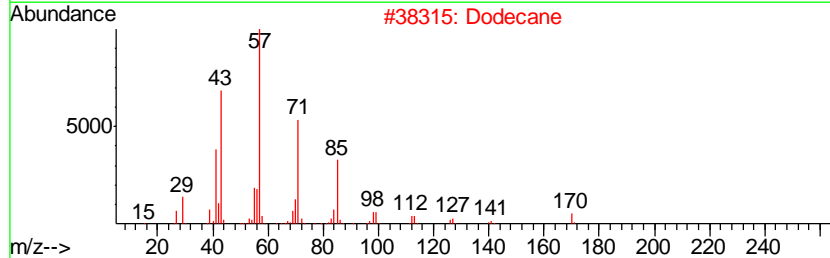
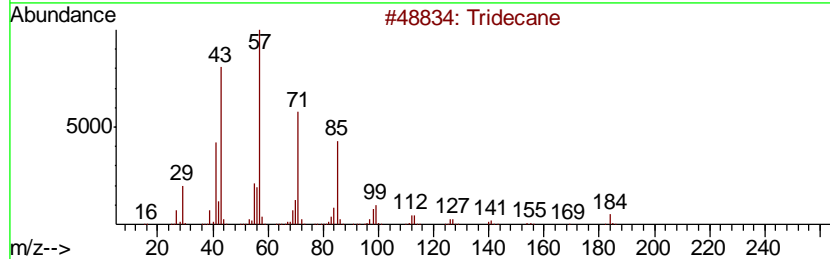
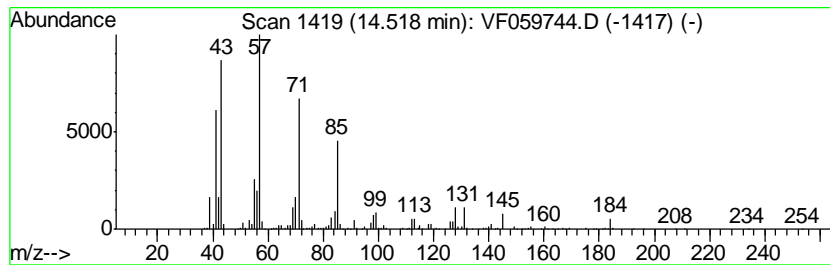
TIC Library : C:\DATABASE\NIST11.L  
 TIC Integration Parameters: LSCINT.P

\*\*\*\*\*  
 Peak Number 6 Tridecane Concentration Rank 6

R.T.	EstConc	Area	Relative to ISTD	R.T.
14.52	45.85 ug/l	633559	1,4-Dichlorobenzene-d4	12.63

Hit#	of	Tentative ID	MW	MolForm	CAS#	Qual
1	5	Tridecane	184	C13H28	000629-50-5	97
2		Dodecane	170	C12H26	000112-40-3	72
3		Hexadecane	226	C16H34	000544-76-3	72
4		Tetradecane	198	C14H30	000629-59-4	68
5		4-Heptanone, 2-methyl-	128	C8H16O	000626-33-5	64



Data Path : Z:\VOASRV\HPCHEM1\MSVOA F\DATA\VF073118\  
 Data File : VF059744.D  
 Acq On : 1 Aug 2018 9:12  
 Operator : VA/AP  
 Sample : J3823-01  
 Misc : 6.10µ/5mL/MSVOA F/SOIL  
 ALS Vial : 100 Sample Multiplier: 1

Instrument :  
 MSVOA\_F  
 ClientSampleID :  
 NB-08-073018-A

Quant Method : Z:\VOASRV\HPCHEM1\MSVOA\_F\METHODS\82F073018S.M  
 Quant Title : SW846 8260

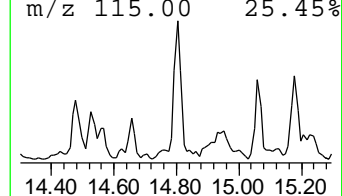
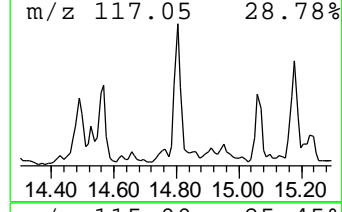
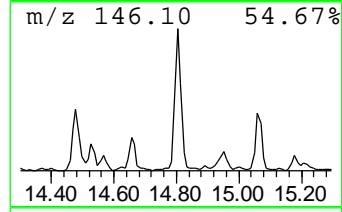
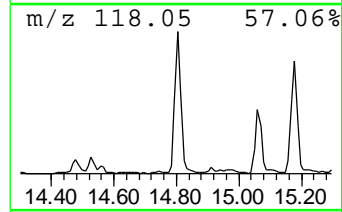
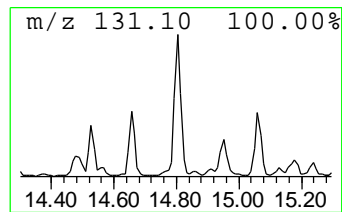
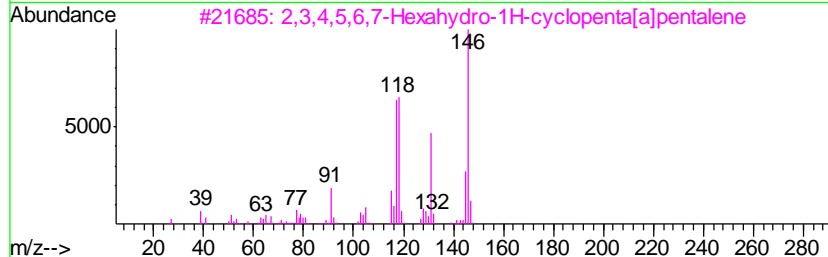
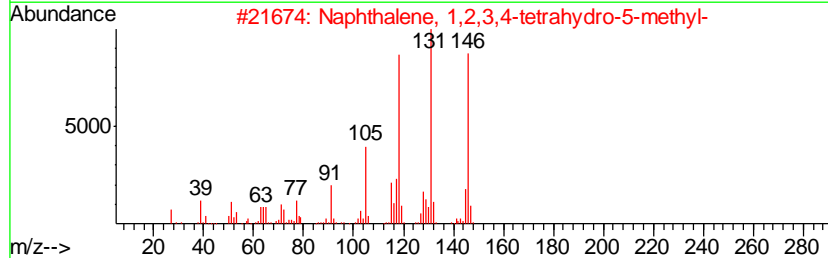
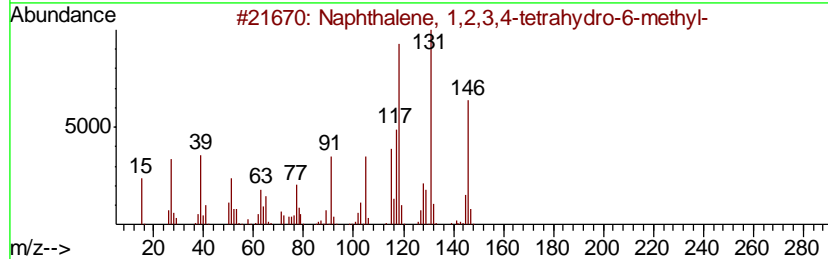
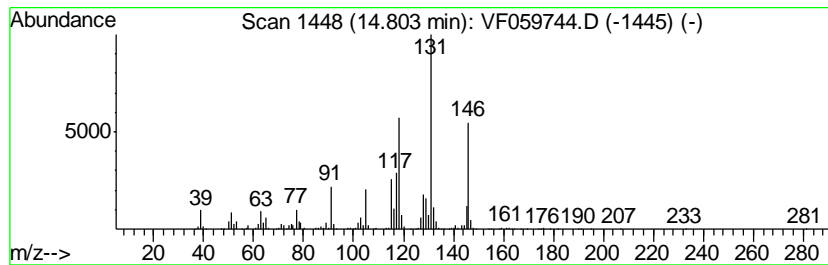
TIC Library : C:\DATABASE\NIST11.L  
 TIC Integration Parameters: LSCINT.P

\*\*\*\*\*  
 Peak Number 7 Naphthalene, 1,2,3,4-tetra... Concentration Rank 3

R.T.	EstConc	Area	Relative to ISTD	R.T.
14.80	56.14 ug/l	775817	1,4-Dichlorobenzene-d4	12.63

Hit#	of	Tentative ID	MW	MolForm	CAS#	Qual
1	5	Naphthalene, 1,2,3,4-tetrahydro-...	146	C11H14	001680-51-9	95
2		Naphthalene, 1,2,3,4-tetrahydro-...	146	C11H14	002809-64-5	95
3		2,3,4,5,6,7-Hexahydro-1H-cyclope...	146	C11H14	1000189-31-0	74
4		2,2-Dimethylindene, 2,3-dihydro-	146	C11H14	020836-11-7	70
5		Benzene, (3-methyl-2-butenyl)-	146	C11H14	004489-84-3	70



Data Path : Z:\VOASRV\HPCHEM1\MSVOA F\DATA\VF073118\  
 Data File : VF059744.D  
 Acq On : 1 Aug 2018 9:12  
 Operator : VA/AP  
 Sample : J3823-01  
 Misc : 6.10α/5mL/MSVOA F/SOIL  
 ALS Vial : 100 Sample Multiplier: 1

Instrument :  
 MSVOA\_F  
 ClientSampleID :  
 NB-08-073018-A

Quant Method : Z:\VOASRV\HPCHEM1\MSVOA\_F\METHODS\82F073018S.M  
 Quant Title : SW846 8260

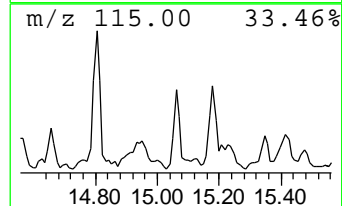
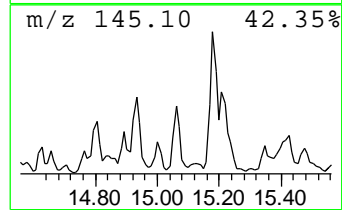
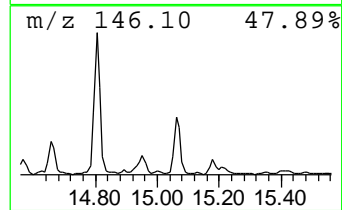
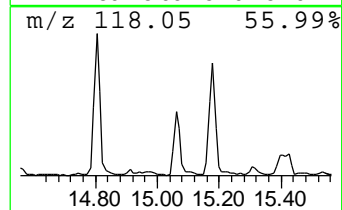
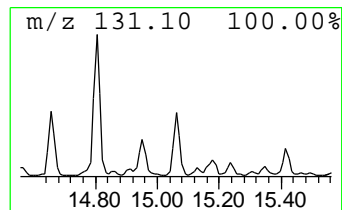
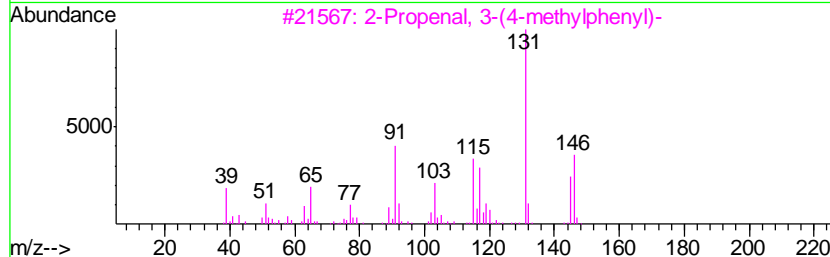
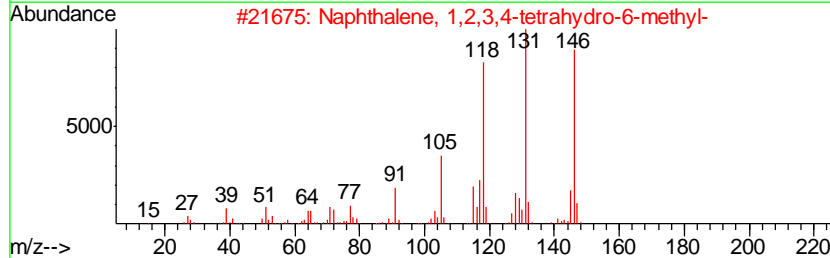
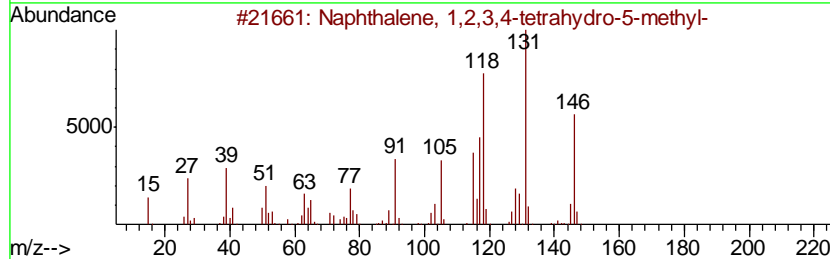
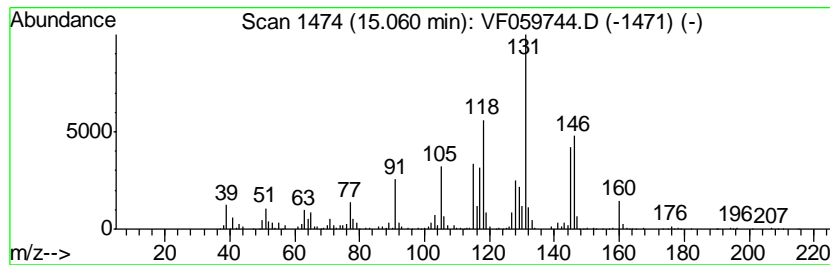
TIC Library : C:\DATABASE\NIST11.L  
 TIC Integration Parameters: LSCINT.P

\*\*\*\*\*  
 Peak Number 8 Naphthalene, 1,2,3,4-tetra... Concentration Rank 5

R.T.	EstConc	Area	Relative to ISTD	R.T.
15.06	50.31 ug/l	695262	1,4-Dichlorobenzene-d4	12.63

Hit#	of	Tentative ID	MW	MolForm	CAS#	Qual
1	5	Naphthalene, 1,2,3,4-tetrahydro-...	146	C11H14	002809-64-5	76
2		Naphthalene, 1,2,3,4-tetrahydro-...	146	C11H14	001680-51-9	58
3		2-Propenal, 3-(4-methylphenyl)-	146	C10H10O	001504-75-2	58
4		Benzene, (3-methyl-2-butenyl)-	146	C11H14	004489-84-3	53
5		1H-Indene, 2,3-dihydro-4,7-dimet...	146	C11H14	006682-71-9	53



Data Path : Z:\VOASRV\HPCHEM1\MSVOA F\DATA\VF073118\  
 Data File : VF059744.D  
 Acq On : 1 Aug 2018 9:12  
 Operator : VA/AP  
 Sample : J3823-01  
 Misc : 6.10α/5mL/MSVOA F/SOIL  
 ALS Vial : 100 Sample Multiplier: 1

Instrument :  
 MSVOA\_F  
 ClientSampleID :  
 NB-08-073018-A

Quant Method : Z:\VOASRV\HPCHEM1\MSVOA\_F\METHODS\82F073018S.M  
 Quant Title : SW846 8260

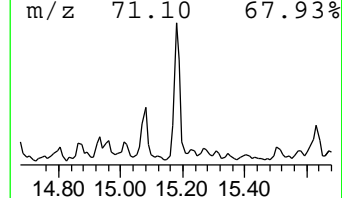
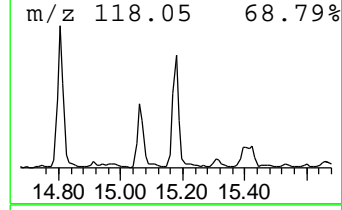
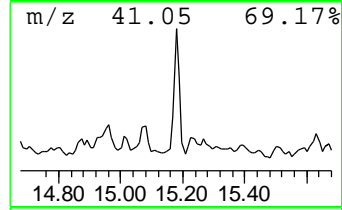
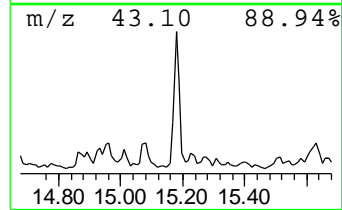
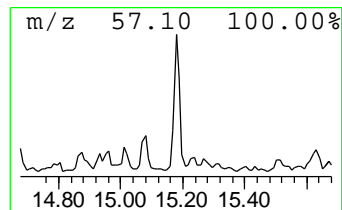
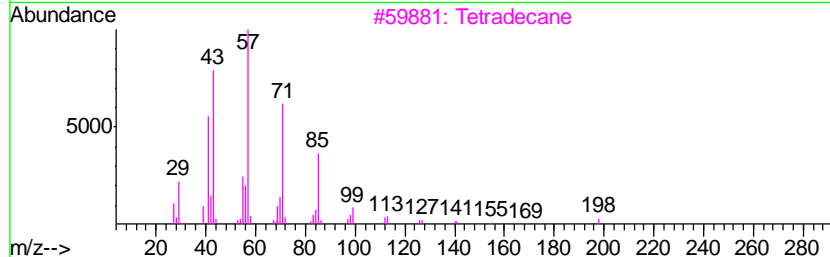
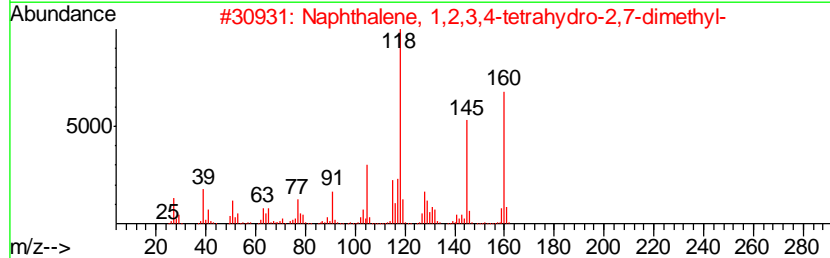
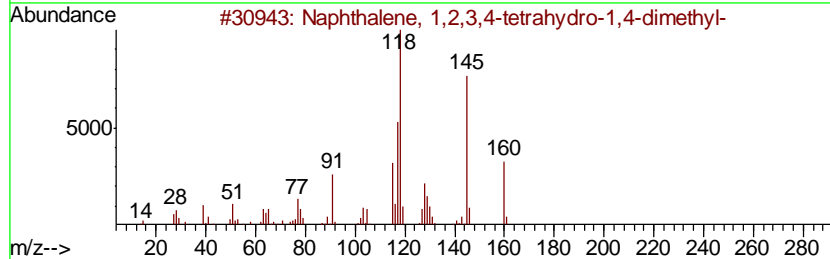
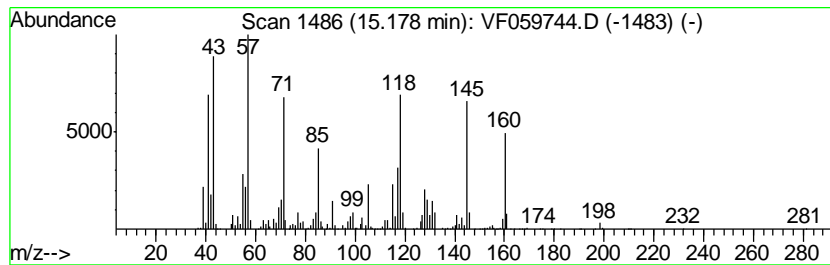
TIC Library : C:\DATABASE\NIST11.L  
 TIC Integration Parameters: LSCINT.P

\*\*\*\*\*  
 Peak Number 9 Naphthalene, 1,2,3,4-tetra... Concentration Rank 1

R.T.	EstConc	Area	Relative to ISTD	R.T.
15.18	78.23 ug/l	1081090	1,4-Dichlorobenzene-d4	12.63

Hit#	of	Tentative ID	MW	MolForm	CAS#	Qual
1	5	Naphthalene, 1,2,3,4-tetrahydro-...	160	C12H16	004175-54-6	93
2		Naphthalene, 1,2,3,4-tetrahydro-...	160	C12H16	013065-07-1	91
3		Tetradecane	198	C14H30	000629-59-4	91
4		Benzene, 4-(2-butenyl)-1,2-dimet...	160	C12H16	054340-86-2	55
5		Benzene, 1,3,5-trimethyl-2-(1-me...	160	C12H16	014679-13-1	46



Data Path : Z:\VOASRV\HPCHEM1\MSVOA F\DATA\VF073118\  
 Data File : VF059744.D  
 Acq On : 1 Aug 2018 9:12  
 Operator : VA/AP  
 Sample : J3823-01  
 Misc : 6.10µ/5mL/MSVOA F/SOIL  
 ALS Vial : 100 Sample Multiplier: 1

Instrument :  
 MSVOA\_F  
 ClientSampleID :  
 NB-08-073018-A

Quant Method : Z:\VOASRV\HPCHEM1\MSVOA\_F\METHODS\82F073018S.M  
 Quant Title : SW846 8260

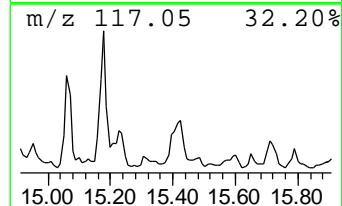
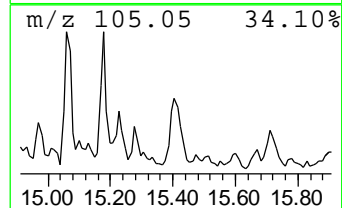
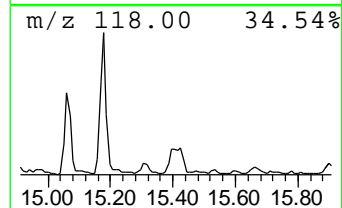
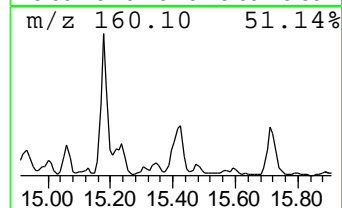
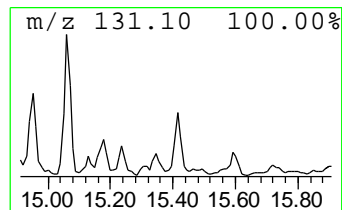
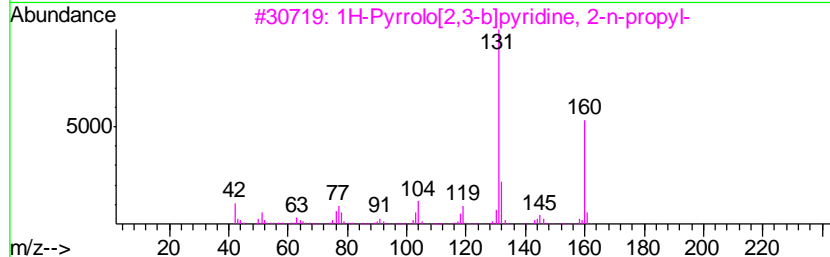
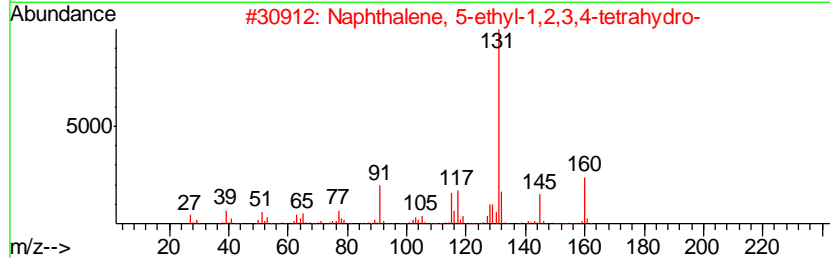
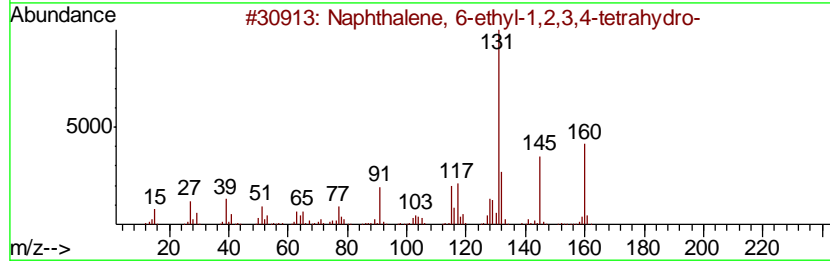
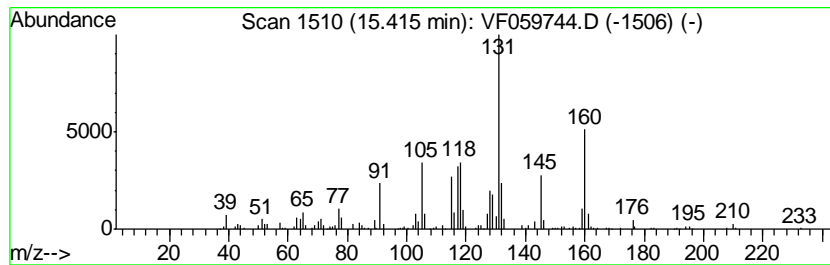
TIC Library : C:\DATABASE\NIST11.L  
 TIC Integration Parameters: LSCINT.P

\*\*\*\*\*  
 Peak Number 10 Naphthalene, 6-ethyl-1,2,3,... Concentration Rank 10

R.T.	EstConc	Area	Relative to ISTD	R.T.
15.41	23.06 ug/l	318624	1,4-Dichlorobenzene-d4	12.63

Hit#	of	Tentative ID	MW	MolForm	CAS#	Qual
1	5	Naphthalene, 6-ethyl-1,2,3,4-tet...	160	C12H16	022531-20-0	68
2		Naphthalene, 5-ethyl-1,2,3,4-tet...	160	C12H16	042775-75-7	55
3		1H-Pyrrolo[2,3-b]pyridine, 2-n-p...	160	C10H12N2	1000212-02-1	52
4		1,4-Methanonaphthalen-9-ol, 1,2,...	160	C11H12O	055255-94-2	47
5		Naphthalene, 1,2,3,4-tetrahydro-...	146	C11H14	001680-51-9	47



Data Path : Z:\VOASRV\HPCHEM1\MSVOA\_F\DATA\VF073118\  
Data File : VF059744.D  
Acq On : 1 Aug 2018 9:12  
Operator : VA/AP  
Sample : J3823-01  
Misc : 6.10g/5mL/MSVOA\_F/SOIL  
ALS Vial : 100 Sample Multiplier: 1

Instrument :  
MSVOA\_F  
ClientSampleId :  
NB-08-073018-A

Quant Method : Z:\VOASRV\HPCHEM1\MSVOA\_F\METHODS\82F073018S.M  
Quant Title : SW846 8260

TIC Library : C:\DATABASE\NIST11.L  
TIC Integration Parameters: LSCINT.P

TIC Top Hit name	RT	EstConc	Units	Response	--Internal Standard--			
					#	RT	Resp	Conc
Undecane	12.88	26.3	ug/l	363839	4	12.63	690939	50.0
Benzene, 1-methyl...	13.77	61.7	ug/l	853233	4	12.63	690939	50.0
1-Phenyl-1-butene	13.92	55.1	ug/l	761712	4	12.63	690939	50.0
Naphthalene, 1,2,...	14.03	33.1	ug/l	457461	4	12.63	690939	50.0
Benzene, (3-methy...	14.21	42.1	ug/l	581912	4	12.63	690939	50.0
Tridecane	14.52	45.9	ug/l	633559	4	12.63	690939	50.0
Naphthalene, 1,2,...	14.80	56.1	ug/l	775817	4	12.63	690939	50.0
Naphthalene, 1,2,...	15.06	50.3	ug/l	695262	4	12.63	690939	50.0
Naphthalene, 1,2,...	15.18	78.2	ug/l	1081090	4	12.63	690939	50.0
Naphthalene, 6-et...	15.41	23.1	ug/l	318624	4	12.63	690939	50.0