

Data Path : Z:\VOASRV\HPCHEM1\MSVOA F\DATA\VF080118\
 Data File : VF059753.D
 Acq On : 1 Aug 2018 14:16
 Operator : VA/AP
 Sample : J4228-04
 Misc : 5.00µ/5mL/MSVOA F/SOIL
 ALS Vial : 85 Sample Multiplier: 1

Instrument :
 MSVOA_F
 ClientSampleId :
 G.L.B(8.0)-1A

Quant Time: Aug 01 15:43:21 2018
 Quant Method : Z:\VOASRV\HPCHEM1\MSVOA_F\METHODS\82F073018S.M
 Quant Title : SW846 8260
 QLast Update : Tue Jul 31 15:23:22 2018
 Response via : Initial Calibration

Internal Standards	R.T.	QIon	Response	Conc	Units	Dev(Min)
1) Pentafluorobenzene	0.00	168	0	0.00	µg/l	-5.03
34) 1,4-Difluorobenzene	5.78	114	61	50.00	µg/l	0.02
63) Chlorobenzene-d5	9.97	117	78	50.00	µg/l	0.06
72) 1,4-Dichlorobenzene-d4	0.00	152	0	0.00	µg/l	-12.63

System Monitoring Compounds

33) 1,2-Dichloroethane-d4	4.92	65	98	0.00	µg/l	-0.10
Spiked Amount	50.000		Recovery	=	0.00%	
35) Dibromofluoromethane	4.40	113	81	127.85	µg/l	0.12
Spiked Amount	50.000		Recovery	=	255.70%	
50) Toluene-d8	7.80	98	63	42.64	µg/l	0.10
Spiked Amount	50.000		Recovery	=	85.28%	
62) 4-Bromofluorobenzene	11.63	95	101	123.48	µg/l	0.12
Spiked Amount	50.000		Recovery	=	246.96%	

Target Compounds

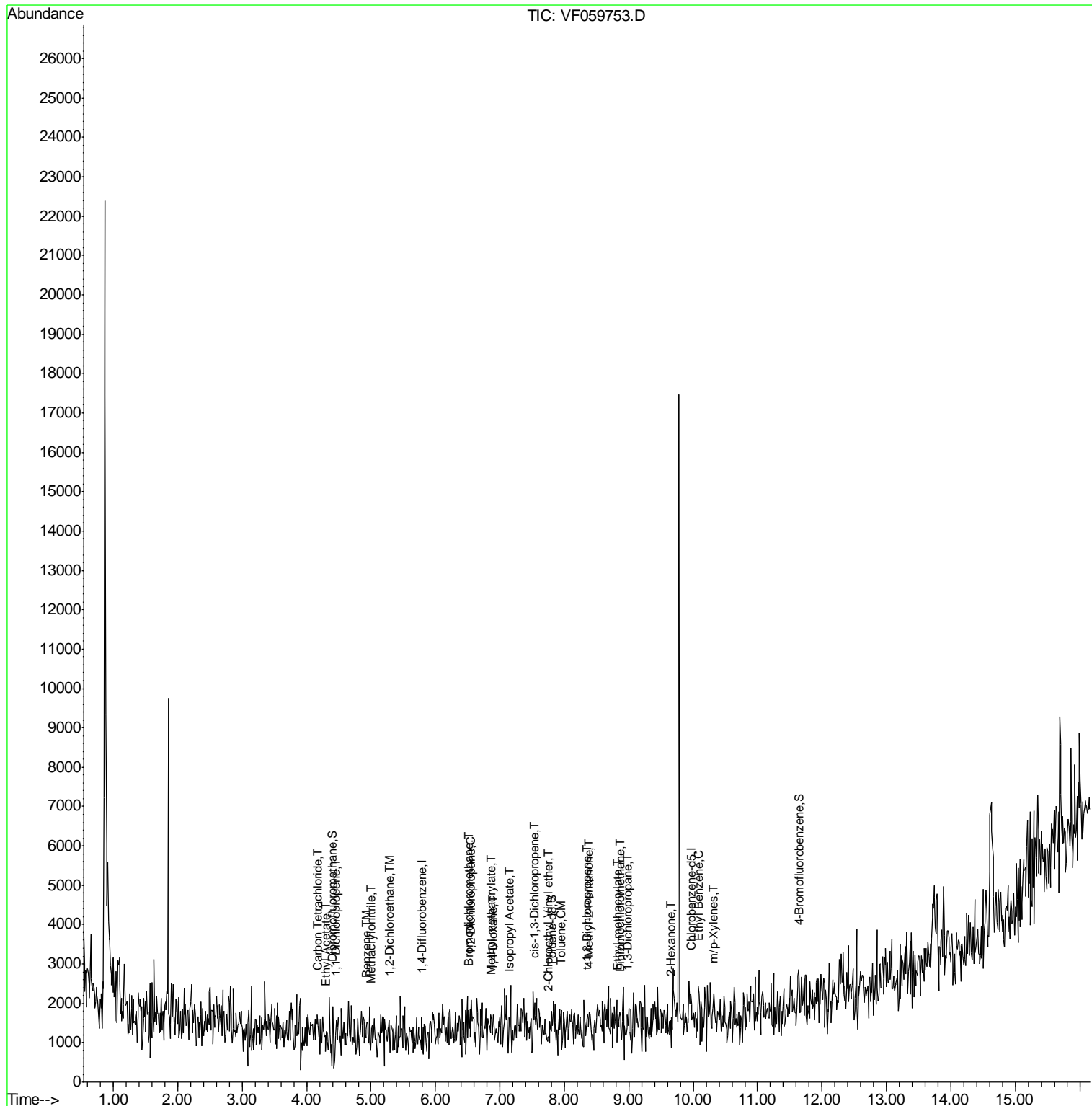
						Qvalue
36) 1,1-Dichloropropene	4.47	75	86	146.92	µg/l #	46
37) Ethyl Acetate	4.31	43	134	480.07	µg/l #	19
38) Carbon Tetrachloride	4.18	117	88	90.73	µg/l #	14
40) Benzene	4.95	78	80	64.94	µg/l #	52
41) Methacrylonitrile	4.99	41	159	1094.07	µg/l #	43
42) 1,2-Dichloroethane	5.27	62	101	117.15	µg/l	85
43) Isopropyl Acetate	7.14	43	86	235.78	µg/l #	46
45) 1,2-Dichloropropane	6.56	63	77	236.69	µg/l #	43
47) Bromodichloromethane	6.51	83	64	76.09	µg/l #	25
48) Methyl methacrylate	6.88	41	152	554.02	µg/l #	1
49) 1,4-Dioxane	6.91	88	63	13190.31	µg/l #	21
51) 4-Methyl-2-Pentanone	8.40	43	91	327.97	µg/l #	42
52) Toluene	7.95	92	71	88.61	µg/l #	1
53) t-1,3-Dichloropropene	8.36	75	108	147.98	µg/l #	41
54) cis-1,3-Dichloropropene	7.54	75	60	84.88	µg/l #	18
56) Ethyl methacrylate	8.83	69	60	172.44	µg/l #	29
57) 1,3-Dichloropropane	8.97	76	59	103.08	µg/l #	41
58) 2-Chloroethyl Vinyl ether	7.75	63	62	1543.36	µg/l	100
59) 2-Hexanone	9.64	43	82	368.79	µg/l #	30
60) Dibromochloromethane	8.88	129	86	146.08	µg/l #	12
67) Ethyl Benzene	10.07	91	63	23.34	µg/l #	46
68) m/p-Xylenes	10.30	106	66	76.43	µg/l #	1

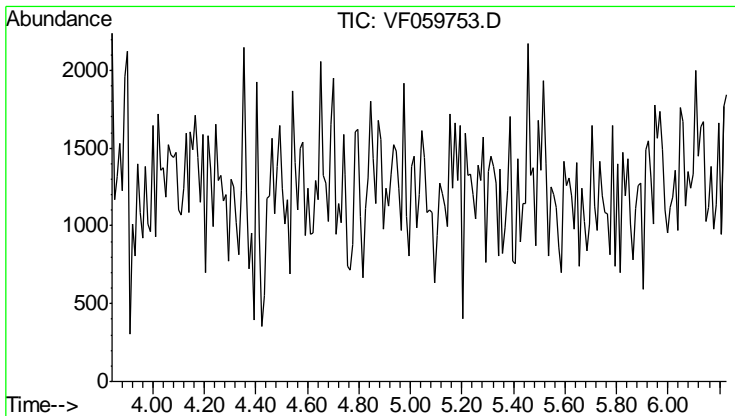
(#) = qualifier out of range (m) = manual integration (+) = signals summed

Data Path : Z:\VOASRV\HPCHEM1\MSVOA F\DATA\VF080118\
 Data File : VF059753.D
 Acq On : 1 Aug 2018 14:16
 Operator : VA/AP
 Sample : J4228-04
 Misc : 5.00µ/5mL/MSVOA F/SOIL
 ALS Vial : 85 Sample Multiplier: 1

Instrument :
 MSVOA_F
 ClientSampleId :
 G.L.B(8.0)-1A

Quant Time: Aug 01 15:43:21 2018
 Quant Method : Z:\VOASRV\HPCHEM1\MSVOA_F\METHODS\82F073018S.M
 Quant Title : SW846 8260
 QLast Update : Tue Jul 31 15:23:22 2018
 Response via : Initial Calibration

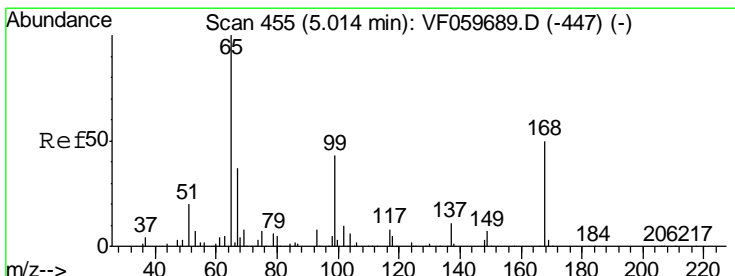
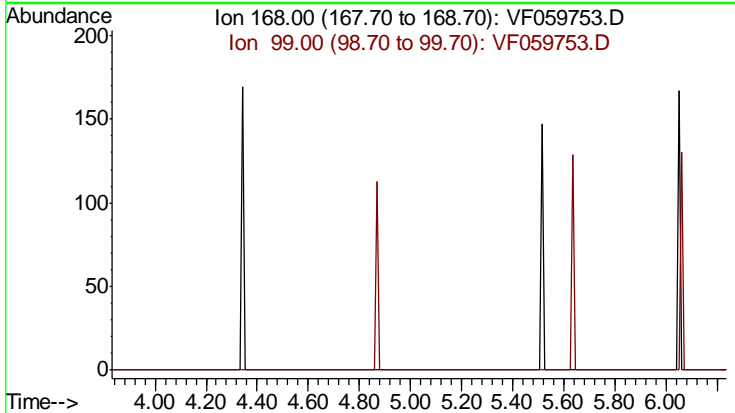




#1
 Pentafluorobenzene
 Concen: 0.00 ug/l
 Expected RT: 5.03 min
 Lab File: VF059753.D
 Acq: 1 Aug 2018 14:16

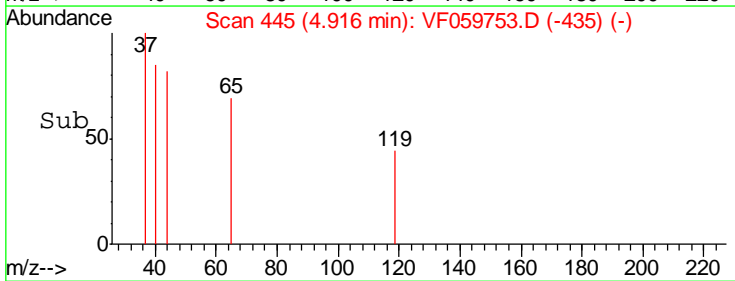
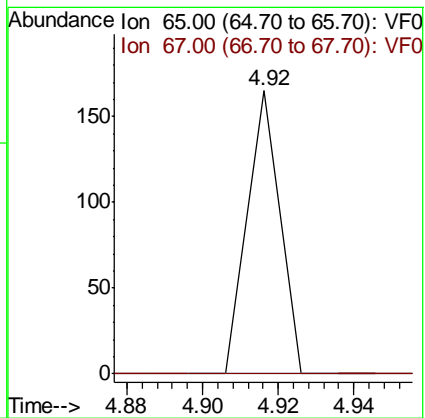
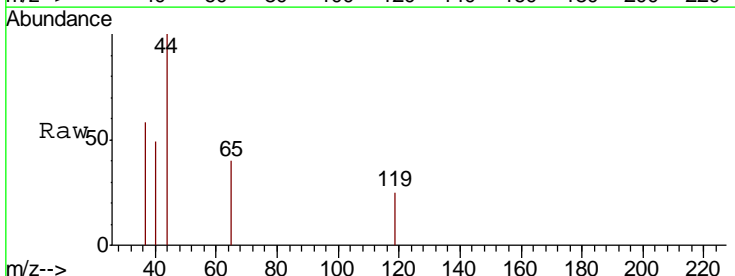
Instrument :
 MSVOA_F
ClientSampled :
 G.L.B(8.0)-1A

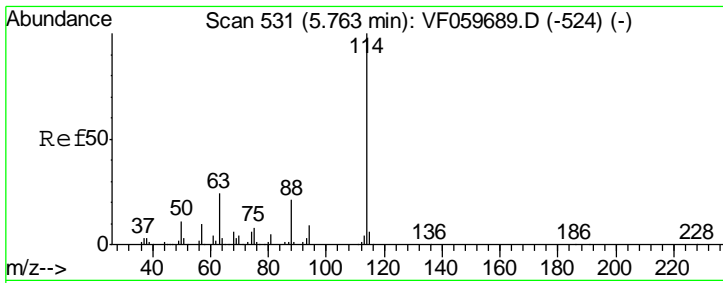
Tgt Ion: 168
 Sig Exp Ratio
 168 100
 99 79.1



#33
 1,2-Dichloroethane-d4
 Concen: 0.00 ug/l
 RT: 4.92 min Scan# 445
 Delta R.T. -0.10 min
 Lab File: VF059753.D
 Acq: 1 Aug 2018 14:16

Tgt Ion: 65 Resp: 98
 Ion Ratio Lower Upper
 65 100
 67 0.0 0.0 84.6

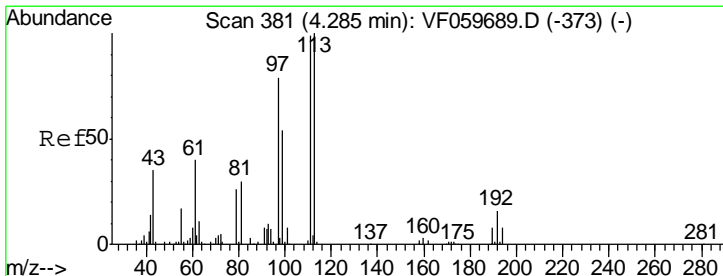
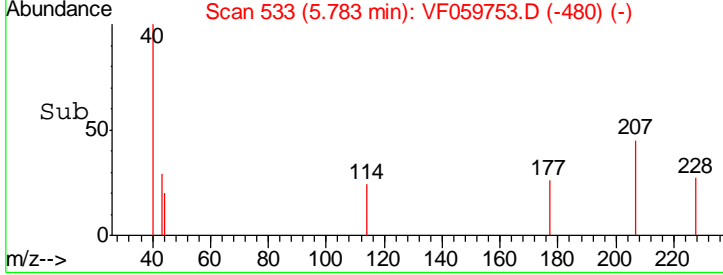
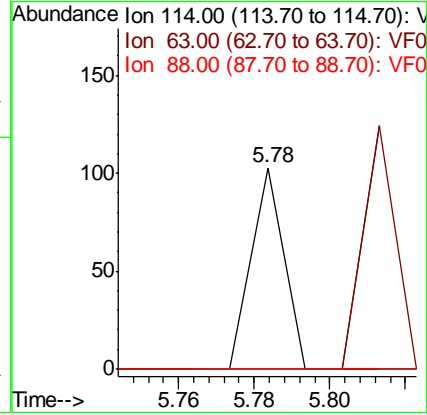
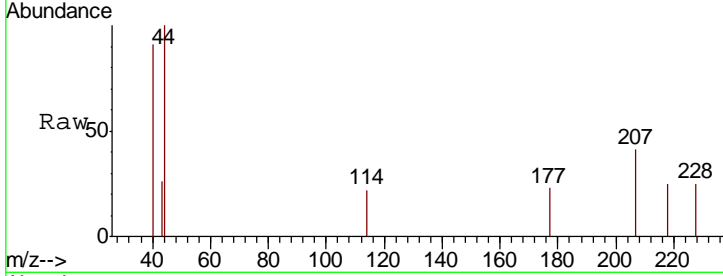




#34
 1,4-Difluorobenzene
 Concen: 50.00 ug/l
 RT: 5.78 min Scan# 533
 Delta R.T. 0.02 min
 Lab File: VF059753.D
 Acq: 1 Aug 2018 14:16

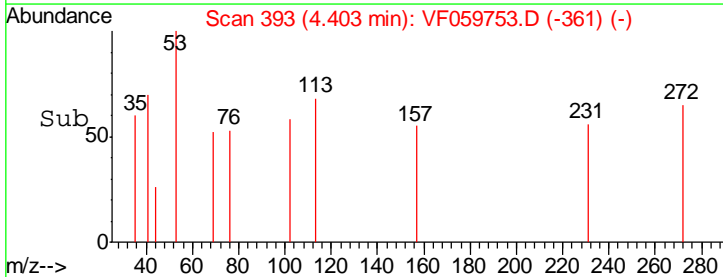
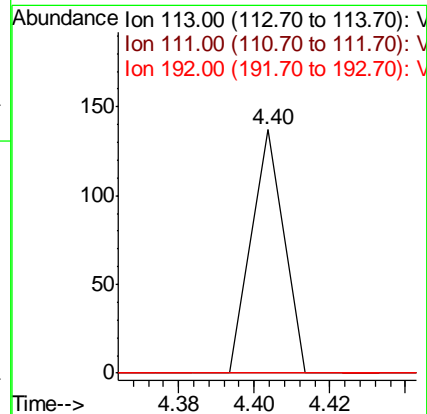
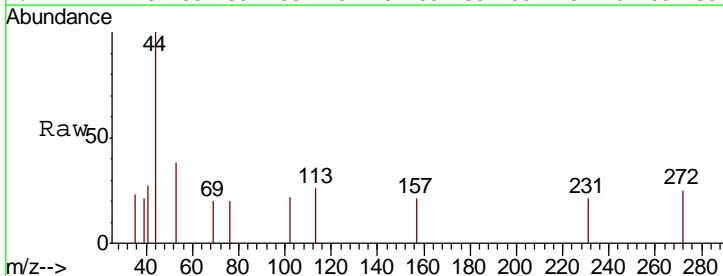
Instrument : MSVOA_F
 ClientSampled : G.L.B(8.0)-1A

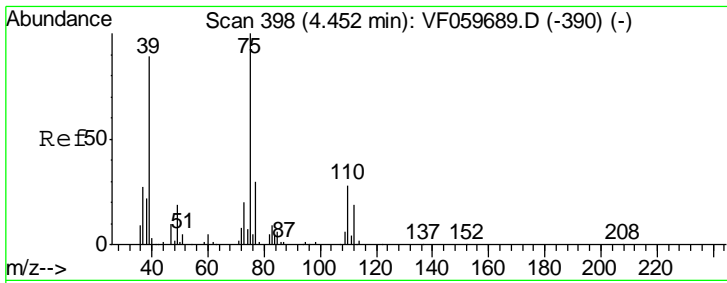
Tgt Ion	Resp	Lower	Upper
114	100		
63	0.0	0.0	47.4
88	0.0	0.0	41.2



#35
 Dibromofluoromethane
 Concen: 127.85 ug/l
 RT: 4.40 min Scan# 393
 Delta R.T. 0.12 min
 Lab File: VF059753.D
 Acq: 1 Aug 2018 14:16

Tgt Ion	Resp	Lower	Upper
113	100		
111	0.0	79.0	118.4#
192	0.0	13.2	19.8#

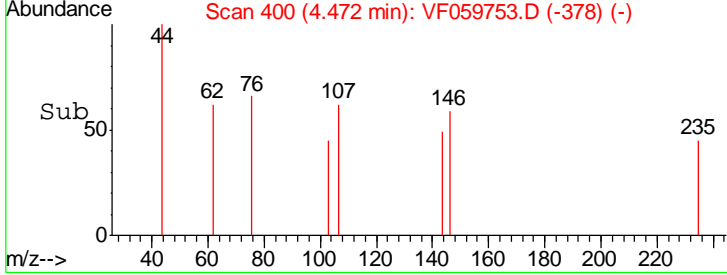
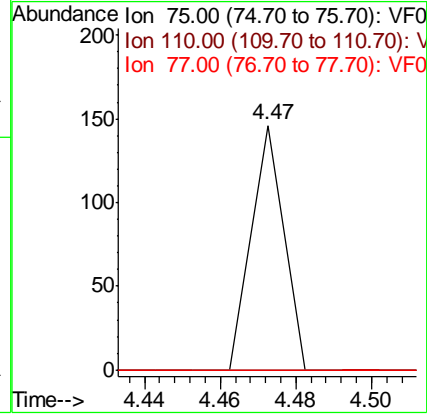
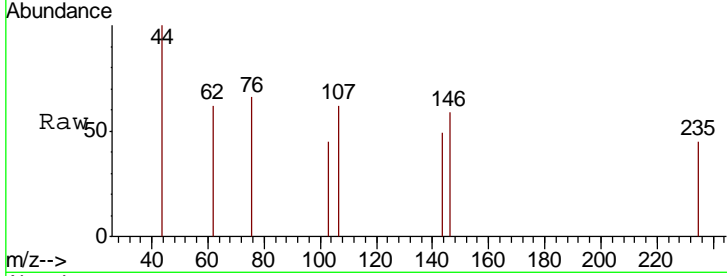




#36
 1,1-Dichloropropene
 Concen: 146.92 ug/l
 RT: 4.47 min Scan# 400
 Delta R.T. 0.02 min
 Lab File: VF059753.D
 Acq: 1 Aug 2018 14:16

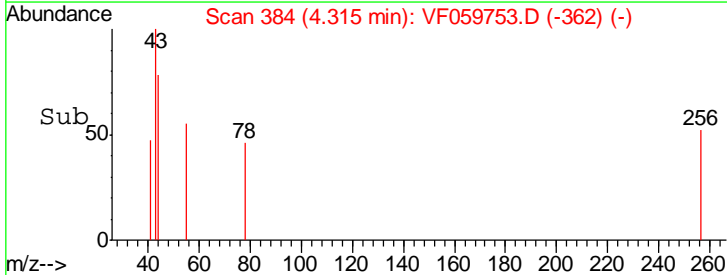
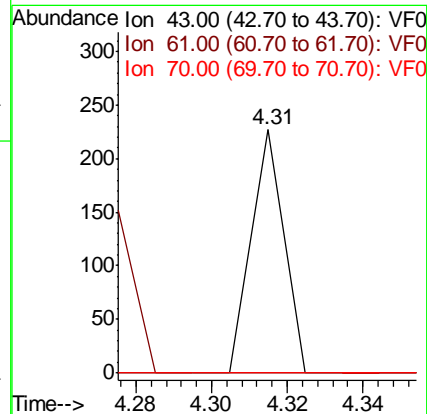
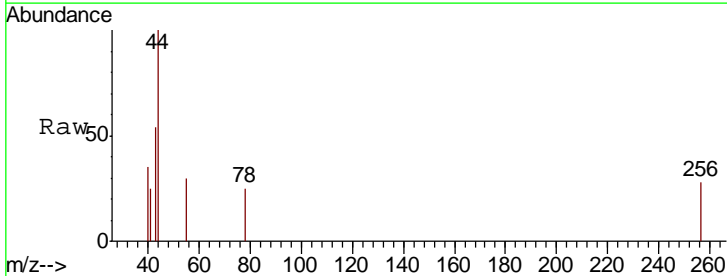
Instrument :
 MSVOA_F
 ClientSampled :
 G.L.B(8.0)-1A

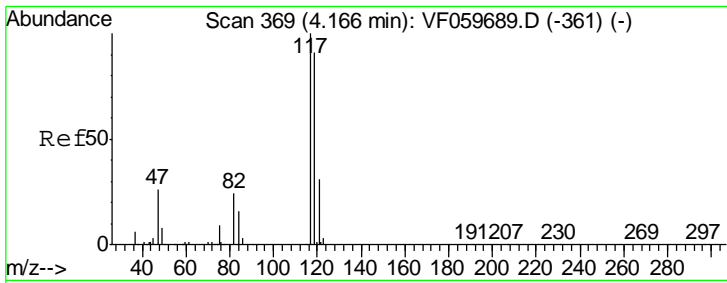
Tgt Ion	Resp	Lower	Upper
75	100		
110	0.0	14.0	41.9#
77	0.0	24.2	36.2#



#37
 Ethyl Acetate
 Concen: 480.07 ug/l
 RT: 4.31 min Scan# 384
 Delta R.T. 0.02 min
 Lab File: VF059753.D
 Acq: 1 Aug 2018 14:16

Tgt Ion	Resp	Lower	Upper
43	100		
61	0.0	58.2	87.2#
70	0.0	6.0	9.0#

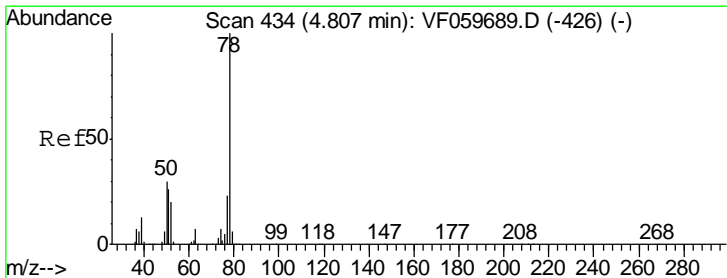
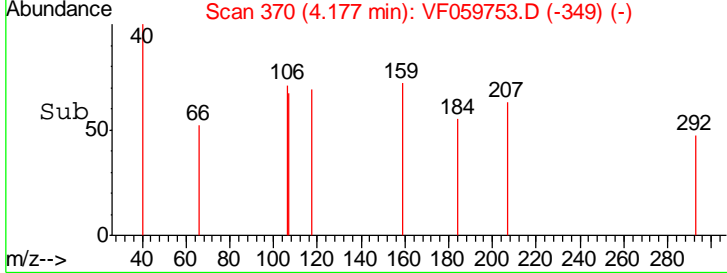
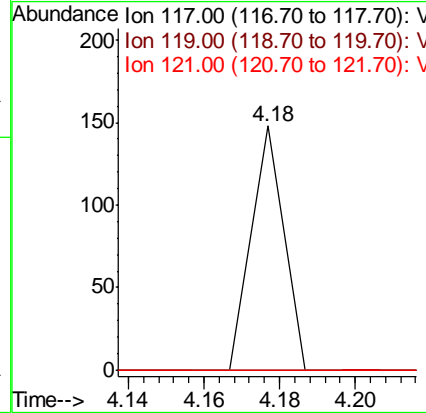
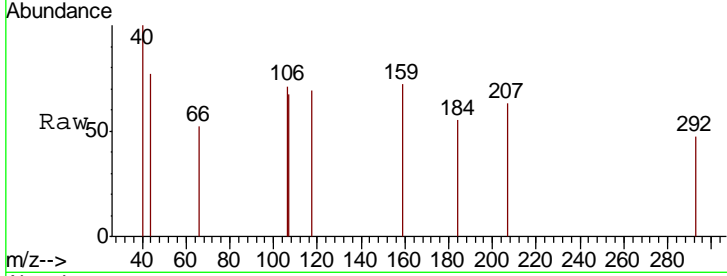




#38
 Carbon Tetrachloride
 Concen: 90.73 ug/l
 RT: 4.18 min Scan# 370
 Delta R.T. 0.01 min
 Lab File: VF059753.D
 Acq: 1 Aug 2018 14:16

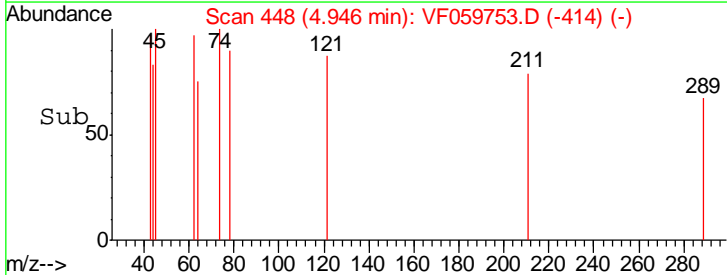
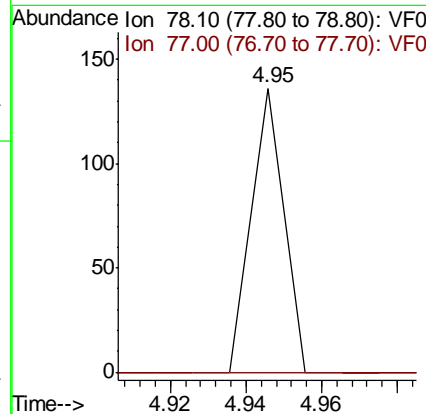
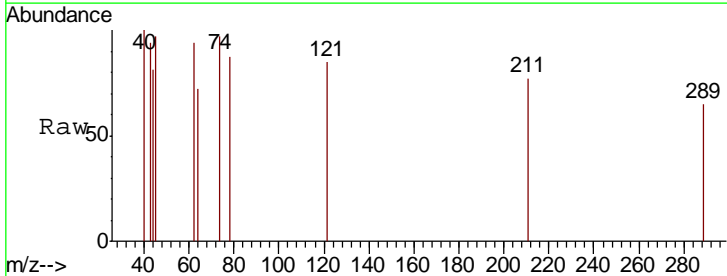
Instrument :
 MSVOA_F
 ClientSampled :
 G.L.B(8.0)-1A

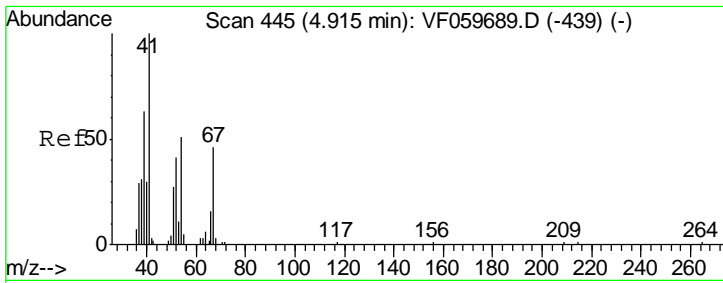
Tgt Ion	Resp	Lower	Upper
117	100		
119	0.0	72.9	109.3#
121	0.0	25.0	37.4#



#40
 Benzene
 Concen: 64.94 ug/l
 RT: 4.95 min Scan# 448
 Delta R.T. 0.14 min
 Lab File: VF059753.D
 Acq: 1 Aug 2018 14:16

Tgt Ion	Resp	Lower	Upper
78	100		
77	0.0	18.9	28.3#

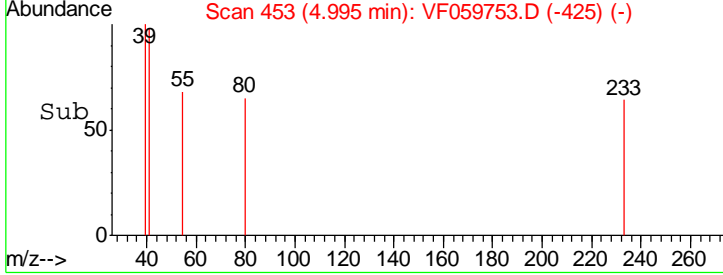
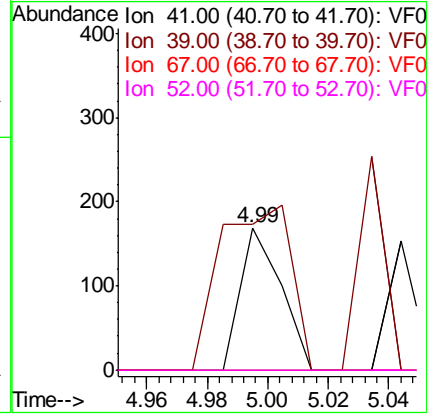
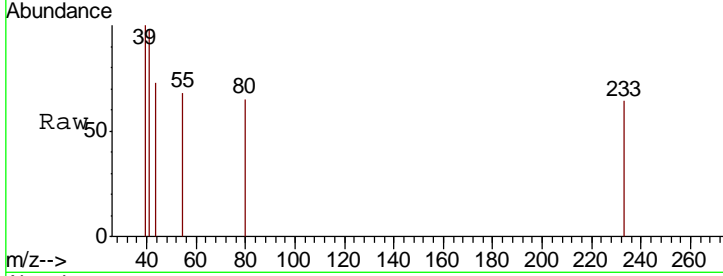




#41
 Methacrylonitrile
 Concen: 1094.07 ug/l
 RT: 4.99 min Scan# 453
 Delta R.T. 0.08 min
 Lab File: VF059753.D
 Acq: 1 Aug 2018 14:16

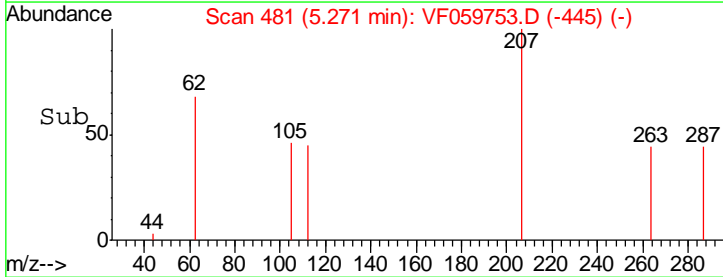
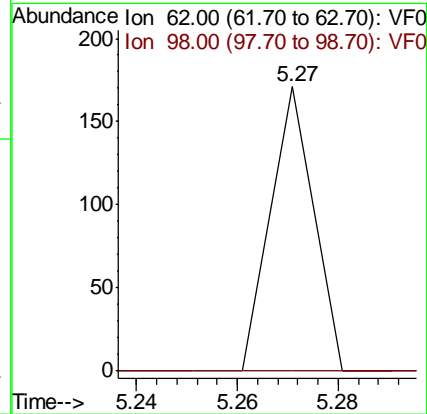
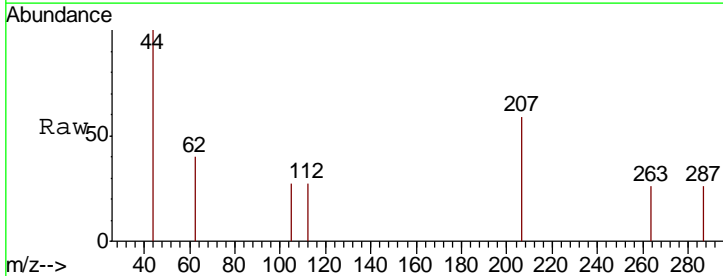
Instrument :
 MSVOA_F
 ClientSampled :
 G.L.B(8.0)-1A

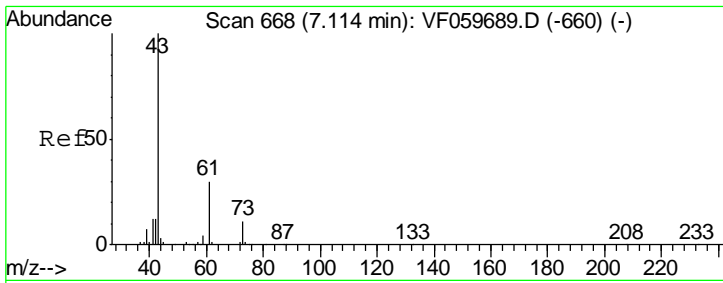
Tgt Ion	Resp	Lower	Upper
41	100		
39	102.4	55.2	82.8#
67	0.0	36.2	54.2#
52	0.0	37.7	56.5#



#42
 1,2-Dichloroethane
 Concen: 117.15 ug/l
 RT: 5.27 min Scan# 481
 Delta R.T. 0.16 min
 Lab File: VF059753.D
 Acq: 1 Aug 2018 14:16

Tgt Ion	Resp	Lower	Upper
62	100		
98	0.0	0.0	9.6

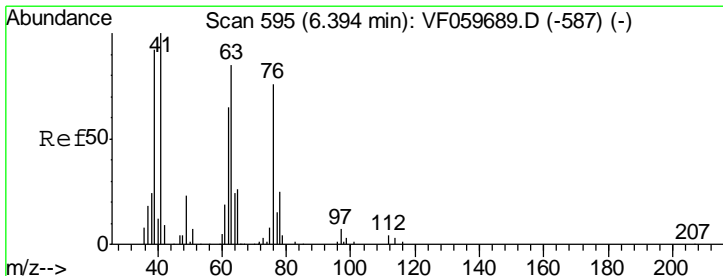
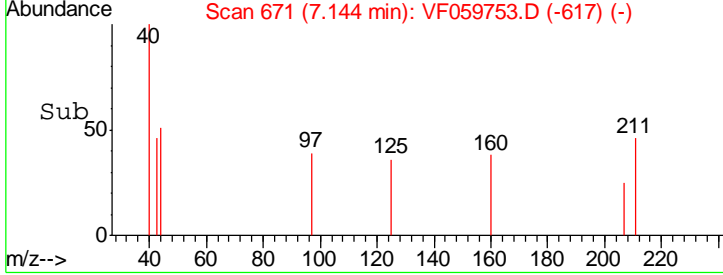
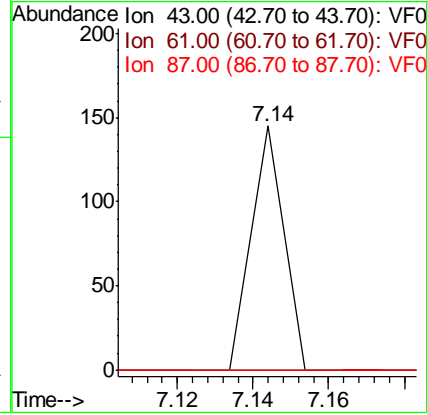
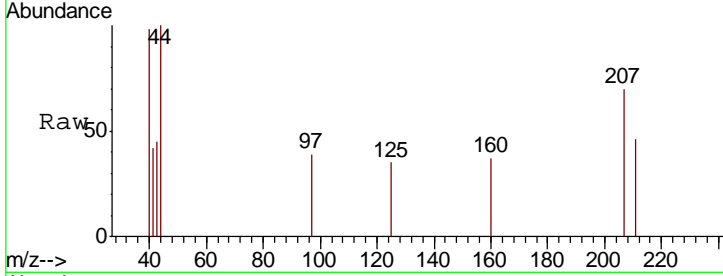




#43
 Isopropyl Acetate
 Concen: 235.78 ug/l
 RT: 7.14 min Scan# 671
 Delta R.T. 0.03 min
 Lab File: VF059753.D
 Acq: 1 Aug 2018 14:16

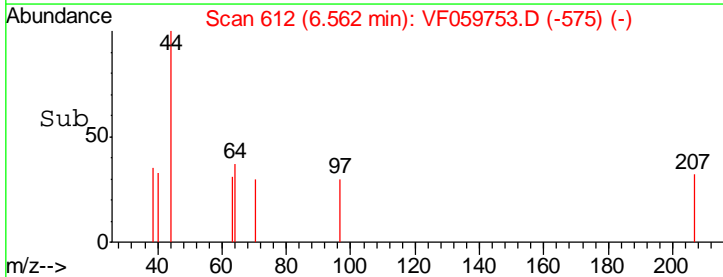
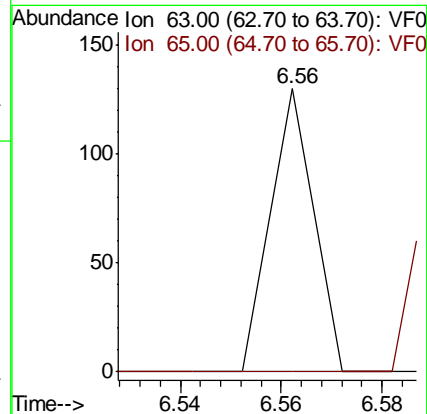
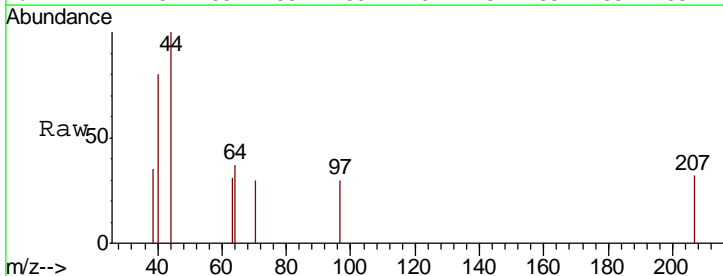
Instrument :
 MSVOA_F
ClientSampled :
 G.L.B(8.0)-1A

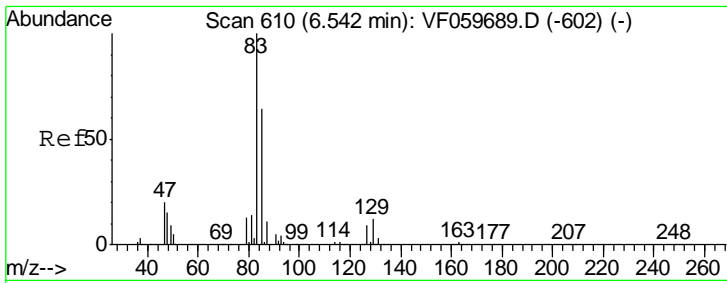
Tgt Ion	Resp	Lower	Upper
43	100		
61	0.0	23.8	35.8#
87	0.0	0.6	1.0#



#45
 1,2-Dichloropropane
 Concen: 236.69 ug/l
 RT: 6.56 min Scan# 612
 Delta R.T. 0.17 min
 Lab File: VF059753.D
 Acq: 1 Aug 2018 14:16

Tgt Ion	Resp	Lower	Upper
63	100		
65	0.0	25.2	37.8#

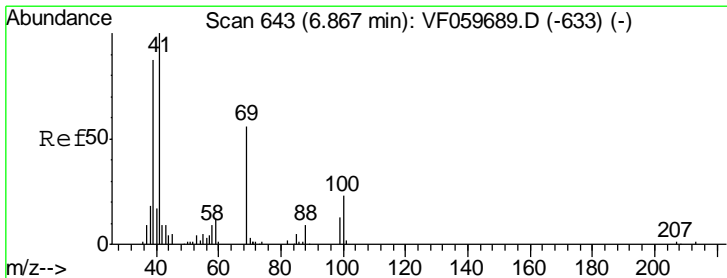
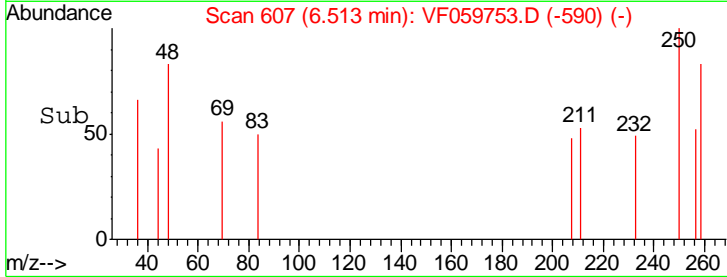
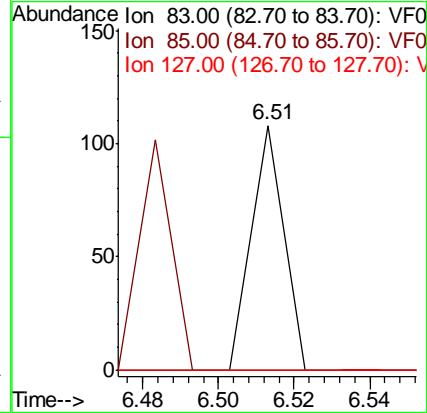
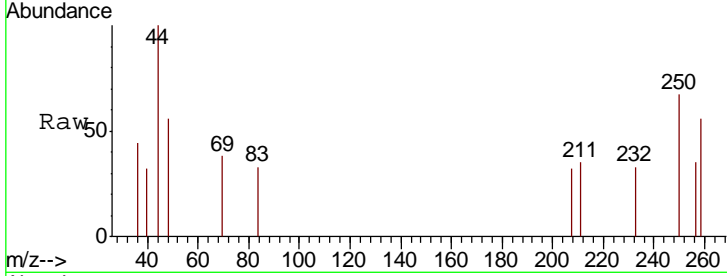




#47
 Bromodichloromethane
 Concen: 76.09 ug/l
 RT: 6.51 min Scan# 607
 Delta R.T. -0.03 min
 Lab File: VF059753.D
 Acq: 1 Aug 2018 14:16

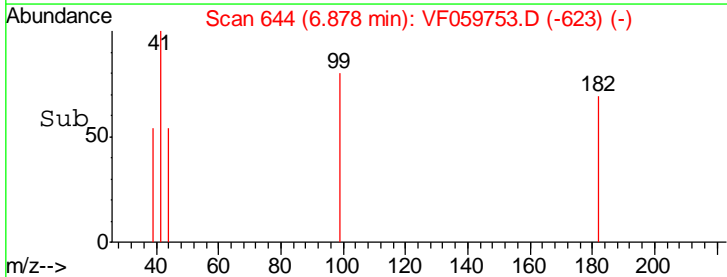
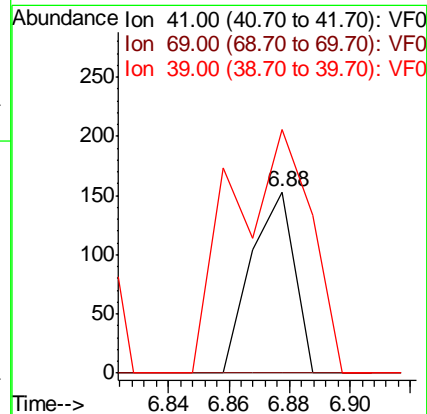
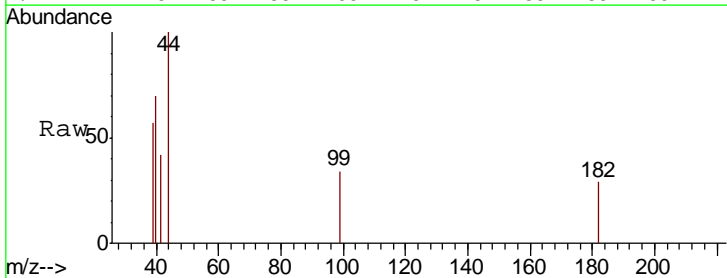
Instrument :
 MSVOA_F
 ClientSampled :
 G.L.B(8.0)-1A

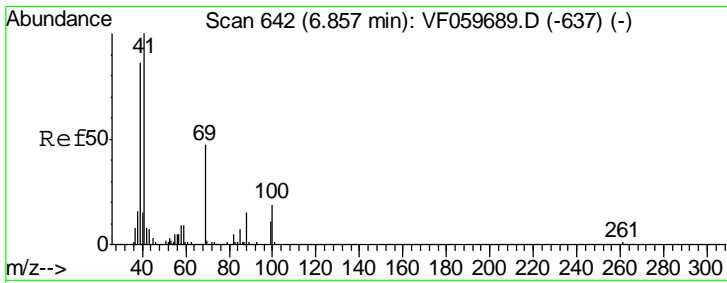
Tgt Ion	Resp	Lower	Upper
83	100		
85	0.0	51.0	76.6#
127	0.0	7.3	10.9#



#48
 Methyl methacrylate
 Concen: 554.02 ug/l
 RT: 6.88 min Scan# 644
 Delta R.T. 0.01 min
 Lab File: VF059753.D
 Acq: 1 Aug 2018 14:16

Tgt Ion	Resp	Lower	Upper
41	100		
69	0.0	44.4	66.6#
39	301.3	69.4	104.2#

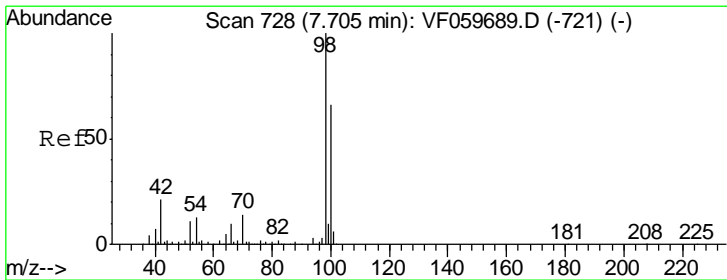
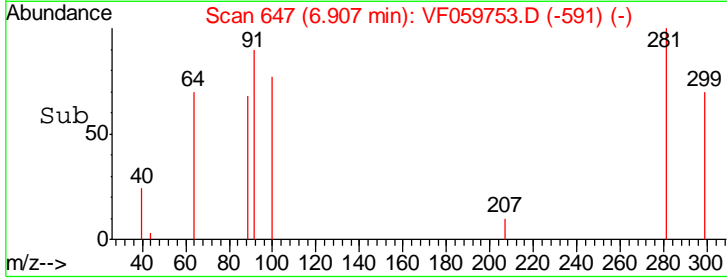
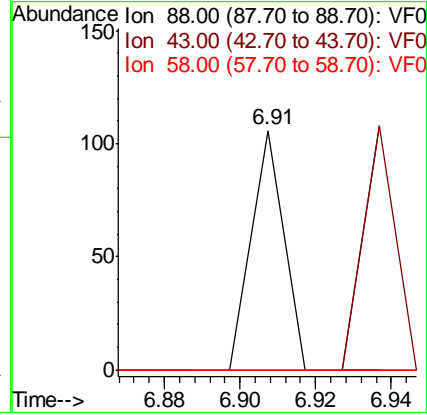
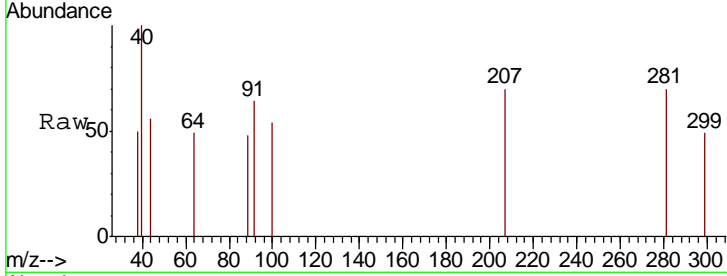




#49
 1,4-Dioxane
 Concen: 13190.31 ug/l
 RT: 6.91 min Scan# 647
 Delta R.T. 0.05 min
 Lab File: VF059753.D
 Acq: 1 Aug 2018 14:16

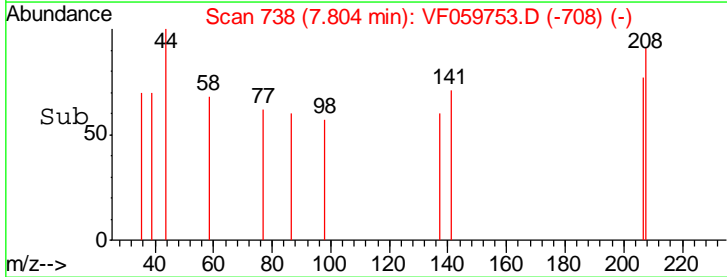
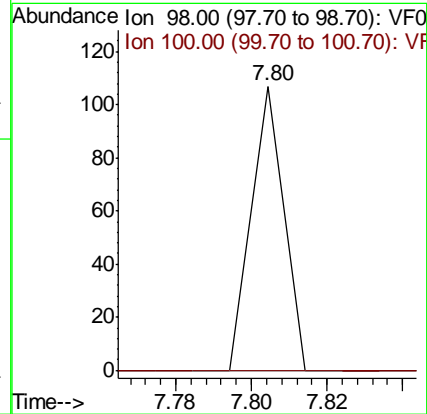
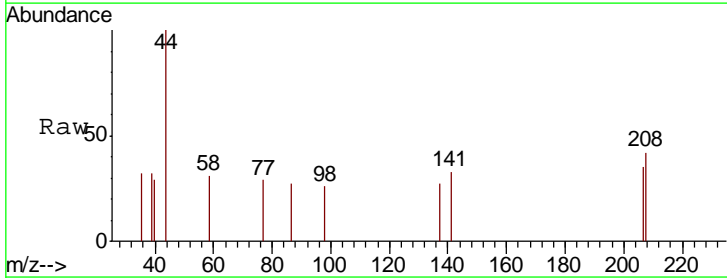
Instrument :
 MSVOA_F
 ClientSampled :
 G.L.B(8.0)-1A

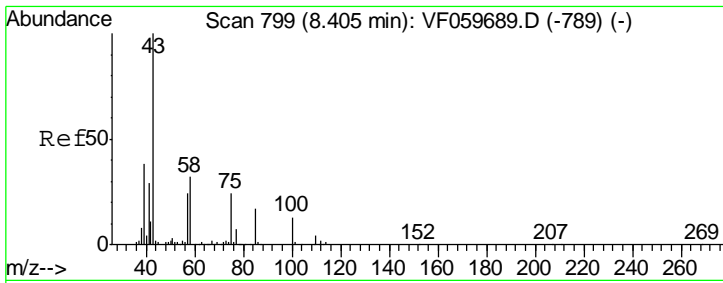
Tgt Ion	Ratio	Lower	Upper
88	100		
43	0.0	45.2	67.8#
58	0.0	49.0	73.6#



#50
 Toluene-d8
 Concen: 42.64 ug/l
 RT: 7.80 min Scan# 738
 Delta R.T. 0.10 min
 Lab File: VF059753.D
 Acq: 1 Aug 2018 14:16

Tgt Ion	Ratio	Lower	Upper
98	100		
100	0.0	52.8	79.2#

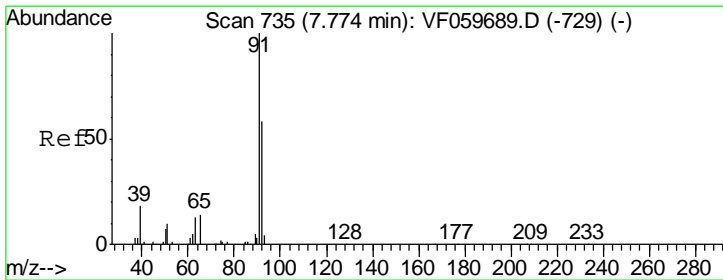
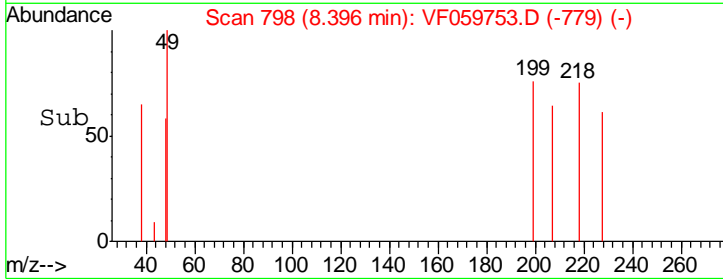
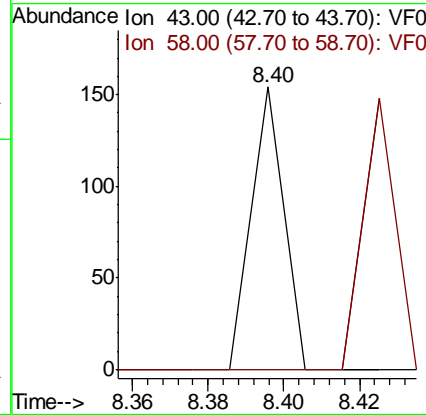
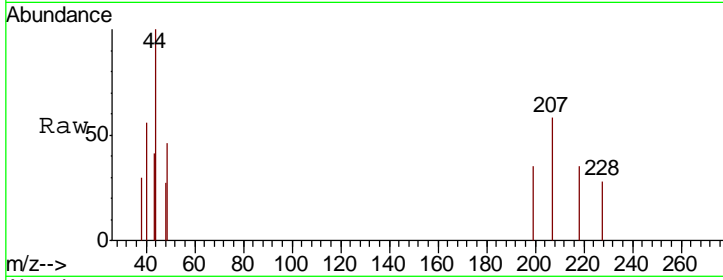




#51
 4-Methyl-2-Pentanone
 Concen: 327.97 ug/l
 RT: 8.40 min Scan# 798
 Delta R.T. -0.01 min
 Lab File: VF059753.D
 Acq: 1 Aug 2018 14:16

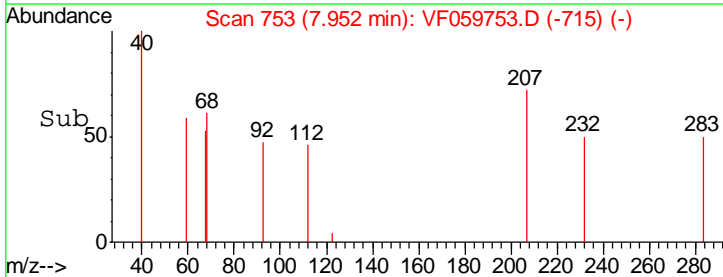
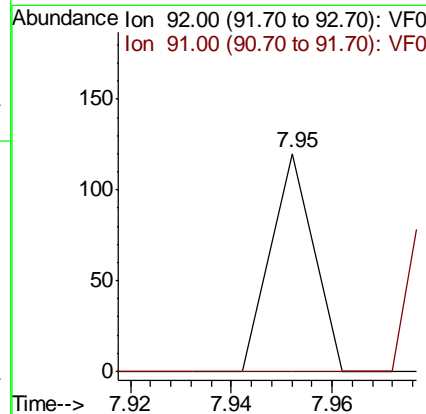
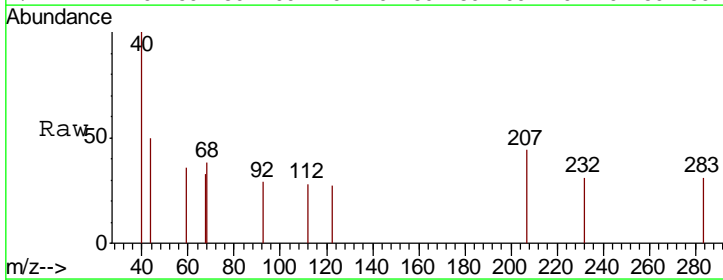
Instrument :
 MSVOA_F
 ClientSampled :
 G.L.B(8.0)-1A

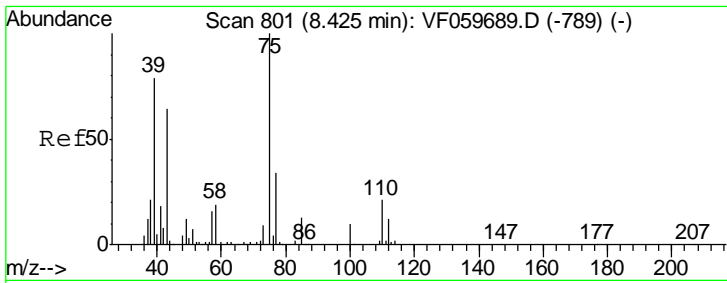
Tgt Ion: 43 Resp: 91
 Ion Ratio Lower Upper
 43 100
 58 0.0 25.9 38.9#



#52
 Toluene
 Concen: 88.61 ug/l
 RT: 7.95 min Scan# 753
 Delta R.T. 0.18 min
 Lab File: VF059753.D
 Acq: 1 Aug 2018 14:16

Tgt Ion: 92 Resp: 71
 Ion Ratio Lower Upper
 92 100
 91 0.0 139.0 208.4#

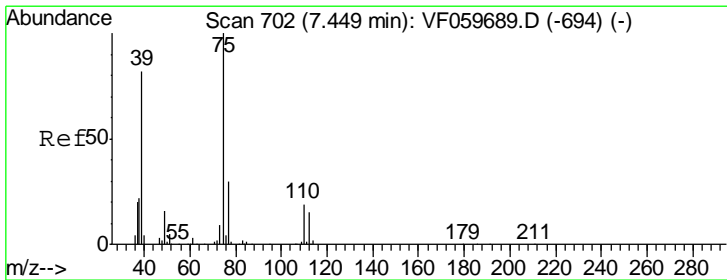
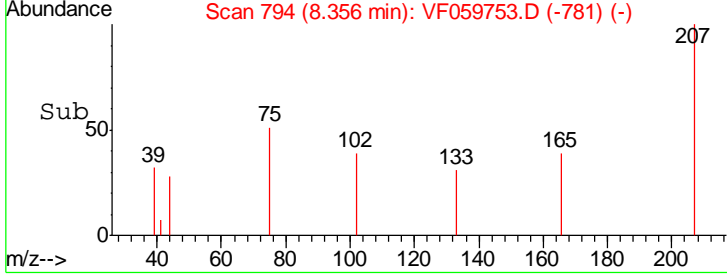
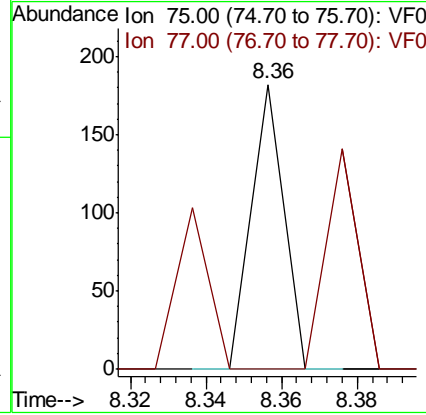
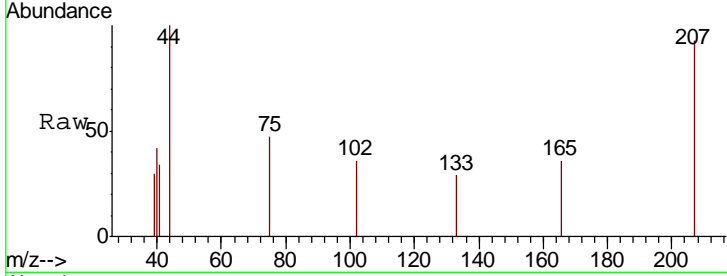




#53
 t-1,3-Dichloropropene
 Concen: 147.98 ug/l
 RT: 8.36 min Scan# 794
 Delta R.T. -0.07 min
 Lab File: VF059753.D
 Acq: 1 Aug 2018 14:16

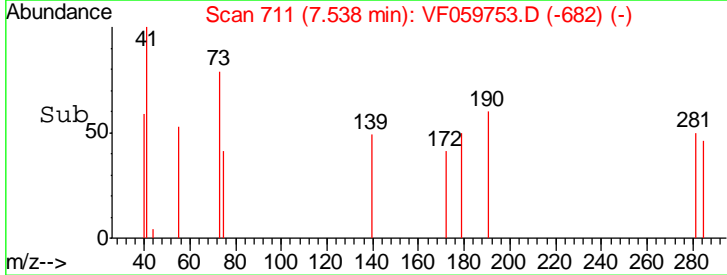
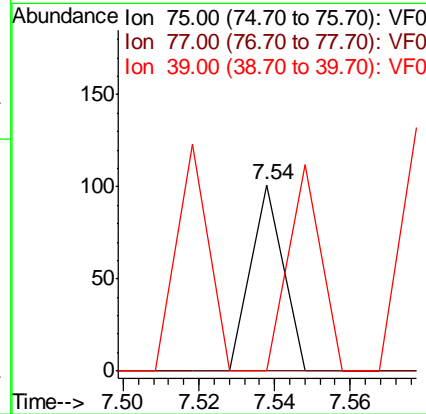
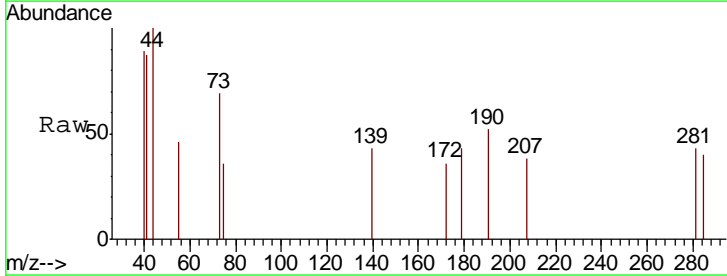
Instrument :
 MSVOA_F
ClientSampled :
 G.L.B(8.0)-1A

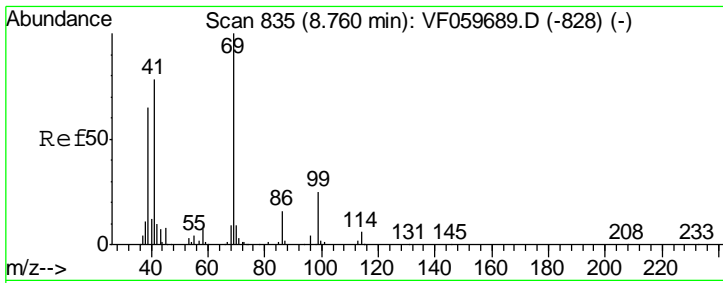
Tgt Ion	Resp	Lower	Upper
75	108		
77	0.0	27.0	40.4#



#54
 cis-1,3-Dichloropropene
 Concen: 84.88 ug/l
 RT: 7.54 min Scan# 711
 Delta R.T. 0.09 min
 Lab File: VF059753.D
 Acq: 1 Aug 2018 14:16

Tgt Ion	Resp	Lower	Upper
75	60		
77	0.0	24.0	36.0#
39	0.0	65.4	98.2#

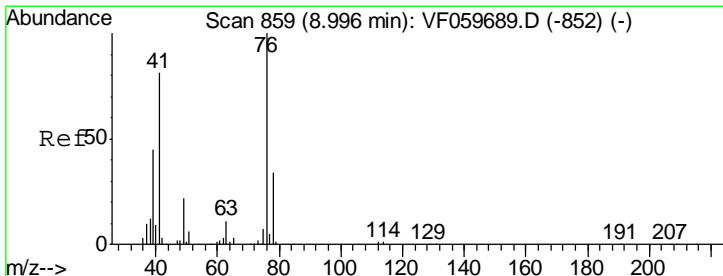
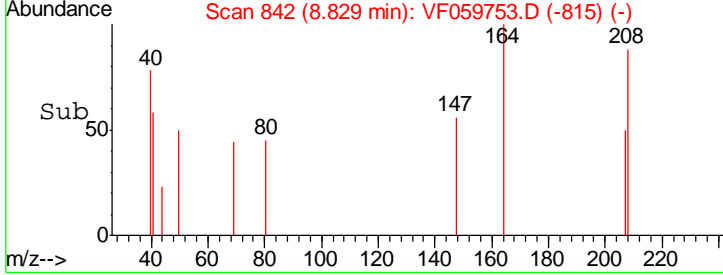
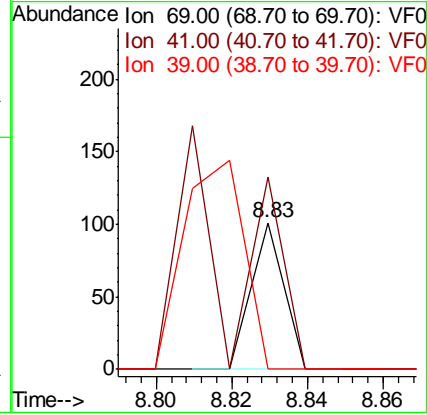
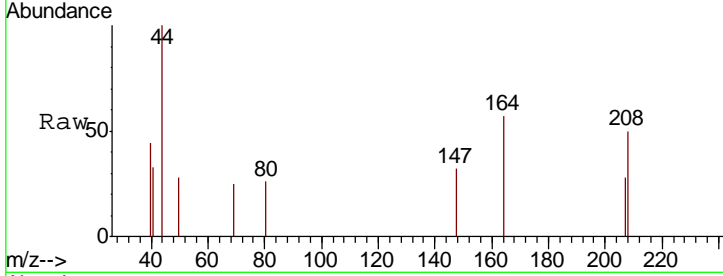




#56
 Ethyl methacrylate
 Concen: 172.44 ug/l
 RT: 8.83 min Scan# 842
 Delta R.T. 0.07 min
 Lab File: VF059753.D
 Acq: 1 Aug 2018 14:16

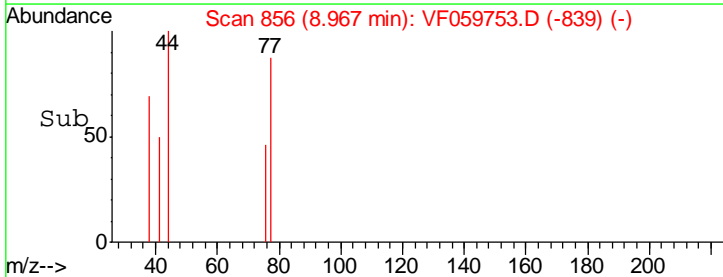
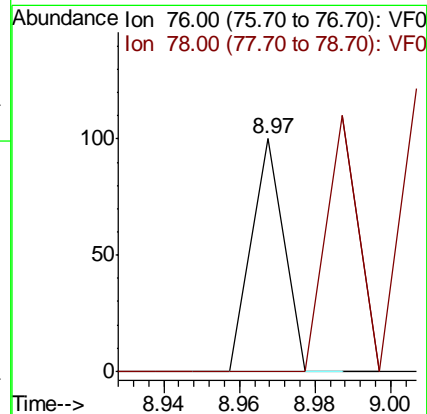
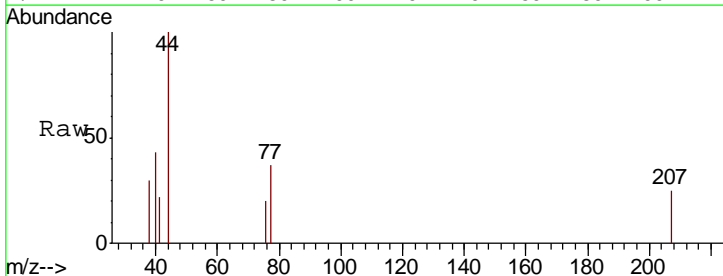
Instrument :
 MSVOA_F
 ClientSampled :
 G.L.B(8.0)-1A

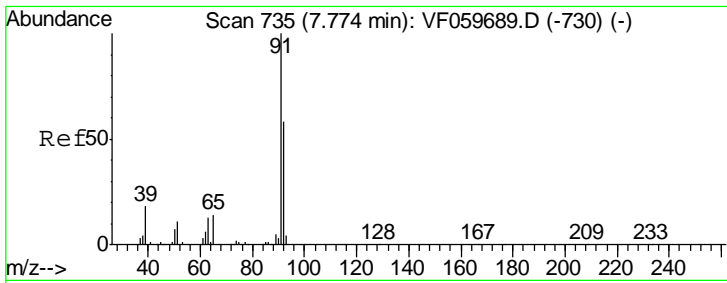
Tgt Ion	Resp	Lower	Upper
69	100		
41	131.7	62.3	93.5#
39	0.0	52.4	78.6#



#57
 1,3-Dichloropropane
 Concen: 103.08 ug/l
 RT: 8.97 min Scan# 856
 Delta R.T. -0.03 min
 Lab File: VF059753.D
 Acq: 1 Aug 2018 14:16

Tgt Ion	Resp	Lower	Upper
76	100		
78	0.0	27.2	40.8#

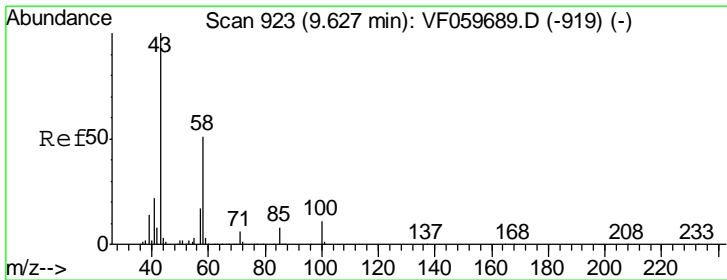
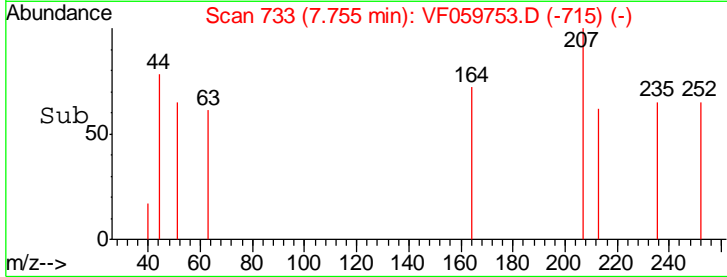
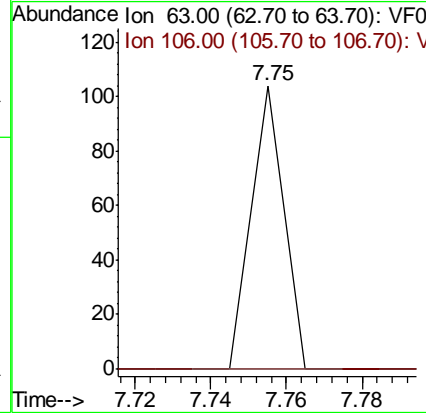
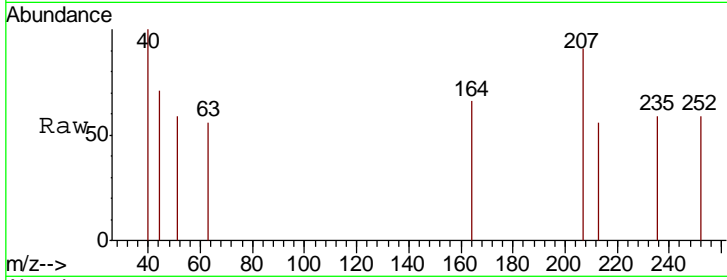




#58
 2-Chloroethyl Vinyl ether
 Concen: 1543.36 ug/l
 RT: 7.75 min Scan# 733
 Delta R.T. -0.02 min
 Lab File: VF059753.D
 Acq: 1 Aug 2018 14:16

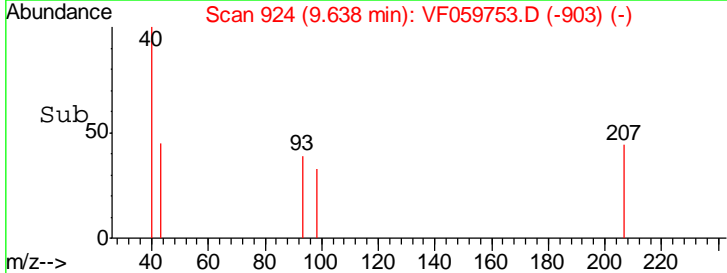
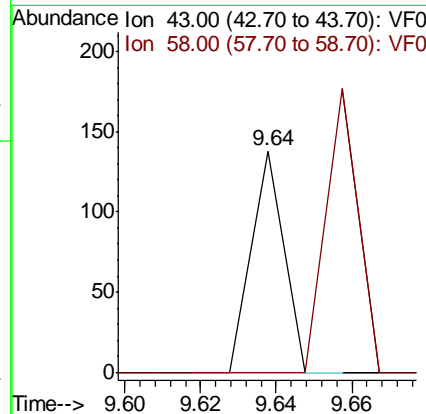
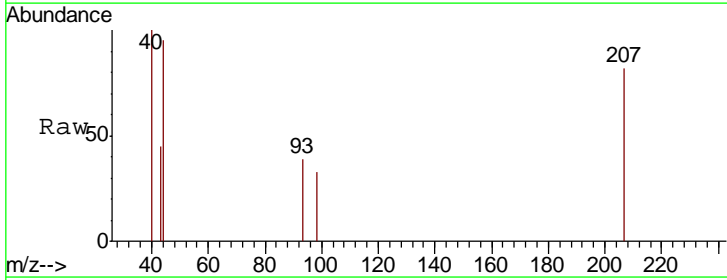
Instrument : MSVOA_F
 ClientSampled : G.L.B(8.0)-1A

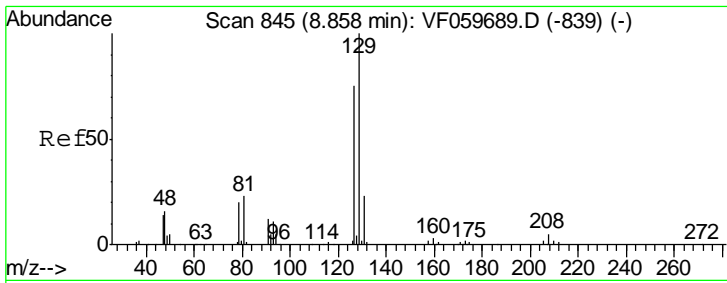
Tgt Ion	Ratio	Lower	Upper
63	100	0.0	0.0
106	0.0	0.0	0.0



#59
 2-Hexanone
 Concen: 368.79 ug/l
 RT: 9.64 min Scan# 924
 Delta R.T. 0.01 min
 Lab File: VF059753.D
 Acq: 1 Aug 2018 14:16

Tgt Ion	Ratio	Lower	Upper
43	100	0.0	0.0
58	0.0	23.3	69.8#

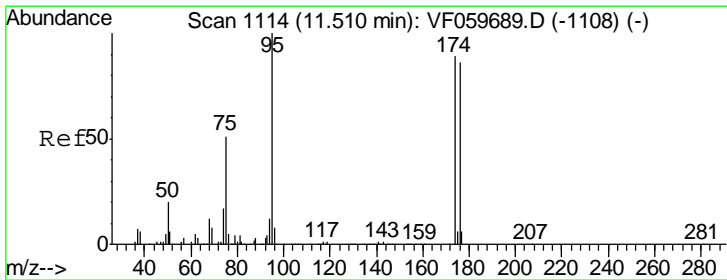
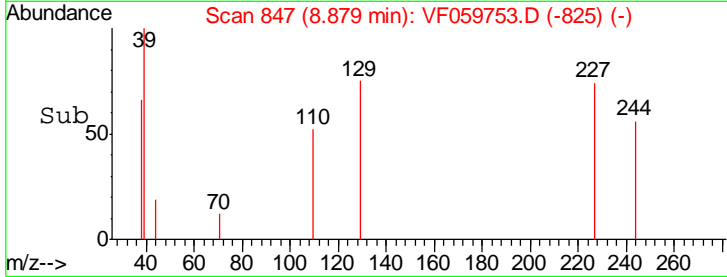
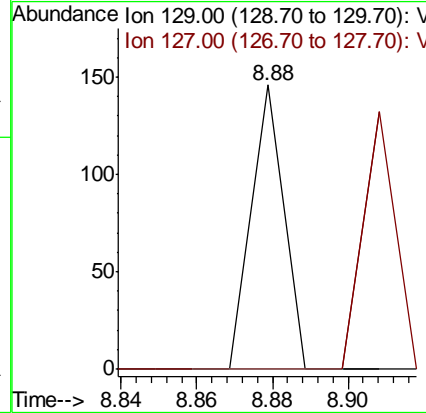
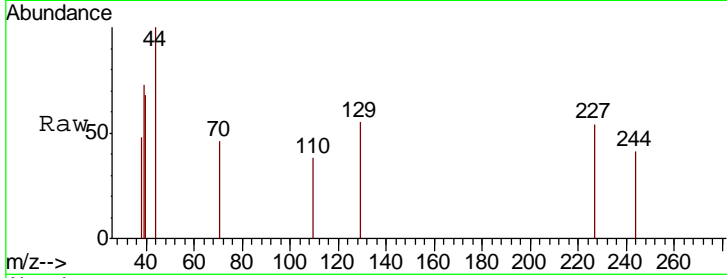




#60
 Dibromochloromethane
 Concen: 146.08 ug/l
 RT: 8.88 min Scan# 847
 Delta R.T. 0.02 min
 Lab File: VF059753.D
 Acq: 1 Aug 2018 14:16

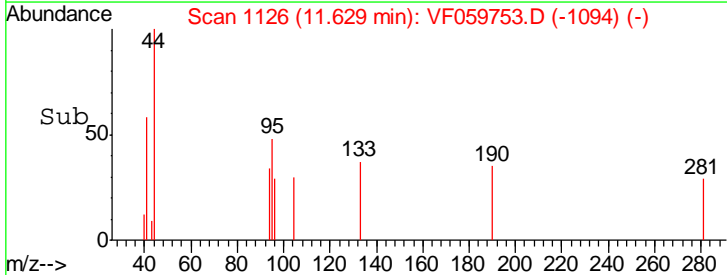
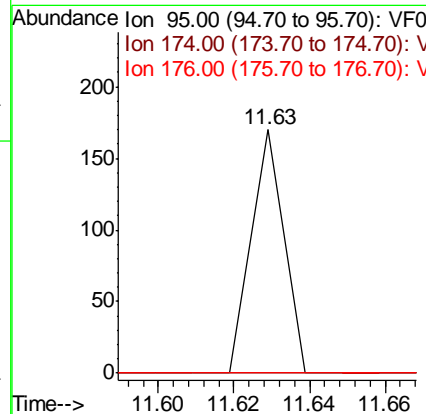
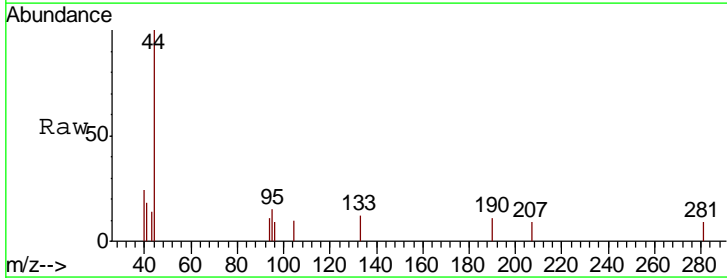
Instrument :
 MSVOA_F
 ClientSampled :
 G.L.B(8.0)-1A

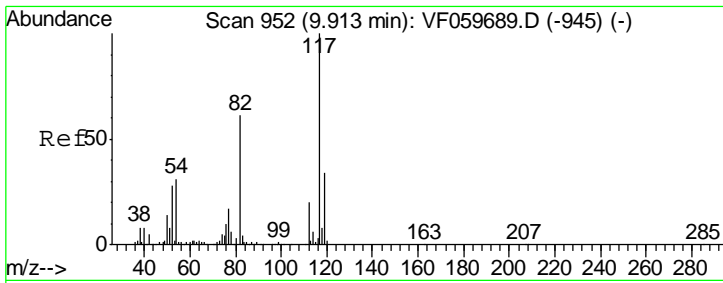
Tgt Ion: 129 Resp: 86
 Ion Ratio Lower Upper
 129 100
 127 0.0 37.7 113.1#



#62
 4-Bromofluorobenzene
 Concen: 123.48 ug/l
 RT: 11.63 min Scan# 1126
 Delta R.T. 0.12 min
 Lab File: VF059753.D
 Acq: 1 Aug 2018 14:16

Tgt Ion: 95 Resp: 101
 Ion Ratio Lower Upper
 95 100
 174 0.0 0.0 178.4
 176 0.0 0.0 173.0

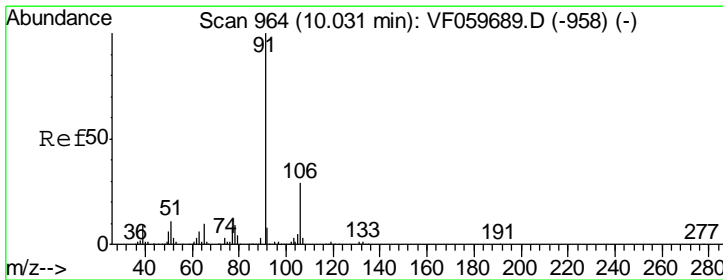
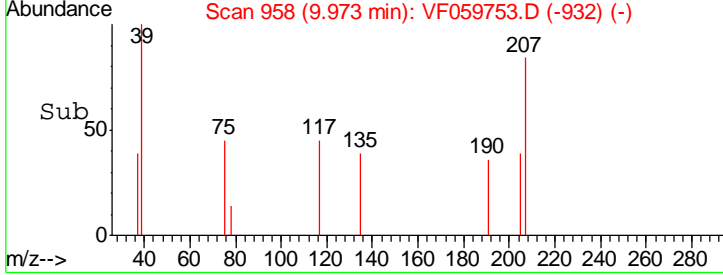
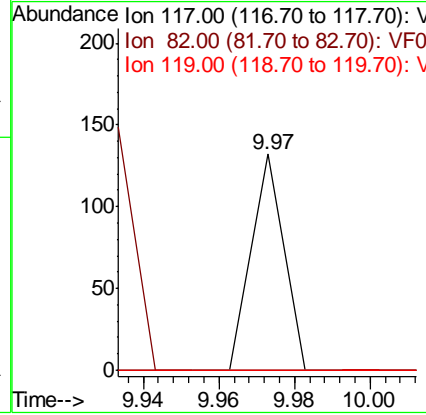
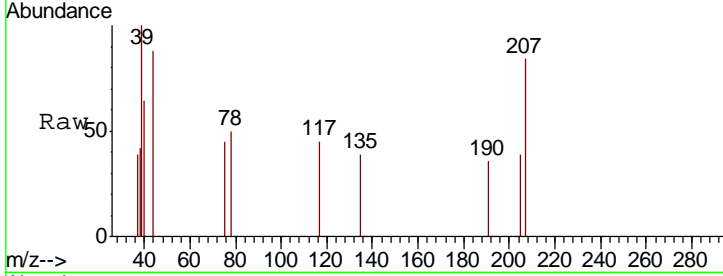




#63
 Chlorobenzene-d5
 Concen: 50.00 ug/l
 RT: 9.97 min Scan# 958
 Delta R.T. 0.06 min
 Lab File: VF059753.D
 Acq: 1 Aug 2018 14:16

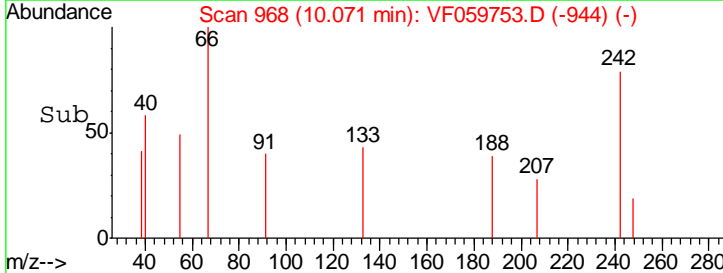
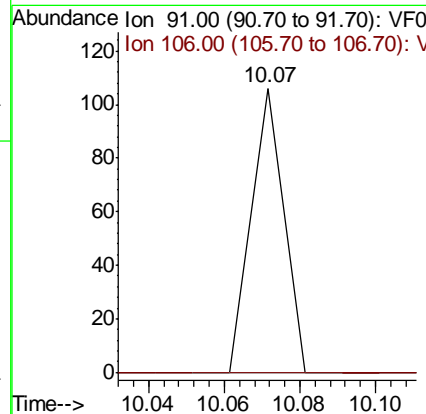
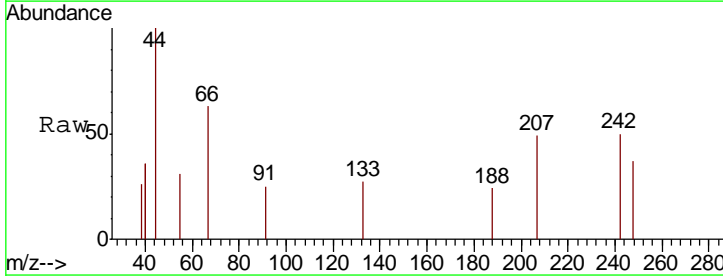
Instrument : MSVOA_F
 ClientSampled : G.L.B(8.0)-1A

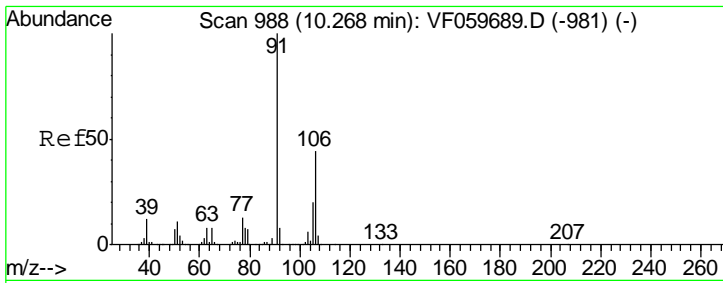
Tgt Ion	Resp	Lower	Upper
117	100		
82	0.0	49.0	73.4#
119	0.0	27.3	40.9#



#67
 Ethyl Benzene
 Concen: 23.34 ug/l
 RT: 10.07 min Scan# 968
 Delta R.T. 0.04 min
 Lab File: VF059753.D
 Acq: 1 Aug 2018 14:16

Tgt Ion	Resp	Lower	Upper
91	100		
106	0.0	22.9	34.3#

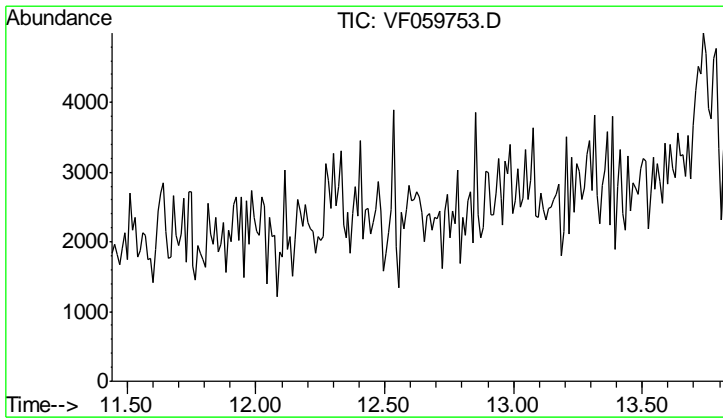
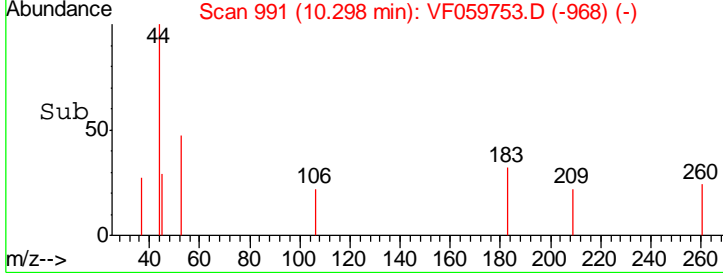
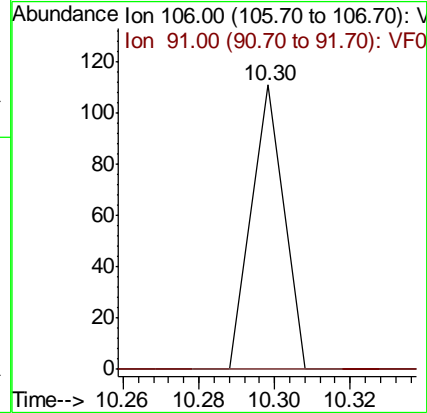
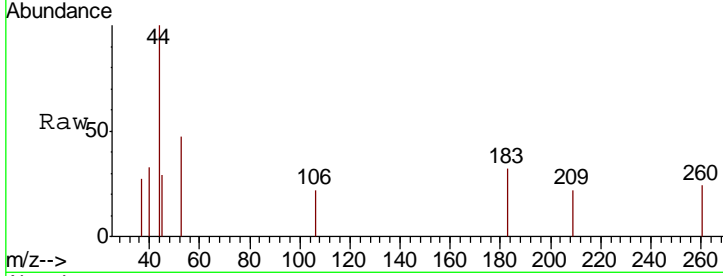




#68
 m/p-Xylenes
 Concen: 76.43 ug/l
 RT: 10.30 min Scan# 991
 Delta R.T. 0.03 min
 Lab File: VF059753.D
 Acq: 1 Aug 2018 14:16

Instrument :
 MSVOA_F
ClientSampled :
 G.L.B(8.0)-1A

Tgt Ion	Resp	Lower	Upper
106	100		
91	0.0	181.7	272.5#



#72
 1,4-Dichlorobenzene-d4
 Concen: 0.00 ug/l
 Expected RT: 12.63 min
 Lab File: VF059753.D
 Acq: 1 Aug 2018 14:16

Tgt Ion	Exp Ratio
152	100
115	56.4
150	158.1

