

Data Path : Z:\VOASRV\HPCHEM1\MSVOA F\DATA\VF080118\  
 Data File : VF059763.D  
 Acq On : 1 Aug 2018 18:50  
 Operator : VA/AP  
 Sample : J4231-11  
 Misc : 5.01µ/5mL/MSVOA F/SOIL  
 ALS Vial : 93 Sample Multiplier: 1

Instrument :  
 MSVOA\_F  
 ClientSampleId :  
 2018-NYSEG-CLARK-AREA-14-6

Quant Time: Aug 02 06:49:19 2018  
 Quant Method : Z:\VOASRV\HPCHEM1\MSVOA\_F\METHODS\82F073018S.M  
 Quant Title : SW846 8260  
 QLast Update : Tue Jul 31 15:23:22 2018  
 Response via : Initial Calibration

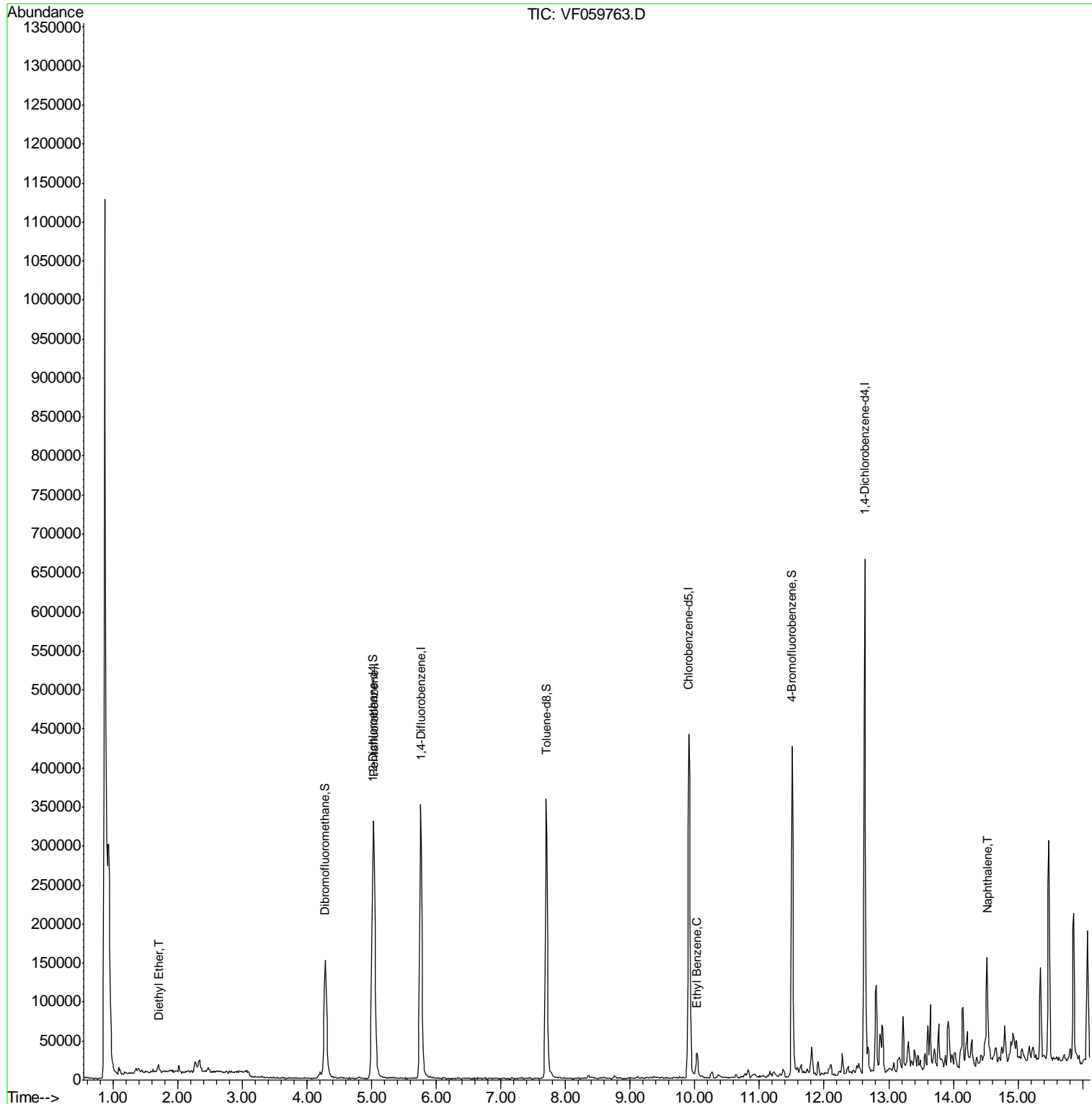
Internal Standards	R.T.	QIon	Response	Conc	Units	Dev(Min)
1) Pentafluorobenzene	5.04	168	227061	50.00	ug/l	0.00
34) 1,4-Difluorobenzene	5.76	114	339526	50.00	ug/l	0.00
63) Chlorobenzene-d5	9.91	117	289894	50.00	ug/l	0.00
72) 1,4-Dichlorobenzene-d4	12.63	152	160853	50.00	ug/l	0.00
System Monitoring Compounds						
33) 1,2-Dichloroethane-d4	5.01	65	155113	38.01	ug/l	0.00
Spiked Amount	50.000		Recovery	=	76.02%	
35) Dibromofluoromethane	4.28	113	135892	38.53	ug/l	0.00
Spiked Amount	50.000		Recovery	=	77.06%	
50) Toluene-d8	7.70	98	283531	34.48	ug/l	0.00
Spiked Amount	50.000		Recovery	=	68.96%	
62) 4-Bromofluorobenzene	11.51	95	137681	30.24	ug/l	0.00
Spiked Amount	50.000		Recovery	=	60.48%	
Target Compounds						
8) Diethyl Ether	1.70	74	3167	4.37	ug/l	81
67) Ethyl Benzene	10.04	91	26513	2.64	ug/l	91
95) Naphthalene	14.52	128	80723	11.64	ug/l #	97

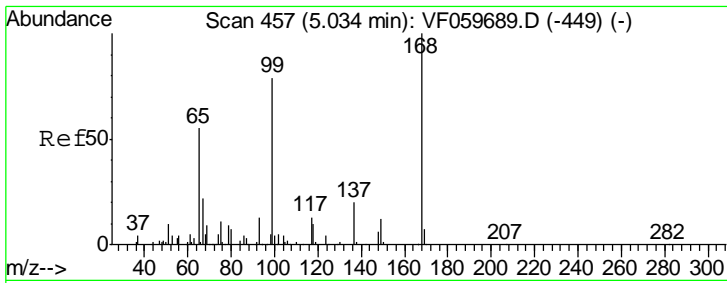
(#) = qualifier out of range (m) = manual integration (+) = signals summed

Data Path : Z:\VOASRV\HPCHEM1\MSVOA F\DATA\VF080118\  
 Data File : VF059763.D  
 Acq On : 1 Aug 2018 18:50  
 Operator : VA/AP  
 Sample : J4231-11  
 Misc : 5.01µ/5mL/MSVOA F/SOIL  
 ALS Vial : 93 Sample Multiplier: 1

Instrument :  
 MSVOA\_F  
 ClientSampleId :  
 2018-NYSEG-CLARK-AREA-14-6

Quant Time: Aug 02 06:49:19 2018  
 Quant Method : Z:\VOASRV\HPCHEM1\MSVOA\_F\METHODS\82F073018S.M  
 Quant Title : SW846 8260  
 QLast Update : Tue Jul 31 15:23:22 2018  
 Response via : Initial Calibration

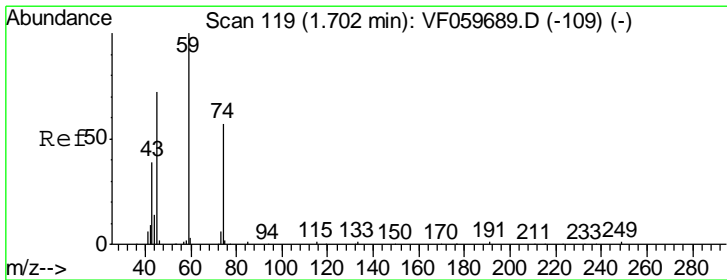
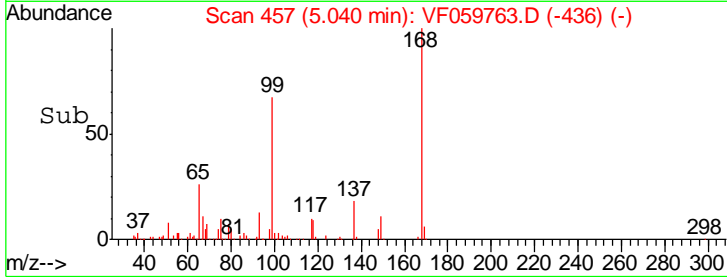
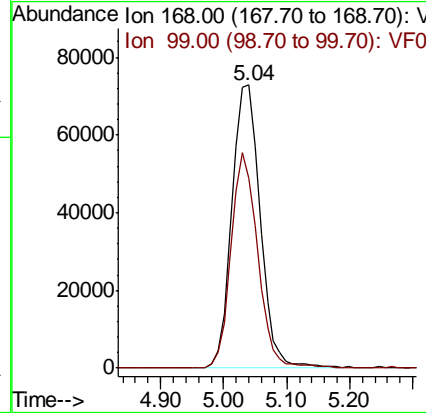
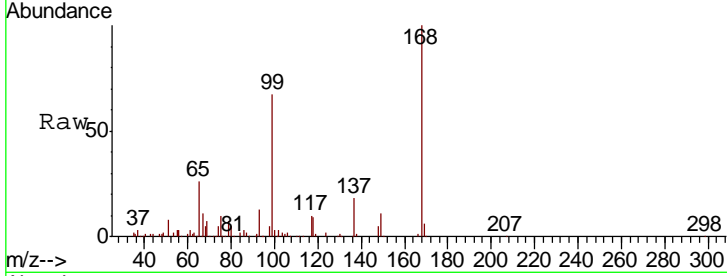




#1  
 Pentafluorobenzene  
 Concen: 50.00 ug/l  
 RT: 5.04 min Scan# 457  
 Delta R.T. 0.01 min  
 Lab File: VF059763.D  
 Acq: 1 Aug 2018 18:50

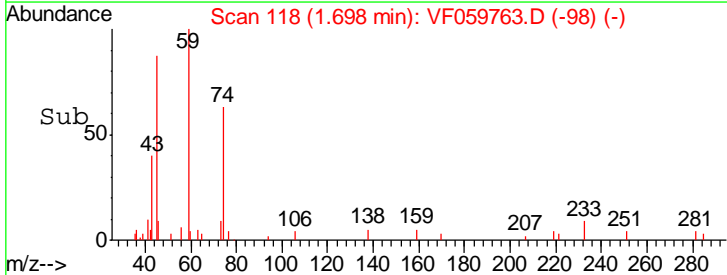
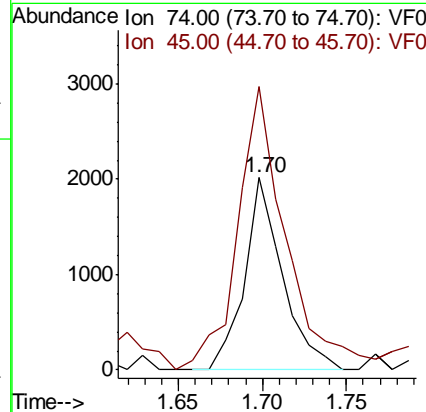
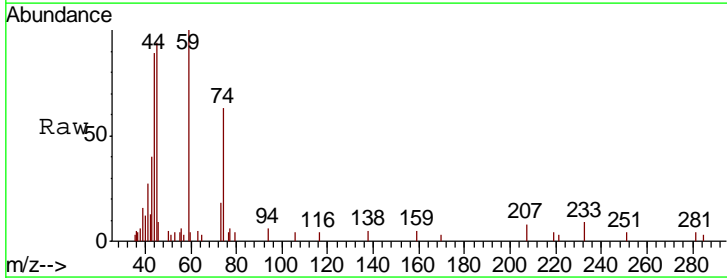
Instrument : MSVOA\_F  
 ClientSampleId : 2018-NYSEG-CLARK-AREA-14-6

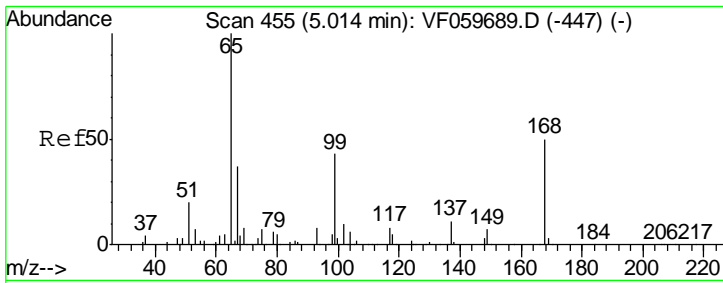
Tgt Ion: 168 Resp: 227061  
 Ion Ratio Lower Upper  
 168 100  
 99 67.0 63.3 94.9



#8  
 Diethyl Ether  
 Concen: 4.37 ug/l  
 RT: 1.70 min Scan# 118  
 Delta R.T. -0.00 min  
 Lab File: VF059763.D  
 Acq: 1 Aug 2018 18:50

Tgt Ion: 74 Resp: 3167  
 Ion Ratio Lower Upper  
 74 100  
 45 147.5 62.7 188.2

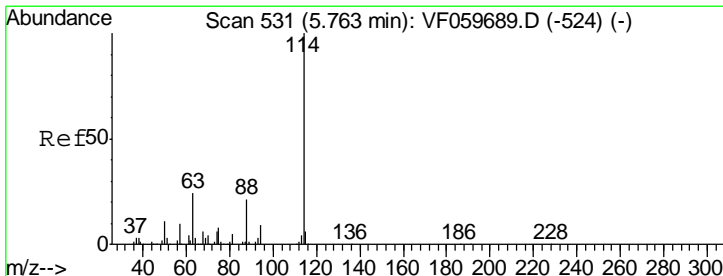
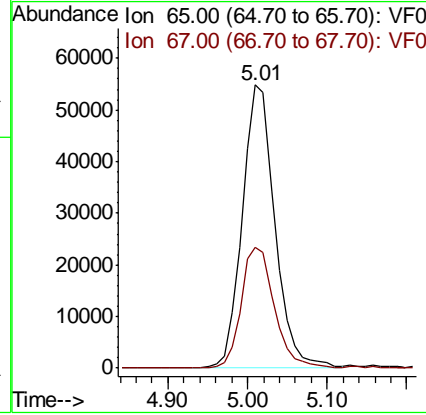
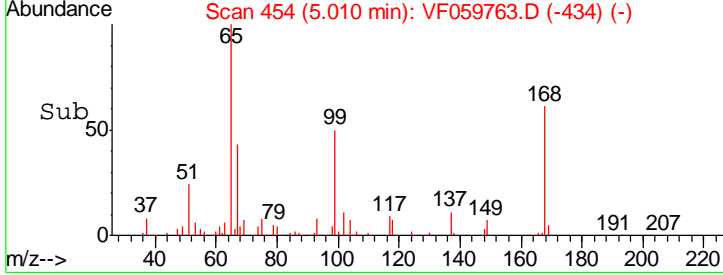
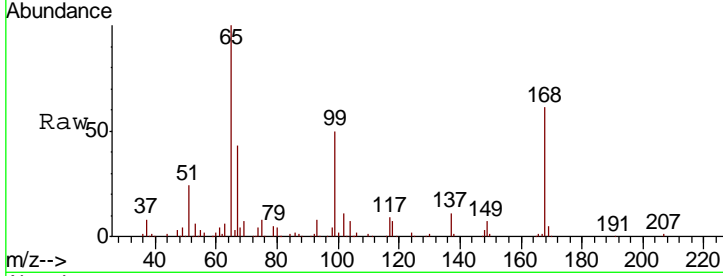




#33  
 1,2-Dichloroethane-d4  
 Concen: 38.01 ug/l  
 RT: 5.01 min Scan# 454  
 Delta R.T. -0.00 min  
 Lab File: VF059763.D  
 Acq: 1 Aug 2018 18:50

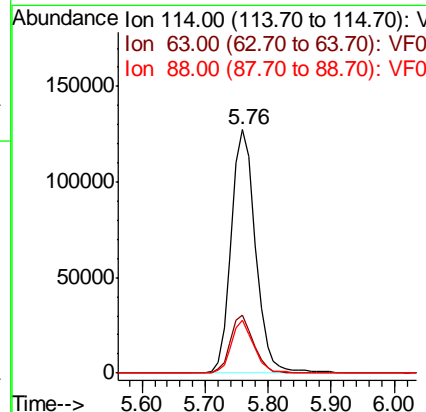
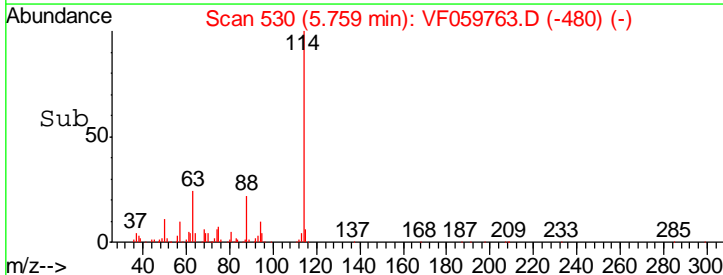
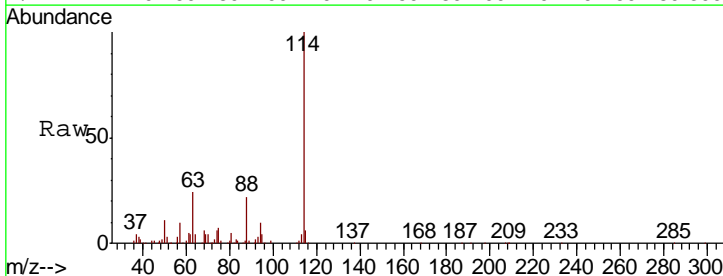
Instrument : MSVOA\_F  
 ClientSampleId : 2018-NYSEG-CLARK-AREA-14-6

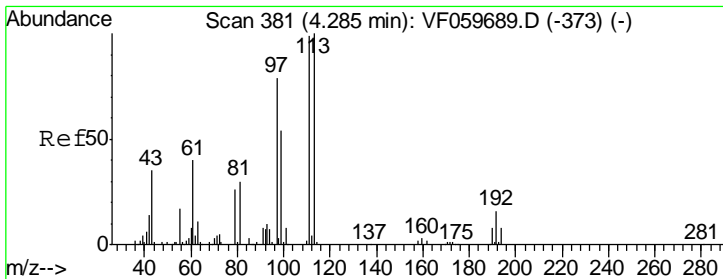
Tgt Ion	Resp	Lower	Upper
65	155113		
67	42.7	0.0	84.6



#34  
 1,4-Difluorobenzene  
 Concen: 50.00 ug/l  
 RT: 5.76 min Scan# 530  
 Delta R.T. -0.00 min  
 Lab File: VF059763.D  
 Acq: 1 Aug 2018 18:50

Tgt Ion	Resp	Lower	Upper
114	339526		
63	24.0	0.0	47.4
88	21.7	0.0	41.2

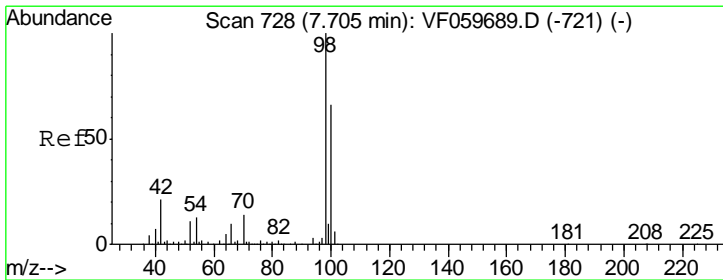
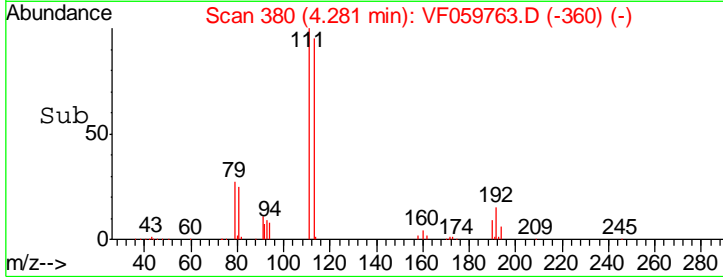
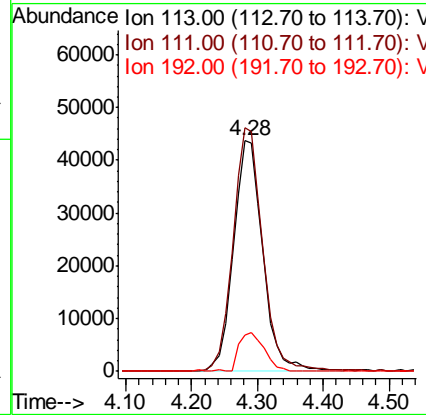
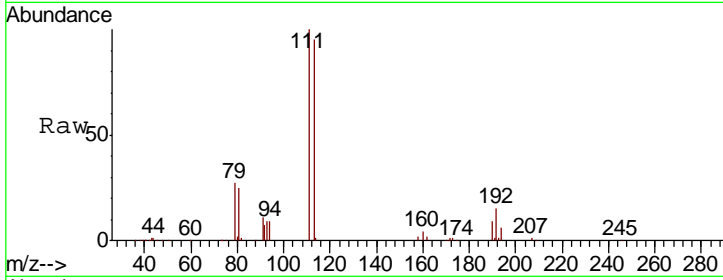




#35  
 Dibromofluoromethane  
 Concen: 38.53 ug/l  
 RT: 4.28 min Scan# 380  
 Delta R.T. -0.00 min  
 Lab File: VF059763.D  
 Acq: 1 Aug 2018 18:50

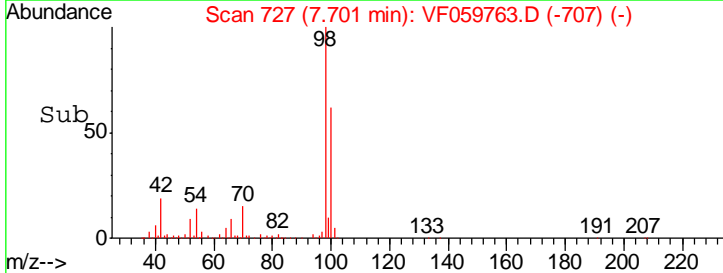
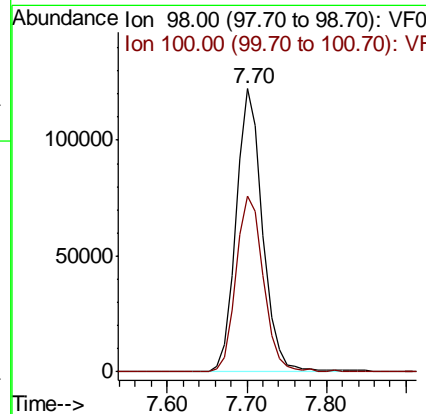
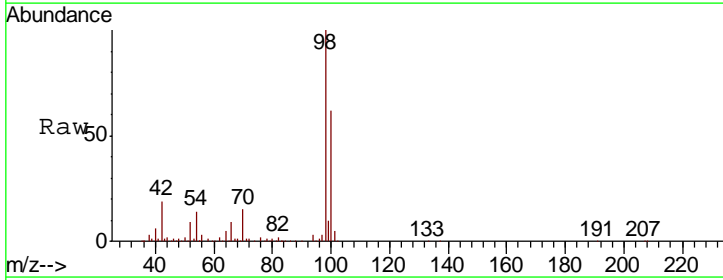
Instrument :  
 MSVOA\_F  
 ClientSampleId :  
 2018-NYSEG-CLARK-AREA-14-6

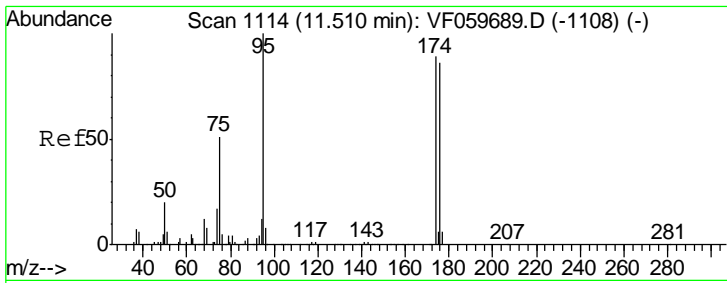
Tgt Ion	Resp	Lower	Upper
113	135892		
113	100		
111	104.8	79.0	118.4
192	15.6	13.2	19.8



#50  
 Toluene-d8  
 Concen: 34.48 ug/l  
 RT: 7.70 min Scan# 727  
 Delta R.T. -0.00 min  
 Lab File: VF059763.D  
 Acq: 1 Aug 2018 18:50

Tgt Ion	Resp	Lower	Upper
98	283531		
98	100		
100	62.1	52.8	79.2

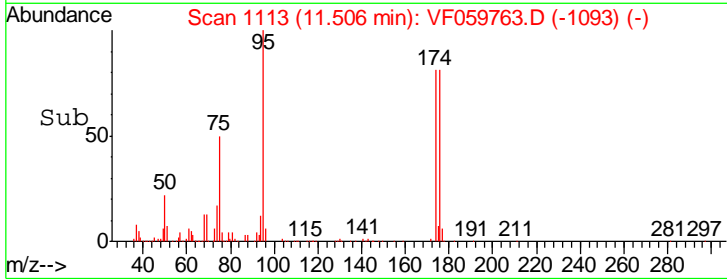
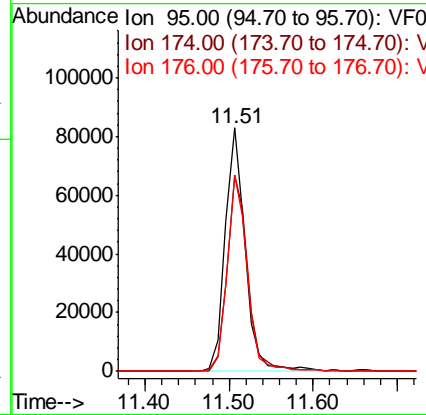
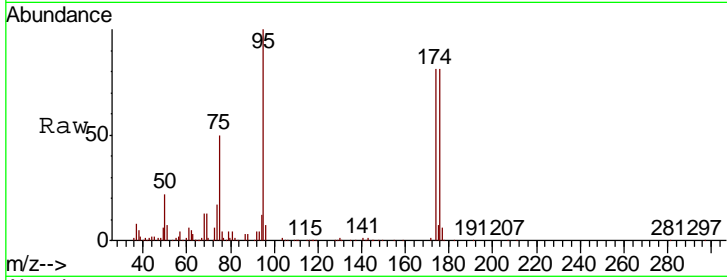




#62  
 4-Bromofluorobenzene  
 Concen: 30.24 ug/l  
 RT: 11.51 min Scan# 1113  
 Delta R.T. -0.00 min  
 Lab File: VF059763.D  
 Acq: 1 Aug 2018 18:50

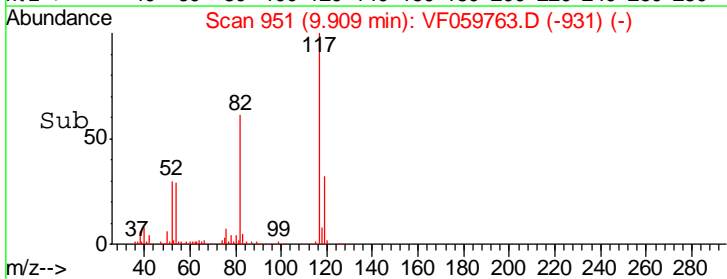
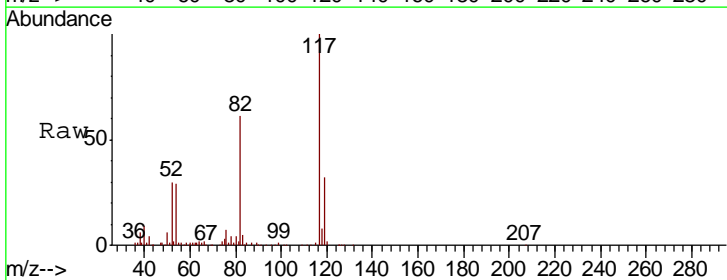
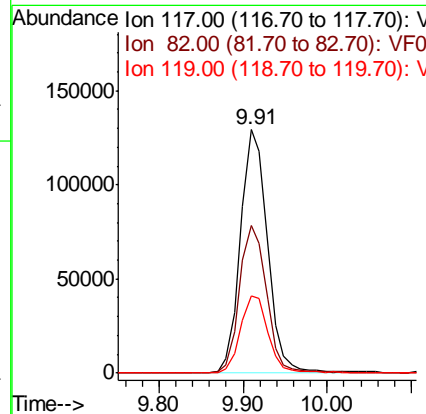
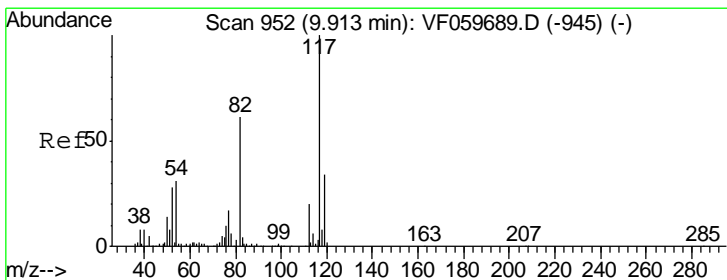
Instrument : MSVOA\_F  
 ClientSampleId : 2018-NYSEG-CLARK-AREA-14-6

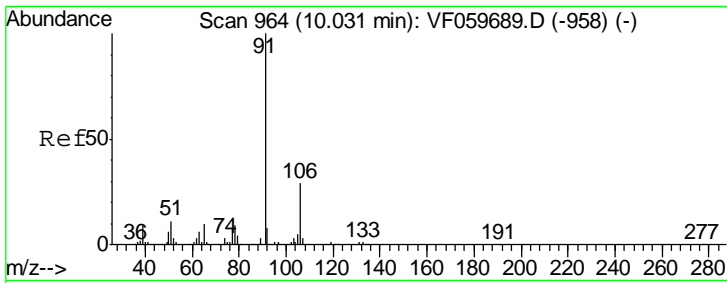
Tgt Ion	Resp	Lower	Upper
95	137681		
174	80.7	0.0	178.4
176	80.7	0.0	173.0



#63  
 Chlorobenzene-d5  
 Concen: 50.00 ug/l  
 RT: 9.91 min Scan# 951  
 Delta R.T. -0.00 min  
 Lab File: VF059763.D  
 Acq: 1 Aug 2018 18:50

Tgt Ion	Resp	Lower	Upper
117	289894		
82	60.6	49.0	73.4
119	31.8	27.3	40.9

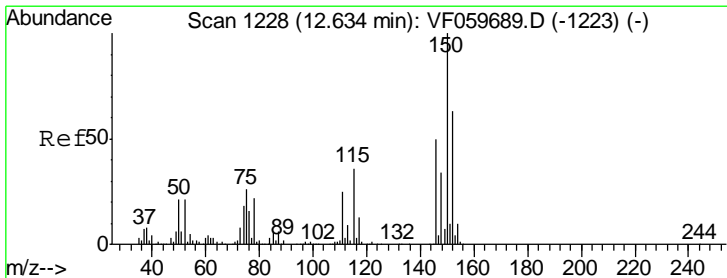
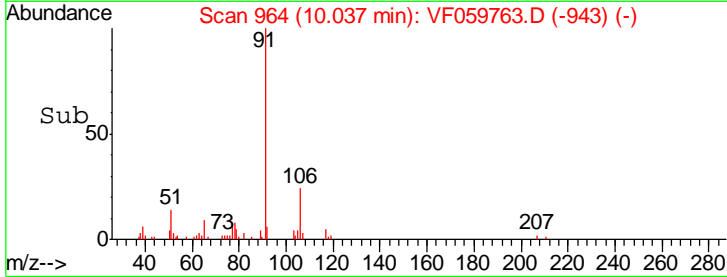
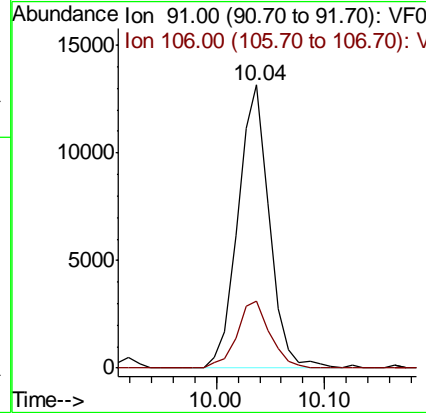
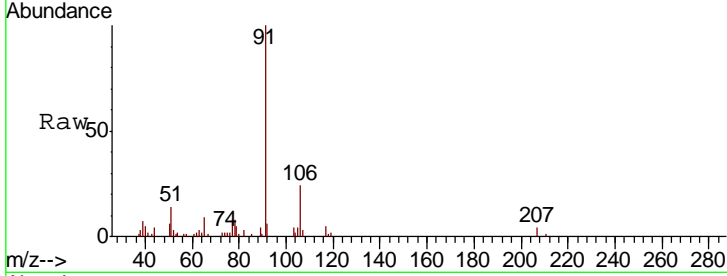




#67  
 Ethyl Benzene  
 Concen: 2.64 ug/l  
 RT: 10.04 min Scan# 964  
 Delta R.T. 0.01 min  
 Lab File: VF059763.D  
 Acq: 1 Aug 2018 18:50

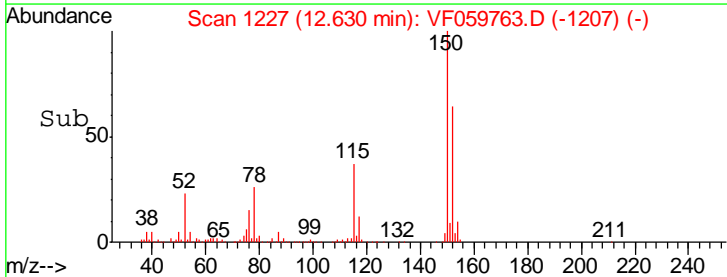
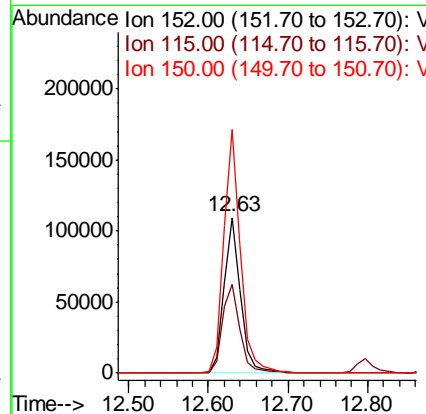
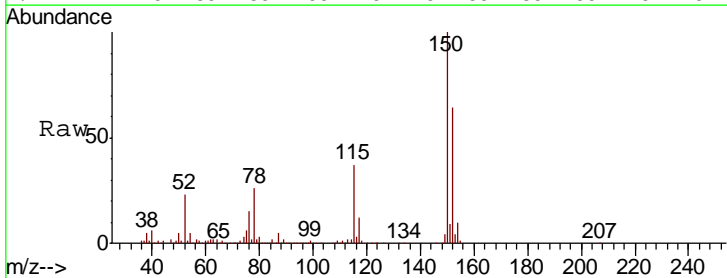
Instrument :  
 MSVOA\_F  
 ClientSampled :  
 2018-NYSEG-CLARK-AREA-14-6

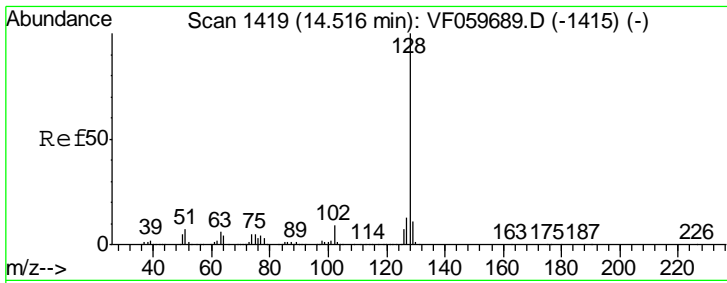
Tgt Ion: 91 Resp: 26513  
 Ion Ratio Lower Upper  
 91 100  
 106 23.7 22.9 34.3



#72  
 1,4-Dichlorobenzene-d4  
 Concen: 50.00 ug/l  
 RT: 12.63 min Scan# 1227  
 Delta R.T. -0.00 min  
 Lab File: VF059763.D  
 Acq: 1 Aug 2018 18:50

Tgt Ion: 152 Resp: 160853  
 Ion Ratio Lower Upper  
 152 100  
 115 57.3 28.2 84.6  
 150 156.6 0.0 316.2





#95  
 Naphthalene  
 Concen: 11.64 ug/l  
 RT: 14.52 min Scan# 1419  
 Delta R.T. 0.01 min  
 Lab File: VF059763.D  
 Acq: 1 Aug 2018 18:50

Instrument :  
 MSVOA\_F  
 ClientSampleId :  
 2018-NYSEG-CLARK-AREA-14-6

Tot Ion:128 Resp: 80723

Ion	Ratio	Lower	Upper
128	100		
127	12.3	10.0	15.0
129	13.0	8.6	13.0#

