

Data Path : Z:\VOASRV\HPCHEM1\MSVOA F\DATA\VF082418\
 Data File : VF060117.D
 Acq On : 24 Aug 2018 23:13
 Operator : VA/AP
 Sample : J4629-02
 Misc : 10.61µ/5mL/MSVOA F/SOIL
 ALS Vial : 24 Sample Multiplier: 1

Instrument :
 MSVOA_F
 ClientSampleId :
 FK-PS-01-038

Quant Time: Aug 25 05:33:21 2018
 Quant Method : Z:\VOASRV\HPCHEM1\MSVOA_F\METHODS\82F082118S.M
 Quant Title : SW846 8260
 QLast Update : Wed Aug 22 04:43:43 2018
 Response via : Initial Calibration

Internal Standards	R.T.	QIon	Response	Conc	Units	Dev(Min)
1) Pentafluorobenzene	5.03	168	161459	50.00	ug/l	-0.02
34) 1,4-Difluorobenzene	5.75	114	230639	50.00	ug/l	-0.03
63) Chlorobenzene-d5	9.91	117	206575	50.00	ug/l	-0.02
72) 1,4-Dichlorobenzene-d4	12.62	152	81036	50.00	ug/l	-0.02

System Monitoring Compounds

33) 1,2-Dichloroethane-d4	5.00	65	85485	38.69	ug/l	-0.03
Spiked Amount	50.000		Recovery	=	77.38%	
35) Dibromofluoromethane	4.27	113	88221	48.71	ug/l	-0.03
Spiked Amount	50.000		Recovery	=	97.42%	
50) Toluene-d8	7.70	98	197952	38.49	ug/l	-0.02
Spiked Amount	50.000		Recovery	=	76.98%	
62) 4-Bromofluorobenzene	11.50	95	78066	28.69	ug/l	-0.02
Spiked Amount	50.000		Recovery	=	57.38%	

Target Compounds

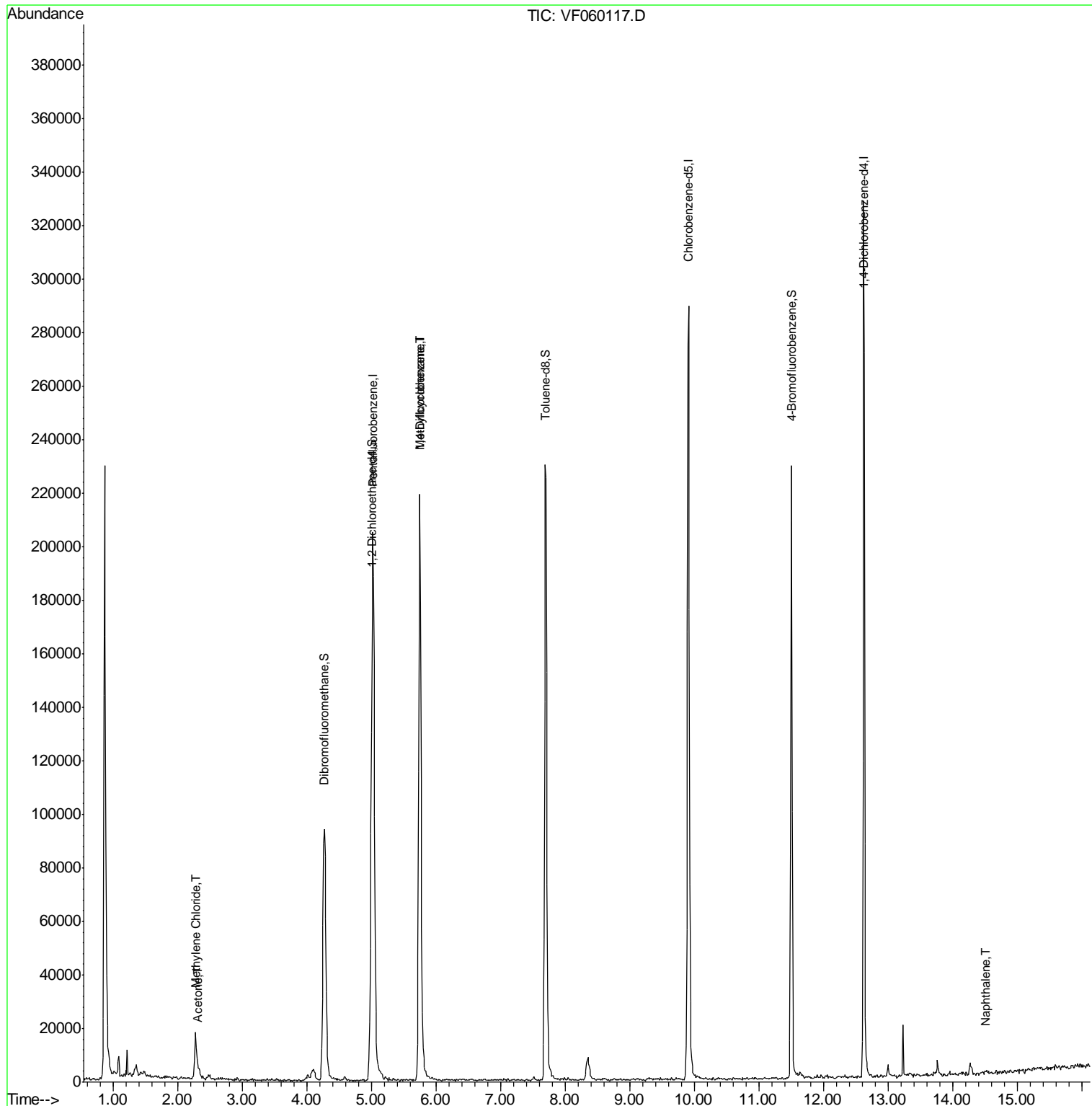
	R.T.	QIon	Response	Conc	Units	Qvalue
3) Chloromethane	1.08	50	692	Below Cal	#	40
16) Acetone	2.32	43	1560	2.69	ug/l	# 63
18) Methyl Acetate	2.47	43	894	Below Cal	#	60
20) Methylene Chloride	2.28	84	9728	3.77	ug/l	# 68
39) Methylcyclohexane	5.74	83	3588	1.77	ug/l	# 45
52) Toluene	7.77	92	72	Below Cal	#	71
68) m/p-Xylenes	10.26	106	67	Below Cal		91
95) Naphthalene	14.50	128	205	2.35	ug/l	# 12

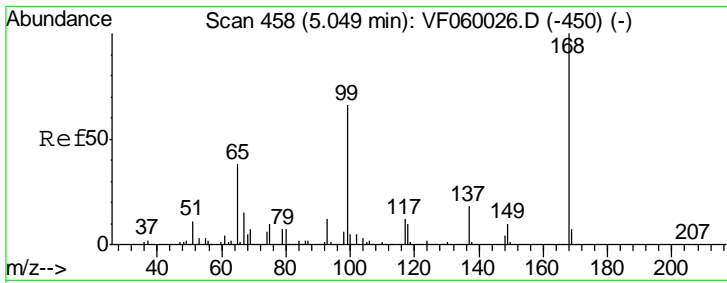
(#) = qualifier out of range (m) = manual integration (+) = signals summed

Data Path : Z:\VOASRV\HPCHEM1\MSVOA F\DATA\VF082418\
 Data File : VF060117.D
 Acq On : 24 Aug 2018 23:13
 Operator : VA/AP
 Sample : J4629-02
 Misc : 10.61µ/5mL/MSVOA F/SOIL
 ALS Vial : 24 Sample Multiplier: 1

Instrument :
 MSVOA_F
 Client Sampled :
 FK-PS-01-038

Quant Time: Aug 25 05:33:21 2018
 Quant Method : Z:\VOASRV\HPCHEM1\MSVOA_F\METHODS\82F082118S.M
 Quant Title : SW846 8260
 QLast Update : Wed Aug 22 04:43:43 2018
 Response via : Initial Calibration

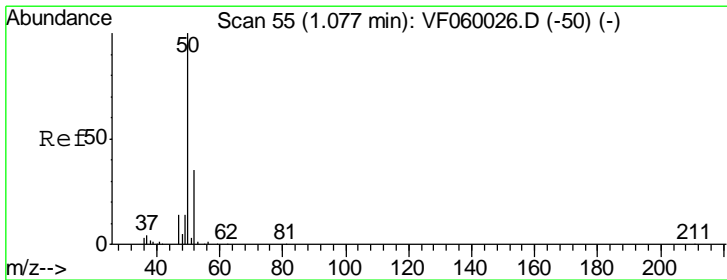
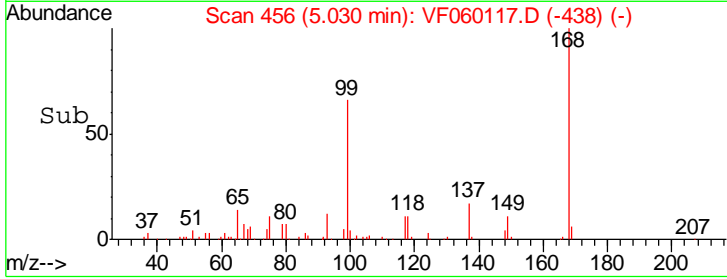
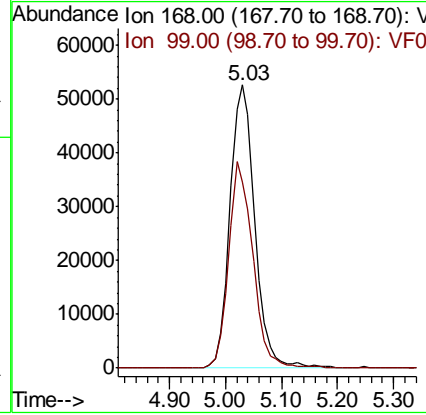
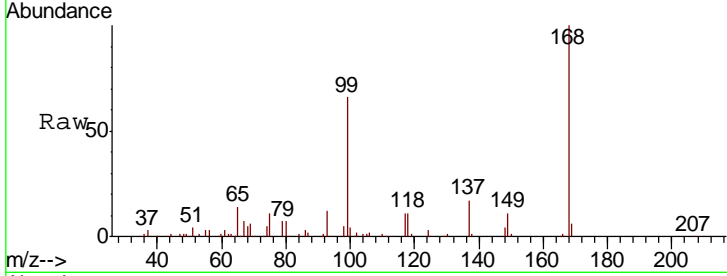




#1
 Pentafluorobenzene
 Concen: 50.00 ug/l
 RT: 5.03 min Scan# 456
 Delta R.T. -0.02 min
 Lab File: VF060117.D
 Acq: 24 Aug 2018 23:13

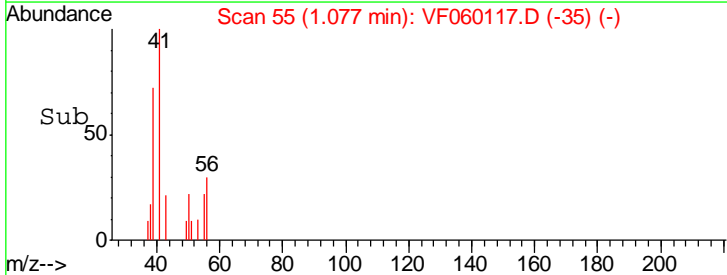
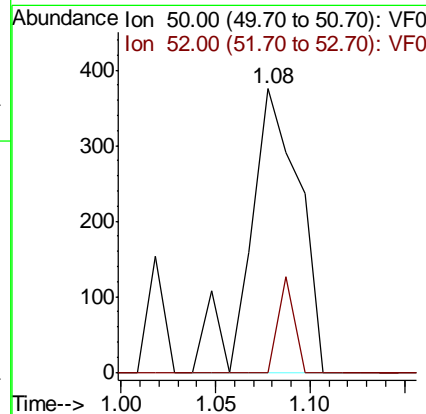
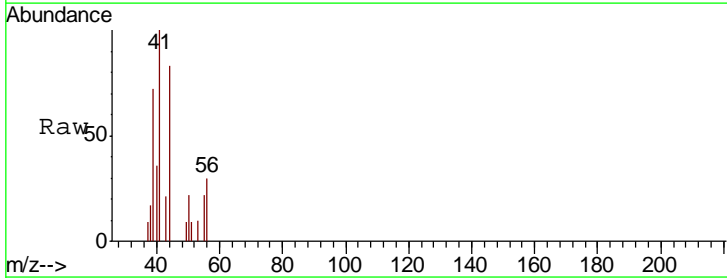
Instrument :
 MSVOA_F
 ClientSampleId :
 FK-PS-01-038

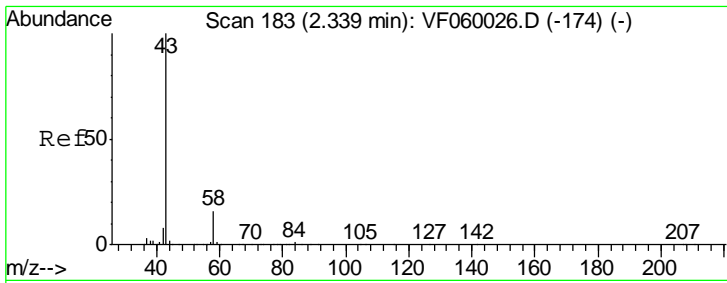
Tgt Ion: 168 Resp: 161459
 Ion Ratio Lower Upper
 168 100
 99 65.8 52.6 79.0



#3
 Chloromethane
 Concen: Below Cal
 RT: 1.08 min Scan# 55
 Delta R.T. 0.00 min
 Lab File: VF060117.D
 Acq: 24 Aug 2018 23:13

Tgt Ion: 50 Resp: 692
 Ion Ratio Lower Upper
 50 100
 52 0.0 27.6 41.4#

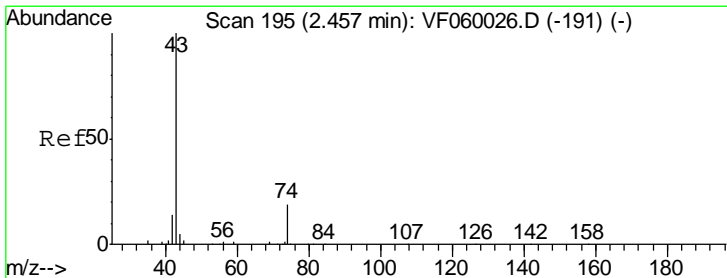
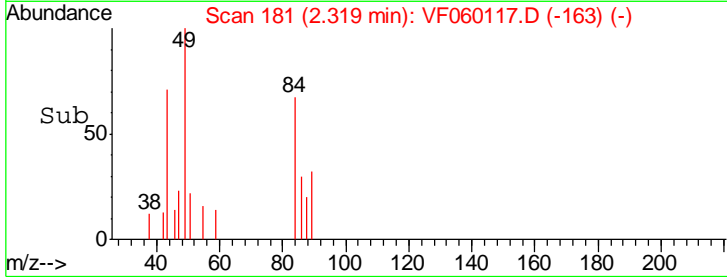
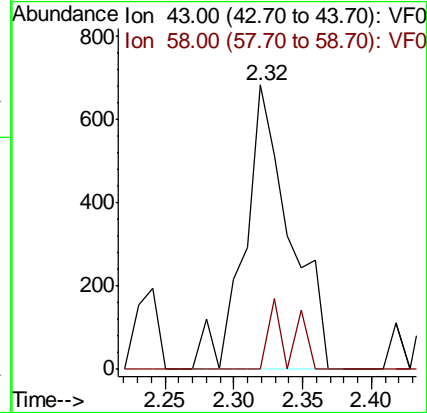
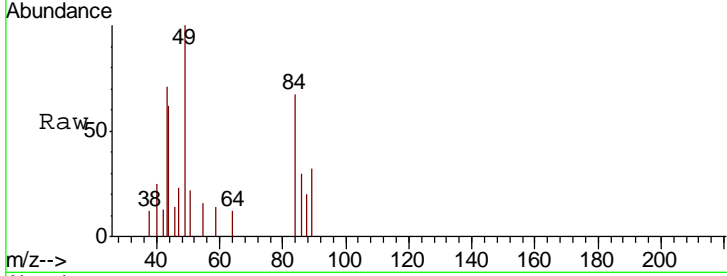




#16
 Acetone
 Concen: 2.69 ug/l
 RT: 2.32 min Scan# 181
 Delta R.T. -0.02 min
 Lab File: VF060117.D
 Acq: 24 Aug 2018 23:13

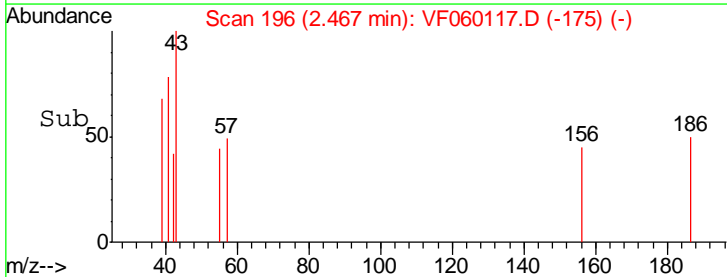
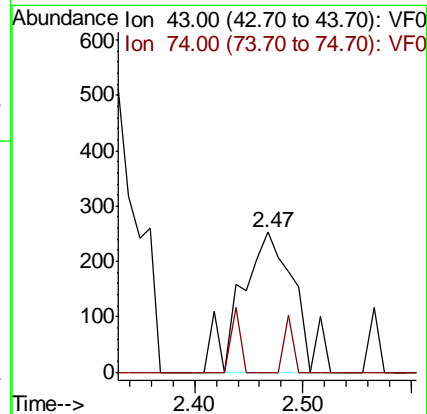
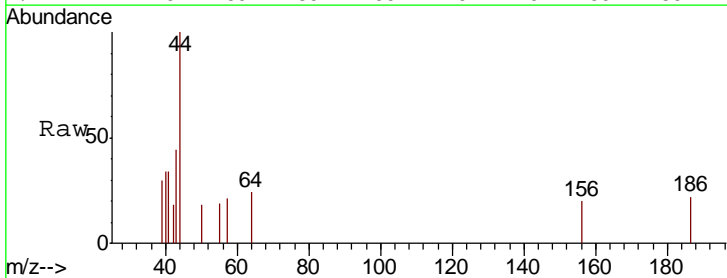
Instrument :
 MSVOA_F
ClientSampled :
 FK-PS-01-038

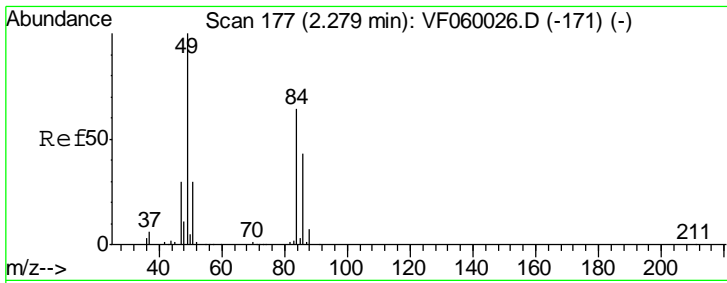
Tgt Ion: 43 Resp: 1560
 Ion Ratio Lower Upper
 43 100
 58 0.0 12.6 19.0#



#18
 Methyl Acetate
 Concen: Below Cal
 RT: 2.47 min Scan# 196
 Delta R.T. 0.01 min
 Lab File: VF060117.D
 Acq: 24 Aug 2018 23:13

Tgt Ion: 43 Resp: 894
 Ion Ratio Lower Upper
 43 100
 74 0.0 13.8 20.6#

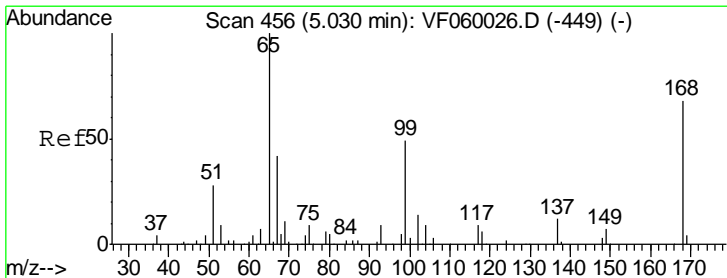
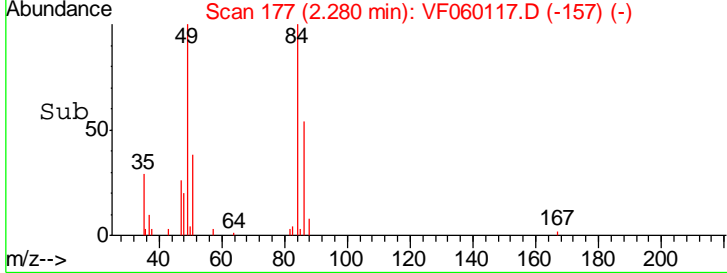
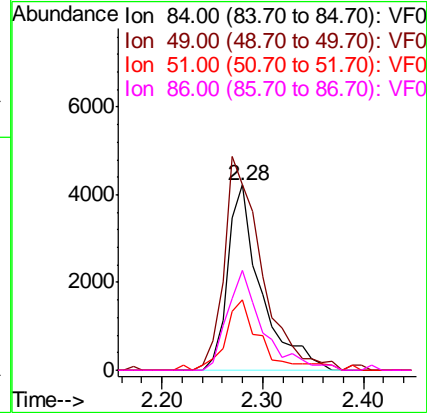
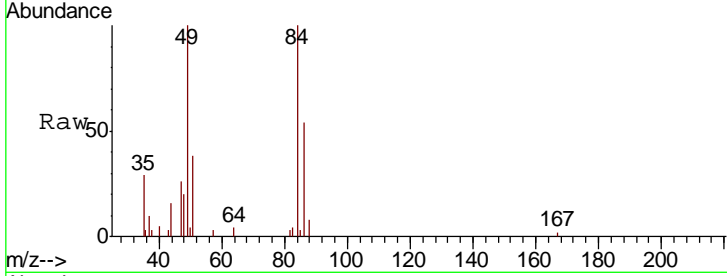




#20
 Methylene Chloride
 Concen: 3.77 ug/l
 RT: 2.28 min Scan# 177
 Delta R.T. 0.00 min
 Lab File: VF060117.D
 Acq: 24 Aug 2018 23:13

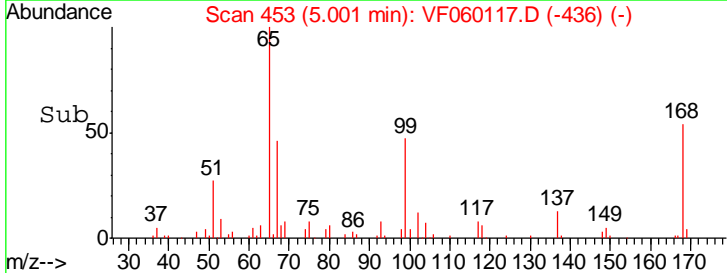
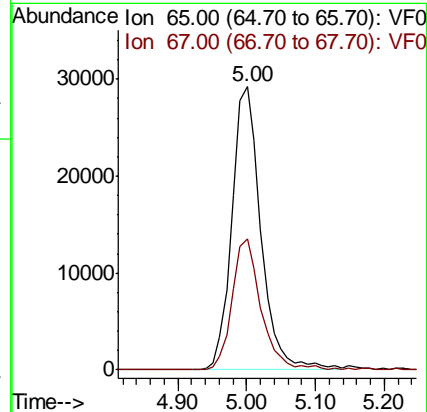
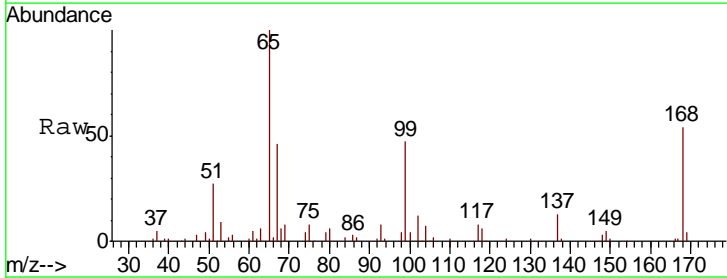
Instrument : MSVOA_F
 ClientSampled : FK-PS-01-038

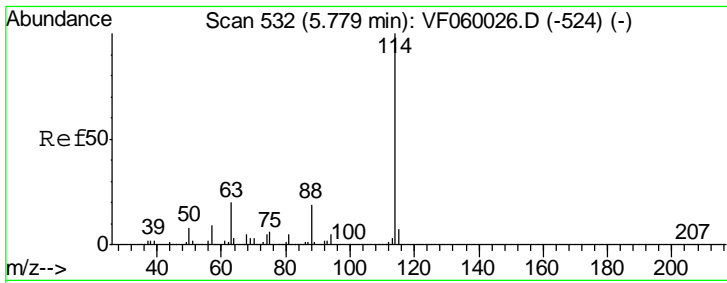
Tgt Ion	Resp	Lower	Upper
84	9728		
49	100.0	125.4	188.0#
51	37.8	38.3	57.5#
86	53.6	53.3	79.9



#33
 1,2-Dichloroethane-d4
 Concen: 38.69 ug/l
 RT: 5.00 min Scan# 453
 Delta R.T. -0.03 min
 Lab File: VF060117.D
 Acq: 24 Aug 2018 23:13

Tgt Ion	Resp	Lower	Upper
65	85485		
67	46.1	0.0	92.0

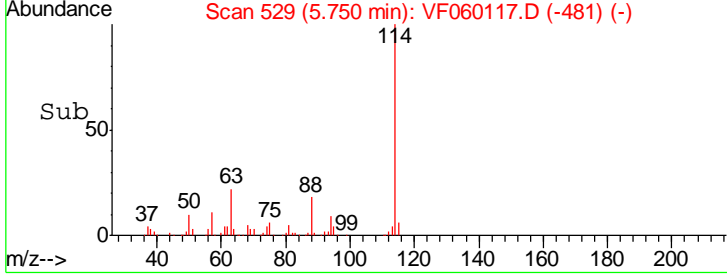
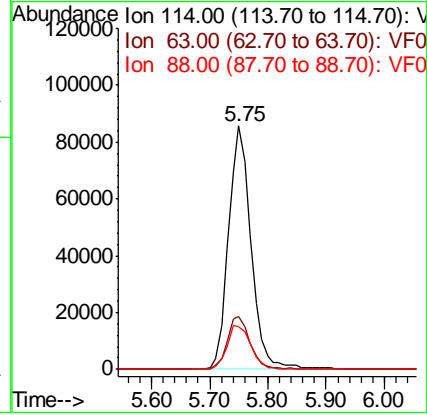
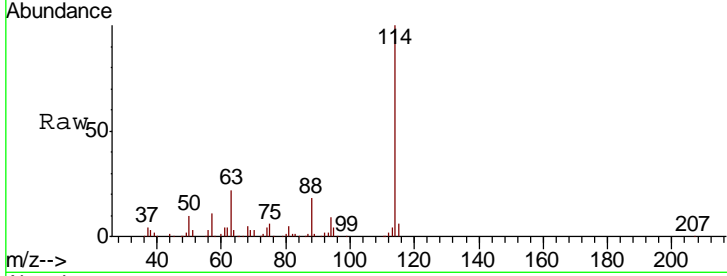




#34
 1,4-Difluorobenzene
 Concen: 50.00 ug/l
 RT: 5.75 min Scan# 529
 Delta R.T. -0.03 min
 Lab File: VF060117.D
 Acq: 24 Aug 2018 23:13

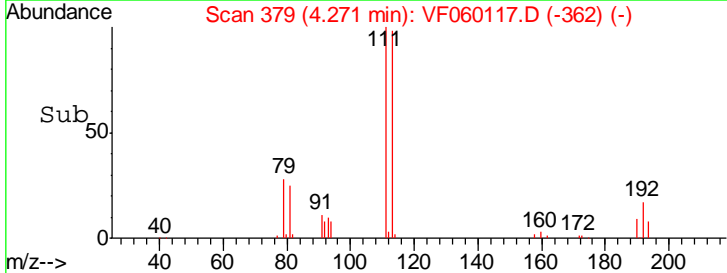
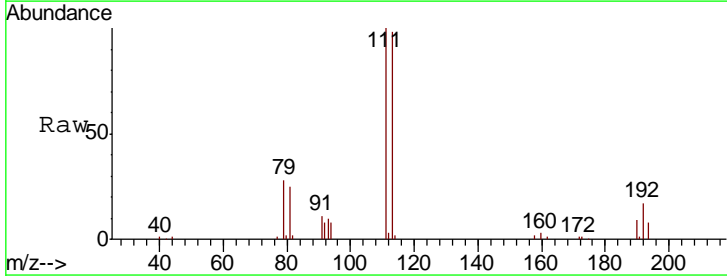
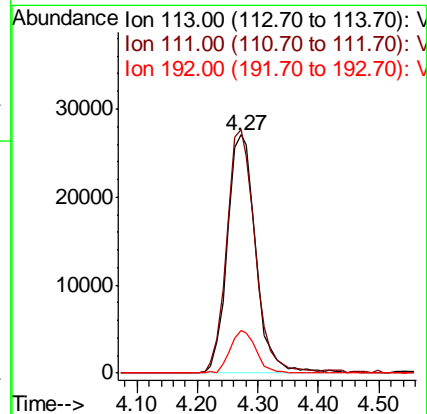
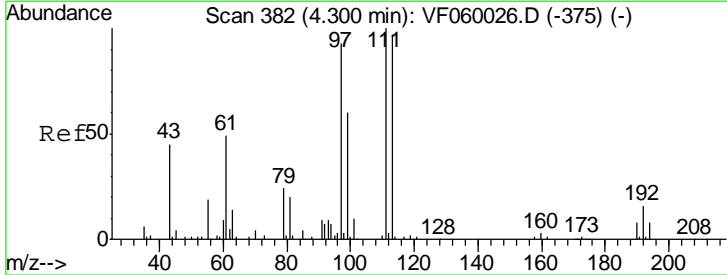
Instrument : MSVOA_F
 ClientSampleId : FK-PS-01-038

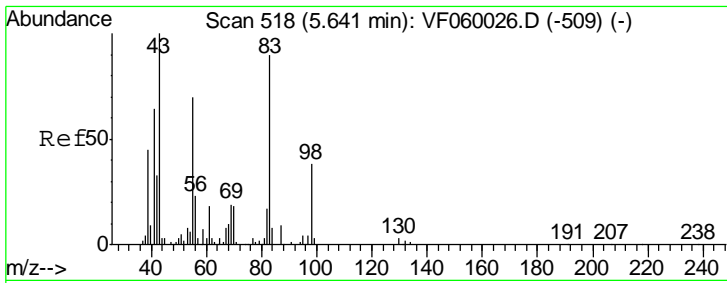
Tgt Ion	Resp	Lower	Upper
114	100		
63	22.0	0.0	40.4
88	17.5	0.0	38.6



#35
 Dibromofluoromethane
 Concen: 48.71 ug/l
 RT: 4.27 min Scan# 379
 Delta R.T. -0.03 min
 Lab File: VF060117.D
 Acq: 24 Aug 2018 23:13

Tgt Ion	Resp	Lower	Upper
113	100		
111	102.2	82.7	124.1
192	17.7	13.0	19.4

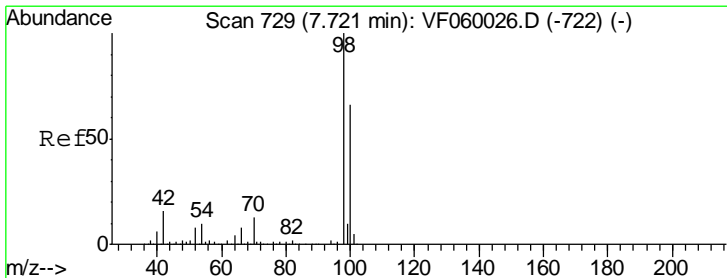
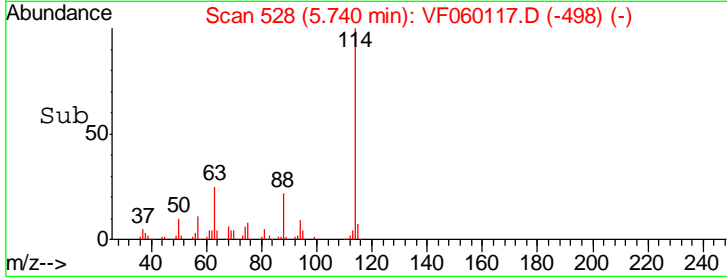
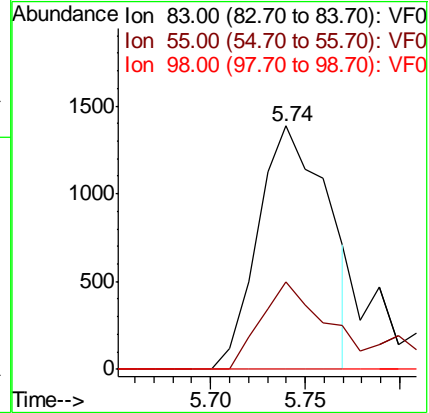
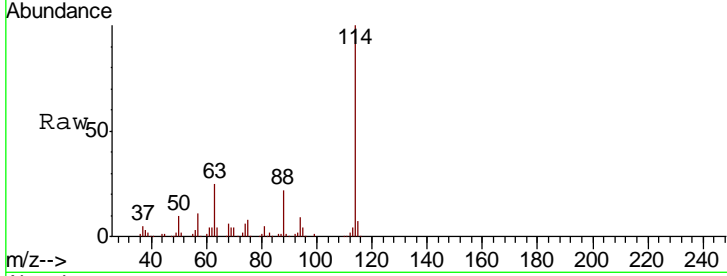




#39
 Methylcyclohexane
 Concen: 1.77 ug/l
 RT: 5.74 min Scan# 528
 Delta R.T. 0.10 min
 Lab File: VF060117.D
 Acq: 24 Aug 2018 23:13

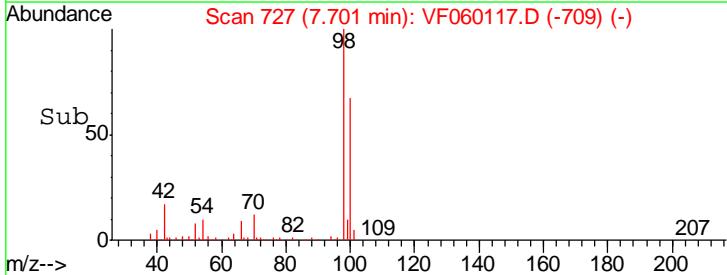
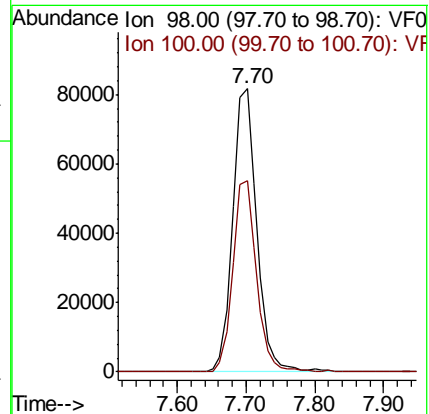
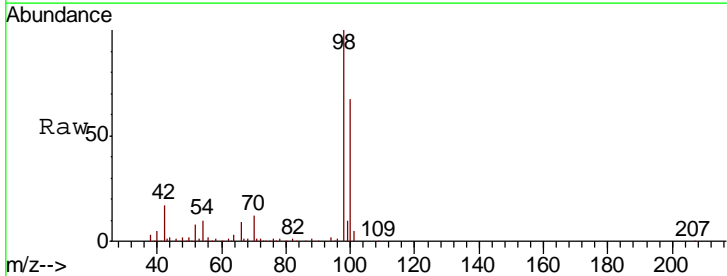
Instrument :
 MSVOA_F
 ClientSampled :
 FK-PS-01-038

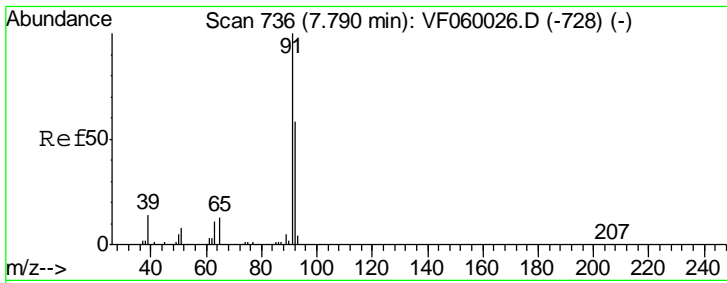
Tgt Ion	Resp	Lower	Upper
83	3588		
55	35.9	62.7	94.1#
98	0.0	33.8	50.8#



#50
 Toluene-d8
 Concen: 38.49 ug/l
 RT: 7.70 min Scan# 727
 Delta R.T. -0.02 min
 Lab File: VF060117.D
 Acq: 24 Aug 2018 23:13

Tgt Ion	Resp	Lower	Upper
98	197952		
100	67.4	53.2	79.8

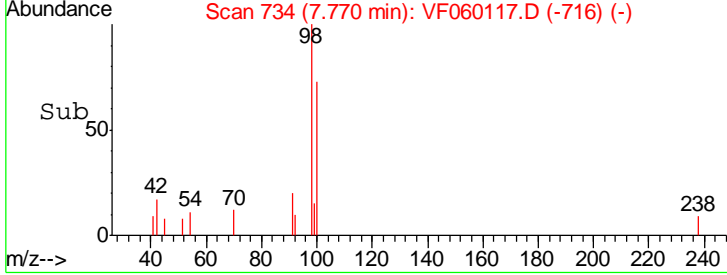
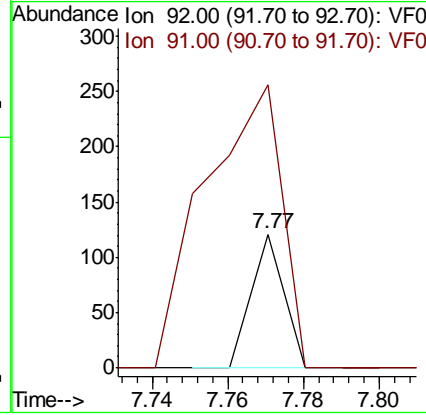
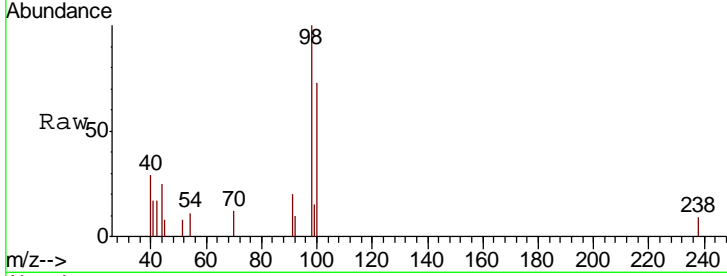




#52
 Toluene
 Concen: Below Cal
 RT: 7.77 min Scan# 734
 Delta R.T. -0.02 min
 Lab File: VF060117.D
 Acq: 24 Aug 2018 23:13

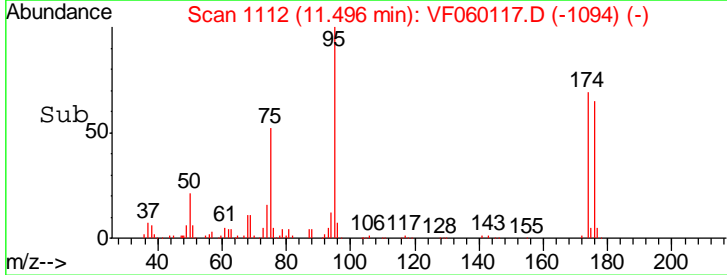
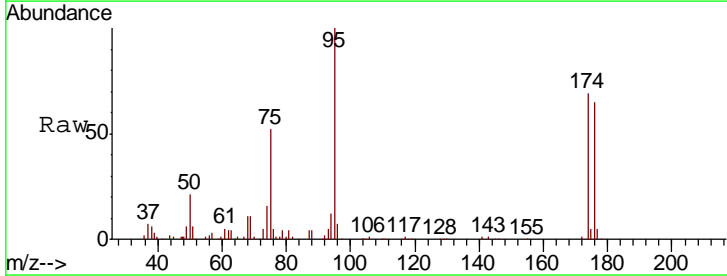
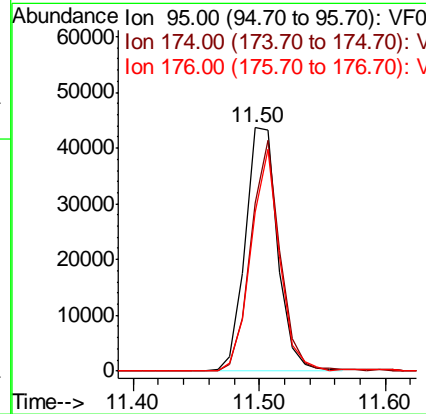
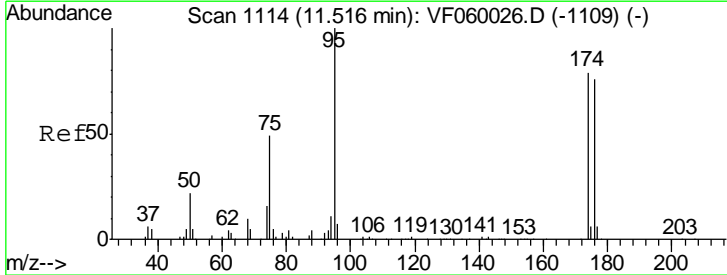
Instrument : MSVOA_F
 ClientSampleID : FK-PS-01-038

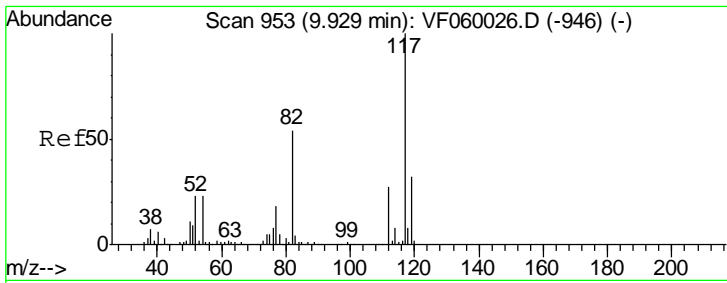
Tgt Ion	Resp	Lower	Upper
92	100		
91	211.6	137.7	206.5#



#62
 4-Bromofluorobenzene
 Concen: 28.69 ug/l
 RT: 11.50 min Scan# 1112
 Delta R.T. -0.02 min
 Lab File: VF060117.D
 Acq: 24 Aug 2018 23:13

Tgt Ion	Resp	Lower	Upper
95	100		
174	68.9	0.0	158.4
176	65.4	0.0	153.0

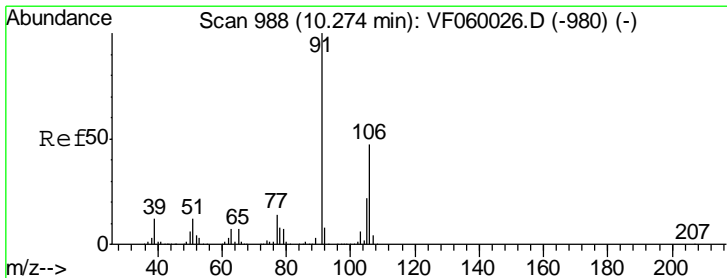
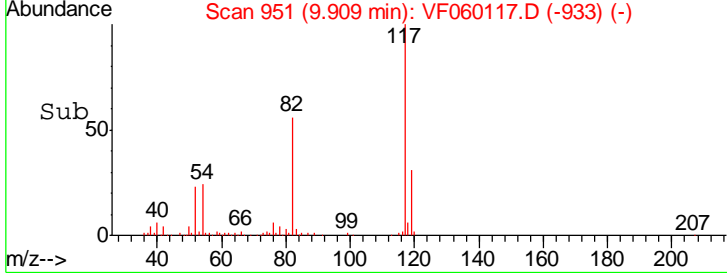
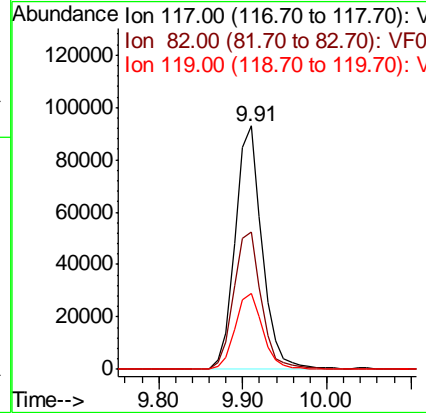
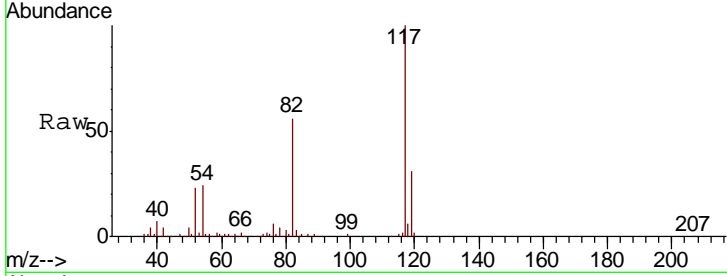




#63
 Chlorobenzene-d5
 Concen: 50.00 ug/l
 RT: 9.91 min Scan# 951
 Delta R.T. -0.02 min
 Lab File: VF060117.D
 Acq: 24 Aug 2018 23:13

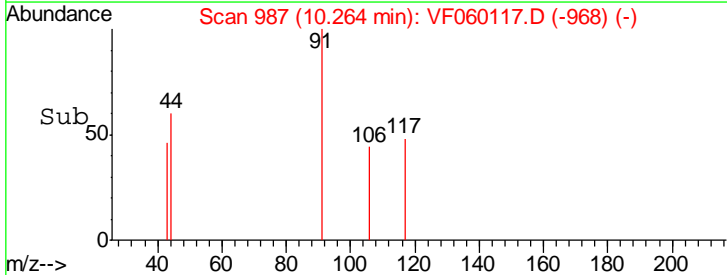
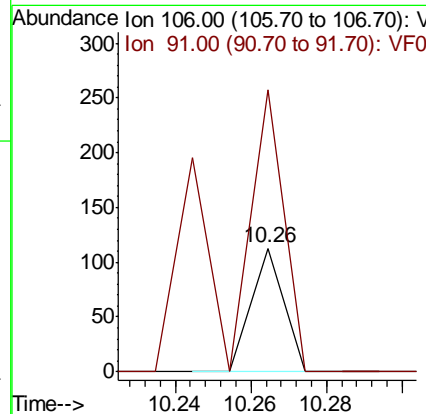
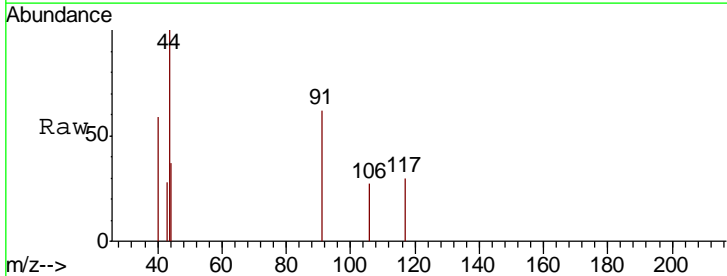
Instrument :
 MSVOA_F
 ClientSampleId :
 FK-PS-01-038

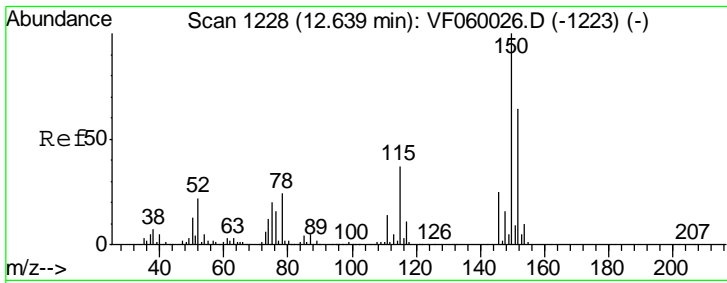
Tgt Ion	Resp	Lower	Upper
117	100		
82	56.4	43.6	65.4
119	31.2	25.6	38.4



#68
 m/p-Xylenes
 Concen: Below Cal
 RT: 10.26 min Scan# 987
 Delta R.T. -0.01 min
 Lab File: VF060117.D
 Acq: 24 Aug 2018 23:13

Tgt Ion	Resp	Lower	Upper
106	100		
91	228.3	171.8	257.8

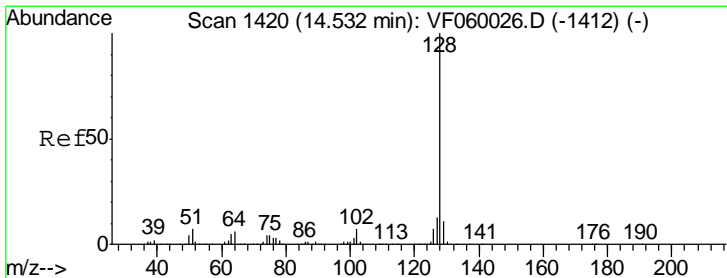
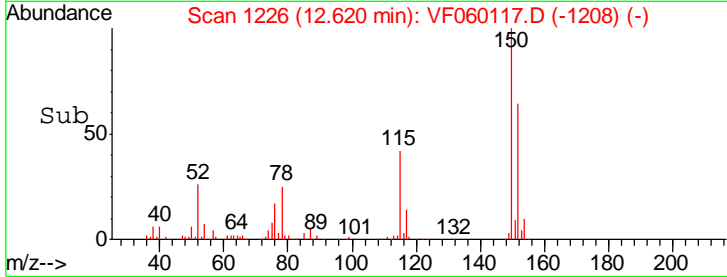
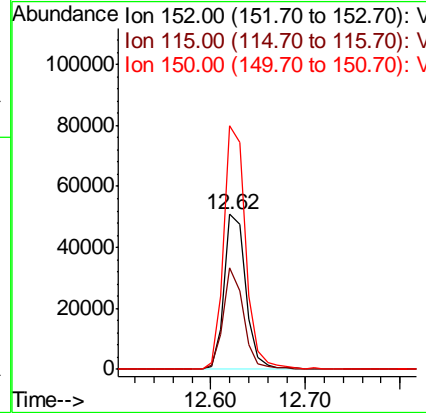
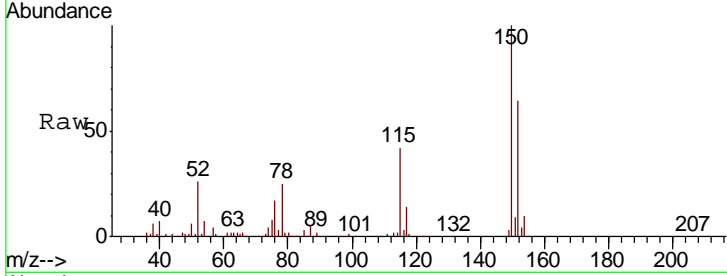




#72
 1,4-Dichlorobenzene-d4
 Concen: 50.00 ug/l
 RT: 12.62 min Scan# 1226
 Delta R.T. -0.02 min
 Lab File: VF060117.D
 Acq: 24 Aug 2018 23:13

Instrument :
 MSVOA_F
 ClientSampled :
 FK-PS-01-038

Tgt Ion	Resp	Lower	Upper
152	81036		
152	100		
115	65.2	28.6	85.9
150	156.9	0.0	312.0



#95
 Naphthalene
 Concen: 2.35 ug/l
 RT: 14.50 min Scan# 1417
 Delta R.T. -0.03 min
 Lab File: VF060117.D
 Acq: 24 Aug 2018 23:13

Tgt Ion	Resp	Lower	Upper
128	205		
128	100		
127	0.0	10.4	15.6#
129	68.8	8.5	12.7#

