

Data Path : Z:\VOASRV\HPCHEM1\MSVOA F\DATA\VF082418\
 Data File : VF060110.D
 Acq On : 24 Aug 2018 19:58
 Operator : VA/AP
 Sample : J4282-13
 Misc : 5.36µ/5mL/MSVOA F/SOIL
 ALS Vial : 17 Sample Multiplier: 1

Instrument :
 MSVOA_F
 ClientSampled :
 SU-02-082318-B

Manual Integrations
 APPROVED

apatel
 8/27/2018 3:22:11 PM

Quant Time: Aug 25 05:17:41 2018
 Quant Method : Z:\VOASRV\HPCHEM1\MSVOA_F\METHODS\82F082118S.M
 Quant Title : SW846 8260
 QLast Update : Wed Aug 22 04:43:43 2018
 Response via : Initial Calibration

Internal Standards	R.T.	QIon	Response	Conc	Units	Dev(Min)
1) Pentafluorobenzene	5.04	168	132308	50.00	µg/l	-0.01
34) 1,4-Difluorobenzene	5.76	114	200962	50.00	µg/l	-0.02
63) Chlorobenzene-d5	9.91	117	186590	50.00	µg/l	-0.02
72) 1,4-Dichlorobenzene-d4	12.63	152	66290	50.00	µg/l	-0.01

System Monitoring Compounds

33) 1,2-Dichloroethane-d4	5.01	65	96171	53.11	µg/l	-0.02
Spiked Amount	50.000		Recovery	=	106.22%	
35) Dibromofluoromethane	4.28	113	42613	27.00	µg/l	-0.02
Spiked Amount	50.000		Recovery	=	54.00%	
50) Toluene-d8	7.70	98	227134	50.68	µg/l	-0.02
Spiked Amount	50.000		Recovery	=	101.36%	
62) 4-Bromofluorobenzene	11.50	95	87087	36.73	µg/l	-0.01
Spiked Amount	50.000		Recovery	=	73.46%	

Target Compounds

						Qvalue
16) Acetone	2.33	43	33103	69.56	µg/l	# 91
17) Carbon Disulfide	1.83	76	9847	3.74	µg/l	98
20) Methylene Chloride	2.28	84	10570	6.85	µg/l	92
52) Toluene	7.77	92	137263	51.91	µg/l	97
64) Tetrachloroethene	8.29	164	1540	1.23	µg/l	# 75
67) Ethyl Benzene	10.03	91	22408	3.69	µg/l	96
68) m/p-Xylenes	10.26	106	47227	15.63	µg/l	98
69) o-Xylene	10.82	106	29704	12.47	µg/l	100
73) Isopropylbenzene	11.22	105	9829	2.46	µg/l	85
78) n-propylbenzene	11.68	91	32433	6.59	µg/l	100
80) 1,3,5-Trimethylbenzene	11.91	105	149434	42.99	µg/l	98
84) 1,2,4-Trimethylbenzene	12.28	105	288270	78.00	µg/l	100
85) sec-Butylbenzene	12.38	105	6988m	1.48	µg/l	
86) p-Isopropyltoluene	12.53	119	7604m	1.94	µg/l	
95) Naphthalene	14.52	128	20045	10.04	µg/l	97

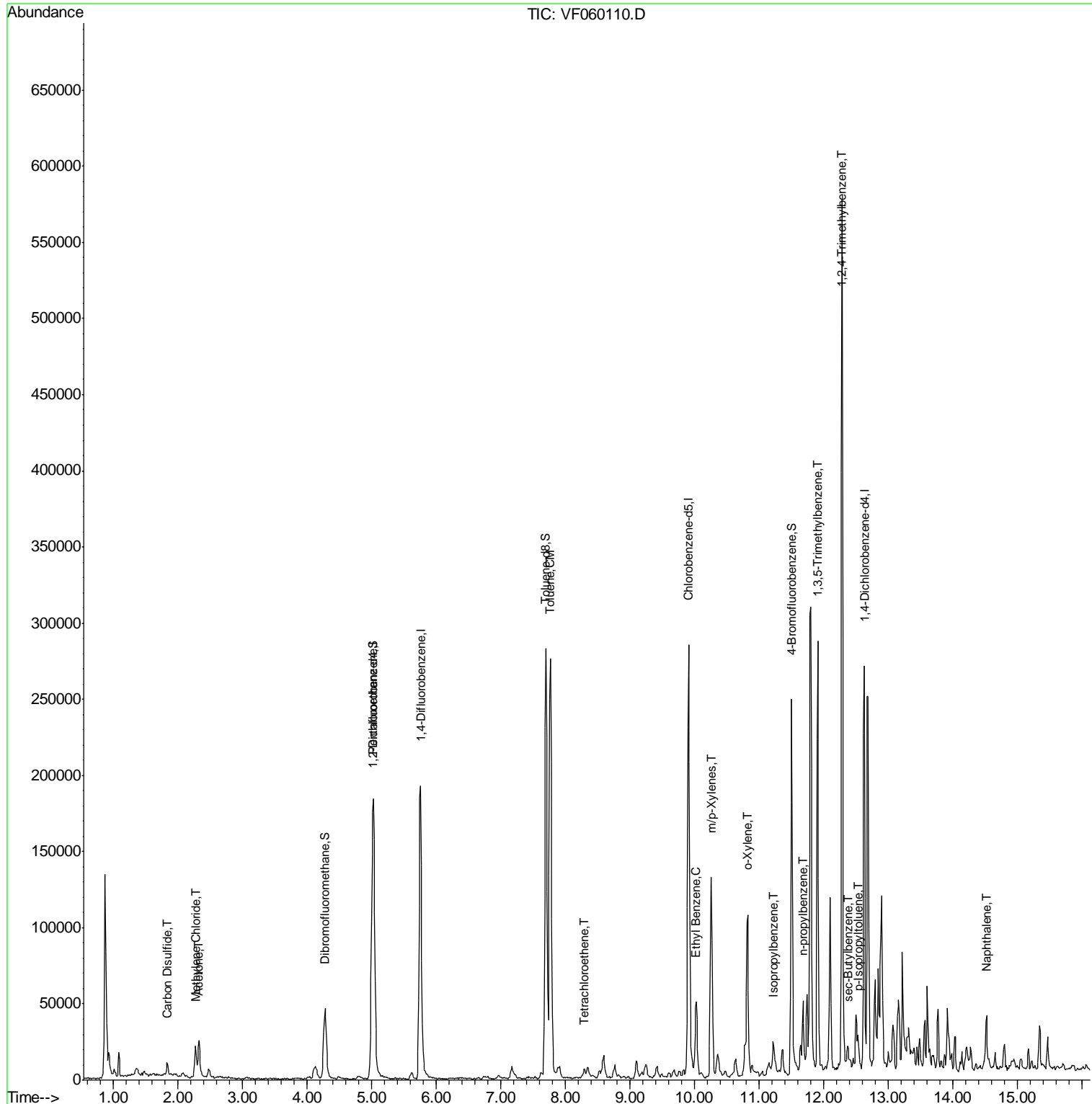
(#) = qualifier out of range (m) = manual integration (+) = signals summed

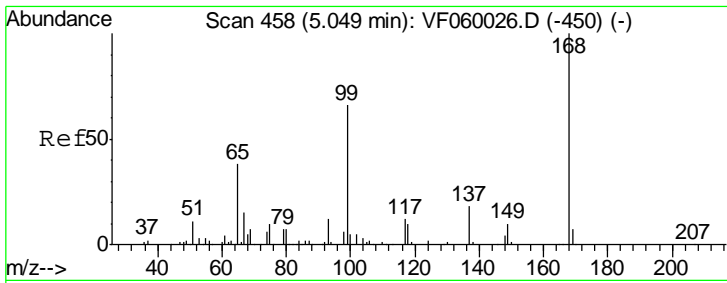
Data Path : Z:\VOASRV\HPCHEM1\MSVOA F\DATA\VF082418\
 Data File : VF060110.D
 Acq On : 24 Aug 2018 19:58
 Operator : VA/AP
 Sample : J4282-13
 Misc : 5.36µ/5mL/MSVOA F/SOIL
 ALS Vial : 17 Sample Multiplier: 1

Instrument :
 MSVOA_F
Client Sampled :
 SU-02-082318-B

Manual Integrations
APPROVED
 apatel
 8/27/2018 3:22:11 PM

Quant Time: Aug 25 05:17:41 2018
 Quant Method : Z:\VOASRV\HPCHEM1\MSVOA_F\METHODS\82F082118S.M
 Quant Title : SW846 8260
 QLast Update : Wed Aug 22 04:43:43 2018
 Response via : Initial Calibration





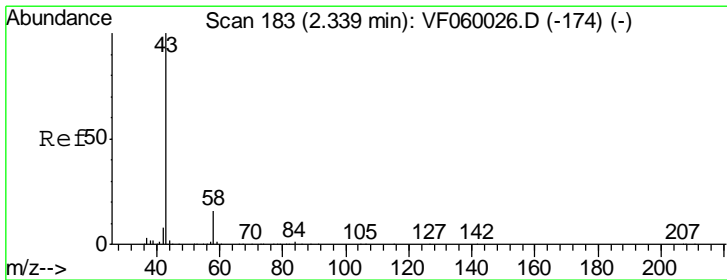
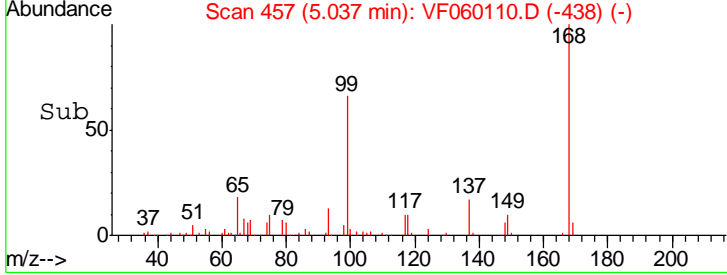
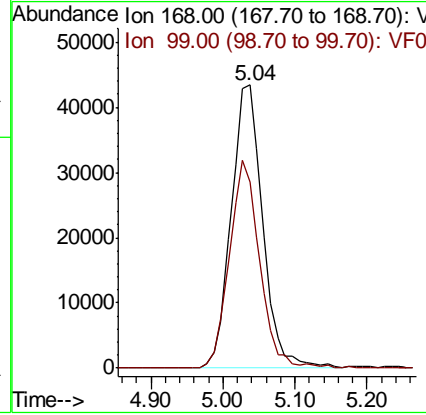
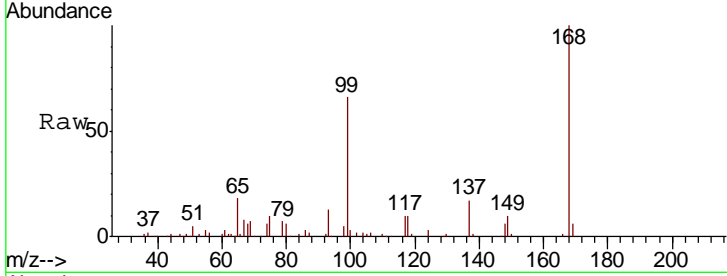
#1
 Pentafluorobenzene
 Concen: 50.00 ug/l
 RT: 5.04 min Scan# 457
 Delta R.T. -0.01 min
 Lab File: VF060110.D
 Acq: 24 Aug 2018 19:58

Instrument :
 MSVOA_F
 ClientSampled :
 SU-02-082318-B

Tgt Ion	Resp	Lower	Upper
168	100		
99	65.5	52.6	79.0

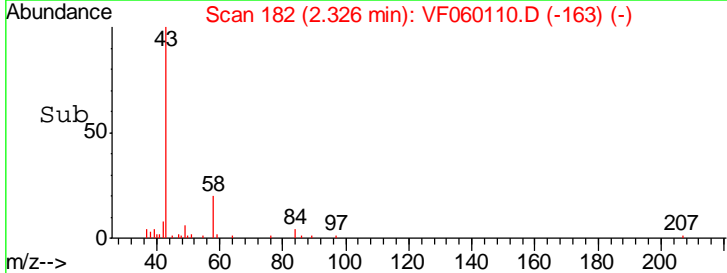
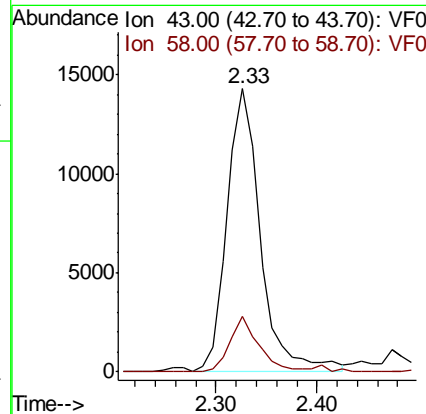
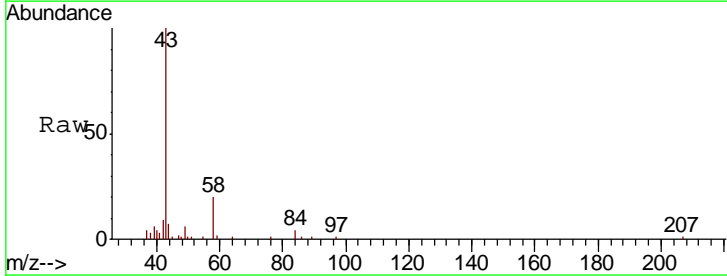
Manual Integrations
 APPROVED

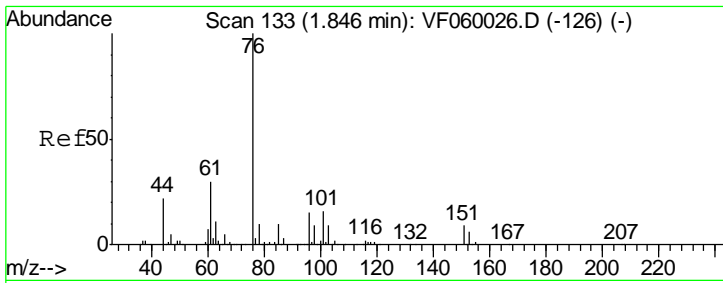
apatel
 8/27/2018 3:22:11 PM



#16
 Acetone
 Concen: 69.56 ug/l
 RT: 2.33 min Scan# 182
 Delta R.T. -0.01 min
 Lab File: VF060110.D
 Acq: 24 Aug 2018 19:58

Tgt Ion	Resp	Lower	Upper
43	100		
58	19.7	12.6	19.0#





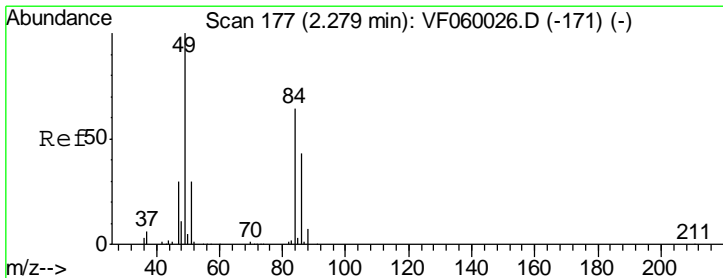
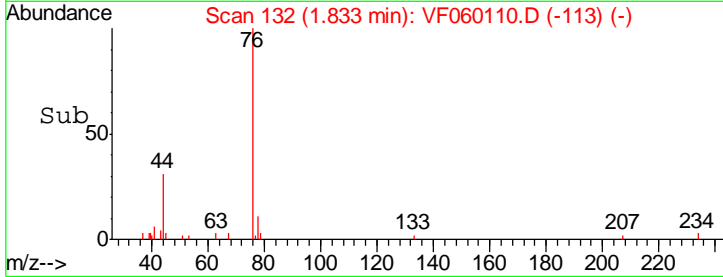
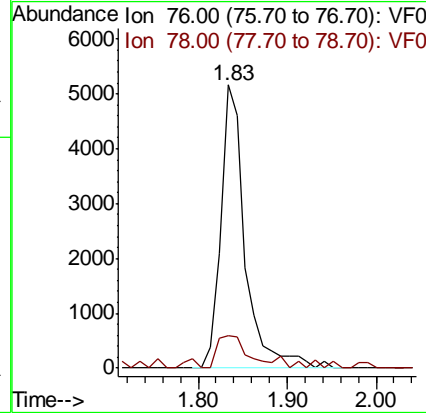
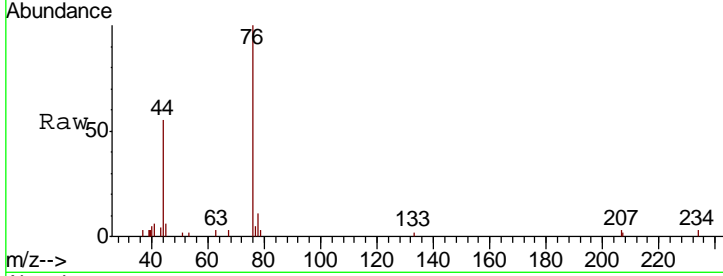
#17
 Carbon Disulfide
 Concen: 3.74 ug/l
 RT: 1.83 min Scan# 132
 Delta R.T. -0.01 min
 Lab File: VF060110.D
 Acq: 24 Aug 2018 19:58

Instrument : MSVOA_F
 ClientSampled : SU-02-082318-B

Tgt Ion	Resp	Lower	Upper
76	9847		
76	100		
78	11.4	8.4	12.6

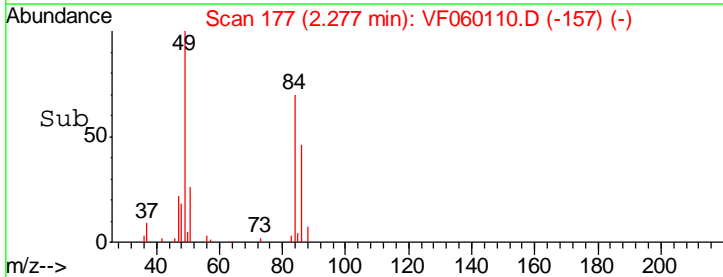
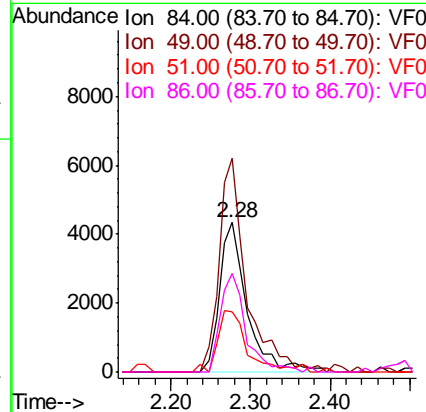
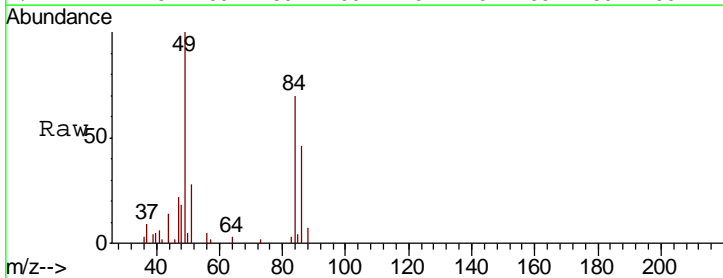
Manual Integrations
 APPROVED

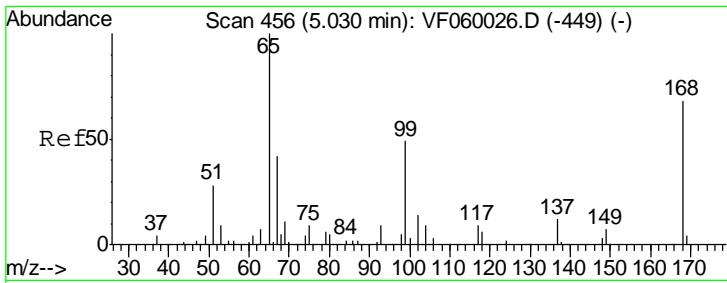
apatel
 8/27/2018 3:22:11 PM



#20
 Methylene Chloride
 Concen: 6.85 ug/l
 RT: 2.28 min Scan# 177
 Delta R.T. -0.00 min
 Lab File: VF060110.D
 Acq: 24 Aug 2018 19:58

Tgt Ion	Resp	Lower	Upper
84	10570		
84	100		
49	142.9	125.4	188.0
51	40.3	38.3	57.5
86	66.4	53.3	79.9





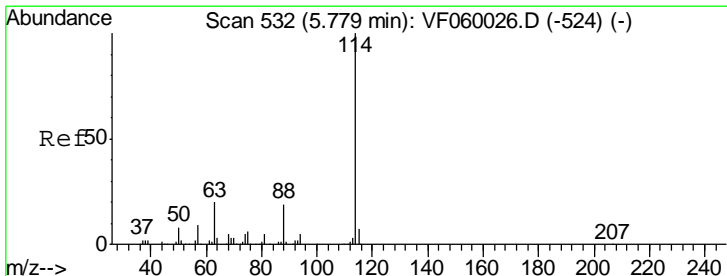
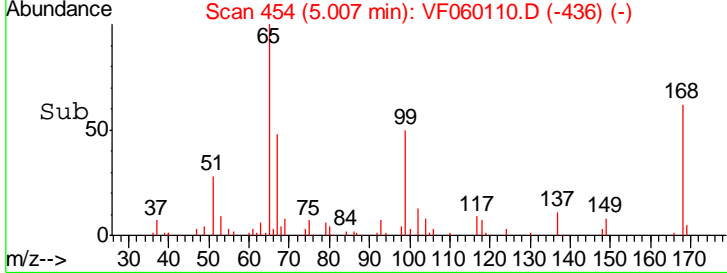
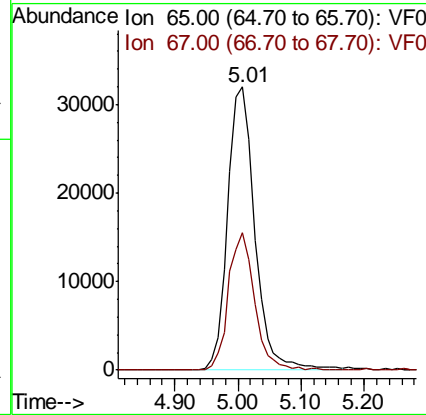
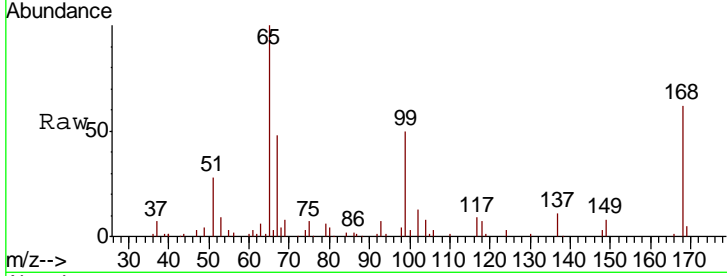
#33
 1,2-Dichloroethane-d4
 Concen: 53.11 ug/l
 RT: 5.01 min Scan# 454
 Delta R.T. -0.02 min
 Lab File: VF060110.D
 Acq: 24 Aug 2018 19:58

Instrument :
 MSVOA_F
ClientSampled :
 SU-02-082318-B

Tgt Ion	Resp	Lower	Upper
65	100		
67	48.4	0.0	92.0

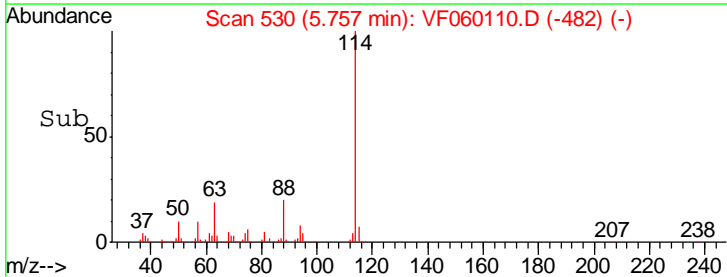
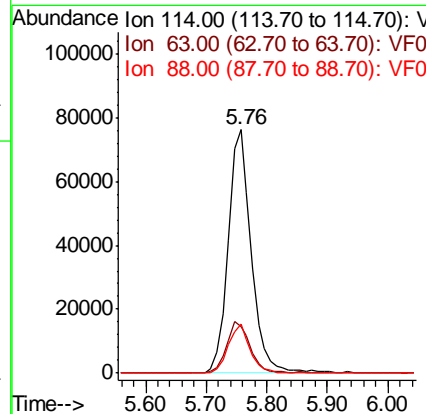
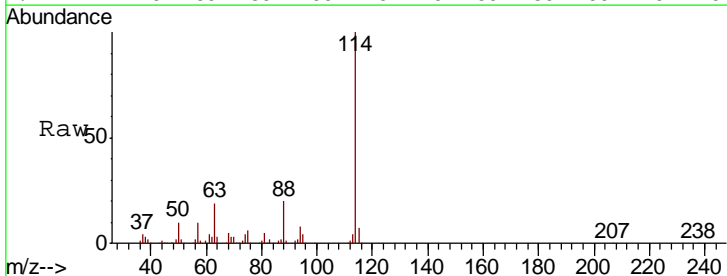
Manual Integrations
APPROVED

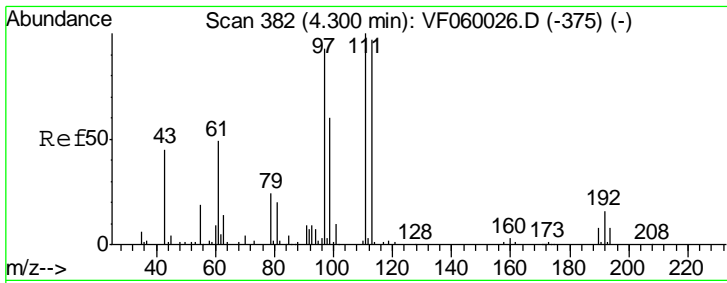
apatel
 8/27/2018 3:22:11 PM



#34
 1,4-Difluorobenzene
 Concen: 50.00 ug/l
 RT: 5.76 min Scan# 530
 Delta R.T. -0.02 min
 Lab File: VF060110.D
 Acq: 24 Aug 2018 19:58

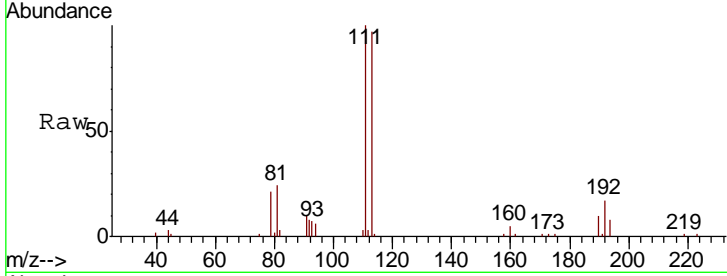
Tgt Ion	Resp	Lower	Upper
114	100		
63	19.3	0.0	40.4
88	20.0	0.0	38.6





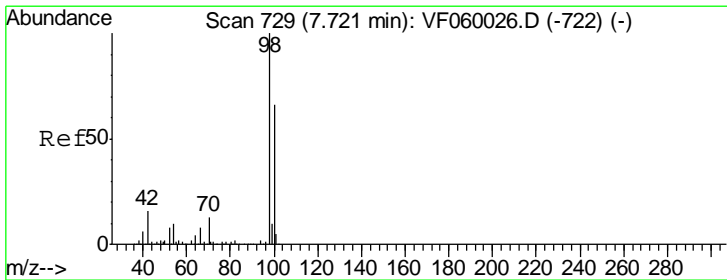
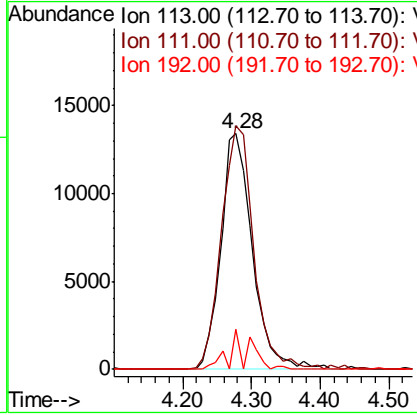
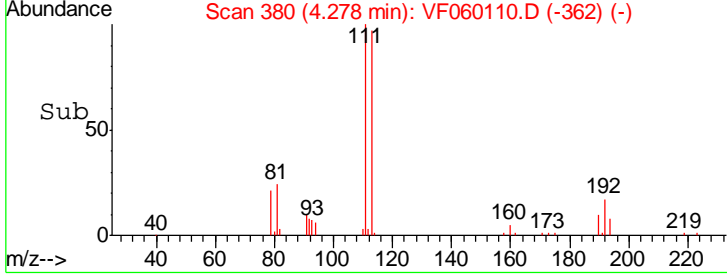
#35
 Dibromofluoromethane
 Concen: 27.00 ug/l
 RT: 4.28 min Scan# 380
 Delta R.T. -0.02 min
 Lab File: VF060110.D
 Acq: 24 Aug 2018 19:58

Instrument :
 MSVOA_F
 ClientSampled :
 SU-02-082318-B



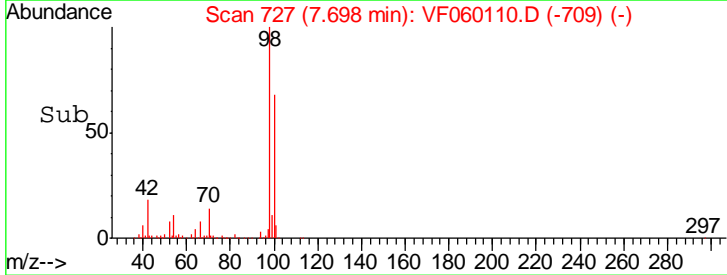
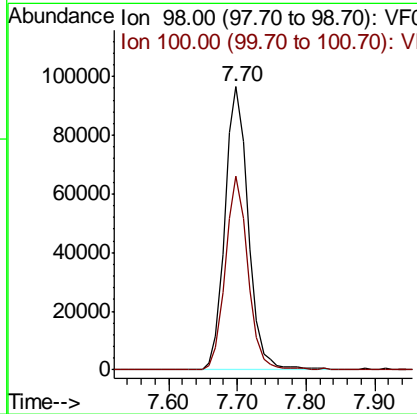
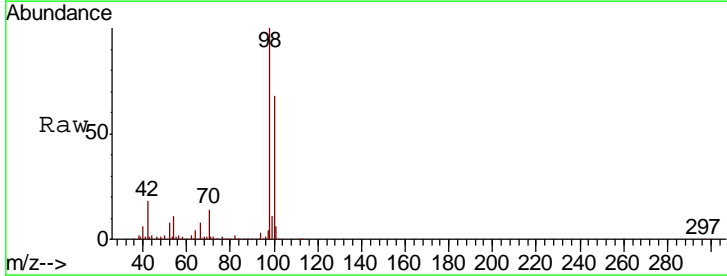
Tgt Ion	Resp	Lower	Upper
113	42613		
113	100		
111	103.3	82.7	124.1
192	17.3	13.0	19.4

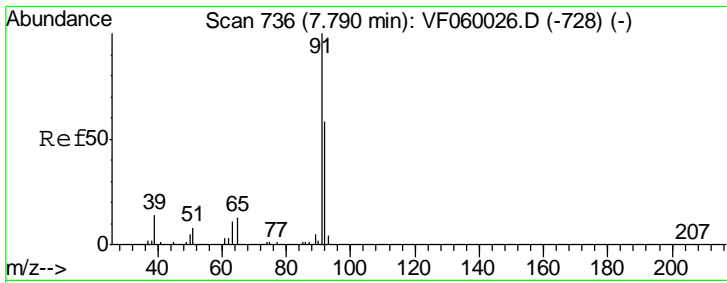
Manual Integrations
APPROVED
 apatel
 8/27/2018 3:22:11 PM



#50
 Toluene-d8
 Concen: 50.68 ug/l
 RT: 7.70 min Scan# 727
 Delta R.T. -0.02 min
 Lab File: VF060110.D
 Acq: 24 Aug 2018 19:58

Tgt Ion	Resp	Lower	Upper
98	227134		
98	100		
100	68.5	53.2	79.8



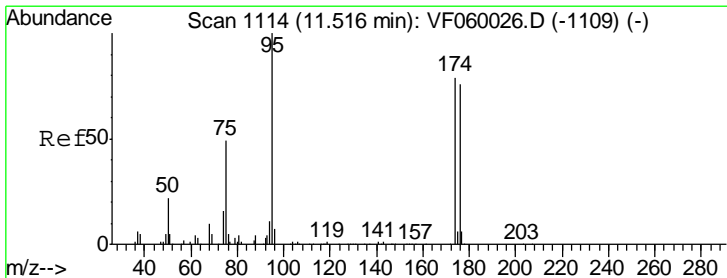
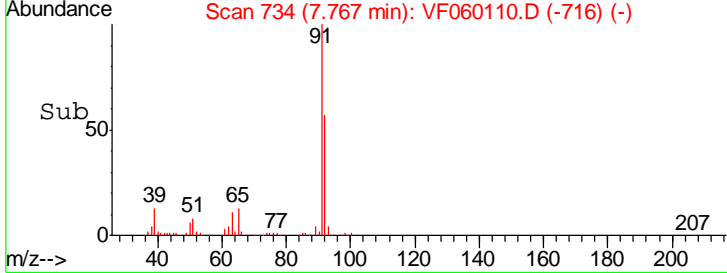
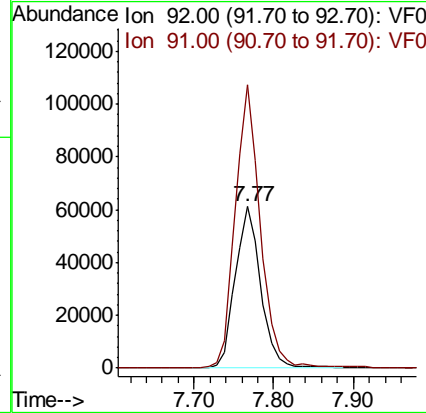
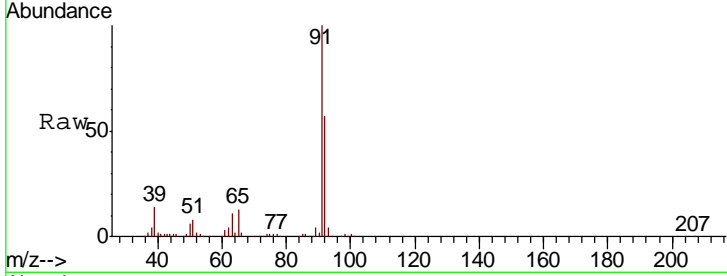


#52
 Toluene
 Concen: 51.91 ug/l
 RT: 7.77 min Scan# 734
 Delta R.T. -0.02 min
 Lab File: VF060110.D
 Acq: 24 Aug 2018 19:58

Instrument :
 MSVOA_F
ClientSampled :
 SU-02-082318-B

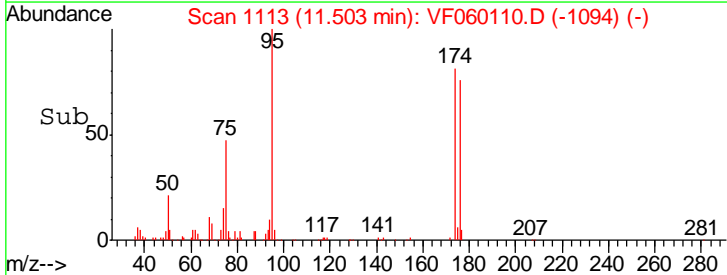
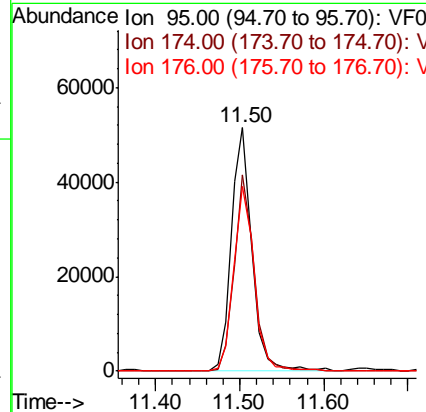
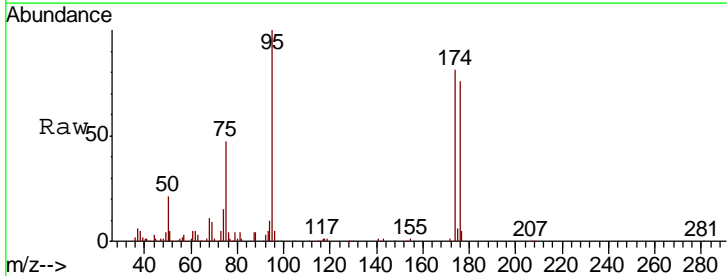
Tgt Ion	Resp	Lower	Upper
92	137263		
92	100		
91	175.6	137.7	206.5

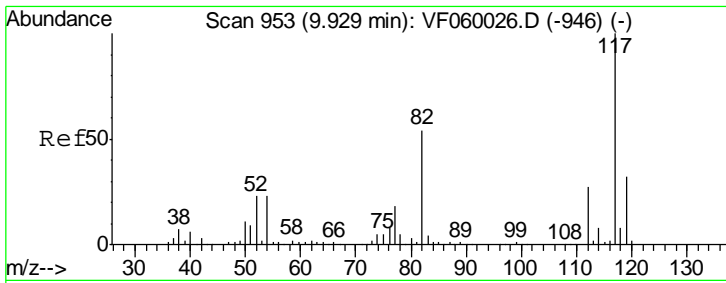
Manual Integrations
APPROVED
 apatel
 8/27/2018 3:22:11 PM



#62
 4-Bromofluorobenzene
 Concen: 36.73 ug/l
 RT: 11.50 min Scan# 1113
 Delta R.T. -0.01 min
 Lab File: VF060110.D
 Acq: 24 Aug 2018 19:58

Tgt Ion	Resp	Lower	Upper
95	87087		
95	100		
174	80.9	0.0	158.4
176	76.1	0.0	153.0





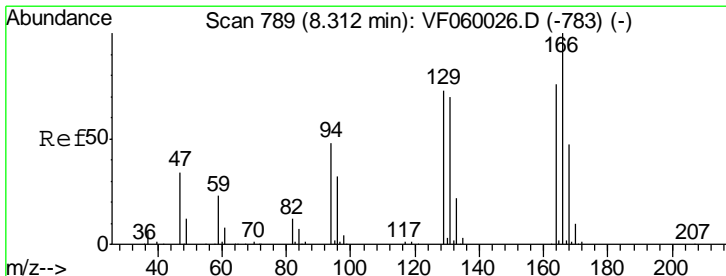
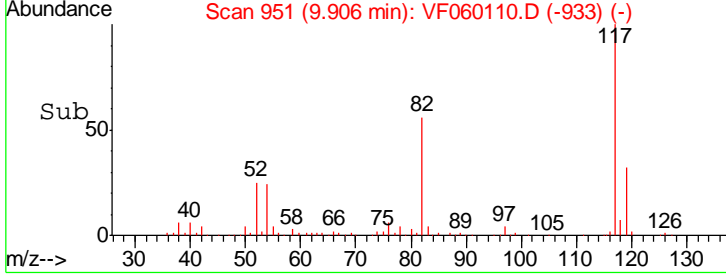
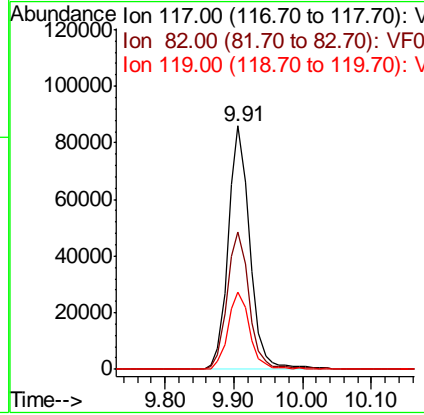
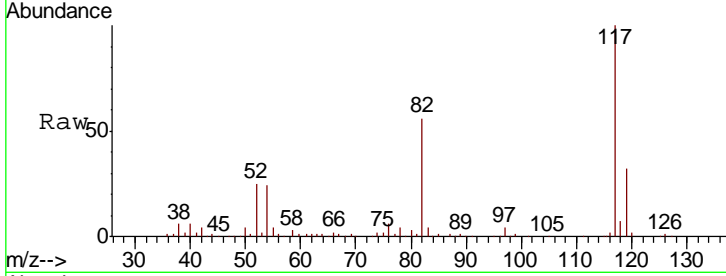
#63
 Chlorobenzene-d5
 Concen: 50.00 ug/l
 RT: 9.91 min Scan# 951
 Delta R.T. -0.02 min
 Lab File: VF060110.D
 Acq: 24 Aug 2018 19:58

Instrument :
 MSVOA_F
 ClientSampled :
 SU-02-082318-B

Tgt Ion	Resp	Lower	Upper
117	186590		
82	56.4	43.6	65.4
119	31.8	25.6	38.4

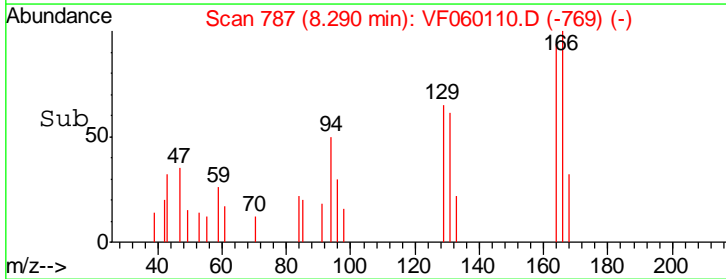
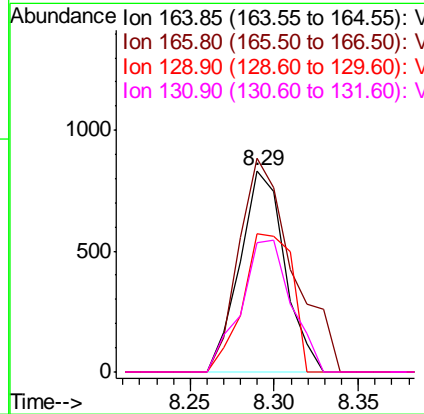
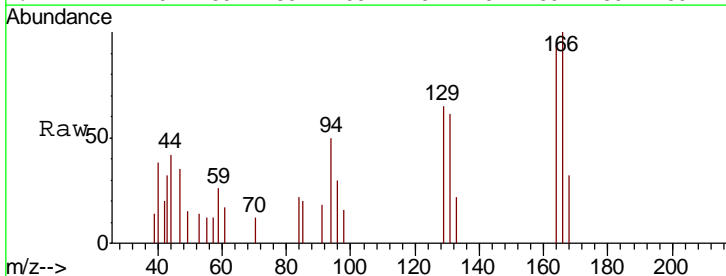
Manual Integrations
 APPROVED

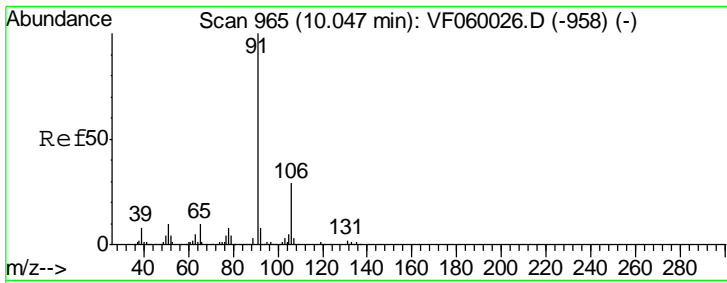
apatel
 8/27/2018 3:22:11 PM



#64
 Tetrachloroethene
 Concen: 1.23 ug/l
 RT: 8.29 min Scan# 787
 Delta R.T. -0.02 min
 Lab File: VF060110.D
 Acq: 24 Aug 2018 19:58

Tgt Ion	Resp	Lower	Upper
164	1540		
166	106.1	104.7	157.1
129	68.8	77.0	115.4#
131	64.5	72.9	109.3#





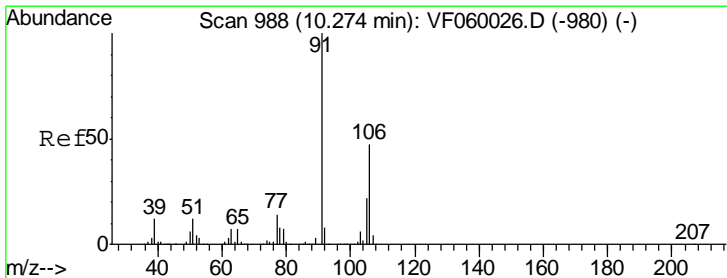
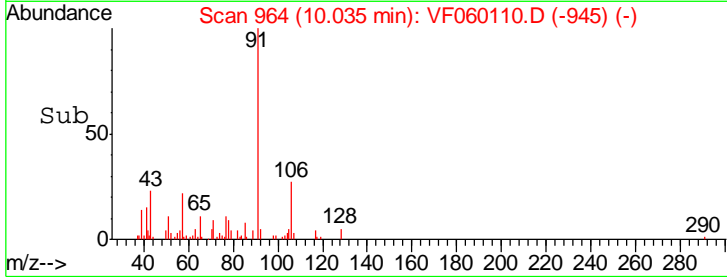
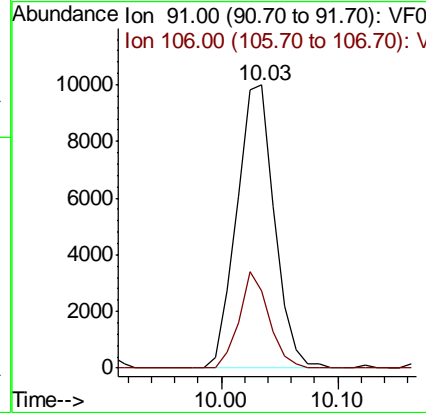
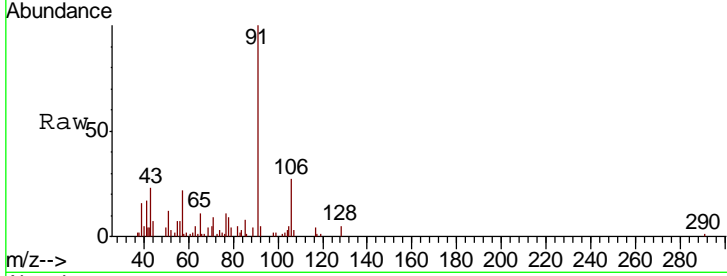
#67
 Ethyl Benzene
 Concen: 3.69 ug/l
 RT: 10.03 min Scan# 964
 Delta R.T. -0.01 min
 Lab File: VF060110.D
 Acq: 24 Aug 2018 19:58

Instrument : MSVOA_F
 ClientSampled : SU-02-082318-B

Tgt Ion	Resp	Lower	Upper
91	100		
106	27.4	23.6	35.4

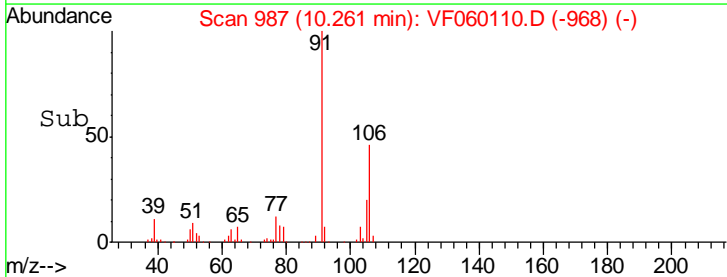
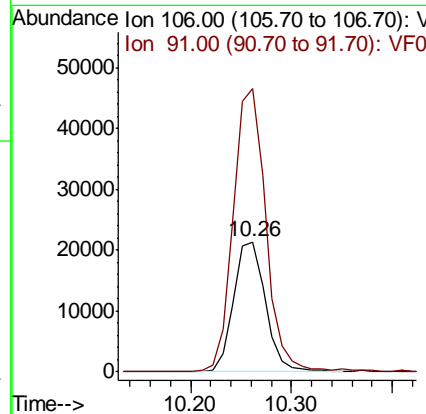
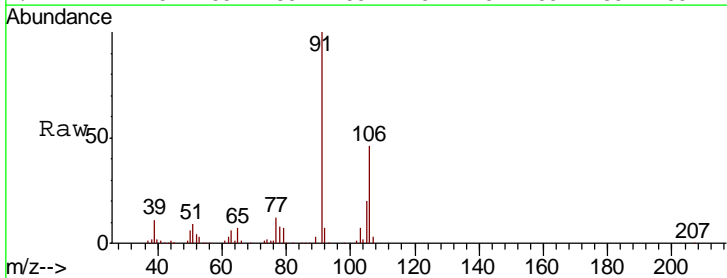
Manual Integrations
 APPROVED

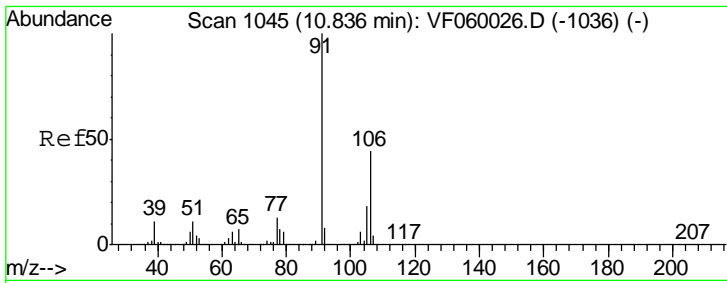
apatel
 8/27/2018 3:22:11 PM



#68
 m/p-Xylenes
 Concen: 15.63 ug/l
 RT: 10.26 min Scan# 987
 Delta R.T. -0.01 min
 Lab File: VF060110.D
 Acq: 24 Aug 2018 19:58

Tgt Ion	Resp	Lower	Upper
106	100		
91	217.2	171.8	257.8





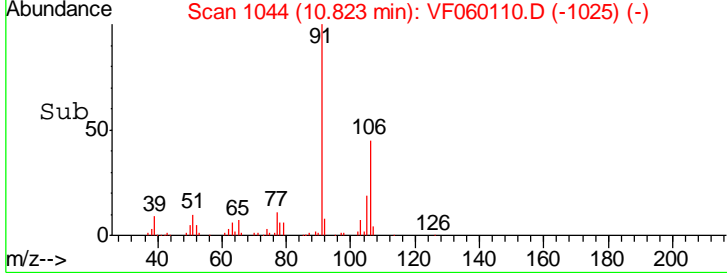
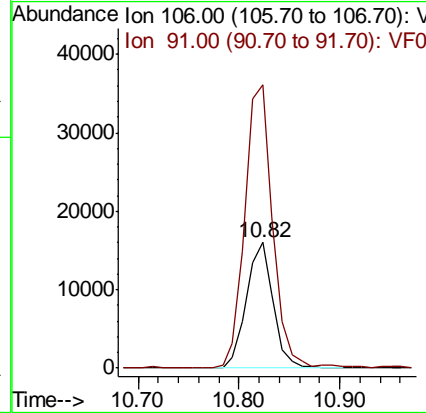
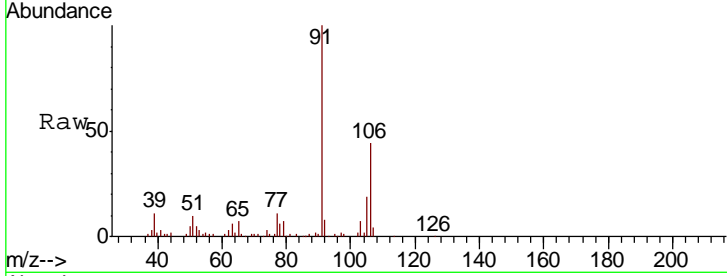
#69
 o-Xylene
 Concen: 12.47 ug/l
 RT: 10.82 min Scan# 1044
 Delta R.T. -0.01 min
 Lab File: VF060110.D
 Acq: 24 Aug 2018 19:58

Instrument : MSVOA_F
 Client Sampled : SU-02-082318-B

Tgt Ion	Resp	Lower	Upper
106	29704		
106	100		
91	224.8	112.5	337.5

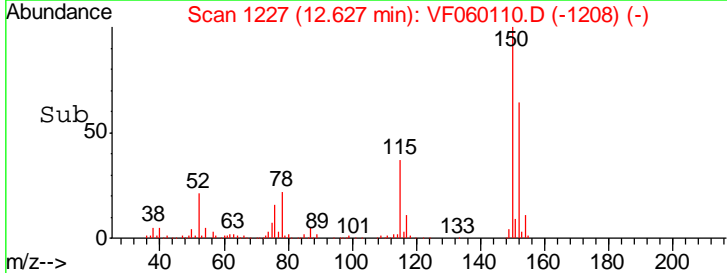
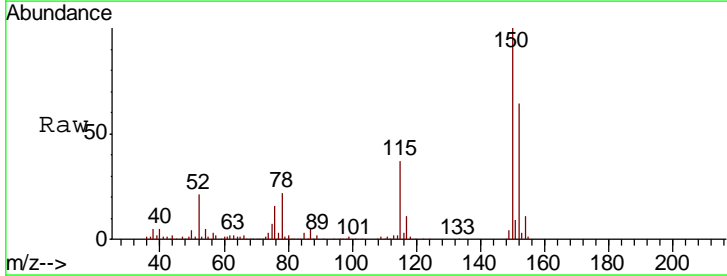
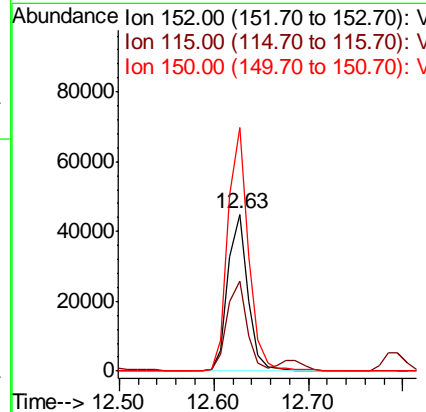
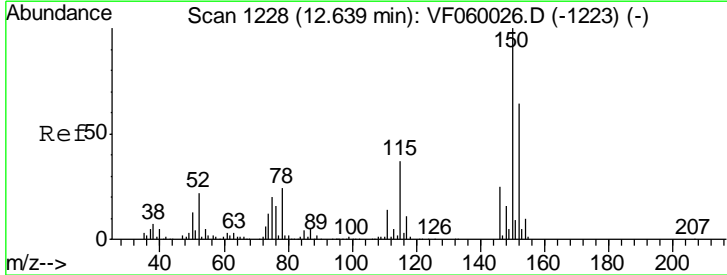
Manual Integrations
 APPROVED

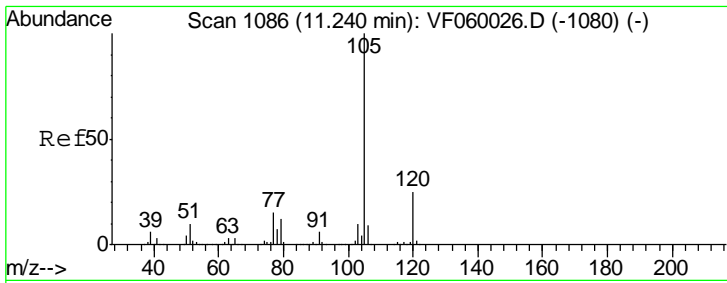
apatel
 8/27/2018 3:22:11 PM



#72
 1,4-Dichlorobenzene-d4
 Concen: 50.00 ug/l
 RT: 12.63 min Scan# 1227
 Delta R.T. -0.01 min
 Lab File: VF060110.D
 Acq: 24 Aug 2018 19:58

Tgt Ion	Resp	Lower	Upper
152	66290		
152	100		
115	57.1	28.6	85.9
150	155.4	0.0	312.0



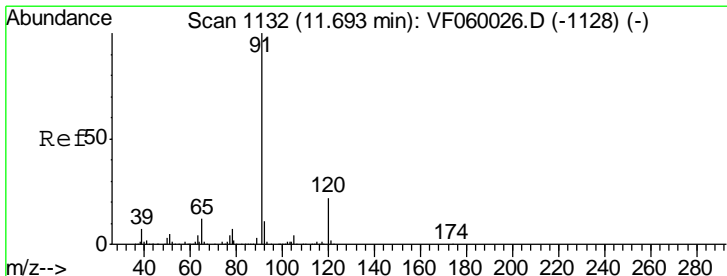
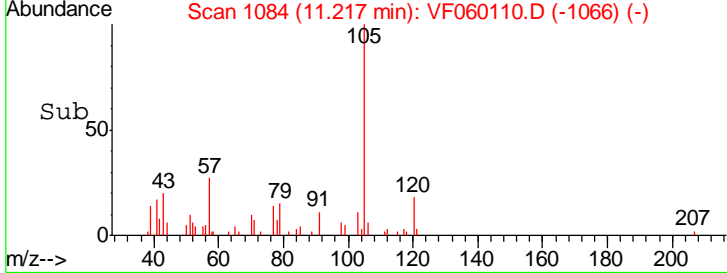
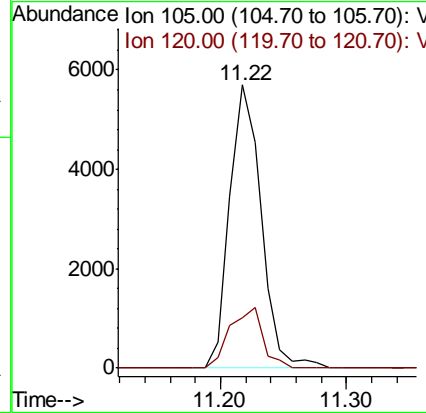
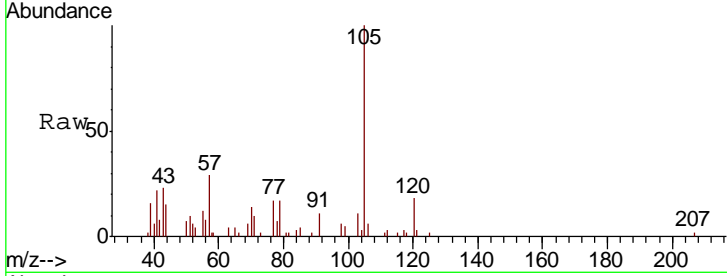


#73
 Isopropylbenzene
 Concen: 2.46 ug/l
 RT: 11.22 min Scan# 1084
 Delta R.T. -0.02 min
 Lab File: VF060110.D
 Acq: 24 Aug 2018 19:58

Instrument : MSVOA_F
 Client Sampled : SU-02-082318-B

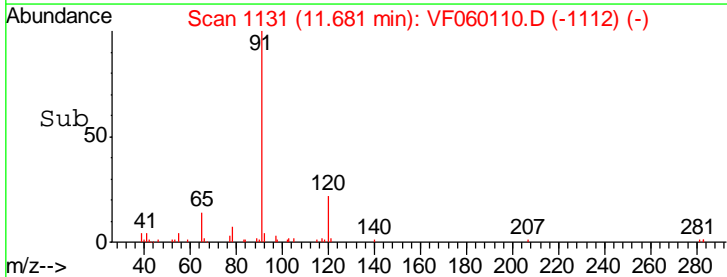
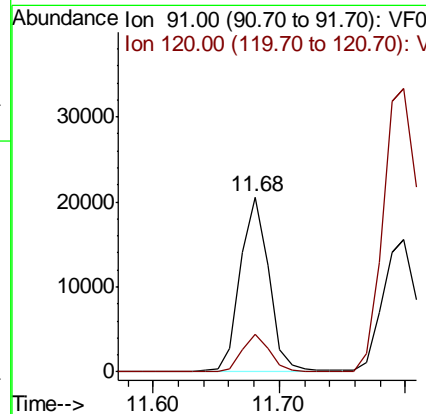
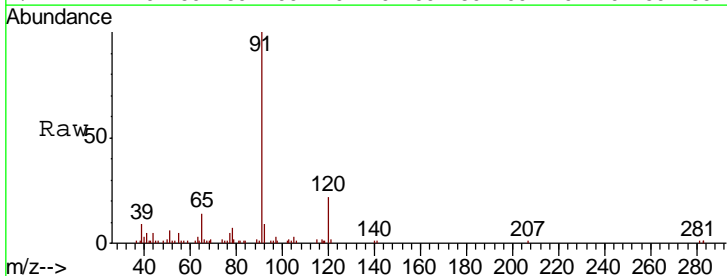
Tgt Ion	Resp	Lower	Upper
105	100		
120	17.6	12.7	38.0

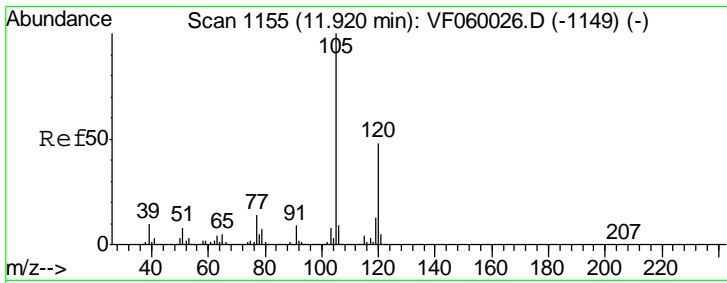
Manual Integrations
APPROVED
 apatel
 8/27/2018 3:22:11 PM



#78
 n-propylbenzene
 Concen: 6.59 ug/l
 RT: 11.68 min Scan# 1131
 Delta R.T. -0.01 min
 Lab File: VF060110.D
 Acq: 24 Aug 2018 19:58

Tgt Ion	Resp	Lower	Upper
91	100		
120	21.7	10.9	32.7





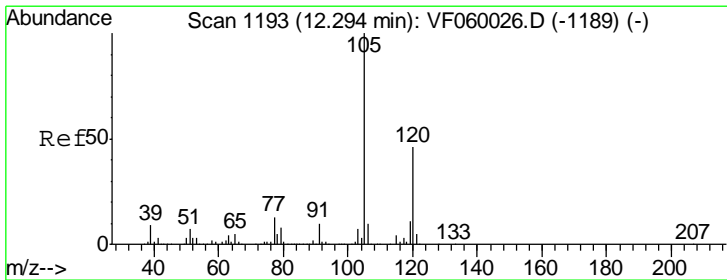
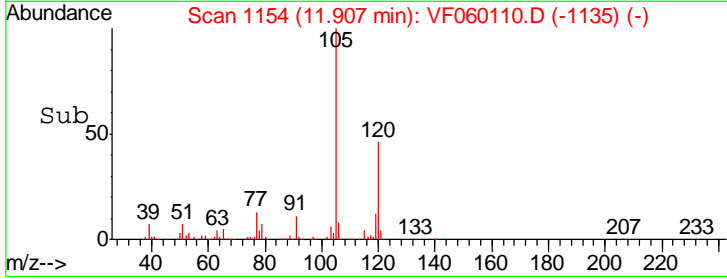
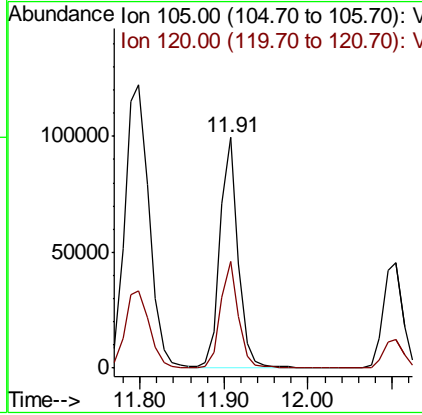
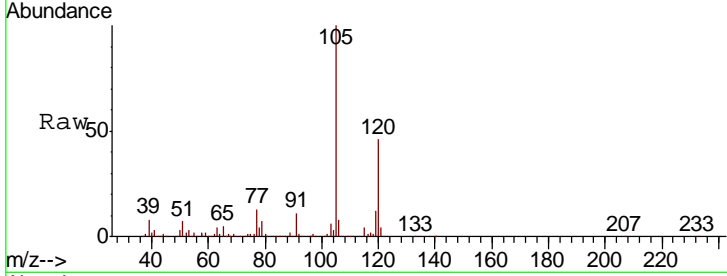
#80
 1,3,5-Trimethylbenzene
 Concen: 42.99 ug/l
 RT: 11.91 min Scan# 1154
 Delta R.T. -0.01 min
 Lab File: VF060110.D
 Acq: 24 Aug 2018 19:58

Instrument : MSVOA_F
 ClientSampled : SU-02-082318-B

Tgt Ion	Resp	Lower	Upper
105	149434		
120	46.1	23.8	71.5

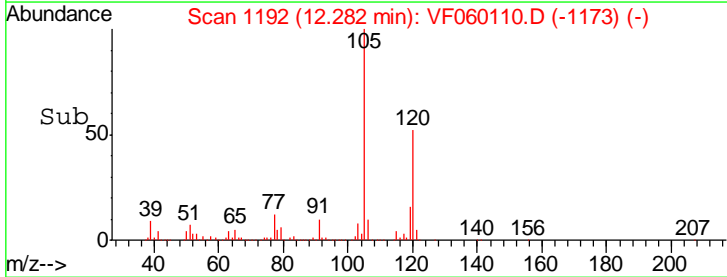
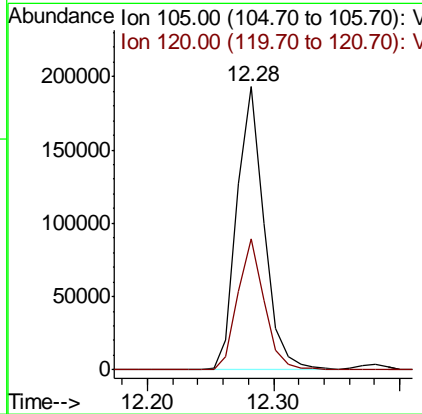
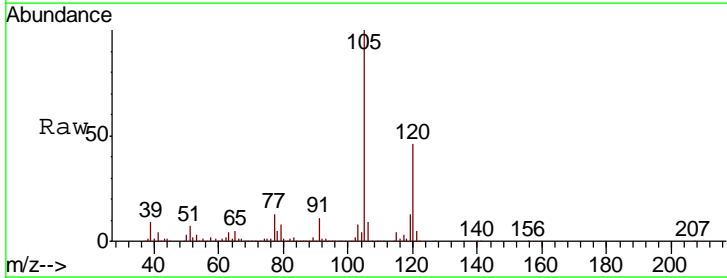
Manual Integrations
 APPROVED

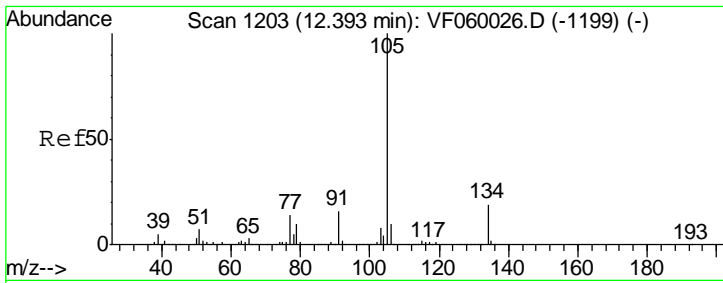
apatel
 8/27/2018 3:22:11 PM



#84
 1,2,4-Trimethylbenzene
 Concen: 78.00 ug/l
 RT: 12.28 min Scan# 1192
 Delta R.T. -0.01 min
 Lab File: VF060110.D
 Acq: 24 Aug 2018 19:58

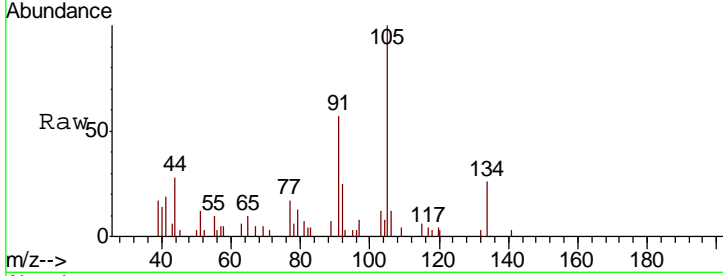
Tgt Ion	Resp	Lower	Upper
105	288270		
120	46.5	23.3	69.8





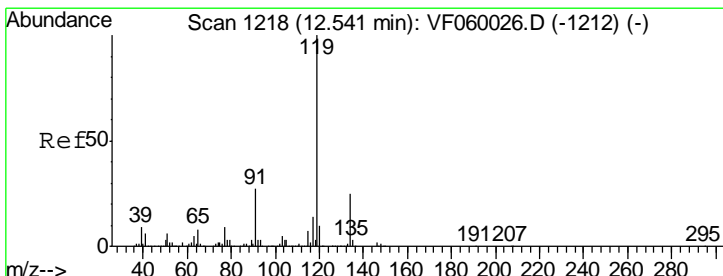
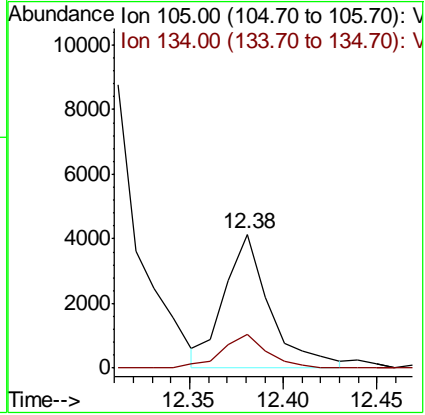
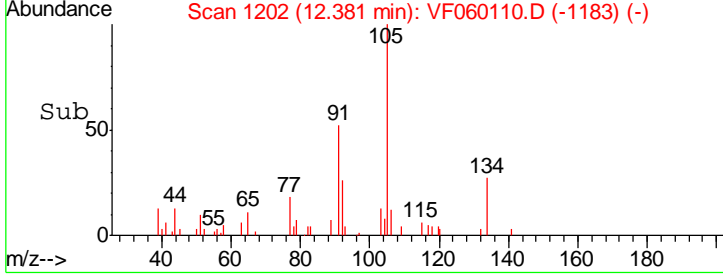
#85
 sec-Butylbenzene
 Concen: 1.48 ug/l m
 RT: 12.38 min Scan# 1202
 Delta R.T. -0.01 min
 Lab File: VF060110.D
 Acq: 24 Aug 2018 19:58

Instrument : MSVOA_F
 Client Sampled : SU-02-082318-B

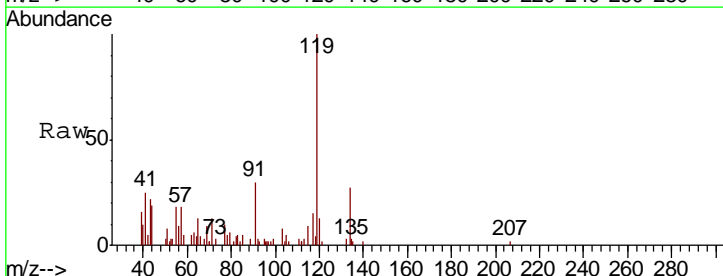


Tgt Ion	Resp	Lower	Upper
105	100		
134	25.6	9.3	27.9

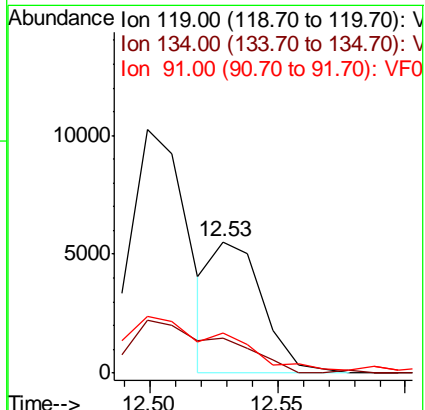
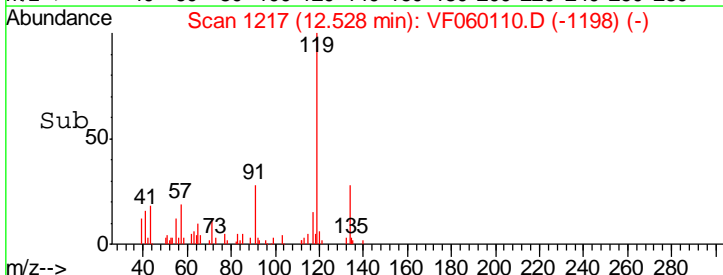
Manual Integrations
APPROVED
 apatel
 8/27/2018 3:22:11 PM

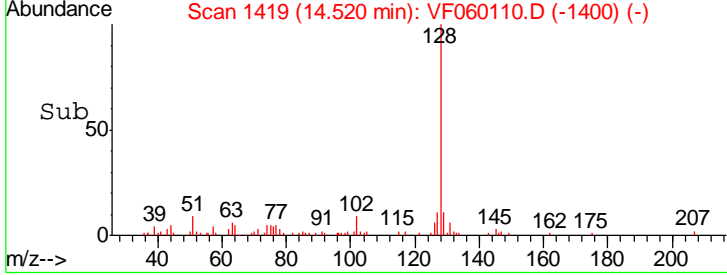
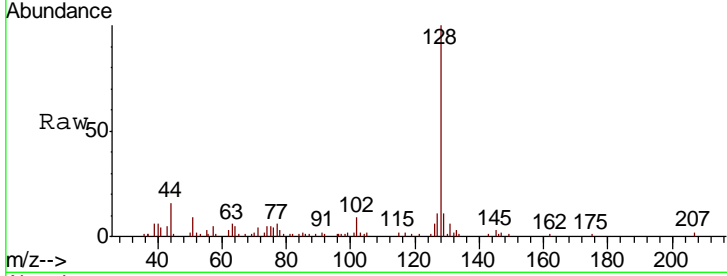
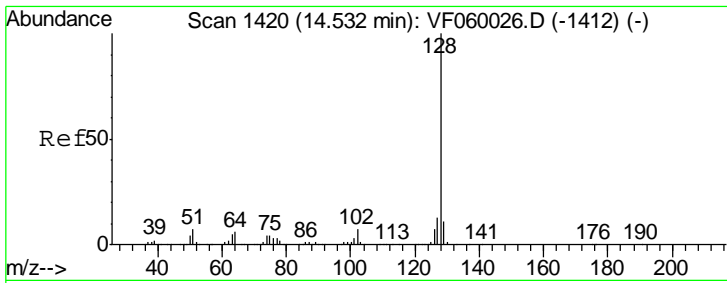


#86
 p-Isopropyltoluene
 Concen: 1.94 ug/l m
 RT: 12.53 min Scan# 1217
 Delta R.T. -0.01 min
 Lab File: VF060110.D
 Acq: 24 Aug 2018 19:58



Tgt Ion	Resp	Lower	Upper
119	100		
134	27.1	12.4	37.2
91	30.3	13.5	40.4





#95
 Naphthalene
 Concen: 10.04 ug/l
 RT: 14.52 min Scan# 1419
 Delta R.T. -0.01 min
 Lab File: VF060110.D
 Acq: 24 Aug 2018 19:58

Tot Ion	Ratio	Lower	Upper
128	100		
127	11.4	10.4	15.6
129	11.4	8.5	12.7

Instrument : MSVOA_F
 ClientSampled : SU-02-082318-B

Manual Integrations
 APPROVED
 apatel
 8/27/2018 3:22:11 PM

