

Data Path : Z:\VOASRV\HPCHEM1\MSVOA F\DATA\VF082718\  
 Data File : VF060121.D  
 Acq On : 27 Aug 2018 13:18  
 Operator : VA/AP  
 Sample : VF0827SBL01  
 Misc : 5.00µ/5mL/MSVOA F/SOIL  
 ALS Vial : 3 Sample Multiplier: 1

Instrument :  
 MSVOA\_F  
 ClientSampleId :

Quant Time: Aug 27 14:04:17 2018  
 Quant Method : Z:\VOASRV\HPCHEM1\MSVOA\_F\METHODS\82F082118S.M  
 Quant Title : SW846 8260  
 QLast Update : Wed Aug 22 04:43:43 2018  
 Response via : Initial Calibration

Internal Standards	R.T.	QIon	Response	Conc	Units	Dev(Min)
1) Pentafluorobenzene	5.04	168	180508	50.00	µg/l	0.00
34) 1,4-Difluorobenzene	5.76	114	242947	50.00	µg/l	-0.02
63) Chlorobenzene-d5	9.91	117	273988	50.00	µg/l	-0.02
72) 1,4-Dichlorobenzene-d4	12.63	152	174976	50.00	µg/l	0.00

## System Monitoring Compounds

33) 1,2-Dichloroethane-d4	5.01	65	116023	46.96	µg/l	-0.02
Spiked Amount	50.000					
			Recovery	=	93.92%	
35) Dibromofluoromethane	4.28	113	111008	58.19	µg/l	-0.02
Spiked Amount	50.000					
			Recovery	=	116.38%	
50) Toluene-d8	7.70	98	270204	49.87	µg/l	-0.02
Spiked Amount	50.000					
			Recovery	=	99.74%	
62) 4-Bromofluorobenzene	11.51	95	155422	54.23	µg/l	0.00
Spiked Amount	50.000					
			Recovery	=	108.46%	

## Target Compounds

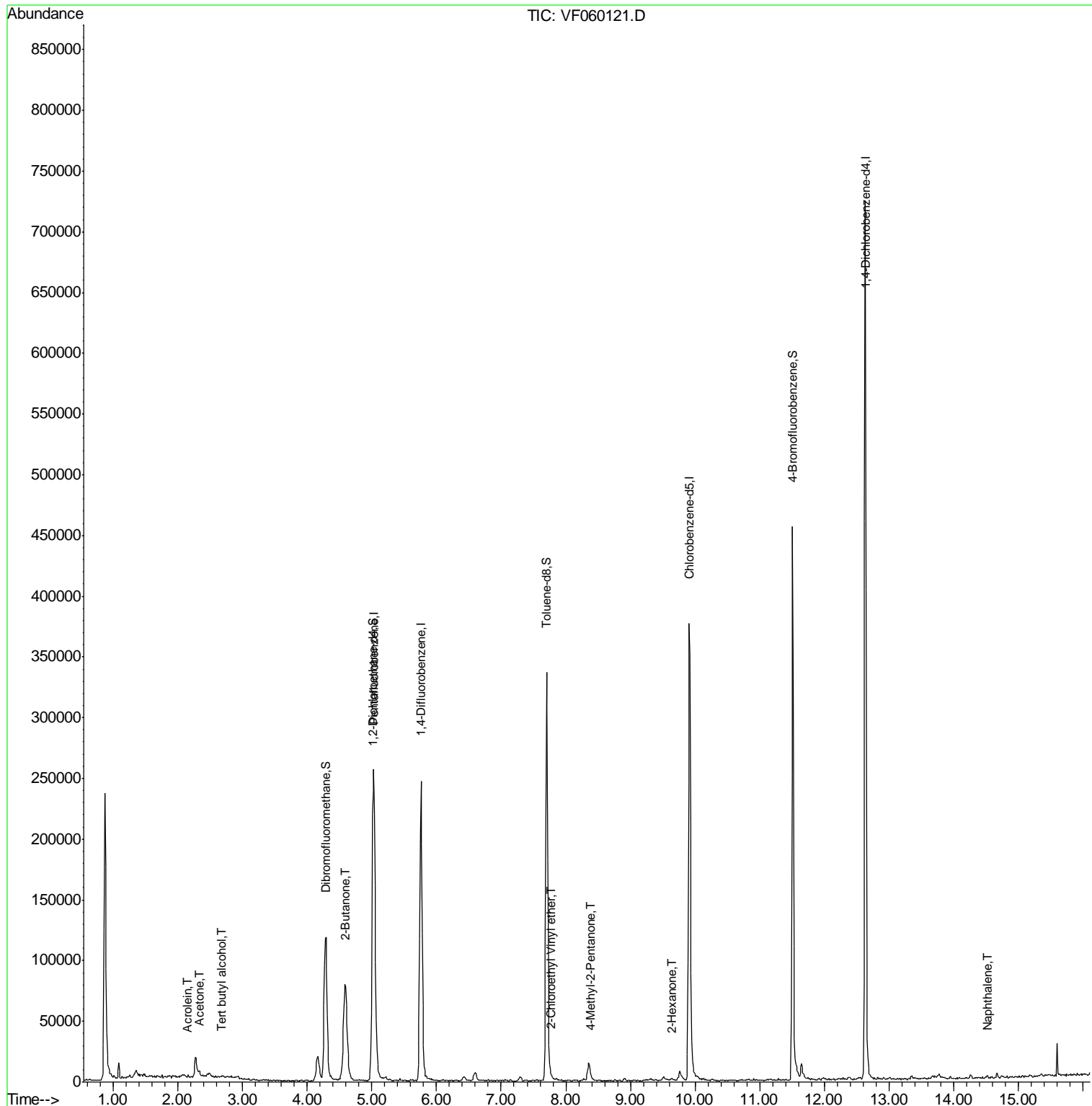
					Qvalue
3) Chloromethane	1.08	50	1373	Below Cal	92
11) Tert butyl alcohol	2.67	59	559	4.253 µg/l #	80
13) Acrolein	2.14	56	279	29.432 µg/l	90
16) Acetone	2.33	43	3456	5.323 µg/l #	91
18) Methyl Acetate	2.48	43	1421	Below Cal #	60
25) 2-Butanone	4.59	43	6917	8.202 µg/l #	20
51) 4-Methyl-2-Pentanone	8.40	43	1701	1.146 µg/l	94
52) Toluene	7.76	92	126	Below Cal #	52
58) 2-Chloroethyl Vinyl ether	7.78	63	164	1.268 µg/l	100
59) 2-Hexanone	9.63	43	1317	1.096 µg/l	72
68) m/p-Xylenes	10.27	106	295	Below Cal #	72
95) Naphthalene	14.52	128	1341	2.483 µg/l #	69

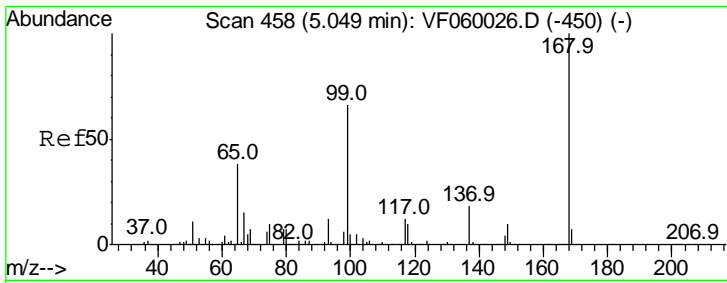
(#) = qualifier out of range (m) = manual integration (+) = signals summed

Data Path : Z:\VOASRV\HPCHEM1\MSVOA F\DATA\VF082718\  
 Data File : VF060121.D  
 Acq On : 27 Aug 2018 13:18  
 Operator : VA/AP  
 Sample : VF0827SBL01  
 Misc : 5.00µ/5mL/MSVOA F/SOIL  
 ALS Vial : 3 Sample Multiplier: 1

Instrument :  
 MSVOA\_F  
 ClientSampled :

Quant Time: Aug 27 14:04:17 2018  
 Quant Method : Z:\VOASRV\HPCHEM1\MSVOA\_F\METHODS\82F082118S.M  
 Quant Title : SW846 8260  
 QLast Update : Wed Aug 22 04:43:43 2018  
 Response via : Initial Calibration

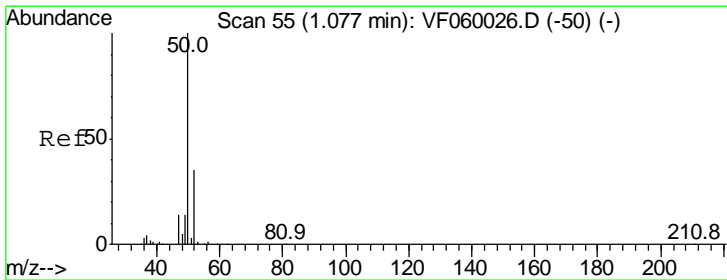
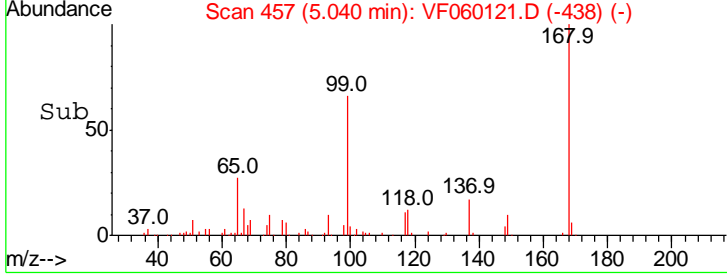
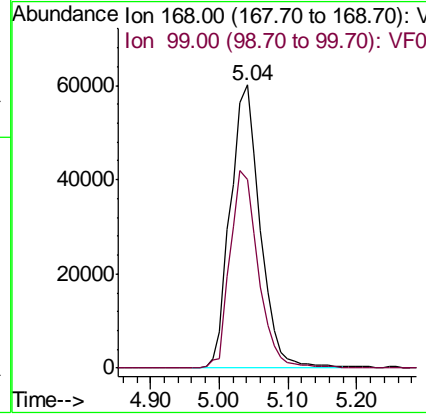
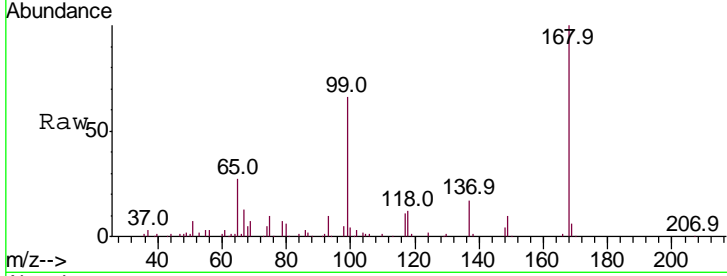




#1  
 Pentafluorobenzene  
 Concen: 50.000 ug/l  
 RT: 5.04 min Scan# 457  
 Delta R.T. -0.01 min  
 Lab File: VF060121.D  
 Acq: 27 Aug 2018 13:18

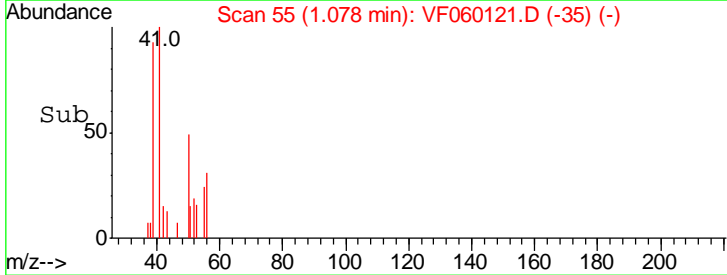
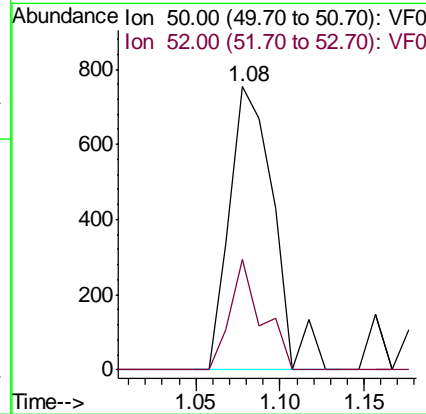
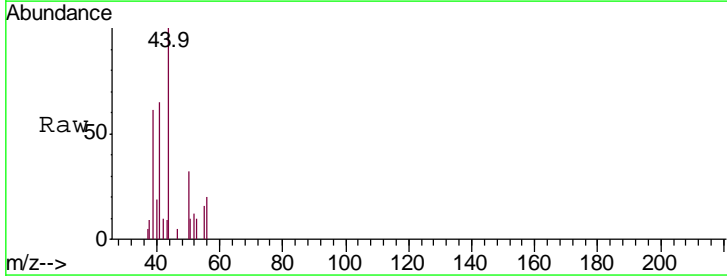
Instrument :  
 MSVOA\_F  
 ClientSampled :

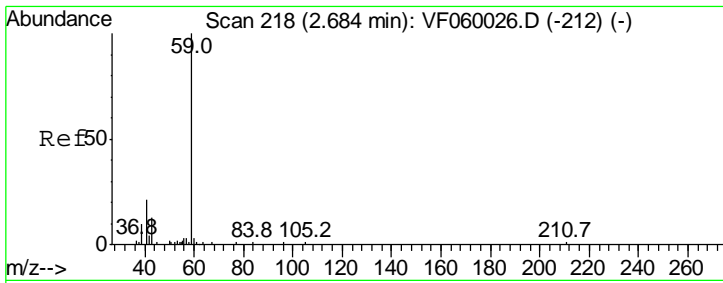
Tgt Ion	Resp	Lower	Upper
168	100		
99	66.5	52.6	79.0



#3  
 Chloromethane  
 Concen: Below Cal  
 RT: 1.08 min Scan# 55  
 Delta R.T. 0.00 min  
 Lab File: VF060121.D  
 Acq: 27 Aug 2018 13:18

Tgt Ion	Resp	Lower	Upper
50	100		
52	38.9	27.6	41.4

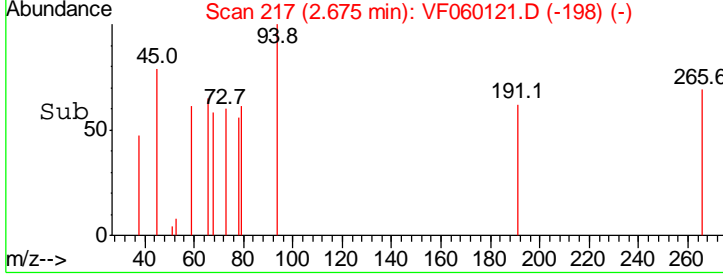
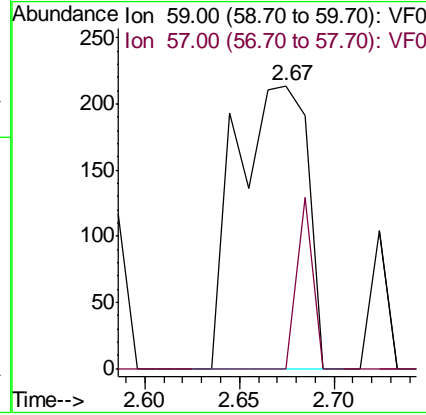
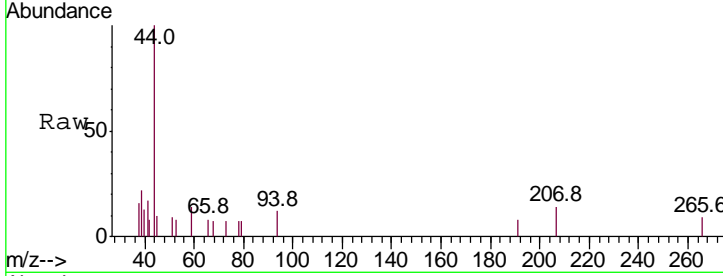




#11  
 Tert butyl alcohol  
 Concen: 4.253 ug/l  
 RT: 2.67 min Scan# 217  
 Delta R.T. -0.01 min  
 Lab File: VF060121.D  
 Acq: 27 Aug 2018 13:18

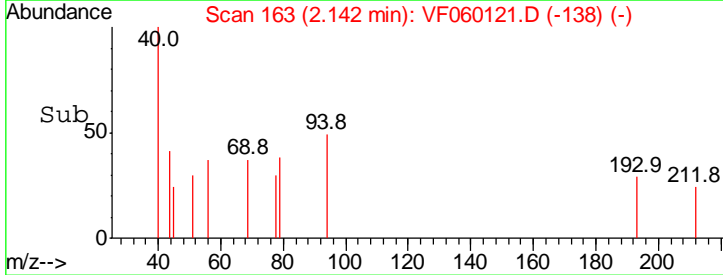
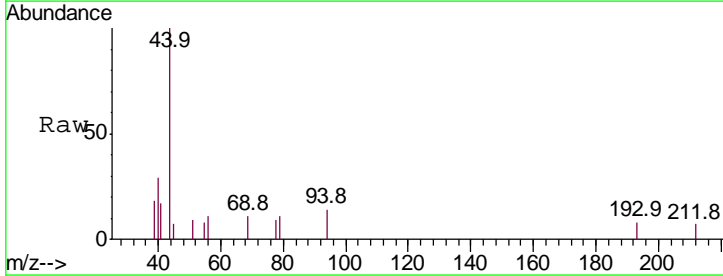
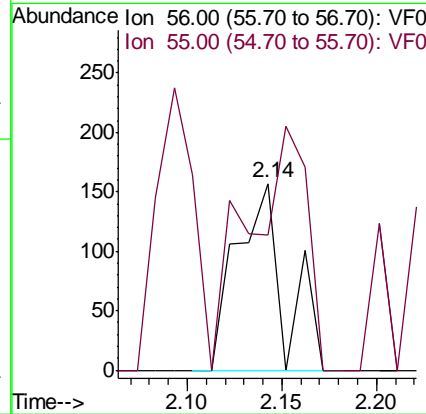
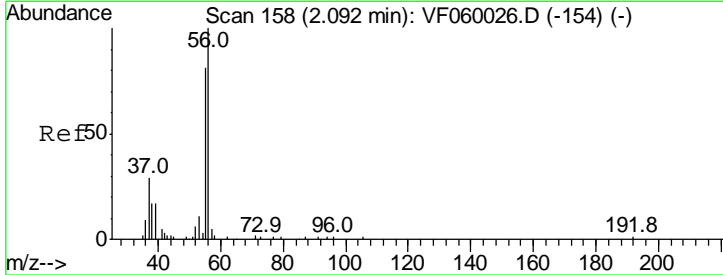
Instrument :  
 MSVOA\_F  
 ClientSampled :

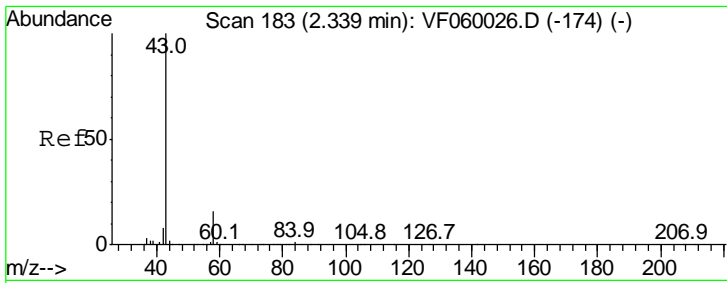
Tgt Ion	Resp	Lower	Upper
59	100		
57	0.0	5.4	8.2#



#13  
 Acrolein  
 Concen: 29.432 ug/l  
 RT: 2.14 min Scan# 163  
 Delta R.T. 0.05 min  
 Lab File: VF060121.D  
 Acq: 27 Aug 2018 13:18

Tgt Ion	Resp	Lower	Upper
56	100		
55	72.6	65.6	98.4

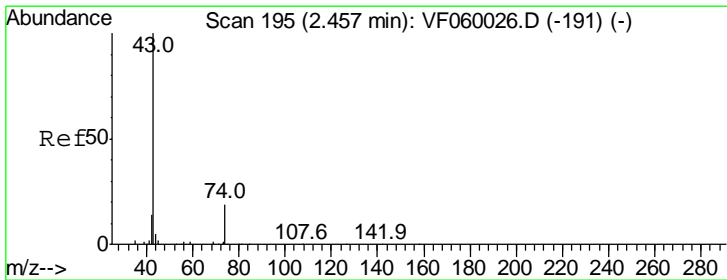
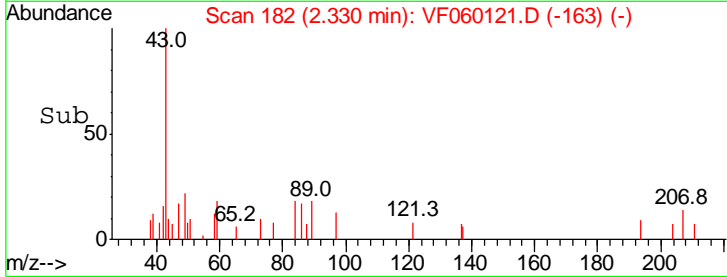
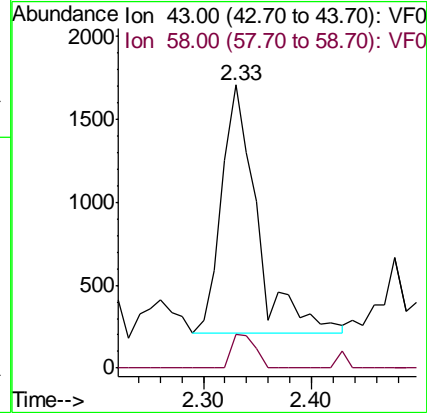
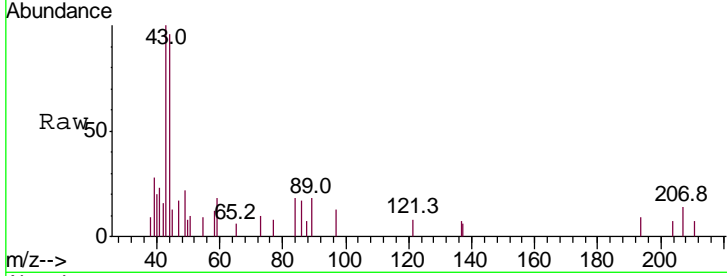




#16  
 Acetone  
 Concen: 5.323 ug/l  
 RT: 2.33 min Scan# 182  
 Delta R.T. -0.01 min  
 Lab File: VF060121.D  
 Acq: 27 Aug 2018 13:18

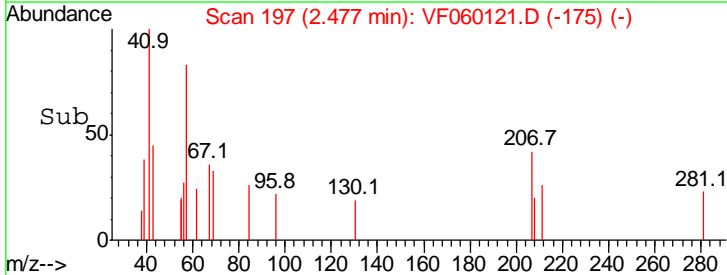
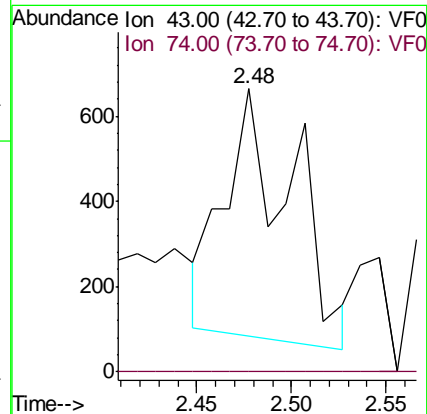
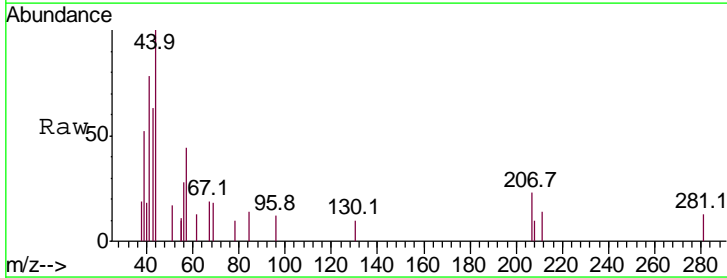
Instrument :  
 MSVOA\_F  
 ClientSampled :

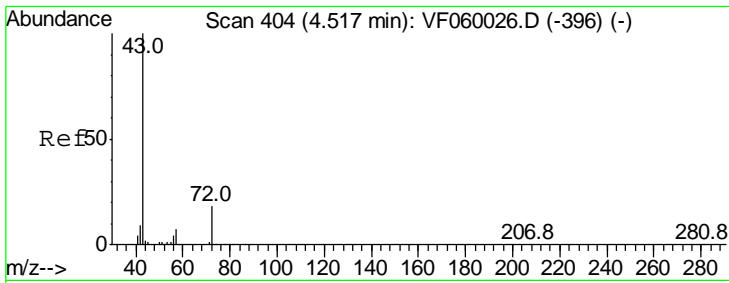
Tgt Ion	Ratio	Lower	Upper
43	100		
58	11.8	12.6	19.0#



#18  
 Methyl Acetate  
 Concen: Below Cal  
 RT: 2.48 min Scan# 197  
 Delta R.T. 0.02 min  
 Lab File: VF060121.D  
 Acq: 27 Aug 2018 13:18

Tgt Ion	Ratio	Lower	Upper
43	100		
74	0.0	13.8	20.6#

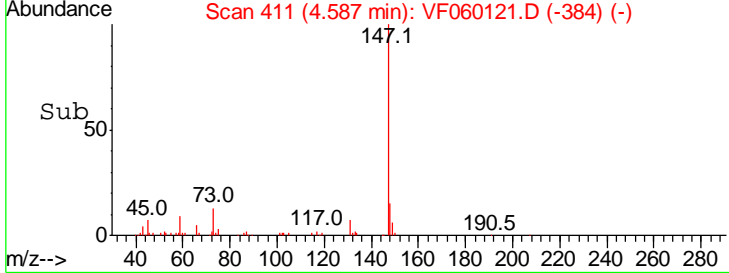
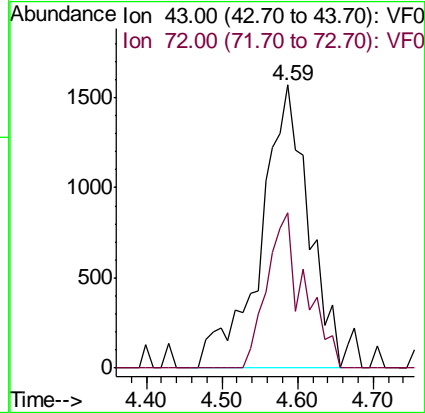
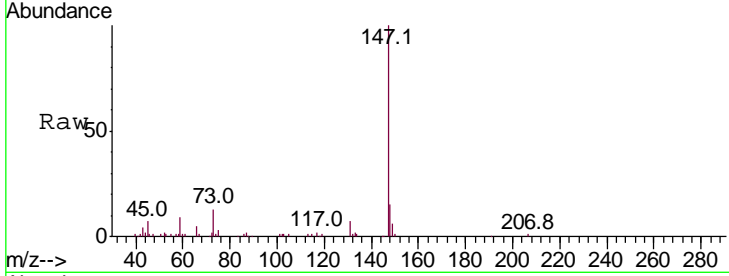




#25  
 2-Butanone  
 Concen: 8.202 ug/l  
 RT: 4.59 min Scan# 411  
 Delta R.T. 0.07 min  
 Lab File: VF060121.D  
 Acq: 27 Aug 2018 13:18

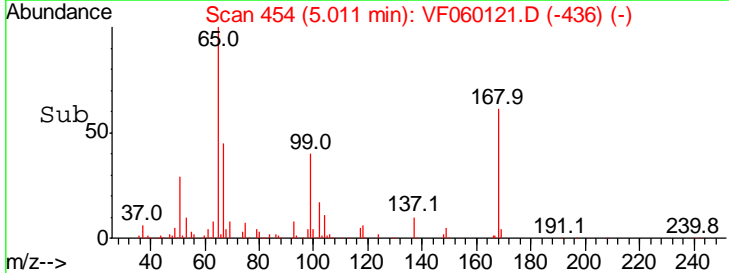
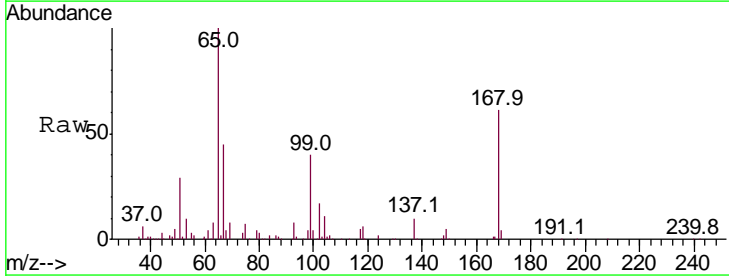
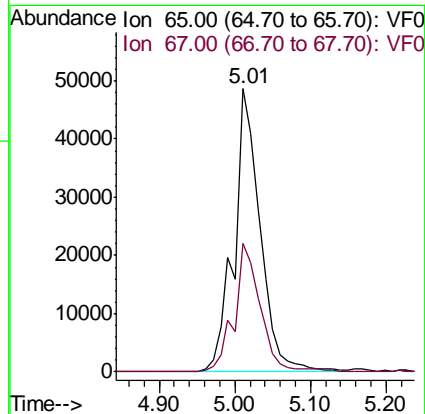
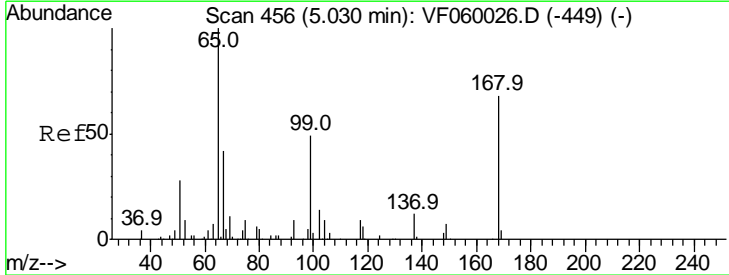
Instrument :  
 MSVOA\_F  
 ClientSampled :

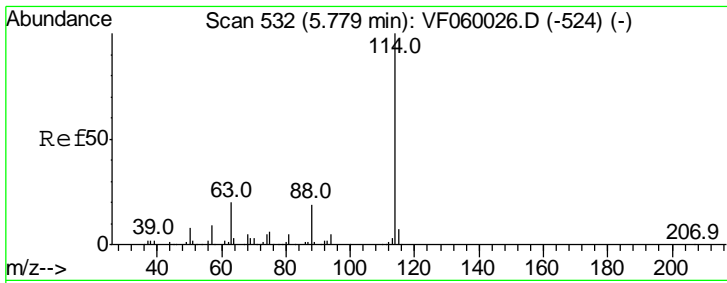
Tgt Ion	Resp	Lower	Upper
43	100		
72	54.7	15.0	22.6#



#33  
 1,2-Dichloroethane-d4  
 Concen: 46.964 ug/l  
 RT: 5.01 min Scan# 454  
 Delta R.T. -0.02 min  
 Lab File: VF060121.D  
 Acq: 27 Aug 2018 13:18

Tgt Ion	Resp	Lower	Upper
65	100		
67	45.3	0.0	92.0

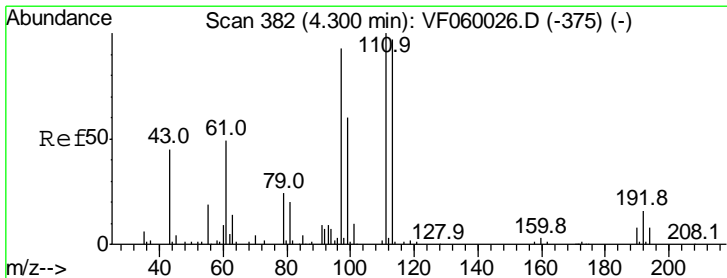
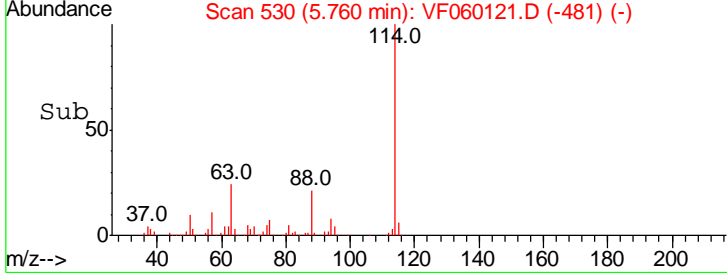
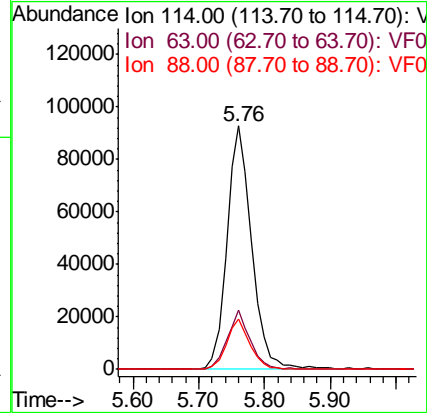
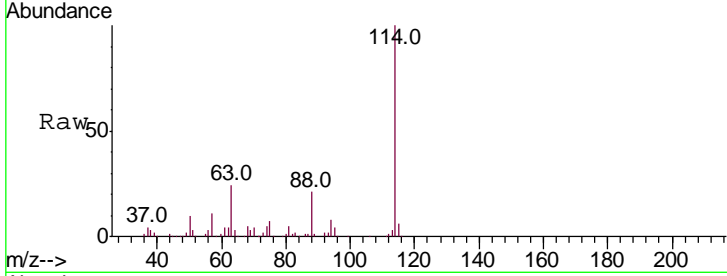




#34  
 1,4-Difluorobenzene  
 Concen: 50.000 ug/l  
 RT: 5.76 min Scan# 530  
 Delta R.T. -0.02 min  
 Lab File: VF060121.D  
 Acq: 27 Aug 2018 13:18

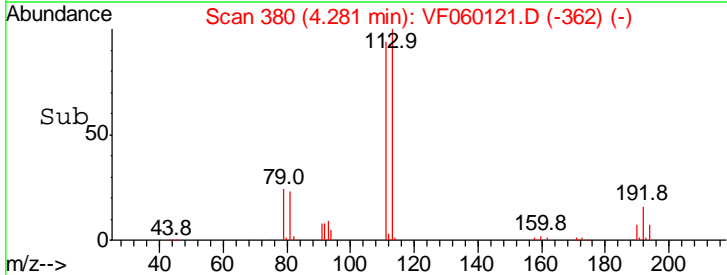
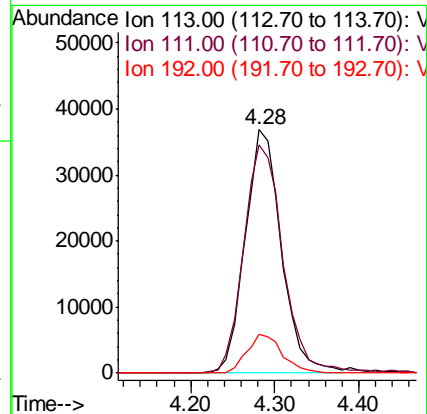
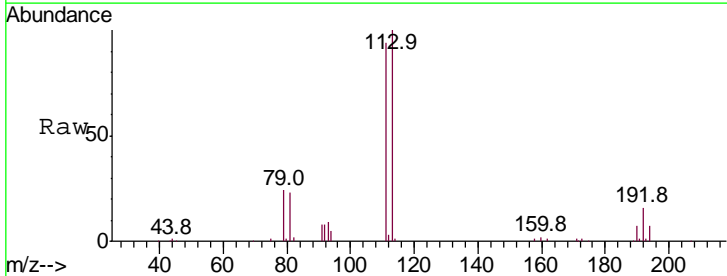
Instrument :  
 MSVOA\_F  
 ClientSampled :

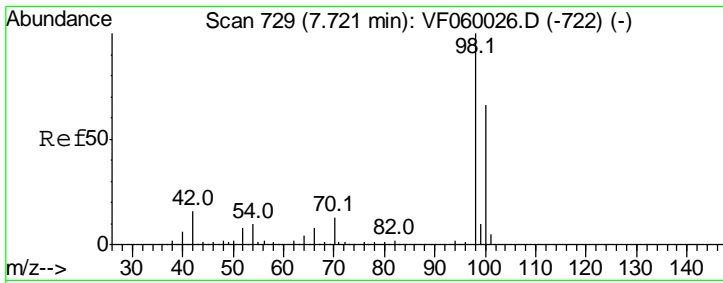
Tgt Ion	Resp	Lower	Upper
114	100		
63	24.3	0.0	40.4
88	20.6	0.0	38.6



#35  
 Dibromofluoromethane  
 Concen: 58.188 ug/l  
 RT: 4.28 min Scan# 380  
 Delta R.T. -0.02 min  
 Lab File: VF060121.D  
 Acq: 27 Aug 2018 13:18

Tgt Ion	Resp	Lower	Upper
113	100		
111	93.6	82.7	124.1
192	16.1	13.0	19.4

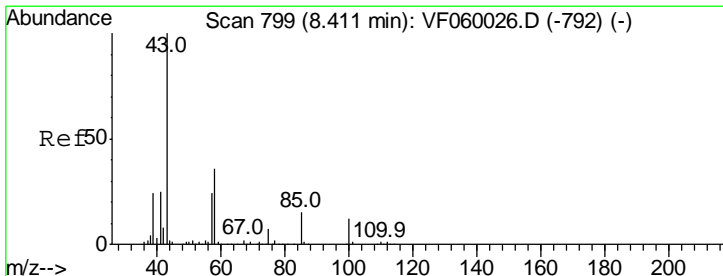
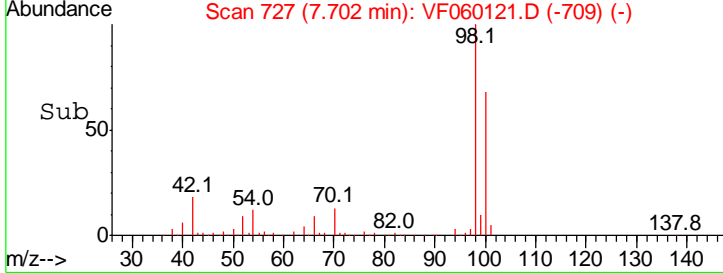
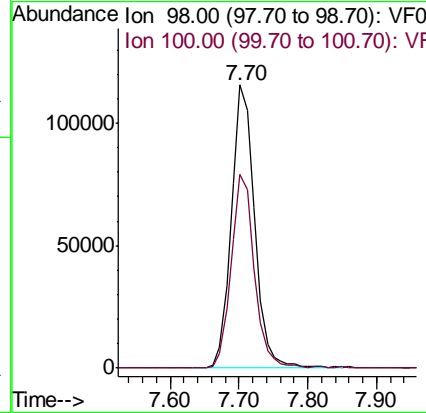
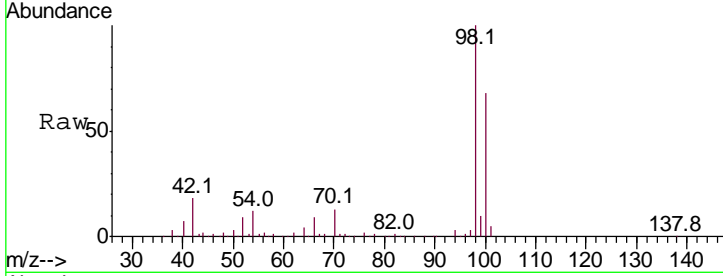




#50  
 Toluene-d8  
 Concen: 49.872 ug/l  
 RT: 7.70 min Scan# 727  
 Delta R.T. -0.02 min  
 Lab File: VF060121.D  
 Acq: 27 Aug 2018 13:18

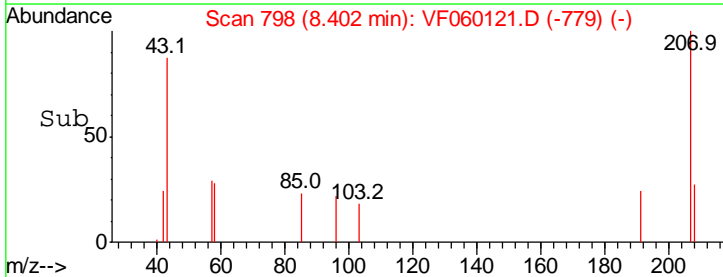
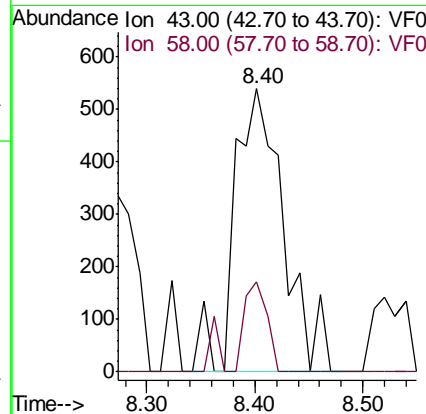
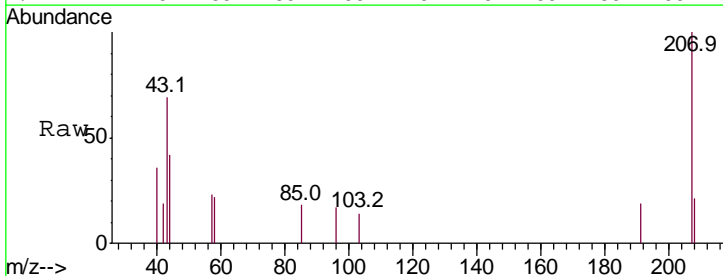
Instrument :  
 MSVOA\_F  
 ClientSampled :

Tgt Ion	Resp	Lower	Upper
98	100		
100	68.3	53.2	79.8

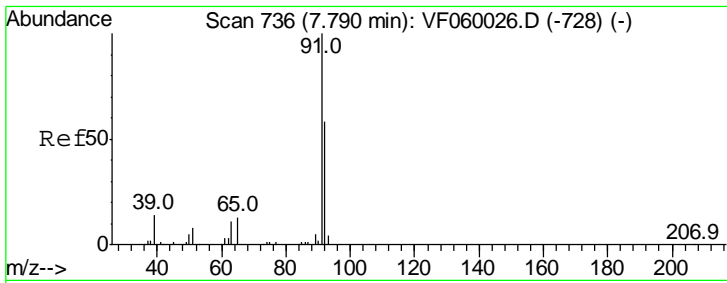


#51  
 4-Methyl-2-Pentanone  
 Concen: 1.146 ug/l  
 RT: 8.40 min Scan# 798  
 Delta R.T. -0.01 min  
 Lab File: VF060121.D  
 Acq: 27 Aug 2018 13:18

Tgt Ion	Resp	Lower	Upper
43	100		
58	31.9	28.6	42.8



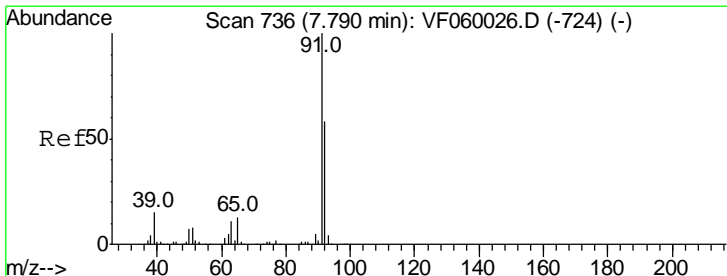
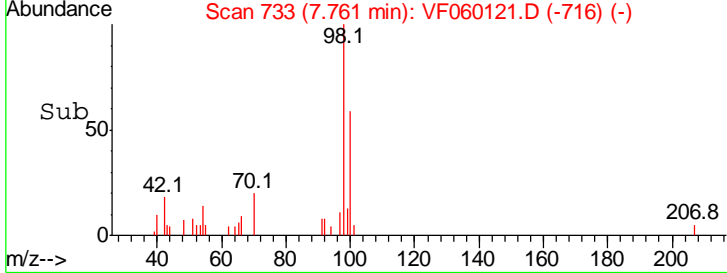
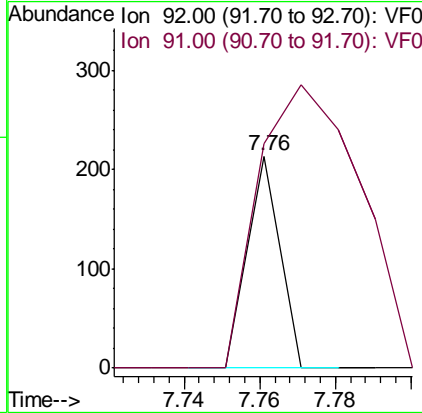
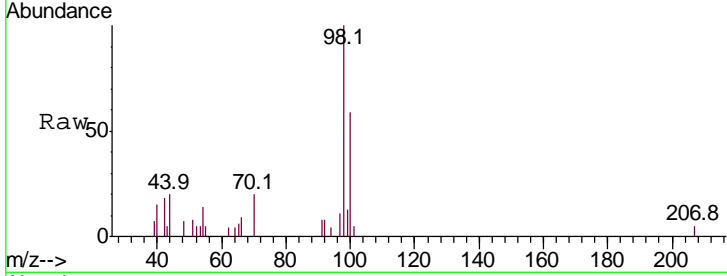




#52  
 Toluene  
 Concen: Below Cal  
 RT: 7.76 min Scan# 733  
 Delta R.T. -0.03 min  
 Lab File: VF060121.D  
 Acq: 27 Aug 2018 13:18

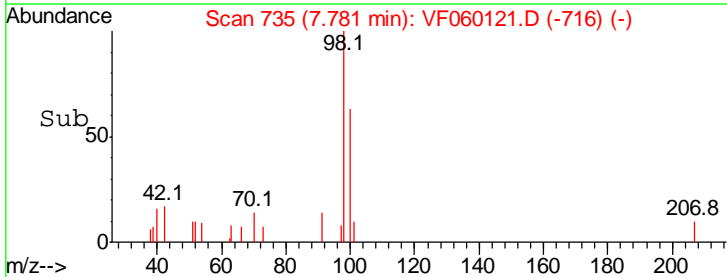
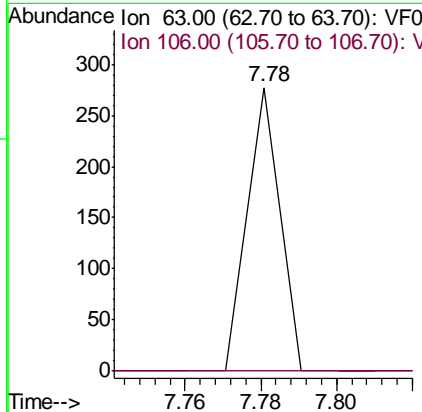
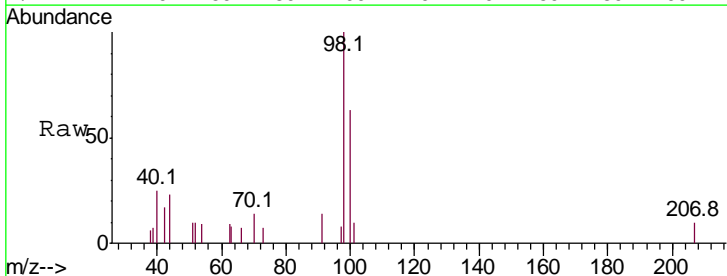
Instrument :  
 MSVOA\_F  
 ClientSampled :

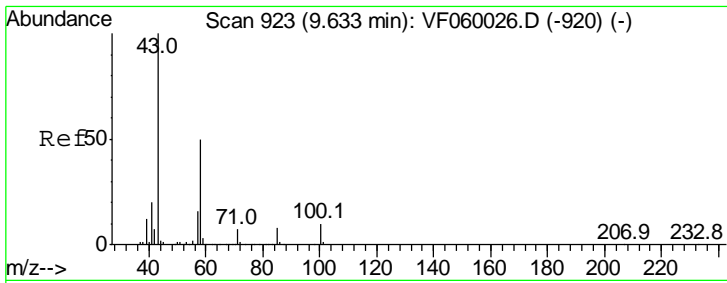
Tgt Ion: 92 Resp: 126  
 Ion Ratio Lower Upper  
 92 100  
 91 106.1 137.7 206.5#



#58  
 2-Chloroethyl Vinyl ether  
 Concen: 1.268 ug/l  
 RT: 7.78 min Scan# 735  
 Delta R.T. -0.01 min  
 Lab File: VF060121.D  
 Acq: 27 Aug 2018 13:18

Tgt Ion: 63 Resp: 164  
 Ion Ratio Lower Upper  
 63 100  
 106 0.0 0.0 0.0

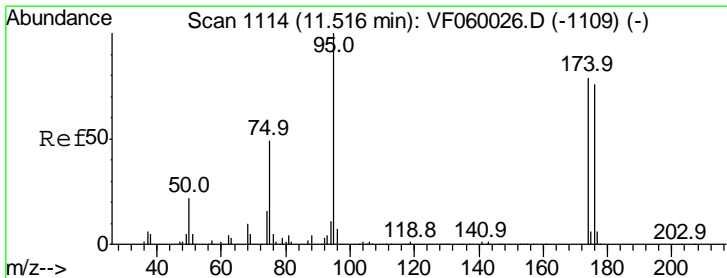
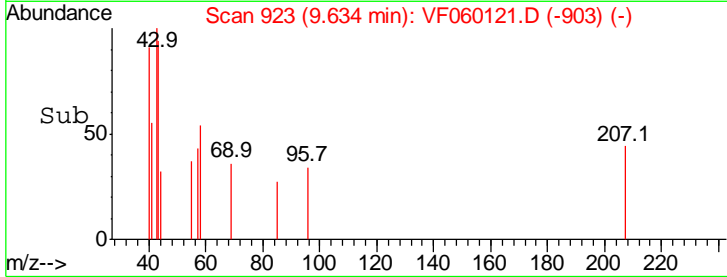
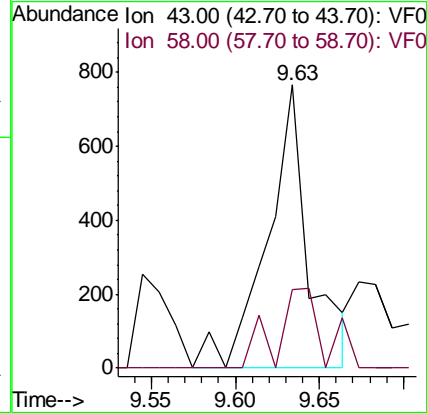
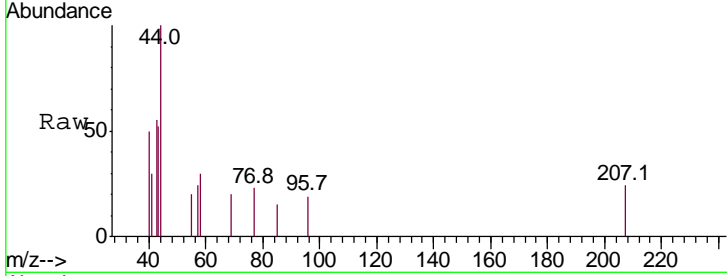




#59  
 2-Hexanone  
 Concen: 1.096 ug/l  
 RT: 9.63 min Scan# 923  
 Delta R.T. 0.00 min  
 Lab File: VF060121.D  
 Acq: 27 Aug 2018 13:18

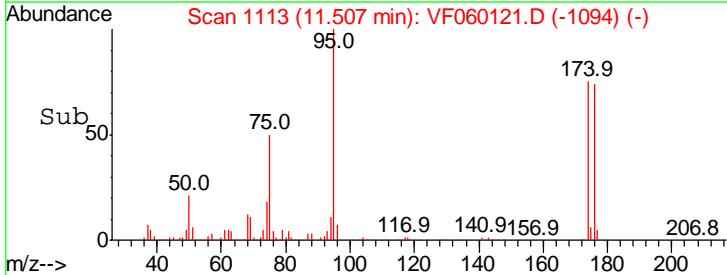
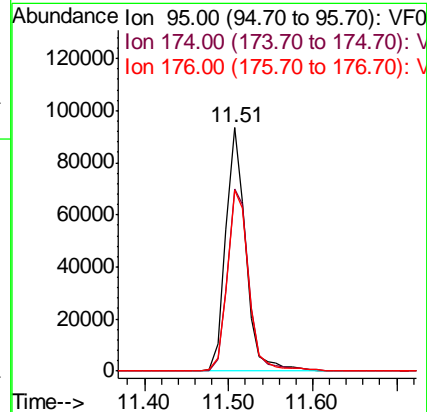
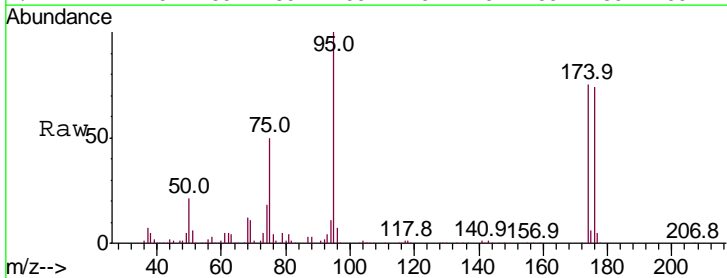
Instrument :  
 MSVOA\_F  
 ClientSampled :

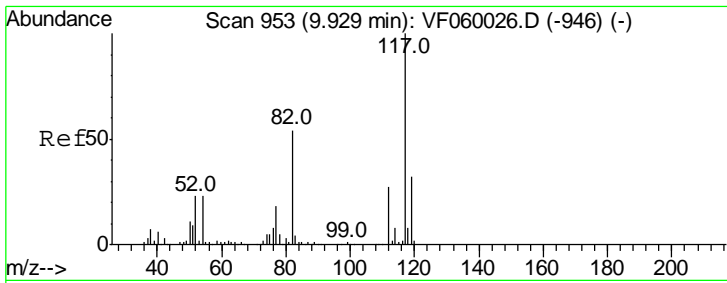
Tgt Ion: 43 Resp: 1317  
 Ion Ratio Lower Upper  
 43 100  
 58 27.9 23.4 70.2



#62  
 4-Bromofluorobenzene  
 Concen: 54.227 ug/l  
 RT: 11.51 min Scan# 1113  
 Delta R.T. -0.01 min  
 Lab File: VF060121.D  
 Acq: 27 Aug 2018 13:18

Tgt Ion: 95 Resp: 155422  
 Ion Ratio Lower Upper  
 95 100  
 174 74.6 0.0 158.4  
 176 74.2 0.0 153.0

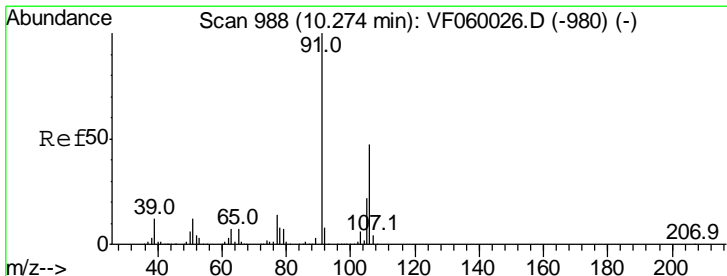
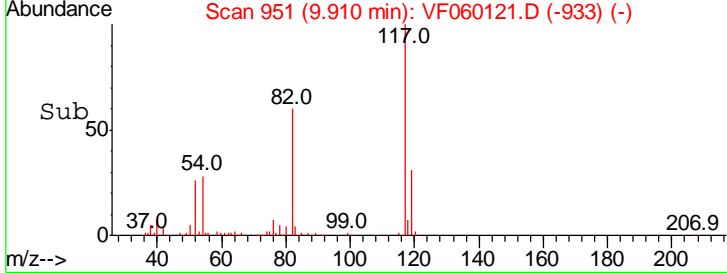
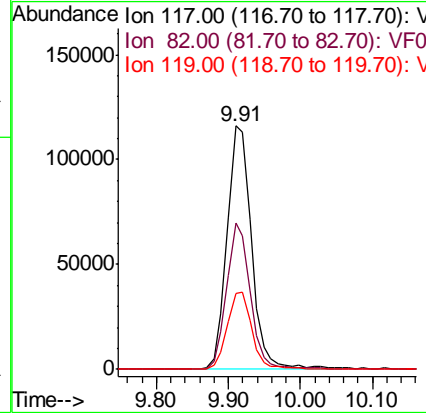
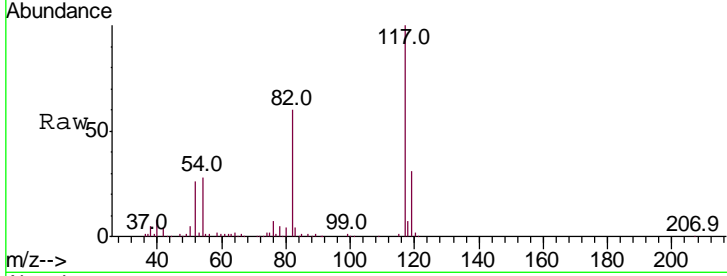




#63  
 Chlorobenzene-d5  
 Concen: 50.000 ug/l  
 RT: 9.91 min Scan# 951  
 Delta R.T. -0.02 min  
 Lab File: VF060121.D  
 Acq: 27 Aug 2018 13:18

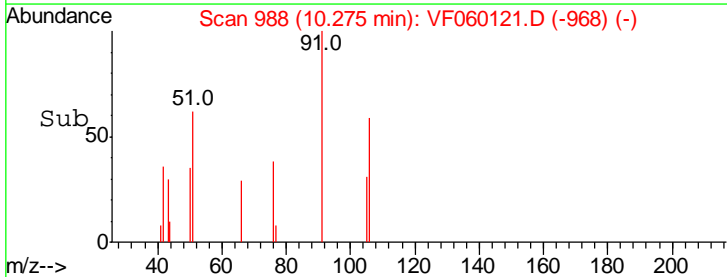
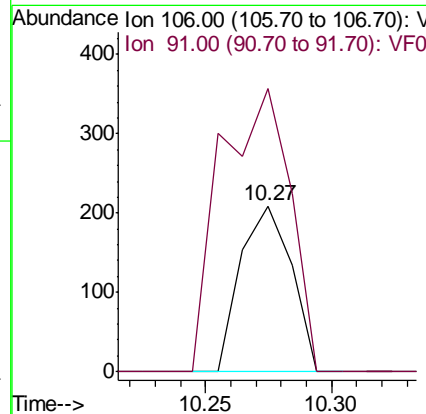
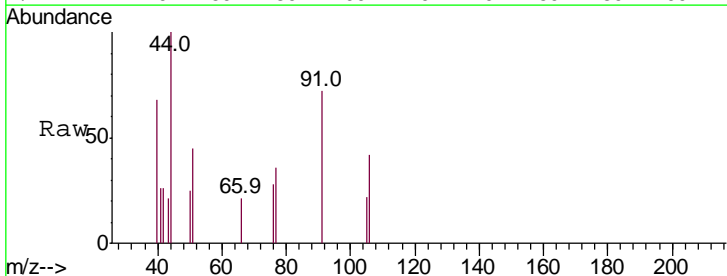
Instrument :  
 MSVOA\_F  
 ClientSampled :

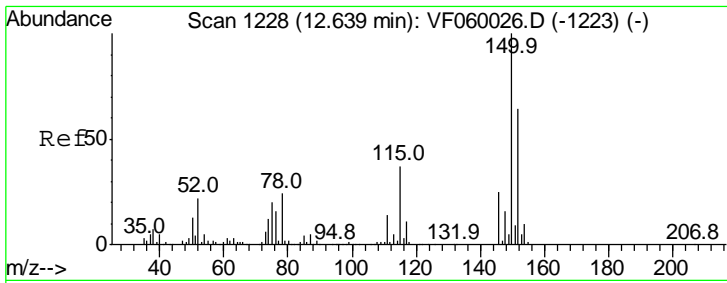
Tgt Ion	Resp	Lower	Upper
117	100		
82	60.1	43.6	65.4
119	31.1	25.6	38.4



#68  
 m/p-Xylenes  
 Concen: Below Cal  
 RT: 10.27 min Scan# 988  
 Delta R.T. 0.00 min  
 Lab File: VF060121.D  
 Acq: 27 Aug 2018 13:18

Tgt Ion	Resp	Lower	Upper
106	100		
91	170.8	171.8	257.8#

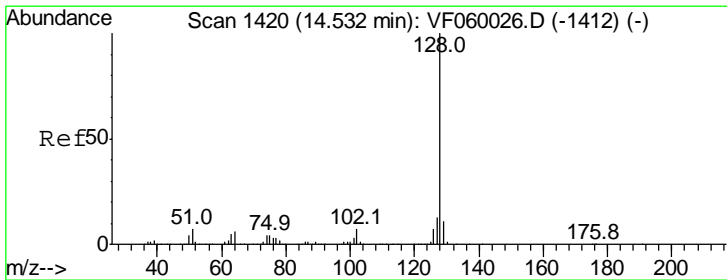
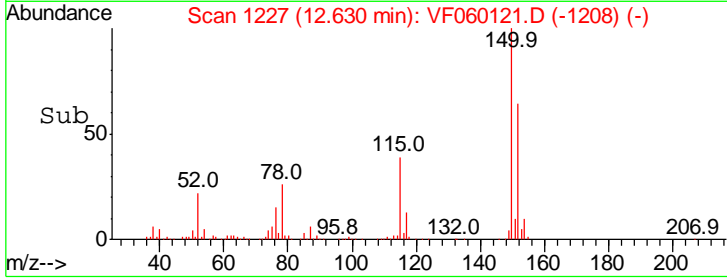
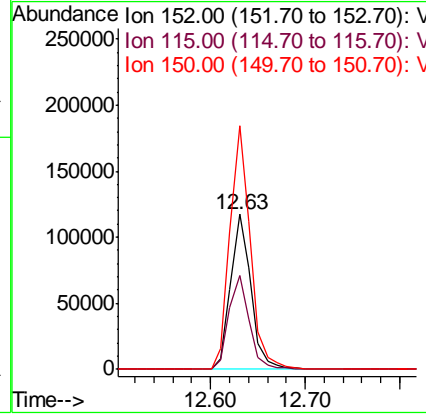
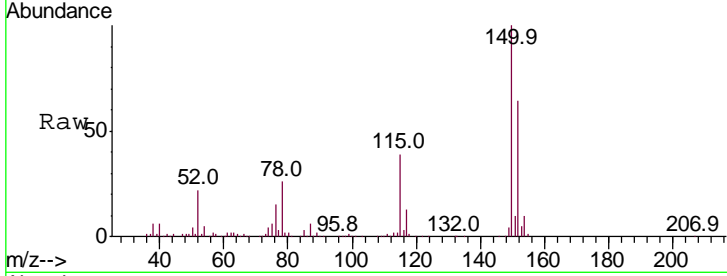




#72  
 1,4-Dichlorobenzene-d4  
 Concen: 50.000 ug/l  
 RT: 12.63 min Scan# 1227  
 Delta R.T. -0.01 min  
 Lab File: VF060121.D  
 Acq: 27 Aug 2018 13:18

Instrument :  
 MSVOA\_F  
 ClientSampled :

Tgt Ion	Resp	Lower	Upper
152	174976		
152	100		
115	60.9	28.6	85.9
150	157.3	0.0	312.0



#95  
 Naphthalene  
 Concen: 2.483 ug/l  
 RT: 14.52 min Scan# 1419  
 Delta R.T. -0.01 min  
 Lab File: VF060121.D  
 Acq: 27 Aug 2018 13:18

Tgt Ion	Resp	Lower	Upper
128	1341		
128	100		
127	0.0	10.4	15.6#
129	0.0	8.5	12.7#

