

Data Path : Z:\VOASRV\HPCHEM1\MSVOA F\DATA\VF082718\  
 Data File : VF060130.D  
 Acq On : 27 Aug 2018 17:38  
 Operator : VA/AP  
 Sample : J4646-12  
 Misc : 5.89µ/5mL/MSVOA F/SOIL  
 ALS Vial : 12 Sample Multiplier: 1

Instrument :  
 MSVOA\_F  
 ClientSampleId :

Quant Time: Aug 27 18:20:21 2018  
 Quant Method : Z:\VOASRV\HPCHEM1\MSVOA\_F\METHODS\82F082118S.M  
 Quant Title : SW846 8260  
 QLast Update : Wed Aug 22 04:43:43 2018  
 Response via : Initial Calibration

Internal Standards	R.T.	QIon	Response	Conc	Units	Dev(Min)
1) Pentafluorobenzene	5.03	168	127140	50.00	µg/l	-0.02
34) 1,4-Difluorobenzene	5.76	114	180343	50.00	µg/l	-0.02
63) Chlorobenzene-d5	9.91	117	205734	50.00	µg/l	-0.02
72) 1,4-Dichlorobenzene-d4	12.63	152	126052	50.00	µg/l	0.00

## System Monitoring Compounds

33) 1,2-Dichloroethane-d4	5.01	65	66378	38.15	µg/l	-0.02
Spiked Amount	50.000		Recovery	=	76.30%	
35) Dibromofluoromethane	4.28	113	73721	52.06	µg/l	-0.02
Spiked Amount	50.000		Recovery	=	104.12%	
50) Toluene-d8	7.70	98	175817	43.72	µg/l	-0.02
Spiked Amount	50.000		Recovery	=	87.44%	
62) 4-Bromofluorobenzene	11.51	95	102882	48.36	µg/l	0.00
Spiked Amount	50.000		Recovery	=	96.72%	

## Target Compounds

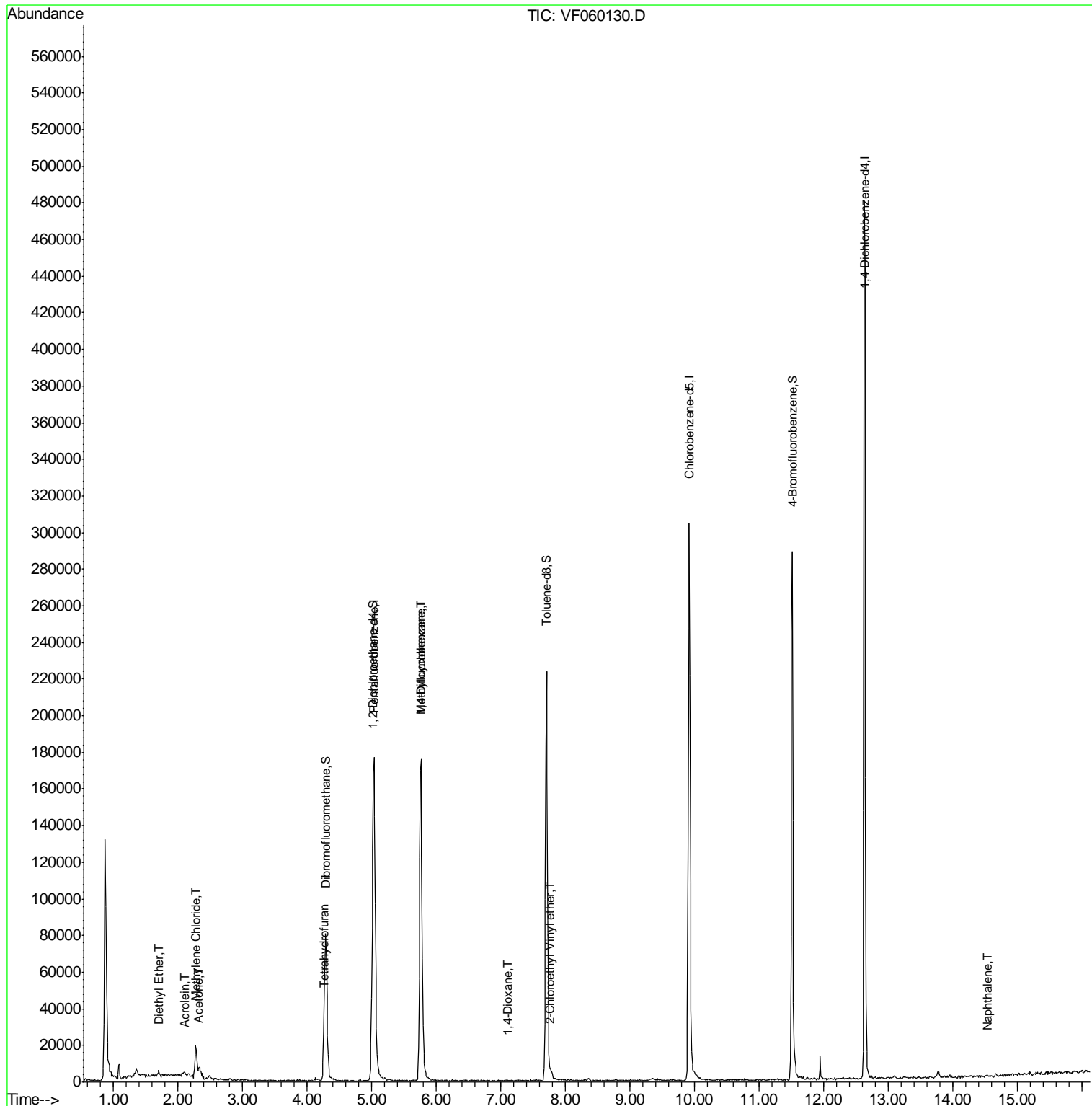
					Qvalue	
3) Chloromethane	1.07	50	442	Below Cal	#	55
8) Diethyl Ether	1.70	74	577	1.544	µg/l	72
13) Acrolein	2.10	56	94	27.811	µg/l #	19
16) Acetone	2.33	43	7255	15.864	µg/l	93
18) Methyl Acetate	2.48	43	988	Below Cal	#	60
20) Methylene Chloride	2.27	84	8963	5.377	µg/l #	86
29) Tetrahydrofuran	4.25	42	252	1.124	µg/l #	37
39) Methylcyclohexane	5.75	83	3056	1.923	µg/l #	32
49) 1,4-Dioxane	7.10	88	63	7.774	µg/l #	1
52) Toluene	7.78	92	867	Below Cal		91
58) 2-Chloroethyl Vinyl ether	7.77	63	150	1.563	µg/l	100
95) Naphthalene	14.53	128	371	2.362	µg/l #	69

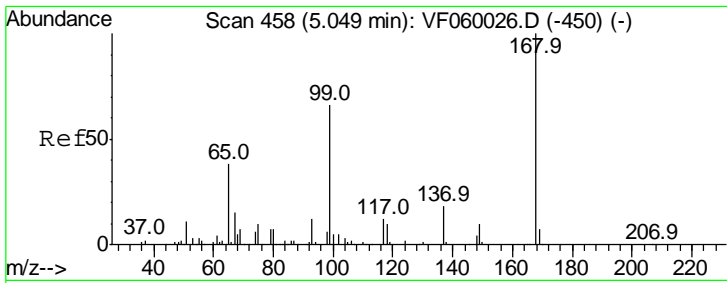
(#) = qualifier out of range (m) = manual integration (+) = signals summed

Data Path : Z:\VOASRV\HPCHEM1\MSVOA F\DATA\VF082718\  
 Data File : VF060130.D  
 Acq On : 27 Aug 2018 17:38  
 Operator : VA/AP  
 Sample : J4646-12  
 Misc : 5.89µ/5mL/MSVOA F/SOIL  
 ALS Vial : 12 Sample Multiplier: 1

Instrument :  
 MSVOA\_F  
 ClientSampled :

Quant Time: Aug 27 18:20:21 2018  
 Quant Method : Z:\VOASRV\HPCHEM1\MSVOA\_F\METHODS\82F082118S.M  
 Quant Title : SW846 8260  
 QLast Update : Wed Aug 22 04:43:43 2018  
 Response via : Initial Calibration

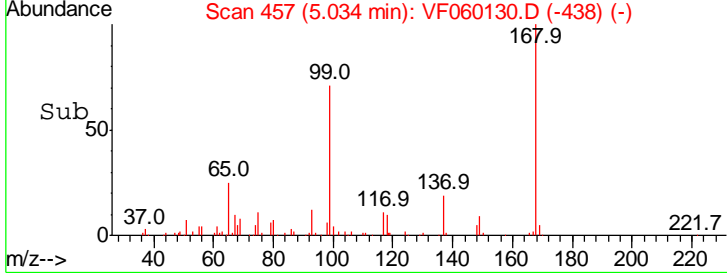
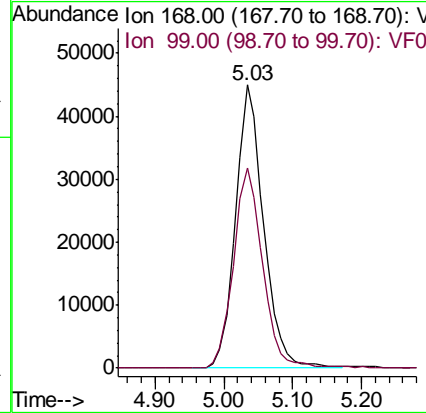
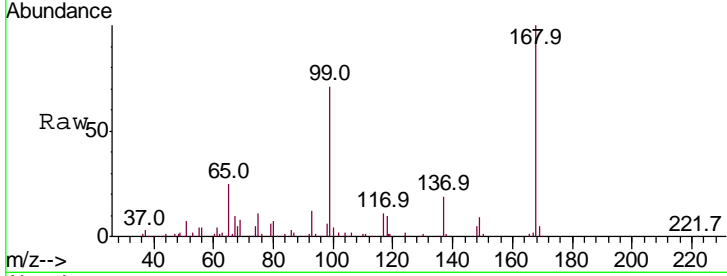




#1  
 Pentafluorobenzene  
 Concen: 50.000 ug/l  
 RT: 5.03 min Scan# 457  
 Delta R.T. -0.02 min  
 Lab File: VF060130.D  
 Acq: 27 Aug 2018 17:38

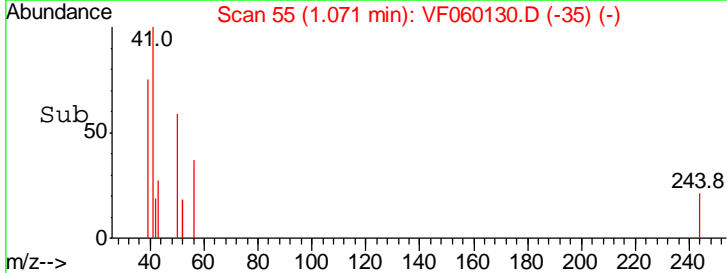
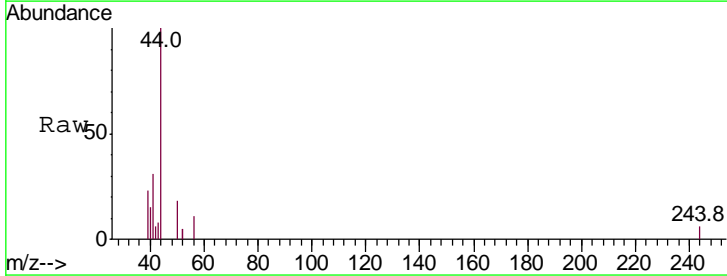
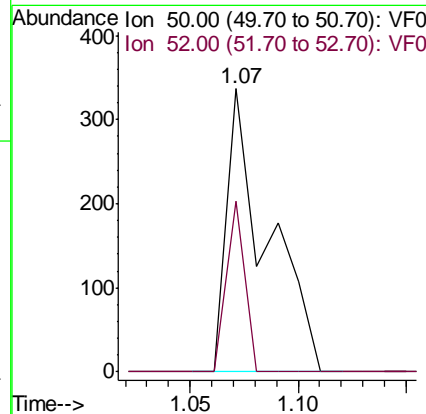
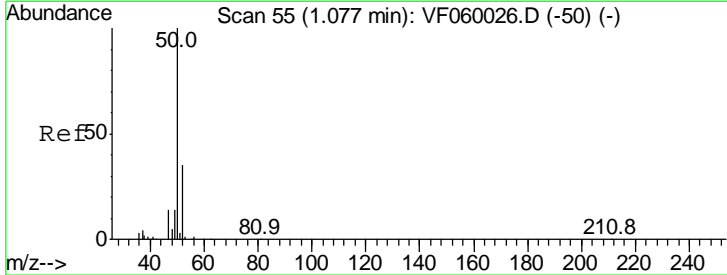
Instrument :  
 MSVOA\_F  
 ClientSampled :

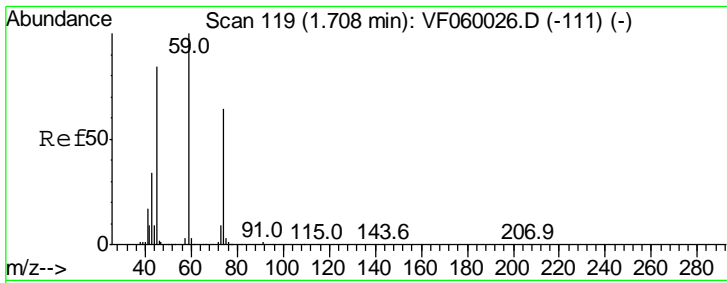
Tgt Ion: 168 Resp: 127140  
 Ion Ratio Lower Upper  
 168 100  
 99 70.8 52.6 79.0



#3  
 Chloromethane  
 Concen: Below Cal  
 RT: 1.07 min Scan# 55  
 Delta R.T. -0.01 min  
 Lab File: VF060130.D  
 Acq: 27 Aug 2018 17:38

Tgt Ion: 50 Resp: 442  
 Ion Ratio Lower Upper  
 50 100  
 52 60.2 27.6 41.4#

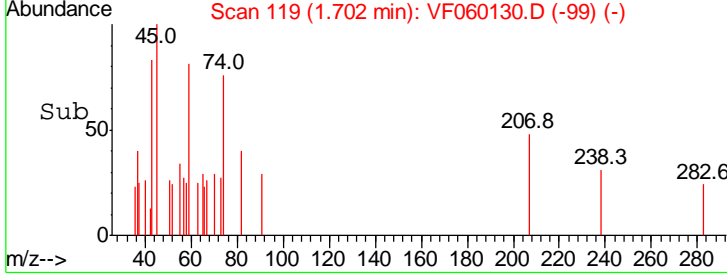
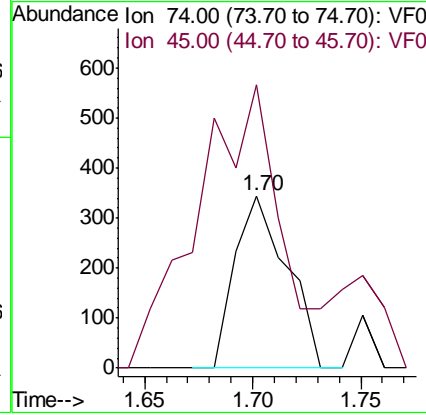
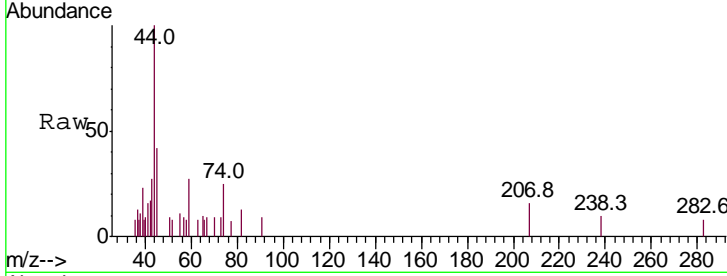




#8  
 Diethyl Ether  
 Concen: 1.544 ug/l  
 RT: 1.70 min Scan# 119  
 Delta R.T. -0.01 min  
 Lab File: VF060130.D  
 Acq: 27 Aug 2018 17:38

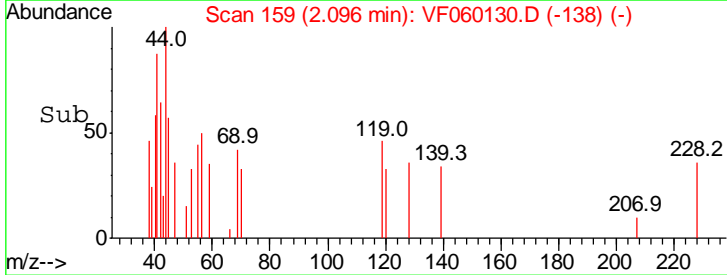
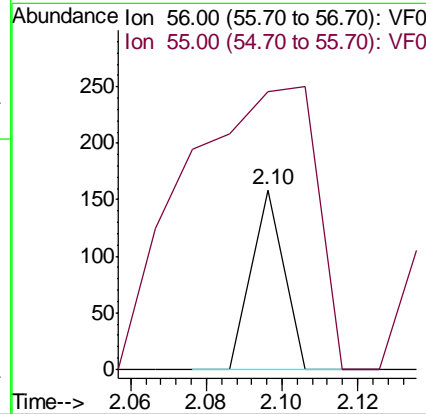
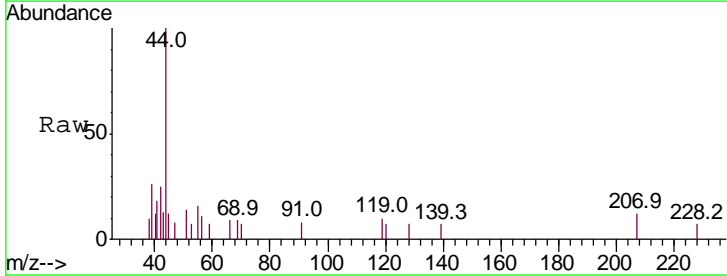
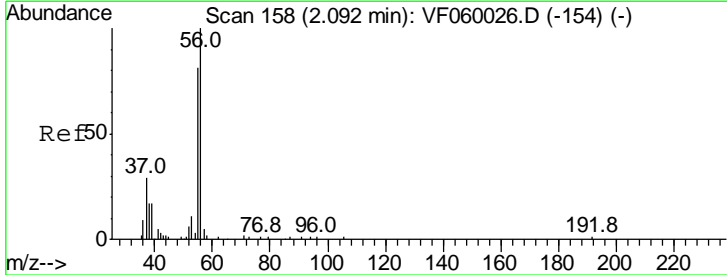
Instrument :  
 MSVOA\_F  
 ClientSampled :

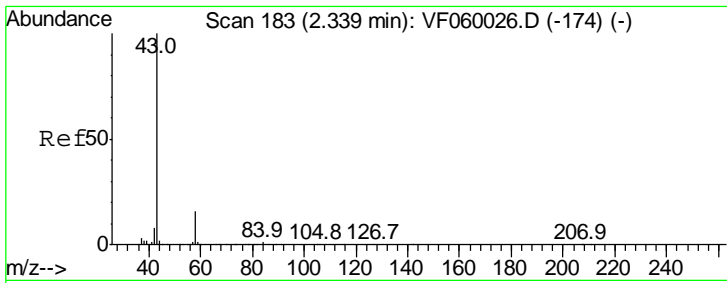
Tgt Ion	Resp	Lower	Upper
74	100		
45	164.5	66.0	198.0



#13  
 Acrolein  
 Concen: 27.811 ug/l  
 RT: 2.10 min Scan# 159  
 Delta R.T. 0.00 min  
 Lab File: VF060130.D  
 Acq: 27 Aug 2018 17:38

Tgt Ion	Resp	Lower	Upper
56	100		
55	154.7	65.6	98.4#

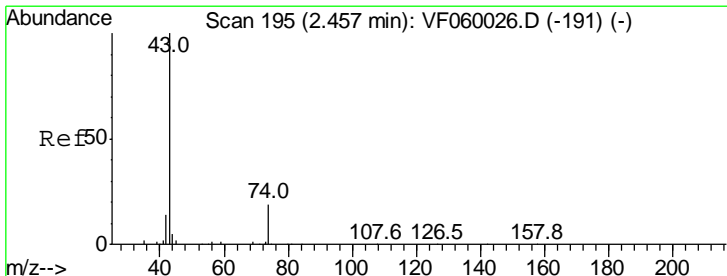
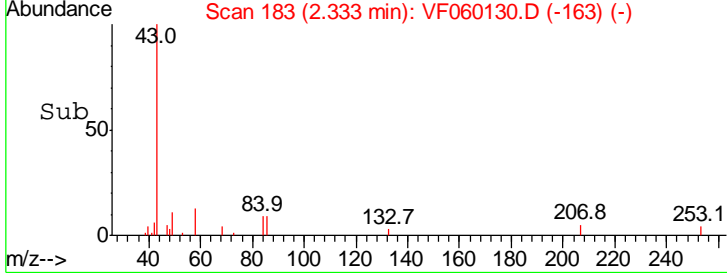
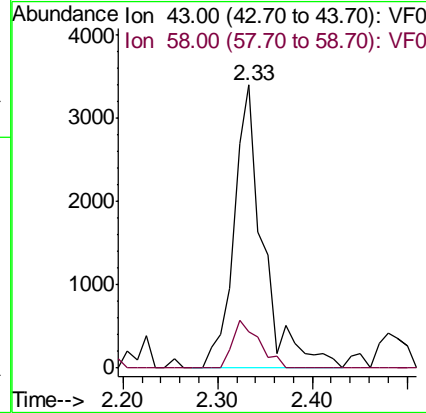
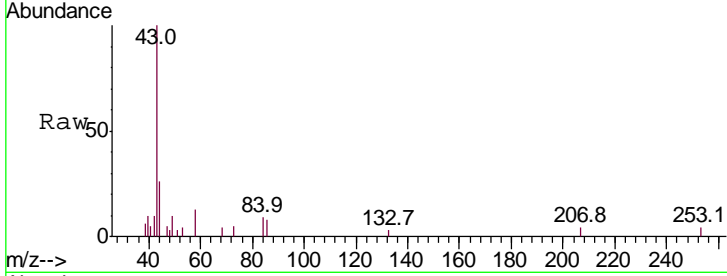




#16  
 Acetone  
 Concen: 15.864 ug/l  
 RT: 2.33 min Scan# 183  
 Delta R.T. -0.01 min  
 Lab File: VF060130.D  
 Acq: 27 Aug 2018 17:38

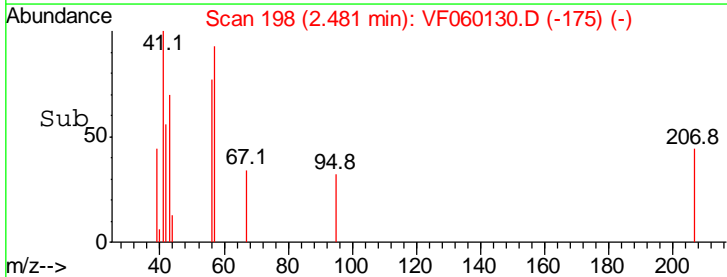
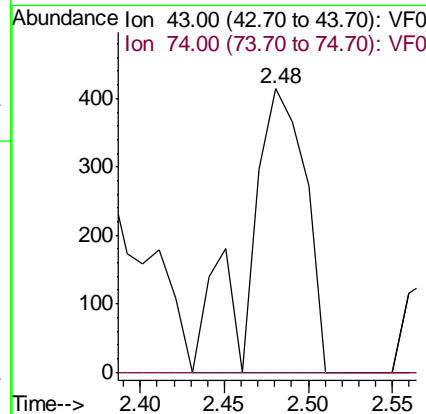
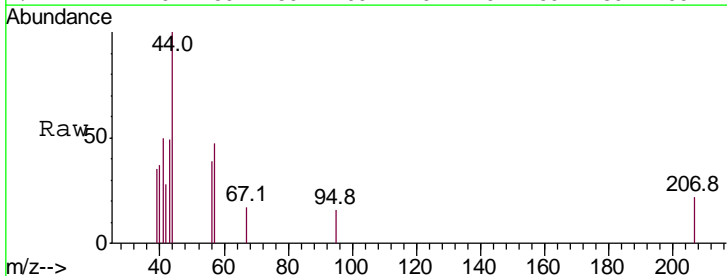
Instrument :  
 MSVOA\_F  
 ClientSampled :

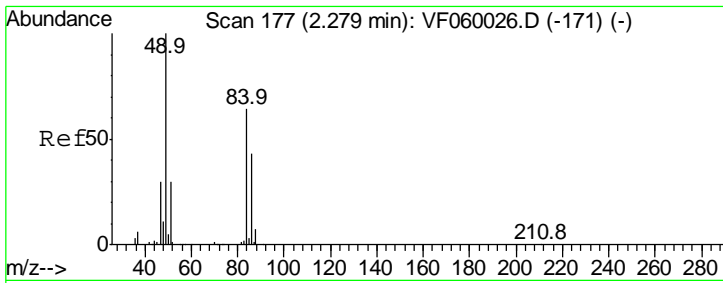
Tgt Ion	43	58	Ratio	Lower	Upper
Resp	7255				
Ion Ratio	100	12.7		12.6	19.0



#18  
 Methyl Acetate  
 Concen: Below Cal  
 RT: 2.48 min Scan# 198  
 Delta R.T. 0.02 min  
 Lab File: VF060130.D  
 Acq: 27 Aug 2018 17:38

Tgt Ion	43	74	Ratio	Lower	Upper
Resp	988				
Ion Ratio	100	0.0		13.8	20.6#

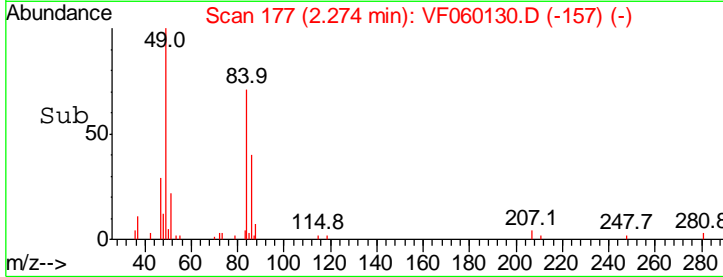
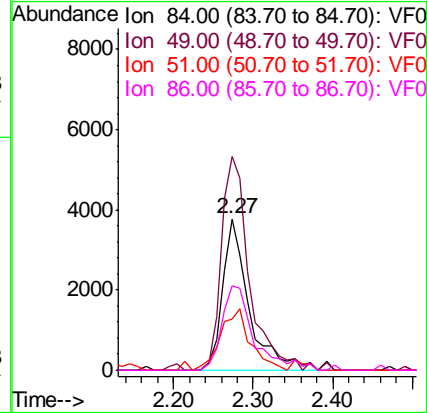
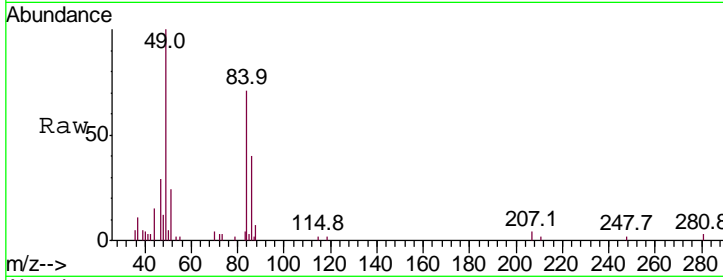




#20  
 Methylene Chloride  
 Concen: 5.377 ug/l  
 RT: 2.27 min Scan# 177  
 Delta R.T. -0.01 min  
 Lab File: VF060130.D  
 Acq: 27 Aug 2018 17:38

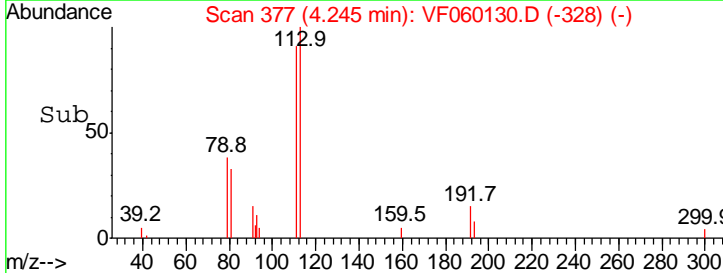
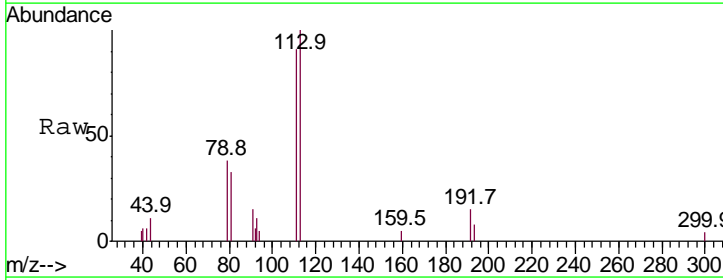
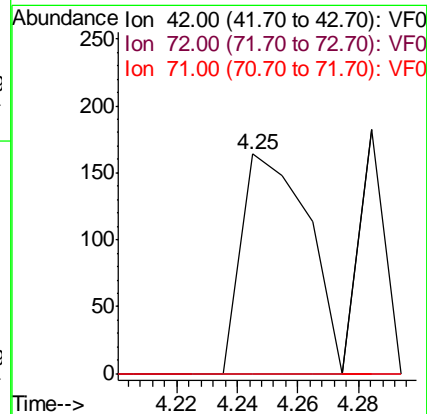
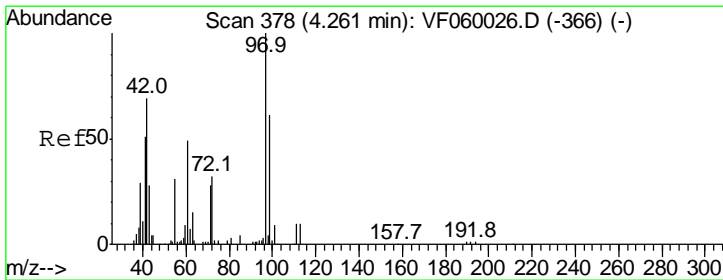
Instrument :  
 MSVOA\_F  
 ClientSampled :

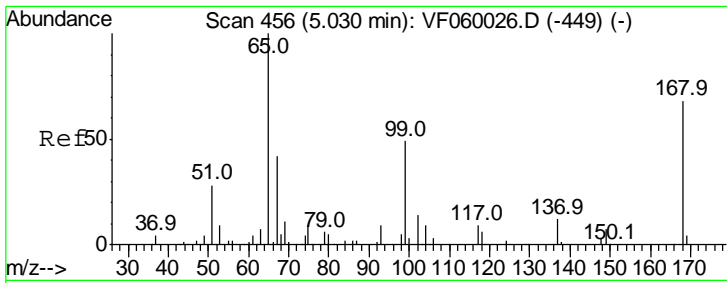
Tgt Ion	Resp	Lower	Upper
84	100		
49	141.0	125.4	188.0
51	34.2	38.3	57.5#
86	55.9	53.3	79.9



#29  
 Tetrahydrofuran  
 Concen: 1.124 ug/l  
 RT: 4.25 min Scan# 377  
 Delta R.T. -0.02 min  
 Lab File: VF060130.D  
 Acq: 27 Aug 2018 17:38

Tgt Ion	Resp	Lower	Upper
42	100		
72	0.0	31.4	47.2#
71	0.0	29.7	44.5#

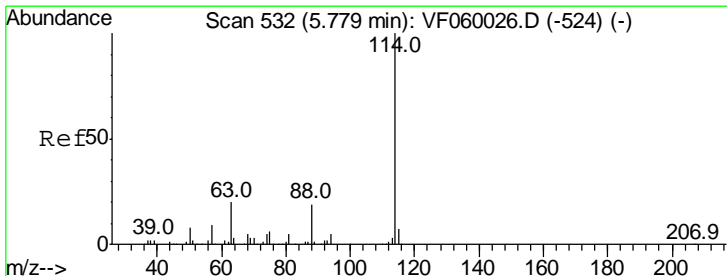
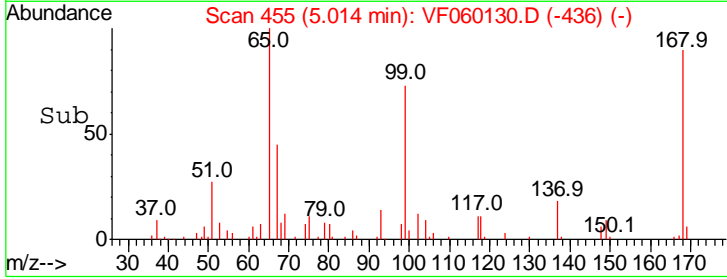
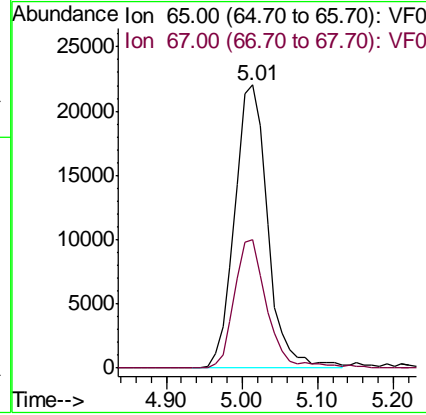
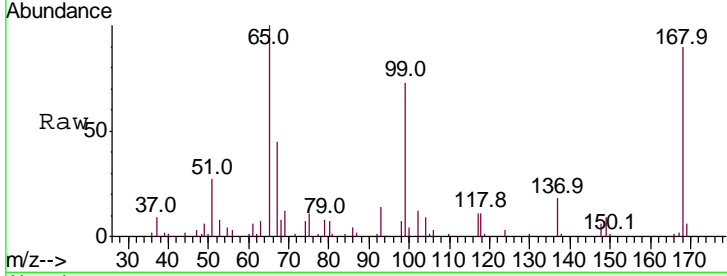




#33  
 1,2-Dichloroethane-d4  
 Concen: 38.147 ug/l  
 RT: 5.01 min Scan# 455  
 Delta R.T. -0.02 min  
 Lab File: VF060130.D  
 Acq: 27 Aug 2018 17:38

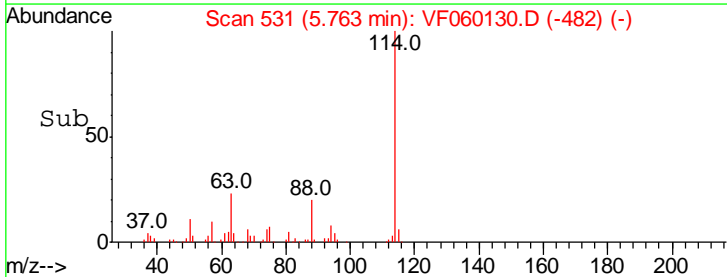
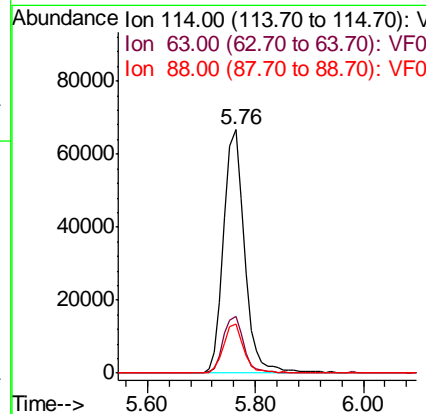
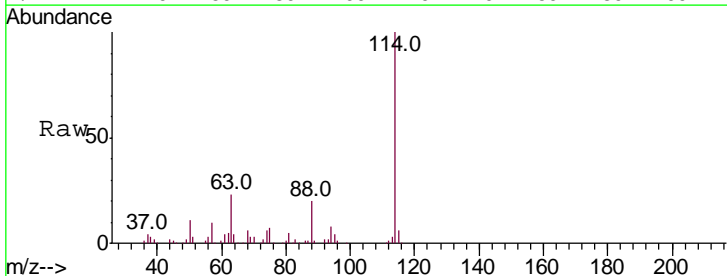
Instrument :  
 MSVOA\_F  
 ClientSampled :

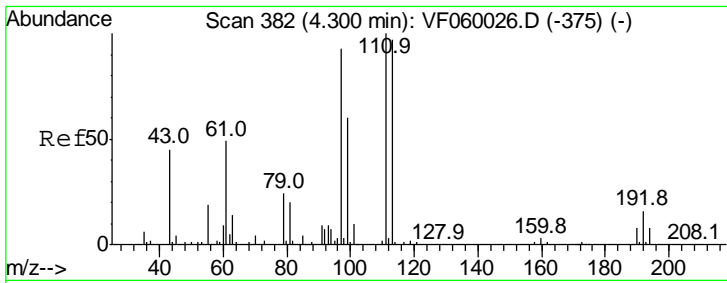
Tgt Ion	Resp	Lower	Upper
65	100		
67	45.4	0.0	92.0



#34  
 1,4-Difluorobenzene  
 Concen: 50.000 ug/l  
 RT: 5.76 min Scan# 531  
 Delta R.T. -0.02 min  
 Lab File: VF060130.D  
 Acq: 27 Aug 2018 17:38

Tgt Ion	Resp	Lower	Upper
114	100		
63	23.4	0.0	40.4
88	20.1	0.0	38.6

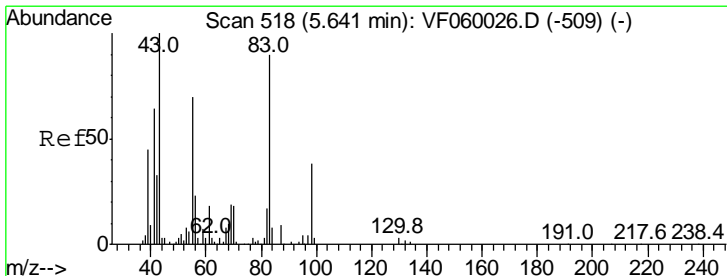
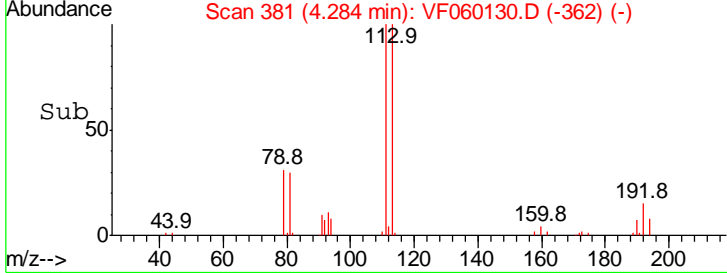
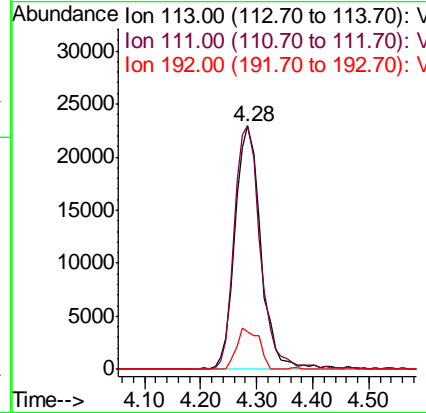
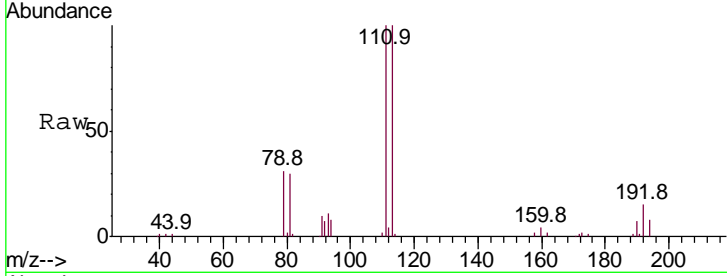




#35  
 Dibromofluoromethane  
 Concen: 52.057 ug/l  
 RT: 4.28 min Scan# 381  
 Delta R.T. -0.02 min  
 Lab File: VF060130.D  
 Acq: 27 Aug 2018 17:38

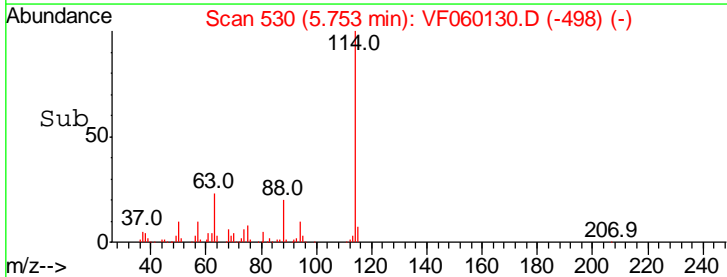
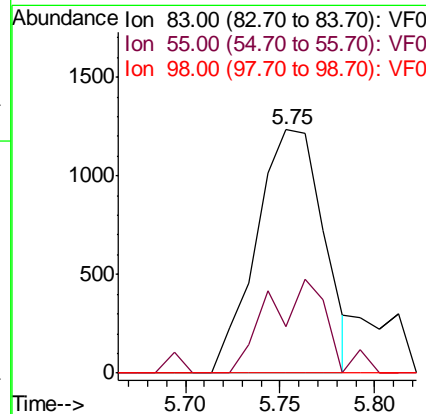
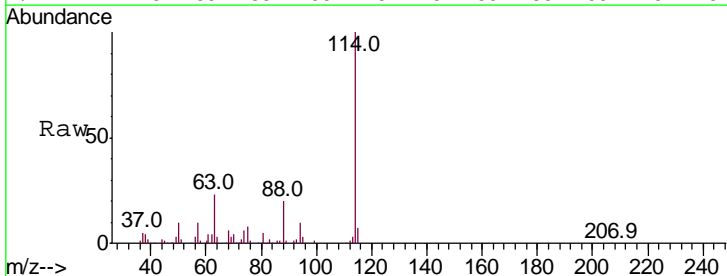
Instrument :  
 MSVOA\_F  
 ClientSampled :

Tgt Ion	Resp	Lower	Upper
113	100		
111	100.0	82.7	124.1
192	15.4	13.0	19.4

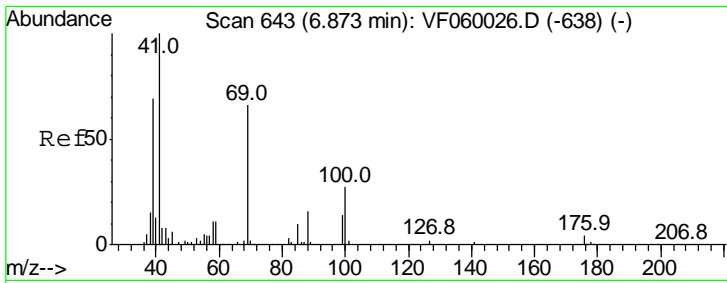


#39  
 Methylcyclohexane  
 Concen: 1.923 ug/l  
 RT: 5.75 min Scan# 530  
 Delta R.T. 0.11 min  
 Lab File: VF060130.D  
 Acq: 27 Aug 2018 17:38

Tgt Ion	Resp	Lower	Upper
83	100		
55	18.9	62.7	94.1#
98	0.0	33.8	50.8#



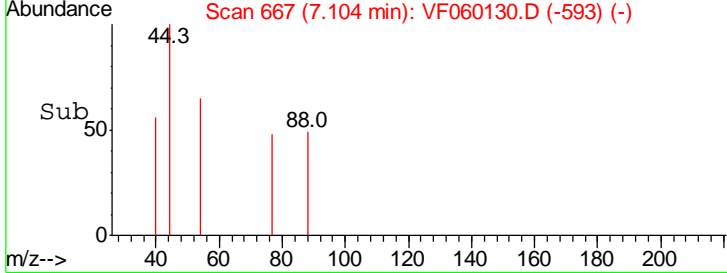
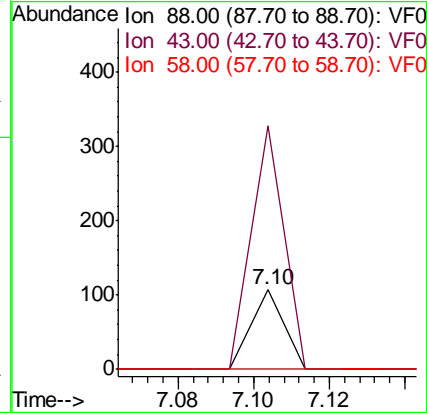
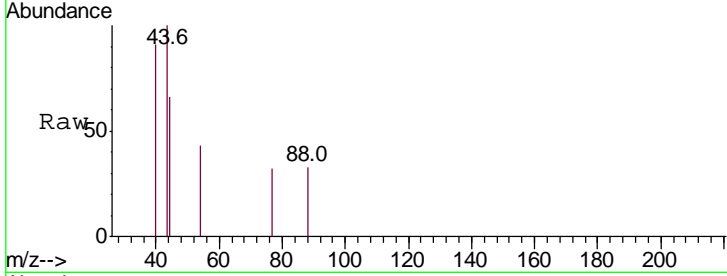




#49  
 1,4-Dioxane  
 Concen: 7.774 ug/l  
 RT: 7.10 min Scan# 667  
 Delta R.T. 0.23 min  
 Lab File: VF060130.D  
 Acq: 27 Aug 2018 17:38

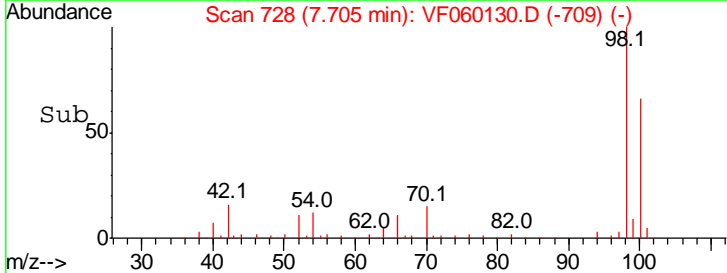
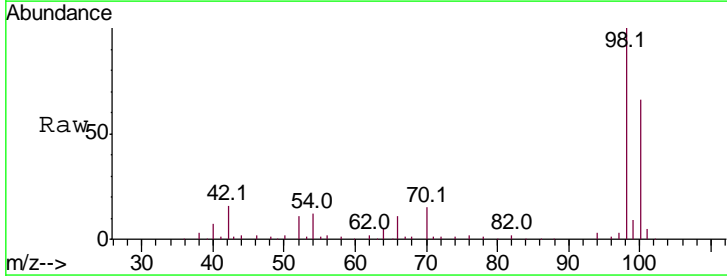
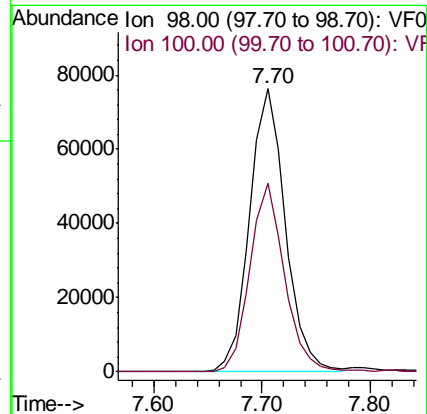
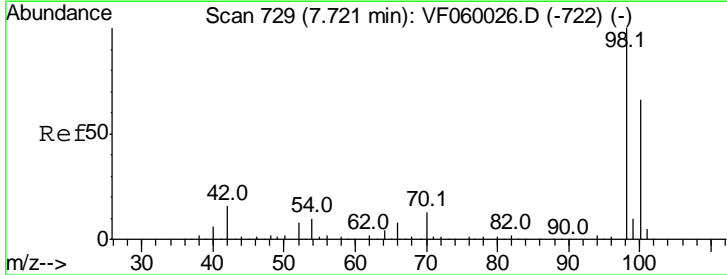
Instrument : MSVOA\_F  
 ClientSampled :

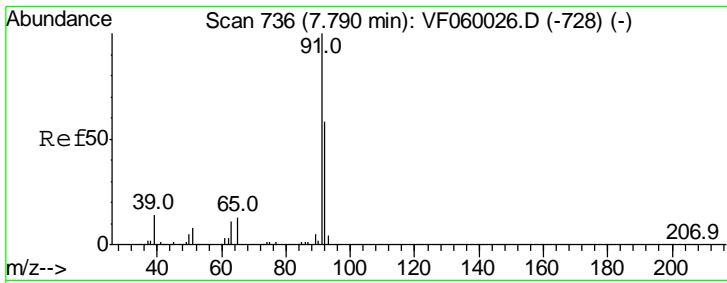
Tgt Ion	Resp	Lower	Upper
88	100		
43	306.5	46.5	69.7#
58	0.0	54.8	82.2#



#50  
 Toluene-d8  
 Concen: 43.715 ug/l  
 RT: 7.70 min Scan# 728  
 Delta R.T. -0.02 min  
 Lab File: VF060130.D  
 Acq: 27 Aug 2018 17:38

Tgt Ion	Resp	Lower	Upper
98	100		
100	66.5	53.2	79.8

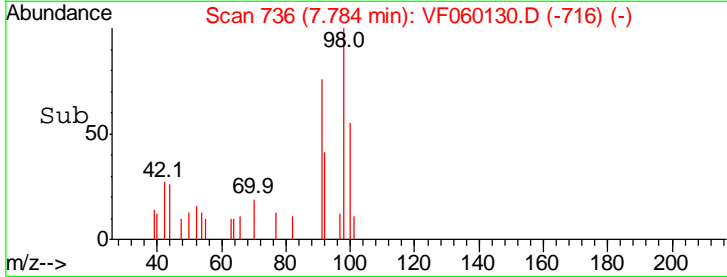
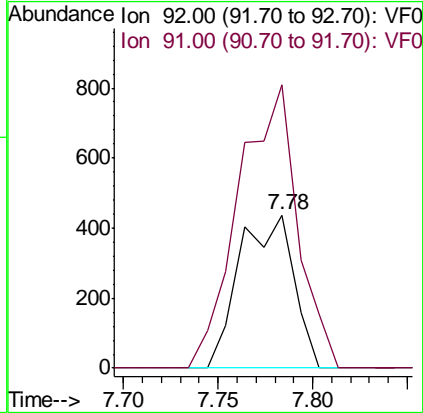
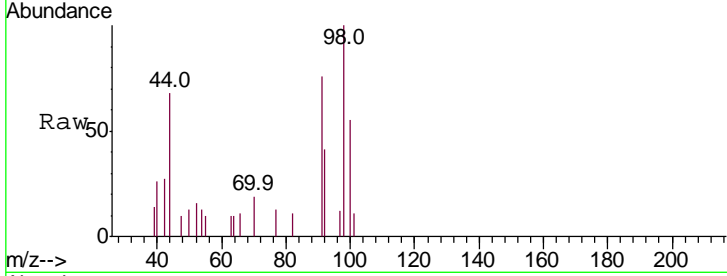




#52  
 Toluene  
 Concen: Below Cal  
 RT: 7.78 min Scan# 736  
 Delta R.T. -0.01 min  
 Lab File: VF060130.D  
 Acq: 27 Aug 2018 17:38

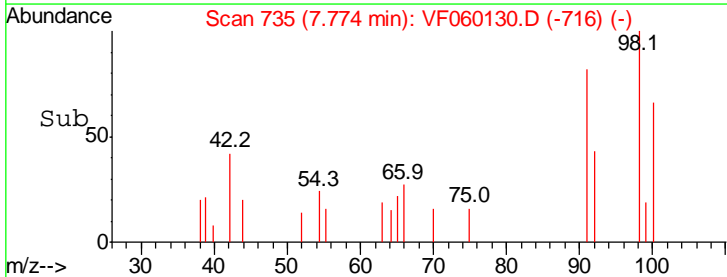
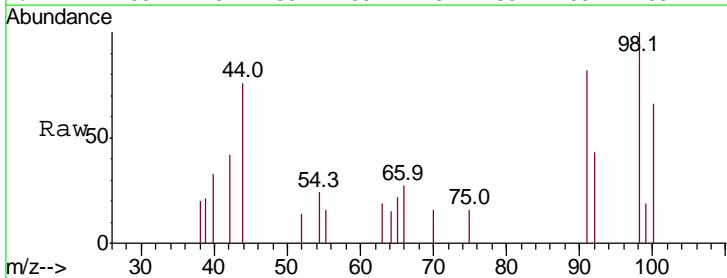
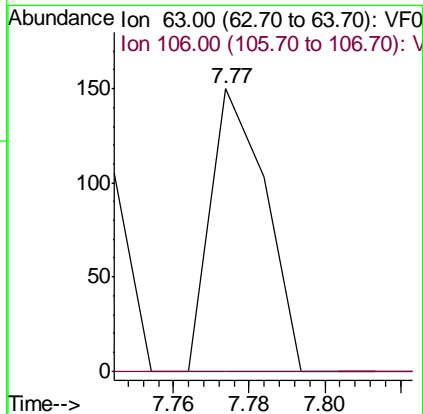
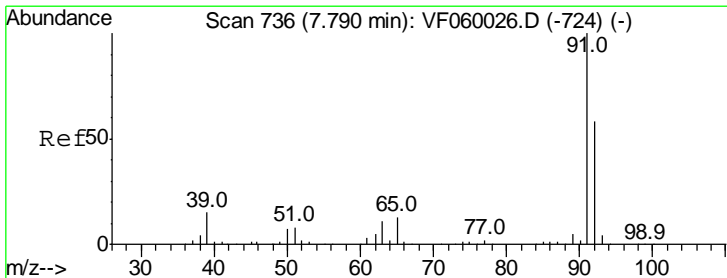
Instrument :  
 MSVOA\_F  
 ClientSampled :

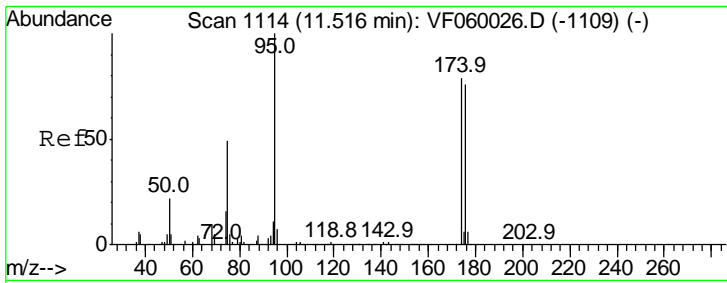
Tgt Ion: 92 Resp: 867  
 Ion Ratio Lower Upper  
 92 100  
 91 184.9 137.7 206.5



#58  
 2-Chloroethyl Vinyl ether  
 Concen: 1.563 ug/l  
 RT: 7.77 min Scan# 735  
 Delta R.T. -0.02 min  
 Lab File: VF060130.D  
 Acq: 27 Aug 2018 17:38

Tgt Ion: 63 Resp: 150  
 Ion Ratio Lower Upper  
 63 100  
 106 0.0 0.0 0.0

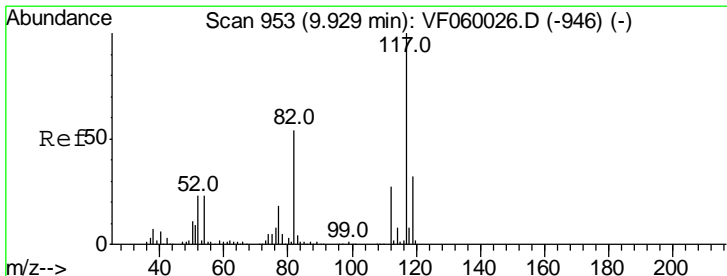
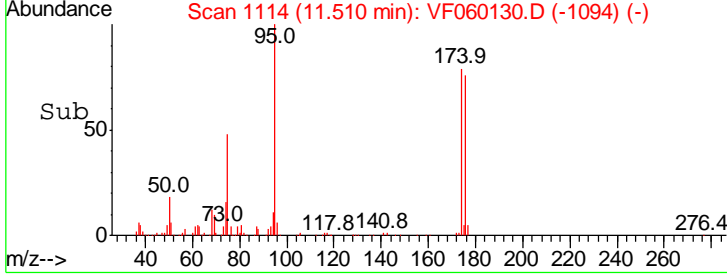
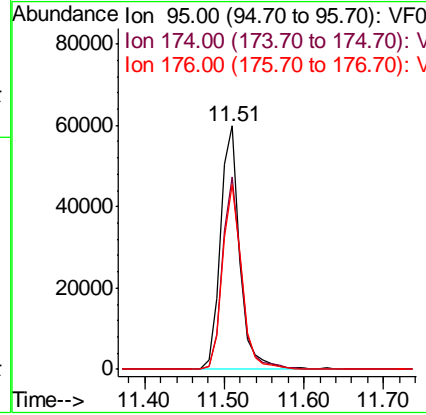
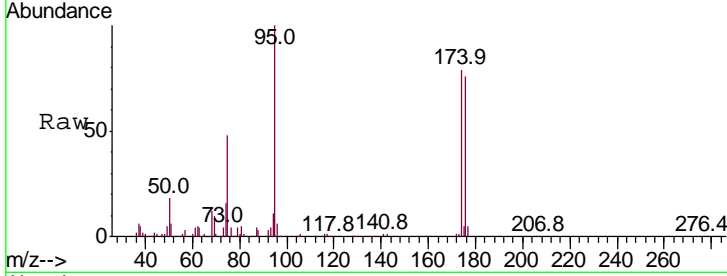




#62  
 4-Bromofluorobenzene  
 Concen: 48.356 ug/l  
 RT: 11.51 min Scan# 1114  
 Delta R.T. -0.01 min  
 Lab File: VF060130.D  
 Acq: 27 Aug 2018 17:38

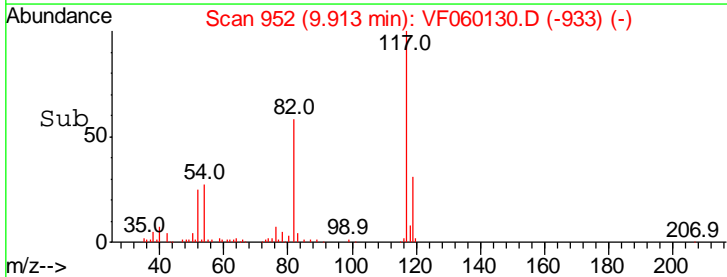
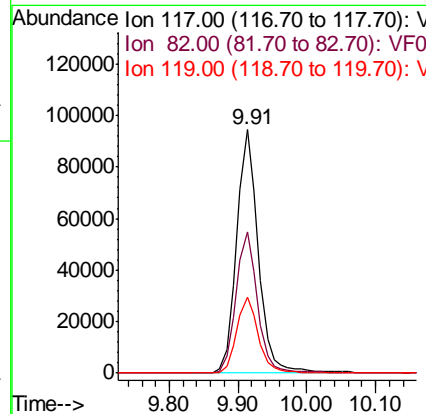
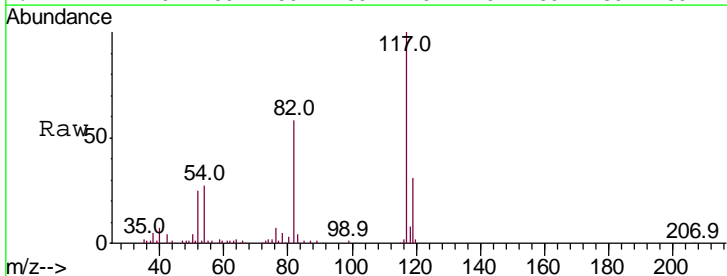
Instrument :  
 MSVOA\_F  
 ClientSampled :

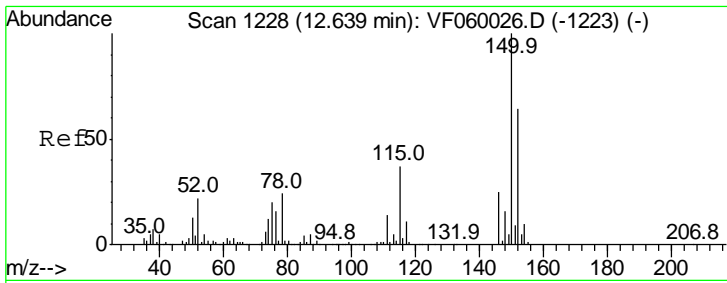
Tgt Ion	Resp	Lower	Upper
95	102882		
174	78.8	0.0	158.4
176	75.9	0.0	153.0



#63  
 Chlorobenzene-d5  
 Concen: 50.000 ug/l  
 RT: 9.91 min Scan# 952  
 Delta R.T. -0.02 min  
 Lab File: VF060130.D  
 Acq: 27 Aug 2018 17:38

Tgt Ion	Resp	Lower	Upper
117	205734		
82	58.1	43.6	65.4
119	31.0	25.6	38.4

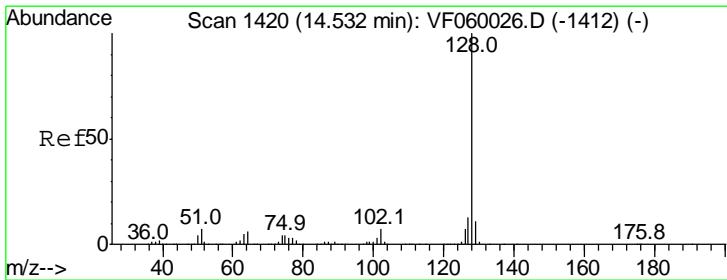
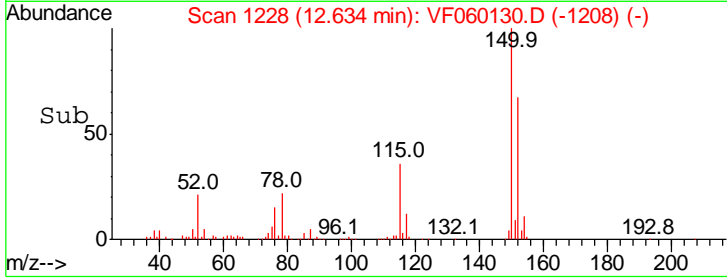
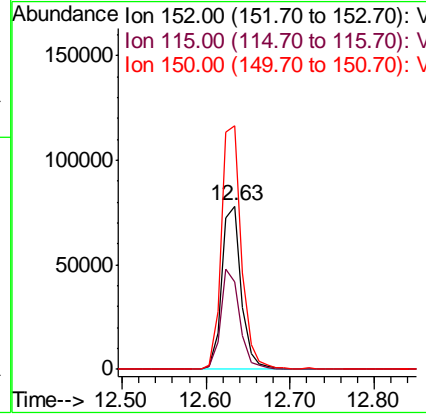
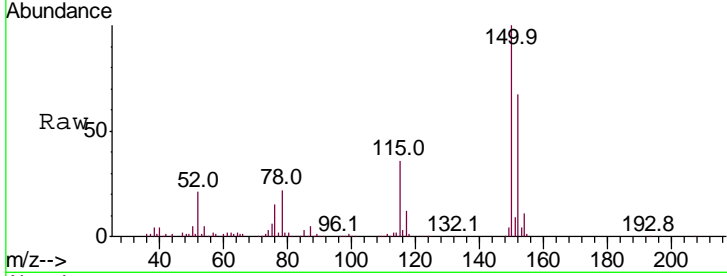




#72  
 1,4-Dichlorobenzene-d4  
 Concen: 50.000 ug/l  
 RT: 12.63 min Scan# 1228  
 Delta R.T. -0.01 min  
 Lab File: VF060130.D  
 Acq: 27 Aug 2018 17:38

Instrument :  
 MSVOA\_F  
 ClientSampled :

Tgt Ion	Resp	Lower	Upper
152	126052		
152	100		
115	53.7	28.6	85.9
150	149.2	0.0	312.0



#95  
 Naphthalene  
 Concen: 2.362 ug/l  
 RT: 14.53 min Scan# 1420  
 Delta R.T. -0.00 min  
 Lab File: VF060130.D  
 Acq: 27 Aug 2018 17:38

Tgt Ion	Resp	Lower	Upper
128	371		
128	100		
127	0.0	10.4	15.6#
129	0.0	8.5	12.7#

