

Data Path : Z:\VOASRV\HPCHEM1\MSVOA F\DATA\VF092818\
 Data File : VF060384.D
 Acq On : 28 Sep 2018 23:08
 Operator : VA/AP
 Sample : J5170-25
 Misc : 6.53/5mL/MSVOA F/SOIL
 ALS Vial : 47 Sample Multiplier: 1

Instrument :
 MSVOA_F
 ClientSampled :
 HC-SOIL-5

Integration Parameters: RTEINT.P

Integrator: RTE
 Smoothing : ON
 Sampling : 1
 Start Thrs: 0.2
 Stop Thrs : 0

Filtering: 5
 Min Area: 3 % of largest Peak
 Max Peaks: 100
 Peak Location: TOP

If leading or trailing edge < 100 prefer < Baseline drop else tangent >
 Peak separation: 5

Method : Z:\VOASRV\HPCHEM1\MSVOA_F\METHODS\82F091918S.M
 Title : SW846 8260

Signal : TIC

peak #	R.T. min	first scan	max scan	last scan	PK TY	peak height	corr. area	corr. % max.	% of total
1	1.113	44	49	50	rBV	11041	22973	1.49%	0.238%
2	1.349	70	73	75	rBV4	8586	16385	1.06%	0.170%
3	1.487	84	87	90	rBV4	10036	15742	1.02%	0.163%
4	2.266	162	166	169	rBV3	35743	89069	5.78%	0.922%
5	2.473	185	187	192	rVB4	11985	21356	1.39%	0.221%
6	4.168	351	359	364	rBV	54612	194062	12.60%	2.008%
7	4.277	364	370	381	rVB2	263896	797812	51.81%	8.256%
8	4.839	420	427	431	rBV9	5460	19311	1.25%	0.200%
9	5.016	437	445	459	rBV2	450377	1522666	98.88%	15.757%
10	5.746	512	519	534	rBV	455409	1240362	80.55%	12.835%
11	7.697	711	717	727	rBV	623035	1539869	100.00%	15.935%
12	8.387	783	787	794	rVB2	21691	54701	3.55%	0.566%
13	8.752	820	824	829	rVB4	10321	23450	1.52%	0.243%
14	9.560	901	906	908	rBV3	6974	15863	1.03%	0.164%
15	9.610	908	911	919	rVB	29497	67811	4.40%	0.702%
16	9.896	934	940	949	rBV	564093	1308467	84.97%	13.540%
17	10.940	1042	1046	1055	rVB	116678	246627	16.02%	2.552%
18	11.305	1080	1083	1088	rBV2	10766	23481	1.52%	0.243%
19	11.453	1094	1098	1099	rBV	24219	36329	2.36%	0.376%
20	11.502	1099	1103	1110	rVB	552447	976381	63.41%	10.104%
21	11.709	1119	1124	1125	rVV4	11025	26447	1.72%	0.274%
22	11.739	1125	1127	1130	rVV	23362	39634	2.57%	0.410%
23	12.360	1186	1190	1193	rBV3	22835	39847	2.59%	0.412%
24	12.616	1213	1216	1225	rVB	704003	1159488	75.30%	11.998%
25	13.760	1328	1332	1335	rBV4	12124	23117	1.50%	0.239%
26	14.262	1379	1383	1389	rVB9	7817	19804	1.29%	0.205%
27	14.509	1405	1408	1412	rBV	33283	49856	3.24%	0.516%
28	15.337	1490	1492	1499	rVB	33724	53140	3.45%	0.550%
29	15.455	1502	1504	1507	rVV4	9921	19568	1.27%	0.202%

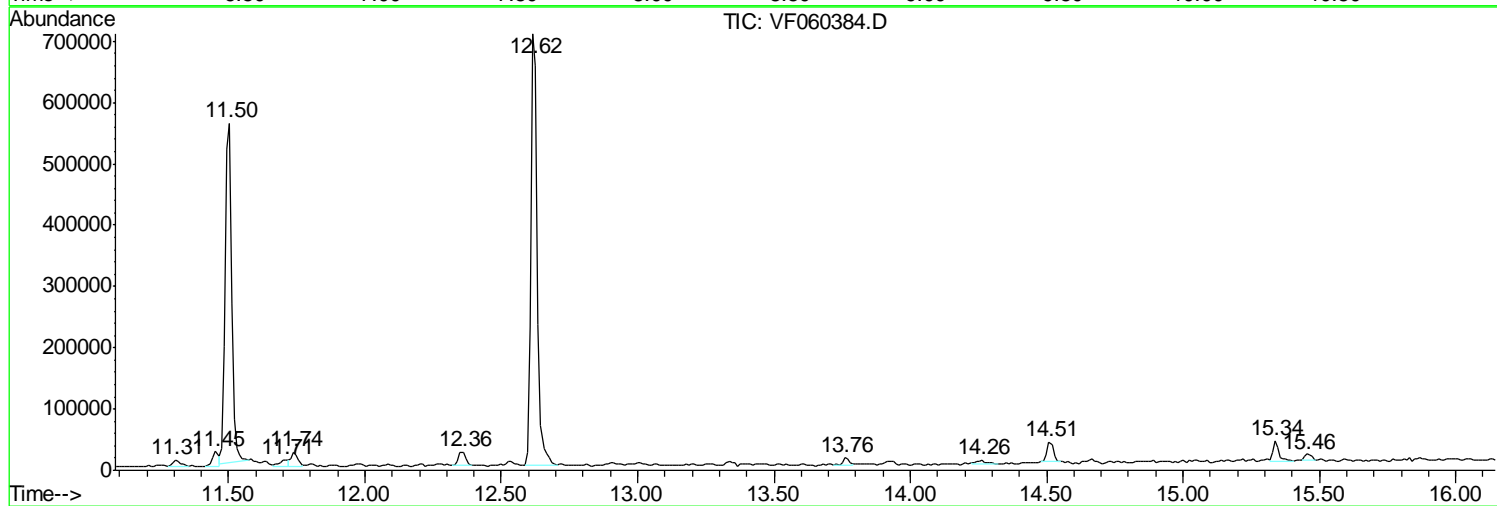
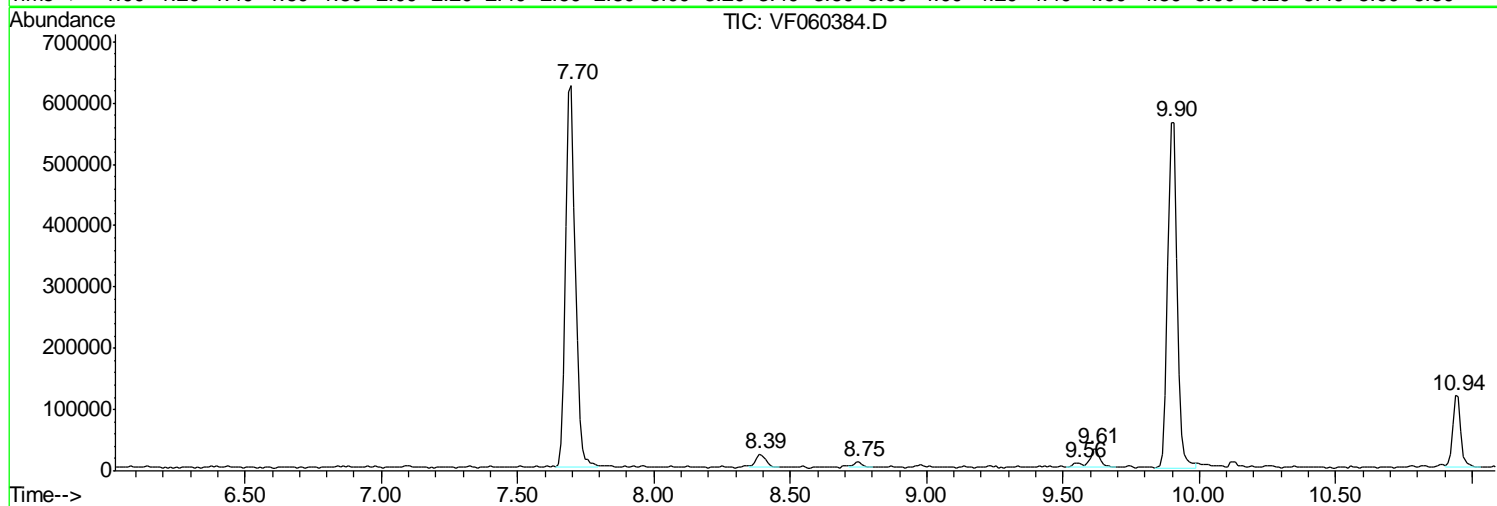
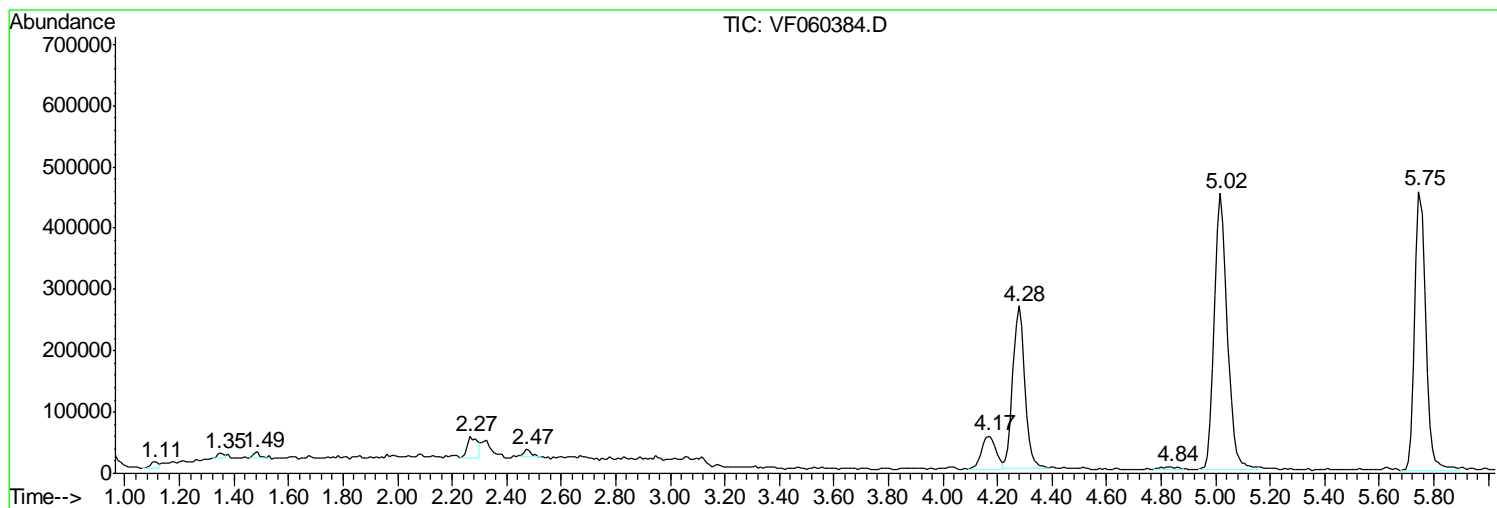
Sum of corrected areas: 9663618

Data Path : Z:\VOASRV\HPCHEM1\MSVOA F\DATA\VF092818\
 Data File : VF060384.D
 Acq On : 28 Sep 2018 23:08
 Operator : VA/AP
 Sample : J5170-25
 Misc : 6.53/5mL/MSVOA F/SOIL
 ALS Vial : 47 Sample Multiplier: 1

Instrument :
 MSVOA_F
 ClientSampled :
 HC-SOIL-5

Quant Method : Z:\VOASRV\HPCHEM1\MSVOA_F\METHODS\82F091918S.M
 Quant Title : SW846 8260

TIC Library : C:\DATABASE\NIST11.L
 TIC Integration Parameters: LSCINT.P



Data Path : Z:\VOASRV\HPCHEM1\MSVOA F\DATA\VF092818\
 Data File : VF060384.D
 Acq On : 28 Sep 2018 23:08
 Operator : VA/AP
 Sample : J5170-25
 Misc : 6.53/5mL/MSVOA F/SOIL
 ALS Vial : 47 Sample Multiplier: 1

Instrument :
 MSVOA_F
 ClientSampled :
 HC-SOIL-5

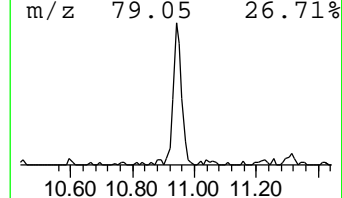
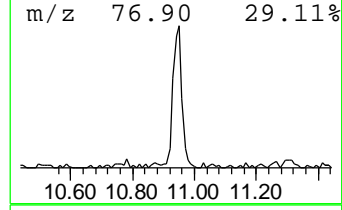
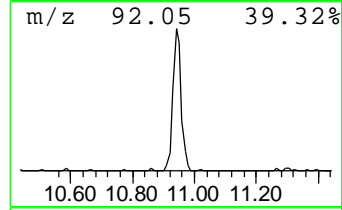
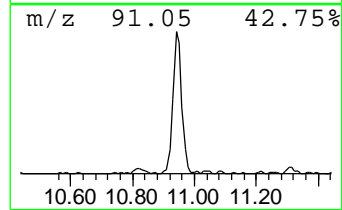
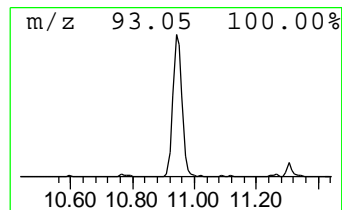
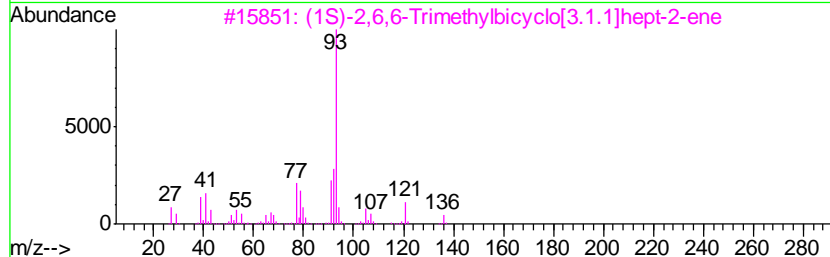
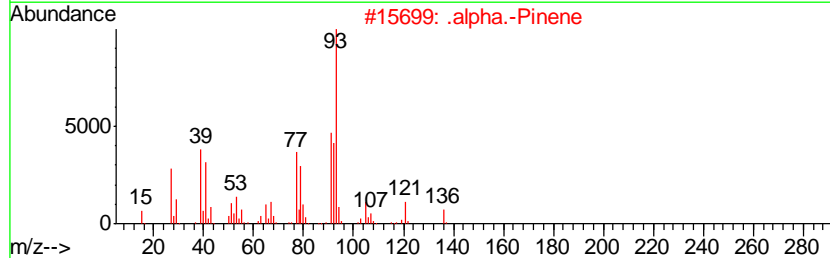
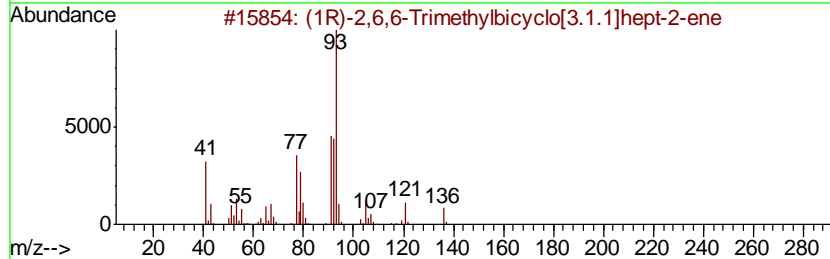
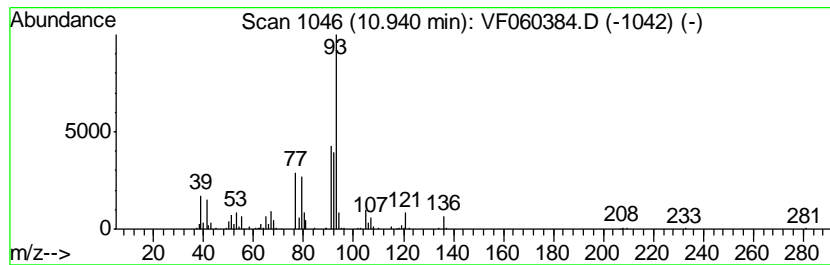
Quant Method : Z:\VOASRV\HPCHEM1\MSVOA_F\METHODS\82F091918S.M
 Quant Title : SW846 8260

TIC Library : C:\DATABASE\NIST11.L
 TIC Integration Parameters: LSCINT.P

 Peak Number 2 (1R)-2,6,6-Trimethylbicyclo... Concentration Rank 1

R.T.	EstConc	Area	Relative to ISTD	R.T.
10.94	9.42 ug/l	246627	Chlorobenzene-d5	9.91

Hit#	of	Tentative ID	MW	MolForm	CAS#	Qual
1	5	(1R)-2,6,6-Trimethylbicyclo[3.1.1]hept-2-ene	136	C10H16	007785-70-8	95
2		.alpha.-Pinene	136	C10H16	000080-56-8	94
3		(1S)-2,6,6-Trimethylbicyclo[3.1.1]hept-2-ene	136	C10H16	007785-26-4	87
4		Bicyclo[3.1.1]hept-2-ene, 3,6,6-trimethyl-	136	C10H16	004889-83-2	78
5		Cyclopropane, 1,1-dimethyl-2-(3-methylbutyl)-	136	C10H16	068998-21-0	76



Data Path : Z:\VOASRV\HPCHEM1\MSVOA_F\DATA\VF092818\
Data File : VF060384.D
Acq On : 28 Sep 2018 23:08
Operator : VA/AP
Sample : J5170-25
Misc : 6.53/5mL/MSVOA_F/SOIL
ALS Vial : 47 Sample Multiplier: 1

Instrument :
MSVOA_F
ClientSampleId :
HC-SOIL-5

Quant Method : Z:\VOASRV\HPCHEM1\MSVOA_F\METHODS\82F091918S.M
Quant Title : SW846 8260

TIC Library : C:\DATABASE\NIST11.L
TIC Integration Parameters: LSCINT.P

TIC Top Hit name	RT	EstConc	Units	Response	--Internal Standard--			
					#	RT	Resp	Conc
(1R)-2,6,6-Trimet...	10.94	9.4	ug/l	246627	3	9.91	1308470	50.0