

Data Path : Z:\VOASRV\HPCHEM1\MSVOA F\DATA\VF100218\
 Data File : VF060410.D
 Acq On : 2 Oct 2018 18:55
 Operator : VA/AP
 Sample : J5171-01
 Misc : 5.01/5mL/MSVOA F/SOIL
 ALS Vial : 45 Sample Multiplier: 1

Instrument :
 MSVOA_F
 ClientSampleId :
 KR-RO-VNJ-221

Integration Parameters: RTEINT.P

Integrator: RTE
 Smoothing : ON
 Sampling : 1
 Start Thrs: 0.2
 Stop Thrs : 0

Filtering: 5
 Min Area: 3 % of largest Peak
 Max Peaks: 100
 Peak Location: TOP

If leading or trailing edge < 100 prefer < Baseline drop else tangent >
 Peak separation: 5

Method : Z:\VOASRV\HPCHEM1\MSVOA_F\METHODS\82F100118S.M
 Title : SW846 8260

Signal : TIC

peak #	R.T. min	first scan	max scan	last scan	PK TY	peak height	corr. area	corr. % max.	% of total
1	1.133	44	51	52	rBV5	12885	40695	3.49%	0.567%
2	2.266	162	166	169	rBV2	26498	84354	7.23%	1.176%
3	2.473	182	187	193	rVB2	23380	64316	5.52%	0.897%
4	3.203	258	261	264	rBV2	10934	16633	1.43%	0.232%
5	4.169	350	359	363	rBV2	21001	76167	6.53%	1.062%
6	4.267	363	369	380	rVB	207630	650964	55.83%	9.077%
7	5.007	437	444	457	rBV2	344947	1165970	100.00%	16.259%
8	5.736	512	518	526	rBV	366232	961409	82.46%	13.407%
9	7.688	710	716	727	rBV	437808	1045691	89.68%	14.582%
10	9.610	906	911	915	rVB4	8766	17575	1.51%	0.245%
11	9.896	934	940	949	rBV	469204	1033451	88.63%	14.411%
12	10.034	951	954	958	rVB	9520	15653	1.34%	0.218%
13	11.493	1098	1102	1110	rBV	470801	818809	70.23%	11.418%
14	11.631	1112	1116	1120	rVB3	12143	26216	2.25%	0.366%
15	11.966	1147	1150	1156	rVB6	4778	14888	1.28%	0.208%
16	12.518	1200	1206	1210	rBV4	5744	17361	1.49%	0.242%
17	12.617	1213	1216	1225	rVV	650659	987145	84.66%	13.765%
18	13.612	1313	1317	1321	rBV4	5715	13516	1.16%	0.188%
19	13.760	1330	1332	1337	rVB4	12876	19778	1.70%	0.276%
20	13.928	1346	1349	1356	rBV4	9146	18169	1.56%	0.253%
21	14.253	1379	1382	1385	rBV5	6474	12495	1.07%	0.174%
22	14.509	1404	1408	1412	rBV2	17016	33636	2.88%	0.469%
23	15.337	1489	1492	1496	rVB3	14448	22732	1.95%	0.317%
24	15.465	1502	1505	1507	rVB	11544	13572	1.16%	0.189%

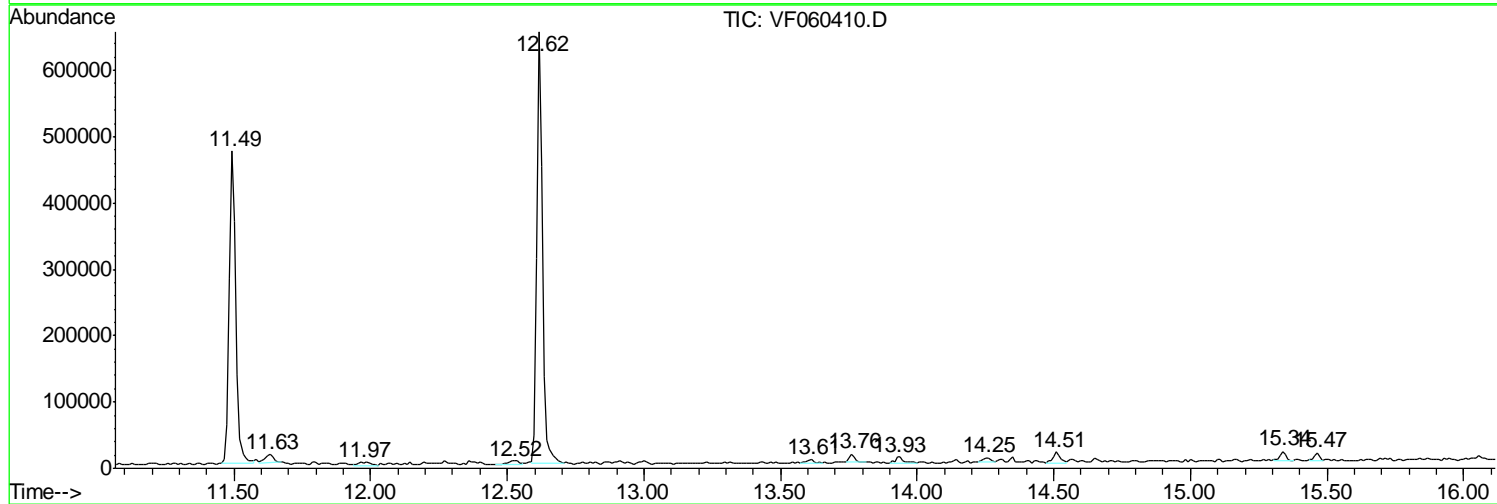
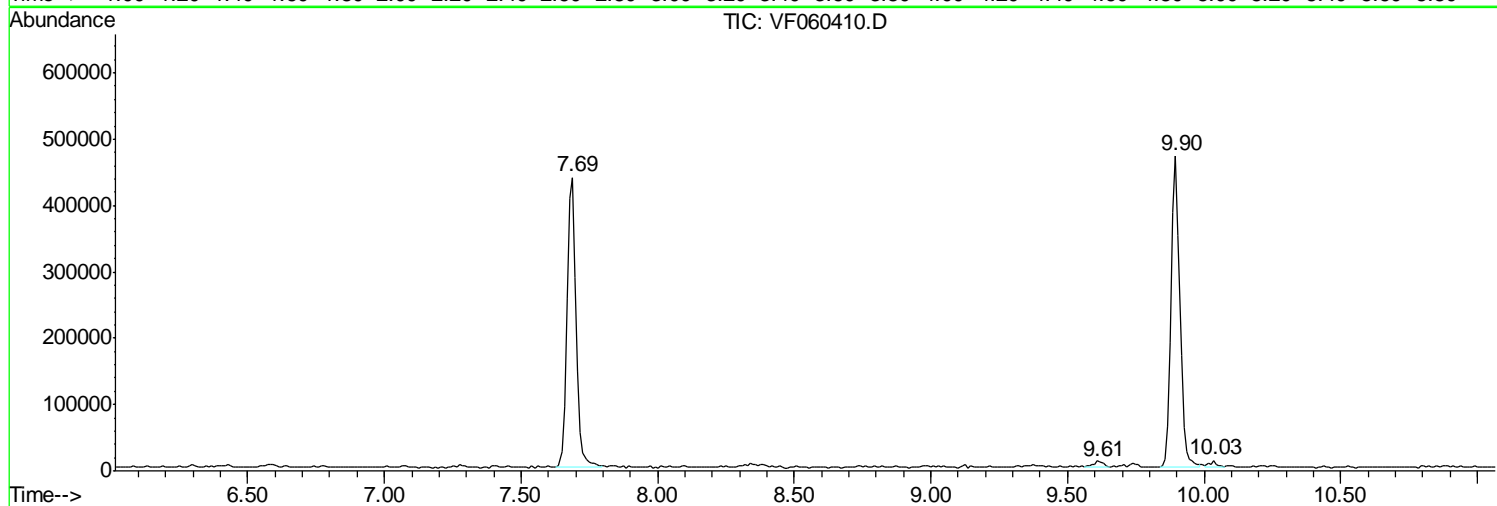
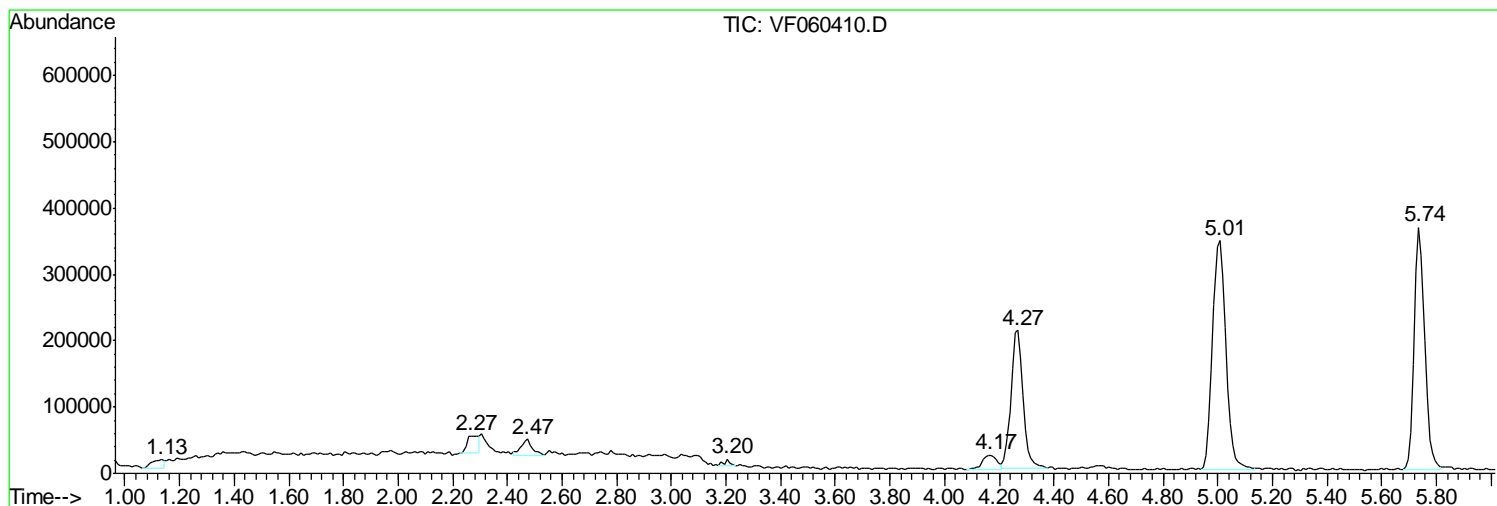
Sum of corrected areas: 7171195

Data Path : Z:\VOASRV\HPCHEM1\MSVOA F\DATA\VF100218\
 Data File : VF060410.D
 Acq On : 2 Oct 2018 18:55
 Operator : VA/AP
 Sample : J5171-01
 Misc : 5.01/5mL/MSVOA F/SOIL
 ALS Vial : 45 Sample Multiplier: 1

Instrument :
 MSVOA_F
 ClientSampleId :
 KR-RO-VNJ-221

Quant Method : Z:\VOASRV\HPCHEM1\MSVOA_F\METHODS\82F100118S.M
 Quant Title : SW846 8260

TIC Library : C:\DATABASE\NIST11.L
 TIC Integration Parameters: LSCINT.P



Data Path : Z:\VOASRV\HPCHEM1\MSVOA_F\DATA\VF100218\
Data File : VF060410.D
Acq On : 2 Oct 2018 18:55
Operator : VA/AP
Sample : J5171-01
Misc : 5.01/5mL/MSVOA_F/SOIL
ALS Vial : 45 Sample Multiplier: 1

Instrument :
MSVOA_F
ClientSampleId :
KR-RO-VNJ-221

Quant Method : Z:\VOASRV\HPCHEM1\MSVOA_F\METHODS\82F100118S.M
Quant Title : SW846 8260

TIC Library : C:\DATABASE\NIST11.L
TIC Integration Parameters: LSCINT.P

No Library Search Compounds Detected

Data Path : Z:\VOASRV\HPCHEM1\MSVOA_F\DATA\VF100218\
Data File : VF060410.D
Acq On : 2 Oct 2018 18:55
Operator : VA/AP
Sample : J5171-01
Misc : 5.01/5mL/MSVOA_F/SOIL
ALS Vial : 45 Sample Multiplier: 1

Instrument :
MSVOA_F
ClientSampleId :
KR-RO-VNJ-221

Quant Method : Z:\VOASRV\HPCHEM1\MSVOA_F\METHODS\82F100118S.M
Quant Title : SW846 8260

TIC Library : C:\DATABASE\NIST11.L
TIC Integration Parameters: LSCINT.P

TIC Top Hit name	RT	EstConc	Units	Response	--Internal Standard--			
					#	RT	Resp	Conc
