

Data Path : Z:\VOASRV\HPCHEM1\MSVOA F\DATA\VF100518\
 Data File : VF060473.D
 Acq On : 5 Oct 2018 23:47
 Operator : VA/AP
 Sample : J5084-18
 Misc : 5.30/5mL/MSVOA F/SOIL
 ALS Vial : 46 Sample Multiplier: 1

Instrument :
 MSVOA_F
 ClientSampleId :
 B-5(12-12.5)

Quant Time: Oct 06 04:40:05 2018
 Quant Method : Z:\VOASRV\HPCHEM1\MSVOA_F\METHODS\82F100118S.M
 Quant Title : SW846 8260
 QLast Update : Tue Oct 02 11:42:56 2018
 Response via : Initial Calibration

Internal Standards	R.T.	QIon	Response	Conc	Units	Dev(Min)
1) Pentafluorobenzene	5.02	168	321481	50.00	ug/l	0.01
34) 1,4-Difluorobenzene	5.75	114	642669	50.00	ug/l	0.01
63) Chlorobenzene-d5	9.90	117	369821	50.00	ug/l	0.01
72) 1,4-Dichlorobenzene-d4	12.62	152	208458	50.00	ug/l	0.00

System Monitoring Compounds

33) 1,2-Dichloroethane-d4	5.00	65	174361	34.66	ug/l	0.01
Spiked Amount	50.000		Recovery	=	69.32%	
35) Dibromofluoromethane	4.27	113	162714	26.95	ug/l	0.01
Spiked Amount	50.000		Recovery	=	53.90%	
50) Toluene-d8	7.69	98	372309	25.04	ug/l	0.01
Spiked Amount	50.000		Recovery	=	50.08%	
62) 4-Bromofluorobenzene	11.50	95	275866	40.63	ug/l	0.01
Spiked Amount	50.000		Recovery	=	81.26%	

Target Compounds

						Qvalue
2) Dichlorodifluoromethane	0.99	85	564	Below Cal	#	43
3) Chloromethane	1.12	50	13684	3.135	ug/l #	79
11) Tert butyl alcohol	2.67	59	738	2.425	ug/l #	1
13) Acrolein	2.08	56	187306	765.445	ug/l #	1
14) Allyl chloride	2.26	41	565490	90.502	ug/l #	27
15) Acrylonitrile	3.04	53	96988	186.023	ug/l #	52
16) Acetone	2.27	43	168737	153.720	ug/l	97
17) Carbon Disulfide	1.90	76	41265	3.495	ug/l	97
18) Methyl Acetate	2.47	43	282759	153.230	ug/l #	57
20) Methylene Chloride	2.26	84	8061	Below Cal	#	1
23) Vinyl Acetate	3.27	43	8410	1.867	ug/l #	86
25) 2-Butanone	4.51	43	202927	155.793	ug/l #	69
26) 2,2-Dichloropropane	3.67	77	7905	1.820	ug/l #	61
29) Tetrahydrofuran	4.17	42	413991	854.815	ug/l #	1
31) Cyclohexane	3.90	56	616126	111.874	ug/l #	52
37) Ethyl Acetate	4.17	43	2046891	674.592	ug/l #	1
39) Methylcyclohexane	5.61	83	1106330	142.424	ug/l	95
43) Isopropyl Acetate	6.96	43	3288200	896.740	ug/l #	44
45) 1,2-Dichloropropane	6.45	63	27384	6.537	ug/l #	1
47) Bromodichloromethane	6.46	83	143537	17.208	ug/l #	27
48) Methyl methacrylate	6.96	41	2055020	780.730	ug/l #	44
49) 1,4-Dioxane	6.85	88	244	10.751	ug/l #	1
51) 4-Methyl-2-Pentanone	8.41	43	851003	326.028	ug/l #	45
55) 1,1,2-Trichloroethane	8.54	97	266614	78.727	ug/l #	32
56) Ethyl methacrylate	8.77	69	917209	238.346	ug/l	93
58) 2-Chloroethyl Vinyl ether	7.76	63	4453	11.329	ug/l	100
59) 2-Hexanone	9.64	43	269093	140.551	ug/l #	50
65) Chlorobenzene	9.88	112	8485	1.117	ug/l #	40
67) Ethyl Benzene	10.03	91	495897	34.331	ug/l	99
68) m/p-Xylenes	10.26	106	64698	13.029	ug/l	91
69) o-Xylene	10.82	106	22575	4.171	ug/l	86
73) Isopropylbenzene	11.21	105	573454	34.938	ug/l	98
74) N-amyl acetate	11.48	43	278633	73.967	ug/l #	47
75) 1,1,2,2-Tetrachloroethane	11.75	83	44197	14.770	ug/l #	92

Data Path : Z:\VOASRV\HPCHEM1\MSVOA F\DATA\VF100518\
 Data File : VF060473.D
 Acq On : 5 Oct 2018 23:47
 Operator : VA/AP
 Sample : J5084-18
 Misc : 5.30/5mL/MSVOA F/SOIL
 ALS Vial : 46 Sample Multiplier: 1

Instrument :
 MSVOA_F
 ClientSampleId :
 B-5(12-12.5)

Quant Time: Oct 06 04:40:05 2018
 Quant Method : Z:\VOASRV\HPCHEM1\MSVOA_F\METHODS\82F100118S.M
 Quant Title : SW846 8260
 QLast Update : Tue Oct 02 11:42:56 2018
 Response via : Initial Calibration

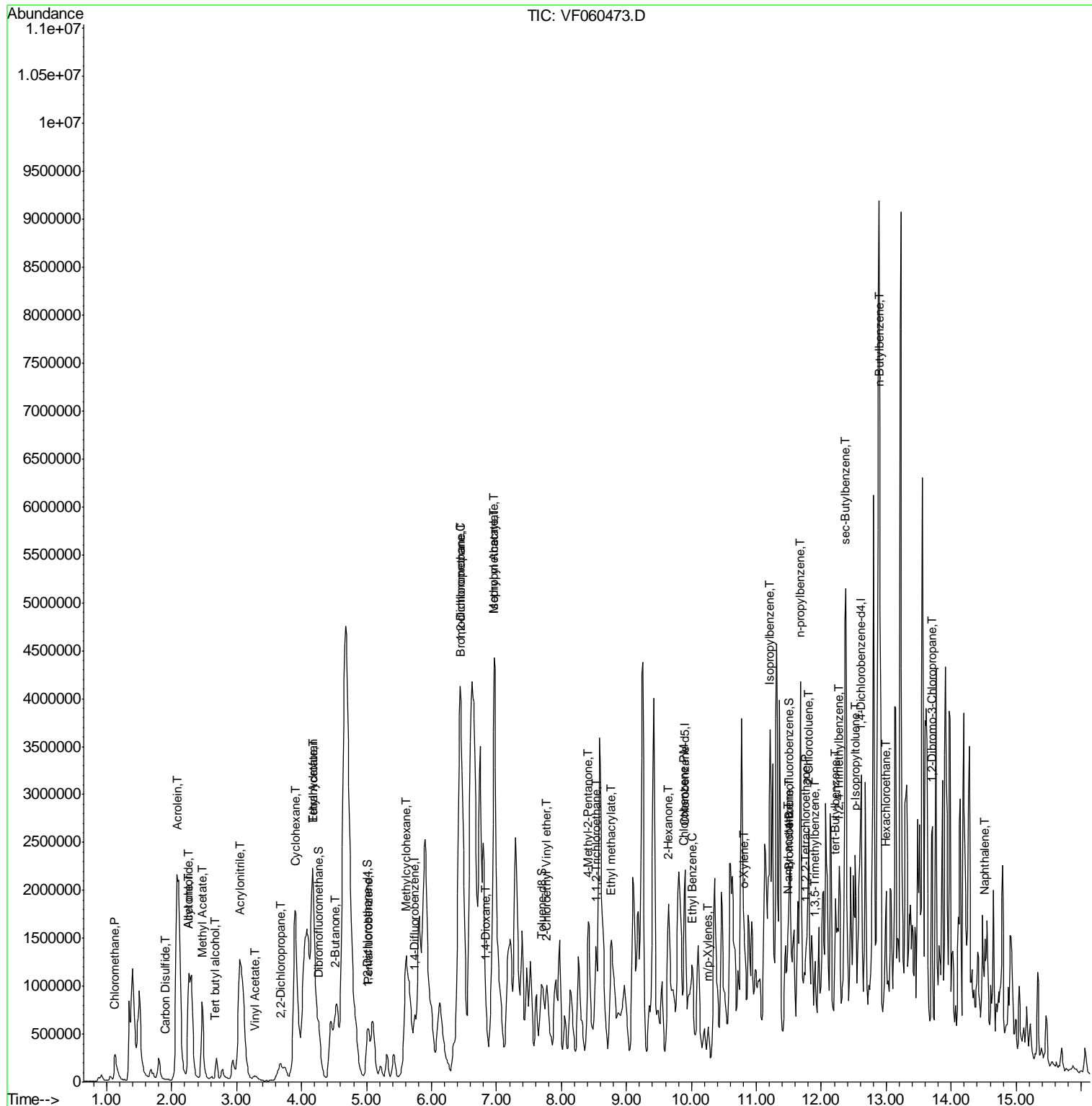
Internal Standards	R.T.	QIon	Response	Conc	Units	Dev(Min)
77) Bromobenzene	11.49	156	8048	2.194	ug/l #	1
78) n-propylbenzene	11.68	91	2614187	131.379	ug/l	94
79) 2-Chlorotoluene	11.80	91	108648	9.334	ug/l #	48
80) 1,3,5-Trimethylbenzene	11.90	105	76479	5.484	ug/l	94
83) tert-Butylbenzene	12.21	119	29346	2.134	ug/l #	63
84) 1,2,4-Trimethylbenzene	12.28	105	90078	6.513	ug/l	89
85) sec-Butylbenzene	12.39	105	1266105	66.689	ug/l #	68
86) p-Isopropyltoluene	12.53	119	228188	14.712	ug/l	97
89) n-Butylbenzene	12.91	91	2581980	157.315	ug/l	93
90) Hexachloroethane	13.00	117	62435	15.574	ug/l #	27
92) 1,2-Dibromo-3-Chloropropan	13.71	75	9194	15.849	ug/l #	29
95) Naphthalene	14.51	128	174117	19.696	ug/l #	64

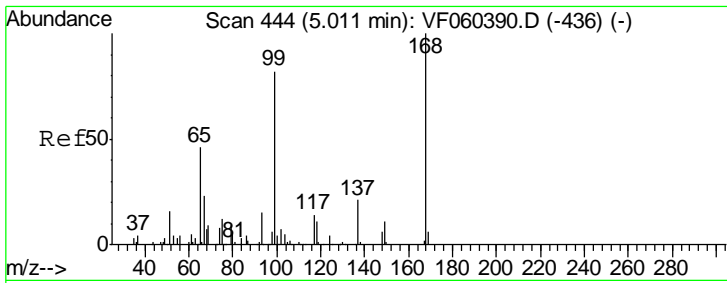
(#) = qualifier out of range (m) = manual integration (+) = signals summed

Data Path : Z:\VOASRV\HPCHEM1\MSVOA F\DATA\VF100518\
 Data File : VF060473.D
 Acq On : 5 Oct 2018 23:47
 Operator : VA/AP
 Sample : J5084-18
 Misc : 5.30/5mL/MSVOA F/SOIL
 ALS Vial : 46 Sample Multiplier: 1

Instrument :
 MSVOA_F
 Client Sampled :
 B-5(12-12.5)

Quant Time: Oct 06 04:40:05 2018
 Quant Method : Z:\VOASRV\HPCHEM1\MSVOA_F\METHODS\82F100118S.M
 Quant Title : SW846 8260
 QLast Update : Tue Oct 02 11:42:56 2018
 Response via : Initial Calibration

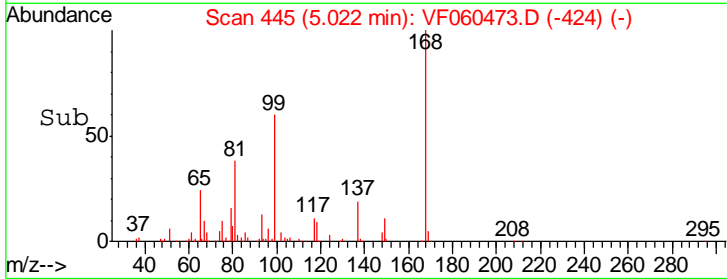
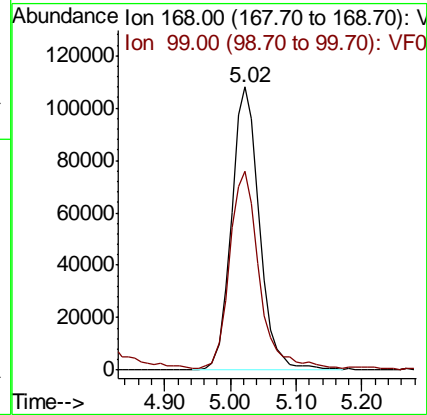
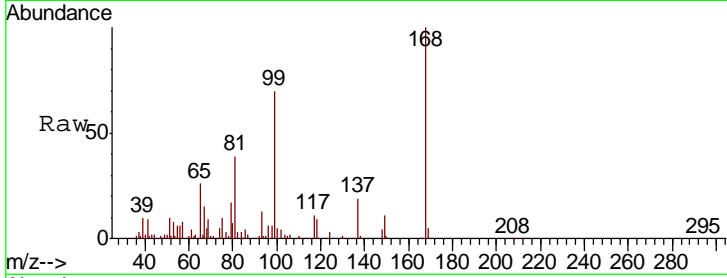




#1
 Pentafluorobenzene
 Concen: 50.000 ug/l
 RT: 5.02 min Scan# 445
 Delta R.T. 0.01 min
 Lab File: VF060473.D
 Acq: 5 Oct 2018 23:47

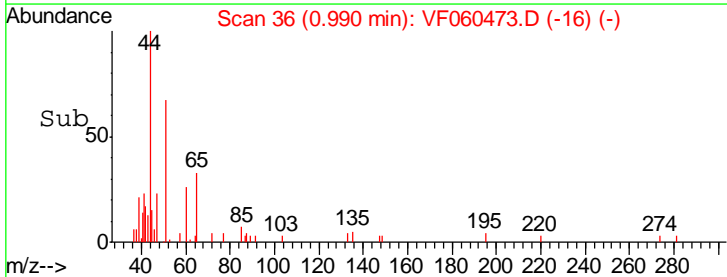
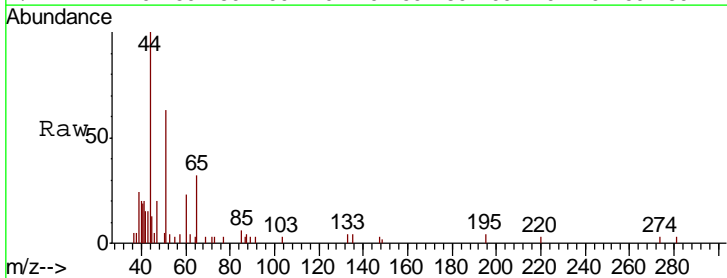
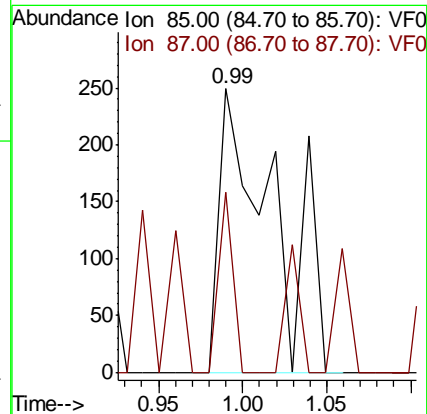
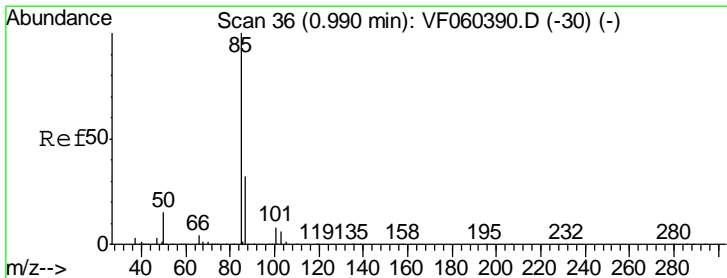
Instrument :
 MSVOA_F
 ClientSampled :
 B-5(12-12.5)

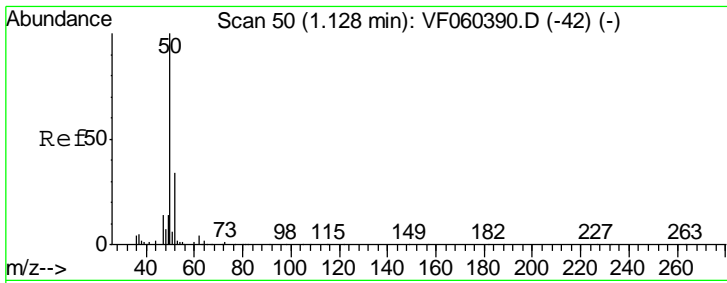
Tgt Ion	Resp	Lower	Upper
168	100		
99	70.2	65.3	97.9



#2
 Dichlorodifluoromethane
 Concen: Below Cal
 RT: 0.99 min Scan# 36
 Delta R.T. 0.00 min
 Lab File: VF060473.D
 Acq: 5 Oct 2018 23:47

Tgt Ion	Resp	Lower	Upper
85	100		
87	63.5	15.9	47.6#

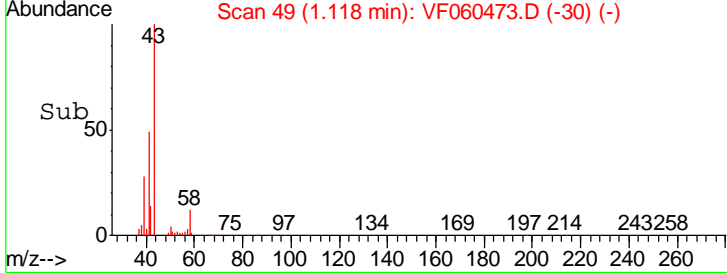
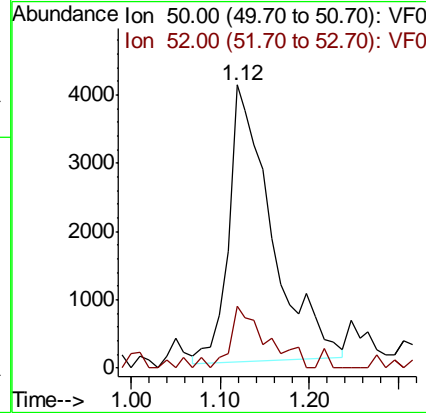
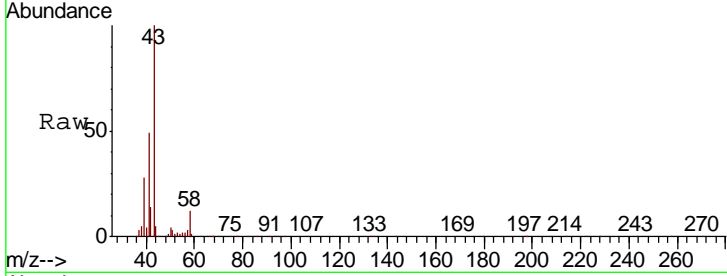




#3
 Chloromethane
 Concen: 3.135 ug/l
 RT: 1.12 min Scan# 49
 Delta R.T. -0.01 min
 Lab File: VF060473.D
 Acq: 5 Oct 2018 23:47

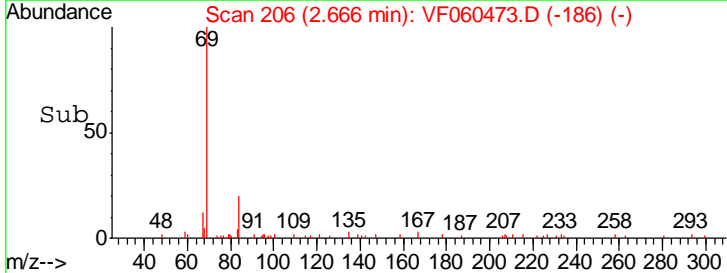
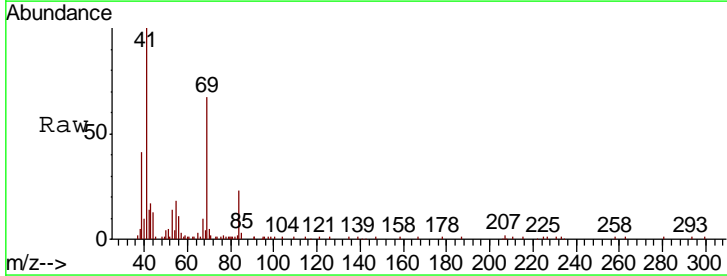
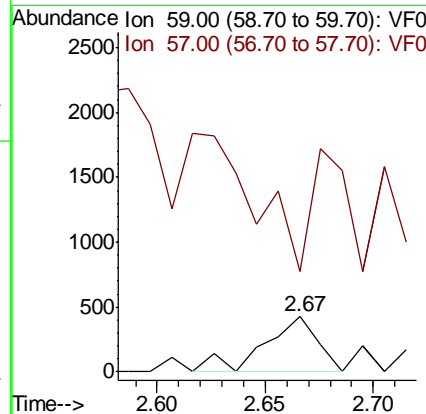
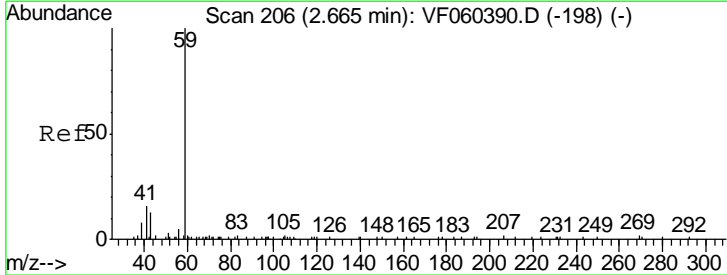
Instrument :
 MSVOA_F
ClientSampled :
 B-5(12-12.5)

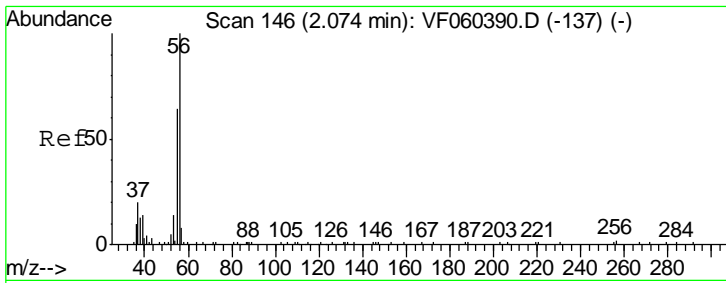
Tgt Ion: 50 Resp: 13684
 Ion Ratio Lower Upper
 50 100
 52 21.7 26.9 40.3#



#11
 Tert butyl alcohol
 Concen: 2.425 ug/l
 RT: 2.67 min Scan# 206
 Delta R.T. 0.00 min
 Lab File: VF060473.D
 Acq: 5 Oct 2018 23:47

Tgt Ion: 59 Resp: 738
 Ion Ratio Lower Upper
 59 100
 57 181.9 6.5 9.7#

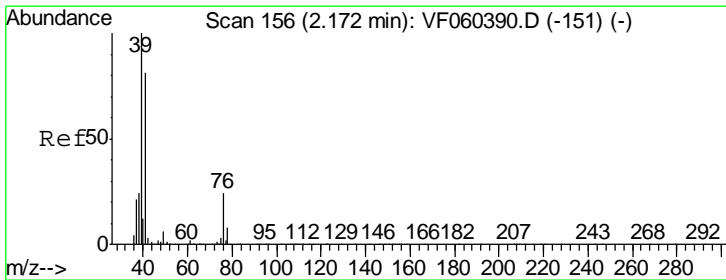
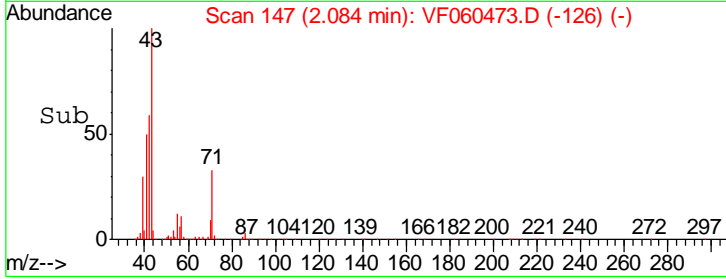
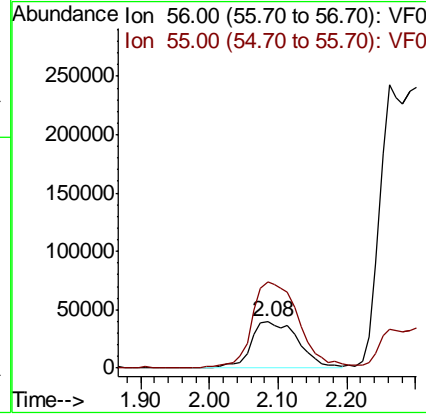
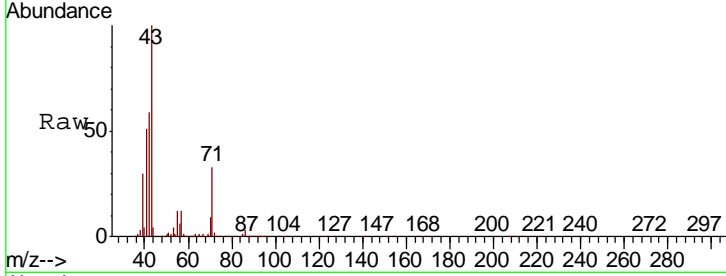




#13
 Acrolein
 Concen: 765.445 ug/l
 RT: 2.08 min Scan# 147
 Delta R.T. 0.01 min
 Lab File: VF060473.D
 Acq: 5 Oct 2018 23:47

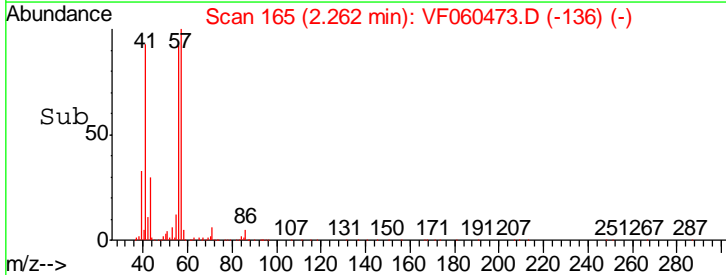
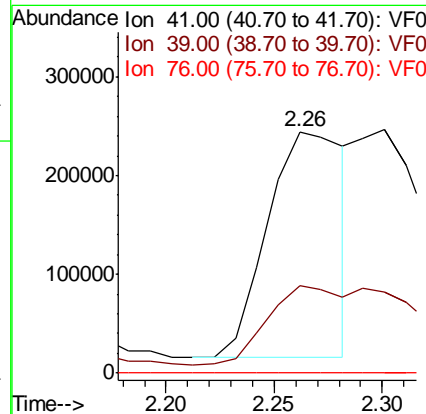
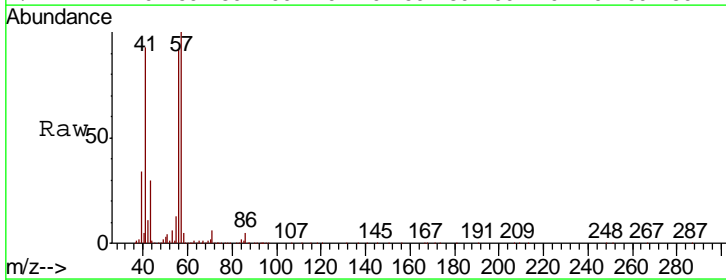
Instrument :
 MSVOA_F
 ClientSampled :
 B-5(12-12.5)

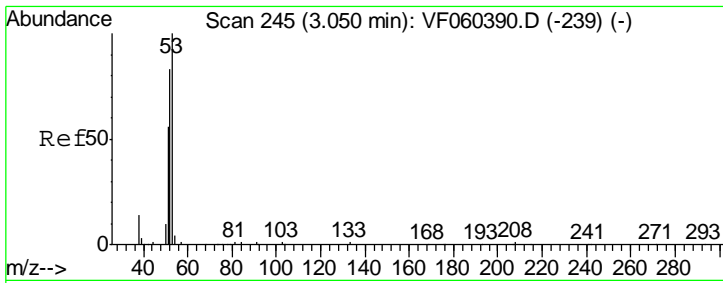
Tgt Ion: 56 Resp: 187306
 Ion Ratio Lower Upper
 56 100
 55 185.3 53.9 80.9#



#14
 Allyl chloride
 Concen: 90.502 ug/l
 RT: 2.26 min Scan# 165
 Delta R.T. 0.09 min
 Lab File: VF060473.D
 Acq: 5 Oct 2018 23:47

Tgt Ion: 41 Resp: 565490
 Ion Ratio Lower Upper
 41 100
 39 36.3 98.3 147.5#
 76 0.0 23.9 35.9#

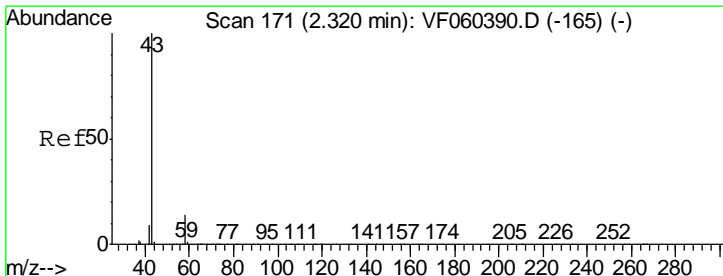
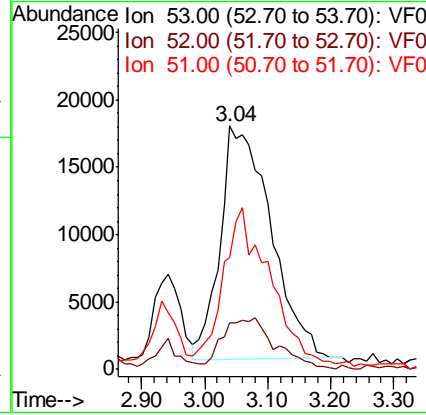
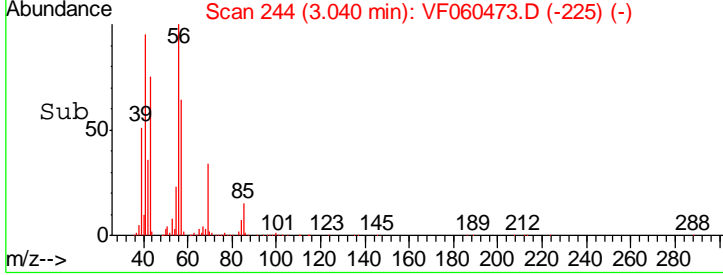
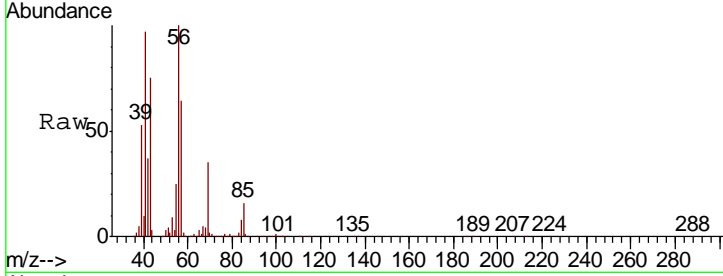




#15
 Acrylonitrile
 Concen: 186.023 ug/l
 RT: 3.04 min Scan# 244
 Delta R.T. -0.01 min
 Lab File: VF060473.D
 Acq: 5 Oct 2018 23:47

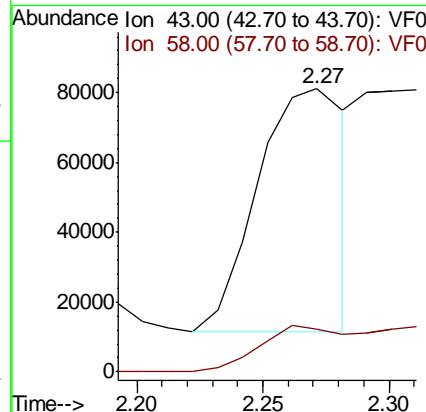
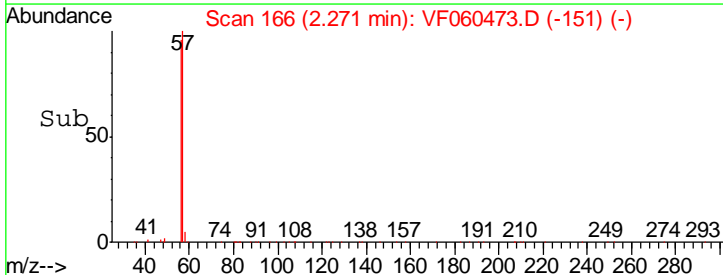
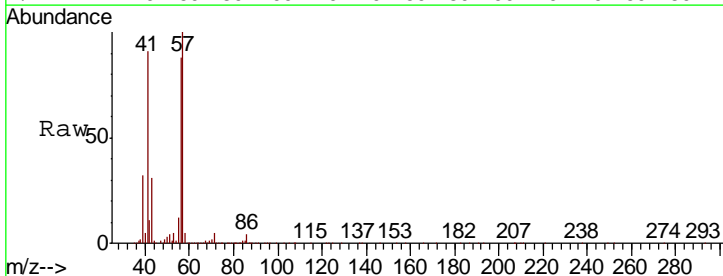
Instrument :
 MSVOA_F
ClientSampled :
 B-5(12-12.5)

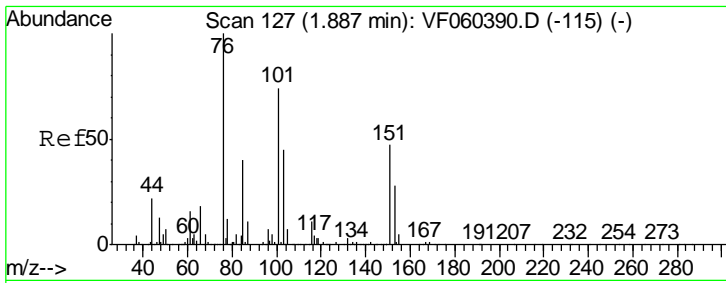
Tgt Ion	Resp	Lower	Upper
53	100		
52	18.9	66.0	99.0#
51	46.0	45.6	68.4



#16
 Acetone
 Concen: 153.720 ug/l
 RT: 2.27 min Scan# 166
 Delta R.T. -0.05 min
 Lab File: VF060473.D
 Acq: 5 Oct 2018 23:47

Tgt Ion	Resp	Lower	Upper
43	100		
58	15.2	11.2	16.8

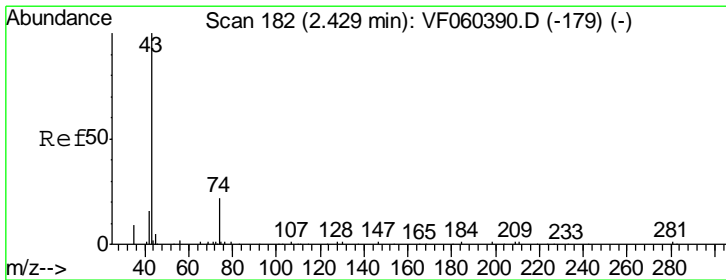
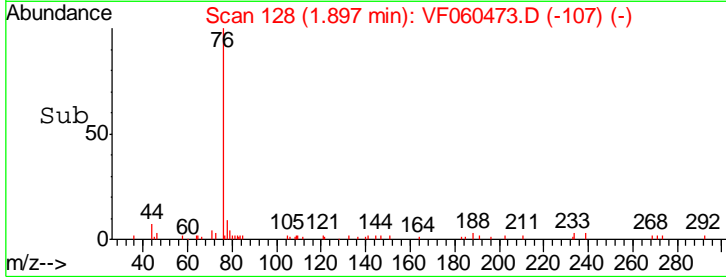
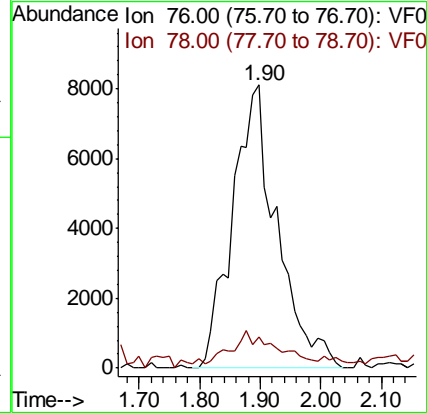
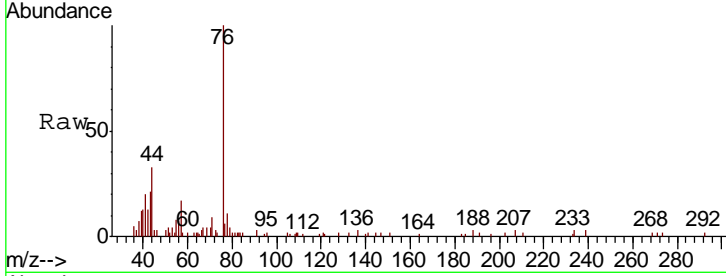




#17
 Carbon Disulfide
 Concen: 3.495 ug/l
 RT: 1.90 min Scan# 128
 Delta R.T. 0.01 min
 Lab File: VF060473.D
 Acq: 5 Oct 2018 23:47

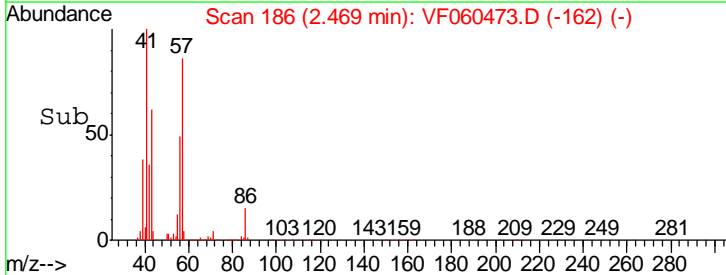
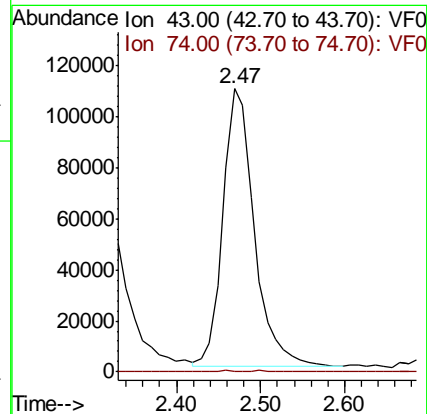
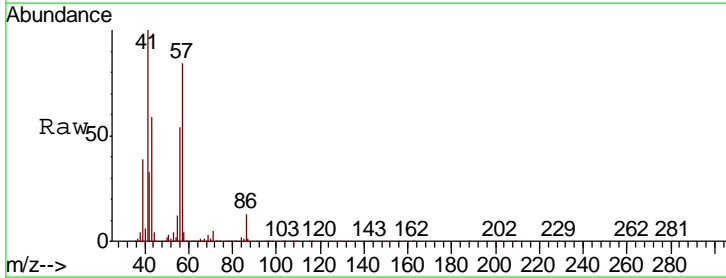
Instrument :
 MSVOA_F
 ClientSampled :
 B-5(12-12.5)

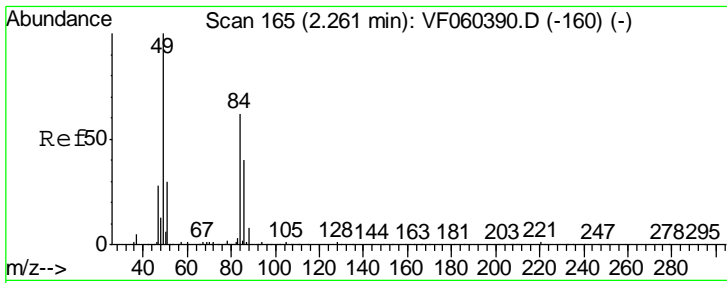
Tgt Ion: 76 Resp: 41265
 Ion Ratio Lower Upper
 76 100
 78 11.2 10.1 15.1



#18
 Methyl Acetate
 Concen: 153.230 ug/l
 RT: 2.47 min Scan# 186
 Delta R.T. 0.04 min
 Lab File: VF060473.D
 Acq: 5 Oct 2018 23:47

Tgt Ion: 43 Resp: 282759
 Ion Ratio Lower Upper
 43 100
 74 0.2 15.8 23.8#

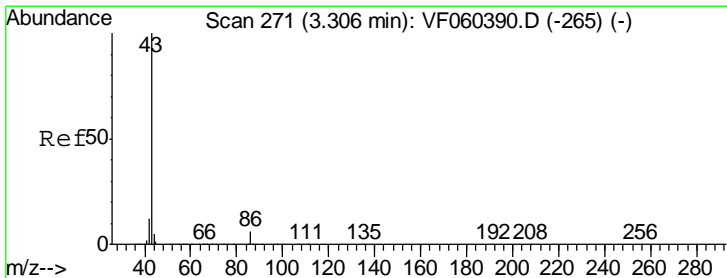
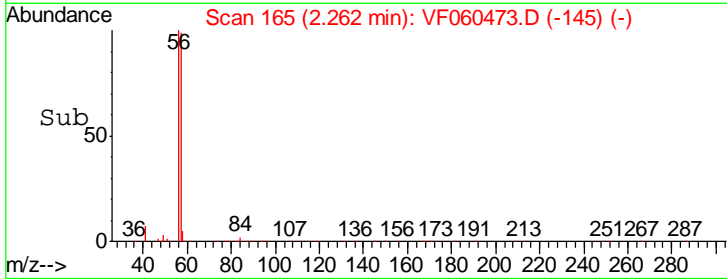
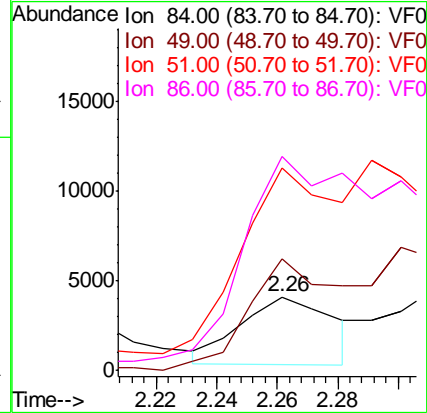
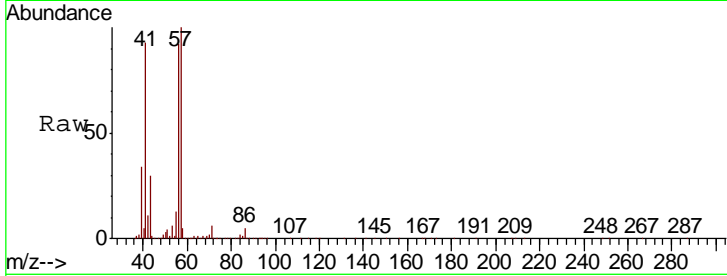




#20
 Methylene Chloride
 Concen: Below Cal
 RT: 2.26 min Scan# 165
 Delta R.T. 0.00 min
 Lab File: VF060473.D
 Acq: 5 Oct 2018 23:47

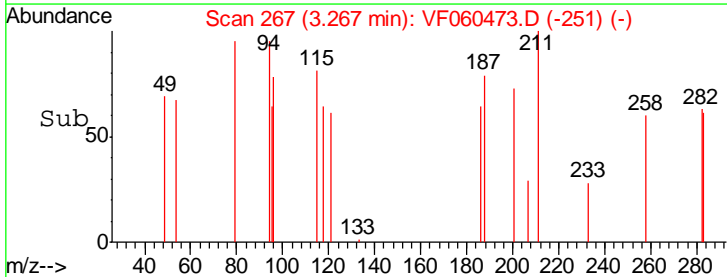
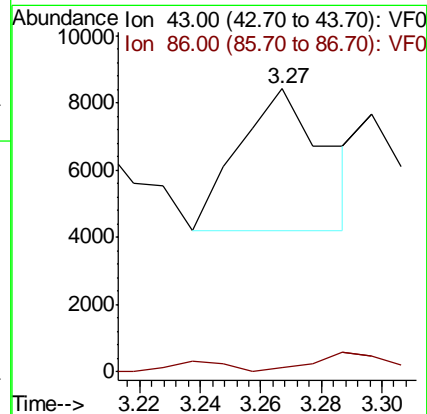
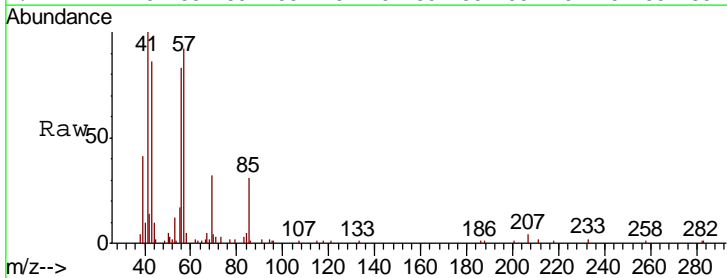
Instrument :
 MSVOA_F
 ClientSampled :
 B-5(12-12.5)

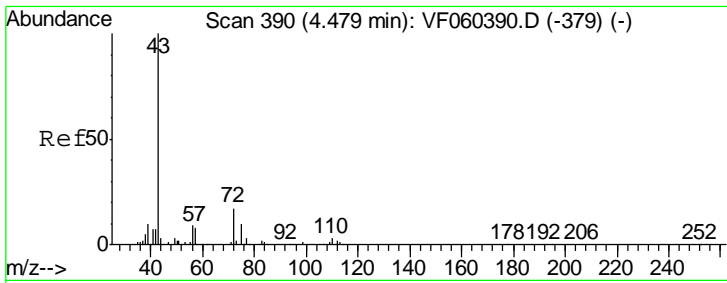
Tgt Ion	Resp	Lower	Upper
84	100		
49	151.9	130.2	195.2
51	275.0	41.0	61.6#
86	290.4	51.5	77.3#



#23
 Vinyl Acetate
 Concen: 1.867 ug/l
 RT: 3.27 min Scan# 267
 Delta R.T. -0.04 min
 Lab File: VF060473.D
 Acq: 5 Oct 2018 23:47

Tgt Ion	Resp	Lower	Upper
43	100		
86	1.5	5.1	7.7#

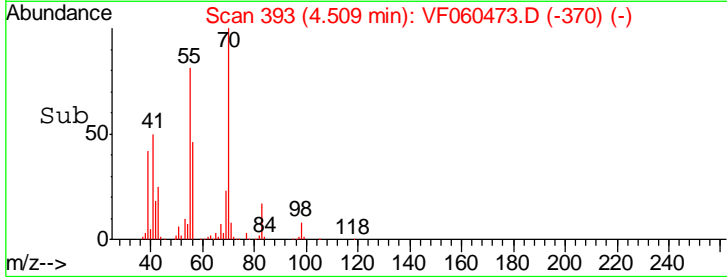
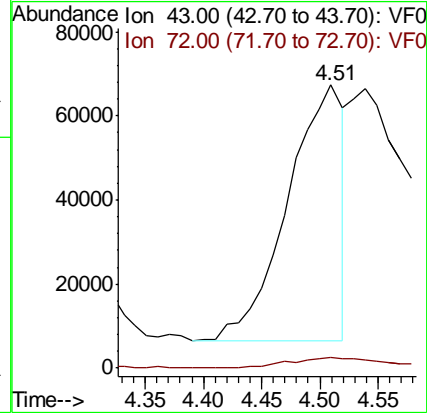
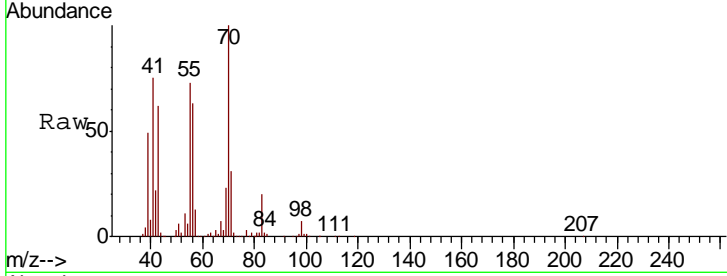




#25
 2-Butanone
 Concen: 155.793 ug/l
 RT: 4.51 min Scan# 393
 Delta R.T. 0.03 min
 Lab File: VF060473.D
 Acq: 5 Oct 2018 23:47

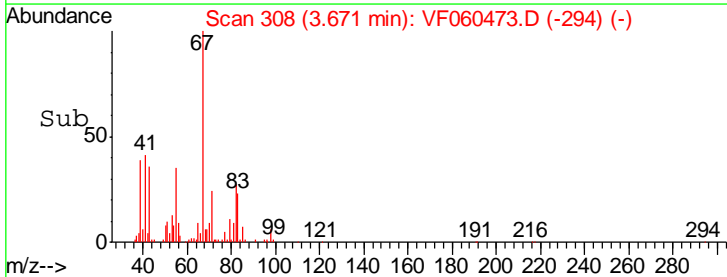
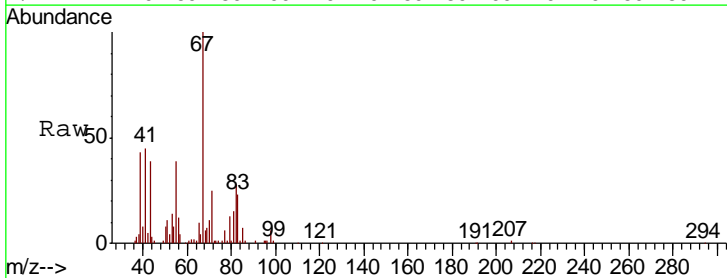
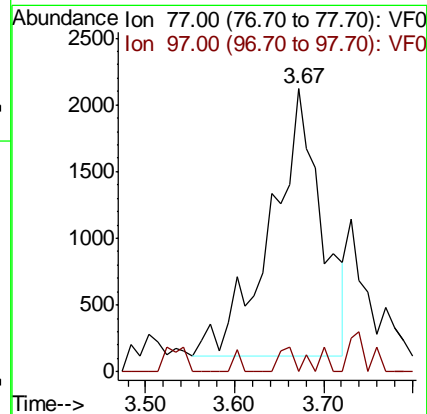
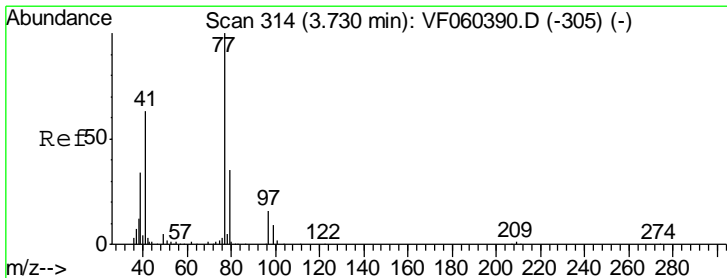
Instrument :
 MSVOA_F
 ClientSampled :
 B-5(12-12.5)

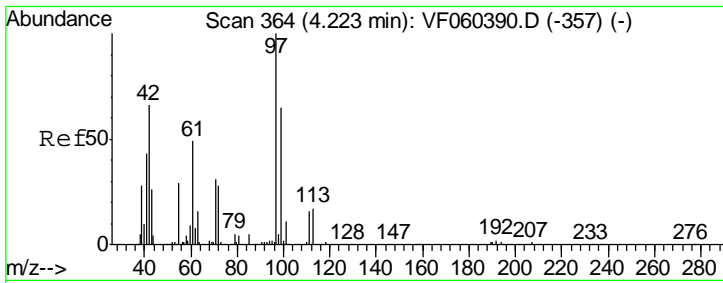
Tgt Ion: 43 Resp: 202927
 Ion Ratio Lower Upper
 43 100
 72 3.8 14.1 21.1#



#26
 2,2-Dichloropropane
 Concen: 1.820 ug/l
 RT: 3.67 min Scan# 308
 Delta R.T. -0.06 min
 Lab File: VF060473.D
 Acq: 5 Oct 2018 23:47

Tgt Ion: 77 Resp: 7905
 Ion Ratio Lower Upper
 77 100
 97 0.0 8.3 25.1#

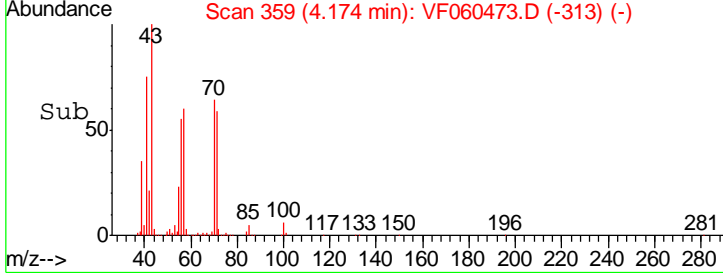
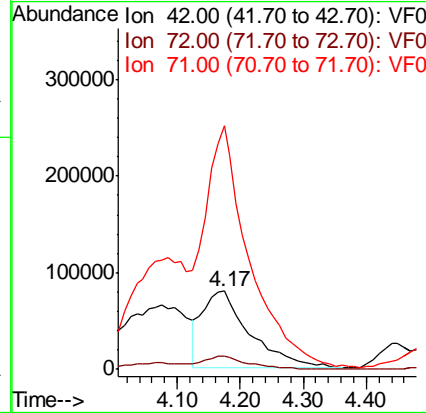
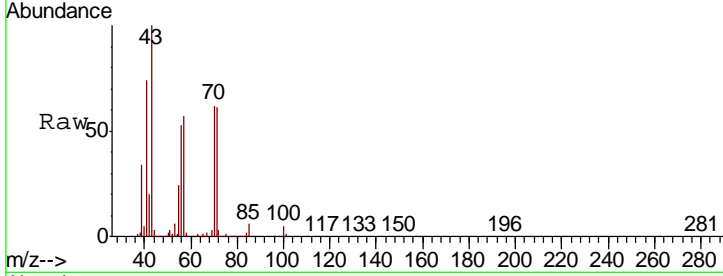




#29
 Tetrahydrofuran
 Concen: 854.815 ug/l
 RT: 4.17 min Scan# 359
 Delta R.T. -0.05 min
 Lab File: VF060473.D
 Acq: 5 Oct 2018 23:47

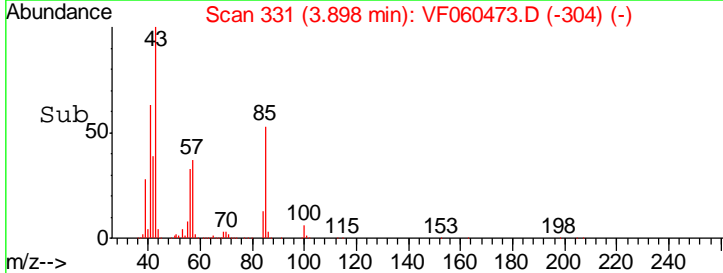
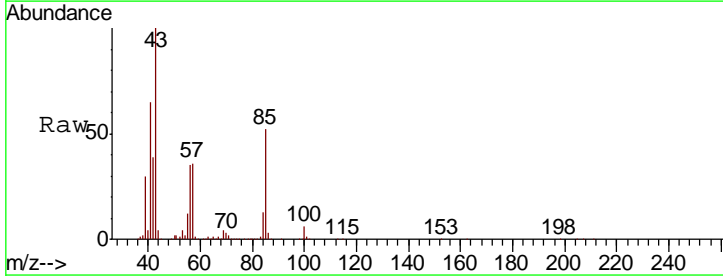
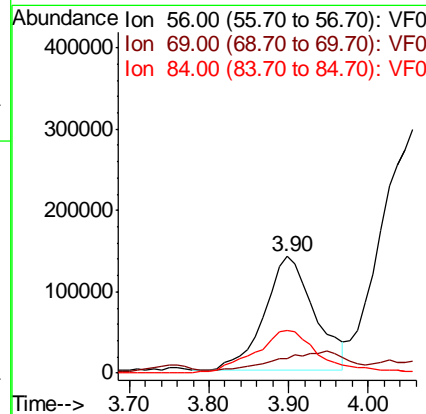
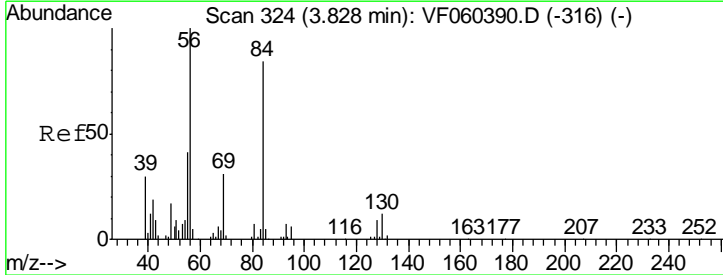
Instrument :
 MSVOA_F
 ClientSampled :
 B-5(12-12.5)

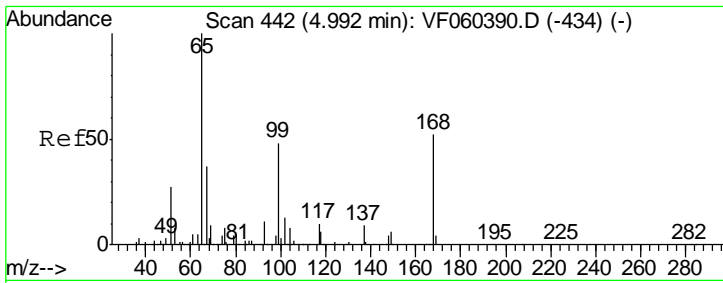
Tgt Ion	Resp	Lower	Upper
42	100		
72	17.0	33.6	50.4#
71	305.2	32.7	49.1#



#31
 Cyclohexane
 Concen: 111.874 ug/l
 RT: 3.90 min Scan# 331
 Delta R.T. 0.07 min
 Lab File: VF060473.D
 Acq: 5 Oct 2018 23:47

Tgt Ion	Resp	Lower	Upper
56	100		
69	12.3	25.5	38.3#
84	36.6	67.4	101.0#

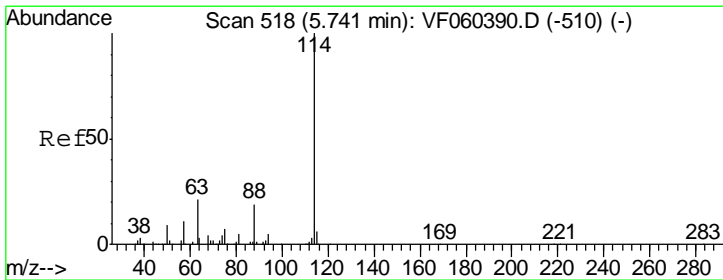
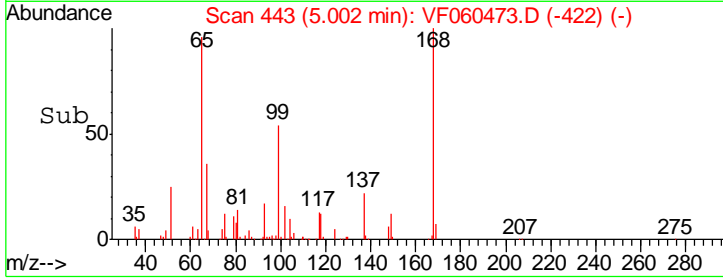
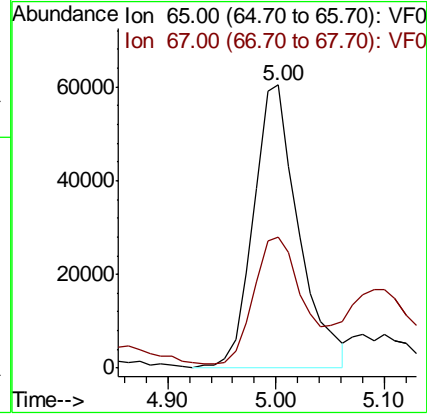
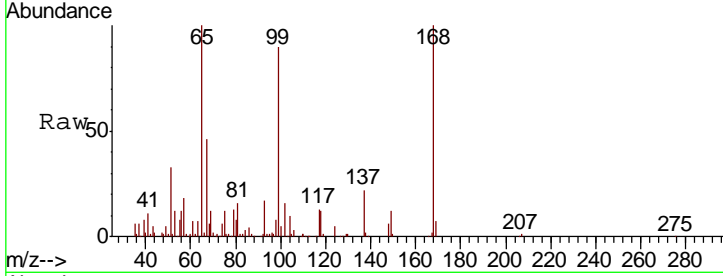




#33
 1,2-Dichloroethane-d4
 Concen: 34.661 ug/l
 RT: 5.00 min Scan# 443
 Delta R.T. 0.01 min
 Lab File: VF060473.D
 Acq: 5 Oct 2018 23:47

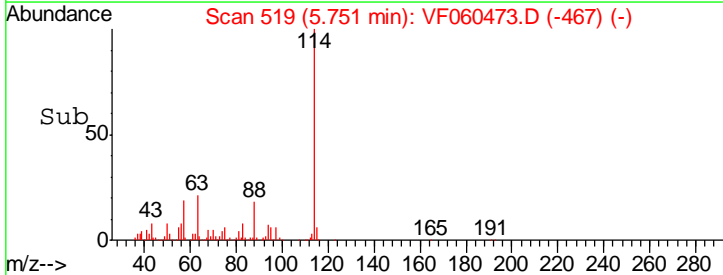
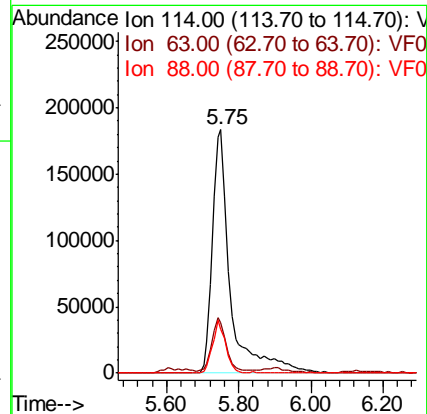
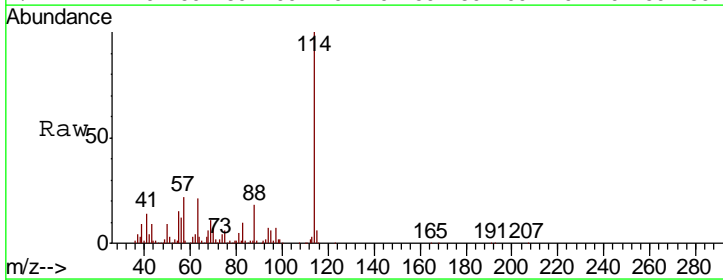
Instrument :
 MSVOA_F
 ClientSampled :
 B-5(12-12.5)

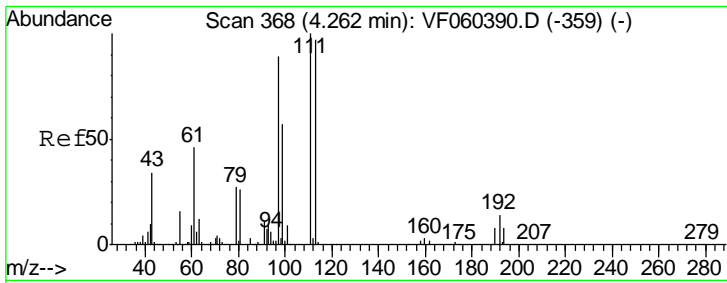
Tgt Ion	Resp	Lower	Upper
65	174361		
67	46.1	0.0	89.4



#34
 1,4-Difluorobenzene
 Concen: 50.000 ug/l
 RT: 5.75 min Scan# 519
 Delta R.T. 0.01 min
 Lab File: VF060473.D
 Acq: 5 Oct 2018 23:47

Tgt Ion	Resp	Lower	Upper
114	642669		
63	20.9	0.0	42.2
88	18.3	0.0	38.8



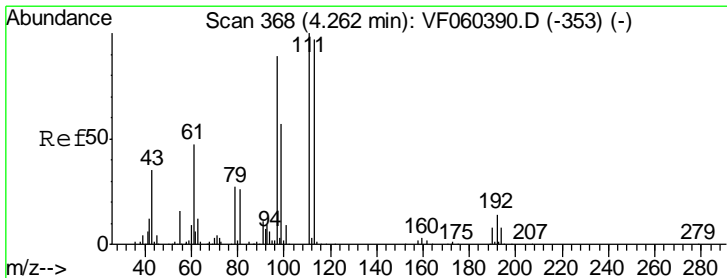
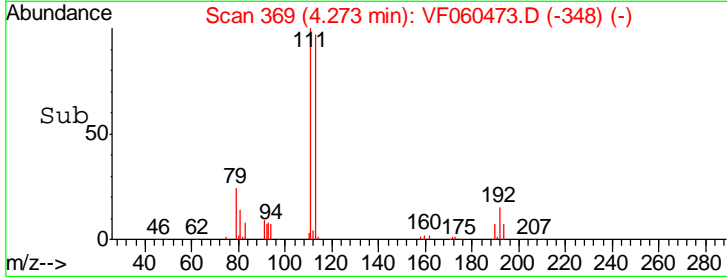
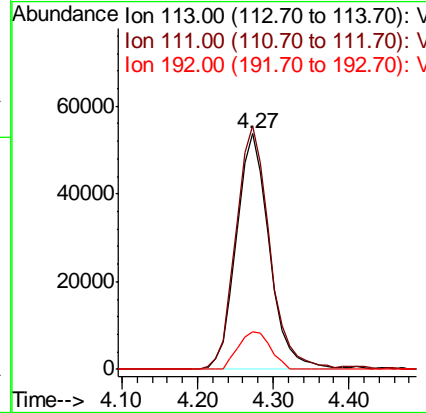
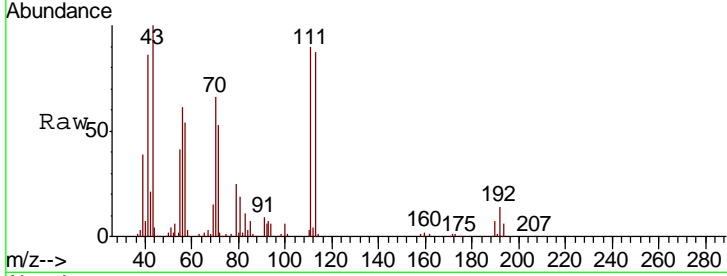


#35
 Dibromofluoromethane
 Concen: 26.951 ug/l
 RT: 4.27 min Scan# 369
 Delta R.T. 0.01 min
 Lab File: VF060473.D
 Acq: 5 Oct 2018 23:47

Instrument :
 MSVOA_F
 ClientSampled :
 B-5(12-12.5)

Tgt Ion:113 Resp: 162714

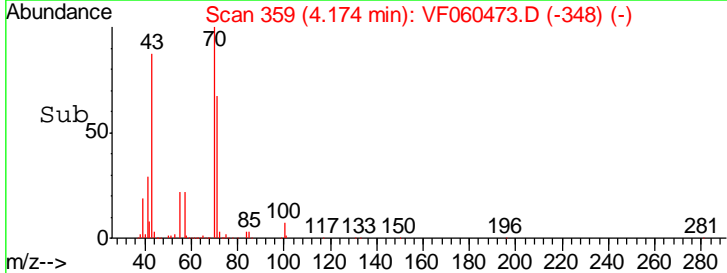
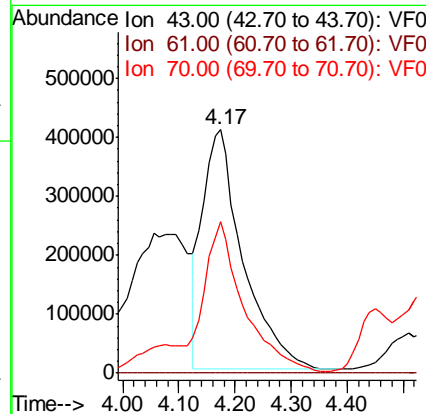
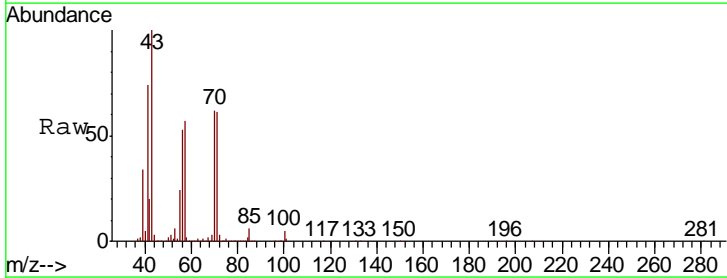
Ion	Ratio	Lower	Upper
113	100		
111	103.4	82.3	123.5
192	16.0	11.8	17.6

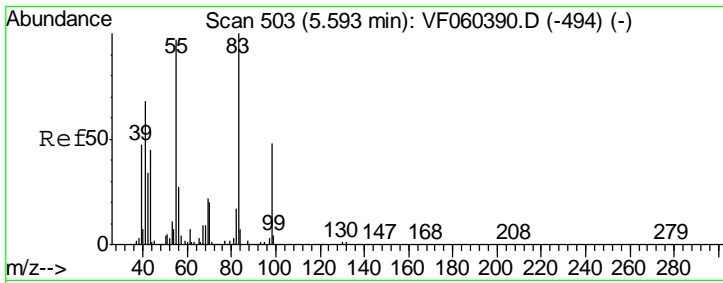


#37
 Ethyl Acetate
 Concen: 674.592 ug/l
 RT: 4.17 min Scan# 359
 Delta R.T. -0.09 min
 Lab File: VF060473.D
 Acq: 5 Oct 2018 23:47

Tgt Ion: 43 Resp: 2046891

Ion	Ratio	Lower	Upper
43	100		
61	0.1	105.1	157.7#
70	62.0	8.0	12.0#

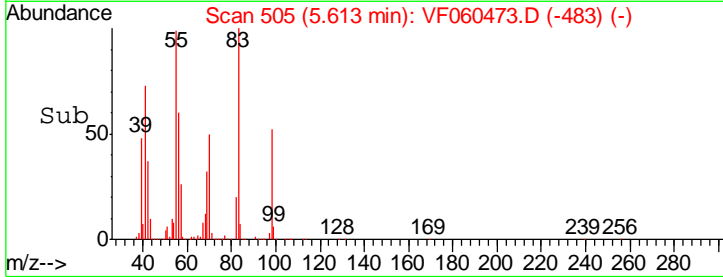
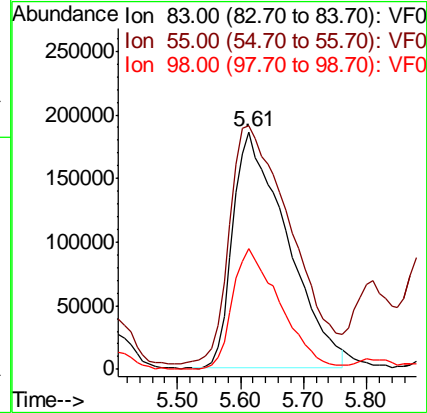
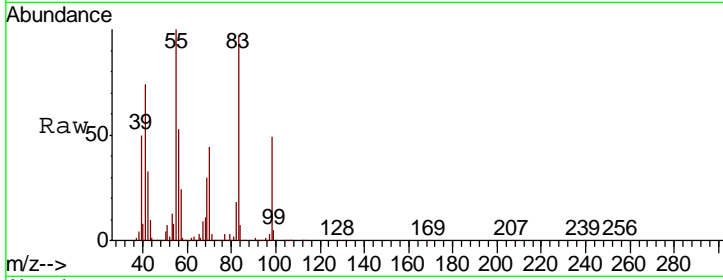




#39
 Methylcyclohexane
 Concen: 142.424 ug/l
 RT: 5.61 min Scan# 505
 Delta R.T. 0.02 min
 Lab File: VF060473.D
 Acq: 5 Oct 2018 23:47

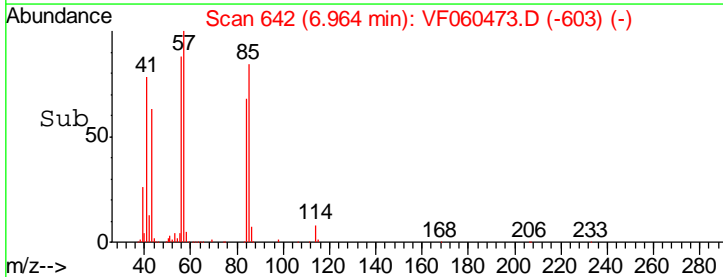
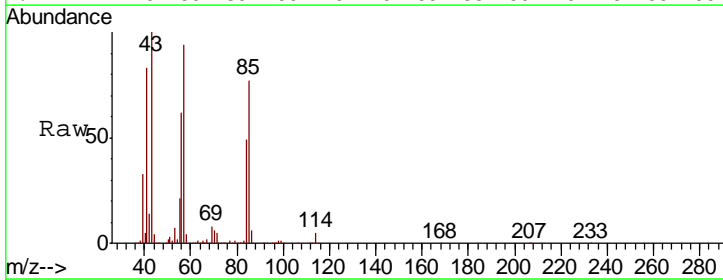
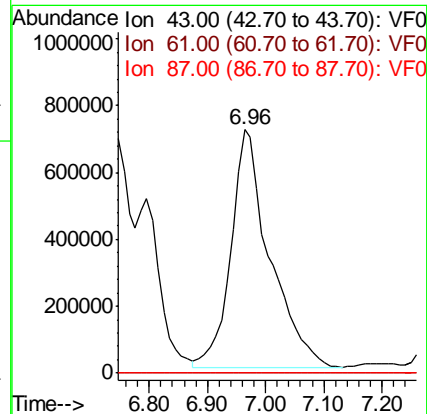
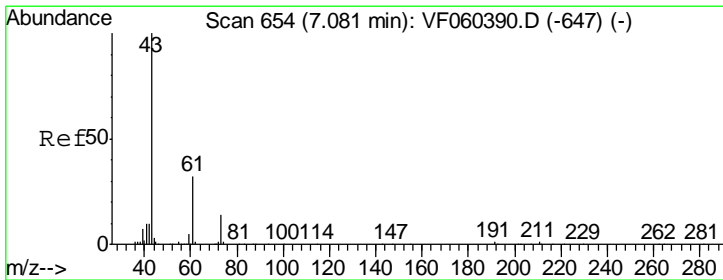
Instrument :
 MSVOA_F
 ClientSampleId :
 B-5(12-12.5)

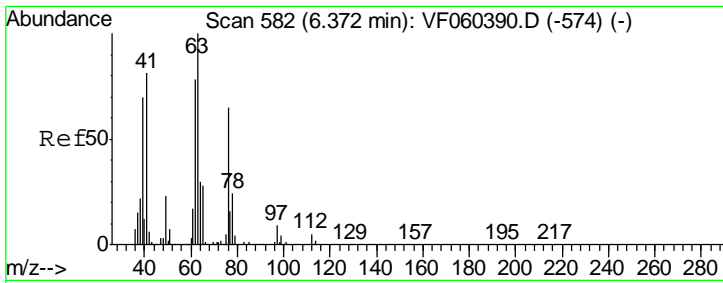
Tgt Ion	Resp	Lower	Upper
83	1106330		
55	102.6	77.5	116.3
98	50.7	38.7	58.1



#43
 Isopropyl Acetate
 Concen: 896.740 ug/l
 RT: 6.96 min Scan# 642
 Delta R.T. -0.12 min
 Lab File: VF060473.D
 Acq: 5 Oct 2018 23:47

Tgt Ion	Resp	Lower	Upper
43	3288200		
61	0.1	25.4	38.2#
87	0.1	0.3	0.5#

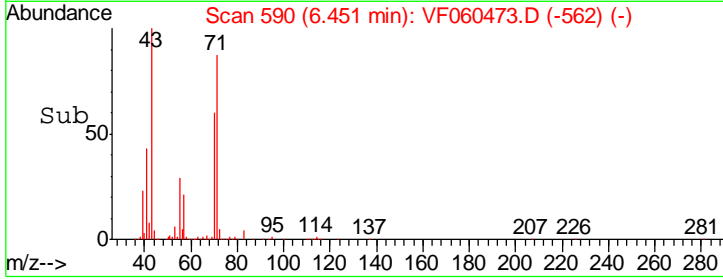
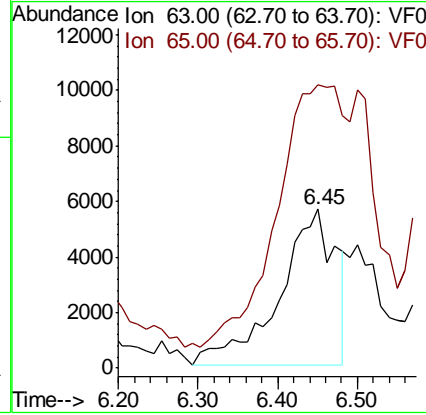
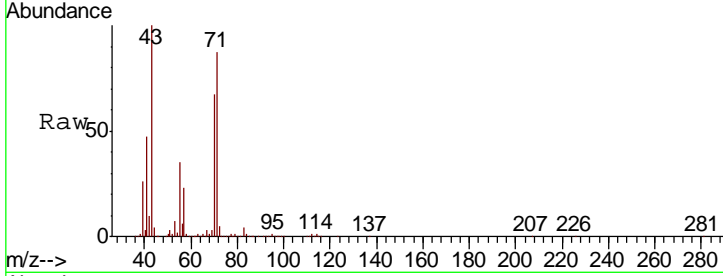




#45
 1,2-Dichloropropane
 Concen: 6.537 ug/l
 RT: 6.45 min Scan# 590
 Delta R.T. 0.08 min
 Lab File: VF060473.D
 Acq: 5 Oct 2018 23:47

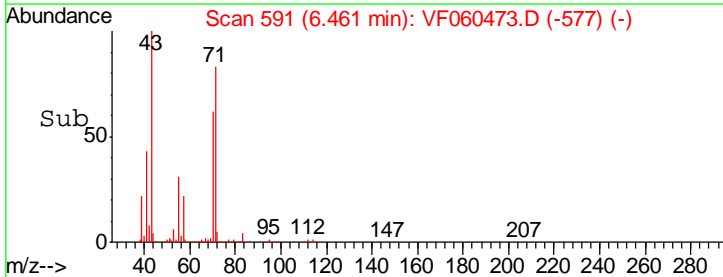
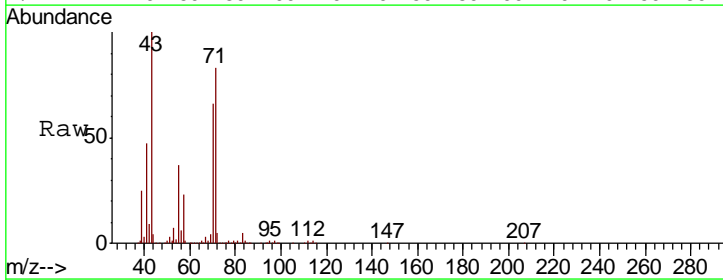
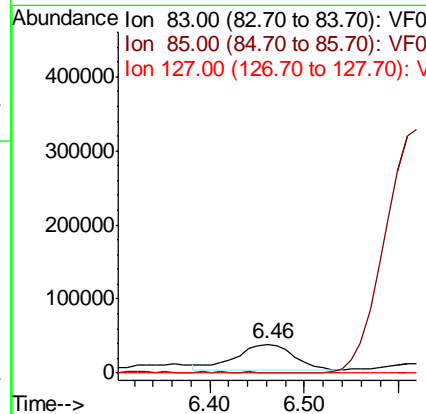
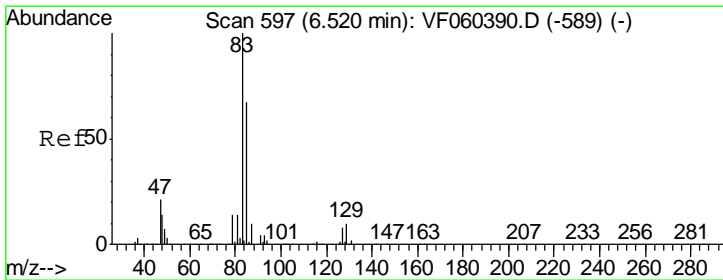
Instrument :
 MSVOA_F
 ClientSampleId :
 B-5(12-12.5)

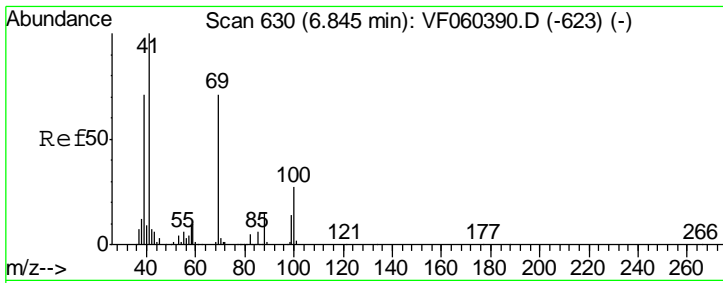
Tgt Ion: 63 Resp: 27384
 Ion Ratio Lower Upper
 63 100
 65 178.5 22.7 34.1#



#47
 Bromodichloromethane
 Concen: 17.208 ug/l
 RT: 6.46 min Scan# 591
 Delta R.T. -0.06 min
 Lab File: VF060473.D
 Acq: 5 Oct 2018 23:47

Tgt Ion: 83 Resp: 143537
 Ion Ratio Lower Upper
 83 100
 85 3.4 53.2 79.8#
 127 0.0 6.6 9.8#



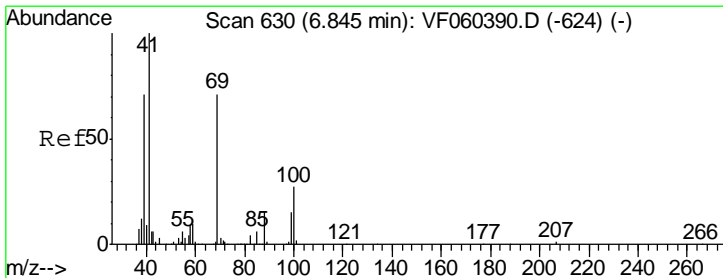
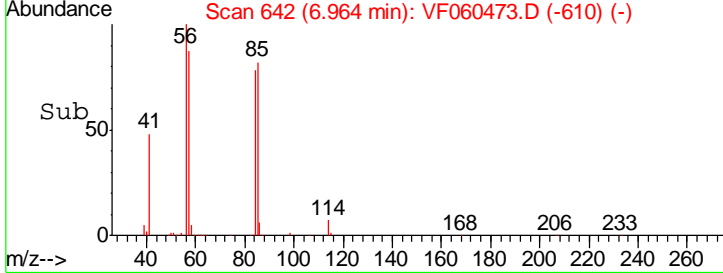
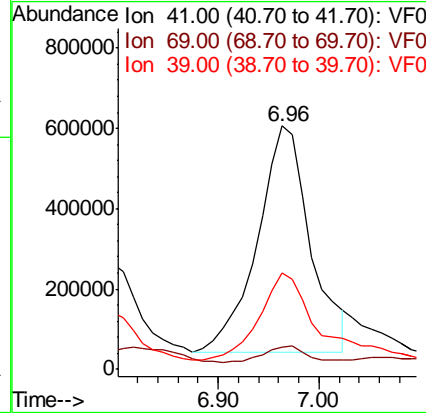
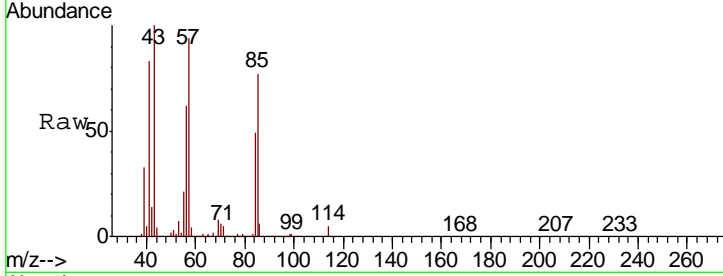


#48
 Methyl methacrylate
 Concen: 780.730 ug/l
 RT: 6.96 min Scan# 642
 Delta R.T. 0.12 min
 Lab File: VF060473.D
 Acq: 5 Oct 2018 23:47

Instrument :
 MSVOA_F
 ClientSampleId :
 B-5(12-12.5)

Tgt Ion: 41 Resp: 2055020

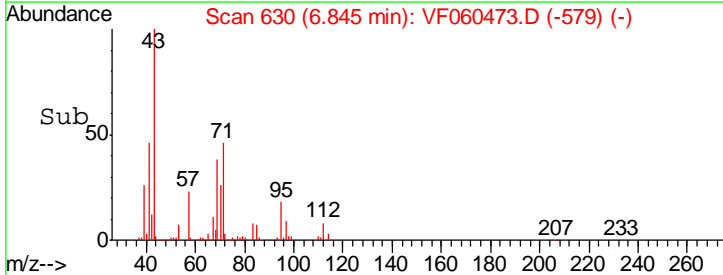
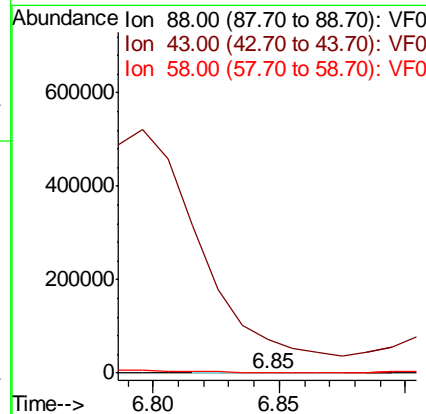
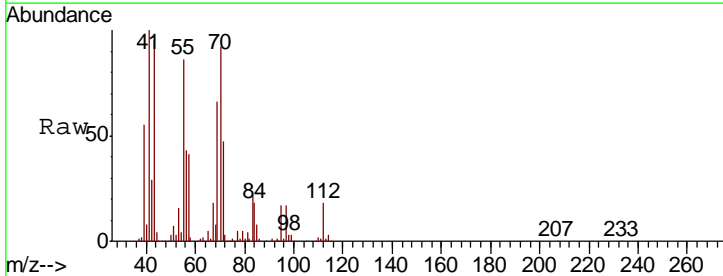
Ion	Ratio	Lower	Upper
41	100		
69	9.3	56.3	84.5#
39	39.6	56.9	85.3#

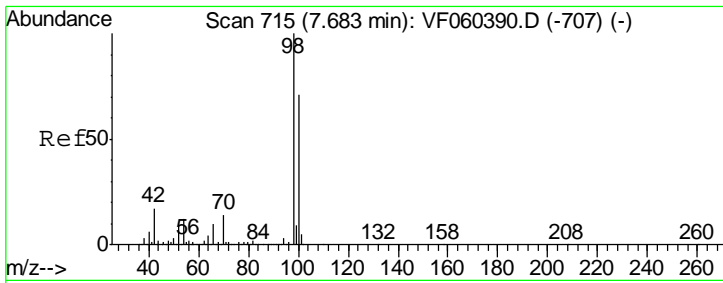


#49
 1,4-Dioxane
 Concen: 10.751 ug/l
 RT: 6.85 min Scan# 630
 Delta R.T. 0.00 min
 Lab File: VF060473.D
 Acq: 5 Oct 2018 23:47

Tgt Ion: 88 Resp: 244

Ion	Ratio	Lower	Upper
88	100		
43	44555.0	38.3	57.5#
58	802.5	47.4	71.2#

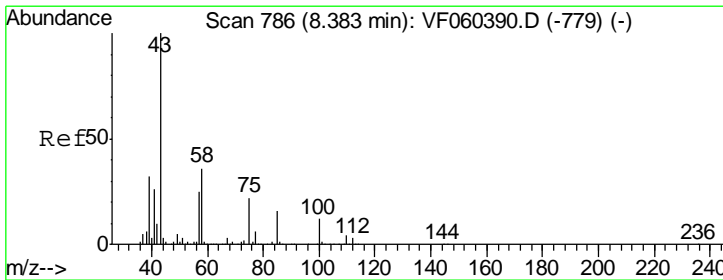
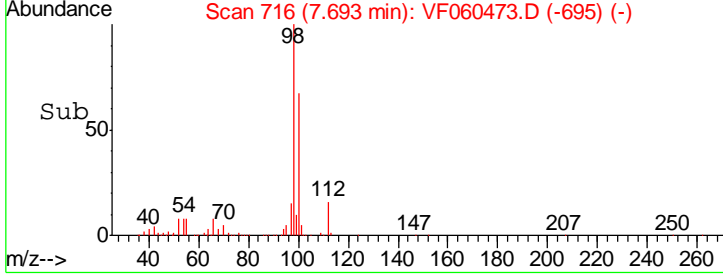
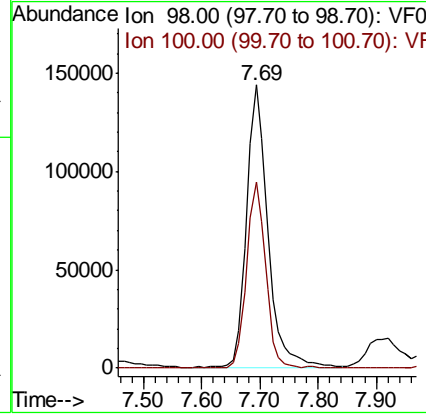
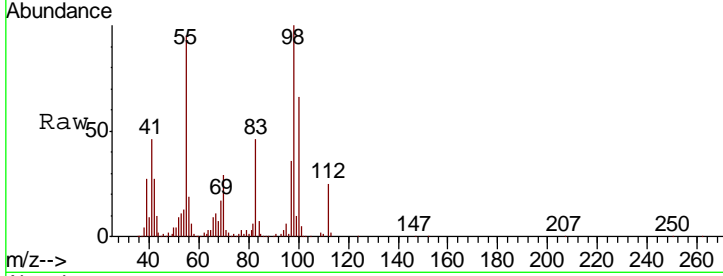




#50
 Toluene-d8
 Concen: 25.039 ug/l
 RT: 7.69 min Scan# 716
 Delta R.T. 0.01 min
 Lab File: VF060473.D
 Acq: 5 Oct 2018 23:47

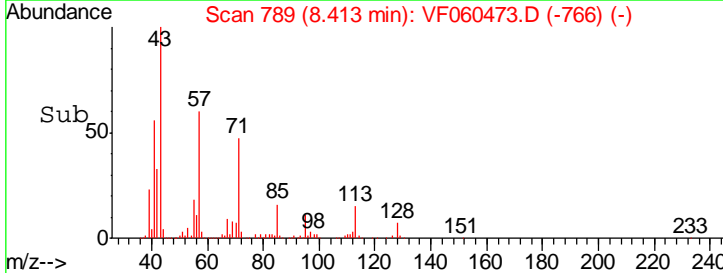
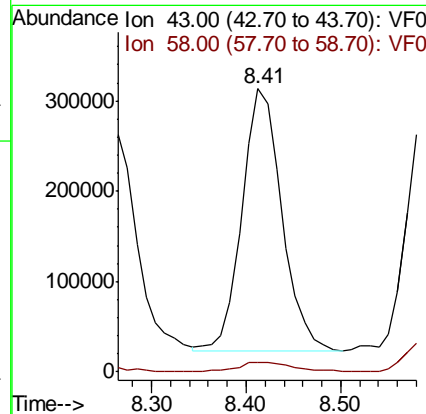
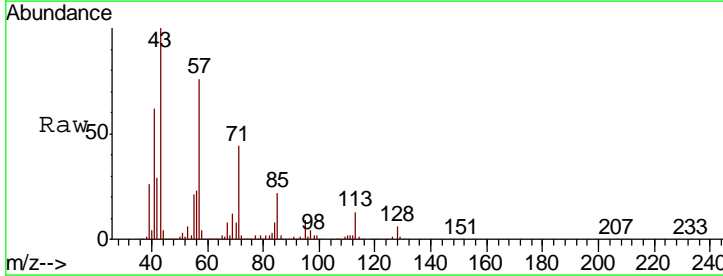
Instrument :
 MSVOA_F
ClientSampled :
 B-5(12-12.5)

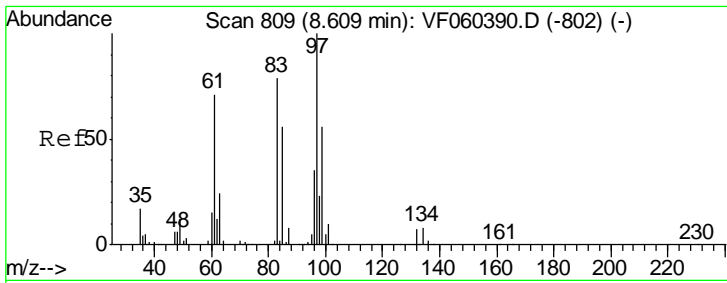
Tgt Ion: 98 Resp: 372309
 Ion Ratio Lower Upper
 98 100
 100 65.6 56.5 84.7



#51
 4-Methyl-2-Pentanone
 Concen: 326.028 ug/l
 RT: 8.41 min Scan# 789
 Delta R.T. 0.03 min
 Lab File: VF060473.D
 Acq: 5 Oct 2018 23:47

Tgt Ion: 43 Resp: 851003
 Ion Ratio Lower Upper
 43 100
 58 3.5 28.5 42.7#

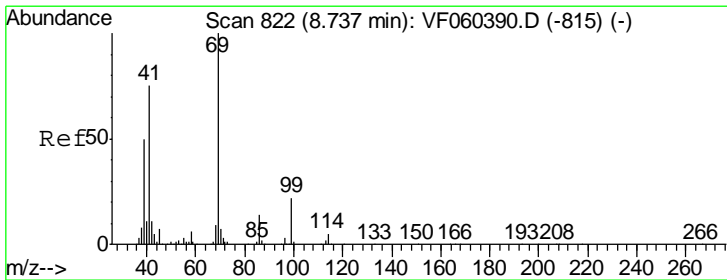
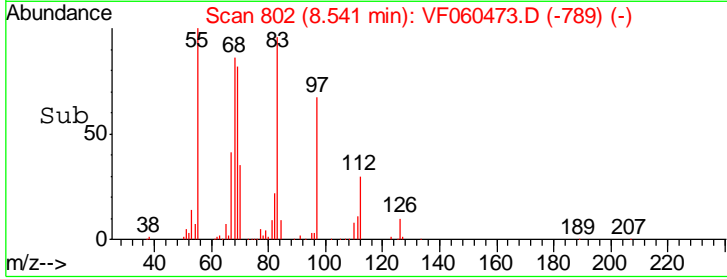
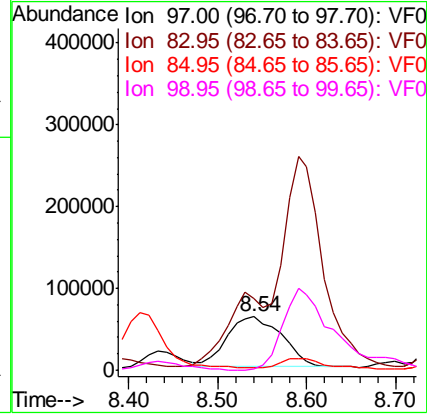
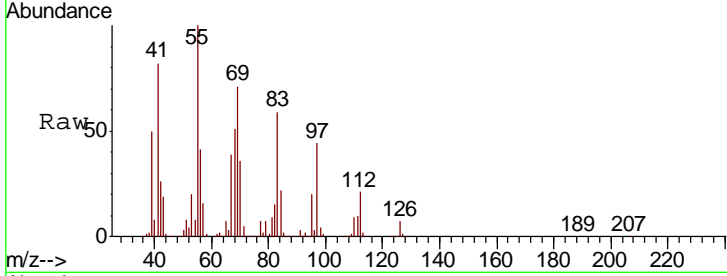




#55
 1,1,2-Trichloroethane
 Concen: 78.727 ug/l
 RT: 8.54 min Scan# 802
 Delta R.T. -0.07 min
 Lab File: VF060473.D
 Acq: 5 Oct 2018 23:47

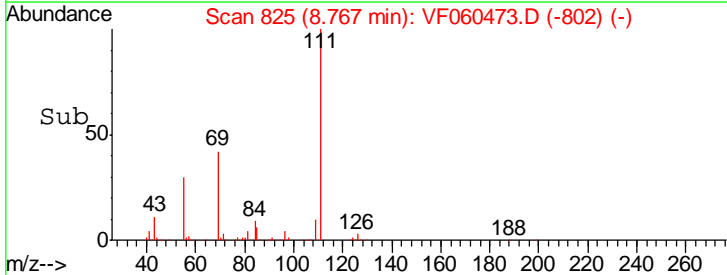
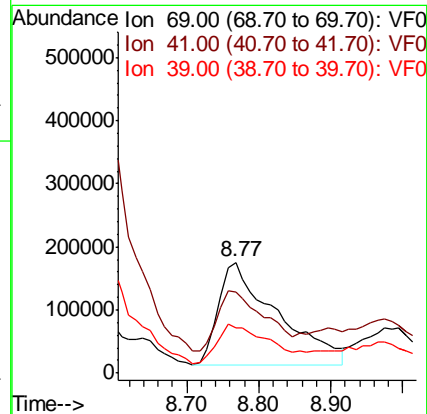
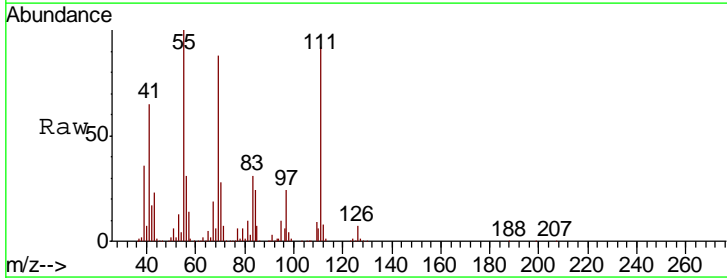
Instrument :
 MSVOA_F
 ClientSampled :
 B-5(12-12.5)

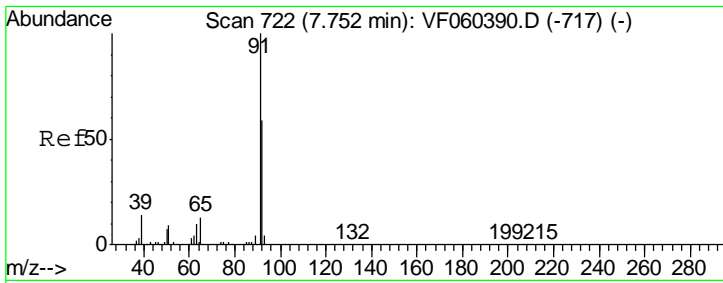
Tgt Ion	Resp	Lower	Upper
97	266614		
83	133.7	63.4	95.0#
85	4.5	44.5	66.7#
99	1.9	45.1	67.7#



#56
 Ethyl methacrylate
 Concen: 238.346 ug/l
 RT: 8.77 min Scan# 825
 Delta R.T. 0.03 min
 Lab File: VF060473.D
 Acq: 5 Oct 2018 23:47

Tgt Ion	Resp	Lower	Upper
69	917209		
41	73.4	60.2	90.4
39	40.3	40.2	60.2

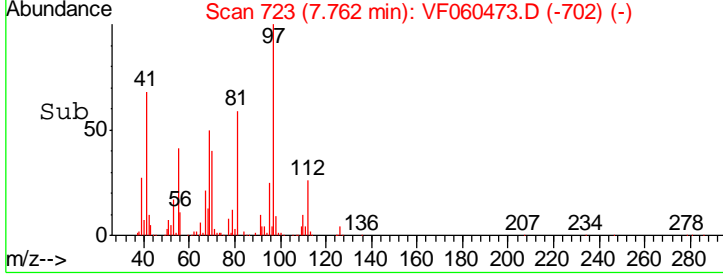
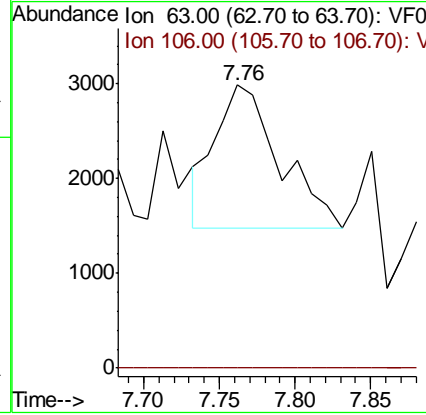
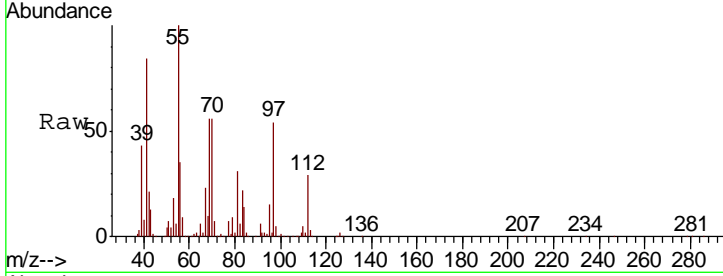




#58
 2-Chloroethyl Vinyl ether
 Concen: 11.329 ug/l
 RT: 7.76 min Scan# 723
 Delta R.T. 0.01 min
 Lab File: VF060473.D
 Acq: 5 Oct 2018 23:47

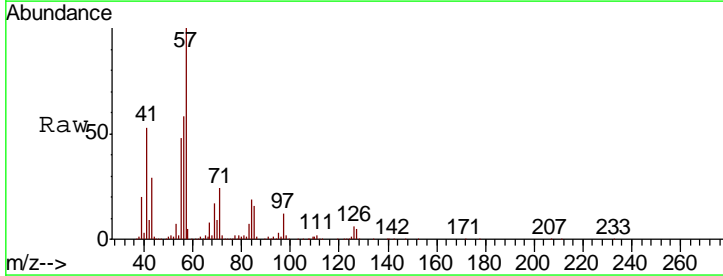
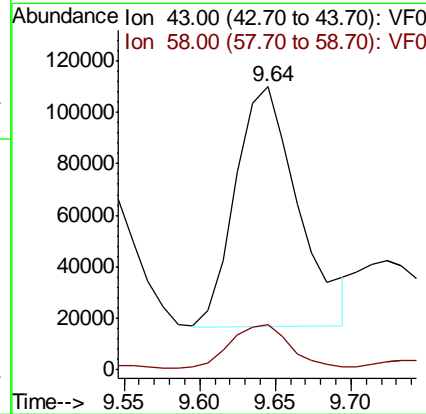
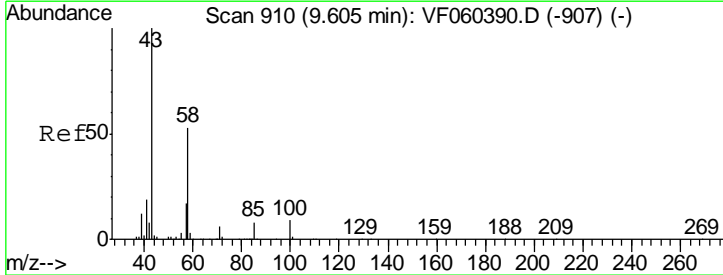
Instrument :
 MSVOA_F
ClientSampled :
 B-5(12-12.5)

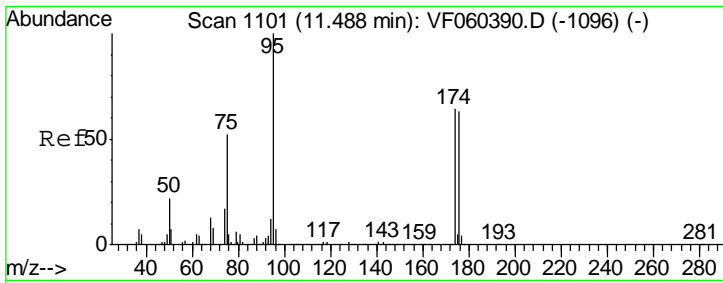
Tgt Ion	Resp	Lower	Upper
63	100	0.0	0.0
106	0.0	0.0	0.0



#59
 2-Hexanone
 Concen: 140.551 ug/l
 RT: 9.64 min Scan# 914
 Delta R.T. 0.04 min
 Lab File: VF060473.D
 Acq: 5 Oct 2018 23:47

Tgt Ion	Resp	Lower	Upper
43	100	25.6	76.6#
58	16.0	25.6	76.6#

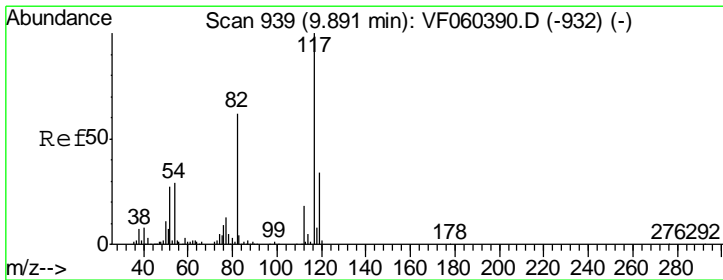
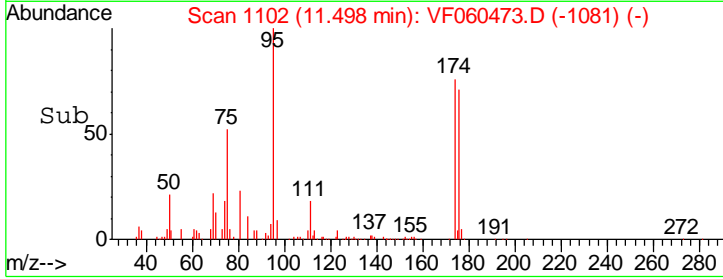
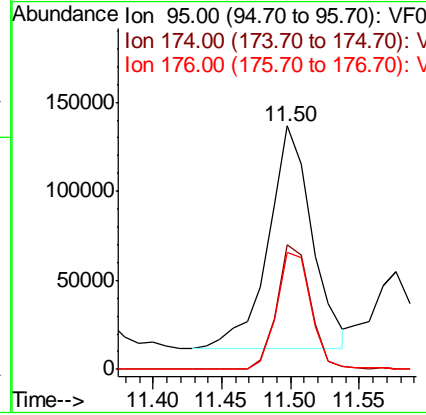
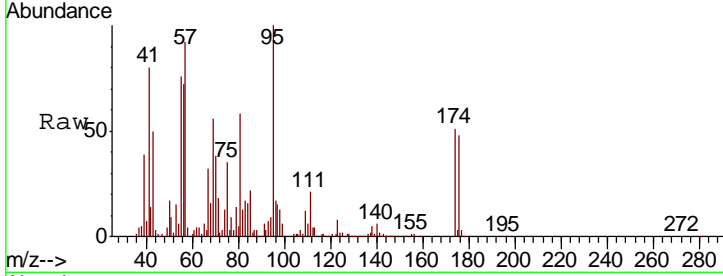




#62
 4-Bromofluorobenzene
 Concen: 40.633 ug/l
 RT: 11.50 min Scan# 1102
 Delta R.T. 0.01 min
 Lab File: VF060473.D
 Acq: 5 Oct 2018 23:47

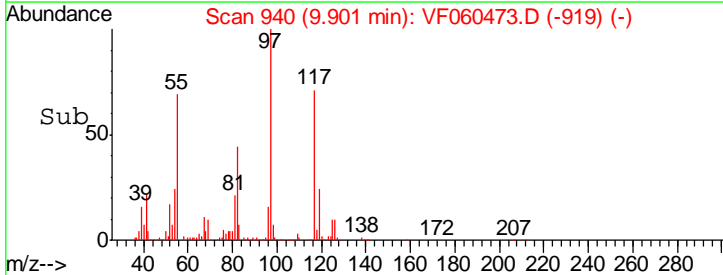
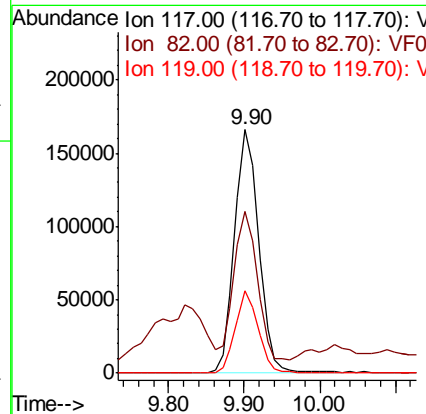
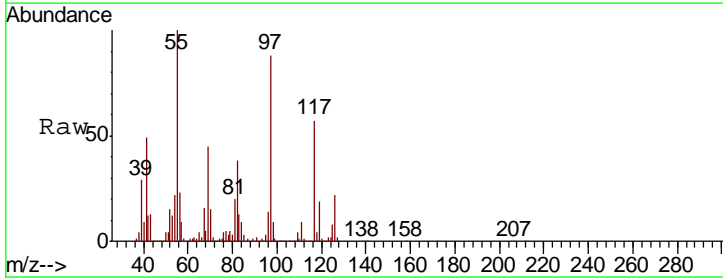
Instrument :
 MSVOA_F
 ClientSampled :
 B-5(12-12.5)

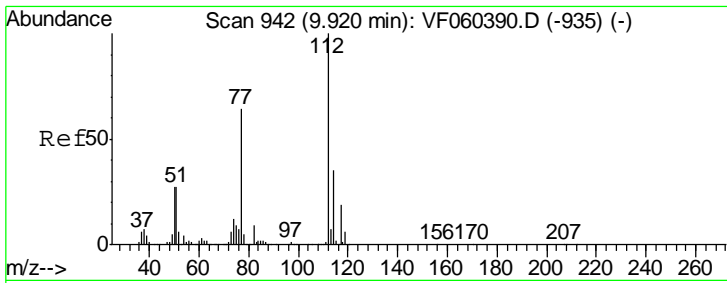
Tgt Ion	Resp	Lower	Upper
95	275866		
174	51.2	0.0	129.0
176	47.8	0.0	125.6



#63
 Chlorobenzene-d5
 Concen: 50.000 ug/l
 RT: 9.90 min Scan# 940
 Delta R.T. 0.01 min
 Lab File: VF060473.D
 Acq: 5 Oct 2018 23:47

Tgt Ion	Resp	Lower	Upper
117	369821		
82	66.2	49.5	74.3
119	33.9	27.0	40.6

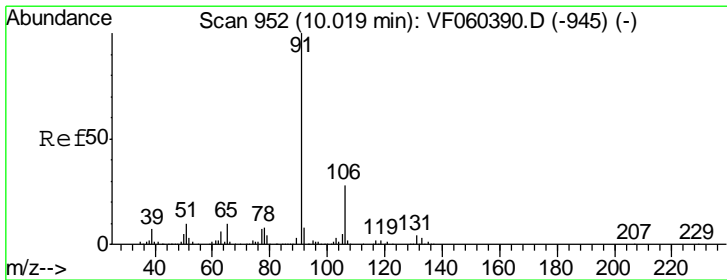
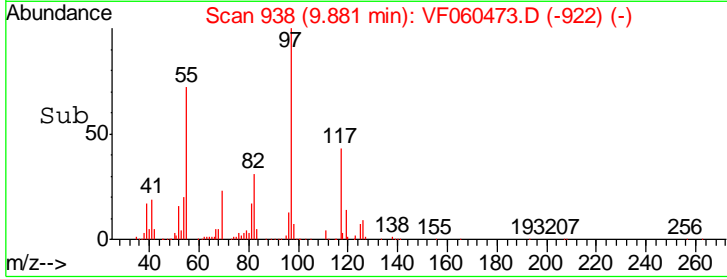
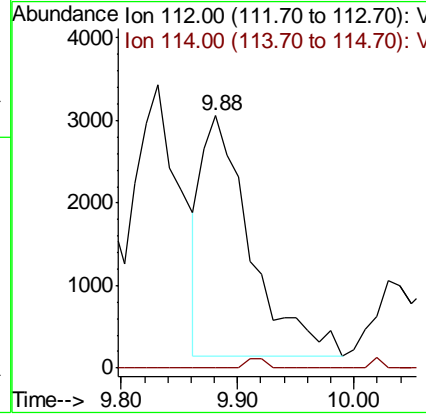
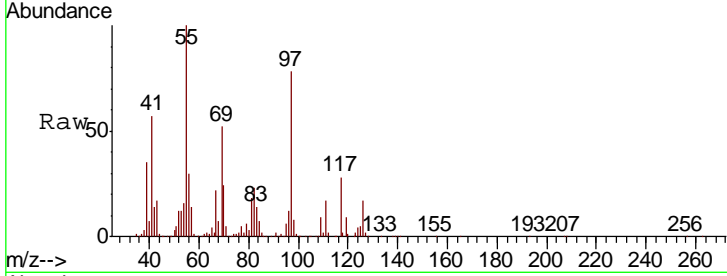




#65
 Chlorobenzene
 Concen: 1.117 ug/l
 RT: 9.88 min Scan# 938
 Delta R.T. -0.04 min
 Lab File: VF060473.D
 Acq: 5 Oct 2018 23:47

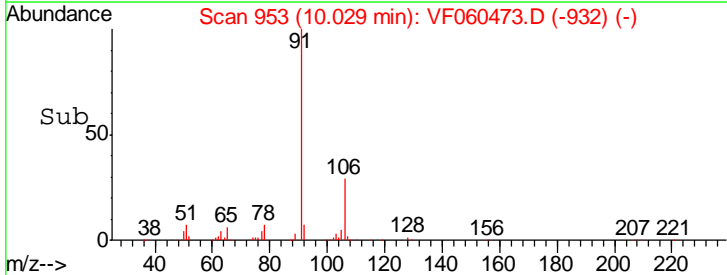
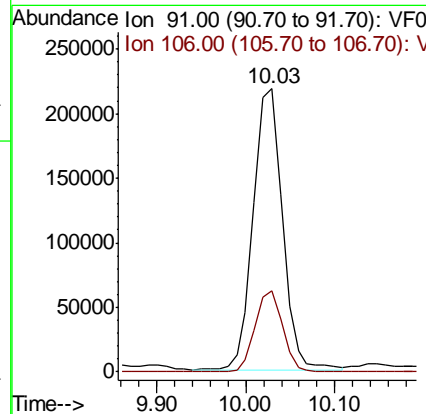
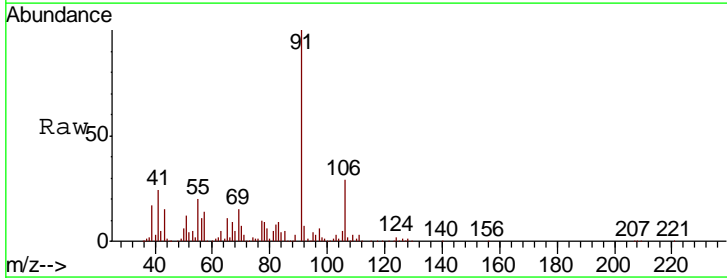
Instrument :
 MSVOA_F
 ClientSampled :
 B-5(12-12.5)

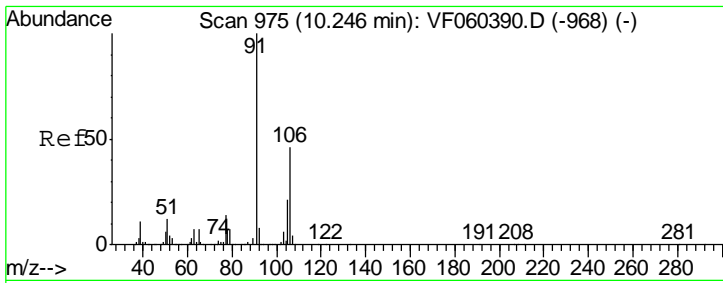
Tgt Ion: 112 Resp: 8485
 Ion Ratio Lower Upper
 112 100
 114 0.0 27.7 41.5#



#67
 Ethyl Benzene
 Concen: 34.331 ug/l
 RT: 10.03 min Scan# 953
 Delta R.T. 0.01 min
 Lab File: VF060473.D
 Acq: 5 Oct 2018 23:47

Tgt Ion: 91 Resp: 495897
 Ion Ratio Lower Upper
 91 100
 106 28.5 22.5 33.7

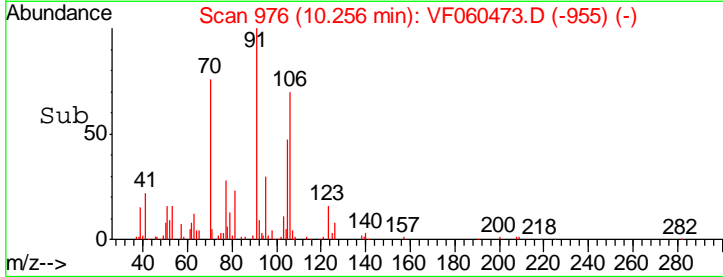
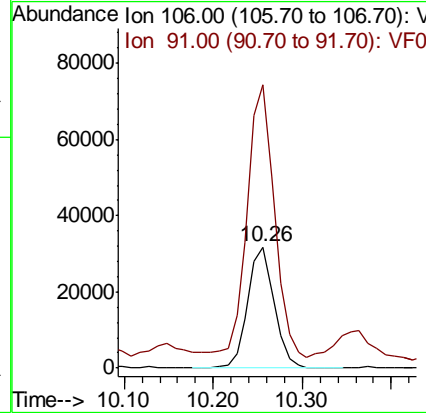
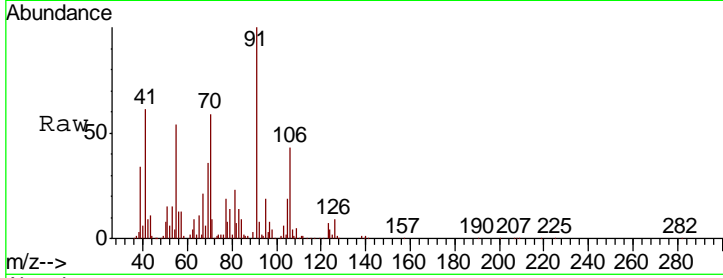




#68
 m/p-Xylenes
 Concen: 13.029 ug/l
 RT: 10.26 min Scan# 976
 Delta R.T. 0.01 min
 Lab File: VF060473.D
 Acq: 5 Oct 2018 23:47

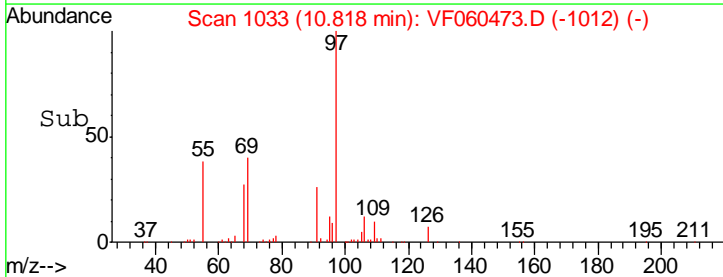
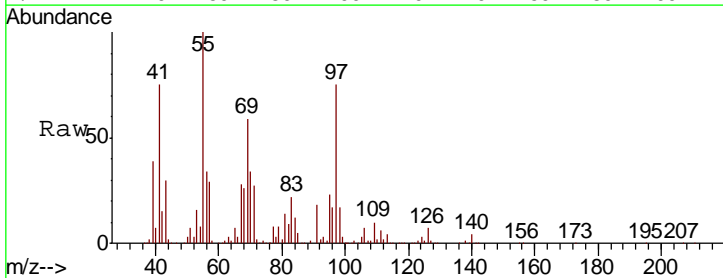
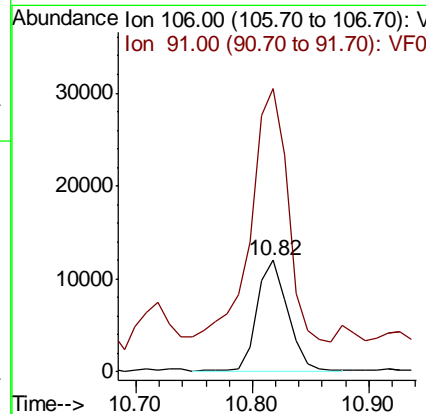
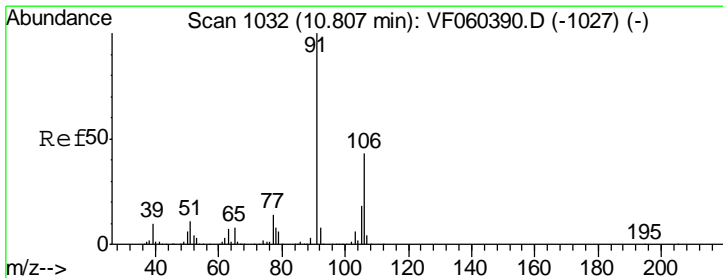
Instrument :
 MSVOA_F
ClientSampled :
 B-5(12-12.5)

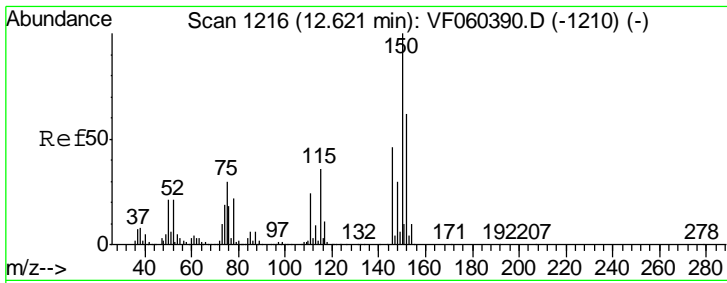
Tgt Ion:106 Resp: 64698
 Ion Ratio Lower Upper
 106 100
 91 233.5 175.0 262.6



#69
 o-Xylene
 Concen: 4.171 ug/l
 RT: 10.82 min Scan# 1033
 Delta R.T. 0.01 min
 Lab File: VF060473.D
 Acq: 5 Oct 2018 23:47

Tgt Ion:106 Resp: 22575
 Ion Ratio Lower Upper
 106 100
 91 253.7 115.1 345.2

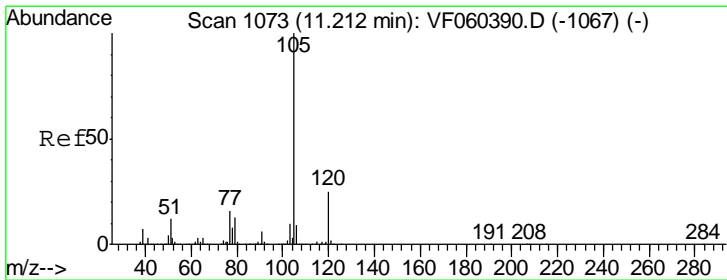
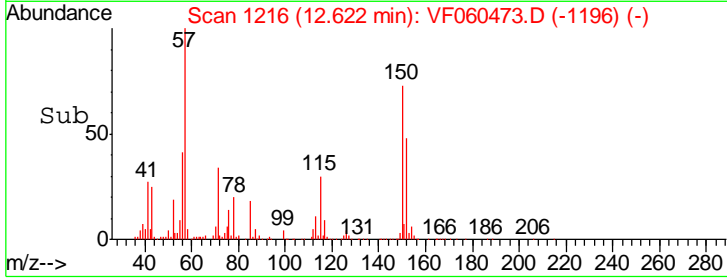
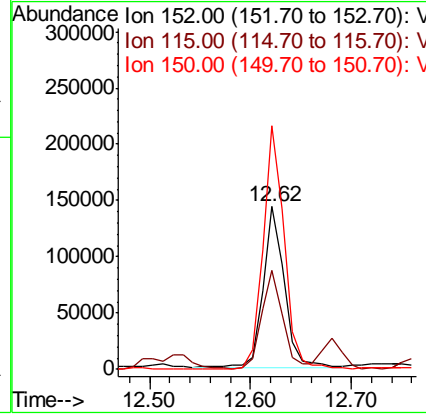
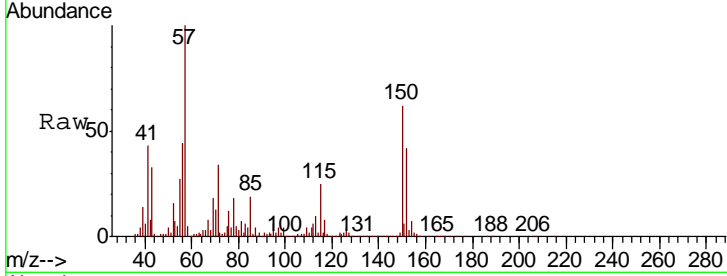




#72
 1,4-Dichlorobenzene-d4
 Concen: 50.000 ug/l
 RT: 12.62 min Scan# 1216
 Delta R.T. 0.00 min
 Lab File: VF060473.D
 Acq: 5 Oct 2018 23:47

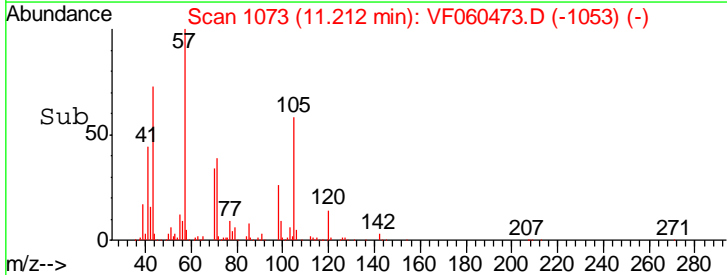
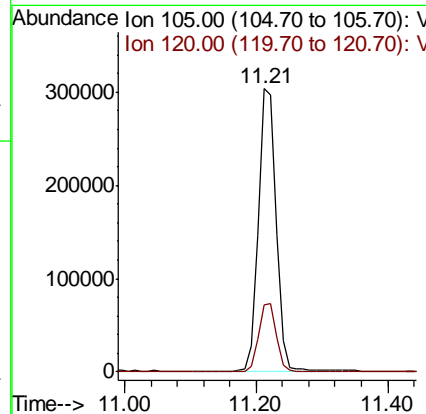
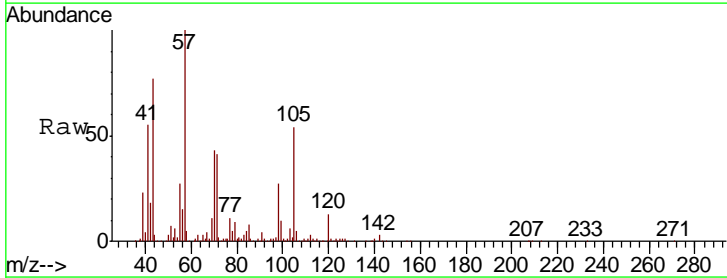
Instrument :
 MSVOA_F
 ClientSampled :
 B-5(12-12.5)

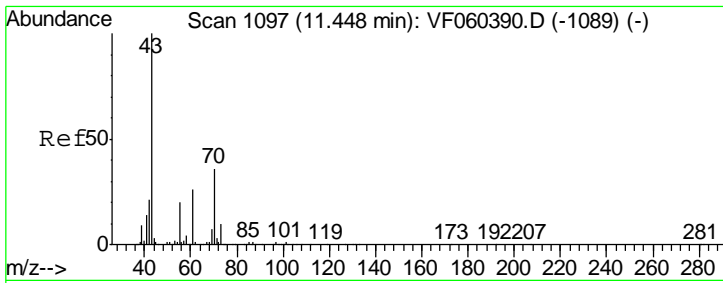
Tgt Ion	Resp	Lower	Upper
152	100		
115	60.6	28.6	85.8
150	149.4	0.0	324.6



#73
 Isopropylbenzene
 Concen: 34.938 ug/l
 RT: 11.21 min Scan# 1073
 Delta R.T. 0.00 min
 Lab File: VF060473.D
 Acq: 5 Oct 2018 23:47

Tgt Ion	Resp	Lower	Upper
105	100		
120	23.5	12.3	36.9

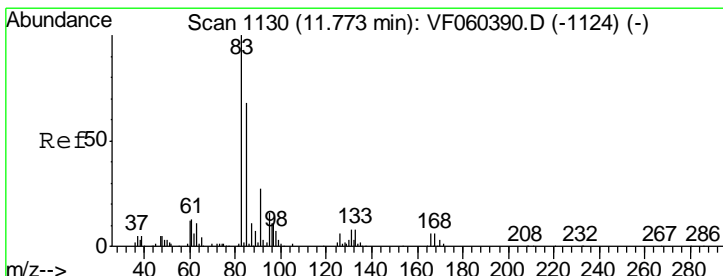
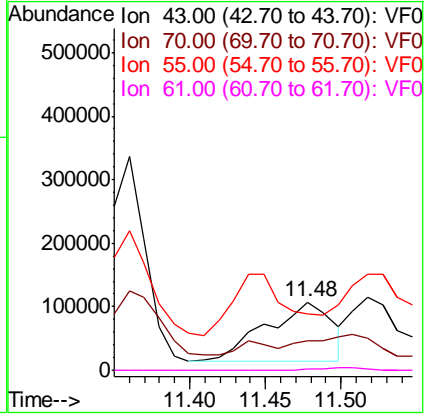
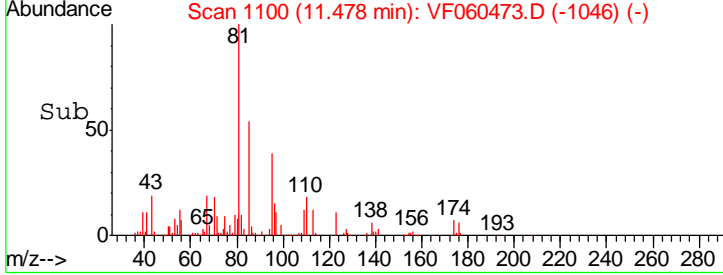
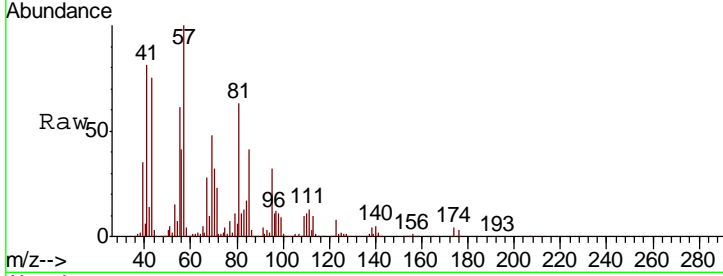




#74
 N-amyl acetate
 Concen: 73.967 ug/l
 RT: 11.48 min Scan# 1100
 Delta R.T. 0.03 min
 Lab File: VF060473.D
 Acq: 5 Oct 2018 23:47

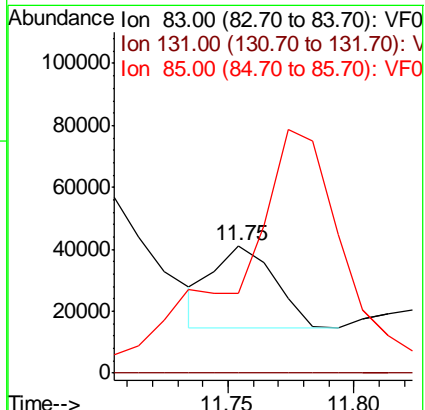
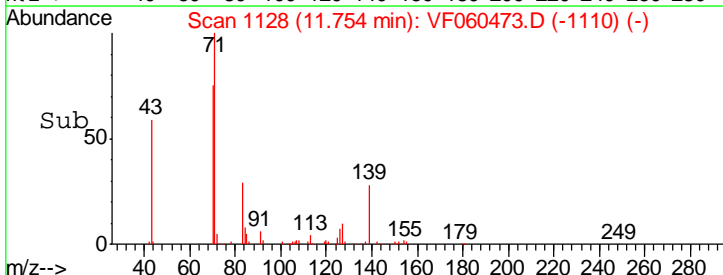
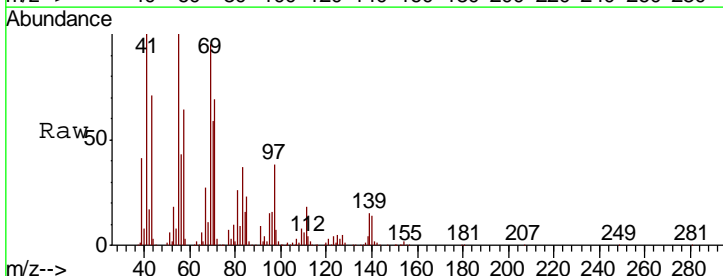
Instrument :
 MSVOA_F
ClientSampled :
 B-5(12-12.5)

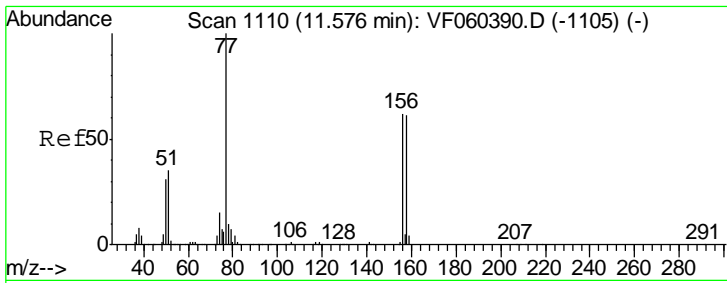
Tgt Ion	Resp	Lower	Upper
43	100		
70	42.5	29.1	43.7
55	82.1	16.3	24.5#
61	1.1	21.0	31.4#



#75
 1,1,2,2-Tetrachloroethane
 Concen: 14.770 ug/l
 RT: 11.75 min Scan# 1128
 Delta R.T. -0.02 min
 Lab File: VF060473.D
 Acq: 5 Oct 2018 23:47

Tgt Ion	Resp	Lower	Upper
83	100		
131	0.4	4.0	12.0#
85	62.5	34.0	102.0

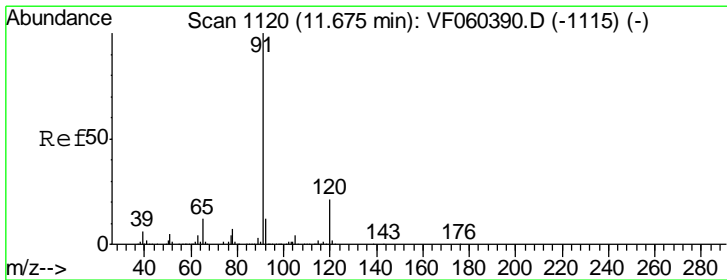
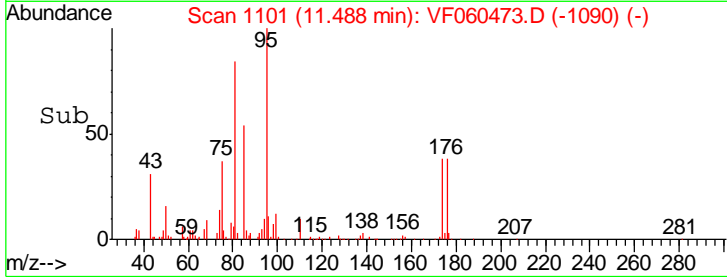
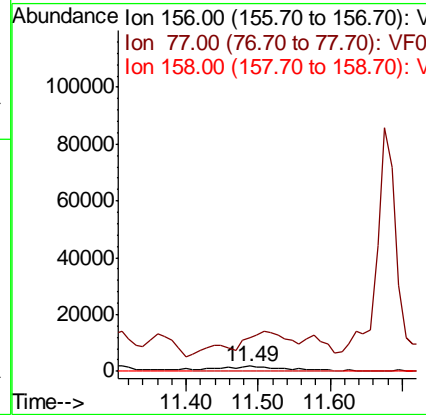
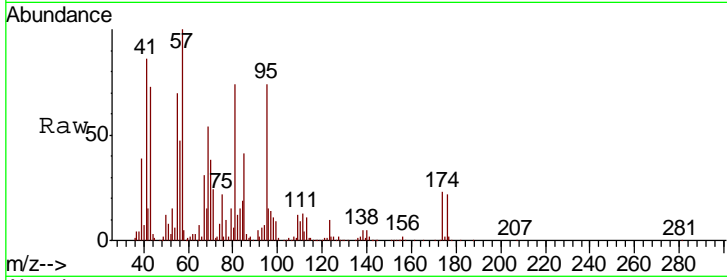




#77
 Bromobenzene
 Concen: 2.194 ug/l
 RT: 11.49 min Scan# 1101
 Delta R.T. -0.09 min
 Lab File: VF060473.D
 Acq: 5 Oct 2018 23:47

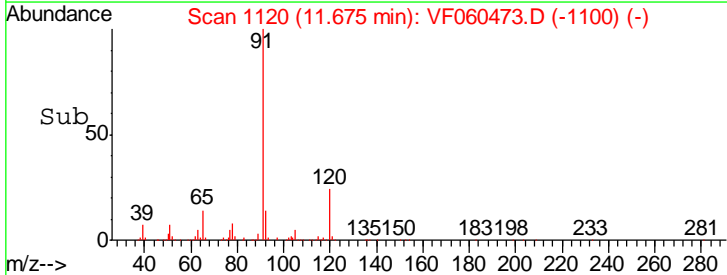
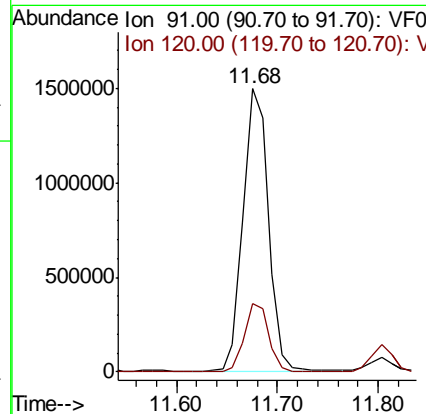
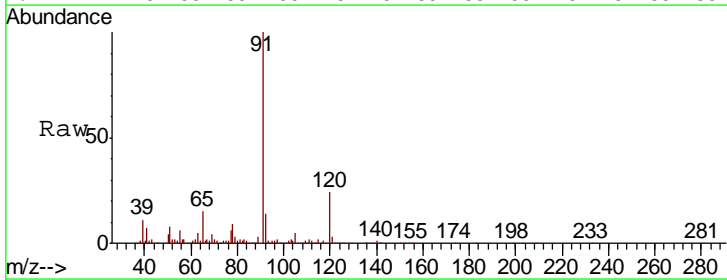
Instrument :
 MSVOA_F
 ClientSampled :
 B-5(12-12.5)

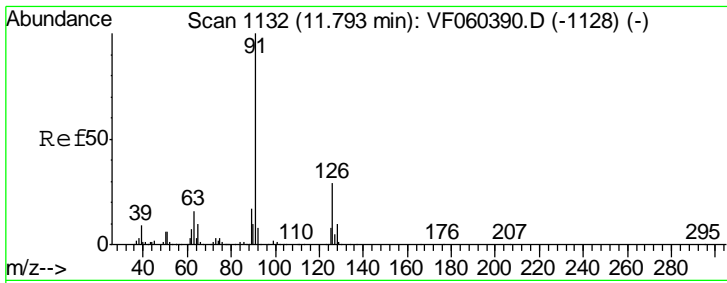
Tgt Ion	Resp	Lower	Upper
156	8048		
77	616.8	81.3	243.9#
158	0.0	49.6	149.0#



#78
 n-propylbenzene
 Concen: 131.379 ug/l
 RT: 11.68 min Scan# 1120
 Delta R.T. 0.00 min
 Lab File: VF060473.D
 Acq: 5 Oct 2018 23:47

Tgt Ion	Resp	Lower	Upper
91	2614187		
120	24.0	10.5	31.6

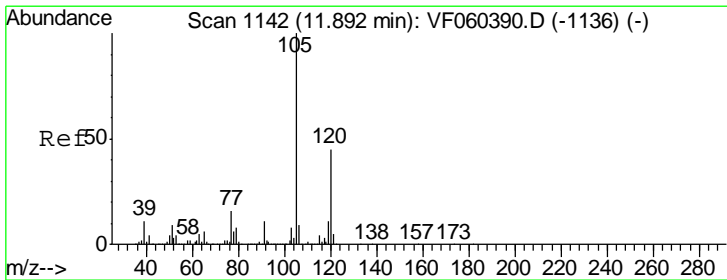
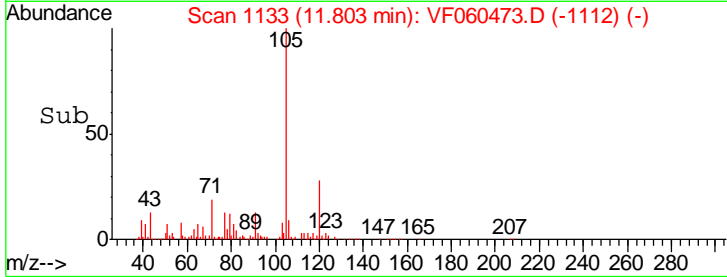
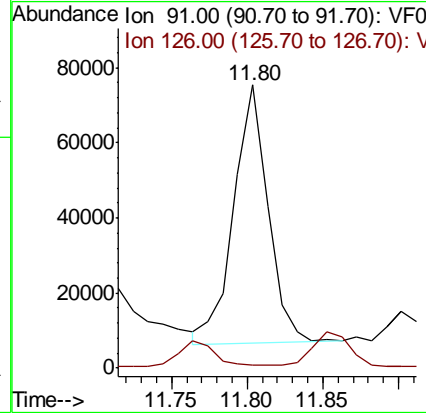
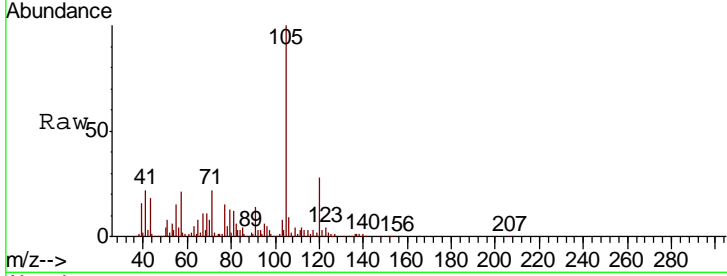




#79
 2-Chlorotoluene
 Concen: 9.334 ug/l
 RT: 11.80 min Scan# 1133
 Delta R.T. 0.01 min
 Lab File: VF060473.D
 Acq: 5 Oct 2018 23:47

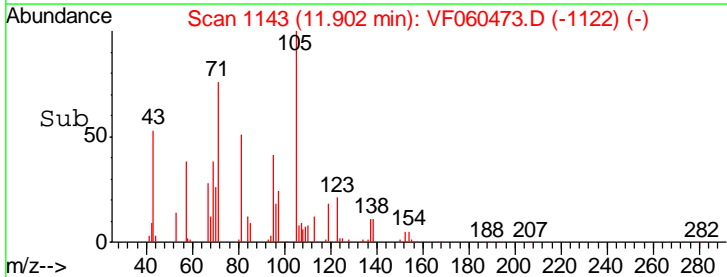
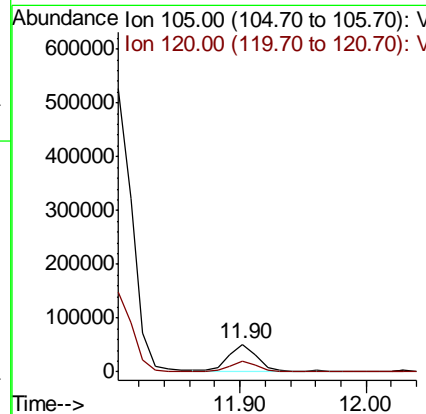
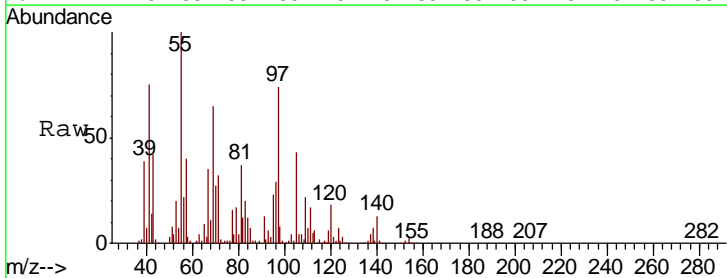
Instrument :
 MSVOA_F
 ClientSampled :
 B-5(12-12.5)

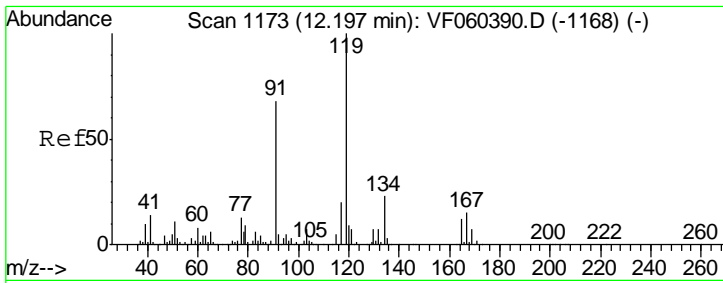
Tgt Ion: 91 Resp: 108648
 Ion Ratio Lower Upper
 91 100
 126 1.3 14.4 43.4#



#80
 1,3,5-Trimethylbenzene
 Concen: 5.484 ug/l
 RT: 11.90 min Scan# 1143
 Delta R.T. 0.01 min
 Lab File: VF060473.D
 Acq: 5 Oct 2018 23:47

Tgt Ion: 105 Resp: 76479
 Ion Ratio Lower Upper
 105 100
 120 40.8 22.3 66.9

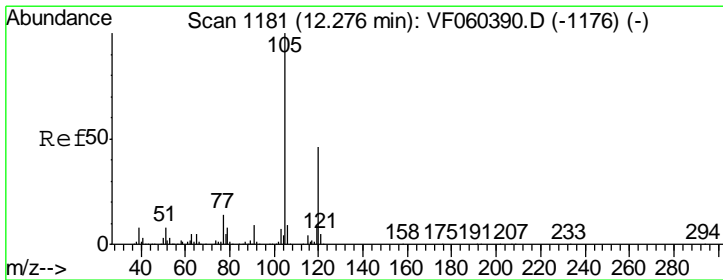
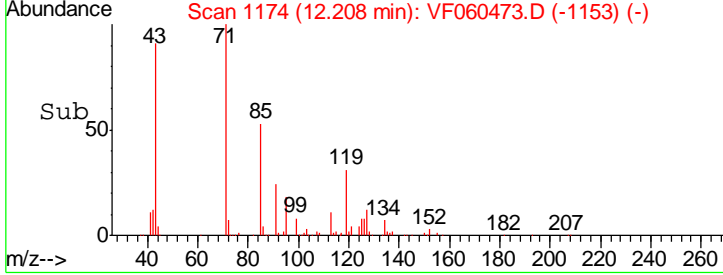
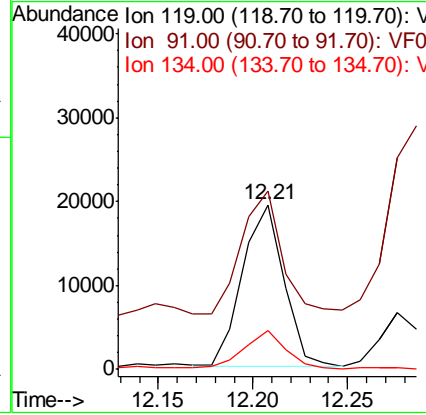
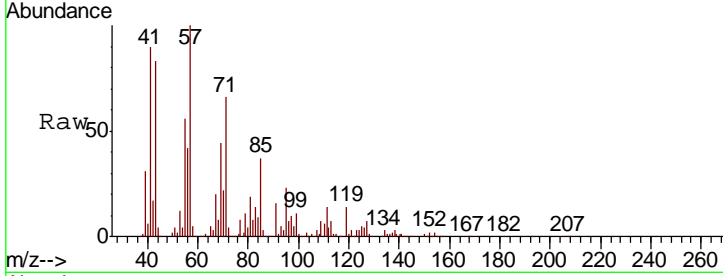




#83
 tert-Butylbenzene
 Concen: 2.134 ug/l
 RT: 12.21 min Scan# 1174
 Delta R.T. 0.01 min
 Lab File: VF060473.D
 Acq: 5 Oct 2018 23:47

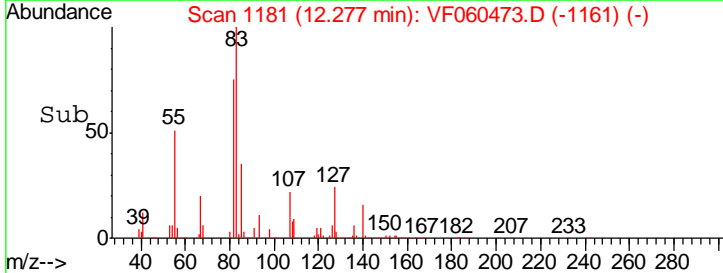
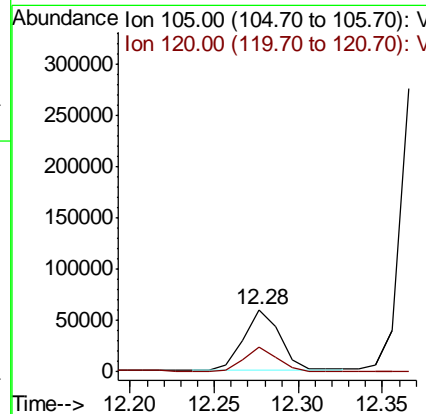
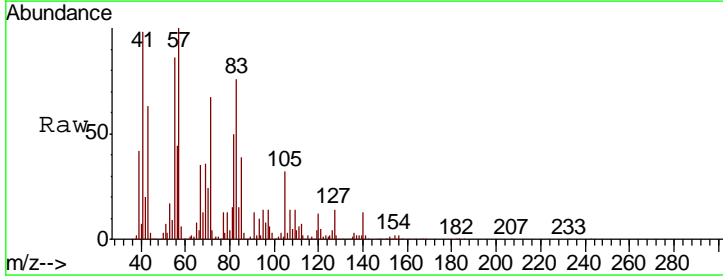
Instrument :
 MSVOA_F
 ClientSampled :
 B-5(12-12.5)

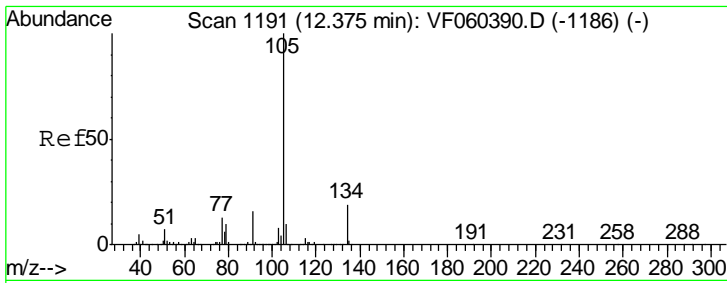
Tgt Ion	Resp	Lower	Upper
119	29346		
91	108.6	34.0	102.0#
134	23.4	11.7	35.0



#84
 1,2,4-Trimethylbenzene
 Concen: 6.513 ug/l
 RT: 12.28 min Scan# 1181
 Delta R.T. 0.00 min
 Lab File: VF060473.D
 Acq: 5 Oct 2018 23:47

Tgt Ion	Resp	Lower	Upper
105	90078		
120	38.8	23.1	69.2

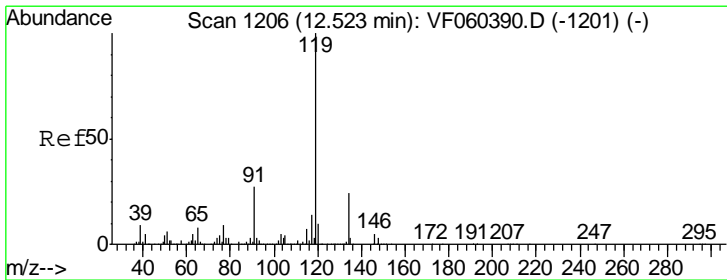
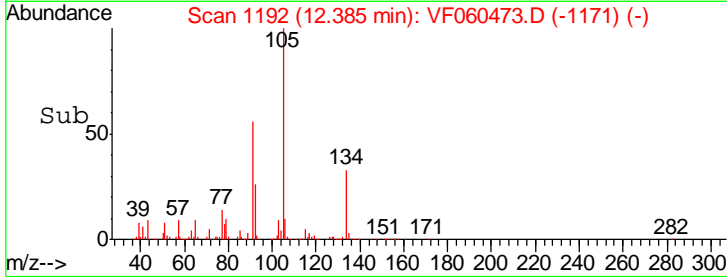
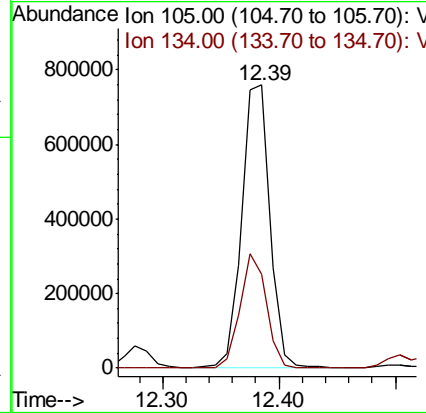
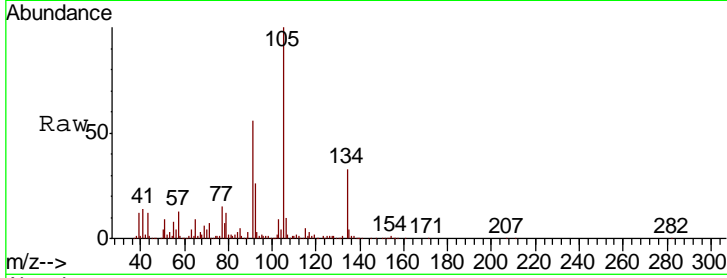




#85
 sec-Butylbenzene
 Concen: 66.689 ug/l
 RT: 12.39 min Scan# 1192
 Delta R.T. 0.01 min
 Lab File: VF060473.D
 Acq: 5 Oct 2018 23:47

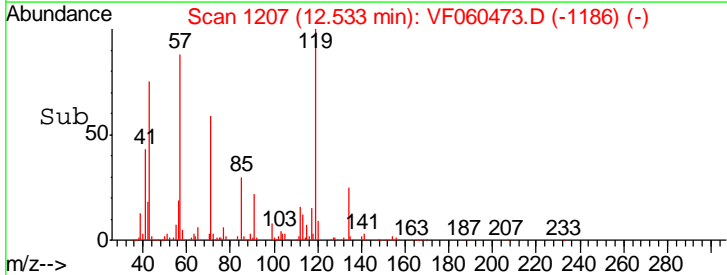
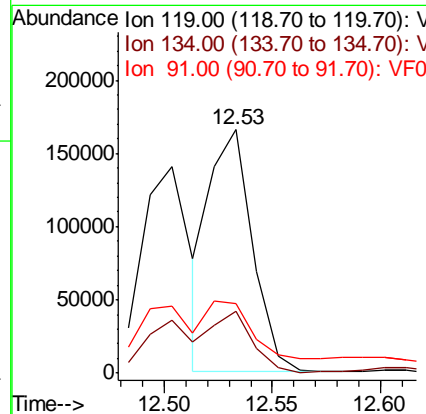
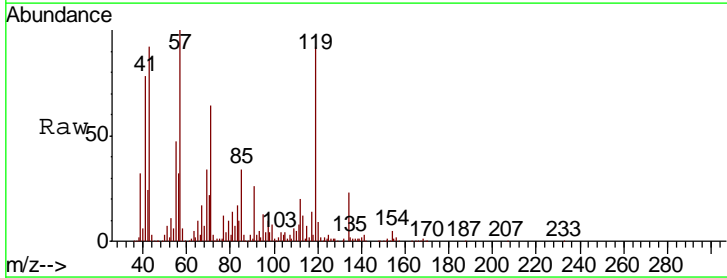
Instrument :
 MSVOA_F
 ClientSampled :
 B-5(12-12.5)

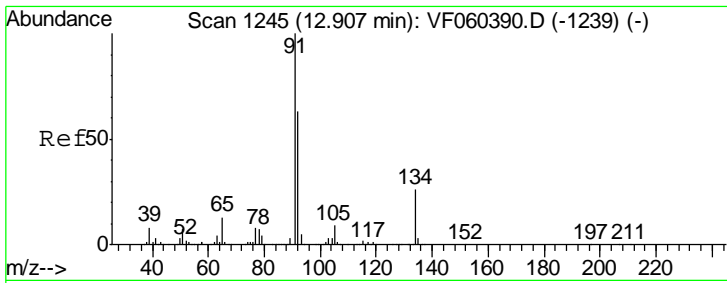
Tgt Ion:105 Resp: 1266105
 Ion Ratio Lower Upper
 105 100
 134 33.2 9.4 28.3#



#86
 p-Isopropyltoluene
 Concen: 14.712 ug/l
 RT: 12.53 min Scan# 1207
 Delta R.T. 0.01 min
 Lab File: VF060473.D
 Acq: 5 Oct 2018 23:47

Tgt Ion:119 Resp: 228188
 Ion Ratio Lower Upper
 119 100
 134 25.5 12.3 36.8
 91 28.7 13.5 40.4

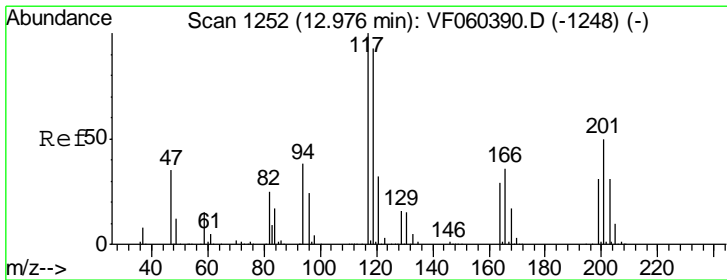
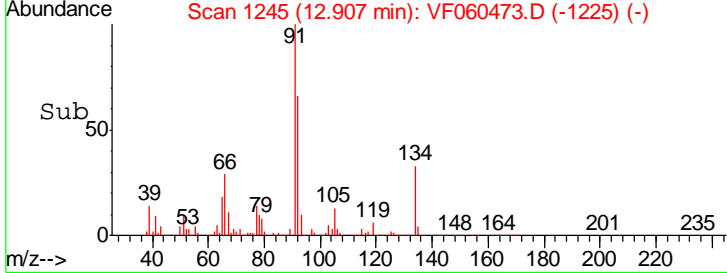
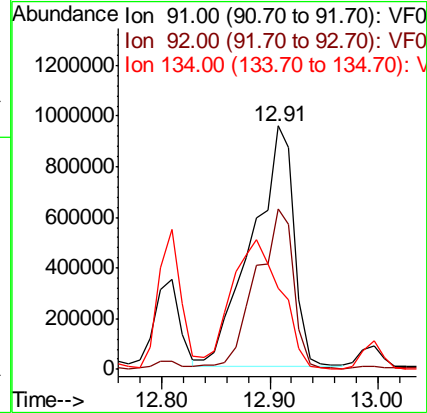
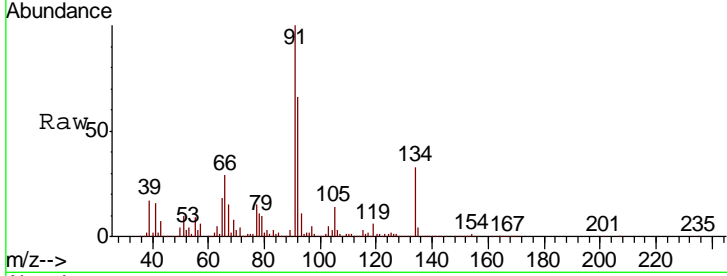




#89
 n-Butylbenzene
 Concen: 157.315 ug/l
 RT: 12.91 min Scan# 1245
 Delta R.T. 0.00 min
 Lab File: VF060473.D
 Acq: 5 Oct 2018 23:47

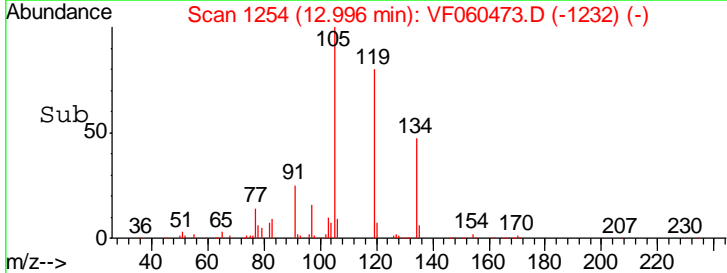
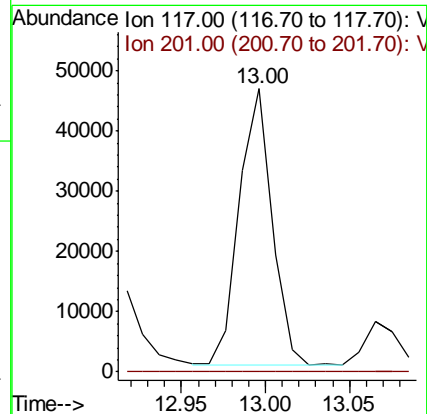
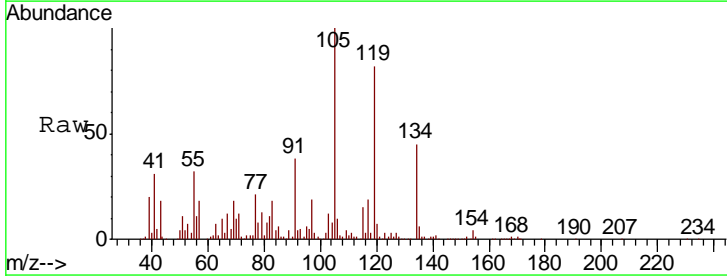
Instrument :
 MSVOA_F
 ClientSampled :
 B-5(12-12.5)

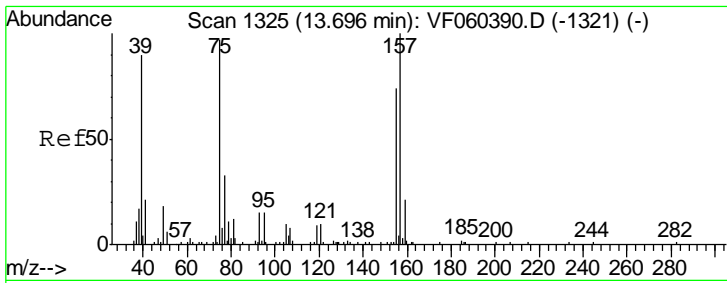
Tgt Ion	Resp	Lower	Upper
91	2581980		
92	65.8	31.3	93.9
134	33.1	13.0	38.9



#90
 Hexachloroethane
 Concen: 15.574 ug/l
 RT: 13.00 min Scan# 1254
 Delta R.T. 0.02 min
 Lab File: VF060473.D
 Acq: 5 Oct 2018 23:47

Tgt Ion	Resp	Lower	Upper
117	62435		
117	100		
201	0.0	25.5	76.5#

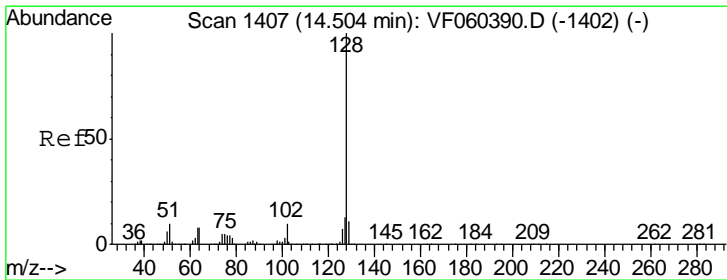
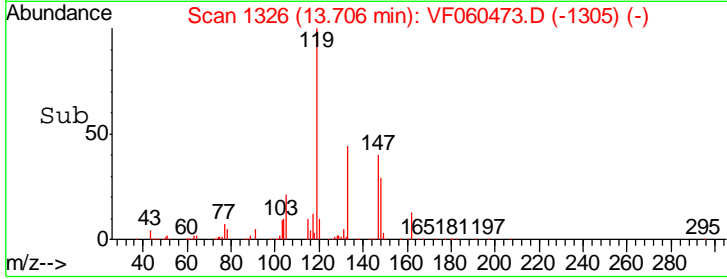
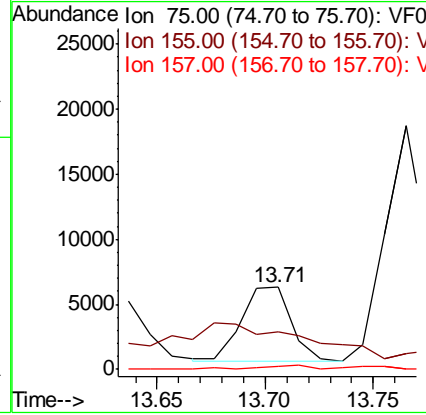
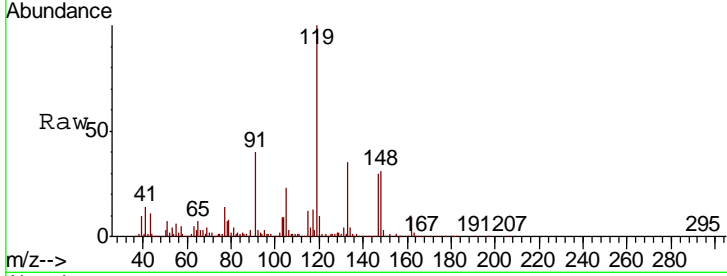




#92
 1,2-Dibromo-3-Chloropropane
 Concen: 15.849 ug/l
 RT: 13.71 min Scan# 1326
 Delta R.T. 0.01 min
 Lab File: VF060473.D
 Acq: 5 Oct 2018 23:47

Instrument :
 MSVOA_F
 ClientSampled :
 B-5(12-12.5)

Tgt Ion	Resp	Lower	Upper
75	100		
155	45.0	37.9	113.6
157	4.3	51.3	154.0#



#95
 Naphthalene
 Concen: 19.696 ug/l
 RT: 14.51 min Scan# 1408
 Delta R.T. 0.01 min
 Lab File: VF060473.D
 Acq: 5 Oct 2018 23:47

Tgt Ion	Resp	Lower	Upper
128	100		
127	20.0	10.0	15.0#
129	31.6	8.7	13.1#

