

Data Path : Z:\VOASRV\HPCHEM1\MSVOA F\DATA\VF111918\
 Data File : VF060792.D
 Acq On : 19 Nov 2018 22:53
 Operator : VA/AP
 Sample : J5950-10
 Misc : 6.41µ/5mL/MSVOA-F/SOIL
 ALS Vial : 16 Sample Multiplier: 1

Instrument :
 MSVOA_F
 ClientSampleId :
 SSI-FD-11132018

Manual Integrations
 APPROVED

apatel
 11/20/2018 1:13:46 PM

Quant Time: Nov 20 03:21:49 2018
 Quant Method : Z:\VOASRV\HPCHEM1\MSVOA_F\METHODS\82F111318S.M
 Quant Title : SW846 8260
 QLast Update : Wed Nov 14 03:11:14 2018
 Response via : Initial Calibration

Internal Standards	R.T.	QIon	Response	Conc	Units	Dev(Min)
1) Pentafluorobenzene	4.87	168	104429	50.00	µg/l	-0.01
34) 1,4-Difluorobenzene	5.60	114	192804	50.00	µg/l	-0.01
63) Chlorobenzene-d5	9.79	117	83570	50.00	µg/l	0.00
72) 1,4-Dichlorobenzene-d4	12.57	152	32220	50.00	µg/l	0.00

System Monitoring Compounds

33) 1,2-Dichloroethane-d4	4.85	65	84394	70.85	µg/l	0.00
Spiked Amount				50.000		
				Recovery	=	141.70%
35) Dibromofluoromethane	4.12	113	90213	62.25	µg/l	0.00
Spiked Amount				50.000		
				Recovery	=	124.50%
50) Toluene-d8	7.57	98	139684	36.57	µg/l	0.00
Spiked Amount				50.000		
				Recovery	=	73.14%
62) 4-Bromofluorobenzene	11.42	95	64591	36.57	µg/l	0.00
Spiked Amount				50.000		
				Recovery	=	73.14%

Target Compounds

						Qvalue
20) Methylene Chloride	2.18	84	6053m	4.553	µg/l	
27) cis-1,2-Dichloroethene	3.48	96	69646	45.995	µg/l	95
39) Methylcyclohexane	5.47	83	66997	25.826	µg/l	89
52) Toluene	7.64	92	53558	16.034	µg/l	96
64) Tetrachloroethene	8.17	164	3528	5.331	µg/l #	82
67) Ethyl Benzene	9.91	91	176725	55.596	µg/l	97
68) m/p-Xylenes	10.14	106	416314	366.477	µg/l	96
69) o-Xylene	10.72	106	184508	144.466	µg/l	99
73) Isopropylbenzene	11.14	105	18882	7.281	µg/l	99
78) n-propylbenzene	11.60	91	69033	22.823	µg/l	91
80) 1,3,5-Trimethylbenzene	11.84	105	1030011	500.247	µg/l	99
83) tert-Butylbenzene	12.14	119	69939	31.991	µg/l	79
84) 1,2,4-Trimethylbenzene	12.22	105	742257	348.565	µg/l	90
85) sec-Butylbenzene	12.32	105	30728	10.361	µg/l	88
86) p-Isopropyltoluene	12.46	119	53227m	21.490	µg/l	
95) Naphthalene	14.46	128	109332	82.413	µg/l #	72

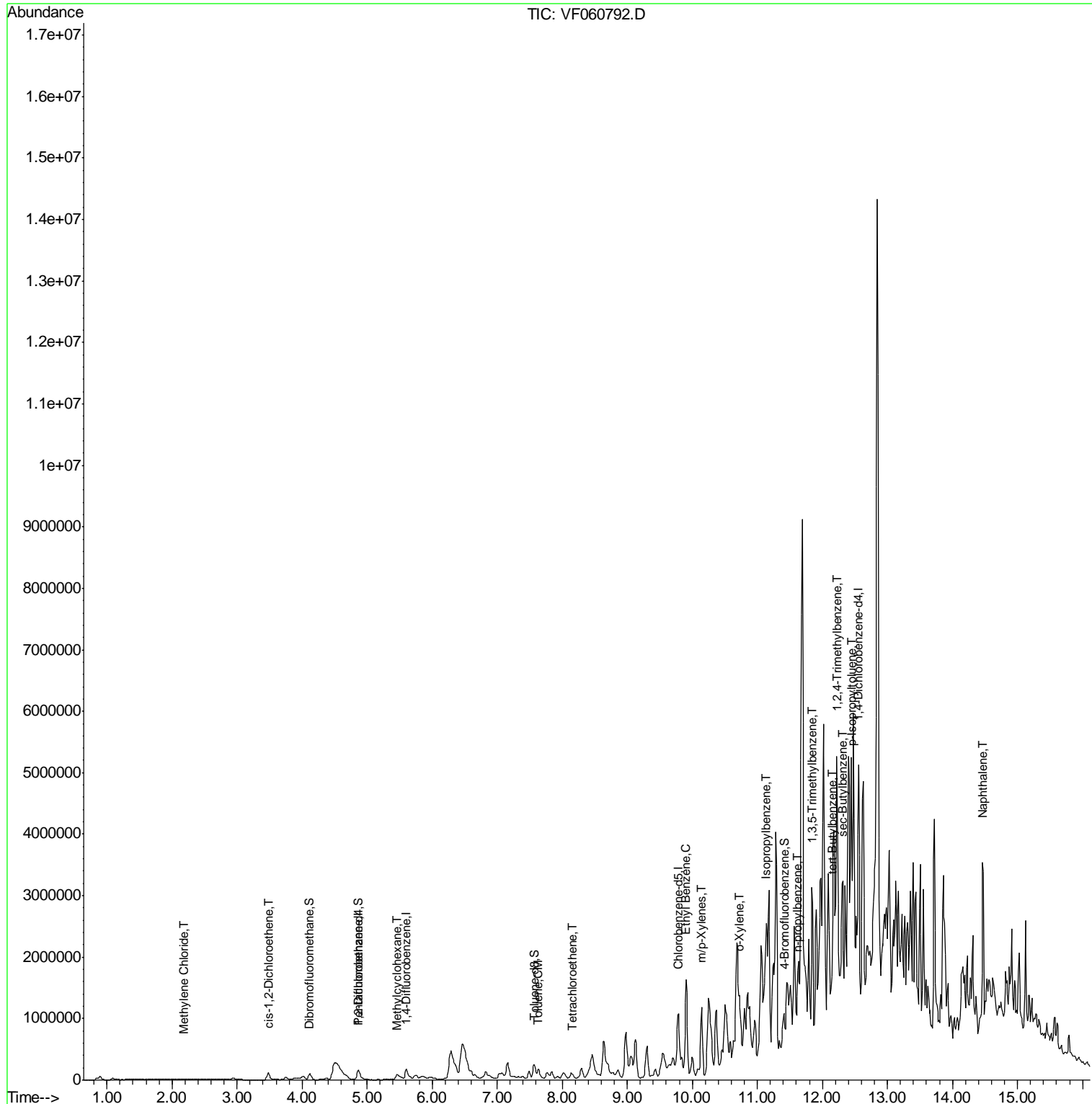
(#) = qualifier out of range (m) = manual integration (+) = signals summed

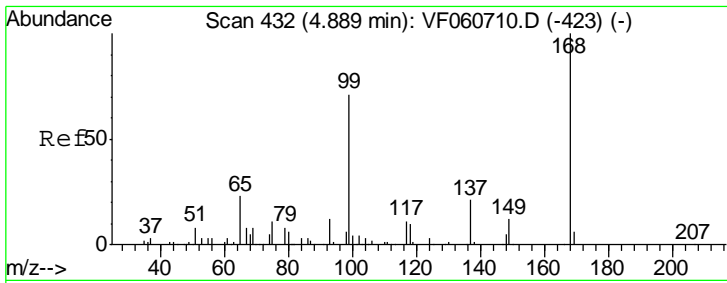
Data Path : Z:\VOASRV\HPCHEM1\MSVOA F\DATA\VF111918\
 Data File : VF060792.D
 Acq On : 19 Nov 2018 22:53
 Operator : VA/AP
 Sample : J5950-10
 Misc : 6.41µ/5mL/MSVOA-F/SOIL
 ALS Vial : 16 Sample Multiplier: 1

Instrument :
 MSVOA_F
Client Sample ID :
 SSI-FD-11132018

Manual Integrations
APPROVED
 apatel
 11/20/2018 1:13:46 PM

Quant Time: Nov 20 03:21:49 2018
 Quant Method : Z:\VOASRV\HPCHEM1\MSVOA_F\METHODS\82F111318S.M
 Quant Title : SW846 8260
 QLast Update : Wed Nov 14 03:11:14 2018
 Response via : Initial Calibration





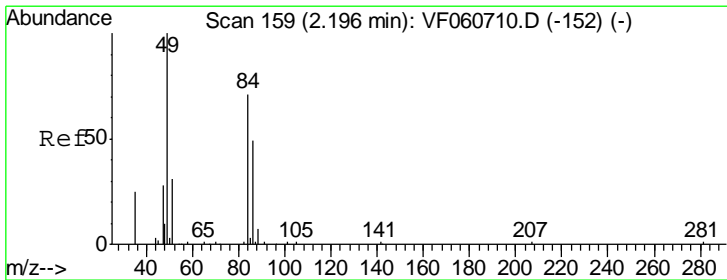
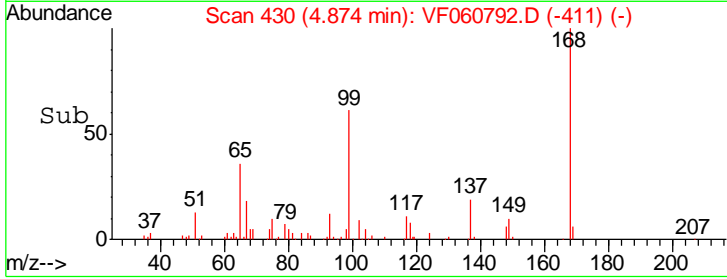
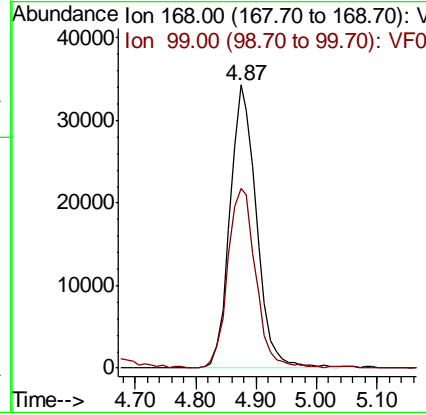
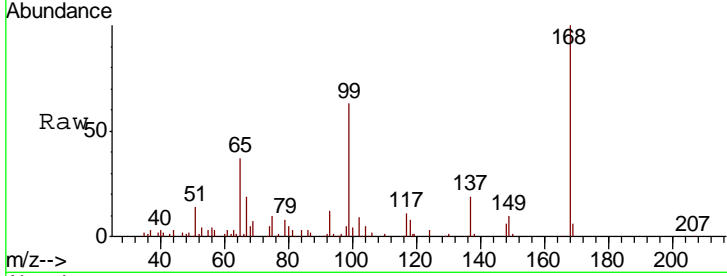
#1
 Pentafluorobenzene
 Concen: 50.000 ug/l
 RT: 4.87 min Scan# 430
 Delta R.T. -0.01 min
 Lab File: VF060792.D
 Acq: 19 Nov 2018 22:53

Instrument : MSVOA_F
 ClientSampleId : SSI-FD-11132018

Tgt Ion	Resp	Lower	Upper
168	100		
99	63.3	57.2	85.8

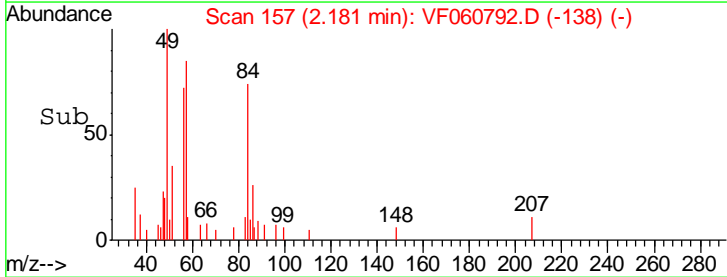
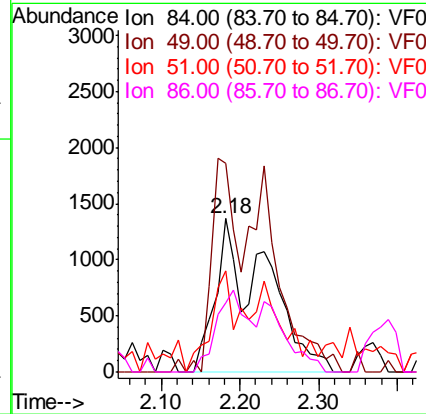
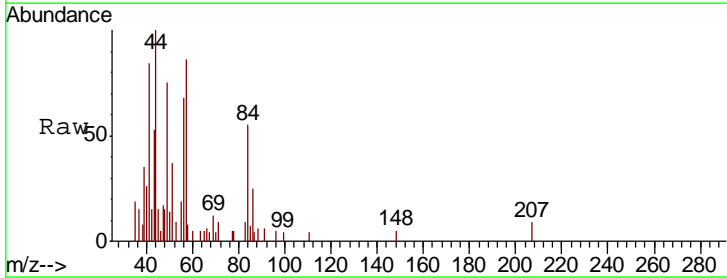
Manual Integrations
 APPROVED

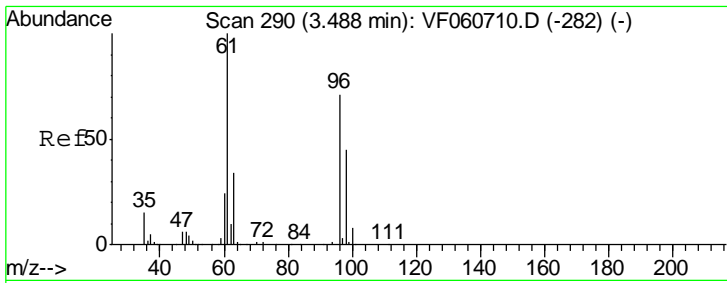
apatel
 11/20/2018 1:13:46 PM



#20
 Methylene Chloride
 Concen: 4.553 ug/l m
 RT: 2.18 min Scan# 157
 Delta R.T. -0.01 min
 Lab File: VF060792.D
 Acq: 19 Nov 2018 22:53

Tgt Ion	Resp	Lower	Upper
84	100		
49	135.7	120.2	180.4
51	65.9	37.2	55.8#
86	45.1	55.1	82.7#





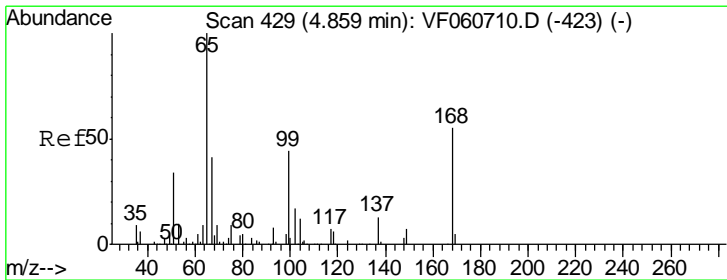
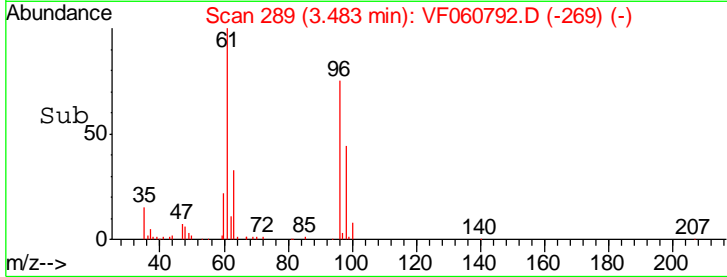
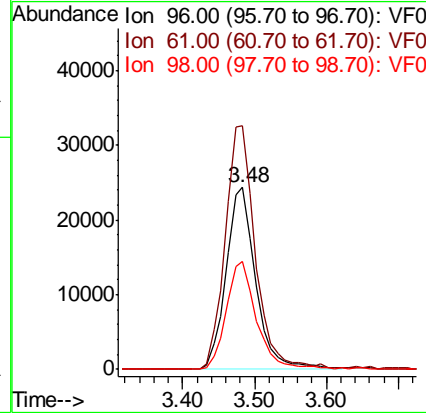
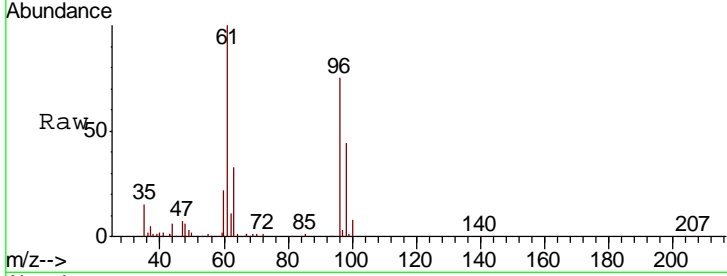
#27
 cis-1,2-Dichloroethene
 Concen: 45.995 ug/l
 RT: 3.48 min Scan# 289
 Delta R.T. -0.00 min
 Lab File: VF060792.D
 Acq: 19 Nov 2018 22:53

Instrument :
 MSVOA_F
ClientSampled :
 SSI-FD-11132018

Tgt Ion	Resp	Lower	Upper
96	69646		
61	133.9	0.0	280.6
98	59.1	0.0	127.6

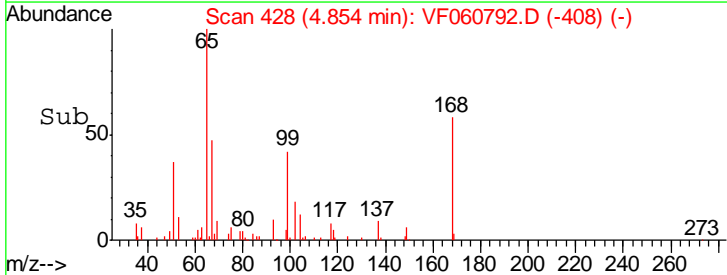
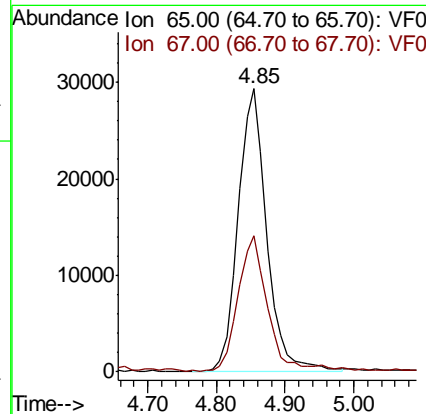
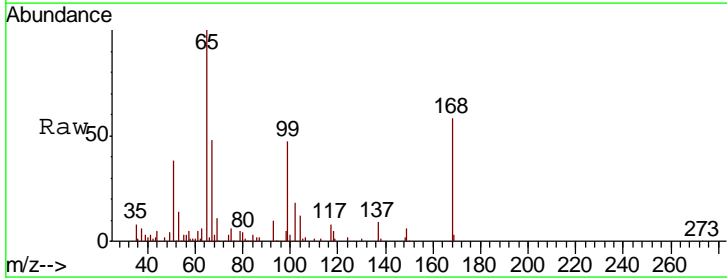
Manual Integrations
APPROVED

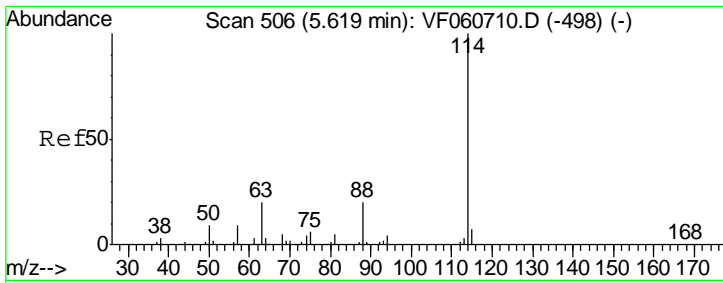
apatel
 11/20/2018 1:13:46 PM



#33
 1,2-Dichloroethane-d4
 Concen: 70.852 ug/l
 RT: 4.85 min Scan# 428
 Delta R.T. -0.00 min
 Lab File: VF060792.D
 Acq: 19 Nov 2018 22:53

Tgt Ion	Resp	Lower	Upper
65	84394		
67	48.2	0.0	90.2





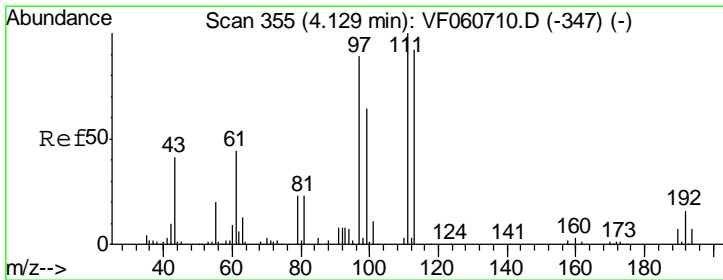
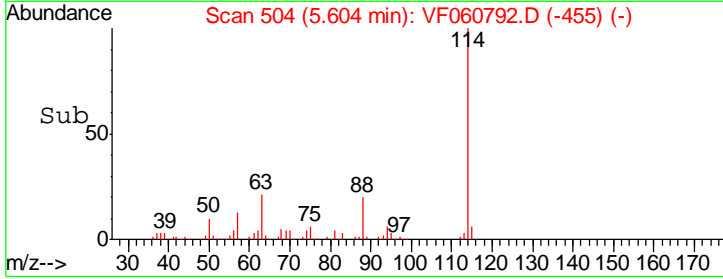
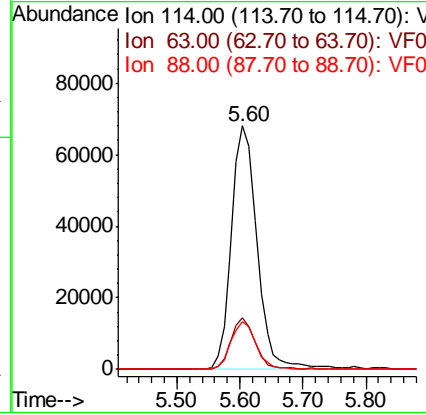
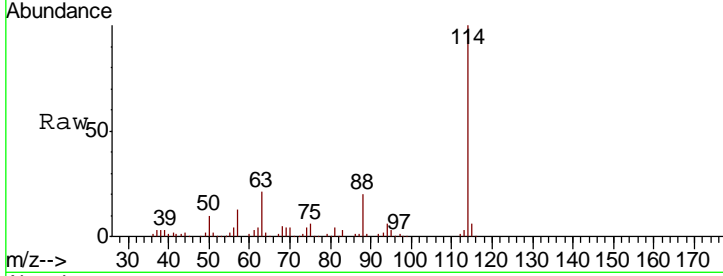
#34
 1,4-Difluorobenzene
 Concen: 50.000 ug/l
 RT: 5.60 min Scan# 504
 Delta R.T. -0.01 min
 Lab File: VF060792.D
 Acq: 19 Nov 2018 22:53

Instrument : MSVOA_F
 ClientSampled : SSI-FD-11132018

Tgt Ion	Resp	Lower	Upper
114	192804		
63	21.4	0.0	40.8
88	19.6	0.0	39.6

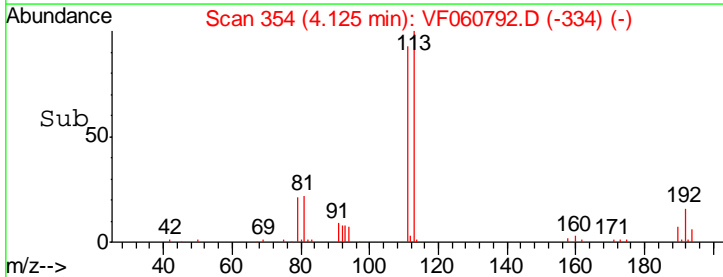
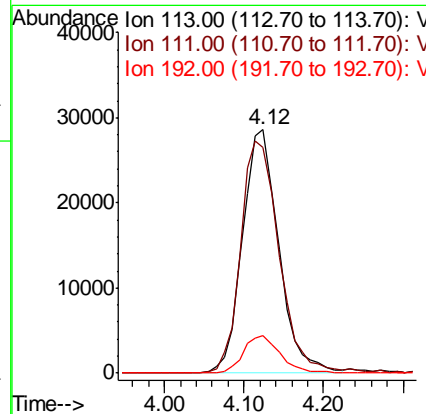
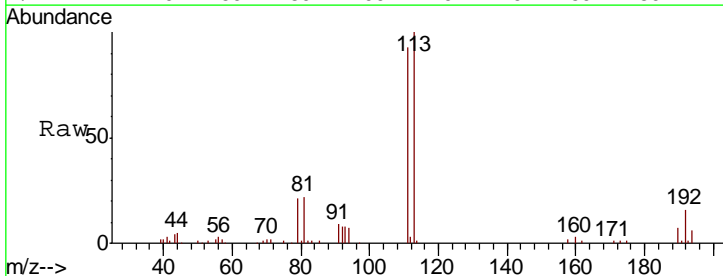
Manual Integrations
 APPROVED

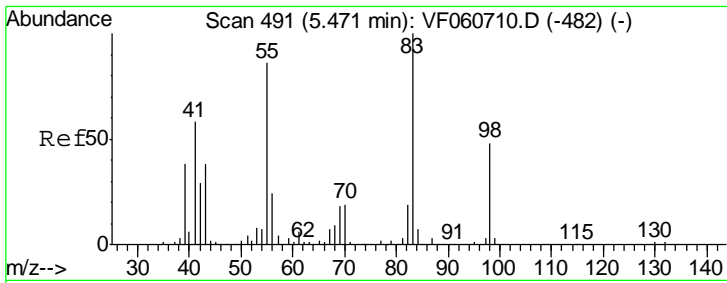
apatel
 11/20/2018 1:13:46 PM



#35
 Dibromofluoromethane
 Concen: 62.246 ug/l
 RT: 4.12 min Scan# 354
 Delta R.T. -0.00 min
 Lab File: VF060792.D
 Acq: 19 Nov 2018 22:53

Tgt Ion	Resp	Lower	Upper
113	90213		
111	92.5	87.1	130.7
192	15.6	13.8	20.6



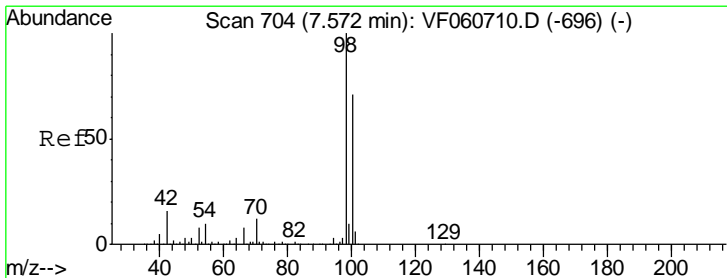
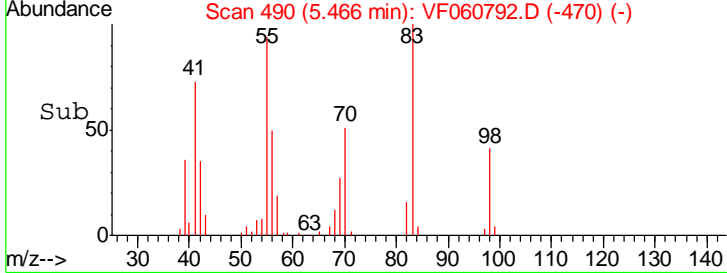
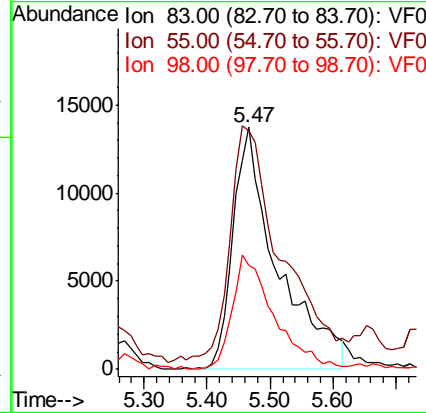
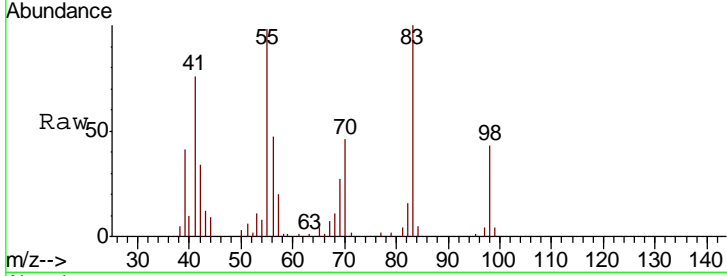


#39
 Methylcyclohexane
 Concen: 25.826 ug/l
 RT: 5.47 min Scan# 490
 Delta R.T. -0.00 min
 Lab File: VF060792.D
 Acq: 19 Nov 2018 22:53

Tgt Ion	Resp	Lower	Upper
83	100		
55	98.4	69.0	103.4
98	42.9	38.5	57.7

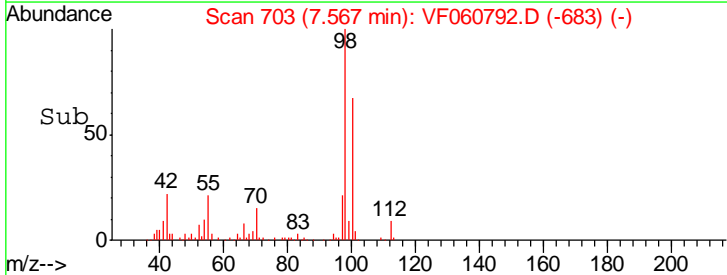
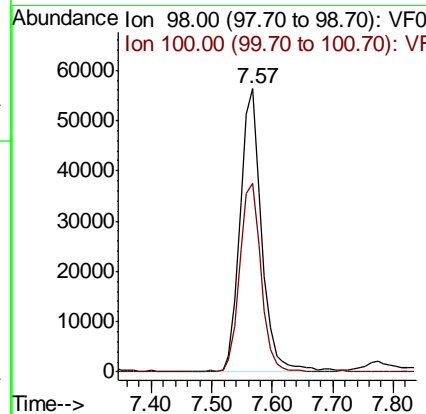
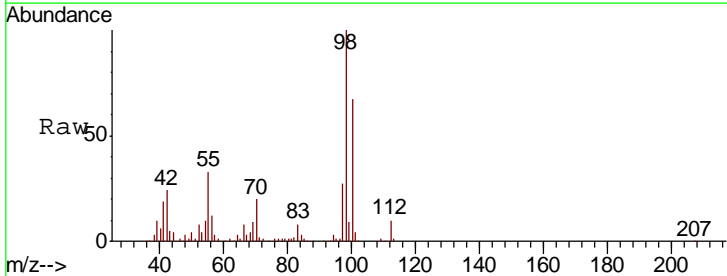
Instrument : MSVOA_F
 ClientSampled : SSI-FD-11132018

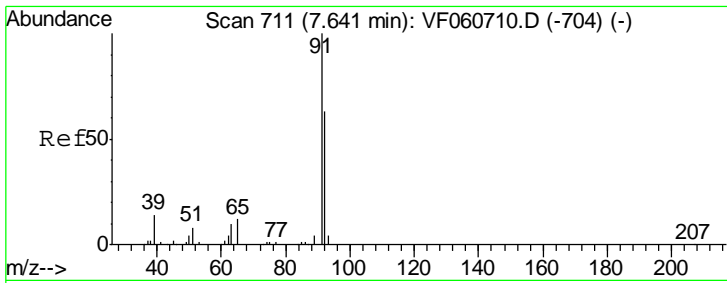
Manual Integrations
APPROVED
 apatel
 11/20/2018 1:13:46 PM



#50
 Toluene-d8
 Concen: 36.572 ug/l
 RT: 7.57 min Scan# 703
 Delta R.T. -0.00 min
 Lab File: VF060792.D
 Acq: 19 Nov 2018 22:53

Tgt Ion	Resp	Lower	Upper
98	100		
100	66.9	56.5	84.7





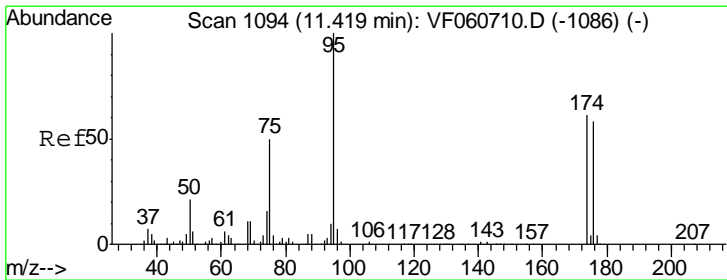
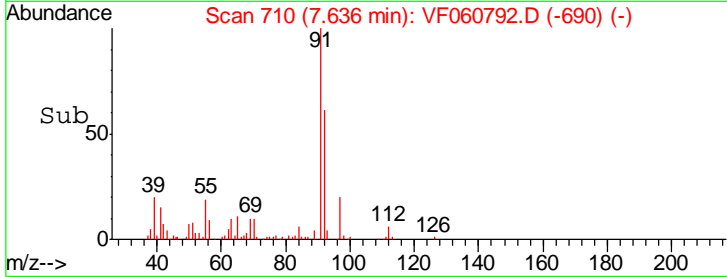
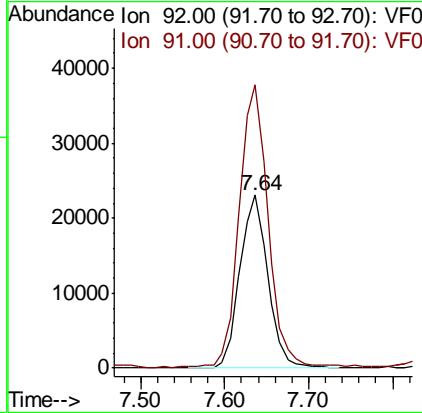
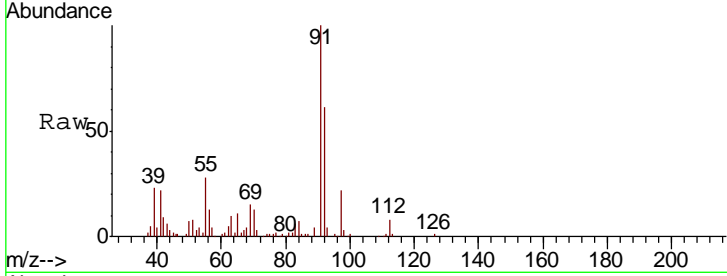
#52
 Toluene
 Concen: 16.034 ug/l
 RT: 7.64 min Scan# 710
 Delta R.T. -0.00 min
 Lab File: VF060792.D
 Acq: 19 Nov 2018 22:53

Instrument :
 MSVOA_F
ClientSampled :
 SSI-FD-11132018

Tgt Ion	Resp	Lower	Upper
92	53558		
92	100		
91	163.5	126.7	190.1

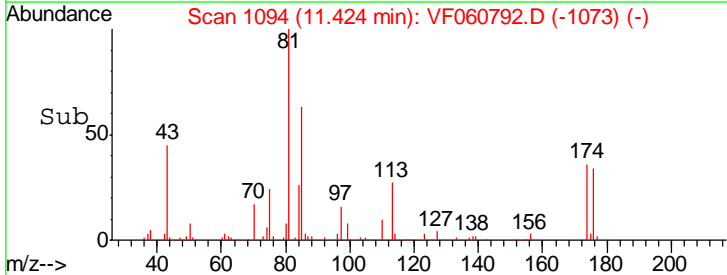
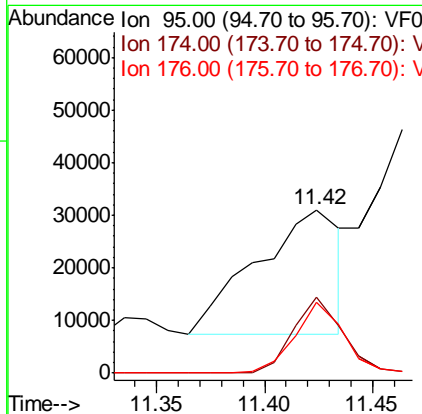
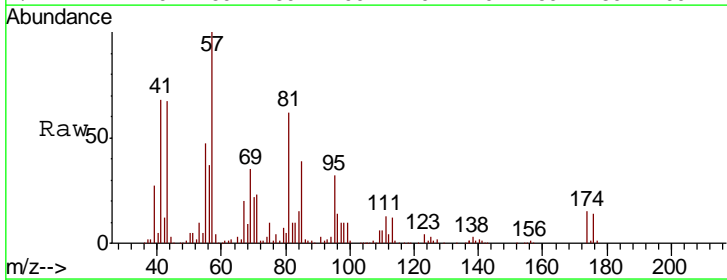
Manual Integrations
APPROVED

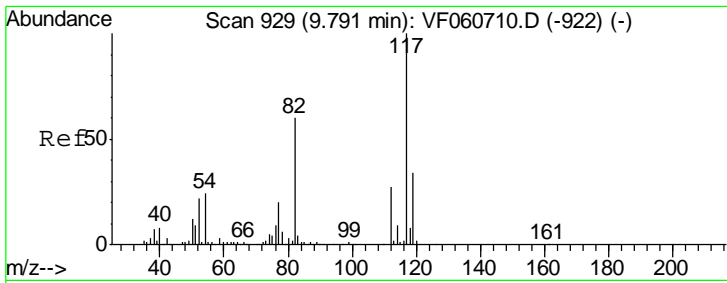
apatel
 11/20/2018 1:13:46 PM



#62
 4-Bromofluorobenzene
 Concen: 36.575 ug/l
 RT: 11.42 min Scan# 1094
 Delta R.T. 0.01 min
 Lab File: VF060792.D
 Acq: 19 Nov 2018 22:53

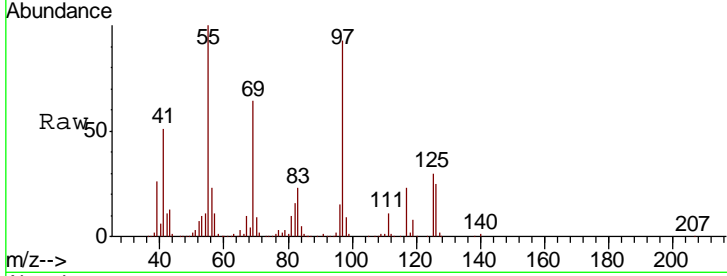
Tgt Ion	Resp	Lower	Upper
95	64591		
95	100		
174	46.2	0.0	121.6
176	43.0	0.0	115.2





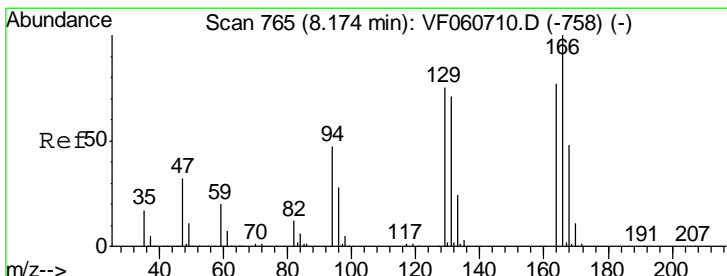
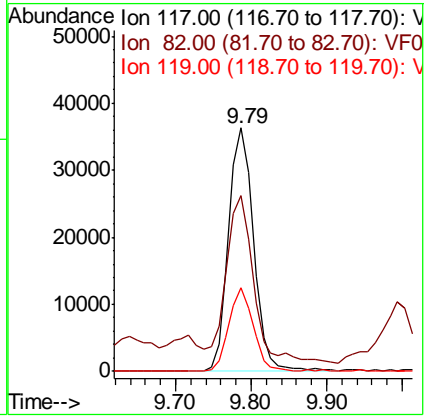
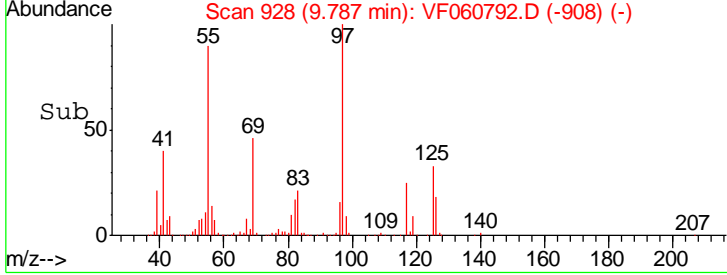
#63
 Chlorobenzene-d5
 Concen: 50.000 ug/l
 RT: 9.79 min Scan# 928
 Delta R.T. -0.00 min
 Lab File: VF060792.D
 Acq: 19 Nov 2018 22:53

Instrument : MSVOA_F
 ClientSampled : SSI-FD-11132018

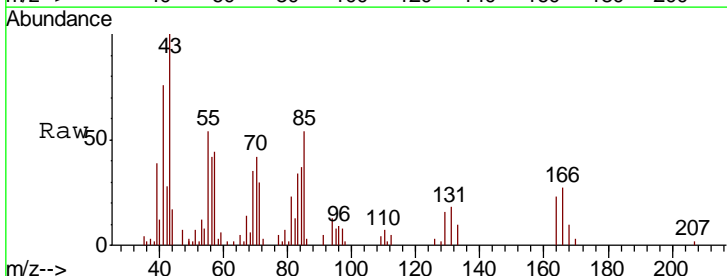


Tgt Ion	Resp	Lower	Upper
117	100		
82	72.3	47.9	71.9#
119	34.5	26.8	40.2

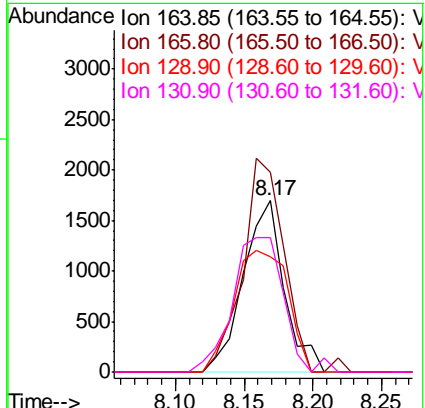
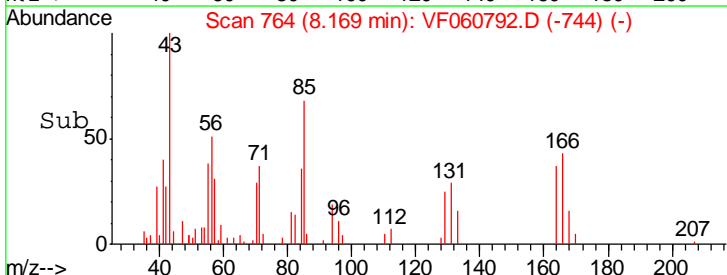
Manual Integrations
APPROVED
 apatel
 11/20/2018 1:13:46 PM

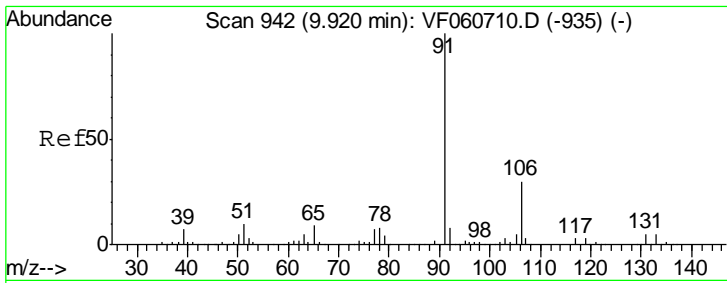


#64
 Tetrachloroethene
 Concen: 5.331 ug/l
 RT: 8.17 min Scan# 764
 Delta R.T. -0.00 min
 Lab File: VF060792.D
 Acq: 19 Nov 2018 22:53



Tgt Ion	Resp	Lower	Upper
164	100		
166	116.7	103.5	155.3
129	67.5	77.4	116.2#
131	78.5	73.5	110.3





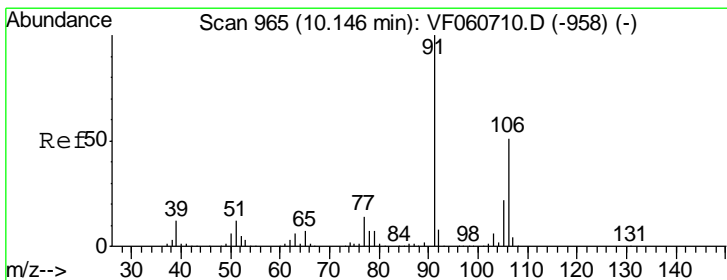
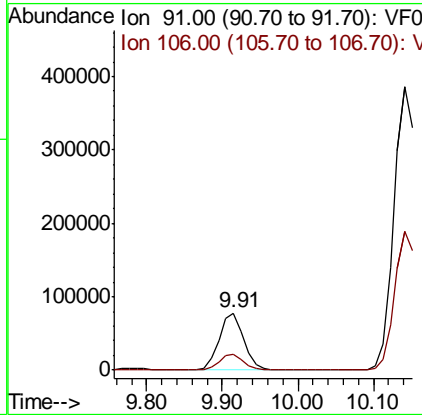
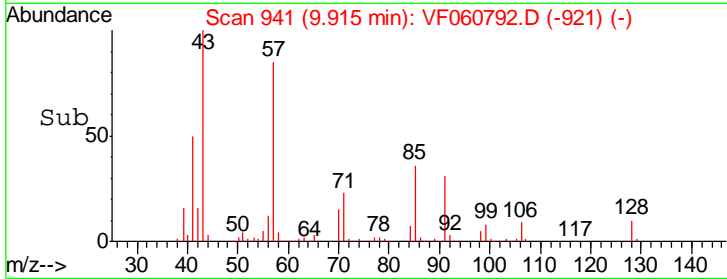
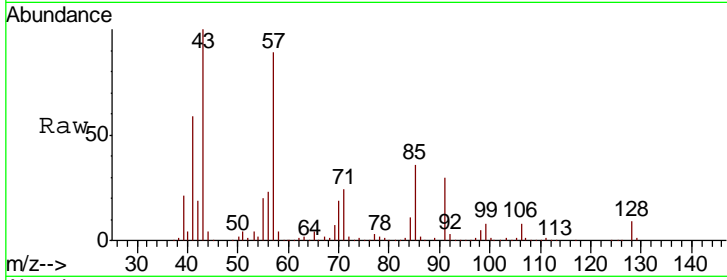
#67
Ethyl Benzene
Concen: 55.596 ug/l
RT: 9.91 min Scan# 941
Delta R.T. -0.00 min
Lab File: VF060792.D
Acq: 19 Nov 2018 22:53

Instrument :
MSVOA_F
ClientSampled :
SSI-FD-11132018

Tgt Ion	Resp	Lower	Upper
91	176725		
106	28.1	23.9	35.9

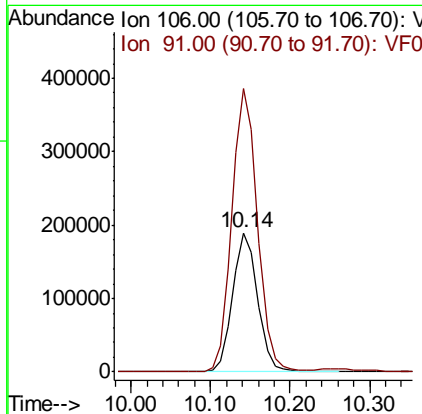
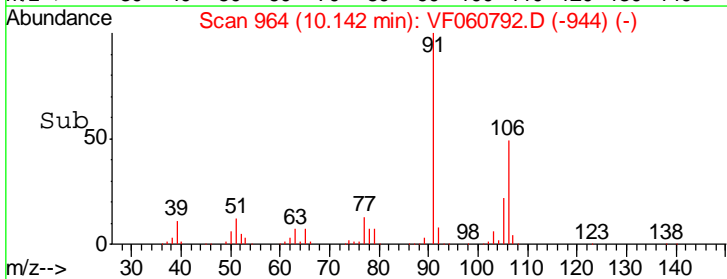
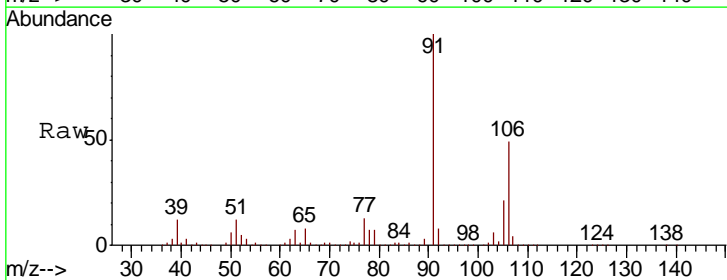
Manual Integrations
APPROVED

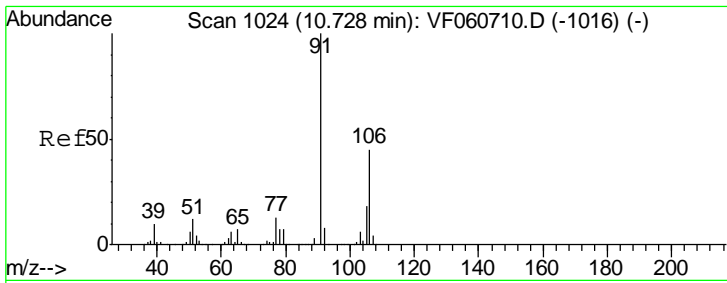
apatel
11/20/2018 1:13:46 PM



#68
m/p-Xylenes
Concen: 366.477 ug/l
RT: 10.14 min Scan# 964
Delta R.T. -0.00 min
Lab File: VF060792.D
Acq: 19 Nov 2018 22:53

Tgt Ion	Resp	Lower	Upper
106	416314		
91	204.0	158.2	237.2





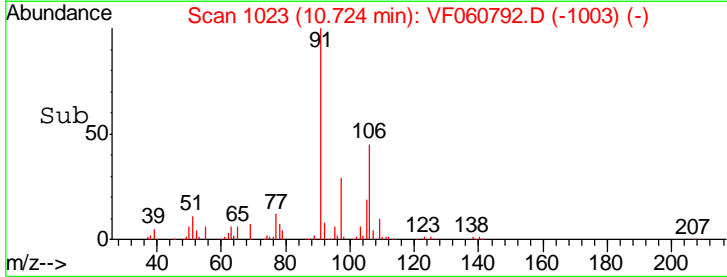
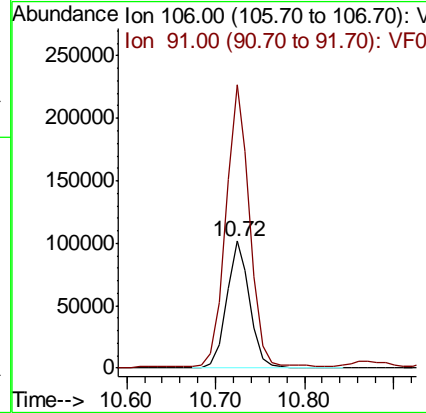
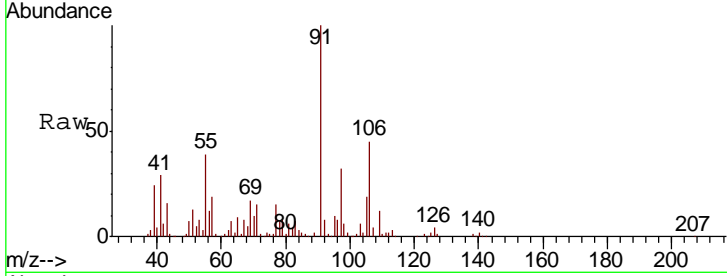
#69
 o-Xylene
 Concen: 144.466 ug/l
 RT: 10.72 min Scan# 1023
 Delta R.T. -0.00 min
 Lab File: VF060792.D
 Acq: 19 Nov 2018 22:53

Instrument : MSVOA_F
 Client Sampled : SSI-FD-11132018

Tgt Ion	Resp	Lower	Upper
106	184508		
106	100		
91	222.8	110.3	330.9

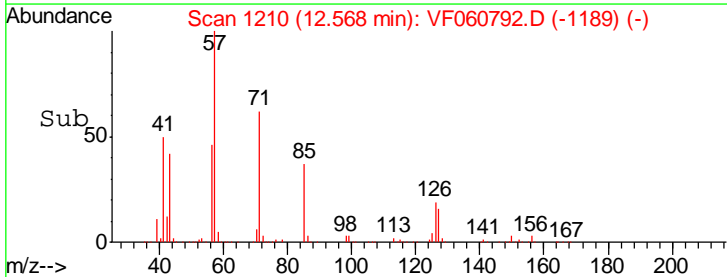
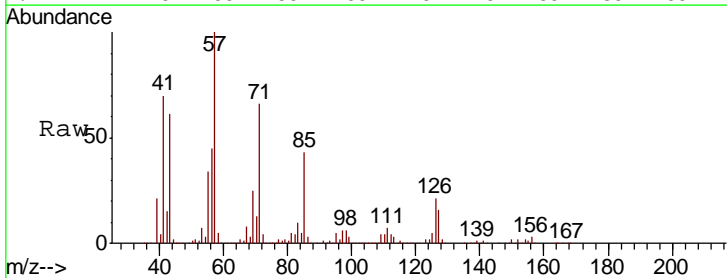
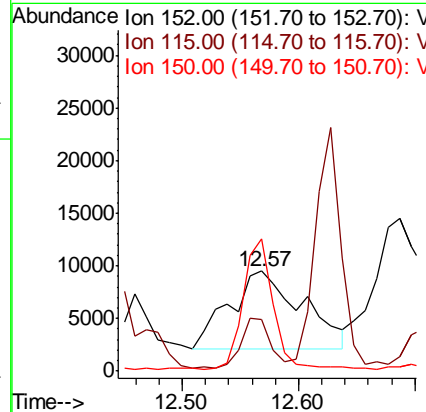
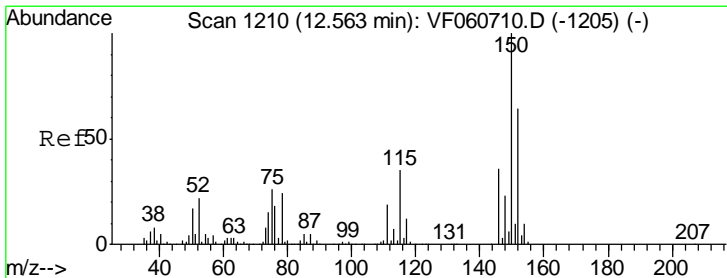
Manual Integrations
 APPROVED

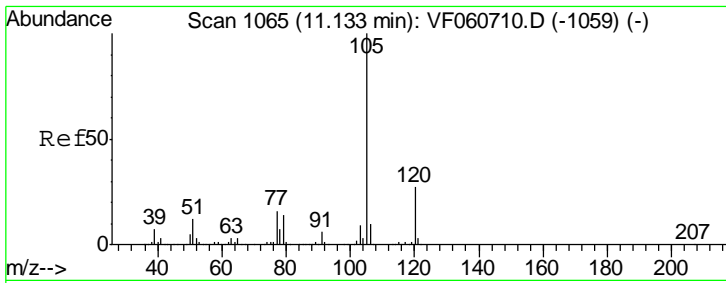
apatel
 11/20/2018 1:13:46 PM



#72
 1,4-Dichlorobenzene-d4
 Concen: 50.000 ug/l
 RT: 12.57 min Scan# 1210
 Delta R.T. 0.01 min
 Lab File: VF060792.D
 Acq: 19 Nov 2018 22:53

Tgt Ion	Resp	Lower	Upper
152	32220		
152	100		
115	51.3	27.9	83.7
150	132.5	0.0	316.4





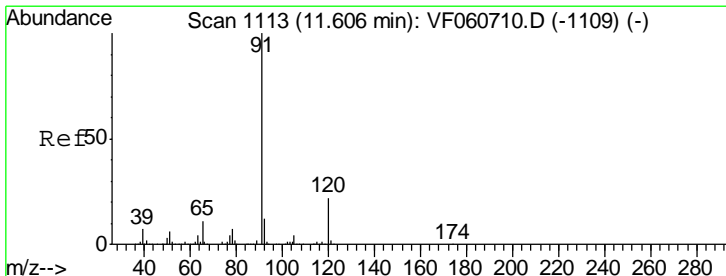
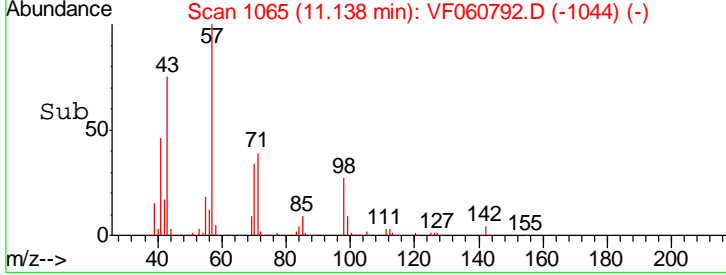
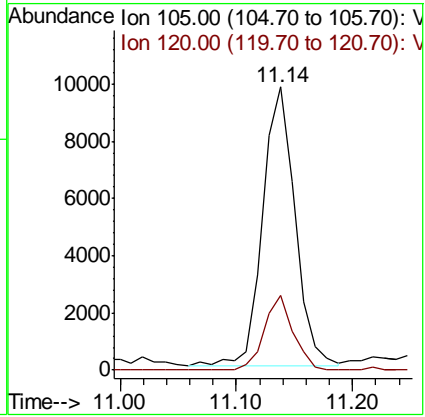
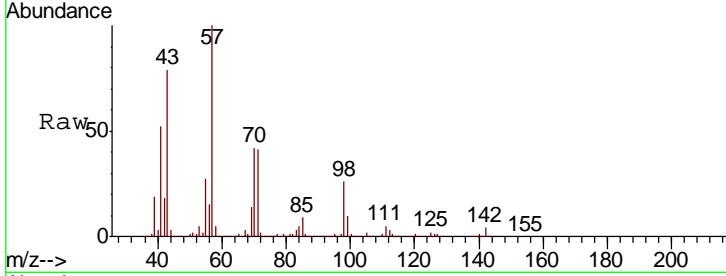
#73
 Isopropylbenzene
 Concen: 7.281 ug/l
 RT: 11.14 min Scan# 1065
 Delta R.T. 0.01 min
 Lab File: VF060792.D
 Acq: 19 Nov 2018 22:53

Instrument : MSVOA_F
 Client Sampled : SSI-FD-11132018

Tgt Ion	Resp	Lower	Upper
105	18882		
105	100		
120	26.2	13.4	40.1

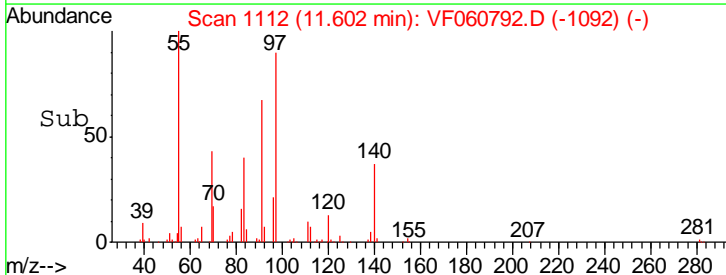
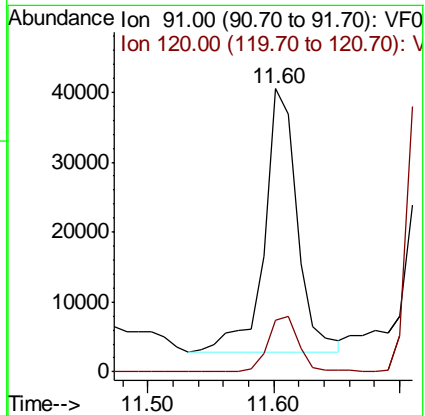
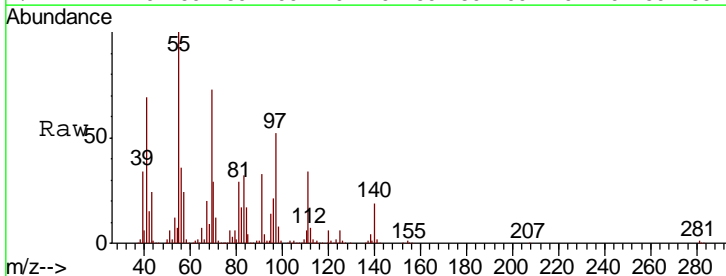
Manual Integrations
 APPROVED

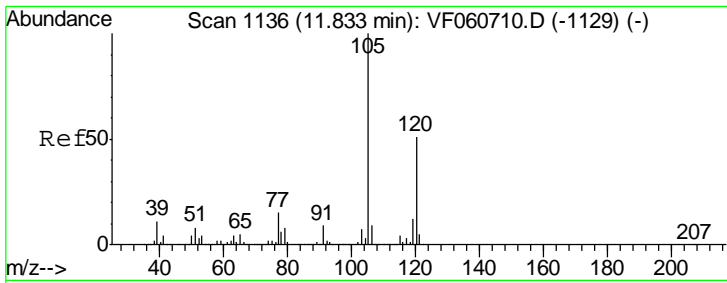
apatel
 11/20/2018 1:13:46 PM



#78
 n-propylbenzene
 Concen: 22.823 ug/l
 RT: 11.60 min Scan# 1112
 Delta R.T. -0.00 min
 Lab File: VF060792.D
 Acq: 19 Nov 2018 22:53

Tgt Ion	Resp	Lower	Upper
91	69033		
91	100		
120	18.2	11.2	33.5





#80
 1,3,5-Trimethylbenzene
 Concen: 500.247 ug/l
 RT: 11.84 min Scan# 1136
 Delta R.T. 0.01 min
 Lab File: VF060792.D
 Acq: 19 Nov 2018 22:53

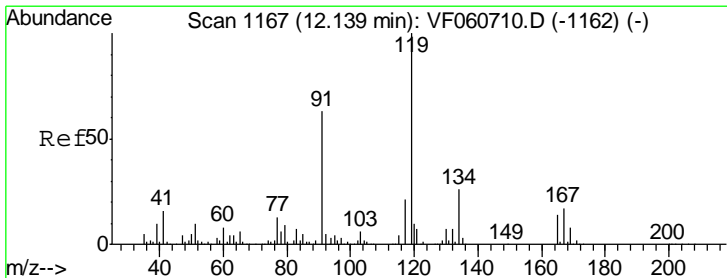
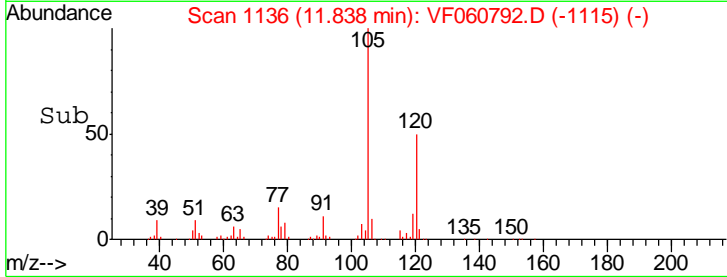
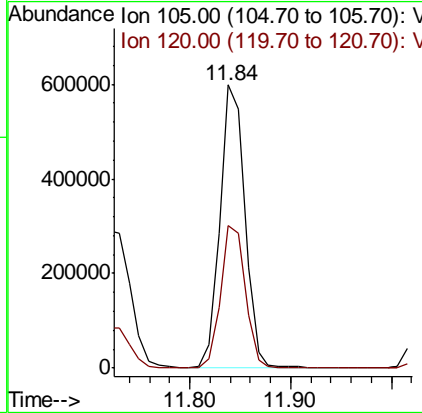
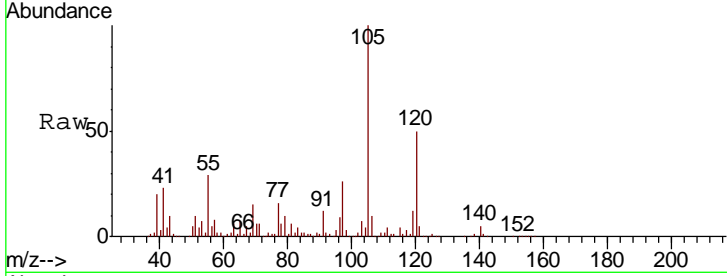
Instrument : MSVOA_F
 ClientSampled : SSI-FD-11132018

Tgt Ion:105 Resp: 1030011

Ion	Ratio	Lower	Upper
105	100		
120	50.2	25.6	76.8

Manual Integrations
 APPROVED

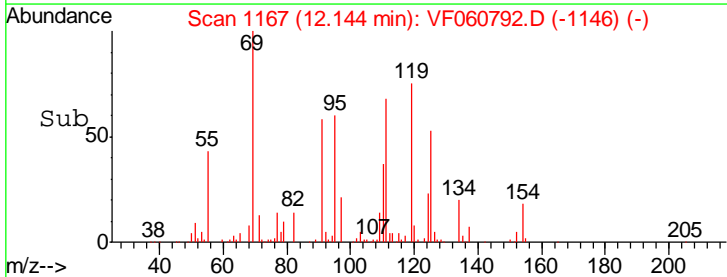
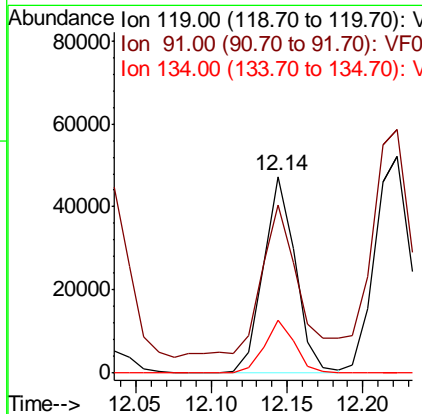
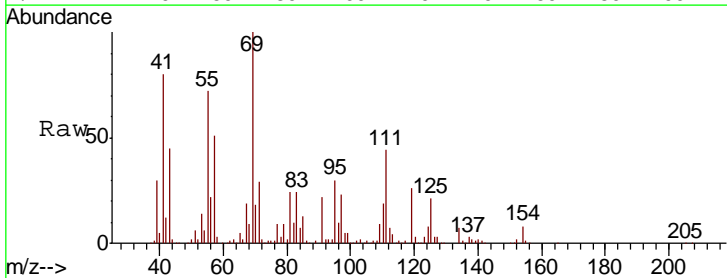
apatel
 11/20/2018 1:13:46 PM

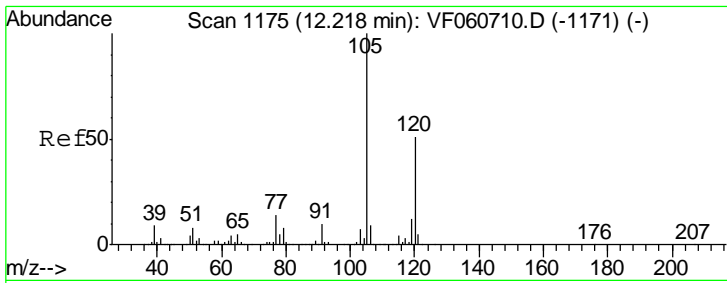


#83
 tert-Butylbenzene
 Concen: 31.991 ug/l
 RT: 12.14 min Scan# 1167
 Delta R.T. 0.01 min
 Lab File: VF060792.D
 Acq: 19 Nov 2018 22:53

Tgt Ion:119 Resp: 69939

Ion	Ratio	Lower	Upper
119	100		
91	85.5	31.4	94.3
134	26.8	12.8	38.4





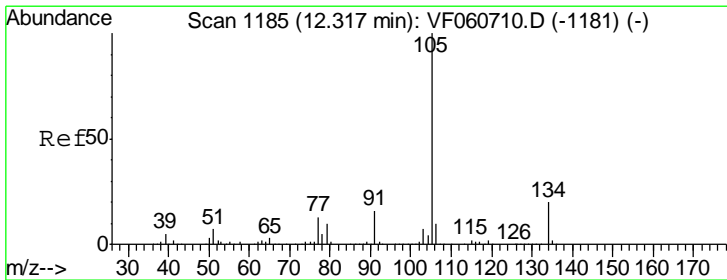
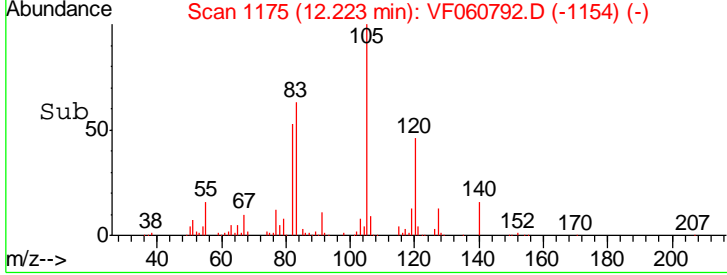
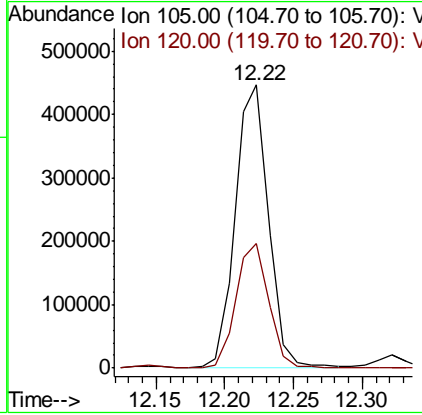
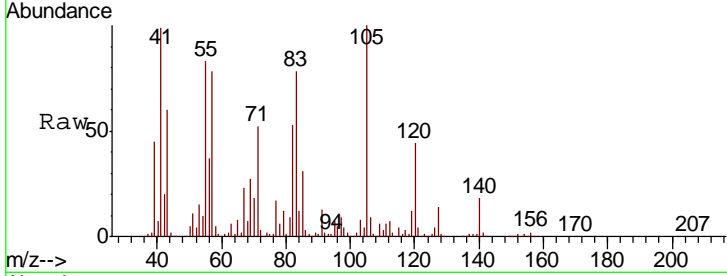
#84
 1,2,4-Trimethylbenzene
 Concen: 348.565 ug/l
 RT: 12.22 min Scan# 1175
 Delta R.T. 0.01 min
 Lab File: VF060792.D
 Acq: 19 Nov 2018 22:53

Instrument : MSVOA_F
 Client Sampled : SSI-FD-11132018

Tgt Ion	Resp	Lower	Upper
105	100		
120	44.1	25.5	76.5

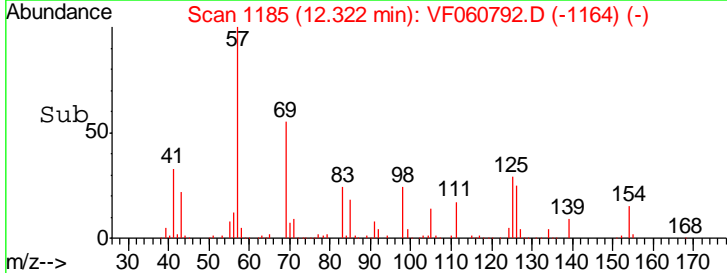
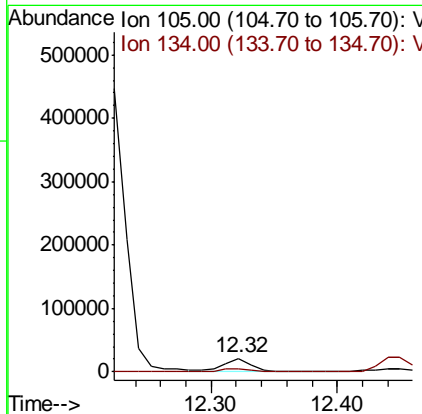
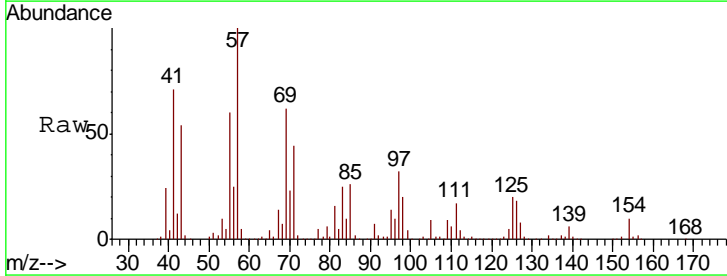
Manual Integrations
 APPROVED

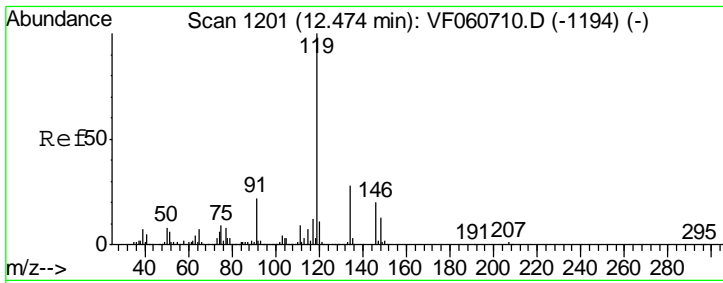
apatel
 11/20/2018 1:13:46 PM



#85
 sec-Butylbenzene
 Concen: 10.361 ug/l
 RT: 12.32 min Scan# 1185
 Delta R.T. 0.01 min
 Lab File: VF060792.D
 Acq: 19 Nov 2018 22:53

Tgt Ion	Resp	Lower	Upper
105	100		
134	25.7	10.1	30.3



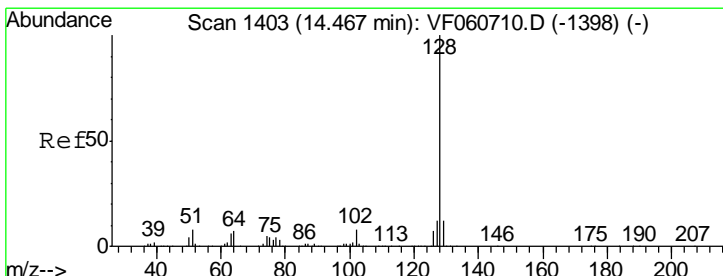
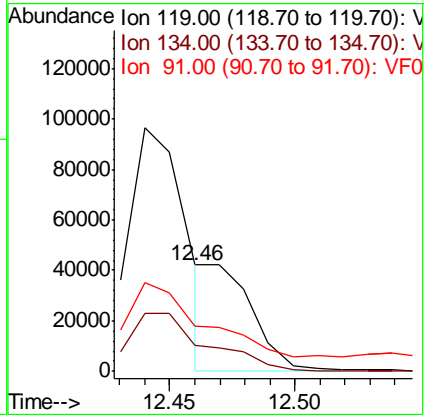
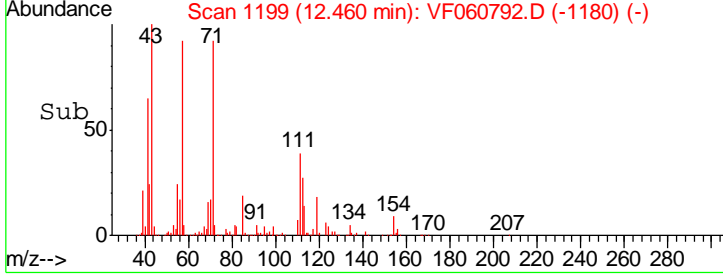
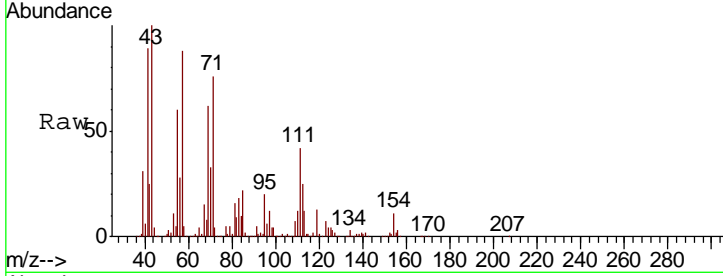


#86
 p-Isopropyltoluene
 Concen: 21.490 ug/l m
 RT: 12.46 min Scan# 1199
 Delta R.T. -0.01 min
 Lab File: VF060792.D
 Acq: 19 Nov 2018 22:53

Instrument : MSVOA_F
 Client Sampled : SSI-FD-11132018

Tgt Ion	Resp	Lower	Upper
119	53227		
134	24.5	13.9	41.7
91	42.5	11.3	33.9#

Manual Integrations
APPROVED
 apatel
 11/20/2018 1:13:46 PM



#95
 Naphthalene
 Concen: 82.413 ug/l
 RT: 14.46 min Scan# 1402
 Delta R.T. -0.00 min
 Lab File: VF060792.D
 Acq: 19 Nov 2018 22:53

Tgt Ion	Resp	Lower	Upper
128	109332		
127	32.2	9.8	14.6#
129	13.2	9.3	13.9

