

Data Path : Z:\voasrv\HPCHEM1\MSVOA_F\Data\VF112018\
 Data File : VF060822.D
 Acq On : 21 Nov 2018 00:26
 Operator : VA/AP
 Sample : J5981-05
 Misc : 3.04g/5mL/MSVOA-F/SOIL
 ALS Vial : 25 Sample Multiplier: 1

Instrument :
 MSVOA_F
 ClientSampleId :
 DTW-03(8-10)

Integration Parameters: RTEINT.P

Integrator: RTE
 Smoothing : ON
 Sampling : 1
 Start Thrs: 0.2
 Stop Thrs : 0

Filtering: 5
 Min Area: 3 % of largest Peak
 Max Peaks: 100
 Peak Location: TOP

If leading or trailing edge < 100 prefer < Baseline drop else tangent >
 Peak separation: 5

Method : Z:\VOASRV\HPCHEM1\MSVOA_F\METHODS\82F111318S.M
 Title : SW846 8260

Signal : TIC

peak #	R.T. min	first scan	max scan	last scan	PK TY	peak height	corr. area	corr. % max.	% of total
1	1.767	111	115	116	rBV	3427364	5884672	27.40%	8.762%
2	1.836	119	122	156	rVV	3642857	21473197	100.00%	31.974%
3	4.115	347	353	364	rVB2	96688	314395	1.46%	0.468%
4	4.638	399	406	422	rBV	210162	636889	2.97%	0.948%
5	4.864	422	429	436	rBV2	215117	758703	3.53%	1.130%
6	5.604	497	504	519	rBV	242801	660119	3.07%	0.983%
7	6.364	575	581	588	rBV	119161	319965	1.49%	0.476%
8	7.557	697	702	706	rBV	264845	630548	2.94%	0.939%
9	7.626	706	709	721	rVV	431335	1008112	4.69%	1.501%
10	7.804	721	727	737	rVB	184274	421183	1.96%	0.627%
11	9.777	921	927	934	rBV	245369	561986	2.62%	0.837%
12	9.905	934	940	949	rBV	1033624	2213390	10.31%	3.296%
13	10.132	958	963	972	rBV	1516645	3431393	15.98%	5.109%
14	10.714	1018	1022	1028	rVB	1160843	2182216	10.16%	3.249%
15	11.414	1089	1093	1098	rBV	203546	332589	1.55%	0.495%
16	11.710	1119	1123	1131	rVB	242638	509285	2.37%	0.758%
17	11.829	1131	1135	1138	rBV	279927	414840	1.93%	0.618%
18	12.016	1150	1154	1170	rVB3	343246	868731	4.05%	1.294%
19	12.204	1170	1173	1179	rBV	777162	1149535	5.35%	1.712%
20	12.460	1196	1199	1204	rVB	227839	327162	1.52%	0.487%
21	12.568	1204	1210	1212	rBV2	387497	852030	3.97%	1.269%
22	12.618	1212	1215	1218	rVV	487757	769607	3.58%	1.146%
23	12.726	1219	1226	1228	rVV	437720	915833	4.27%	1.364%
24	12.795	1228	1233	1252	rVB	423222	2197595	10.23%	3.272%
25	13.131	1258	1267	1275	rVB2	255395	1259518	5.87%	1.875%
26	13.673	1319	1322	1329	rVB2	104587	262311	1.22%	0.391%
27	14.097	1355	1365	1373	rVV2	216549	751928	3.50%	1.120%
28	14.462	1398	1402	1407	rVV	6646545	11821787	55.05%	17.603%
29	14.541	1407	1410	1425	rVB	677291	1230073	5.73%	1.832%
30	15.281	1482	1485	1491	rVV	1037328	1657646	7.72%	2.468%
31	15.409	1495	1498	1507	rVB	601207	957911	4.46%	1.426%
32	15.794	1534	1537	1543	rVB	230066	382882	1.78%	0.570%

Data Path : Z:\voasrv\HPCHEM1\MSVOA_F\Data\VF112018\
Data File : VF060822.D
Acq On : 21 Nov 2018 00:26
Operator : VA/AP
Sample : J5981-05
Misc : 3.04g/5mL/MSVOA-F/SOIL
ALS Vial : 25 Sample Multiplier: 1

Instrument :
MSVOA_F
ClientSampleId :
DTW-03(8-10)

Integration Parameters: RTEINT.P
Integrator: RTE
Smoothing : ON Filtering: 5
Sampling : 1 Min Area: 3 % of largest Peak
Start Thrs: 0.2 Max Peaks: 100
Stop Thrs : 0 Peak Location: TOP

If leading or trailing edge < 100 prefer < Baseline drop else tangent >
Peak separation: 5

Method : Z:\VOASRV\HPCHEM1\MSVOA_F\METHODS\82F111318S.M
Title : SW846 8260

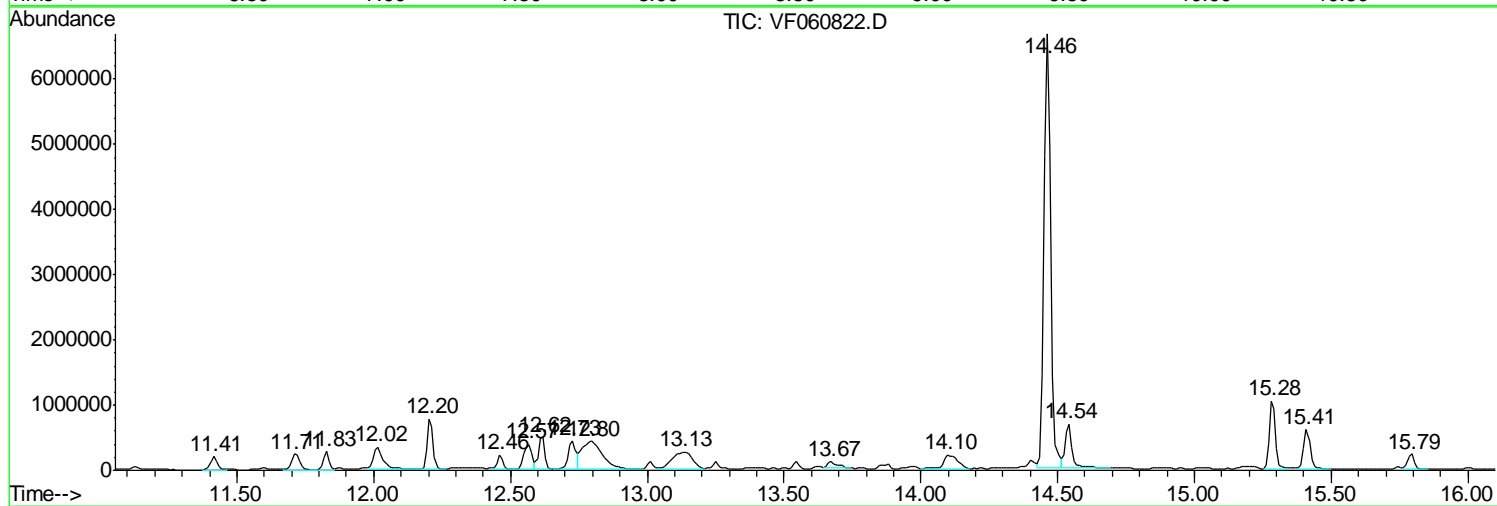
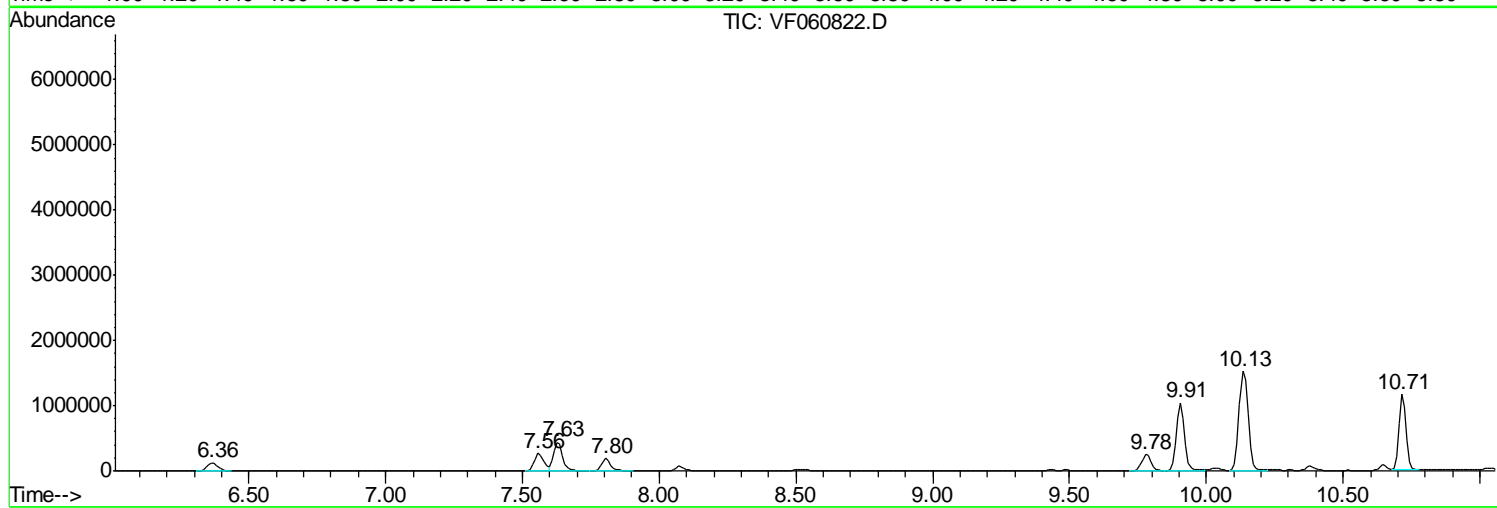
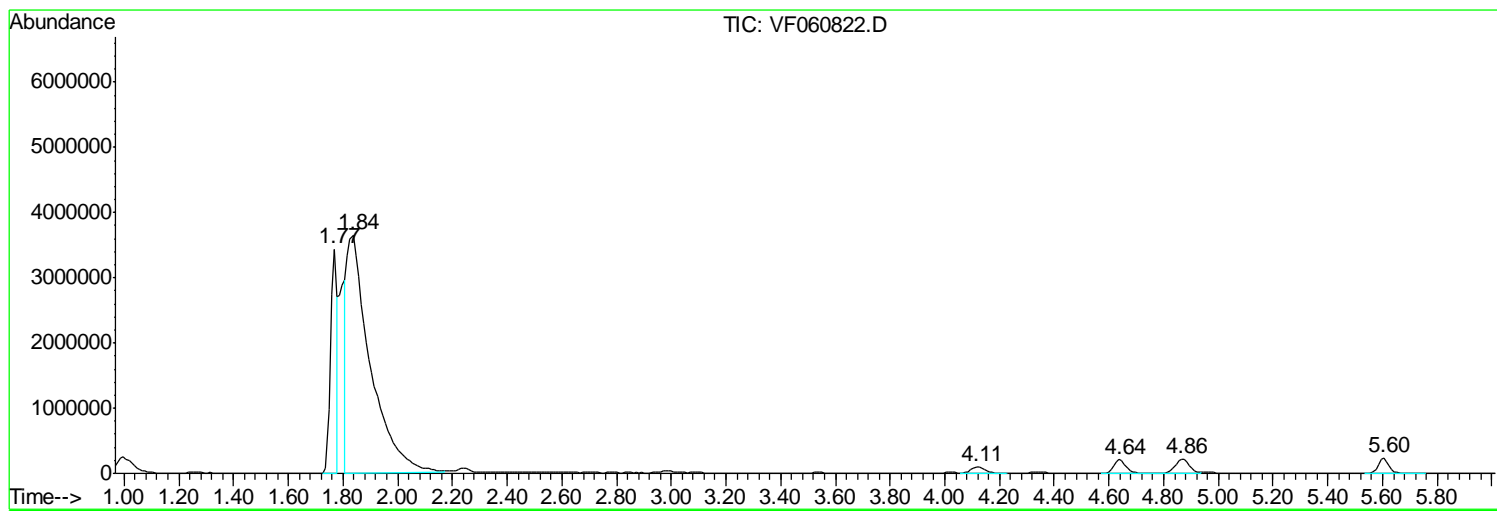
Sum of corrected areas: 67158031

Data Path : Z:\voasrv\HPCHEM1\MSVOA_F\Data\VF112018\
 Data File : VF060822.D
 Acq On : 21 Nov 2018 00:26
 Operator : VA/AP
 Sample : J5981-05
 Misc : 3.04g/5mL/MSVOA-F/SOIL
 ALS Vial : 25 Sample Multiplier: 1

Instrument :
 MSVOA_F
 ClientSampleId :
 DTW-03(8-10)

Quant Method : Z:\VOASRV\HPCHEM1\MSVOA_F\METHODS\82F111318S.M
 Quant Title : SW846 8260

TIC Library : C:\DATABASE\NIST11.L
 TIC Integration Parameters: LSCINT.P



Data Path : Z:\voasrv\HPCHEM1\MSVOA_F\Data\VF112018\
 Data File : VF060822.D
 Acq On : 21 Nov 2018 00:26
 Operator : VA/AP
 Sample : J5981-05
 Misc : 3.04g/5mL/MSVOA-F/SOIL
 ALS Vial : 25 Sample Multiplier: 1

Instrument :
 MSVOA_F
 ClientSampleID :
 DTW-03(8-10)

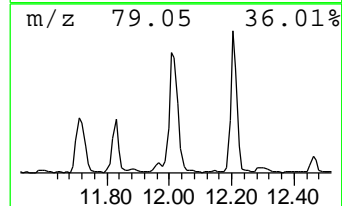
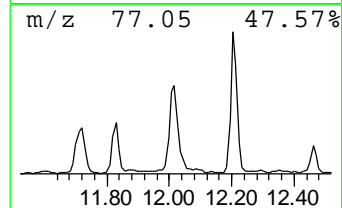
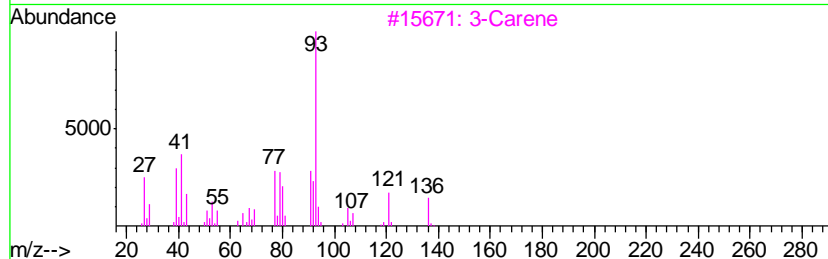
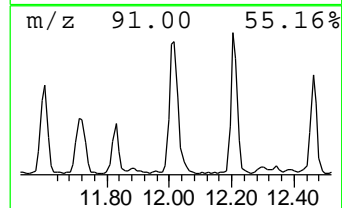
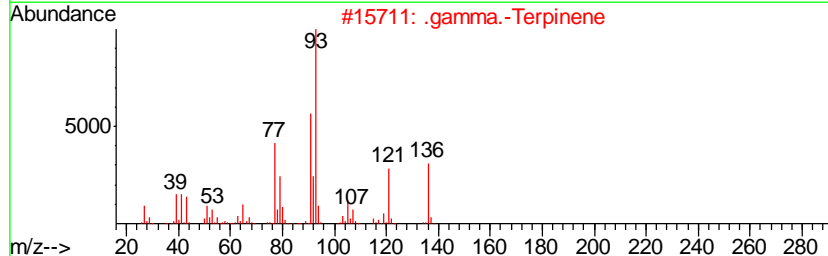
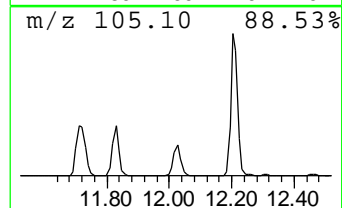
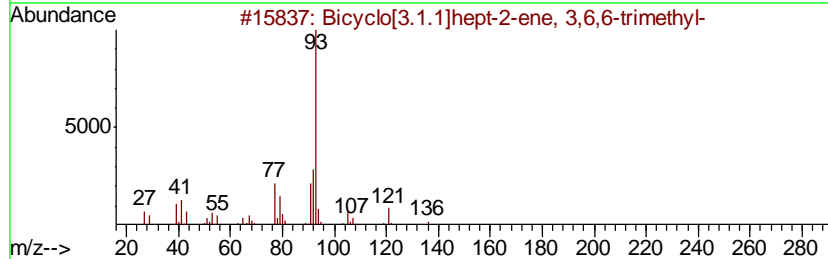
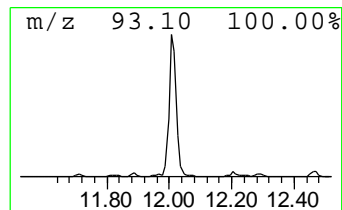
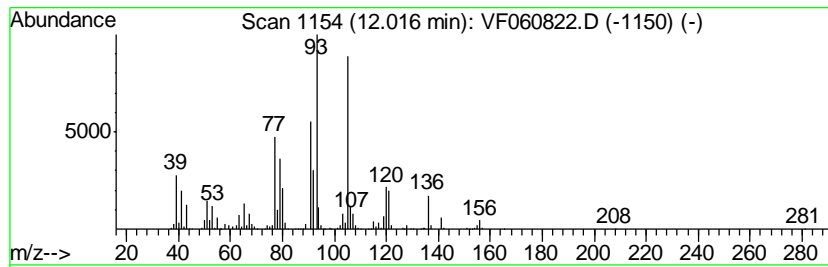
Quant Method : Z:\VOASRV\HPCHEM1\MSVOA_F\METHODS\82F111318S.M
 Quant Title : SW846 8260

TIC Library : C:\DATABASE\NIST11.L
 TIC Integration Parameters: LSCINT.P

 Peak Number 2 Bicyclo[3.1.1]hept-2-ene, 3... Concentration Rank 8

R.T.	EstConc	Area	Relative to ISTD	R.T.
12.02	50.98 ug/l	868731	1,4-Dichlorobenzene-d4	12.56

Hit#	of	Tentative ID	MW	MolForm	CAS#	Qual
1	5	Bicyclo[3.1.1]hept-2-ene, 3,6,6-...	136	C10H16	004889-83-2	76
2		.gamma.-Terpinene	136	C10H16	000099-85-4	76
3		3-Carene	136	C10H16	013466-78-9	70
4		.beta.-Ocimene	136	C10H16	013877-91-3	64
5		.alpha.-Phellandrene	136	C10H16	000099-83-2	64



Data Path : Z:\voasrv\HPCHEM1\MSVOA_F\Data\VF112018\
 Data File : VF060822.D
 Acq On : 21 Nov 2018 00:26
 Operator : VA/AP
 Sample : J5981-05
 Misc : 3.04g/5mL/MSVOA-F/SOIL
 ALS Vial : 25 Sample Multiplier: 1

Instrument :
 MSVOA_F
 ClientSampled :
 DTW-03(8-10)

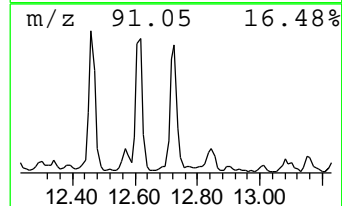
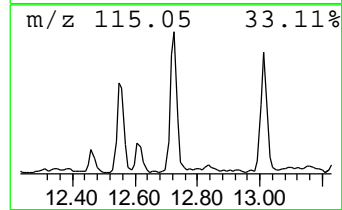
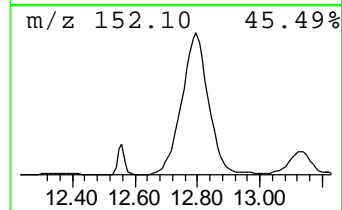
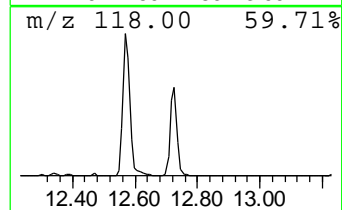
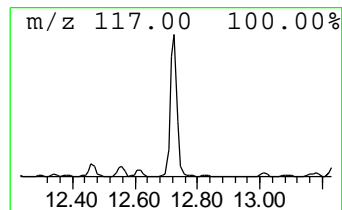
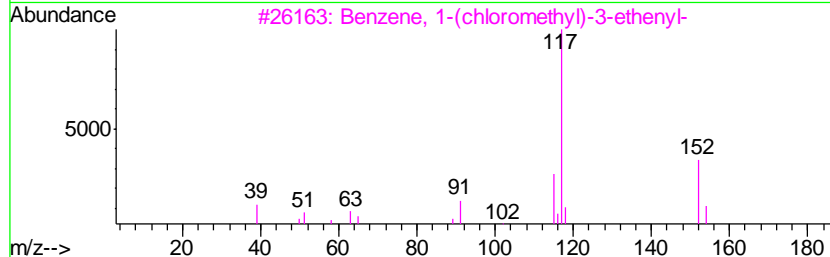
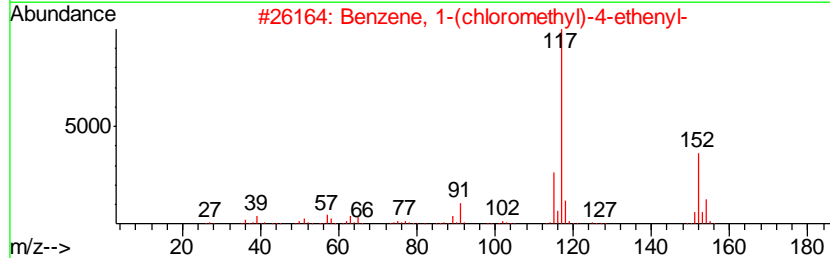
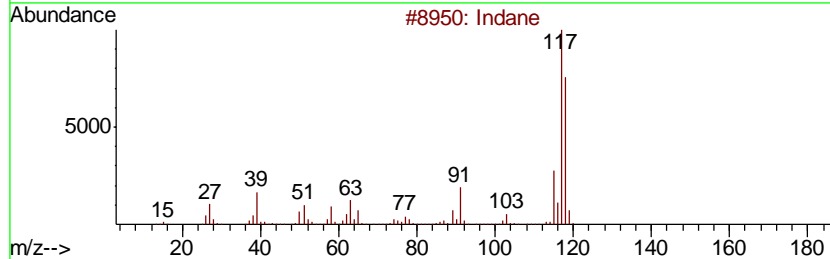
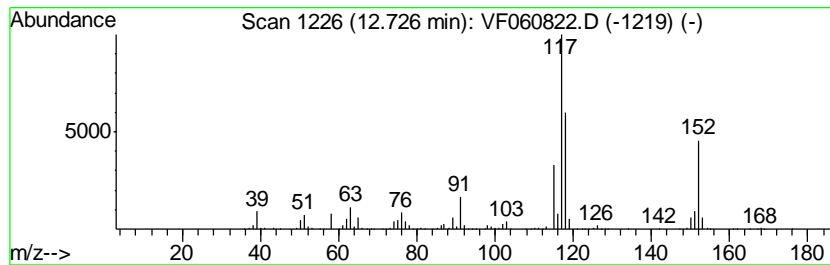
Quant Method : Z:\VOASRV\HPCHEM1\MSVOA_F\METHODS\82F111318S.M
 Quant Title : SW846 8260

TIC Library : C:\DATABASE\NIST11.L
 TIC Integration Parameters: LSCINT.P

 Peak Number 4 Indane Concentration Rank 7

R.T.	EstConc	Area	Relative to ISTD	R.T.
12.73	53.74 ug/l	915833	1,4-Dichlorobenzene-d4	12.56

Hit#	of	Tentative ID	MW	MolForm	CAS#	Qual
1	5	Indane	118	C9H10	000496-11-7	91
2		Benzene, 1-(chloromethyl)-4-ethe...	152	C9H9Cl	001592-20-7	74
3		Benzene, 1-(chloromethyl)-3-ethe...	152	C9H9Cl	039833-65-3	70
4		Benzene, (3-chloro-1-propenyl)-	152	C9H9Cl	002687-12-9	70
5		Benzene, 1-propenyl-	118	C9H10	000637-50-3	60



Data Path : Z:\voasrv\HPCHEM1\MSVOA_F\Data\VF112018\
 Data File : VF060822.D
 Acq On : 21 Nov 2018 00:26
 Operator : VA/AP
 Sample : J5981-05
 Misc : 3.04g/5mL/MSVOA-F/SOIL
 ALS Vial : 25 Sample Multiplier: 1

Instrument :
 MSVOA_F
 ClientSampleID :
 DTW-03(8-10)

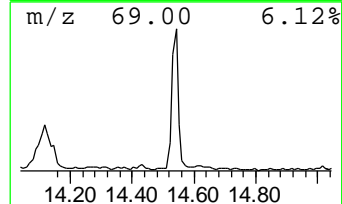
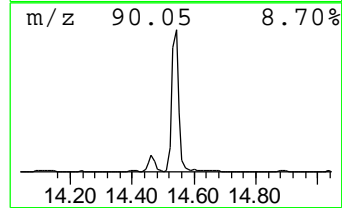
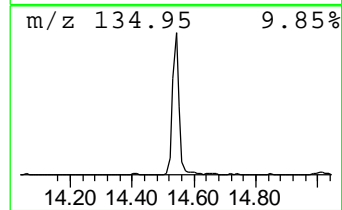
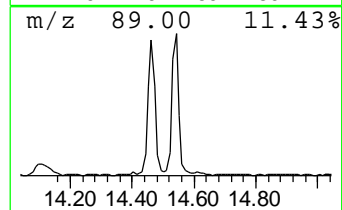
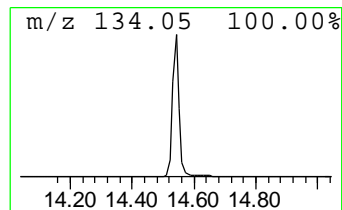
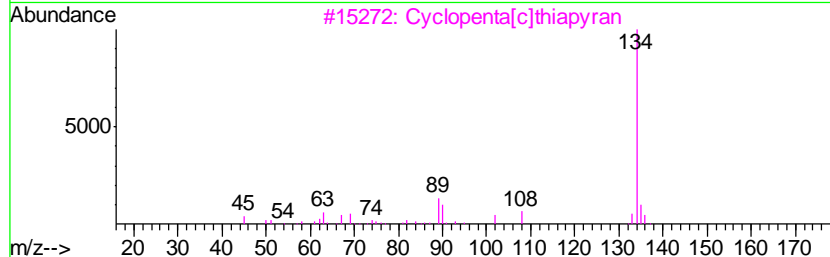
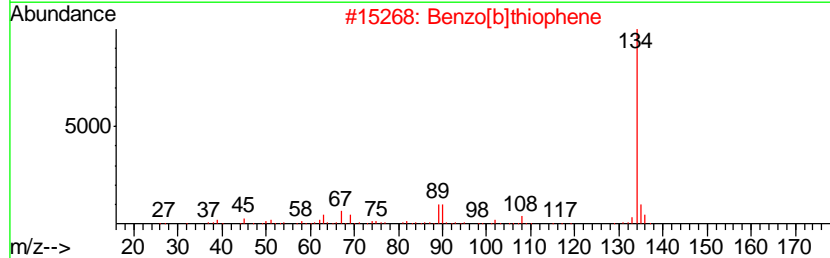
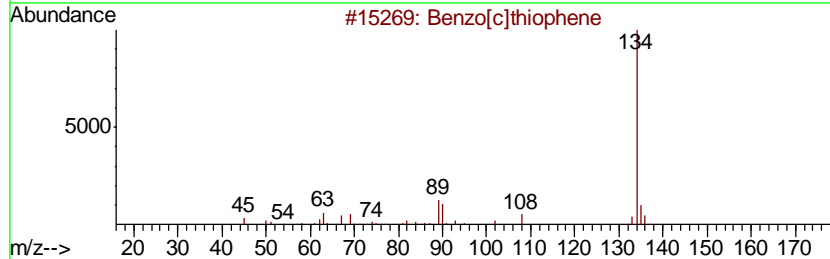
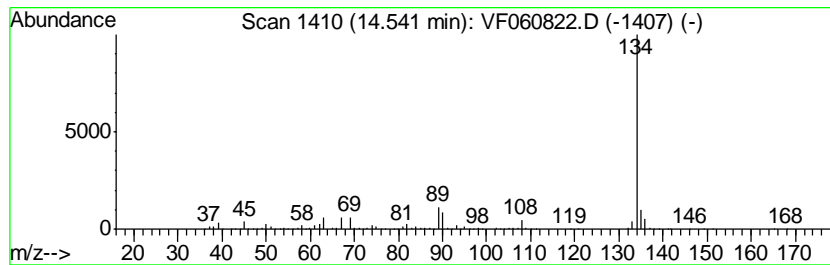
Quant Method : Z:\VOASRV\HPCHEM1\MSVOA_F\METHODS\82F111318S.M
 Quant Title : SW846 8260

TIC Library : C:\DATABASE\NIST11.L
 TIC Integration Parameters: LSCINT.P

 Peak Number 8 Benzo[c]thiophene Concentration Rank 5

R.T.	EstConc	Area	Relative to ISTD	R.T.
14.54	72.18 ug/l	1230070	1,4-Dichlorobenzene-d4	12.56

Hit#	of	Tentative ID	MW	MolForm	CAS#	Qual
1	5	Benzo[c]thiophene	134	C8H6S	000270-82-6	95
2		Benzo[b]thiophene	134	C8H6S	000095-15-8	94
3		Cyclopenta[c]thiapyran	134	C8H6S	000270-63-3	94
4		[1]Benzothieno[2',3':3,4]cyclobu...	246	C13H10O3S	034002-19-2	64
5		Benzaldehyde, 4-ethyl-	134	C9H10O	004748-78-1	50



Data Path : Z:\voasrv\HPCHEM1\MSVOA_F\Data\VF112018\
 Data File : VF060822.D
 Acq On : 21 Nov 2018 00:26
 Operator : VA/AP
 Sample : J5981-05
 Misc : 3.04g/5mL/MSVOA-F/SOIL
 ALS Vial : 25 Sample Multiplier: 1

Instrument :
 MSVOA_F
 ClientSampleId :
 DTW-03(8-10)

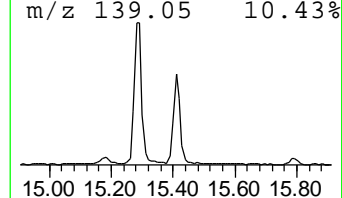
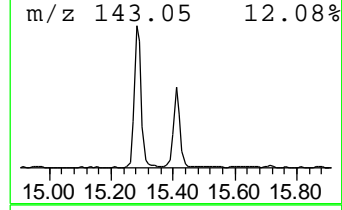
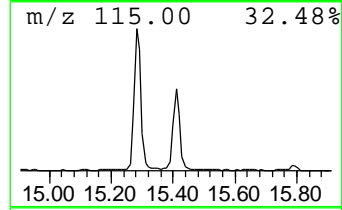
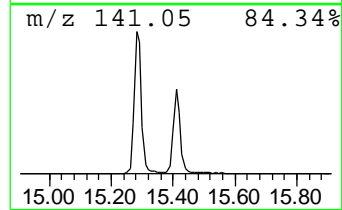
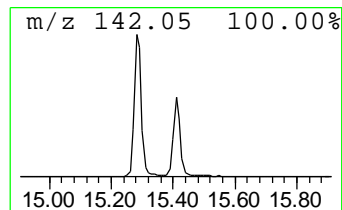
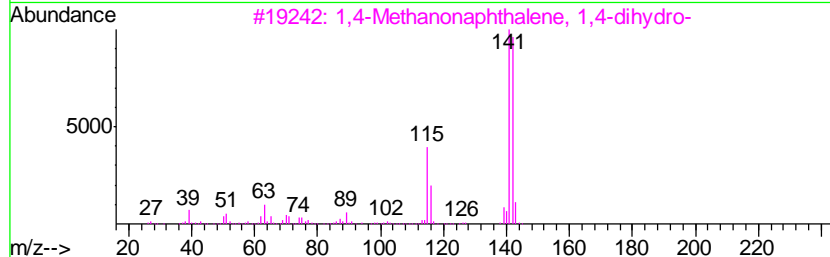
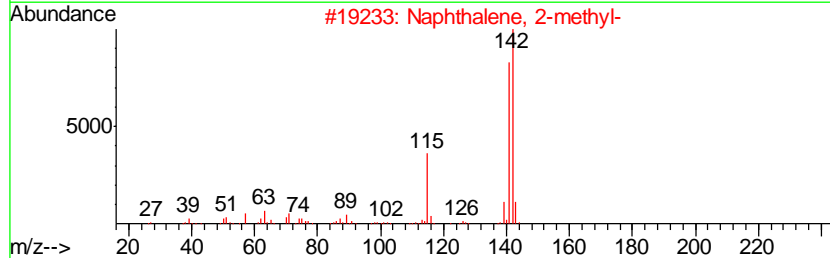
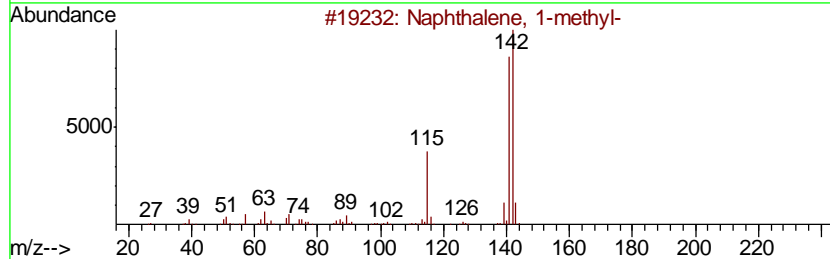
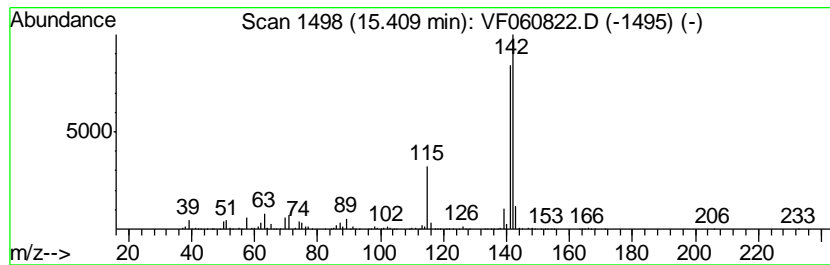
Quant Method : Z:\VOASRV\HPCHEM1\MSVOA_F\METHODS\82F111318S.M
 Quant Title : SW846 8260

TIC Library : C:\DATABASE\NIST11.L
 TIC Integration Parameters: LSCINT.P

 Peak Number 10 Naphthalene, 1-methyl- Concentration Rank 6

R.T.	EstConc	Area	Relative to ISTD	R.T.
15.41	56.21 ug/l	957911	1,4-Dichlorobenzene-d4	12.56

Hit#	of	Tentative ID	MW	MolForm	CAS#	Qual
1	5	Naphthalene, 1-methyl-	142	C11H10	000090-12-0	96
2		Naphthalene, 2-methyl-	142	C11H10	000091-57-6	96
3		1,4-Methanonaphthalene, 1,4-dihy...	142	C11H10	004453-90-1	94
4		Benzocycloheptatriene	142	C11H10	000264-09-5	91
5		1H-Indene, 1-ethylidene-	142	C11H10	002471-83-2	64



Data Path : Z:\voasrv\HPCHEM1\MSVOA_F\Data\VF112018\
Data File : VF060822.D
Acq On : 21 Nov 2018 00:26
Operator : VA/AP
Sample : J5981-05
Misc : 3.04g/5mL/MSVOA-F/SOIL
ALS Vial : 25 Sample Multiplier: 1

Instrument :
MSVOA_F
ClientSampleId :
DTW-03(8-10)

Quant Method : Z:\VOASRV\HPCHEM1\MSVOA_F\METHODS\82F111318S.M
Quant Title : SW846 8260

TIC Library : C:\DATABASE\NIST11.L
TIC Integration Parameters: LSCINT.P

TIC Top Hit name	RT	EstConc	Units	Response	--Internal Standard--			
					#	RT	Resp	Conc
Bicyclo[3.1.1]hep...	12.02	51.0	ug/l	868731	4	12.56	852030	50.0
Indane	12.73	53.7	ug/l	915833	4	12.56	852030	50.0
Benzo[c]thiophene	14.54	72.2	ug/l	1230070	4	12.56	852030	50.0
Naphthalene, 1-me...	15.41	56.2	ug/l	957911	4	12.56	852030	50.0