

Data Path : Z:\VOASRV\HPCHEM1\MSVOA F\DATA\VF122718\
 Data File : VF061220.D
 Acq On : 27 Dec 2018 20:59
 Operator : VA/AP
 Sample : J6195-11
 Misc : 6.78µ/5mL/MSVOA-F/SOIL
 ALS Vial : 20 Sample Multiplier: 1

Instrument :
 MSVOA_F
 ClientSampleID :
 OR-01-122618-A

Quant Time: Dec 28 09:56:28 2018
 Quant Method : Z:\VOASRV\HPCHEM1\MSVOA_F\METHODS\82F121918S.M
 Quant Title : SW846 8260
 QLast Update : Thu Dec 20 00:56:59 2018
 Response via : Initial Calibration

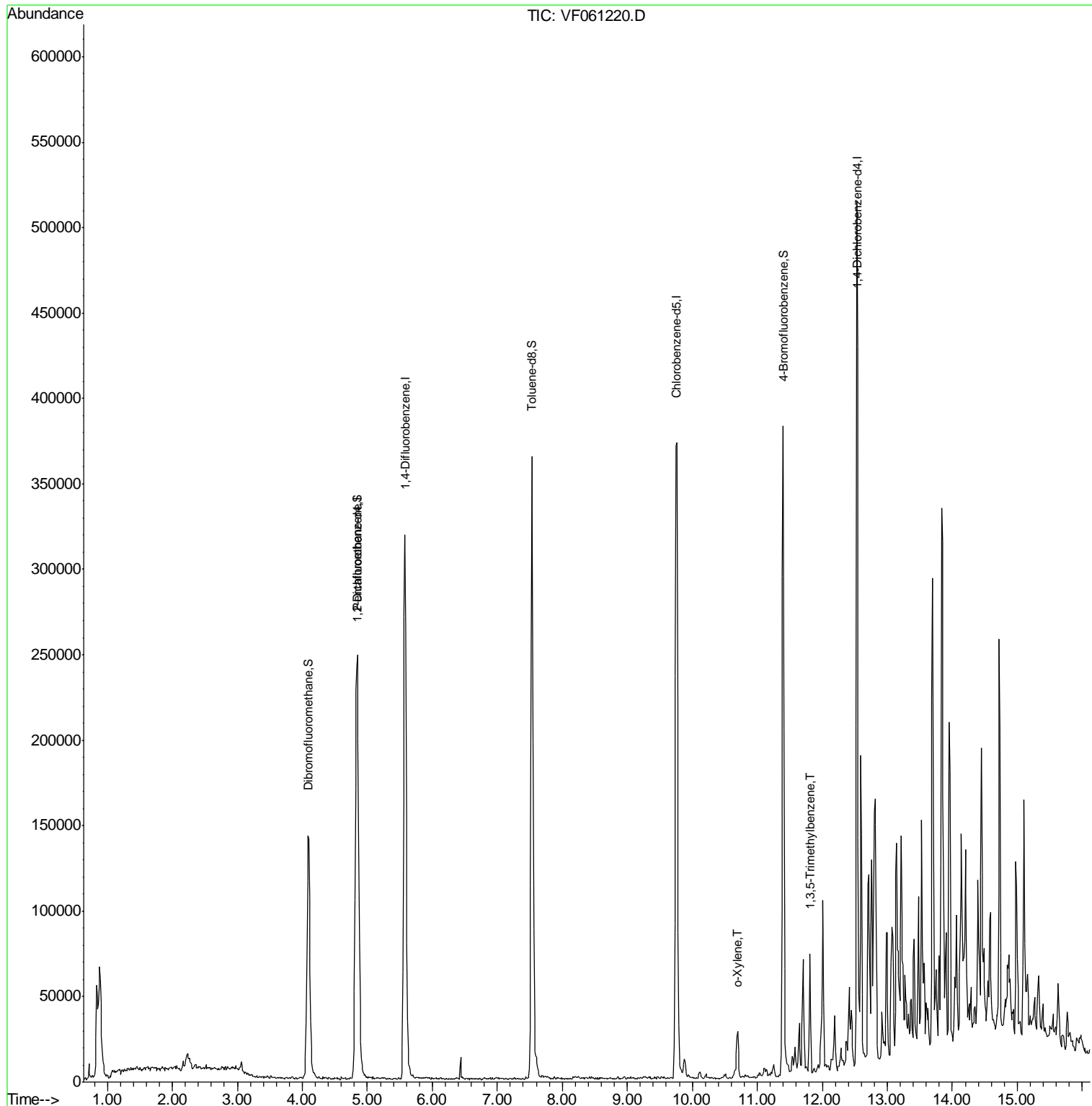
Internal Standards	R.T.	QIon	Response	Conc	Units	Dev(Min)
1) Pentafluorobenzene	4.85	168	175889	50.00	µg/l	-0.02
34) 1,4-Difluorobenzene	5.58	114	338501	50.00	µg/l	-0.01
63) Chlorobenzene-d5	9.76	117	273291	50.00	µg/l	-0.01
72) 1,4-Dichlorobenzene-d4	12.54	152	116472	50.00	µg/l	0.00
System Monitoring Compounds						
33) 1,2-Dichloroethane-d4	4.83	65	126137	55.76	µg/l	-0.01
Spiked Amount	50.000		Recovery	=	111.52%	
35) Dibromofluoromethane	4.09	113	137076	50.55	µg/l	-0.02
Spiked Amount	50.000		Recovery	=	101.10%	
50) Toluene-d8	7.53	98	300984	39.17	µg/l	-0.02
Spiked Amount	50.000		Recovery	=	78.34%	
62) 4-Bromofluorobenzene	11.40	95	143168	40.41	µg/l	-0.01
Spiked Amount	50.000		Recovery	=	80.82%	
Target Compounds						
69) o-Xylene	10.70	106	7949	1.980	µg/l	93
80) 1,3,5-Trimethylbenzene	11.81	105	35922	4.346	µg/l	92

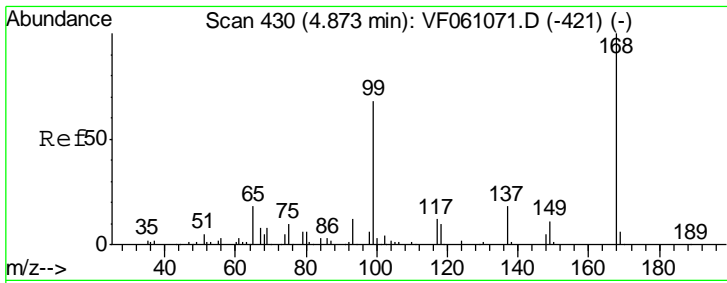
(#) = qualifier out of range (m) = manual integration (+) = signals summed

Data Path : Z:\VOASRV\HPCHEM1\MSVOA F\DATA\VF122718\
 Data File : VF061220.D
 Acq On : 27 Dec 2018 20:59
 Operator : VA/AP
 Sample : J6195-11
 Misc : 6.78µ/5mL/MSVOA-F/SOIL
 ALS Vial : 20 Sample Multiplier: 1

Instrument :
 MSVOA_F
 ClientSampleId :
 OR-01-122618-A

Quant Time: Dec 28 09:56:28 2018
 Quant Method : Z:\VOASRV\HPCHEM1\MSVOA_F\METHODS\82F121918S.M
 Quant Title : SW846 8260
 QLast Update : Thu Dec 20 00:56:59 2018
 Response via : Initial Calibration

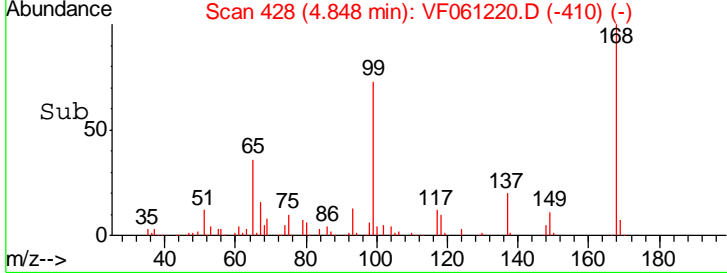
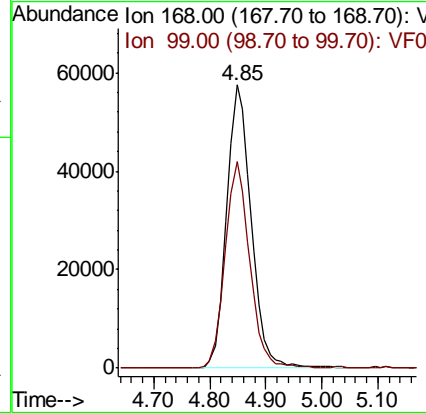
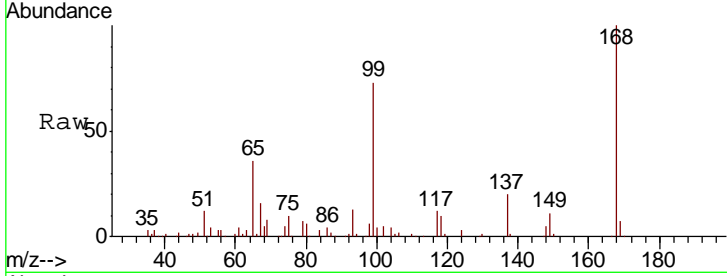




#1
 Pentafluorobenzene
 Concen: 50.000 ug/l
 RT: 4.85 min Scan# 428
 Delta R.T. -0.02 min
 Lab File: VF061220.D
 Acq: 27 Dec 2018 20:59

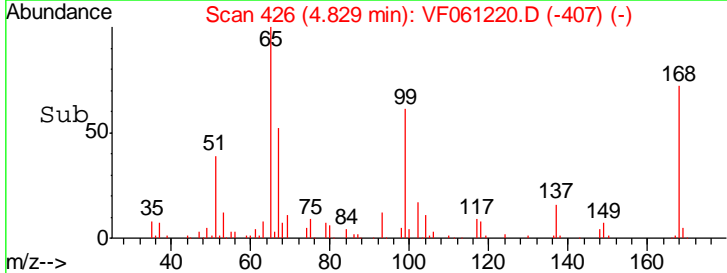
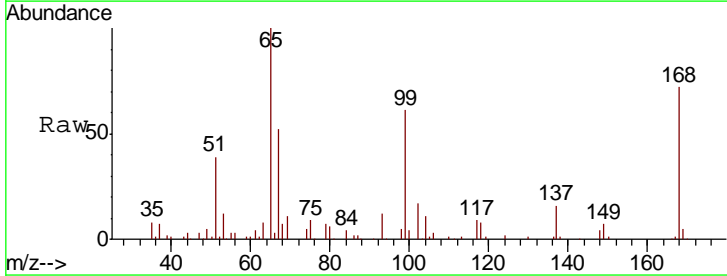
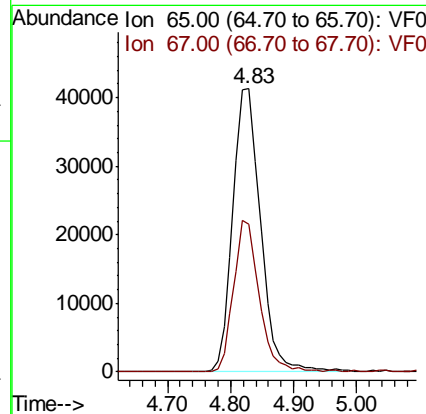
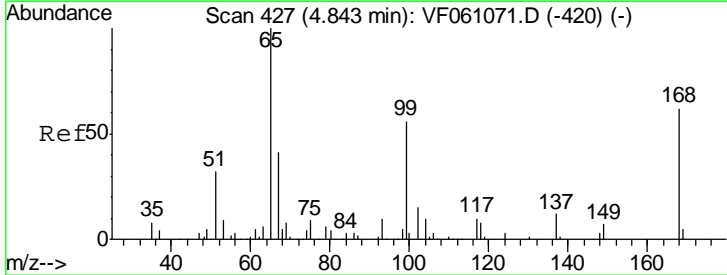
Instrument : MSVOA_F
 ClientSampleID : OR-01-122618-A

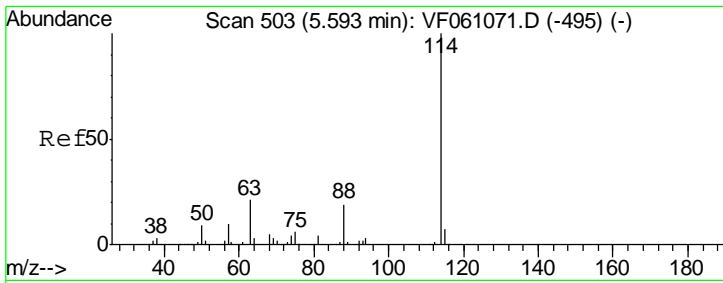
Tgt Ion	Resp	Lower	Upper
168	100		
99	73.1	54.4	81.6



#33
 1,2-Dichloroethane-d4
 Concen: 55.758 ug/l
 RT: 4.83 min Scan# 426
 Delta R.T. -0.01 min
 Lab File: VF061220.D
 Acq: 27 Dec 2018 20:59

Tgt Ion	Resp	Lower	Upper
65	100		
67	52.1	0.0	94.6

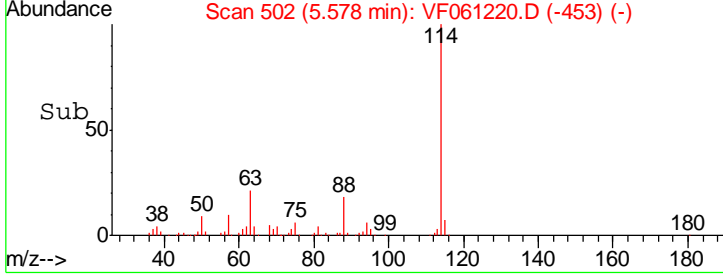
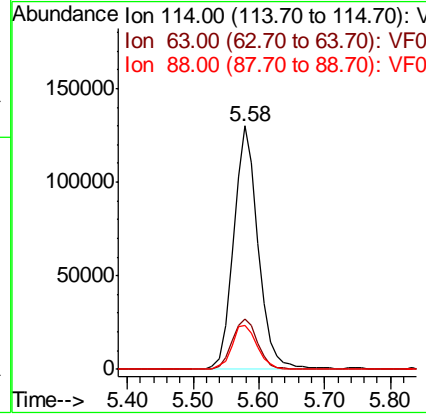
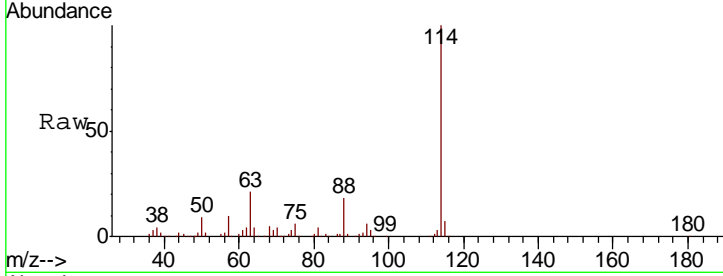




#34
 1,4-Difluorobenzene
 Concen: 50.000 ug/l
 RT: 5.58 min Scan# 502
 Delta R.T. -0.01 min
 Lab File: VF061220.D
 Acq: 27 Dec 2018 20:59

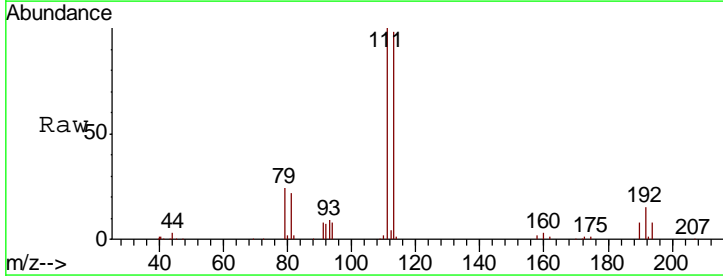
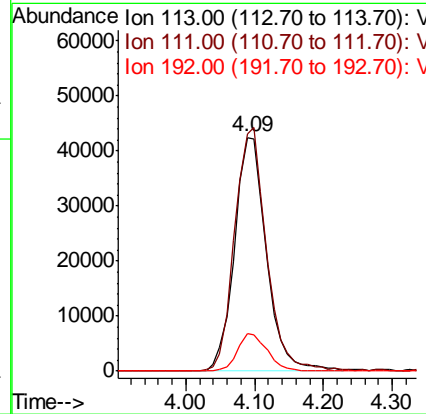
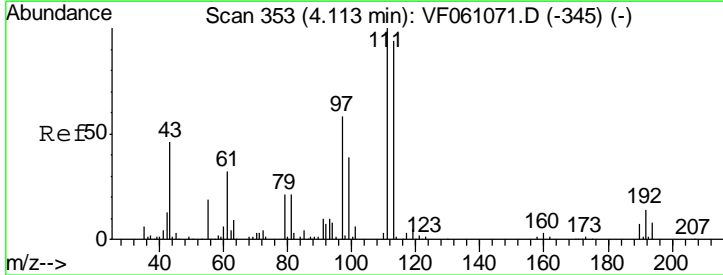
Instrument : MSVOA_F
 ClientSampled : OR-01-122618-A

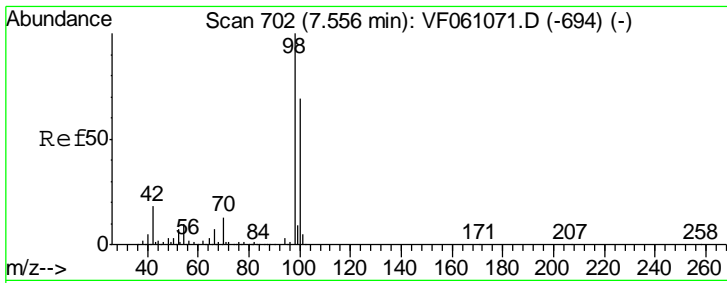
Tgt Ion	Resp	Lower	Upper
114	100		
63	20.7	0.0	41.6
88	18.1	0.0	38.0



#35
 Dibromofluoromethane
 Concen: 50.552 ug/l
 RT: 4.09 min Scan# 351
 Delta R.T. -0.02 min
 Lab File: VF061220.D
 Acq: 27 Dec 2018 20:59

Tgt Ion	Resp	Lower	Upper
113	100		
111	101.6	85.2	127.8
192	15.9	12.8	19.2

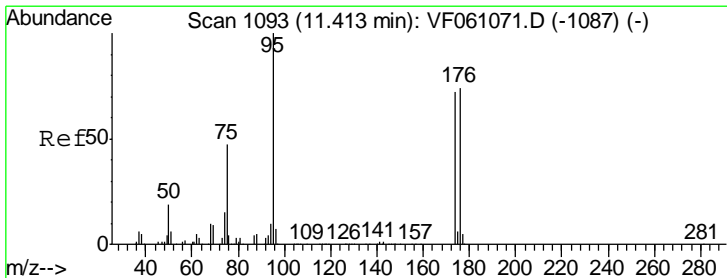
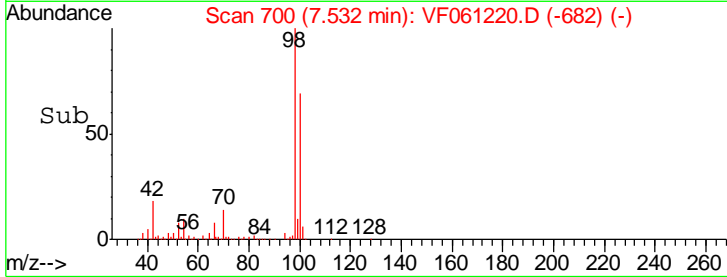
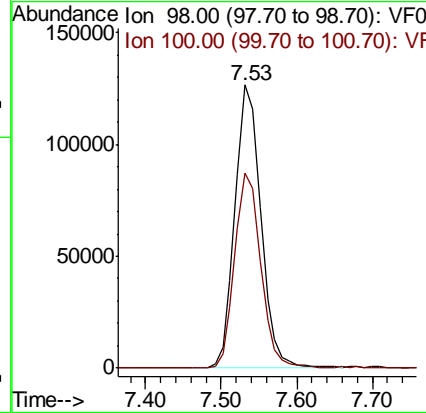
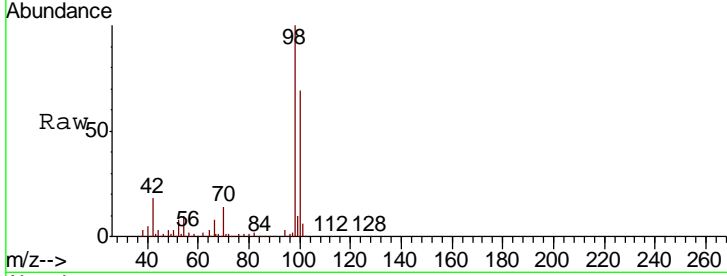




#50
 Toluene-d8
 Concen: 39.169 ug/l
 RT: 7.53 min Scan# 700
 Delta R.T. -0.02 min
 Lab File: VF061220.D
 Acq: 27 Dec 2018 20:59

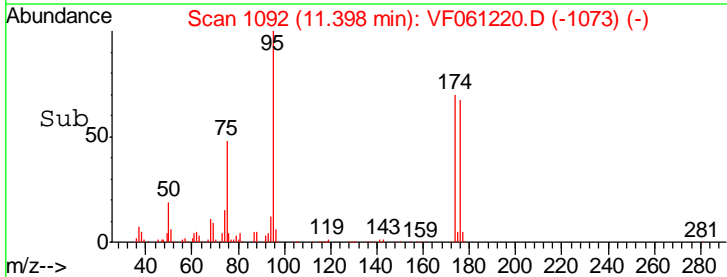
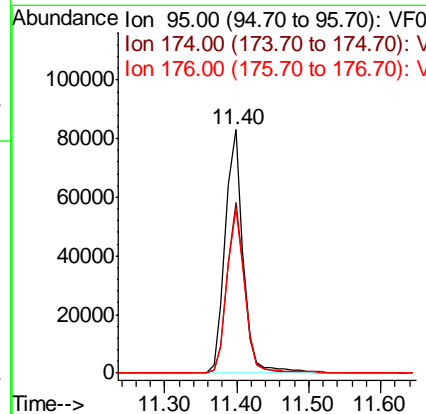
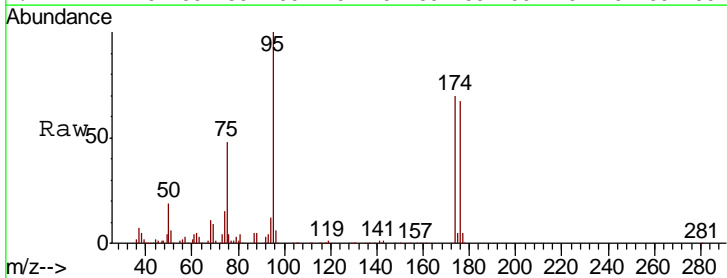
Instrument : MSVOA_F
 ClientSampleID : OR-01-122618-A

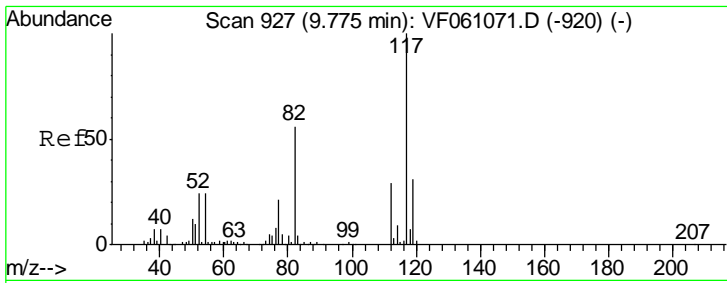
Tgt Ion	Resp	Lower	Upper
98	300984		
100	100	69.0	82.9



#62
 4-Bromofluorobenzene
 Concen: 40.414 ug/l
 RT: 11.40 min Scan# 1092
 Delta R.T. -0.01 min
 Lab File: VF061220.D
 Acq: 27 Dec 2018 20:59

Tgt Ion	Resp	Lower	Upper
95	143168		
174	100	70.0	143.8
176	100	67.3	147.6

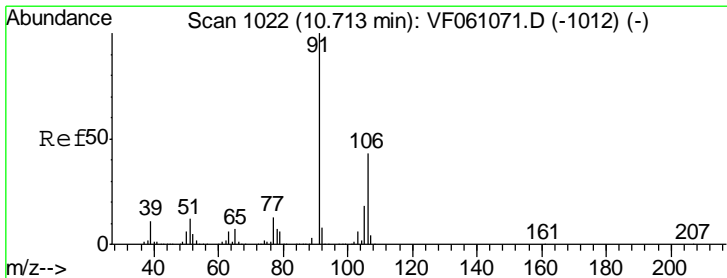
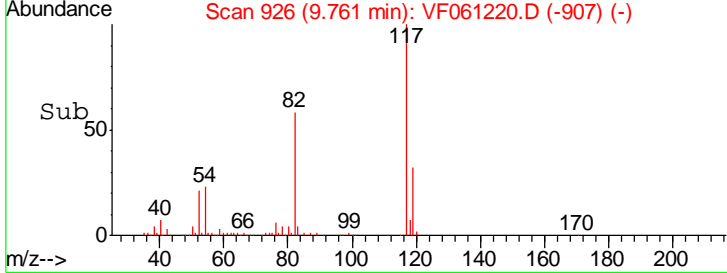
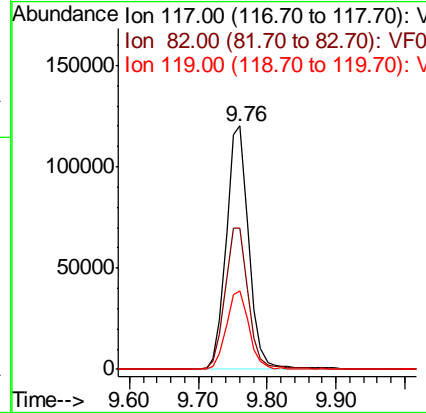
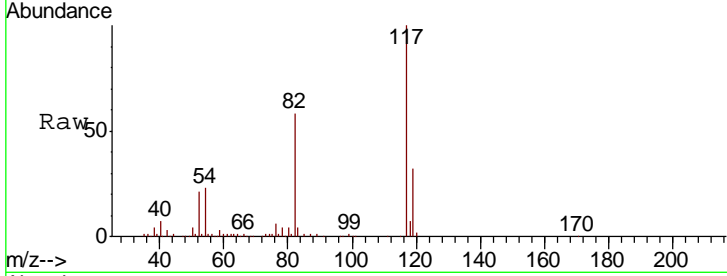




#63
 Chlorobenzene-d5
 Concen: 50.000 ug/l
 RT: 9.76 min Scan# 926
 Delta R.T. -0.01 min
 Lab File: VF061220.D
 Acq: 27 Dec 2018 20:59

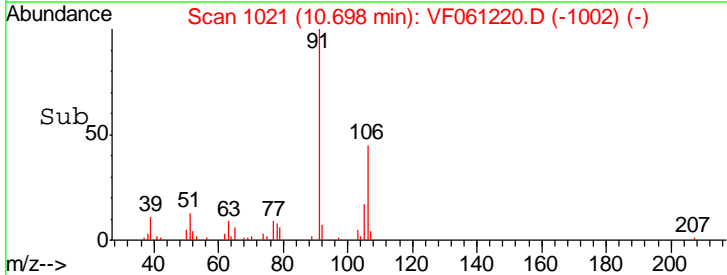
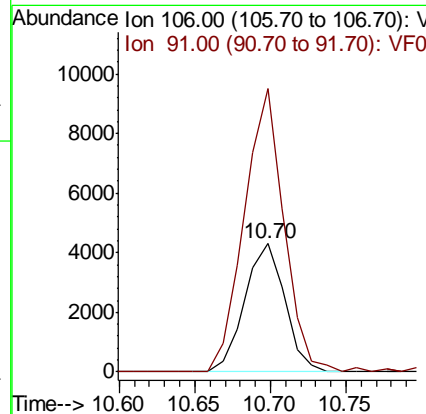
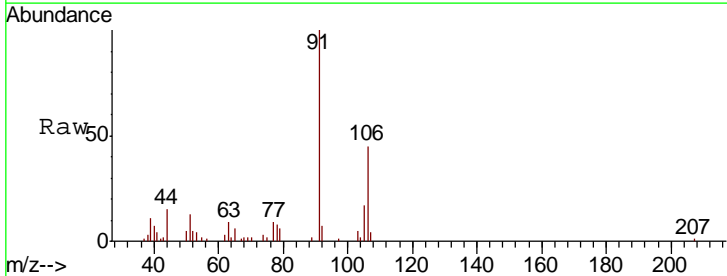
Instrument :
 MSVOA_F
 ClientSampleId :
 OR-01-122618-A

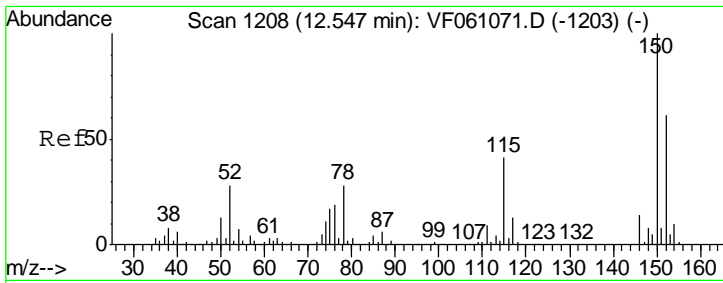
Tgt Ion	Resp	Lower	Upper
117	100		
82	57.9	45.0	67.4
119	32.1	24.8	37.2



#69
 o-Xylene
 Concen: 1.980 ug/l
 RT: 10.70 min Scan# 1021
 Delta R.T. -0.01 min
 Lab File: VF061220.D
 Acq: 27 Dec 2018 20:59

Tgt Ion	Resp	Lower	Upper
106	100		
91	220.8	115.9	347.7

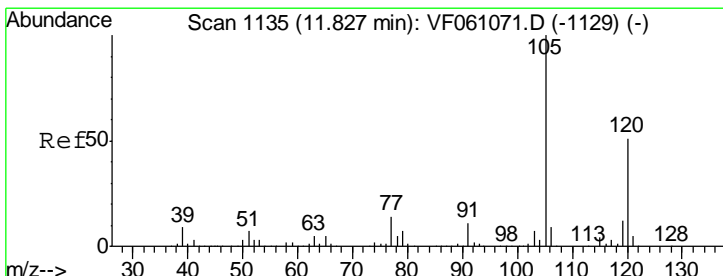
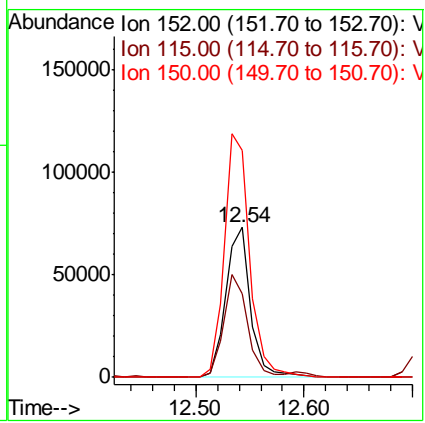
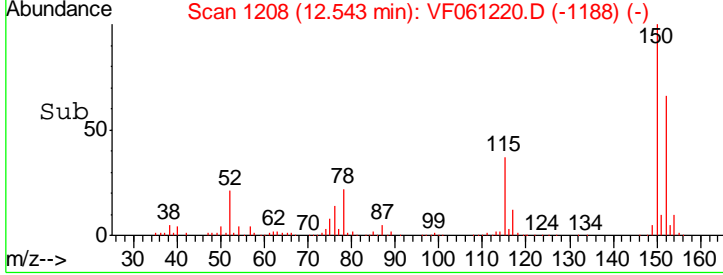
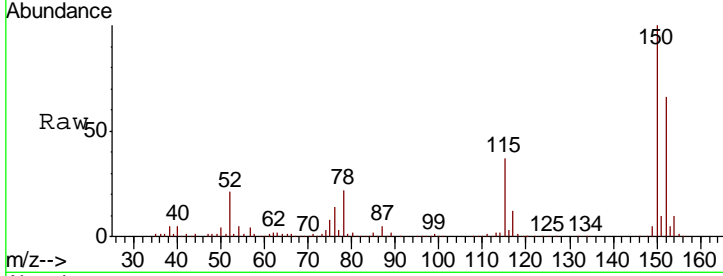




#72
 1,4-Dichlorobenzene-d4
 Concen: 50.000 ug/l
 RT: 12.54 min Scan# 1208
 Delta R.T. -0.00 min
 Lab File: VF061220.D
 Acq: 27 Dec 2018 20:59

Instrument : MSVOA_F
 ClientSampled : OR-01-122618-A

Tgt Ion	Resp	Lower	Upper
152	116472		
152	100		
115	55.9	33.3	99.9
150	151.7	0.0	328.2



#80
 1,3,5-Trimethylbenzene
 Concen: 4.346 ug/l
 RT: 11.81 min Scan# 1134
 Delta R.T. -0.01 min
 Lab File: VF061220.D
 Acq: 27 Dec 2018 20:59

Tgt Ion	Resp	Lower	Upper
105	35922		
105	100		
120	45.6	25.4	76.4

