

Data File : VF061326.D  
 Acq On : 10 Jan 2019 5:06  
 Operator : VA/AP  
 Sample : K1006-15  
 Misc : 7.01g/5mL/MSVOA-F/SOIL  
 ALS Vial : 39 Sample Multiplier: 1

Instrument :  
 MSVOA\_F  
 ClientSampleId :  
 JC-03-010819-H

Quant Time: Jan 10 06:07:00 2019  
 Quant Method : Z:\VOASRV\HPCHEM1\MSVOA\_F\METHODS\82F010819S.M  
 Quant Title : SW846 8260  
 QLast Update : Wed Jan 09 07:13:51 2019  
 Response via : Initial Calibration

Internal Standards	R.T.	QIon	Response	Conc	Units	Dev(Min)
1) Pentafluorobenzene	0.00	168	0	0.00	ug/l	-4.87
34) 1,4-Difluorobenzene	0.00	114	0	0.00	ug/l	-5.60
63) Chlorobenzene-d5	9.72	117	77	50.00	ug/l	-0.06
72) 1,4-Dichlorobenzene-d4	0.00	152	0	0.00	ug/l	-12.56

System Monitoring Compounds

33) 1,2-Dichloroethane-d4	0.00	65	0	0.00	ug/l	
Spiked Amount		50.000				
			Recovery	=		0.00%
35) Dibromofluoromethane	0.00	113	0	0.00	ug/l	
Spiked Amount		50.000				
			Recovery	=		0.00%
50) Toluene-d8	0.00	98	0	0.00	ug/l	
Spiked Amount		50.000				
			Recovery	=		0.00%
62) 4-Bromofluorobenzene	0.00	95	0	0.00	ug/l	
Spiked Amount		50.000				
			Recovery	=		0.00%

Target Compounds

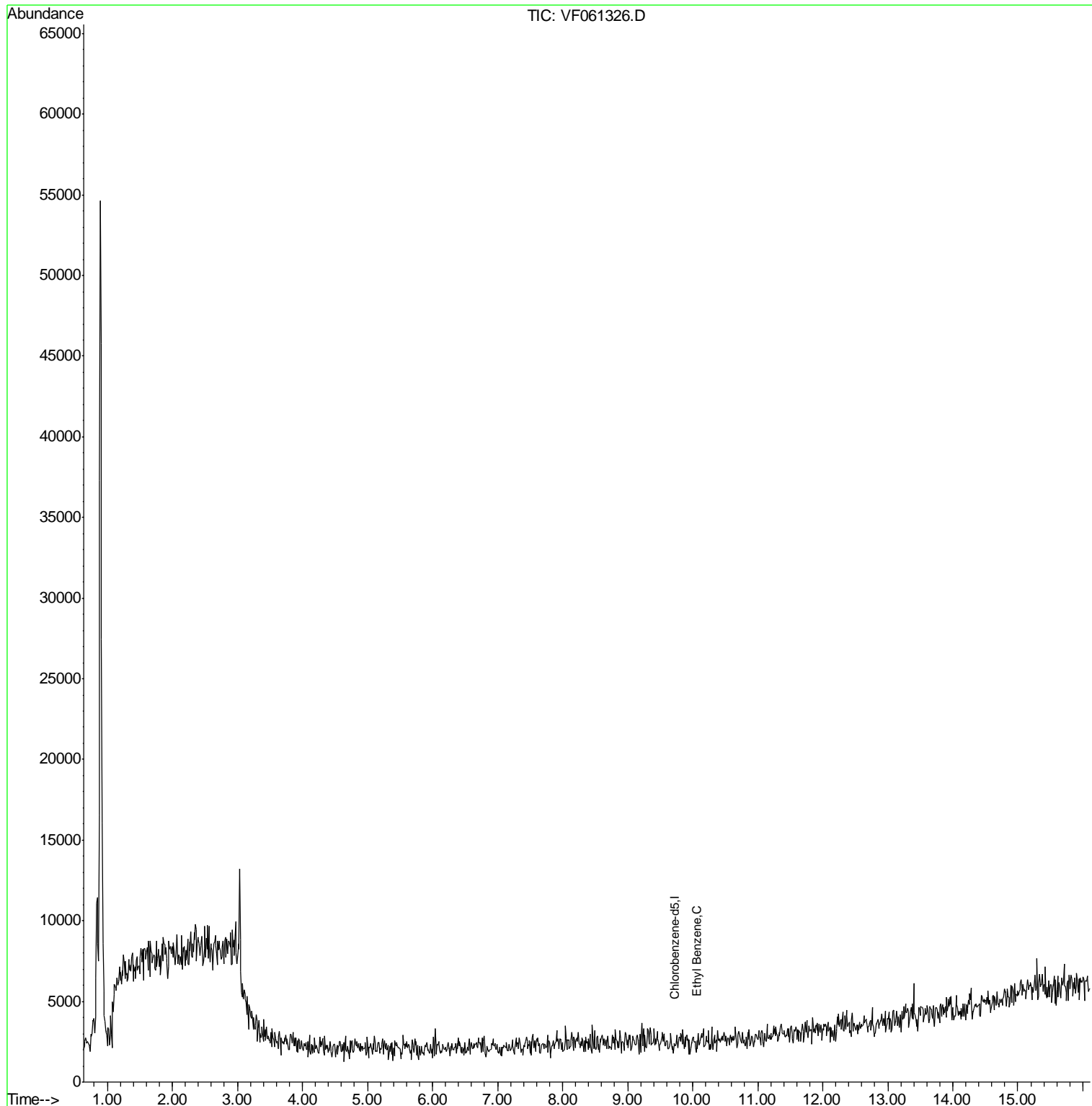
	R.T.	QIon	Response	Conc	Units	Qvalue
67) Ethyl Benzene	10.06	91	63	21.014	ug/l #	48

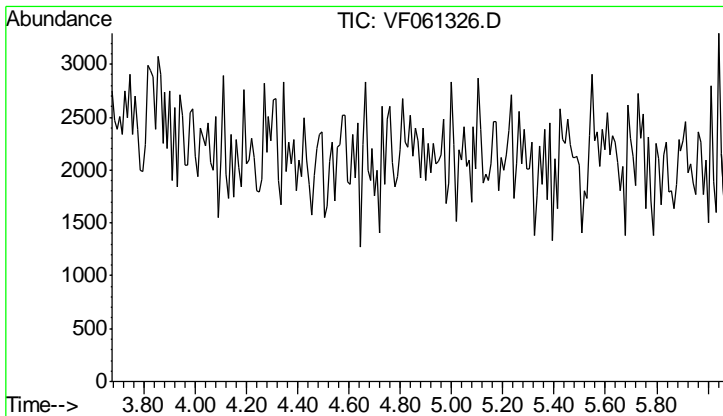
(#) = qualifier out of range (m) = manual integration (+) = signals summed

Data File : VF061326.D  
Acq On : 10 Jan 2019 5:06  
Operator : VA/AP  
Sample : K1006-15  
Misc : 7.01g/5mL/MSVOA-F/SOIL  
ALS Vial : 39 Sample Multiplier: 1

Instrument :  
MSVOA\_F  
ClientSampleId :  
JC-03-010819-H

Quant Time: Jan 10 06:07:00 2019  
Quant Method : Z:\VOASRV\HPCHEM1\MSVOA\_F\METHODS\82F010819S.M  
Quant Title : SW846 8260  
QLast Update : Wed Jan 09 07:13:51 2019  
Response via : Initial Calibration

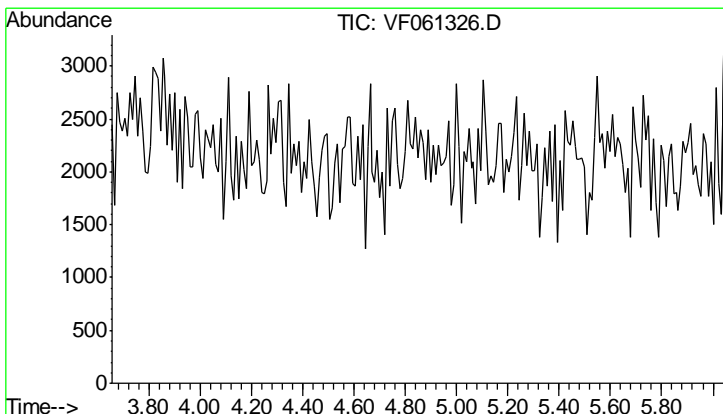
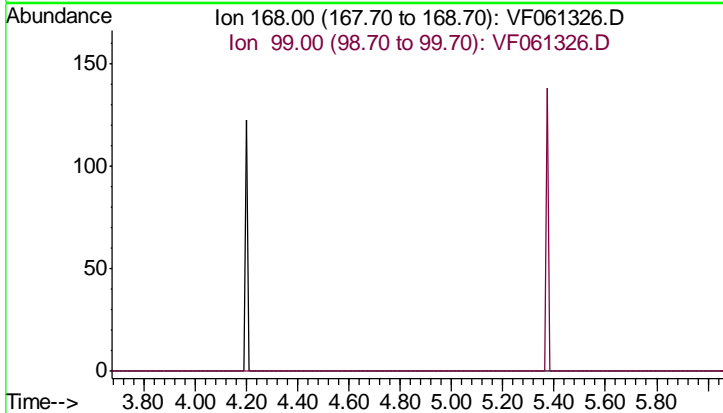




#1  
 Pentafluorobenzene  
 Concen: 0.000 ug/l  
 Expected RT: 4.87 min  
 Lab File: VF061326.D  
 Acq: 10 Jan 2019 5:06

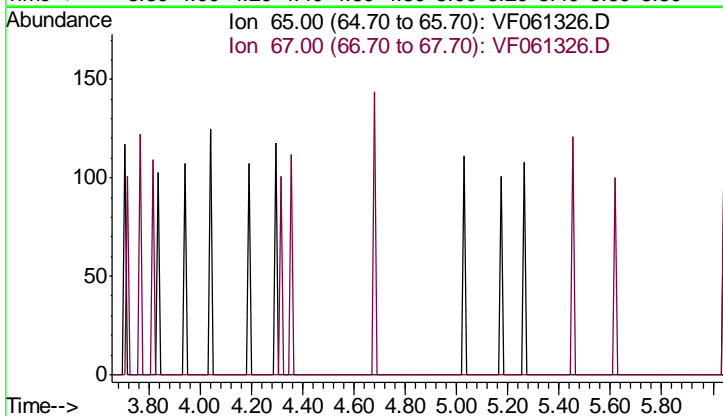
Instrument : MSVOA\_F  
 ClientSampleID : JC-03-010819-H

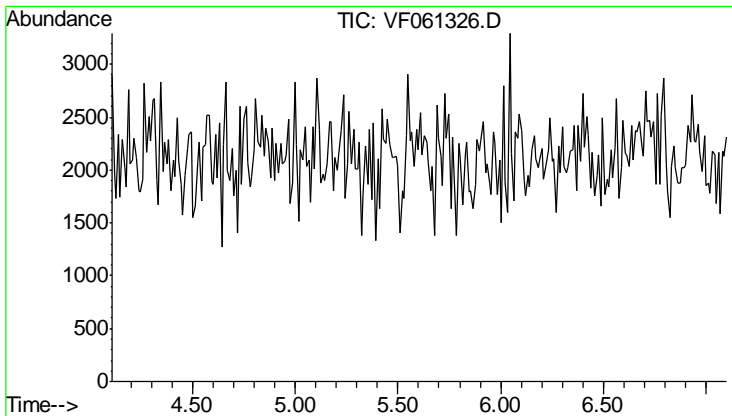
Tgt Ion	Exp Ratio
168	100
99	65.9



#33  
 1,2-Dichloroethane-d4  
 Concen: 0.000 ug/l  
 Expected RT: 4.85 min  
 Lab File: VF061326.D  
 Acq: 10 Jan 2019 5:06

Tgt Ion	Exp Ratio
65	100
67	49.1

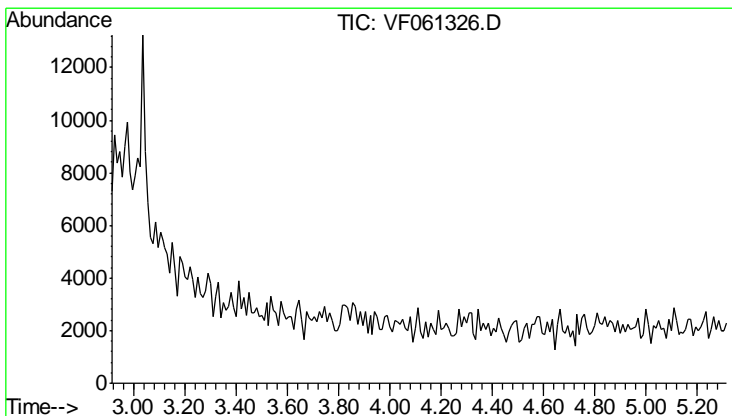
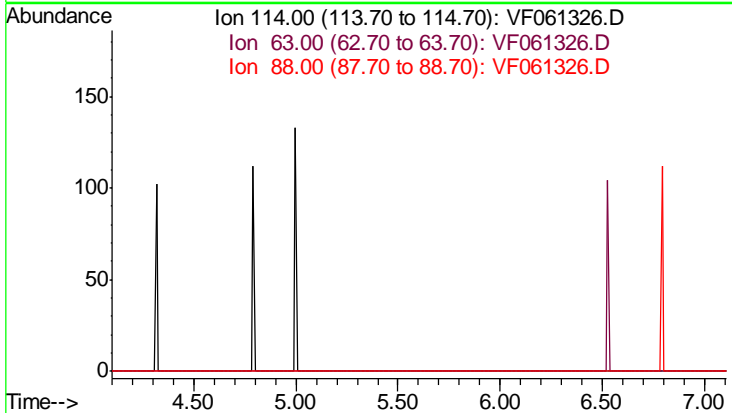




#34  
 1,4-Difluorobenzene  
 Concen: 0.000 ug/l  
 Expected RT: 5.60 min  
 Lab File: VF061326.D  
 Acq: 10 Jan 2019 5:06

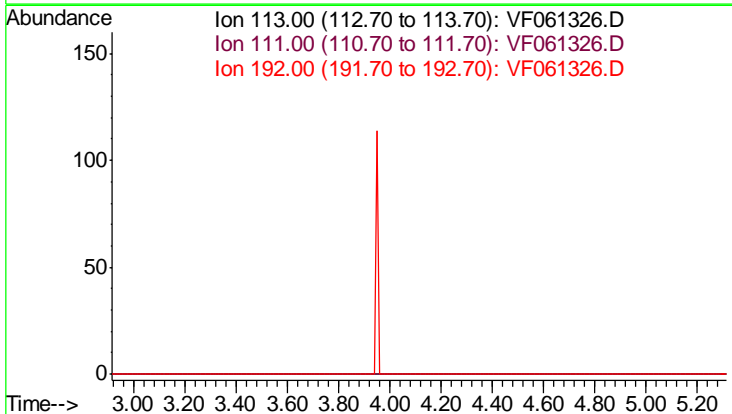
Instrument : MSVOA\_F  
 ClientSampleId : JC-03-010819-H

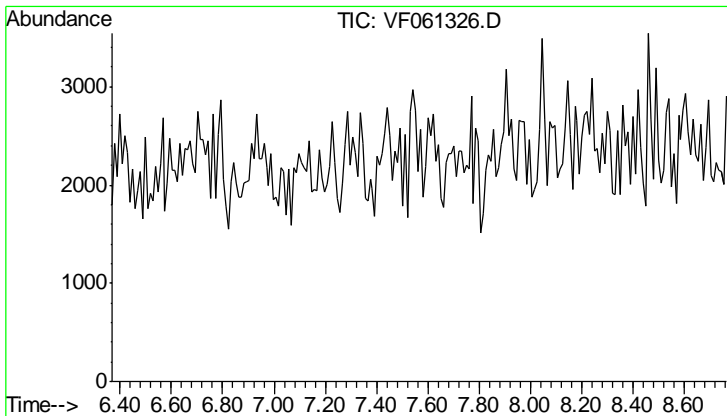
Tgt Ion	Exp Ratio
114	100
63	21.4
88	20.0



#35  
 Dibromofluoromethane  
 Concen: 0.000 ug/l  
 Expected RT: 4.11 min  
 Lab File: VF061326.D  
 Acq: 10 Jan 2019 5:06

Tgt Ion	Exp Ratio
113	100
111	97.5
192	13.3

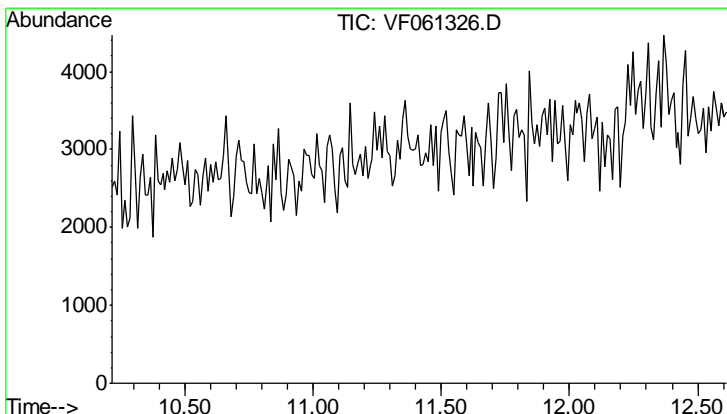
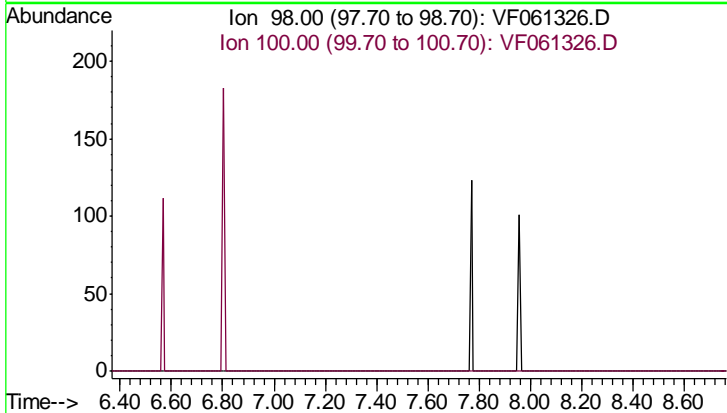




#50  
 Toluene-d8  
 Concen: 0.000 ug/l  
 Expected RT: 7.57 min  
 Lab File: VF061326.D  
 Acq: 10 Jan 2019 5:06

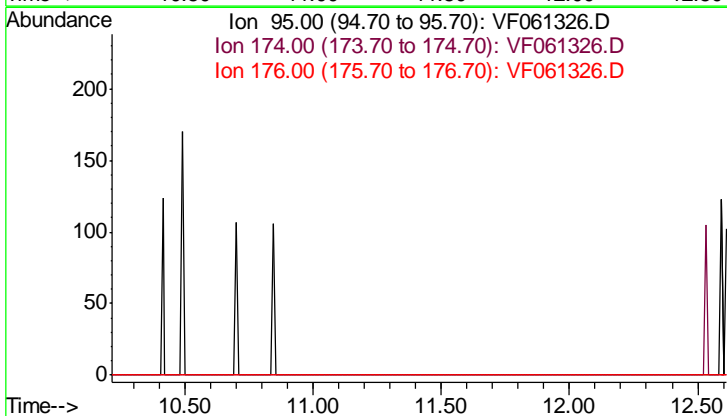
Instrument :  
 MSVOA\_F  
 ClientSampled :  
 JC-03-010819-H

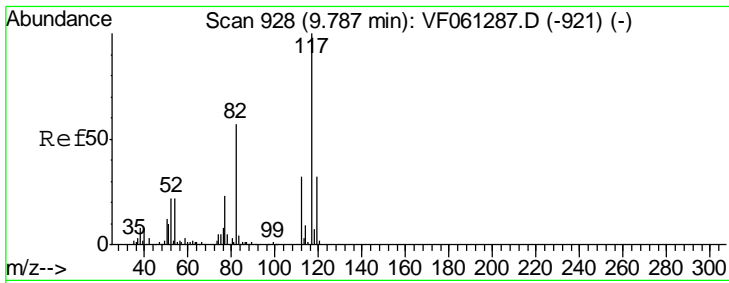
Tgt Ion	Exp Ratio
98	100
100	69.5



#62  
 4-Bromofluorobenzene  
 Concen: 0.000 ug/l  
 Expected RT: 11.41 min  
 Lab File: VF061326.D  
 Acq: 10 Jan 2019 5:06

Tgt Ion	Exp Ratio
95	100
174	57.1
176	58.9

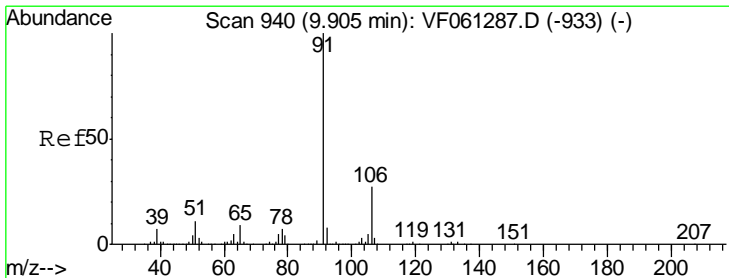
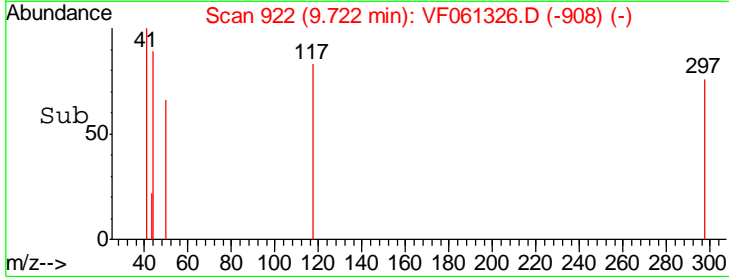
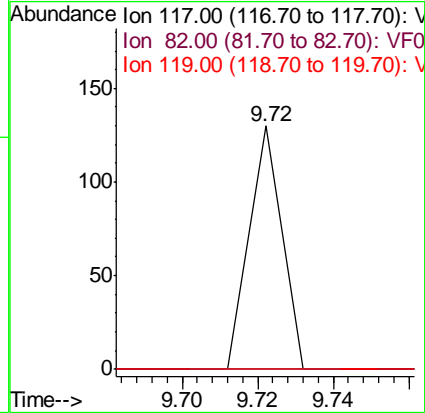
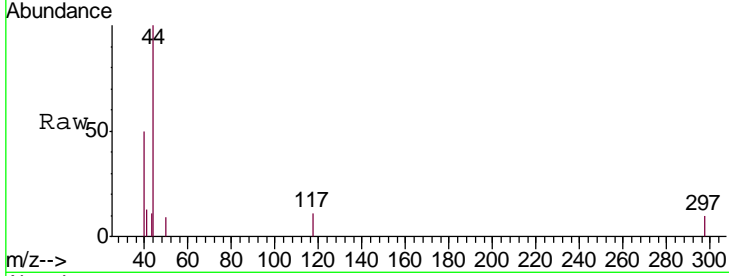




#63  
 Chlorobenzene-d5  
 Concen: 50.000 ug/l  
 RT: 9.72 min Scan# 922  
 Delta R.T. -0.06 min  
 Lab File: VF061326.D  
 Acq: 10 Jan 2019 5:06

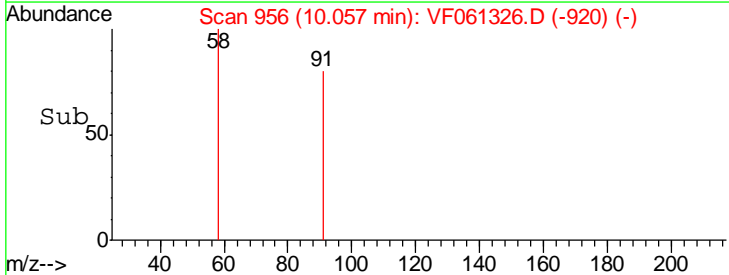
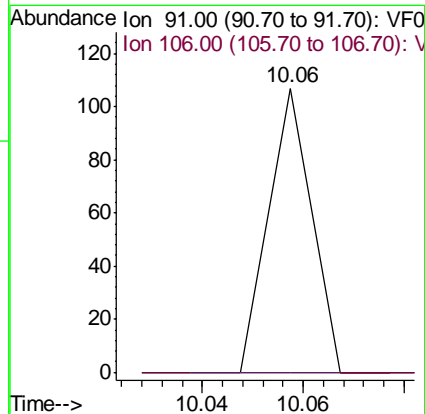
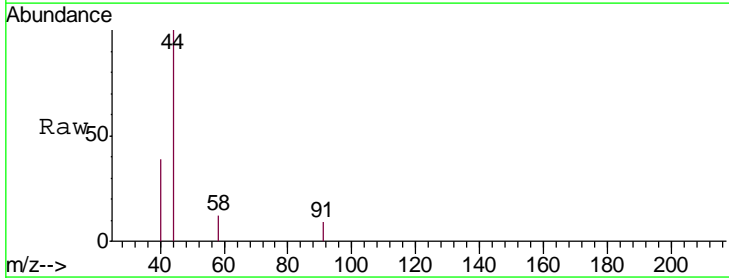
Instrument :  
 MSVOA\_F  
 ClientSampled :  
 JC-03-010819-H

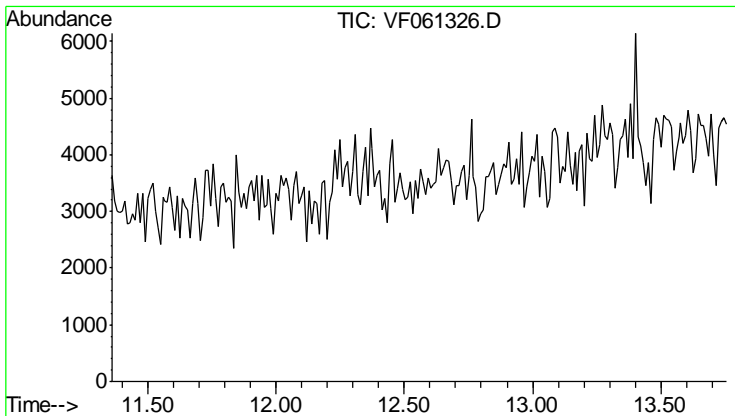
Tgt Ion	Resp	Lower	Upper
117	100		
82	0.0	45.3	67.9#
119	0.0	25.4	38.0#



#67  
 Ethyl Benzene  
 Concen: 21.014 ug/l  
 RT: 10.06 min Scan# 956  
 Delta R.T. 0.15 min  
 Lab File: VF061326.D  
 Acq: 10 Jan 2019 5:06

Tgt Ion	Resp	Lower	Upper
91	100		
106	0.0	21.4	32.2#





#72  
 1,4-Dichlorobenzene-d4  
 Concen: 0.000 ug/l  
 Expected RT: 12.56 min  
 Lab File: VF061326.D  
 Acq: 10 Jan 2019 5:06

**Instrument :**  
 MSVOA\_F  
**ClientSampled :**  
 JC-03-010819-H

Tgt Ion:	Exp Ratio
152	100
115	59.3
150	157.7

