

Data Path : Z:\VOASRV\HPCHEM1\MSVOA F\DATA\VF010919\
 Data File : VF061331.D
 Acq On : 10 Jan 2019 7:30
 Operator : VA/AP
 Sample : K1100-01
 Misc : 5.06µ/5mL/MSVOA-F/SOIL
 ALS Vial : 44 Sample Multiplier: 1

Instrument :
 MSVOA_F
 ClientSampleId :
 SOIL-DRUM-A

Quant Time: Jan 10 11:34:49 2019
 Quant Method : Z:\VOASRV\HPCHEM1\MSVOA_F\METHODS\82F010819S.M
 Quant Title : SW846 8260
 QLast Update : Wed Jan 09 07:13:51 2019
 Response via : Initial Calibration

Internal Standards	R.T.	QIon	Response	Conc	Units	Dev(Min)
1) Pentafluorobenzene	4.89	168	2081	50.00	µg/l	0.01
34) 1,4-Difluorobenzene	5.62	114	2375	50.00	µg/l	0.01
63) Chlorobenzene-d5	9.78	117	1746	50.00	µg/l	0.00
72) 1,4-Dichlorobenzene-d4	12.56	152	178	50.00	µg/l	0.00

System Monitoring Compounds

33) 1,2-Dichloroethane-d4	4.85	65	423	18.26	µg/l	0.00
Spiked Amount	50.000		Recovery	= 36.52%		
35) Dibromofluoromethane	4.13	113	675	37.14	µg/l	0.01
Spiked Amount	50.000		Recovery	= 74.28%		
50) Toluene-d8	7.56	98	2595	48.25	µg/l	0.00
Spiked Amount	50.000		Recovery	= 96.50%		
62) 4-Bromofluorobenzene	11.42	95	365	15.54	µg/l	0.00
Spiked Amount	50.000		Recovery	= 31.08%		

Target Compounds

						Qvalue
2) Dichlorodifluoromethane	0.97	85	59	1.537	µg/l #	44
3) Chloromethane	1.06	50	138	4.034	µg/l #	40
5) Bromomethane	1.27	94	67	5.280	µg/l #	6
6) Chloroethane	1.46	64	80	5.362	µg/l #	45
8) Diethyl Ether	1.62	74	76	9.993	µg/l	89
9) 1,1,2-Trichlorotrifluoroet	1.84	101	60	2.194	µg/l #	23
12) 1,1-Dichloroethene	1.80	96	76	3.475	µg/l #	1
13) Acrolein	2.05	56	69	51.602	µg/l #	12
14) Allyl chloride	2.13	41	797	19.939	µg/l #	68
15) Acrylonitrile	2.94	53	62	18.859	µg/l #	51
16) Acetone	2.25	43	841	156.081	µg/l #	55
18) Methyl Acetate	2.35	43	891	84.048	µg/l #	65
19) Methyl tert-butyl Ether	2.46	73	136	3.264	µg/l #	57
20) Methylene Chloride	2.13	84	65	2.851	µg/l #	1
22) Diisopropyl ether	2.75	45	691	8.936	µg/l #	18
23) Vinyl Acetate	3.18	43	307	13.575	µg/l #	77
24) 1,1-Dichloroethane	2.93	63	70	1.565	µg/l #	87
25) 2-Butanone	4.40	43	96	11.070	µg/l #	56
26) 2,2-Dichloropropane	3.60	77	68	2.275	µg/l #	60
27) cis-1,2-Dichloroethene	3.38	96	67	2.071	µg/l	1
29) Tetrahydrofuran	4.09	42	90	24.821	µg/l #	36
30) Chloroform	3.74	83	82	1.444	µg/l #	16
37) Ethyl Acetate	4.13	43	60	5.941	µg/l #	1
38) Carbon Tetrachloride	3.91	117	62	2.360	µg/l #	11
41) Methacrylonitrile	4.74	41	172	30.496	µg/l #	55
43) Isopropyl Acetate	6.99	43	70	5.250	µg/l #	45
45) 1,2-Dichloropropane	6.33	63	64	3.887	µg/l #	43
48) Methyl methacrylate	6.72	41	76	8.781	µg/l #	17
51) 4-Methyl-2-Pentanone	8.28	43	492	48.885	µg/l #	38
52) Toluene	7.65	92	289	6.944	µg/l	83
56) Ethyl methacrylate	8.70	69	70	5.378	µg/l #	20
59) 2-Hexanone	9.63	43	85	11.921	µg/l	72
61) 1,2-Dibromoethane	8.97	107	64	5.391	µg/l #	3
67) Ethyl Benzene	9.81	91	913	13.430	µg/l	97

Data Path : Z:\VOASRV\HPCHEM1\MSVOA F\DATA\VF010919\
 Data File : VF061331.D
 Acq On : 10 Jan 2019 7:30
 Operator : VA/AP
 Sample : K1100-01
 Misc : 5.06µ/5mL/MSVOA-F/SOIL
 ALS Vial : 44 Sample Multiplier: 1

Instrument :
 MSVOA_F
 ClientSampleId :
 SOIL-DRUM-A

Quant Time: Jan 10 11:34:49 2019
 Quant Method : Z:\VOASRV\HPCHEM1\MSVOA_F\METHODS\82F010819S.M
 Quant Title : SW846 8260
 QLast Update : Wed Jan 09 07:13:51 2019
 Response via : Initial Calibration

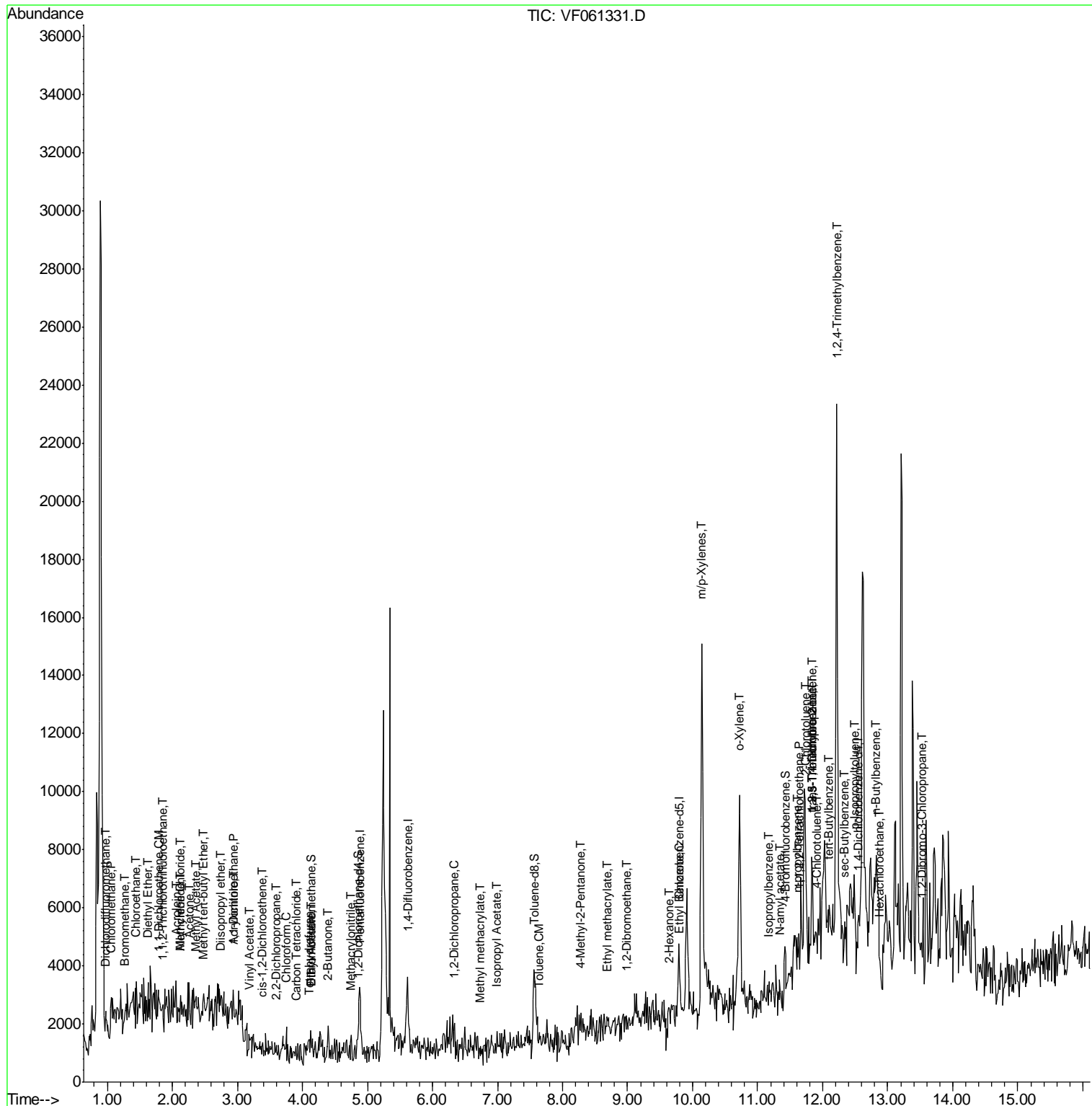
Internal Standards	R.T.	QIon	Response	Conc	Units	Dev(Min)
68) m/p-Xylenes	10.14	106	6240	263.148	µg/l	87
69) o-Xylene	10.73	106	4294	162.105	µg/l	75
73) Isopropylbenzene	11.17	105	859	54.843	µg/l	96
74) N-amyl acetate	11.35	43	65	18.256	µg/l #	48
75) 1,1,2,2-Tetrachloroethane	11.63	83	59	23.757	µg/l #	25
76) 1,2,3-Trichloropropane	11.82	75	136	74.665	µg/l #	1
78) n-propylbenzene	11.61	91	1081	57.885	µg/l #	33
79) 2-Chlorotoluene	11.74	91	1193	114.659	µg/l #	41
80) 1,3,5-Trimethylbenzene	11.84	105	2181	174.996	µg/l	80
81) trans-1,4-Dichloro-2-buten	11.82	75	136	170.860	µg/l #	17
82) 4-Chlorotoluene	11.91	91	401	37.928	µg/l #	42
83) tert-Butylbenzene	12.10	119	378	30.442	µg/l #	1
84) 1,2,4-Trimethylbenzene	12.21	105	12264	991.122	µg/l	80
85) sec-Butylbenzene	12.33	105	1617	91.458	µg/l #	57
86) p-Isopropyltoluene	12.49	119	497	34.560	µg/l #	1
89) n-Butylbenzene	12.81	91	242	16.378	µg/l #	26
90) Hexachloroethane	12.89	117	85	25.840	µg/l #	23
92) 1,2-Dibromo-3-Chloropropan	13.52	75	61	145.372	µg/l #	1

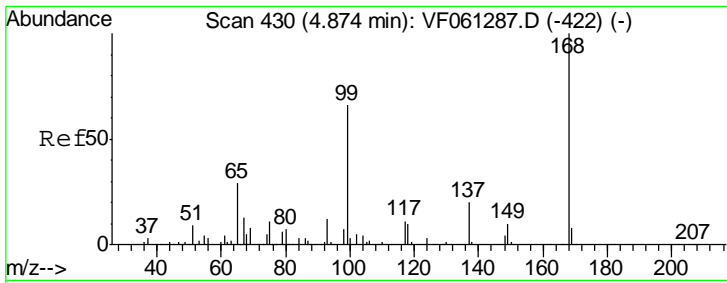
(#) = qualifier out of range (m) = manual integration (+) = signals summed

Data Path : Z:\VOASRV\HPCHEM1\MSVOA F\DATA\VF010919\
 Data File : VF061331.D
 Acq On : 10 Jan 2019 7:30
 Operator : VA/AP
 Sample : K1100-01
 Misc : 5.06µ/5mL/MSVOA-F/SOIL
 ALS Vial : 44 Sample Multiplier: 1

Instrument :
 MSVOA_F
 Client Sampled :
 SOIL-DRUM-A

Quant Time: Jan 10 11:34:49 2019
 Quant Method : Z:\VOASRV\HPCHEM1\MSVOA_F\METHODS\82F010819S.M
 Quant Title : SW846 8260
 QLast Update : Wed Jan 09 07:13:51 2019
 Response via : Initial Calibration

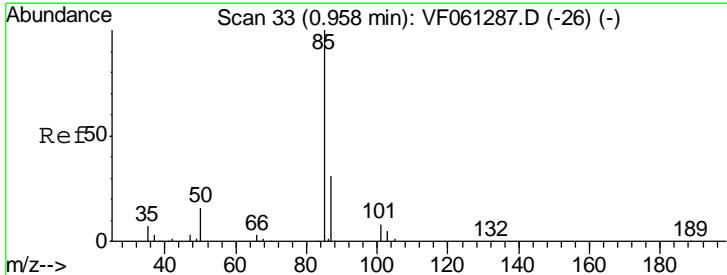
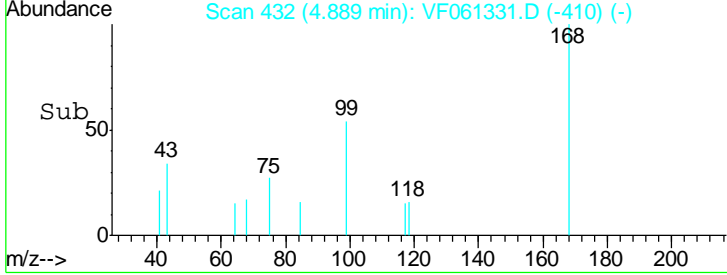
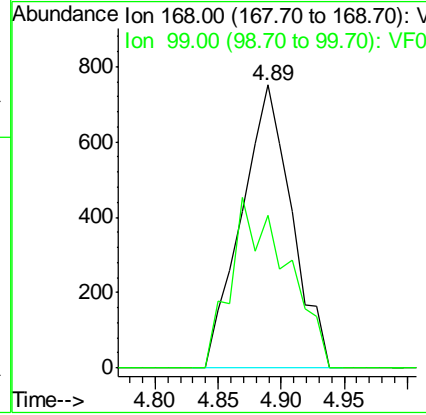
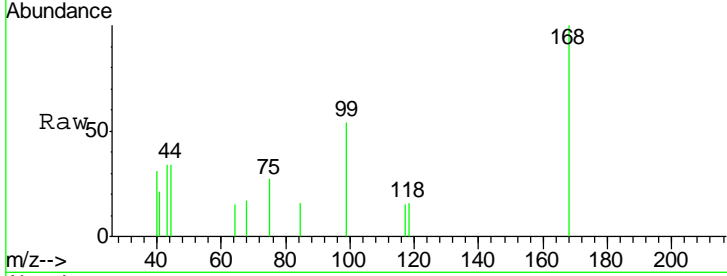




#1
 Pentafluorobenzene
 Concen: 50.000 ug/l
 RT: 4.89 min Scan# 432
 Delta R.T. 0.01 min
 Lab File: VF061331.D
 Acq: 10 Jan 2019 7:30

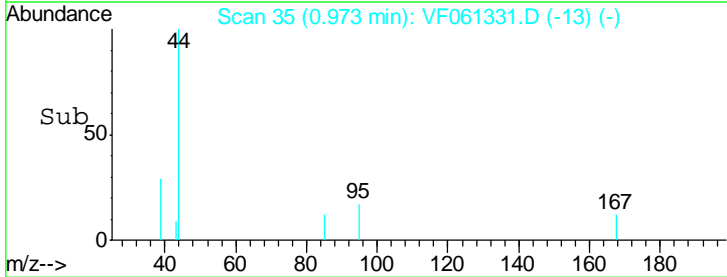
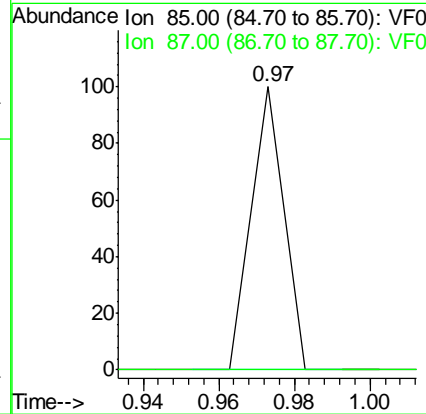
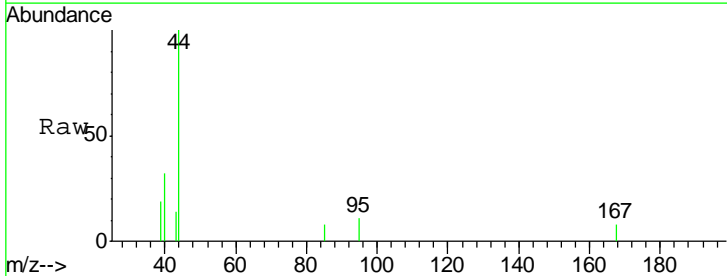
Instrument : MSVOA_F
 ClientSampleId : SOIL-DRUM-A

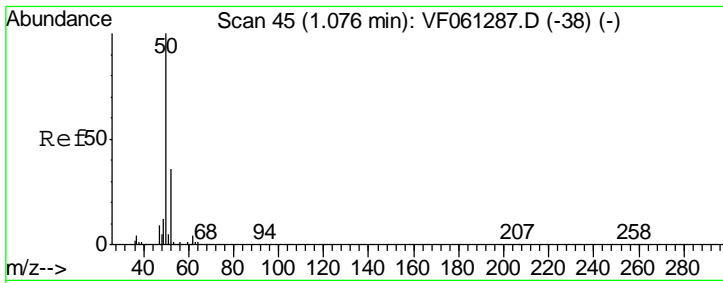
Tgt Ion	Resp	Lower	Upper
168	100		
99	54.1	52.7	79.1



#2
 Dichlorodifluoromethane
 Concen: 1.537 ug/l
 RT: 0.97 min Scan# 35
 Delta R.T. 0.01 min
 Lab File: VF061331.D
 Acq: 10 Jan 2019 7:30

Tgt Ion	Resp	Lower	Upper
85	100		
87	0.0	15.4	46.2#

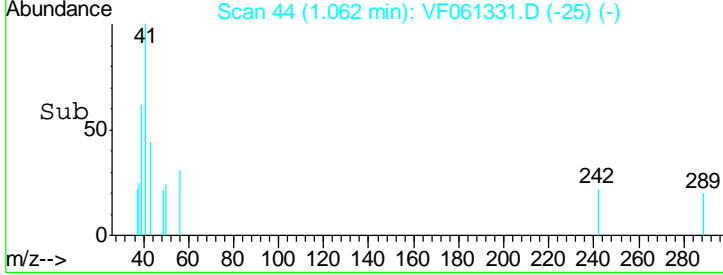
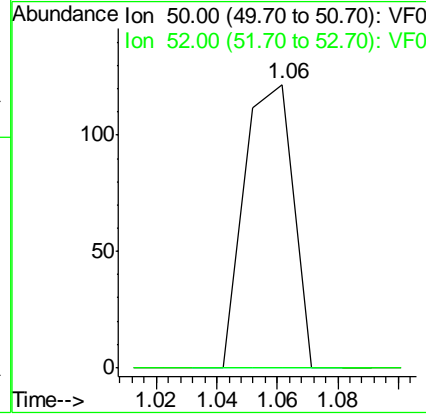
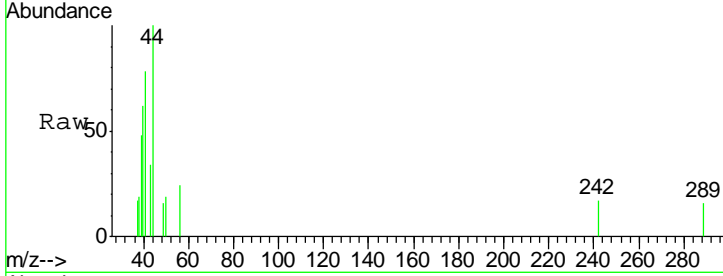




#3
 Chloromethane
 Concen: 4.034 ug/l
 RT: 1.06 min Scan# 44
 Delta R.T. -0.01 min
 Lab File: VF061331.D
 Acq: 10 Jan 2019 7:30

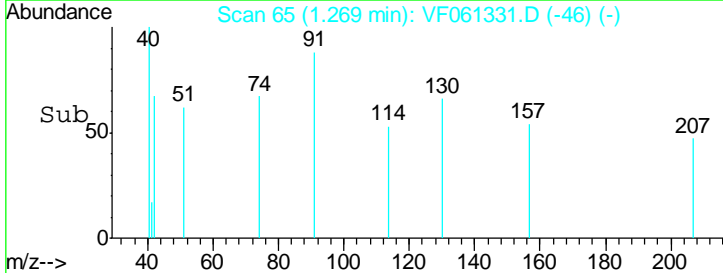
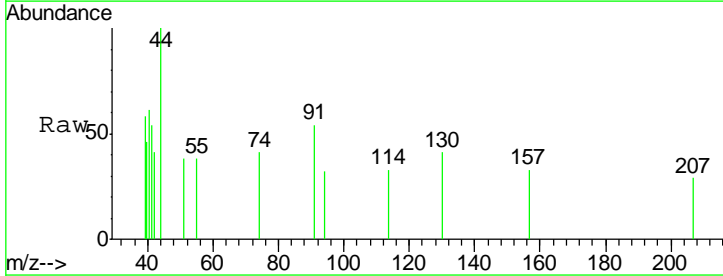
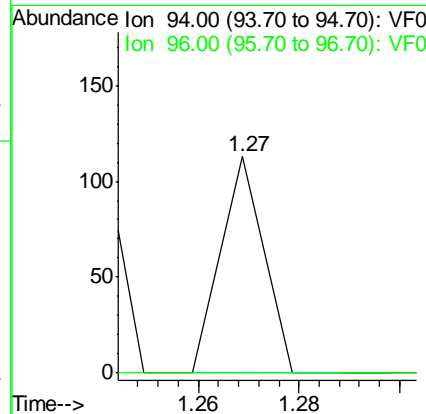
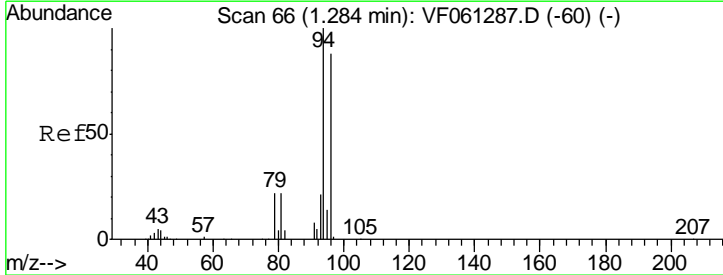
Instrument :
 MSVOA_F
ClientSampled :
 SOIL-DRUM-A

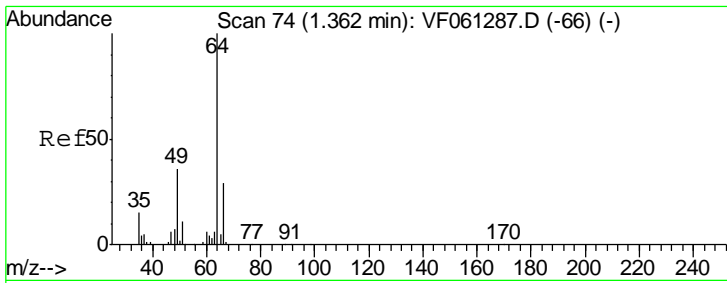
Tgt Ion	Resp	Lower	Upper
50	138		
52	0.0	28.2	42.2#



#5
 Bromomethane
 Concen: 5.280 ug/l
 RT: 1.27 min Scan# 65
 Delta R.T. -0.01 min
 Lab File: VF061331.D
 Acq: 10 Jan 2019 7:30

Tgt Ion	Resp	Lower	Upper
94	67		
96	0.0	70.2	105.4#

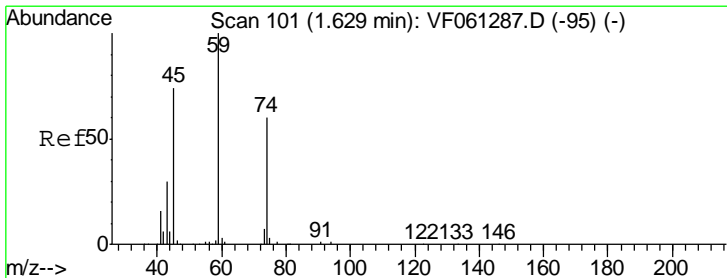
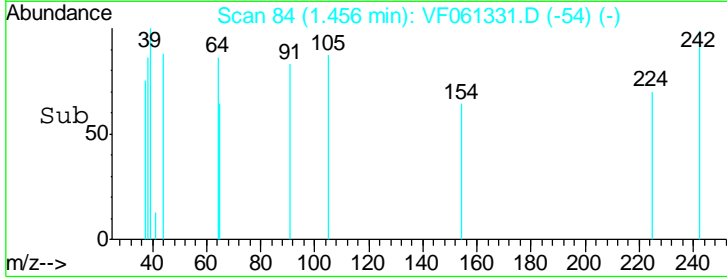
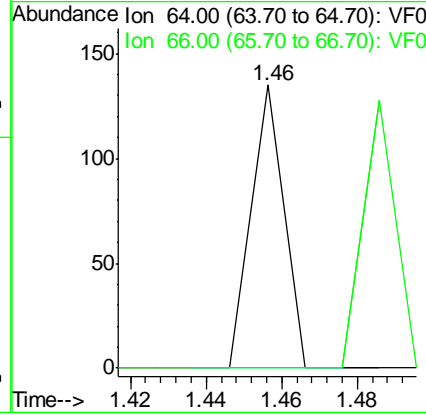
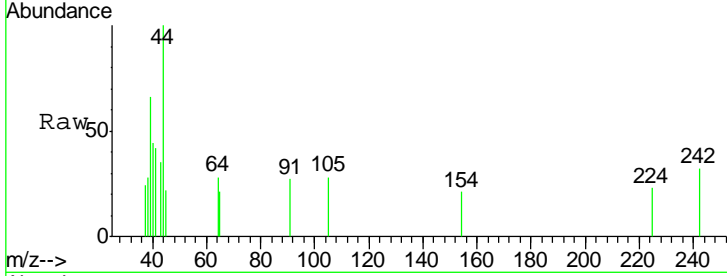




#6
 Chloroethane
 Concen: 5.362 ug/l
 RT: 1.46 min Scan# 84
 Delta R.T. 0.09 min
 Lab File: VF061331.D
 Acq: 10 Jan 2019 7:30

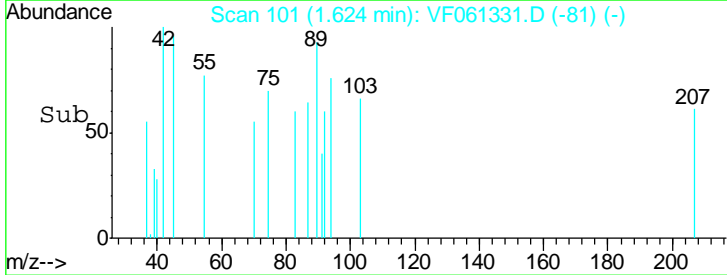
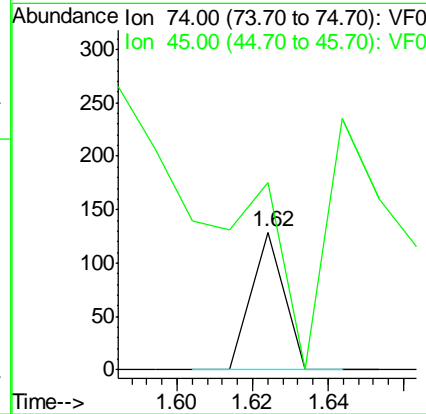
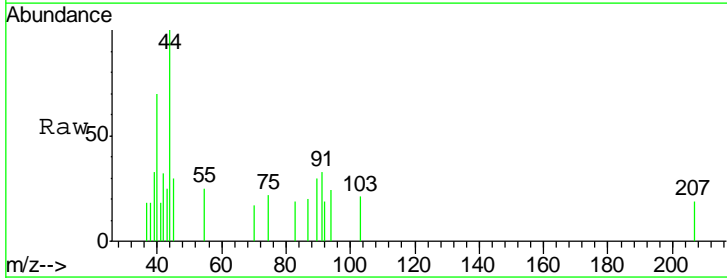
Instrument :
 MSVOA_F
ClientSampled :
 SOIL-DRUM-A

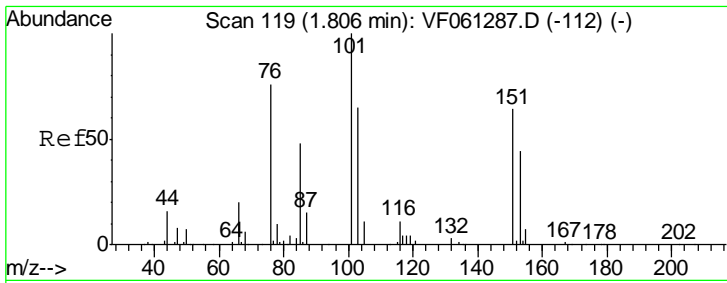
Tgt Ion	Ratio	Lower	Upper
64	100		
66	0.0	23.4	35.0#



#8
 Diethyl Ether
 Concen: 9.993 ug/l
 RT: 1.62 min Scan# 101
 Delta R.T. -0.00 min
 Lab File: VF061331.D
 Acq: 10 Jan 2019 7:30

Tgt Ion	Ratio	Lower	Upper
74	100		
45	136.4	62.1	186.3

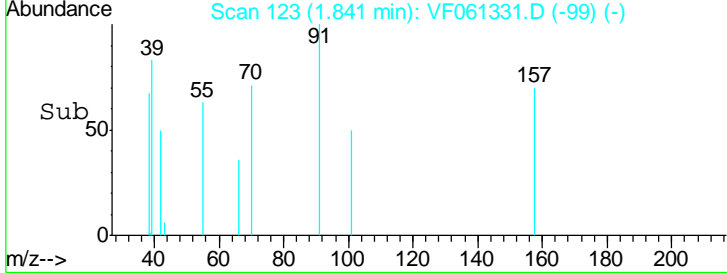
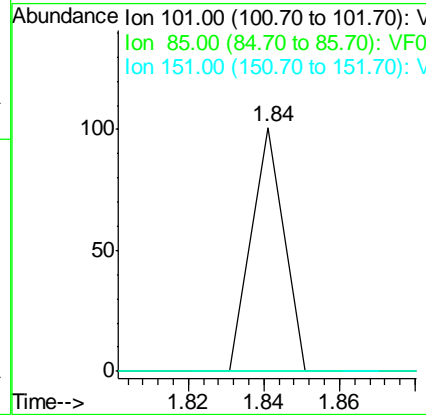
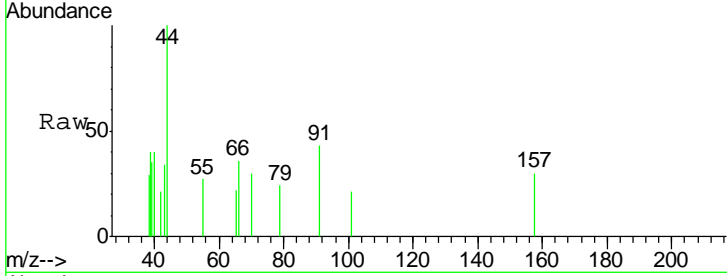




#9
 1,1,2-Trichlorotrifluoroethane
 Concen: 2.194 ug/l
 RT: 1.84 min Scan# 123
 Delta R.T. 0.03 min
 Lab File: VF061331.D
 Acq: 10 Jan 2019 7:30

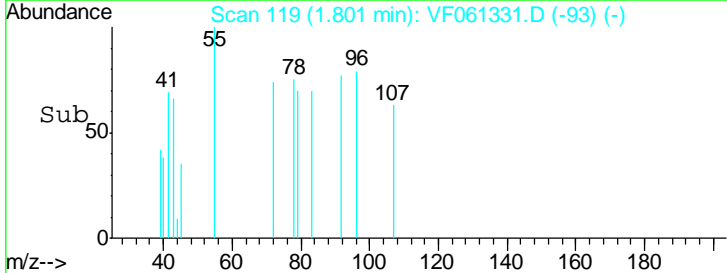
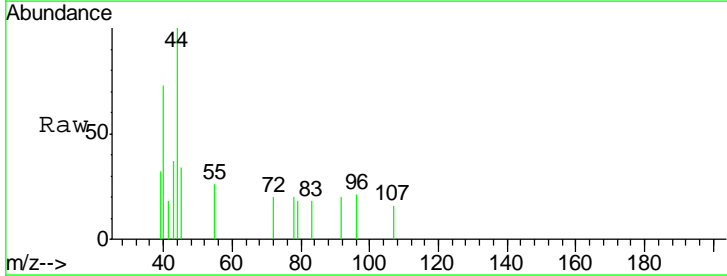
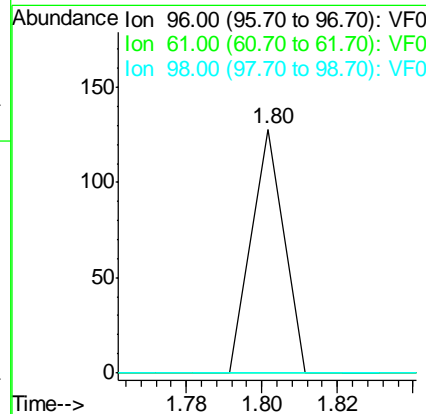
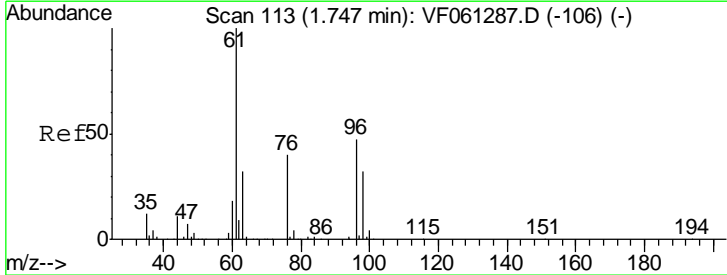
Instrument :
 MSVOA_F
 ClientSampled :
 SOIL-DRUM-A

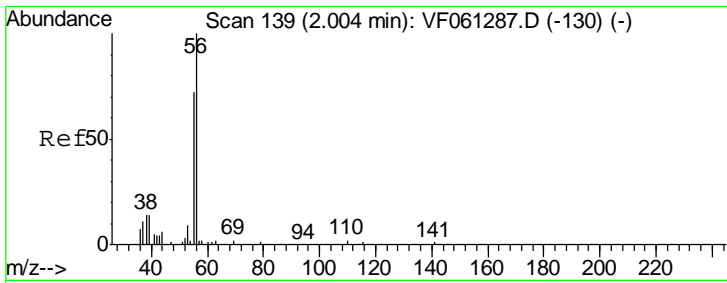
Tgt Ion	Resp	Lower	Upper
101	100		
85	0.0	38.4	57.6#
151	0.0	51.4	77.2#



#12
 1,1-Dichloroethene
 Concen: 3.475 ug/l
 RT: 1.80 min Scan# 119
 Delta R.T. 0.05 min
 Lab File: VF061331.D
 Acq: 10 Jan 2019 7:30

Tgt Ion	Resp	Lower	Upper
96	100		
61	0.0	171.8	257.8#
98	0.0	54.2	81.4#

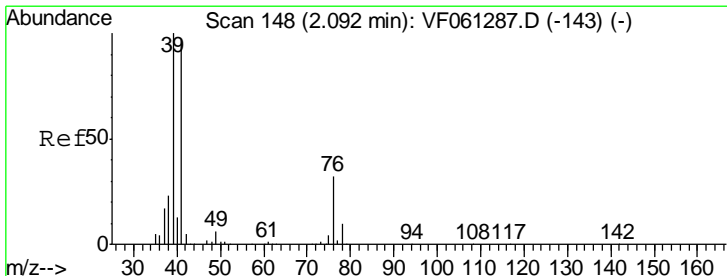
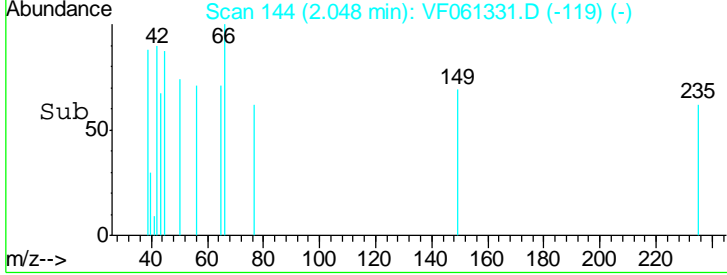
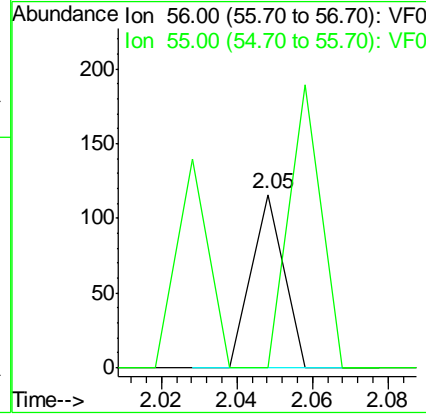
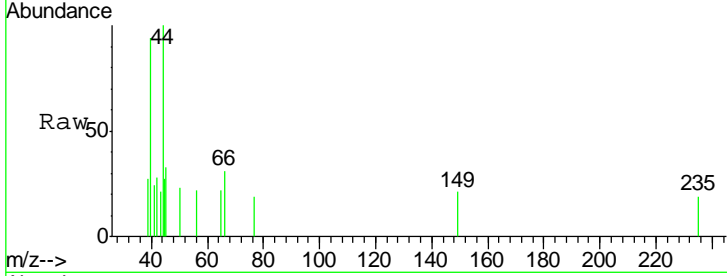




#13
 Acrolein
 Concen: 51.602 ug/l
 RT: 2.05 min Scan# 144
 Delta R.T. 0.05 min
 Lab File: VF061331.D
 Acq: 10 Jan 2019 7:30

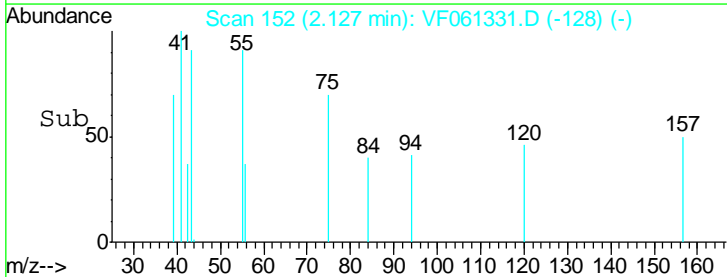
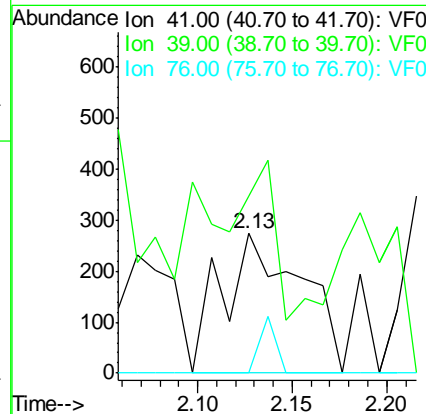
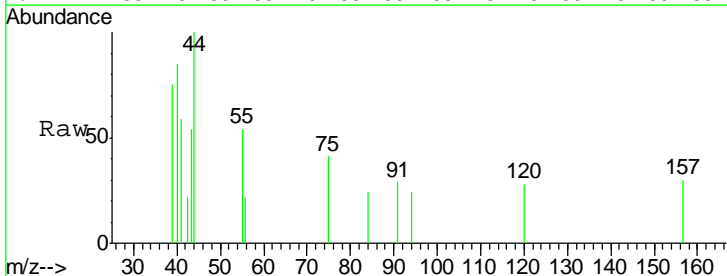
Instrument :
 MSVOA_F
 ClientSampled :
 SOIL-DRUM-A

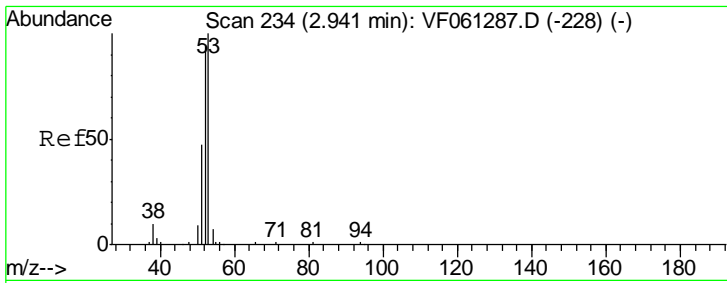
Tgt Ion: 56 Resp: 69
 Ion Ratio Lower Upper
 56 100
 55 0.0 59.4 89.0#



#14
 Allyl chloride
 Concen: 19.939 ug/l
 RT: 2.13 min Scan# 152
 Delta R.T. 0.03 min
 Lab File: VF061331.D
 Acq: 10 Jan 2019 7:30

Tgt Ion: 41 Resp: 797
 Ion Ratio Lower Upper
 41 100
 39 126.6 82.6 123.8#
 76 0.0 26.9 40.3#

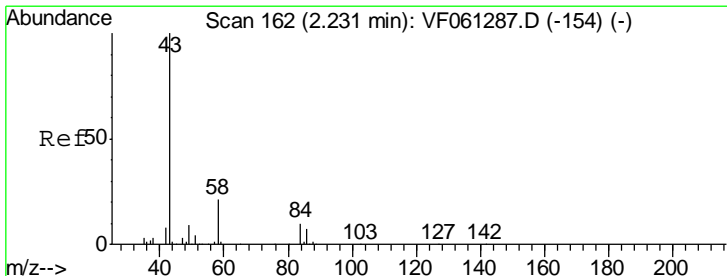
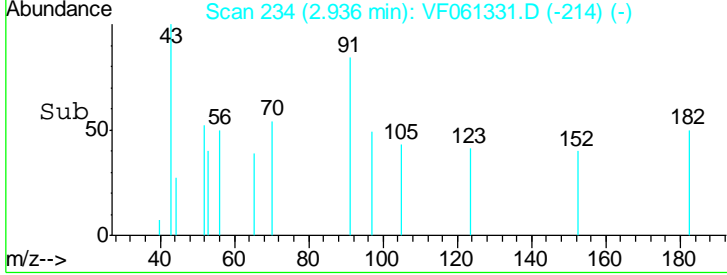
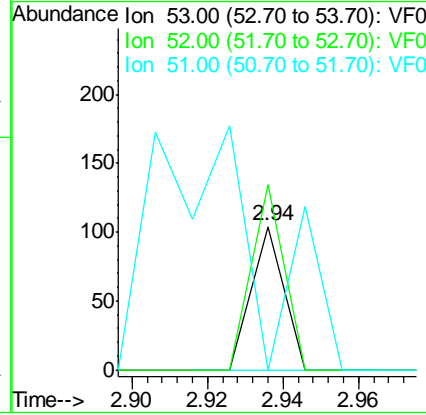
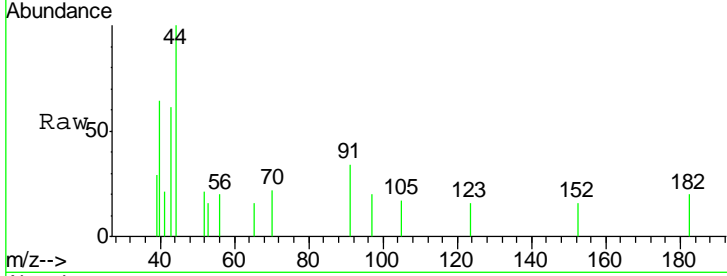




#15
 Acrylonitrile
 Concen: 18.859 ug/l
 RT: 2.94 min Scan# 234
 Delta R.T. -0.00 min
 Lab File: VF061331.D
 Acq: 10 Jan 2019 7:30

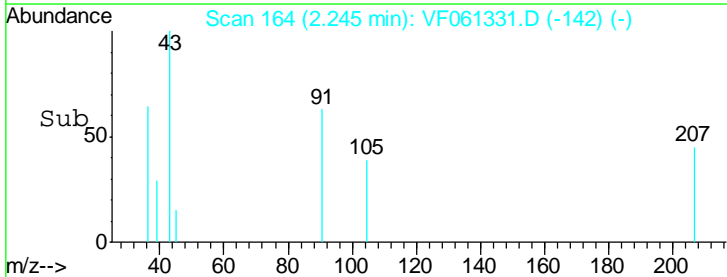
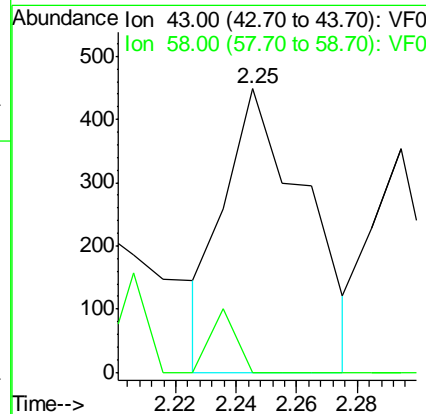
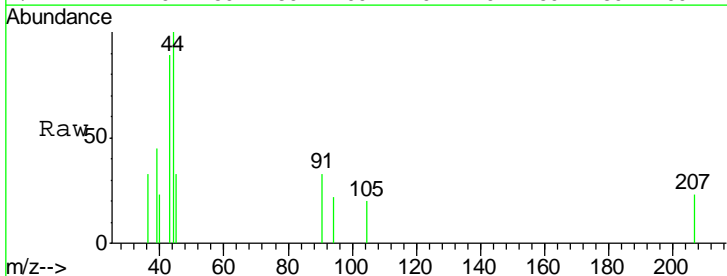
Instrument :
 MSVOA_F
ClientSampled :
 SOIL-DRUM-A

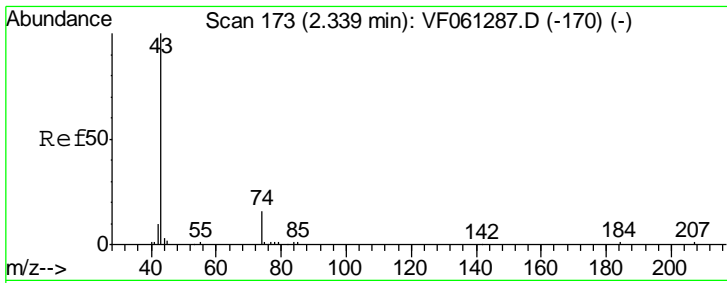
Tgt Ion	Resp	Lower	Upper
53	100		
52	129.8	74.6	111.8#
51	0.0	37.8	56.6#



#16
 Acetone
 Concen: 156.081 ug/l
 RT: 2.25 min Scan# 164
 Delta R.T. 0.01 min
 Lab File: VF061331.D
 Acq: 10 Jan 2019 7:30

Tgt Ion	Resp	Lower	Upper
43	100		
58	0.0	16.6	25.0#

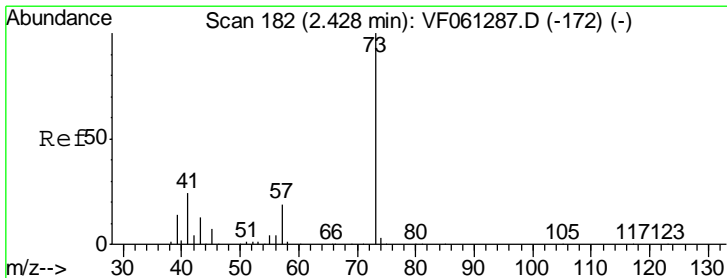
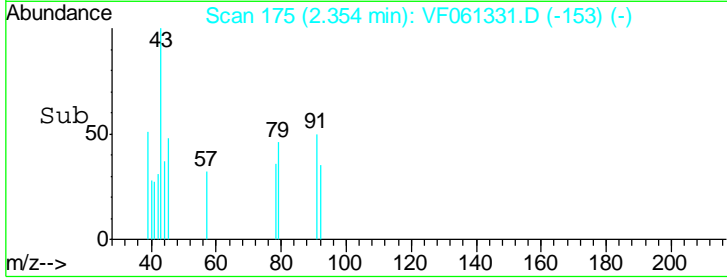
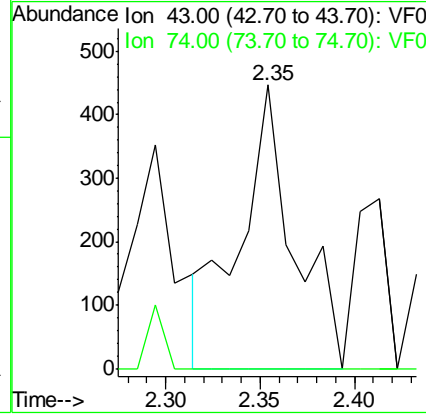
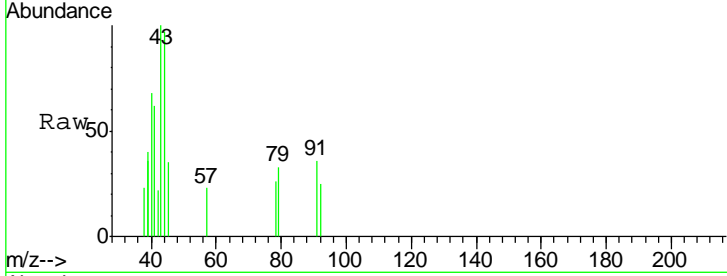




#18
 Methyl Acetate
 Concen: 84.048 ug/l
 RT: 2.35 min Scan# 175
 Delta R.T. 0.01 min
 Lab File: VF061331.D
 Acq: 10 Jan 2019 7:30

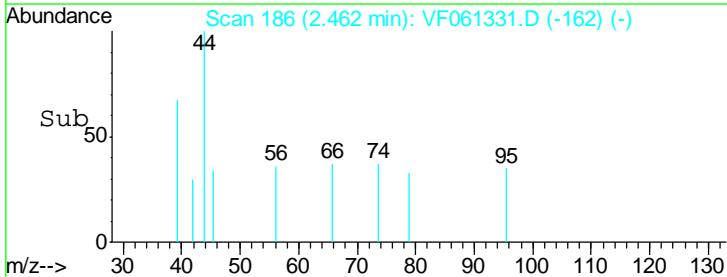
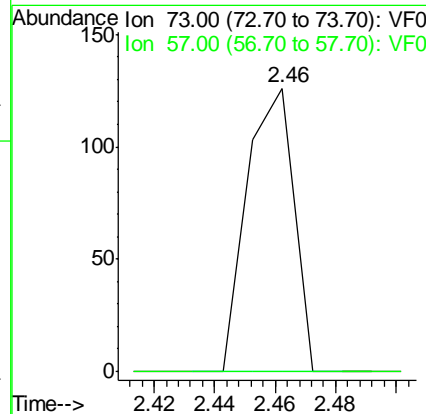
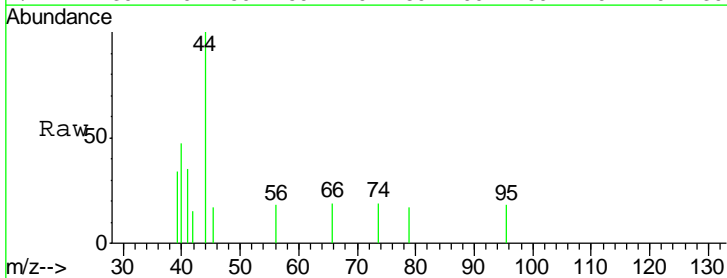
Instrument :
 MSVOA_F
 ClientSampled :
 SOIL-DRUM-A

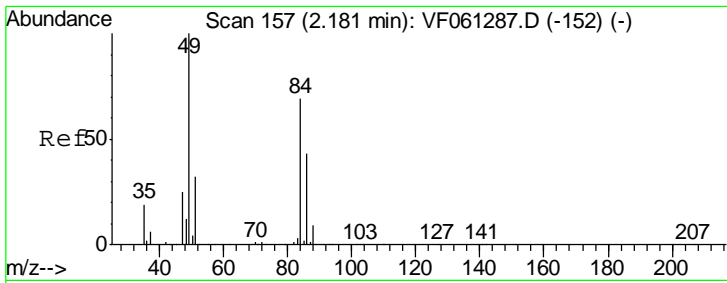
Tgt Ion: 43 Resp: 891
 Ion Ratio Lower Upper
 43 100
 74 0.0 11.6 17.4#



#19
 Methyl tert-butyl Ether
 Concen: 3.264 ug/l
 RT: 2.46 min Scan# 186
 Delta R.T. 0.03 min
 Lab File: VF061331.D
 Acq: 10 Jan 2019 7:30

Tgt Ion: 73 Resp: 136
 Ion Ratio Lower Upper
 73 100
 57 0.0 15.5 23.3#

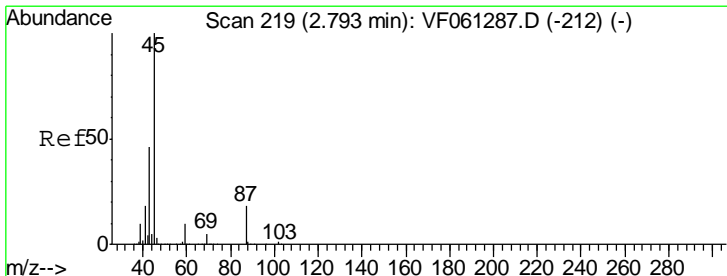
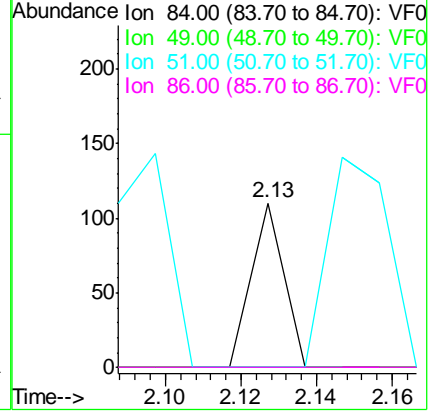
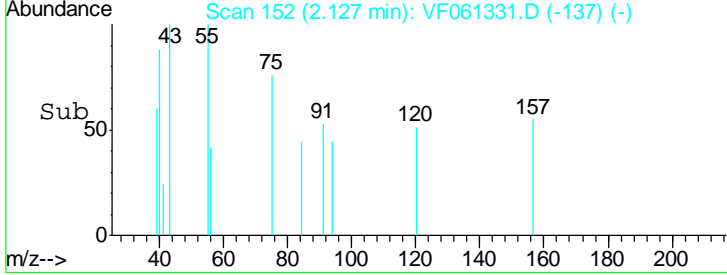
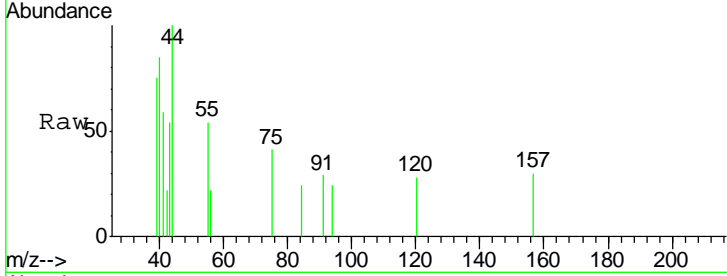




#20
 Methylene Chloride
 Concen: 2.851 ug/l
 RT: 2.13 min Scan# 152
 Delta R.T. -0.05 min
 Lab File: VF061331.D
 Acq: 10 Jan 2019 7:30

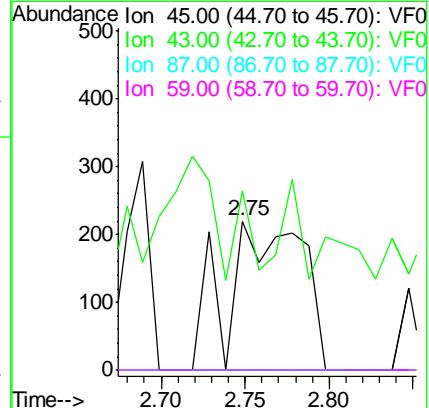
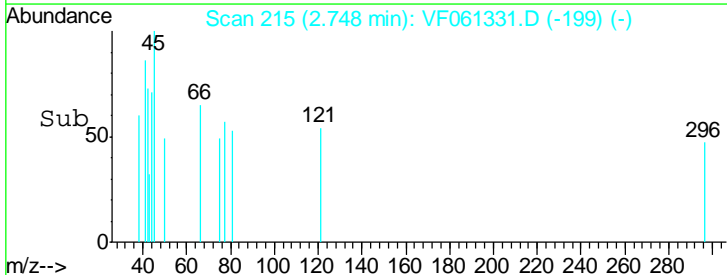
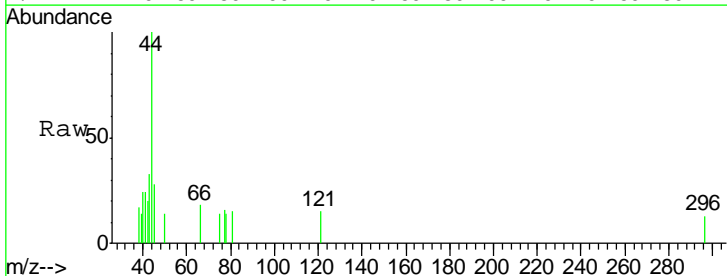
Instrument :
 MSVOA_F
ClientSampled :
 SOIL-DRUM-A

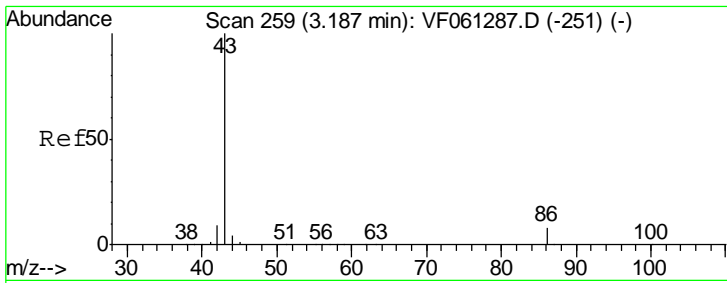
Tgt Ion	Resp	Lower	Upper
84	100		
49	0.0	116.6	175.0#
51	0.0	37.7	56.5#
86	0.0	49.8	74.8#



#22
 Diisopropyl ether
 Concen: 8.936 ug/l
 RT: 2.75 min Scan# 215
 Delta R.T. -0.04 min
 Lab File: VF061331.D
 Acq: 10 Jan 2019 7:30

Tgt Ion	Resp	Lower	Upper
45	100		
43	120.0	37.4	56.2#
87	0.0	14.2	21.2#
59	0.0	8.2	12.2#

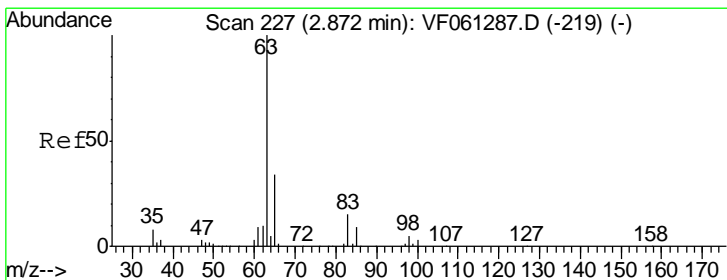
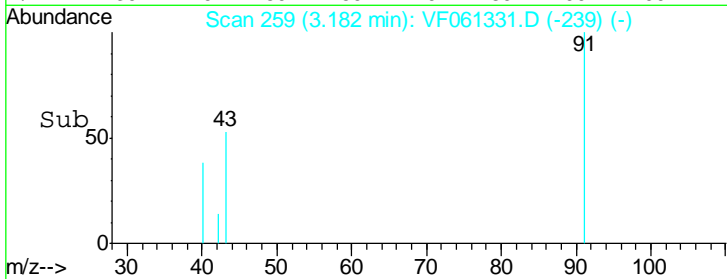
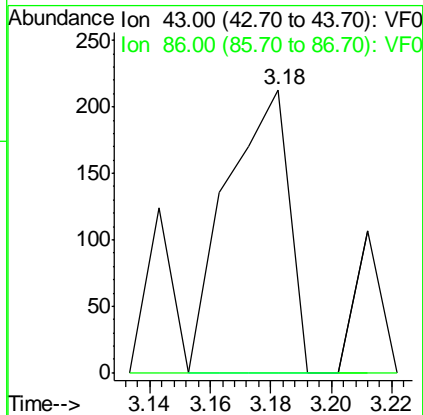
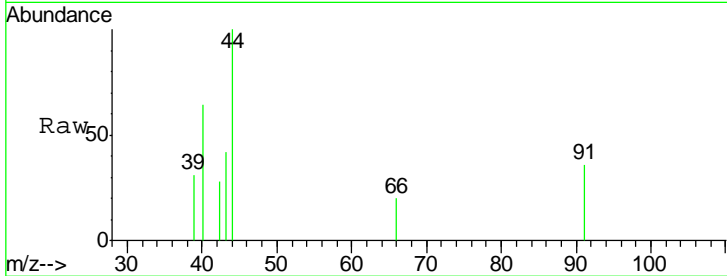




#23
 Vinyl Acetate
 Concen: 13.575 ug/l
 RT: 3.18 min Scan# 259
 Delta R.T. -0.00 min
 Lab File: VF061331.D
 Acq: 10 Jan 2019 7:30

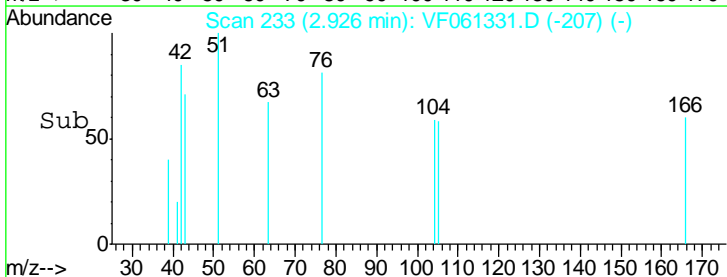
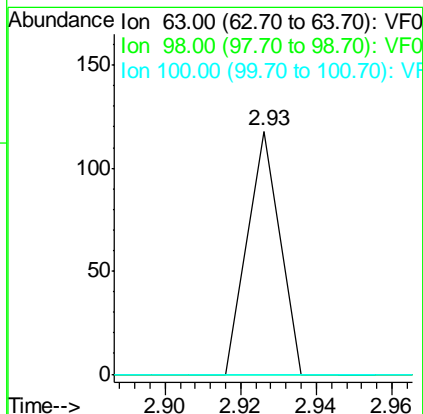
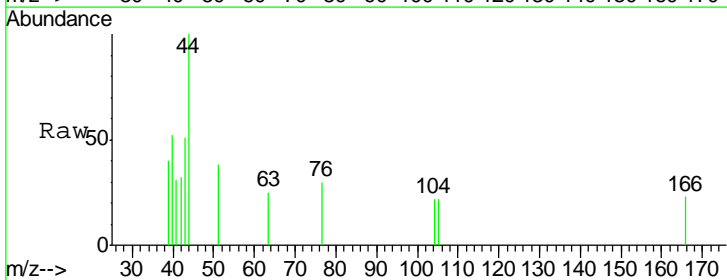
Instrument :
 MSVOA_F
 ClientSampled :
 SOIL-DRUM-A

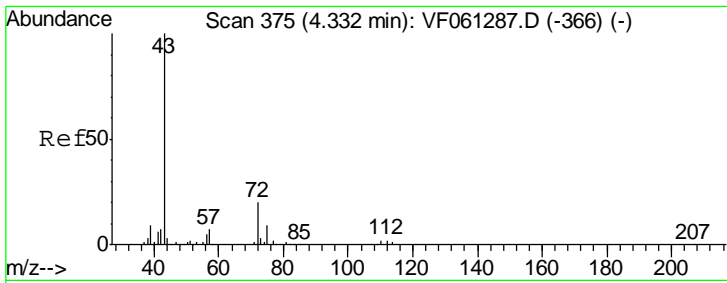
Tgt Ion	Resp	Lower	Upper
43	100		
86	0.0	6.5	9.7#



#24
 1,1-Dichloroethane
 Concen: 1.565 ug/l
 RT: 2.93 min Scan# 233
 Delta R.T. 0.05 min
 Lab File: VF061331.D
 Acq: 10 Jan 2019 7:30

Tgt Ion	Resp	Lower	Upper
63	100		
98	0.0	2.5	7.6#
100	0.0	1.7	5.0#

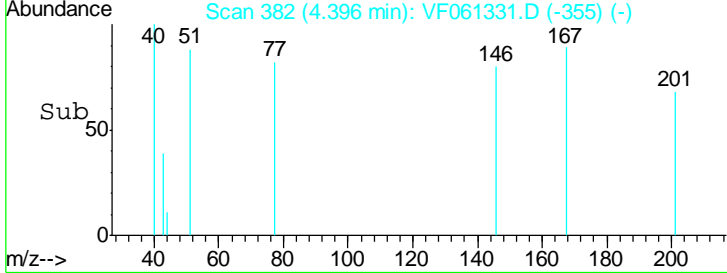
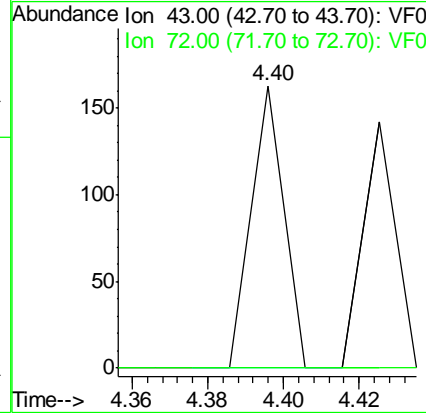
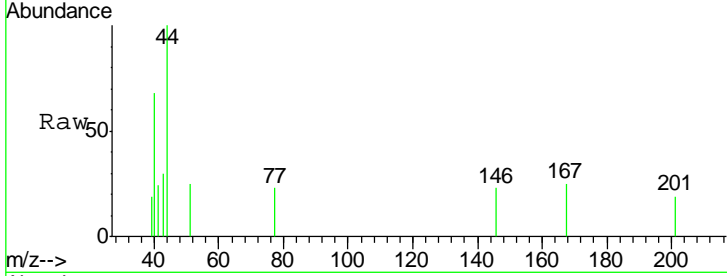




#25
 2-Butanone
 Concen: 11.070 ug/l
 RT: 4.40 min Scan# 382
 Delta R.T. 0.06 min
 Lab File: VF061331.D
 Acq: 10 Jan 2019 7:30

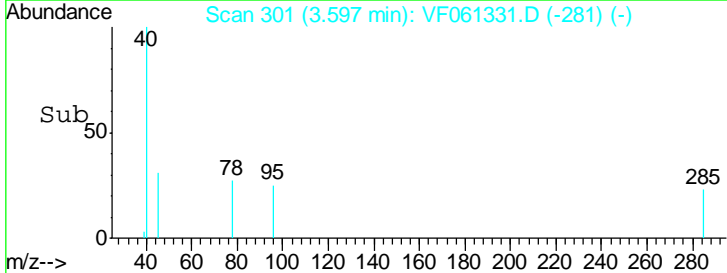
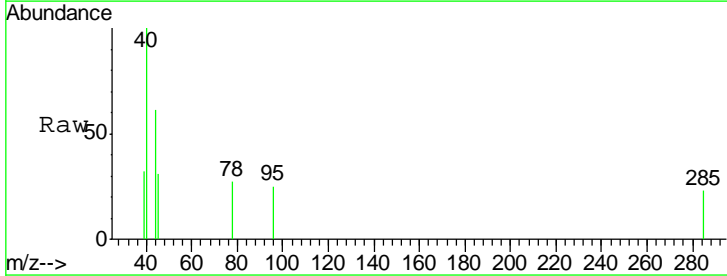
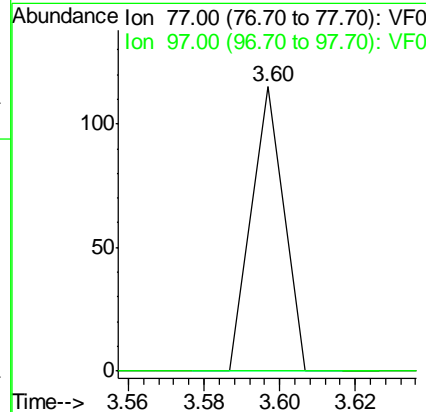
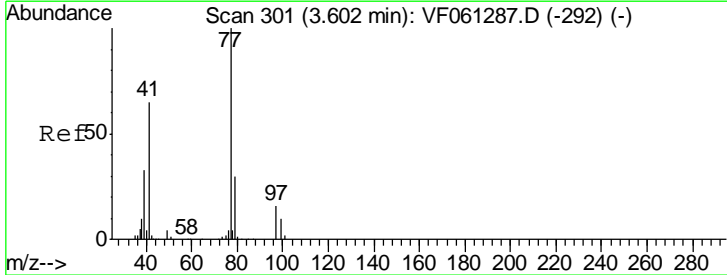
Instrument :
 MSVOA_F
ClientSampled :
 SOIL-DRUM-A

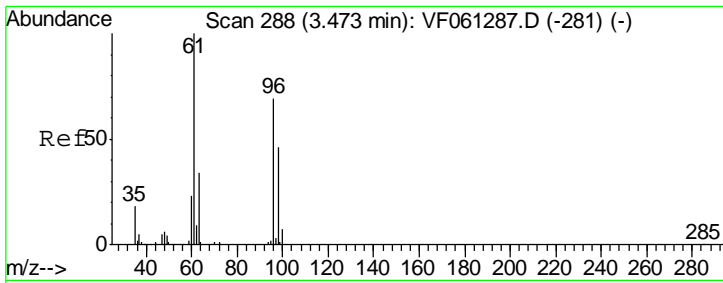
Tgt Ion: 43 Resp: 96
 Ion Ratio Lower Upper
 43 100
 72 0.0 16.5 24.7#



#26
 2,2-Dichloropropane
 Concen: 2.275 ug/l
 RT: 3.60 min Scan# 301
 Delta R.T. -0.00 min
 Lab File: VF061331.D
 Acq: 10 Jan 2019 7:30

Tgt Ion: 77 Resp: 68
 Ion Ratio Lower Upper
 77 100
 97 0.0 8.6 25.9#

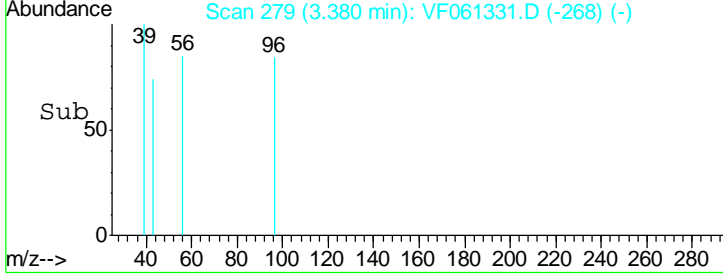
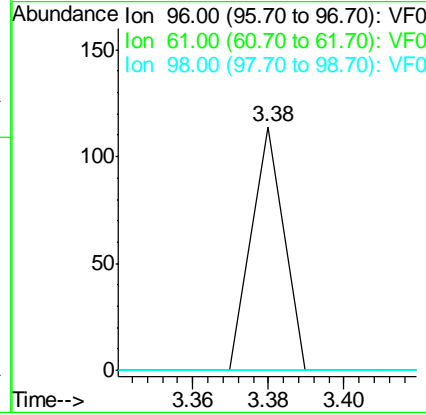
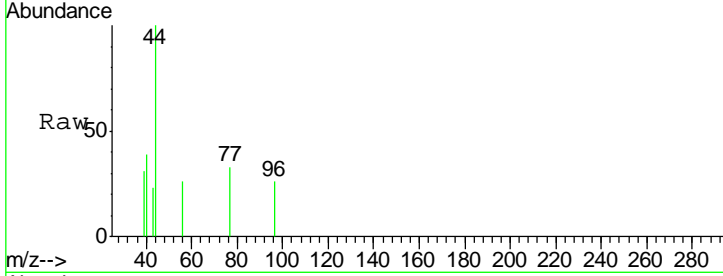




#27
 cis-1,2-Dichloroethene
 Concen: 2.071 ug/l
 RT: 3.38 min Scan# 279
 Delta R.T. -0.09 min
 Lab File: VF061331.D
 Acq: 10 Jan 2019 7:30

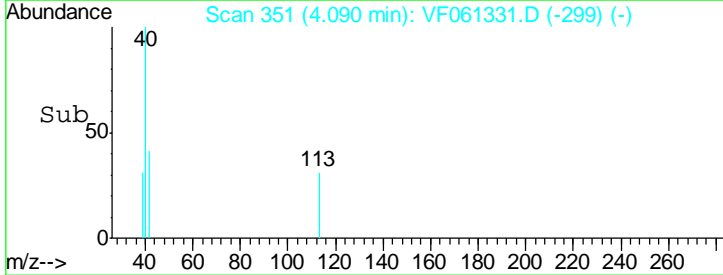
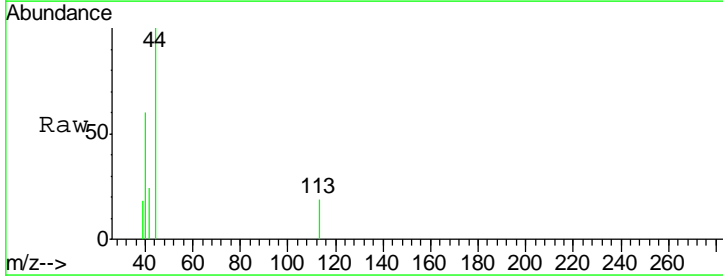
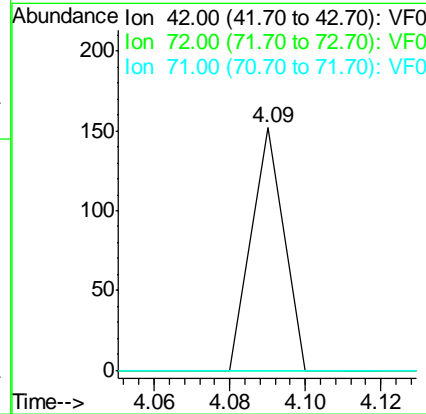
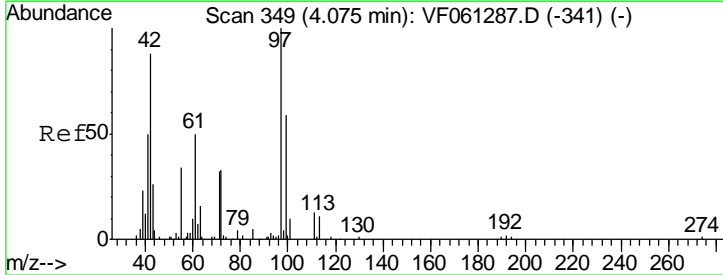
Instrument :
 MSVOA_F
ClientSampled :
 SOIL-DRUM-A

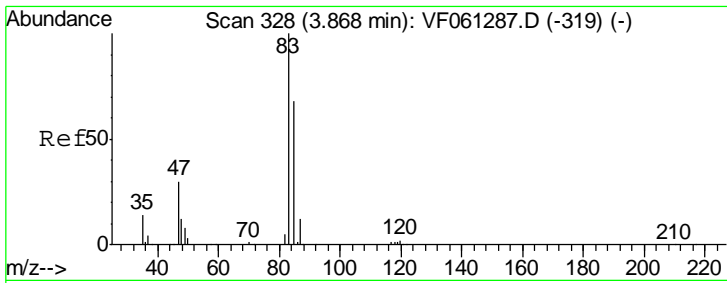
Tgt Ion	Resp	Lower	Upper
96	100		
61	0.0	0.0	288.2
98	0.0	0.0	132.2



#29
 Tetrahydrofuran
 Concen: 24.821 ug/l
 RT: 4.09 min Scan# 351
 Delta R.T. 0.01 min
 Lab File: VF061331.D
 Acq: 10 Jan 2019 7:30

Tgt Ion	Resp	Lower	Upper
42	100		
72	0.0	32.3	48.5#
71	0.0	29.5	44.3#

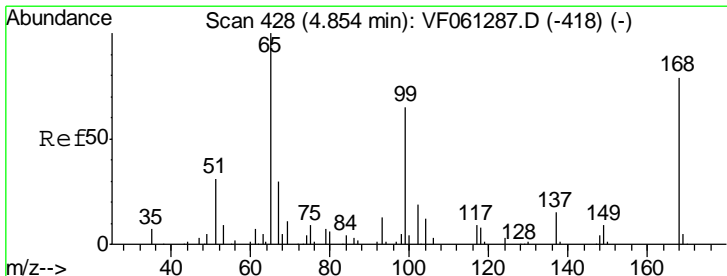
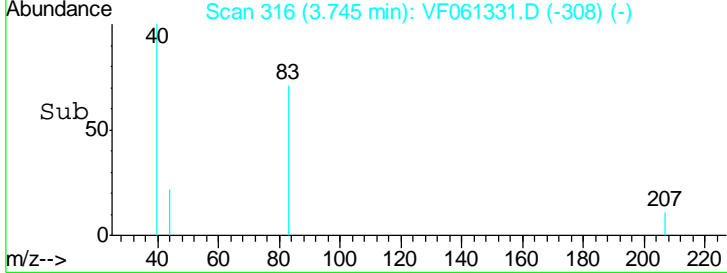
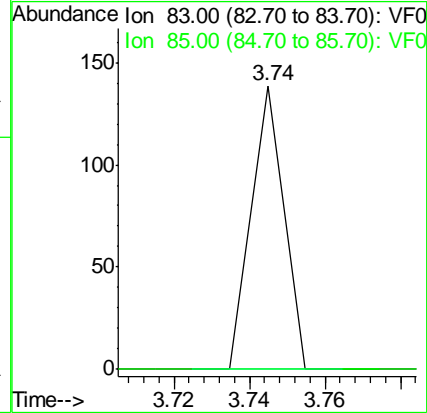
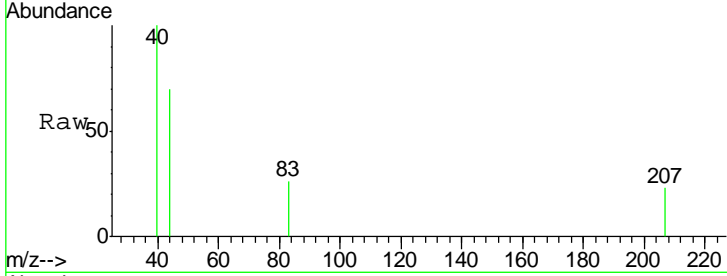




#30
 Chloroform
 Concen: 1.444 ug/l
 RT: 3.74 min Scan# 316
 Delta R.T. -0.12 min
 Lab File: VF061331.D
 Acq: 10 Jan 2019 7:30

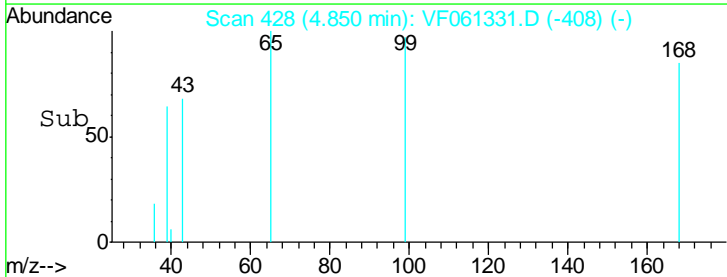
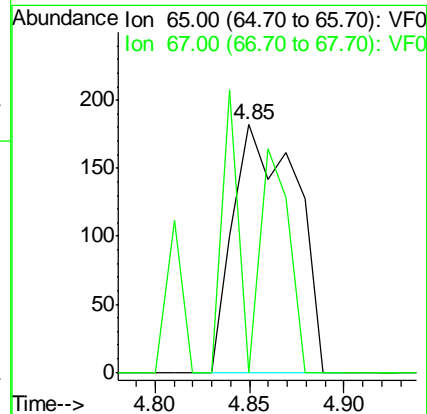
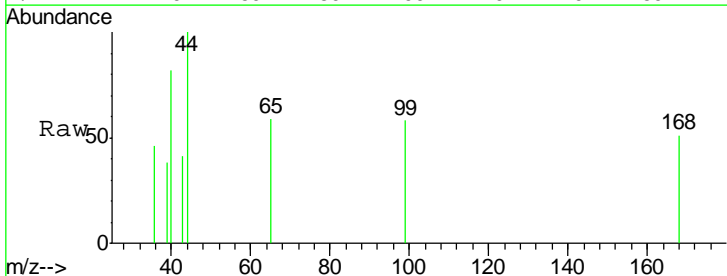
Instrument :
 MSVOA_F
 ClientSampled :
 SOIL-DRUM-A

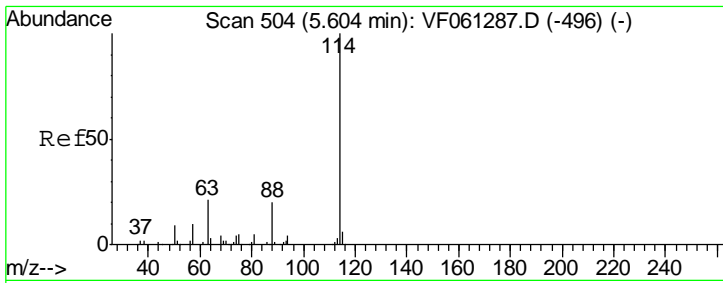
Tgt Ion: 83 Resp: 82
 Ion Ratio Lower Upper
 83 100
 85 0.0 54.4 81.6#



#33
 1,2-Dichloroethane-d4
 Concen: 18.262 ug/l
 RT: 4.85 min Scan# 428
 Delta R.T. -0.00 min
 Lab File: VF061331.D
 Acq: 10 Jan 2019 7:30

Tgt Ion: 65 Resp: 423
 Ion Ratio Lower Upper
 65 100
 67 0.0 0.0 98.2

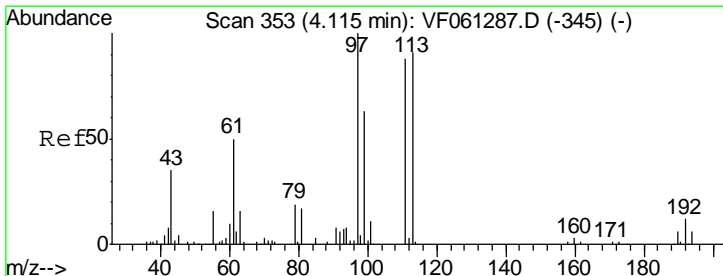
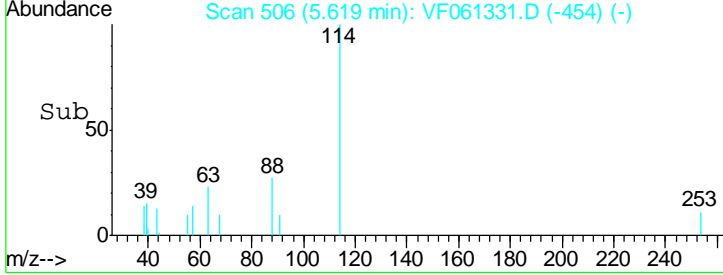
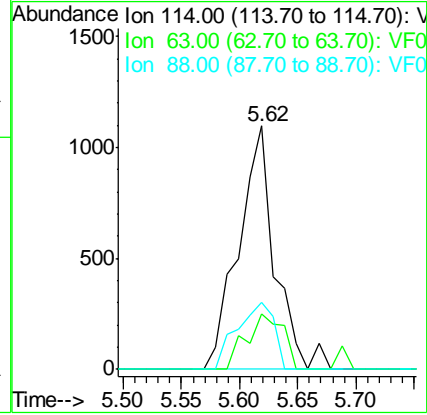
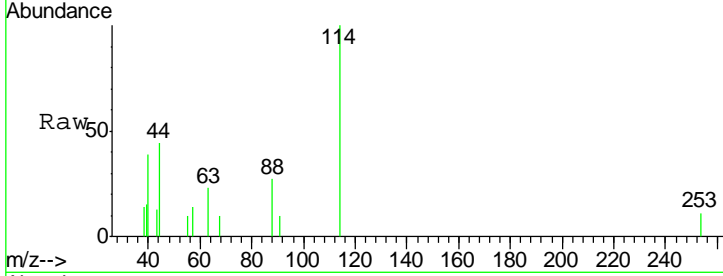




#34
 1,4-Difluorobenzene
 Concen: 50.000 ug/l
 RT: 5.62 min Scan# 506
 Delta R.T. 0.01 min
 Lab File: VF061331.D
 Acq: 10 Jan 2019 7:30

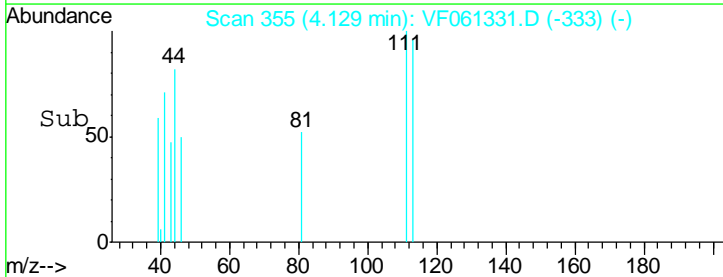
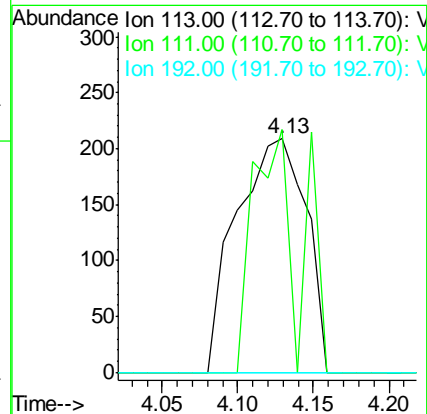
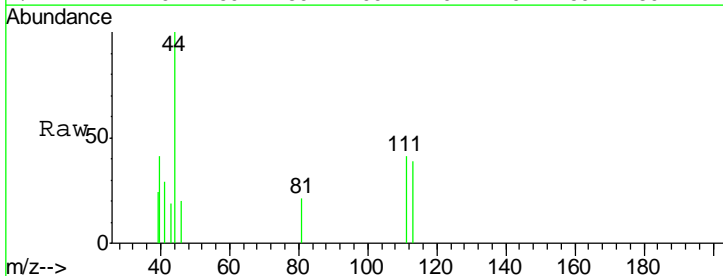
Instrument :
 MSVOA_F
 ClientSampled :
 SOIL-DRUM-A

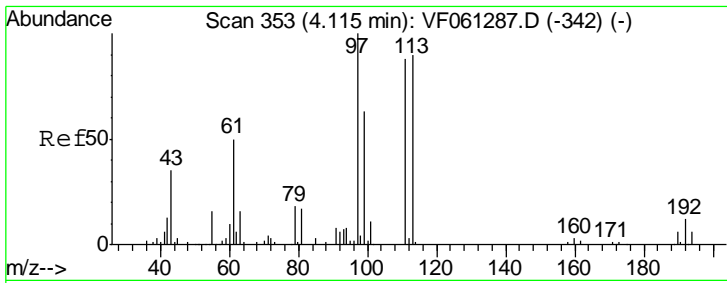
Tgt Ion	Resp	Lower	Upper
114	100		
63	22.8	0.0	42.8
88	27.3	0.0	40.0



#35
 Dibromofluoromethane
 Concen: 37.144 ug/l
 RT: 4.13 min Scan# 355
 Delta R.T. 0.01 min
 Lab File: VF061331.D
 Acq: 10 Jan 2019 7:30

Tgt Ion	Resp	Lower	Upper
113	100		
111	103.8	78.0	117.0
192	0.0	10.6	16.0#

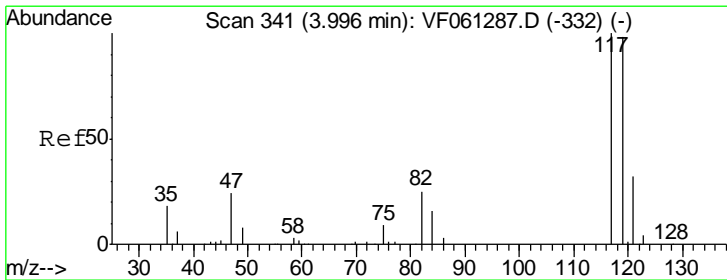
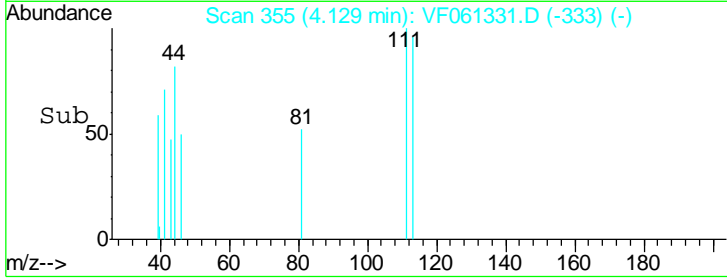
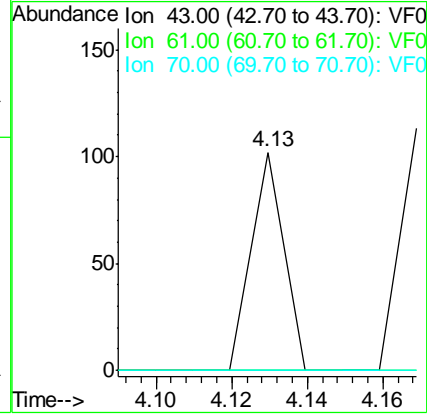
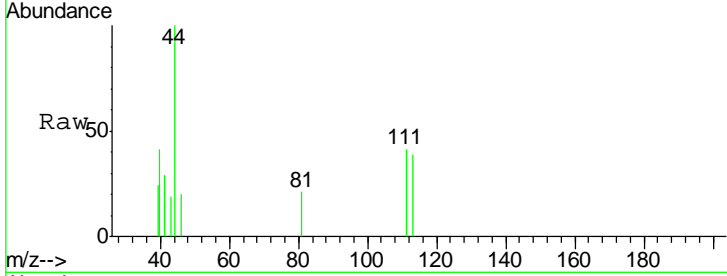




#37
 Ethyl Acetate
 Concen: 5.941 ug/l
 RT: 4.13 min Scan# 355
 Delta R.T. 0.01 min
 Lab File: VF061331.D
 Acq: 10 Jan 2019 7:30

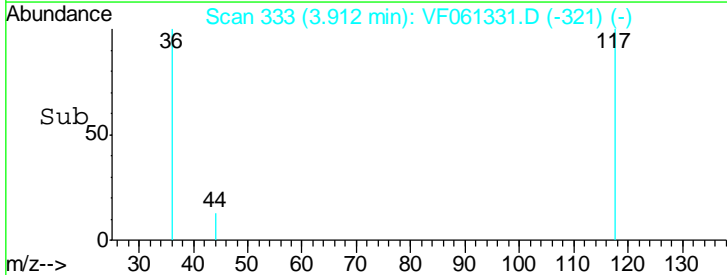
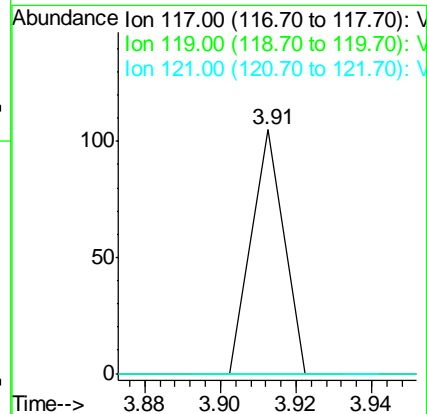
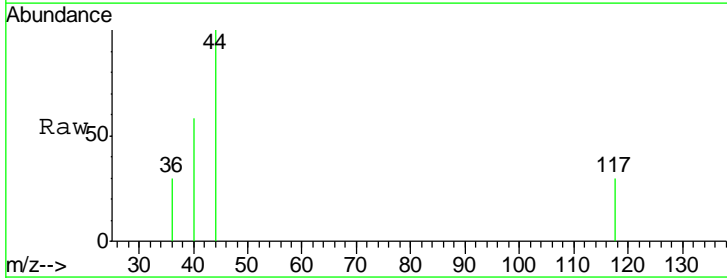
Instrument :
 MSVOA_F
 ClientSampled :
 SOIL-DRUM-A

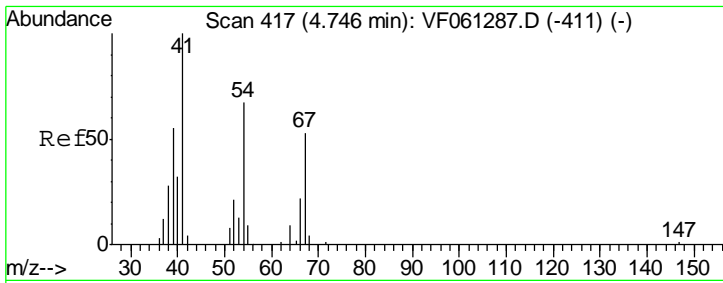
Tgt Ion	Resp	Lower	Upper
43	100		
61	0.0	113.3	169.9#
70	0.0	9.4	14.0#



#38
 Carbon Tetrachloride
 Concen: 2.360 ug/l
 RT: 3.91 min Scan# 333
 Delta R.T. -0.08 min
 Lab File: VF061331.D
 Acq: 10 Jan 2019 7:30

Tgt Ion	Resp	Lower	Upper
117	100		
119	0.0	78.5	117.7#
121	0.0	25.3	37.9#

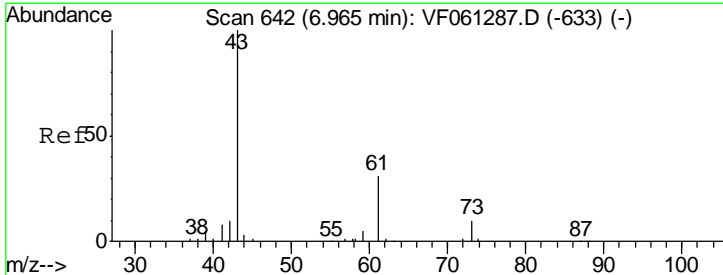
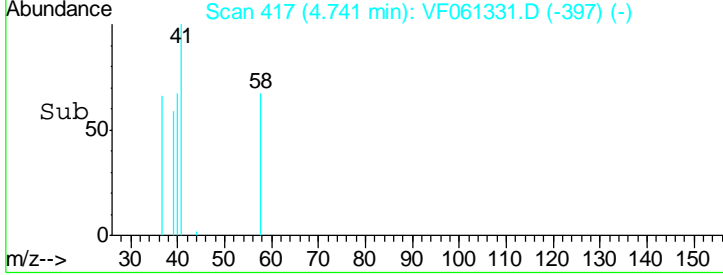
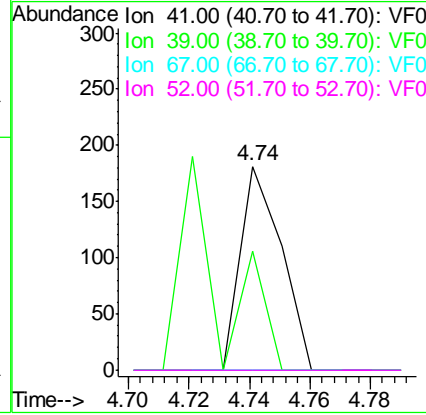
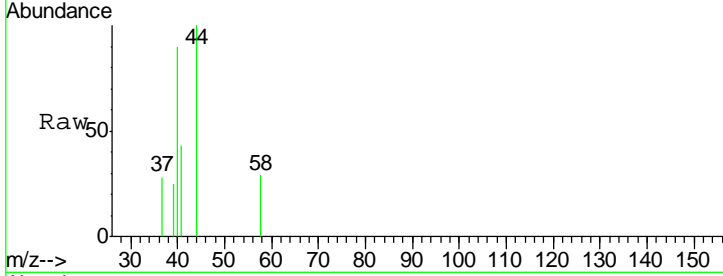




#41
 Methacrylonitrile
 Concen: 30.496 ug/l
 RT: 4.74 min Scan# 417
 Delta R.T. -0.00 min
 Lab File: VF061331.D
 Acq: 10 Jan 2019 7:30

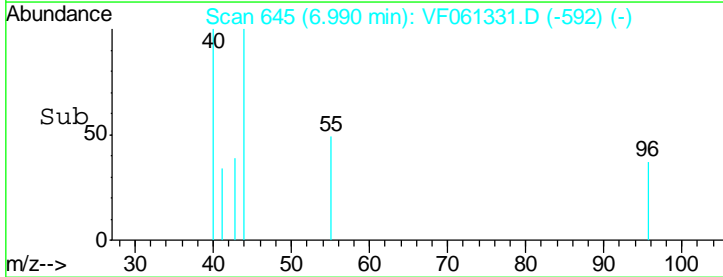
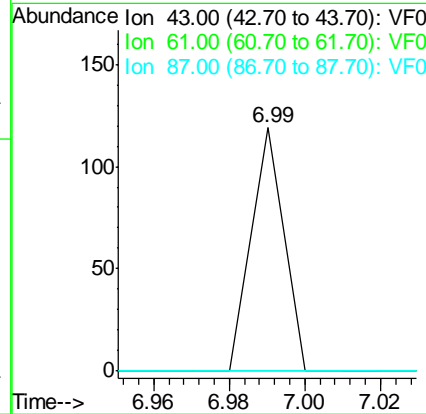
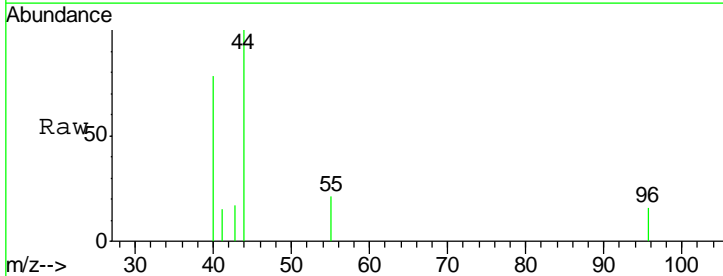
Instrument : MSVOA_F
 ClientSampled : SOIL-DRUM-A

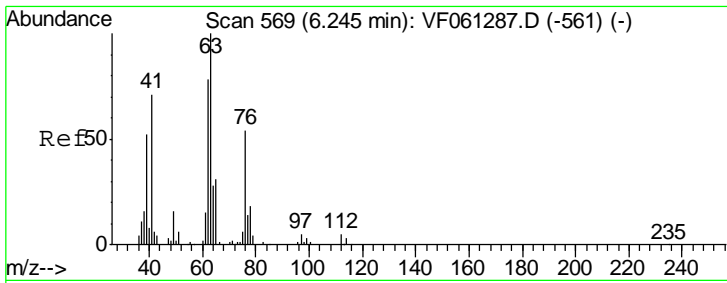
Tgt Ion	Resp	Lower	Upper
41	100		
39	58.6	52.7	79.1
67	0.0	41.4	62.2#
52	0.0	33.0	49.4#



#43
 Isopropyl Acetate
 Concen: 5.250 ug/l
 RT: 6.99 min Scan# 645
 Delta R.T. 0.02 min
 Lab File: VF061331.D
 Acq: 10 Jan 2019 7:30

Tgt Ion	Resp	Lower	Upper
43	100		
61	0.0	24.3	36.5#
87	0.0	0.2	0.4#

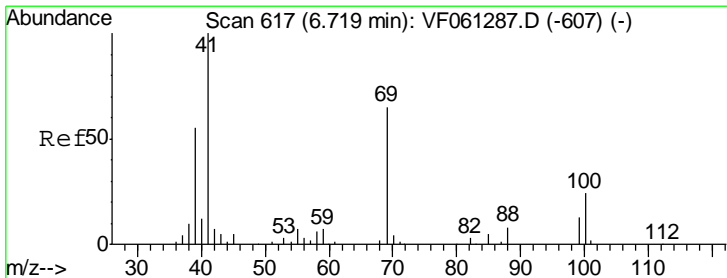
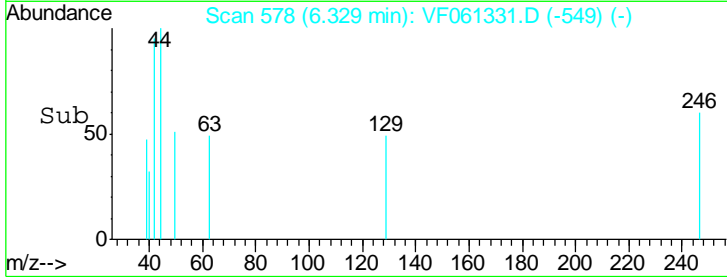
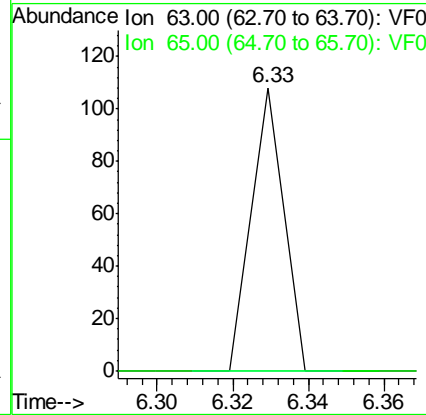
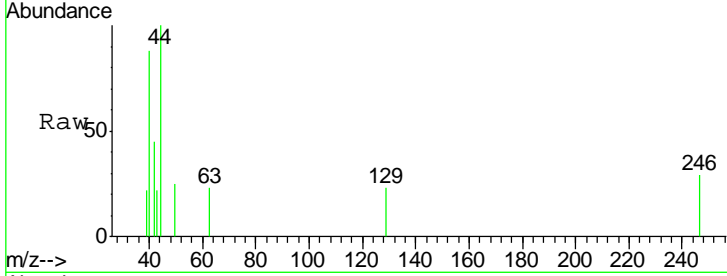




#45
 1,2-Dichloropropane
 Concen: 3.887 ug/l
 RT: 6.33 min Scan# 578
 Delta R.T. 0.08 min
 Lab File: VF061331.D
 Acq: 10 Jan 2019 7:30

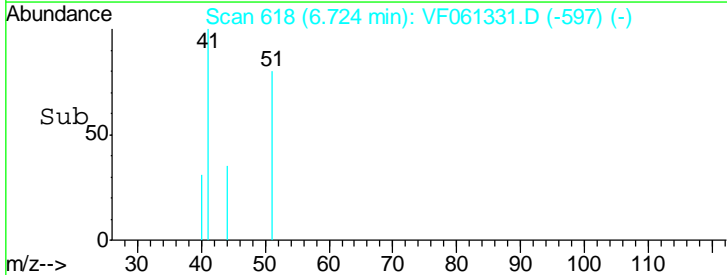
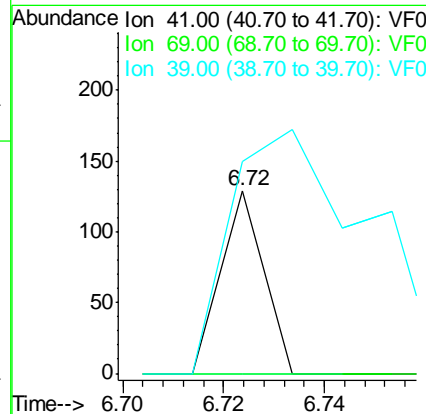
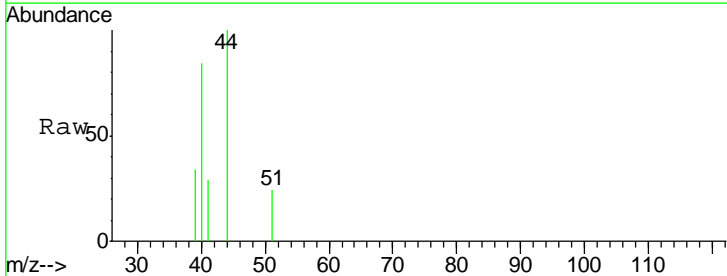
Instrument :
 MSVOA_F
 ClientSampled :
 SOIL-DRUM-A

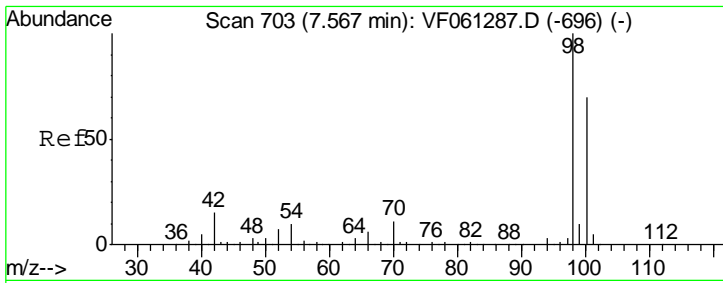
Tgt Ion	Resp	Lower	Upper
63	100		
65	0.0	25.1	37.7#



#48
 Methyl methacrylate
 Concen: 8.781 ug/l
 RT: 6.72 min Scan# 618
 Delta R.T. 0.00 min
 Lab File: VF061331.D
 Acq: 10 Jan 2019 7:30

Tgt Ion	Resp	Lower	Upper
41	100		
69	0.0	51.5	77.3#
39	116.3	44.1	66.1#

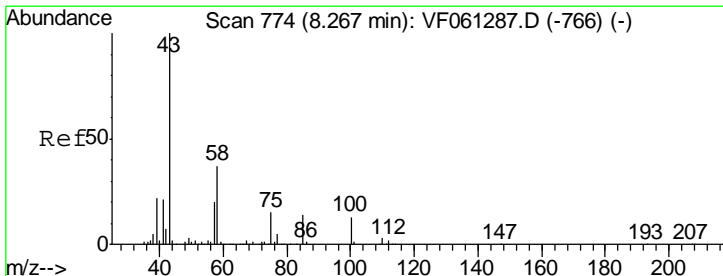
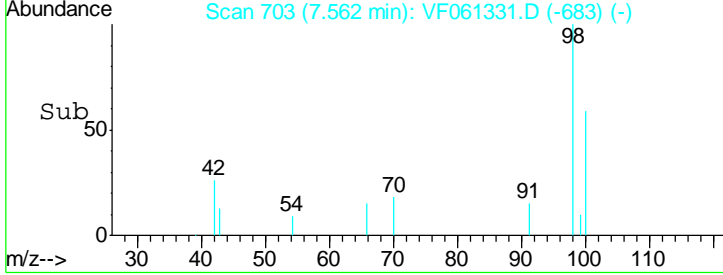
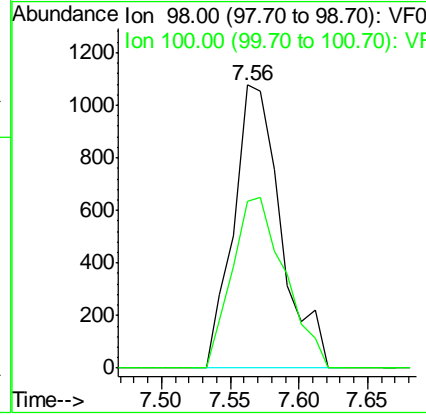
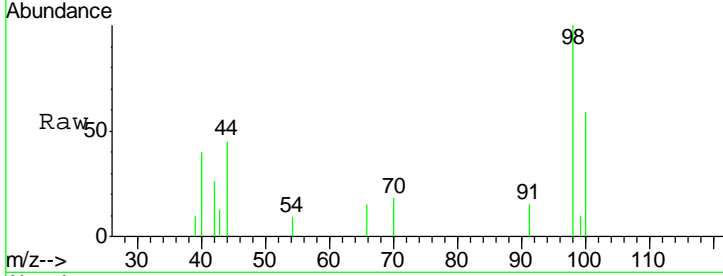




#50
 Toluene-d8
 Concen: 48.254 ug/l
 RT: 7.56 min Scan# 703
 Delta R.T. -0.00 min
 Lab File: VF061331.D
 Acq: 10 Jan 2019 7:30

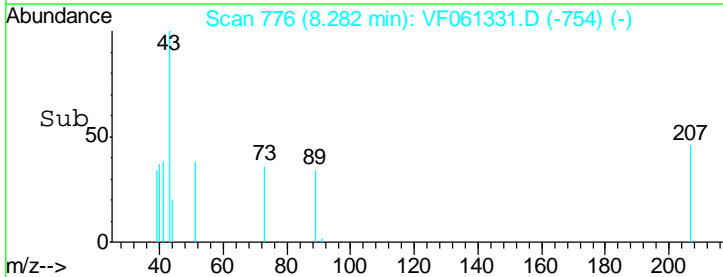
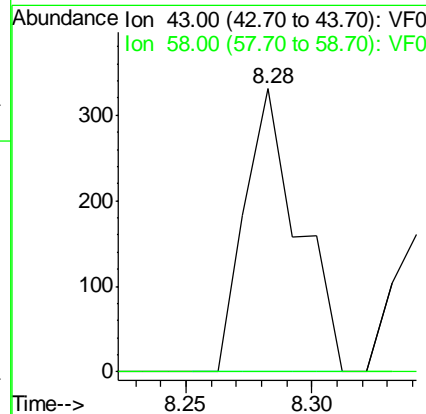
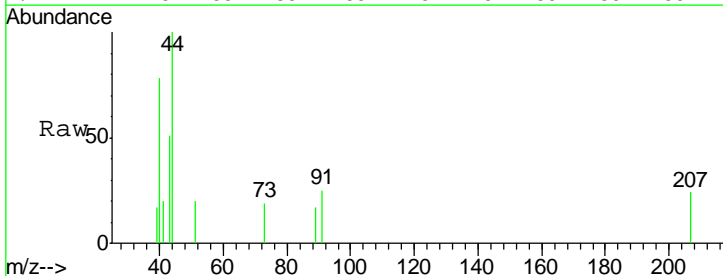
Instrument :
 MSVOA_F
 ClientSampled :
 SOIL-DRUM-A

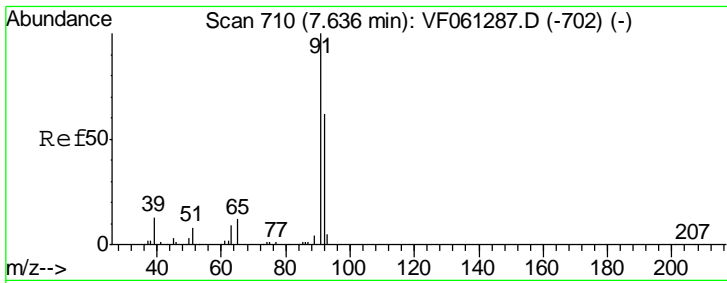
Tgt Ion: 98 Resp: 2595
 Ion Ratio Lower Upper
 98 100
 100 59.0 55.6 83.4



#51
 4-Methyl-2-Pentanone
 Concen: 48.885 ug/l
 RT: 8.28 min Scan# 776
 Delta R.T. 0.01 min
 Lab File: VF061331.D
 Acq: 10 Jan 2019 7:30

Tgt Ion: 43 Resp: 492
 Ion Ratio Lower Upper
 43 100
 58 0.0 29.6 44.4#

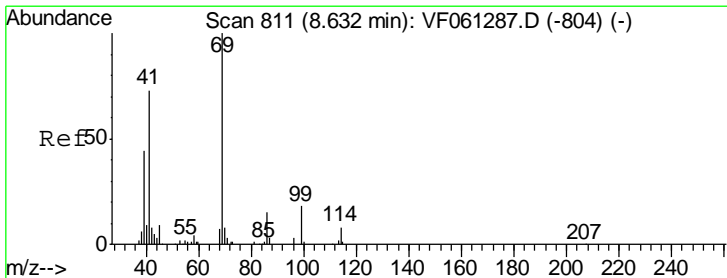
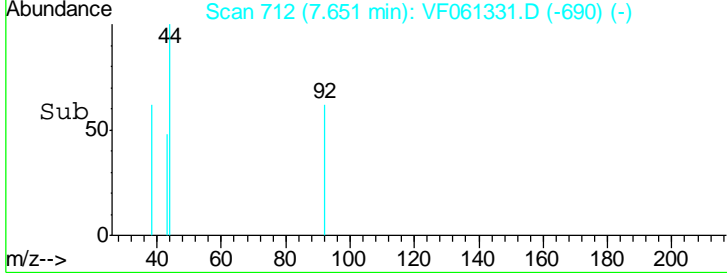
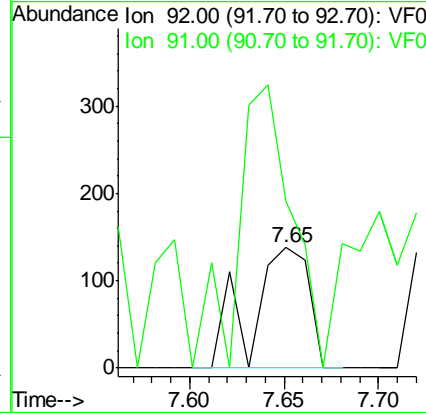
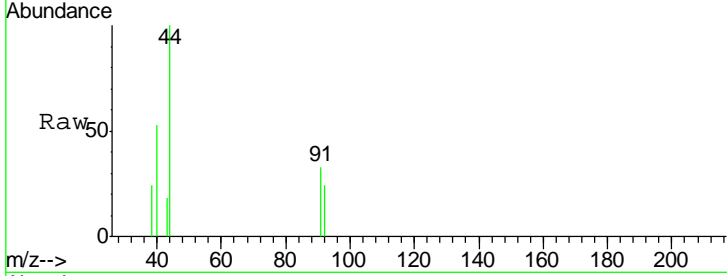




#52
 Toluene
 Concen: 6.944 ug/l
 RT: 7.65 min Scan# 712
 Delta R.T. 0.01 min
 Lab File: VF061331.D
 Acq: 10 Jan 2019 7:30

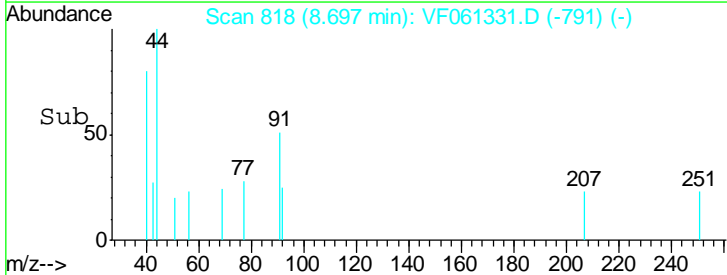
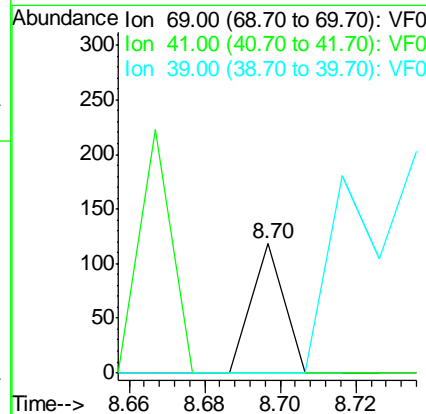
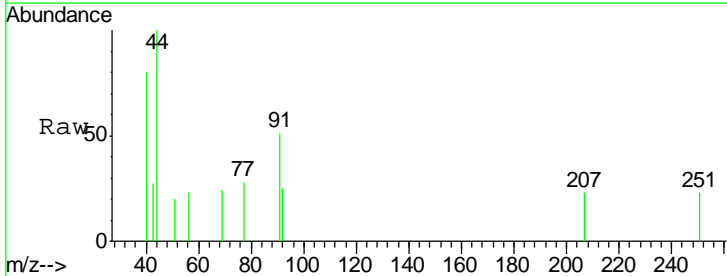
Instrument :
 MSVOA_F
ClientSampled :
 SOIL-DRUM-A

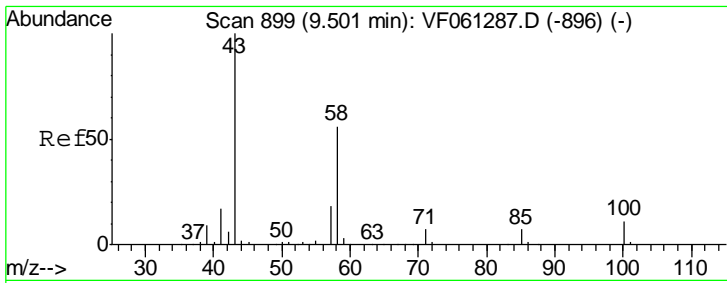
Tgt Ion	Resp	Lower	Upper
92	289		
92	100		
91	138.4	129.2	193.8



#56
 Ethyl methacrylate
 Concen: 5.378 ug/l
 RT: 8.70 min Scan# 818
 Delta R.T. 0.06 min
 Lab File: VF061331.D
 Acq: 10 Jan 2019 7:30

Tgt Ion	Resp	Lower	Upper
69	70		
69	100		
41	0.0	59.0	88.4#
39	0.0	35.3	52.9#

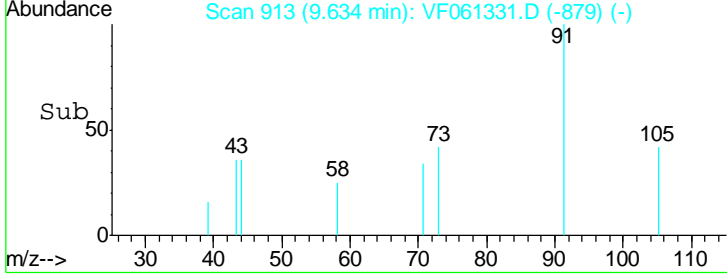
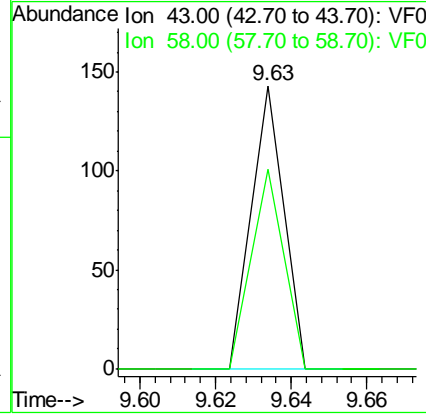
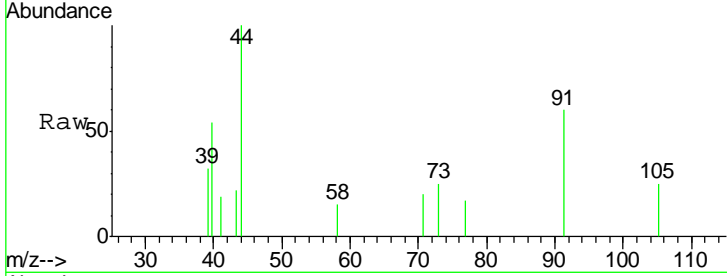




#59
 2-Hexanone
 Concen: 11.921 ug/l
 RT: 9.63 min Scan# 913
 Delta R.T. 0.13 min
 Lab File: VF061331.D
 Acq: 10 Jan 2019 7:30

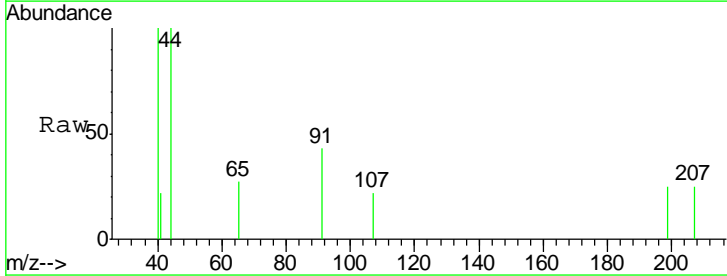
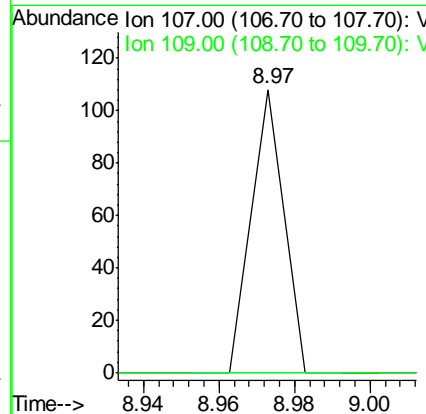
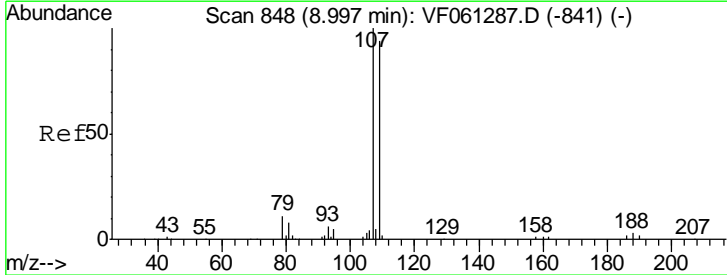
Instrument :
 MSVOA_F
ClientSampled :
 SOIL-DRUM-A

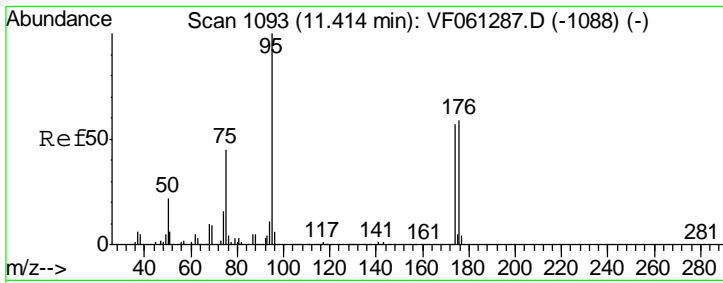
Tgt Ion	Resp	Lower	Upper
43	100		
58	70.6	25.6	76.8



#61
 1,2-Dibromoethane
 Concen: 5.391 ug/l
 RT: 8.97 min Scan# 846
 Delta R.T. -0.02 min
 Lab File: VF061331.D
 Acq: 10 Jan 2019 7:30

Tgt Ion	Resp	Lower	Upper
107	100		
109	0.0	75.1	112.7#

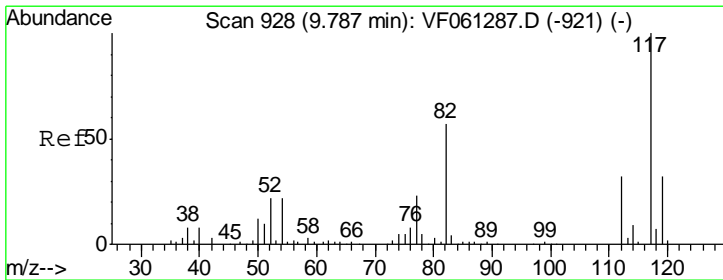
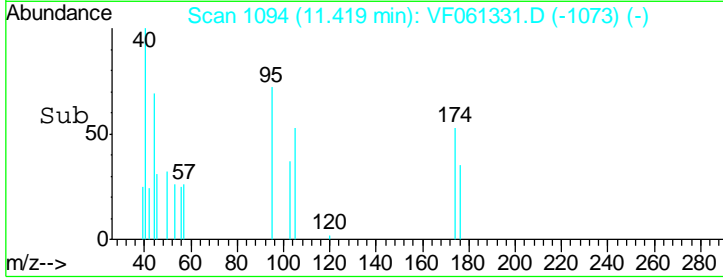
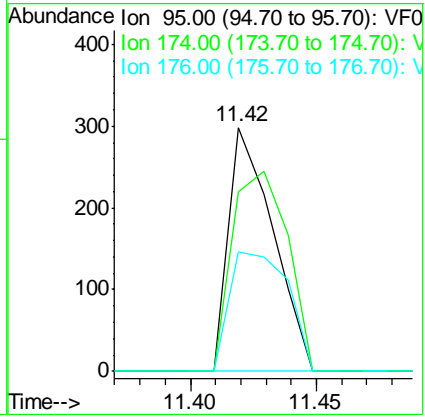
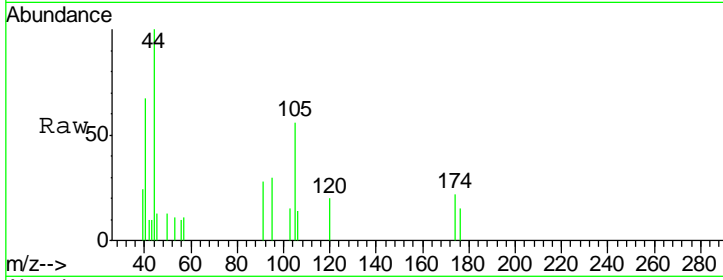




#62
 4-Bromofluorobenzene
 Concen: 15.544 ug/l
 RT: 11.42 min Scan# 1094
 Delta R.T. 0.00 min
 Lab File: VF061331.D
 Acq: 10 Jan 2019 7:30

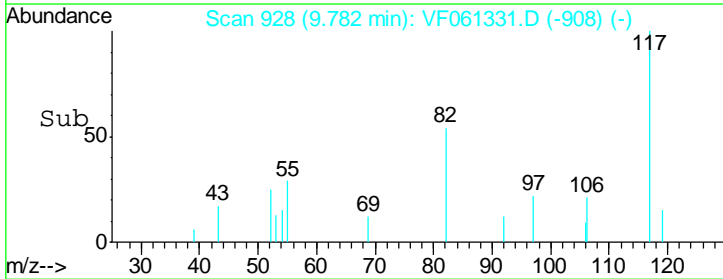
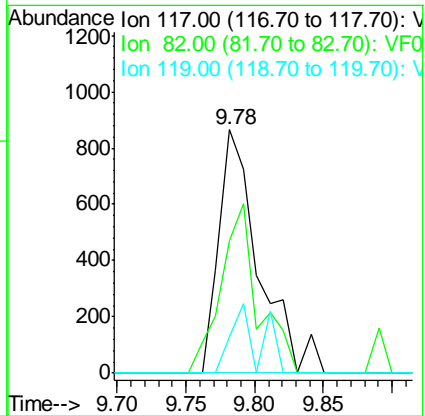
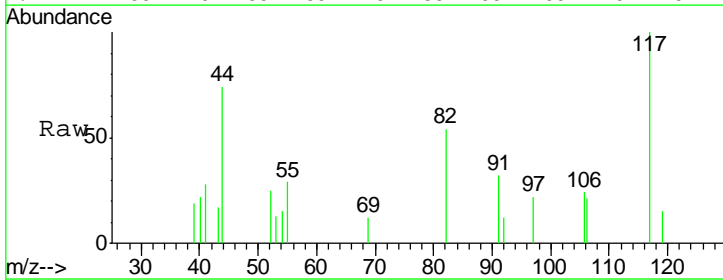
Instrument : MSVOA_F
 ClientSampled : SOIL-DRUM-A

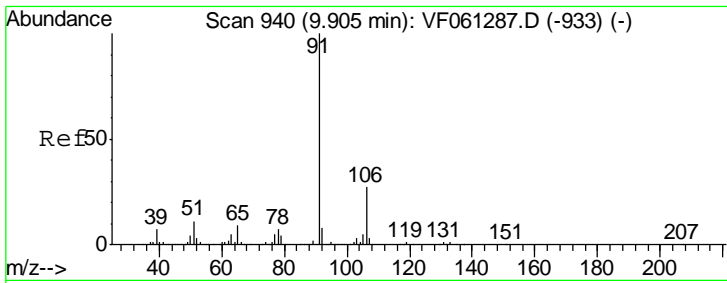
Tgt Ion	Resp	Lower	Upper
95	365		
174	73.8	0.0	114.2
176	49.0	0.0	117.8



#63
 Chlorobenzene-d5
 Concen: 50.000 ug/l
 RT: 9.78 min Scan# 928
 Delta R.T. -0.00 min
 Lab File: VF061331.D
 Acq: 10 Jan 2019 7:30

Tgt Ion	Resp	Lower	Upper
117	1746		
82	54.0	45.3	67.9
119	14.9	25.4	38.0#

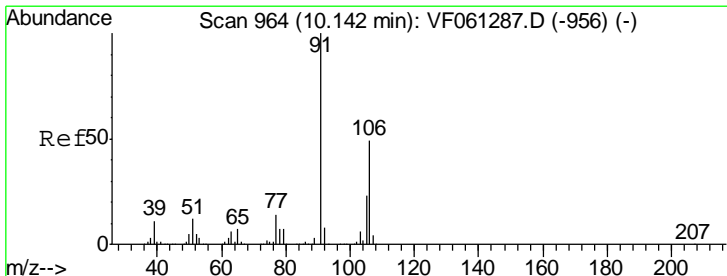
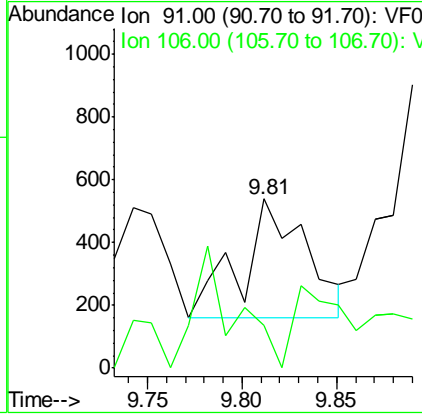
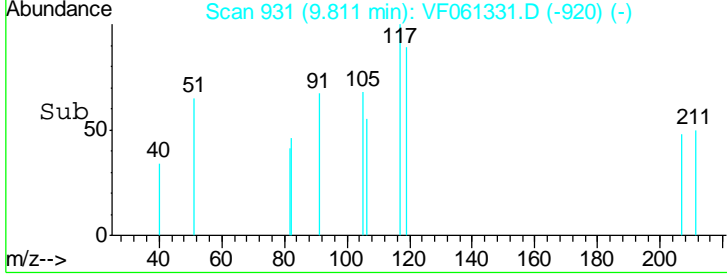
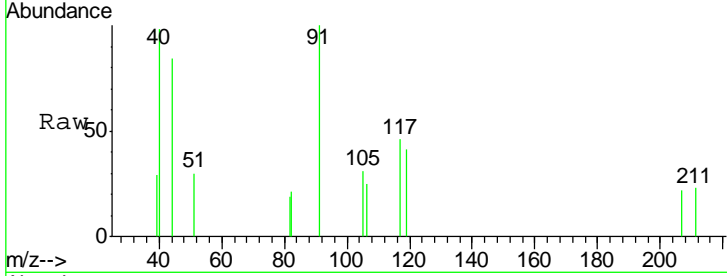




#67
 Ethyl Benzene
 Concen: 13.430 ug/l
 RT: 9.81 min Scan# 931
 Delta R.T. -0.09 min
 Lab File: VF061331.D
 Acq: 10 Jan 2019 7:30

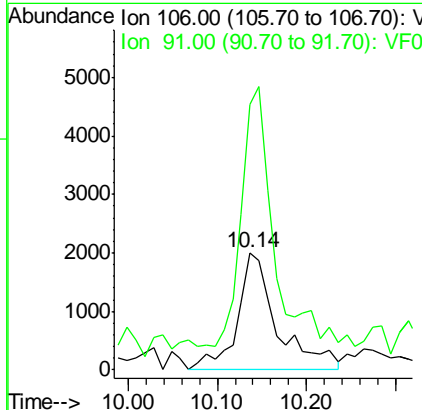
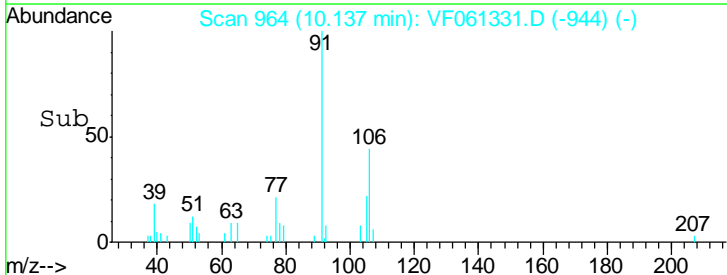
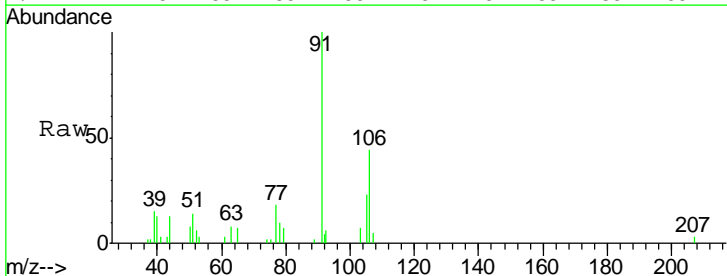
Instrument :
 MSVOA_F
ClientSampled :
 SOIL-DRUM-A

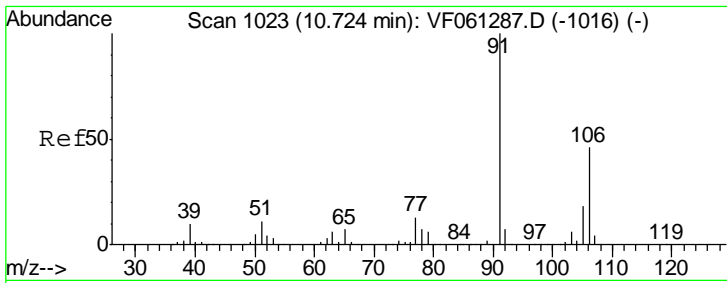
Tgt Ion: 91 Resp: 913
 Ion Ratio Lower Upper
 91 100
 106 25.3 21.4 32.2



#68
 m/p-Xylenes
 Concen: 263.148 ug/l
 RT: 10.14 min Scan# 964
 Delta R.T. -0.00 min
 Lab File: VF061331.D
 Acq: 10 Jan 2019 7:30

Tgt Ion: 106 Resp: 6240
 Ion Ratio Lower Upper
 106 100
 91 226.2 165.0 247.6

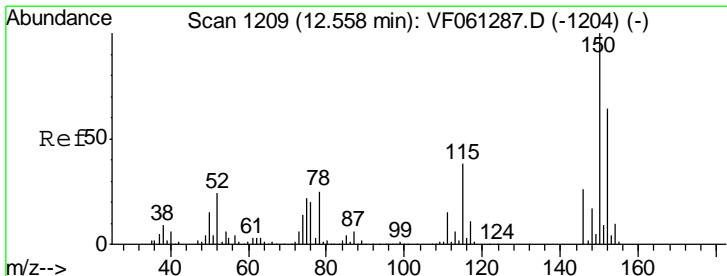
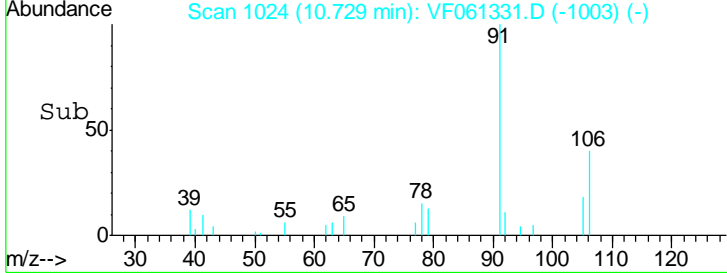
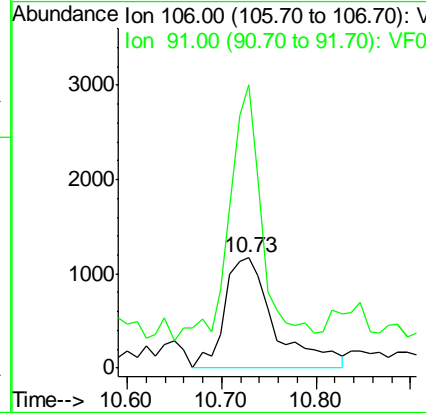
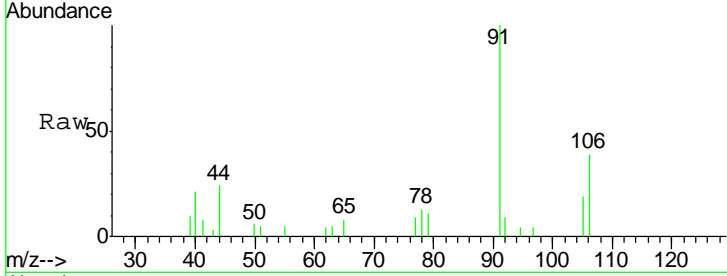




#69
 o-Xylene
 Concen: 162.105 ug/l
 RT: 10.73 min Scan# 1024
 Delta R.T. 0.00 min
 Lab File: VF061331.D
 Acq: 10 Jan 2019 7:30

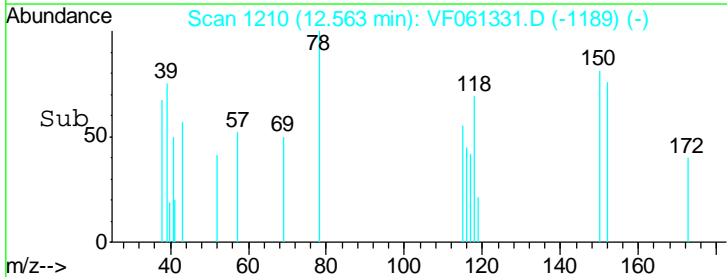
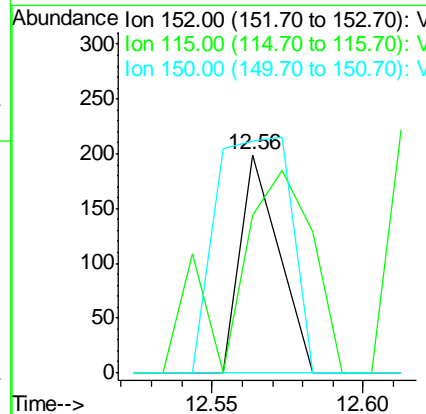
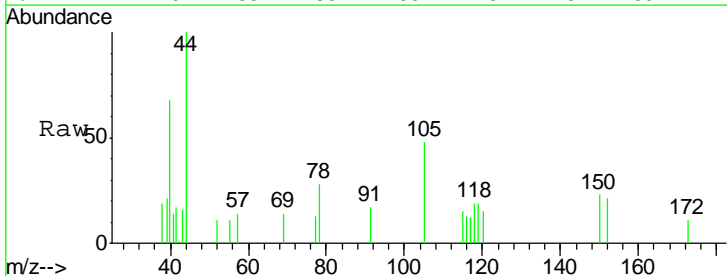
Instrument : MSVOA_F
 ClientSampled : SOIL-DRUM-A

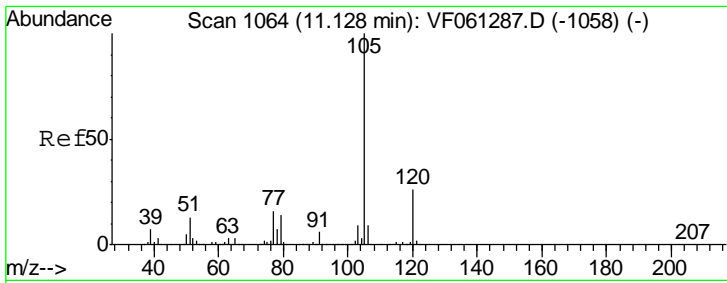
Tgt Ion:106 Resp: 4294
 Ion Ratio Lower Upper
 106 100
 91 256.8 108.1 324.4



#72
 1,4-Dichlorobenzene-d4
 Concen: 50.000 ug/l
 RT: 12.56 min Scan# 1210
 Delta R.T. 0.00 min
 Lab File: VF061331.D
 Acq: 10 Jan 2019 7:30

Tgt Ion:152 Resp: 178
 Ion Ratio Lower Upper
 152 100
 115 72.4 29.6 88.9
 150 106.5 0.0 315.4

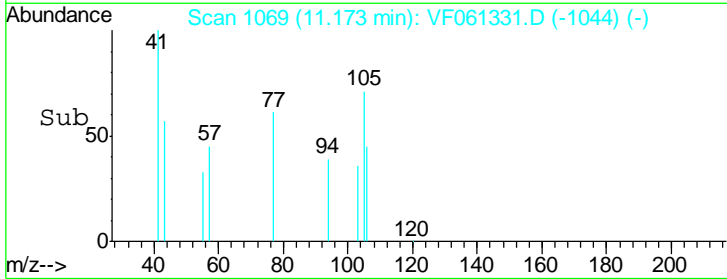
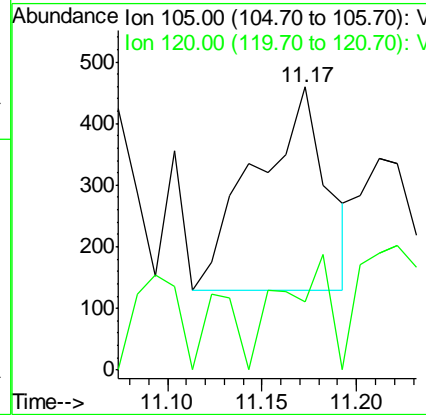
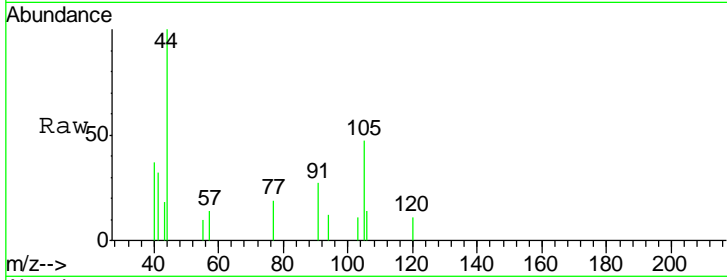




#73
 Isopropylbenzene
 Concen: 54.843 ug/l
 RT: 11.17 min Scan# 1069
 Delta R.T. 0.04 min
 Lab File: VF061331.D
 Acq: 10 Jan 2019 7:30

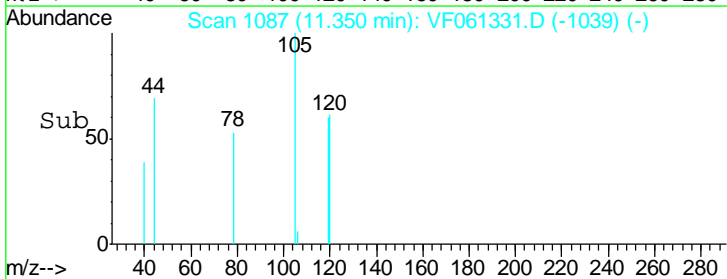
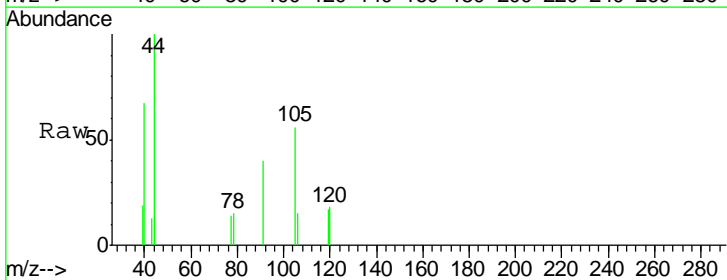
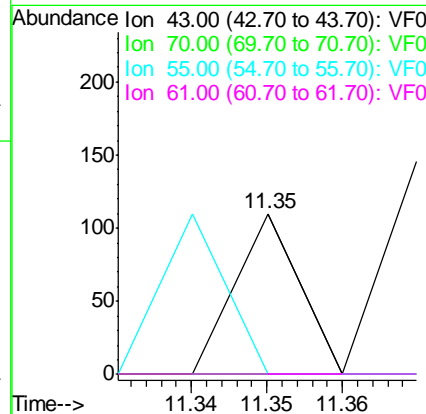
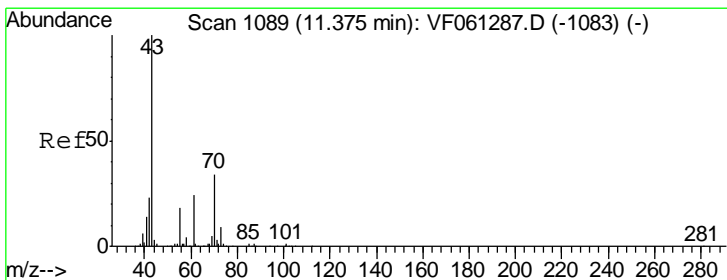
Instrument :
 MSVOA_F
 ClientSampleId :
 SOIL-DRUM-A

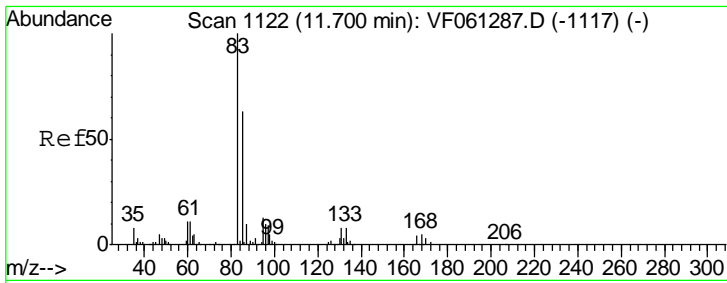
Tgt Ion: 105 Resp: 859
 Ion Ratio Lower Upper
 105 100
 120 24.0 12.9 38.7



#74
 N-amyl acetate
 Concen: 18.256 ug/l
 RT: 11.35 min Scan# 1087
 Delta R.T. -0.02 min
 Lab File: VF061331.D
 Acq: 10 Jan 2019 7:30

Tgt Ion: 43 Resp: 65
 Ion Ratio Lower Upper
 43 100
 70 0.0 27.4 41.0#
 55 0.0 14.7 22.1#
 61 0.0 19.0 28.4#

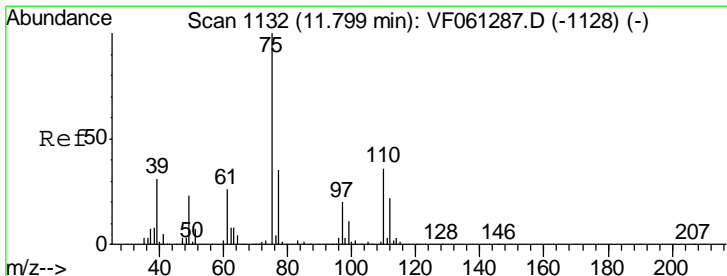
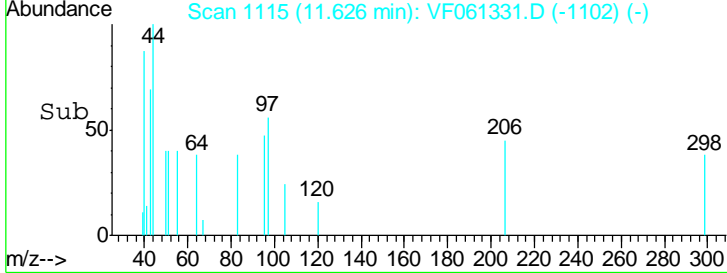
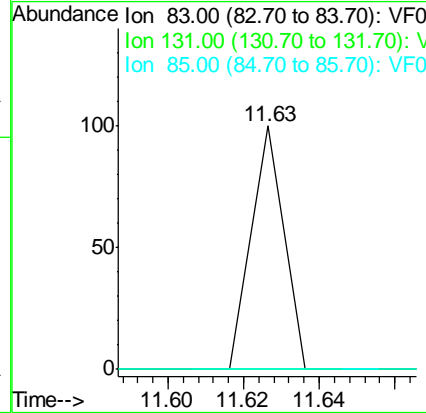
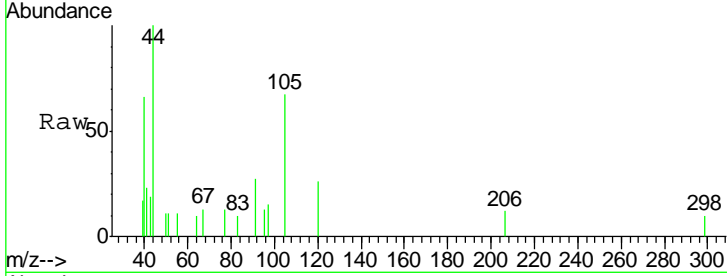




#75
 1,1,2,2-Tetrachloroethane
 Concen: 23.757 ug/l
 RT: 11.63 min Scan# 1115
 Delta R.T. -0.07 min
 Lab File: VF061331.D
 Acq: 10 Jan 2019 7:30

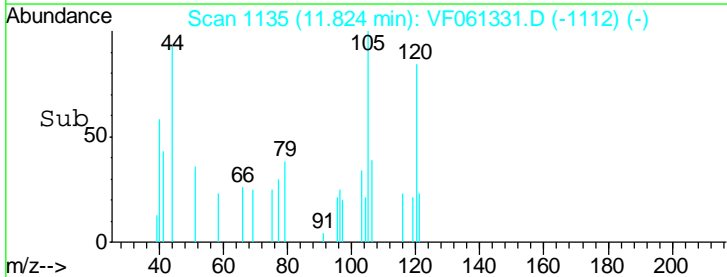
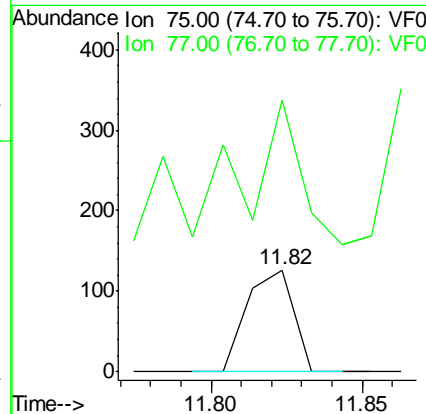
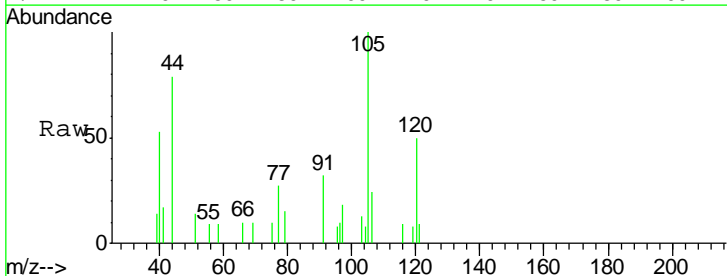
Instrument :
 MSVOA_F
 ClientSampled :
 SOIL-DRUM-A

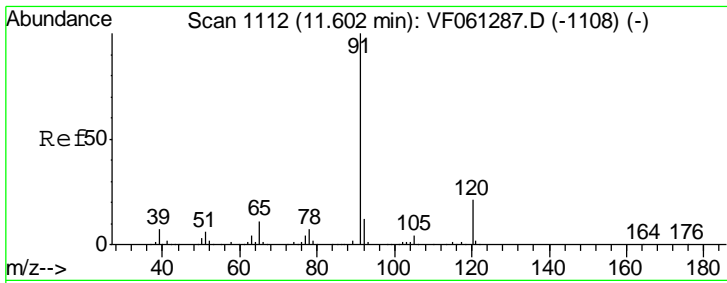
Tgt Ion	Resp	Lower	Upper
83	100		
131	0.0	3.9	11.7#
85	0.0	31.6	94.7#



#76
 1,2,3-Trichloropropane
 Concen: 74.665 ug/l
 RT: 11.82 min Scan# 1135
 Delta R.T. 0.02 min
 Lab File: VF061331.D
 Acq: 10 Jan 2019 7:30

Tgt Ion	Resp	Lower	Upper
75	100		
77	268.3	17.5	52.5#

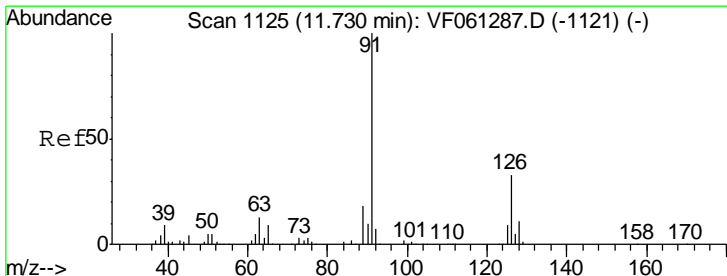
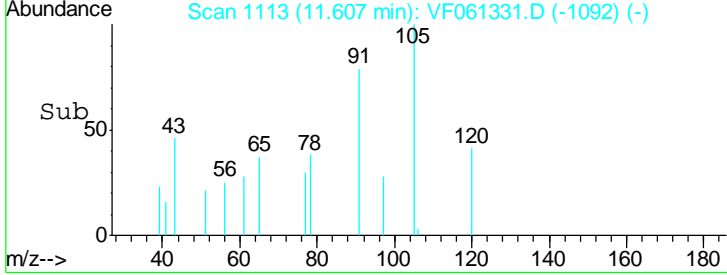
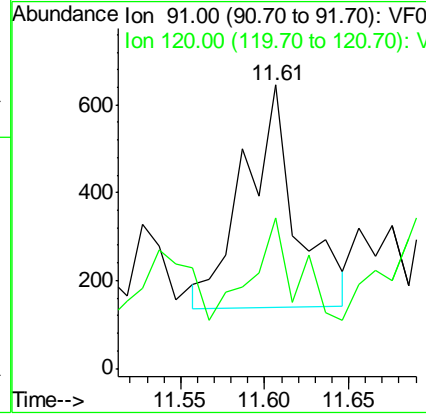
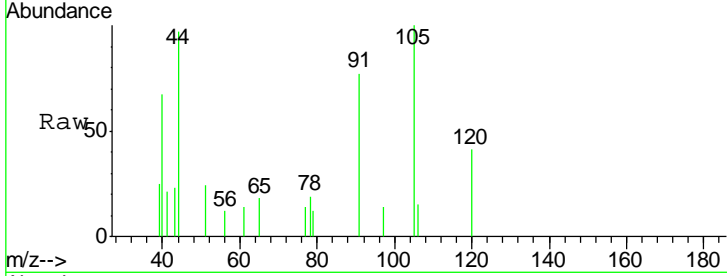




#78
 n-propylbenzene
 Concen: 57.885 ug/l
 RT: 11.61 min Scan# 1113
 Delta R.T. 0.00 min
 Lab File: VF061331.D
 Acq: 10 Jan 2019 7:30

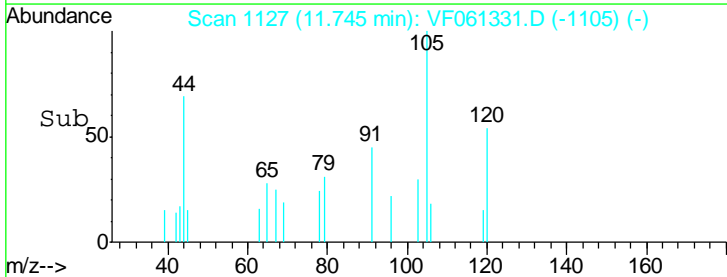
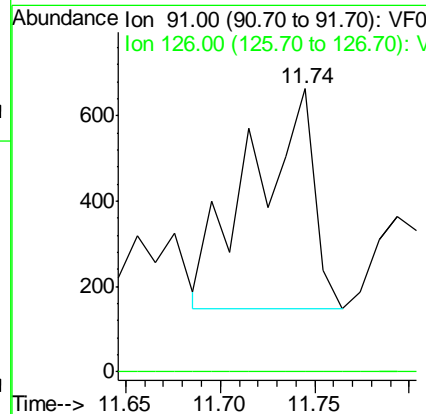
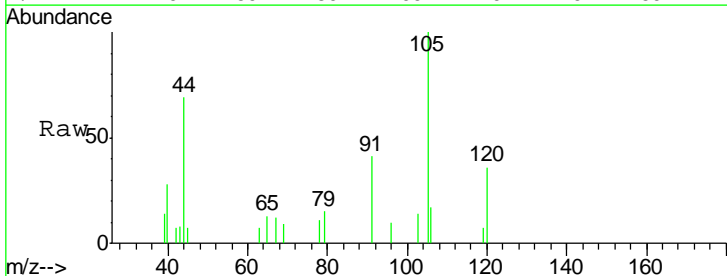
Instrument : MSVOA_F
 ClientSampled : SOIL-DRUM-A

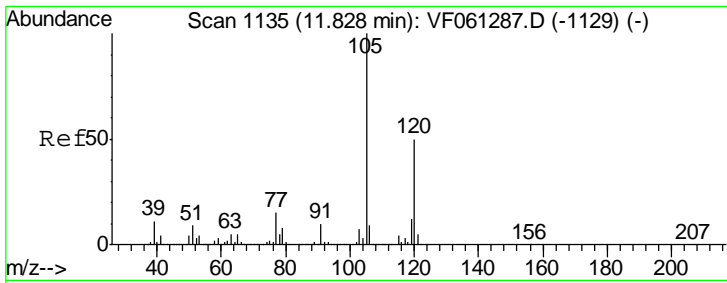
Tgt Ion: 91 Resp: 1081
 Ion Ratio Lower Upper
 91 100
 120 53.0 10.7 32.1#



#79
 2-Chlorotoluene
 Concen: 114.659 ug/l
 RT: 11.74 min Scan# 1127
 Delta R.T. 0.01 min
 Lab File: VF061331.D
 Acq: 10 Jan 2019 7:30

Tgt Ion: 91 Resp: 1193
 Ion Ratio Lower Upper
 91 100
 126 0.0 16.6 49.8#

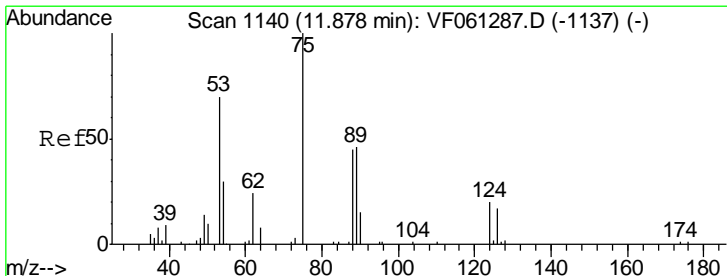
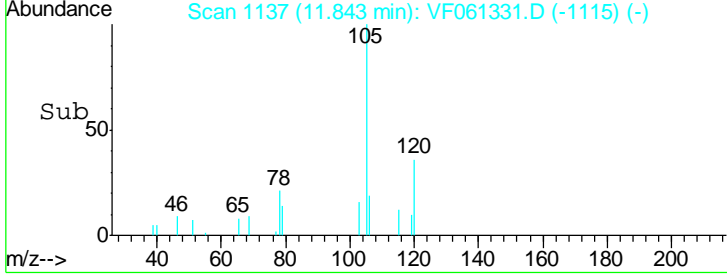
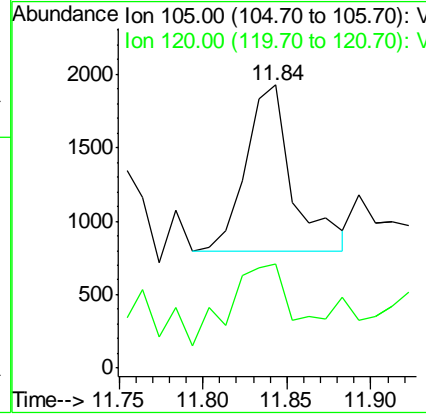
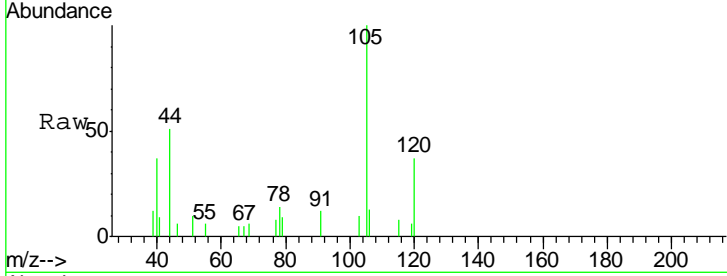




#80
 1,3,5-Trimethylbenzene
 Concen: 174.996 ug/l
 RT: 11.84 min Scan# 1137
 Delta R.T. 0.01 min
 Lab File: VF061331.D
 Acq: 10 Jan 2019 7:30

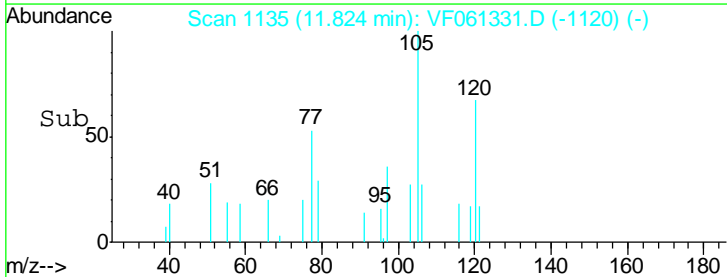
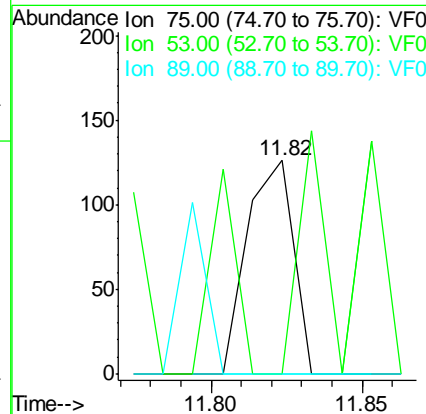
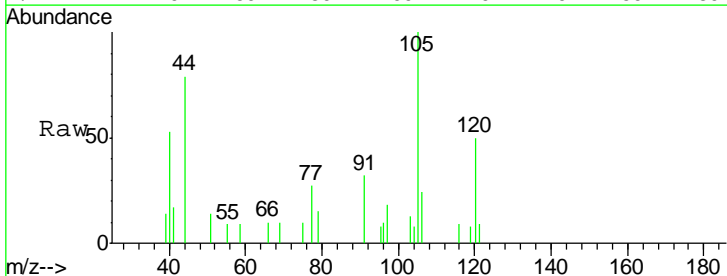
Instrument :
 MSVOA_F
 ClientSampled :
 SOIL-DRUM-A

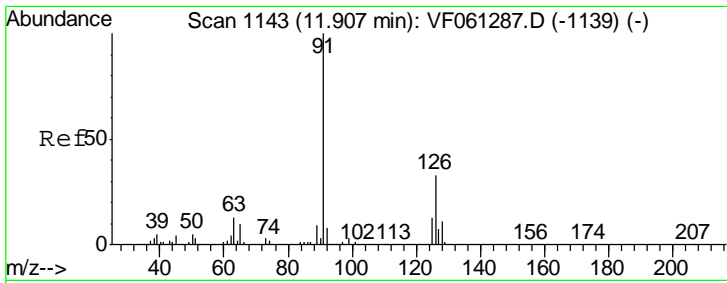
Tgt Ion	Resp	Lower	Upper
105	100		
120	36.9	25.2	75.6



#81
 trans-1,4-Dichloro-2-butene
 Concen: 170.860 ug/l
 RT: 11.82 min Scan# 1135
 Delta R.T. -0.05 min
 Lab File: VF061331.D
 Acq: 10 Jan 2019 7:30

Tgt Ion	Resp	Lower	Upper
75	100		
53	0.0	62.2	93.2#
89	0.0	40.2	60.4#

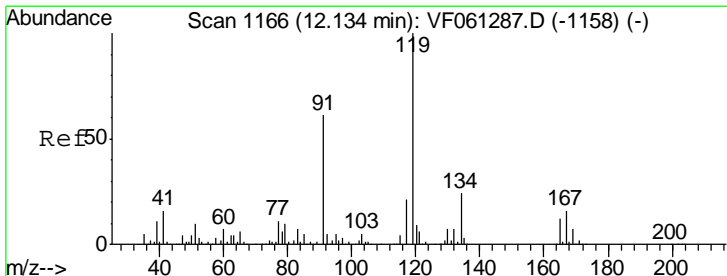
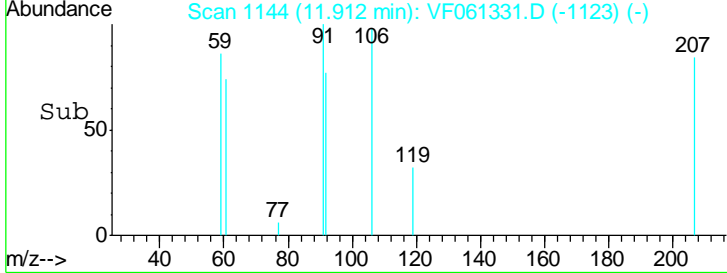
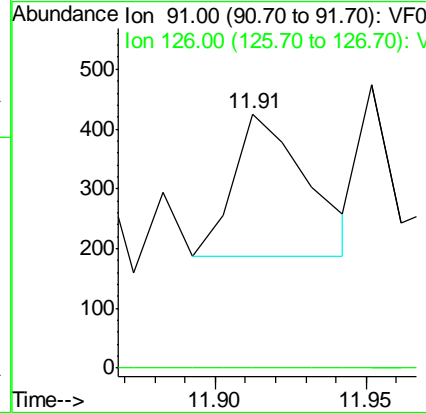
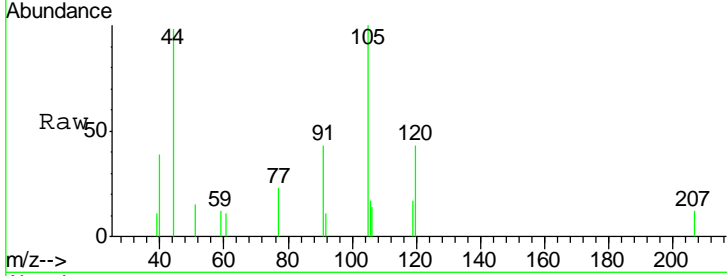




#82
 4-Chlorotoluene
 Concen: 37.928 ug/l
 RT: 11.91 min Scan# 1144
 Delta R.T. 0.00 min
 Lab File: VF061331.D
 Acq: 10 Jan 2019 7:30

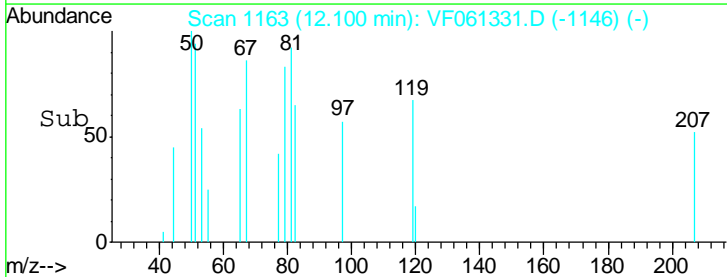
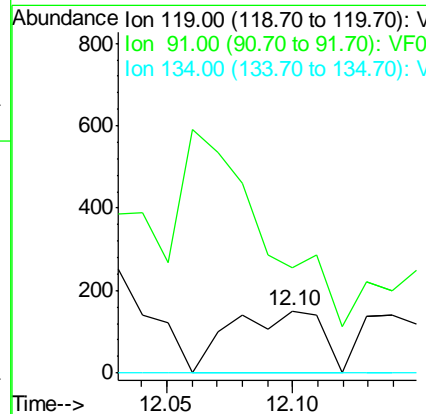
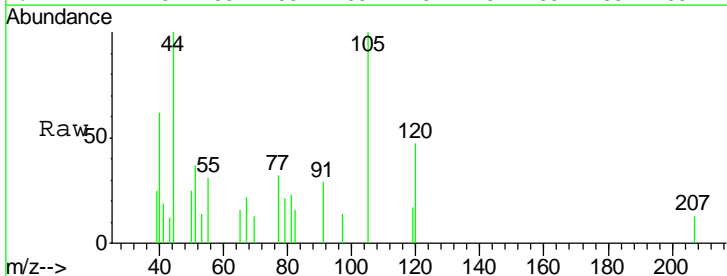
Instrument : MSVOA_F
 ClientSampled : SOIL-DRUM-A

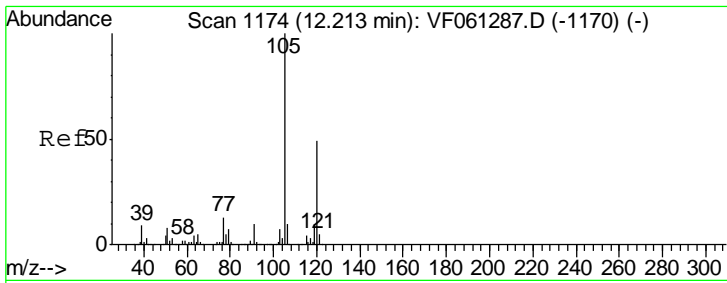
Tgt Ion: 91 Resp: 401
 Ion Ratio Lower Upper
 91 100
 126 0.0 16.4 49.4#



#83
 tert-Butylbenzene
 Concen: 30.442 ug/l
 RT: 12.10 min Scan# 1163
 Delta R.T. -0.03 min
 Lab File: VF061331.D
 Acq: 10 Jan 2019 7:30

Tgt Ion: 119 Resp: 378
 Ion Ratio Lower Upper
 119 100
 91 170.0 30.8 92.4#
 134 0.0 11.9 35.9#

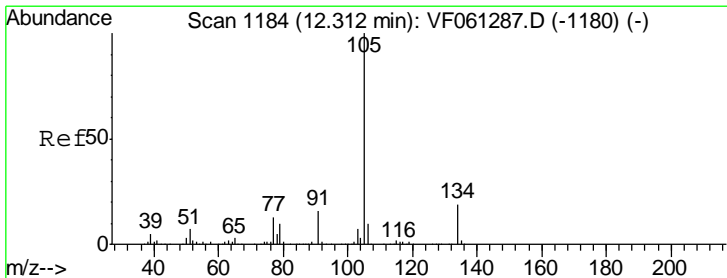
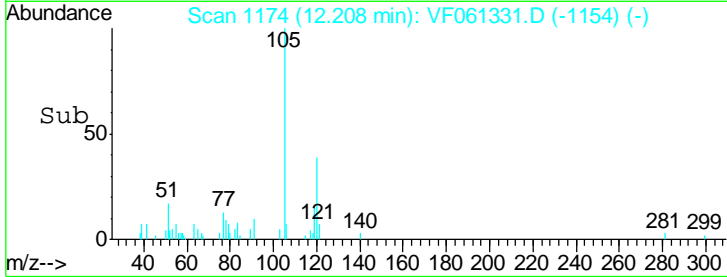
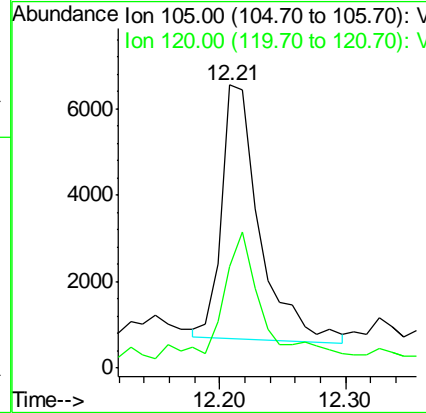
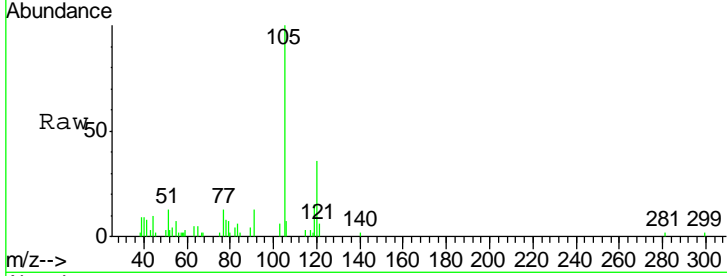




#84
 1,2,4-Trimethylbenzene
 Concen: 991.122 ug/l
 RT: 12.21 min Scan# 1174
 Delta R.T. -0.00 min
 Lab File: VF061331.D
 Acq: 10 Jan 2019 7:30

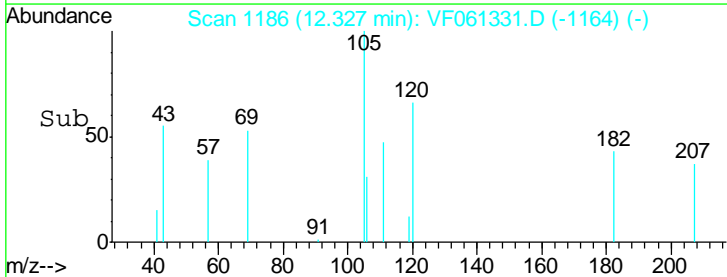
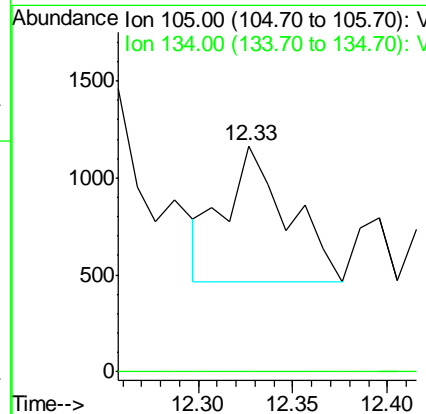
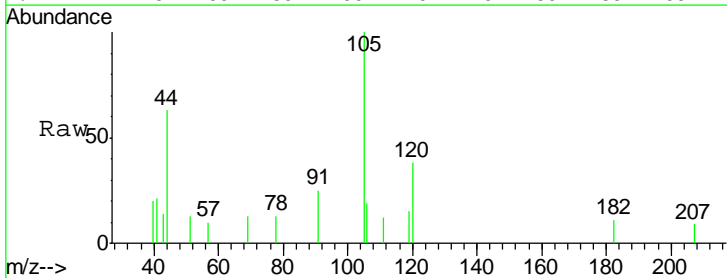
Instrument :
 MSVOA_F
 ClientSampled :
 SOIL-DRUM-A

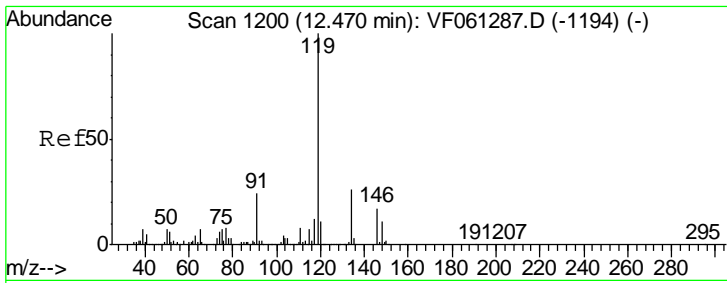
Tgt Ion	Resp	Lower	Upper
105	100		
120	35.8	24.7	74.1



#85
 sec-Butylbenzene
 Concen: 91.458 ug/l
 RT: 12.33 min Scan# 1186
 Delta R.T. 0.01 min
 Lab File: VF061331.D
 Acq: 10 Jan 2019 7:30

Tgt Ion	Resp	Lower	Upper
105	100		
134	0.0	9.7	28.9#

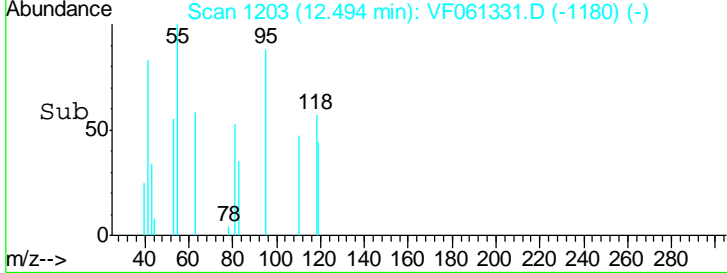
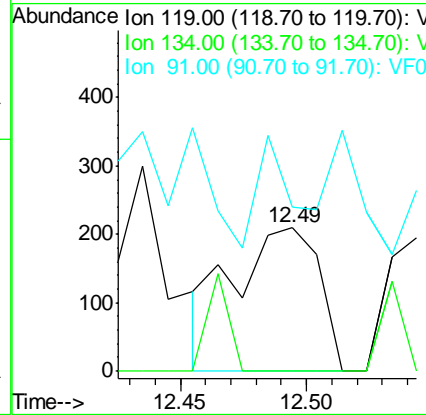
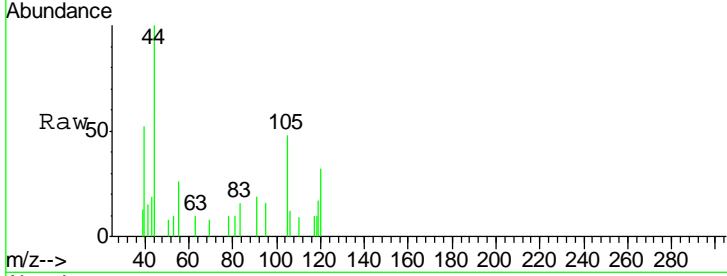




#86
 p-Isopropyltoluene
 Concen: 34.560 ug/l
 RT: 12.49 min Scan# 1203
 Delta R.T. 0.02 min
 Lab File: VF061331.D
 Acq: 10 Jan 2019 7:30

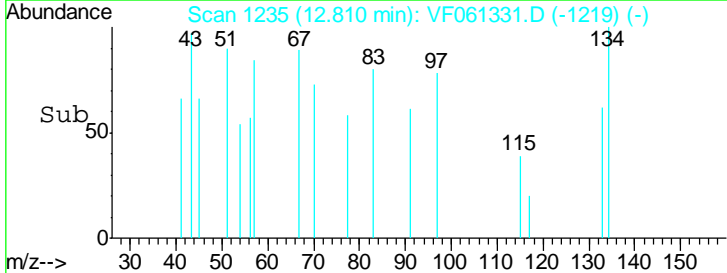
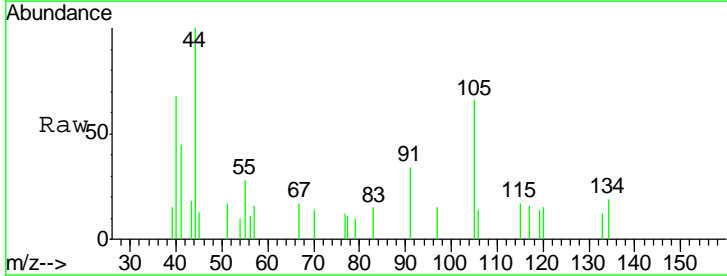
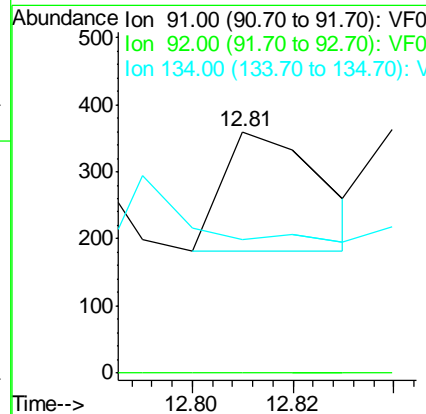
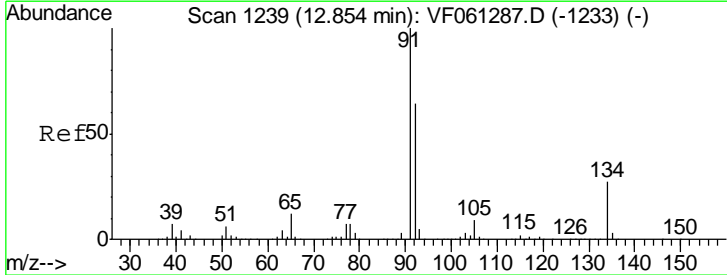
Instrument : MSVOA_F
 ClientSampled : SOIL-DRUM-A

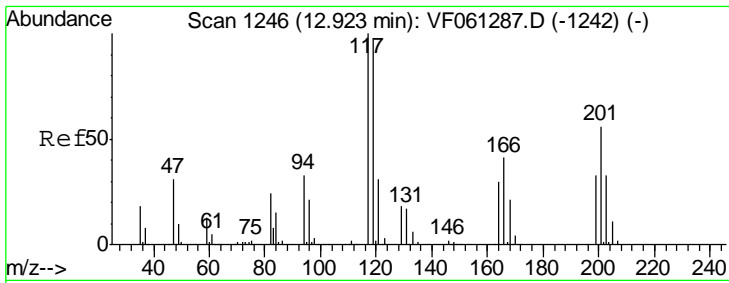
Tgt Ion	Resp	Lower	Upper
119	497		
134	0.0	13.0	39.0#
91	114.4	12.2	36.4#



#89
 n-Butylbenzene
 Concen: 16.378 ug/l
 RT: 12.81 min Scan# 1235
 Delta R.T. -0.04 min
 Lab File: VF061331.D
 Acq: 10 Jan 2019 7:30

Tgt Ion	Resp	Lower	Upper
91	242		
92	0.0	32.1	96.3#
134	55.0	13.4	40.1#

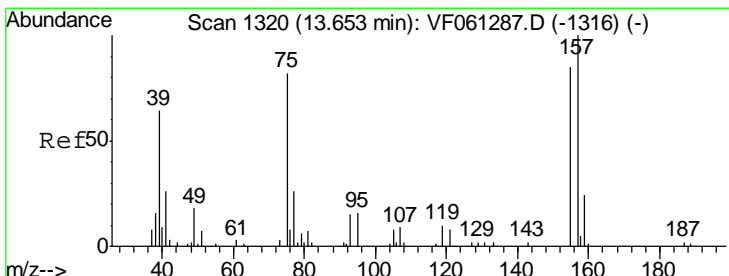
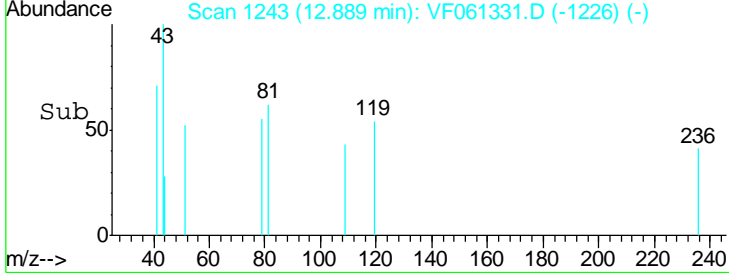
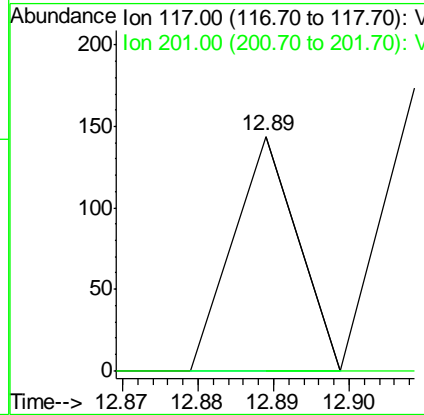
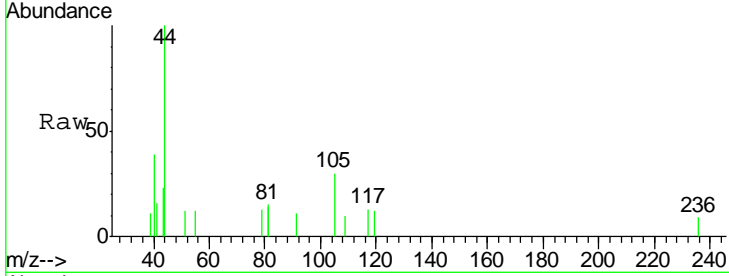




#90
 Hexachloroethane
 Concen: 25.840 ug/l
 RT: 12.89 min Scan# 1243
 Delta R.T. -0.03 min
 Lab File: VF061331.D
 Acq: 10 Jan 2019 7:30

Instrument : MSVOA_F
 ClientSampled : SOIL-DRUM-A

Tgt Ion	Resp	Lower	Upper
117	100		
201	0.0	27.9	83.7#



#92
 1,2-Dibromo-3-Chloropropane
 Concen: 145.372 ug/l
 RT: 13.52 min Scan# 1307
 Delta R.T. -0.13 min
 Lab File: VF061331.D
 Acq: 10 Jan 2019 7:30

Tgt Ion	Resp	Lower	Upper
75	100		
155	0.0	51.3	154.0#
157	0.0	60.7	182.0#

