

Data Path : Z:\VOASRV\HPCHEM1\MSVOA F\DATA\VF022619\
 Data File : VF061749.D
 Acq On : 26 Feb 2019 18:58
 Operator : VA/AP
 Sample : K1627-03
 Misc : 5.41µ/5mL/MSVOA-F/SOIL
 ALS Vial : 11 Sample Multiplier: 1

Instrument :
 MSVOA_F
 ClientSampleId :
 SB-02-(2-5)

Quant Time: Feb 27 04:08:42 2019
 Quant Method : Z:\VOASRV\HPCHEM1\MSVOA_F\METHODS\82F021319S.M
 Quant Title : SW846 8260
 QLast Update : Thu Feb 14 03:27:56 2019
 Response via : Initial Calibration

Internal Standards	R.T.	QIon	Response	Conc	Units	Dev(Min)
1) Pentafluorobenzene	4.84	168	342752	50.00	ug/l	-0.05
34) 1,4-Difluorobenzene	5.57	114	526631	50.00	ug/l	-0.04
63) Chlorobenzene-d5	9.75	117	404343	50.00	ug/l	-0.04
72) 1,4-Dichlorobenzene-d4	12.53	152	193704	50.00	ug/l	-0.03

System Monitoring Compounds

33) 1,2-Dichloroethane-d4	4.82	65	82897	32.98	ug/l	-0.04
Spiked Amount				50.000		
			Recovery	=		65.96%
35) Dibromofluoromethane	4.09	113	135443	34.63	ug/l	-0.03
Spiked Amount				50.000		
			Recovery	=		69.26%
50) Toluene-d8	7.53	98	322287	28.67	ug/l	-0.03
Spiked Amount				50.000		
			Recovery	=		57.34%
62) 4-Bromofluorobenzene	11.39	95	124695	27.41	ug/l	-0.03
Spiked Amount				50.000		
			Recovery	=		54.82%

Target Compounds

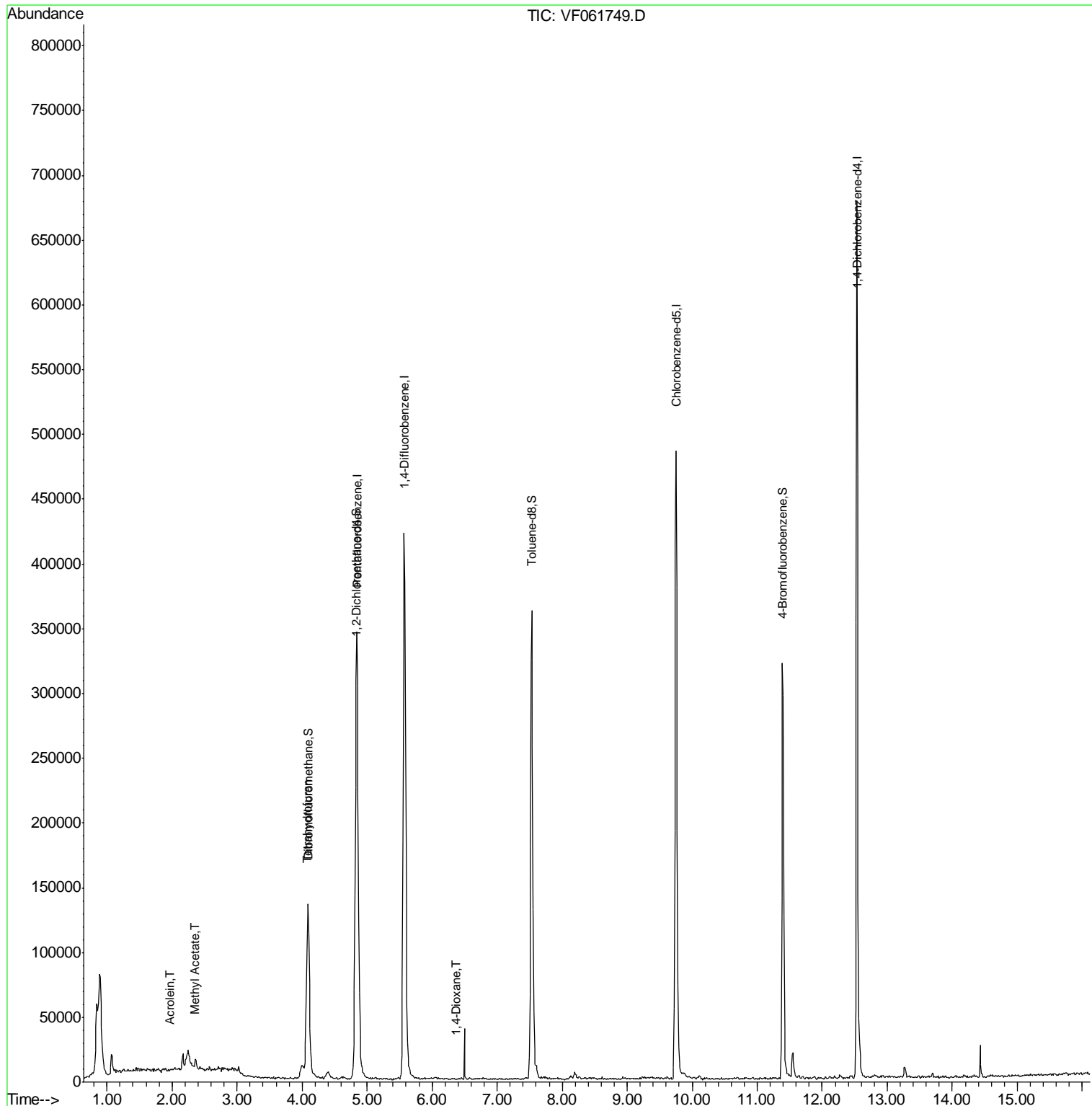
					Qvalue	
13) Acrolein	1.97	56	395	2.161	ug/l	# 1
18) Methyl Acetate	2.36	43	4034	3.321	ug/l	# 59
20) Methylene Chloride	2.17	84	5981	Below Cal		94
29) Tetrahydrofuran	4.07	42	1619	3.024	ug/l	# 56
49) 1,4-Dioxane	6.36	88	65	4.006	ug/l	# 10

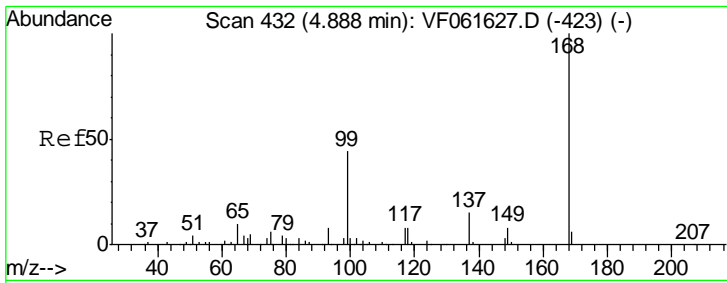
(#) = qualifier out of range (m) = manual integration (+) = signals summed

Data Path : Z:\VOASRV\HPCHEM1\MSVOA F\DATA\VF022619\
 Data File : VF061749.D
 Acq On : 26 Feb 2019 18:58
 Operator : VA/AP
 Sample : K1627-03
 Misc : 5.41µ/5mL/MSVOA-F/SOIL
 ALS Vial : 11 Sample Multiplier: 1

Instrument :
 MSVOA_F
 Client Sampled :
 SB-02-(2-5)

Quant Time: Feb 27 04:08:42 2019
 Quant Method : Z:\VOASRV\HPCHEM1\MSVOA_F\METHODS\82F021319S.M
 Quant Title : SW846 8260
 QLast Update : Thu Feb 14 03:27:56 2019
 Response via : Initial Calibration

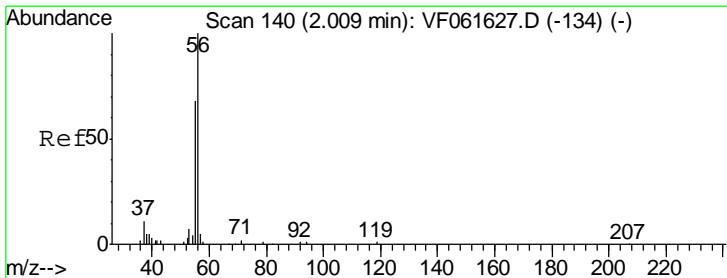
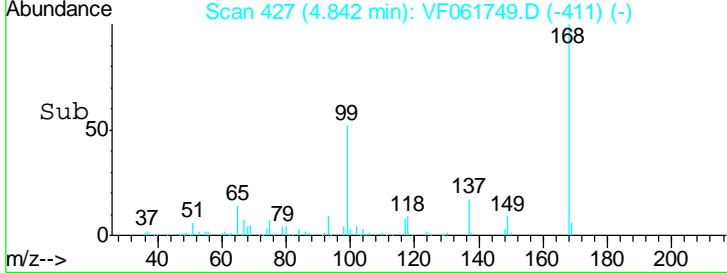
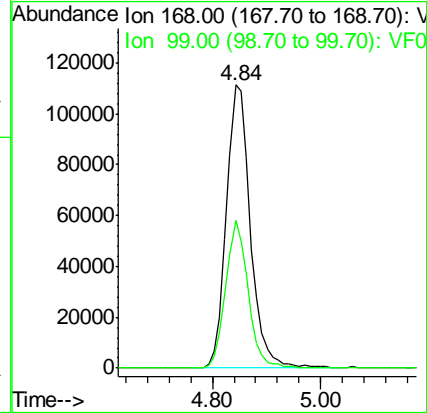
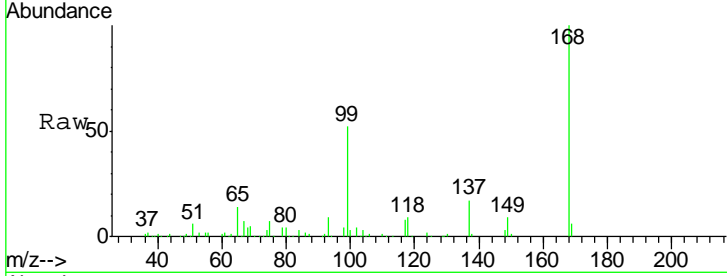




#1
 Pentafluorobenzene
 Concen: 50.000 ug/l
 RT: 4.84 min Scan# 427
 Delta R.T. -0.05 min
 Lab File: VF061749.D
 Acq: 26 Feb 2019 18:58

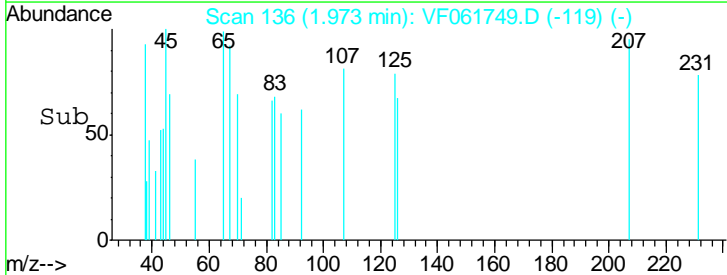
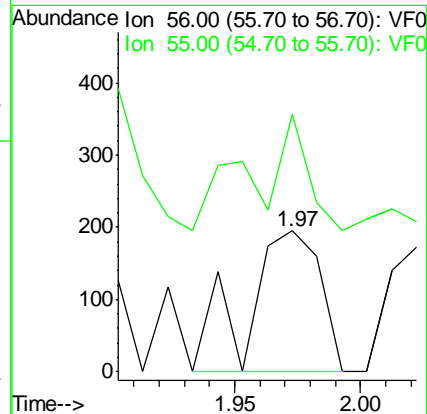
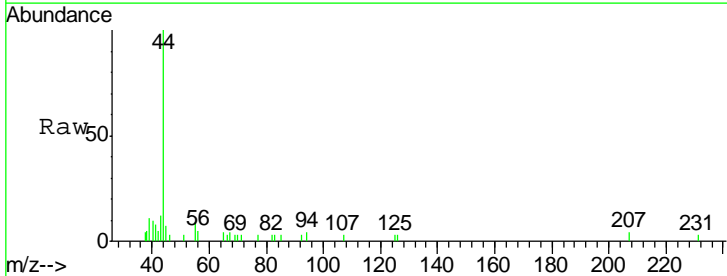
Instrument :
 MSVOA_F
ClientSampled :
 SB-02-(2-5)

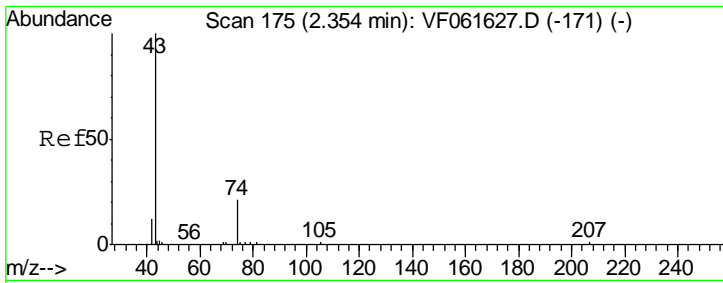
Tgt Ion	Resp	Lower	Upper
168	100		
99	52.1	34.9	52.3



#13
 Acrolein
 Concen: 2.161 ug/l
 RT: 1.97 min Scan# 136
 Delta R.T. -0.04 min
 Lab File: VF061749.D
 Acq: 26 Feb 2019 18:58

Tgt Ion	Resp	Lower	Upper
56	100		
55	182.6	55.0	82.6#

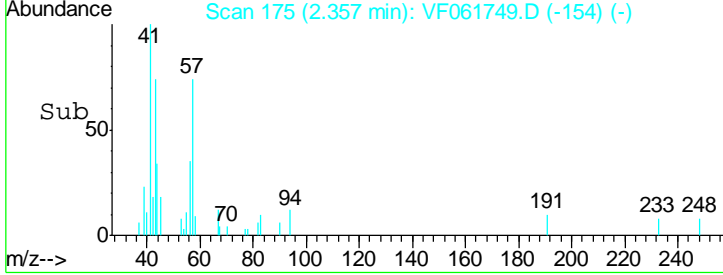
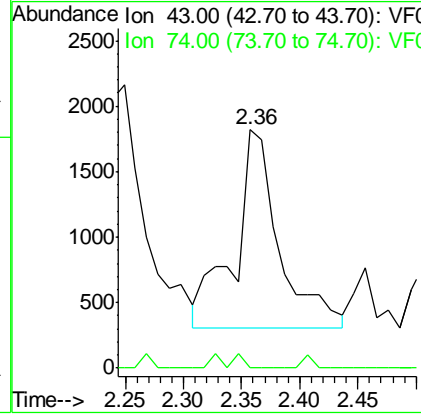
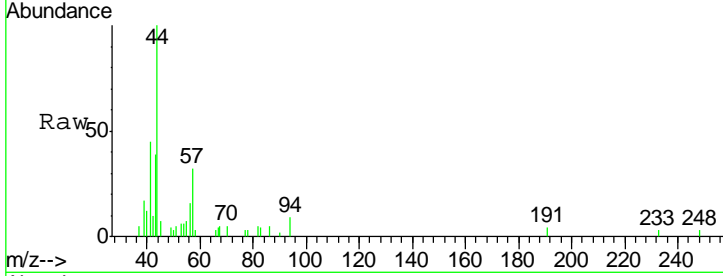




#18
 Methyl Acetate
 Concen: 3.321 ug/l
 RT: 2.36 min Scan# 175
 Delta R.T. 0.00 min
 Lab File: VF061749.D
 Acq: 26 Feb 2019 18:58

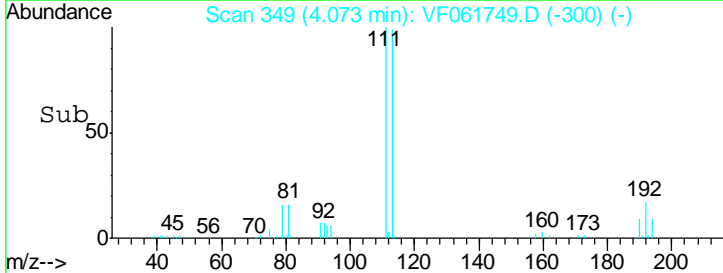
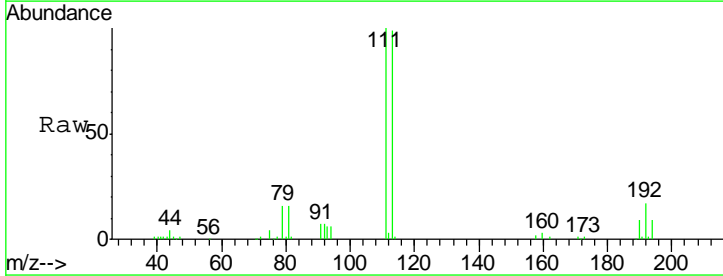
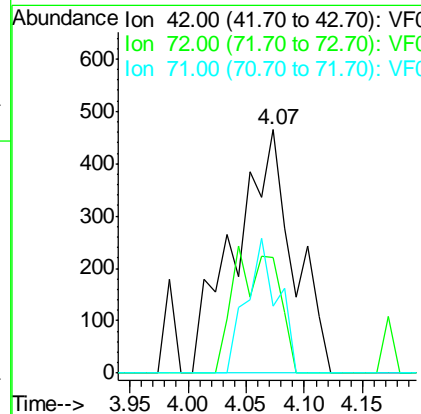
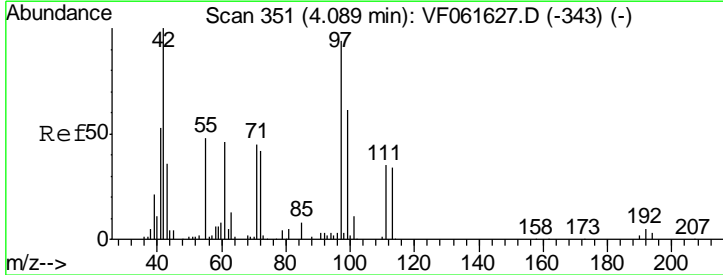
Instrument :
 MSVOA_F
ClientSampled :
 SB-02-(2-5)

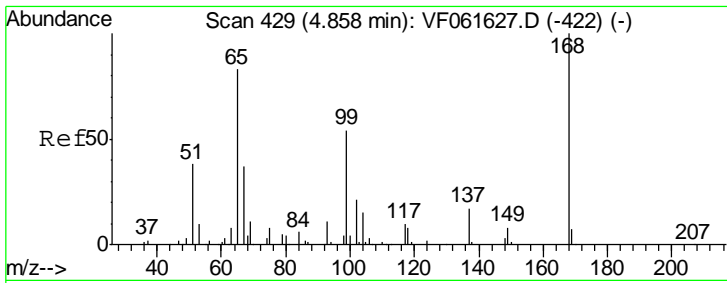
Tgt Ion	Ratio	Lower	Upper
43	100		
74	0.0	14.6	21.8#



#29
 Tetrahydrofuran
 Concen: 3.024 ug/l
 RT: 4.07 min Scan# 349
 Delta R.T. -0.02 min
 Lab File: VF061749.D
 Acq: 26 Feb 2019 18:58

Tgt Ion	Ratio	Lower	Upper
42	100		
72	0.0	35.2	52.8#
71	29.8	32.9	49.3#

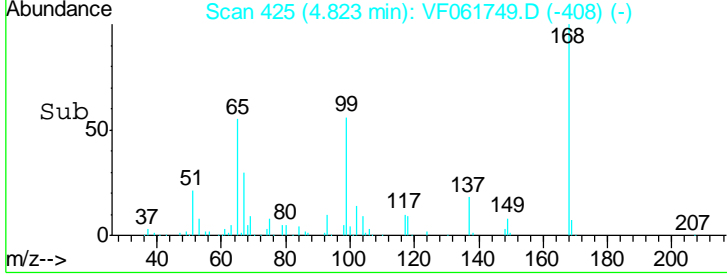
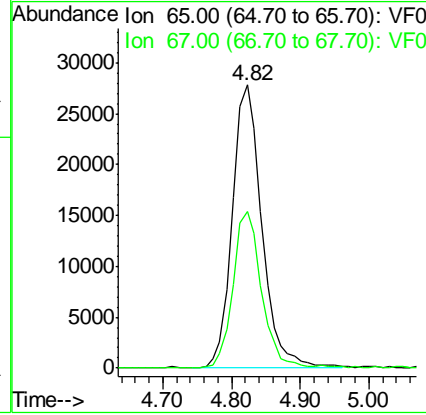
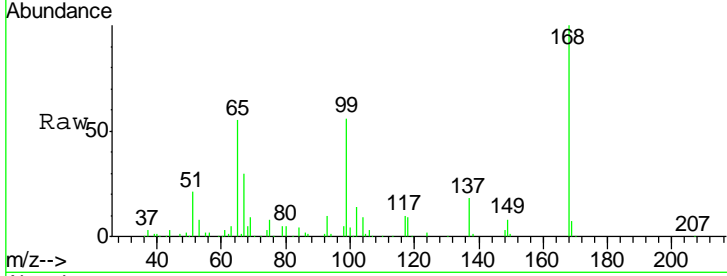




#33
 1,2-Dichloroethane-d4
 Concen: 32.981 ug/l
 RT: 4.82 min Scan# 425
 Delta R.T. -0.04 min
 Lab File: VF061749.D
 Acq: 26 Feb 2019 18:58

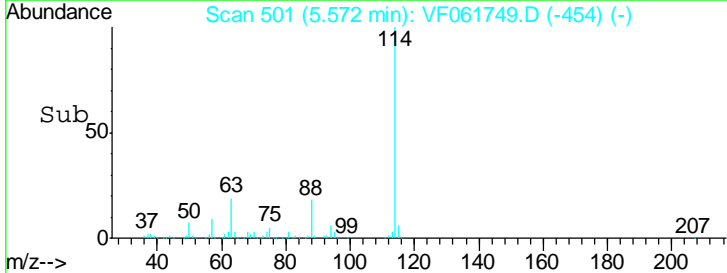
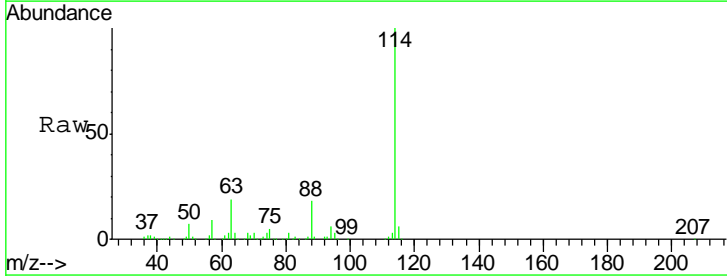
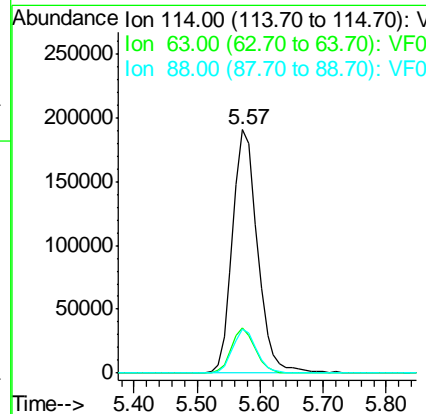
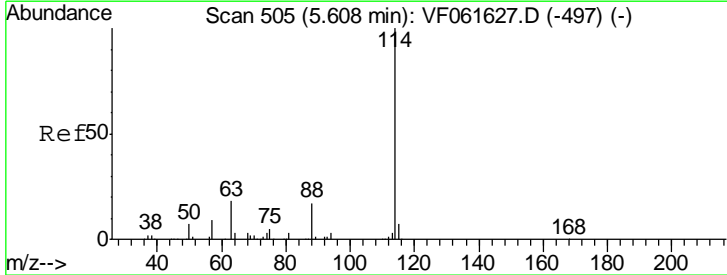
Instrument :
 MSVOA_F
 ClientSampled :
 SB-02-(2-5)

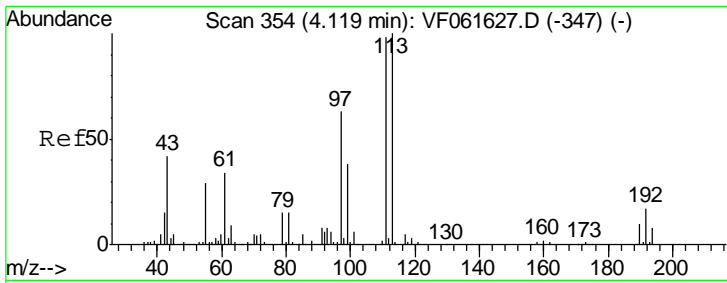
Tgt Ion: 65 Resp: 82897
 Ion Ratio Lower Upper
 65 100
 67 55.2 0.0 104.0



#34
 1,4-Difluorobenzene
 Concen: 50.000 ug/l
 RT: 5.57 min Scan# 501
 Delta R.T. -0.04 min
 Lab File: VF061749.D
 Acq: 26 Feb 2019 18:58

Tgt Ion: 114 Resp: 526631
 Ion Ratio Lower Upper
 114 100
 63 18.7 0.0 36.6
 88 17.8 0.0 34.4

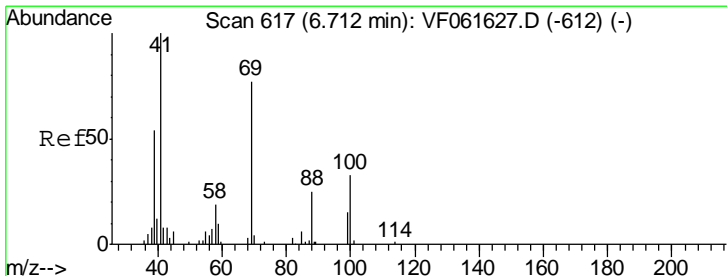
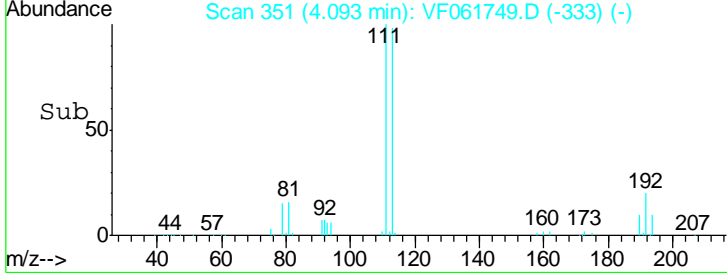
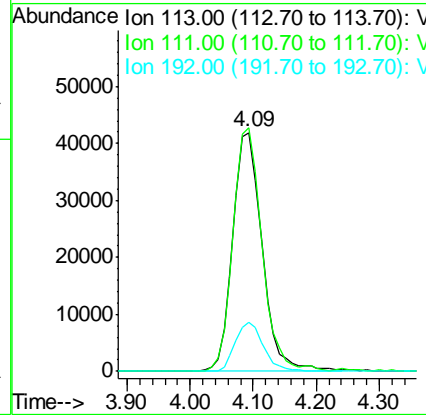
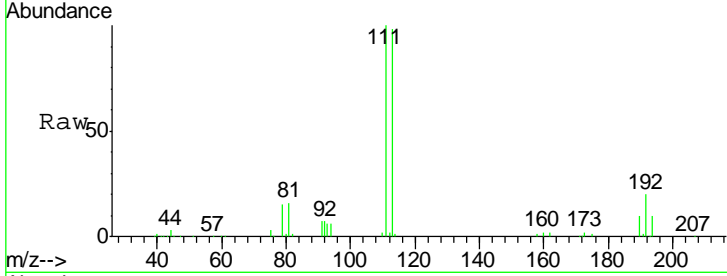




#35
 Dibromofluoromethane
 Concen: 34.633 ug/l
 RT: 4.09 min Scan# 351
 Delta R.T. -0.03 min
 Lab File: VF061749.D
 Acq: 26 Feb 2019 18:58

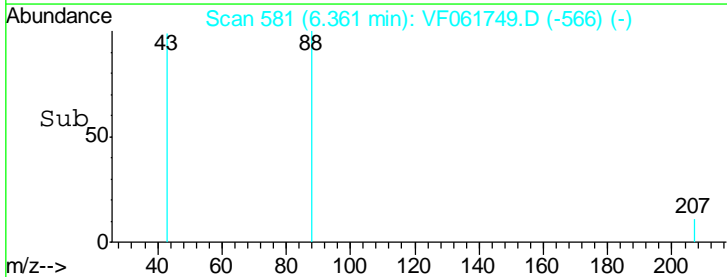
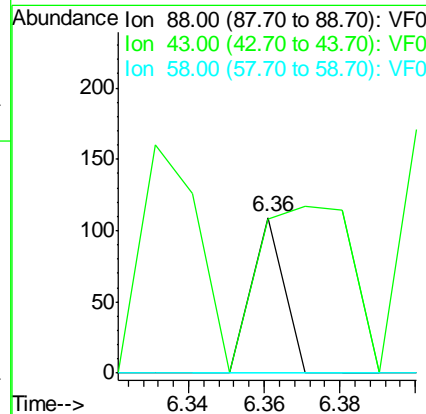
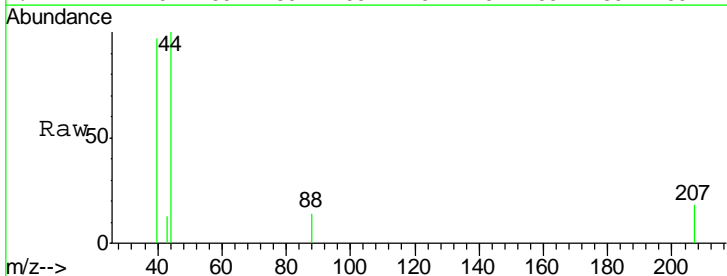
Instrument :
 MSVOA_F
 ClientSampled :
 SB-02-(2-5)

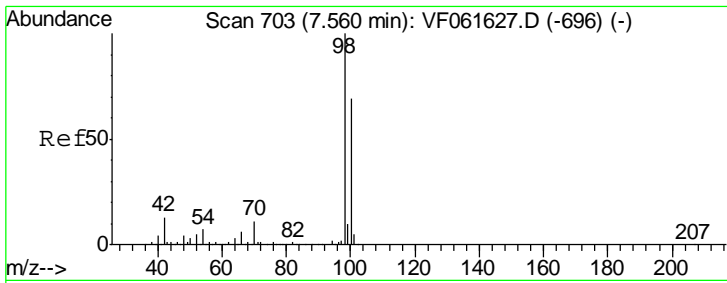
Tgt Ion	Resp	Lower	Upper
113	100		
111	102.0	78.8	118.2
192	20.4	13.4	20.0#



#49
 1,4-Dioxane
 Concen: 4.006 ug/l
 RT: 6.36 min Scan# 581
 Delta R.T. -0.35 min
 Lab File: VF061749.D
 Acq: 26 Feb 2019 18:58

Tgt Ion	Resp	Lower	Upper
88	100		
43	99.1	32.3	48.5#
58	0.0	59.4	89.2#

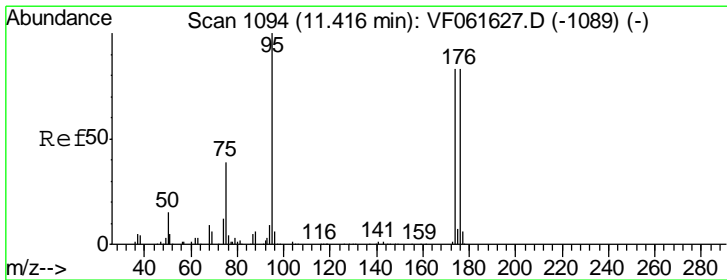
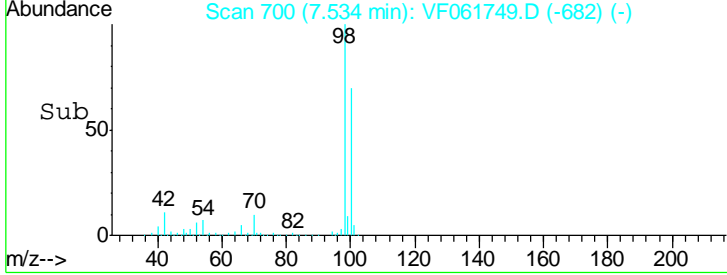
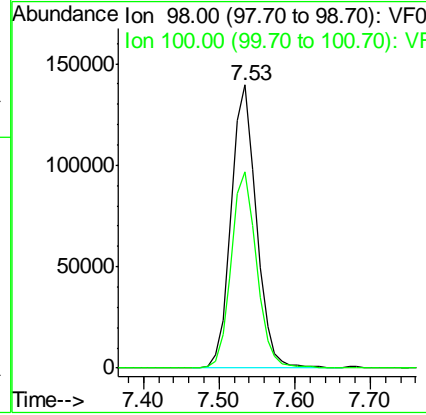
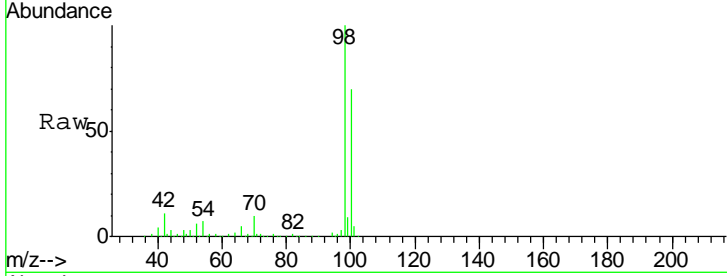




#50
 Toluene-d8
 Concen: 28.667 ug/l
 RT: 7.53 min Scan# 700
 Delta R.T. -0.03 min
 Lab File: VF061749.D
 Acq: 26 Feb 2019 18:58

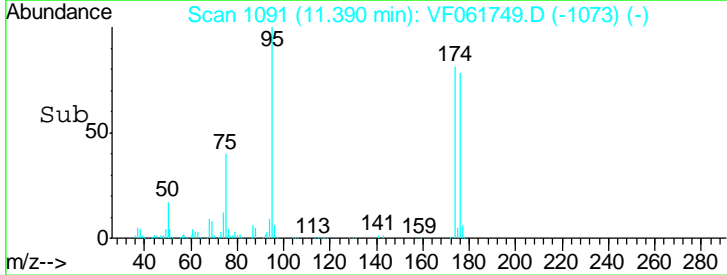
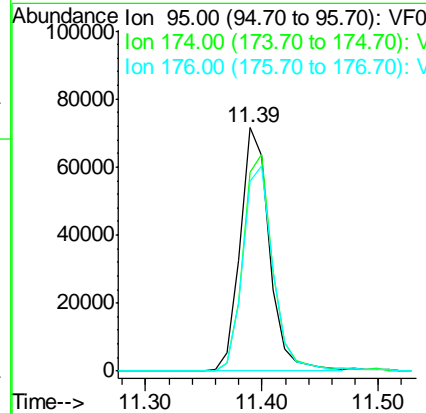
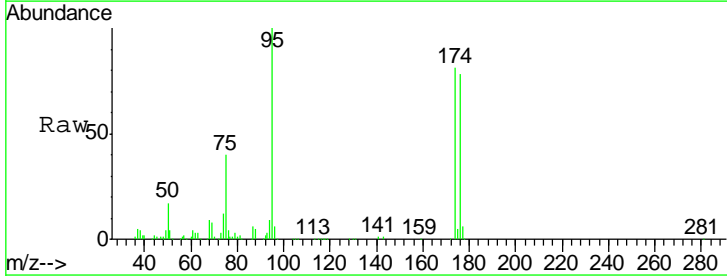
Instrument :
 MSVOA_F
ClientSampled :
 SB-02-(2-5)

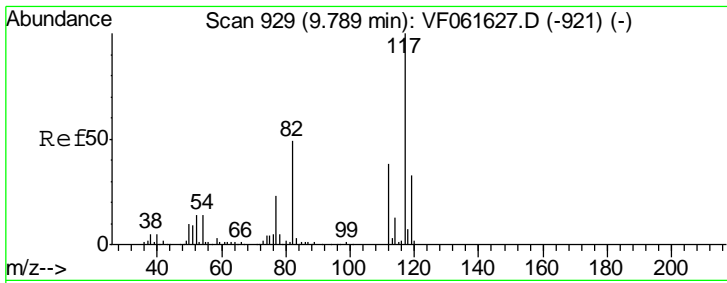
Tgt Ion	Resp	Lower	Upper
98	322287		
100	69.5	55.4	83.2



#62
 4-Bromofluorobenzene
 Concen: 27.412 ug/l
 RT: 11.39 min Scan# 1091
 Delta R.T. -0.03 min
 Lab File: VF061749.D
 Acq: 26 Feb 2019 18:58

Tgt Ion	Resp	Lower	Upper
95	124695		
174	81.5	0.0	165.8
176	78.0	0.0	167.0

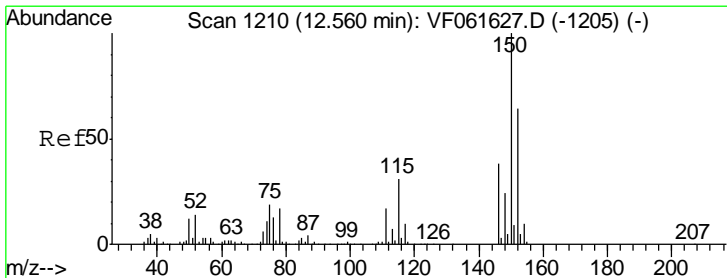
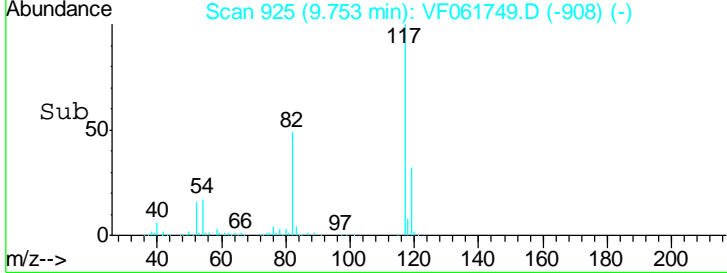
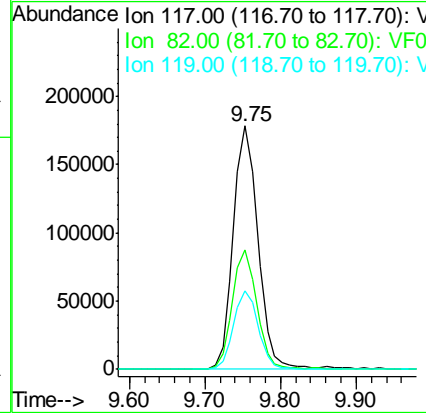
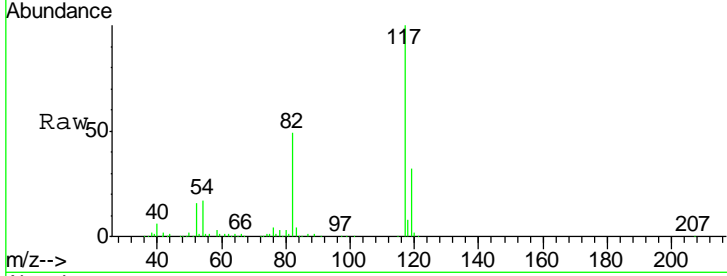




#63
 Chlorobenzene-d5
 Concen: 50.000 ug/l
 RT: 9.75 min Scan# 925
 Delta R.T. -0.04 min
 Lab File: VF061749.D
 Acq: 26 Feb 2019 18:58

Instrument :
 MSVOA_F
ClientSampled :
 SB-02-(2-5)

Tgt Ion	Resp	Lower	Upper
117	404343		
82	49.0	39.3	58.9
119	32.4	26.6	40.0



#72
 1,4-Dichlorobenzene-d4
 Concen: 50.000 ug/l
 RT: 12.53 min Scan# 1207
 Delta R.T. -0.03 min
 Lab File: VF061749.D
 Acq: 26 Feb 2019 18:58

Tgt Ion	Resp	Lower	Upper
152	193704		
115	55.4	24.3	72.8
150	153.2	0.0	312.0

