

Data Path : Z:\VOASRV\HPCHEM1\MSVOA F\DATA\VF092118\
 Data File : VF060317.D
 Acq On : 21 Sep 2018 17:28
 Operator : VA/AP
 Sample : J5057-01RE
 Misc : 6.39/5mL/MSVOA F/SOIL
 ALS Vial : 37 Sample Multiplier: 1

Instrument :
 MSVOA_F
 ClientSampleId :
 HC-SOILRE

Quant Time: Sep 22 02:26:47 2018
 Quant Method : Z:\VOASRV\HPCHEM1\MSVOA_F\METHODS\82F091918S.M
 Quant Title : SW846 8260
 QLast Update : Thu Sep 20 02:58:42 2018
 Response via : Initial Calibration

Internal Standards	R.T.	QIon	Response	Conc	Units	Dev(Min)
1) Pentafluorobenzene	5.03	168	106263	50.00	ug/l	0.00
34) 1,4-Difluorobenzene	5.76	114	178211	50.00	ug/l	0.00
63) Chlorobenzene-d5	9.91	117	157757	50.00	ug/l	0.00
72) 1,4-Dichlorobenzene-d4	12.63	152	88023	50.00	ug/l	0.00

System Monitoring Compounds

33) 1,2-Dichloroethane-d4	5.01	65	91328	63.83	ug/l	0.00
Spiked Amount	50.000		Recovery	=	127.66%	
35) Dibromofluoromethane	4.28	113	111841	70.40	ug/l	0.00
Spiked Amount	50.000		Recovery	=	140.80%	
50) Toluene-d8	7.70	98	260127	62.88	ug/l	0.00
Spiked Amount	50.000		Recovery	=	125.76%	
62) 4-Bromofluorobenzene	11.50	95	118292	66.15	ug/l	0.00
Spiked Amount	50.000		Recovery	=	132.30%	

Target Compounds

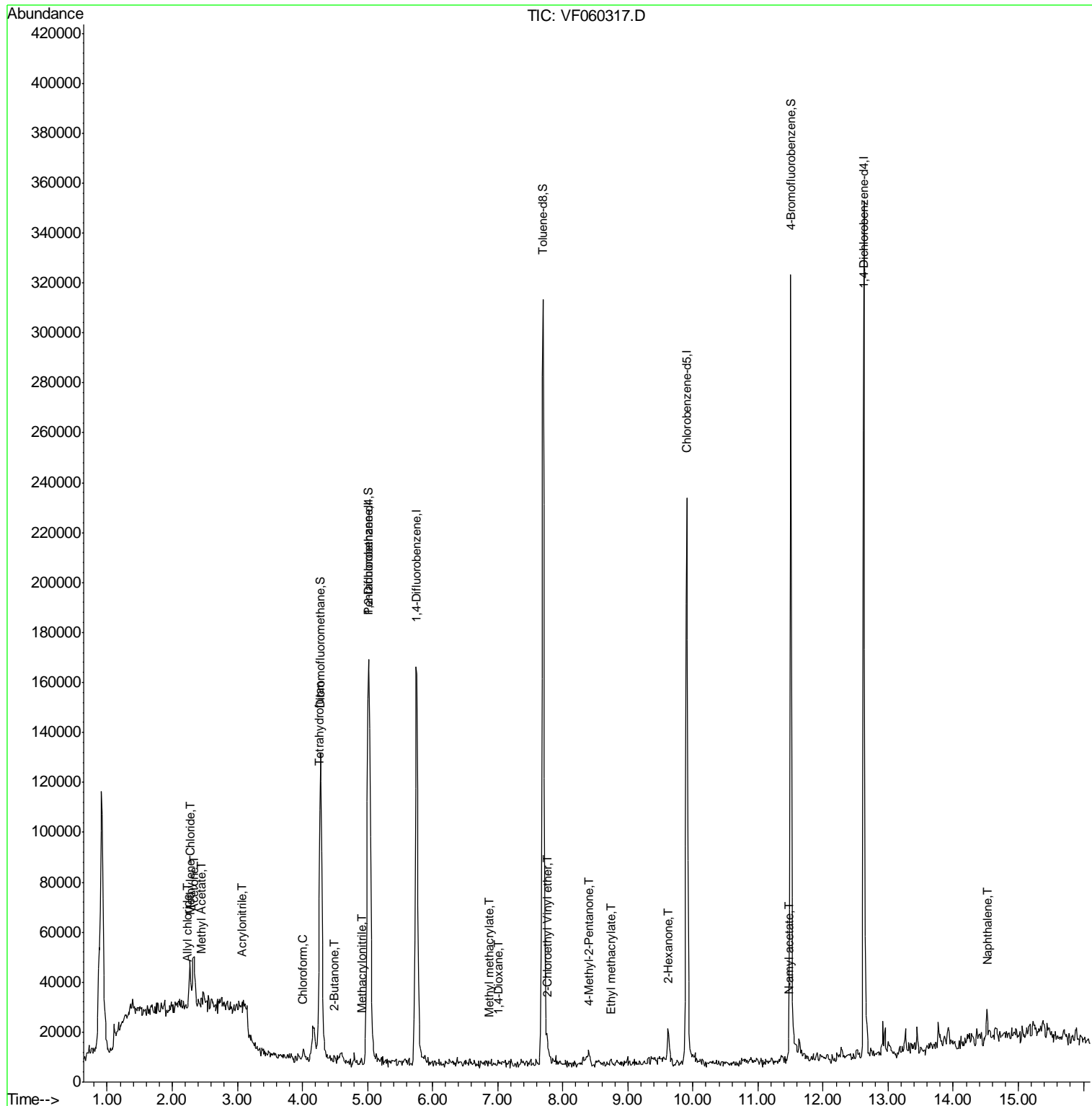
						Qvalue
2) Dichlorodifluoromethane	0.99	85	474	Below Cal		97
5) Bromomethane	1.34	94	1003	Below Cal		85
11) Tert butyl alcohol	2.66	59	728	Below Cal	#	1
13) Acrolein	2.11	56	1630	Below Cal		85
14) Allyl chloride	2.23	41	2130	1.009	ug/l #	41
15) Acrylonitrile	3.06	53	1755	8.684	ug/l #	70
16) Acetone	2.33	43	32600	80.901	ug/l	99
17) Carbon Disulfide	1.88	76	244	Below Cal	#	1
18) Methyl Acetate	2.44	43	1001	1.491	ug/l #	76
20) Methylene Chloride	2.28	84	10019	2.082	ug/l #	91
25) 2-Butanone	4.48	43	1991	3.671	ug/l #	57
29) Tetrahydrofuran	4.26	42	1487	7.487	ug/l #	41
30) Chloroform	4.02	83	4212	1.352	ug/l #	72
41) Methacrylonitrile	4.91	41	897	1.758	ug/l #	43
48) Methyl methacrylate	6.88	41	851	1.071	ug/l #	63
49) 1,4-Dioxane	7.00	88	79	11.125	ug/l #	1
51) 4-Methyl-2-Pentanone	8.40	43	6604	7.567	ug/l #	75
56) Ethyl methacrylate	8.75	69	1656	1.417	ug/l #	35
58) 2-Chloroethyl Vinyl ether	7.78	63	483	4.674	ug/l	100
59) 2-Hexanone	9.62	43	14965	24.083	ug/l	87
74) N-amyl acetate	11.46	43	2887	1.713	ug/l #	80
78) n-propylbenzene	11.68	91	1344	Below Cal		83
85) sec-Butylbenzene	12.38	105	691	Below Cal	#	76
86) p-Isopropyltoluene	12.53	119	832	Below Cal	#	57
89) n-Butylbenzene	12.91	91	1570	Below Cal		82
95) Naphthalene	14.52	128	6693	1.730	ug/l #	90

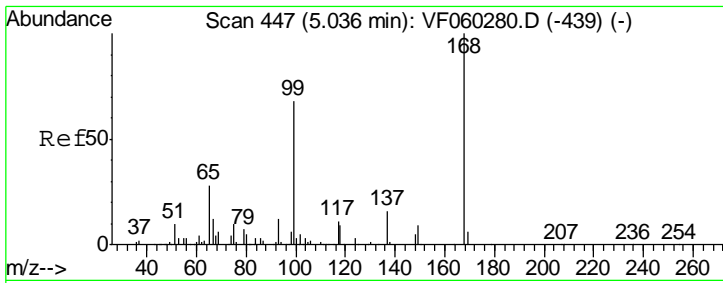
(#) = qualifier out of range (m) = manual integration (+) = signals summed

Data Path : Z:\VOASRV\HPCHEM1\MSVOA F\DATA\VF092118\
 Data File : VF060317.D
 Acq On : 21 Sep 2018 17:28
 Operator : VA/AP
 Sample : J5057-01RE
 Misc : 6.39/5mL/MSVOA F/SOIL
 ALS Vial : 37 Sample Multiplier: 1

Instrument :
 MSVOA_F
 Client Sampled :
 HC-SOILRE

Quant Time: Sep 22 02:26:47 2018
 Quant Method : Z:\VOASRV\HPCHEM1\MSVOA_F\METHODS\82F091918S.M
 Quant Title : SW846 8260
 QLast Update : Thu Sep 20 02:58:42 2018
 Response via : Initial Calibration

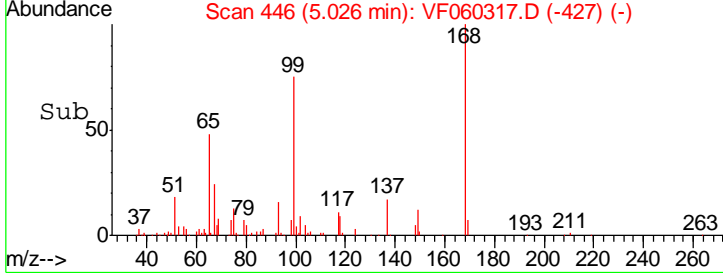
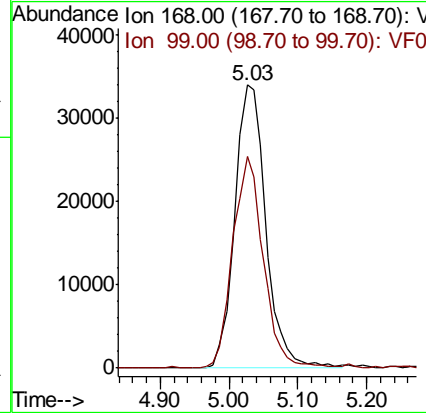
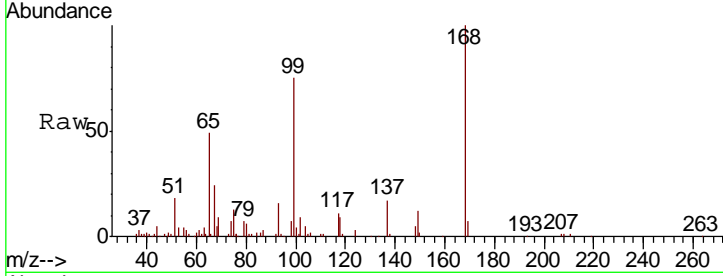




#1
 Pentafluorobenzene
 Concen: 50.000 ug/l
 RT: 5.03 min Scan# 446
 Delta R.T. -0.01 min
 Lab File: VF060317.D
 Acq: 21 Sep 2018 17:28

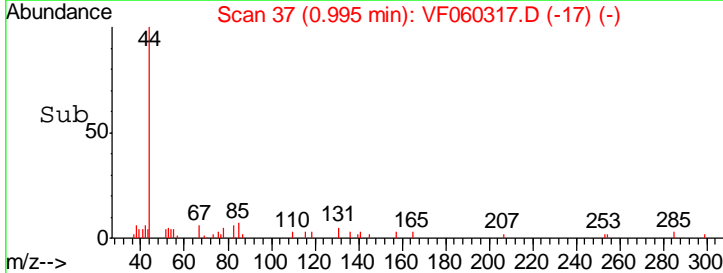
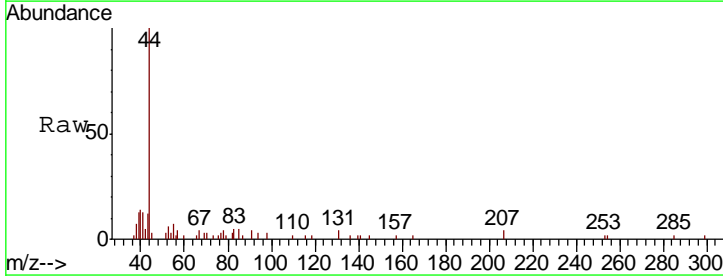
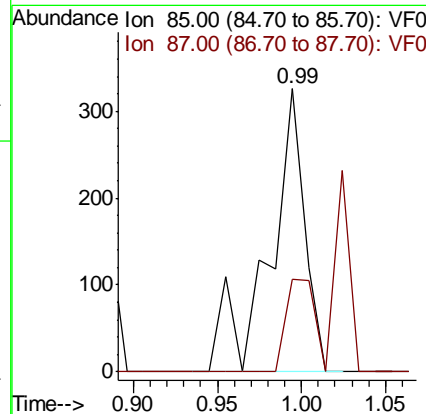
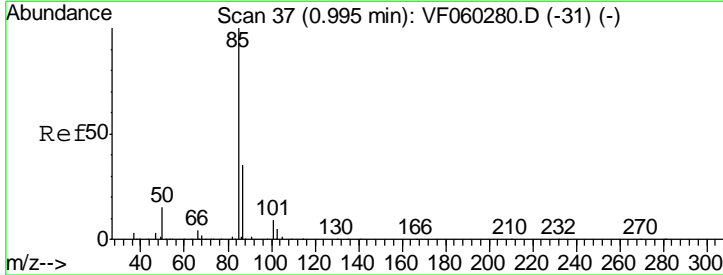
Instrument :
 MSVOA_F
 ClientSampled :
 HC-SOILRE

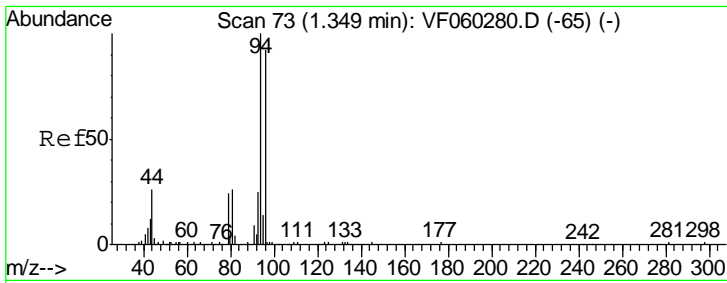
Tgt Ion	Resp	Lower	Upper
168	106263		
99	74.7	54.8	82.2



#2
 Dichlorodifluoromethane
 Concen: Below Cal
 RT: 0.99 min Scan# 37
 Delta R.T. 0.00 min
 Lab File: VF060317.D
 Acq: 21 Sep 2018 17:28

Tgt Ion	Resp	Lower	Upper
85	474		
87	32.8	17.3	52.0

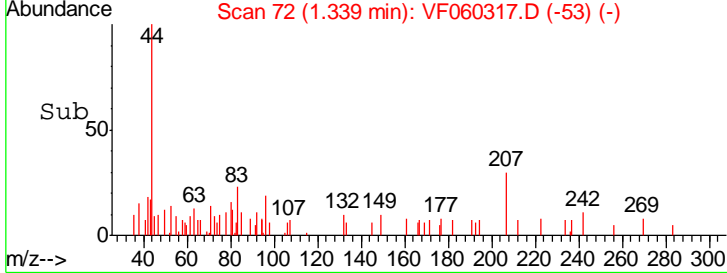
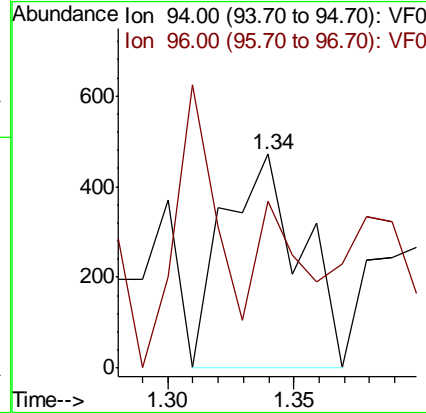
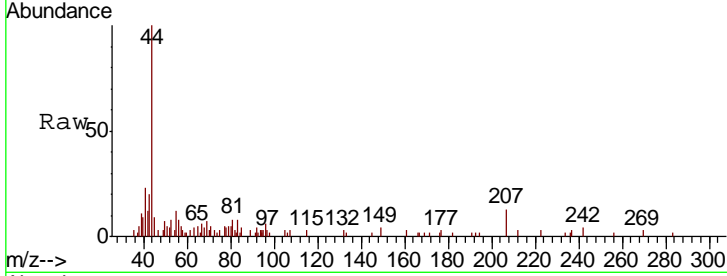




#5
 Bromomethane
 Concen: Below Cal
 RT: 1.34 min Scan# 72
 Delta R.T. -0.01 min
 Lab File: VF060317.D
 Acq: 21 Sep 2018 17:28

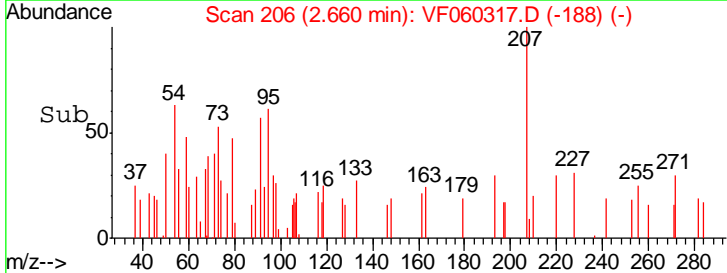
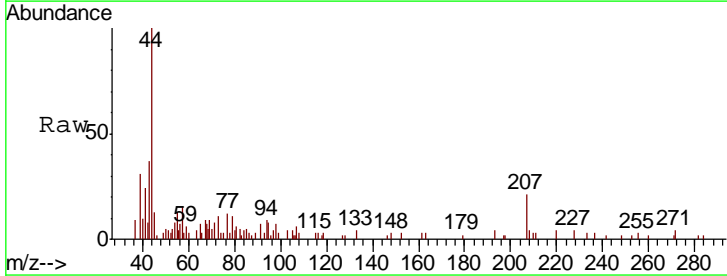
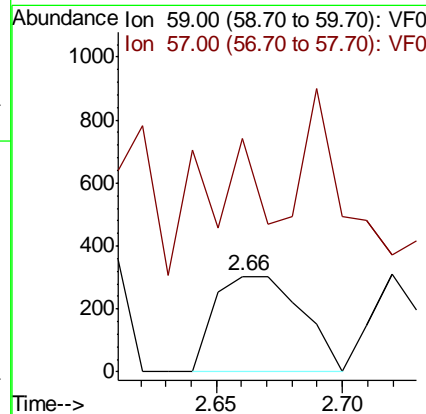
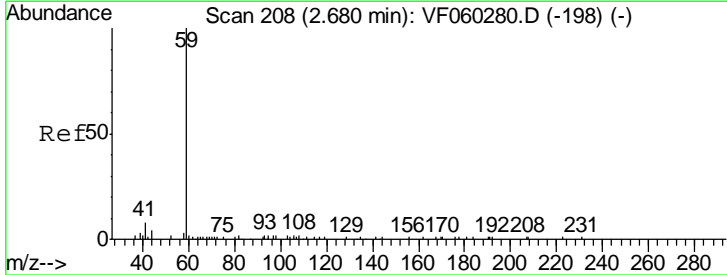
Instrument :
 MSVOA_F
 ClientSampled :
 HC-SOILRE

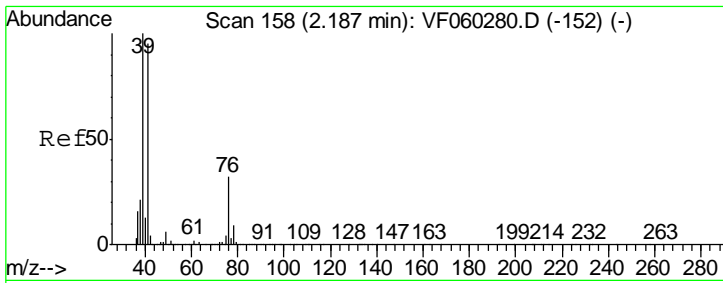
Tgt Ion: 94 Resp: 1003
 Ion Ratio Lower Upper
 94 100
 96 78.0 73.9 110.9



#11
 Tert butyl alcohol
 Concen: Below Cal
 RT: 2.66 min Scan# 206
 Delta R.T. -0.02 min
 Lab File: VF060317.D
 Acq: 21 Sep 2018 17:28

Tgt Ion: 59 Resp: 728
 Ion Ratio Lower Upper
 59 100
 57 244.2 12.4 18.6#

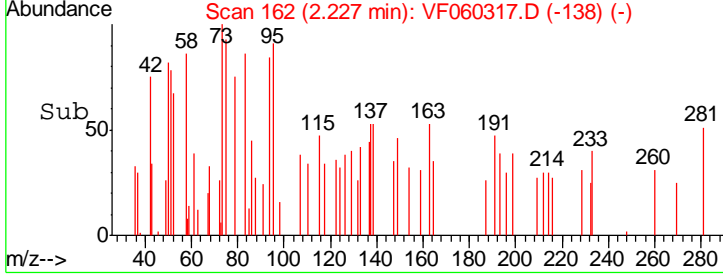
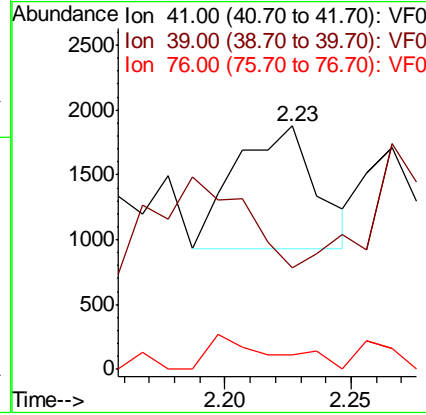
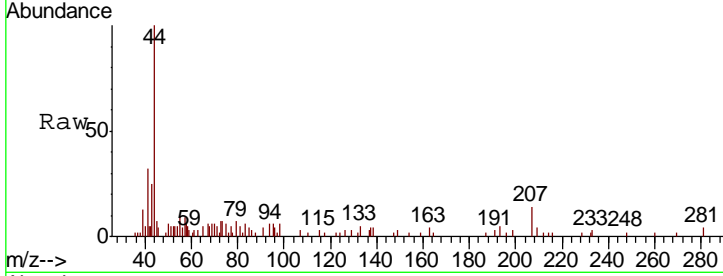




#14
 Allyl chloride
 Concen: 1.009 ug/l
 RT: 2.23 min Scan# 162
 Delta R.T. 0.04 min
 Lab File: VF060317.D
 Acq: 21 Sep 2018 17:28

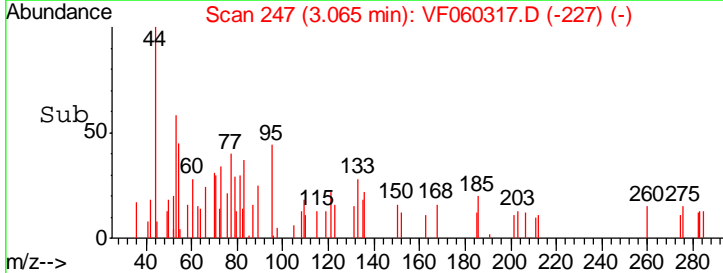
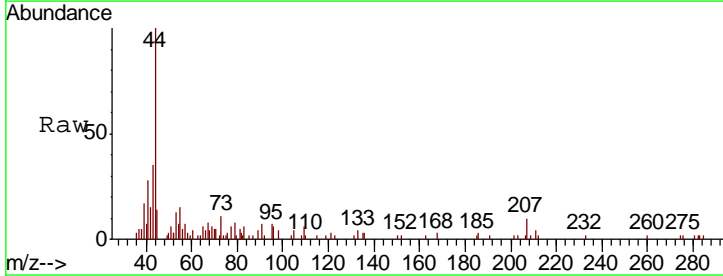
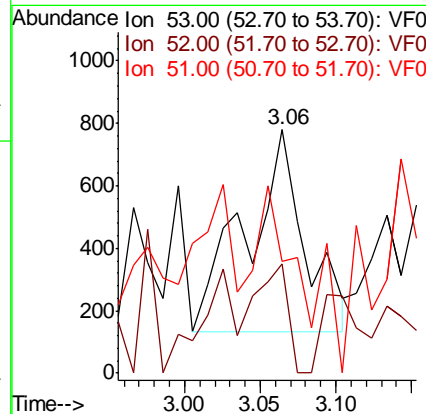
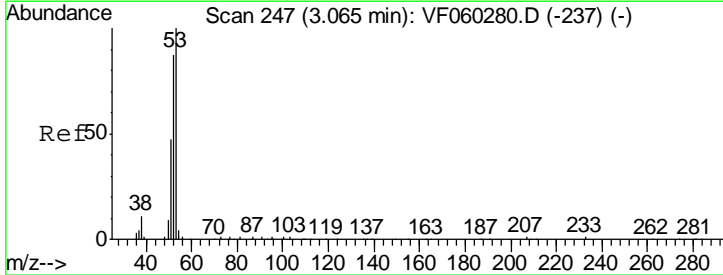
Instrument :
 MSVOA_F
ClientSampled :
 HC-SOILRE

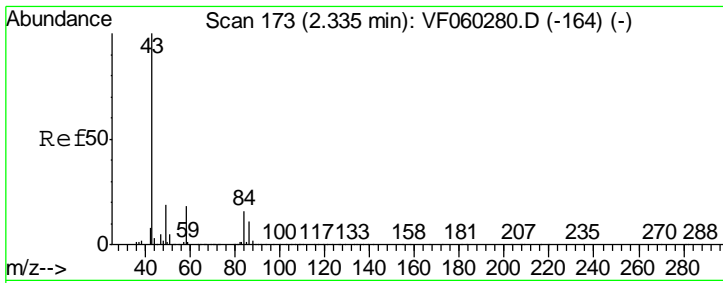
Tgt Ion	Resp	Lower	Upper
41	100		
39	41.7	84.8	127.2#
76	6.0	27.4	41.2#



#15
 Acrylonitrile
 Concen: 8.684 ug/l
 RT: 3.06 min Scan# 247
 Delta R.T. -0.00 min
 Lab File: VF060317.D
 Acq: 21 Sep 2018 17:28

Tgt Ion	Resp	Lower	Upper
53	100		
52	45.0	69.5	104.3#
51	45.9	38.1	57.1

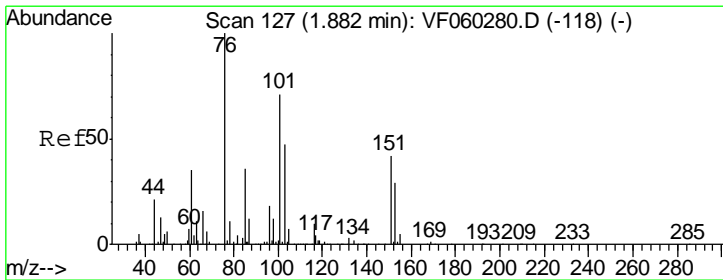
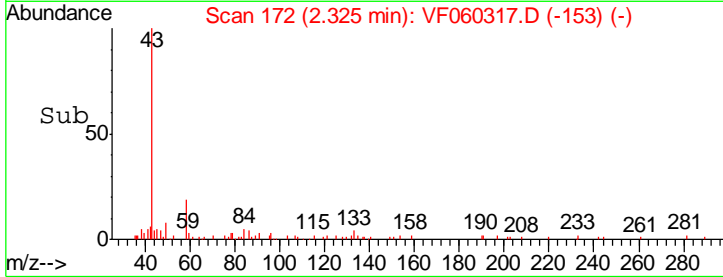
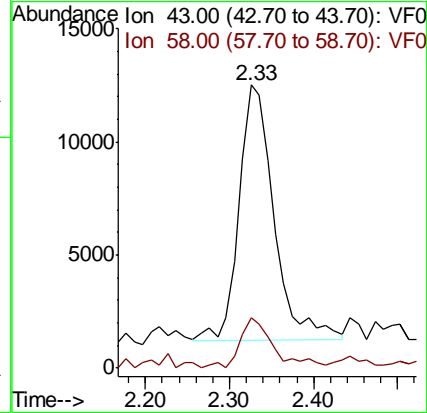
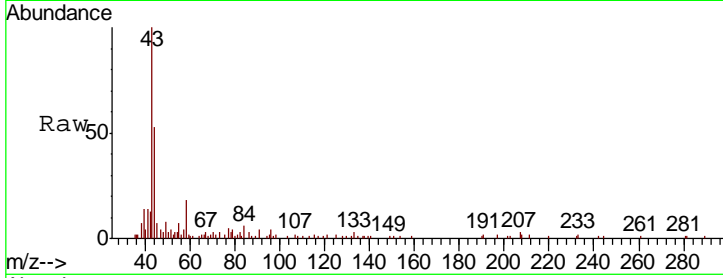




#16
 Acetone
 Concen: 80.901 ug/l
 RT: 2.33 min Scan# 172
 Delta R.T. -0.01 min
 Lab File: VF060317.D
 Acq: 21 Sep 2018 17:28

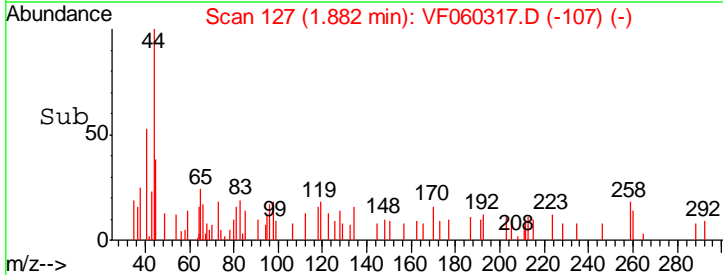
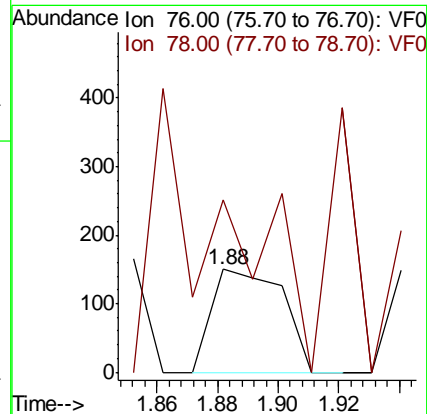
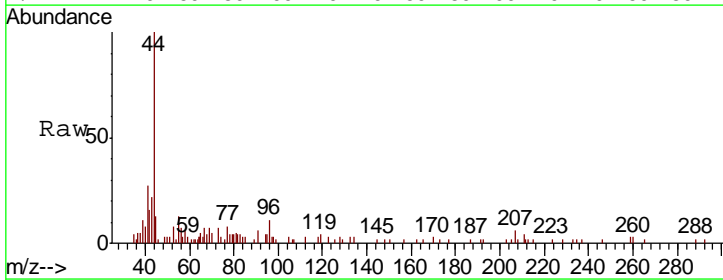
Instrument :
 MSVOA_F
 ClientSampleId :
 HC-SOILRE

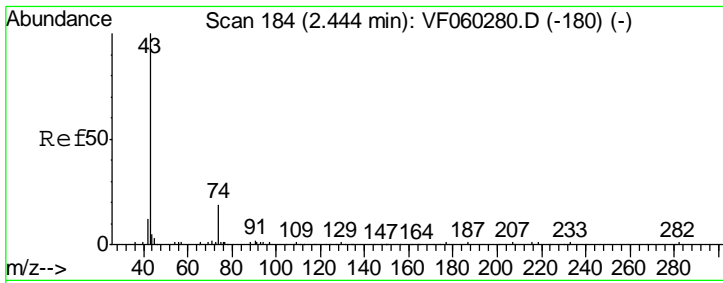
Tgt Ion: 43 Resp: 32600
 Ion Ratio Lower Upper
 43 100
 58 17.7 14.5 21.7



#17
 Carbon Disulfide
 Concen: Below Cal
 RT: 1.88 min Scan# 127
 Delta R.T. 0.00 min
 Lab File: VF060317.D
 Acq: 21 Sep 2018 17:28

Tgt Ion: 76 Resp: 244
 Ion Ratio Lower Upper
 76 100
 78 168.0 9.4 14.0#

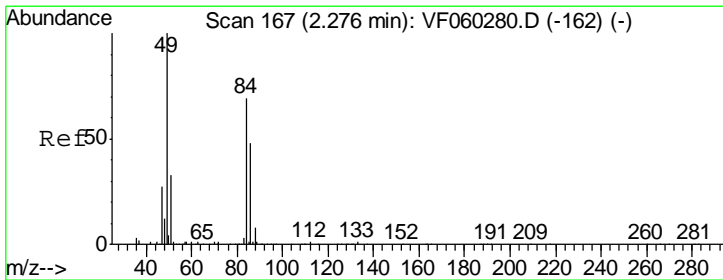
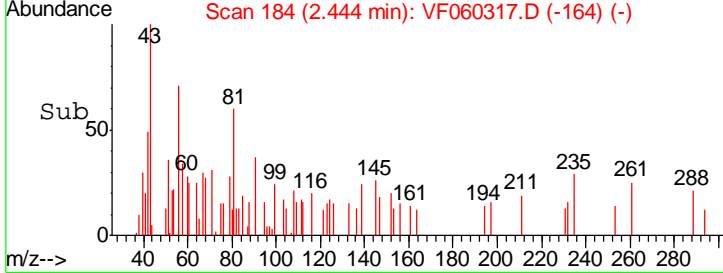
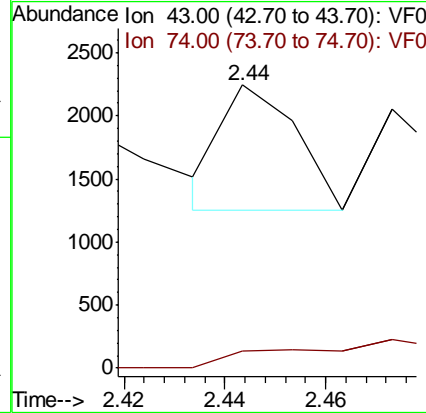
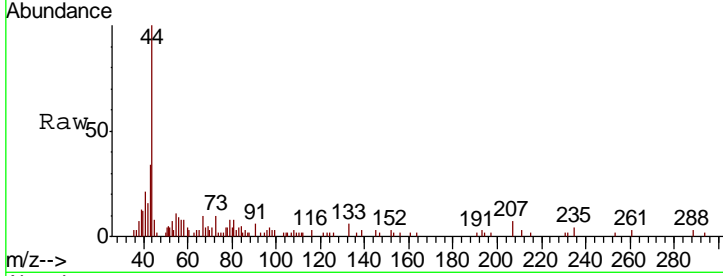




#18
 Methyl Acetate
 Concen: 1.491 ug/l
 RT: 2.44 min Scan# 184
 Delta R.T. -0.00 min
 Lab File: VF060317.D
 Acq: 21 Sep 2018 17:28

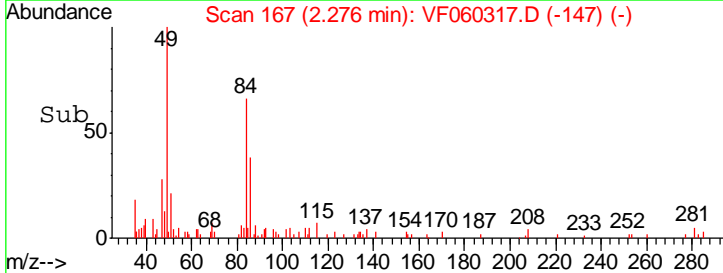
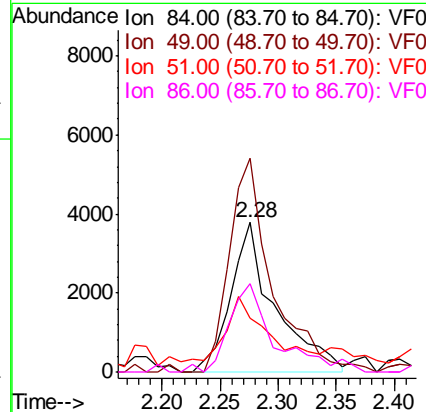
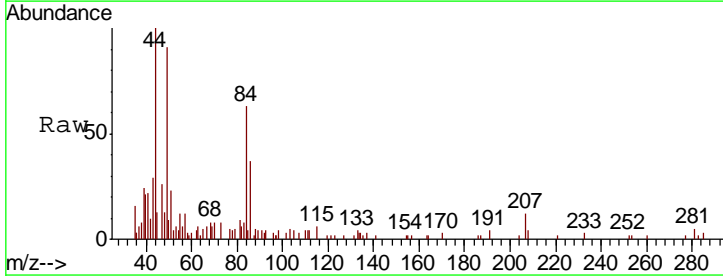
Instrument :
 MSVOA_F
 ClientSampled :
 HC-SOILRE

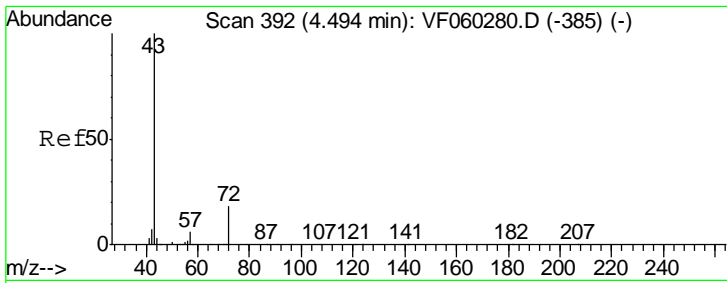
Tgt Ion	Resp	Lower	Upper
43	1001		
74	5.9	12.7	19.1#



#20
 Methylene Chloride
 Concen: 2.082 ug/l
 RT: 2.28 min Scan# 167
 Delta R.T. -0.00 min
 Lab File: VF060317.D
 Acq: 21 Sep 2018 17:28

Tgt Ion	Resp	Lower	Upper
84	10019		
49	142.9	118.3	177.5
51	36.4	38.7	58.1#
86	58.8	55.8	83.6

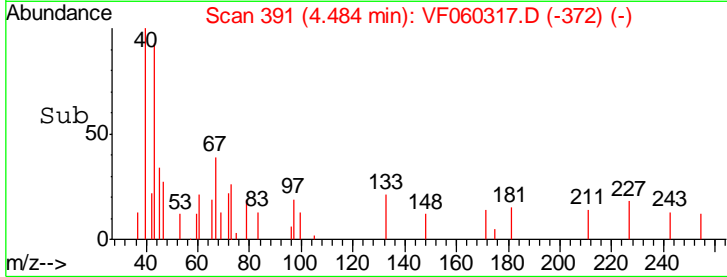
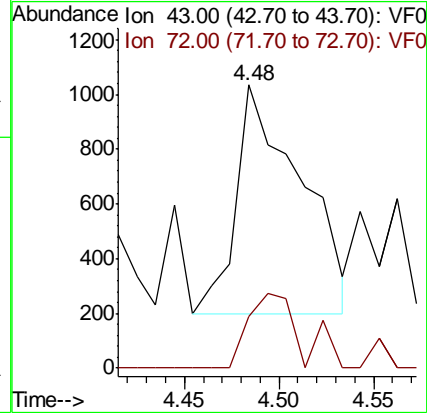
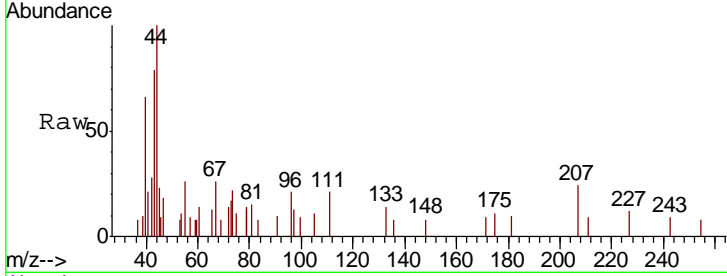




#25
 2-Butanone
 Concen: 3.671 ug/l
 RT: 4.48 min Scan# 391
 Delta R.T. -0.01 min
 Lab File: VF060317.D
 Acq: 21 Sep 2018 17:28

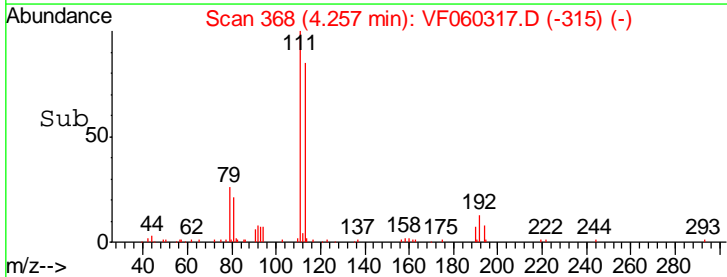
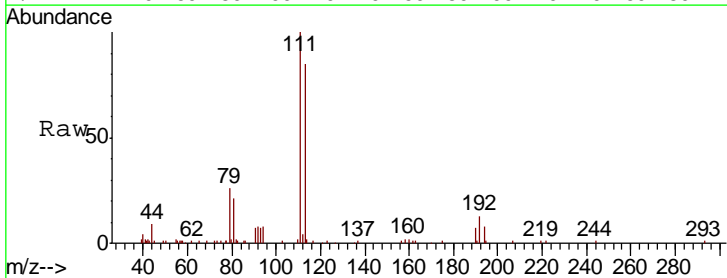
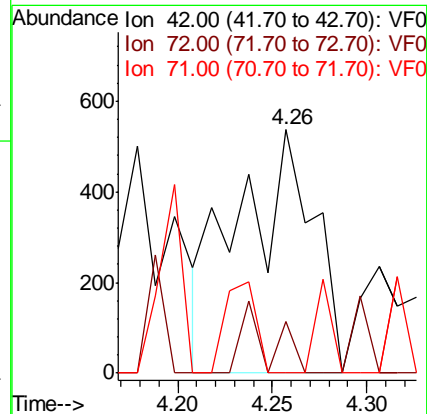
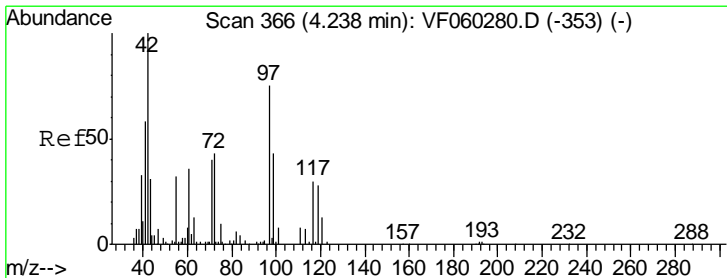
Instrument :
 MSVOA_F
 ClientSampled :
 HC-SOILRE

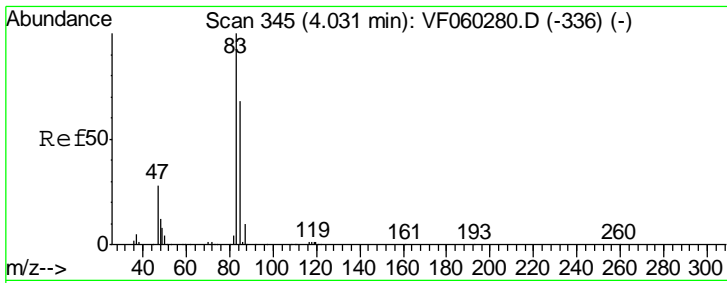
Tgt Ion	Resp	Lower	Upper
43	1991		
72	39.9	16.2	24.2#



#29
 Tetrahydrofuran
 Concen: 7.487 ug/l
 RT: 4.26 min Scan# 368
 Delta R.T. 0.02 min
 Lab File: VF060317.D
 Acq: 21 Sep 2018 17:28

Tgt Ion	Resp	Lower	Upper
42	1487		
72	0.0	32.6	49.0#
71	8.2	32.7	49.1#

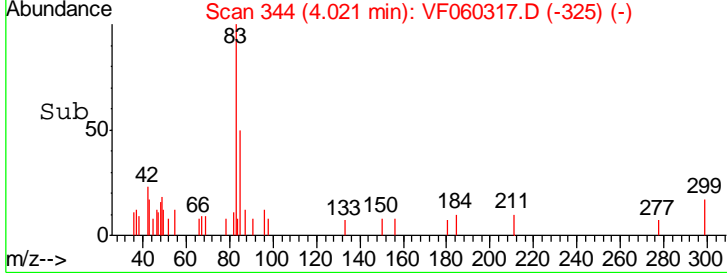
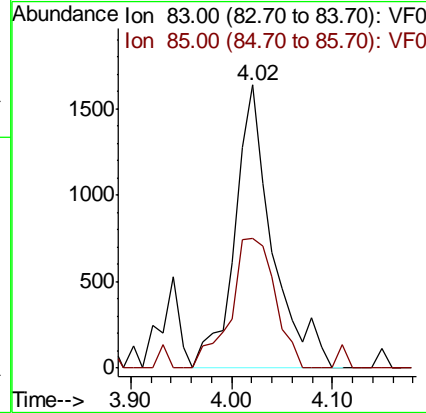
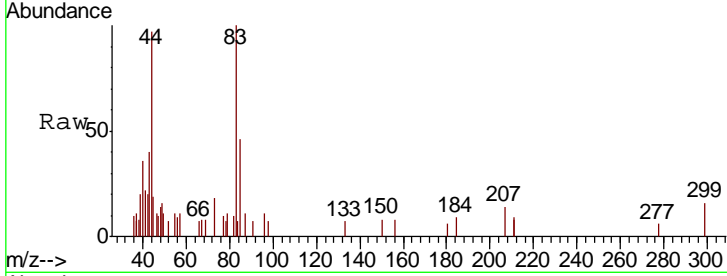




#30
 Chloroform
 Concen: 1.352 ug/l
 RT: 4.02 min Scan# 344
 Delta R.T. -0.01 min
 Lab File: VF060317.D
 Acq: 21 Sep 2018 17:28

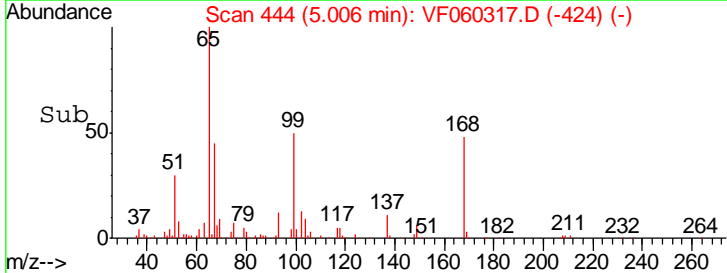
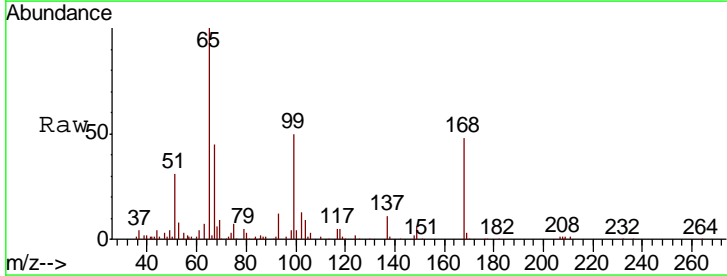
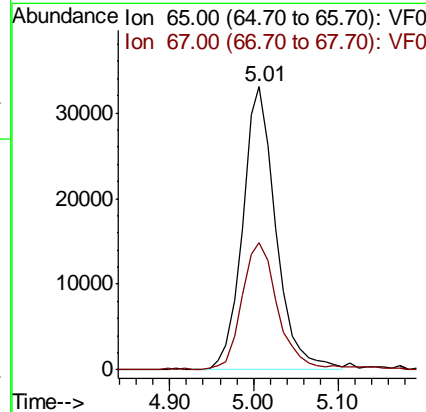
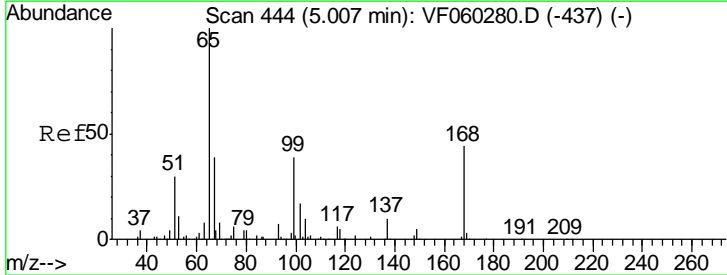
Instrument :
 MSVOA_F
ClientSampled :
 HC-SOILRE

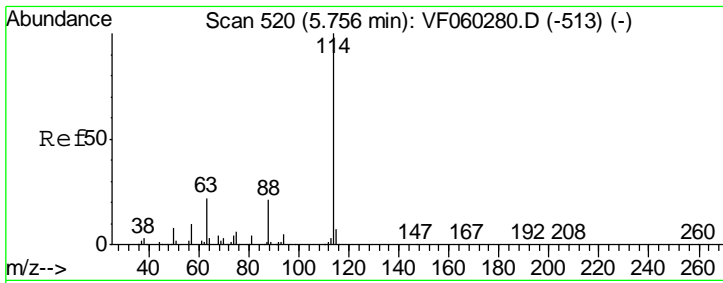
Tgt Ion: 83 Resp: 4212
 Ion Ratio Lower Upper
 83 100
 85 45.7 54.9 82.3#



#33
 1,2-Dichloroethane-d4
 Concen: 63.827 ug/l
 RT: 5.01 min Scan# 444
 Delta R.T. -0.00 min
 Lab File: VF060317.D
 Acq: 21 Sep 2018 17:28

Tgt Ion: 65 Resp: 91328
 Ion Ratio Lower Upper
 65 100
 67 45.1 0.0 94.4

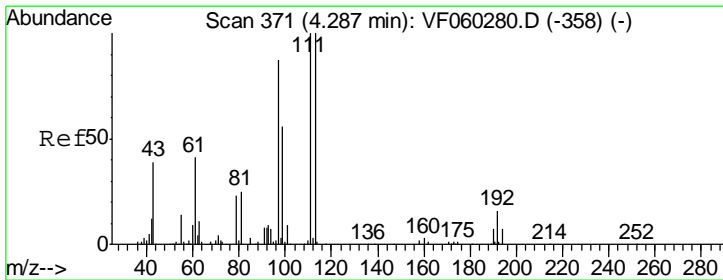
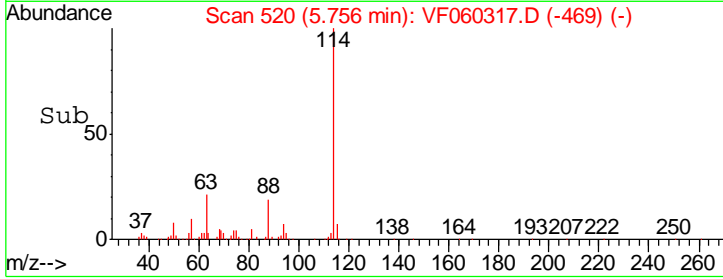
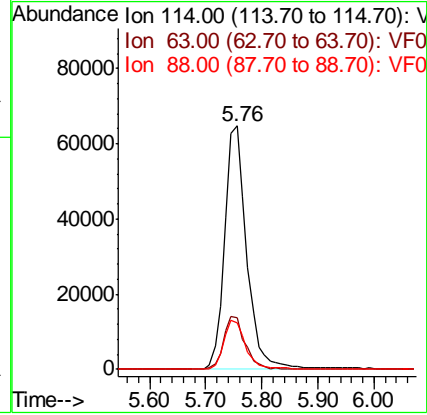
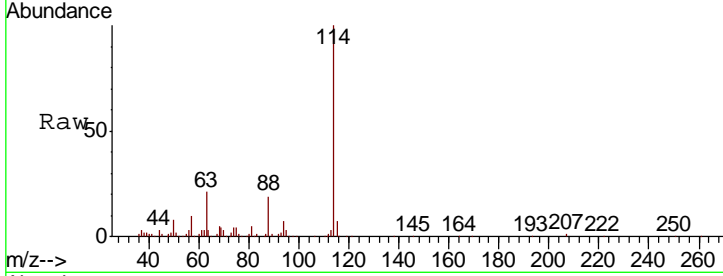




#34
 1,4-Difluorobenzene
 Concen: 50.000 ug/l
 RT: 5.76 min Scan# 520
 Delta R.T. -0.00 min
 Lab File: VF060317.D
 Acq: 21 Sep 2018 17:28

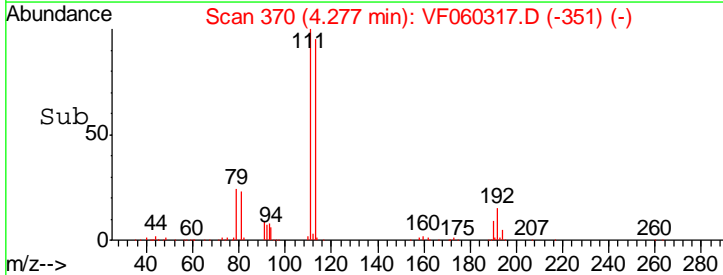
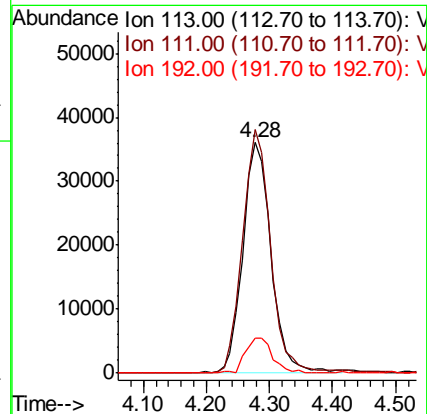
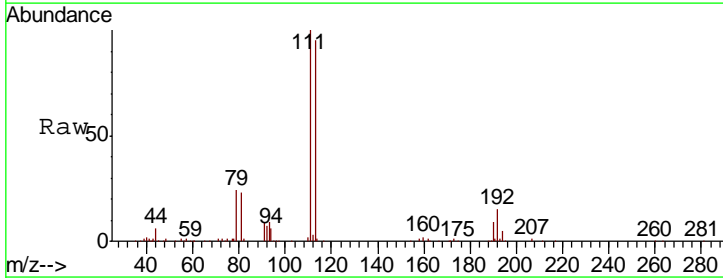
Instrument :
 MSVOA_F
 ClientSampled :
 HC-SOILRE

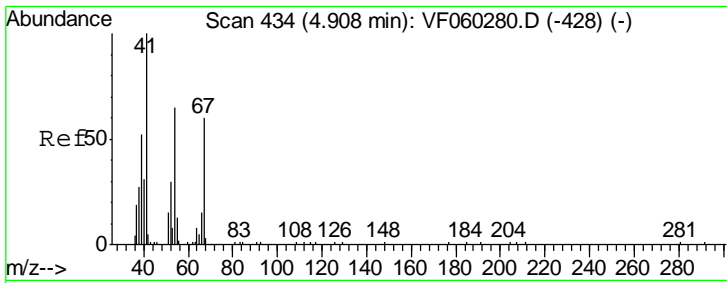
Tgt Ion	Resp	Lower	Upper
114	178211		
63	21.4	0.0	43.8
88	19.3	0.0	41.2



#35
 Dibromofluoromethane
 Concen: 70.401 ug/l
 RT: 4.28 min Scan# 370
 Delta R.T. -0.01 min
 Lab File: VF060317.D
 Acq: 21 Sep 2018 17:28

Tgt Ion	Resp	Lower	Upper
113	111841		
111	105.6	79.6	119.4
192	15.4	13.0	19.6

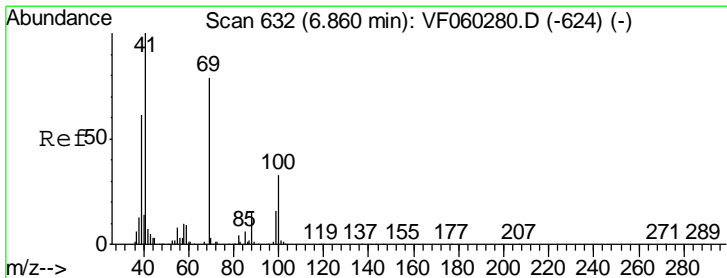
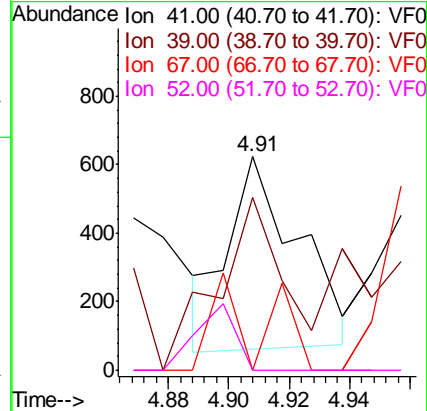
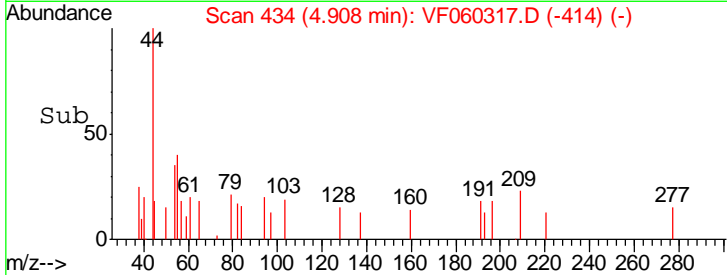
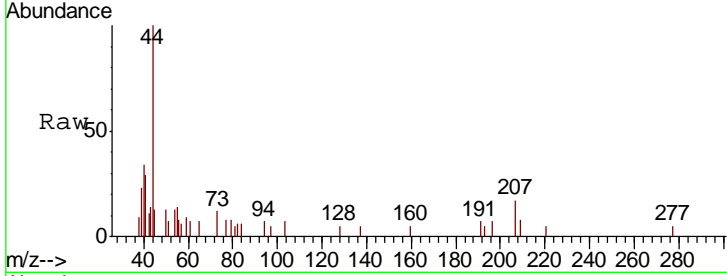




#41
 Methacrylonitrile
 Concen: 1.758 ug/l
 RT: 4.91 min Scan# 434
 Delta R.T. -0.00 min
 Lab File: VF060317.D
 Acq: 21 Sep 2018 17:28

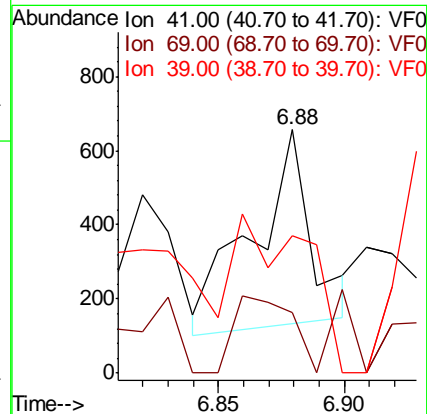
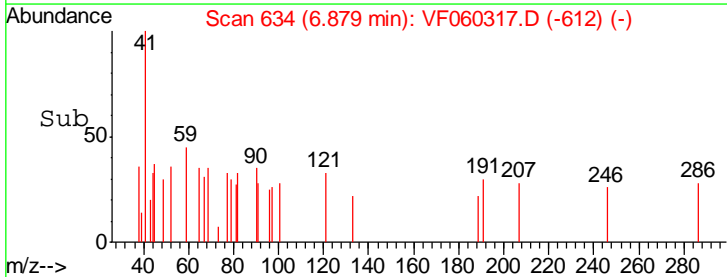
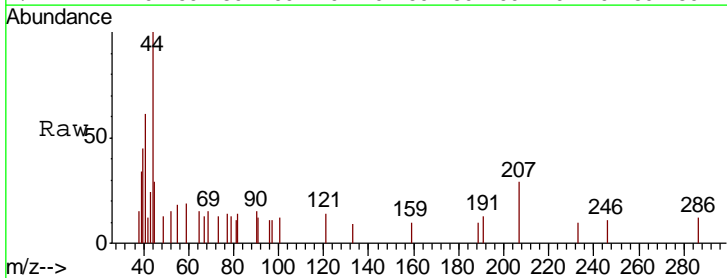
Instrument :
 MSVOA_F
 ClientSampleID :
 HC-SOILRE

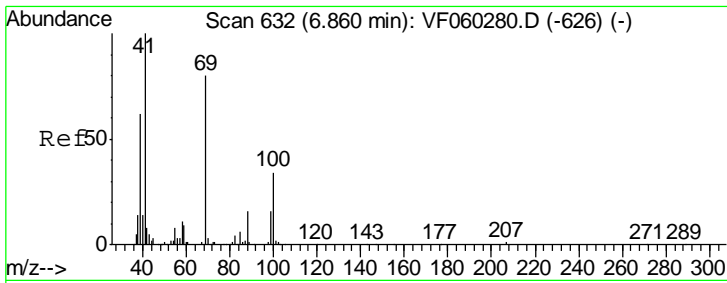
Tgt Ion	Resp	Lower	Upper
41	100		
39	80.8	49.1	73.7#
67	0.0	48.2	72.4#
52	0.0	35.8	53.8#



#48
 Methyl methacrylate
 Concen: 1.071 ug/l
 RT: 6.88 min Scan# 634
 Delta R.T. 0.02 min
 Lab File: VF060317.D
 Acq: 21 Sep 2018 17:28

Tgt Ion	Resp	Lower	Upper
41	100		
69	25.0	62.6	94.0#
39	56.6	49.1	73.7

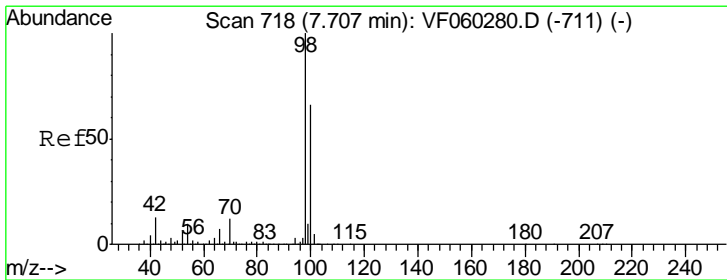
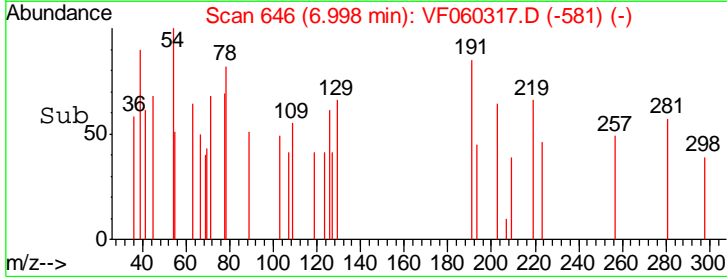
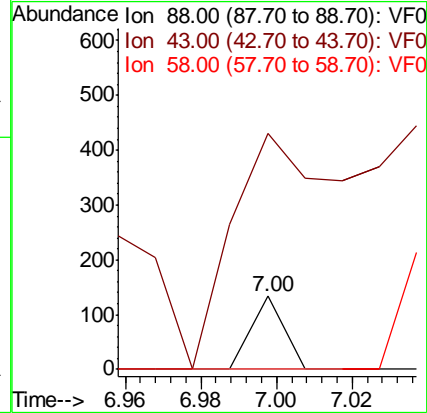
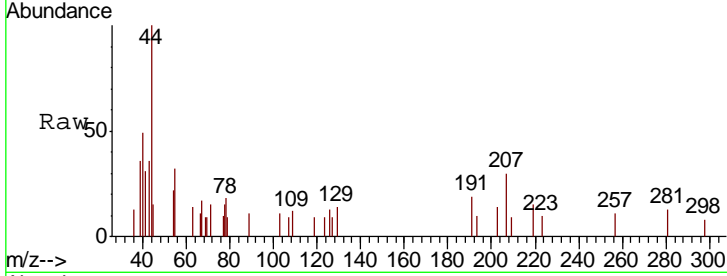




#49
 1,4-Dioxane
 Concen: 11.125 ug/l
 RT: 7.00 min Scan# 646
 Delta R.T. 0.14 min
 Lab File: VF060317.D
 Acq: 21 Sep 2018 17:28

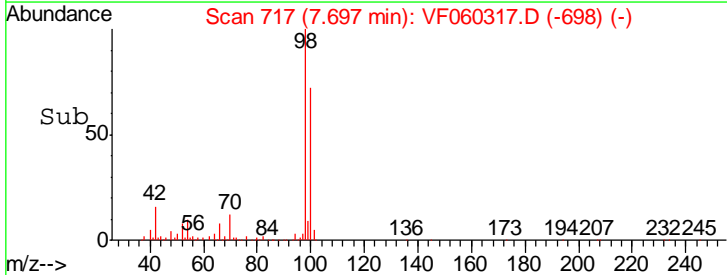
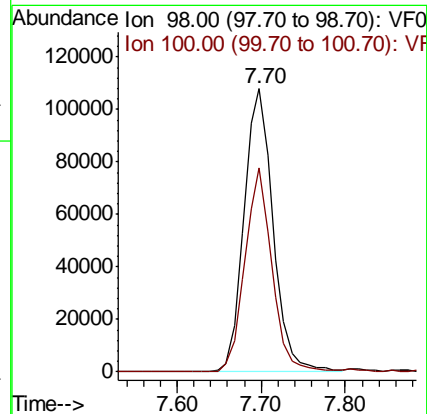
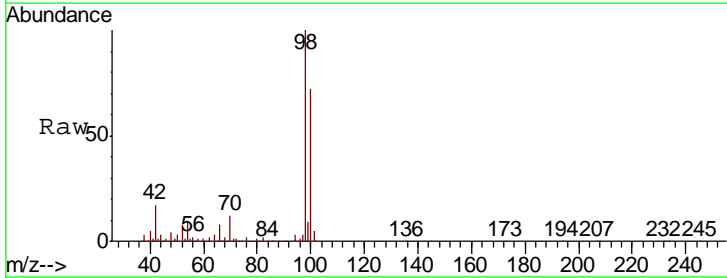
Instrument :
 MSVOA_F
 ClientSampled :
 HC-SOILRE

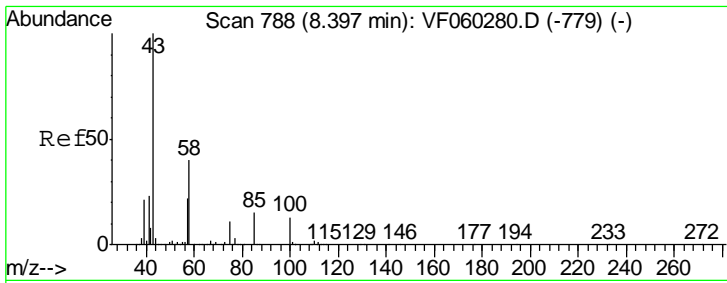
Tgt Ion	Resp	Lower	Upper
88	100		
43	323.3	40.2	60.4#
58	0.0	56.7	85.1#



#50
 Toluene-d8
 Concen: 62.876 ug/l
 RT: 7.70 min Scan# 717
 Delta R.T. -0.01 min
 Lab File: VF060317.D
 Acq: 21 Sep 2018 17:28

Tgt Ion	Resp	Lower	Upper
98	100		
100	71.9	53.0	79.6

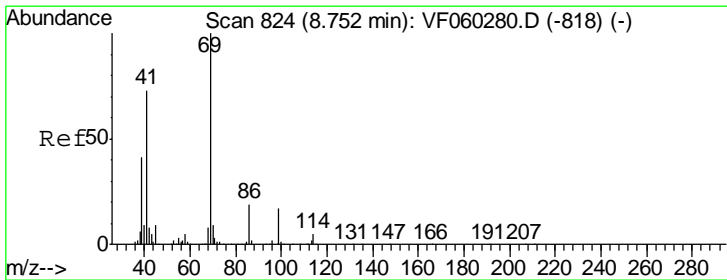
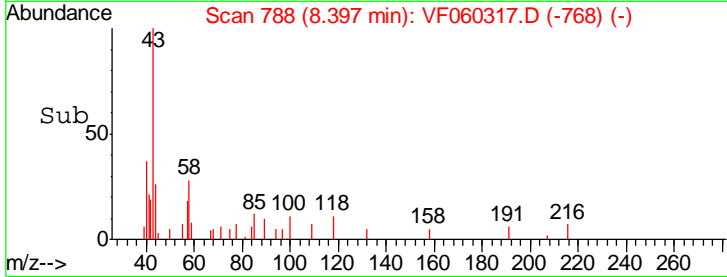
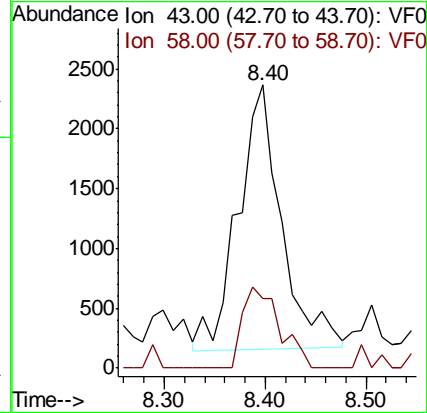
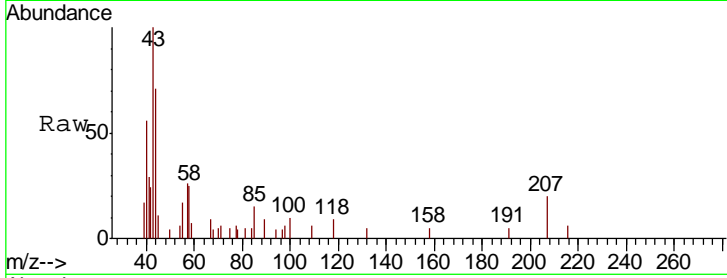




#51
 4-Methyl-2-Pentanone
 Concen: 7.567 ug/l
 RT: 8.40 min Scan# 788
 Delta R.T. -0.00 min
 Lab File: VF060317.D
 Acq: 21 Sep 2018 17:28

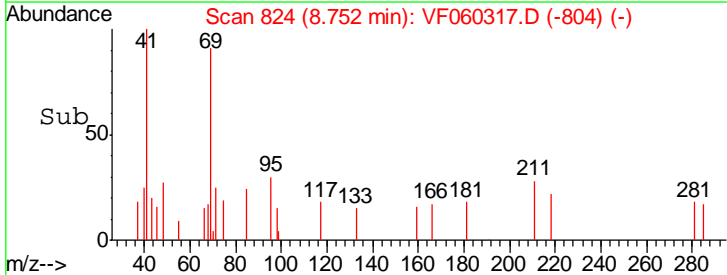
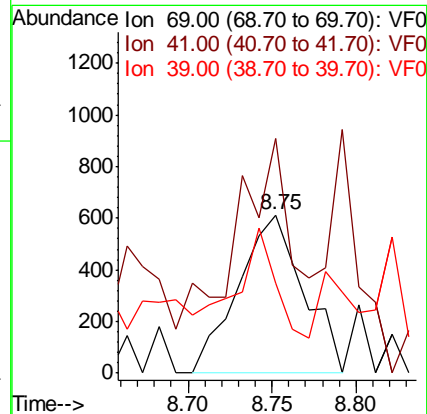
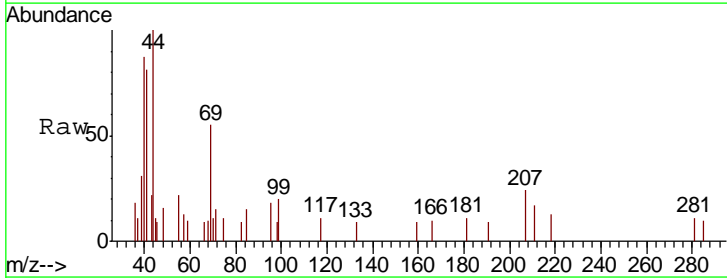
Instrument :
 MSVOA_F
 ClientSampleID :
 HC-SOILRE

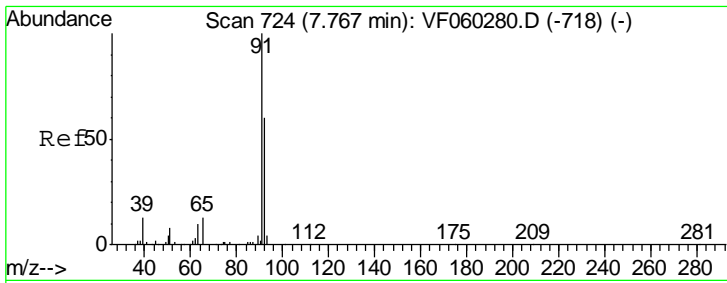
Tgt Ion: 43 Resp: 6604
 Ion Ratio Lower Upper
 43 100
 58 24.5 31.8 47.8#



#56
 Ethyl methacrylate
 Concen: 1.417 ug/l
 RT: 8.75 min Scan# 824
 Delta R.T. -0.00 min
 Lab File: VF060317.D
 Acq: 21 Sep 2018 17:28

Tgt Ion: 69 Resp: 1656
 Ion Ratio Lower Upper
 69 100
 41 148.5 59.4 89.2#
 39 56.9 33.5 50.3#

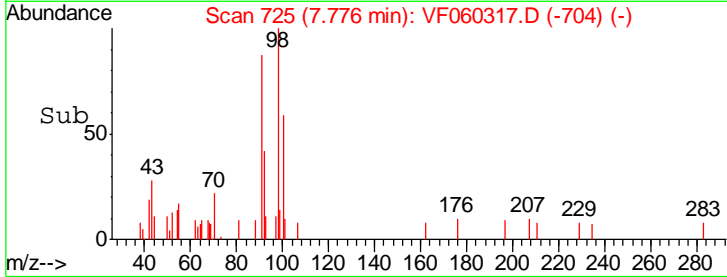
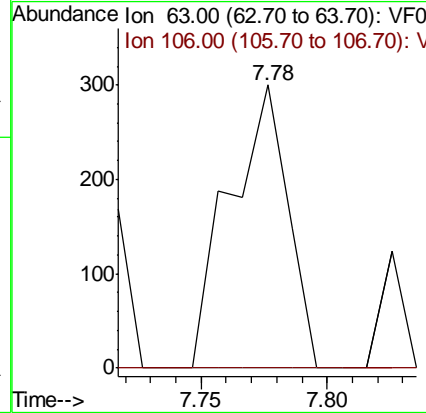
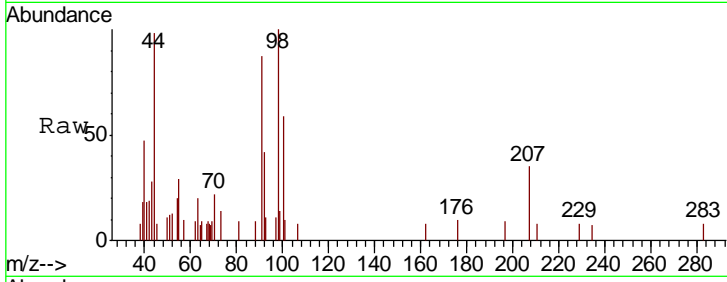




#58
 2-Chloroethyl Vinyl ether
 Concen: 4.674 ug/l
 RT: 7.78 min Scan# 725
 Delta R.T. 0.01 min
 Lab File: VF060317.D
 Acq: 21 Sep 2018 17:28

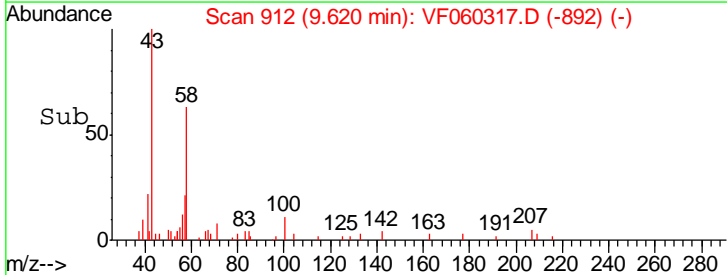
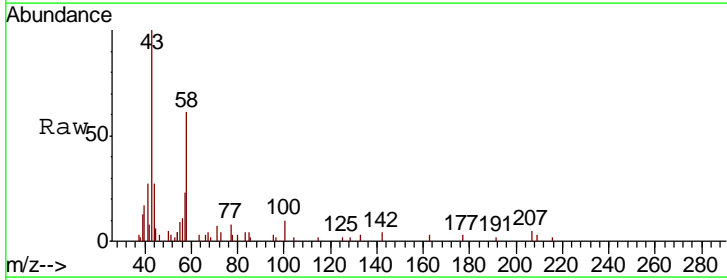
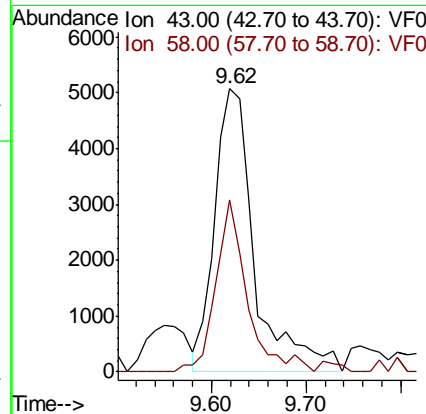
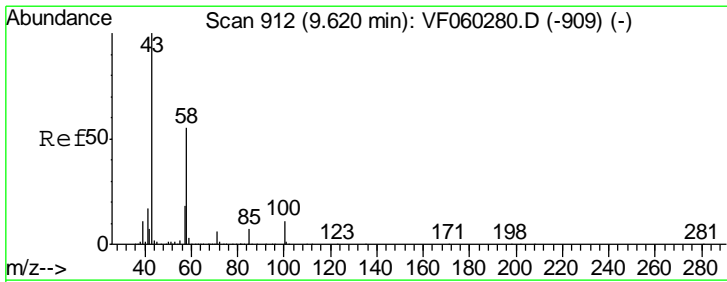
Instrument :
 MSVOA_F
ClientSampled :
 HC-SOILRE

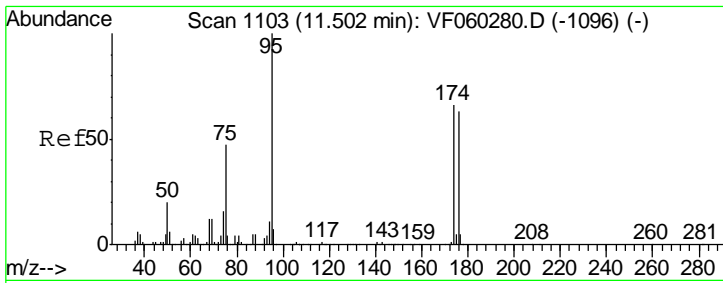
Tgt Ion: 63 Resp: 483
 Ion Ratio Lower Upper
 63 100
 106 0.0 0.0 0.0



#59
 2-Hexanone
 Concen: 24.083 ug/l
 RT: 9.62 min Scan# 912
 Delta R.T. -0.00 min
 Lab File: VF060317.D
 Acq: 21 Sep 2018 17:28

Tgt Ion: 43 Resp: 14965
 Ion Ratio Lower Upper
 43 100
 58 60.9 25.9 77.6

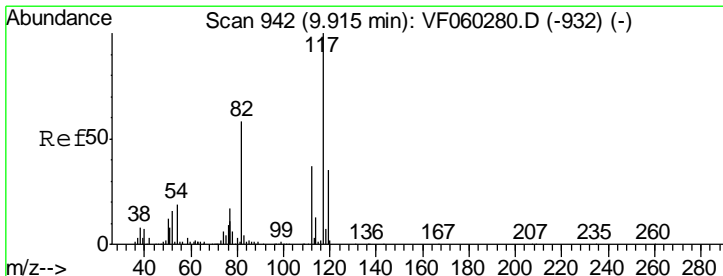
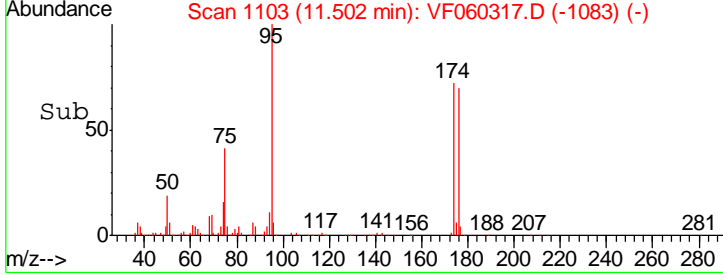
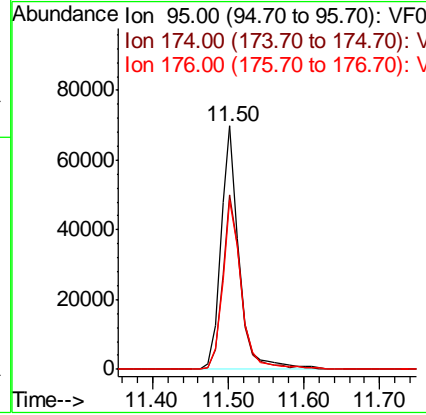
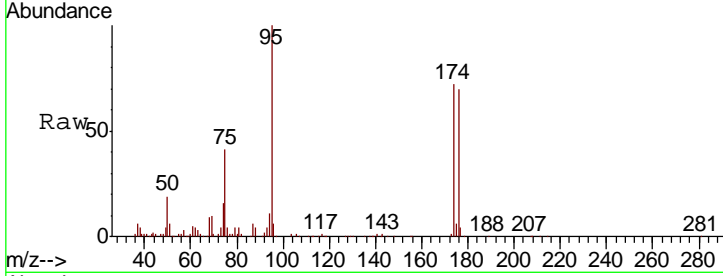




#62
 4-Bromofluorobenzene
 Concen: 66.146 ug/l
 RT: 11.50 min Scan# 1103
 Delta R.T. -0.00 min
 Lab File: VF060317.D
 Acq: 21 Sep 2018 17:28

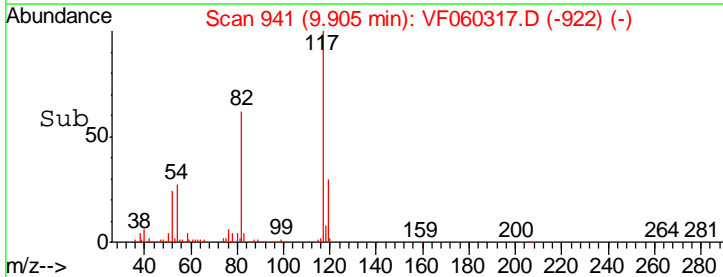
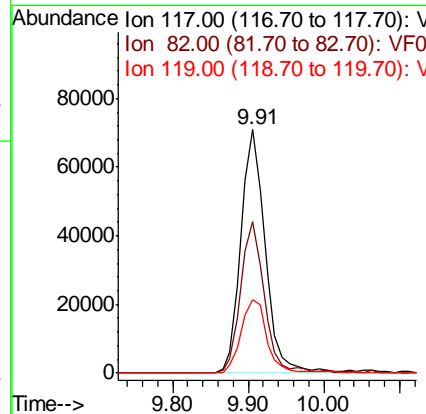
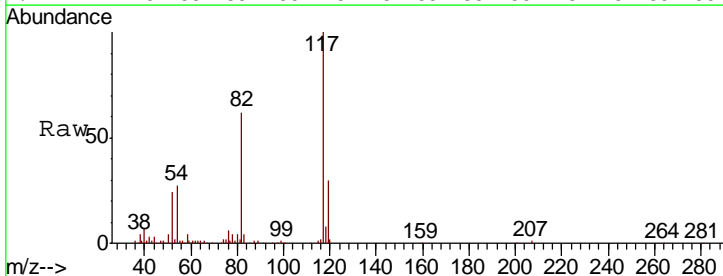
Instrument :
 MSVOA_F
 ClientSampled :
 HC-SOILRE

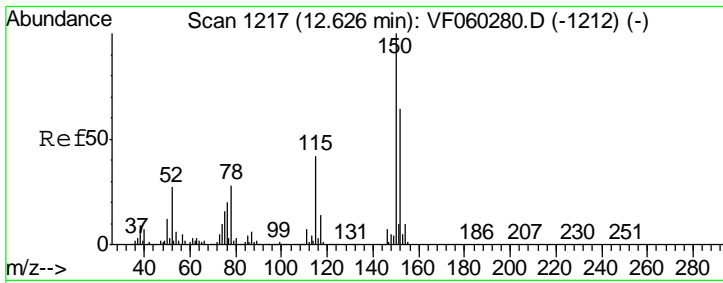
Tgt Ion	Resp	Lower	Upper
95	118292		
174	71.6	0.0	131.2
176	69.8	0.0	126.6



#63
 Chlorobenzene-d5
 Concen: 50.000 ug/l
 RT: 9.91 min Scan# 941
 Delta R.T. -0.01 min
 Lab File: VF060317.D
 Acq: 21 Sep 2018 17:28

Tgt Ion	Resp	Lower	Upper
117	157757		
82	62.0	46.2	69.2
119	30.3	27.8	41.6

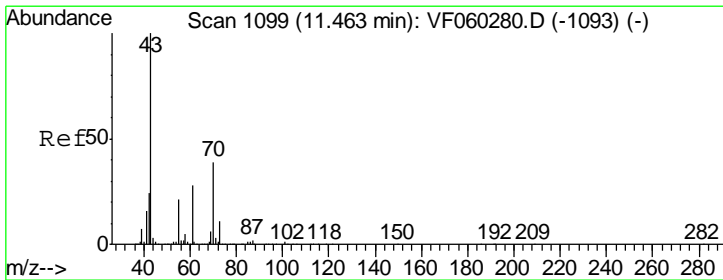
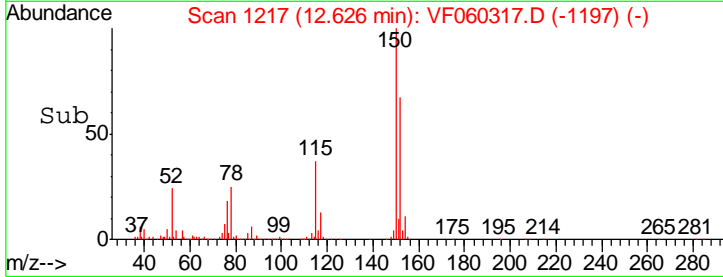
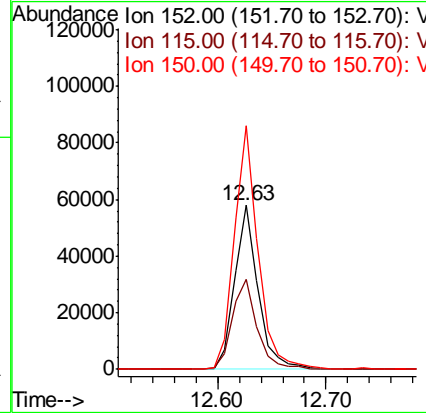
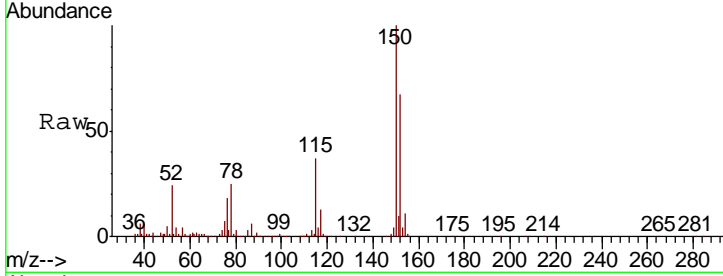




#72
 1,4-Dichlorobenzene-d4
 Concen: 50.000 ug/l
 RT: 12.63 min Scan# 1217
 Delta R.T. -0.00 min
 Lab File: VF060317.D
 Acq: 21 Sep 2018 17:28

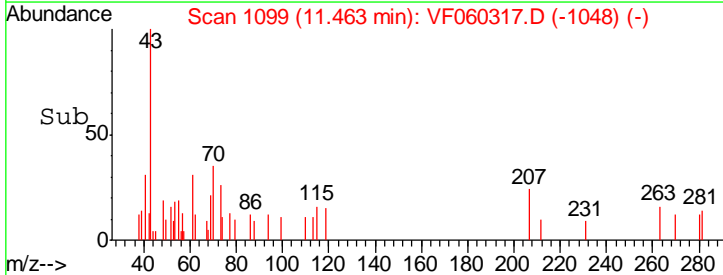
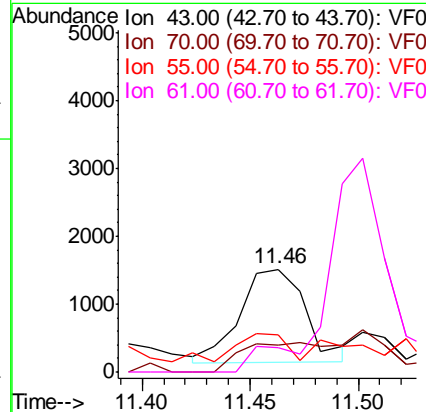
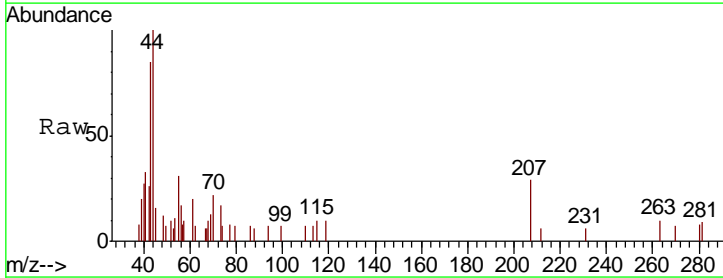
Instrument :
 MSVOA_F
 ClientSampled :
 HC-SOILRE

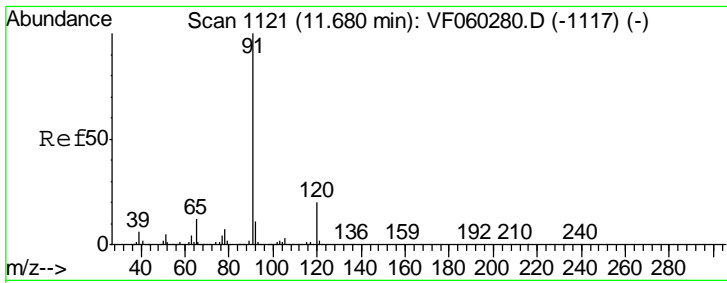
Tgt Ion	Resp	Lower	Upper
152	100		
115	54.9	32.6	97.8
150	148.7	0.0	314.2



#74
 N-amyl acetate
 Concen: 1.713 ug/l
 RT: 11.46 min Scan# 1099
 Delta R.T. -0.00 min
 Lab File: VF060317.D
 Acq: 21 Sep 2018 17:28

Tgt Ion	Resp	Lower	Upper
43	100		
70	26.6	31.4	47.2#
55	36.4	16.8	25.2#
61	23.3	22.6	34.0

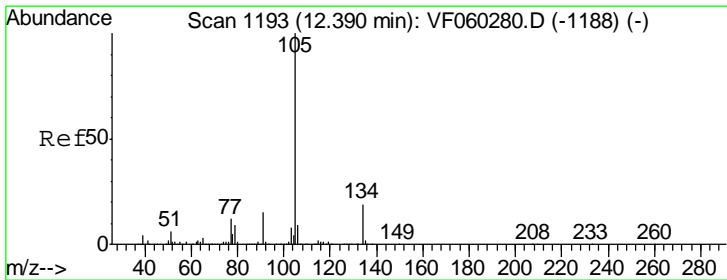
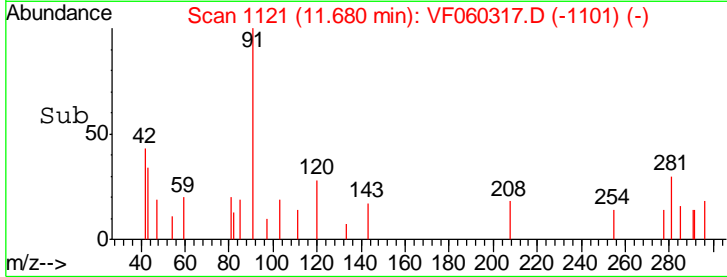
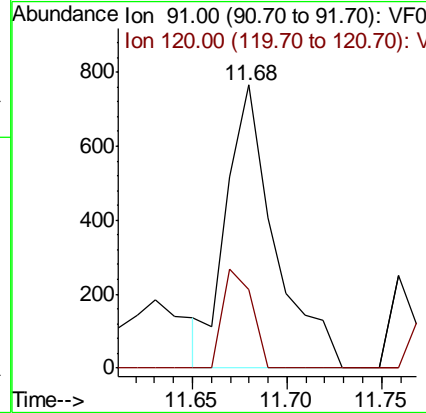
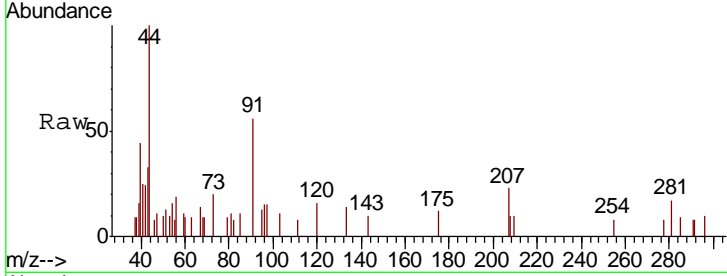




#78
 n-propylbenzene
 Concen: Below Cal
 RT: 11.68 min Scan# 1121
 Delta R.T. 0.00 min
 Lab File: VF060317.D
 Acq: 21 Sep 2018 17:28

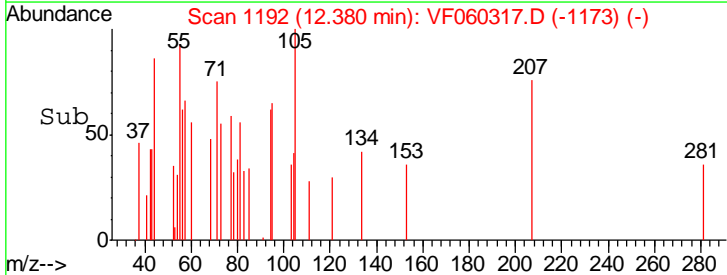
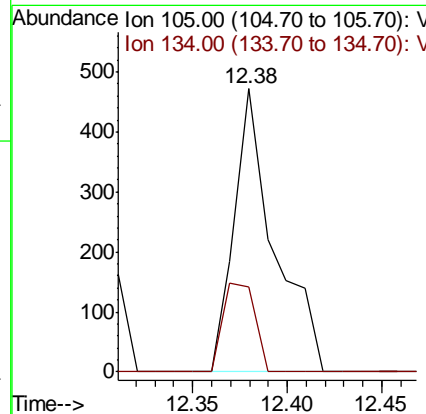
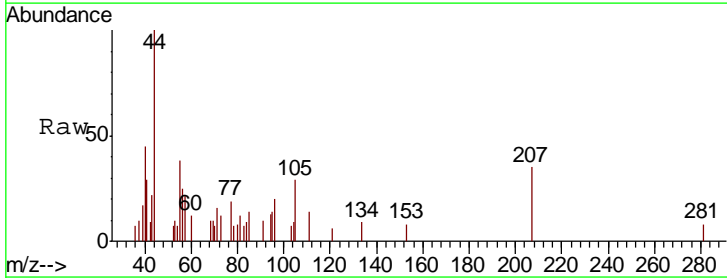
Instrument : MSVOA_F
 ClientSampled : HC-SOILRE

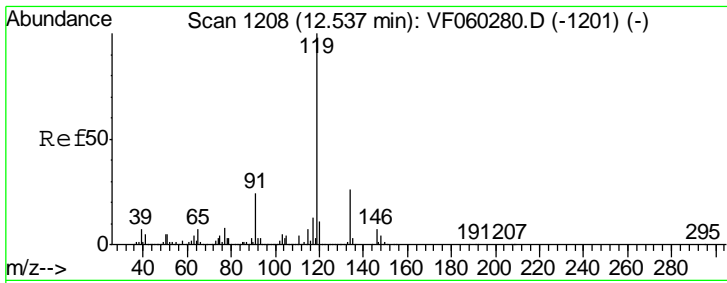
Tgt Ion	Resp	Lower	Upper
91	1344		
120	27.6	10.0	29.8



#85
 sec-Butylbenzene
 Concen: Below Cal
 RT: 12.38 min Scan# 1192
 Delta R.T. -0.01 min
 Lab File: VF060317.D
 Acq: 21 Sep 2018 17:28

Tgt Ion	Resp	Lower	Upper
105	691		
134	29.9	9.6	28.6#

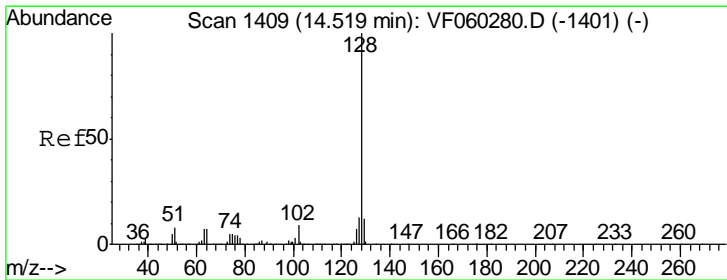
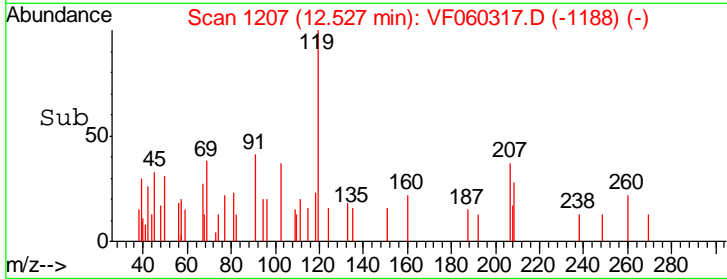
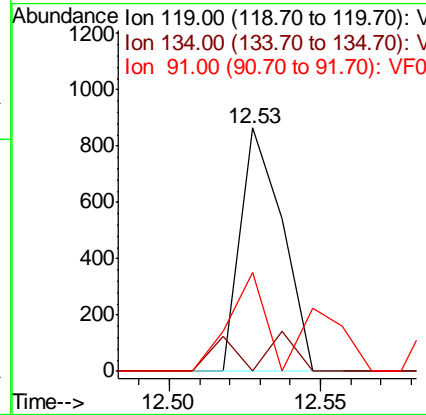
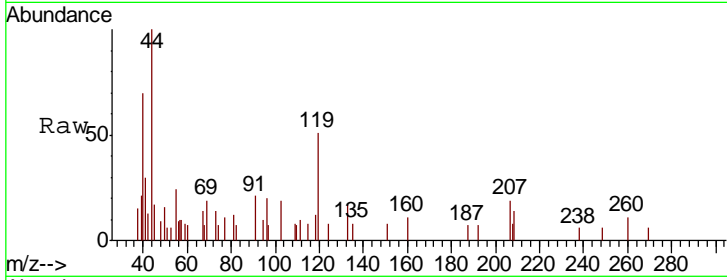




#86
 p-Isopropyltoluene
 Concen: Below Cal
 RT: 12.53 min Scan# 1207
 Delta R.T. -0.01 min
 Lab File: VF060317.D
 Acq: 21 Sep 2018 17:28

Instrument : MSVOA_F
 ClientSampled : HC-SOILRE

Tgt Ion	Resp	Lower	Upper
119	832		
134	0.0	12.9	38.7#
91	40.8	11.9	35.7#



#95
 Naphthalene
 Concen: 1.730 ug/l
 RT: 14.52 min Scan# 1409
 Delta R.T. -0.00 min
 Lab File: VF060317.D
 Acq: 21 Sep 2018 17:28

Tgt Ion	Resp	Lower	Upper
128	6693		
127	18.8	10.1	15.1#
129	13.6	9.8	14.8

