

Data Path : Z:\VOASRV\HPCHEM1\MSVOA F\DATA\VF062018\
 Data File : VF059240.D
 Acq On : 20 Jun 2018 21:55
 Operator : VA/AP
 Sample : J3584-07RE
 Misc : 5.41g/5mL/MSVOA-F/SOIL
 ALS Vial : 13 Sample Multiplier: 1

Instrument :
 MSVOA_F
ClientSampleId :
 TP-12-DRE

Manual Integrations
APPROVED
 apatel
 6/21/2018 9:46:00 AM

Quant Time: Jun 21 09:10:57 2018
 Quant Method : Z:\VOASRV\HPCHEM1\MSVOA_F\METHODS\82F060618S.M
 Quant Title : SW846 8260
 QLast Update : Thu Jun 07 10:52:00 2018
 Response via : Initial Calibration

| Internal Standards | R.T. | QIon | Response | Conc | Units | Dev(Min) |
|------------------------------------|--------|------|----------|-------|---------|----------|
| 1) Pentafluorobenzene | 5.04 | 168 | 223257 | 50.00 | ug/l | 0.00 |
| 34) 1,4-Difluorobenzene | 5.76 | 114 | 347393 | 50.00 | ug/l | 0.00 |
| 63) Chlorobenzene-d5 | 9.91 | 117 | 333200 | 50.00 | ug/l | 0.00 |
| 72) 1,4-Dichlorobenzene-d4 | 12.63 | 152 | 208603 | 50.00 | ug/l | 0.00 |
| System Monitoring Compounds | | | | | | |
| 33) 1,2-Dichloroethane-d4 | 5.02 | 65 | 164289 | 60.68 | ug/l | 0.00 |
| Spiked Amount | 50.000 | | Recovery | = | 121.36% | |
| 35) Dibromofluoromethane | 4.29 | 113 | 144514 | 59.29 | ug/l | 0.00 |
| Spiked Amount | 50.000 | | Recovery | = | 118.58% | |
| 50) Toluene-d8 | 7.70 | 98 | 335673 | 46.87 | ug/l | 0.00 |
| Spiked Amount | 50.000 | | Recovery | = | 93.74% | |
| 62) 4-Bromofluorobenzene | 11.51 | 95 | 181448 | 49.40 | ug/l | 0.00 |
| Spiked Amount | 50.000 | | Recovery | = | 98.80% | |
| Target Compounds | | | | | | |
| 20) Methylene Chloride | 2.28 | 84 | 18160m | 11.73 | ug/l | Qvalue |

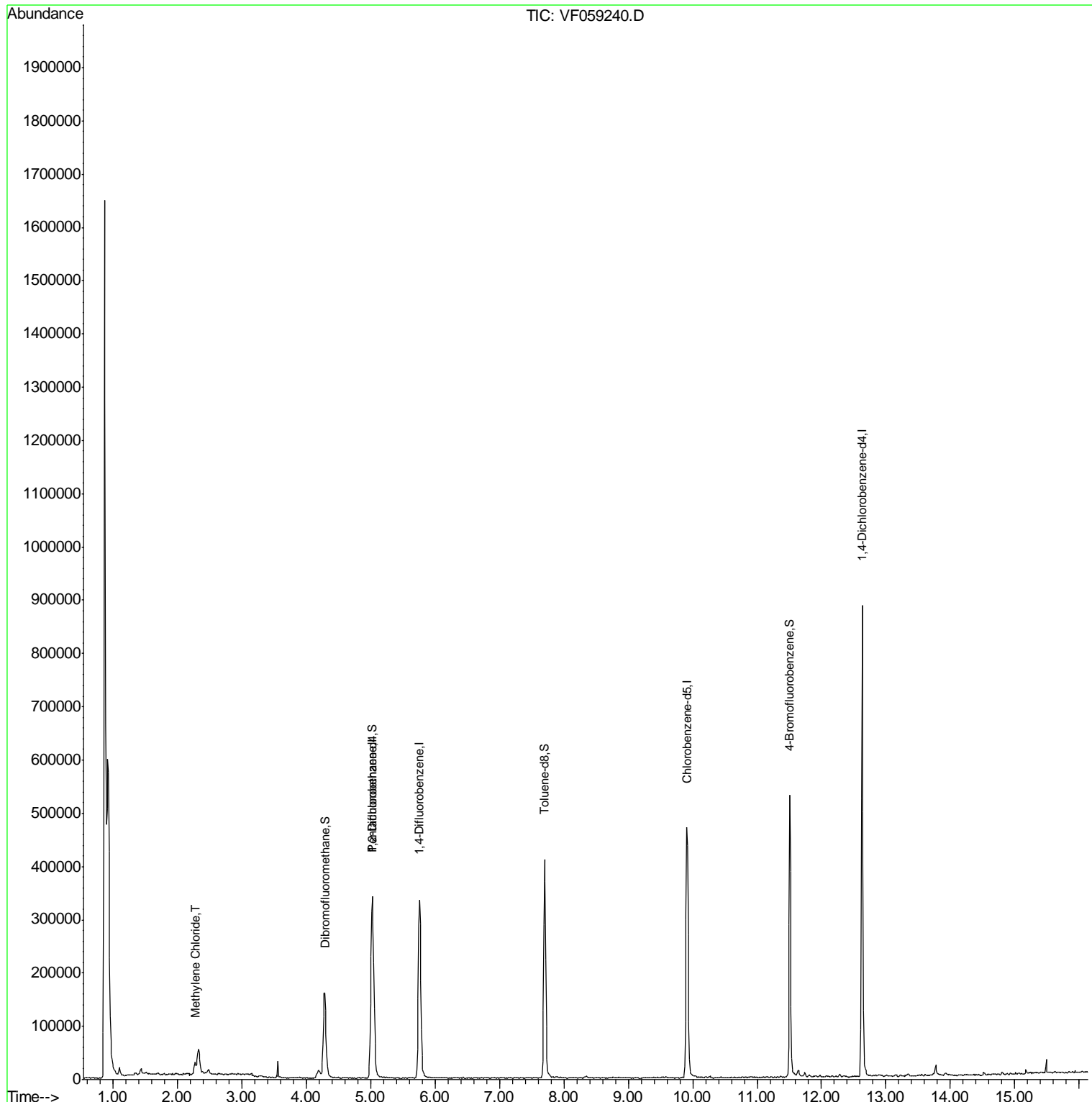
(#) = qualifier out of range (m) = manual integration (+) = signals summed

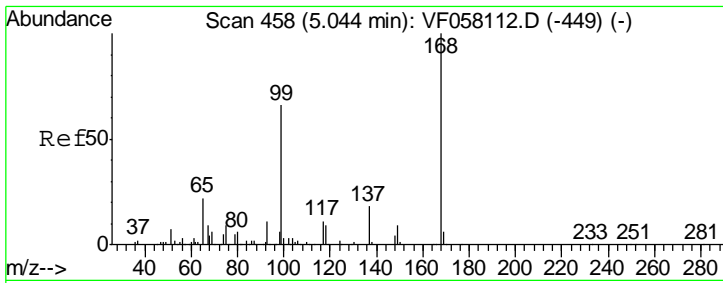
Data Path : Z:\VOASRV\HPCHEM1\MSVOA F\DATA\VF062018\
 Data File : VF059240.D
 Acq On : 20 Jun 2018 21:55
 Operator : VA/AP
 Sample : J3584-07RE
 Misc : 5.41µ/5mL/MSVOA-F/SOIL
 ALS Vial : 13 Sample Multiplier: 1

Instrument :
 MSVOA_F
Client Sampled :
 TP-12-DRE

Manual Integrations
APPROVED
 apatel
 6/21/2018 9:46:00 AM

Quant Time: Jun 21 09:10:57 2018
 Quant Method : Z:\VOASRV\HPCHEM1\MSVOA_F\METHODS\82F060618S.M
 Quant Title : SW846 8260
 QLast Update : Thu Jun 07 10:52:00 2018
 Response via : Initial Calibration





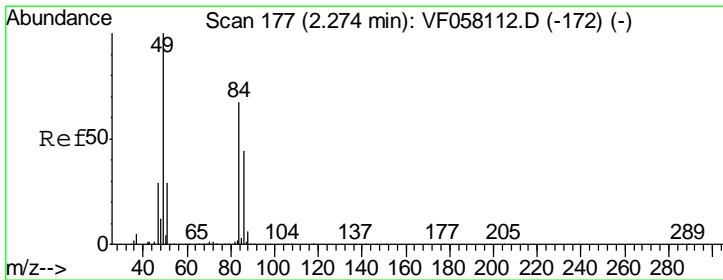
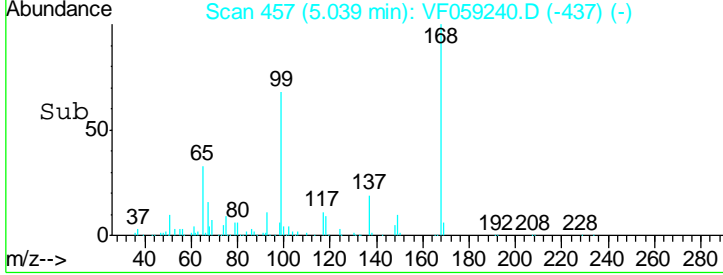
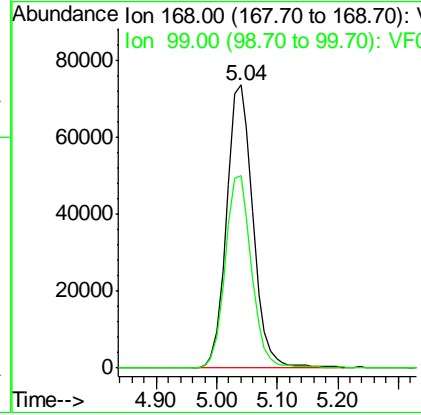
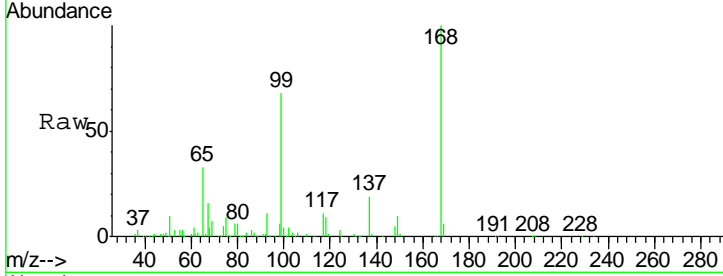
#1
 Pentafluorobenzene
 Concen: 50.00 ug/l
 RT: 5.04 min Scan# 457
 Delta R.T. -0.01 min
 Lab File: VF059240.D
 Acq: 20 Jun 2018 21:55

Instrument : MSVOA_F
 Client Sampled : TP-12-DRE

| Tgt Ion | Resp | Lower | Upper |
|---------|------|-------|-------|
| 168 | 100 | | |
| 99 | 68.2 | 52.9 | 79.3 |

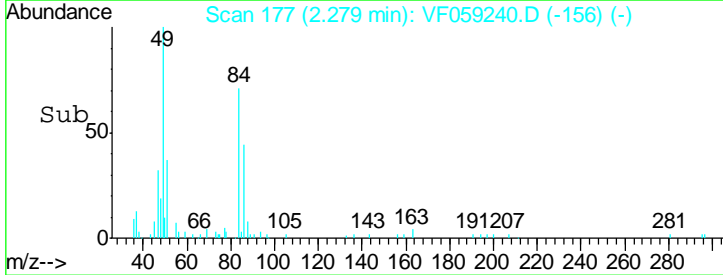
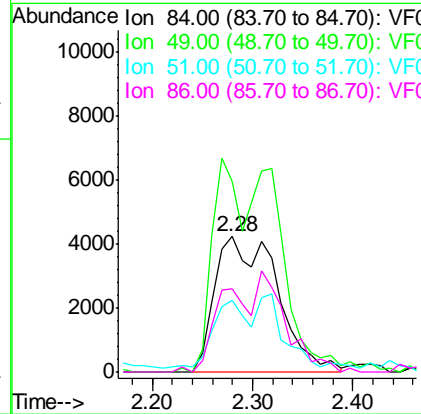
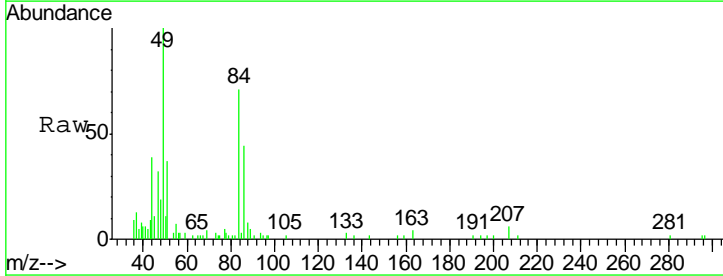
Manual Integrations
 APPROVED

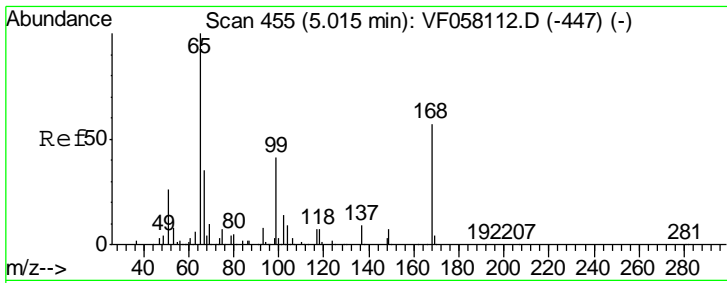
apatel
 6/21/2018 9:46:00 AM



#20
 Methylene Chloride
 Concen: 11.73 ug/l m
 RT: 2.28 min Scan# 177
 Delta R.T. 0.00 min
 Lab File: VF059240.D
 Acq: 20 Jun 2018 21:55

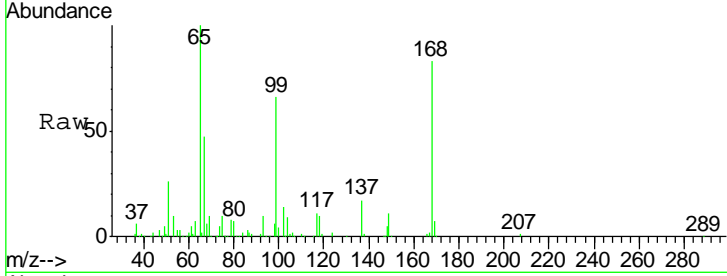
| Tgt Ion | Resp | Lower | Upper |
|---------|-------|-------|-------|
| 84 | 100 | | |
| 49 | 140.8 | 121.0 | 181.4 |
| 51 | 52.6 | 35.8 | 53.6 |
| 86 | 61.7 | 53.2 | 79.8 |





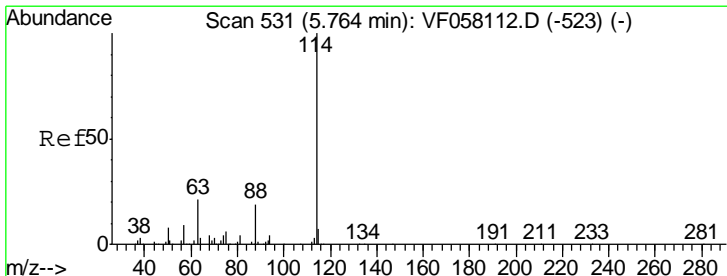
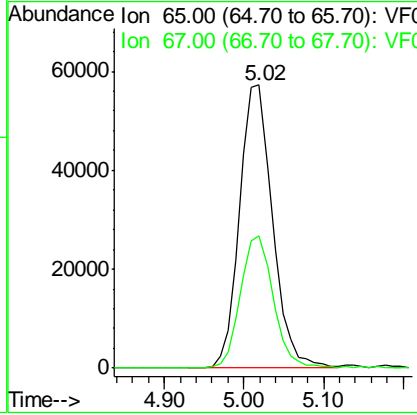
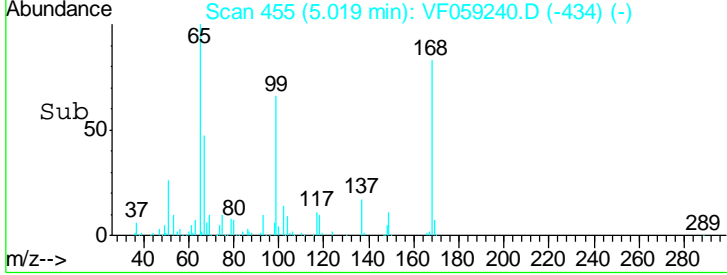
#33
 1,2-Dichloroethane-d4
 Concen: 60.68 ug/l
 RT: 5.02 min Scan# 455
 Delta R.T. 0.00 min
 Lab File: VF059240.D
 Acq: 20 Jun 2018 21:55

Instrument :
 MSVOA_F
ClientSampled :
 TP-12-DRE

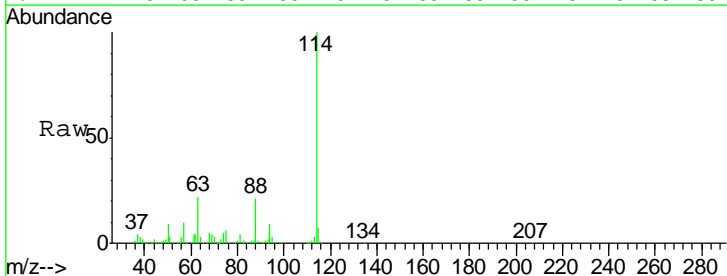


Tgt Ion: 65 Resp: 164289
 Ion Ratio Lower Upper
 65 100
 67 46.8 0.0 97.0

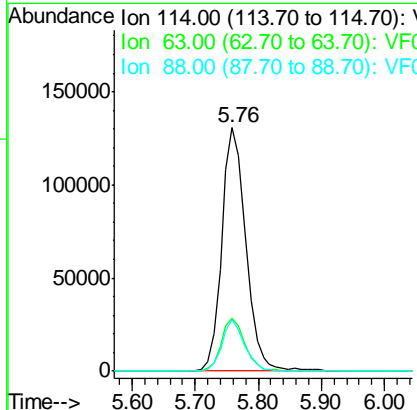
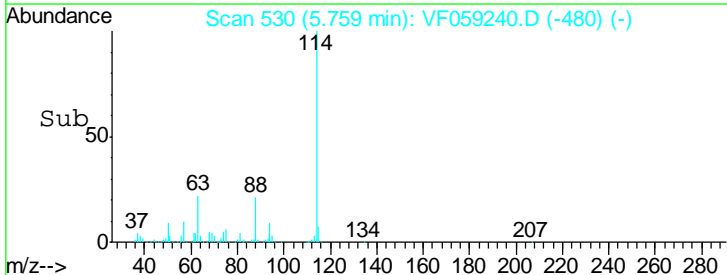
Manual Integrations
APPROVED
 apatel
 6/21/2018 9:46:00 AM

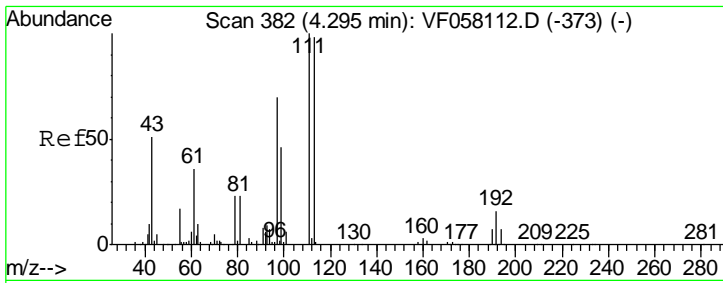


#34
 1,4-Difluorobenzene
 Concen: 50.00 ug/l
 RT: 5.76 min Scan# 530
 Delta R.T. -0.01 min
 Lab File: VF059240.D
 Acq: 20 Jun 2018 21:55



Tgt Ion: 114 Resp: 347393
 Ion Ratio Lower Upper
 114 100
 63 21.7 0.0 41.6
 88 21.0 0.0 38.8





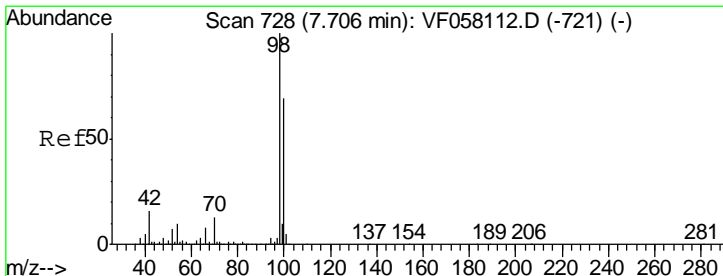
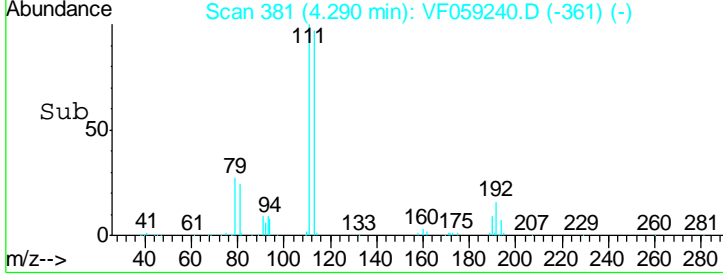
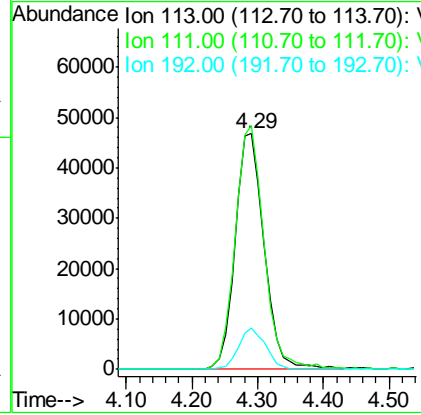
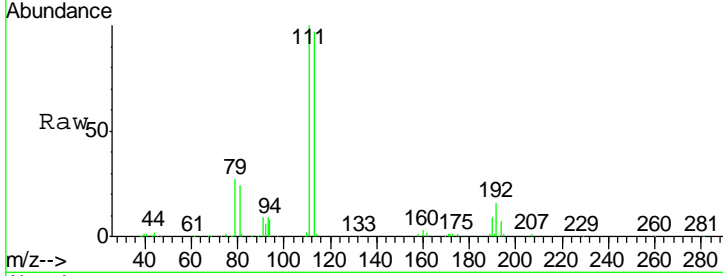
#35
 Dibromofluoromethane
 Concen: 59.29 ug/l
 RT: 4.29 min Scan# 381
 Delta R.T. -0.01 min
 Lab File: VF059240.D
 Acq: 20 Jun 2018 21:55

Instrument :
 MSVOA_F
 ClientSampled :
 TP-12-DRE

| Tgt Ion | Resp | Lower | Upper |
|---------|--------|-------|-------|
| 113 | 144514 | | |
| 113 | 100 | | |
| 111 | 103.4 | 81.3 | 121.9 |
| 192 | 17.4 | 12.7 | 19.1 |

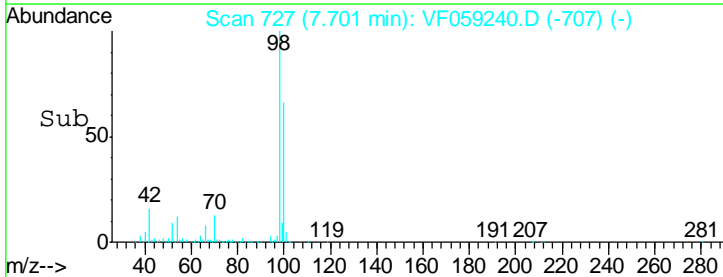
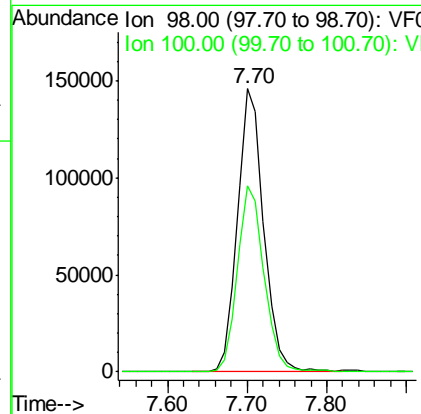
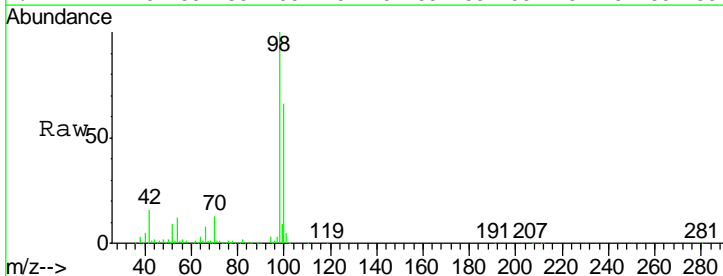
Manual Integrations
 APPROVED

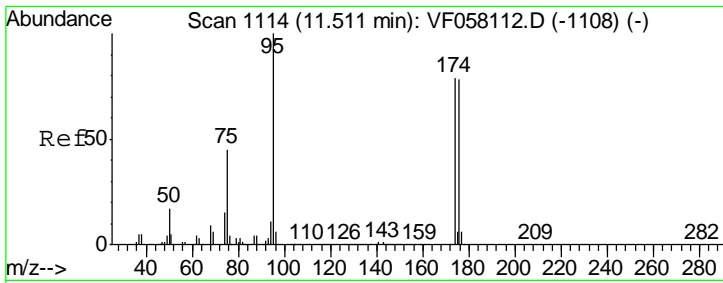
apatel
 6/21/2018 9:46:00 AM



#50
 Toluene-d8
 Concen: 46.87 ug/l
 RT: 7.70 min Scan# 727
 Delta R.T. -0.01 min
 Lab File: VF059240.D
 Acq: 20 Jun 2018 21:55

| Tgt Ion | Resp | Lower | Upper |
|---------|--------|-------|-------|
| 98 | 335673 | | |
| 98 | 100 | | |
| 100 | 65.6 | 55.6 | 83.4 |



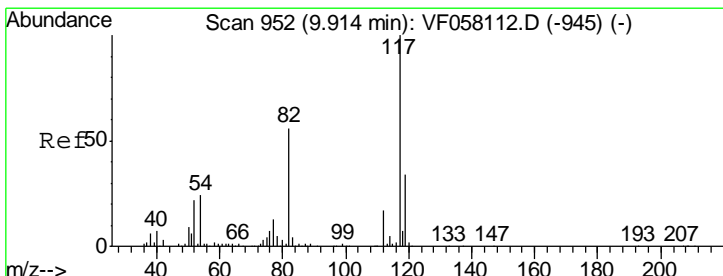
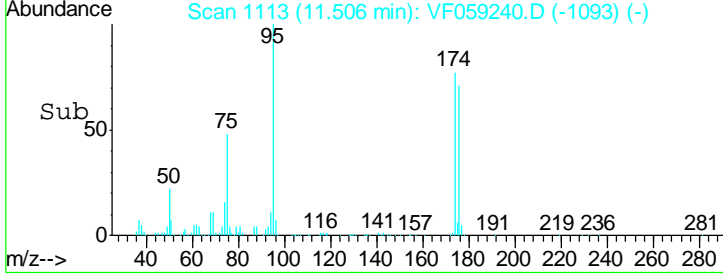
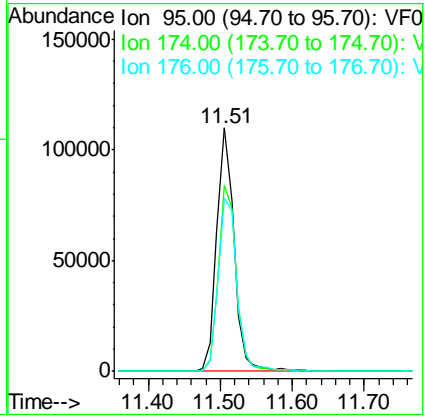
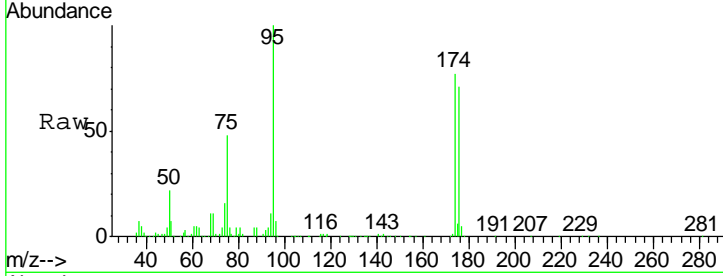


#62
 4-Bromofluorobenzene
 Concen: 49.40 ug/l
 RT: 11.51 min Scan# 1113
 Delta R.T. -0.01 min
 Lab File: VF059240.D
 Acq: 20 Jun 2018 21:55

Instrument : MSVOA_F
 Client Sampled : TP-12-DRE

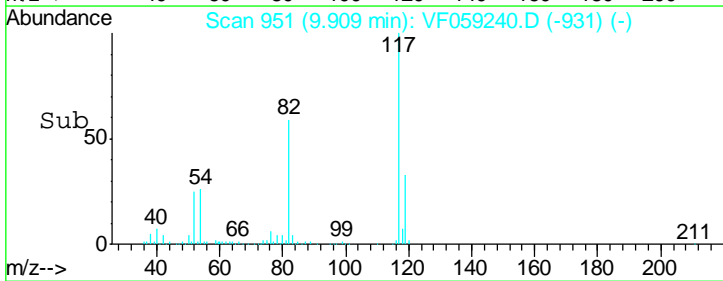
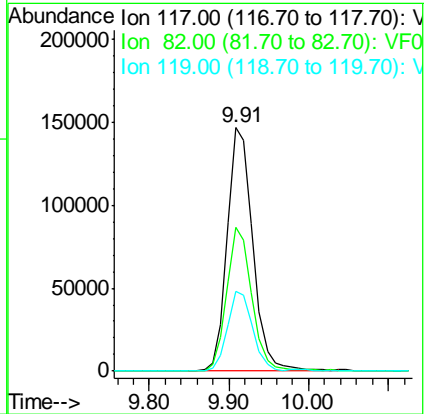
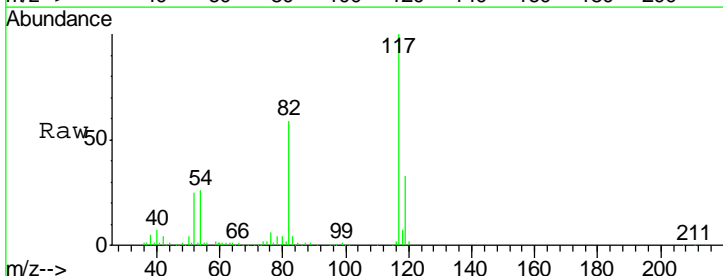
| Tgt Ion | Resp | Lower | Upper |
|---------|--------|-------|-------|
| 95 | 181448 | | |
| 95 | 100 | | |
| 174 | 76.6 | 0.0 | 157.8 |
| 176 | 71.1 | 0.0 | 155.8 |

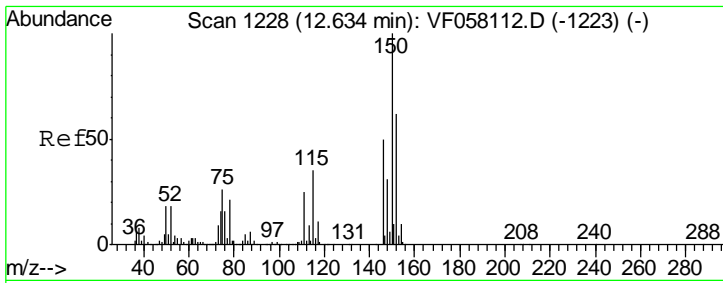
Manual Integrations APPROVED
 apatel
 6/21/2018 9:46:00 AM



#63
 Chlorobenzene-d5
 Concen: 50.00 ug/l
 RT: 9.91 min Scan# 951
 Delta R.T. -0.01 min
 Lab File: VF059240.D
 Acq: 20 Jun 2018 21:55

| Tgt Ion | Resp | Lower | Upper |
|---------|--------|-------|-------|
| 117 | 333200 | | |
| 117 | 100 | | |
| 82 | 58.8 | 45.2 | 67.8 |
| 119 | 32.8 | 27.5 | 41.3 |





#72
 1,4-Dichlorobenzene-d4
 Concen: 50.00 ug/l
 RT: 12.63 min Scan# 1227
 Delta R.T. -0.01 min
 Lab File: VF059240.D
 Acq: 20 Jun 2018 21:55

Instrument :
 MSVOA_F
ClientSampled :
 TP-12-DRE

| Tot Ion | Resp | Lower | Upper |
|---------|--------|-------|-------|
| 152 | 208603 | | |
| 152 | 100 | | |
| 115 | 59.6 | 28.5 | 85.5 |
| 150 | 161.6 | 0.0 | 323.8 |

Manual Integrations
APPROVED
 apatel
 6/21/2018 9:46:00 AM

