

Data Path : W:\HPCHEM1\MSVOA\_H\DATA\VH092215\  
 Data File : VH057106.D  
 Acq On : 22 Sep 2015 15:59  
 Operator : SY/FY  
 Sample : I.BLK  
 Misc : 12.84g/5mL//100uL/5mL/MSVOA\_H/MEOH  
 ALS Vial : 7 Sample Multiplier: 1

Instrument :  
 MSVOA\_H  
 ClientSampleId :  
 I.BLK

Quant Time: Sep 23 04:38:01 2015  
 Quant Method : W:\HPCHEM1\MSVOA\_H\METHODS\82H091715W.M  
 Quant Title : SW846 8260  
 QLast Update : Fri Sep 18 15:34:01 2015  
 Response via : Initial Calibration

Internal Standards	R.T.	QIon	Response	Conc	Units	Dev(Min)
1) Pentafluorobenzene	4.82	168	350476	50.00	ug/l	-0.03
34) 1,4-Difluorobenzene	5.54	114	781441	50.00	ug/l	-0.03
63) Chlorobenzene-d5	9.71	117	472641	50.00	ug/l	-0.02
72) 1,4-Dichlorobenzene-d4	12.49	152	117838	50.00	ug/l	0.00

## System Monitoring Compounds

33) 1,2-Dichloroethane-d4	4.79	65	613782	98.07	ug/l	-0.03
Spiked Amount	50.000	Range	66 - 150	Recovery	=	196.14%#
35) Dibromofluoromethane	4.06	113	498288	80.09	ug/l	-0.02
Spiked Amount	50.000	Range	76 - 130	Recovery	=	160.18%#
48) Toluene-d8	7.50	98	723969	40.47	ug/l	-0.02
Spiked Amount	50.000	Range	78 - 121	Recovery	=	80.94%
62) 4-Bromofluorobenzene	11.35	95	223777	37.09	ug/l	0.00
Spiked Amount	50.000	Range	70 - 131	Recovery	=	74.18%

## Target Compounds

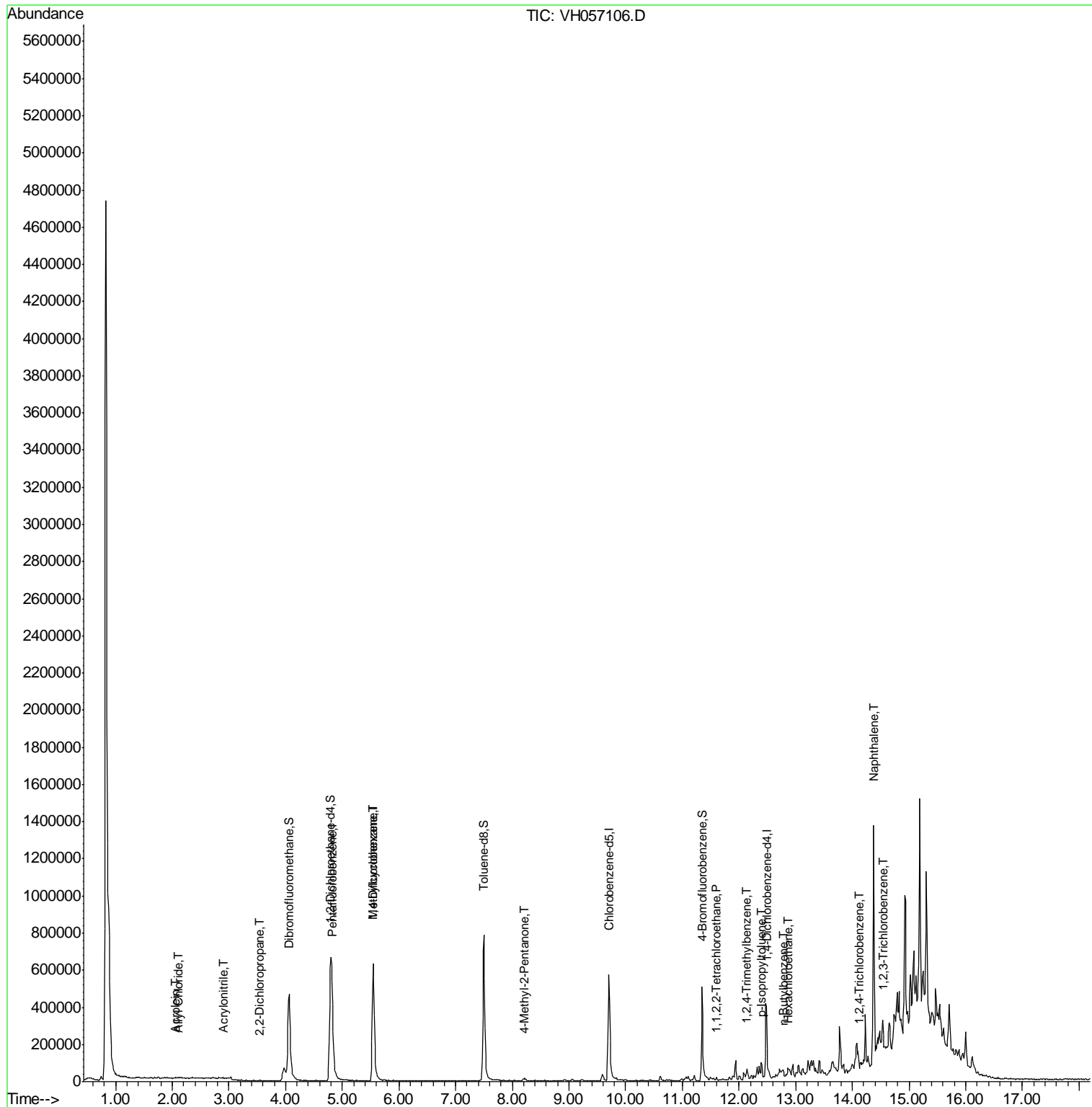
Target Compounds	R.T.	QIon	Response	Conc	Units	Qvalue
5) Bromomethane	1.29	94	1988	Below Cal	#	1
6) Chloroethane	1.40	64	396	Below Cal	#	1
13) Acrolein	2.06	56	459	0.68	ug/l	94
15) Acrylonitrile	2.90	53	589	0.29	ug/l	# 1
16) Allyl Chloride	2.11	41	1778	0.27	ug/l	# 34
17) Acetone	2.12	43	1278	Below Cal		91
26) 2,2-Dichloropropane	3.54	77	1112	0.23	ug/l	# 60
44) Methylcyclohexane	5.54	83	4975	1.01	ug/l	25
49) 4-Methyl-2-Pentanone	8.21	43	19184	1.50	ug/l	78
75) 1,1,2,2-Tetrachloroethane	11.60	83	1318	0.23	ug/l	# 49
84) 1,2,4-Trimethylbenzene	12.14	105	3338	0.46	ug/l	90
86) p-Isopropyltoluene	12.39	119	2067	0.38	ug/l	# 50
89) n-Butylbenzene	12.77	91	1864	0.43	ug/l	# 71
90) Hexachloroethane	12.86	117	579	0.51	ug/l	# 29
93) 1,2,4-Trichlorobenzene	14.12	180	520	4.41	ug/l	# 19
95) Naphthalene	14.38	128	916653	281.31	ug/l	99
96) 1,2,3-Trichlorobenzene	14.54	180	3926	12.69	ug/l	75

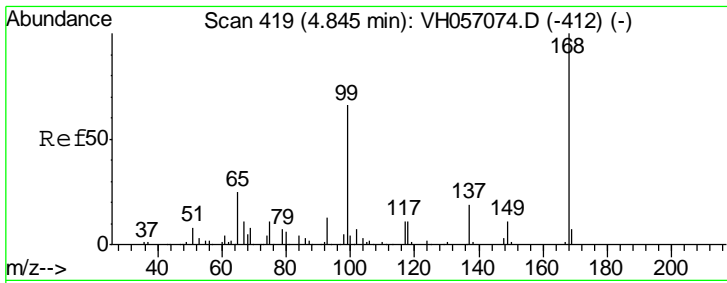
(#) = qualifier out of range (m) = manual integration (+) = signals summed

Data Path : W:\HPCHEM1\MSVOA\_H\DATA\VH092215\  
 Data File : VH057106.D  
 Acq On : 22 Sep 2015 15:59  
 Operator : SY/FY  
 Sample : I.BLK  
 Misc : 12.84g/5mL//100uL/5mL/MSVOA\_H/MEOH  
 ALS Vial : 7 Sample Multiplier: 1

Instrument :  
 MSVOA\_H  
 ClientSampleId :  
 I.BLK

Quant Time: Sep 23 04:38:01 2015  
 Quant Method : W:\HPCHEM1\MSVOA\_H\METHODS\82H091715W.M  
 Quant Title : SW846 8260  
 QLast Update : Fri Sep 18 15:34:01 2015  
 Response via : Initial Calibration

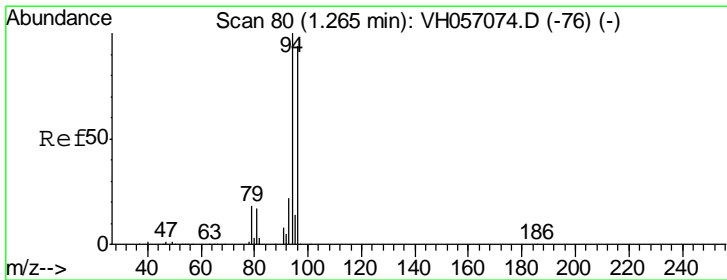
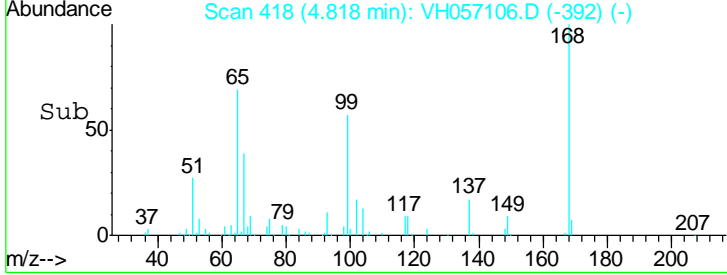
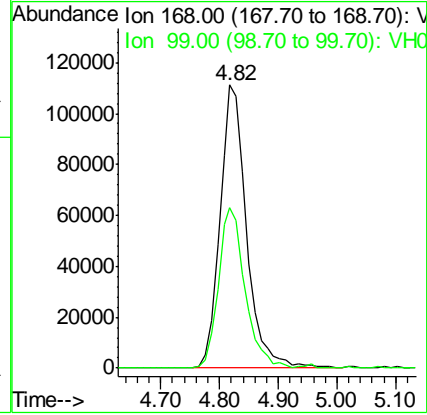
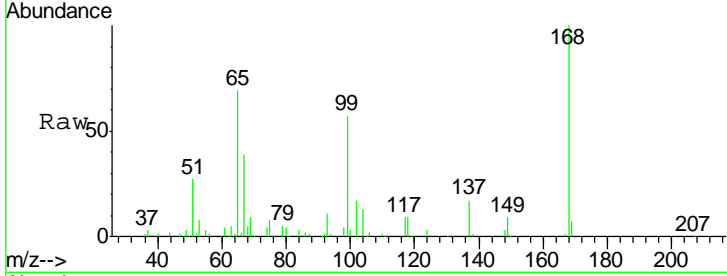




#1  
 Pentafluorobenzene  
 Concen: 50.00 ug/l  
 RT: 4.82 min Scan# 418  
 Delta R.T. -0.03 min  
 Lab File: VH057106.D  
 Acq: 22 Sep 2015 15:59

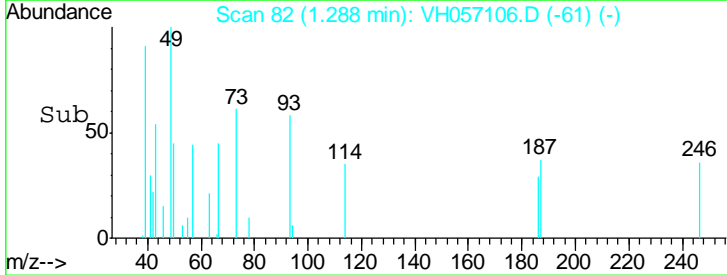
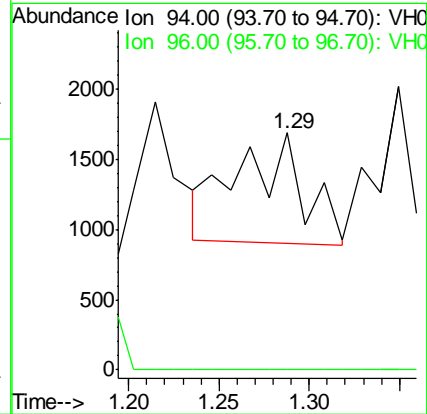
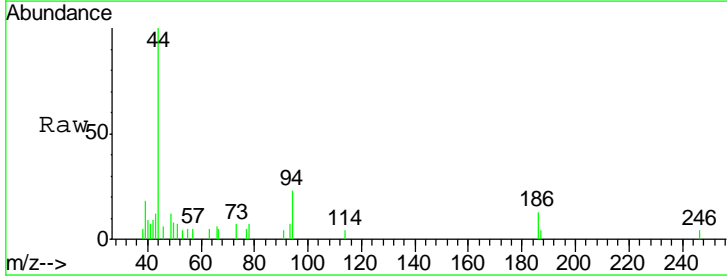
Instrument : MSVOA\_H  
 ClientSampled : I.BLK

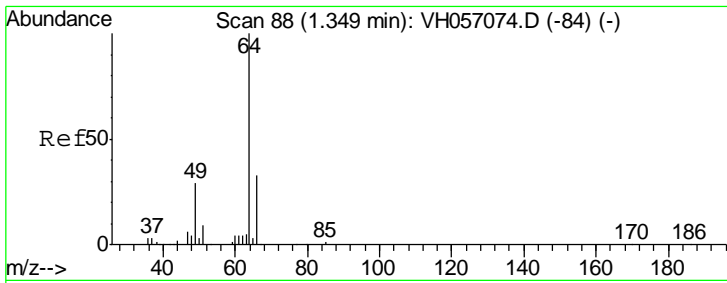
Tgt Ion	Resp	Lower	Upper
168	100		
99	56.7	55.8	83.6



#5  
 Bromomethane  
 Concen: Below Cal  
 RT: 1.29 min Scan# 82  
 Delta R.T. 0.02 min  
 Lab File: VH057106.D  
 Acq: 22 Sep 2015 15:59

Tgt Ion	Resp	Lower	Upper
94	100		
96	0.0	78.5	117.7#

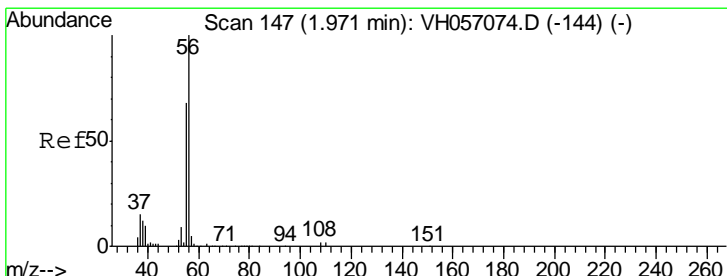
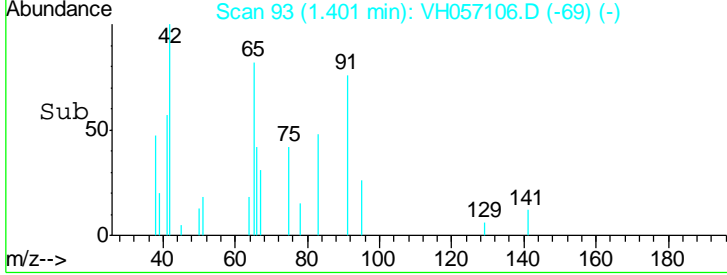
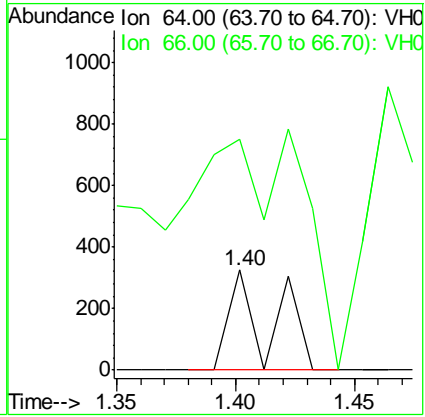
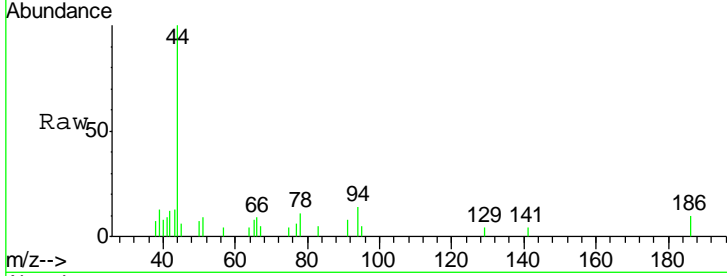




#6  
 Chloroethane  
 Concen: Below Cal  
 RT: 1.40 min Scan# 93  
 Delta R.T. 0.05 min  
 Lab File: VH057106.D  
 Acq: 22 Sep 2015 15:59

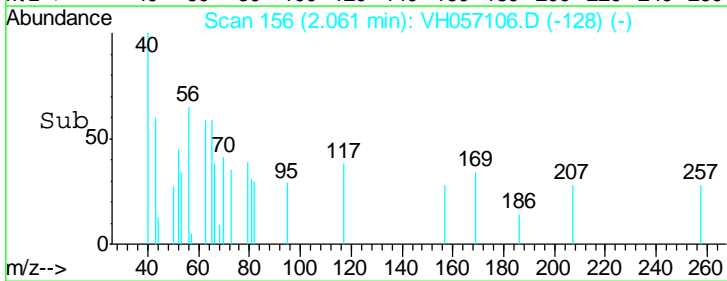
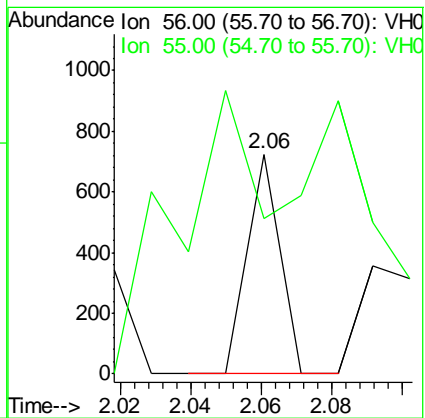
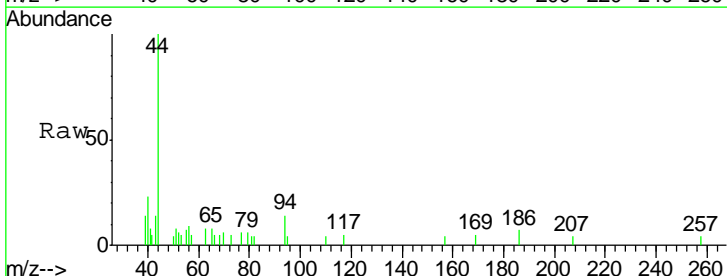
**Instrument :**  
 MSVOA\_H  
**ClientSampled :**  
 I.BLK

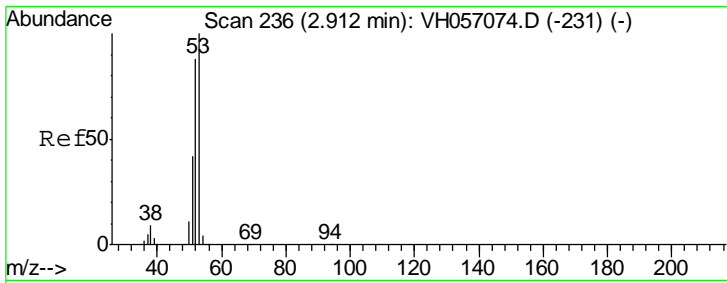
Tgt Ion: 64 Resp: 396  
 Ion Ratio Lower Upper  
 64 100  
 66 230.5 25.2 37.8#



#13  
 Acrolein  
 Concen: 0.68 ug/l  
 RT: 2.06 min Scan# 156  
 Delta R.T. 0.09 min  
 Lab File: VH057106.D  
 Acq: 22 Sep 2015 15:59

Tgt Ion: 56 Resp: 459  
 Ion Ratio Lower Upper  
 56 100  
 55 70.6 52.9 79.3

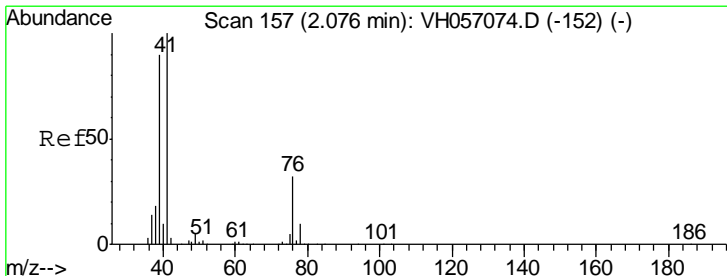
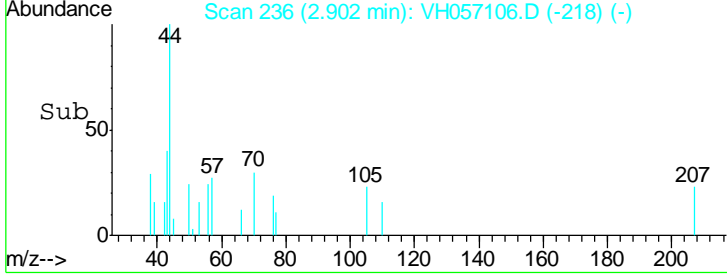
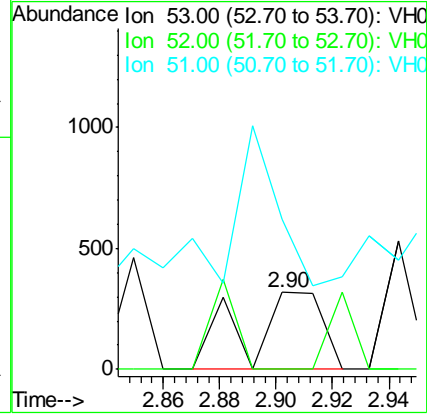
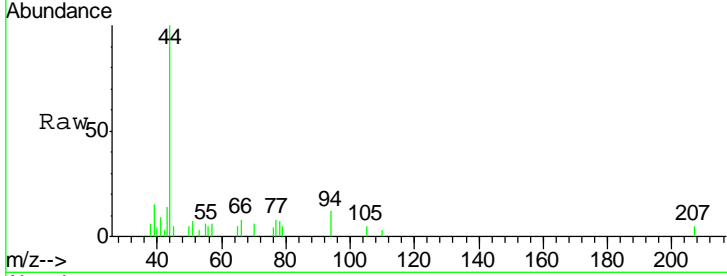




#15  
 Acrylonitrile  
 Concen: 0.29 ug/l  
 RT: 2.90 min Scan# 236  
 Delta R.T. -0.01 min  
 Lab File: VH057106.D  
 Acq: 22 Sep 2015 15:59

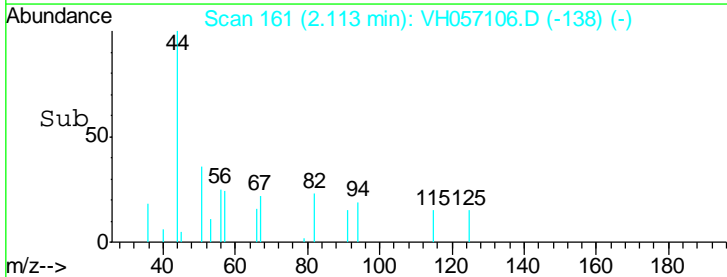
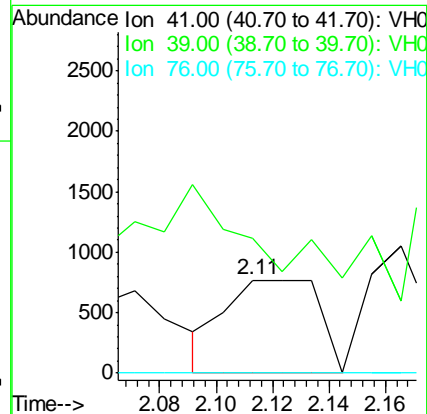
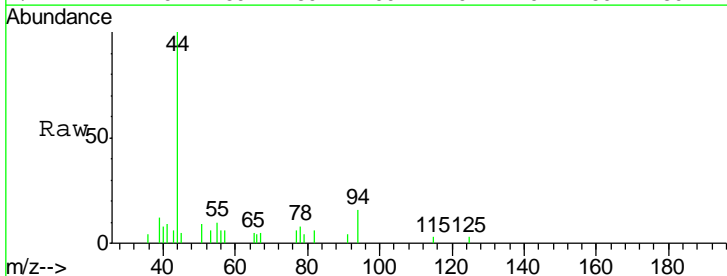
Instrument :  
 MSVOA\_H  
 ClientSampled :  
 I.BLK

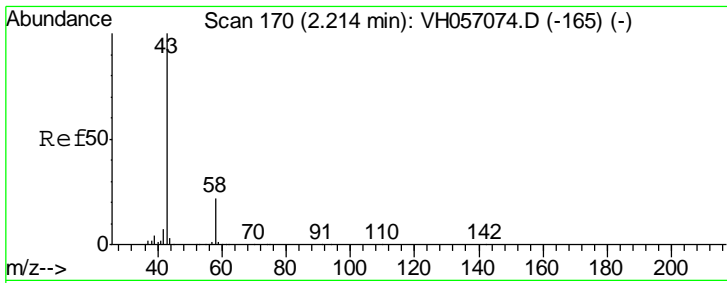
Tgt Ion	Resp	Lower	Upper
53	100		
52	0.0	67.6	101.4#
51	195.6	31.8	47.6#



#16  
 Allyl Chloride  
 Concen: 0.27 ug/l  
 RT: 2.11 min Scan# 161  
 Delta R.T. 0.04 min  
 Lab File: VH057106.D  
 Acq: 22 Sep 2015 15:59

Tgt Ion	Resp	Lower	Upper
41	100		
39	144.7	41.0	123.2#
76	0.0	14.3	42.9#

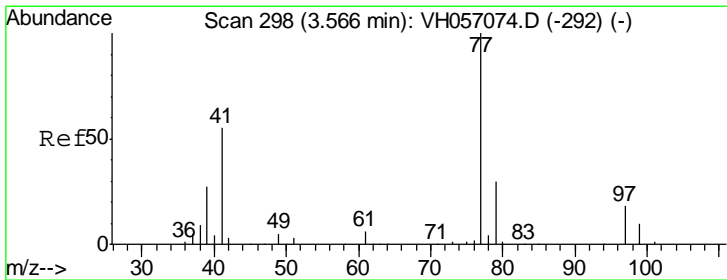
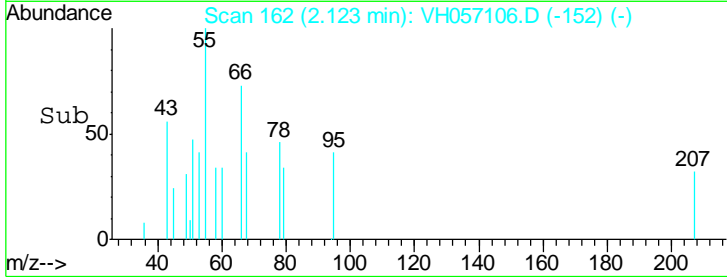
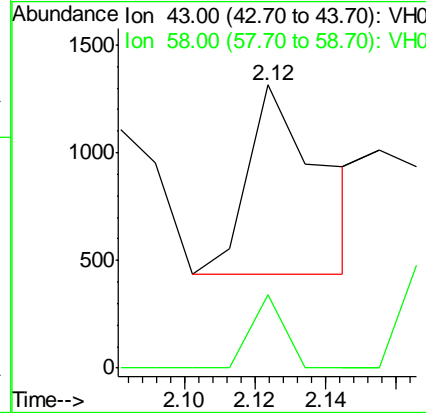
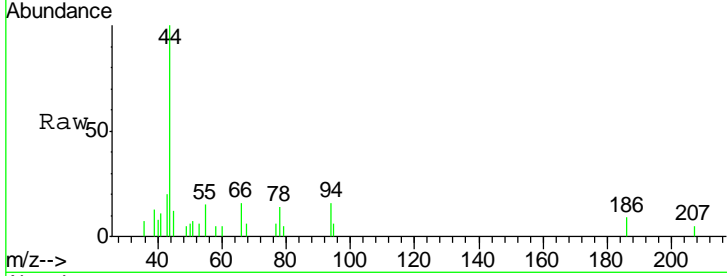




#17  
 Acetone  
 Concen: Below Cal  
 RT: 2.12 min Scan# 162  
 Delta R.T. -0.09 min  
 Lab File: VH057106.D  
 Acq: 22 Sep 2015 15:59

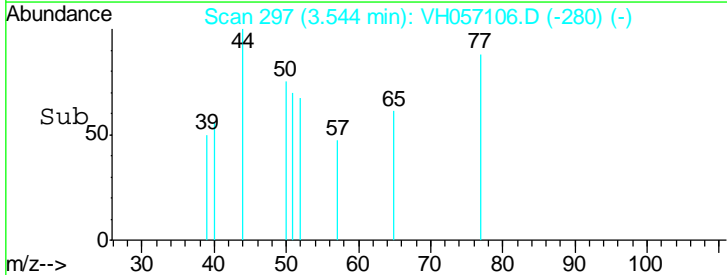
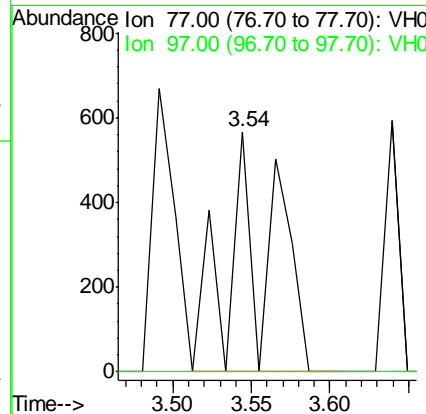
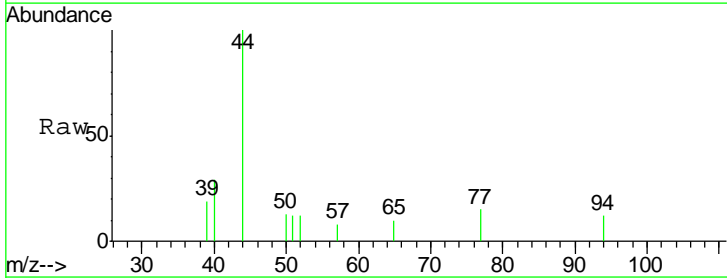
Instrument : MSVOA\_H  
 ClientSampled : I.BLK

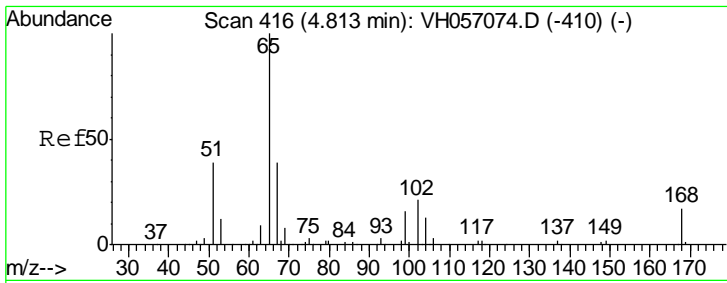
Tgt Ion: 43 Resp: 1278  
 Ion Ratio Lower Upper  
 43 100  
 58 26.2 17.7 26.5



#26  
 2,2-Dichloropropane  
 Concen: 0.23 ug/l  
 RT: 3.54 min Scan# 297  
 Delta R.T. -0.02 min  
 Lab File: VH057106.D  
 Acq: 22 Sep 2015 15:59

Tgt Ion: 77 Resp: 1112  
 Ion Ratio Lower Upper  
 77 100  
 97 0.0 8.8 26.4#

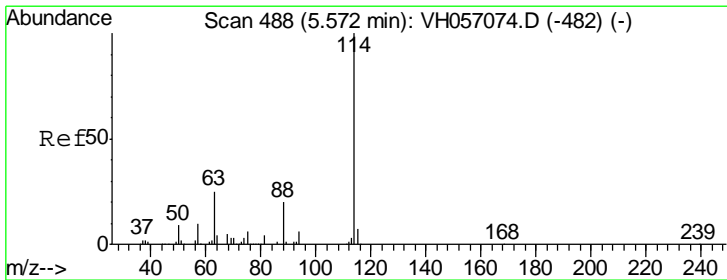
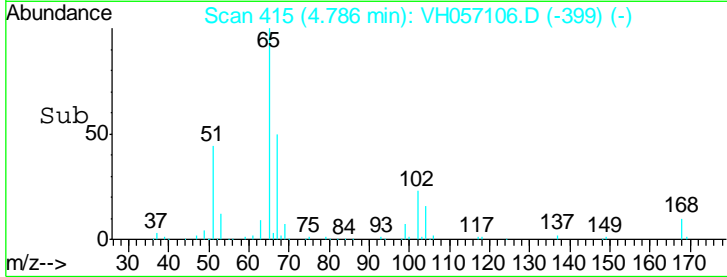
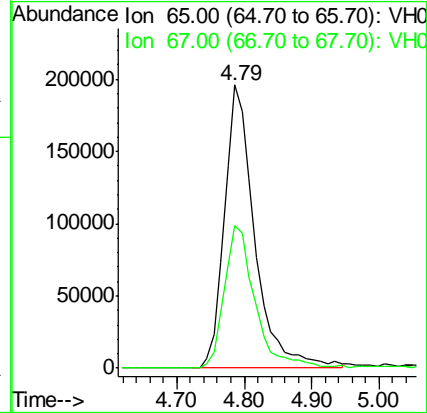
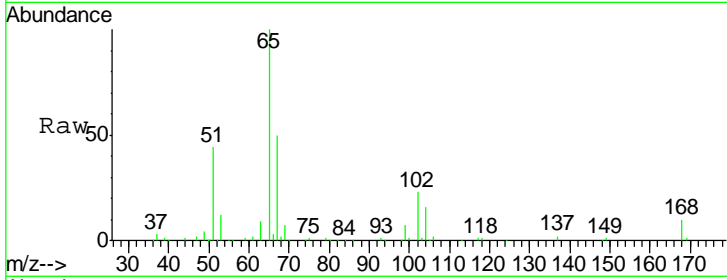




#33  
 1,2-Dichloroethane-d4  
 Concen: 98.07 ug/l  
 RT: 4.79 min Scan# 415  
 Delta R.T. -0.03 min  
 Lab File: VH057106.D  
 Acq: 22 Sep 2015 15:59

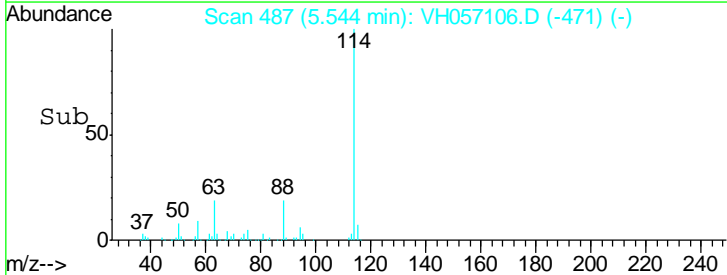
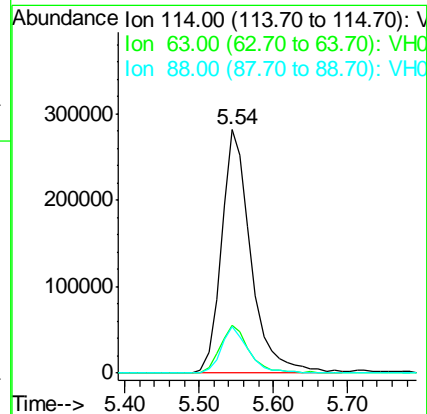
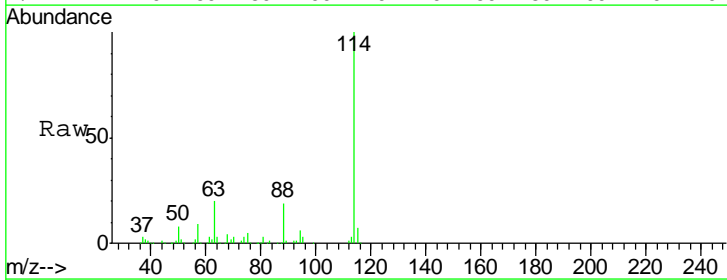
Instrument :  
 MSVOA\_H  
 ClientSampled :  
 I.BLK

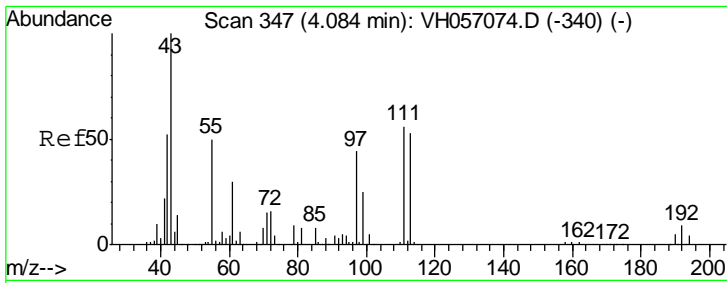
Tgt Ion: 65 Resp: 613782  
 Ion Ratio Lower Upper  
 65 100  
 67 50.2 43.2 64.8



#34  
 1,4-Difluorobenzene  
 Concen: 50.00 ug/l  
 RT: 5.54 min Scan# 487  
 Delta R.T. -0.03 min  
 Lab File: VH057106.D  
 Acq: 22 Sep 2015 15:59

Tgt Ion: 114 Resp: 781441  
 Ion Ratio Lower Upper  
 114 100  
 63 19.6 19.0 28.4  
 88 19.3 15.7 23.5

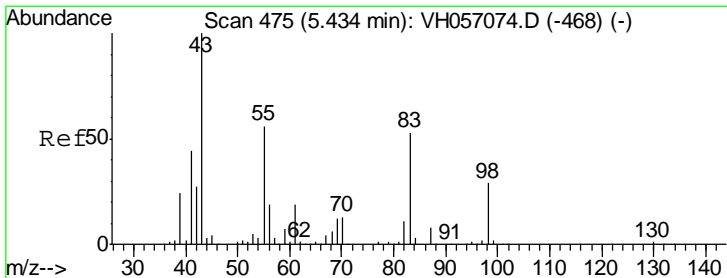
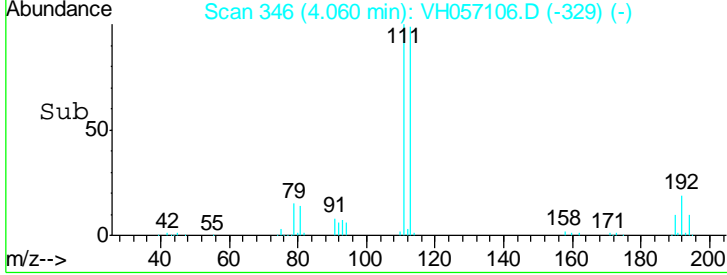
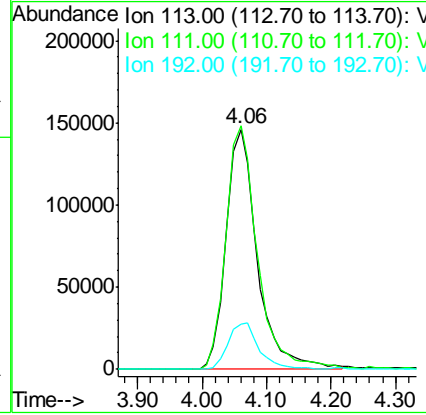
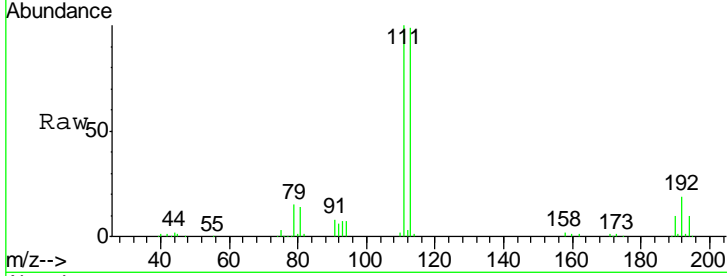




#35  
 Dibromofluoromethane  
 Concen: 80.09 ug/l  
 RT: 4.06 min Scan# 346  
 Delta R.T. -0.02 min  
 Lab File: VH057106.D  
 Acq: 22 Sep 2015 15:59

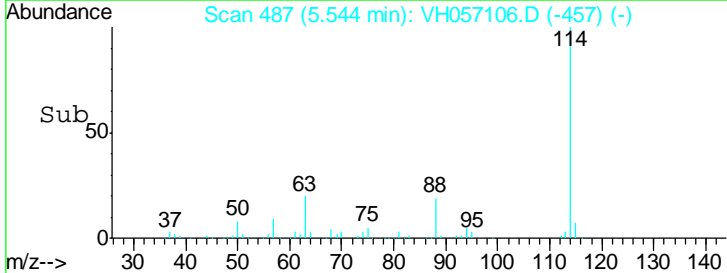
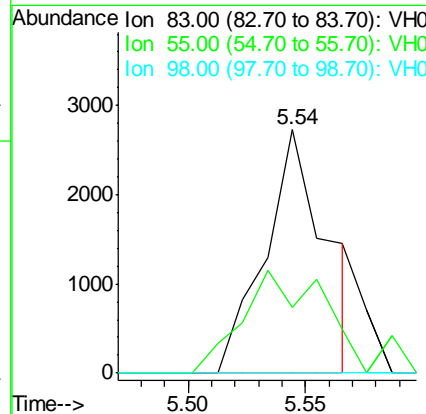
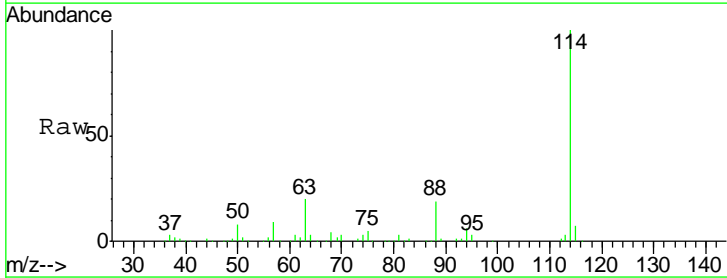
Instrument : MSVOA\_H  
 ClientSampled : I.BLK

Tgt Ion	Resp	Lower	Upper
113	498288		
113	100		
111	101.4	84.0	126.0
192	18.8	13.6	20.4

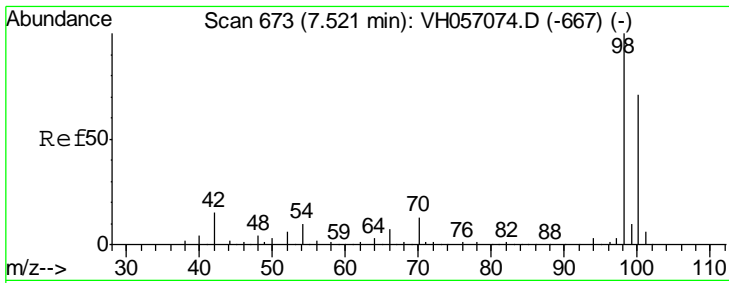


#44  
 Methylcyclohexane  
 Concen: 1.01 ug/l  
 RT: 5.54 min Scan# 487  
 Delta R.T. 0.11 min  
 Lab File: VH057106.D  
 Acq: 22 Sep 2015 15:59

Tgt Ion	Resp	Lower	Upper
83	4975		
83	100		
55	27.1	0.0	207.2
98	0.0	0.0	108.4



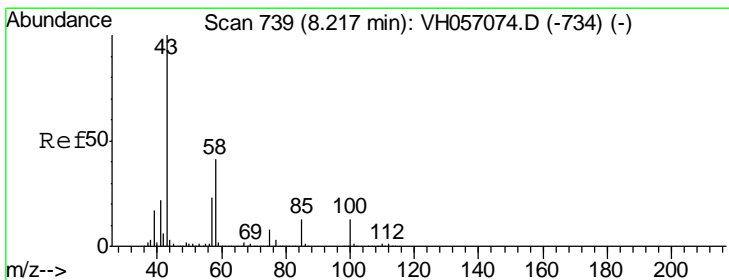
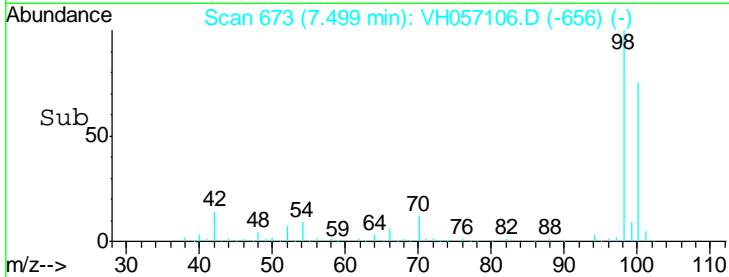
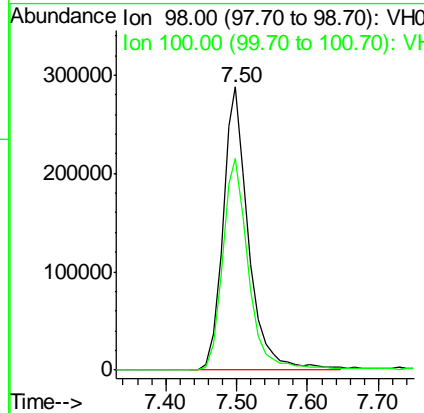
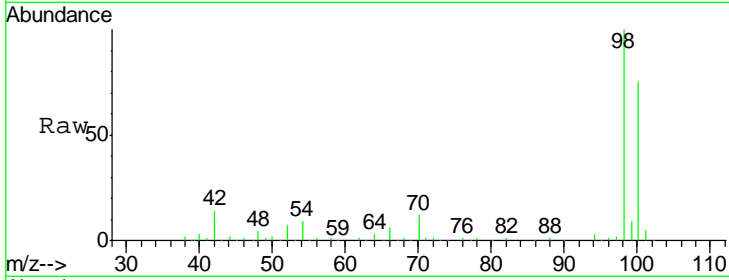




#48  
 Toluene-d8  
 Concen: 40.47 ug/l  
 RT: 7.50 min Scan# 673  
 Delta R.T. -0.02 min  
 Lab File: VH057106.D  
 Acq: 22 Sep 2015 15:59

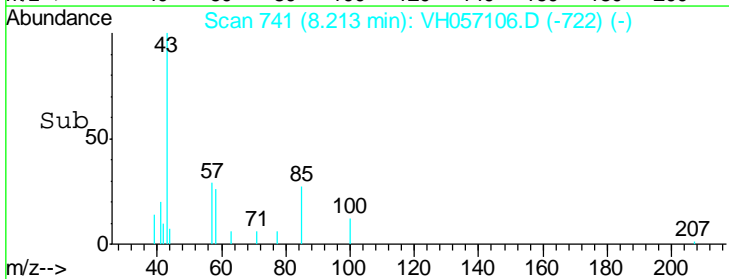
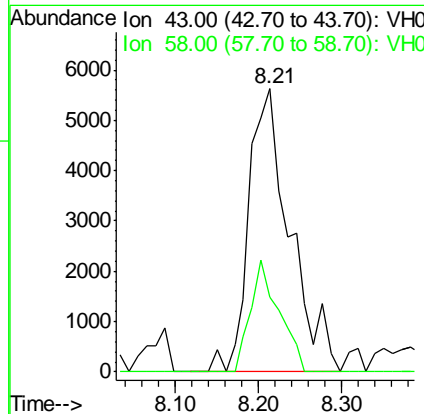
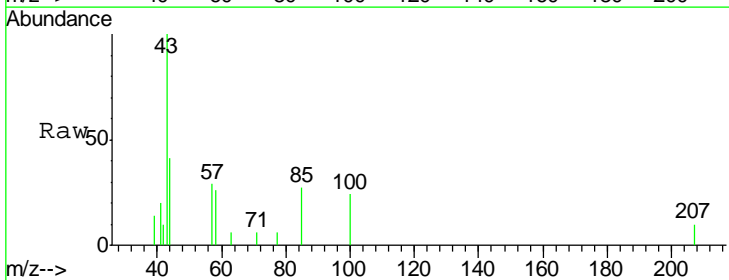
Instrument :  
 MSVOA\_H  
 ClientSampled :  
 I.BLK

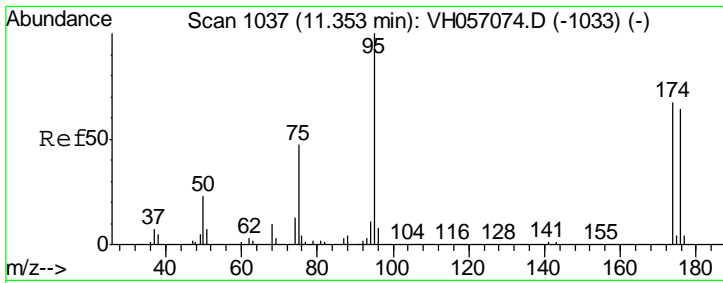
Tgt Ion: 98 Resp: 723969  
 Ion Ratio Lower Upper  
 98 100  
 100 74.8 56.7 85.1



#49  
 4-Methyl-2-Pentanone  
 Concen: 1.50 ug/l  
 RT: 8.21 min Scan# 741  
 Delta R.T. -0.00 min  
 Lab File: VH057106.D  
 Acq: 22 Sep 2015 15:59

Tgt Ion: 43 Resp: 19184  
 Ion Ratio Lower Upper  
 43 100  
 58 26.3 20.0 60.0

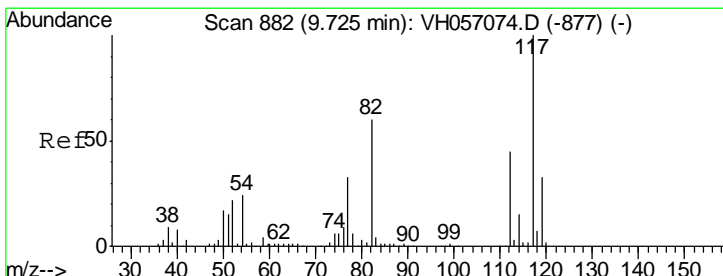
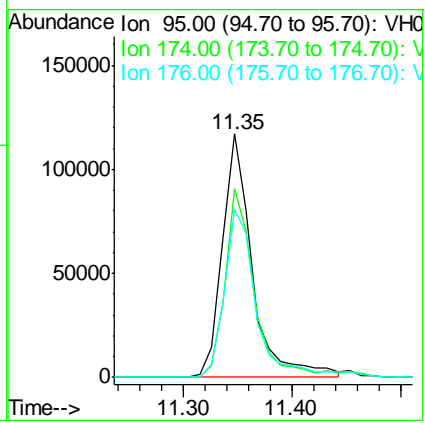
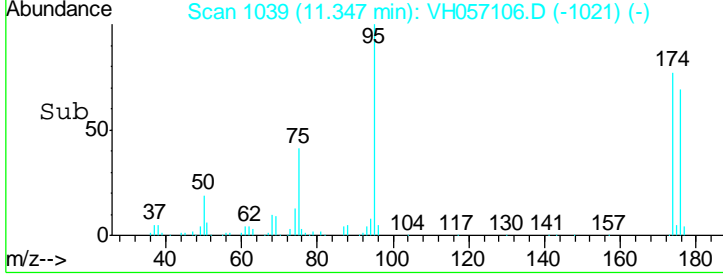
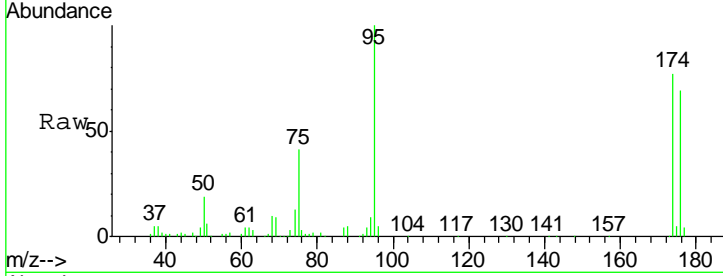




#62  
 4-Bromofluorobenzene  
 Concen: 37.09 ug/l  
 RT: 11.35 min Scan# 1039  
 Delta R.T. -0.01 min  
 Lab File: VH057106.D  
 Acq: 22 Sep 2015 15:59

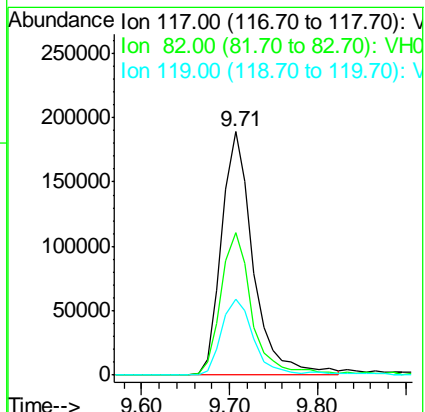
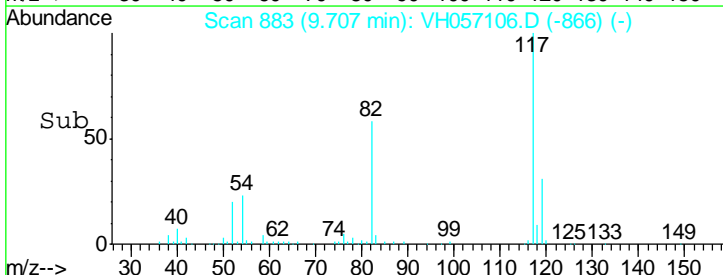
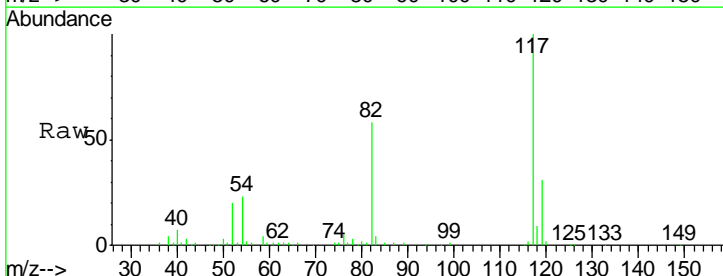
Instrument : MSVOA\_H  
 ClientSampled : I.BLK

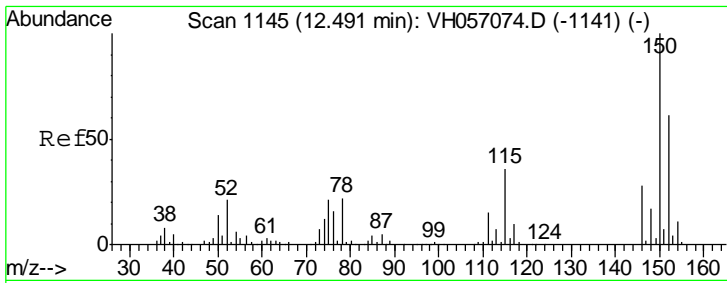
Tgt Ion	Resp	Lower	Upper
95	223777		
174	77.5	58.4	87.6
176	69.0	54.3	81.5



#63  
 Chlorobenzene-d5  
 Concen: 50.00 ug/l  
 RT: 9.71 min Scan# 883  
 Delta R.T. -0.02 min  
 Lab File: VH057106.D  
 Acq: 22 Sep 2015 15:59

Tgt Ion	Resp	Lower	Upper
117	472641		
82	58.3	51.0	76.6
119	31.2	26.7	40.1

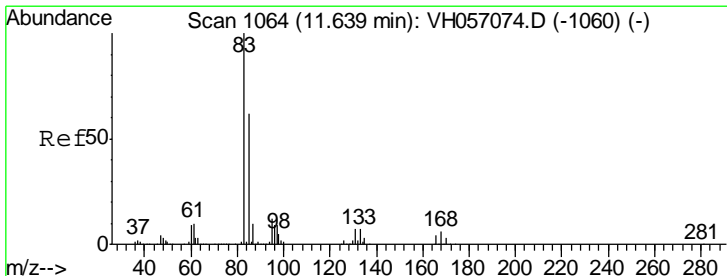
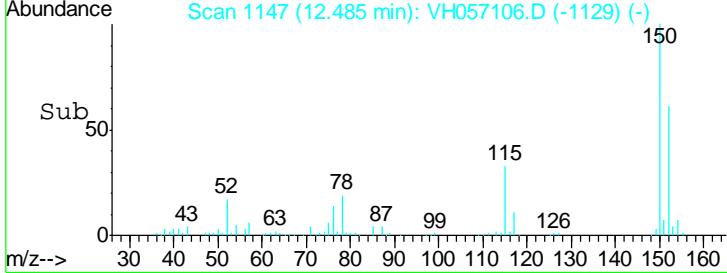
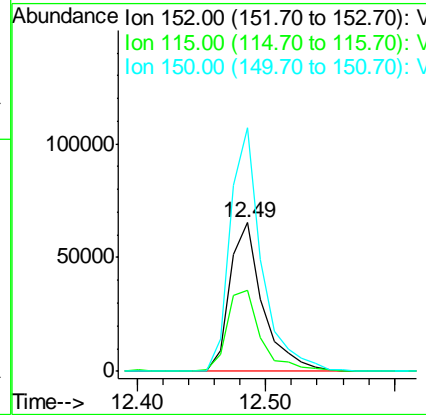
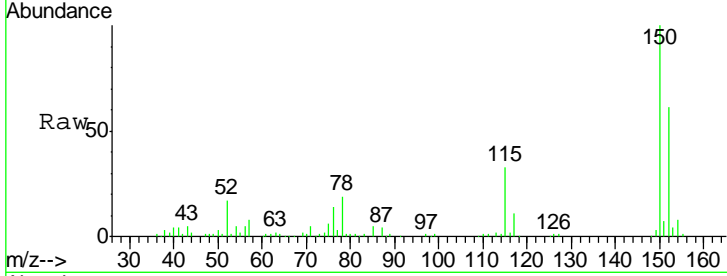




#72  
 1,4-Dichlorobenzene-d4  
 Concen: 50.00 ug/l  
 RT: 12.49 min Scan# 1147  
 Delta R.T. -0.01 min  
 Lab File: VH057106.D  
 Acq: 22 Sep 2015 15:59

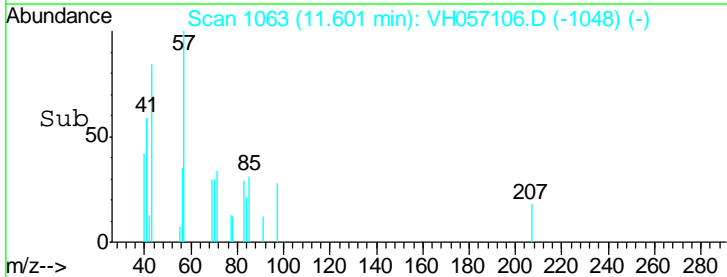
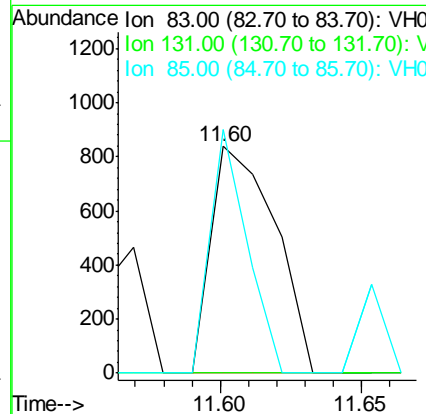
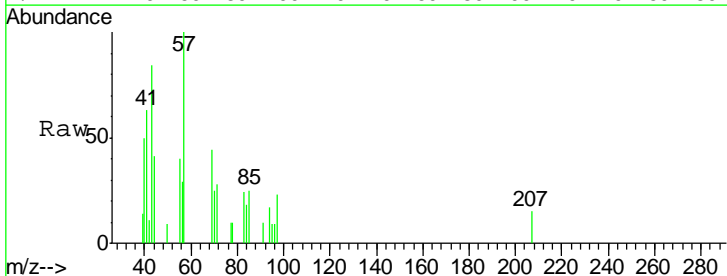
Instrument :  
 MSVOA\_H  
 ClientSampled :  
 I.BLK

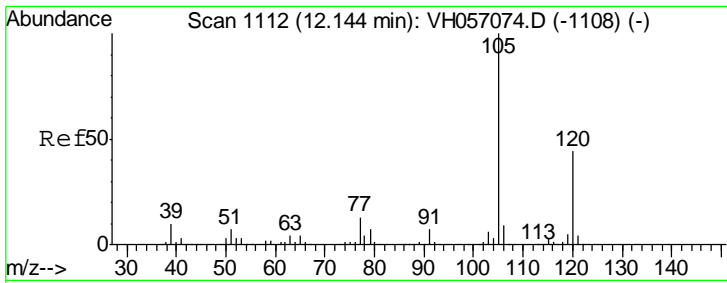
Tgt Ion	Resp	Lower	Upper
152	117838		
152	100		
115	54.9	28.2	84.6
150	163.9	0.0	332.0



#75  
 1,1,2,2-Tetrachloroethane  
 Concen: 0.23 ug/l  
 RT: 11.60 min Scan# 1063  
 Delta R.T. -0.04 min  
 Lab File: VH057106.D  
 Acq: 22 Sep 2015 15:59

Tgt Ion	Resp	Lower	Upper
83	1318		
83	100		
131	0.0	3.1	9.3#
85	107.4	32.3	96.8#

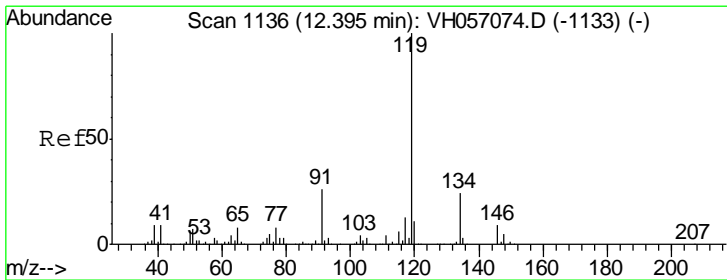
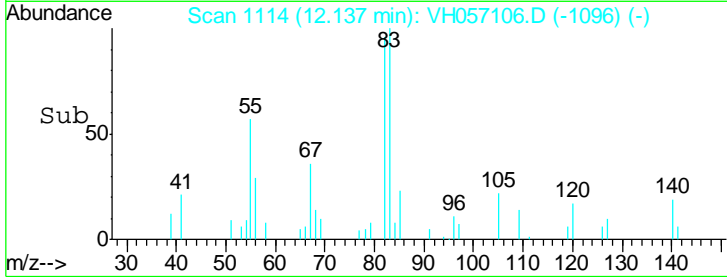
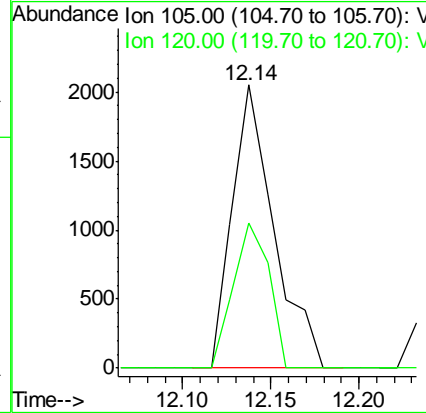
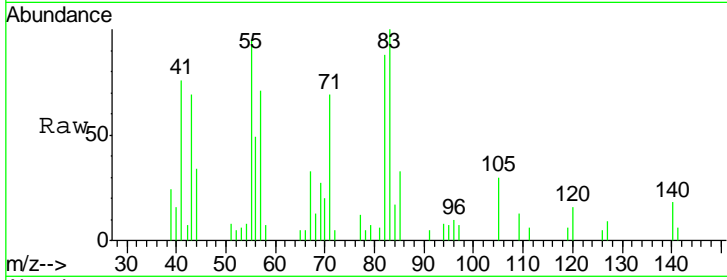




#84  
 1,2,4-Trimethylbenzene  
 Concen: 0.46 ug/l  
 RT: 12.14 min Scan# 1114  
 Delta R.T. -0.01 min  
 Lab File: VH057106.D  
 Acq: 22 Sep 2015 15:59

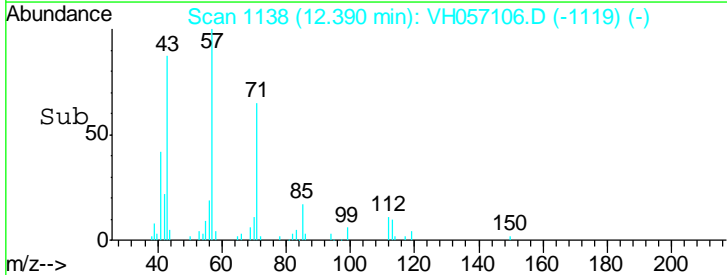
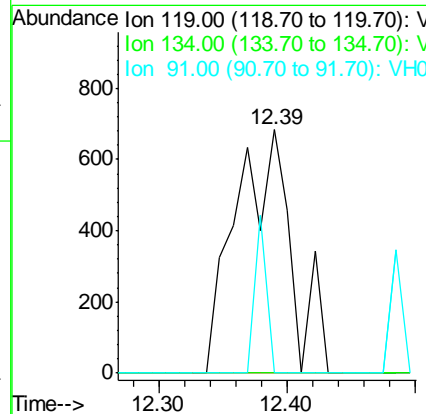
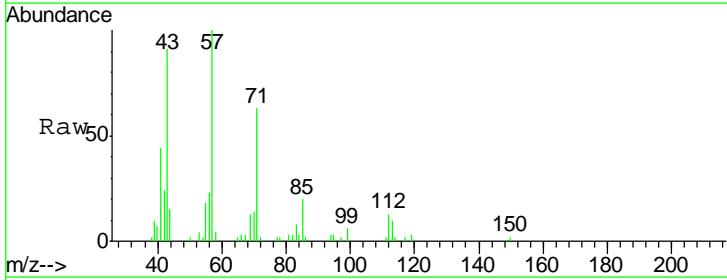
Instrument : MSVOA\_H  
 ClientSampled : I.BLK

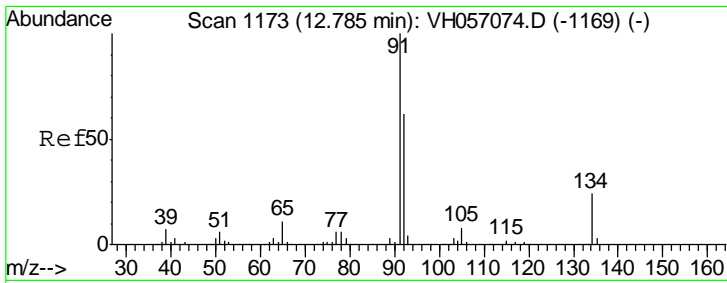
Tgt Ion: 105 Resp: 3338  
 Ion Ratio Lower Upper  
 105 100  
 120 51.5 22.6 67.7



#86  
 p-Isopropyltoluene  
 Concen: 0.38 ug/l  
 RT: 12.39 min Scan# 1138  
 Delta R.T. -0.01 min  
 Lab File: VH057106.D  
 Acq: 22 Sep 2015 15:59

Tgt Ion: 119 Resp: 2067  
 Ion Ratio Lower Upper  
 119 100  
 134 0.0 13.0 38.9#  
 91 0.0 12.5 37.5#

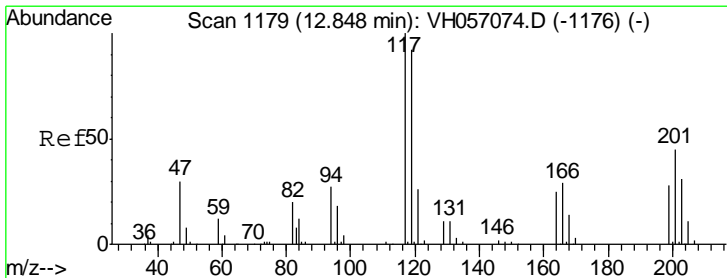
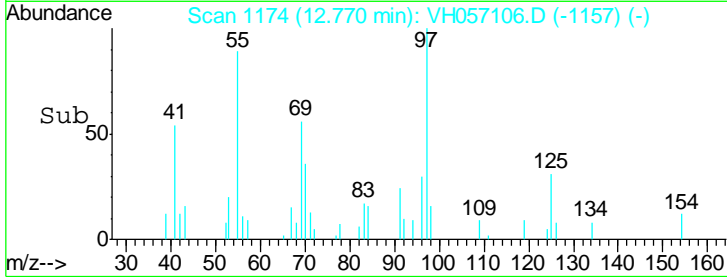
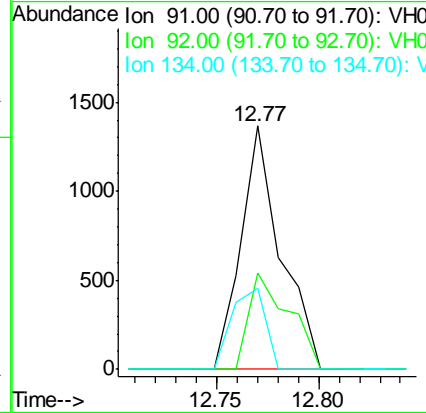
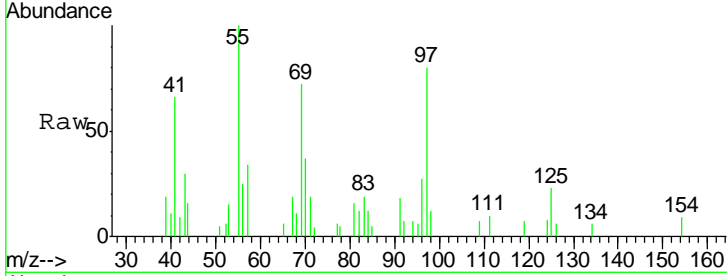




#89  
 n-Butylbenzene  
 Concen: 0.43 ug/l  
 RT: 12.77 min Scan# 1174  
 Delta R.T. -0.02 min  
 Lab File: VH057106.D  
 Acq: 22 Sep 2015 15:59

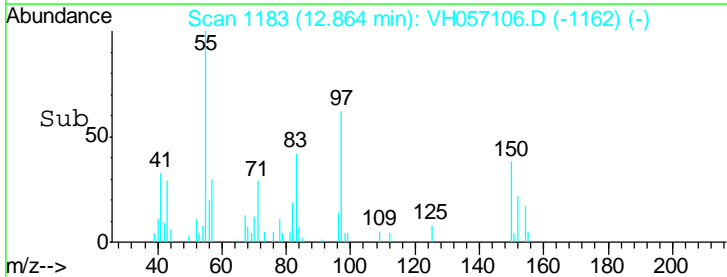
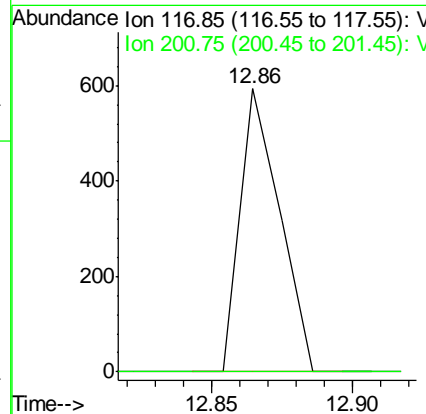
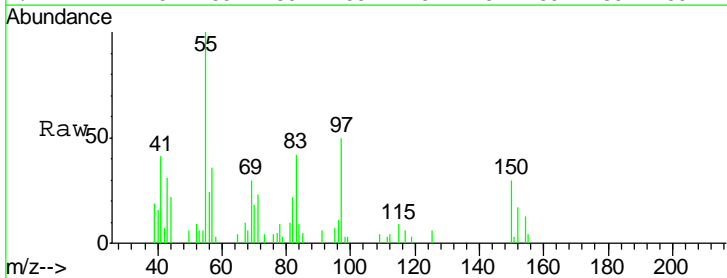
Instrument : MSVOA\_H  
 ClientSampled : I.BLK

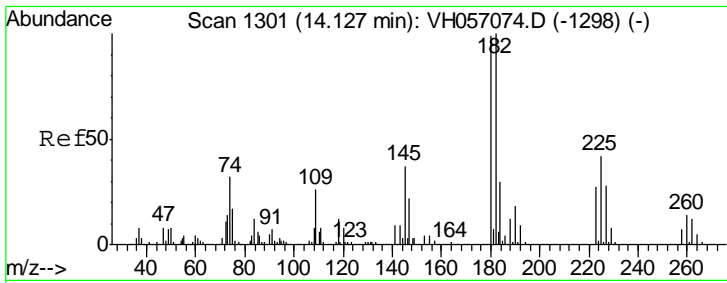
Tgt Ion	Resp	Lower	Upper
91	1864		
92	39.9	31.3	93.9
134	33.3	10.5	31.6#



#90  
 Hexachloroethane  
 Concen: 0.51 ug/l  
 RT: 12.86 min Scan# 1183  
 Delta R.T. 0.02 min  
 Lab File: VH057106.D  
 Acq: 22 Sep 2015 15:59

Tgt Ion	Resp	Lower	Upper
117	579		
201	0.0	14.0	80.8#

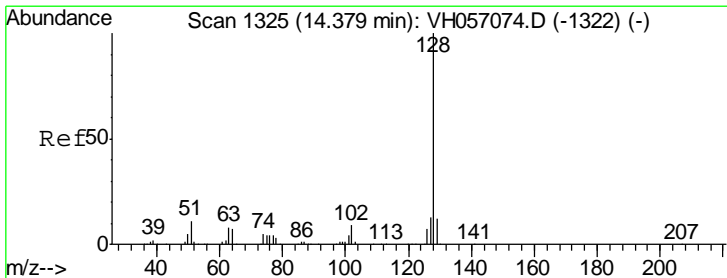
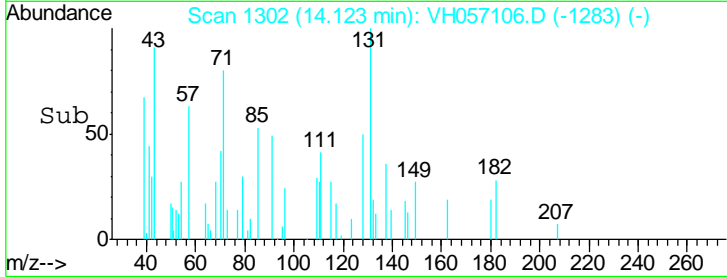
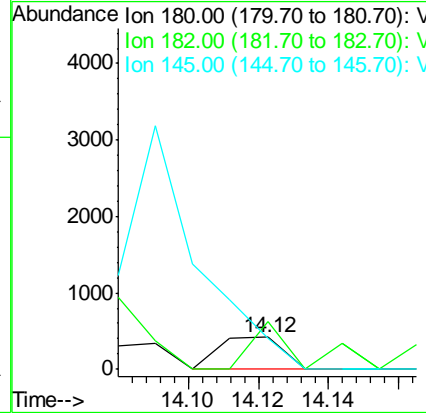
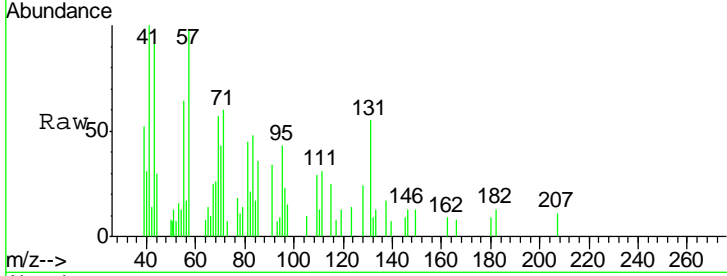




#93  
 1,2,4-Trichlorobenzene  
 Concen: 4.41 ug/l  
 RT: 14.12 min Scan# 1302  
 Delta R.T. -0.00 min  
 Lab File: VH057106.D  
 Acq: 22 Sep 2015 15:59

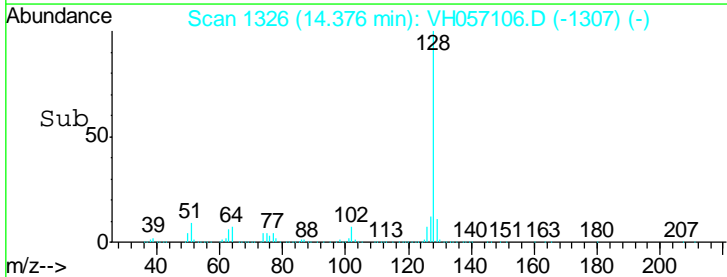
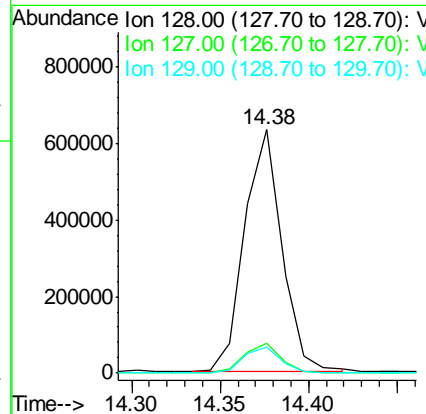
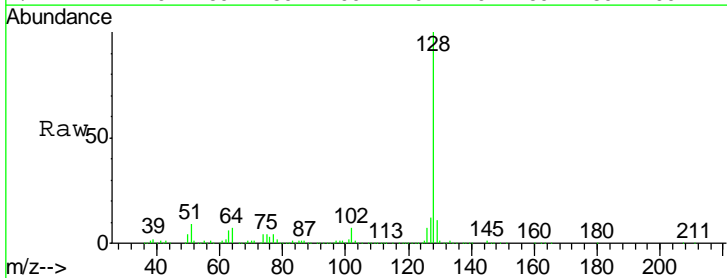
Instrument :  
 MSVOA\_H  
 ClientSampled :  
 I.BLK

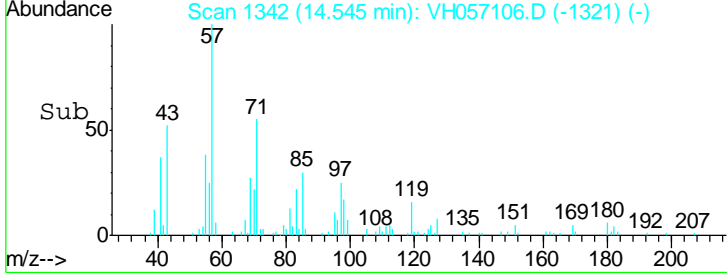
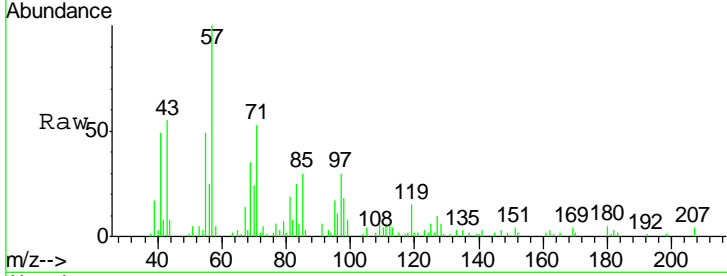
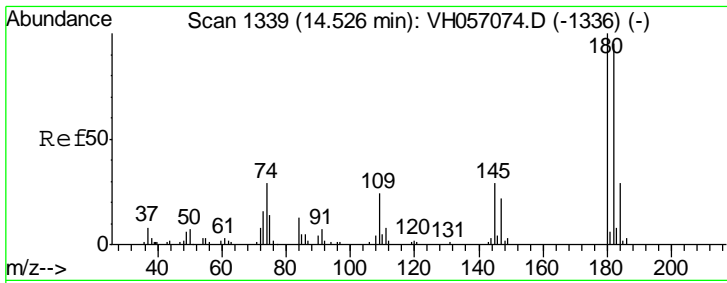
Tgt Ion	Resp	Lower	Upper
180	100		
182	149.5	43.0	129.2#
145	98.1	17.3	52.0#



#95  
 Naphthalene  
 Concen: 281.31 ug/l  
 RT: 14.38 min Scan# 1326  
 Delta R.T. -0.00 min  
 Lab File: VH057106.D  
 Acq: 22 Sep 2015 15:59

Tgt Ion	Resp	Lower	Upper
128	100		
127	12.2	9.6	14.4
129	10.6	8.7	13.1





#96  
 1,2,3-Trichlorobenzene  
 Concen: 12.69 ug/l  
 RT: 14.54 min Scan# 1342  
 Delta R.T. 0.02 min  
 Lab File: VH057106.D  
 Acq: 22 Sep 2015 15:59

Instrument :  
 MSVOA\_H  
 ClientSampled :  
 I.BLK

Tgt Ion	Resp	Lower	Upper
180	3926		
182	70.3	47.1	141.3
145	37.3	12.5	37.5

