

Data Path : Z:\VOASRV\HPCHEM1\MSVOA_L\DATA\VL012819\
 Data File : VL033127.D
 Acq On : 29 Jan 2019 4:25
 Operator : SY/AP
 Sample : K1245-01DL 10X
 Misc : 400ml/MSVOA_L
 ALS Vial : 1 Sample Multiplier: 1

Instrument :
 MSVOA_L
 ClientSampleId :
 S-01DL

Quant Time: Jan 29 06:42:42 2019
 Quant Method : Z:\VOASRV\HPCHEM1\MSVOA_L\METHODS\VL012819AIR.M
 Quant Title : AIR ANALYSIS BY METHOD TO-15 Instrument: MSVOA_LTue Jan 29 06:21:00 2019
 QLast Update : Tue Jan 29 06:21:00 2019
 Response via : Initial Calibration

Internal Standards	R.T.	QIon	Response	Conc	Units	Dev(Min)
1) Bromochloromethane	5.76	49	1181249	10.00	ppbv	0.00
33) 1,4-Difluorobenzene	7.29	114	2974288	10.00	ppbv	0.00
55) Chlorobenzene-d5	12.24	117	2558475	10.00	ppbv	0.00

System Monitoring Compounds						
68) 1-Bromo-4-Fluorobenzene	14.57	95	1886365	9.75	ppbv	0.00
Spiked Amount	10.000	Range	65 - 135	Recovery	=	97.50%

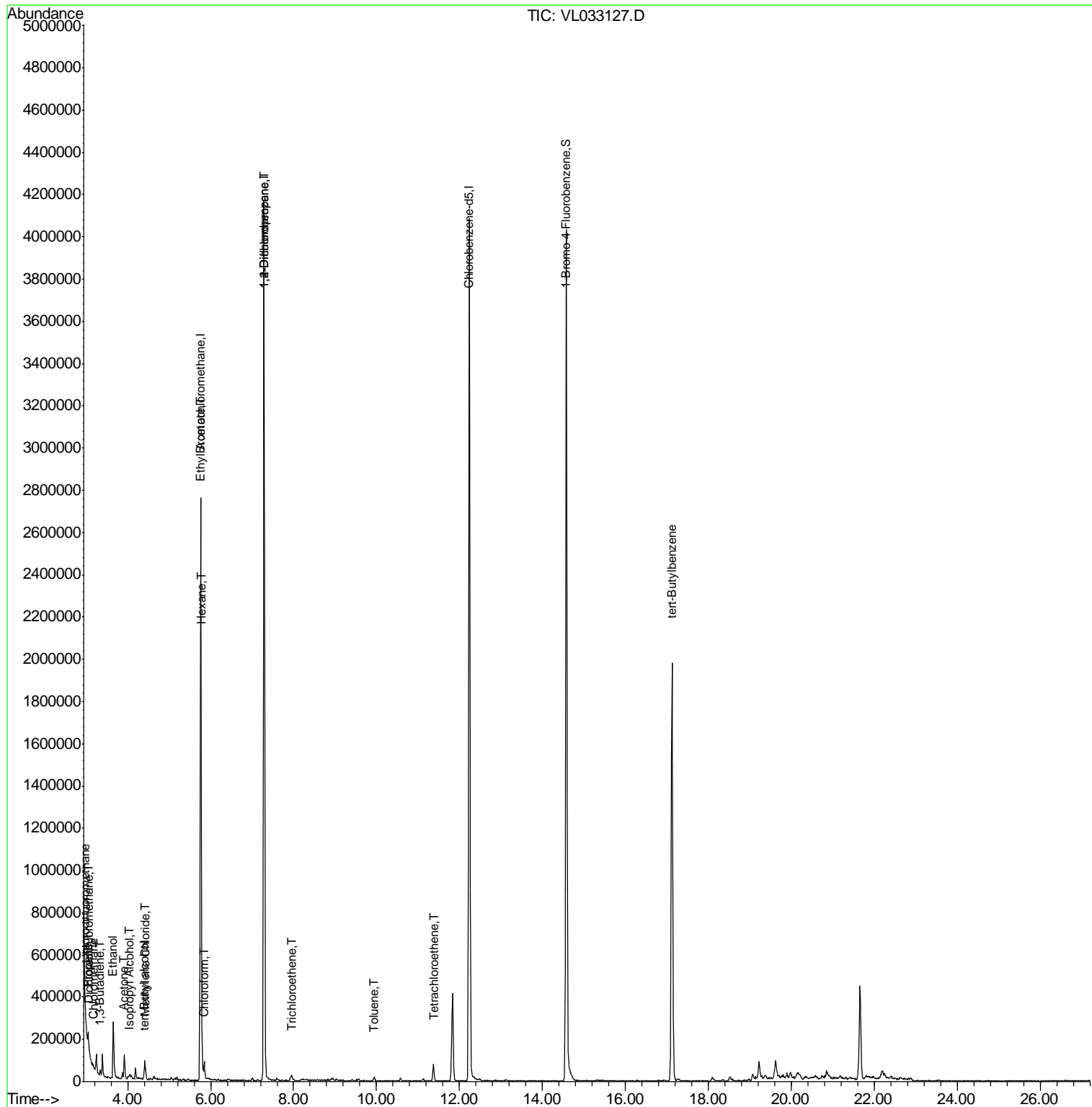
Target Compounds	R.T.	QIon	Response	Conc	Units	Qvalue
2) Dichlorodifluoromethane	3.08	85	13861	0.050	ppbv	90
3) Chlorodifluoromethane	2.98	51	16677	0.106	ppbv #	73
4) Chloromethane	3.17	50	5413	0.064	ppbv #	84
9) Propene	3.05	41	14683	0.241	ppbv #	79
13) Ethanol	3.65	45	295872	13.510	ppbv	99
15) Acetone	3.92	43	85752	0.538	ppbv	100
16) 1,3-Butadiene	3.35	39	4736	0.071	ppbv #	1
17) tert-Butyl alcohol	4.38	59	1256	0.035	ppbv #	74
19) Isopropyl Alcohol	4.05	45	14221	0.131	ppbv #	72
20) Methylene Chloride	4.41	84	25337	0.350	ppbv	94
25) Ethyl Acetate	5.77	43	10303	0.036	ppbv #	75
26) Hexane	5.78	57	19050	0.140	ppbv #	61
29) Chloroform	5.84	83	30711	0.137	ppbv	93
38) Trichloroethene	7.96	130	3557	0.033	ppbv #	91
39) 1,2-Dichloropropane	7.29	63	718935	7.778	ppbv #	26
52) Tetrachloroethene	11.37	164	17498	0.200	ppbv	91
53) Toluene	9.94	91	10192	0.039	ppbv #	78
65) tert-Butylbenzene	17.11	119	23353	0.068	ppbv #	9

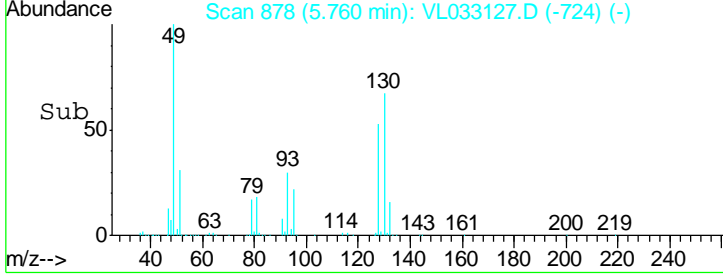
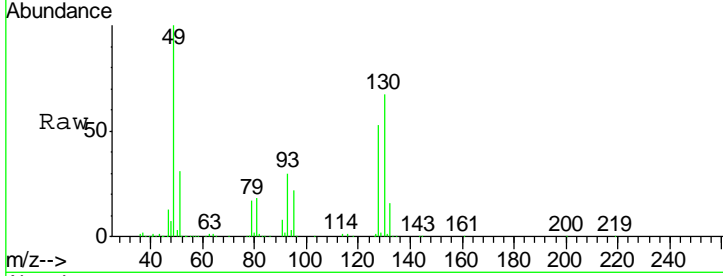
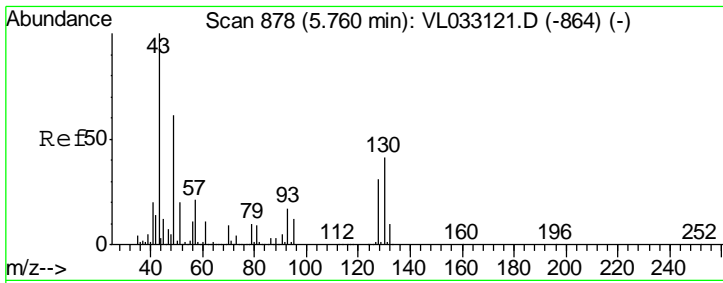
(#) = qualifier out of range (m) = manual integration (+) = signals summed

Data Path : Z:\VOASRV\HPCHEM1\MSVOA_L\DATA\VL012819\
 Data File : VL033127.D
 Acq On : 29 Jan 2019 4:25
 Operator : SY/AP
 Sample : K1245-01DL 10X
 Misc : 400ml/MSVOA_L
 ALS Vial : 1 Sample Multiplier: 1

Instrument :
 MSVOA_L
 ClientSampleID :
 S-01DL

Quant Time: Jan 29 06:42:42 2019
 Quant Method : Z:\VOASRV\HPCHEM1\MSVOA_L\METHODS\VL012819AIR.M
 Quant Title : AIR ANALYSIS BY METHOD TO-15 Instrument: MSVOA_L Tue Jan 29 06:21:00 2019
 QLast Update : Tue Jan 29 06:21:00 2019
 Response via : Initial Calibration



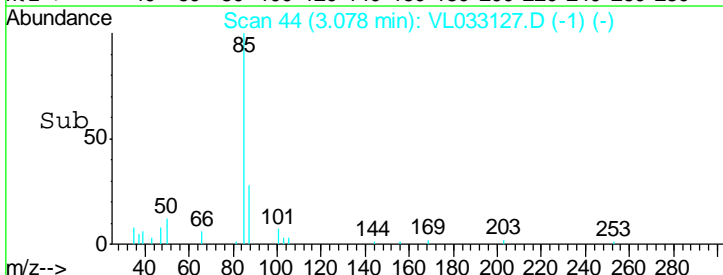
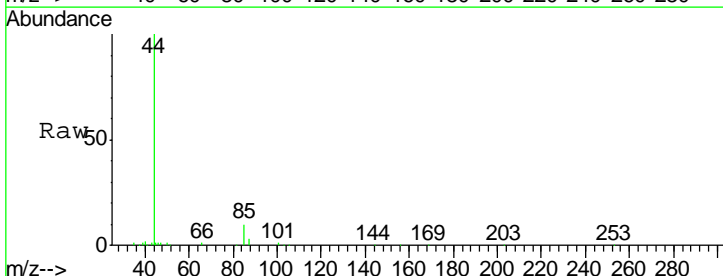
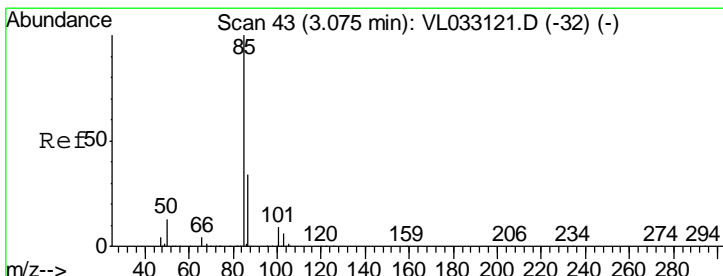
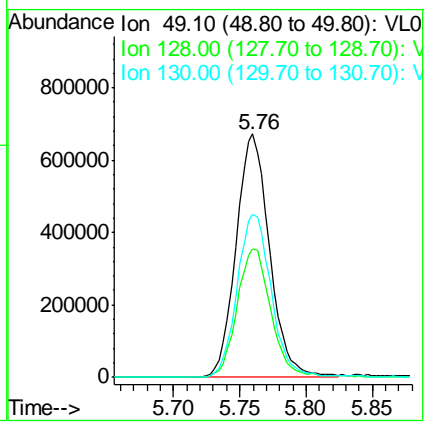


#1
 Bromochloromethane
 Concen: 10.000 ppbv
 RT: 5.76 min Scan# 878
 Delta R.T. -0.00 min
 Lab File: VL033127.D
 Acq: 29 Jan 2019 4:25

Instrument :
 MSVOA_L
 ClientSampled :
 S-01DL

Tgt Ion: 49 Resp: 1181249

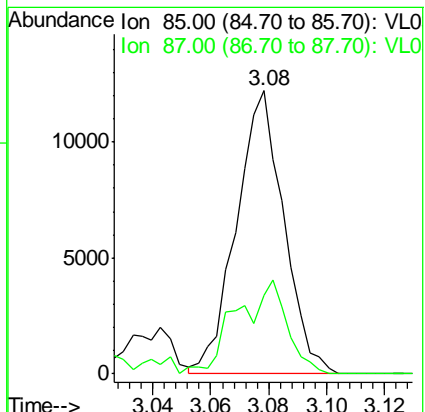
Ion	Ratio	Lower	Upper
49	100		
128	53.5	25.9	77.7
130	68.8	32.9	98.7

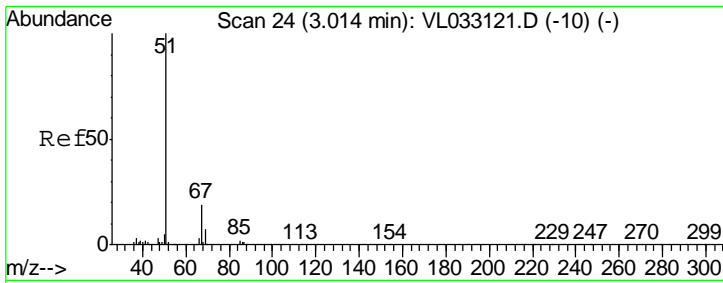


#2
 Dichlorodifluoromethane
 Concen: 0.050 ppbv
 RT: 3.08 min Scan# 44
 Delta R.T. 0.00 min
 Lab File: VL033127.D
 Acq: 29 Jan 2019 4:25

Tgt Ion: 85 Resp: 13861

Ion	Ratio	Lower	Upper
85	100		
87	27.6	26.4	39.6

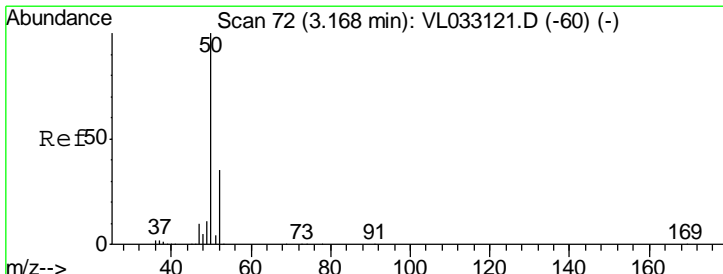
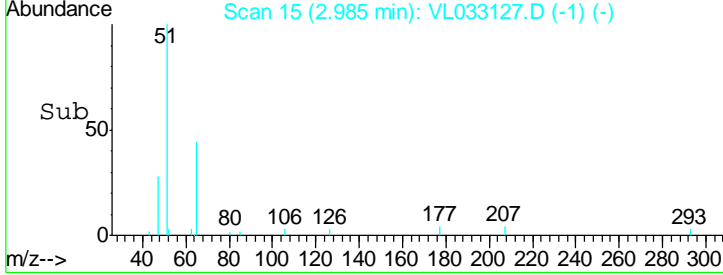
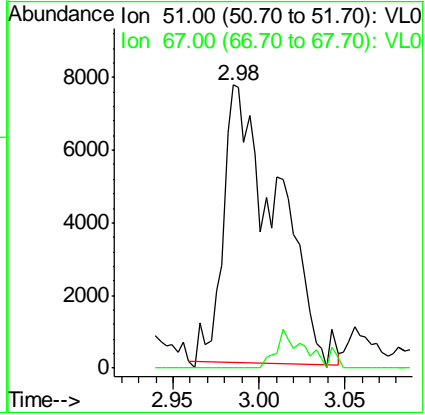
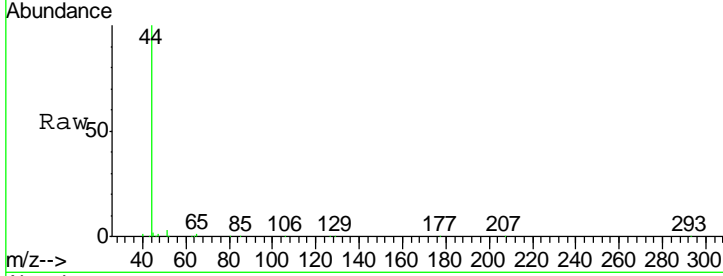




#3
 Chlorodifluoromethane
 Concen: 0.106 ppbv
 RT: 2.98 min Scan# 15
 Delta R.T. -0.03 min
 Lab File: VL033127.D
 Acq: 29 Jan 2019 4:25

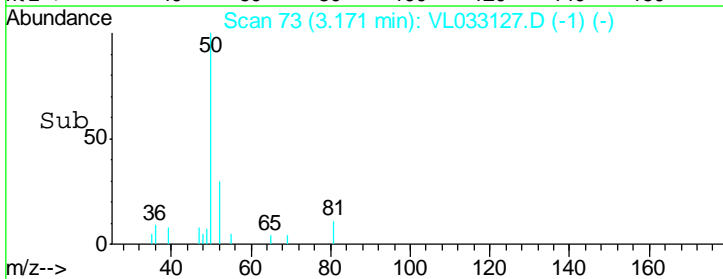
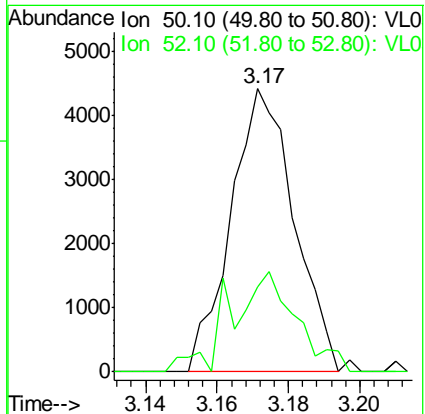
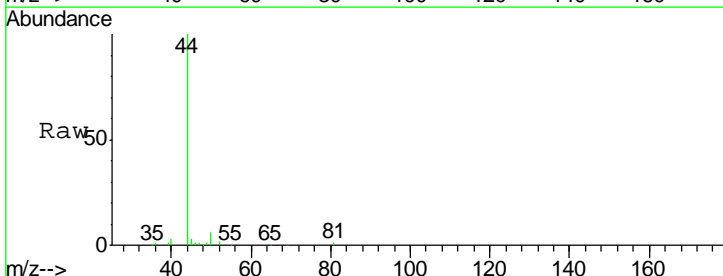
Instrument :
 MSVOA_L
ClientSampled :
 S-01DL

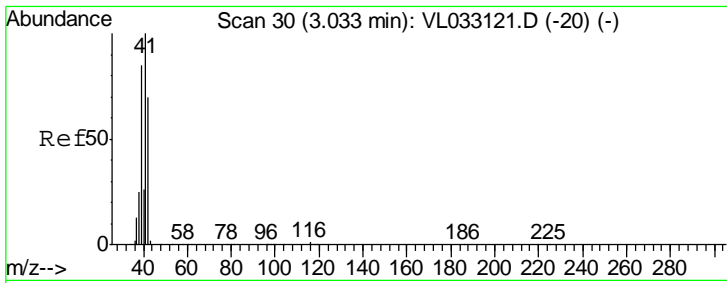
Tgt Ion: 51 Resp: 16677
 Ion Ratio Lower Upper
 51 100
 67 7.8 16.2 24.2#



#4
 Chloromethane
 Concen: 0.064 ppbv
 RT: 3.17 min Scan# 73
 Delta R.T. -0.00 min
 Lab File: VL033127.D
 Acq: 29 Jan 2019 4:25

Tgt Ion: 50 Resp: 5413
 Ion Ratio Lower Upper
 50 100
 52 24.7 27.0 40.4#

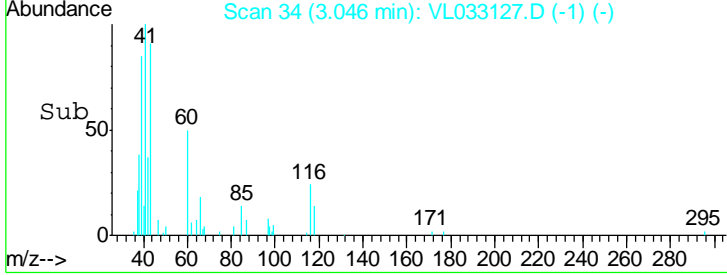
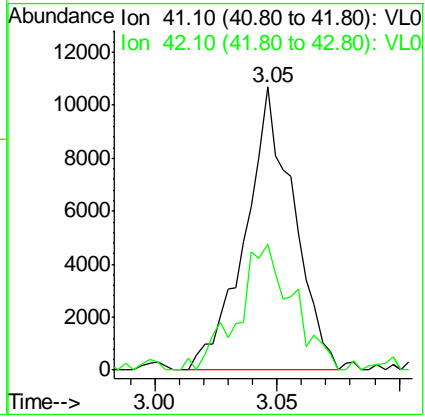
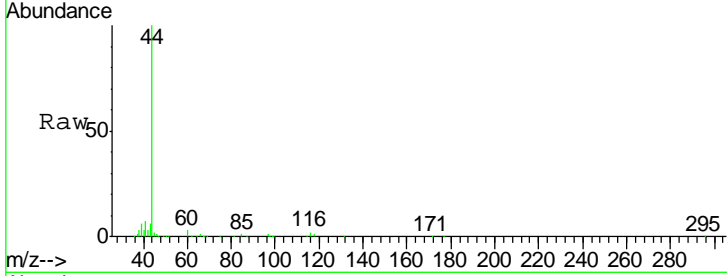




#9
 Propene
 Concen: 0.241 ppbv
 RT: 3.05 min Scan# 34
 Delta R.T. 0.01 min
 Lab File: VL033127.D
 Acq: 29 Jan 2019 4:25

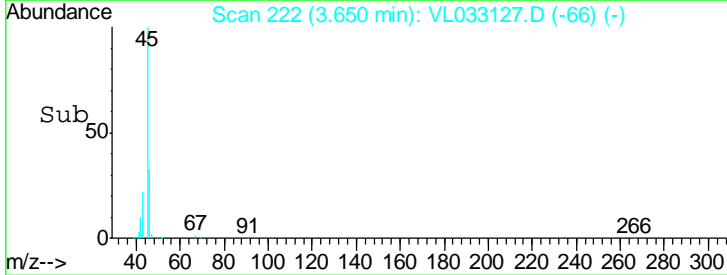
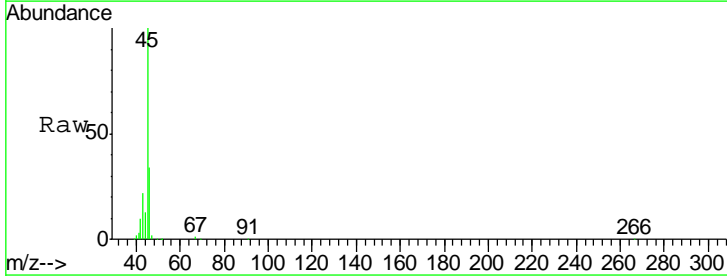
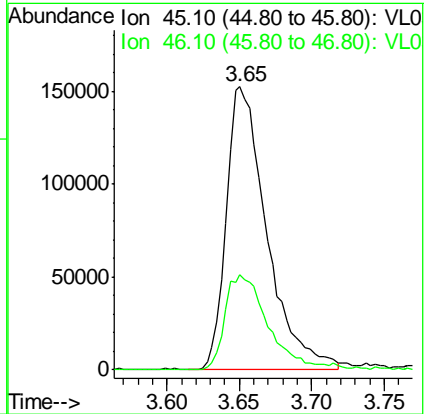
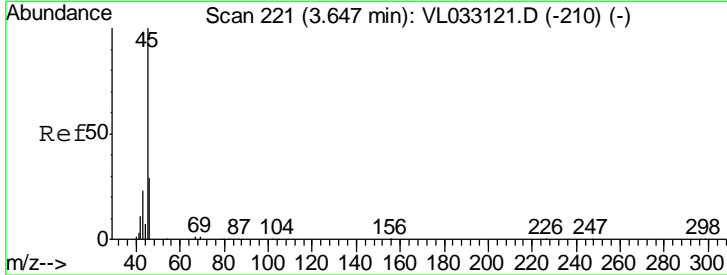
Instrument :
 MSVOA_L
ClientSampled :
 S-01DL

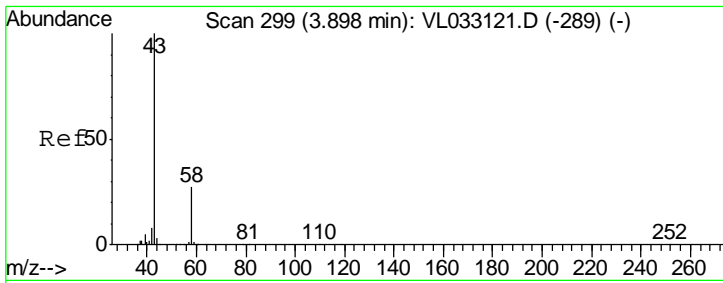
Tgt Ion: 41 Resp: 14683
 Ion Ratio Lower Upper
 41 100
 42 51.0 54.6 82.0#



#13
 Ethanol
 Concen: 13.510 ppbv
 RT: 3.65 min Scan# 222
 Delta R.T. 0.00 min
 Lab File: VL033127.D
 Acq: 29 Jan 2019 4:25

Tgt Ion: 45 Resp: 295872
 Ion Ratio Lower Upper
 45 100
 46 36.7 15.0 60.2

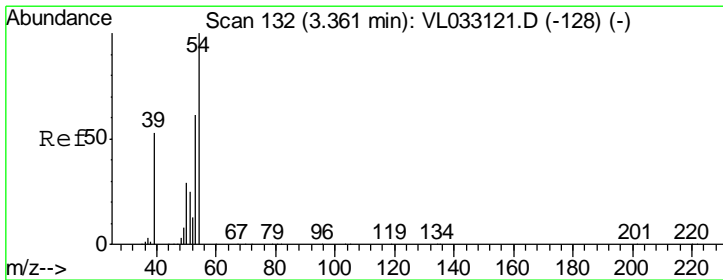
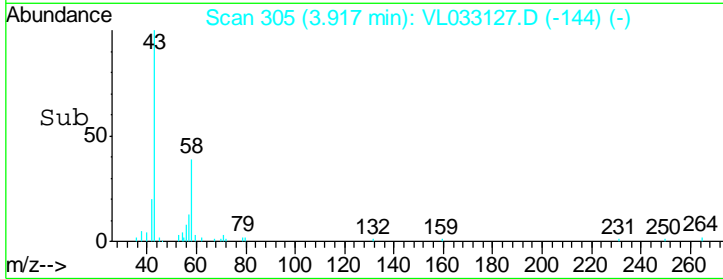
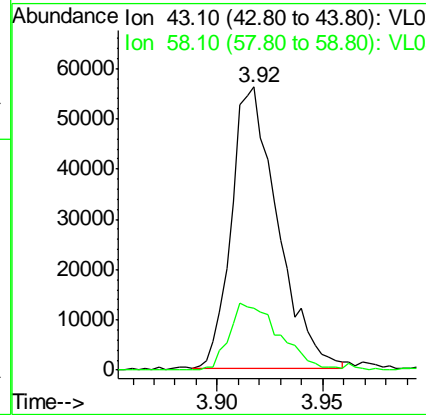
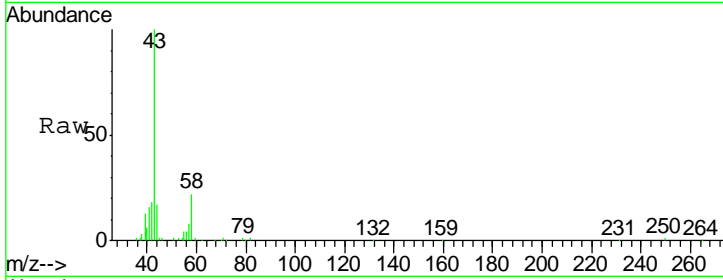




#15
 Acetone
 Concen: 0.538 ppbv
 RT: 3.92 min Scan# 305
 Delta R.T. 0.02 min
 Lab File: VL033127.D
 Acq: 29 Jan 2019 4:25

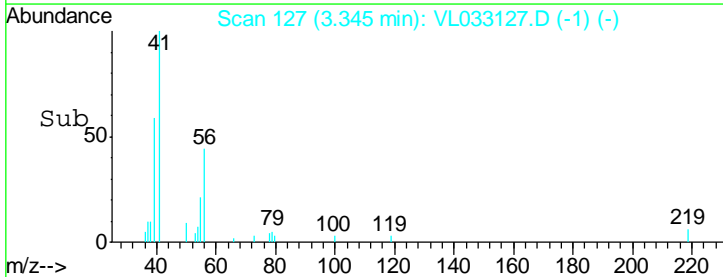
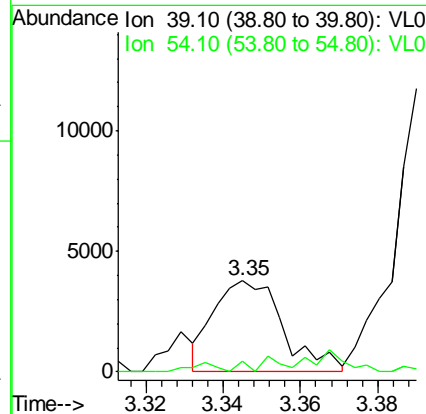
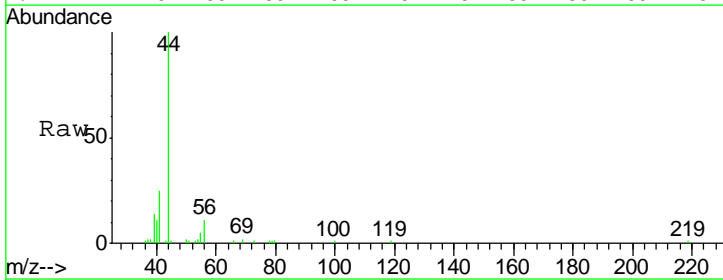
Instrument :
 MSVOA_L
ClientSampled :
 S-01DL

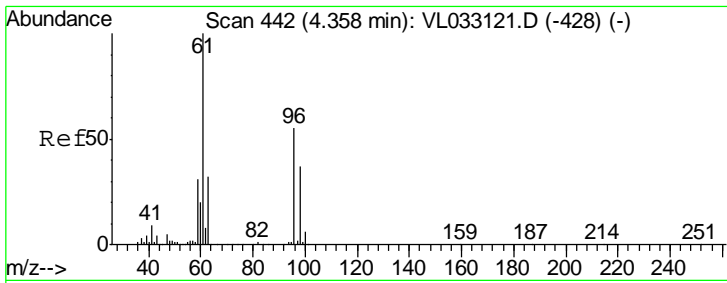
Tgt Ion	Resp	Lower	Upper
43	100		
58	26.6	21.1	31.7



#16
 1,3-Butadiene
 Concen: 0.071 ppbv
 RT: 3.35 min Scan# 127
 Delta R.T. -0.02 min
 Lab File: VL033127.D
 Acq: 29 Jan 2019 4:25

Tgt Ion	Resp	Lower	Upper
39	100		
54	0.0	80.0	120.0#

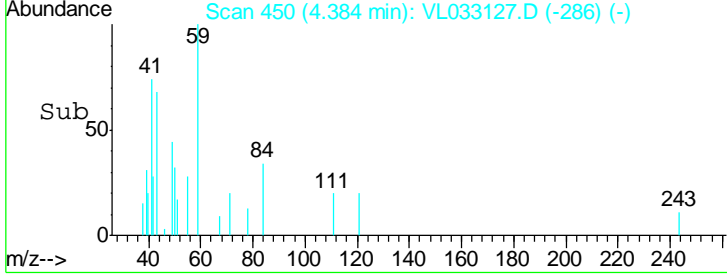
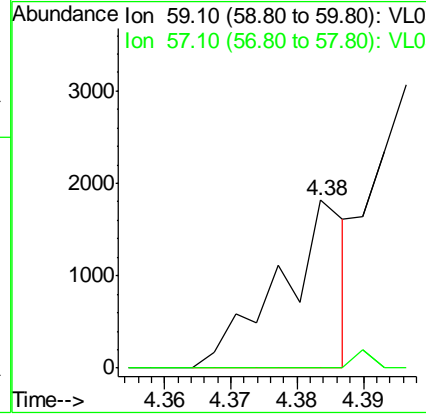
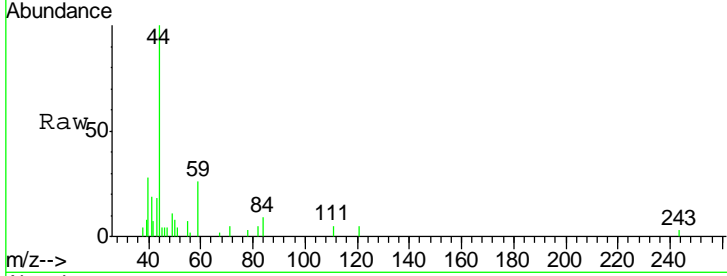




#17
 tert-Butyl alcohol
 Concen: 0.035 ppbv
 RT: 4.38 min Scan# 450
 Delta R.T. 0.03 min
 Lab File: VL033127.D
 Acq: 29 Jan 2019 4:25

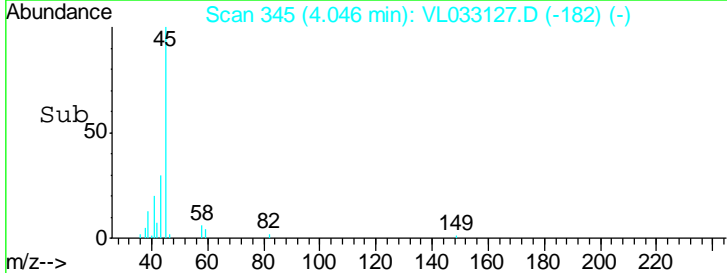
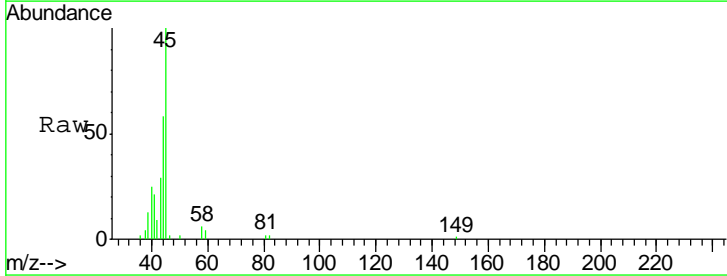
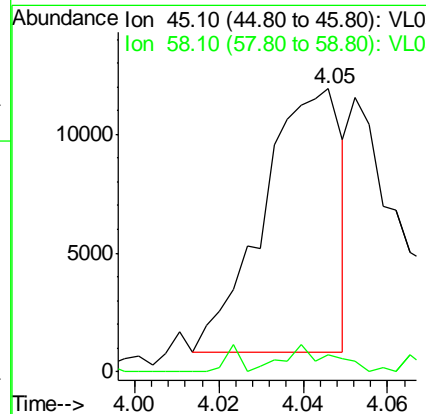
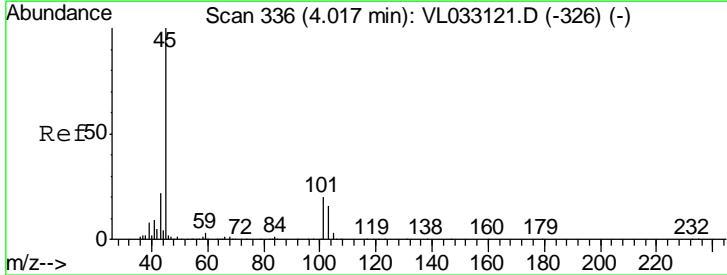
Instrument :
 MSVOA_L
 ClientSampled :
 S-01DL

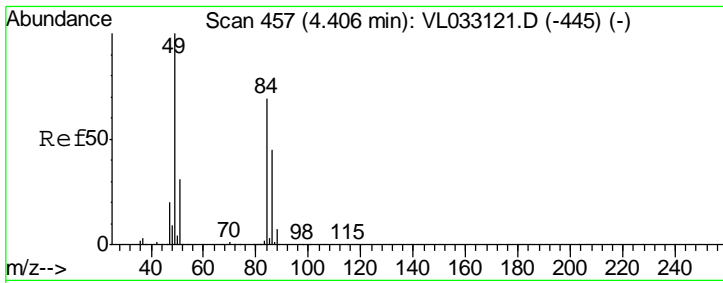
Tgt Ion: 59 Resp: 1256
 Ion Ratio Lower Upper
 59 100
 57 0.0 7.4 11.2#



#19
 Isopropyl Alcohol
 Concen: 0.131 ppbv
 RT: 4.05 min Scan# 345
 Delta R.T. 0.03 min
 Lab File: VL033127.D
 Acq: 29 Jan 2019 4:25

Tgt Ion: 45 Resp: 14221
 Ion Ratio Lower Upper
 45 100
 58 11.9 1.4 2.2#

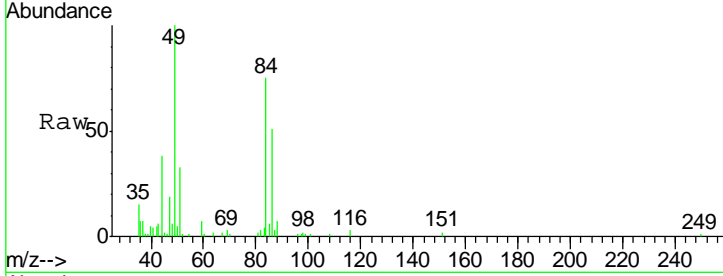




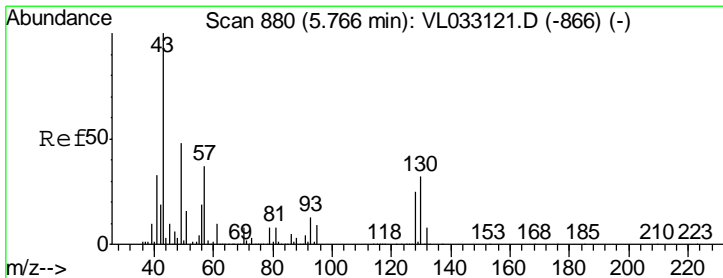
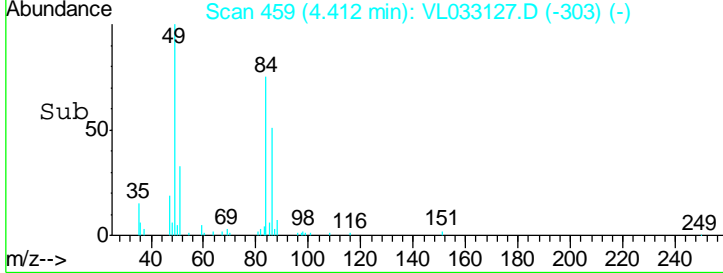
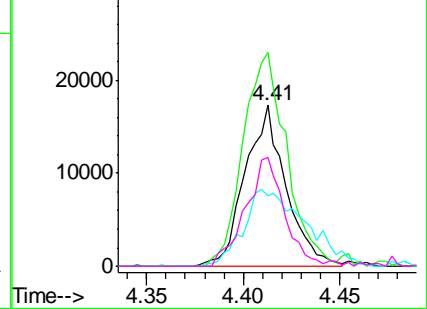
#20
 Methylene Chloride
 Concen: 0.350 ppbv
 RT: 4.41 min Scan# 459
 Delta R.T. 0.00 min
 Lab File: VL033127.D
 Acq: 29 Jan 2019 4:25

Instrument :
 MSVOA_L
 ClientSampled :
 S-01DL

Tgt Ion	Resp	Lower	Upper
84	100		
49	132.9	113.8	170.6
51	43.6	34.5	51.7
86	68.1	51.8	77.6

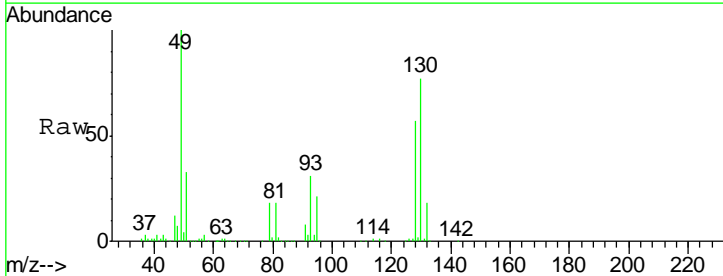


Abundance Ion 84.00 (83.70 to 84.70): VL0
 Ion 49.10 (48.80 to 49.80): VL0
 Ion 51.10 (50.80 to 51.80): VL0
 Ion 86.00 (85.70 to 86.70): VL0

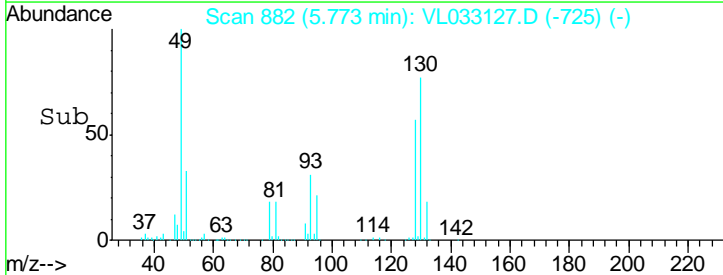
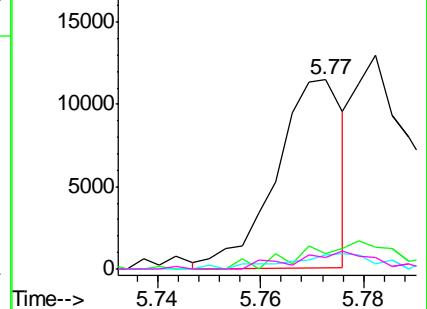


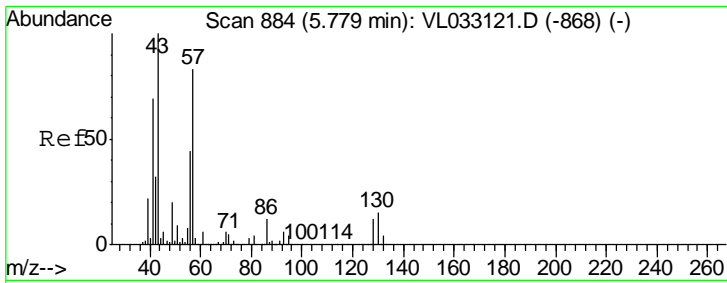
#25
 Ethyl Acetate
 Concen: 0.036 ppbv
 RT: 5.77 min Scan# 882
 Delta R.T. 0.01 min
 Lab File: VL033127.D
 Acq: 29 Jan 2019 4:25

Tgt Ion	Resp	Lower	Upper
43	100		
45	0.0	8.0	12.0#
61	0.0	7.6	11.4#
70	0.0	5.9	8.9#



Abundance Ion 43.10 (42.80 to 43.80): VL0
 Ion 45.10 (44.80 to 45.80): VL0
 Ion 61.10 (60.80 to 61.80): VL0
 Ion 70.10 (69.80 to 70.80): VL0



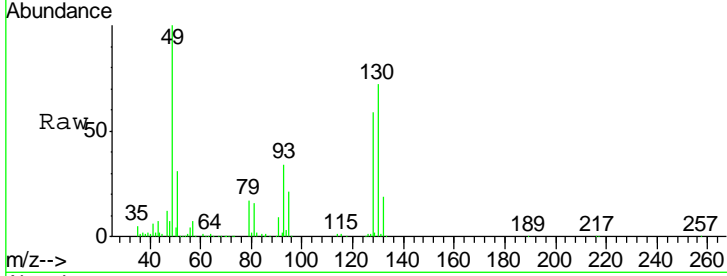


#26
Hexane
Concen: 0.140 ppbv
RT: 5.78 min Scan# 884
Delta R.T. -0.00 min
Lab File: VL033127.D
Acq: 29 Jan 2019 4:25

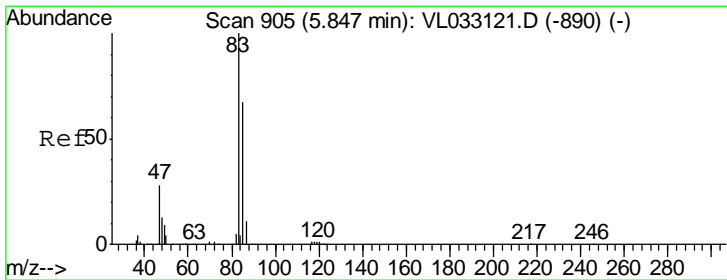
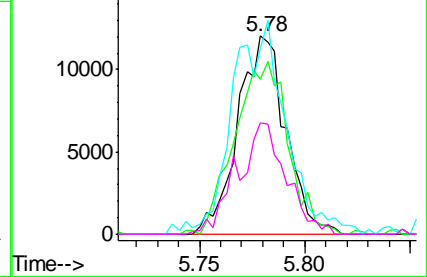
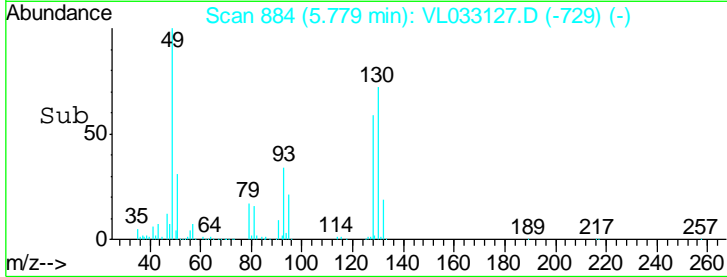
Instrument :
MSVOA_L
ClientSampled :
S-01DL

Tgt Ion: 57 Resp: 19050

Ion	Ratio	Lower	Upper
57	100		
41	98.0	69.9	104.9
43	120.5	169.0	253.4
56	57.4	42.0	63.0



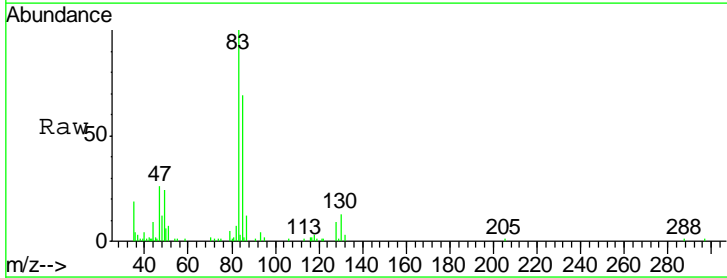
Abundance Ion 57.10 (56.80 to 57.80): VL0
Ion 41.10 (40.80 to 41.80): VL0
Ion 43.10 (42.80 to 43.80): VL0
Ion 56.10 (55.80 to 56.80): VL0



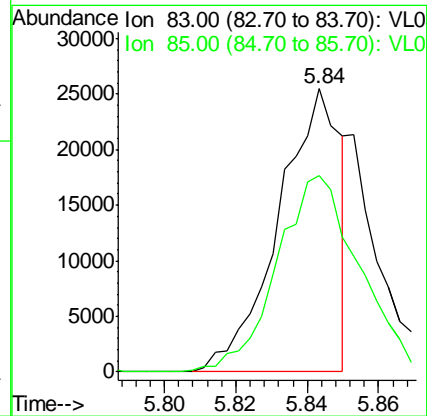
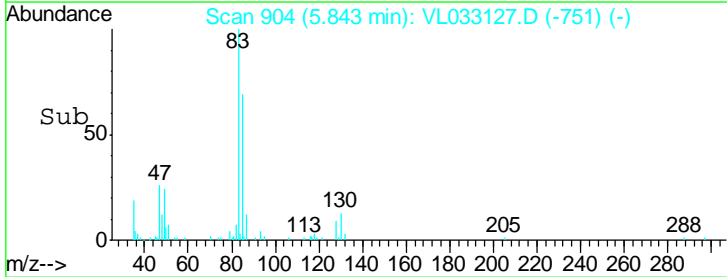
#29
Chloroform
Concen: 0.137 ppbv
RT: 5.84 min Scan# 904
Delta R.T. -0.01 min
Lab File: VL033127.D
Acq: 29 Jan 2019 4:25

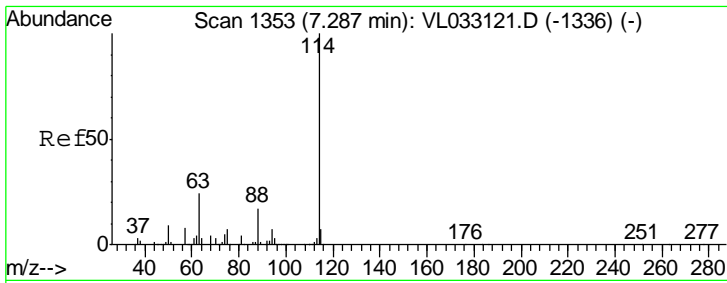
Tgt Ion: 83 Resp: 30711

Ion	Ratio	Lower	Upper
83	100		
85	68.4	50.4	75.6



Abundance Ion 83.00 (82.70 to 83.70): VL0
Ion 85.00 (84.70 to 85.70): VL0

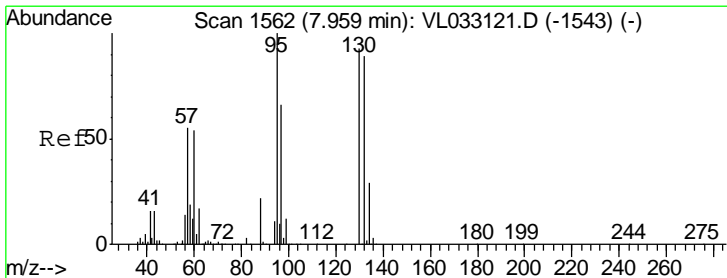
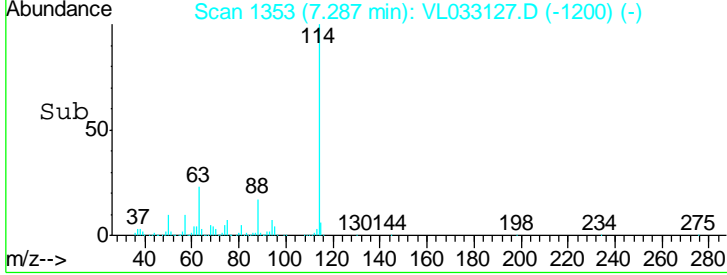
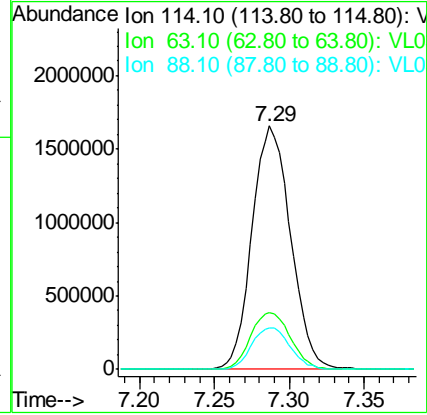
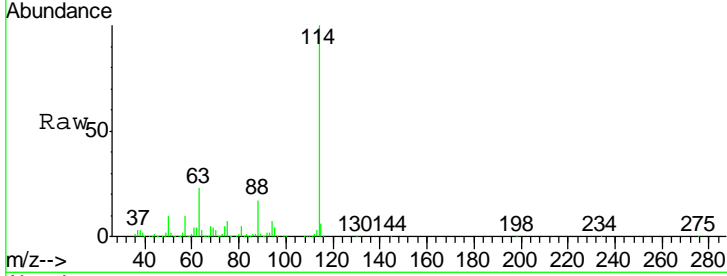




#33
 1,4-Difluorobenzene
 Concen: 10.000 ppbv
 RT: 7.29 min Scan# 1353
 Delta R.T. -0.01 min
 Lab File: VL033127.D
 Acq: 29 Jan 2019 4:25

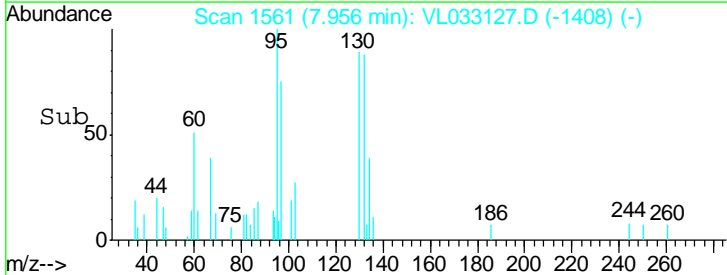
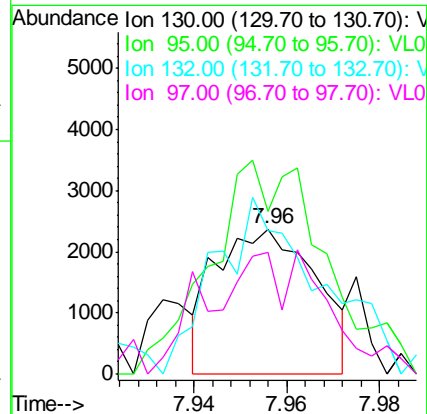
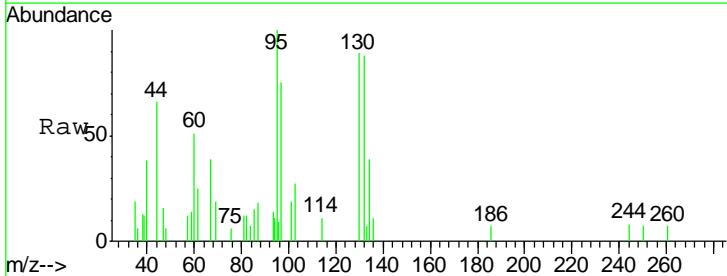
Instrument :
 MSVOA_L
 ClientSampleID :
 S-01DL

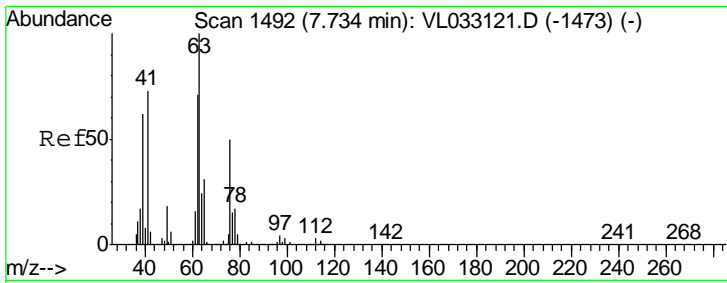
Tgt Ion	Resp	Lower	Upper
114	100		
63	24.3	19.8	29.8
88	17.3	14.2	21.2



#38
 Trichloroethene
 Concen: 0.033 ppbv
 RT: 7.96 min Scan# 1561
 Delta R.T. -0.01 min
 Lab File: VL033127.D
 Acq: 29 Jan 2019 4:25

Tgt Ion	Resp	Lower	Upper
130	100		
95	115.4	94.0	141.0
132	109.9	79.7	119.5
97	90.2	58.4	87.6#

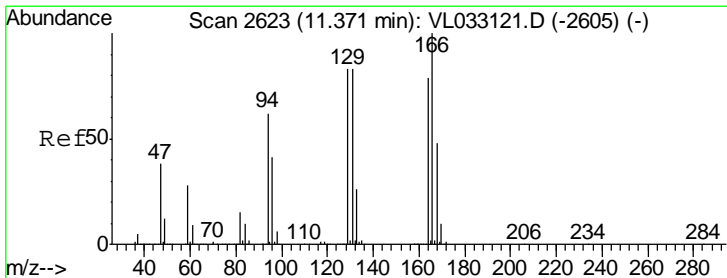
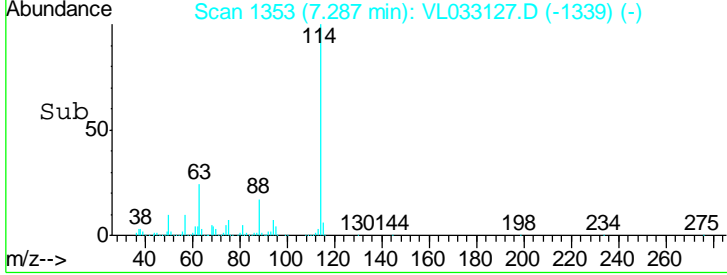
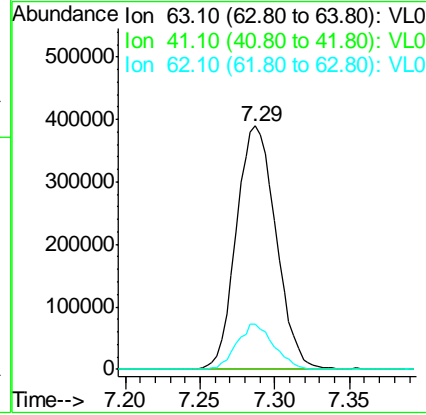
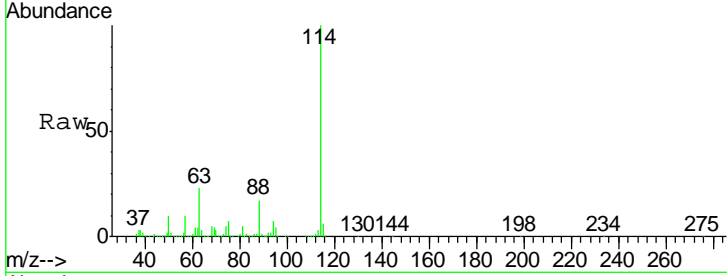




#39
 1,2-Dichloropropane
 Concen: 7.778 ppbv
 RT: 7.29 min Scan# 1353
 Delta R.T. -0.45 min
 Lab File: VL033127.D
 Acq: 29 Jan 2019 4:25

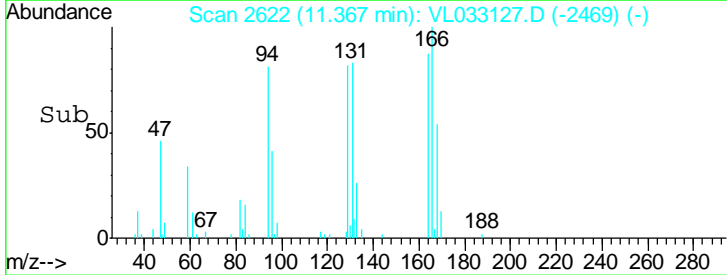
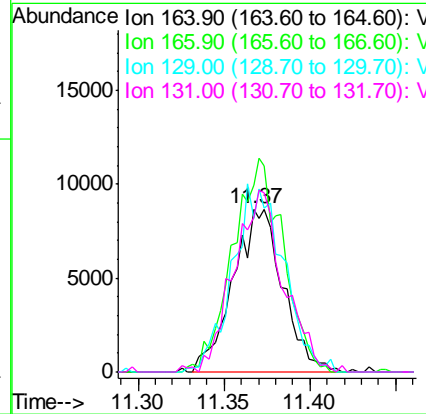
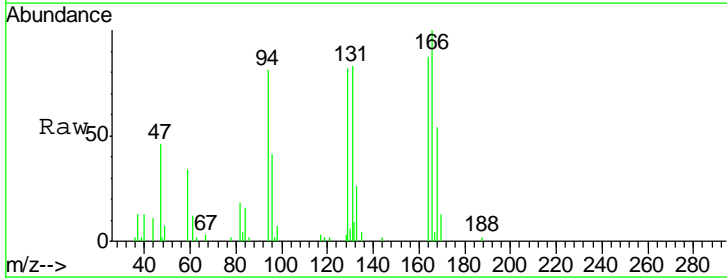
Instrument : MSVOA_L
 ClientSampled : S-01DL

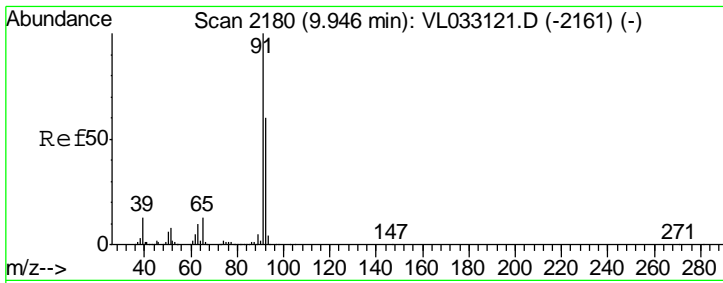
Tgt Ion	Resp	Lower	Upper
63	100		
41	0.0	57.8	86.8#
62	18.7	54.6	82.0#



#52
 Tetrachloroethene
 Concen: 0.200 ppbv
 RT: 11.37 min Scan# 2622
 Delta R.T. -0.01 min
 Lab File: VL033127.D
 Acq: 29 Jan 2019 4:25

Tgt Ion	Resp	Lower	Upper
164	100		
166	119.4	101.3	151.9
129	93.9	83.3	124.9
131	92.3	82.0	123.0

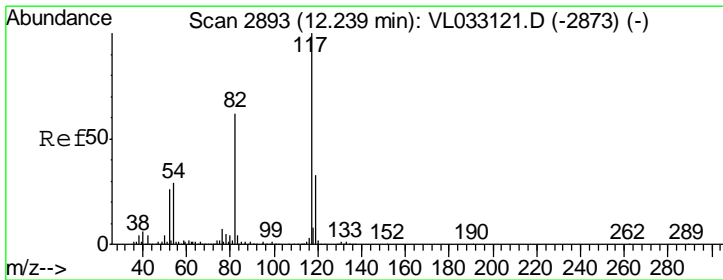
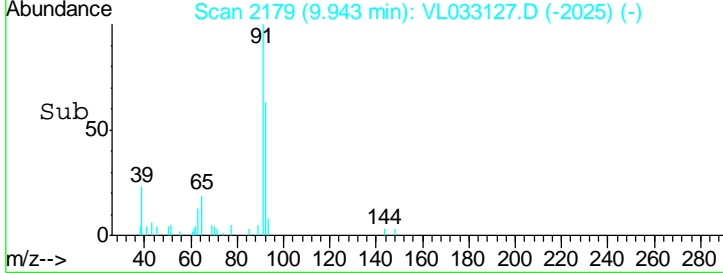
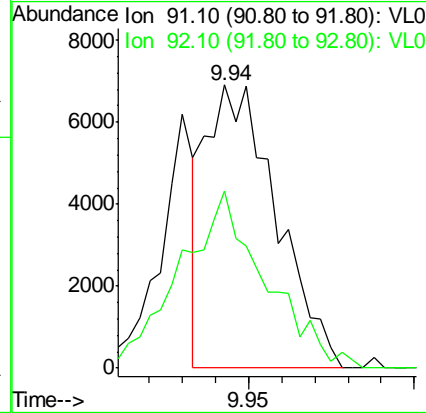
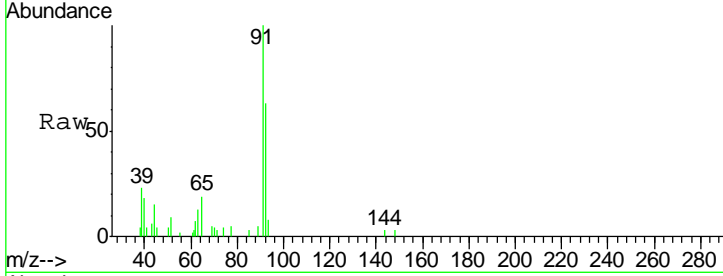




#53
 Toluene
 Concen: 0.039 ppbv
 RT: 9.94 min Scan# 2179
 Delta R.T. -0.00 min
 Lab File: VL033127.D
 Acq: 29 Jan 2019 4:25

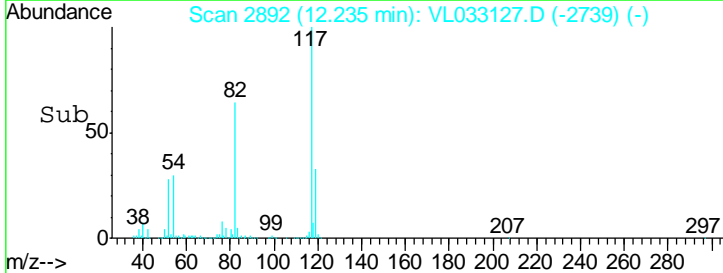
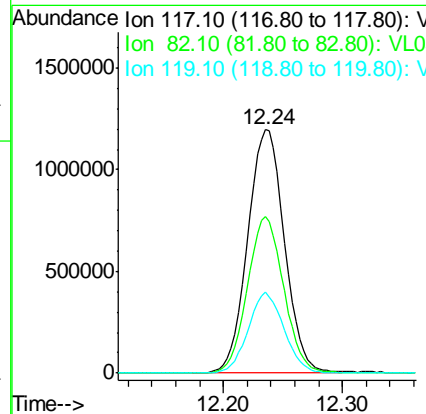
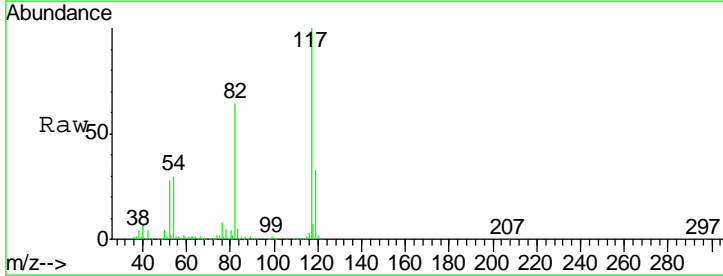
Instrument :
 MSVOA_L
ClientSampled :
 S-01DL

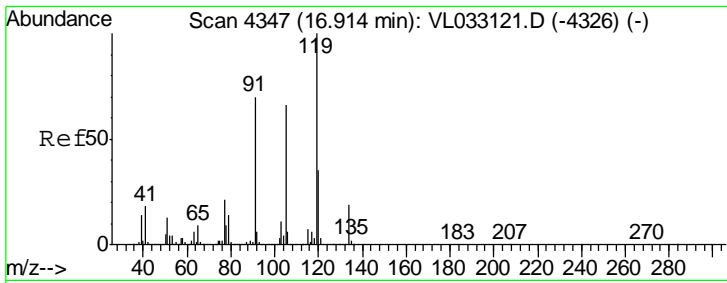
Tgt Ion	Resp	Lower	Upper
91	10192		
92	76.8	47.9	71.9#



#55
 Chlorobenzene-d5
 Concen: 10.000 ppbv
 RT: 12.24 min Scan# 2892
 Delta R.T. -0.01 min
 Lab File: VL033127.D
 Acq: 29 Jan 2019 4:25

Tgt Ion	Resp	Lower	Upper
117	2558475		
82	63.9	48.3	72.5
119	32.4	25.9	38.9

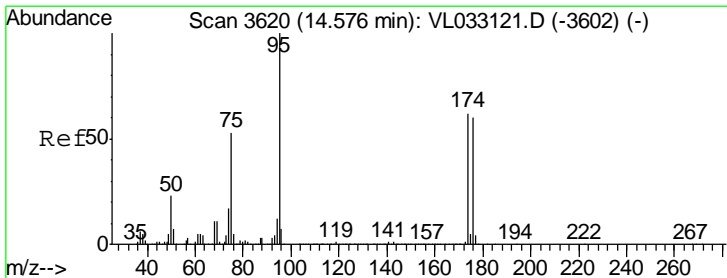
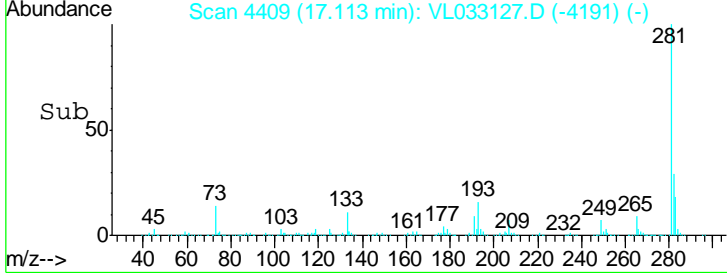
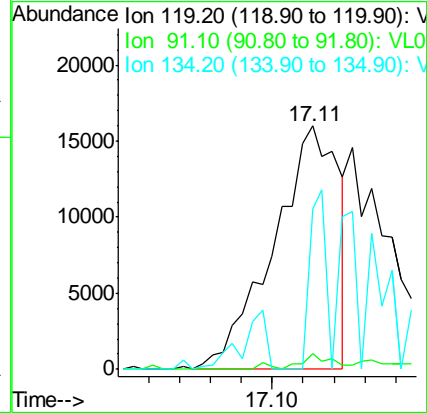
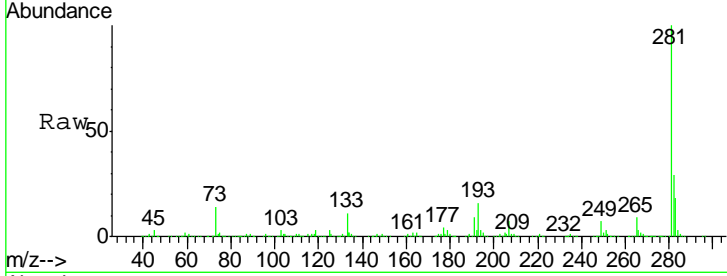




#65
 tert-Butylbenzene
 Concen: 0.068 ppbv
 RT: 17.11 min Scan# 4409
 Delta R.T. 0.20 min
 Lab File: VL033127.D
 Acq: 29 Jan 2019 4:25

Instrument :
 MSVOA_L
 ClientSampled :
 S-01DL

Tgt Ion	Resp	Lower	Upper
119	100		
91	4.7	64.5	96.7#
134	71.1	15.7	23.5#



#68
 1-Bromo-4-Fluorobenzene
 Concen: 9.747 ppbv
 RT: 14.57 min Scan# 3618
 Delta R.T. -0.01 min
 Lab File: VL033127.D
 Acq: 29 Jan 2019 4:25

Tgt Ion	Resp	Lower	Upper
95	100		
174	64.6	51.4	77.2
175	4.8	4.0	6.0

