

Data Path : Z:\VOASRV\HPCHEM1\MSVOA L\DATA\VL012821\
 Data File : VL036283.D
 Acq On : 28 Jan 2021 22:32
 Operator : SY/AP
 Sample : M1245-02 4X
 Misc : 400ml/MSVOA L
 ALS Vial : 1 Sample Multiplier: 1

Instrument :
 MSVOA_L
 ClientSampled :

Quant Time: Jan 29 02:28:26 2021
 Quant Method : Z:\VOASRV\HPCHEM1\MSVOA L\METHODS\VL011321AIR.M
 Quant Title : AIR ANALYSIS BY METHOD TO-15 Instrument: MSVOA_LThu Jan 14 16:13:38 2021
 QLast Update : Thu Jan 14 16:13:38 2021
 Response via : Initial Calibration

Internal Standards	R.T.	QIon	Response	Conc	Units	Dev(Min)
1) Bromochloromethane	5.66	49	1678232	10.00	ppbv	0.00
33) 1,4-Difluorobenzene	7.17	114	3536838	10.00	ppbv	0.00
55) Chlorobenzene-d5	12.08	117	3278240	10.00	ppbv	0.00

System Monitoring Compounds

68) 1-Bromo-4-Fluorobenzene	14.41	95	2715855	10.01	ppbv	0.00
Spiked Amount	10.000	Range	65 - 135	Recovery	=	100.10%

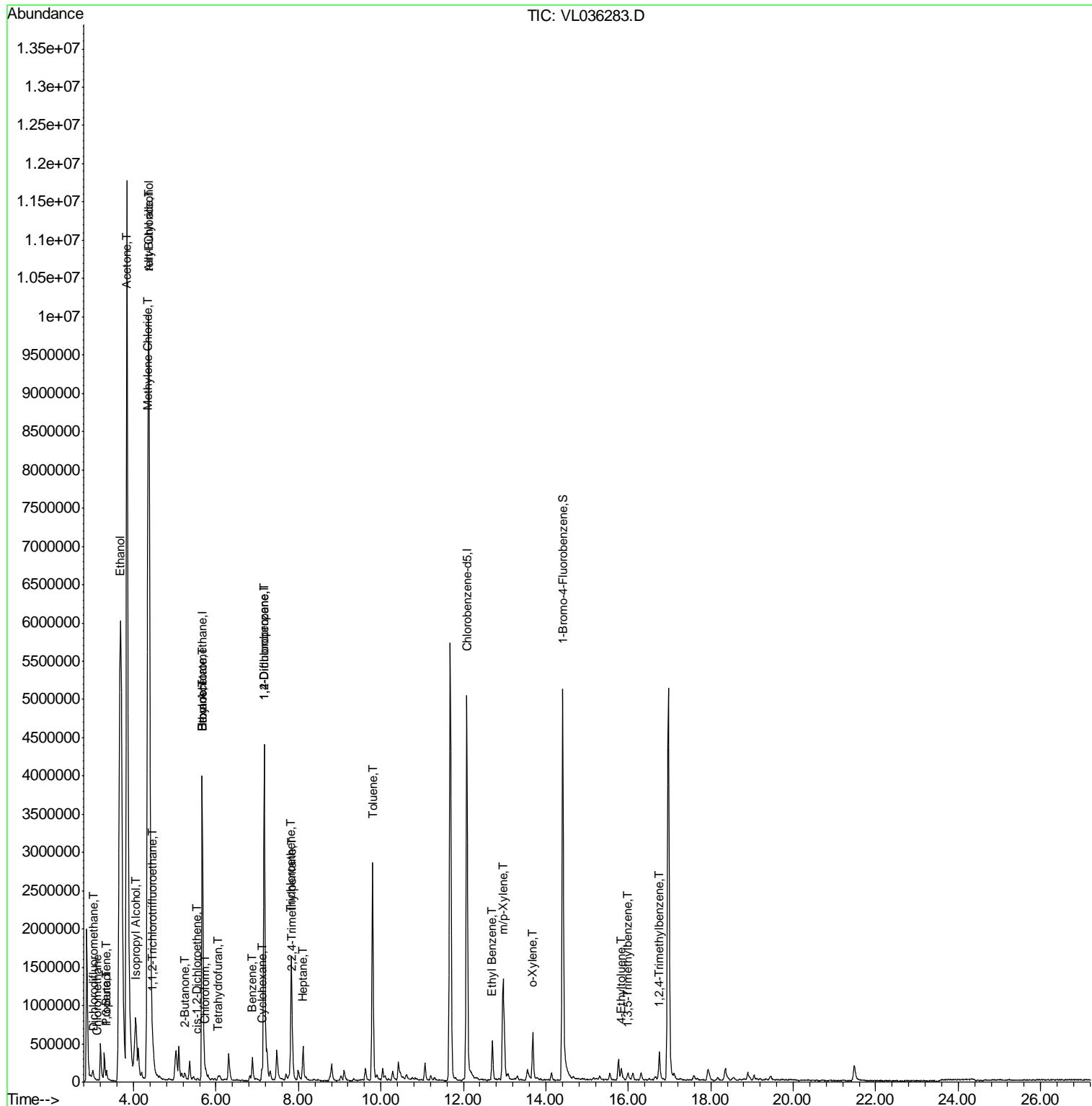
Target Compounds	R.T.	QIon	Response	Conc	Units	Ovalue
2) Dichlorodifluoromethane	3.04	85	8481	0.038	ppbv #	87
4) Chloromethane	3.13	50	11478	0.113	ppbv #	82
9) Propene	3.34	41	31299	0.319	ppbv	88
10) Heptane	8.10	43	199589	0.819	ppbv	94
12) 1,1,2-Trichlorotrifluoroet	4.47	101	29961	0.216	ppbv #	71
13) Ethanol	3.68	45	17494546	1135.140	ppbv	85
15) Acetone	3.84	43	18765765	91.302	ppbv #	82
16) 1,3-Butadiene	3.34	39	17098	0.171	ppbv #	10
17) tert-Butyl alcohol	4.37	59	18561927	109.441	ppbv	96
19) Isopropyl Alcohol	4.04	45	629715	5.082	ppbv #	93
20) Methylene Chloride	4.34	84	220649	3.364	ppbv #	87
21) Allyl Chloride	4.37	41	7054368	63.054	ppbv #	62
25) Ethyl Acetate	5.67	43	920240	2.230	ppbv	97
26) Hexane	5.67	57	507254	2.953	ppbv #	77
29) Chloroform	5.74	83	23322	0.095	ppbv	89
30) Cyclohexane	7.11	84	44723	0.341	ppbv	85
31) cis-1,2-Dichloroethene	5.54	61	10718	0.065	ppbv #	87
34) 2-Butanone	5.24	43	119769	0.460	ppbv #	77
36) Benzene	6.88	78	246891	0.762	ppbv	97
38) Trichloroethene	7.83	130	460959	3.840	ppbv	94
39) 1,2-Dichloropropane	7.17	63	1025974	7.797	ppbv #	21
41) Tetrahydrofuran	6.05	42	8475	0.056	ppbv #	59
44) 2,2,4-Trimethylpentane	7.86	57	162699	0.273	ppbv #	39
53) Toluene	9.80	91	2341091	6.458	ppbv	100
58) Ethyl Benzene	12.70	91	462526	0.951	ppbv	96
59) m/p-Xylene	12.96	91	1465239	3.505	ppbv	96
60) o-Xylene	13.68	91	496701	1.233	ppbv	97
72) 4-Ethyltoluene	15.84	105	43818	0.096	ppbv #	54
73) 1,3,5-Trimethylbenzene	15.99	105	64869	0.150	ppbv #	69
74) 1,2,4-Trimethylbenzene	16.75	105	274589	0.618	ppbv #	68

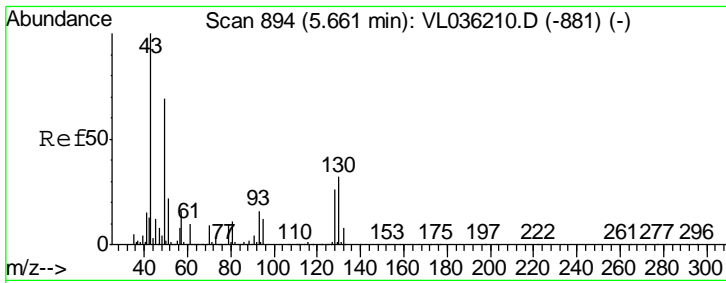
(#) = qualifier out of range (m) = manual integration (+) = signals summed

Data Path : Z:\VOASRV\HPCHEM1\MSVOA L\DATA\VL012821\
 Data File : VL036283.D
 Acq On : 28 Jan 2021 22:32
 Operator : SY/AP
 Sample : M1245-02 4X
 Misc : 400ml/MSVOA L
 ALS Vial : 1 Sample Multiplier: 1

Instrument :
 MSVOA_L
 ClientSampled :

Quant Time: Jan 29 02:28:26 2021
 Quant Method : Z:\VOASRV\HPCHEM1\MSVOA L\METHODS\VL011321AIR.M
 Quant Title : AIR ANALYSIS BY METHOD TO-15 Instrument: MSVOA_L Thu Jan 14 16:13:38 2021
 QLast Update : Thu Jan 14 16:13:38 2021
 Response via : Initial Calibration

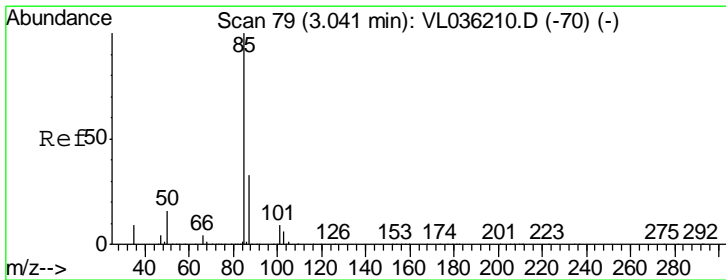
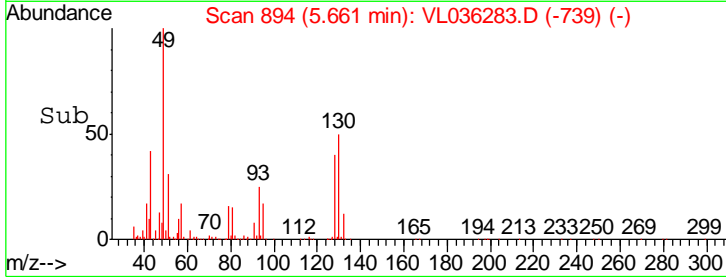
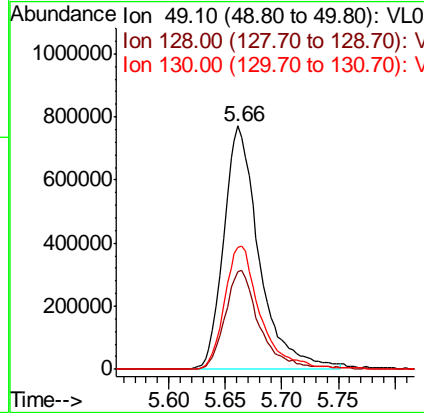
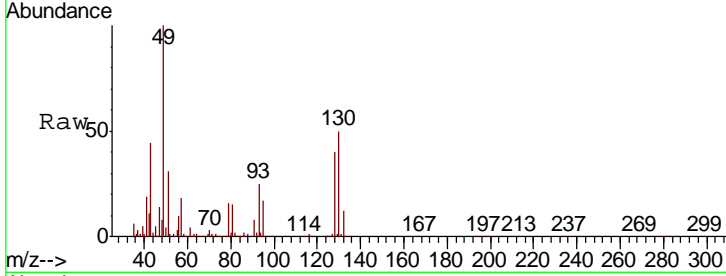




#1
 Bromochloromethane
 Concen: 10.000 ppbv
 RT: 5.66 min Scan# 894
 Delta R.T. -0.00 min
 Lab File: VL036283.D
 Acq: 28 Jan 2021 22:32

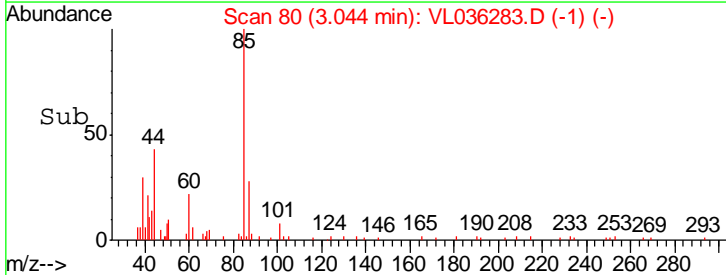
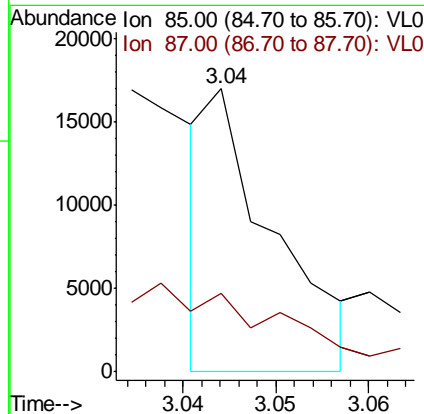
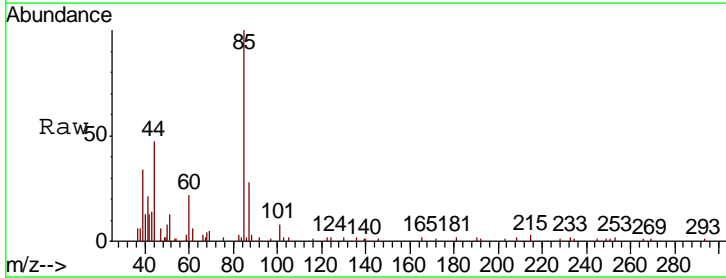
Instrument :
 MSVOA_L
 ClientSampled :

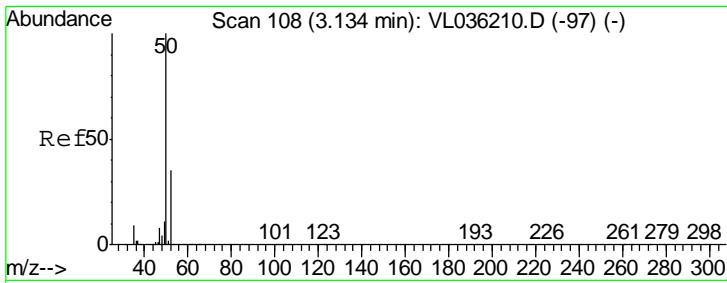
Tgt Ion	Resp	Lower	Upper
49	100		
128	40.4	20.1	60.2
130	51.6	25.3	75.9



#2
 Dichlorodifluoromethane
 Concen: 0.038 ppbv
 RT: 3.04 min Scan# 80
 Delta R.T. 0.00 min
 Lab File: VL036283.D
 Acq: 28 Jan 2021 22:32

Tgt Ion	Resp	Lower	Upper
85	100		
87	25.5	26.4	39.6#

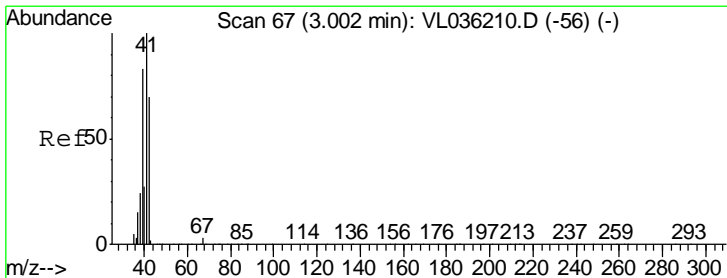
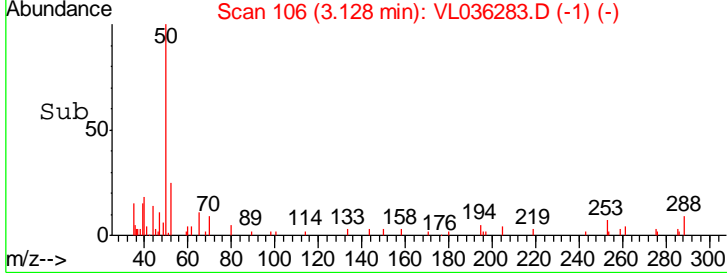
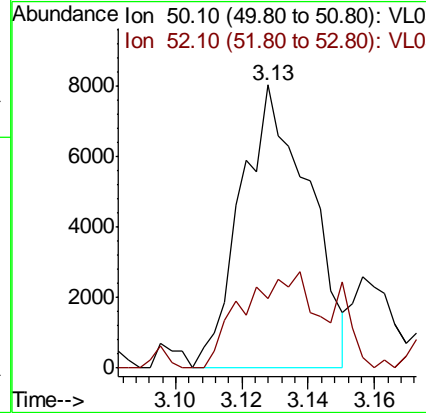
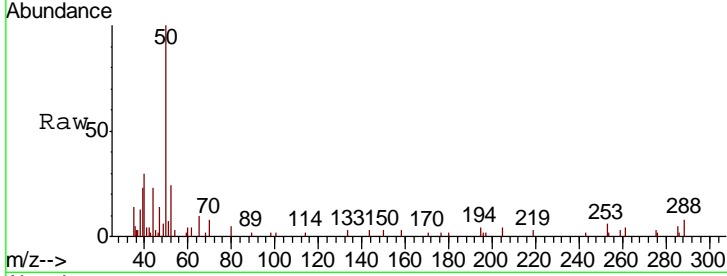




#4
 Chloromethane
 Concen: 0.113 ppbv
 RT: 3.13 min Scan# 106
 Delta R.T. -0.01 min
 Lab File: VL036283.D
 Acq: 28 Jan 2021 22:32

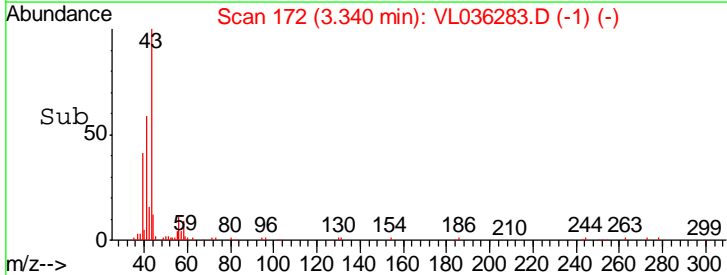
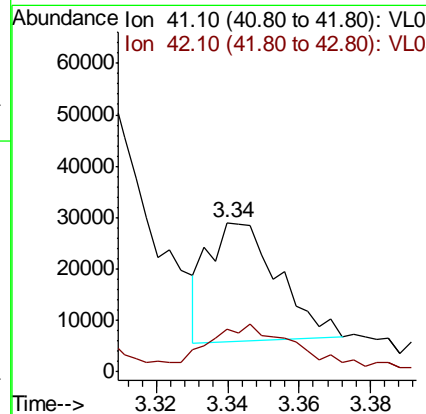
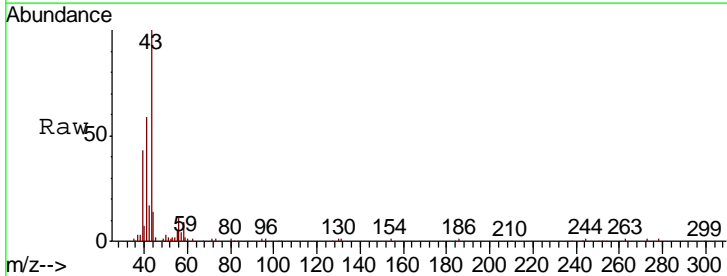
Instrument :
 MSVOA_L
 ClientSampled :

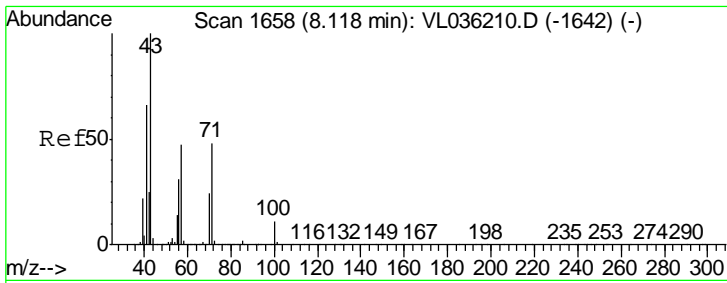
Tgt Ion: 50 Resp: 11478
 Ion Ratio Lower Upper
 50 100
 52 24.5 27.8 41.8#



#9
 Propene
 Concen: 0.319 ppbv
 RT: 3.34 min Scan# 172
 Delta R.T. 0.34 min
 Lab File: VL036283.D
 Acq: 28 Jan 2021 22:32

Tgt Ion: 41 Resp: 31299
 Ion Ratio Lower Upper
 41 100
 42 61.3 57.1 85.7

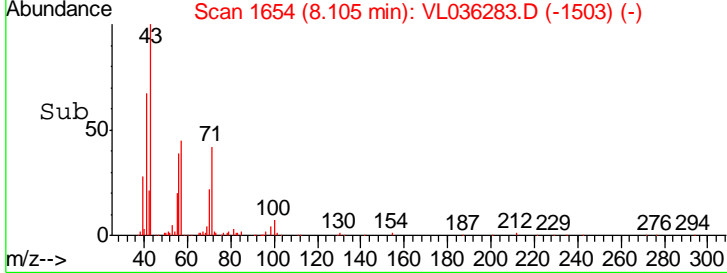
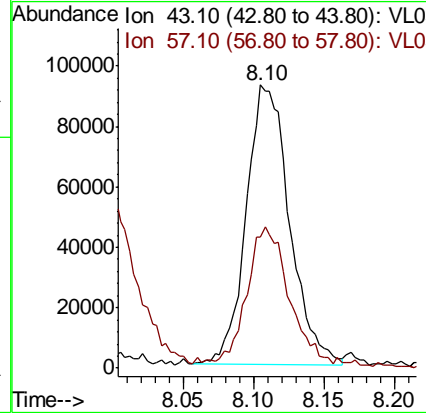
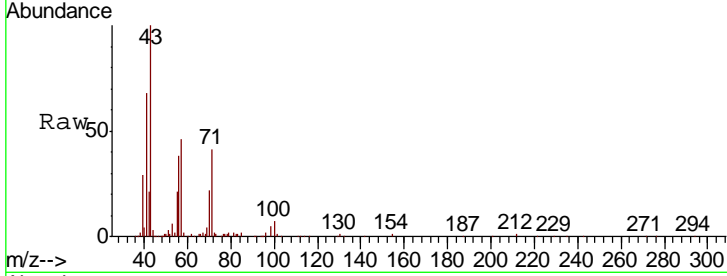




#10
 Heptane
 Concen: 0.819 ppbv
 RT: 8.10 min Scan# 1654
 Delta R.T. -0.01 min
 Lab File: VL036283.D
 Acq: 28 Jan 2021 22:32

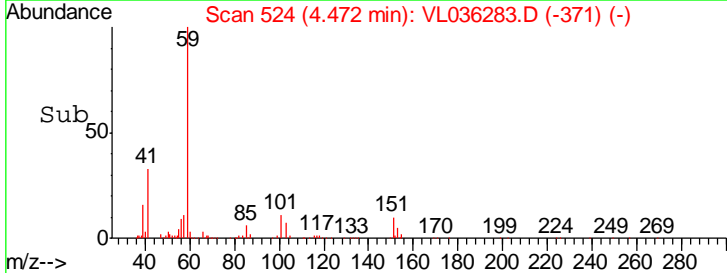
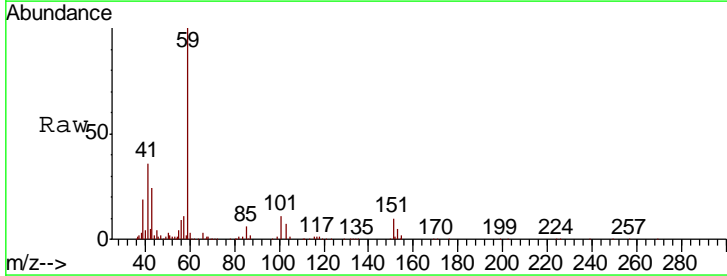
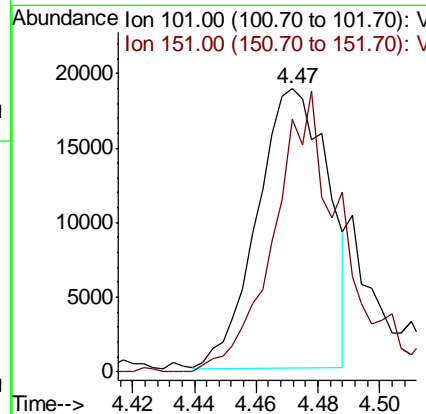
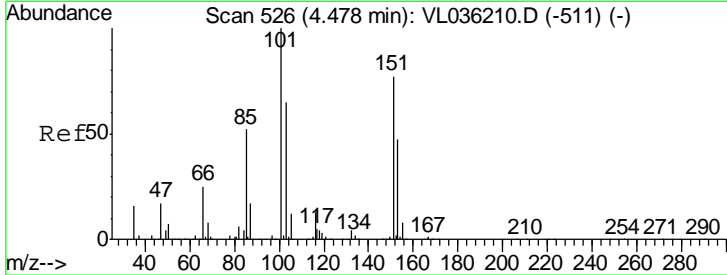
Instrument :
 MSVOA_L
 ClientSampled :

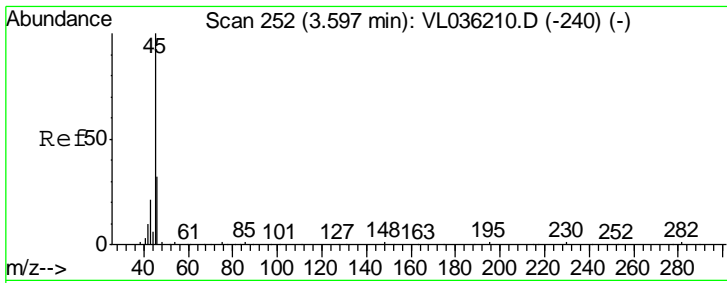
Tgt Ion: 43 Resp: 199589
 Ion Ratio Lower Upper
 43 100
 57 51.3 38.1 57.1



#12
 1,1,2-Trichlorotrifluoroethane
 Concen: 0.216 ppbv
 RT: 4.47 min Scan# 524
 Delta R.T. -0.01 min
 Lab File: VL036283.D
 Acq: 28 Jan 2021 22:32

Tgt Ion: 101 Resp: 29961
 Ion Ratio Lower Upper
 101 100
 151 99.0 59.8 89.6#

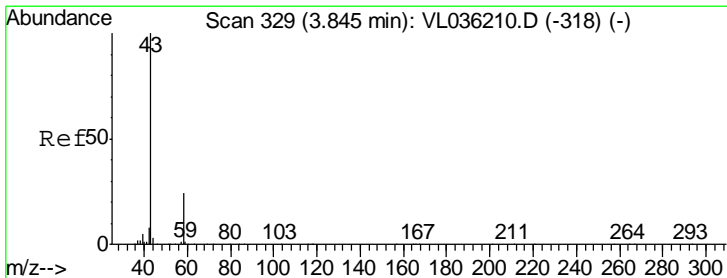
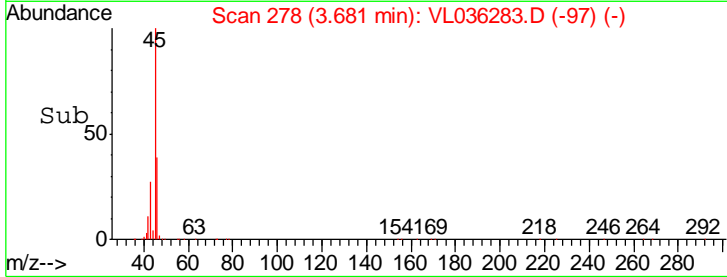
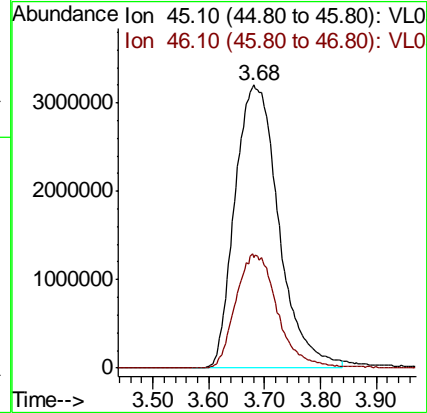
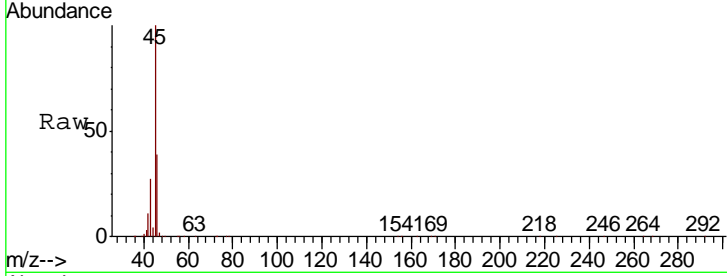




#13
 Ethanol
 Concen: 1135.140 ppbv
 RT: 3.68 min Scan# 278
 Delta R.T. 0.08 min
 Lab File: VL036283.D
 Acq: 28 Jan 2021 22:32

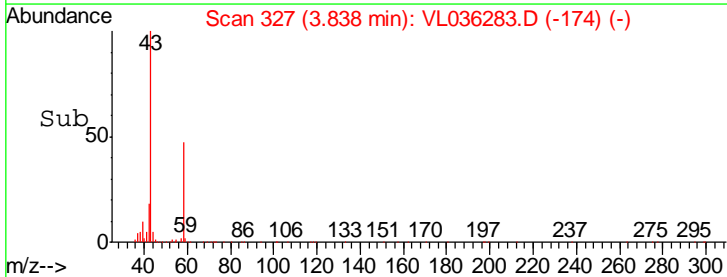
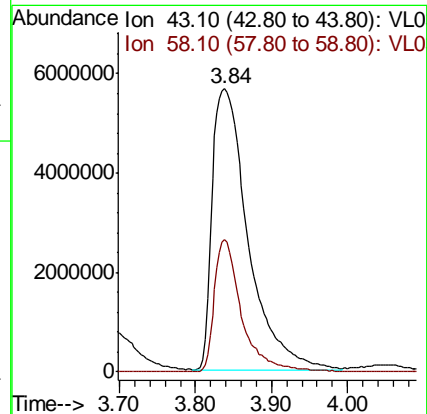
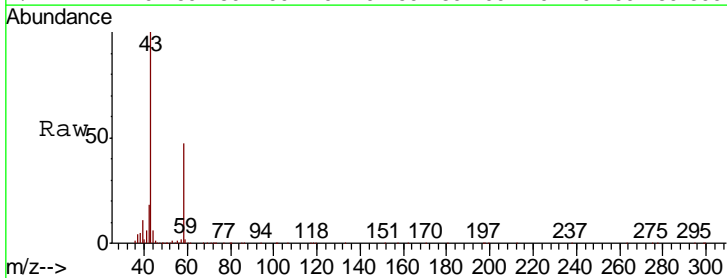
Instrument :
 MSVOA_L
 ClientSampled :

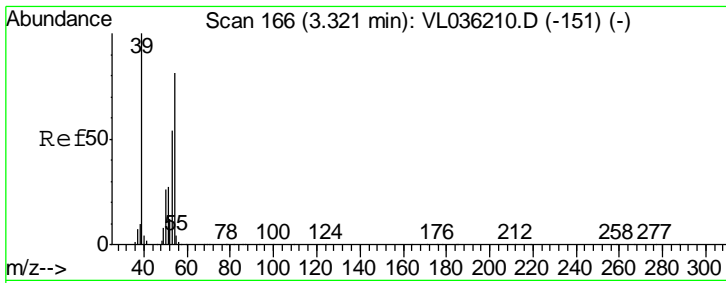
Tgt Ion: 45 Resp:17494546
 Ion Ratio Lower Upper
 45 100
 46 38.2 19.2 77.0



#15
 Acetone
 Concen: 91.302 ppbv
 RT: 3.84 min Scan# 327
 Delta R.T. -0.01 min
 Lab File: VL036283.D
 Acq: 28 Jan 2021 22:32

Tgt Ion: 43 Resp:18765765
 Ion Ratio Lower Upper
 43 100
 58 35.5 20.9 31.3#

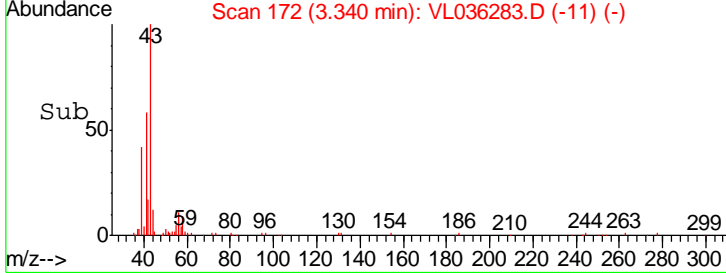
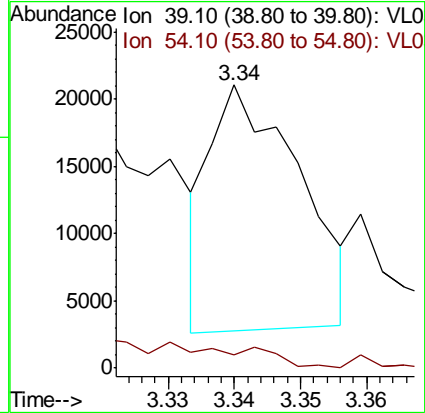
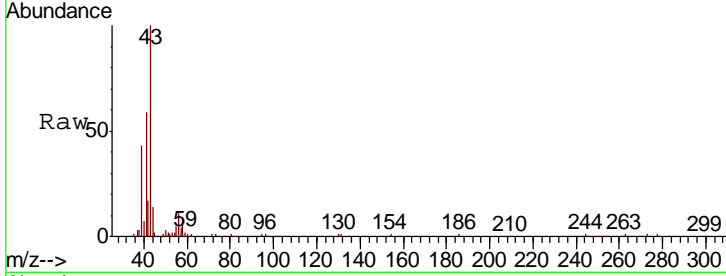




#16
 1,3-Butadiene
 Concen: 0.171 ppbv
 RT: 3.34 min Scan# 172
 Delta R.T. 0.02 min
 Lab File: VL036283.D
 Acq: 28 Jan 2021 22:32

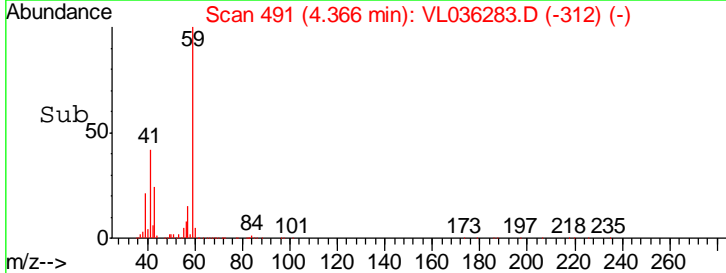
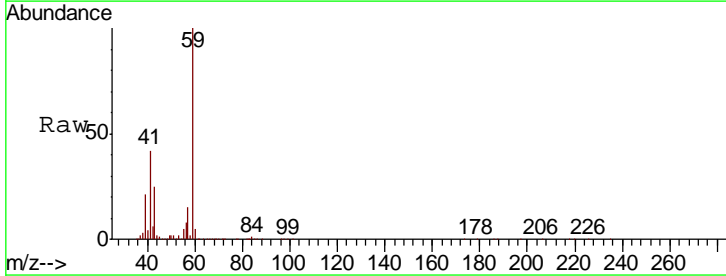
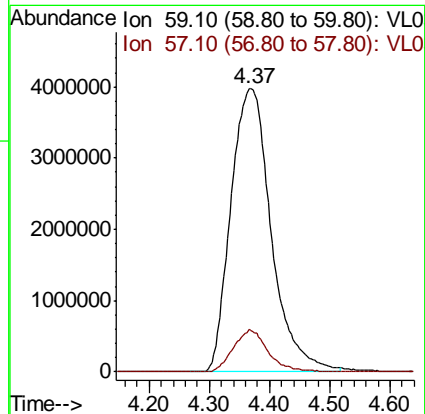
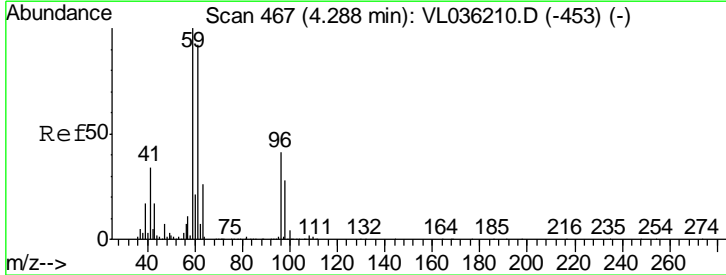
Instrument :
 MSVOA_L
 ClientSampled :

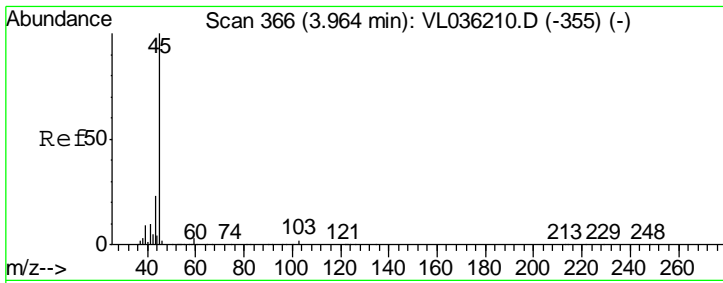
Tgt Ion: 39 Resp: 17098
 Ion Ratio Lower Upper
 39 100
 54 0.0 62.5 93.7#



#17
 tert-Butyl alcohol
 Concen: 109.441 ppbv
 RT: 4.37 min Scan# 491
 Delta R.T. 0.08 min
 Lab File: VL036283.D
 Acq: 28 Jan 2021 22:32

Tgt Ion: 59 Resp: 18561927
 Ion Ratio Lower Upper
 59 100
 57 12.9 9.2 13.8

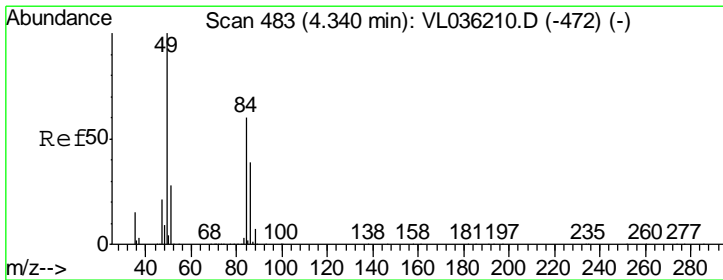
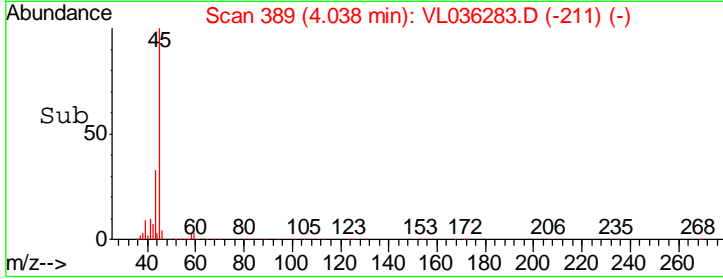
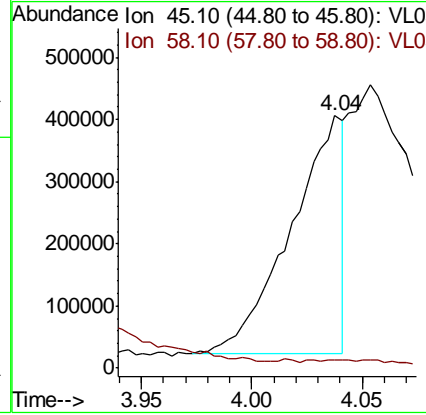
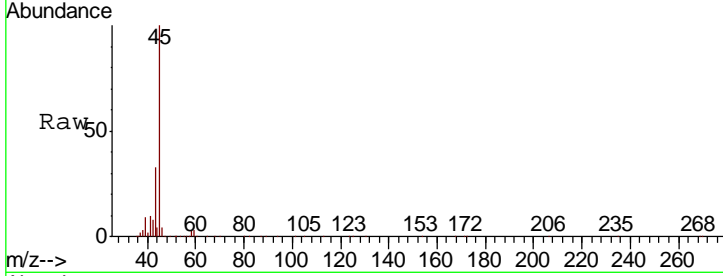




#19
 Isopropyl Alcohol
 Concen: 5.082 ppbv
 RT: 4.04 min Scan# 389
 Delta R.T. 0.07 min
 Lab File: VL036283.D
 Acq: 28 Jan 2021 22:32

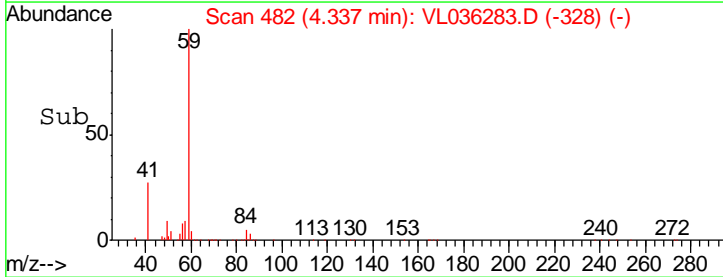
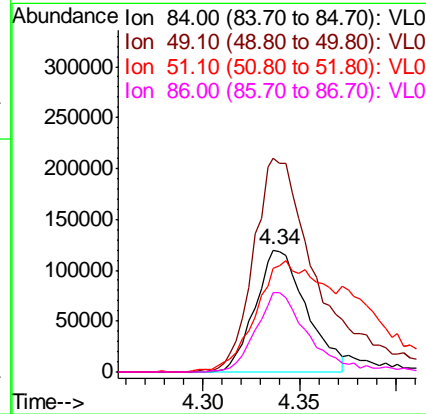
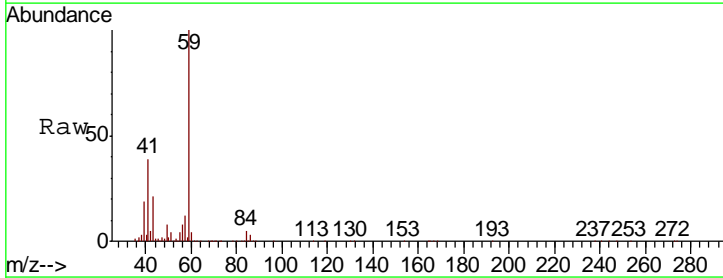
Instrument :
 MSVOA_L
 ClientSampleId :

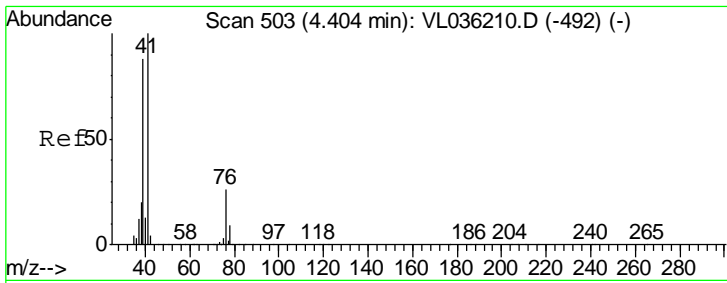
Tgt Ion	Resp	Lower	Upper
45	100		
58	0.0	1.9	2.9#



#20
 Methylene Chloride
 Concen: 3.364 ppbv
 RT: 4.34 min Scan# 482
 Delta R.T. -0.00 min
 Lab File: VL036283.D
 Acq: 28 Jan 2021 22:32

Tgt Ion	Resp	Lower	Upper
84	100		
49	174.9	134.1	201.1
51	84.3	37.4	56.0#
86	64.6	52.6	78.8



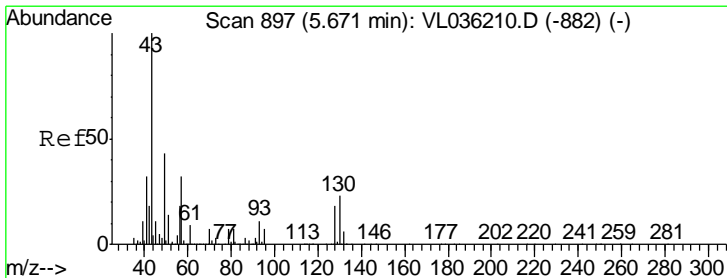
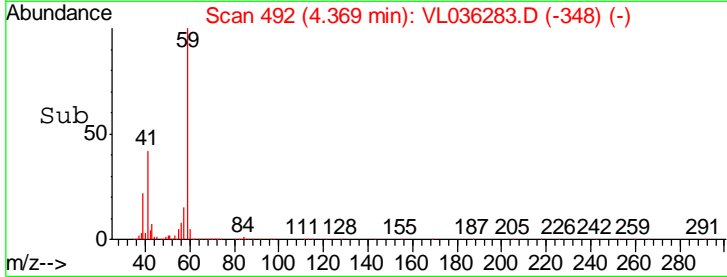
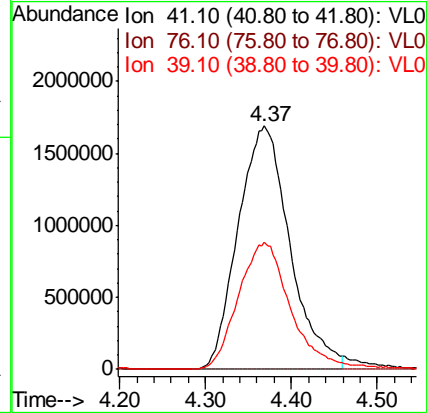
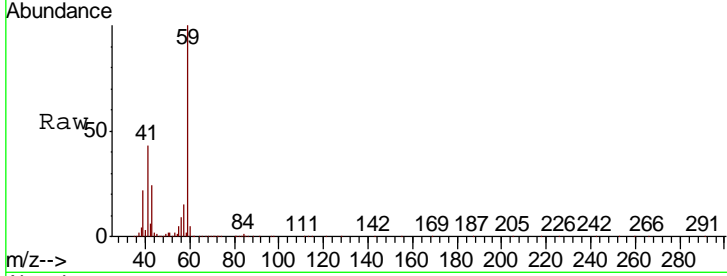


#21
 Allyl Chloride
 Concen: 63.054 ppbv
 RT: 4.37 min Scan# 492
 Delta R.T. -0.04 min
 Lab File: VL036283.D
 Acq: 28 Jan 2021 22:32

Instrument :
 MSVOA_L
 ClientSampled :

Tgt Ion: 41 Resp: 7054368

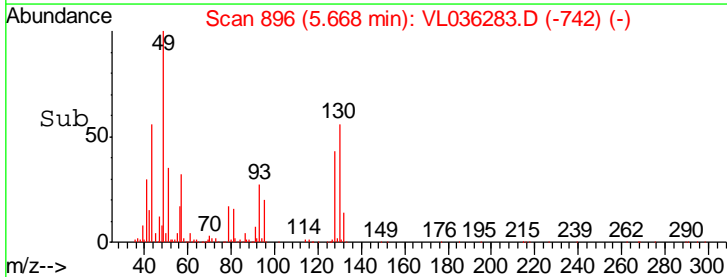
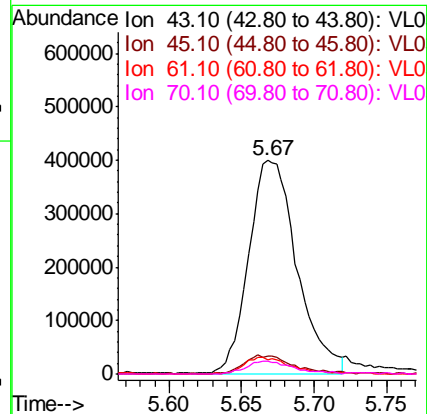
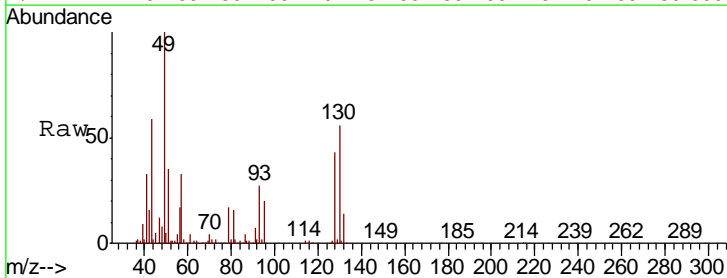
Ion	Ratio	Lower	Upper
41	100		
76	0.0	20.5	30.7#
39	53.2	67.8	101.8#

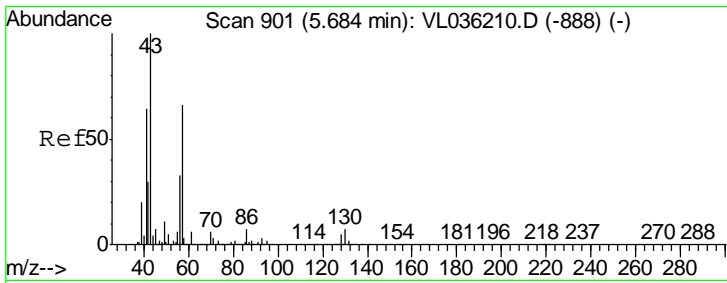


#25
 Ethyl Acetate
 Concen: 2.230 ppbv
 RT: 5.67 min Scan# 896
 Delta R.T. -0.00 min
 Lab File: VL036283.D
 Acq: 28 Jan 2021 22:32

Tgt Ion: 43 Resp: 920240

Ion	Ratio	Lower	Upper
43	100		
45	9.3	8.3	12.5
61	8.2	7.4	11.2
70	6.1	5.5	8.3

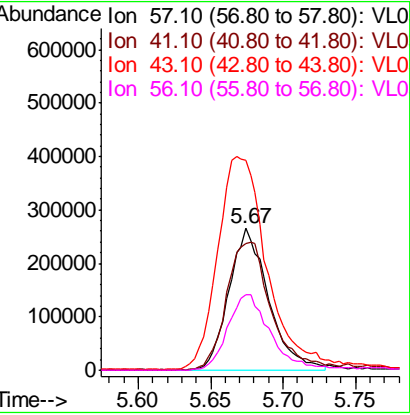
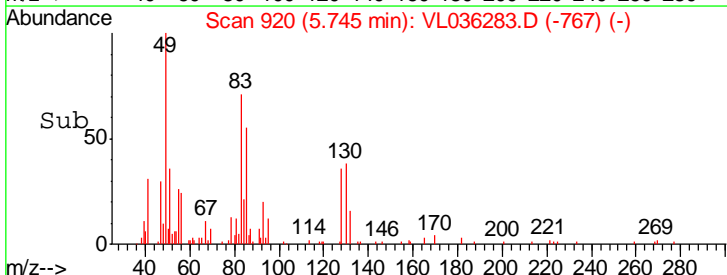
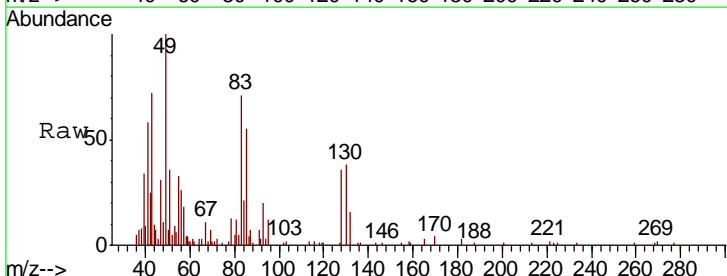
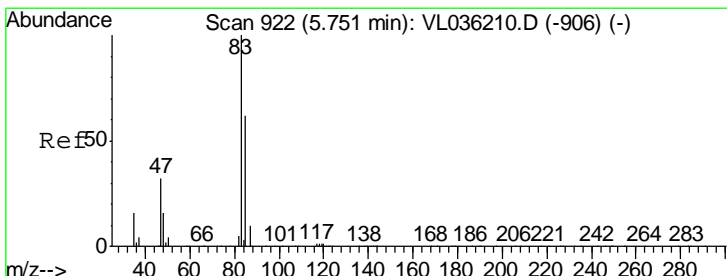
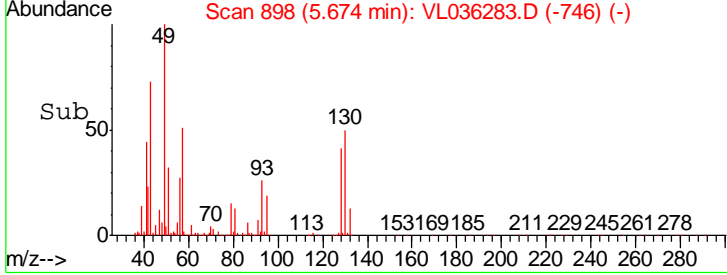
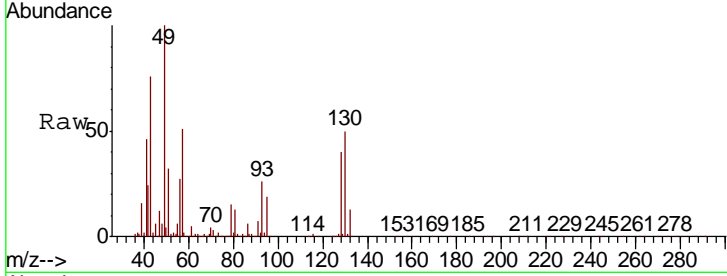




#26
 Hexane
 Concen: 2.953 ppbv
 RT: 5.67 min Scan# 898
 Delta R.T. -0.01 min
 Lab File: VL036283.D
 Acq: 28 Jan 2021 22:32

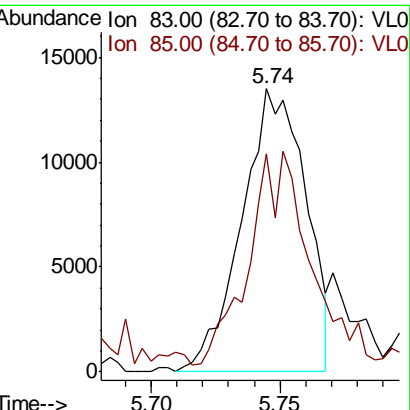
Instrument :
 MSVOA_L
 ClientSampled :

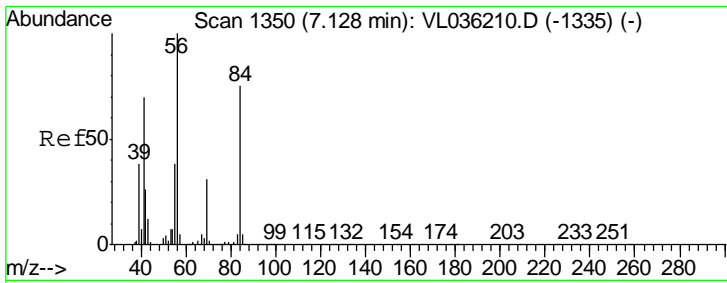
Tgt Ion	Resp	Lower	Upper
57	100		
41	104.3	83.0	124.6
43	190.2	202.4	303.6#
56	57.1	43.4	65.0



#29
 Chloroform
 Concen: 0.095 ppbv
 RT: 5.74 min Scan# 920
 Delta R.T. -0.01 min
 Lab File: VL036283.D
 Acq: 28 Jan 2021 22:32

Tgt Ion	Resp	Lower	Upper
83	100		
85	70.1	49.3	73.9

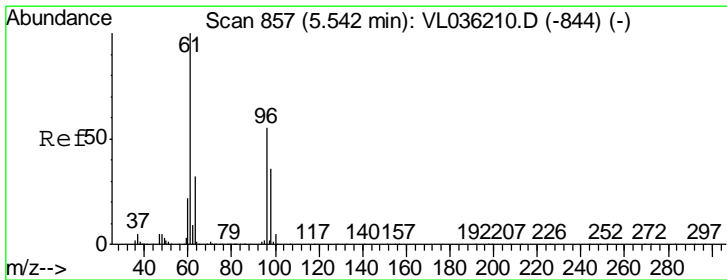
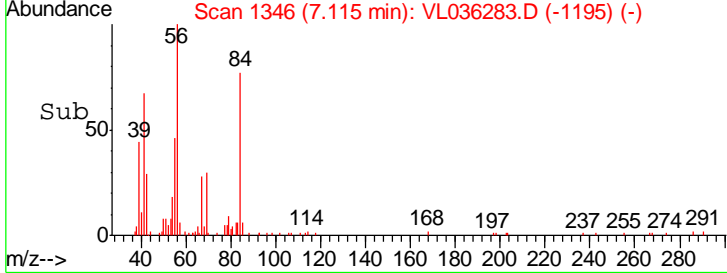
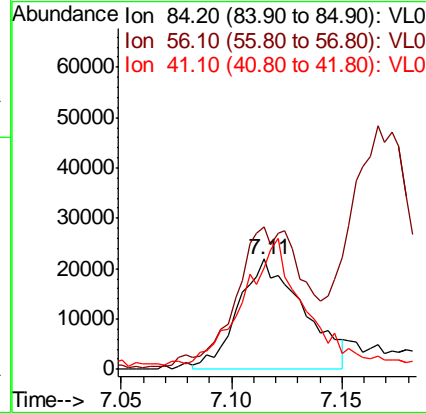
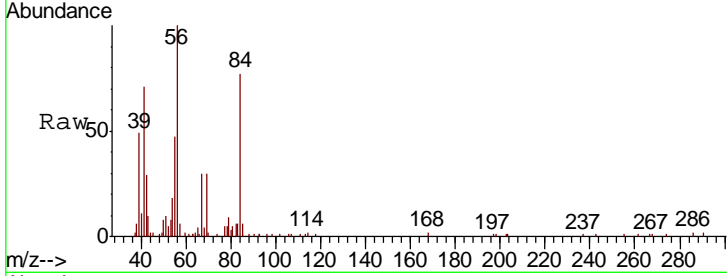




#30
 Cyclohexane
 Concen: 0.341 ppbv
 RT: 7.11 min Scan# 1346
 Delta R.T. -0.01 min
 Lab File: VL036283.D
 Acq: 28 Jan 2021 22:32

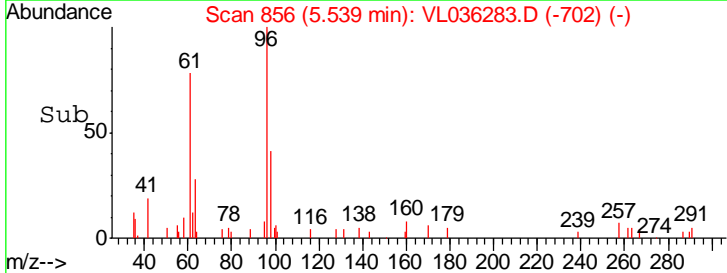
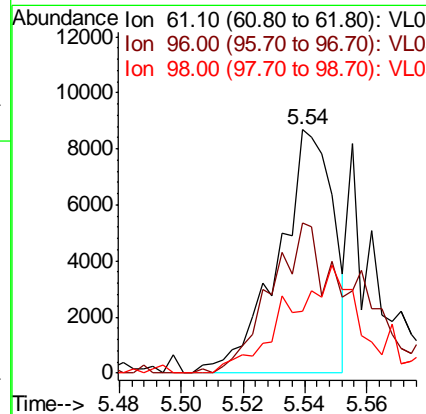
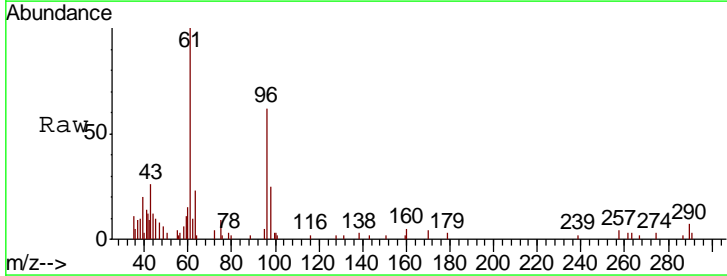
Instrument :
 MSVOA_L
 ClientSampled :

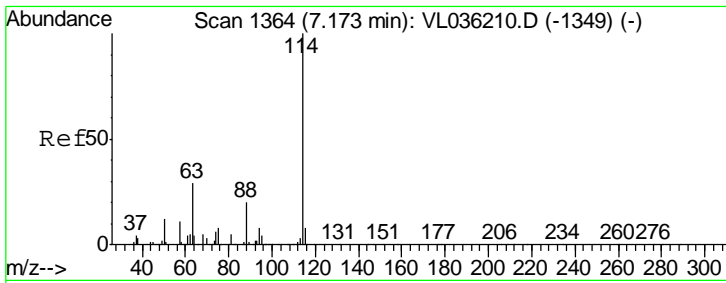
Tgt Ion	Resp	Lower	Upper
84	44723		
56	128.1	119.4	179.0
41	111.6	79.4	119.0



#31
 cis-1,2-Dichloroethene
 Concen: 0.065 ppbv
 RT: 5.54 min Scan# 856
 Delta R.T. -0.00 min
 Lab File: VL036283.D
 Acq: 28 Jan 2021 22:32

Tgt Ion	Resp	Lower	Upper
61	10718		
96	61.7	44.1	66.1
98	25.3	28.6	42.8#

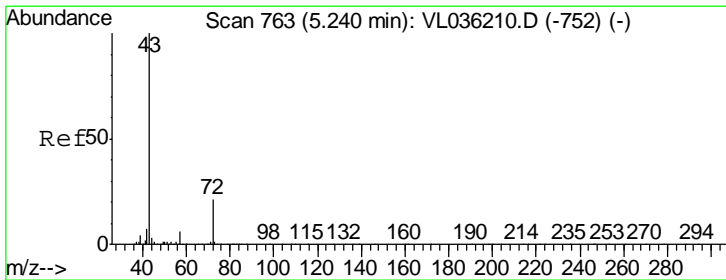
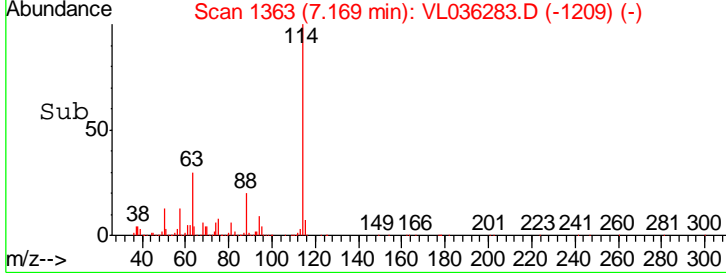
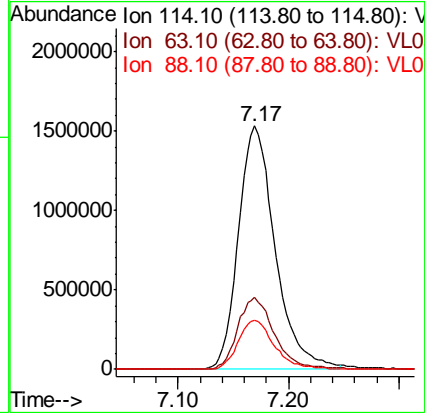
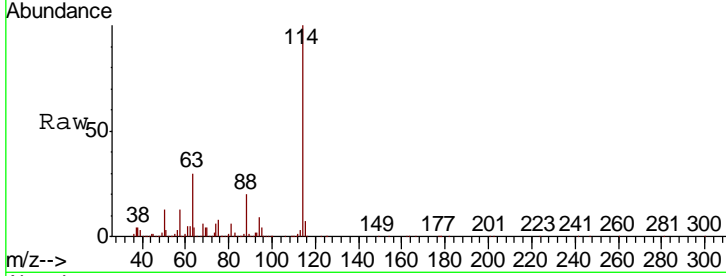




#33
 1,4-Difluorobenzene
 Concen: 10.000 ppbv
 RT: 7.17 min Scan# 1363
 Delta R.T. -0.00 min
 Lab File: VL036283.D
 Acq: 28 Jan 2021 22:32

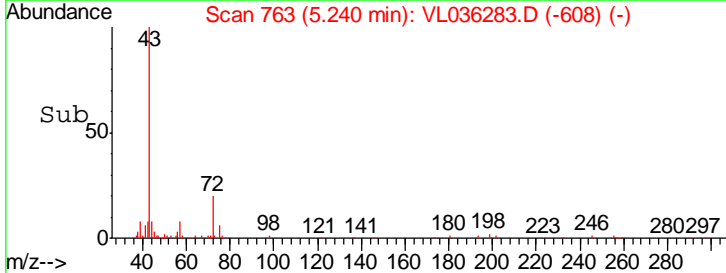
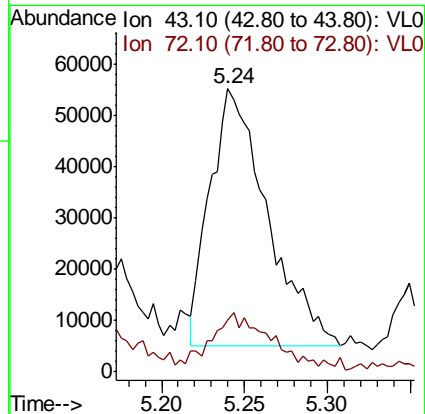
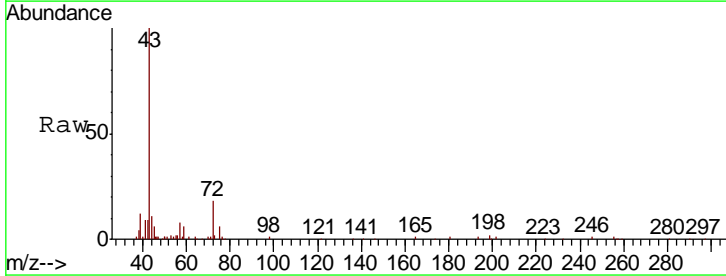
Instrument :
 MSVOA_L
 ClientSampled :

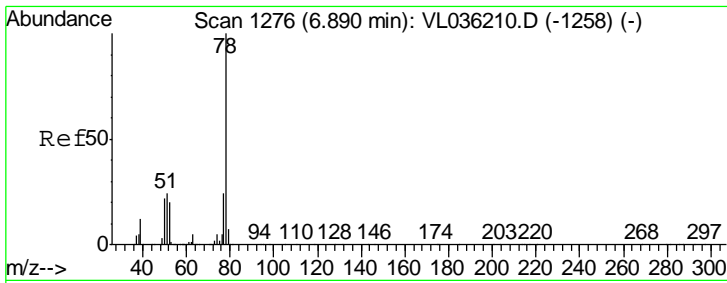
Tgt Ion	Resp	Lower	Upper
114	3536838		
63	29.9	24.7	37.1
88	20.1	16.6	24.8



#34
 2-Butanone
 Concen: 0.460 ppbv
 RT: 5.24 min Scan# 763
 Delta R.T. -0.00 min
 Lab File: VL036283.D
 Acq: 28 Jan 2021 22:32

Tgt Ion	Resp	Lower	Upper
43	119769		
72	30.5	16.1	24.1#

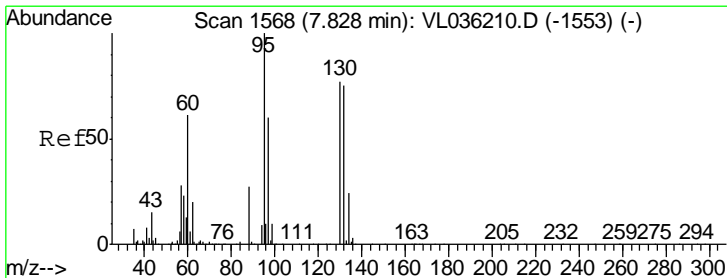
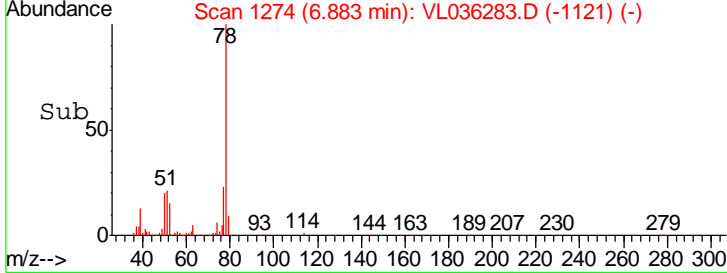
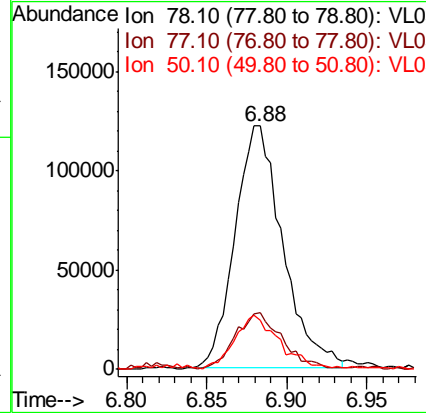
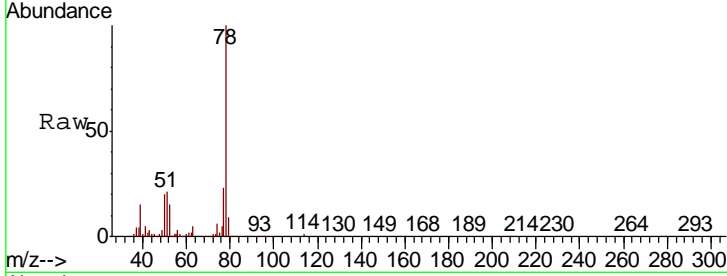




#36
Benzene
Concen: 0.762 ppbv
RT: 6.88 min Scan# 1274
Delta R.T. -0.01 min
Lab File: VL036283.D
Acq: 28 Jan 2021 22:32

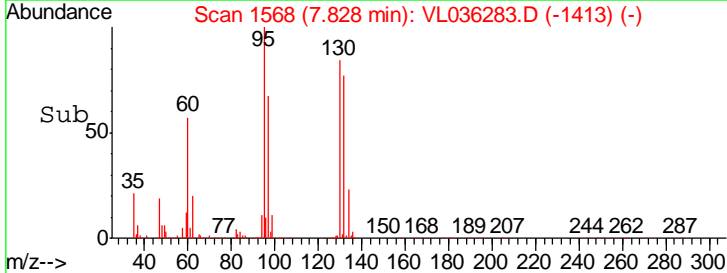
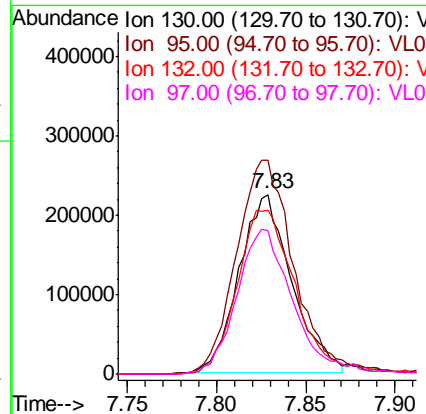
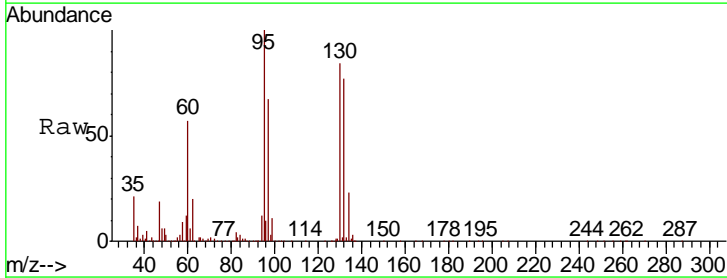
Instrument :
MSVOA_L
ClientSampled :

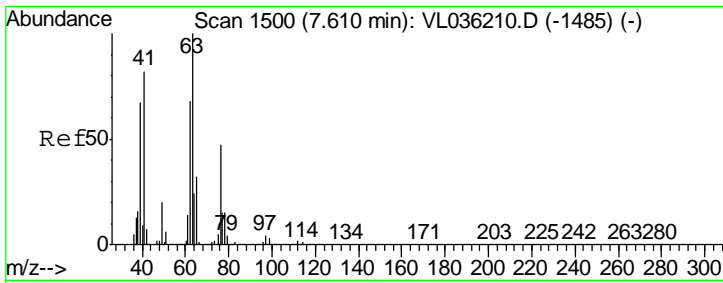
Tgt Ion	Resp	Lower	Upper
78	246891		
77	22.9	19.4	29.0
50	19.8	17.4	26.2



#38
Trichloroethene
Concen: 3.840 ppbv
RT: 7.83 min Scan# 1568
Delta R.T. -0.00 min
Lab File: VL036283.D
Acq: 28 Jan 2021 22:32

Tgt Ion	Resp	Lower	Upper
130	460959		
95	118.6	103.9	155.9
132	90.9	77.4	116.2
97	79.0	62.5	93.7

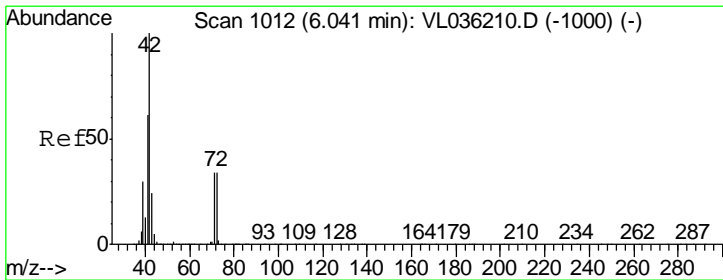
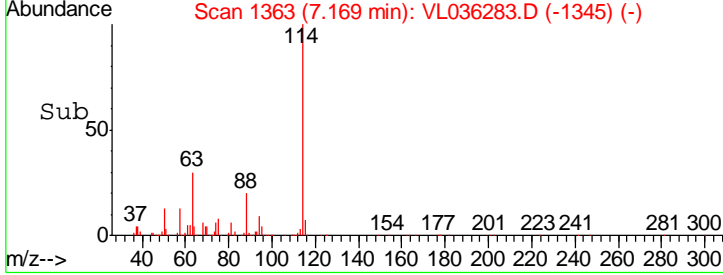
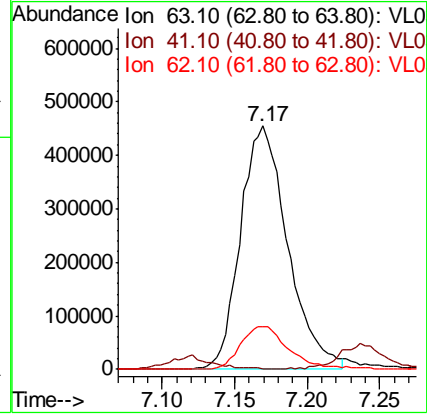
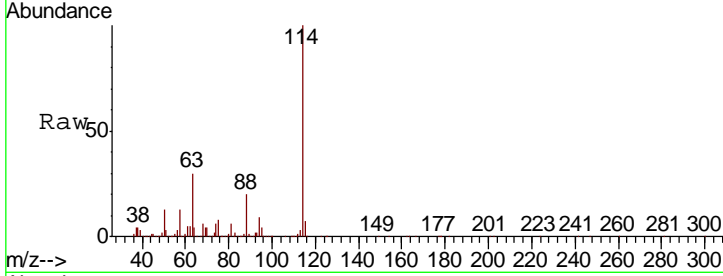




#39
 1,2-Dichloropropane
 Concen: 7.797 ppbv
 RT: 7.17 min Scan# 1363
 Delta R.T. -0.44 min
 Lab File: VL036283.D
 Acq: 28 Jan 2021 22:32

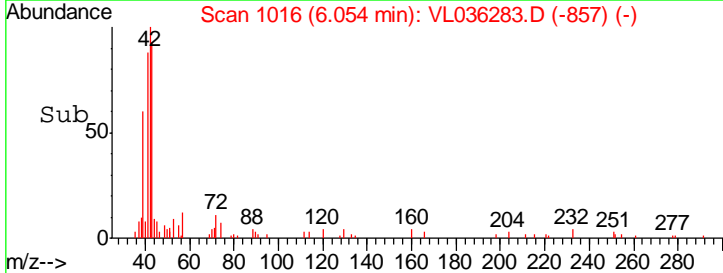
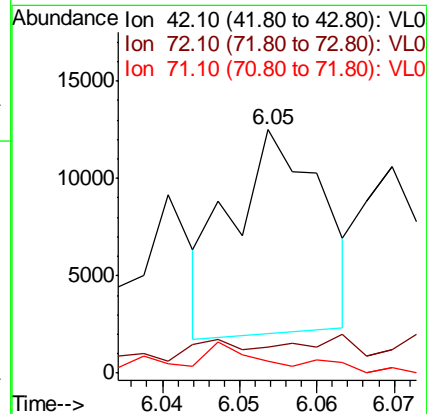
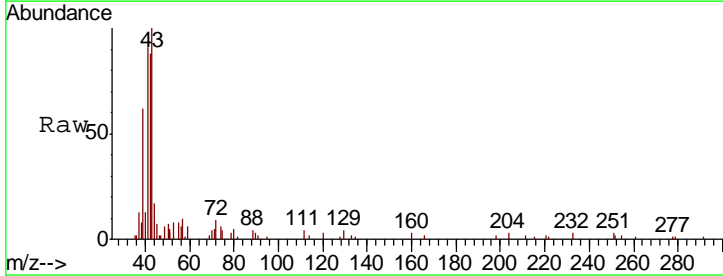
Instrument :
 MSVOA_L
 ClientSampled :

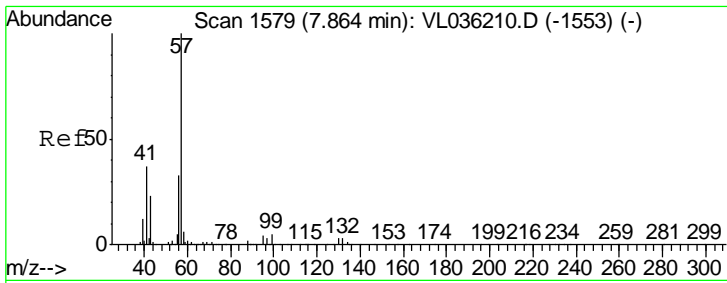
Tgt Ion	Resp	Lower	Upper
63	1025974		
41	0.0	66.1	99.1#
62	17.5	54.8	82.2#



#41
 Tetrahydrofuran
 Concen: 0.056 ppbv
 RT: 6.05 min Scan# 1016
 Delta R.T. 0.01 min
 Lab File: VL036283.D
 Acq: 28 Jan 2021 22:32

Tgt Ion	Resp	Lower	Upper
42	8475		
72	0.0	29.5	44.3#
71	25.1	29.1	43.7#



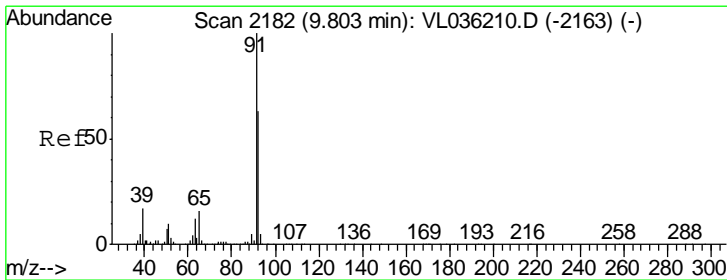
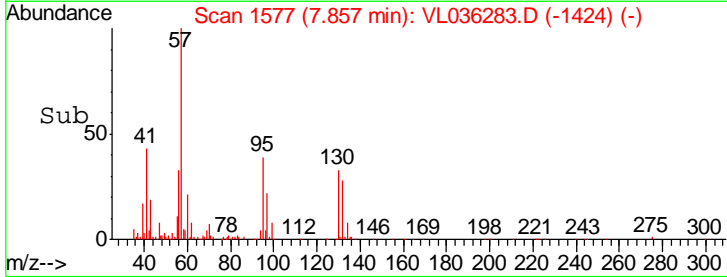
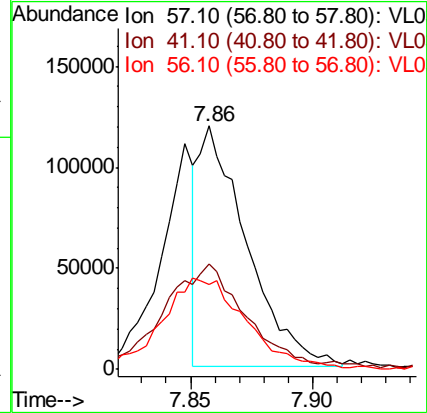
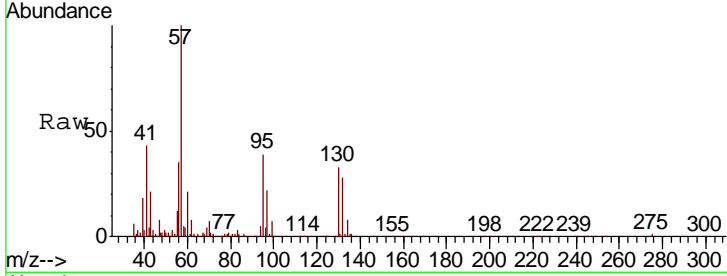


#44
 2,2,4-Trimethylpentane
 Concen: 0.273 ppbv
 RT: 7.86 min Scan# 1577
 Delta R.T. -0.01 min
 Lab File: VL036283.D
 Acq: 28 Jan 2021 22:32

Instrument :
 MSVOA_L
 ClientSampled :

Tgt Ion: 57 Resp: 162699

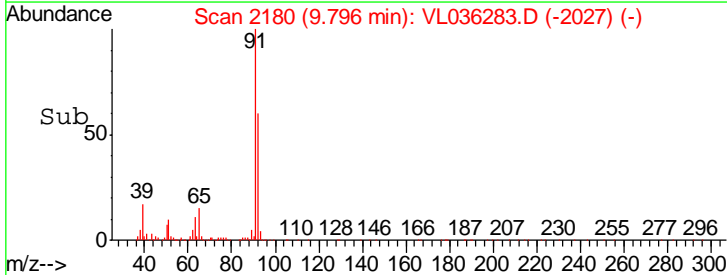
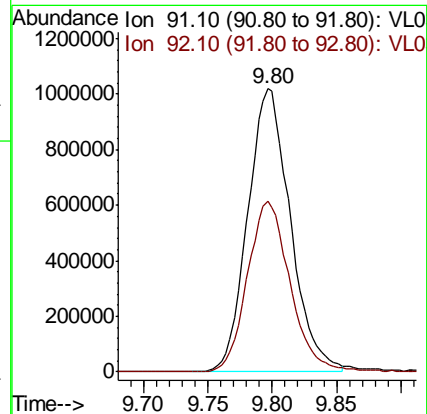
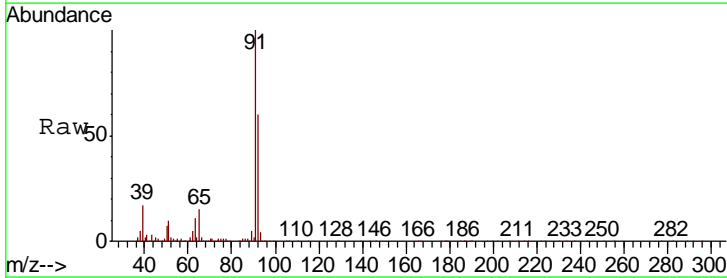
Ion	Ratio	Lower	Upper
57	100		
41	73.7	28.5	42.7#
56	0.0	25.5	38.3#

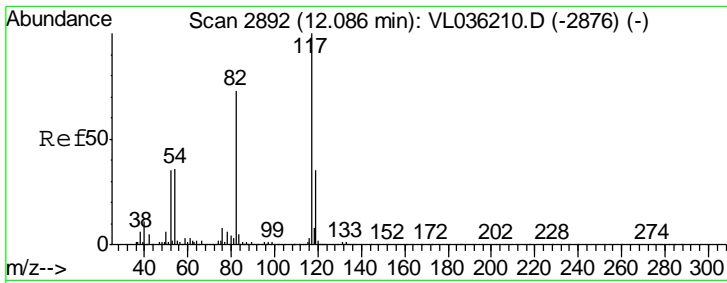


#53
 Toluene
 Concen: 6.458 ppbv
 RT: 9.80 min Scan# 2180
 Delta R.T. -0.01 min
 Lab File: VL036283.D
 Acq: 28 Jan 2021 22:32

Tgt Ion: 91 Resp: 2341091

Ion	Ratio	Lower	Upper
91	100		
92	60.9	48.5	72.7

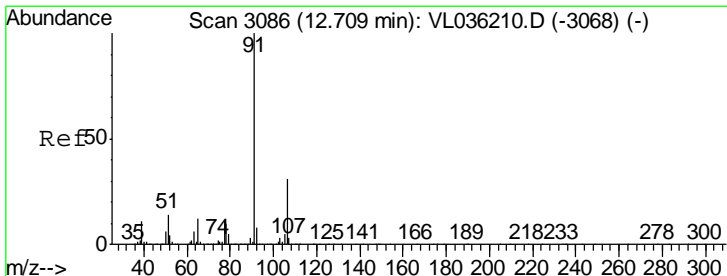
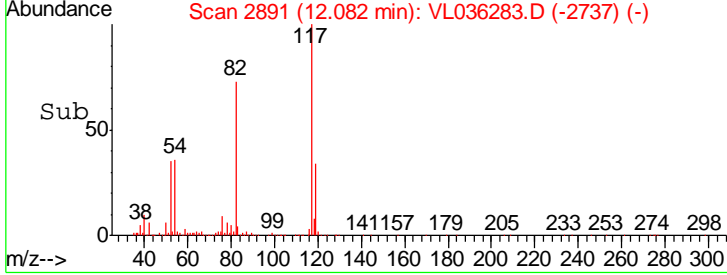
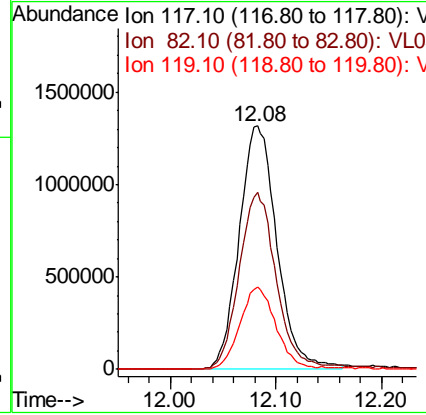
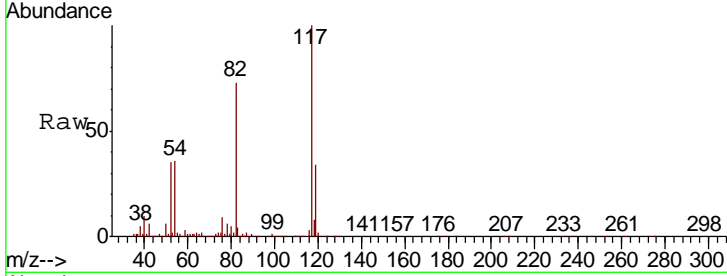




#55
 Chlorobenzene-d5
 Concen: 10.000 ppbv
 RT: 12.08 min Scan# 2891
 Delta R.T. -0.00 min
 Lab File: VL036283.D
 Acq: 28 Jan 2021 22:32

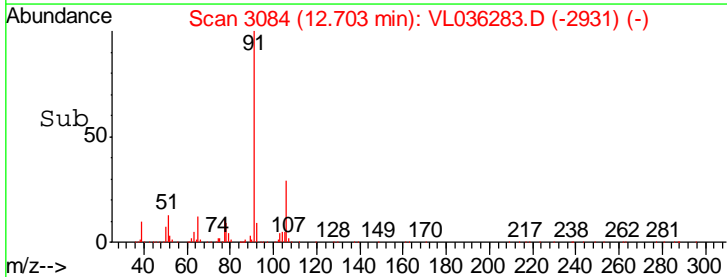
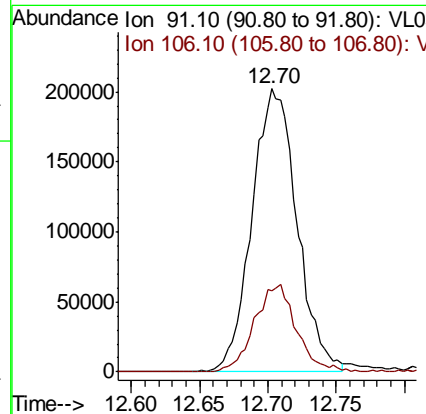
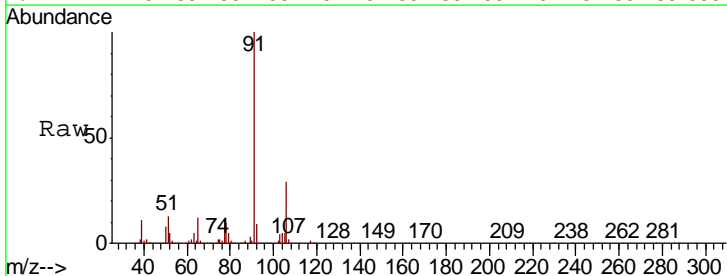
Instrument :
 MSVOA_L
 ClientSampled :

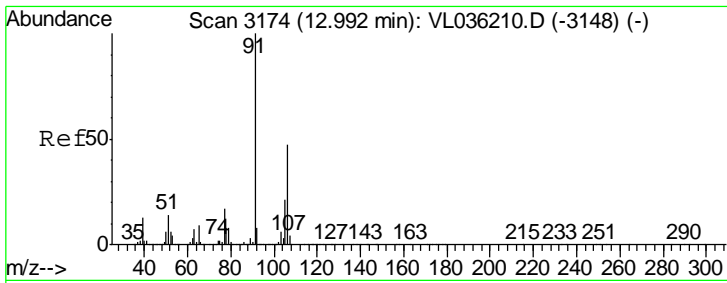
Tgt Ion	Resp	Lower	Upper
117	3278240		
82	73.4	59.7	89.5
119	33.5	28.6	43.0



#58
 Ethyl Benzene
 Concen: 0.951 ppbv
 RT: 12.70 min Scan# 3084
 Delta R.T. -0.01 min
 Lab File: VL036283.D
 Acq: 28 Jan 2021 22:32

Tgt Ion	Resp	Lower	Upper
91	462526		
106	28.8	24.8	37.2

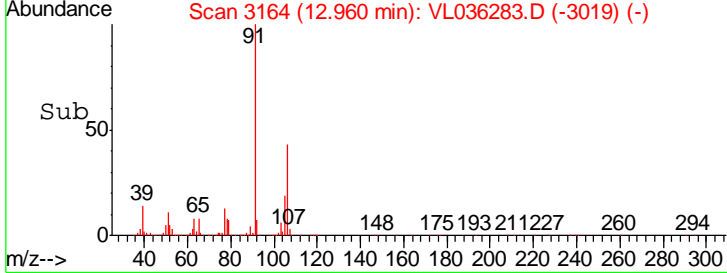
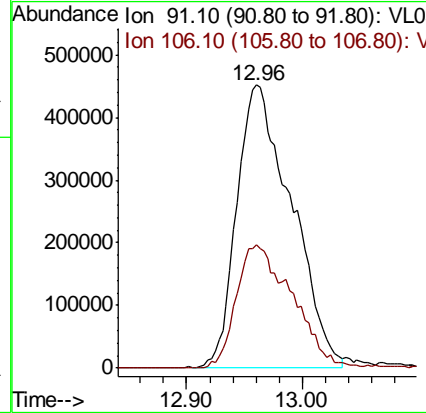
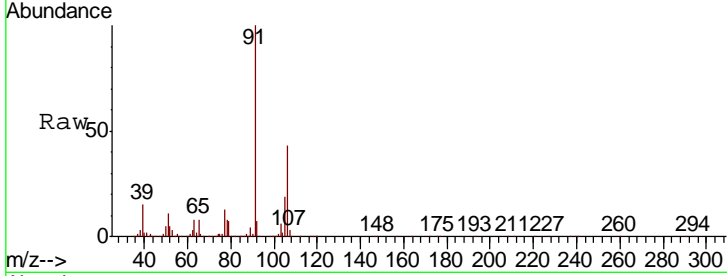




#59
 m/p-Xylene
 Concen: 3.505 ppbv
 RT: 12.96 min Scan# 3164
 Delta R.T. -0.03 min
 Lab File: VL036283.D
 Acq: 28 Jan 2021 22:32

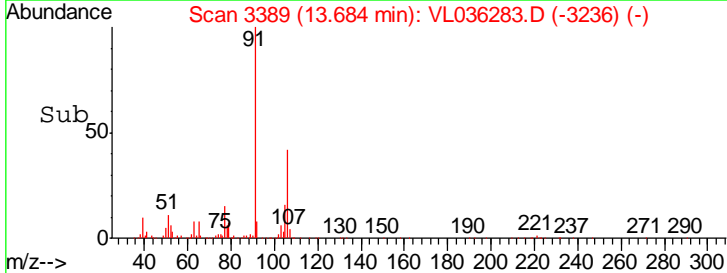
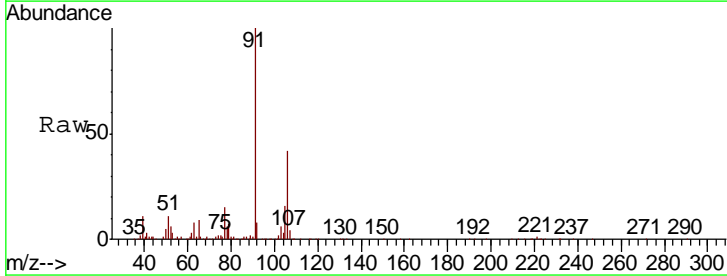
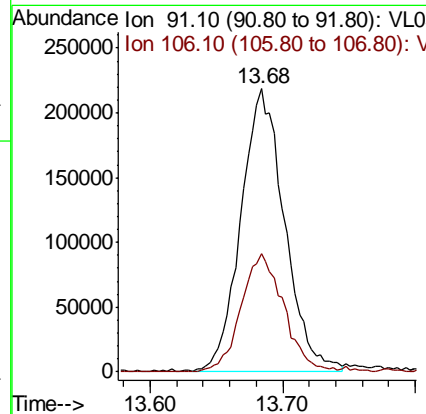
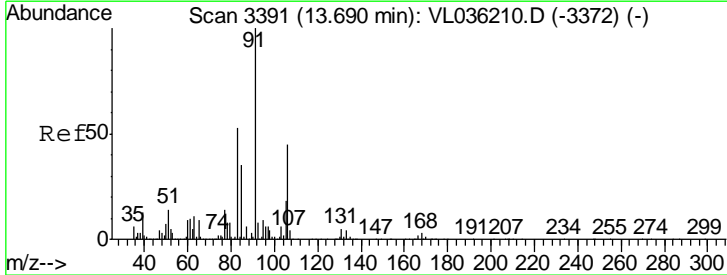
Instrument : MSVOA_L
 ClientSampled :

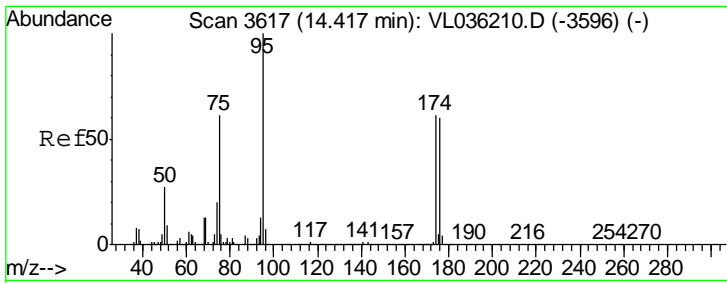
Tgt Ion: 91 Resp: 1465239
 Ion Ratio Lower Upper
 91 100
 106 45.7 34.6 51.8



#60
 o-Xylene
 Concen: 1.233 ppbv
 RT: 13.68 min Scan# 3389
 Delta R.T. -0.01 min
 Lab File: VL036283.D
 Acq: 28 Jan 2021 22:32

Tgt Ion: 91 Resp: 496701
 Ion Ratio Lower Upper
 91 100
 106 42.3 21.9 65.8

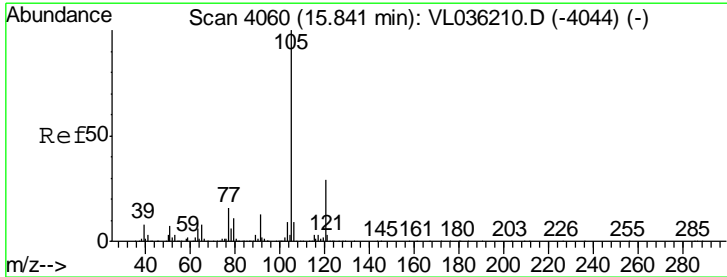
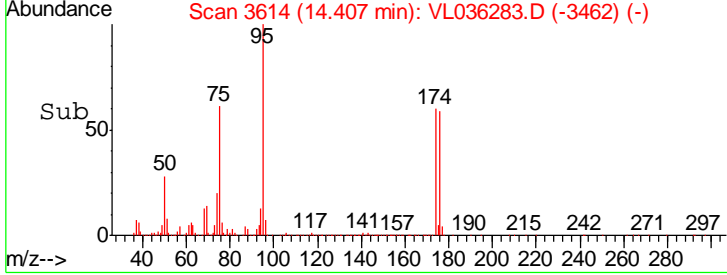
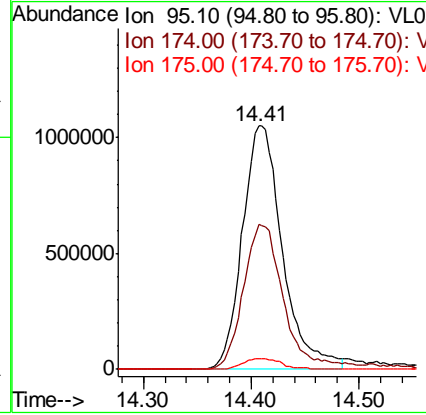
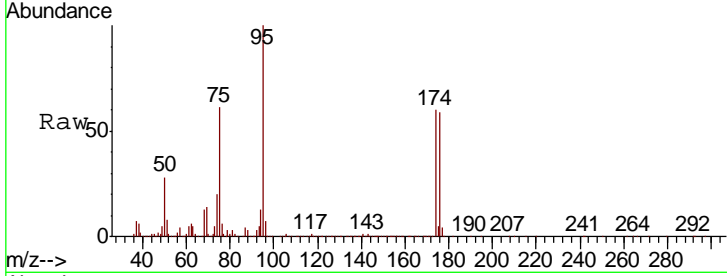




#68
 1-Bromo-4-Fluorobenzene
 Concen: 10.009 ppbv
 RT: 14.41 min Scan# 3614
 Delta R.T. -0.01 min
 Lab File: VL036283.D
 Acq: 28 Jan 2021 22:32

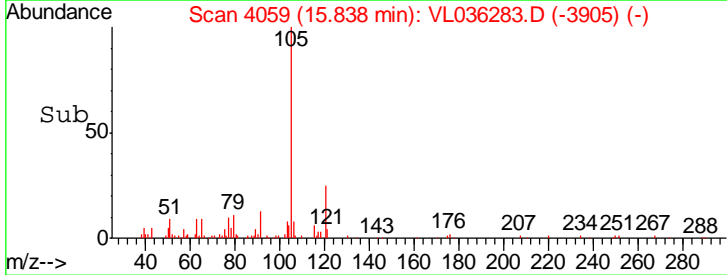
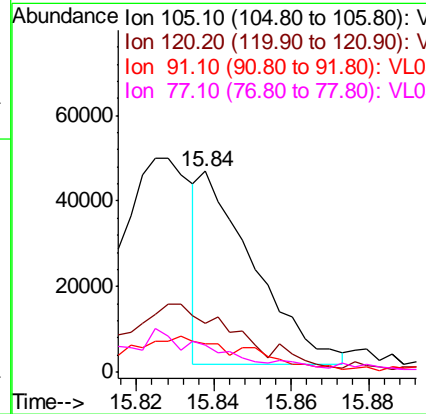
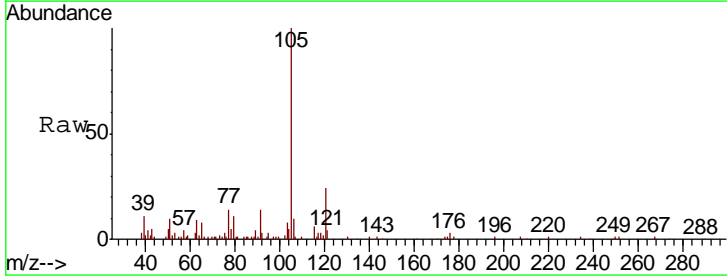
Instrument :
 MSVOA_L
 ClientSampled :

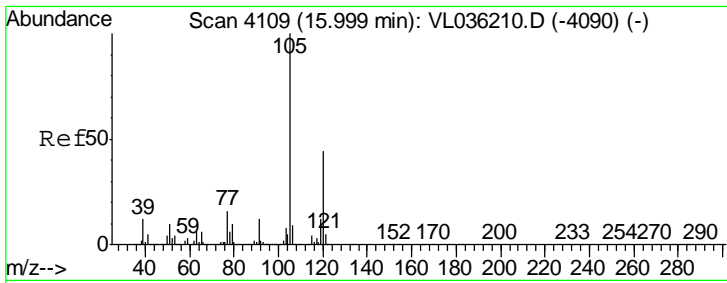
Tgt Ion	Resp	Lower	Upper
95	2715855		
174	62.6	49.4	74.0
175	4.7	3.8	5.8



#72
 4-Ethyltoluene
 Concen: 0.096 ppbv
 RT: 15.84 min Scan# 4059
 Delta R.T. -0.00 min
 Lab File: VL036283.D
 Acq: 28 Jan 2021 22:32

Tgt Ion	Resp	Lower	Upper
105	43818		
120	0.0	23.7	35.5#
91	0.0	11.9	17.9#
77	0.0	12.6	18.8#

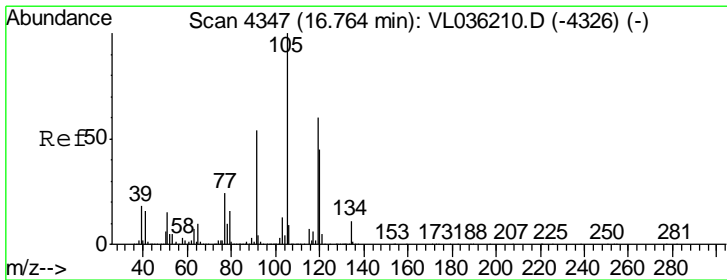
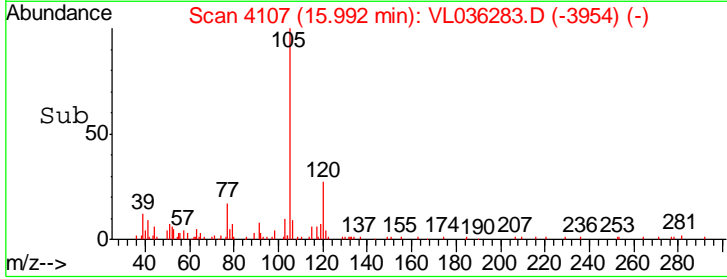
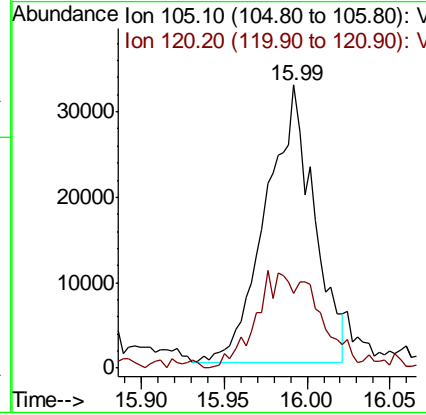
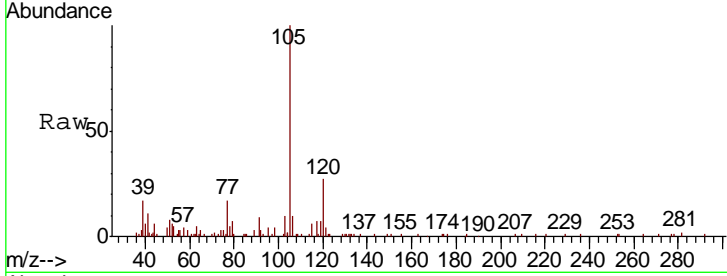




#73
 1,3,5-Trimethylbenzene
 Concen: 0.150 ppbv
 RT: 15.99 min Scan# 4107
 Delta R.T. -0.01 min
 Lab File: VL036283.D
 Acq: 28 Jan 2021 22:32

Instrument :
 MSVOA_L
 ClientSampled :

Tgt Ion	Resp	Lower	Upper
105	100		
120	24.0	35.5	53.3#



#74
 1,2,4-Trimethylbenzene
 Concen: 0.618 ppbv
 RT: 16.75 min Scan# 4343
 Delta R.T. -0.01 min
 Lab File: VL036283.D
 Acq: 28 Jan 2021 22:32

Tgt Ion	Resp	Lower	Upper
105	100		
120	40.3	36.2	54.2
91	13.4	43.3	64.9#
77	11.8	19.1	28.7#

