

Data Path : Z:\VOASRV\HPCHEM1\MSVOA\_L\DATA\VL021422\  
 Data File : VL038361.D  
 Acq On : 15 Feb 2022 10:28  
 Operator : SY/AP  
 Sample : VSTDCCC010  
 Misc : 400mL/MSVOA\_L  
 ALS Vial : 1 Sample Multiplier: 1

Instrument :  
 MSVOA\_L  
 ClientSampleId :  
 VSTDCCC010EC

Quant Time: Feb 16 00:41:06 2022

Quant Method : Z:\VOASRV\HPCHEM1\MSVOA\_L\METHODS\VL012422AIR.M

Quant Title : AIR ANALYSIS BY METHOD TO-15 Instrument: MSVOA\_L Mon Jan 24 14:12:48 2022

QLast Update : Mon Jan 24 14:12:48 2022

Response via : Initial Calibration

Internal Standards	R.T.	QIon	Response	Conc	Units	Dev(Min)
1) Bromochloromethane	5.63	49	619927	10.00	ppbv	-0.05
33) 1,4-Difluorobenzene	7.13	114	2138873	10.00	ppbv	-0.05
55) Chlorobenzene-d5	12.03	117	2420555	10.00	ppbv	-0.06

#### System Monitoring Compounds

68) 1-Bromo-4-Fluorobenzene	14.36	95	1625439	8.85	ppbv	-0.05
Spiked Amount	10.000	Range	65 - 135	Recovery	=	88.50%

#### Target Compounds

Target Compounds	R.T.	QIon	Response	Conc	Units	Qvalue
2) Dichlorodifluoromethane	3.02	85	1177800	8.92	ppbv	100
3) Chlorodifluoromethane	2.97	51	1461541	11.84	ppbv	99
4) Chloromethane	3.12	50	470462	11.08	ppbv	97
5) Vinyl Chloride	3.23	62	468345	11.05	ppbv	100
6) Bromomethane	3.45	94	175122	7.64	ppbv	97
7) Chloroethane	3.53	64	162566	11.36	ppbv	100
8) Dichlorotetrafluoroethane	3.16	85	1152530	11.29	ppbv	100
9) Propene	2.99	41	448814	11.17	ppbv	100
10) Heptane	8.07	43	1140258	11.03	ppbv	99
11) Trichlorofluoromethane	3.92	101	1216153	11.83	ppbv	100
12) 1,1,2-Trichlorotrifluoroet	4.45	101	899866	11.58	ppbv	100
13) Ethanol	3.58	45	31202	7.23	ppbv #	49
14) Bromoethene	3.71	108	350186	11.53	ppbv	99
15) Acetone	3.82	43	754892	13.81	ppbv	100
16) 1,3-Butadiene	3.30	39	490707	12.51	ppbv	92
17) tert-Butyl alcohol	4.25	59	650343	10.84	ppbv	97
18) 1,1-Dichloroethene	4.26	96	390804	11.56	ppbv	96
19) Isopropyl Alcohol	3.93	45	366232	10.71	ppbv	99
20) Methylene Chloride	4.31	84	318686	10.03	ppbv	97
21) Allyl Chloride	4.38	41	499747	10.34	ppbv	98
22) trans-1,2-Dichloroethene	4.85	96	405808	11.62	ppbv	99
23) Vinyl Acetate	5.03	43	945494	11.90	ppbv	99
24) 1,1-Dichloroethane	4.97	63	817316	11.55	ppbv	99
25) Ethyl Acetate	5.63	43	1293543	8.45	ppbv	99
26) Hexane	5.65	57	632139	8.88	ppbv	96
27) Carbon Disulfide	4.51	76	934624	11.23	ppbv	99
28) Methyl tert-Butyl Ether	5.00	73	810103	10.97	ppbv	99
29) Chloroform	5.71	83	1156542	9.96	ppbv	100
30) Cyclohexane	7.08	84	706254	11.40	ppbv	99
31) cis-1,2-Dichloroethene	5.51	61	621076	10.00	ppbv	98
32) 1,1,1-Trichloroethane	6.47	97	1299020	11.20	ppbv	99
34) 2-Butanone	5.20	43	629460	9.00	ppbv	100
35) Carbon Tetrachloride	6.97	117	1328666	8.85	ppbv	98
36) Benzene	6.84	78	1712057	9.05	ppbv	98
37) 1,2-Dichloroethane	6.26	62	980188	9.05	ppbv	100
38) Trichloroethene	7.79	130	596606	8.47	ppbv	96
39) 1,2-Dichloropropane	7.56	63	670459	8.74	ppbv	98
40) 1,4-Dioxane	7.79	88	148474	8.04	ppbv #	1
41) Tetrahydrofuran	6.01	42	379451	8.07	ppbv	99
42) Bromodichloromethane	7.74	83	1445939	8.99	ppbv	98
43) Methyl Methacrylate	7.97	69	650245	9.72	ppbv	98

Data Path : Z:\VOASRV\HPCHEM1\MSVOA\_L\DATA\VL021422\  
 Data File : VL038361.D  
 Acq On : 15 Feb 2022 10:28  
 Operator : SY/AP  
 Sample : VSTDCCC010  
 Misc : 400mL/MSVOA\_L  
 ALS Vial : 1 Sample Multiplier: 1

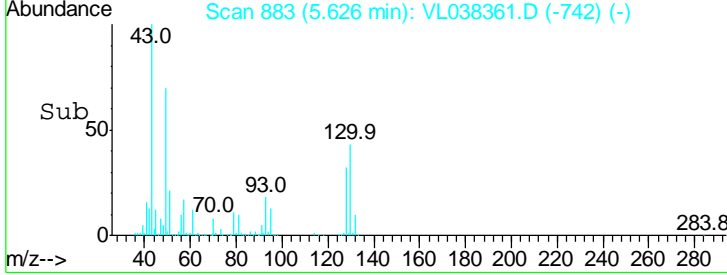
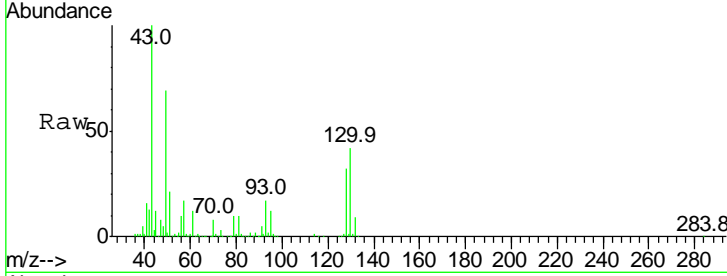
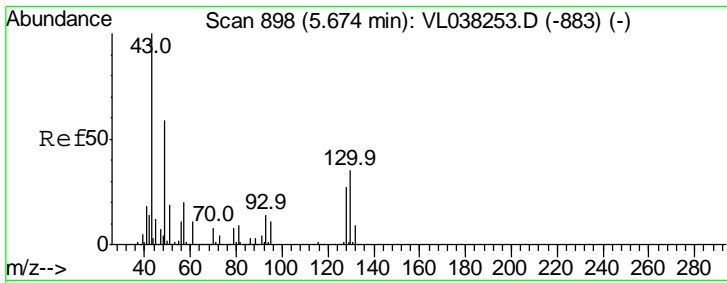
Instrument :  
 MSVOA\_L  
 ClientSampleId :  
 VSTDCCC010EC

Quant Time: Feb 16 00:41:06 2022  
 Quant Method : Z:\VOASRV\HPCHEM1\MSVOA\_L\METHODS\VL012422AIR.M  
 Quant Title : AIR ANALYSIS BY METHOD TO-15 Instrument: MSVOA\_L Mon Jan 24 14:12:48 2022  
 QLast Update : Mon Jan 24 14:12:48 2022  
 Response via : Initial Calibration

Internal Standards	R.T.	QIon	Response	Conc	Units	Dev(Min)
44) 2,2,4-Trimethylpentane	7.82	57	2954413	8.86	ppbv	98
45) t-1,3-Dichloropropene	9.22	75	210585	3.87	ppbv	97
46) cis-1,3-Dichloropropene	8.65	75	382412	5.27	ppbv	98
47) 1,1,2-Trichloroethane	9.42	97	678846	9.01	ppbv	99
48) Dibromochloromethane	10.25	129	1151015	9.07	ppbv	98
49) Bromoform	12.98	173	864610	9.45	ppbv	97
50) 4-Methyl-2-Pentanone	8.69	43	1255075	10.06	ppbv	98
51) 2-Hexanone	10.08	43	612282	11.14	ppbv #	98
52) Tetrachloroethene	11.17	164	526768	8.08	ppbv	97
53) Toluene	9.75	91	1873413	8.95	ppbv	99
54) 1,2-Dibromoethane	10.56	107	908790	8.48	ppbv	98
56) 1,1,1,2-Tetrachloroethane	12.07	131	778249	7.35	ppbv	97
57) Chlorobenzene	12.09	112	1309860	6.76	ppbv	99
58) Ethyl Benzene	12.65	91	2524224	7.10	ppbv	98
59) m/p-Xylene	12.94	91	2271054	7.48	ppbv #	44
60) o-Xylene	13.64	91	1977538	7.01	ppbv	100
61) Styrene	13.47	104	931697	7.07	ppbv	99
62) Isopropylbenzene	14.61	105	2743280	7.29	ppbv	100
63) 1,1,2,2-Tetrachloroethane	13.62	83	1510015	7.23	ppbv	99
64) n-propylbenzene	15.50	120	683755	7.55	ppbv	97
65) tert-Butylbenzene	16.69	119	2366353	7.63	ppbv	99
66) Benzyl Chloride	16.69	91	1977247	140.43	ppbv #	68
67) sec-Butylbenzene	17.24	105	3292918	7.64	ppbv	100
69) p-Isopropyltoluene	17.60	119	2553059	7.74	ppbv	99
70) n-Butylbenzene	18.49	91	2577742	7.98	ppbv	100
71) 2-Chlorotoluene	15.39	91	2049768	7.35	ppbv	100
72) 4-Ethyltoluene	15.78	105	2217391	7.51	ppbv	99
73) 1,3,5-Trimethylbenzene	15.94	105	1975887	7.44	ppbv	97
74) 1,2,4-Trimethylbenzene	16.71	105	2033729	7.27	ppbv	93
75) 1,3-Dichlorobenzene	16.94	146	1096722	7.31	ppbv	99
76) 1,4-Dichlorobenzene	17.08	146	1024226	7.05	ppbv	97
77) 1,2-Dichlorobenzene	17.76	146	1051680	7.54	ppbv	99
78) Hexachloro-1,3-Butadiene	23.32	225	611557	6.31	ppbv	99
79) Naphthalene	22.12	128	472176	3.61	ppbv	99
80) Naphthalene,2-methyl-	24.93	142	125339	8.81	ppbv	93
81) 1,2,4-Trichlorobenzene	21.86	180	553558	7.20	ppbv	99

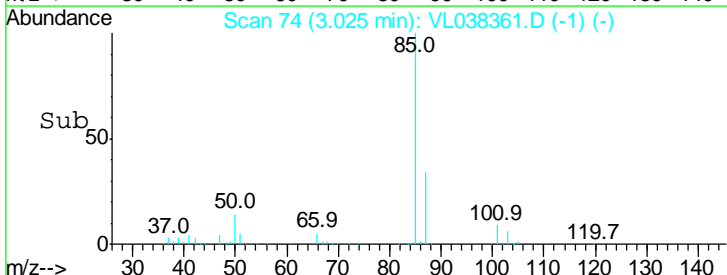
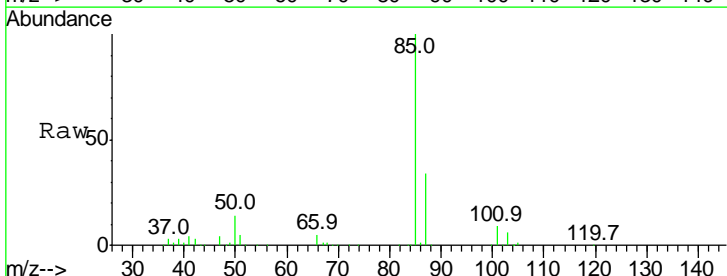
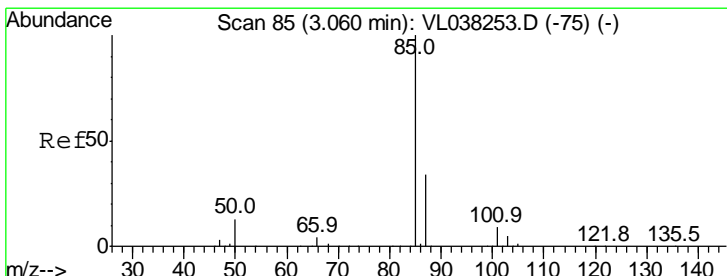
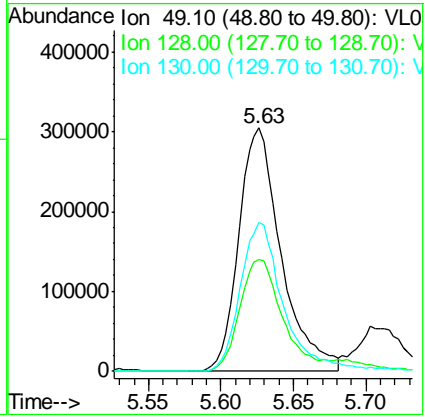
(#) = qualifier out of range (m) = manual integration (+) = signals summed





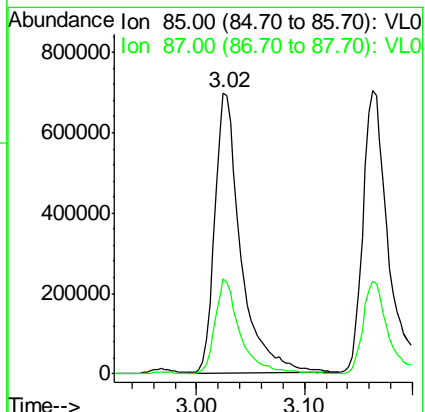
#1  
 Bromochloromethane  
 Concen: 10.00 ppbv  
 RT: 5.63 Instrument : MSVOA\_1  
 Delta R.T. ClientSampleId : VSTDCCC010EC  
 Lab File :  
 Acq: 15 Feb 2022 10:28

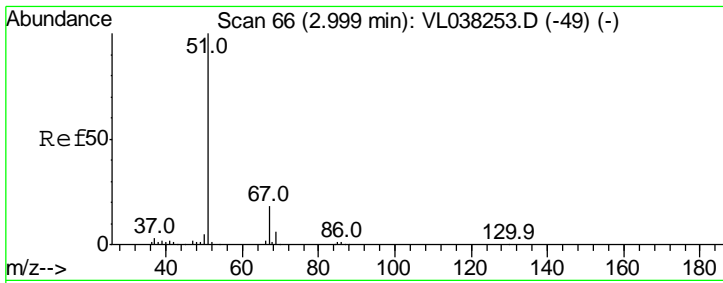
Tgt Ion	Resp	Lower	Upper
49	100		
128	52.5	24.5	73.5
130	64.3	30.1	90.5



#2  
 Dichlorodifluoromethane  
 Concen: 8.92 ppbv  
 RT: 3.02 min Scan# 74  
 Delta R.T. -0.04 min  
 Lab File: VL038361.D  
 Acq: 15 Feb 2022 10:28

Tgt Ion	Resp	Lower	Upper
85	100		
87	33.8	27.0	40.6

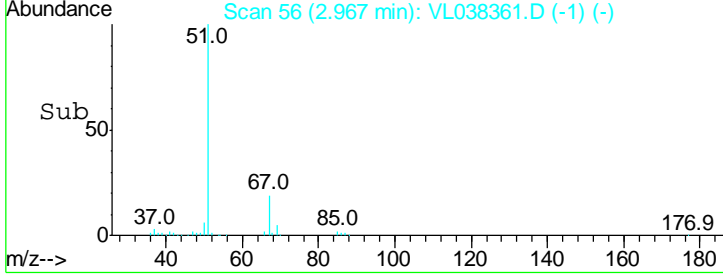
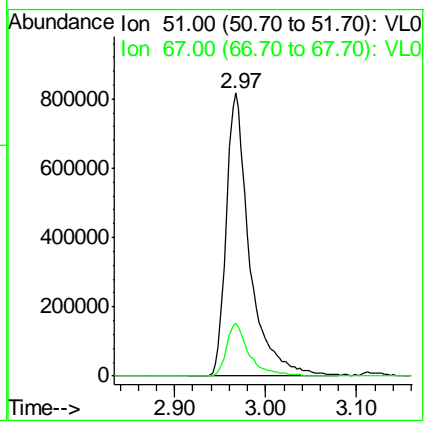
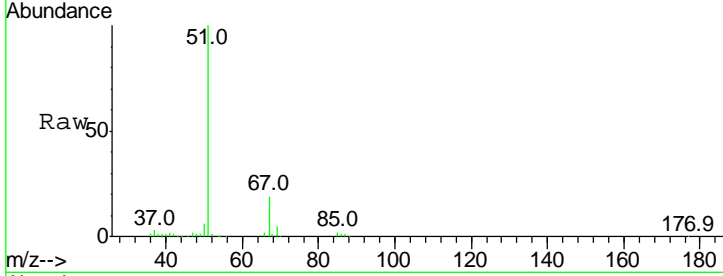




#3  
 Chlorodifluoromethane  
 Concen: 11.84 ppbv  
 RT: 2.97  
 Delta R.T. MSVOA\_L  
 Lab File: ClientSampleId : VSTDCCC010EC  
 Acq: 15 Feb 2022 10:28

Tgt Ion: 51 Resp: 1461541

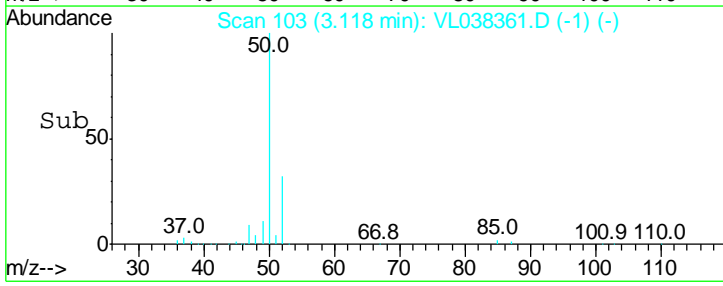
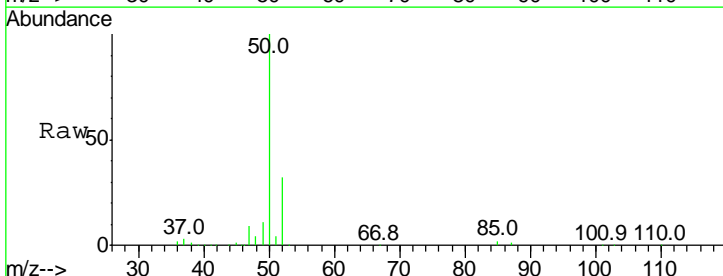
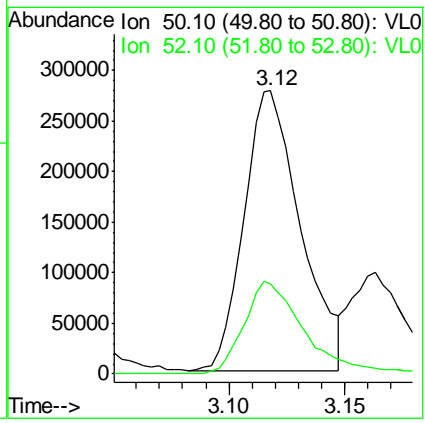
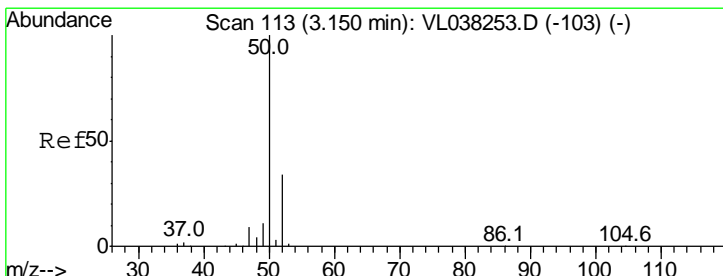
Ion	Ratio	Lower	Upper
51	100		
67	18.3	14.4	21.6

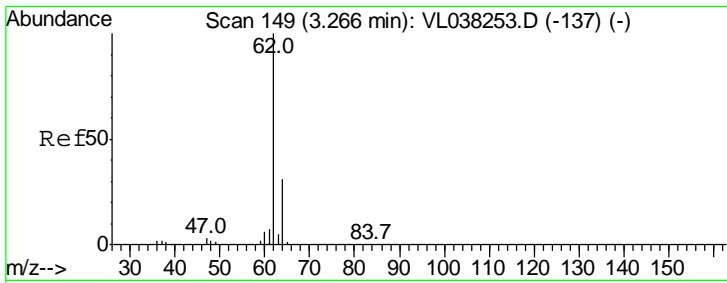


#4  
 Chloromethane  
 Concen: 11.08 ppbv  
 RT: 3.12 min Scan# 103  
 Delta R.T. -0.03 min  
 Lab File: VL038361.D  
 Acq: 15 Feb 2022 10:28

Tgt Ion: 50 Resp: 470462

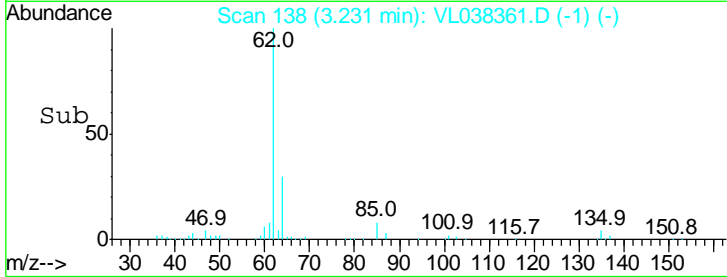
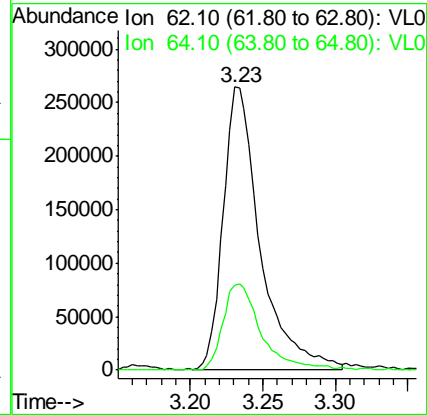
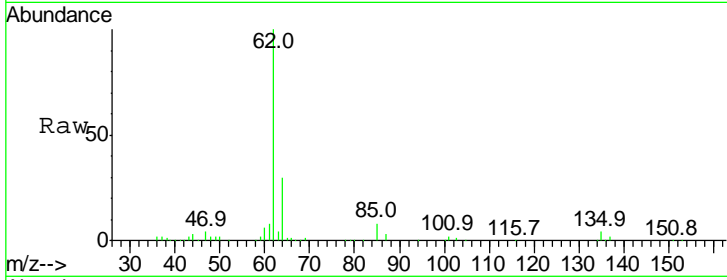
Ion	Ratio	Lower	Upper
50	100		
52	32.0	27.1	40.7





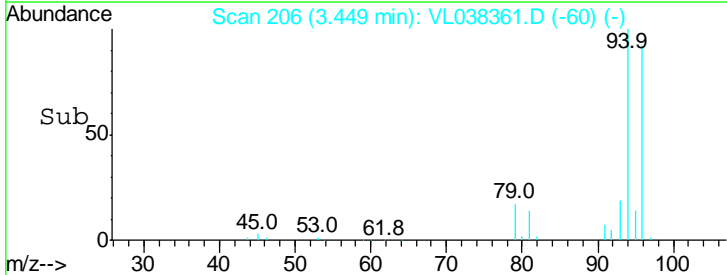
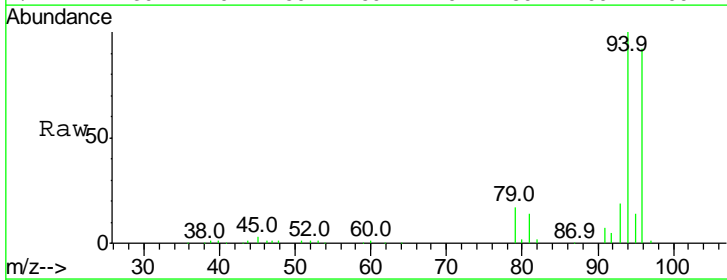
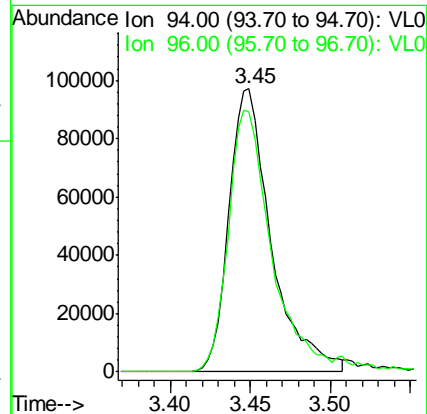
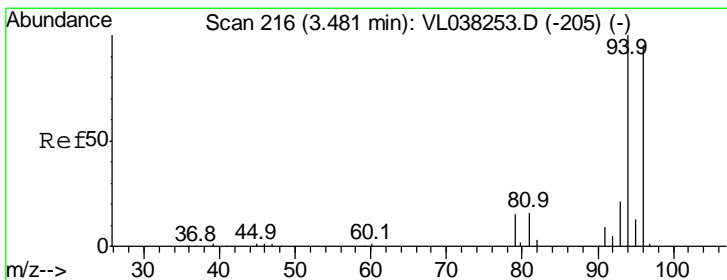
#5  
 Vinyl Chloride  
 Concen: 11.05 ppbv  
 RT: 3.23  
 Delta R.T. MSVOA\_L  
 Lab File: ClientSampleId :  
 VSTDCCC010EC  
 Acq: 15 Feb 2022 10:28

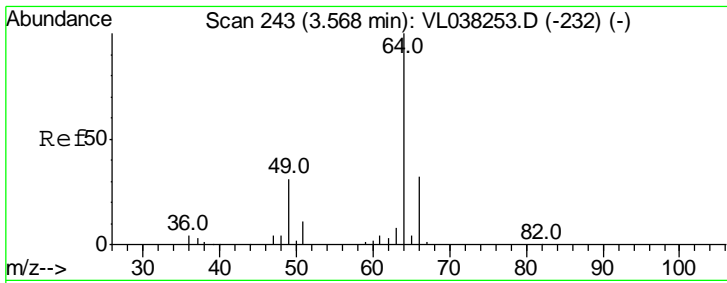
Tgt Ion: 62 Resp: 468345  
 Ion Ratio Lower Upper  
 62 100  
 64 30.3 24.4 36.6



#6  
 Bromomethane  
 Concen: 7.64 ppbv  
 RT: 3.45 min Scan# 206  
 Delta R.T. -0.03 min  
 Lab File: VL038361.D  
 Acq: 15 Feb 2022 10:28

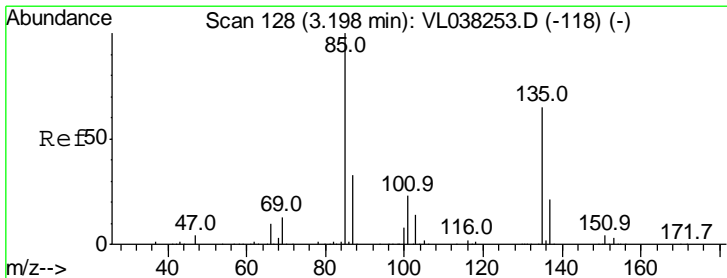
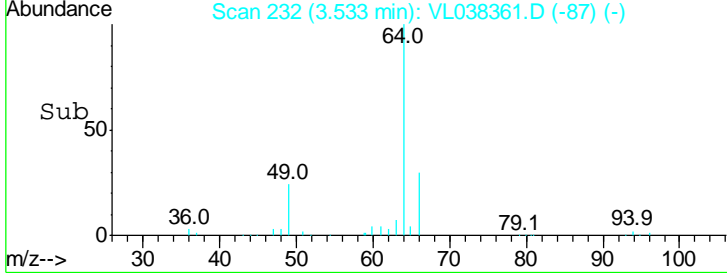
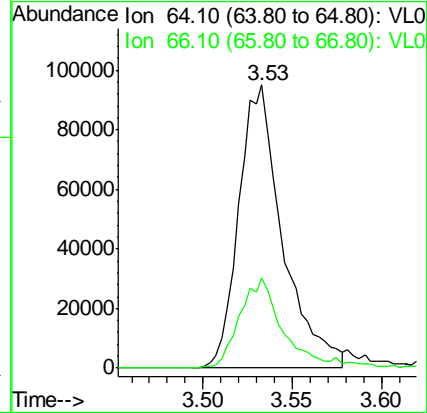
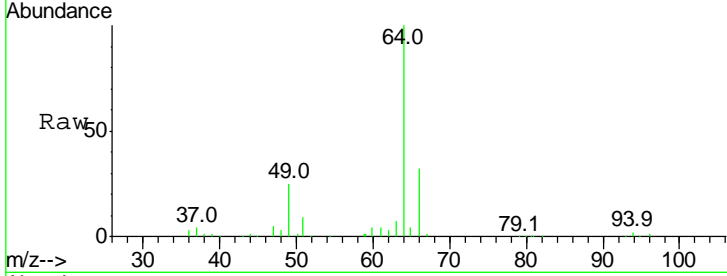
Tgt Ion: 94 Resp: 175122  
 Ion Ratio Lower Upper  
 94 100  
 96 91.7 76.0 114.0





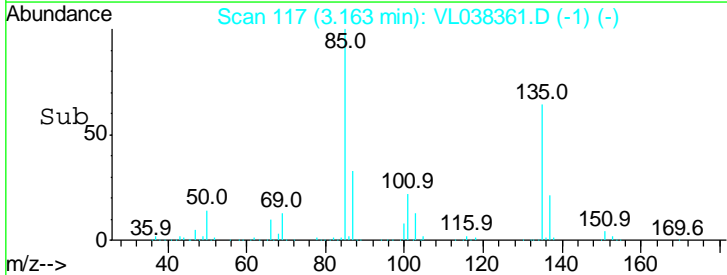
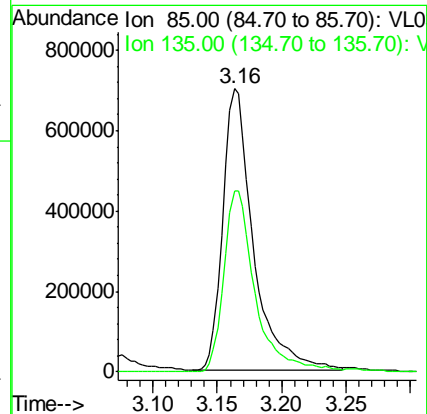
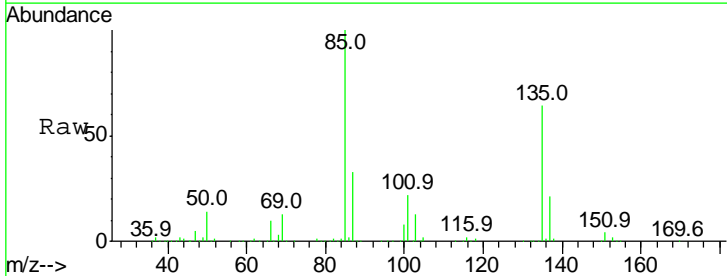
#7  
 Chloroethane  
 Concen: 11.36 ppbv  
 RT: 3.53  
 Delta R.T. MSVOA\_L  
 Lab File: ClientSampleId :  
 VSTDCCC010EC  
 Acq: 15 Feb 2022 10:28

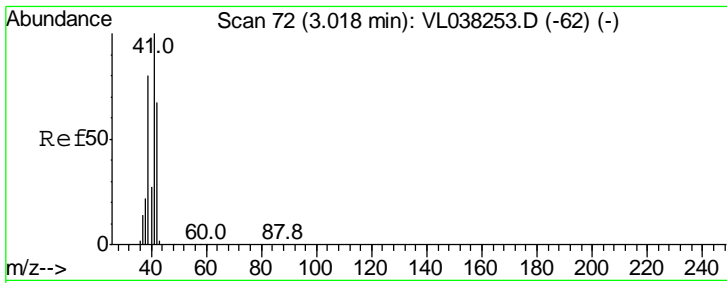
Tgt Ion: 64 Resp: 162566  
 Ion Ratio Lower Upper  
 64 100  
 66 32.0 25.8 38.6



#8  
 Dichlorotetrafluoroethane  
 Concen: 11.29 ppbv  
 RT: 3.16 min Scan# 117  
 Delta R.T. -0.04 min  
 Lab File: VL038361.D  
 Acq: 15 Feb 2022 10:28

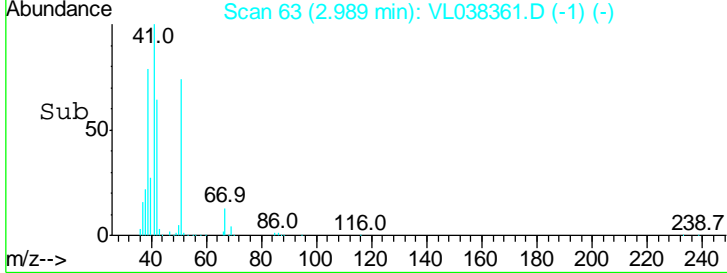
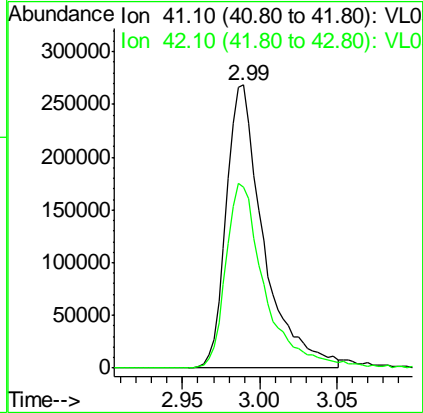
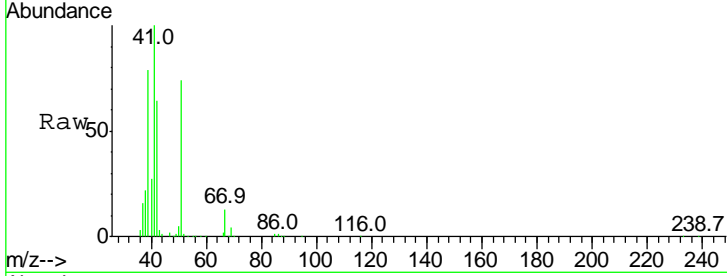
Tgt Ion: 85 Resp: 1152530  
 Ion Ratio Lower Upper  
 85 100  
 135 67.2 53.7 80.5





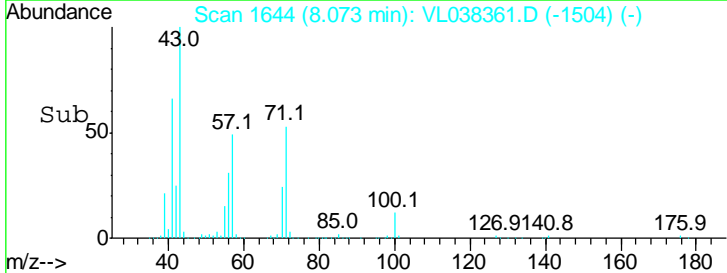
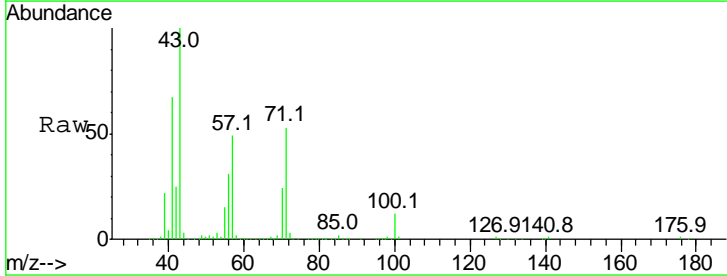
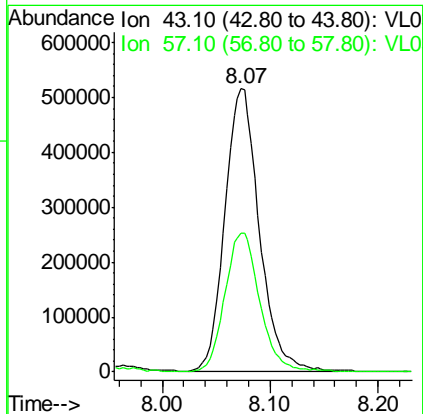
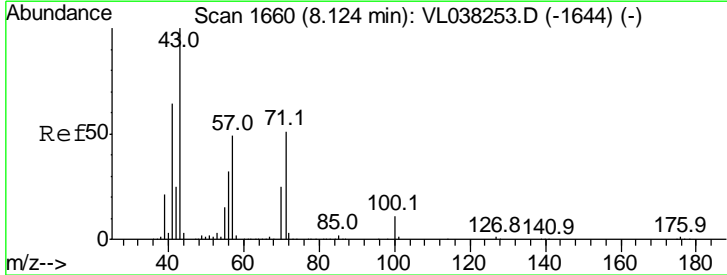
#9  
 Propene  
 Concen: 11.17 ppbv  
 RT: 2.99  
 Delta R.T. MSVOA\_L  
 Lab File: ClientSampleId :  
 VSTDCCC010EC  
 Acq: 15 Feb 2022 10:28

Tgt Ion	Resp	Lower	Upper
41	100		
42	68.8	54.9	82.3

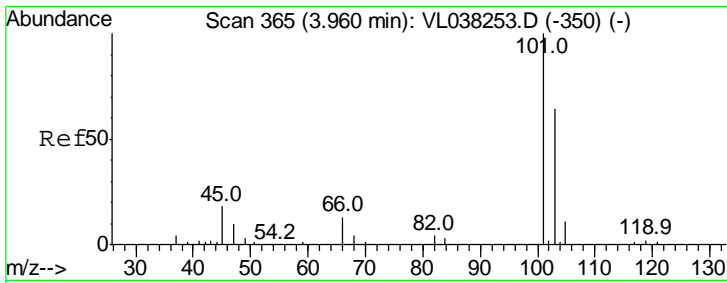


#10  
 Heptane  
 Concen: 11.03 ppbv  
 RT: 8.07 min Scan# 1644  
 Delta R.T. -0.05 min  
 Lab File: VL038361.D  
 Acq: 15 Feb 2022 10:28

Tgt Ion	Resp	Lower	Upper
43	100		
57	50.2	39.5	59.3

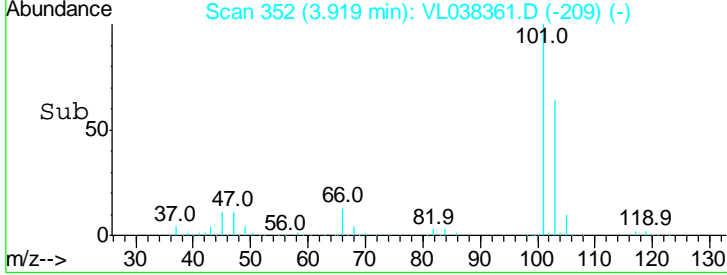
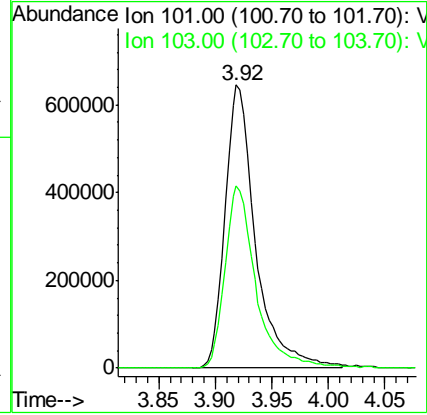
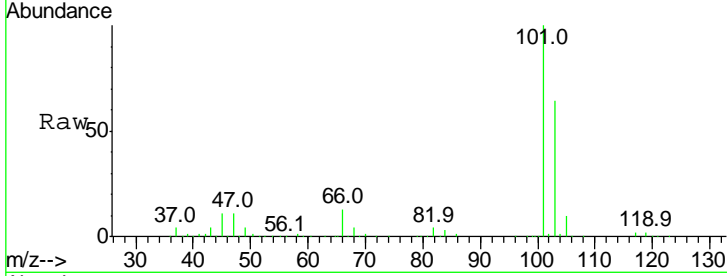






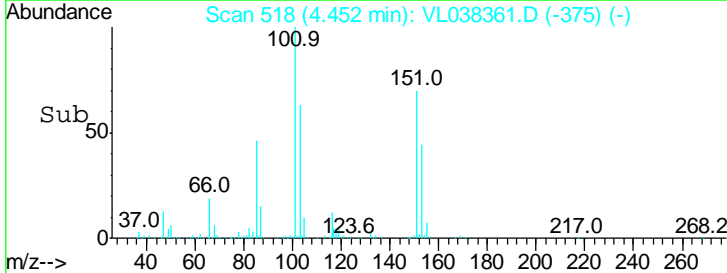
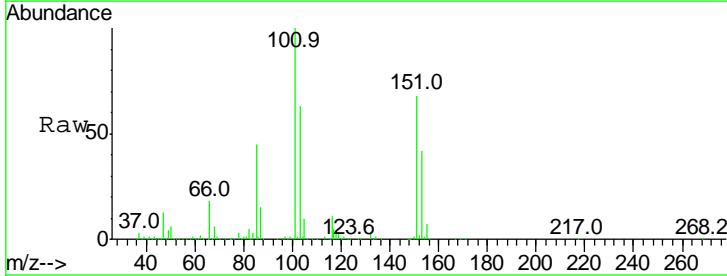
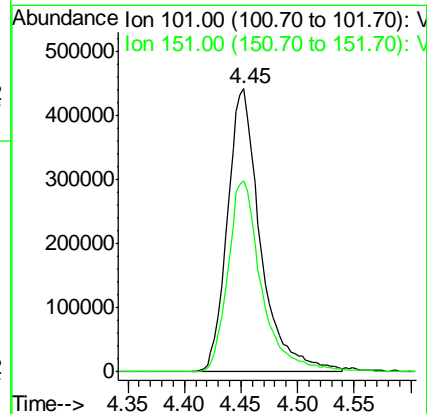
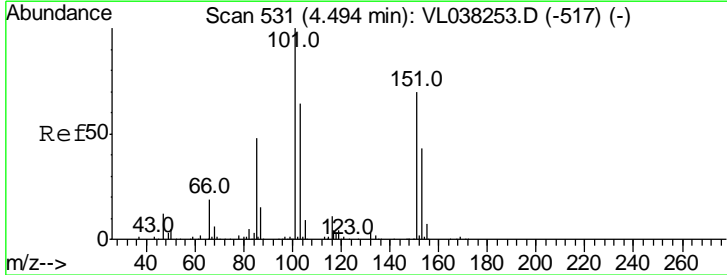
#11  
 Trichlorofluoromethane  
 Concen: 11.83 ppbv  
 RT: 3.92 Instrument : MSVOA\_1  
 Delta R.T. ClientSampleId :  
 Lab File: VSTDCCC010EC  
 Acq: 15 Feb 2022 10:28

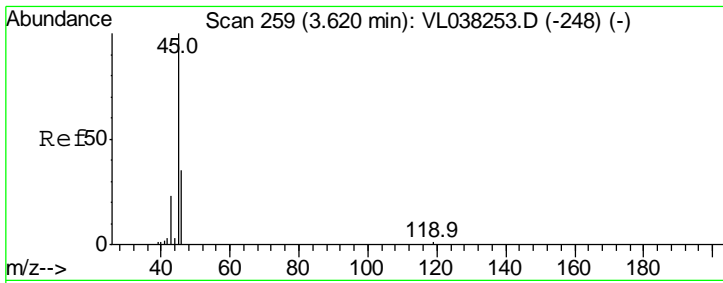
Tgt Ion:101 Resp: 1216153  
 Ion Ratio Lower Upper  
 101 100  
 103 64.2 51.2 76.8



#12  
 1,1,2-Trichlorotrifluoroethane  
 Concen: 11.58 ppbv  
 RT: 4.45 min Scan# 518  
 Delta R.T. -0.04 min  
 Lab File: VL038361.D  
 Acq: 15 Feb 2022 10:28

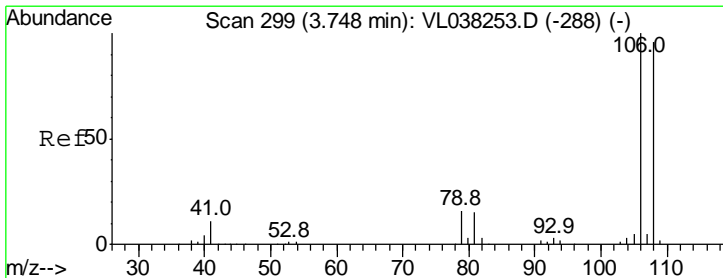
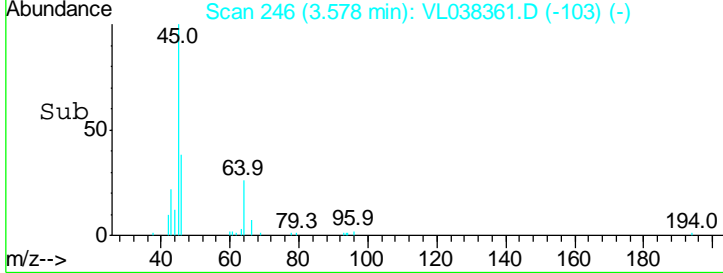
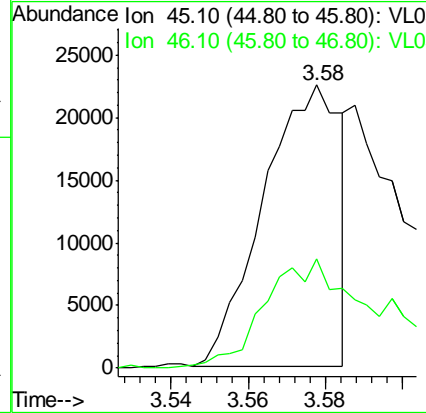
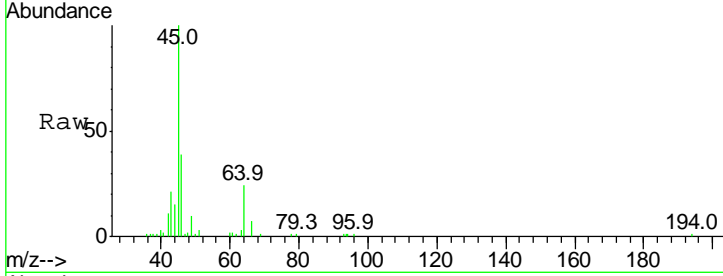
Tgt Ion:101 Resp: 899866  
 Ion Ratio Lower Upper  
 101 100  
 151 68.9 55.3 82.9





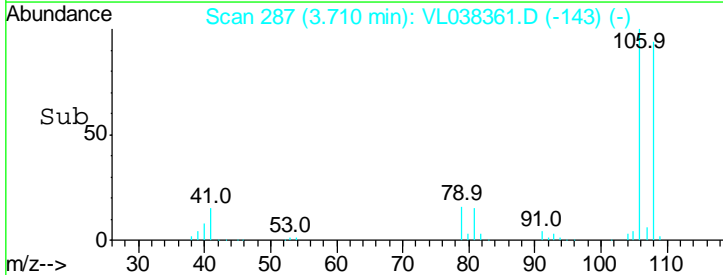
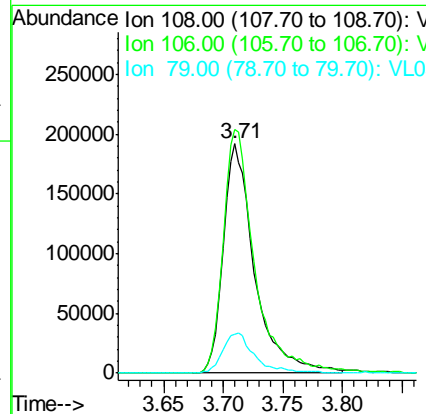
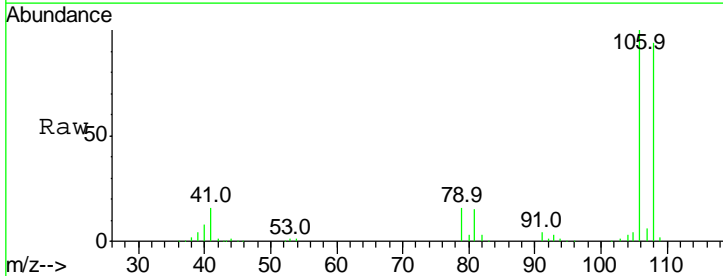
#13  
 Ethanol  
 Concen: 7.23 ppbv  
 RT: 3.58  
 Delta R.T. MSVOA\_L  
 Lab File: ClientSampled :  
 VSTDCCC010EC  
 Acq: 15 Feb 2022 10:28

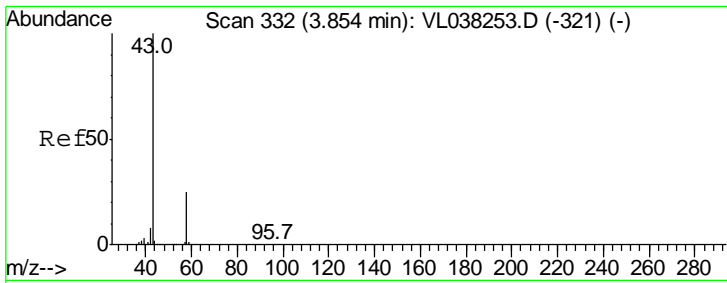
Tgt Ion	45	46	Resp	31202	Lower	Upper
Ratio	100	69.5			15.4	61.6#



#14  
 Bromoethene  
 Concen: 11.53 ppbv  
 RT: 3.71 min Scan# 287  
 Delta R.T. -0.04 min  
 Lab File: VL038361.D  
 Acq: 15 Feb 2022 10:28

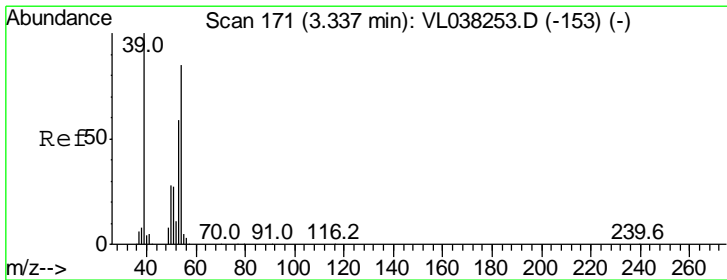
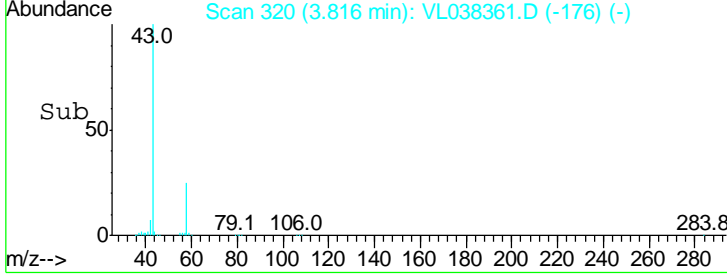
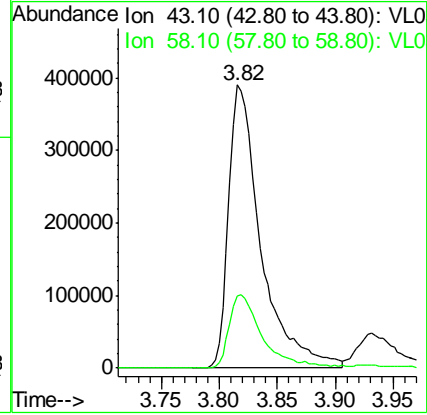
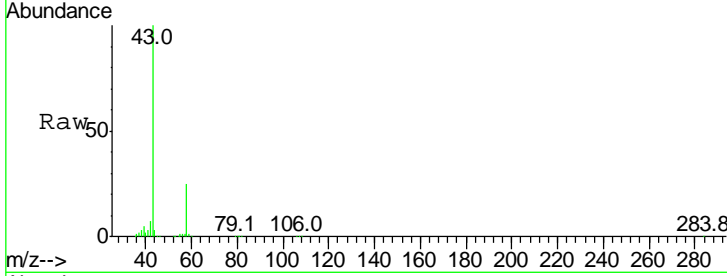
Tgt Ion	108	106	79	Resp	350186	Lower	Upper
Ratio	100	107.5	18.2			86.4	129.6
						14.1	21.1





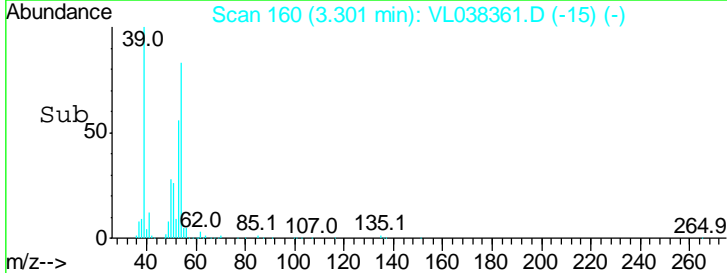
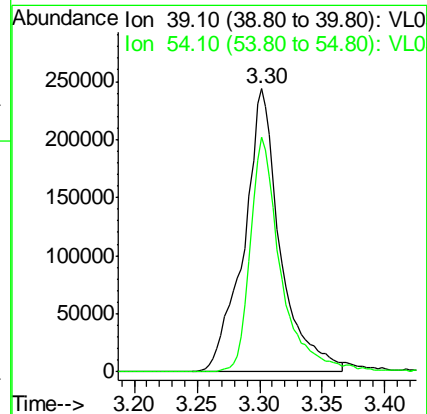
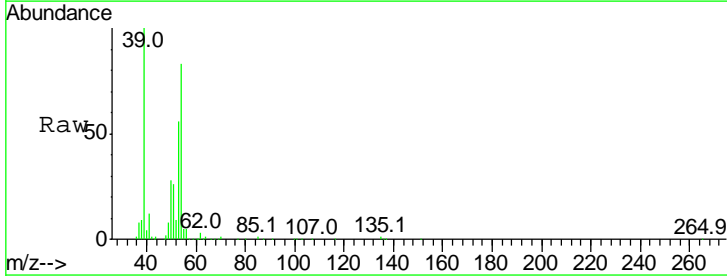
#15  
 Acetone  
 Concen: 13.81 ppbv  
 RT: 3.82  
 Delta R.T. MSVOA\_L  
 Lab File: ClientSampleId :  
 VSTDCCC010EC  
 Acq: 15 Feb 2022 10:28

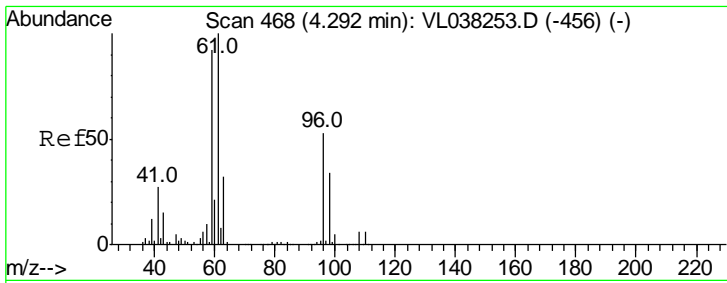
Tgt Ion	Resp	Lower	Upper
43	100		
58	26.9	21.5	32.3



#16  
 1,3-Butadiene  
 Concen: 12.51 ppbv  
 RT: 3.30 min Scan# 160  
 Delta R.T. -0.04 min  
 Lab File: VL038361.D  
 Acq: 15 Feb 2022 10:28

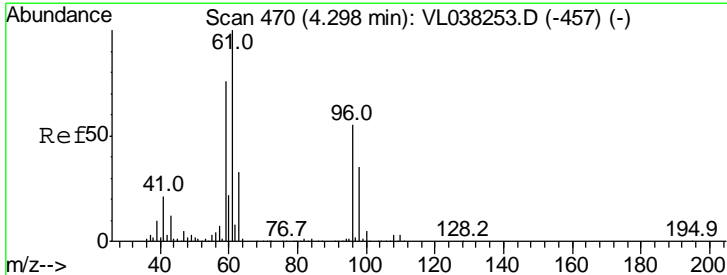
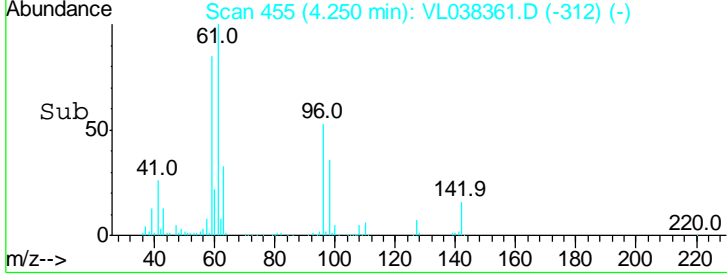
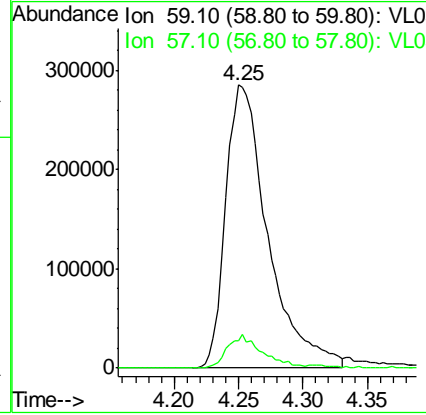
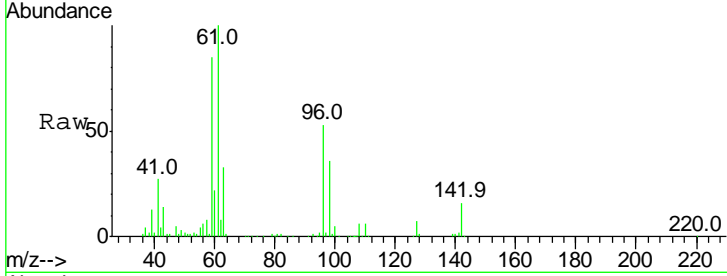
Tgt Ion	Resp	Lower	Upper
39	100		
54	71.0	62.6	94.0





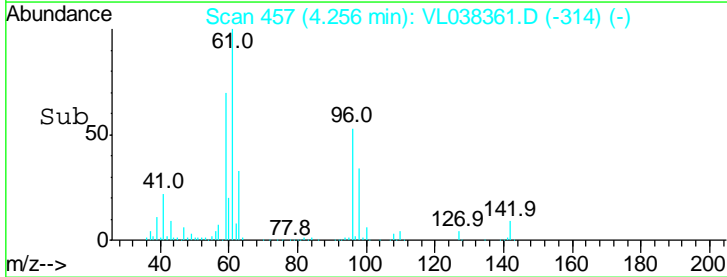
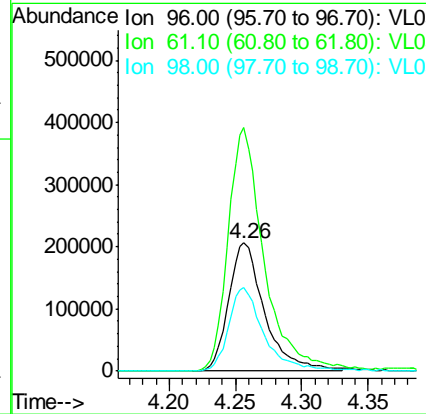
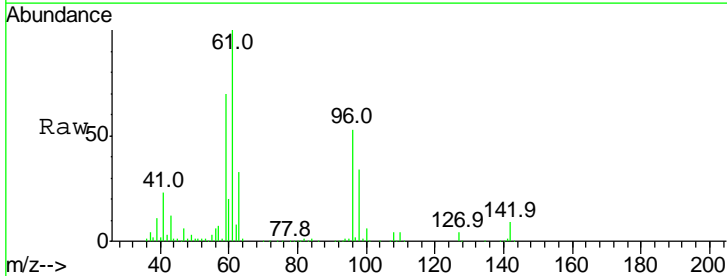
#17  
 tert-Butyl alcohol  
 Concen: 10.84 ppbv  
 RT: 4.25 Instrument : MSVOA\_1  
 Delta R.T. ClientSampleId :  
 Lab File: VSTDCCC010EC  
 Acq: 15 Feb 2022 10:28

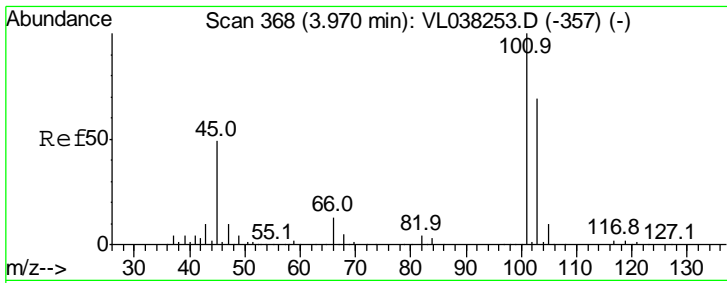
Tgt Ion	Resp	Lower	Upper
59	100		
57	10.5	9.2	13.8



#18  
 1,1-Dichloroethene  
 Concen: 11.56 ppbv  
 RT: 4.26 min Scan# 457  
 Delta R.T. -0.04 min  
 Lab File: VL038361.D  
 Acq: 15 Feb 2022 10:28

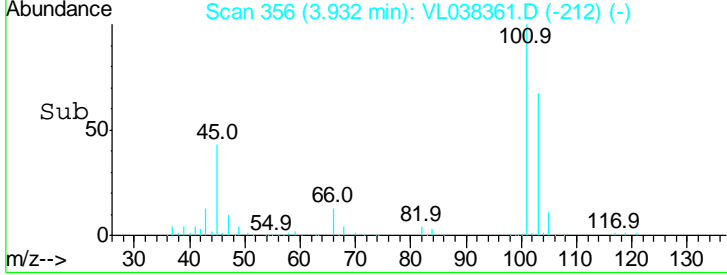
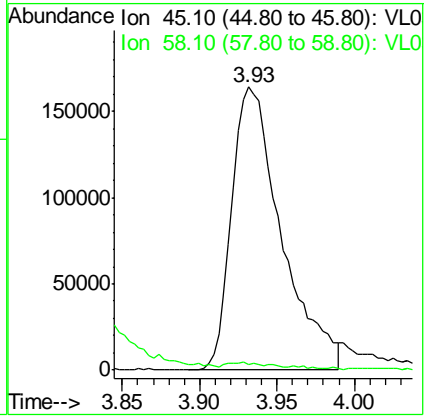
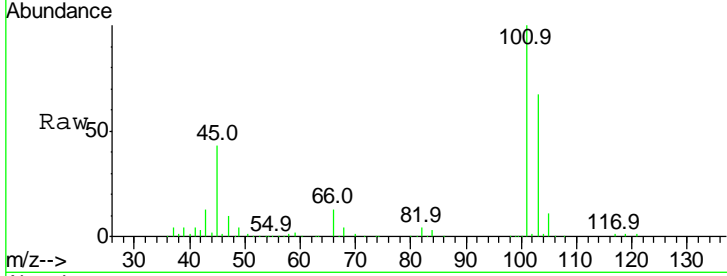
Tgt Ion	Resp	Lower	Upper
96	100		
61	189.6	146.5	219.7
98	65.3	51.9	77.9





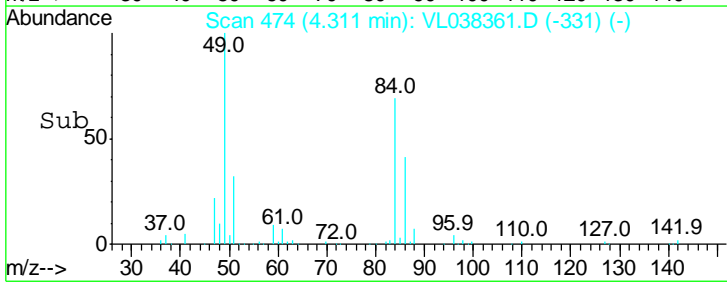
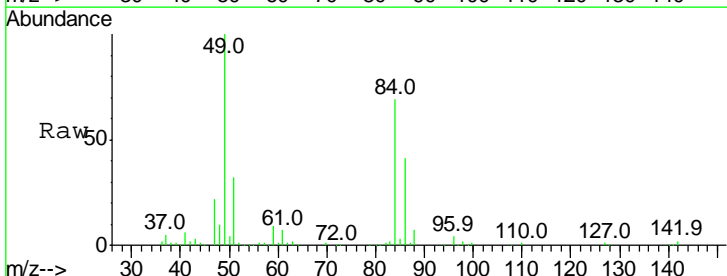
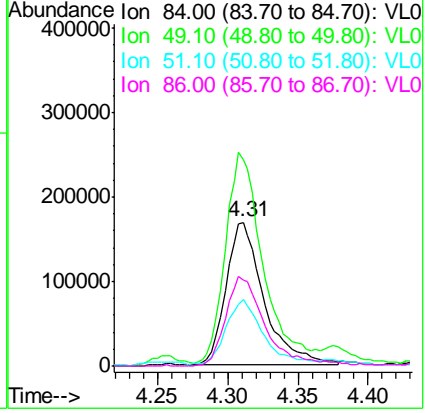
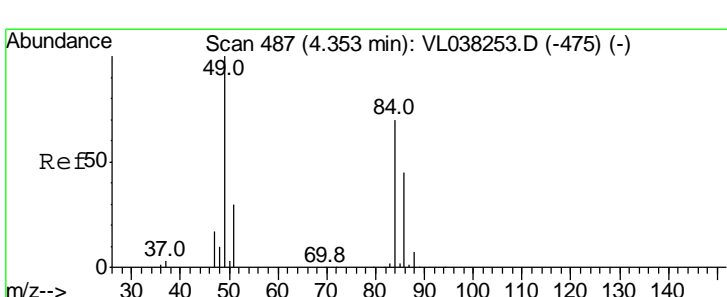
#19  
 Isopropyl Alcohol  
 Concen: 10.71 ppbv  
 RT: 3.93  
 Delta R.T. MSVOA\_L  
 Lab File: ClientSampleId : VSTDCCC010EC  
 Acq: 15 Feb 2022 10:28

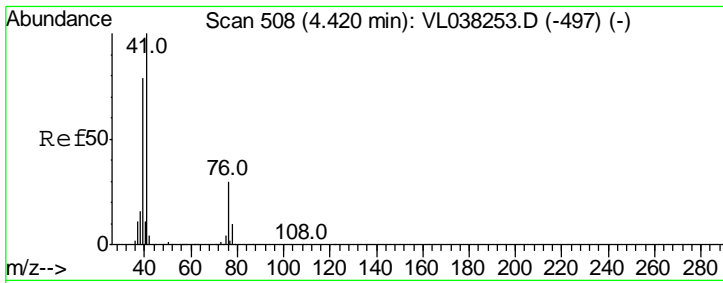
Tgt Ion	Resp	Lower	Upper
45	100	2.3	3.5
58	2.6		



#20  
 Methylene Chloride  
 Concen: 10.03 ppbv  
 RT: 4.31 min Scan# 474  
 Delta R.T. -0.04 min  
 Lab File: VL038361.D  
 Acq: 15 Feb 2022 10:28

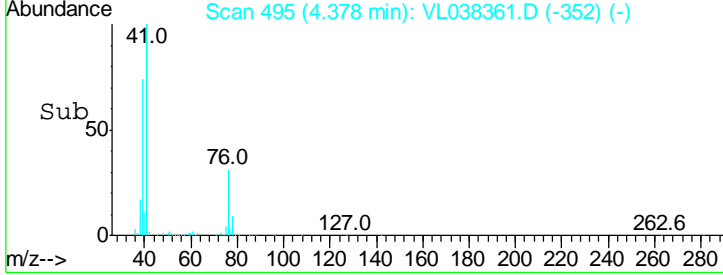
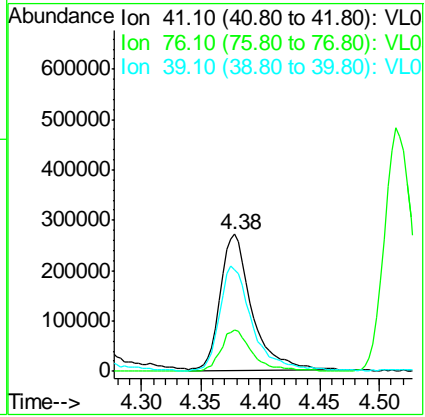
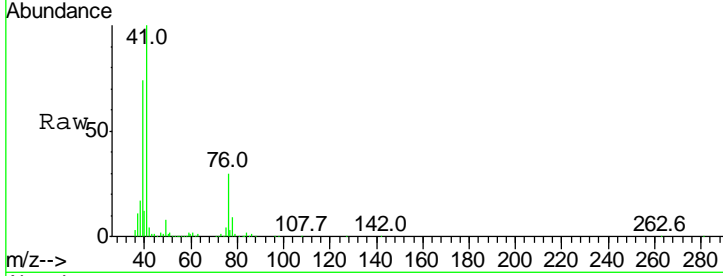
Tgt Ion	Resp	Lower	Upper
84	100	51.4	77.0
49	142.3	115.0	172.6
51	45.5	35.0	52.6
86	59.8		





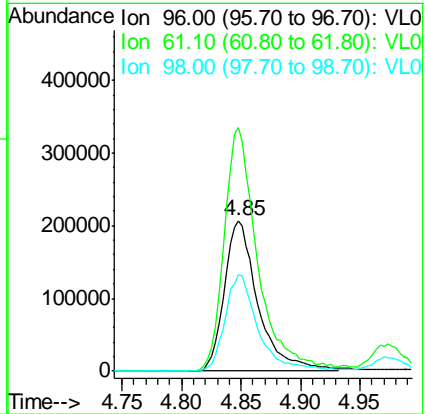
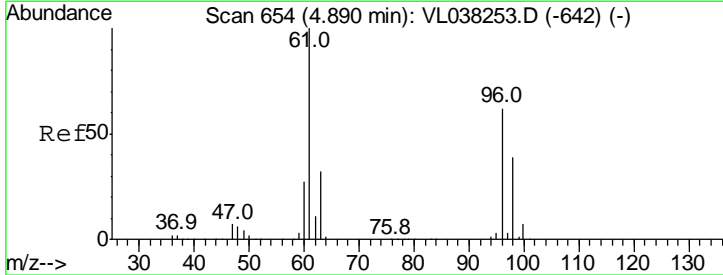
#21  
 Allyl Chloride  
 Concen: 10.34 ppbv  
 RT: 4.38  
 Delta R.T. MSVOA\_L  
 Lab File: ClientSampleId : VSTDCCC010EC  
 Acq: 15 Feb 2022 10:28

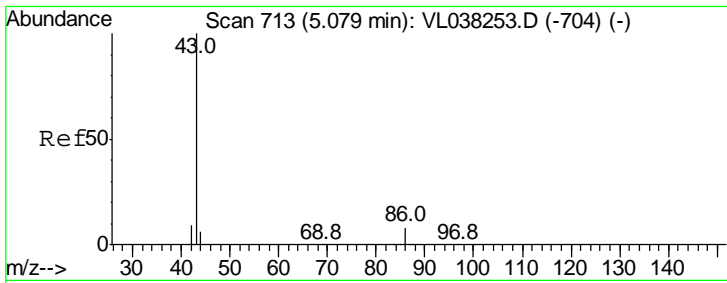
Tgt Ion	Resp	Lower	Upper
41	100		
76	30.5	25.0	37.6
39	81.0	63.0	94.6



#22  
 trans-1,2-Dichloroethene  
 Concen: 11.62 ppbv  
 RT: 4.85 min Scan# 641  
 Delta R.T. -0.04 min  
 Lab File: VL038361.D  
 Acq: 15 Feb 2022 10:28

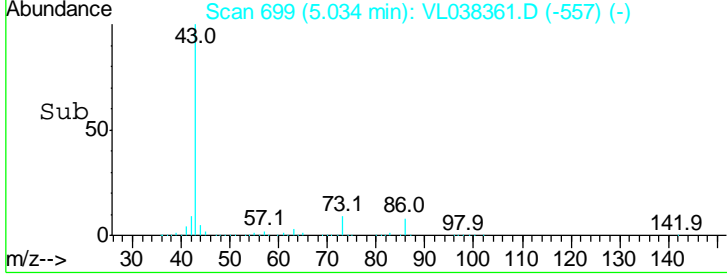
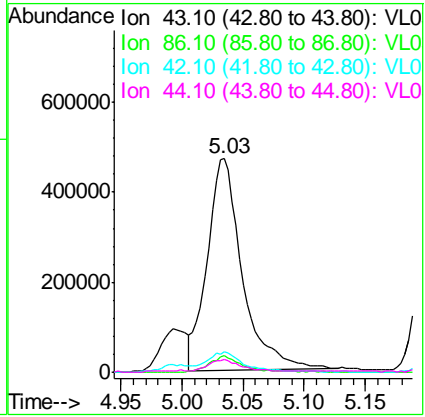
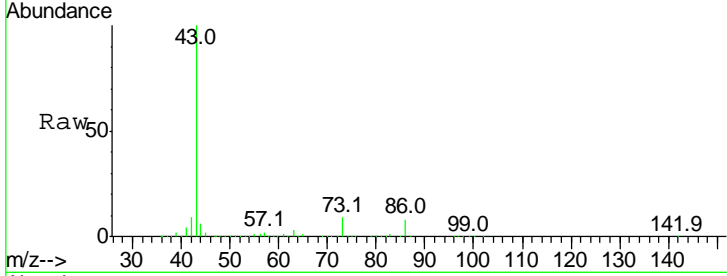
Tgt Ion	Resp	Lower	Upper
96	100		
61	161.5	128.8	193.2
98	63.9	49.8	74.8



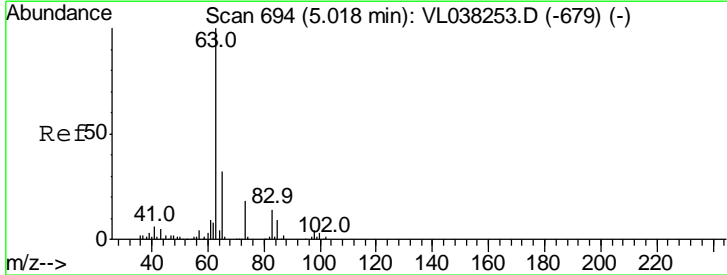


#23  
 Vinyl Acetate  
 Concen: 11.90 ppbv  
 RT: 5.03  
 Delta R.T. MSVOA\_L  
 Lab File: ClientSampleId :  
 VSTDCCC010EC  
 Acq: 15 Feb 2022 10:28

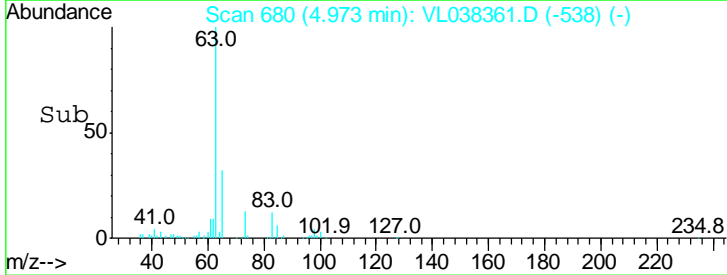
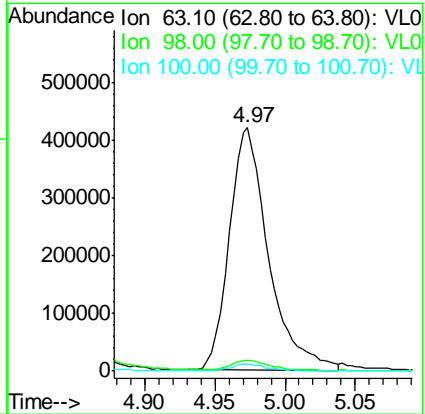
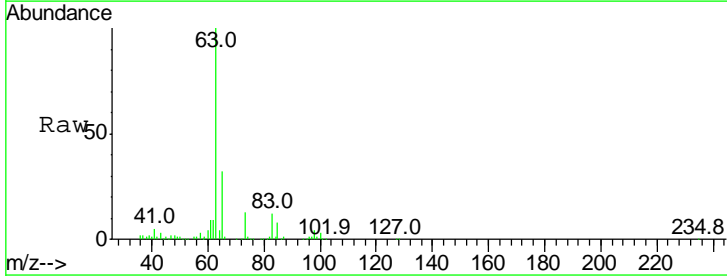
Tgt Ion	Resp	Lower	Upper
43	100		
86	7.7	5.7	8.5
42	9.4	7.7	11.5
44	5.2	4.2	6.4

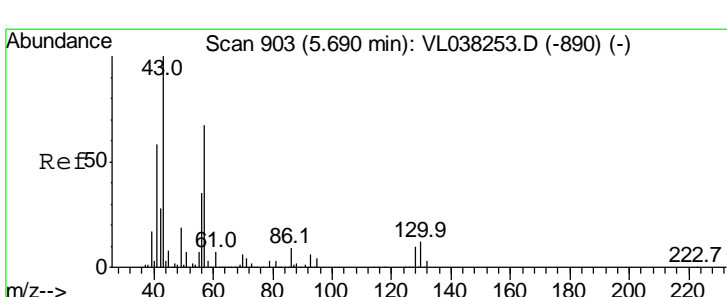
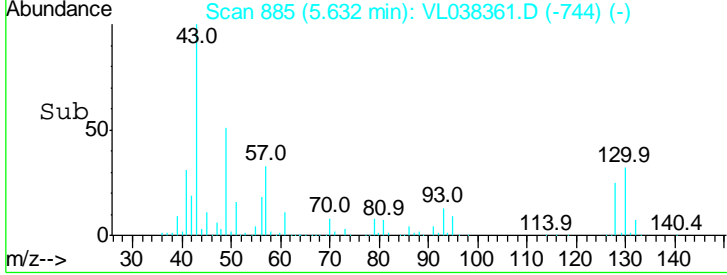
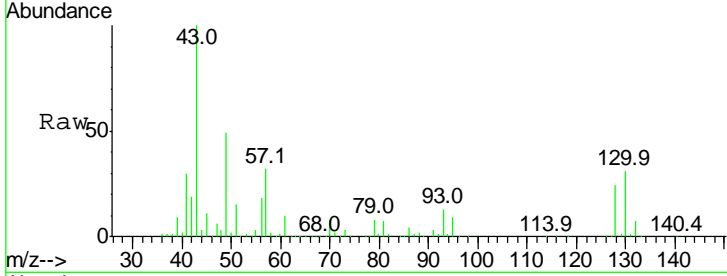
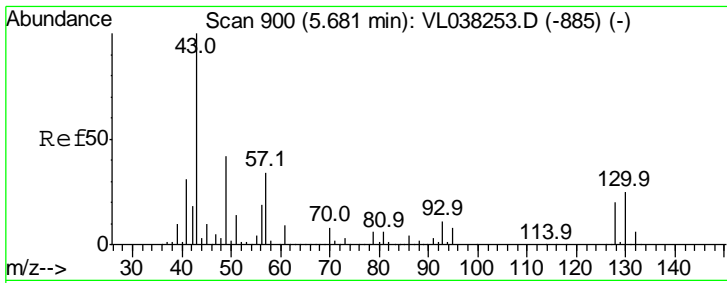


#24  
 1,1-Dichloroethane  
 Concen: 11.55 ppbv  
 RT: 4.97 min Scan# 680  
 Delta R.T. -0.04 min  
 Lab File: VL038361.D  
 Acq: 15 Feb 2022 10:28



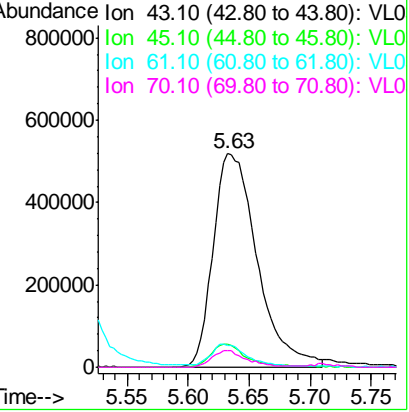
Tgt Ion	Resp	Lower	Upper
63	100		
98	4.3	2.3	6.8
100	2.8	1.3	3.9





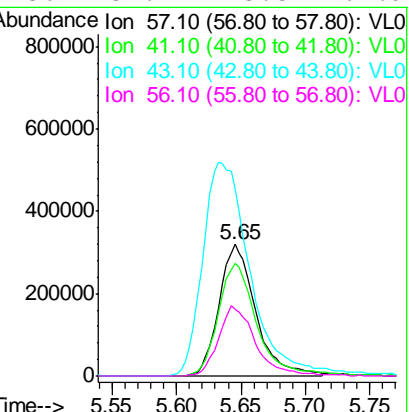
#25  
 Ethyl Acetate  
 Concen: 8.45 ppbv  
 RT: 5.63  
 Delta R.T. MSVOA\_L  
 Lab File: ClientSampleId :  
 VSTDCCC010EC  
 Acq: 15 Feb 2022 10:28

Tgt Ion	Resp	Lower	Upper
43	100		
45	9.7	7.9	11.9
61	9.9	7.8	11.8
70	6.5	5.4	8.0

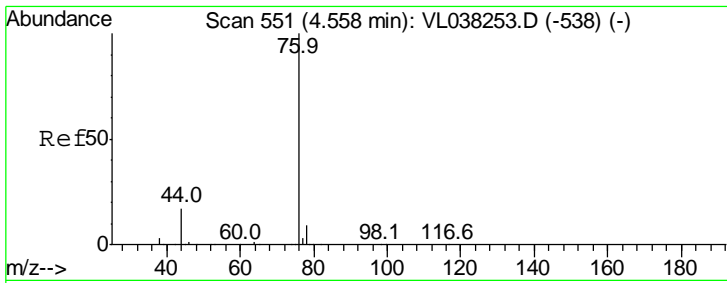


#26  
 Hexane  
 Concen: 8.88 ppbv  
 RT: 5.65 min Scan# 889  
 Delta R.T. -0.04 min  
 Lab File: VL038361.D  
 Acq: 15 Feb 2022 10:28

Tgt Ion	Resp	Lower	Upper
57	100		
41	91.4	72.8	109.2
43	210.6	177.0	265.6
56	54.4	43.3	64.9

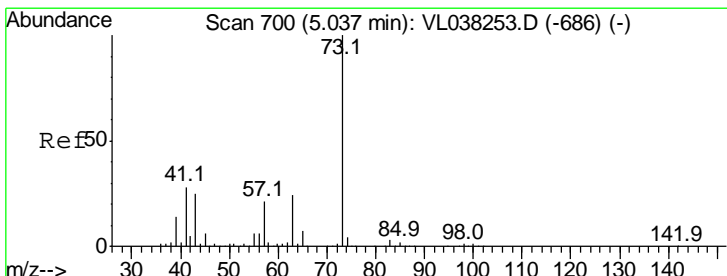
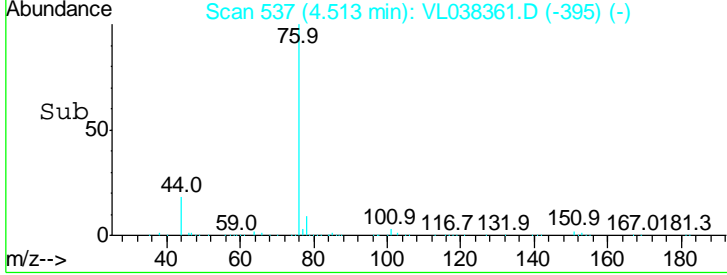
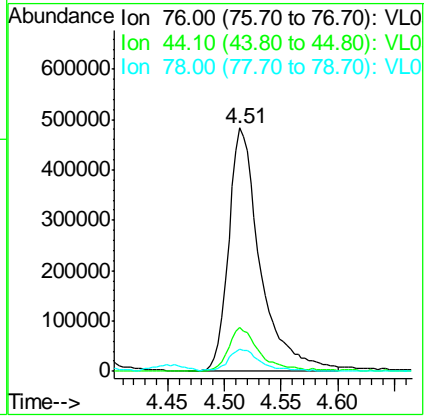
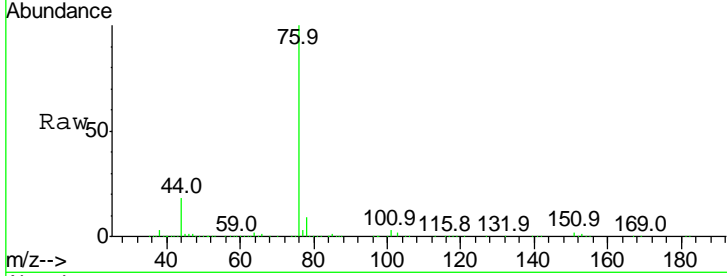






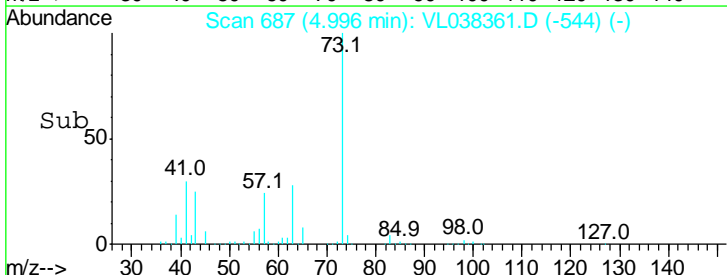
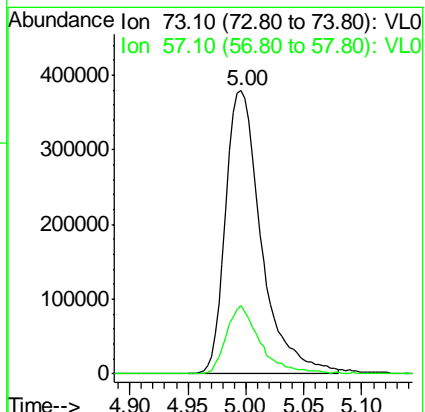
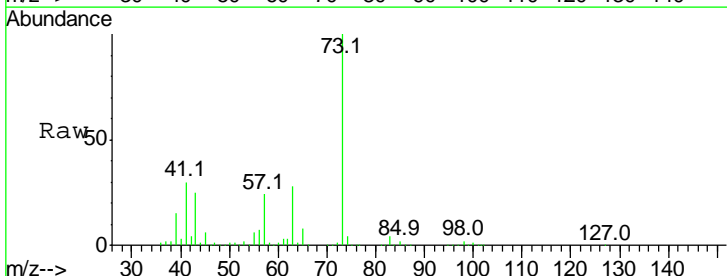
#27  
 Carbon Disulfide  
 Concen: 11.23 ppbv  
 RT: 4.51  
 Delta R.T. MSVOA\_L  
 Lab File: ClientSampleId : VSTDCCC010EC  
 Acq: 15 Feb 2022 10:28

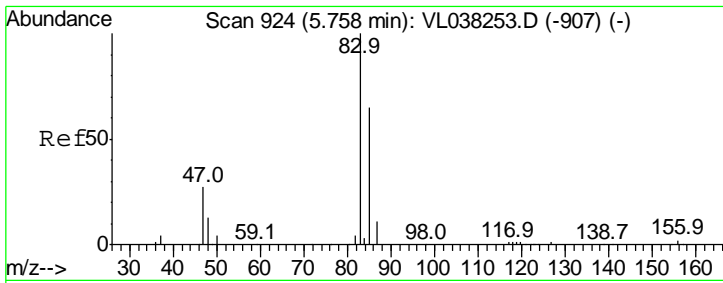
Tgt Ion	Resp	Lower	Upper
76	100		
44	18.3	14.8	22.2
78	9.4	7.9	11.9



#28  
 Methyl tert-Butyl Ether  
 Concen: 10.97 ppbv  
 RT: 5.00 min Scan# 687  
 Delta R.T. -0.04 min  
 Lab File: VL038361.D  
 Acq: 15 Feb 2022 10:28

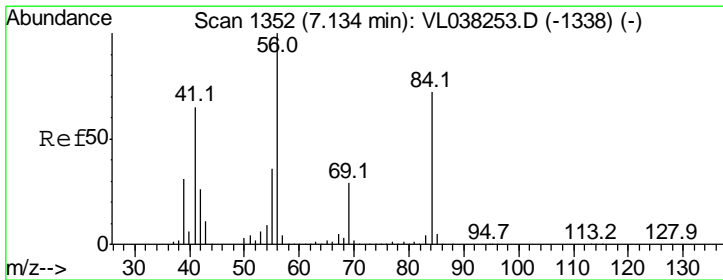
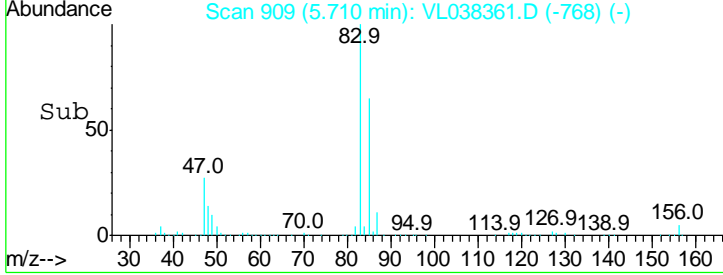
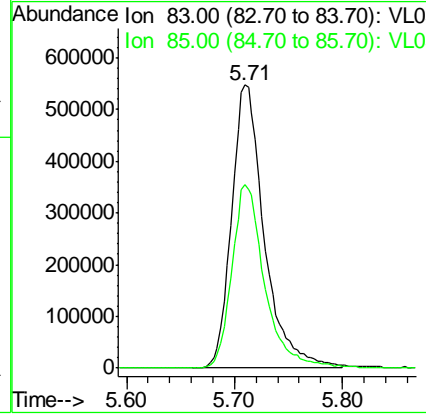
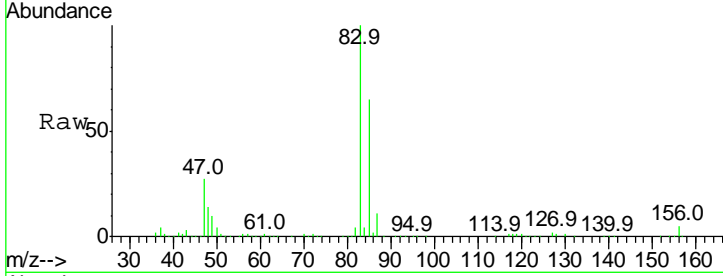
Tgt Ion	Resp	Lower	Upper
73	100		
57	23.4	18.2	27.4





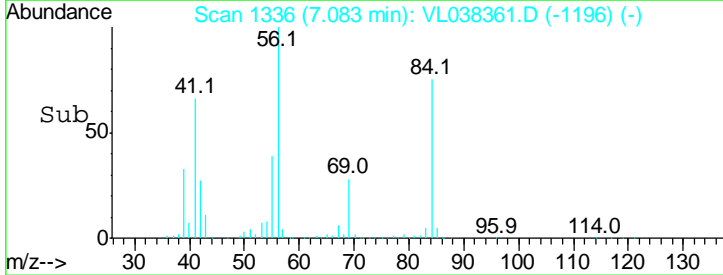
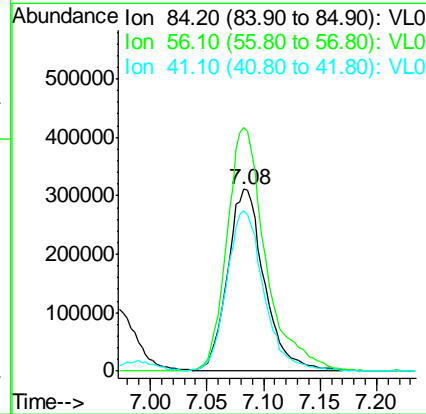
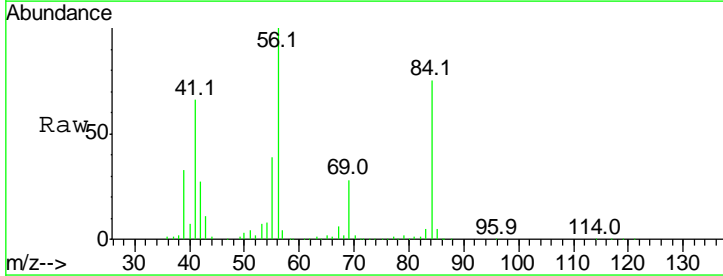
#29  
 Chloroform  
 Concen: 9.96 ppbv  
 RT: 5.71  
 Delta R.T. MSVOA\_L  
 Lab File: ClientSampleId : VSTDCCC010EC  
 Acq: 15 Feb 2022 10:28

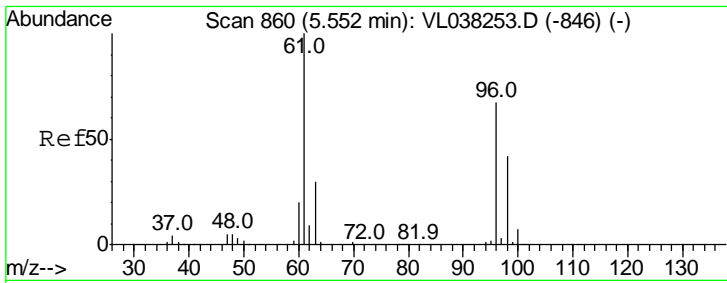
Tgt Ion	Resp	Lower	Upper
83	100		
85	64.6	51.9	77.9



#30  
 Cyclohexane  
 Concen: 11.40 ppbv  
 RT: 7.08 min Scan# 1336  
 Delta R.T. -0.05 min  
 Lab File: VL038361.D  
 Acq: 15 Feb 2022 10:28

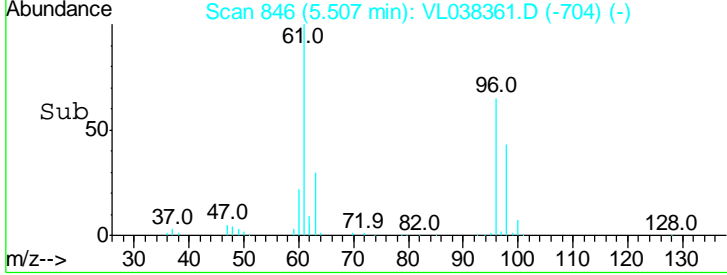
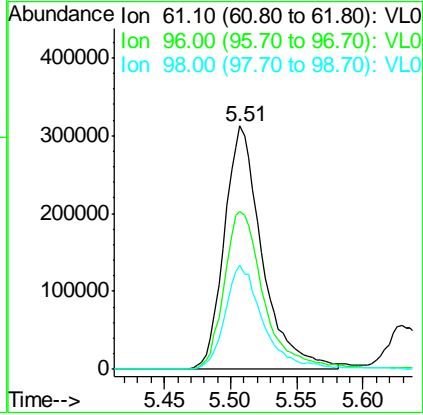
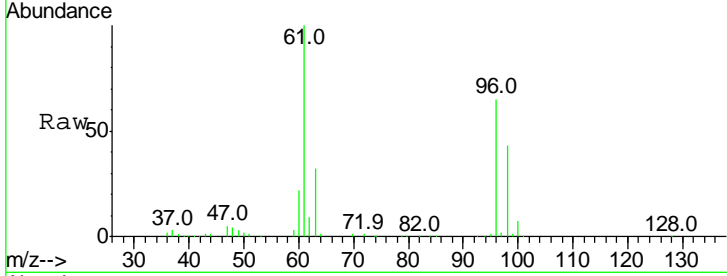
Tgt Ion	Resp	Lower	Upper
84	100		
56	141.5	112.7	169.1
41	88.2	71.1	106.7





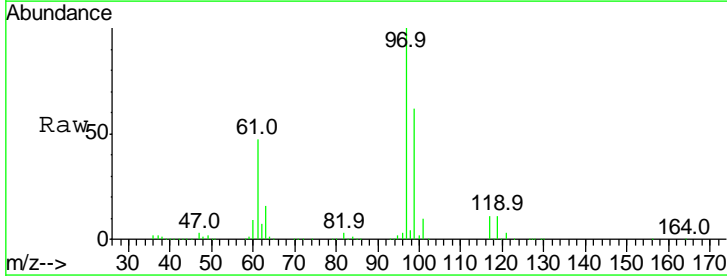
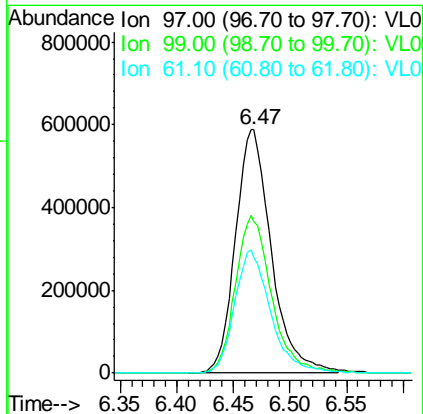
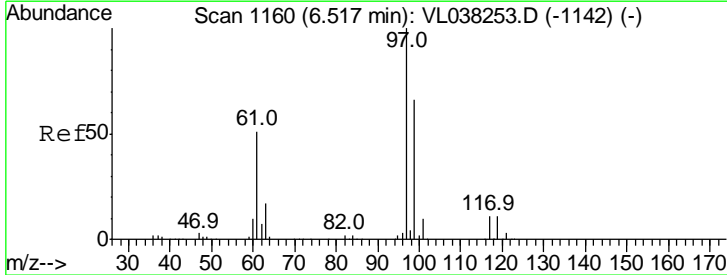
#31  
 cis-1,2-Dichloroethene  
 Concen: 10.00 ppbv  
 RT: 5.51 Instrument : MSVOA\_L  
 Delta R.T. ClientSampleId :  
 Lab File: VSTDCCC010EC  
 Acq: 15 Feb 2022 10:28

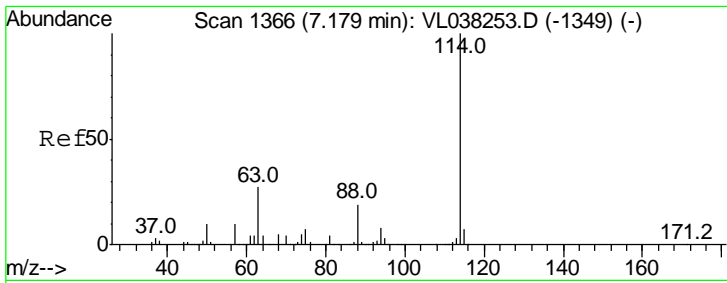
Tgt Ion	Resp	Lower	Upper
61	100		
96	64.8	53.3	79.9
98	42.6	33.7	50.5



#32  
 1,1,1-Trichloroethane  
 Concen: 11.20 ppbv  
 RT: 6.47 min Scan# 1145  
 Delta R.T. -0.05 min  
 Lab File: VL038361.D  
 Acq: 15 Feb 2022 10:28

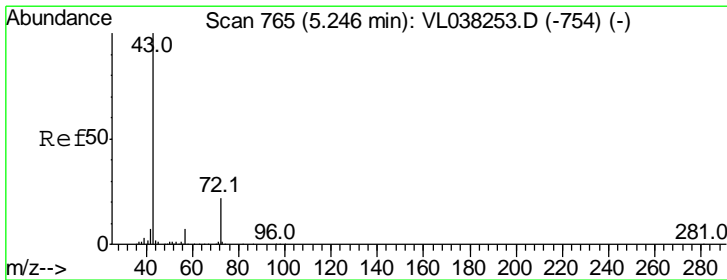
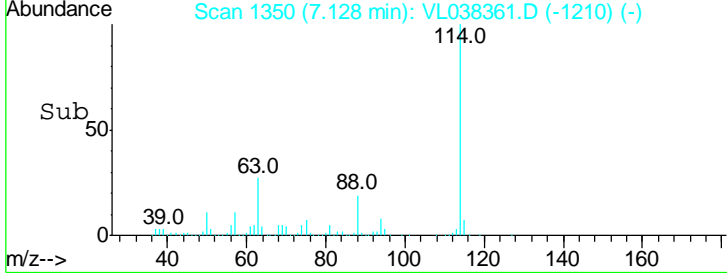
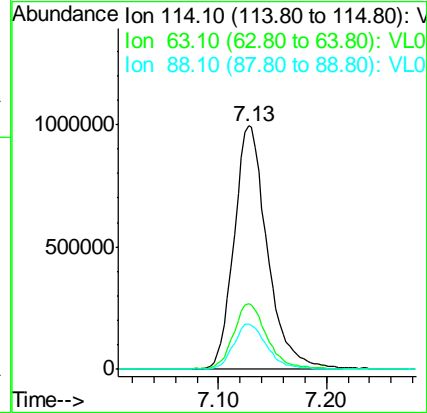
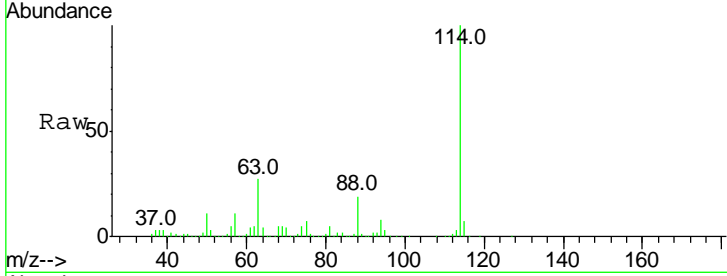
Tgt Ion	Resp	Lower	Upper
97	100		
99	65.4	51.5	77.3
61	50.7	40.5	60.7





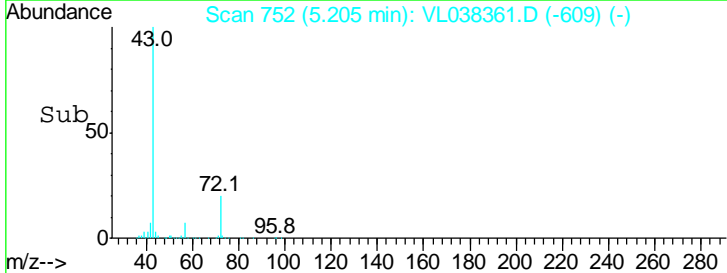
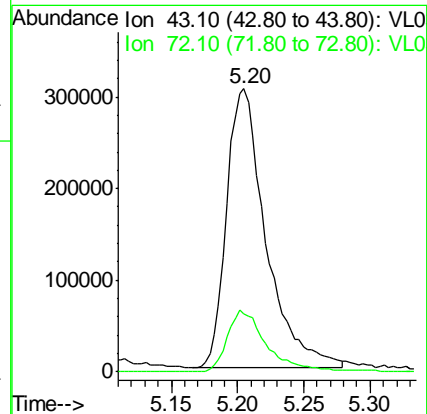
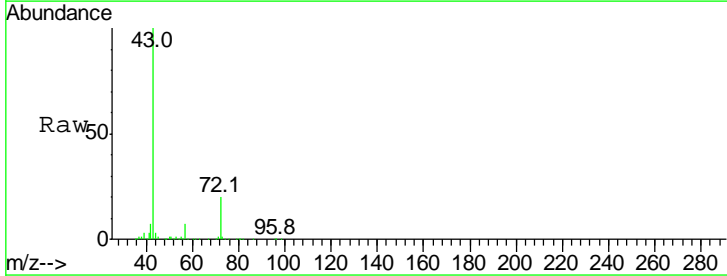
#33  
 1,4-Difluorobenzene  
 Concen: 10.00 ppbv  
 RT: 7.13 Instrument : MSVOA\_L  
 Delta R.T. ClientSampleId :  
 Lab File: VSTDCCC010EC  
 Acq: 15 Feb 2022 10:28

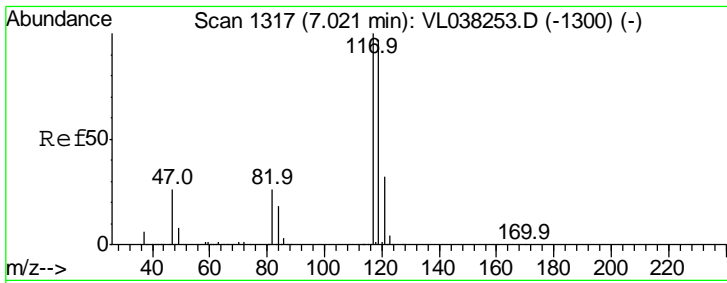
Tgt Ion	Resp	Lower	Upper
114	100		
63	27.5	22.0	33.0
88	18.9	15.0	22.6



#34  
 2-Butanone  
 Concen: 9.00 ppbv  
 RT: 5.20 min Scan# 752  
 Delta R.T. -0.04 min  
 Lab File: VL038361.D  
 Acq: 15 Feb 2022 10:28

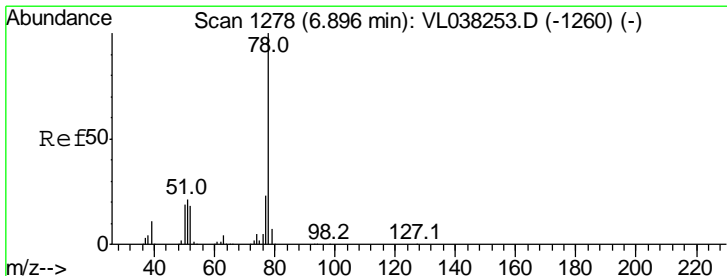
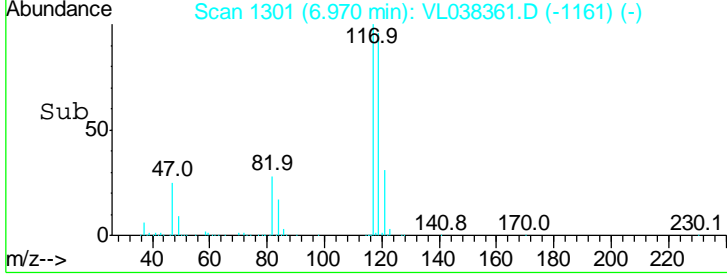
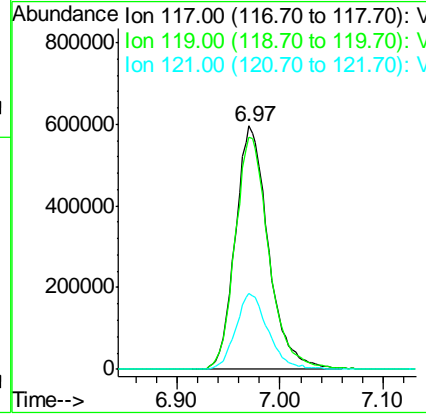
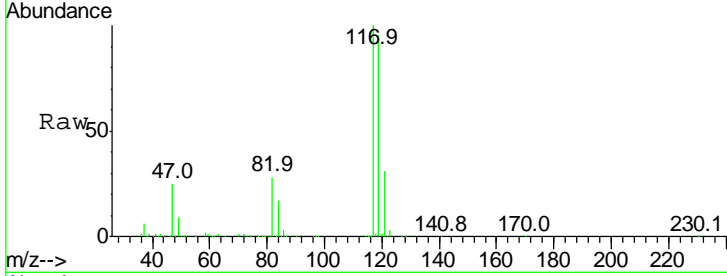
Tgt Ion	Resp	Lower	Upper
43	100		
72	22.4	18.1	27.1





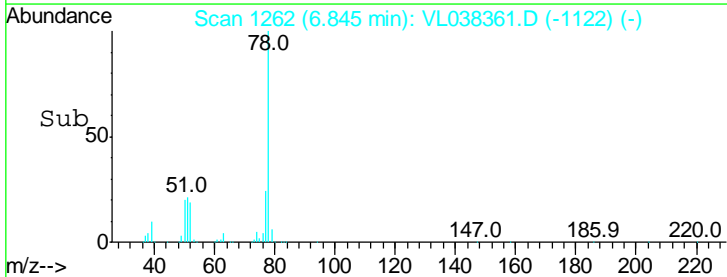
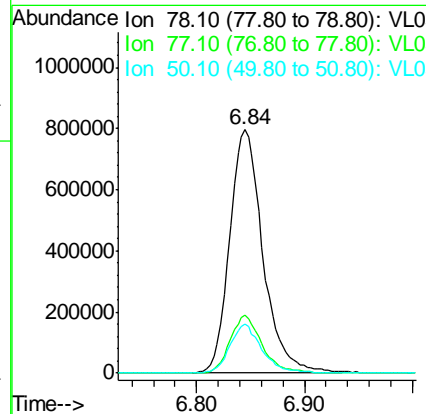
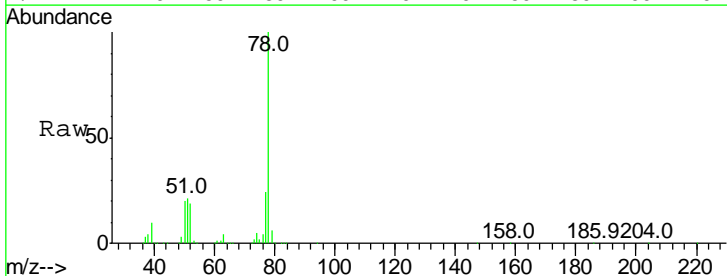
#35  
 Carbon Tetrachloride  
 Concen: 8.85 ppbv  
 RT: 6.97  
 Delta R.T. MSVOA\_L  
 Lab File: ClientSampleId : VSTDCCC010EC  
 Acq: 15 Feb 2022 10:28

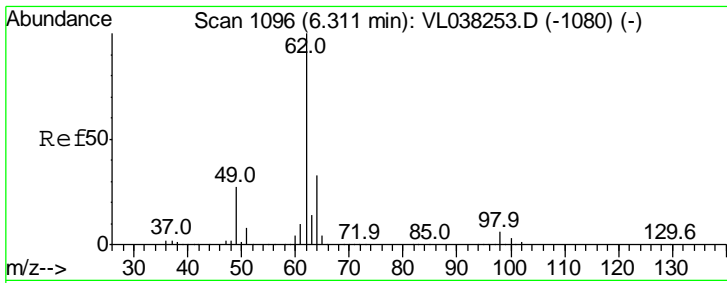
Tgt Ion	Resp	Lower	Upper
117	100		
119	95.4	77.9	116.9
121	31.0	25.4	38.2



#36  
 Benzene  
 Concen: 9.05 ppbv  
 RT: 6.84 min Scan# 1262  
 Delta R.T. -0.05 min  
 Lab File: VL038361.D  
 Acq: 15 Feb 2022 10:28

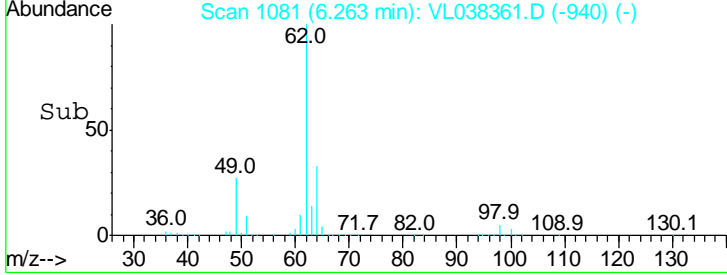
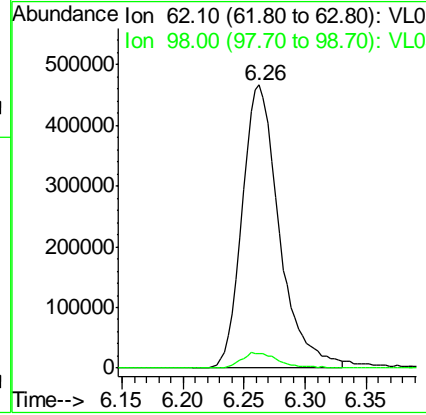
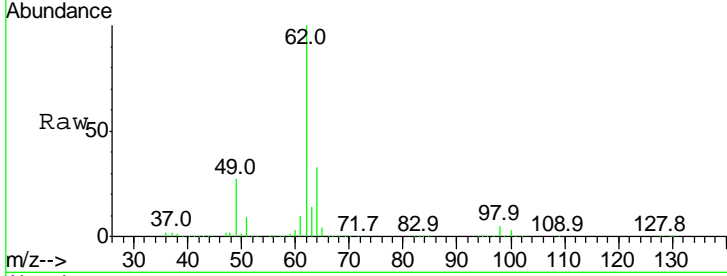
Tgt Ion	Resp	Lower	Upper
78	100		
77	23.7	18.2	27.2
50	20.0	15.1	22.7



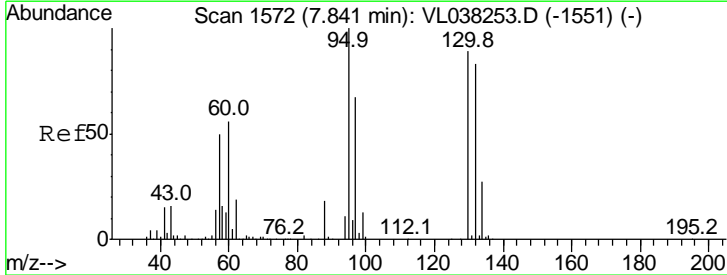


#37  
 1,2-Dichloroethane  
 Concen: 9.05 ppbv  
 RT: 6.26  
 Delta R.T. MSVOA\_L  
 Lab File: ClientSampleId : VSTDCCC010EC  
 Acq: 15 Feb 2022 10:28

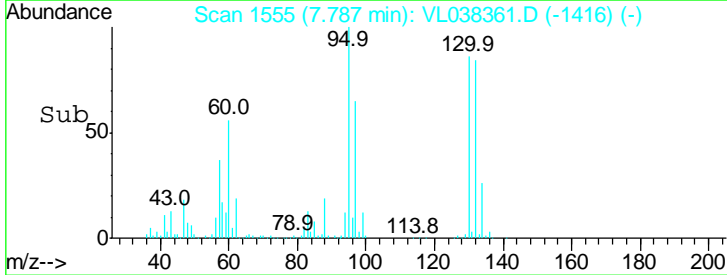
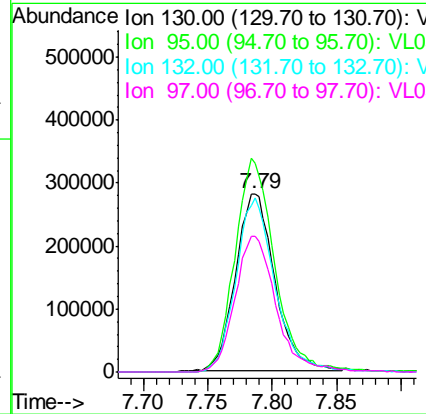
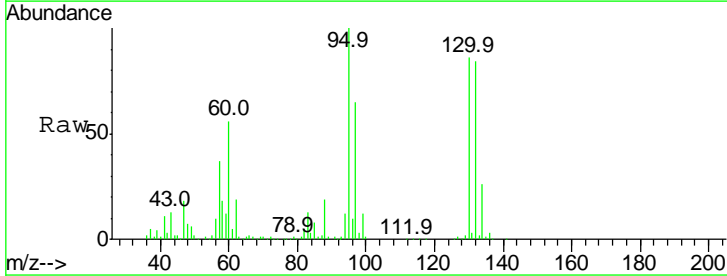
Tgt Ion	Resp	Lower	Upper
62	100		
98	5.8	4.5	6.7

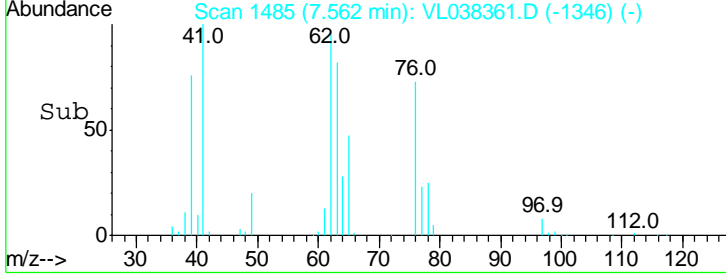
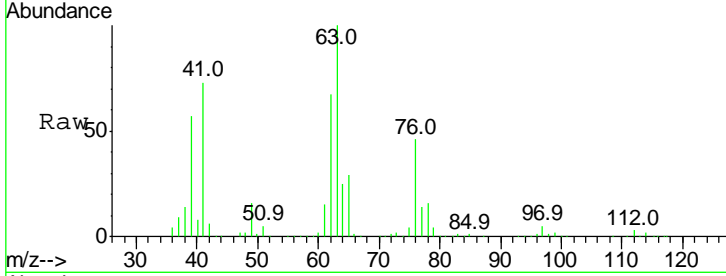
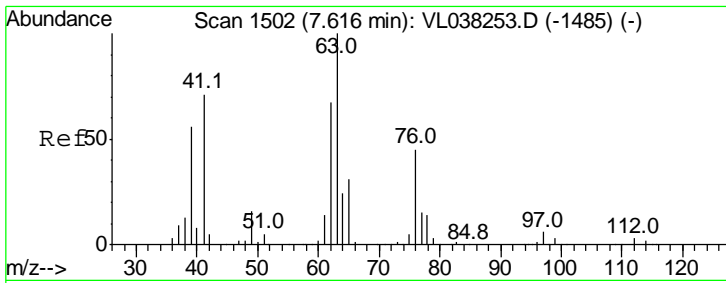


#38  
 Trichloroethene  
 Concen: 8.47 ppbv  
 RT: 7.79 min Scan# 1555  
 Delta R.T. -0.05 min  
 Lab File: VL038361.D  
 Acq: 15 Feb 2022 10:28



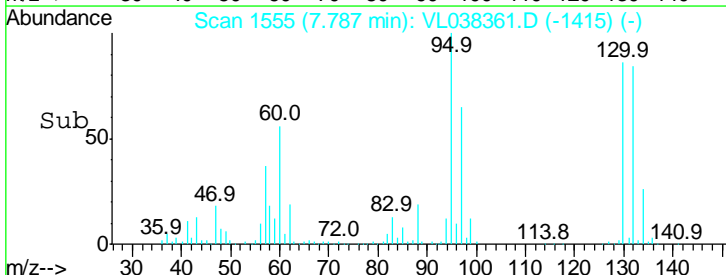
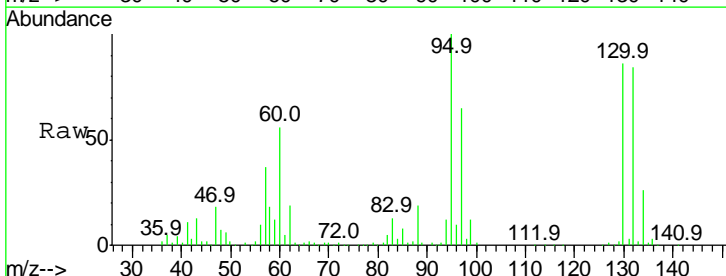
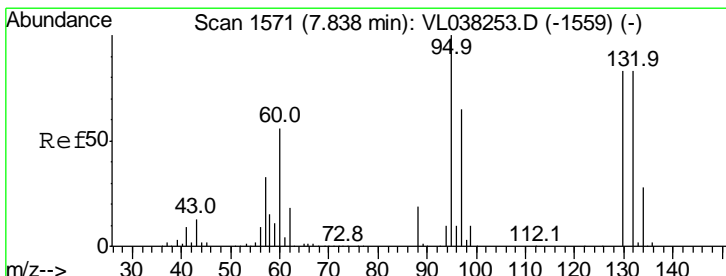
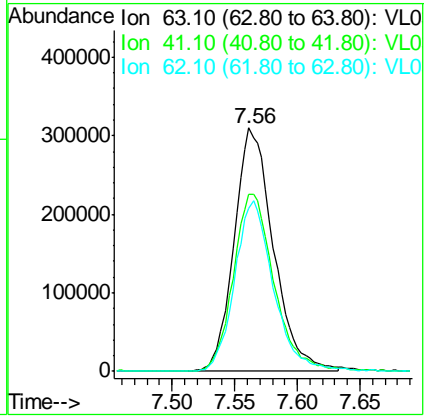
Tgt Ion	Resp	Lower	Upper
130	100		
95	117.4	89.4	134.2
132	98.0	74.6	111.8
97	76.0	59.6	89.4





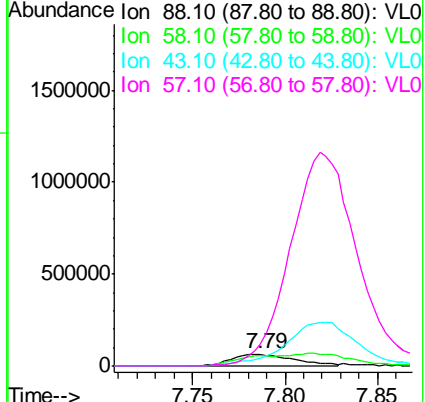
#39  
 1,2-Dichloropropane  
 Concen: 8.74 ppbv  
 RT: 7.56  
 Delta R.T. MSVOA\_L  
 Lab File: ClientSampleId : VSTDCCC010EC  
 Acq: 15 Feb 2022 10:28

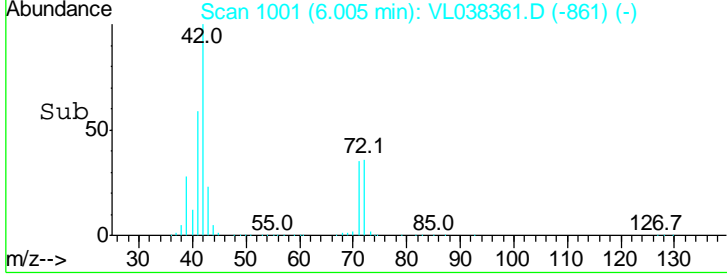
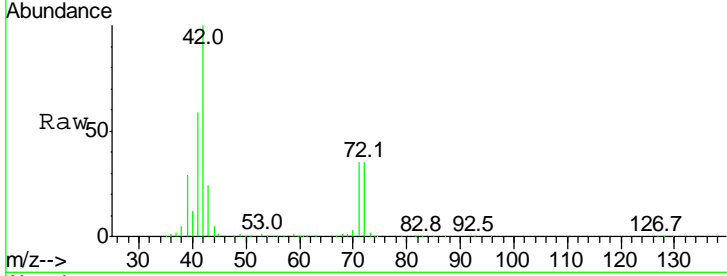
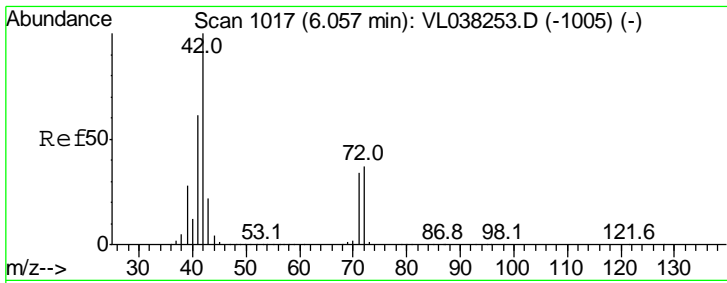
Tgt Ion	Resp	Lower	Upper
63	100		
41	72.6	56.6	85.0
62	66.8	53.9	80.9



#40  
 1,4-Dioxane  
 Concen: 8.04 ppbv  
 RT: 7.79 min Scan# 1555  
 Delta R.T. -0.05 min  
 Lab File: VL038361.D  
 Acq: 15 Feb 2022 10:28

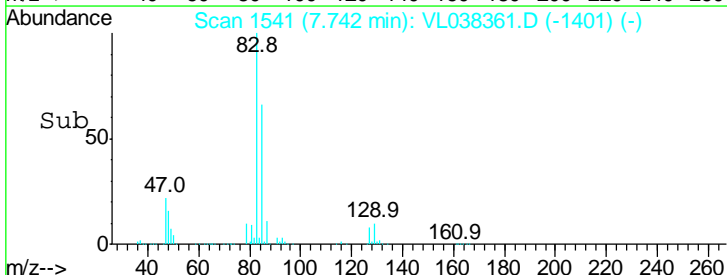
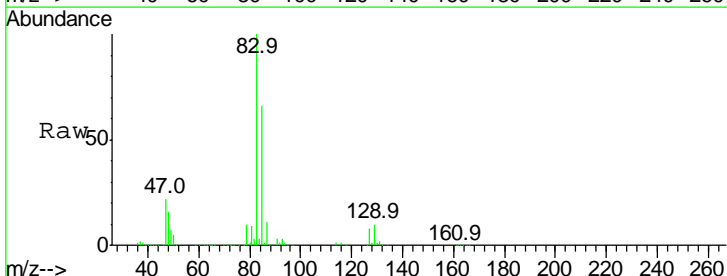
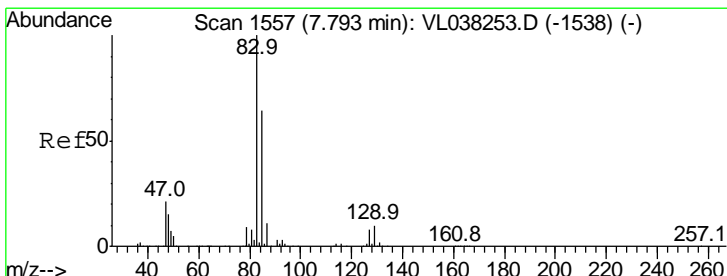
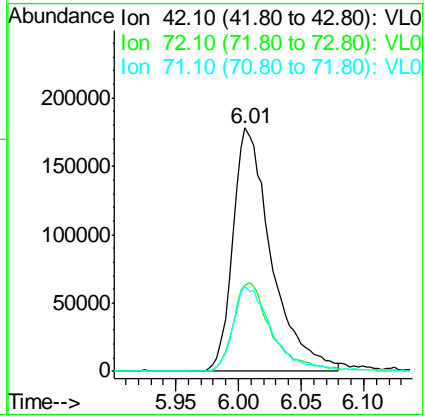
Tgt Ion	Resp	Lower	Upper
88	100		
58	0.0	138.6	208.0#
43	0.0	346.9	520.3#
57	0.0	1527.9	2291.9#





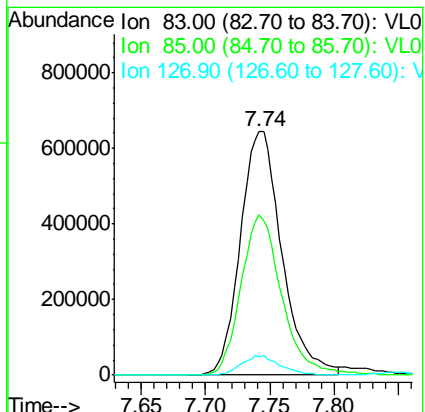
#41  
 Tetrahydrofuran  
 Concen: 8.07 ppbv  
 RT: 6.01  
 Delta R.T. MSVOA\_L  
 Lab File: ClientSampleId : VSTDCCC010EC  
 Acq: 15 Feb 2022 10:28

Tgt Ion	Resp	Lower	Upper
42	100		
72	36.8	29.7	44.5
71	35.9	29.4	44.2

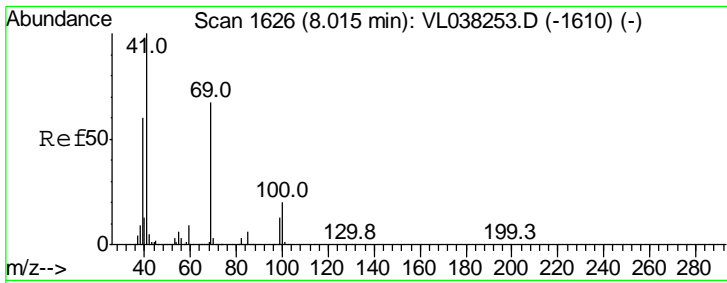


#42  
 Bromodichloromethane  
 Concen: 8.99 ppbv  
 RT: 7.74 min Scan# 1541  
 Delta R.T. -0.05 min  
 Lab File: VL038361.D  
 Acq: 15 Feb 2022 10:28

Tgt Ion	Resp	Lower	Upper
83	100		
85	65.9	51.5	77.3
127	7.7	6.2	9.4

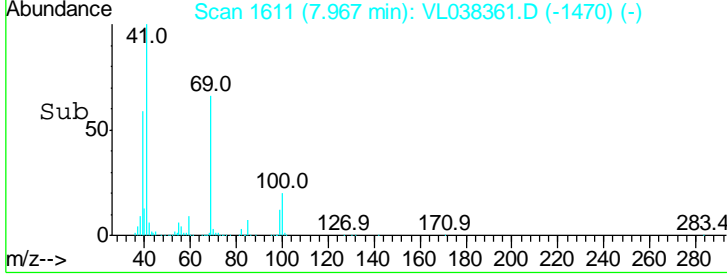
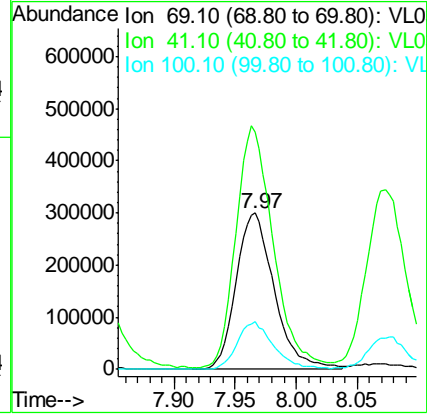
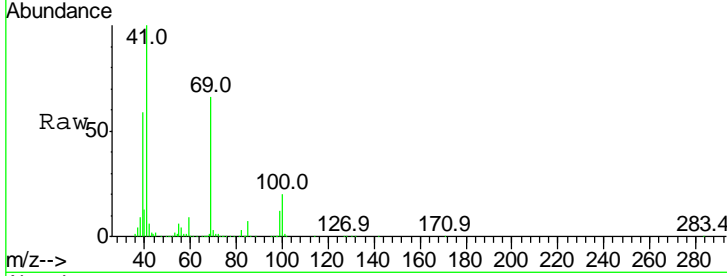






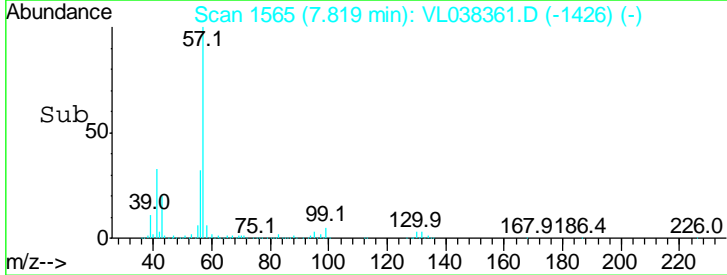
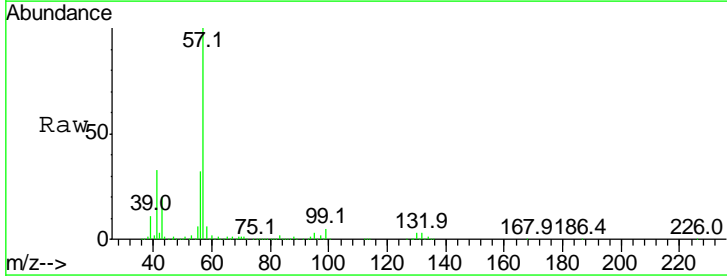
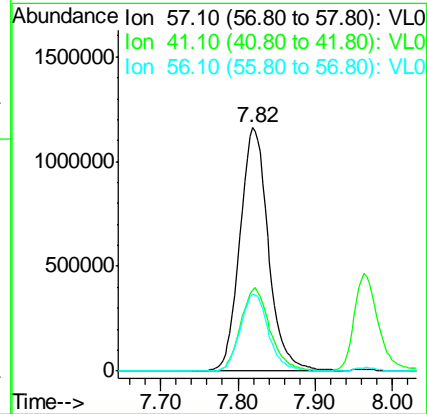
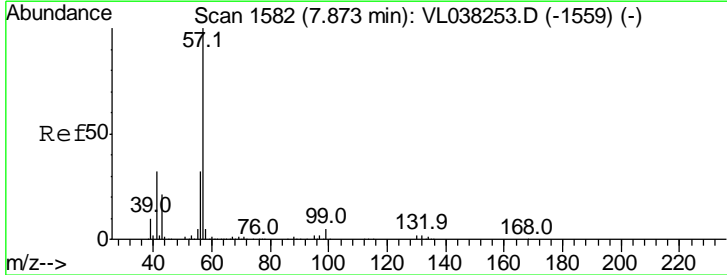
#43  
 Methyl Methacrylate  
 Concen: 9.72 ppbv  
 RT: 7.97  
 Delta R.T. MSVOA\_L  
 Lab File: ClientSampled :  
 VSTDCCC010EC  
 Acq: 15 Feb 2022 10:28

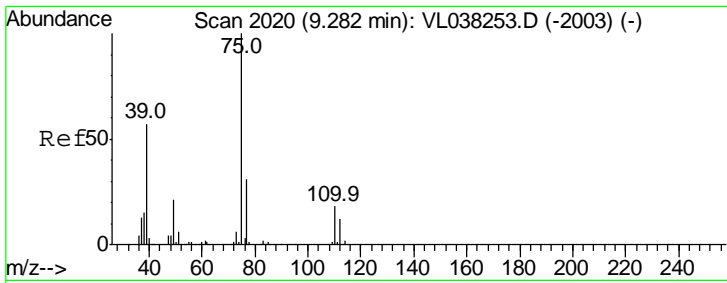
Tgt Ion	Resp	Lower	Upper
69	100		
41	153.5	120.9	181.3
100	29.0	23.4	35.0



#44  
 2,2,4-Trimethylpentane  
 Concen: 8.86 ppbv  
 RT: 7.82 min Scan# 1565  
 Delta R.T. -0.05 min  
 Lab File: VL038361.D  
 Acq: 15 Feb 2022 10:28

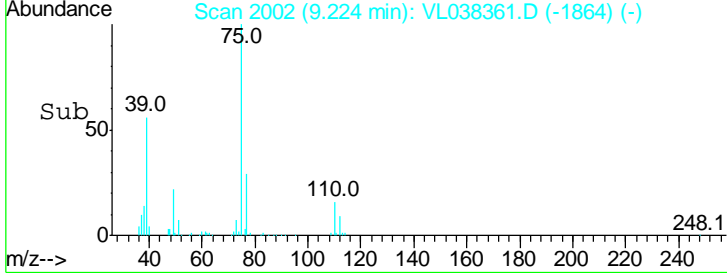
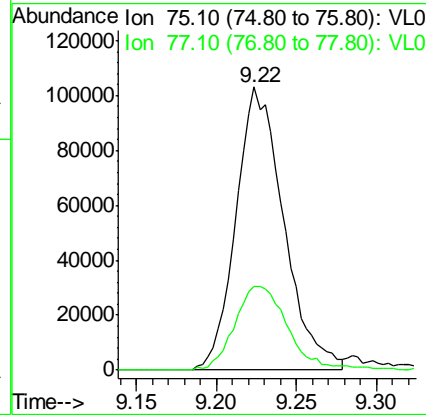
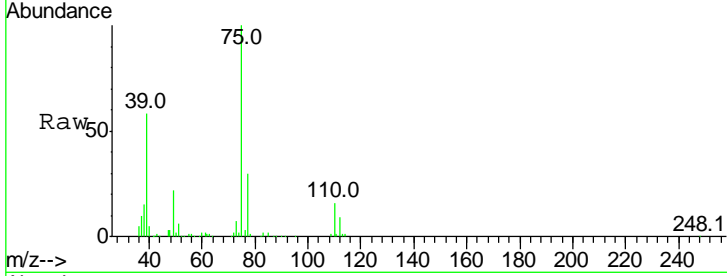
Tgt Ion	Resp	Lower	Upper
57	100		
41	35.4	26.3	39.5
56	31.4	25.2	37.8





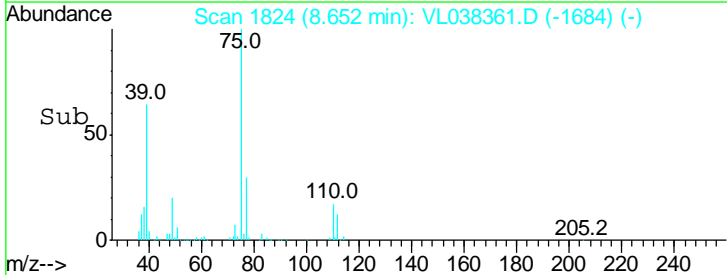
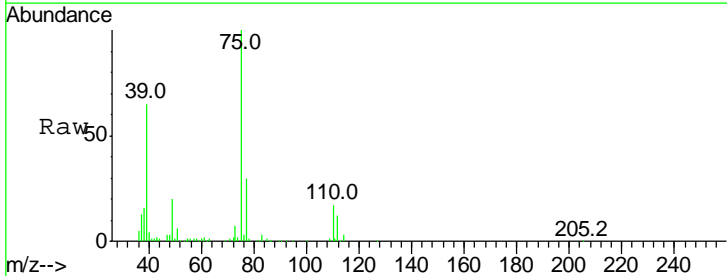
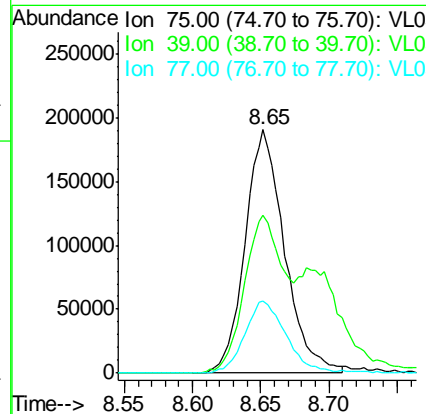
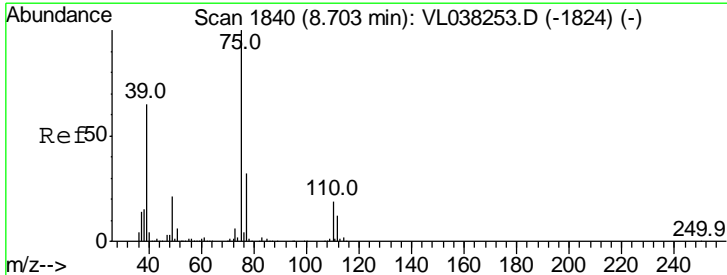
#45  
 t-1,3-Dichloropropene  
 Concen: 3.87 ppbv  
 RT: 9.22  
 Delta R.T. MSVOA\_L  
 Lab File: ClientSampleId : VSTDCCC010EC  
 Acq: 15 Feb 2022 10:28

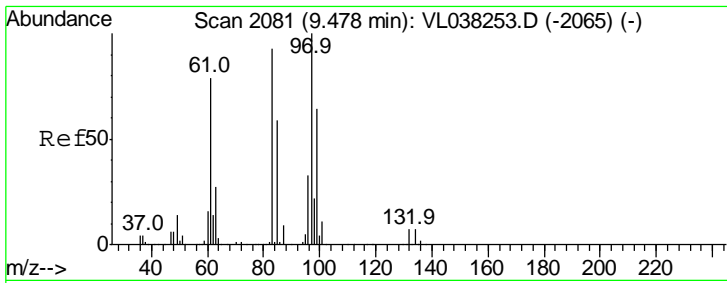
Tgt Ion: 75 Resp: 210585  
 Ion Ratio Lower Upper  
 75 100  
 77 29.7 24.9 37.3



#46  
 cis-1,3-Dichloropropene  
 Concen: 5.27 ppbv  
 RT: 8.65 min Scan# 1824  
 Delta R.T. -0.05 min  
 Lab File: VL038361.D  
 Acq: 15 Feb 2022 10:28

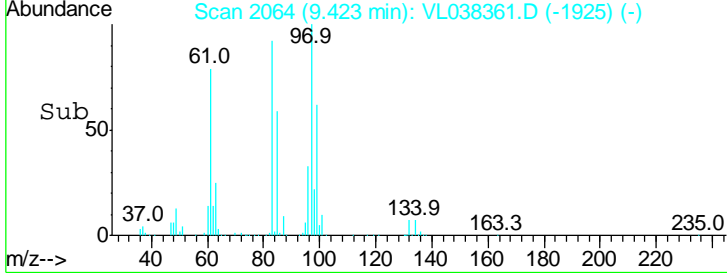
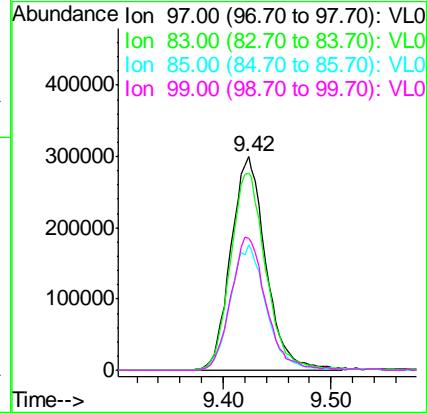
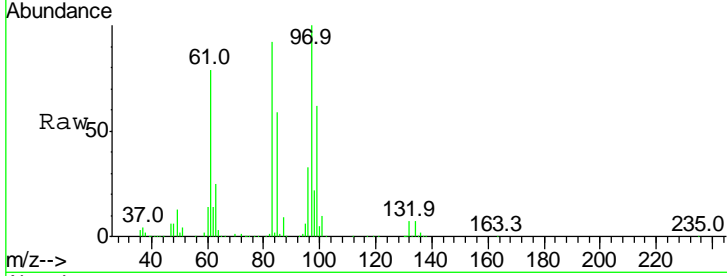
Tgt Ion: 75 Resp: 382412  
 Ion Ratio Lower Upper  
 75 100  
 39 64.6 52.3 78.5  
 77 29.6 25.4 38.0





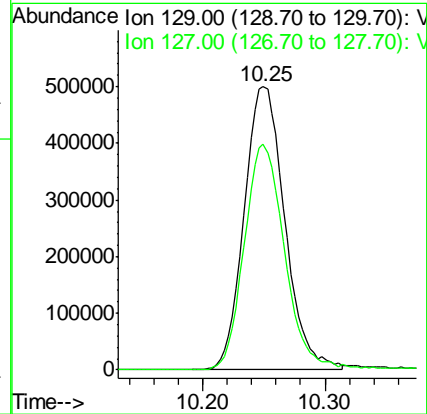
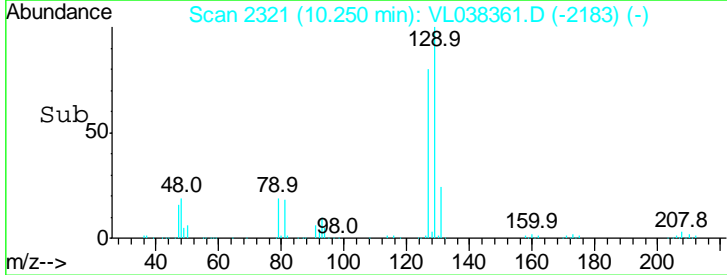
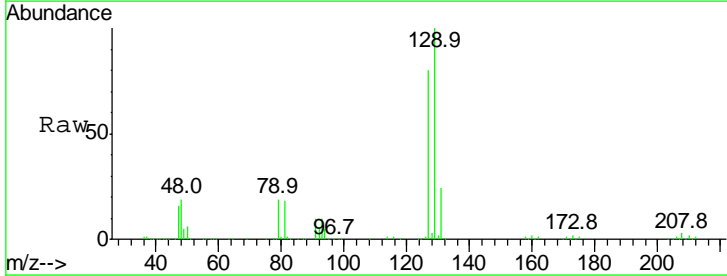
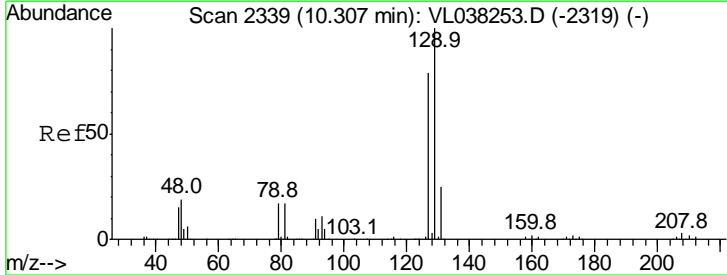
#47  
 1,1,2-Trichloroethane  
 Concen: 9.01 ppbv  
 RT: 9.42  
 Delta R.T. MSVOA\_L  
 Lab File: ClientSampleId : VSTDCCC010EC  
 Acq: 15 Feb 2022 10:28

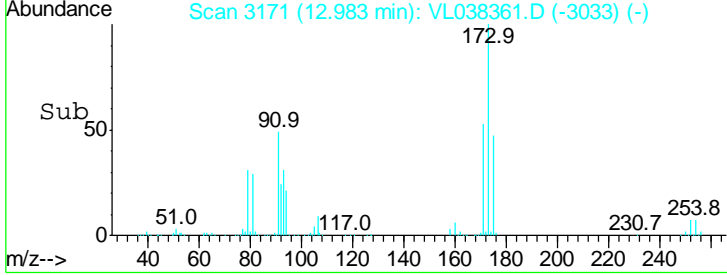
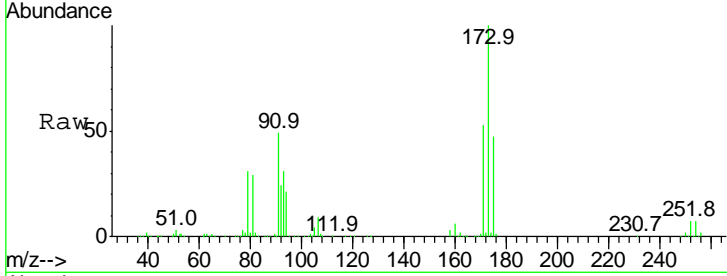
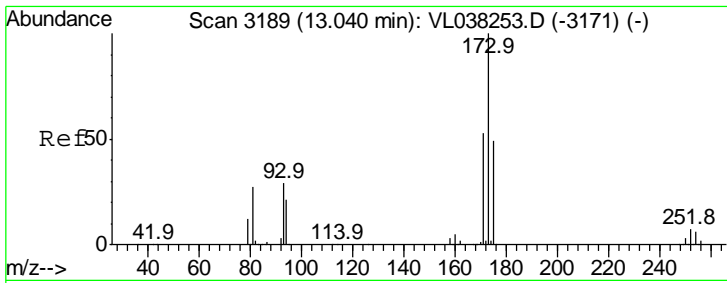
Tgt Ion	Resp	Lower	Upper
97	100		
83	92.2	74.3	111.5
85	58.5	47.5	71.3
99	61.8	51.1	76.7



#48  
 Dibromochloromethane  
 Concen: 9.07 ppbv  
 RT: 10.25 min Scan# 2321  
 Delta R.T. -0.06 min  
 Lab File: VL038361.D  
 Acq: 15 Feb 2022 10:28

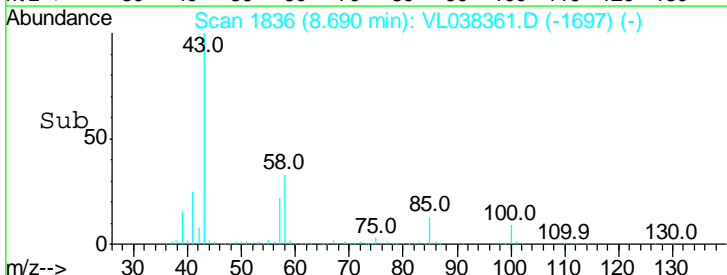
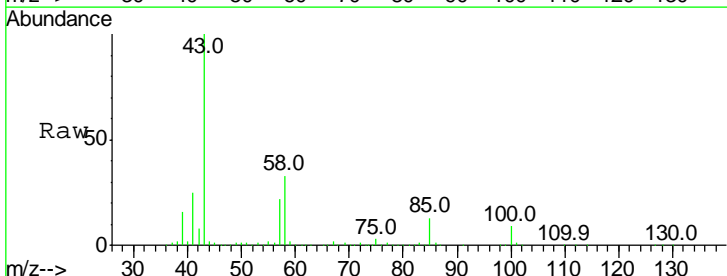
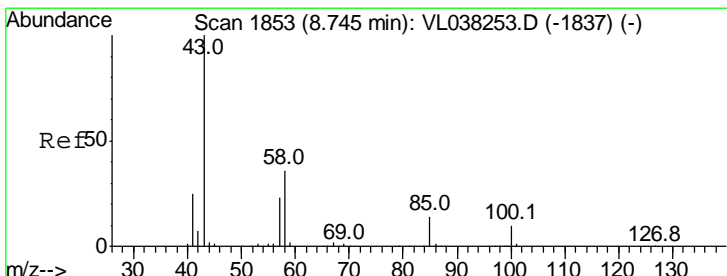
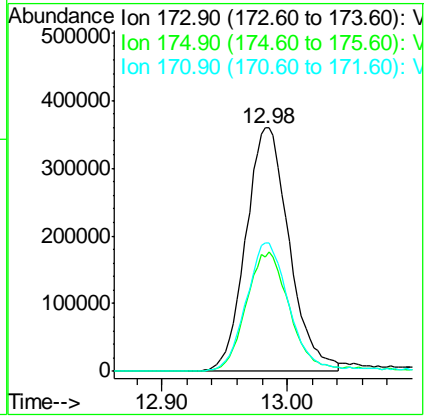
Tgt Ion	Resp	Lower	Upper
129	100		
127	80.4	39.1	117.3





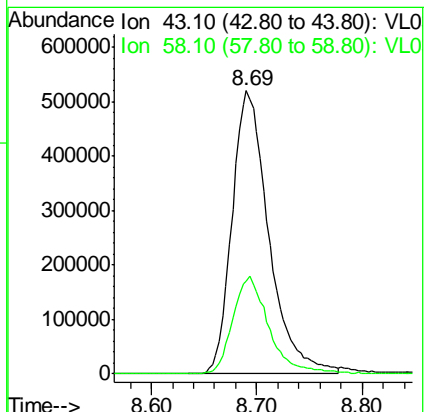
#49  
 Bromoform  
 Concen: 9.45 ppbv  
 RT: 12.98  
 Delta R.T. MSVOA\_L  
 Lab File: ClientSampleId : VSTDCCC010EC  
 Acq: 15 Feb 2022 10:28

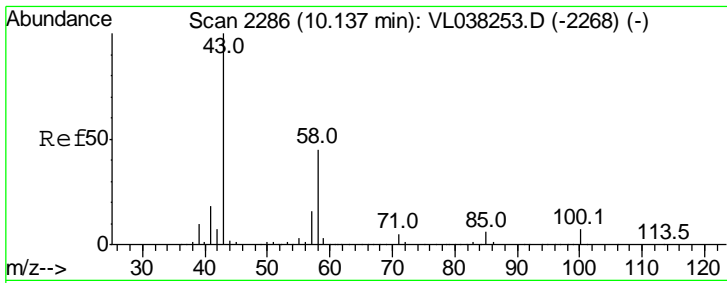
Tgt Ion	Resp	Lower	Upper
173	100		
175	51.5	39.7	59.5
171	54.4	42.1	63.1



#50  
 4-Methyl-2-Pentanone  
 Concen: 10.06 ppbv  
 RT: 8.69 min Scan# 1836  
 Delta R.T. -0.05 min  
 Lab File: VL038361.D  
 Acq: 15 Feb 2022 10:28

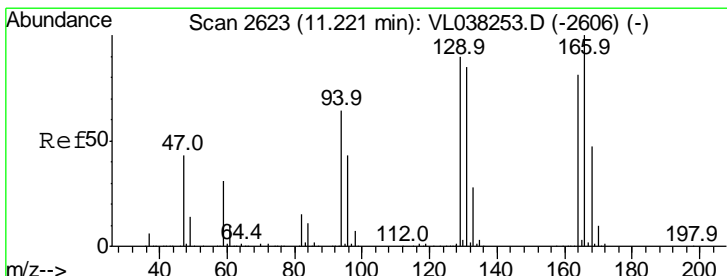
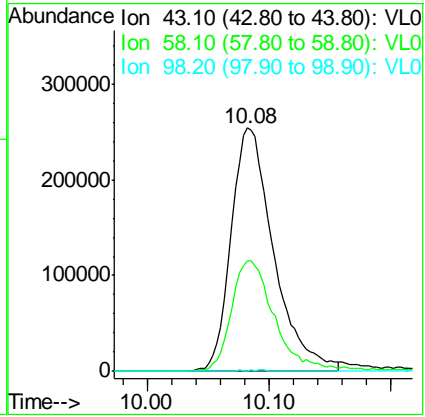
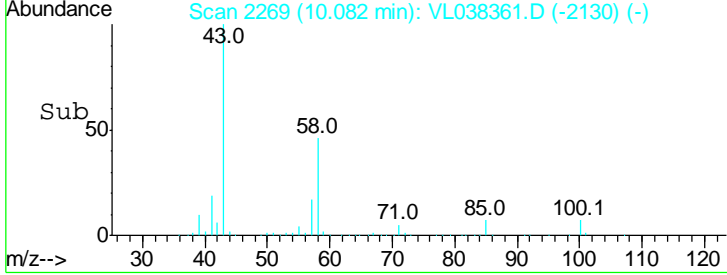
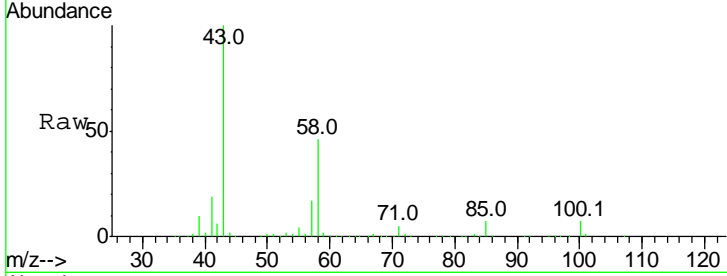
Tgt Ion	Resp	Lower	Upper
43	100		
58	34.3	28.2	42.4



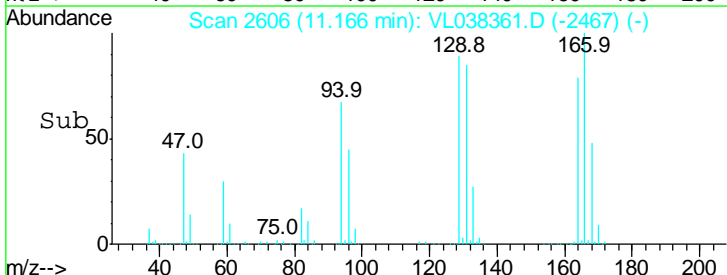
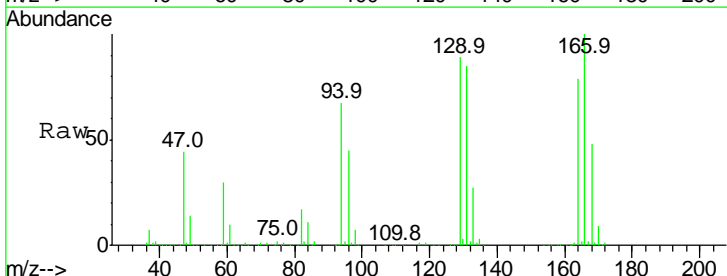


#51  
 2-Hexanone  
 Concen: 11.14 ppbv  
 RT: 10.08  
 Delta R.T. MSVOA\_L  
 Lab File: ClientSampleId : VSTDCCC010EC  
 Acq: 15 Feb 2022 10:28

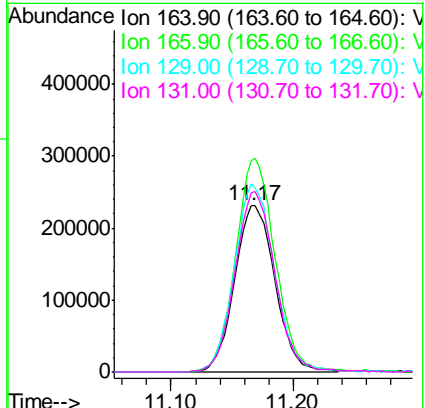
Tgt Ion	Resp	Lower	Upper
43	100		
58	47.3	37.0	55.4
98	0.3	0.2	0.2#

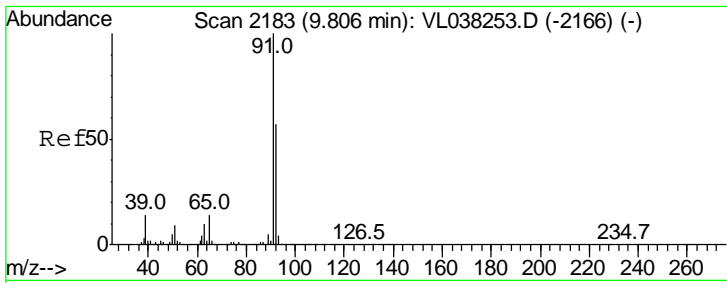


#52  
 Tetrachloroethene  
 Concen: 8.08 ppbv  
 RT: 11.17 min Scan# 2606  
 Delta R.T. -0.05 min  
 Lab File: VL038361.D  
 Acq: 15 Feb 2022 10:28



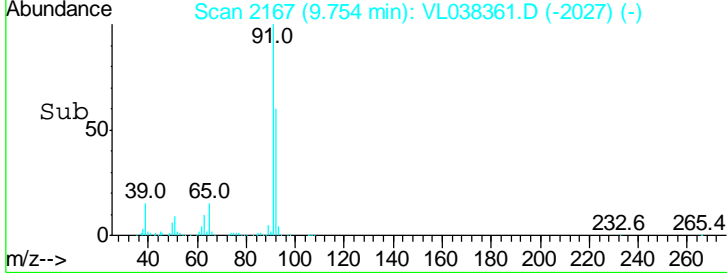
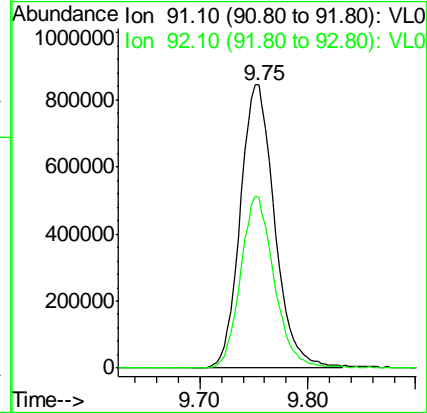
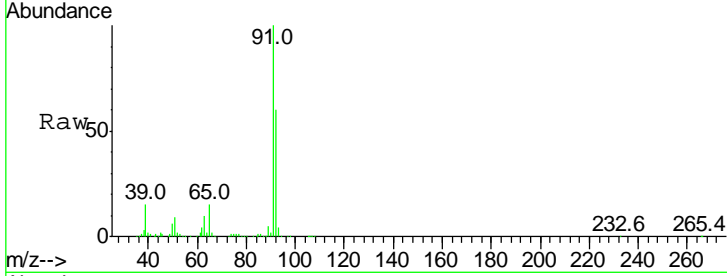
Tgt Ion	Resp	Lower	Upper
164	100		
166	127.0	98.8	148.2
129	113.4	89.2	133.8
131	108.0	83.6	125.4





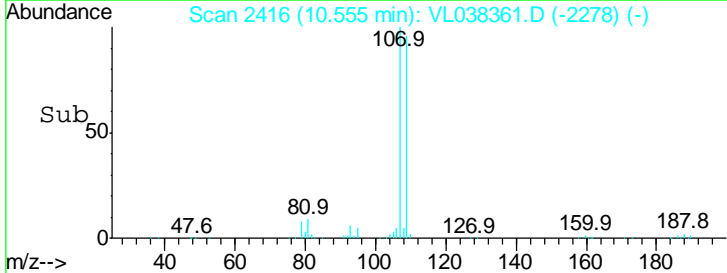
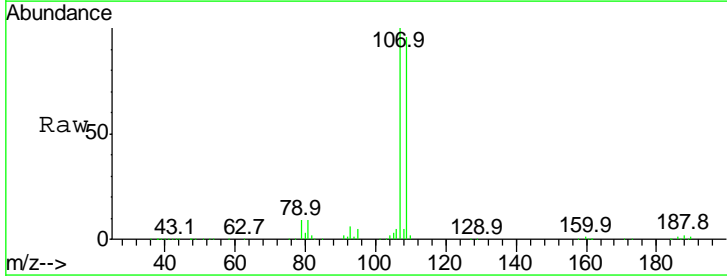
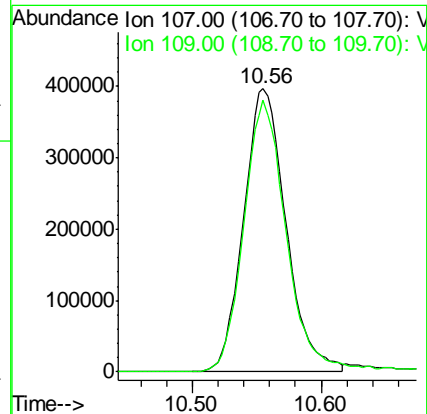
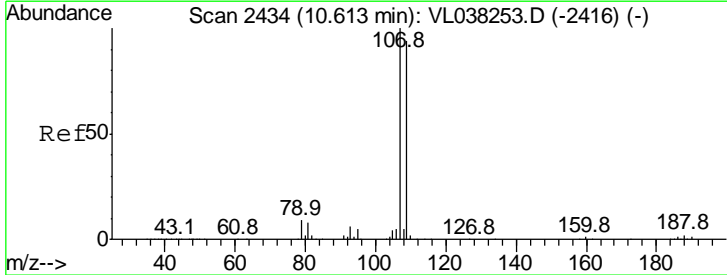
#53  
 Toluene  
 Concen: 8.95 ppbv  
 RT: 9.75  
 Delta R.T. MSVOA\_L  
 Lab File: ClientSampleId :  
 VSTDCCC010EC  
 Acq: 15 Feb 2022 10:28

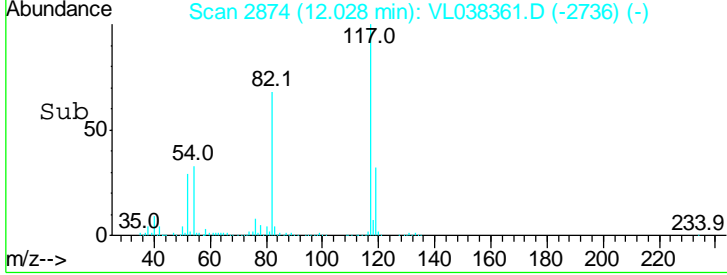
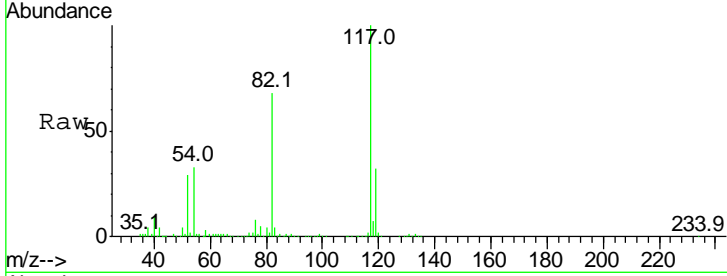
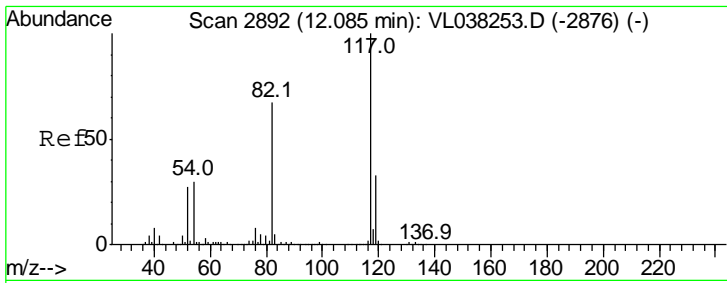
Tgt Ion: 91 Resp: 1873413  
 Ion Ratio Lower Upper  
 91 100  
 92 59.9 47.4 71.0



#54  
 1,2-Dibromoethane  
 Concen: 8.48 ppbv  
 RT: 10.56 min Scan# 2416  
 Delta R.T. -0.06 min  
 Lab File: VL038361.D  
 Acq: 15 Feb 2022 10:28

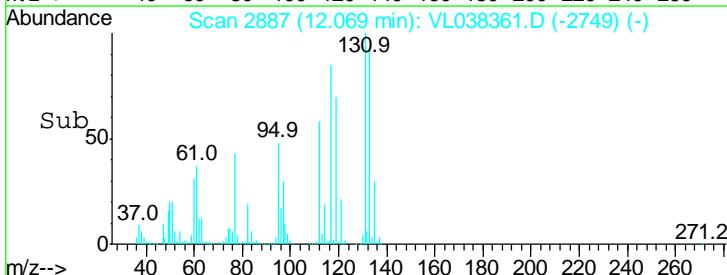
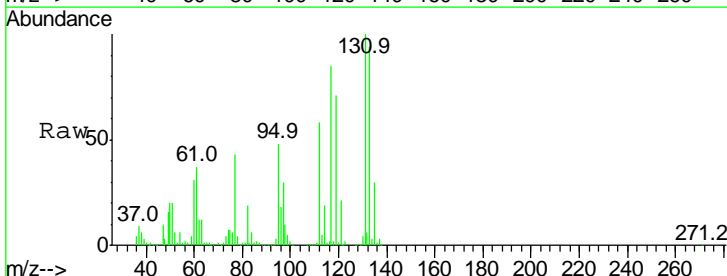
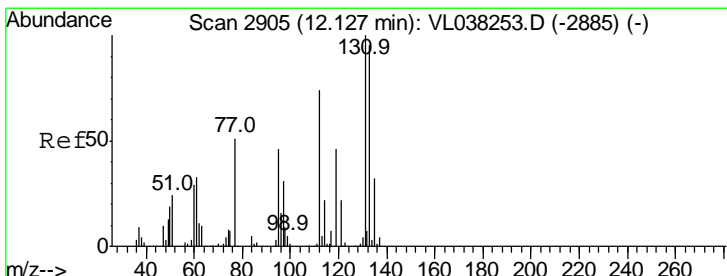
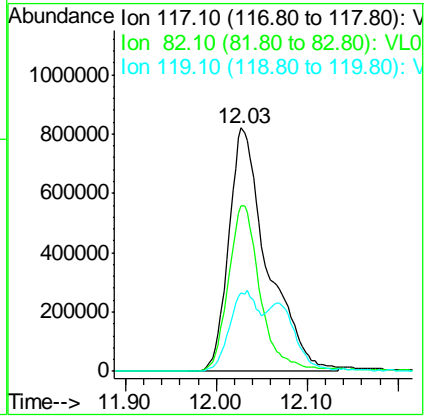
Tgt Ion: 107 Resp: 908790  
 Ion Ratio Lower Upper  
 107 100  
 109 95.8 75.4 113.0





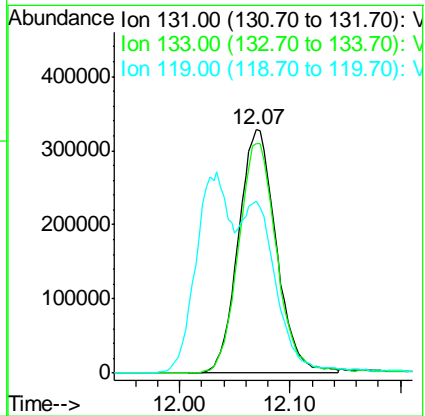
#55  
 Chlorobenzene-d5  
 Concen: 10.00 ppbv  
 RT: 12.03  
 Delta R.T. MSVOA\_L  
 Lab File: ClientSampleId : VSTDCCC010EC  
 Acq: 15 Feb 2022 10:28

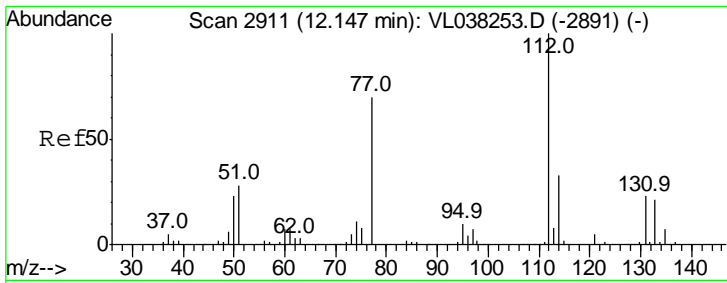
Tgt Ion	Resp	Lower	Upper
117	100		
82	58.0	54.4	81.6
119	26.0	45.9	68.9#



#56  
 1,1,1,2-Tetrachloroethane  
 Concen: 7.35 ppbv  
 RT: 12.07 min Scan# 2887  
 Delta R.T. -0.06 min  
 Lab File: VL038361.D  
 Acq: 15 Feb 2022 10:28

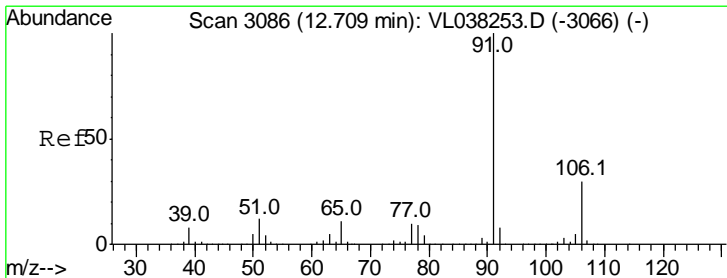
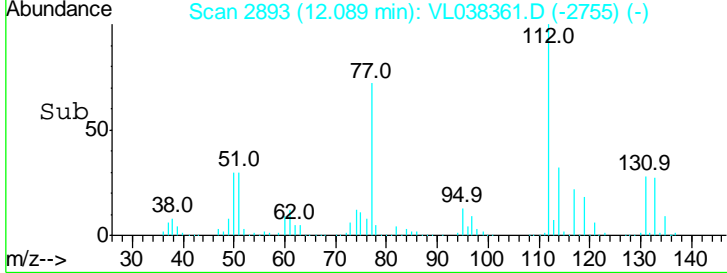
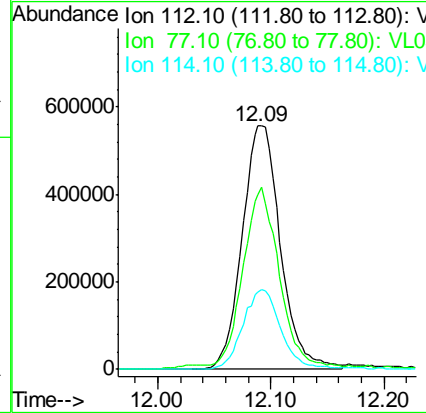
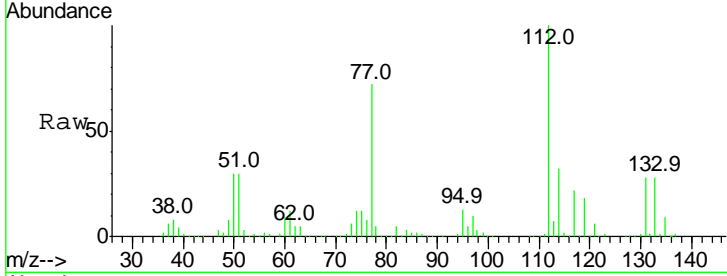
Tgt Ion	Resp	Lower	Upper
131	100		
133	96.7	76.0	114.0
119	62.7	53.0	79.4





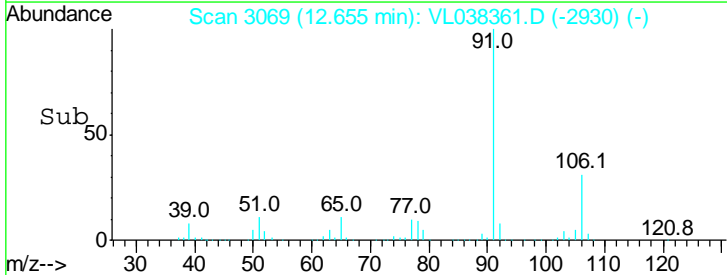
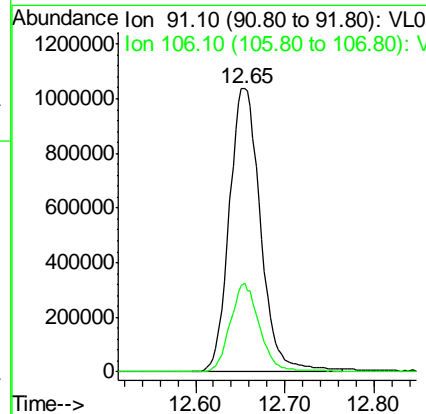
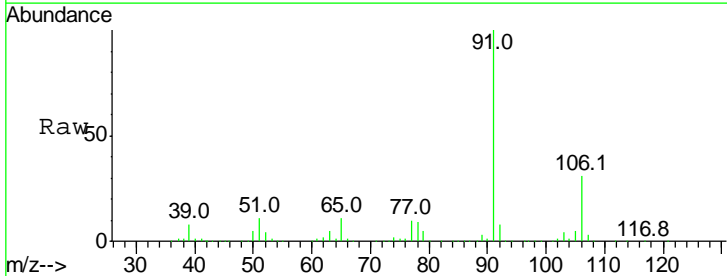
#57  
 Chlorobenzene  
 Concen: 6.76 ppbv  
 RT: 12.09  
 Delta R.T. MSVOA\_L  
 Lab File: ClientSampleId : VSTDCCC010EC  
 Acq: 15 Feb 2022 10:28

Tgt Ion	Resp	Lower	Upper
112	100		
77	70.5	55.9	83.9
114	31.8	29.3	35.9

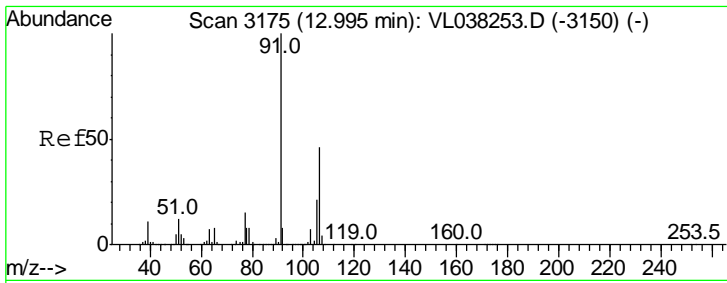


#58  
 Ethyl Benzene  
 Concen: 7.10 ppbv  
 RT: 12.65 min Scan# 3069  
 Delta R.T. -0.05 min  
 Lab File: VL038361.D  
 Acq: 15 Feb 2022 10:28

Tgt Ion	Resp	Lower	Upper
91	100		
106	31.2	24.1	36.1

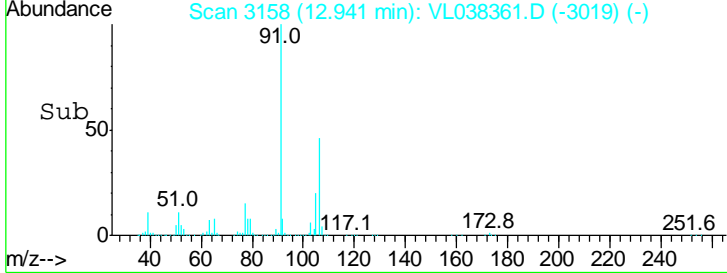
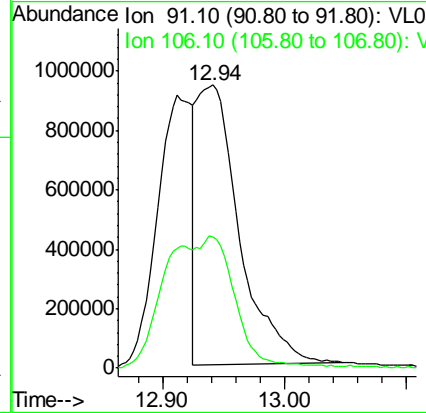
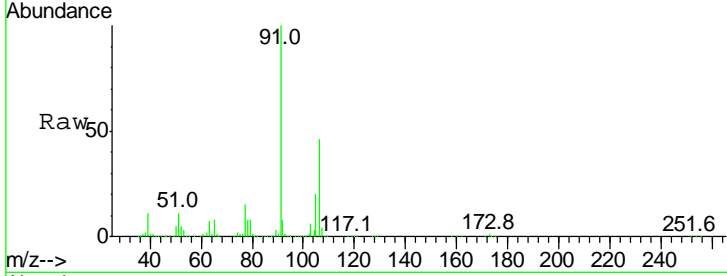






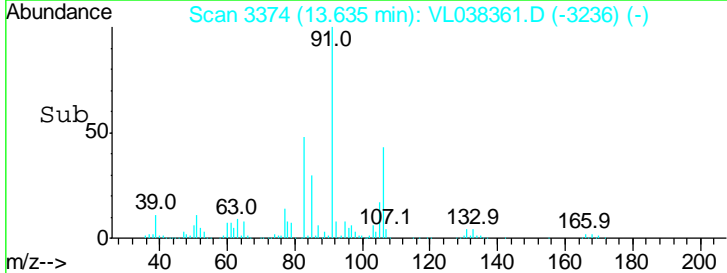
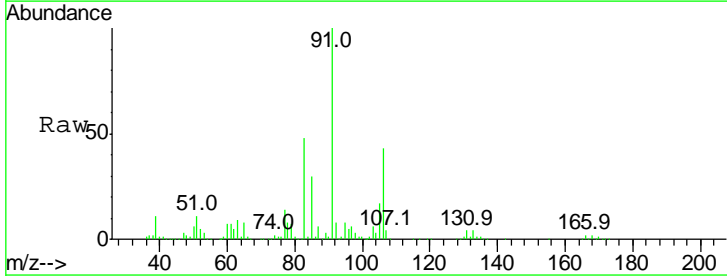
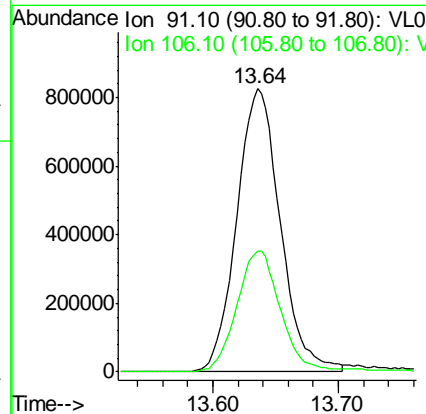
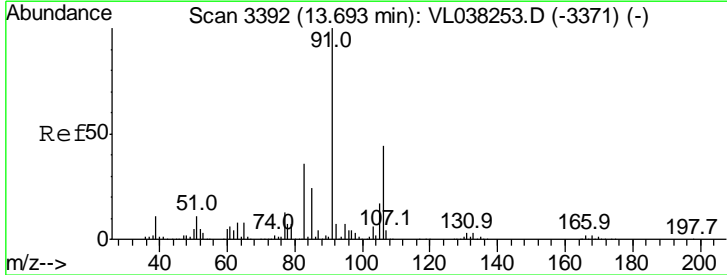
#59  
 m/p-Xylene  
 Concen: 7.48 ppbv  
 RT: 12.94  
 Delta R.T. MSVOA\_L  
 Lab File: ClientSampleId : VSTDCCC010EC  
 Acq: 15 Feb 2022 10:28

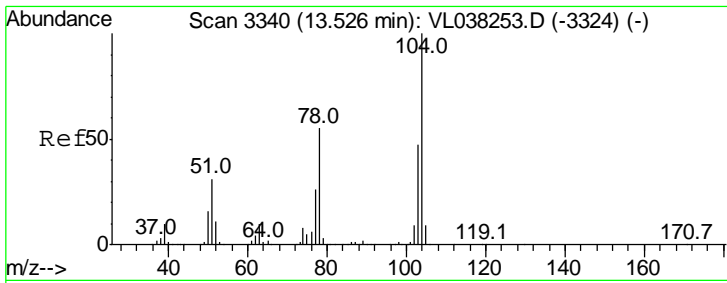
Tgt Ion	Resp	Lower	Upper
91	100		
106	79.5	34.8	52.2#



#60  
 o-Xylene  
 Concen: 7.01 ppbv  
 RT: 13.64 min Scan# 3374  
 Delta R.T. -0.06 min  
 Lab File: VL038361.D  
 Acq: 15 Feb 2022 10:28

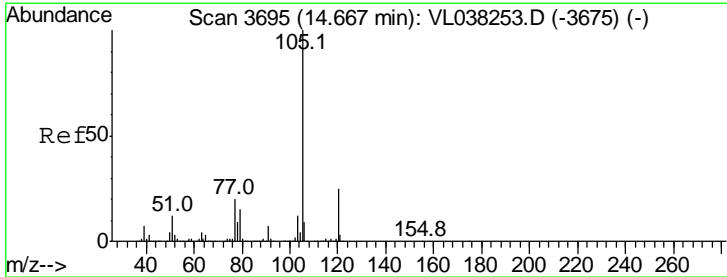
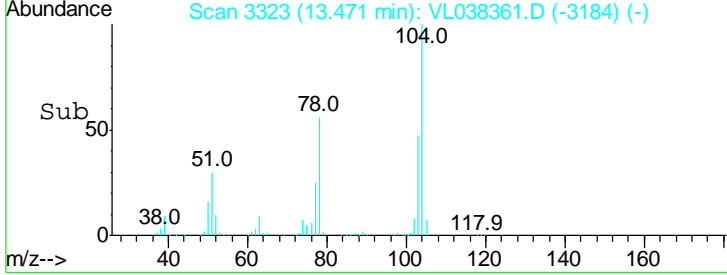
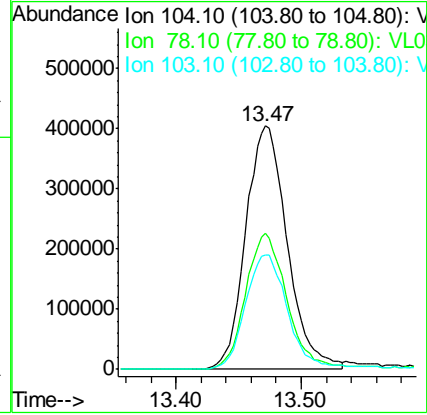
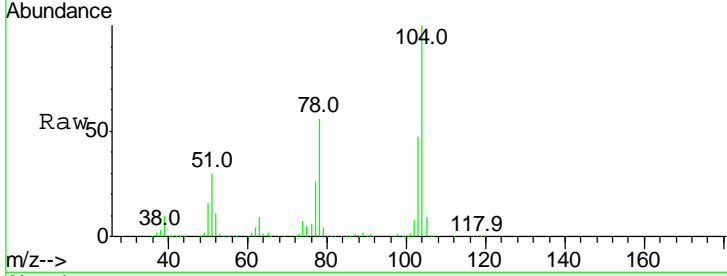
Tgt Ion	Resp	Lower	Upper
91	100		
106	44.5	22.2	66.6





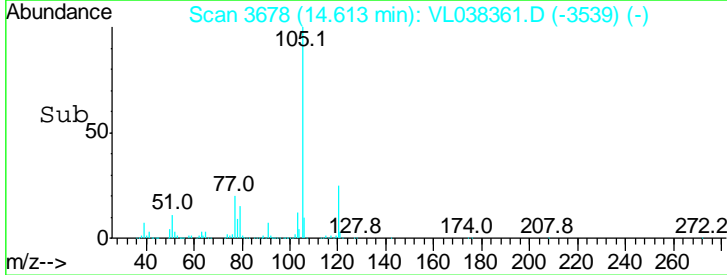
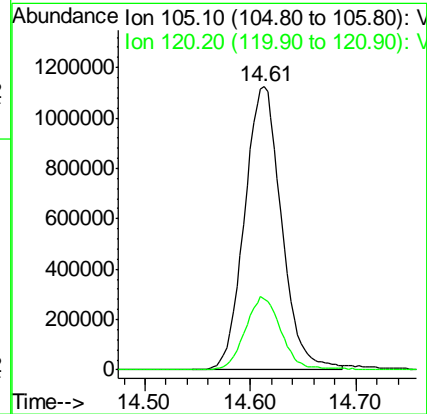
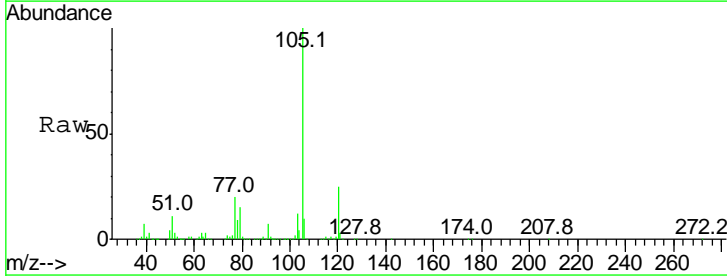
#61  
 Styrene  
 Concen: 7.07 ppbv  
 RT: 13.47  
 Delta R.T. MSVOA\_L  
 Lab File: ClientSampleId :  
 VSTDCCC010EC  
 Acq: 15 Feb 2022 10:28

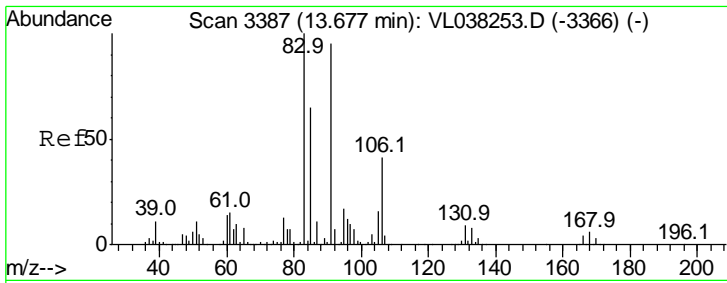
Tgt Ion	Resp	Lower	Upper
104	100		
78	56.3	44.2	66.4
103	48.8	38.2	57.4



#62  
 Isopropylbenzene  
 Concen: 7.29 ppbv  
 RT: 14.61 min Scan# 3678  
 Delta R.T. -0.05 min  
 Lab File: VL038361.D  
 Acq: 15 Feb 2022 10:28

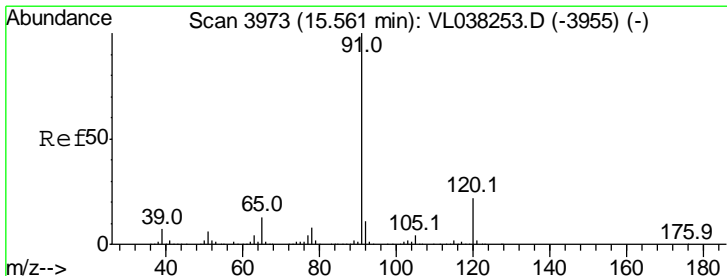
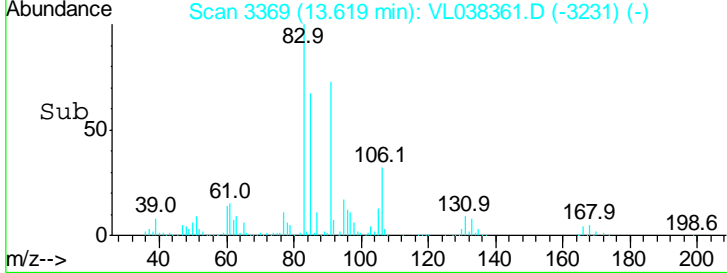
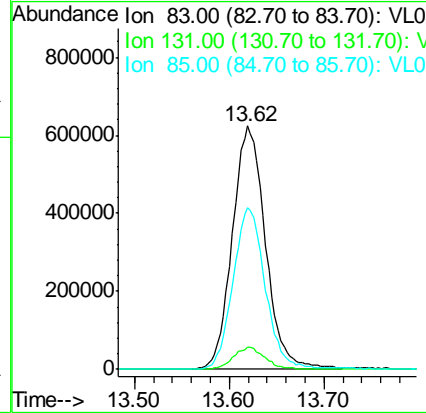
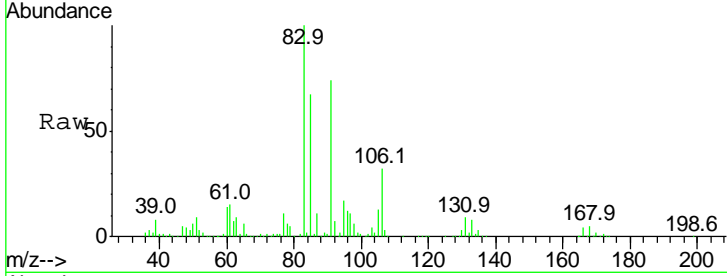
Tgt Ion	Resp	Lower	Upper
105	100		
120	25.4	20.5	30.7





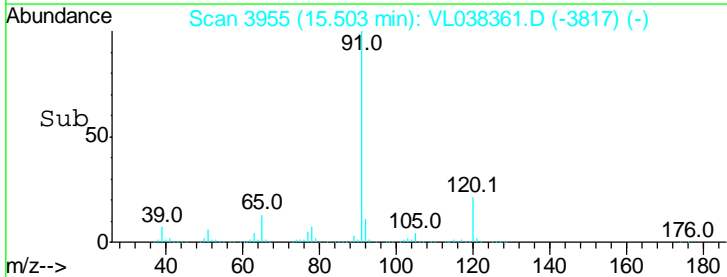
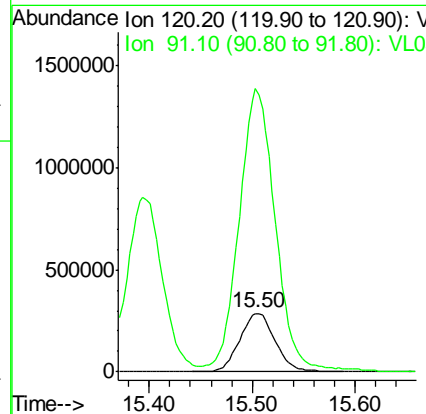
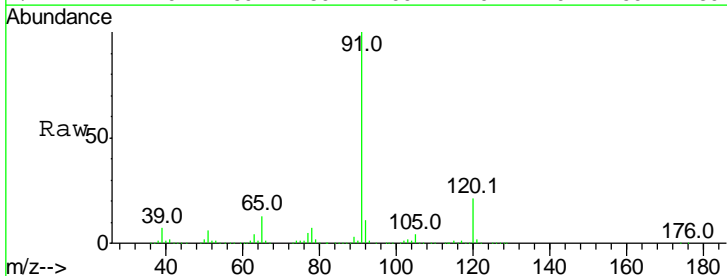
#63  
 1,1,2,2-Tetrachloroethane  
 Concen: 7.23 ppbv  
 RT: 13.62  
 Delta R.T. MSVOA\_L  
 Lab File: ClientSampleId :  
 VSTDCCC010EC  
 Acq: 15 Feb 2022 10:28

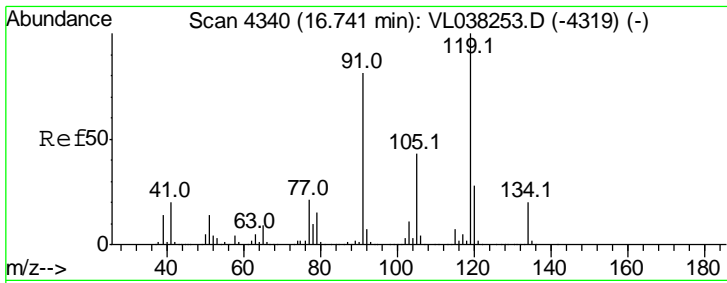
Tgt Ion	Resp	Lower	Upper
83	1510015		
83	100		
131	8.9	4.5	13.5
85	66.0	32.8	98.4



#64  
 n-propylbenzene  
 Concen: 7.55 ppbv  
 RT: 15.50 min Scan# 3955  
 Delta R.T. -0.06 min  
 Lab File: VL038361.D  
 Acq: 15 Feb 2022 10:28

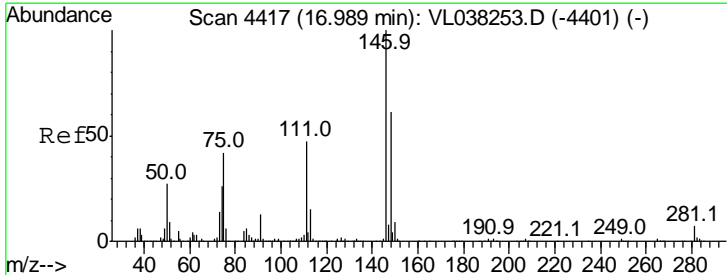
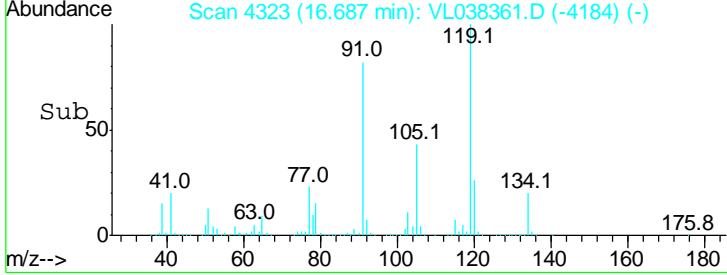
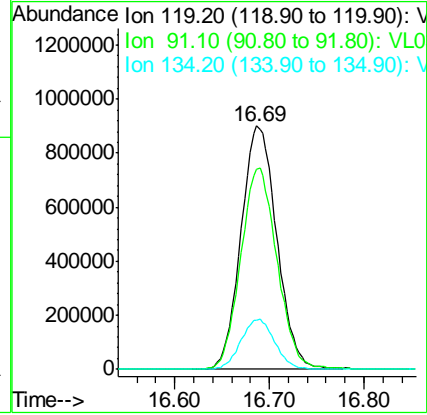
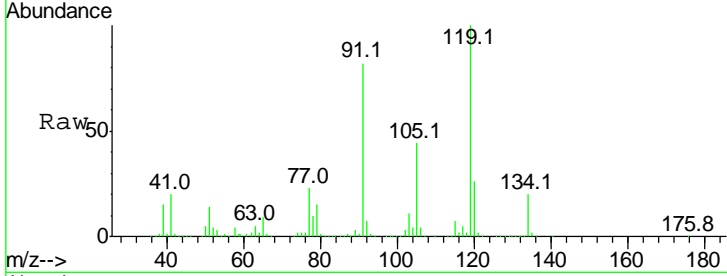
Tgt Ion	Resp	Lower	Upper
120	683755		
120	100		
91	497.5	390.8	586.2





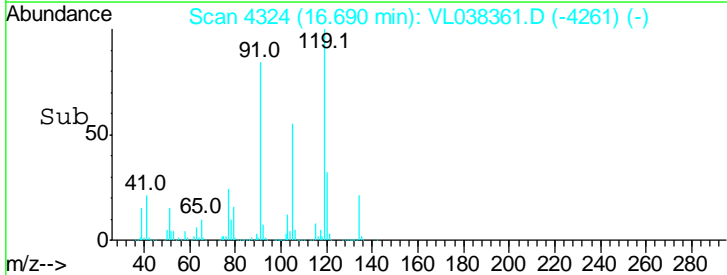
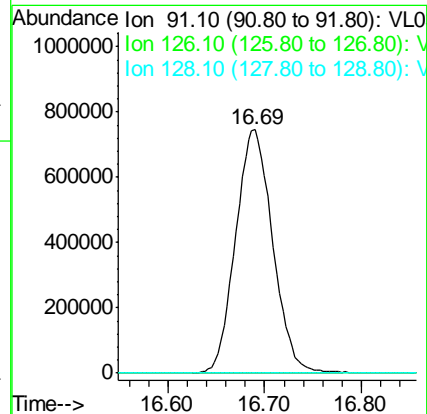
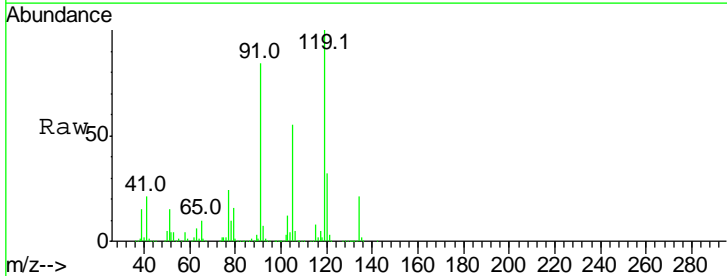
#65  
 tert-Butylbenzene  
 Concen: 7.63 ppbv  
 RT: 16.69  
 Delta R.T. MSVOA\_L  
 Lab File: ClientSampleId :  
 VSTDCCC010EC  
 Acq: 15 Feb 2022 10:28

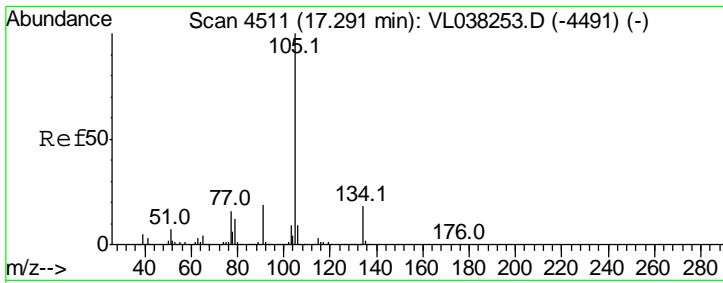
Tgt Ion	Resp	Lower	Upper
119	100		
91	84.1	66.6	100.0
134	19.7	15.8	23.6



#66  
 Benzyl Chloride  
 Concen: 140.43 ppbv  
 RT: 16.69 min Scan# 4324  
 Delta R.T. -0.30 min  
 Lab File: VL038361.D  
 Acq: 15 Feb 2022 10:28

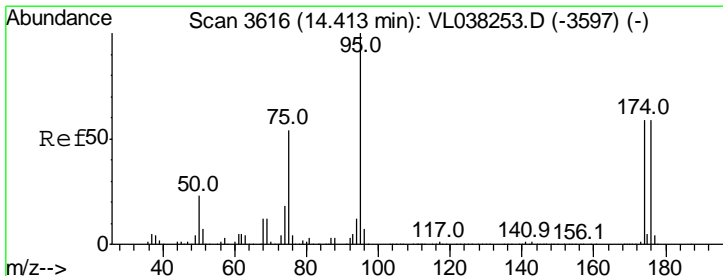
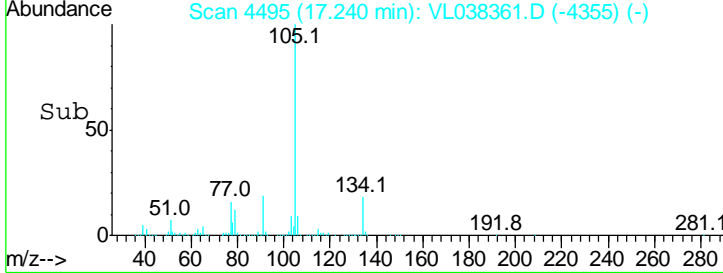
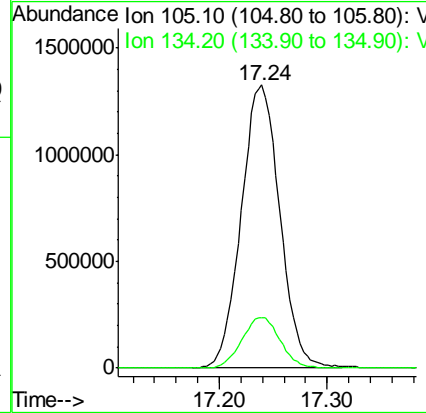
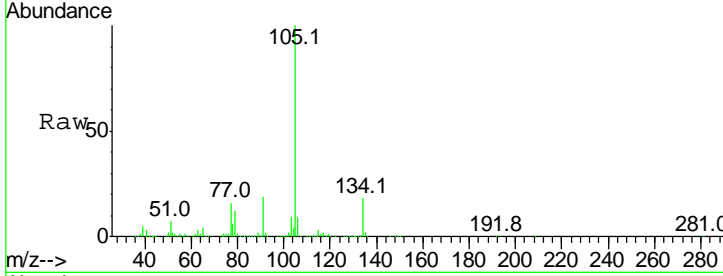
Tgt Ion	Resp	Lower	Upper
91	100		
126	0.0	12.6	18.8#
128	0.3	4.3	6.5#





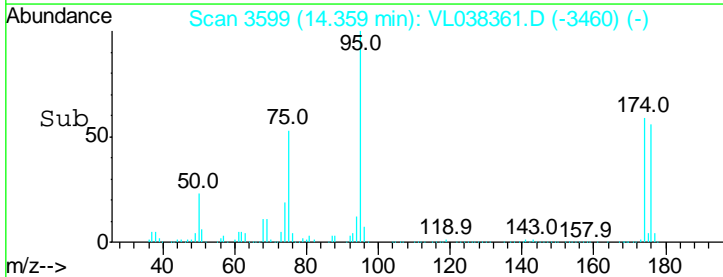
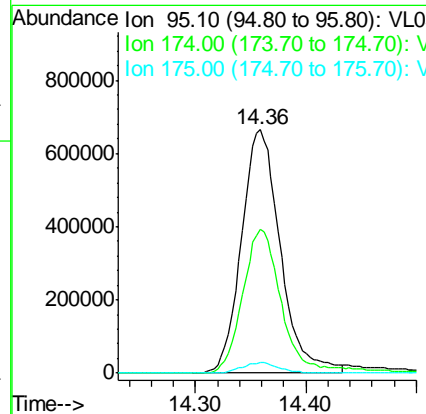
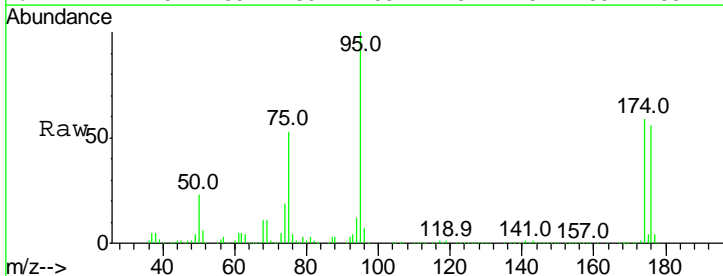
#67  
 sec-Butylbenzene  
 Concen: 7.64 ppbv  
 RT: 17.24  
 Delta R.T. MSVOA\_L  
 Lab File: ClientSampleId : VSTDCCC010EC  
 Acq: 15 Feb 2022 10:28

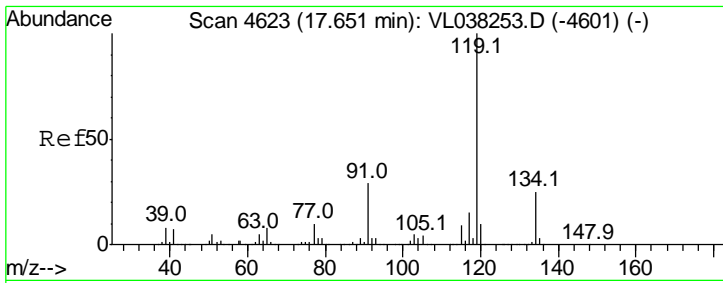
Tgt Ion	Resp	Lower	Upper
105	100		
134	17.9	14.3	21.5



#68  
 1-Bromo-4-Fluorobenzene  
 Concen: 8.85 ppbv  
 RT: 14.36 min Scan# 3599  
 Delta R.T. -0.05 min  
 Lab File: VL038361.D  
 Acq: 15 Feb 2022 10:28

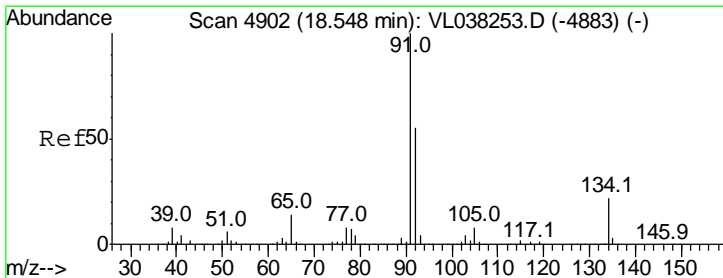
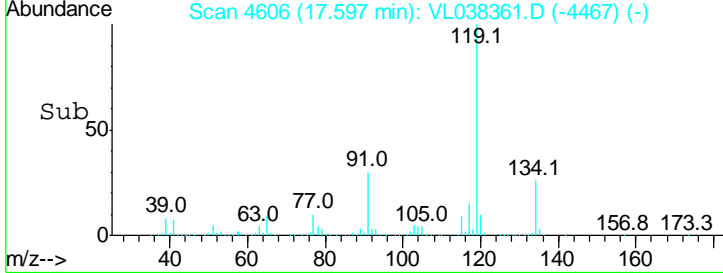
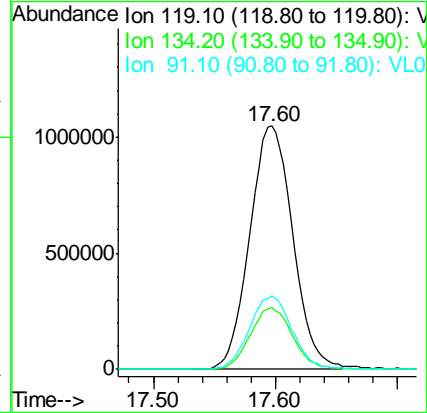
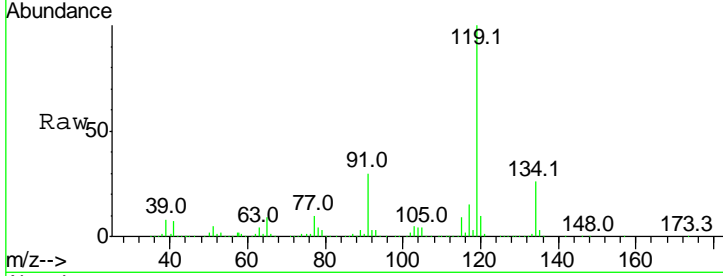
Tgt Ion	Resp	Lower	Upper
95	100		
174	60.4	48.3	72.5
175	4.5	3.5	5.3





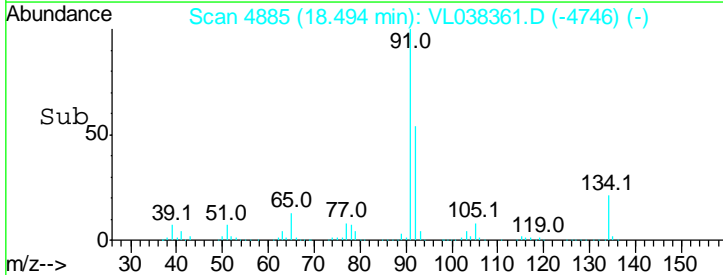
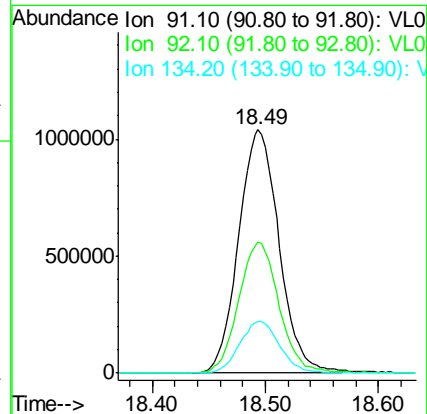
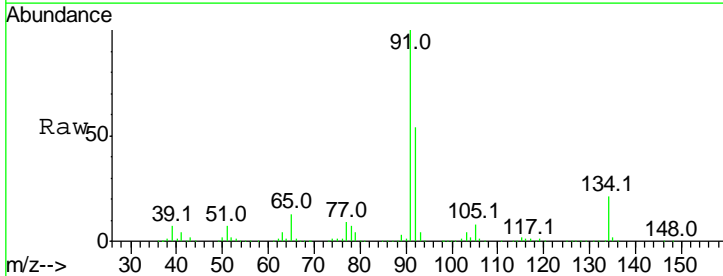
#69  
 p-Isopropyltoluene  
 Concen: 7.74 ppbv  
 RT: 17.60  
 Delta R.T. MSVOA\_L  
 Lab File: ClientSampleId :  
 VSTDCCC010EC  
 Acq: 15 Feb 2022 10:28

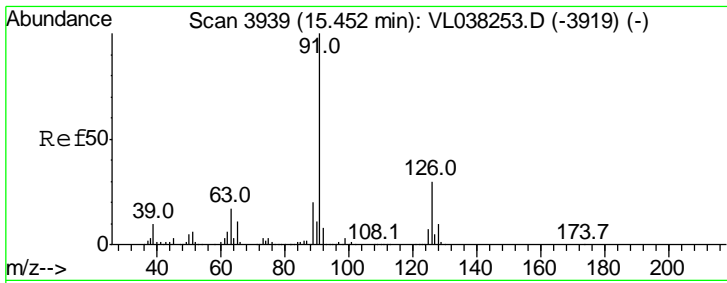
Tgt Ion	Resp	Lower	Upper
119	100		
134	25.1	20.2	30.2
91	30.0	23.2	34.8



#70  
 n-Butylbenzene  
 Concen: 7.98 ppbv  
 RT: 18.49 min Scan# 4885  
 Delta R.T. -0.05 min  
 Lab File: VL038361.D  
 Acq: 15 Feb 2022 10:28

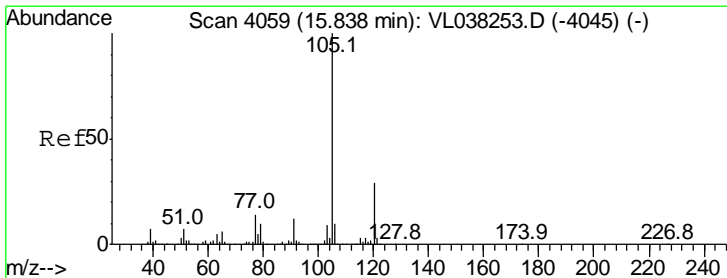
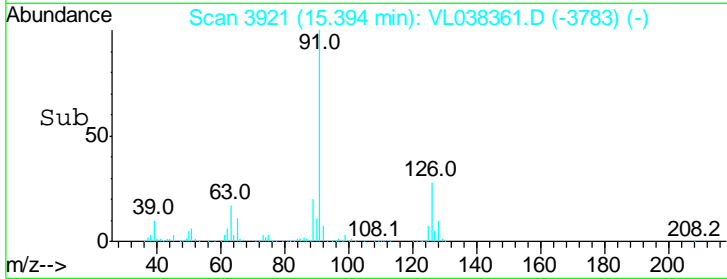
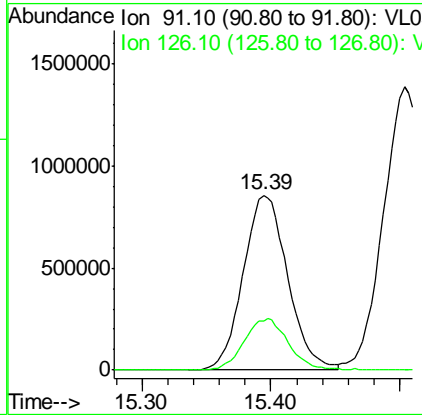
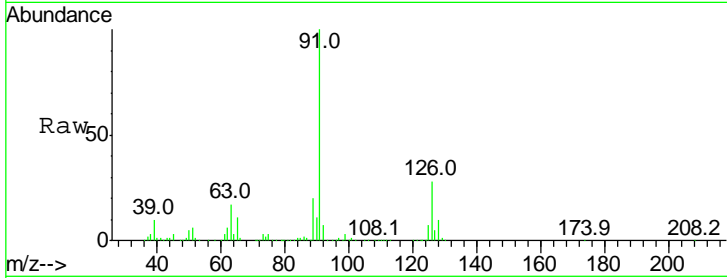
Tgt Ion	Resp	Lower	Upper
91	100		
92	54.1	43.4	65.0
134	21.4	17.3	25.9





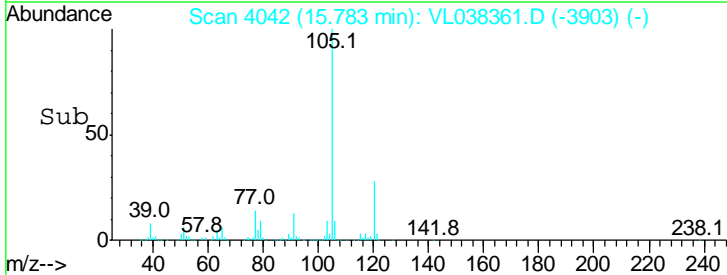
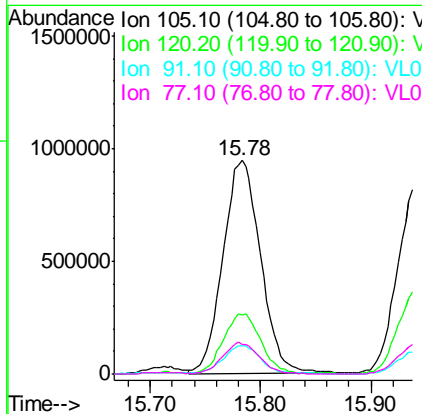
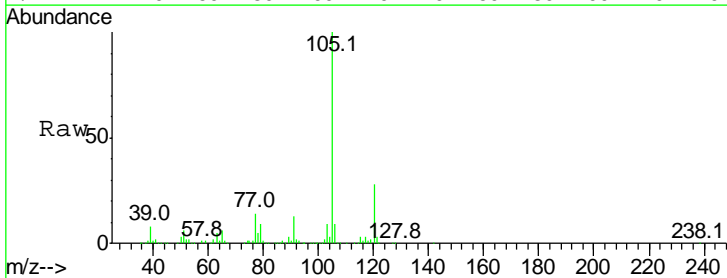
#71  
 2-Chlorotoluene  
 Concen: 7.35 ppbv  
 RT: 15.39  
 Delta R.T. MSVOA\_L  
 Lab File: ClientSampleId : VSTDCCC010EC  
 Acq: 15 Feb 2022 10:28

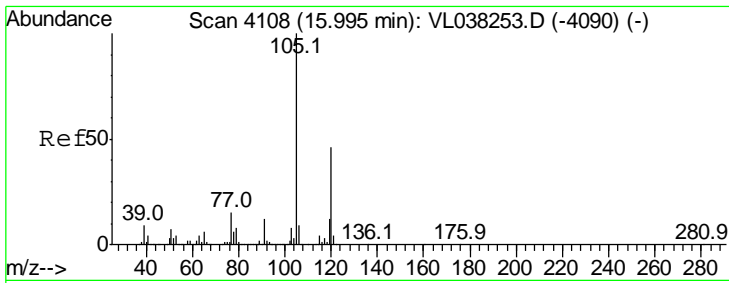
Tgt Ion	Resp	Lower	Upper
91	100		
126	30.1	12.1	48.5



#72  
 4-Ethyltoluene  
 Concen: 7.51 ppbv  
 RT: 15.78 min Scan# 4042  
 Delta R.T. -0.05 min  
 Lab File: VL038361.D  
 Acq: 15 Feb 2022 10:28

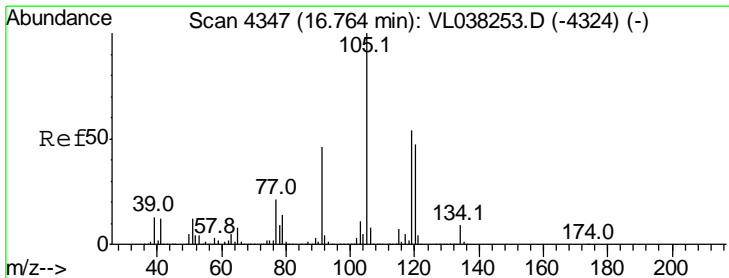
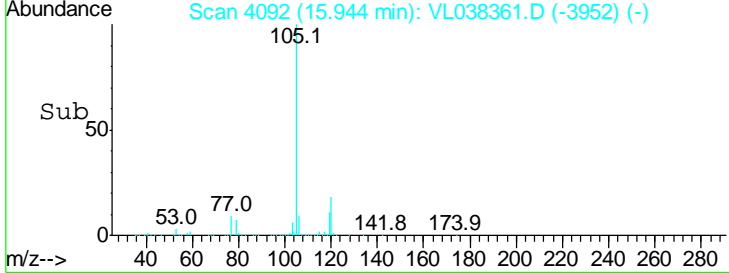
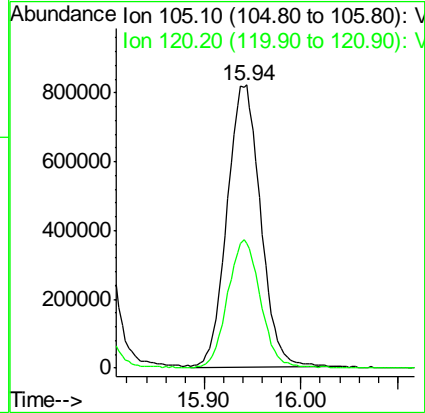
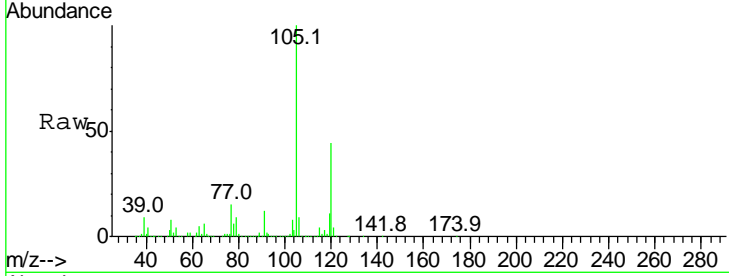
Tgt Ion	Resp	Lower	Upper
105	100		
120	29.1	23.8	35.8
91	13.2	10.2	15.4
77	14.7	11.7	17.5





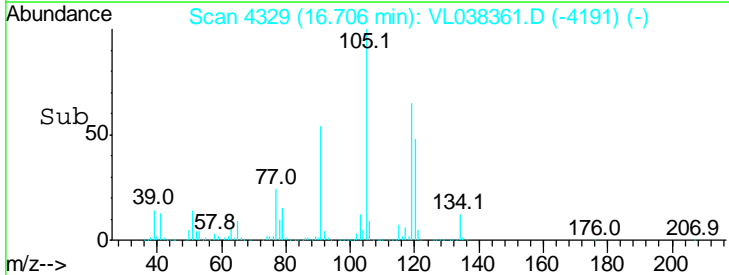
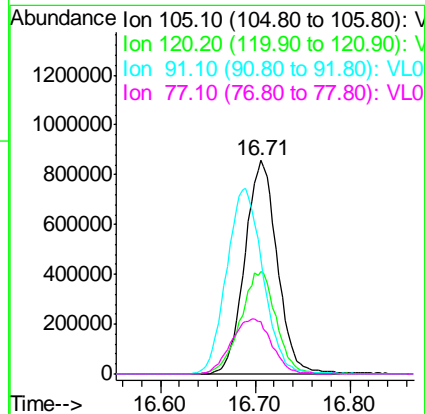
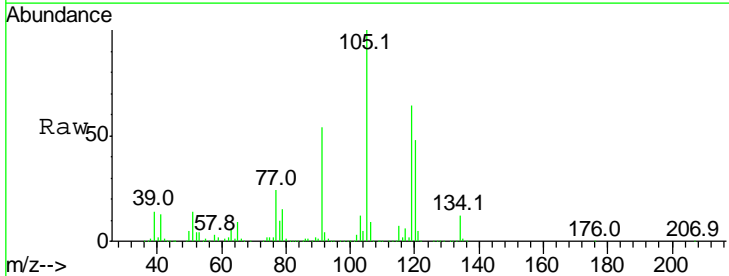
#73  
 1,3,5-Trimethylbenzene  
 Concen: 7.44 ppbv  
 RT: 15.94  
 Delta R.T. MSVOA\_L  
 Lab File: ClientSampleId : VSTDCCC010EC  
 Acq: 15 Feb 2022 10:28

Tgt Ion	Resp	Lower	Upper
105	100		
120	44.1	36.6	55.0

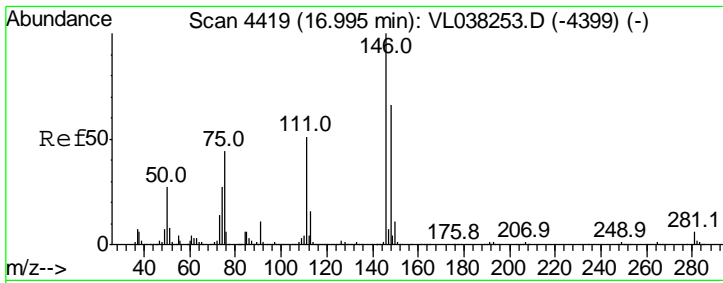


#74  
 1,2,4-Trimethylbenzene  
 Concen: 7.27 ppbv  
 RT: 16.71 min Scan# 4329  
 Delta R.T. -0.06 min  
 Lab File: VL038361.D  
 Acq: 15 Feb 2022 10:28

Tgt Ion	Resp	Lower	Upper
105	100		
120	47.7	37.2	55.8
91	53.6	36.6	55.0
77	24.3	16.9	25.3

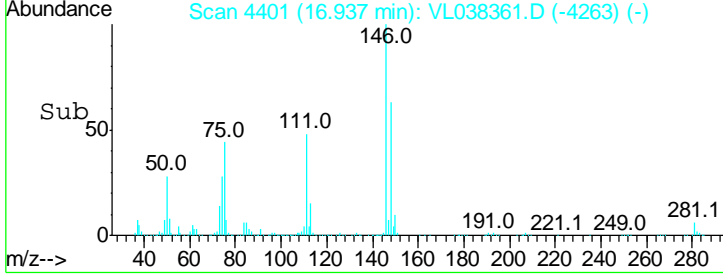
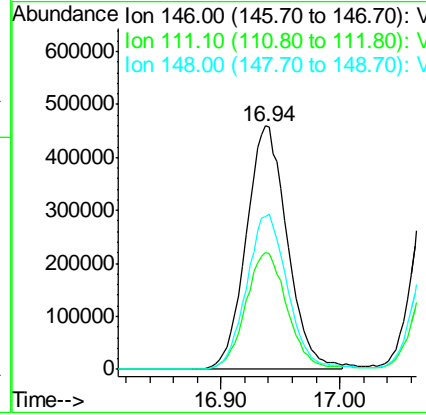
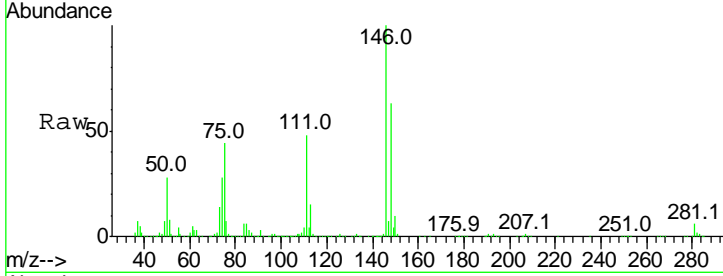






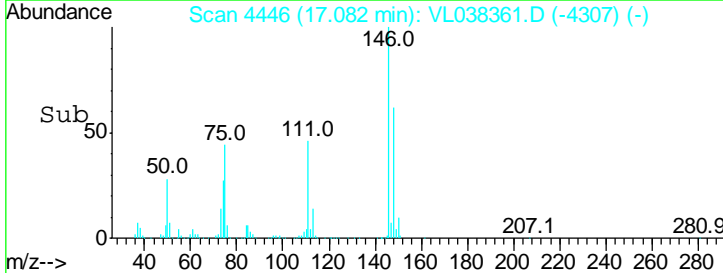
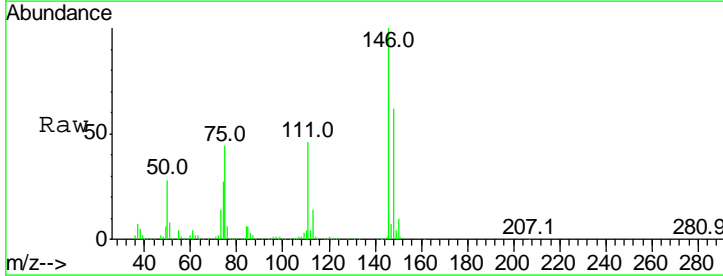
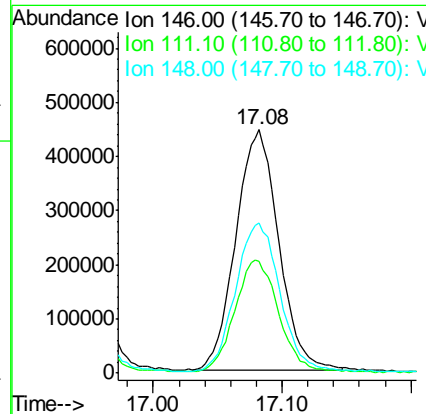
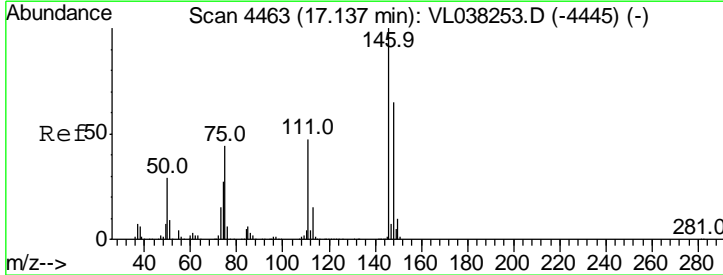
#75  
 1,3-Dichlorobenzene  
 Concen: 7.31 ppbv  
 RT: 16.94  
 Delta R.T. MSVOA\_1  
 Lab File: ClientSampleId : VSTDCCC010EC  
 Acq: 15 Feb 2022 10:28

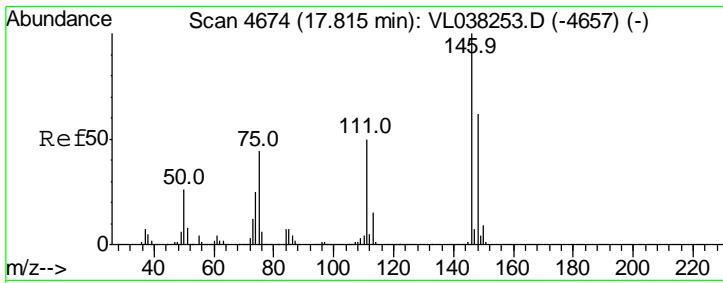
Tgt Ion	Resp	Lower	Upper
146	1096722		
146	100		
111	48.7	24.1	72.4
148	63.6	32.1	96.5



#76  
 1,4-Dichlorobenzene  
 Concen: 7.05 ppbv  
 RT: 17.08 min Scan# 4446  
 Delta R.T. -0.05 min  
 Lab File: VL038361.D  
 Acq: 15 Feb 2022 10:28

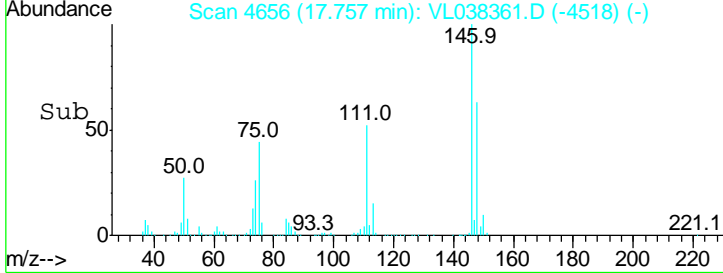
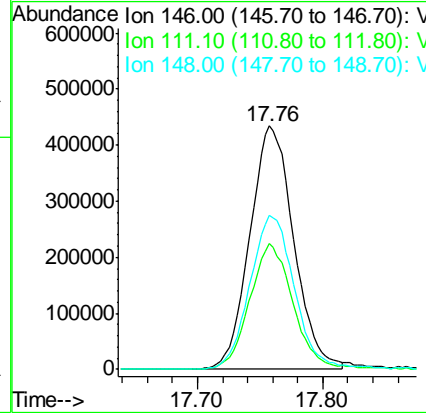
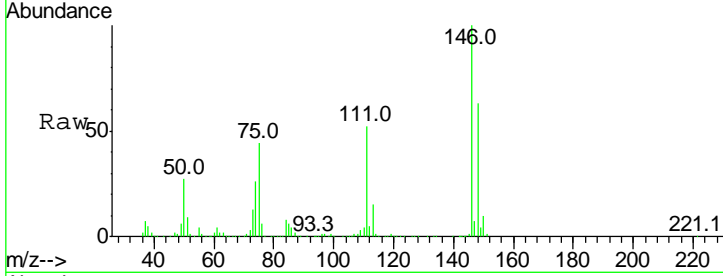
Tgt Ion	Resp	Lower	Upper
146	1024226		
146	100		
111	49.4	23.2	69.6
148	66.7	32.4	97.0





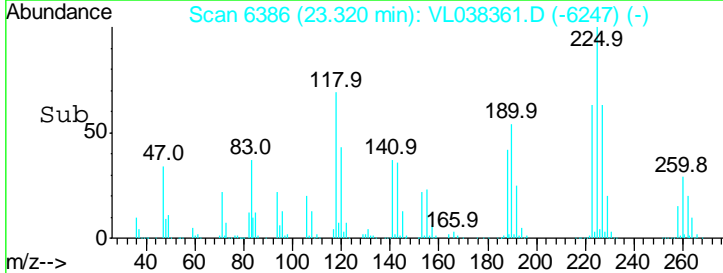
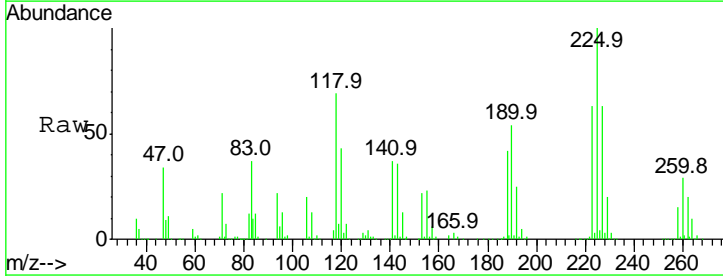
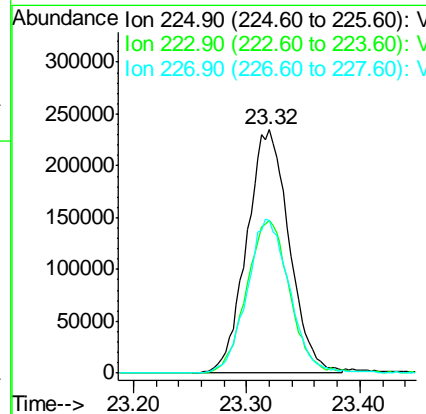
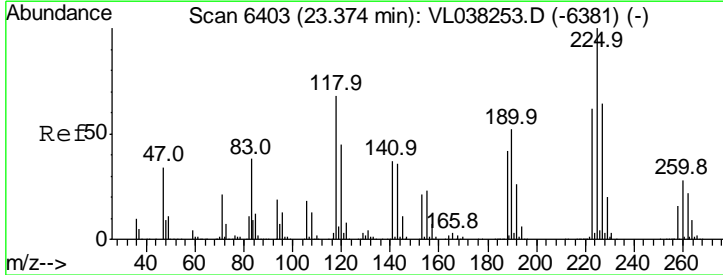
#77  
 1,2-Dichlorobenzene  
 Concen: 7.54 ppbv  
 RT: 17.76  
 Delta R.T. MSVOA\_L  
 Lab File: ClientSampleId :  
 VSTDCCC010EC  
 Acq: 15 Feb 2022 10:28

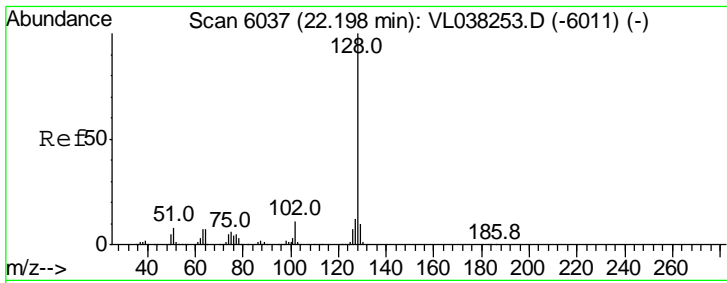
Tgt Ion	Resp	Lower	Upper
146	1051680		
146	100		
111	51.2	25.2	75.6
148	64.9	32.6	97.8



#78  
 Hexachloro-1,3-Butadiene  
 Concen: 6.31 ppbv  
 RT: 23.32 min Scan# 6386  
 Delta R.T. -0.05 min  
 Lab File: VL038361.D  
 Acq: 15 Feb 2022 10:28

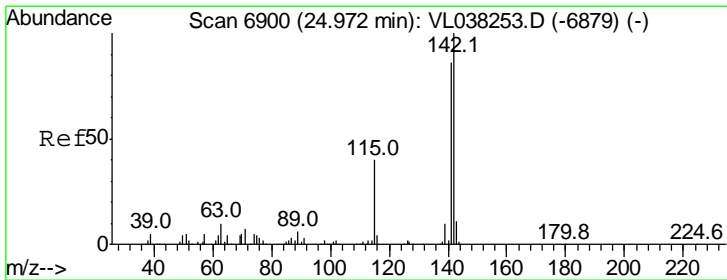
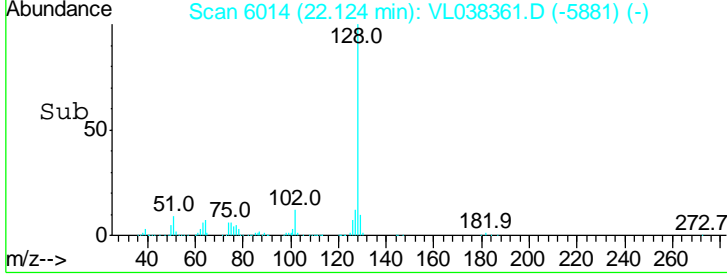
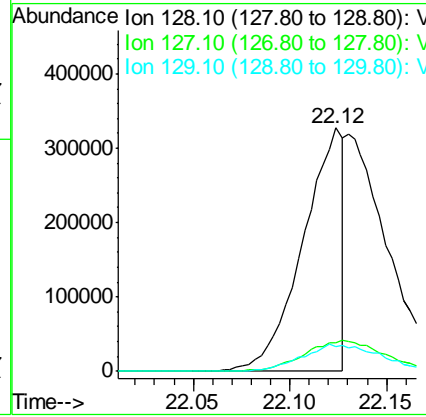
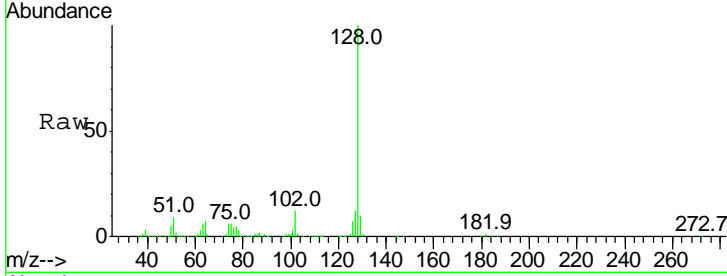
Tgt Ion	Resp	Lower	Upper
225	611557		
225	100		
223	64.0	51.7	77.5
227	63.9	51.4	77.0



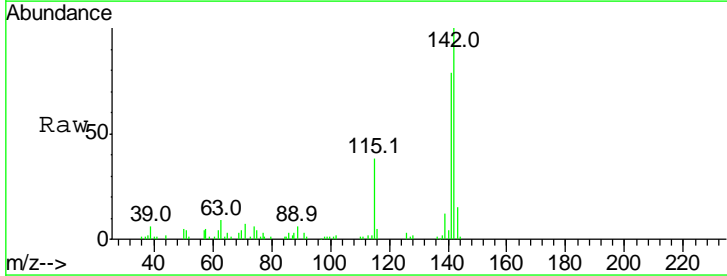


#79  
 Naphthalene  
 Concen: 3.61 ppbv  
 RT: 22.12  
 Delta R.T. MSVOA\_L  
 Lab File: ClientSampled : VSTDCCC010EC  
 Acq: 15 Feb 2022 10:28

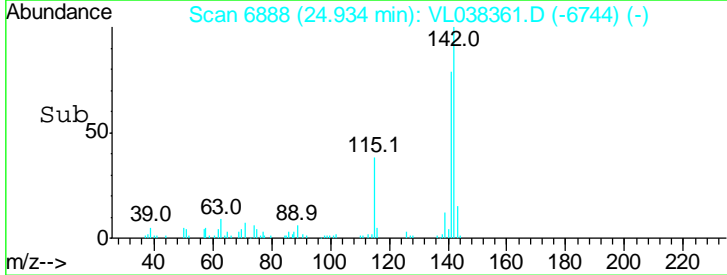
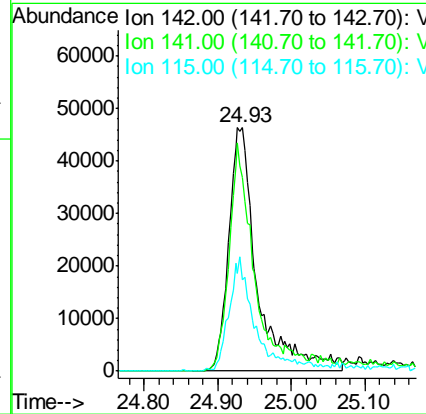
Tgt Ion	Resp	Lower	Upper
128	100		
127	11.8	9.7	14.5
129	10.4	8.1	12.1

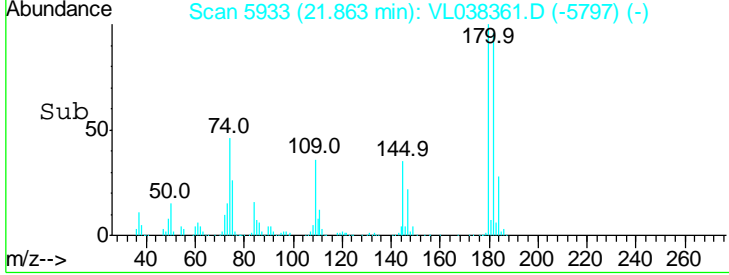
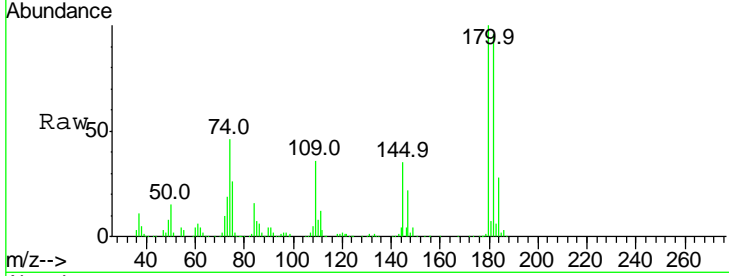
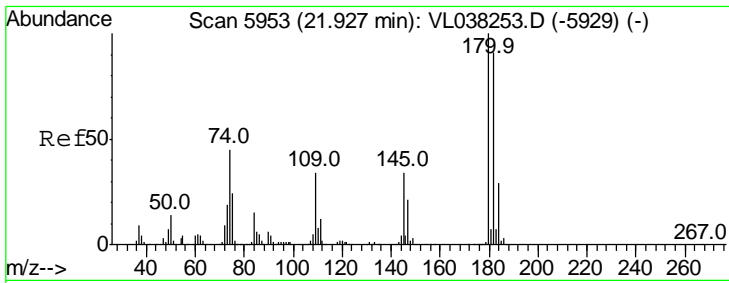


#80  
 Naphthalene, 2-methyl-  
 Concen: 8.81 ppbv  
 RT: 24.93 min Scan# 6888  
 Delta R.T. -0.04 min  
 Lab File: VL038361.D  
 Acq: 15 Feb 2022 10:28



Tgt Ion	Resp	Lower	Upper
142	100		
141	81.5	70.2	105.4
115	43.7	31.8	47.6





#81  
 1,2,4-Trichlorobenzene  
 Concen: 7.20 ppbv  
 RT: 21.86  
 Delta R.T: MSVOA\_L  
 Lab File: ClientSampleId :  
 VSTDCCC010EC  
 Acq: 15 Feb 2022 10:28

Tgt Ion:180 Resp: 553558

Ion	Ratio	Lower	Upper
180	100		
182	98.4	77.7	116.5
184	30.2	24.4	36.6

