

Data File : VL034624.D  
 Acq On : 18 Feb 2020 15:01  
 Operator : SY/AP  
 Sample : L1532-02  
 Misc : 400ml/MSVOA\_L  
 ALS Vial : 1 Sample Multiplier: 1

Instrument :  
 MSVOA\_L  
 ClientSampleId :  
 L-IA

Quant Time: Feb 19 06:03:34 2020  
 Quant Method : Z:\VOASRV\HPCHEM1\MSVOA\_L\METHODS\VL013020AIR.M  
 Quant Title : AIR ANALYSIS BY METHOD TO-15 Instrument: MSVOA\_LThu Jan 30 17:16:44 2020  
 QLast Update : Thu Jan 30 17:16:44 2020  
 Response via : Initial Calibration

Internal Standards	R.T.	QIon	Response	Conc	Units	Dev(Min)
1) Bromochloromethane	5.66	49	871218	10.00	ppbv	0.00
33) 1,4-Difluorobenzene	7.18	114	1801792	10.00	ppbv	0.00
55) Chlorobenzene-d5	12.11	117	1752829	10.00	ppbv	0.00

System Monitoring Compounds

68) 1-Bromo-4-Fluorobenzene	14.45	95	1506468	10.17	ppbv	0.00
Spiked Amount	10.000	Range	65 - 135	Recovery	=	101.70%

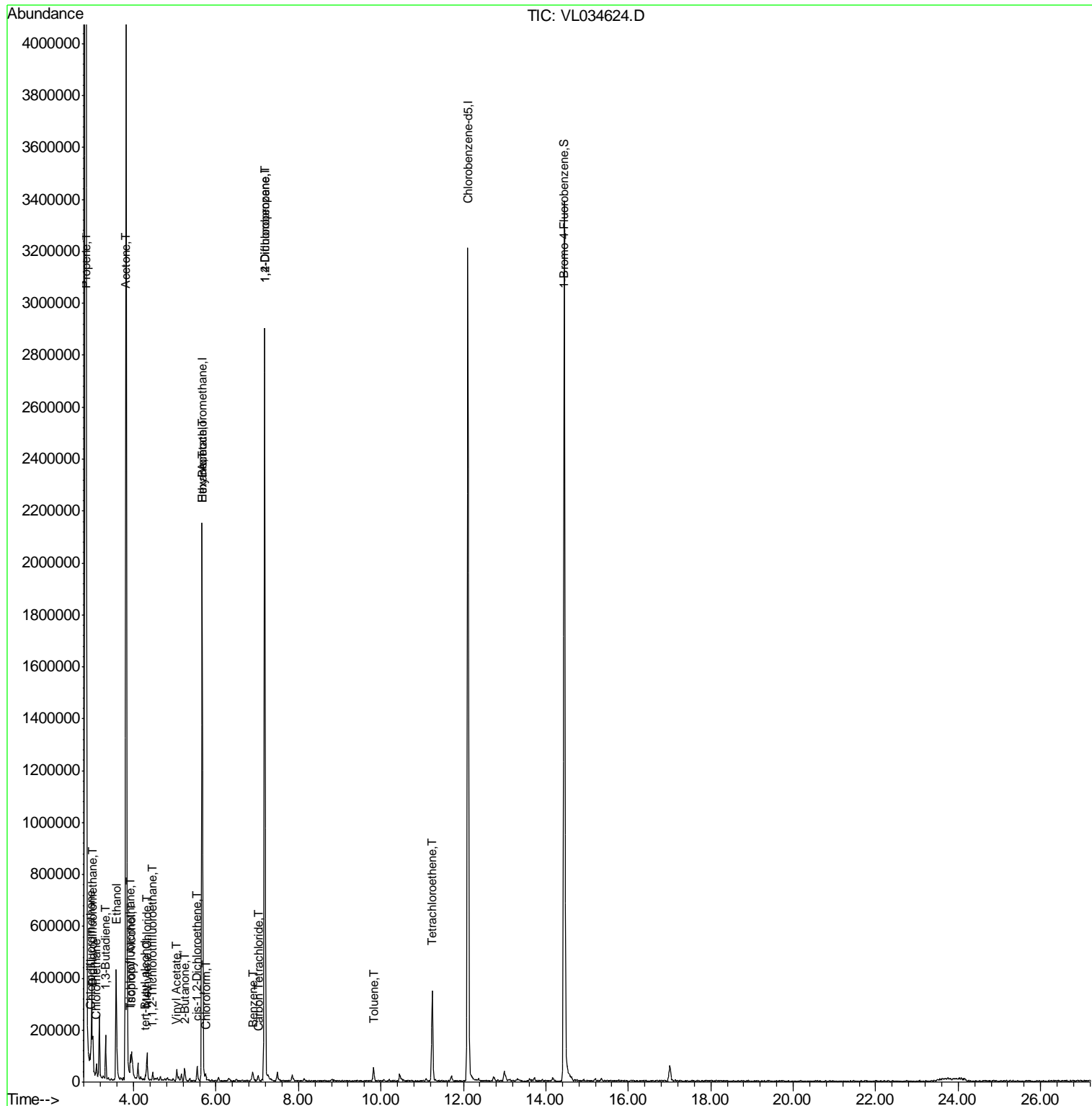
Target Compounds	R.T.	QIon	Response	Conc	Units	Qvalue
2) Dichlorodifluoromethane	3.01	85	102137	0.532	ppbv	94
3) Chlorodifluoromethane	2.95	51	48470	0.460	ppbv #	90
4) Chloromethane	3.10	50	29434	0.457	ppbv	96
9) Propene	2.84	41	1879	0.046	ppbv	91
11) Trichlorofluoromethane	3.92	101	42833	0.246	ppbv	91
12) 1,1,2-Trichlorotrifluoroet	4.47	101	3805	0.033	ppbv #	7
13) Ethanol	3.57	45	409359	37.286	ppbv	98
15) Acetone	3.82	43	6178920	48.257	ppbv #	84
16) 1,3-Butadiene	3.32	39	23450	0.461	ppbv #	15
17) tert-Butyl alcohol	4.29	59	3082	0.033	ppbv #	71
19) Isopropyl Alcohol	3.95	45	46481	0.622	ppbv #	94
20) Methylene Chloride	4.32	84	30919	0.634	ppbv	93
23) Vinyl Acetate	5.05	43	43233	0.296	ppbv #	96
25) Ethyl Acetate	5.67	43	19464	0.094	ppbv #	88
26) Hexane	5.67	57	19618	0.226	ppbv #	50
29) Chloroform	5.74	83	11589	0.075	ppbv #	83
31) cis-1,2-Dichloroethene	5.55	61	28162	0.312	ppbv	96
34) 2-Butanone	5.25	43	50665	0.387	ppbv	99
35) Carbon Tetrachloride	7.02	117	6231	0.036	ppbv #	63
36) Benzene	6.89	78	11938	0.075	ppbv	95
39) 1,2-Dichloropropane	7.18	63	527510	7.941	ppbv #	19
52) Tetrachloroethene	11.25	164	43996	0.684	ppbv #	78
53) Toluene	9.83	91	16644	0.095	ppbv #	14

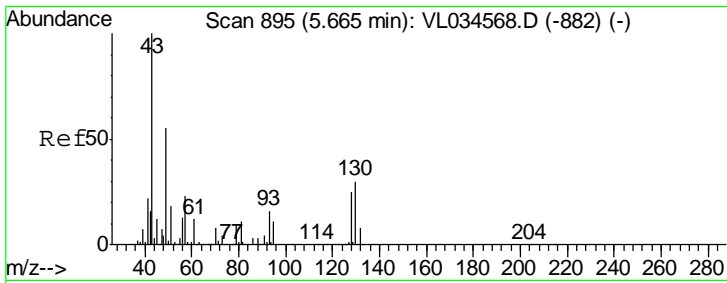
(#) = qualifier out of range (m) = manual integration (+) = signals summed

Data File : VL034624.D  
Acq On : 18 Feb 2020 15:01  
Operator : SY/AP  
Sample : L1532-02  
Misc : 400ml/MSVOA\_L  
ALS Vial : 1 Sample Multiplier: 1

Instrument :  
MSVOA\_L  
ClientSampled :  
L-IA

Quant Time: Feb 19 06:03:34 2020  
Quant Method : Z:\VOASRV\HPCHEM1\MSVOA\_L\METHODS\VL013020AIR.M  
Quant Title : AIR ANALYSIS BY METHOD TO-15 Instrument: MSVOA\_L Thu Jan 30 17:16:44 2020  
QLast Update : Thu Jan 30 17:16:44 2020  
Response via : Initial Calibration

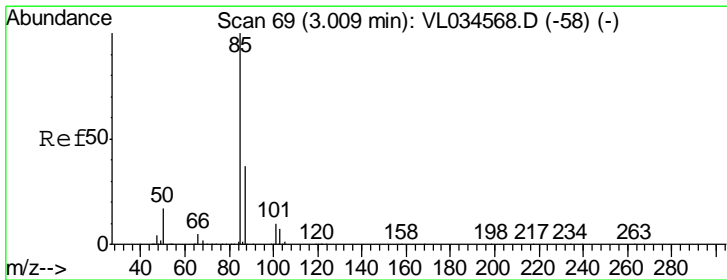
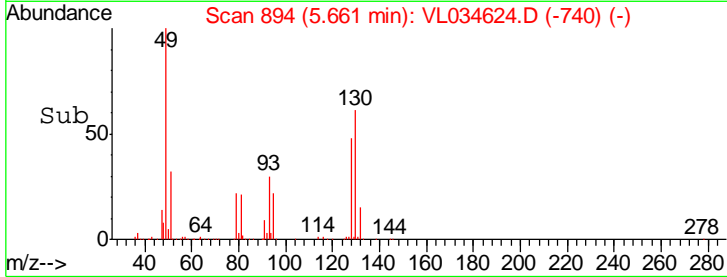
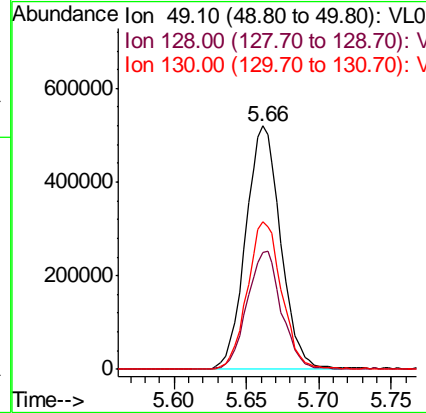
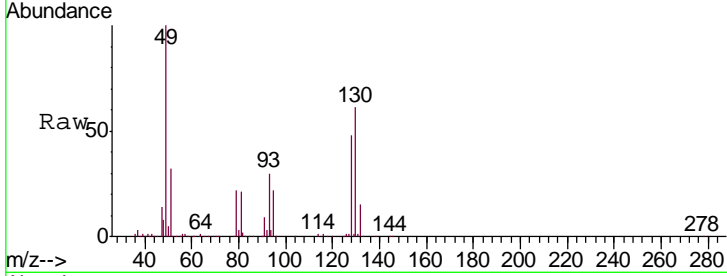




#1  
 Bromochloromethane  
 Concen: 10.000 ppbv  
 RT: 5.66 min Scan# 894  
 Delta R.T. -0.00 min  
 Lab File: VL034624.D  
 Acq: 18 Feb 2020 15:01

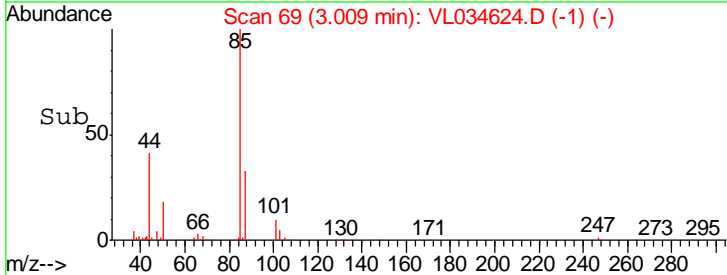
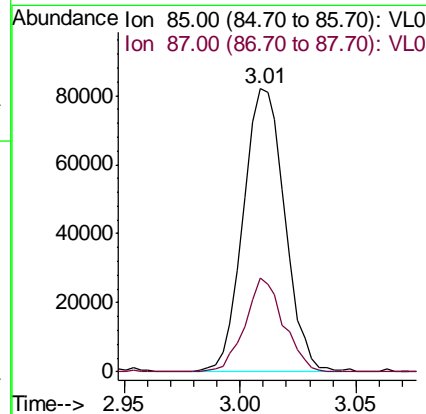
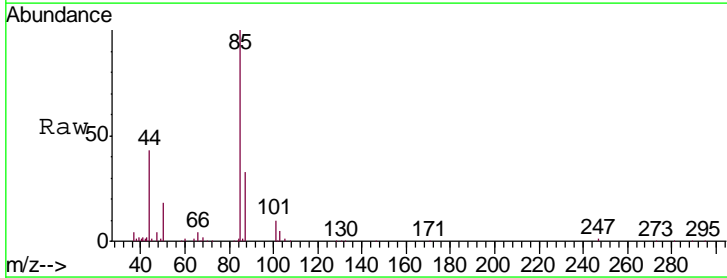
Instrument :  
 MSVOA\_L  
 ClientSampled :  
 L-IA

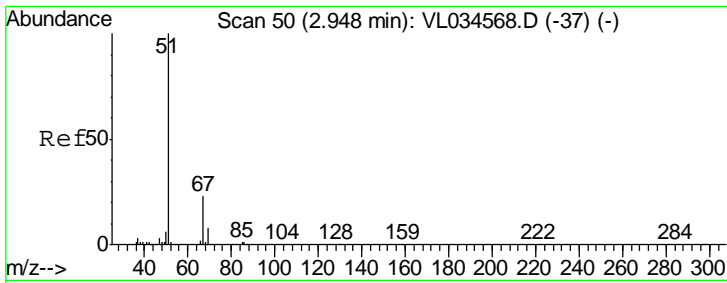
Tgt Ion	Resp	Lower	Upper
49	100		
128	48.1	22.7	68.1
130	60.2	28.6	85.8



#2  
 Dichlorodifluoromethane  
 Concen: 0.532 ppbv  
 RT: 3.01 min Scan# 69  
 Delta R.T. -0.00 min  
 Lab File: VL034624.D  
 Acq: 18 Feb 2020 15:01

Tgt Ion	Resp	Lower	Upper
85	100		
87	33.2	29.5	44.3

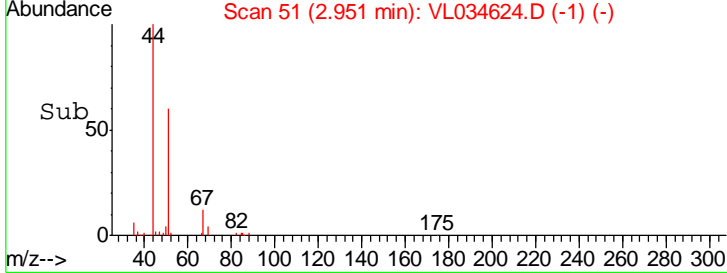
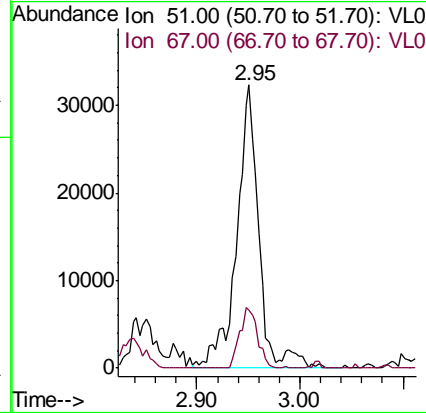
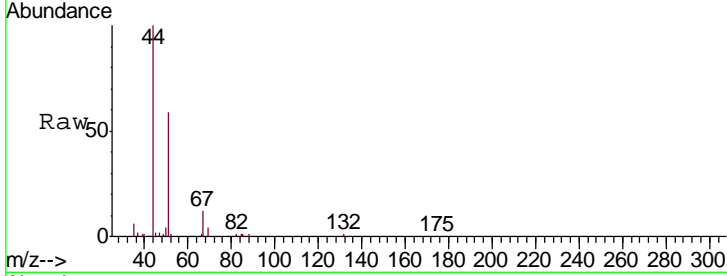




#3  
 Chlorodifluoromethane  
 Concen: 0.460 ppbv  
 RT: 2.95 min Scan# 51  
 Delta R.T. 0.00 min  
 Lab File: VL034624.D  
 Acq: 18 Feb 2020 15:01

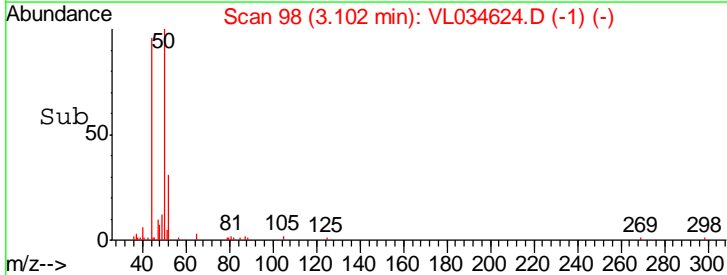
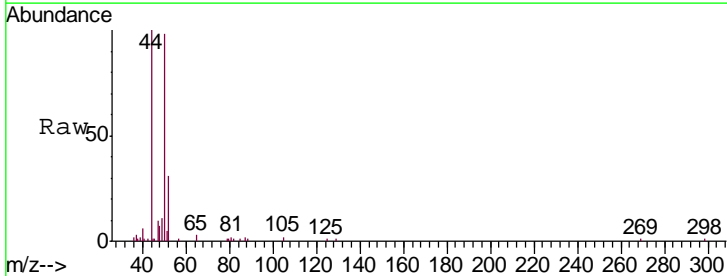
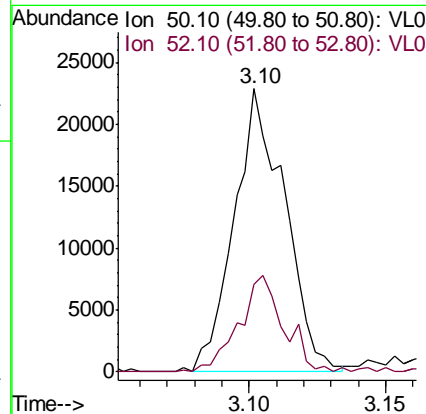
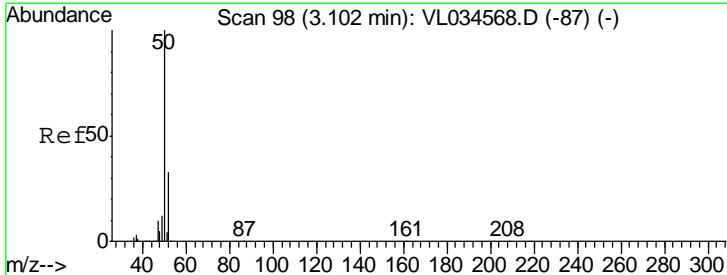
Instrument : MSVOA\_L  
 ClientSampled : L-IA

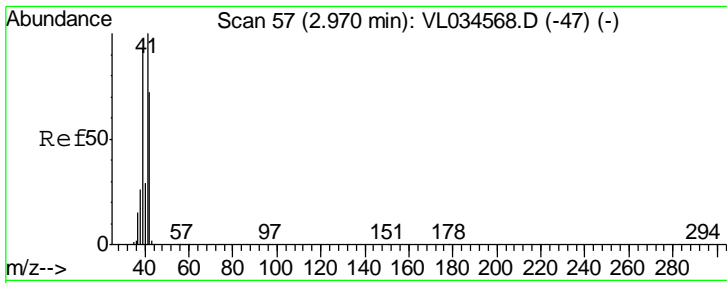
Tgt Ion: 51 Resp: 48470  
 Ion Ratio Lower Upper  
 51 100  
 67 17.3 17.8 26.8#



#4  
 Chloromethane  
 Concen: 0.457 ppbv  
 RT: 3.10 min Scan# 98  
 Delta R.T. -0.00 min  
 Lab File: VL034624.D  
 Acq: 18 Feb 2020 15:01

Tgt Ion: 50 Resp: 29434  
 Ion Ratio Lower Upper  
 50 100  
 52 31.0 26.6 39.8

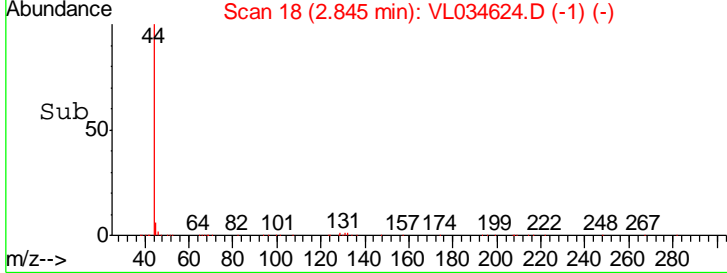
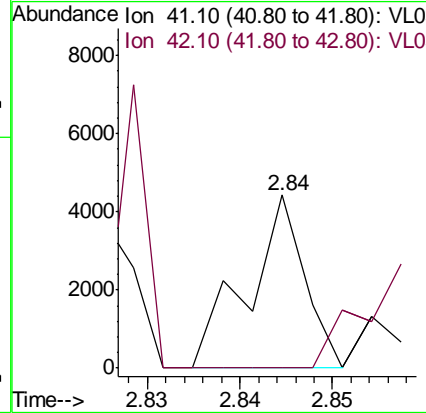
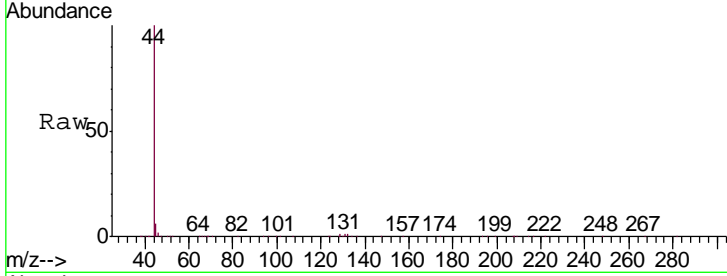




#9  
 Propene  
 Concen: 0.046 ppbv  
 RT: 2.84 min Scan# 18  
 Delta R.T. -0.13 min  
 Lab File: VL034624.D  
 Acq: 18 Feb 2020 15:01

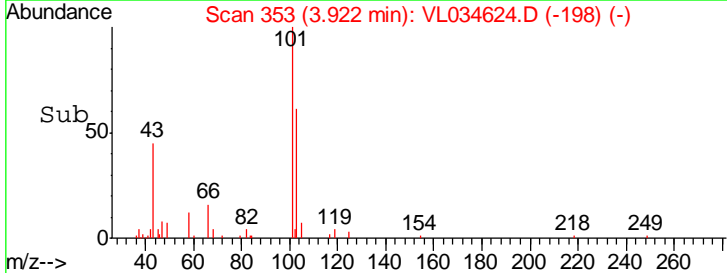
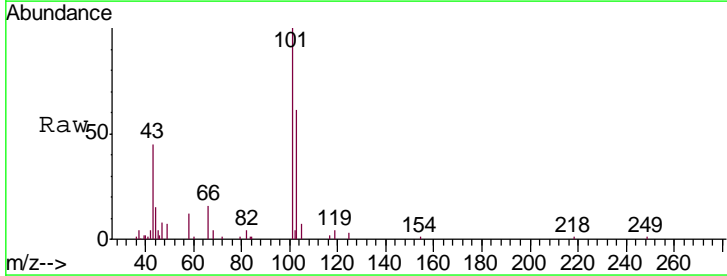
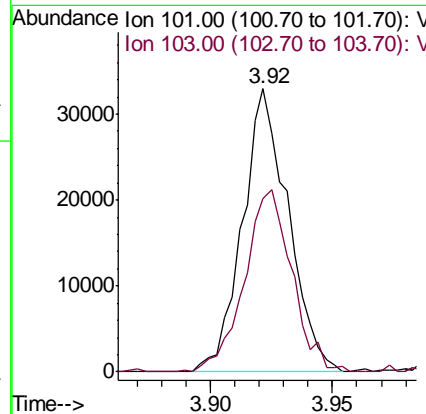
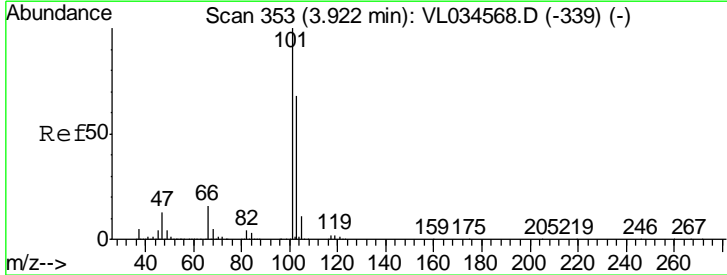
Instrument :  
 MSVOA\_L  
 ClientSampled :  
 L-IA

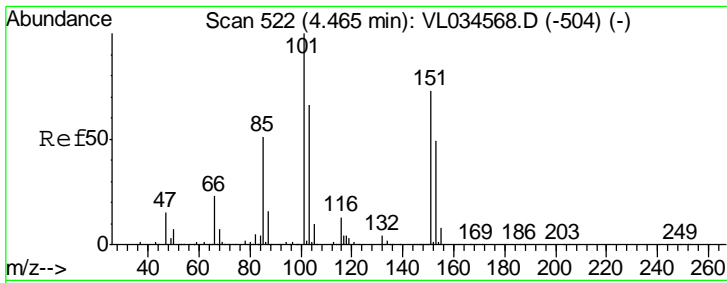
Tgt Ion: 41 Resp: 1879  
 Ion Ratio Lower Upper  
 41 100  
 42 78.9 57.0 85.4



#11  
 Trichlorofluoromethane  
 Concen: 0.246 ppbv  
 RT: 3.92 min Scan# 353  
 Delta R.T. -0.00 min  
 Lab File: VL034624.D  
 Acq: 18 Feb 2020 15:01

Tgt Ion: 101 Resp: 42833  
 Ion Ratio Lower Upper  
 101 100  
 103 61.1 54.4 81.6

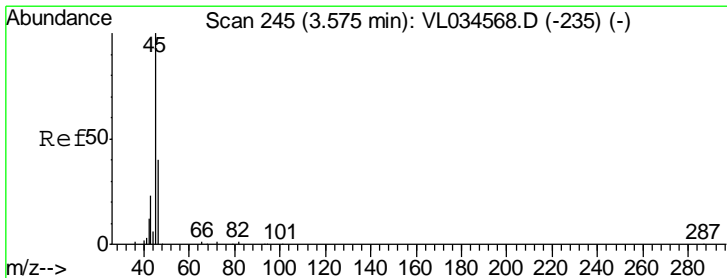
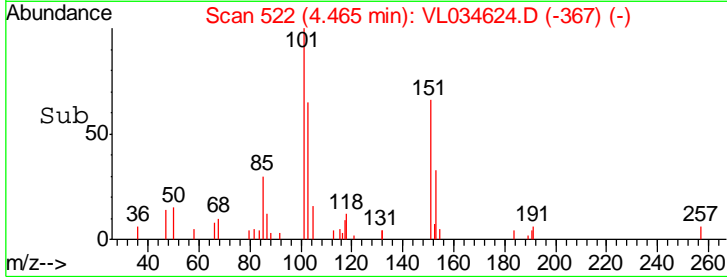
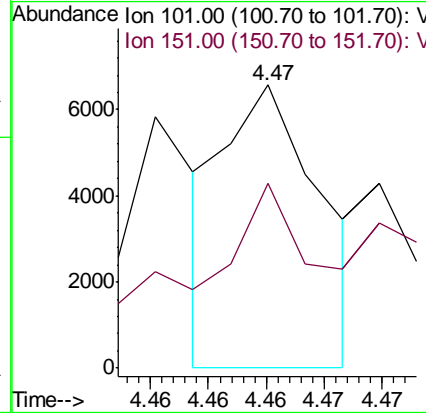
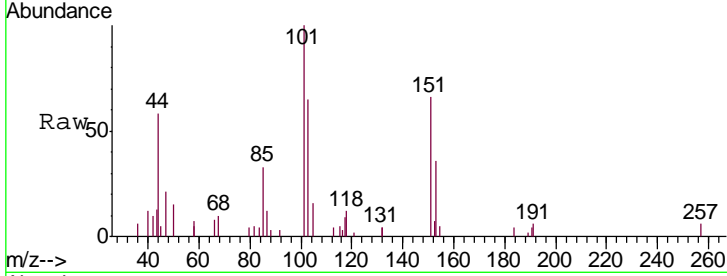




#12  
 1,1,2-Trichlorotrifluoroethane  
 Concen: 0.033 ppbv  
 RT: 4.47 min Scan# 522  
 Delta R.T. -0.00 min  
 Lab File: VL034624.D  
 Acq: 18 Feb 2020 15:01

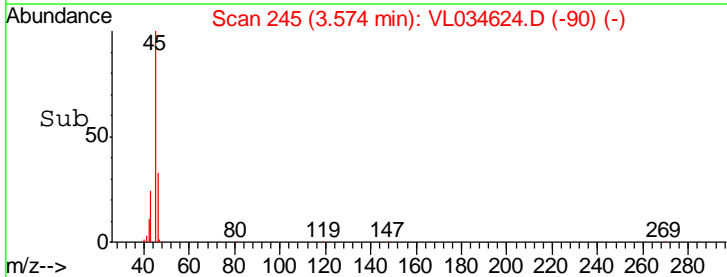
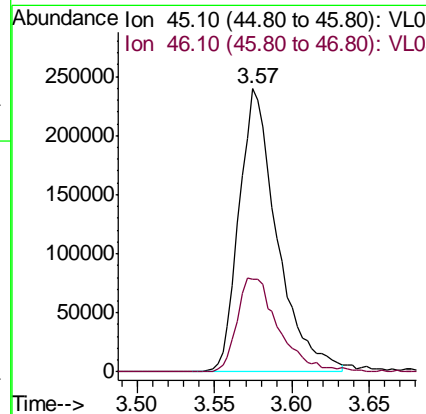
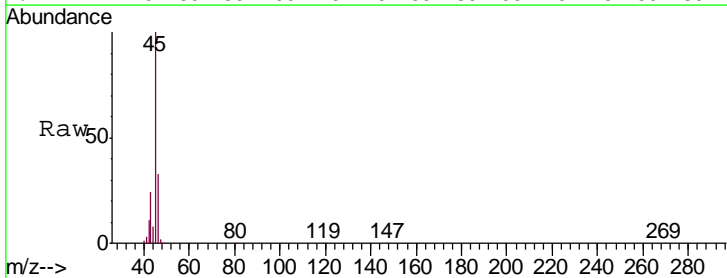
Instrument :  
 MSVOA\_L  
 ClientSampled :  
 L-IA

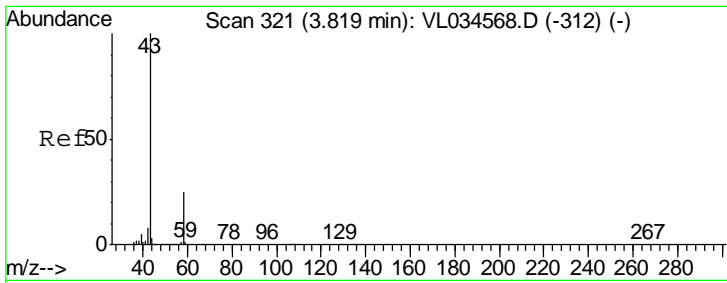
Tgt Ion:101 Resp: 3805  
 Ion Ratio Lower Upper  
 101 100  
 151 148.2 57.0 85.6#



#13  
 Ethanol  
 Concen: 37.286 ppbv  
 RT: 3.57 min Scan# 245  
 Delta R.T. -0.00 min  
 Lab File: VL034624.D  
 Acq: 18 Feb 2020 15:01

Tgt Ion: 45 Resp: 409359  
 Ion Ratio Lower Upper  
 45 100  
 46 36.1 14.8 59.2

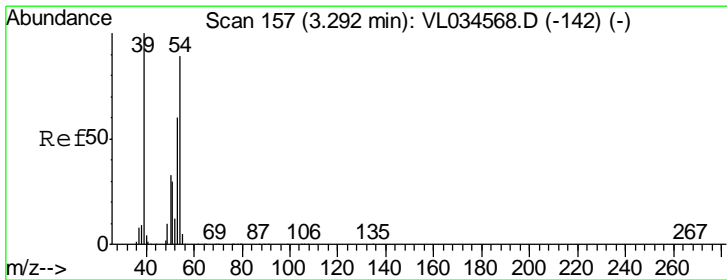
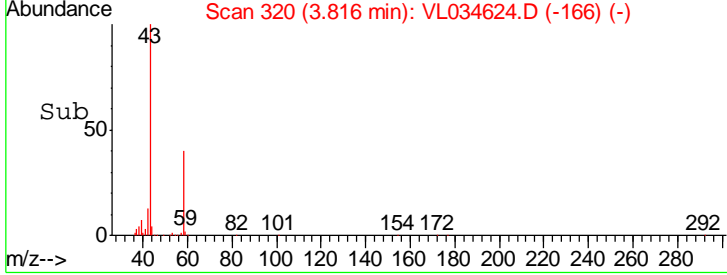
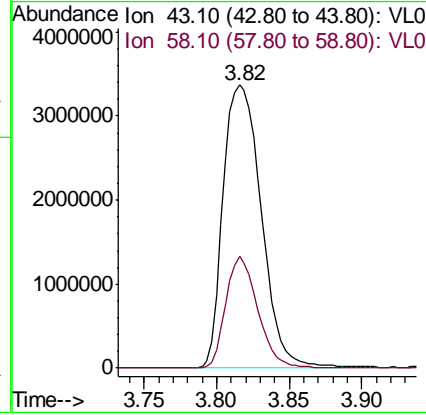
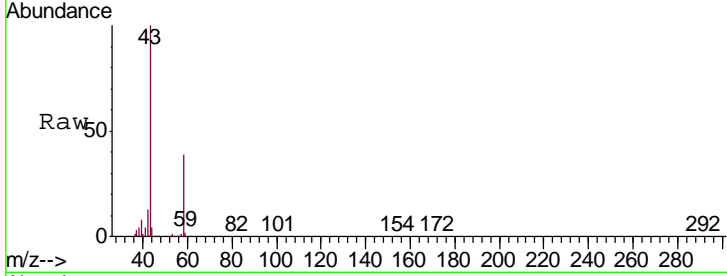




#15  
 Acetone  
 Concen: 48.257 ppbv  
 RT: 3.82 min Scan# 320  
 Delta R.T. -0.00 min  
 Lab File: VL034624.D  
 Acq: 18 Feb 2020 15:01

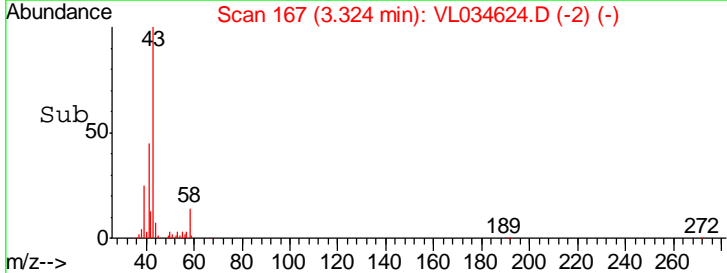
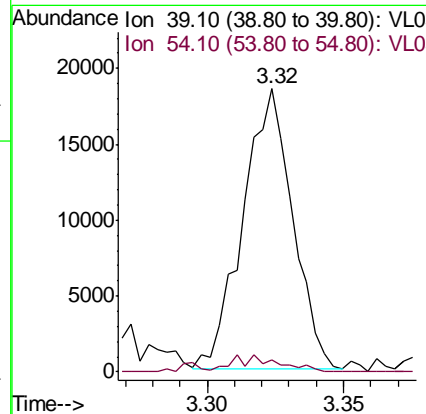
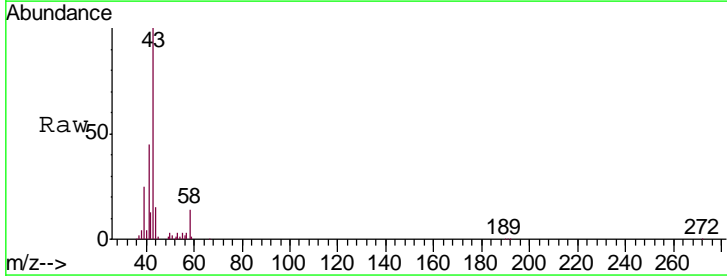
Instrument :  
 MSVOA\_L  
 ClientSampled :  
 L-IA

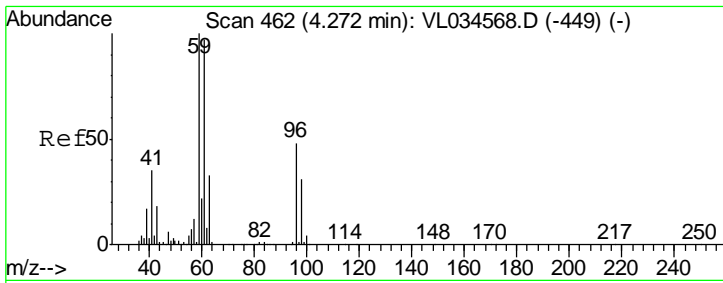
Tgt Ion: 43 Resp: 6178920  
 Ion Ratio Lower Upper  
 43 100  
 58 33.3 20.3 30.5#



#16  
 1,3-Butadiene  
 Concen: 0.461 ppbv  
 RT: 3.32 min Scan# 167  
 Delta R.T. 0.03 min  
 Lab File: VL034624.D  
 Acq: 18 Feb 2020 15:01

Tgt Ion: 39 Resp: 23450  
 Ion Ratio Lower Upper  
 39 100  
 54 6.7 66.7 100.1#

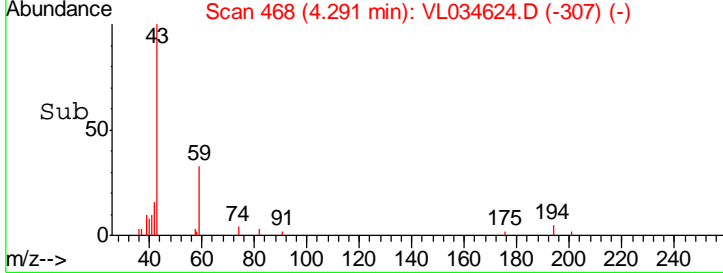
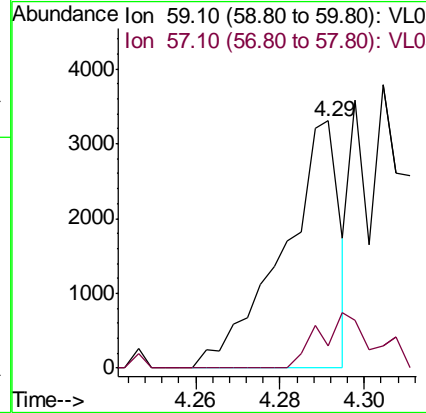
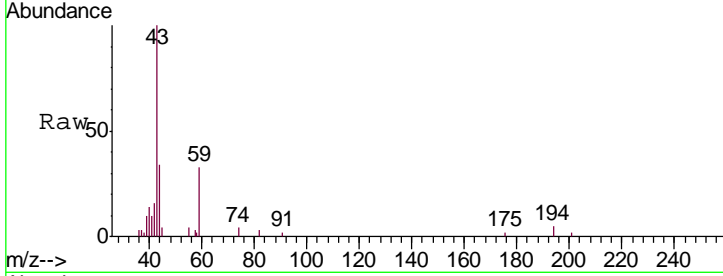




#17  
 tert-Butyl alcohol  
 Concen: 0.033 ppbv  
 RT: 4.29 min Scan# 468  
 Delta R.T. 0.02 min  
 Lab File: VL034624.D  
 Acq: 18 Feb 2020 15:01

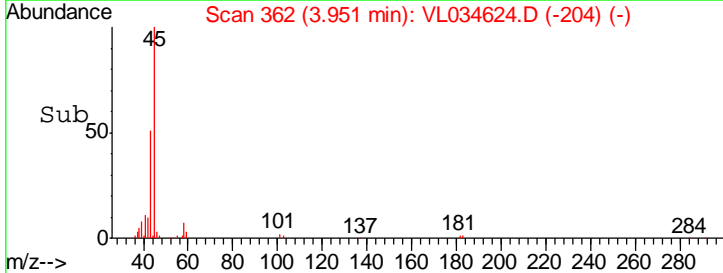
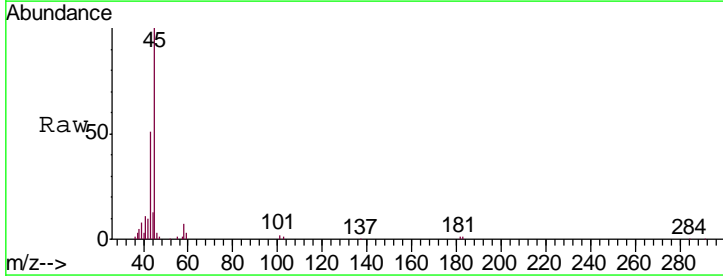
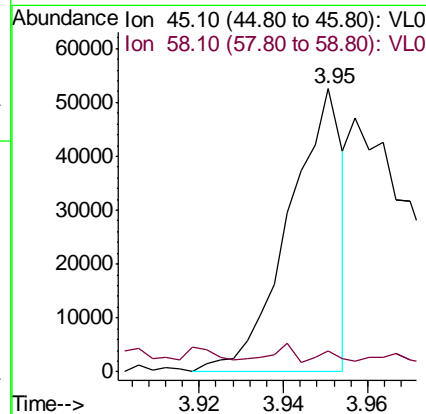
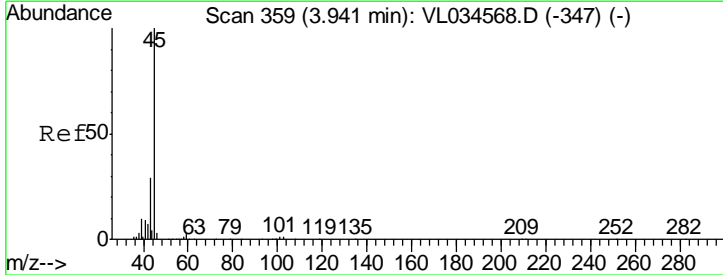
Instrument :  
 MSVOA\_L  
 ClientSampled :  
 L-IA

Tgt Ion: 59 Resp: 3082  
 Ion Ratio Lower Upper  
 59 100  
 57 0.0 8.7 13.1#

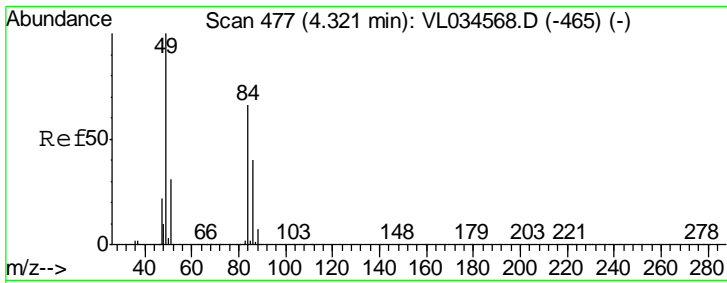


#19  
 Isopropyl Alcohol  
 Concen: 0.622 ppbv  
 RT: 3.95 min Scan# 362  
 Delta R.T. 0.01 min  
 Lab File: VL034624.D  
 Acq: 18 Feb 2020 15:01

Tgt Ion: 45 Resp: 46481  
 Ion Ratio Lower Upper  
 45 100  
 58 0.0 1.7 2.5#



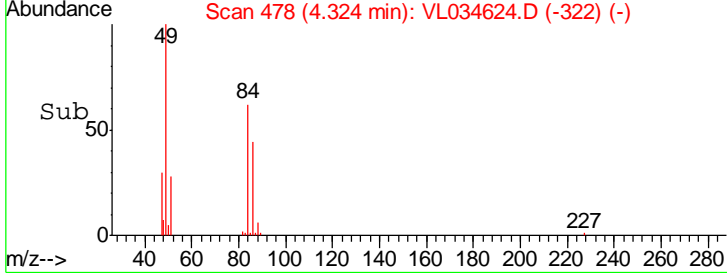
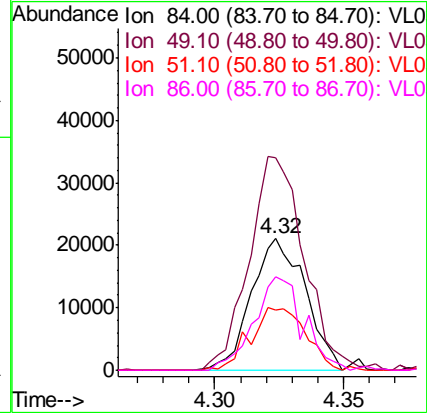
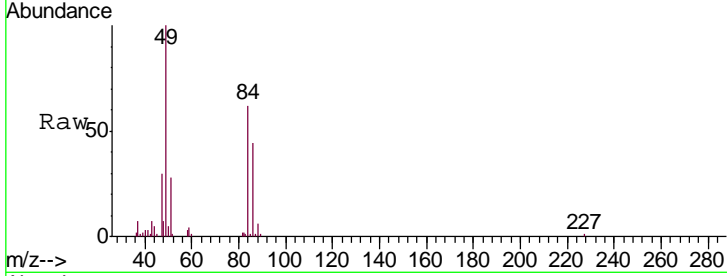




#20  
 Methylene Chloride  
 Concen: 0.634 ppbv  
 RT: 4.32 min Scan# 478  
 Delta R.T. 0.00 min  
 Lab File: VL034624.D  
 Acq: 18 Feb 2020 15:01

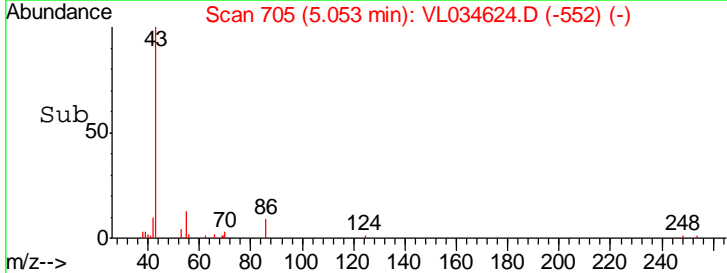
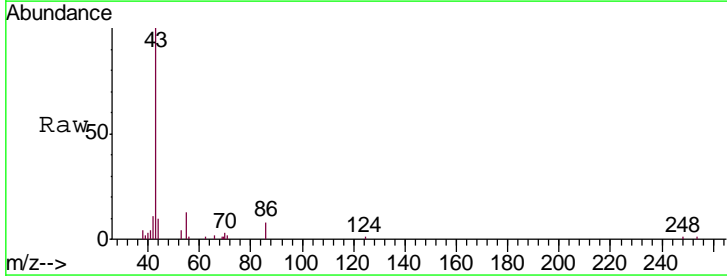
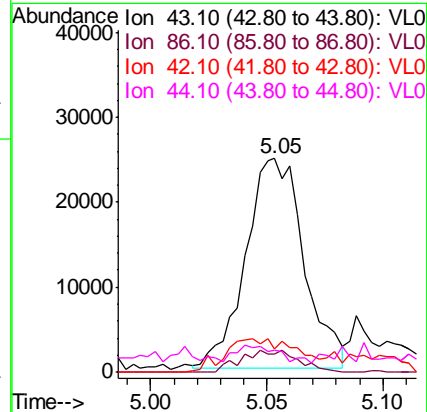
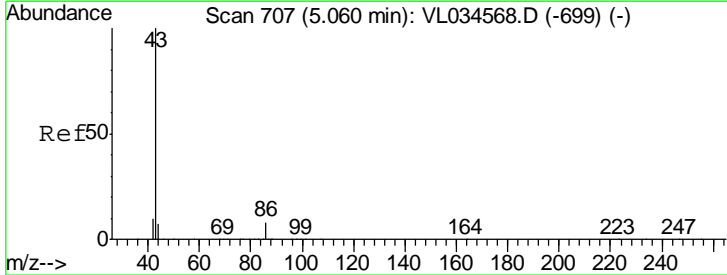
Instrument :  
 MSVOA\_L  
 ClientSampled :  
 L-IA

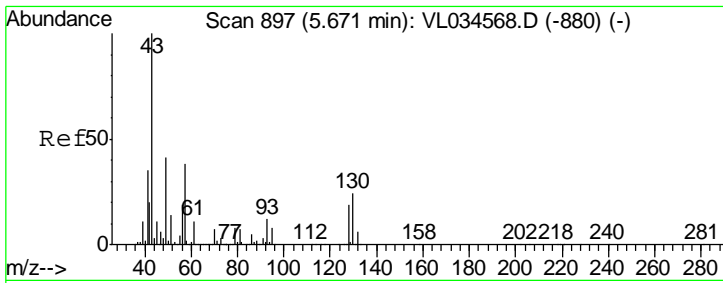
Tgt Ion	Resp	Lower	Upper
84	30919		
84	100		
49	161.3	122.4	183.6
51	47.3	38.6	57.8
86	71.1	49.0	73.6



#23  
 Vinyl Acetate  
 Concen: 0.296 ppbv  
 RT: 5.05 min Scan# 705  
 Delta R.T. -0.01 min  
 Lab File: VL034624.D  
 Acq: 18 Feb 2020 15:01

Tgt Ion	Resp	Lower	Upper
43	43233		
43	100		
86	8.4	5.9	8.9
42	10.6	8.8	13.2
44	3.3	5.0	7.6#



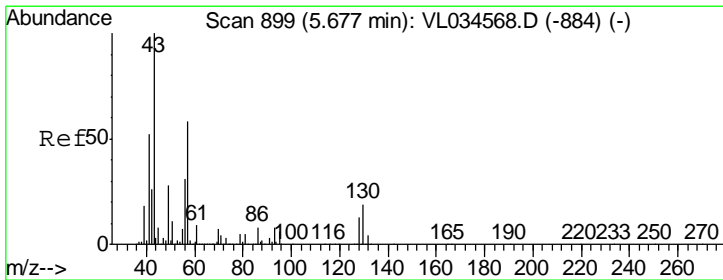
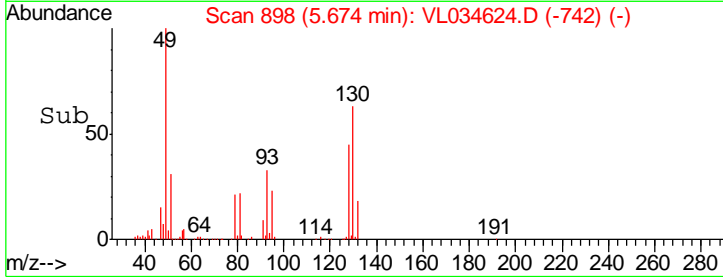
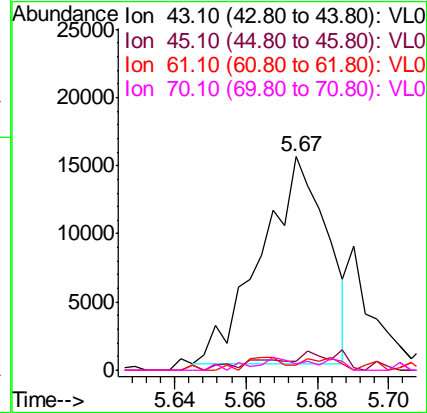
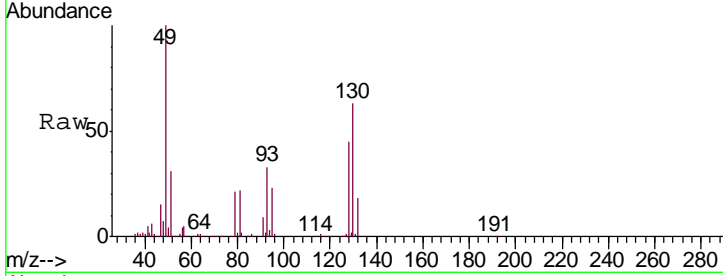


#25  
Ethyl Acetate  
Concen: 0.094 ppbv  
RT: 5.67 min Scan# 898  
Delta R.T. 0.00 min  
Lab File: VL034624.D  
Acq: 18 Feb 2020 15:01

Instrument :  
MSVOA\_L  
ClientSampled :  
L-IA

Tgt Ion: 43 Resp: 19464

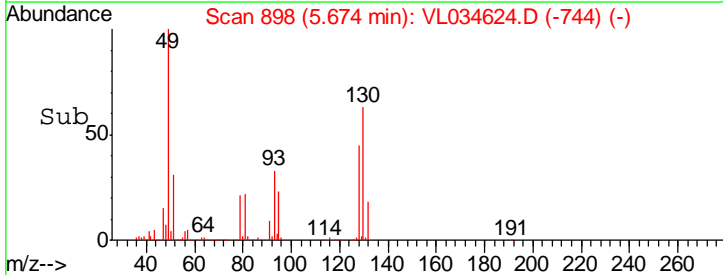
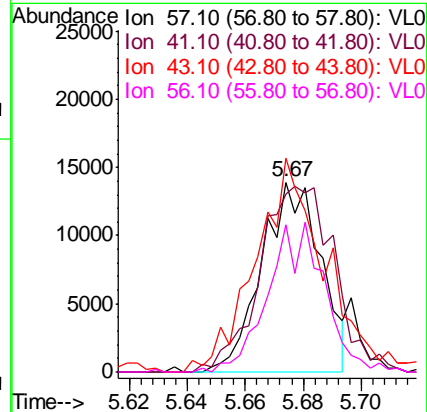
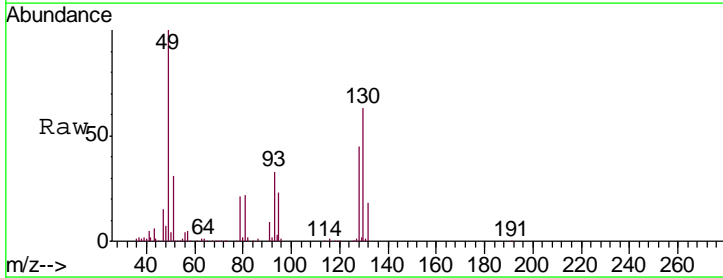
Ion	Ratio	Lower	Upper
43	100		
45	1.1	8.5	12.7#
61	8.1	7.8	11.6
70	6.3	5.8	8.8

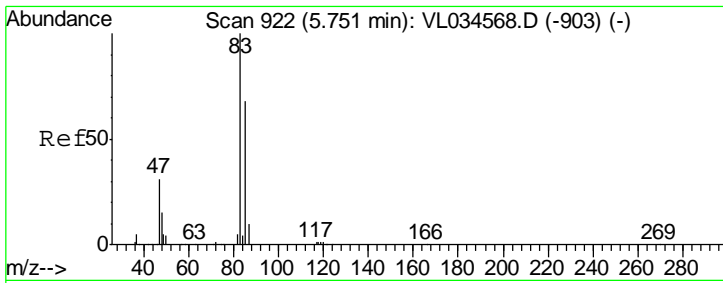


#26  
Hexane  
Concen: 0.226 ppbv  
RT: 5.67 min Scan# 898  
Delta R.T. -0.00 min  
Lab File: VL034624.D  
Acq: 18 Feb 2020 15:01

Tgt Ion: 57 Resp: 19618

Ion	Ratio	Lower	Upper
57	100		
41	125.3	76.2	114.2#
43	133.2	189.9	284.9#
56	75.8	43.6	65.4#

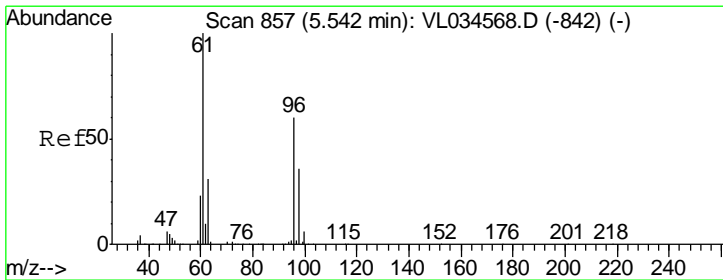
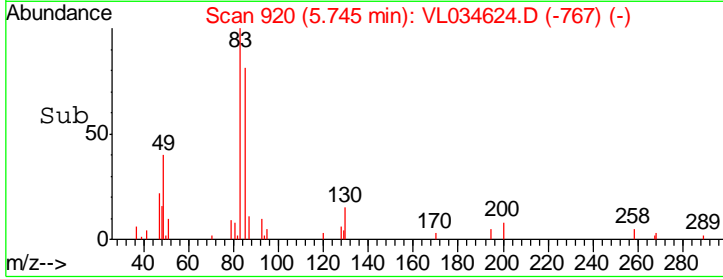
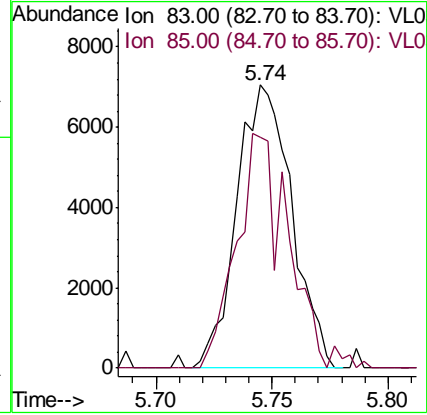
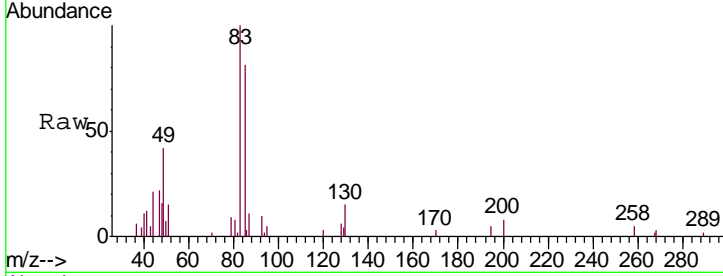




#29  
 Chloroform  
 Concen: 0.075 ppbv  
 RT: 5.74 min Scan# 920  
 Delta R.T. -0.01 min  
 Lab File: VL034624.D  
 Acq: 18 Feb 2020 15:01

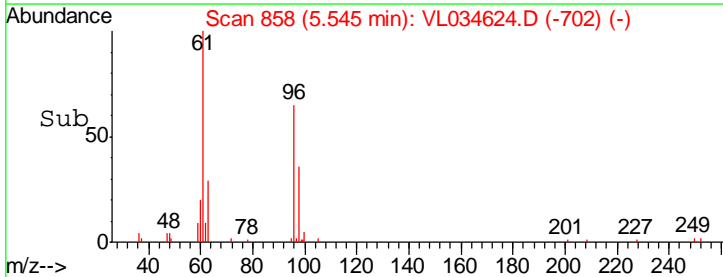
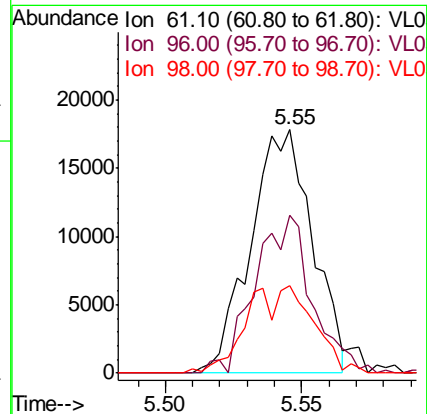
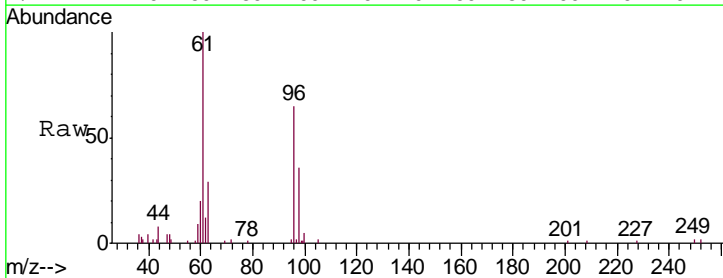
Instrument :  
 MSVOA\_L  
 ClientSampled :  
 L-IA

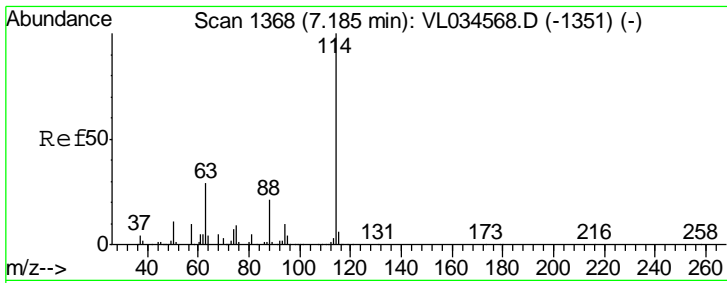
Tgt Ion: 83 Resp: 11589  
 Ion Ratio Lower Upper  
 83 100  
 85 81.4 54.0 81.0#



#31  
 cis-1,2-Dichloroethene  
 Concen: 0.312 ppbv  
 RT: 5.55 min Scan# 858  
 Delta R.T. 0.00 min  
 Lab File: VL034624.D  
 Acq: 18 Feb 2020 15:01

Tgt Ion: 61 Resp: 28162  
 Ion Ratio Lower Upper  
 61 100  
 96 64.6 48.0 72.0  
 98 36.0 28.6 43.0

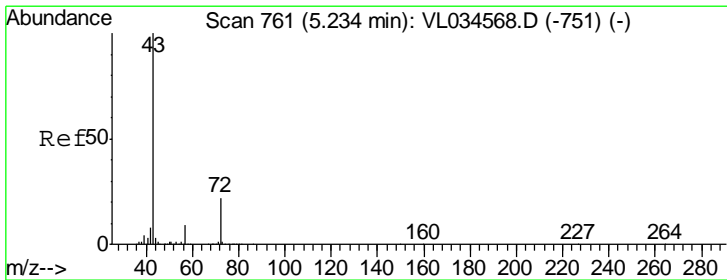
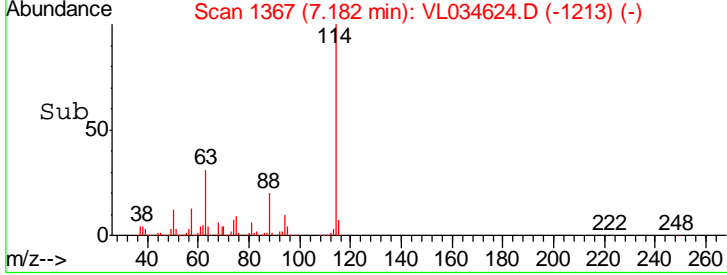
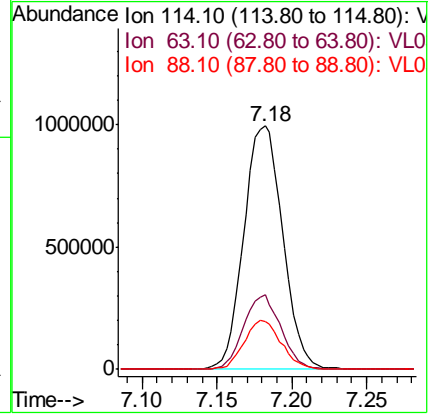
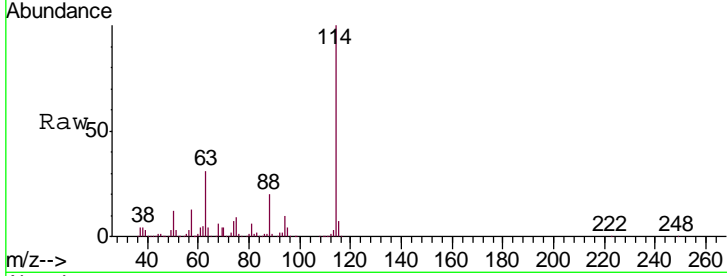




#33  
 1,4-Difluorobenzene  
 Concen: 10.000 ppbv  
 RT: 7.18 min Scan# 1367  
 Delta R.T. -0.00 min  
 Lab File: VL034624.D  
 Acq: 18 Feb 2020 15:01

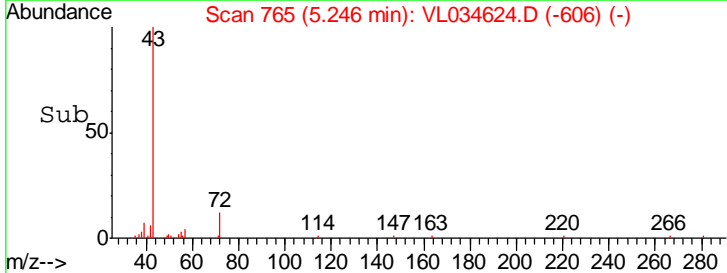
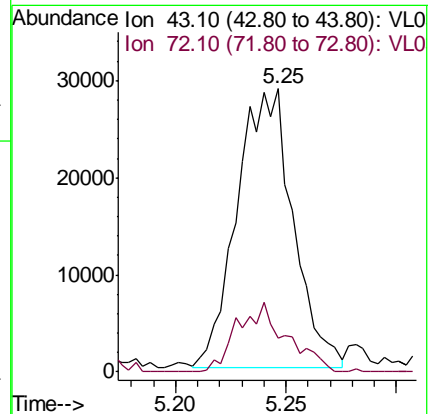
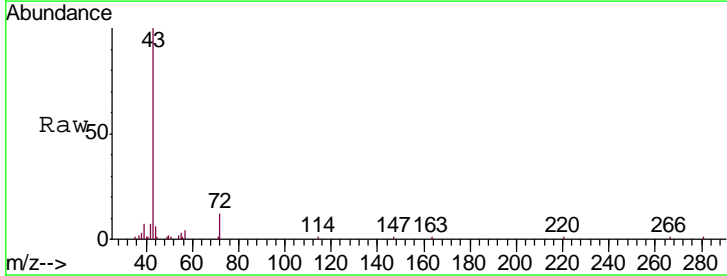
Instrument :  
 MSVOA\_L  
 ClientSampled :  
 L-IA

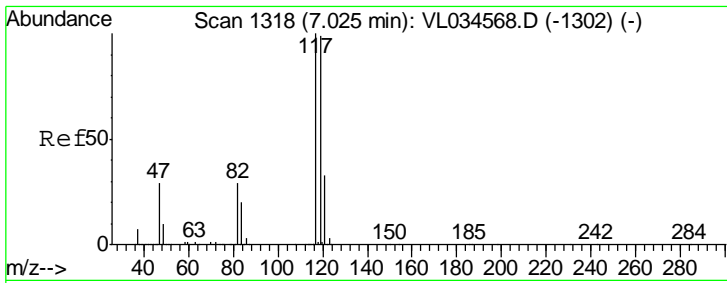
Tgt Ion	Resp	Lower	Upper
114	1801792		
63	29.4	24.1	36.1
88	19.3	15.9	23.9



#34  
 2-Butanone  
 Concen: 0.387 ppbv  
 RT: 5.25 min Scan# 765  
 Delta R.T. 0.01 min  
 Lab File: VL034624.D  
 Acq: 18 Feb 2020 15:01

Tgt Ion	Resp	Lower	Upper
43	50665		
72	21.9	17.2	25.8

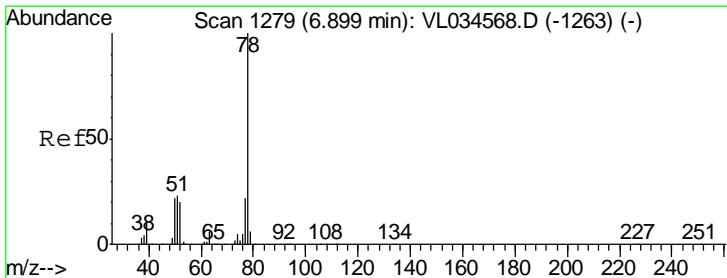
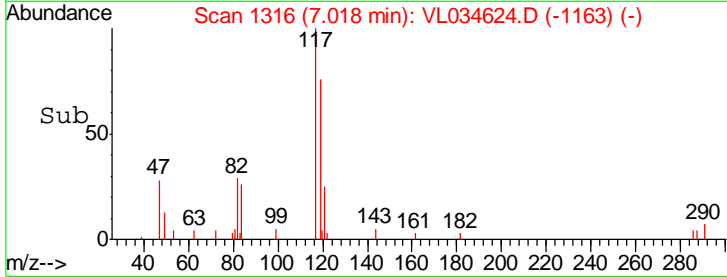
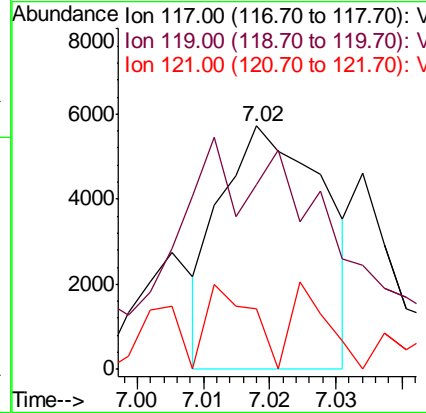
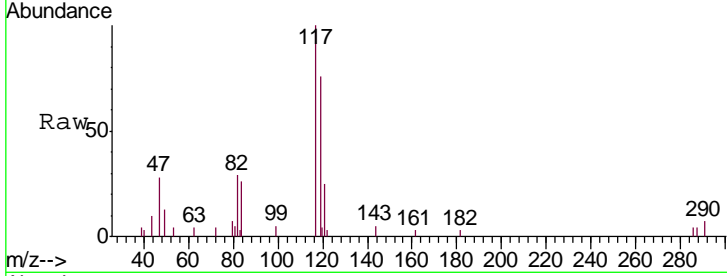




#35  
 Carbon Tetrachloride  
 Concen: 0.036 ppbv  
 RT: 7.02 min Scan# 1316  
 Delta R.T. -0.01 min  
 Lab File: VL034624.D  
 Acq: 18 Feb 2020 15:01

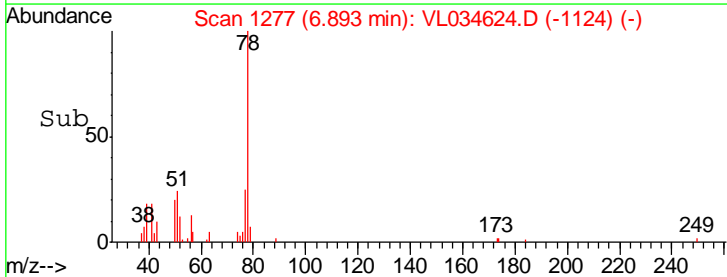
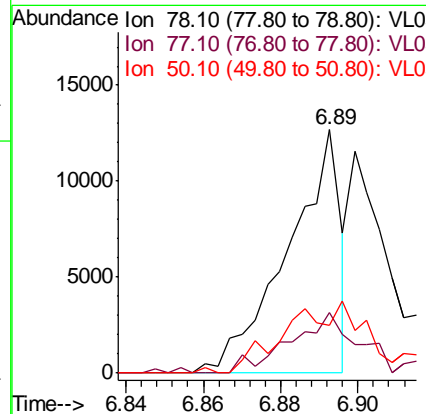
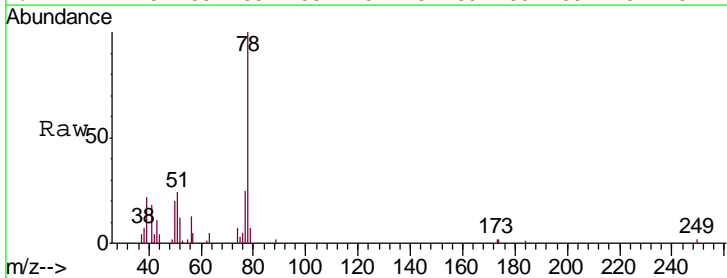
Instrument : MSVOA\_L  
 ClientSampled : L-IA

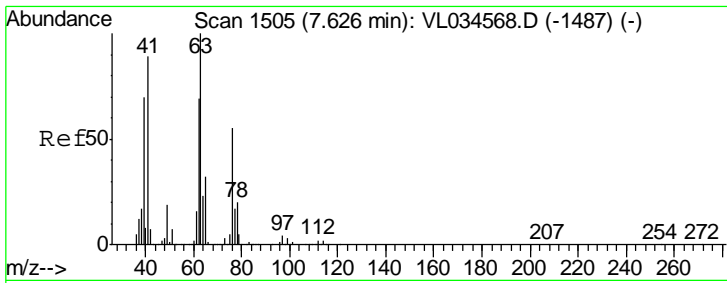
Tgt Ion	Resp	Lower	Upper
117	100		
119	55.0	79.5	119.3#
121	40.3	26.2	39.2#



#36  
 Benzene  
 Concen: 0.075 ppbv  
 RT: 6.89 min Scan# 1277  
 Delta R.T. -0.01 min  
 Lab File: VL034624.D  
 Acq: 18 Feb 2020 15:01

Tgt Ion	Resp	Lower	Upper
78	100		
77	24.7	17.3	25.9
50	19.8	17.4	26.2

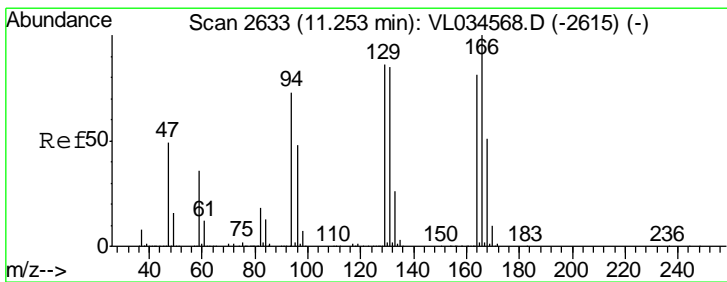
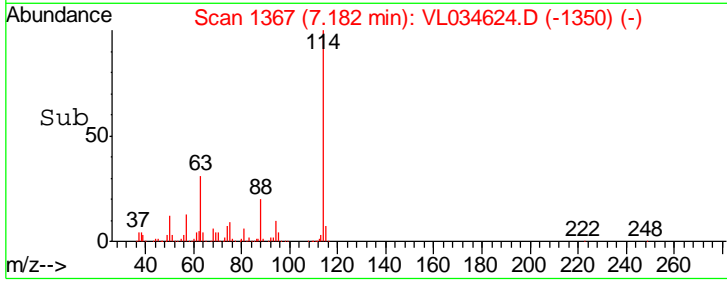
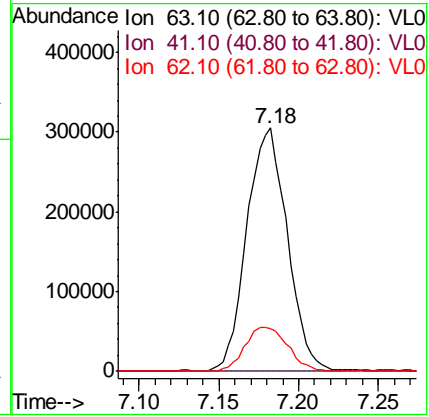
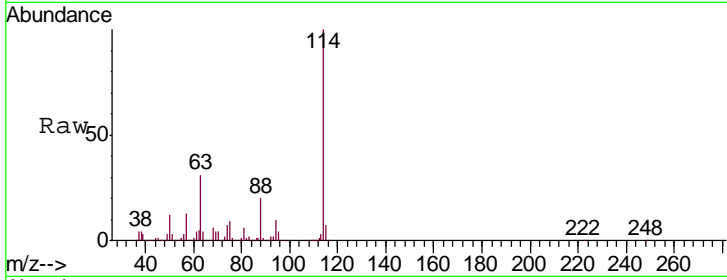




#39  
 1,2-Dichloropropane  
 Concen: 7.941 ppbv  
 RT: 7.18 min Scan# 1367  
 Delta R.T. -0.44 min  
 Lab File: VL034624.D  
 Acq: 18 Feb 2020 15:01

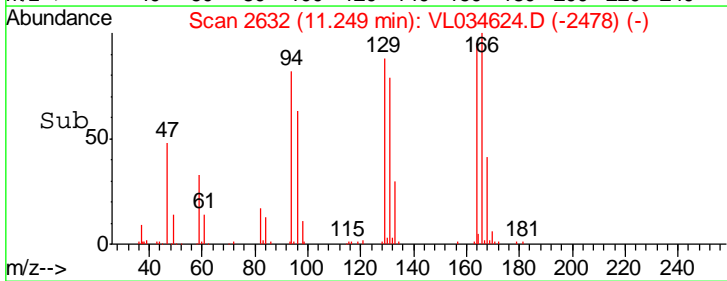
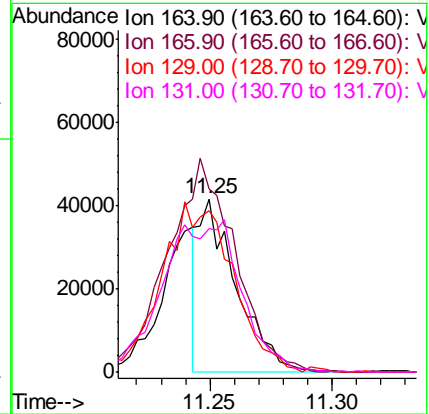
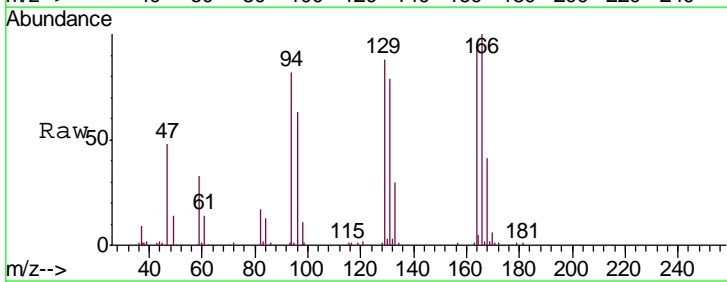
Instrument :  
 MSVOA\_L  
 ClientSampled :  
 L-IA

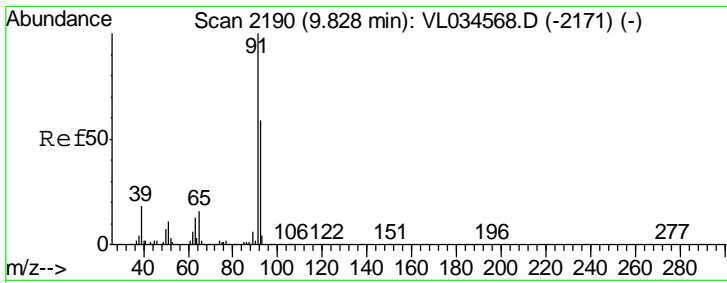
Tgt Ion	Resp	Lower	Upper
63	100		
41	0.1	71.0	106.4#
62	17.4	55.4	83.0#



#52  
 Tetrachloroethene  
 Concen: 0.684 ppbv  
 RT: 11.25 min Scan# 2632  
 Delta R.T. -0.00 min  
 Lab File: VL034624.D  
 Acq: 18 Feb 2020 15:01

Tgt Ion	Resp	Lower	Upper
164	100		
166	100.3	99.0	148.4
129	88.5	85.3	127.9
131	77.9	84.2	126.2#

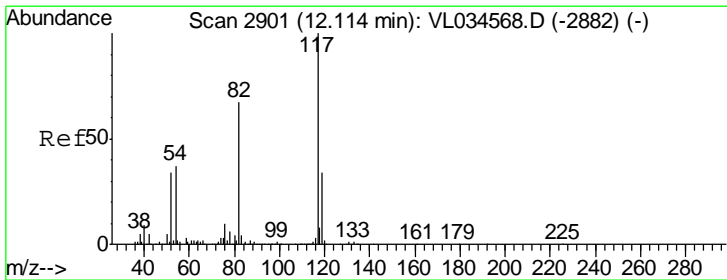
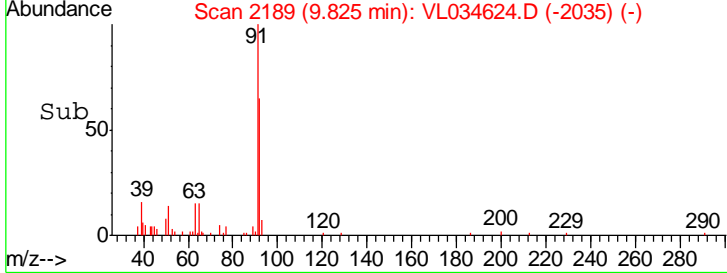
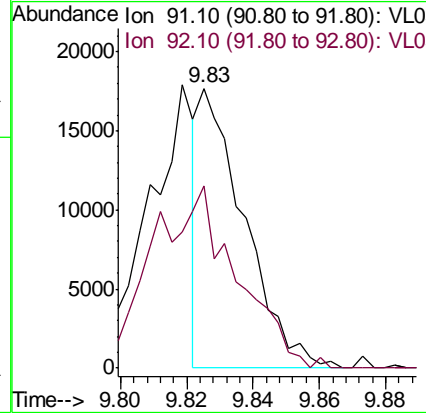
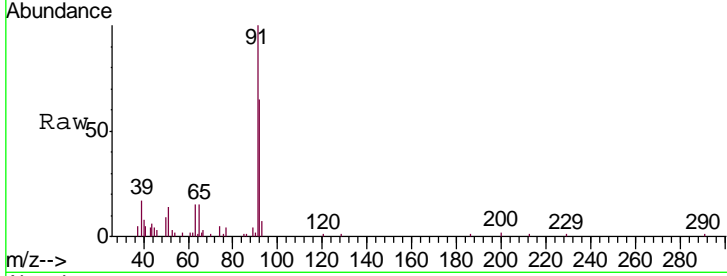




#53  
 Toluene  
 Concen: 0.095 ppbv  
 RT: 9.83 min Scan# 2189  
 Delta R.T. -0.00 min  
 Lab File: VL034624.D  
 Acq: 18 Feb 2020 15:01

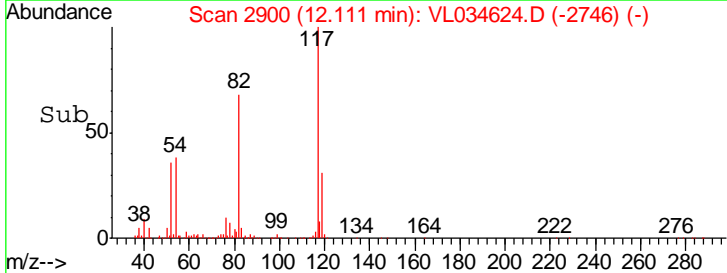
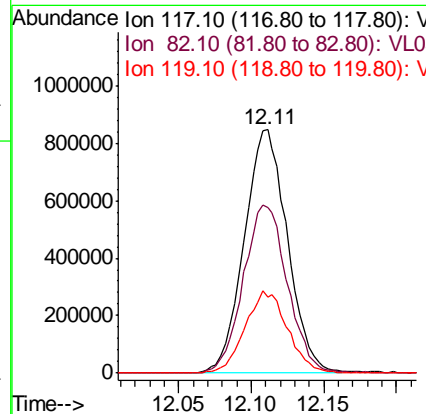
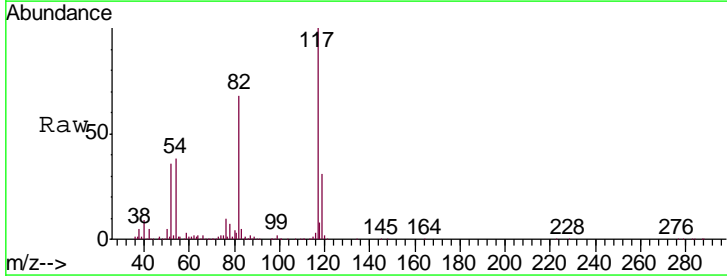
Instrument :  
 MSVOA\_L  
 ClientSampled :  
 L-IA

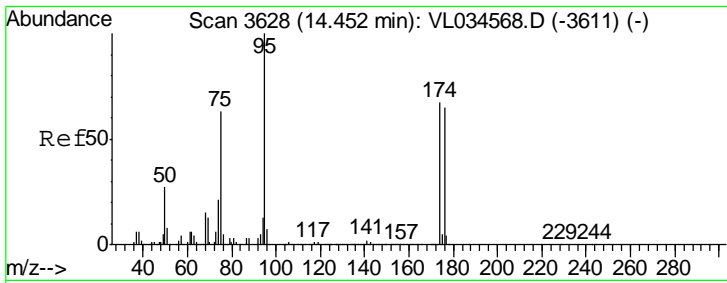
Tgt Ion	Resp	Lower	Upper
91	16644		
92	125.4	48.2	72.2#



#55  
 Chlorobenzene-d5  
 Concen: 10.000 ppbv  
 RT: 12.11 min Scan# 2900  
 Delta R.T. -0.00 min  
 Lab File: VL034624.D  
 Acq: 18 Feb 2020 15:01

Tgt Ion	Resp	Lower	Upper
117	1752829		
82	71.2	54.2	81.4
119	33.3	26.1	39.1





#68  
 1-Bromo-4-Fluorobenzene  
 Concen: 10.169 ppbv  
 RT: 14.45 min Scan# 3627  
 Delta R.T. -0.00 min  
 Lab File: VL034624.D  
 Acq: 18 Feb 2020 15:01

Instrument : MSVOA\_L  
 ClientSampled : L-IA

Tgt Ion	Resp	Lower	Upper
95	1506468		
174	66.1	52.3	78.5
175	4.6	3.8	5.6

