

Data File : VL034637.D
 Acq On : 18 Feb 2020 23:39
 Operator : SY/AP
 Sample : L1532-10
 Misc : 400ml/MSVOA_L
 ALS Vial : 1 Sample Multiplier: 1

Instrument :
 MSVOA_L
 ClientSampleId :
 DC-SS

Quant Time: Feb 19 06:06:49 2020
 Quant Method : Z:\VOASRV\HPCHEM1\MSVOA_L\METHODS\VL013020AIR.M
 Quant Title : AIR ANALYSIS BY METHOD TO-15 Instrument: MSVOA_L Thu Jan 30 17:16:44 2020
 QLast Update : Thu Jan 30 17:16:44 2020
 Response via : Initial Calibration

Internal Standards	R.T.	QIon	Response	Conc	Units	Dev(Min)
1) Bromochloromethane	5.65	49	851200	10.00	ppbv	0.00
33) 1,4-Difluorobenzene	7.18	114	1749613	10.00	ppbv	0.00
55) Chlorobenzene-d5	12.11	117	1722181	10.00	ppbv	0.00

System Monitoring Compounds

68) 1-Bromo-4-Fluorobenzene	14.45	95	1459500	10.03	ppbv	0.00
Spiked Amount	10.000	Range	65 - 135	Recovery	=	100.30%

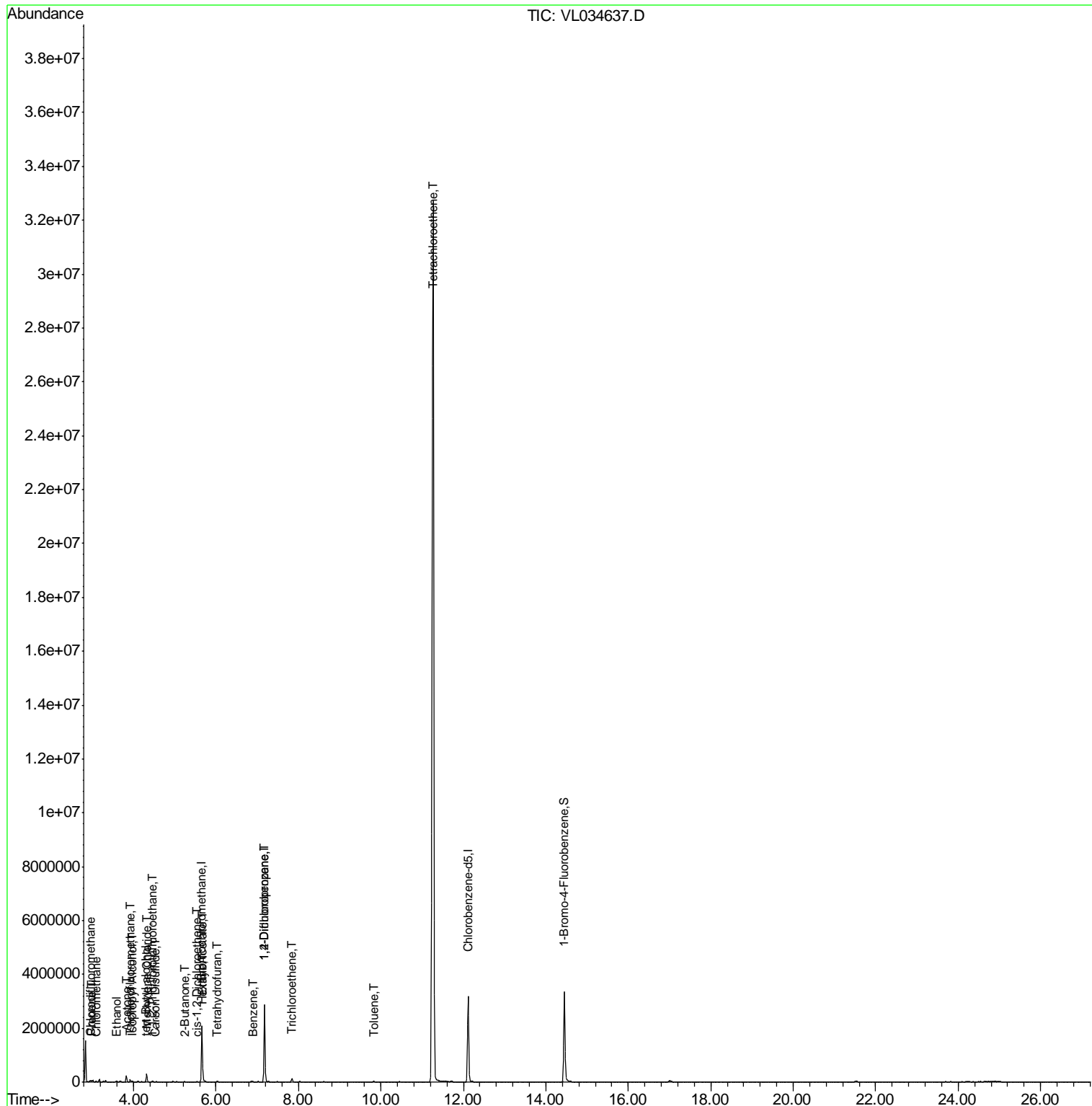
Target Compounds	R.T.	QIon	Response	Conc	Units	Qvalue
3) Chlorodifluoromethane	2.95	51	39143	0.381	ppbv #	89
4) Chloromethane	3.11	50	3234	0.051	ppbv #	41
9) Propene	2.98	41	13462	0.336	ppbv	85
11) Trichlorofluoromethane	3.92	101	43977	0.258	ppbv #	82
12) 1,1,2-Trichlorotrifluoroet	4.46	101	9904	0.089	ppbv	96
13) Ethanol	3.57	45	9784	0.912	ppbv #	1
15) Acetone	3.82	43	223556	1.787	ppbv	99
17) tert-Butyl alcohol	4.29	59	2917	0.032	ppbv #	71
19) Isopropyl Alcohol	3.96	45	30044	0.412	ppbv #	82
20) Methylene Chloride	4.32	84	94312	1.980	ppbv	94
25) Ethyl Acetate	5.67	43	34495	0.170	ppbv #	79
26) Hexane	5.68	57	47113	0.555	ppbv #	36
27) Carbon Disulfide	4.53	76	3629	0.032	ppbv #	56
31) cis-1,2-Dichloroethene	5.53	61	2875	0.033	ppbv #	43
34) 2-Butanone	5.24	43	17343	0.137	ppbv	98
36) Benzene	6.89	78	7396	0.048	ppbv #	68
38) Trichloroethene	7.83	130	13696	0.209	ppbv #	81
39) 1,2-Dichloropropane	7.17	63	520273	8.066	ppbv #	20
41) Tetrahydrofuran	6.03	42	2251	0.034	ppbv #	67
52) Tetrachloroethene	11.27	164	10377309	166.026	ppbv	87
53) Toluene	9.82	91	6404	0.037	ppbv #	1

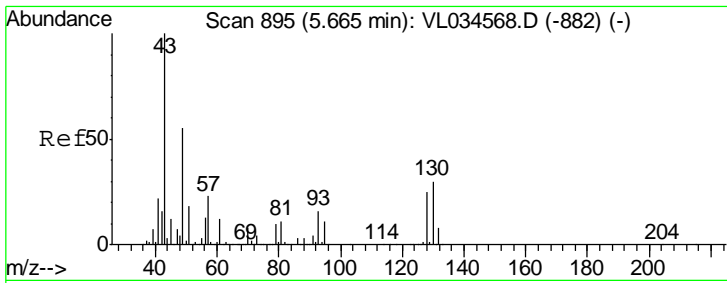
(#) = qualifier out of range (m) = manual integration (+) = signals summed

Data File : VL034637.D
Acq On : 18 Feb 2020 23:39
Operator : SY/AP
Sample : L1532-10
Misc : 400ml/MSVOA_L
ALS Vial : 1 Sample Multiplier: 1

Instrument :
MSVOA_L
ClientSampleId :
DC-SS

Quant Time: Feb 19 06:06:49 2020
Quant Method : Z:\VOASRV\HPCHEM1\MSVOA_L\METHODS\VL013020AIR.M
Quant Title : AIR ANALYSIS BY METHOD TO-15 Instrument: MSVOA_L Thu Jan 30 17:16:44 2020
QLast Update : Thu Jan 30 17:16:44 2020
Response via : Initial Calibration

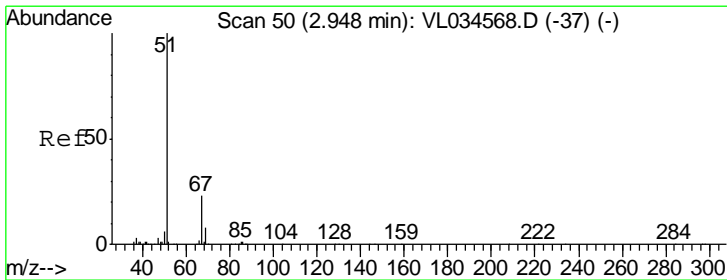
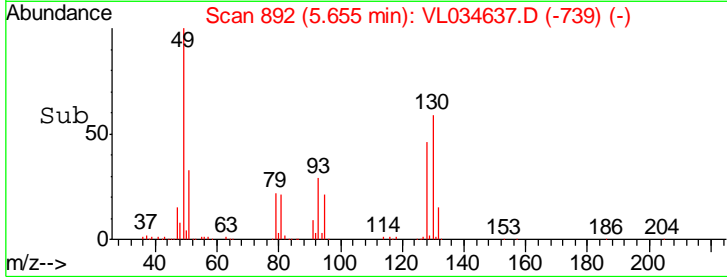
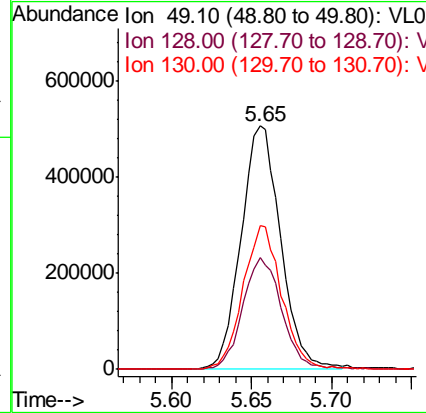
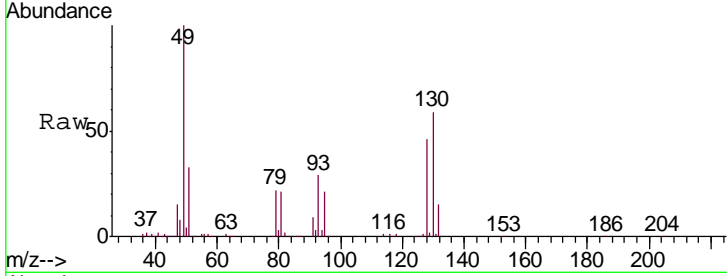




#1
 Bromochloromethane
 Concen: 10.000 ppbv
 RT: 5.65 min Scan# 892
 Delta R.T. -0.01 min
 Lab File: VL034637.D
 Acq: 18 Feb 2020 23:39

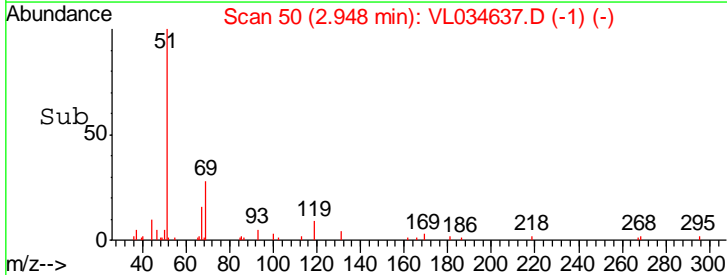
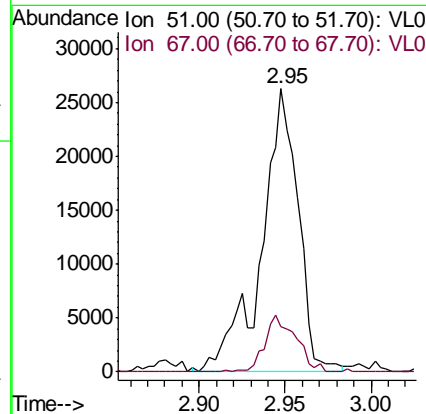
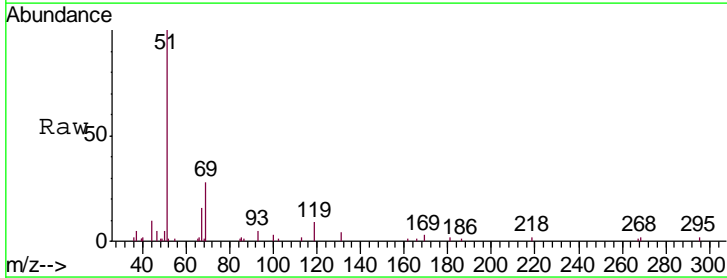
Instrument :
 MSVOA_L
 ClientSampleID :
 DC-SS

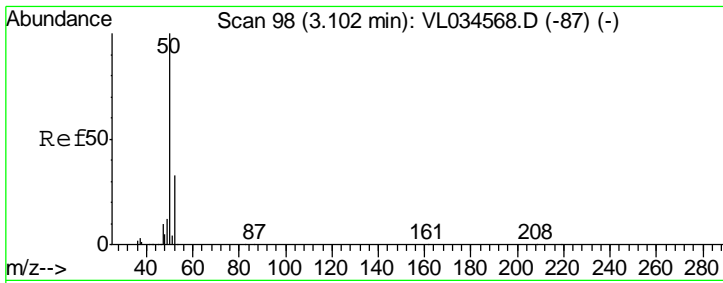
Tgt Ion	Resp	Lower	Upper
49	100		
128	45.6	22.7	68.1
130	58.3	28.6	85.8



#3
 Chlorodifluoromethane
 Concen: 0.381 ppbv
 RT: 2.95 min Scan# 50
 Delta R.T. 0.00 min
 Lab File: VL034637.D
 Acq: 18 Feb 2020 23:39

Tgt Ion	Resp	Lower	Upper
51	100		
67	17.1	17.8	26.8#

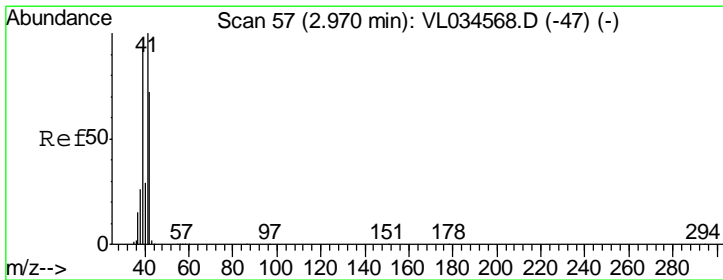
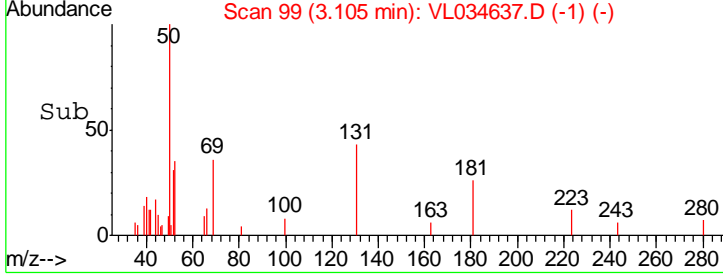
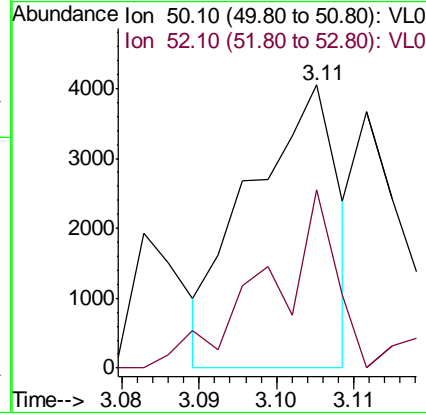
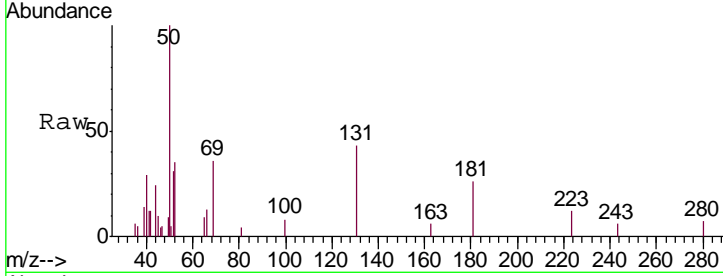




#4
 Chloromethane
 Concen: 0.051 ppbv
 RT: 3.11 min Scan# 99
 Delta R.T. 0.00 min
 Lab File: VL034637.D
 Acq: 18 Feb 2020 23:39

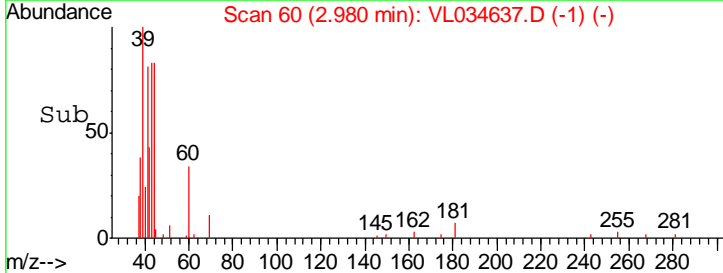
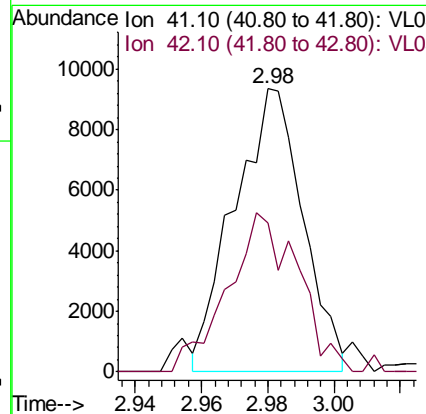
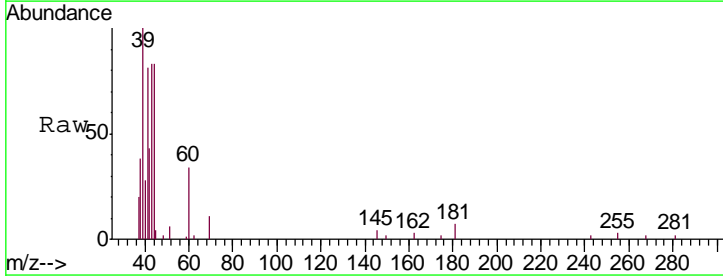
Instrument :
 MSVOA_L
 ClientSampled :
 DC-SS

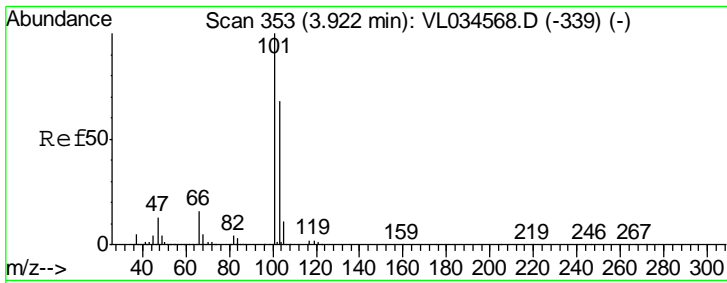
Tgt Ion: 50 Resp: 3234
 Ion Ratio Lower Upper
 50 100
 52 66.4 26.6 39.8#



#9
 Propene
 Concen: 0.336 ppbv
 RT: 2.98 min Scan# 60
 Delta R.T. 0.01 min
 Lab File: VL034637.D
 Acq: 18 Feb 2020 23:39

Tgt Ion: 41 Resp: 13462
 Ion Ratio Lower Upper
 41 100
 42 59.1 57.0 85.4

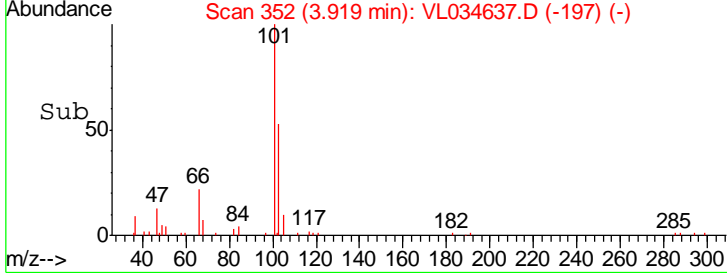
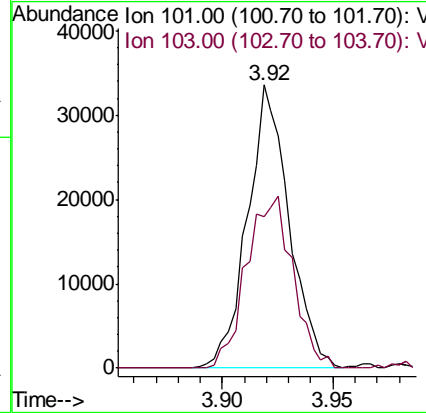
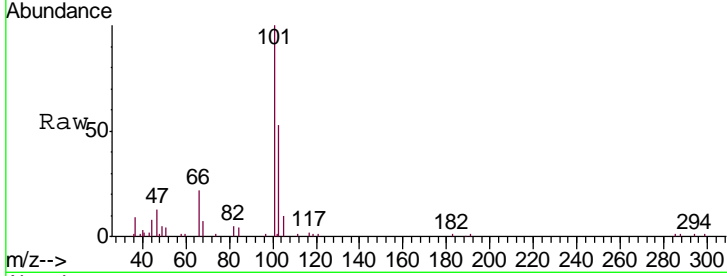




#11
 Trichlorofluoromethane
 Concen: 0.258 ppbv
 RT: 3.92 min Scan# 352
 Delta R.T. -0.00 min
 Lab File: VL034637.D
 Acq: 18 Feb 2020 23:39

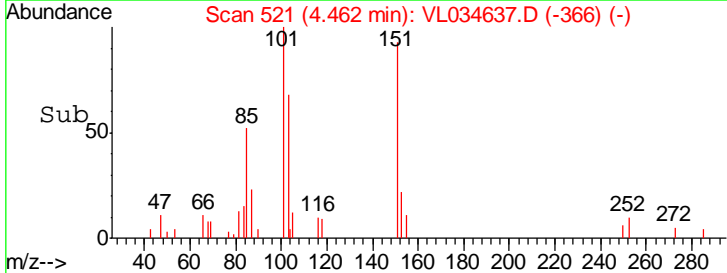
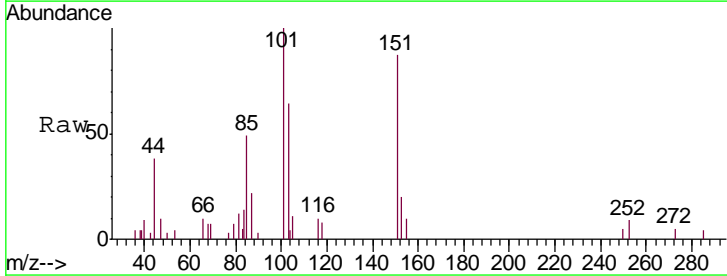
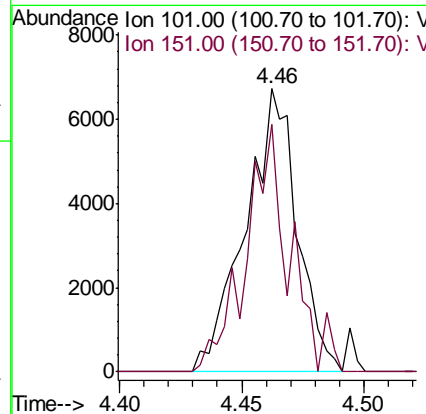
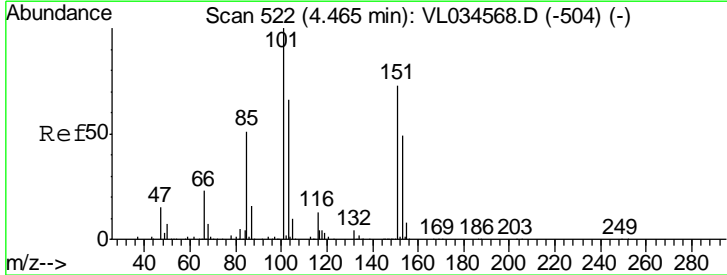
Instrument : MSVOA_L
 ClientSampled : DC-SS

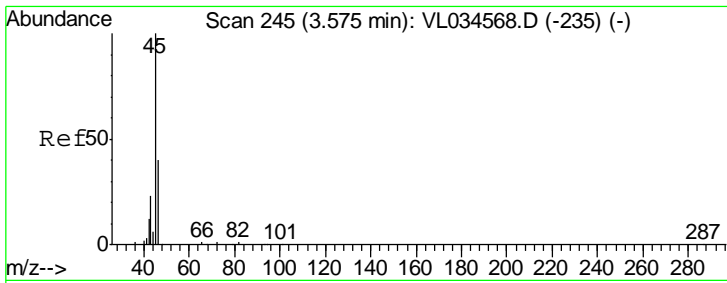
Tgt Ion:101 Resp: 43977
 Ion Ratio Lower Upper
 101 100
 103 53.4 54.4 81.6#



#12
 1,1,2-Trichlorotrifluoroethane
 Concen: 0.089 ppbv
 RT: 4.46 min Scan# 521
 Delta R.T. -0.00 min
 Lab File: VL034637.D
 Acq: 18 Feb 2020 23:39

Tgt Ion:101 Resp: 9904
 Ion Ratio Lower Upper
 101 100
 151 74.2 57.0 85.6

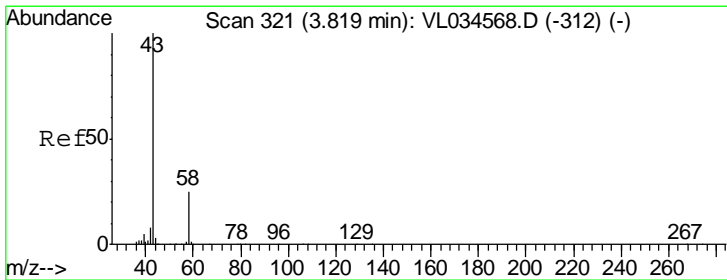
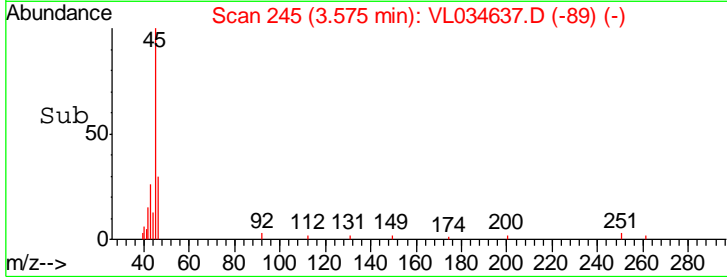
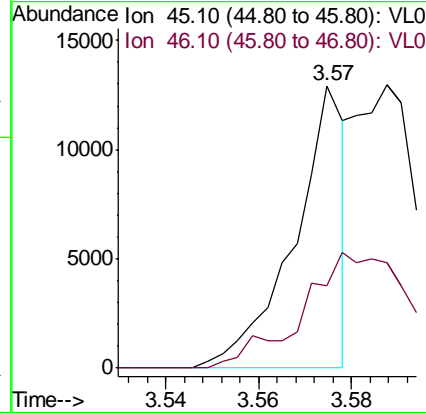
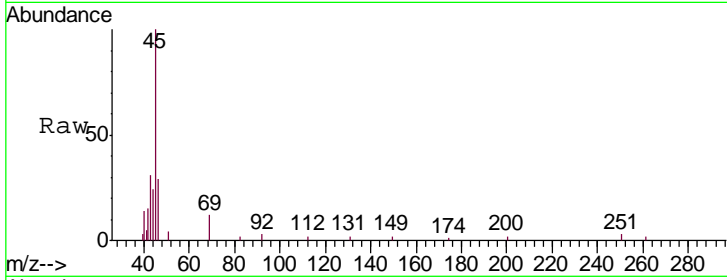




#13
 Ethanol
 Concen: 0.912 ppbv
 RT: 3.57 min Scan# 245
 Delta R.T. 0.00 min
 Lab File: VL034637.D
 Acq: 18 Feb 2020 23:39

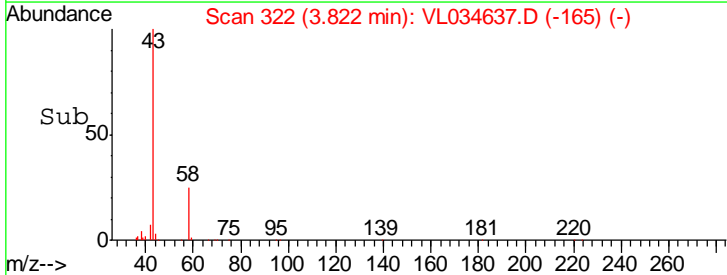
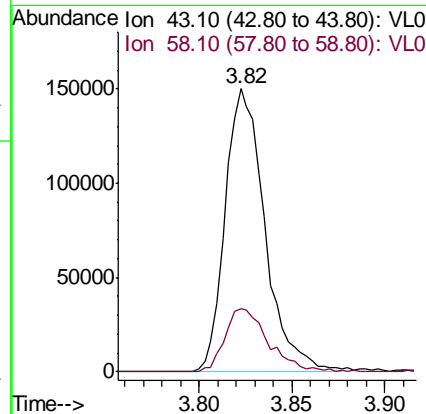
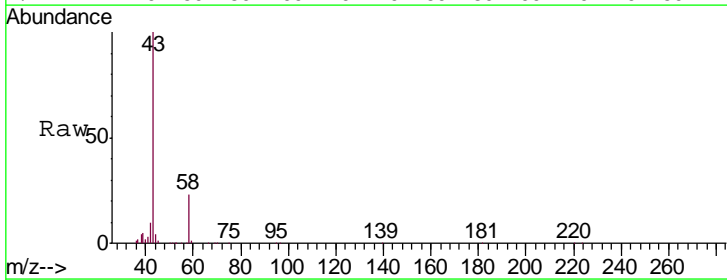
Instrument :
 MSVOA_L
 ClientSampled :
 DC-SS

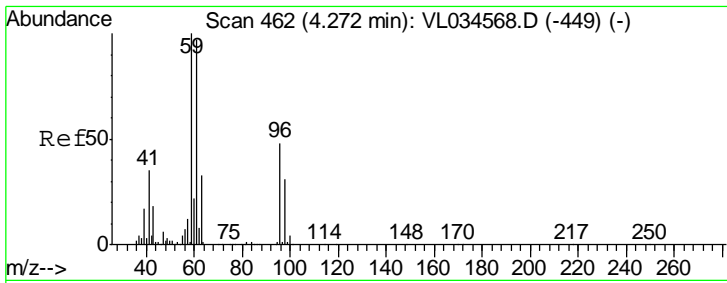
Tgt Ion: 45 Resp: 9784
 Ion Ratio Lower Upper
 45 100
 46 103.9 14.8 59.2#



#15
 Acetone
 Concen: 1.787 ppbv
 RT: 3.82 min Scan# 322
 Delta R.T. 0.00 min
 Lab File: VL034637.D
 Acq: 18 Feb 2020 23:39

Tgt Ion: 43 Resp: 223556
 Ion Ratio Lower Upper
 43 100
 58 24.7 20.3 30.5

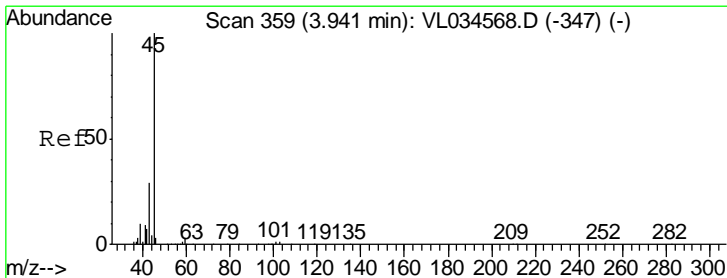
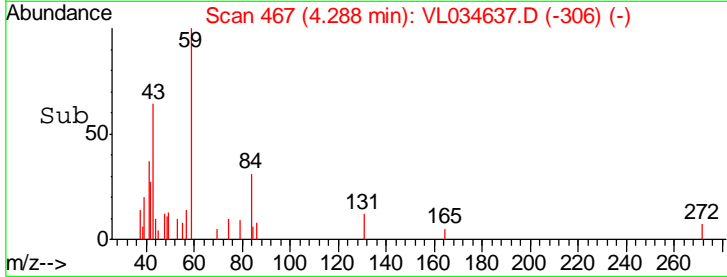
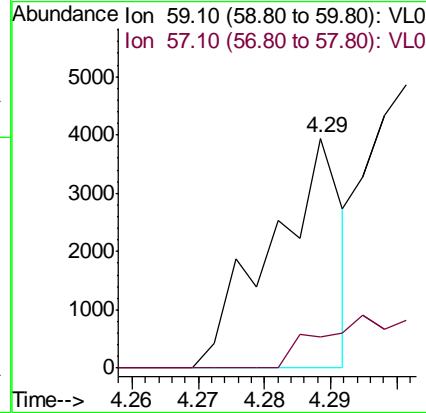
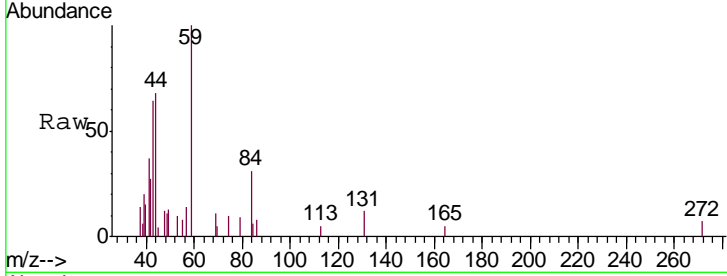




#17
 tert-Butyl alcohol
 Concen: 0.032 ppbv
 RT: 4.29 min Scan# 467
 Delta R.T. 0.02 min
 Lab File: VL034637.D
 Acq: 18 Feb 2020 23:39

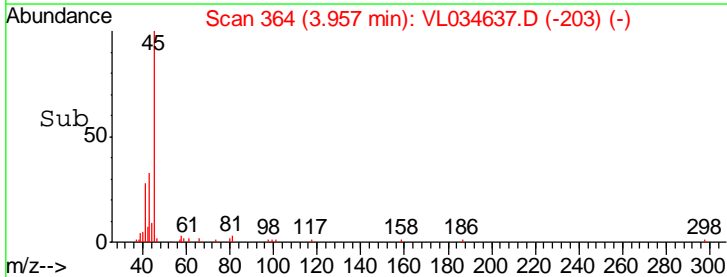
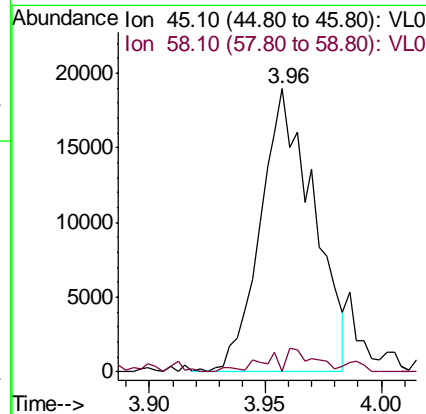
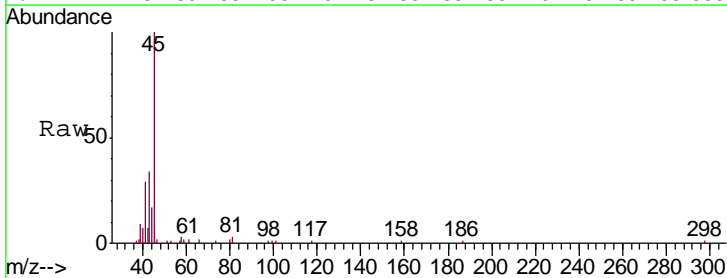
Instrument :
 MSVOA_L
 ClientSampled :
 DC-SS

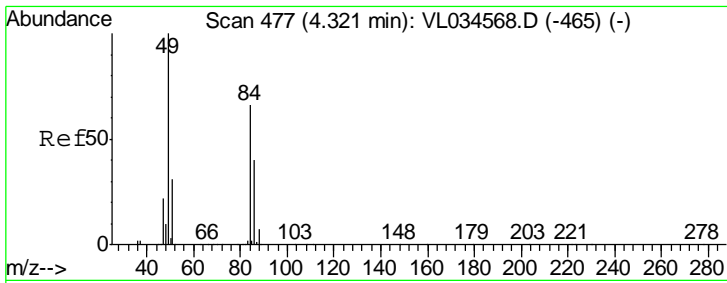
Tgt Ion: 59 Resp: 2917
 Ion Ratio Lower Upper
 59 100
 57 0.0 8.7 13.1#



#19
 Isopropyl Alcohol
 Concen: 0.412 ppbv
 RT: 3.96 min Scan# 364
 Delta R.T. 0.02 min
 Lab File: VL034637.D
 Acq: 18 Feb 2020 23:39

Tgt Ion: 45 Resp: 30044
 Ion Ratio Lower Upper
 45 100
 58 8.3 1.7 2.5#

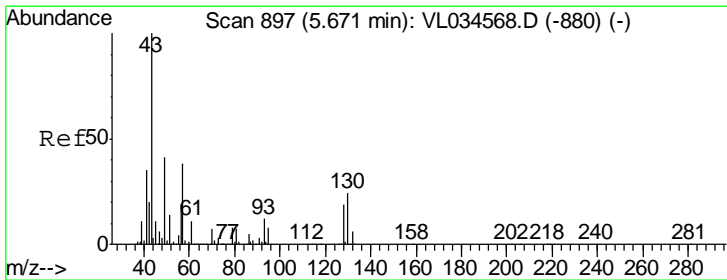
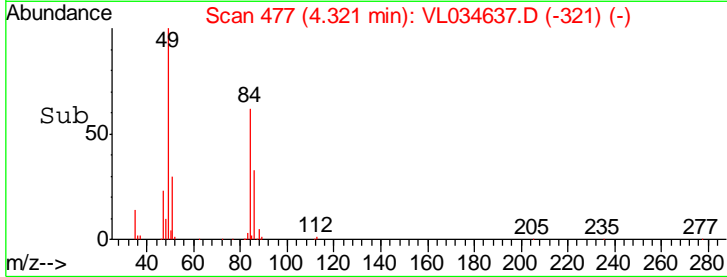
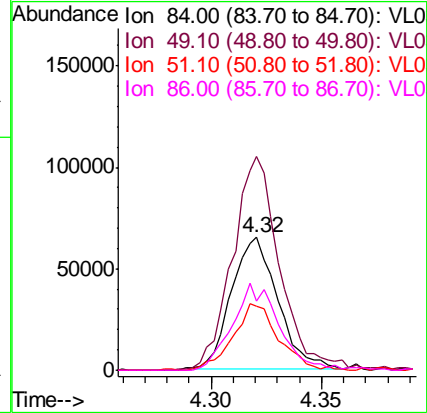
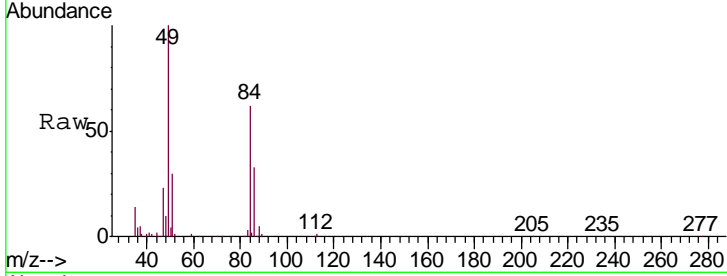




#20
 Methylene Chloride
 Concen: 1.980 ppbv
 RT: 4.32 min Scan# 477
 Delta R.T. 0.00 min
 Lab File: VL034637.D
 Acq: 18 Feb 2020 23:39

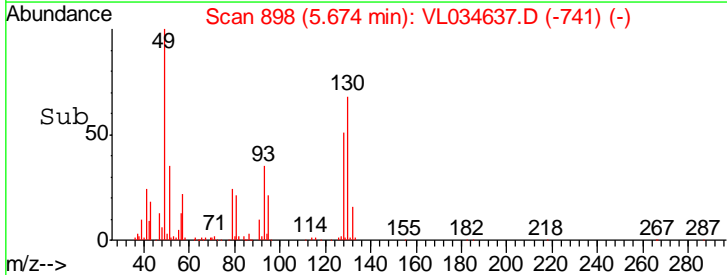
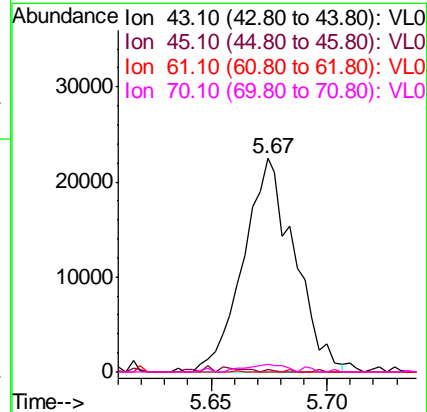
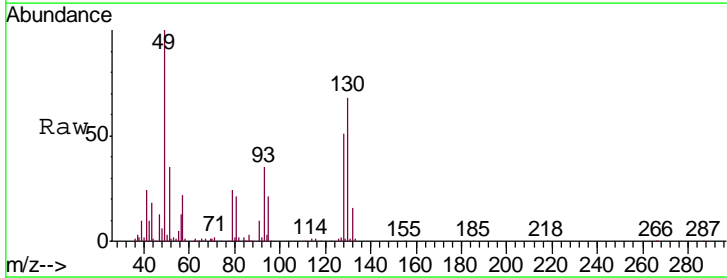
Instrument :
 MSVOA_L
 ClientSampled :
 DC-SS

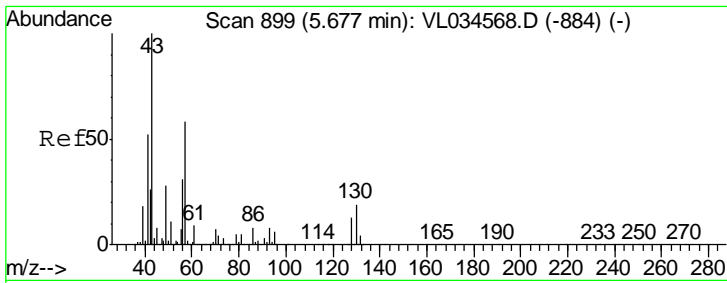
Tgt Ion	Resp	Lower	Upper
84	94312		
84	100		
49	160.7	122.4	183.6
51	47.9	38.6	57.8
86	53.0	49.0	73.6



#25
 Ethyl Acetate
 Concen: 0.170 ppbv
 RT: 5.67 min Scan# 898
 Delta R.T. 0.00 min
 Lab File: VL034637.D
 Acq: 18 Feb 2020 23:39

Tgt Ion	Resp	Lower	Upper
43	34495		
43	100		
45	1.5	8.5	12.7#
61	0.0	7.8	11.6#
70	3.7	5.8	8.8#



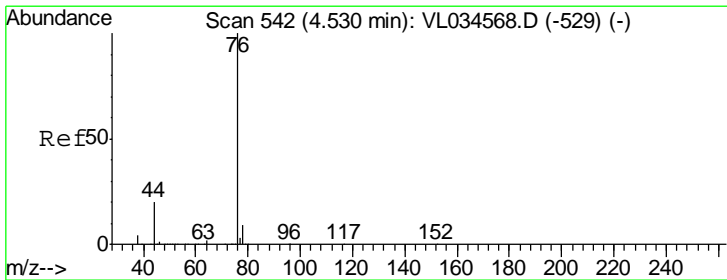
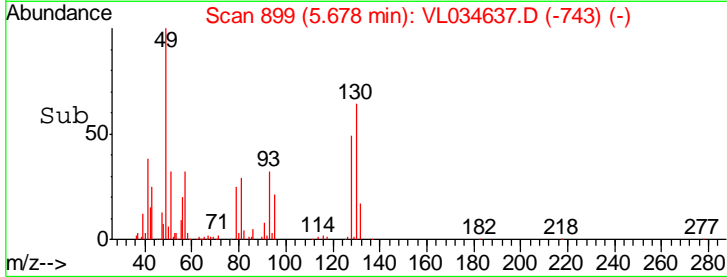
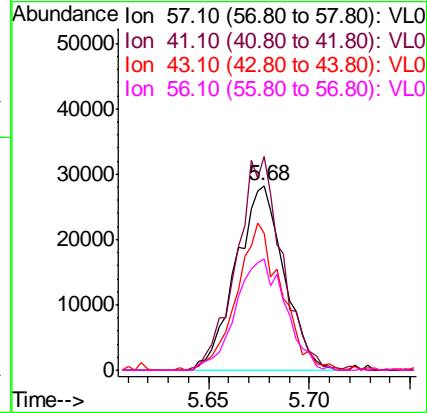
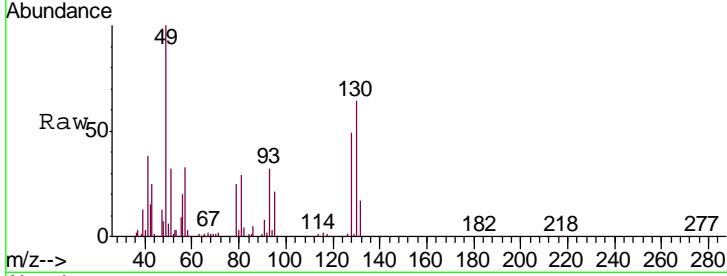


#26
 Hexane
 Concen: 0.555 ppbv
 RT: 5.68 min Scan# 899
 Delta R.T. 0.00 min
 Lab File: VL034637.D
 Acq: 18 Feb 2020 23:39

Instrument :
 MSVOA_L
 ClientSampled :
 DC-SS

Tgt Ion: 57 Resp: 47113

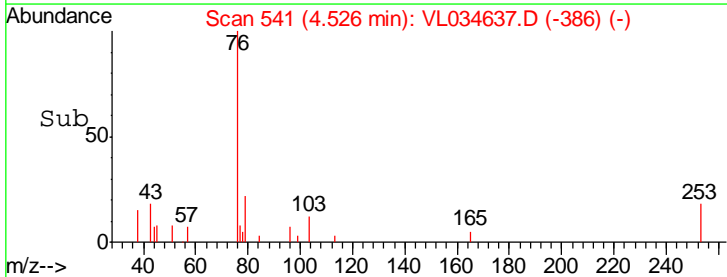
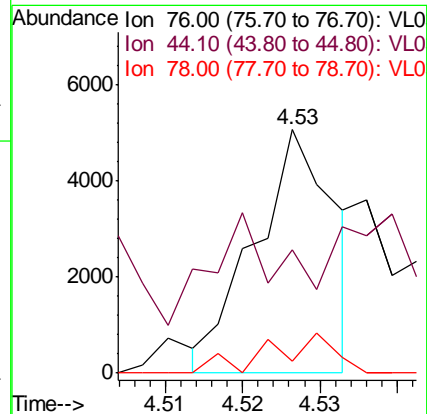
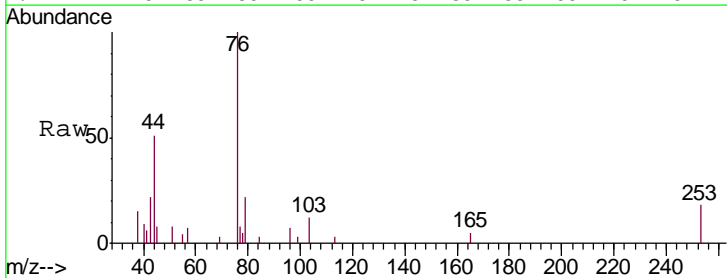
Ion	Ratio	Lower	Upper
57	100		
41	109.8	76.2	114.2
43	74.7	189.9	284.9#
56	62.6	43.6	65.4

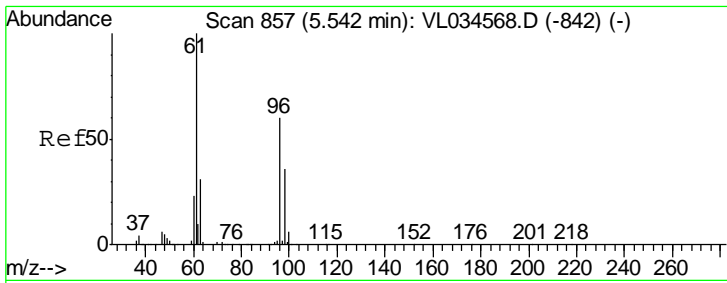


#27
 Carbon Disulfide
 Concen: 0.032 ppbv
 RT: 4.53 min Scan# 541
 Delta R.T. -0.00 min
 Lab File: VL034637.D
 Acq: 18 Feb 2020 23:39

Tgt Ion: 76 Resp: 3629

Ion	Ratio	Lower	Upper
76	100		
44	46.0	16.3	24.5#
78	16.0	7.4	11.2#

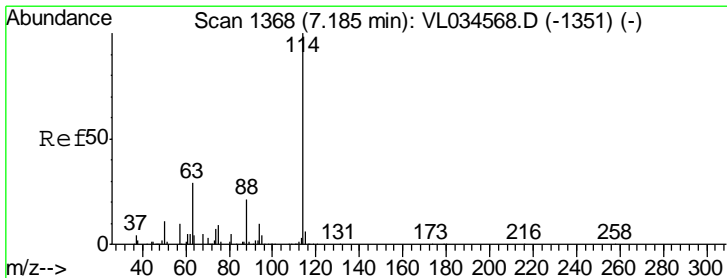
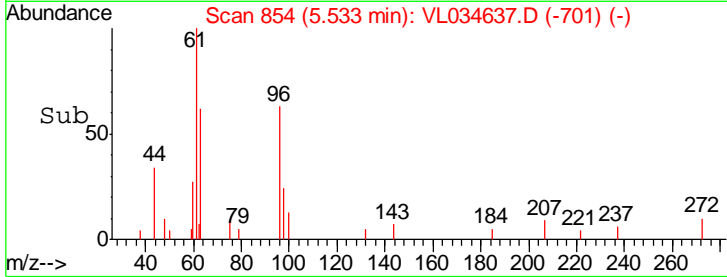
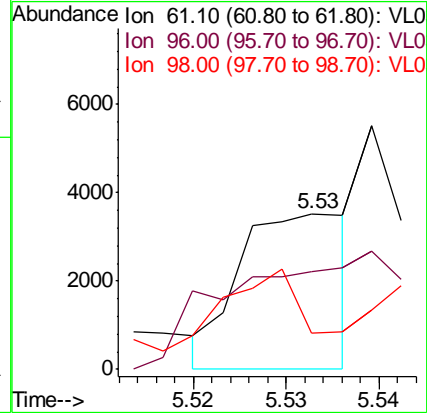
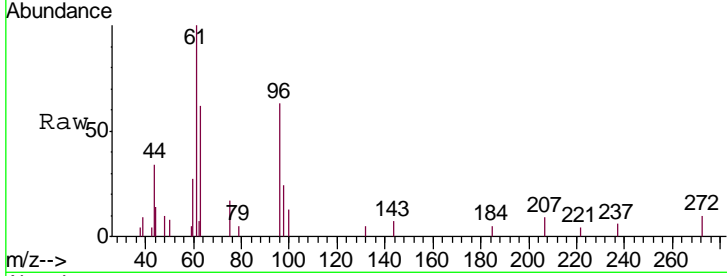




#31
 cis-1,2-Dichloroethene
 Concen: 0.033 ppbv
 RT: 5.53 min Scan# 854
 Delta R.T. -0.01 min
 Lab File: VL034637.D
 Acq: 18 Feb 2020 23:39

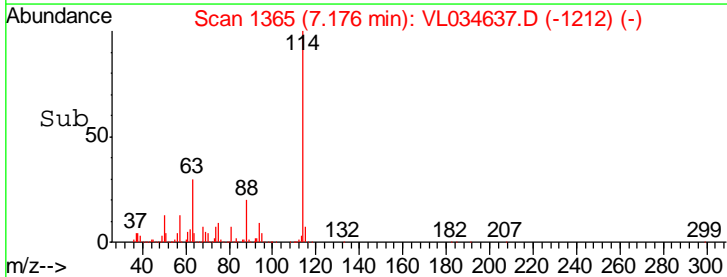
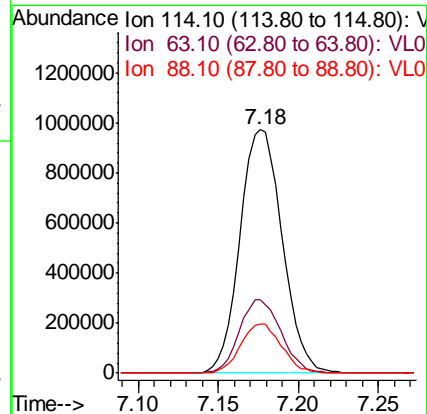
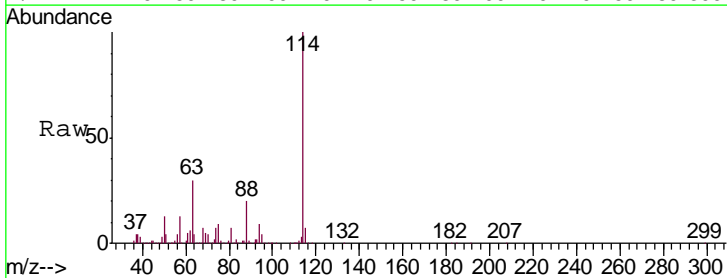
Instrument :
 MSVOA_L
 ClientSampleID :
 DC-SS

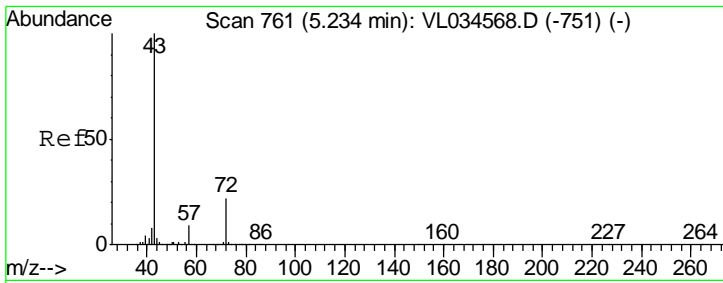
Tgt Ion	Resp	Lower	Upper
61	100		
96	15.8	48.0	72.0#
98	3.0	28.6	43.0#



#33
 1,4-Difluorobenzene
 Concen: 10.000 ppbv
 RT: 7.18 min Scan# 1365
 Delta R.T. -0.01 min
 Lab File: VL034637.D
 Acq: 18 Feb 2020 23:39

Tgt Ion	Resp	Lower	Upper
114	100		
63	29.8	24.1	36.1
88	19.7	15.9	23.9

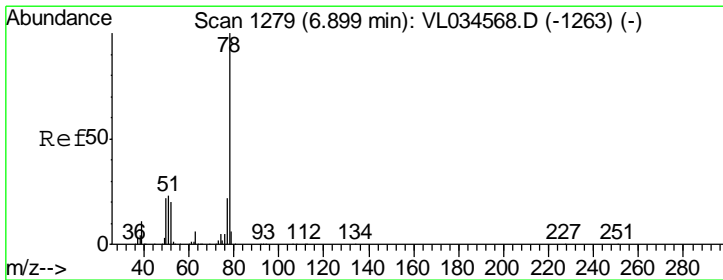
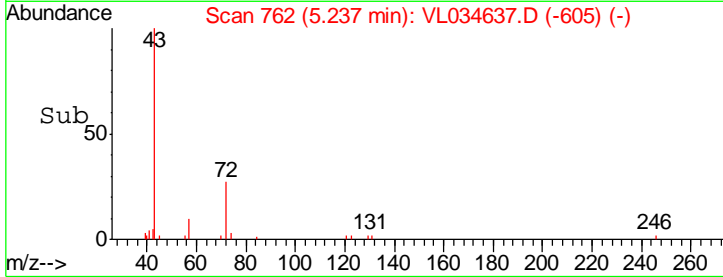
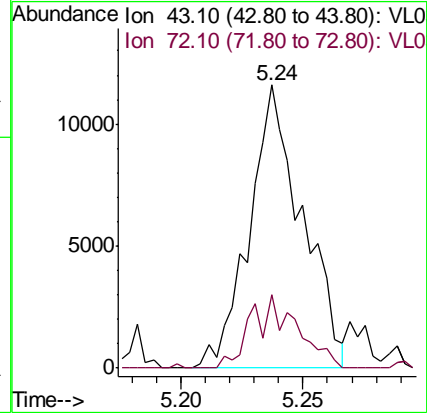
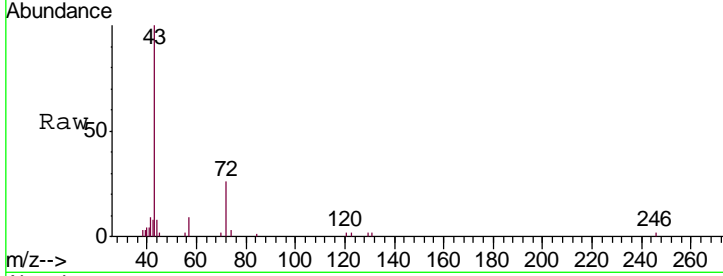




#34
 2-Butanone
 Concen: 0.137 ppbv
 RT: 5.24 min Scan# 762
 Delta R.T. 0.00 min
 Lab File: VL034637.D
 Acq: 18 Feb 2020 23:39

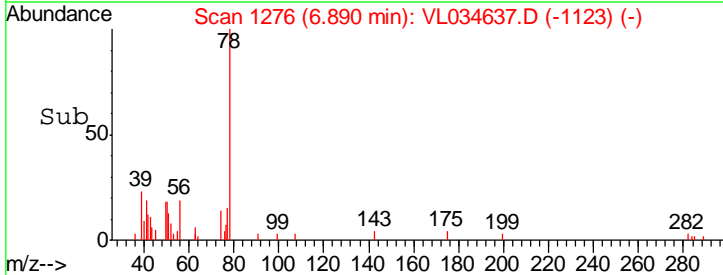
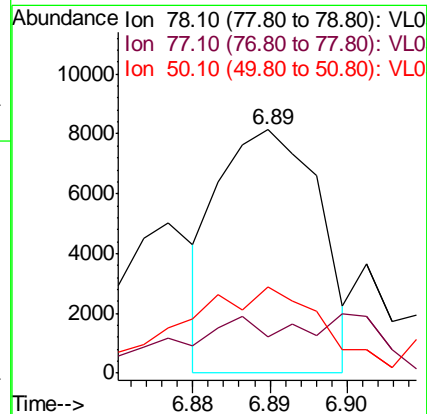
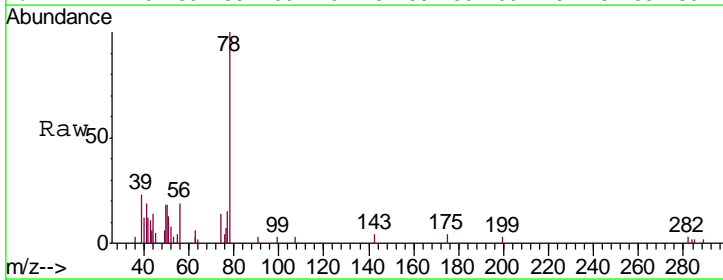
Instrument :
 MSVOA_L
 ClientSampled :
 DC-SS

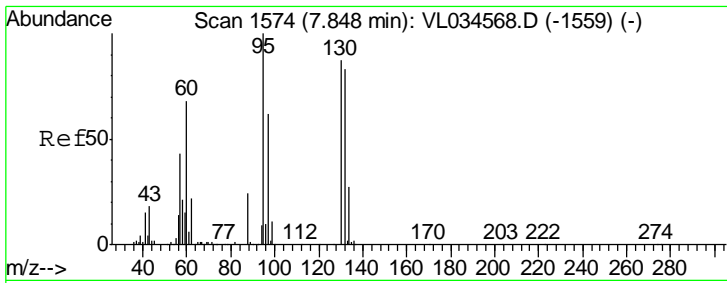
Tgt Ion: 43 Resp: 17343
 Ion Ratio Lower Upper
 43 100
 72 22.6 17.2 25.8



#36
 Benzene
 Concen: 0.048 ppbv
 RT: 6.89 min Scan# 1276
 Delta R.T. -0.01 min
 Lab File: VL034637.D
 Acq: 18 Feb 2020 23:39

Tgt Ion: 78 Resp: 7396
 Ion Ratio Lower Upper
 78 100
 77 5.0 17.3 25.9#
 50 35.5 17.4 26.2#

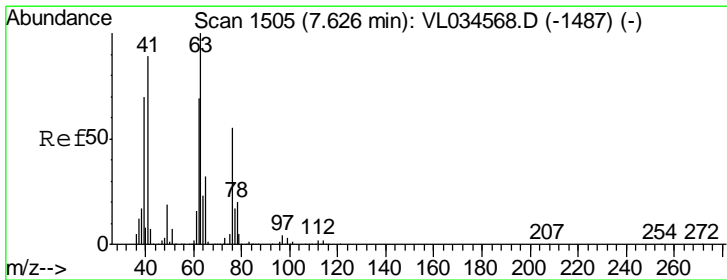
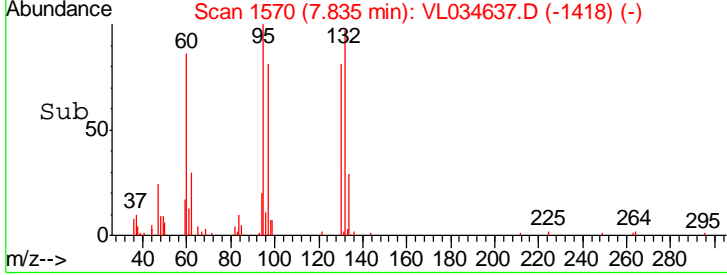
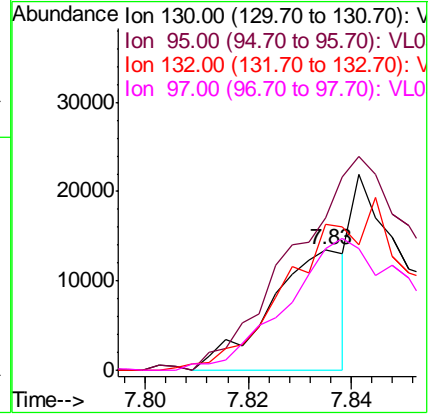
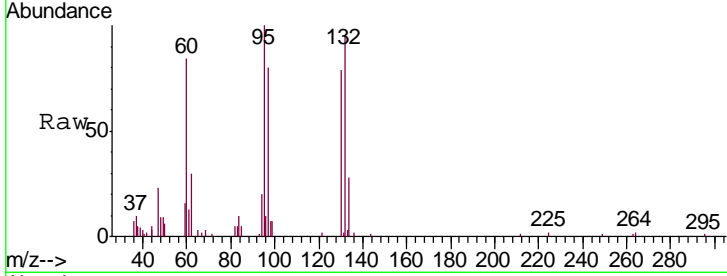




#38
 Trichloroethene
 Concen: 0.209 ppbv
 RT: 7.83 min Scan# 1570
 Delta R.T. -0.01 min
 Lab File: VL034637.D
 Acq: 18 Feb 2020 23:39

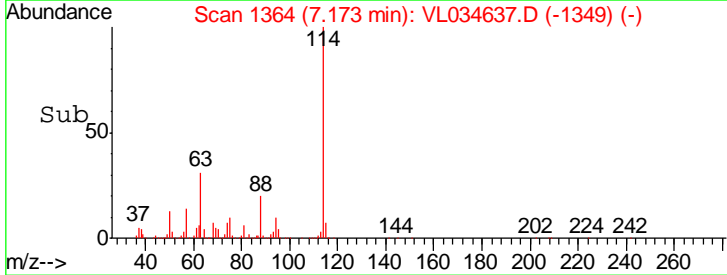
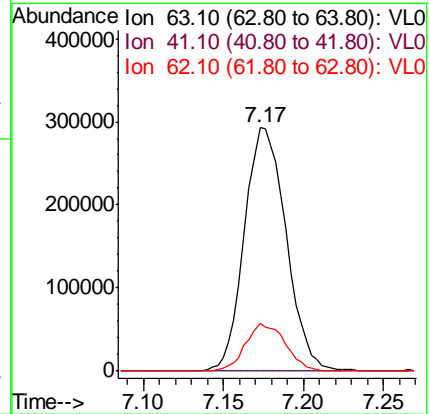
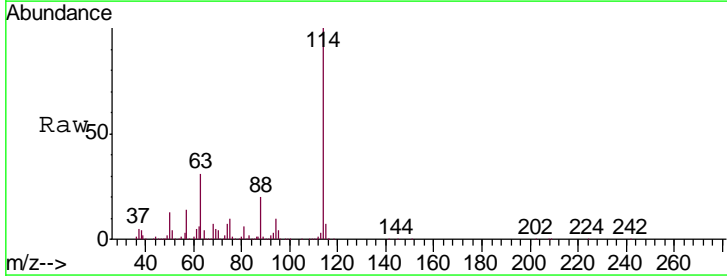
Instrument :
 MSVOA_L
 ClientSampled :
 DC-SS

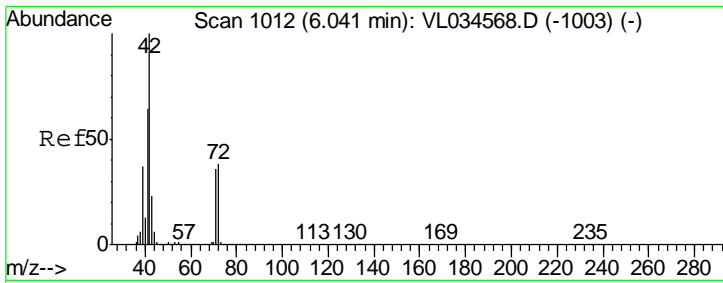
Tgt Ion	Resp	Lower	Upper
130	13696		
95	126.8	91.6	137.4
132	115.5	76.1	114.1#
97	95.8	56.6	84.8#



#39
 1,2-Dichloropropane
 Concen: 8.066 ppbv
 RT: 7.17 min Scan# 1364
 Delta R.T. -0.45 min
 Lab File: VL034637.D
 Acq: 18 Feb 2020 23:39

Tgt Ion	Resp	Lower	Upper
63	520273		
41	0.0	71.0	106.4#
62	19.8	55.4	83.0#

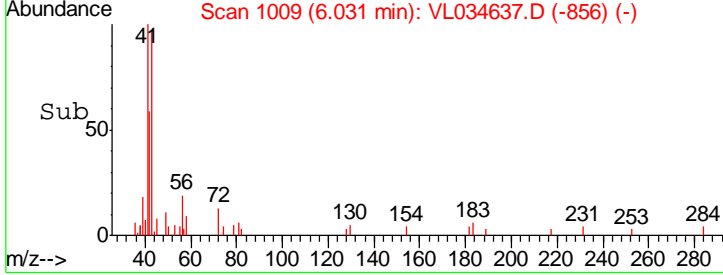
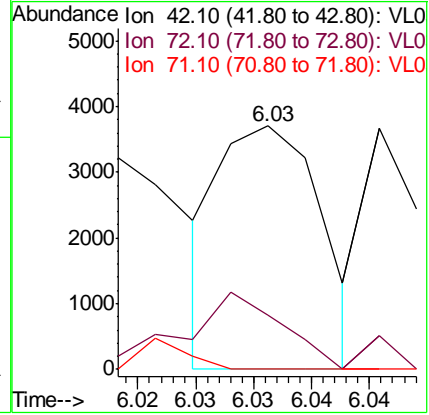
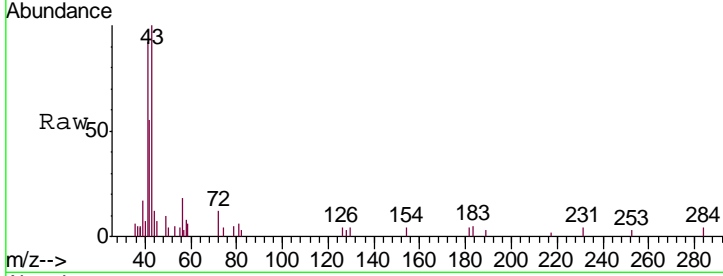




#41
 Tetrahydrofuran
 Concen: 0.034 ppbv
 RT: 6.03 min Scan# 1009
 Delta R.T. -0.01 min
 Lab File: VL034637.D
 Acq: 18 Feb 2020 23:39

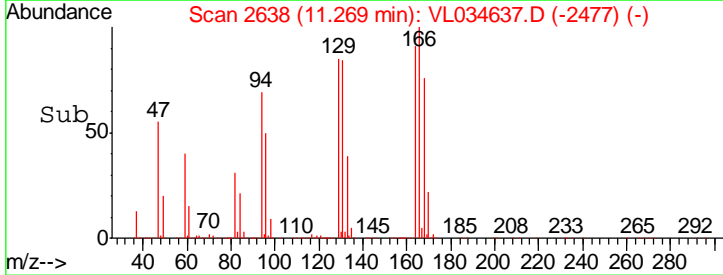
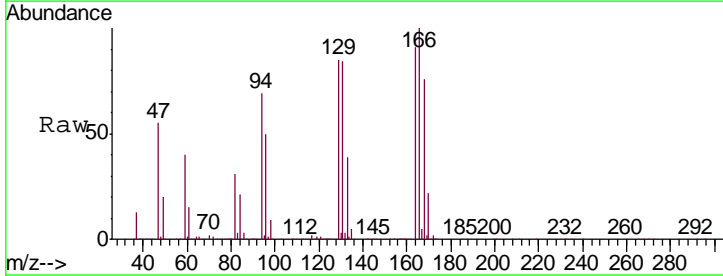
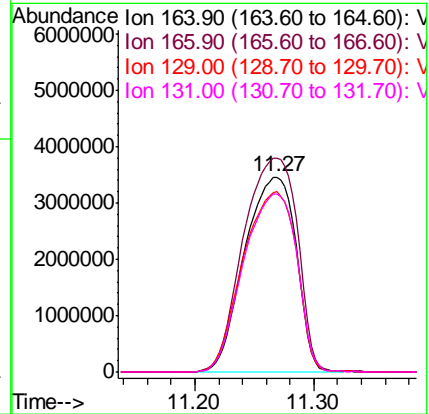
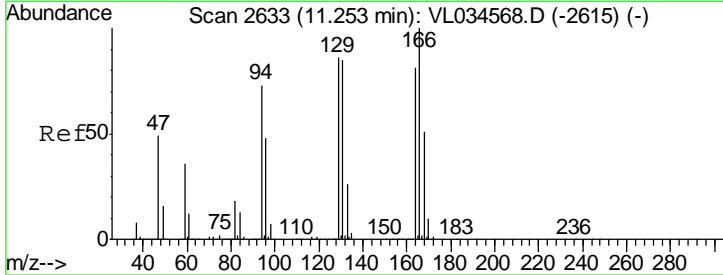
Instrument :
 MSVOA_L
 ClientSampled :
 DC-SS

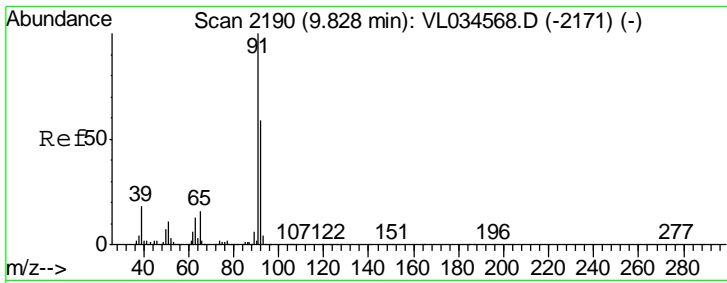
Tgt Ion	Resp	Lower	Upper
42	100		
72	42.7	31.8	47.8
71	0.0	30.2	45.4#



#52
 Tetrachloroethene
 Concen: 166.026 ppbv
 RT: 11.27 min Scan# 2638
 Delta R.T. 0.02 min
 Lab File: VL034637.D
 Acq: 18 Feb 2020 23:39

Tgt Ion	Resp	Lower	Upper
164	100		
166	109.3	99.0	148.4
129	92.7	85.3	127.9
131	91.4	84.2	126.2

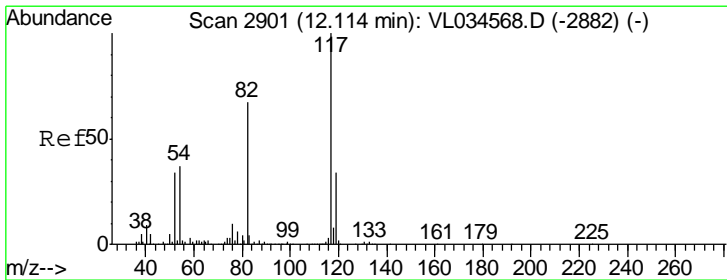
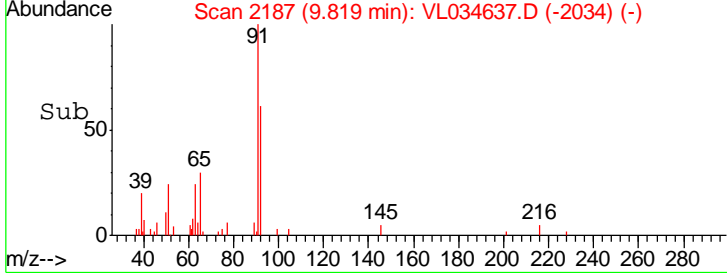
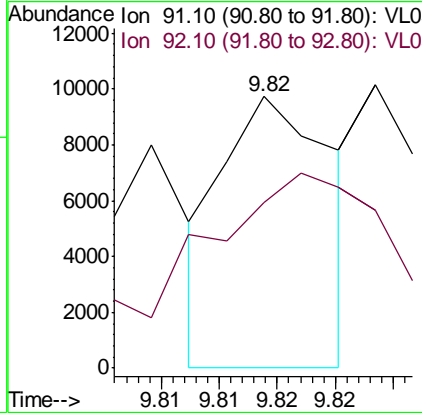
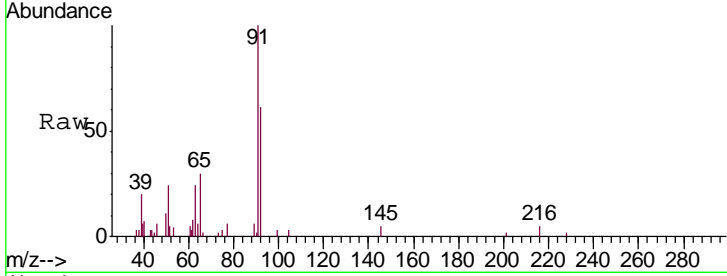




#53
 Toluene
 Concen: 0.037 ppbv
 RT: 9.82 min Scan# 2187
 Delta R.T. -0.01 min
 Lab File: VL034637.D
 Acq: 18 Feb 2020 23:39

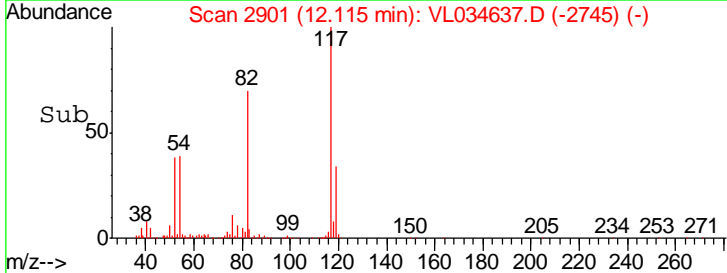
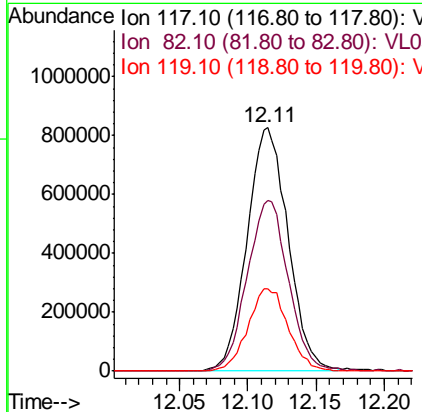
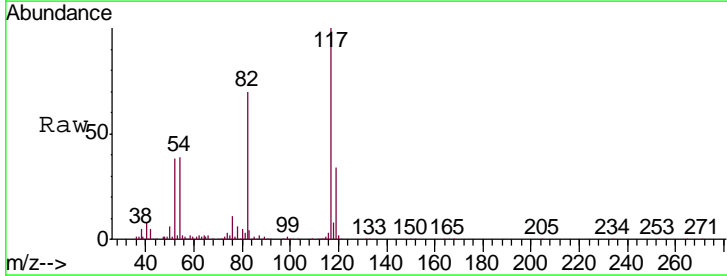
Instrument :
 MSVOA_L
 ClientSampled :
 DC-SS

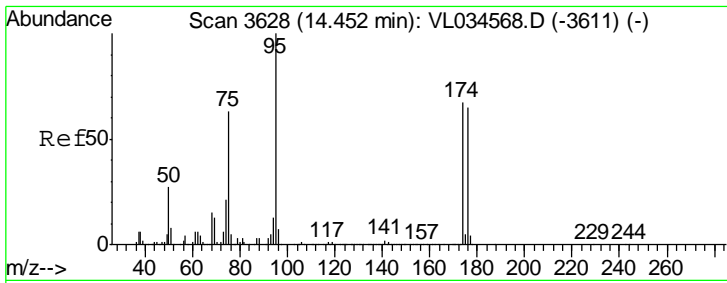
Tgt Ion: 91 Resp: 6404
 Ion Ratio Lower Upper
 91 100
 92 187.8 48.2 72.2#



#55
 Chlorobenzene-d5
 Concen: 10.000 ppbv
 RT: 12.11 min Scan# 2901
 Delta R.T. 0.00 min
 Lab File: VL034637.D
 Acq: 18 Feb 2020 23:39

Tgt Ion: 117 Resp: 1722181
 Ion Ratio Lower Upper
 117 100
 82 70.9 54.2 81.4
 119 33.5 26.1 39.1





#68
 1-Bromo-4-Fluorobenzene
 Concen: 10.028 ppbv
 RT: 14.45 min Scan# 3627
 Delta R.T. -0.00 min
 Lab File: VL034637.D
 Acq: 18 Feb 2020 23:39

Instrument :
 MSVOA_L
 ClientSampleID :
 DC-SS

Tgt Ion: 95 Resp: 1459500

Ion	Ratio	Lower	Upper
95	100		
174	64.7	52.3	78.5
175	4.6	3.8	5.6

