

Data Path : Z:\VOASRV\HPCHEM1\MSVOA L\DATA\VL031620\  
 Data File : VL034902.D  
 Acq On : 16 Mar 2020 22:42  
 Operator : SY/AP  
 Sample : L1924-05DL2 40X  
 Misc : 400ml/MSVOA L  
 ALS Vial : 1 Sample Multiplier: 1

Instrument :  
 MSVOA\_L  
 ClientSampleId :

Quant Time: Mar 17 04:28:26 2020  
 Quant Method : Z:\VOASRV\HPCHEM1\MSVOA L\METHODS\VL030920AIR.M  
 Quant Title : AIR ANALYSIS BY METHOD TO-15 Instrument: MSVOA\_L Mon Mar 09 16:42:53 2020  
 QLast Update : Mon Mar 09 16:42:53 2020  
 Response via : Initial Calibration

| Internal Standards      | R.T.  | QIon | Response | Conc  | Units | Dev(Min) |
|-------------------------|-------|------|----------|-------|-------|----------|
| 1) Bromochloromethane   | 5.65  | 49   | 845114   | 10.00 | ppbv  | 0.00     |
| 33) 1,4-Difluorobenzene | 7.17  | 114  | 1814154  | 10.00 | ppbv  | 0.00     |
| 55) Chlorobenzene-d5    | 12.10 | 117  | 1748549  | 10.00 | ppbv  | 0.00     |

System Monitoring Compounds  
 68) 1-Bromo-4-Fluorobenzene 14.44 95 1419824 10.41 ppbv 0.00  
 Spiked Amount 10.000 Range 65 - 135 Recovery = 104.10%

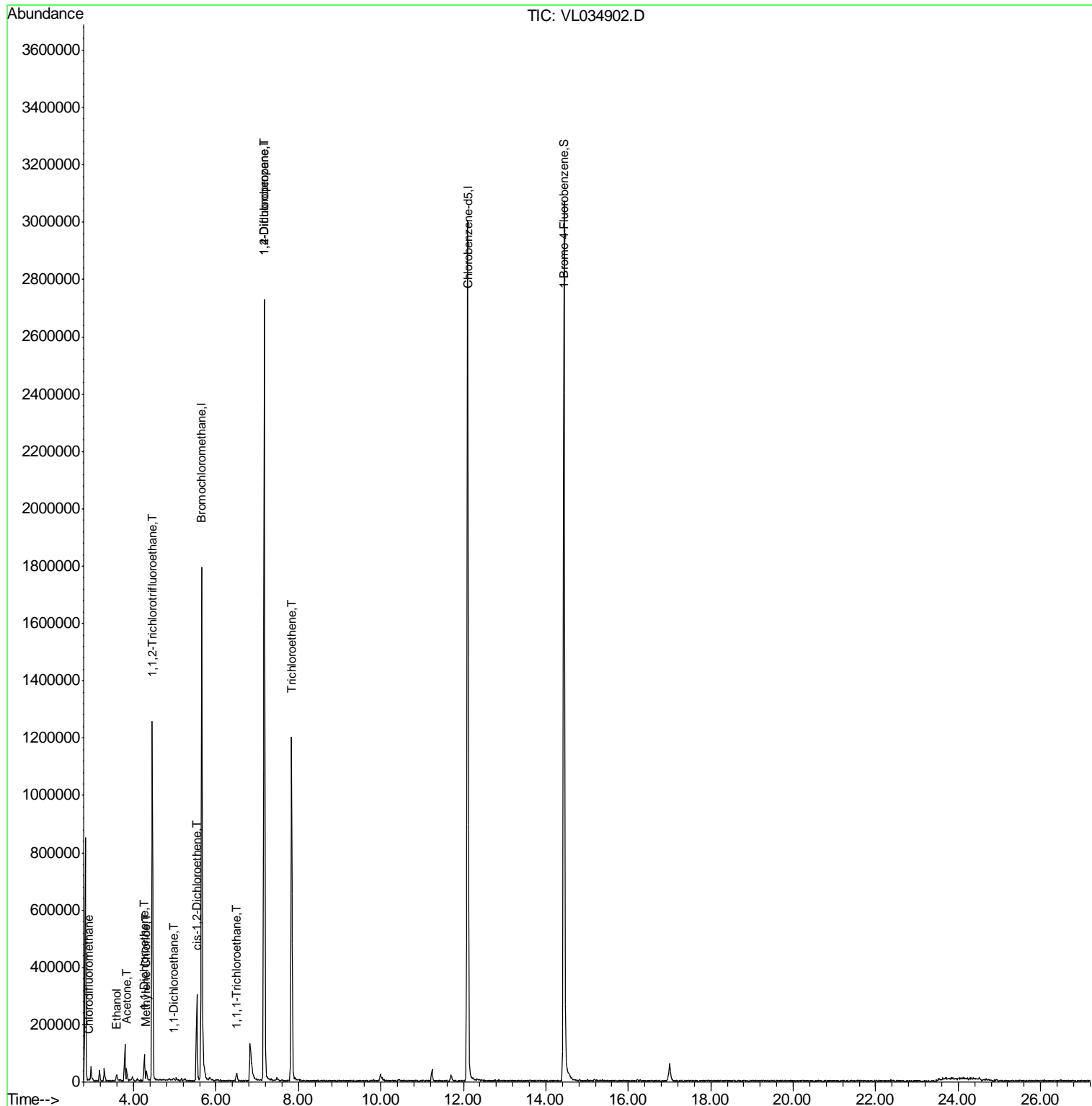
| Target Compounds               | R.T. | QIon | Response | Conc  | Units  | Ovalue |
|--------------------------------|------|------|----------|-------|--------|--------|
| 3) Chlorodifluoromethane       | 2.92 | 51   | 3867     | 0.041 | ppbv # | 59     |
| 12) 1,1,2-Trichlorotrifluoroet | 4.46 | 101  | 427078   | 4.956 | ppbv   | 94     |
| 13) Ethanol                    | 3.59 | 45   | 14635    | 1.068 | ppbv   | 91     |
| 15) Acetone                    | 3.83 | 43   | 38156    | 0.348 | ppbv   | 97     |
| 18) 1,1-Dichloroethene         | 4.26 | 96   | 23930    | 0.627 | ppbv   | 91     |
| 20) Methylene Chloride         | 4.31 | 84   | 7656     | 0.221 | ppbv   | 89     |
| 24) 1,1-Dichloroethane         | 4.98 | 63   | 3269     | 0.030 | ppbv # | 90     |
| 31) cis-1,2-Dichloroethene     | 5.53 | 61   | 156679   | 1.823 | ppbv   | 94     |
| 32) 1,1,1-Trichloroethane      | 6.49 | 97   | 7250     | 0.058 | ppbv # | 11     |
| 38) Trichloroethene            | 7.83 | 130  | 339793   | 5.533 | ppbv   | 95     |
| 39) 1,2-Dichloropropane        | 7.17 | 63   | 493383   | 7.701 | ppbv # | 25     |

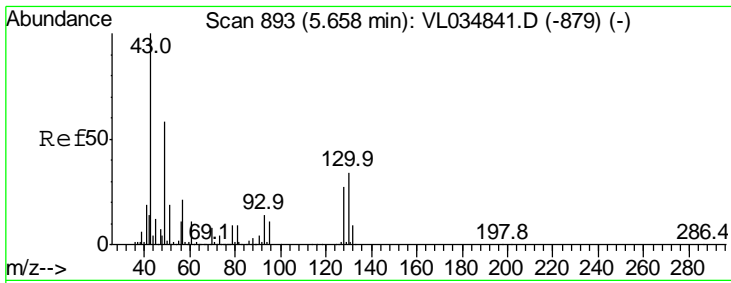
(#) = qualifier out of range (m) = manual integration (+) = signals summed

Data Path : Z:\VOASRV\HPCHEM1\MSVOA L\DATA\VL031620\  
 Data File : VL034902.D  
 Acq On : 16 Mar 2020 22:42  
 Operator : SY/AP  
 Sample : L1924-05DL2 40X  
 Misc : 400ml/MSVOA L  
 ALS Vial : 1 Sample Multiplier: 1

Instrument :  
 MSVOA\_L  
 ClientSampled :

Quant Time: Mar 17 04:28:26 2020  
 Quant Method : Z:\VOASRV\HPCHEM1\MSVOA L\METHODS\VL030920AIR.M  
 Quant Title : AIR ANALYSIS BY METHOD TO-15 Instrument: MSVOA\_L Mon Mar 09 16:42:53 2020  
 QLast Update : Mon Mar 09 16:42:53 2020  
 Response via : Initial Calibration

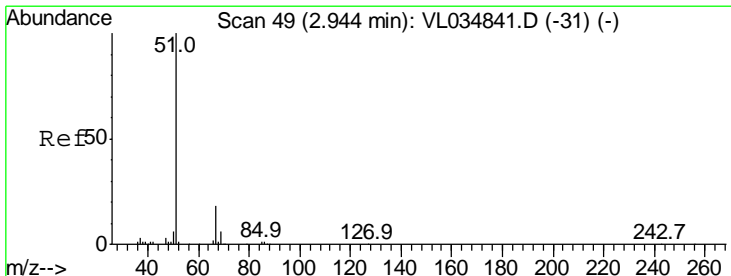
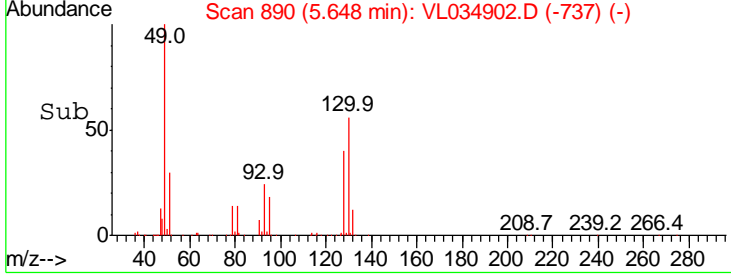
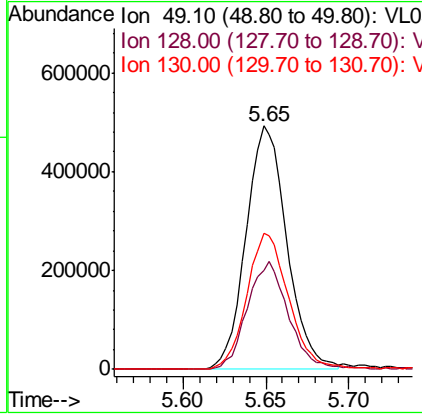
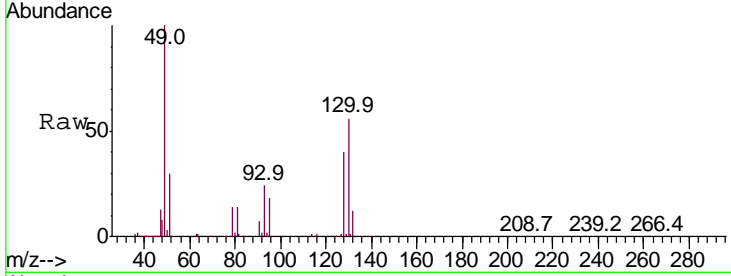




#1  
 Bromochloromethane  
 Concen: 10.000 ppbv  
 RT: 5.65 min Scan# 890  
 Delta R.T. -0.01 min  
 Lab File: VL034902.D  
 Acq: 16 Mar 2020 22:42

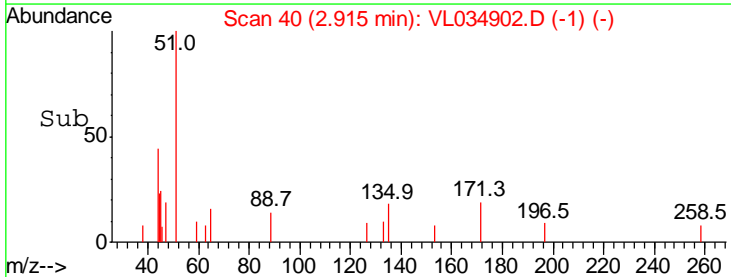
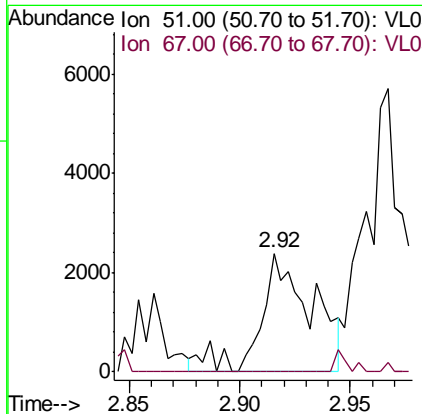
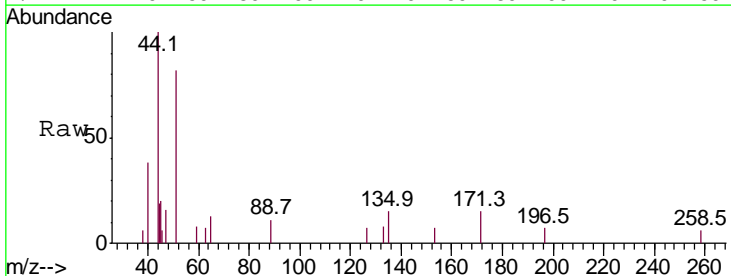
Instrument :  
 MSVOA\_L  
 ClientSampled :

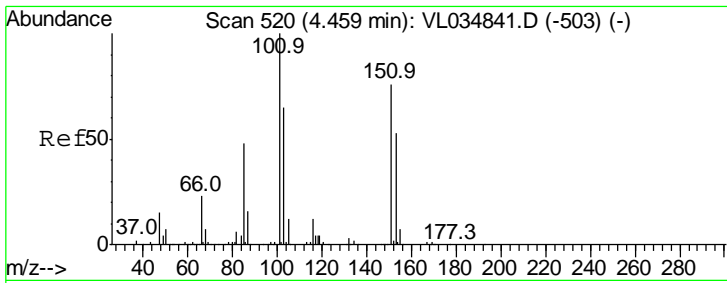
| Tgt Ion | Resp | Lower | Upper |
|---------|------|-------|-------|
| 49      | 100  |       |       |
| 128     | 44.7 | 23.4  | 70.3  |
| 130     | 57.3 | 30.0  | 90.0  |



#3  
 Chlorodifluoromethane  
 Concen: 0.041 ppbv  
 RT: 2.92 min Scan# 40  
 Delta R.T. -0.03 min  
 Lab File: VL034902.D  
 Acq: 16 Mar 2020 22:42

| Tgt Ion | Resp | Lower | Upper |
|---------|------|-------|-------|
| 51      | 100  |       |       |
| 67      | 0.0  | 14.3  | 21.5# |

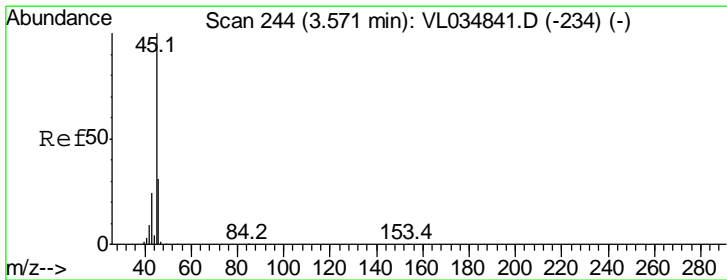
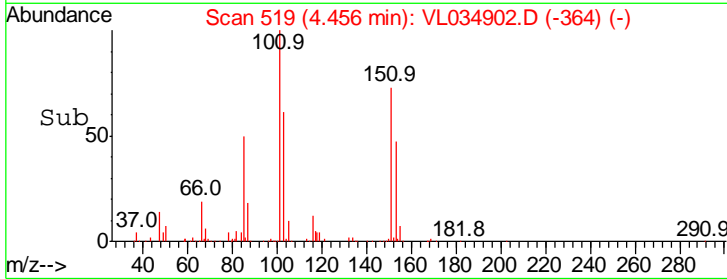
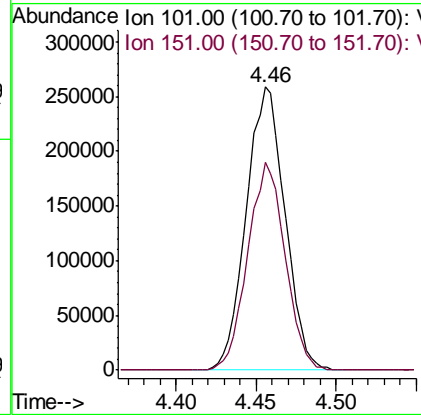
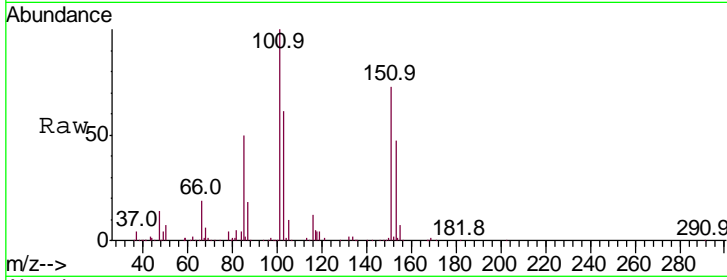




#12  
 1,1,2-Trichlorotrifluoroethane  
 Concen: 4.956 ppbv  
 RT: 4.46 min Scan# 519  
 Delta R.T. -0.00 min  
 Lab File: VL034902.D  
 Acq: 16 Mar 2020 22:42

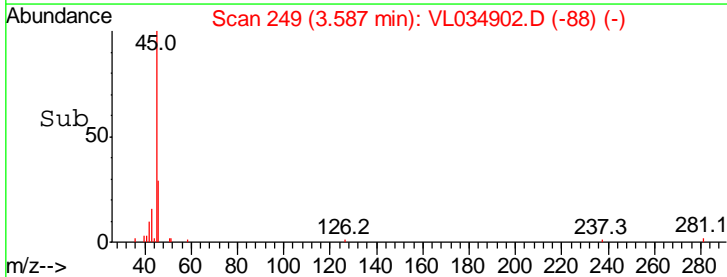
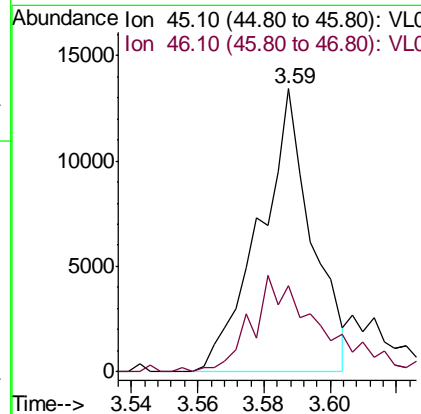
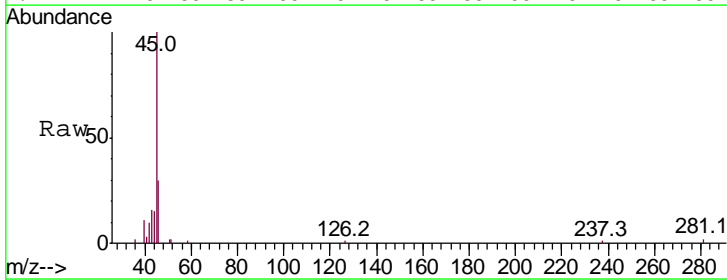
Instrument :  
 MSVOA\_L  
 ClientSampled :

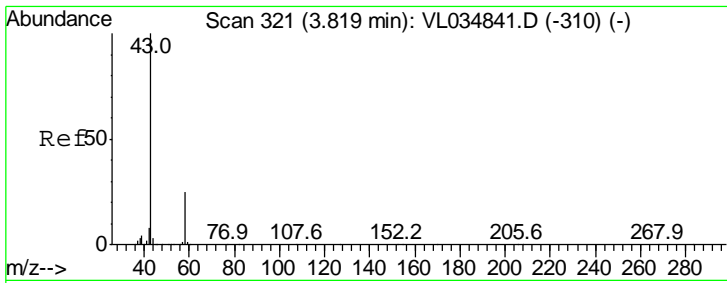
| Tgt Ion | Resp | Lower | Upper |
|---------|------|-------|-------|
| 101     | 100  |       |       |
| 151     | 71.1 | 60.8  | 91.2  |



#13  
 Ethanol  
 Concen: 1.068 ppbv  
 RT: 3.59 min Scan# 249  
 Delta R.T. 0.02 min  
 Lab File: VL034902.D  
 Acq: 16 Mar 2020 22:42

| Tgt Ion | Resp | Lower | Upper |
|---------|------|-------|-------|
| 45      | 100  |       |       |
| 46      | 45.5 | 16.0  | 64.0  |

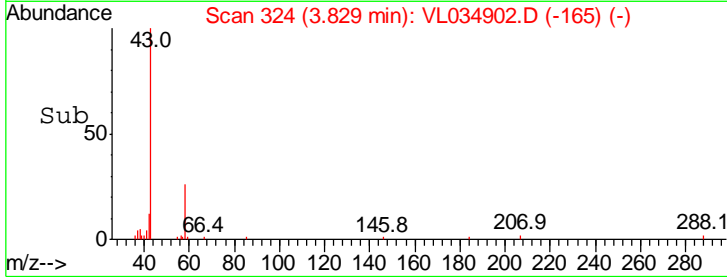
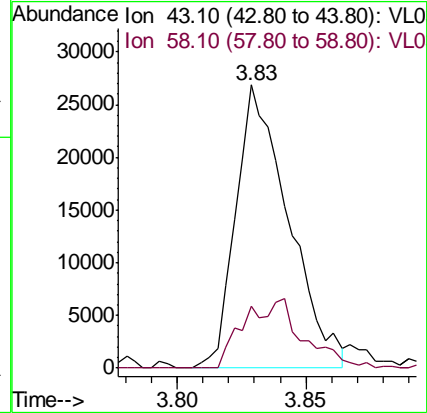
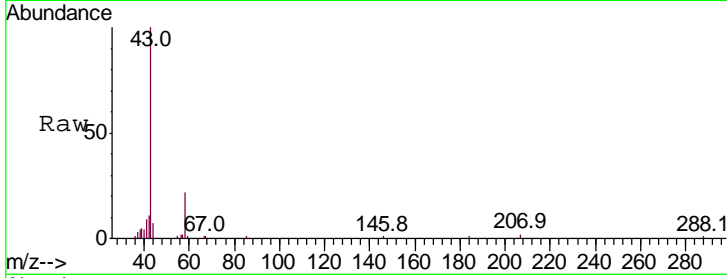




#15  
 Acetone  
 Concen: 0.348 ppbv  
 RT: 3.83 min Scan# 324  
 Delta R.T. 0.01 min  
 Lab File: VL034902.D  
 Acq: 16 Mar 2020 22:42

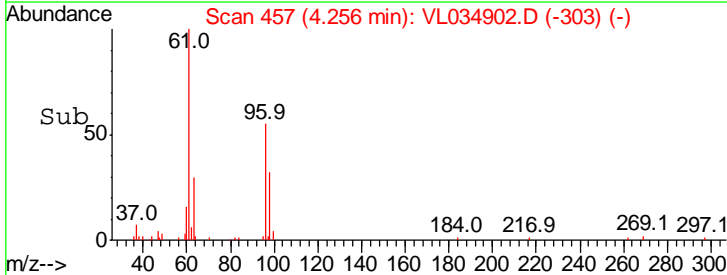
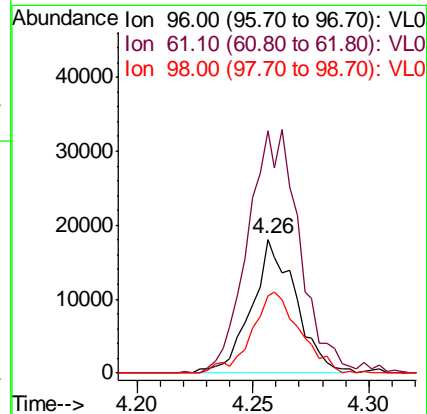
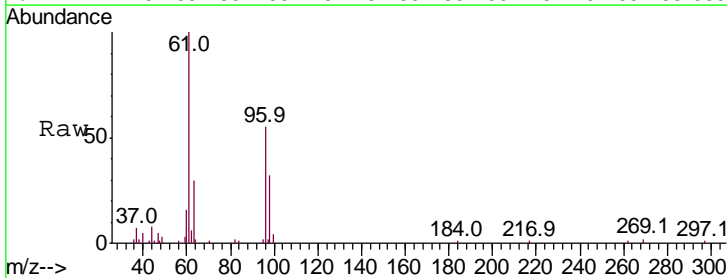
Instrument :  
 MSVOA\_L  
 ClientSampleID :

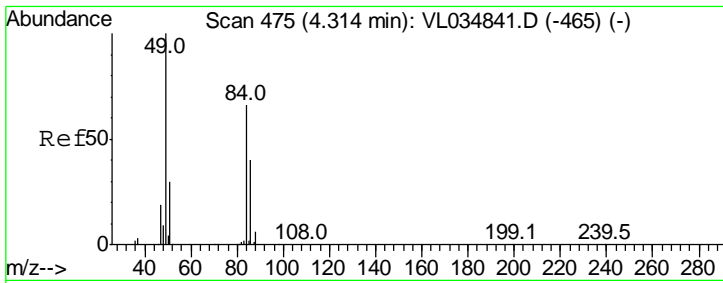
| Tgt Ion | Resp  | Lower | Upper |
|---------|-------|-------|-------|
| 43      | 38156 |       |       |
| 58      | 27.8  | 21.0  | 31.6  |



#18  
 1,1-Dichloroethene  
 Concen: 0.627 ppbv  
 RT: 4.26 min Scan# 457  
 Delta R.T. -0.01 min  
 Lab File: VL034902.D  
 Acq: 16 Mar 2020 22:42

| Tgt Ion | Resp  | Lower | Upper |
|---------|-------|-------|-------|
| 96      | 23930 |       |       |
| 61      | 181.0 | 157.3 | 235.9 |
| 98      | 57.7  | 50.2  | 75.4  |

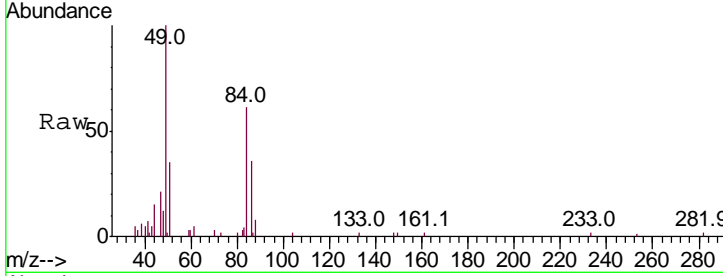




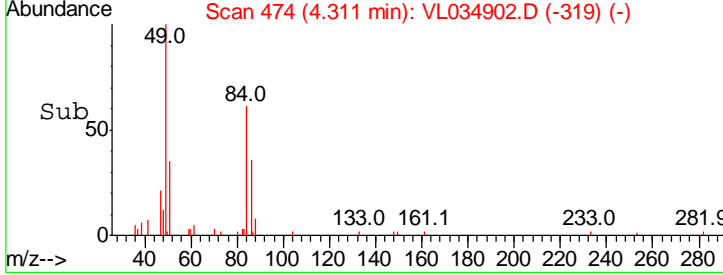
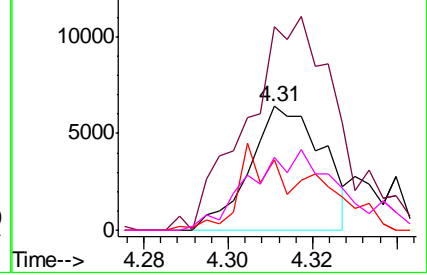
#20  
 Methylene Chloride  
 Concen: 0.221 ppbv  
 RT: 4.31 min Scan# 474  
 Delta R.T. -0.00 min  
 Lab File: VL034902.D  
 Acq: 16 Mar 2020 22:42

Instrument :  
 MSVOA\_L  
 ClientSampled :

| Tgt Ion | Resp  | Lower | Upper |
|---------|-------|-------|-------|
| 84      | 100   |       |       |
| 49      | 168.1 | 121.5 | 182.3 |
| 51      | 54.4  | 36.6  | 55.0  |
| 86      | 56.1  | 48.2  | 72.2  |

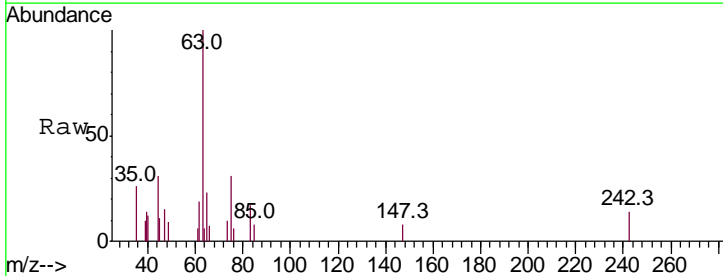


Abundance Ion 84.00 (83.70 to 84.70): VL0  
 Ion 49.10 (48.80 to 49.80): VL0  
 Ion 51.10 (50.80 to 51.80): VL0  
 Ion 86.00 (85.70 to 86.70): VL0

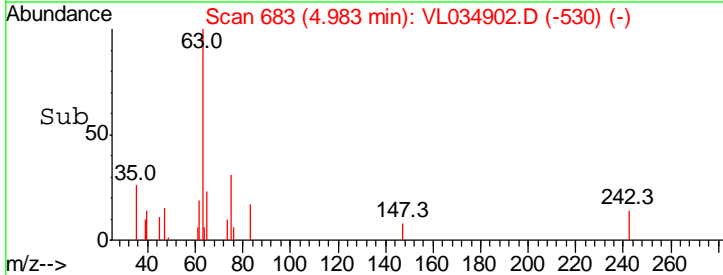
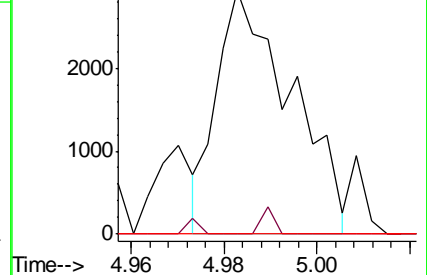


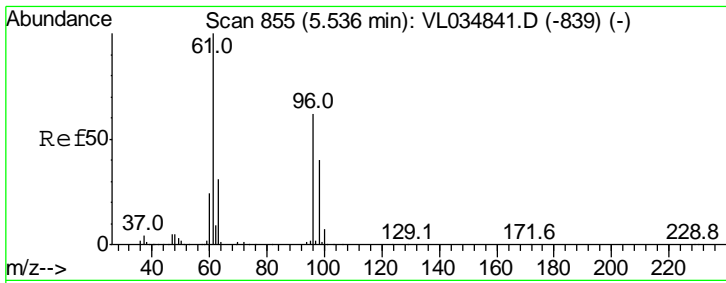
#24  
 1,1-Dichloroethane  
 Concen: 0.030 ppbv  
 RT: 4.98 min Scan# 683  
 Delta R.T. -0.01 min  
 Lab File: VL034902.D  
 Acq: 16 Mar 2020 22:42

| Tgt Ion | Resp | Lower | Upper |
|---------|------|-------|-------|
| 63      | 100  |       |       |
| 98      | 0.0  | 2.0   | 5.8#  |
| 100     | 0.0  | 1.4   | 4.0#  |



Abundance Ion 63.10 (62.80 to 63.80): VL0  
 Ion 98.00 (97.70 to 98.70): VL0  
 Ion 100.00 (99.70 to 100.70): VL0

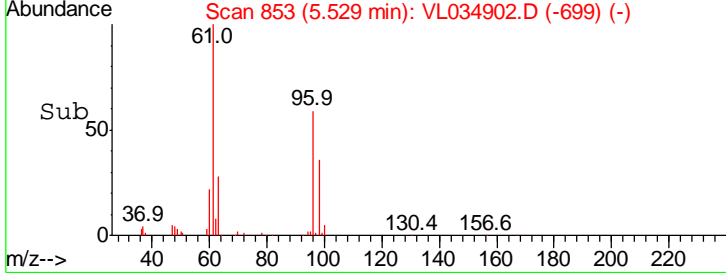
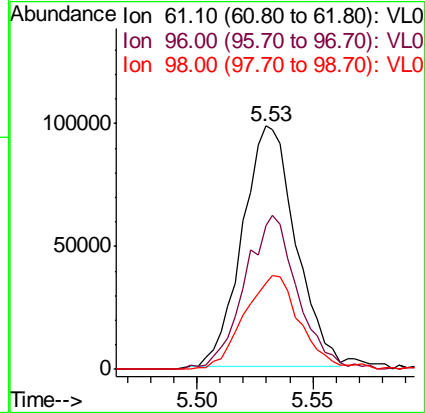
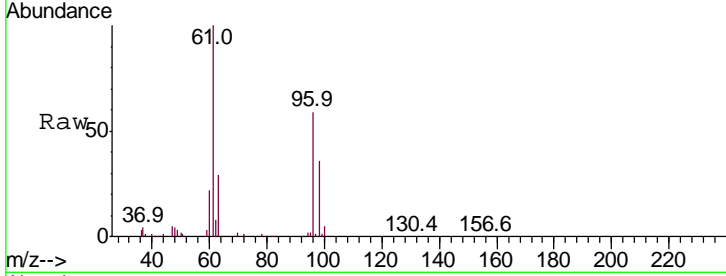




#31  
 cis-1,2-Dichloroethene  
 Concen: 1.823 ppbv  
 RT: 5.53 min Scan# 853  
 Delta R.T. -0.01 min  
 Lab File: VL034902.D  
 Acq: 16 Mar 2020 22:42

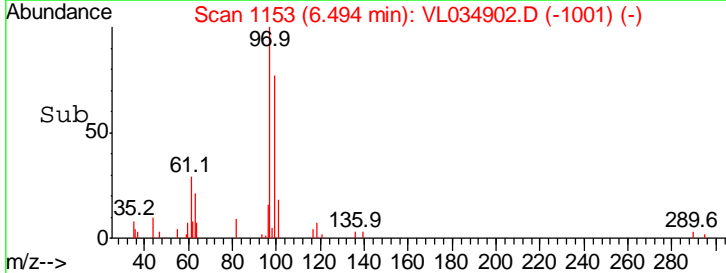
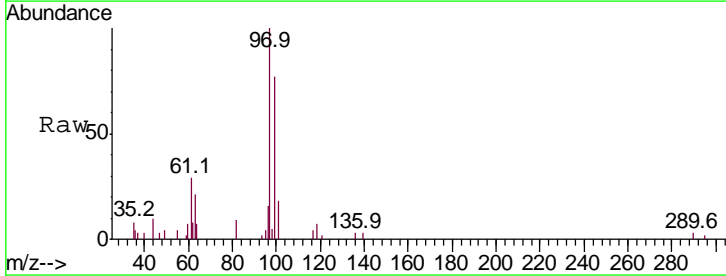
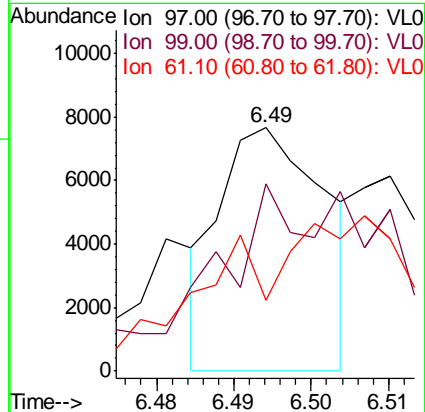
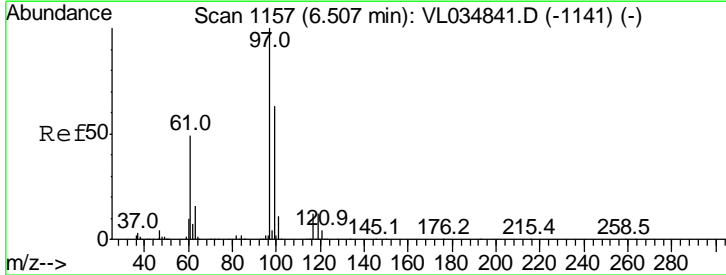
Instrument :  
 MSVOA\_L  
 ClientSampled :

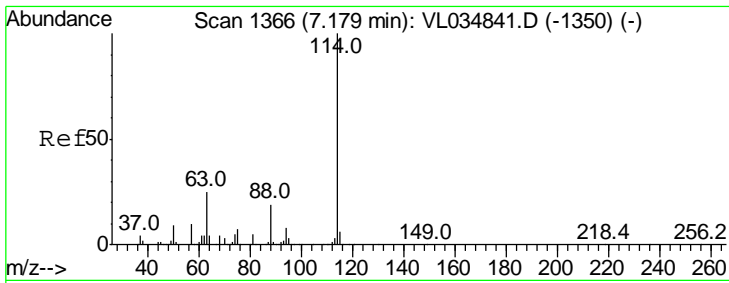
| Tgt Ion | Resp | Lower | Upper |
|---------|------|-------|-------|
| 61      | 100  |       |       |
| 96      | 58.1 | 49.8  | 74.8  |
| 98      | 35.6 | 32.2  | 48.4  |



#32  
 1,1,1-Trichloroethane  
 Concen: 0.058 ppbv  
 RT: 6.49 min Scan# 1153  
 Delta R.T. -0.01 min  
 Lab File: VL034902.D  
 Acq: 16 Mar 2020 22:42

| Tgt Ion | Resp  | Lower | Upper |
|---------|-------|-------|-------|
| 97      | 100   |       |       |
| 99      | 143.7 | 51.1  | 76.7# |
| 61      | 0.0   | 39.7  | 59.5# |



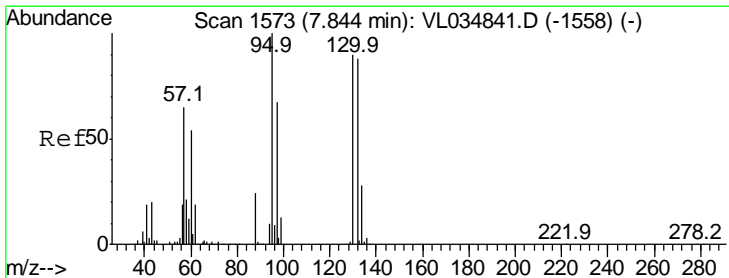
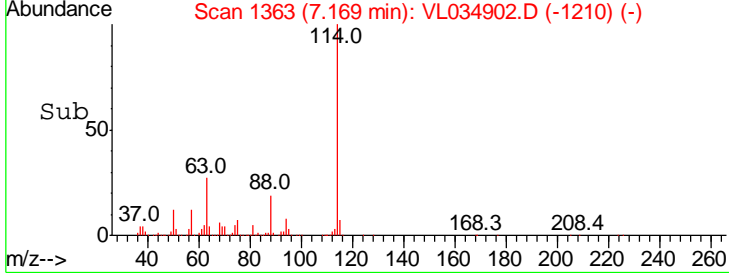
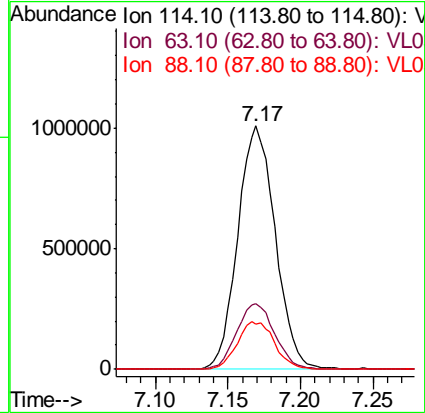
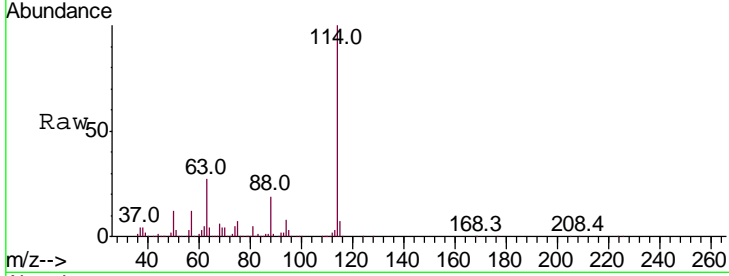


#33  
 1,4-Difluorobenzene  
 Concen: 10.000 ppbv  
 RT: 7.17 min Scan# 1363  
 Delta R.T. -0.01 min  
 Lab File: VL034902.D  
 Acq: 16 Mar 2020 22:42

Instrument :  
 MSVOA\_L  
 ClientSampled :

Tgt Ion:114 Resp: 1814154

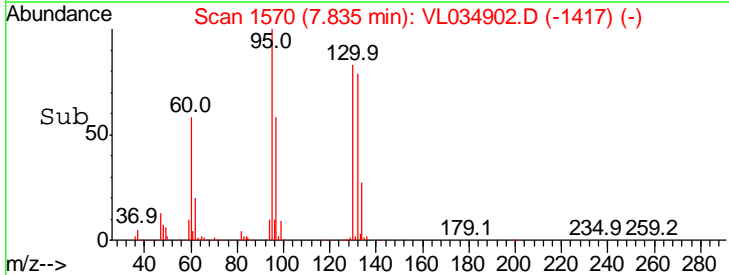
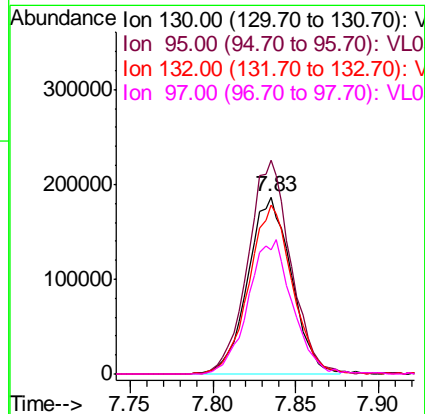
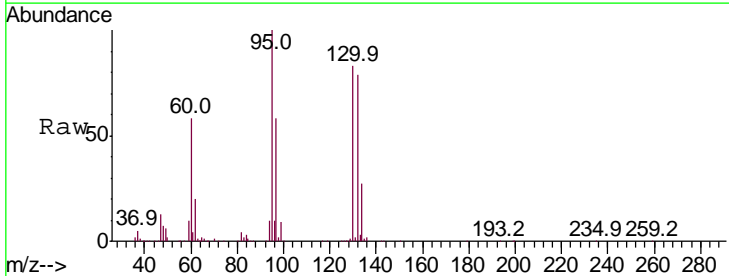
| Ion | Ratio | Lower | Upper |
|-----|-------|-------|-------|
| 114 | 100   |       |       |
| 63  | 27.4  | 20.6  | 31.0  |
| 88  | 19.5  | 15.0  | 22.6  |



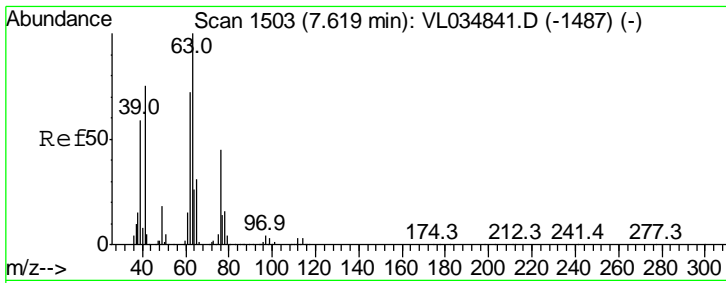
#38  
 Trichloroethene  
 Concen: 5.533 ppbv  
 RT: 7.83 min Scan# 1570  
 Delta R.T. -0.01 min  
 Lab File: VL034902.D  
 Acq: 16 Mar 2020 22:42

Tgt Ion:130 Resp: 339793

| Ion | Ratio | Lower | Upper |
|-----|-------|-------|-------|
| 130 | 100   |       |       |
| 95  | 120.8 | 88.5  | 132.7 |
| 132 | 96.0  | 78.0  | 117.0 |
| 97  | 70.4  | 59.3  | 88.9  |



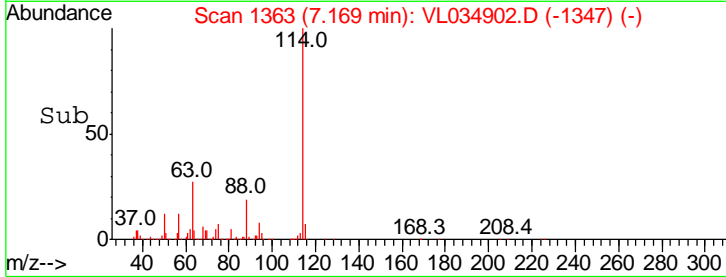
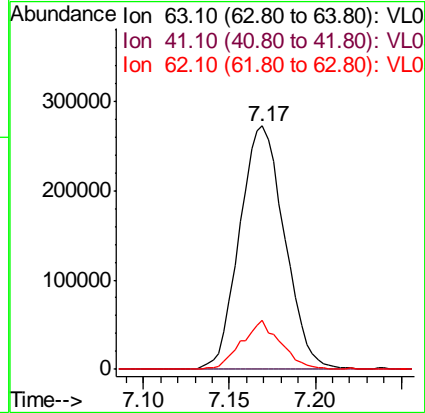
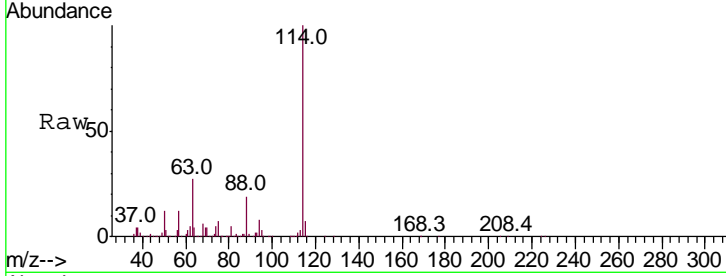




#39  
 1,2-Dichloropropane  
 Concen: 7.701 ppbv  
 RT: 7.17 min Scan# 1363  
 Delta R.T. -0.45 min  
 Lab File: VL034902.D  
 Acq: 16 Mar 2020 22:42

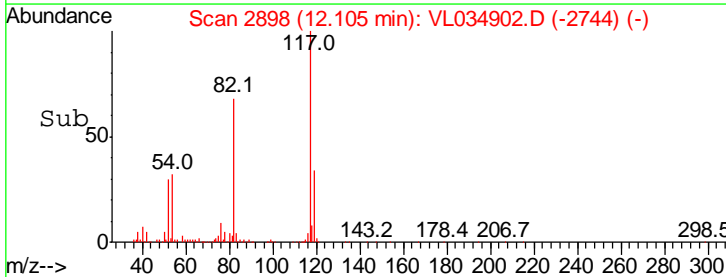
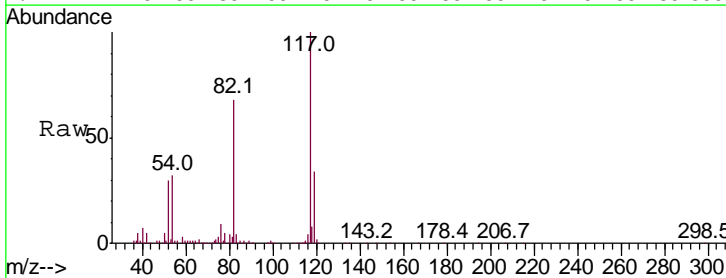
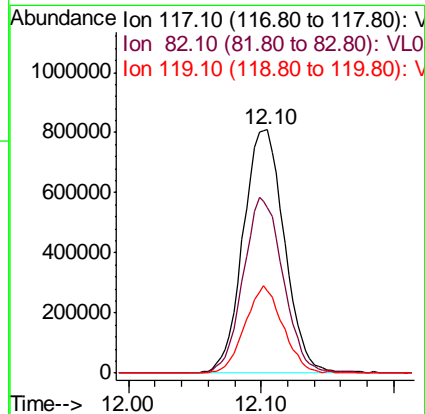
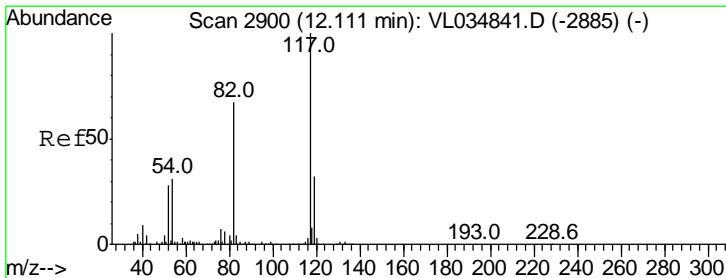
Instrument :  
 MSVOA\_L  
 ClientSampled :

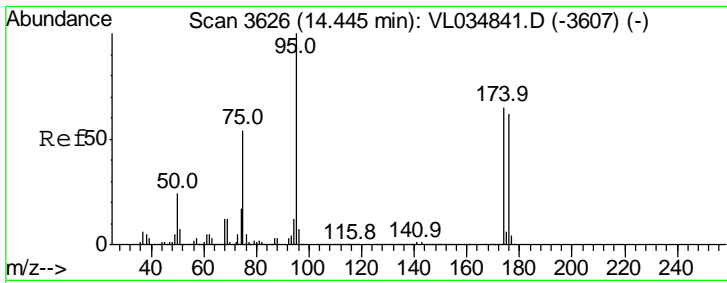
| Tgt Ion | Resp   | Lower | Upper |
|---------|--------|-------|-------|
| 63      | 493383 |       |       |
| 41      | 0.0    | 59.8  | 89.8# |
| 62      | 19.9   | 57.6  | 86.4# |



#55  
 Chlorobenzene-d5  
 Concen: 10.000 ppbv  
 RT: 12.10 min Scan# 2898  
 Delta R.T. -0.01 min  
 Lab File: VL034902.D  
 Acq: 16 Mar 2020 22:42

| Tgt Ion | Resp    | Lower | Upper |
|---------|---------|-------|-------|
| 117     | 1748549 |       |       |
| 82      | 70.4    | 51.1  | 76.7  |
| 119     | 33.4    | 27.3  | 40.9  |





#68  
 1-Bromo-4-Fluorobenzene  
 Concen: 10.412 ppbv  
 RT: 14.44 min Scan# 3624  
 Delta R.T. -0.01 min  
 Lab File: VL034902.D  
 Acq: 16 Mar 2020 22:42

Instrument :  
 MSVOA\_L  
 ClientSampled :

Tot Ion: 95 Resp: 1419824

| Ion | Ratio | Lower | Upper |
|-----|-------|-------|-------|
| 95  | 100   |       |       |
| 174 | 65.4  | 55.2  | 82.8  |
| 175 | 4.8   | 4.3   | 6.5   |

