

Data File : VL031859.D  
Acq On : 12 Apr 2018 9:00  
Operator : SY/AP  
Sample : VL0412ABL01  
Misc : 400ml/MSVOA\_L  
ALS Vial : 1 Sample Multiplier: 1

Instrument :  
MSVOA\_L  
ClientSampleId :  
VL0412ABL01

Quant Time: Apr 14 01:33:14 2018  
Quant Method : W:\HPCHEM1\MSVOA\_L\METHODS\VL041218AIR.M  
Quant Title : AIR ANALYSIS BY METHOD TO-15 Instrument: MSVOA\_L Fri Apr 13 16:50:02 2018  
QLast Update : Fri Apr 13 16:50:02 2018  
Response via : Initial Calibration

Internal Standards	R.T.	QIon	Response	Conc	Units	Dev(Min)
1) Bromochloromethane	5.89	49	1285522	10.00	ppbv	0.00
33) 1,4-Difluorobenzene	7.42	114	2677357	10.00	ppbv	0.00
55) Chlorobenzene-d5	12.39	117	2662851	10.00	ppbv	0.00

System Monitoring Compounds

68) 1-Bromo-4-Fluorobenzene 14.73 95 2148111 10.03 ppbv 0.00  
Spiked Amount 10.000 Range 65 - 135 Recovery = 100.30%

Target Compounds

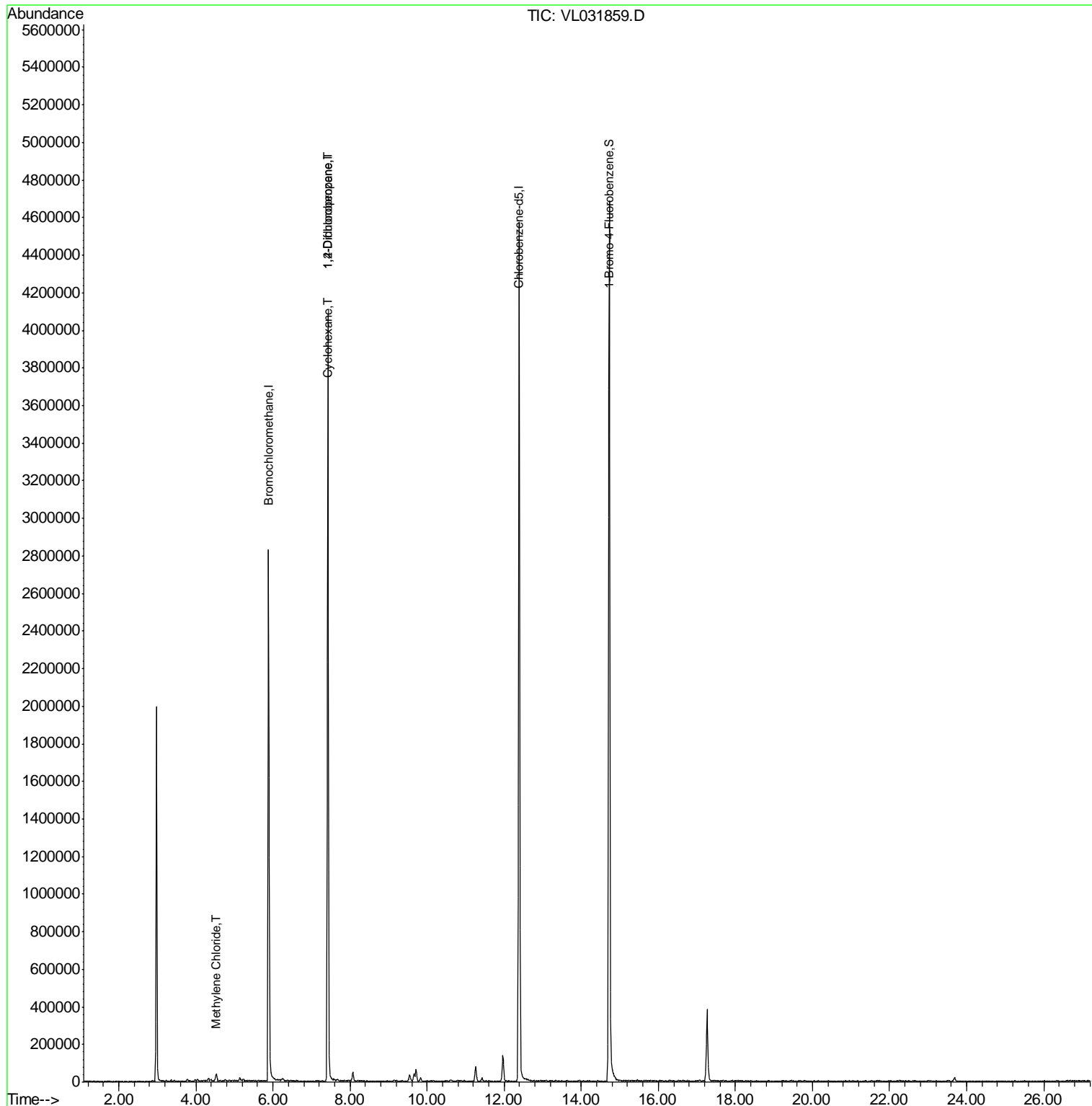
						Qvalue
20) Methylene Chloride	4.52	84	3344	0.05	ppbv #	15
30) Cyclohexane	7.41	84	6434	0.06	ppbv #	1
39) 1,2-Dichloropropane	7.42	63	731152	8.17	ppbv #	21

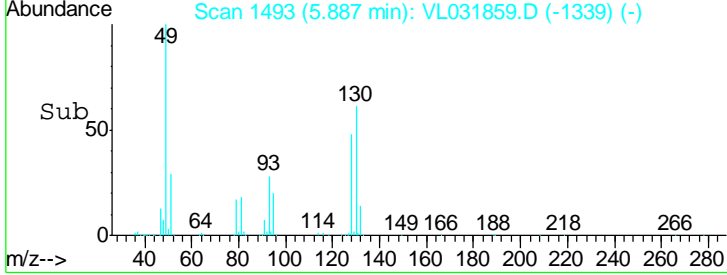
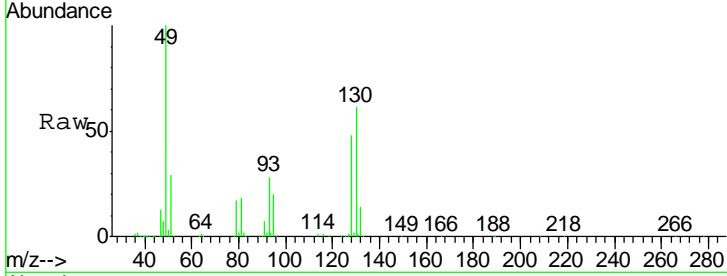
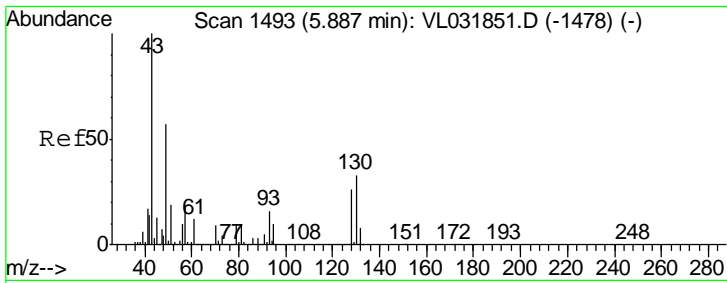
(#) = qualifier out of range (m) = manual integration (+) = signals summed

Data File : VL031859.D  
Acq On : 12 Apr 2018 9:00  
Operator : SY/AP  
Sample : VL0412ABL01  
Misc : 400ml/MSVOA\_L  
ALS Vial : 1 Sample Multiplier: 1

Instrument :  
MSVOA\_L  
ClientSampleId :  
VL0412ABL01

Quant Time: Apr 14 01:33:14 2018  
Quant Method : W:\HPCHEM1\MSVOA\_L\METHODS\VL041218AIR.M  
Quant Title : AIR ANALYSIS BY METHOD TO-15 Instrument: MSVOA\_L Fri Apr 13 16:50:02 2018  
QLast Update : Fri Apr 13 16:50:02 2018  
Response via : Initial Calibration

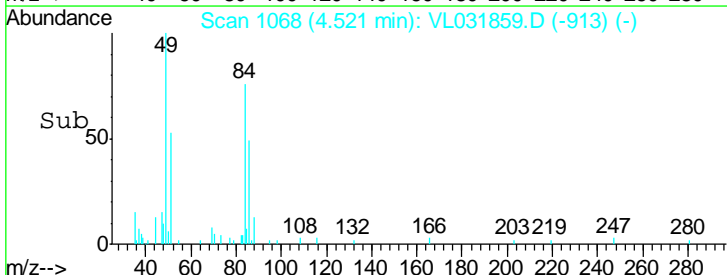
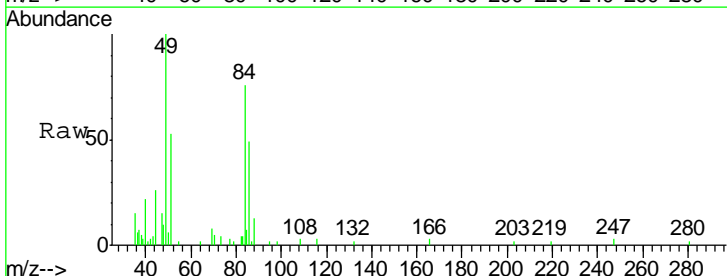
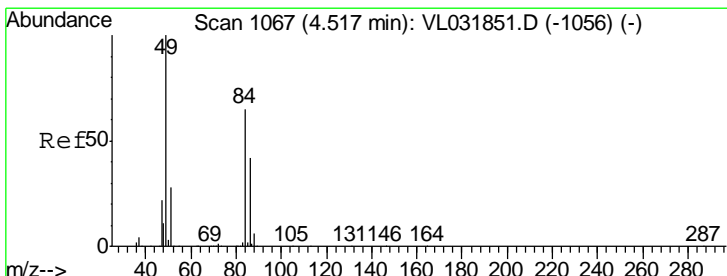
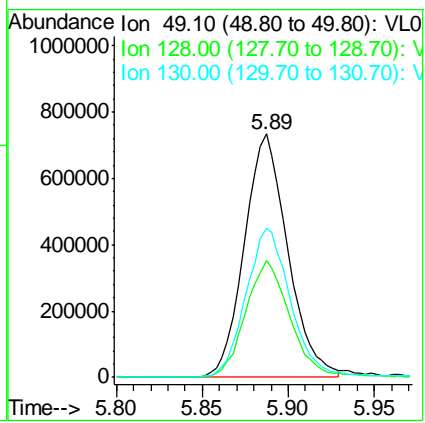




#1  
 Bromochloromethane  
 Concen: 10.00 ppbv  
 RT: 5.89 min Scan# 1493  
 Delta R.T. -0.00 min  
 Lab File: VL031859.D  
 Acq: 12 Apr 2018 9:00

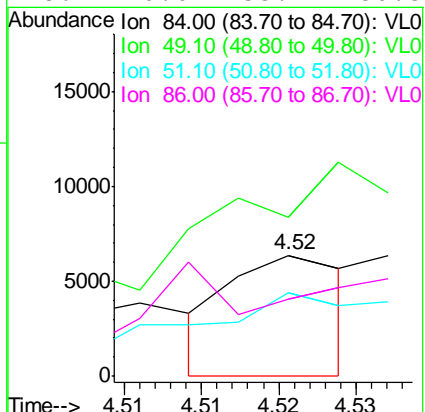
Instrument :  
 MSVOA\_L  
 ClientSampleId :  
 VL0412ABL01

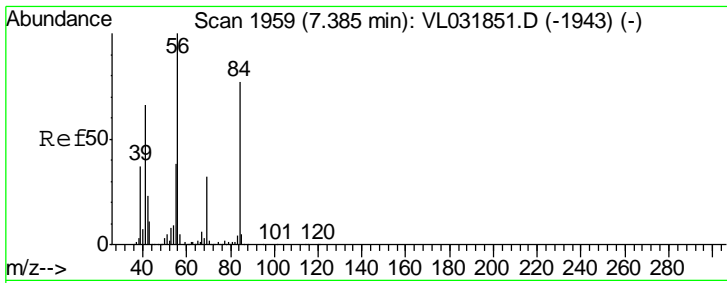
Tgt Ion	Resp	Lower	Upper
49	100		
128	49.7	23.9	71.7
130	64.1	30.9	92.7



#20  
 Methylene Chloride  
 Concen: 0.05 ppbv  
 RT: 4.52 min Scan# 1068  
 Delta R.T. -0.00 min  
 Lab File: VL031859.D  
 Acq: 12 Apr 2018 9:00

Tgt Ion	Resp	Lower	Upper
84	100		
49	18.4	125.6	188.4#
51	56.2	36.4	54.6#
86	0.0	53.7	80.5#

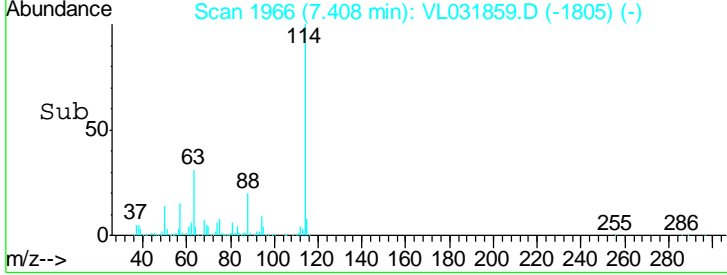
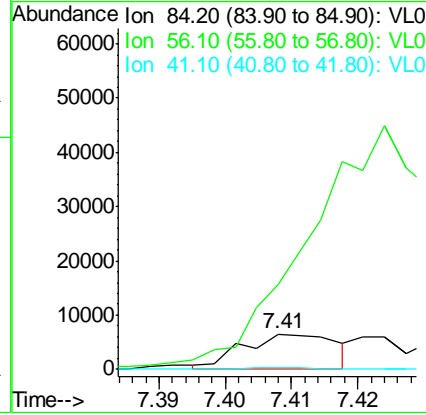
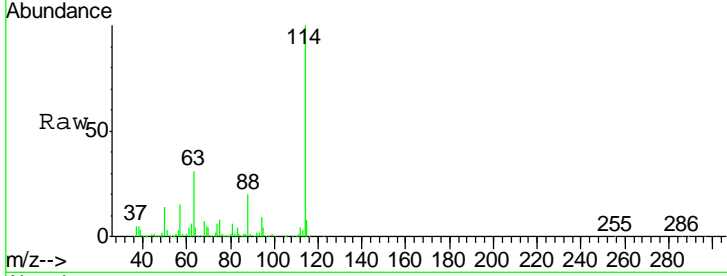




#30  
 Cyclohexane  
 Concen: 0.06 ppbv  
 RT: 7.41 min Scan# 1966  
 Delta R.T. 0.02 min  
 Lab File: VL031859.D  
 Acq: 12 Apr 2018 9:00

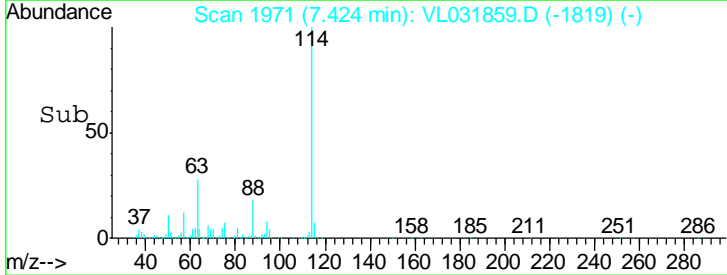
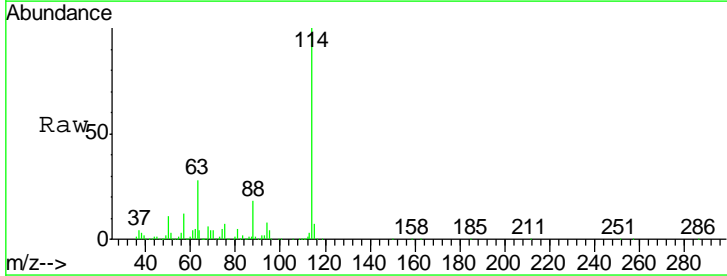
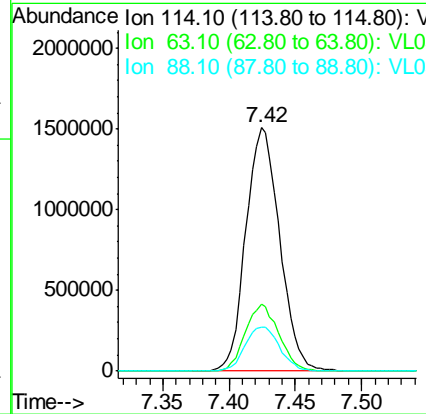
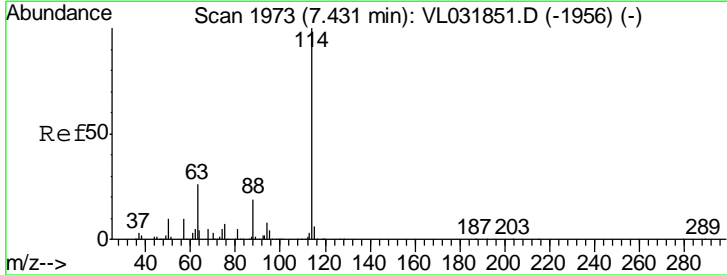
**Instrument :**  
 MSVOA\_L  
**ClientSampleId :**  
 VL0412ABL01

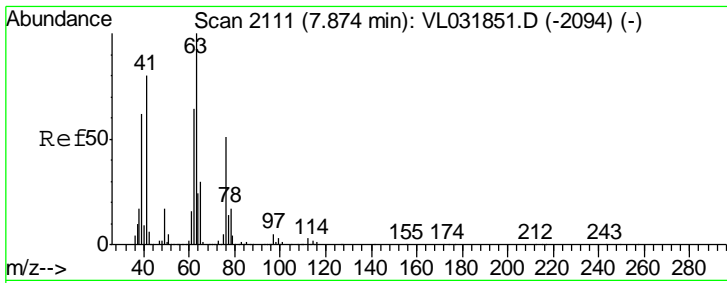
Tgt Ion	Resp	Lower	Upper
84	100		
56	0.0	107.7	161.5#
41	3.5	68.2	102.2#



#33  
 1,4-Difluorobenzene  
 Concen: 10.00 ppbv  
 RT: 7.42 min Scan# 1971  
 Delta R.T. -0.01 min  
 Lab File: VL031859.D  
 Acq: 12 Apr 2018 9:00

Tgt Ion	Resp	Lower	Upper
114	100		
63	27.4	21.8	32.6
88	18.7	14.6	22.0

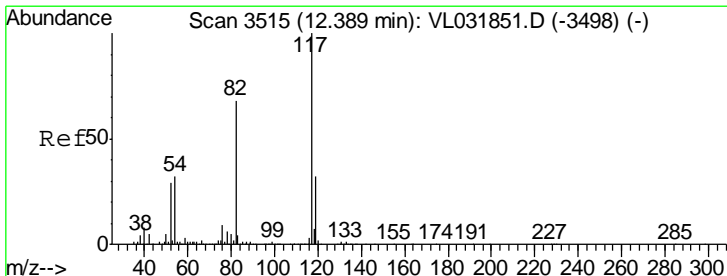
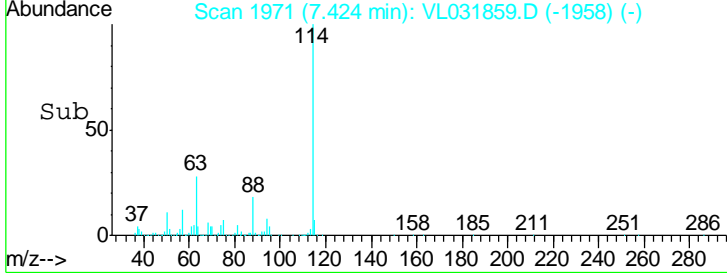
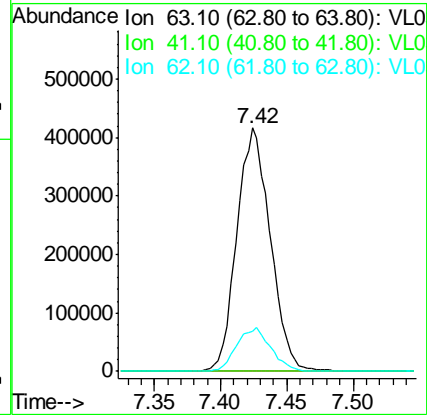
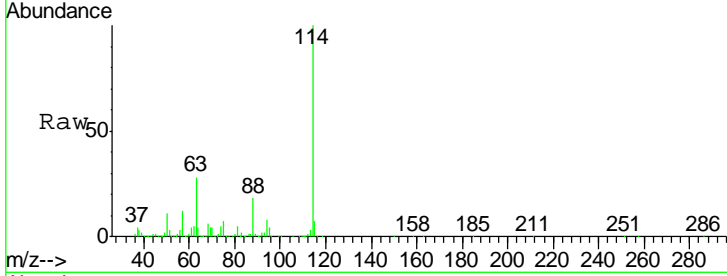




#39  
 1,2-Dichloropropane  
 Concen: 8.17 ppbv  
 RT: 7.42 min Scan# 1971  
 Delta R.T. -0.46 min  
 Lab File: VL031859.D  
 Acq: 12 Apr 2018 9:00

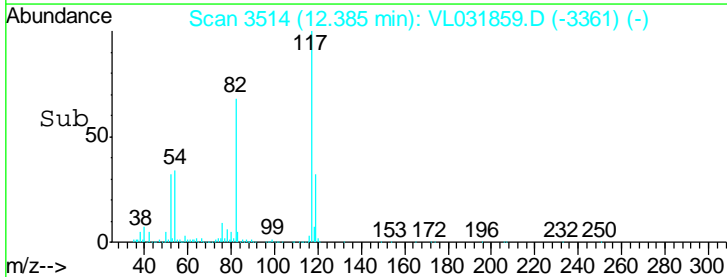
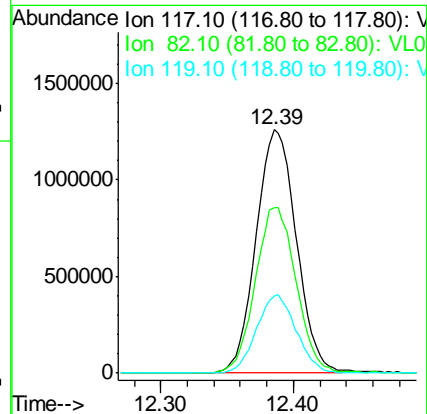
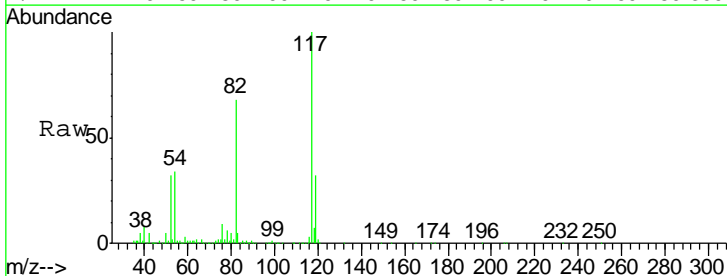
Instrument :  
 MSVOA\_L  
 ClientSampled :  
 VL0412ABL01

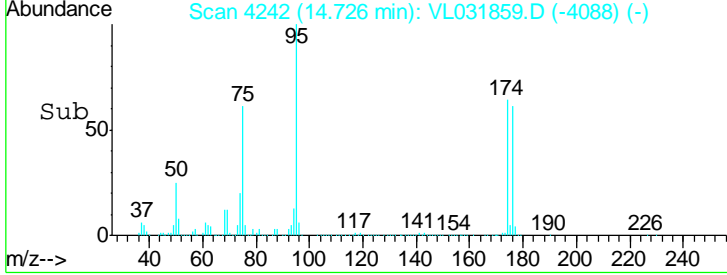
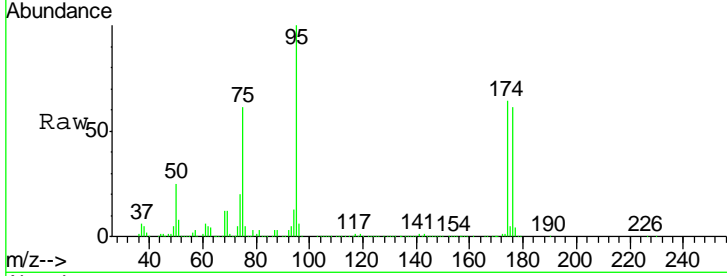
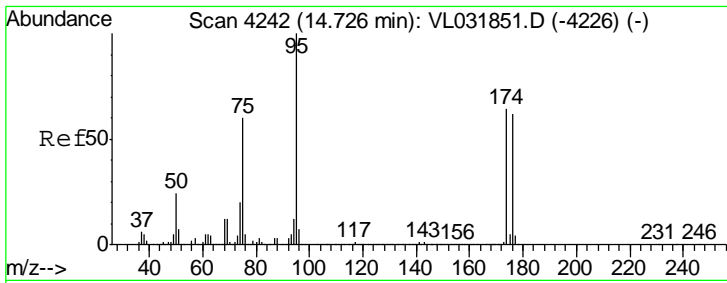
Tgt Ion	Resp	Lower	Upper
63	100		
41	0.1	65.8	98.6#
62	16.4	55.0	82.6#



#55  
 Chlorobenzene-d5  
 Concen: 10.00 ppbv  
 RT: 12.39 min Scan# 3514  
 Delta R.T. -0.01 min  
 Lab File: VL031859.D  
 Acq: 12 Apr 2018 9:00

Tgt Ion	Resp	Lower	Upper
117	100		
82	69.6	54.6	81.8
119	32.0	26.0	39.0





#68  
 1-Bromo-4-Fluorobenzene  
 Concen: 10.03 ppbv  
 RT: 14.73 min Scan# 4242  
 Delta R.T. -0.00 min  
 Lab File: VL031859.D  
 Acq: 12 Apr 2018 9:00

Instrument : MSVOA\_L  
 ClientSampleId : VL0412ABL01

Tgt Ion: 95 Resp: 2148111

Ion	Ratio	Lower	Upper
95	100		
174	65.1	52.3	78.5
175	4.8	3.9	5.9

