

Data Path : Z:\VOASRV\HPCHEM1\MSVOA L\DATA\VL050522\  
 Data File : VL038960.D  
 Acq On : 5 May 2022 4:39  
 Operator : SY/AP  
 Sample : VSTDIC0.5  
 Misc : 400mL/MSVOA L  
 ALS Vial : 1 Sample Multiplier: 1

Instrument :  
 MSVOA\_L  
 ClientSampleId :

Quant Time: May 05 05:15:40 2022  
 Quant Method : Z:\VOASRV\HPCHEM1\MSVOA L\METHODS\VL050522AIR.M  
 Quant Title : AIR ANALYSIS BY METHOD TO-15 Instrument: MSVOA\_LThu May 05 04:53:24 2022  
 QLast Update : Thu May 05 04:53:24 2022  
 Response via : Initial Calibration

Internal Standards	R.T.	QIon	Response	Conc	Units	Dev(Min)
1) Bromochloromethane	5.66	49	1352843	10.00	ppbv	0.00
33) 1,4-Difluorobenzene	7.17	114	3227645	10.00	ppbv	0.00
55) Chlorobenzene-d5	12.07	117	2852397	10.00	ppbv	0.00

System Monitoring Compounds

68) 1-Bromo-4-Fluorobenzene	14.40	95	2277705	10.10	ppbv	0.00
Spiked Amount	10.000	Range	65 - 135	Recovery	=	101.00%

Target Compounds	R.T.	QIon	Response	Conc	Units	Ovalue
2) Dichlorodifluoromethane	3.05	85	116152	0.531	ppbv	90
3) Chlorodifluoromethane	2.99	51	87102	0.366	ppbv	98
4) Chloromethane	3.14	50	22926	0.259	ppbv	90
5) Vinyl Chloride	3.25	62	35572	0.393	ppbv	98
6) Bromomethane	3.47	94	17407	0.361	ppbv	93
7) Chloroethane	3.56	64	13402	0.434	ppbv	95
8) Dichlorotetrafluoroethane	3.19	85	98871	0.476	ppbv	95
9) Propene	3.01	41	41408	0.530	ppbv	100
10) Heptane	8.11	43	89948	0.450	ppbv	97
11) Trichlorofluoromethane	3.95	101	95306	0.438	ppbv	96
12) 1,1,2-Trichlorotrifluoroet	4.48	101	62031	0.441	ppbv	90
13) Ethanol	3.61	45	1188	0.139	ppbv #	18
14) Bromoethene	3.74	108	23694	0.405	ppbv #	80
15) Acetone	3.86	43	63311	0.474	ppbv #	88
16) 1,3-Butadiene	3.33	39	22951	0.258	ppbv #	48
18) 1,1-Dichloroethene	4.29	96	23285	0.375	ppbv	96
19) Isopropyl Alcohol	3.98	45	28743	0.403	ppbv #	93
20) Methylene Chloride	4.35	84	25454	0.423	ppbv	97
21) Allyl Chloride	4.41	41	19135	0.187	ppbv #	19
22) trans-1,2-Dichloroethene	4.88	96	22946	0.389	ppbv	94
23) Vinyl Acetate	5.07	43	12120	0.060	ppbv #	83
24) 1,1-Dichloroethane	5.01	63	56492	0.361	ppbv	97
25) Ethyl Acetate	5.68	43	150388	0.475	ppbv #	97
26) Hexane	5.68	57	39128	0.271	ppbv #	1
27) Carbon Disulfide	4.55	76	55345	0.389	ppbv #	82
28) Methyl tert-Butyl Ether	5.04	73	49264	0.309	ppbv #	87
29) Chloroform	5.75	83	110004	0.470	ppbv	99
30) Cyclohexane	7.12	84	59356	0.508	ppbv	87
31) cis-1,2-Dichloroethene	5.55	61	68093	0.483	ppbv	96
32) 1,1,1-Trichloroethane	6.50	97	106203	0.450	ppbv	96
34) 2-Butanone	5.25	43	84994	0.530	ppbv	98
35) Carbon Tetrachloride	7.01	117	104034	0.420	ppbv	97
36) Benzene	6.88	78	139432	0.474	ppbv	97
37) 1,2-Dichloroethane	6.30	62	77546	0.440	ppbv #	96
38) Trichloroethene	7.83	130	55505	0.471	ppbv	95
39) 1,2-Dichloropropane	7.61	63	50556	0.424	ppbv	94
41) Tetrahydrofuran	6.07	42	34783	0.437	ppbv #	64
42) Bromodichloromethane	7.78	83	55492	0.232	ppbv #	94
43) Methyl Methacrylate	8.01	69	40700	0.401	ppbv #	55
44) 2,2,4-Trimethylpentane	7.86	57	249281	0.479	ppbv	97
45) t-1,3-Dichloropropene	9.27	75	21718	0.189	ppbv	97

Data Path : Z:\VOASRV\HPCHEM1\MSVOA L\DATA\VL050522\  
 Data File : VL038960.D  
 Acq On : 5 May 2022 4:39  
 Operator : SY/AP  
 Sample : VSTDIC0.5  
 Misc : 400mL/MSVOA L  
 ALS Vial : 1 Sample Multiplier: 1

Instrument :  
 MSVOA\_L  
 ClientSampleId :

Quant Time: May 05 05:15:40 2022  
 Quant Method : Z:\VOASRV\HPCHEM1\MSVOA L\METHODS\VL050522AIR.M  
 Quant Title : AIR ANALYSIS BY METHOD TO-15 Instrument: MSVOA\_LThu May 05 04:53:24 2022  
 QLast Update : Thu May 05 04:53:24 2022  
 Response via : Initial Calibration

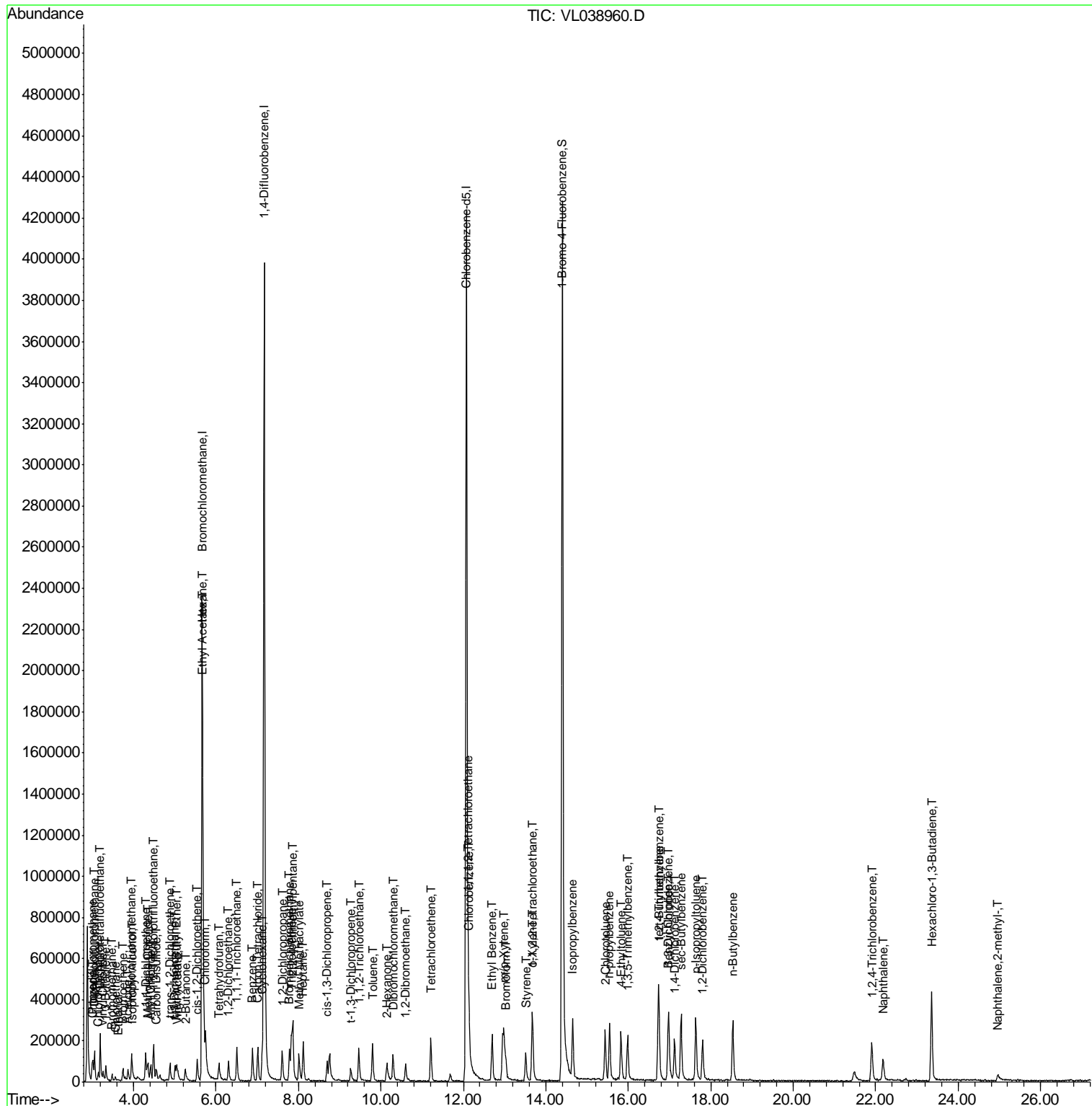
Internal Standards	R.T.	QIon	Response	Conc	Units	Dev(Min)
46) cis-1,3-Dichloropropene	8.69	75	60292	0.412	ppbv #	91
47) 1,1,2-Trichloroethane	9.46	97	28106	0.232	ppbv #	83
48) Dibromochloromethane	10.29	129	44311	0.237	ppbv #	10
49) Bromoform	13.03	173	39452	0.264	ppbv #	62
51) 2-Hexanone	10.14	43	93392	0.689	ppbv #	94
52) Tetrachloroethene	11.21	164	47448	0.436	ppbv #	90
53) Toluene	9.80	91	151586	0.482	ppbv	99
54) 1,2-Dibromoethane	10.60	107	63840	0.373	ppbv	86
56) 1,1,1,2-Tetrachloroethane	12.12	131	22670	0.176	ppbv #	9
57) Chlorobenzene	12.13	112	111093	0.466	ppbv	90
58) Ethyl Benzene	12.70	91	214489	0.523	ppbv	92
59) m/p-Xylene	12.98	91	92649	0.258	ppbv #	33
60) o-Xylene	13.67	91	164057	0.474	ppbv	99
61) Styrene	13.52	104	44468	0.258	ppbv #	31
62) Isopropylbenzene	14.65	105	252932	0.536	ppbv	99
63) 1,1,2,2-Tetrachloroethane	13.67	83	99298	0.382	ppbv	97
64) n-propylbenzene	15.55	120	27443	0.238	ppbv #	1
65) tert-Butylbenzene	16.73	119	107386	0.262	ppbv #	15
66) Benzyl Chloride	16.96	91	4841	0.097	ppbv #	70
67) sec-Butylbenzene	17.27	105	149199	0.257	ppbv #	56
69) p-Isopropyltoluene	17.63	119	241922	0.532	ppbv	95
70) n-Butylbenzene	18.54	91	249990	0.525	ppbv	100
71) 2-Chlorotoluene	15.44	91	192620	0.543	ppbv	98
72) 4-Ethyltoluene	15.82	105	181206	0.476	ppbv	97
73) 1,3,5-Trimethylbenzene	15.98	105	155703	0.439	ppbv	97
74) 1,2,4-Trimethylbenzene	16.75	105	89541	0.234	ppbv	96
75) 1,3-Dichlorobenzene	16.97	146	46453	0.217	ppbv #	11
76) 1,4-Dichlorobenzene	17.12	146	91134	0.427	ppbv	87
77) 1,2-Dichlorobenzene	17.80	146	57663	0.284	ppbv #	30
78) Hexachloro-1,3-Butadiene	23.35	225	99350	0.544	ppbv	93
79) Naphthalene	22.17	128	67316	0.285	ppbv #	95
80) Naphthalene,2-methyl-	24.97	142	24818	0.482	ppbv #	75
81) 1,2,4-Trichlorobenzene	21.90	180	32102	0.224	ppbv #	11

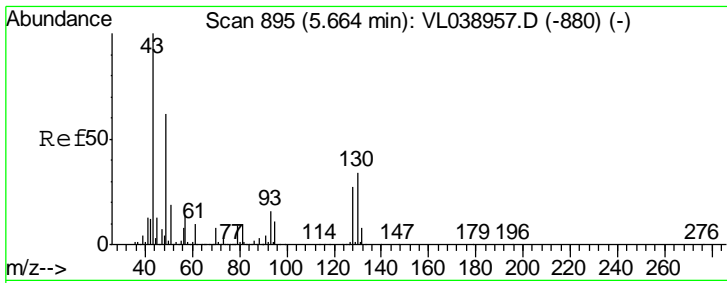
(#) = qualifier out of range (m) = manual integration (+) = signals summed

Data Path : Z:\VOASRV\HPCHEM1\MSVOA L\DATA\VL050522\  
 Data File : VL038960.D  
 Acq On : 5 May 2022 4:39  
 Operator : SY/AP  
 Sample : VSTDICCO.5  
 Misc : 400mL/MSVOA L  
 ALS Vial : 1 Sample Multiplier: 1

Instrument :  
 MSVOA\_L  
 ClientSampleId :

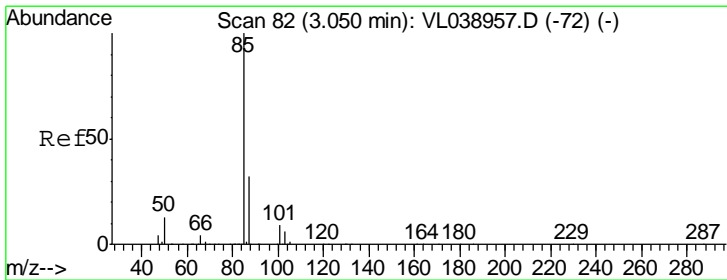
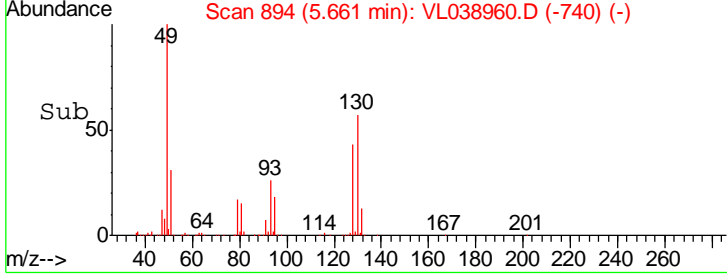
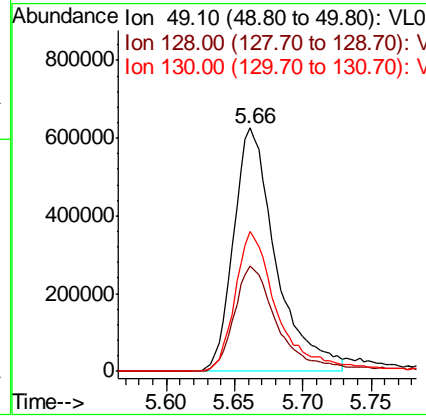
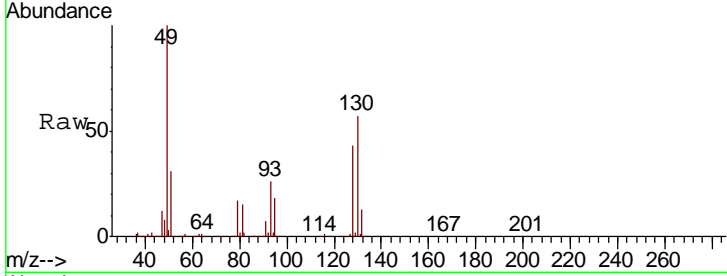
Quant Time: May 05 05:15:40 2022  
 Quant Method : Z:\VOASRV\HPCHEM1\MSVOA L\METHODS\VL050522AIR.M  
 Quant Title : AIR ANALYSIS BY METHOD TO-15 Instrument: MSVOA\_L Thu May 05 04:53:24 2022  
 QLast Update : Thu May 05 04:53:24 2022  
 Response via : Initial Calibration





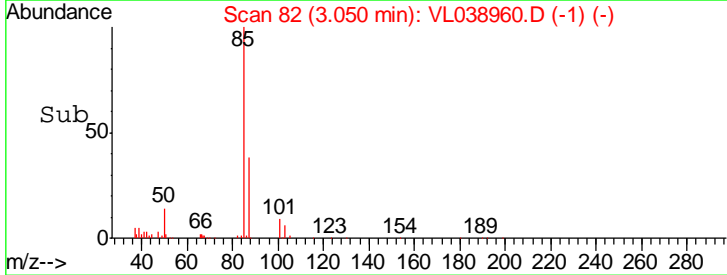
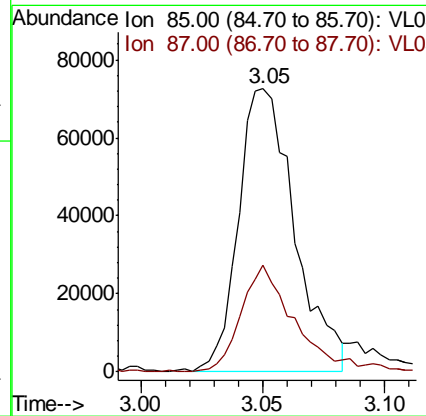
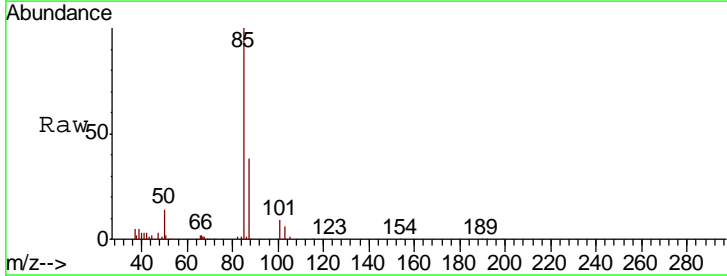
#1  
 Bromochloromethane  
 Concen: 10.000 ppbv  
 RT: 5.66 Instrument :  
 Delta R.T. MSVOA\_L  
 Lab File: ClientSampleId :  
 Acq: 5 May 2022 4:39

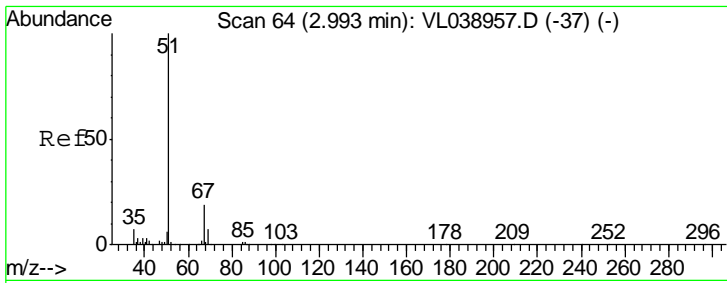
Tgt Ion	Resp	Lower	Upper
49	100		
128	46.1	23.3	69.8
130	60.0	29.8	89.3



#2  
 Dichlorodifluoromethane  
 Concen: 0.531 ppbv  
 RT: 3.05 min Scan# 82  
 Delta R.T. -0.00 min  
 Lab File: VL038960.D  
 Acq: 5 May 2022 4:39

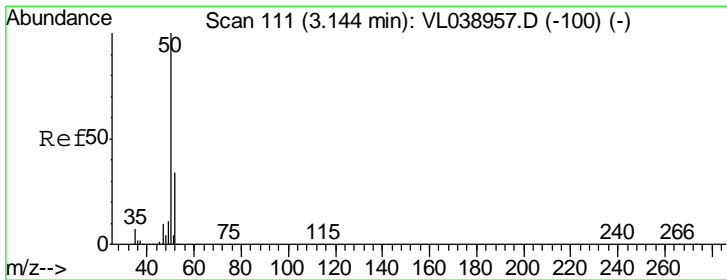
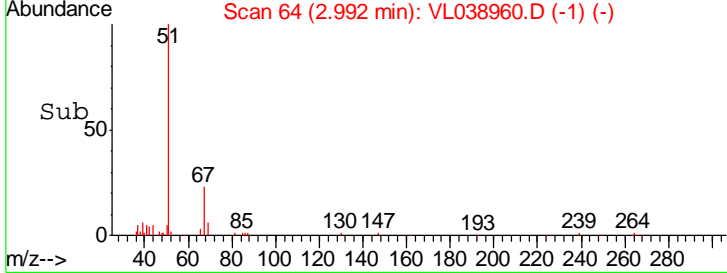
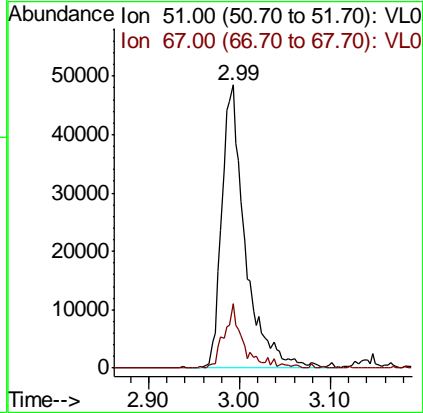
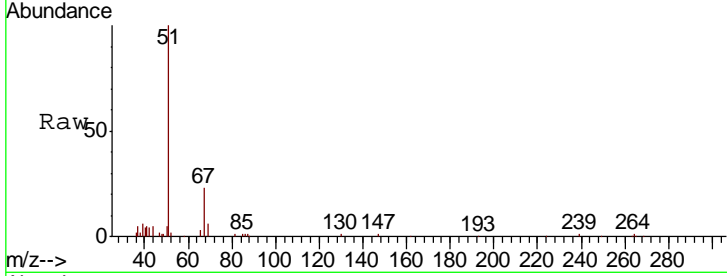
Tgt Ion	Resp	Lower	Upper
85	100		
87	37.6	25.7	38.5





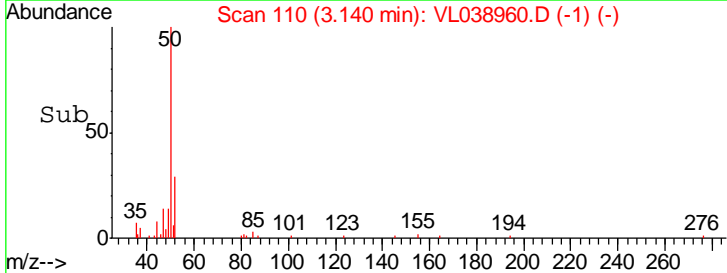
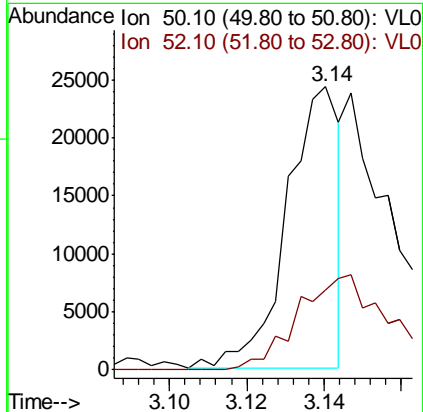
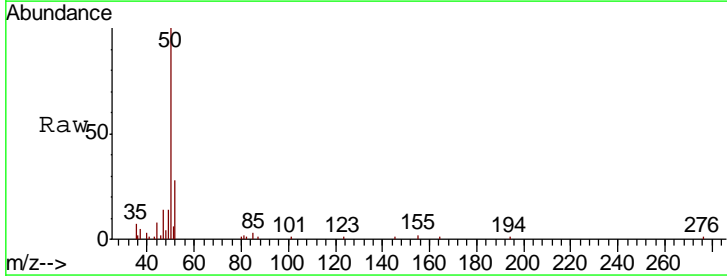
#3  
 Chlorodifluoromethane  
 Concen: 0.366 ppbv  
 RT: 2.99 Instrument :  
 Delta R.T. MSVOA\_L  
 Lab File: ClientSampleId :  
 Acq: 5 May 2022 4:39

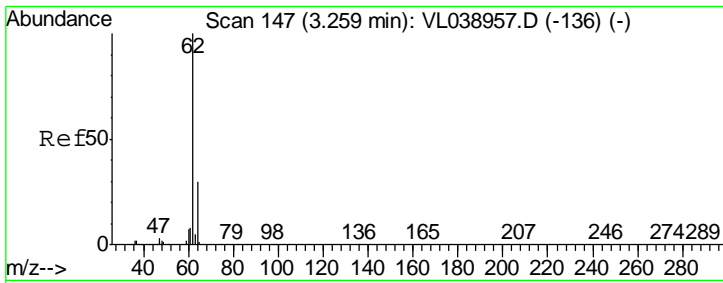
Tgt Ion	Resp	Lower	Upper
51	100		
67	18.7	15.8	23.8



#4  
 Chloromethane  
 Concen: 0.259 ppbv  
 RT: 3.14 min Scan# 110  
 Delta R.T. -0.00 min  
 Lab File: VL038960.D  
 Acq: 5 May 2022 4:39

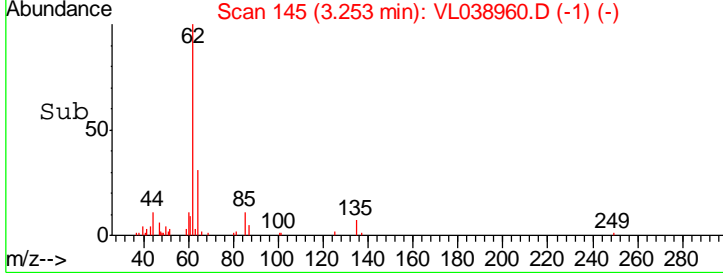
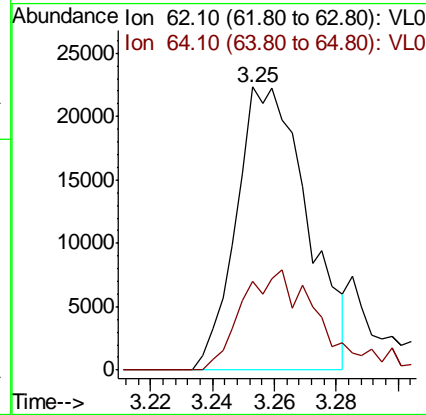
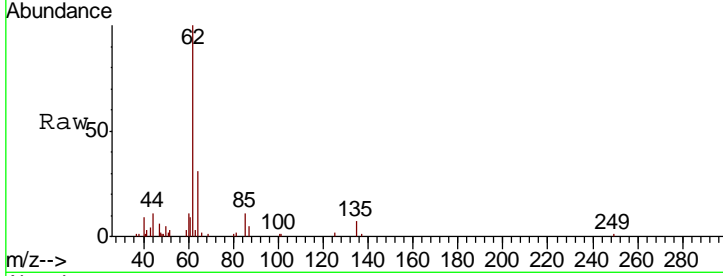
Tgt Ion	Resp	Lower	Upper
50	100		
52	28.5	27.3	40.9





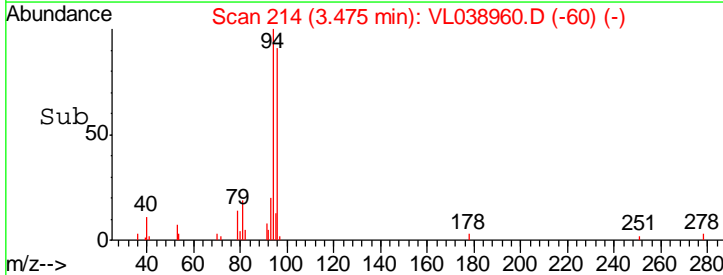
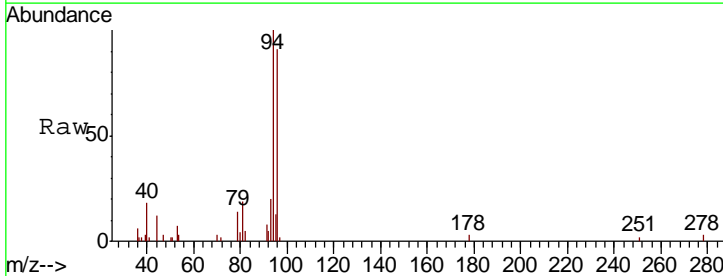
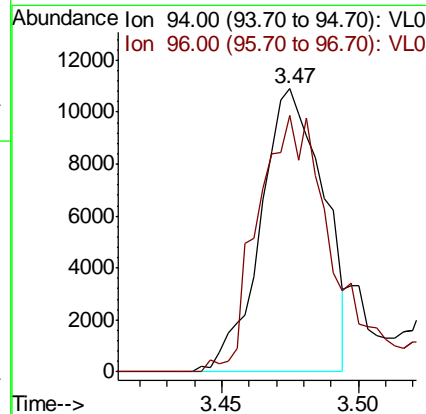
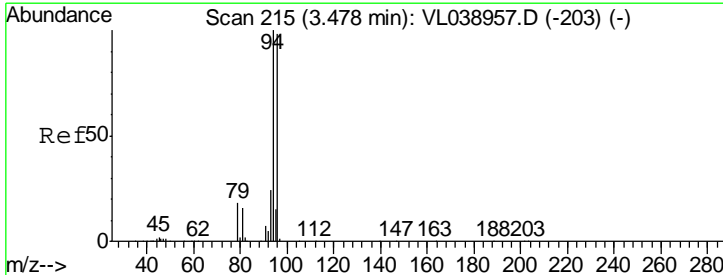
#5  
 Vinyl Chloride  
 Concen: 0.393 ppbv  
 RT: 3.25 Instrument :  
 Delta R.T. MSVOA\_L  
 Lab File: ClientSampled :  
 Acq: 5 May 2022 4:39

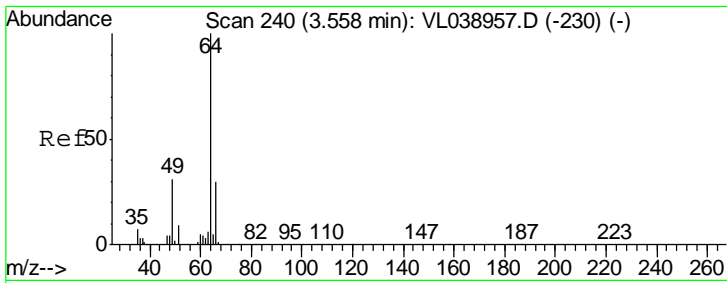
Tgt Ion	Resp	Lower	Upper
62	100		
64	31.3	24.2	36.4



#6  
 Bromomethane  
 Concen: 0.361 ppbv  
 RT: 3.47 min Scan# 214  
 Delta R.T. -0.00 min  
 Lab File: VL038960.D  
 Acq: 5 May 2022 4:39

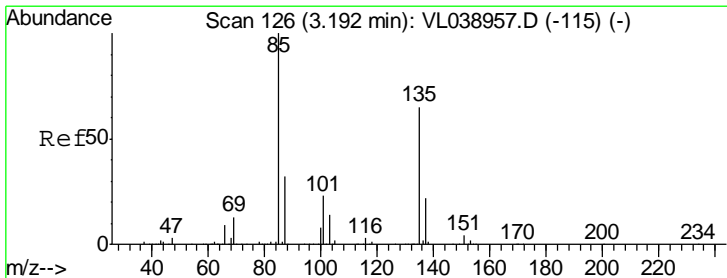
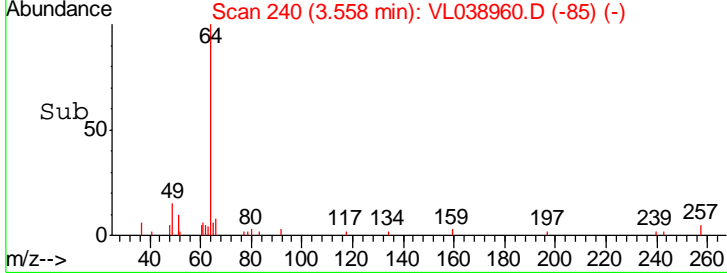
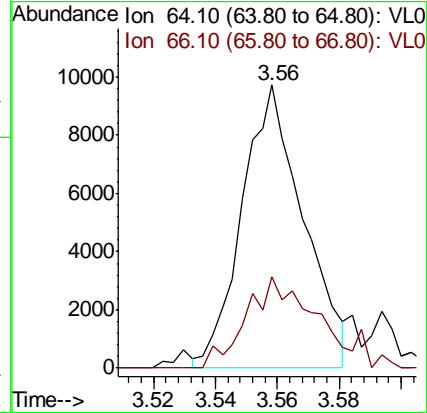
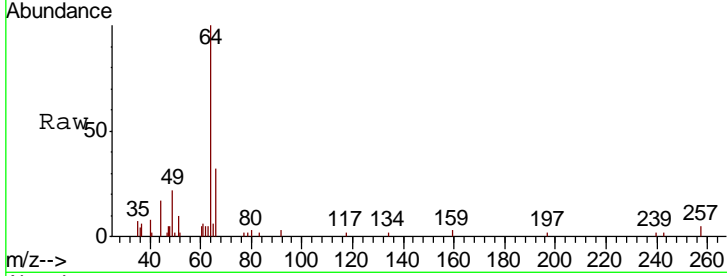
Tgt Ion	Resp	Lower	Upper
94	100		
96	90.7	78.1	117.1





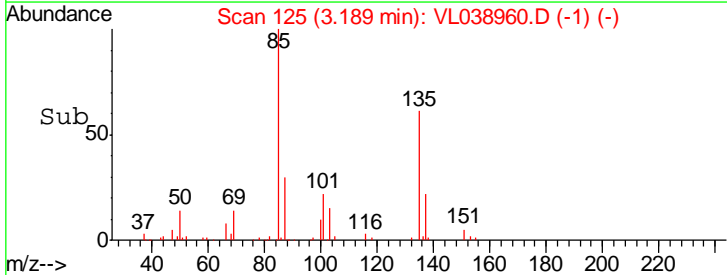
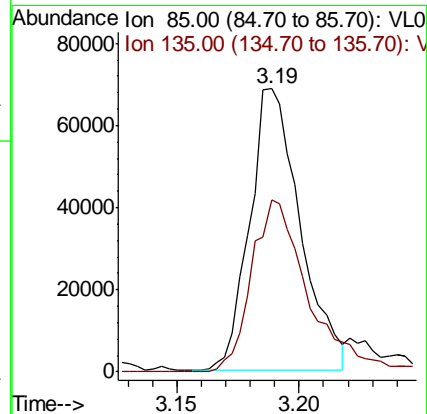
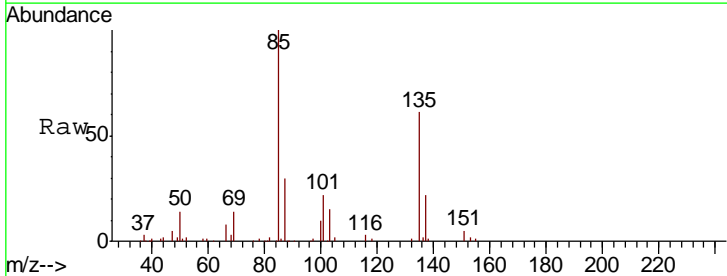
#7  
 Chloroethane  
 Concen: 0.434 ppbv  
 RT: 3.56 Instrument :  
 Delta R.T. MSVOA\_L  
 Lab File: ClientSampleId :  
 Acq: 5 May 2022 4:39

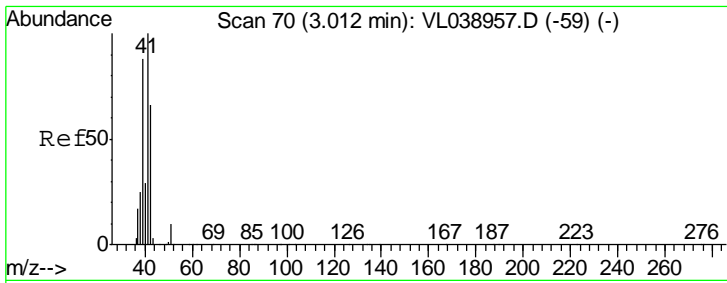
Tgt Ion	Resp	Lower	Upper
64	13402		
66	32.3	23.8	35.8



#8  
 Dichlorotetrafluoroethane  
 Concen: 0.476 ppbv  
 RT: 3.19 min Scan# 125  
 Delta R.T. -0.00 min  
 Lab File: VL038960.D  
 Acq: 5 May 2022 4:39

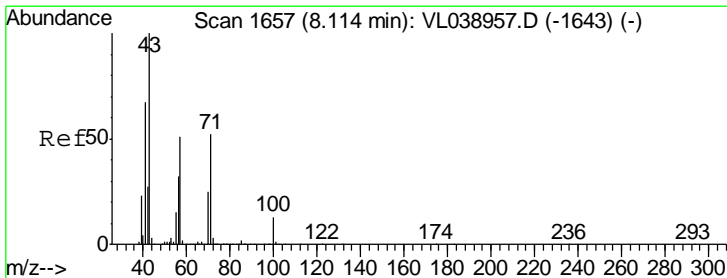
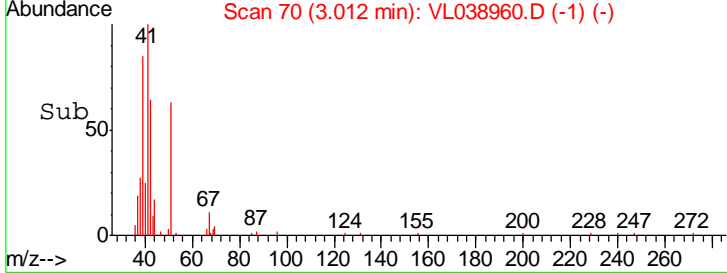
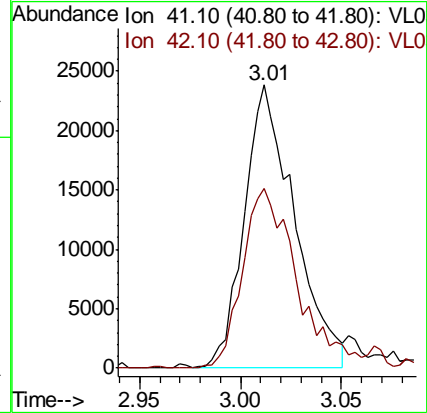
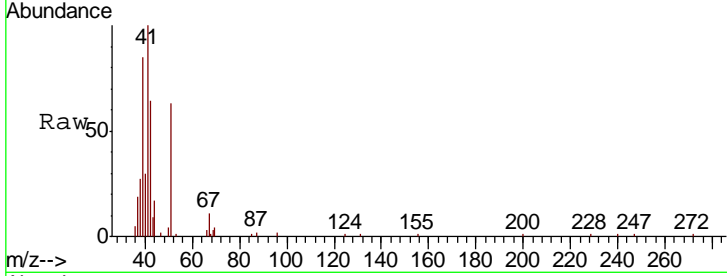
Tgt Ion	Resp	Lower	Upper
85	98871		
135	71.0	53.6	80.4





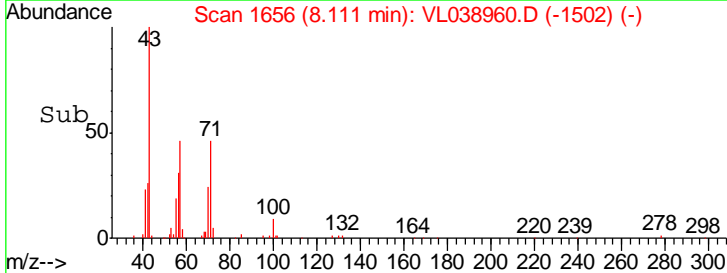
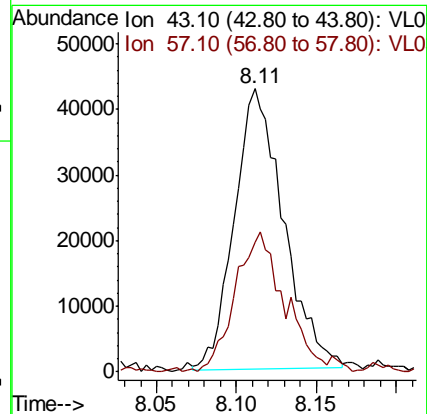
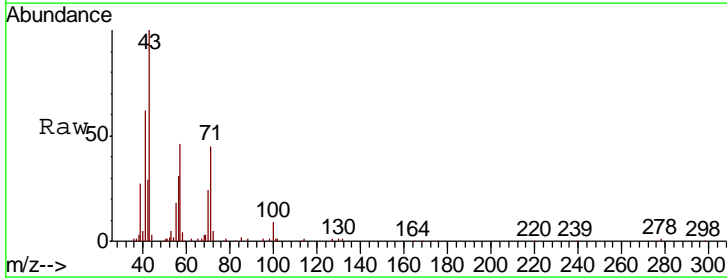
#9  
 Propene  
 Concen: 0.530 ppbv  
 RT: 3.01  
 Instrument: MSVOA\_L  
 Delta R.T.:  
 Lab File: ClientSampled:  
 Acq: 5 May 2022 4:39

Tgt Ion	Resp	Lower	Upper
41	100		
42	73.0	58.3	87.5

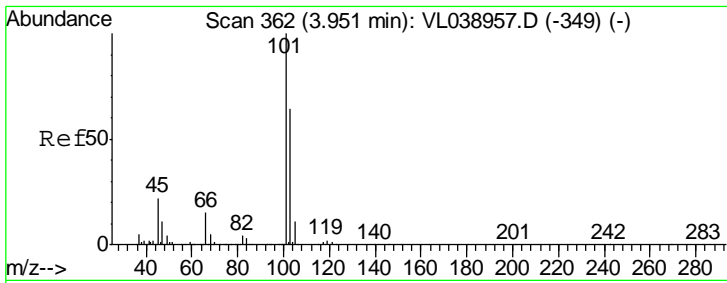


#10  
 Heptane  
 Concen: 0.450 ppbv  
 RT: 8.11 min Scan# 1656  
 Delta R.T. -0.00 min  
 Lab File: VL038960.D  
 Acq: 5 May 2022 4:39

Tgt Ion	Resp	Lower	Upper
43	100		
57	52.8	40.5	60.7

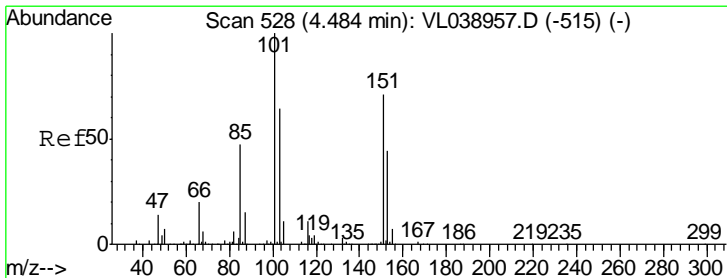
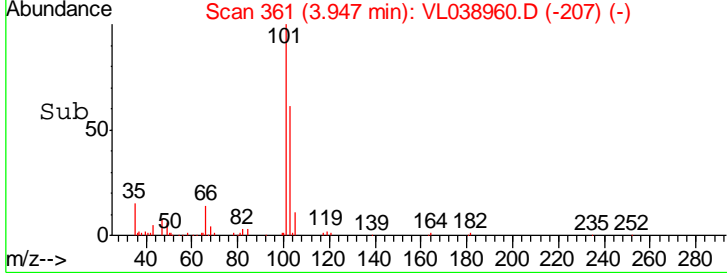
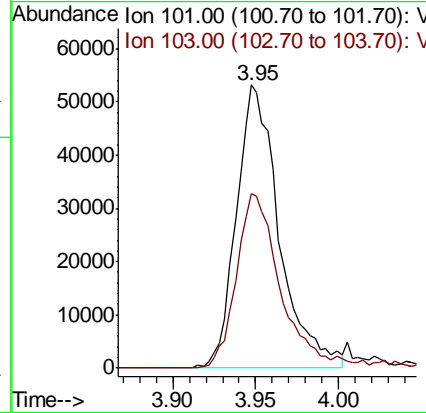
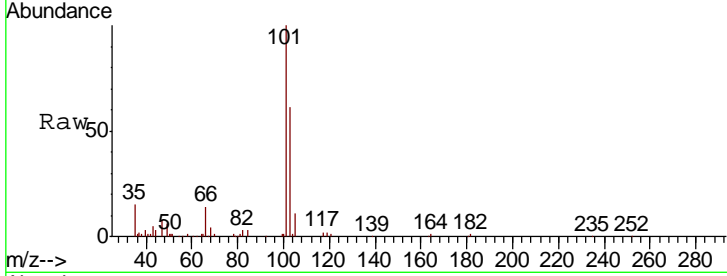






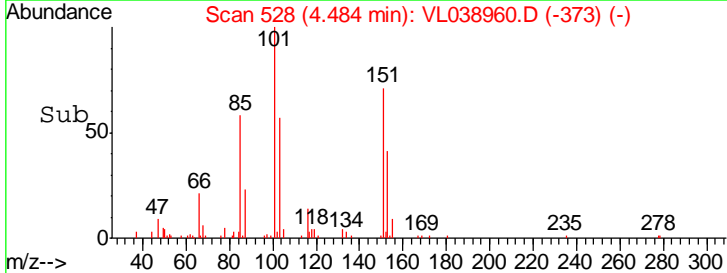
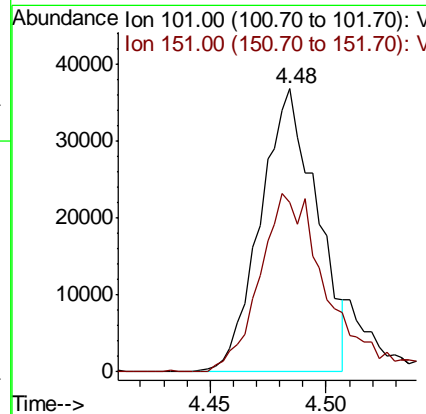
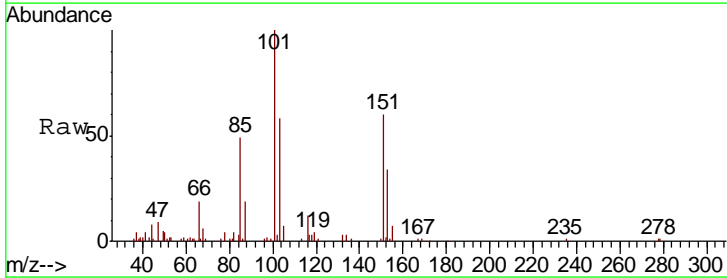
#11  
 Trichlorofluoromethane  
 Concen: 0.438 ppbv  
 RT: 3.95 Instrument :  
 Delta R.T. MSVOA\_L  
 Lab File: ClientSampled :  
 Acq: 5 May 2022 4:39

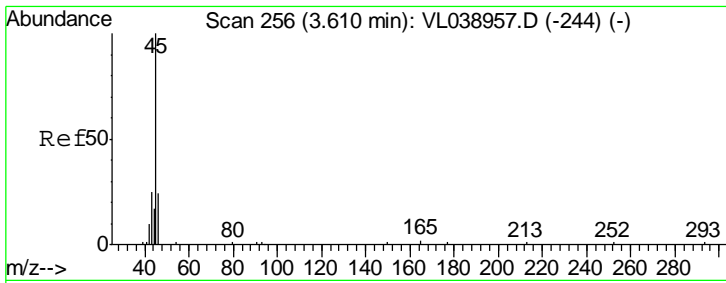
Tgt Ion	Resp	Lower	Upper
101	100		
103	61.5	51.5	77.3



#12  
 1,1,2-Trichlorotrifluoroethane  
 Concen: 0.441 ppbv  
 RT: 4.48 min Scan# 528  
 Delta R.T. -0.00 min  
 Lab File: VL038960.D  
 Acq: 5 May 2022 4:39

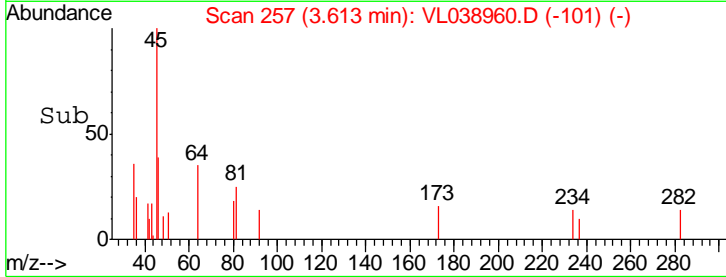
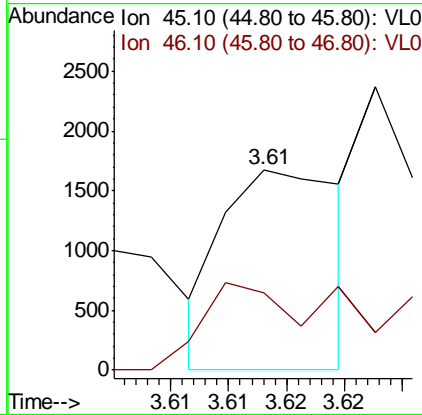
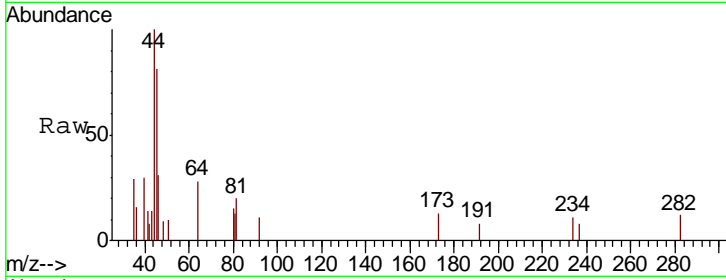
Tgt Ion	Resp	Lower	Upper
101	100		
151	77.5	55.4	83.0





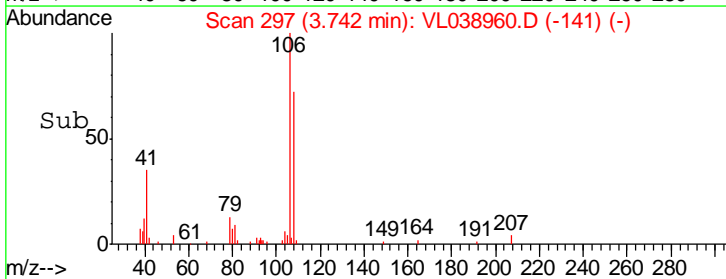
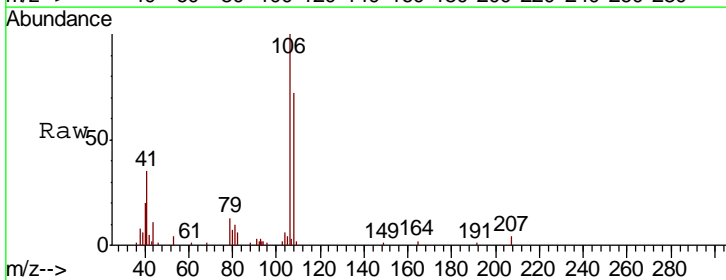
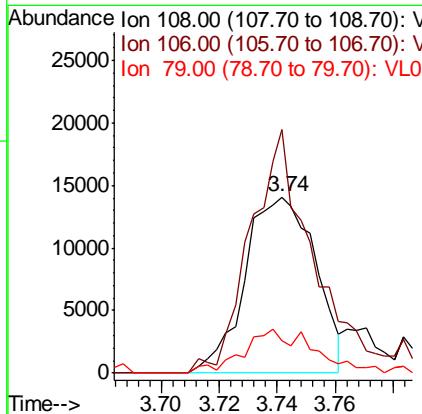
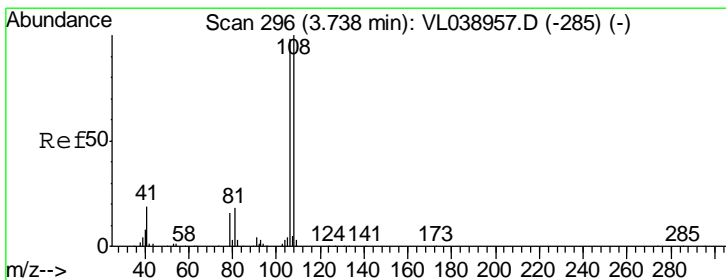
#13  
 Ethanol  
 Concen: 0.139 ppbv  
 RT: 3.61 Instrument :  
 Delta R.T. MSVOA\_L  
 Lab File: ClientSampleId :  
 Acq: 5 May 2022 4:39

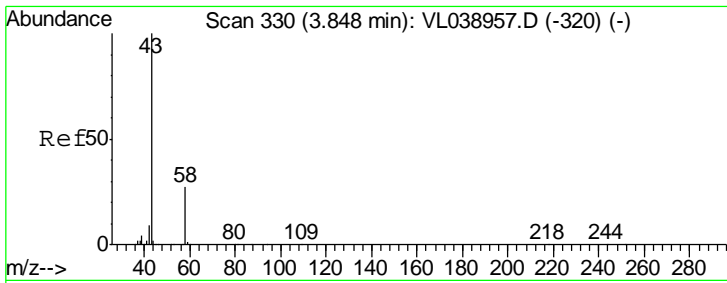
Tgt Ion	Resp	Lower	Upper
45	100		
46	98.5	18.0	72.2#



#14  
 Bromoethene  
 Concen: 0.405 ppbv  
 RT: 3.74 min Scan# 297  
 Delta R.T. 0.00 min  
 Lab File: VL038960.D  
 Acq: 5 May 2022 4:39

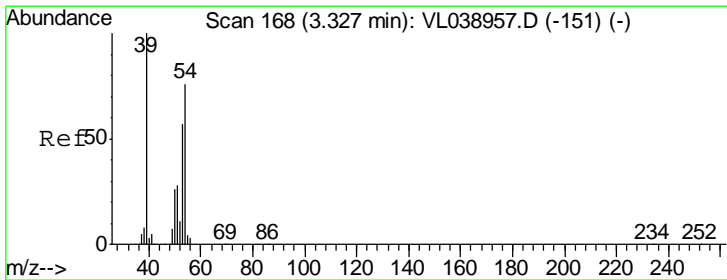
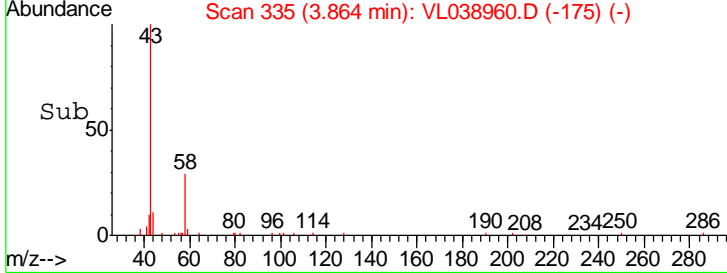
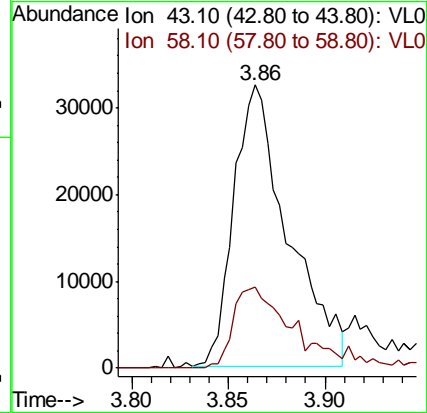
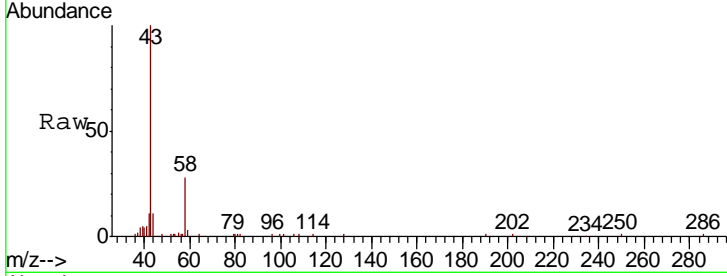
Tgt Ion	Resp	Lower	Upper
108	100		
106	135.0	90.3	135.5
79	25.6	14.9	22.3#





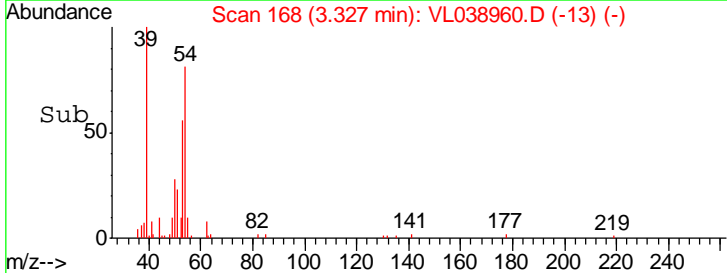
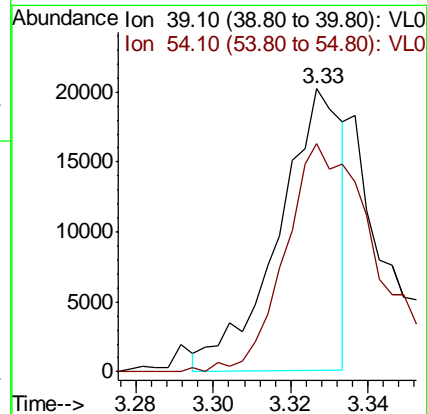
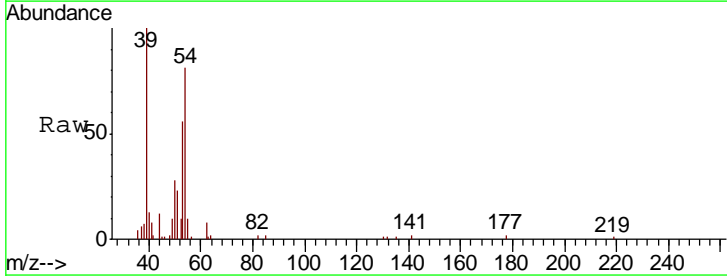
#15  
 Acetone  
 Concen: 0.474 ppbv  
 RT: 3.86  
 Delta R.T. MSVOA\_L  
 Lab File: ClientSampled :  
 Acq: 5 May 2022 4:39

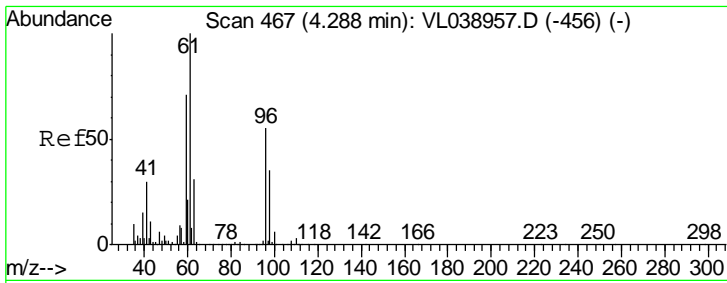
Tgt Ion	Resp	Lower	Upper
43	100		
58	32.7	21.3	31.9#



#16  
 1,3-Butadiene  
 Concen: 0.258 ppbv  
 RT: 3.33 min Scan# 168  
 Delta R.T. -0.00 min  
 Lab File: VL038960.D  
 Acq: 5 May 2022 4:39

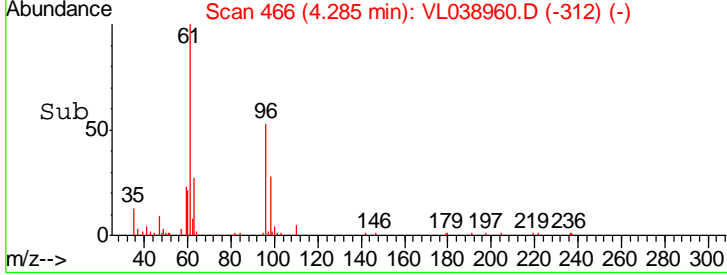
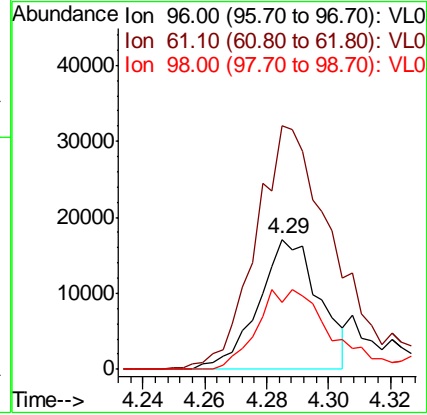
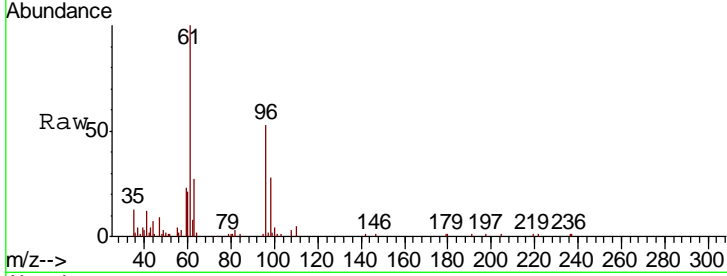
Tgt Ion	Resp	Lower	Upper
39	100		
54	128.1	65.2	97.8#





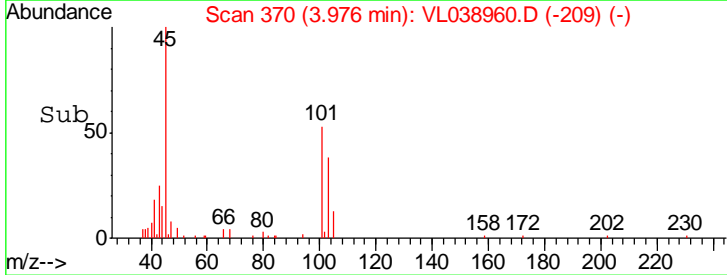
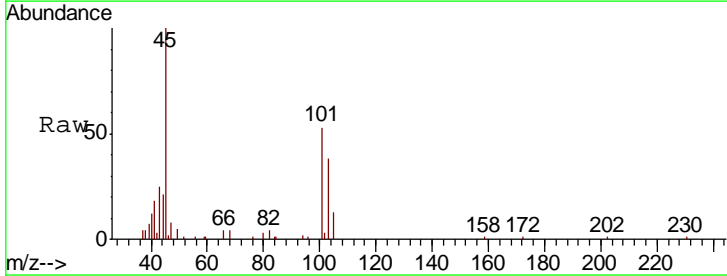
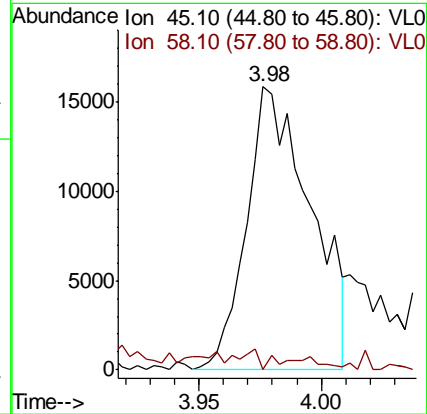
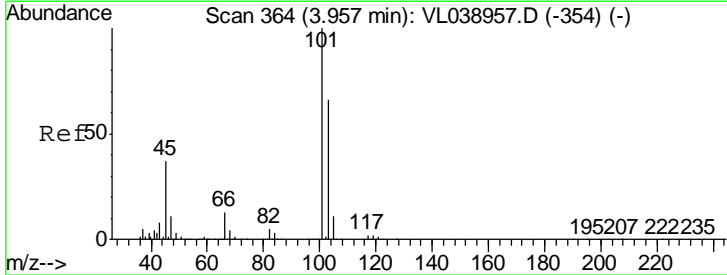
#18  
 1,1-Dichloroethene  
 Concen: 0.375 ppbv  
 RT: 4.29 Instrument :  
 Delta R.T. MSVOA\_L  
 Lab File: ClientSampleId :  
 Acq: 5 May 2022 4:39

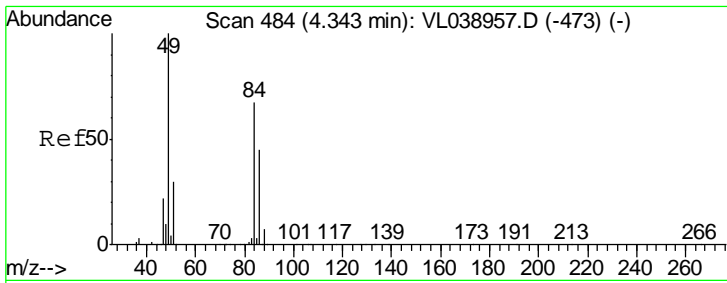
Tgt Ion	Resp	Lower	Upper
96	23285		
96	100		
61	183.5	146.3	219.5
98	52.0	50.6	75.8



#19  
 Isopropyl Alcohol  
 Concen: 0.403 ppbv  
 RT: 3.98 min Scan# 370  
 Delta R.T. 0.02 min  
 Lab File: VL038960.D  
 Acq: 5 May 2022 4:39

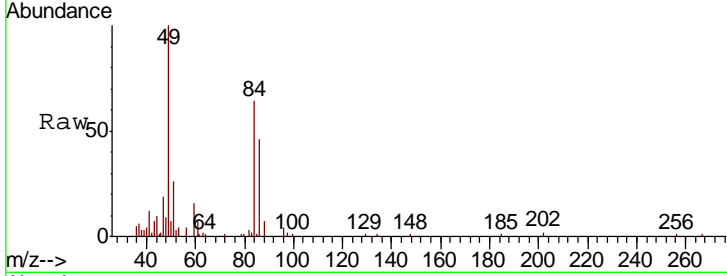
Tgt Ion	Resp	Lower	Upper
45	28743		
45	100		
58	4.2	1.4	2.2#



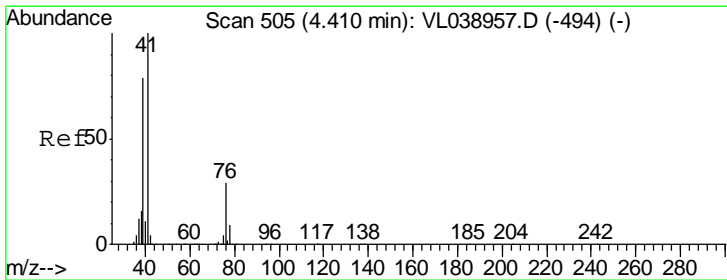
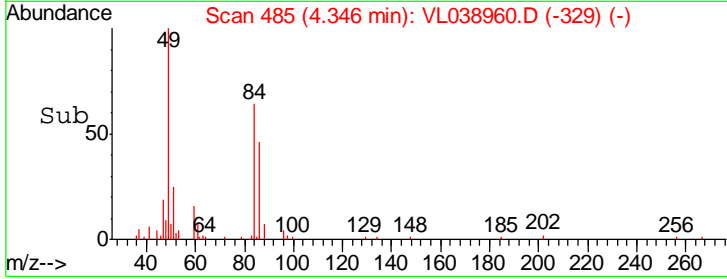
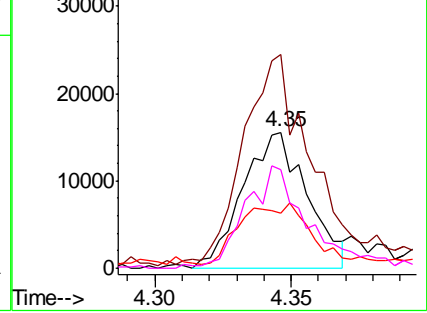


#20  
 Methylene Chloride  
 Concen: 0.423 ppbv  
 RT: 4.35 Instrument :  
 Delta R.T. MSVOA\_L  
 Lab File: ClientSampleId :  
 Acq: 5 May 2022 4:39

Tgt Ion	Resp	Lower	Upper
84	100		
49	150.4	119.9	179.9
51	36.9	35.7	53.5
86	70.0	53.8	80.6

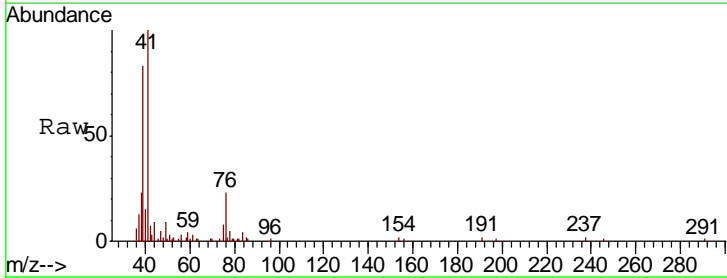


Abundance Ion 84.00 (83.70 to 84.70): VL0  
 Ion 49.10 (48.80 to 49.80): VL0  
 Ion 51.10 (50.80 to 51.80): VL0  
 Ion 86.00 (85.70 to 86.70): VL0

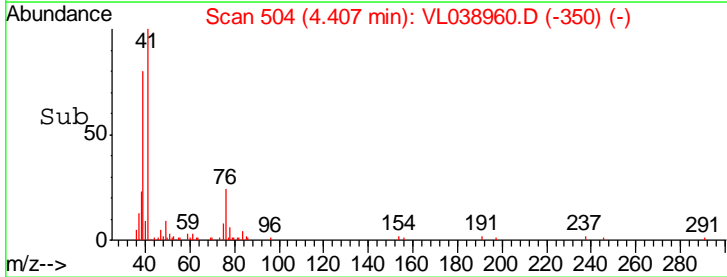
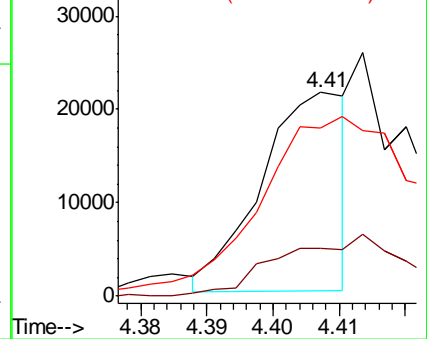


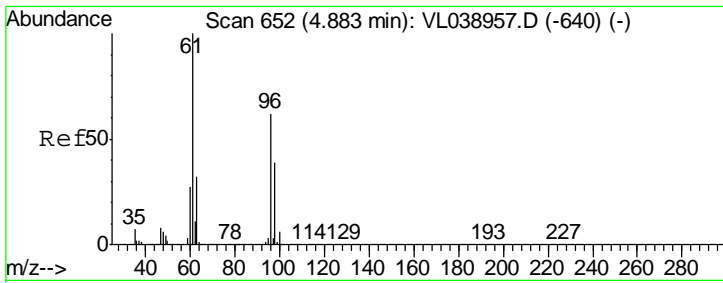
#21  
 Allyl Chloride  
 Concen: 0.187 ppbv  
 RT: 4.41 min Scan# 504  
 Delta R.T. -0.00 min  
 Lab File: VL038960.D  
 Acq: 5 May 2022 4:39

Tgt Ion	Resp	Lower	Upper
41	100		
76	0.0	24.2	36.4#
39	0.0	63.8	95.8#



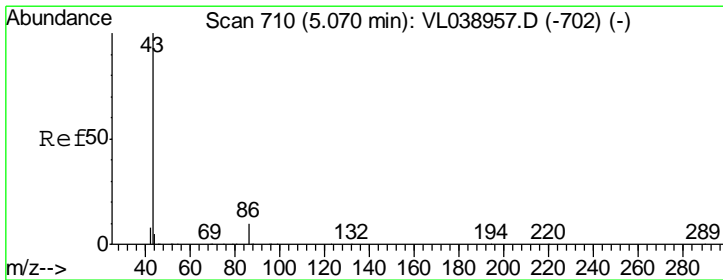
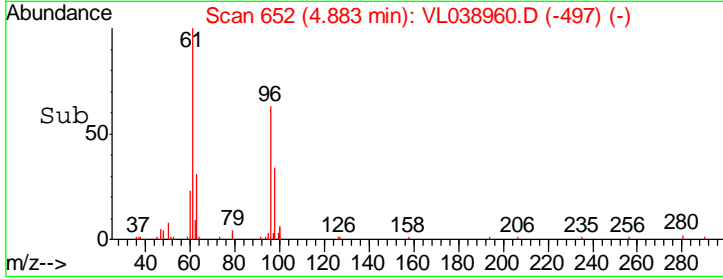
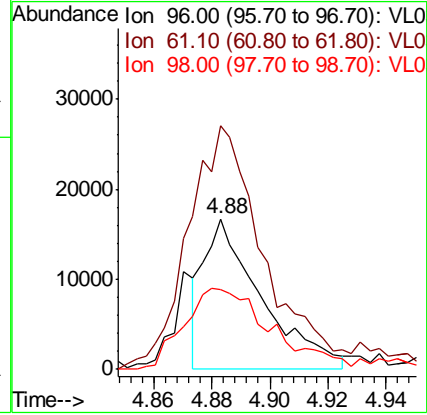
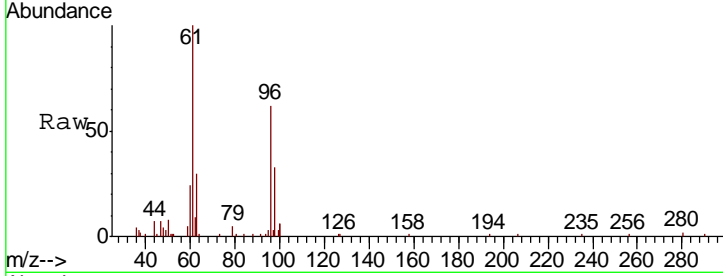
Abundance Ion 41.10 (40.80 to 41.80): VL0  
 Ion 76.10 (75.80 to 76.80): VL0  
 Ion 39.10 (38.80 to 39.80): VL0





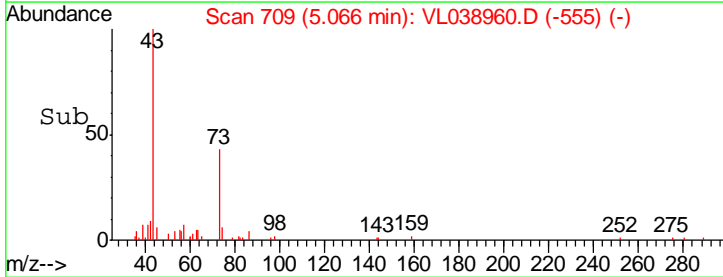
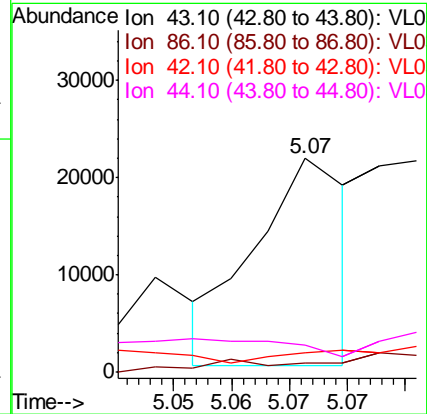
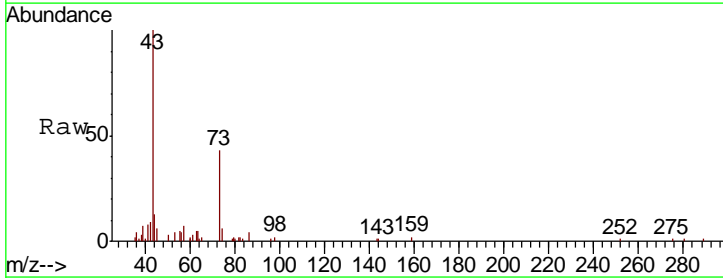
#22  
 trans-1,2-Dichloroethene  
 Concen: 0.389 ppbv  
 RT: 4.88  
 Delta R.T. MSVOA\_L  
 Lab File: ClientSampleId :  
 Acq: 5 May 2022 4:39

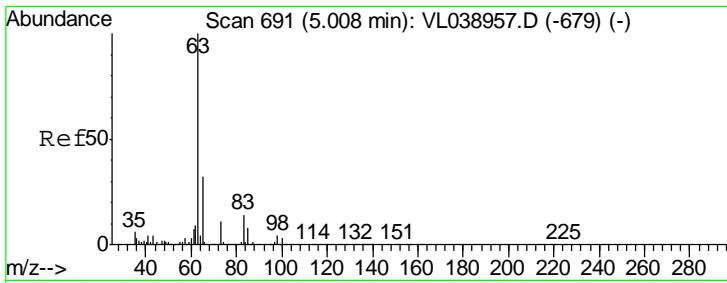
Tgt Ion	Resp	Lower	Upper
96	22946		
61	163.3	128.2	192.2
98	50.3	50.1	75.1



#23  
 Vinyl Acetate  
 Concen: 0.060 ppbv  
 RT: 5.07 min Scan# 709  
 Delta R.T. -0.00 min  
 Lab File: VL038960.D  
 Acq: 5 May 2022 4:39

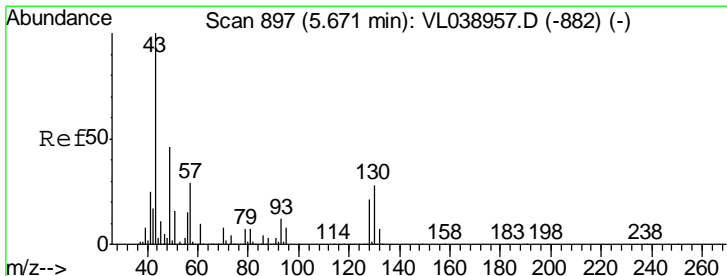
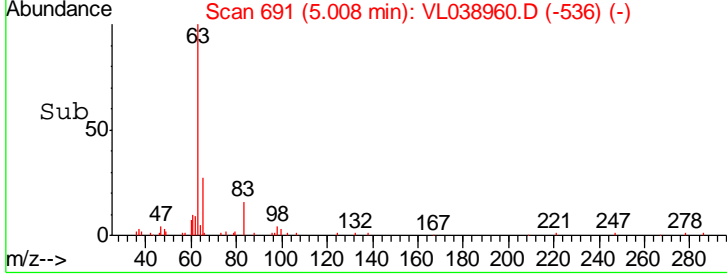
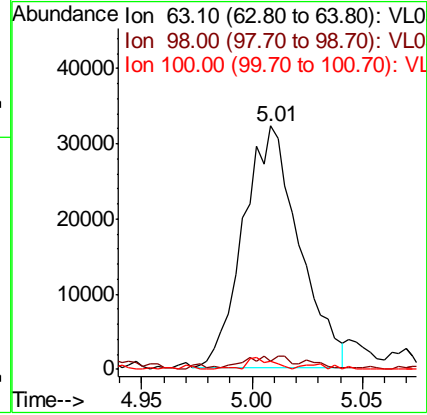
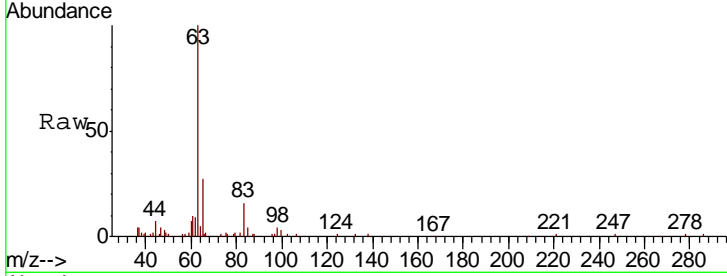
Tgt Ion	Resp	Lower	Upper
43	12120		
86	3.2	6.6	9.8#
42	1.9	8.1	12.1#
44	8.0	3.5	5.3#





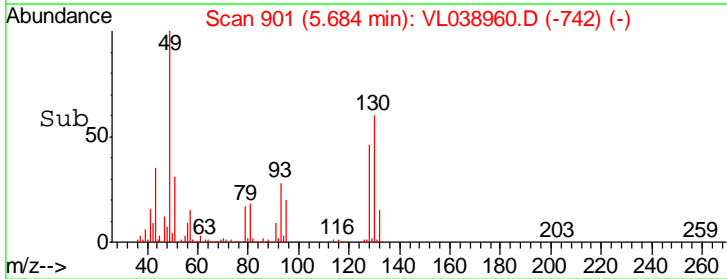
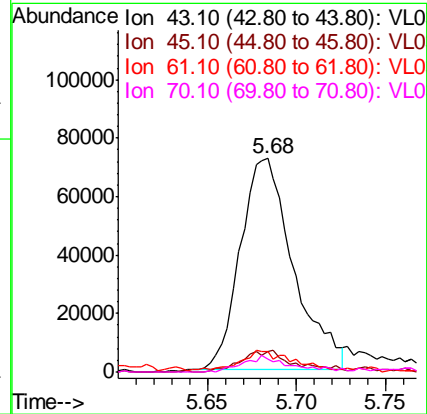
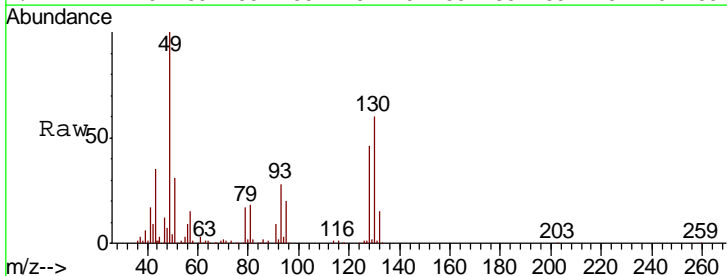
#24  
 1,1-Dichloroethane  
 Concen: 0.361 ppbv  
 RT: 5.01 Instrument :  
 Delta R.T. MSVOA\_L  
 Lab File: ClientSampleId :  
 Acq: 5 May 2022 4:39

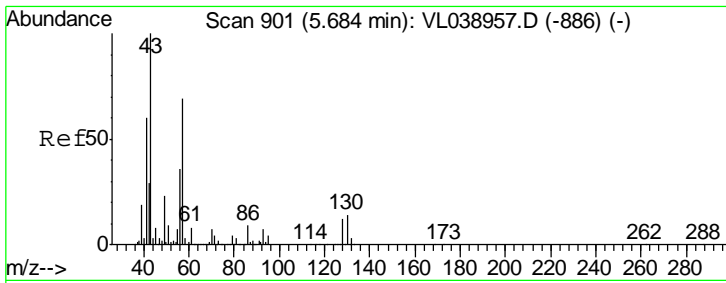
Tgt Ion	Ratio	Lower	Upper
63	100		
98	2.8	2.1	6.2
100	3.1	1.4	4.2



#25  
 Ethyl Acetate  
 Concen: 0.475 ppbv  
 RT: 5.68 min Scan# 901  
 Delta R.T. 0.01 min  
 Lab File: VL038960.D  
 Acq: 5 May 2022 4:39

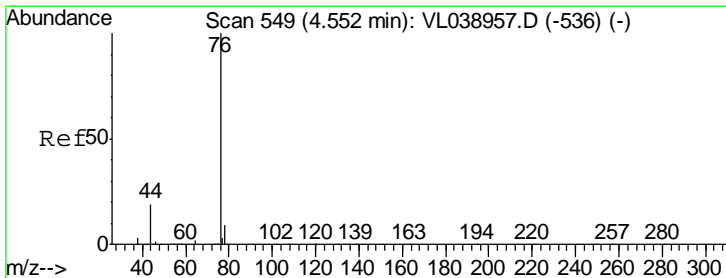
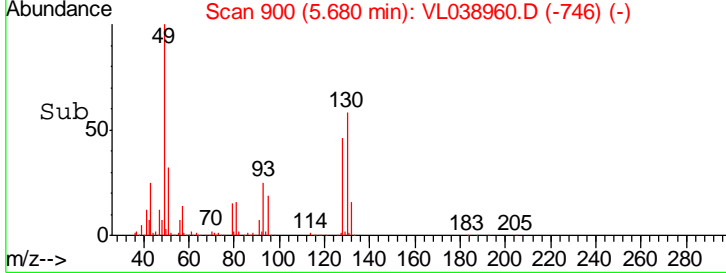
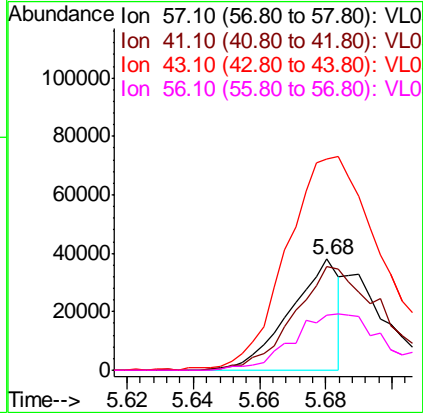
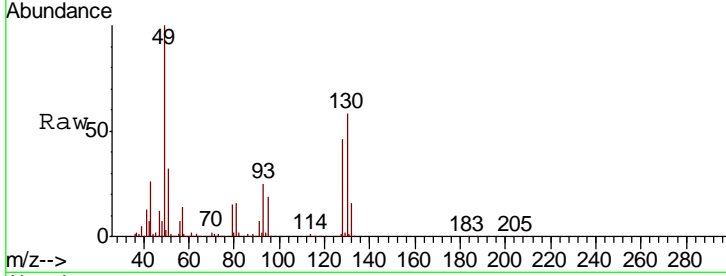
Tgt Ion	Ratio	Lower	Upper
43	100		
45	10.3	8.1	12.1
61	12.5	7.8	11.6#
70	7.3	5.6	8.4





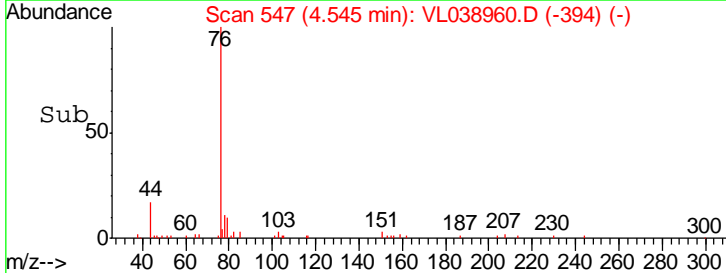
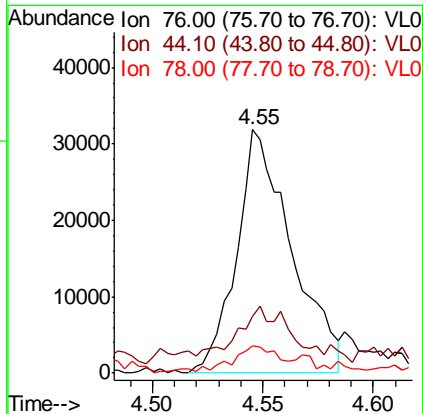
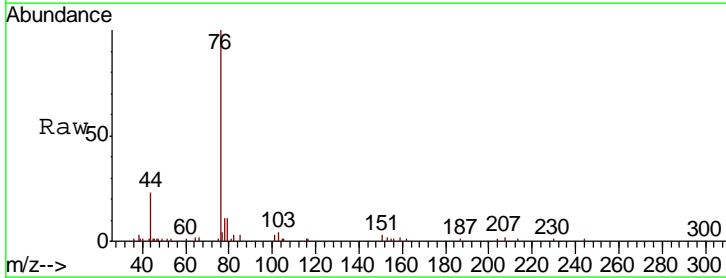
#26  
 Hexane  
 Concen: 0.271 ppbv  
 RT: 5.68  
 Delta R.T. MSVOA\_L  
 Lab File: ClientSampleId:  
 Acq: 5 May 2022 4:39

Tgt Ion	Resp	Lower	Upper
57	100		
41	183.0	75.2	112.8#
43	438.7	190.8	286.2#
56	99.8	43.0	64.6#

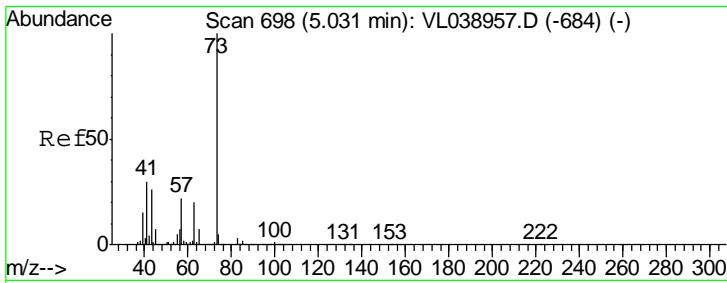


#27  
 Carbon Disulfide  
 Concen: 0.389 ppbv  
 RT: 4.55 min Scan# 547  
 Delta R.T. -0.01 min  
 Lab File: VL038960.D  
 Acq: 5 May 2022 4:39

Tgt Ion	Resp	Lower	Upper
76	100		
44	29.1	15.3	22.9#
78	13.8	8.2	12.2#

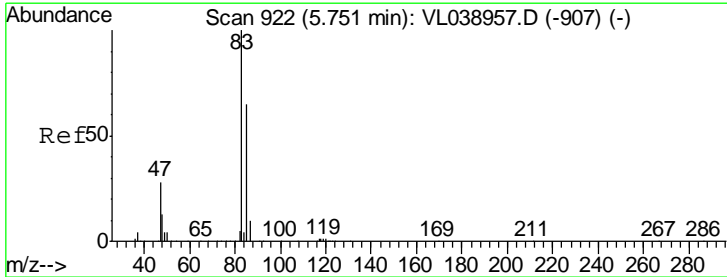
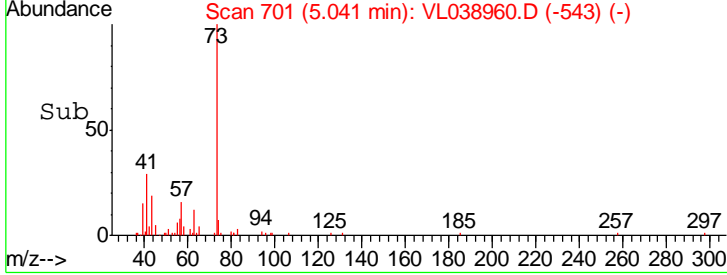
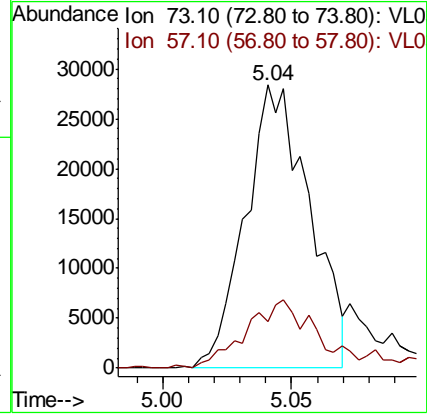
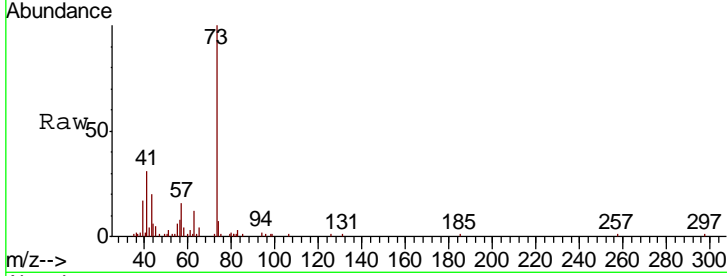






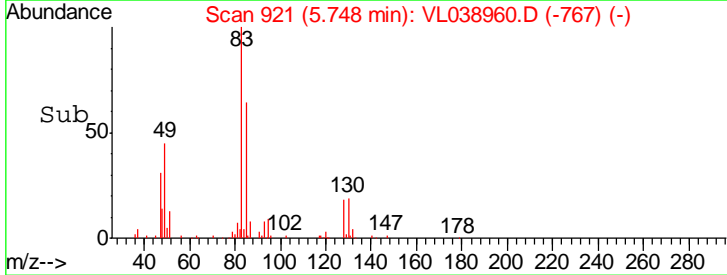
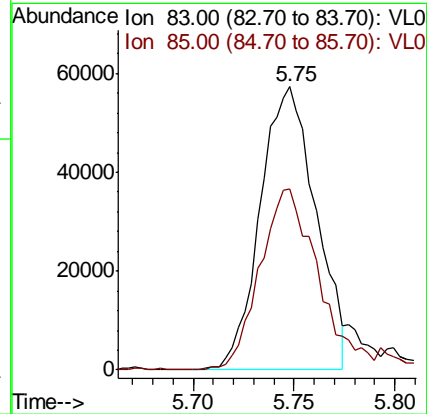
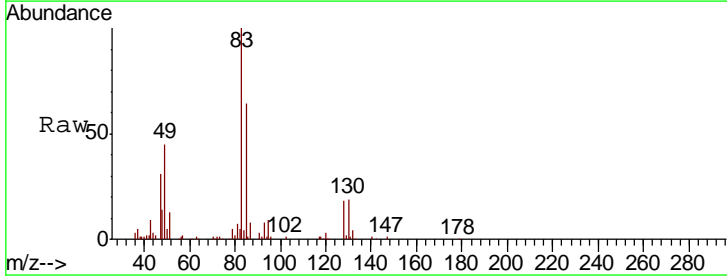
#28  
 Methyl tert-Butyl Ether  
 Concen: 0.309 ppbv  
 RT: 5.04 Instrument :  
 Delta R.T. MSVOA\_L  
 Lab File: ClientSampleId :  
 Acq: 5 May 2022 4:39

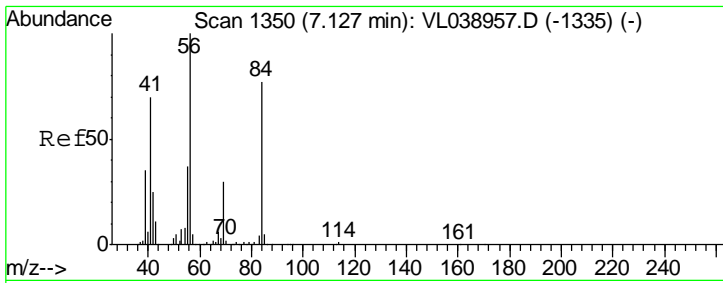
Tgt Ion	Resp	Lower	Upper
73	49264		
57	29.7	18.8	28.2#



#29  
 Chloroform  
 Concen: 0.470 ppbv  
 RT: 5.75 min Scan# 921  
 Delta R.T. -0.00 min  
 Lab File: VL038960.D  
 Acq: 5 May 2022 4:39

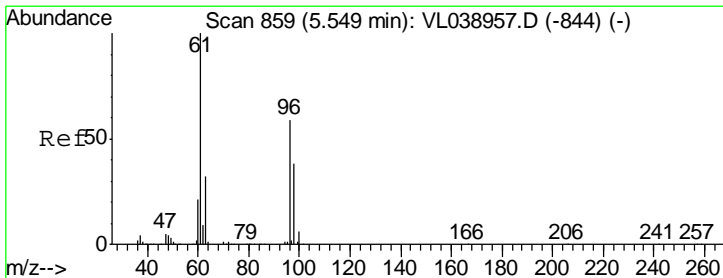
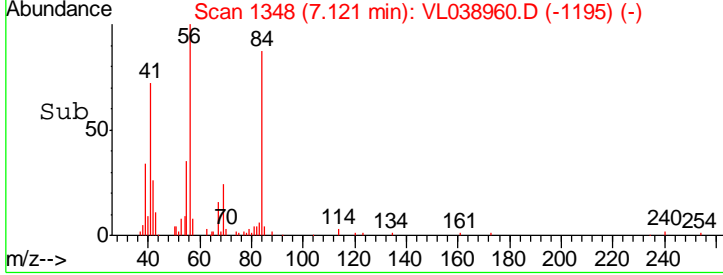
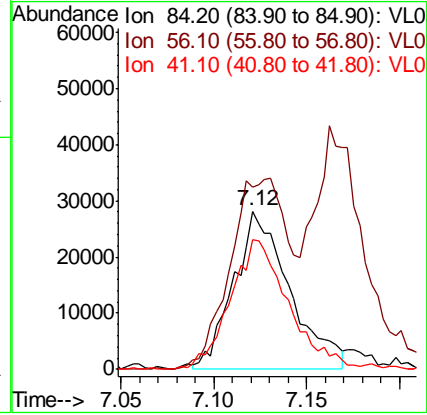
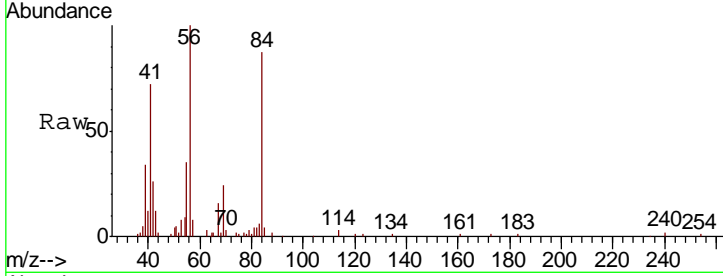
Tgt Ion	Resp	Lower	Upper
83	110004		
85	64.1	51.8	77.6





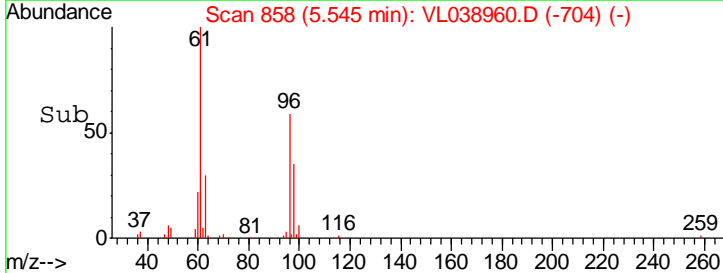
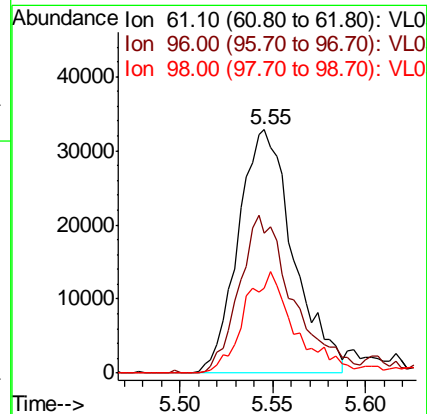
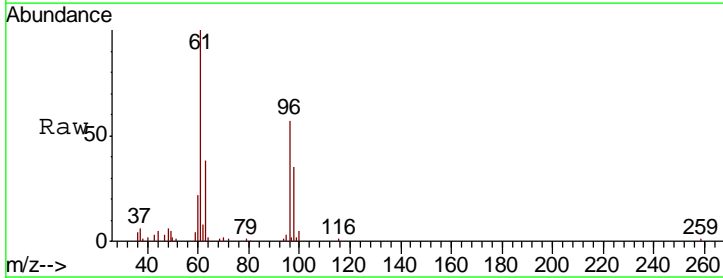
#30  
 Cyclohexane  
 Concen: 0.508 ppbv  
 RT: 7.12  
 Instrument: MSVOA\_L  
 Delta R.T.:  
 Lab File: ClientSampleId:  
 Acq: 5 May 2022 4:39

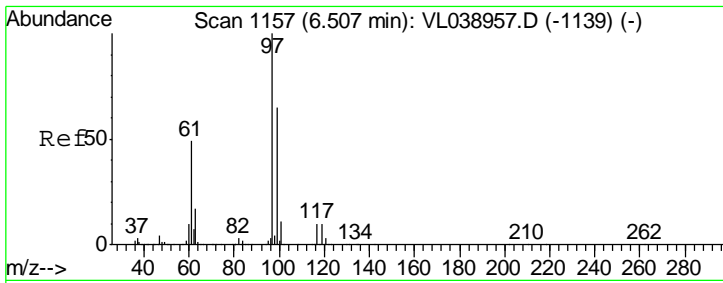
Tgt Ion	Resp	Lower	Upper
84	100		
56	121.8	115.3	172.9
41	86.1	72.0	108.0



#31  
 cis-1,2-Dichloroethene  
 Concen: 0.483 ppbv  
 RT: 5.55 min Scan# 858  
 Delta R.T. -0.00 min  
 Lab File: VL038960.D  
 Acq: 5 May 2022 4:39

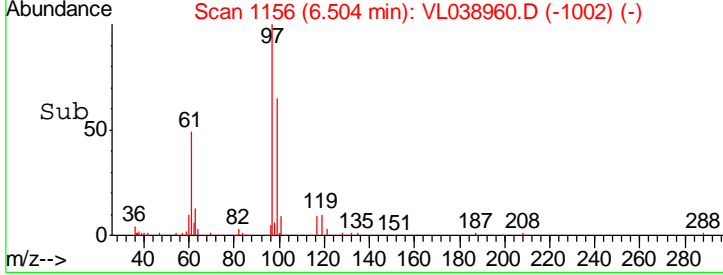
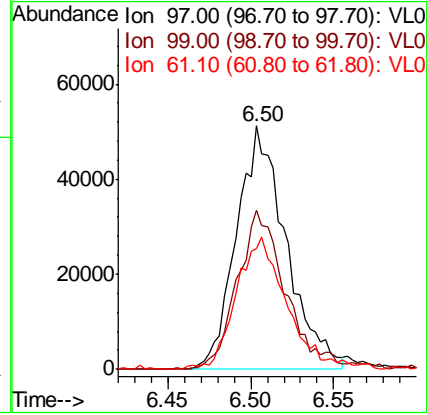
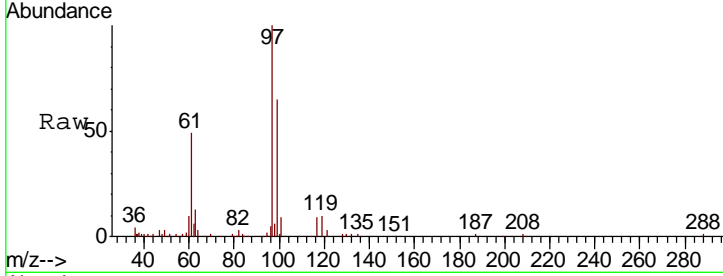
Tgt Ion	Resp	Lower	Upper
61	100		
96	57.5	47.4	71.0
98	34.7	30.6	45.8





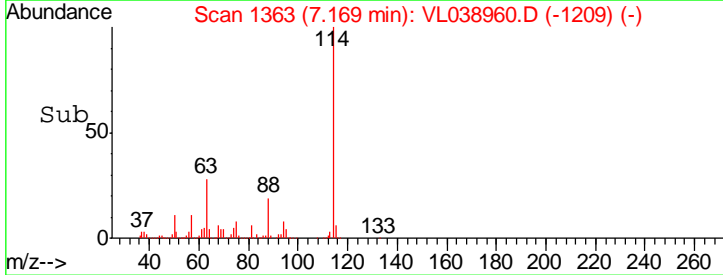
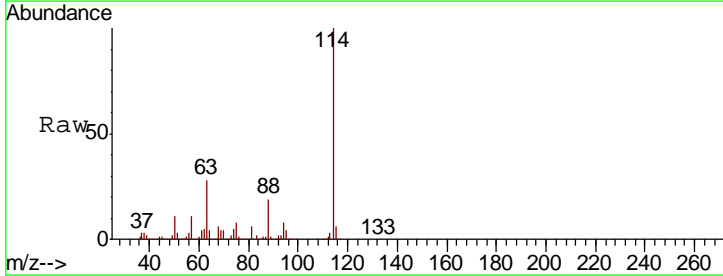
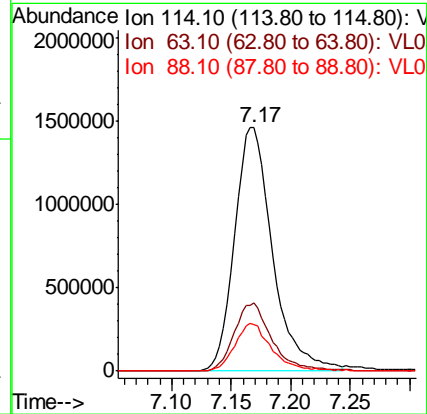
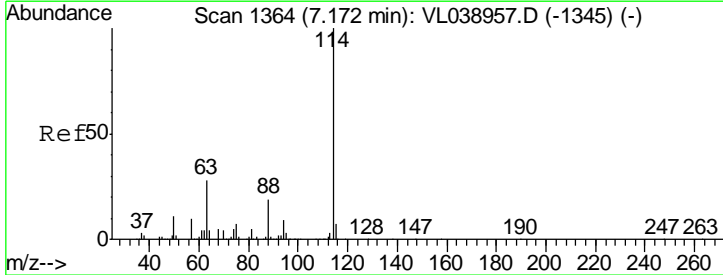
#32  
 1,1,1-Trichloroethane  
 Concen: 0.450 ppbv  
 RT: 6.50  
 Delta R.T. MSVOA\_L  
 Lab File: ClientSampled :  
 Acq: 5 May 2022 4:39

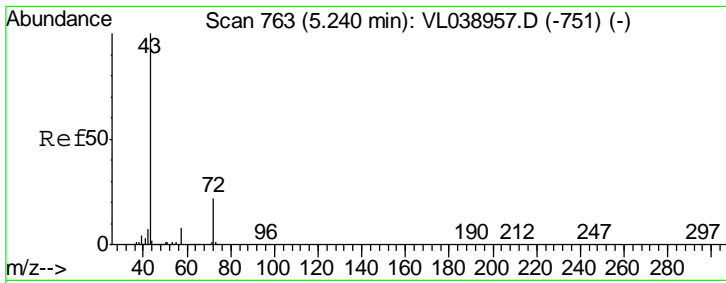
Tgt Ion	Resp	Lower	Upper
97	106203		
99	65.2	51.9	77.9
61	56.3	40.9	61.3



#33  
 1,4-Difluorobenzene  
 Concen: 10.000 ppbv  
 RT: 7.17 min Scan# 1363  
 Delta R.T. -0.00 min  
 Lab File: VL038960.D  
 Acq: 5 May 2022 4:39

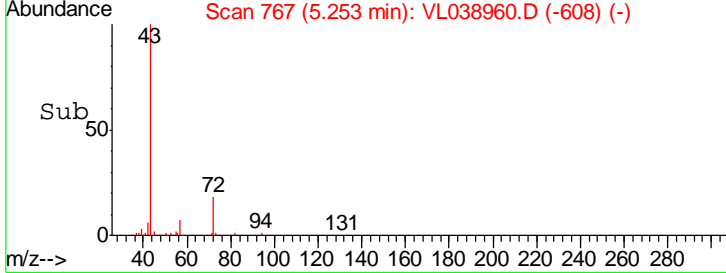
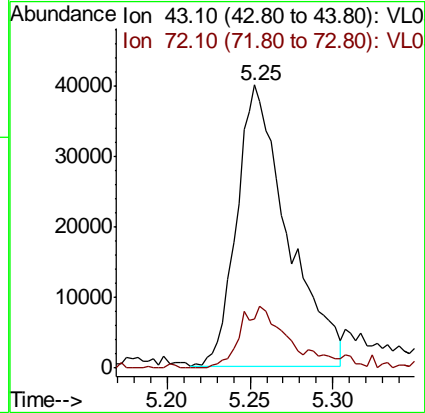
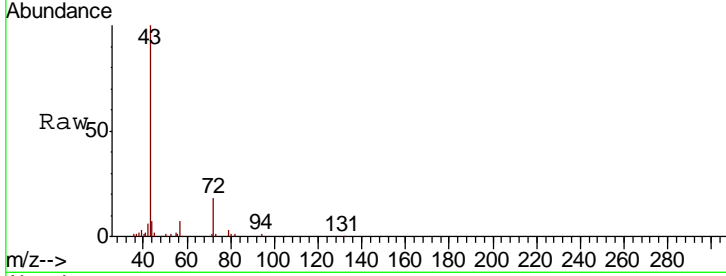
Tgt Ion	Resp	Lower	Upper
114	3227645		
63	28.2	22.6	33.8
88	19.5	15.4	23.0





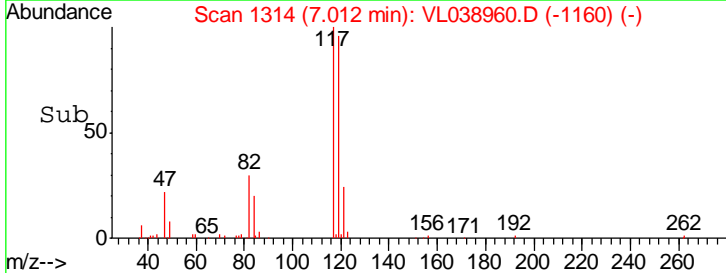
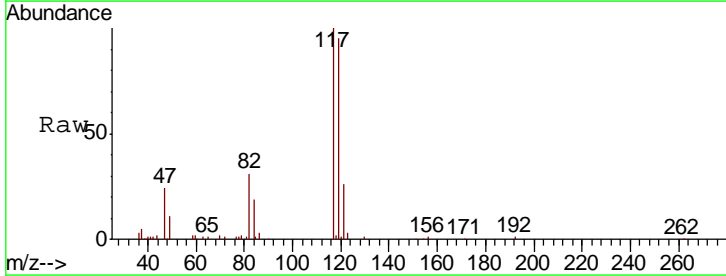
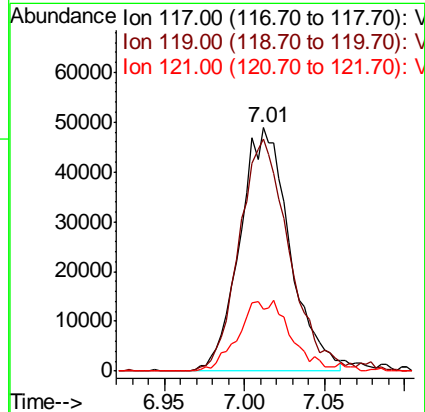
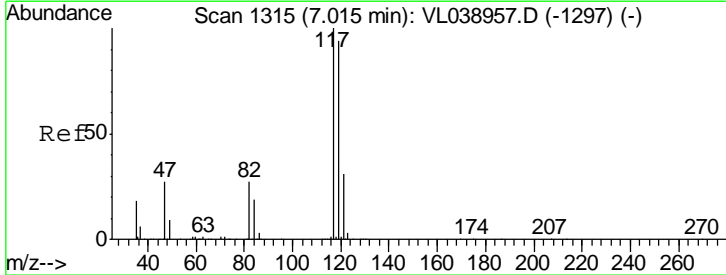
#34  
 2-Butanone  
 Concen: 0.530 ppbv  
 RT: 5.25 Instrument : MSVOA\_L  
 Delta R.T. ClientSampleId :  
 Lab File:  
 Acq: 5 May 2022 4:39

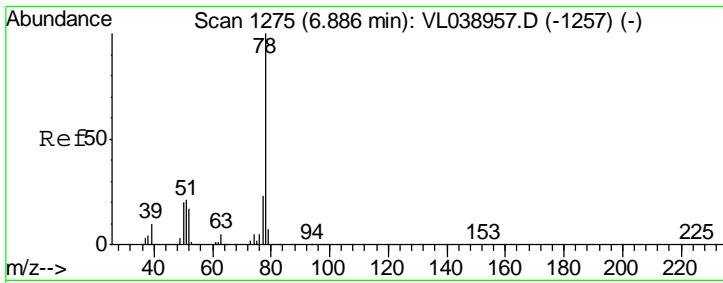
Tgt Ion	Ratio	Lower	Upper
43	100		
72	23.0	17.8	26.6



#35  
 Carbon Tetrachloride  
 Concen: 0.420 ppbv  
 RT: 7.01 min Scan# 1314  
 Delta R.T. -0.00 min  
 Lab File: VL038960.D  
 Acq: 5 May 2022 4:39

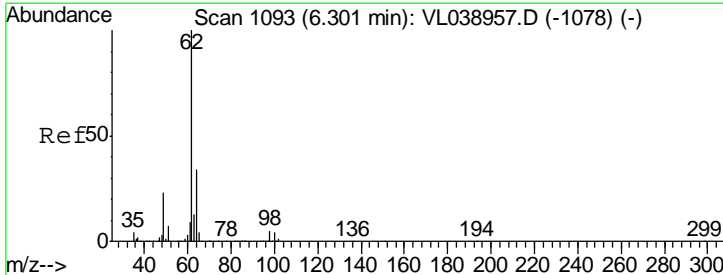
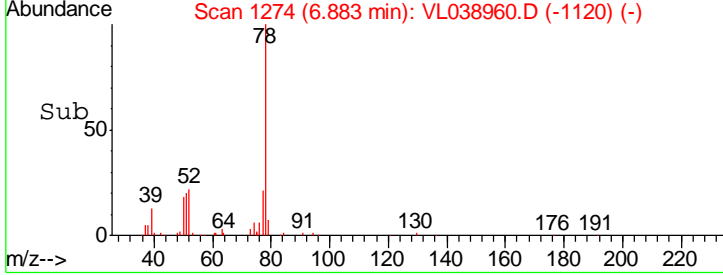
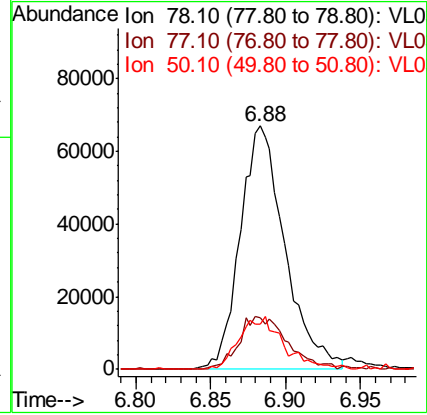
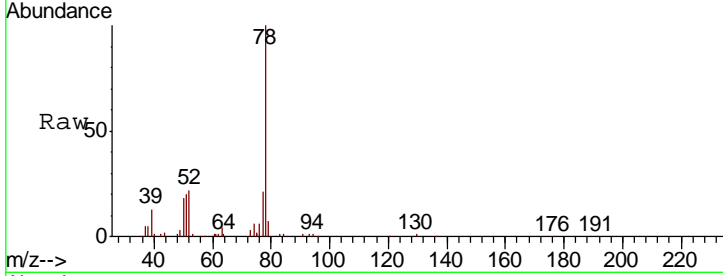
Tgt Ion	Ratio	Lower	Upper
117	100		
119	95.1	75.2	112.8
121	25.6	24.6	37.0





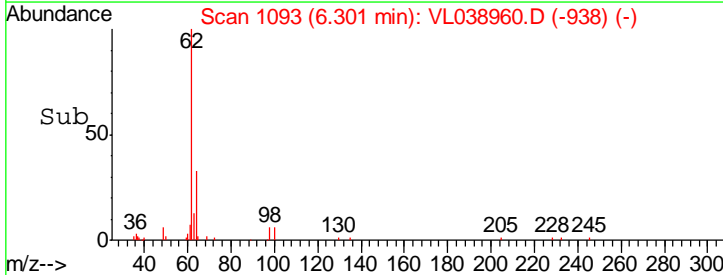
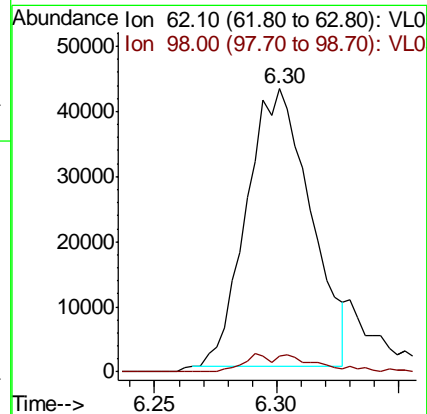
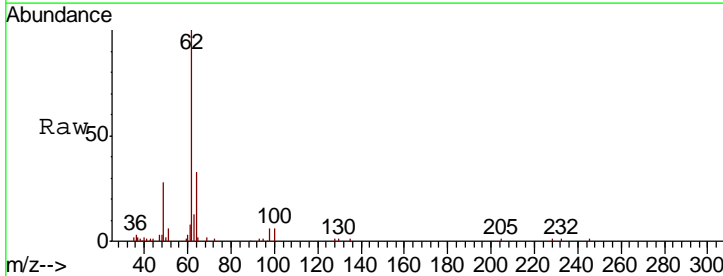
#36  
 Benzene  
 Concen: 0.474 ppbv  
 RT: 6.88 Instrument :  
 Delta R.T. MSVOA\_L  
 Lab File: ClientSampleId :  
 Acq: 5 May 2022 4:39

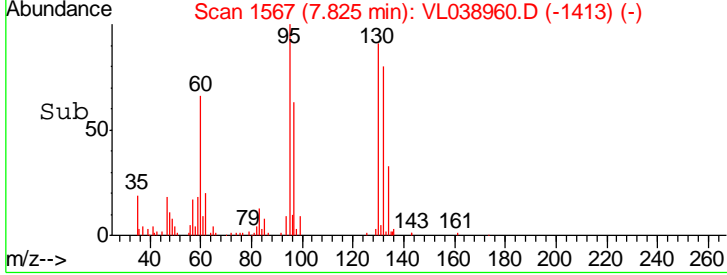
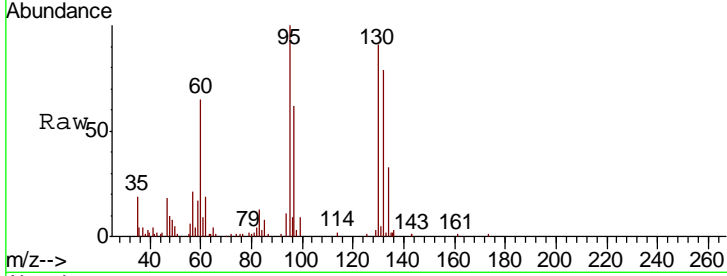
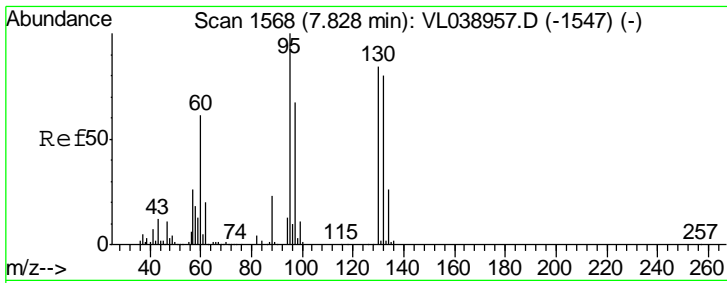
Tgt Ion	Resp	Lower	Upper
78	139432		
77	21.2	18.6	28.0
50	18.4	15.6	23.4



#37  
 1,2-Dichloroethane  
 Concen: 0.440 ppbv  
 RT: 6.30 min Scan# 1093  
 Delta R.T. -0.00 min  
 Lab File: VL038960.D  
 Acq: 5 May 2022 4:39

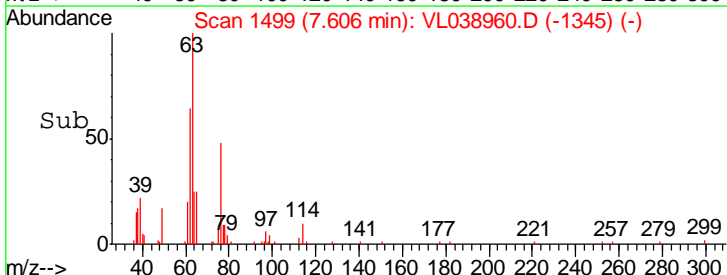
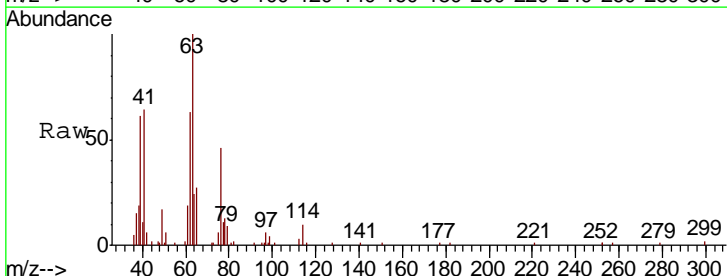
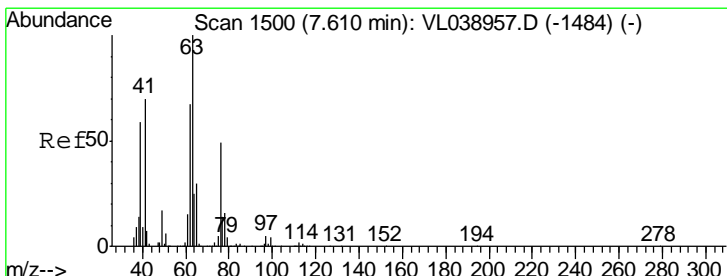
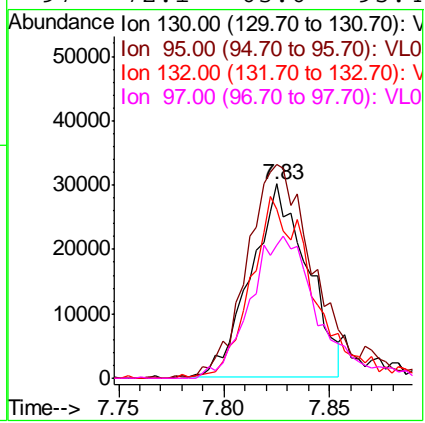
Tgt Ion	Resp	Lower	Upper
62	77546		
98	6.9	4.5	6.7#





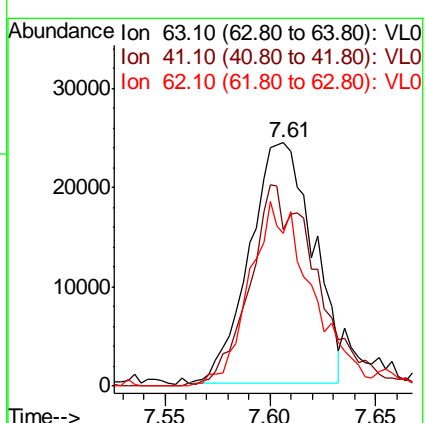
#38  
 Trichloroethene  
 Concen: 0.471 ppbv  
 RT: 7.83  
 Delta R.T. MSVOA\_L  
 Lab File: ClientSampled :  
 Acq: 5 May 2022 4:39

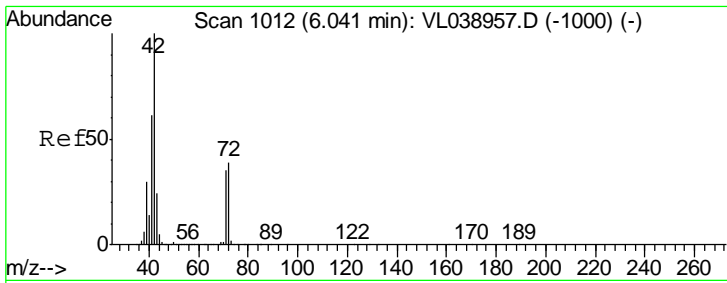
Tgt Ion	Resp	Lower	Upper
130	100		
95	115.0	94.8	142.2
132	90.9	75.8	113.8
97	72.1	63.6	95.4



#39  
 1,2-Dichloropropane  
 Concen: 0.424 ppbv  
 RT: 7.61 min Scan# 1499  
 Delta R.T. -0.00 min  
 Lab File: VL038960.D  
 Acq: 5 May 2022 4:39

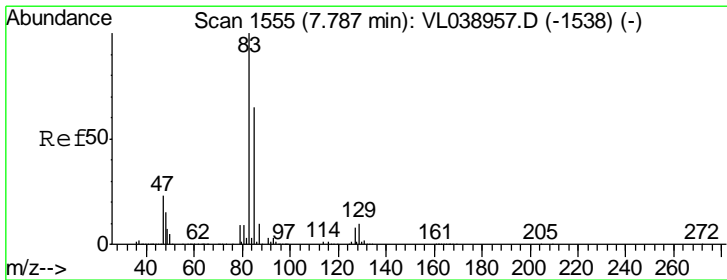
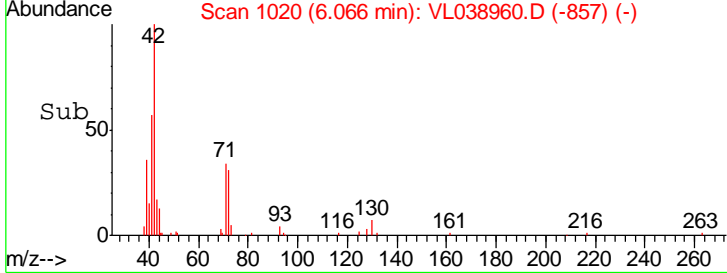
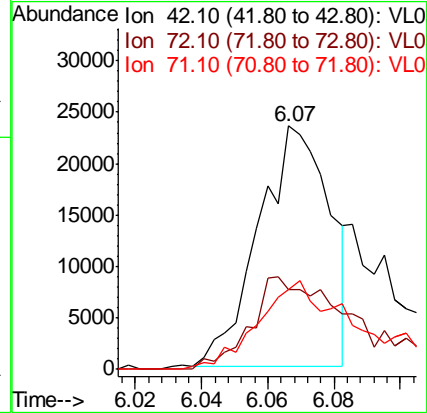
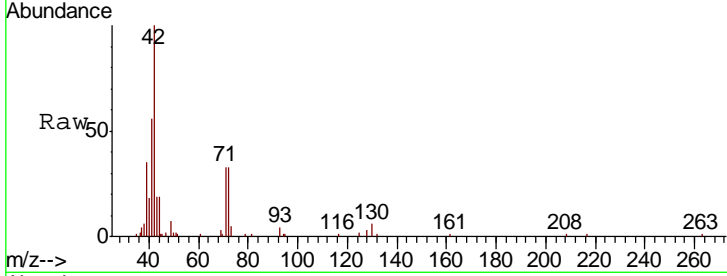
Tgt Ion	Resp	Lower	Upper
63	100		
41	63.9	55.9	83.9
62	63.8	53.8	80.6





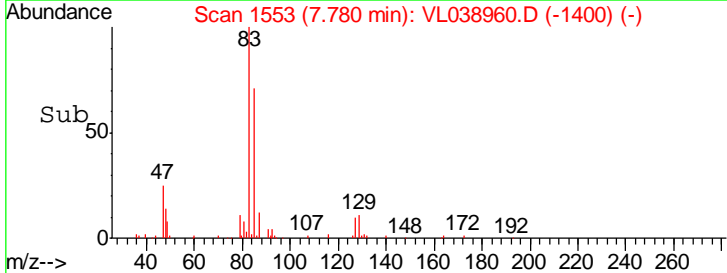
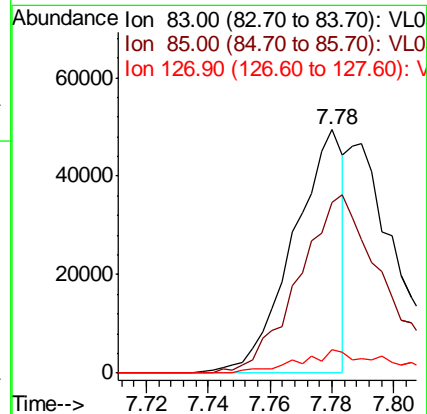
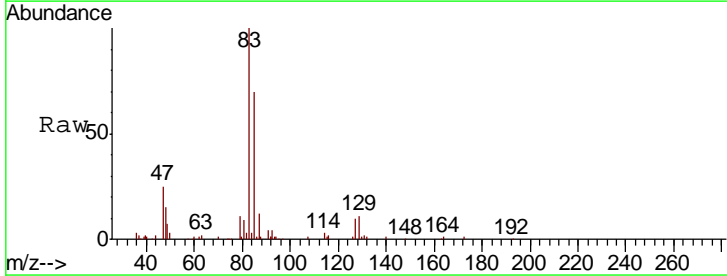
#41  
 Tetrahydrofuran  
 Concen: 0.437 ppbv  
 RT: 6.07 Instrument :  
 Delta R.T. MSVOA\_L  
 Lab File: ClientSampled :  
 Acq: 5 May 2022 4:39

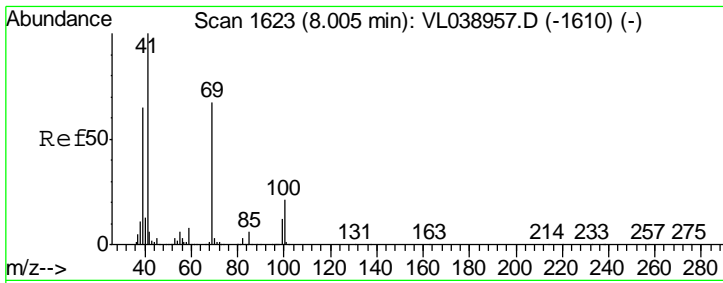
Tgt Ion	Resp	Lower	Upper
42	100		
72	61.2	31.8	47.6#
71	60.0	30.6	45.8#



#42  
 Bromodichloromethane  
 Concen: 0.232 ppbv  
 RT: 7.78 min Scan# 1553  
 Delta R.T. -0.01 min  
 Lab File: VL038960.D  
 Acq: 5 May 2022 4:39

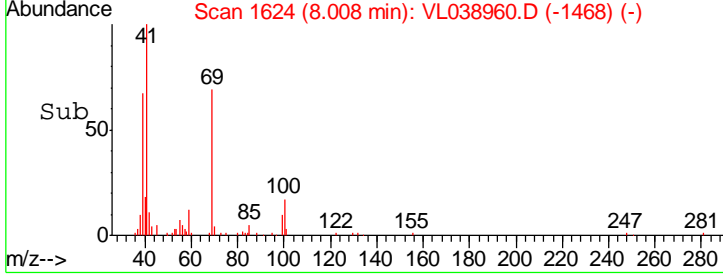
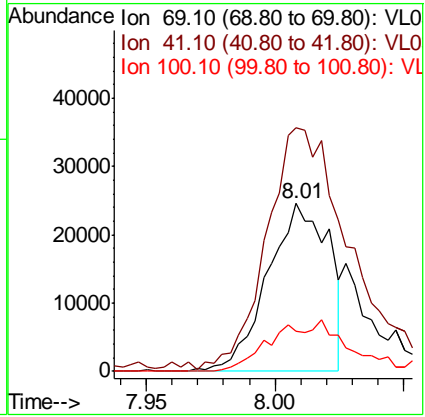
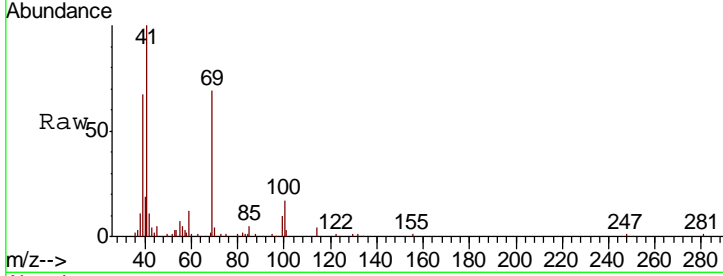
Tgt Ion	Resp	Lower	Upper
83	100		
85	70.1	52.0	78.0
127	9.5	6.0	9.0#





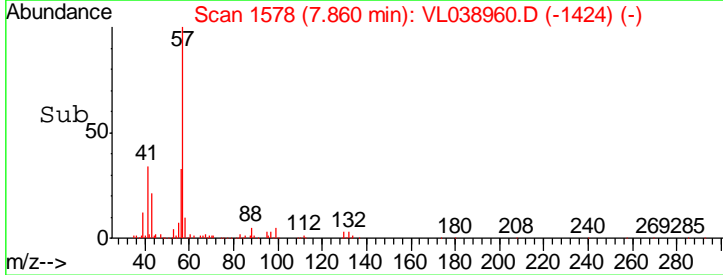
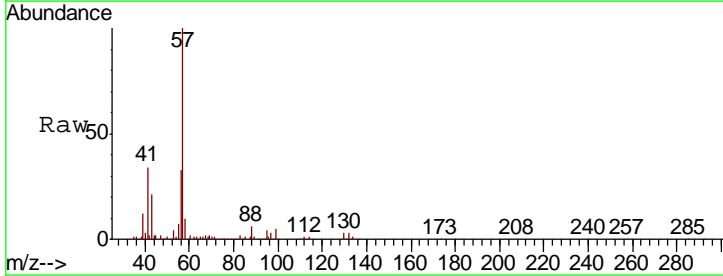
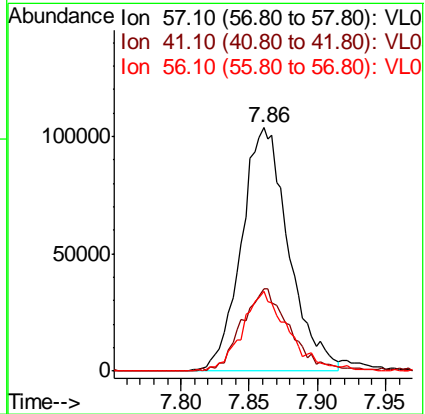
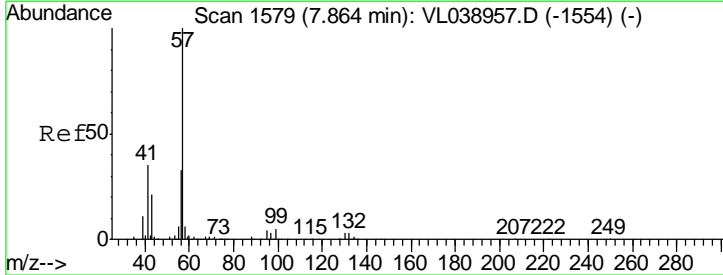
#43  
 Methyl Methacrylate  
 Concen: 0.401 ppbv  
 RT: 8.01 Instrument :  
 Delta R.T. MSVOA\_L  
 Lab File: ClientSampleId :  
 Acq: 5 May 2022 4:39

Tgt Ion	Resp	Lower	Upper
69	40700		
Ion Ratio			
69	100		
41	207.7	121.9	182.9#
100	0.0	24.6	36.8#

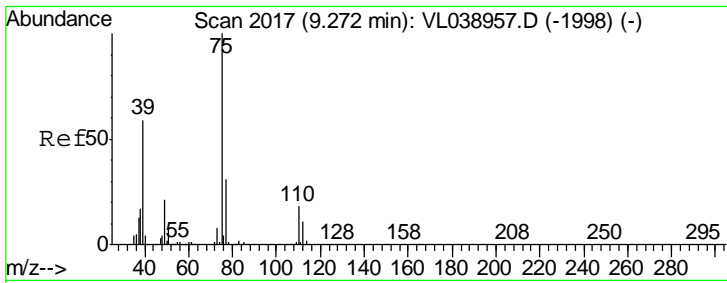


#44  
 2,2,4-Trimethylpentane  
 Concen: 0.479 ppbv  
 RT: 7.86 min Scan# 1578  
 Delta R.T. -0.00 min  
 Lab File: VL038960.D  
 Acq: 5 May 2022 4:39

Tgt Ion	Resp	Lower	Upper
57	249281		
Ion Ratio			
57	100		
41	35.0	26.3	39.5
56	32.3	24.6	37.0

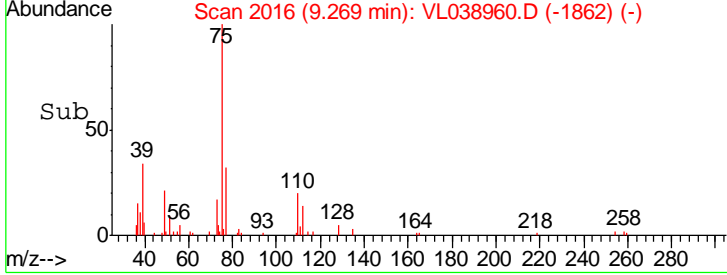
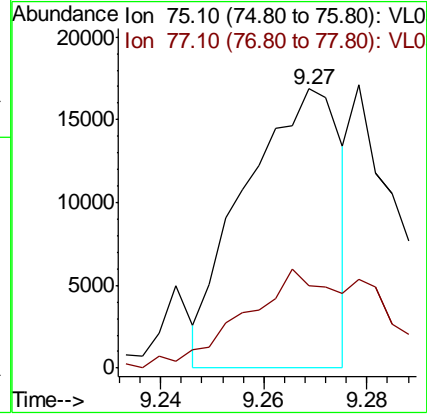
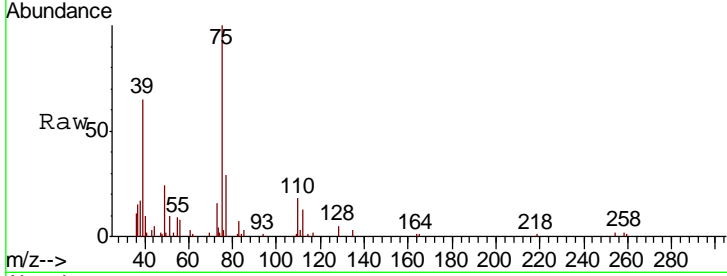






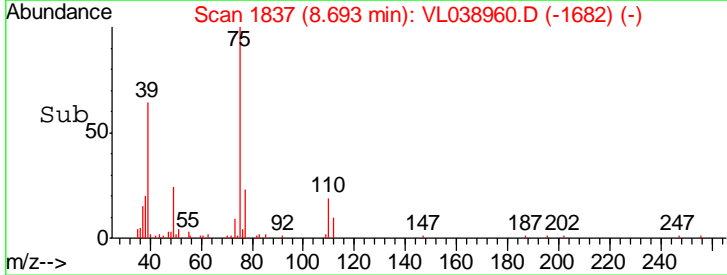
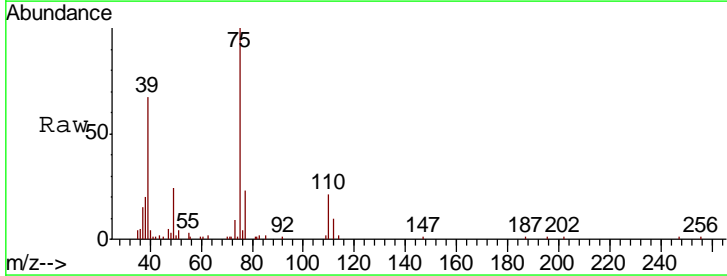
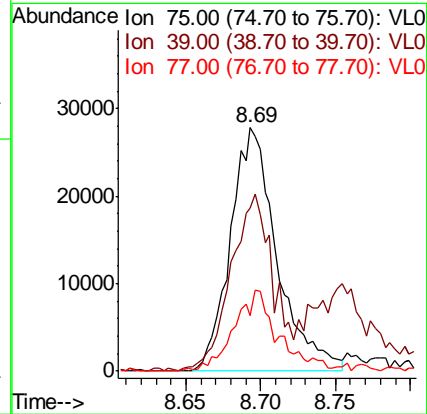
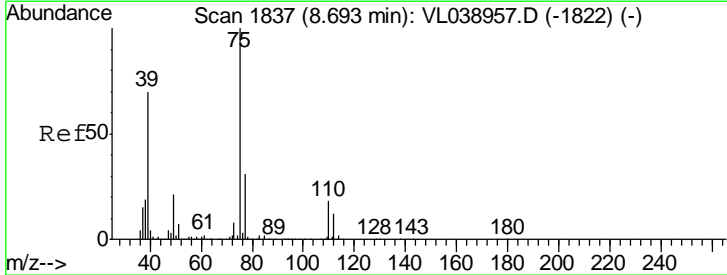
#45  
 t-1,3-Dichloropropene  
 Concen: 0.189 ppbv  
 RT: 9.27 Instrument :  
 Delta R.T. MSVOA\_L  
 Lab File: ClientSampled :  
 Acq: 5 May 2022 4:39

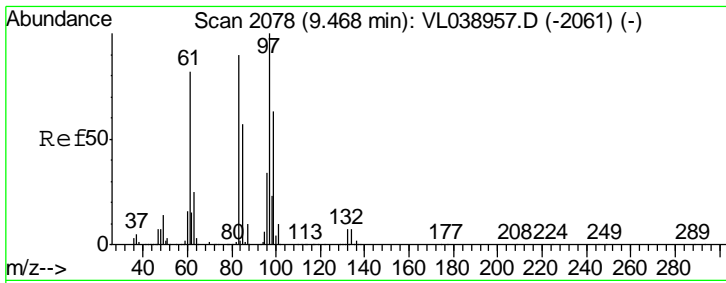
Tgt Ion	Ratio	Lower	Upper
75	100		
77	29.4	24.6	37.0



#46  
 cis-1,3-Dichloropropene  
 Concen: 0.412 ppbv  
 RT: 8.69 min Scan# 1837  
 Delta R.T. -0.00 min  
 Lab File: VL038960.D  
 Acq: 5 May 2022 4:39

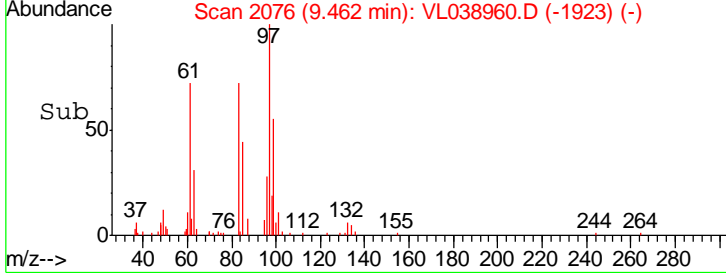
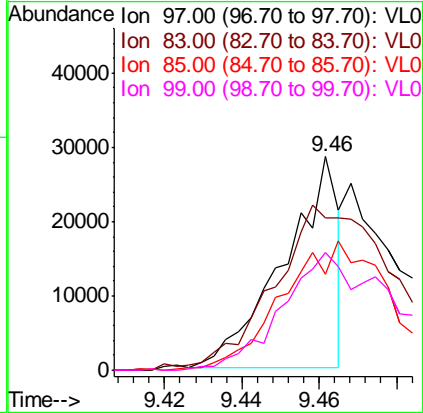
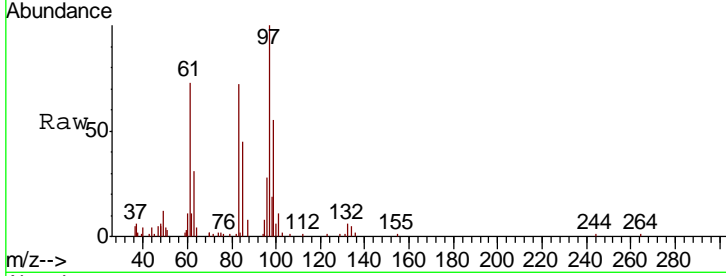
Tgt Ion	Ratio	Lower	Upper
75	100		
39	65.3	55.8	83.6
77	22.1	24.8	37.2#





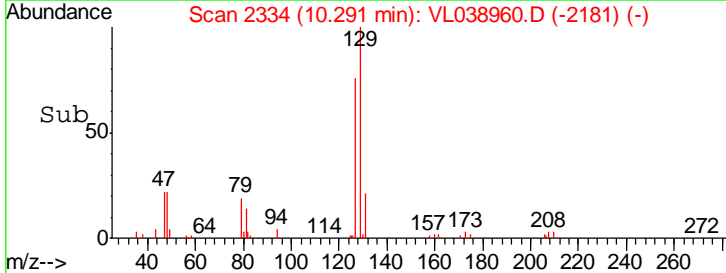
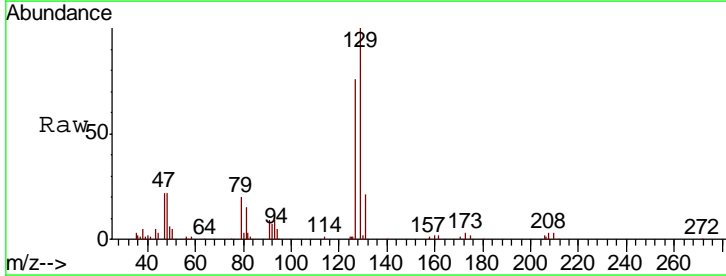
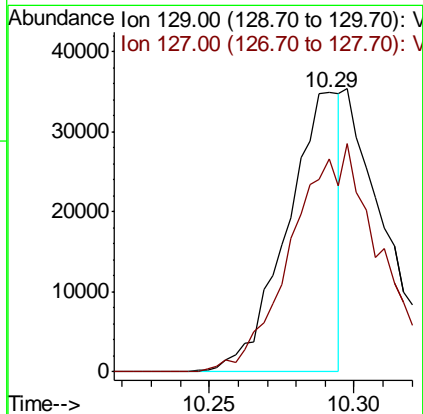
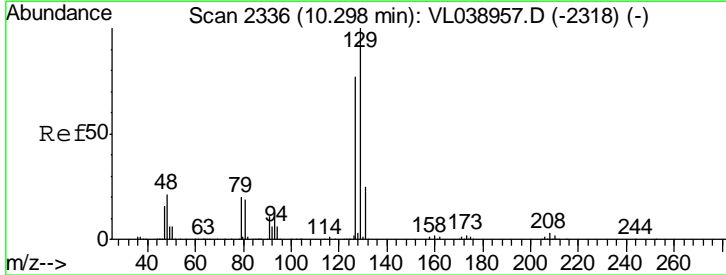
#47  
 1,1,2-Trichloroethane  
 Concen: 0.232 ppbv  
 RT: 9.46  
 Delta R.T. MSVOA\_L  
 Lab File: ClientSampled :  
 Acq: 5 May 2022 4:39

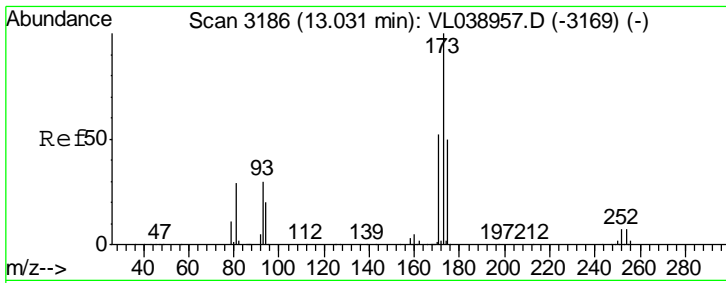
Tgt Ion	Resp	Lower	Upper
97	100		
83	70.1	72.0	108.0#
85	44.0	45.7	68.5#
99	54.9	50.2	75.4



#48  
 Dibromochloromethane  
 Concen: 0.237 ppbv  
 RT: 10.29 min Scan# 2334  
 Delta R.T. -0.01 min  
 Lab File: VL038960.D  
 Acq: 5 May 2022 4:39

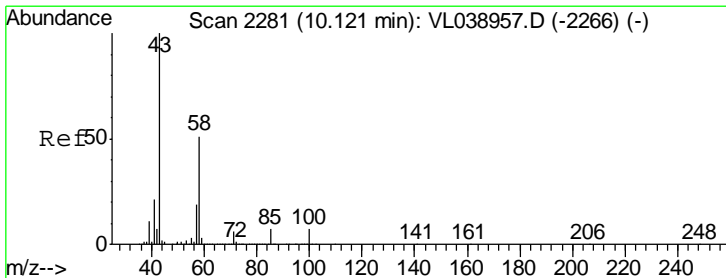
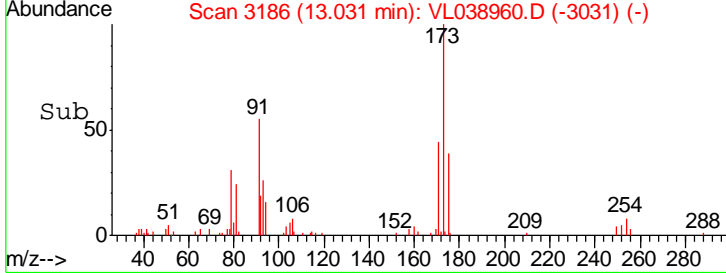
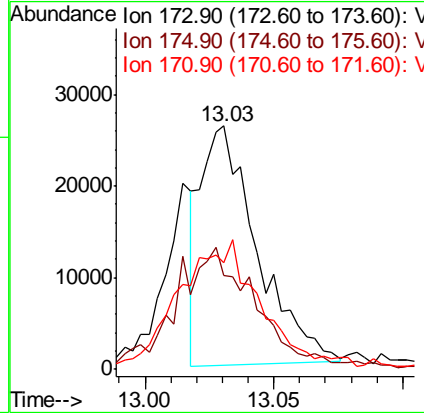
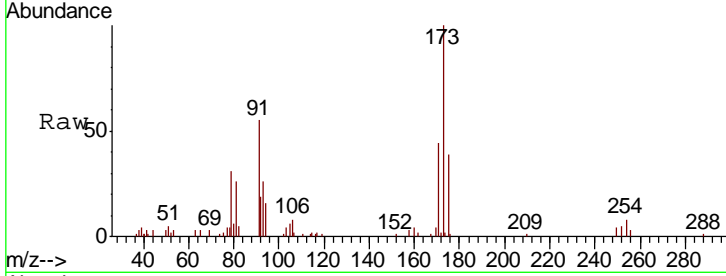
Tgt Ion	Resp	Lower	Upper
129	100		
127	0.0	39.3	117.9#





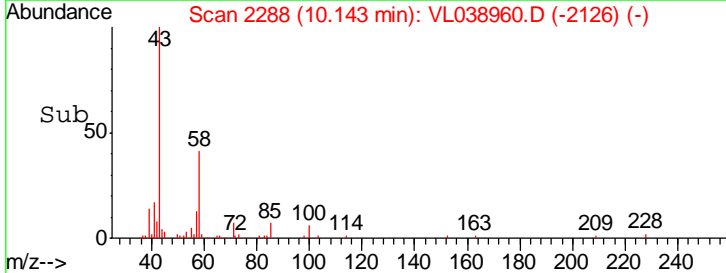
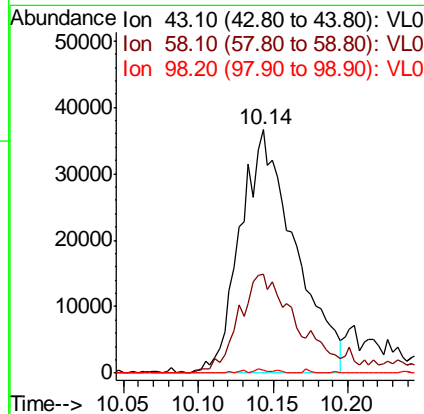
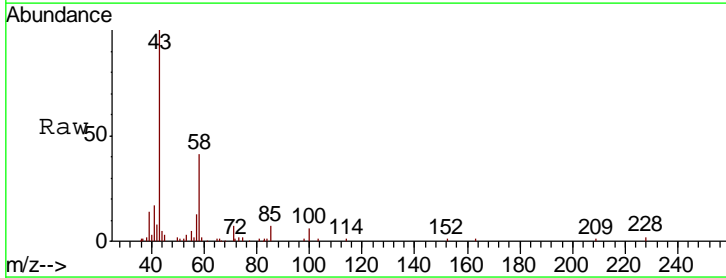
#49  
 Bromoform  
 Concen: 0.264 ppbv  
 RT: 13.03  
 Delta R.T. MSVOA\_L  
 Lab File: ClientSampled :  
 Acq: 5 May 2022 4:39

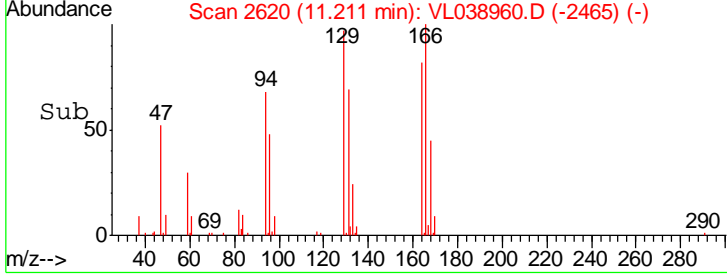
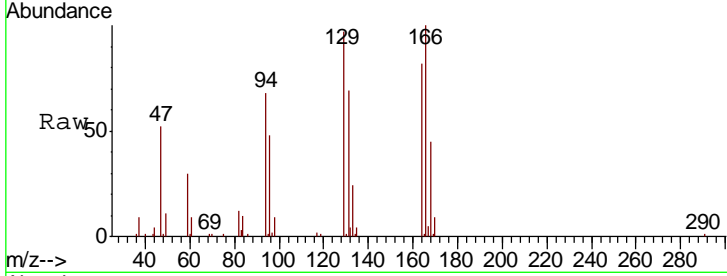
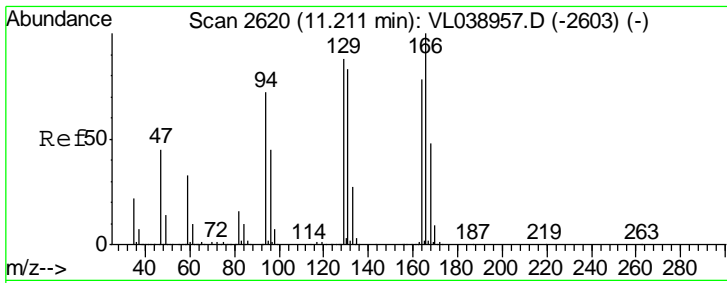
Tgt Ion	Resp	Lower	Upper
173	100		
175	76.6	41.0	61.6#
171	82.1	42.6	64.0#



#51  
 2-Hexanone  
 Concen: 0.689 ppbv  
 RT: 10.14 min Scan# 2288  
 Delta R.T. 0.02 min  
 Lab File: VL038960.D  
 Acq: 5 May 2022 4:39

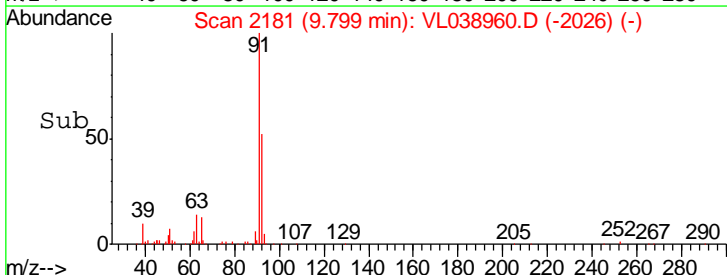
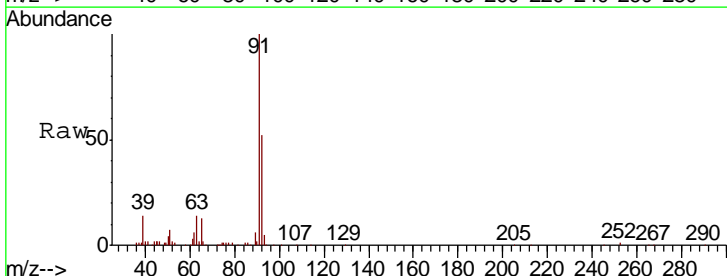
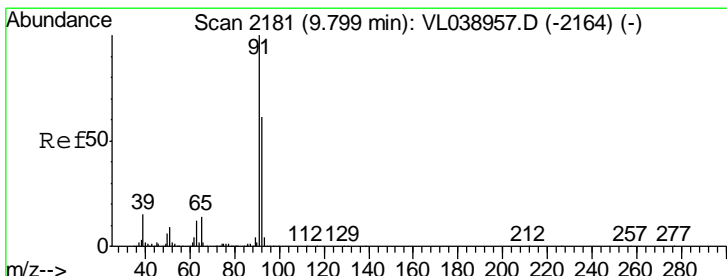
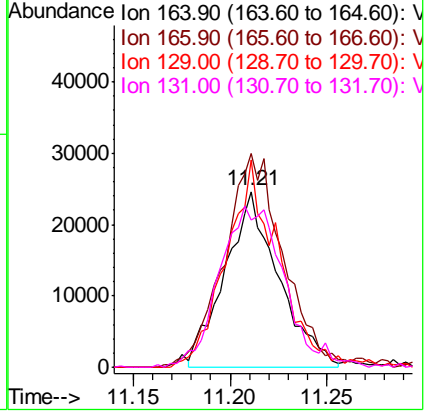
Tgt Ion	Resp	Lower	Upper
43	100		
58	45.1	39.3	58.9
98	1.0	0.2	0.2#





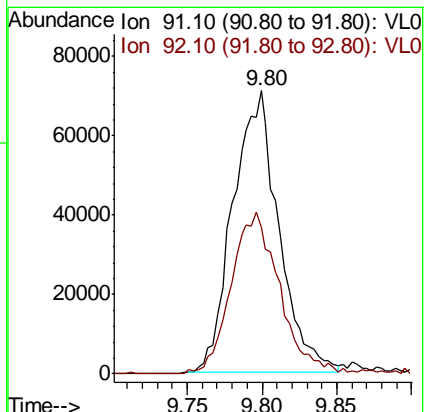
#52  
 Tetrachloroethene  
 Concen: 0.436 ppbv  
 RT: 11.21  
 Delta R.T. MSVOA\_L  
 Lab File: ClientSampleId :  
 Acq: 5 May 2022 4:39

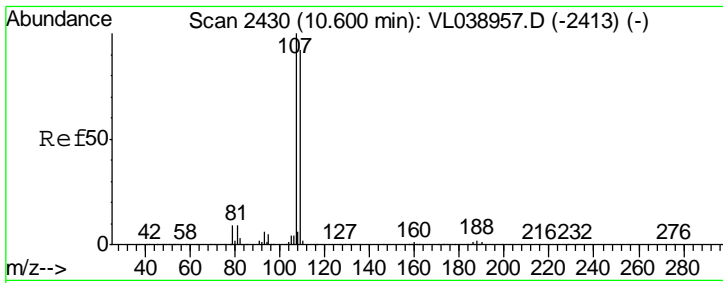
Tgt Ion	Resp	Lower	Upper
164	100		
166	120.2	102.5	153.7
129	114.8	90.1	135.1
131	81.9	84.8	127.2#



#53  
 Toluene  
 Concen: 0.482 ppbv  
 RT: 9.80 min Scan# 2181  
 Delta R.T. -0.00 min  
 Lab File: VL038960.D  
 Acq: 5 May 2022 4:39

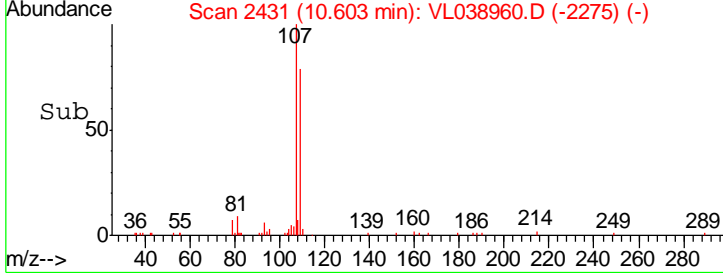
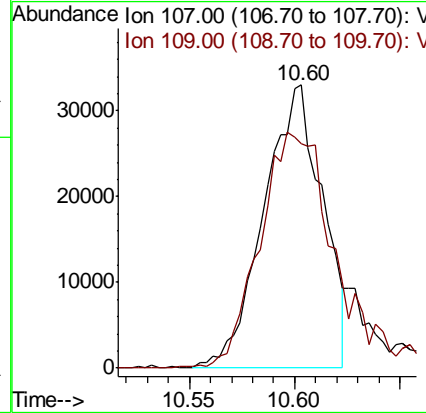
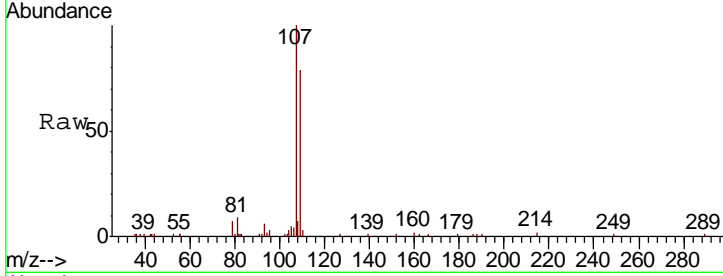
Tgt Ion	Resp	Lower	Upper
91	100		
92	61.2	48.2	72.2





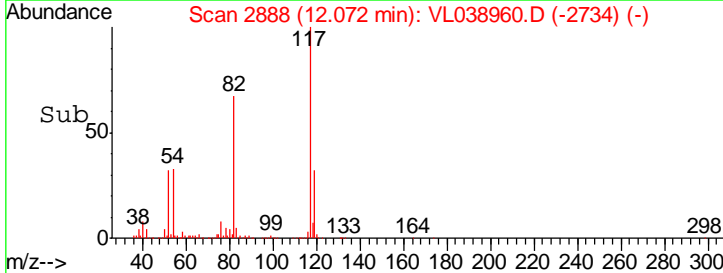
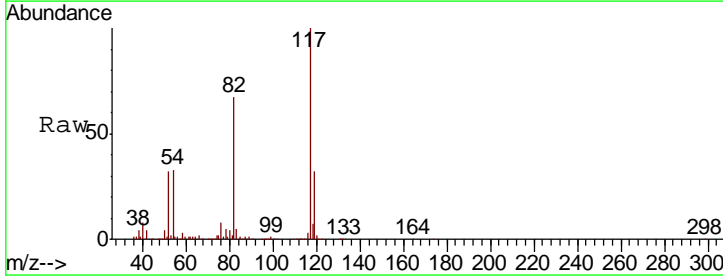
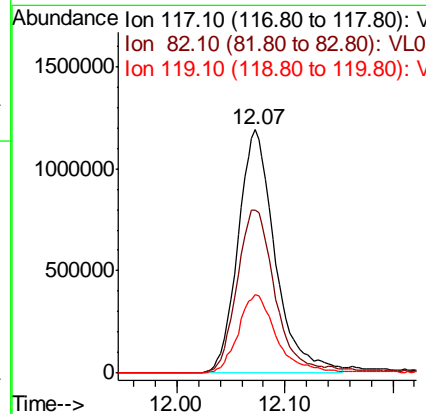
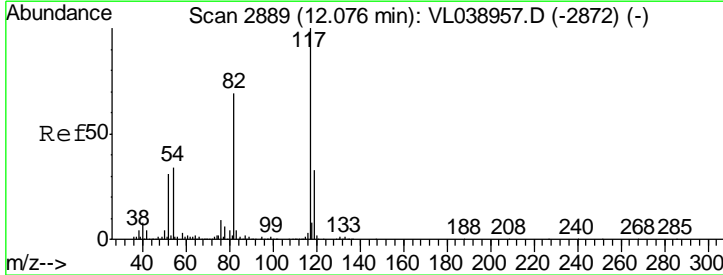
#54  
 1,2-Dibromoethane  
 Concen: 0.373 ppbv  
 RT: 10.60  
 Delta R.T. MSVOA\_L  
 Lab File: ClientSampled :  
 Acq: 5 May 2022 4:39

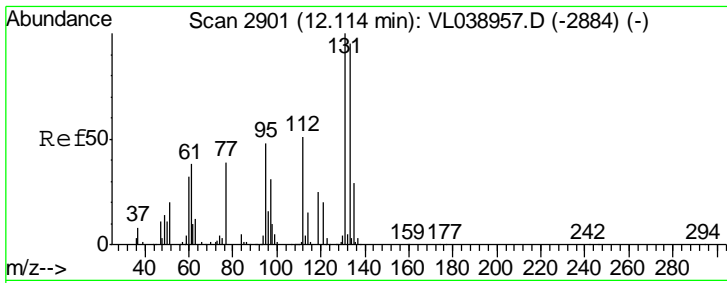
Tgt Ion	Resp	Lower	Upper
107	100		
109	79.0	73.8	110.8



#55  
 Chlorobenzene-d5  
 Concen: 10.000 ppbv  
 RT: 12.07 min Scan# 2888  
 Delta R.T. -0.00 min  
 Lab File: VL038960.D  
 Acq: 5 May 2022 4:39

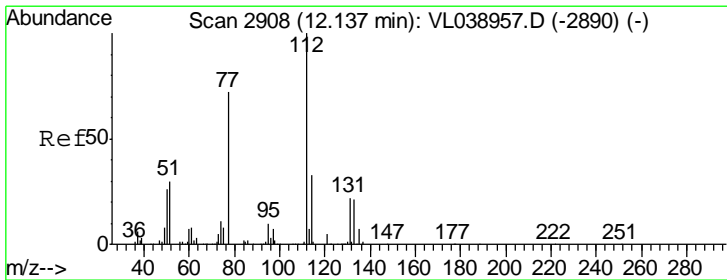
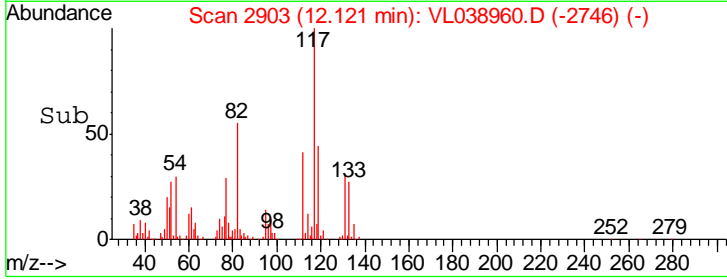
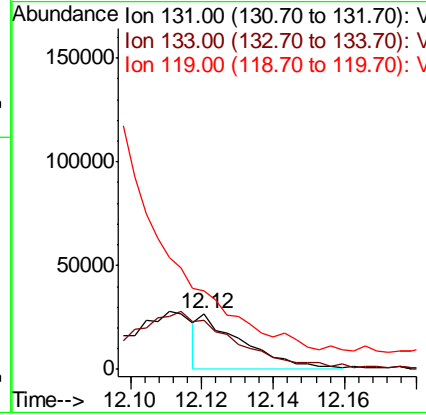
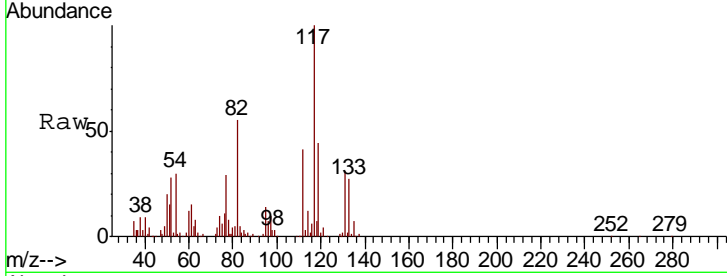
Tgt Ion	Resp	Lower	Upper
117	100		
82	72.7	57.0	85.6
119	34.6	27.2	40.8





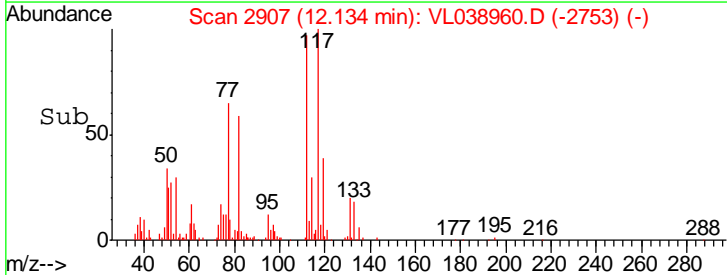
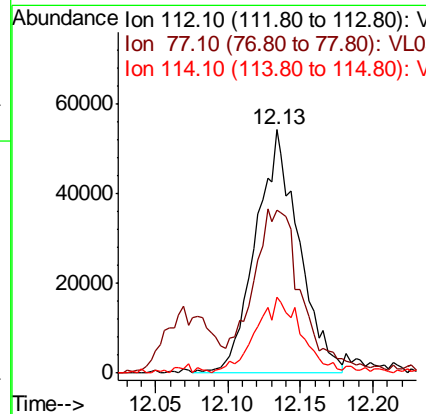
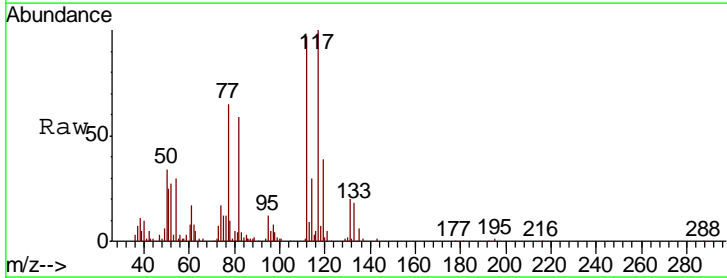
#56  
 1,1,1,2-Tetrachloroethane  
 Concen: 0.176 ppbv  
 RT: 12.12 Instrument :  
 Delta R.T. MSVOA\_L  
 Lab File: ClientSampleId :  
 Acq: 5 May 2022 4:39

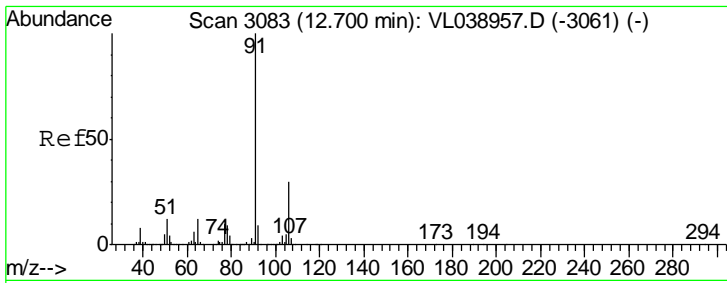
Tgt Ion	Resp	Lower	Upper
131	100		
133	0.0	76.9	115.3#
119	0.0	47.4	71.0#



#57  
 Chlorobenzene  
 Concen: 0.466 ppbv  
 RT: 12.13 min Scan# 2907  
 Delta R.T. -0.00 min  
 Lab File: VL038960.D  
 Acq: 5 May 2022 4:39

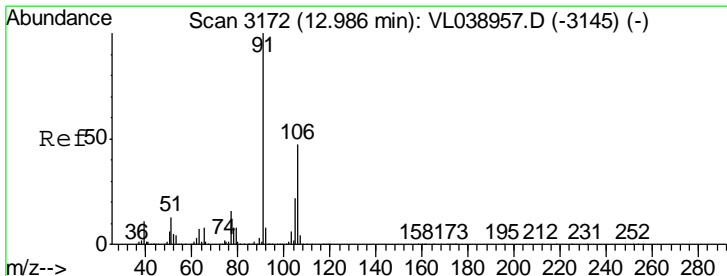
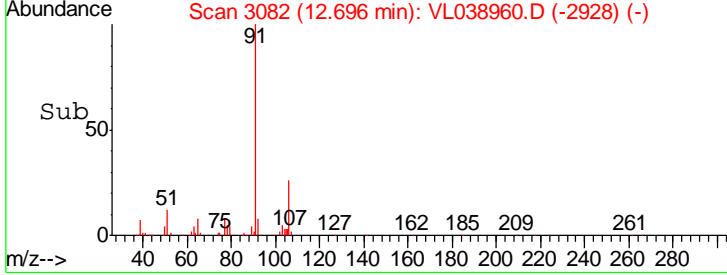
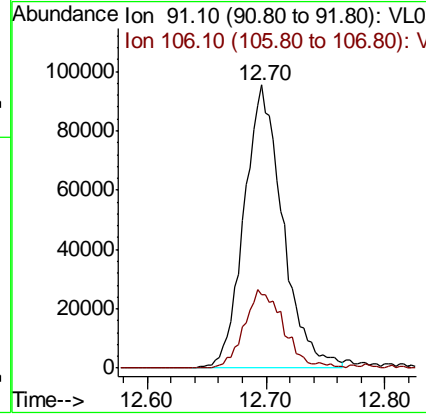
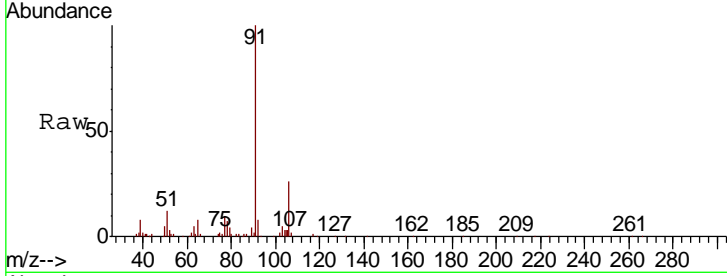
Tgt Ion	Resp	Lower	Upper
112	100		
77	60.9	57.7	86.5
114	31.2	30.1	36.7





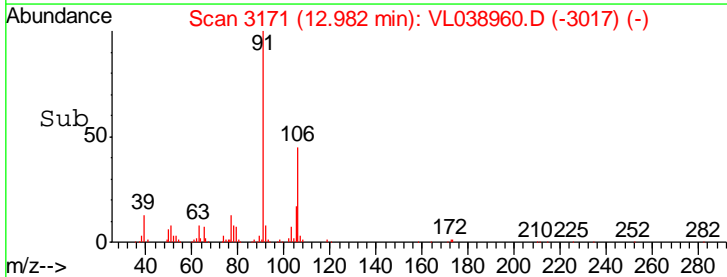
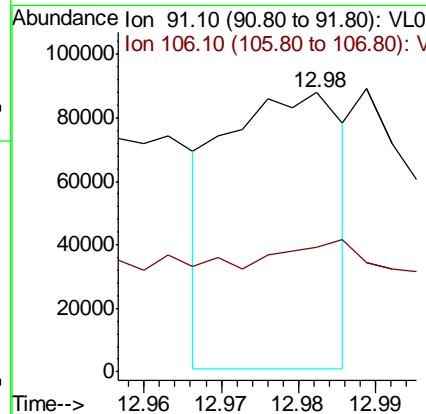
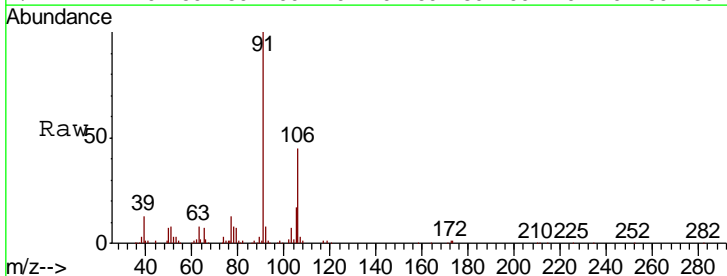
#58  
 Ethyl Benzene  
 Concen: 0.523 ppbv  
 RT: 12.70  
 Instrument : MSVOA\_L  
 Delta R.T. :  
 Lab File: ClientSampleId :  
 Acq: 5 May 2022 4:39

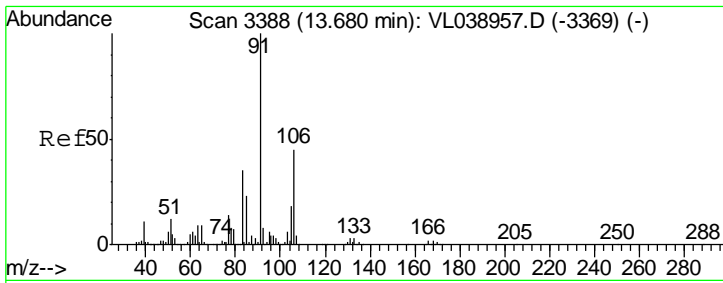
Tgt Ion	Resp	Lower	Upper
91	100		
106	26.0	24.2	36.4



#59  
 m/p-Xylene  
 Concen: 0.258 ppbv  
 RT: 12.98 min Scan# 3171  
 Delta R.T. -0.00 min  
 Lab File: VL038960.D  
 Acq: 5 May 2022 4:39

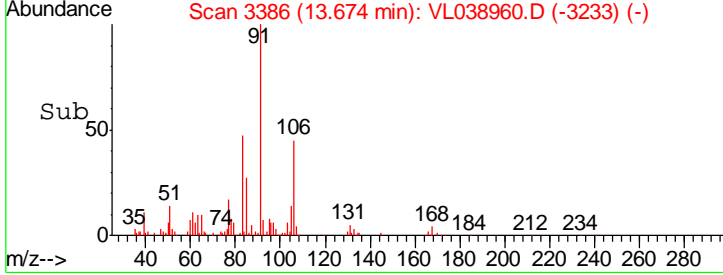
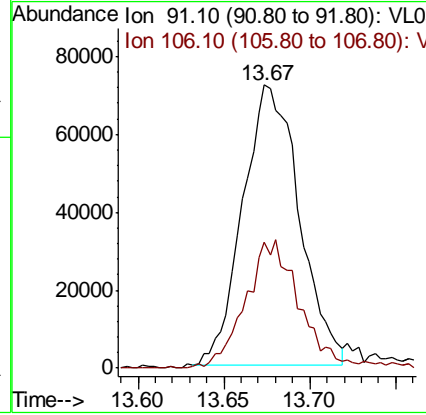
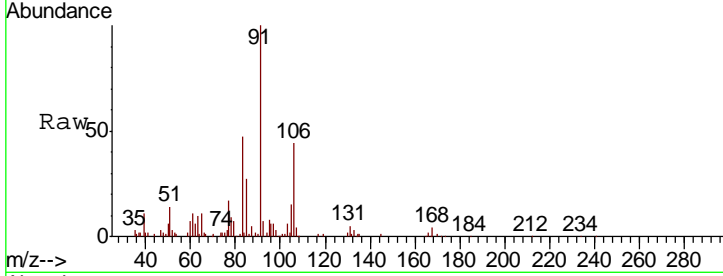
Tgt Ion	Resp	Lower	Upper
91	100		
106	0.0	34.6	52.0#





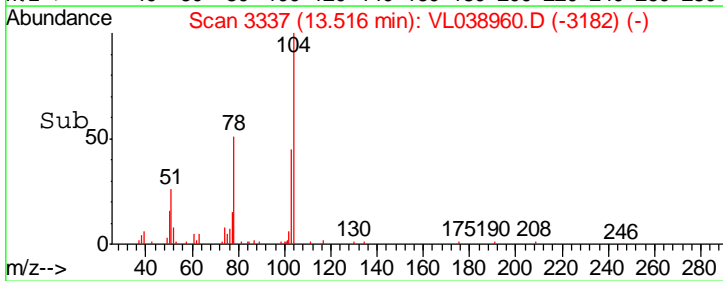
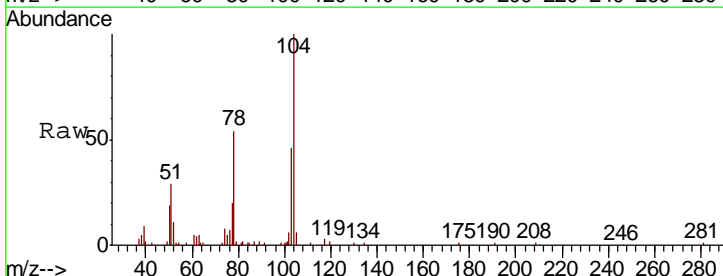
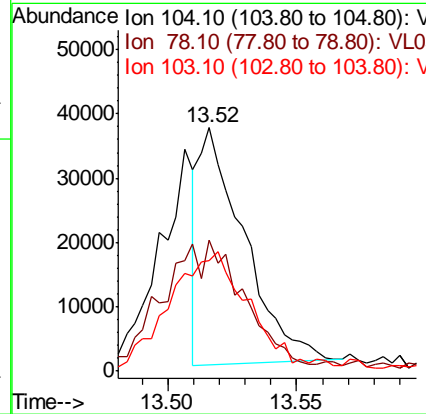
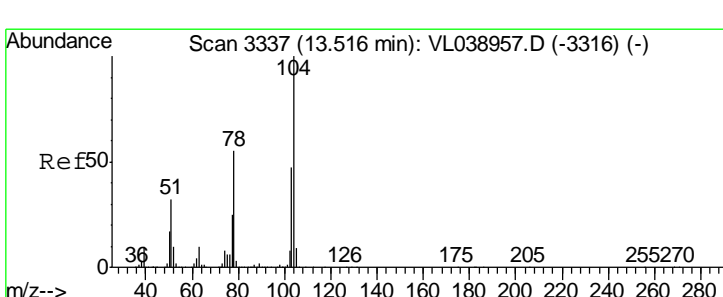
#60  
 o-Xylene  
 Concen: 0.474 ppbv  
 RT: 13.67  
 Delta R.T. MSVOA\_L  
 Lab File: ClientSampleId :  
 Acq: 5 May 2022 4:39

Tgt Ion	Resp	Lower	Upper
91	164057		
106	45.3	22.2	66.6

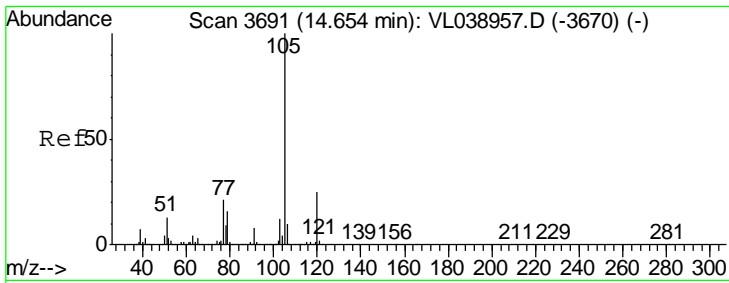


#61  
 Styrene  
 Concen: 0.258 ppbv  
 RT: 13.52 min Scan# 3337  
 Delta R.T. -0.00 min  
 Lab File: VL038960.D  
 Acq: 5 May 2022 4:39

Tgt Ion	Resp	Lower	Upper
104	44468		
78	107.3	46.4	69.6#
103	97.9	39.3	58.9#

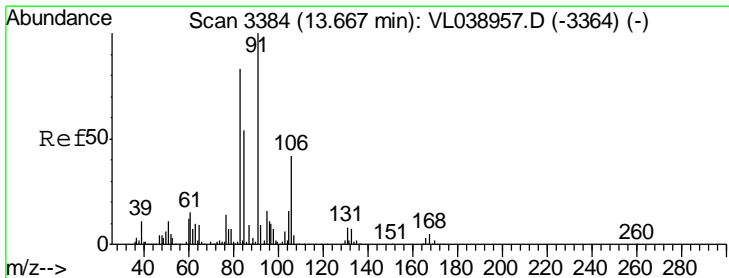
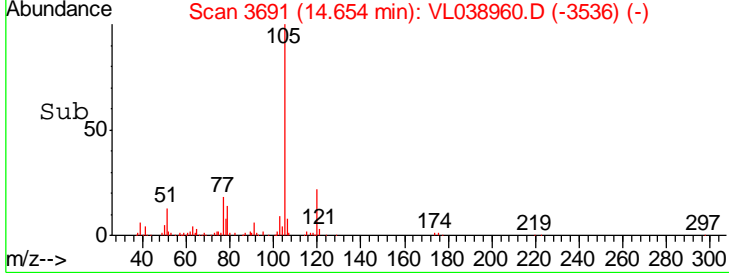
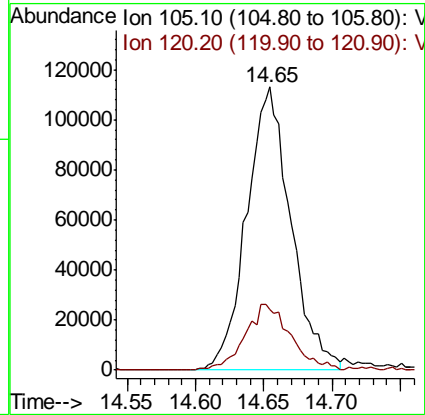
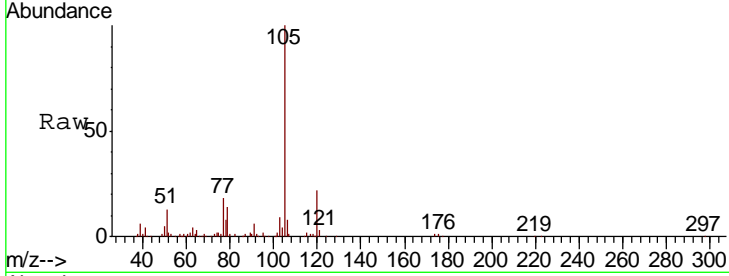






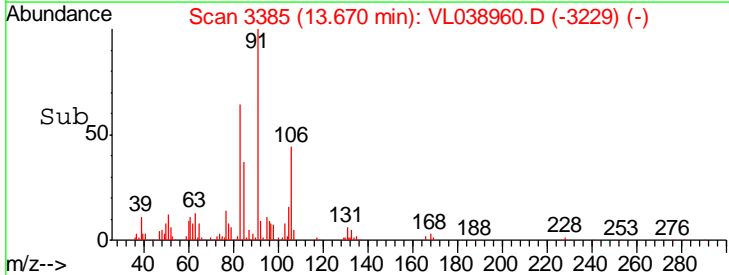
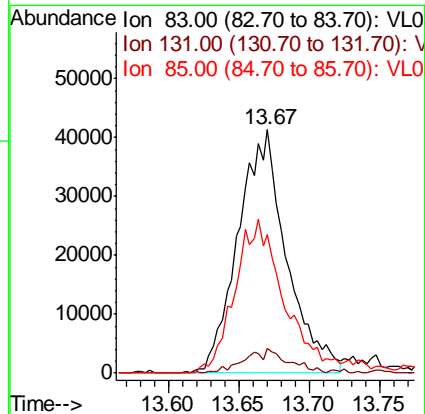
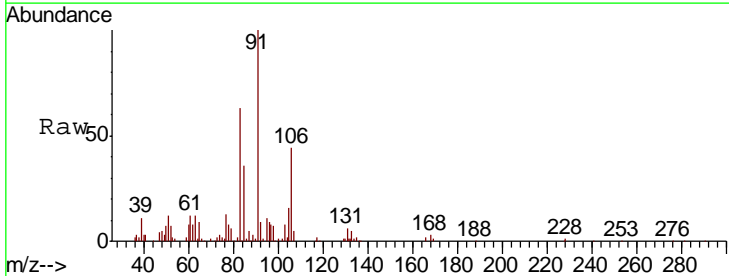
#62  
 Isopropylbenzene  
 Concen: 0.536 ppbv  
 RT: 14.65  
 Delta R.T. MSVOA\_L  
 Lab File: ClientSampled :  
 Acq: 5 May 2022 4:39

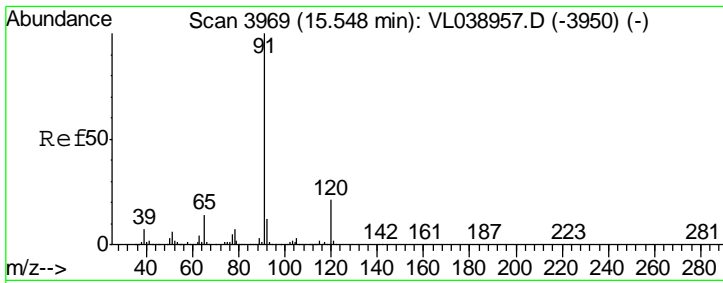
Tgt Ion	Resp	Lower	Upper
105	100		
120	24.9	20.5	30.7



#63  
 1,1,2,2-Tetrachloroethane  
 Concen: 0.382 ppbv  
 RT: 13.67 min Scan# 3385  
 Delta R.T. 0.00 min  
 Lab File: VL038960.D  
 Acq: 5 May 2022 4:39

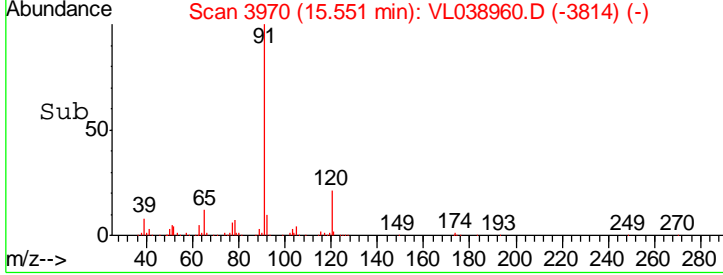
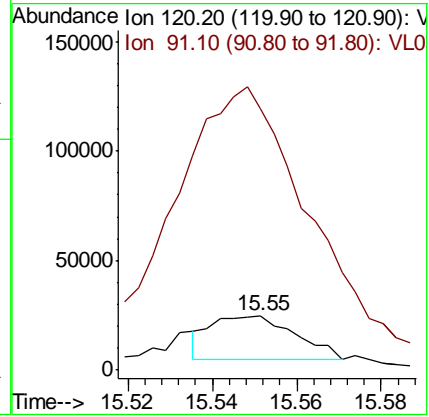
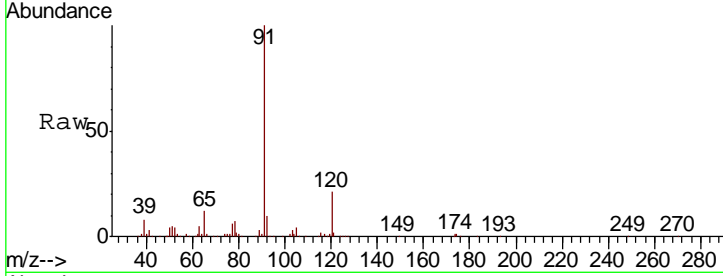
Tgt Ion	Resp	Lower	Upper
83	100		
131	9.6	4.5	13.7
85	68.2	32.8	98.3





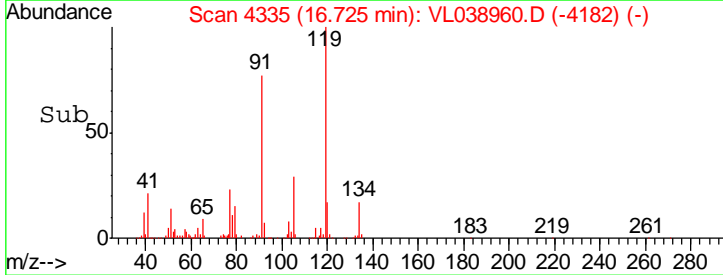
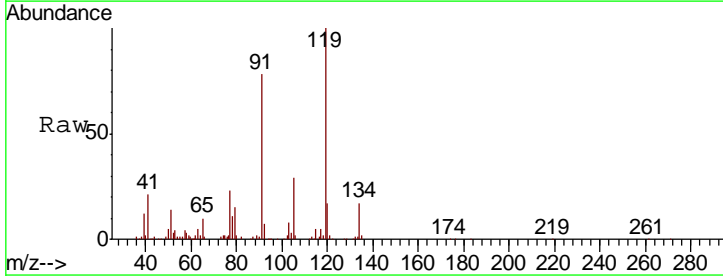
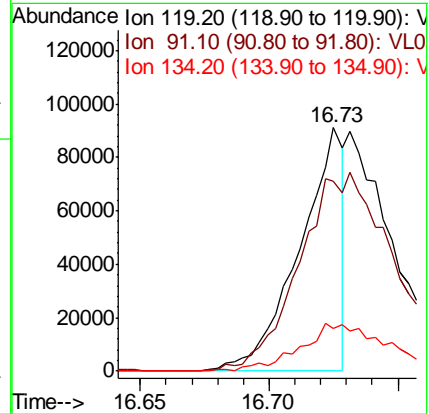
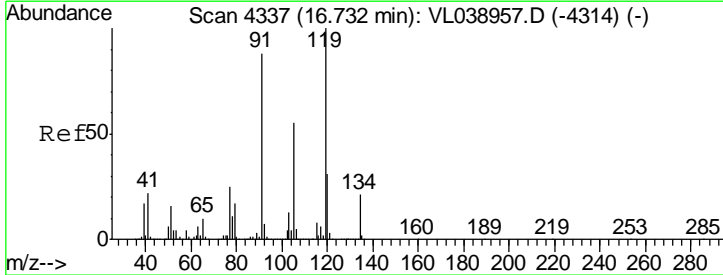
#64  
 n-propylbenzene  
 Concen: 0.238 ppbv  
 RT: 15.55  
 Delta R.T. MSVOA\_L  
 Lab File: ClientSampled :  
 Acq: 5 May 2022 4:39

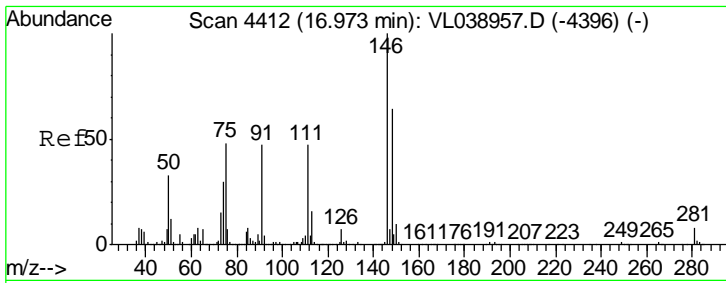
Tgt Ion	Resp	Lower	Upper
120	27443		
91	1164.3	400.6	601.0#



#65  
 tert-Butylbenzene  
 Concen: 0.262 ppbv  
 RT: 16.73 min Scan# 4335  
 Delta R.T. -0.01 min  
 Lab File: VL038960.D  
 Acq: 5 May 2022 4:39

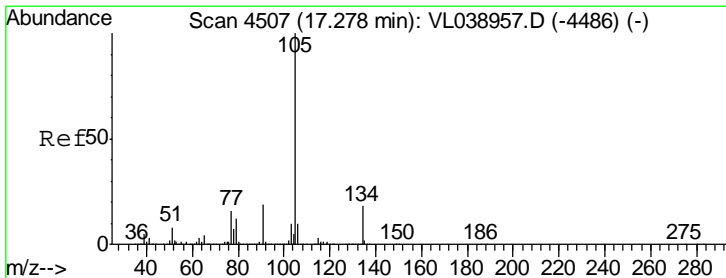
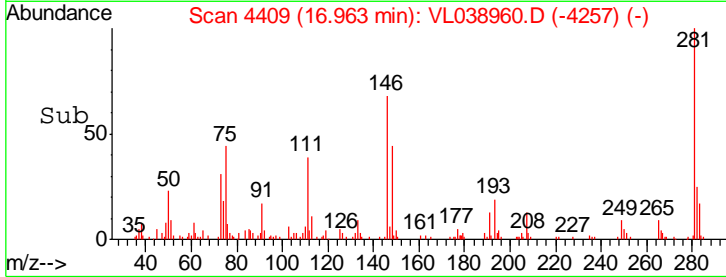
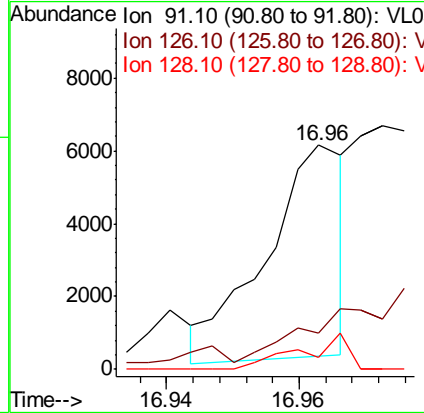
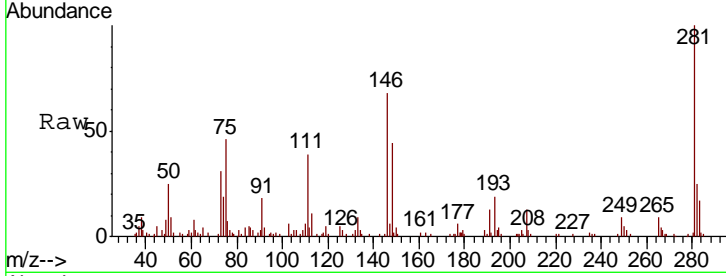
Tgt Ion	Resp	Lower	Upper
119	107386		
91	0.0	69.4	104.2#
134	39.9	15.8	23.8#





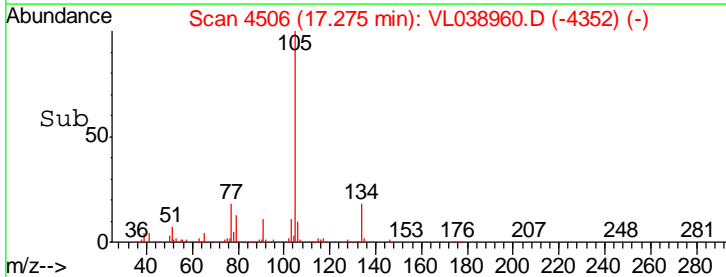
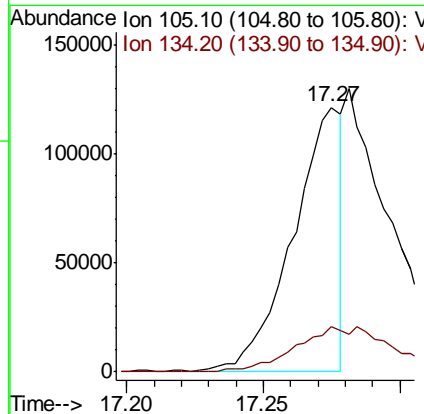
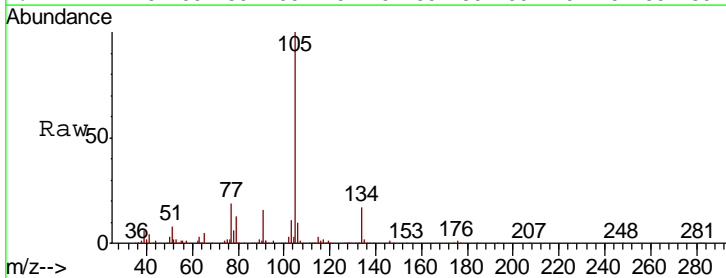
#66  
 Benzyl Chloride  
 Concen: 0.097 ppbv  
 RT: 16.96  
 Delta R.T. MSVOA\_L  
 Lab File: ClientSampled :  
 Acq: 5 May 2022 4:39

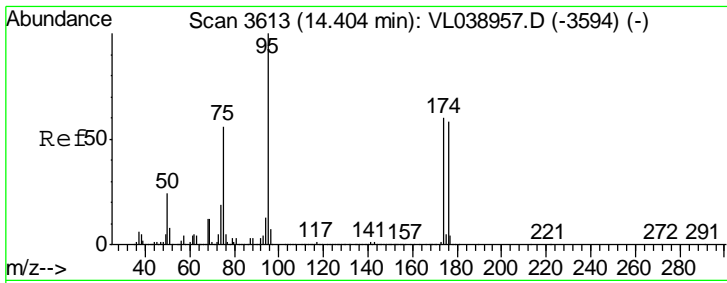
Tgt Ion	Resp	Lower	Upper
91	100		
126	0.0	11.8	17.6#
128	9.9	4.2	6.2#



#67  
 sec-Butylbenzene  
 Concen: 0.257 ppbv  
 RT: 17.27 min Scan# 4506  
 Delta R.T. -0.00 min  
 Lab File: VL038960.D  
 Acq: 5 May 2022 4:39

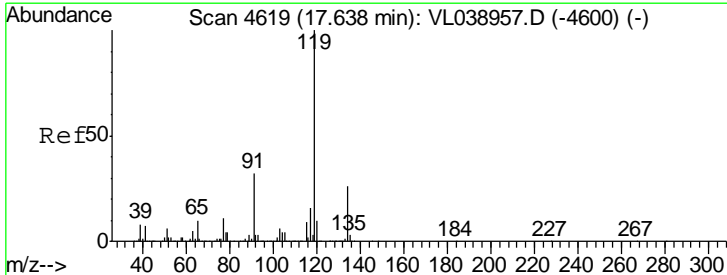
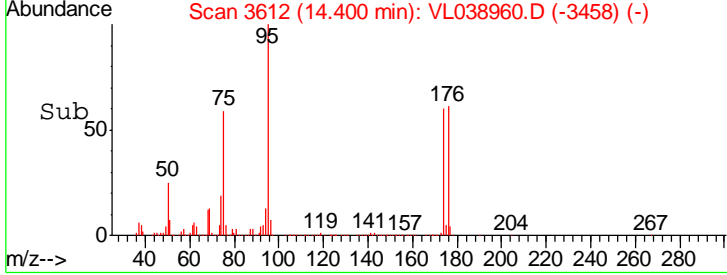
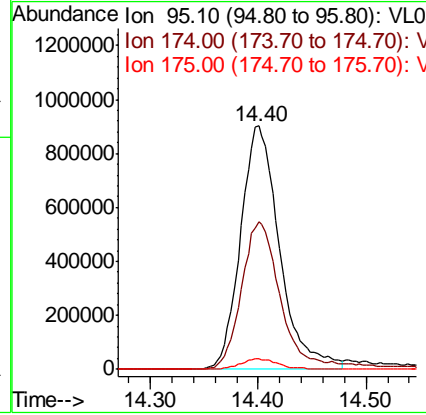
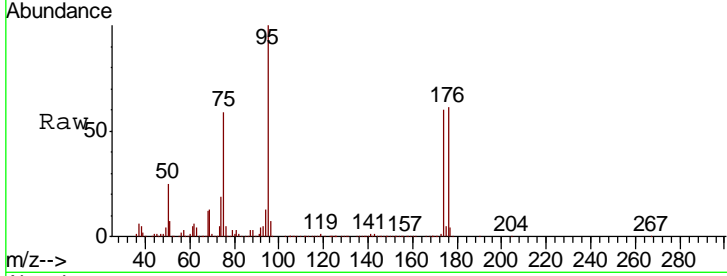
Tgt Ion	Resp	Lower	Upper
105	100		
134	37.1	14.2	21.4#





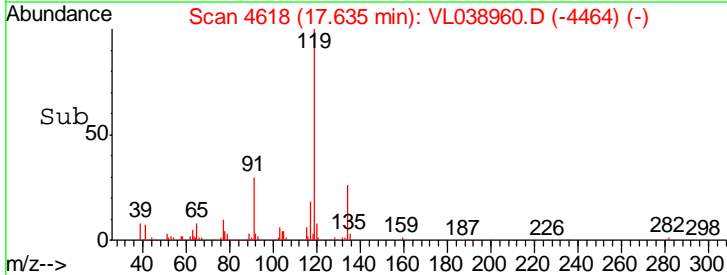
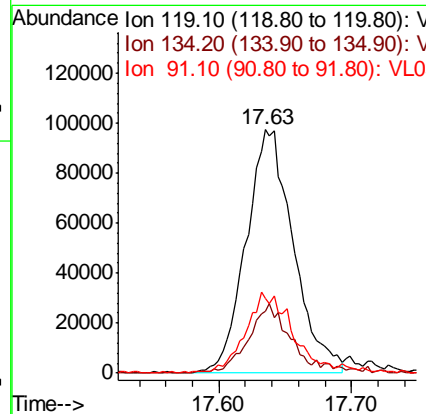
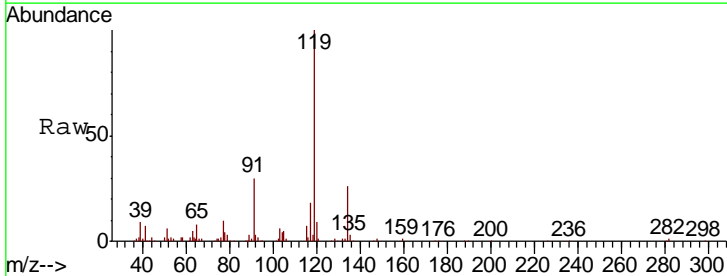
#68  
 1-Bromo-4-Fluorobenzene  
 Concen: 10.095 ppbv  
 RT: 14.40  
 Delta R.T. MSVOA\_L  
 Lab File: ClientSampleId :  
 Acq: 5 May 2022 4:39

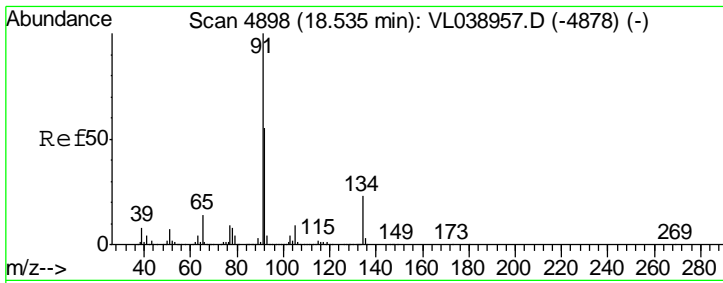
Tgt Ion	Resp	Lower	Upper
95	100		
174	63.2	50.8	76.2
175	4.4	3.8	5.6



#69  
 p-Isopropyltoluene  
 Concen: 0.532 ppbv  
 RT: 17.63 min Scan# 4618  
 Delta R.T. -0.00 min  
 Lab File: VL038960.D  
 Acq: 5 May 2022 4:39

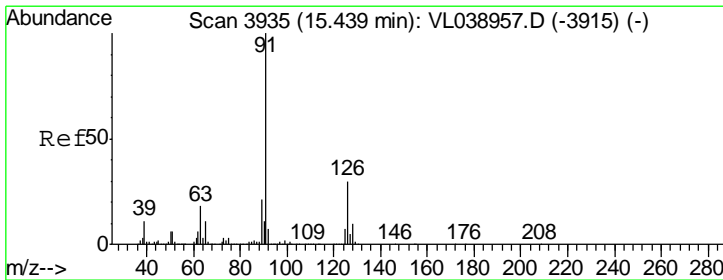
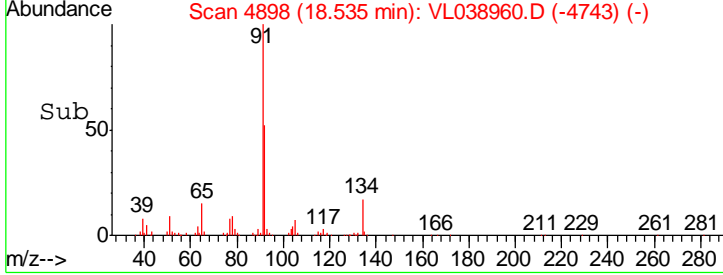
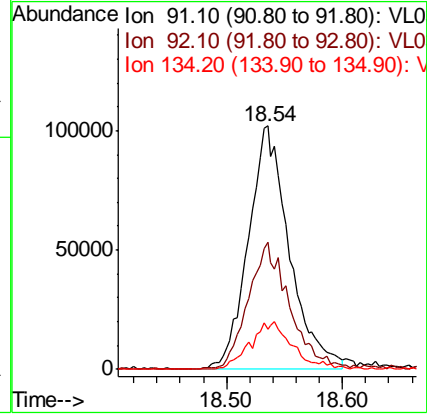
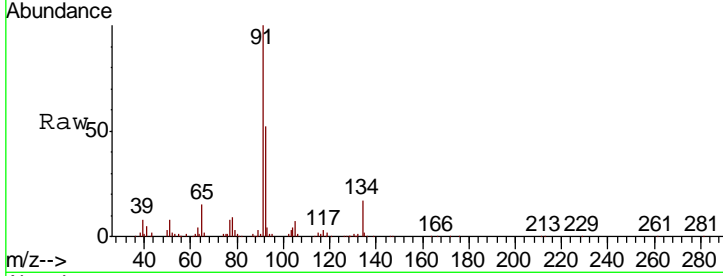
Tgt Ion	Resp	Lower	Upper
119	100		
134	26.6	20.0	30.0
91	34.5	24.8	37.2





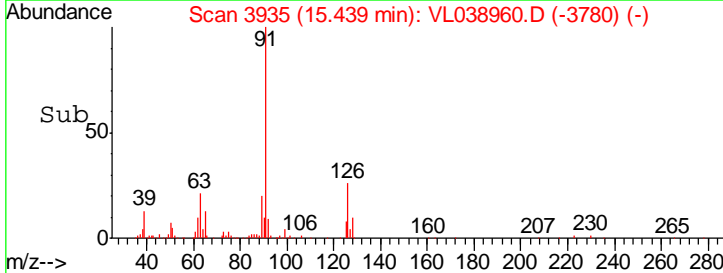
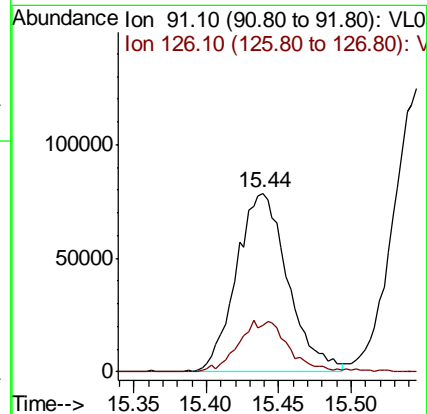
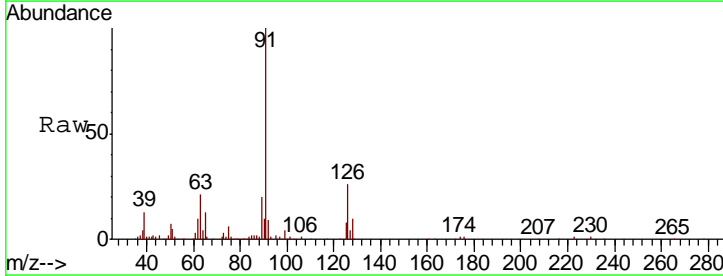
#70  
 n-Butylbenzene  
 Concen: 0.525 ppbv  
 RT: 18.54  
 Delta R.T. MSVOA\_L  
 Lab File: ClientSampled :  
 Acq: 5 May 2022 4:39

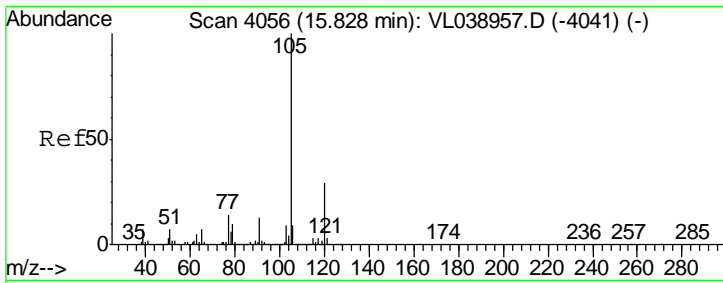
Tgt Ion	Resp	Lower	Upper
91	100		
92	54.0	43.1	64.7
134	20.7	17.0	25.4



#71  
 2-Chlorotoluene  
 Concen: 0.543 ppbv  
 RT: 15.44 min Scan# 3935  
 Delta R.T. -0.00 min  
 Lab File: VL038960.D  
 Acq: 5 May 2022 4:39

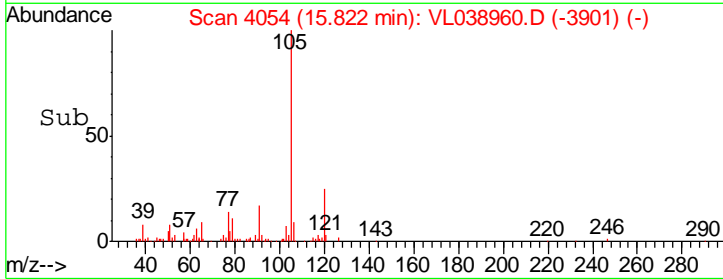
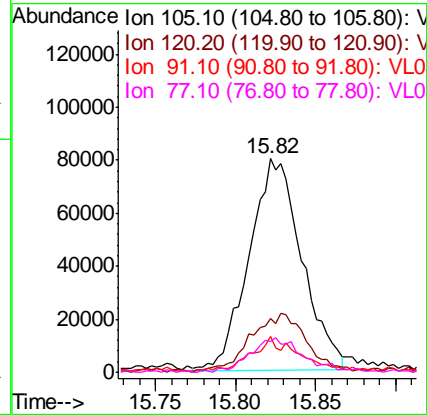
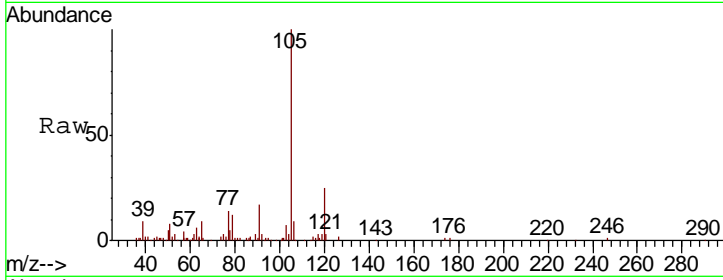
Tgt Ion	Resp	Lower	Upper
91	100		
126	28.7	11.9	47.5





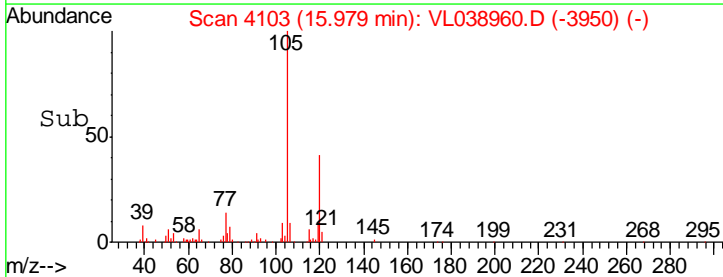
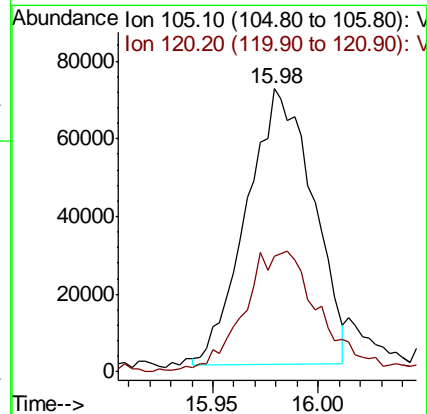
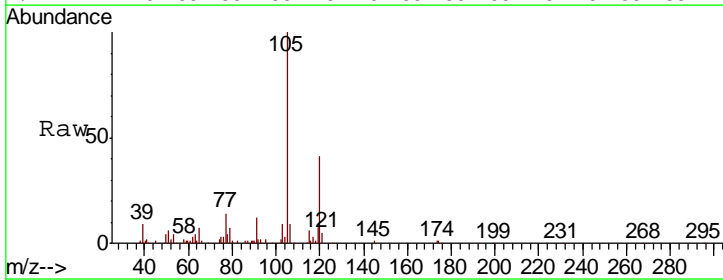
#72  
 4-Ethyltoluene  
 Concen: 0.476 ppbv  
 RT: 15.82  
 Delta R.T. MSVOA\_L  
 Lab File: ClientSampled :  
 Acq: 5 May 2022 4:39

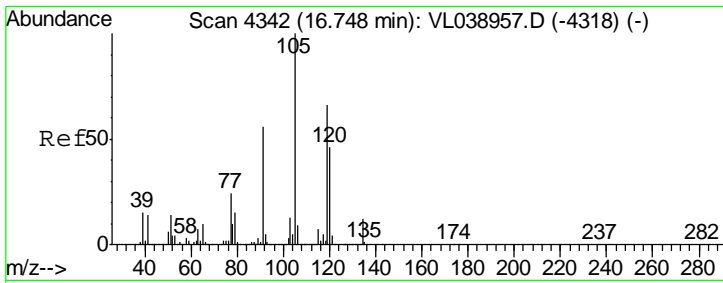
Tgt Ion	Resp	Lower	Upper
105	100		
120	30.2	23.4	35.0
91	15.4	10.6	16.0
77	16.4	12.5	18.7



#73  
 1,3,5-Trimethylbenzene  
 Concen: 0.439 ppbv  
 RT: 15.98 min Scan# 4103  
 Delta R.T. -0.01 min  
 Lab File: VL038960.D  
 Acq: 5 May 2022 4:39

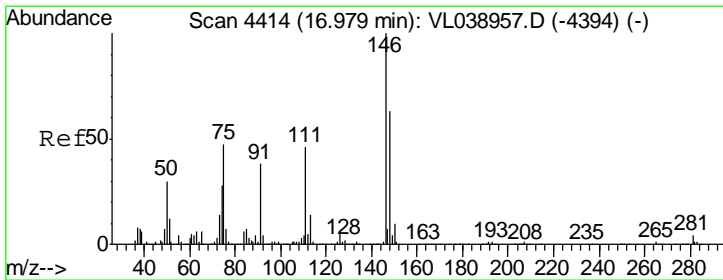
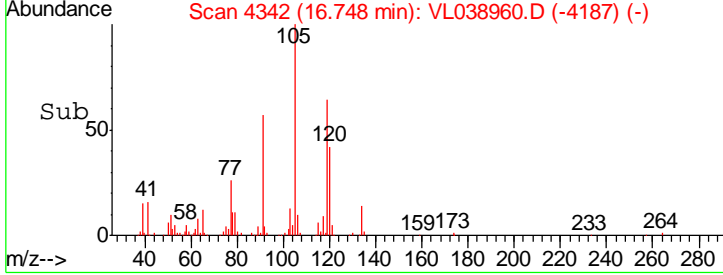
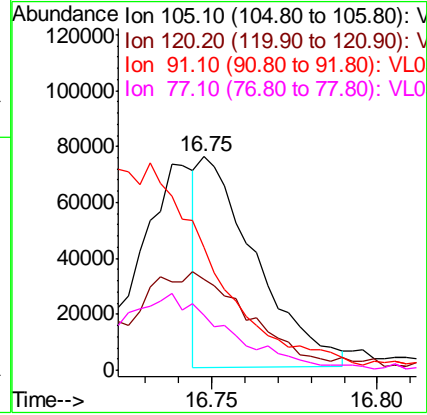
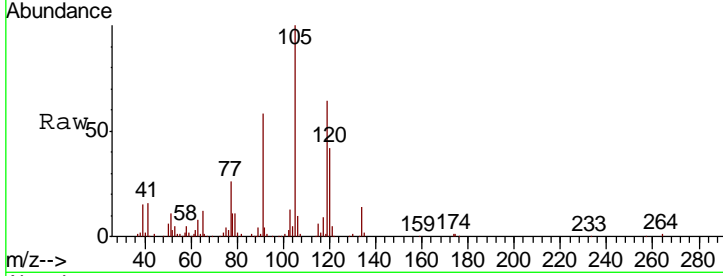
Tgt Ion	Resp	Lower	Upper
105	100		
120	41.1	34.4	51.6





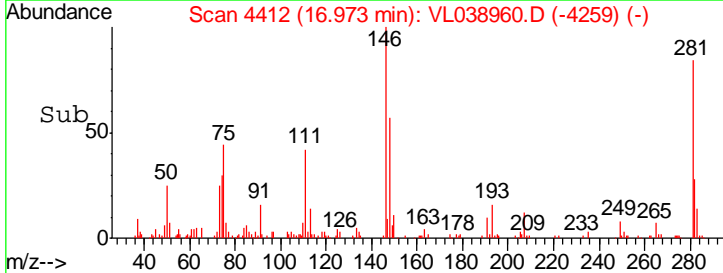
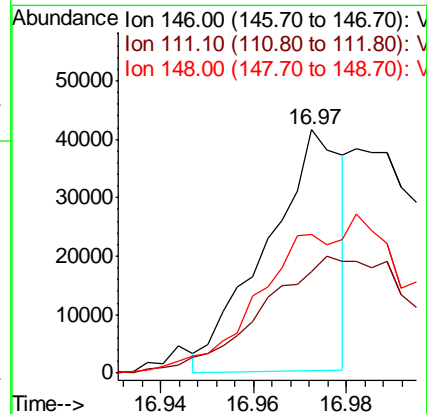
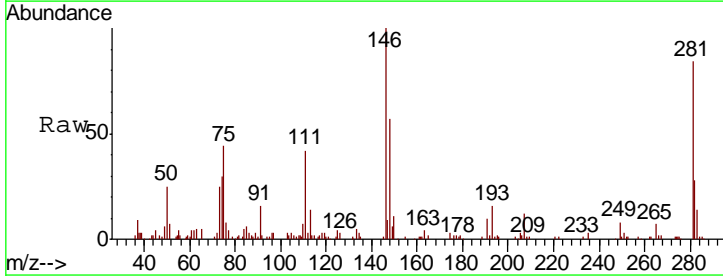
#74  
 1,2,4-Trimethylbenzene  
 Concen: 0.234 ppbv  
 RT: 16.75  
 Delta R.T. MSVOA\_L  
 Lab File: ClientSampleId :  
 Acq: 5 May 2022 4:39

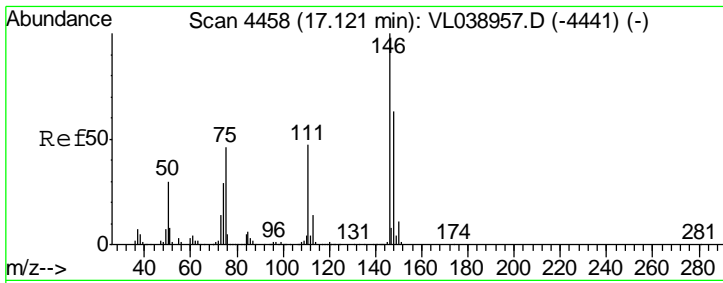
Tgt Ion	Resp	Lower	Upper
105	100		
120	40.2	36.9	55.3
91	56.9	45.0	67.4
77	25.8	19.2	28.8



#75  
 1,3-Dichlorobenzene  
 Concen: 0.217 ppbv  
 RT: 16.97 min Scan# 4412  
 Delta R.T. -0.01 min  
 Lab File: VL038960.D  
 Acq: 5 May 2022 4:39

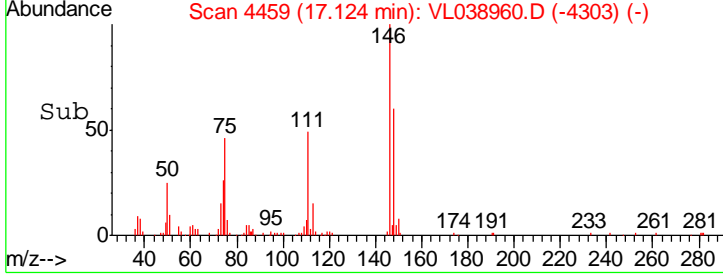
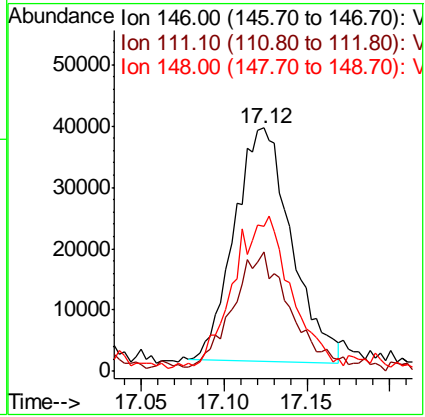
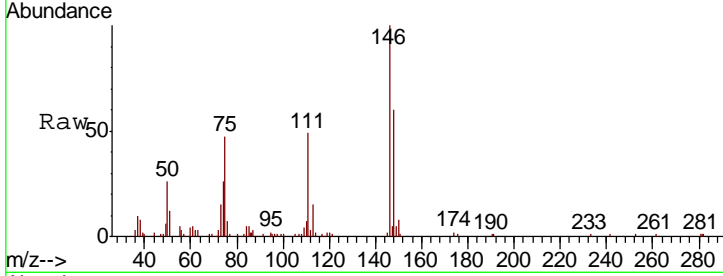
Tgt Ion	Resp	Lower	Upper
146	100		
111	114.4	24.1	72.2#
148	0.0	32.4	97.2#





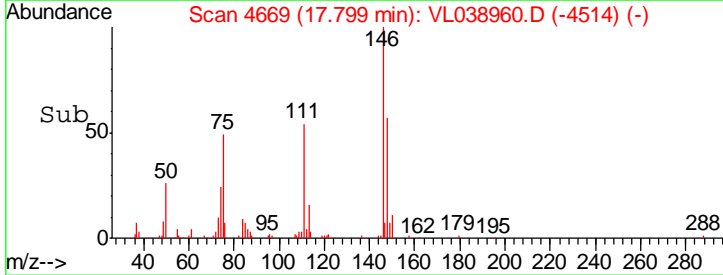
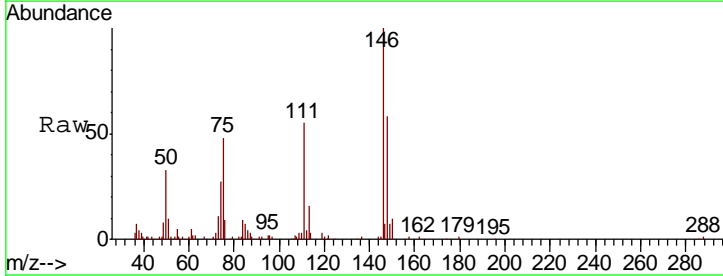
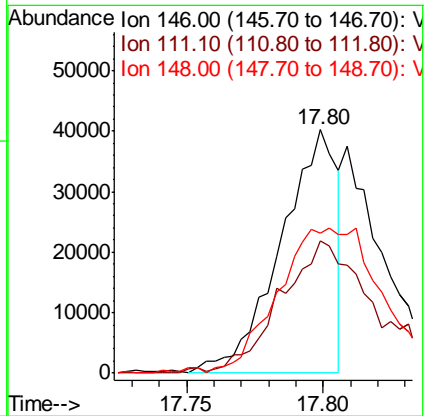
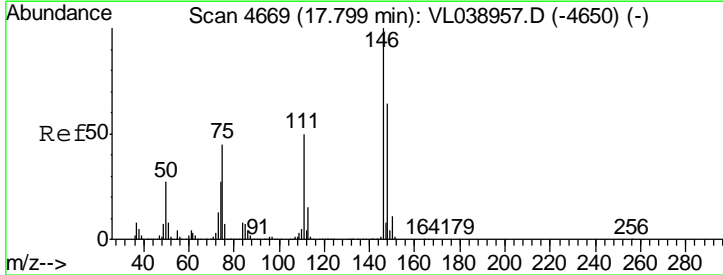
#76  
 1,4-Dichlorobenzene  
 Concen: 0.427 ppbv  
 RT: 17.12  
 Delta R.T. MSVOA\_L  
 Lab File: ClientSampled :  
 Acq: 5 May 2022 4:39

Tgt Ion	Resp	Lower	Upper
146	100		
111	58.0	23.6	71.0
148	73.1	32.2	96.6

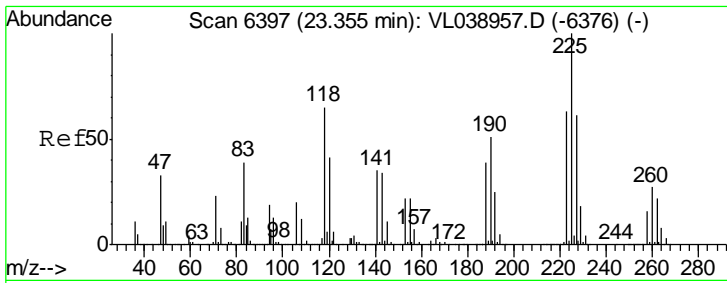


#77  
 1,2-Dichlorobenzene  
 Concen: 0.284 ppbv  
 RT: 17.80 min Scan# 4669  
 Delta R.T. -0.00 min  
 Lab File: VL038960.D  
 Acq: 5 May 2022 4:39

Tgt Ion	Resp	Lower	Upper
146	100		
111	97.0	25.3	75.9#
148	121.3	32.3	96.9#

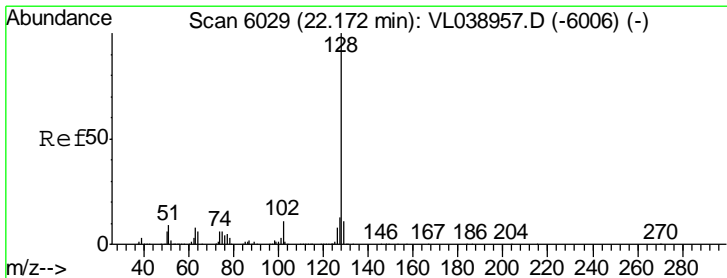
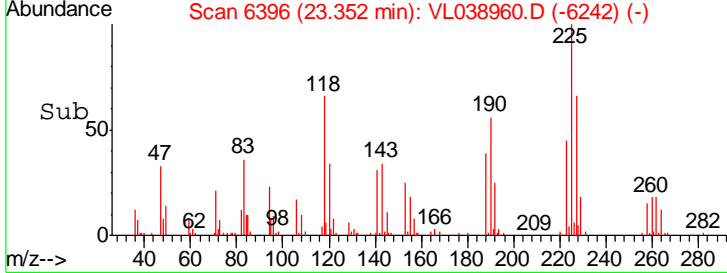
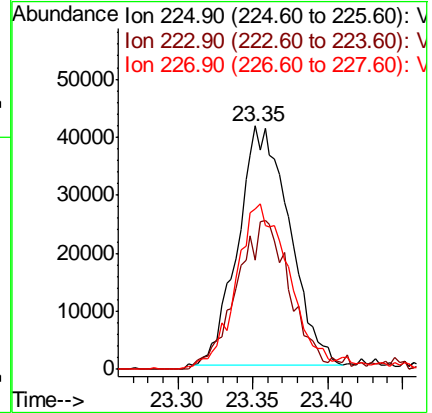
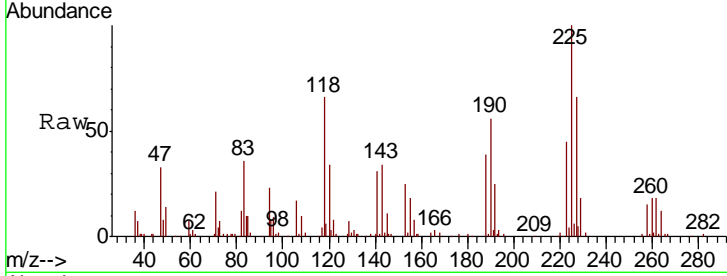






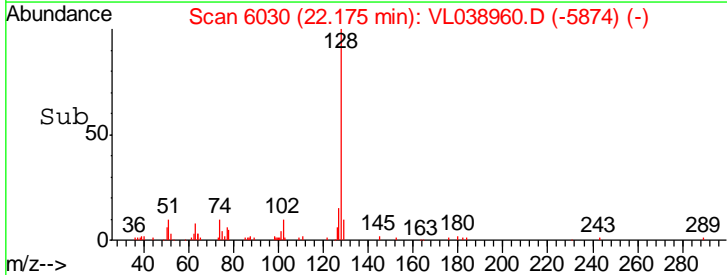
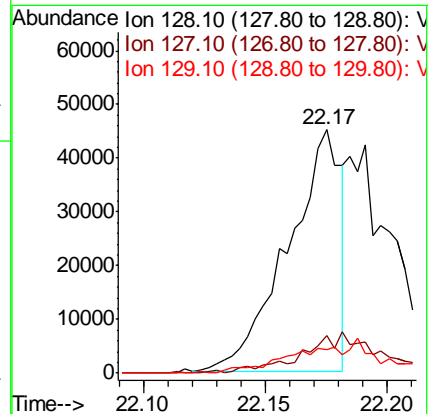
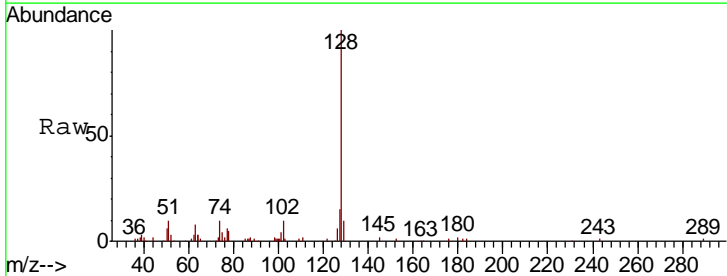
#78  
 Hexachloro-1,3-Butadiene  
 Concen: 0.544 ppbv  
 RT: 23.35  
 Delta R.T. MSVOA\_L  
 Lab File: ClientSampled :  
 Acq: 5 May 2022 4:39

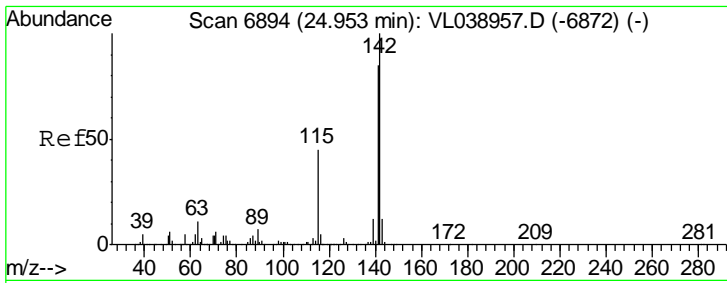
Tgt Ion	Resp	Lower	Upper
225	99350		
223	100	51.4	77.0
227	74.2	51.4	77.0



#79  
 Naphthalene  
 Concen: 0.285 ppbv  
 RT: 22.17 min Scan# 6030  
 Delta R.T. 0.00 min  
 Lab File: VL038960.D  
 Acq: 5 May 2022 4:39

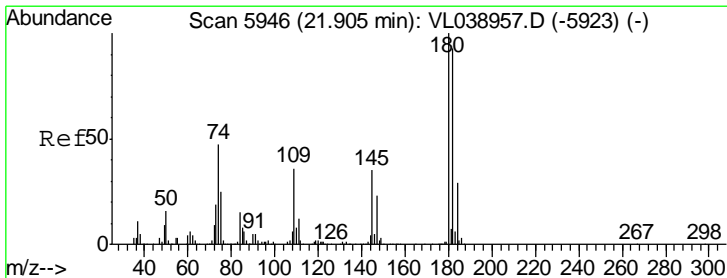
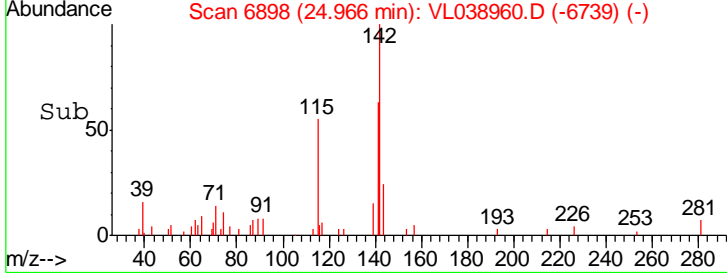
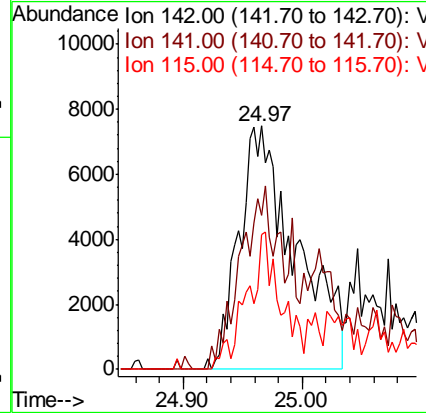
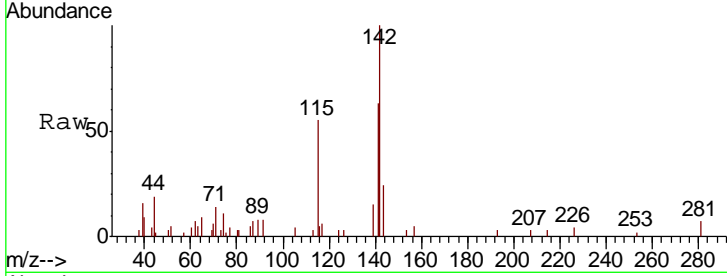
Tgt Ion	Resp	Lower	Upper
128	67316		
127	15.3	10.2	15.2#
129	9.7	8.9	13.3





#80  
 Naphthalene, 2-methyl-  
 Concen: 0.482 ppbv  
 RT: 24.97  
 Instrument: MSVOA\_L  
 Delta R.T.:  
 Lab File: ClientSampleId:  
 Acq: 5 May 2022 4:39

Tgt Ion	Resp	Lower	Upper
142	100		
141	56.1	70.8	106.2#
115	47.8	35.1	52.7



#81  
 1,2,4-Trichlorobenzene  
 Concen: 0.224 ppbv  
 RT: 21.90 min Scan# 5945  
 Delta R.T. -0.00 min  
 Lab File: VL038960.D  
 Acq: 5 May 2022 4:39

Tgt Ion	Resp	Lower	Upper
180	100		
182	0.0	78.4	117.6#
184	0.0	24.4	36.6#

