

Data Path : Z:\VOASRV\HPCHEM1\MSVOA L\DATA\VL050522\  
 Data File : VL038967.D  
 Acq On : 5 May 2022 11:18  
 Operator : SY/AP  
 Sample : N2682-01  
 Misc : 400mL/MSVOA L  
 ALS Vial : 1 Sample Multiplier: 1

Instrument :  
 MSVOA\_L  
 ClientSampleId :

Quant Time: May 06 07:27:07 2022  
 Quant Method : Z:\VOASRV\HPCHEM1\MSVOA L\METHODS\VL050522AIR.M  
 Quant Title : AIR ANALYSIS BY METHOD TO-15 Instrument: MSVOA\_LThu May 05 07:41:27 2022  
 QLast Update : Thu May 05 07:41:27 2022  
 Response via : Initial Calibration

Internal Standards	R.T.	QIon	Response	Conc	Units	Dev(Min)
1) Bromochloromethane	5.66	49	1080793	10.00	ppbv	0.00
33) 1,4-Difluorobenzene	7.16	114	2573066	10.00	ppbv	0.00
55) Chlorobenzene-d5	12.07	117	2178233	10.00	ppbv	0.00

System Monitoring Compounds

68) 1-Bromo-4-Fluorobenzene	14.39	95	1769921	10.26	ppbv	0.00
Spiked Amount	10.000	Range	65 - 135	Recovery	=	102.60%

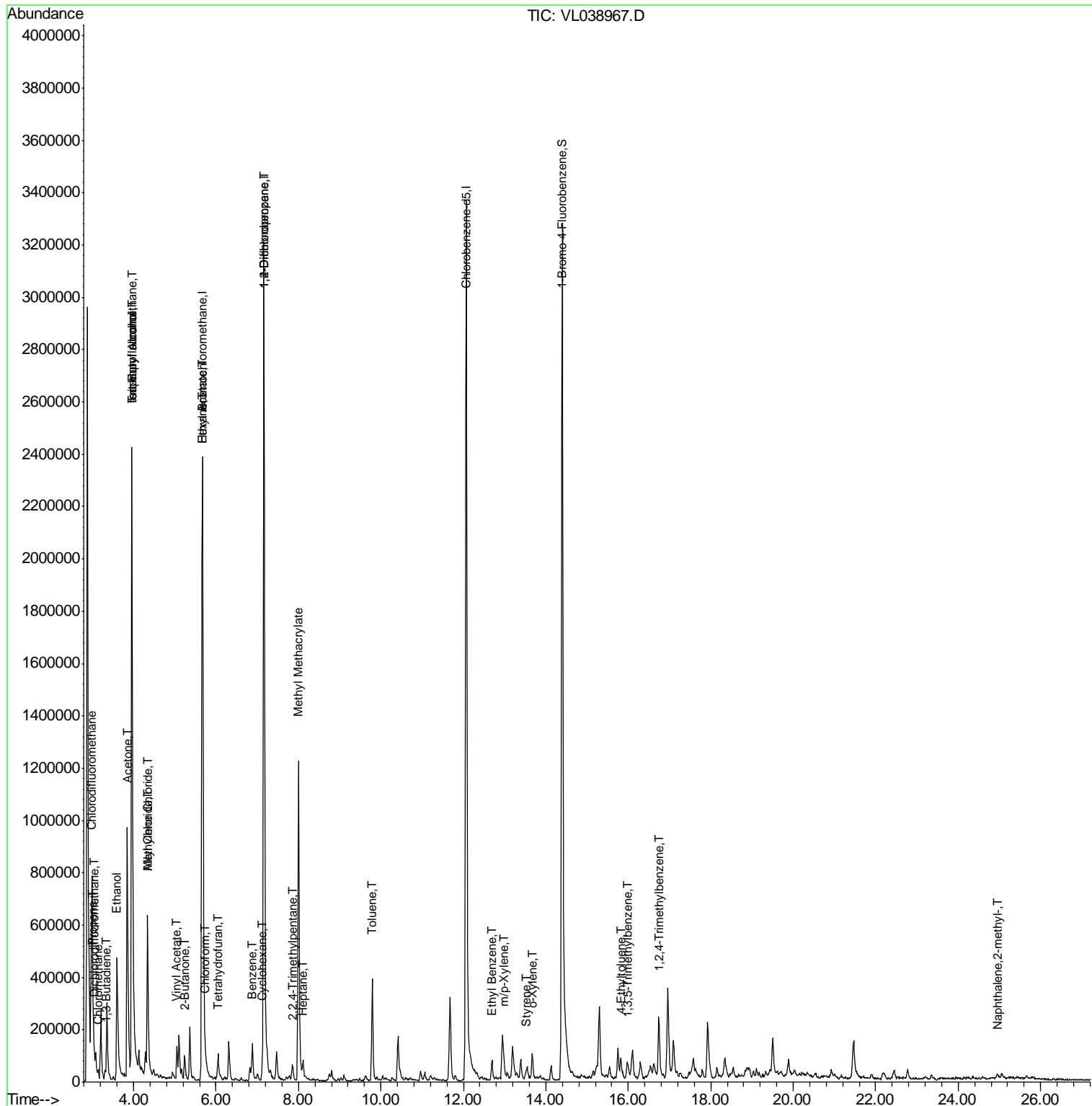
Target Compounds	R.T.	QIon	Response	Conc	Units	Ovalue
2) Dichlorodifluoromethane	3.05	85	41601	0.246	ppbv	99
3) Chlorodifluoromethane	2.99	51	1163376	8.675	ppbv #	88
4) Chloromethane	3.14	50	20785	0.309	ppbv	99
9) Propene	3.02	41	52175	0.891	ppbv #	83
10) Heptane	8.10	43	24559	0.171	ppbv	93
11) Trichlorofluoromethane	3.95	101	32490	0.224	ppbv	93
13) Ethanol	3.60	45	622096	136.020	ppbv	96
15) Acetone	3.84	43	1231543	12.080	ppbv	99
16) 1,3-Butadiene	3.33	39	4473	0.076	ppbv #	1
17) tert-Butyl alcohol	3.96	59	108993	1.391	ppbv	99
19) Isopropyl Alcohol	3.95	45	3206644	66.152	ppbv	99
20) Methylene Chloride	4.34	84	237364	6.177	ppbv	97
21) Allyl Chloride	4.34	41	3856	0.056	ppbv #	20
23) Vinyl Acetate	5.05	43	36882	0.457	ppbv #	1
25) Ethyl Acetate	5.68	43	453665	1.859	ppbv #	81
26) Hexane	5.68	57	565902	5.219	ppbv #	43
29) Chloroform	5.74	83	5790	0.033	ppbv	93
30) Cyclohexane	7.12	84	4051	0.045	ppbv #	1
34) 2-Butanone	5.24	43	60654	0.462	ppbv #	34
36) Benzene	6.88	78	115577	0.525	ppbv #	92
39) 1,2-Dichloropropane	7.17	63	716888	8.367	ppbv #	26
41) Tetrahydrofuran	6.05	42	48974	0.555	ppbv	88
43) Methyl Methacrylate	8.00	69	499011	5.582	ppbv	95
44) 2,2,4-Trimethylpentane	7.85	57	21286	0.055	ppbv #	6
53) Toluene	9.79	91	294262	1.192	ppbv	98
58) Ethyl Benzene	12.69	91	29698	0.095	ppbv	91
59) m/p-Xylene	12.99	91	36361	0.136	ppbv #	33
60) o-Xylene	13.67	91	34323	0.136	ppbv #	32
61) Styrene	13.50	104	7960	0.059	ppbv #	25
72) 4-Ethyltoluene	15.82	105	20170	0.070	ppbv #	22
73) 1,3,5-Trimethylbenzene	15.97	105	10391	0.040	ppbv #	33
74) 1,2,4-Trimethylbenzene	16.74	105	109370	0.387	ppbv #	67
80) Naphthalene,2-methyl-	24.95	142	4457	0.064	ppbv #	33

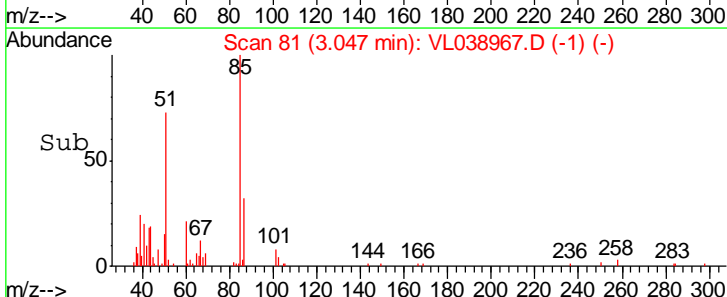
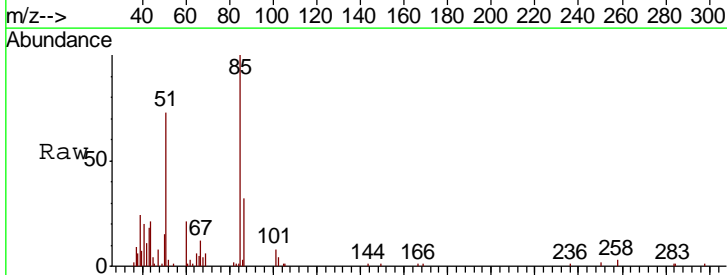
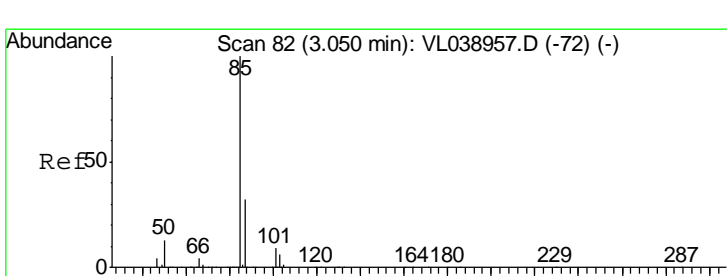
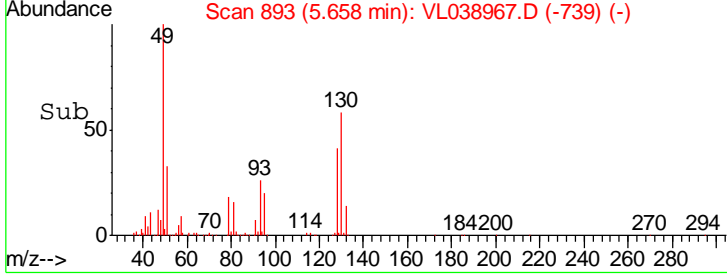
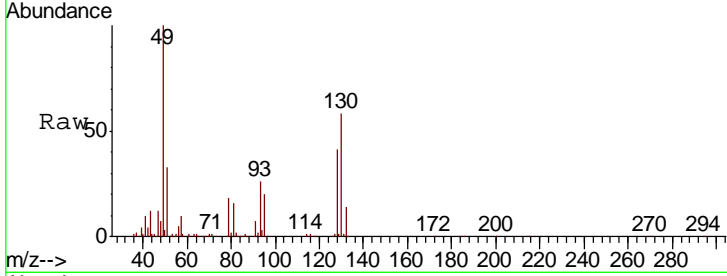
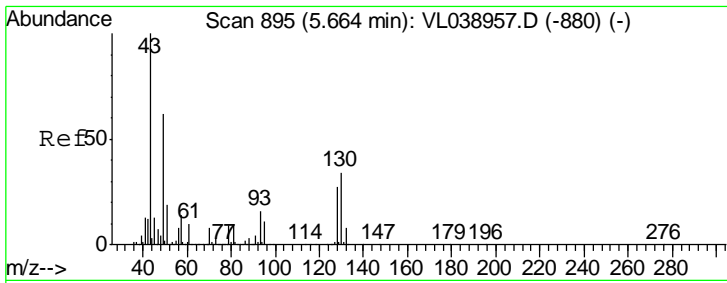
(#) = qualifier out of range (m) = manual integration (+) = signals summed

Data Path : Z:\VOASRV\HPCHEM1\MSVOA L\DATA\VL050522\  
 Data File : VL038967.D  
 Acq On : 5 May 2022 11:18  
 Operator : SY/AP  
 Sample : N2682-01  
 Misc : 400mL/MSVOA L  
 ALS Vial : 1 Sample Multiplier: 1

Instrument :  
 MSVOA\_L  
 ClientSampleId :

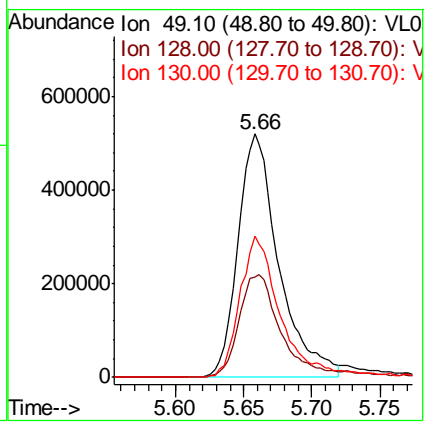
Quant Time: May 06 07:27:07 2022  
 Quant Method : Z:\VOASRV\HPCHEM1\MSVOA L\METHODS\VL050522AIR.M  
 Quant Title : AIR ANALYSIS BY METHOD TO-15 Instrument: MSVOA\_L Thu May 05 07:41:27 2022  
 QLast Update : Thu May 05 07:41:27 2022  
 Response via : Initial Calibration





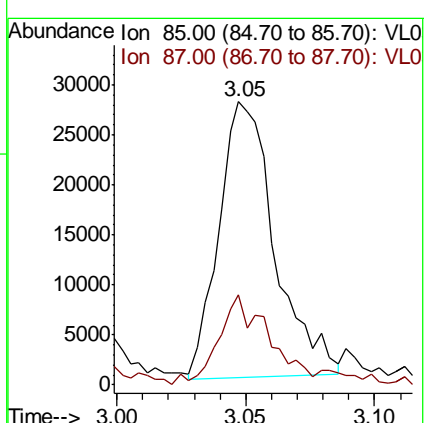
#1  
 Bromochloromethane  
 Concen: 10.000 ppbv  
 RT: 5.66 Instrument :  
 Delta R.T. MSVOA\_L  
 Lab File: ClientSampleId :  
 Acq: 5 May 2022 11:18

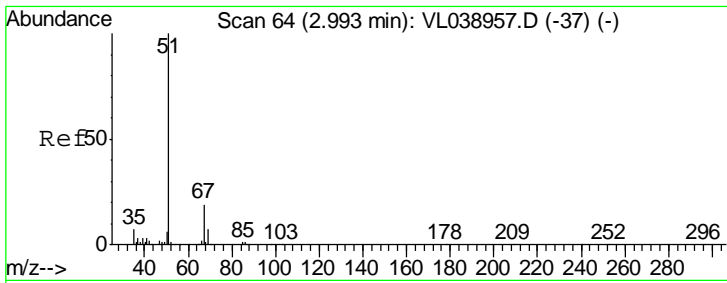
Tgt Ion	Resp	Lower	Upper
49	100		
128	46.0	23.3	69.8
130	59.8	29.8	89.3



#2  
 Dichlorodifluoromethane  
 Concen: 0.246 ppbv  
 RT: 3.05 min Scan# 81  
 Delta R.T. -0.00 min  
 Lab File: VL038967.D  
 Acq: 5 May 2022 11:18

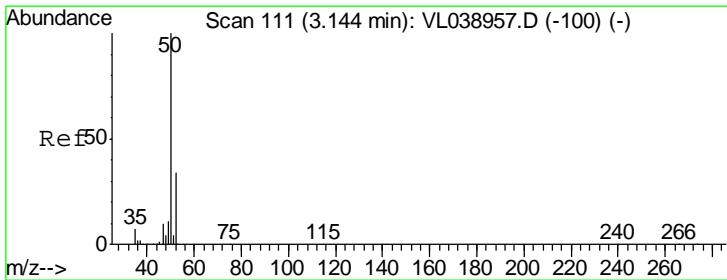
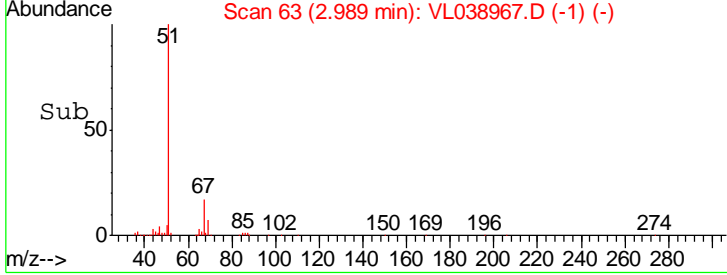
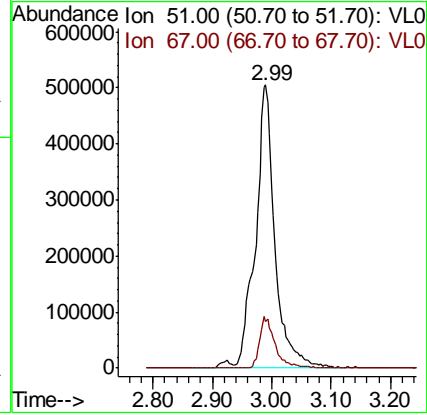
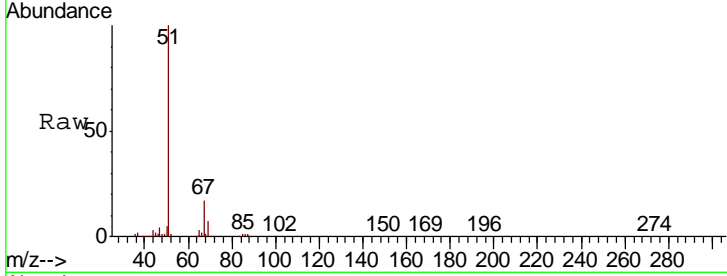
Tgt Ion	Resp	Lower	Upper
85	100		
87	31.3	25.7	38.5





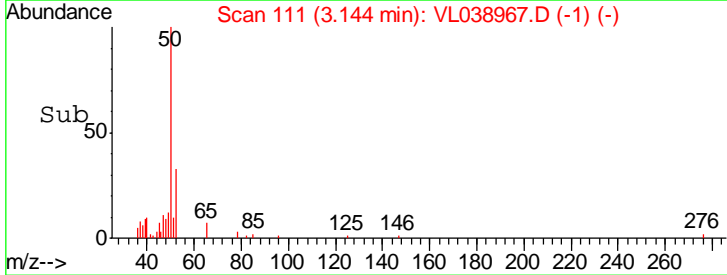
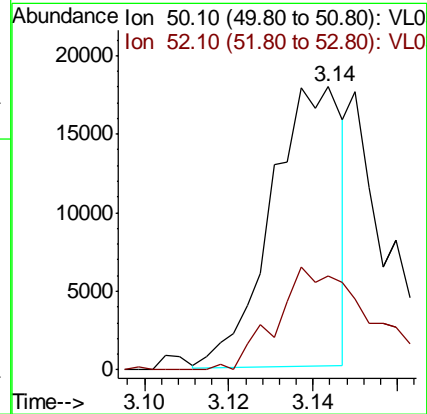
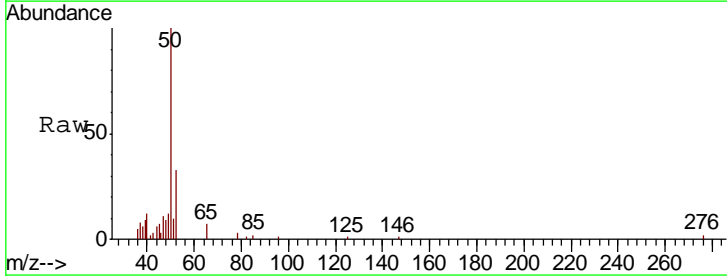
#3  
 Chlorodifluoromethane  
 Concen: 8.675 ppbv  
 RT: 2.99 Instrument : MSVOA\_L  
 Delta R.T. ClientSampleId :  
 Lab File:  
 Acq: 5 May 2022 11:18

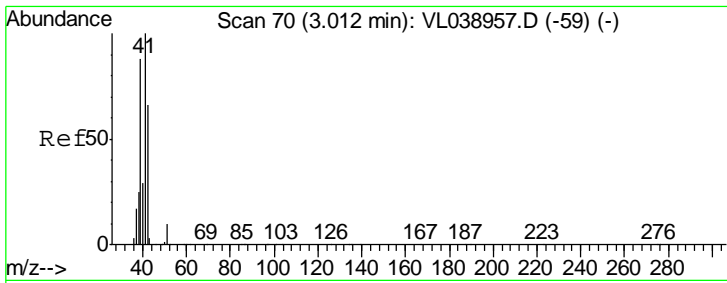
Tgt Ion	Resp	Lower	Upper
51	1163376		
67	14.5	15.8	23.8#



#4  
 Chloromethane  
 Concen: 0.309 ppbv  
 RT: 3.14 min Scan# 111  
 Delta R.T. 0.00 min  
 Lab File: VL038967.D  
 Acq: 5 May 2022 11:18

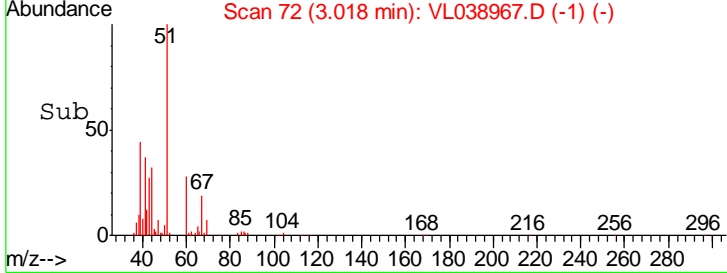
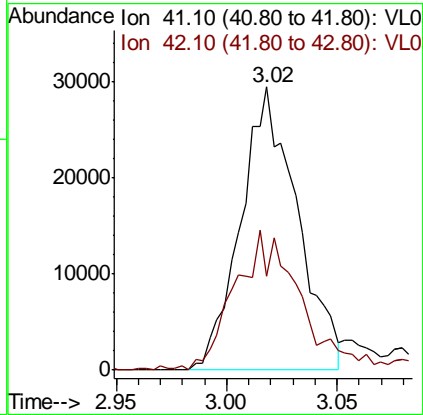
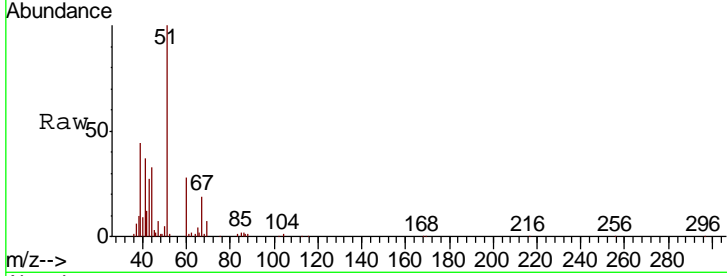
Tgt Ion	Resp	Lower	Upper
50	20785		
52	33.7	27.3	40.9





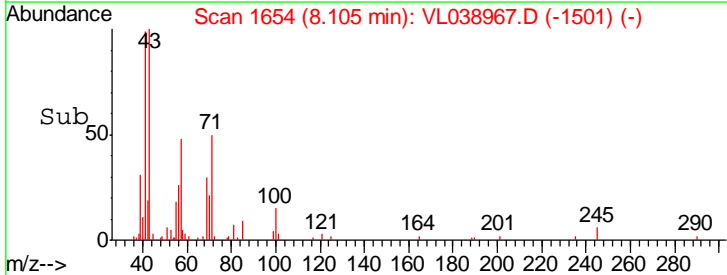
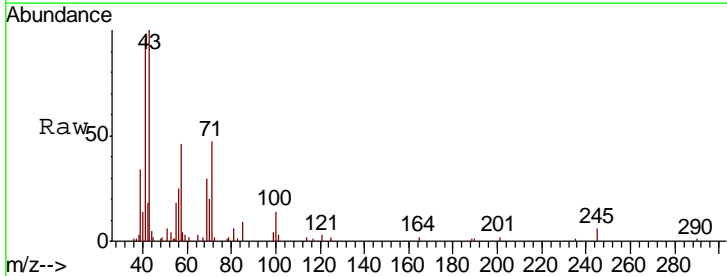
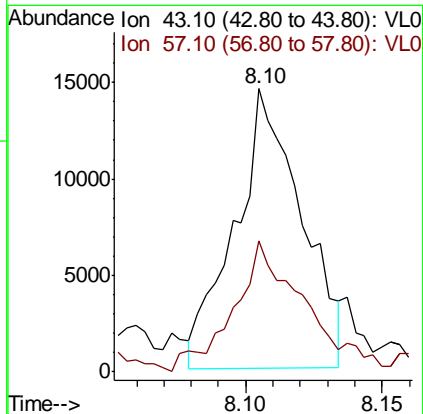
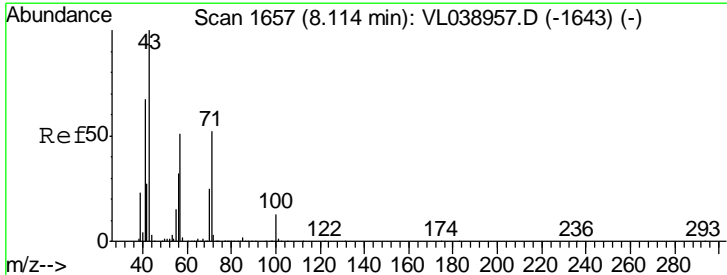
#9  
 Propene  
 Concen: 0.891 ppbv  
 RT: 3.02  
 Delta R.T. MSVOA\_L  
 Lab File: ClientSampled :  
 Acq: 5 May 2022 11:18

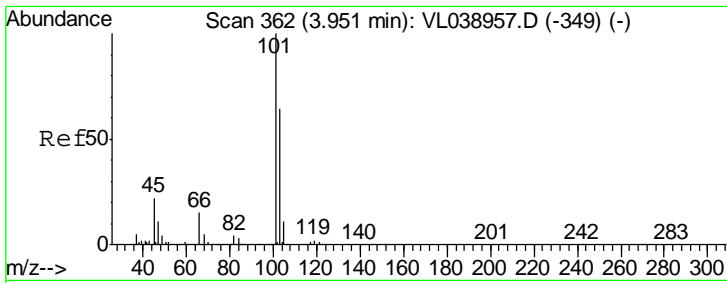
Tgt Ion	Resp	Lower	Upper
41	100		
42	58.2	58.3	87.5#



#10  
 Heptane  
 Concen: 0.171 ppbv  
 RT: 8.10 min Scan# 1654  
 Delta R.T. -0.01 min  
 Lab File: VL038967.D  
 Acq: 5 May 2022 11:18

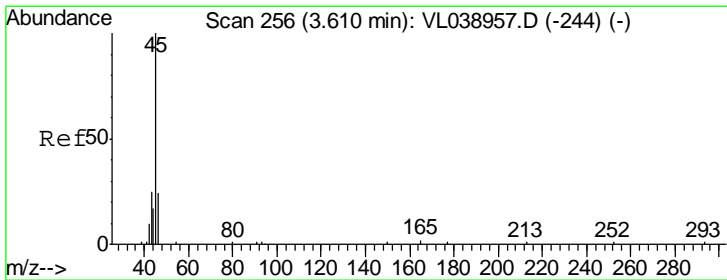
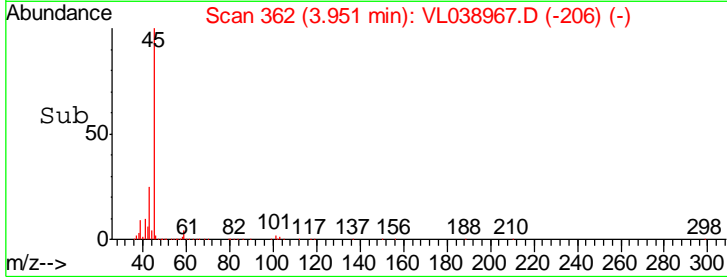
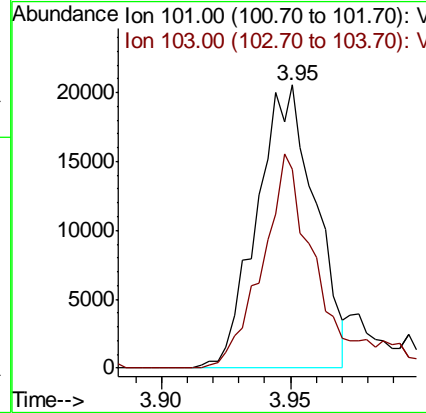
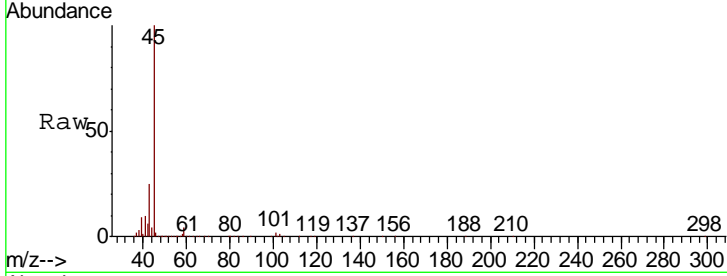
Tgt Ion	Resp	Lower	Upper
43	100		
57	55.3	40.5	60.7





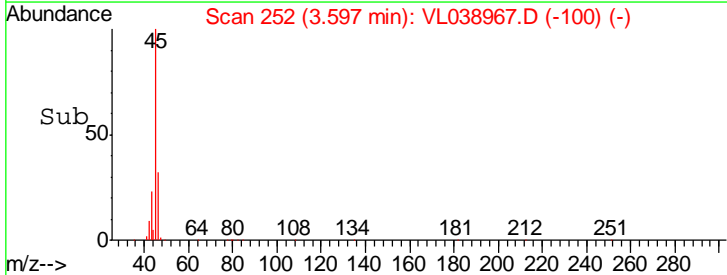
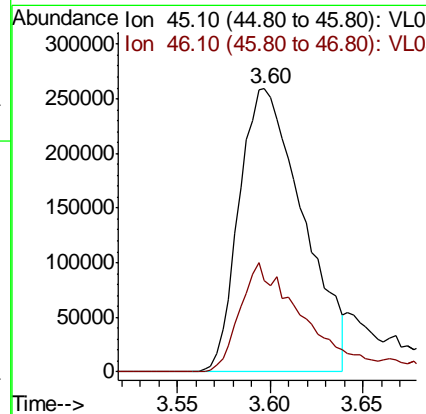
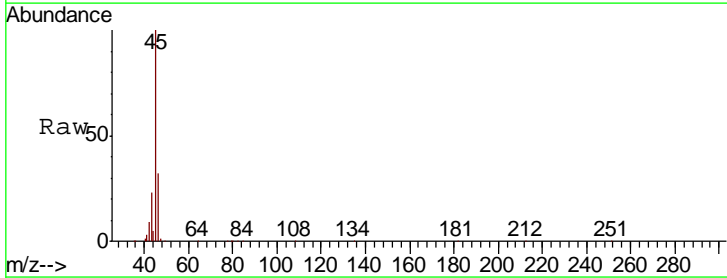
#11  
 Trichlorofluoromethane  
 Concen: 0.224 ppbv  
 RT: 3.95 Instrument :  
 Delta R.T. MSVOA\_L  
 Lab File: ClientSampleId :  
 Acq: 5 May 2022 11:18

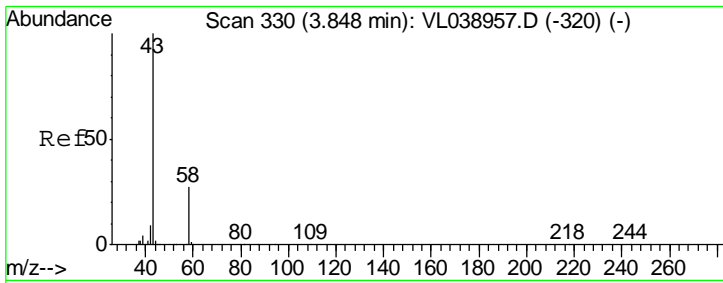
Tgt Ion	Resp	Lower	Upper
101	100		
103	70.1	51.5	77.3



#13  
 Ethanol  
 Concen: 136.020 ppbv  
 RT: 3.60 min Scan# 252  
 Delta R.T. -0.01 min  
 Lab File: VL038967.D  
 Acq: 5 May 2022 11:18

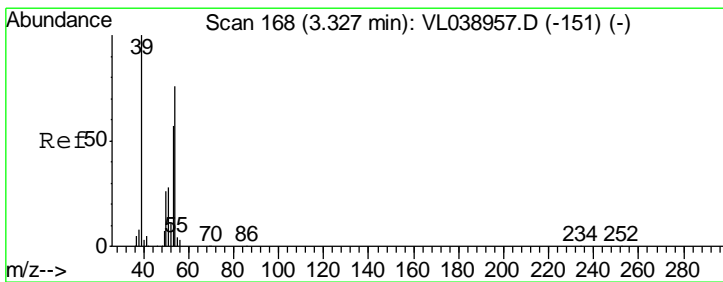
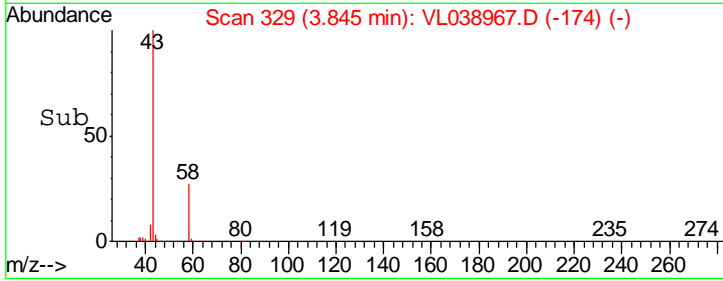
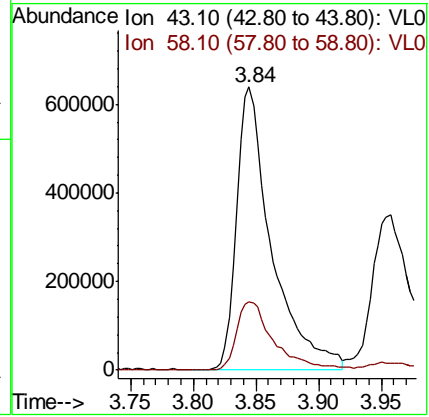
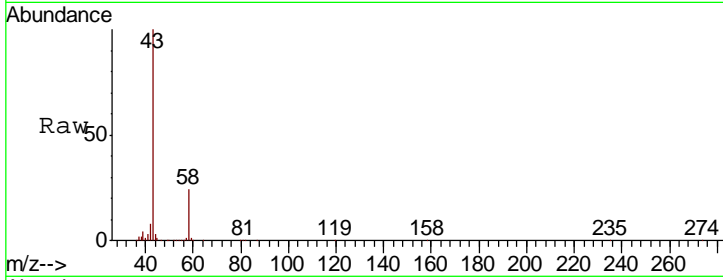
Tgt Ion	Resp	Lower	Upper
45	100		
46	42.6	18.0	72.2





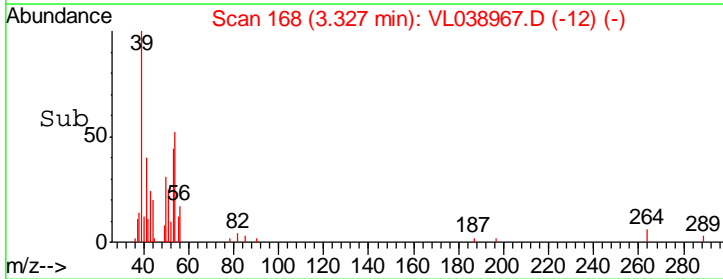
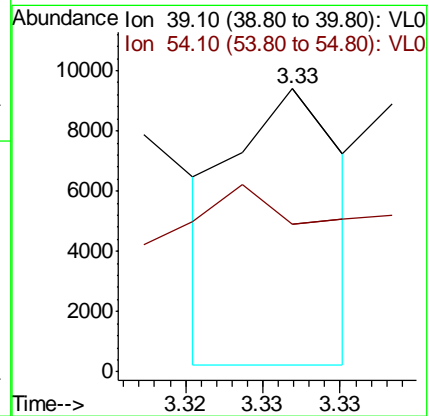
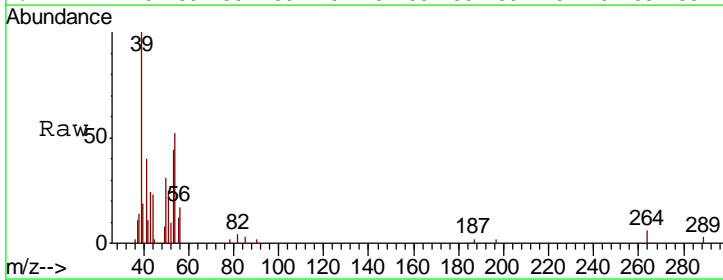
#15  
 Acetone  
 Concen: 12.080 ppbv  
 RT: 3.84  
 Instrument: MSVOA\_L  
 Delta R.T.:  
 Lab File: ClientSampled:  
 Acq: 5 May 2022 11:18

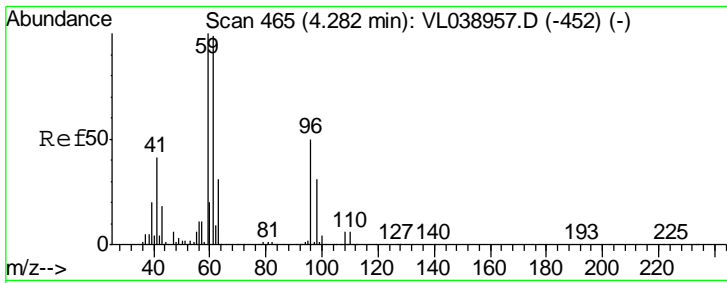
Tgt Ion	Resp	Lower	Upper
43	1231543		
58	26.3	21.3	31.9



#16  
 1,3-Butadiene  
 Concen: 0.076 ppbv  
 RT: 3.33 min Scan# 168  
 Delta R.T. 0.00 min  
 Lab File: VL038967.D  
 Acq: 5 May 2022 11:18

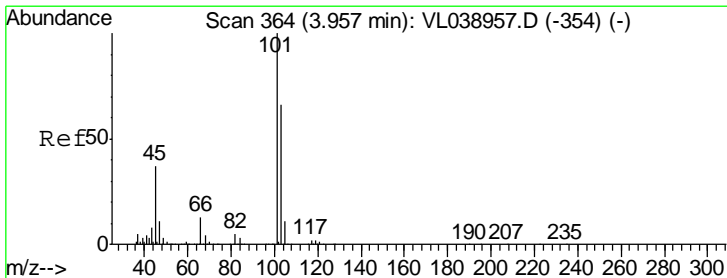
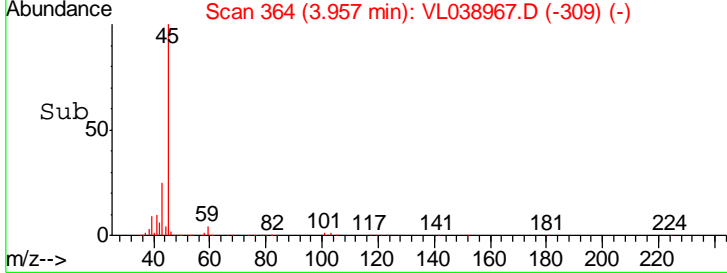
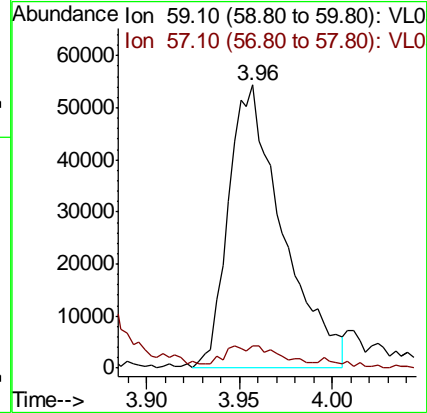
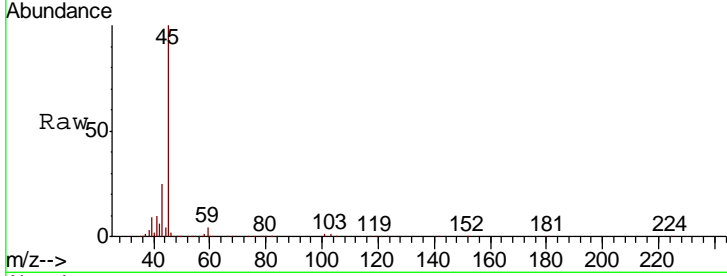
Tgt Ion	Resp	Lower	Upper
39	4473		
54	230.4	65.2	97.8#





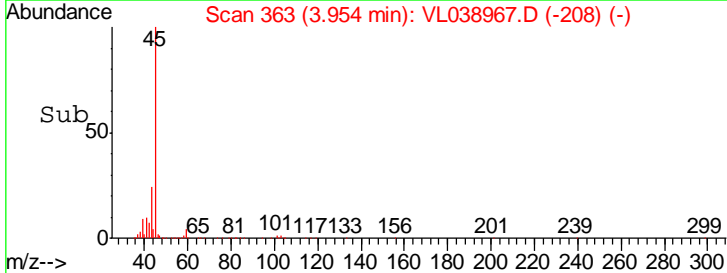
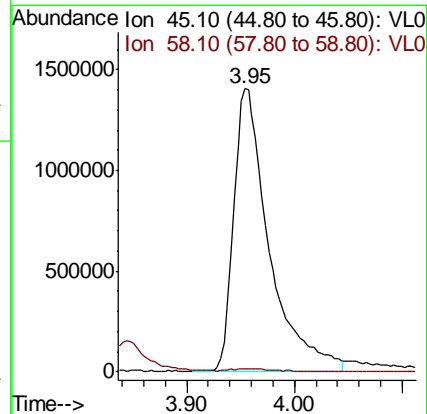
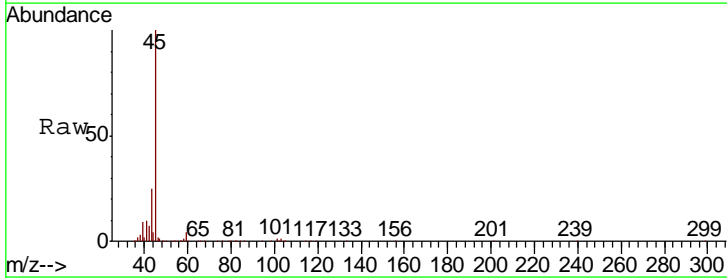
#17  
 tert-Butyl alcohol  
 Concen: 1.391 ppbv  
 RT: 3.96  
 Delta R.T. MSVOA\_L  
 Lab File: ClientSampled :  
 Acq: 5 May 2022 11:18

Tgt Ion	Resp	Lower	Upper
59	108993		
57	11.2	9.2	13.8

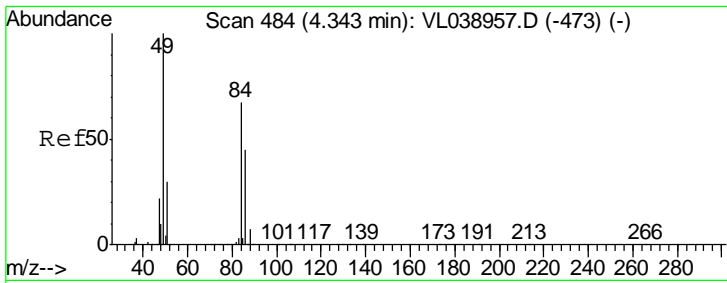


#19  
 Isopropyl Alcohol  
 Concen: 66.152 ppbv  
 RT: 3.95 min Scan# 363  
 Delta R.T. -0.00 min  
 Lab File: VL038967.D  
 Acq: 5 May 2022 11:18

Tgt Ion	Resp	Lower	Upper
45	3206644		
58	1.6	1.4	2.2

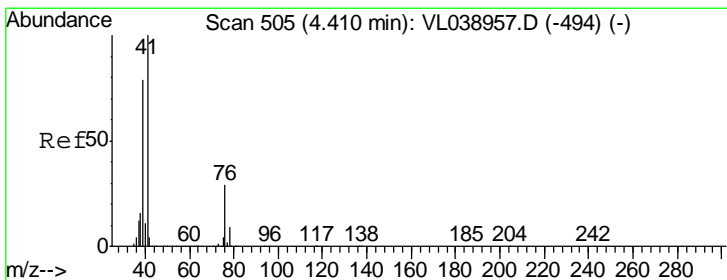
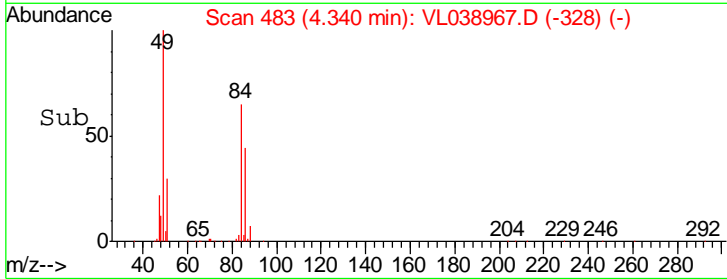
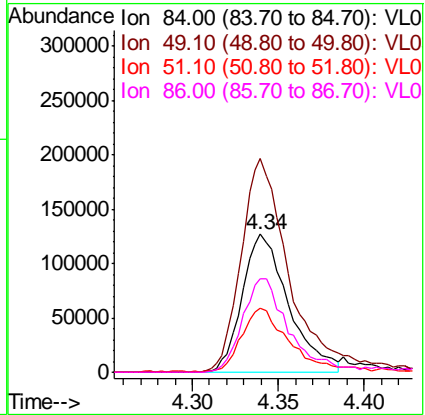
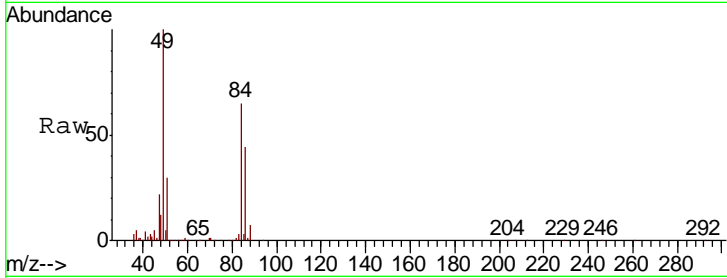






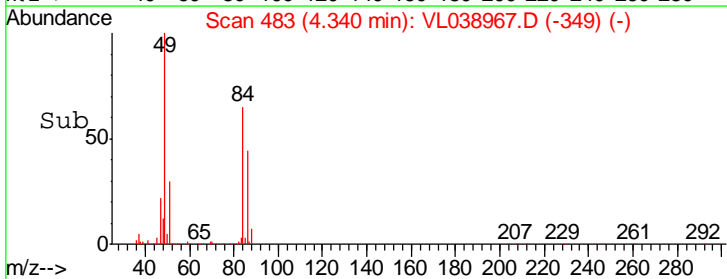
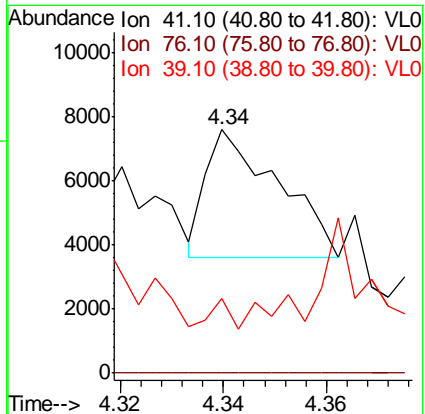
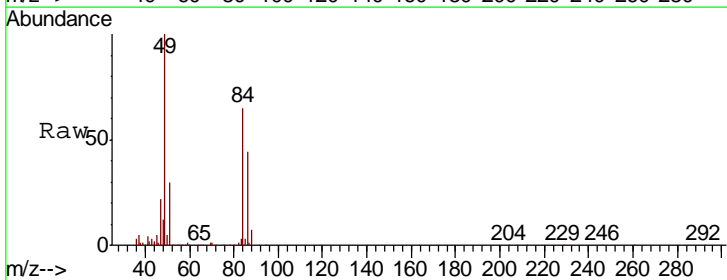
#20  
 Methylene Chloride  
 Concen: 6.177 ppbv  
 RT: 4.34 Instrument :  
 Delta R.T. MSVOA\_L  
 Lab File: ClientSampleId :  
 Acq: 5 May 2022 11:18

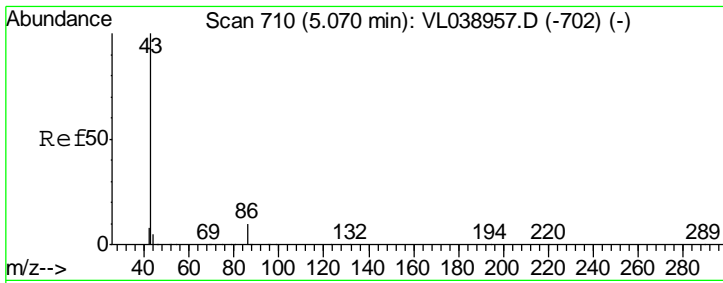
Tgt Ion	Resp	Lower	Upper
84	100		
49	154.8	119.9	179.9
51	46.2	35.7	53.5
86	67.7	53.8	80.6



#21  
 Allyl Chloride  
 Concen: 0.056 ppbv  
 RT: 4.34 min Scan# 483  
 Delta R.T. -0.07 min  
 Lab File: VL038967.D  
 Acq: 5 May 2022 11:18

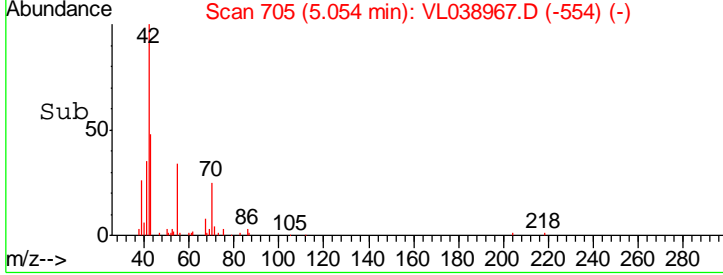
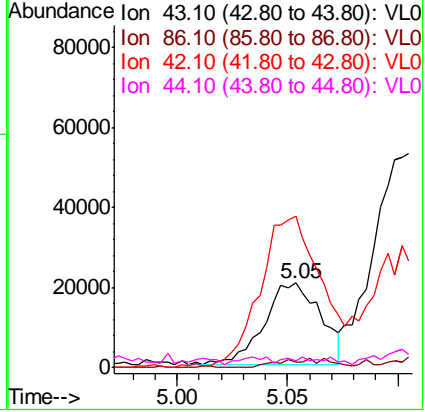
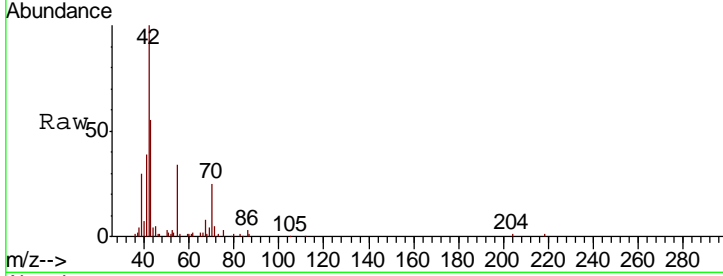
Tgt Ion	Resp	Lower	Upper
41	100		
76	2.3	24.2	36.4#
39	0.0	63.8	95.8#





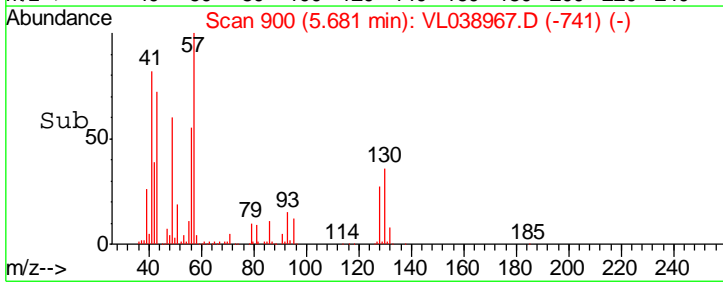
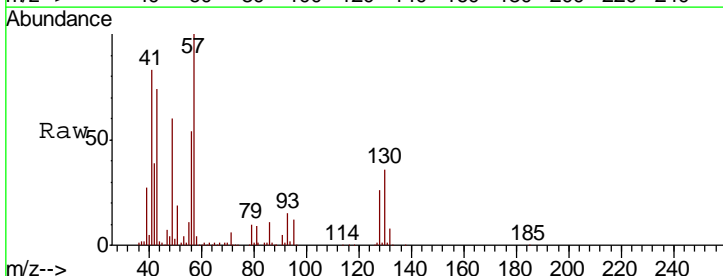
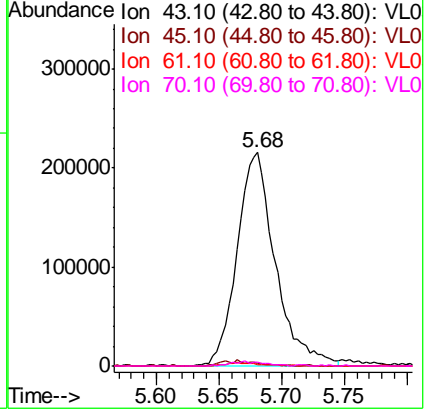
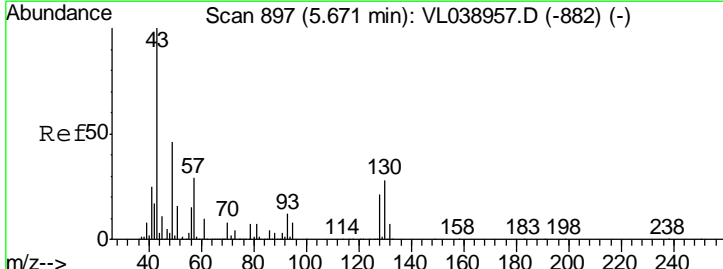
#23  
 Vinyl Acetate  
 Concen: 0.457 ppbv  
 RT: 5.05  
 Delta R.T. MSVOA\_L  
 Lab File: ClientSampleId :  
 Acq: 5 May 2022 11:18

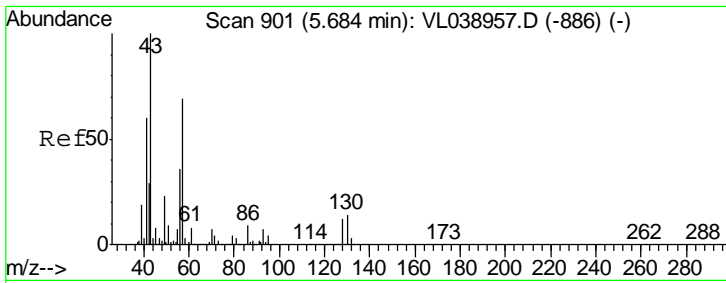
Tgt Ion	Resp	Lower	Upper
43	100		
86	7.1	6.6	9.8
42	184.1	8.1	12.1#
44	2.2	3.5	5.3#



#25  
 Ethyl Acetate  
 Concen: 1.859 ppbv  
 RT: 5.68 min Scan# 900  
 Delta R.T. 0.01 min  
 Lab File: VL038967.D  
 Acq: 5 May 2022 11:18

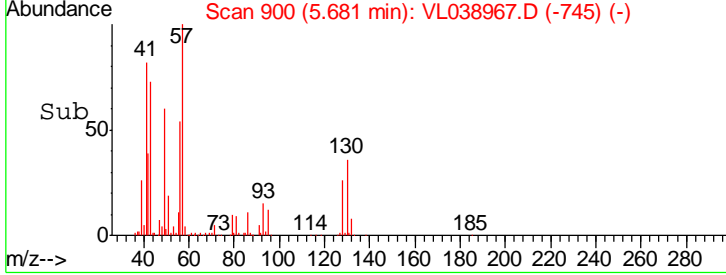
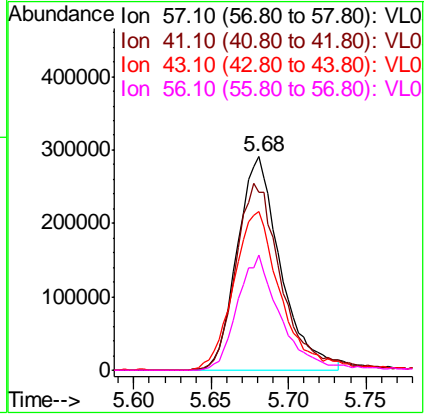
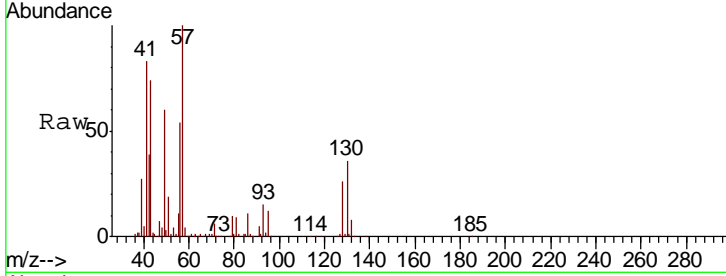
Tgt Ion	Resp	Lower	Upper
43	100		
45	2.8	8.1	12.1#
61	1.8	7.8	11.6#
70	2.1	5.6	8.4#





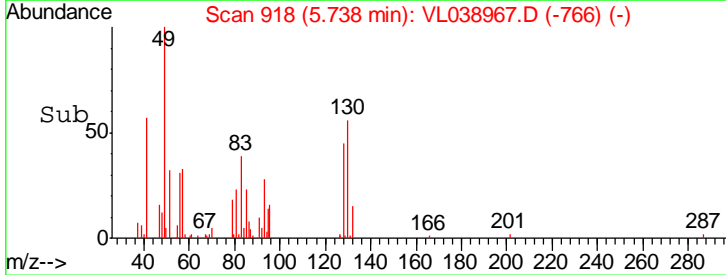
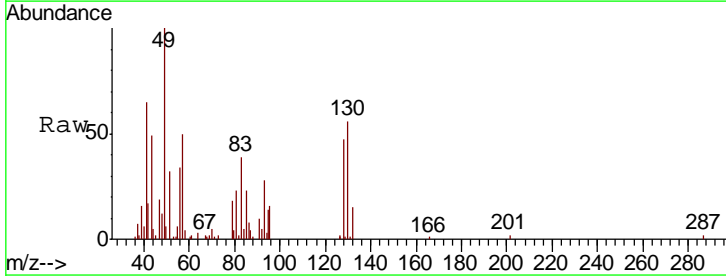
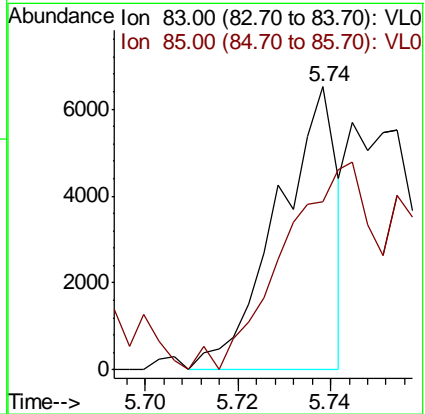
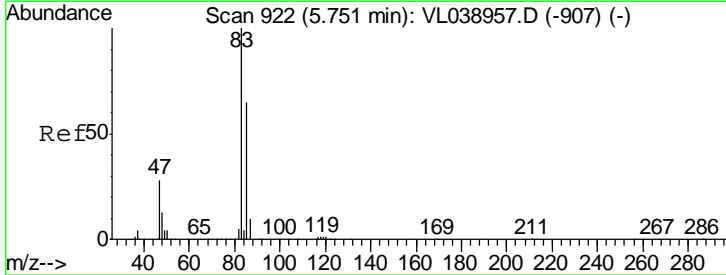
#26  
 Hexane  
 Concen: 5.219 ppbv  
 RT: 5.68  
 Delta R.T. MSVOA\_L  
 Lab File: ClientSampled :  
 Acq: 5 May 2022 11:18

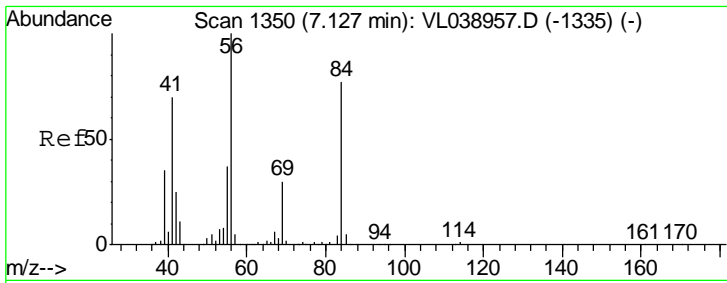
Tgt Ion	Resp	Lower	Upper
57	100		
41	93.8	75.2	112.8
43	81.7	190.8	286.2#
56	54.5	43.0	64.6



#29  
 Chloroform  
 Concen: 0.033 ppbv  
 RT: 5.74 min Scan# 918  
 Delta R.T. -0.01 min  
 Lab File: VL038967.D  
 Acq: 5 May 2022 11:18

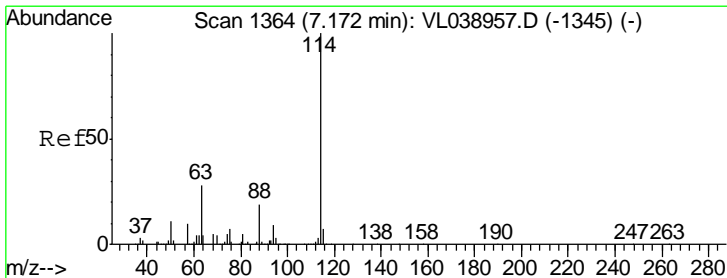
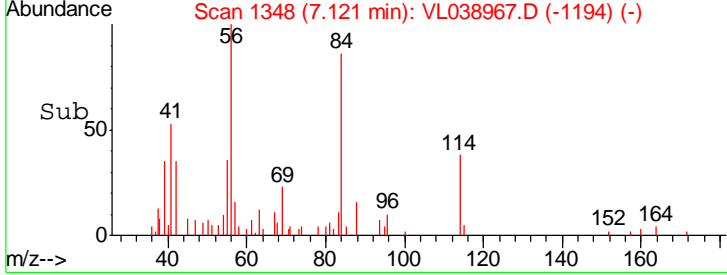
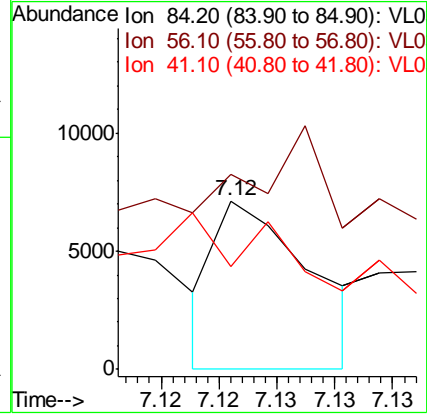
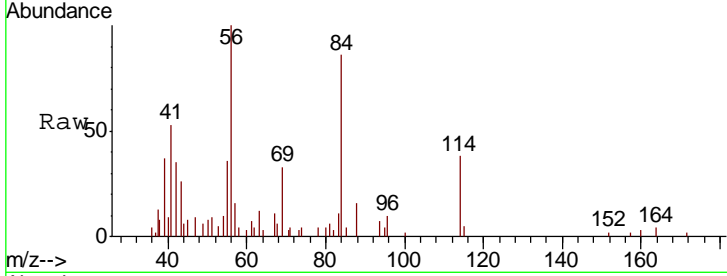
Tgt Ion	Resp	Lower	Upper
83	100		
85	59.3	51.8	77.6





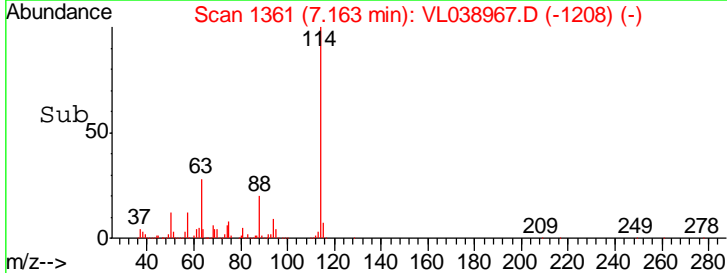
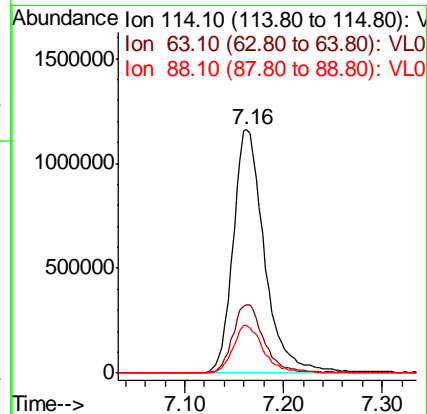
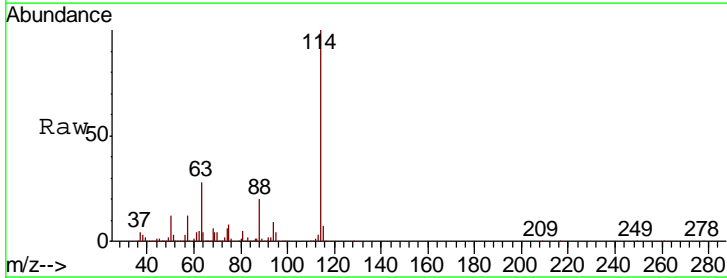
#30  
 Cyclohexane  
 Concen: 0.045 ppbv  
 RT: 7.12 min  
 Delta R.T. MSVOA\_L  
 Lab File: ClientSampled :  
 Acq: 5 May 2022 11:18

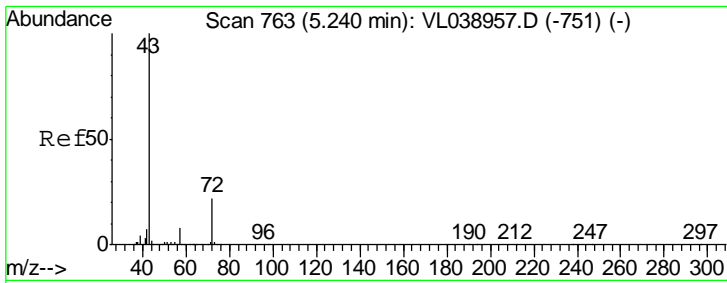
Tgt Ion	Resp	Lower	Upper
84	100		
56	0.0	115.3	172.9#
41	331.5	72.0	108.0#



#33  
 1,4-Difluorobenzene  
 Concen: 10.000 ppbv  
 RT: 7.16 min Scan# 1361  
 Delta R.T. -0.01 min  
 Lab File: VL038967.D  
 Acq: 5 May 2022 11:18

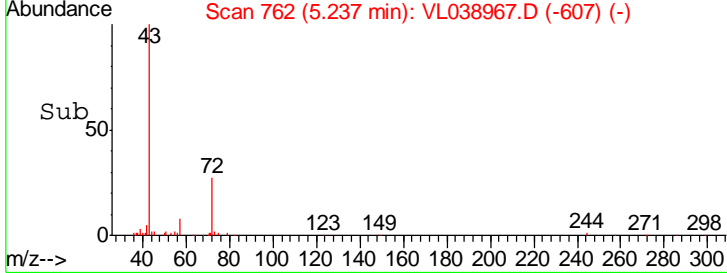
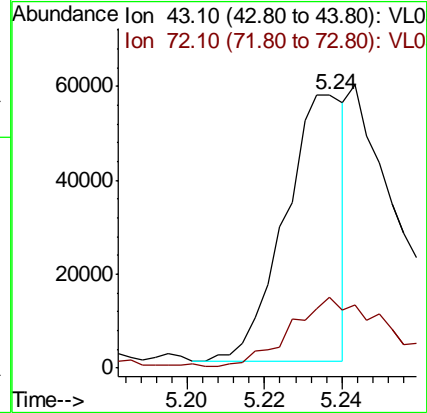
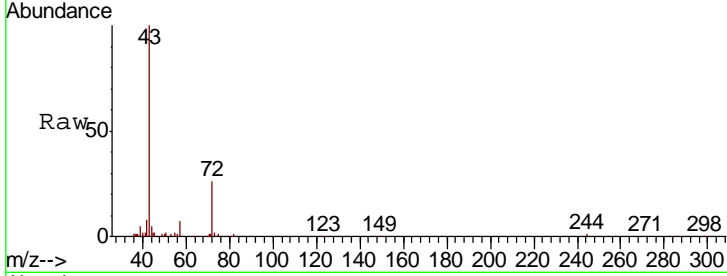
Tgt Ion	Resp	Lower	Upper
114	100		
63	28.6	22.6	33.8
88	19.4	15.4	23.0





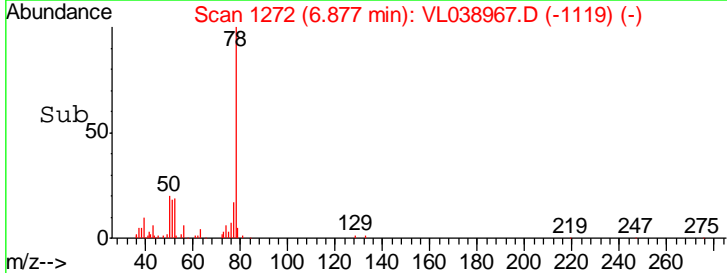
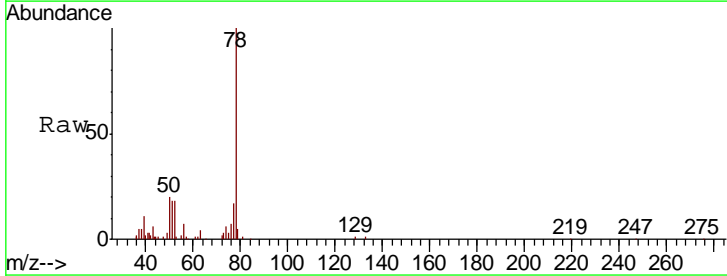
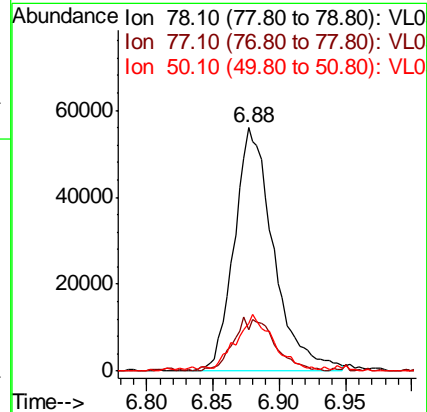
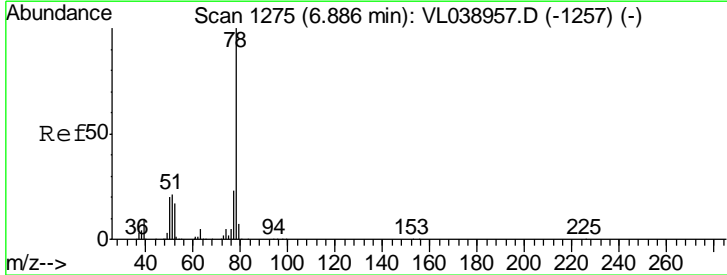
#34  
 2-Butanone  
 Concen: 0.462 ppbv  
 RT: 5.24  
 Delta R.T. MSVOA\_L  
 Lab File: ClientSampled :  
 Acq: 5 May 2022 11:18

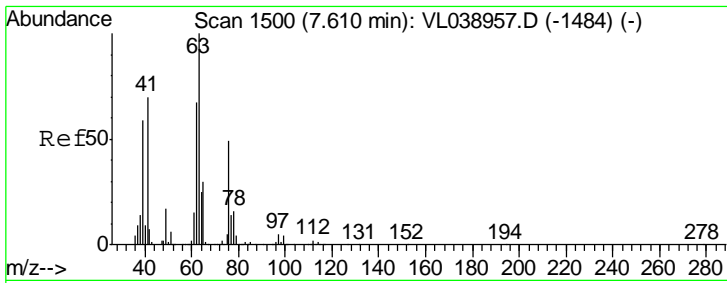
Tgt Ion	Resp	Lower	Upper
43	100		
72	54.0	17.8	26.6#



#36  
 Benzene  
 Concen: 0.525 ppbv  
 RT: 6.88 min Scan# 1272  
 Delta R.T. -0.01 min  
 Lab File: VL038967.D  
 Acq: 5 May 2022 11:18

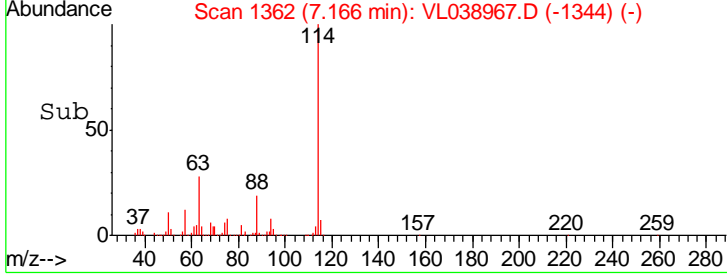
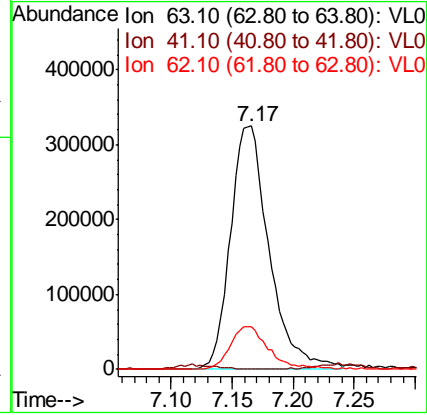
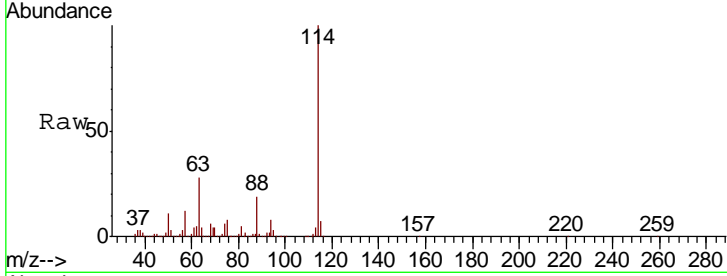
Tgt Ion	Resp	Lower	Upper
78	100		
77	17.1	18.6	28.0#
50	18.6	15.6	23.4





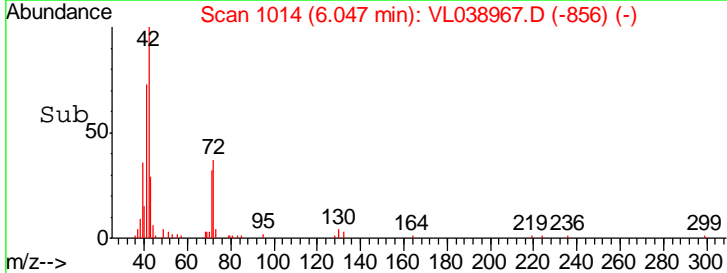
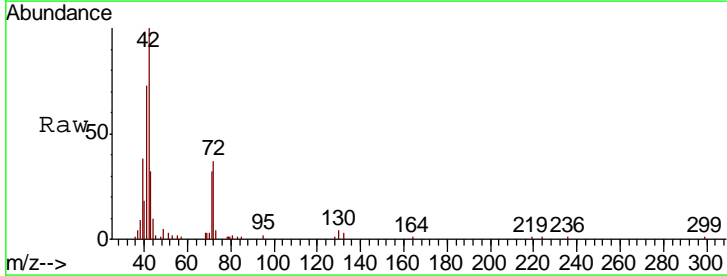
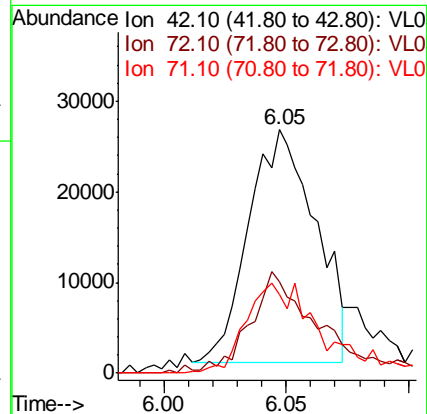
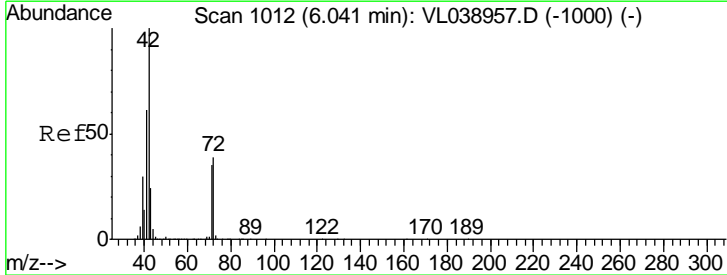
#39  
 1,2-Dichloropropane  
 Concen: 8.367 ppbv  
 RT: 7.17 Instrument :  
 Delta R.T. MSVOA\_L  
 Lab File: ClientSampleId :  
 Acq: 5 May 2022 11:18

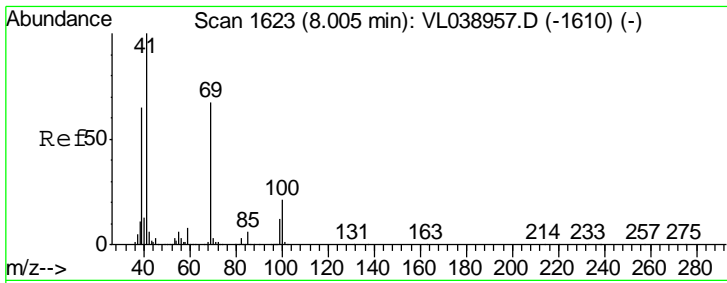
Tgt Ion	Resp	Lower	Upper
63	100		
41	0.0	55.9	83.9#
62	17.4	53.8	80.6#



#41  
 Tetrahydrofuran  
 Concen: 0.555 ppbv  
 RT: 6.05 min Scan# 1014  
 Delta R.T. 0.01 min  
 Lab File: VL038967.D  
 Acq: 5 May 2022 11:18

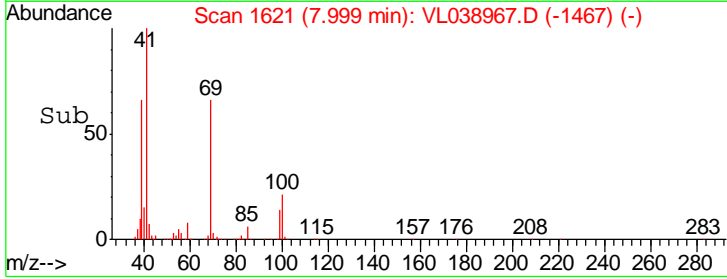
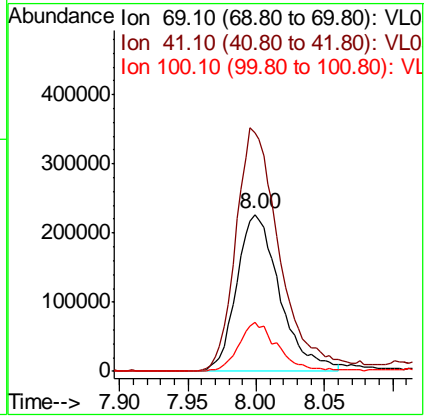
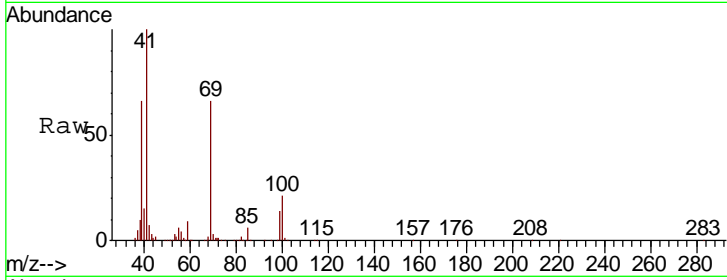
Tgt Ion	Resp	Lower	Upper
42	100		
72	46.8	31.8	47.6
71	45.6	30.6	45.8





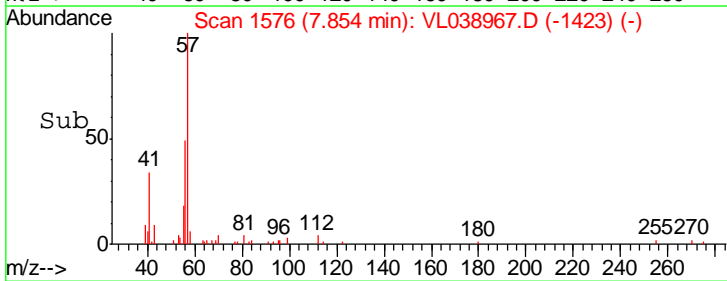
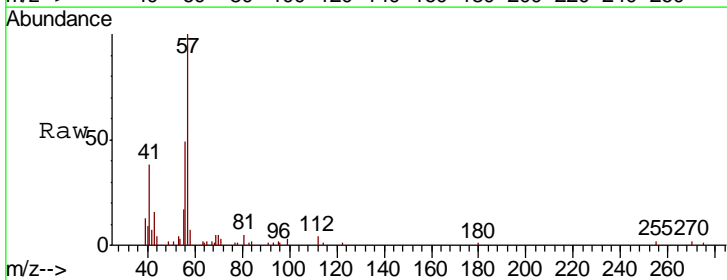
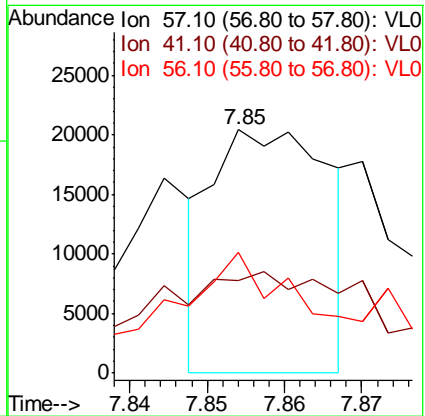
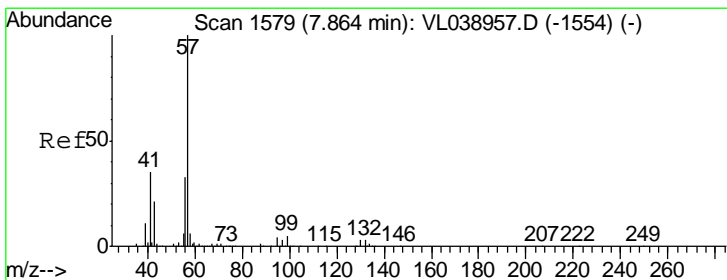
#43  
 Methyl Methacrylate  
 Concen: 5.582 ppbv  
 RT: 8.00  
 Delta R.T. MSVOA\_L  
 Lab File: ClientSampled :  
 Acq: 5 May 2022 11:18

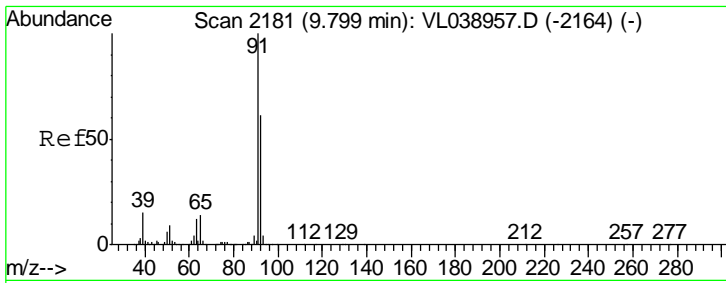
Tgt Ion	Resp	Lower	Upper
69	499011		
Ion Ratio			
69	100		
41	159.7	121.9	182.9
100	28.8	24.6	36.8



#44  
 2,2,4-Trimethylpentane  
 Concen: 0.055 ppbv  
 RT: 7.85 min Scan# 1576  
 Delta R.T. -0.01 min  
 Lab File: VL038967.D  
 Acq: 5 May 2022 11:18

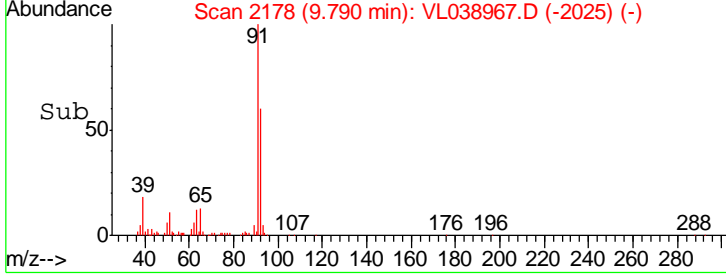
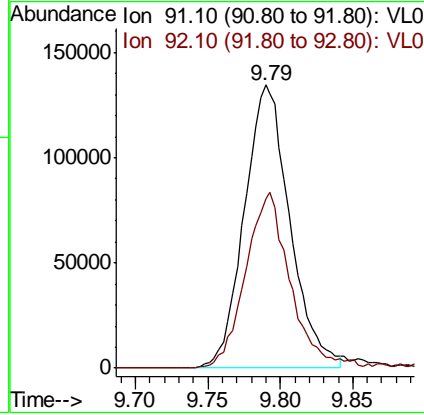
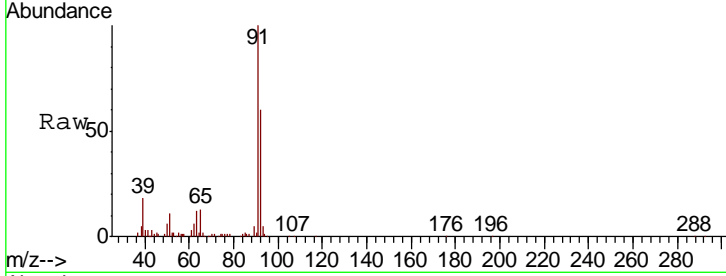
Tgt Ion	Resp	Lower	Upper
57	21286		
Ion Ratio			
57	100		
41	0.0	26.3	39.5#
56	103.7	24.6	37.0#





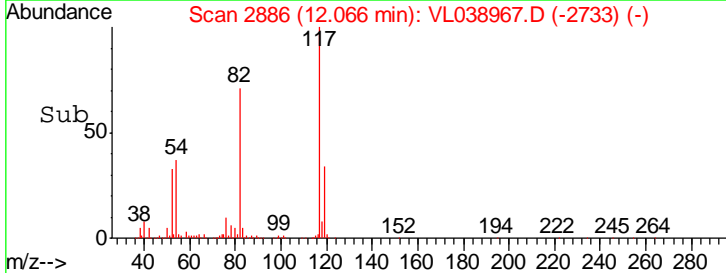
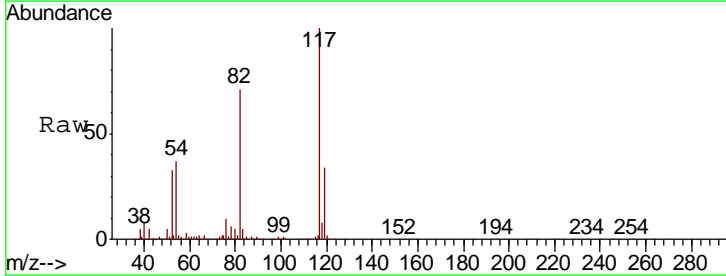
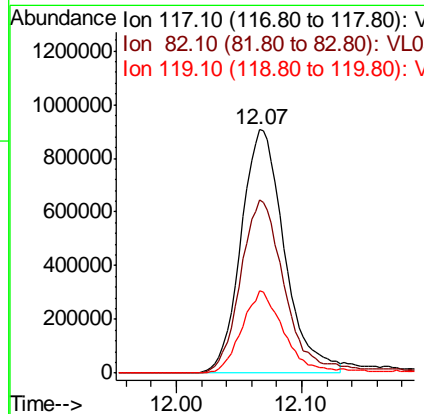
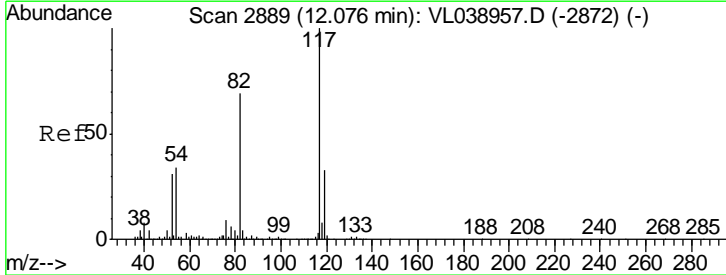
#53  
 Toluene  
 Concen: 1.192 ppbv  
 RT: 9.79 Instrument :  
 Delta R.T. MSVOA\_L  
 Lab File: ClientSampled :  
 Acq: 5 May 2022 11:18

Tgt Ion	Resp	Lower	Upper
91	100		
92	61.7	48.2	72.2

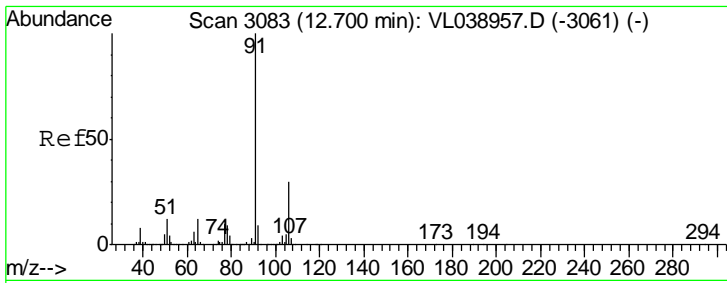


#55  
 Chlorobenzene-d5  
 Concen: 10.000 ppbv  
 RT: 12.07 min Scan# 2886  
 Delta R.T. -0.01 min  
 Lab File: VL038967.D  
 Acq: 5 May 2022 11:18

Tgt Ion	Resp	Lower	Upper
117	100		
82	75.0	57.0	85.6
119	34.0	27.2	40.8

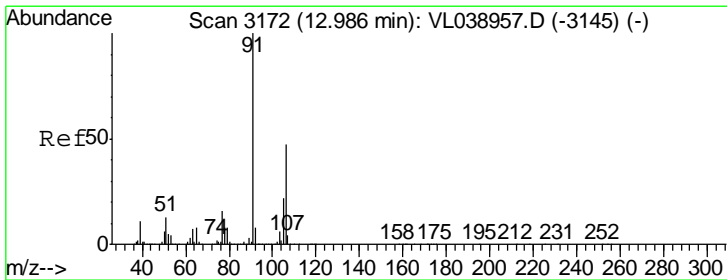
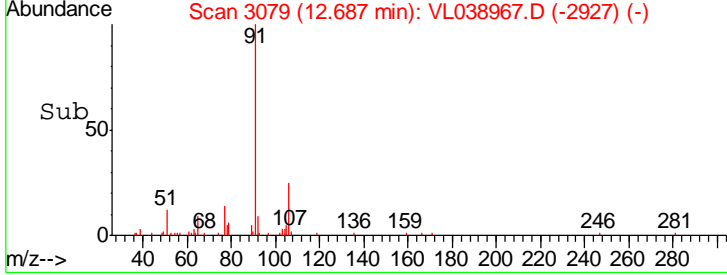
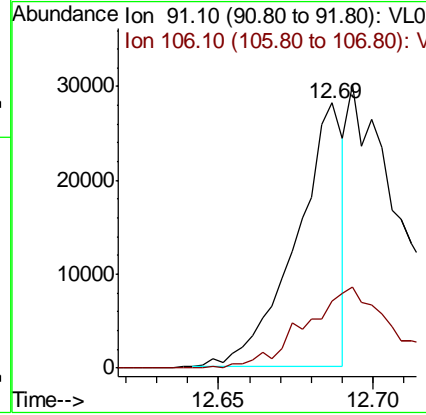
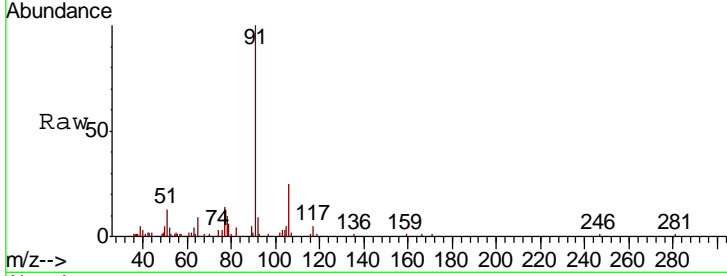






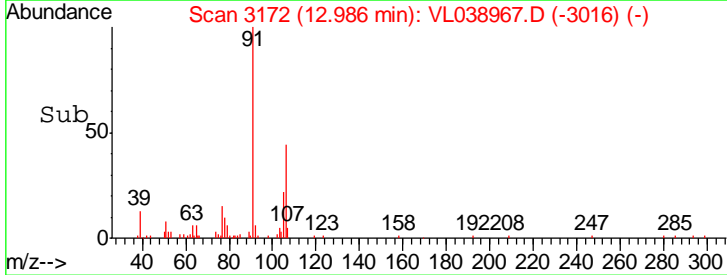
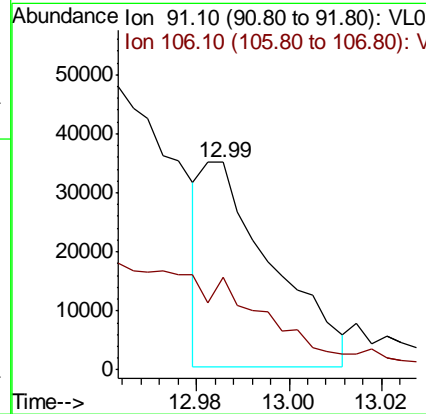
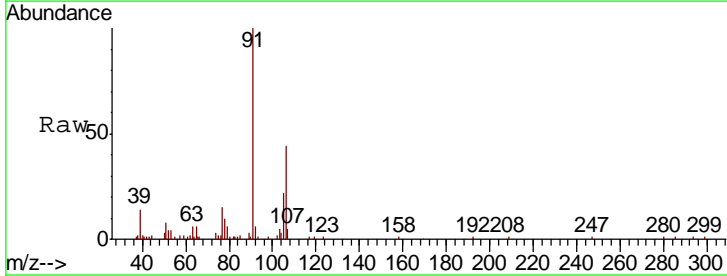
#58  
 Ethyl Benzene  
 Concen: 0.095 ppbv  
 RT: 12.69  
 Instrument : MSVOA\_1  
 Delta R.T. :  
 Lab File: ClientSampled :  
 Acq: 5 May 2022 11:18

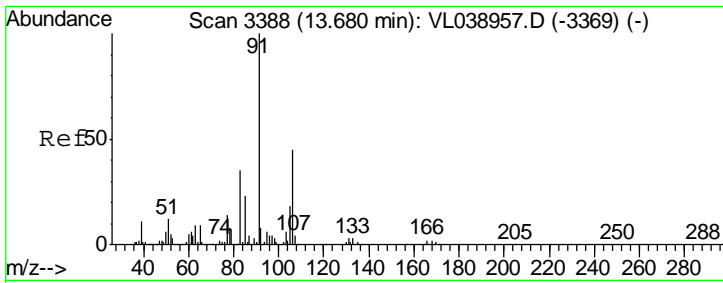
Tgt Ion	Resp	Lower	Upper
91	100		
106	25.3	24.2	36.4



#59  
 m/p-Xylene  
 Concen: 0.136 ppbv  
 RT: 12.99 min Scan# 3172  
 Delta R.T. 0.00 min  
 Lab File: VL038967.D  
 Acq: 5 May 2022 11:18

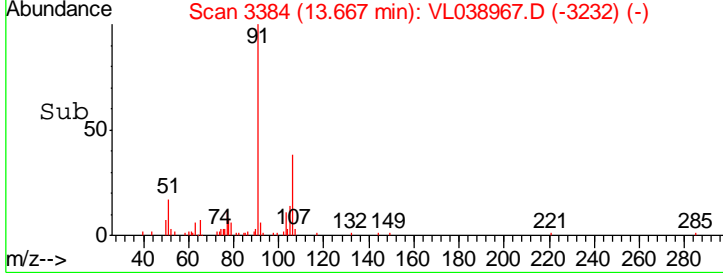
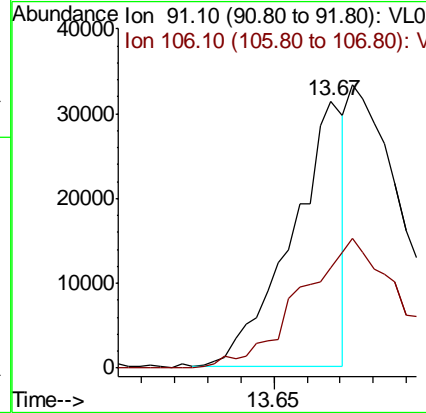
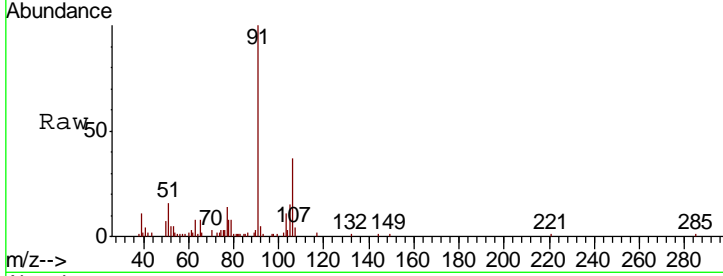
Tgt Ion	Resp	Lower	Upper
91	100		
106	0.0	34.6	52.0#





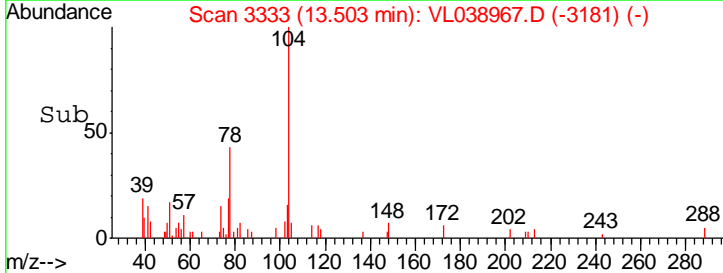
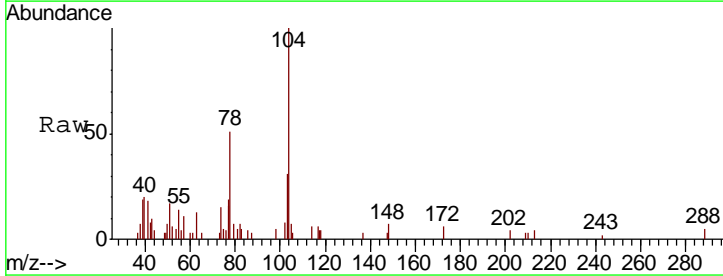
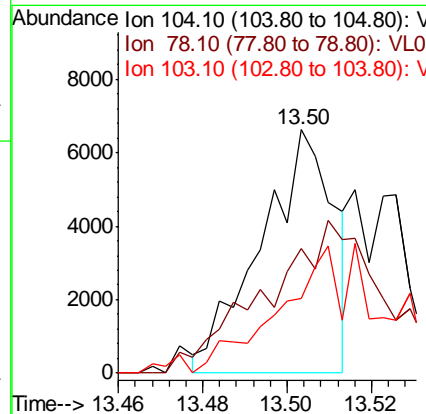
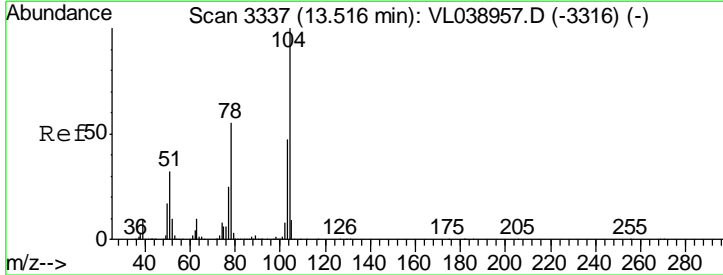
#60  
 o-Xylene  
 Concen: 0.136 ppbv  
 RT: 13.67  
 Delta R.T. MSVOA\_L  
 Lab File: ClientSampled :  
 Acq: 5 May 2022 11:18

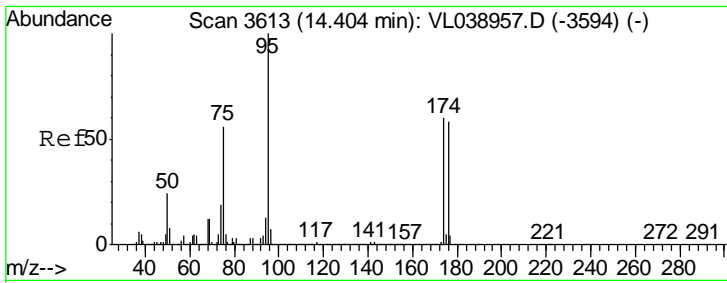
Tgt Ion	Resp	Lower	Upper
91	100		
106	0.0	22.2	66.6#



#61  
 Styrene  
 Concen: 0.059 ppbv  
 RT: 13.50 min Scan# 3333  
 Delta R.T. -0.01 min  
 Lab File: VL038967.D  
 Acq: 5 May 2022 11:18

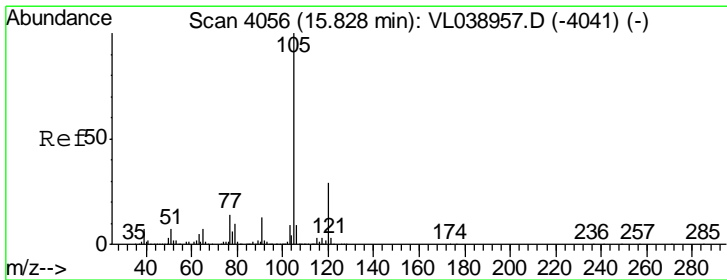
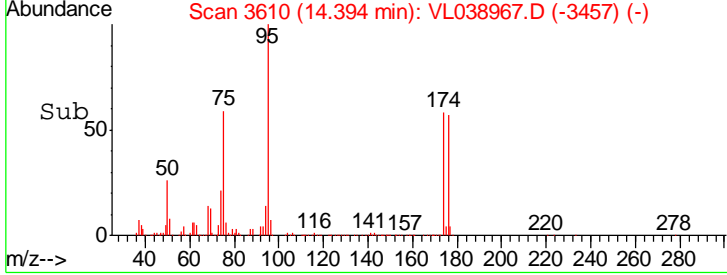
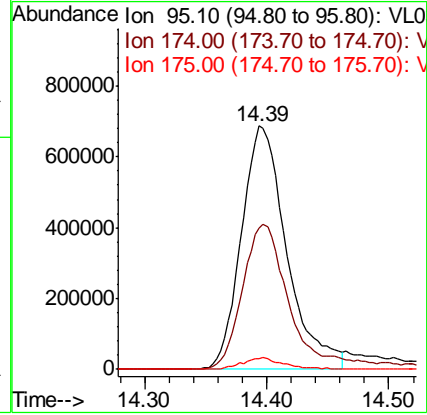
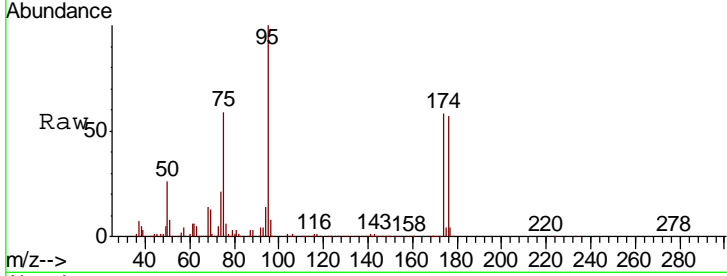
Tgt Ion	Resp	Lower	Upper
104	100		
78	0.0	46.4	69.6#
103	0.0	39.3	58.9#





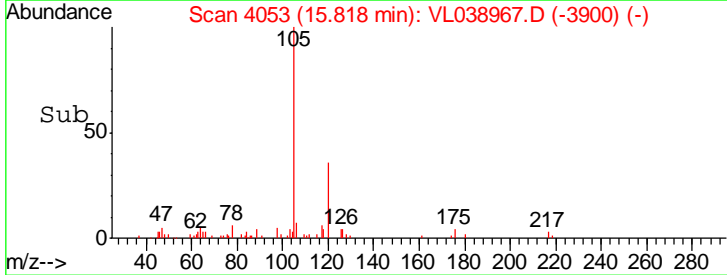
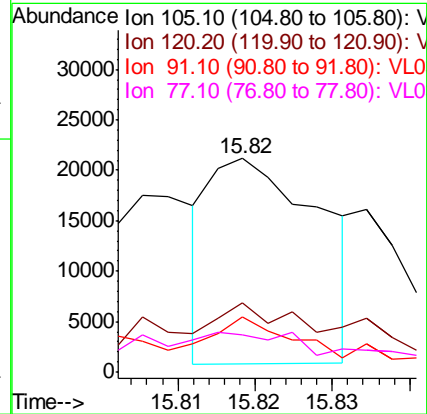
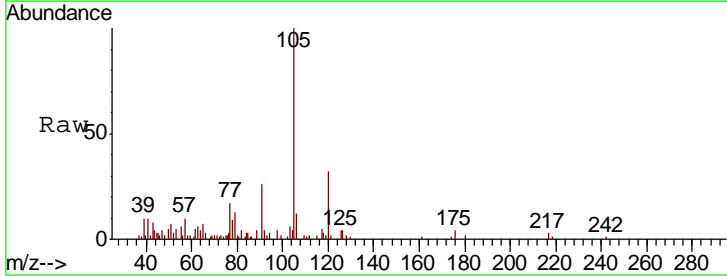
#68  
 1-Bromo-4-Fluorobenzene  
 Concen: 10.260 ppbv  
 RT: 14.39  
 Delta R.T. MSVOA\_L  
 Lab File: ClientSampled :  
 Acq: 5 May 2022 11:18

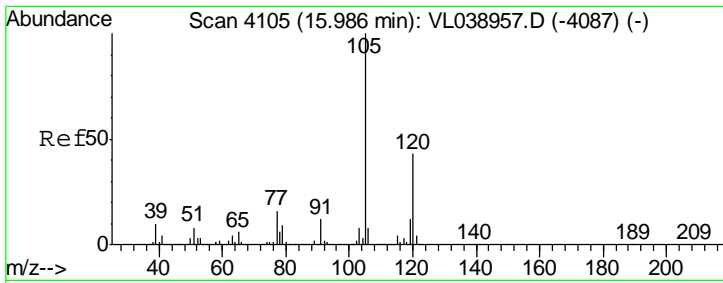
Tgt Ion	Resp	Lower	Upper
95	100		
174	64.9	50.8	76.2
175	4.6	3.8	5.6



#72  
 4-Ethyltoluene  
 Concen: 0.070 ppbv  
 RT: 15.82 min Scan# 4053  
 Delta R.T. -0.01 min  
 Lab File: VL038967.D  
 Acq: 5 May 2022 11:18

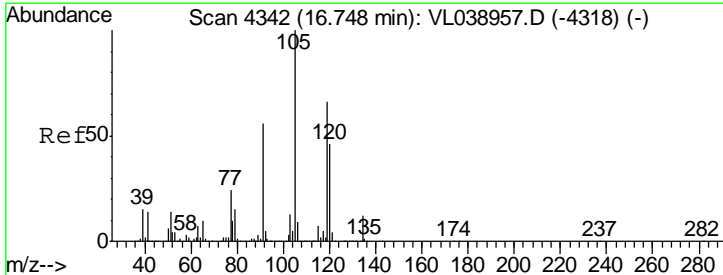
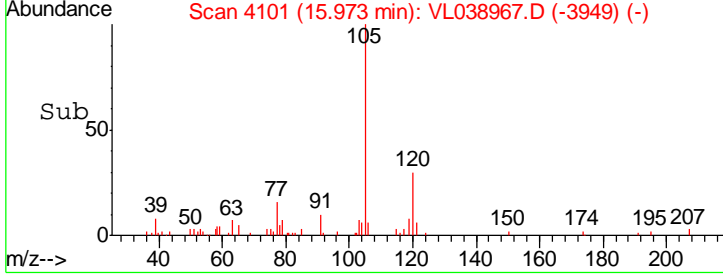
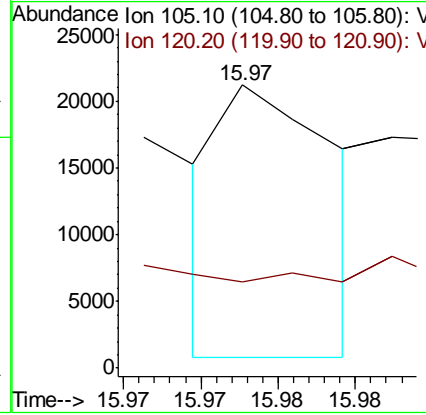
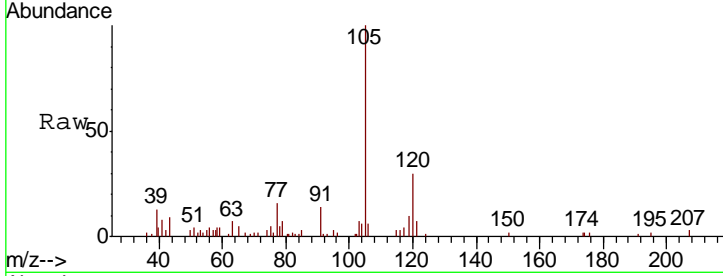
Tgt Ion	Resp	Lower	Upper
105	100		
120	72.2	23.4	35.0#
91	47.2	10.6	16.0#
77	44.5	12.5	18.7#





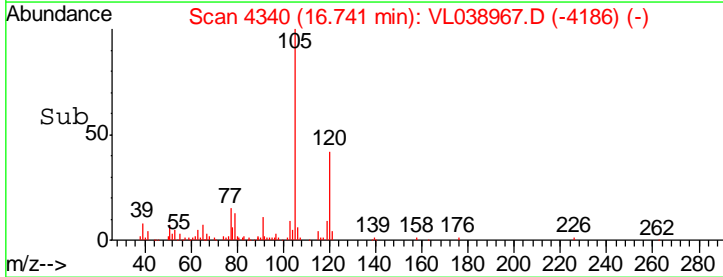
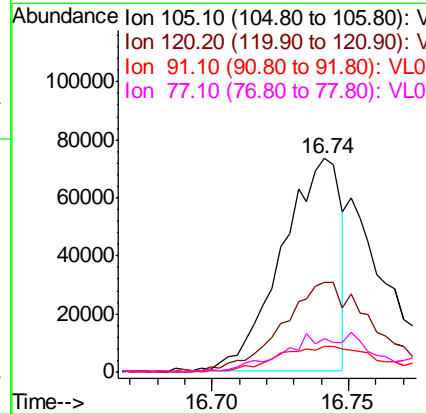
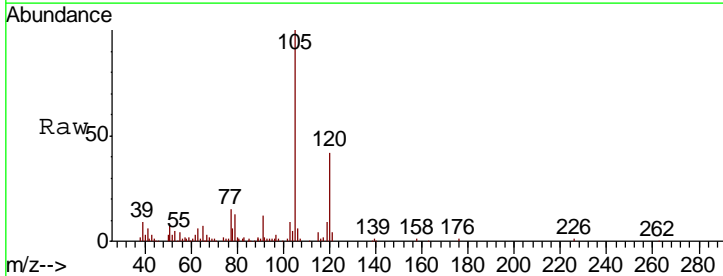
#73  
 1,3,5-Trimethylbenzene  
 Concen: 0.040 ppbv  
 RT: 15.97  
 Delta R.T. MSVOA\_L  
 Lab File: ClientSampled :  
 Acq: 5 May 2022 11:18

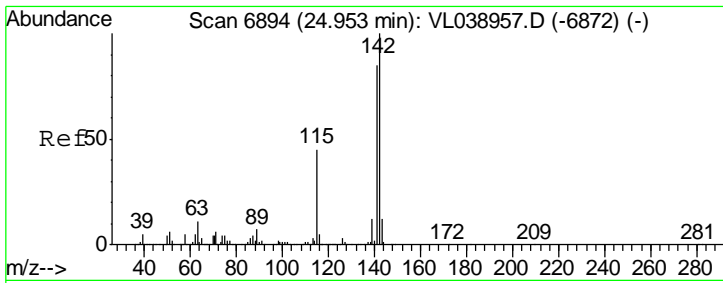
Tgt Ion	Resp	Lower	Upper
105	100		
120	0.0	34.4	51.6#



#74  
 1,2,4-Trimethylbenzene  
 Concen: 0.387 ppbv  
 RT: 16.74 min Scan# 4340  
 Delta R.T. -0.01 min  
 Lab File: VL038967.D  
 Acq: 5 May 2022 11:18

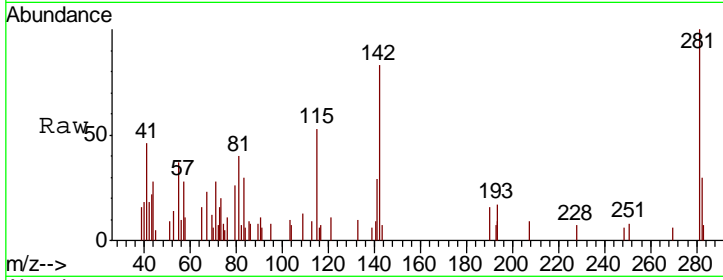
Tgt Ion	Resp	Lower	Upper
105	100		
120	42.5	36.9	55.3
91	11.1	45.0	67.4#
77	14.9	19.2	28.8#





#80  
 Naphthalene, 2-methyl-  
 Concen: 0.064 ppbv  
 RT: 24.95  
 Delta R.T: MSVOA\_L  
 Lab File: ClientSampleId :  
 Acq: 5 May 2022 11:18

Tot Ion	Ratio	Lower	Upper
142	100		
141	0.0	70.8	106.2#
115	37.0	35.1	52.7



Abundance Ion 142.00 (141.70 to 142.70): V  
 Ion 141.00 (140.70 to 141.70): V  
 Ion 115.00 (114.70 to 115.70): V

