

Data Path : Z:\voasrv\HPCHEM1\MSVOA_L\Data\VL050525\
 Data File : VL042474.D
 Acq On : 05 May 2025 13:11
 Operator : SY/MD
 Sample : Q1927-03
 Misc : 400mL/MSVOA_L
 ALS Vial : 1 Sample Multiplier: 1

Instrument :
 MSVOA_L
 ClientSampleId :
 EBR-P04-SC-SS01-20250428

Quant Time: May 06 01:41:08 2025
 Quant Method : Z:\voasrv\HPCHEM1\MSVOA_L\methods\VL050125AIR.M
 Quant Title : AIR ANALYSIS BY METHOD TO-15 Instrument: MSVOA_L Fri Aug 26 06:05:16 2022
 QLast Update : Fri May 02 03:16:31 2025
 Response via : Initial Calibration

Compound	R.T.	QIon	Response	Conc	Units	Dev(Min)

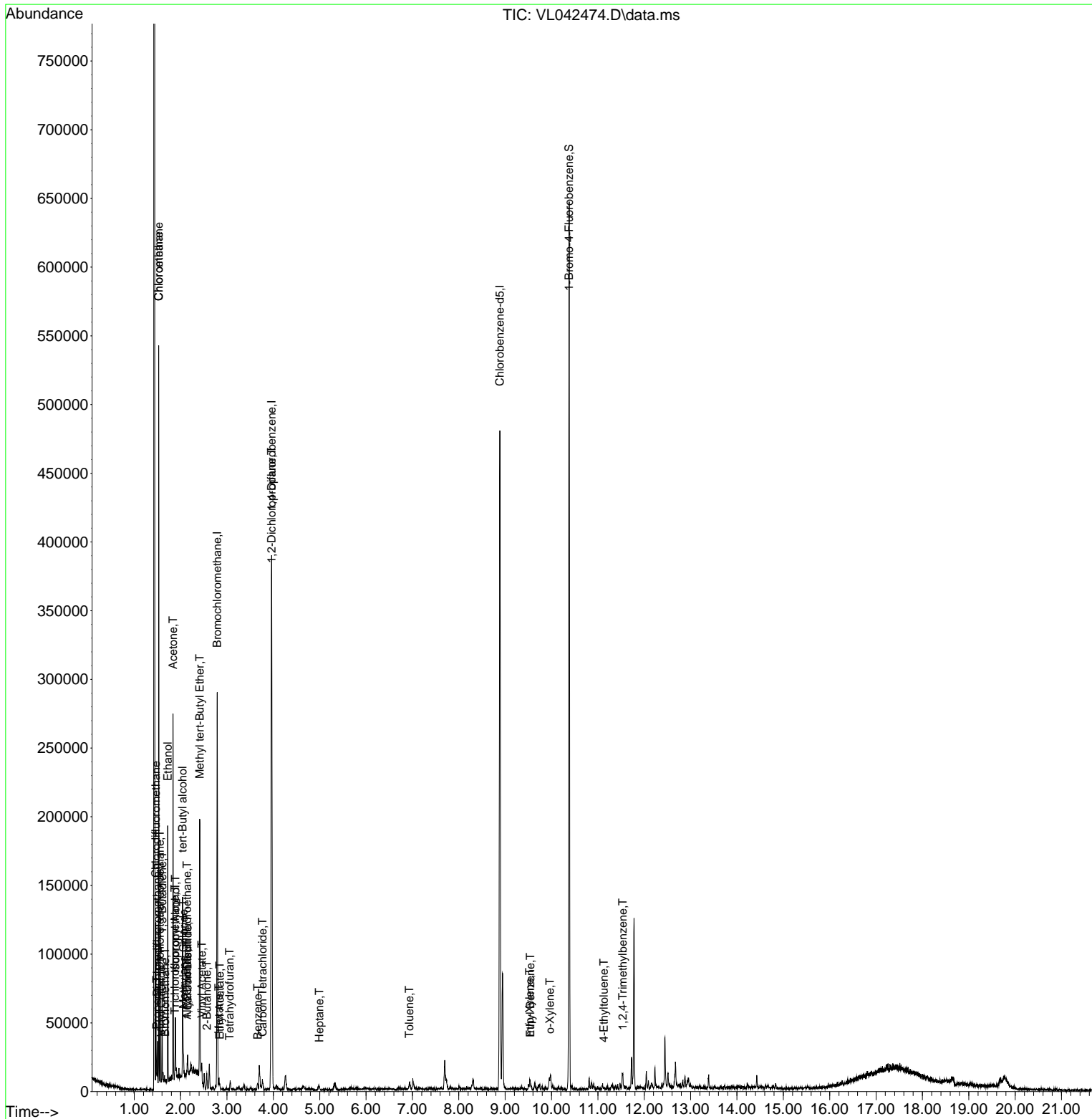
Internal Standards						
1) Bromochloromethane	2.790	49	71873	10.000	ppbv	0.00
33) 1,4-Difluorobenzene	3.962	114	203294	10.000	ppbv	0.00
55) Chlorobenzene-d5	8.885	117	175917	10.000	ppbv	0.00
System Monitoring Compounds						
68) 1-Bromo-4-Fluorobenzene	10.380	95	158342	9.708	ppbv	0.00
Spiked Amount	10.000	Range	65 - 135	Recovery	=	97.100%
Target Compounds						
						Qvalue
2) Dichlorodifluoromethane	1.499	85	6716	0.565	ppbv	97
3) Chlorodifluoromethane	1.467	51	32555	2.589	ppbv #	63
4) Chloromethane	1.528	50	2840	0.571	ppbv #	61
5) Vinyl Chloride	1.583	62	215	0.043	ppbv #	68
6) Bromomethane	1.664	94	82	0.035	ppbv #	6
7) Chloroethane	1.528	64	10918	5.908	ppbv	91
8) Dichlorotetrafluoroethane	1.554	85	369	0.038	ppbv #	66
9) Propene	1.486	41	995	0.242	ppbv #	68
10) Heptane	4.991	43	388	0.036	ppbv #	1
11) Trichlorofluoromethane	1.878	101	3131	0.285	ppbv #	73
12) 1,1,2-Trichlorotrifluo...	2.140	101	657	0.075	ppbv #	77
13) Ethanol	1.722	45	61821	74.066	ppbv	99
15) Acetone	1.836	43	111511	8.499	ppbv	100
16) 1,3-Butadiene	1.602	39	8789	1.519	ppbv #	23
17) tert-Butyl alcohol	2.043	59	48508	4.196	ppbv	97
19) Isopropyl Alcohol	1.887	45	18121	2.495	ppbv #	1
20) Methylene Chloride	2.062	84	2382	0.604	ppbv #	86
21) Allyl Chloride	2.140	41	276	0.033	ppbv #	21
23) Vinyl Acetate	2.457	43	6146	0.491	ppbv #	64
25) Ethyl Acetate	2.845	43	714	0.034	ppbv #	65
26) Hexane	2.826	57	1409	0.154	ppbv #	62
27) Carbon Disulfide	2.153	76	7142	0.669	ppbv #	1
28) Methyl tert-Butyl Ether	2.415	73	657	0.119	ppbv #	1
34) 2-Butanone	2.567	43	7445	0.506	ppbv	97
35) Carbon Tetrachloride	3.768	117	667	0.036	ppbv #	42
36) Benzene	3.664	78	684	0.036	ppbv	94
39) 1,2-Dichloropropane	3.965	63	57339	7.984	ppbv #	21
41) Tetrahydrofuran	3.059	42	295	0.042	ppbv #	34
53) Toluene	6.936	91	1391	0.069	ppbv #	1
58) Ethyl Benzene	9.542	91	1725	0.059	ppbv	97
59) m/p-Xylene	9.526	91	1473	0.060	ppbv #	1
60) o-Xylene	9.966	91	1706	0.069	ppbv	85
72) 4-Ethyltoluene	11.128	105	923	0.032	ppbv #	61
74) 1,2,4-Trimethylbenzene	11.536	105	2102	0.068	ppbv #	68

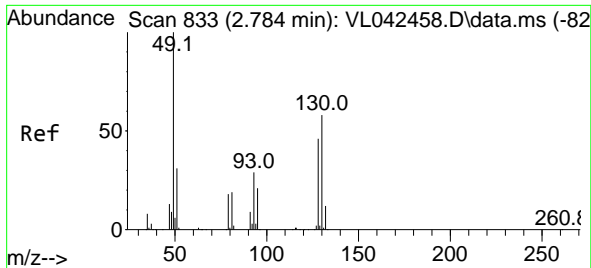
(#) = qualifier out of range (m) = manual integration (+) = signals summed

Data Path : Z:\voasrv\HPCHEM1\MSVOA_L\Data\VL050525\
 Data File : VL042474.D
 Acq On : 05 May 2025 13:11
 Operator : SY/MD
 Sample : Q1927-03
 Misc : 400mL/MSVOA_L
 ALS Vial : 1 Sample Multiplier: 1

Instrument :
 MSVOA_L
 ClientSampleId :
 EBR-P04-SC-SS01-20250428

Quant Time: May 06 01:41:08 2025
 Quant Method : Z:\voasrv\HPCHEM1\MSVOA_L\methods\VL050125AIR.M
 Quant Title : AIR ANALYSIS BY METHOD TO-15 Instrument: MSVOA_L Fri Aug 26 06:05:16 2022
 QLast Update : Fri May 02 03:16:31 2025
 Response via : Initial Calibration

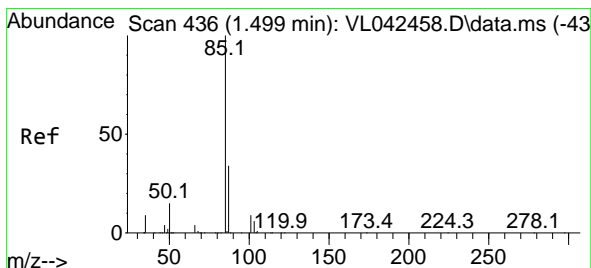
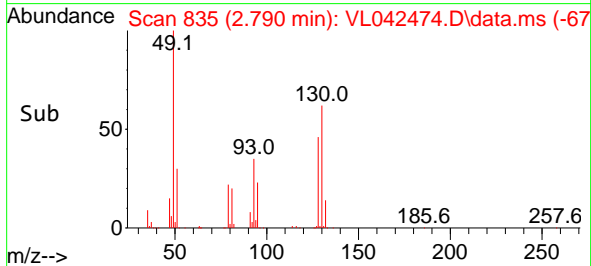
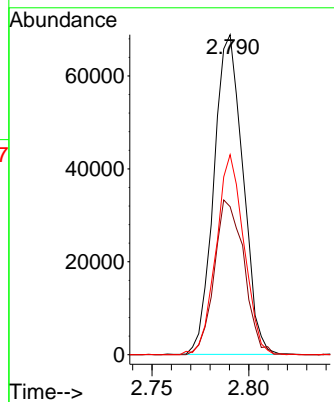
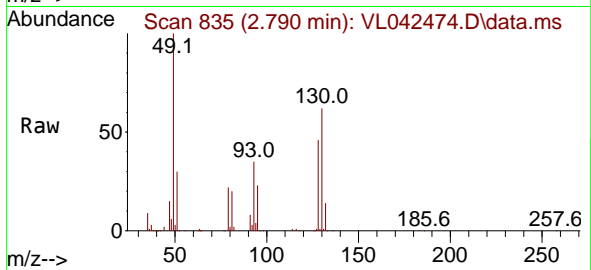




#1
 Bromochloromethane
 Concen: 10.000 ppbv
 RT: 2.790 min Scan# 81
 Delta R.T. 0.006 min
 Lab File: VL042474.D
 Acq: 05 May 2025 13:11

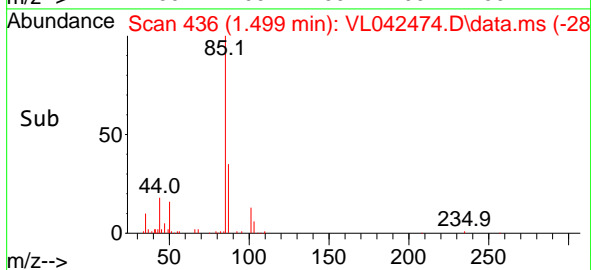
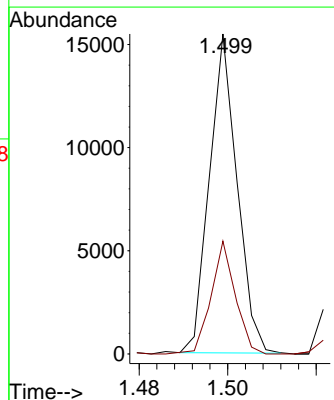
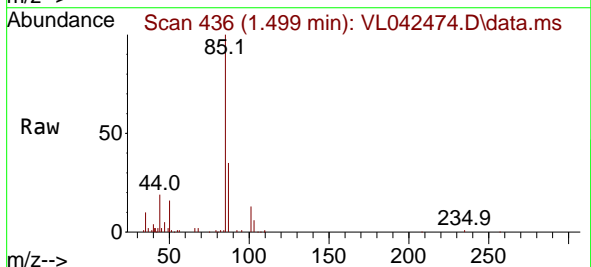
Instrument : MSVOA_L
 ClientSampleId : EBR-P04-SC-SS01-20250428

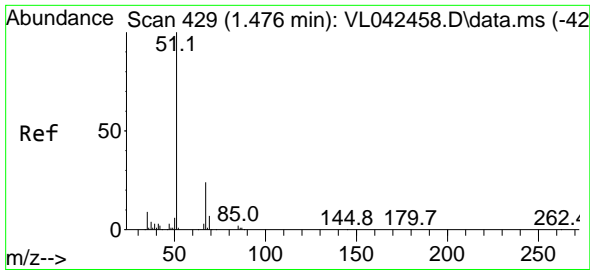
Tgt Ion: 49 Resp: 71873
 Ion Ratio Lower Upper
 49 100
 128 49.4 23.3 69.9
 130 59.8 29.5 88.6



#2
 Dichlorodifluoromethane
 Concen: 0.565 ppbv
 RT: 1.499 min Scan# 436
 Delta R.T. 0.000 min
 Lab File: VL042474.D
 Acq: 05 May 2025 13:11

Tgt Ion: 85 Resp: 6716
 Ion Ratio Lower Upper
 85 100
 87 35.4 26.9 40.3

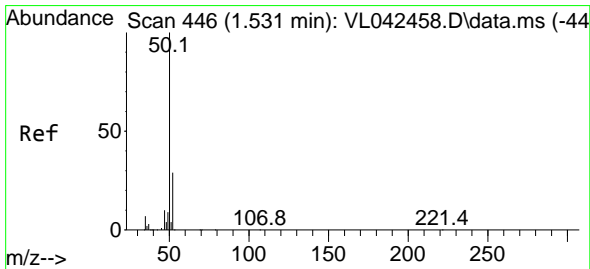
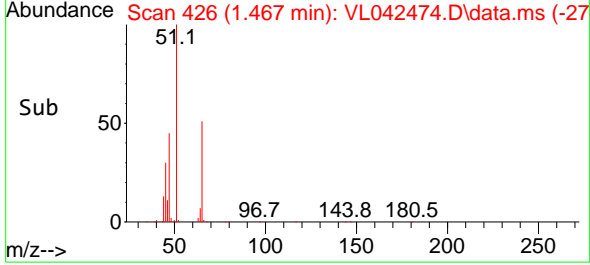
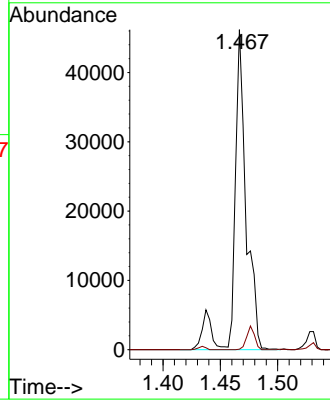
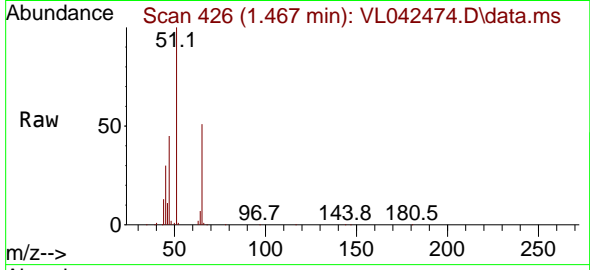




#3
 Chlorodifluoromethane
 Concen: 2.589 ppbv
 RT: 1.467 min Scan# 41
 Delta R.T. -0.010 min
 Lab File: VL042474.D
 Acq: 05 May 2025 13:11

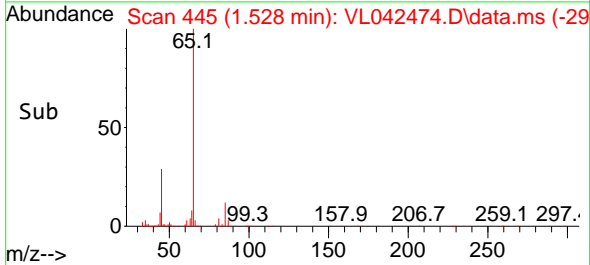
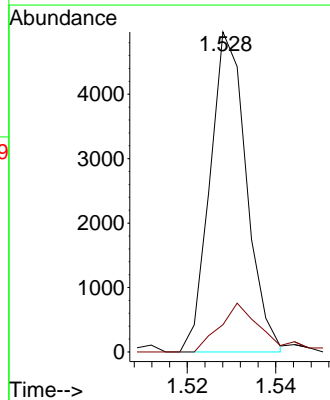
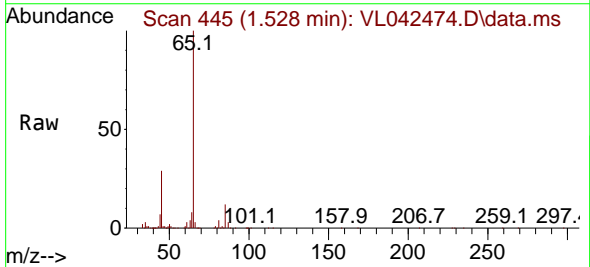
Instrument : MSVOA_L
 ClientSampleId : EBR-P04-SC-SS01-20250428

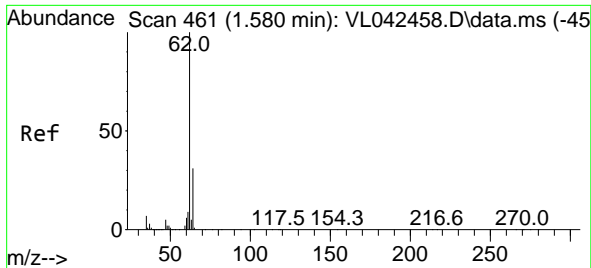
Tgt Ion: 51 Resp: 32555
 Ion Ratio Lower Upper
 51 100
 67 5.2 18.4 27.6#



#4
 Chloromethane
 Concen: 0.571 ppbv
 RT: 1.528 min Scan# 445
 Delta R.T. -0.003 min
 Lab File: VL042474.D
 Acq: 05 May 2025 13:11

Tgt Ion: 50 Resp: 2840
 Ion Ratio Lower Upper
 50 100
 52 8.5 23.5 35.3#

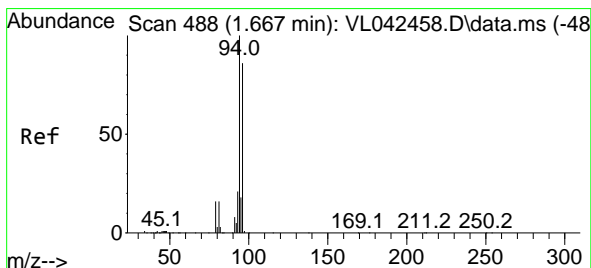
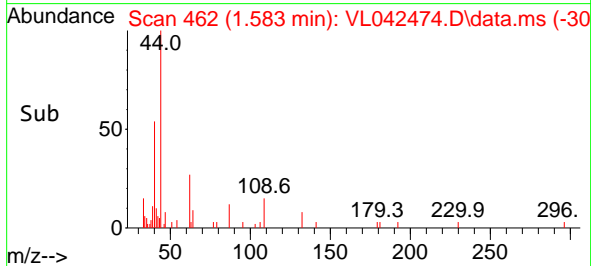
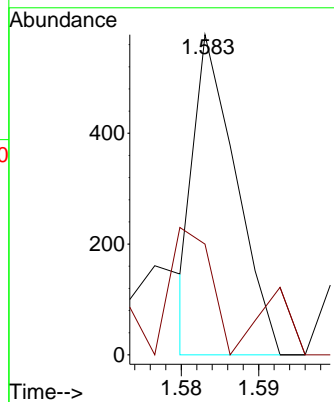
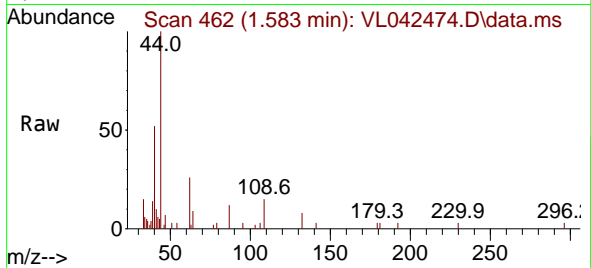




#5
 Vinyl Chloride
 Concen: 0.043 ppbv
 RT: 1.583 min Scan# 461
 Delta R.T. 0.003 min
 Lab File: VL042474.D
 Acq: 05 May 2025 13:11

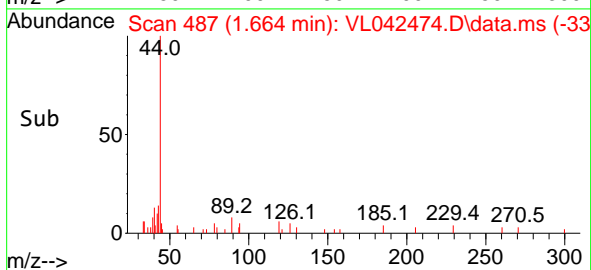
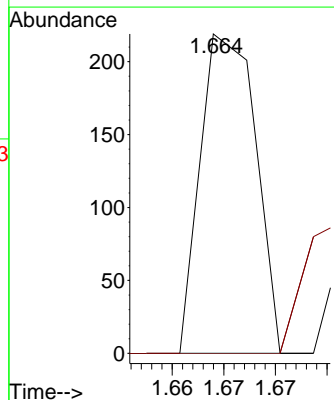
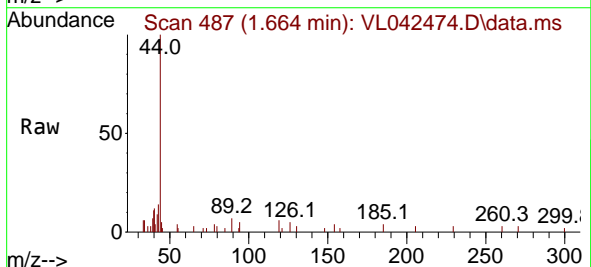
Instrument : MSVOA_L
 ClientSampleId : EBR-P04-SC-SS01-20250428

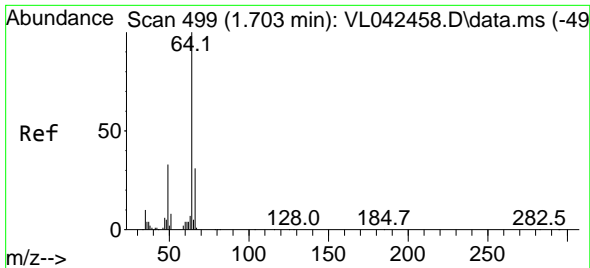
Tgt Ion: 62 Resp: 215
 Ion Ratio Lower Upper
 62 100
 64 13.5 24.9 37.3#



#6
 Bromomethane
 Concen: 0.035 ppbv
 RT: 1.664 min Scan# 487
 Delta R.T. -0.003 min
 Lab File: VL042474.D
 Acq: 05 May 2025 13:11

Tgt Ion: 94 Resp: 82
 Ion Ratio Lower Upper
 94 100
 96 0.0 68.8 103.2#

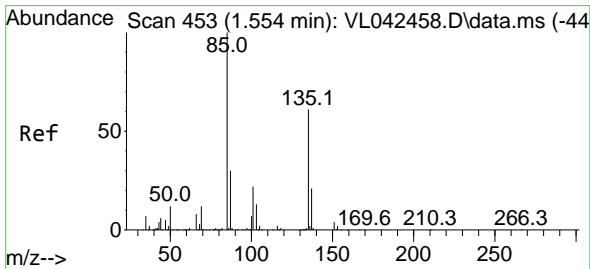
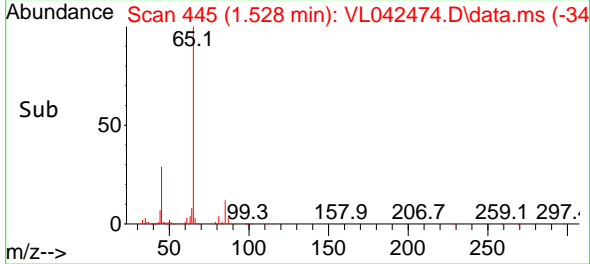
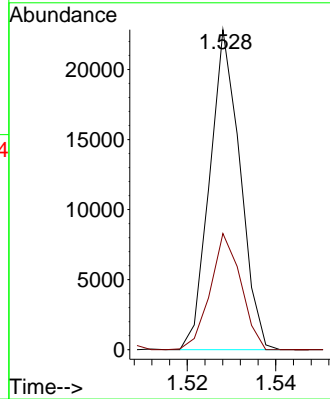
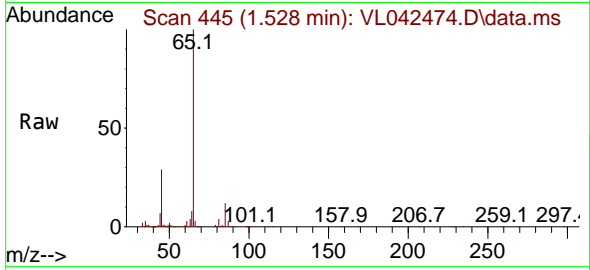




#7
 Chloroethane
 Concen: 5.908 ppbv
 RT: 1.528 min Scan# 445
 Delta R.T. -0.175 min
 Lab File: VL042474.D
 Acq: 05 May 2025 13:11

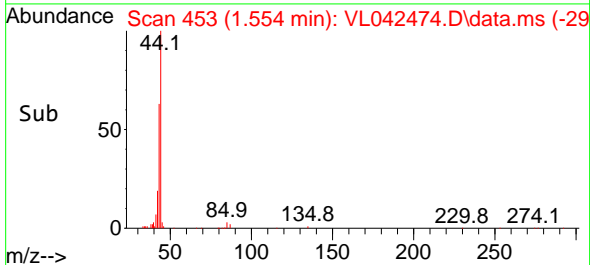
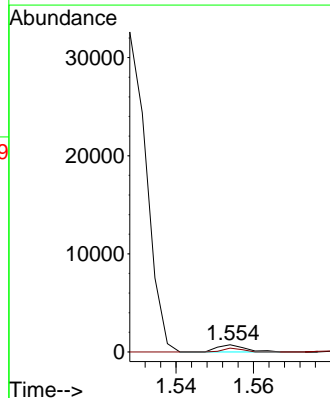
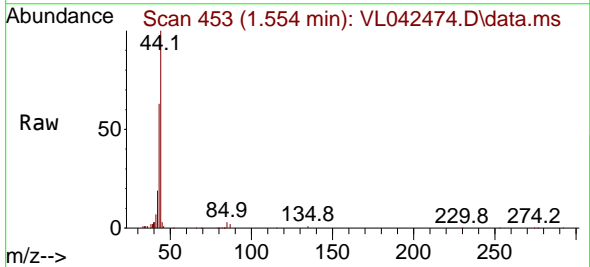
Instrument : MSVOA_L
 ClientSampleId : EBR-P04-SC-SS01-20250428

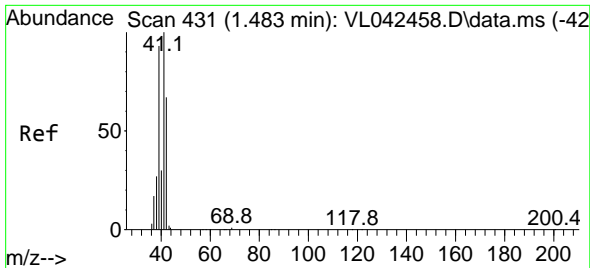
Tgt Ion: 64 Resp: 10918
 Ion Ratio Lower Upper
 64 100
 66 36.3 25.0 37.4



#8
 Dichlorotetrafluoroethane
 Concen: 0.038 ppbv
 RT: 1.554 min Scan# 453
 Delta R.T. 0.000 min
 Lab File: VL042474.D
 Acq: 05 May 2025 13:11

Tgt Ion: 85 Resp: 369
 Ion Ratio Lower Upper
 85 100
 135 36.0 49.8 74.8#

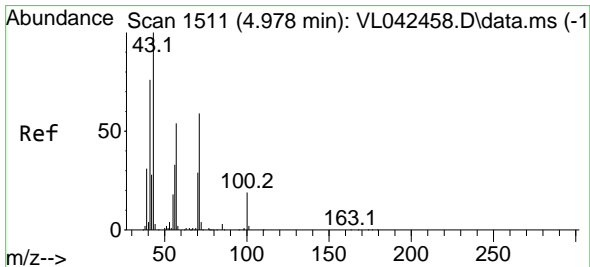
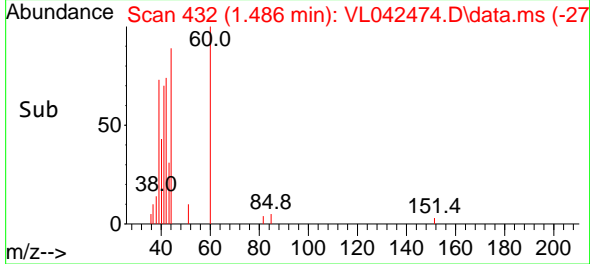
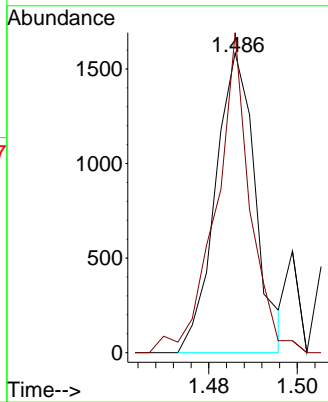
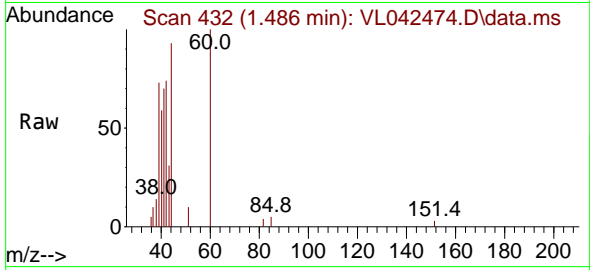




#9
 Propene
 Concen: 0.242 ppbv
 RT: 1.486 min Scan# 41
 Delta R.T. 0.003 min
 Lab File: VL042474.D
 Acq: 05 May 2025 13:11

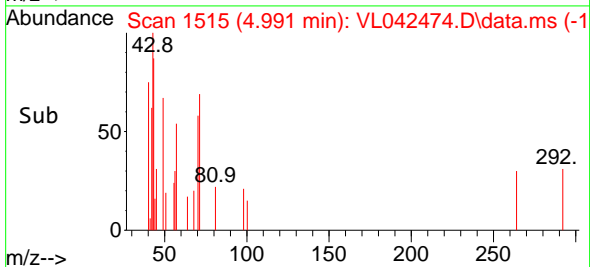
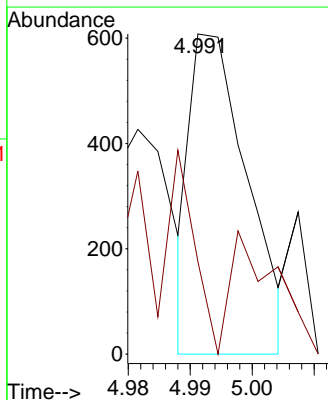
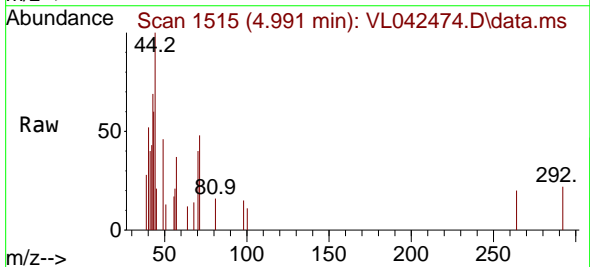
Instrument : MSVOA_L
 ClientSampleId : EBR-P04-SC-SS01-20250428

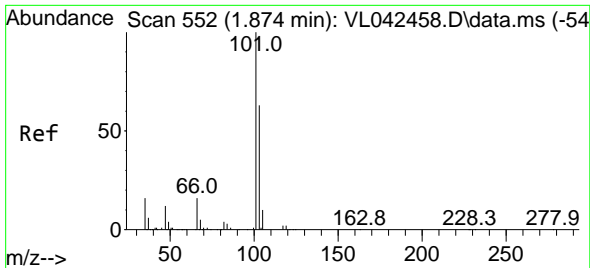
Tgt Ion: 41 Resp: 995
 Ion Ratio Lower Upper
 41 100
 42 94.0 54.3 81.5#



#10
 Heptane
 Concen: 0.036 ppbv
 RT: 4.991 min Scan# 1515
 Delta R.T. 0.013 min
 Lab File: VL042474.D
 Acq: 05 May 2025 13:11

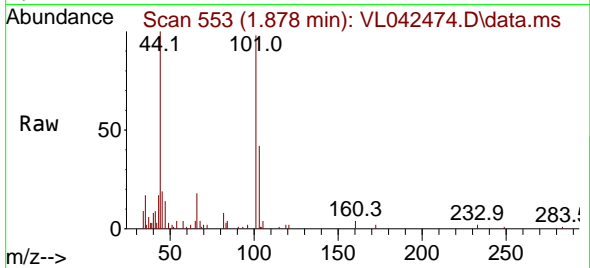
Tgt Ion: 43 Resp: 388
 Ion Ratio Lower Upper
 43 100
 57 133.5 41.8 62.8#



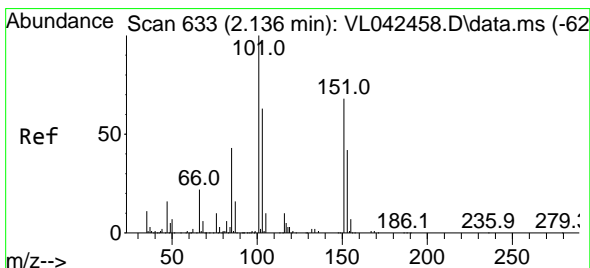
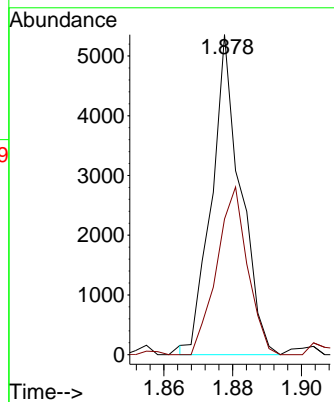
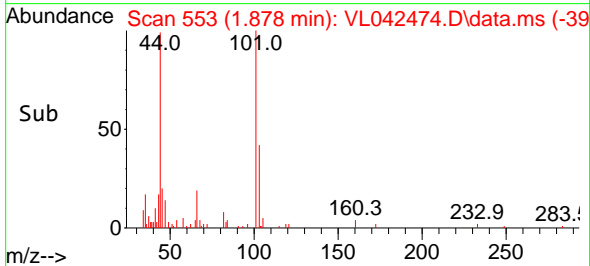


#11
 Trichlorofluoromethane
 Concen: 0.285 ppbv
 RT: 1.878 min Scan# 511
 Delta R.T. 0.003 min
 Lab File: VL042474.D
 Acq: 05 May 2025 13:11

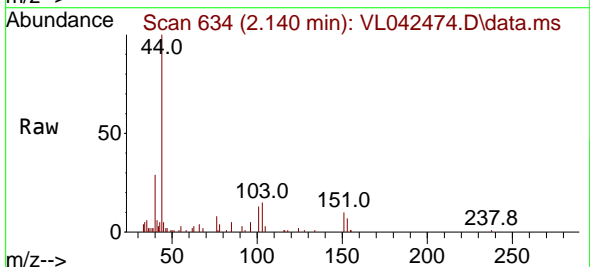
Instrument : MSVOA_L
 ClientSampleId : EBR-P04-SC-SS01-20250428



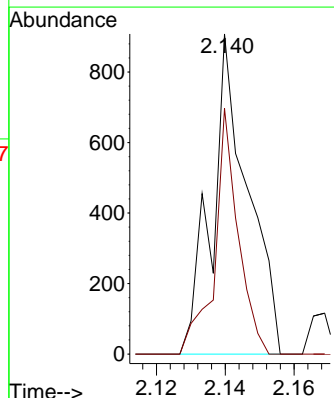
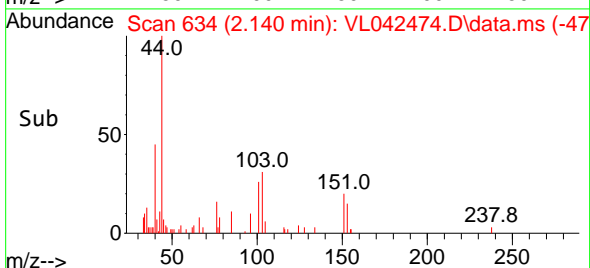
Tgt Ion:101 Resp: 3131
 Ion Ratio Lower Upper
 101 100
 103 42.4 50.6 76.0#

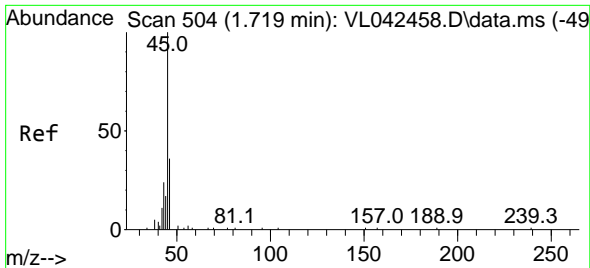


#12
 1,1,2-Trichlorotrifluoroethane
 Concen: 0.075 ppbv
 RT: 2.140 min Scan# 634
 Delta R.T. 0.003 min
 Lab File: VL042474.D
 Acq: 05 May 2025 13:11



Tgt Ion:101 Resp: 657
 Ion Ratio Lower Upper
 101 100
 151 50.1 54.6 82.0#

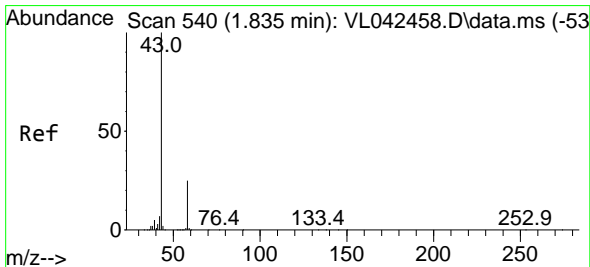
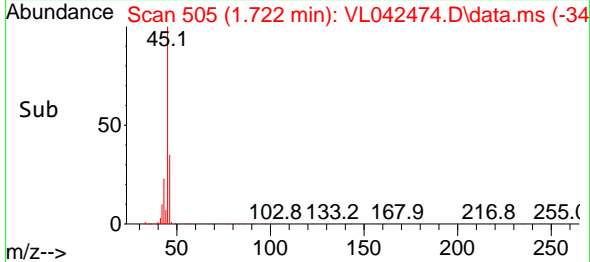
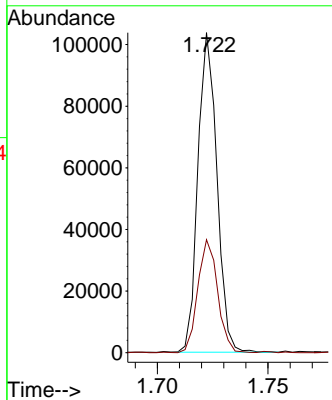
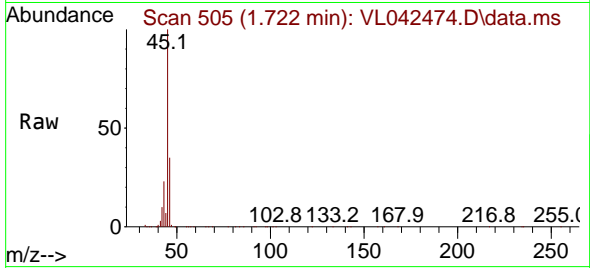




#13
 Ethanol
 Concen: 74.066 ppbv
 RT: 1.722 min Scan# 50
 Delta R.T. 0.003 min
 Lab File: VL042474.D
 Acq: 05 May 2025 13:11

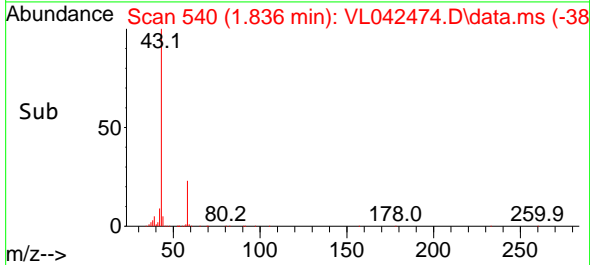
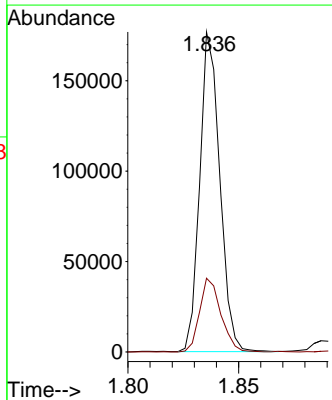
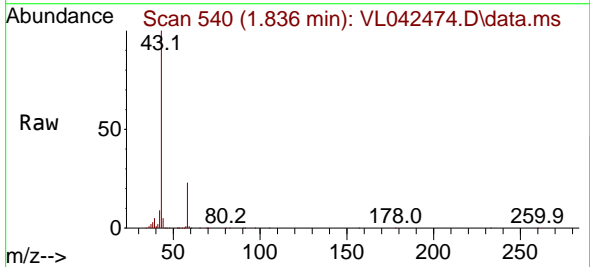
Instrument : MSVOA_L
 ClientSampleId : EBR-P04-SC-SS01-20250428

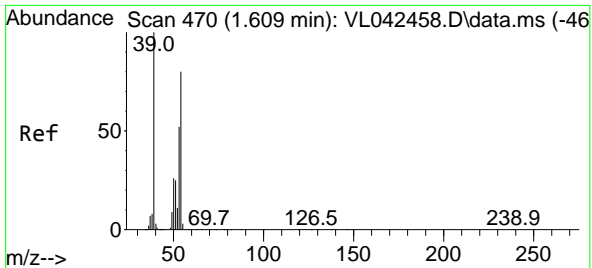
Tgt Ion: 45 Resp: 61821
 Ion Ratio Lower Upper
 45 100
 46 37.3 15.3 61.1



#15
 Acetone
 Concen: 8.499 ppbv
 RT: 1.836 min Scan# 540
 Delta R.T. 0.000 min
 Lab File: VL042474.D
 Acq: 05 May 2025 13:11

Tgt Ion: 43 Resp: 111511
 Ion Ratio Lower Upper
 43 100
 58 24.6 19.8 29.8

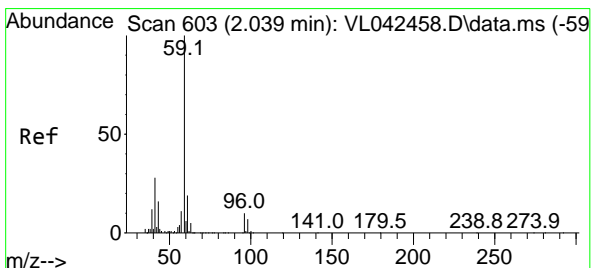
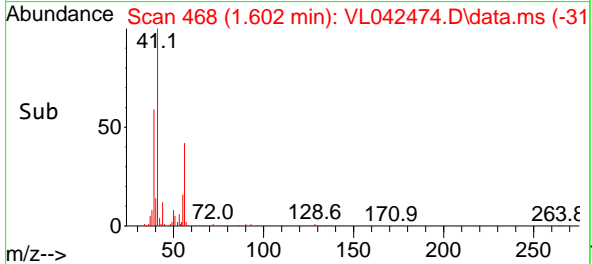
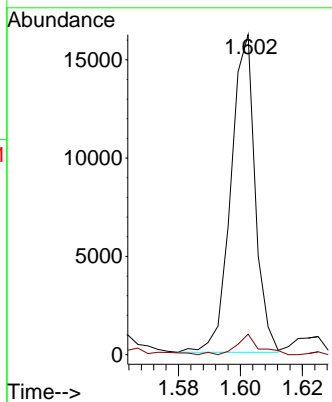
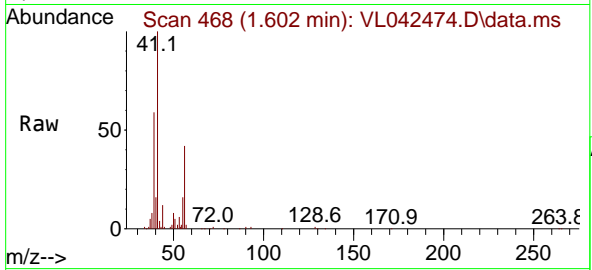




#16
 1,3-Butadiene
 Concen: 1.519 ppbv
 RT: 1.602 min Scan# 410
 Delta R.T. -0.006 min
 Lab File: VL042474.D
 Acq: 05 May 2025 13:11

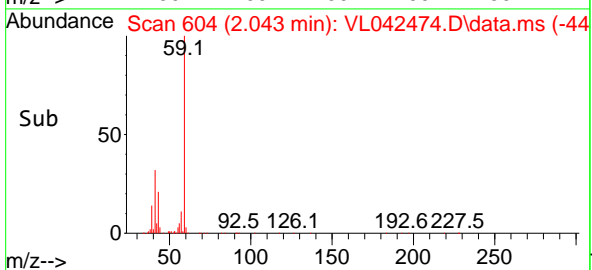
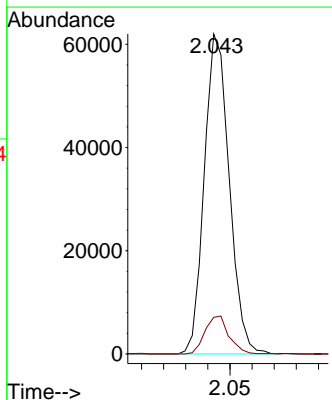
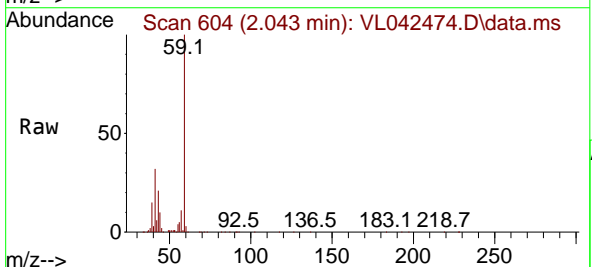
Instrument : MSVOA_L
 ClientSampleId : EBR-P04-SC-SS01-20250428

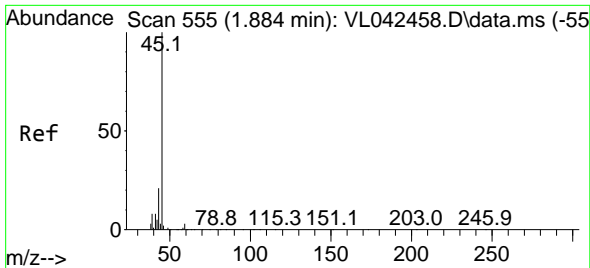
Tgt Ion: 39 Resp: 8789
 Ion Ratio Lower Upper
 39 100
 54 6.3 55.2 82.8#



#17
 tert-Butyl alcohol
 Concen: 4.196 ppbv
 RT: 2.043 min Scan# 604
 Delta R.T. 0.003 min
 Lab File: VL042474.D
 Acq: 05 May 2025 13:11

Tgt Ion: 59 Resp: 48508
 Ion Ratio Lower Upper
 59 100
 57 11.6 8.3 12.5

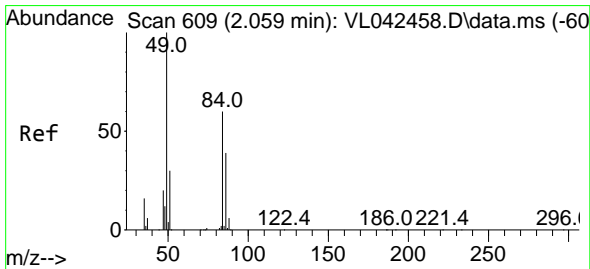
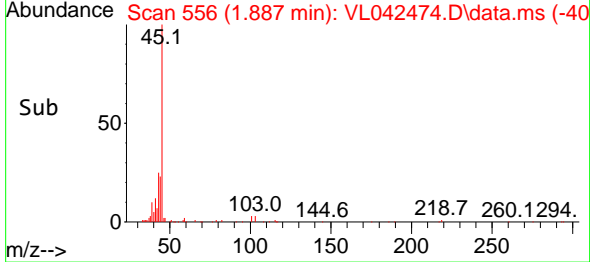
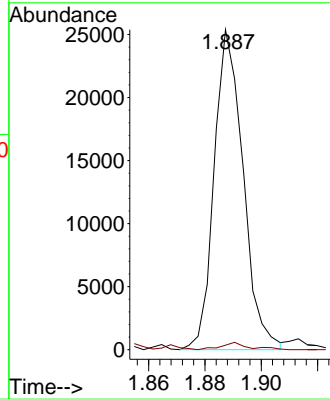
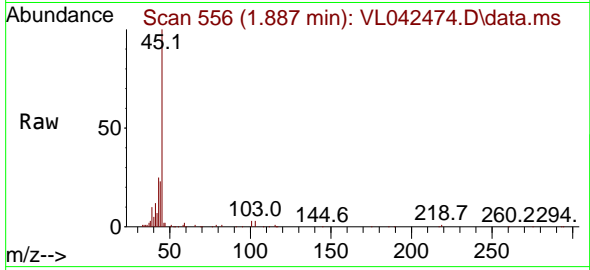




#19
 Isopropyl Alcohol
 Concen: 2.495 ppbv
 RT: 1.887 min Scan# 51
 Delta R.T. 0.003 min
 Lab File: VL042474.D
 Acq: 05 May 2025 13:11

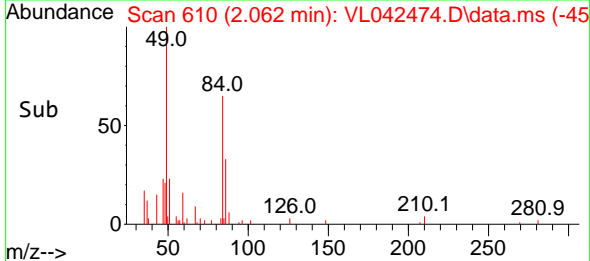
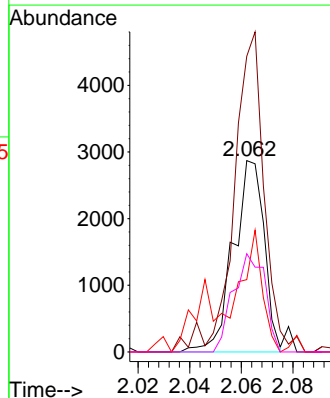
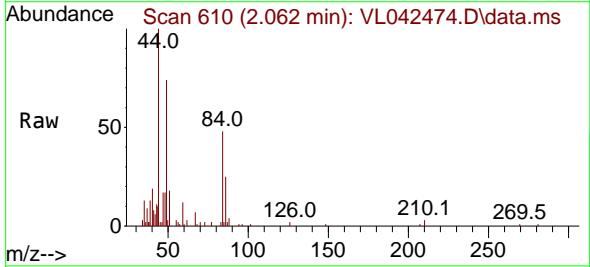
Instrument : MSVOA_L
 ClientSampleId : EBR-P04-SC-SS01-20250428

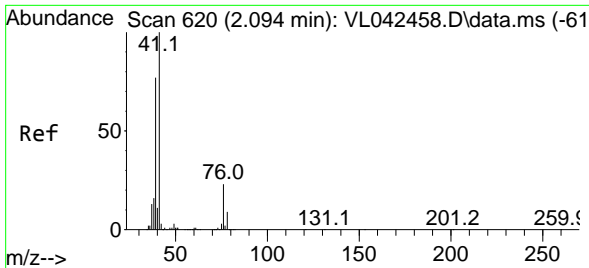
Tgt Ion: 45 Resp: 18121
 Ion Ratio Lower Upper
 45 100
 58 151.4 1.6 2.4#



#20
 Methylene Chloride
 Concen: 0.604 ppbv
 RT: 2.062 min Scan# 610
 Delta R.T. 0.003 min
 Lab File: VL042474.D
 Acq: 05 May 2025 13:11

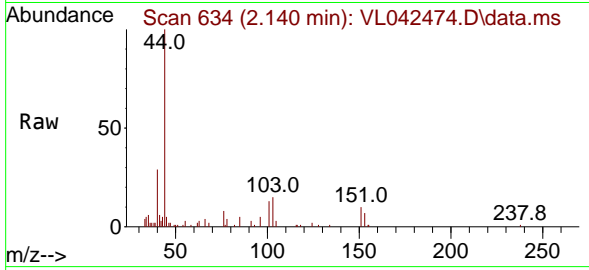
Tgt Ion: 84 Resp: 2382
 Ion Ratio Lower Upper
 84 100
 49 152.9 133.9 200.9
 51 37.7 41.0 61.6#
 86 51.3 51.9 77.9#





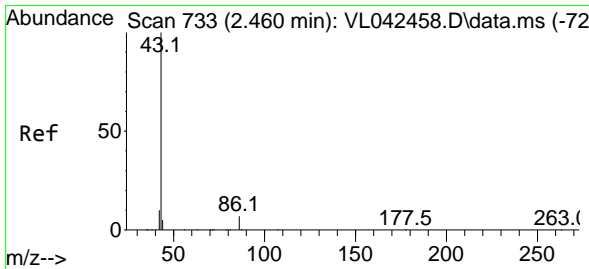
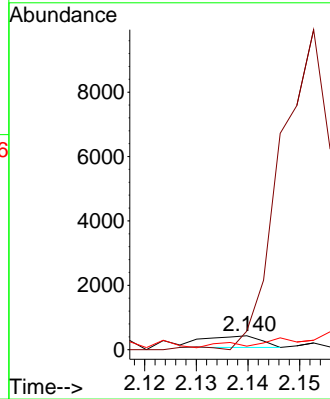
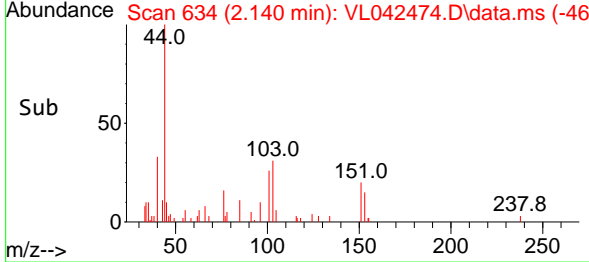
#21
 Allyl Chloride
 Concen: 0.033 ppbv
 RT: 2.140 min Scan# 61
 Delta R.T. 0.046 min
 Lab File: VL042474.D
 Acq: 05 May 2025 13:11

Instrument : MSVOA_L
 ClientSampleId : EBR-P04-SC-SS01-20250428

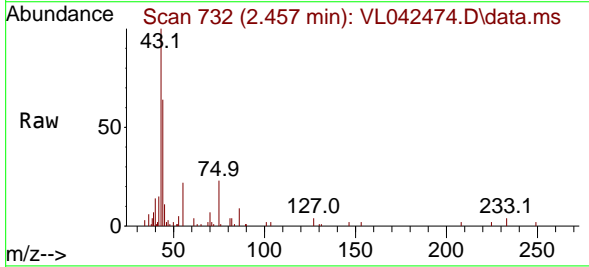


Tgt Ion: 41 Resp: 276

Ion	Ratio	Lower	Upper
41	100		
76	0.0	19.6	29.4#
39	0.0	61.0	91.4#

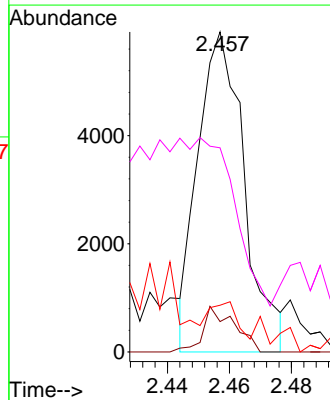
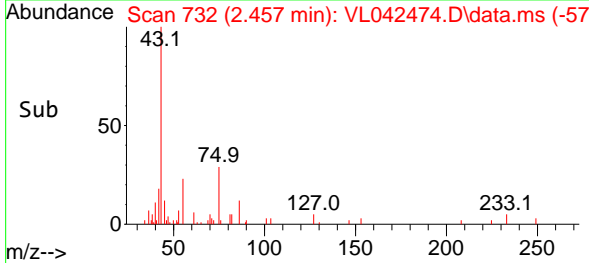


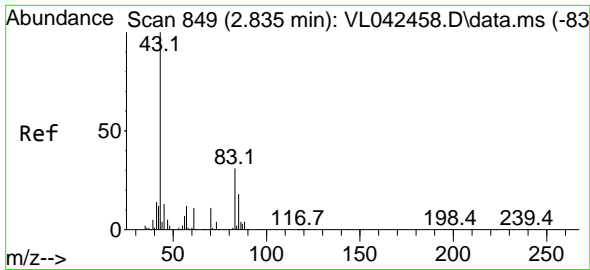
#23
 Vinyl Acetate
 Concen: 0.491 ppbv
 RT: 2.457 min Scan# 732
 Delta R.T. -0.003 min
 Lab File: VL042474.D
 Acq: 05 May 2025 13:11



Tgt Ion: 43 Resp: 6146

Ion	Ratio	Lower	Upper
43	100		
86	10.8	5.5	8.3#
42	10.0	8.3	12.5
44	49.0	4.6	7.0#



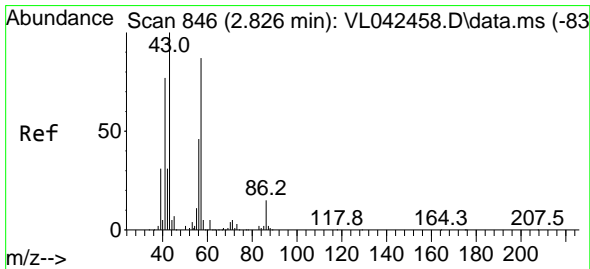
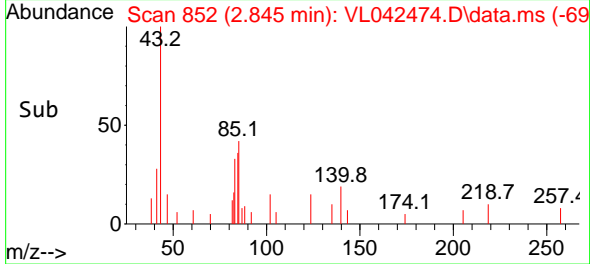
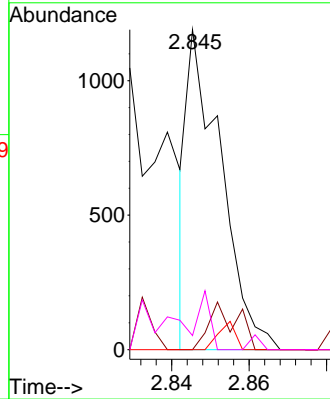
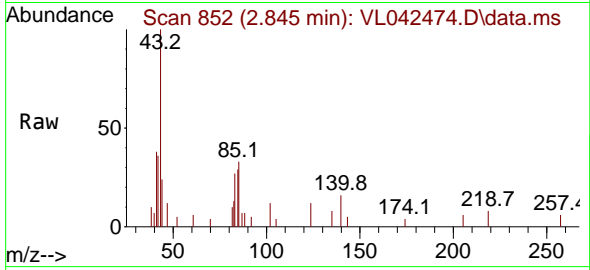


#25
 Ethyl Acetate
 Concen: 0.034 ppbv
 RT: 2.845 min Scan# 811
 Delta R.T. 0.010 min
 Lab File: VL042474.D
 Acq: 05 May 2025 13:11

Instrument : MSVOA_L
 ClientSampleId : EBR-P04-SC-SS01-20250428

Tgt Ion: 43 Resp: 714

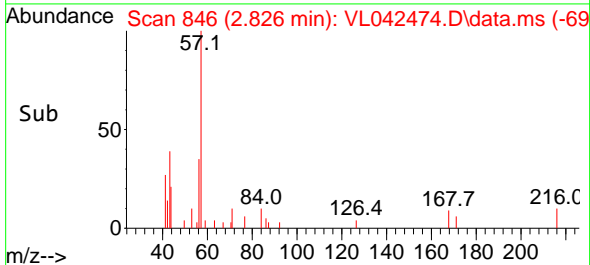
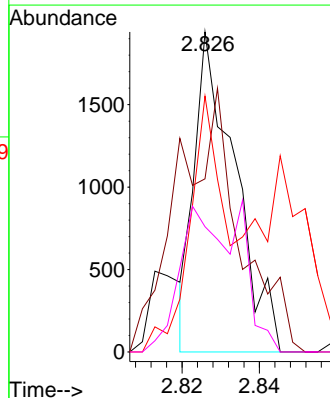
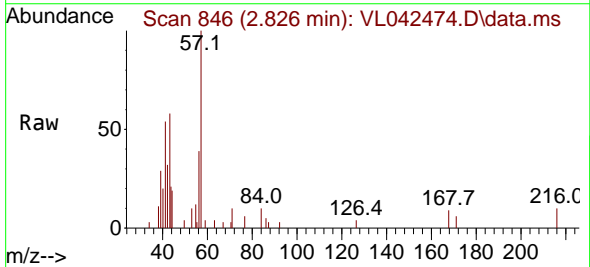
Ion	Ratio	Lower	Upper
43	100		
45	0.0	7.8	11.6#
61	0.0	7.2	10.8#
70	29.1	7.2	10.8#

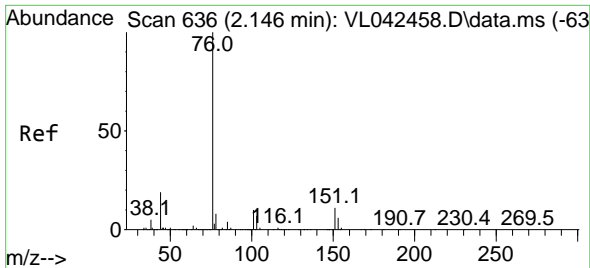


#26
 Hexane
 Concen: 0.154 ppbv
 RT: 2.826 min Scan# 846
 Delta R.T. 0.000 min
 Lab File: VL042474.D
 Acq: 05 May 2025 13:11

Tgt Ion: 57 Resp: 1409

Ion	Ratio	Lower	Upper
57	100		
41	125.3	77.8	116.8#
43	155.1	187.0	280.6#
56	67.1	43.9	65.9#

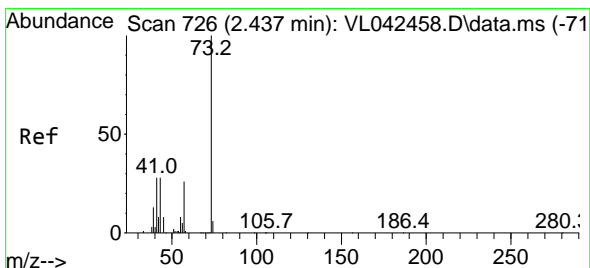
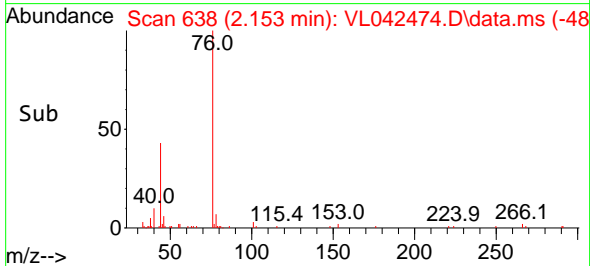
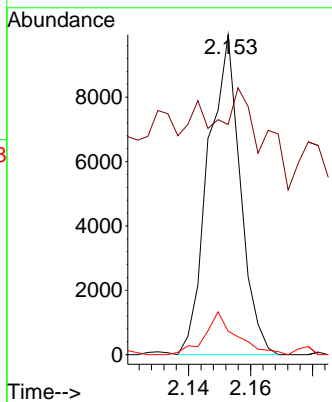
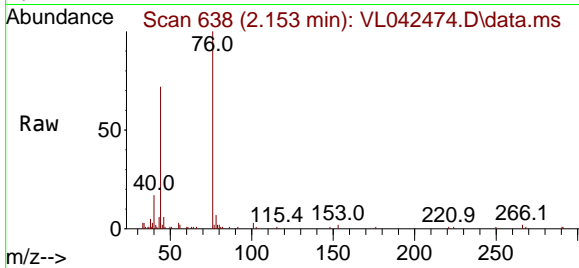




#27
 Carbon Disulfide
 Concen: 0.669 ppbv
 RT: 2.153 min Scan# 611
 Delta R.T. 0.007 min
 Lab File: VL042474.D
 Acq: 05 May 2025 13:11

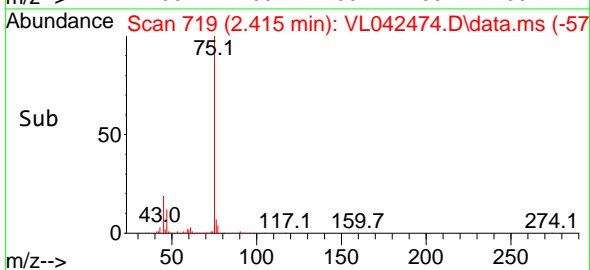
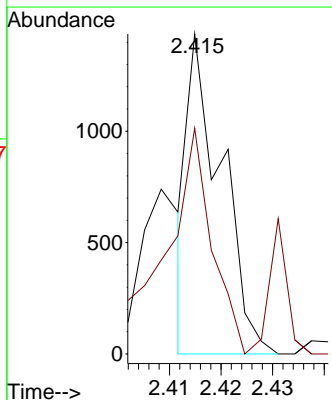
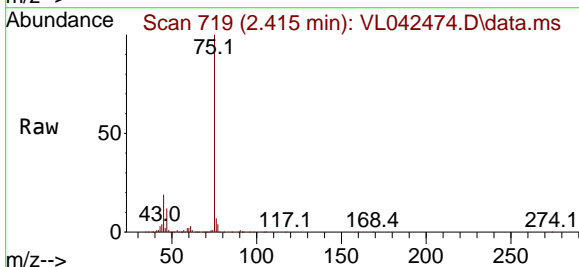
Instrument : MSVOA_L
 ClientSampleId : EBR-P04-SC-SS01-20250428

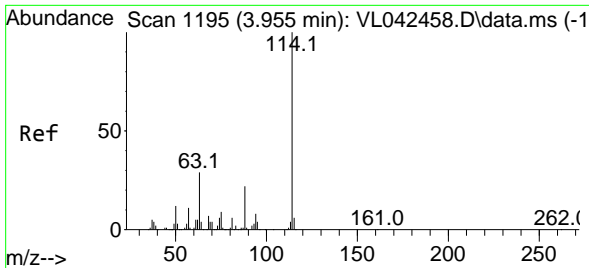
Tgt Ion: 76 Resp: 7142
 Ion Ratio Lower Upper
 76 100
 44 296.2 21.0 31.6#
 78 14.2 8.6 13.0#



#28
 Methyl tert-Butyl Ether
 Concen: 0.119 ppbv
 RT: 2.415 min Scan# 719
 Delta R.T. -0.022 min
 Lab File: VL042474.D
 Acq: 05 May 2025 13:11

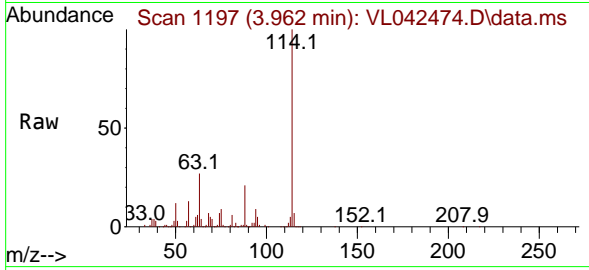
Tgt Ion: 73 Resp: 657
 Ion Ratio Lower Upper
 73 100
 57 119.8 19.9 29.9#





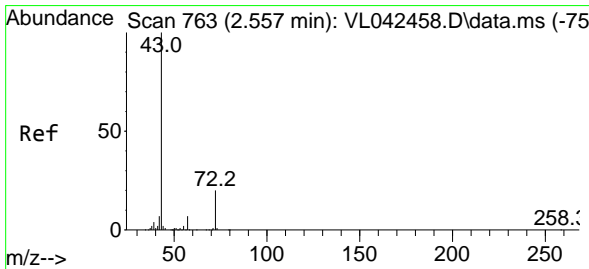
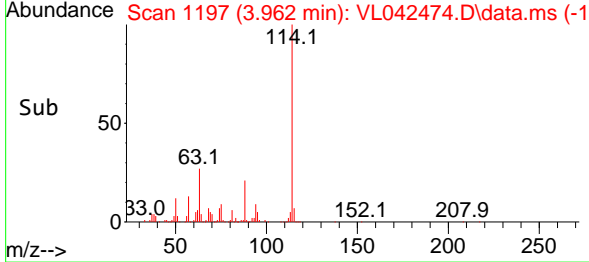
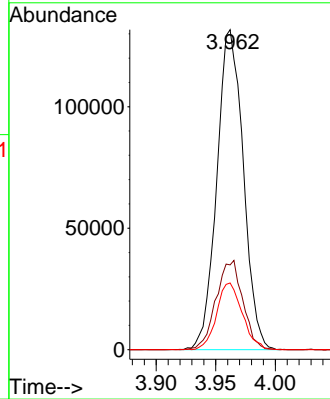
#33
 1,4-Difluorobenzene
 Concen: 10.000 ppbv
 RT: 3.962 min Scan# 1197
 Delta R.T. 0.007 min
 Lab File: VL042474.D
 Acq: 05 May 2025 13:11

Instrument : MSVOA_L
 ClientSampleId : EBR-P04-SC-SS01-20250428

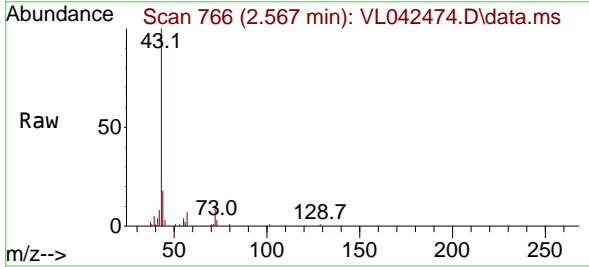


Tgt Ion: 114 Resp: 203294

Ion	Ratio	Lower	Upper
114	100		
63	28.2	23.1	34.7
88	20.3	16.1	24.1

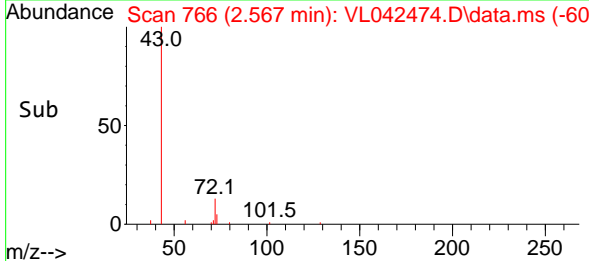
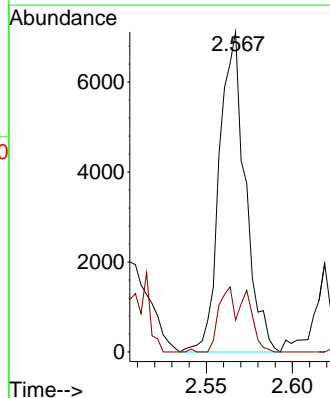


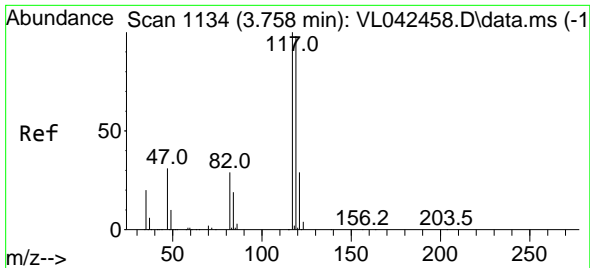
#34
 2-Butanone
 Concen: 0.506 ppbv
 RT: 2.567 min Scan# 766
 Delta R.T. 0.010 min
 Lab File: VL042474.D
 Acq: 05 May 2025 13:11



Tgt Ion: 43 Resp: 7445

Ion	Ratio	Lower	Upper
43	100		
72	22.1	16.7	25.1



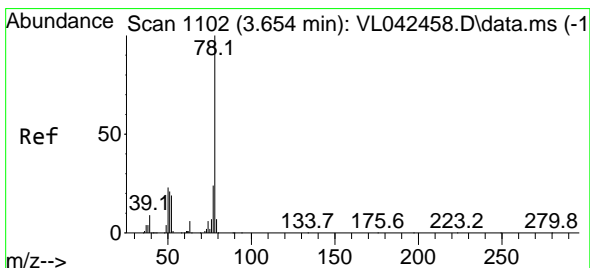
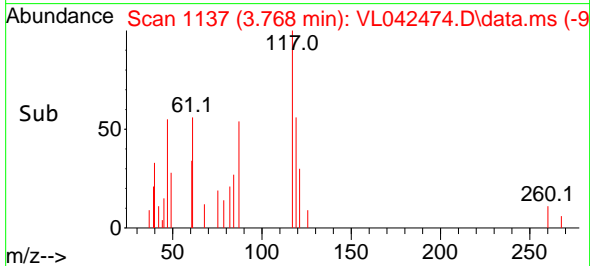
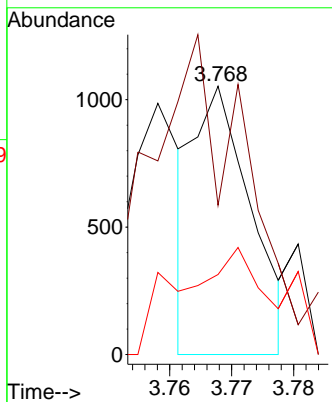
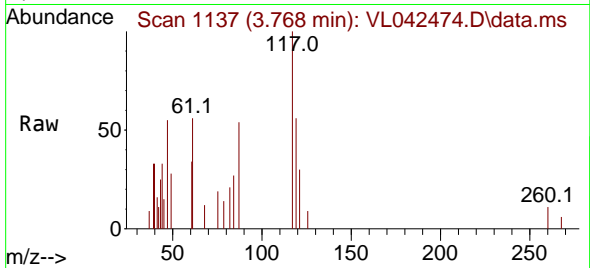


#35
 Carbon Tetrachloride
 Concen: 0.036 ppbv
 RT: 3.768 min Scan# 1117
 Delta R.T. 0.010 min
 Lab File: VL042474.D
 Acq: 05 May 2025 13:11

Instrument : MSVOA_L
 ClientSampleId : EBR-P04-SC-SS01-20250428

Tgt Ion:117 Resp: 667

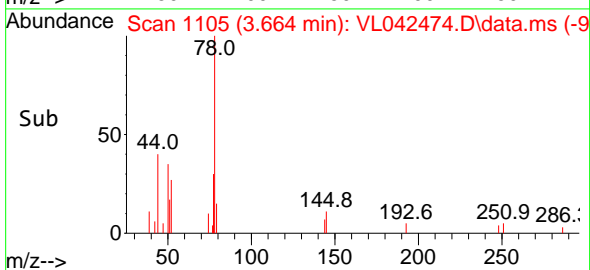
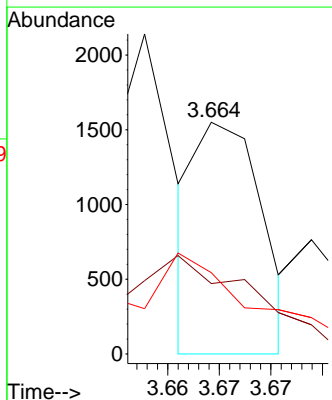
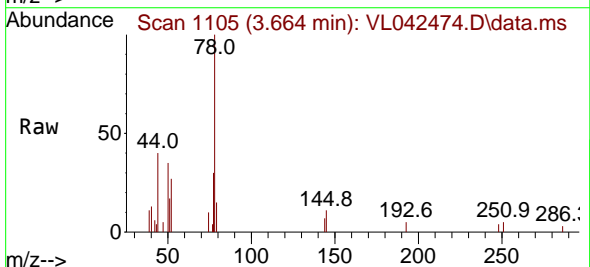
Ion	Ratio	Lower	Upper
117	100		
119	29.9	78.1	117.1#
121	17.6	23.0	34.6#

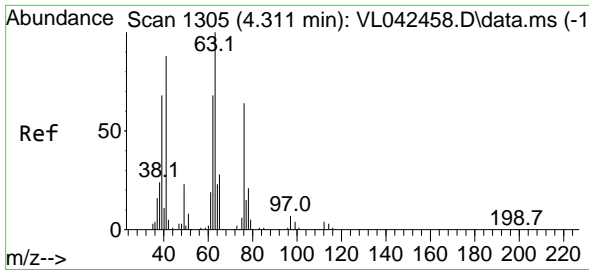


#36
 Benzene
 Concen: 0.036 ppbv
 RT: 3.664 min Scan# 1105
 Delta R.T. 0.010 min
 Lab File: VL042474.D
 Acq: 05 May 2025 13:11

Tgt Ion: 78 Resp: 684

Ion	Ratio	Lower	Upper
78	100		
77	18.9	18.9	28.3
50	24.2	18.4	27.6

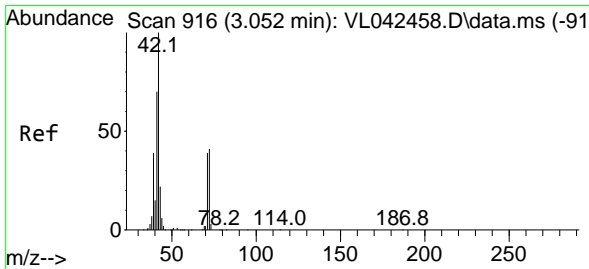
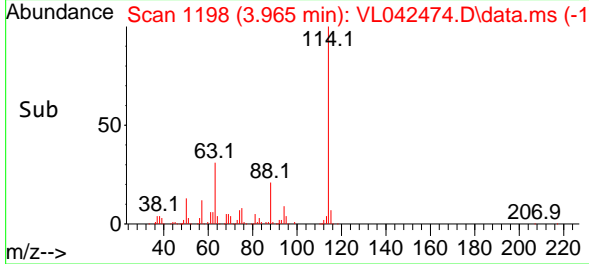
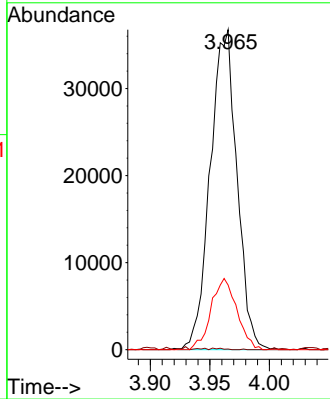
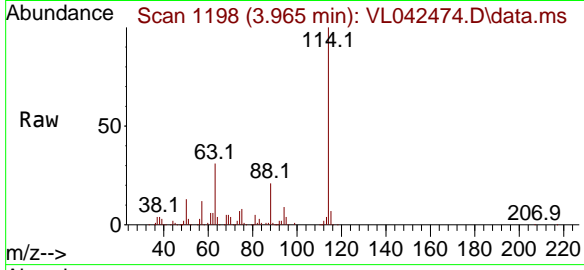




#39
 1,2-Dichloropropane
 Concen: 7.984 ppbv
 RT: 3.965 min Scan# 1198
 Delta R.T. -0.346 min
 Lab File: VL042474.D
 Acq: 05 May 2025 13:11

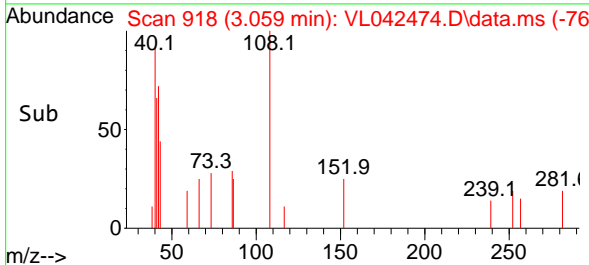
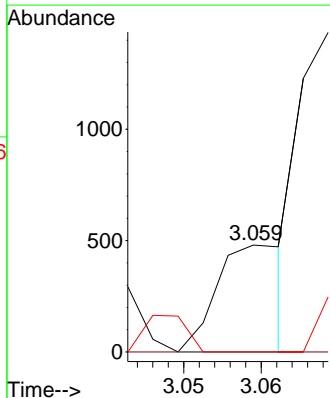
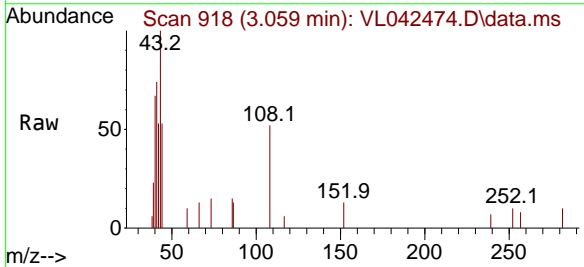
Instrument : MSVOA_L
 ClientSampleId : EBR-P04-SC-SS01-20250428

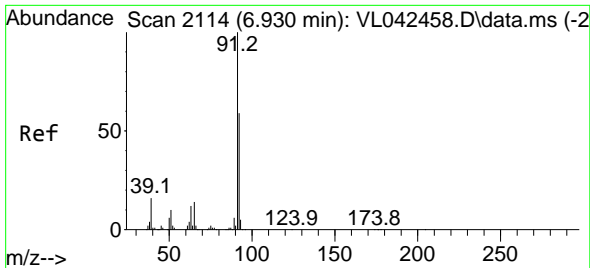
Tgt Ion: 63 Resp: 57339
 Ion Ratio Lower Upper
 63 100
 41 0.0 69.8 104.6#
 62 20.2 54.3 81.5#



#41
 Tetrahydrofuran
 Concen: 0.042 ppbv
 RT: 3.059 min Scan# 918
 Delta R.T. 0.007 min
 Lab File: VL042474.D
 Acq: 05 May 2025 13:11

Tgt Ion: 42 Resp: 295
 Ion Ratio Lower Upper
 42 100
 72 0.0 33.5 50.3#
 71 0.0 32.6 49.0#

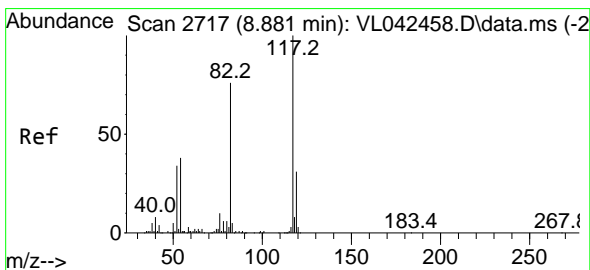
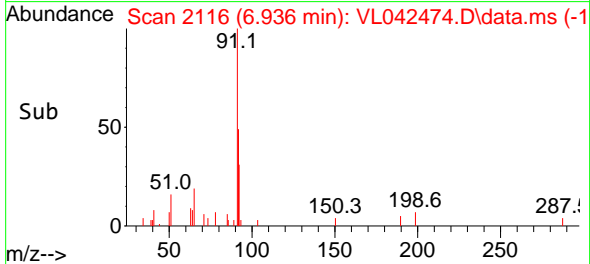
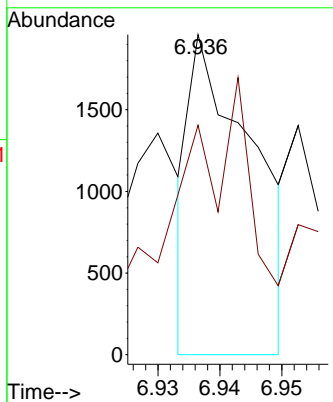
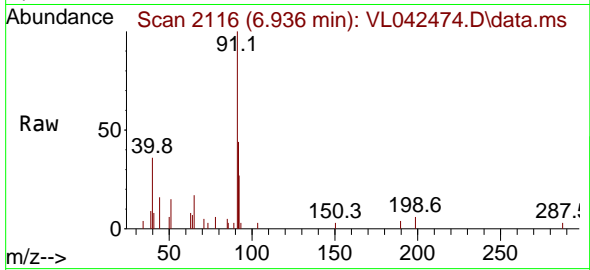




#53
 Toluene
 Concen: 0.069 ppbv
 RT: 6.936 min Scan# 2114
 Delta R.T. 0.007 min
 Lab File: VL042474.D
 Acq: 05 May 2025 13:11

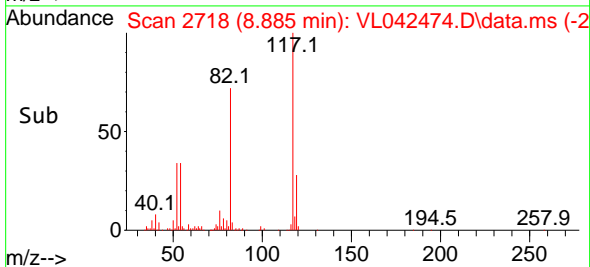
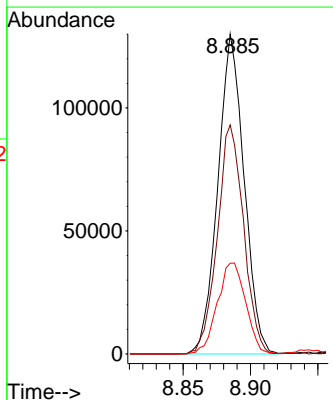
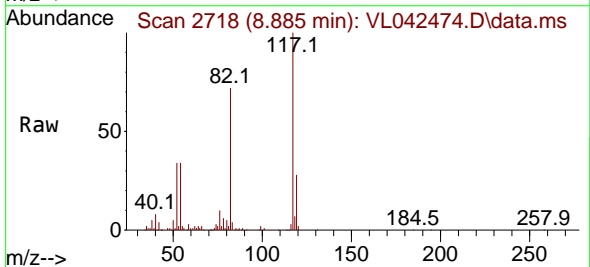
Instrument : MSVOA_L
 ClientSampleId : EBR-P04-SC-SS01-20250428

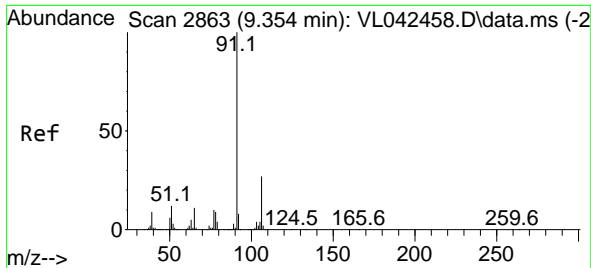
Tgt Ion: 91 Resp: 1391
 Ion Ratio Lower Upper
 91 100
 92 160.2 47.9 71.9#



#55
 Chlorobenzene-d5
 Concen: 10.000 ppbv
 RT: 8.885 min Scan# 2718
 Delta R.T. 0.003 min
 Lab File: VL042474.D
 Acq: 05 May 2025 13:11

Tgt Ion: 117 Resp: 175917
 Ion Ratio Lower Upper
 117 100
 82 72.0 63.5 95.3
 119 30.7 25.8 38.8

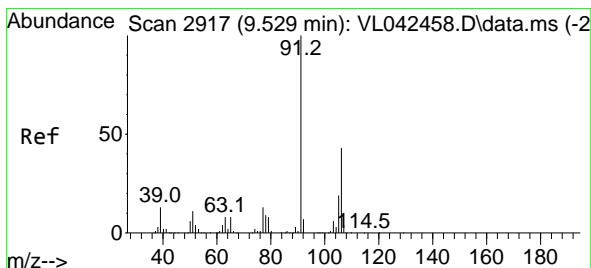
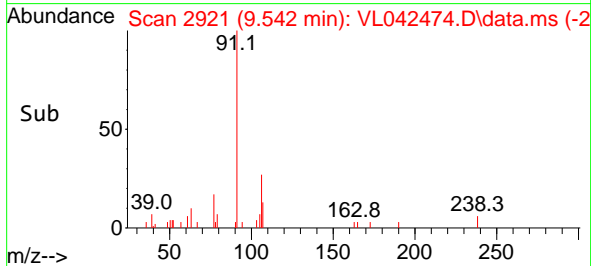
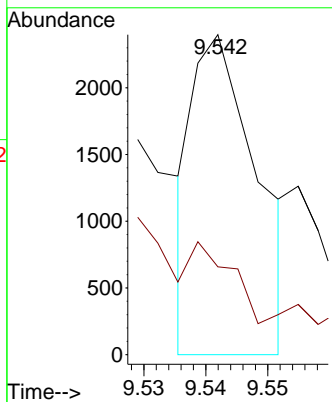
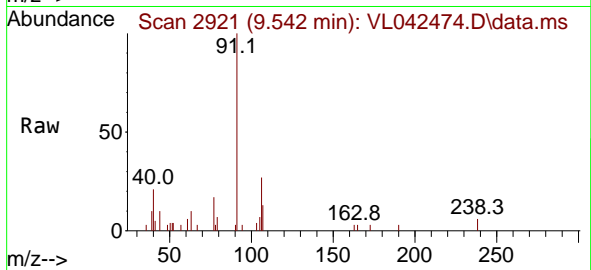




#58
 Ethyl Benzene
 Concen: 0.059 ppbv
 RT: 9.542 min Scan# 2916
 Delta R.T. 0.188 min
 Lab File: VL042474.D
 Acq: 05 May 2025 13:11

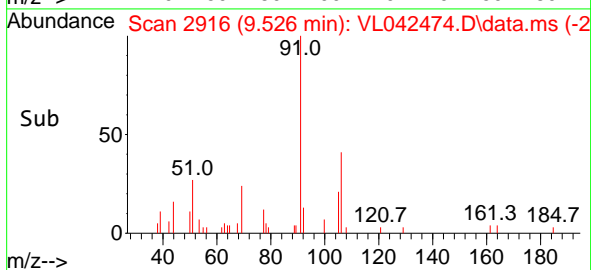
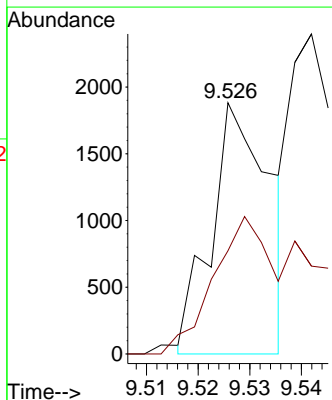
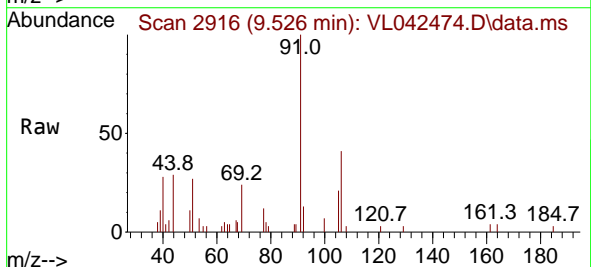
Instrument : MSVOA_L
 ClientSampleId : EBR-P04-SC-SS01-20250428

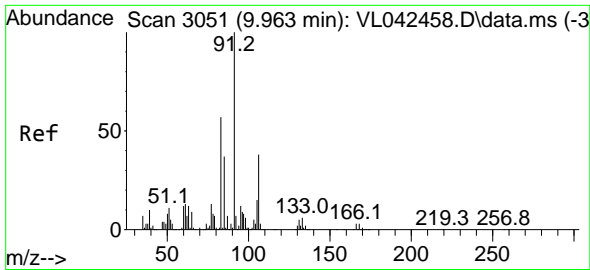
Tgt Ion: 91 Resp: 1725
 Ion Ratio Lower Upper
 91 100
 106 29.0 21.9 32.9



#59
 m/p-Xylene
 Concen: 0.060 ppbv
 RT: 9.526 min Scan# 2916
 Delta R.T. -0.003 min
 Lab File: VL042474.D
 Acq: 05 May 2025 13:11

Tgt Ion: 91 Resp: 1473
 Ion Ratio Lower Upper
 91 100
 106 117.7 34.2 51.2#

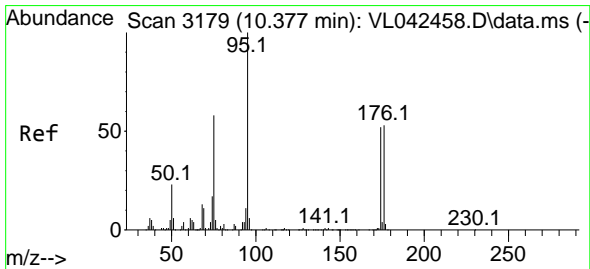
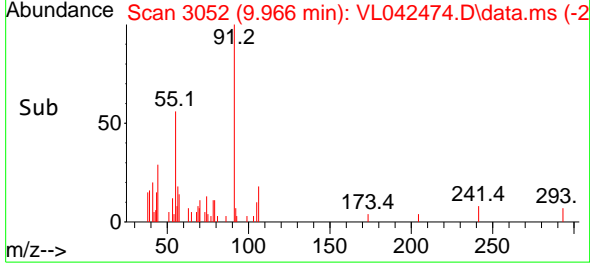
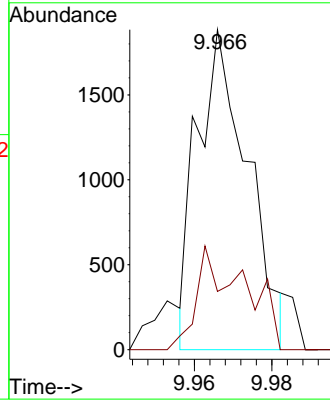
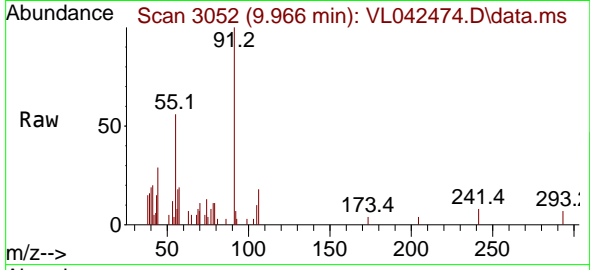




#60
 o-Xylene
 Concen: 0.069 ppbv
 RT: 9.966 min Scan# 3051
 Delta R.T. 0.003 min
 Lab File: VL042474.D
 Acq: 05 May 2025 13:11

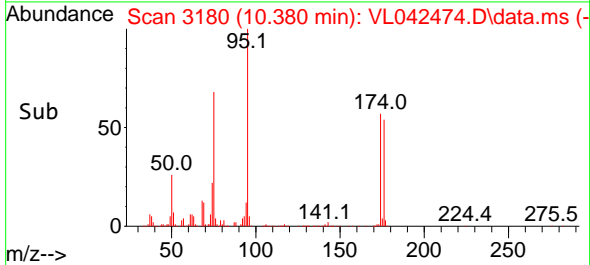
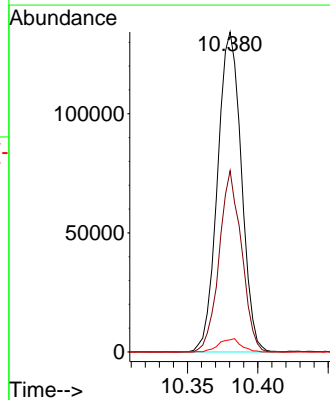
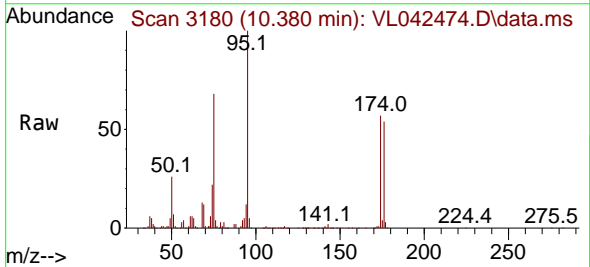
Instrument : MSVOA_L
 ClientSampleId : EBR-P04-SC-SS01-20250428

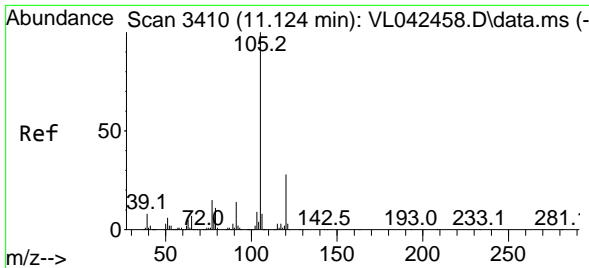
Tgt Ion: 91 Resp: 1706
 Ion Ratio Lower Upper
 91 100
 106 30.5 20.1 60.2



#68
 1-Bromo-4-Fluorobenzene
 Concen: 9.708 ppbv
 RT: 10.380 min Scan# 3180
 Delta R.T. 0.003 min
 Lab File: VL042474.D
 Acq: 05 May 2025 13:11

Tgt Ion: 95 Resp: 158342
 Ion Ratio Lower Upper
 95 100
 174 53.3 42.7 64.1
 175 3.9 3.6 5.4

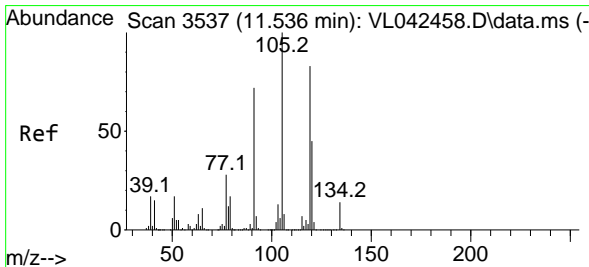
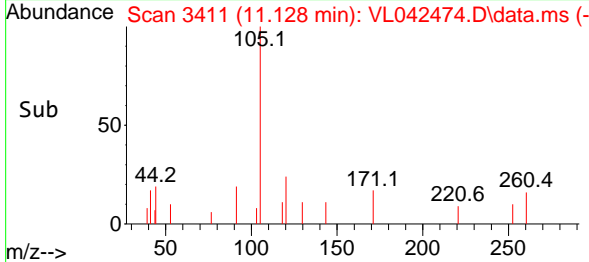
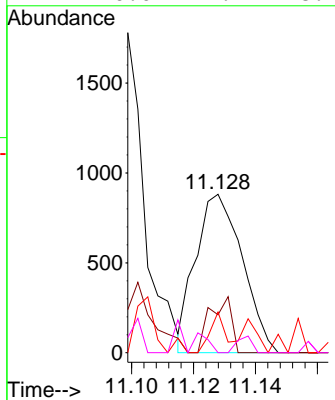
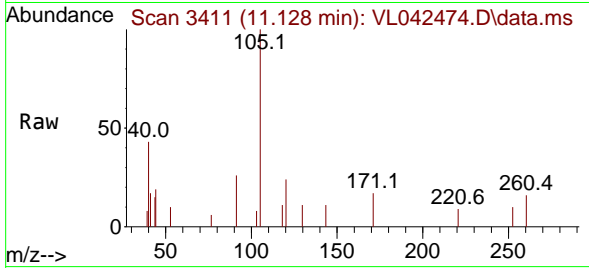




#72
 4-Ethyltoluene
 Concen: 0.032 ppbv
 RT: 11.128 min Scan# 3411
 Delta R.T. 0.003 min
 Lab File: VL042474.D
 Acq: 05 May 2025 13:11

Instrument : MSVOA_L
 ClientSampleId : EBR-P04-SC-SS01-20250428

Tgt Ion	Resp	Lower	Upper
105	100		
120	0.0	22.0	33.0#
91	7.4	11.2	16.8#
77	0.0	12.2	18.4#



#74
 1,2,4-Trimethylbenzene
 Concen: 0.068 ppbv
 RT: 11.536 min Scan# 3537
 Delta R.T. 0.000 min
 Lab File: VL042474.D
 Acq: 05 May 2025 13:11

Tgt Ion	Resp	Lower	Upper
105	100		
120	23.0	36.1	54.1#
91	49.0	57.6	86.4#
77	7.0	22.1	33.1#

