

Data Path : Z:\VOASRV\HPCHEM1\MSVOA L\DATA\VL050619\  
 Data File : VL033672.D  
 Acq On : 6 May 2019 23:48  
 Operator : SY/AP  
 Sample : OC042919 CAN 10607  
 Misc : 400ml/MSVOA L  
 ALS Vial : 1 Sample Multiplier: 1

Instrument :  
 MSVOA\_L  
 ClientSampled :

Quant Time: May 07 04:11:38 2019  
 Quant Method : Z:\VOASRV\HPCHEM1\MSVOA L\METHODS\VL050619AIR.M  
 Quant Title : AIR ANALYSIS BY METHOD TO-15 Instrument: MSVOA\_L Mon May 06 15:19:01 2019  
 QLast Update : Mon May 06 15:19:01 2019  
 Response via : Initial Calibration

Internal Standards	R.T.	QIon	Response	Conc	Units	Dev(Min)
1) Bromochloromethane	5.75	49	808511	10.00	ppbv	0.00
33) 1,4-Difluorobenzene	7.28	114	1901253	10.00	ppbv	0.00
55) Chlorobenzene-d5	12.23	117	1894076	10.00	ppbv	0.00

System Monitoring Compounds  
 68) 1-Bromo-4-Fluorobenzene 14.57 95 1674470 10.78 ppbv 0.00  
 Spiked Amount 10.000 Range 65 - 135 Recovery = 107.80%

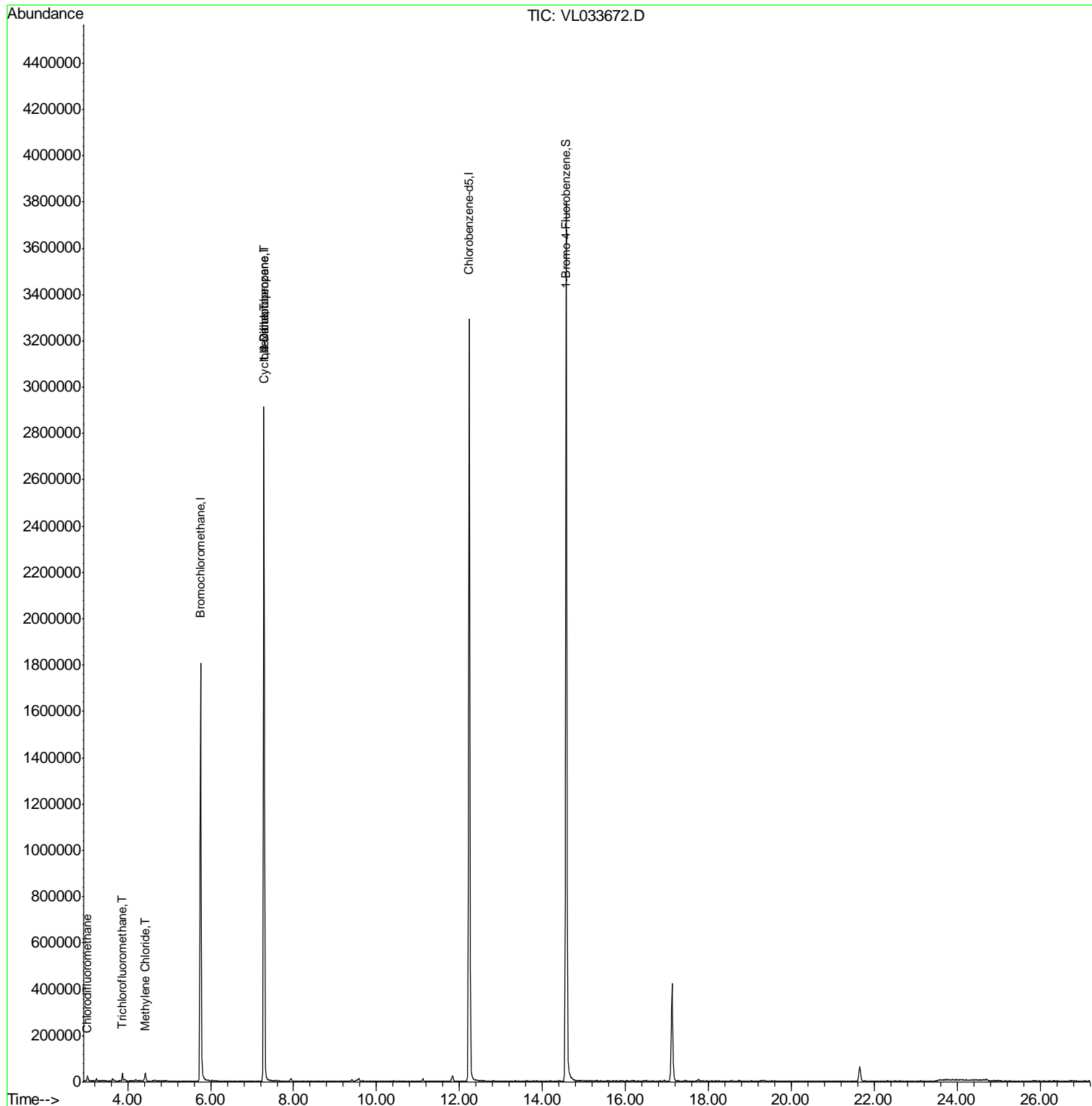
Target Compounds	R.T.	QIon	Response	Conc	Units	Ovalue
3) Chlorodifluoromethane	3.01	51	2193	0.019	ppbv #	88
11) Trichlorofluoromethane	3.87	101	3660	0.021	ppbv	94
20) Methylene Chloride	4.40	84	2621	0.057	ppbv #	74
30) Cyclohexane	7.27	84	4243	0.060	ppbv #	1
39) 1,2-Dichloropropane	7.28	63	509743	8.022	ppbv #	23

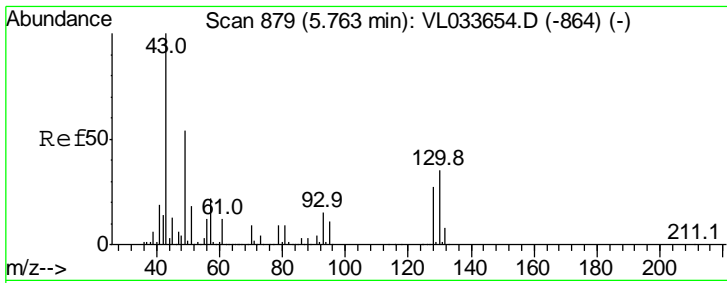
(#) = qualifier out of range (m) = manual integration (+) = signals summed

Data Path : Z:\VOASRV\HPCHEM1\MSVOA L\DATA\VL050619\  
 Data File : VL033672.D  
 Acq On : 6 May 2019 23:48  
 Operator : SY/AP  
 Sample : OC042919 CAN 10607  
 Misc : 400ml/MSVOA L  
 ALS Vial : 1 Sample Multiplier: 1

Instrument :  
 MSVOA\_L  
 ClientSampled :

Quant Time: May 07 04:11:38 2019  
 Quant Method : Z:\VOASRV\HPCHEM1\MSVOA L\METHODS\VL050619AIR.M  
 Quant Title : AIR ANALYSIS BY METHOD TO-15 Instrument: MSVOA\_L Mon May 06 15:19:01 2019  
 QLast Update : Mon May 06 15:19:01 2019  
 Response via : Initial Calibration



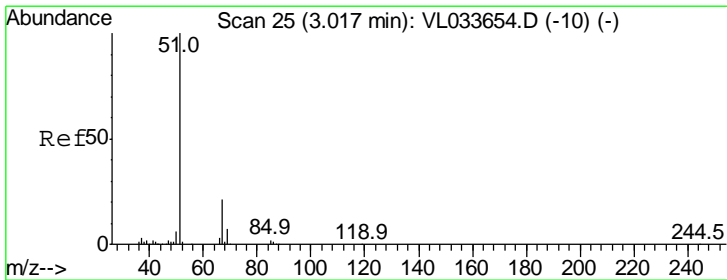
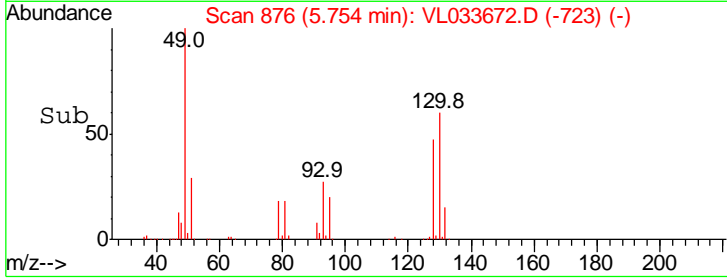
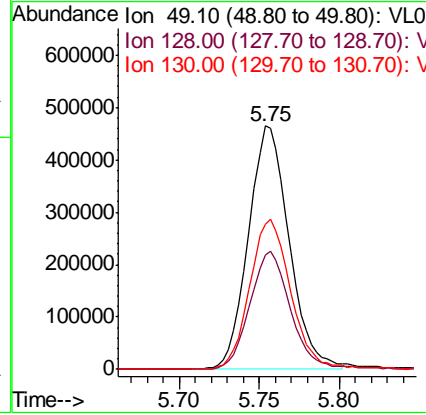
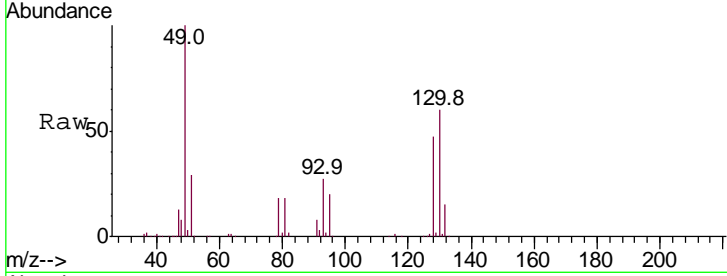


#1  
 Bromochloromethane  
 Concen: 10.000 ppbv  
 RT: 5.75 min Scan# 876  
 Delta R.T. -0.01 min  
 Lab File: VL033672.D  
 Acq: 6 May 2019 23:48

Instrument :  
 MSVOA\_L  
 ClientSampled :

Tgt Ion: 49 Resp: 808511

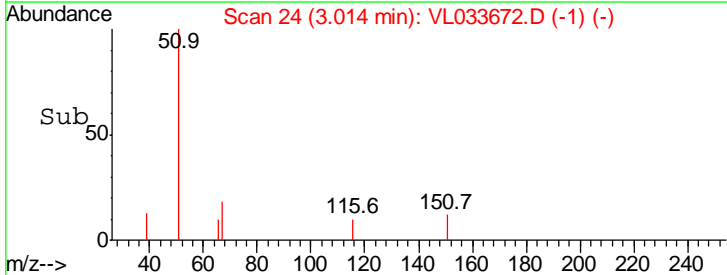
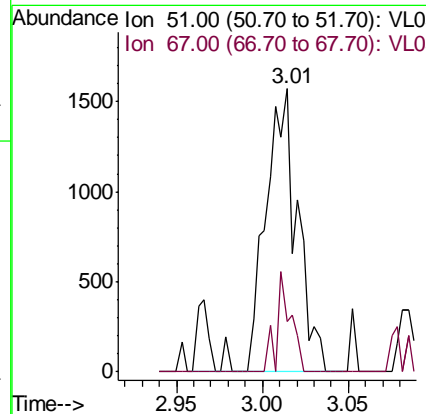
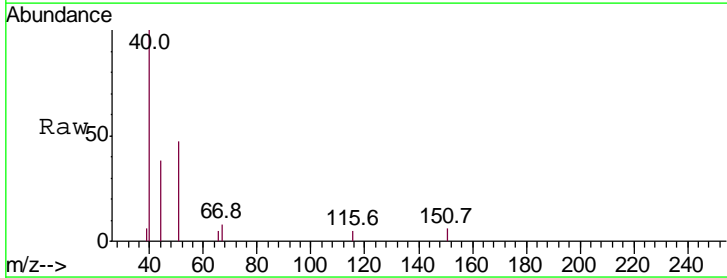
Ion	Ratio	Lower	Upper
49	100		
128	48.5	24.8	74.3
130	62.9	32.1	96.5

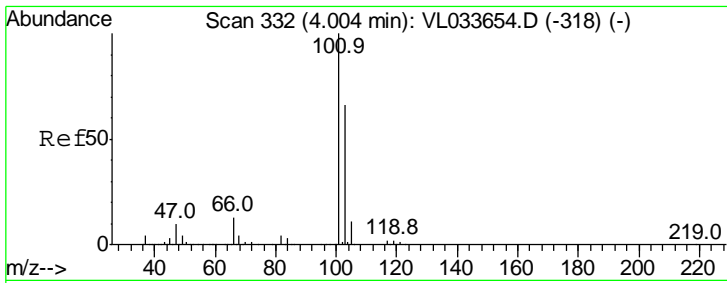


#3  
 Chlorodifluoromethane  
 Concen: 0.019 ppbv  
 RT: 3.01 min Scan# 24  
 Delta R.T. -0.00 min  
 Lab File: VL033672.D  
 Acq: 6 May 2019 23:48

Tgt Ion: 51 Resp: 2193

Ion	Ratio	Lower	Upper
51	100		
67	14.2	15.7	23.5#

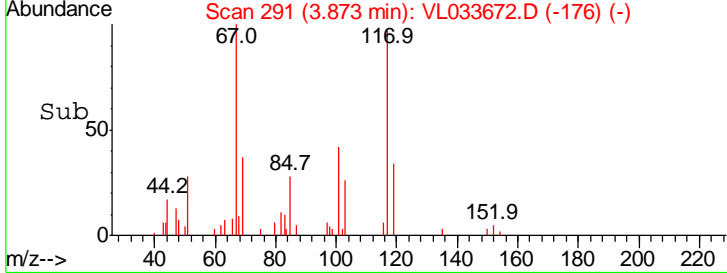
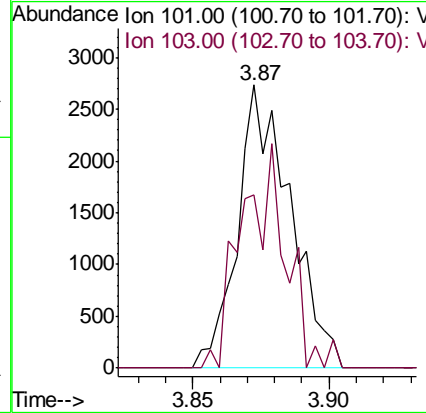
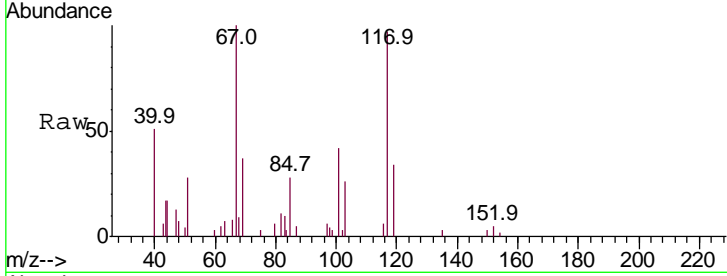




#11  
 Trichlorofluoromethane  
 Concen: 0.021 ppbv  
 RT: 3.87 min Scan# 291  
 Delta R.T. -0.13 min  
 Lab File: VL033672.D  
 Acq: 6 May 2019 23:48

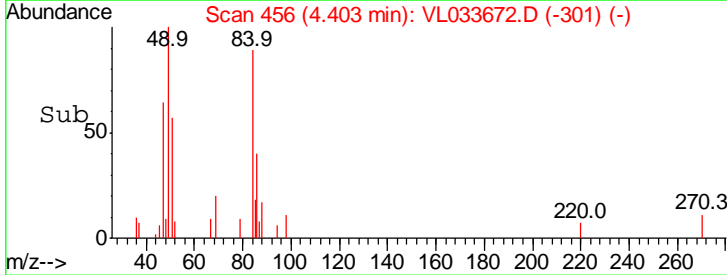
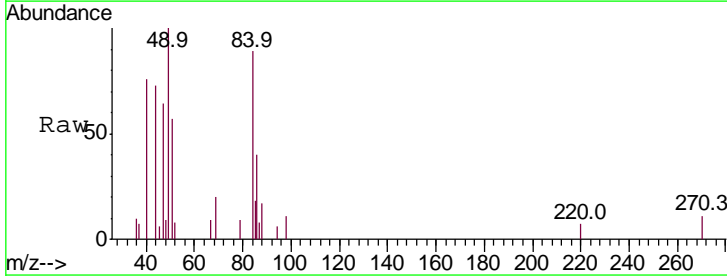
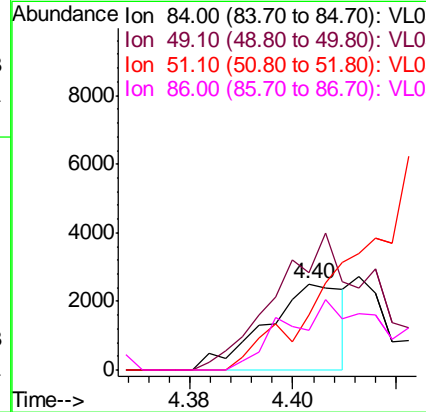
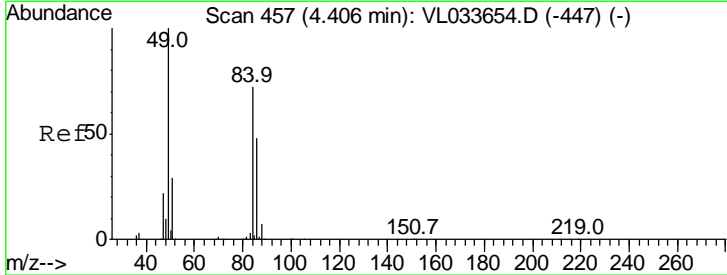
Instrument :  
 MSVOA\_L  
 ClientSampled :

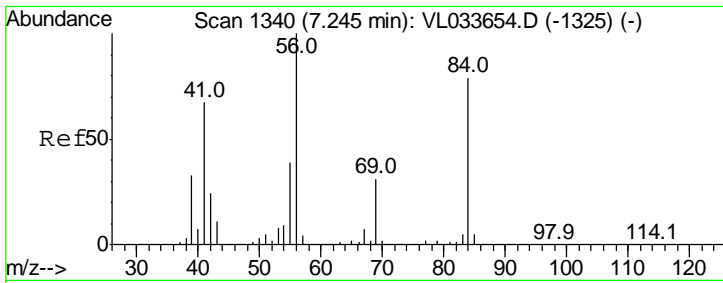
Tgt Ion	Resp	Lower	Upper
101	3660		
101	100		
103	61.1	52.7	79.1



#20  
 Methylene Chloride  
 Concen: 0.057 ppbv  
 RT: 4.40 min Scan# 456  
 Delta R.T. -0.00 min  
 Lab File: VL033672.D  
 Acq: 6 May 2019 23:48

Tgt Ion	Resp	Lower	Upper
84	2621		
84	100		
49	112.9	111.8	167.6
51	64.4	32.3	48.5#
86	45.6	53.9	80.9#

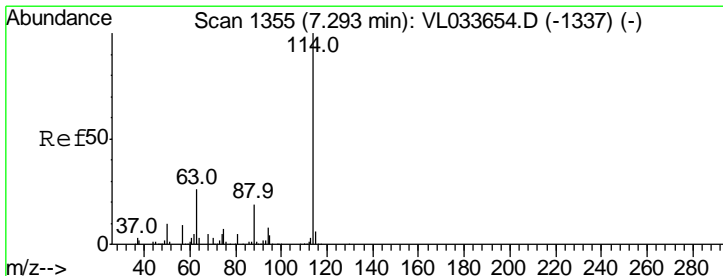
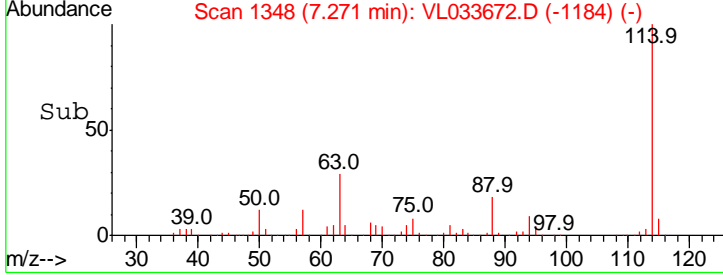
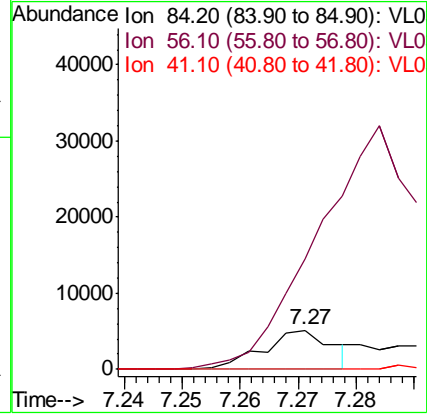
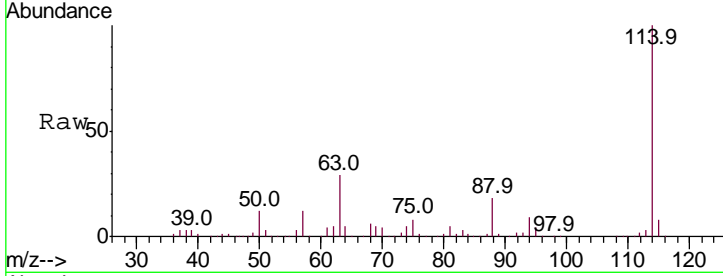




#30  
 Cyclohexane  
 Concen: 0.060 ppbv  
 RT: 7.27 min Scan# 1348  
 Delta R.T. 0.03 min  
 Lab File: VL033672.D  
 Acq: 6 May 2019 23:48

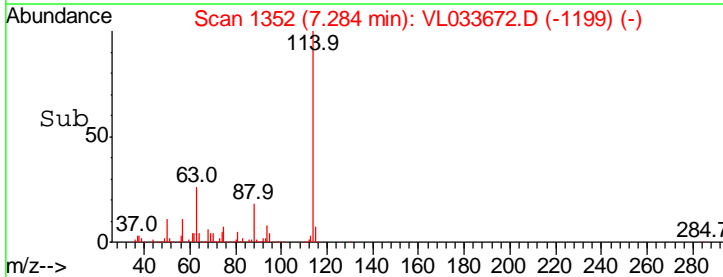
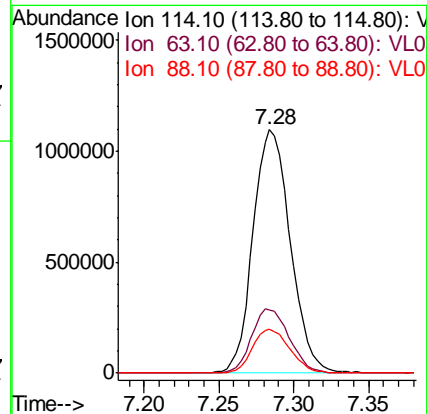
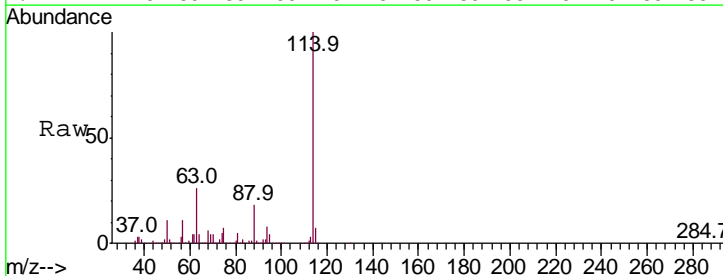
Instrument :  
 MSVOA\_L  
 ClientSampled :

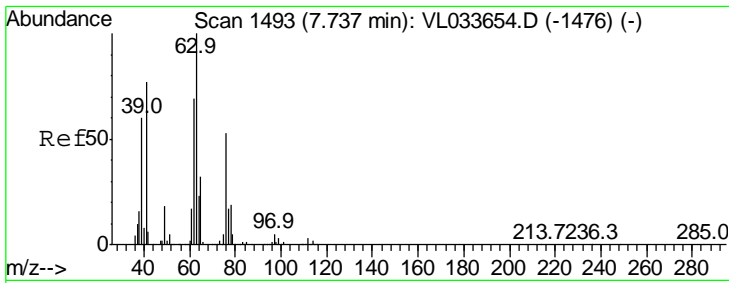
Tgt Ion	Resp	Lower	Upper
84	100		
56	0.0	107.0	160.4#
41	2.2	66.6	99.8#



#33  
 1,4-Difluorobenzene  
 Concen: 10.000 ppbv  
 RT: 7.28 min Scan# 1352  
 Delta R.T. -0.01 min  
 Lab File: VL033672.D  
 Acq: 6 May 2019 23:48

Tgt Ion	Resp	Lower	Upper
114	100		
63	27.0	21.3	31.9
88	18.1	14.4	21.6

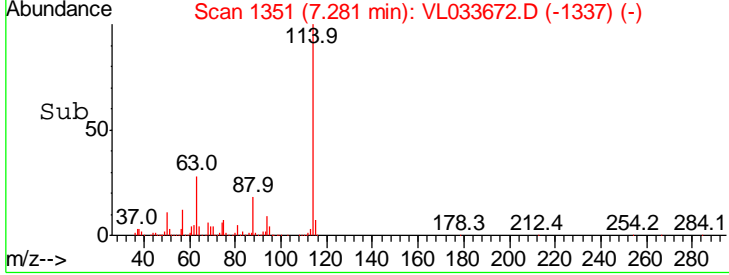
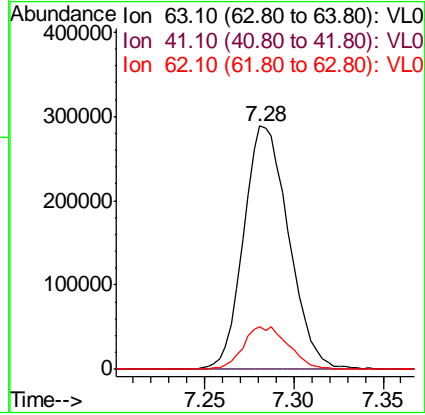
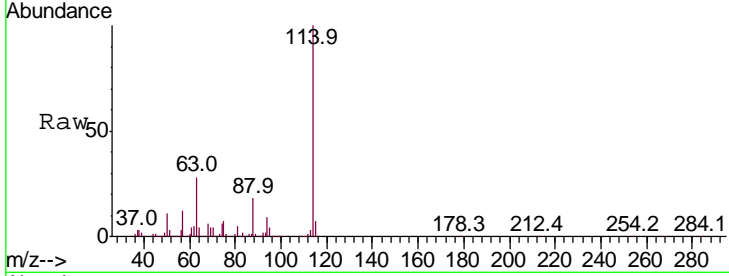




#39  
 1,2-Dichloropropane  
 Concen: 8.022 ppbv  
 RT: 7.28 min Scan# 1351  
 Delta R.T. -0.46 min  
 Lab File: VL033672.D  
 Acq: 6 May 2019 23:48

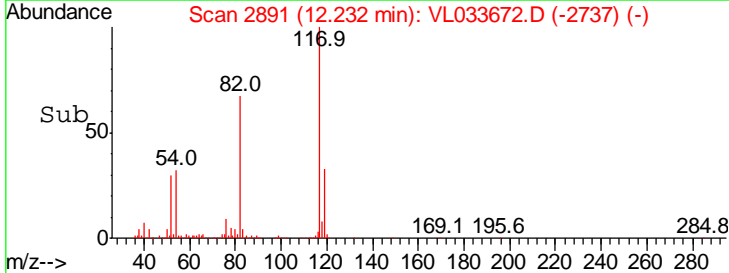
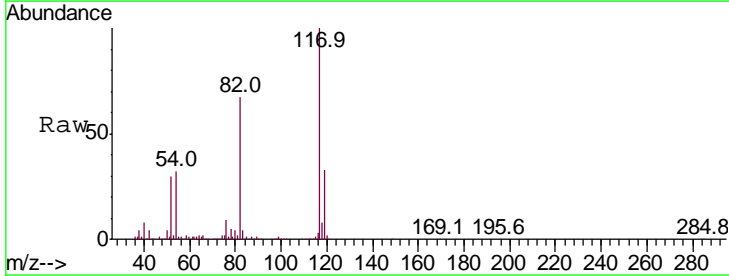
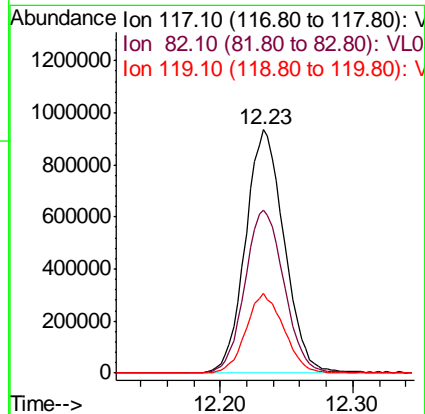
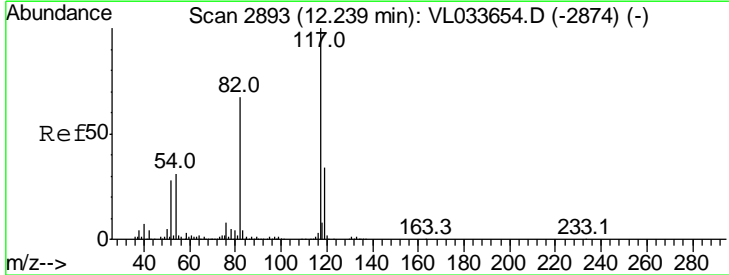
Instrument :  
 MSVOA\_L  
 ClientSampled :

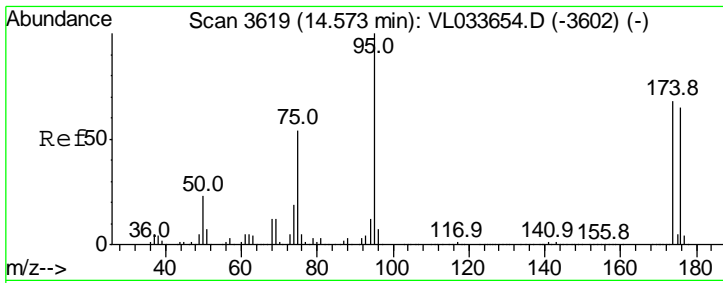
Tgt Ion	Resp	Lower	Upper
63	100		
41	0.0	61.6	92.4#
62	17.6	55.0	82.6#



#55  
 Chlorobenzene-d5  
 Concen: 10.000 ppbv  
 RT: 12.23 min Scan# 2891  
 Delta R.T. -0.01 min  
 Lab File: VL033672.D  
 Acq: 6 May 2019 23:48

Tgt Ion	Resp	Lower	Upper
117	100		
82	68.4	49.7	74.5
119	32.3	24.8	37.2





#68  
 1-Bromo-4-Fluorobenzene  
 Concen: 10.785 ppbv  
 RT: 14.57 min Scan# 3618  
 Delta R.T. -0.00 min  
 Lab File: VL033672.D  
 Acq: 6 May 2019 23:48

Instrument :  
 MSVOA\_L  
 ClientSampled :

Tot Ion: 95 Resp: 1674470

Ion	Ratio	Lower	Upper
95	100		
174	66.2	54.0	81.0
175	4.7	3.8	5.8

