

Data Path : Z:\VOASRV\HPCHEM1\MSVOA L\DATA\VL050720\
 Data File : VL034974.D
 Acq On : 7 May 2020 19:11
 Operator : SY/AP
 Sample : L2524-01DL 10X
 Misc : 400ml/MSVOA L
 ALS Vial : 1 Sample Multiplier: 1

Instrument :
 MSVOA_L
ClientSampled :
 IIA2DL

Manual Integrations
APPROVED
 MMDadoda
 5/8/2020 5:22:43 PM

Quant Time: May 08 05:37:07 2020
 Quant Method : Z:\VOASRV\HPCHEM1\MSVOA L\METHODS\VL050620AIR.M
 Quant Title : AIR ANALYSIS BY METHOD TO-15 Instrument: MSVOA_LWed May 0
 QLast Update : Wed May 06 14:49:39 2020
 Response via : Initial Calibration

Internal Standards	R.T.	QIon	Response	Conc	Units	Dev(Min)
1) Bromochloromethane	5.67	49	1026900	10.00	ppbv	0.00
33) 1,4-Difluorobenzene	7.19	114	2357576	10.00	ppbv	0.00
55) Chlorobenzene-d5	12.12	117	2203229	10.00	ppbv	0.00

System Monitoring Compounds
 68) 1-Bromo-4-Fluorobenzene 14.46 95 1823642 10.23 ppbv 0.00
 Spiked Amount 10.000 Range 65 - 135 Recovery = 102.30%

Target Compounds	R.T.	QIon	Response	Conc	Units	Ovalue
13) Ethanol	3.58	45	136564	8.135	ppbv	95
15) Acetone	3.84	43	194540	1.433	ppbv	98
19) Isopropyl Alcohol	3.95	45	1191009	13.155	ppbv	99
20) Methylene Chloride	4.33	84	17490m	0.389	ppbv	
26) Hexane	5.68	57	14006	0.142	ppbv #	44
34) 2-Butanone	5.25	43	35496	0.242	ppbv	96

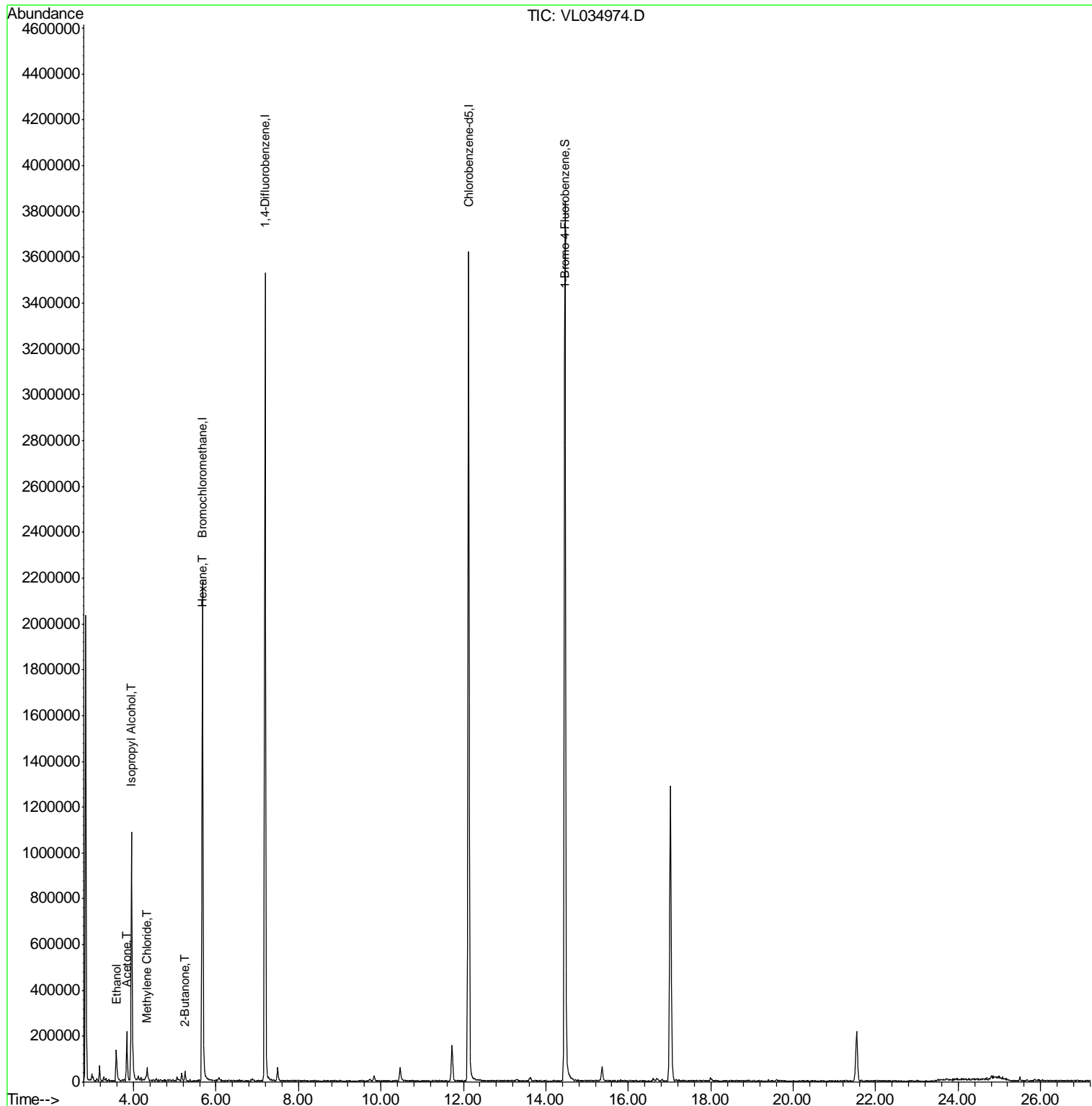
(#) = qualifier out of range (m) = manual integration (+) = signals summed

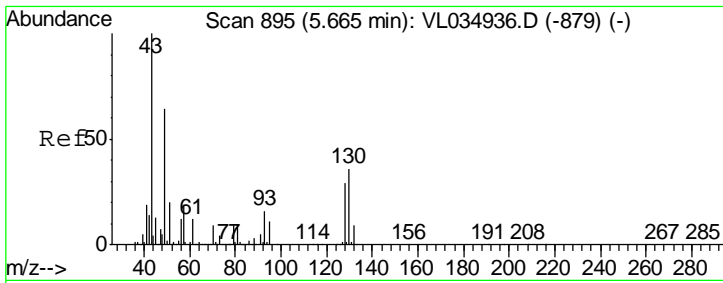
Data Path : Z:\VOASRV\HPCHEM1\MSVOA L\DATA\VL050720\
 Data File : VL034974.D
 Acq On : 7 May 2020 19:11
 Operator : SY/AP
 Sample : L2524-01DL 10X
 Misc : 400ml/MSVOA L
 ALS Vial : 1 Sample Multiplier: 1

Instrument :
 MSVOA_L
 ClientSampled :
 IIA2DL

Manual Integrations
 APPROVED
 MMDadoda
 5/8/2020 5:22:43 PM

Quant Time: May 08 05:37:07 2020
 Quant Method : Z:\VOASRV\HPCHEM1\MSVOA L\METHODS\VL050620AIR.M
 Quant Title : AIR ANALYSIS BY METHOD TO-15 Instrument: MSVOA_LWed May
 QLast Update : Wed May 06 14:49:39 2020
 Response via : Initial Calibration





#1
 Bromochloromethane
 Concen: 10.000 ppbv
 RT: 5.67 min Scan# 896
 Delta R.T. 0.00 min
 Lab File: VL034974.D
 Acq: 7 May 2020 19:11

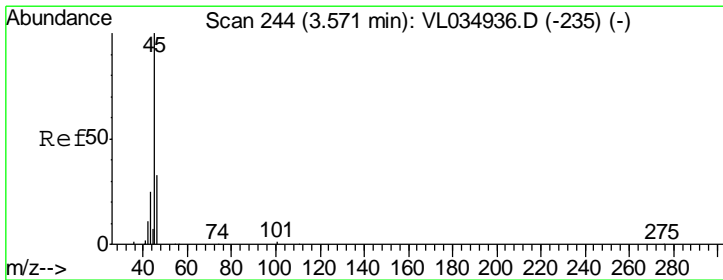
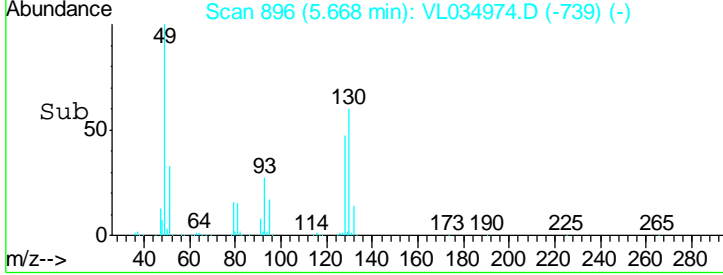
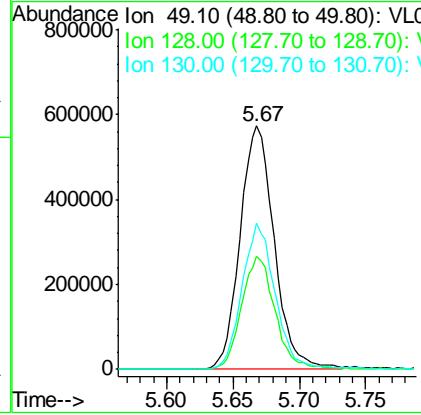
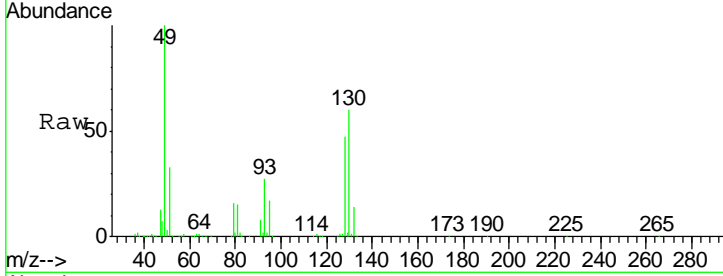
Instrument :
 MSVOA_L
 ClientSampled :
 IIA2DL

Tgt Ion: 49 Resp: 1026900

Ion	Ratio	Lower	Upper
49	100		
128	45.5	22.1	66.5
130	58.9	29.1	87.3

Manual Integrations
 APPROVED

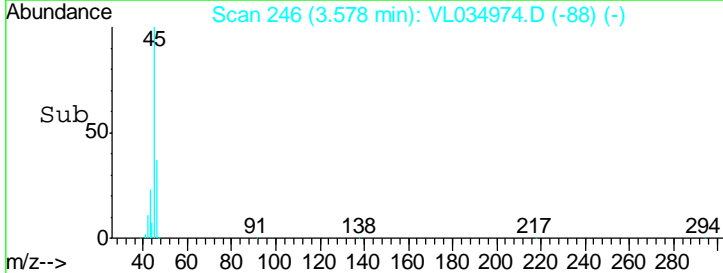
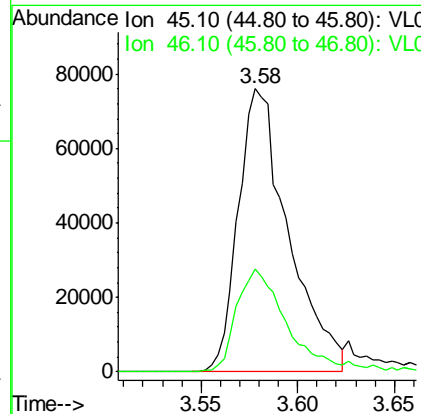
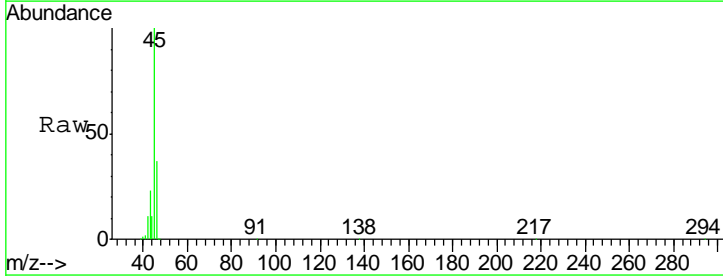
MMDadoda
 5/8/2020 5:22:43 PM

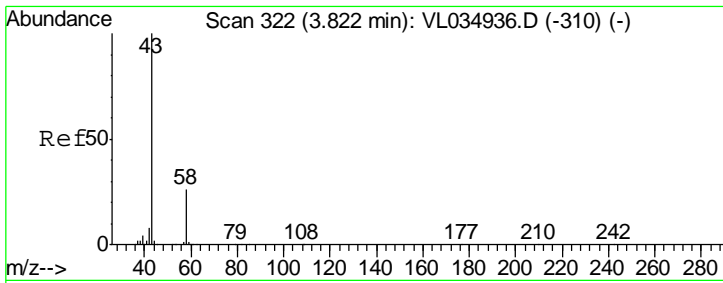


#13
 Ethanol
 Concen: 8.135 ppbv
 RT: 3.58 min Scan# 246
 Delta R.T. 0.01 min
 Lab File: VL034974.D
 Acq: 7 May 2020 19:11

Tgt Ion: 45 Resp: 136564

Ion	Ratio	Lower	Upper
45	100		
46	38.5	14.3	57.3





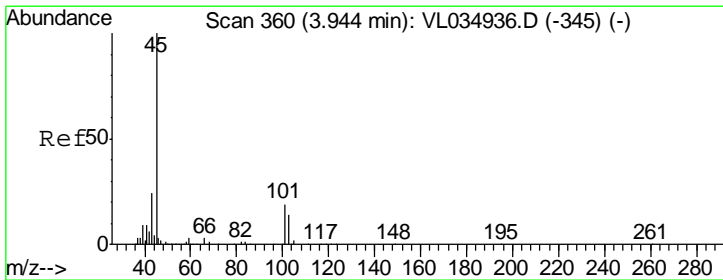
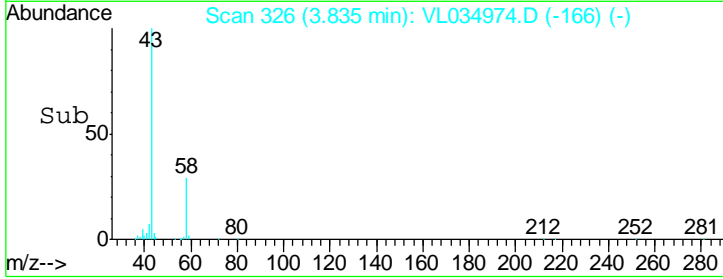
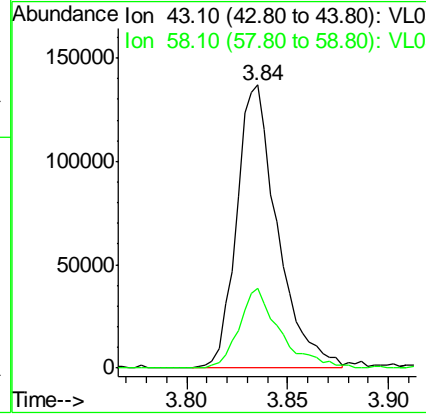
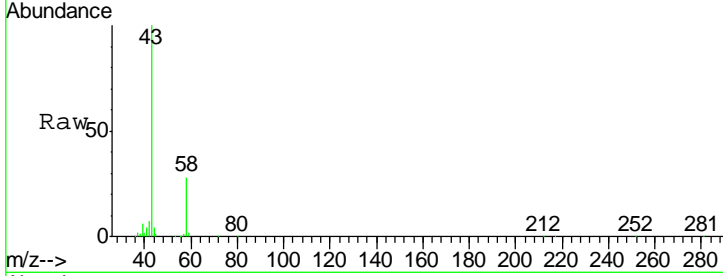
#15
 Acetone
 Concen: 1.433 ppbv
 RT: 3.84 min Scan# 326
 Delta R.T. 0.01 min
 Lab File: VL034974.D
 Acq: 7 May 2020 19:11

Instrument : MSVOA_L
 ClientSampled : IIA2DL

Tgt Ion	Resp	Lower	Upper
43	100		
58	28.4	21.7	32.5

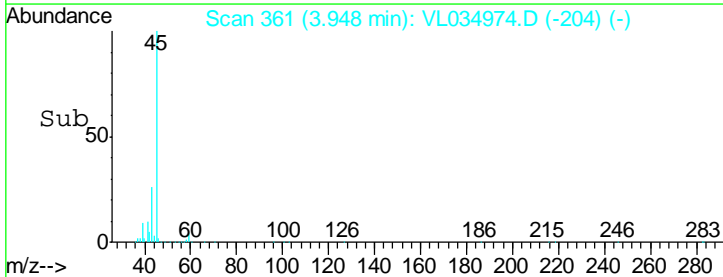
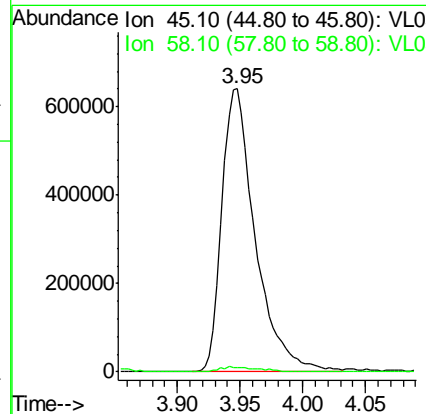
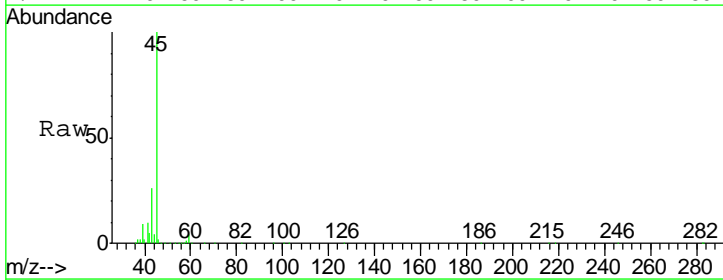
Manual Integrations
 APPROVED

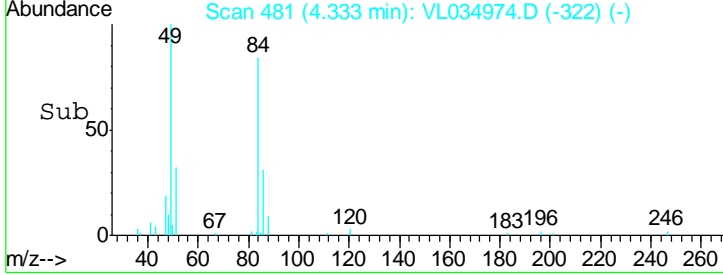
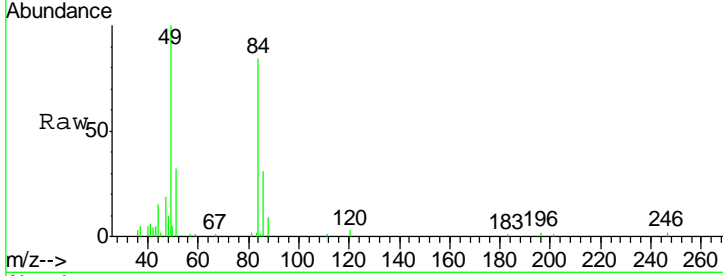
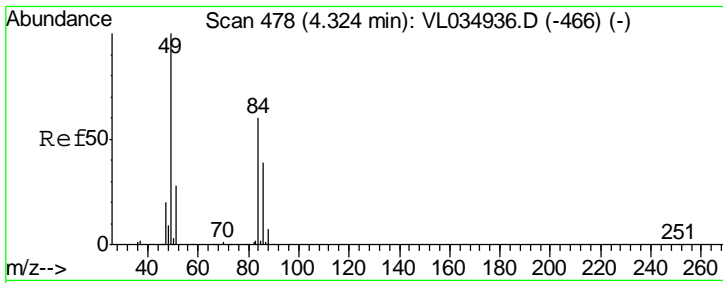
MMDadoda
 5/8/2020 5:22:43 PM



#19
 Isopropyl Alcohol
 Concen: 13.155 ppbv
 RT: 3.95 min Scan# 361
 Delta R.T. 0.00 min
 Lab File: VL034974.D
 Acq: 7 May 2020 19:11

Tgt Ion	Resp	Lower	Upper
45	100		
58	2.4	1.7	2.5



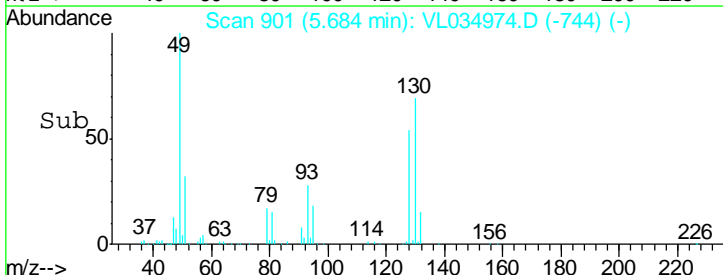
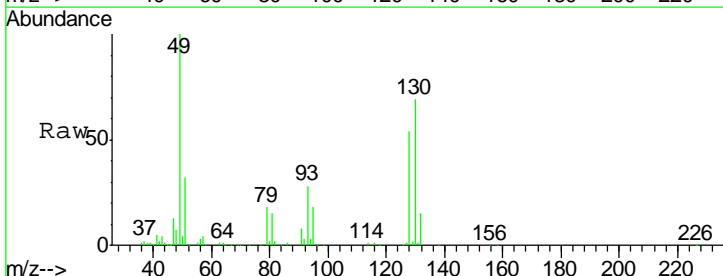
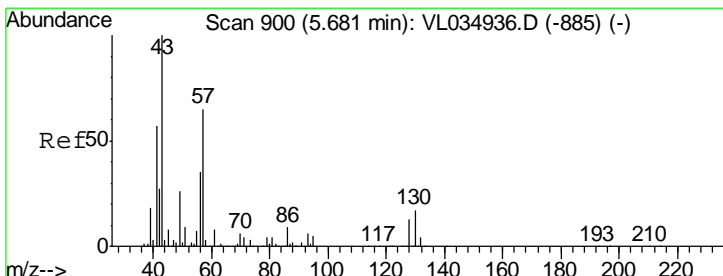
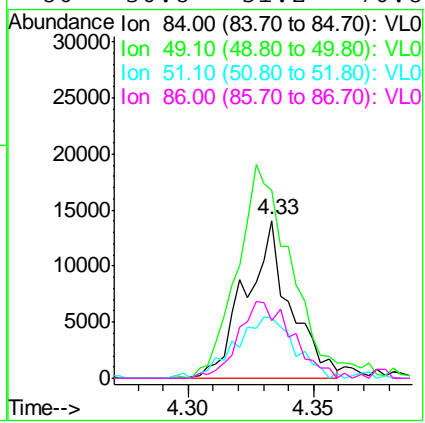


#20
 Methylene Chloride
 Concen: 0.389 ppbv m
 RT: 4.33 min Scan# 481
 Delta R.T. 0.01 min
 Lab File: VL034974.D
 Acq: 7 May 2020 19:11

Tgt Ion	Resp	Lower	Upper
84	17490		
84	100		
49	119.4	132.5	198.7#
51	38.1	38.4	57.6#
86	36.8	51.2	76.8#

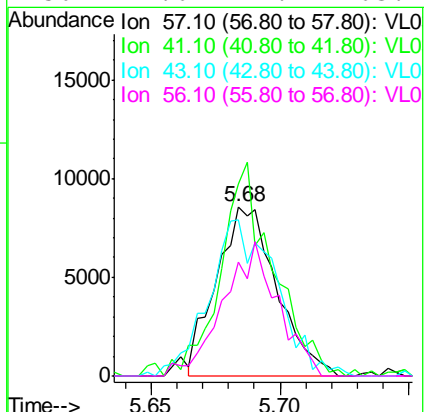
Instrument : MSVOA_L
 ClientSampled : IIA2DL

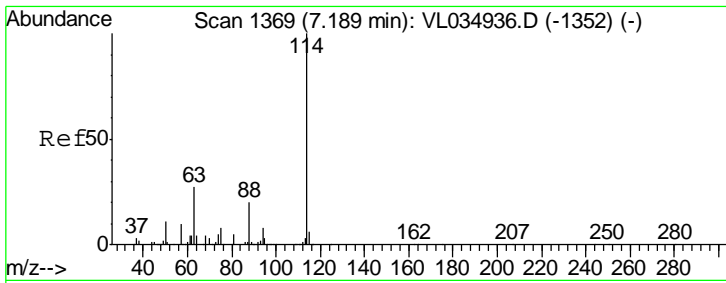
Manual Integrations
APPROVED
 MMDadoda
 5/8/2020 5:22:43 PM



#26
 Hexane
 Concen: 0.142 ppbv
 RT: 5.68 min Scan# 901
 Delta R.T. 0.00 min
 Lab File: VL034974.D
 Acq: 7 May 2020 19:11

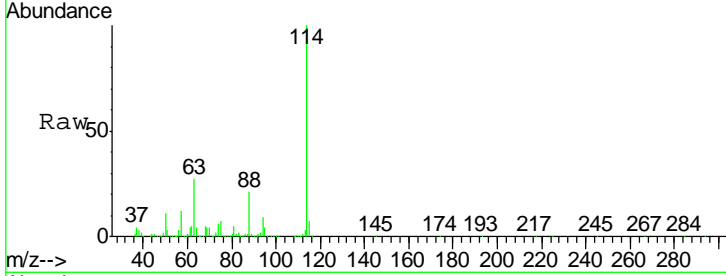
Tgt Ion	Resp	Lower	Upper
57	14006		
57	100		
41	113.8	72.7	109.1#
43	102.5	182.1	273.1#
56	71.6	42.2	63.2#





#33
 1,4-Difluorobenzene
 Concen: 10.000 ppbv
 RT: 7.19 min Scan# 1369
 Delta R.T. 0.00 min
 Lab File: VL034974.D
 Acq: 7 May 2020 19:11

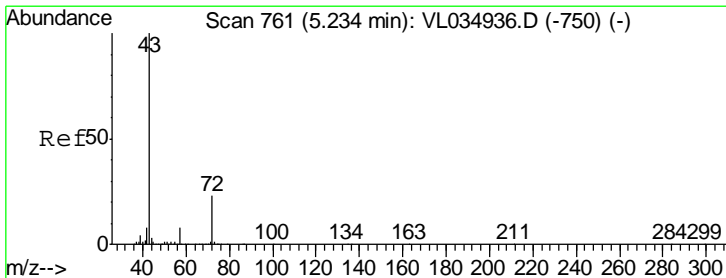
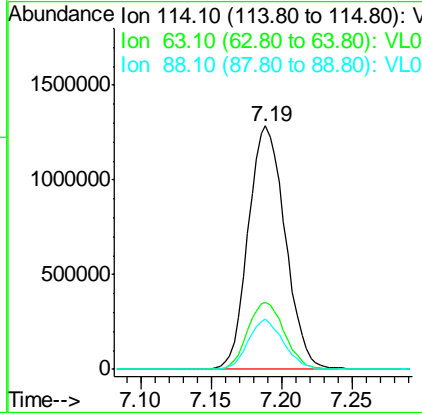
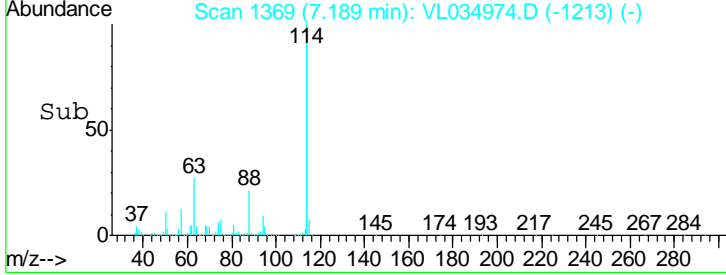
Instrument : MSVOA_L
 ClientSampled : IIA2DL



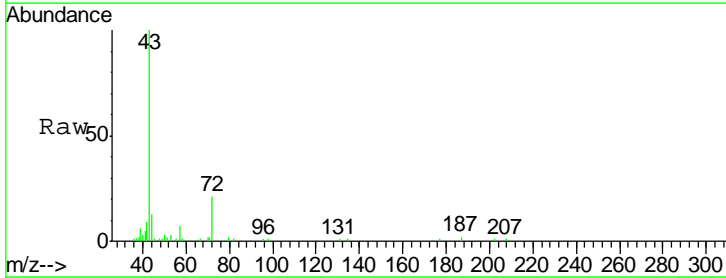
Tgt Ion: 114 Resp: 2357576

Ion	Ratio	Lower	Upper
114	100		
63	27.7	22.2	33.4
88	19.6	15.5	23.3

Manual Integrations
APPROVED
 MMDadoda
 5/8/2020 5:22:43 PM

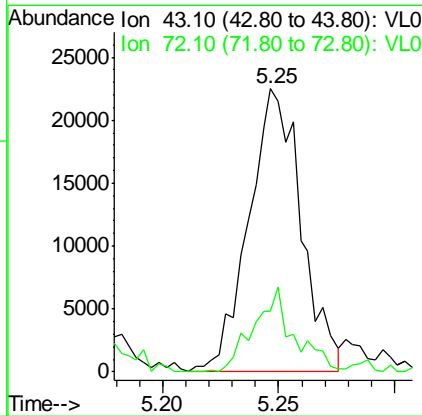
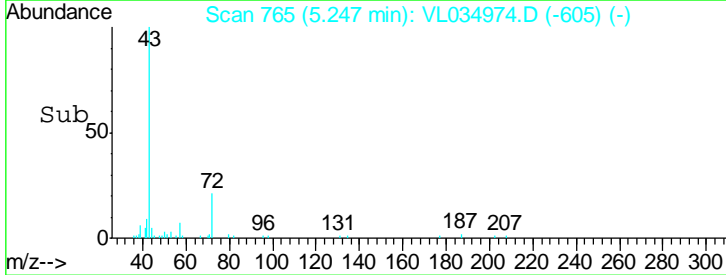


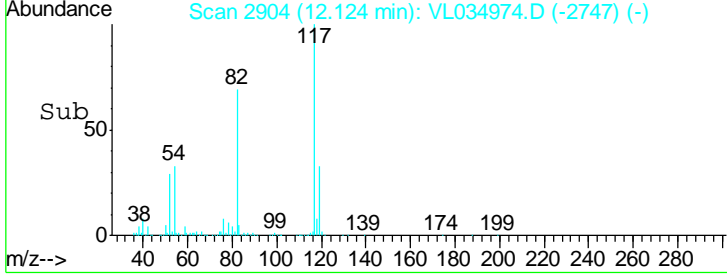
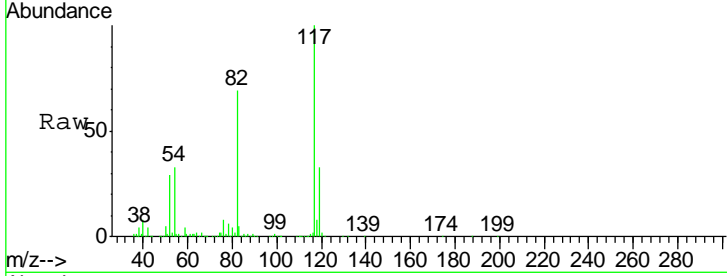
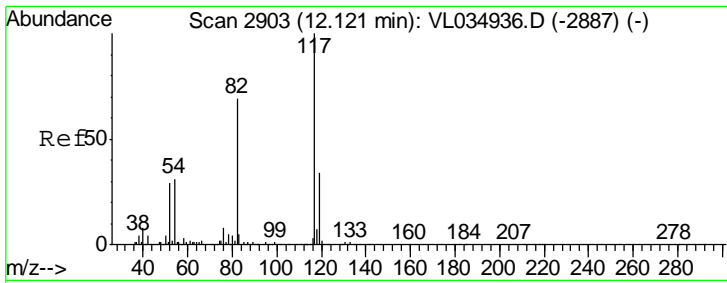
#34
 2-Butanone
 Concen: 0.242 ppbv
 RT: 5.25 min Scan# 765
 Delta R.T. 0.01 min
 Lab File: VL034974.D
 Acq: 7 May 2020 19:11



Tgt Ion: 43 Resp: 35496

Ion	Ratio	Lower	Upper
43	100		
72	24.2	18.0	27.0



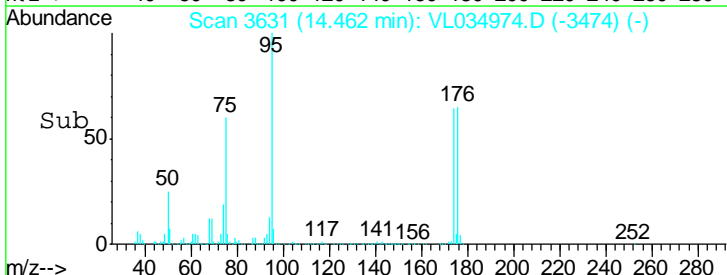
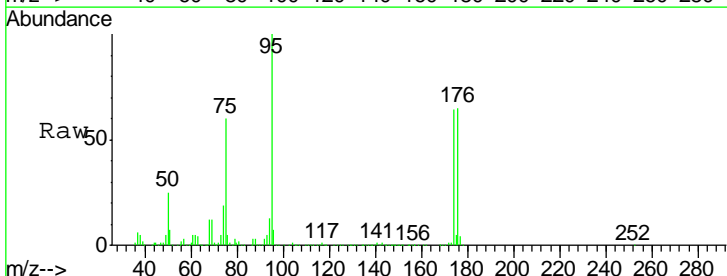
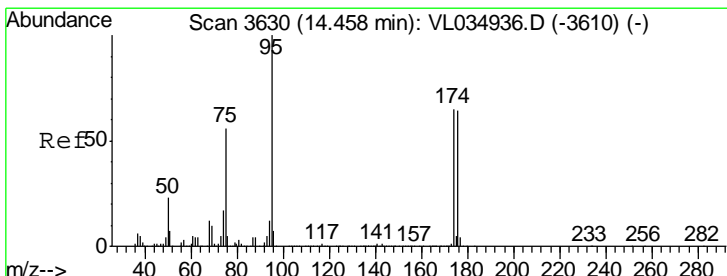
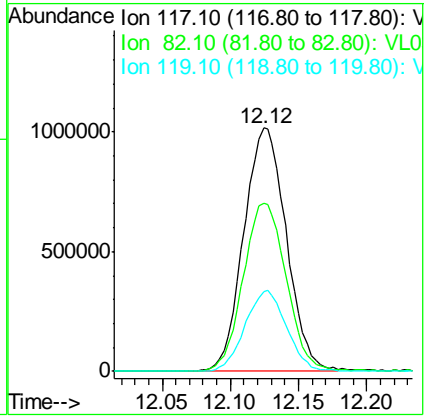


#55
 Chlorobenzene-d5
 Concen: 10.000 ppbv
 RT: 12.12 min Scan# 2904
 Delta R.T. 0.00 min
 Lab File: VL034974.D
 Acq: 7 May 2020 19:11

Tgt Ion	Resp	Lower	Upper
117	100		
82	70.2	53.1	79.7
119	32.6	26.7	40.1

Instrument : MSVOA_L
 ClientSampled : IIA2DL

Manual Integrations
APPROVED
 MMDadoda
 5/8/2020 5:22:43 PM



#68
 1-Bromo-4-Fluorobenzene
 Concen: 10.226 ppbv
 RT: 14.46 min Scan# 3631
 Delta R.T. 0.00 min
 Lab File: VL034974.D
 Acq: 7 May 2020 19:11

Tgt Ion	Resp	Lower	Upper
95	100		
174	65.2	51.5	77.3
175	5.1	3.8	5.8

