

Data Path : Z:\voasrv\HPCHEM1\MSVOA_L\Data\VL050725\
 Data File : VL042522.D
 Acq On : 07 May 2025 17:24
 Operator : SY/MD
 Sample : MDL2 0.1
 Misc : 400mL/MSVOA_L
 ALS Vial : 1 Sample Multiplier: 1

Instrument :
 MSVOA_L
 ClientSampleId :
 MDL2 0.1

Quant Time: May 08 01:41:28 2025
 Quant Method : Z:\voasrv\HPCHEM1\MSVOA_L\methods\VL050125AIR.M
 Quant Title : AIR ANALYSIS BY METHOD TO-15 Instrument: MSVOA_L Fri Aug 26 06:05:16 2022
 QLast Update : Fri May 02 03:16:31 2025
 Response via : Initial Calibration

Compound	R.T.	QIon	Response	Conc	Units	Dev(Min)

Internal Standards						
1) Bromochloromethane	2.794	49	74360	10.000	ppbv	0.00
33) 1,4-Difluorobenzene	3.972	114	181585	10.000	ppbv	0.02
55) Chlorobenzene-d5	8.895	117	153768	10.000	ppbv	0.01

System Monitoring Compounds						
68) 1-Bromo-4-Fluorobenzene	10.387	95	139250	9.768	ppbv	0.01
Spiked Amount	10.000	Range	65 - 135	Recovery	=	97.700%

Target Compounds	R.T.	QIon	Response	Conc	Units	Qvalue
2) Dichlorodifluoromethane	1.499	85	1184	0.096	ppbv #	78
3) Chlorodifluoromethane	1.477	51	1543	0.119	ppbv #	89
4) Chloromethane	1.535	50	887	0.172	ppbv	95
5) Vinyl Chloride	1.583	62	631	0.122	ppbv #	75
6) Bromomethane	1.668	94	570	0.233	ppbv #	47
7) Chloroethane	1.706	64	155	0.081	ppbv #	43
8) Dichlorotetrafluoroethane	1.554	85	1535	0.151	ppbv	98
9) Propene	1.483	41	514	0.121	ppbv #	66
10) Heptane	4.992	43	250	0.023	ppbv #	1
11) Trichlorofluoromethane	1.881	101	1618	0.142	ppbv	90
12) 1,1,2-Trichlorotrifluo...	2.143	101	1024	0.113	ppbv	99
13) Ethanol	1.726	45	251	0.291	ppbv #	37
14) Bromoethene	1.784	108	475	0.142	ppbv #	88
15) Acetone	1.842	43	2671	0.197	ppbv #	83
16) 1,3-Butadiene	1.609	39	638	0.107	ppbv	84
17) tert-Butyl alcohol	2.053	59	1423	0.119	ppbv #	76
18) 1,1-Dichloroethene	2.037	96	555	0.131	ppbv #	81
19) Isopropyl Alcohol	1.891	45	1216	0.162	ppbv #	91
20) Methylene Chloride	2.066	84	1210	0.296	ppbv #	78
21) Allyl Chloride	2.095	41	1263	0.145	ppbv #	74
22) trans-1,2-Dichloroethene	2.347	96	638	0.129	ppbv	81
23) Vinyl Acetate	2.470	43	1936	0.149	ppbv #	56
24) 1,1-Dichloroethane	2.418	63	1204	0.119	ppbv #	93
25) Ethyl Acetate	2.849	43	1341	0.062	ppbv #	78
26) Hexane	2.830	57	471	0.050	ppbv #	1
27) Carbon Disulfide	2.153	76	1224	0.111	ppbv #	1
28) Methyl tert-Butyl Ether	2.448	73	583	0.102	ppbv #	30
29) Chloroform	2.859	83	2006	0.113	ppbv	87
30) Cyclohexane	3.875	84	48	0.006	ppbv #	1
31) cis-1,2-Dichloroethene	2.726	61	1054	0.095	ppbv #	76
32) 1,1,1-Trichloroethane	3.380	97	1055	0.055	ppbv #	22
34) 2-Butanone	2.571	43	1481	0.113	ppbv #	88
35) Carbon Tetrachloride	3.775	117	1777	0.108	ppbv #	60
36) Benzene	3.665	78	1016	0.059	ppbv #	66
37) 1,2-Dichloroethane	3.228	62	1022	0.077	ppbv	98
38) Trichloroethene	4.568	130	367	0.056	ppbv #	57
39) 1,2-Dichloropropane	3.972	63	52727	8.219	ppbv #	18
40) 1,4-Dioxane	4.626	88	35	0.012	ppbv #	100
41) Tetrahydrofuran	3.072	42	213	0.034	ppbv #	16
42) Bromodichloromethane	4.506	83	469	0.029	ppbv #	25
43) Methyl Methacrylate	4.907	69	298	0.047	ppbv #	1
44) 2,2,4-Trimethylpentane	4.652	57	694	0.025	ppbv #	22
45) t-1,3-Dichloropropene	6.438	75	46	0.005	ppbv #	1

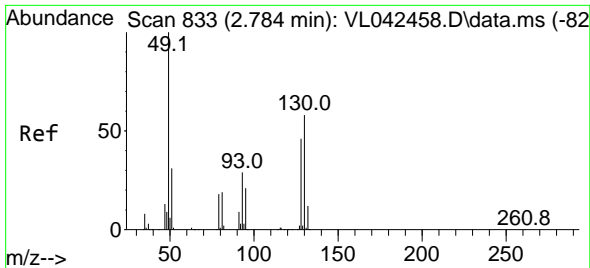
Data Path : Z:\voasrv\HPCHEM1\MSVOA_L\Data\VL050725\
 Data File : VL042522.D
 Acq On : 07 May 2025 17:24
 Operator : SY/MD
 Sample : MDL2 0.1
 Misc : 400mL/MSVOA_L
 ALS Vial : 1 Sample Multiplier: 1

Instrument :
 MSVOA_L
 ClientSampleId :
 MDL2 0.1

Quant Time: May 08 01:41:28 2025
 Quant Method : Z:\voasrv\HPCHEM1\MSVOA_L\methods\VL050125AIR.M
 Quant Title : AIR ANALYSIS BY METHOD TO-15 Instrument: MSVOA_L Fri Aug 26 06:05:16 2022
 QLast Update : Fri May 02 03:16:31 2025
 Response via : Initial Calibration

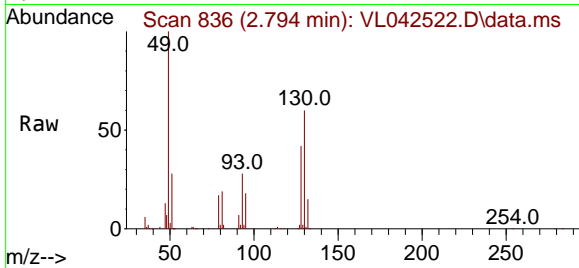
Compound	R.T.	QIon	Response	Conc	Units	Dev(Min)
46) cis-1,3-Dichloropropene	5.623	75	299	0.030	ppbv #	80
47) 1,1,2-Trichloroethane	6.603	97	154	0.022	ppbv #	40
48) Dibromochloromethane	7.416	129	475	0.040	ppbv #	1
49) Bromoform	9.500	173	378	0.038	ppbv #	1
50) 4-Methyl-2-Pentanone	5.775	43	134	0.008	ppbv #	38
51) 2-Hexanone	7.464	43	244	0.018	ppbv #	1
52) Tetrachloroethene	8.241	164	352	0.054	ppbv #	82
53) Toluene	6.960	91	213	0.012	ppbv #	1
54) 1,2-Dibromoethane	7.678	107	343	0.032	ppbv	87
56) 1,1,1,2-Tetrachloroethane	8.940	131	493	0.054	ppbv #	10
57) Chlorobenzene	8.931	112	1853	0.120	ppbv #	71
58) Ethyl Benzene	9.374	91	509	0.020	ppbv #	47
59) m/p-Xylene	9.539	91	434	0.020	ppbv #	33
60) o-Xylene	9.976	91	1229	0.057	ppbv	81
61) Styrene	9.885	104	249	0.031	ppbv #	26
62) Isopropylbenzene	10.549	105	1996	0.064	ppbv	95
63) 1,1,2,2-Tetrachloroethane	9.976	83	902	0.061	ppbv #	25
64) n-propylbenzene	11.009	120	216	0.028	ppbv #	1
65) tert-Butylbenzene	11.543	119	1417	0.051	ppbv #	94
66) Benzyl Chloride	11.627	91	286	0.089	ppbv #	70
67) sec-Butylbenzene	11.792	105	147	0.004	ppbv #	60
69) p-Isopropyltoluene	11.934	119	1508	0.045	ppbv	96
70) n-Butylbenzene	12.290	91	1594	0.046	ppbv #	94
71) 2-Chlorotoluene	10.911	91	1439	0.059	ppbv #	69
72) 4-Ethyltoluene	11.141	105	418	0.016	ppbv #	1
73) 1,3,5-Trimethylbenzene	11.212	105	1270	0.057	ppbv #	65
74) 1,2,4-Trimethylbenzene	11.546	105	1347	0.050	ppbv	94
75) 1,3-Dichlorobenzene	11.617	146	811	0.054	ppbv #	51
76) 1,4-Dichlorobenzene	11.688	146	353	0.025	ppbv #	23
77) 1,2-Dichlorobenzene	11.957	146	1089	0.074	ppbv	89
78) Hexachloro-1,3-Butadiene	13.892	225	1210	0.082	ppbv #	31
79) Naphthalene	13.517	128	740	0.032	ppbv #	70
80) Naphthalene,2-methyl-	14.653	142	30	0.002	ppbv #	37
81) 1,2,4-Trichlorobenzene	13.459	180	122	0.010	ppbv #	1

(#) = qualifier out of range (m) = manual integration (+) = signals summed

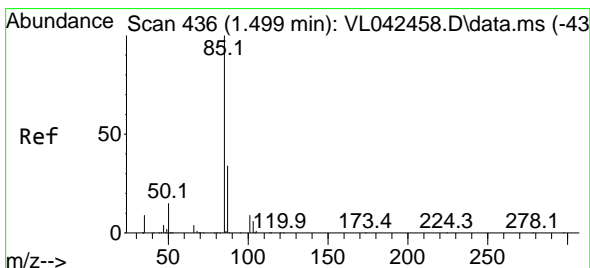
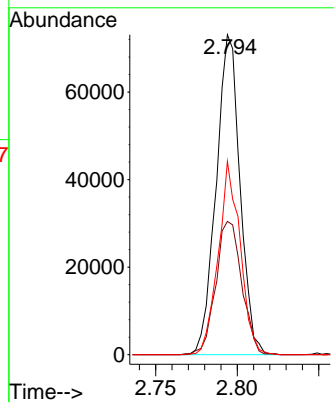
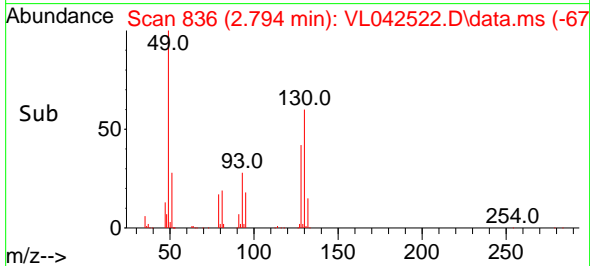


#1
 Bromochloromethane
 Concen: 10.000 ppbv
 RT: 2.794 min Scan# 81
 Delta R.T. 0.010 min
 Lab File: VL042522.D
 Acq: 07 May 2025 17:24

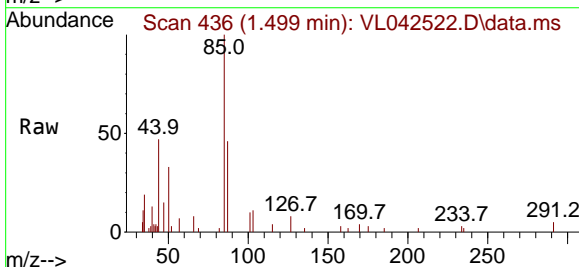
Instrument :
 MSVOA_L
 ClientSampleId :
 MDL2 0.1



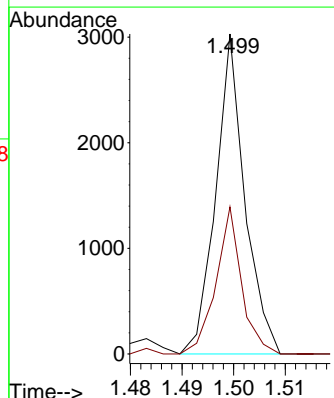
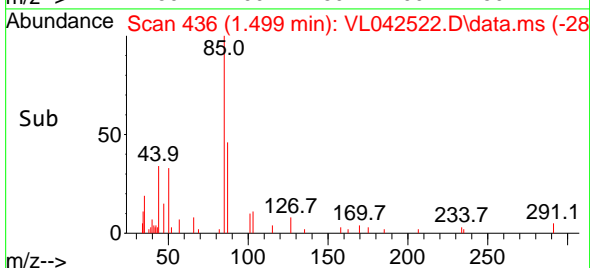
Tgt Ion: 49 Resp: 74360
 Ion Ratio Lower Upper
 49 100
 128 45.3 23.3 69.9
 130 55.5 29.5 88.6

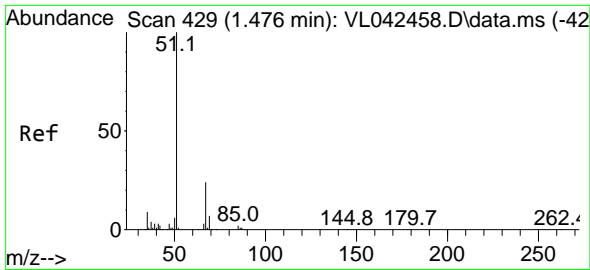


#2
 Dichlorodifluoromethane
 Concen: 0.096 ppbv
 RT: 1.499 min Scan# 436
 Delta R.T. 0.001 min
 Lab File: VL042522.D
 Acq: 07 May 2025 17:24



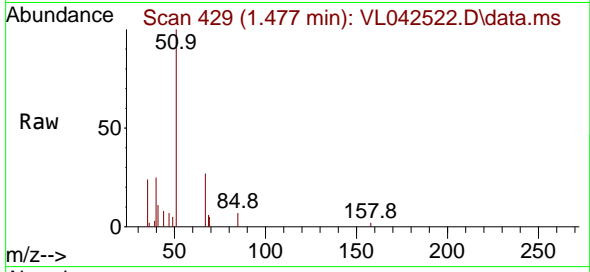
Tgt Ion: 85 Resp: 1184
 Ion Ratio Lower Upper
 85 100
 87 45.9 26.9 40.3#



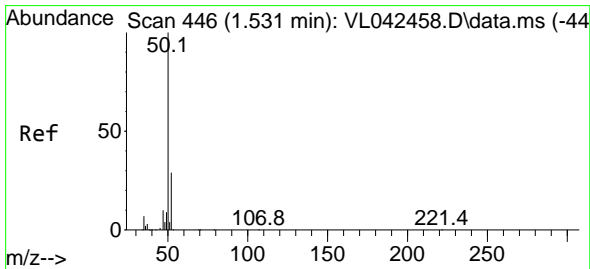
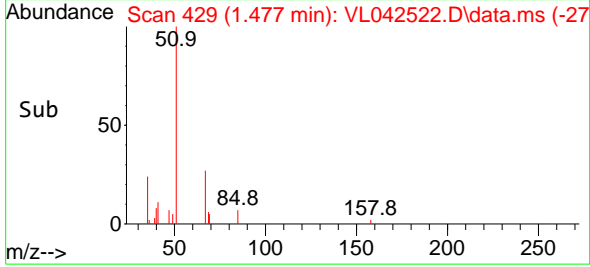
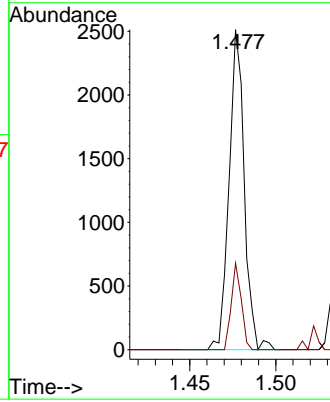


#3
 Chlorodifluoromethane
 Concen: 0.119 ppbv
 RT: 1.477 min Scan# 41
 Delta R.T. 0.001 min
 Lab File: VL042522.D
 Acq: 07 May 2025 17:24

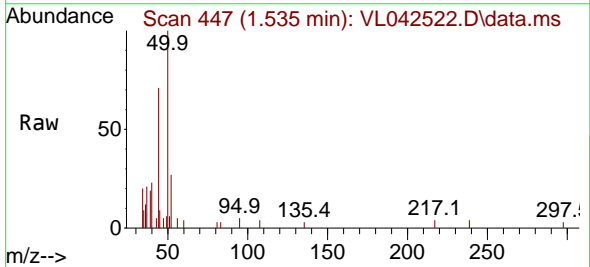
Instrument :
 MSVOA_L
 ClientSampleId :
 MDL2 0.1



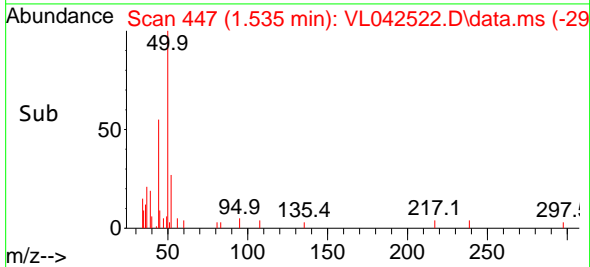
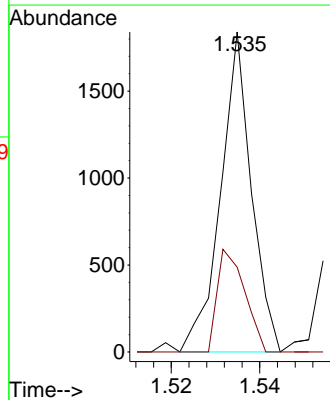
Tgt Ion: 51 Resp: 1543
 Ion Ratio Lower Upper
 51 100
 67 17.8 18.4 27.6#

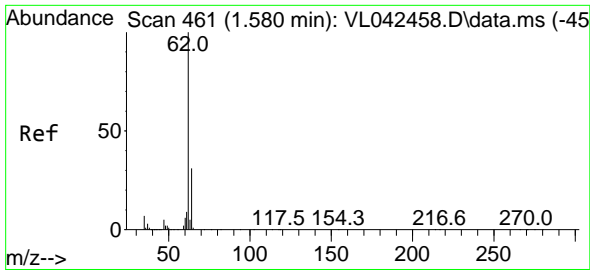


#4
 Chloromethane
 Concen: 0.172 ppbv
 RT: 1.535 min Scan# 447
 Delta R.T. 0.004 min
 Lab File: VL042522.D
 Acq: 07 May 2025 17:24



Tgt Ion: 50 Resp: 887
 Ion Ratio Lower Upper
 50 100
 52 26.5 23.5 35.3

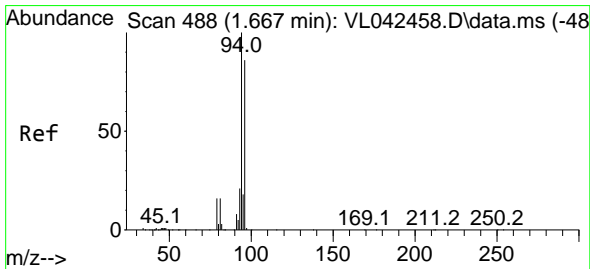
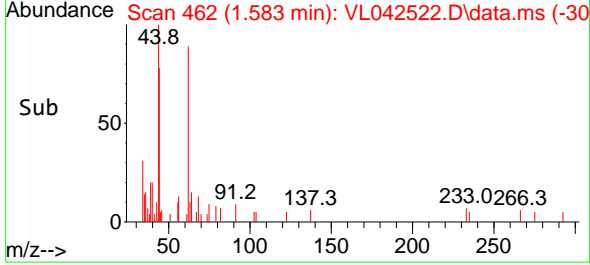
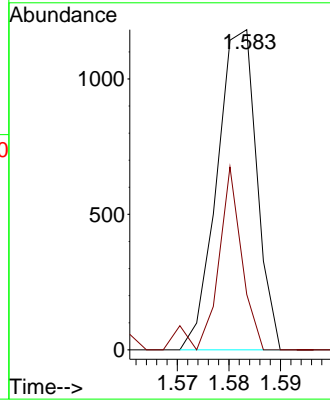
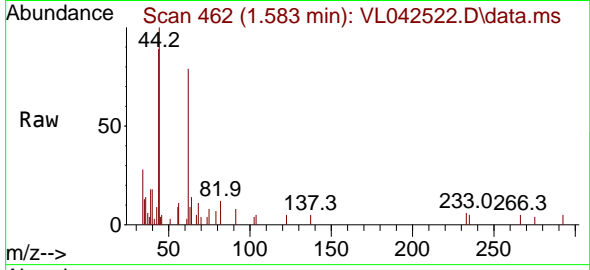




#5
 Vinyl Chloride
 Concen: 0.122 ppbv
 RT: 1.583 min Scan# 461
 Delta R.T. 0.004 min
 Lab File: VL042522.D
 Acq: 07 May 2025 17:24

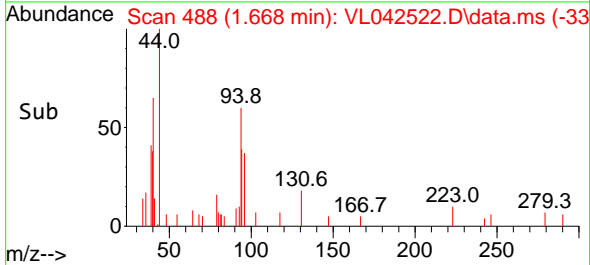
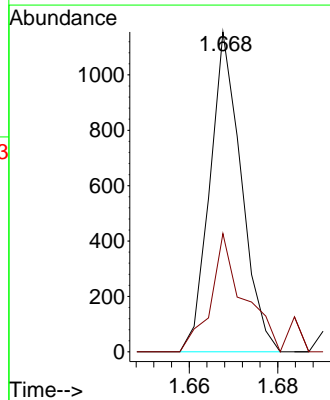
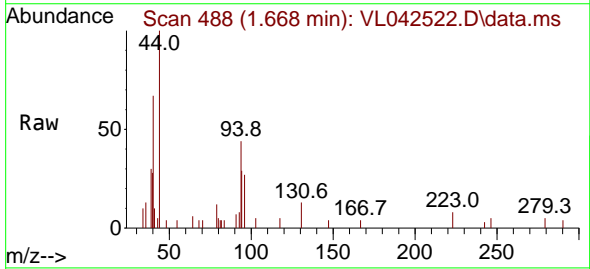
Instrument :
 MSVOA_L
 ClientSampleId :
 MDL2 0.1

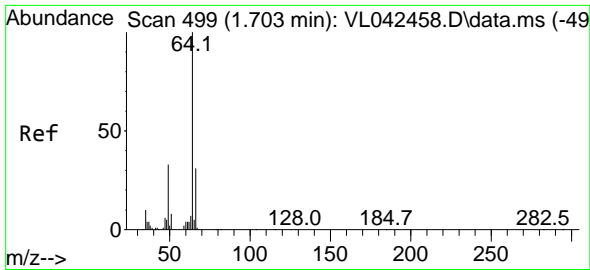
Tgt Ion: 62 Resp: 631
 Ion Ratio Lower Upper
 62 100
 64 17.3 24.9 37.3#



#6
 Bromomethane
 Concen: 0.233 ppbv
 RT: 1.668 min Scan# 488
 Delta R.T. 0.001 min
 Lab File: VL042522.D
 Acq: 07 May 2025 17:24

Tgt Ion: 94 Resp: 570
 Ion Ratio Lower Upper
 94 100
 96 37.0 68.8 103.2#

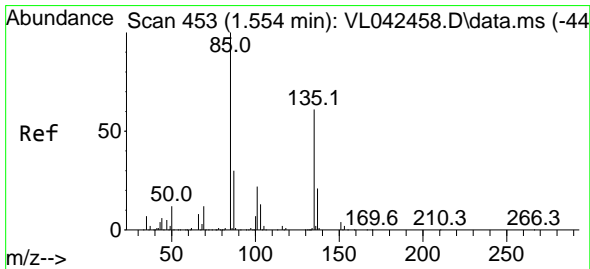
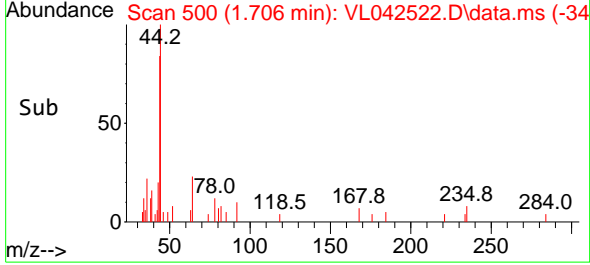
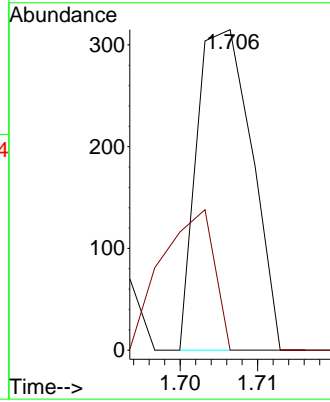
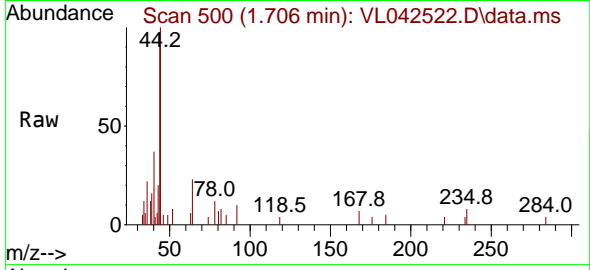




#7
 Chloroethane
 Concen: 0.081 ppbv
 RT: 1.706 min Scan# 50
 Delta R.T. 0.004 min
 Lab File: VL042522.D
 Acq: 07 May 2025 17:24

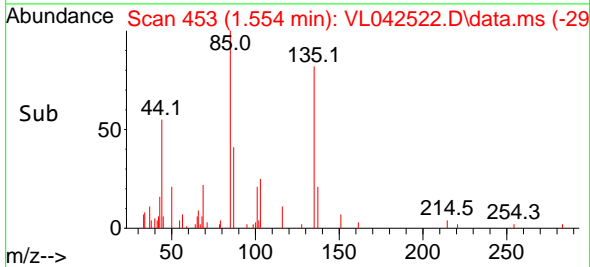
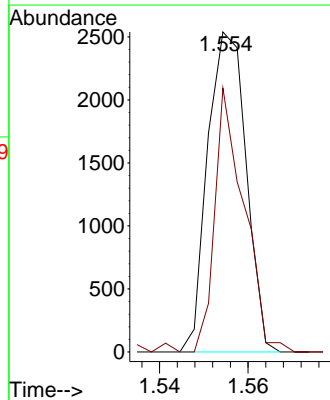
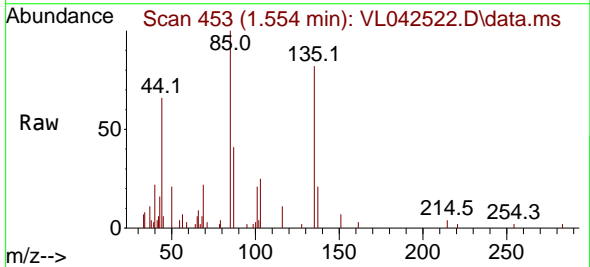
Instrument :
 MSVOA_L
 ClientSampleId :
 MDL2 0.1

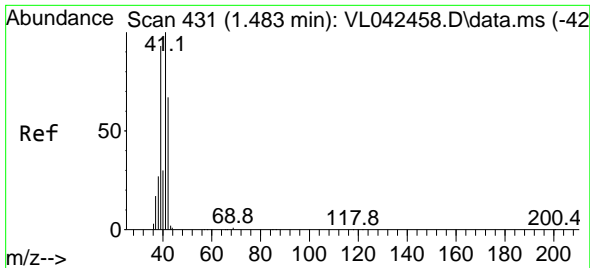
Tgt Ion: 64 Resp: 155
 Ion Ratio Lower Upper
 64 100
 66 0.0 25.0 37.4#



#8
 Dichlorotetrafluoroethane
 Concen: 0.151 ppbv
 RT: 1.554 min Scan# 453
 Delta R.T. 0.001 min
 Lab File: VL042522.D
 Acq: 07 May 2025 17:24

Tgt Ion: 85 Resp: 1535
 Ion Ratio Lower Upper
 85 100
 135 64.2 49.8 74.8

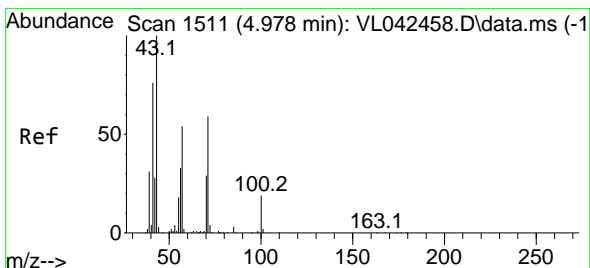
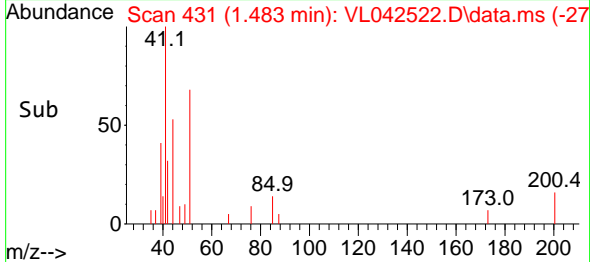
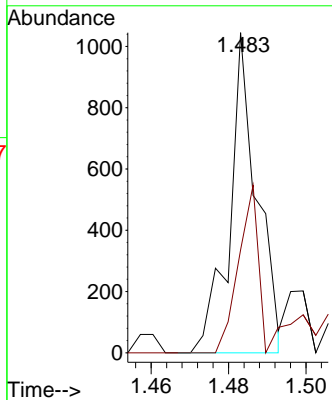
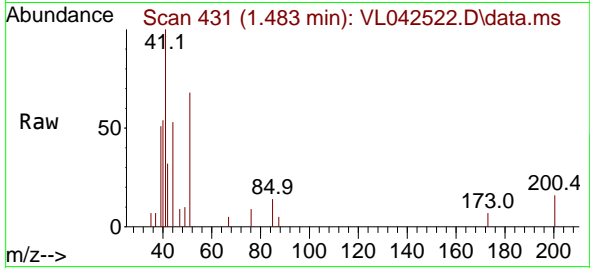




#9
 Propene
 Concen: 0.121 ppbv
 RT: 1.483 min Scan# 41
 Delta R.T. 0.001 min
 Lab File: VL042522.D
 Acq: 07 May 2025 17:24

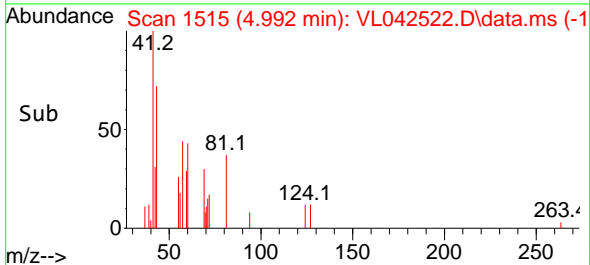
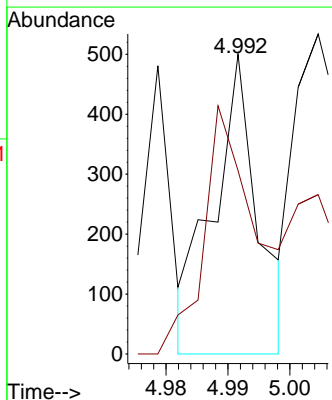
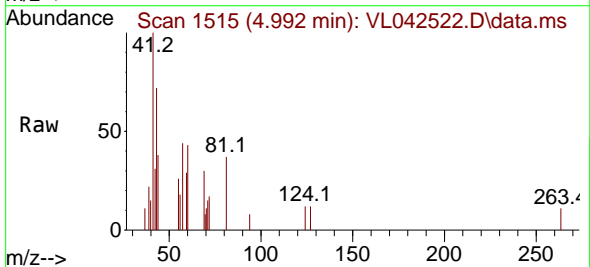
Instrument :
 MSVOA_L
 ClientSampleId :
 MDL2 0.1

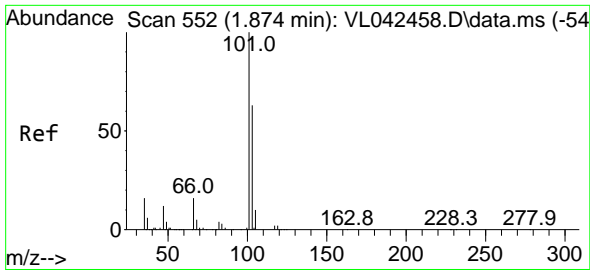
Tgt Ion: 41 Resp: 514
 Ion Ratio Lower Upper
 41 100
 42 95.3 54.3 81.5#



#10
 Heptane
 Concen: 0.023 ppbv
 RT: 4.992 min Scan# 1515
 Delta R.T. 0.014 min
 Lab File: VL042522.D
 Acq: 07 May 2025 17:24

Tgt Ion: 43 Resp: 250
 Ion Ratio Lower Upper
 43 100
 57 161.6 41.8 62.8#

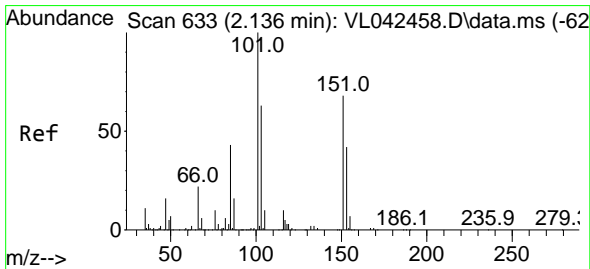
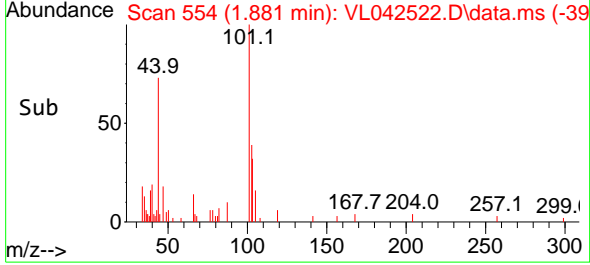
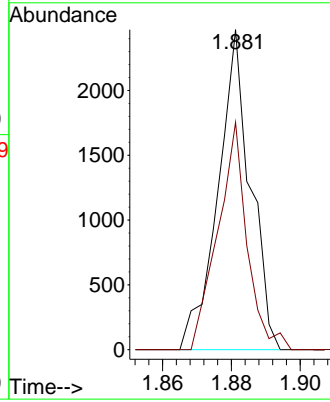
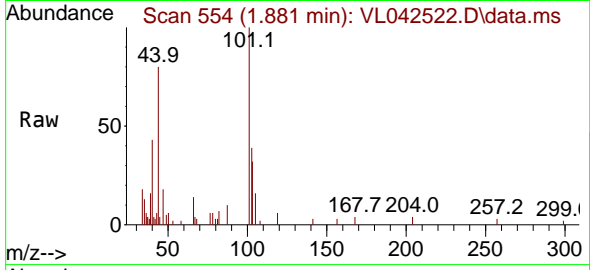




#11
 Trichlorofluoromethane
 Concen: 0.142 ppbv
 RT: 1.881 min Scan# 511
 Delta R.T. 0.007 min
 Lab File: VL042522.D
 Acq: 07 May 2025 17:24

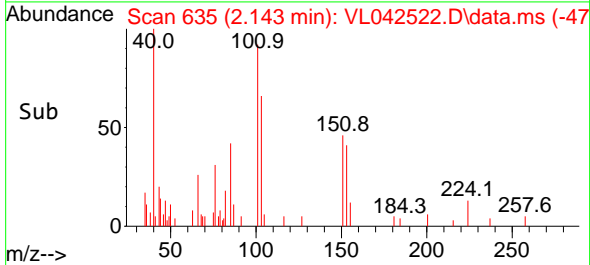
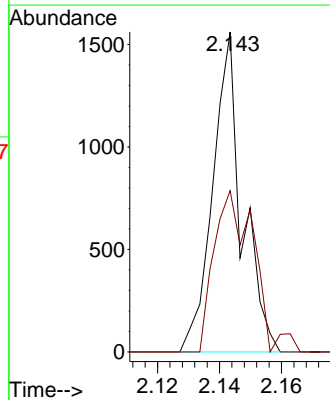
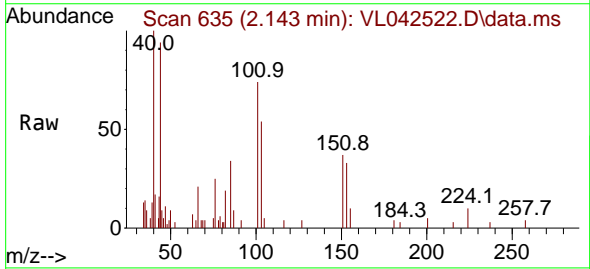
Instrument :
 MSVOA_L
 ClientSampleId :
 MDL2 0.1

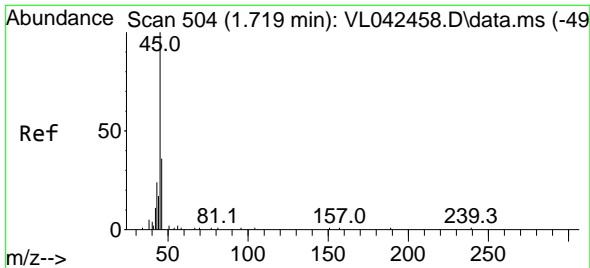
Tgt Ion:101 Resp: 1618
 Ion Ratio Lower Upper
 101 100
 103 71.0 50.6 76.0



#12
 1,1,2-Trichlorotrifluoroethane
 Concen: 0.113 ppbv
 RT: 2.143 min Scan# 635
 Delta R.T. 0.007 min
 Lab File: VL042522.D
 Acq: 07 May 2025 17:24

Tgt Ion:101 Resp: 1024
 Ion Ratio Lower Upper
 101 100
 151 68.8 54.6 82.0

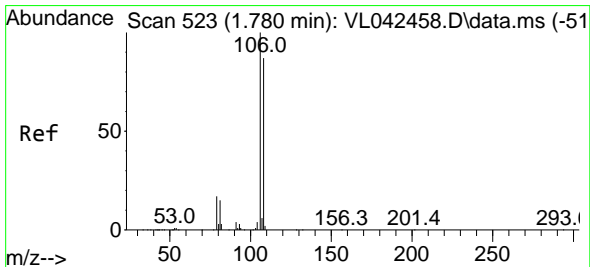
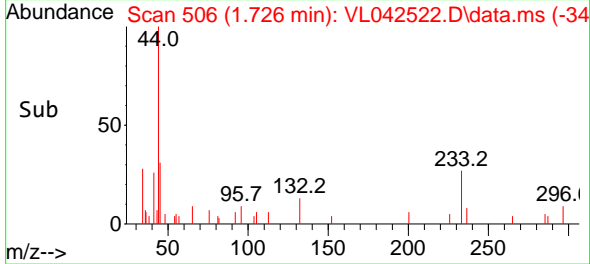
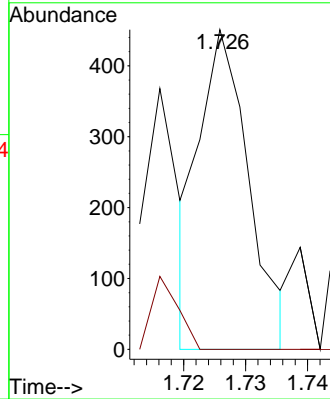
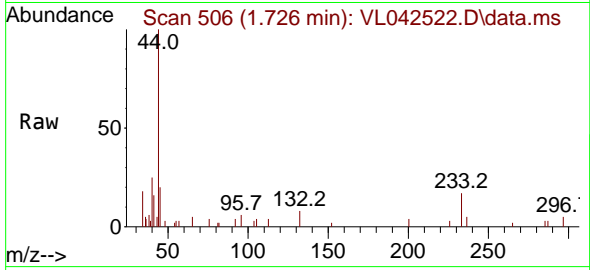




#13
 Ethanol
 Concen: 0.291 ppbv
 RT: 1.726 min Scan# 504
 Delta R.T. 0.007 min
 Lab File: VL042522.D
 Acq: 07 May 2025 17:24

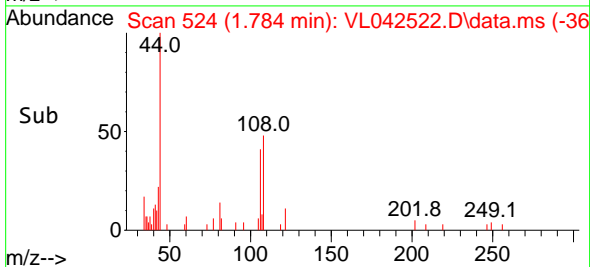
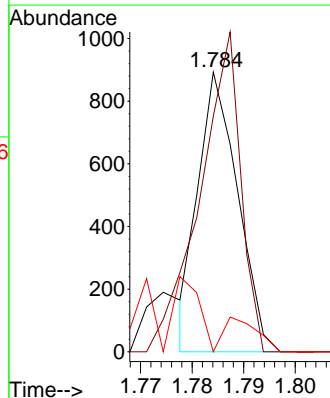
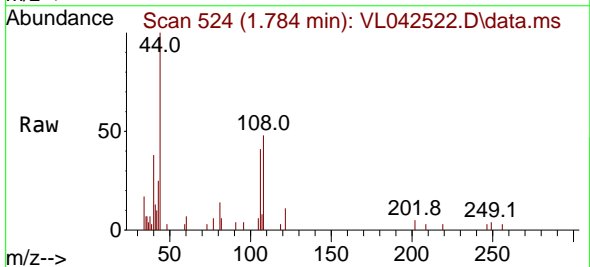
Instrument :
 MSVOA_L
 ClientSampleId :
 MDL2 0.1

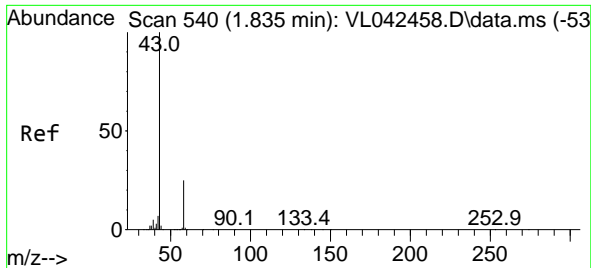
Tgt Ion: 45 Resp: 251
 Ion Ratio Lower Upper
 45 100
 46 0.0 15.3 61.1#



#14
 Bromoethene
 Concen: 0.142 ppbv
 RT: 1.784 min Scan# 524
 Delta R.T. 0.004 min
 Lab File: VL042522.D
 Acq: 07 May 2025 17:24

Tgt Ion: 108 Resp: 475
 Ion Ratio Lower Upper
 108 100
 106 117.3 88.8 133.2
 79 0.0 17.1 25.7#

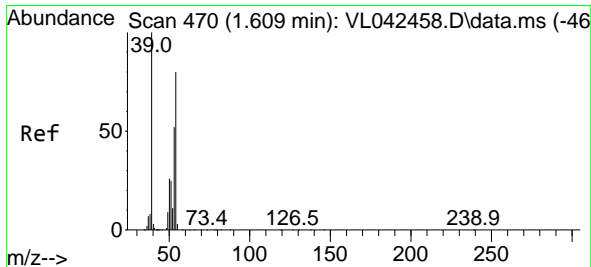
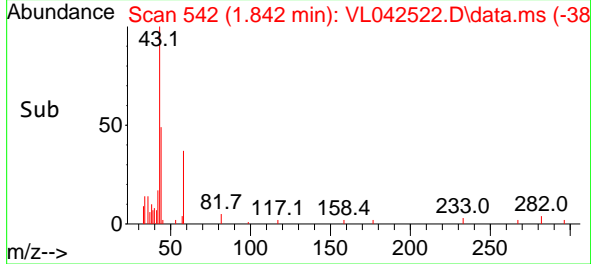
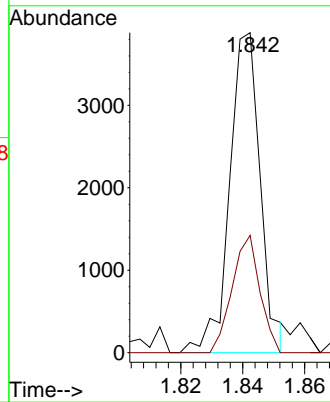
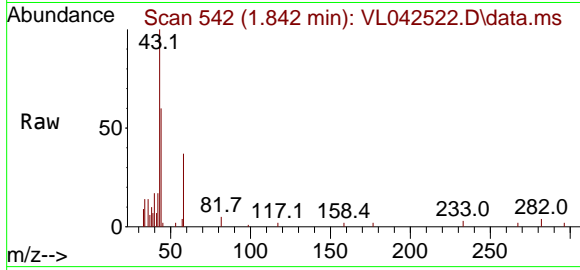




#15
 Acetone
 Concen: 0.197 ppbv
 RT: 1.842 min Scan# 54
 Delta R.T. 0.007 min
 Lab File: VL042522.D
 Acq: 07 May 2025 17:24

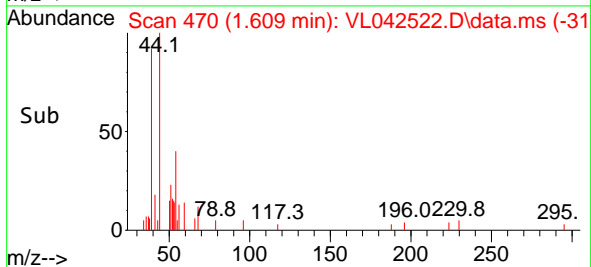
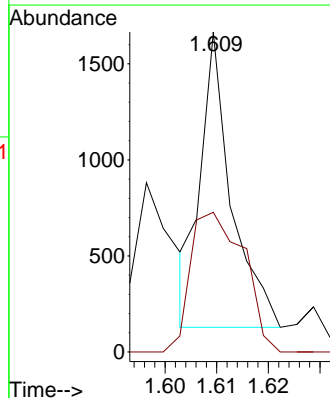
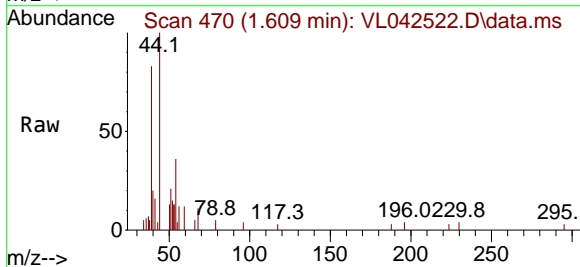
Instrument :
 MSVOA_L
 ClientSampleId :
 MDL2 0.1

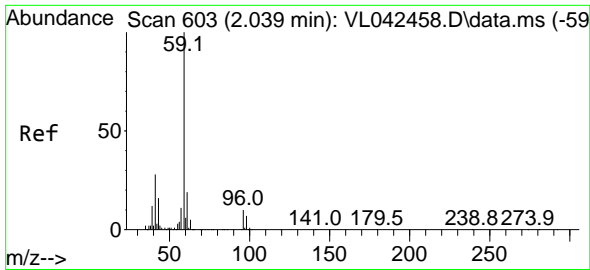
Tgt Ion: 43 Resp: 2671
 Ion Ratio Lower Upper
 43 100
 58 33.1 19.8 29.8#



#16
 1,3-Butadiene
 Concen: 0.107 ppbv
 RT: 1.609 min Scan# 470
 Delta R.T. 0.001 min
 Lab File: VL042522.D
 Acq: 07 May 2025 17:24

Tgt Ion: 39 Resp: 638
 Ion Ratio Lower Upper
 39 100
 54 82.0 55.2 82.8

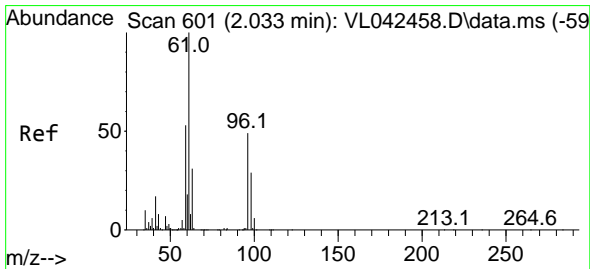
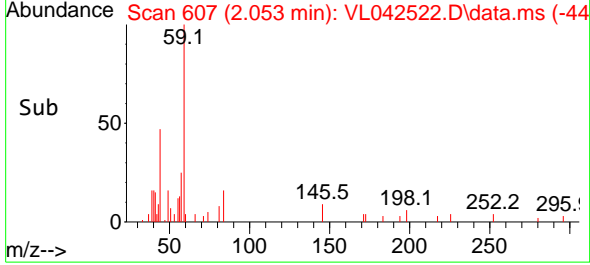
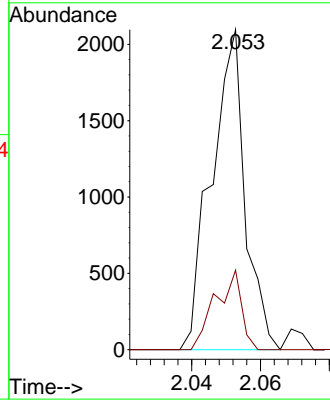
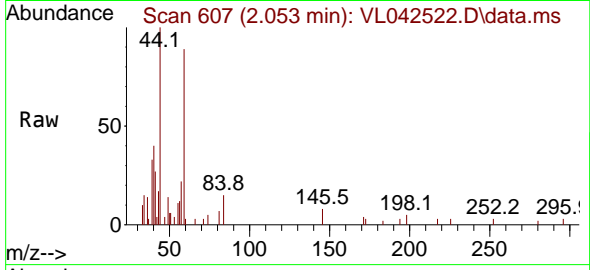




#17
 tert-Butyl alcohol
 Concen: 0.119 ppbv
 RT: 2.053 min Scan# 607
 Delta R.T. 0.014 min
 Lab File: VL042522.D
 Acq: 07 May 2025 17:24

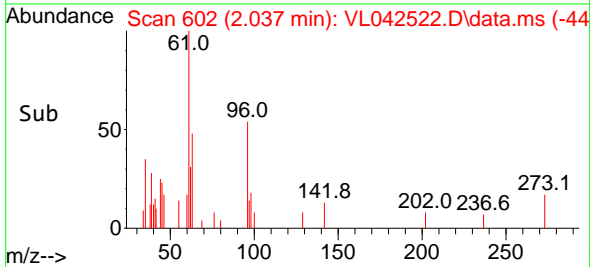
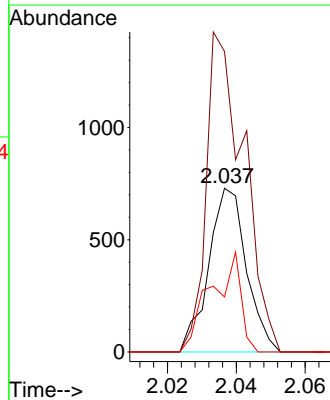
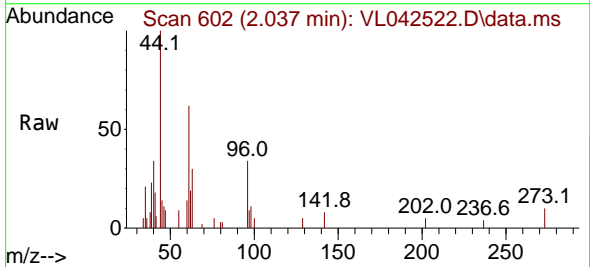
Instrument : MSVOA_L
 ClientSampleId : MDL2 0.1

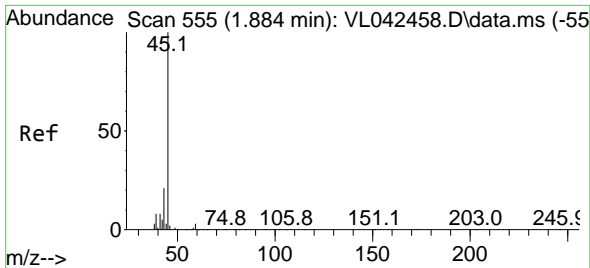
Tgt Ion: 59 Resp: 1423
 Ion Ratio Lower Upper
 59 100
 57 19.3 8.3 12.5#



#18
 1,1-Dichloroethene
 Concen: 0.131 ppbv
 RT: 2.037 min Scan# 602
 Delta R.T. 0.004 min
 Lab File: VL042522.D
 Acq: 07 May 2025 17:24

Tgt Ion: 96 Resp: 555
 Ion Ratio Lower Upper
 96 100
 61 183.7 164.9 247.3
 98 33.6 48.2 72.2#

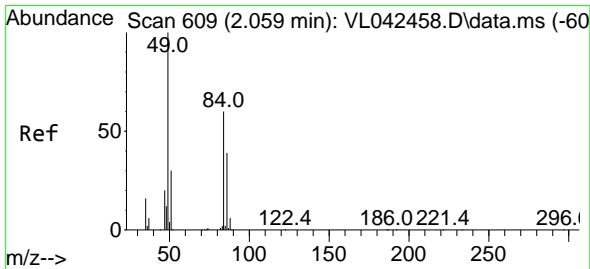
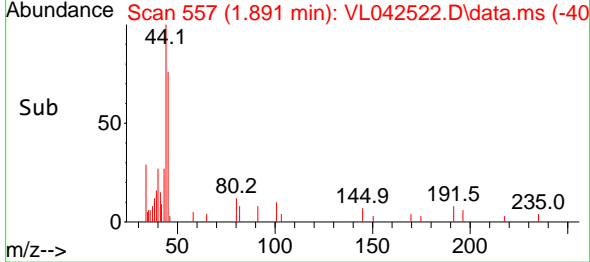
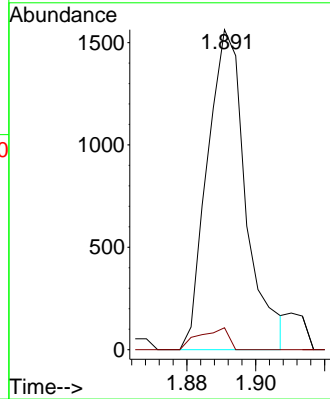
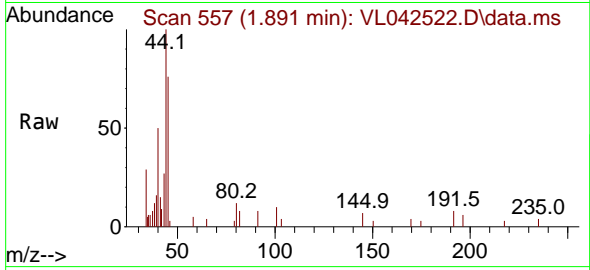




#19
 Isopropyl Alcohol
 Concen: 0.162 ppbv
 RT: 1.891 min Scan# 511
 Delta R.T. 0.007 min
 Lab File: VL042522.D
 Acq: 07 May 2025 17:24

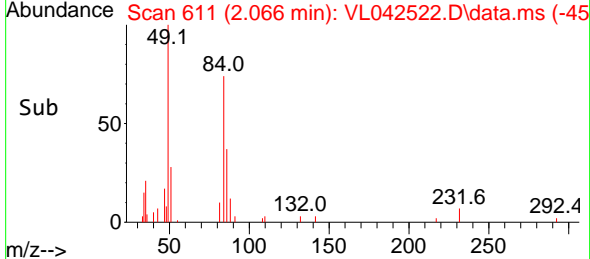
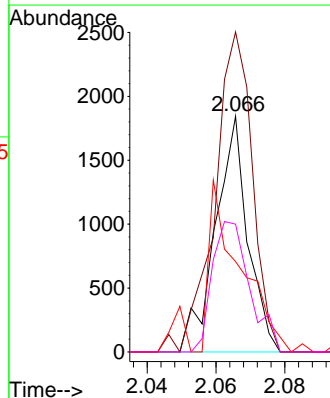
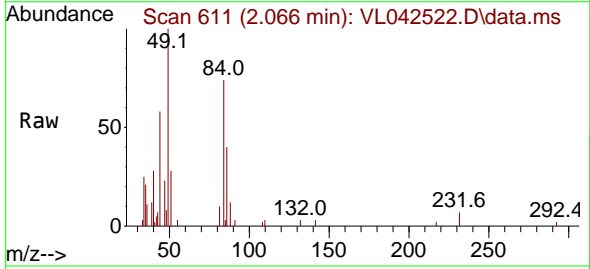
Instrument : MSVOA_L
 ClientSampleId : MDL2 0.1

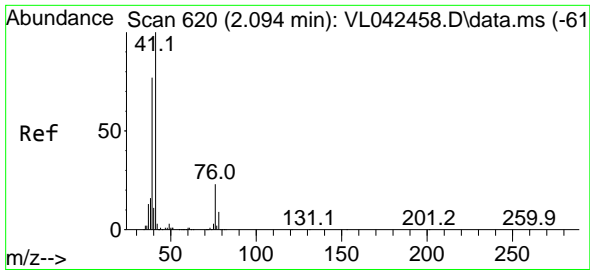
Tgt Ion: 45 Resp: 1216
 Ion Ratio Lower Upper
 45 100
 58 5.2 1.6 2.4#



#20
 Methylene Chloride
 Concen: 0.296 ppbv
 RT: 2.066 min Scan# 611
 Delta R.T. 0.007 min
 Lab File: VL042522.D
 Acq: 07 May 2025 17:24

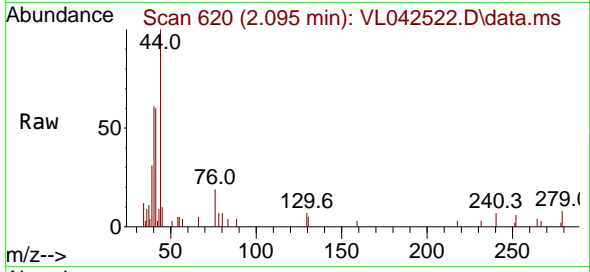
Tgt Ion: 84 Resp: 1210
 Ion Ratio Lower Upper
 84 100
 49 135.8 133.9 200.9
 51 32.0 41.0 61.6#
 86 54.3 51.9 77.9



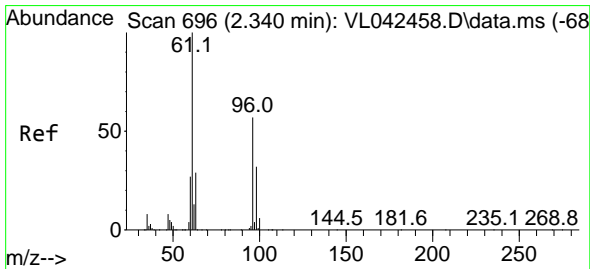
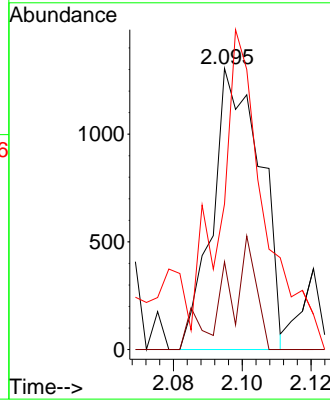
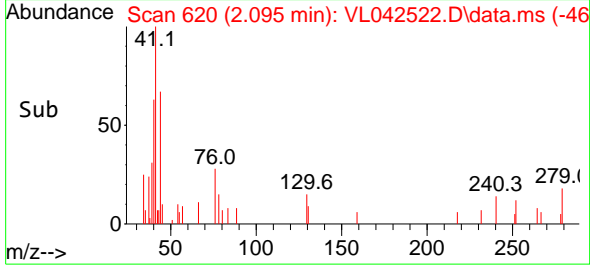


#21
 Allyl Chloride
 Concen: 0.145 ppbv
 RT: 2.095 min Scan# 61
 Delta R.T. 0.001 min
 Lab File: VL042522.D
 Acq: 07 May 2025 17:24

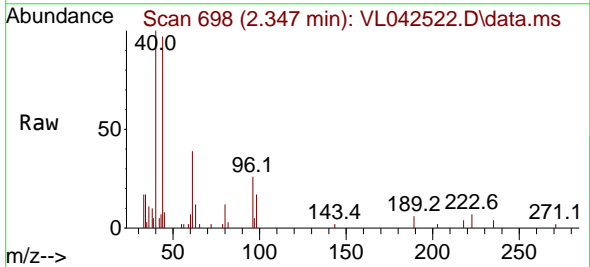
Instrument :
 MSVOA_L
 ClientSampleId :
 MDL2 0.1



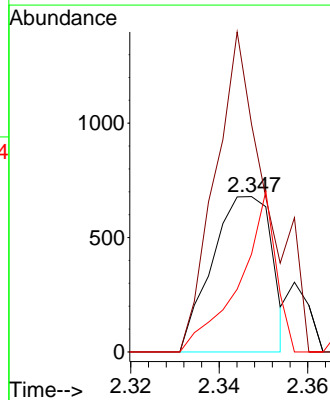
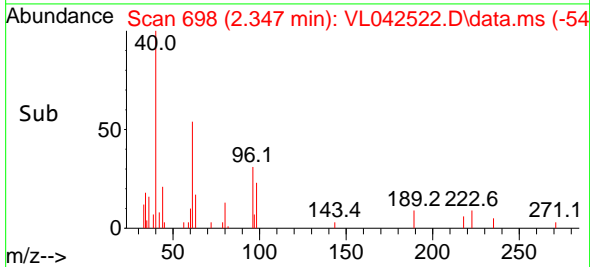
Tgt Ion: 41 Resp: 1263
 Ion Ratio Lower Upper
 41 100
 76 25.7 19.6 29.4
 39 105.6 61.0 91.4#

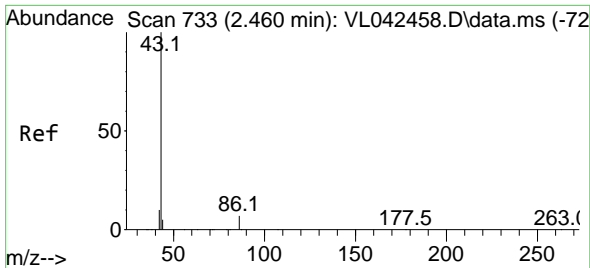


#22
 trans-1,2-Dichloroethene
 Concen: 0.129 ppbv
 RT: 2.347 min Scan# 698
 Delta R.T. 0.007 min
 Lab File: VL042522.D
 Acq: 07 May 2025 17:24



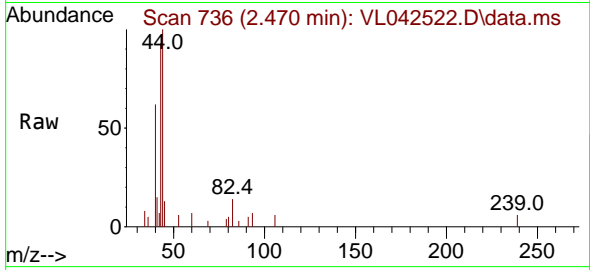
Tgt Ion: 96 Resp: 638
 Ion Ratio Lower Upper
 96 100
 61 146.5 141.8 212.6
 98 63.0 45.0 67.6





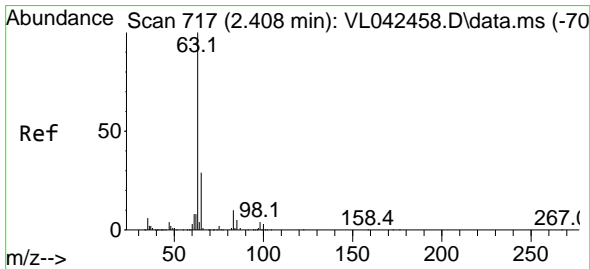
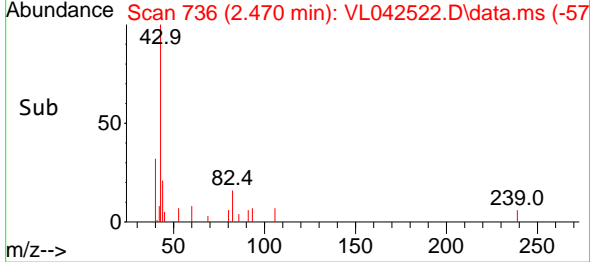
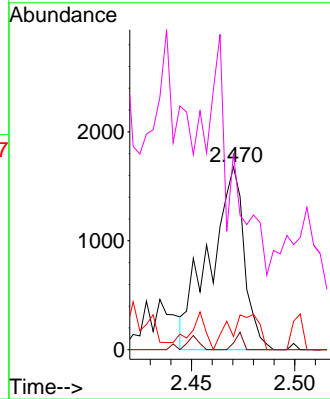
#23
 Vinyl Acetate
 Concen: 0.149 ppbv
 RT: 2.470 min Scan# 71
 Delta R.T. 0.010 min
 Lab File: VL042522.D
 Acq: 07 May 2025 17:24

Instrument :
 MSVOA_L
 ClientSampleId :
 MDL2 0.1

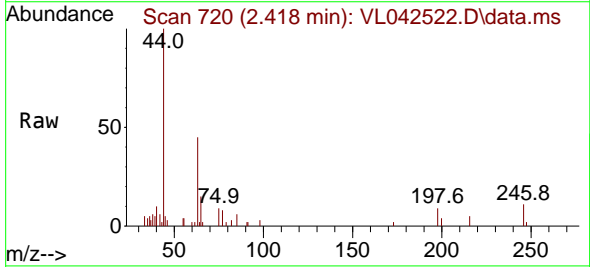


Tgt Ion: 43 Resp: 1936

Ion	Ratio	Lower	Upper
43	100		
86	3.7	5.5	8.3#
42	7.2	8.3	12.5#
44	55.2	4.6	7.0#

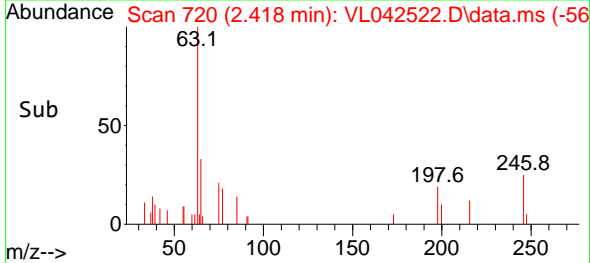
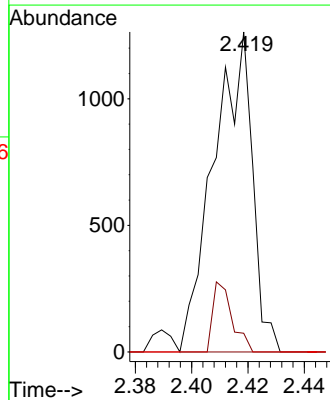


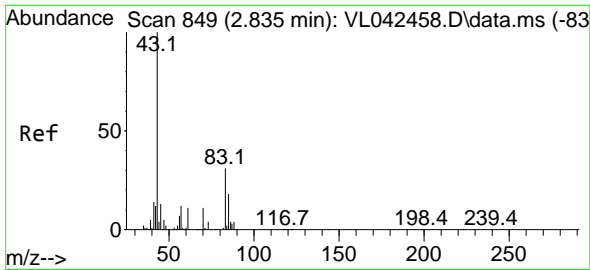
#24
 1,1-Dichloroethane
 Concen: 0.119 ppbv
 RT: 2.418 min Scan# 720
 Delta R.T. 0.010 min
 Lab File: VL042522.D
 Acq: 07 May 2025 17:24



Tgt Ion: 63 Resp: 1204

Ion	Ratio	Lower	Upper
63	100		
98	5.9	1.8	5.5#
100	0.0	1.4	4.2#



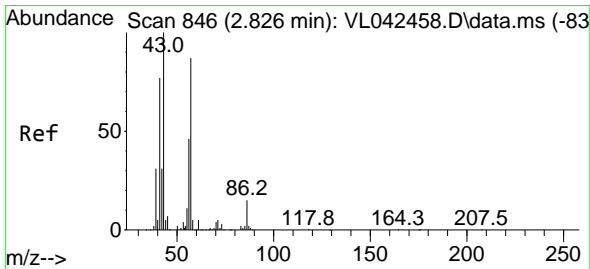
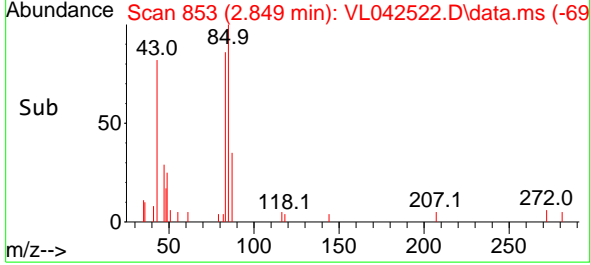
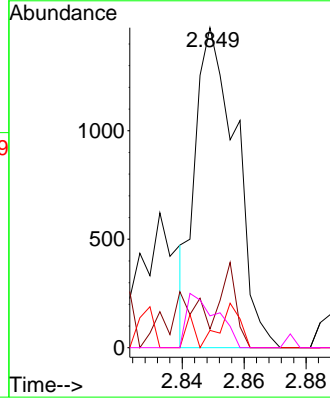
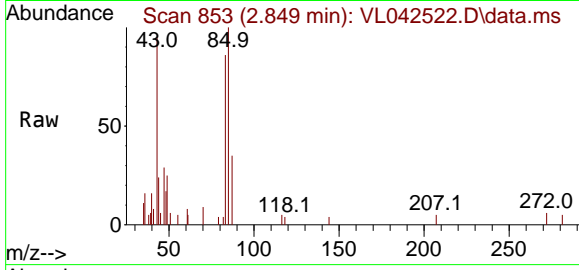


#25
 Ethyl Acetate
 Concen: 0.062 ppbv
 RT: 2.849 min Scan# 81
 Delta R.T. 0.014 min
 Lab File: VL042522.D
 Acq: 07 May 2025 17:24

Instrument :
 MSVOA_L
 ClientSampleId :
 MDL2 0.1

Tgt Ion: 43 Resp: 1341

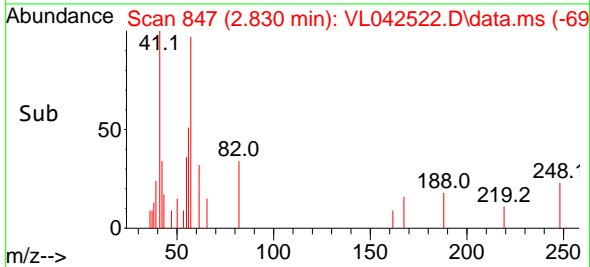
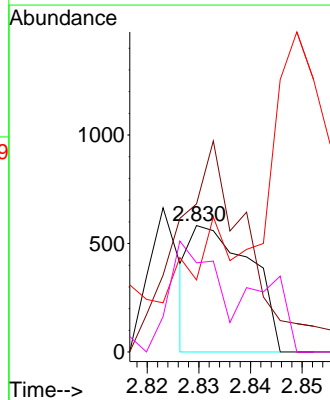
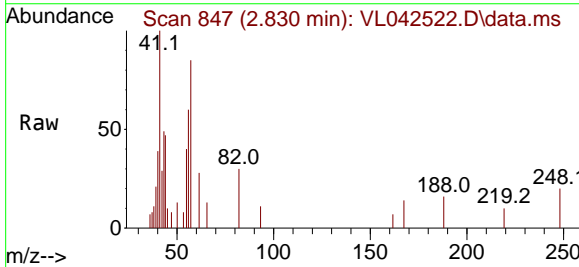
Ion	Ratio	Lower	Upper
43	100		
45	28.8	7.8	11.6#
61	9.2	7.2	10.8
70	12.7	7.2	10.8#

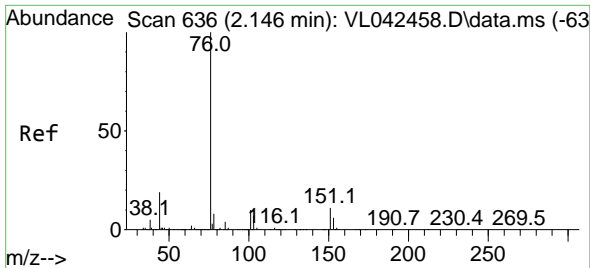


#26
 Hexane
 Concen: 0.050 ppbv
 RT: 2.830 min Scan# 847
 Delta R.T. 0.004 min
 Lab File: VL042522.D
 Acq: 07 May 2025 17:24

Tgt Ion: 57 Resp: 471

Ion	Ratio	Lower	Upper
57	100		
41	215.7	77.8	116.8#
43	411.0	187.0	280.6#
56	108.7	43.9	65.9#

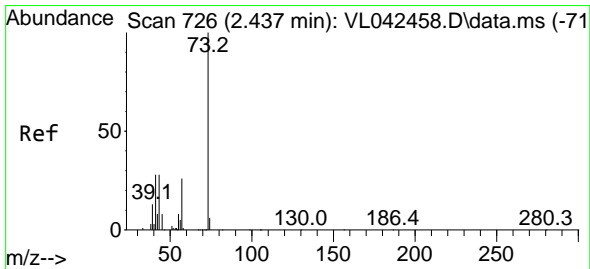
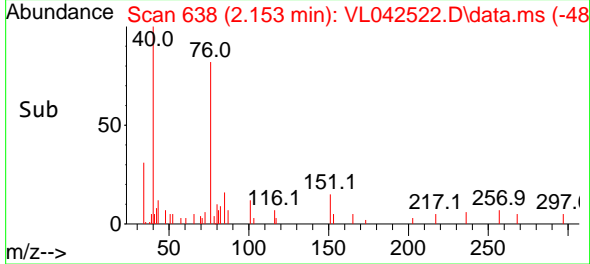
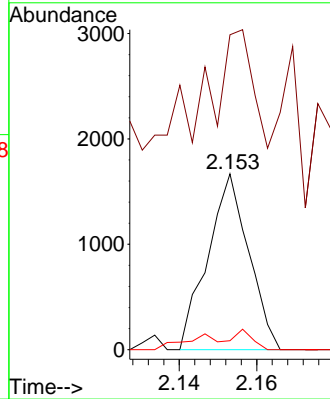
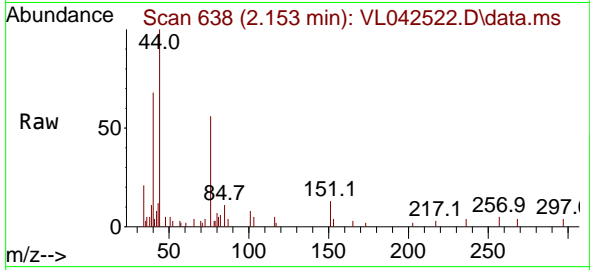




#27
 Carbon Disulfide
 Concen: 0.111 ppbv
 RT: 2.153 min Scan# 61
 Delta R.T. 0.007 min
 Lab File: VL042522.D
 Acq: 07 May 2025 17:24

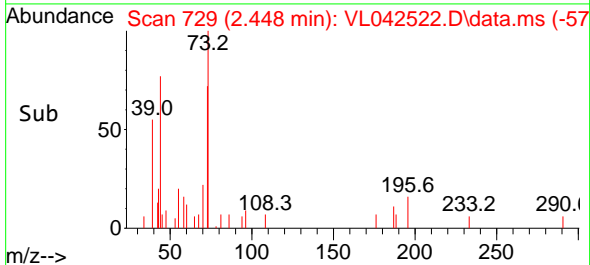
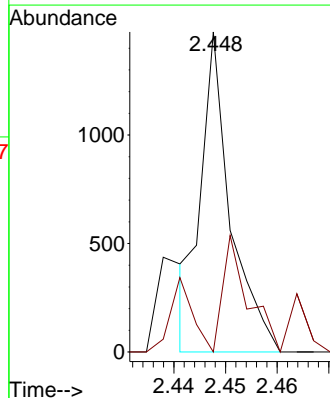
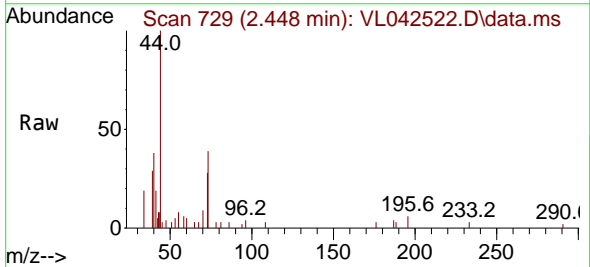
Instrument :
 MSVOA_L
 ClientSampleId :
 MDL2 0.1

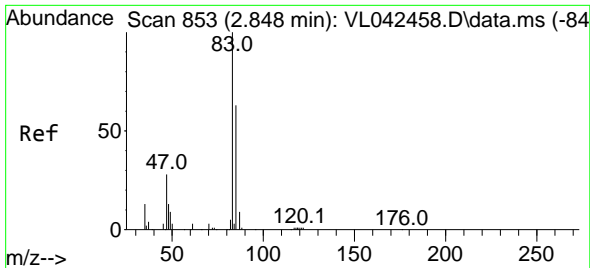
Tgt Ion: 76 Resp: 1224
 Ion Ratio Lower Upper
 76 100
 44 395.8 21.0 31.6#
 78 12.7 8.6 13.0



#28
 Methyl tert-Butyl Ether
 Concen: 0.102 ppbv
 RT: 2.448 min Scan# 729
 Delta R.T. 0.010 min
 Lab File: VL042522.D
 Acq: 07 May 2025 17:24

Tgt Ion: 73 Resp: 583
 Ion Ratio Lower Upper
 73 100
 57 59.9 19.9 29.9#

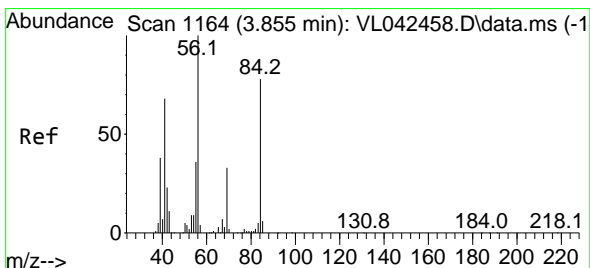
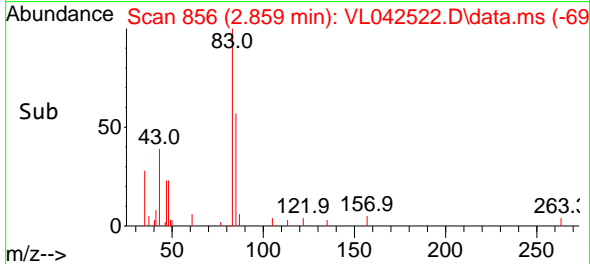
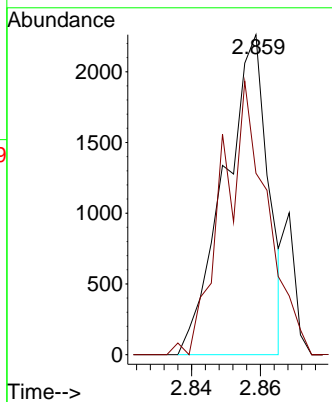
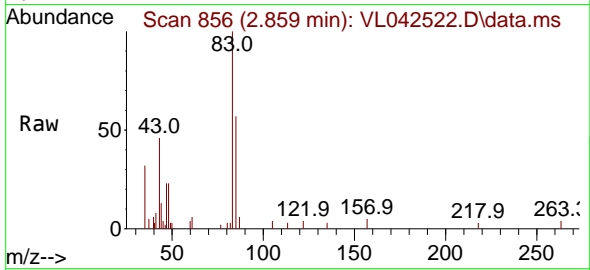




#29
 Chloroform
 Concen: 0.113 ppbv
 RT: 2.859 min Scan# 856
 Delta R.T. 0.010 min
 Lab File: VL042522.D
 Acq: 07 May 2025 17:24

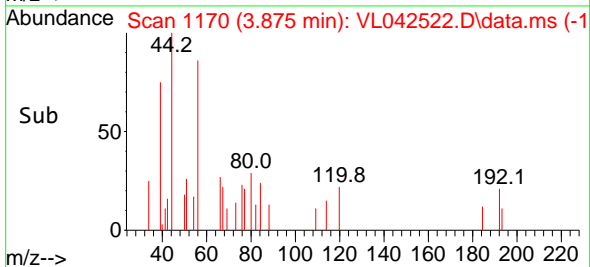
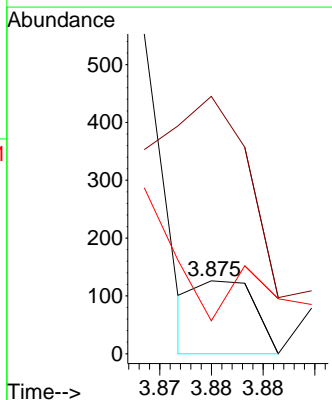
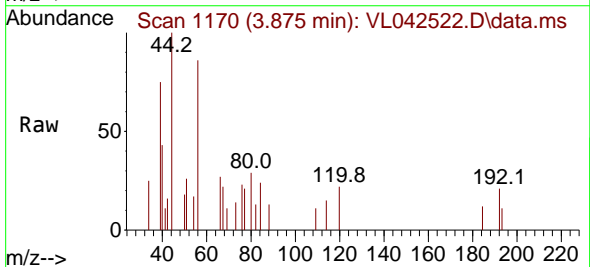
Instrument : MSVOA_L
 ClientSampleId : MDL2 0.1

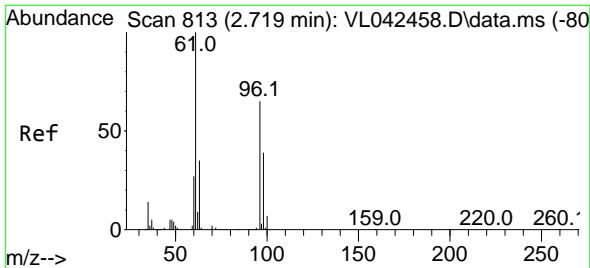
Tgt Ion: 83 Resp: 2006
 Ion Ratio Lower Upper
 83 100
 85 53.1 50.4 75.6



#30
 Cyclohexane
 Concen: 0.006 ppbv
 RT: 3.875 min Scan# 1170
 Delta R.T. 0.020 min
 Lab File: VL042522.D
 Acq: 07 May 2025 17:24

Tgt Ion: 84 Resp: 48
 Ion Ratio Lower Upper
 84 100
 56 0.0 98.1 147.1#
 41 0.0 65.8 98.8#

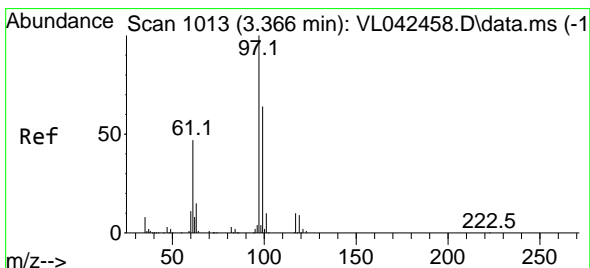
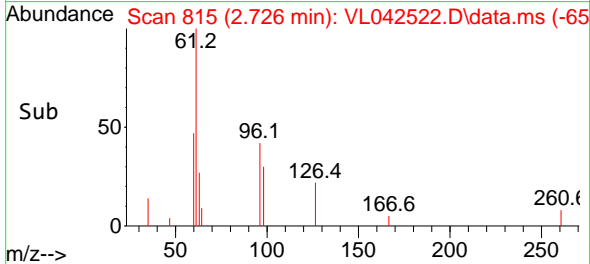
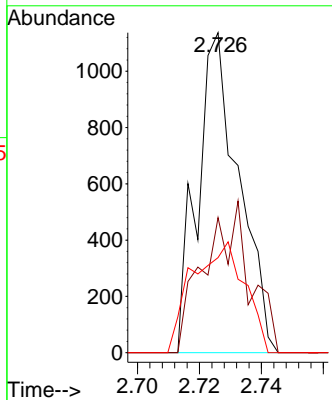
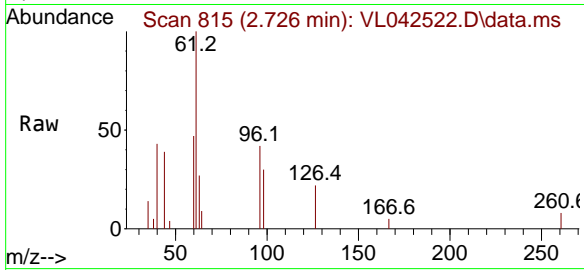




#31
 cis-1,2-Dichloroethene
 Concen: 0.095 ppbv
 RT: 2.726 min Scan# 815
 Delta R.T. 0.007 min
 Lab File: VL042522.D
 Acq: 07 May 2025 17:24

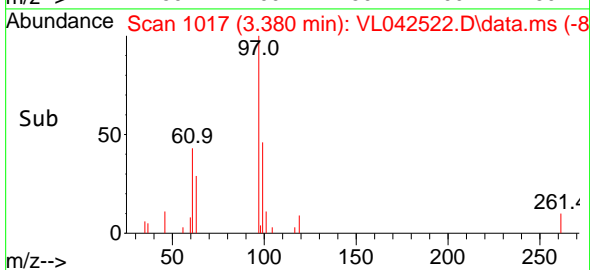
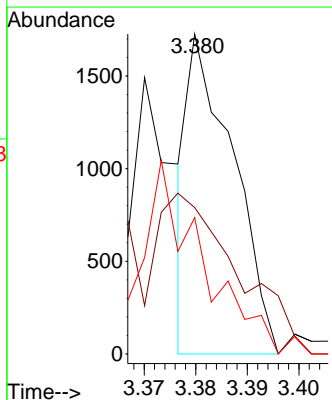
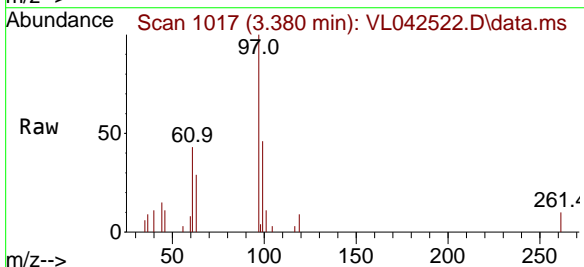
Instrument : MSVOA_L
 ClientSampleId : MDL2 0.1

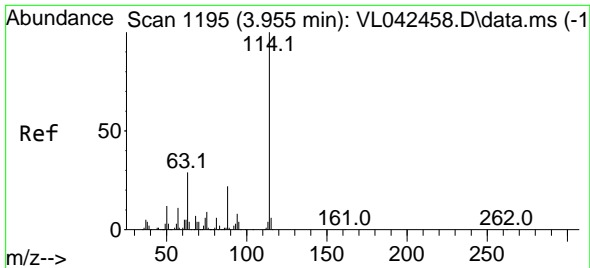
Tgt Ion	Resp	Lower	Upper
61	1054		
96	42.2	52.0	78.0#
98	29.7	31.0	46.6#



#32
 1,1,1-Trichloroethane
 Concen: 0.055 ppbv
 RT: 3.380 min Scan# 1017
 Delta R.T. 0.014 min
 Lab File: VL042522.D
 Acq: 07 May 2025 17:24

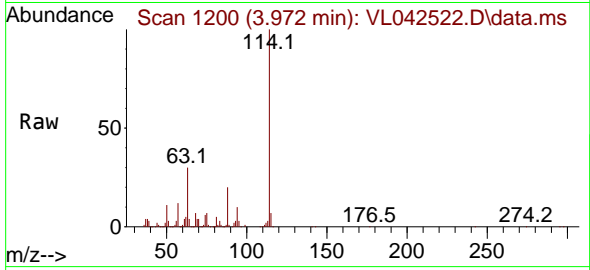
Tgt Ion	Resp	Lower	Upper
97	1055		
99	0.0	50.7	76.1#
61	0.0	40.9	61.3#



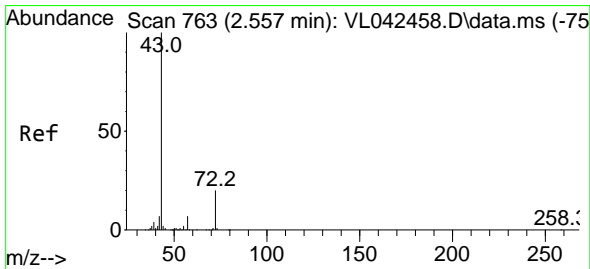
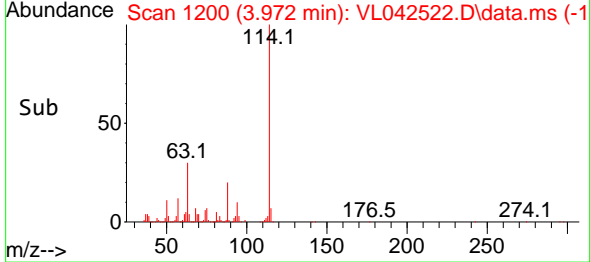
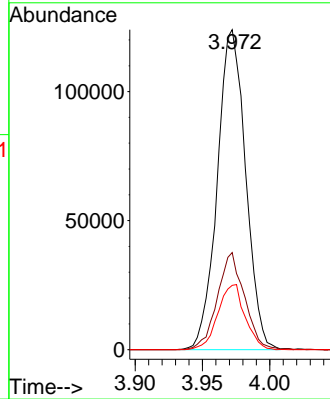


#33
 1,4-Difluorobenzene
 Concen: 10.000 ppbv
 RT: 3.972 min Scan# 1195
 Delta R.T. 0.017 min
 Lab File: VL042522.D
 Acq: 07 May 2025 17:24

Instrument : MSVOA_L
 ClientSampleId : MDL2 0.1

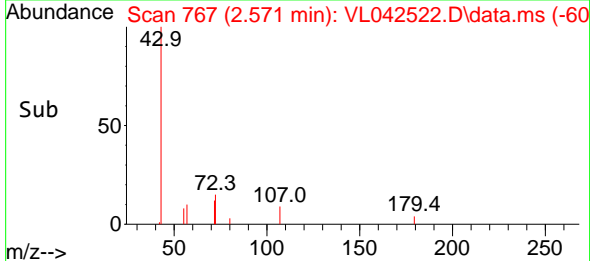
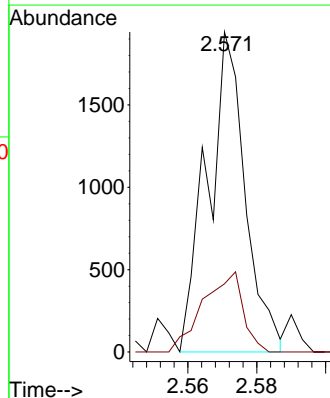
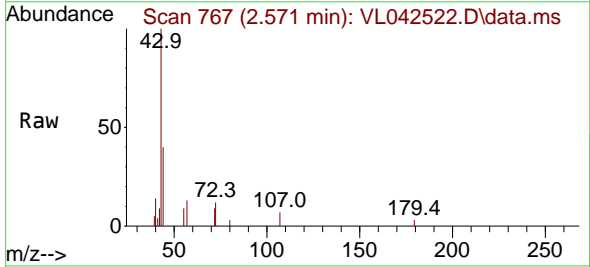


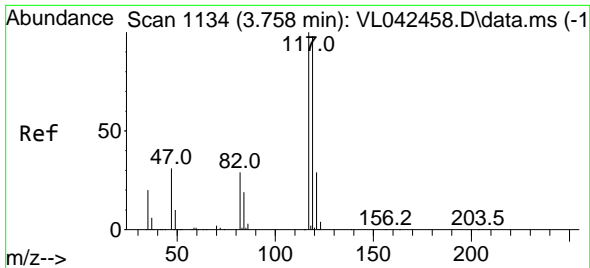
Tgt Ion:114 Resp: 181585
 Ion Ratio Lower Upper
 114 100
 63 29.2 23.1 34.7
 88 19.5 16.1 24.1



#34
 2-Butanone
 Concen: 0.113 ppbv
 RT: 2.571 min Scan# 767
 Delta R.T. 0.014 min
 Lab File: VL042522.D
 Acq: 07 May 2025 17:24

Tgt Ion: 43 Resp: 1481
 Ion Ratio Lower Upper
 43 100
 72 26.5 16.7 25.1#

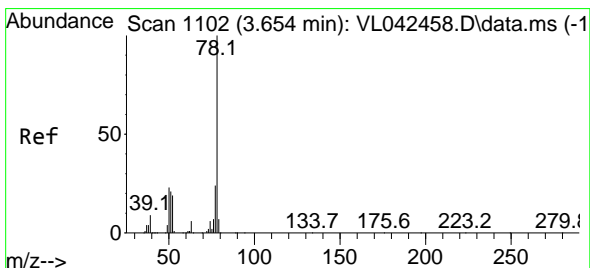
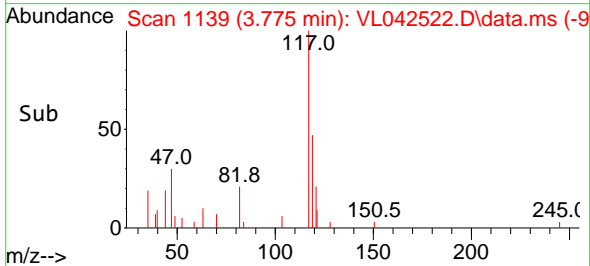
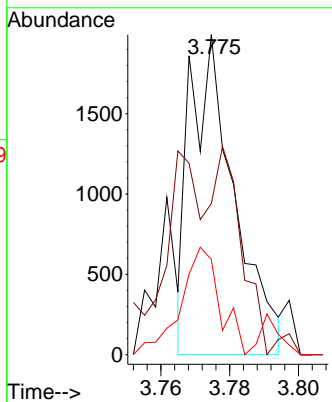
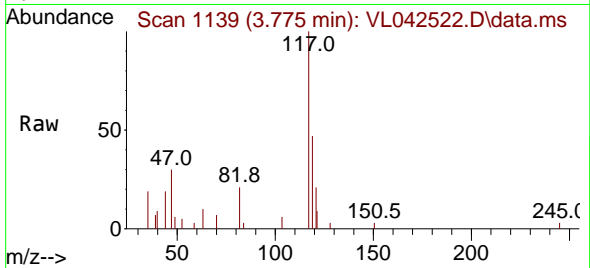




#35
 Carbon Tetrachloride
 Concen: 0.108 ppbv
 RT: 3.775 min Scan# 1119
 Delta R.T. 0.017 min
 Lab File: VL042522.D
 Acq: 07 May 2025 17:24

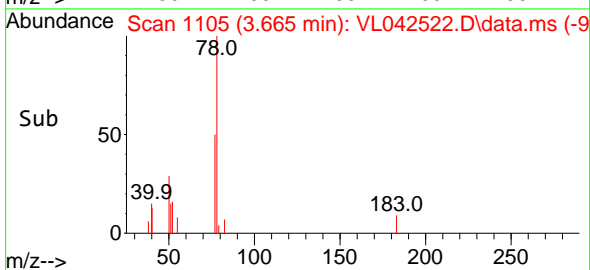
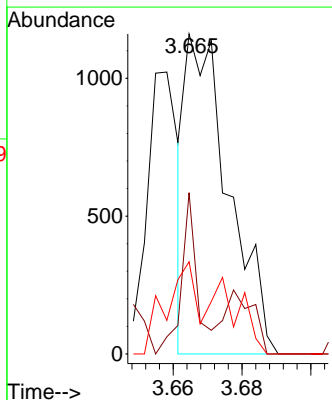
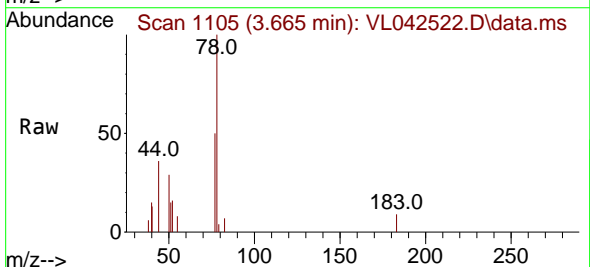
Instrument : MSVOA_L
 ClientSampleId : MDL2 0.1

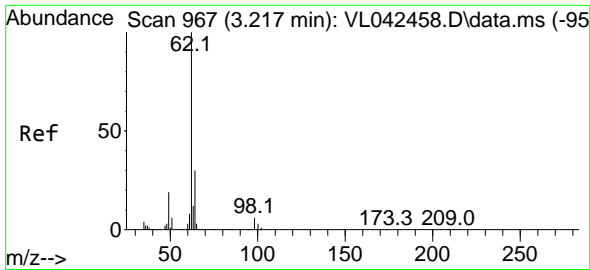
Tgt Ion:117 Resp: 1777
 Ion Ratio Lower Upper
 117 100
 119 48.2 78.1 117.1#
 121 26.4 23.0 34.6



#36
 Benzene
 Concen: 0.059 ppbv
 RT: 3.665 min Scan# 1105
 Delta R.T. 0.010 min
 Lab File: VL042522.D
 Acq: 07 May 2025 17:24

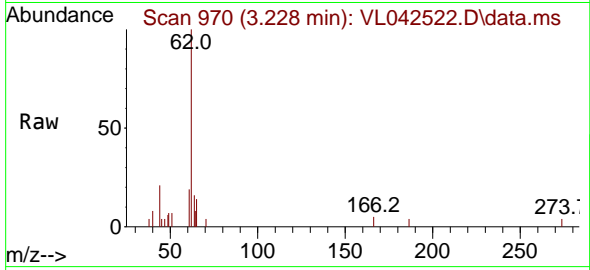
Tgt Ion: 78 Resp: 1016
 Ion Ratio Lower Upper
 78 100
 77 50.4 18.9 28.3#
 50 28.8 18.4 27.6#



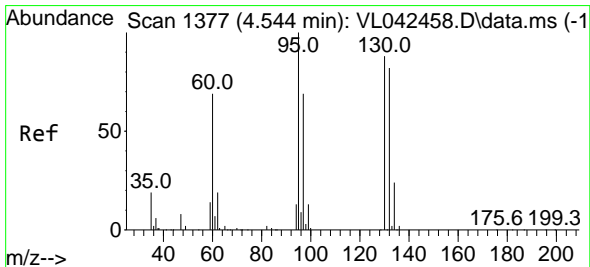
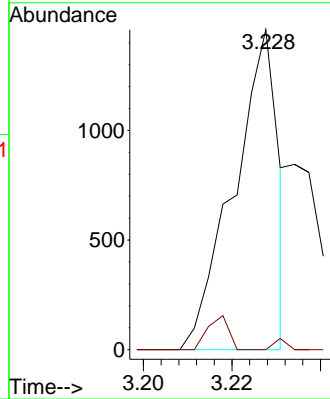
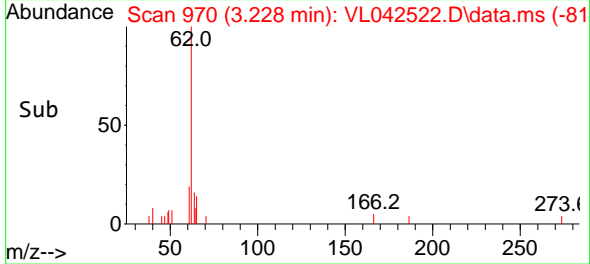


#37
 1,2-Dichloroethane
 Concen: 0.077 ppbv
 RT: 3.228 min Scan# 91
 Delta R.T. 0.010 min
 Lab File: VL042522.D
 Acq: 07 May 2025 17:24

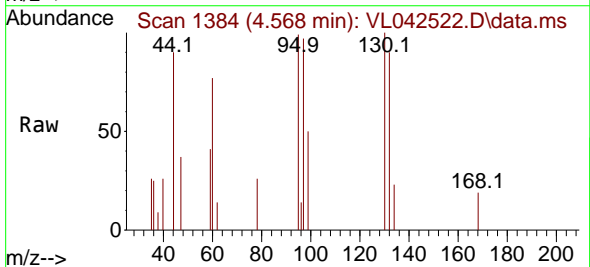
Instrument :
 MSVOA_L
 ClientSampleId :
 MDL2 0.1



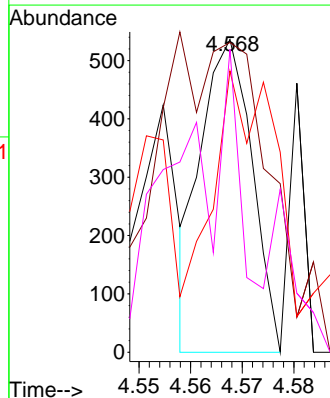
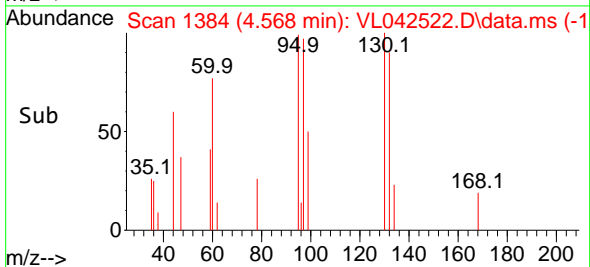
Tgt Ion: 62 Resp: 1022
 Ion Ratio Lower Upper
 62 100
 98 6.0 4.3 6.5

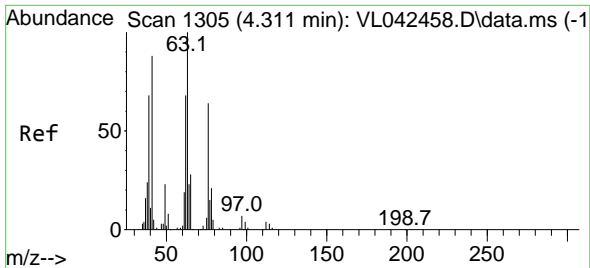


#38
 Trichloroethene
 Concen: 0.056 ppbv
 RT: 4.568 min Scan# 1384
 Delta R.T. 0.023 min
 Lab File: VL042522.D
 Acq: 07 May 2025 17:24



Tgt Ion: 130 Resp: 367
 Ion Ratio Lower Upper
 130 100
 95 45.1 91.0 136.4#
 132 72.2 74.2 111.4#
 97 44.8 62.3 93.5#



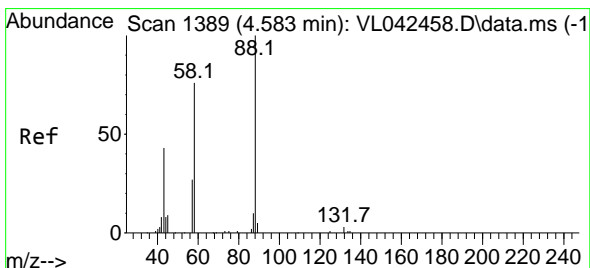
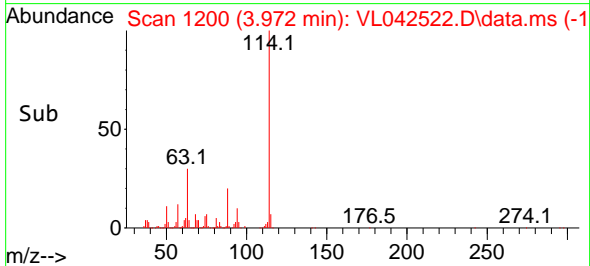
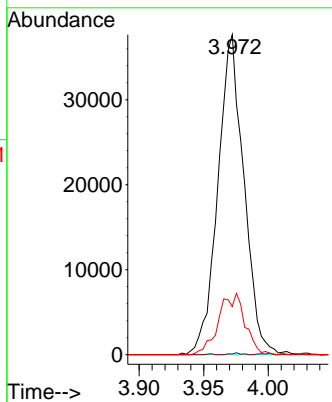
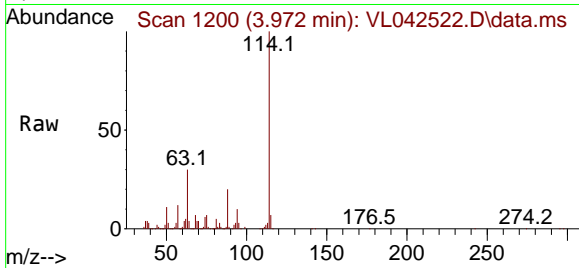


#39
 1,2-Dichloropropane
 Concen: 8.219 ppbv
 RT: 3.972 min Scan# 11
 Delta R.T. -0.339 min
 Lab File: VL042522.D
 Acq: 07 May 2025 17:24

Instrument : MSVOA_L
 ClientSampleId : MDL2 0.1

Tgt Ion: 63 Resp: 52727

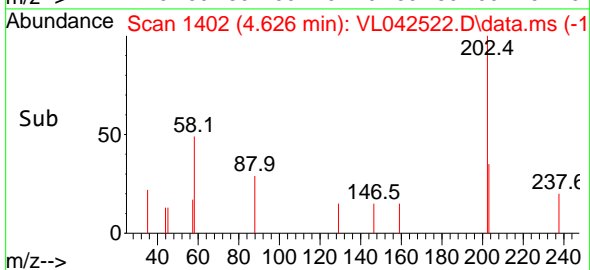
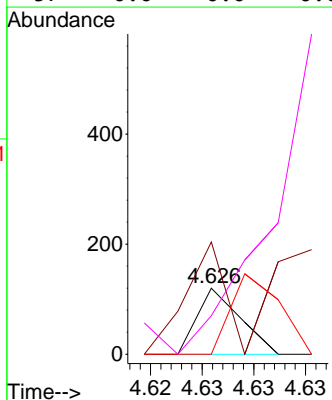
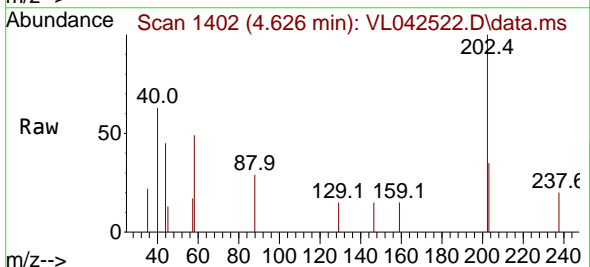
Ion	Ratio	Lower	Upper
63	100		
41	0.2	69.8	104.6#
62	15.0	54.3	81.5#

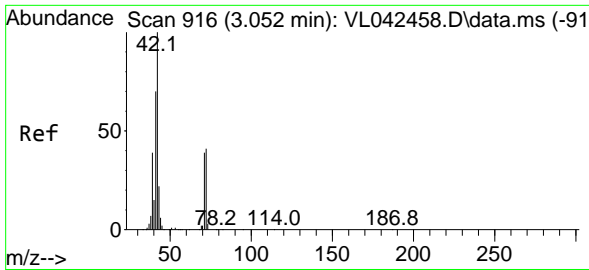


#40
 1,4-Dioxane
 Concen: 0.012 ppbv
 RT: 4.626 min Scan# 1402
 Delta R.T. 0.043 min
 Lab File: VL042522.D
 Acq: 07 May 2025 17:24

Tgt Ion: 88 Resp: 35

Ion	Ratio	Lower	Upper
88	100		
58	680.0	0.0	0.0#
43	0.0	0.0	0.0
57	0.0	0.0	0.0



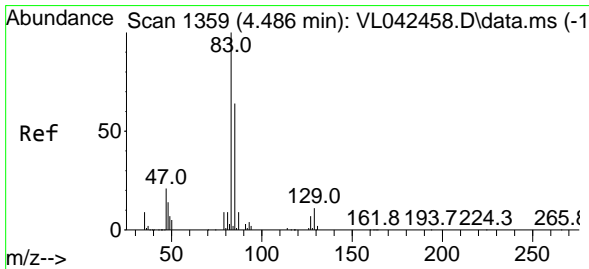
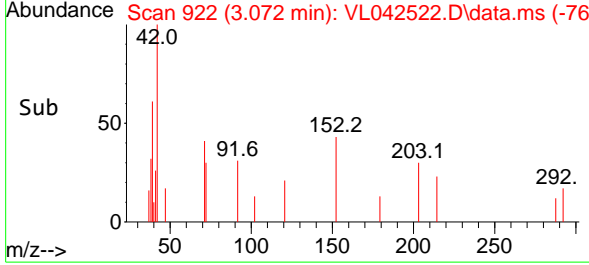
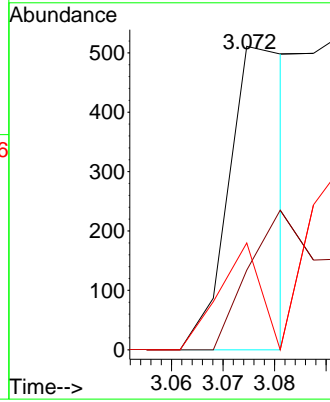
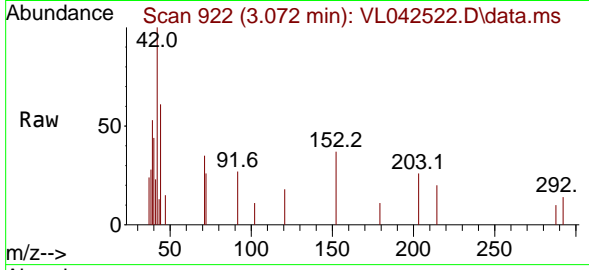


#41
 Tetrahydrofuran
 Concen: 0.034 ppbv
 RT: 3.072 min Scan# 916
 Delta R.T. 0.020 min
 Lab File: VL042522.D
 Acq: 07 May 2025 17:24

Instrument :
 MSVOA_L
 ClientSampleId :
 MDL2 0.1

Tgt Ion: 42 Resp: 213

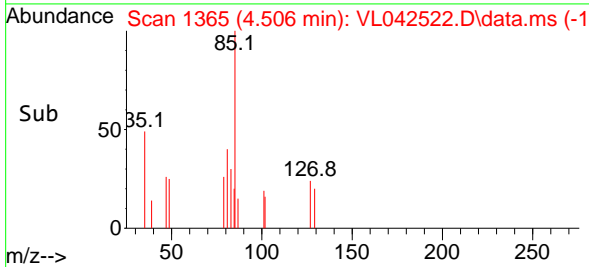
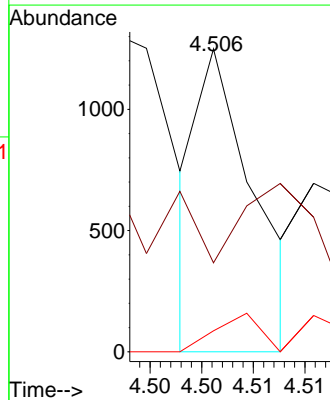
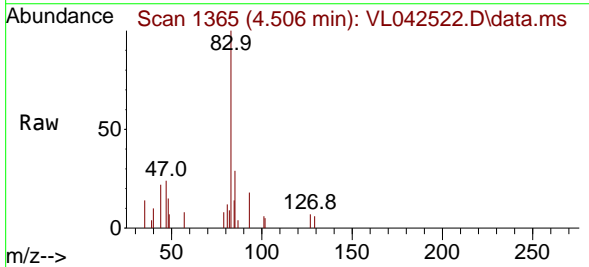
Ion	Ratio	Lower	Upper
42	100		
72	106.1	33.5	50.3#
71	0.0	32.6	49.0#

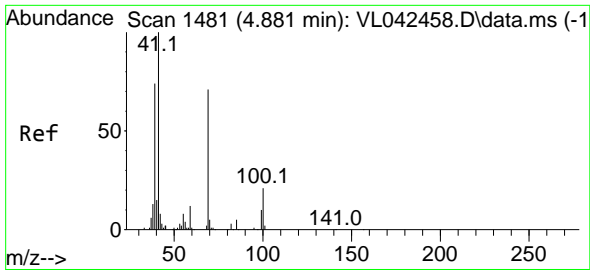


#42
 Bromodichloromethane
 Concen: 0.029 ppbv
 RT: 4.506 min Scan# 1365
 Delta R.T. 0.020 min
 Lab File: VL042522.D
 Acq: 07 May 2025 17:24

Tgt Ion: 83 Resp: 469

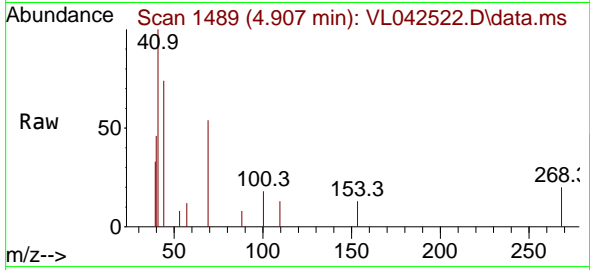
Ion	Ratio	Lower	Upper
83	100		
85	0.0	51.5	77.3#
127	11.1	5.4	8.2#



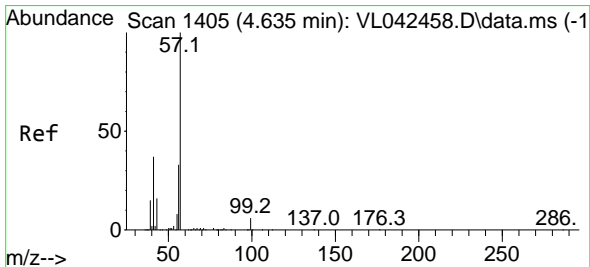
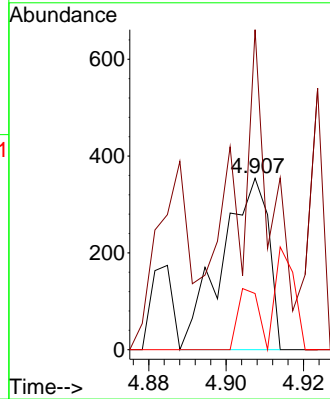
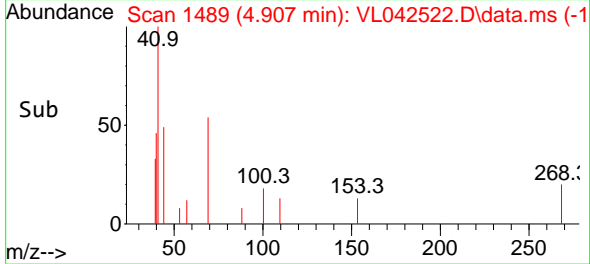


#43
 Methyl Methacrylate
 Concen: 0.047 ppbv
 RT: 4.907 min Scan# 1489
 Delta R.T. 0.026 min
 Lab File: VL042522.D
 Acq: 07 May 2025 17:24

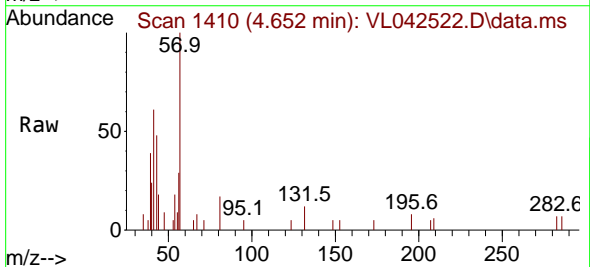
Instrument :
 MSVOA_L
 ClientSampleId :
 MDL2 0.1



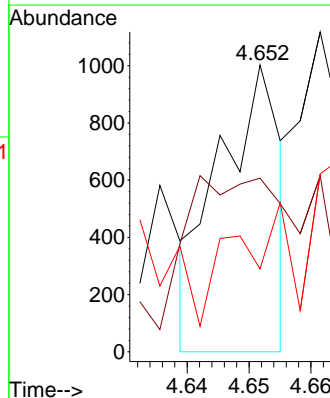
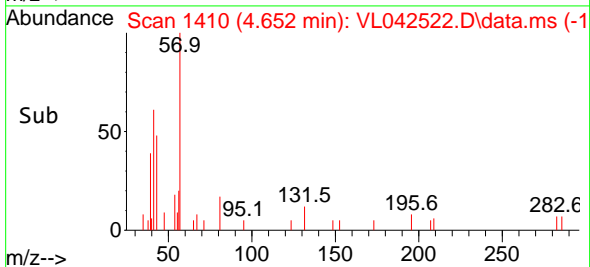
Tgt Ion: 69 Resp: 298
 Ion Ratio Lower Upper
 69 100
 41 305.4 120.8 181.2#
 100 39.9 26.7 40.1

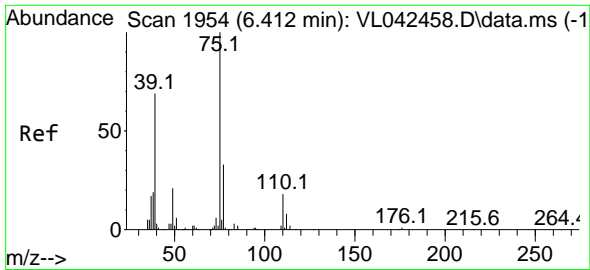


#44
 2,2,4-Trimethylpentane
 Concen: 0.025 ppbv
 RT: 4.652 min Scan# 1410
 Delta R.T. 0.017 min
 Lab File: VL042522.D
 Acq: 07 May 2025 17:24



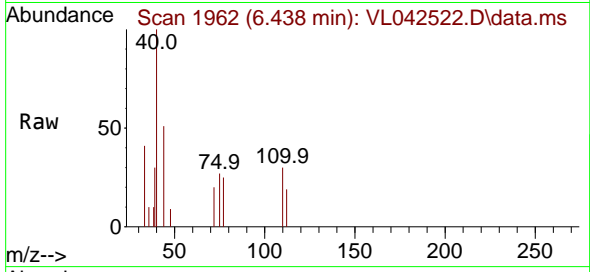
Tgt Ion: 57 Resp: 694
 Ion Ratio Lower Upper
 57 100
 41 0.0 30.6 45.8#
 56 84.3 25.0 37.6#



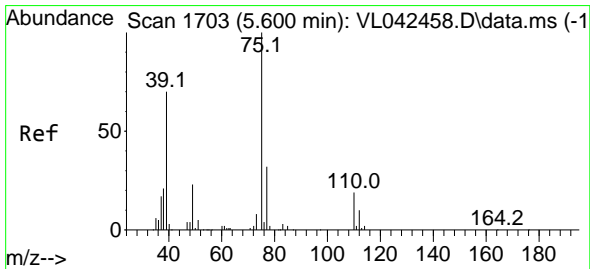
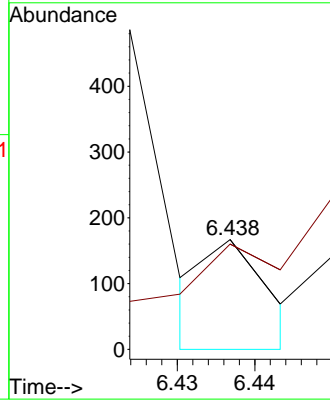
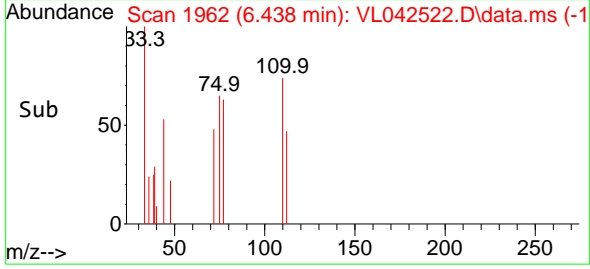


#45
 t-1,3-Dichloropropene
 Concen: 0.005 ppbv
 RT: 6.438 min Scan# 1710
 Delta R.T. 0.026 min
 Lab File: VL042522.D
 Acq: 07 May 2025 17:24

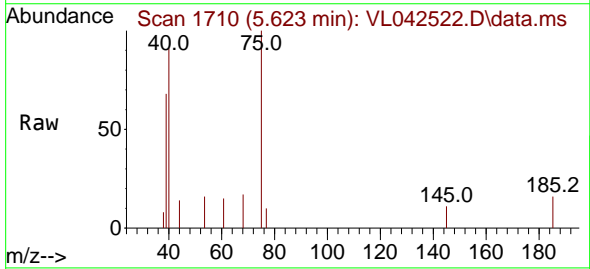
Instrument :
 MSVOA_L
 ClientSampleId :
 MDL2 0.1



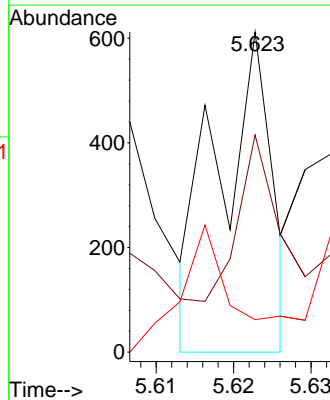
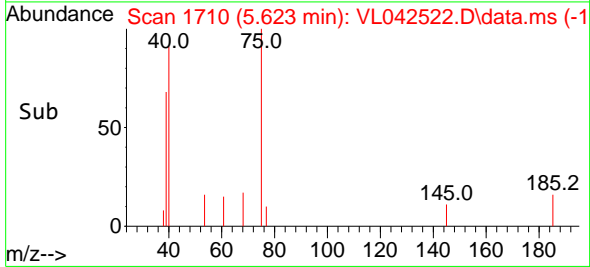
Tgt Ion: 75 Resp: 46
 Ion Ratio Lower Upper
 75 100
 77 95.8 26.3 39.5#

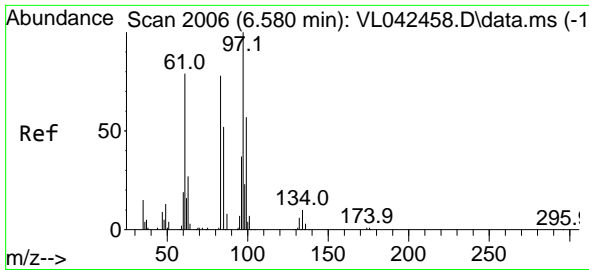


#46
 cis-1,3-Dichloropropene
 Concen: 0.030 ppbv
 RT: 5.623 min Scan# 1710
 Delta R.T. 0.023 min
 Lab File: VL042522.D
 Acq: 07 May 2025 17:24



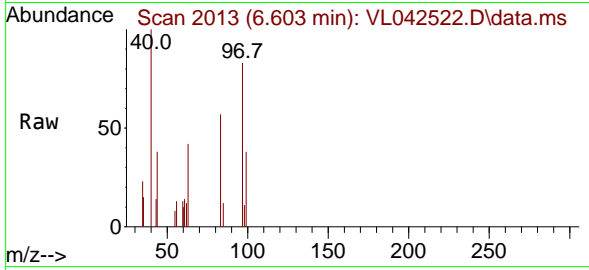
Tgt Ion: 75 Resp: 299
 Ion Ratio Lower Upper
 75 100
 39 71.1 55.7 83.5
 77 0.0 25.8 38.8#





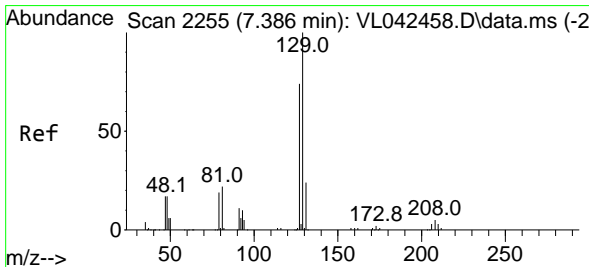
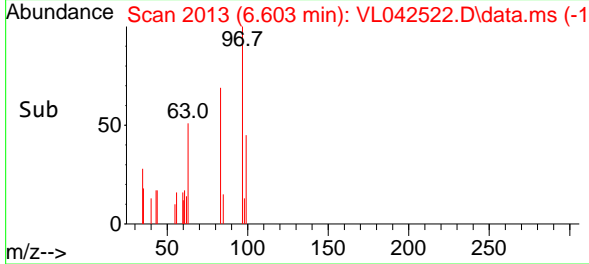
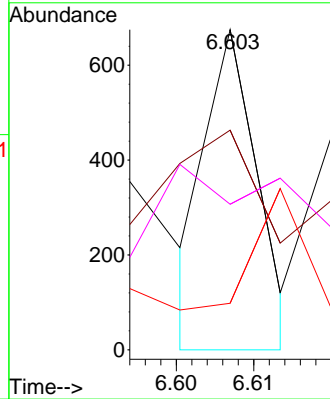
#47
 1,1,2-Trichloroethane
 Concen: 0.022 ppbv
 RT: 6.603 min Scan# 2006
 Delta R.T. 0.023 min
 Lab File: VL042522.D
 Acq: 07 May 2025 17:24

Instrument : MSVOA_L
 ClientSampleId : MDL2 0.1

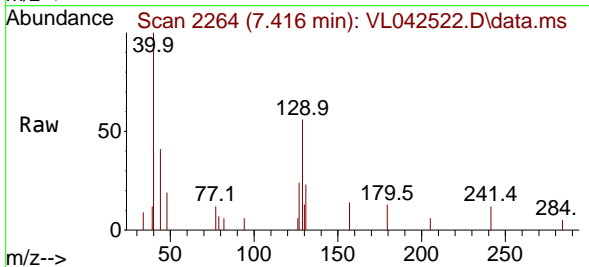


Tgt Ion: 97 Resp: 154

Ion	Ratio	Lower	Upper
97	100		
83	42.9	62.2	93.2#
85	2.5	41.5	62.3#
99	0.0	45.4	68.0#

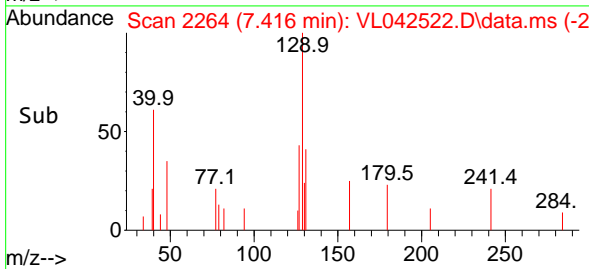
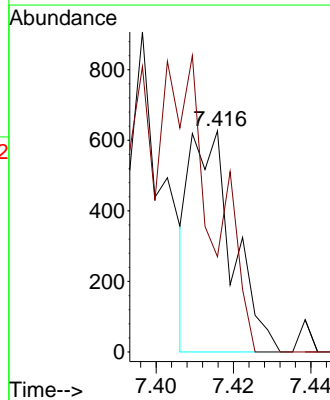


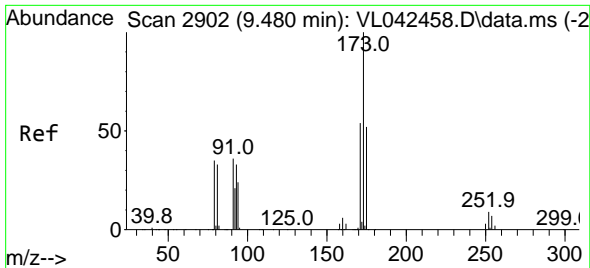
#48
 Dibromochloromethane
 Concen: 0.040 ppbv
 RT: 7.416 min Scan# 2264
 Delta R.T. 0.030 min
 Lab File: VL042522.D
 Acq: 07 May 2025 17:24



Tgt Ion: 129 Resp: 475

Ion	Ratio	Lower	Upper
129	100		
127	286.9	39.5	118.5#

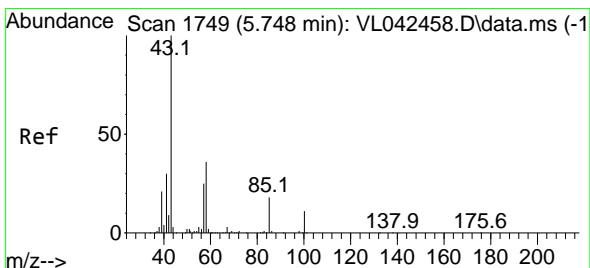
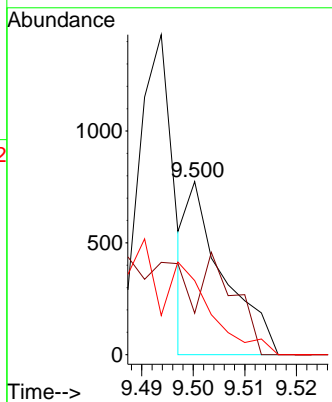
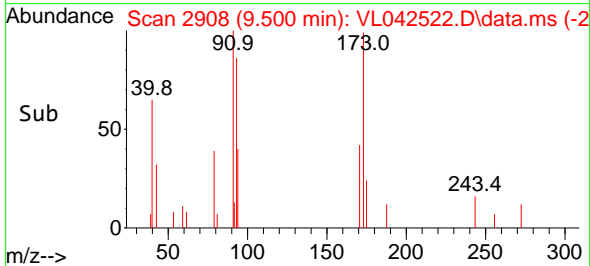
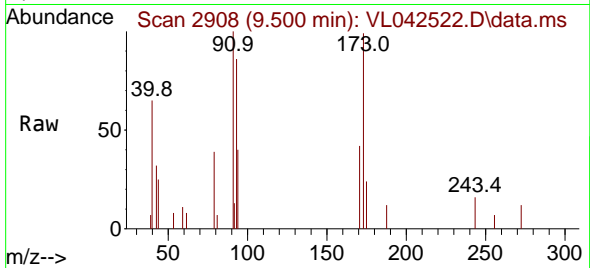




#49
 Bromoform
 Concen: 0.038 ppbv
 RT: 9.500 min Scan# 2902
 Delta R.T. 0.020 min
 Lab File: VL042522.D
 Acq: 07 May 2025 17:24

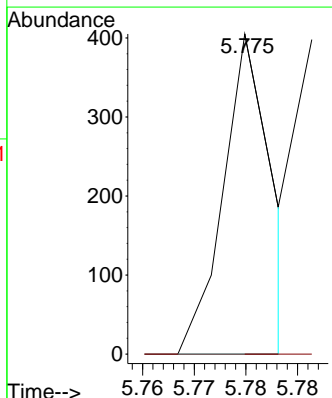
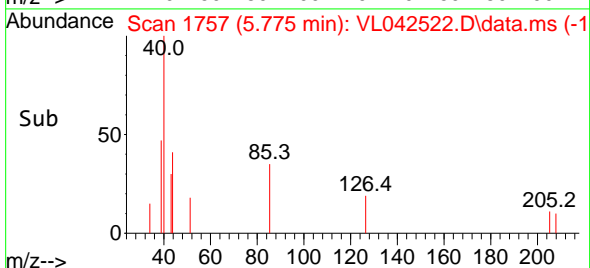
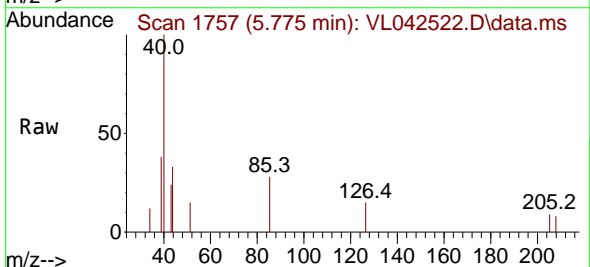
Instrument : MSVOA_L
 ClientSampleId : MDL2 0.1

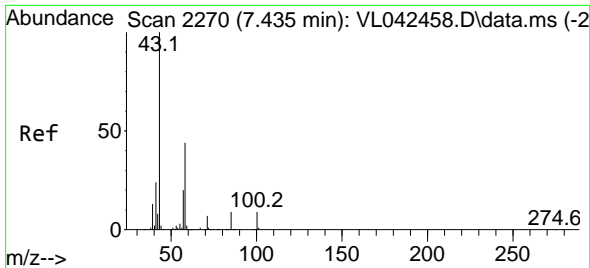
Tgt Ion	Resp	Lower	Upper
173	100		
175	162.2	38.9	58.3#
171	0.0	40.6	60.8#



#50
 4-Methyl-2-Pentanone
 Concen: 0.008 ppbv
 RT: 5.775 min Scan# 1757
 Delta R.T. 0.026 min
 Lab File: VL042522.D
 Acq: 07 May 2025 17:24

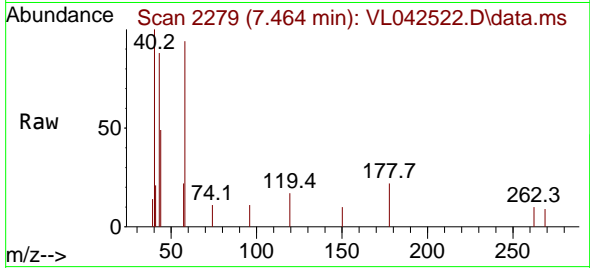
Tgt Ion	Resp	Lower	Upper
43	100		
58	0.0	29.5	44.3#



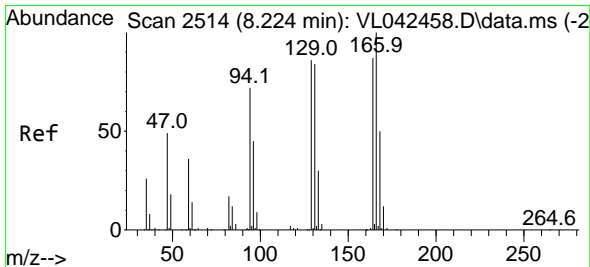
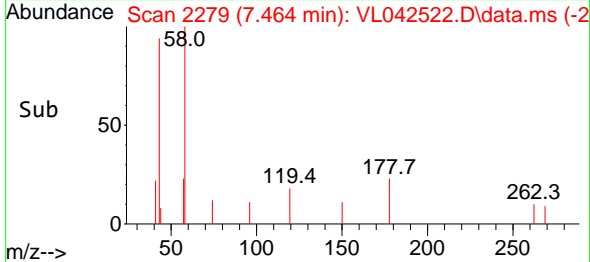
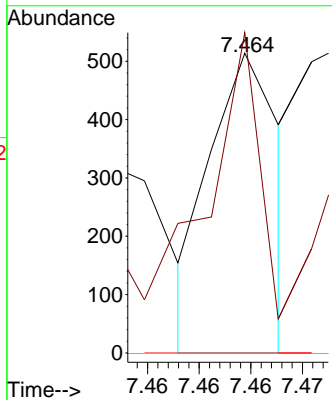


#51
 2-Hexanone
 Concen: 0.018 ppbv
 RT: 7.464 min Scan# 211
 Delta R.T. 0.030 min
 Lab File: VL042522.D
 Acq: 07 May 2025 17:24

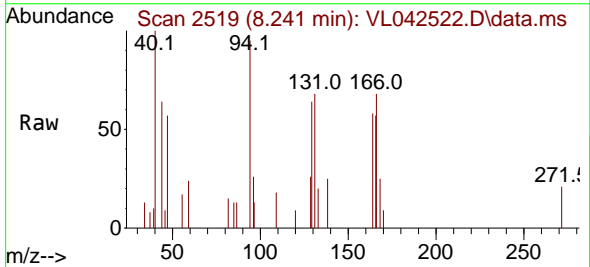
Instrument :
 MSVOA_L
 ClientSampleId :
 MDL2 0.1



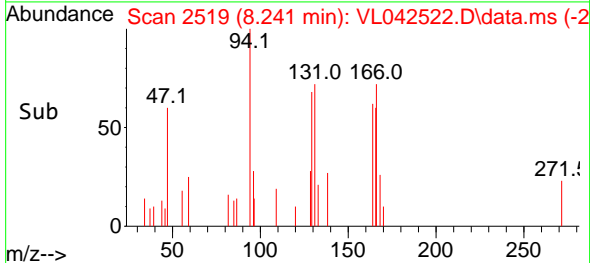
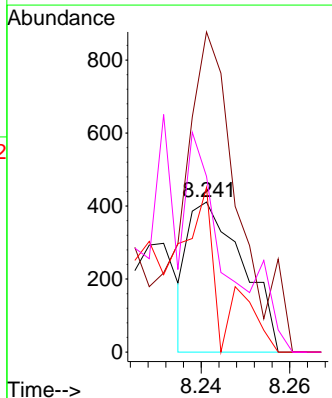
Tgt Ion: 43 Resp: 244
 Ion Ratio Lower Upper
 43 100
 58 186.9 37.2 55.8#
 98 0.0 0.4 0.6#

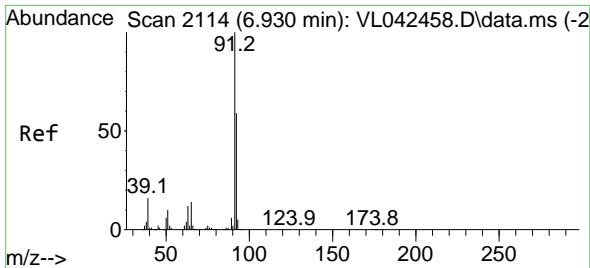


#52
 Tetrachloroethene
 Concen: 0.054 ppbv
 RT: 8.241 min Scan# 2519
 Delta R.T. 0.017 min
 Lab File: VL042522.D
 Acq: 07 May 2025 17:24



Tgt Ion: 164 Resp: 352
 Ion Ratio Lower Upper
 164 100
 166 151.3 91.6 137.4#
 129 109.7 79.0 118.4
 131 102.2 77.6 116.4

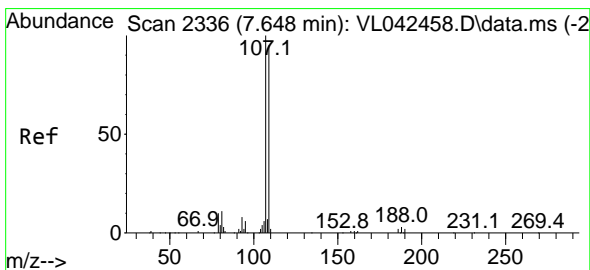
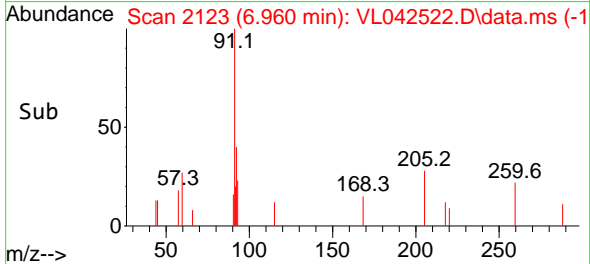
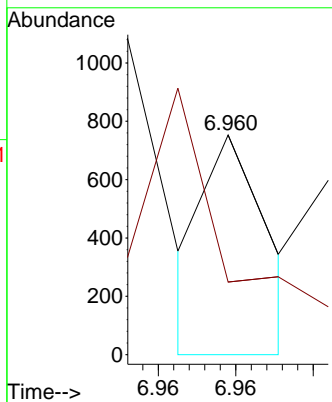
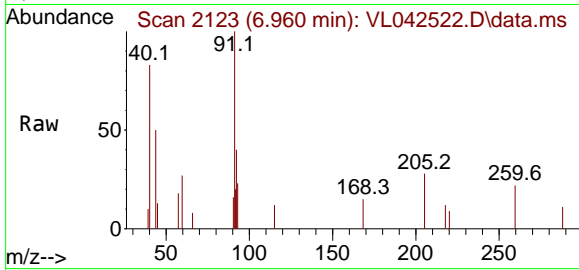




#53
 Toluene
 Concen: 0.012 ppbv
 RT: 6.960 min Scan# 2114
 Delta R.T. 0.030 min
 Lab File: VL042522.D
 Acq: 07 May 2025 17:24

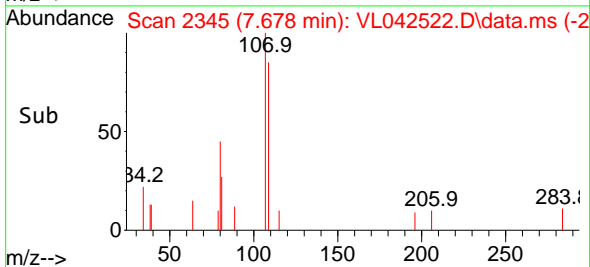
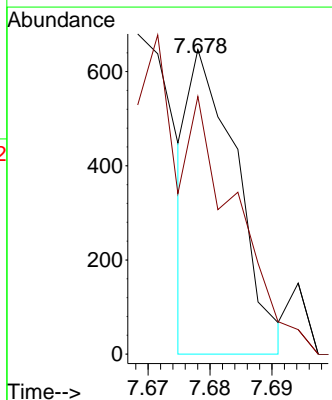
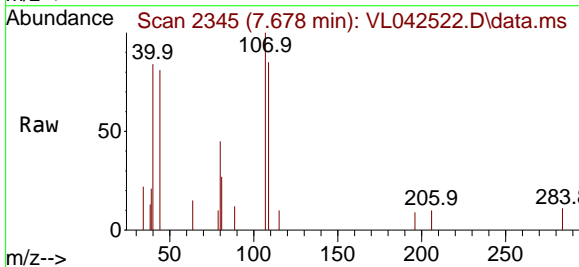
Instrument :
 MSVOA_L
 ClientSampleId :
 MDL2 0.1

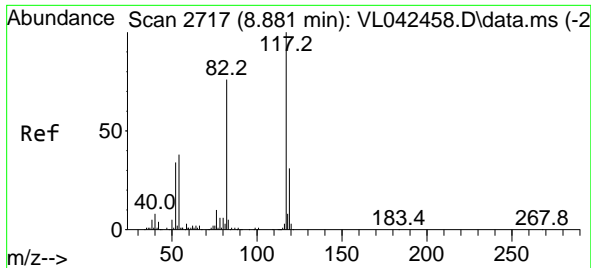
Tgt Ion: 91 Resp: 213
 Ion Ratio Lower Upper
 91 100
 92 436.6 47.9 71.9#



#54
 1,2-Dibromoethane
 Concen: 0.032 ppbv
 RT: 7.678 min Scan# 2345
 Delta R.T. 0.030 min
 Lab File: VL042522.D
 Acq: 07 May 2025 17:24

Tgt Ion: 107 Resp: 343
 Ion Ratio Lower Upper
 107 100
 109 82.4 76.0 114.0



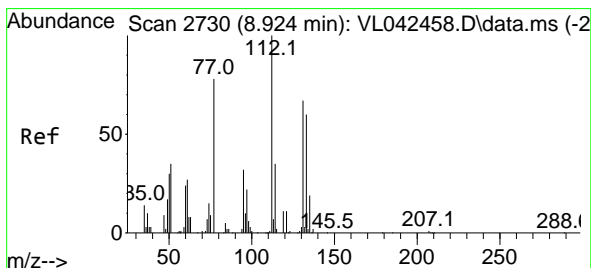
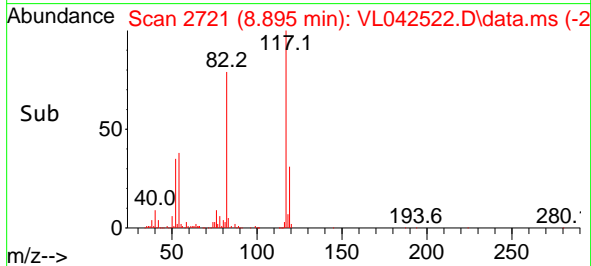
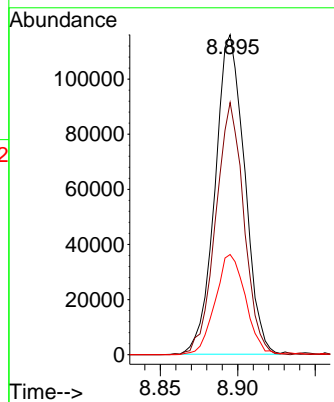
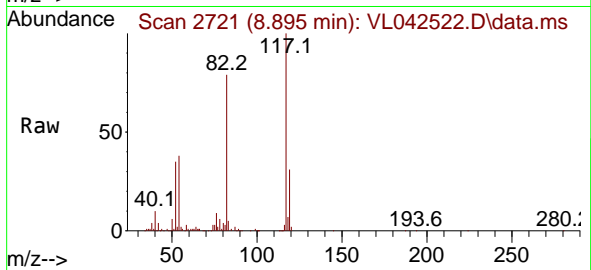


#55
 Chlorobenzene-d5
 Concen: 10.000 ppbv
 RT: 8.895 min Scan# 2717
 Delta R.T. 0.014 min
 Lab File: VL042522.D
 Acq: 07 May 2025 17:24

Instrument : MSVOA_L
 ClientSampleId : MDL2 0.1

Tgt Ion:117 Resp: 153768

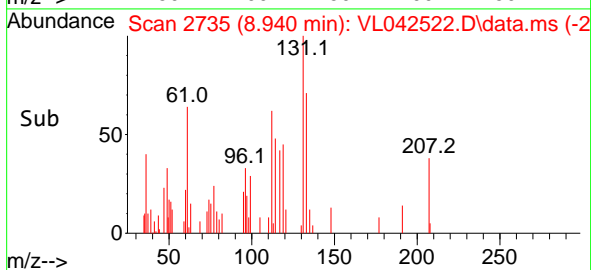
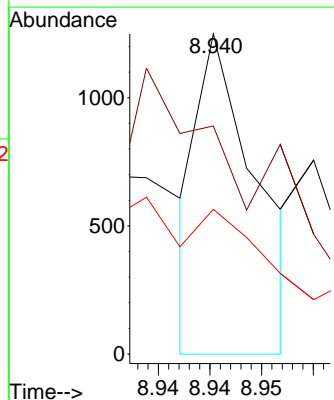
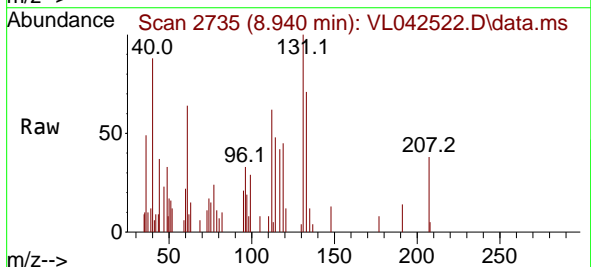
Ion	Ratio	Lower	Upper
117	100		
82	75.6	63.5	95.3
119	32.7	25.8	38.8

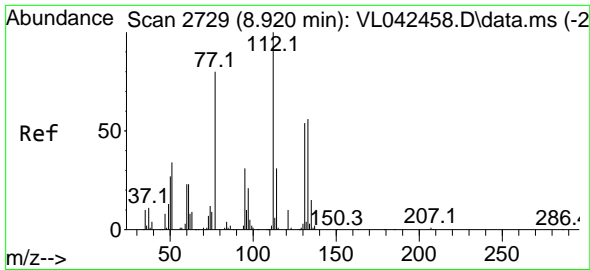


#56
 1,1,1,2-Tetrachloroethane
 Concen: 0.054 ppbv
 RT: 8.940 min Scan# 2735
 Delta R.T. 0.017 min
 Lab File: VL042522.D
 Acq: 07 May 2025 17:24

Tgt Ion:131 Resp: 493

Ion	Ratio	Lower	Upper
131	100		
133	0.0	76.0	114.0#
119	0.0	46.1	69.1#



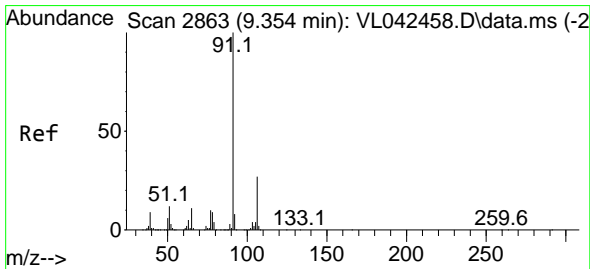
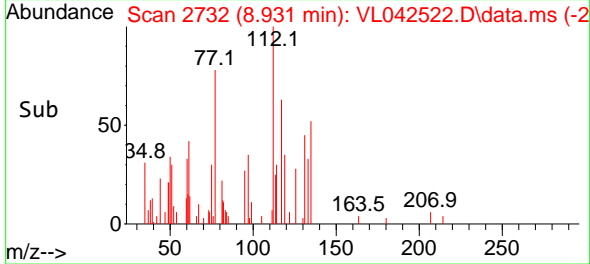
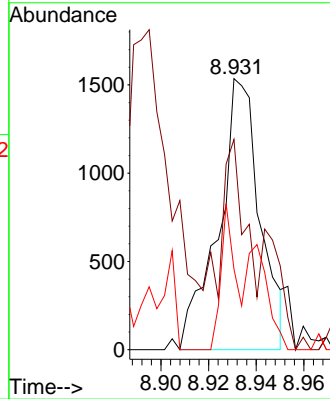
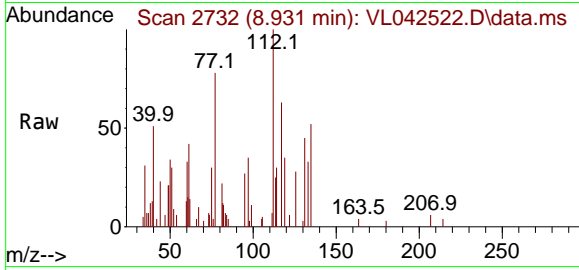


#57
 Chlorobenzene
 Concen: 0.120 ppbv
 RT: 8.931 min Scan# 21
 Delta R.T. 0.010 min
 Lab File: VL042522.D
 Acq: 07 May 2025 17:24

Instrument :
 MSVOA_L
 ClientSampleId :
 MDL2 0.1

Tgt Ion:112 Resp: 1853

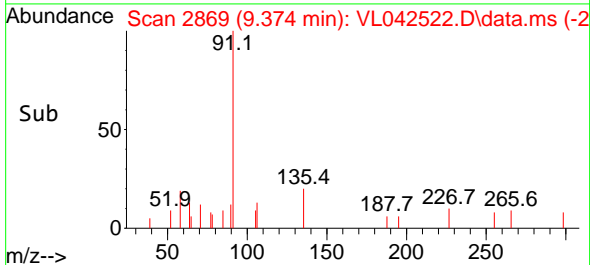
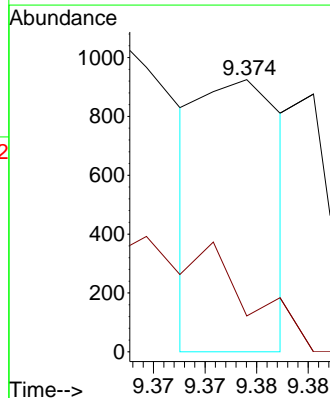
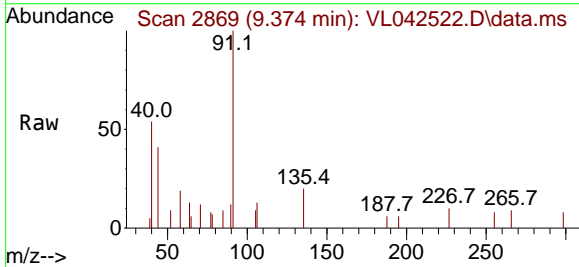
Ion	Ratio	Lower	Upper
112	100		
77	46.5	65.0	97.4#
114	29.8	27.5	33.7

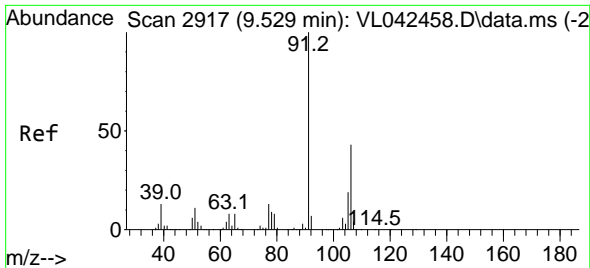


#58
 Ethyl Benzene
 Concen: 0.020 ppbv
 RT: 9.374 min Scan# 2869
 Delta R.T. 0.020 min
 Lab File: VL042522.D
 Acq: 07 May 2025 17:24

Tgt Ion: 91 Resp: 509

Ion	Ratio	Lower	Upper
91	100		
106	0.0	21.9	32.9#

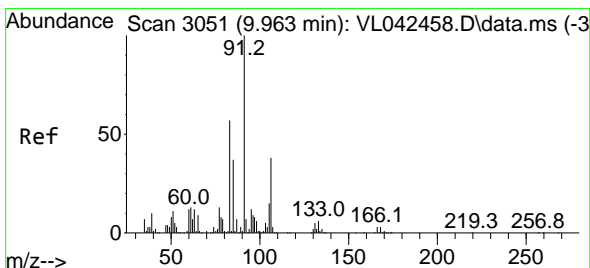
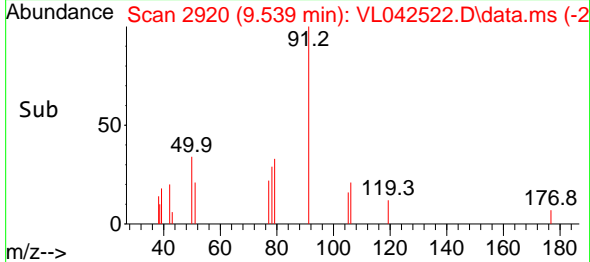
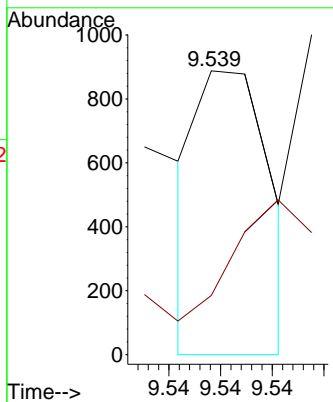
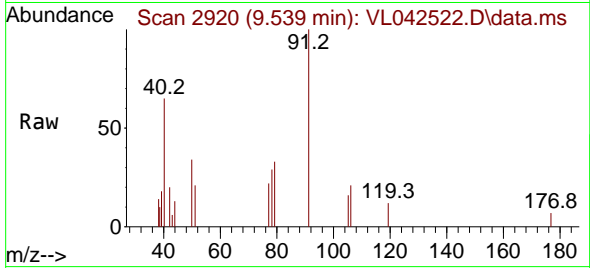




#59
 m/p-Xylene
 Concen: 0.020 ppbv
 RT: 9.539 min Scan# 2917
 Delta R.T. 0.010 min
 Lab File: VL042522.D
 Acq: 07 May 2025 17:24

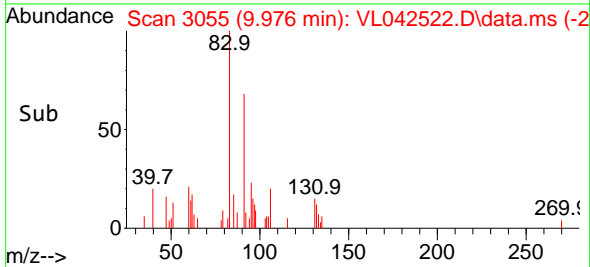
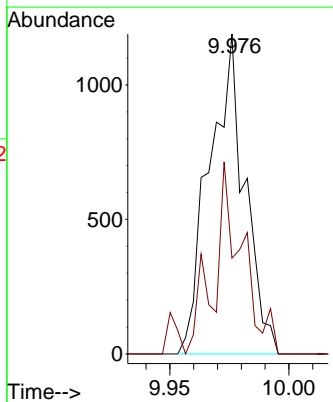
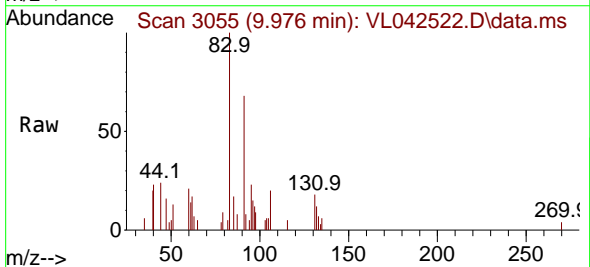
Instrument : MSVOA_L
 ClientSampleId : MDL2 0.1

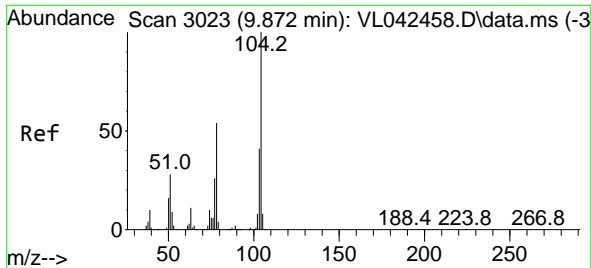
Tgt Ion: 91 Resp: 434
 Ion Ratio Lower Upper
 91 100
 106 0.0 34.2 51.2#



#60
 o-Xylene
 Concen: 0.057 ppbv
 RT: 9.976 min Scan# 3055
 Delta R.T. 0.014 min
 Lab File: VL042522.D
 Acq: 07 May 2025 17:24

Tgt Ion: 91 Resp: 1229
 Ion Ratio Lower Upper
 91 100
 106 51.8 20.1 60.2



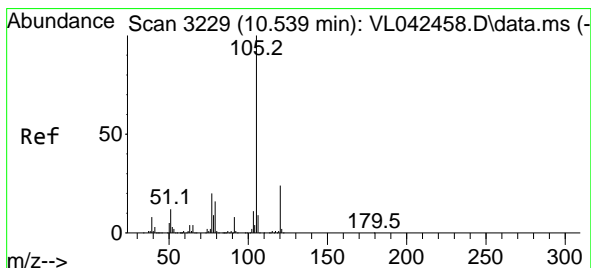
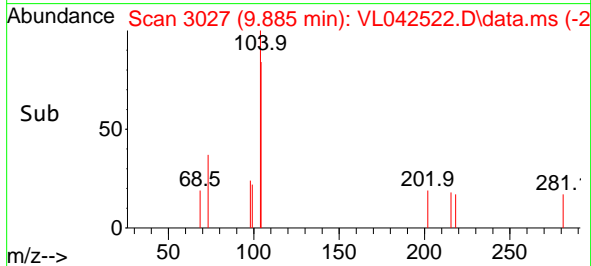
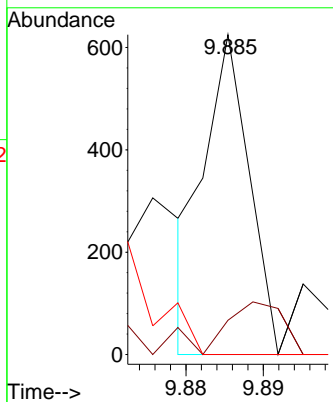
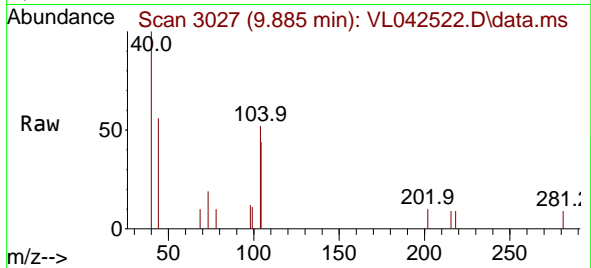


#61
 Styrene
 Concen: 0.031 ppbv
 RT: 9.885 min Scan# 3027
 Delta R.T. 0.014 min
 Lab File: VL042522.D
 Acq: 07 May 2025 17:24

Instrument : MSVOA_L
 ClientSampleId : MDL2 0.1

Tgt Ion:104 Resp: 249

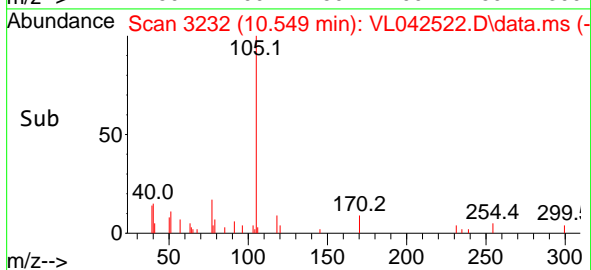
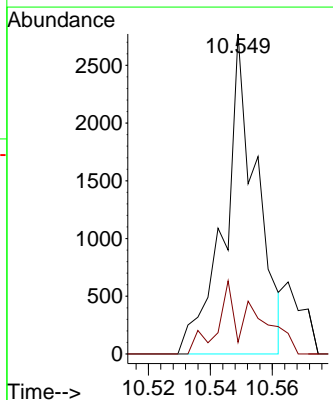
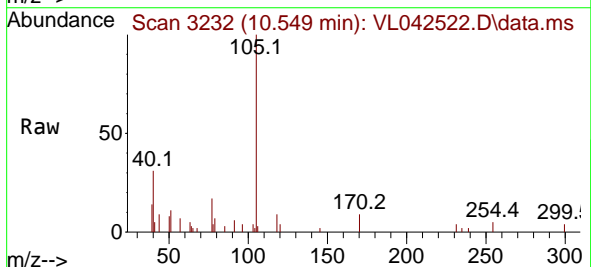
Ion	Ratio	Lower	Upper
104	100		
78	0.0	46.9	70.3#
103	0.0	36.6	55.0#

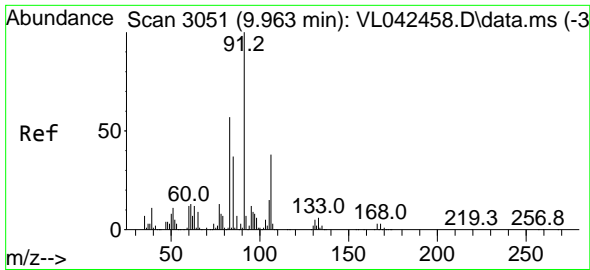


#62
 Isopropylbenzene
 Concen: 0.064 ppbv
 RT: 10.549 min Scan# 3232
 Delta R.T. 0.010 min
 Lab File: VL042522.D
 Acq: 07 May 2025 17:24

Tgt Ion:105 Resp: 1996

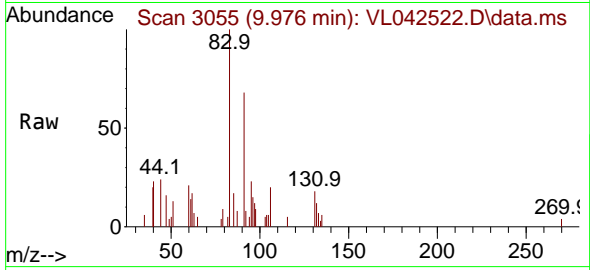
Ion	Ratio	Lower	Upper
105	100		
120	25.8	18.8	28.2



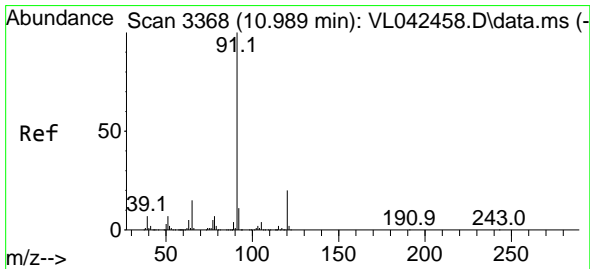
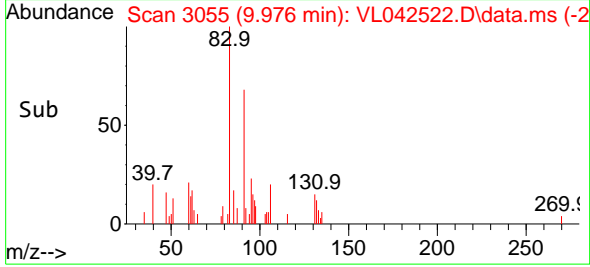
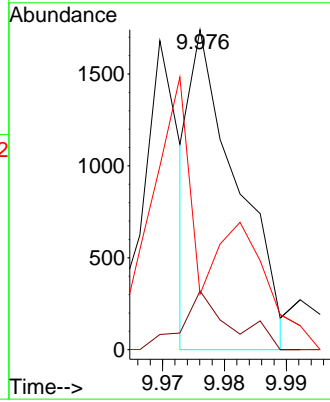


#63
 1,1,2-Tetrachloroethane
 Concen: 0.061 ppbv
 RT: 9.976 min Scan# 3055
 Delta R.T. 0.014 min
 Lab File: VL042522.D
 Acq: 07 May 2025 17:24

Instrument : MSVOA_L
 ClientSampleId : MDL2 0.1

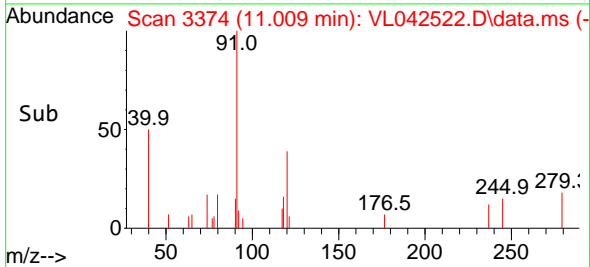
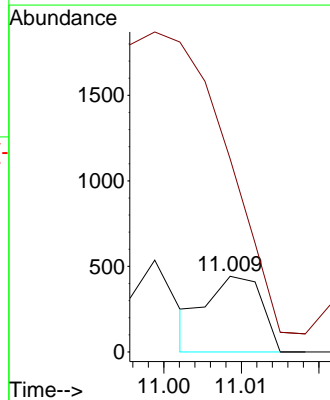
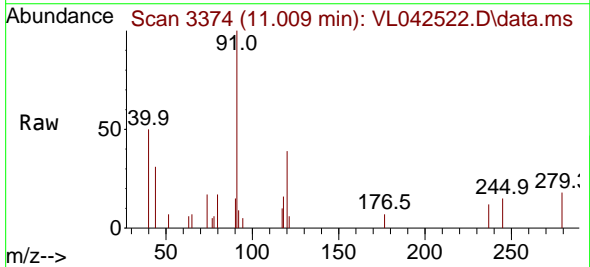


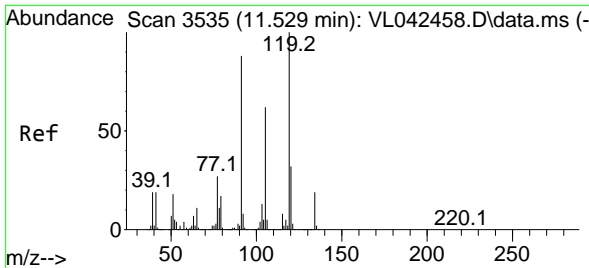
Tgt Ion: 83 Resp: 902
 Ion Ratio Lower Upper
 83 100
 131 19.3 4.7 14.1#
 85 0.0 32.5 97.4#



#64
 n-propylbenzene
 Concen: 0.028 ppbv
 RT: 11.009 min Scan# 3374
 Delta R.T. 0.020 min
 Lab File: VL042522.D
 Acq: 07 May 2025 17:24

Tgt Ion: 120 Resp: 216
 Ion Ratio Lower Upper
 120 100
 91 0.0 408.6 612.8#



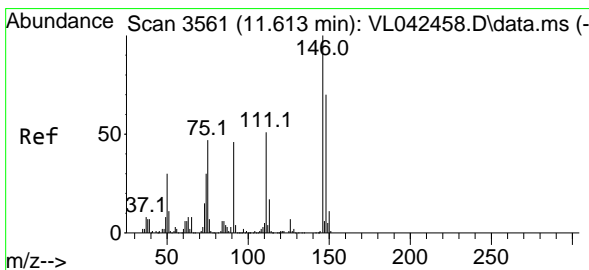
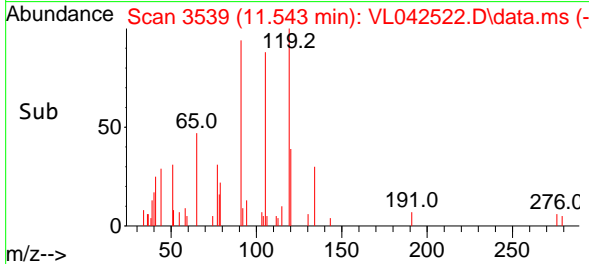
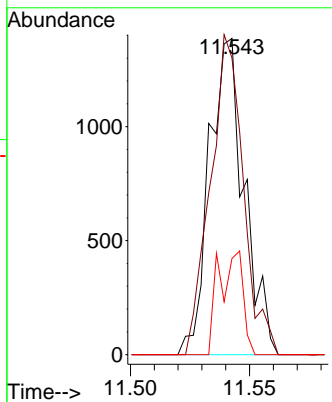
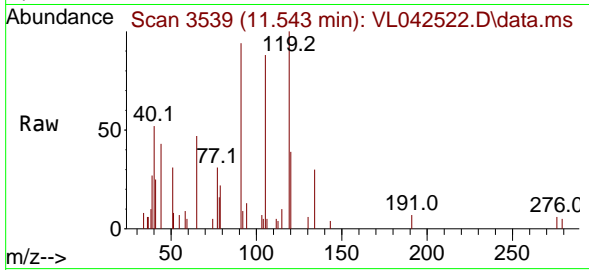


#65
 tert-Butylbenzene
 Concen: 0.051 ppbv
 RT: 11.543 min Scan# 3539
 Delta R.T. 0.014 min
 Lab File: VL042522.D
 Acq: 07 May 2025 17:24

Instrument : MSVOA_L
 ClientSampleId : MDL2 0.1

Tgt Ion:119 Resp: 1417

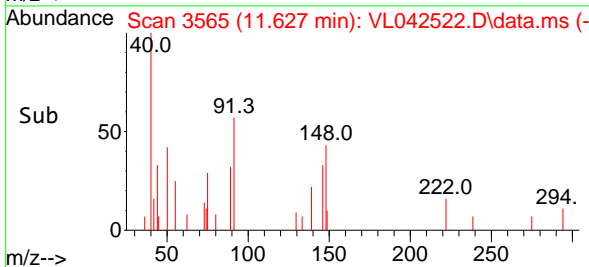
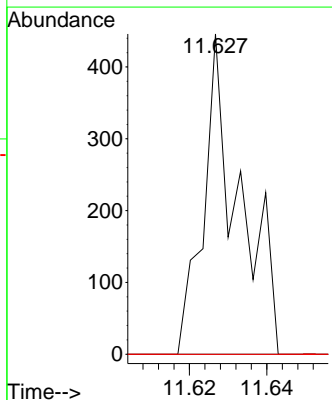
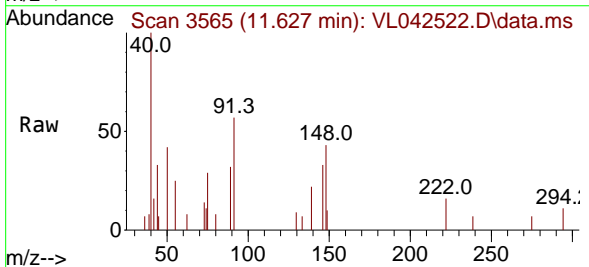
Ion	Ratio	Lower	Upper
119	100		
91	95.1	71.6	107.4
134	22.5	15.0	22.4#

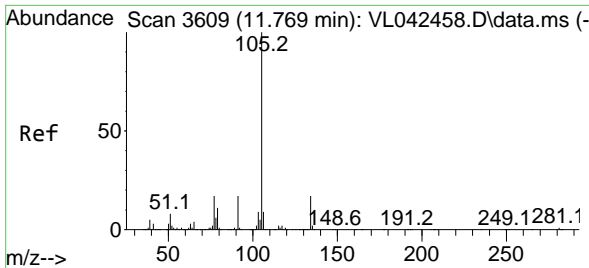


#66
 Benzyl Chloride
 Concen: 0.089 ppbv
 RT: 11.627 min Scan# 3565
 Delta R.T. 0.014 min
 Lab File: VL042522.D
 Acq: 07 May 2025 17:24

Tgt Ion: 91 Resp: 286

Ion	Ratio	Lower	Upper
91	100		
126	0.0	13.3	19.9#
128	5.9	4.2	6.4

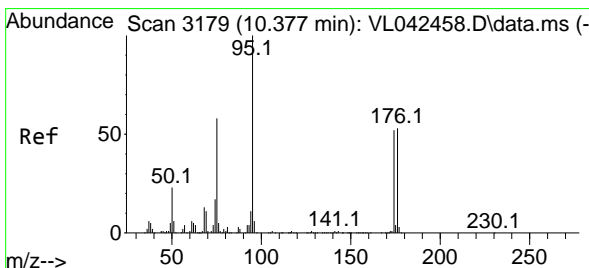
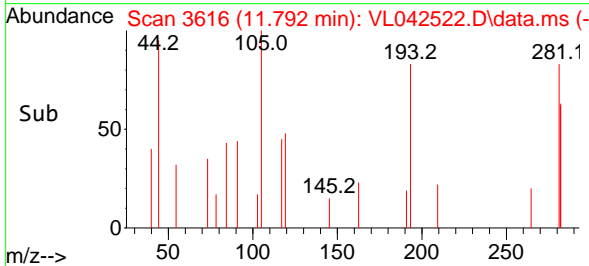
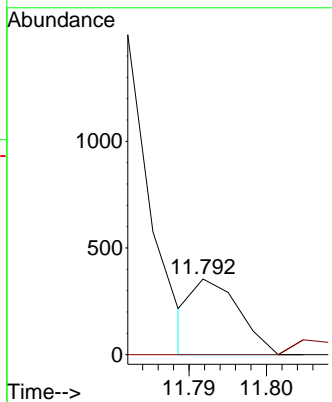
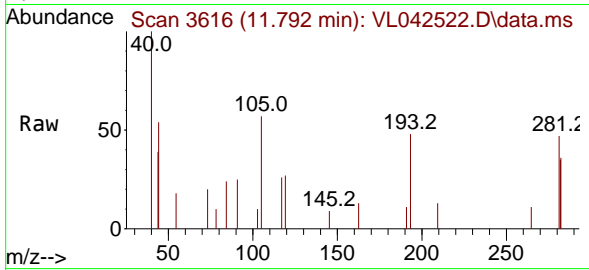




#67
 sec-Butylbenzene
 Concen: 0.004 ppbv
 RT: 11.792 min Scan# 3182
 Delta R.T. 0.023 min
 Lab File: VL042522.D
 Acq: 07 May 2025 17:24

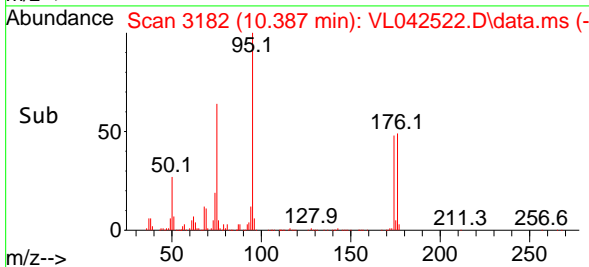
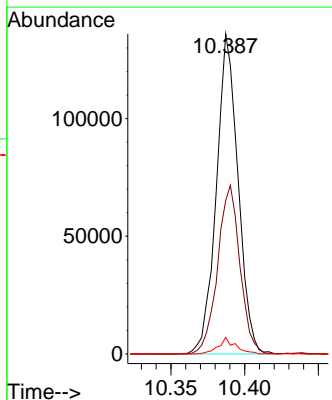
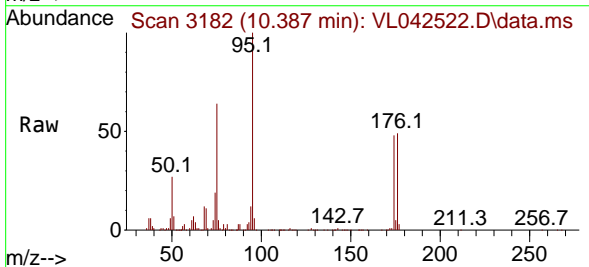
Instrument :
 MSVOA_L
 ClientSampleId :
 MDL2 0.1

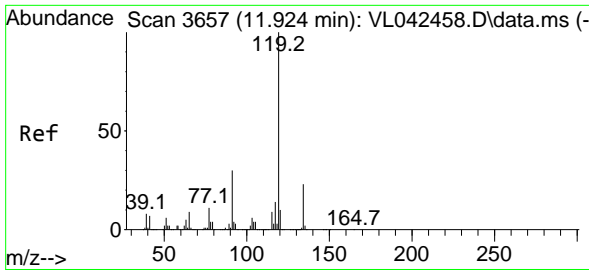
Tgt Ion:105 Resp: 147
 Ion Ratio Lower Upper
 105 100
 134 0.0 14.1 21.1#



#68
 1-Bromo-4-Fluorobenzene
 Concen: 9.768 ppbv
 RT: 10.387 min Scan# 3182
 Delta R.T. 0.010 min
 Lab File: VL042522.D
 Acq: 07 May 2025 17:24

Tgt Ion: 95 Resp: 139250
 Ion Ratio Lower Upper
 95 100
 174 54.5 42.7 64.1
 175 4.1 3.6 5.4

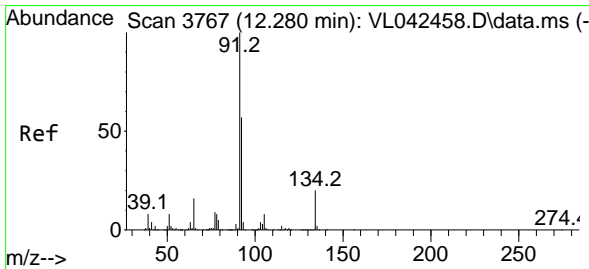
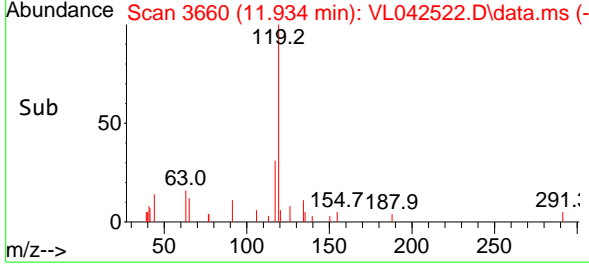
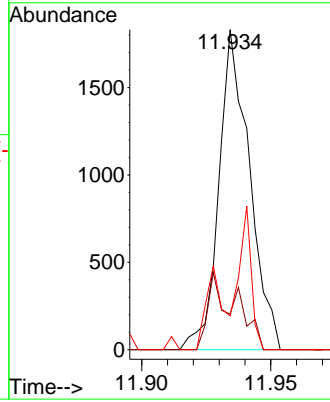
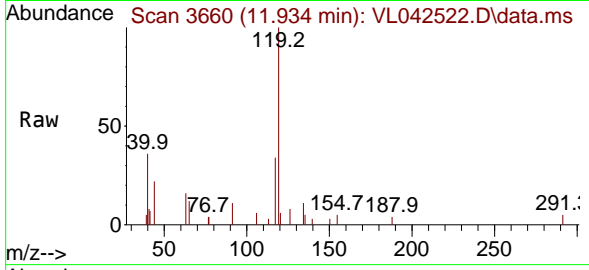




#69
 p-Isopropyltoluene
 Concen: 0.045 ppbv
 RT: 11.934 min Scan# 3660
 Delta R.T. 0.010 min
 Lab File: VL042522.D
 Acq: 07 May 2025 17:24

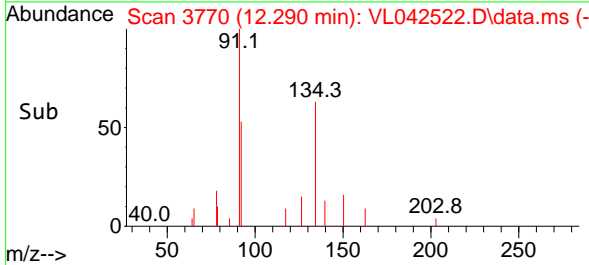
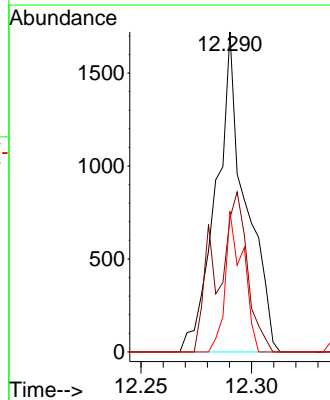
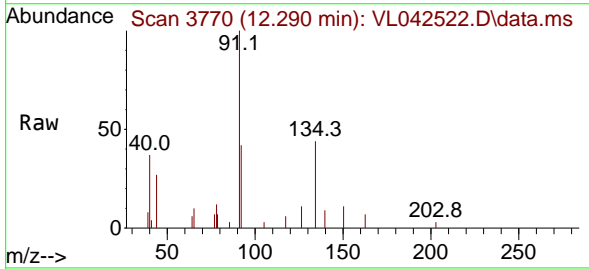
Instrument : MSVOA_L
 ClientSampleId : VL042522.D
 MDL2 0.1

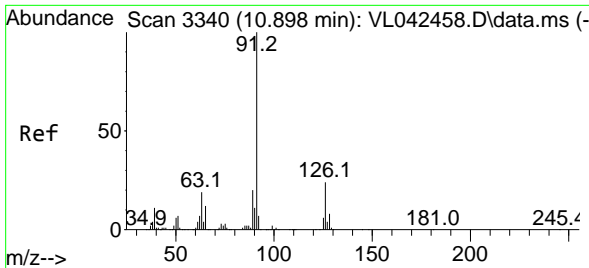
Tgt Ion	Resp	Lower	Upper
119	1508		
134	21.6	19.0	28.4
91	33.6	25.5	38.3



#70
 n-Butylbenzene
 Concen: 0.046 ppbv
 RT: 12.290 min Scan# 3770
 Delta R.T. 0.010 min
 Lab File: VL042522.D
 Acq: 07 May 2025 17:24

Tgt Ion	Resp	Lower	Upper
91	1594		
92	51.9	44.0	66.0
134	26.8	16.8	25.2

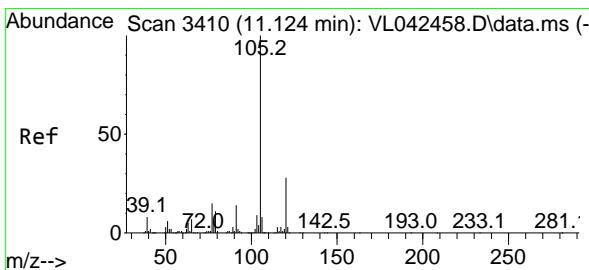
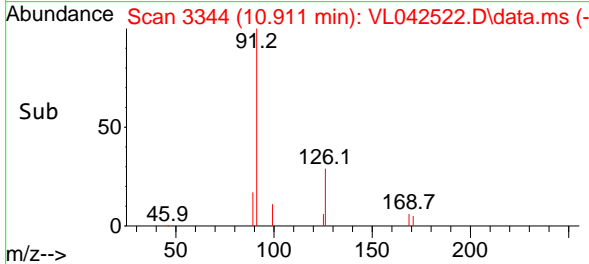
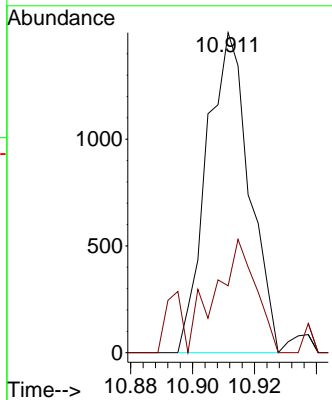
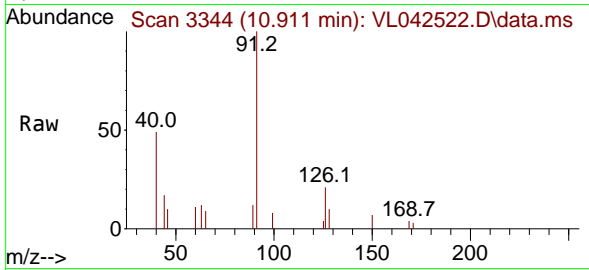




#71
 2-Chlorotoluene
 Concen: 0.059 ppbv
 RT: 10.911 min Scan# 31
 Delta R.T. 0.014 min
 Lab File: VL042522.D
 Acq: 07 May 2025 17:24

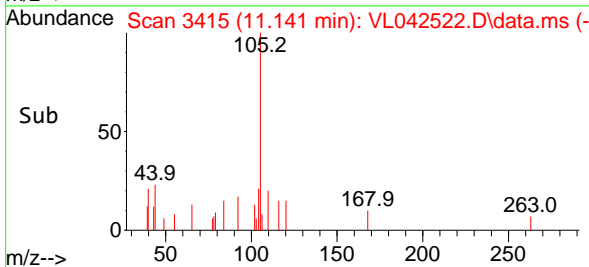
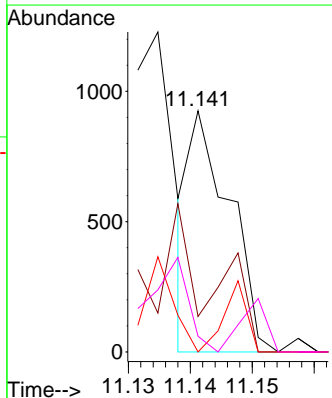
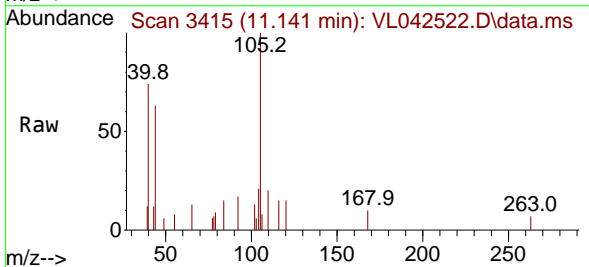
Instrument :
 MSVOA_L
 ClientSampleId :
 MDL2 0.1

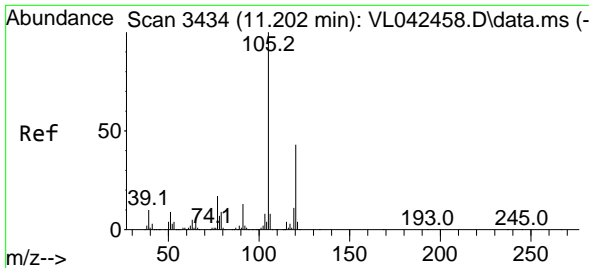
Tgt Ion: 91 Resp: 1439
 Ion Ratio Lower Upper
 91 100
 126 42.5 10.6 42.2#



#72
 4-Ethyltoluene
 Concen: 0.016 ppbv
 RT: 11.141 min Scan# 3415
 Delta R.T. 0.017 min
 Lab File: VL042522.D
 Acq: 07 May 2025 17:24

Tgt Ion: 105 Resp: 418
 Ion Ratio Lower Upper
 105 100
 120 117.9 22.0 33.0#
 91 0.0 11.2 16.8#
 77 87.1 12.2 18.4#

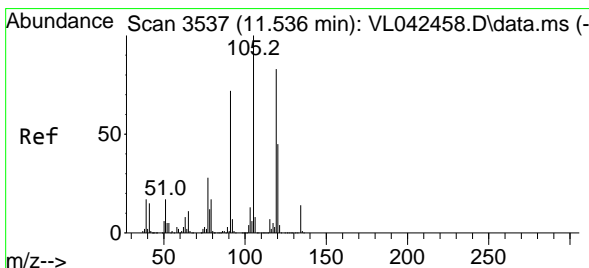
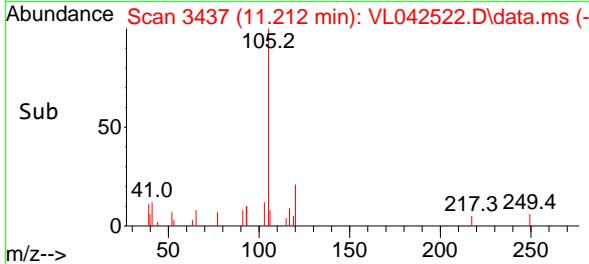
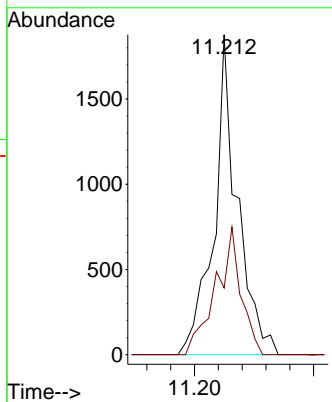
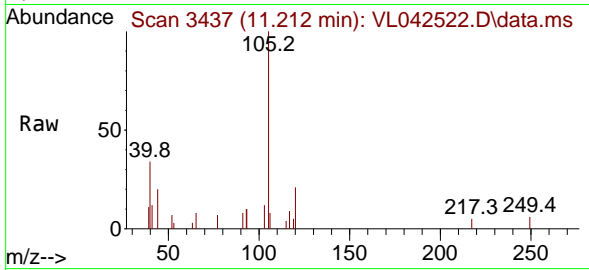




#73
 1,3,5-Trimethylbenzene
 Concen: 0.057 ppbv
 RT: 11.212 min Scan# 3437
 Delta R.T. 0.010 min
 Lab File: VL042522.D
 Acq: 07 May 2025 17:24

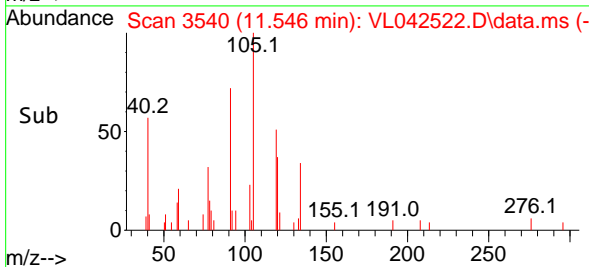
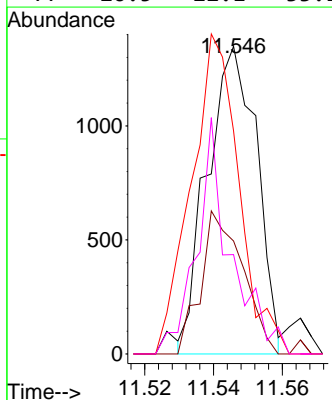
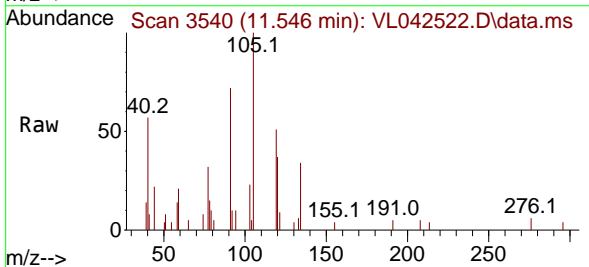
Instrument :
 MSVOA_L
 ClientSampleId :
 MDL2 0.1

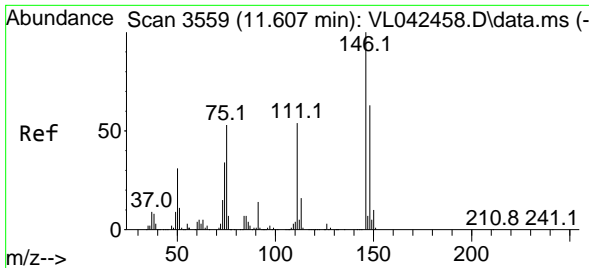
Tgt Ion:105 Resp: 1270
 Ion Ratio Lower Upper
 105 100
 120 20.9 34.4 51.6#



#74
 1,2,4-Trimethylbenzene
 Concen: 0.050 ppbv
 RT: 11.546 min Scan# 3540
 Delta R.T. 0.010 min
 Lab File: VL042522.D
 Acq: 07 May 2025 17:24

Tgt Ion:105 Resp: 1347
 Ion Ratio Lower Upper
 105 100
 120 38.3 36.1 54.1
 91 67.7 57.6 86.4
 77 26.5 22.1 33.1

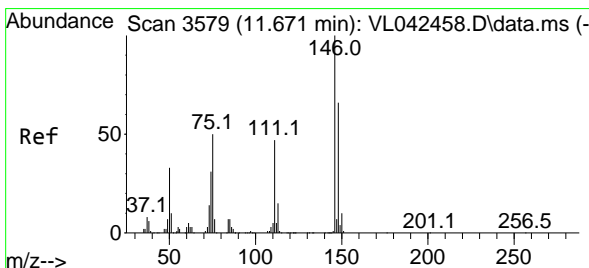
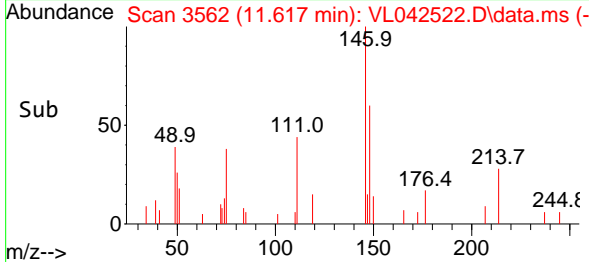
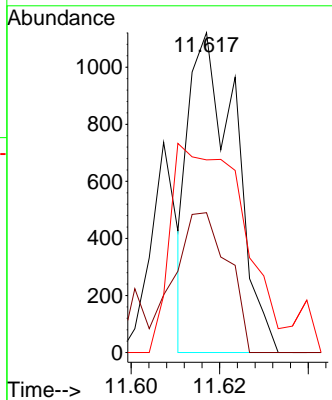
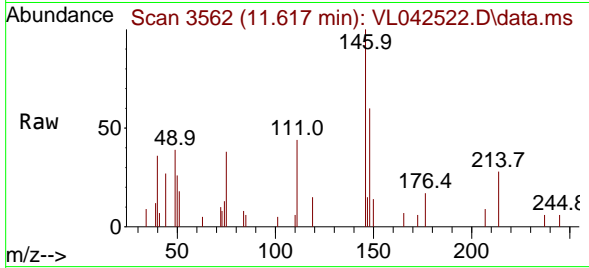




#75
 1,3-Dichlorobenzene
 Concen: 0.054 ppbv
 RT: 11.617 min Scan# 3562
 Delta R.T. 0.010 min
 Lab File: VL042522.D
 Acq: 07 May 2025 17:24

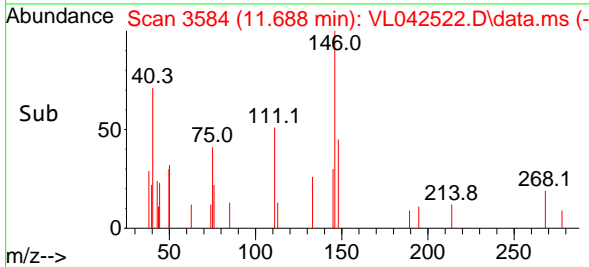
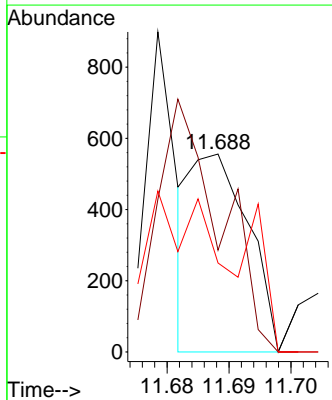
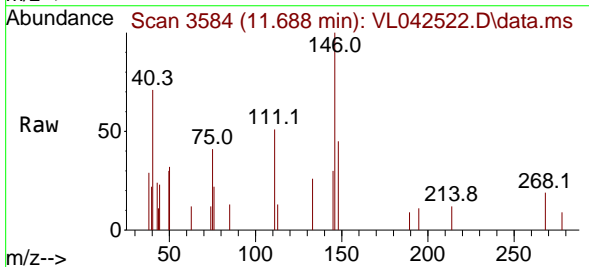
Instrument :
 MSVOA_L
 ClientSampleId :
 MDL2 0.1

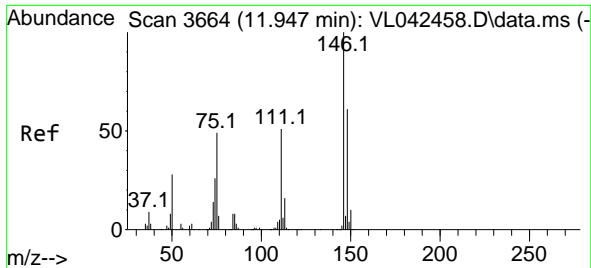
Tgt Ion	Resp	Lower	Upper
146	100		
111	57.7	26.1	78.3
148	0.0	32.0	96.0



#76
 1,4-Dichlorobenzene
 Concen: 0.025 ppbv
 RT: 11.688 min Scan# 3584
 Delta R.T. 0.017 min
 Lab File: VL042522.D
 Acq: 07 May 2025 17:24

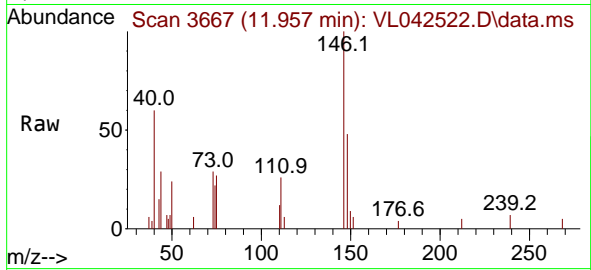
Tgt Ion	Resp	Lower	Upper
146	100		
111	0.0	24.4	73.2
148	0.0	32.0	96.2



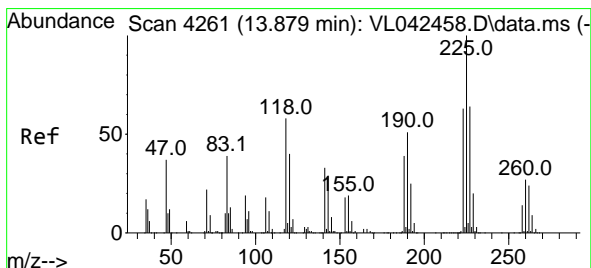
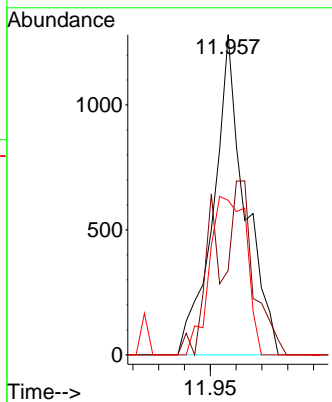
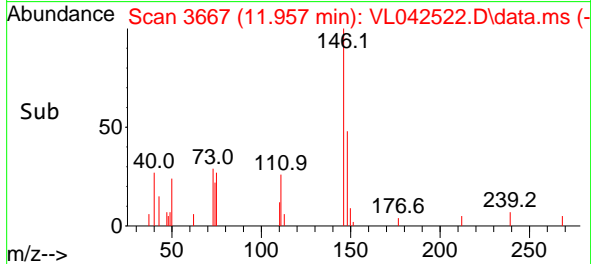


#77
 1,2-Dichlorobenzene
 Concen: 0.074 ppbv
 RT: 11.957 min Scan# 30
 Delta R.T. 0.010 min
 Lab File: VL042522.D
 Acq: 07 May 2025 17:24

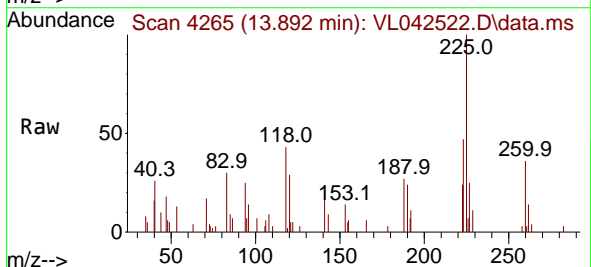
Instrument :
 MSVOA_L
 ClientSampleId :
 MDL2 0.1



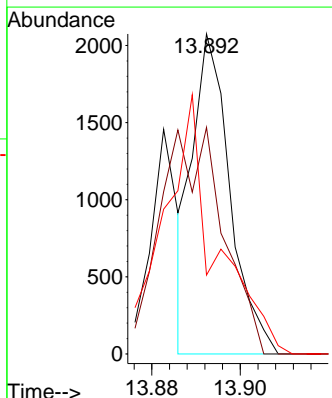
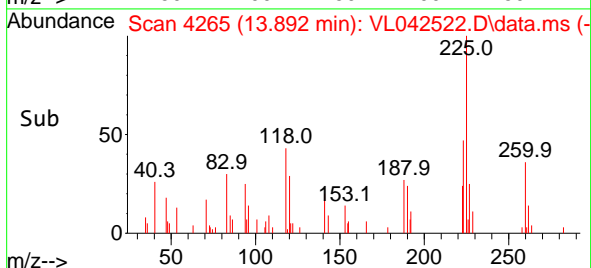
Tgt Ion:146 Resp: 1089
 Ion Ratio Lower Upper
 146 100
 111 64.5 26.5 79.5
 148 57.9 31.5 94.5

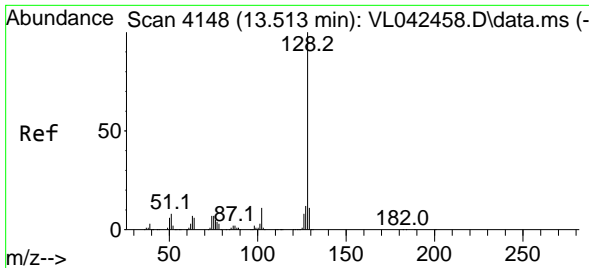


#78
 Hexachloro-1,3-Butadiene
 Concen: 0.082 ppbv
 RT: 13.892 min Scan# 4265
 Delta R.T. 0.014 min
 Lab File: VL042522.D
 Acq: 07 May 2025 17:24



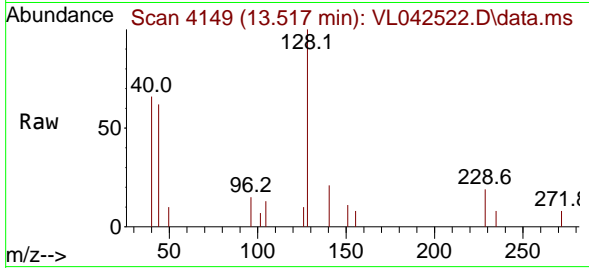
Tgt Ion:225 Resp: 1210
 Ion Ratio Lower Upper
 225 100
 223 119.3 50.2 75.4#
 227 115.2 51.2 76.8#



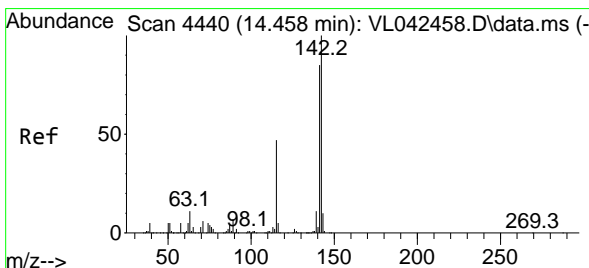
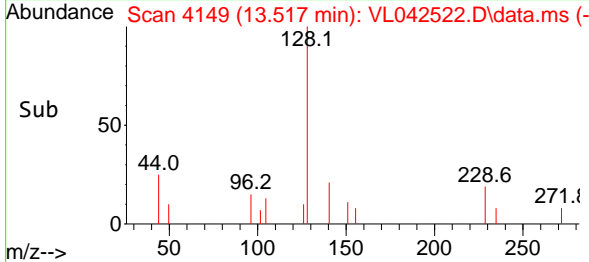
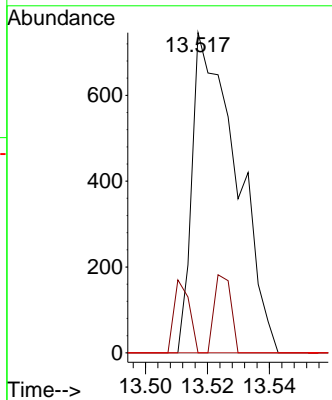


#79
 Naphthalene
 Concen: 0.032 ppbv
 RT: 13.517 min Scan# 4148
 Delta R.T. 0.004 min
 Lab File: VL042522.D
 Acq: 07 May 2025 17:24

Instrument :
 MSVOA_L
 ClientSampleId :
 MDL2 0.1

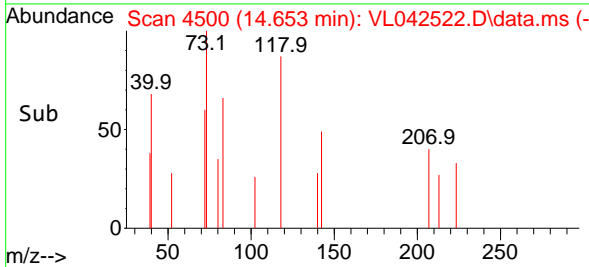
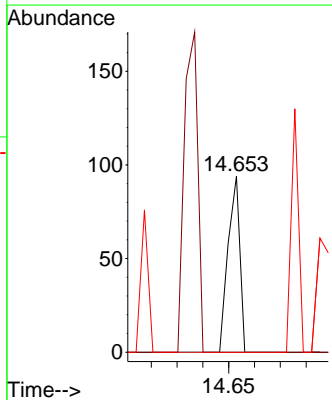
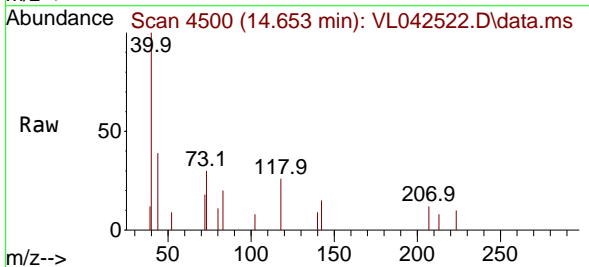


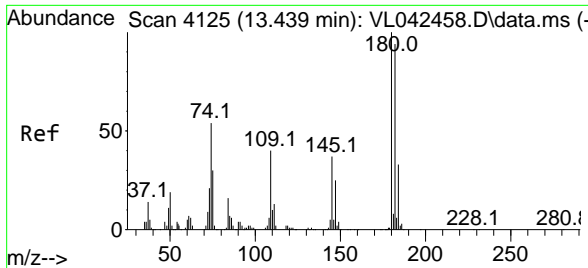
Tgt Ion:128 Resp: 740
 Ion Ratio Lower Upper
 128 100
 127 0.0 9.7 14.5#
 129 0.0 8.6 13.0#



#80
 Naphthalene,2-methyl-
 Concen: 0.002 ppbv
 RT: 14.653 min Scan# 4500
 Delta R.T. 0.195 min
 Lab File: VL042522.D
 Acq: 07 May 2025 17:24

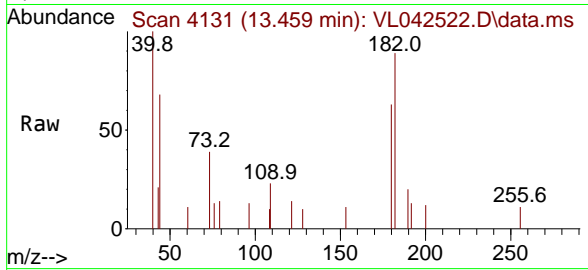
Tgt Ion:142 Resp: 30
 Ion Ratio Lower Upper
 142 100
 141 90.0 67.4 101.0
 115 156.7 36.9 55.3#





#81
 1,2,4-Trichlorobenzene
 Concen: 0.010 ppbv
 RT: 13.459 min Scan# 41
 Delta R.T. 0.020 min
 Lab File: VL042522.D
 Acq: 07 May 2025 17:24

Instrument :
 MSVOA_L
 ClientSampleId :
 MDL2 0.1



Tgt Ion:180 Resp: 122

Ion	Ratio	Lower	Upper
180	100		
182	285.2	74.6	111.8#
184	63.1	24.9	37.3#

