

Data Path : Z:\voasrv\HPCHEM1\MSVOA_L\Data\VL051123\
 Data File : VL040408.D
 Acq On : 11 May 2023 20:02
 Operator : SY/MD
 Sample : 02748-02DL 10X
 Misc : 400mL/MSVOA_L
 ALS Vial : 1 Sample Multiplier: 1

Instrument :
 MSVOA_L
 ClientSampleId :
 SV-02-20230510DL

Quant Time: May 12 05:56:58 2023
 Quant Method : Z:\voasrv\HPCHEM1\MSVOA_L\methods\VL041323AIR.M
 Quant Title : AIR ANALYSIS BY METHOD TO-15 Instrument: MSVOA_L Fri Aug 26 06:05:16 2022
 QLast Update : Thu Apr 13 14:37:02 2023
 Response via : Initial Calibration

Compound	R.T.	QIon	Response	Conc	Units	Dev(Min)

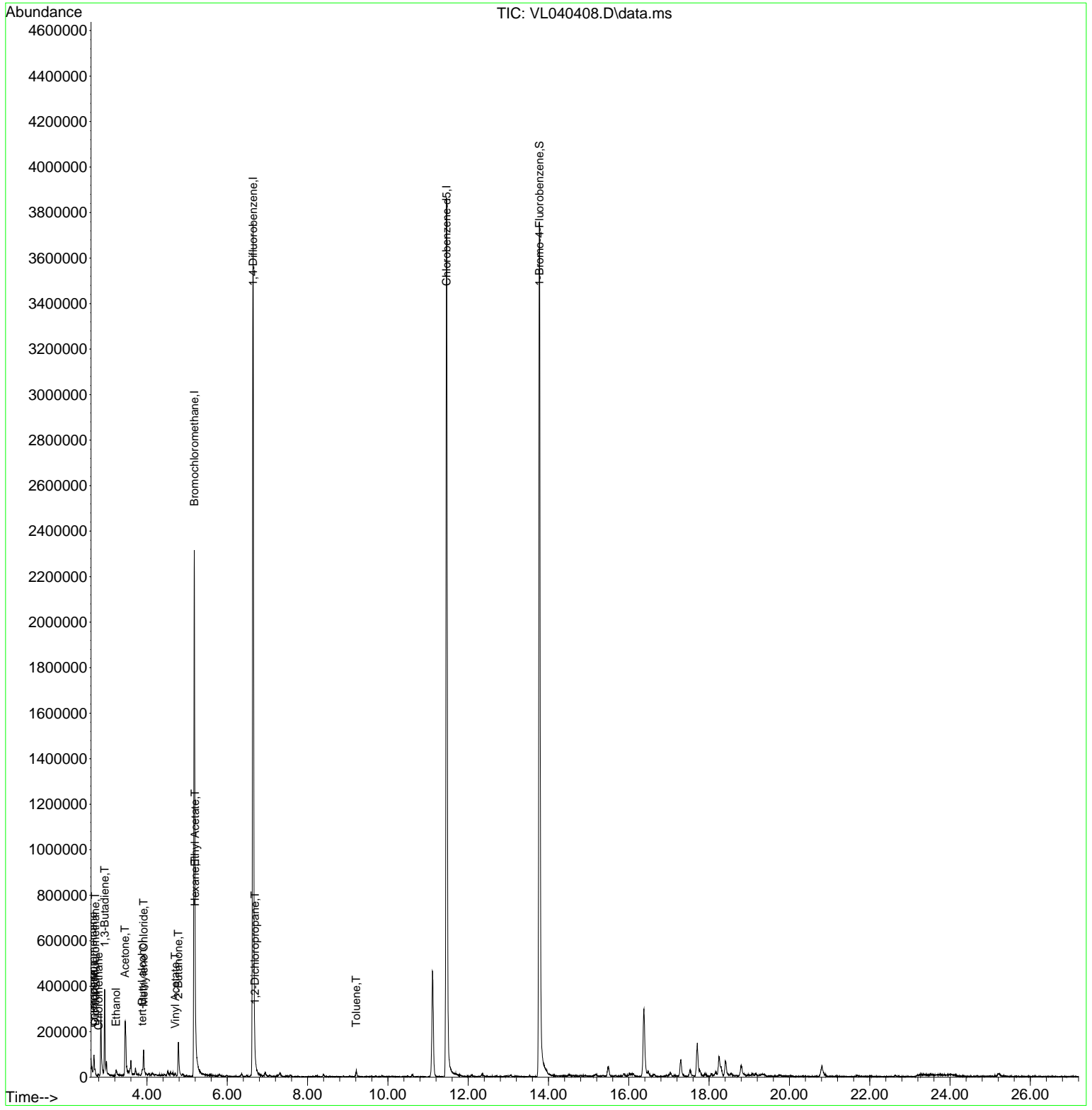
Internal Standards						
1) Bromochloromethane	5.179	49	1103194	10.000	ppbv	-0.01
33) 1,4-Difluorobenzene	6.642	114	2777740	10.000	ppbv	-0.01
55) Chlorobenzene-d5	11.462	117	2462321	10.000	ppbv	-0.01
System Monitoring Compounds						
68) 1-Bromo-4-Fluorobenzene	13.777	95	1918521	9.422	ppbv	0.00
Spiked Amount	10.000	Range	65 - 135	Recovery	=	94.200%
Target Compounds						
						Qvalue
2) Dichlorodifluoromethane	2.713	85	12049	0.061	ppbv	95
3) Chlorodifluoromethane	2.655	51	13729	0.095	ppbv	92
4) Chloromethane	2.796	50	6151	0.068	ppbv	97
9) Propene	2.674	41	30589	0.537	ppbv	95
13) Ethanol	3.231	45	13491	2.838	ppbv #	11
15) Acetone	3.456	43	259808	1.663	ppbv #	67
16) 1,3-Butadiene	2.948	39	95182	1.472	ppbv #	13
17) tert-Butyl alcohol	3.880	59	14580	0.102	ppbv #	72
20) Methylene Chloride	3.919	84	34429	0.552	ppbv	92
23) Vinyl Acetate	4.706	43	3077	0.077	ppbv #	14
25) Ethyl Acetate	5.198	43	17655	0.067	ppbv #	87
26) Hexane	5.201	57	10201	0.092	ppbv #	39
34) 2-Butanone	4.780	43	177456	1.185	ppbv	98
39) 1,2-Dichloropropane	6.690	63	10294	0.115	ppbv #	25
53) Toluene	9.211	91	8466	0.035	ppbv #	20

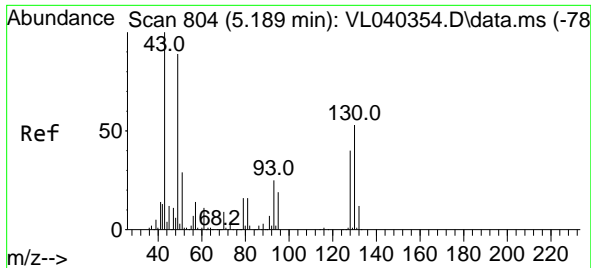
(#) = qualifier out of range (m) = manual integration (+) = signals summed

Data Path : Z:\voasrv\HPCHEM1\MSVOA_L\Data\VL051123\
 Data File : VL040408.D
 Acq On : 11 May 2023 20:02
 Operator : SY/MD
 Sample : 02748-02DL 10X
 Misc : 400mL/MSVOA_L
 ALS Vial : 1 Sample Multiplier: 1

Instrument :
 MSVOA_L
 ClientSampleId :
 SV-02-20230510DL

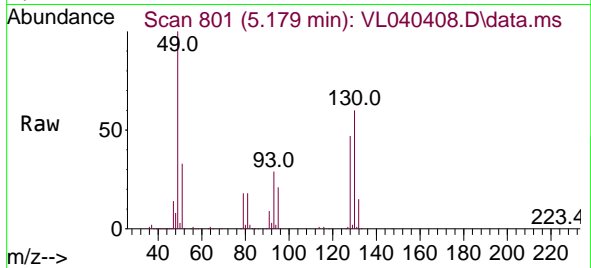
Quant Time: May 12 05:56:58 2023
 Quant Method : Z:\voasrv\HPCHEM1\MSVOA_L\methods\VL041323AIR.M
 Quant Title : AIR ANALYSIS BY METHOD TO-15 Instrument: MSVOA_L Fri Aug 26 06:05:16 2022
 QLast Update : Thu Apr 13 14:37:02 2023
 Response via : Initial Calibration



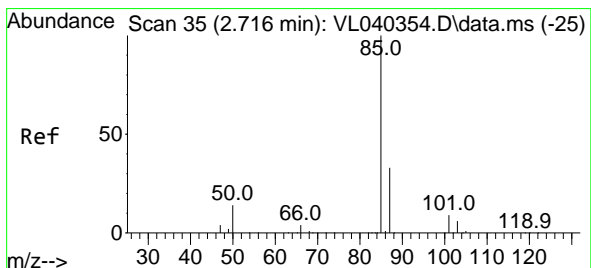
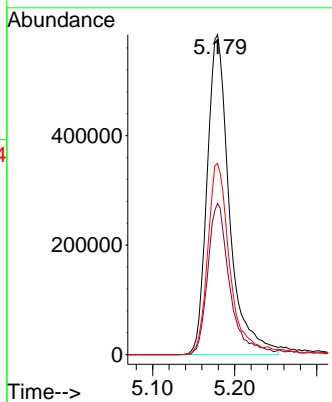
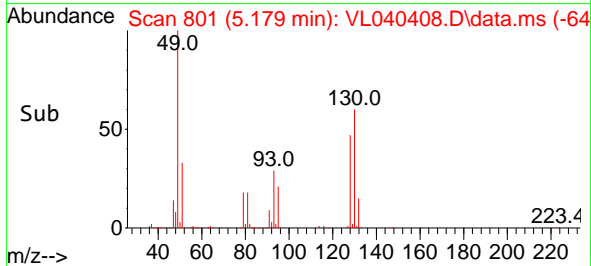


#1
 Bromochloromethane
 Concen: 10.000 ppbv
 RT: 5.179 min Scan# 80
 Delta R.T. -0.010 min
 Lab File: VL040408.D
 Acq: 11 May 2023 20:02

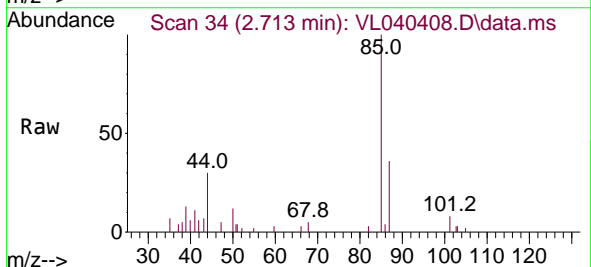
Instrument :
 MSVOA_L
 ClientSampleId :
 SV-02-20230510DL



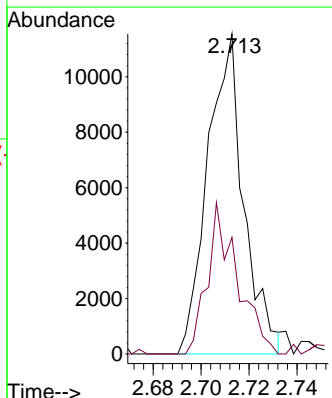
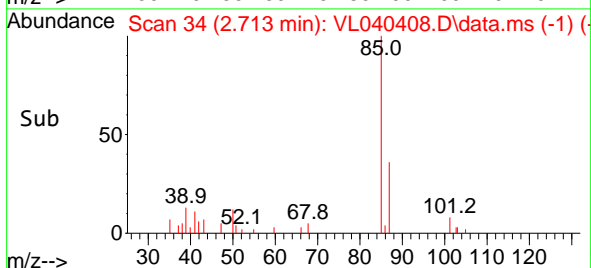
Tgt Ion: 49 Resp: 1103194
 Ion Ratio Lower Upper
 49 100
 128 48.5 23.7 71.1
 130 62.3 29.9 89.8

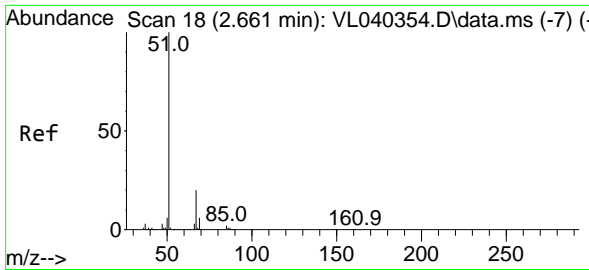


#2
 Dichlorodifluoromethane
 Concen: 0.061 ppbv
 RT: 2.713 min Scan# 34
 Delta R.T. -0.003 min
 Lab File: VL040408.D
 Acq: 11 May 2023 20:02



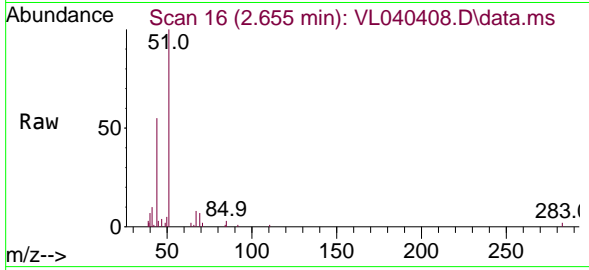
Tgt Ion: 85 Resp: 12049
 Ion Ratio Lower Upper
 85 100
 87 36.4 26.6 40.0



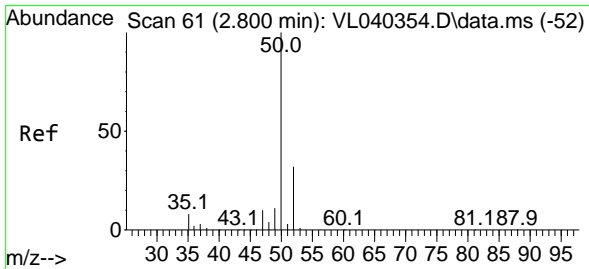
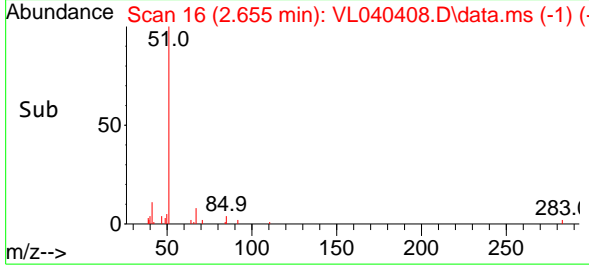
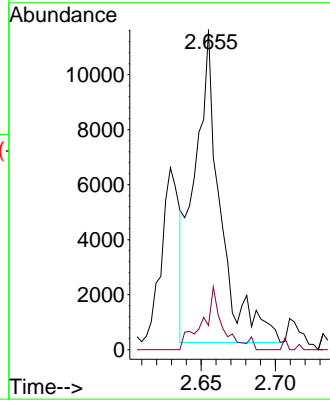


#3
 Chlorodifluoromethane
 Concen: 0.095 ppbv
 RT: 2.655 min Scan# 10
 Delta R.T. -0.006 min
 Lab File: VL040408.D
 Acq: 11 May 2023 20:02

Instrument : MSVOA_L
 ClientSampleId : SV-02-20230510DL

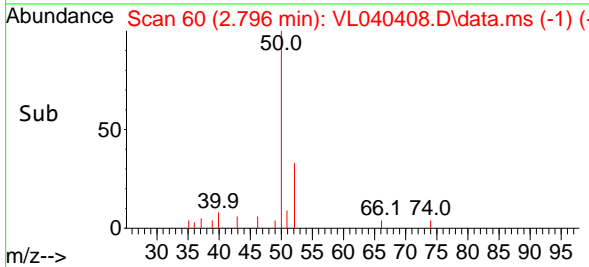
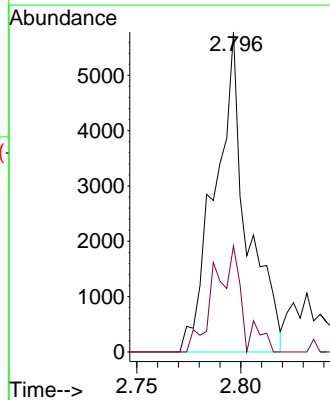
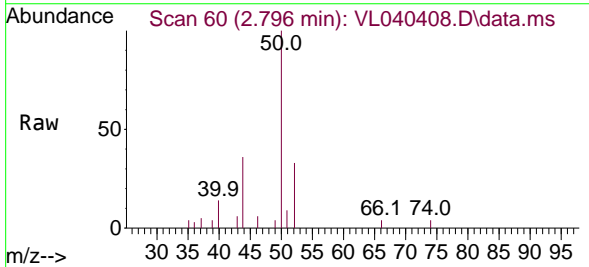


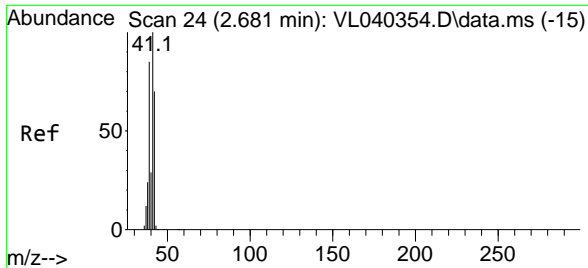
Tgt Ion: 51 Resp: 13729
 Ion Ratio Lower Upper
 51 100
 67 15.8 15.5 23.3



#4
 Chloromethane
 Concen: 0.068 ppbv
 RT: 2.796 min Scan# 60
 Delta R.T. -0.004 min
 Lab File: VL040408.D
 Acq: 11 May 2023 20:02

Tgt Ion: 50 Resp: 6151
 Ion Ratio Lower Upper
 50 100
 52 33.1 25.3 37.9

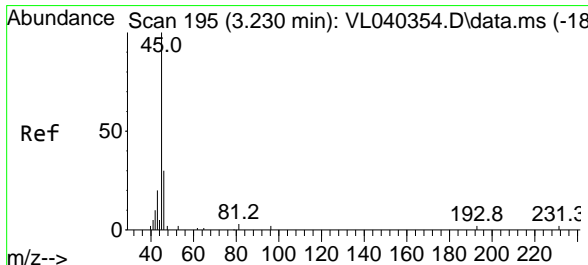
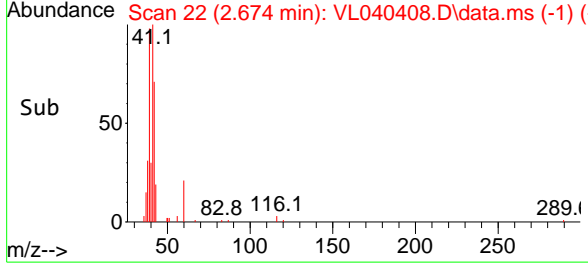
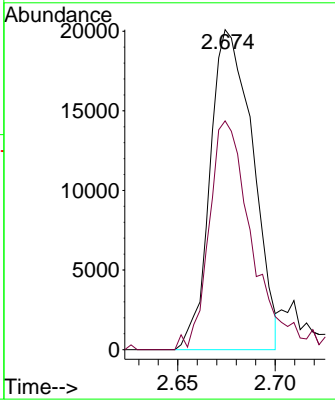
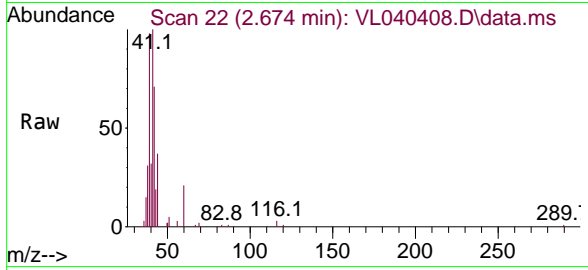




#9
 Propene
 Concen: 0.537 ppbv
 RT: 2.674 min Scan# 21
 Delta R.T. -0.007 min
 Lab File: VL040408.D
 Acq: 11 May 2023 20:02

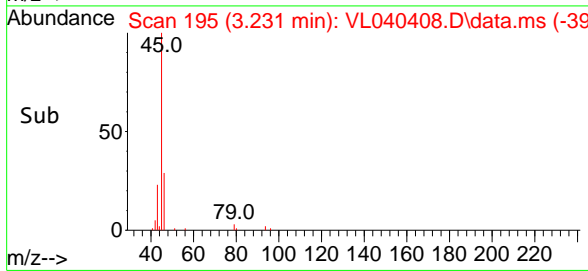
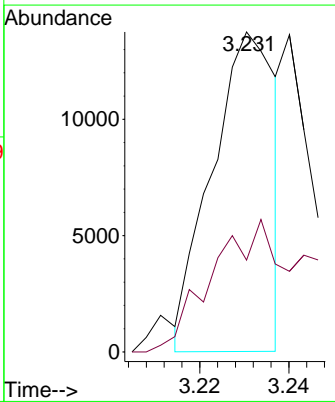
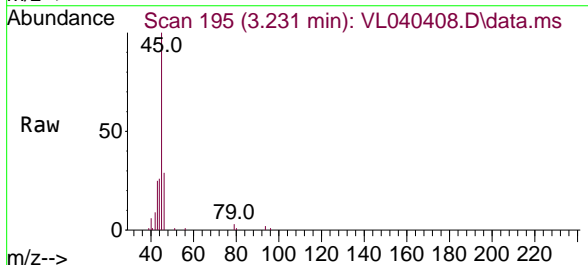
Instrument : MSVOA_L
 ClientSampleId : SV-02-20230510DL

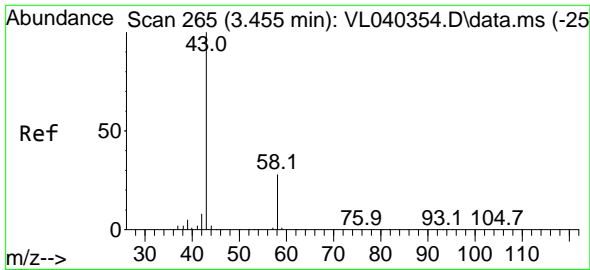
Tgt Ion: 41 Resp: 30589
 Ion Ratio Lower Upper
 41 100
 42 74.5 56.5 84.7



#13
 Ethanol
 Concen: 2.838 ppbv
 RT: 3.231 min Scan# 195
 Delta R.T. 0.001 min
 Lab File: VL040408.D
 Acq: 11 May 2023 20:02

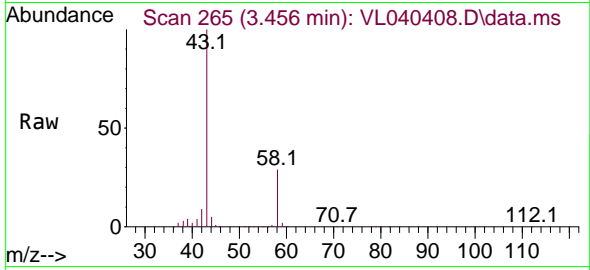
Tgt Ion: 45 Resp: 13491
 Ion Ratio Lower Upper
 45 100
 46 92.0 15.3 61.3#



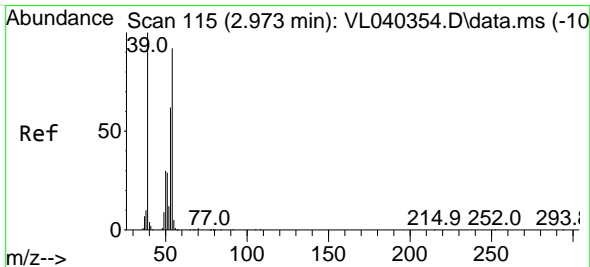
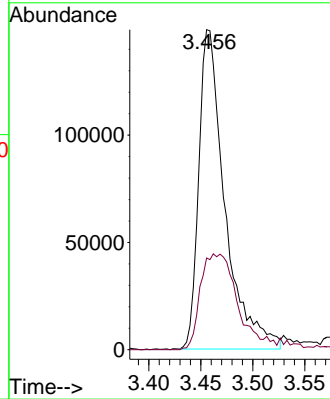
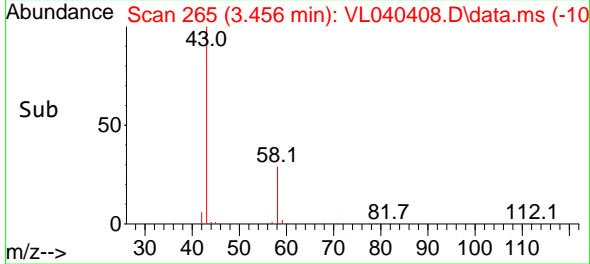


#15
 Acetone
 Concen: 1.663 ppbv
 RT: 3.456 min Scan# 20
 Delta R.T. 0.001 min
 Lab File: VL040408.D
 Acq: 11 May 2023 20:02

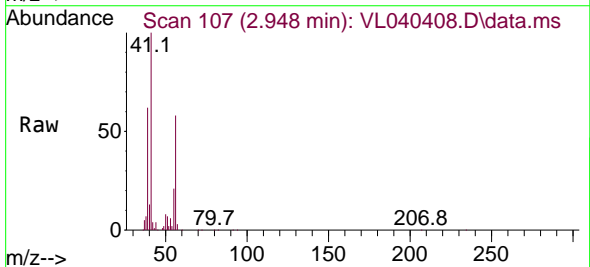
Instrument : MSVOA_L
 ClientSampleId : SV-02-20230510DL



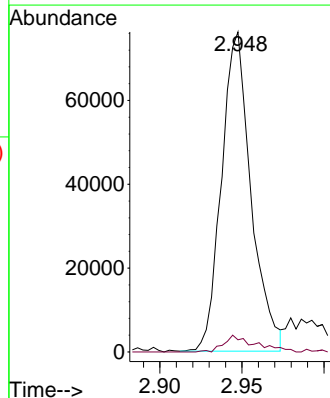
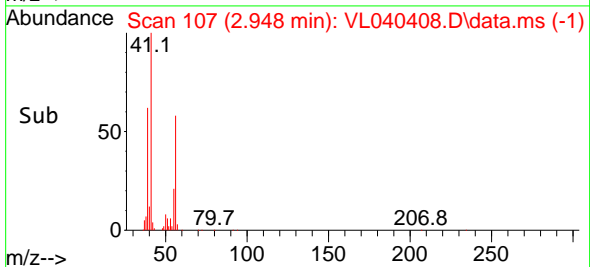
Tgt Ion: 43 Resp: 259808
 Ion Ratio Lower Upper
 43 100
 58 44.7 22.2 33.2#

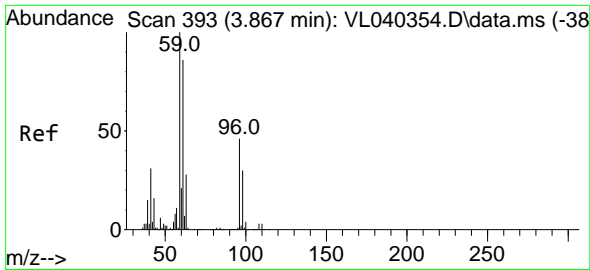


#16
 1,3-Butadiene
 Concen: 1.472 ppbv
 RT: 2.948 min Scan# 107
 Delta R.T. -0.025 min
 Lab File: VL040408.D
 Acq: 11 May 2023 20:02



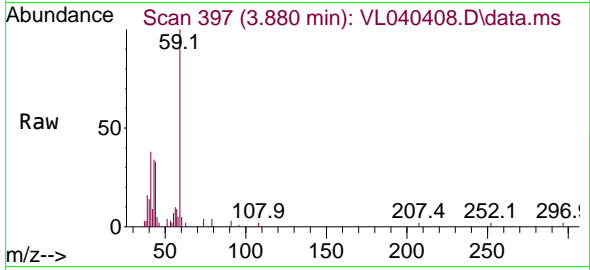
Tgt Ion: 39 Resp: 95182
 Ion Ratio Lower Upper
 39 100
 54 5.9 68.8 103.2#



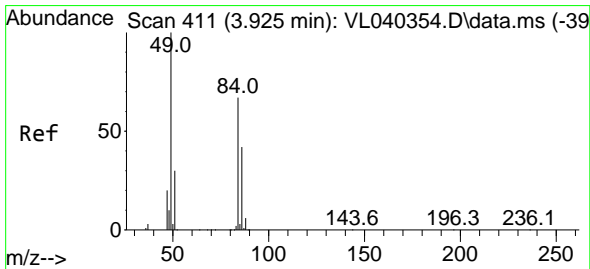
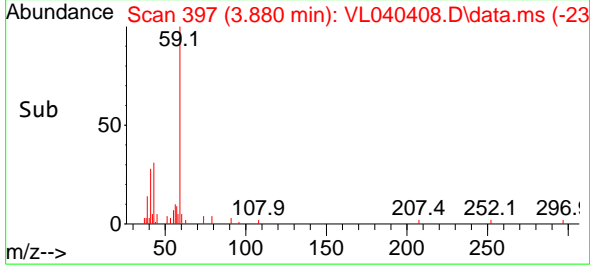
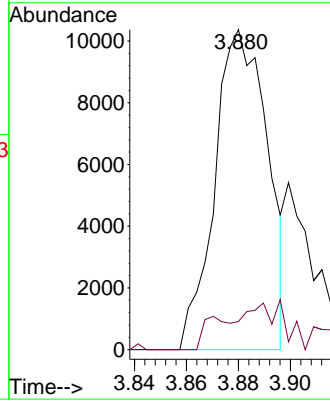


#17
 tert-Butyl alcohol
 Concen: 0.102 ppbv
 RT: 3.880 min Scan# 397
 Delta R.T. 0.013 min
 Lab File: VL040408.D
 Acq: 11 May 2023 20:02

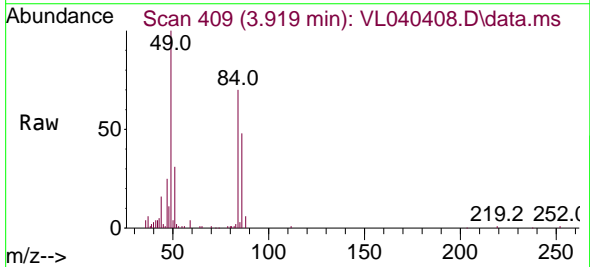
Instrument : MSVOA_L
 ClientSampleId : SV-02-20230510DL



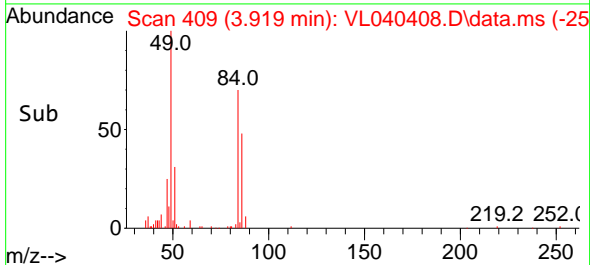
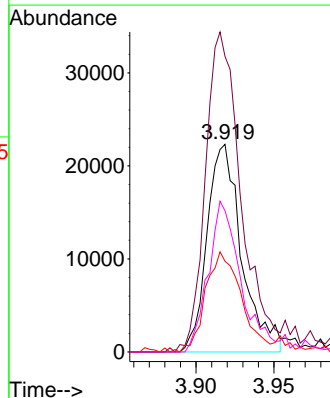
Tgt Ion: 59 Resp: 14580
 Ion Ratio Lower Upper
 59 100
 57 0.0 8.5 12.7#

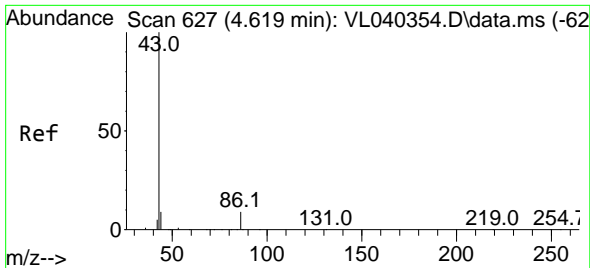


#20
 Methylene Chloride
 Concen: 0.552 ppbv
 RT: 3.919 min Scan# 409
 Delta R.T. -0.006 min
 Lab File: VL040408.D
 Acq: 11 May 2023 20:02



Tgt Ion: 84 Resp: 34429
 Ion Ratio Lower Upper
 84 100
 49 136.4 120.1 180.1
 51 43.7 36.3 54.5
 86 67.9 50.8 76.2



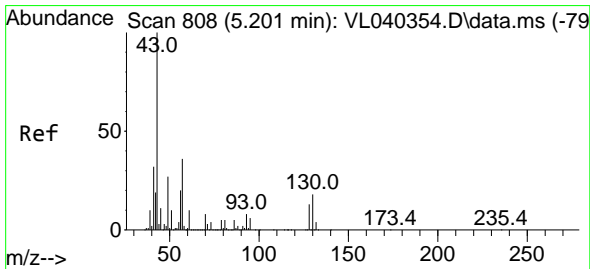
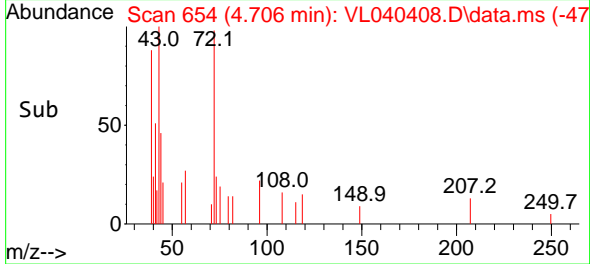
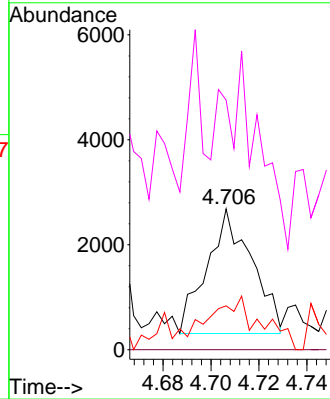
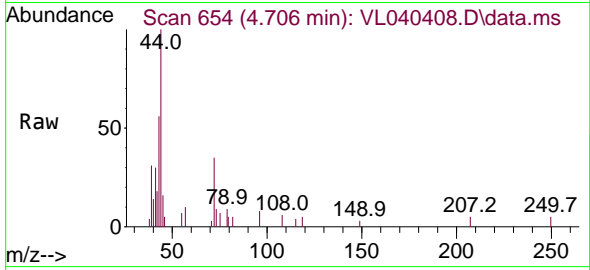


#23
 Vinyl Acetate
 Concen: 0.077 ppbv
 RT: 4.706 min Scan# 61
 Delta R.T. 0.087 min
 Lab File: VL040408.D
 Acq: 11 May 2023 20:02

Instrument :
 MSVOA_L
 ClientSampleId :
 SV-02-20230510DL

Tgt Ion: 43 Resp: 3077

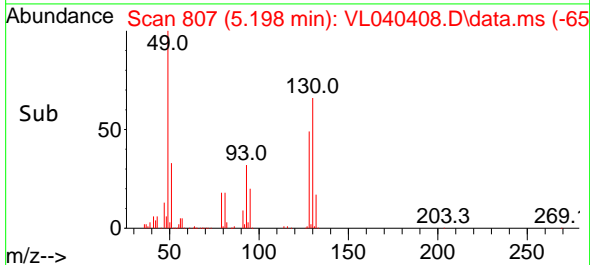
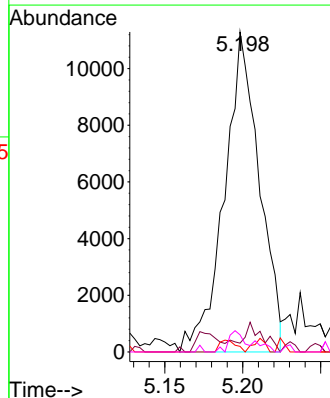
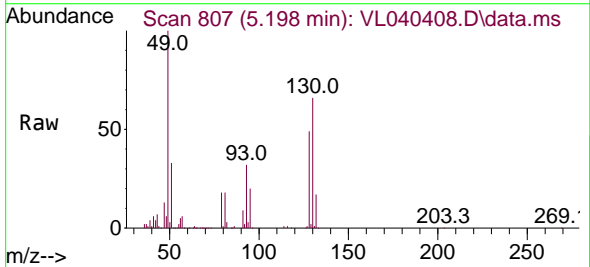
Ion	Ratio	Lower	Upper
43	100		
86	0.0	6.0	9.0#
42	20.3	6.4	9.6#
44	80.2	5.6	8.4#

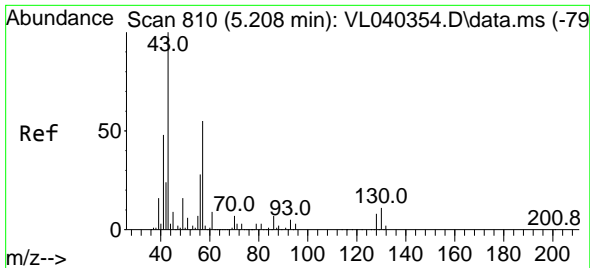


#25
 Ethyl Acetate
 Concen: 0.067 ppbv
 RT: 5.198 min Scan# 807
 Delta R.T. -0.003 min
 Lab File: VL040408.D
 Acq: 11 May 2023 20:02

Tgt Ion: 43 Resp: 17655

Ion	Ratio	Lower	Upper
43	100		
45	9.6	8.5	12.7
61	0.0	8.5	12.7#
70	4.8	6.1	9.1#

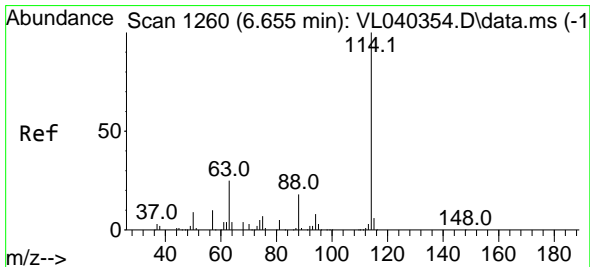
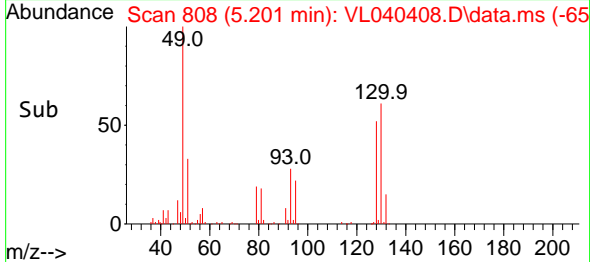
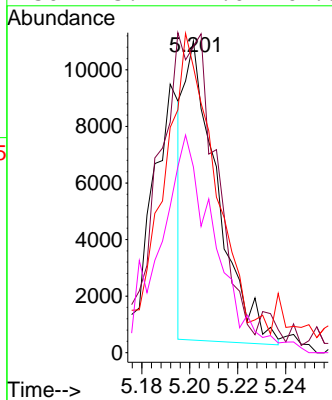
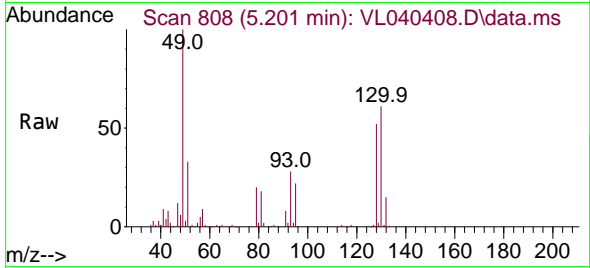




#26
 Hexane
 Concen: 0.092 ppbv
 RT: 5.201 min Scan# 80
 Delta R.T. -0.007 min
 Lab File: VL040408.D
 Acq: 11 May 2023 20:02

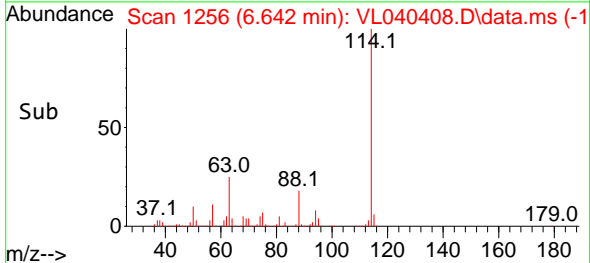
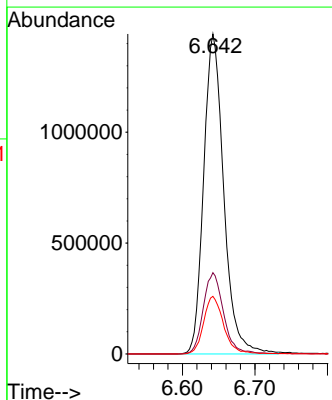
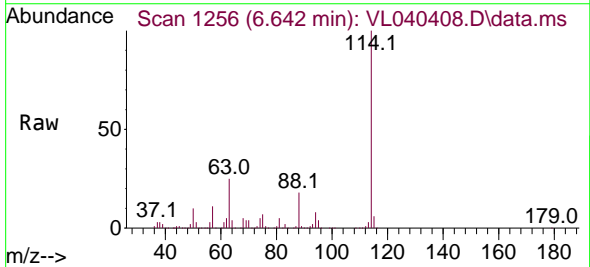
Instrument : MSVOA_L
 ClientSampleId : SV-02-20230510DL

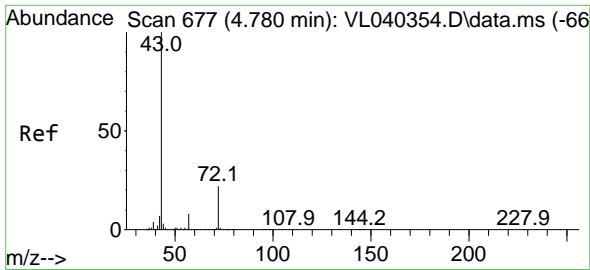
Tgt Ion: 57 Resp: 10201
 Ion Ratio Lower Upper
 57 100
 41 205.3 74.8 112.2#
 43 189.2 192.7 289.1#
 56 125.7 42.6 64.0#



#33
 1,4-Difluorobenzene
 Concen: 10.000 ppbv
 RT: 6.642 min Scan# 1256
 Delta R.T. -0.013 min
 Lab File: VL040408.D
 Acq: 11 May 2023 20:02

Tgt Ion: 114 Resp: 2777740
 Ion Ratio Lower Upper
 114 100
 63 25.8 21.4 32.0
 88 18.0 14.6 22.0

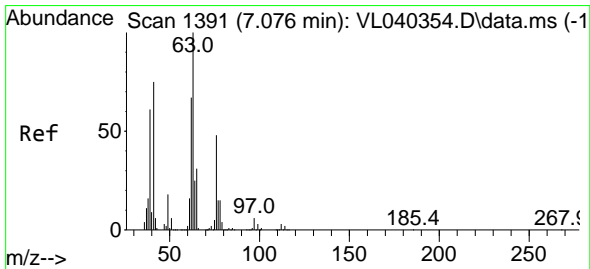
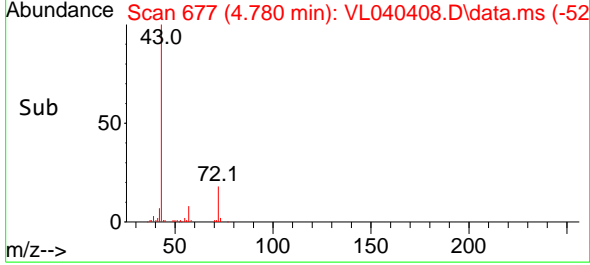
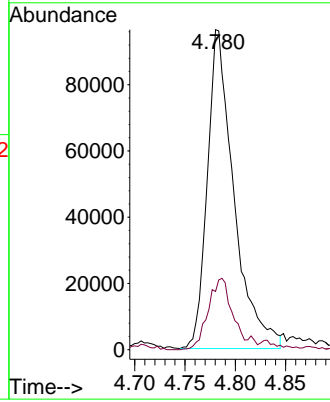
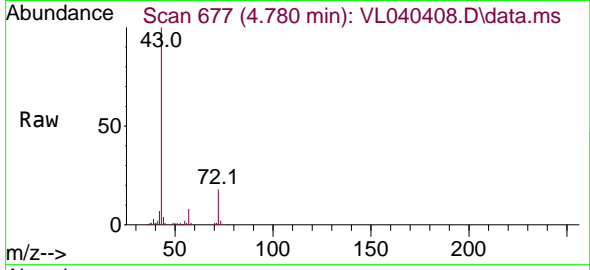




#34
 2-Butanone
 Concen: 1.185 ppbv
 RT: 4.780 min Scan# 61
 Delta R.T. 0.000 min
 Lab File: VL040408.D
 Acq: 11 May 2023 20:02

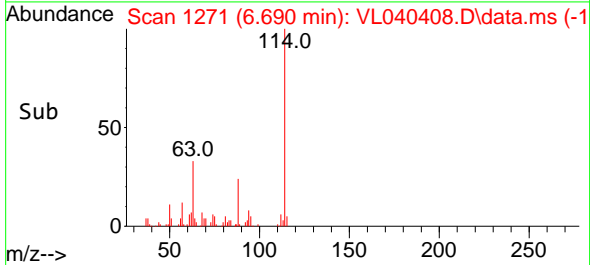
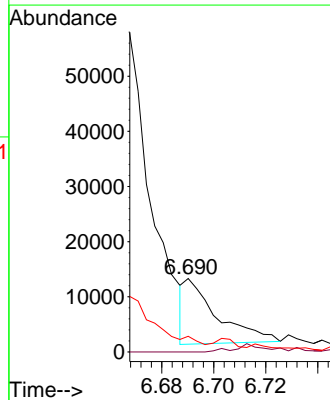
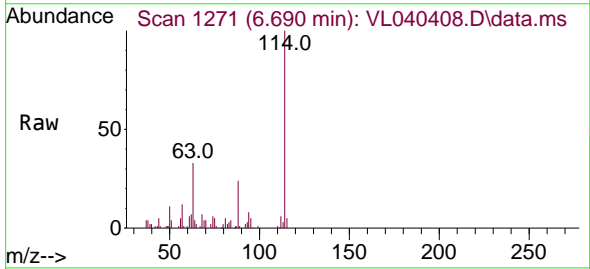
Instrument :
 MSVOA_L
 ClientSampleId :
 SV-02-20230510DL

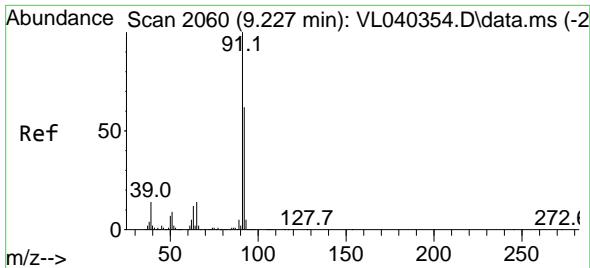
Tgt Ion: 43 Resp: 177456
 Ion Ratio Lower Upper
 43 100
 72 23.9 18.4 27.6



#39
 1,2-Dichloropropane
 Concen: 0.115 ppbv
 RT: 6.690 min Scan# 1271
 Delta R.T. -0.386 min
 Lab File: VL040408.D
 Acq: 11 May 2023 20:02

Tgt Ion: 63 Resp: 10294
 Ion Ratio Lower Upper
 63 100
 41 0.0 59.6 89.4#
 62 18.7 53.9 80.9#

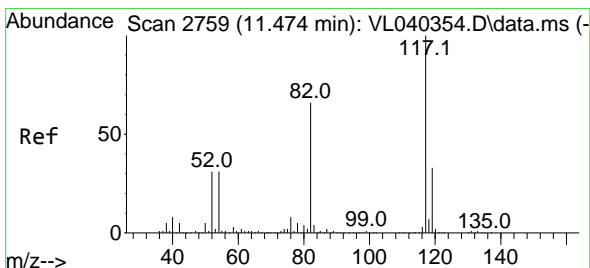
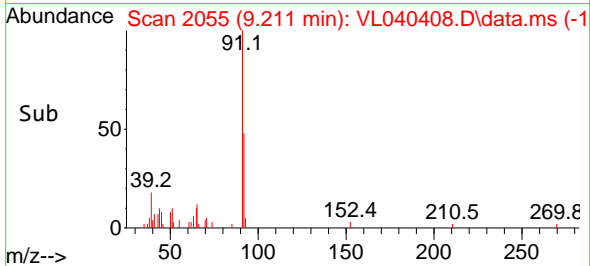
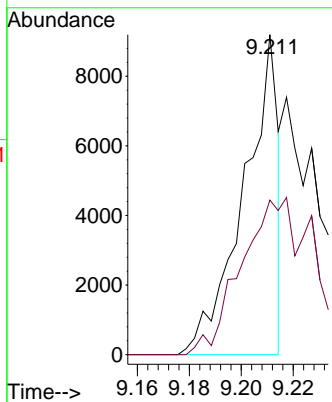
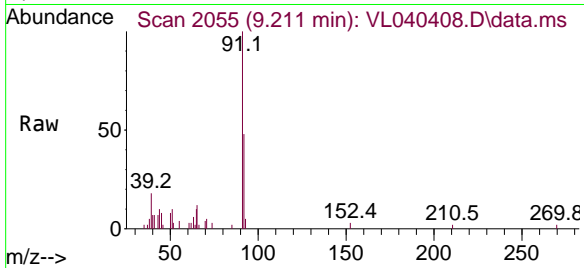




#53
 Toluene
 Concen: 0.035 ppbv
 RT: 9.211 min Scan# 2060
 Delta R.T. -0.016 min
 Lab File: VL040408.D
 Acq: 11 May 2023 20:02

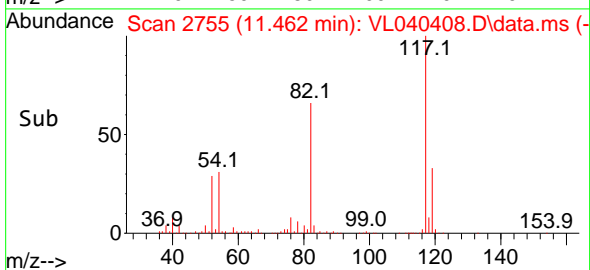
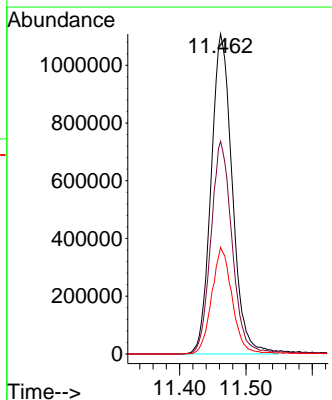
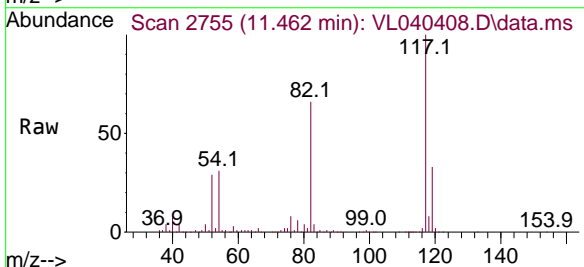
Instrument : MSVOA_L
 ClientSampleId : SV-02-20230510DL

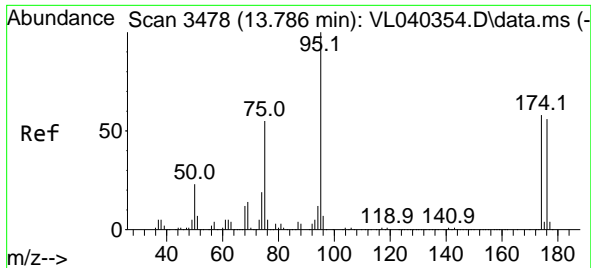
Tgt Ion: 91 Resp: 8466
 Ion Ratio Lower Upper
 91 100
 92 0.0 48.9 73.3#



#55
 Chlorobenzene-d5
 Concen: 10.000 ppbv
 RT: 11.462 min Scan# 2755
 Delta R.T. -0.012 min
 Lab File: VL040408.D
 Acq: 11 May 2023 20:02

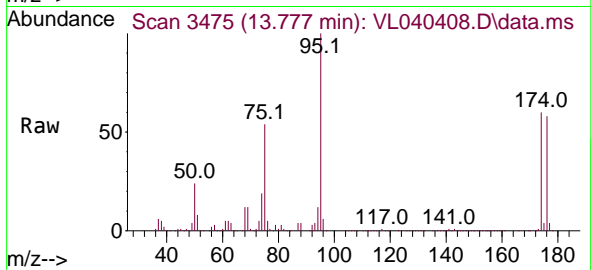
Tgt Ion: 117 Resp: 2462321
 Ion Ratio Lower Upper
 117 100
 82 67.5 52.5 78.7
 119 32.4 24.3 36.5





#68
 1-Bromo-4-Fluorobenzene
 Concen: 9.422 ppbv
 RT: 13.777 min Scan# 34
 Delta R.T. -0.009 min
 Lab File: VL040408.D
 Acq: 11 May 2023 20:02

Instrument :
 MSVOA_L
 ClientSampleId :
 SV-02-20230510DL



Tgt Ion: 95 Resp: 1918521
 Ion Ratio Lower Upper
 95 100
 174 60.8 47.2 70.8
 175 4.3 3.5 5.3

