

Data Path : Z:\voasrv\HPCHEM1\MSVOA\_L\Data\VL052125\  
 Data File : VL042557.D  
 Acq On : 21 May 2025 09:28  
 Operator : SY/MD  
 Sample : VL0521ABL01  
 Misc : 400mL/MSVOA\_L  
 ALS Vial : 1 Sample Multiplier: 1

Instrument :  
 MSVOA\_L  
 ClientSampleId :  
 VL0521ABL01

Quant Time: May 21 22:53:30 2025  
 Quant Method : Z:\voasrv\HPCHEM1\MSVOA\_L\methods\VL052025AIR.M  
 Quant Title : AIR ANALYSIS BY METHOD TO-15 Instrument: MSVOA\_L Fri Aug 26 06:05:16 2022  
 QLast Update : Wed May 21 00:21:29 2025  
 Response via : Initial Calibration

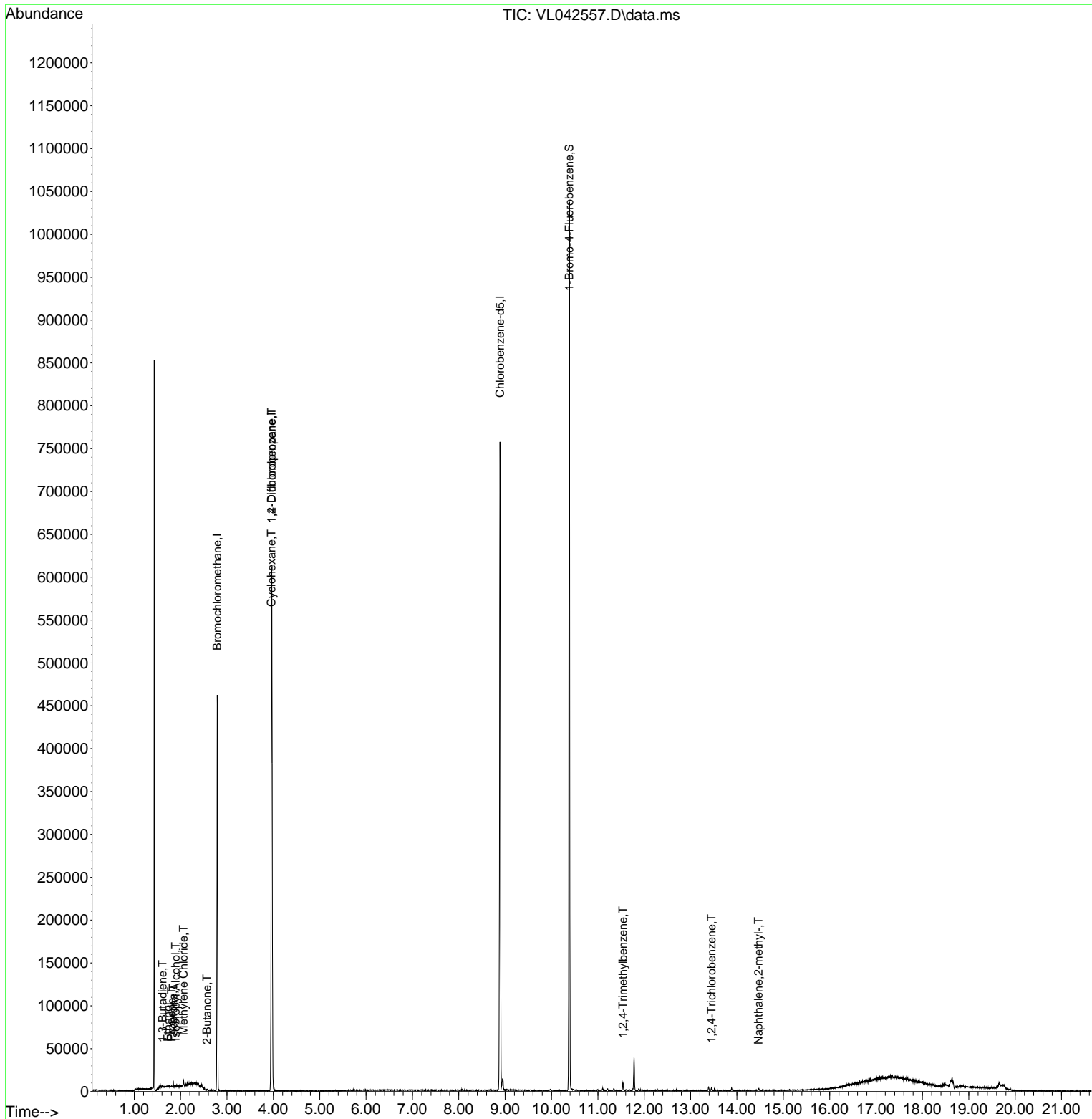
Compound	R.T.	QIon	Response	Conc	Units	Dev(Min)
-----						
Internal Standards						
1) Bromochloromethane	2.791	49	115052	10.000	ppbv	0.00
33) 1,4-Difluorobenzene	3.965	114	371222	10.000	ppbv	0.00
55) Chlorobenzene-d5	8.888	117	319806	10.000	ppbv	0.00
System Monitoring Compounds						
68) 1-Bromo-4-Fluorobenzene	10.384	95	251444	9.824	ppbv	0.00
Spiked Amount	10.000	Range	65 - 135	Recovery	=	98.200%
Target Compounds						
						Qvalue
9) Propene	1.807	41	206	0.033	ppbv	87
13) Ethanol	1.726	45	182	0.204	ppbv #	37
15) Acetone	1.839	43	2890	0.180	ppbv #	81
16) 1,3-Butadiene	1.609	39	226	0.035	ppbv #	59
19) Isopropyl Alcohol	1.891	45	449	0.049	ppbv #	32
20) Methylene Chloride	2.062	84	1478	0.190	ppbv	86
30) Cyclohexane	3.959	84	1488	0.123	ppbv #	3
34) 2-Butanone	2.567	43	901	0.046	ppbv	95
39) 1,2-Dichloropropane	3.965	63	87701	8.317	ppbv #	26
74) 1,2,4-Trimethylbenzene	11.539	105	3094	0.068	ppbv #	66
80) Naphthalene,2-methyl-	14.468	142	665	0.038	ppbv #	72
81) 1,2,4-Trichlorobenzene	13.449	180	652	0.032	ppbv #	83
-----						

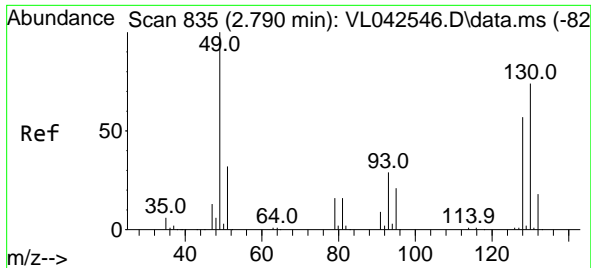
(#) = qualifier out of range (m) = manual integration (+) = signals summed

Data Path : Z:\voasrv\HPCHEM1\MSVOA\_L\Data\VL052125\  
 Data File : VL042557.D  
 Acq On : 21 May 2025 09:28  
 Operator : SY/MD  
 Sample : VL0521ABL01  
 Misc : 400mL/MSVOA\_L  
 ALS Vial : 1 Sample Multiplier: 1

Instrument :  
 MSVOA\_L  
 ClientSampleId :  
 VL0521ABL01

Quant Time: May 21 22:53:30 2025  
 Quant Method : Z:\voasrv\HPCHEM1\MSVOA\_L\methods\VL052025AIR.M  
 Quant Title : AIR ANALYSIS BY METHOD TO-15 Instrument: MSVOA\_L Fri Aug 26 06:05:16 2022  
 QLast Update : Wed May 21 00:21:29 2025  
 Response via : Initial Calibration

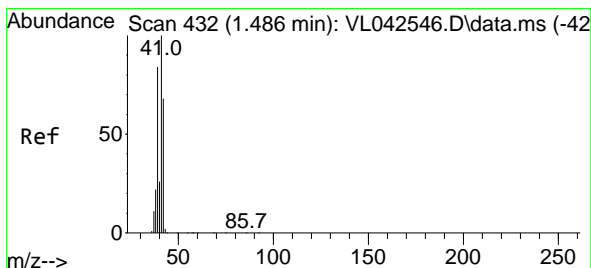
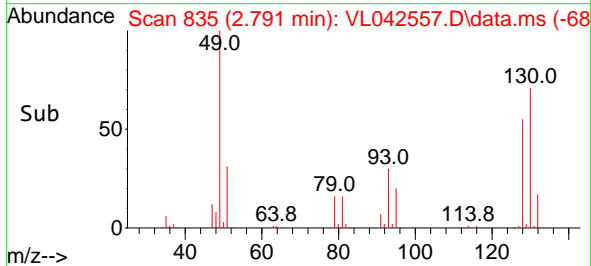
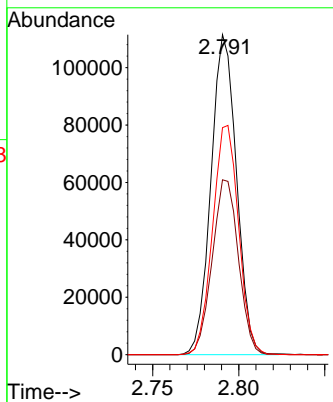
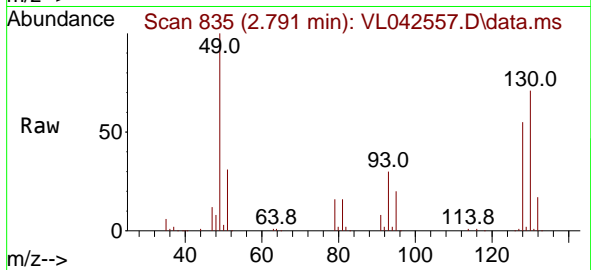




#1  
 Bromochloromethane  
 Concen: 10.000 ppbv  
 RT: 2.791 min Scan# 81  
 Delta R.T. 0.001 min  
 Lab File: VL042557.D  
 Acq: 21 May 2025 09:28

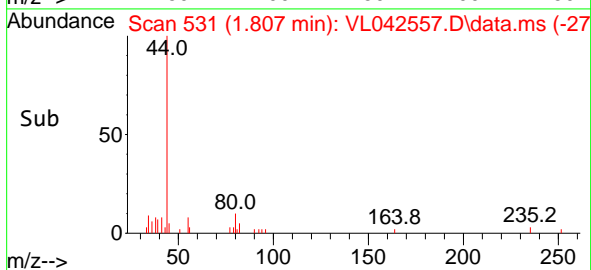
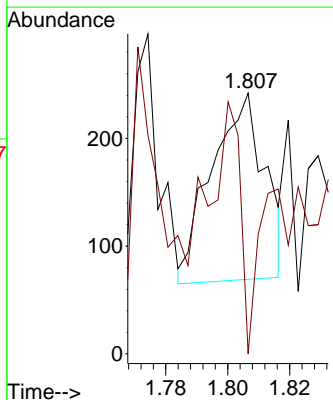
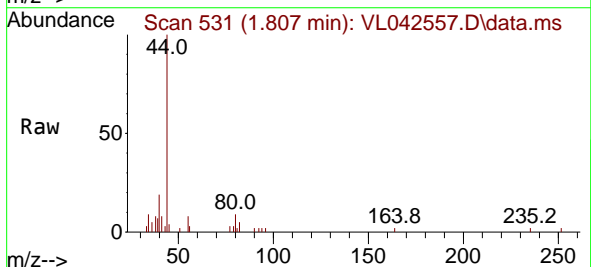
Instrument :  
 MSVOA\_L  
 ClientSampleId :  
 VL0521ABL01

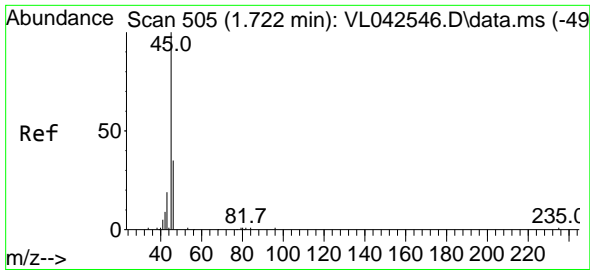
Tgt Ion: 49 Resp: 115052  
 Ion Ratio Lower Upper  
 49 100  
 128 56.2 28.6 85.8  
 130 73.0 36.6 109.8



#9  
 Propene  
 Concen: 0.033 ppbv  
 RT: 1.807 min Scan# 531  
 Delta R.T. 0.321 min  
 Lab File: VL042557.D  
 Acq: 21 May 2025 09:28

Tgt Ion: 41 Resp: 206  
 Ion Ratio Lower Upper  
 41 100  
 42 57.8 55.0 82.4

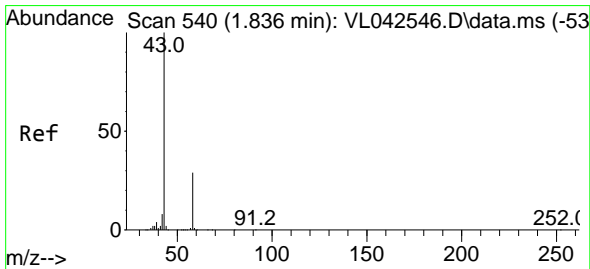
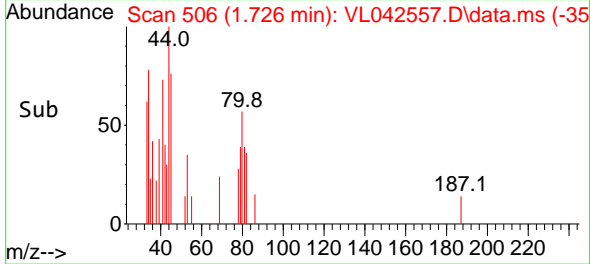
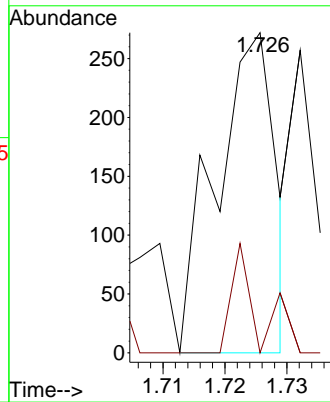
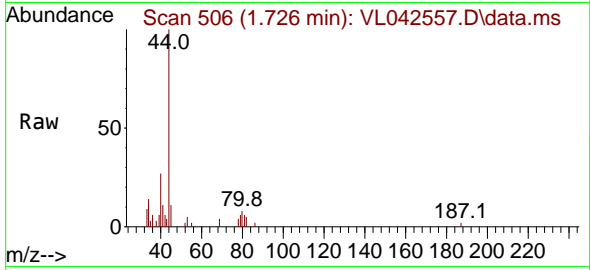




#13  
 Ethanol  
 Concen: 0.204 ppbv  
 RT: 1.726 min Scan# 505  
 Delta R.T. 0.003 min  
 Lab File: VL042557.D  
 Acq: 21 May 2025 09:28

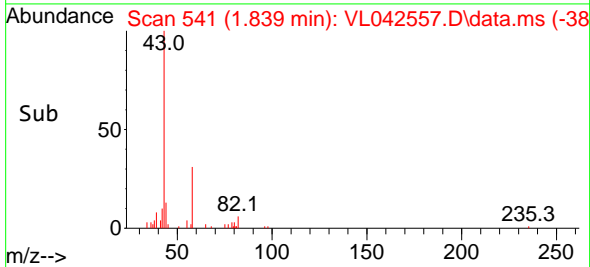
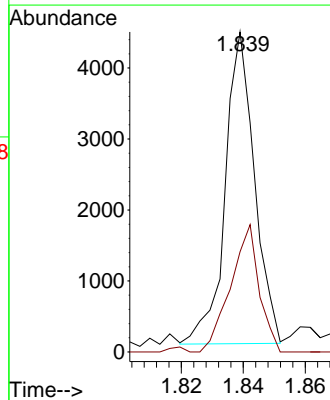
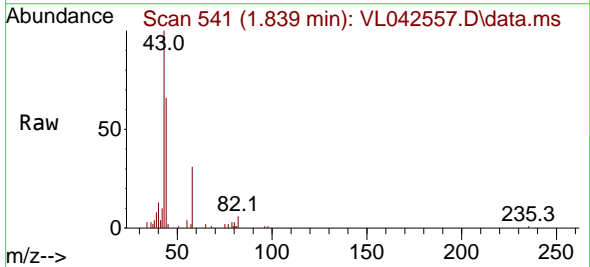
Instrument : MSVOA\_L  
 ClientSampleId : VL0521ABL01

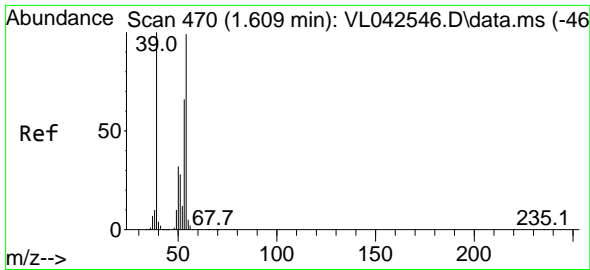
Tgt Ion: 45 Resp: 182  
 Ion Ratio Lower Upper  
 45 100  
 46 0.0 15.3 61.3#



#15  
 Acetone  
 Concen: 0.180 ppbv  
 RT: 1.839 min Scan# 541  
 Delta R.T. 0.003 min  
 Lab File: VL042557.D  
 Acq: 21 May 2025 09:28

Tgt Ion: 43 Resp: 2890  
 Ion Ratio Lower Upper  
 43 100  
 58 40.4 24.2 36.2#

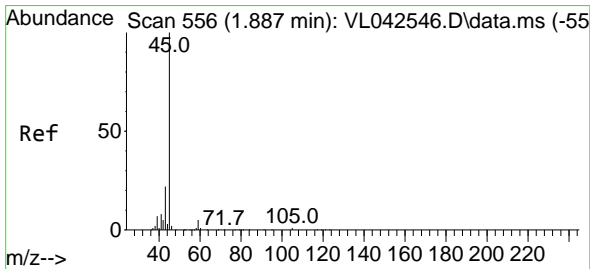
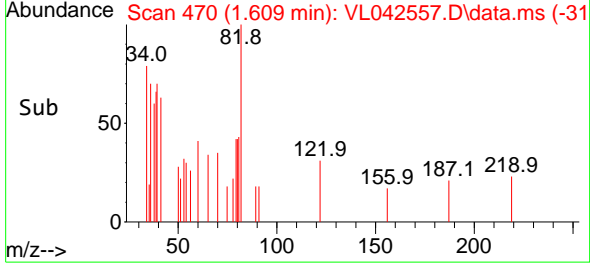
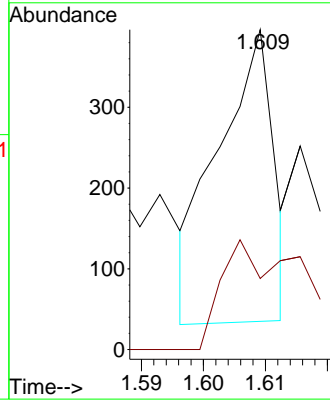
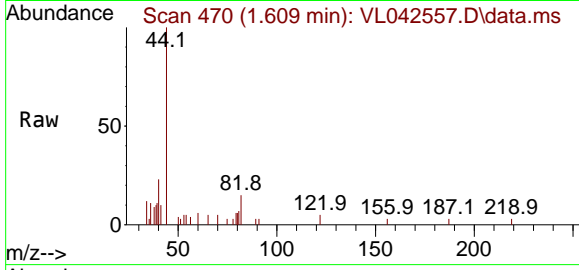




#16  
 1,3-Butadiene  
 Concen: 0.035 ppbv  
 RT: 1.609 min Scan# 41  
 Delta R.T. 0.000 min  
 Lab File: VL042557.D  
 Acq: 21 May 2025 09:28

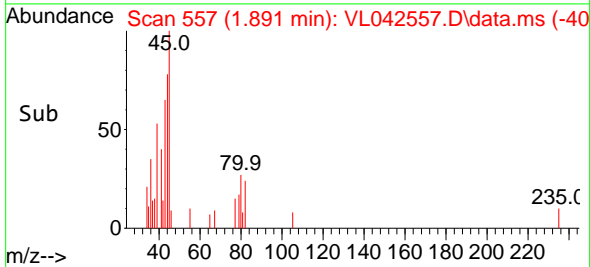
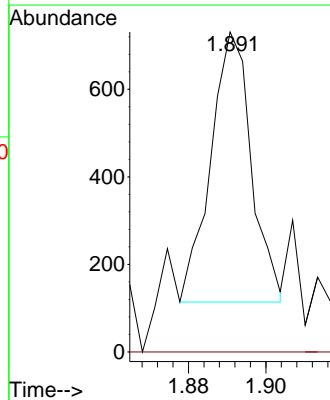
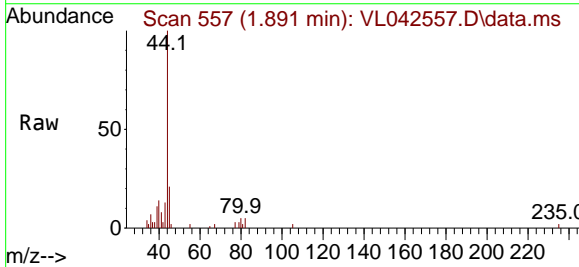
Instrument :  
 MSVOA\_L  
 ClientSampleId :  
 VL0521ABL01

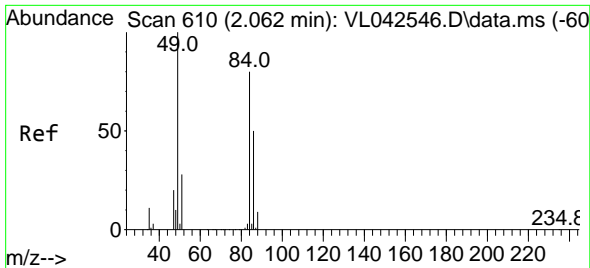
Tgt Ion: 39 Resp: 226  
 Ion Ratio Lower Upper  
 39 100  
 54 51.3 71.8 107.8#



#19  
 Isopropyl Alcohol  
 Concen: 0.049 ppbv  
 RT: 1.891 min Scan# 557  
 Delta R.T. 0.003 min  
 Lab File: VL042557.D  
 Acq: 21 May 2025 09:28

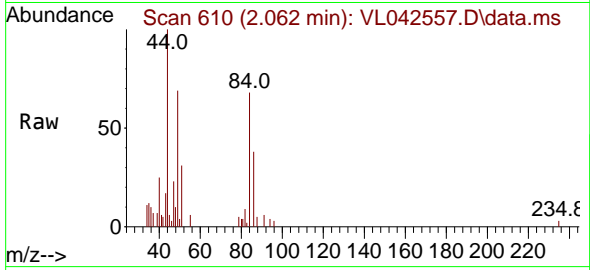
Tgt Ion: 45 Resp: 449  
 Ion Ratio Lower Upper  
 45 100  
 58 0.0 35.3 52.9#





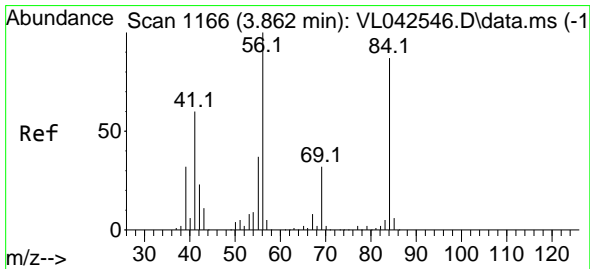
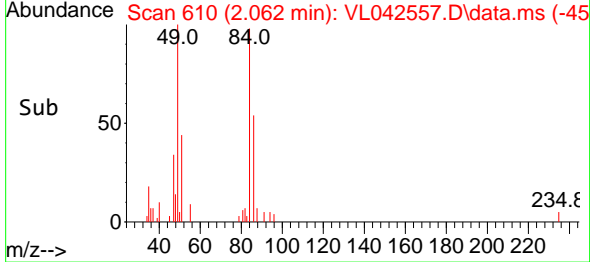
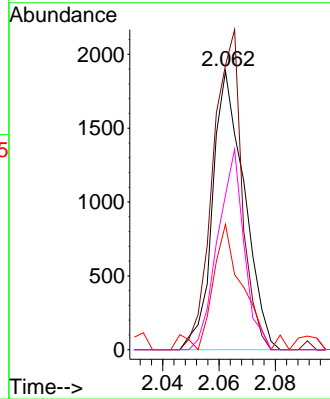
#20  
 Methylene Chloride  
 Concen: 0.190 ppbv  
 RT: 2.062 min Scan# 610  
 Delta R.T. 0.000 min  
 Lab File: VL042557.D  
 Acq: 21 May 2025 09:28

Instrument :  
 MSVOA\_L  
 ClientSampleId :  
 VL0521ABL01



Tgt Ion: 84 Resp: 1478

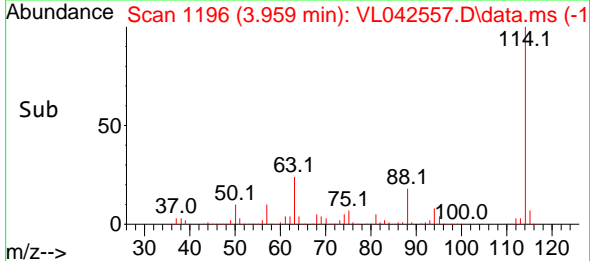
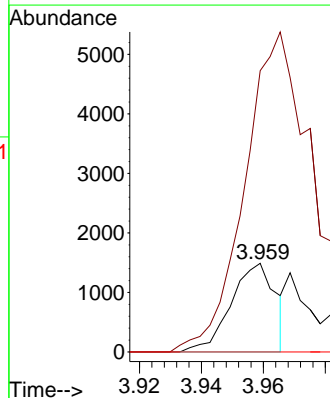
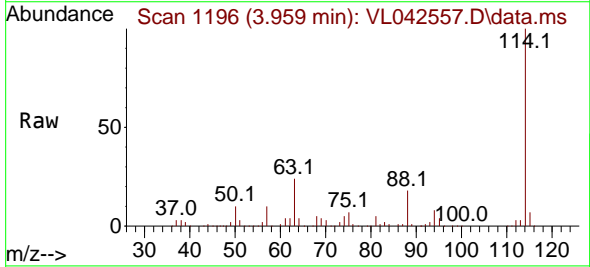
Ion	Ratio	Lower	Upper
84	100		
49	102.2	99.7	149.5
51	39.8	29.7	44.5
86	55.5	49.7	74.5

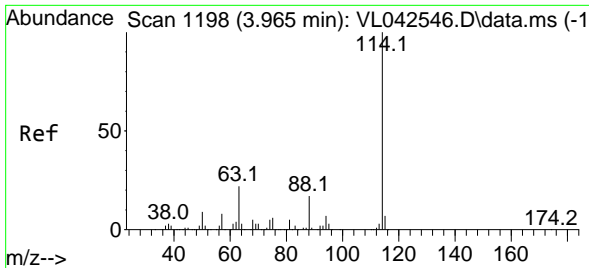


#30  
 Cyclohexane  
 Concen: 0.123 ppbv  
 RT: 3.959 min Scan# 1196  
 Delta R.T. 0.097 min  
 Lab File: VL042557.D  
 Acq: 21 May 2025 09:28

Tgt Ion: 84 Resp: 1488

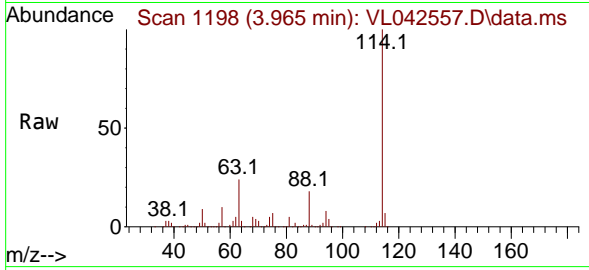
Ion	Ratio	Lower	Upper
84	100		
56	0.0	92.3	138.5#
41	4.2	57.0	85.4#





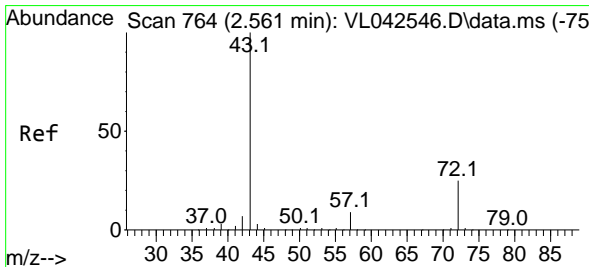
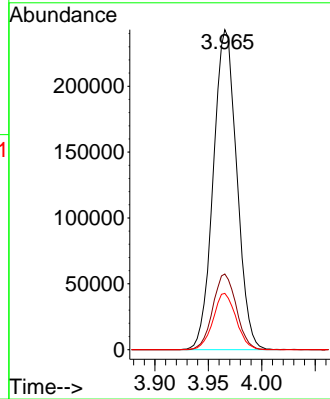
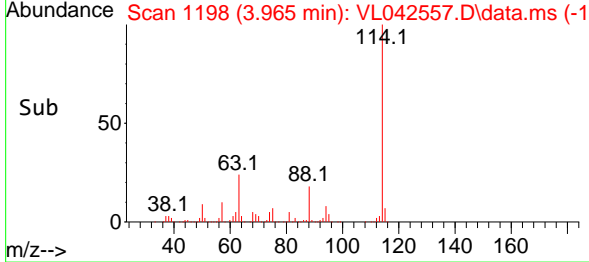
#33  
 1,4-Difluorobenzene  
 Concen: 10.000 ppbv  
 RT: 3.965 min Scan# 1198  
 Delta R.T. 0.000 min  
 Lab File: VL042557.D  
 Acq: 21 May 2025 09:28

Instrument : MSVOA\_L  
 ClientSampleId : VL0521ABL01

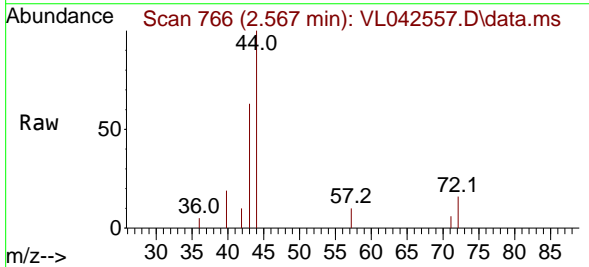


Tgt Ion:114 Resp: 371222

Ion	Ratio	Lower	Upper
114	100		
63	23.7	18.4	27.6
88	17.3	14.0	21.0

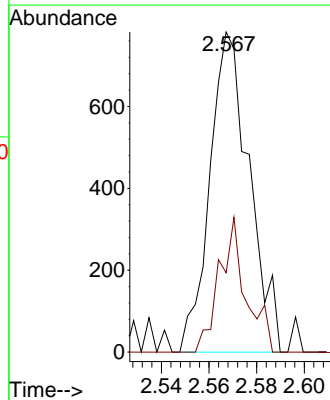
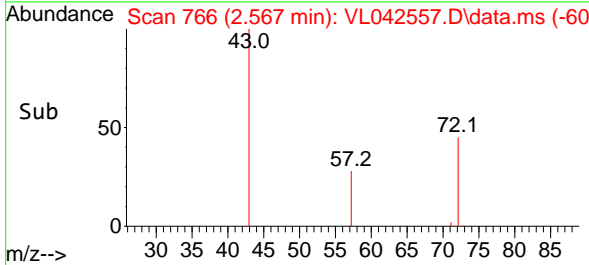


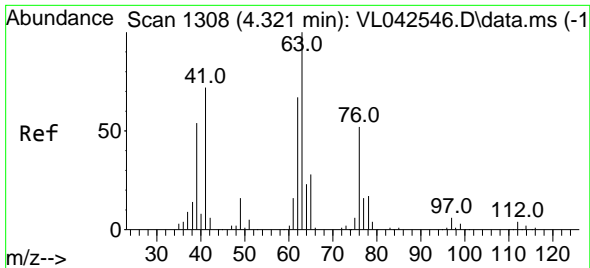
#34  
 2-Butanone  
 Concen: 0.046 ppbv  
 RT: 2.567 min Scan# 766  
 Delta R.T. 0.007 min  
 Lab File: VL042557.D  
 Acq: 21 May 2025 09:28



Tgt Ion: 43 Resp: 901

Ion	Ratio	Lower	Upper
43	100		
72	28.2	20.5	30.7

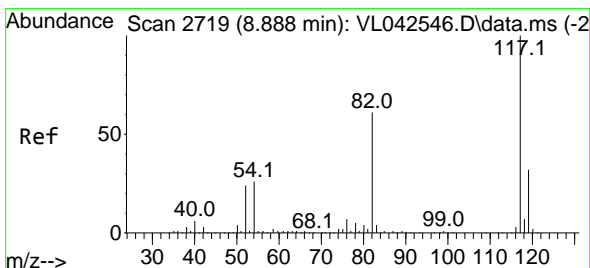
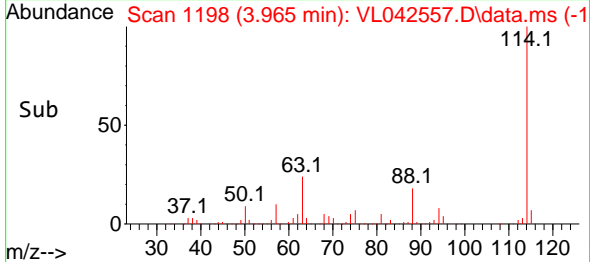
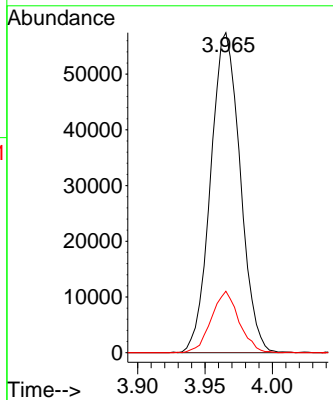
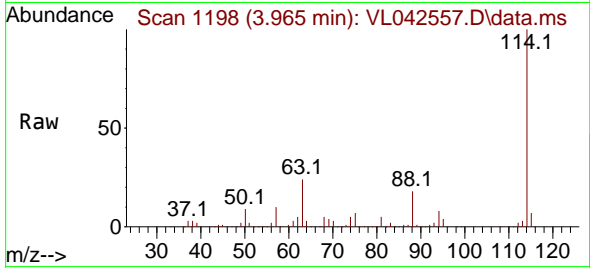




#39  
 1,2-Dichloropropane  
 Concen: 8.317 ppbv  
 RT: 3.965 min Scan# 1198  
 Delta R.T. -0.356 min  
 Lab File: VL042557.D  
 Acq: 21 May 2025 09:28

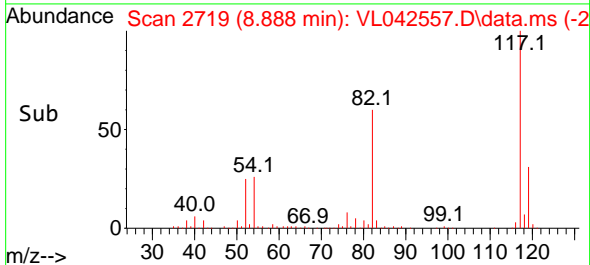
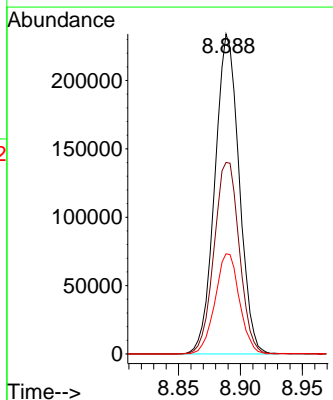
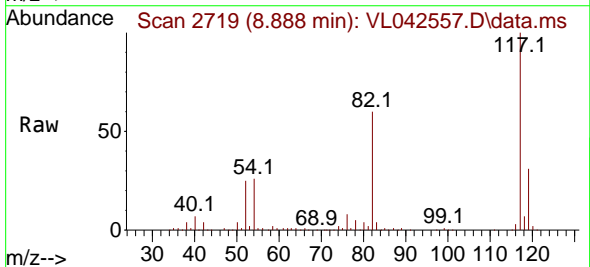
Instrument :  
 MSVOA\_L  
 ClientSampleId :  
 VL0521ABL01

Tgt Ion: 63 Resp: 87701  
 Ion Ratio Lower Upper  
 63 100  
 41 0.0 58.0 87.0#  
 62 19.2 53.3 79.9#

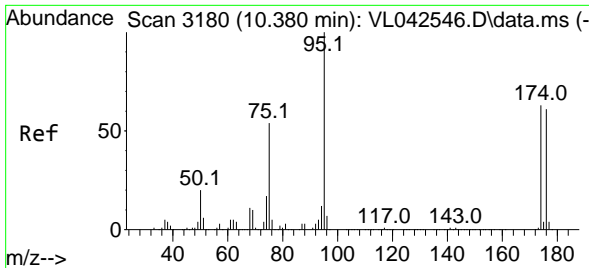


#55  
 Chlorobenzene-d5  
 Concen: 10.000 ppbv  
 RT: 8.888 min Scan# 2719  
 Delta R.T. 0.000 min  
 Lab File: VL042557.D  
 Acq: 21 May 2025 09:28

Tgt Ion: 117 Resp: 319806  
 Ion Ratio Lower Upper  
 117 100  
 82 62.4 51.0 76.4  
 119 31.6 27.0 40.4

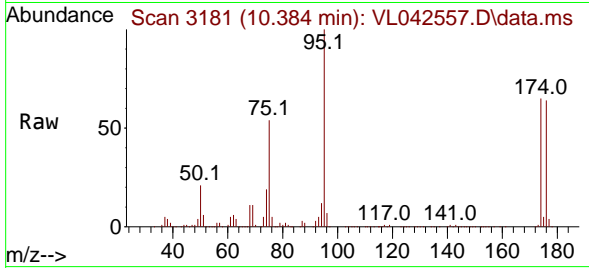




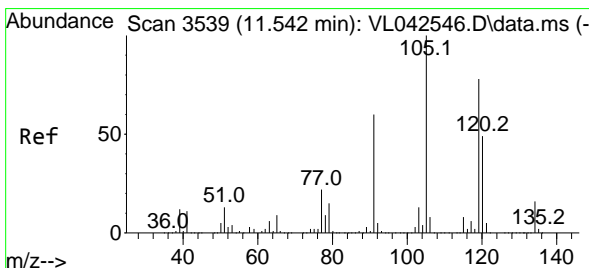
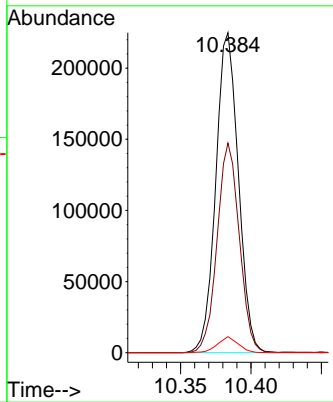
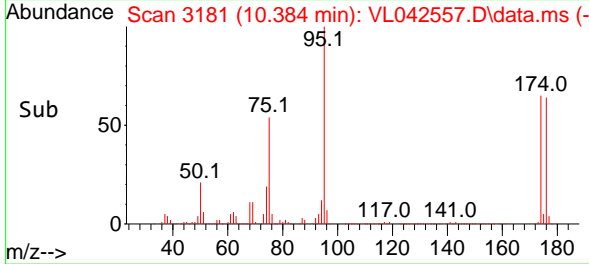


#68  
 1-Bromo-4-Fluorobenzene  
 Concen: 9.824 ppbv  
 RT: 10.384 min Scan# 3180  
 Delta R.T. 0.003 min  
 Lab File: VL042557.D  
 Acq: 21 May 2025 09:28

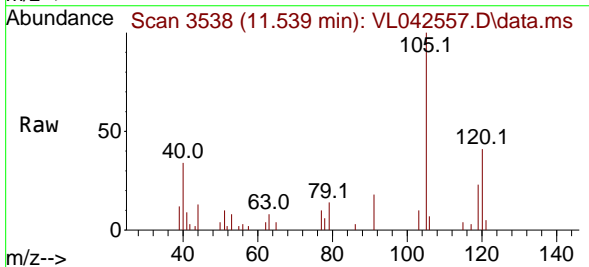
Instrument : MSVOA\_L  
 ClientSampleId : VL0521ABL01



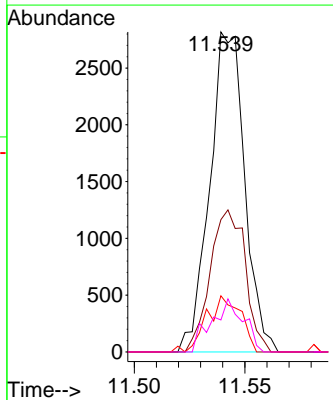
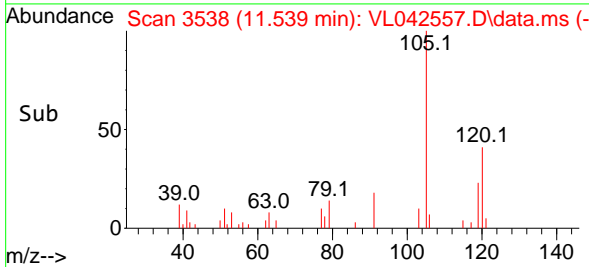
Tgt Ion: 95 Resp: 251444  
 Ion Ratio Lower Upper  
 95 100  
 174 64.6 52.0 78.0  
 175 4.6 3.8 5.6

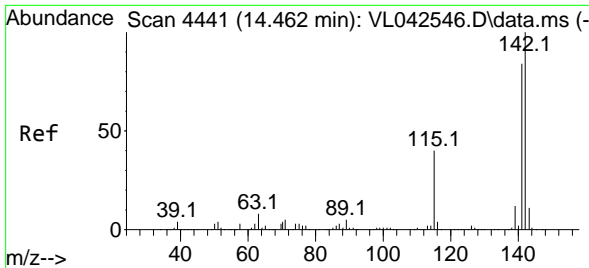


#74  
 1,2,4-Trimethylbenzene  
 Concen: 0.068 ppbv  
 RT: 11.539 min Scan# 3538  
 Delta R.T. -0.003 min  
 Lab File: VL042557.D  
 Acq: 21 May 2025 09:28



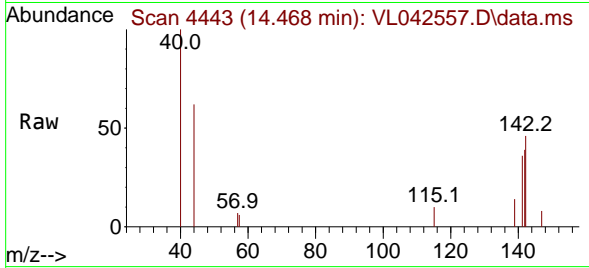
Tgt Ion: 105 Resp: 3094  
 Ion Ratio Lower Upper  
 105 100  
 120 41.3 39.4 59.0  
 91 17.5 47.8 71.8#  
 77 10.0 17.8 26.6#



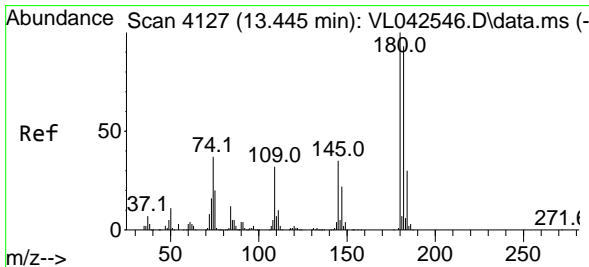
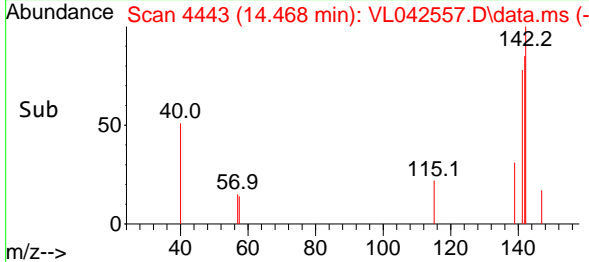
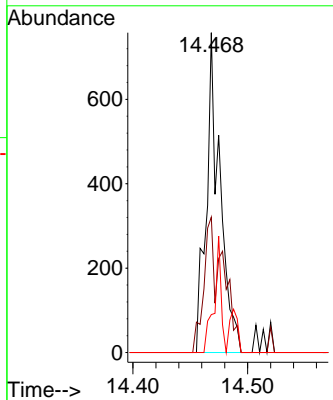


#80  
 Naphthalene, 2-methyl-  
 Concen: 0.038 ppbv  
 RT: 14.468 min Scan# 4443  
 Delta R.T. 0.007 min  
 Lab File: VL042557.D  
 Acq: 21 May 2025 09:28

Instrument :  
 MSVOA\_L  
 ClientSampleId :  
 VL0521ABL01



Tgt Ion: 142 Resp: 665  
 Ion Ratio Lower Upper  
 142 100  
 141 56.2 67.4 101.0#  
 115 25.1 31.5 47.3#



#81  
 1,2,4-Trichlorobenzene  
 Concen: 0.032 ppbv  
 RT: 13.449 min Scan# 4128  
 Delta R.T. 0.003 min  
 Lab File: VL042557.D  
 Acq: 21 May 2025 09:28

Tgt Ion: 180 Resp: 652  
 Ion Ratio Lower Upper  
 180 100  
 182 77.1 75.6 113.4  
 184 23.0 23.7 35.5#

