

Data Path : Z:\voasrv\HPCHEM1\MSVOA_L\Data\VL052125\
 Data File : VL042558.D
 Acq On : 21 May 2025 10:12
 Operator : SY/MD
 Sample : VL0521ABS01
 Misc : 400mL/MSVOA_L
 ALS Vial : 1 Sample Multiplier: 1

Instrument :
 MSVOA_L
 ClientSampleId :
 VL0521ABS01

Quant Time: May 21 22:53:52 2025
 Quant Method : Z:\voasrv\HPCHEM1\MSVOA_L\methods\VL052025AIR.M
 Quant Title : AIR ANALYSIS BY METHOD TO-15 Instrument: MSVOA_L Fri Aug 26 06:05:16 2022
 QLast Update : Wed May 21 00:21:29 2025
 Response via : Initial Calibration

Compound	R.T.	QIon	Response	Conc	Units	Dev(Min)
Internal Standards						
1) Bromochloromethane	2.793	49	116321	10.000	ppbv	0.00
33) 1,4-Difluorobenzene	3.965	114	377848	10.000	ppbv	0.00
55) Chlorobenzene-d5	8.891	117	333400	10.000	ppbv	0.00
System Monitoring Compounds						
68) 1-Bromo-4-Fluorobenzene	10.383	95	281736	10.559	ppbv	0.00
Spiked Amount	10.000	Range	65 - 135	Recovery	=	105.600%
Target Compounds						
						Qvalue
2) Dichlorodifluoromethane	1.499	85	208299	9.576	ppbv	98
3) Chlorodifluoromethane	1.476	51	166978	9.316	ppbv	99
4) Chloromethane	1.534	50	64844	9.253	ppbv	99
5) Vinyl Chloride	1.583	62	70380	9.109	ppbv	100
6) Bromomethane	1.670	94	41995	9.448	ppbv	94
7) Chloroethane	1.706	64	29263	9.419	ppbv	99
8) Dichlorotetrafluoroethane	1.557	85	173808	9.433	ppbv	99
9) Propene	1.482	41	55735	8.948	ppbv	100
10) Heptane	4.988	43	166704	10.157	ppbv	99
11) Trichlorofluoromethane	1.881	101	204847	9.019	ppbv	100
12) 1,1,2-Trichlorotrifluo...	2.143	101	165114	9.018	ppbv	99
13) Ethanol	1.725	45	6675	7.393	ppbv	97
14) Bromoethene	1.784	108	64287	9.294	ppbv	97
15) Acetone	1.839	43	122417	7.552	ppbv	99
16) 1,3-Butadiene	1.612	39	59838	9.093	ppbv	97
17) tert-Butyl alcohol	2.042	59	162833	8.692	ppbv	100
18) 1,1-Dichloroethene	2.036	96	73897	8.931	ppbv	97
19) Isopropyl Alcohol	1.887	45	79558	8.631	ppbv #	35
20) Methylene Chloride	2.065	84	62225	7.928	ppbv	99
21) Allyl Chloride	2.097	41	93327	8.988	ppbv	99
22) trans-1,2-Dichloroethene	2.343	96	82974	9.038	ppbv	96
23) Vinyl Acetate	2.466	43	160397	8.696	ppbv	99
24) 1,1-Dichloroethane	2.411	63	144008	9.147	ppbv	99
25) Ethyl Acetate	2.842	43	307783	9.822	ppbv	100
26) Hexane	2.829	57	138375	9.767	ppbv	96
27) Carbon Disulfide	2.152	76	191355	9.325	ppbv	95
28) Methyl tert-Butyl Ether	2.444	73	81115	8.497	ppbv	99
29) Chloroform	2.855	83	255414	9.533	ppbv	99
30) Cyclohexane	3.865	84	124310	10.142	ppbv	98
31) cis-1,2-Dichloroethene	2.725	61	145782	9.359	ppbv	100
32) 1,1,1-Trichloroethane	3.376	97	264881	9.674	ppbv	99
34) 2-Butanone	2.564	43	193483	9.646	ppbv	98
35) Carbon Tetrachloride	3.771	117	289943	10.036	ppbv	99
36) Benzene	3.664	78	300694	9.834	ppbv	99
37) 1,2-Dichloroethane	3.224	62	186306	9.972	ppbv	99
38) Trichloroethene	4.557	130	134468	9.636	ppbv	94
39) 1,2-Dichloropropane	4.324	63	103756	9.668	ppbv	95
40) 1,4-Dioxane	4.596	88	47199	9.832	ppbv #	80
41) Tetrahydrofuran	3.062	42	102011	10.433	ppbv	99
42) Bromodichloromethane	4.499	83	270663	10.281	ppbv	97
43) Methyl Methacrylate	4.891	69	109007	10.505	ppbv	99
44) 2,2,4-Trimethylpentane	4.648	57	486516	10.374	ppbv	98
45) t-1,3-Dichloropropene	6.428	75	137509	10.389	ppbv	97

Data Path : Z:\voasrv\HPCHEM1\MSVOA_L\Data\VL052125\
 Data File : VL042558.D
 Acq On : 21 May 2025 10:12
 Operator : SY/MD
 Sample : VL0521ABS01
 Misc : 400mL/MSVOA_L
 ALS Vial : 1 Sample Multiplier: 1

Instrument :
 MSVOA_L
 ClientSampleId :
 VL0521ABS01

Quant Time: May 21 22:53:52 2025
 Quant Method : Z:\voasrv\HPCHEM1\MSVOA_L\methods\VL052025AIR.M
 Quant Title : AIR ANALYSIS BY METHOD TO-15 Instrument: MSVOA_L Fri Aug 26 06:05:16 2022
 QLast Update : Wed May 21 00:21:29 2025
 Response via : Initial Calibration

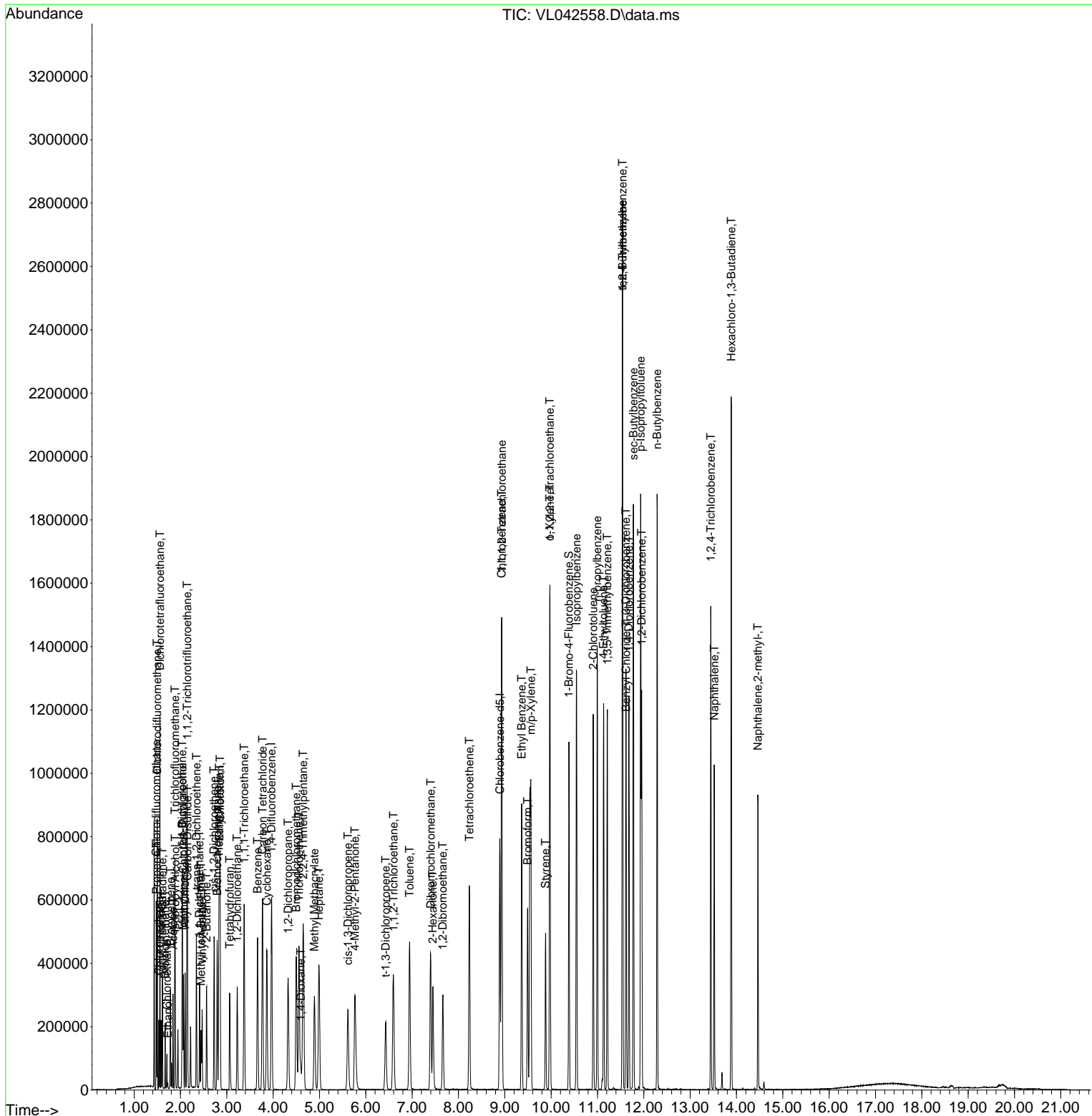
Compound	R.T.	QIon	Response	Conc	Units	Dev(Min)
46) cis-1,3-Dichloropropene	5.612	75	164177	10.199	ppbv	99
47) 1,1,2-Trichloroethane	6.596	97	127525	9.919	ppbv	99
48) Dibromochloromethane	7.399	129	230923	10.378	ppbv	100
49) Bromoform	9.490	173	202892	10.684	ppbv	99
50) 4-Methyl-2-Pentanone	5.765	43	261272	10.856	ppbv	100
51) 2-Hexanone	7.444	43	207178	11.672	ppbv #	97
52) Tetrachloroethene	8.234	164	116970	9.809	ppbv	98
53) Toluene	6.943	91	349032	10.679	ppbv	99
54) 1,2-Dibromoethane	7.661	107	194890	10.404	ppbv	99
56) 1,1,1,2-Tetrachloroethane	8.933	131	185173	10.418	ppbv	98
57) Chlorobenzene	8.930	112	298157	10.040	ppbv	99
58) Ethyl Benzene	9.364	91	496019	11.364	ppbv	97
59) m/p-Xylene	9.561	91	439016	11.780	ppbv #	37
60) o-Xylene	9.972	91	423569	11.474	ppbv	99
61) Styrene	9.878	104	169581	11.986	ppbv	99
62) Isopropylbenzene	10.545	105	624942	11.065	ppbv	100
63) 1,1,2,2-Tetrachloroethane	9.972	83	256372	10.393	ppbv	99
64) n-propylbenzene	10.995	120	163942	11.652	ppbv	99
65) tert-Butylbenzene	11.539	119	584410	11.503	ppbv	99
66) Benzyl Chloride	11.620	91	68619	10.796	ppbv	100
67) sec-Butylbenzene	11.775	105	798171	11.130	ppbv	100
69) p-Isopropyltoluene	11.934	119	690311	11.656	ppbv	100
70) n-Butylbenzene	12.286	91	671916	12.008	ppbv	99
71) 2-Chlorotoluene	10.908	91	463109	11.393	ppbv	99
72) 4-Ethyltoluene	11.131	105	533569	11.704	ppbv	100
73) 1,3,5-Trimethylbenzene	11.212	105	454600	11.527	ppbv	99
74) 1,2,4-Trimethylbenzene	11.542	105	515907	10.849	ppbv #	89
75) 1,3-Dichlorobenzene	11.613	146	310950	10.595	ppbv	100
76) 1,4-Dichlorobenzene	11.678	146	308975	10.840	ppbv	99
77) 1,2-Dichlorobenzene	11.953	146	302402	10.457	ppbv	99
78) Hexachloro-1,3-Butadiene	13.889	225	230027	9.630	ppbv	99
79) Naphthalene	13.520	128	464800	13.044	ppbv	99
80) Naphthalene,2-methyl-	14.461	142	248065	13.511	ppbv	99
81) 1,2,4-Trichlorobenzene	13.445	180	250439	11.700	ppbv	99

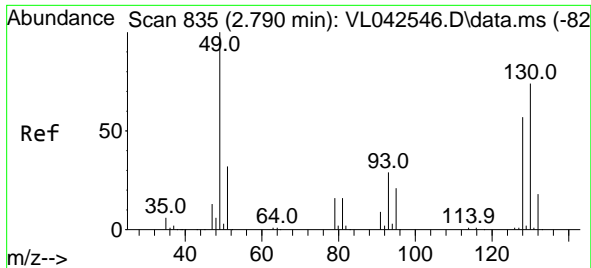
(#) = qualifier out of range (m) = manual integration (+) = signals summed

Data Path : Z:\voasrv\HPCHEM1\MSVOA_L\Data\VL052125\
 Data File : VL042558.D
 Acq On : 21 May 2025 10:12
 Operator : SY/MD
 Sample : VL0521ABS01
 Misc : 400mL/MSVOA_L
 ALS Vial : 1 Sample Multiplier: 1

Instrument :
 MSVOA_L
ClientSampleId :
 VL0521ABS01

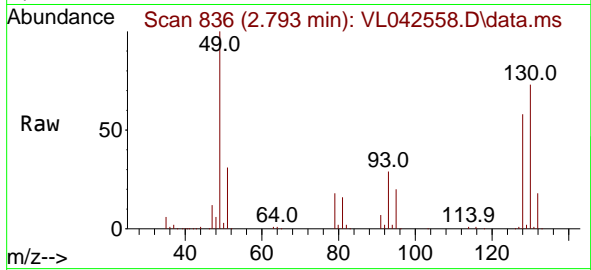
Quant Time: May 21 22:53:52 2025
 Quant Method : Z:\voasrv\HPCHEM1\MSVOA_L\methods\VL052025AIR.M
 Quant Title : AIR ANALYSIS BY METHOD TO-15 Instrument: MSVOA_L Fri Aug 26 06:05:16 2022
 QLast Update : Wed May 21 00:21:29 2025
 Response via : Initial Calibration



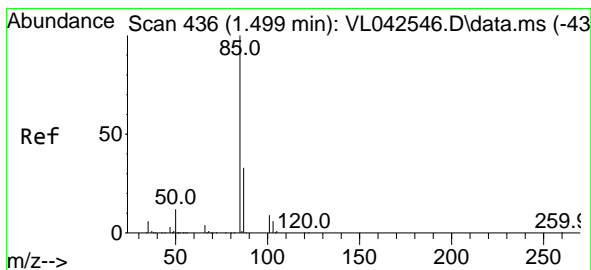
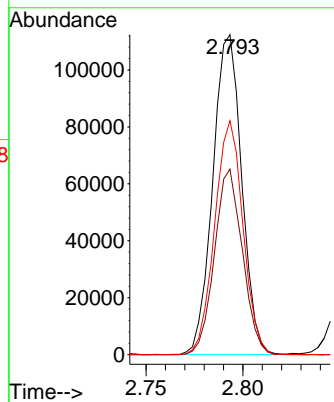
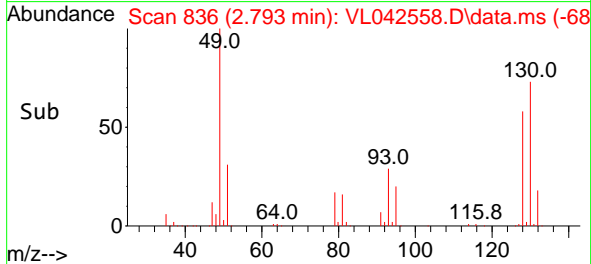


#1
 Bromochloromethane
 Concen: 10.000 ppbv
 RT: 2.793 min Scan# 835
 Delta R.T. 0.003 min
 Lab File: VL042558.D
 Acq: 21 May 2025 10:12

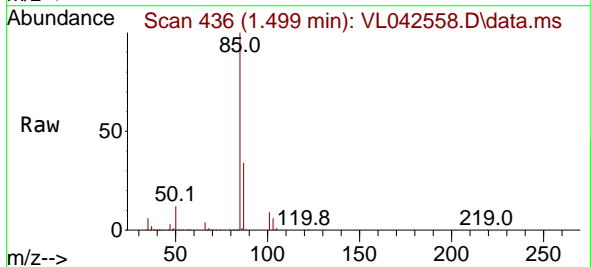
Instrument :
 MSVOA_L
 ClientSampleId :
 VL0521ABS01



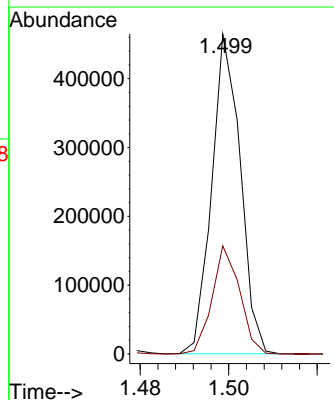
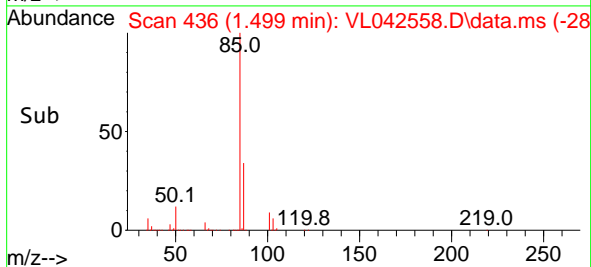
Tgt Ion: 49 Resp: 116321
 Ion Ratio Lower Upper
 49 100
 128 56.2 28.6 85.8
 130 71.8 36.6 109.8

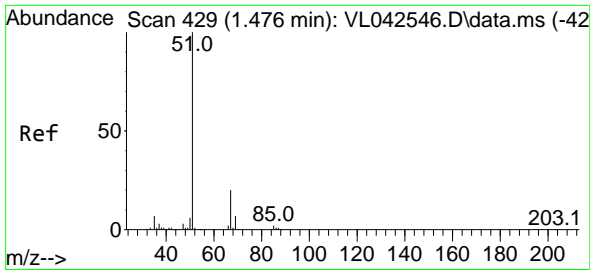


#2
 Dichlorodifluoromethane
 Concen: 9.576 ppbv
 RT: 1.499 min Scan# 436
 Delta R.T. -0.000 min
 Lab File: VL042558.D
 Acq: 21 May 2025 10:12



Tgt Ion: 85 Resp: 208299
 Ion Ratio Lower Upper
 85 100
 87 33.8 26.2 39.4

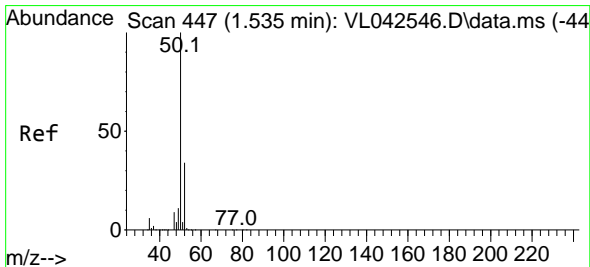
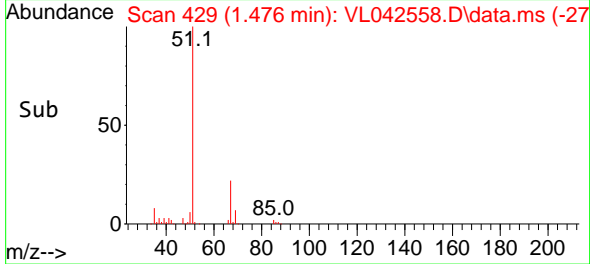
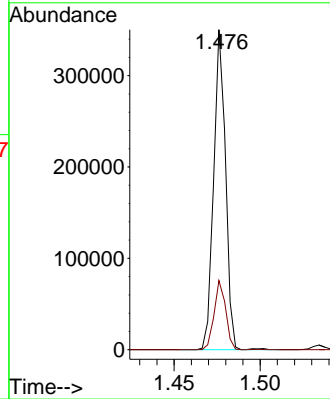
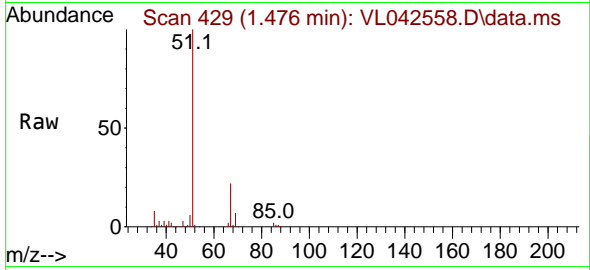




#3
 Chlorodifluoromethane
 Concen: 9.316 ppbv
 RT: 1.476 min Scan# 41
 Delta R.T. -0.000 min
 Lab File: VL042558.D
 Acq: 21 May 2025 10:12

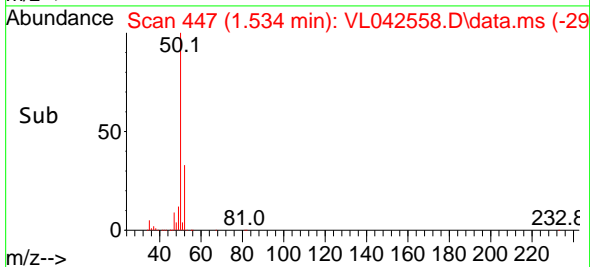
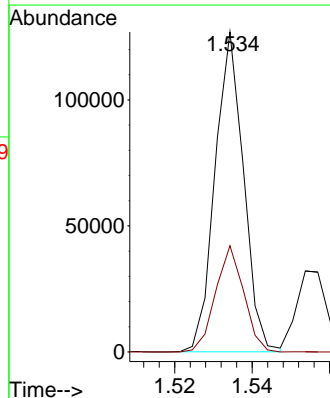
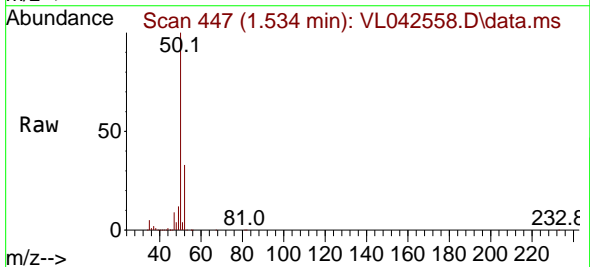
Instrument : MSVOA_L
 ClientSampleId : VL0521ABS01

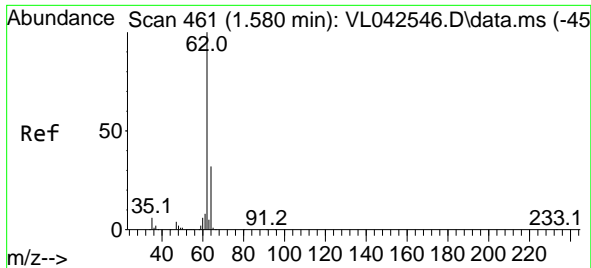
Tgt Ion: 51 Resp: 166978
 Ion Ratio Lower Upper
 51 100
 67 21.1 16.6 25.0



#4
 Chloromethane
 Concen: 9.253 ppbv
 RT: 1.534 min Scan# 447
 Delta R.T. -0.000 min
 Lab File: VL042558.D
 Acq: 21 May 2025 10:12

Tgt Ion: 50 Resp: 64844
 Ion Ratio Lower Upper
 50 100
 52 33.2 26.9 40.3

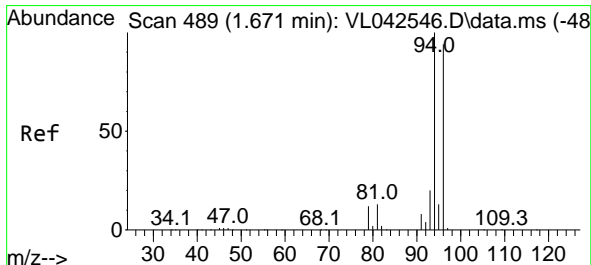
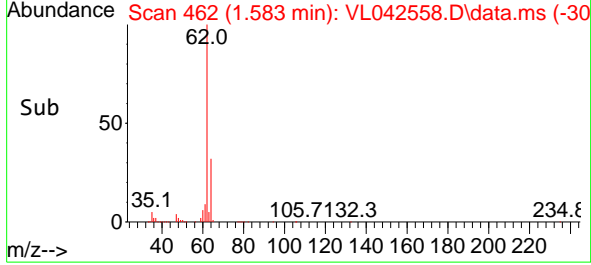
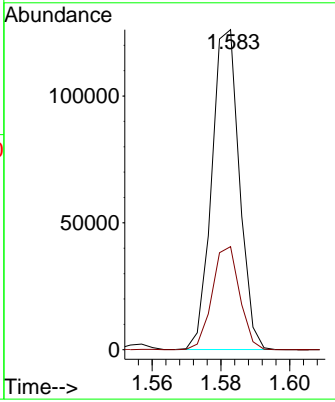
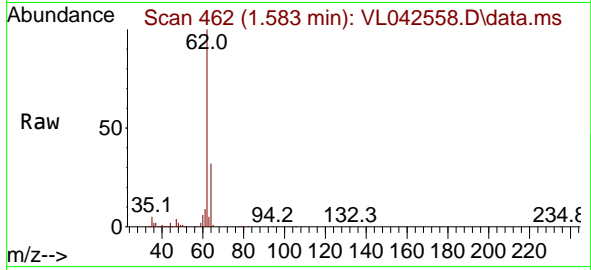




#5
 Vinyl Chloride
 Concen: 9.109 ppbv
 RT: 1.583 min Scan# 462
 Delta R.T. 0.003 min
 Lab File: VL042558.D
 Acq: 21 May 2025 10:12

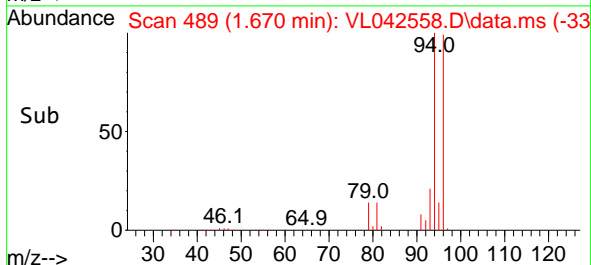
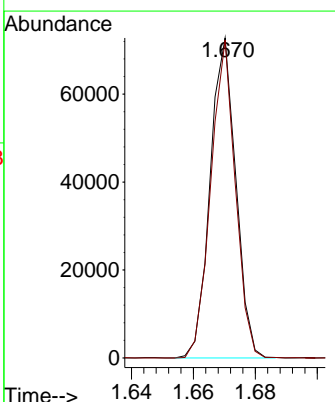
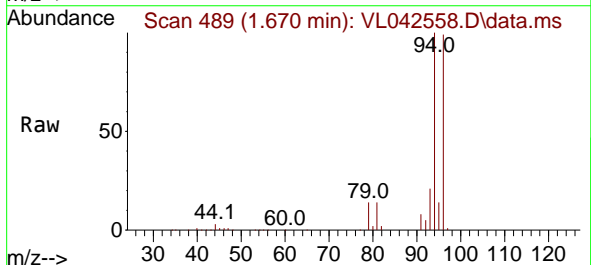
Instrument : MSVOA_L
 ClientSampleId : VL0521ABS01

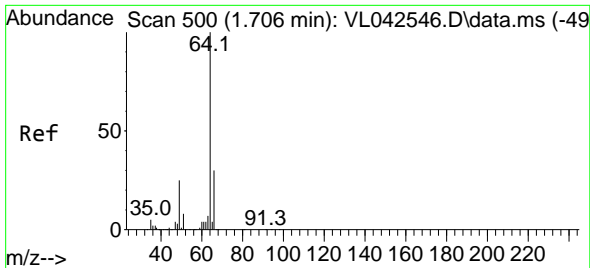
Tgt Ion: 62 Resp: 70380
 Ion Ratio Lower Upper
 62 100
 64 32.2 25.7 38.5



#6
 Bromomethane
 Concen: 9.448 ppbv
 RT: 1.670 min Scan# 489
 Delta R.T. -0.000 min
 Lab File: VL042558.D
 Acq: 21 May 2025 10:12

Tgt Ion: 94 Resp: 41995
 Ion Ratio Lower Upper
 94 100
 96 99.4 74.9 112.3

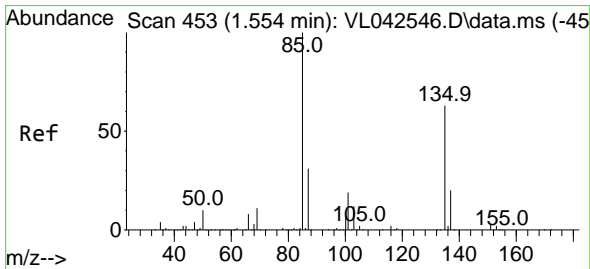
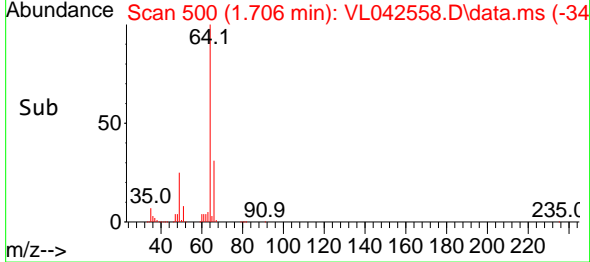
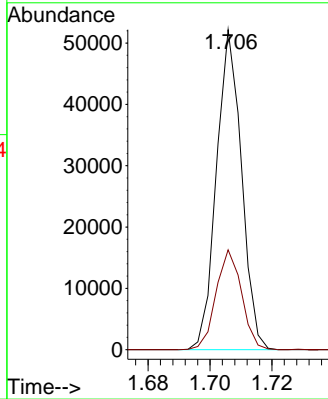
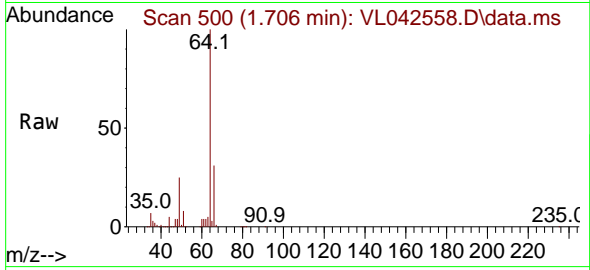




#7
 Chloroethane
 Concen: 9.419 ppbv
 RT: 1.706 min Scan# 500
 Delta R.T. -0.000 min
 Lab File: VL042558.D
 Acq: 21 May 2025 10:12

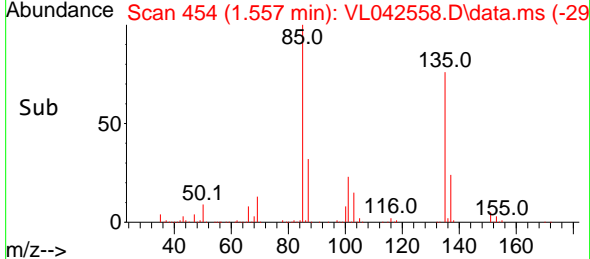
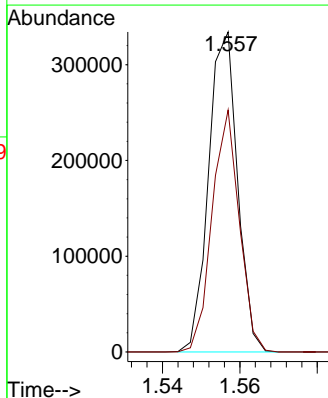
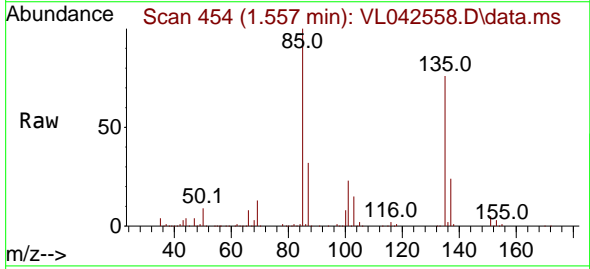
Instrument : MSVOA_L
 ClientSampleId : VL0521ABS01

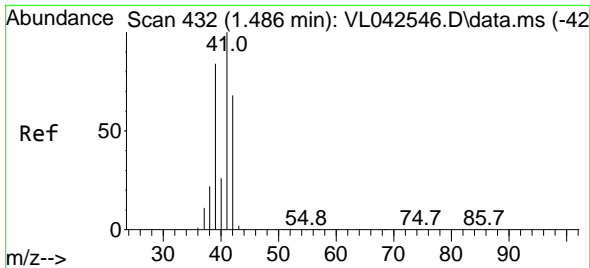
Tgt Ion: 64 Resp: 29263
 Ion Ratio Lower Upper
 64 100
 66 31.2 24.4 36.6



#8
 Dichlorotetrafluoroethane
 Concen: 9.433 ppbv
 RT: 1.557 min Scan# 454
 Delta R.T. 0.003 min
 Lab File: VL042558.D
 Acq: 21 May 2025 10:12

Tgt Ion: 85 Resp: 173808
 Ion Ratio Lower Upper
 85 100
 135 71.0 57.2 85.8

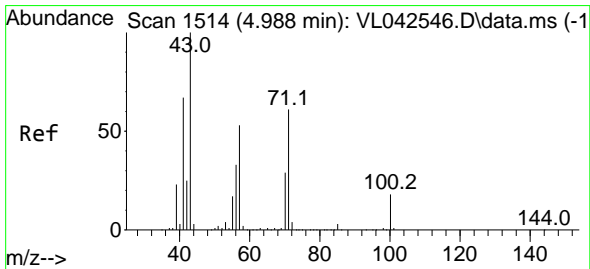
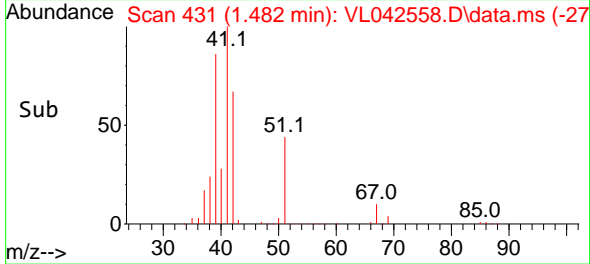
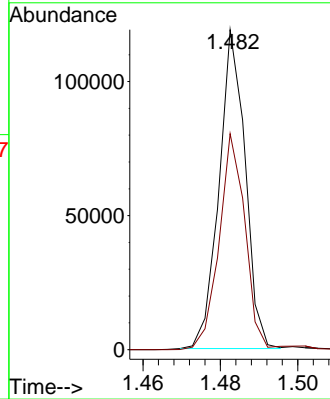
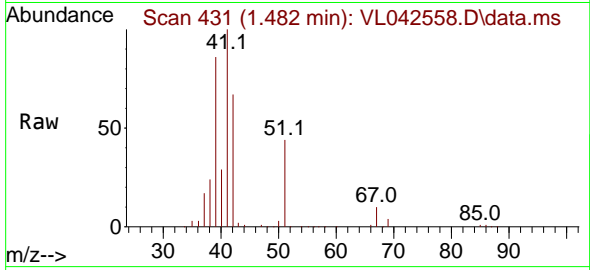




#9
 Propene
 Concen: 8.948 ppbv
 RT: 1.482 min Scan# 41
 Delta R.T. -0.004 min
 Lab File: VL042558.D
 Acq: 21 May 2025 10:12

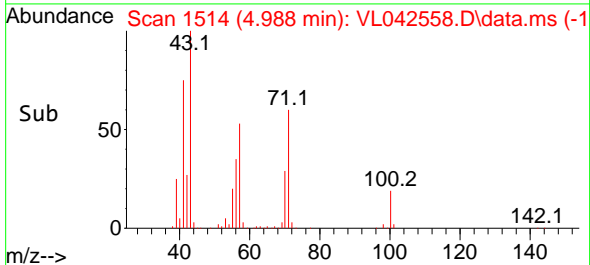
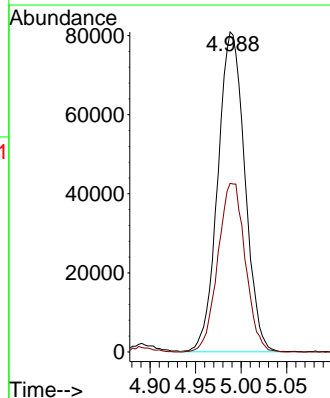
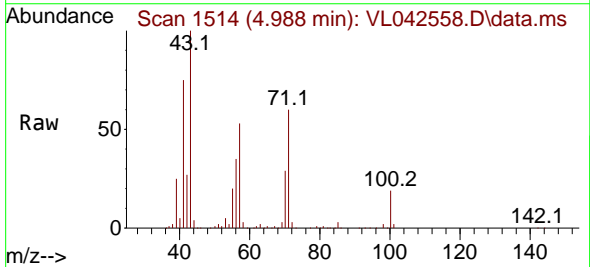
Instrument :
 MSVOA_L
 ClientSampleId :
 VL0521ABS01

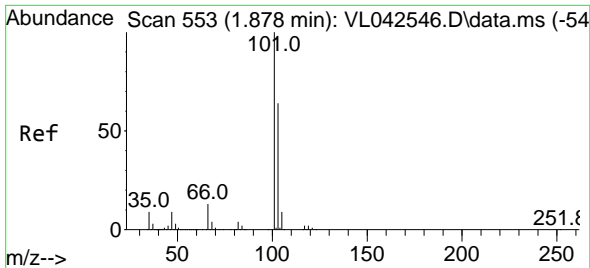
Tgt Ion: 41 Resp: 55735
 Ion Ratio Lower Upper
 41 100
 42 68.7 55.0 82.4



#10
 Heptane
 Concen: 10.157 ppbv
 RT: 4.988 min Scan# 1514
 Delta R.T. -0.000 min
 Lab File: VL042558.D
 Acq: 21 May 2025 10:12

Tgt Ion: 43 Resp: 166704
 Ion Ratio Lower Upper
 43 100
 57 53.5 43.4 65.0

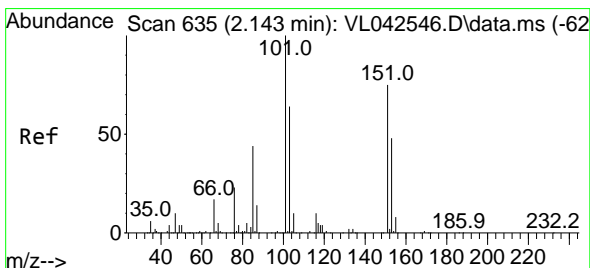
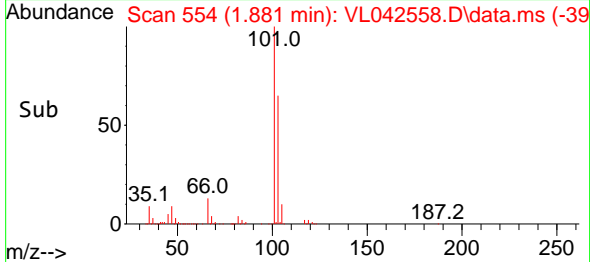
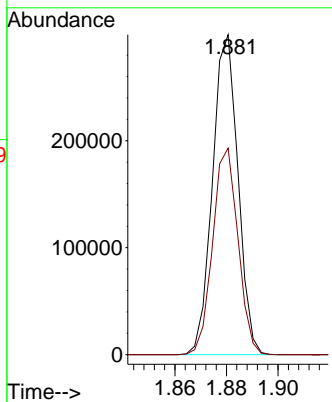
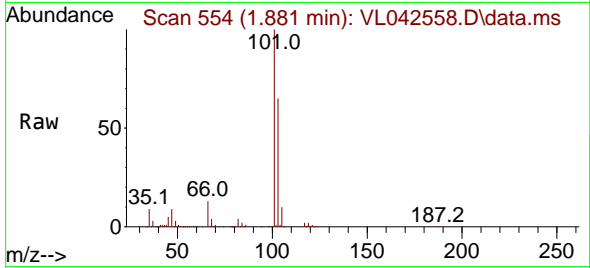




#11
 Trichlorofluoromethane
 Concen: 9.019 ppbv
 RT: 1.881 min Scan# 511
 Delta R.T. 0.003 min
 Lab File: VL042558.D
 Acq: 21 May 2025 10:12

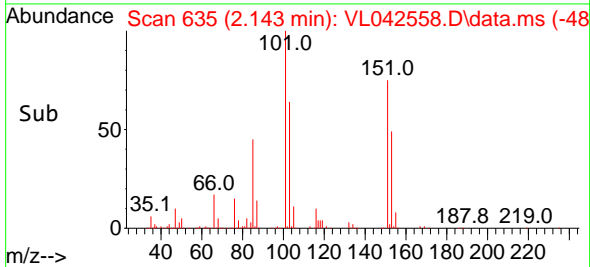
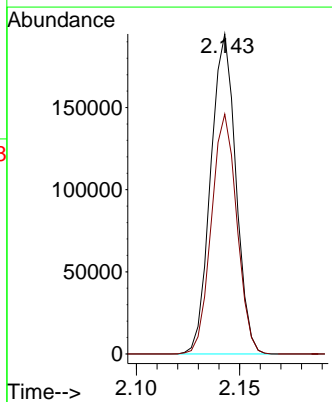
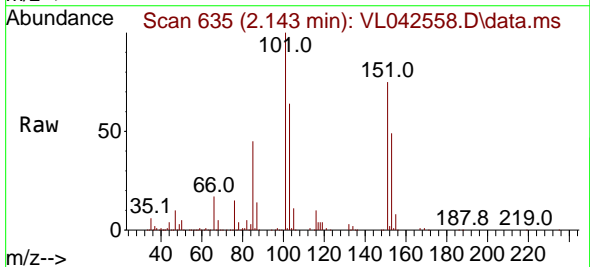
Instrument :
 MSVOA_L
 ClientSampleId :
 VL0521ABS01

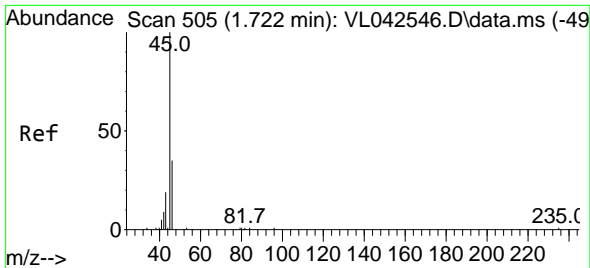
Tgt Ion:101 Resp: 204847
 Ion Ratio Lower Upper
 101 100
 103 64.6 51.5 77.3



#12
 1,1,2-Trichlorotrifluoroethane
 Concen: 9.018 ppbv
 RT: 2.143 min Scan# 635
 Delta R.T. -0.000 min
 Lab File: VL042558.D
 Acq: 21 May 2025 10:12

Tgt Ion:101 Resp: 165114
 Ion Ratio Lower Upper
 101 100
 151 75.6 59.5 89.3

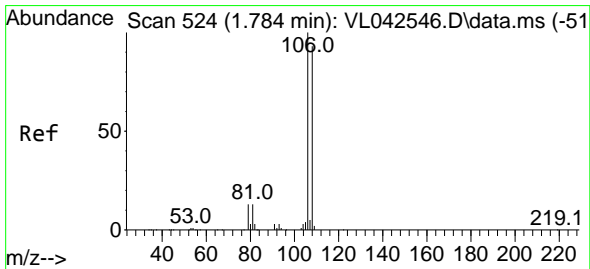
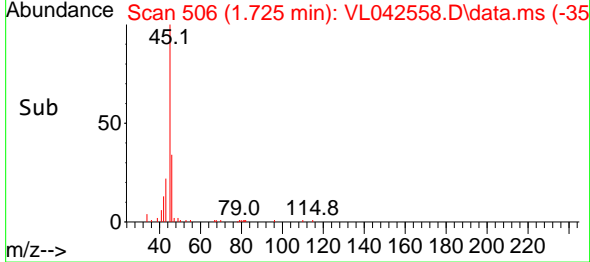
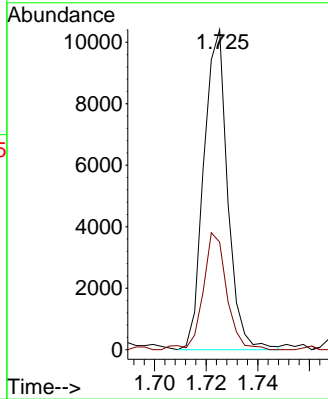
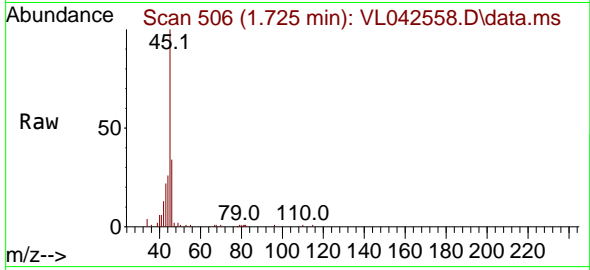




#13
 Ethanol
 Concen: 7.393 ppbv
 RT: 1.725 min Scan# 505
 Delta R.T. 0.003 min
 Lab File: VL042558.D
 Acq: 21 May 2025 10:12

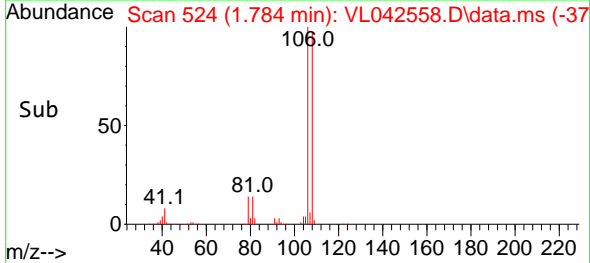
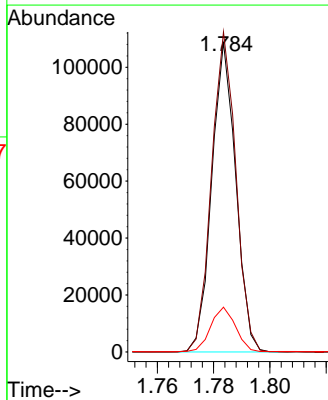
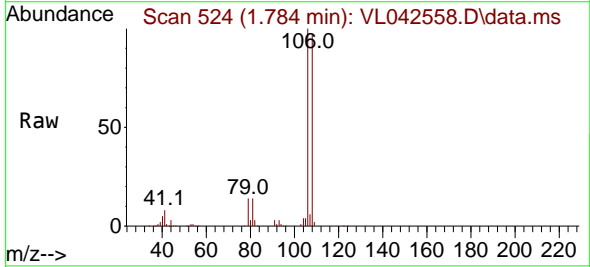
Instrument : MSVOA_L
 ClientSampleId : VL0521ABS01

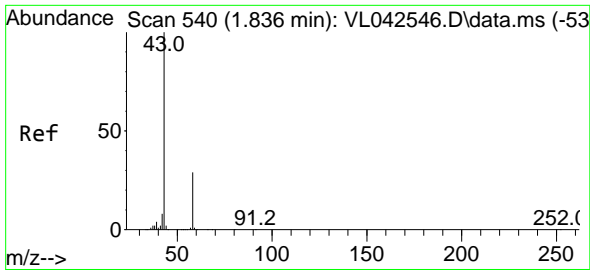
Tgt Ion: 45 Resp: 6675
 Ion Ratio Lower Upper
 45 100
 46 36.6 15.3 61.3



#14
 Bromoethene
 Concen: 9.294 ppbv
 RT: 1.784 min Scan# 524
 Delta R.T. -0.000 min
 Lab File: VL042558.D
 Acq: 21 May 2025 10:12

Tgt Ion: 108 Resp: 64287
 Ion Ratio Lower Upper
 108 100
 106 104.7 86.4 129.6
 79 15.6 11.9 17.9

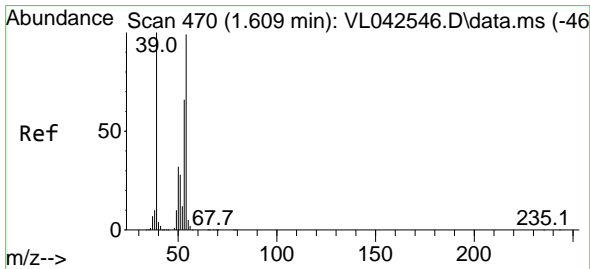
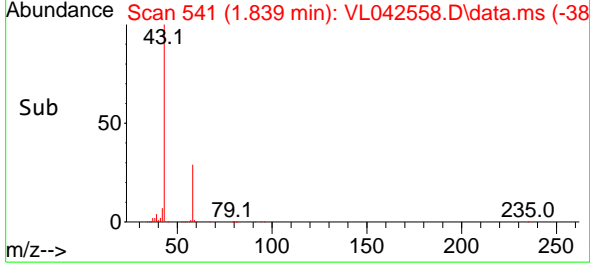
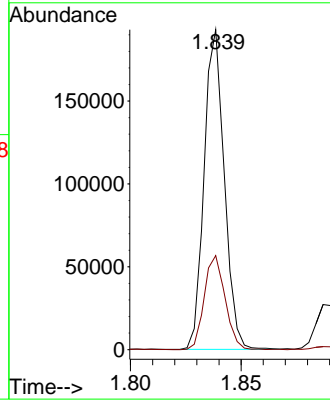
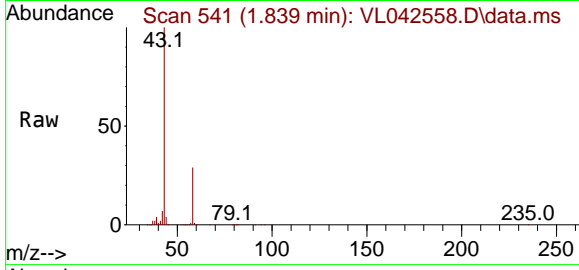




#15
 Acetone
 Concen: 7.552 ppbv
 RT: 1.839 min Scan# 541
 Delta R.T. 0.003 min
 Lab File: VL042558.D
 Acq: 21 May 2025 10:12

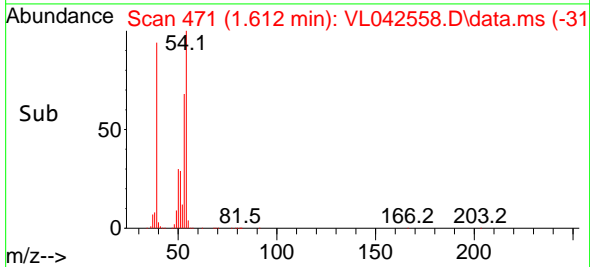
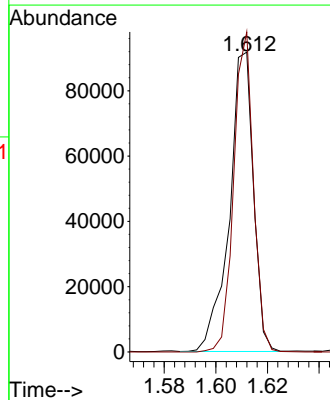
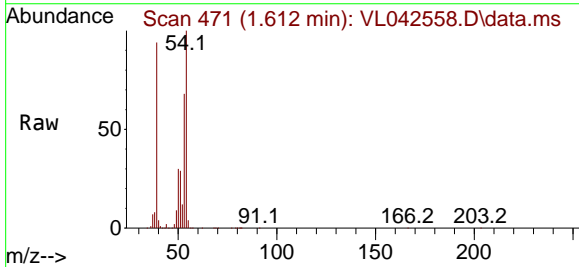
Instrument :
 MSVOA_L
 ClientSampleId :
 VL0521ABS01

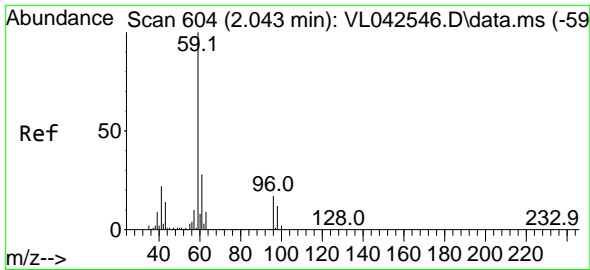
Tgt Ion: 43 Resp: 122417
 Ion Ratio Lower Upper
 43 100
 58 30.6 24.2 36.2



#16
 1,3-Butadiene
 Concen: 9.093 ppbv
 RT: 1.612 min Scan# 471
 Delta R.T. 0.003 min
 Lab File: VL042558.D
 Acq: 21 May 2025 10:12

Tgt Ion: 39 Resp: 59838
 Ion Ratio Lower Upper
 39 100
 54 86.8 71.8 107.8

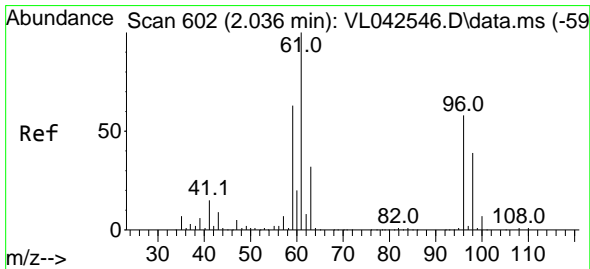
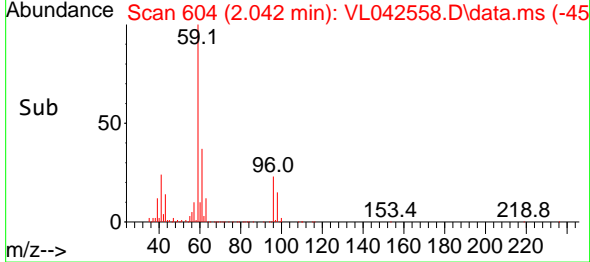
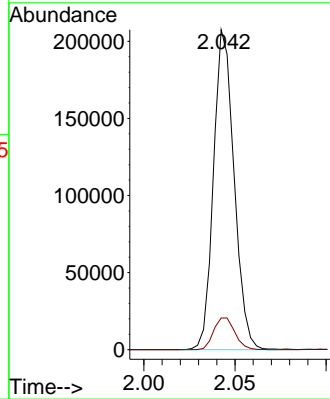
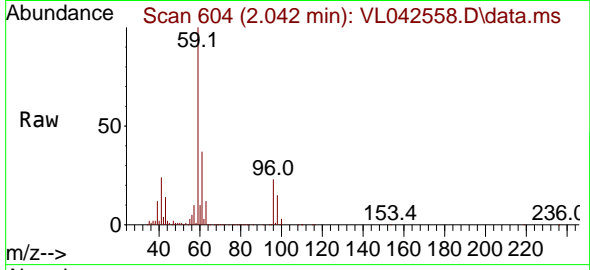




#17
 tert-Butyl alcohol
 Concen: 8.692 ppbv
 RT: 2.042 min Scan# 604
 Delta R.T. -0.000 min
 Lab File: VL042558.D
 Acq: 21 May 2025 10:12

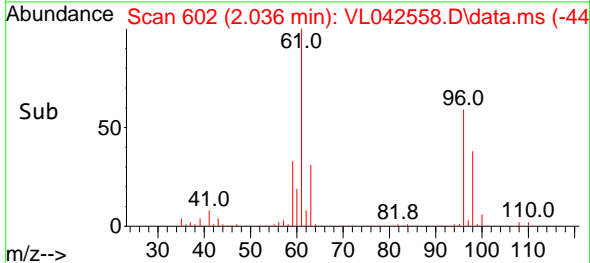
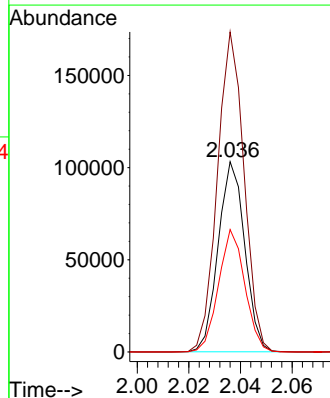
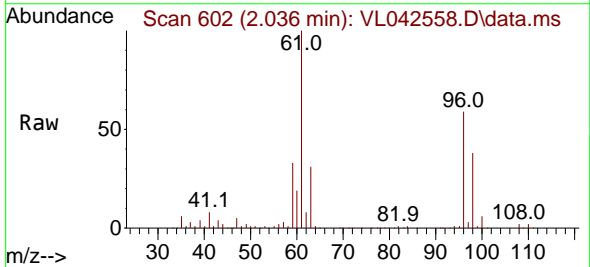
Instrument : MSVOA_L
 ClientSampleId : VL0521ABS01

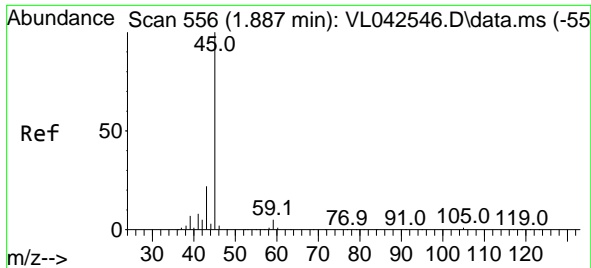
Tgt Ion: 59 Resp: 162833
 Ion Ratio Lower Upper
 59 100
 57 10.3 8.2 12.2



#18
 1,1-Dichloroethene
 Concen: 8.931 ppbv
 RT: 2.036 min Scan# 602
 Delta R.T. -0.000 min
 Lab File: VL042558.D
 Acq: 21 May 2025 10:12

Tgt Ion: 96 Resp: 73897
 Ion Ratio Lower Upper
 96 100
 61 168.3 137.5 206.3
 98 64.4 53.2 79.8

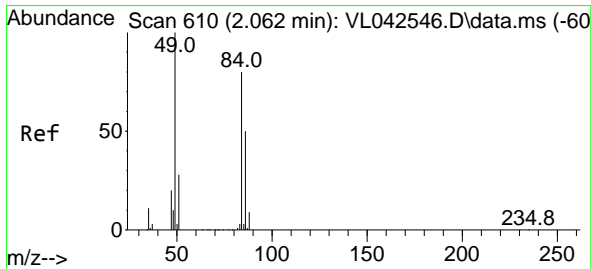
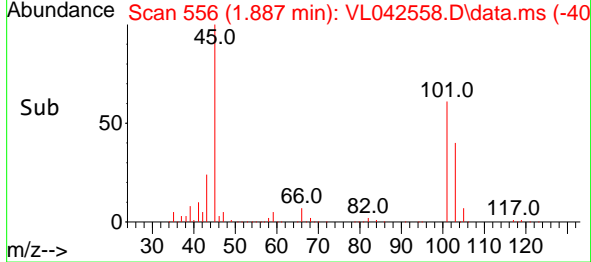
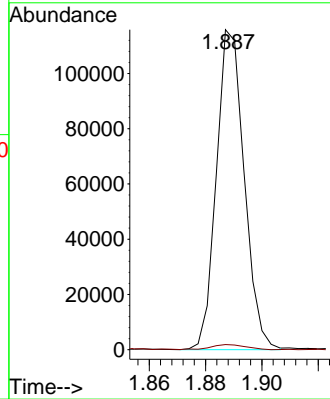
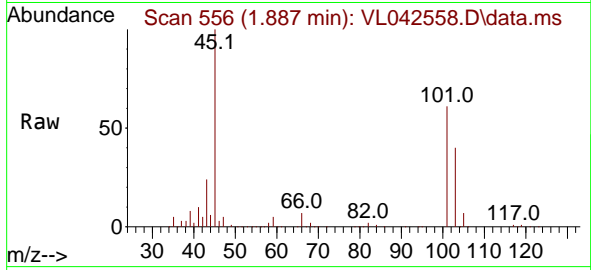




#19
 Isopropyl Alcohol
 Concen: 8.631 ppbv
 RT: 1.887 min Scan# 511
 Delta R.T. -0.000 min
 Lab File: VL042558.D
 Acq: 21 May 2025 10:12

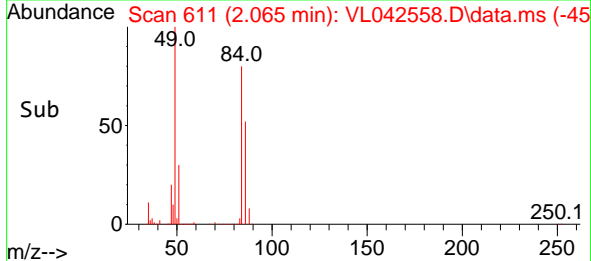
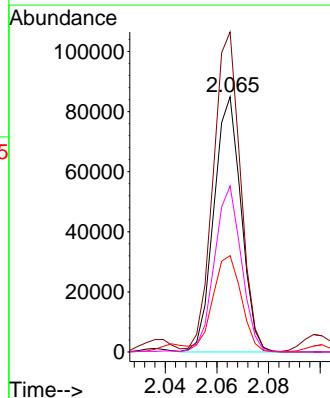
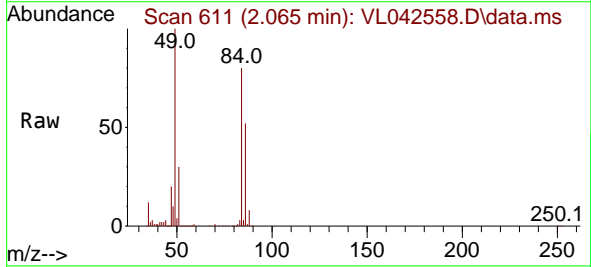
Instrument : MSVOA_L
 ClientSampleId : VL0521ABS01

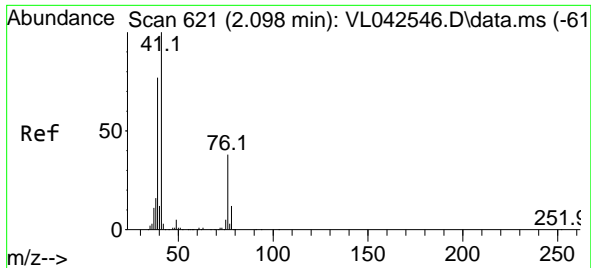
Tgt Ion: 45 Resp: 79558
 Ion Ratio Lower Upper
 45 100
 58 2.1 35.3 52.9#



#20
 Methylene Chloride
 Concen: 7.928 ppbv
 RT: 2.065 min Scan# 611
 Delta R.T. 0.003 min
 Lab File: VL042558.D
 Acq: 21 May 2025 10:12

Tgt Ion: 84 Resp: 62225
 Ion Ratio Lower Upper
 84 100
 49 125.2 99.7 149.5
 51 37.6 29.7 44.5
 86 65.1 49.7 74.5



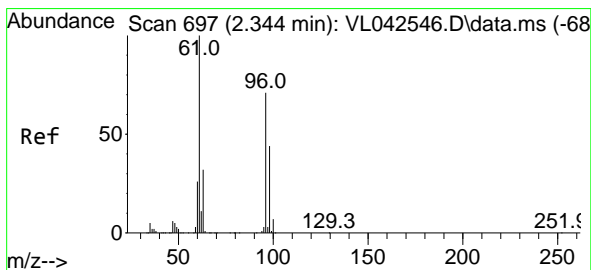
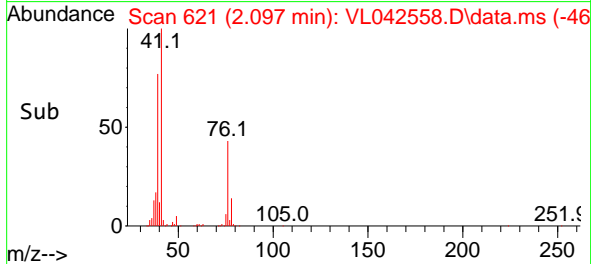
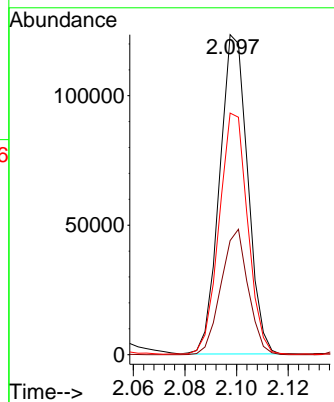
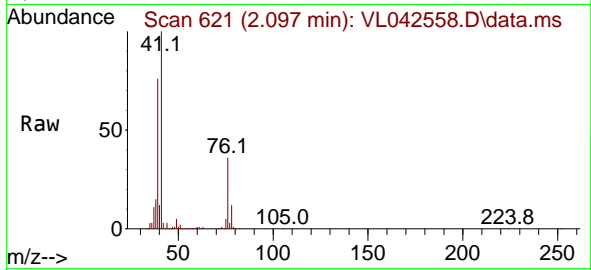


#21
 Allyl Chloride
 Concen: 8.988 ppbv
 RT: 2.097 min Scan# 61
 Delta R.T. -0.000 min
 Lab File: VL042558.D
 Acq: 21 May 2025 10:12

Instrument :
 MSVOA_L
 ClientSampleId :
 VL0521ABS01

Tgt Ion: 41 Resp: 93327

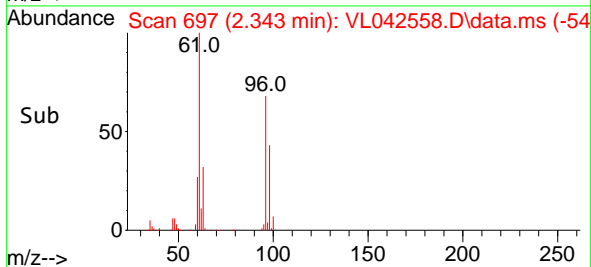
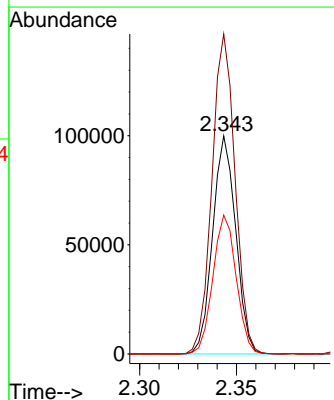
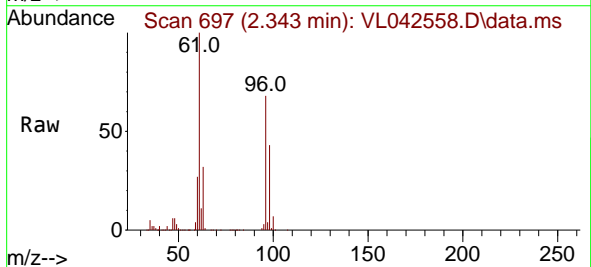
Ion	Ratio	Lower	Upper
41	100		
76	37.9	30.2	45.4
39	76.5	62.5	93.7

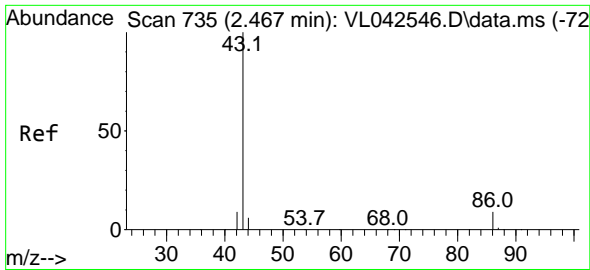


#22
 trans-1,2-Dichloroethene
 Concen: 9.038 ppbv
 RT: 2.343 min Scan# 697
 Delta R.T. -0.000 min
 Lab File: VL042558.D
 Acq: 21 May 2025 10:12

Tgt Ion: 96 Resp: 82974

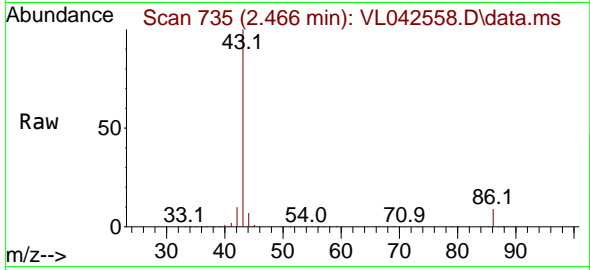
Ion	Ratio	Lower	Upper
96	100		
61	146.7	112.5	168.7
98	63.7	49.0	73.4





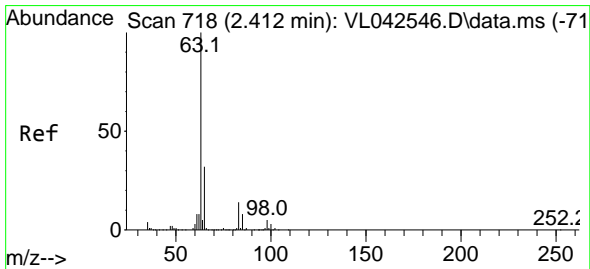
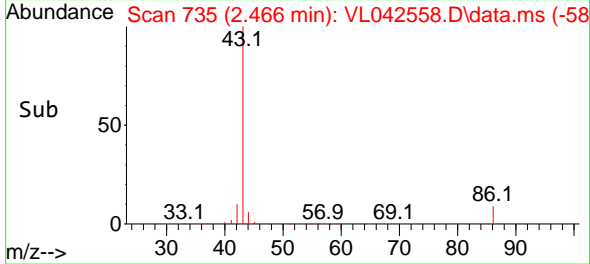
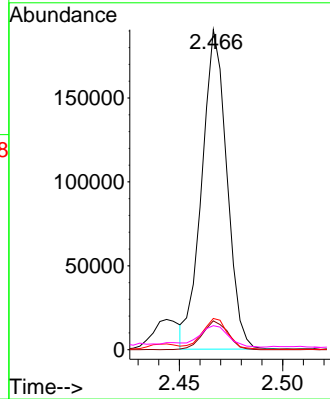
#23
 Vinyl Acetate
 Concen: 8.696 ppbv
 RT: 2.466 min Scan# 718
 Delta R.T. -0.000 min
 Lab File: VL042558.D
 Acq: 21 May 2025 10:12

Instrument : MSVOA_L
 ClientSampleId : VL0521ABS01

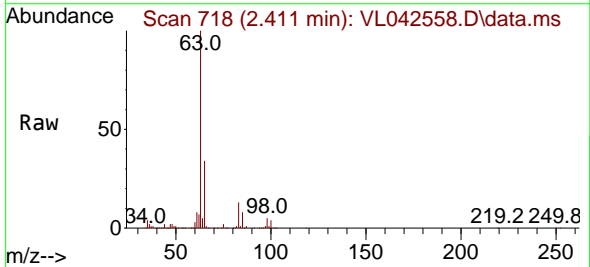


Tgt Ion: 43 Resp: 160397

Ion	Ratio	Lower	Upper
43	100		
86	9.0	7.0	10.6
42	9.6	7.4	11.2
44	6.5	4.8	7.2

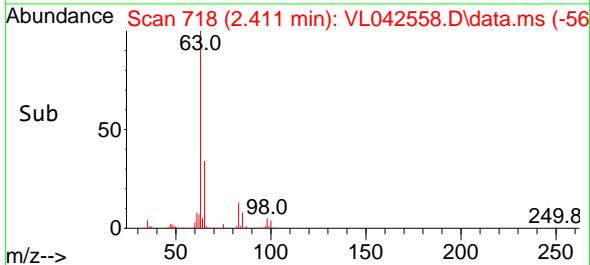
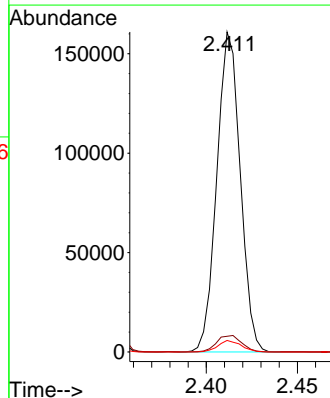


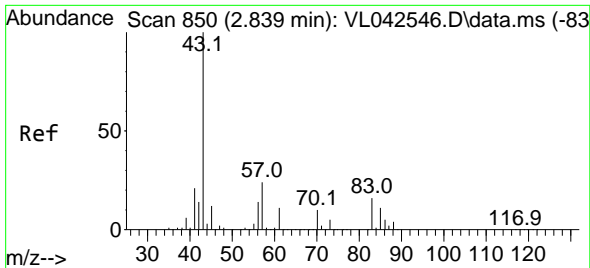
#24
 1,1-Dichloroethane
 Concen: 9.147 ppbv
 RT: 2.411 min Scan# 718
 Delta R.T. -0.000 min
 Lab File: VL042558.D
 Acq: 21 May 2025 10:12



Tgt Ion: 63 Resp: 144008

Ion	Ratio	Lower	Upper
63	100		
98	4.9	2.6	7.8
100	3.6	1.8	5.3



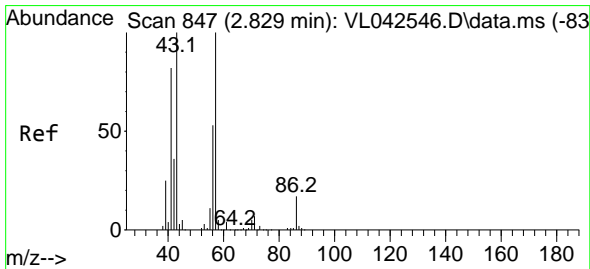
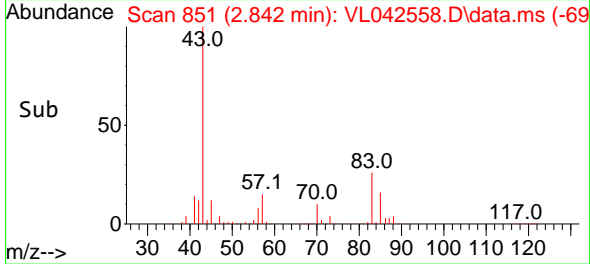
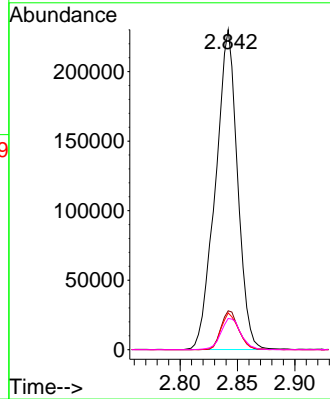
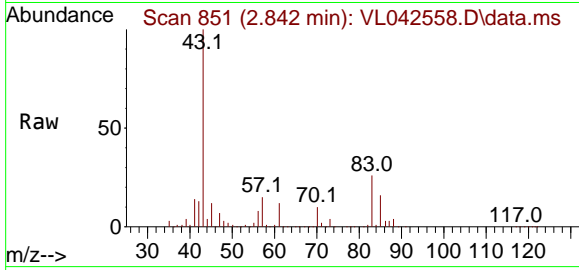


#25
 Ethyl Acetate
 Concen: 9.822 ppbv
 RT: 2.842 min Scan# 850
 Delta R.T. 0.003 min
 Lab File: VL042558.D
 Acq: 21 May 2025 10:12

Instrument :
 MSVOA_L
 ClientSampleId :
 VL0521ABS01

Tgt Ion: 43 Resp: 307783

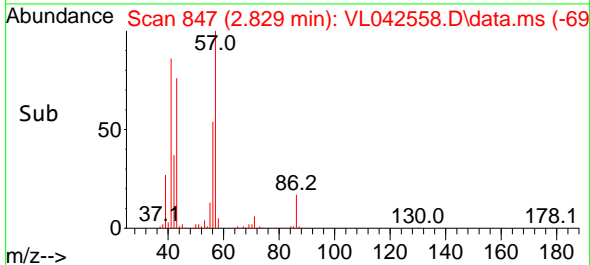
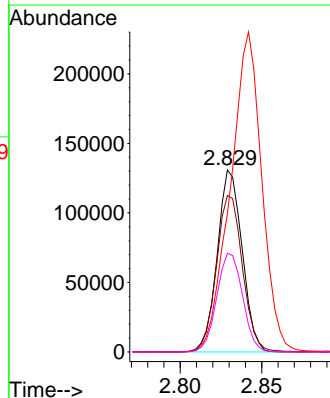
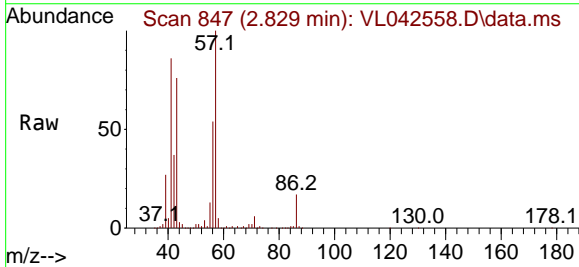
Ion	Ratio	Lower	Upper
43	100		
45	9.9	8.0	12.0
61	9.2	7.5	11.3
70	8.9	7.2	10.8

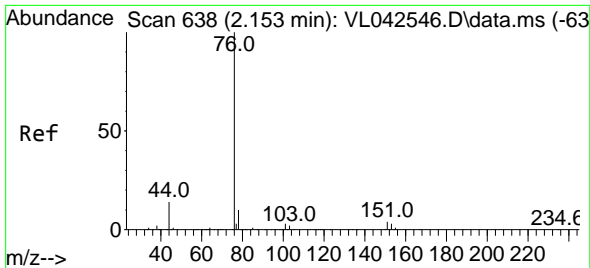


#26
 Hexane
 Concen: 9.767 ppbv
 RT: 2.829 min Scan# 847
 Delta R.T. -0.000 min
 Lab File: VL042558.D
 Acq: 21 May 2025 10:12

Tgt Ion: 57 Resp: 138375

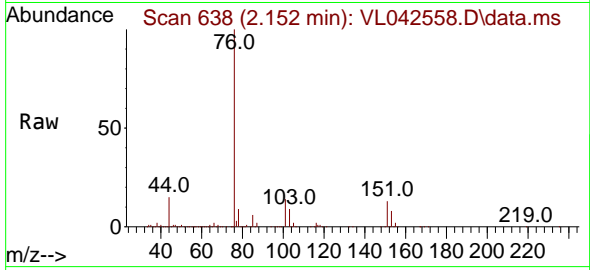
Ion	Ratio	Lower	Upper
57	100		
41	91.4	69.0	103.4
43	224.3	174.2	261.2
56	56.5	44.1	66.1



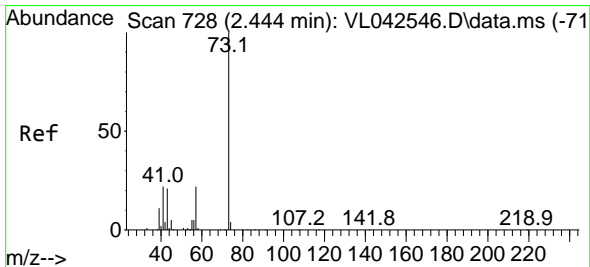
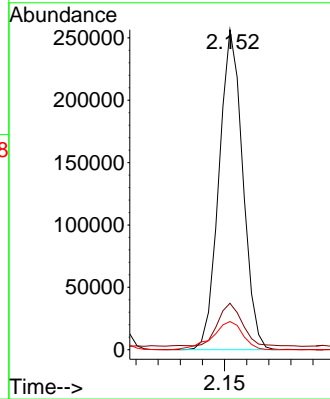
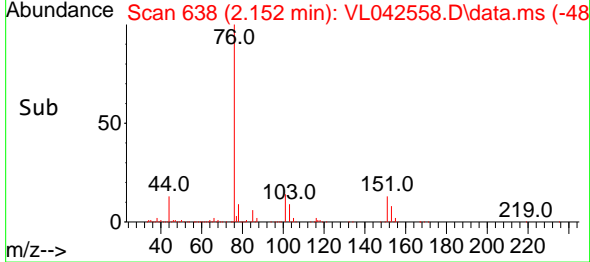


#27
 Carbon Disulfide
 Concen: 9.325 ppbv
 RT: 2.152 min Scan# 61
 Delta R.T. -0.000 min
 Lab File: VL042558.D
 Acq: 21 May 2025 10:12

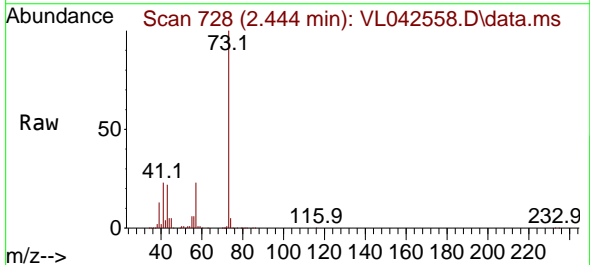
Instrument :
 MSVOA_L
 ClientSampleId :
 VL0521ABS01



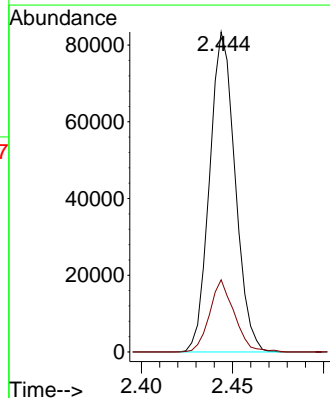
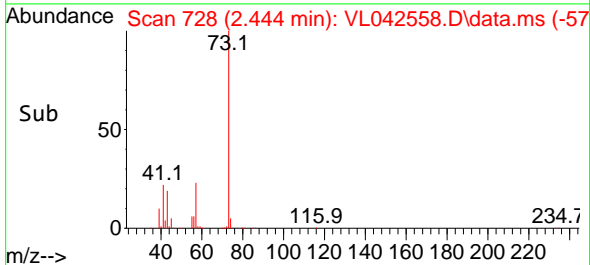
Tgt Ion: 76 Resp: 191355
 Ion Ratio Lower Upper
 76 100
 44 14.2 14.0 21.0
 78 11.2 9.4 14.0

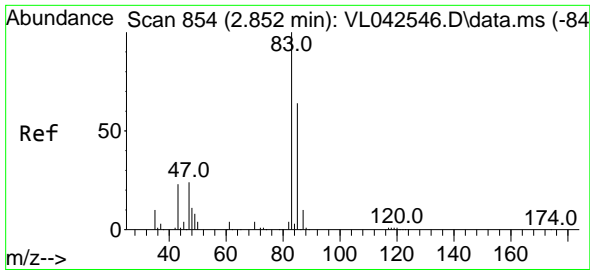


#28
 Methyl tert-Butyl Ether
 Concen: 8.497 ppbv
 RT: 2.444 min Scan# 728
 Delta R.T. -0.000 min
 Lab File: VL042558.D
 Acq: 21 May 2025 10:12



Tgt Ion: 73 Resp: 81115
 Ion Ratio Lower Upper
 73 100
 57 21.8 17.2 25.8

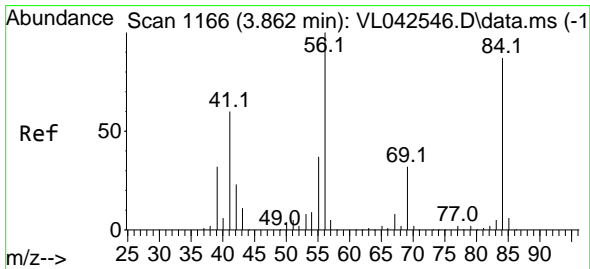
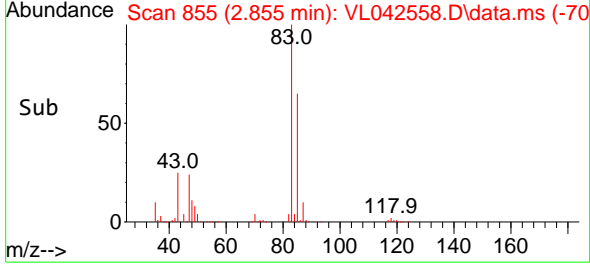
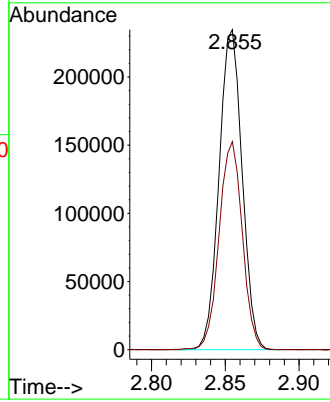
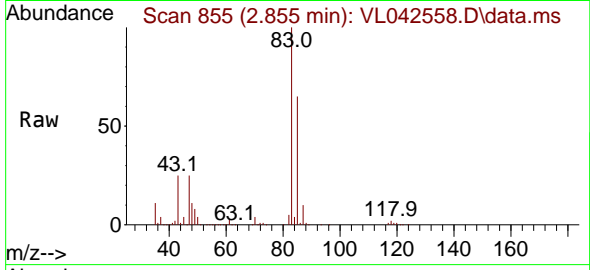




#29
 Chloroform
 Concen: 9.533 ppbv
 RT: 2.855 min Scan# 81
 Delta R.T. 0.003 min
 Lab File: VL042558.D
 Acq: 21 May 2025 10:12

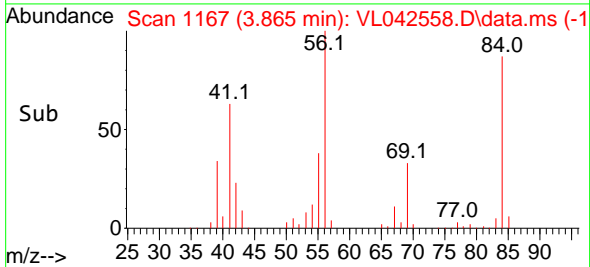
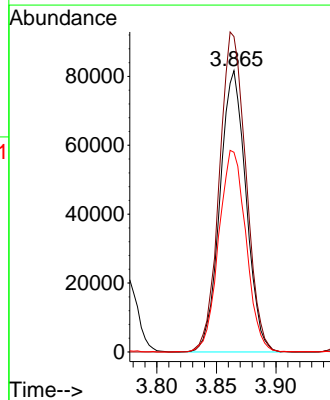
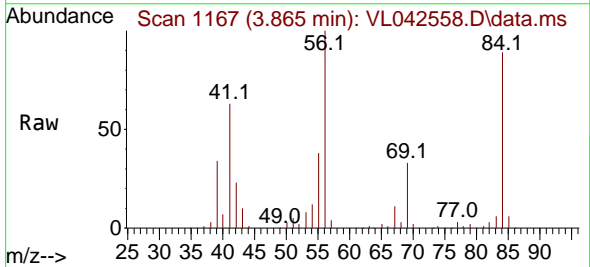
Instrument :
 MSVOA_L
 ClientSampleId :
 VL0521ABS01

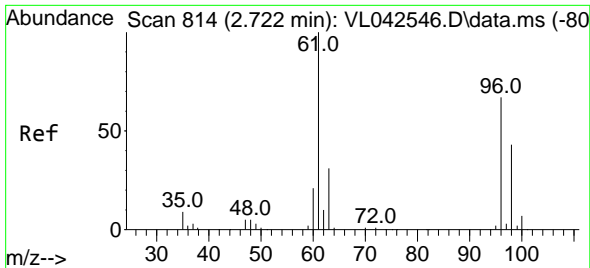
Tgt Ion: 83 Resp: 255414
 Ion Ratio Lower Upper
 83 100
 85 65.0 51.6 77.4



#30
 Cyclohexane
 Concen: 10.142 ppbv
 RT: 3.865 min Scan# 1167
 Delta R.T. 0.003 min
 Lab File: VL042558.D
 Acq: 21 May 2025 10:12

Tgt Ion: 84 Resp: 124310
 Ion Ratio Lower Upper
 84 100
 56 116.0 92.3 138.5
 41 74.9 57.0 85.4



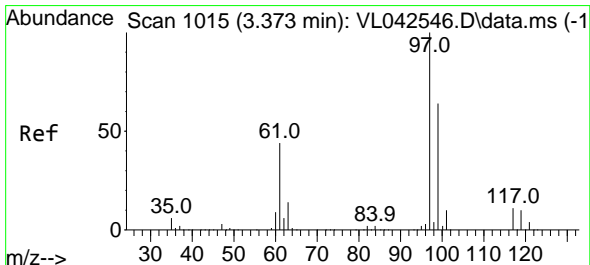
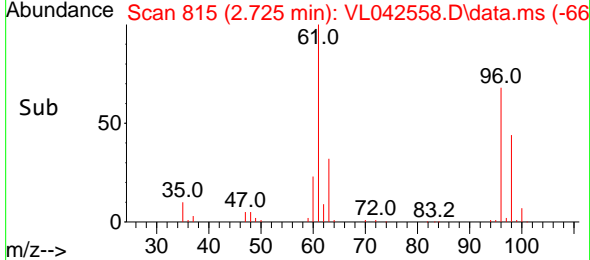
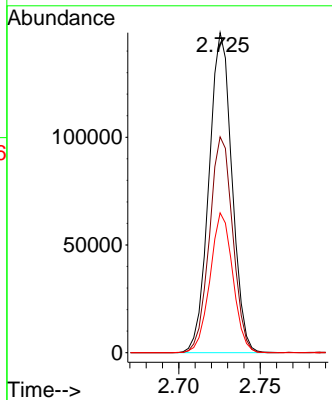
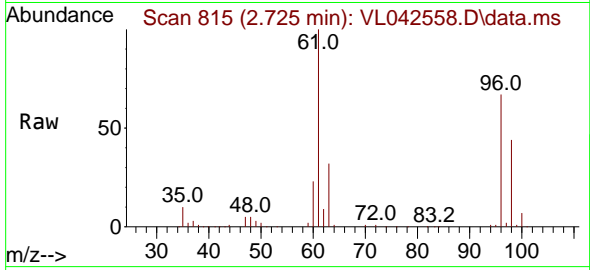


#31
 cis-1,2-Dichloroethene
 Concen: 9.359 ppbv
 RT: 2.725 min Scan# 814
 Delta R.T. 0.003 min
 Lab File: VL042558.D
 Acq: 21 May 2025 10:12

Instrument : MSVOA_L
 ClientSampleId : VL0521ABS01

Tgt Ion: 61 Resp: 145782

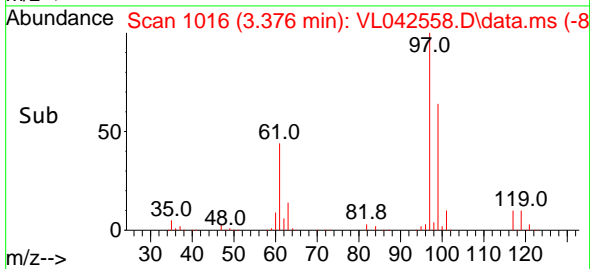
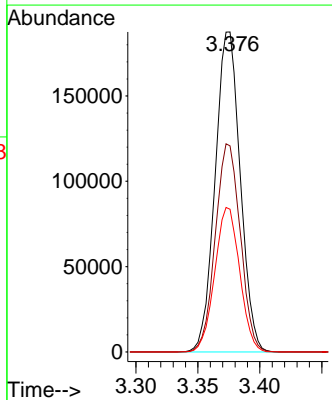
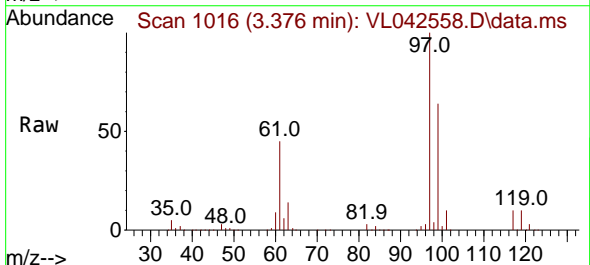
Ion	Ratio	Lower	Upper
61	100		
96	67.5	53.8	80.8
98	43.7	34.5	51.7

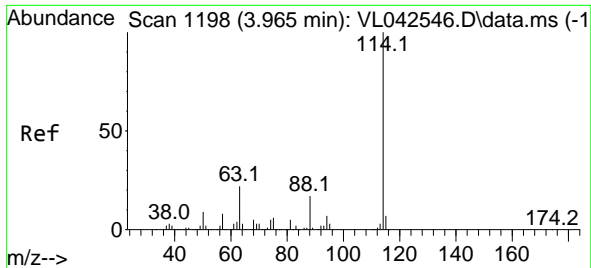


#32
 1,1,1-Trichloroethane
 Concen: 9.674 ppbv
 RT: 3.376 min Scan# 1016
 Delta R.T. 0.003 min
 Lab File: VL042558.D
 Acq: 21 May 2025 10:12

Tgt Ion: 97 Resp: 264881

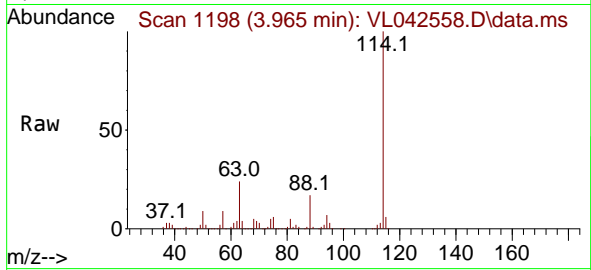
Ion	Ratio	Lower	Upper
97	100		
99	64.8	51.5	77.3
61	44.9	35.7	53.5



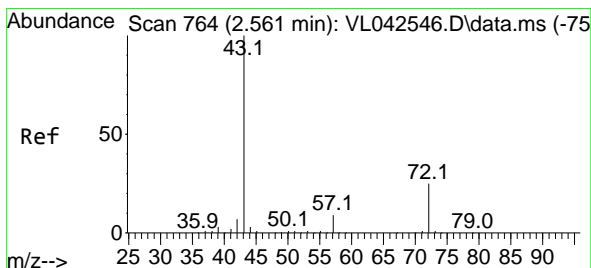
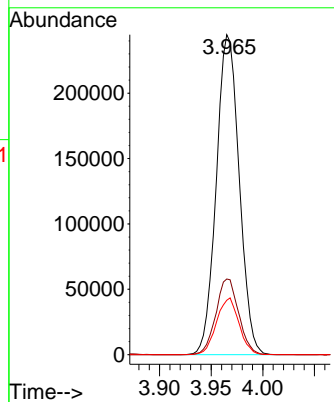
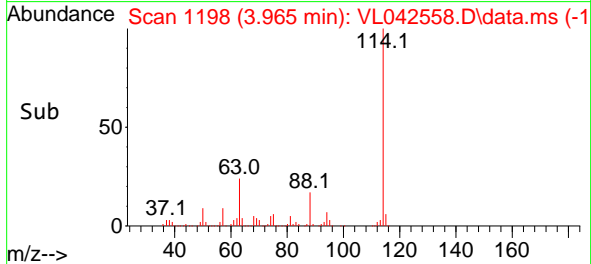


#33
 1,4-Difluorobenzene
 Concen: 10.000 ppbv
 RT: 3.965 min Scan# 1198
 Delta R.T. -0.000 min
 Lab File: VL042558.D
 Acq: 21 May 2025 10:12

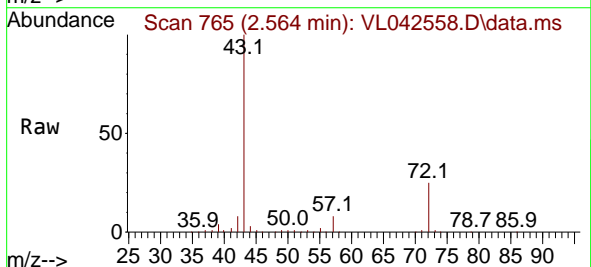
Instrument : MSVOA_L
 ClientSampleId : VL0521ABS01



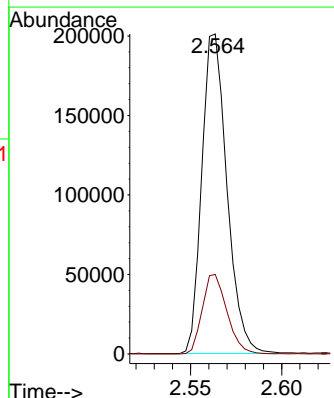
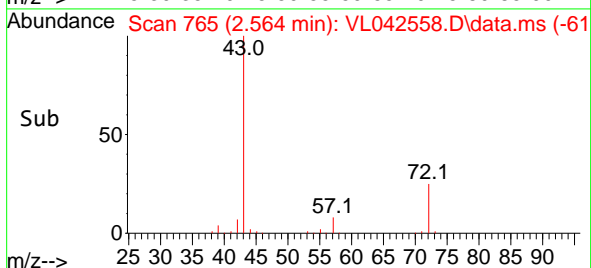
Tgt Ion:114 Resp: 377848
 Ion Ratio Lower Upper
 114 100
 63 23.6 18.4 27.6
 88 17.4 14.0 21.0

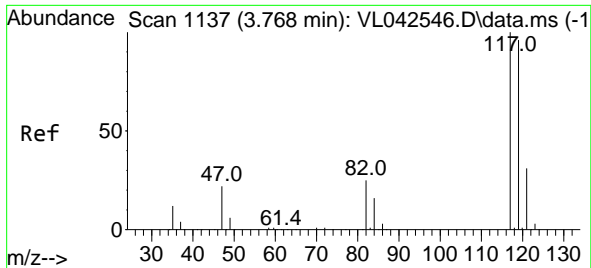


#34
 2-Butanone
 Concen: 9.646 ppbv
 RT: 2.564 min Scan# 765
 Delta R.T. 0.003 min
 Lab File: VL042558.D
 Acq: 21 May 2025 10:12



Tgt Ion: 43 Resp: 193483
 Ion Ratio Lower Upper
 43 100
 72 24.5 20.5 30.7

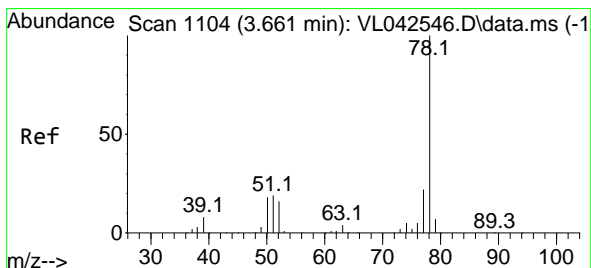
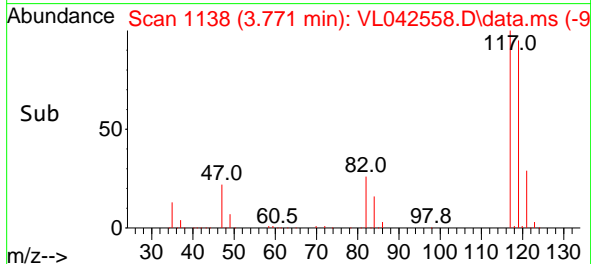
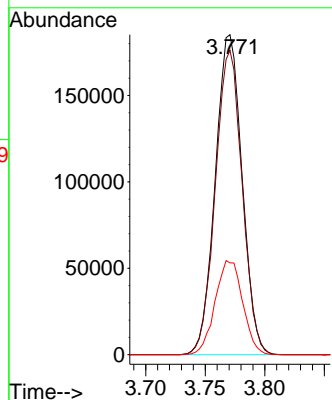
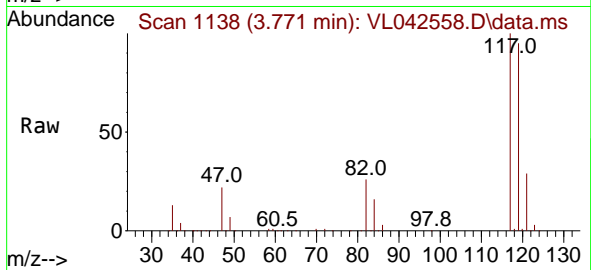




#35
 Carbon Tetrachloride
 Concen: 10.036 ppbv
 RT: 3.771 min Scan# 1138
 Delta R.T. 0.003 min
 Lab File: VL042558.D
 Acq: 21 May 2025 10:12

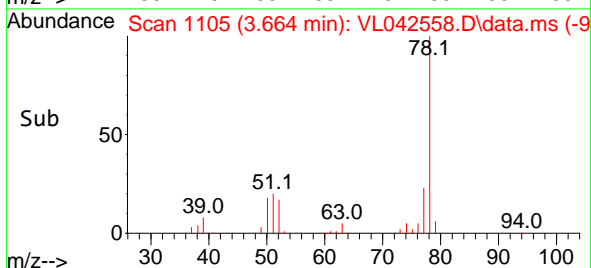
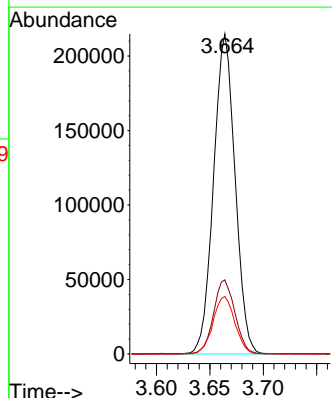
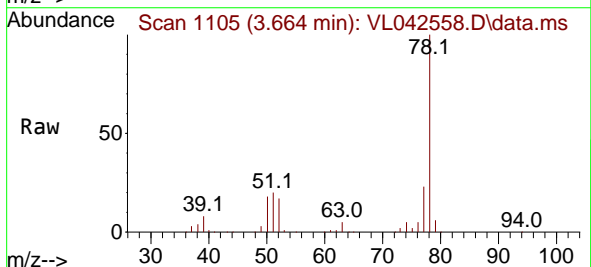
Instrument :
 MSVOA_L
 ClientSampleId :
 VL0521ABS01

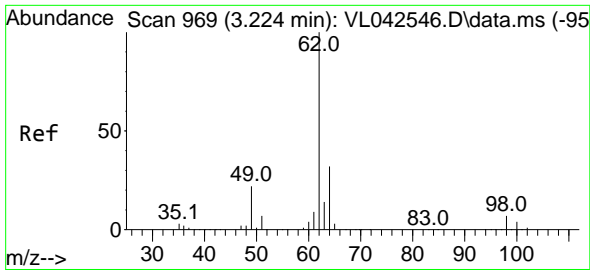
Tgt Ion:117 Resp: 289943
 Ion Ratio Lower Upper
 117 100
 119 95.2 76.6 114.8
 121 28.7 24.7 37.1



#36
 Benzene
 Concen: 9.834 ppbv
 RT: 3.664 min Scan# 1105
 Delta R.T. 0.003 min
 Lab File: VL042558.D
 Acq: 21 May 2025 10:12

Tgt Ion: 78 Resp: 300694
 Ion Ratio Lower Upper
 78 100
 77 23.1 17.8 26.6
 50 18.0 14.0 21.0

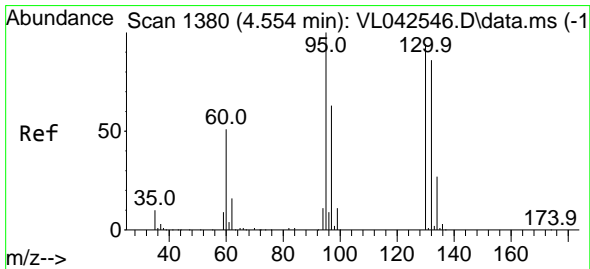
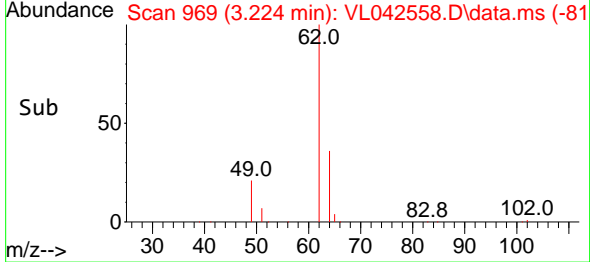
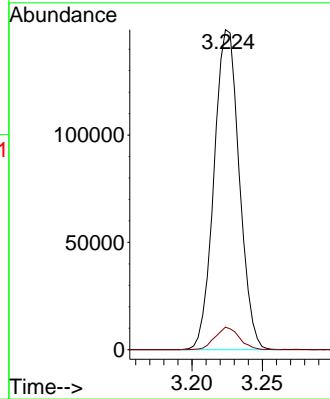
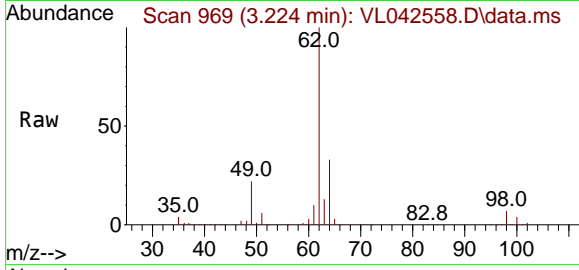




#37
 1,2-Dichloroethane
 Concen: 9.972 ppbv
 RT: 3.224 min Scan# 969
 Delta R.T. -0.000 min
 Lab File: VL042558.D
 Acq: 21 May 2025 10:12

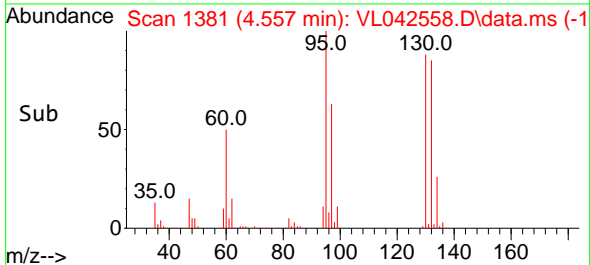
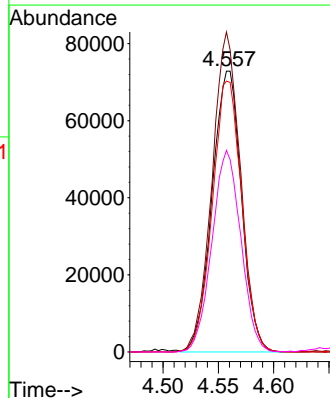
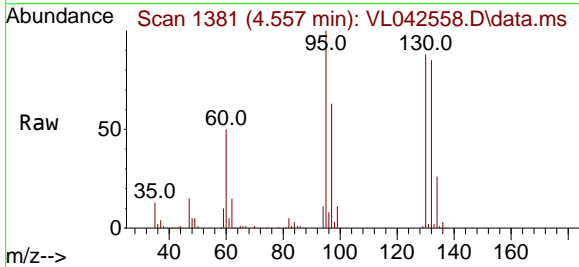
Instrument : MSVOA_L
 ClientSampleId : VL0521ABS01

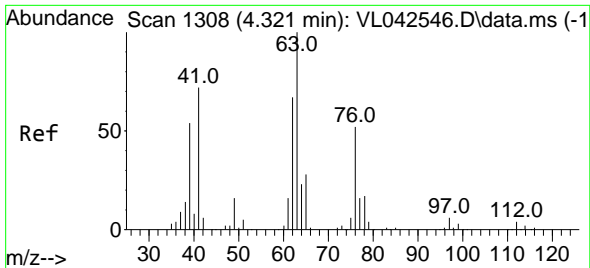
Tgt Ion: 62 Resp: 186306
 Ion Ratio Lower Upper
 62 100
 98 6.7 5.5 8.3



#38
 Trichloroethene
 Concen: 9.636 ppbv
 RT: 4.557 min Scan# 1381
 Delta R.T. 0.003 min
 Lab File: VL042558.D
 Acq: 21 May 2025 10:12

Tgt Ion:130 Resp: 134468
 Ion Ratio Lower Upper
 130 100
 95 113.8 85.2 127.8
 132 96.3 73.4 110.2
 97 71.7 54.2 81.2

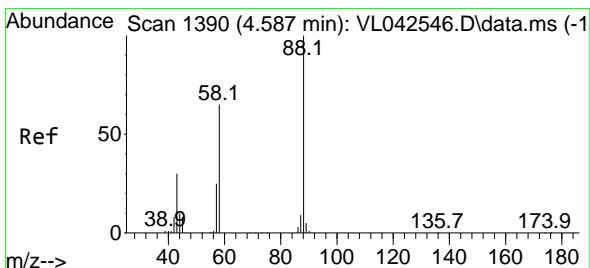
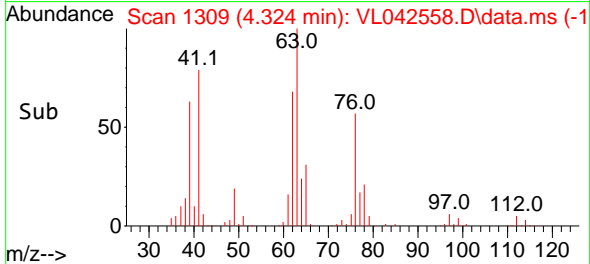
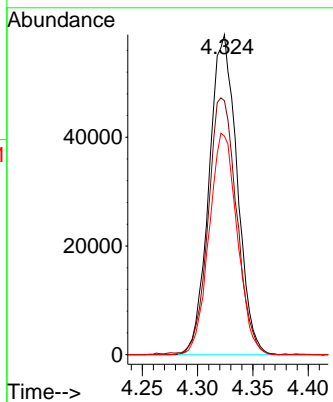
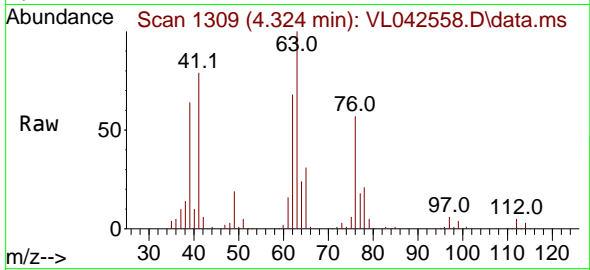




#39
 1,2-Dichloropropane
 Concen: 9.668 ppbv
 RT: 4.324 min Scan# 11
 Delta R.T. 0.003 min
 Lab File: VL042558.D
 Acq: 21 May 2025 10:12

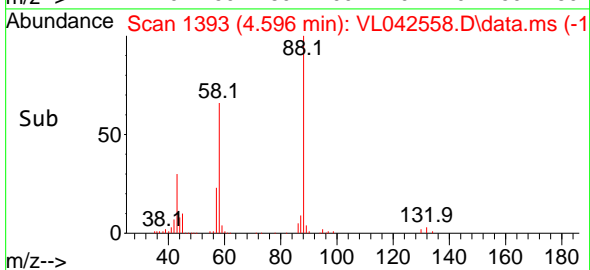
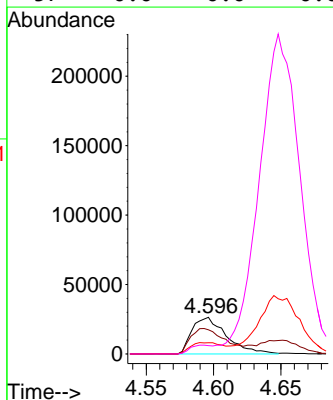
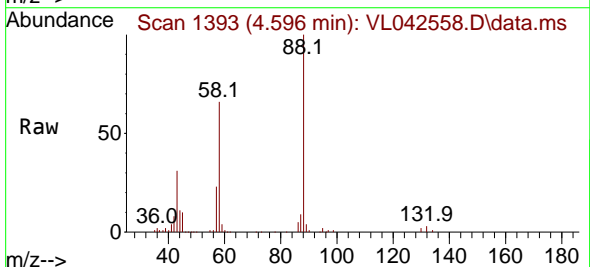
Instrument :
 MSVOA_L
 ClientSampleId :
 VL0521ABS01

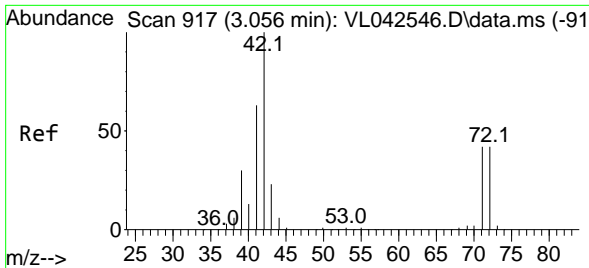
Tgt Ion: 63 Resp: 103756
 Ion Ratio Lower Upper
 63 100
 41 79.3 58.0 87.0
 62 68.3 53.3 79.9



#40
 1,4-Dioxane
 Concen: 9.832 ppbv
 RT: 4.596 min Scan# 1393
 Delta R.T. 0.009 min
 Lab File: VL042558.D
 Acq: 21 May 2025 10:12

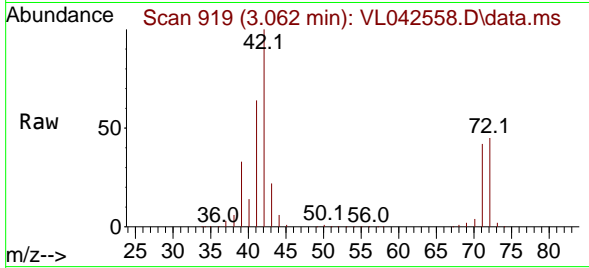
Tgt Ion: 88 Resp: 47199
 Ion Ratio Lower Upper
 88 100
 58 69.8 52.8 79.2
 43 0.0 23.0 34.4#
 57 0.0 0.0 0.0



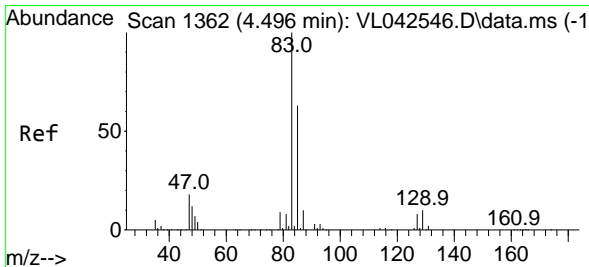
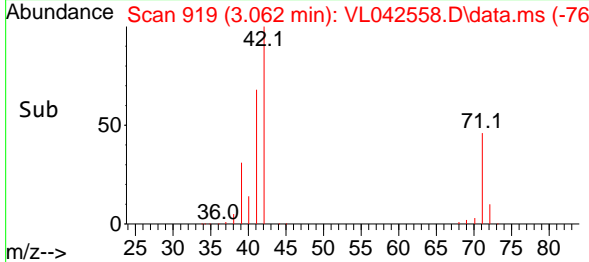
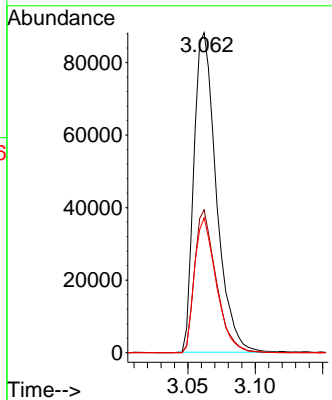


#41
 Tetrahydrofuran
 Concen: 10.433 ppbv
 RT: 3.062 min Scan# 919
 Delta R.T. 0.006 min
 Lab File: VL042558.D
 Acq: 21 May 2025 10:12

Instrument :
 MSVOA_L
 ClientSampleId :
 VL0521ABS01

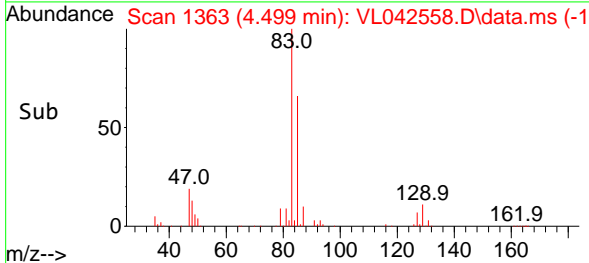
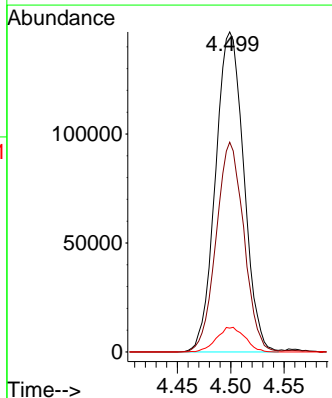
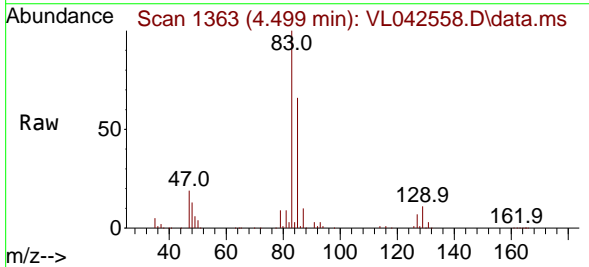


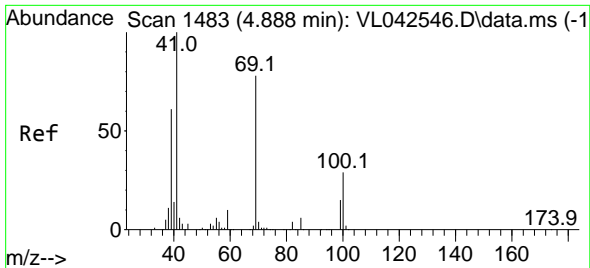
Tgt Ion: 42 Resp: 102011
 Ion Ratio Lower Upper
 42 100
 72 42.9 34.8 52.2
 71 41.1 33.6 50.4



#42
 Bromodichloromethane
 Concen: 10.281 ppbv
 RT: 4.499 min Scan# 1363
 Delta R.T. 0.003 min
 Lab File: VL042558.D
 Acq: 21 May 2025 10:12

Tgt Ion: 83 Resp: 270663
 Ion Ratio Lower Upper
 83 100
 85 65.6 50.4 75.6
 127 7.5 6.5 9.7

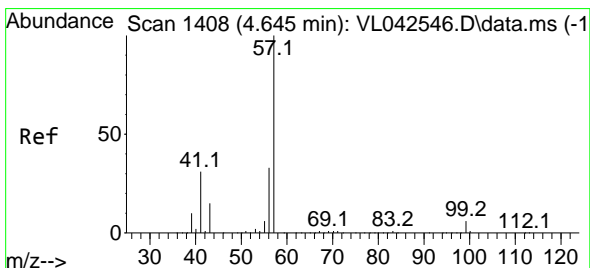
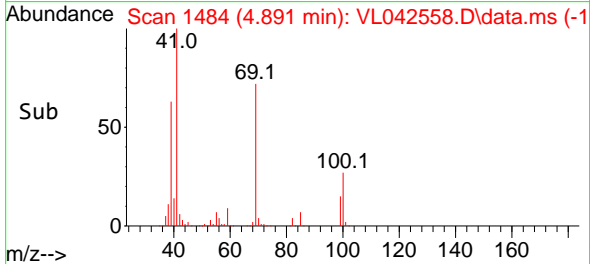
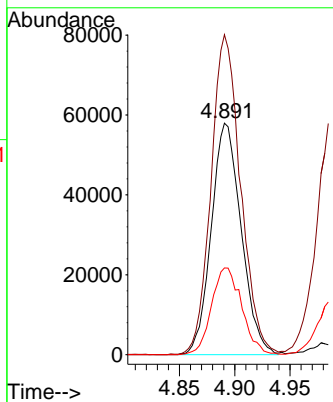
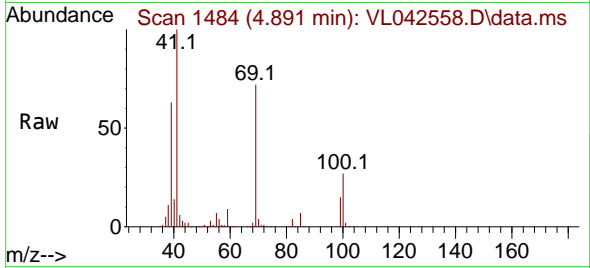




#43
 Methyl Methacrylate
 Concen: 10.505 ppbv
 RT: 4.891 min Scan# 1483
 Delta R.T. 0.003 min
 Lab File: VL042558.D
 Acq: 21 May 2025 10:12

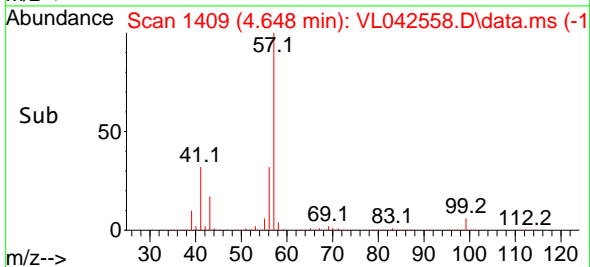
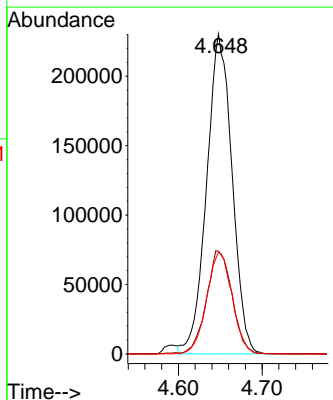
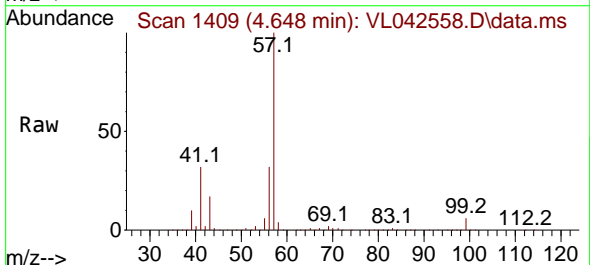
Instrument : MSVOA_L
 ClientSampleId : VL0521ABS01

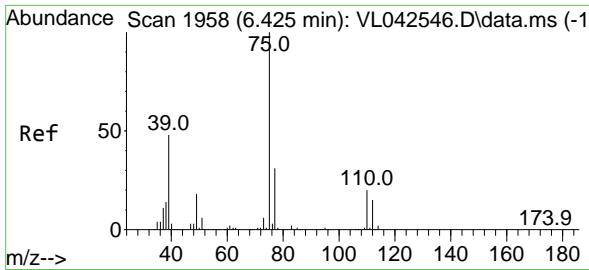
Tgt Ion: 69 Resp: 109007
 Ion Ratio Lower Upper
 69 100
 41 136.7 107.8 161.8
 100 37.9 30.3 45.5



#44
 2,2,4-Trimethylpentane
 Concen: 10.374 ppbv
 RT: 4.648 min Scan# 1409
 Delta R.T. 0.003 min
 Lab File: VL042558.D
 Acq: 21 May 2025 10:12

Tgt Ion: 57 Resp: 486516
 Ion Ratio Lower Upper
 57 100
 41 32.9 25.0 37.4
 56 31.8 25.1 37.7

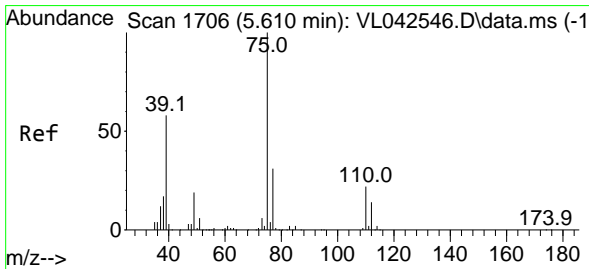
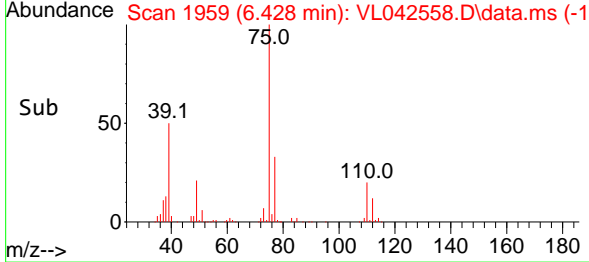
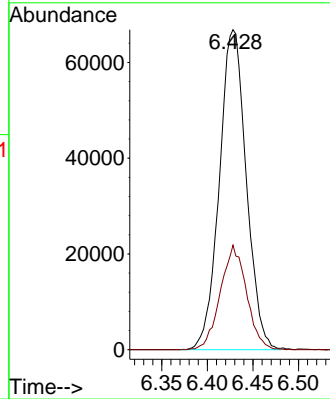
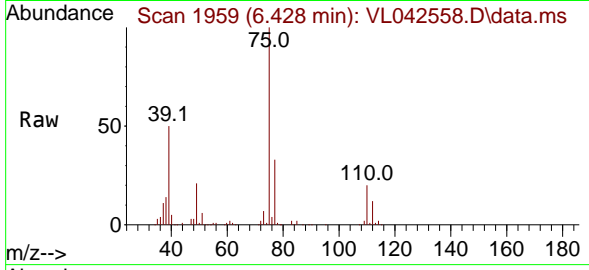




#45
 t-1,3-Dichloropropene
 Concen: 10.389 ppbv
 RT: 6.428 min Scan# 1958
 Delta R.T. 0.003 min
 Lab File: VL042558.D
 Acq: 21 May 2025 10:12

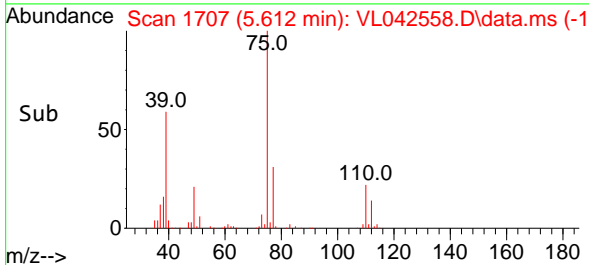
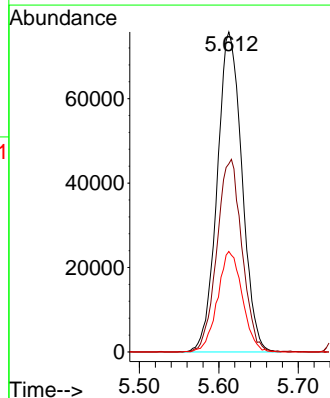
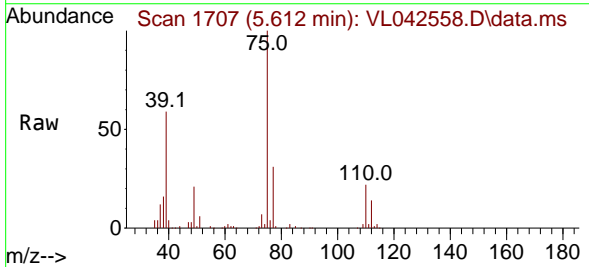
Instrument :
 MSVOA_L
 ClientSampleId :
 VL0521ABS01

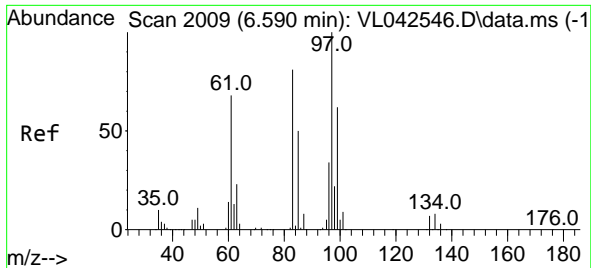
Tgt Ion: 75 Resp: 137509
 Ion Ratio Lower Upper
 75 100
 77 32.6 24.6 37.0



#46
 cis-1,3-Dichloropropene
 Concen: 10.199 ppbv
 RT: 5.612 min Scan# 1707
 Delta R.T. 0.003 min
 Lab File: VL042558.D
 Acq: 21 May 2025 10:12

Tgt Ion: 75 Resp: 164177
 Ion Ratio Lower Upper
 75 100
 39 58.7 46.3 69.5
 77 31.4 25.0 37.6



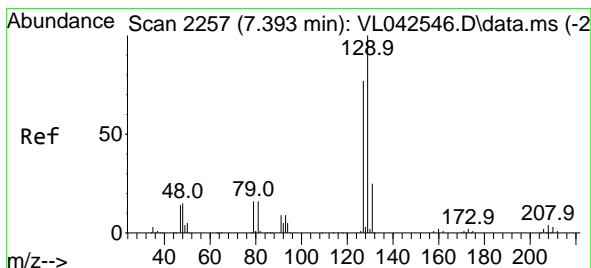
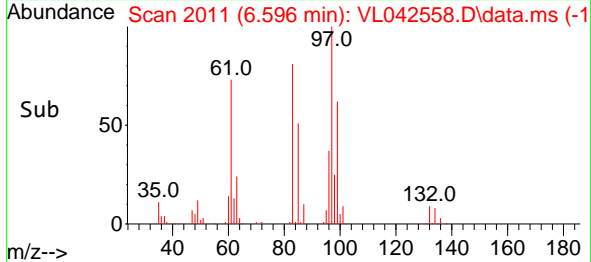
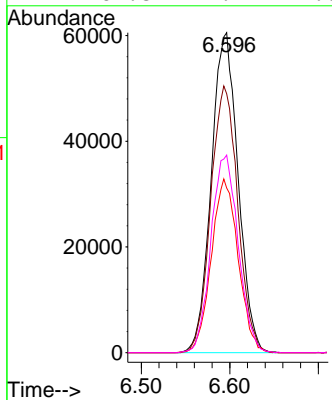
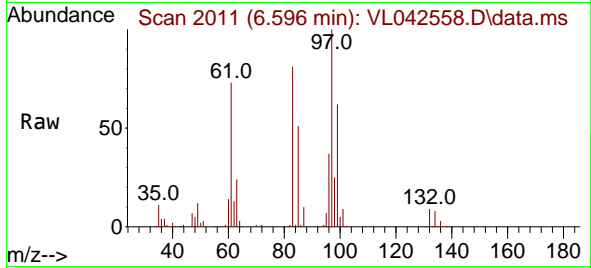


#47
 1,1,2-Trichloroethane
 Concen: 9.919 ppbv
 RT: 6.596 min Scan# 2009
 Delta R.T. 0.006 min
 Lab File: VL042558.D
 Acq: 21 May 2025 10:12

Instrument : MSVOA_L
 ClientSampleId : VL0521ABS01

Tgt Ion: 97 Resp: 127525

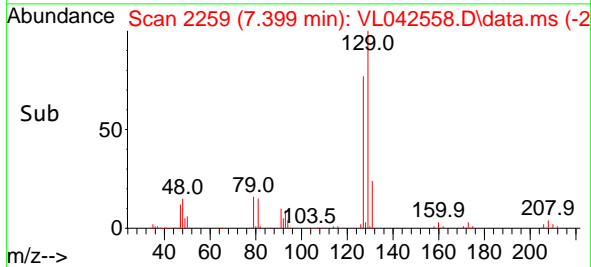
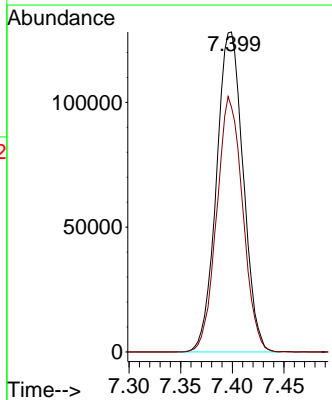
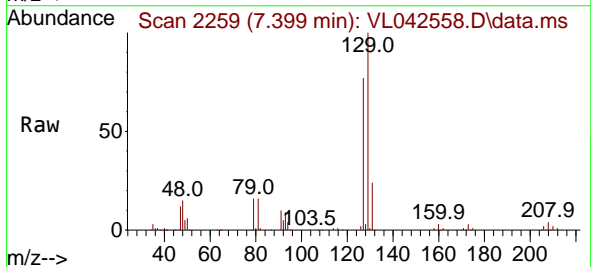
Ion	Ratio	Lower	Upper
97	100		
83	80.9	65.0	97.4
85	51.4	39.9	59.9
99	61.8	49.4	74.0

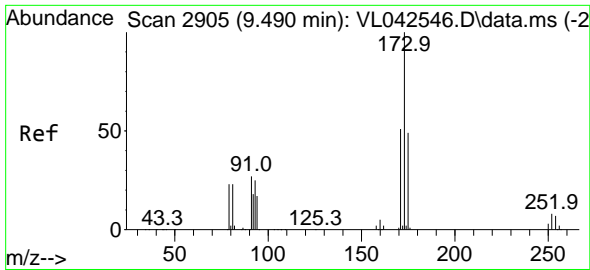


#48
 Dibromochloromethane
 Concen: 10.378 ppbv
 RT: 7.399 min Scan# 2259
 Delta R.T. 0.006 min
 Lab File: VL042558.D
 Acq: 21 May 2025 10:12

Tgt Ion: 129 Resp: 230923

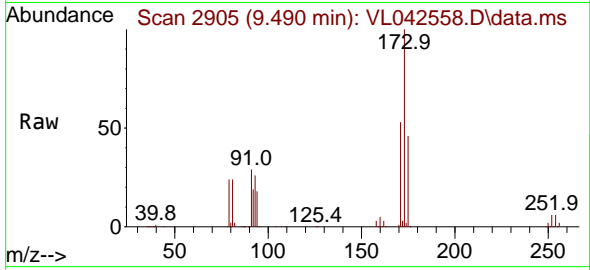
Ion	Ratio	Lower	Upper
129	100		
127	77.7	39.0	117.0



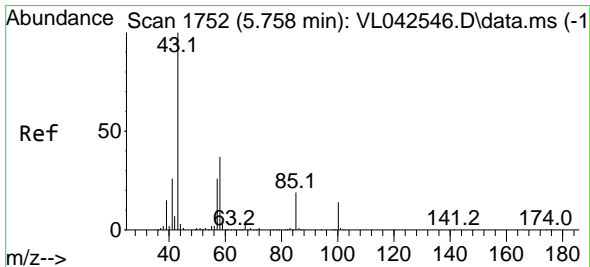
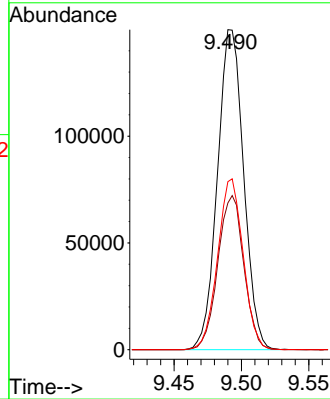
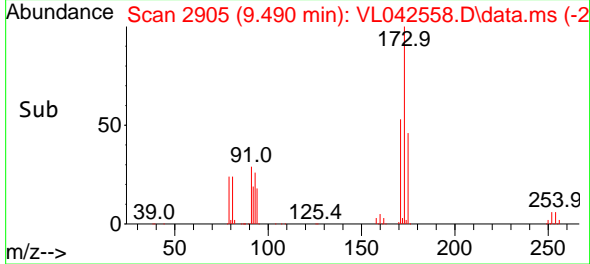


#49
 Bromoform
 Concen: 10.684 ppbv
 RT: 9.490 min Scan# 2905
 Delta R.T. -0.000 min
 Lab File: VL042558.D
 Acq: 21 May 2025 10:12

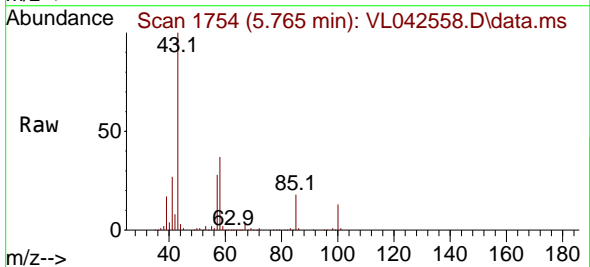
Instrument :
 MSVOA_L
 ClientSampleId :
 VL0521ABS01



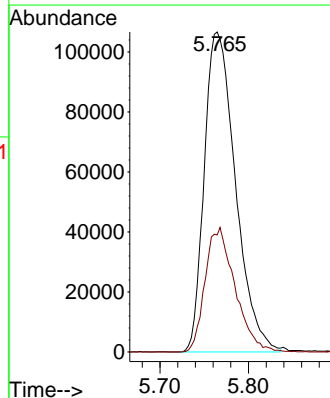
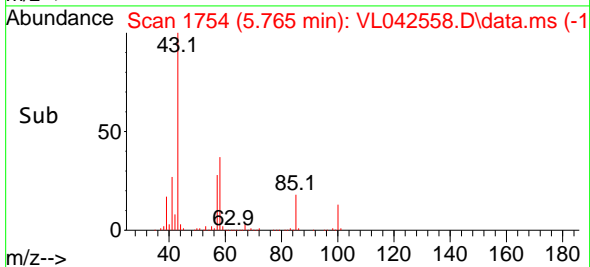
Tgt Ion:173 Resp: 202892
 Ion Ratio Lower Upper
 173 100
 175 47.9 39.2 58.8
 171 52.0 41.9 62.9

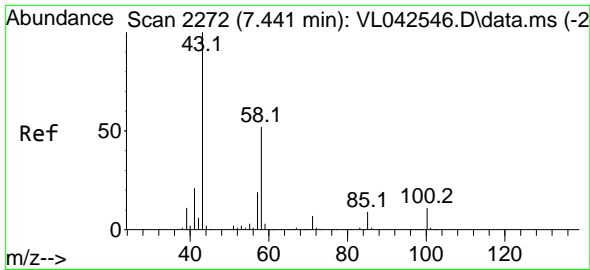


#50
 4-Methyl-2-Pentanone
 Concen: 10.856 ppbv
 RT: 5.765 min Scan# 1754
 Delta R.T. 0.006 min
 Lab File: VL042558.D
 Acq: 21 May 2025 10:12



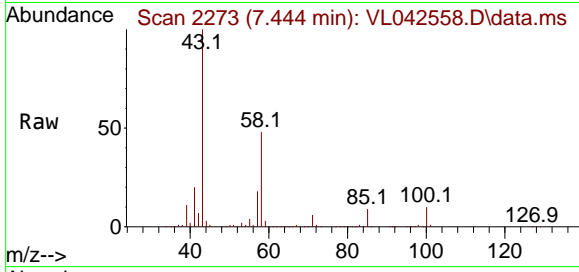
Tgt Ion: 43 Resp: 261272
 Ion Ratio Lower Upper
 43 100
 58 37.3 30.0 45.0



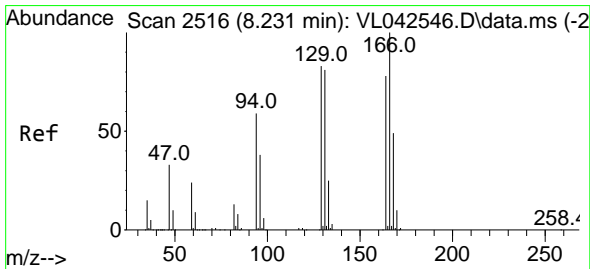
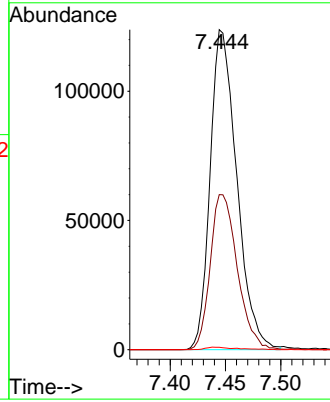
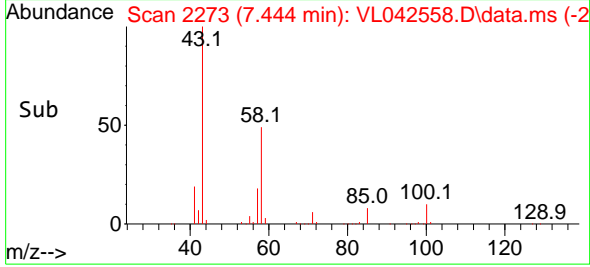


#51
 2-Hexanone
 Concen: 11.672 ppbv
 RT: 7.444 min Scan# 21
 Delta R.T. 0.003 min
 Lab File: VL042558.D
 Acq: 21 May 2025 10:12

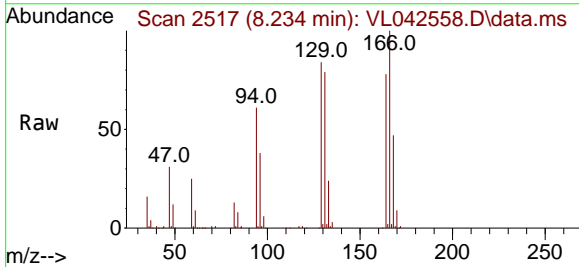
Instrument :
 MSVOA_L
 ClientSampleId :
 VL0521ABS01



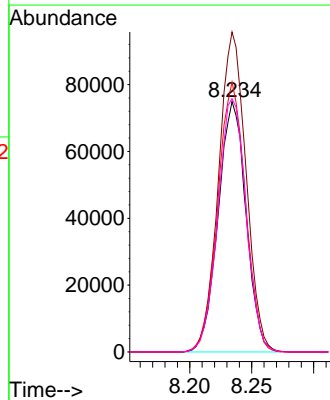
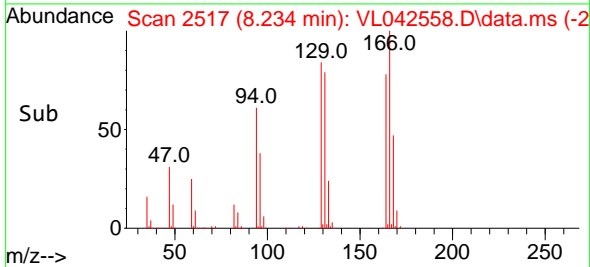
Tgt Ion: 43 Resp: 207178
 Ion Ratio Lower Upper
 43 100
 58 49.4 41.4 62.2
 98 0.9 0.4 0.6#

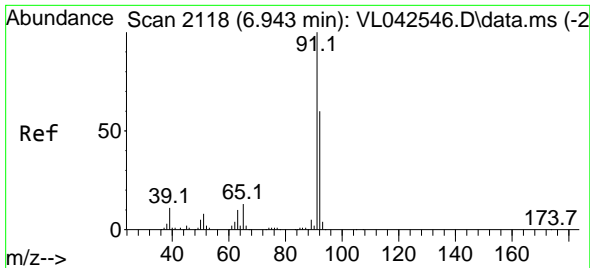


#52
 Tetrachloroethene
 Concen: 9.809 ppbv
 RT: 8.234 min Scan# 2517
 Delta R.T. 0.003 min
 Lab File: VL042558.D
 Acq: 21 May 2025 10:12



Tgt Ion: 164 Resp: 116970
 Ion Ratio Lower Upper
 164 100
 166 127.8 103.1 154.7
 129 107.8 85.3 127.9
 131 101.1 83.5 125.3

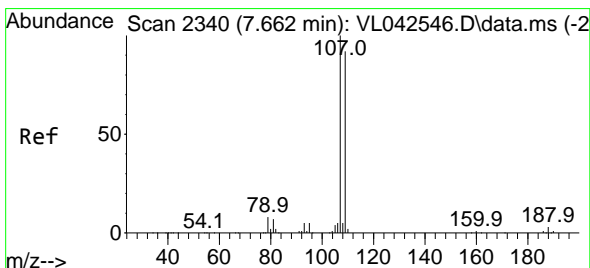
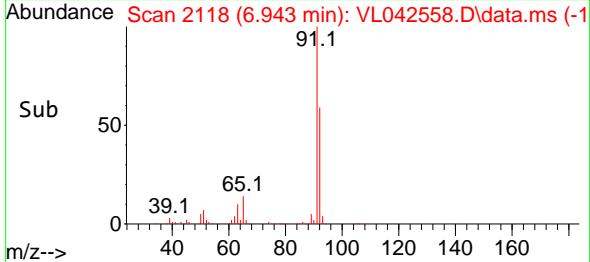
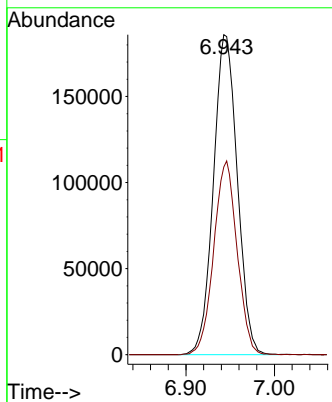
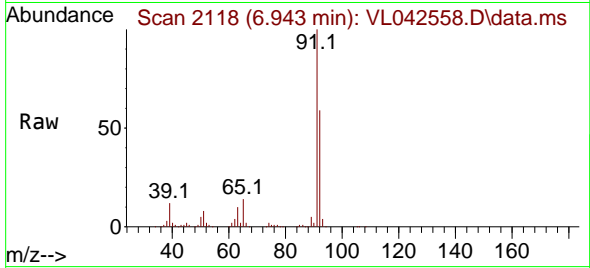




#53
 Toluene
 Concen: 10.679 ppbv
 RT: 6.943 min Scan# 2118
 Delta R.T. -0.000 min
 Lab File: VL042558.D
 Acq: 21 May 2025 10:12

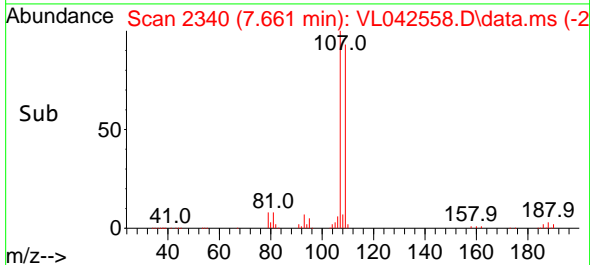
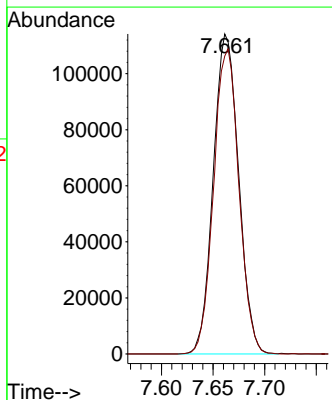
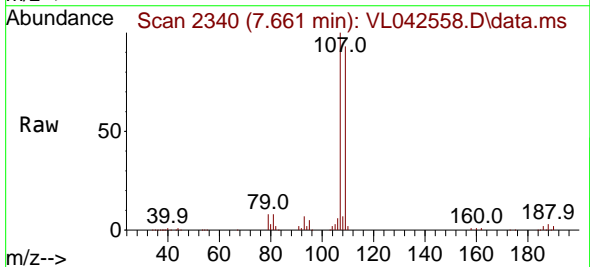
Instrument : MSVOA_L
 ClientSampleId : VL0521ABS01

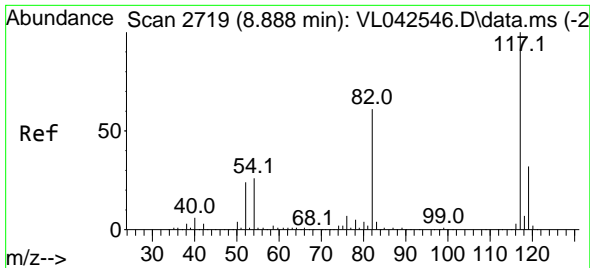
Tgt Ion: 91 Resp: 349032
 Ion Ratio Lower Upper
 91 100
 92 59.2 47.8 71.8



#54
 1,2-Dibromoethane
 Concen: 10.404 ppbv
 RT: 7.661 min Scan# 2340
 Delta R.T. -0.000 min
 Lab File: VL042558.D
 Acq: 21 May 2025 10:12

Tgt Ion: 107 Resp: 194890
 Ion Ratio Lower Upper
 107 100
 109 93.1 73.4 110.2

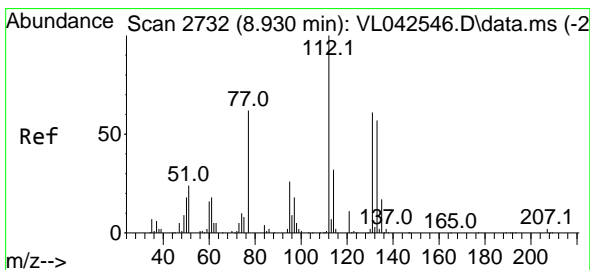
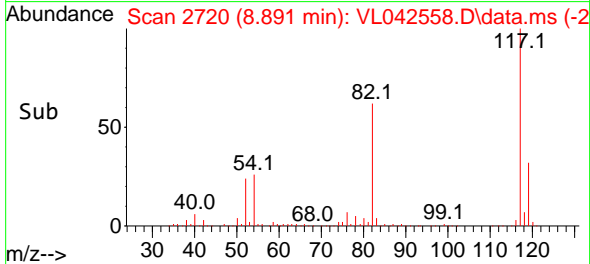
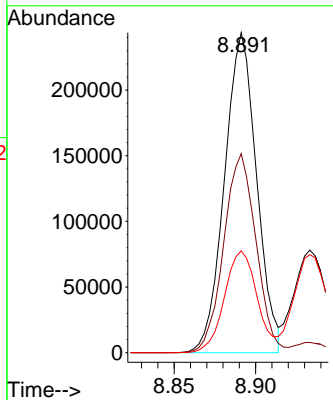
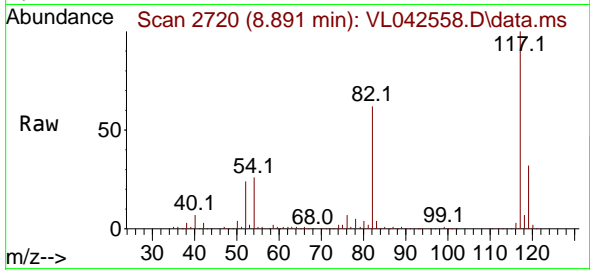




#55
 Chlorobenzene-d5
 Concen: 10.000 ppbv
 RT: 8.891 min Scan# 2719
 Delta R.T. 0.003 min
 Lab File: VL042558.D
 Acq: 21 May 2025 10:12

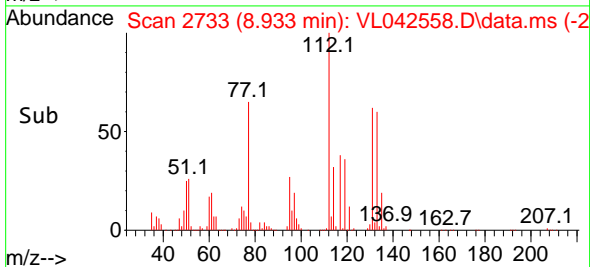
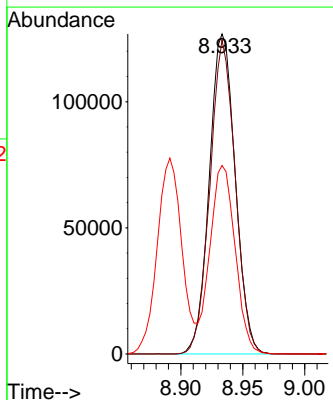
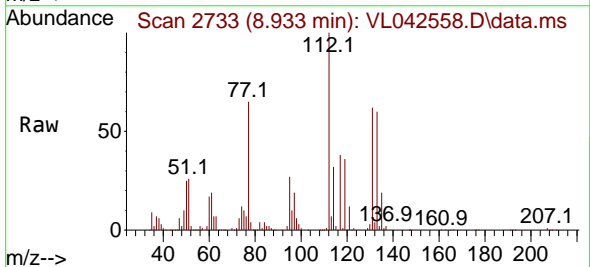
Instrument :
 MSVOA_L
 ClientSampleId :
 VL0521ABS01

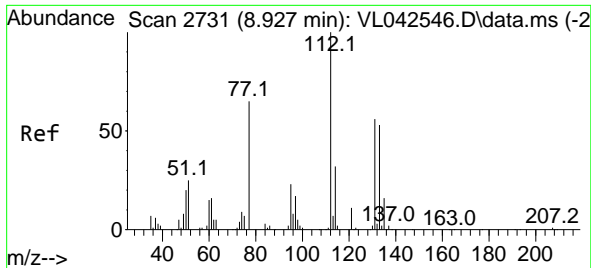
Tgt Ion:117 Resp: 333400
 Ion Ratio Lower Upper
 117 100
 82 65.9 51.0 76.4
 119 32.1 27.0 40.4



#56
 1,1,1,2-Tetrachloroethane
 Concen: 10.418 ppbv
 RT: 8.933 min Scan# 2733
 Delta R.T. 0.003 min
 Lab File: VL042558.D
 Acq: 21 May 2025 10:12

Tgt Ion:131 Resp: 185173
 Ion Ratio Lower Upper
 131 100
 133 95.5 76.3 114.5
 119 55.1 47.5 71.3



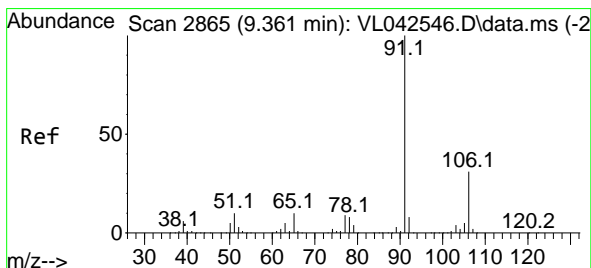
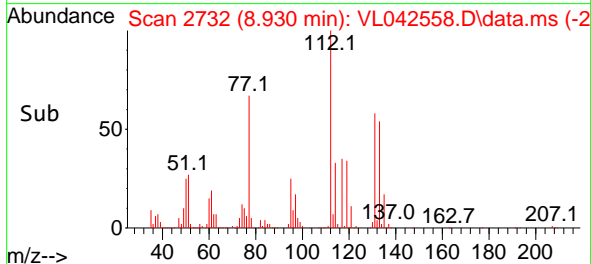
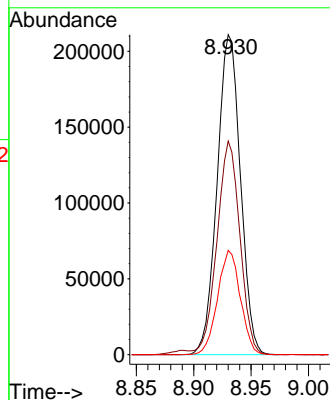
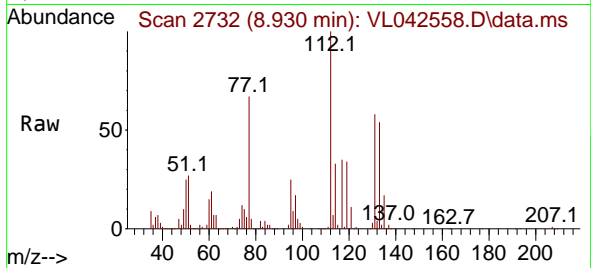


#57
 Chlorobenzene
 Concen: 10.040 ppbv
 RT: 8.930 min Scan# 21
 Delta R.T. 0.003 min
 Lab File: VL042558.D
 Acq: 21 May 2025 10:12

Instrument :
 MSVOA_L
 ClientSampleId :
 VL0521ABS01

Tgt Ion: 112 Resp: 298157

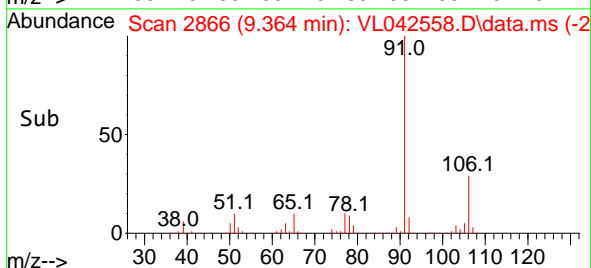
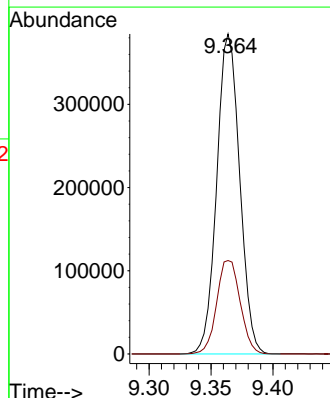
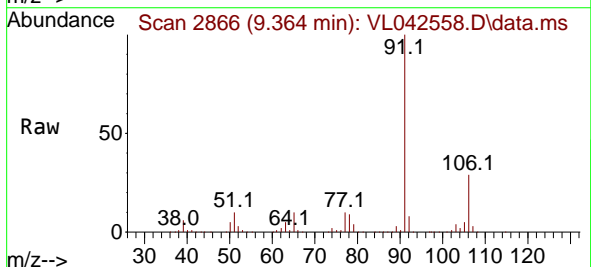
Ion	Ratio	Lower	Upper
112	100		
77	66.7	53.2	79.8
114	32.6	28.4	34.8

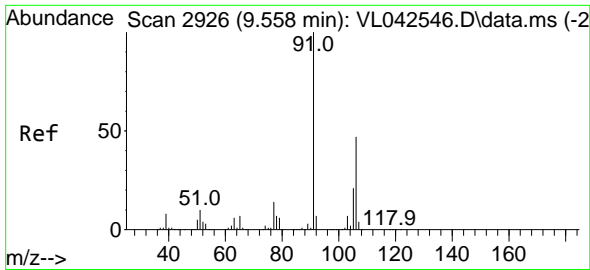


#58
 Ethyl Benzene
 Concen: 11.364 ppbv
 RT: 9.364 min Scan# 2866
 Delta R.T. 0.003 min
 Lab File: VL042558.D
 Acq: 21 May 2025 10:12

Tgt Ion: 91 Resp: 496019

Ion	Ratio	Lower	Upper
91	100		
106	29.2	24.6	37.0

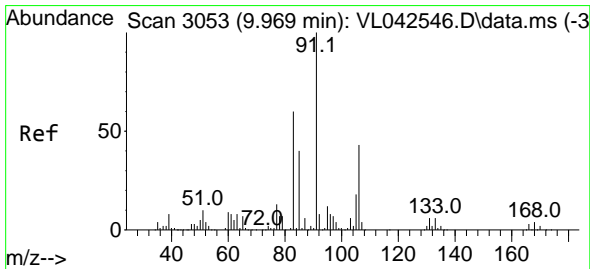
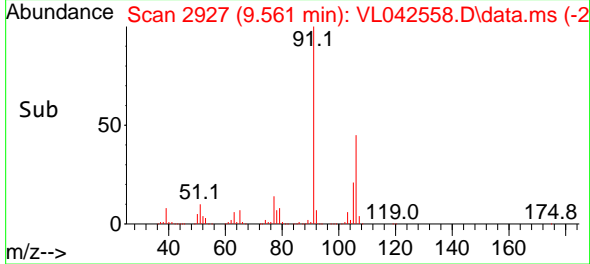
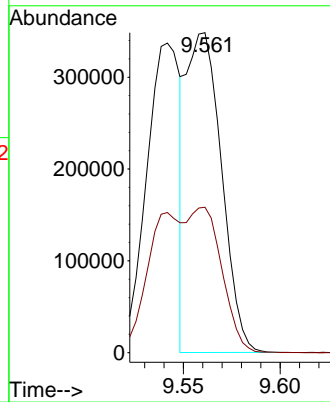
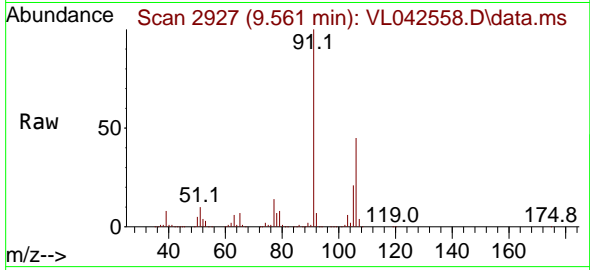




#59
 m/p-Xylene
 Concen: 11.780 ppbv
 RT: 9.561 min Scan# 2926
 Delta R.T. 0.003 min
 Lab File: VL042558.D
 Acq: 21 May 2025 10:12

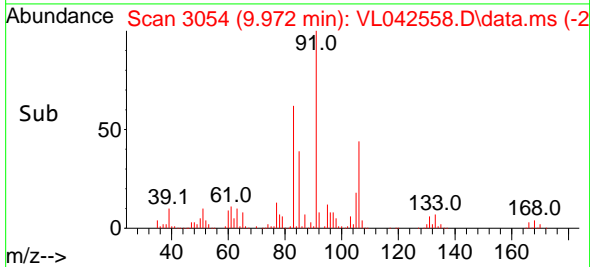
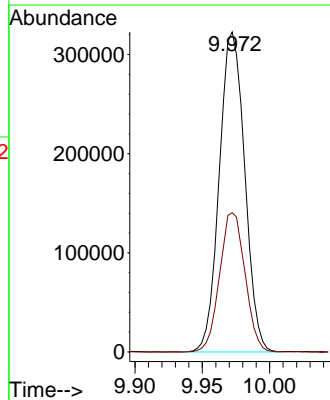
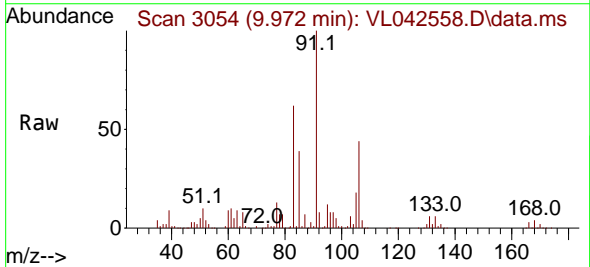
Instrument : MSVOA_L
 ClientSampleId : VL0521ABS01

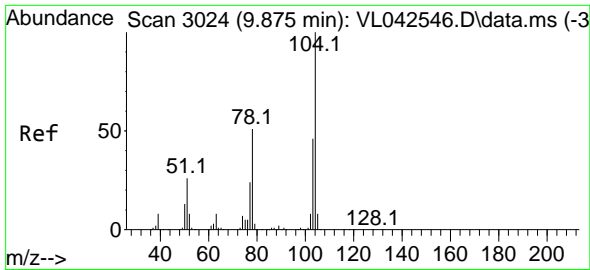
Tgt Ion: 91 Resp: 439016
 Ion Ratio Lower Upper
 91 100
 106 88.3 37.1 55.7#



#60
 o-Xylene
 Concen: 11.474 ppbv
 RT: 9.972 min Scan# 3054
 Delta R.T. 0.003 min
 Lab File: VL042558.D
 Acq: 21 May 2025 10:12

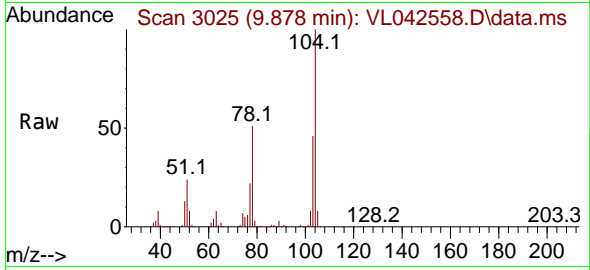
Tgt Ion: 91 Resp: 423569
 Ion Ratio Lower Upper
 91 100
 106 43.6 21.6 64.8



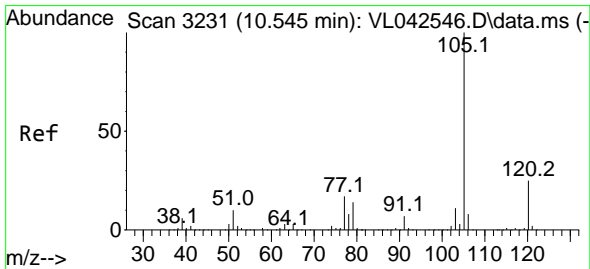
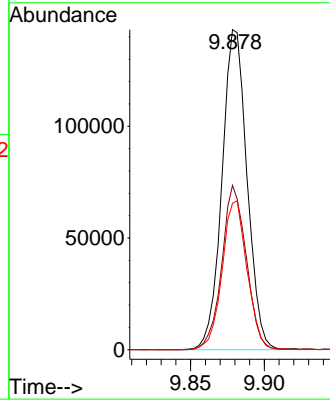
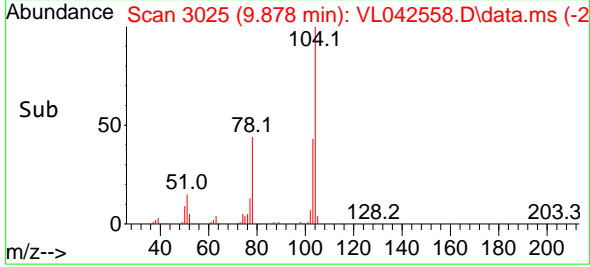


#61
 Styrene
 Concen: 11.986 ppbv
 RT: 9.878 min Scan# 3024
 Delta R.T. 0.003 min
 Lab File: VL042558.D
 Acq: 21 May 2025 10:12

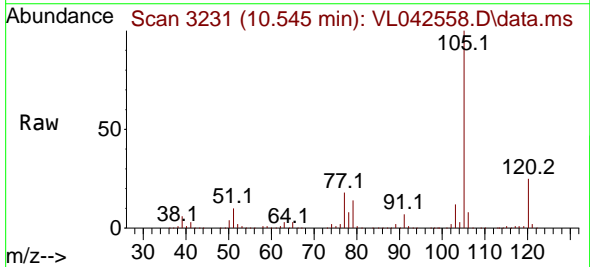
Instrument :
 MSVOA_L
 ClientSampleId :
 VL0521ABS01



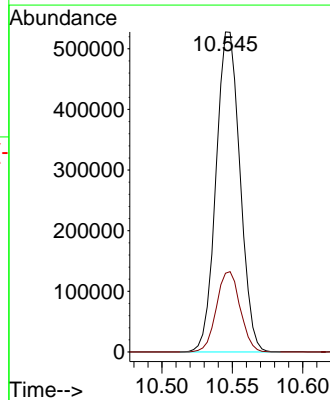
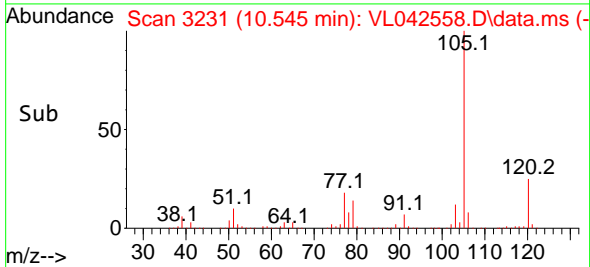
Tgt Ion:104 Resp: 169581
 Ion Ratio Lower Upper
 104 100
 78 50.2 39.2 58.8
 103 46.4 37.1 55.7

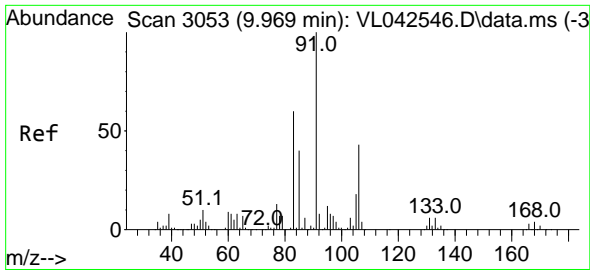


#62
 Isopropylbenzene
 Concen: 11.065 ppbv
 RT: 10.545 min Scan# 3231
 Delta R.T. -0.000 min
 Lab File: VL042558.D
 Acq: 21 May 2025 10:12



Tgt Ion:105 Resp: 624942
 Ion Ratio Lower Upper
 105 100
 120 24.9 20.0 30.0

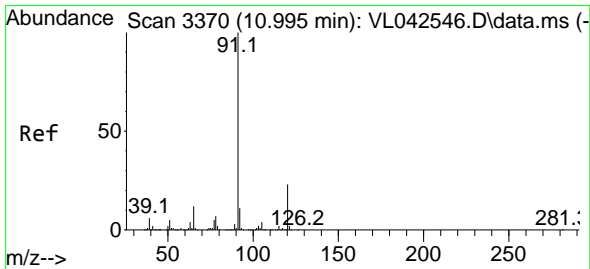
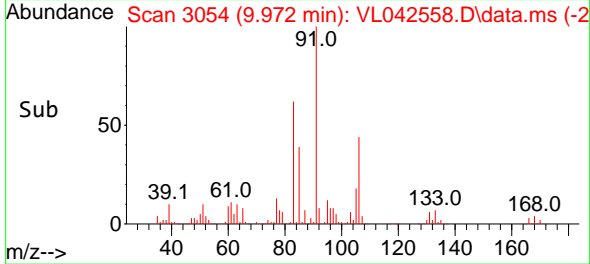
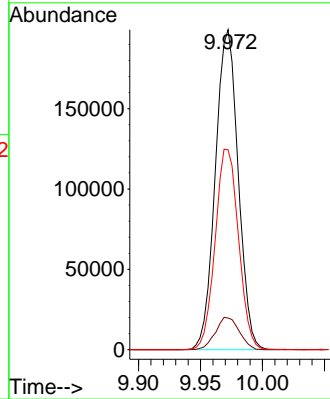
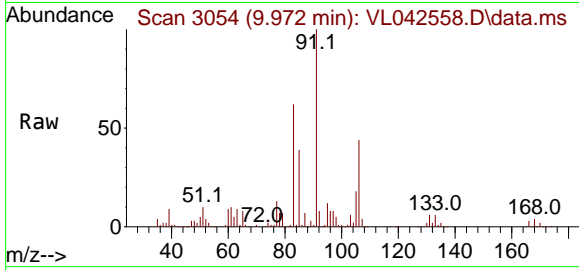




#63
 1,1,2,2-Tetrachloroethane
 Concen: 10.393 ppbv
 RT: 9.972 min Scan# 3053
 Delta R.T. 0.003 min
 Lab File: VL042558.D
 Acq: 21 May 2025 10:12

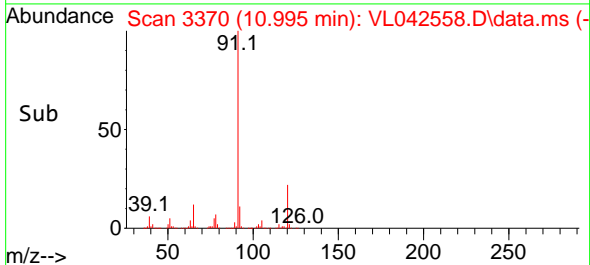
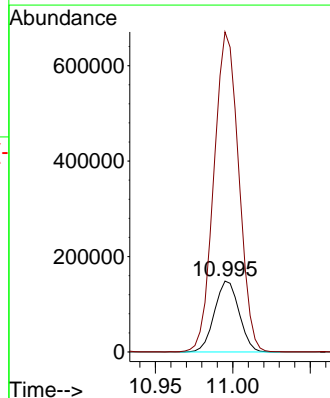
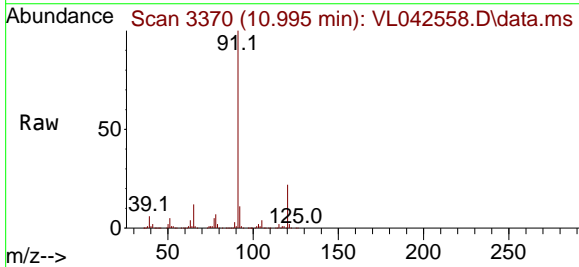
Instrument : MSVOA_L
 ClientSampleId : VL0521ABS01

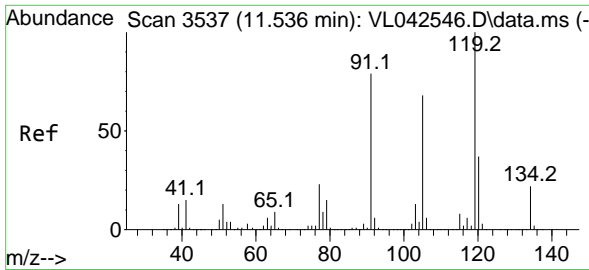
Tgt Ion: 83 Resp: 256372
 Ion Ratio Lower Upper
 83 100
 131 10.5 5.1 15.3
 85 63.9 32.5 97.4



#64
 n-propylbenzene
 Concen: 11.652 ppbv
 RT: 10.995 min Scan# 3370
 Delta R.T. -0.000 min
 Lab File: VL042558.D
 Acq: 21 May 2025 10:12

Tgt Ion:120 Resp: 163942
 Ion Ratio Lower Upper
 120 100
 91 456.6 367.0 550.4

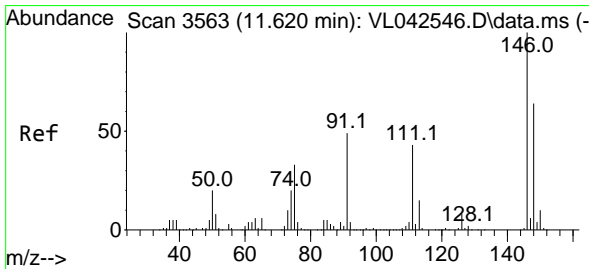
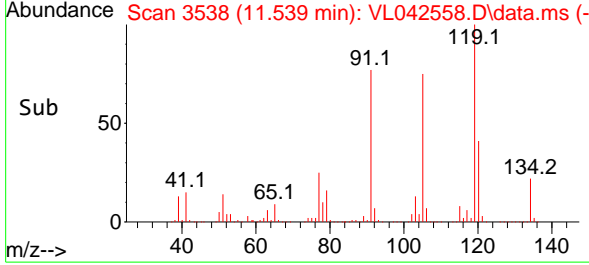
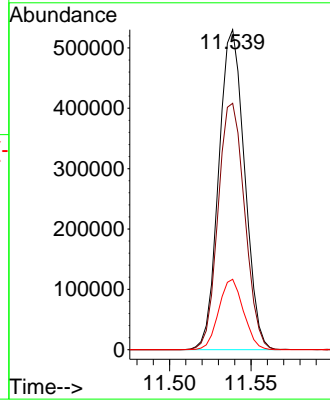
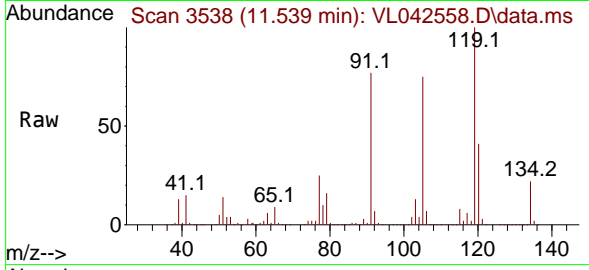




#65
 tert-Butylbenzene
 Concen: 11.503 ppbv
 RT: 11.539 min Scan# 3537
 Delta R.T. 0.003 min
 Lab File: VL042558.D
 Acq: 21 May 2025 10:12

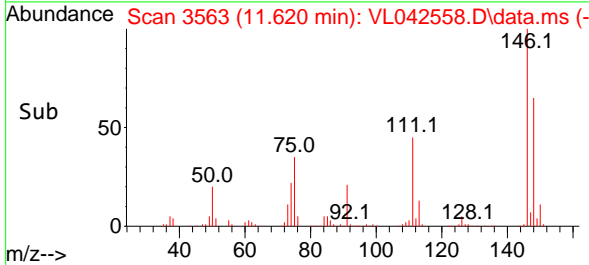
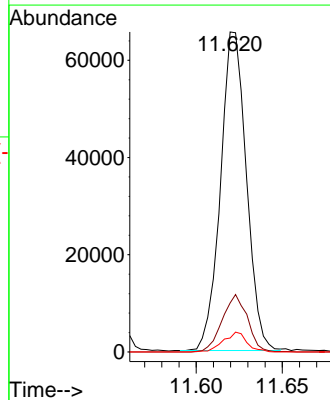
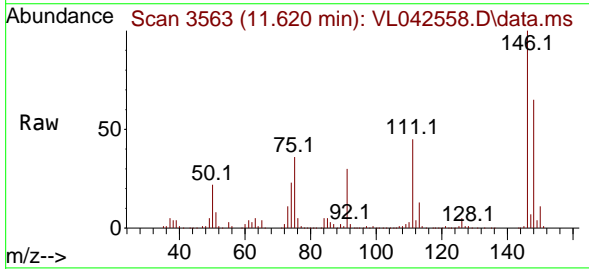
Instrument :
 MSVOA_L
 ClientSampleId :
 VL0521ABS01

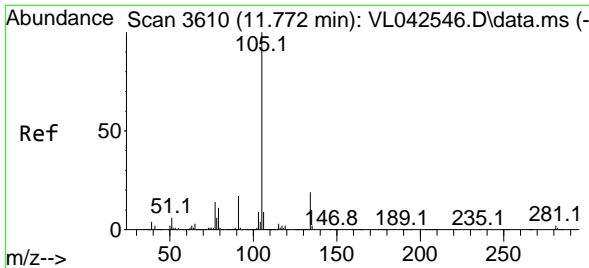
Tgt Ion:119 Resp: 584410
 Ion Ratio Lower Upper
 119 100
 91 79.2 62.7 94.1
 134 21.0 16.8 25.2



#66
 Benzyl Chloride
 Concen: 10.796 ppbv
 RT: 11.620 min Scan# 3563
 Delta R.T. -0.000 min
 Lab File: VL042558.D
 Acq: 21 May 2025 10:12

Tgt Ion: 91 Resp: 68619
 Ion Ratio Lower Upper
 91 100
 126 17.6 14.2 21.2
 128 5.7 4.6 6.8

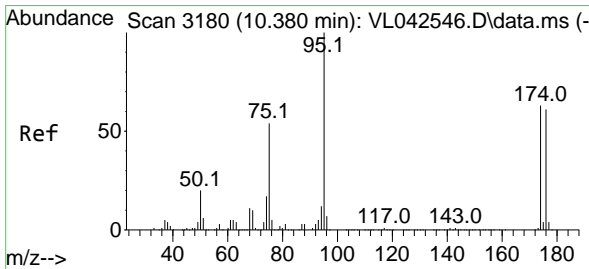
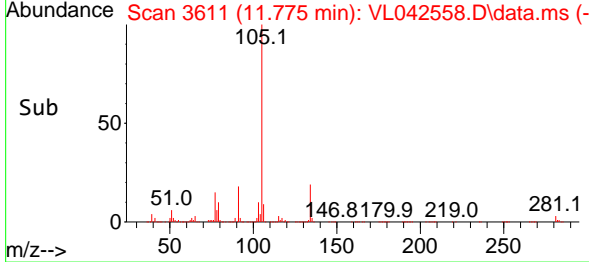
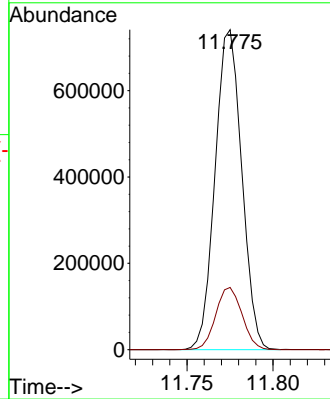
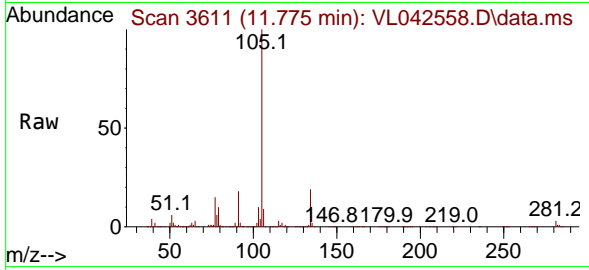




#67
 sec-Butylbenzene
 Concen: 11.130 ppbv
 RT: 11.775 min Scan# 3611
 Delta R.T. 0.003 min
 Lab File: VL042558.D
 Acq: 21 May 2025 10:12

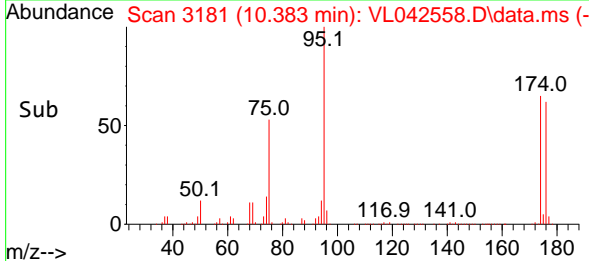
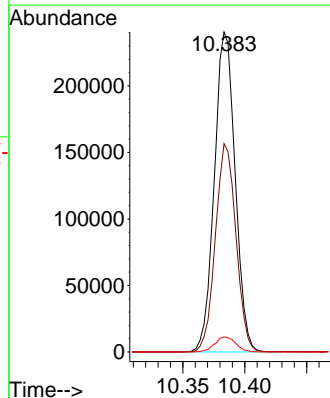
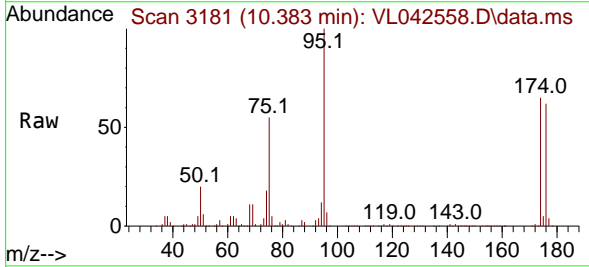
Instrument :
 MSVOA_L
 ClientSampleId :
 VL0521ABS01

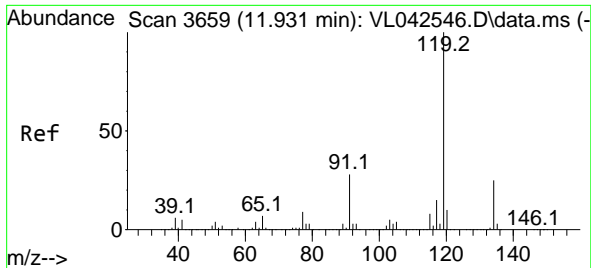
Tgt Ion:105 Resp: 798171
 Ion Ratio Lower Upper
 105 100
 134 19.2 15.4 23.2



#68
 1-Bromo-4-Fluorobenzene
 Concen: 10.559 ppbv
 RT: 10.383 min Scan# 3181
 Delta R.T. 0.003 min
 Lab File: VL042558.D
 Acq: 21 May 2025 10:12

Tgt Ion: 95 Resp: 281736
 Ion Ratio Lower Upper
 95 100
 174 64.5 52.0 78.0
 175 4.8 3.8 5.6

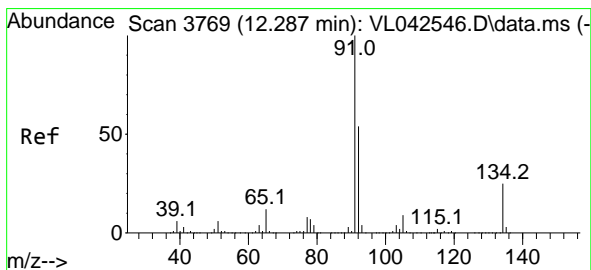
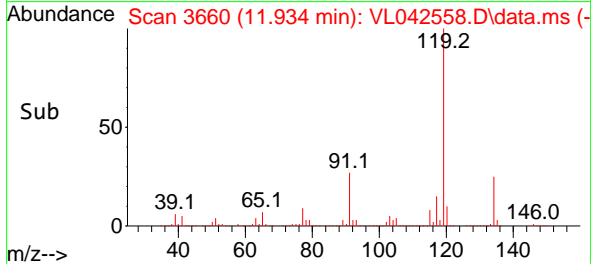
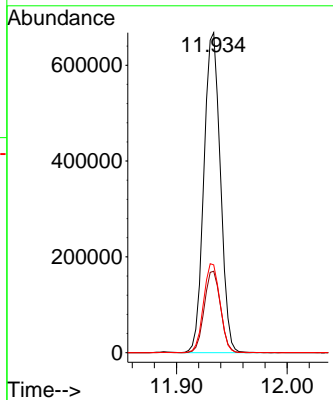
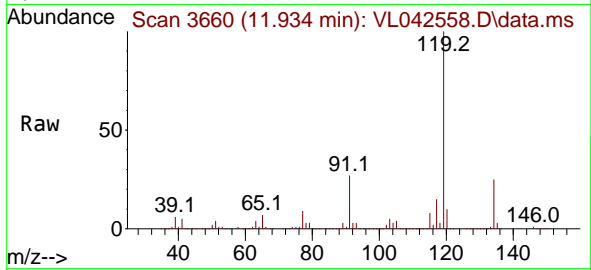




#69
 p-Isopropyltoluene
 Concen: 11.656 ppbv
 RT: 11.934 min Scan# 3660
 Delta R.T. 0.003 min
 Lab File: VL042558.D
 Acq: 21 May 2025 10:12

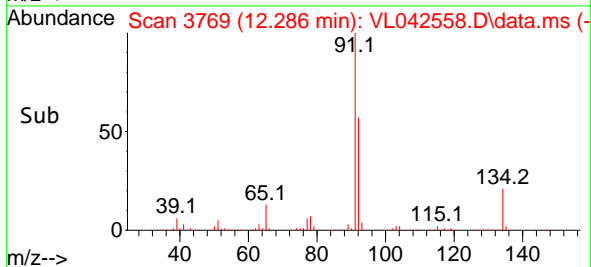
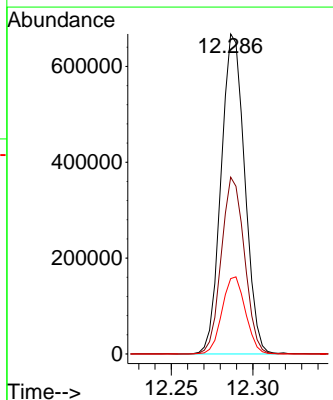
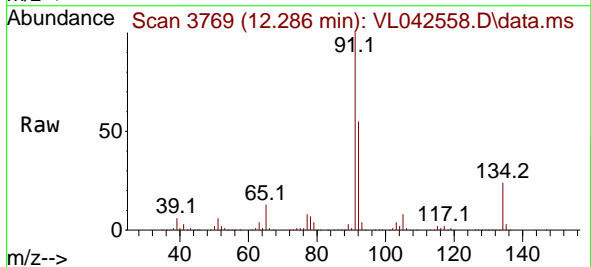
Instrument :
 MSVOA_L
 ClientSampleId :
 VL0521ABS01

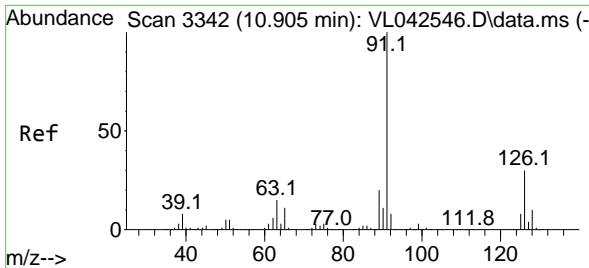
Tgt Ion:119 Resp: 690311
 Ion Ratio Lower Upper
 119 100
 134 25.3 20.1 30.1
 91 28.0 22.3 33.5



#70
 n-Butylbenzene
 Concen: 12.008 ppbv
 RT: 12.286 min Scan# 3769
 Delta R.T. -0.000 min
 Lab File: VL042558.D
 Acq: 21 May 2025 10:12

Tgt Ion: 91 Resp: 671916
 Ion Ratio Lower Upper
 91 100
 92 54.3 43.8 65.6
 134 23.9 19.7 29.5

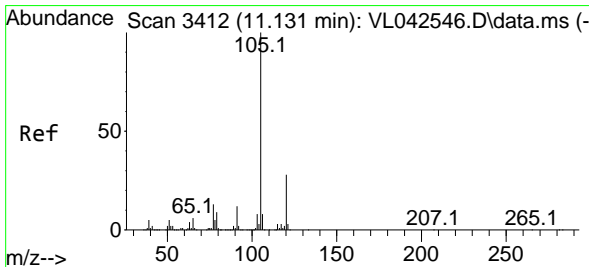
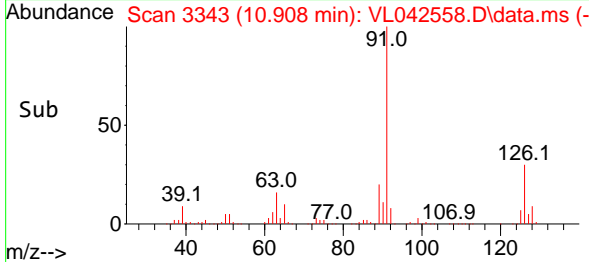
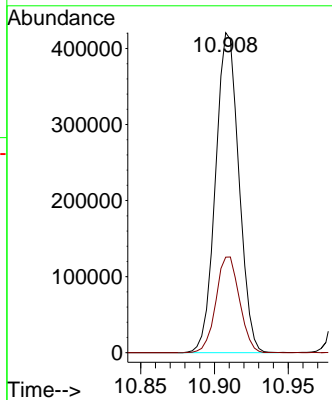
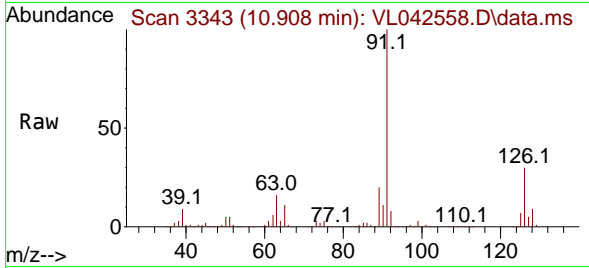




#71
 2-Chlorotoluene
 Concen: 11.393 ppbv
 RT: 10.908 min Scan# 311
 Delta R.T. 0.003 min
 Lab File: VL042558.D
 Acq: 21 May 2025 10:12

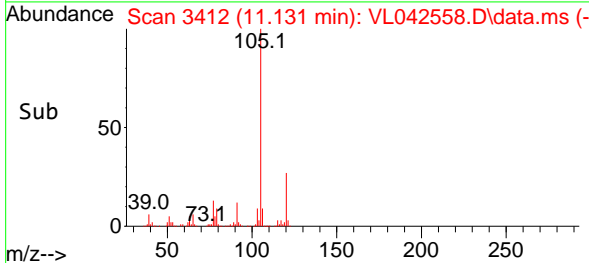
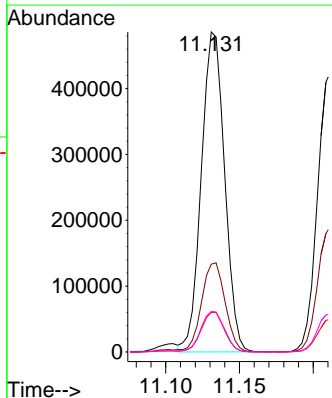
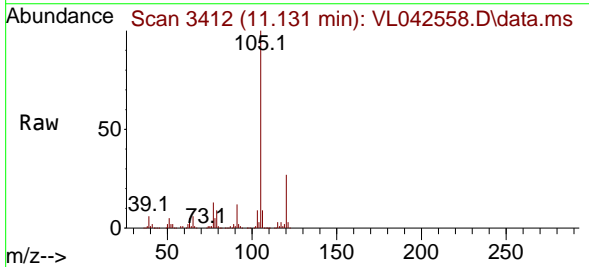
Instrument :
 MSVOA_L
 ClientSampleId :
 VL0521ABS01

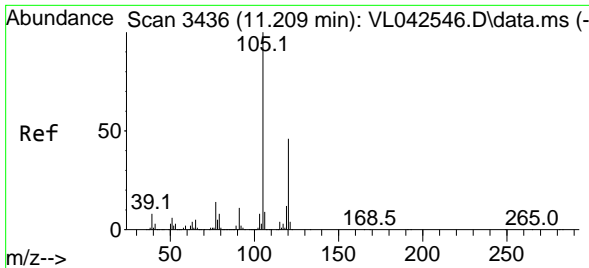
Tgt Ion: 91 Resp: 463109
 Ion Ratio Lower Upper
 91 100
 126 30.2 12.4 49.4



#72
 4-Ethyltoluene
 Concen: 11.704 ppbv
 RT: 11.131 min Scan# 3412
 Delta R.T. -0.000 min
 Lab File: VL042558.D
 Acq: 21 May 2025 10:12

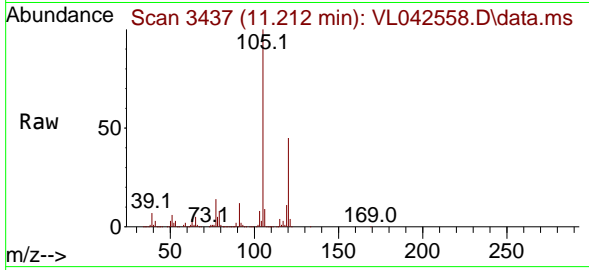
Tgt Ion: 105 Resp: 533569
 Ion Ratio Lower Upper
 105 100
 120 28.9 23.4 35.0
 91 12.9 10.2 15.4
 77 13.1 10.4 15.6



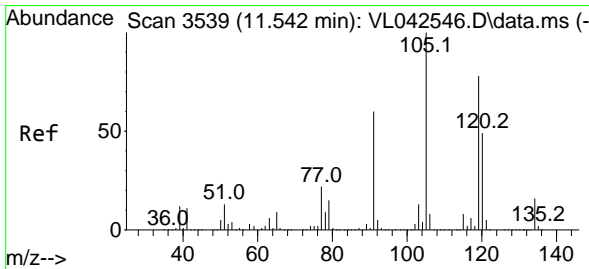
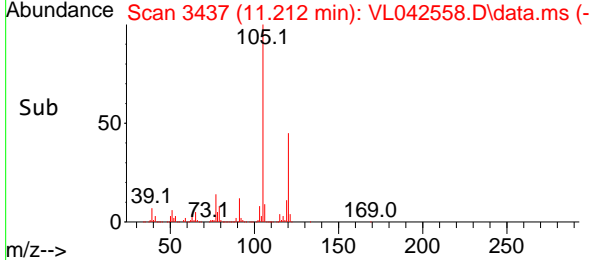
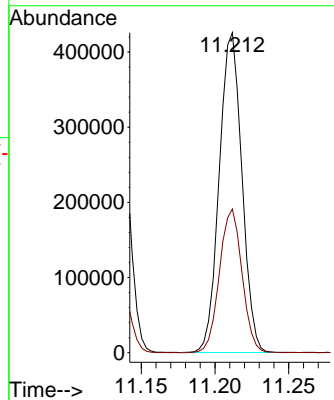


#73
 1,3,5-Trimethylbenzene
 Concen: 11.527 ppbv
 RT: 11.212 min Scan# 3437
 Delta R.T. 0.003 min
 Lab File: VL042558.D
 Acq: 21 May 2025 10:12

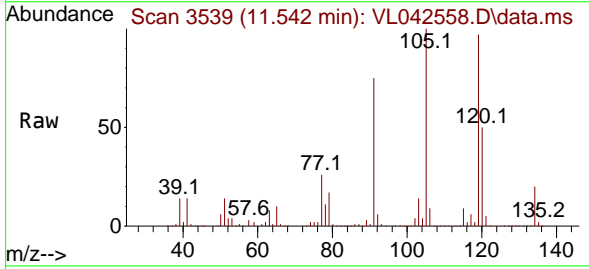
Instrument : MSVOA_L
 ClientSampleId : VL0521ABS01



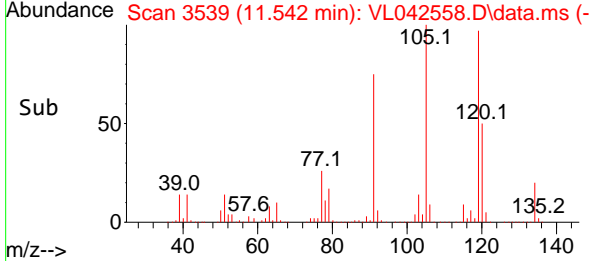
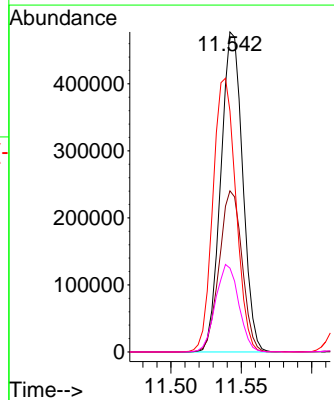
Tgt Ion:105 Resp: 454600
 Ion Ratio Lower Upper
 105 100
 120 44.9 36.5 54.7

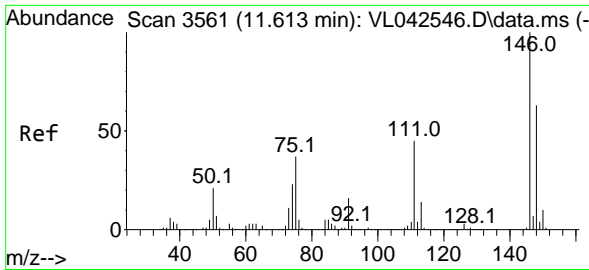


#74
 1,2,4-Trimethylbenzene
 Concen: 10.849 ppbv
 RT: 11.542 min Scan# 3539
 Delta R.T. -0.000 min
 Lab File: VL042558.D
 Acq: 21 May 2025 10:12



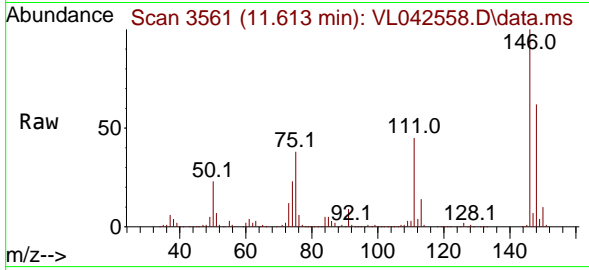
Tgt Ion:105 Resp: 515907
 Ion Ratio Lower Upper
 105 100
 120 50.4 39.4 59.0
 91 75.2 47.8 71.8#
 77 26.2 17.8 26.6



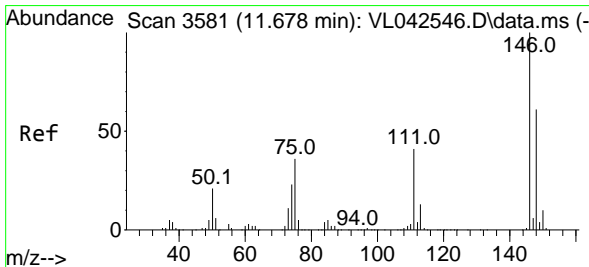
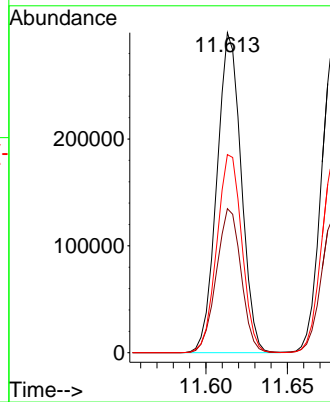
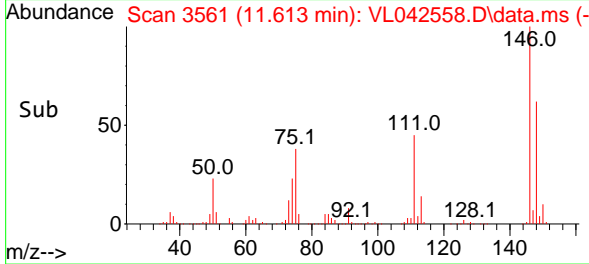


#75
 1,3-Dichlorobenzene
 Concen: 10.595 ppbv
 RT: 11.613 min Scan# 3561
 Delta R.T. -0.000 min
 Lab File: VL042558.D
 Acq: 21 May 2025 10:12

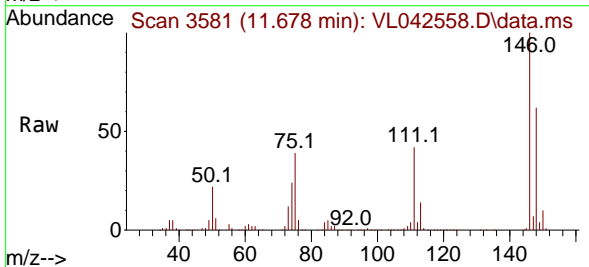
Instrument :
 MSVOA_L
 ClientSampleId :
 VL0521ABS01



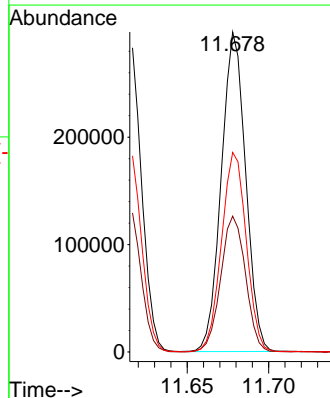
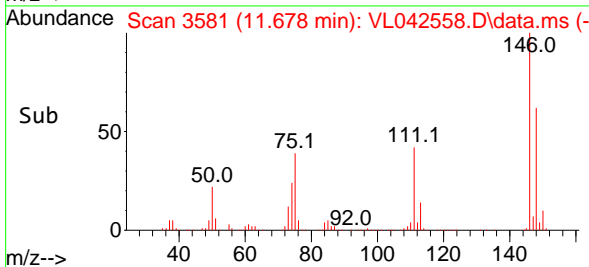
Tgt Ion:146 Resp: 310950
 Ion Ratio Lower Upper
 146 100
 111 45.7 22.8 68.4
 148 63.5 31.6 94.8

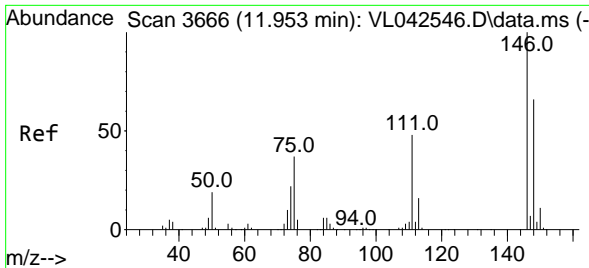


#76
 1,4-Dichlorobenzene
 Concen: 10.840 ppbv
 RT: 11.678 min Scan# 3581
 Delta R.T. -0.000 min
 Lab File: VL042558.D
 Acq: 21 May 2025 10:12



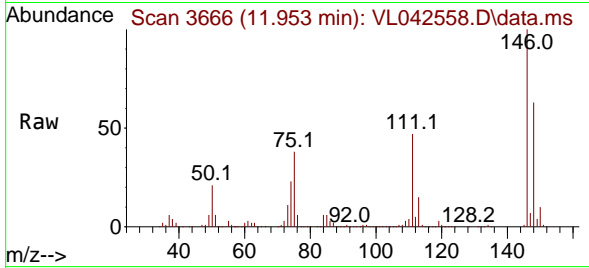
Tgt Ion:146 Resp: 308975
 Ion Ratio Lower Upper
 146 100
 111 43.5 21.8 65.3
 148 63.9 31.4 94.3



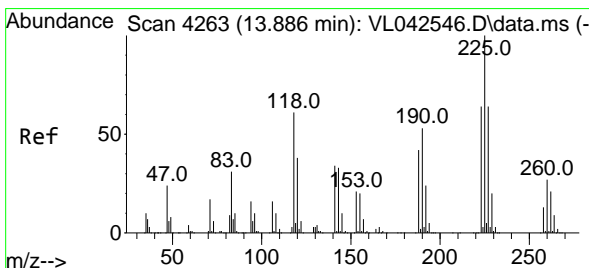
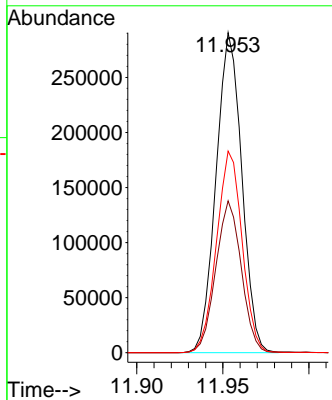
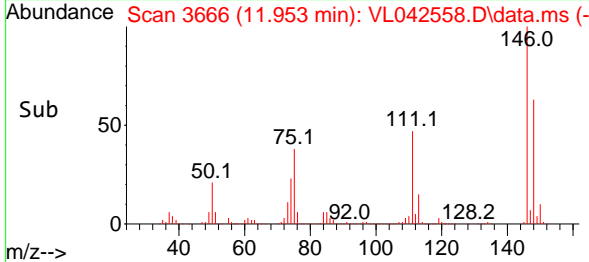


#77
 1,2-Dichlorobenzene
 Concen: 10.457 ppbv
 RT: 11.953 min Scan# 30
 Delta R.T. -0.000 min
 Lab File: VL042558.D
 Acq: 21 May 2025 10:12

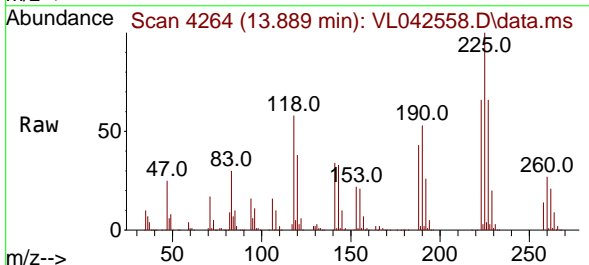
Instrument :
 MSVOA_L
 ClientSampleId :
 VL0521ABS01



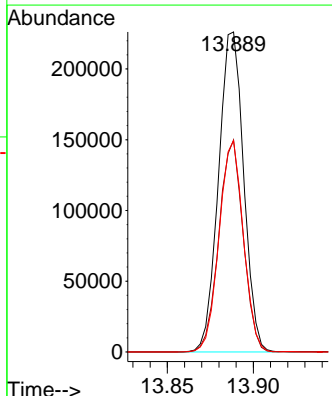
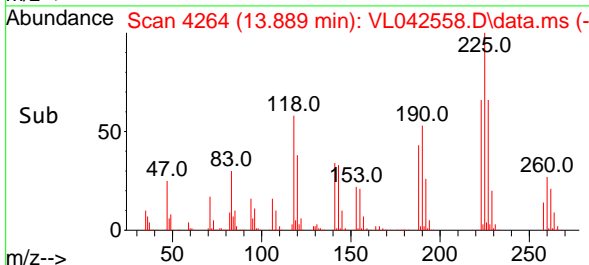
Tgt Ion:146 Resp: 302402
 Ion Ratio Lower Upper
 146 100
 111 47.2 23.7 71.1
 148 62.9 32.3 96.9

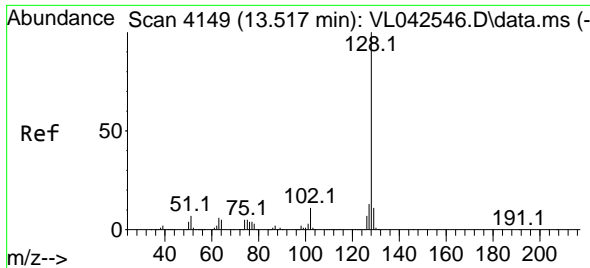


#78
 Hexachloro-1,3-Butadiene
 Concen: 9.630 ppbv
 RT: 13.889 min Scan# 4264
 Delta R.T. 0.003 min
 Lab File: VL042558.D
 Acq: 21 May 2025 10:12



Tgt Ion:225 Resp: 230027
 Ion Ratio Lower Upper
 225 100
 223 63.9 51.0 76.6
 227 63.7 50.2 75.4



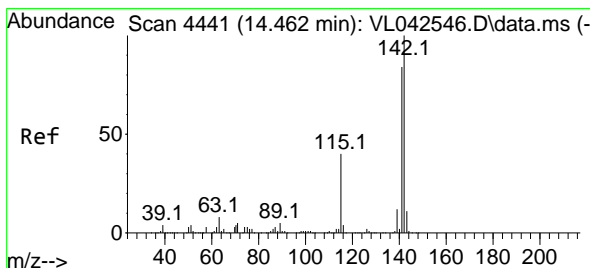
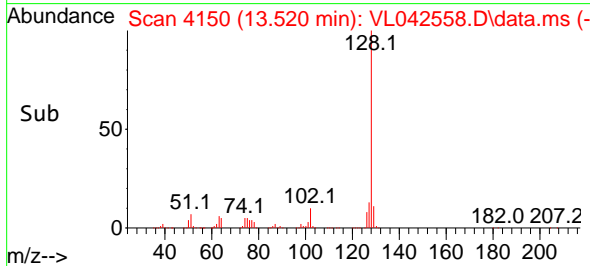
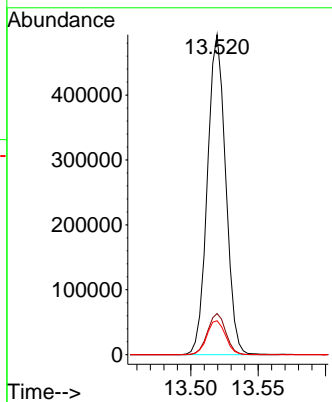
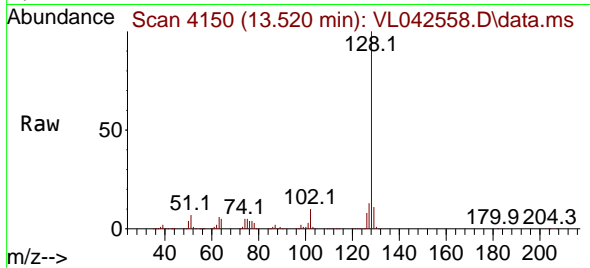


#79
 Naphthalene
 Concen: 13.044 ppbv
 RT: 13.520 min Scan# 4149
 Delta R.T. 0.003 min
 Lab File: VL042558.D
 Acq: 21 May 2025 10:12

Instrument : MSVOA_L
 ClientSampleId : VL0521ABS01

Tgt Ion:128 Resp: 464800

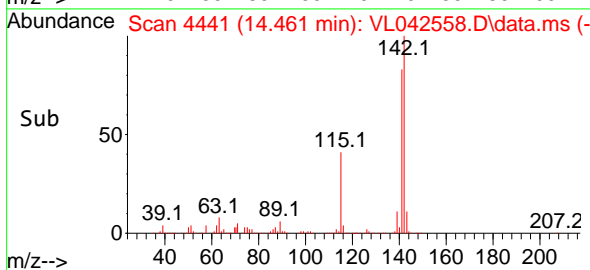
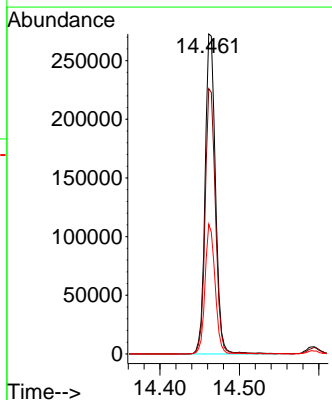
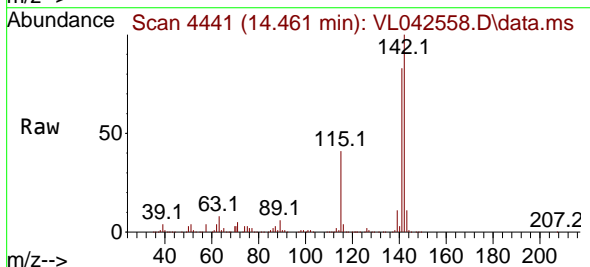
Ion	Ratio	Lower	Upper
128	100		
127	12.9	10.5	15.7
129	10.6	9.0	13.4

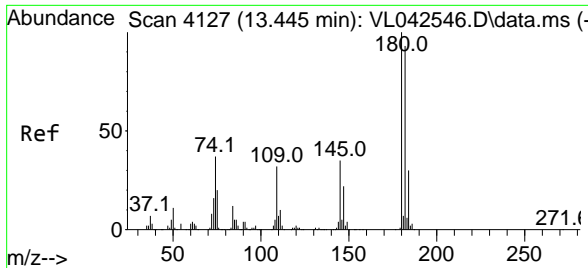


#80
 Naphthalene,2-methyl-
 Concen: 13.511 ppbv
 RT: 14.461 min Scan# 4441
 Delta R.T. -0.000 min
 Lab File: VL042558.D
 Acq: 21 May 2025 10:12

Tgt Ion:142 Resp: 248065

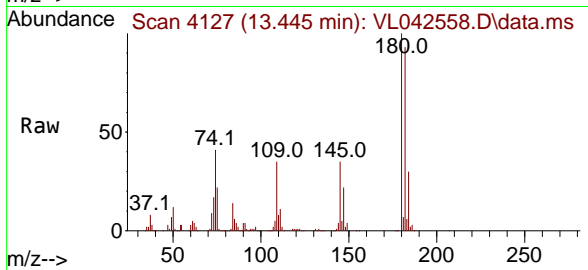
Ion	Ratio	Lower	Upper
142	100		
141	82.9	67.4	101.0
115	39.5	31.5	47.3





#81
 1,2,4-Trichlorobenzene
 Concen: 11.700 ppbv
 RT: 13.445 min Scan# 41
 Delta R.T. -0.000 min
 Lab File: VL042558.D
 Acq: 21 May 2025 10:12

Instrument :
 MSVOA_L
 ClientSampleId :
 VL0521ABS01



Tgt Ion:180 Resp: 250439

Ion	Ratio	Lower	Upper
180	100		
182	95.1	75.6	113.4
184	30.8	23.7	35.5

