

Data Path : Z:\VOASRV\HPCHEM1\MSVOA L\DATA\VL060821\
 Data File : VL037136.D
 Acq On : 8 Jun 2021 17:40
 Operator : SY/AP
 Sample : M2614-04
 Misc : 400mL/MSVOA L
 ALS Vial : 1 Sample Multiplier: 1

Instrument :
 MSVOA_L
 ClientSampled :

Quant Time: Jun 09 01:20:33 2021
 Quant Method : Z:\VOASRV\HPCHEM1\MSVOA L\METHODS\VL051821AIR.M
 Quant Title : AIR ANALYSIS BY METHOD TO-15 Instrument: MSVOA_LTue May 18 12:00:15 2021
 QLast Update : Tue May 18 12:00:15 2021
 Response via : Initial Calibration

Internal Standards	R.T.	QIon	Response	Conc	Units	Dev(Min)
1) Bromochloromethane	5.66	49	1368124	10.00	ppbv	0.02
33) 1,4-Difluorobenzene	7.17	114	4006233	10.00	ppbv	0.02
55) Chlorobenzene-d5	12.08	117	3662197	10.00	ppbv	0.02

System Monitoring Compounds

68) 1-Bromo-4-Fluorobenzene	14.41	95	2763504	10.05	ppbv	0.02
Spiked Amount	10.000	Range	65 - 135	Recovery	=	100.50%

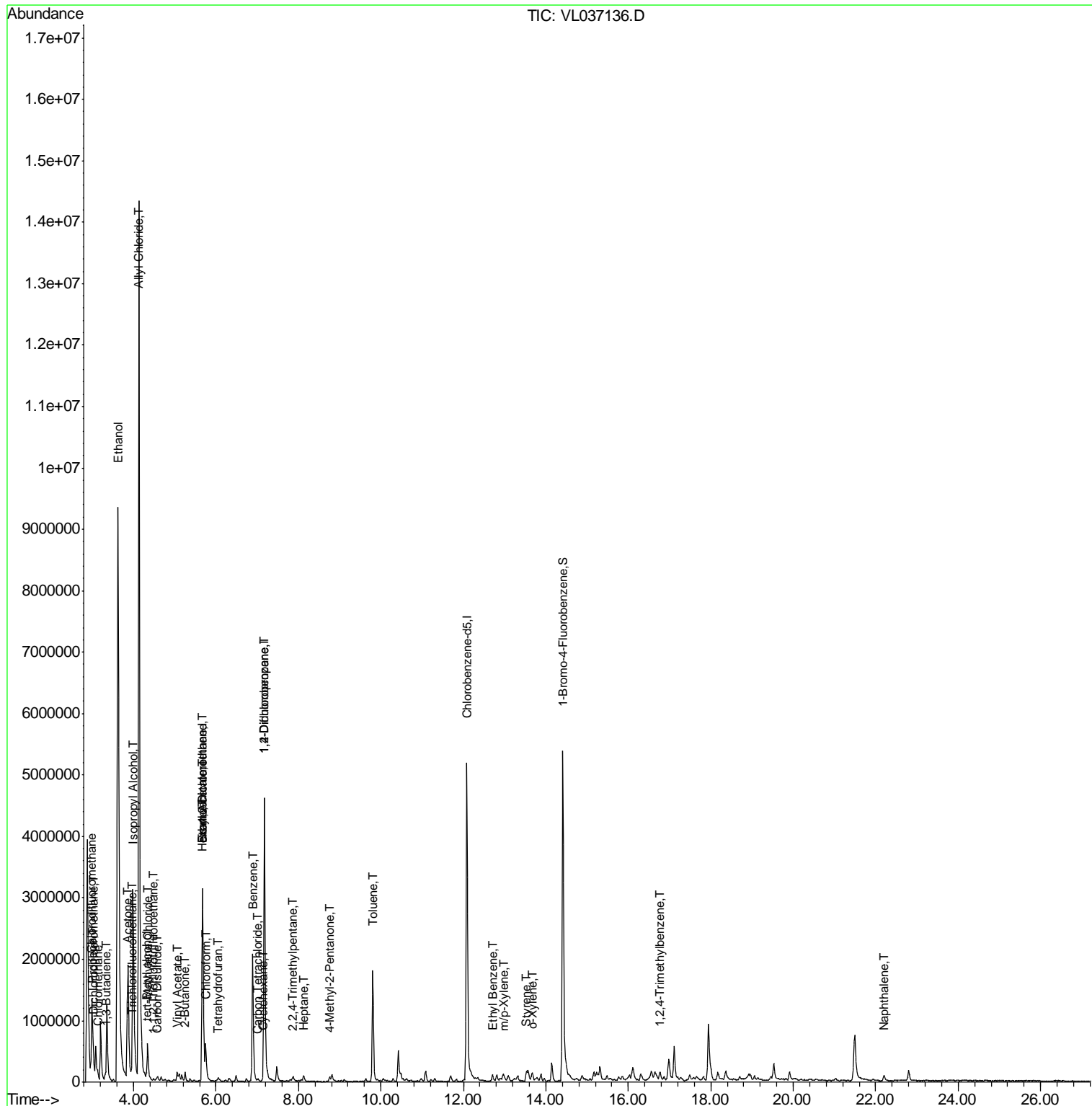
Target Compounds	R.T.	QIon	Response	Conc	Units	Ovalue
2) Dichlorodifluoromethane	3.04	85	54750	0.236	ppbv	89
3) Chlorodifluoromethane	2.99	51	1748273	6.975	ppbv	99
4) Chloromethane	3.14	50	49619	0.582	ppbv	95
9) Propene	3.01	41	223922	2.495	ppbv	89
10) Heptane	8.12	43	15059	0.067	ppbv #	1
11) Trichlorofluoromethane	3.95	101	52661	0.245	ppbv	86
12) 1,1,2-Trichlorotrifluoroet	4.48	101	5241	0.034	ppbv #	14
13) Ethanol	3.62	45	15973485	1333.907	ppbv	99
15) Acetone	3.85	43	2266639	16.175	ppbv #	87
16) 1,3-Butadiene	3.32	39	46303	0.532	ppbv #	56
17) tert-Butyl alcohol	4.32	59	40168	0.313	ppbv #	72
19) Isopropyl Alcohol	3.99	45	4563536	60.582	ppbv #	33
20) Methylene Chloride	4.34	84	220432	2.935	ppbv	98
21) Allyl Chloride	4.13	41	5885237	55.671	ppbv #	52
23) Vinyl Acetate	5.07	43	101203	0.455	ppbv #	66
25) Ethyl Acetate	5.68	43	792269	2.353	ppbv	97
26) Hexane	5.68	57	367638	2.137	ppbv	93
27) Carbon Disulfide	4.55	76	17010	0.098	ppbv #	65
29) Chloroform	5.75	83	402331	1.655	ppbv	96
30) Cyclohexane	7.13	84	5114	0.035	ppbv #	1
31) cis-1,2-Dichloroethene	5.67	61	65461	0.424	ppbv #	24
34) 2-Butanone	5.25	43	180621	1.238	ppbv	96
35) Carbon Tetrachloride	7.02	117	8588	0.032	ppbv	98
36) Benzene	6.89	78	1923625	5.574	ppbv	99
39) 1,2-Dichloropropane	7.17	63	957558	7.203	ppbv #	26
41) Tetrahydrofuran	6.04	42	6349	0.076	ppbv #	36
44) 2,2,4-Trimethylpentane	7.87	57	39000	0.066	ppbv #	1
50) 4-Methyl-2-Pentanone	8.74	43	25626	0.106	ppbv #	31
53) Toluene	9.80	91	1524176	3.712	ppbv	98
58) Ethyl Benzene	12.71	91	56711	0.110	ppbv	92
59) m/p-Xylene	13.00	91	14113	0.033	ppbv #	30
60) o-Xylene	13.69	91	34774	0.085	ppbv #	30
61) Styrene	13.53	104	38335	0.167	ppbv #	28
74) 1,2,4-Trimethylbenzene	16.76	105	34412	0.073	ppbv #	71
79) Naphthalene	22.20	128	108545	0.295	ppbv #	95

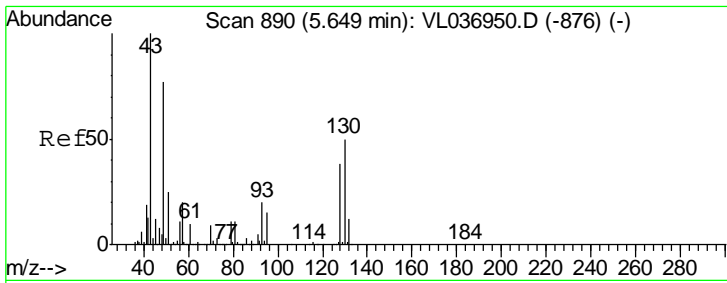
(#) = qualifier out of range (m) = manual integration (+) = signals summed

Data Path : Z:\VOASRV\HPCHEM1\MSVOA L\DATA\VL060821\
 Data File : VL037136.D
 Acq On : 8 Jun 2021 17:40
 Operator : SY/AP
 Sample : M2614-04
 Misc : 400mL/MSVOA L
 ALS Vial : 1 Sample Multiplier: 1

Instrument :
 MSVOA_L
 ClientSampled :

Quant Time: Jun 09 01:20:33 2021
 Quant Method : Z:\VOASRV\HPCHEM1\MSVOA L\METHODS\VL051821AIR.M
 Quant Title : AIR ANALYSIS BY METHOD TO-15 Instrument: MSVOA_L Tue May 18 12:00:15 2021
 QLast Update : Tue May 18 12:00:15 2021
 Response via : Initial Calibration



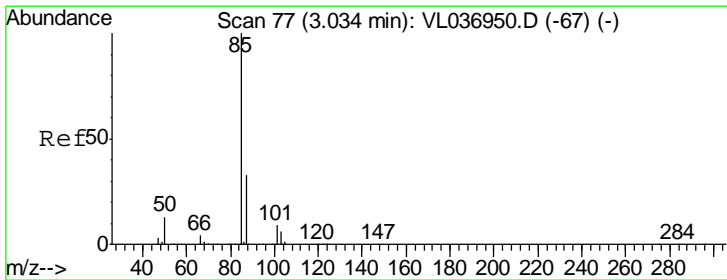
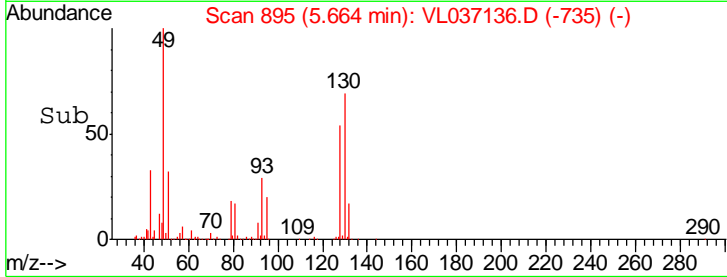
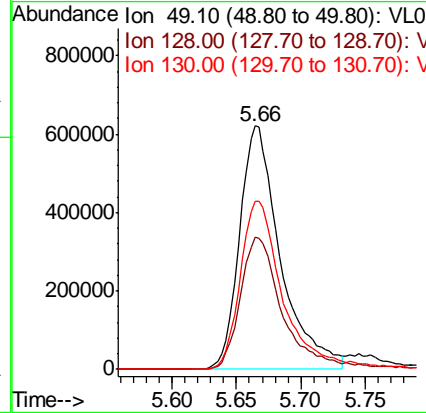
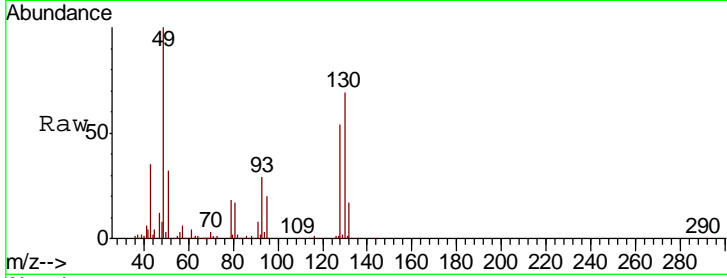


#1
 Bromochloromethane
 Concen: 10.000 ppbv
 RT: 5.66 min Scan# 895
 Delta R.T. 0.02 min
 Lab File: VL037136.D
 Acq: 8 Jun 2021 17:40

Instrument :
 MSVOA_L
 ClientSampled :

Tgt Ion: 49 Resp: 1368124

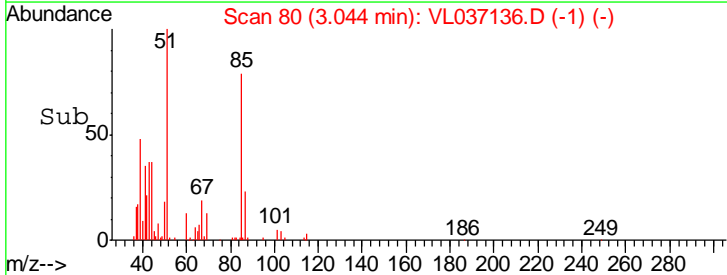
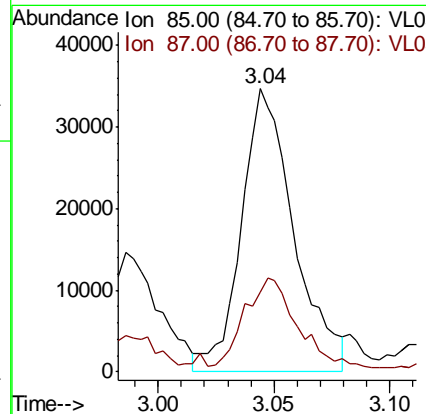
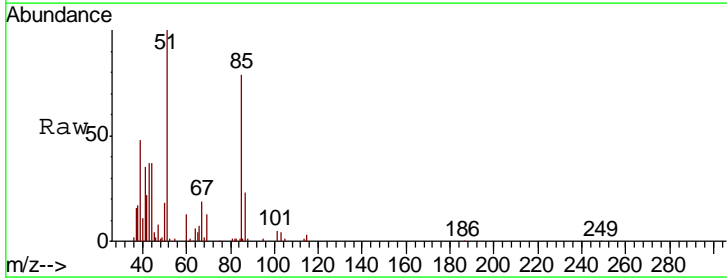
Ion	Ratio	Lower	Upper
49	100		
128	57.3	26.9	80.7
130	73.9	33.8	101.4

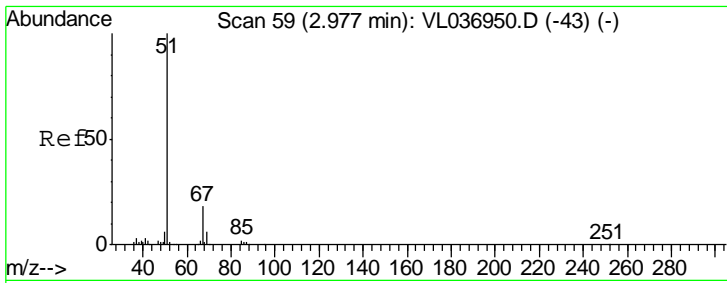


#2
 Dichlorodifluoromethane
 Concen: 0.236 ppbv
 RT: 3.04 min Scan# 80
 Delta R.T. 0.01 min
 Lab File: VL037136.D
 Acq: 8 Jun 2021 17:40

Tgt Ion: 85 Resp: 54750

Ion	Ratio	Lower	Upper
85	100		
87	27.1	26.6	39.8

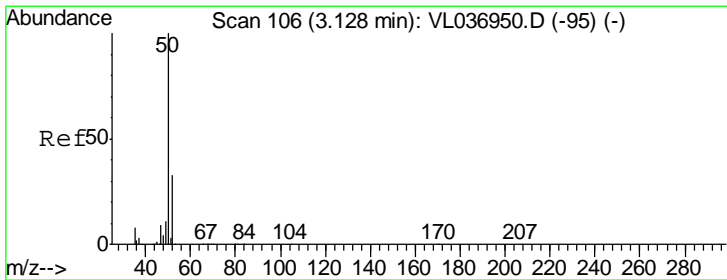
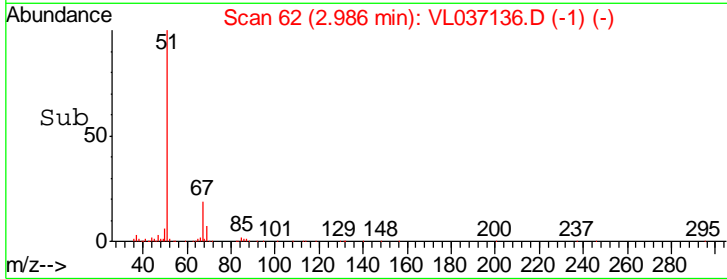
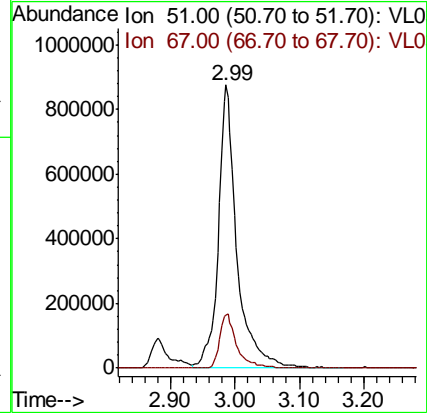
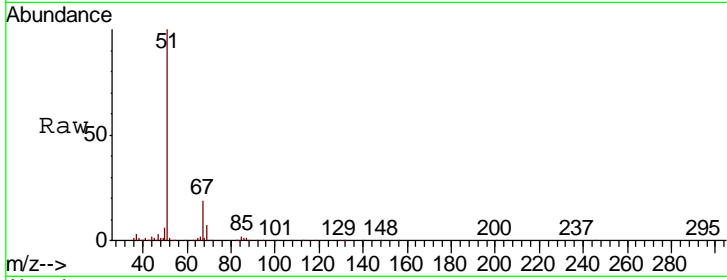




#3
 Chlorodifluoromethane
 Concen: 6.975 ppbv
 RT: 2.99 min Scan# 62
 Delta R.T. 0.01 min
 Lab File: VL037136.D
 Acq: 8 Jun 2021 17:40

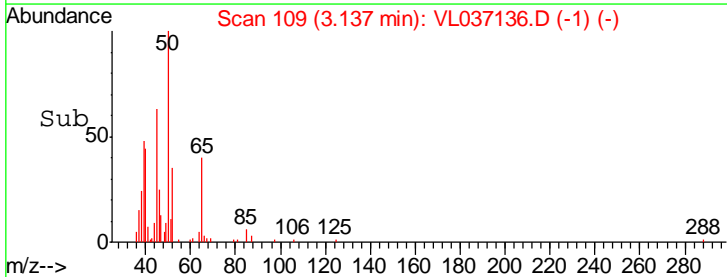
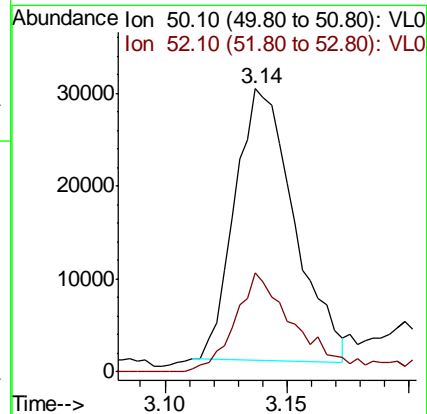
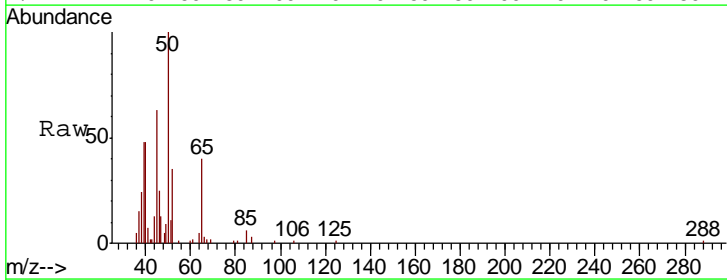
Instrument :
 MSVOA_L
 ClientSampled :

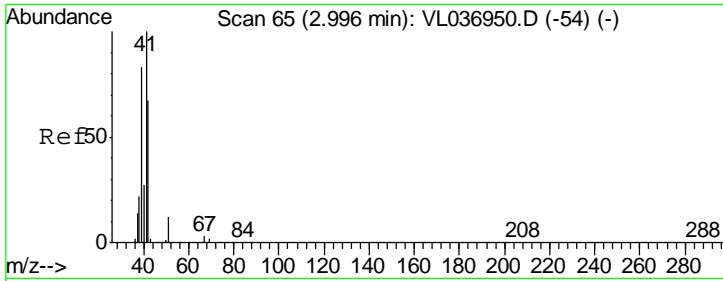
Tgt Ion	Resp	Lower	Upper
51	100		
67	17.9	14.6	21.8



#4
 Chloromethane
 Concen: 0.582 ppbv
 RT: 3.14 min Scan# 109
 Delta R.T. 0.01 min
 Lab File: VL037136.D
 Acq: 8 Jun 2021 17:40

Tgt Ion	Resp	Lower	Upper
50	100		
52	35.6	26.1	39.1

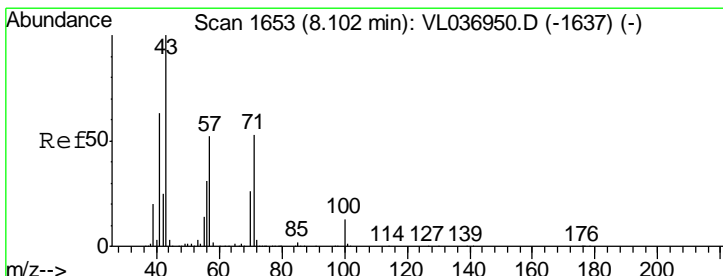
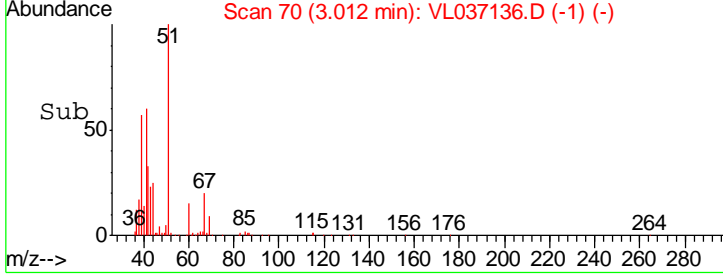
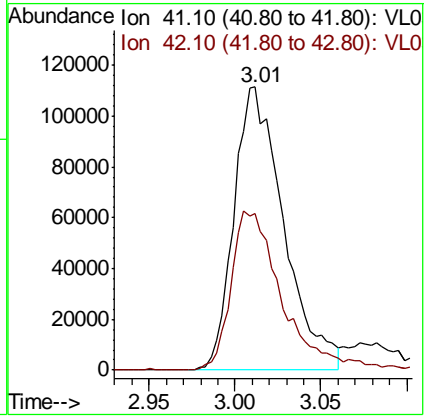
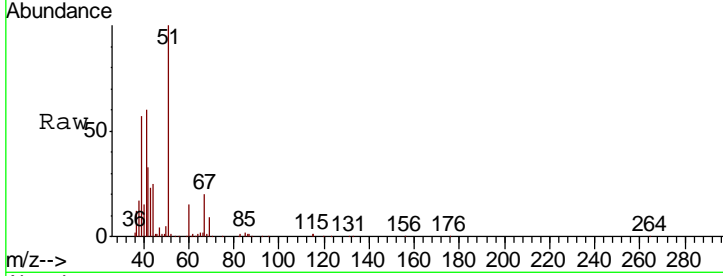




#9
 Propene
 Concen: 2.495 ppbv
 RT: 3.01 min Scan# 70
 Delta R.T. 0.02 min
 Lab File: VL037136.D
 Acq: 8 Jun 2021 17:40

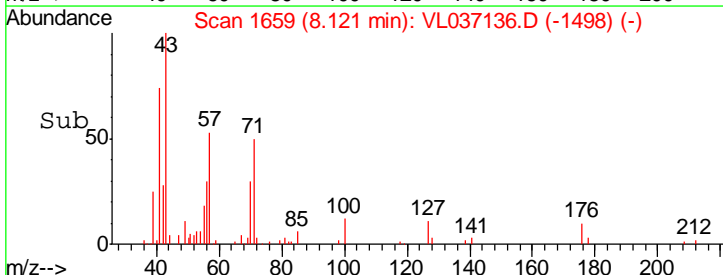
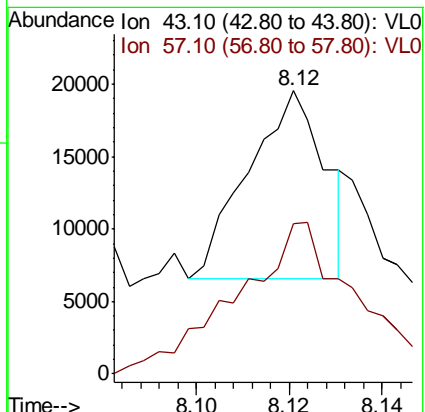
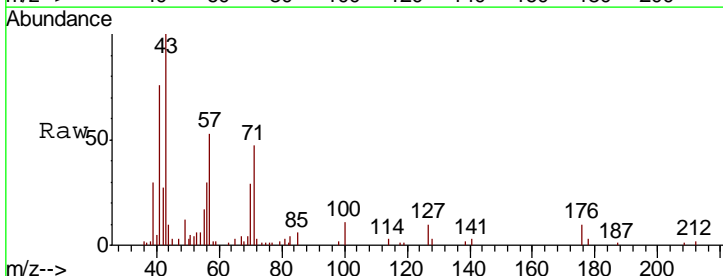
Instrument :
 MSVOA_L
 ClientSampled :

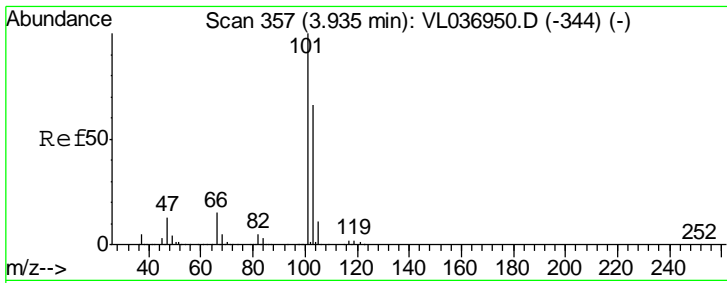
Tgt Ion	Resp	Lower	Upper
41	100		
42	58.7	53.9	80.9



#10
 Heptane
 Concen: 0.067 ppbv
 RT: 8.12 min Scan# 1659
 Delta R.T. 0.02 min
 Lab File: VL037136.D
 Acq: 8 Jun 2021 17:40

Tgt Ion	Resp	Lower	Upper
43	100		
57	140.7	41.0	61.6#

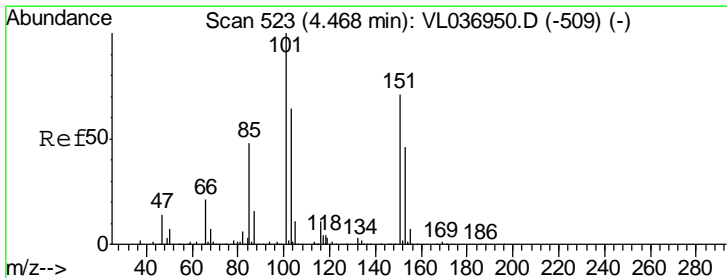
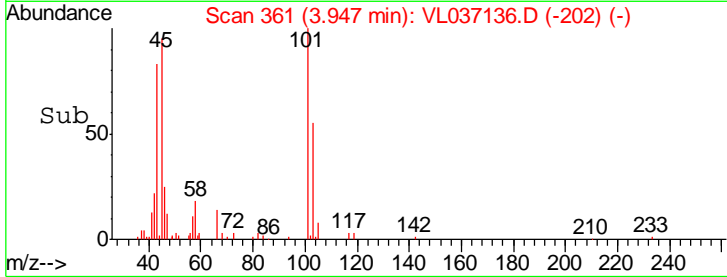
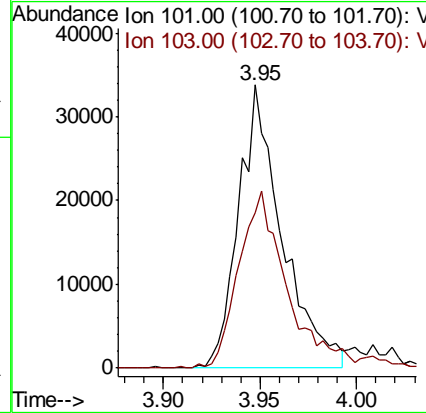
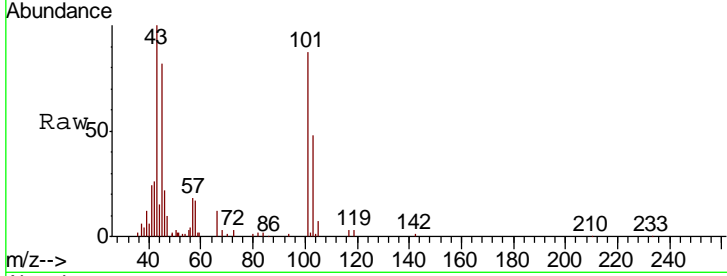




#11
 Trichlorofluoromethane
 Concen: 0.245 ppbv
 RT: 3.95 min Scan# 361
 Delta R.T. 0.01 min
 Lab File: VL037136.D
 Acq: 8 Jun 2021 17:40

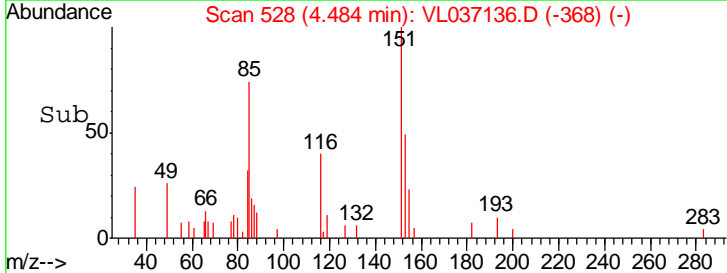
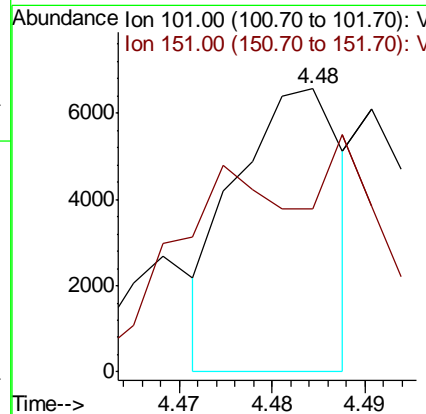
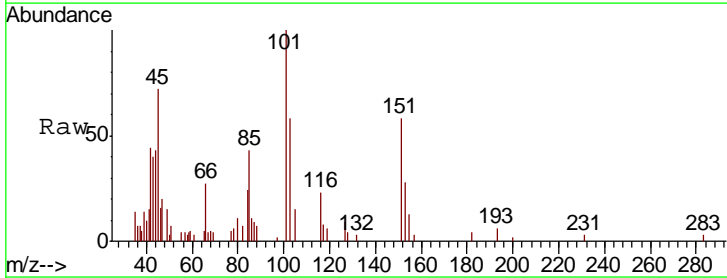
Instrument :
 MSVOA_L
 ClientSampled :

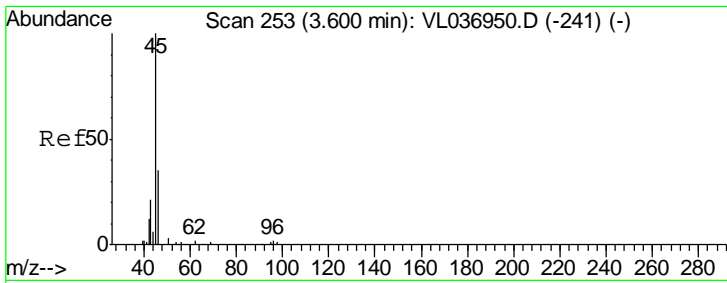
Tgt Ion:101 Resp: 52661
 Ion Ratio Lower Upper
 101 100
 103 54.9 52.6 79.0



#12
 1,1,2-Trichlorotrifluoroethane
 Concen: 0.034 ppbv
 RT: 4.48 min Scan# 528
 Delta R.T. 0.02 min
 Lab File: VL037136.D
 Acq: 8 Jun 2021 17:40

Tgt Ion:101 Resp: 5241
 Ion Ratio Lower Upper
 101 100
 151 0.0 57.7 86.5#

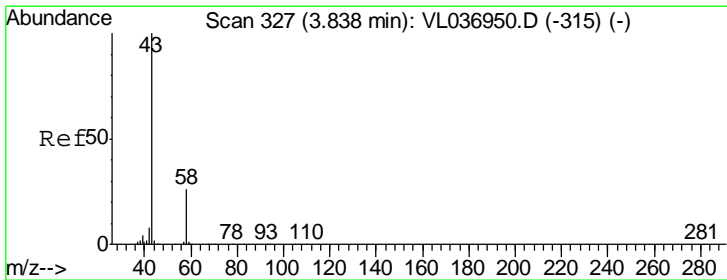
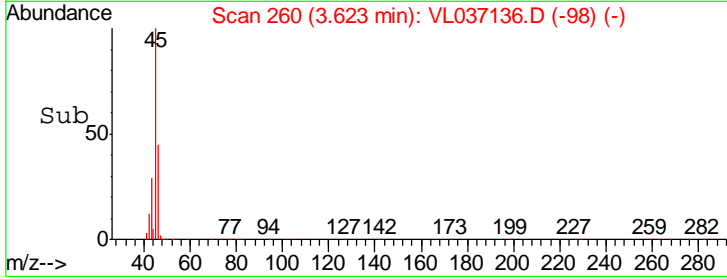
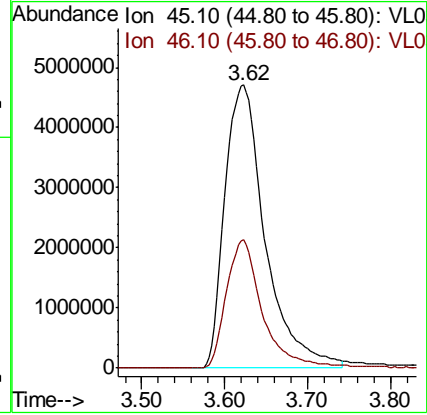
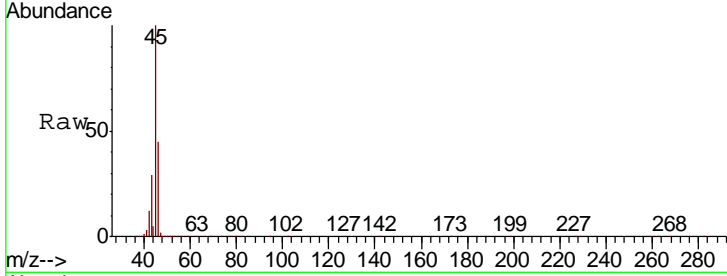




#13
 Ethanol
 Concen: 1333.907 ppbv
 RT: 3.62 min Scan# 260
 Delta R.T. 0.02 min
 Lab File: VL037136.D
 Acq: 8 Jun 2021 17:40

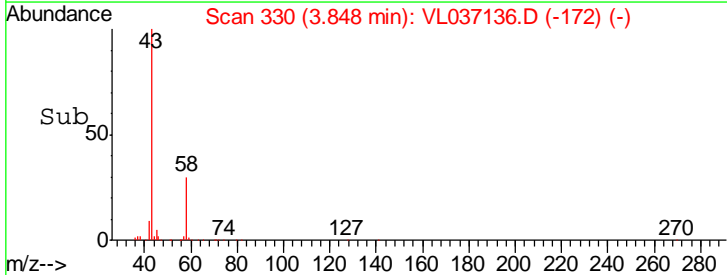
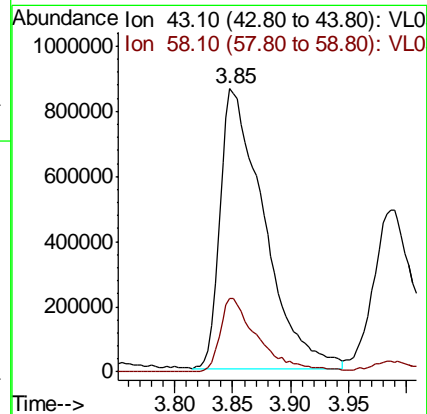
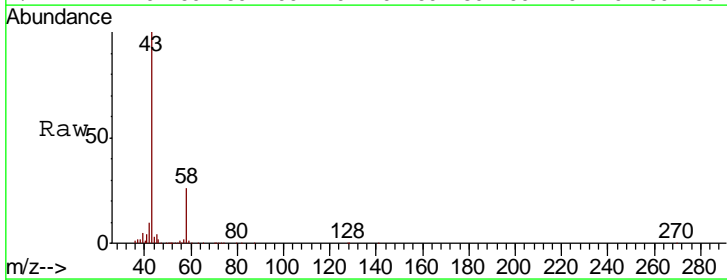
Instrument :
 MSVOA_L
 ClientSampled :

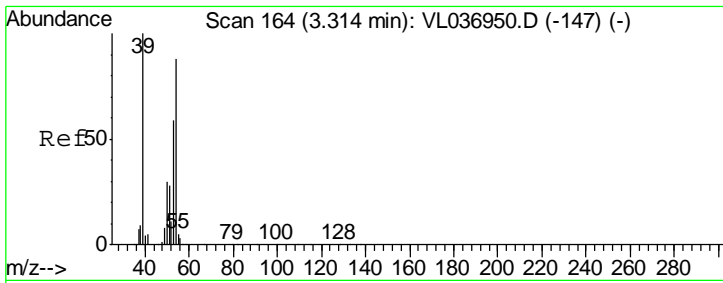
Tgt Ion: 45 Resp:15973485
 Ion Ratio Lower Upper
 45 100
 46 41.5 16.3 65.3



#15
 Acetone
 Concen: 16.175 ppbv
 RT: 3.85 min Scan# 330
 Delta R.T. 0.01 min
 Lab File: VL037136.D
 Acq: 8 Jun 2021 17:40

Tgt Ion: 43 Resp: 2266639
 Ion Ratio Lower Upper
 43 100
 58 22.9 24.0 36.0#

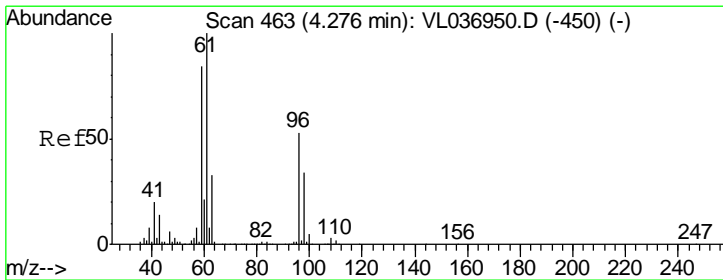
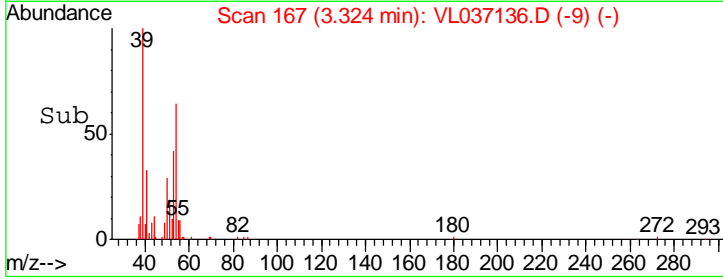
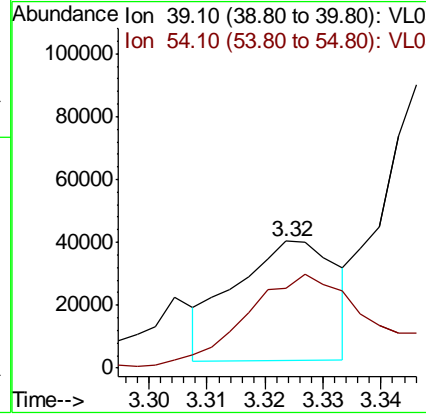
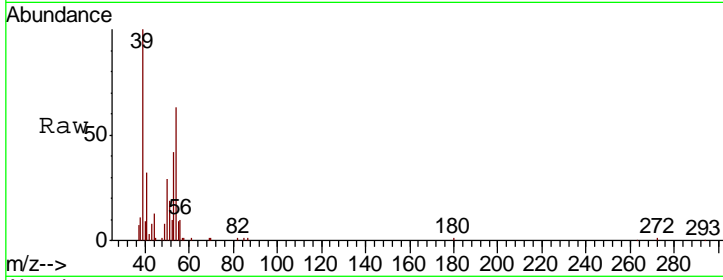




#16
 1,3-Butadiene
 Concen: 0.532 ppbv
 RT: 3.32 min Scan# 167
 Delta R.T. 0.01 min
 Lab File: VL037136.D
 Acq: 8 Jun 2021 17:40

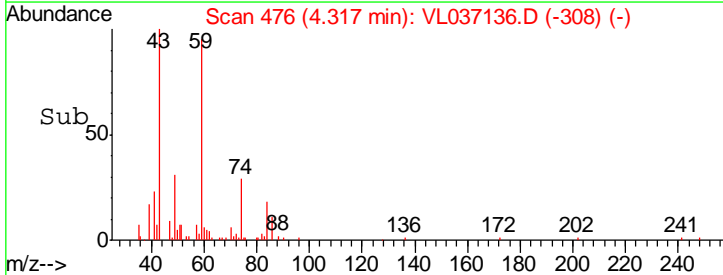
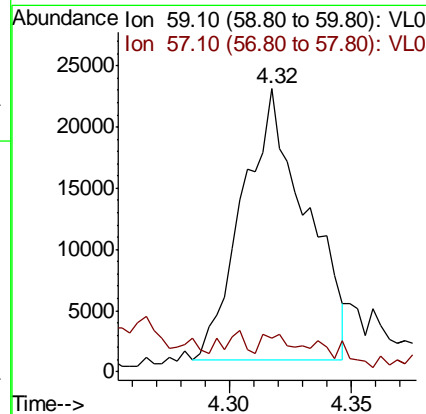
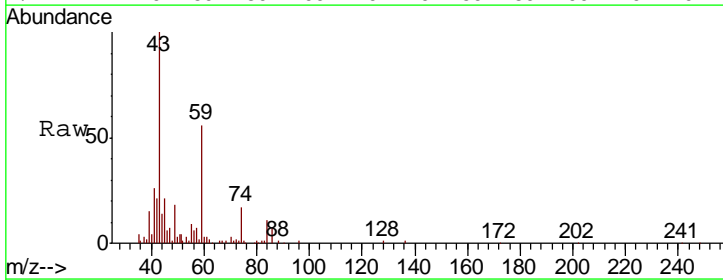
Instrument :
 MSVOA_L
 ClientSampled :

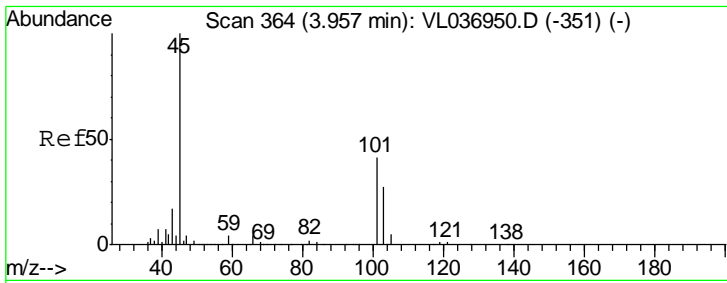
Tgt Ion	Resp	Lower	Upper
39	100		
54	117.3	63.2	94.8#



#17
 tert-Butyl alcohol
 Concen: 0.313 ppbv
 RT: 4.32 min Scan# 476
 Delta R.T. 0.04 min
 Lab File: VL037136.D
 Acq: 8 Jun 2021 17:40

Tgt Ion	Resp	Lower	Upper
59	100		
57	0.0	8.3	12.5#

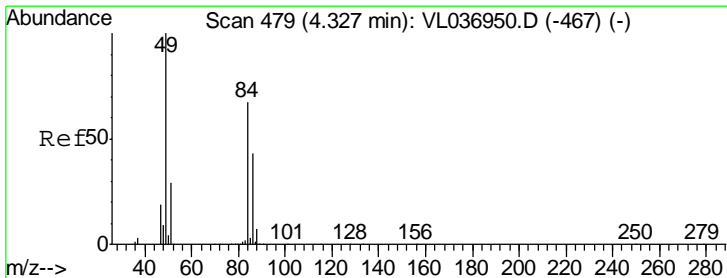
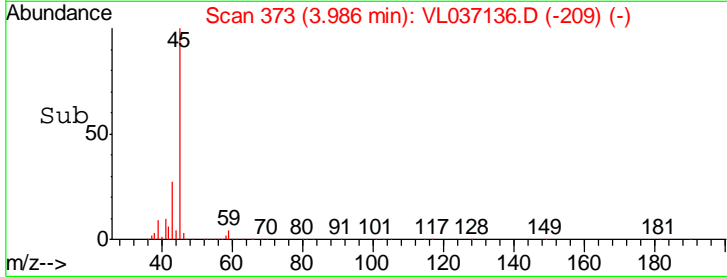
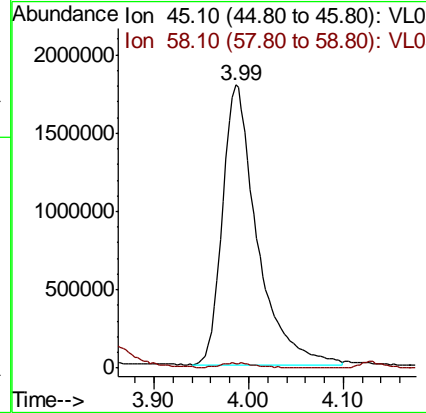
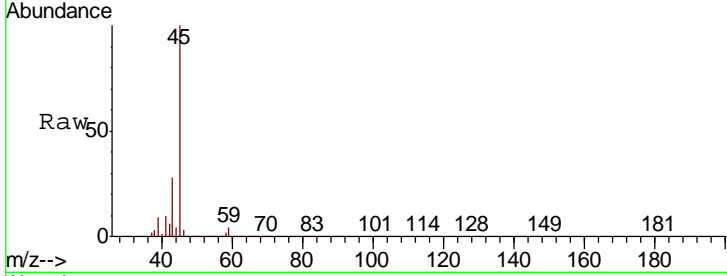




#19
 Isopropyl Alcohol
 Concen: 60.582 ppbv
 RT: 3.99 min Scan# 373
 Delta R.T. 0.03 min
 Lab File: VL037136.D
 Acq: 8 Jun 2021 17:40

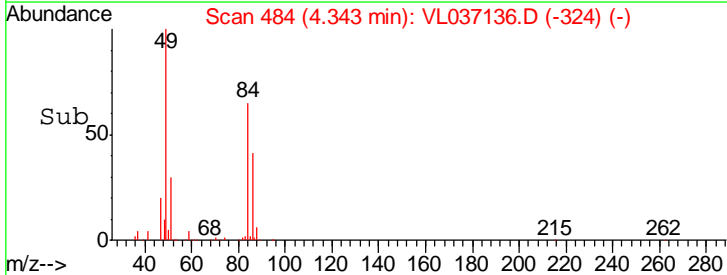
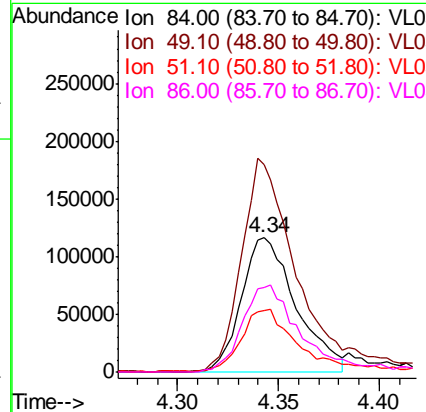
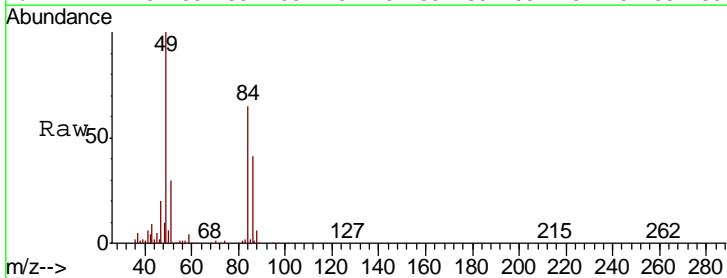
Instrument :
 MSVOA_L
 ClientSampleId :

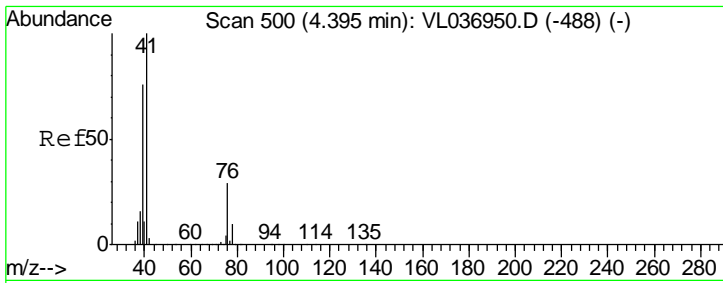
Tgt Ion: 45 Resp: 4563536
 Ion Ratio Lower Upper
 45 100
 58 2.1 37.2 55.8#



#20
 Methylene Chloride
 Concen: 2.935 ppbv
 RT: 4.34 min Scan# 484
 Delta R.T. 0.02 min
 Lab File: VL037136.D
 Acq: 8 Jun 2021 17:40

Tgt Ion: 84 Resp: 220432
 Ion Ratio Lower Upper
 84 100
 49 153.6 119.8 179.6
 51 45.2 35.1 52.7
 86 62.9 50.9 76.3

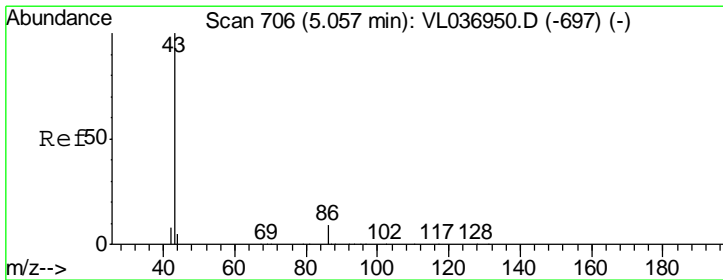
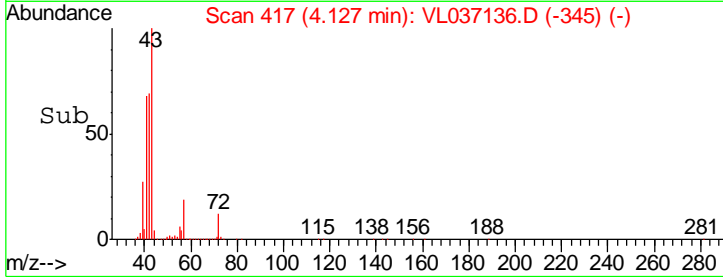
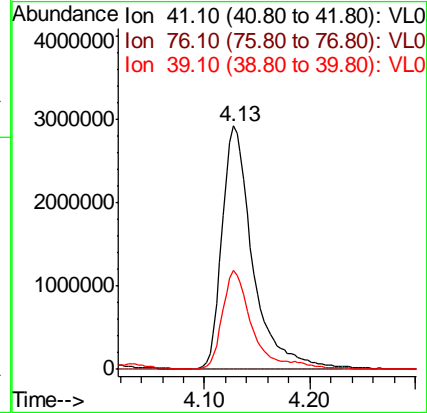
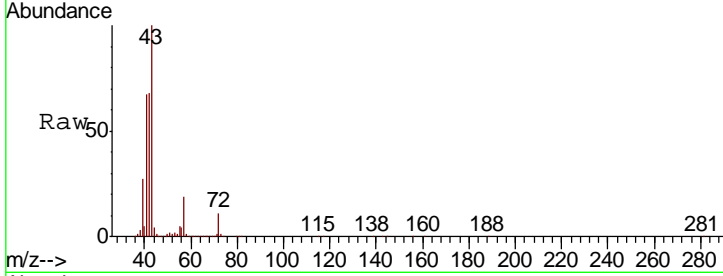




#21
 Allyl Chloride
 Concen: 55.671 ppbv
 RT: 4.13 min Scan# 417
 Delta R.T. -0.27 min
 Lab File: VL037136.D
 Acq: 8 Jun 2021 17:40

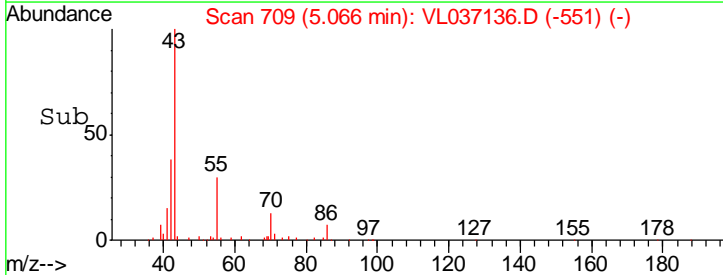
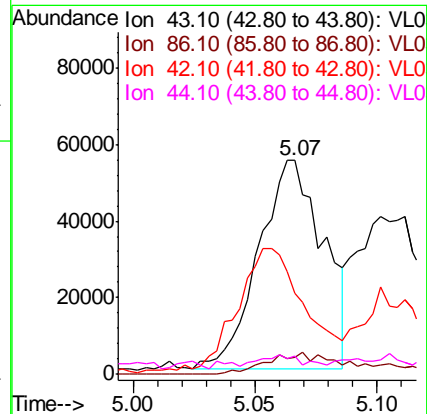
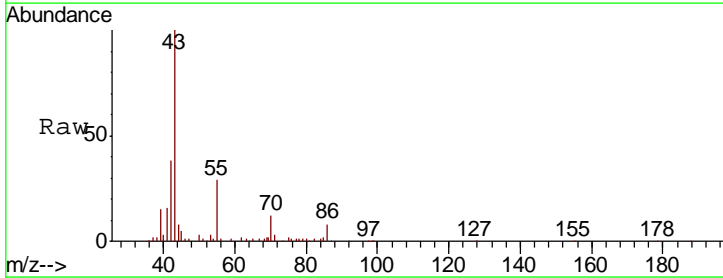
Instrument :
 MSVOA_L
 ClientSampled :

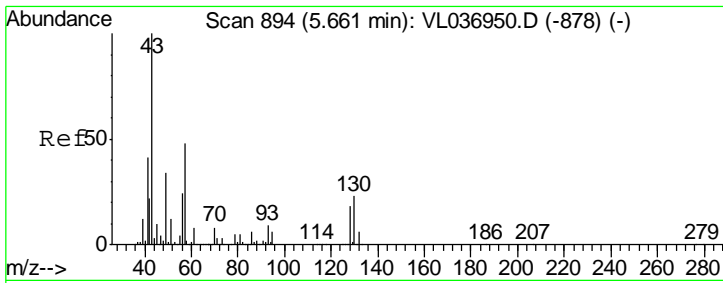
Tgt Ion	Resp	Lower	Upper
41	100		
76	0.0	24.9	37.3#
39	39.8	63.7	95.5#



#23
 Vinyl Acetate
 Concen: 0.455 ppbv
 RT: 5.07 min Scan# 709
 Delta R.T. 0.01 min
 Lab File: VL037136.D
 Acq: 8 Jun 2021 17:40

Tgt Ion	Resp	Lower	Upper
43	100		
86	8.0	5.8	8.8
42	35.8	7.4	11.2#
44	2.6	3.3	4.9#



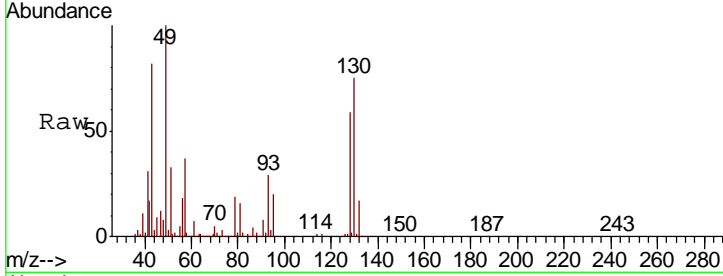


#25
Ethyl Acetate
Concen: 2.353 ppbv
RT: 5.68 min Scan# 899
Delta R.T. 0.02 min
Lab File: VL037136.D
Acq: 8 Jun 2021 17:40

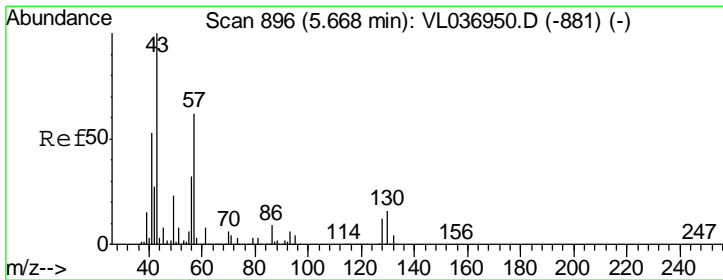
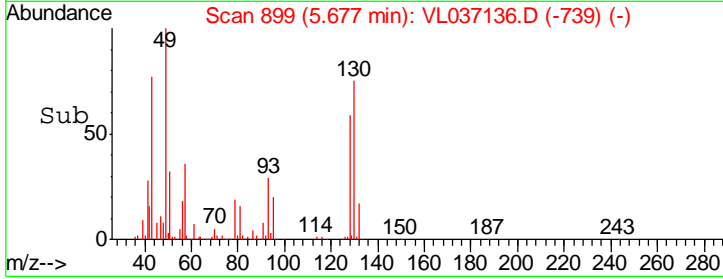
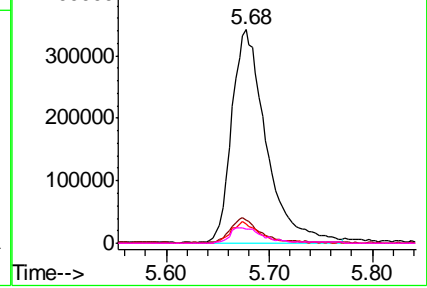
Instrument :
MSVOA_L
ClientSampled :

Tgt Ion: 43 Resp: 792269

Ion	Ratio	Lower	Upper
43	100		
45	11.0	7.8	11.8
61	8.7	7.8	11.8
70	7.8	5.6	8.4



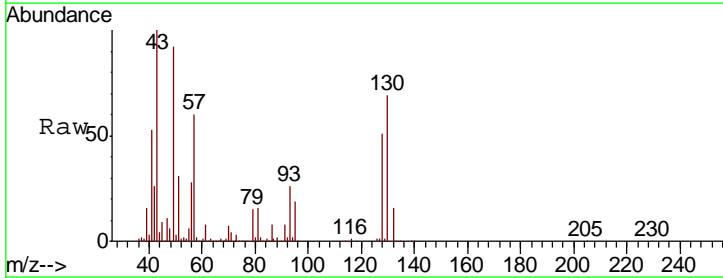
Abundance Ion 43.10 (42.80 to 43.80): VL0
Ion 45.10 (44.80 to 45.80): VL0
Ion 61.10 (60.80 to 61.80): VL0
Ion 70.10 (69.80 to 70.80): VL0



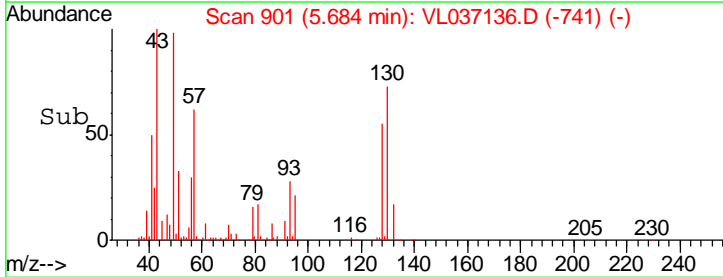
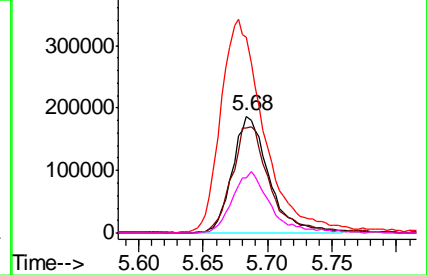
#26
Hexane
Concen: 2.137 ppbv
RT: 5.68 min Scan# 901
Delta R.T. 0.02 min
Lab File: VL037136.D
Acq: 8 Jun 2021 17:40

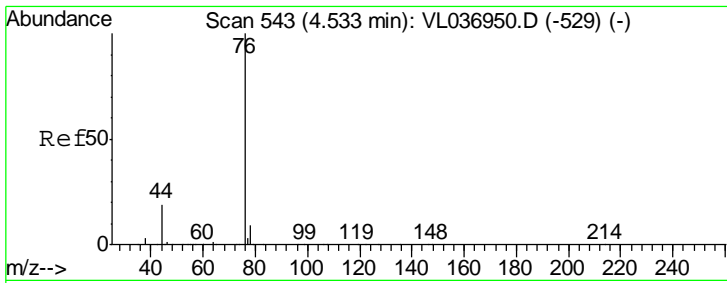
Tgt Ion: 57 Resp: 367638

Ion	Ratio	Lower	Upper
57	100		
41	96.6	70.5	105.7
43	218.8	165.8	248.8
56	55.3	42.2	63.4



Abundance Ion 57.10 (56.80 to 57.80): VL0
Ion 41.10 (40.80 to 41.80): VL0
Ion 43.10 (42.80 to 43.80): VL0
Ion 56.10 (55.80 to 56.80): VL0

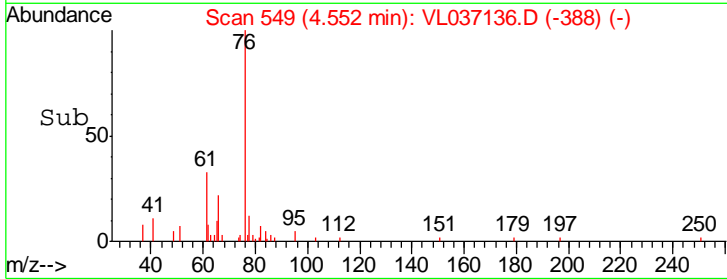
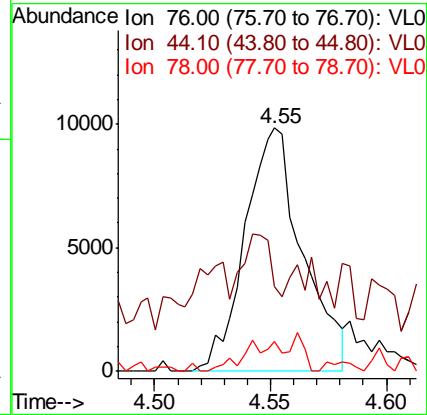
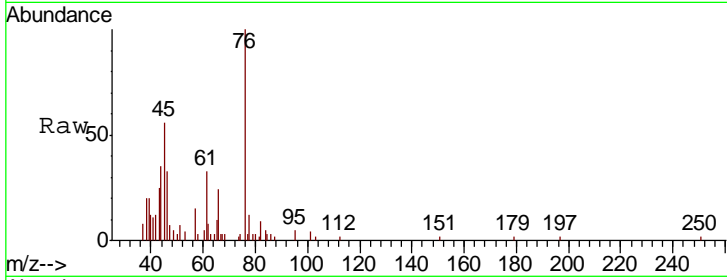




#27
 Carbon Disulfide
 Concen: 0.098 ppbv
 RT: 4.55 min Scan# 549
 Delta R.T. 0.02 min
 Lab File: VL037136.D
 Acq: 8 Jun 2021 17:40

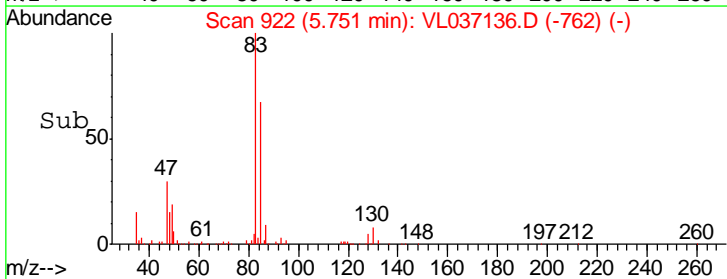
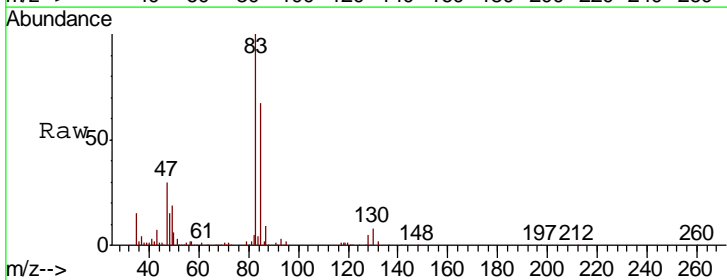
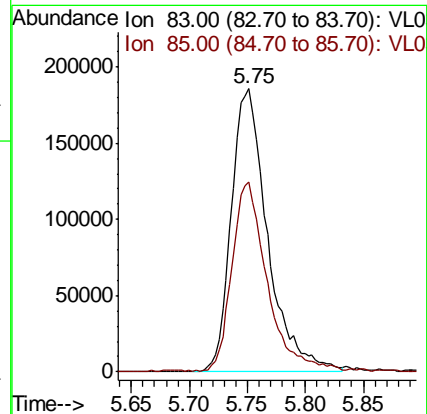
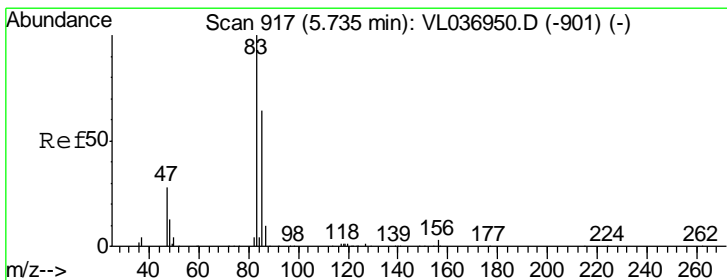
Instrument :
 MSVOA_L
 ClientSampled :

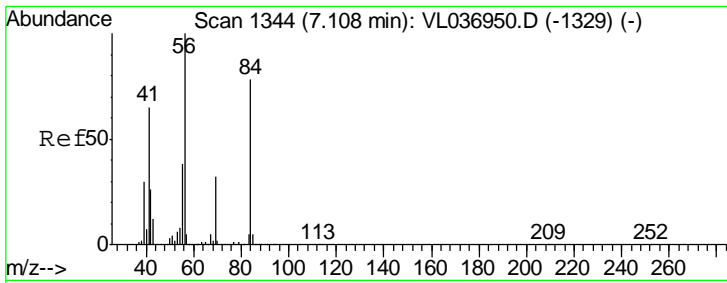
Tgt Ion	Resp	Lower	Upper
76	17010		
44	0.0	15.5	23.3#
78	17.2	7.8	11.6#



#29
 Chloroform
 Concen: 1.655 ppbv
 RT: 5.75 min Scan# 922
 Delta R.T. 0.02 min
 Lab File: VL037136.D
 Acq: 8 Jun 2021 17:40

Tgt Ion	Resp	Lower	Upper
83	402331		
85	66.8	51.1	76.7

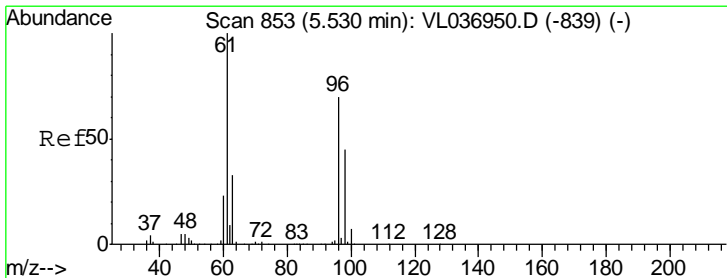
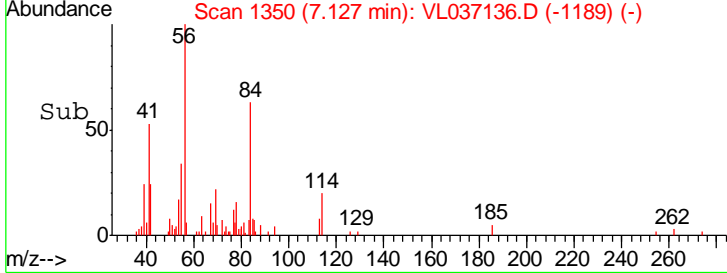
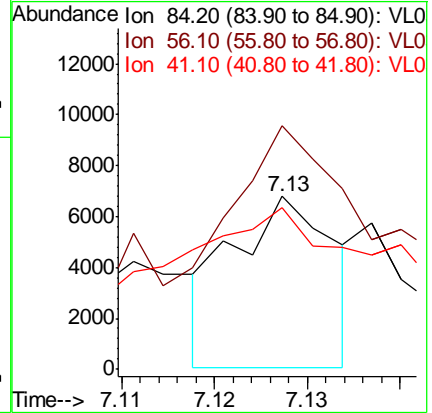
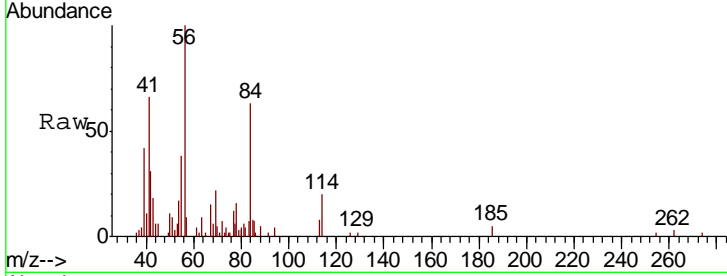




#30
 Cyclohexane
 Concen: 0.035 ppbv
 RT: 7.13 min Scan# 1350
 Delta R.T. 0.02 min
 Lab File: VL037136.D
 Acq: 8 Jun 2021 17:40

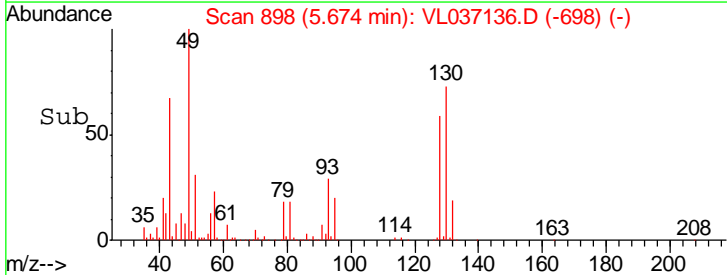
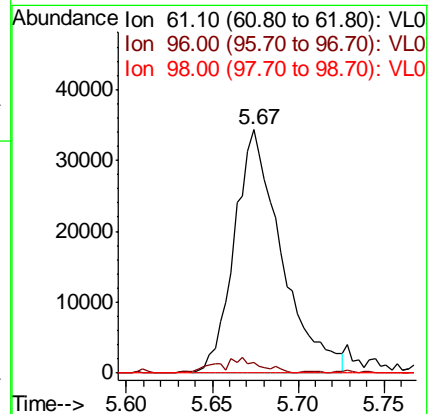
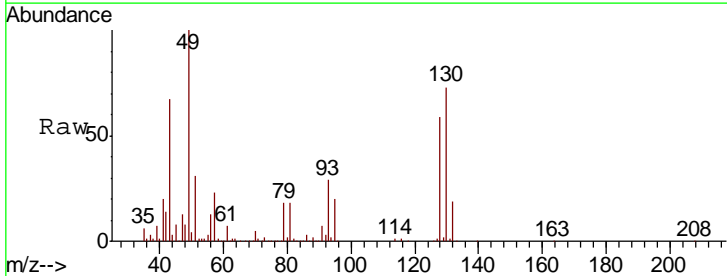
Instrument :
 MSVOA_L
 ClientSampled :

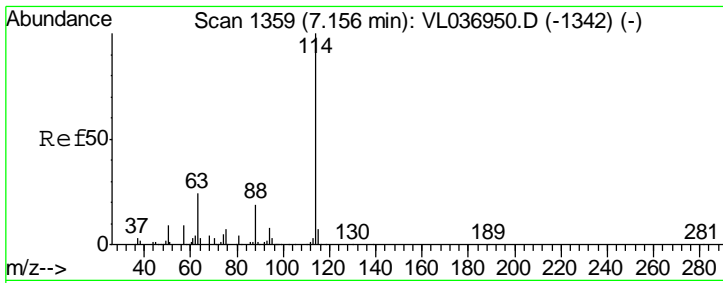
Tgt Ion	Resp	Lower	Upper
84	100		
56	0.0	107.9	161.9#
41	292.7	65.5	98.3#



#31
 cis-1,2-Dichloroethene
 Concen: 0.424 ppbv
 RT: 5.67 min Scan# 898
 Delta R.T. 0.14 min
 Lab File: VL037136.D
 Acq: 8 Jun 2021 17:40

Tgt Ion	Resp	Lower	Upper
61	100		
96	4.2	55.9	83.9#
98	0.0	35.6	53.4#

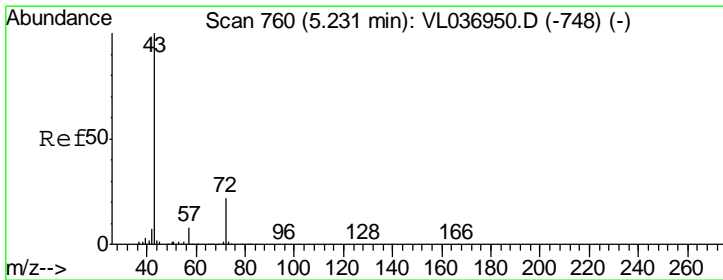
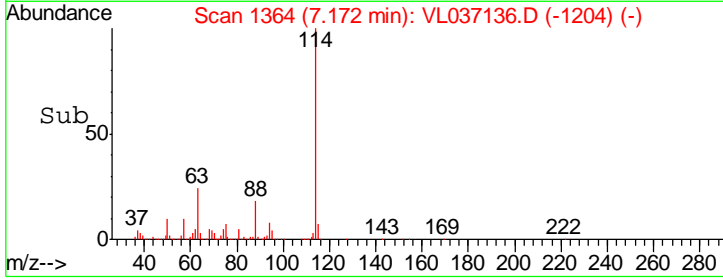
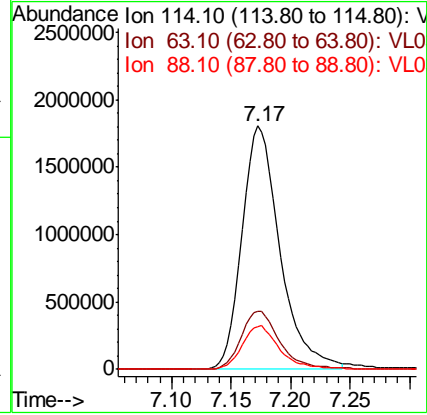
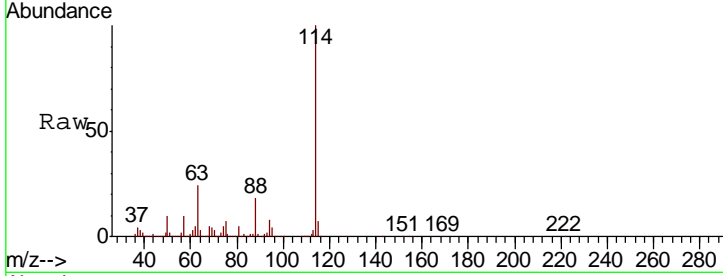




#33
 1,4-Difluorobenzene
 Concen: 10.000 ppbv
 RT: 7.17 min Scan# 1364
 Delta R.T. 0.02 min
 Lab File: VL037136.D
 Acq: 8 Jun 2021 17:40

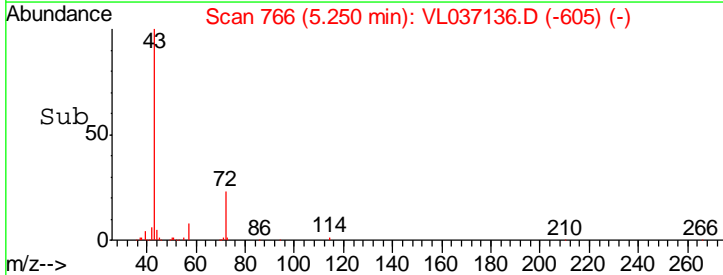
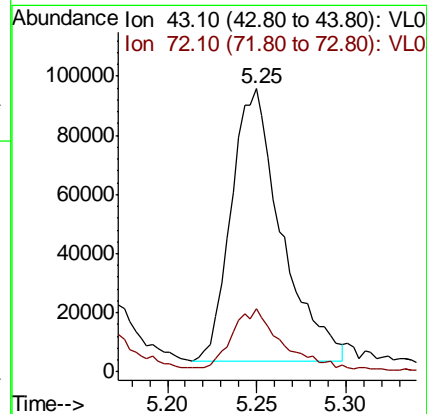
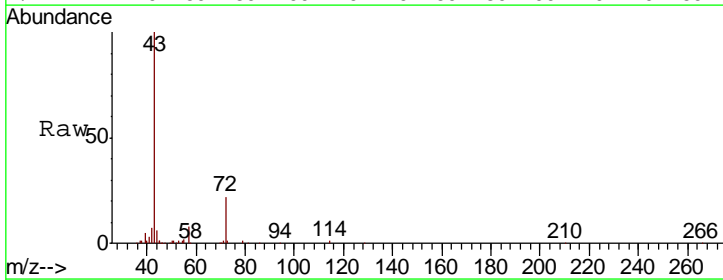
Instrument :
 MSVOA_L
 ClientSampled :

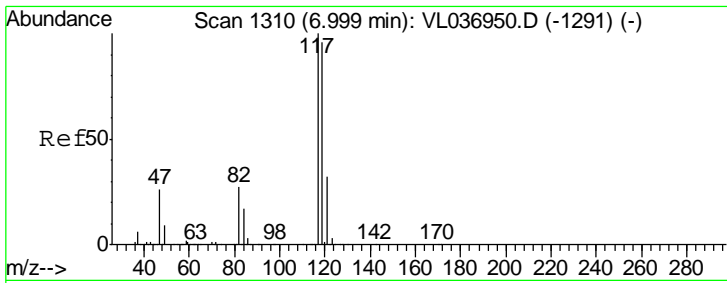
Tgt Ion	Resp	Lower	Upper
114	4006233		
63	24.5	19.6	29.4
88	17.9	14.6	21.8



#34
 2-Butanone
 Concen: 1.238 ppbv
 RT: 5.25 min Scan# 766
 Delta R.T. 0.02 min
 Lab File: VL037136.D
 Acq: 8 Jun 2021 17:40

Tgt Ion	Resp	Lower	Upper
43	180621		
72	25.5	19.0	28.4



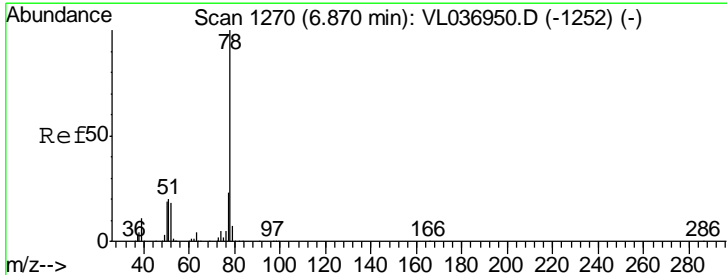
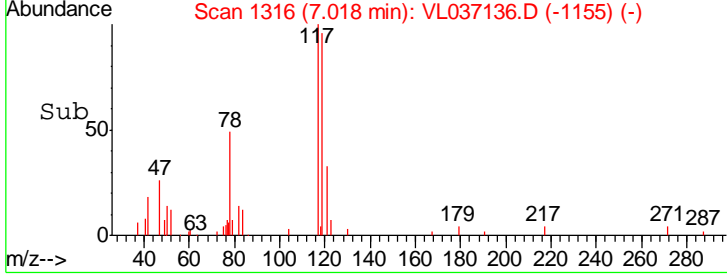
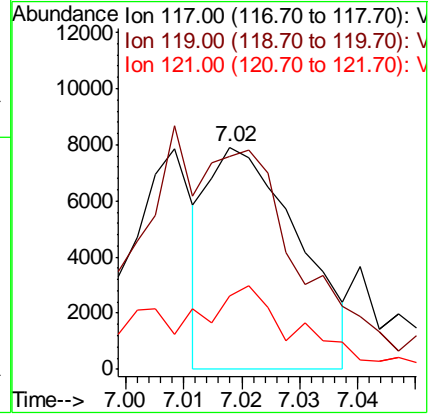
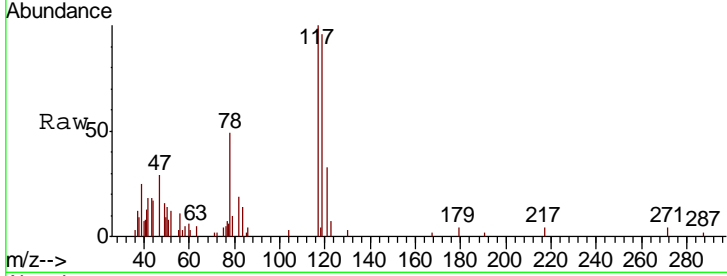


#35

Carbon Tetrachloride
 Concen: 0.032 ppbv
 RT: 7.02 min Scan# 1316
 Delta R.T. 0.02 min
 Lab File: VL037136.D
 Acq: 8 Jun 2021 17:40

Instrument :
 MSVOA_L
 ClientSampled :

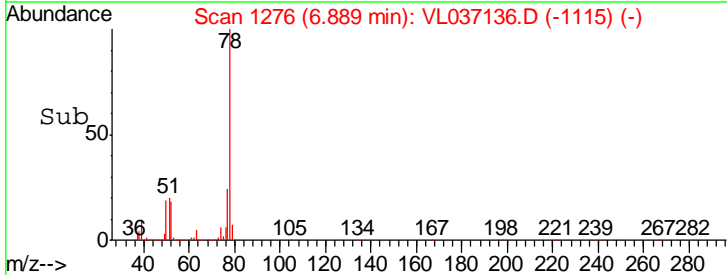
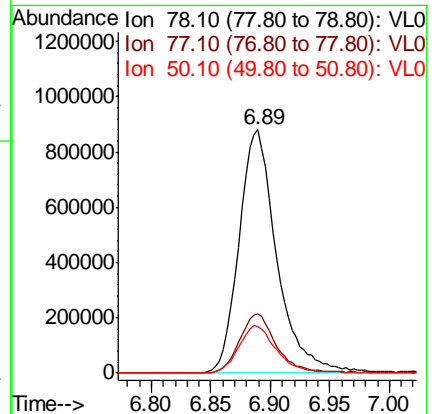
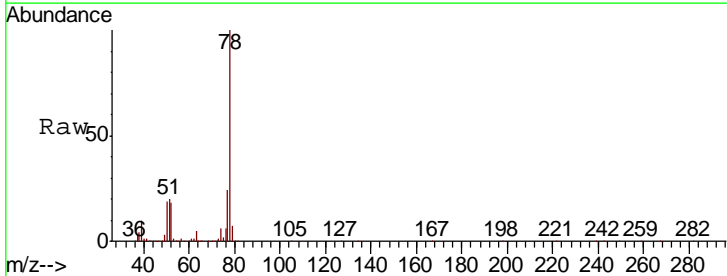
Tgt Ion	Resp	Lower	Upper
117	100		
119	96.7	76.6	114.8
121	29.7	25.8	38.6

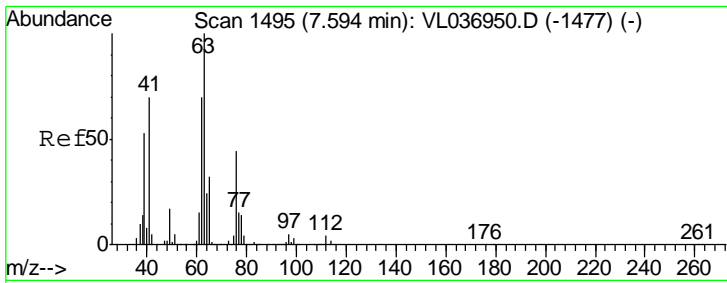


#36

Benzene
 Concen: 5.574 ppbv
 RT: 6.89 min Scan# 1276
 Delta R.T. 0.02 min
 Lab File: VL037136.D
 Acq: 8 Jun 2021 17:40

Tgt Ion	Resp	Lower	Upper
78	100		
77	24.2	18.6	28.0
50	19.0	15.0	22.4

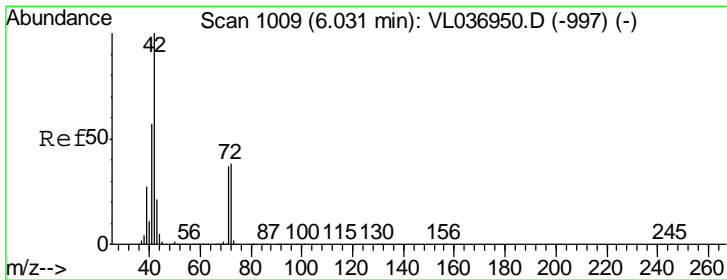
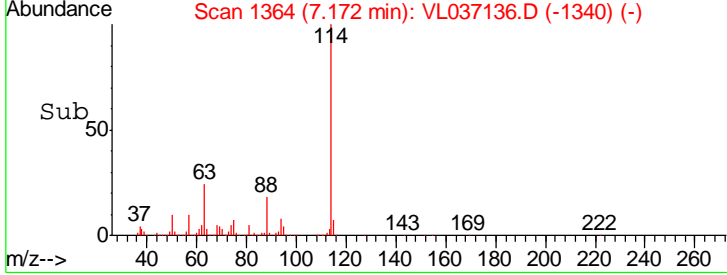
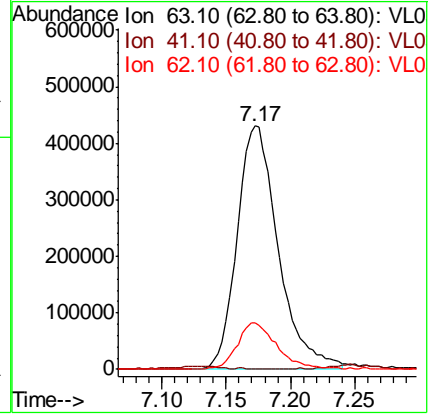
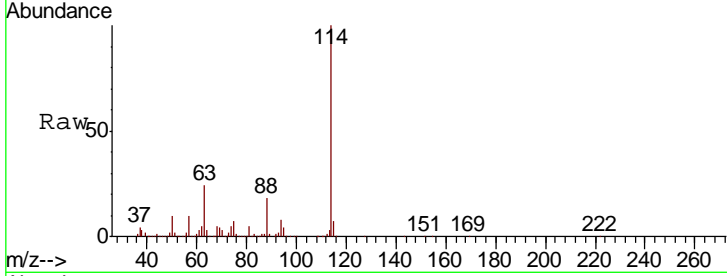




#39
 1,2-Dichloropropane
 Concen: 7.203 ppbv
 RT: 7.17 min Scan# 1364
 Delta R.T. -0.42 min
 Lab File: VL037136.D
 Acq: 8 Jun 2021 17:40

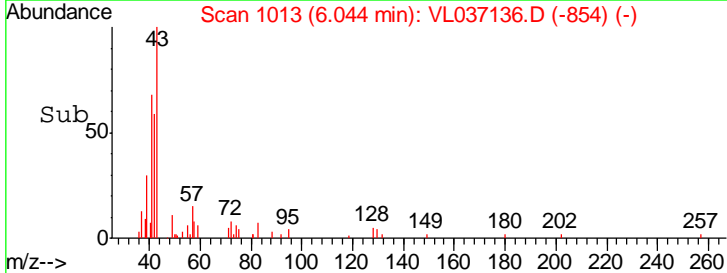
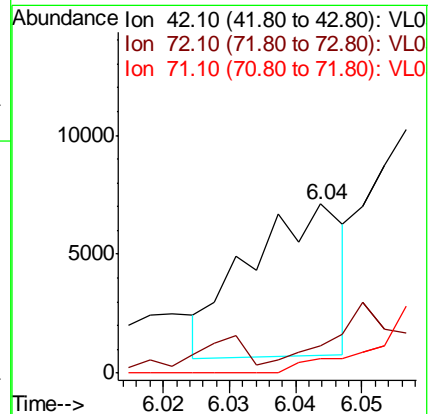
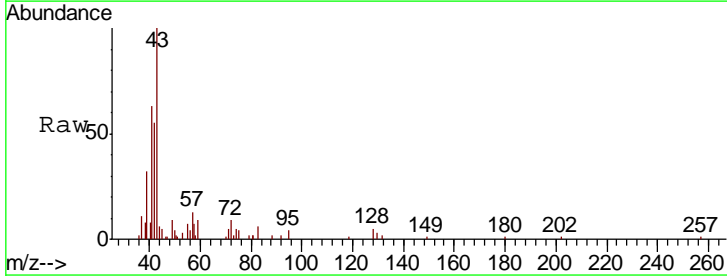
Instrument :
 MSVOA_L
 ClientSampled :

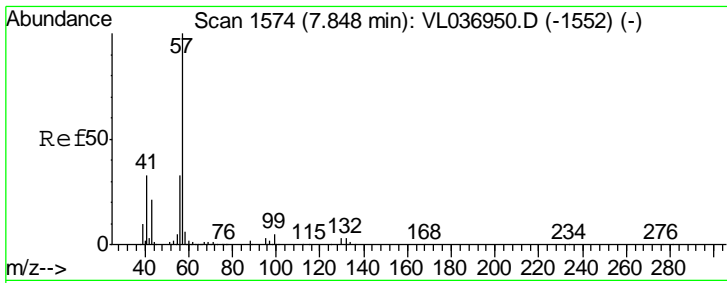
Tgt Ion	Resp	Lower	Upper
63	100		
41	0.0	55.7	83.5#
62	19.2	56.2	84.4#



#41
 Tetrahydrofuran
 Concen: 0.076 ppbv
 RT: 6.04 min Scan# 1013
 Delta R.T. 0.01 min
 Lab File: VL037136.D
 Acq: 8 Jun 2021 17:40

Tgt Ion	Resp	Lower	Upper
42	100		
72	0.0	31.4	47.2#
71	0.0	30.4	45.6#

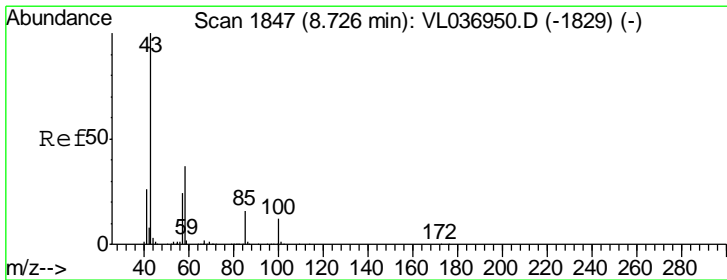
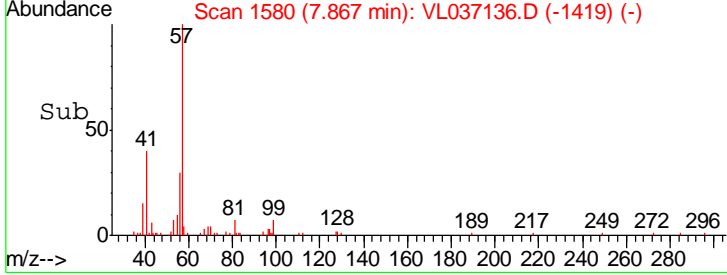
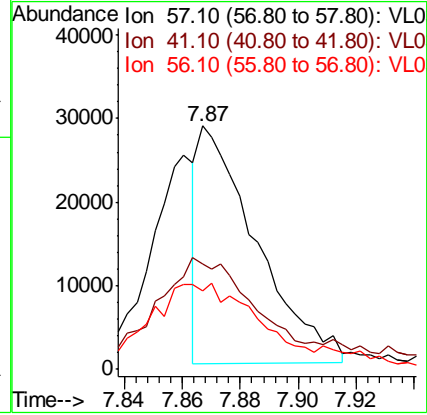
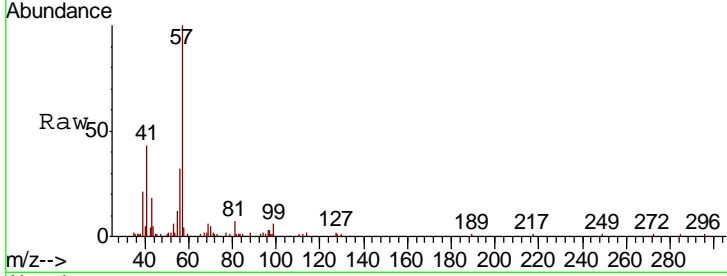




#44
 2,2,4-Trimethylpentane
 Concen: 0.066 ppbv
 RT: 7.87 min Scan# 1580
 Delta R.T. 0.02 min
 Lab File: VL037136.D
 Acq: 8 Jun 2021 17:40

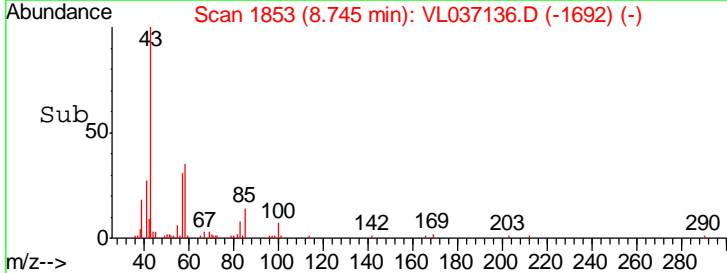
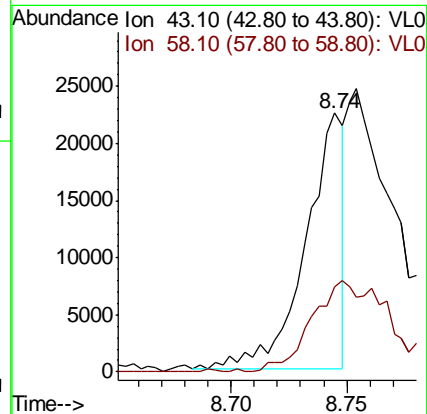
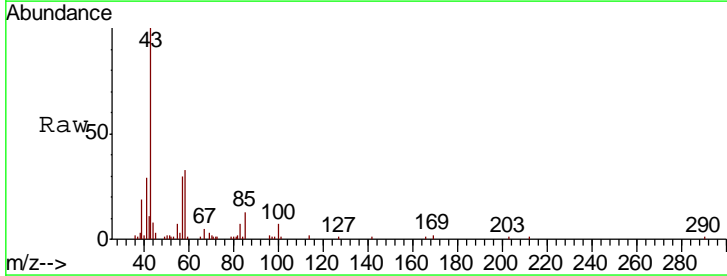
Instrument :
 MSVOA_L
 ClientSampled :

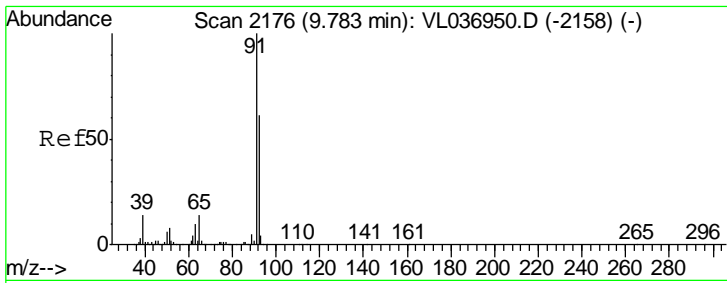
Tgt Ion	Resp	Lower	Upper
57	100		
41	99.0	27.0	40.4#
56	80.5	25.4	38.2#



#50
 4-Methyl-2-Pentanone
 Concen: 0.106 ppbv
 RT: 8.74 min Scan# 1853
 Delta R.T. 0.02 min
 Lab File: VL037136.D
 Acq: 8 Jun 2021 17:40

Tgt Ion	Resp	Lower	Upper
43	100		
58	78.1	29.4	44.2#



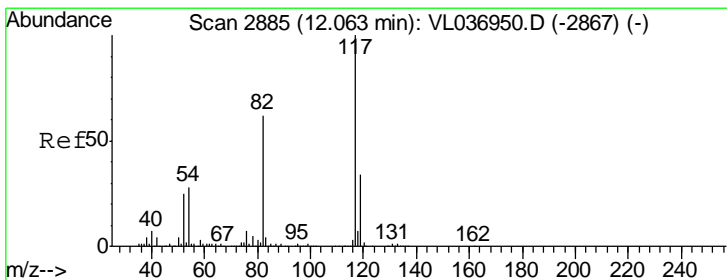
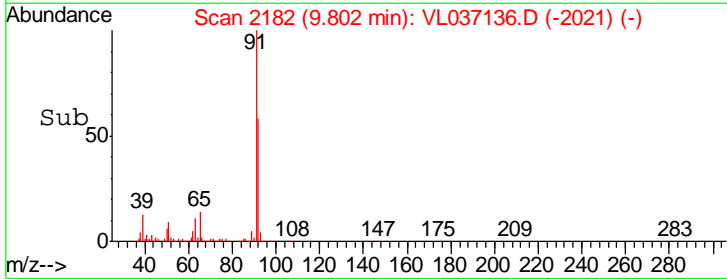
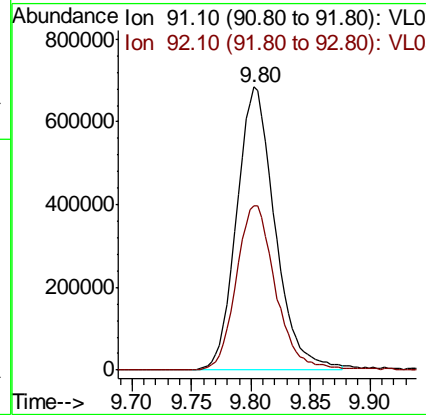
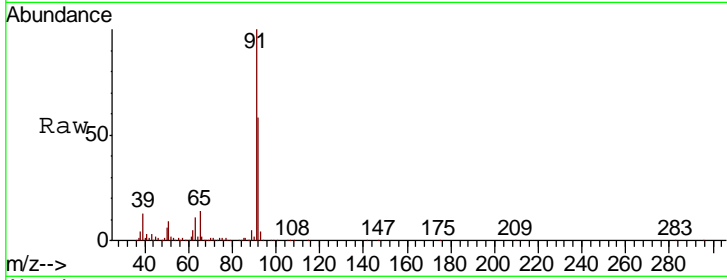


#53
 Toluene
 Concen: 3.712 ppbv
 RT: 9.80 min Scan# 2182
 Delta R.T. 0.02 min
 Lab File: VL037136.D
 Acq: 8 Jun 2021 17:40

Instrument :
 MSVOA_L
 ClientSampled :

Tgt Ion: 91 Resp: 1524176

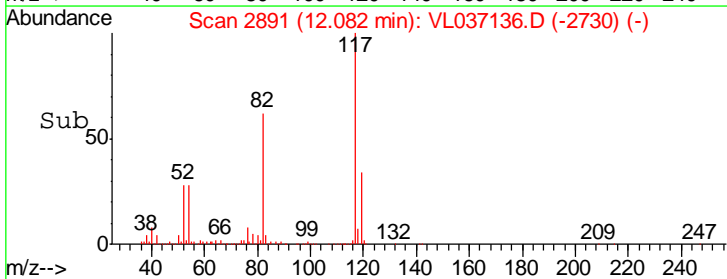
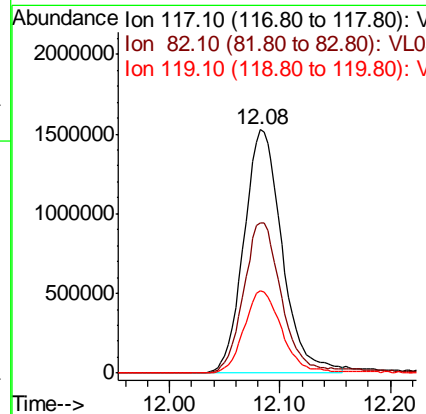
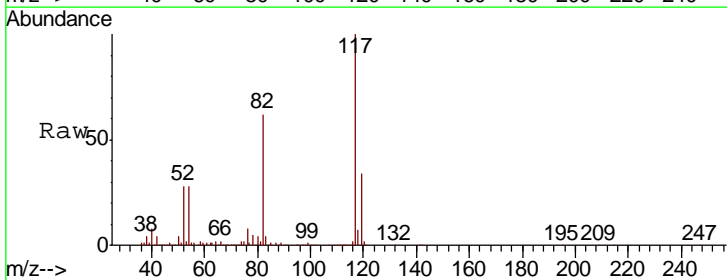
Ion	Ratio	Lower	Upper
91	100		
92	60.6	49.5	74.3

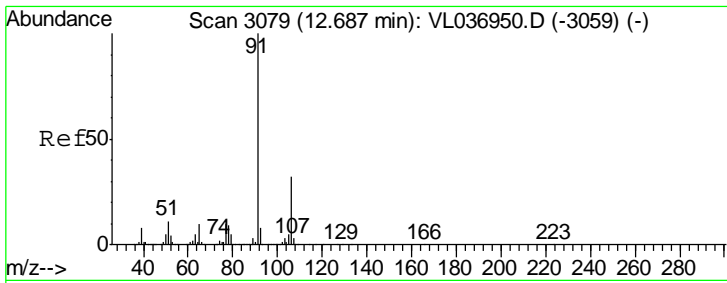


#55
 Chlorobenzene-d5
 Concen: 10.000 ppbv
 RT: 12.08 min Scan# 2891
 Delta R.T. 0.02 min
 Lab File: VL037136.D
 Acq: 8 Jun 2021 17:40

Tgt Ion: 117 Resp: 3662197

Ion	Ratio	Lower	Upper
117	100		
82	64.4	52.6	79.0
119	34.6	46.6	70.0#

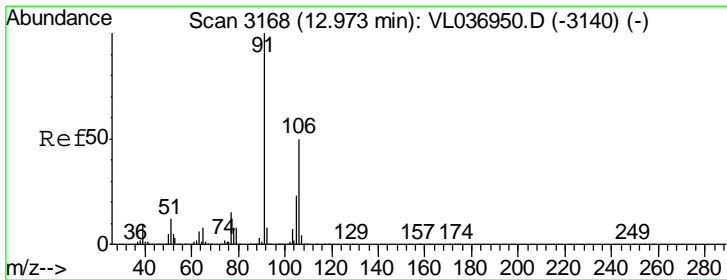
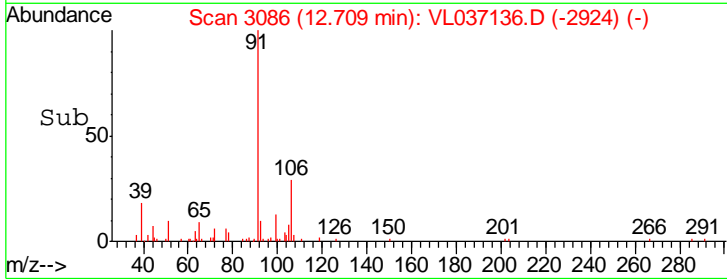
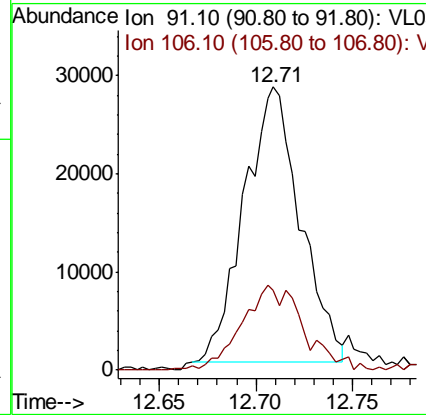
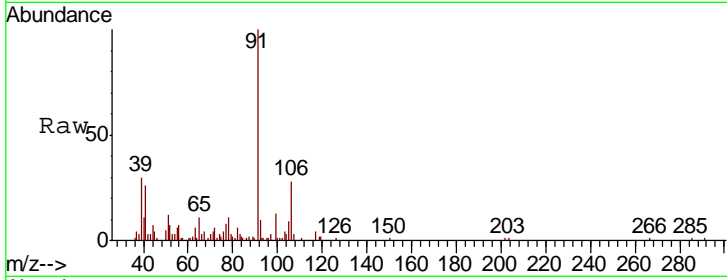




#58
 Ethyl Benzene
 Concen: 0.110 ppbv
 RT: 12.71 min Scan# 3086
 Delta R.T. 0.02 min
 Lab File: VL037136.D
 Acq: 8 Jun 2021 17:40

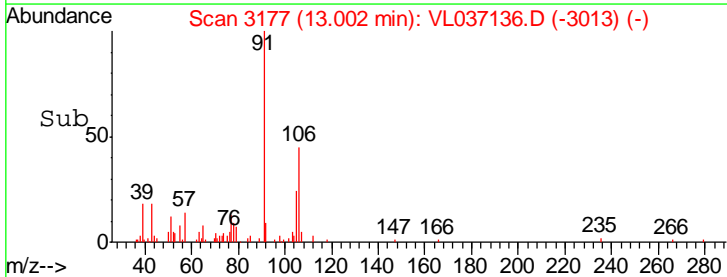
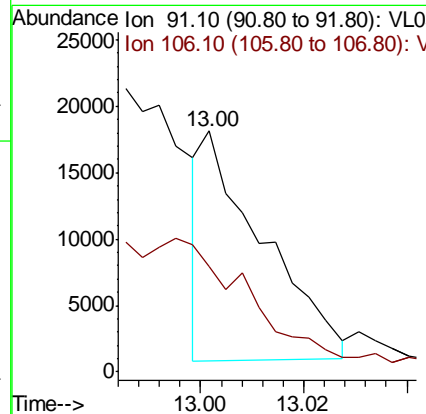
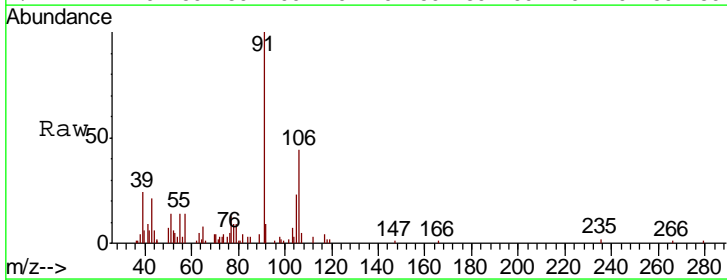
Instrument : MSVOA_L
 ClientSampled :

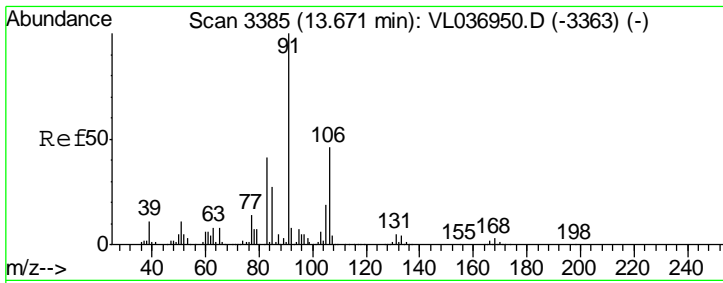
Tgt Ion	Resp	Lower	Upper
91	100		
106	27.8	25.6	38.4



#59
 m/p-Xylene
 Concen: 0.033 ppbv
 RT: 13.00 min Scan# 3177
 Delta R.T. 0.03 min
 Lab File: VL037136.D
 Acq: 8 Jun 2021 17:40

Tgt Ion	Resp	Lower	Upper
91	100		
106	0.0	37.4	56.2#

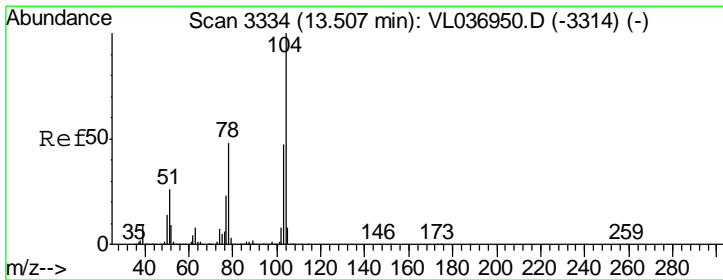
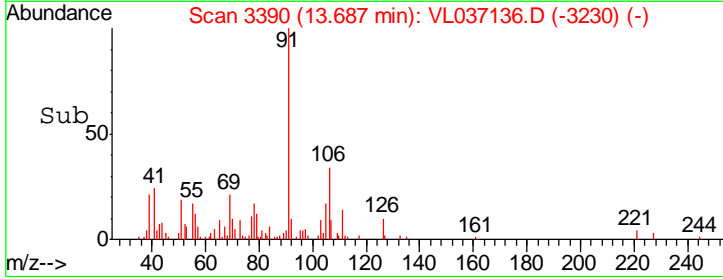
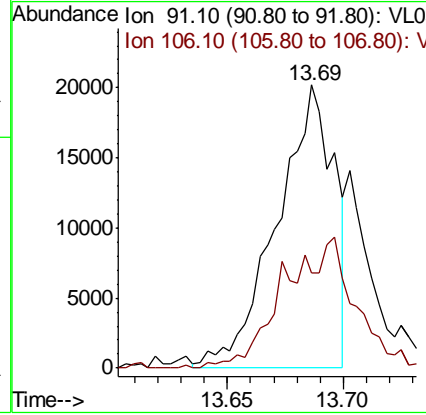
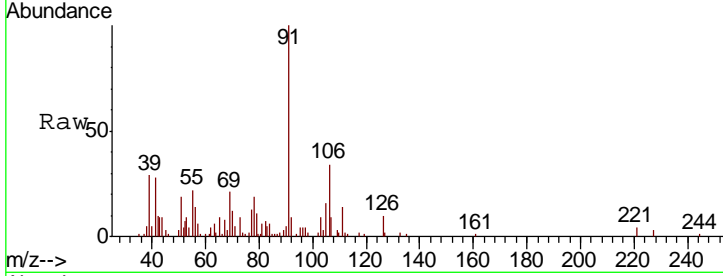




#60
 o-Xylene
 Concen: 0.085 ppbv
 RT: 13.69 min Scan# 3390
 Delta R.T. 0.02 min
 Lab File: VL037136.D
 Acq: 8 Jun 2021 17:40

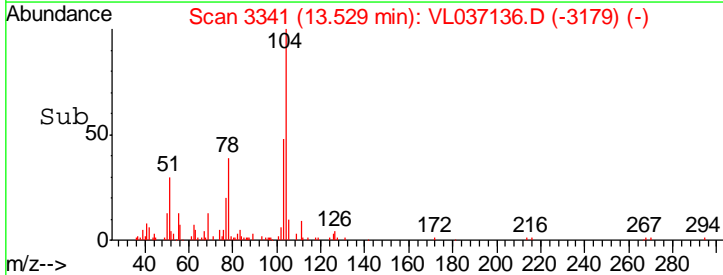
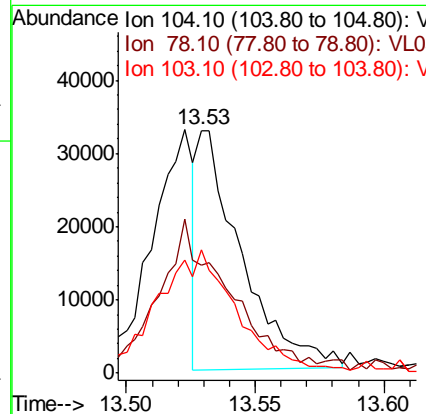
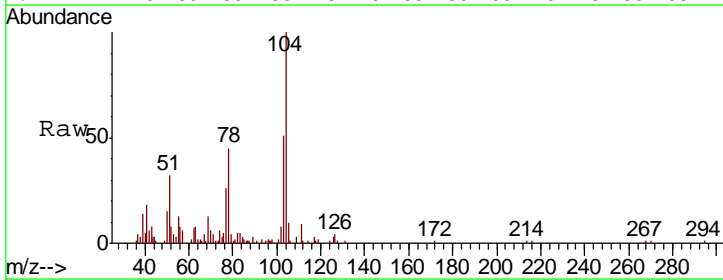
Instrument :
 MSVOA_L
 ClientSampled :

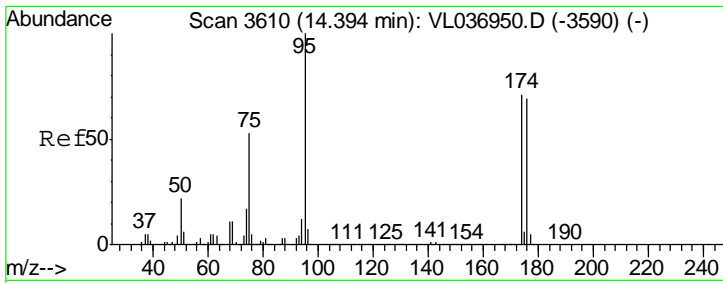
Tgt Ion: 91 Resp: 34774
 Ion Ratio Lower Upper
 91 100
 106 0.0 23.4 70.3#



#61
 Styrene
 Concen: 0.167 ppbv
 RT: 13.53 min Scan# 3341
 Delta R.T. 0.02 min
 Lab File: VL037136.D
 Acq: 8 Jun 2021 17:40

Tgt Ion: 104 Resp: 38335
 Ion Ratio Lower Upper
 104 100
 78 0.0 39.0 58.6#
 103 96.2 38.0 57.0#

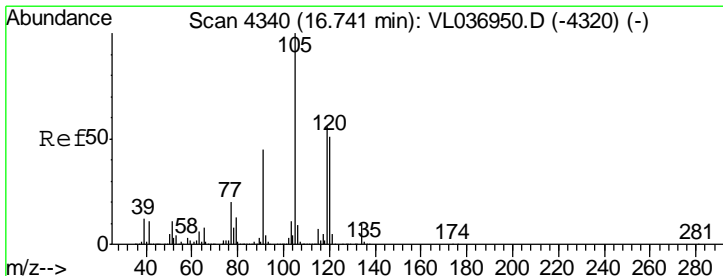
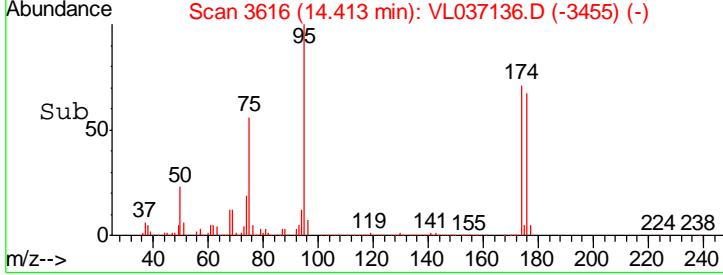
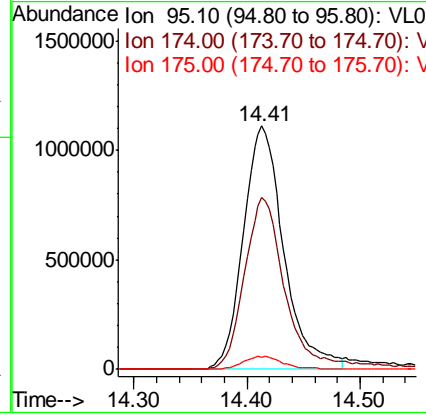
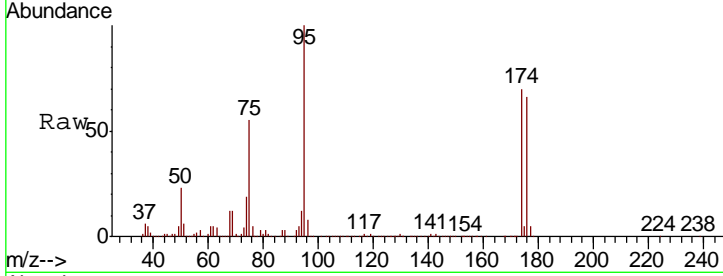




#68
 1-Bromo-4-Fluorobenzene
 Concen: 10.045 ppbv
 RT: 14.41 min Scan# 3616
 Delta R.T. 0.02 min
 Lab File: VL037136.D
 Acq: 8 Jun 2021 17:40

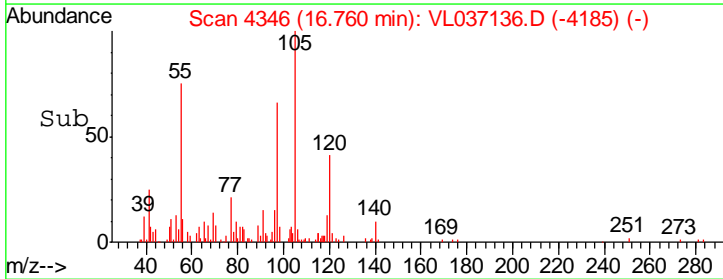
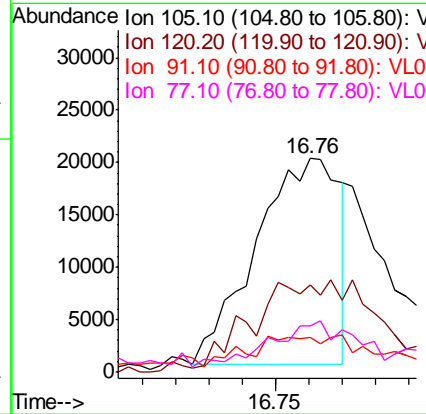
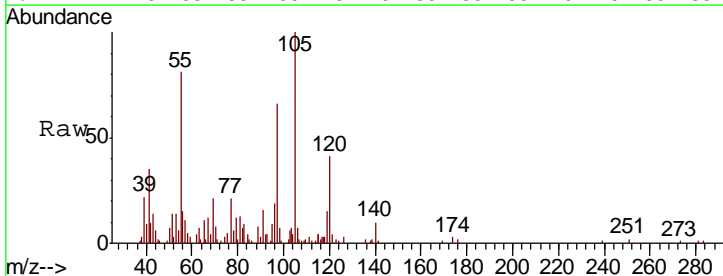
Instrument : MSVOA_L
 ClientSampled :

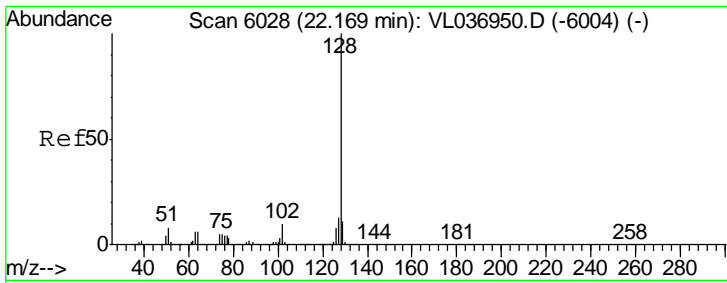
Tgt Ion	Resp	Lower	Upper
95	2763504		
174	74.4	58.4	87.6
175	5.5	4.4	6.6



#74
 1,2,4-Trimethylbenzene
 Concen: 0.073 ppbv
 RT: 16.76 min Scan# 4346
 Delta R.T. 0.02 min
 Lab File: VL037136.D
 Acq: 8 Jun 2021 17:40

Tgt Ion	Resp	Lower	Upper
105	34412		
120	40.3	40.6	61.0#
91	10.0	37.4	56.0#
77	19.4	16.2	24.4





#79
 Naphthalene
 Concen: 0.295 ppbv
 RT: 22.20 min Scan# 6039
 Delta R.T. 0.04 min
 Lab File: VL037136.D
 Acq: 8 Jun 2021 17:40

Instrument :
 MSVOA_L
 ClientSampled :

Tot Ion	128	Resp	108545
Ion	Ratio	Lower	Upper
128	100		
127	16.6	10.4	15.6#
129	10.8	9.0	13.6

