

Data Path : Z:\voasrv\HPCHEM1\MSVOA_L\Data\VL062725\
 Data File : VL042674.D
 Acq On : 27 Jun 2025 11:30
 Operator : SY/MD
 Sample : Q2432-01 20X
 Misc : 400mL/MSVOA_L
 ALS Vial : 1 Sample Multiplier: 1

Instrument :
 MSVOA_L
 ClientSampleId :
 SV1

Quant Time: Jun 27 23:02:57 2025
 Quant Method : Z:\voasrv\HPCHEM1\MSVOA_L\methods\VL052925AIR.M
 Quant Title : AIR ANALYSIS BY METHOD TO-15 Instrument: MSVOA_L Fri Aug 26 06:05:16 2022
 QLast Update : Fri May 30 02:01:56 2025
 Response via : Initial Calibration

Compound	R.T.	QIon	Response	Conc	Units	Dev(Min)

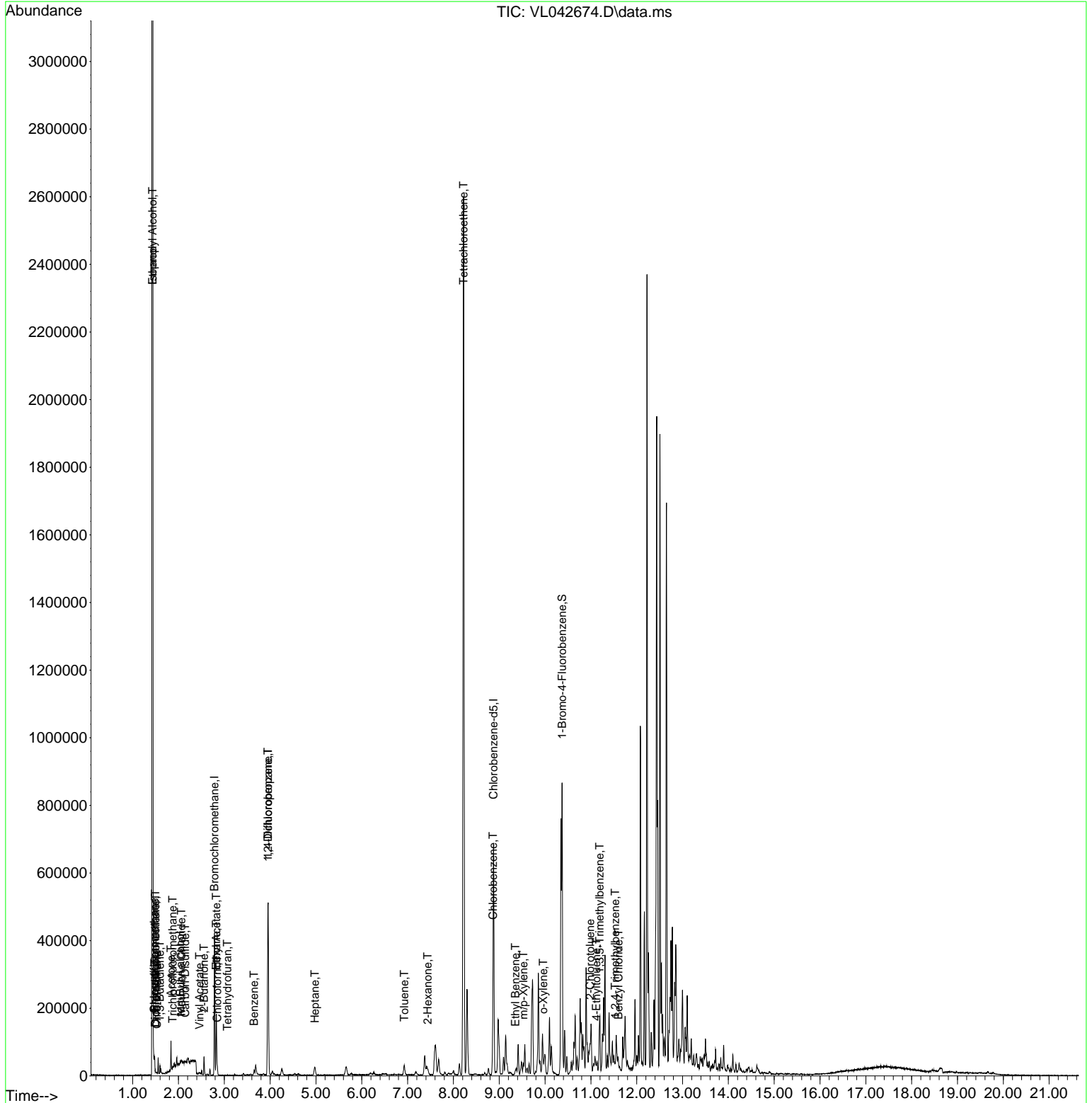
Internal Standards						
1) Bromochloromethane	2.787	49	116857	10.000	ppbv	0.00
33) 1,4-Difluorobenzene	3.956	114	298488	10.000	ppbv	0.00
55) Chlorobenzene-d5	8.875	117	274601	10.000	ppbv	-0.01
System Monitoring Compounds						
68) 1-Bromo-4-Fluorobenzene	10.371	95	213051	10.350	ppbv	0.00
Spiked Amount	10.000	Range	65 - 135	Recovery	=	103.500%
Target Compounds						
						Qvalue
2) Dichlorodifluoromethane	1.496	85	529	0.037	ppbv	99
3) Chlorodifluoromethane	1.470	51	5911	0.299	ppbv	99
4) Chloromethane	1.528	50	251	0.044	ppbv #	73
8) Dichlorotetrafluoroethane	1.496	85	529	0.044	ppbv #	19
9) Propene	1.480	41	4952	0.622	ppbv	95
10) Heptane	4.978	43	4208	0.187	ppbv #	28
11) Trichlorofluoromethane	1.874	101	961	0.072	ppbv	88
13) Ethanol	1.437	45	133282	140.399	ppbv #	1
15) Acetone	1.836	43	34981	2.485	ppbv	97
16) 1,3-Butadiene	1.596	39	2840	0.426	ppbv #	35
17) tert-Butyl alcohol	2.039	59	4395	0.300	ppbv #	90
19) Isopropyl Alcohol	1.437	45	133282	15.839	ppbv #	39
20) Methylene Chloride	2.062	84	1352	0.291	ppbv #	56
23) Vinyl Acetate	2.457	43	830	0.044	ppbv #	83
25) Ethyl Acetate	2.826	43	29767	0.773	ppbv #	77
26) Hexane	2.826	57	40228	2.298	ppbv #	39
27) Carbon Disulfide	2.143	76	568	0.042	ppbv #	1
29) Chloroform	2.849	83	10081	0.443	ppbv	88
34) 2-Butanone	2.557	43	32658	1.534	ppbv	99
36) Benzene	3.651	78	8711	0.296	ppbv #	89
39) 1,2-Dichloropropane	3.952	63	75388	6.935	ppbv #	22
41) Tetrahydrofuran	3.065	42	440	0.035	ppbv #	61
51) 2-Hexanone	7.438	43	2634	0.112	ppbv #	28
52) Tetrachloroethene	8.221	164	483973	44.063	ppbv	97
53) Toluene	6.927	91	19125	0.563	ppbv	97
57) Chlorobenzene	8.862	112	1736	0.065	ppbv #	50
58) Ethyl Benzene	9.351	91	4473	0.096	ppbv	99
59) m/p-Xylene	9.526	91	19208	0.524	ppbv	96
60) o-Xylene	9.960	91	10309	0.282	ppbv	87
66) Benzyl Chloride	11.604	91	924	0.146	ppbv #	56
71) 2-Chlorotoluene	10.982	91	3842	0.093	ppbv	66
72) 4-Ethyltoluene	11.118	105	2709	0.059	ppbv #	83
73) 1,3,5-Trimethylbenzene	11.193	105	1553	0.041	ppbv #	66
74) 1,2,4-Trimethylbenzene	11.533	105	6547	0.156	ppbv #	65

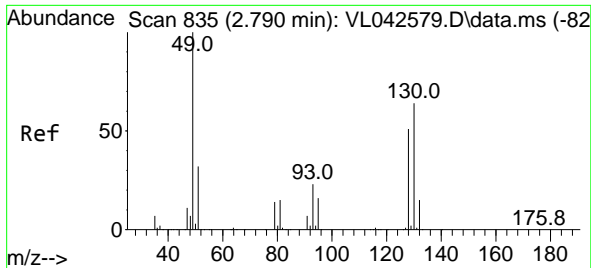
(#) = qualifier out of range (m) = manual integration (+) = signals summed

Data Path : Z:\voasrv\HPCHEM1\MSVOA_L\Data\VL062725\
 Data File : VL042674.D
 Acq On : 27 Jun 2025 11:30
 Operator : SY/MD
 Sample : Q2432-01 20X
 Misc : 400mL/MSVOA_L
 ALS Vial : 1 Sample Multiplier: 1

Instrument :
 MSVOA_L
 ClientSampleId :
 SV1

Quant Time: Jun 27 23:02:57 2025
 Quant Method : Z:\voasrv\HPCHEM1\MSVOA_L\methods\VL052925AIR.M
 Quant Title : AIR ANALYSIS BY METHOD TO-15 Instrument: MSVOA_L Fri Aug 26 06:05:16 2022
 QLast Update : Fri May 30 02:01:56 2025
 Response via : Initial Calibration



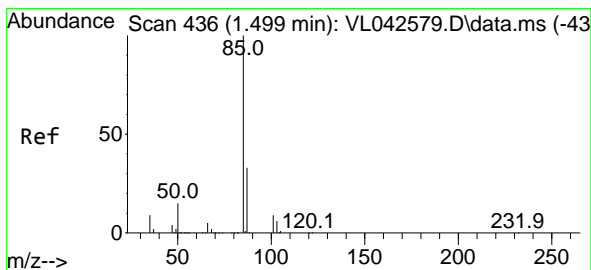
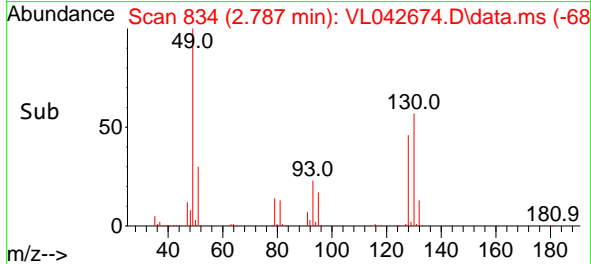
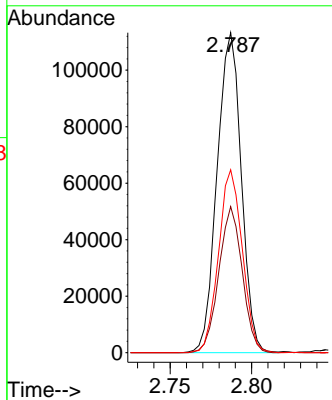
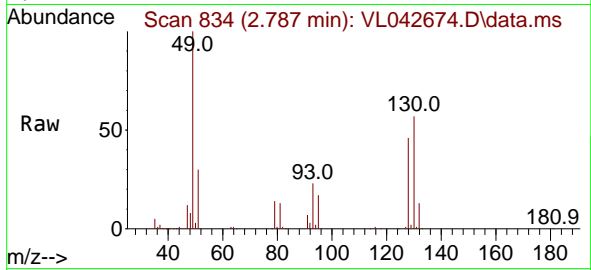


#1
 Bromochloromethane
 Concen: 10.000 ppbv
 RT: 2.787 min Scan# 81
 Delta R.T. -0.003 min
 Lab File: VL042674.D
 Acq: 27 Jun 2025 11:30

Instrument :
 MSVOA_L
 ClientSampleId :
 SV1

Tgt Ion: 49 Resp: 116857

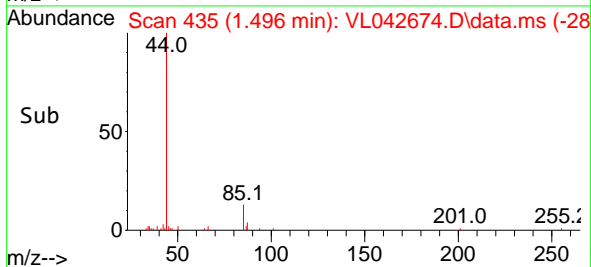
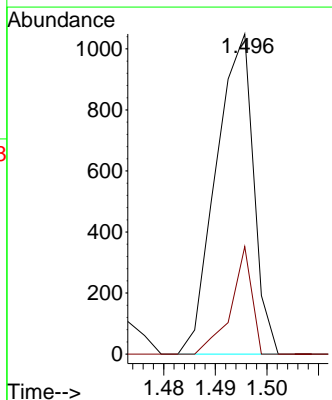
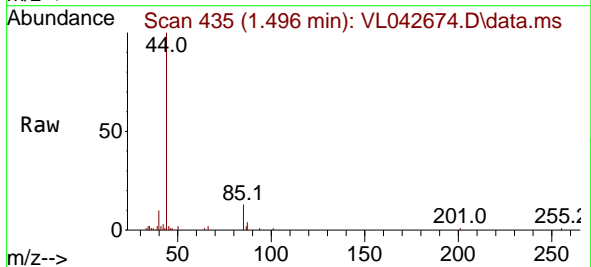
Ion	Ratio	Lower	Upper
49	100		
128	44.2	24.2	72.6
130	56.2	30.4	91.2

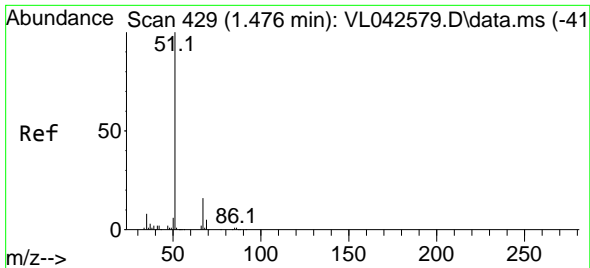


#2
 Dichlorodifluoromethane
 Concen: 0.037 ppbv
 RT: 1.496 min Scan# 435
 Delta R.T. -0.003 min
 Lab File: VL042674.D
 Acq: 27 Jun 2025 11:30

Tgt Ion: 85 Resp: 529

Ion	Ratio	Lower	Upper
85	100		
87	33.6	26.6	39.8

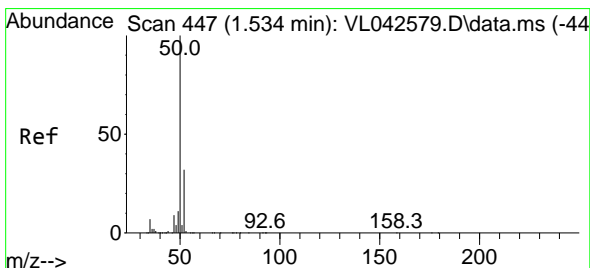
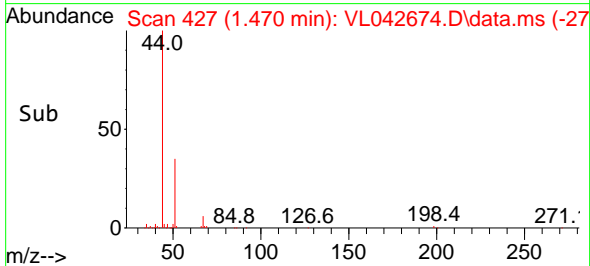
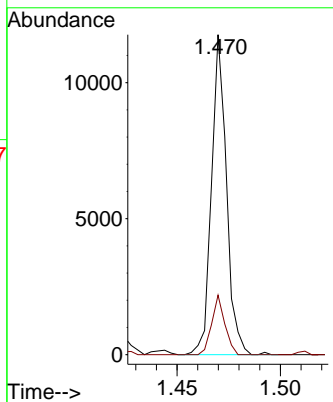
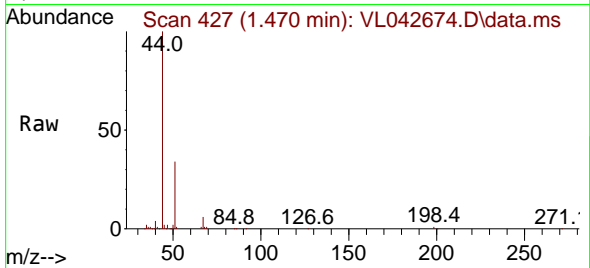




#3
 Chlorodifluoromethane
 Concen: 0.299 ppbv
 RT: 1.470 min Scan# 41
 Delta R.T. -0.006 min
 Lab File: VL042674.D
 Acq: 27 Jun 2025 11:30

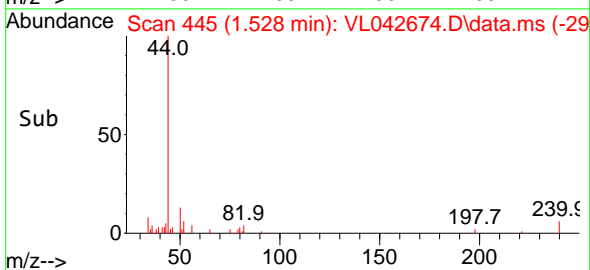
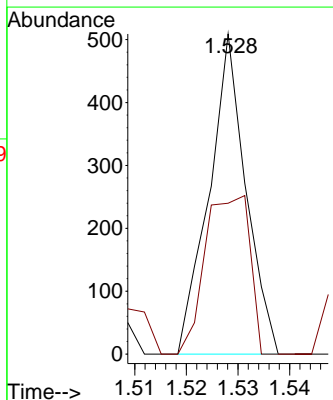
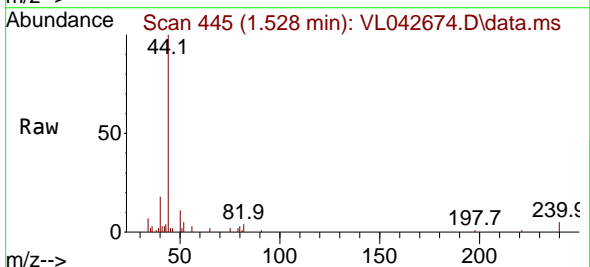
Instrument :
 MSVOA_L
 ClientSampleId :
 SV1

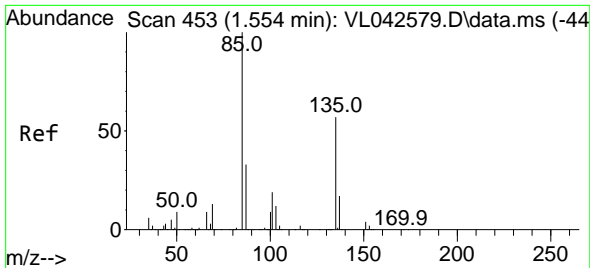
Tgt Ion: 51 Resp: 5911
 Ion Ratio Lower Upper
 51 100
 67 16.3 13.4 20.2



#4
 Chloromethane
 Concen: 0.044 ppbv
 RT: 1.528 min Scan# 445
 Delta R.T. -0.006 min
 Lab File: VL042674.D
 Acq: 27 Jun 2025 11:30

Tgt Ion: 50 Resp: 251
 Ion Ratio Lower Upper
 50 100
 52 47.2 25.8 38.6#

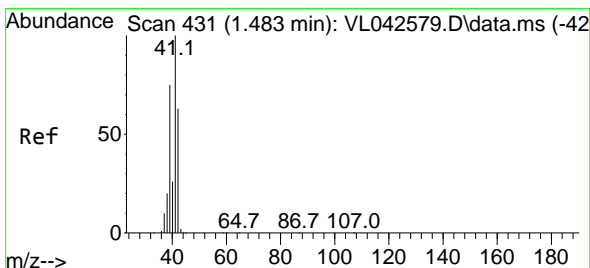
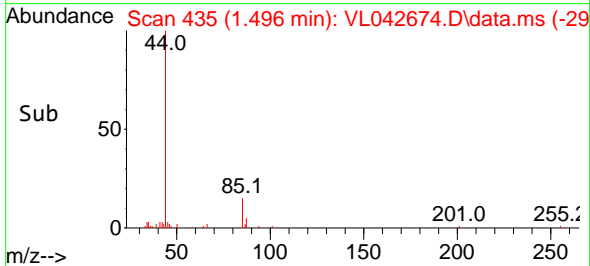
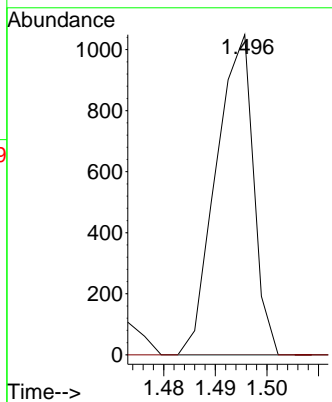
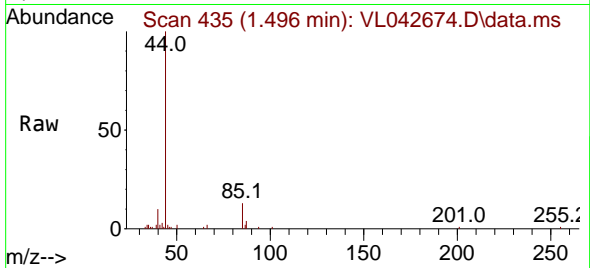




#8
 Dichlorotetrafluoroethane
 Concen: 0.044 ppbv
 RT: 1.496 min Scan# 411
 Delta R.T. -0.058 min
 Lab File: VL042674.D
 Acq: 27 Jun 2025 11:30

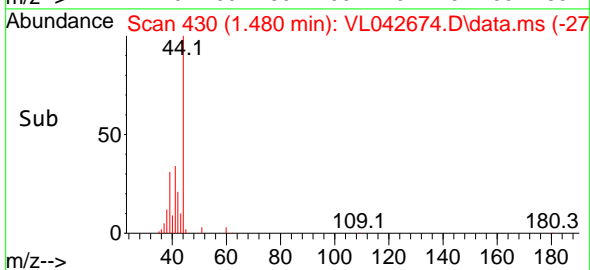
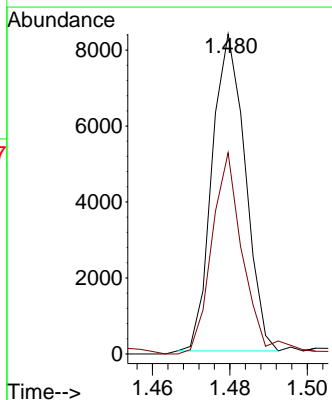
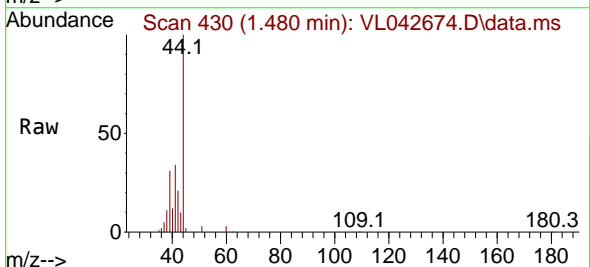
Instrument : MSVOA_L
 ClientSampleId : SV1

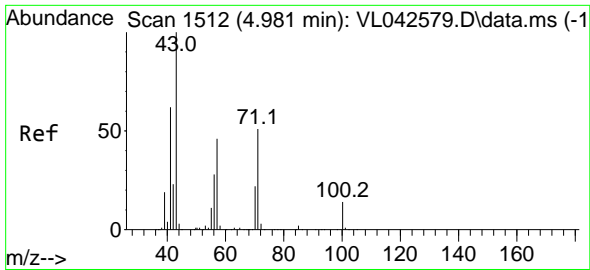
Tgt Ion: 85 Resp: 529
 Ion Ratio Lower Upper
 85 100
 135 0.0 50.2 75.4#



#9
 Propene
 Concen: 0.622 ppbv
 RT: 1.480 min Scan# 430
 Delta R.T. -0.003 min
 Lab File: VL042674.D
 Acq: 27 Jun 2025 11:30

Tgt Ion: 41 Resp: 4952
 Ion Ratio Lower Upper
 41 100
 42 70.2 53.3 79.9

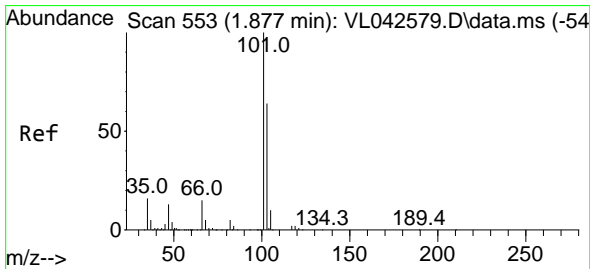
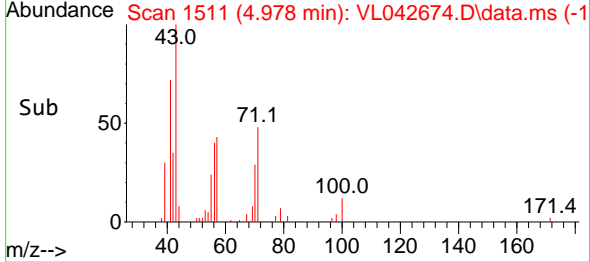
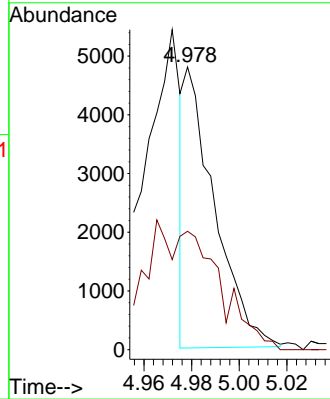
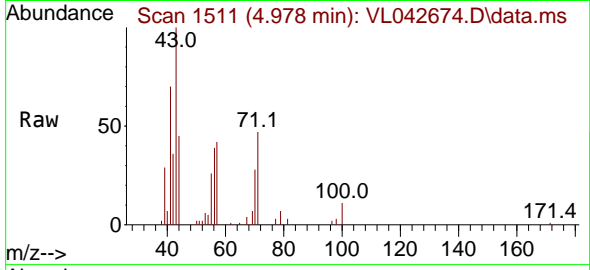




#10
 Heptane
 Concen: 0.187 ppbv
 RT: 4.978 min Scan# 11
 Delta R.T. -0.003 min
 Lab File: VL042674.D
 Acq: 27 Jun 2025 11:30

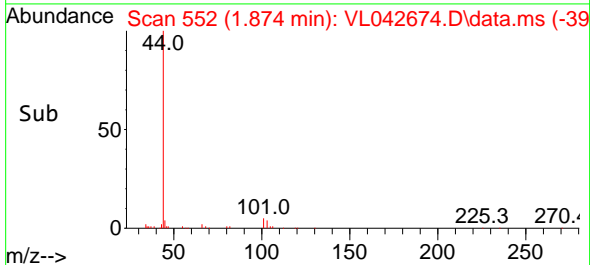
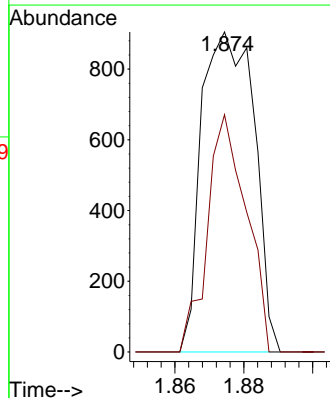
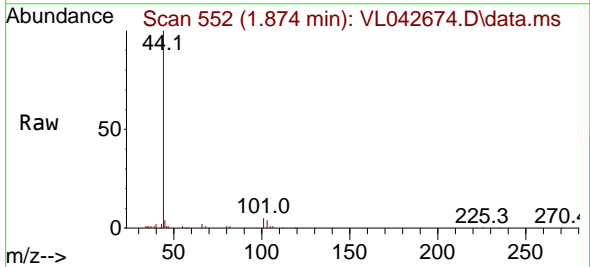
Instrument :
 MSVOA_L
 ClientSampleId :
 SV1

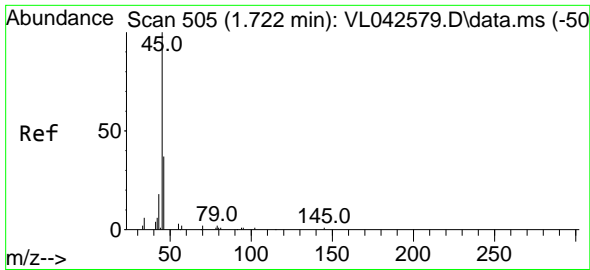
Tgt Ion: 43 Resp: 4208
 Ion Ratio Lower Upper
 43 100
 57 0.0 38.9 58.3#



#11
 Trichlorofluoromethane
 Concen: 0.072 ppbv
 RT: 1.874 min Scan# 552
 Delta R.T. -0.003 min
 Lab File: VL042674.D
 Acq: 27 Jun 2025 11:30

Tgt Ion: 101 Resp: 961
 Ion Ratio Lower Upper
 101 100
 103 74.1 51.5 77.3

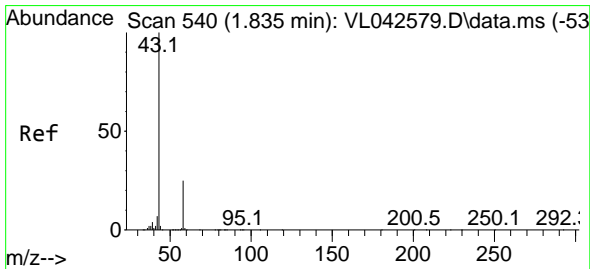
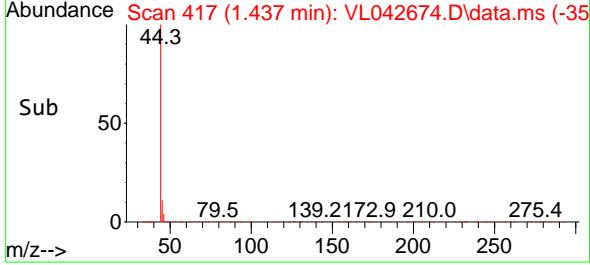
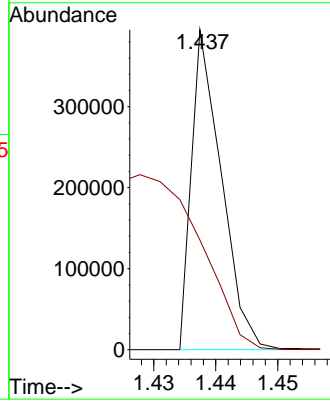
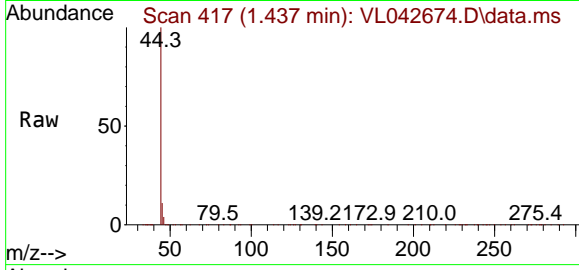




#13
 Ethanol
 Concen: 140.399 ppbv
 RT: 1.437 min Scan# 417
 Delta R.T. -0.285 min
 Lab File: VL042674.D
 Acq: 27 Jun 2025 11:30

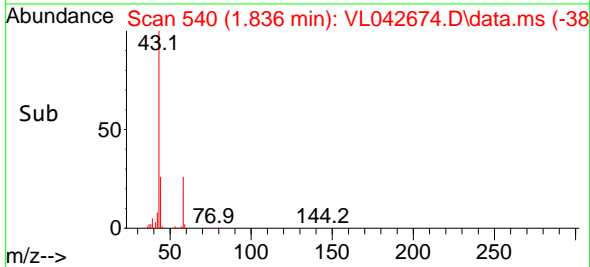
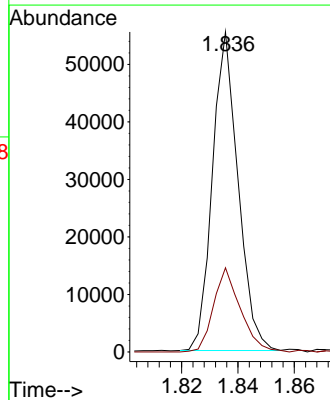
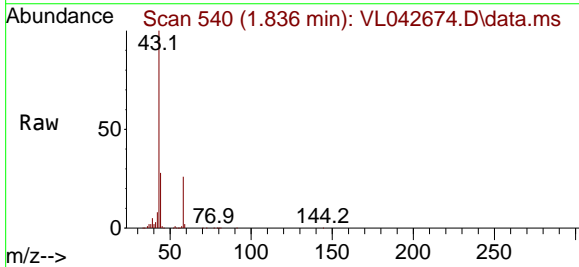
Instrument :
 MSVOA_L
 ClientSampleId :
 SV1

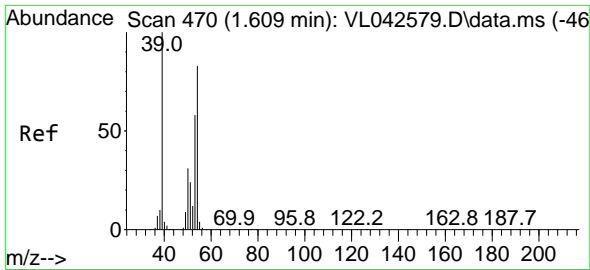
Tgt Ion: 45 Resp: 133282
 Ion Ratio Lower Upper
 45 100
 46 212.2 14.5 58.1#



#15
 Acetone
 Concen: 2.485 ppbv
 RT: 1.836 min Scan# 540
 Delta R.T. 0.000 min
 Lab File: VL042674.D
 Acq: 27 Jun 2025 11:30

Tgt Ion: 43 Resp: 34981
 Ion Ratio Lower Upper
 43 100
 58 28.0 21.0 31.4

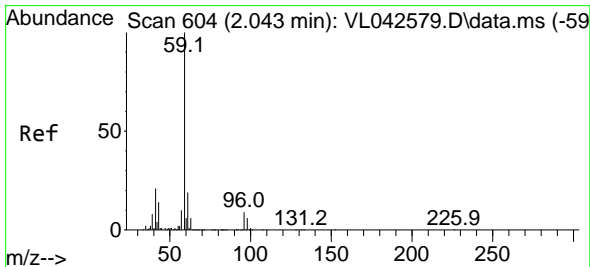
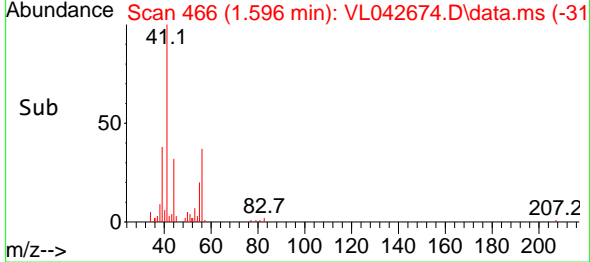
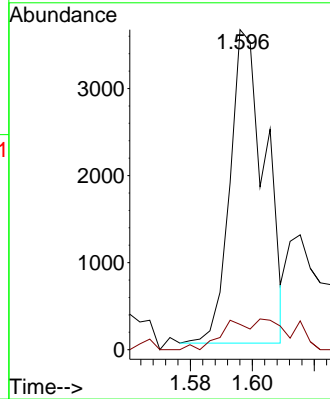
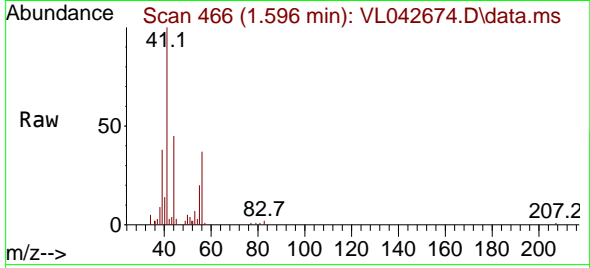




#16
 1,3-Butadiene
 Concen: 0.426 ppbv
 RT: 1.596 min Scan# 466
 Delta R.T. -0.013 min
 Lab File: VL042674.D
 Acq: 27 Jun 2025 11:30

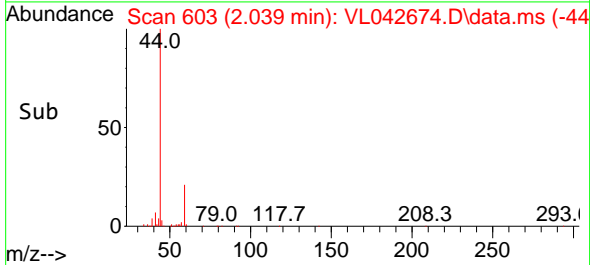
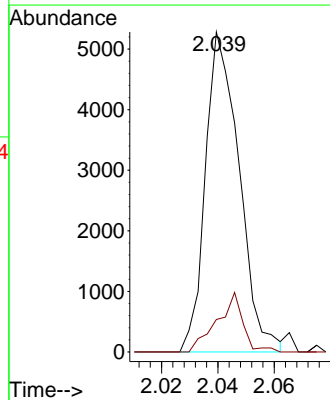
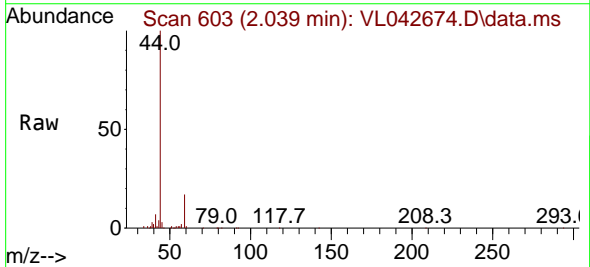
Instrument :
 MSVOA_L
 ClientSampleId :
 SV1

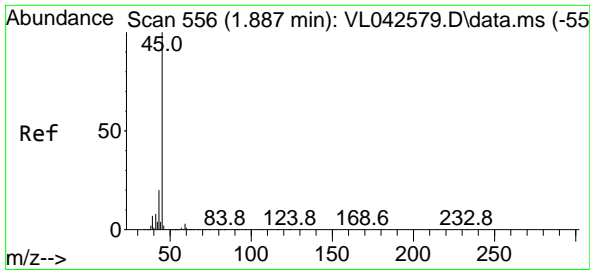
Tgt Ion: 39 Resp: 2840
 Ion Ratio Lower Upper
 39 100
 54 18.0 57.9 86.9#



#17
 tert-Butyl alcohol
 Concen: 0.300 ppbv
 RT: 2.039 min Scan# 603
 Delta R.T. -0.003 min
 Lab File: VL042674.D
 Acq: 27 Jun 2025 11:30

Tgt Ion: 59 Resp: 4395
 Ion Ratio Lower Upper
 59 100
 57 14.3 8.6 12.8#

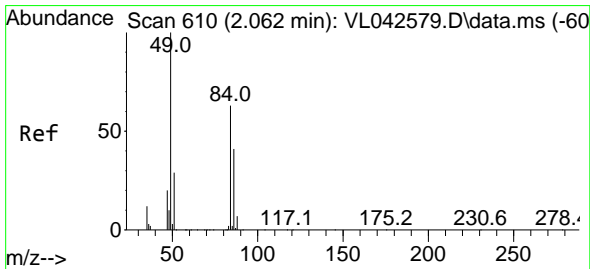
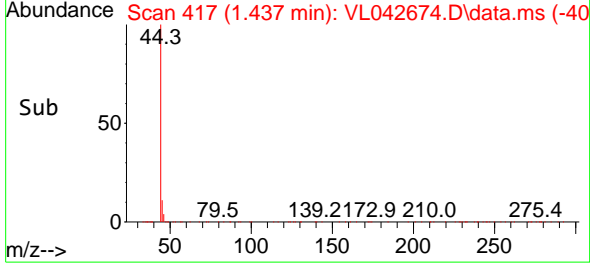
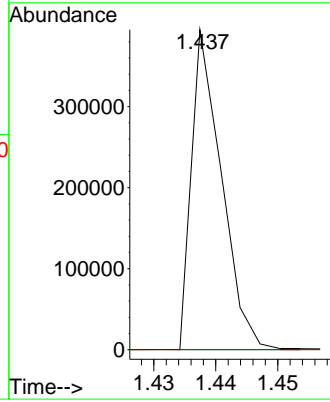
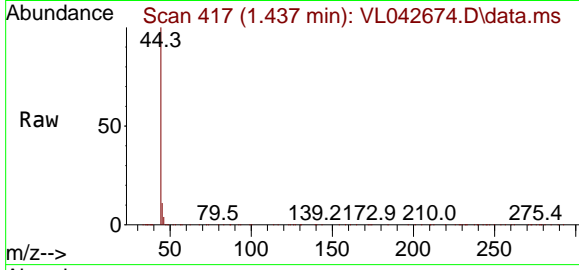




#19
 Isopropyl Alcohol
 Concen: 15.839 ppbv
 RT: 1.437 min Scan# 417
 Delta R.T. -0.450 min
 Lab File: VL042674.D
 Acq: 27 Jun 2025 11:30

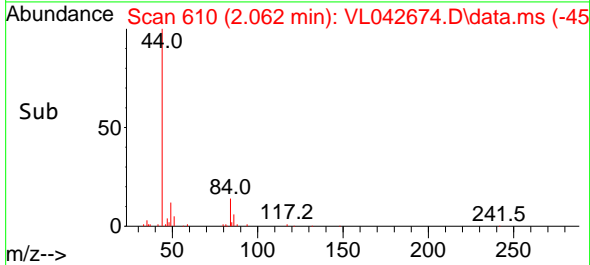
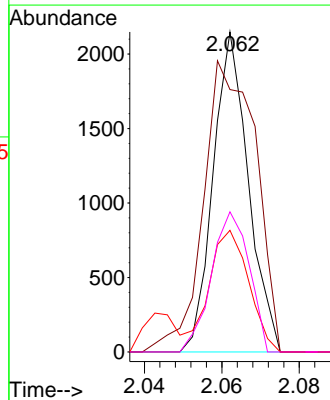
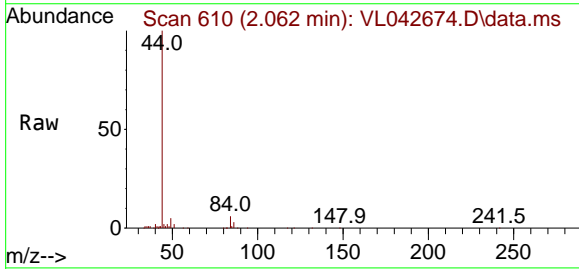
Instrument : MSVOA_L
 ClientSampleId : SV1

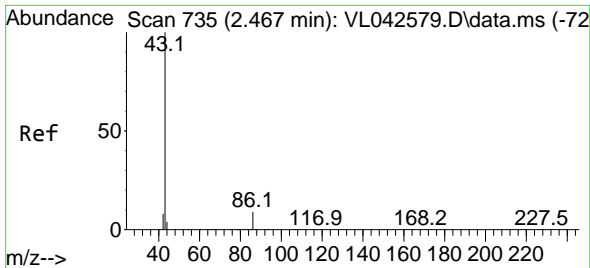
Tgt Ion: 45 Resp: 133282
 Ion Ratio Lower Upper
 45 100
 58 0.6 29.4 44.2#



#20
 Methylene Chloride
 Concen: 0.291 ppbv
 RT: 2.062 min Scan# 610
 Delta R.T. 0.000 min
 Lab File: VL042674.D
 Acq: 27 Jun 2025 11:30

Tgt Ion: 84 Resp: 1352
 Ion Ratio Lower Upper
 84 100
 49 82.0 128.8 193.2#
 51 38.0 38.6 57.8#
 86 43.8 52.5 78.7#



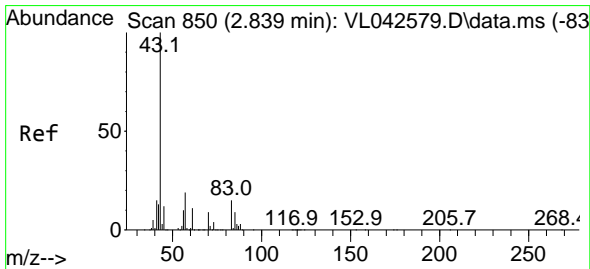
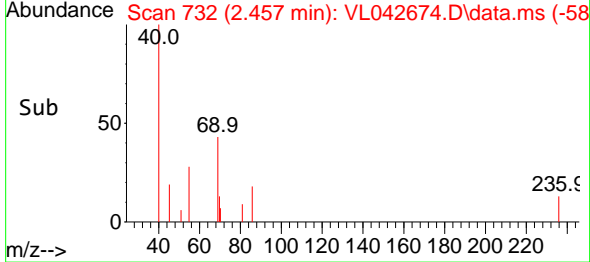
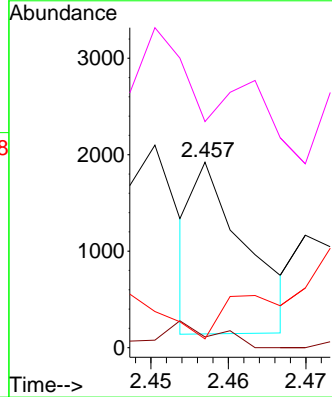
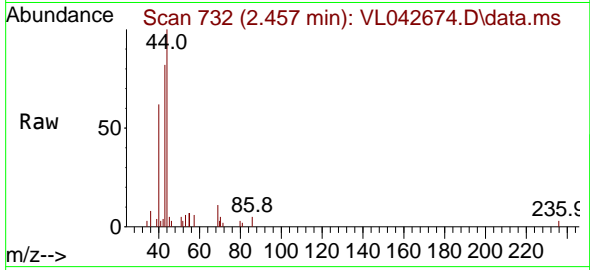


#23
 Vinyl Acetate
 Concen: 0.044 ppbv
 RT: 2.457 min Scan# 71
 Delta R.T. -0.010 min
 Lab File: VL042674.D
 Acq: 27 Jun 2025 11:30

Instrument :
 MSVOA_L
 ClientSampleId :
 SV1

Tgt Ion: 43 Resp: 830

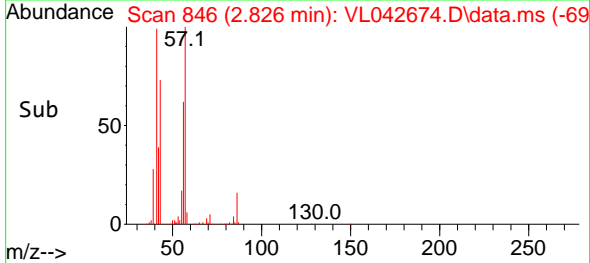
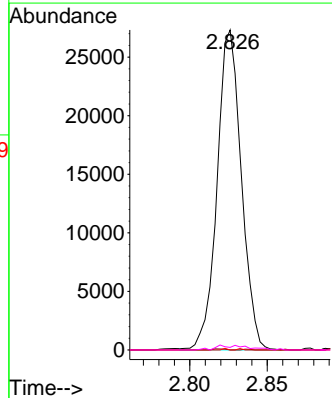
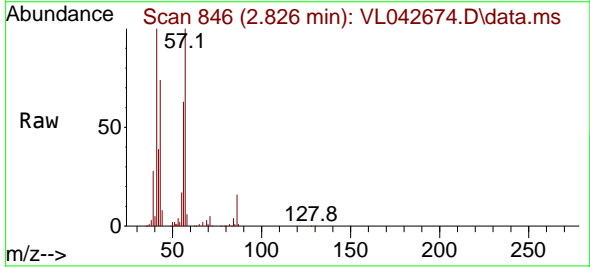
Ion	Ratio	Lower	Upper
43	100		
86	9.4	6.6	9.8
42	0.0	7.0	10.4#
44	14.2	4.2	6.2#

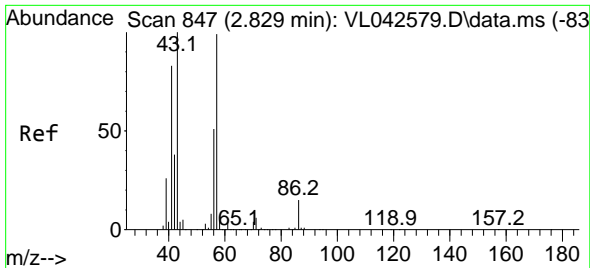


#25
 Ethyl Acetate
 Concen: 0.773 ppbv
 RT: 2.826 min Scan# 846
 Delta R.T. -0.013 min
 Lab File: VL042674.D
 Acq: 27 Jun 2025 11:30

Tgt Ion: 43 Resp: 29767

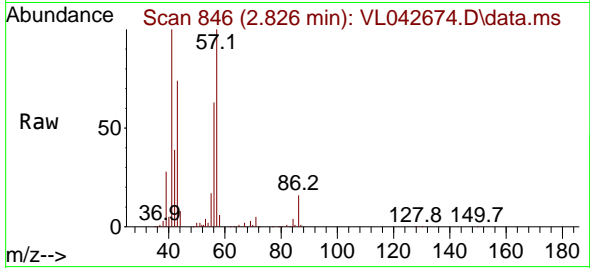
Ion	Ratio	Lower	Upper
43	100		
45	0.2	8.2	12.2#
61	0.2	7.1	10.7#
70	2.0	6.4	9.6#



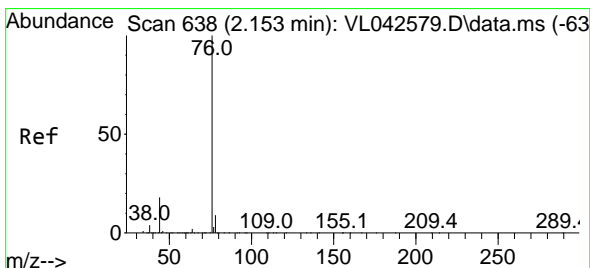
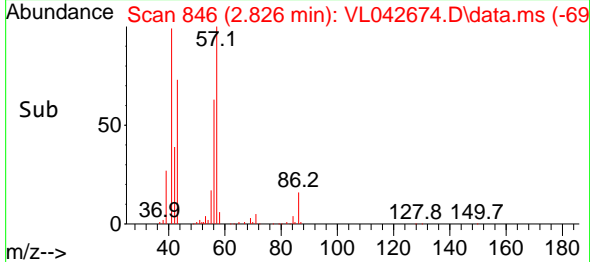
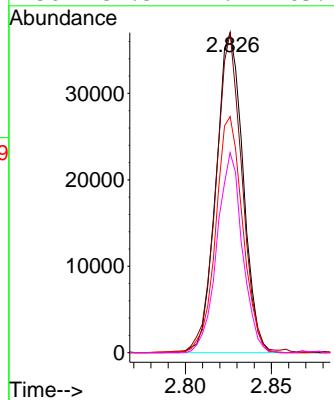


#26
 Hexane
 Concen: 2.298 ppbv
 RT: 2.826 min Scan# 84
 Delta R.T. -0.003 min
 Lab File: VL042674.D
 Acq: 27 Jun 2025 11:30

Instrument :
 MSVOA_L
 ClientSampleId :
 SV1

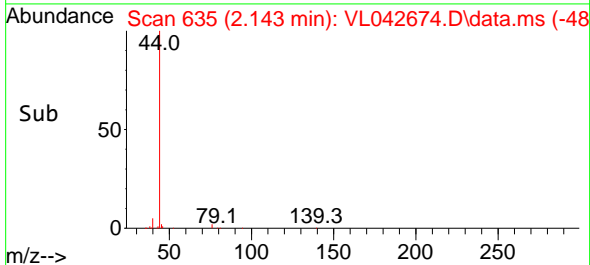
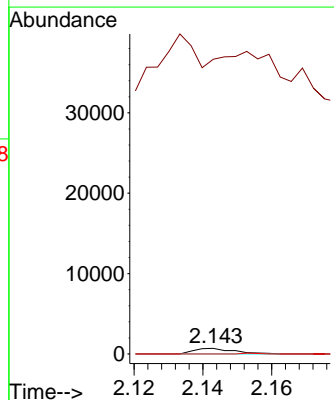
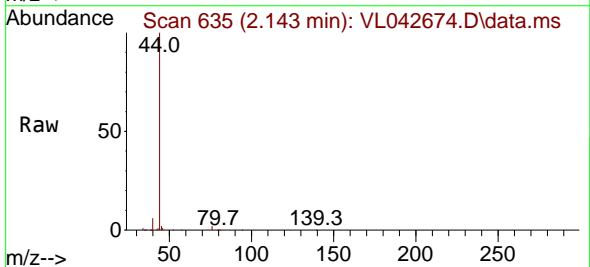


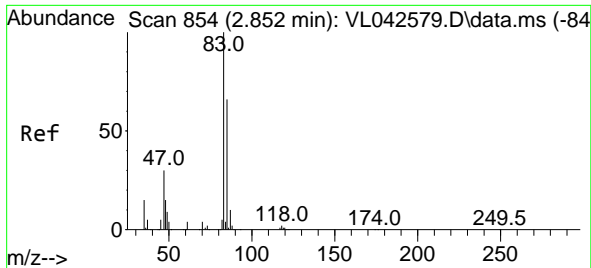
Tgt Ion: 57 Resp: 40228
 Ion Ratio Lower Upper
 57 100
 41 97.3 70.6 106.0
 43 74.2 181.1 271.7#
 56 59.5 42.2 63.4



#27
 Carbon Disulfide
 Concen: 0.042 ppbv
 RT: 2.143 min Scan# 635
 Delta R.T. -0.010 min
 Lab File: VL042674.D
 Acq: 27 Jun 2025 11:30

Tgt Ion: 76 Resp: 568
 Ion Ratio Lower Upper
 76 100
 44 2716.5 21.3 31.9#
 78 4.9 9.4 14.0#

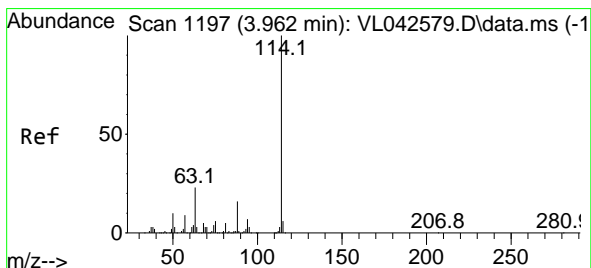
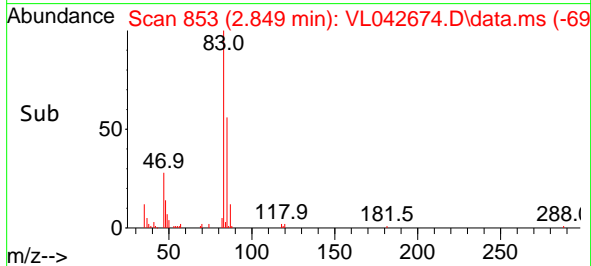
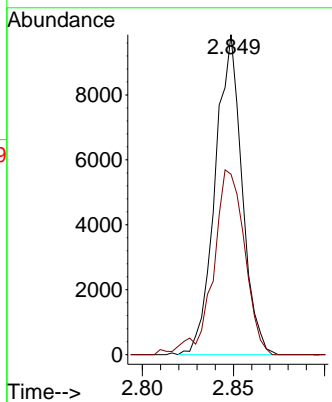
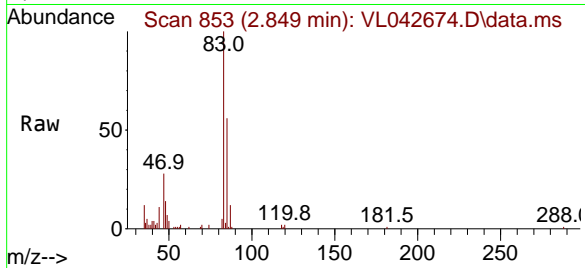




#29
 Chloroform
 Concen: 0.443 ppbv
 RT: 2.849 min Scan# 81
 Delta R.T. -0.003 min
 Lab File: VL042674.D
 Acq: 27 Jun 2025 11:30

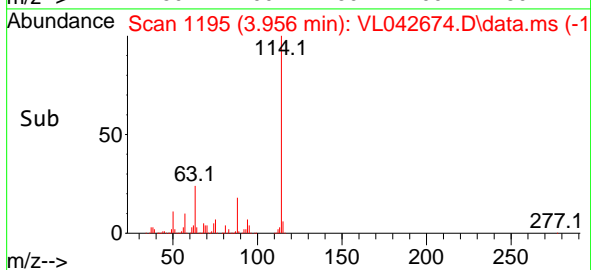
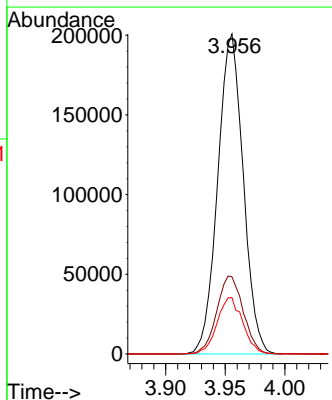
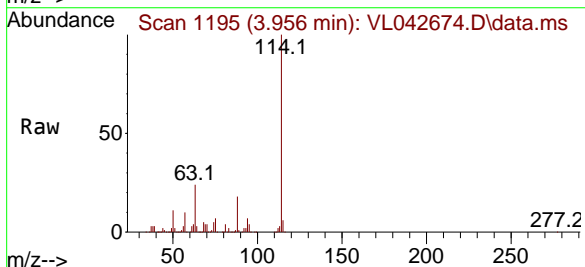
Instrument :
 MSVOA_L
 ClientSampleId :
 SV1

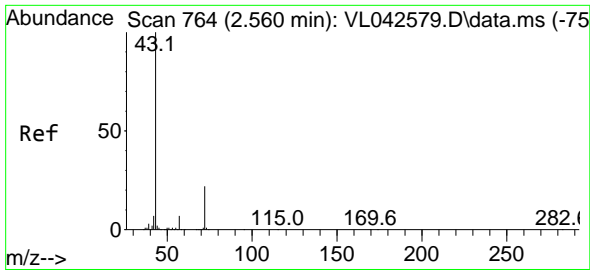
Tgt Ion: 83 Resp: 10081
 Ion Ratio Lower Upper
 83 100
 85 56.4 52.8 79.2



#33
 1,4-Difluorobenzene
 Concen: 10.000 ppbv
 RT: 3.956 min Scan# 1195
 Delta R.T. -0.006 min
 Lab File: VL042674.D
 Acq: 27 Jun 2025 11:30

Tgt Ion: 114 Resp: 298488
 Ion Ratio Lower Upper
 114 100
 63 25.3 19.0 28.6
 88 17.7 13.6 20.4

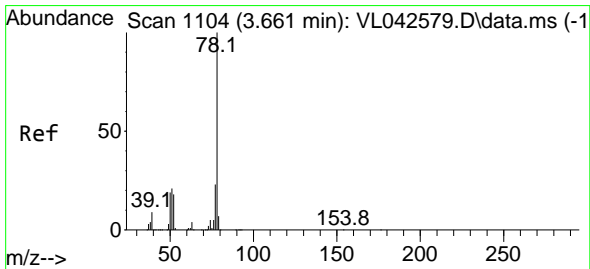
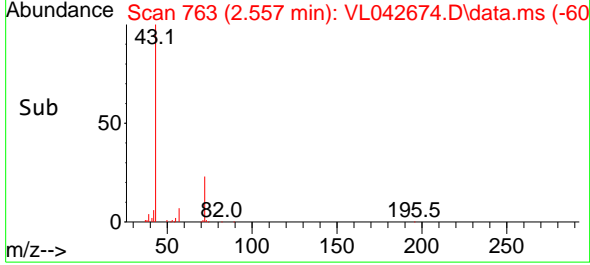
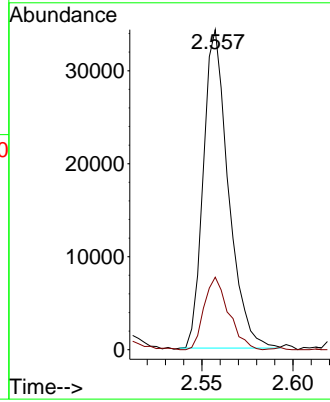
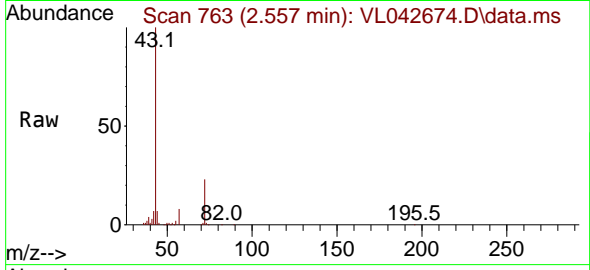




#34
 2-Butanone
 Concen: 1.534 ppbv
 RT: 2.557 min Scan# 763
 Delta R.T. -0.003 min
 Lab File: VL042674.D
 Acq: 27 Jun 2025 11:30

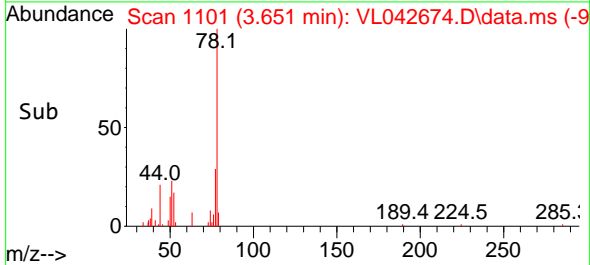
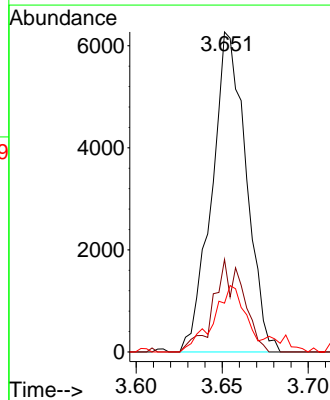
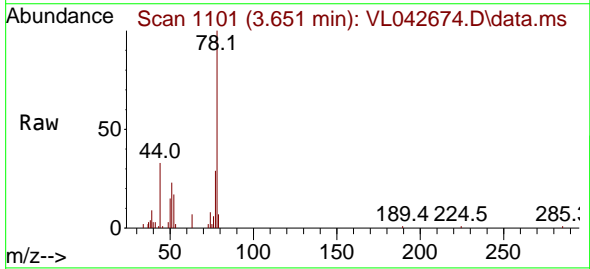
Instrument : MSVOA_L
 ClientSampleId : SV1

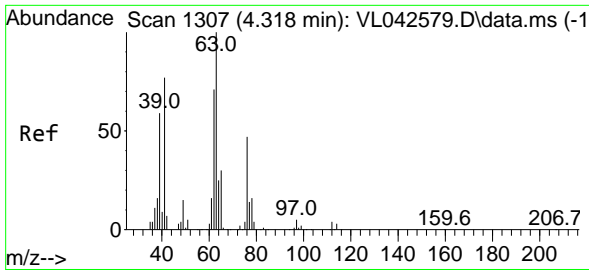
Tgt Ion: 43 Resp: 32658
 Ion Ratio Lower Upper
 43 100
 72 22.7 17.7 26.5



#36
 Benzene
 Concen: 0.296 ppbv
 RT: 3.651 min Scan# 1101
 Delta R.T. -0.010 min
 Lab File: VL042674.D
 Acq: 27 Jun 2025 11:30

Tgt Ion: 78 Resp: 8711
 Ion Ratio Lower Upper
 78 100
 77 28.9 18.2 27.2#
 50 15.2 15.2 22.8



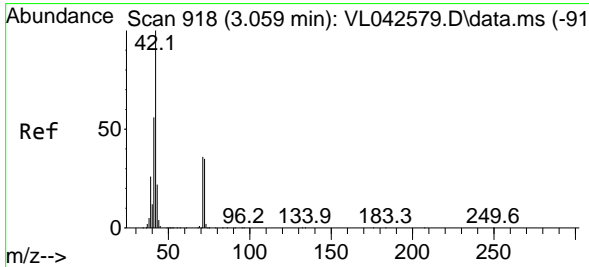
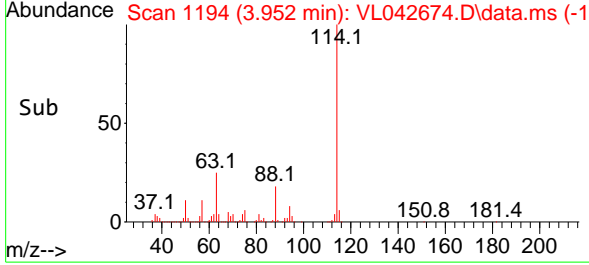
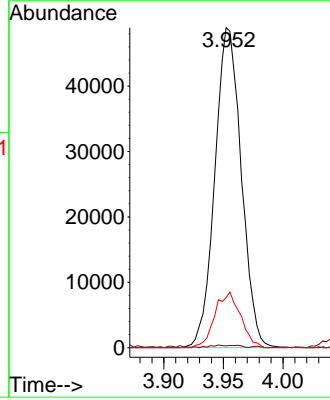
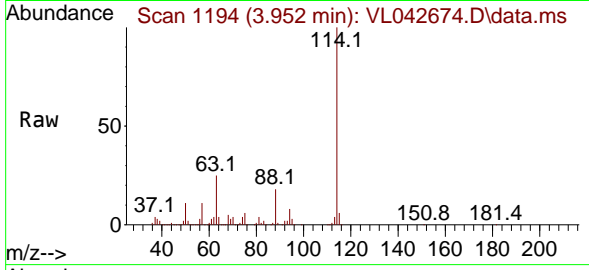


#39
 1,2-Dichloropropane
 Concen: 6.935 ppbv
 RT: 3.952 min Scan# 111
 Delta R.T. -0.366 min
 Lab File: VL042674.D
 Acq: 27 Jun 2025 11:30

Instrument : MSVOA_L
 ClientSampleId : SV1

Tgt Ion: 63 Resp: 75388

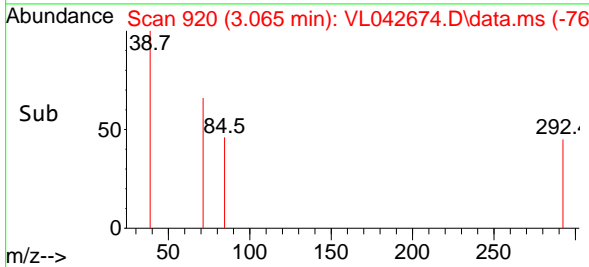
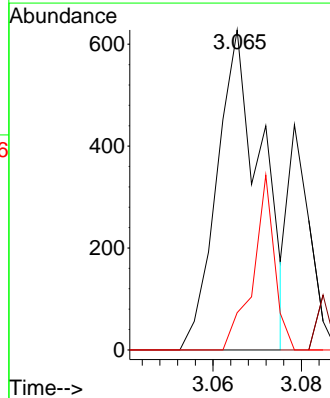
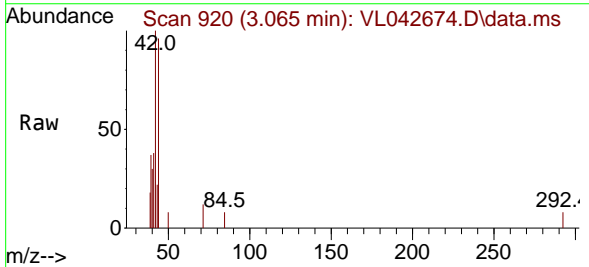
Ion	Ratio	Lower	Upper
63	100		
41	0.4	61.8	92.6#
62	15.6	56.6	85.0#

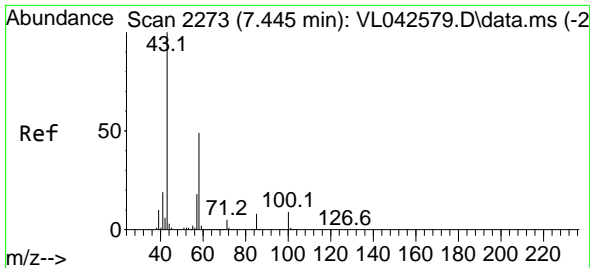


#41
 Tetrahydrofuran
 Concen: 0.035 ppbv
 RT: 3.065 min Scan# 920
 Delta R.T. 0.007 min
 Lab File: VL042674.D
 Acq: 27 Jun 2025 11:30

Tgt Ion: 42 Resp: 440

Ion	Ratio	Lower	Upper
42	100		
72	0.0	28.9	43.3#
71	26.1	28.5	42.7#



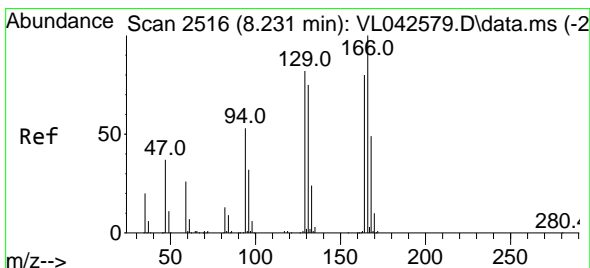
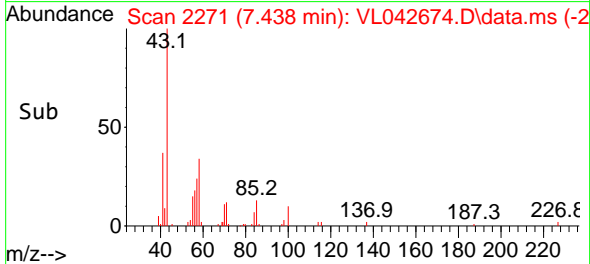
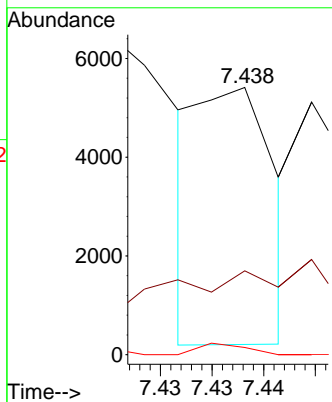
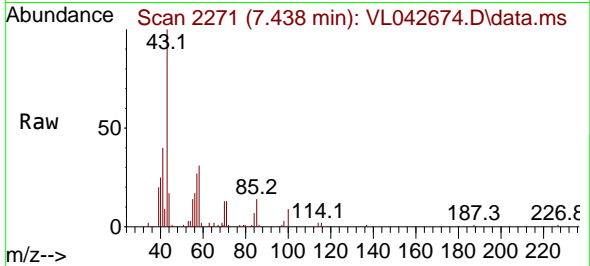


#51
 2-Hexanone
 Concen: 0.112 ppbv
 RT: 7.438 min Scan# 2113
 Delta R.T. -0.006 min
 Lab File: VL042674.D
 Acq: 27 Jun 2025 11:30

Instrument : MSVOA_L
 ClientSampleId : SV1

Tgt Ion: 43 Resp: 2634

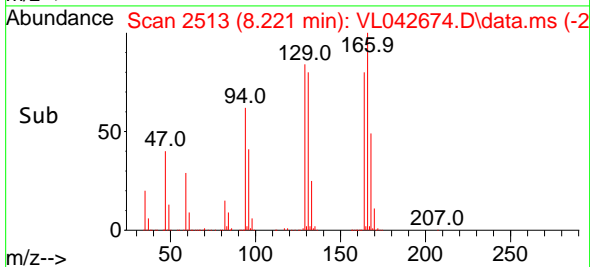
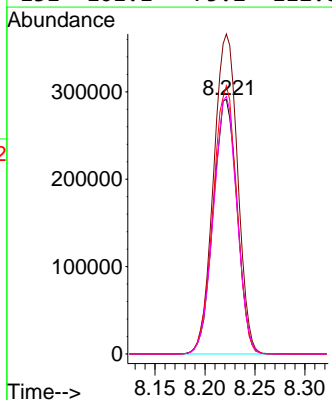
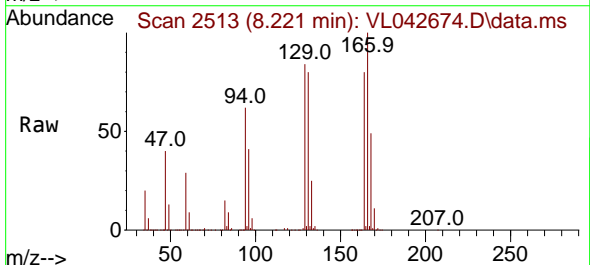
Ion	Ratio	Lower	Upper
43	100		
58	0.0	39.9	59.9#
98	5.7	0.1	0.1#

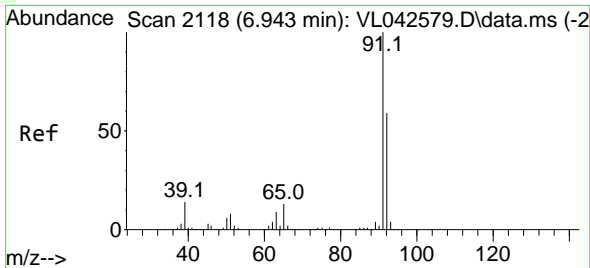


#52
 Tetrachloroethene
 Concen: 44.063 ppbv
 RT: 8.221 min Scan# 2513
 Delta R.T. -0.010 min
 Lab File: VL042674.D
 Acq: 27 Jun 2025 11:30

Tgt Ion: 164 Resp: 483973

Ion	Ratio	Lower	Upper
164	100		
166	125.7	100.0	150.0
129	105.3	82.2	123.4
131	101.1	75.2	112.8

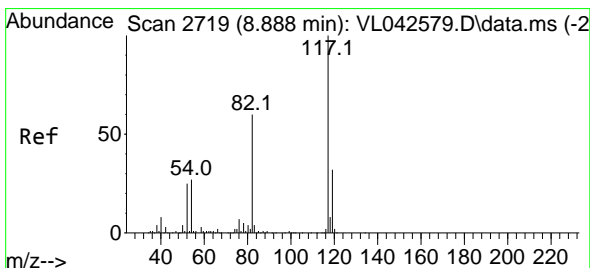
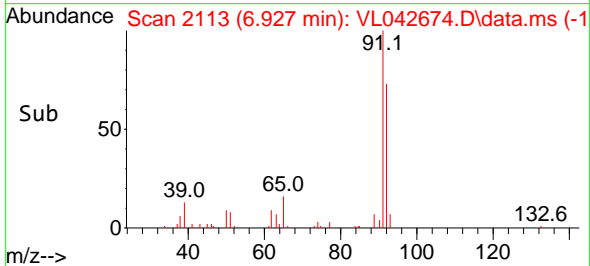
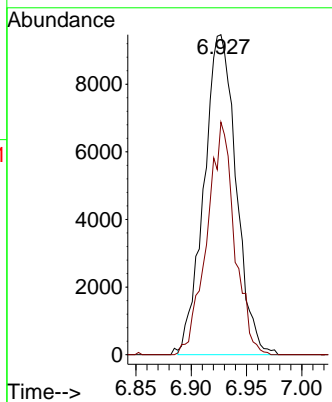
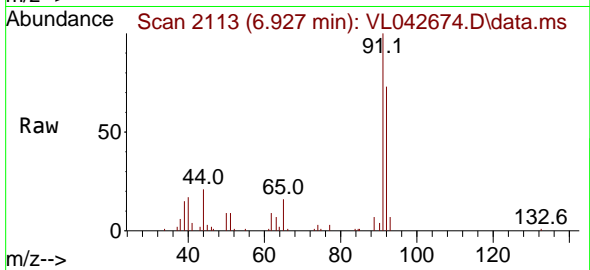




#53
 Toluene
 Concen: 0.563 ppbv
 RT: 6.927 min Scan# 2113
 Delta R.T. -0.016 min
 Lab File: VL042674.D
 Acq: 27 Jun 2025 11:30

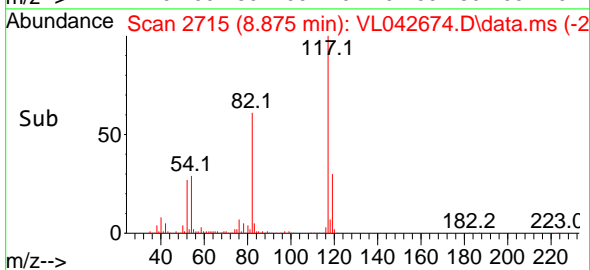
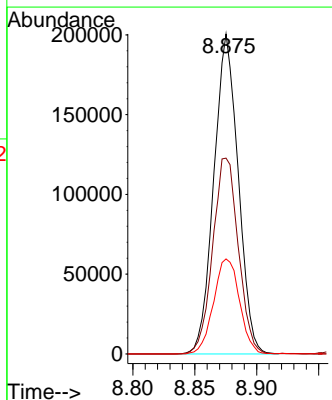
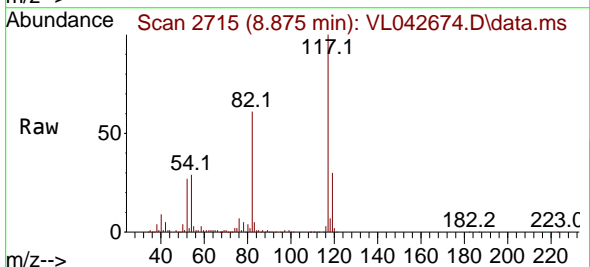
Instrument : MSVOA_L
 ClientSampleId : SV1

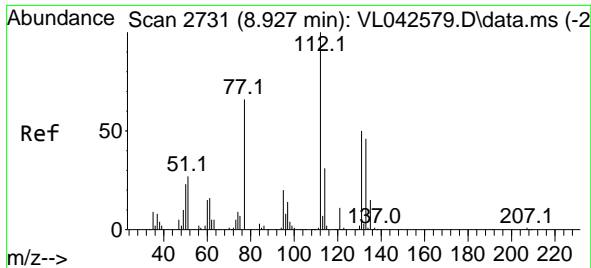
Tgt Ion: 91 Resp: 19125
 Ion Ratio Lower Upper
 91 100
 92 62.7 48.2 72.4



#55
 Chlorobenzene-d5
 Concen: 10.000 ppbv
 RT: 8.875 min Scan# 2715
 Delta R.T. -0.013 min
 Lab File: VL042674.D
 Acq: 27 Jun 2025 11:30

Tgt Ion: 117 Resp: 274601
 Ion Ratio Lower Upper
 117 100
 82 64.5 51.2 76.8
 119 31.8 26.3 39.5



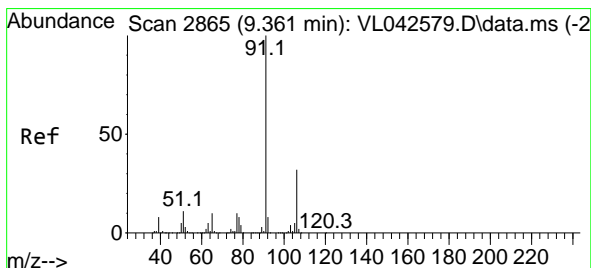
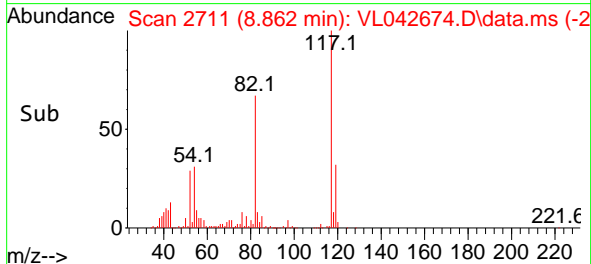
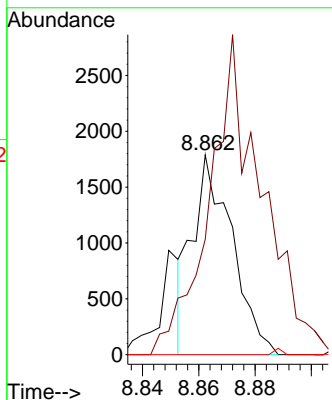
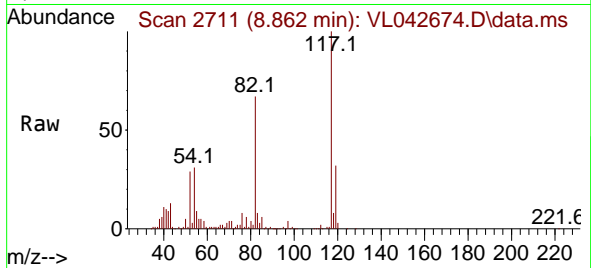


#57
 Chlorobenzene
 Concen: 0.065 ppbv
 RT: 8.862 min Scan# 2111
 Delta R.T. -0.065 min
 Lab File: VL042674.D
 Acq: 27 Jun 2025 11:30

Instrument : MSVOA_L
 ClientSampleId : SV1

Tgt Ion:112 Resp: 1736

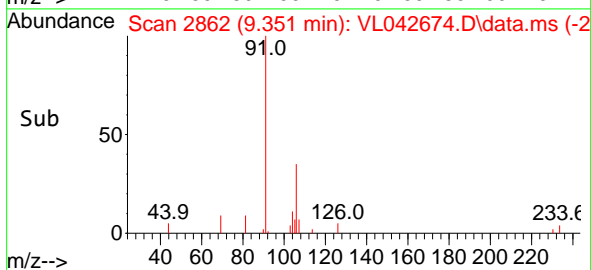
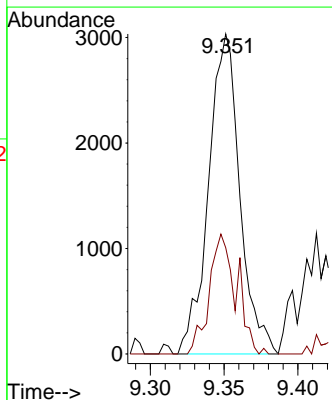
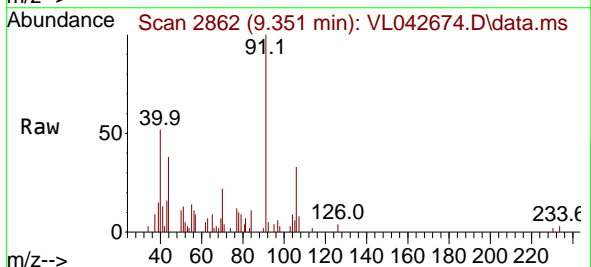
Ion	Ratio	Lower	Upper
112	100		
77	29.5	53.5	80.3#
114	0.0	27.8	34.0#

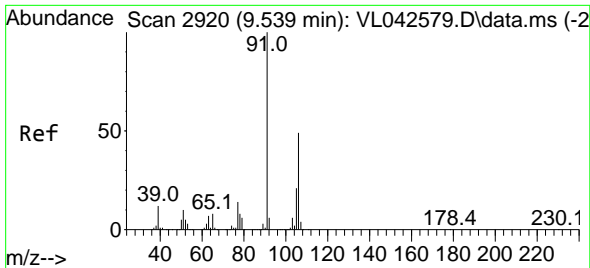


#58
 Ethyl Benzene
 Concen: 0.096 ppbv
 RT: 9.351 min Scan# 2862
 Delta R.T. -0.010 min
 Lab File: VL042674.D
 Acq: 27 Jun 2025 11:30

Tgt Ion: 91 Resp: 4473

Ion	Ratio	Lower	Upper
91	100		
106	33.2	25.9	38.9

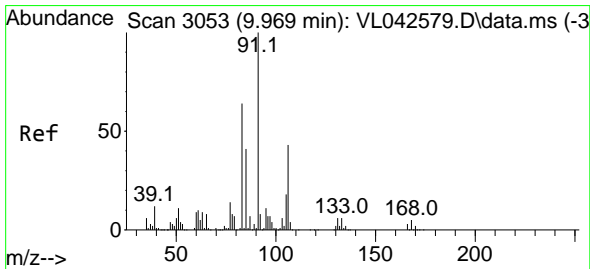
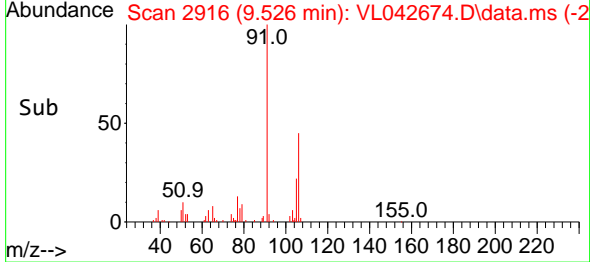
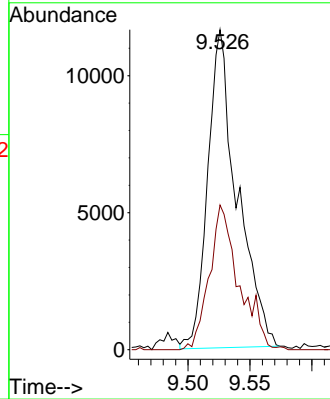
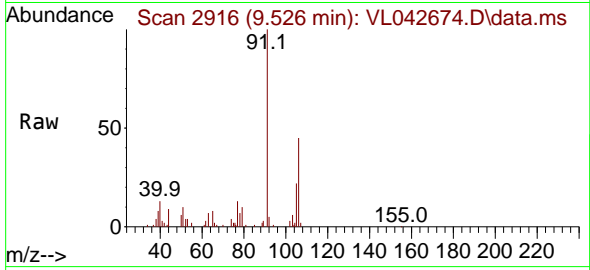




#59
 m/p-Xylene
 Concen: 0.524 ppbv
 RT: 9.526 min Scan# 2916
 Delta R.T. -0.013 min
 Lab File: VL042674.D
 Acq: 27 Jun 2025 11:30

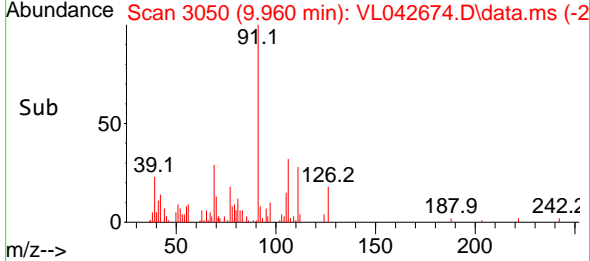
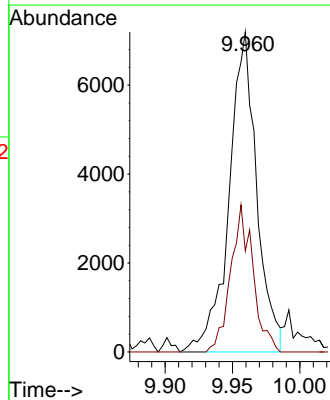
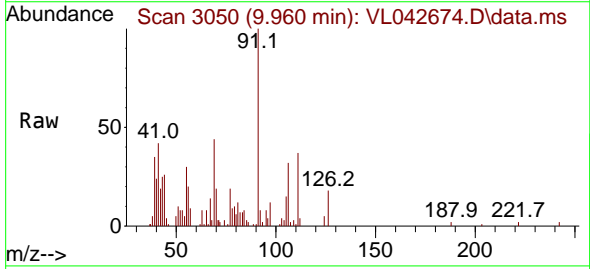
Instrument : MSVOA_L
 ClientSampleId : SV1

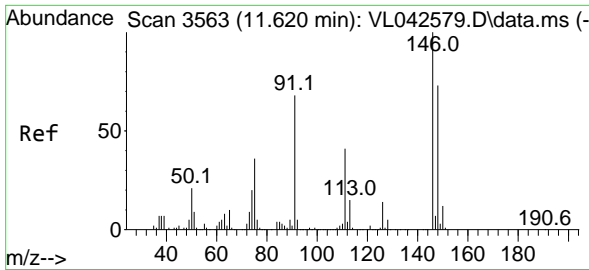
Tgt Ion: 91 Resp: 19208
 Ion Ratio Lower Upper
 91 100
 106 45.9 38.8 58.2



#60
 o-Xylene
 Concen: 0.282 ppbv
 RT: 9.960 min Scan# 3050
 Delta R.T. -0.010 min
 Lab File: VL042674.D
 Acq: 27 Jun 2025 11:30

Tgt Ion: 91 Resp: 10309
 Ion Ratio Lower Upper
 91 100
 106 36.9 22.9 68.5

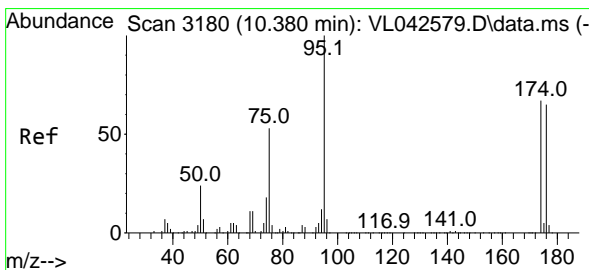
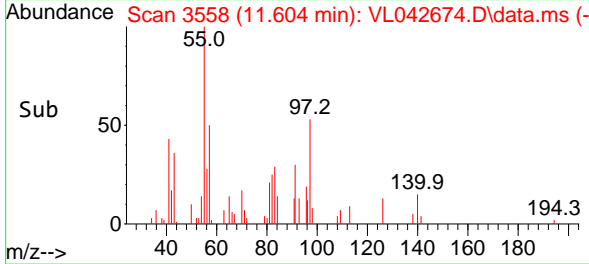
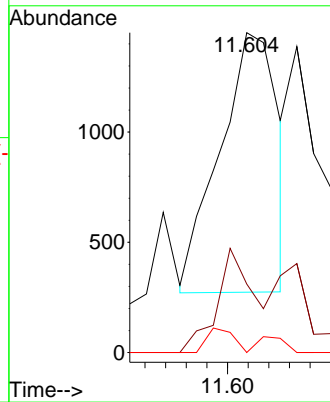
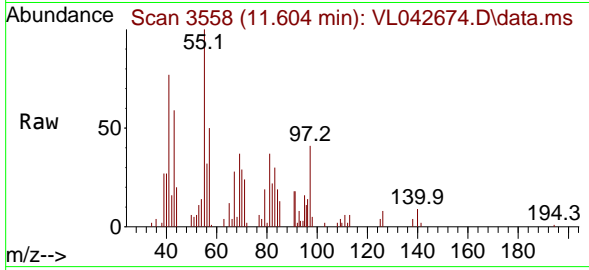




#66
 Benzyl Chloride
 Concen: 0.146 ppbv
 RT: 11.604 min Scan# 3177
 Delta R.T. -0.016 min
 Lab File: VL042674.D
 Acq: 27 Jun 2025 11:30

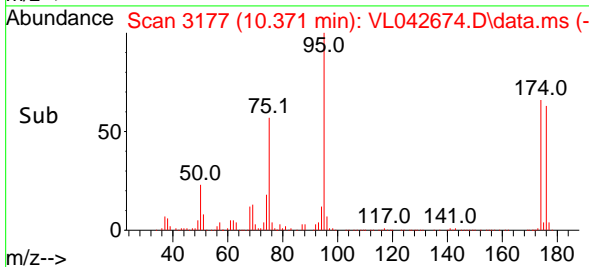
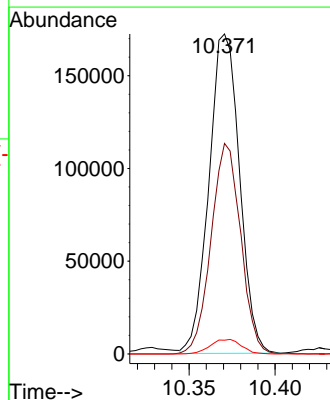
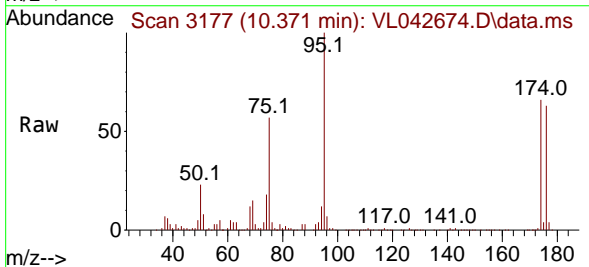
Instrument :
 MSVOA_L
 ClientSampleId :
 SV1

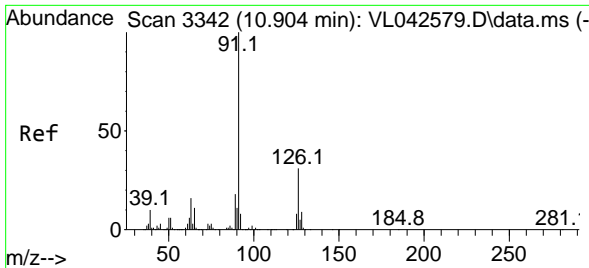
Tgt Ion	Resp	Lower	Upper
91	100		
126	44.7	15.1	22.7#
128	7.1	5.0	7.6



#68
 1-Bromo-4-Fluorobenzene
 Concen: 10.350 ppbv
 RT: 10.371 min Scan# 3177
 Delta R.T. -0.010 min
 Lab File: VL042674.D
 Acq: 27 Jun 2025 11:30

Tgt Ion	Resp	Lower	Upper
95	100		
174	63.7	53.1	79.7
175	4.7	4.2	6.2

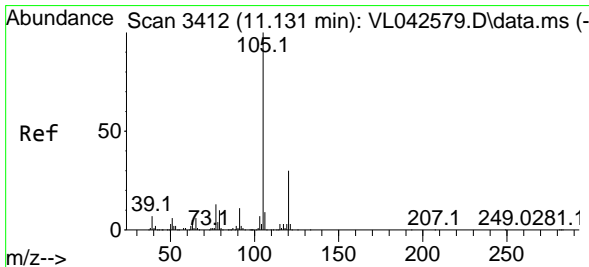
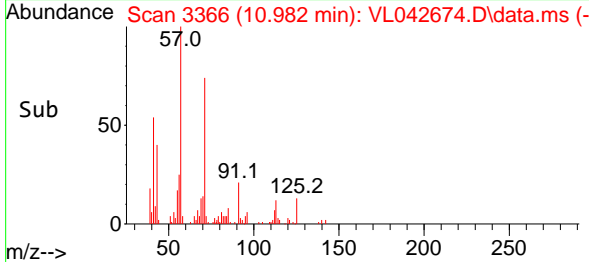
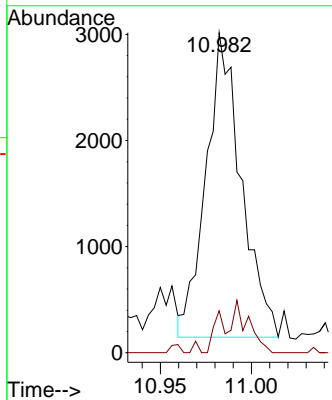
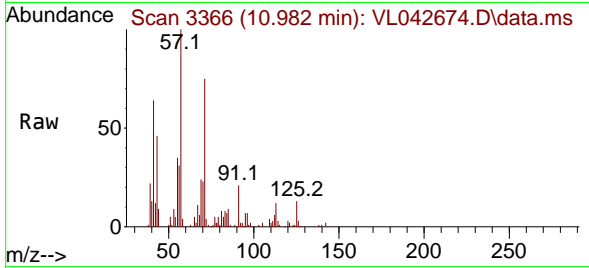




#71
 2-Chlorotoluene
 Concen: 0.093 ppbv
 RT: 10.982 min Scan# 31
 Delta R.T. 0.078 min
 Lab File: VL042674.D
 Acq: 27 Jun 2025 11:30

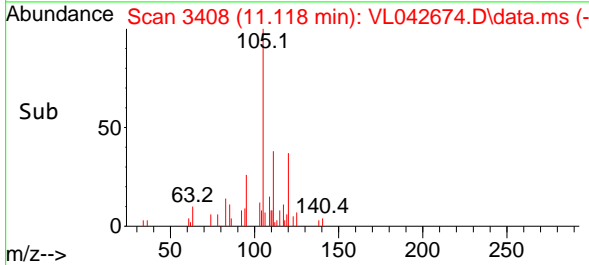
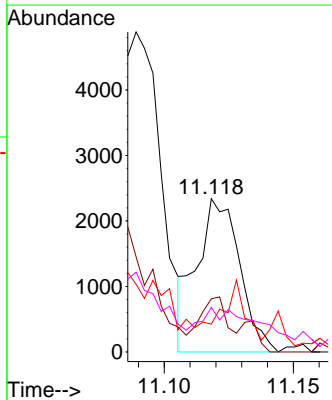
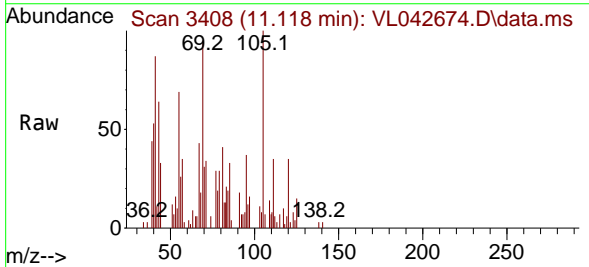
Instrument : MSVOA_L
 ClientSampleId : SV1

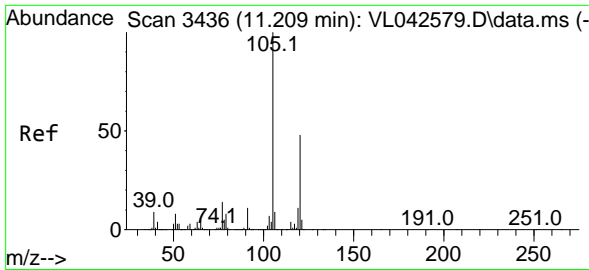
Tgt Ion: 91 Resp: 3842
 Ion Ratio Lower Upper
 91 100
 126 12.8 12.6 50.4



#72
 4-Ethyltoluene
 Concen: 0.059 ppbv
 RT: 11.118 min Scan# 3408
 Delta R.T. -0.013 min
 Lab File: VL042674.D
 Acq: 27 Jun 2025 11:30

Tgt Ion: 105 Resp: 2709
 Ion Ratio Lower Upper
 105 100
 120 28.6 24.6 36.8
 91 0.0 9.6 14.4#
 77 0.0 10.6 15.8#

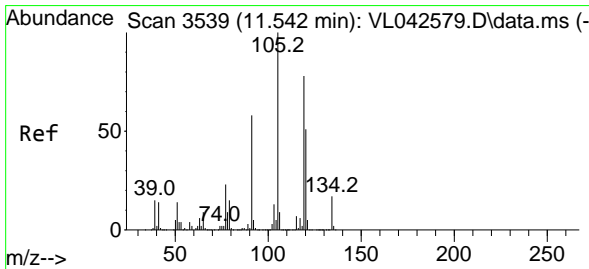
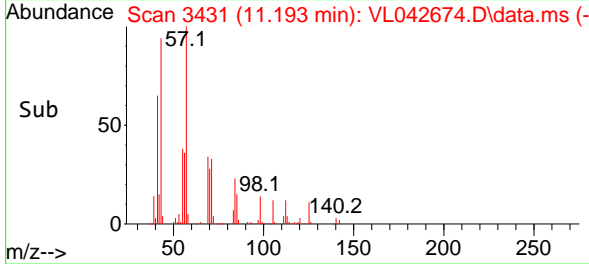
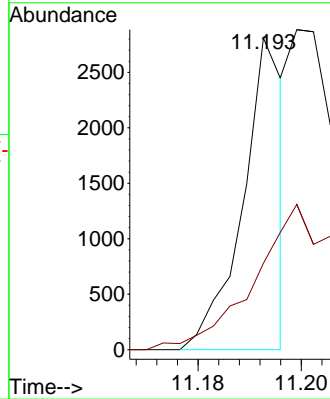
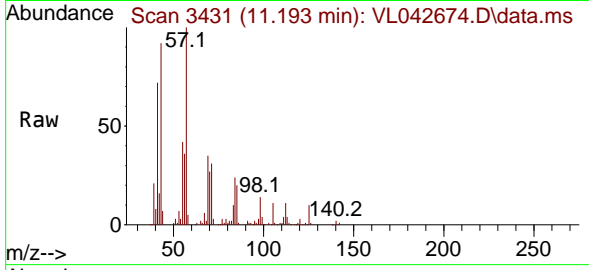




#73
 1,3,5-Trimethylbenzene
 Concen: 0.041 ppbv
 RT: 11.193 min Scan# 3436
 Delta R.T. -0.016 min
 Lab File: VL042674.D
 Acq: 27 Jun 2025 11:30

Instrument : MSVOA_L
 ClientSampleId : SV1

Tgt Ion:105 Resp: 1553
 Ion Ratio Lower Upper
 105 100
 120 25.8 38.8 58.2#



#74
 1,2,4-Trimethylbenzene
 Concen: 0.156 ppbv
 RT: 11.533 min Scan# 3536
 Delta R.T. -0.010 min
 Lab File: VL042674.D
 Acq: 27 Jun 2025 11:30

Tgt Ion:105 Resp: 6547
 Ion Ratio Lower Upper
 105 100
 120 40.9 40.8 61.2
 91 17.4 46.8 70.2#
 77 7.3 18.2 27.2#

