

Data Path : Z:\voasrv\HPCHEM1\MSVOA\_L\Data\VL080923\  
 Data File : VL040621.D  
 Acq On : 10 Aug 2023 1:21  
 Operator : SY/MD  
 Sample : 03907-03DL2 40X  
 Misc : 400mL/MSVOA\_L  
 ALS Vial : 1 Sample Multiplier: 1

Instrument :  
 MSVOA\_L  
 ClientSampleId :  
 SV-2DL2

Quant Time: Aug 10 04:56:46 2023  
 Quant Method : Z:\voasrv\HPCHEM1\MSVOA\_L\methods\VL071023AIR.M  
 Quant Title : AIR ANALYSIS BY METHOD TO-15 Instrument: MSVOA\_L Fri Aug 26 06:05:16 2022  
 QLast Update : Mon Jul 10 16:32:00 2023  
 Response via : Initial Calibration

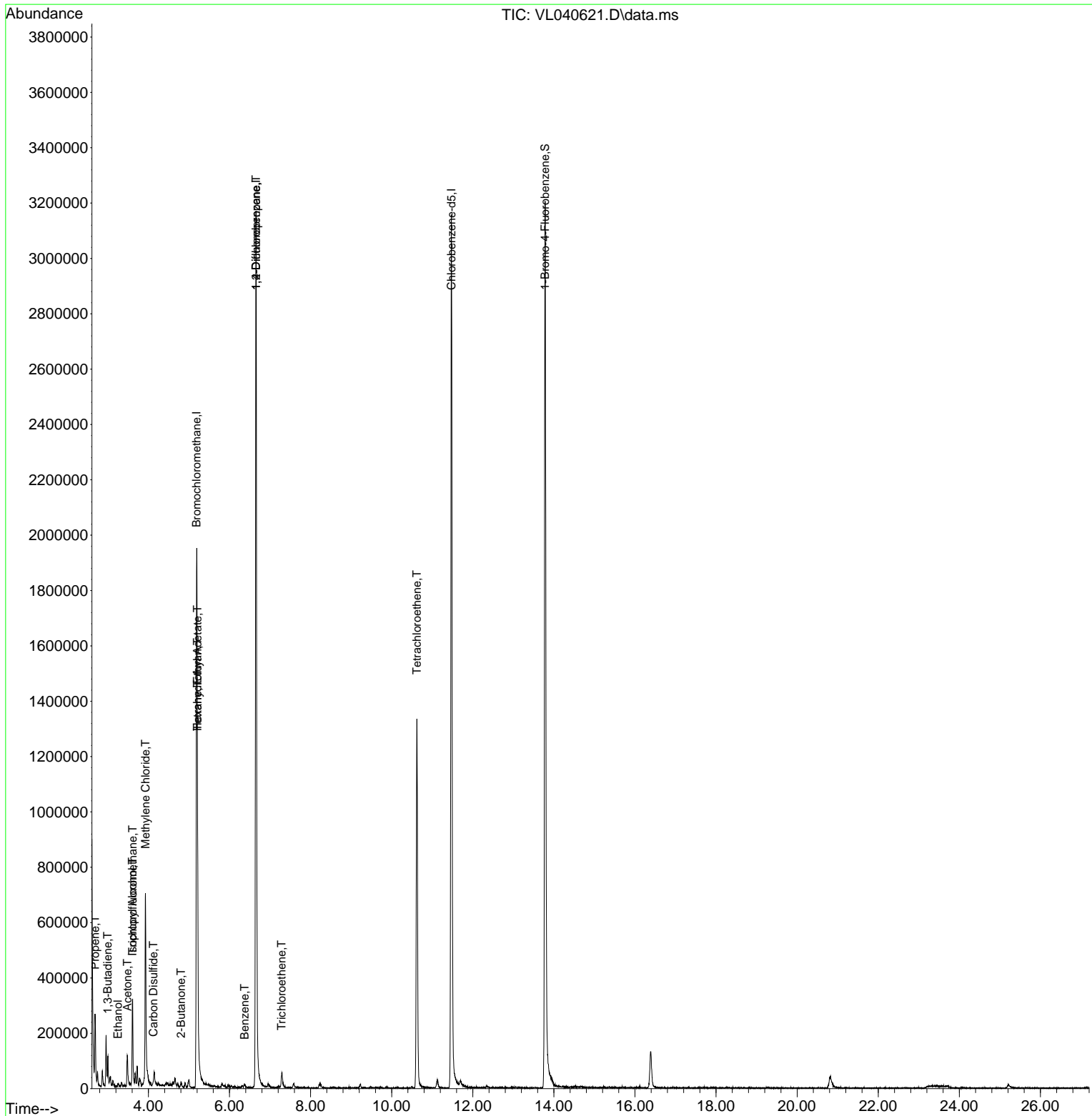
| Compound                    | R.T.   | QIon  | Response | Conc     | Units  | Dev(Min) |
|-----------------------------|--------|-------|----------|----------|--------|----------|
| -----                       |        |       |          |          |        |          |
| Internal Standards          |        |       |          |          |        |          |
| 1) Bromochloromethane       | 5.189  | 49    | 906648   | 10.000   | ppbv   | -0.01    |
| 33) 1,4-Difluorobenzene     | 6.655  | 114   | 2270172  | 10.000   | ppbv   | 0.00     |
| 55) Chlorobenzene-d5        | 11.471 | 117   | 1930614  | 10.000   | ppbv   | 0.00     |
| System Monitoring Compounds |        |       |          |          |        |          |
| 68) 1-Bromo-4-Fluorobenzene | 13.783 | 95    | 1566347  | 10.251   | ppbv   | 0.00     |
| Spiked Amount               | 10.000 | Range | 65 - 135 | Recovery | =      | 102.500% |
| Target Compounds            |        |       |          |          |        |          |
|                             |        |       |          |          |        | Qvalue   |
| 9) Propene                  | 2.684  | 41    | 91006    | 1.850    | ppbv   | 100      |
| 11) Trichlorofluoromethane  | 3.610  | 101   | 12058    | 0.082    | ppbv   | 97       |
| 13) Ethanol                 | 3.247  | 45    | 5632     | 0.526    | ppbv # | 50       |
| 15) Acetone                 | 3.481  | 43    | 90208    | 0.864    | ppbv   | 96       |
| 16) 1,3-Butadiene           | 2.996  | 39    | 5870     | 0.111    | ppbv # | 8        |
| 19) Isopropyl Alcohol       | 3.607  | 45    | 51888    | 0.866    | ppbv # | 85       |
| 20) Methylene Chloride      | 3.928  | 84    | 234213   | 5.276    | ppbv   | 99       |
| 25) Ethyl Acetate           | 5.208  | 43    | 145223   | 0.731    | ppbv # | 76       |
| 26) Hexane                  | 5.211  | 57    | 208383   | 2.258    | ppbv # | 39       |
| 27) Carbon Disulfide        | 4.121  | 76    | 11178    | 0.103    | ppbv # | 67       |
| 34) 2-Butanone              | 4.803  | 43    | 12619    | 0.112    | ppbv # | 51       |
| 36) Benzene                 | 6.372  | 78    | 6277     | 0.034    | ppbv # | 70       |
| 38) Trichloroethene         | 7.285  | 130   | 4762     | 0.069    | ppbv   | 93       |
| 39) 1,2-Dichloropropane     | 6.652  | 63    | 585539   | 8.327    | ppbv # | 26       |
| 41) Tetrahydrofuran         | 5.211  | 42    | 87022    | 1.329    | ppbv # | 45       |
| 52) Tetrachloroethene       | 10.622 | 164   | 288954   | 4.885    | ppbv   | 93       |
| -----                       |        |       |          |          |        |          |

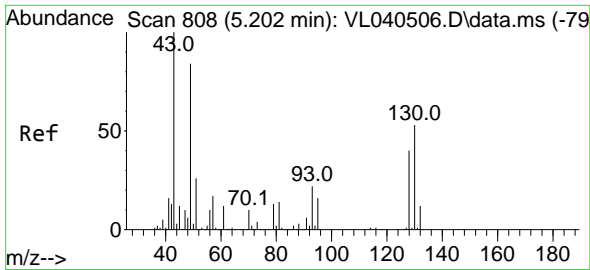
(#) = qualifier out of range (m) = manual integration (+) = signals summed

Data Path : Z:\voasrv\HPCHEM1\MSVOA\_L\Data\VL080923\  
 Data File : VL040621.D  
 Acq On : 10 Aug 2023 1:21  
 Operator : SY/MD  
 Sample : 03907-03DL2 40X  
 Misc : 400mL/MSVOA\_L  
 ALS Vial : 1 Sample Multiplier: 1

Instrument :  
 MSVOA\_L  
 ClientSampleId :  
 SV-2DL2

Quant Time: Aug 10 04:56:46 2023  
 Quant Method : Z:\voasrv\HPCHEM1\MSVOA\_L\methods\VL071023AIR.M  
 Quant Title : AIR ANALYSIS BY METHOD TO-15 Instrument: MSVOA\_L Fri Aug 26 06:05:16 2022  
 QLast Update : Mon Jul 10 16:32:00 2023  
 Response via : Initial Calibration

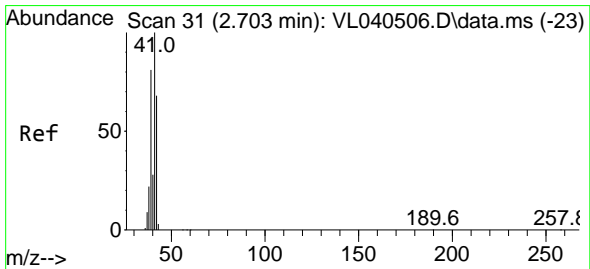
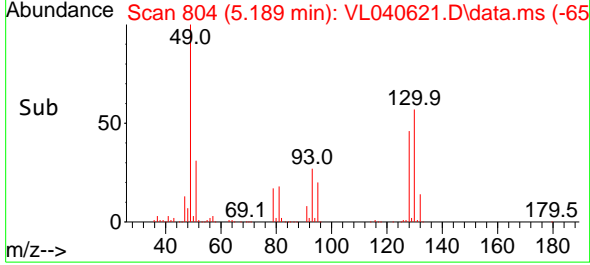
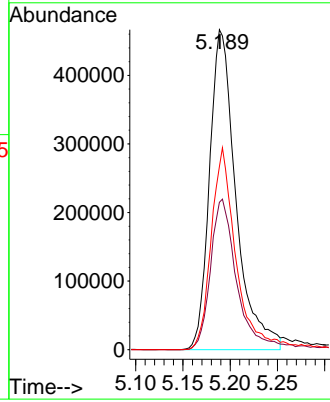
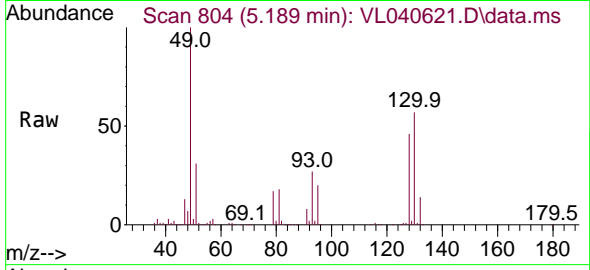




#1  
 Bromochloromethane  
 Concen: 10.000 ppbv  
 RT: 5.189 min Scan# 80  
 Delta R.T. -0.013 min  
 Lab File: VL040621.D  
 Acq: 10 Aug 2023 1:21

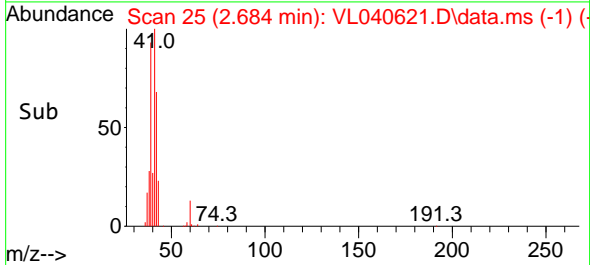
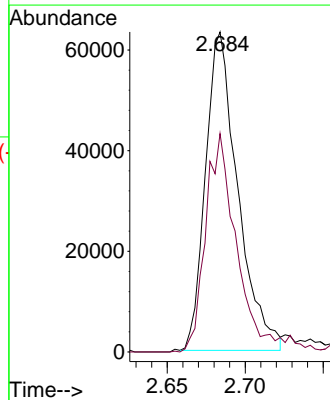
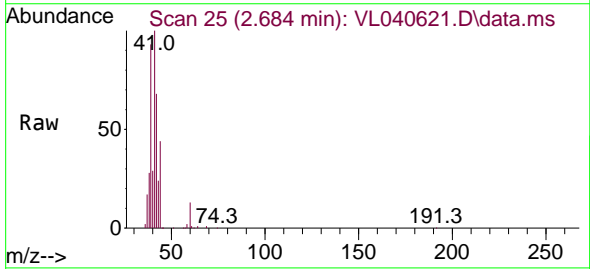
Instrument :  
 MSVOA\_L  
 ClientSampleId :  
 SV-2DL2

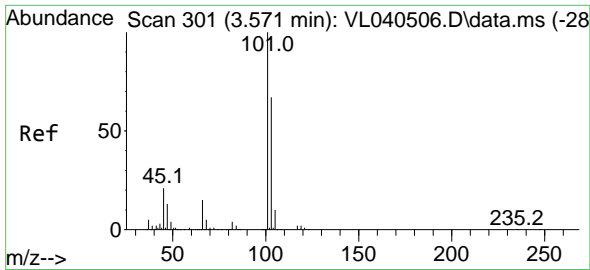
Tgt Ion: 49 Resp: 906648  
 Ion Ratio Lower Upper  
 49 100  
 128 48.1 25.1 75.4  
 130 61.9 31.6 94.7



#9  
 Propene  
 Concen: 1.850 ppbv  
 RT: 2.684 min Scan# 25  
 Delta R.T. -0.019 min  
 Lab File: VL040621.D  
 Acq: 10 Aug 2023 1:21

Tgt Ion: 41 Resp: 91006  
 Ion Ratio Lower Upper  
 41 100  
 42 68.7 55.0 82.6

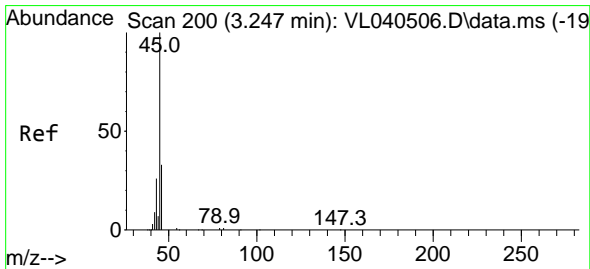
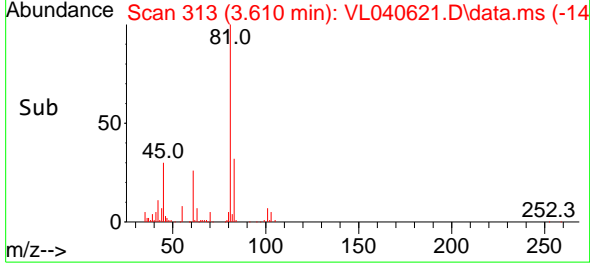
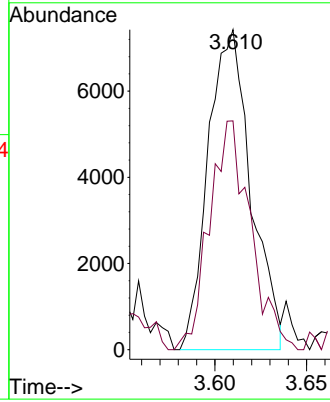
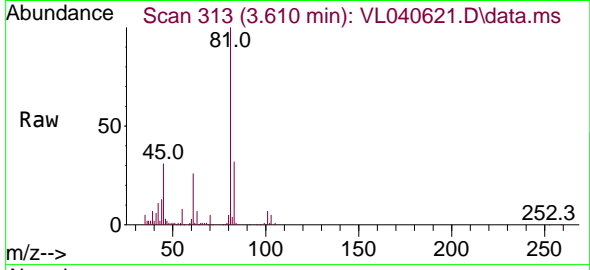




#11  
 Trichlorofluoromethane  
 Concen: 0.082 ppbv  
 RT: 3.610 min Scan# 313  
 Delta R.T. 0.038 min  
 Lab File: VL040621.D  
 Acq: 10 Aug 2023 1:21

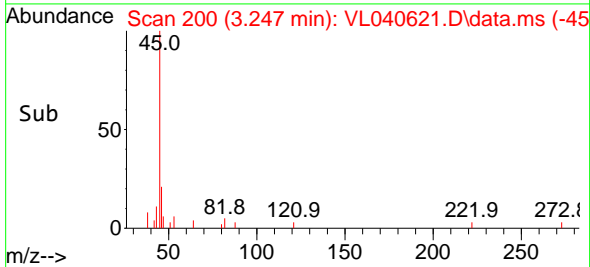
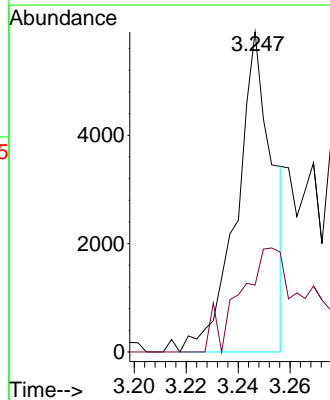
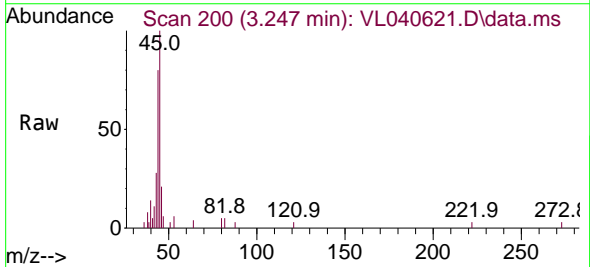
Instrument : MSVOA\_L  
 ClientSampleId : SV-2DL2

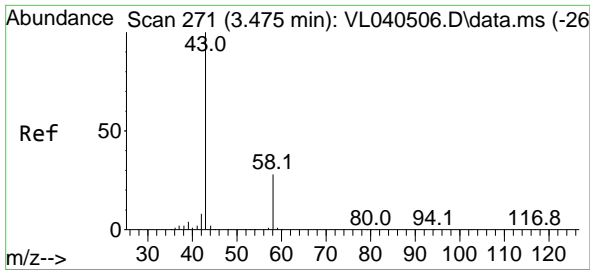
Tgt Ion:101 Resp: 12058  
 Ion Ratio Lower Upper  
 101 100  
 103 68.9 53.4 80.0



#13  
 Ethanol  
 Concen: 0.526 ppbv  
 RT: 3.247 min Scan# 200  
 Delta R.T. -0.000 min  
 Lab File: VL040621.D  
 Acq: 10 Aug 2023 1:21

Tgt Ion: 45 Resp: 5632  
 Ion Ratio Lower Upper  
 45 100  
 46 68.5 15.3 61.1#

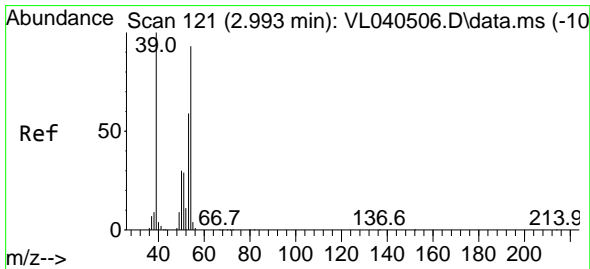
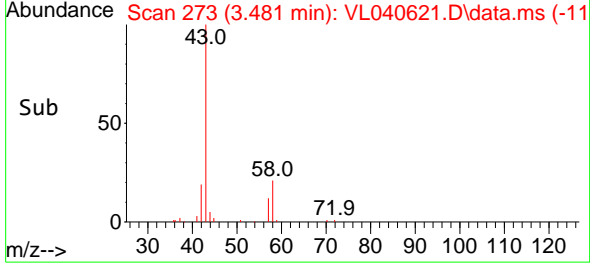
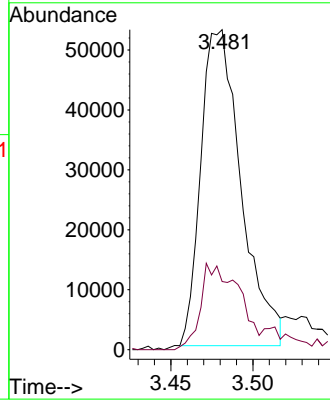
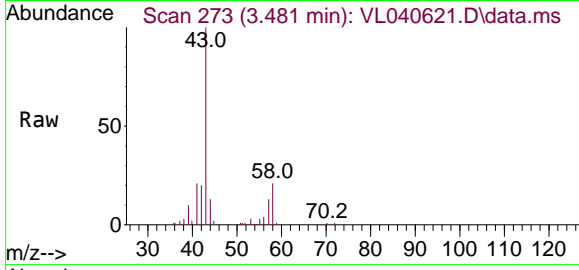




#15  
 Acetone  
 Concen: 0.864 ppbv  
 RT: 3.481 min Scan# 21  
 Delta R.T. 0.006 min  
 Lab File: VL040621.D  
 Acq: 10 Aug 2023 1:21

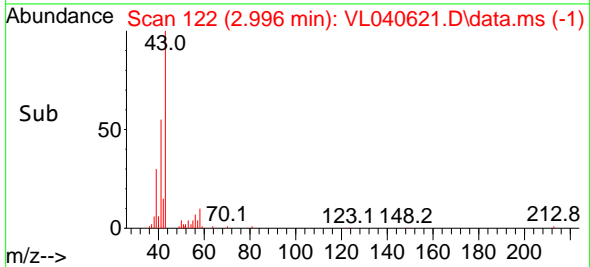
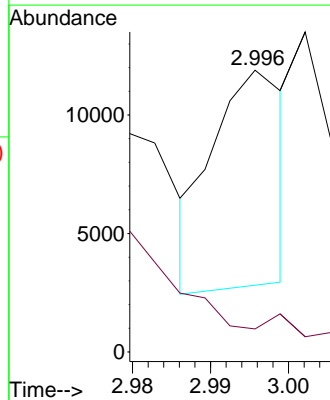
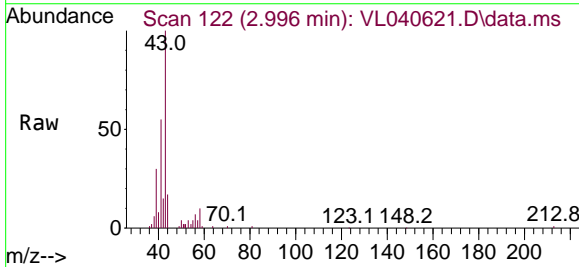
Instrument :  
 MSVOA\_L  
 ClientSampleId :  
 SV-2DL2

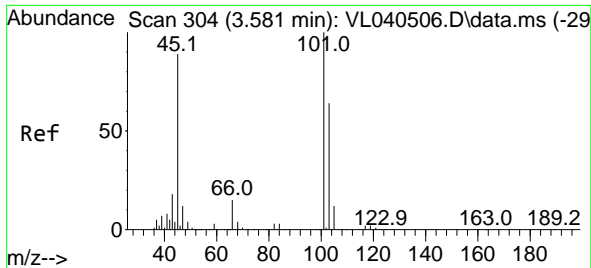
Tgt Ion: 43 Resp: 90208  
 Ion Ratio Lower Upper  
 43 100  
 58 30.7 22.9 34.3



#16  
 1,3-Butadiene  
 Concen: 0.111 ppbv  
 RT: 2.996 min Scan# 122  
 Delta R.T. 0.003 min  
 Lab File: VL040621.D  
 Acq: 10 Aug 2023 1:21

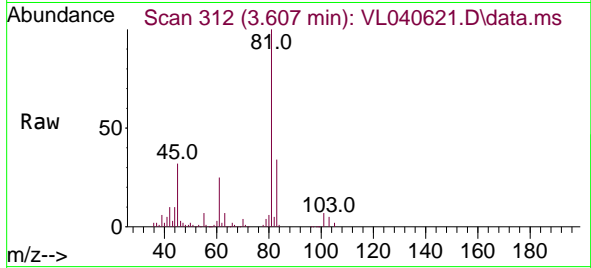
Tgt Ion: 39 Resp: 5870  
 Ion Ratio Lower Upper  
 39 100  
 54 0.0 66.6 100.0#



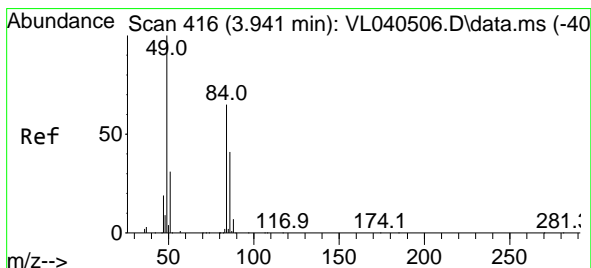
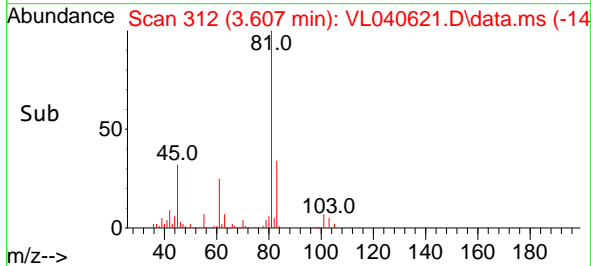
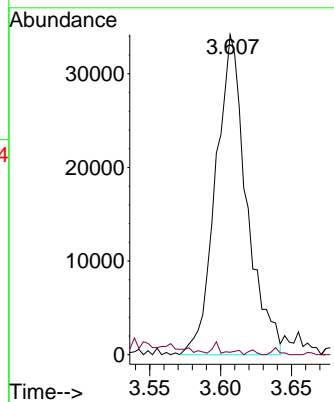


#19  
 Isopropyl Alcohol  
 Concen: 0.866 ppbv  
 RT: 3.607 min Scan# 312  
 Delta R.T. 0.026 min  
 Lab File: VL040621.D  
 Acq: 10 Aug 2023 1:21

Instrument : MSVOA\_L  
 ClientSampleId : SV-2DL2

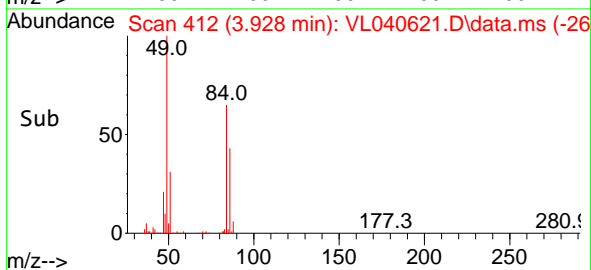
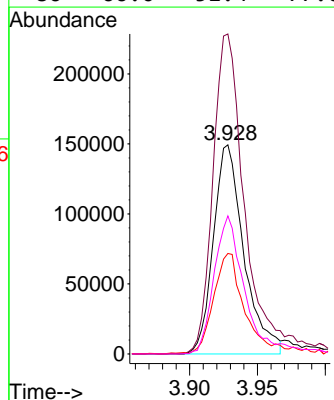
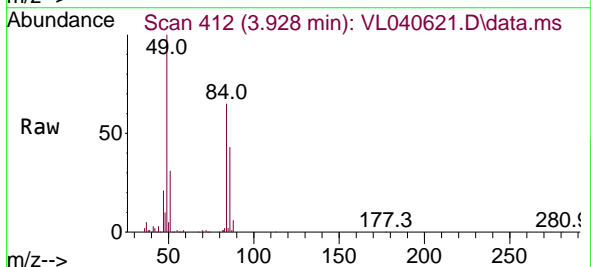


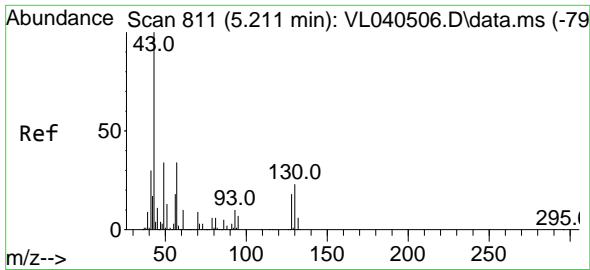
Tgt Ion: 45 Resp: 51888  
 Ion Ratio Lower Upper  
 45 100  
 58 7.1 1.1 1.7#



#20  
 Methylene Chloride  
 Concen: 5.276 ppbv  
 RT: 3.928 min Scan# 412  
 Delta R.T. -0.013 min  
 Lab File: VL040621.D  
 Acq: 10 Aug 2023 1:21

Tgt Ion: 84 Resp: 234213  
 Ion Ratio Lower Upper  
 84 100  
 49 153.0 123.4 185.2  
 51 47.5 38.3 57.5  
 86 66.0 51.4 77.0

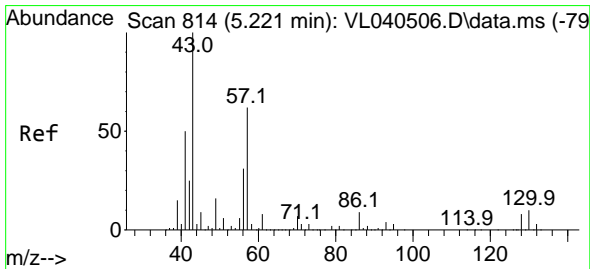
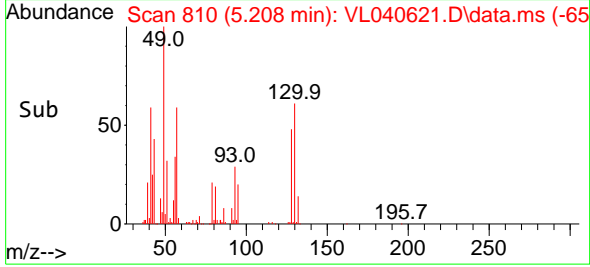
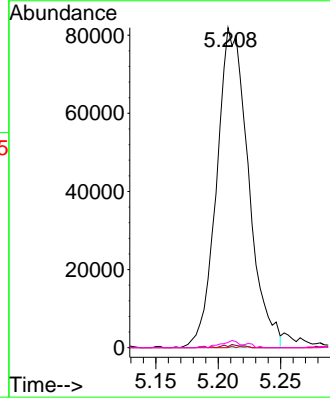
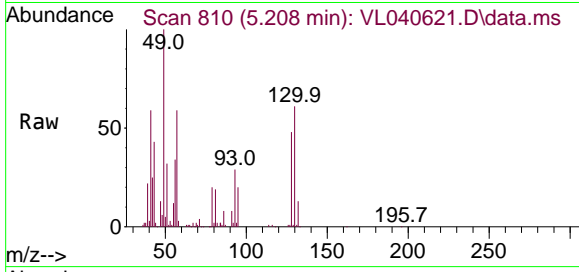




#25  
 Ethyl Acetate  
 Concen: 0.731 ppbv  
 RT: 5.208 min Scan# 811  
 Delta R.T. -0.003 min  
 Lab File: VL040621.D  
 Acq: 10 Aug 2023 1:21

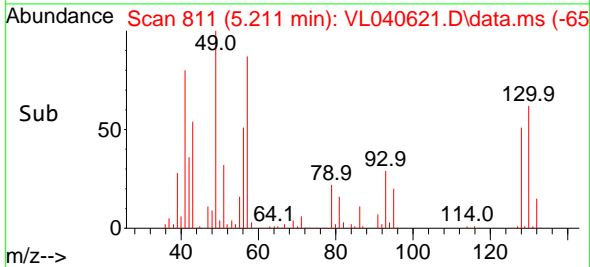
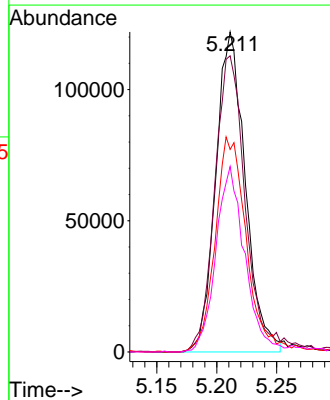
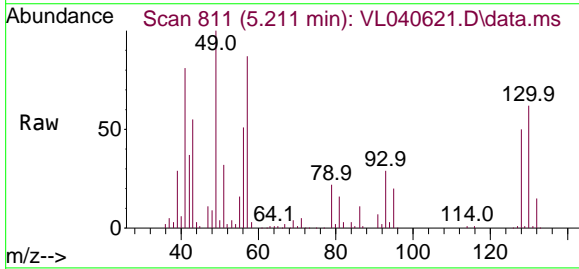
Instrument :  
 MSVOA\_L  
 ClientSampleId :  
 SV-2DL2

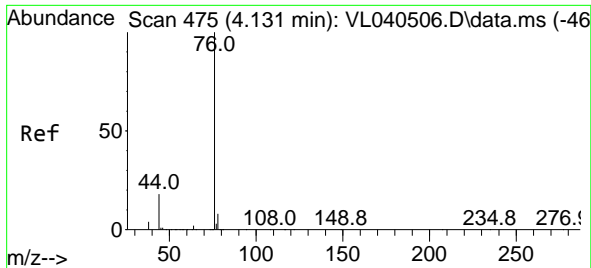
Tgt Ion: 43 Resp: 145223  
 Ion Ratio Lower Upper  
 43 100  
 45 0.6 8.2 12.4#  
 61 0.2 8.3 12.5#  
 70 1.6 6.2 9.2#



#26  
 Hexane  
 Concen: 2.258 ppbv  
 RT: 5.211 min Scan# 811  
 Delta R.T. -0.010 min  
 Lab File: VL040621.D  
 Acq: 10 Aug 2023 1:21

Tgt Ion: 57 Resp: 208383  
 Ion Ratio Lower Upper  
 57 100  
 41 98.1 69.5 104.3  
 43 71.7 177.1 265.7#  
 56 58.9 42.3 63.5



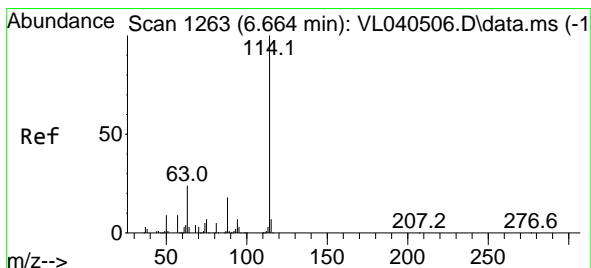
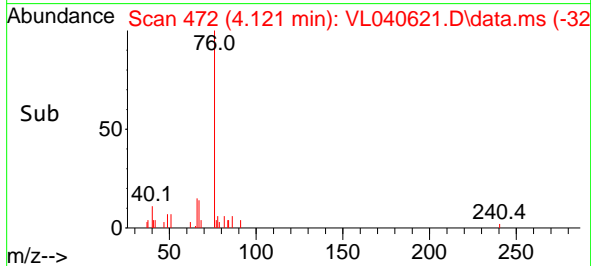
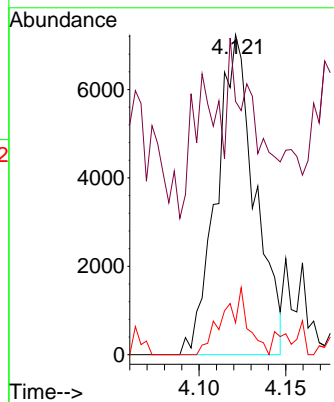
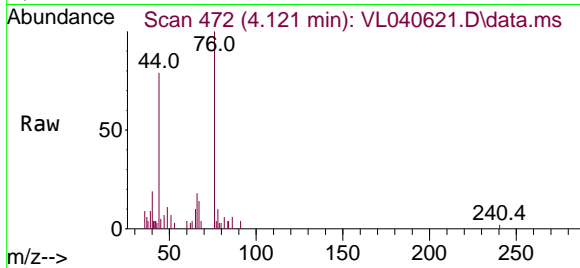


#27  
 Carbon Disulfide  
 Concen: 0.103 ppbv  
 RT: 4.121 min Scan# 41  
 Delta R.T. -0.010 min  
 Lab File: VL040621.D  
 Acq: 10 Aug 2023 1:21

Instrument :  
 MSVOA\_L  
 ClientSampleId :  
 SV-2DL2

Tgt Ion: 76 Resp: 11178

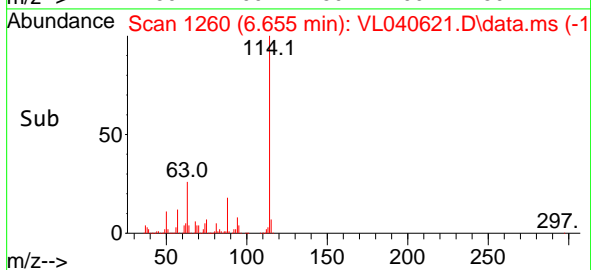
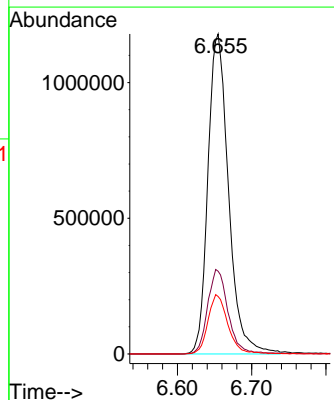
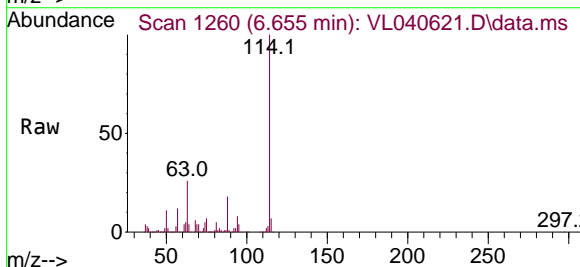
| Ion | Ratio | Lower | Upper |
|-----|-------|-------|-------|
| 76  | 100   |       |       |
| 44  | 35.5  | 15.1  | 22.7# |
| 78  | 18.3  | 7.5   | 11.3# |



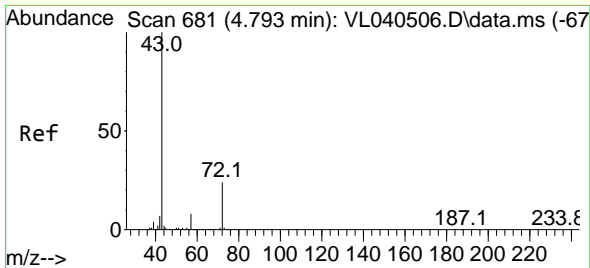
#33  
 1,4-Difluorobenzene  
 Concen: 10.000 ppbv  
 RT: 6.655 min Scan# 1260  
 Delta R.T. -0.010 min  
 Lab File: VL040621.D  
 Acq: 10 Aug 2023 1:21

Tgt Ion: 114 Resp: 2270172

| Ion | Ratio | Lower | Upper |
|-----|-------|-------|-------|
| 114 | 100   |       |       |
| 63  | 26.5  | 19.6  | 29.4  |
| 88  | 18.1  | 14.2  | 21.2  |



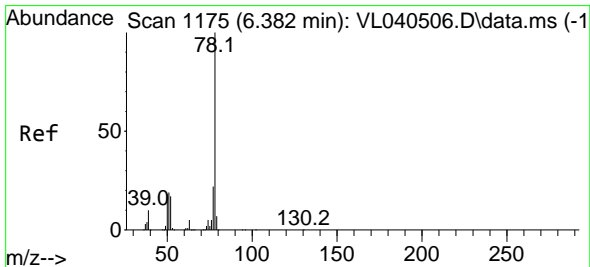
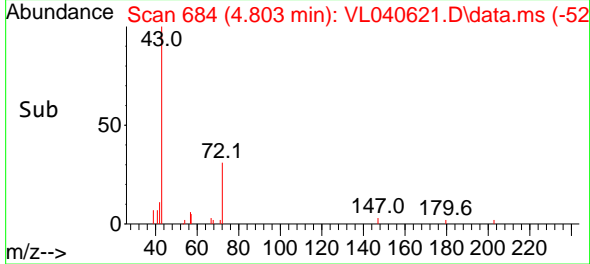
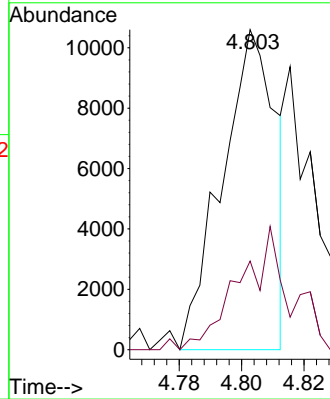
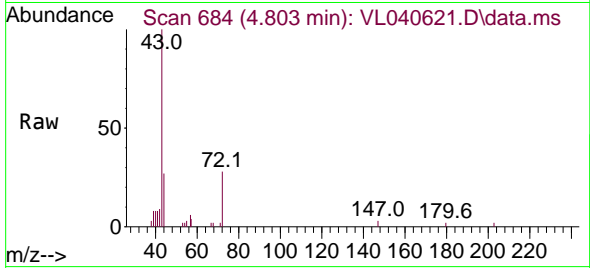




#34  
 2-Butanone  
 Concen: 0.112 ppbv  
 RT: 4.803 min Scan# 681  
 Delta R.T. 0.010 min  
 Lab File: VL040621.D  
 Acq: 10 Aug 2023 1:21

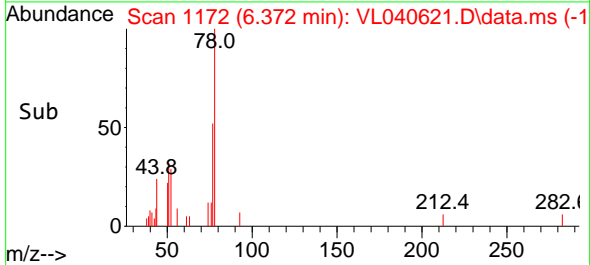
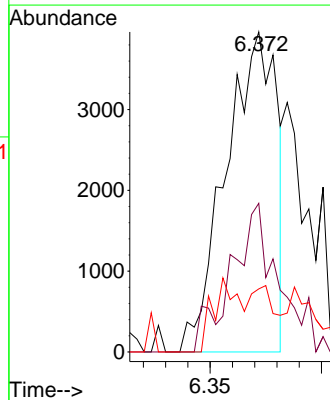
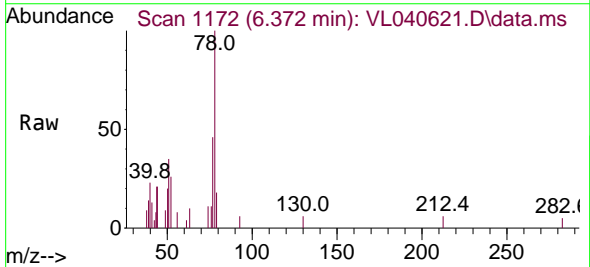
Instrument : MSVOA\_L  
 ClientSampleId : SV-2DL2

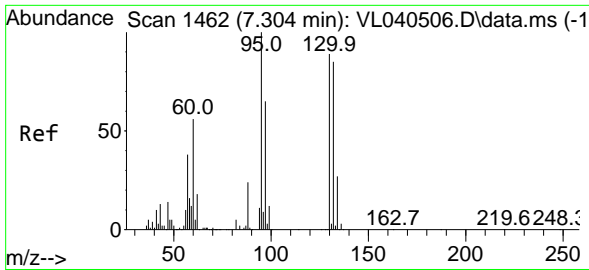
Tgt Ion: 43 Resp: 12619  
 Ion Ratio Lower Upper  
 43 100  
 72 0.0 19.1 28.7#



#36  
 Benzene  
 Concen: 0.034 ppbv  
 RT: 6.372 min Scan# 1172  
 Delta R.T. -0.010 min  
 Lab File: VL040621.D  
 Acq: 10 Aug 2023 1:21

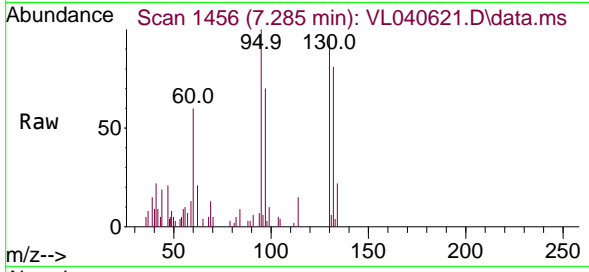
Tgt Ion: 78 Resp: 6277  
 Ion Ratio Lower Upper  
 78 100  
 77 46.4 17.4 26.0#  
 50 19.7 14.4 21.6





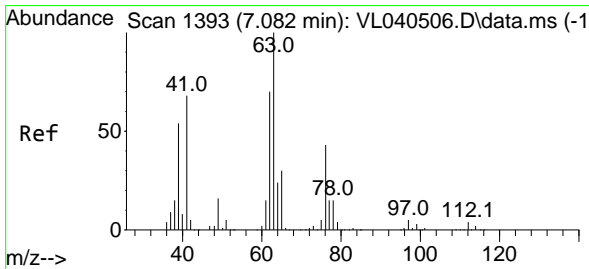
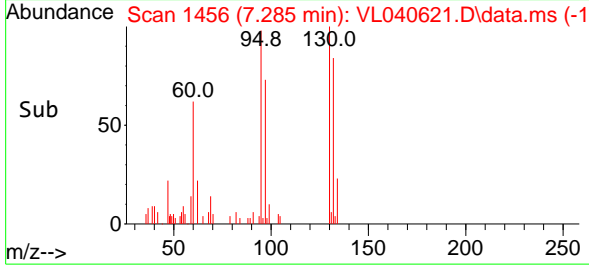
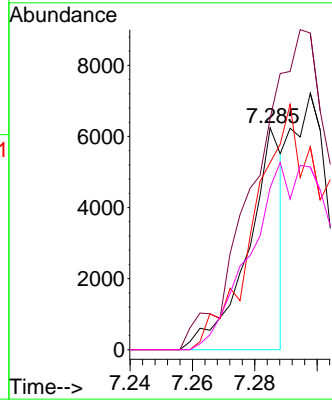
#38  
 Trichloroethene  
 Concen: 0.069 ppbv  
 RT: 7.285 min Scan# 1462  
 Delta R.T. -0.019 min  
 Lab File: VL040621.D  
 Acq: 10 Aug 2023 1:21

Instrument :  
 MSVOA\_L  
 ClientSampleId :  
 SV-2DL2

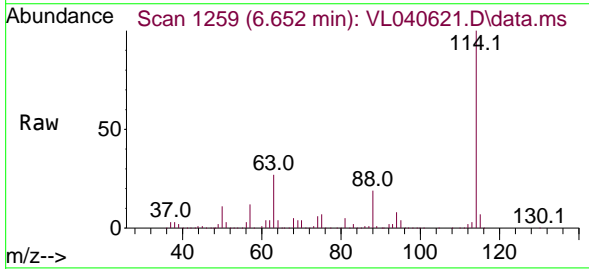


Tgt Ion:130 Resp: 4762

| Ion | Ratio | Lower | Upper |
|-----|-------|-------|-------|
| 130 | 100   |       |       |
| 95  | 104.2 | 90.2  | 135.2 |
| 132 | 84.3  | 76.3  | 114.5 |
| 97  | 73.0  | 58.7  | 88.1  |

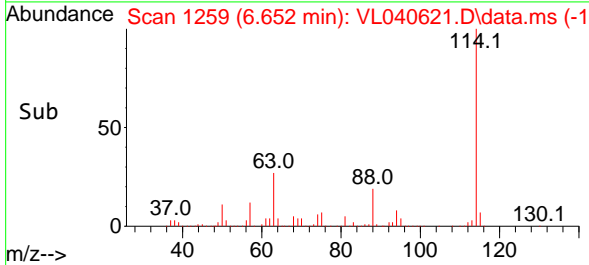
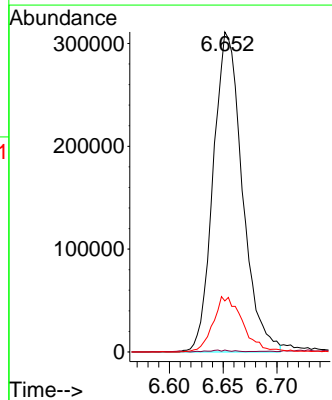


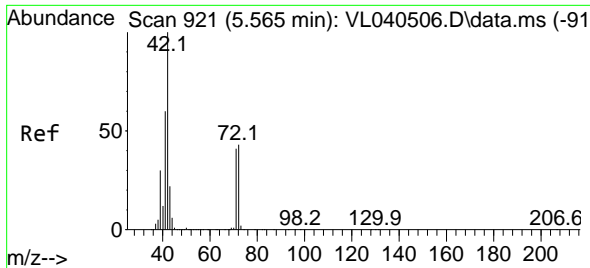
#39  
 1,2-Dichloropropane  
 Concen: 8.327 ppbv  
 RT: 6.652 min Scan# 1259  
 Delta R.T. -0.431 min  
 Lab File: VL040621.D  
 Acq: 10 Aug 2023 1:21



Tgt Ion: 63 Resp: 585539

| Ion | Ratio | Lower | Upper |
|-----|-------|-------|-------|
| 63  | 100   |       |       |
| 41  | 0.5   | 54.3  | 81.5# |
| 62  | 15.9  | 55.6  | 83.4# |

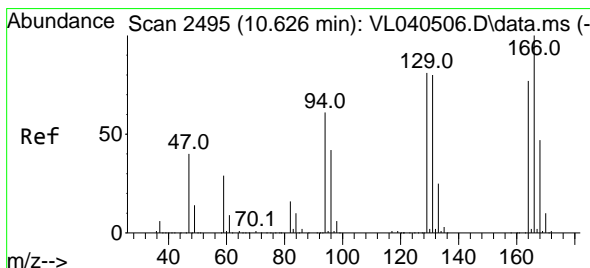
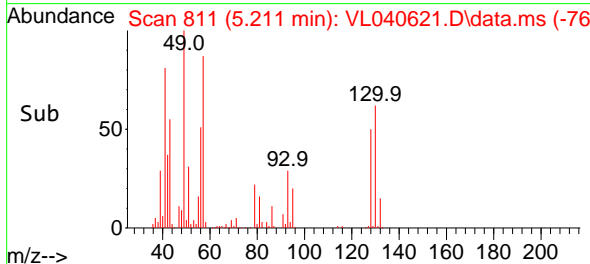
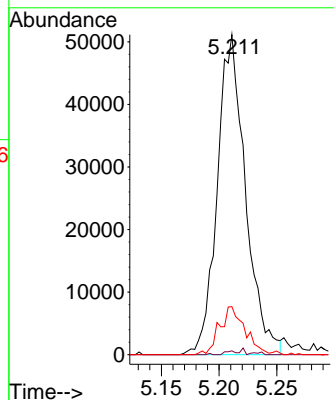
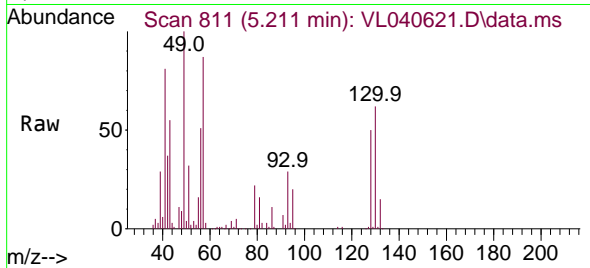




#41  
 Tetrahydrofuran  
 Concen: 1.329 ppbv  
 RT: 5.211 min Scan# 811  
 Delta R.T. -0.354 min  
 Lab File: VL040621.D  
 Acq: 10 Aug 2023 1:21

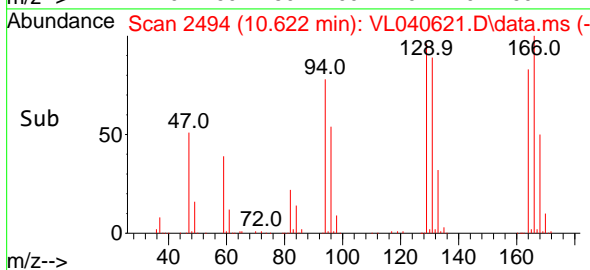
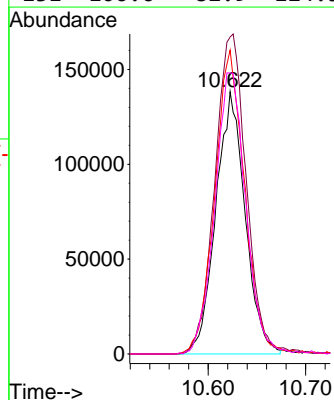
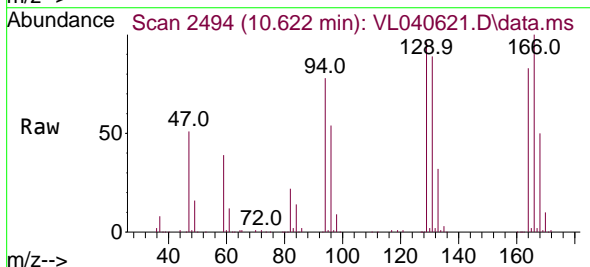
Instrument : MSVOA\_L  
 ClientSampleId : SV-2DL2

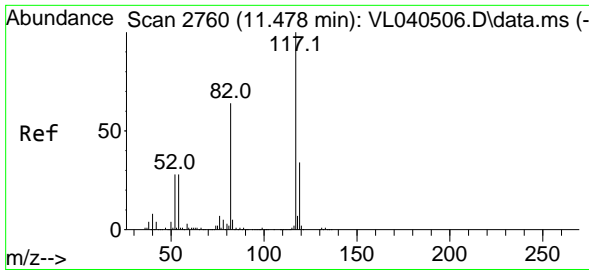
Tgt Ion: 42 Resp: 87022  
 Ion Ratio Lower Upper  
 42 100  
 72 1.0 33.8 50.8#  
 71 13.8 33.0 49.6#



#52  
 Tetrachloroethene  
 Concen: 4.885 ppbv  
 RT: 10.622 min Scan# 2494  
 Delta R.T. -0.003 min  
 Lab File: VL040621.D  
 Acq: 10 Aug 2023 1:21

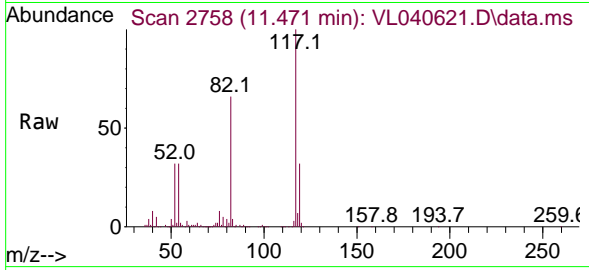
Tgt Ion:164 Resp: 288954  
 Ion Ratio Lower Upper  
 164 100  
 166 120.7 103.9 155.9  
 129 115.6 84.6 126.8  
 131 106.6 82.9 124.3



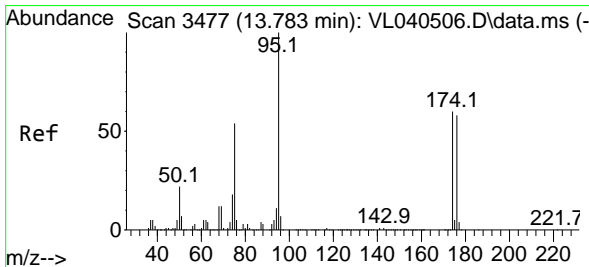
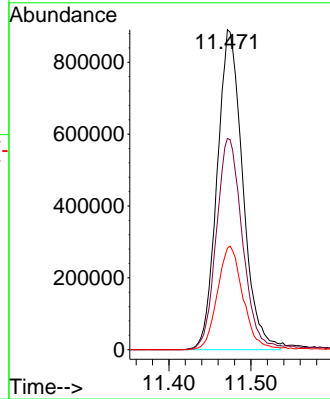
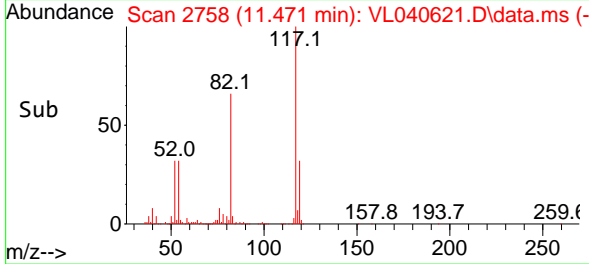


#55  
 Chlorobenzene-d5  
 Concen: 10.000 ppbv  
 RT: 11.471 min Scan# 21  
 Delta R.T. -0.007 min  
 Lab File: VL040621.D  
 Acq: 10 Aug 2023 1:21

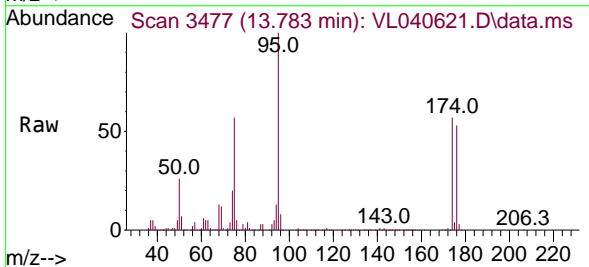
Instrument : MSVOA\_L  
 ClientSampleId : SV-2DL2



Tgt Ion:117 Resp: 1930614  
 Ion Ratio Lower Upper  
 117 100  
 82 68.8 50.2 75.4  
 119 33.0 26.9 40.3



#68  
 1-Bromo-4-Fluorobenzene  
 Concen: 10.251 ppbv  
 RT: 13.783 min Scan# 3477  
 Delta R.T. -0.000 min  
 Lab File: VL040621.D  
 Acq: 10 Aug 2023 1:21



Tgt Ion: 95 Resp: 1566347  
 Ion Ratio Lower Upper  
 95 100  
 174 59.9 50.6 75.8  
 175 4.1 3.7 5.5

