

Data Path : Z:\voasrv\HPCHEM1\MSVOA_L\Data\VL082224\
 Data File : VL041586.D
 Acq On : 22 Aug 2024 14:14
 Operator : SY/MD
 Sample : P3710-03DL 10X
 Misc : 400mL/MSVOA_L
 ALS Vial : 1 Sample Multiplier: 1

Instrument :
 MSVOA_L
 ClientSampleId :
 CD132DL

Quant Time: Aug 23 01:32:19 2024
 Quant Method : Z:\voasrv\HPCHEM1\MSVOA_L\methods\VL072524AIR.M
 Quant Title : AIR ANALYSIS BY METHOD TO-15 Instrument: MSVOA_L Fri Aug 26 06:05:16 2022
 QLast Update : Fri Aug 23 01:15:26 2024
 Response via : Initial Calibration

Compound	R.T.	QIon	Response	Conc	Units	Dev(Min)

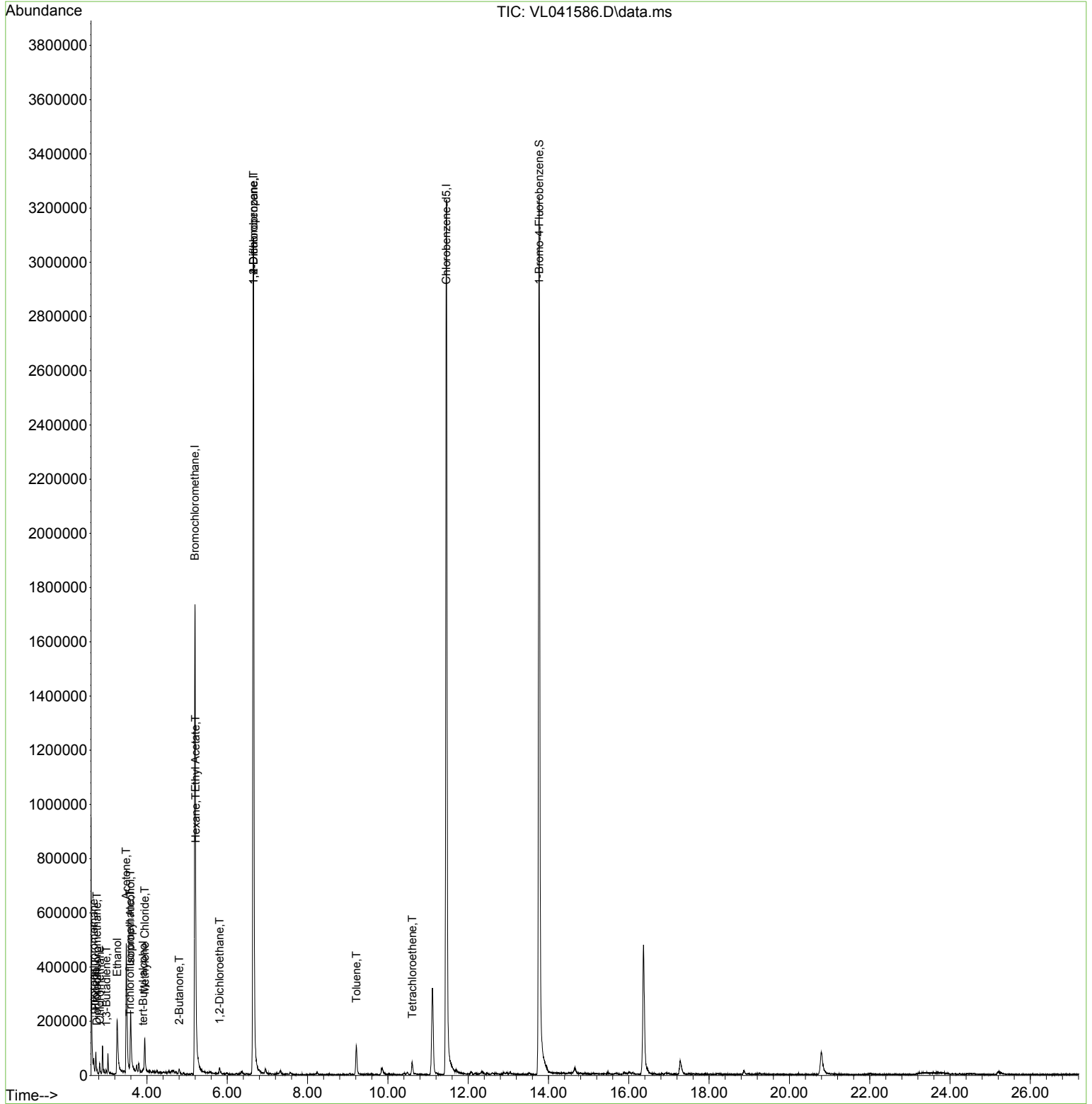
Internal Standards						
1) Bromochloromethane	5.195	49	889754	10.000	ppbv	0.00
33) 1,4-Difluorobenzene	6.652	114	2364531	10.000	ppbv	0.00
55) Chlorobenzene-d5	11.458	117	2147832	10.000	ppbv	# 0.00
System Monitoring Compounds						
68) 1-Bromo-4-Fluorobenzene	13.767	95	1612195	9.754	ppbv	0.00
Spiked Amount	10.000	Range	65 - 135	Recovery	=	97.500%
Target Compounds						
						Qvalue
2) Dichlorodifluoromethane	2.751	85	6789	0.044	ppbv	95
3) Chlorodifluoromethane	2.674	51	33473	0.316	ppbv #	60
4) Chloromethane	2.832	50	3550	0.063	ppbv	89
9) Propene	2.722	41	19059	0.392	ppbv #	82
11) Trichlorofluoromethane	3.574	101	4728	0.035	ppbv	88
13) Ethanol	3.259	45	222888	51.251	ppbv	83
15) Acetone	3.484	43	521292	5.156	ppbv	98
16) 1,3-Butadiene	2.989	39	1691	0.031	ppbv #	51
17) tert-Butyl alcohol	3.902	59	5723	0.062	ppbv #	72
19) Isopropyl Alcohol	3.591	45	257406	4.355	ppbv #	94
20) Methylene Chloride	3.947	84	39791	1.056	ppbv	91
25) Ethyl Acetate	5.211	43	24765	0.123	ppbv #	58
26) Hexane	5.214	57	24774	0.297	ppbv #	86
34) 2-Butanone	4.803	43	20347	0.178	ppbv #	86
37) 1,2-Dichloroethane	5.812	62	6752	0.070	ppbv #	66
39) 1,2-Dichloropropane	6.652	63	589939	8.919	ppbv #	24
52) Tetrachloroethene	10.606	164	6644	0.100	ppbv	95
53) Toluene	9.217	91	79420	0.413	ppbv	95

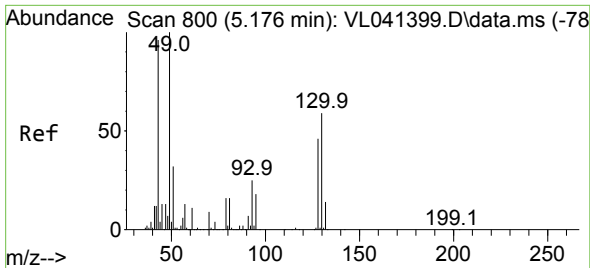
(#) = qualifier out of range (m) = manual integration (+) = signals summed

Data Path : Z:\voasrv\HPCHEM1\MSVOA_L\Data\VL082224\
 Data File : VL041586.D
 Acq On : 22 Aug 2024 14:14
 Operator : SY/MD
 Sample : P3710-03DL 10X
 Misc : 400mL/MSVOA_L
 ALS Vial : 1 Sample Multiplier: 1

Instrument :
 MSVOA_L
 ClientSampleId :
 CD132DL

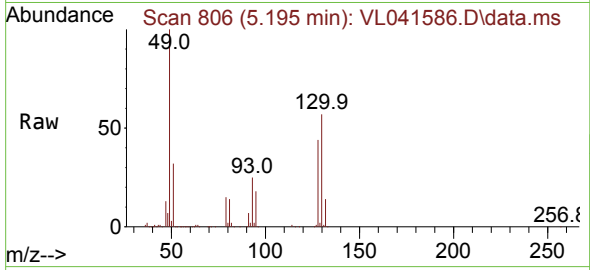
Quant Time: Aug 23 01:32:19 2024
 Quant Method : Z:\voasrv\HPCHEM1\MSVOA_L\methods\VL072524AIR.M
 Quant Title : AIR ANALYSIS BY METHOD TO-15 Instrument: MSVOA_L Fri Aug 26 06:05:16 2022
 QLast Update : Fri Aug 23 01:15:26 2024
 Response via : Initial Calibration





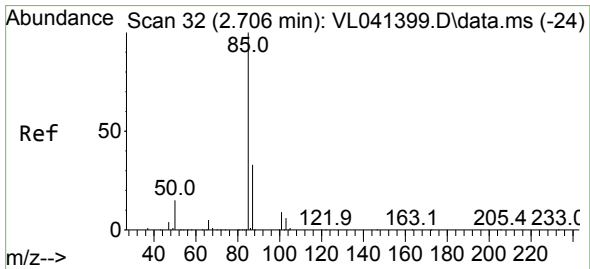
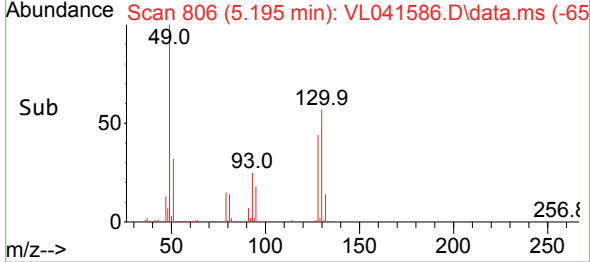
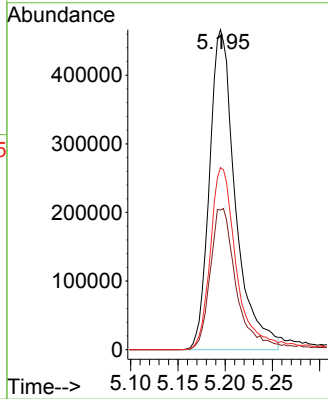
#1
 Bromochloromethane
 Concen: 10.000 ppbv
 RT: 5.195 min Scan# 80
 Delta R.T. 0.003 min
 Lab File: VL041586.D
 Acq: 22 Aug 2024 14:14

Instrument :
 MSVOA_L
 ClientSampleId :
 CD132DL

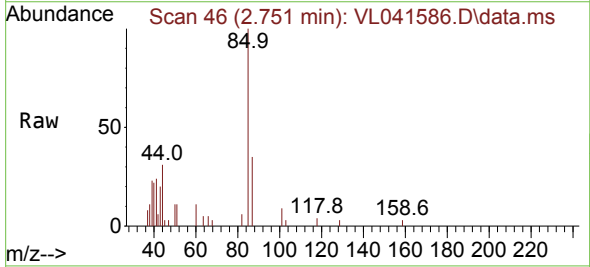


Tgt Ion: 49 Resp: 889754

Ion	Ratio	Lower	Upper
49	100		
128	45.9	23.8	71.4
130	59.6	30.8	92.4

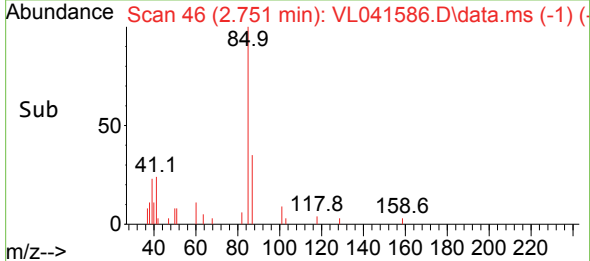
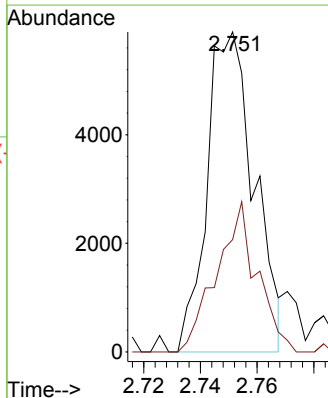


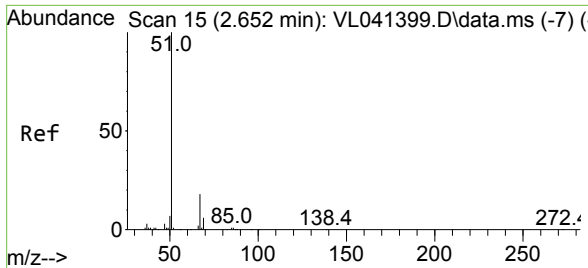
#2
 Dichlorodifluoromethane
 Concen: 0.044 ppbv
 RT: 2.751 min Scan# 46
 Delta R.T. 0.006 min
 Lab File: VL041586.D
 Acq: 22 Aug 2024 14:14



Tgt Ion: 85 Resp: 6789

Ion	Ratio	Lower	Upper
85	100		
87	35.1	26.0	39.0

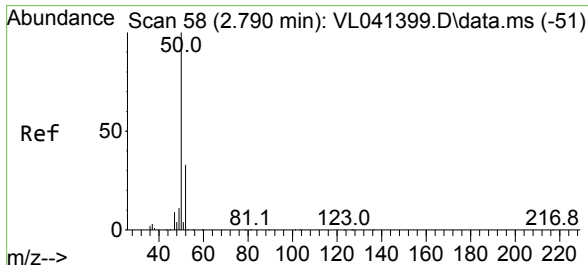
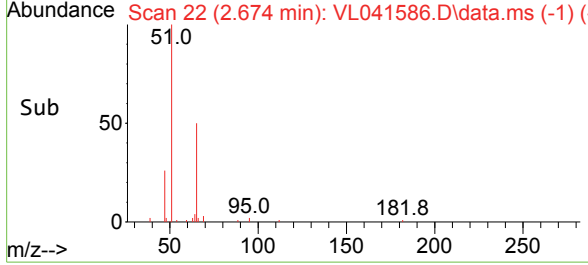
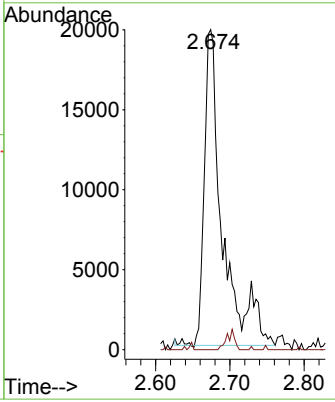
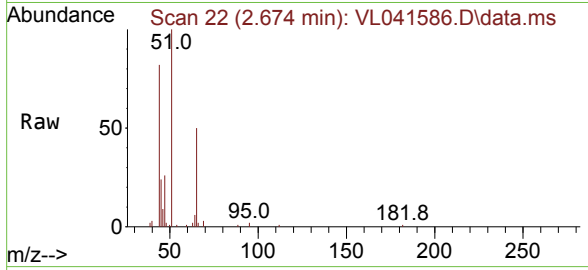




#3
 Chlorodifluoromethane
 Concen: 0.316 ppbv
 RT: 2.674 min Scan# 21
 Delta R.T. -0.016 min
 Lab File: VL041586.D
 Acq: 22 Aug 2024 14:14

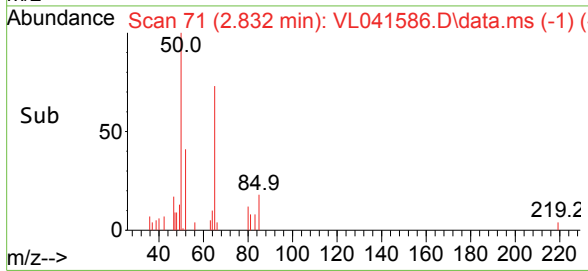
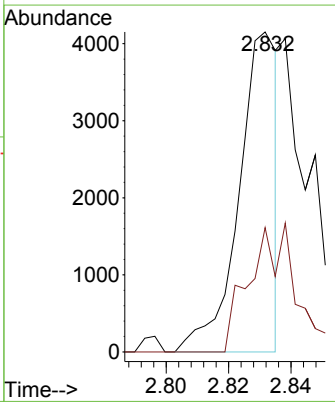
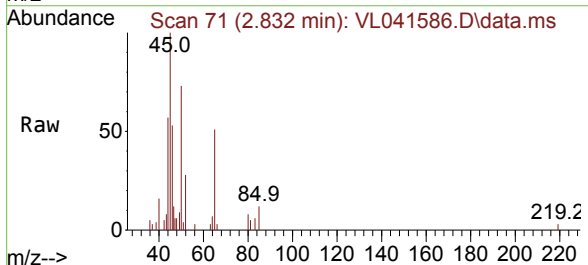
Instrument : MSVOA_L
 ClientSampleId : CD132DL

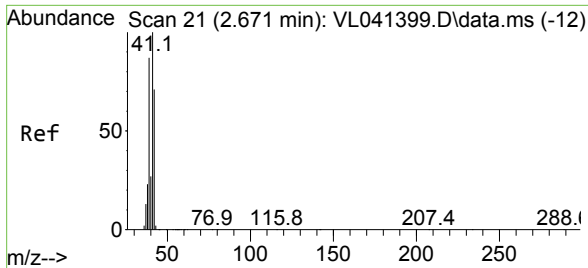
Tgt Ion: 51 Resp: 33473
 Ion Ratio Lower Upper
 51 100
 67 0.5 14.5 21.7#



#4
 Chloromethane
 Concen: 0.063 ppbv
 RT: 2.832 min Scan# 71
 Delta R.T. 0.006 min
 Lab File: VL041586.D
 Acq: 22 Aug 2024 14:14

Tgt Ion: 50 Resp: 3550
 Ion Ratio Lower Upper
 50 100
 52 38.8 26.1 39.1

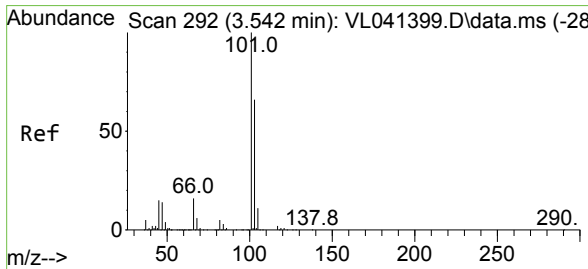
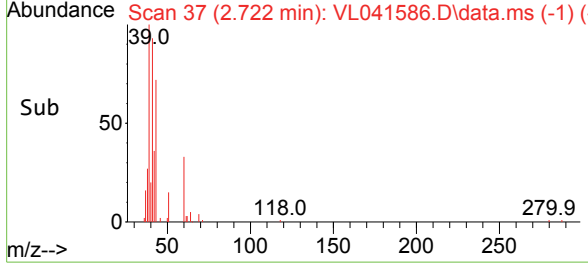
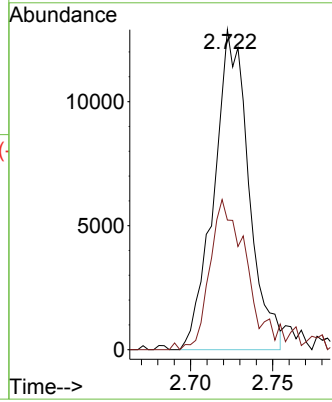
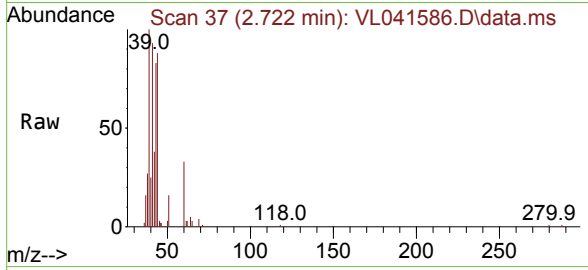




#9
 Propene
 Concen: 0.392 ppbv
 RT: 2.722 min Scan# 31
 Delta R.T. 0.013 min
 Lab File: VL041586.D
 Acq: 22 Aug 2024 14:14

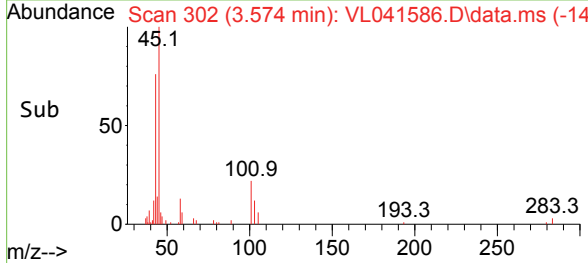
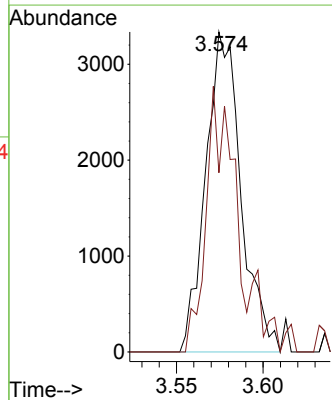
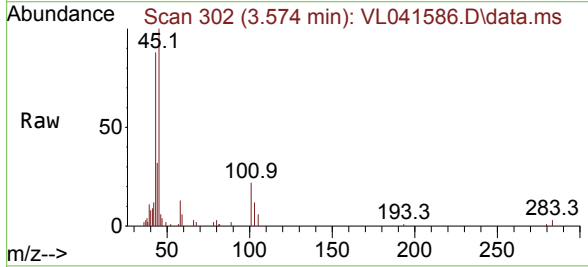
Instrument :
 MSVOA_L
 ClientSampleId :
 CD132DL

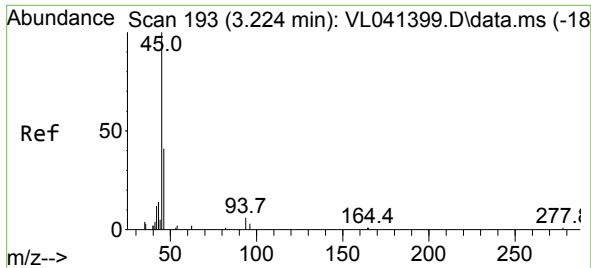
Tgt Ion: 41 Resp: 19059
 Ion Ratio Lower Upper
 41 100
 42 55.4 55.9 83.9#



#11
 Trichlorofluoromethane
 Concen: 0.035 ppbv
 RT: 3.574 min Scan# 302
 Delta R.T. 0.003 min
 Lab File: VL041586.D
 Acq: 22 Aug 2024 14:14

Tgt Ion:101 Resp: 4728
 Ion Ratio Lower Upper
 101 100
 103 56.0 52.6 79.0

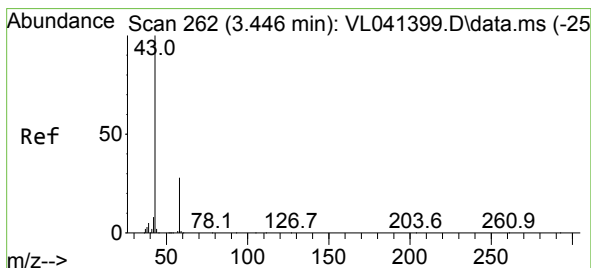
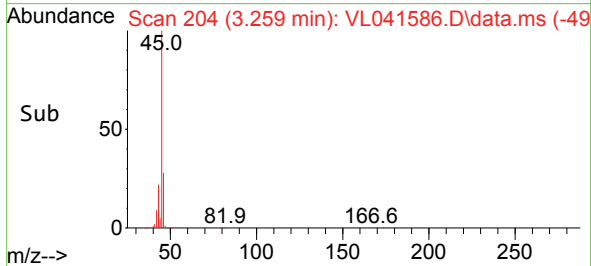
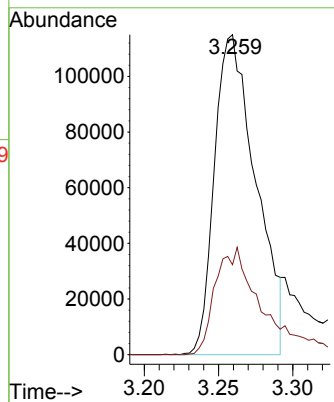
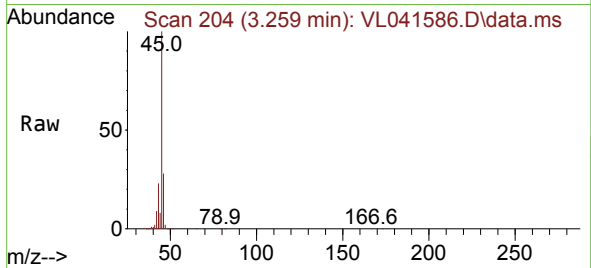




#13
 Ethanol
 Concen: 51.251 ppbv
 RT: 3.259 min Scan# 204
 Delta R.T. -0.003 min
 Lab File: VL041586.D
 Acq: 22 Aug 2024 14:14

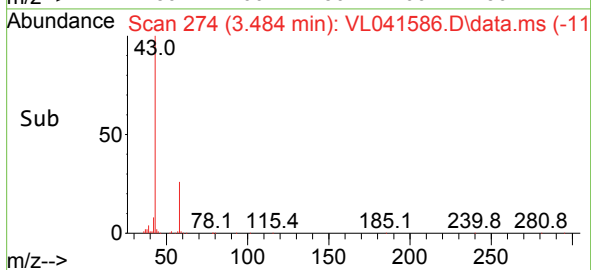
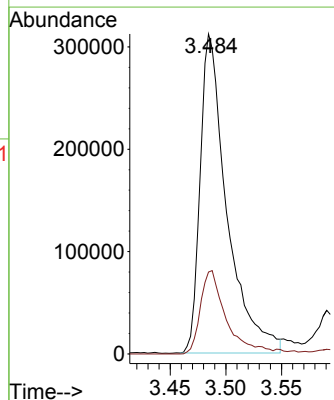
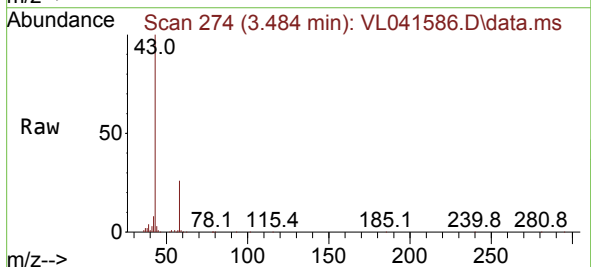
Instrument :
 MSVOA_L
 ClientSampleId :
 CD132DL

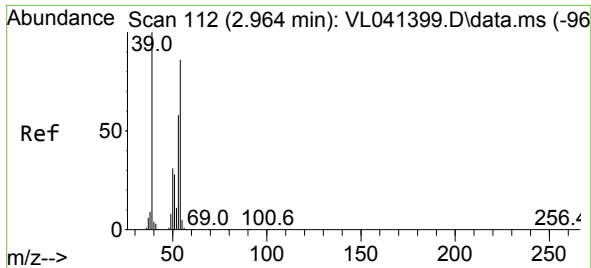
Tgt Ion: 45 Resp: 222888
 Ion Ratio Lower Upper
 45 100
 46 42.8 13.4 53.4



#15
 Acetone
 Concen: 5.156 ppbv
 RT: 3.484 min Scan# 274
 Delta R.T. 0.006 min
 Lab File: VL041586.D
 Acq: 22 Aug 2024 14:14

Tgt Ion: 43 Resp: 521292
 Ion Ratio Lower Upper
 43 100
 58 25.9 21.4 32.2

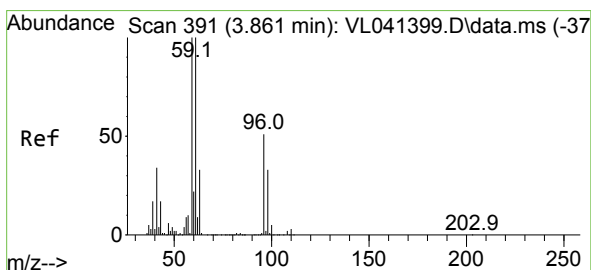
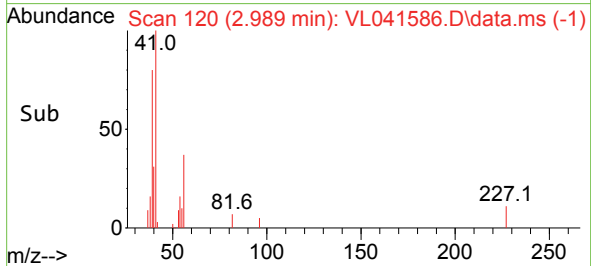
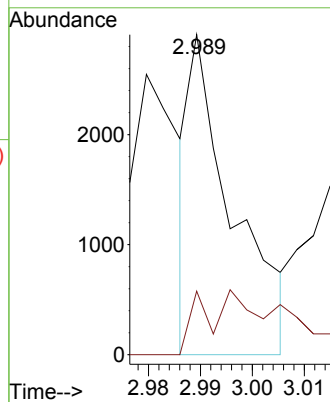
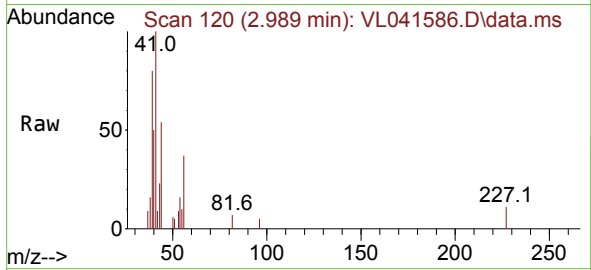




#16
 1,3-Butadiene
 Concen: 0.031 ppbv
 RT: 2.989 min Scan# 112
 Delta R.T. -0.006 min
 Lab File: VL041586.D
 Acq: 22 Aug 2024 14:14

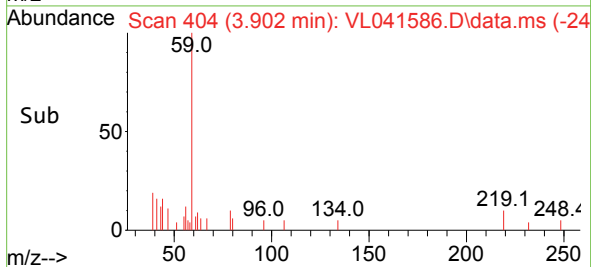
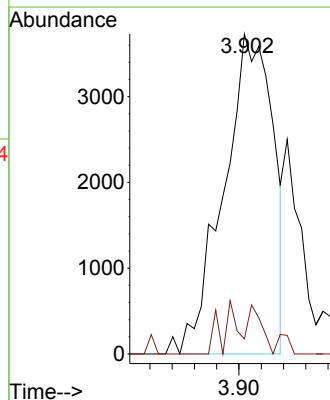
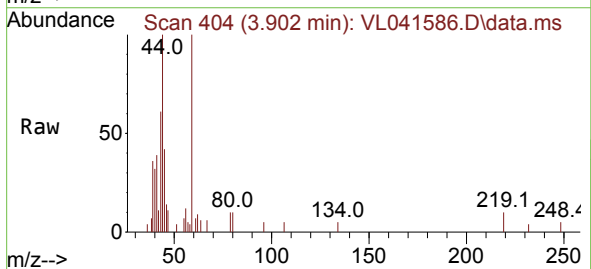
Instrument : MSVOA_L
 ClientSampleId : CD132DL

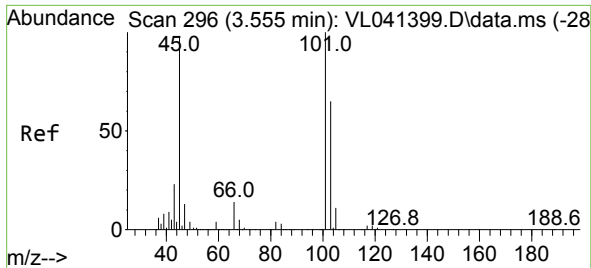
Tgt Ion: 39 Resp: 1691
 Ion Ratio Lower Upper
 39 100
 54 35.1 62.5 93.7#



#17
 tert-Butyl alcohol
 Concen: 0.062 ppbv
 RT: 3.902 min Scan# 404
 Delta R.T. 0.019 min
 Lab File: VL041586.D
 Acq: 22 Aug 2024 14:14

Tgt Ion: 59 Resp: 5723
 Ion Ratio Lower Upper
 59 100
 57 0.0 8.6 12.8#

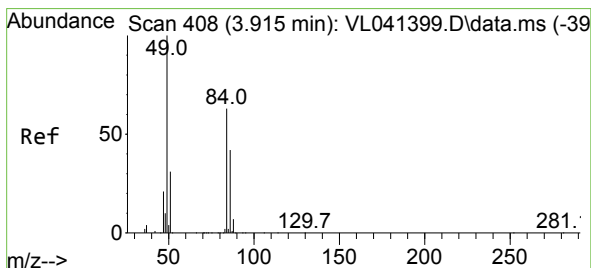
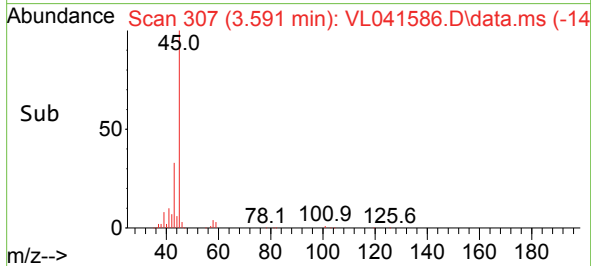
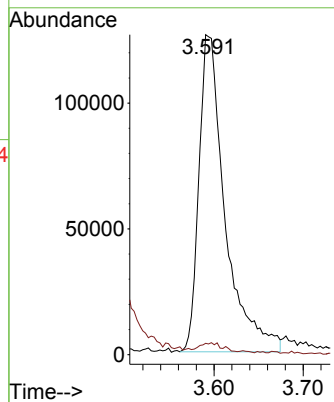
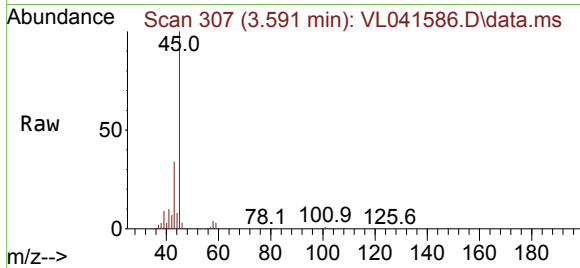




#19
 Isopropyl Alcohol
 Concen: 4.355 ppbv
 RT: 3.591 min Scan# 307
 Delta R.T. 0.006 min
 Lab File: VL041586.D
 Acq: 22 Aug 2024 14:14

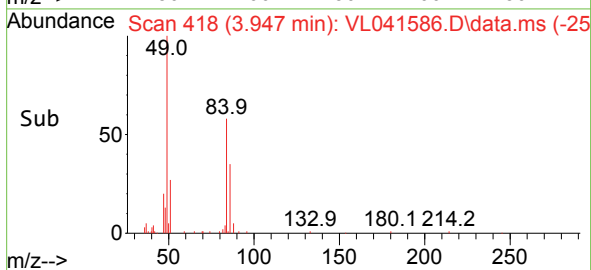
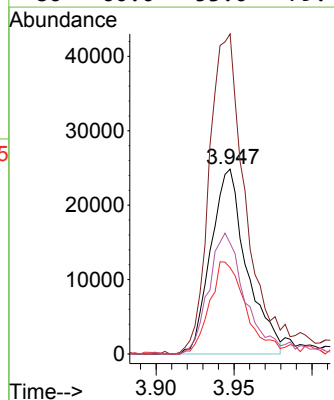
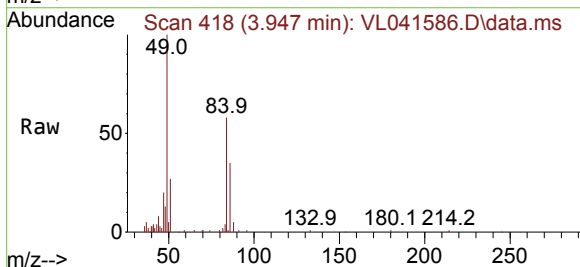
Instrument : MSVOA_L
 ClientSampleId : CD132DL

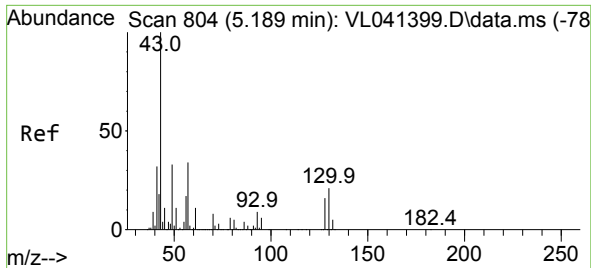
Tgt Ion: 45 Resp: 257406
 Ion Ratio Lower Upper
 45 100
 58 4.4 1.9 2.9#



#20
 Methylene Chloride
 Concen: 1.056 ppbv
 RT: 3.947 min Scan# 418
 Delta R.T. 0.010 min
 Lab File: VL041586.D
 Acq: 22 Aug 2024 14:14

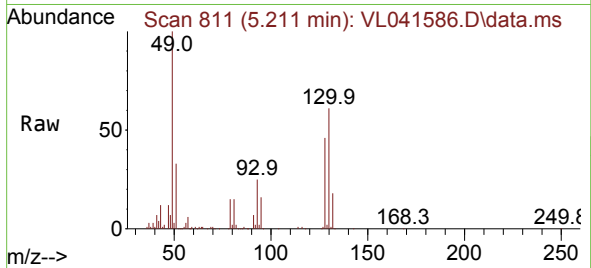
Tgt Ion: 84 Resp: 39791
 Ion Ratio Lower Upper
 84 100
 49 172.4 126.6 190.0
 51 46.7 38.6 58.0
 86 60.0 53.0 79.4



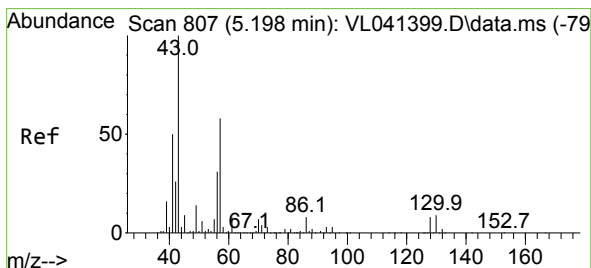
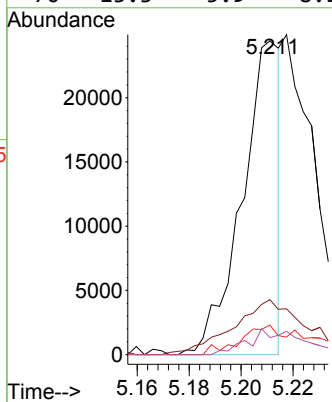
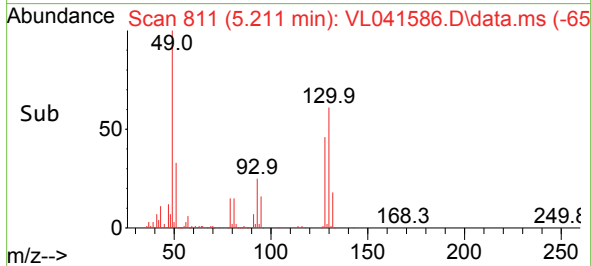


#25
 Ethyl Acetate
 Concen: 0.123 ppbv
 RT: 5.211 min Scan# 811
 Delta R.T. 0.006 min
 Lab File: VL041586.D
 Acq: 22 Aug 2024 14:14

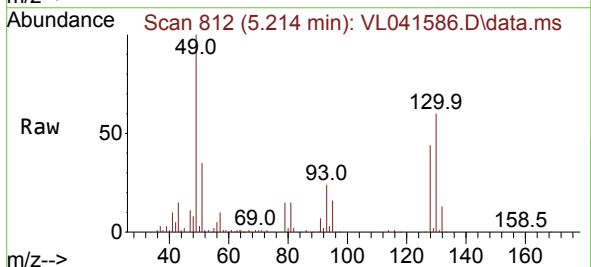
Instrument :
 MSVOA_L
 ClientSampleId :
 CD132DL



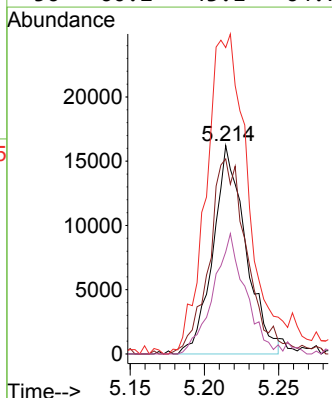
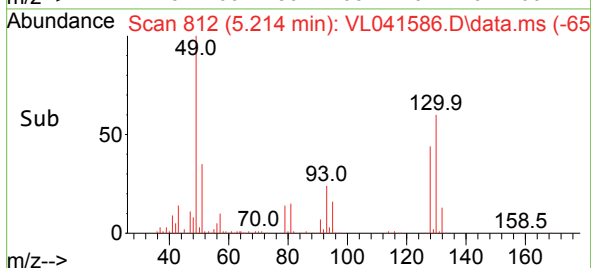
Tgt Ion: 43 Resp: 24765
 Ion Ratio Lower Upper
 43 100
 45 39.2 8.5 12.7#
 61 19.3 8.0 12.0#
 70 13.3 5.9 8.9#

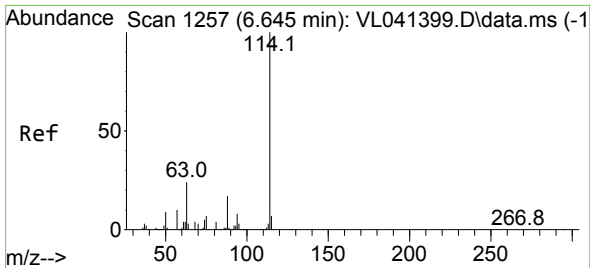


#26
 Hexane
 Concen: 0.297 ppbv
 RT: 5.214 min Scan# 812
 Delta R.T. -0.000 min
 Lab File: VL041586.D
 Acq: 22 Aug 2024 14:14



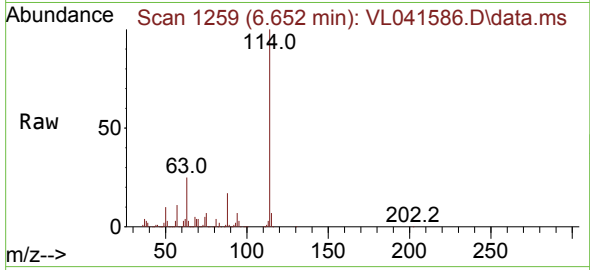
Tgt Ion: 57 Resp: 24774
 Ion Ratio Lower Upper
 57 100
 41 112.4 74.0 111.0#
 43 220.9 193.6 290.4
 56 60.2 43.1 64.7



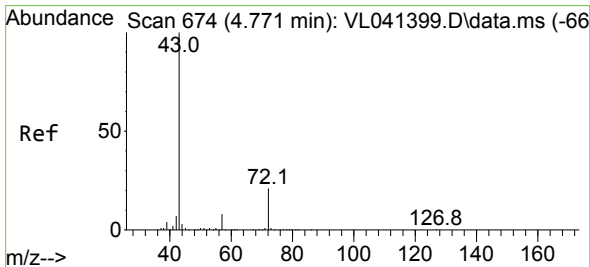
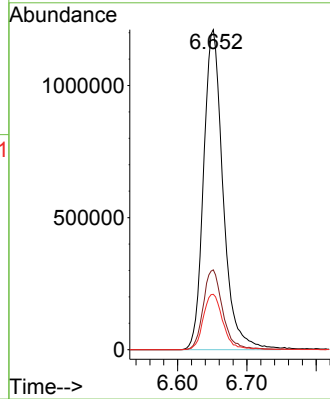
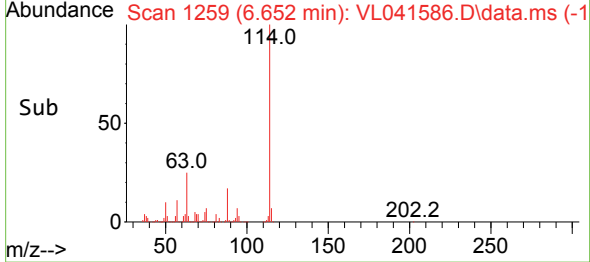


#33
 1,4-Difluorobenzene
 Concen: 10.000 ppbv
 RT: 6.652 min Scan# 111
 Delta R.T. 0.003 min
 Lab File: VL041586.D
 Acq: 22 Aug 2024 14:14

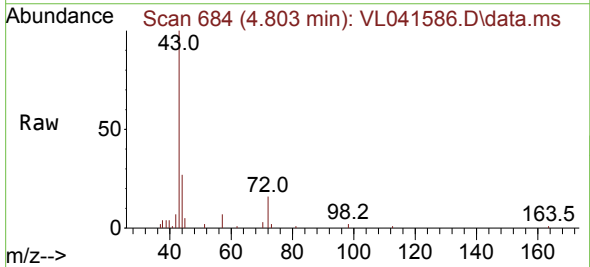
Instrument : MSVOA_L
 ClientSampleId : CD132DL



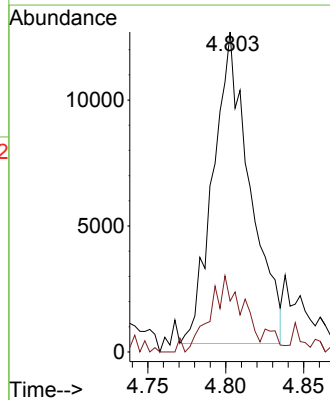
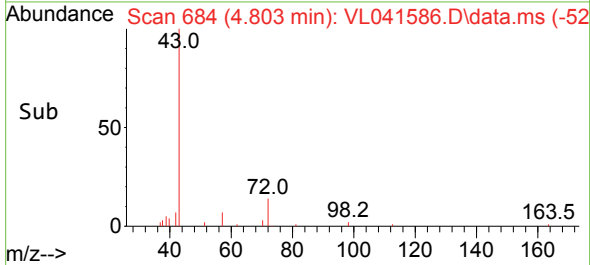
Tgt Ion:114 Resp: 2364531
 Ion Ratio Lower Upper
 114 100
 63 25.2 20.3 30.5
 88 17.6 14.3 21.5

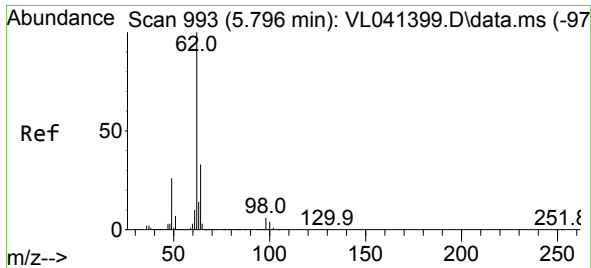


#34
 2-Butanone
 Concen: 0.178 ppbv
 RT: 4.803 min Scan# 684
 Delta R.T. 0.016 min
 Lab File: VL041586.D
 Acq: 22 Aug 2024 14:14



Tgt Ion: 43 Resp: 20347
 Ion Ratio Lower Upper
 43 100
 72 28.4 17.3 25.9#

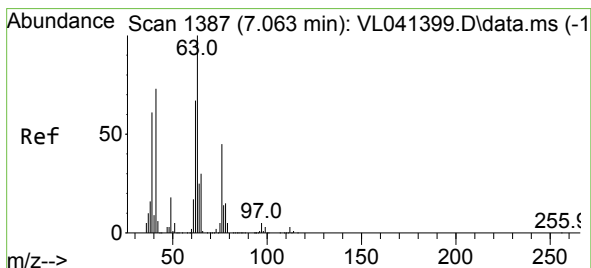
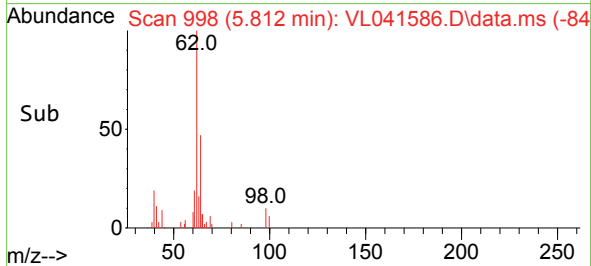
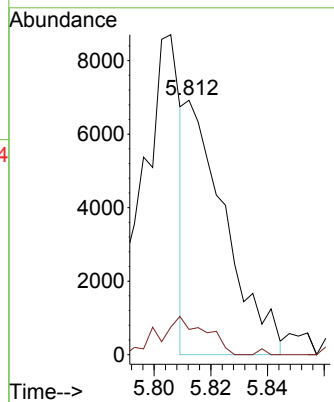
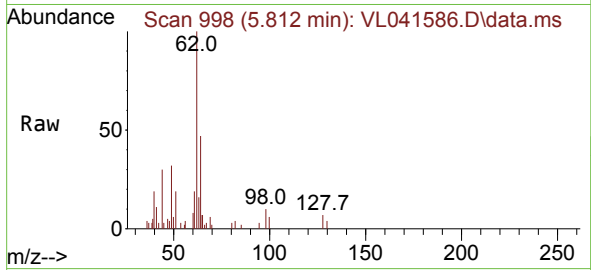




#37
 1,2-Dichloroethane
 Concen: 0.070 ppbv
 RT: 5.812 min Scan# 998
 Delta R.T. 0.006 min
 Lab File: VL041586.D
 Acq: 22 Aug 2024 14:14

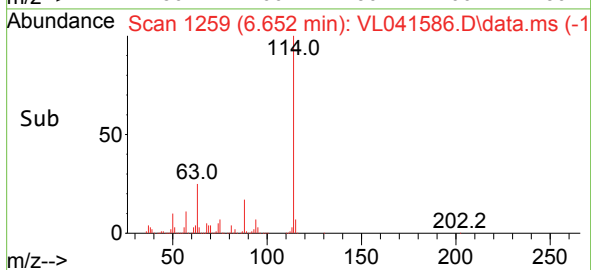
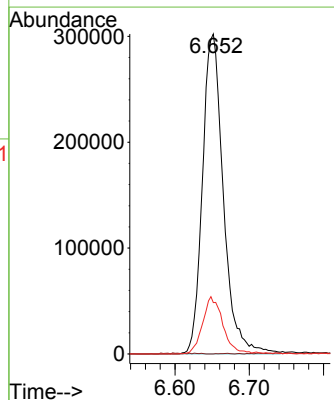
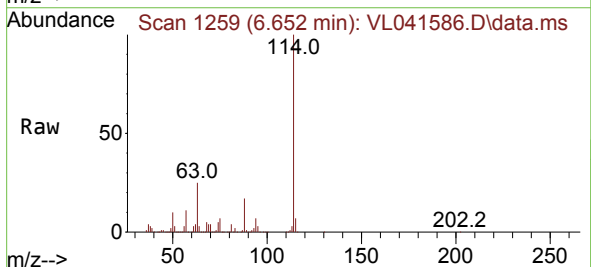
Instrument :
 MSVOA_L
 ClientSampleId :
 CD132DL

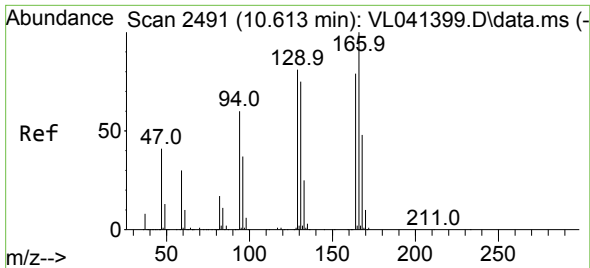
Tgt Ion: 62 Resp: 6752
 Ion Ratio Lower Upper
 62 100
 98 17.9 5.0 7.4#



#39
 1,2-Dichloropropane
 Concen: 8.919 ppbv
 RT: 6.652 min Scan# 1259
 Delta R.T. -0.418 min
 Lab File: VL041586.D
 Acq: 22 Aug 2024 14:14

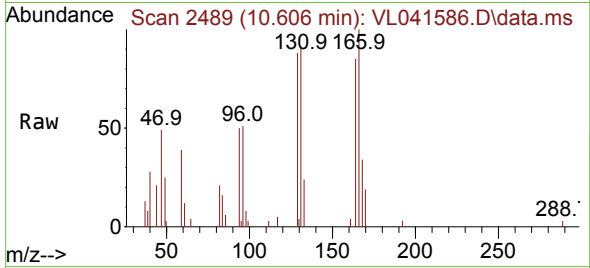
Tgt Ion: 63 Resp: 589939
 Ion Ratio Lower Upper
 63 100
 41 0.0 58.3 87.5#
 62 16.0 53.9 80.9#



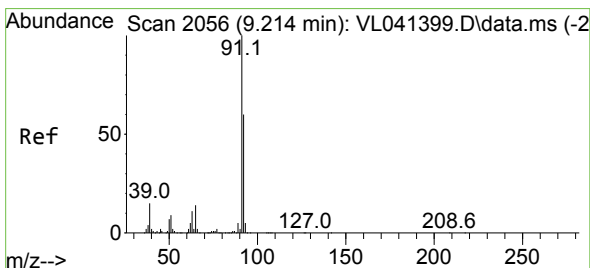
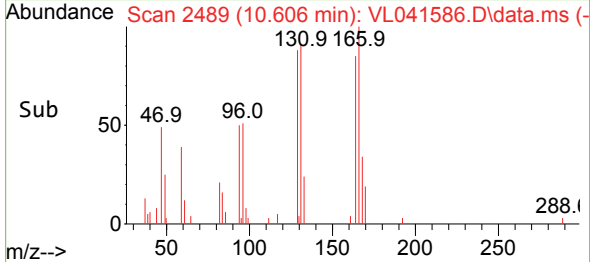
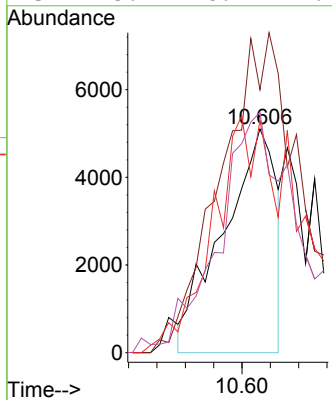


#52
 Tetrachloroethene
 Concen: 0.100 ppbv
 RT: 10.606 min Scan# 2491
 Delta R.T. -0.000 min
 Lab File: VL041586.D
 Acq: 22 Aug 2024 14:14

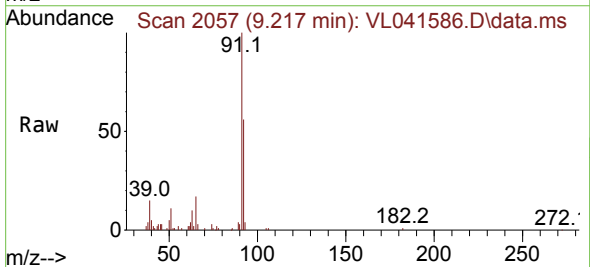
Instrument : MSVOA_L
 ClientSampleId : CD132DL



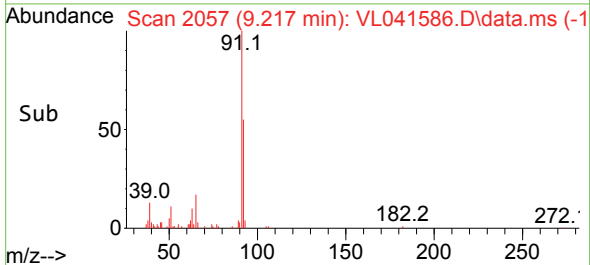
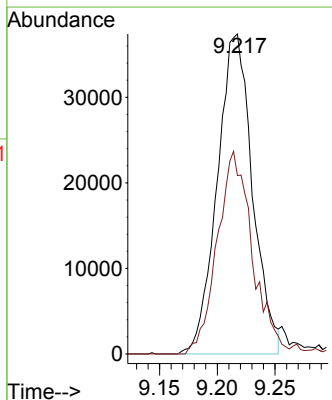
Tgt Ion:164 Resp: 6644
 Ion Ratio Lower Upper
 164 100
 166 116.1 101.1 151.7
 129 108.3 81.7 122.5
 131 95.2 76.2 114.4

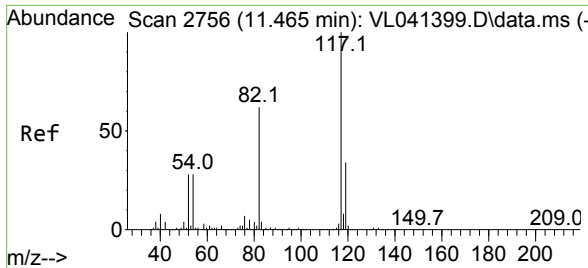


#53
 Toluene
 Concen: 0.413 ppbv
 RT: 9.217 min Scan# 2057
 Delta R.T. 0.006 min
 Lab File: VL041586.D
 Acq: 22 Aug 2024 14:14



Tgt Ion: 91 Resp: 79420
 Ion Ratio Lower Upper
 91 100
 92 64.6 48.7 73.1

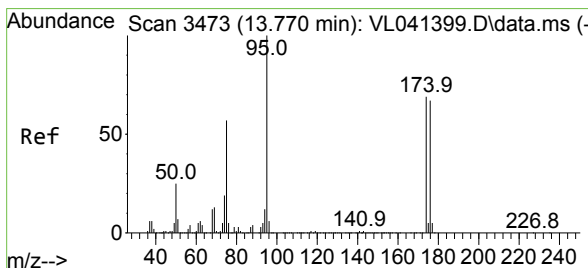
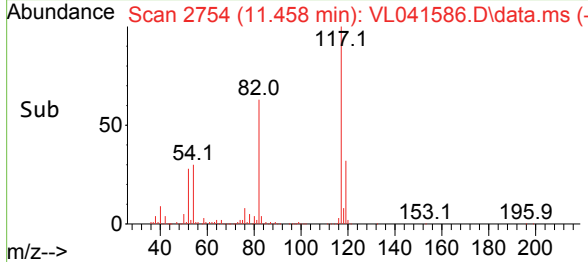
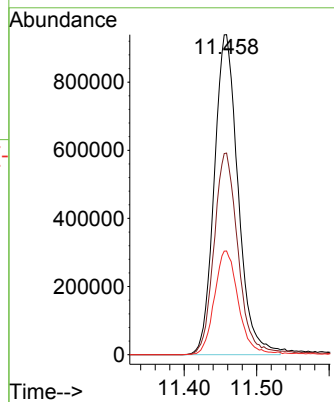
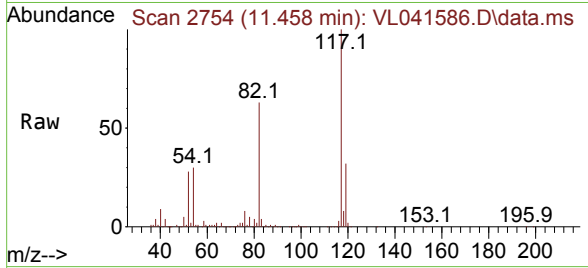




#55
 Chlorobenzene-d5
 Concen: 10.000 ppbv
 RT: 11.458 min Scan# 21
 Delta R.T. 0.003 min
 Lab File: VL041586.D
 Acq: 22 Aug 2024 14:14

Instrument :
 MSVOA_L
 ClientSampleId :
 CD132DL

Tgt Ion:117 Resp: 2147832
 Ion Ratio Lower Upper
 117 100
 82 65.2 51.0 76.6
 119 33.2 45.2 67.8#



#68
 1-Bromo-4-Fluorobenzene
 Concen: 9.754 ppbv
 RT: 13.767 min Scan# 3472
 Delta R.T. 0.003 min
 Lab File: VL041586.D
 Acq: 22 Aug 2024 14:14

Tgt Ion: 95 Resp: 1612195
 Ion Ratio Lower Upper
 95 100
 174 72.3 56.3 84.5
 175 5.1 4.0 6.0

