

Data Path : Z:\VOASRV\HPCHEM1\MSVOA L\DATA\VL101220\
 Data File : VL035760.D
 Acq On : 12 Oct 2020 13:58
 Operator : SY/AP
 Sample : L4347-01DL 10X
 Misc : 400ml/MSVOA L
 ALS Vial : 1 Sample Multiplier: 1

Instrument :
 MSVOA_L
 ClientSampled :
 1DL

Quant Time: Oct 13 00:03:34 2020
 Quant Method : Z:\VOASRV\HPCHEM1\MSVOA L\METHODS\VL092320AIR.M
 Quant Title : AIR ANALYSIS BY METHOD TO-15 Instrument: MSVOA_LWed Sep 23 07:38:05 2020
 QLast Update : Wed Sep 23 07:38:05 2020
 Response via : Initial Calibration

Internal Standards	R.T.	QIon	Response	Conc	Units	Dev(Min)
1) Bromochloromethane	5.66	49	1258670	10.00	ppbv	-0.02
33) 1,4-Difluorobenzene	7.17	114	4885453	10.00	ppbv	-0.02
55) Chlorobenzene-d5	12.09	117	4817110	10.00	ppbv	-0.03

System Monitoring Compounds

68) 1-Bromo-4-Fluorobenzene	14.42	95	3626498	10.05	ppbv	-0.02
Spiked Amount	10.000	Range	65 - 135	Recovery	=	100.50%

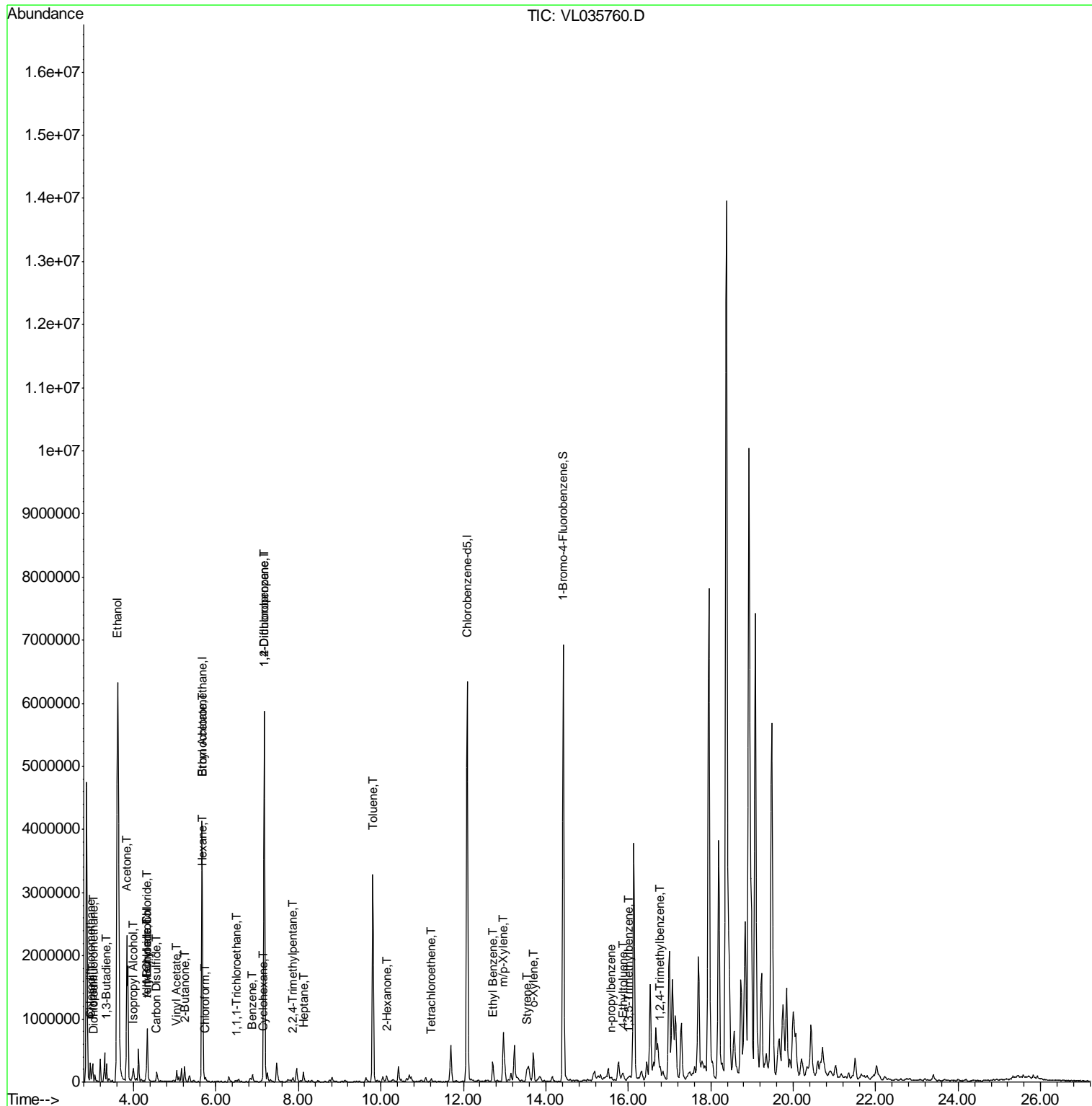
Target Compounds	R.T.	QIon	Response	Conc	Units	Ovalue
2) Dichlorodifluoromethane	3.03	85	13176	0.064	ppbv	94
3) Chlorodifluoromethane	2.95	51	157344	1.162	ppbv #	57
9) Propene	3.00	41	102119	2.077	ppbv	88
10) Heptane	8.12	43	50291	0.367	ppbv	96
13) Ethanol	3.62	45	11646865	960.612	ppbv	91
15) Acetone	3.83	43	2485880	18.355	ppbv	96
16) 1,3-Butadiene	3.34	39	29223	0.590	ppbv #	61
17) tert-Butyl alcohol	4.31	59	206757	1.401	ppbv	99
19) Isopropyl Alcohol	3.99	45	246771	3.350	ppbv #	1
20) Methylene Chloride	4.33	84	311903	3.135	ppbv	96
21) Allyl Chloride	4.31	41	55811	0.850	ppbv #	46
23) Vinyl Acetate	5.06	43	41144	0.248	ppbv #	2
25) Ethyl Acetate	5.67	43	399733	1.640	ppbv	99
26) Hexane	5.68	57	213817	1.601	ppbv	96
27) Carbon Disulfide	4.54	76	27581	0.139	ppbv #	93
29) Chloroform	5.74	83	34921	0.129	ppbv	98
30) Cyclohexane	7.12	84	11019	0.084	ppbv #	11
32) 1,1,1-Trichloroethane	6.50	97	14194	0.059	ppbv	95
34) 2-Butanone	5.24	43	223457	1.383	ppbv	98
36) Benzene	6.89	78	45174	0.142	ppbv	95
39) 1,2-Dichloropropane	7.17	63	964468	8.359	ppbv #	30
44) 2,2,4-Trimethylpentane	7.87	57	45837	0.100	ppbv #	78
51) 2-Hexanone	10.14	43	69202	0.364	ppbv #	99
52) Tetrachloroethene	11.23	164	12496	0.082	ppbv	96
53) Toluene	9.80	91	2846572	7.583	ppbv	99
58) Ethyl Benzene	12.72	91	283581	0.587	ppbv	93
59) m/p-Xylene	12.97	91	769520	1.823	ppbv	99
60) o-Xylene	13.70	91	355651	0.833	ppbv	99
61) Styrene	13.53	104	77023	0.261	ppbv	98
64) n-propylbenzene	15.57	120	5923	0.031	ppbv #	1
72) 4-Ethyltoluene	15.85	105	38784	0.077	ppbv #	97
73) 1,3,5-Trimethylbenzene	16.01	105	35026	0.073	ppbv	99
74) 1,2,4-Trimethylbenzene	16.77	105	138096	0.256	ppbv #	70

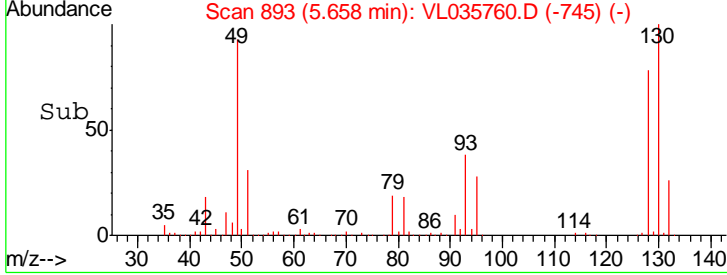
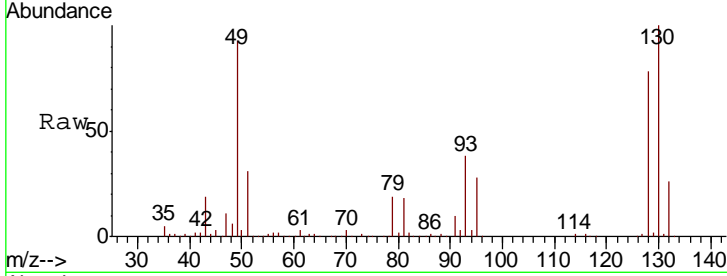
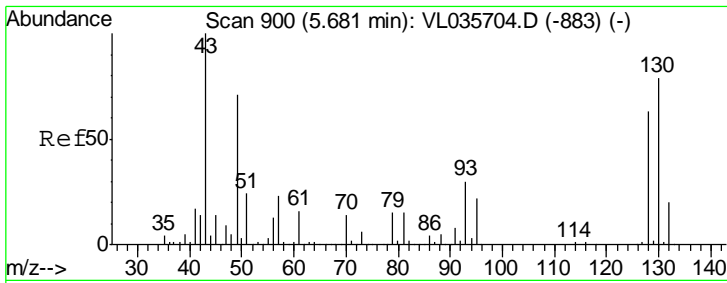
(#) = qualifier out of range (m) = manual integration (+) = signals summed

Data Path : Z:\VOASRV\HPCHEM1\MSVOA L\DATA\VL101220\
 Data File : VL035760.D
 Acq On : 12 Oct 2020 13:58
 Operator : SY/AP
 Sample : L4347-01DL 10X
 Misc : 400ml/MSVOA L
 ALS Vial : 1 Sample Multiplier: 1

Instrument :
 MSVOA_L
 ClientSampleId :
 1DL

Quant Time: Oct 13 00:03:34 2020
 Quant Method : Z:\VOASRV\HPCHEM1\MSVOA L\METHODS\VL092320AIR.M
 Quant Title : AIR ANALYSIS BY METHOD TO-15 Instrument: MSVOA_L Wed Sep 23 07:38:05 2020
 QLast Update : Wed Sep 23 07:38:05 2020
 Response via : Initial Calibration

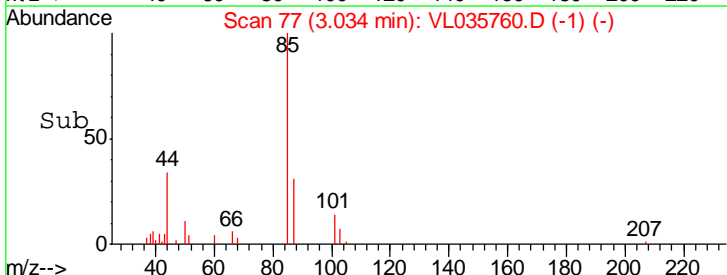
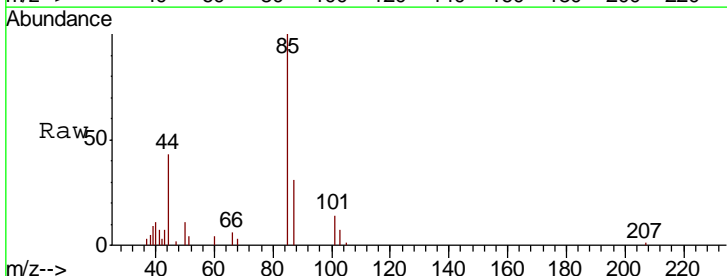
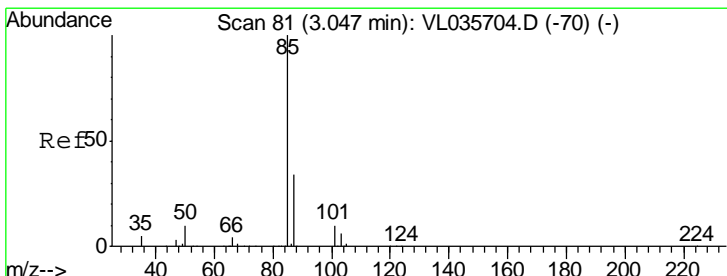
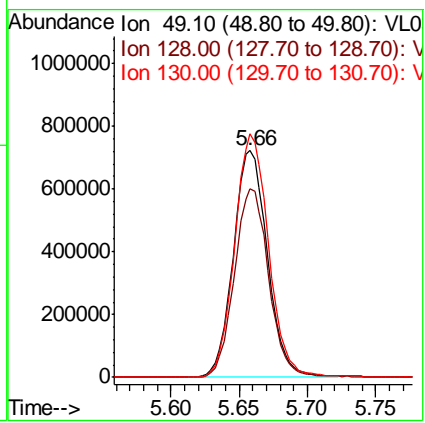




#1
 Bromochloromethane
 Concen: 10.000 ppbv
 RT: 5.66 min Scan# 893
 Delta R.T. -0.02 min
 Lab File: VL035760.D
 Acq: 12 Oct 2020 13:58

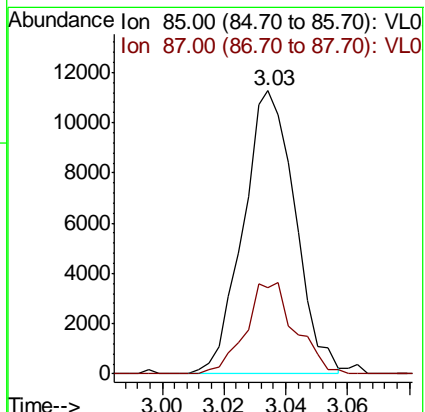
Instrument :
 MSVOA_L
 ClientSampled :
 1DL

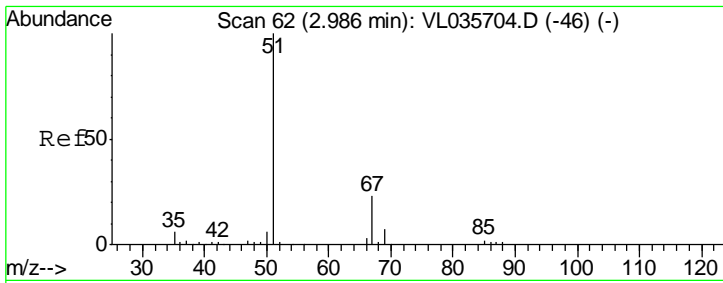
Tgt Ion	Resp	Lower	Upper
49	100		
128	84.0	43.1	129.4
130	107.3	54.9	164.7



#2
 Dichlorodifluoromethane
 Concen: 0.064 ppbv
 RT: 3.03 min Scan# 77
 Delta R.T. -0.01 min
 Lab File: VL035760.D
 Acq: 12 Oct 2020 13:58

Tgt Ion	Resp	Lower	Upper
85	100		
87	30.5	27.3	40.9

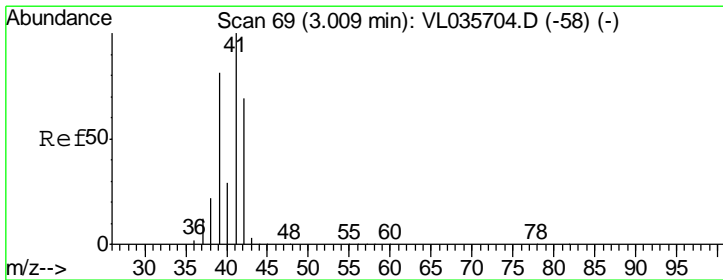
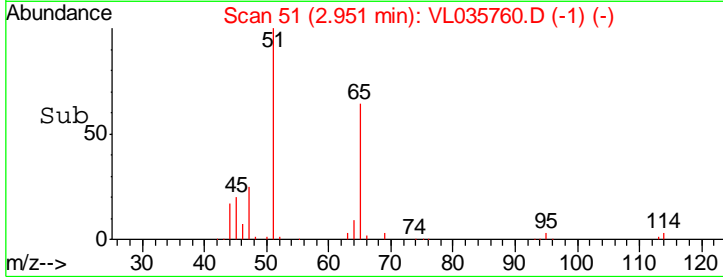
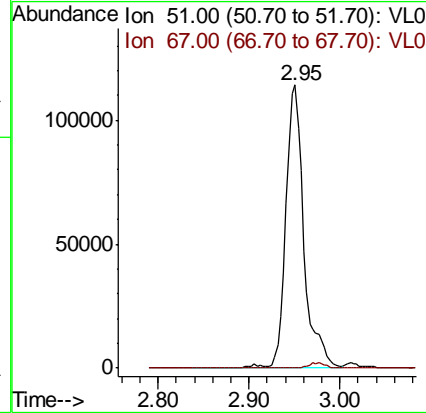
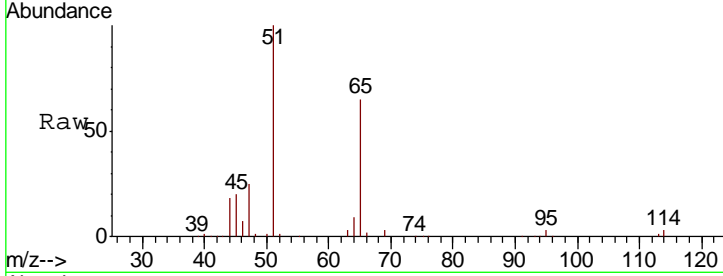




#3
 Chlorodifluoromethane
 Concen: 1.162 ppbv
 RT: 2.95 min Scan# 51
 Delta R.T. -0.04 min
 Lab File: VL035760.D
 Acq: 12 Oct 2020 13:58

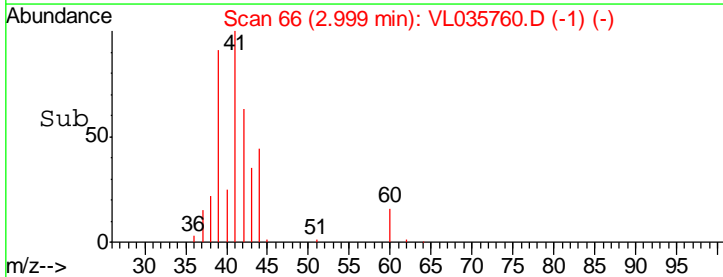
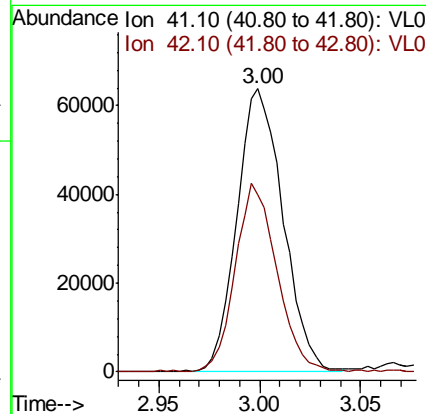
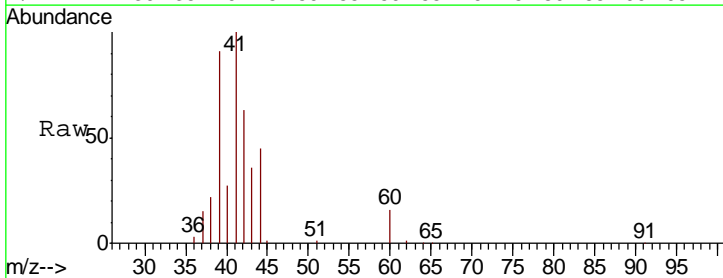
Instrument :
 MSVOA_L
 ClientSampled :
 1DL

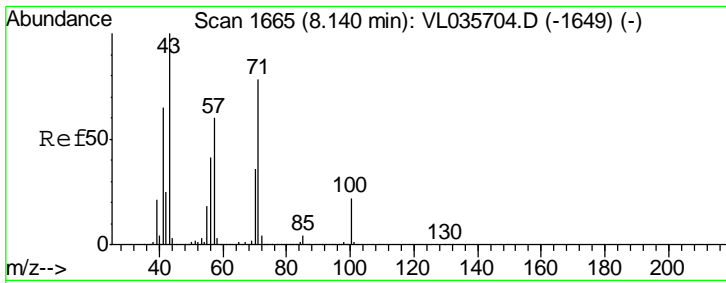
Tgt Ion: 51 Resp: 157344
 Ion Ratio Lower Upper
 51 100
 67 1.8 17.8 26.8#



#9
 Propene
 Concen: 2.077 ppbv
 RT: 3.00 min Scan# 66
 Delta R.T. -0.01 min
 Lab File: VL035760.D
 Acq: 12 Oct 2020 13:58

Tgt Ion: 41 Resp: 102119
 Ion Ratio Lower Upper
 41 100
 42 60.5 56.2 84.4

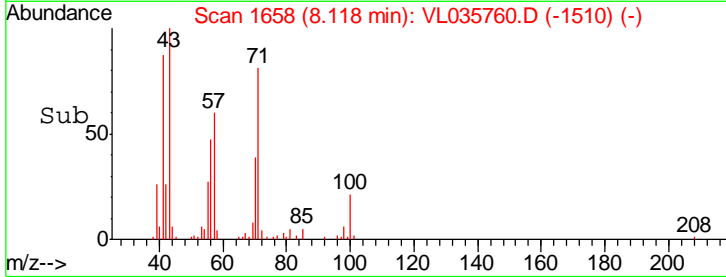
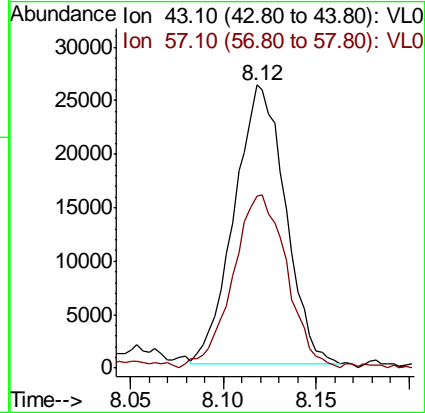
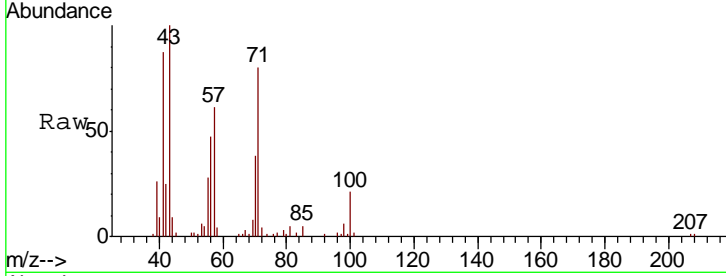




#10
 Heptane
 Concen: 0.367 ppbv
 RT: 8.12 min Scan# 1658
 Delta R.T. -0.02 min
 Lab File: VL035760.D
 Acq: 12 Oct 2020 13:58

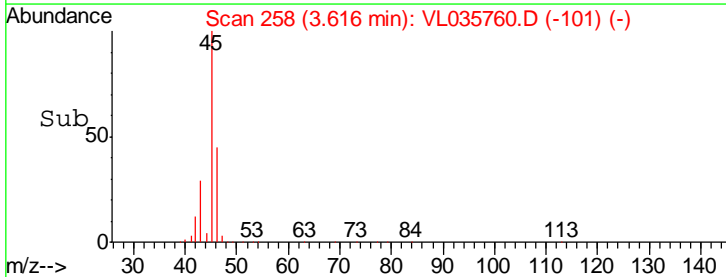
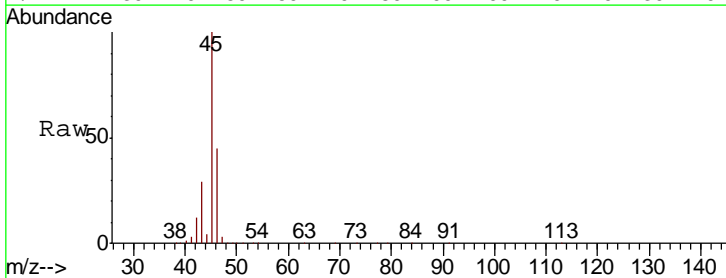
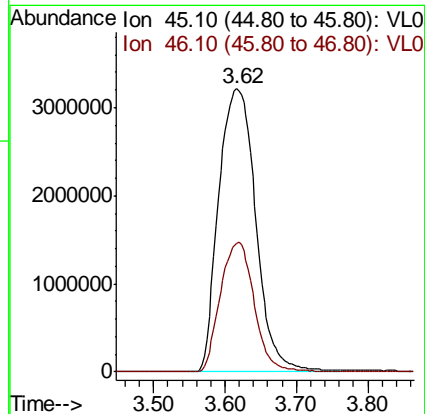
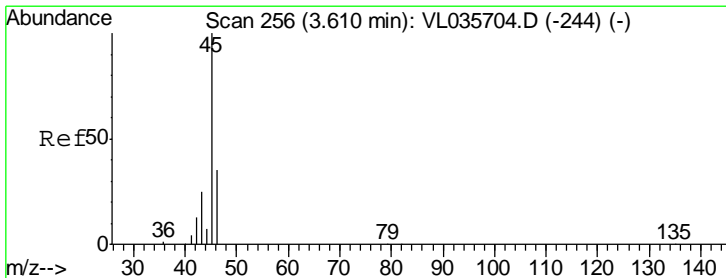
Instrument :
 MSVOA_L
 ClientSampled :
 1DL

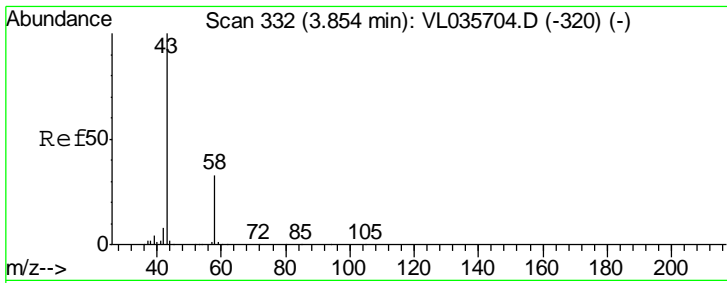
Tgt Ion	Resp	Lower	Upper
43	50291		
57	66.2	50.4	75.6



#13
 Ethanol
 Concen: 960.612 ppbv
 RT: 3.62 min Scan# 258
 Delta R.T. 0.01 min
 Lab File: VL035760.D
 Acq: 12 Oct 2020 13:58

Tgt Ion	Resp	Lower	Upper
45	11646865		
46	42.0	14.7	58.7

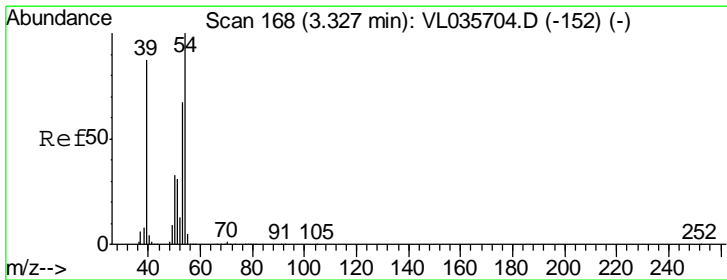
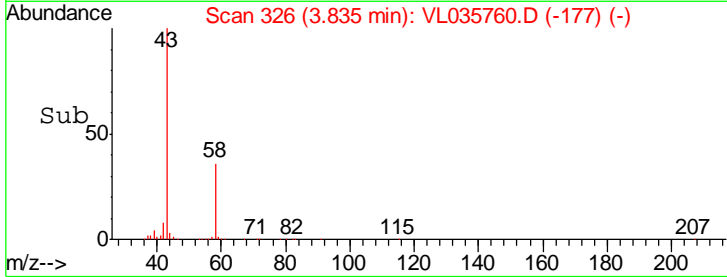
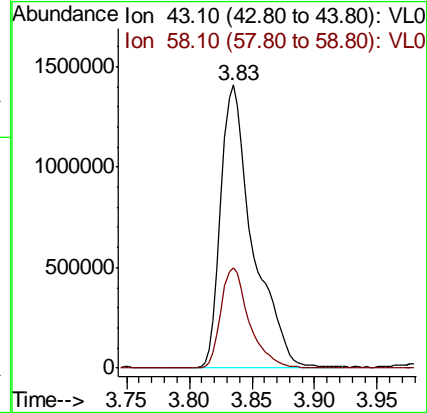
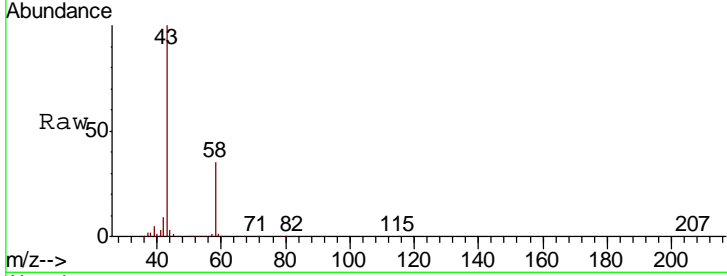




#15
 Acetone
 Concen: 18.355 ppbv
 RT: 3.83 min Scan# 326
 Delta R.T. -0.02 min
 Lab File: VL035760.D
 Acq: 12 Oct 2020 13:58

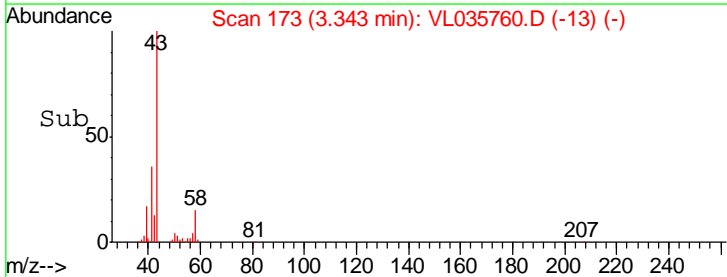
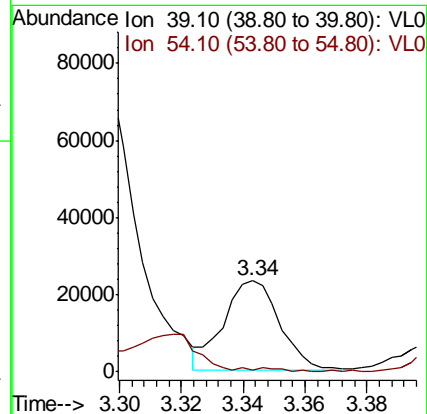
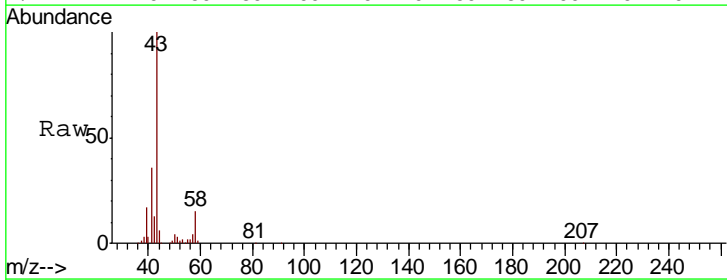
Instrument :
 MSVOA_L
 ClientSampled :
 1DL

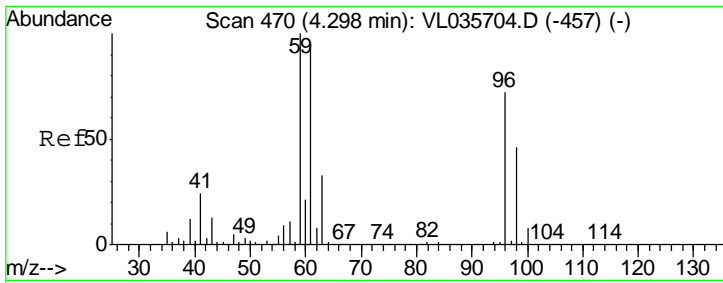
Tot Ion: 43 Resp: 2485880
 Ion Ratio Lower Upper
 43 100
 58 31.7 27.3 40.9



#16
 1,3-Butadiene
 Concen: 0.590 ppbv
 RT: 3.34 min Scan# 173
 Delta R.T. 0.02 min
 Lab File: VL035760.D
 Acq: 12 Oct 2020 13:58

Tgt Ion: 39 Resp: 29223
 Ion Ratio Lower Upper
 39 100
 54 68.3 87.4 131.0#

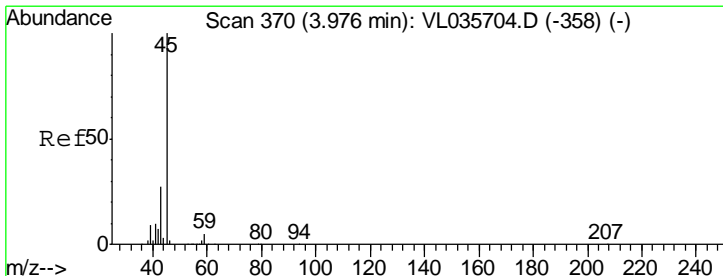
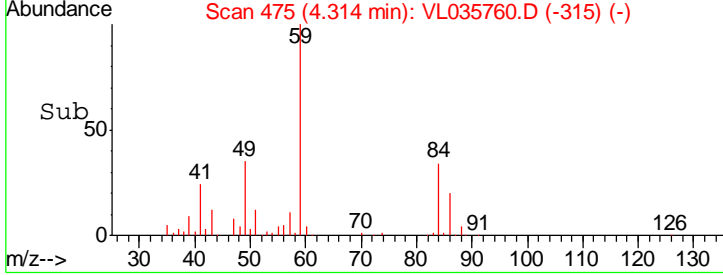
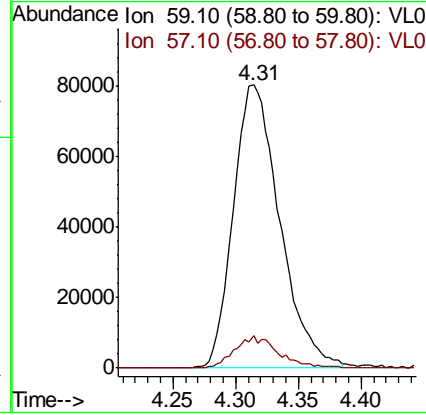
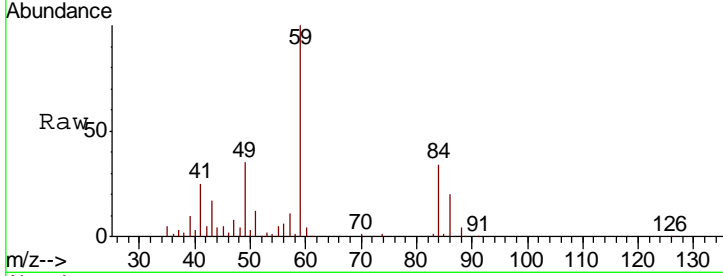




#17
 tert-Butyl alcohol
 Concen: 1.401 ppbv
 RT: 4.31 min Scan# 475
 Delta R.T. 0.02 min
 Lab File: VL035760.D
 Acq: 12 Oct 2020 13:58

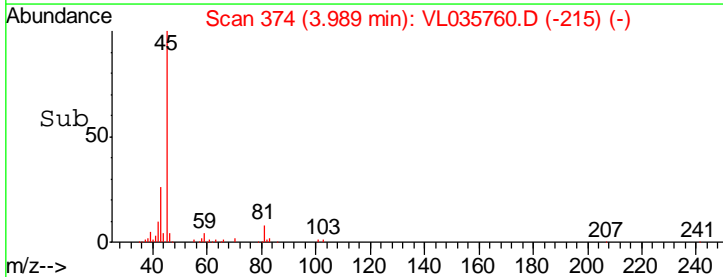
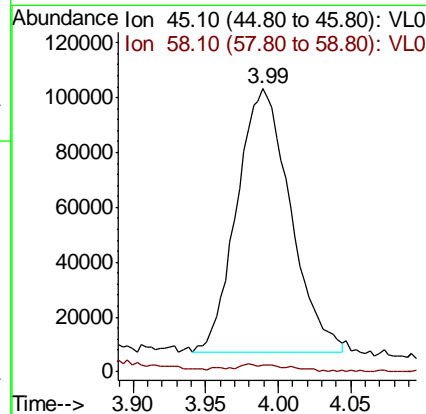
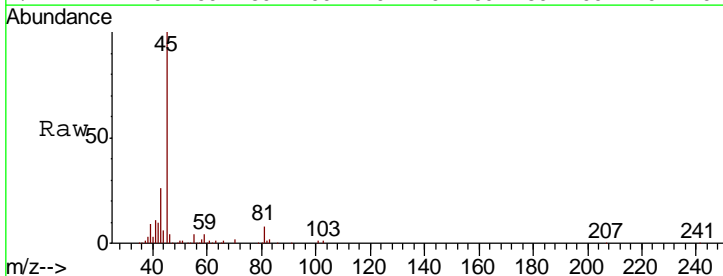
Instrument :
 MSVOA_L
 ClientSampled :
 1DL

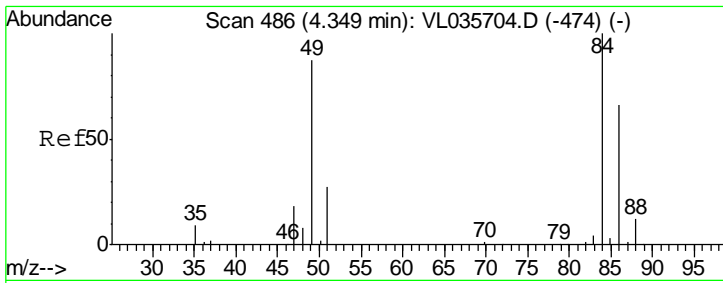
Tgt Ion	Resp	Lower	Upper
59	100		
57	10.8	8.5	12.7



#19
 Isopropyl Alcohol
 Concen: 3.350 ppbv
 RT: 3.99 min Scan# 374
 Delta R.T. 0.01 min
 Lab File: VL035760.D
 Acq: 12 Oct 2020 13:58

Tgt Ion	Resp	Lower	Upper
45	100		
58	319.0	2.8	4.2#

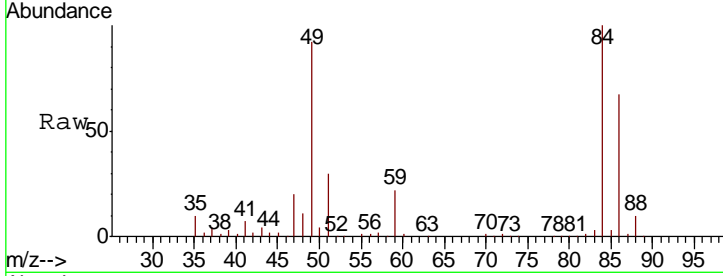




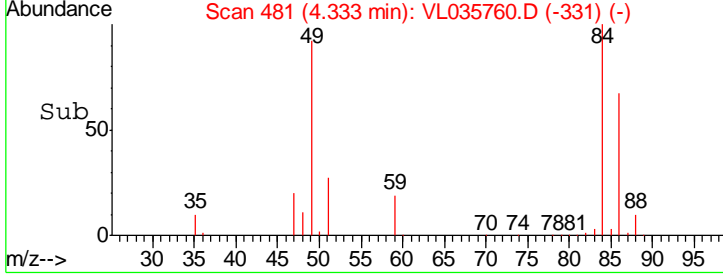
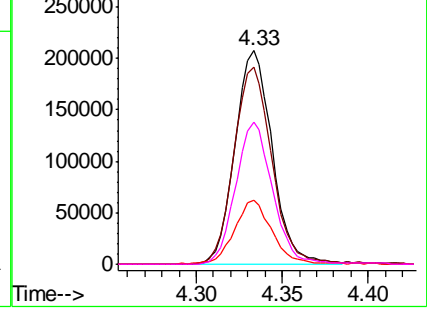
#20
 Methylene Chloride
 Concen: 3.135 ppbv
 RT: 4.33 min Scan# 481
 Delta R.T. -0.02 min
 Lab File: VL035760.D
 Acq: 12 Oct 2020 13:58

Instrument :
 MSVOA_L
 ClientSampled :
 1DL

Tgt Ion	Resp	Lower	Upper
84	100		
49	92.0	69.8	104.6
51	29.5	21.8	32.8
86	66.8	52.6	78.8

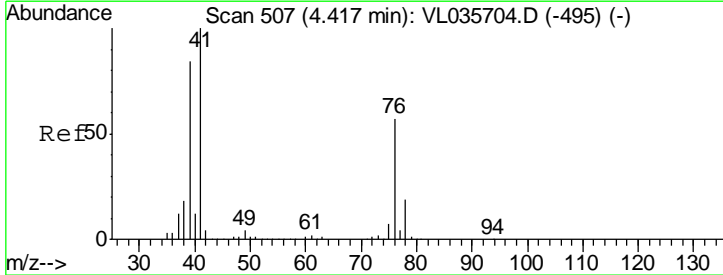


Abundance Ion 84.00 (83.70 to 84.70): VL0
 Ion 49.10 (48.80 to 49.80): VL0
 Ion 51.10 (50.80 to 51.80): VL0
 Ion 86.00 (85.70 to 86.70): VL0

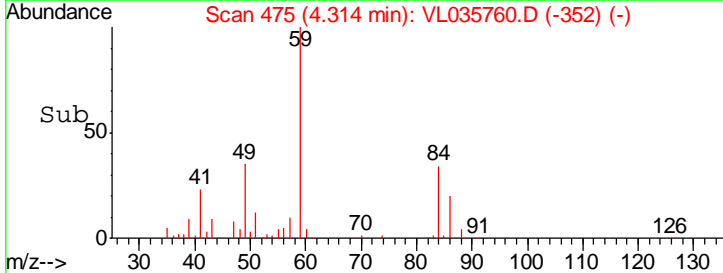
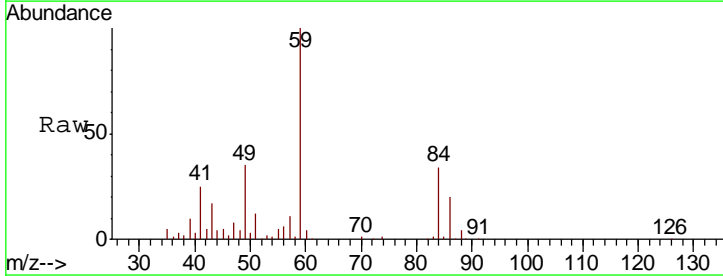
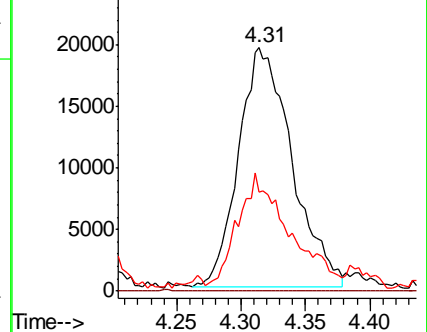


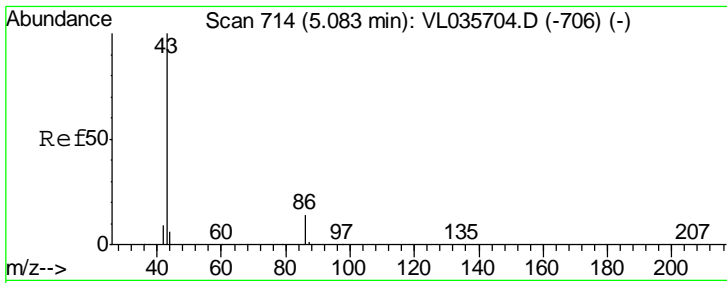
#21
 Allyl Chloride
 Concen: 0.850 ppbv
 RT: 4.31 min Scan# 475
 Delta R.T. -0.10 min
 Lab File: VL035760.D
 Acq: 12 Oct 2020 13:58

Tgt Ion	Resp	Lower	Upper
41	100		
76	0.0	44.8	67.2#
39	50.0	68.4	102.6#



Abundance Ion 41.10 (40.80 to 41.80): VL0
 Ion 76.10 (75.80 to 76.80): VL0
 Ion 39.10 (38.80 to 39.80): VL0

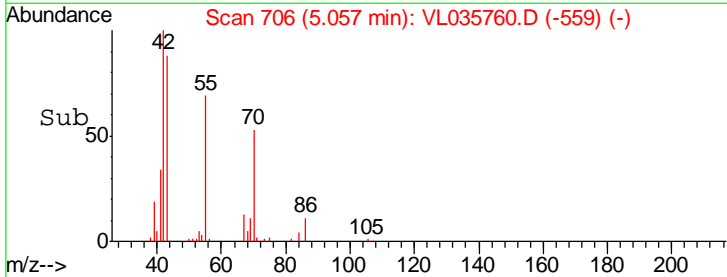
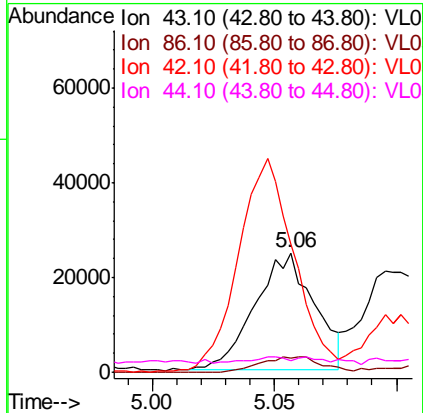
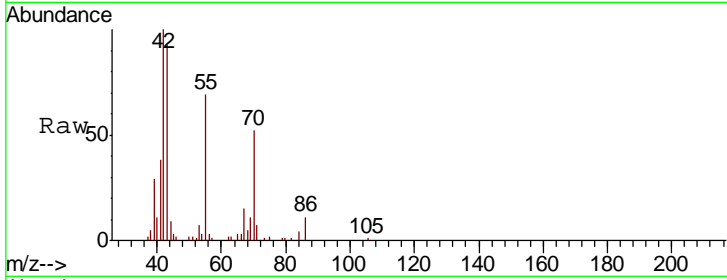




#23
 Vinyl Acetate
 Concen: 0.248 ppbv
 RT: 5.06 min Scan# 706
 Delta R.T. -0.03 min
 Lab File: VL035760.D
 Acq: 12 Oct 2020 13:58

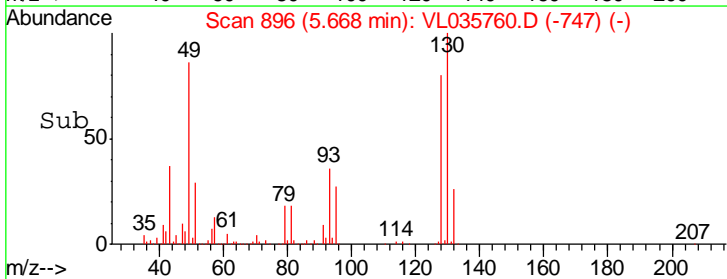
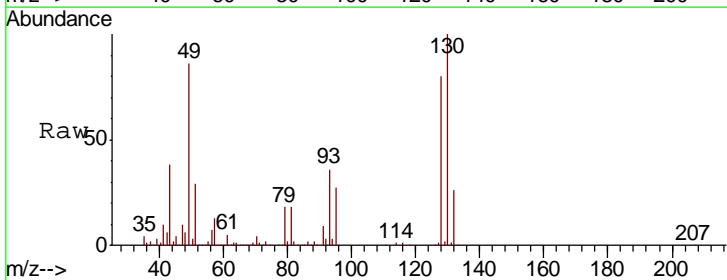
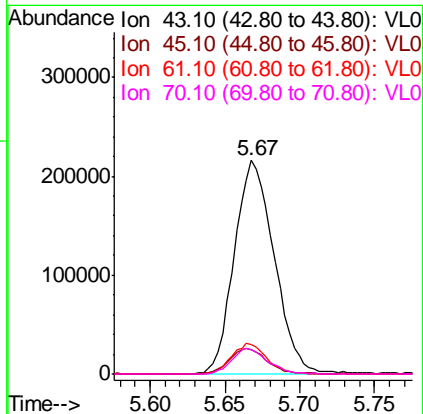
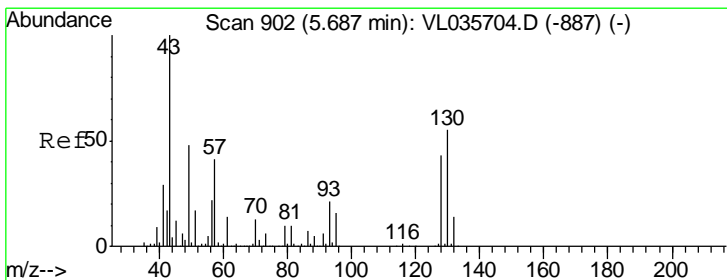
Instrument :
 MSVOA_L
 ClientSampled :
 1DL

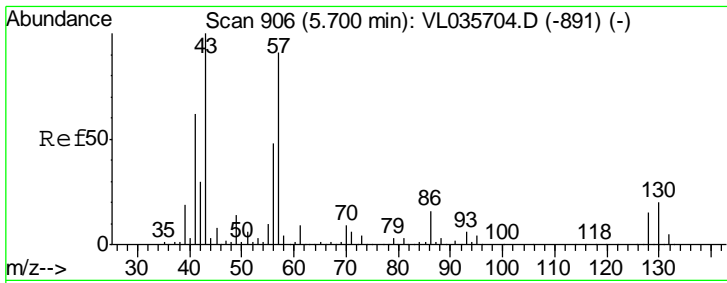
Tgt Ion	Resp	Lower	Upper
43	41144		
86	12.4	9.7	14.5
42	108.1	7.9	11.9#
44	0.7	4.8	7.2#



#25
 Ethyl Acetate
 Concen: 1.640 ppbv
 RT: 5.67 min Scan# 896
 Delta R.T. -0.02 min
 Lab File: VL035760.D
 Acq: 12 Oct 2020 13:58

Tgt Ion	Resp	Lower	Upper
43	399733		
45	11.8	8.6	12.8
61	12.7	10.4	15.6
70	10.9	8.9	13.3

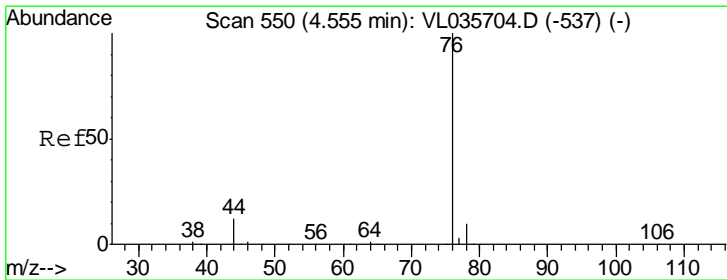
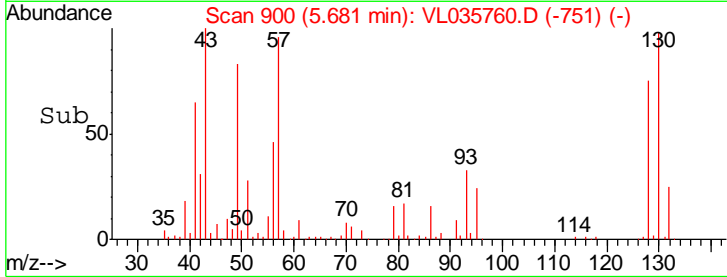
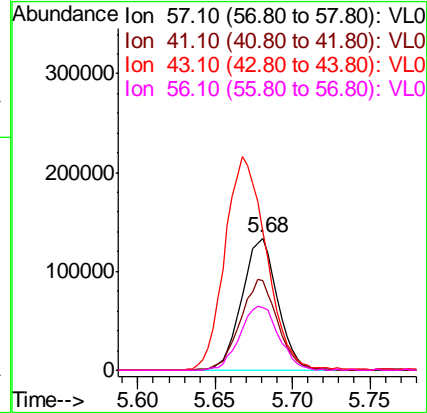
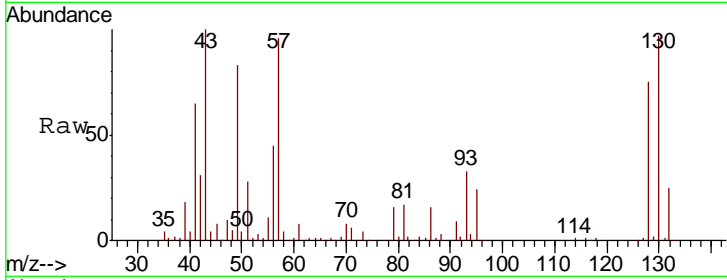




#26
 Hexane
 Concen: 1.601 ppbv
 RT: 5.68 min Scan# 900
 Delta R.T. -0.02 min
 Lab File: VL035760.D
 Acq: 12 Oct 2020 13:58

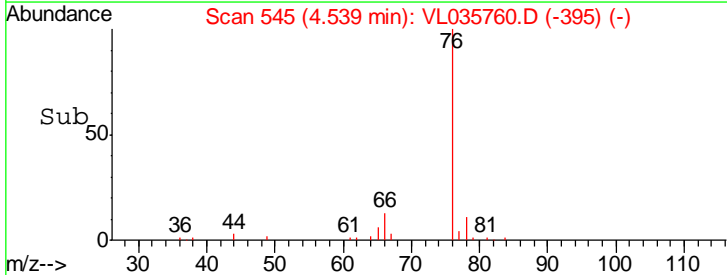
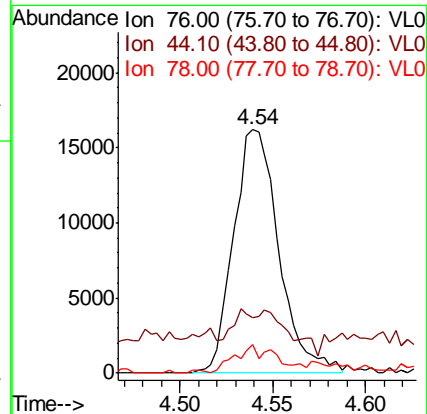
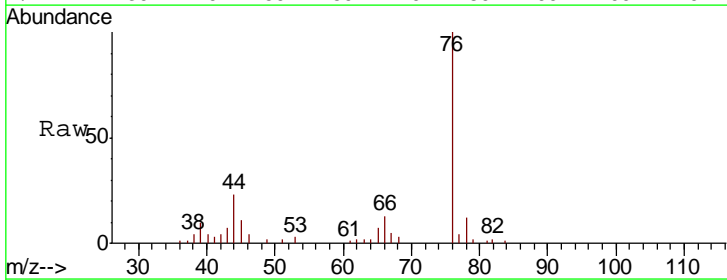
Instrument :
 MSVOA_L
 ClientSampled :
 1DL

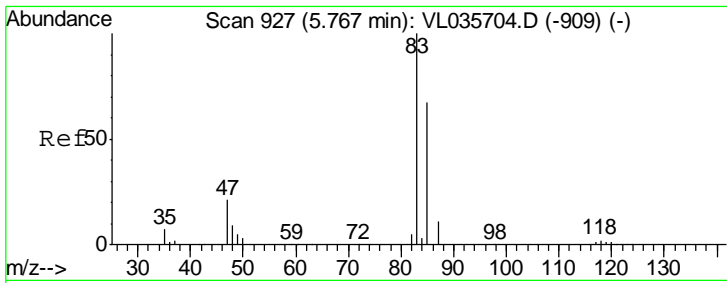
Tgt Ion	Resp	Lower	Upper
57	100		
41	71.6	57.9	86.9
43	189.2	143.8	215.6
56	53.8	43.0	64.6



#27
 Carbon Disulfide
 Concen: 0.139 ppbv
 RT: 4.54 min Scan# 545
 Delta R.T. -0.02 min
 Lab File: VL035760.D
 Acq: 12 Oct 2020 13:58

Tgt Ion	Resp	Lower	Upper
76	100		
44	11.8	9.7	14.5
78	15.5	7.8	11.8#

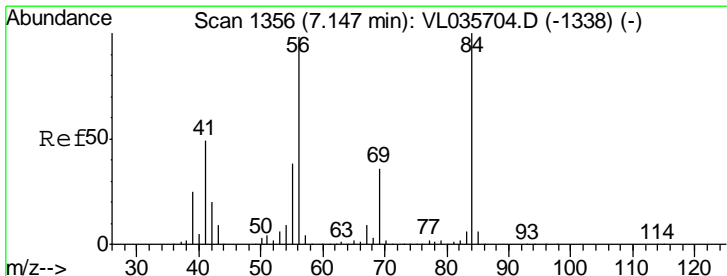
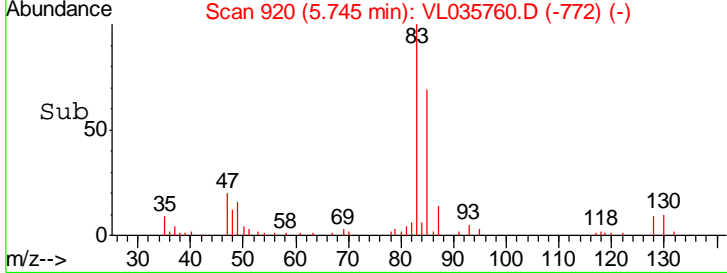
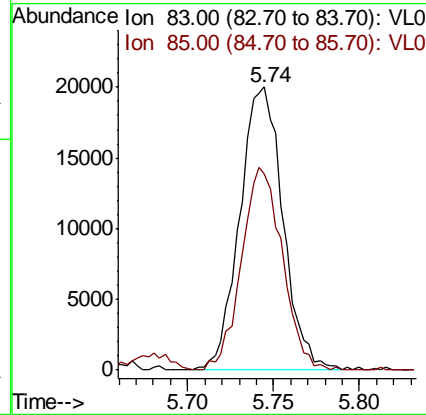
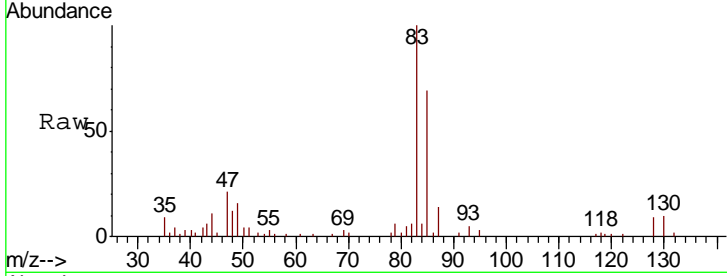




#29
 Chloroform
 Concen: 0.129 ppbv
 RT: 5.74 min Scan# 920
 Delta R.T. -0.02 min
 Lab File: VL035760.D
 Acq: 12 Oct 2020 13:58

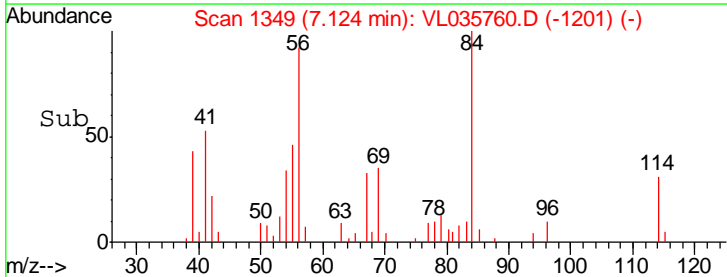
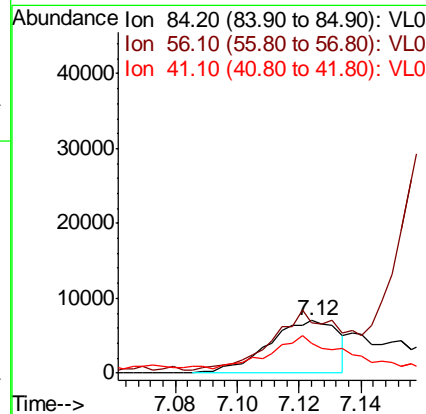
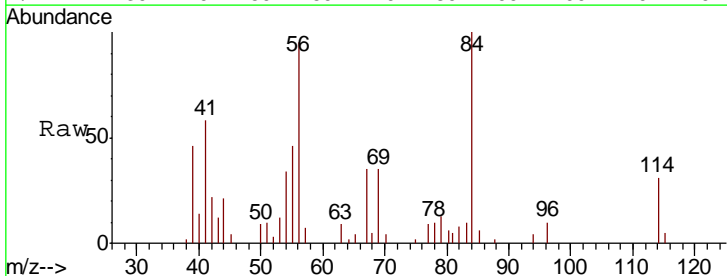
Instrument : MSVOA_L
 ClientSampleID : 1DL

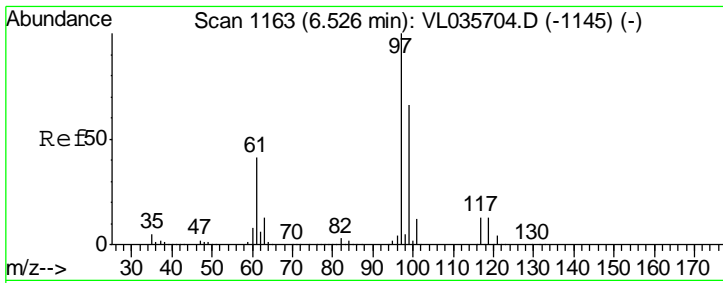
Tgt Ion	Resp	Lower	Upper
83	34921		
85	69.2	54.0	81.0



#30
 Cyclohexane
 Concen: 0.084 ppbv
 RT: 7.12 min Scan# 1349
 Delta R.T. -0.02 min
 Lab File: VL035760.D
 Acq: 12 Oct 2020 13:58

Tgt Ion	Resp	Lower	Upper
84	11019		
56	0.0	84.6	127.0#
41	95.2	41.1	61.7#

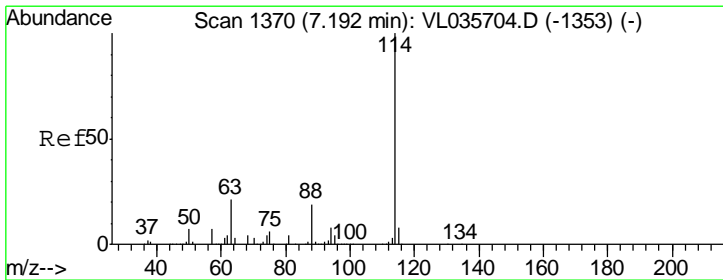
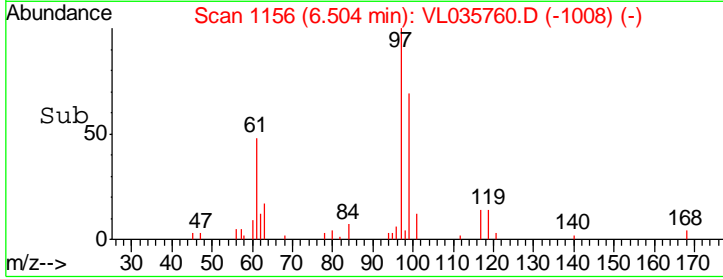
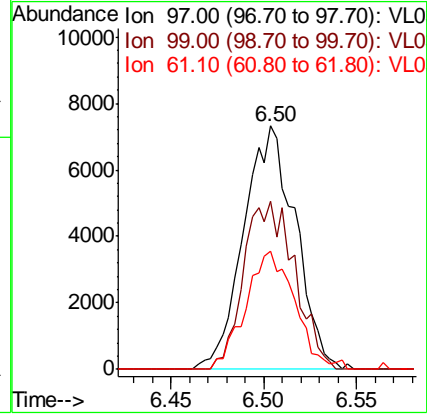
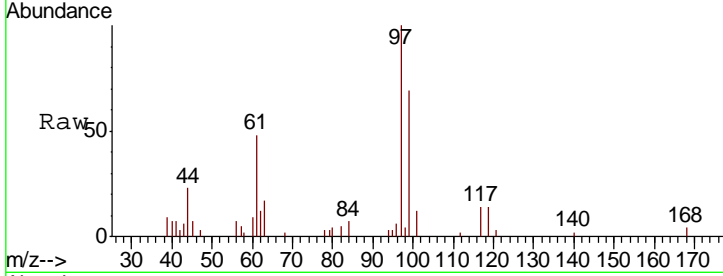




#32
 1,1,1-Trichloroethane
 Concen: 0.059 ppbv
 RT: 6.50 min Scan# 1156
 Delta R.T. -0.02 min
 Lab File: VL035760.D
 Acq: 12 Oct 2020 13:58

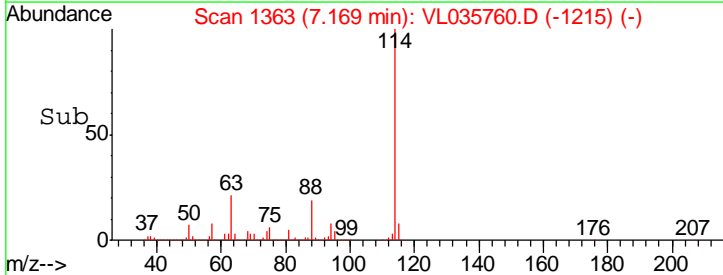
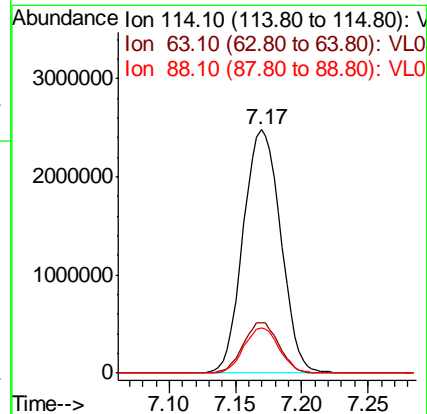
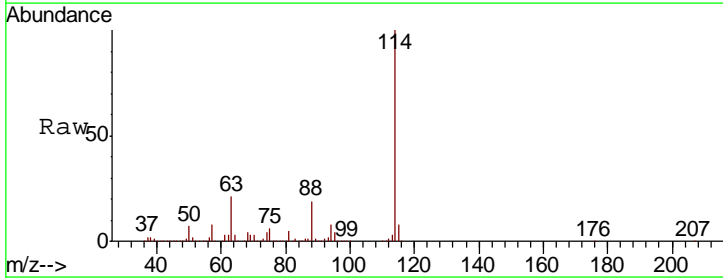
Instrument :
 MSVOA_L
 ClientSampled :
 1DL

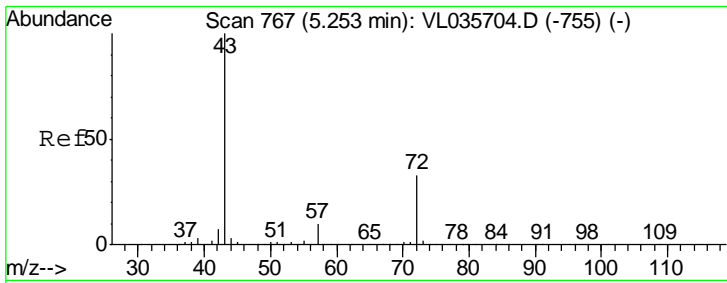
Tgt Ion	Resp	Lower	Upper
97	14194		
99	67.9	52.7	79.1
61	46.1	32.7	49.1



#33
 1,4-Difluorobenzene
 Concen: 10.000 ppbv
 RT: 7.17 min Scan# 1363
 Delta R.T. -0.02 min
 Lab File: VL035760.D
 Acq: 12 Oct 2020 13:58

Tgt Ion	Resp	Lower	Upper
114	4885453		
63	19.8	16.1	24.1
88	17.6	14.1	21.1

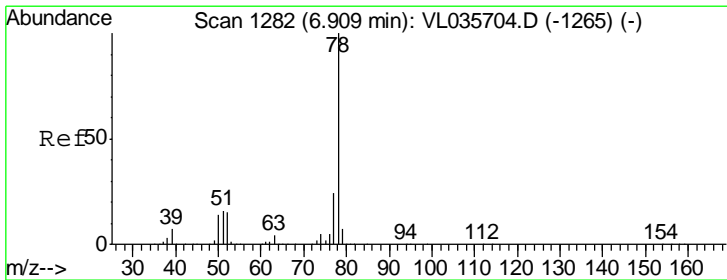
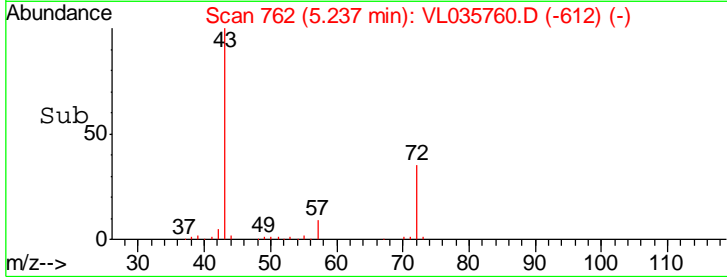
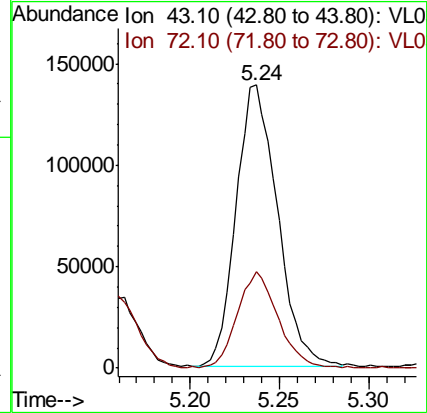
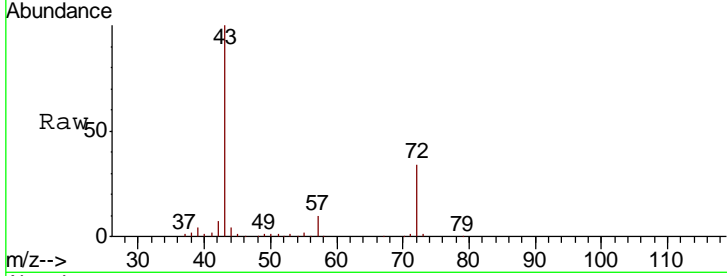




#34
 2-Butanone
 Concen: 1.383 ppbv
 RT: 5.24 min Scan# 762
 Delta R.T. -0.02 min
 Lab File: VL035760.D
 Acq: 12 Oct 2020 13:58

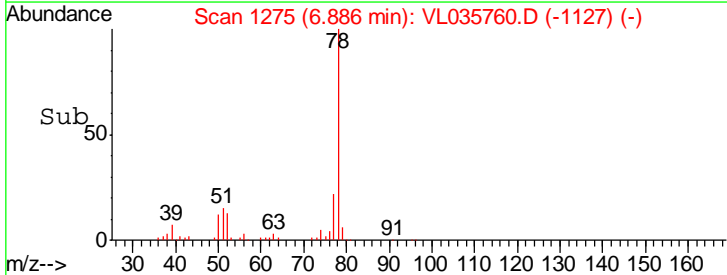
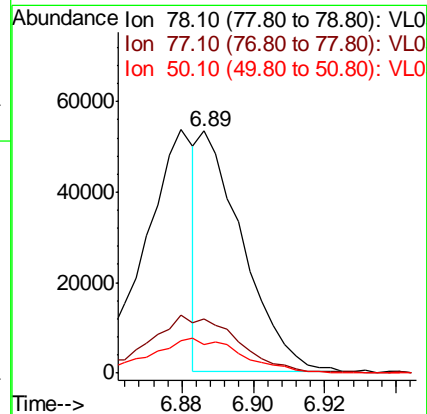
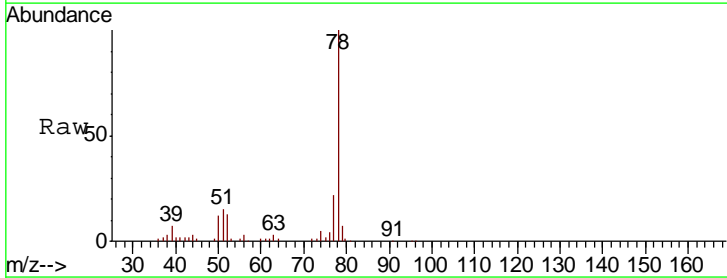
Instrument :
 MSVOA_L
 ClientSampled :
 1DL

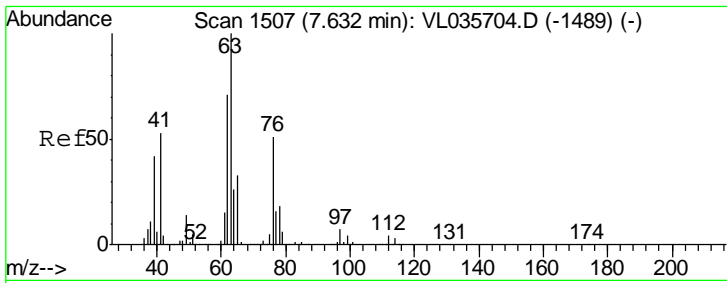
Tgt Ion	Resp	Lower	Upper
43	100		
72	33.9	26.1	39.1



#36
 Benzene
 Concen: 0.142 ppbv
 RT: 6.89 min Scan# 1275
 Delta R.T. -0.02 min
 Lab File: VL035760.D
 Acq: 12 Oct 2020 13:58

Tgt Ion	Resp	Lower	Upper
78	100		
77	22.0	19.3	28.9
50	11.7	11.6	17.4

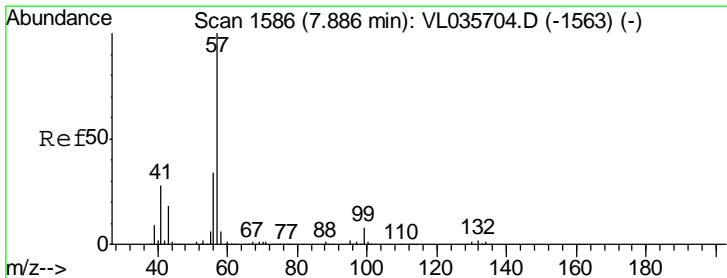
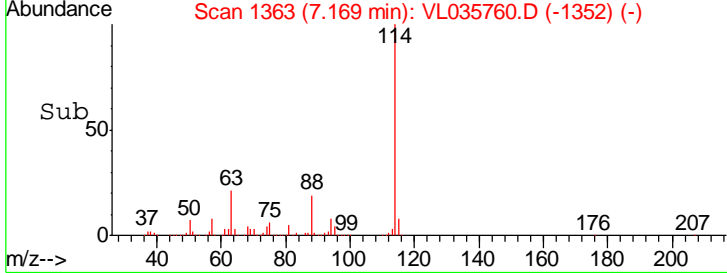
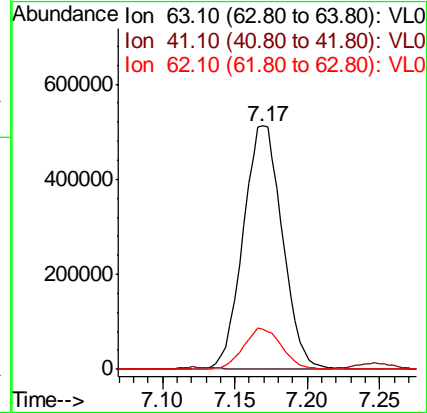
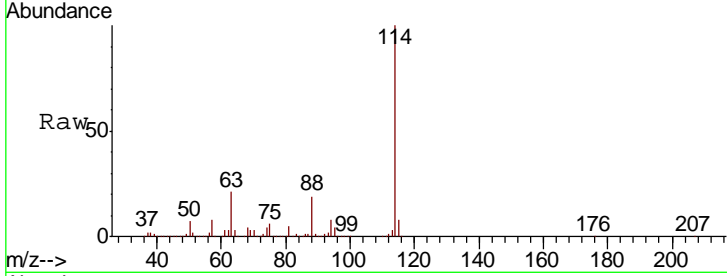




#39
 1,2-Dichloropropane
 Concen: 8.359 ppbv
 RT: 7.17 min Scan# 1363
 Delta R.T. -0.46 min
 Lab File: VL035760.D
 Acq: 12 Oct 2020 13:58

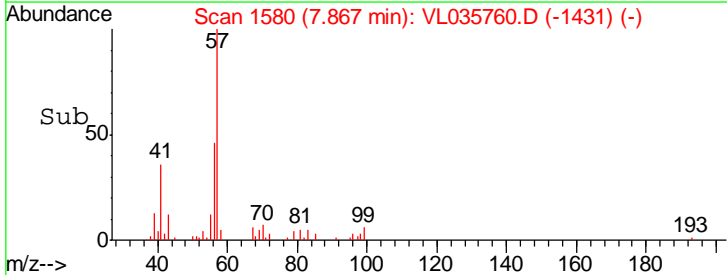
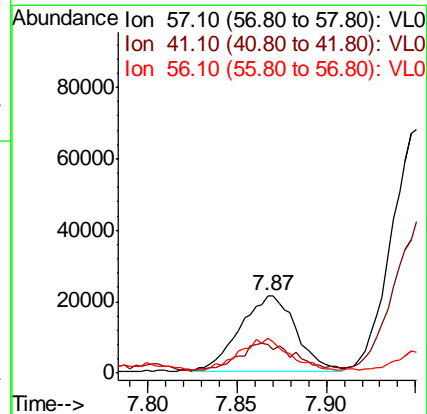
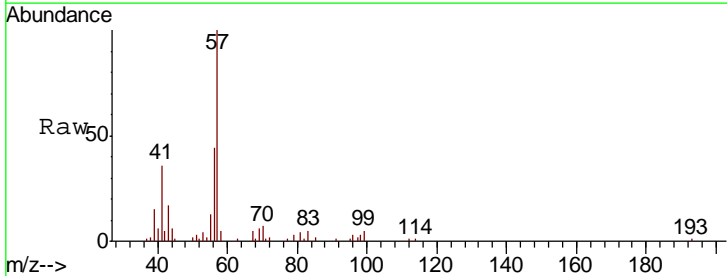
Instrument :
 MSVOA_L
 ClientSampled :
 1DL

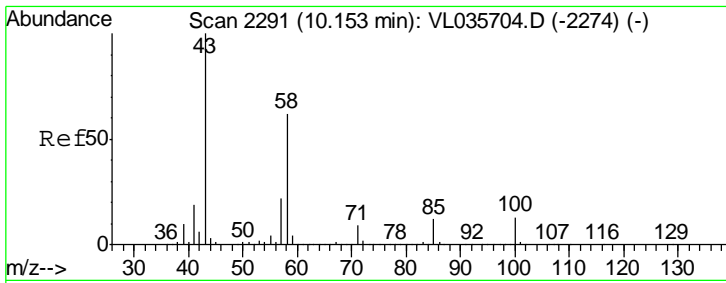
Tgt Ion	Resp	Lower	Upper
63	100		
41	0.0	42.6	63.8#
62	16.6	56.5	84.7#



#44
 2,2,4-Trimethylpentane
 Concen: 0.100 ppbv
 RT: 7.87 min Scan# 1580
 Delta R.T. -0.02 min
 Lab File: VL035760.D
 Acq: 12 Oct 2020 13:58

Tgt Ion	Resp	Lower	Upper
57	100		
41	43.7	21.2	31.8#
56	39.3	25.8	38.8#

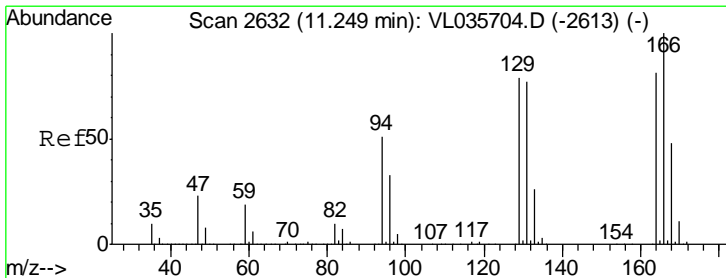
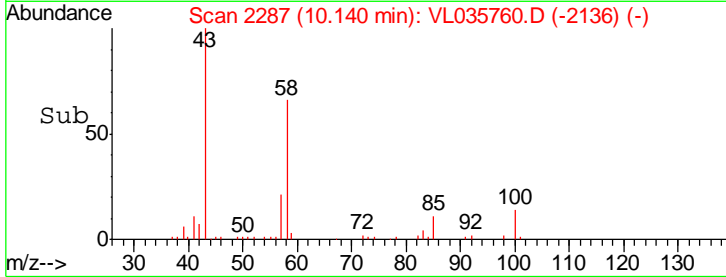
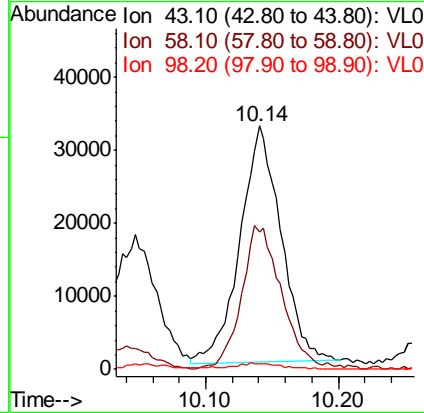
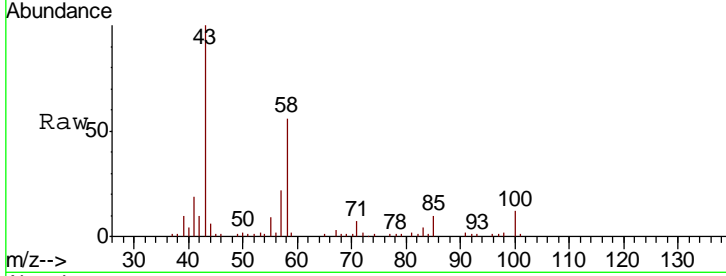




#51
 2-Hexanone
 Concen: 0.364 ppbv
 RT: 10.14 min Scan# 2287
 Delta R.T. -0.01 min
 Lab File: VL035760.D
 Acq: 12 Oct 2020 13:58

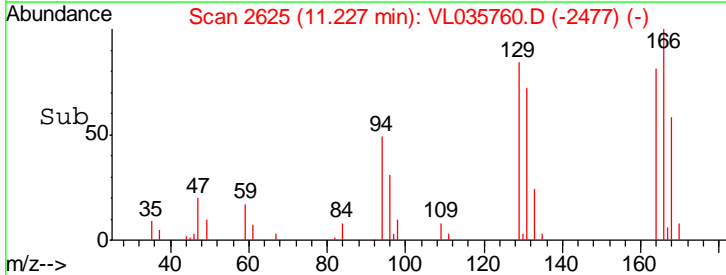
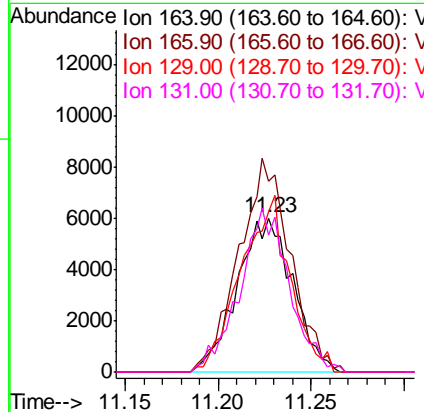
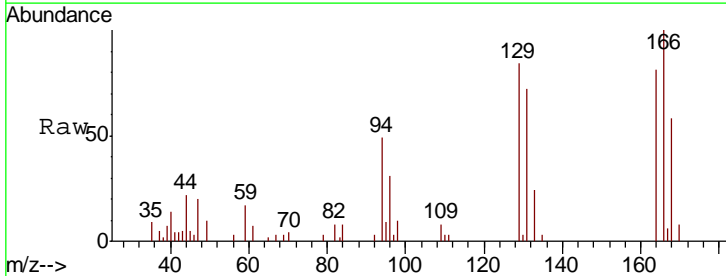
Instrument : MSVOA_L
 ClientSampled : 1DL

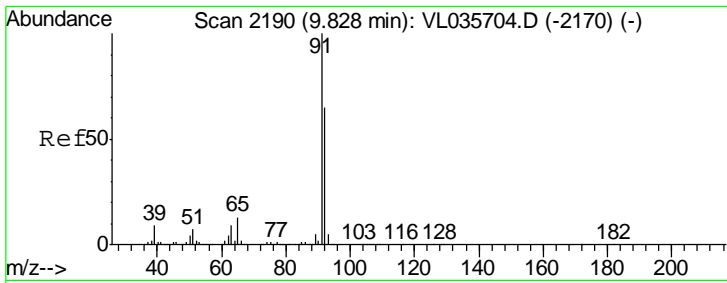
Tgt Ion	Resp	Lower	Upper
43	69202		
58	60.3	48.7	73.1
98	3.3	0.7	1.1#



#52
 Tetrachloroethene
 Concen: 0.082 ppbv
 RT: 11.23 min Scan# 2625
 Delta R.T. -0.02 min
 Lab File: VL035760.D
 Acq: 12 Oct 2020 13:58

Tgt Ion	Resp	Lower	Upper
164	12496		
166	124.0	98.7	148.1
129	104.3	78.4	117.6
131	89.2	76.2	114.2



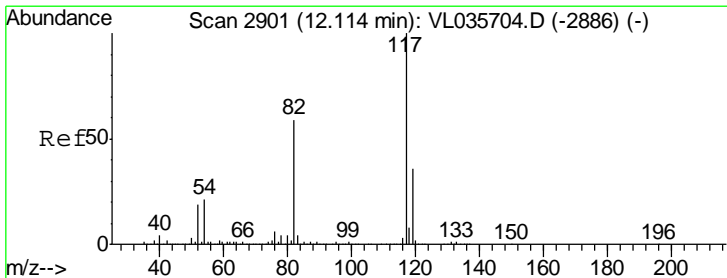
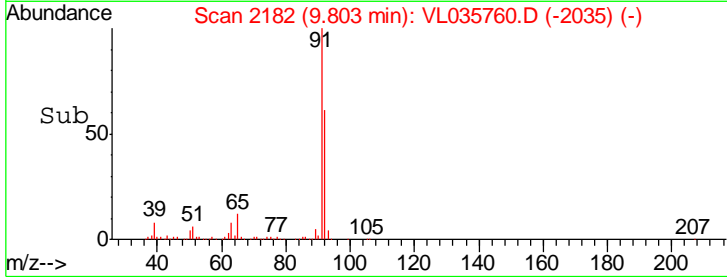
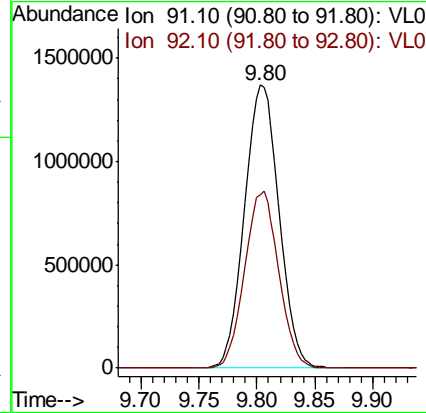
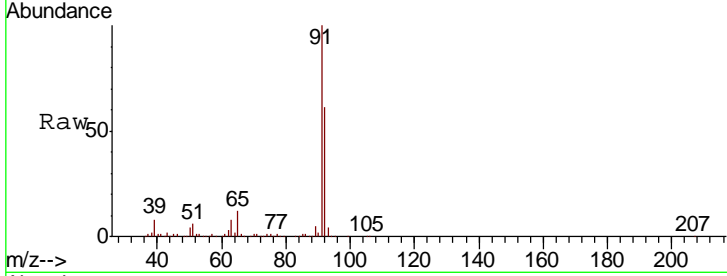


#53
 Toluene
 Concen: 7.583 ppbv
 RT: 9.80 min Scan# 2182
 Delta R.T. -0.03 min
 Lab File: VL035760.D
 Acq: 12 Oct 2020 13:58

Instrument :
 MSVOA_L
 ClientSampled :
 1DL

Tgt Ion: 91 Resp: 2846572

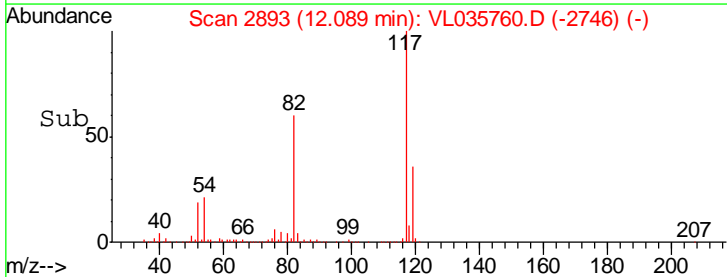
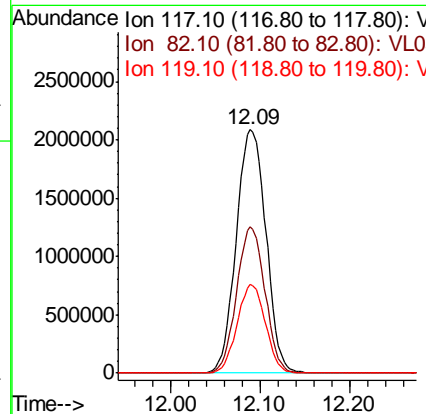
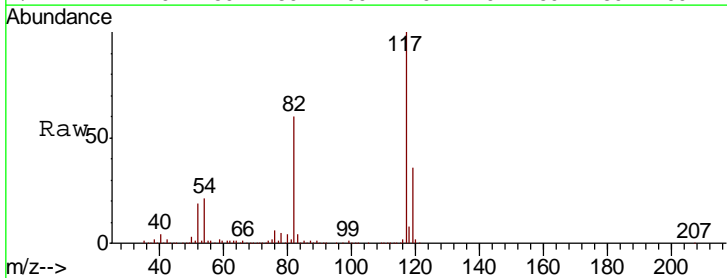
Ion	Ratio	Lower	Upper
91	100		
92	61.7	50.0	75.0

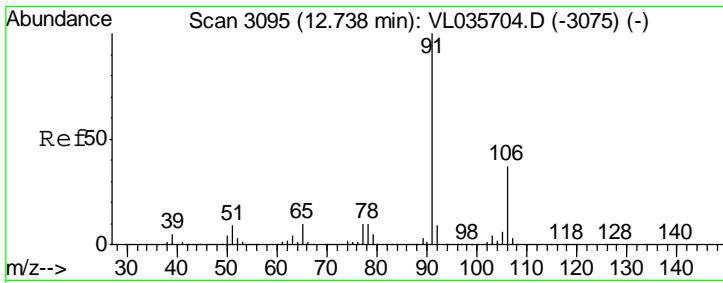


#55
 Chlorobenzene-d5
 Concen: 10.000 ppbv
 RT: 12.09 min Scan# 2893
 Delta R.T. -0.03 min
 Lab File: VL035760.D
 Acq: 12 Oct 2020 13:58

Tgt Ion: 117 Resp: 4817110

Ion	Ratio	Lower	Upper
117	100		
82	57.4	46.1	69.1
119	34.8	28.0	42.0

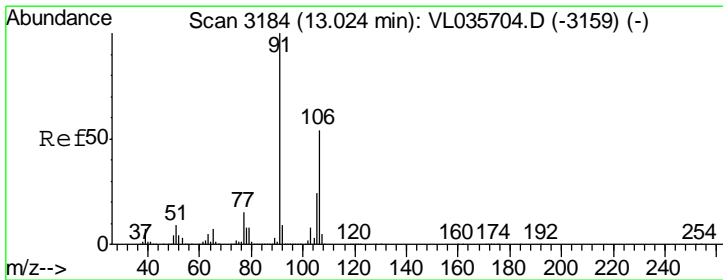
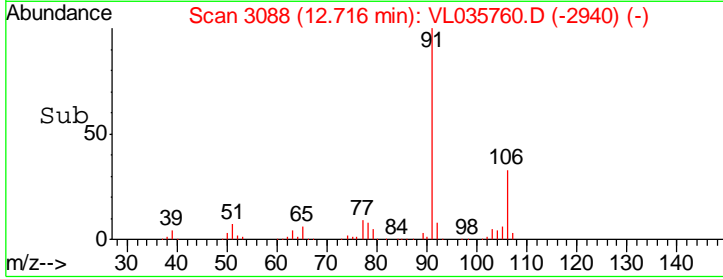
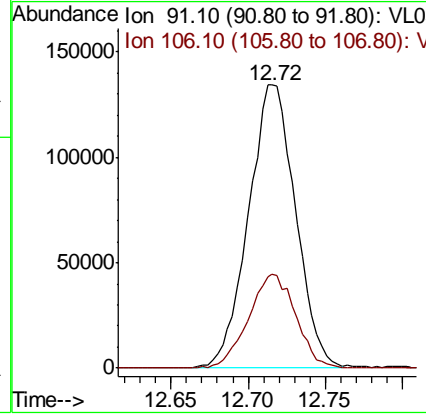
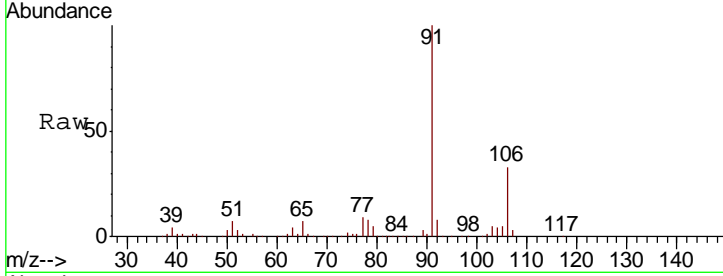




#58
 Ethyl Benzene
 Concen: 0.587 ppbv
 RT: 12.72 min Scan# 3088
 Delta R.T. -0.02 min
 Lab File: VL035760.D
 Acq: 12 Oct 2020 13:58

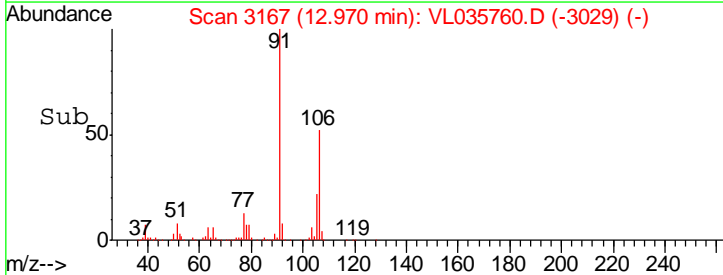
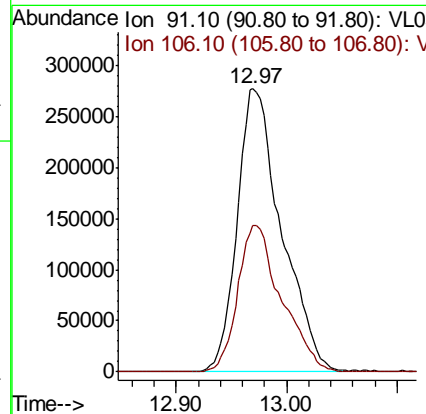
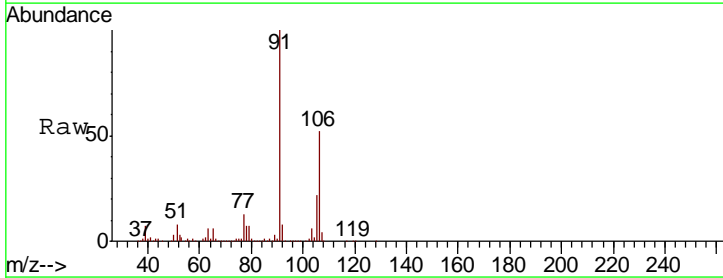
Instrument :
 MSVOA_L
 ClientSampled :
 1DL

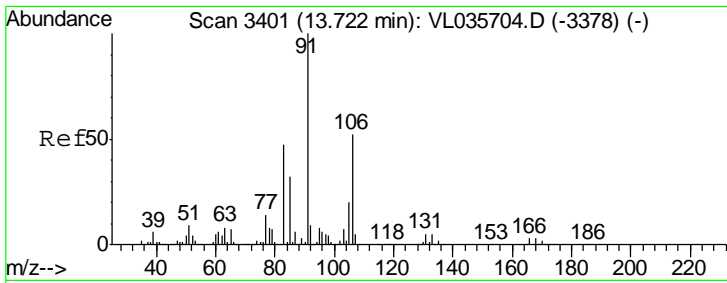
Tgt Ion	Resp	Lower	Upper
91	283581		
106	33.2	29.7	44.5



#59
 m/p-Xylene
 Concen: 1.823 ppbv
 RT: 12.97 min Scan# 3167
 Delta R.T. -0.05 min
 Lab File: VL035760.D
 Acq: 12 Oct 2020 13:58

Tgt Ion	Resp	Lower	Upper
91	769520		
106	51.3	41.4	62.0

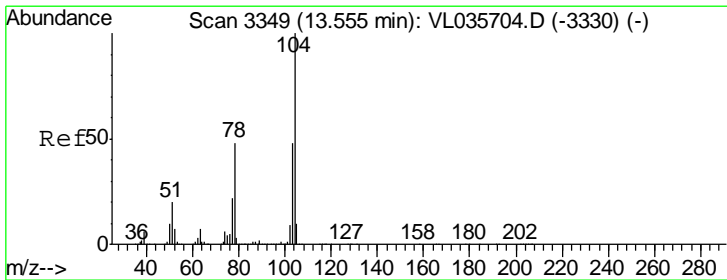
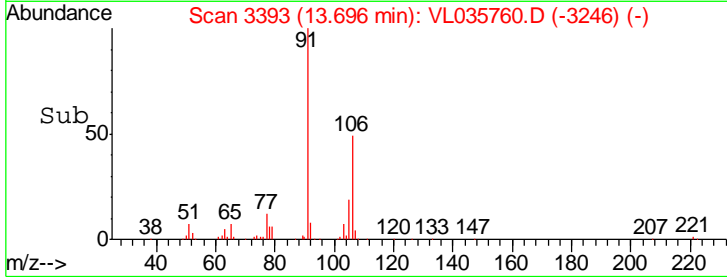
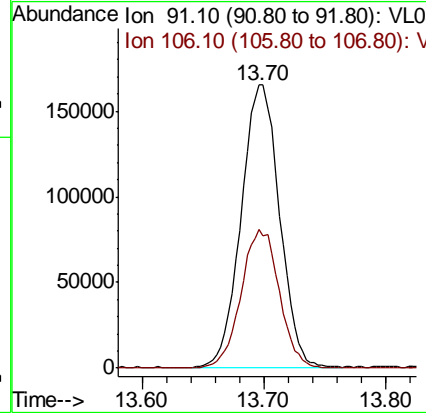
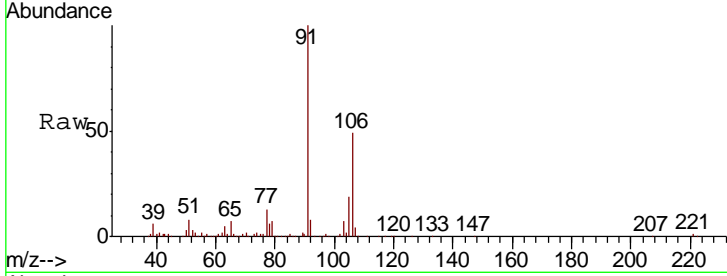




#60
 o-Xylene
 Concen: 0.833 ppbv
 RT: 13.70 min Scan# 3393
 Delta R.T. -0.03 min
 Lab File: VL035760.D
 Acq: 12 Oct 2020 13:58

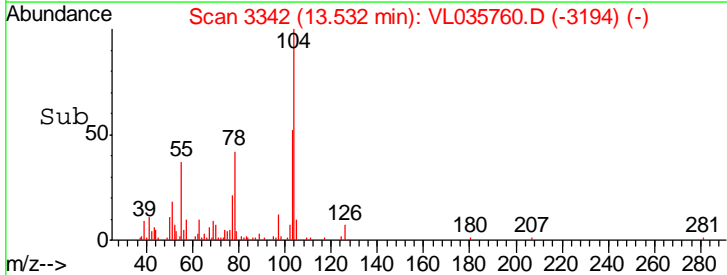
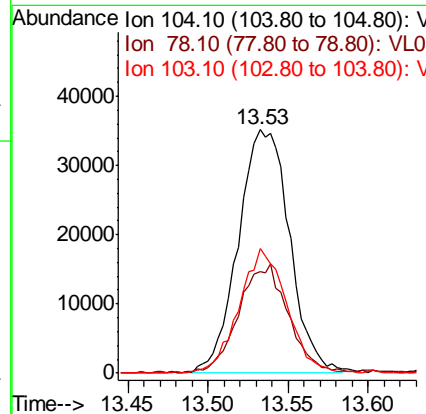
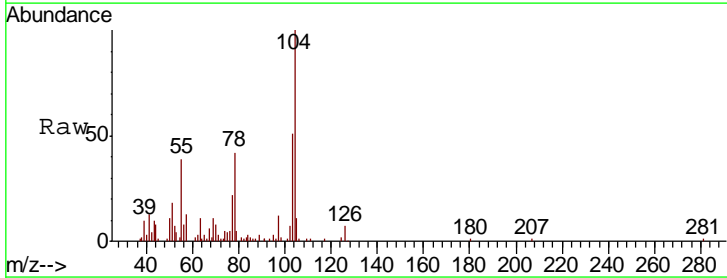
Instrument :
 MSVOA_L
 ClientSampled :
 1DL

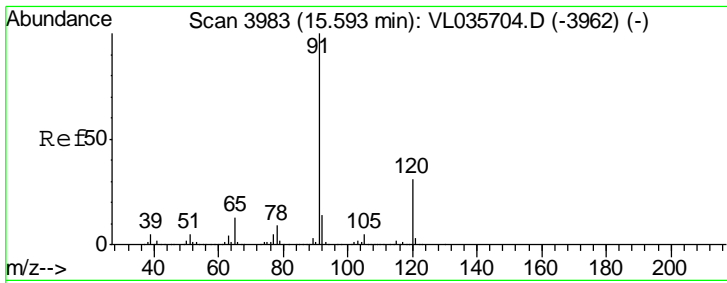
Tgt Ion: 91 Resp: 355651
 Ion Ratio Lower Upper
 91 100
 106 49.0 25.0 75.0



#61
 Styrene
 Concen: 0.261 ppbv
 RT: 13.53 min Scan# 3342
 Delta R.T. -0.02 min
 Lab File: VL035760.D
 Acq: 12 Oct 2020 13:58

Tgt Ion: 104 Resp: 77023
 Ion Ratio Lower Upper
 104 100
 78 44.4 37.2 55.8
 103 47.9 38.2 57.2

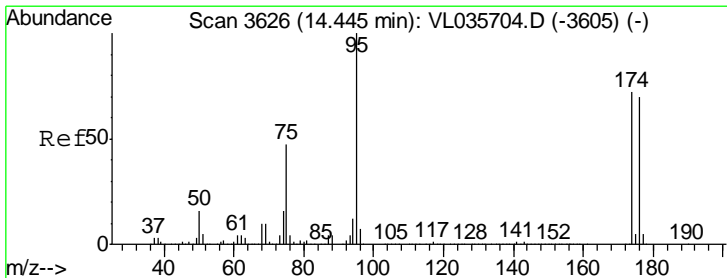
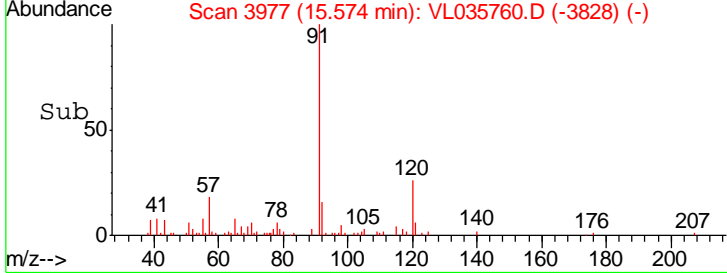
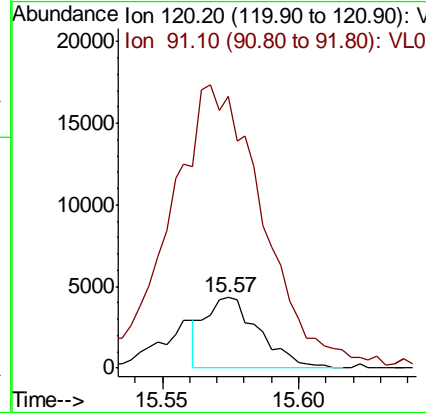
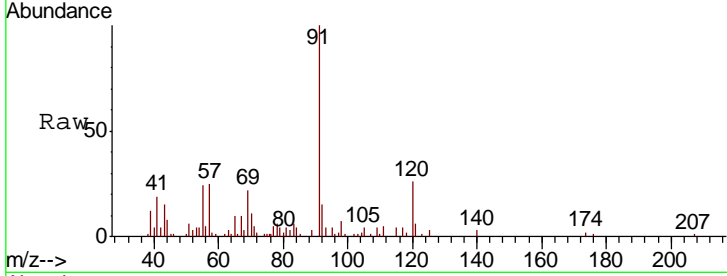




#64
 n-propylbenzene
 Concen: 0.031 ppbv
 RT: 15.57 min Scan# 3977
 Delta R.T. -0.02 min
 Lab File: VL035760.D
 Acq: 12 Oct 2020 13:58

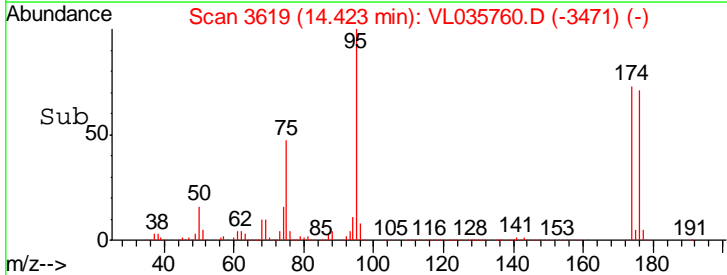
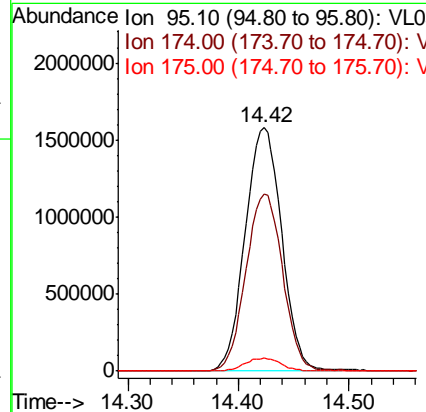
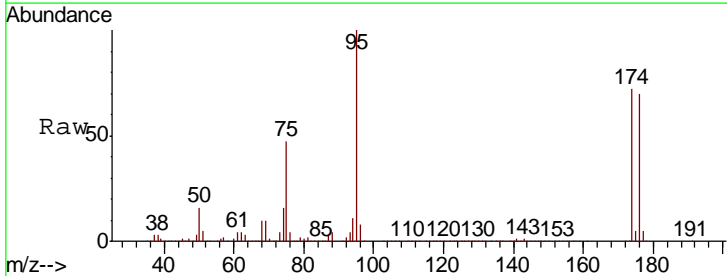
Instrument :
 MSVOA_L
 ClientSampled :
 1DL

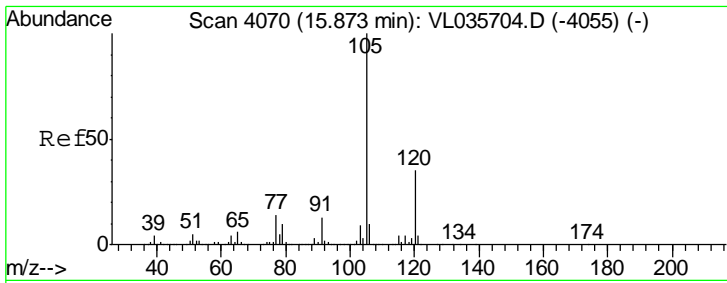
Tgt Ion: 120 Resp: 5923
 Ion Ratio Lower Upper
 120 100
 91 703.7 300.4 450.6#



#68
 1-Bromo-4-Fluorobenzene
 Concen: 10.047 ppbv
 RT: 14.42 min Scan# 3619
 Delta R.T. -0.02 min
 Lab File: VL035760.D
 Acq: 12 Oct 2020 13:58

Tgt Ion: 95 Resp: 3626498
 Ion Ratio Lower Upper
 95 100
 174 74.0 59.6 89.4
 175 5.3 4.2 6.4

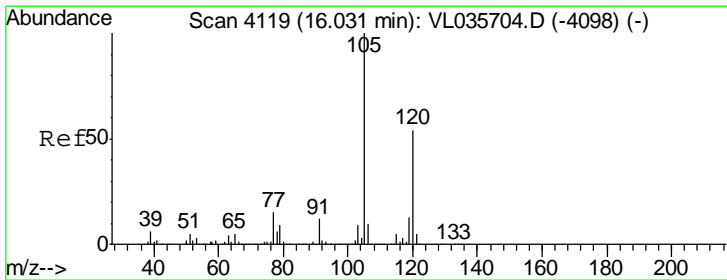
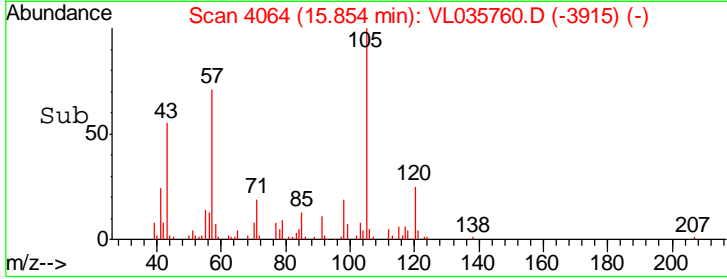
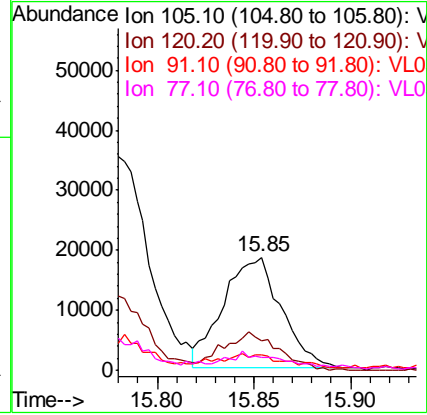
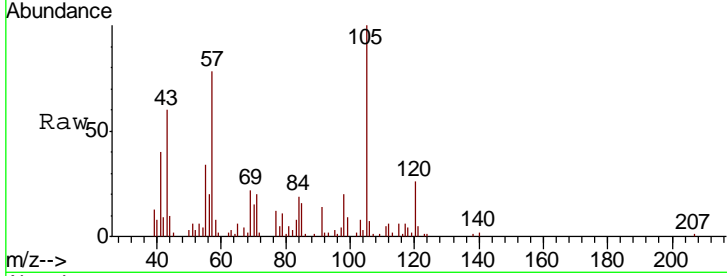




#72
 4-Ethyltoluene
 Concen: 0.077 ppbv
 RT: 15.85 min Scan# 4064
 Delta R.T. -0.02 min
 Lab File: VL035760.D
 Acq: 12 Oct 2020 13:58

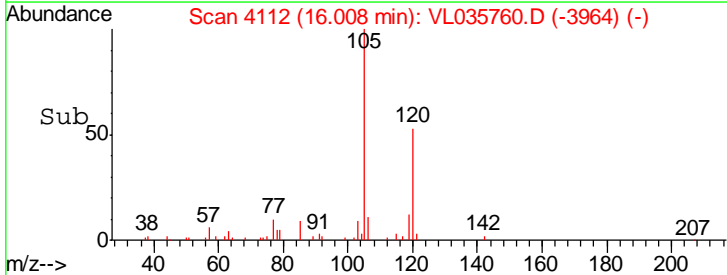
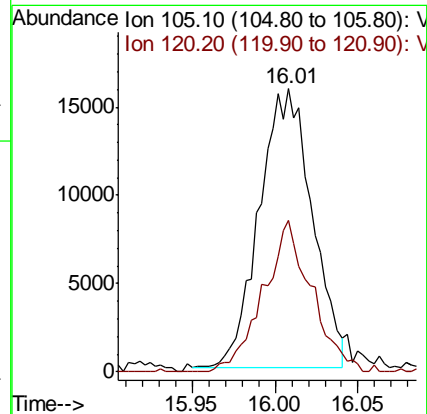
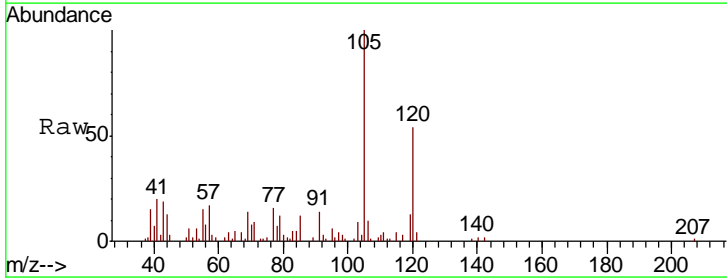
Instrument : MSVOA_L
 ClientSampled : 1DL

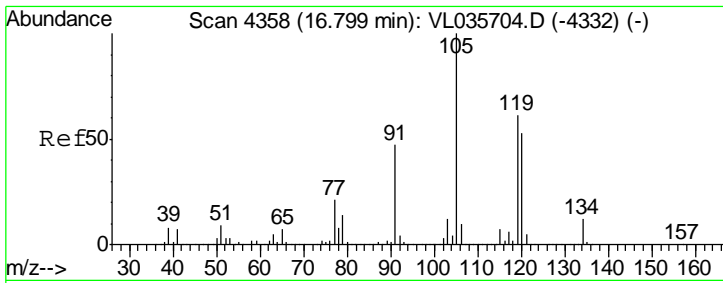
Tgt Ion	Resp	Lower	Upper
105	100		
120	32.3	26.5	39.7
91	12.3	10.2	15.2
77	16.3	10.3	15.5#



#73
 1,3,5-Trimethylbenzene
 Concen: 0.073 ppbv
 RT: 16.01 min Scan# 4112
 Delta R.T. -0.02 min
 Lab File: VL035760.D
 Acq: 12 Oct 2020 13:58

Tgt Ion	Resp	Lower	Upper
105	100		
120	54.6	43.0	64.4





#74
 1,2,4-Trimethylbenzene
 Concen: 0.256 ppbv
 RT: 16.77 min Scan# 4349
 Delta R.T. -0.03 min
 Lab File: VL035760.D
 Acq: 12 Oct 2020 13:58

Instrument : MSVOA_L
 ClientSampleID : 1DL

Tot Ion	105	Resp	138096
Ion Ratio	Lower	Upper	
105	100		
120	44.9	42.5	63.7
91	9.7	37.7	56.5#
77	12.9	16.7	25.1#

