

Data Path : Z:\VOASRV\HPCHEM1\MSVOA L\DATA\VL110121\
 Data File : VL037949.D
 Acq On : 1 Nov 2021 22:13
 Operator : SY/AP
 Sample : M4426-02DL 10X
 Misc : 400mL/MSVOA L
 ALS Vial : 1 Sample Multiplier: 1

Instrument :
 MSVOA_L
 ClientSampleId :
 IA2DL

Quant Time: Nov 02 06:07:28 2021
 Quant Method : Z:\VOASRV\HPCHEM1\MSVOA L\METHODS\VL110121AIR.M
 Quant Title : AIR ANALYSIS BY METHOD TO-15 Instrument: MSVOA_LTue Nov 02 05:54:07 2021
 QLast Update : Tue Nov 02 05:54:07 2021
 Response via : Initial Calibration

Internal Standards	R.T.	QIon	Response	Conc	Units	Dev(Min)
1) Bromochloromethane	5.65	49	1501135	10.00	ppbv	0.00
33) 1,4-Difluorobenzene	7.16	114	4340747	10.00	ppbv	-0.01
55) Chlorobenzene-d5	12.06	117	3812019	10.00	ppbv	-0.02

System Monitoring Compounds						
68) 1-Bromo-4-Fluorobenzene	14.39	95	2648259	9.56	ppbv	-0.01
Spiked Amount	10.000	Range	65 - 135	Recovery	=	95.60%

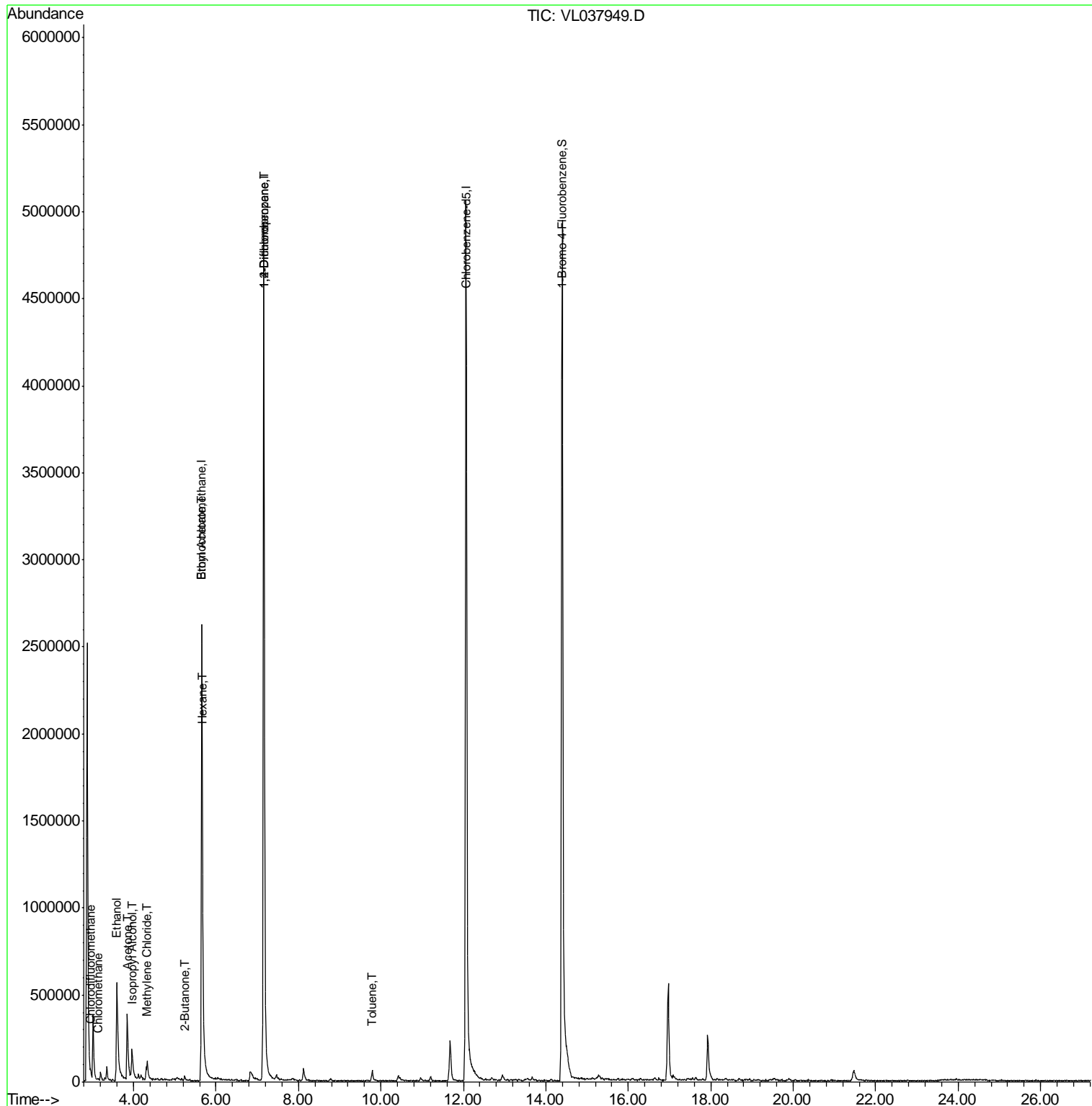
Target Compounds	R.T.	QIon	Response	Conc	Units	Ovalue
3) Chlorodifluoromethane	2.96	51	40161	0.144	ppbv #	68
4) Chloromethane	3.14	50	5074	0.048	ppbv #	81
13) Ethanol	3.59	45	792788	78.433	ppbv	97
15) Acetone	3.84	43	462281	3.727	ppbv	98
19) Isopropyl Alcohol	3.96	45	222264	2.802	ppbv #	96
20) Methylene Chloride	4.34	84	19538	0.287	ppbv #	87
25) Ethyl Acetate	5.66	43	113513	0.308	ppbv #	85
26) Hexane	5.68	57	6446	0.037	ppbv #	1
34) 2-Butanone	5.24	43	26060	0.162	ppbv #	78
39) 1,2-Dichloropropane	7.16	63	1032179	7.760	ppbv #	27
53) Toluene	9.78	91	21288	0.056	ppbv #	1

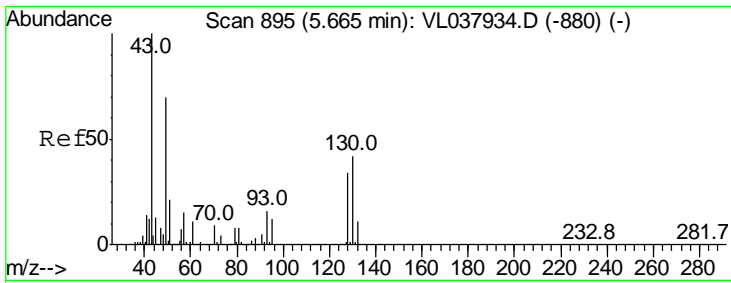
(#) = qualifier out of range (m) = manual integration (+) = signals summed

Data Path : Z:\VOASRV\HPCHEM1\MSVOA L\DATA\VL110121\
 Data File : VL037949.D
 Acq On : 1 Nov 2021 22:13
 Operator : SY/AP
 Sample : M4426-02DL 10X
 Misc : 400mL/MSVOA L
 ALS Vial : 1 Sample Multiplier: 1

Instrument :
 MSVOA_L
 ClientSampleId :
 IA2DL

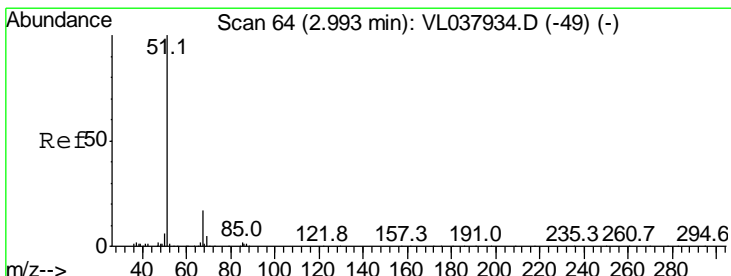
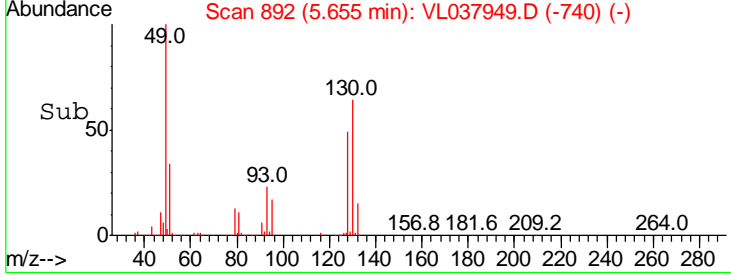
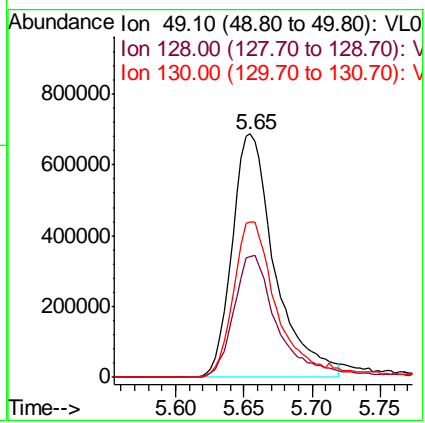
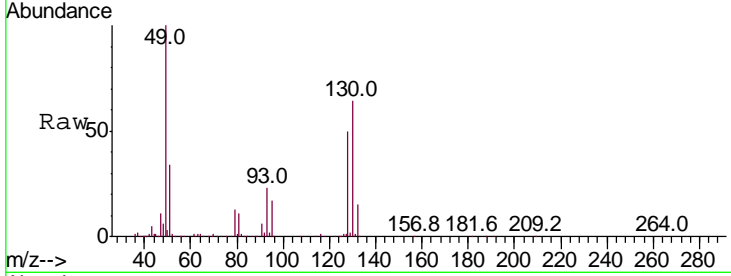
Quant Time: Nov 02 06:07:28 2021
 Quant Method : Z:\VOASRV\HPCHEM1\MSVOA L\METHODS\VL110121AIR.M
 Quant Title : AIR ANALYSIS BY METHOD TO-15 Instrument: MSVOA_LTue Nov 02 05:54:07 2021
 QLast Update : Tue Nov 02 05:54:07 2021
 Response via : Initial Calibration





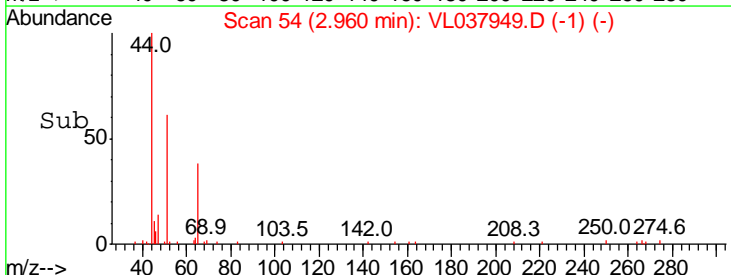
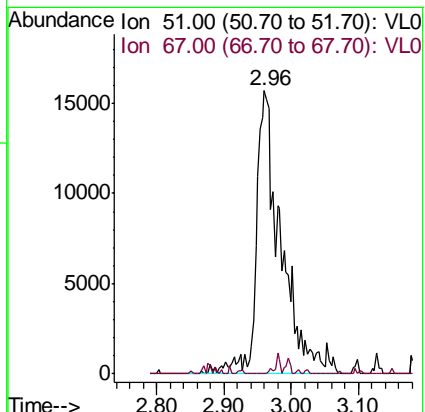
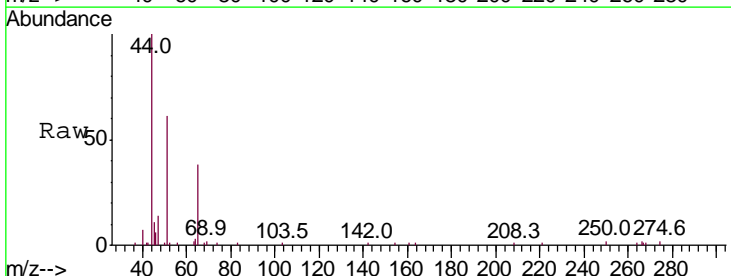
#1
 Bromochloromethane
 Concen: 10.000 ppbv
 RT: 5.65 Instrument : MSVOA_L
 Delta R.T. ClientSampleId :
 Lab File: IA2DL
 Acq: 1 Nov 2021 22:13

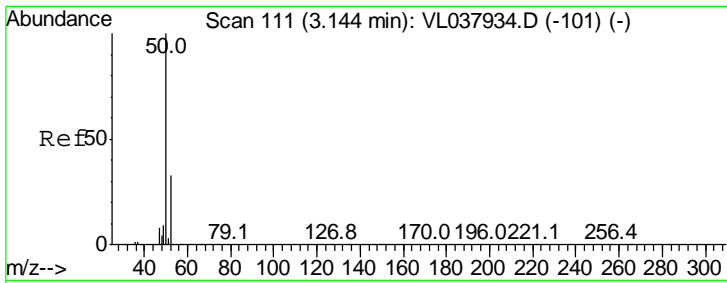
Tgt Ion	Resp	Lower	Upper
49	100		
128	53.5	27.0	81.0
130	69.0	33.4	100.2



#3
 Chlorodifluoromethane
 Concen: 0.144 ppbv
 RT: 2.96 min Scan# 54
 Delta R.T. -0.03 min
 Lab File: VL037949.D
 Acq: 1 Nov 2021 22:13

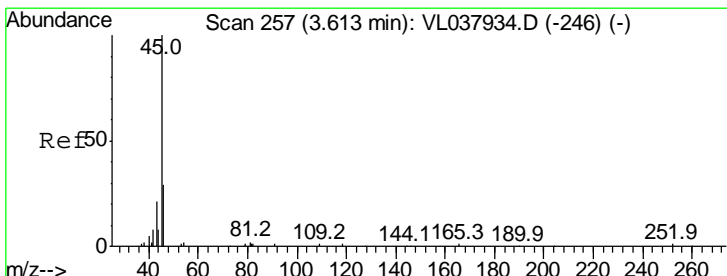
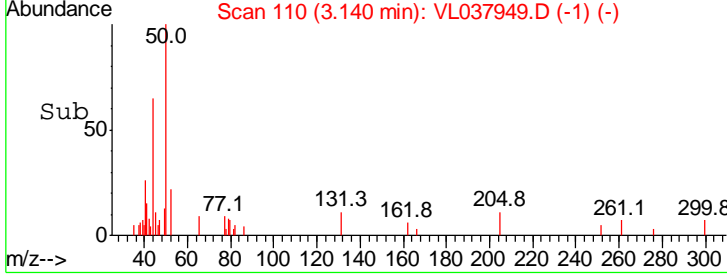
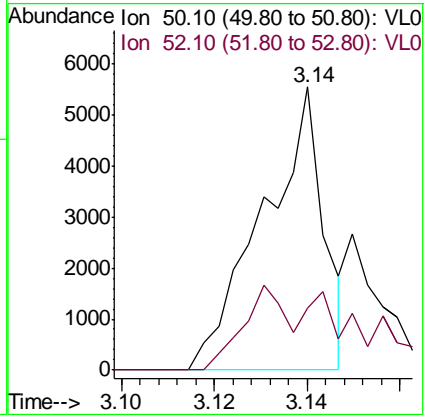
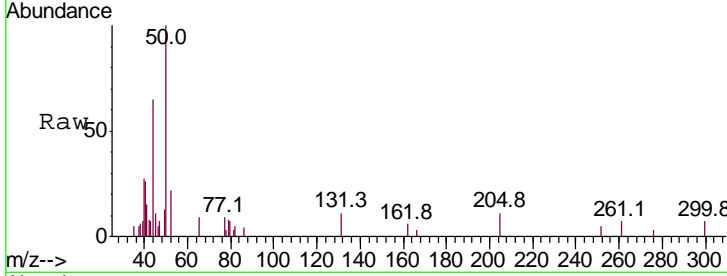
Tgt Ion	Resp	Lower	Upper
51	100		
67	2.8	13.4	20.0#





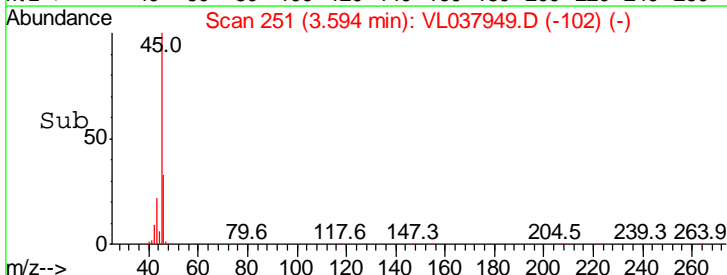
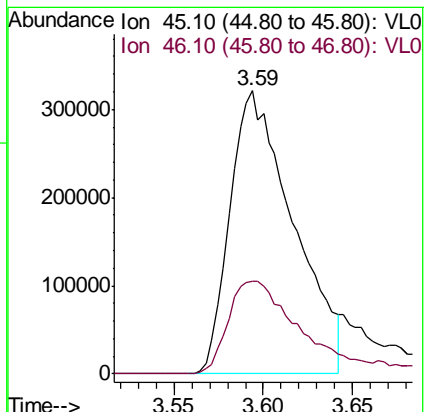
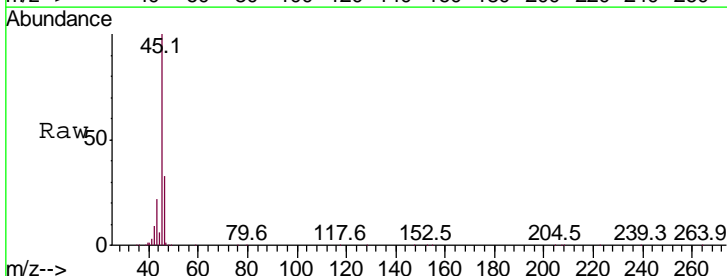
#4
 Chloromethane
 Concen: 0.048 ppbv
 RT: 3.14 Instrument : MSVOA_1
 Delta R.T. ClientSampled :
 Lab File: IA2DL
 Acq: 1 Nov 2021 22:13

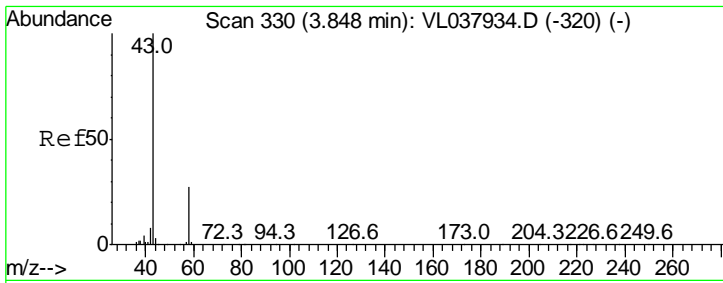
Tgt Ion	Resp	Lower	Upper
50	100		
52	22.1	26.3	39.5#



#13
 Ethanol
 Concen: 78.433 ppbv
 RT: 3.59 min Scan# 251
 Delta R.T. -0.02 min
 Lab File: VL037949.D
 Acq: 1 Nov 2021 22:13

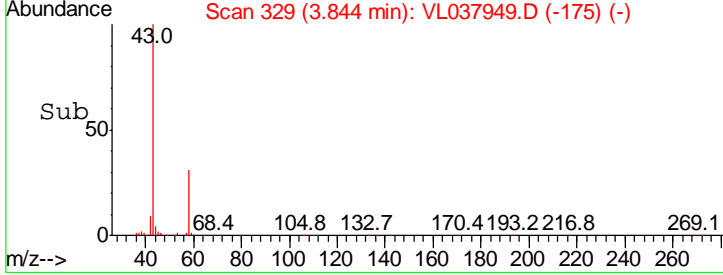
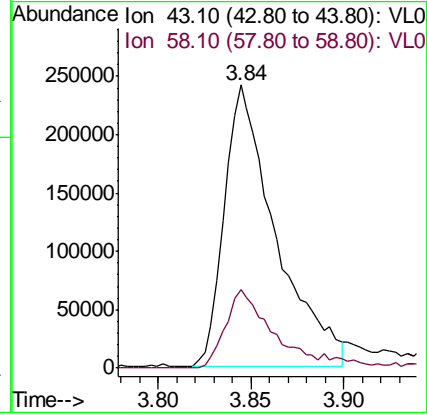
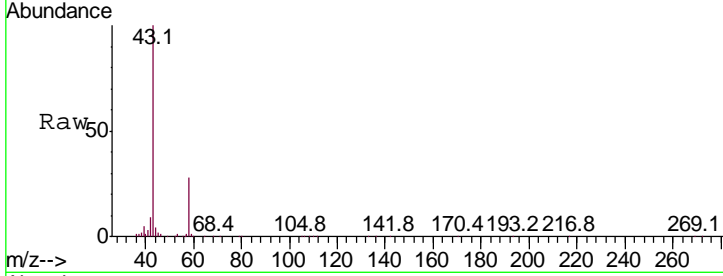
Tgt Ion	Resp	Lower	Upper
45	100		
46	41.7	17.4	69.8





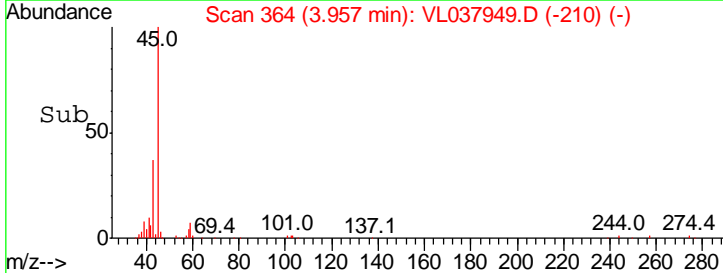
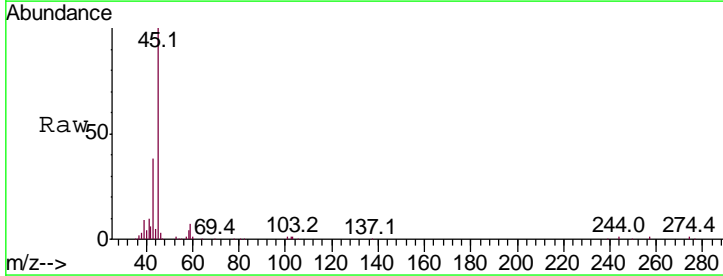
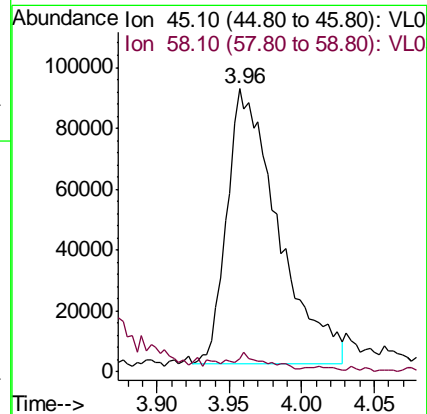
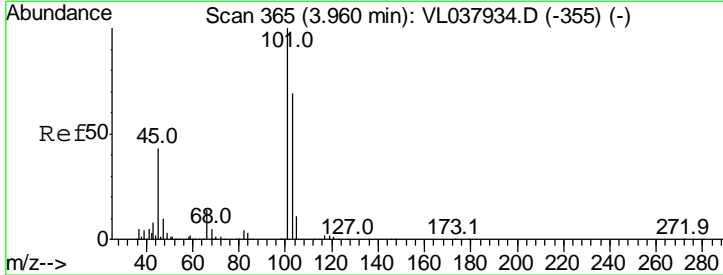
#15
 Acetone
 Concen: 3.727 ppbv
 RT: 3.84
 Delta R.T. MSVOA_L
 Lab File: ClientSampled :
 IA2DL
 Acq: 1 Nov 2021 22:13

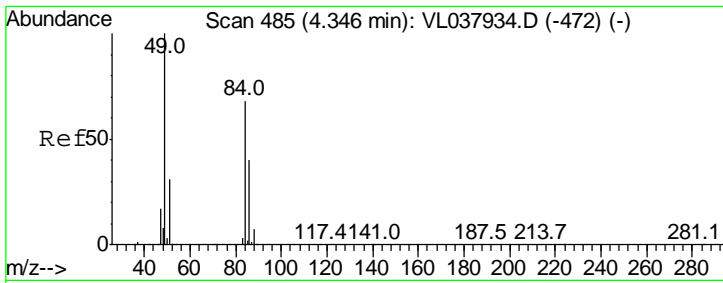
Tgt Ion	Resp	Lower	Upper
43	100		
58	28.1	23.3	34.9



#19
 Isopropyl Alcohol
 Concen: 2.802 ppbv
 RT: 3.96 min Scan# 364
 Delta R.T. -0.00 min
 Lab File: VL037949.D
 Acq: 1 Nov 2021 22:13

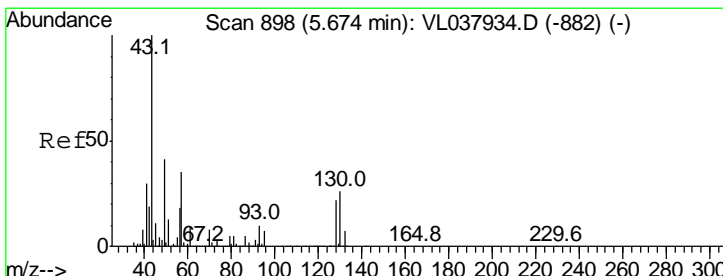
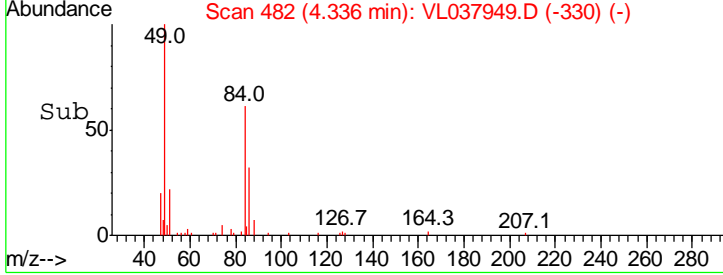
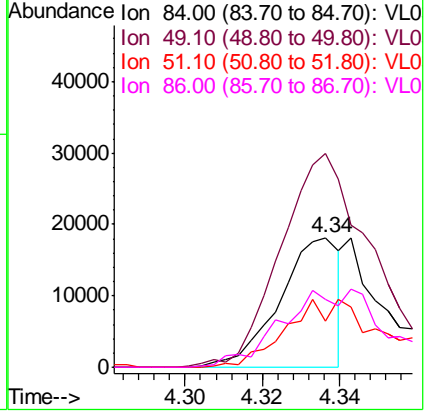
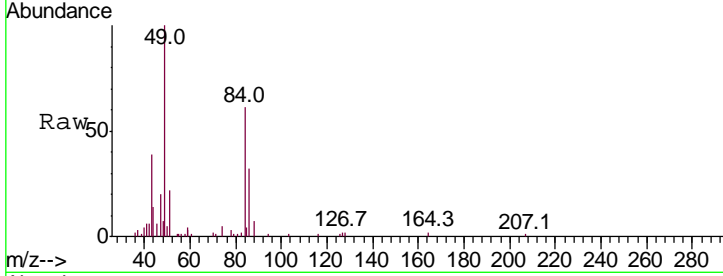
Tgt Ion	Resp	Lower	Upper
45	100		
58	3.6	4.0	6.0#





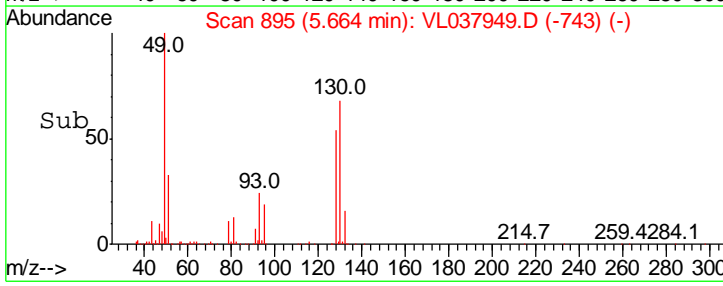
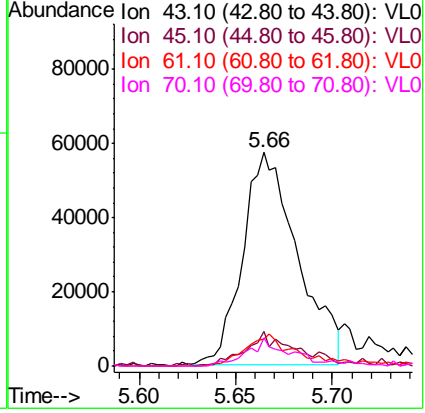
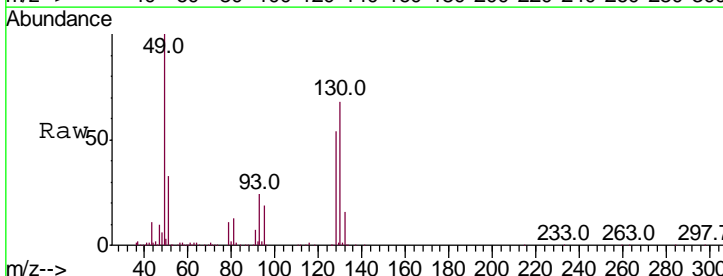
#20
 Methylene Chloride
 Concen: 0.287 ppbv
 RT: 4.34
 Delta R.T. MSVOA_L
 Lab File: ClientSampled :
 Acq: 1 Nov 2021 22:13

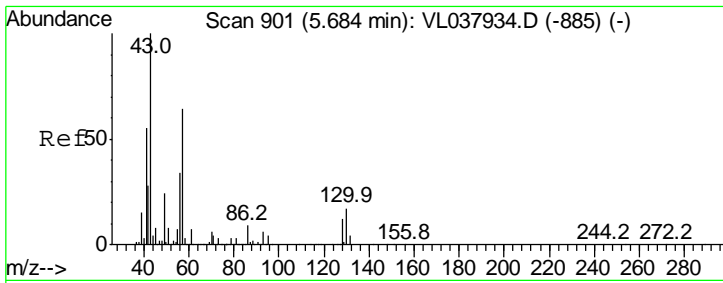
Tgt Ion	Resp	Lower	Upper
84	19538		
84	100		
49	164.2	117.5	176.3
51	35.9	35.9	53.9#
86	52.5	47.3	70.9



#25
 Ethyl Acetate
 Concen: 0.308 ppbv
 RT: 5.66 min Scan# 895
 Delta R.T. -0.01 min
 Lab File: VL037949.D
 Acq: 1 Nov 2021 22:13

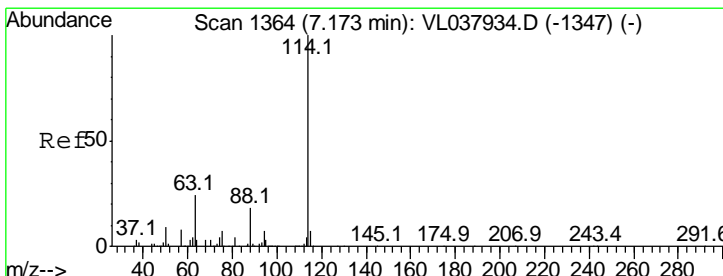
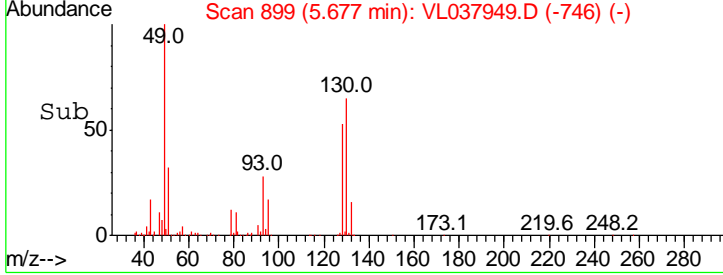
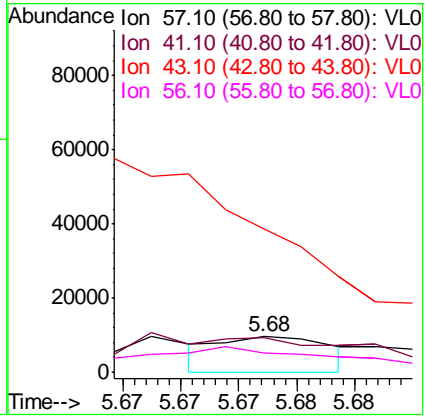
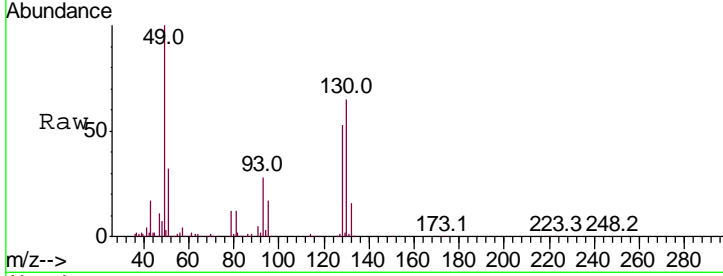
Tgt Ion	Resp	Lower	Upper
43	113513		
43	100		
45	16.2	8.1	12.1#
61	16.0	8.1	12.1#
70	11.2	5.8	8.6#



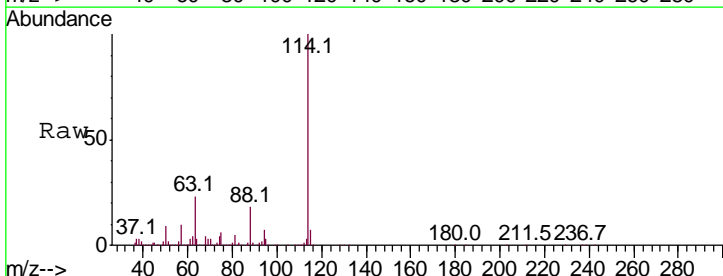


#26
 Hexane
 Concen: 0.037 ppbv
 RT: 5.68 Instrument :
 Delta R.T. MSVOA_L
 Lab File: ClientSampled :
 Acq: 1 Nov 2021 22:13

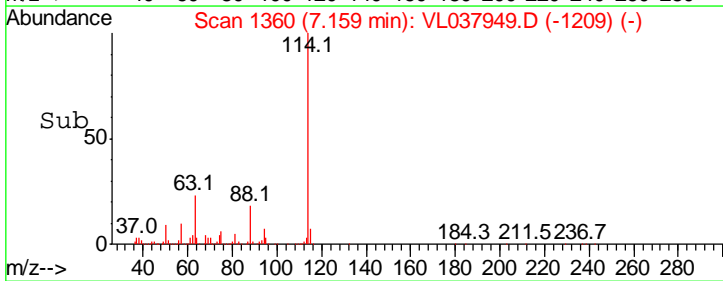
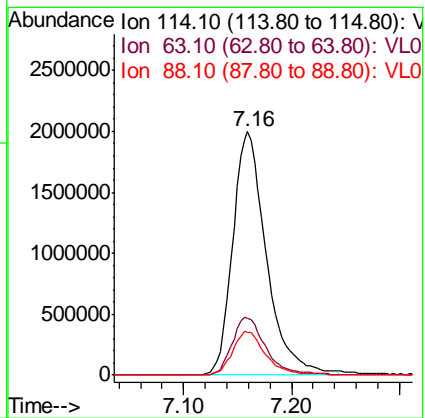
Tgt Ion	Resp	Lower	Upper
57	100		
41	0.0	71.0	106.6#
43	0.0	173.0	259.6#
56	180.8	43.6	65.4#

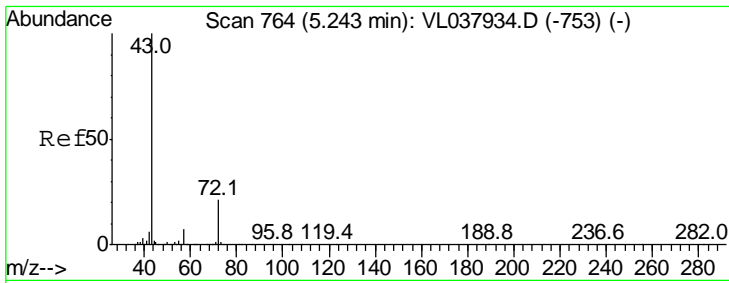


#33
 1,4-Difluorobenzene
 Concen: 10.000 ppbv
 RT: 7.16 min Scan# 1360
 Delta R.T. -0.01 min
 Lab File: VL037949.D
 Acq: 1 Nov 2021 22:13



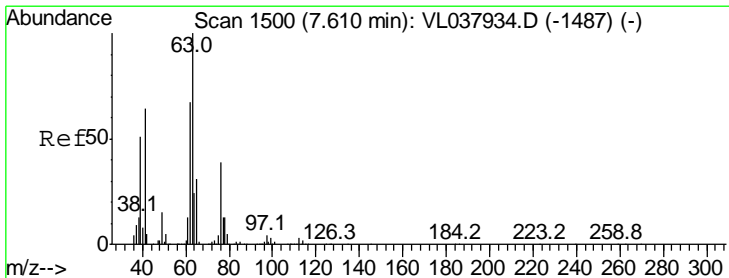
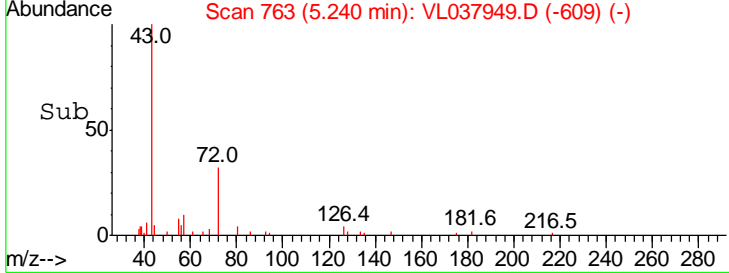
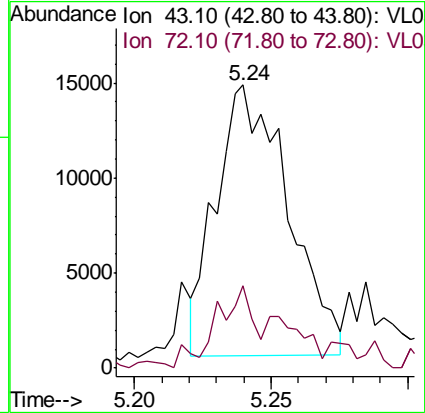
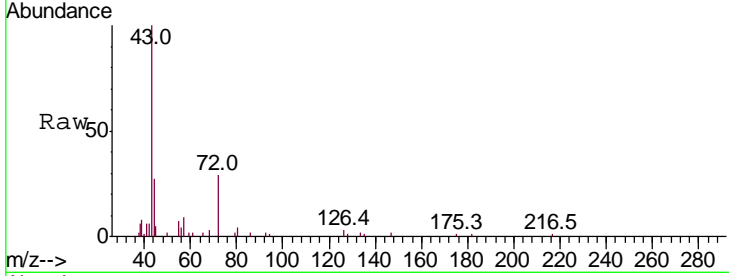
Tgt Ion	Resp	Lower	Upper
114	100		
63	24.3	19.4	29.0
88	18.1	14.2	21.4





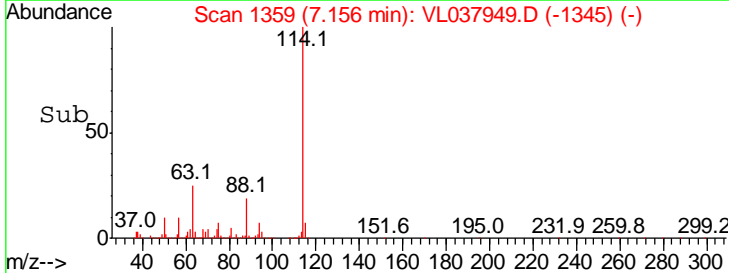
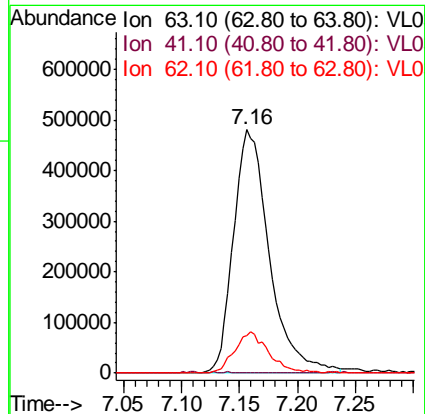
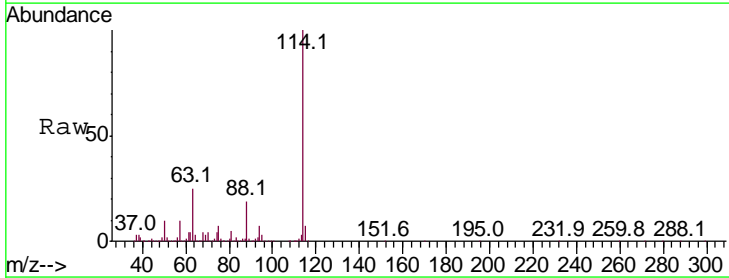
#34
 2-Butanone
 Concen: 0.162 ppbv
 RT: 5.24 Instrument : MSVOA_1
 Delta R.T. ClientSampleId :
 Lab File: IA2DL
 Acq: 1 Nov 2021 22:13

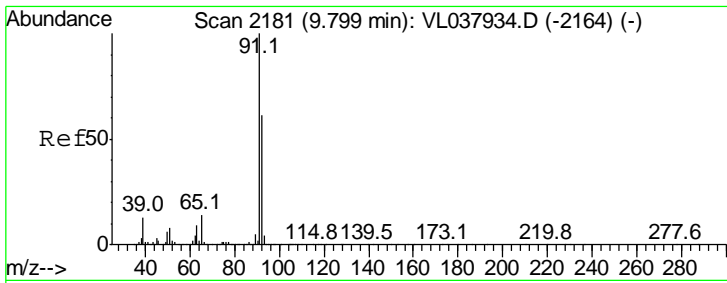
Tgt Ion	Ratio	Lower	Upper
43	100		
72	33.7	18.3	27.5#



#39
 1,2-Dichloropropane
 Concen: 7.760 ppbv
 RT: 7.16 min Scan# 1359
 Delta R.T. -0.45 min
 Lab File: VL037949.D
 Acq: 1 Nov 2021 22:13

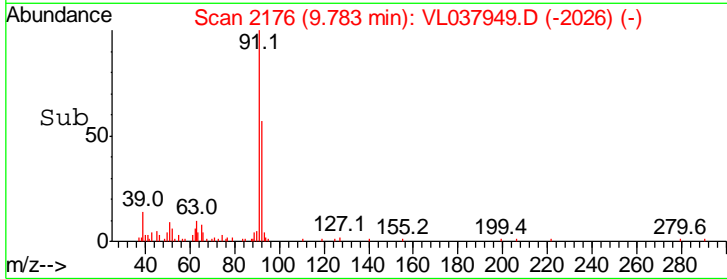
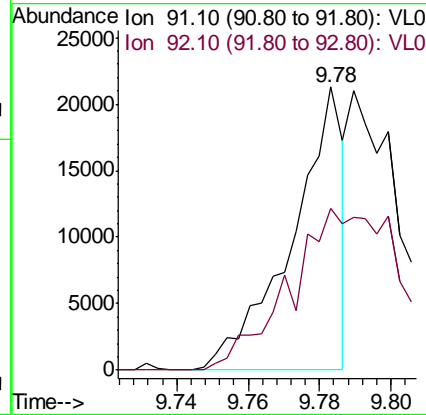
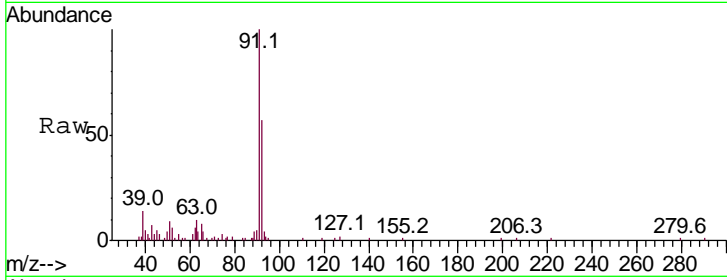
Tgt Ion	Ratio	Lower	Upper
63	100		
41	0.0	51.6	77.4#
62	15.2	53.5	80.3#





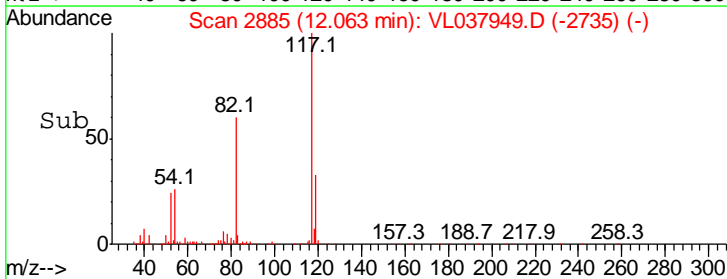
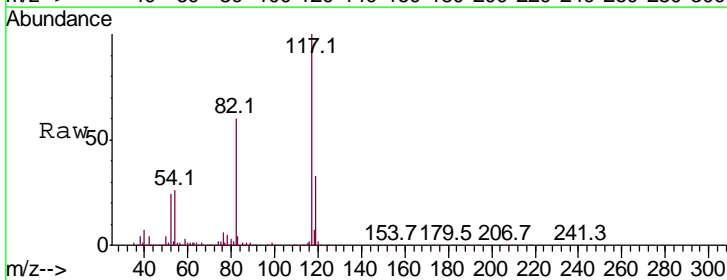
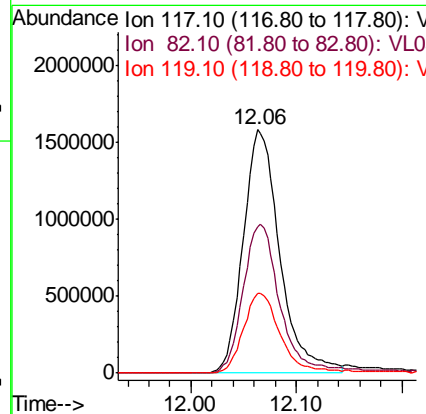
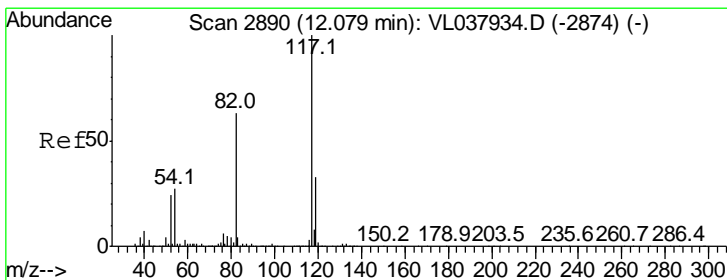
#53
 Toluene
 Concen: 0.056 ppbv
 RT: 9.78
 Delta R.T. MSVOA_L
 Lab File: ClientSampled :
 Acq: 1 Nov 2021 22:13

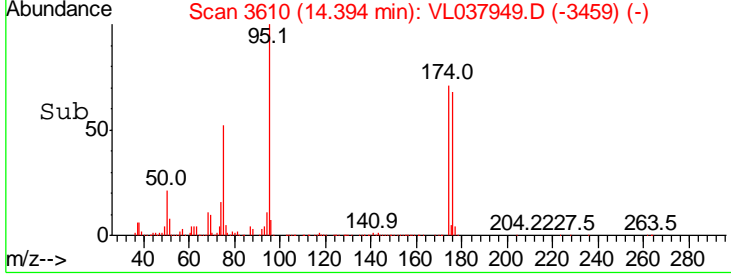
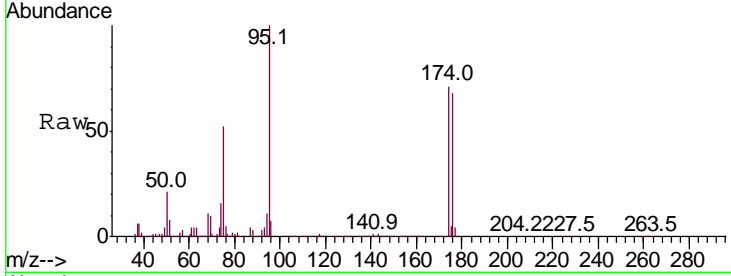
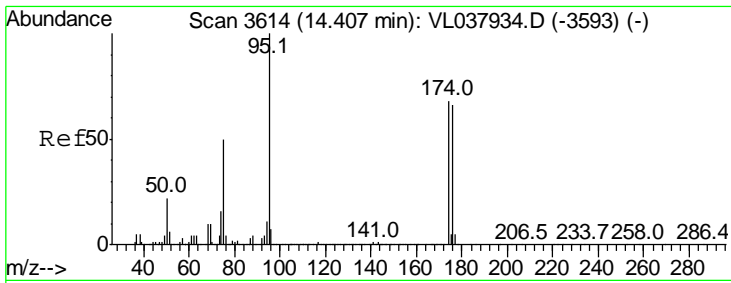
Tgt Ion	Resp	Lower	Upper
91	100		
92	135.9	48.2	72.4#



#55
 Chlorobenzene-d5
 Concen: 10.000 ppbv
 RT: 12.06 min Scan# 2885
 Delta R.T. -0.02 min
 Lab File: VL037949.D
 Acq: 1 Nov 2021 22:13

Tgt Ion	Resp	Lower	Upper
117	100		
82	64.8	51.0	76.6
119	33.8	26.9	40.3





#68
 1-Bromo-4-Fluorobenzene
 Concen: 9.557 ppbv
 RT: 14.39
 Delta R.T: MSVOA_L
 Lab File: ClientSampleId :
 Acq: 1 Nov 2021 22:13

Tot Ion: 95 Resp: 2648259

Ion	Ratio	Lower	Upper
95	100		
174	77.2	58.3	87.5
175	5.5	4.6	6.8

