

Data Path : Z:\voasrv\HPCHEM1\MSVOA\_L\Data\VL110121\  
 Data File : VL037938.D  
 Acq On : 1 Nov 2021 11:53  
 Operator : SY/AP  
 Sample : VSTDIC0.1  
 Misc : 400mL/MSVOA\_L  
 ALS Vial : 1 Sample Multiplier: 1

**Instrument :**  
 MSVOA\_L  
**ClientSampleId :**  
 VSTDIC0.1

Quant Time: Nov 01 12:52:49 2021  
 Quant Method : Z:\VOASRV\HPCHEM1\MSVOA\_L\METHODS\VL110121AIR.M  
 Quant Title : AIR ANALYSIS BY METHOD TO-15 Instrument: MSVOA\_L Mon Nov 01 2021  
 QLast Update : Mon Nov 01 11:08:47 2021  
 Response via : Initial Calibration

**Manual Integrations**  
**APPROVED**  
 Reviewed By :Semsettin Yesilyurt 11/05/2021  
 Supervised By :Mahesh Dadoda 11/10/2021

Compound	R.T.	QIon	Response	Conc	Units	Dev(Min)	
-----							
Internal Standards							
1) Bromochloromethane	5.661	49	1591172	10.000	ppbv	0.00	
33) 1,4-Difluorobenzene	7.166	114	4616333	10.000	ppbv	0.00	
55) Chlorobenzene-d5	12.076	117	4008276	10.000	ppbv	0.00	
System Monitoring Compounds							
68) 1-Bromo-4-Fluorobenzene	14.404	95	2961019	10.564	ppbv	0.00	
Spiked Amount	10.000	Range	65 - 135	Recovery	=	105.600%	
Target Compounds							
							Qvalue
5) Vinyl Chloride	3.263	62	10392	0.101	ppbv		97
32) 1,1,1-Trichloroethane	6.510	97	27768m	0.104	ppbv		
35) Carbon Tetrachloride	7.012	117	28089m	0.107	ppbv		
38) Trichloroethene	7.825	130	14754m	0.095	ppbv		
52) Tetrachloroethene	11.201	164	14709m	0.096	ppbv		
63) 1,1,2,2-Tetrachloroethane	13.664	83	36485m	0.107	ppbv		
-----							

(#) = qualifier out of range (m) = manual integration (+) = signals summed

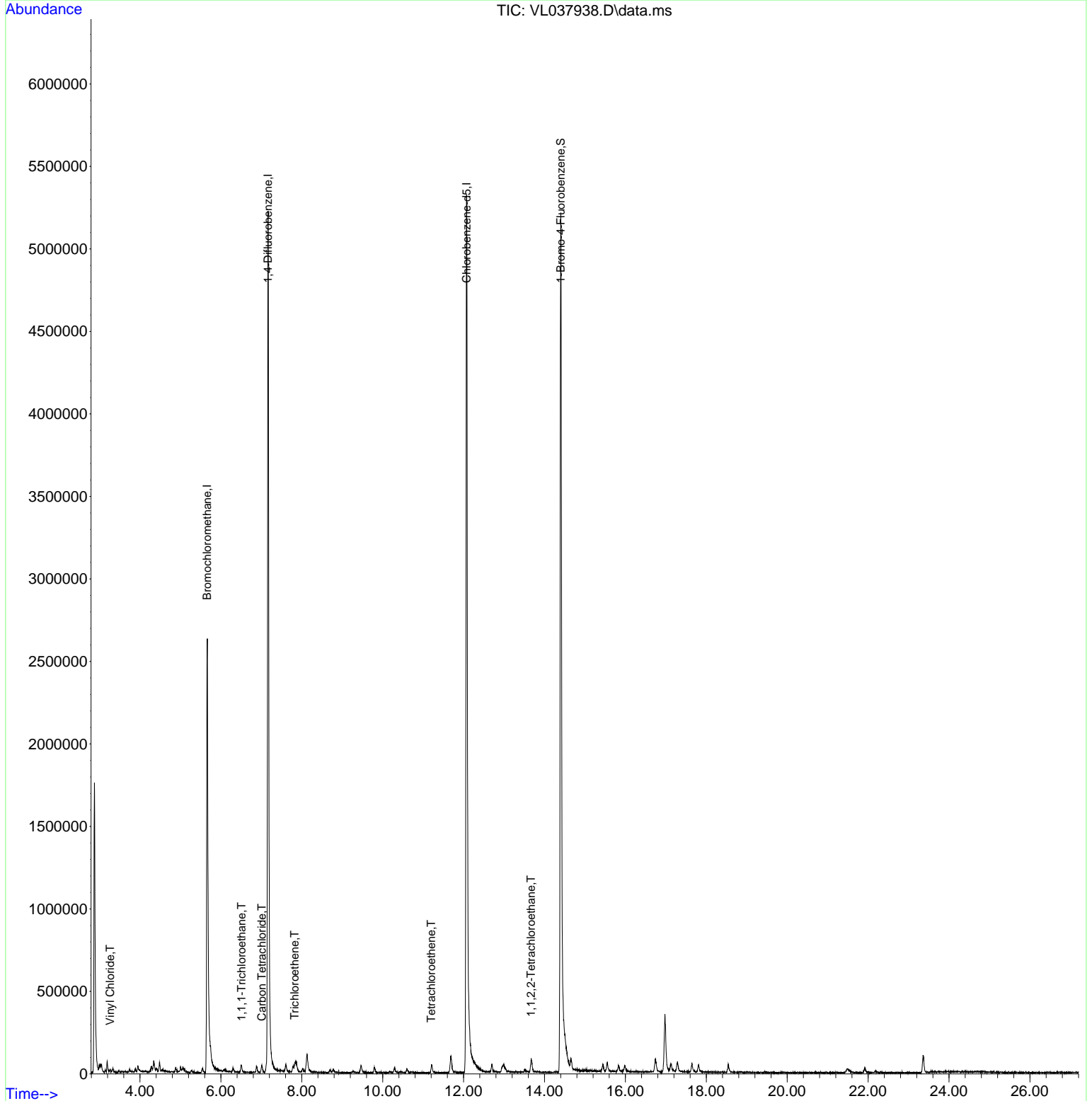
Data Path : Z:\voasrv\HPCHEM1\MSVOA\_L\Data\VL110121\  
 Data File : VL037938.D  
 Acq On : 1 Nov 2021 11:53  
 Operator : SY/AP  
 Sample : VSTDIC0.1  
 Misc : 400mL/MSVOA\_L  
 ALS Vial : 1 Sample Multiplier: 1

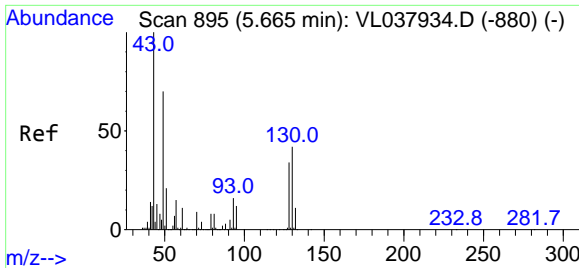
Instrument :  
 MSVOA\_L  
 ClientSampleId :  
 VSTDIC0.1

Quant Time: Nov 01 12:52:49 2021  
 Quant Method : Z:\VOASRV\HPCHEM1\MSVOA\_L\METHODS\VL110121AIR.M  
 Quant Title : AIR ANALYSIS BY METHOD TO-15 Instrument: MSVOA\_L Mon Nov  
 QLast Update : Mon Nov 01 11:08:47 2021  
 Response via : Initial Calibration

Manual Integrations  
**APPROVED**

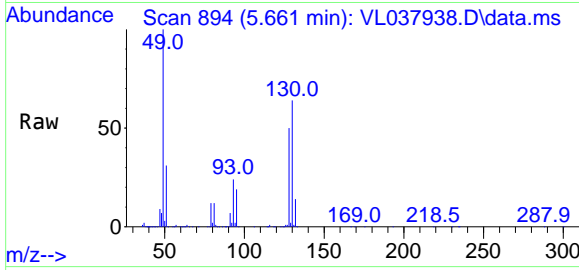
Reviewed By :Semsettin Yesilyurt 11/05/2021  
 Supervised By :Mahesh Dadoda 11/10/2021





#1  
 Bromochloromethane  
 Concen: 10.000 ppbv  
 RT: 5.661 min Scan# 895  
 Delta R.T. -0.003 min  
 Lab File: VL037938.D  
 Acq: 1 Nov 2021 11:53

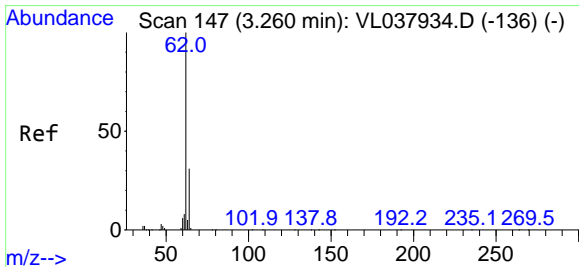
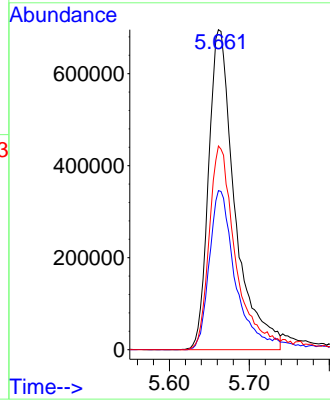
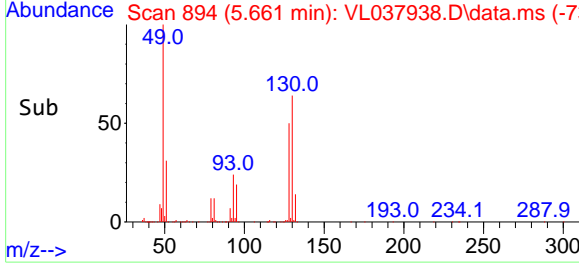
Instrument : MSVOA\_L  
 ClientSampleId : VSTDIC0.1



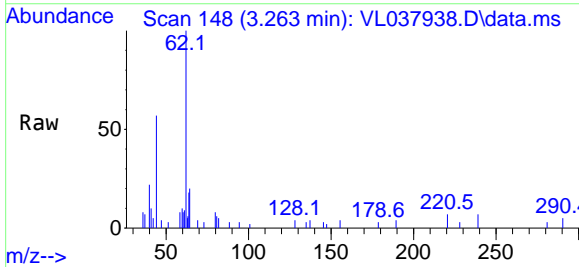
Tgt Ion: 49 Resp: 159117  
 Ion Ratio Lower Upper  
 49 100  
 128 53.2 27.0 81.0  
 130 67.5 33.4 100.2

Manual Integrations  
 APPROVED

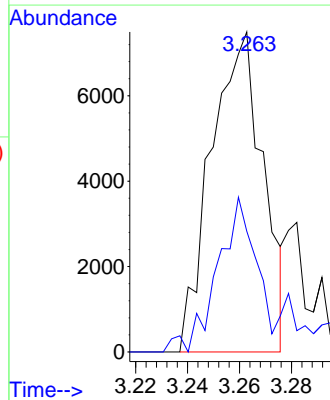
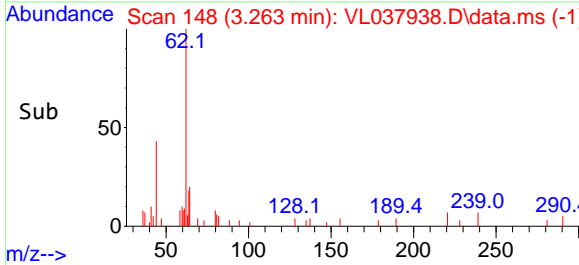
Reviewed By :Semsettin Yesilyurt 11/05/2021  
 Supervised By :Mahesh Dadoda 11/10/2021

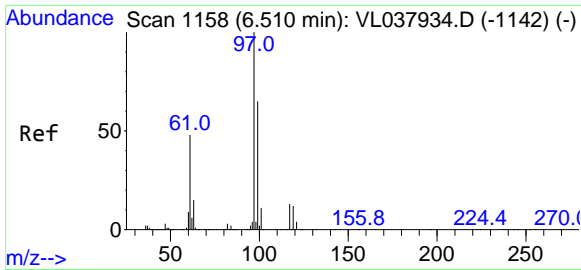


#5  
 Vinyl Chloride  
 Concen: 0.101 ppbv  
 RT: 3.263 min Scan# 148  
 Delta R.T. 0.003 min  
 Lab File: VL037938.D  
 Acq: 1 Nov 2021 11:53



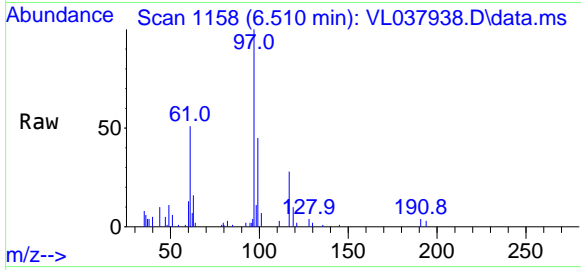
Tgt Ion: 62 Resp: 10392  
 Ion Ratio Lower Upper  
 62 100  
 64 32.7 24.7 37.1





#32  
 1,1,1-Trichloroethane  
 Concen: 0.104 ppbv m  
 RT: 6.510 min Scan# 1158  
 Delta R.T. 0.000 min  
 Lab File: VL037938.D  
 Acq: 1 Nov 2021 11:53

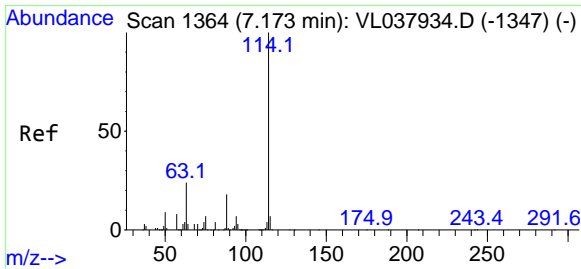
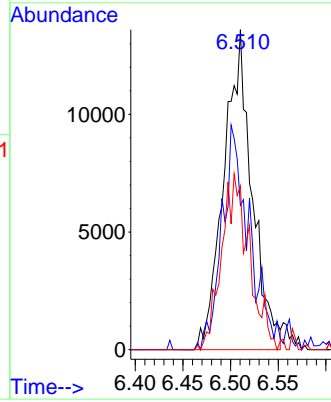
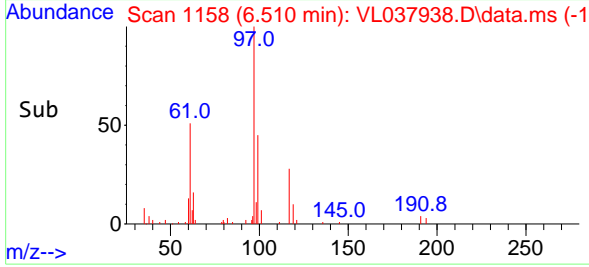
Instrument : MSVOA\_L  
 ClientSampleId : VSTDIC0.1



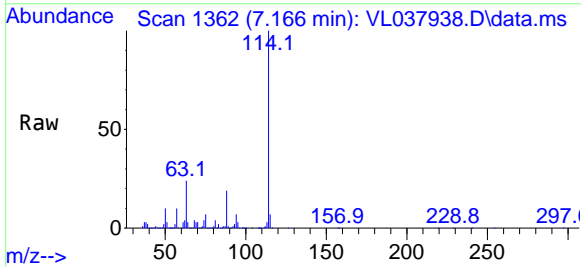
Tgt Ion: 97 Resp: 2776  
 Ion Ratio Lower Upper  
 97 100  
 99 0.0 52.2 78.4  
 61 0.0 39.8 59.6

Manual Integrations  
 APPROVED

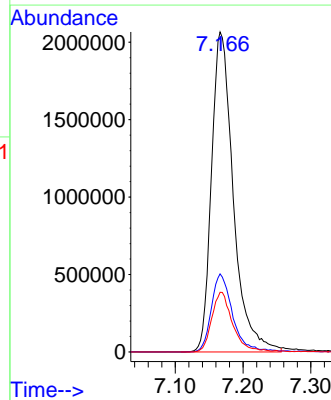
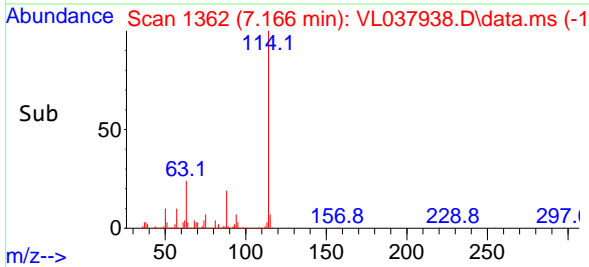
Reviewed By :Semsettin Yesilyurt 11/05/2021  
 Supervised By :Mahesh Dadoda 11/10/2021

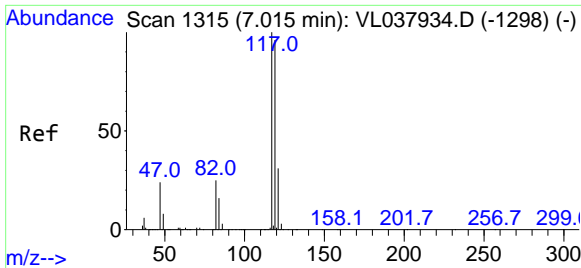


#33  
 1,4-Difluorobenzene  
 Concen: 10.000 ppbv  
 RT: 7.166 min Scan# 1362  
 Delta R.T. -0.006 min  
 Lab File: VL037938.D  
 Acq: 1 Nov 2021 11:53



Tgt Ion:114 Resp: 4616333  
 Ion Ratio Lower Upper  
 114 100  
 63 24.1 19.4 29.0  
 88 18.2 14.2 21.4





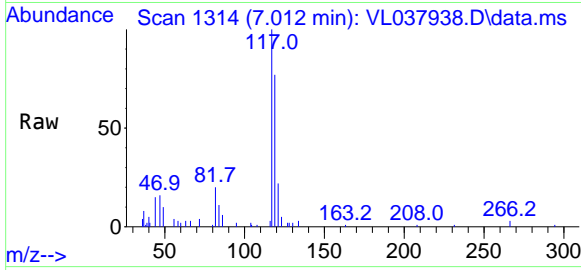
#35  
 Carbon Tetrachloride  
 Concen: 0.107 ppbv m  
 RT: 7.012 min Scan# 11  
 Delta R.T. -0.003 min  
 Lab File: VL037938.D  
 Acq: 1 Nov 2021 11:53

Instrument :

MSVOA\_L

ClientSampleId :

VSTDIC0.1

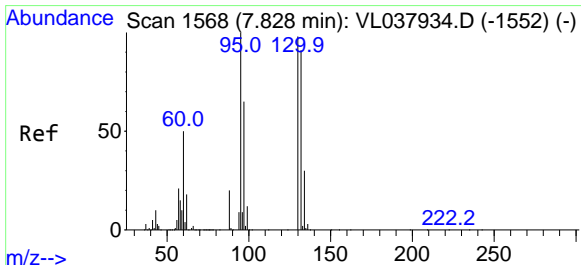
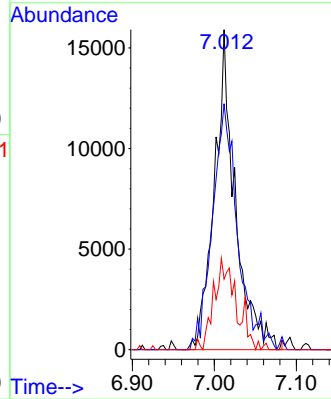
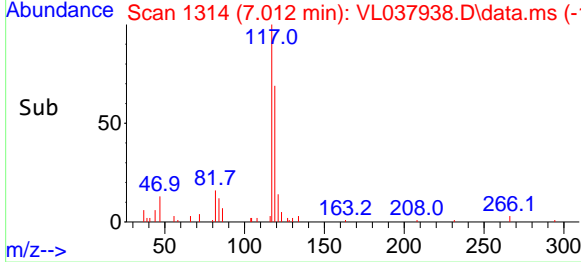


Tgt Ion:117 Resp: 28089  
 Ion Ratio Lower Upper  
 117 100  
 119 76.8 76.6 114.8  
 121 22.1 25.1 37.7

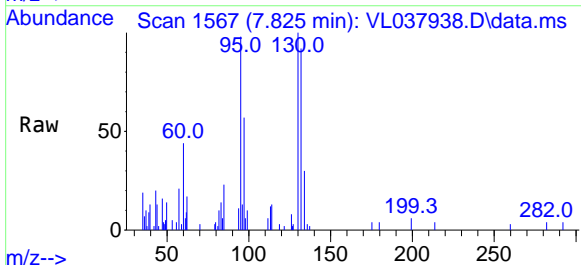
Manual Integrations

APPROVED

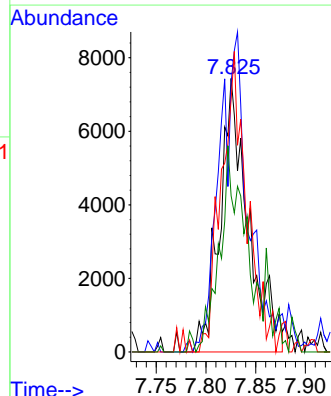
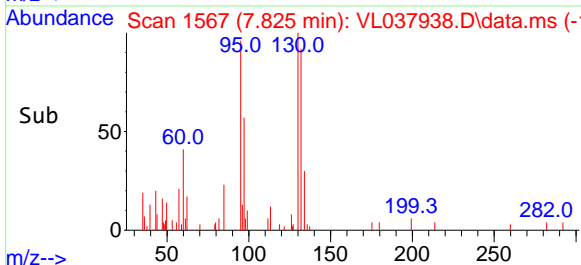
Reviewed By :Semsettin Yesilyurt 11/05/2021  
 Supervised By :Mahesh Dadoda 11/10/2021

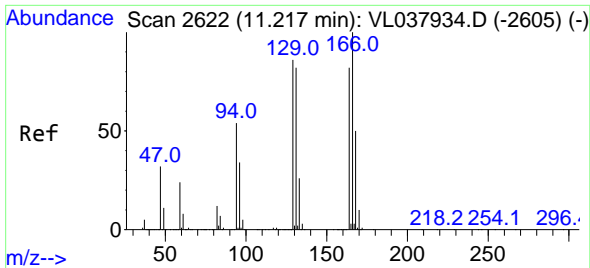


#38  
 Trichloroethene  
 Concen: 0.095 ppbv m  
 RT: 7.825 min Scan# 1567  
 Delta R.T. -0.003 min  
 Lab File: VL037938.D  
 Acq: 1 Nov 2021 11:53



Tgt Ion:130 Resp: 14754  
 Ion Ratio Lower Upper  
 130 100  
 95 98.4 81.8 122.8  
 132 92.4 74.2 111.2  
 97 57.1 53.4 80.2





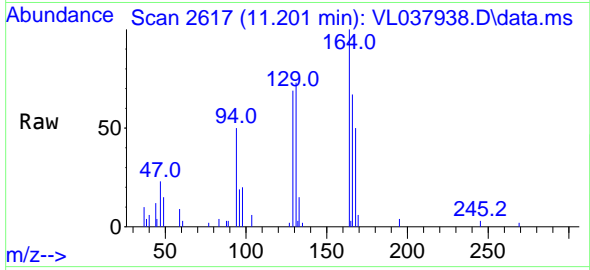
#52  
 Tetrachloroethene  
 Concen: 0.096 ppbv m  
 RT: 11.201 min Scan# 2617  
 Delta R.T. -0.016 min  
 Lab File: VL037938.D  
 Acq: 1 Nov 2021 11:53

Instrument :

MSVOA\_L

ClientSampleId :

VSTDIC0.1

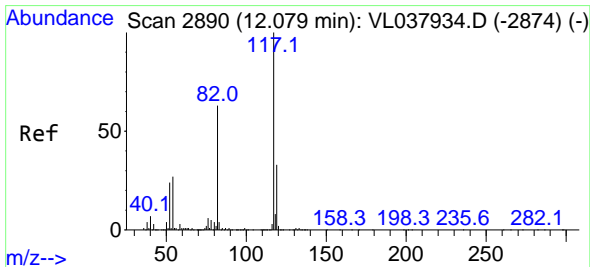
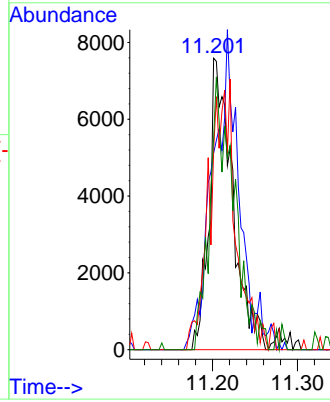
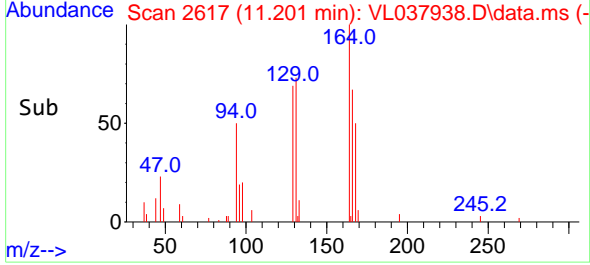


Tgt Ion:164 Resp: 14709  
 Ion Ratio Lower Upper  
 164 100  
 166 67.5 97.6 146.4  
 129 68.6 84.2 126.2  
 131 72.7 79.6 119.4#

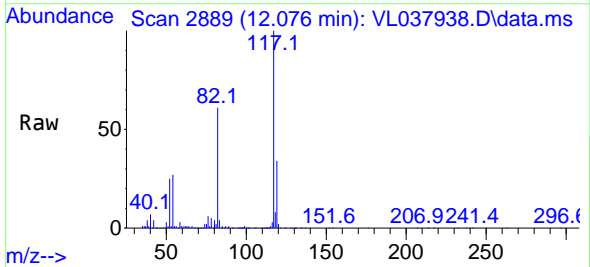
Manual Integrations

APPROVED

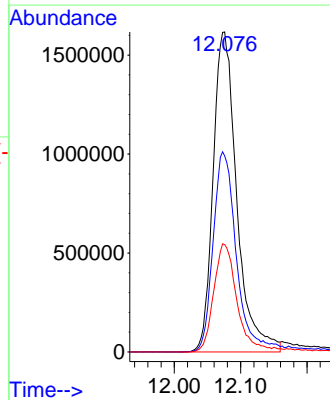
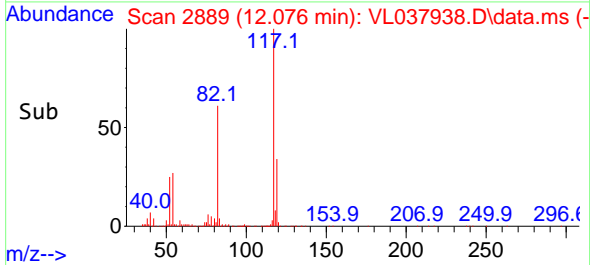
Reviewed By :Semsettin Yesilyurt 11/05/2021  
 Supervised By :Mahesh Dadoda 11/10/2021

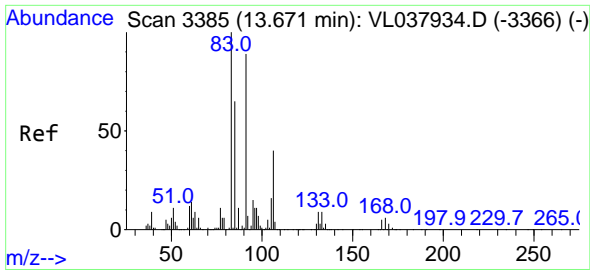


#55  
 Chlorobenzene-d5  
 Concen: 10.000 ppbv  
 RT: 12.076 min Scan# 2889  
 Delta R.T. -0.003 min  
 Lab File: VL037938.D  
 Acq: 1 Nov 2021 11:53



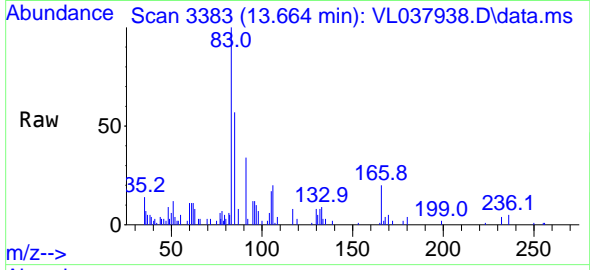
Tgt Ion:117 Resp: 4008276  
 Ion Ratio Lower Upper  
 117 100  
 82 64.1 51.0 76.6  
 119 34.7 26.9 40.3





#63  
 1,1,2,2-Tetrachloroethane  
 Concen: 0.107 ppbv m  
 RT: 13.664 min Scan# 31  
 Delta R.T. -0.006 min  
 Lab File: VL037938.D  
 Acq: 1 Nov 2021 11:53

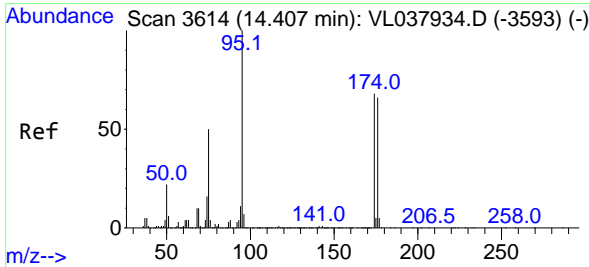
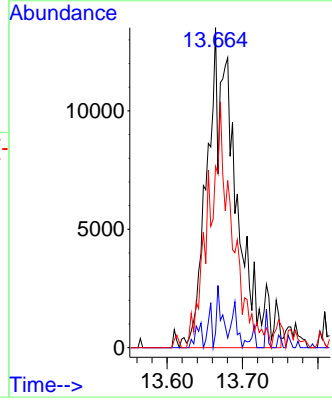
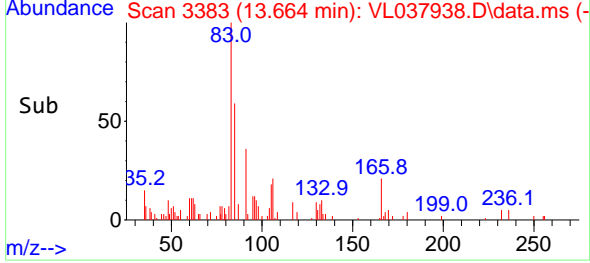
Instrument : MSVOA\_L  
 ClientSampleId : VSTDIC0.1



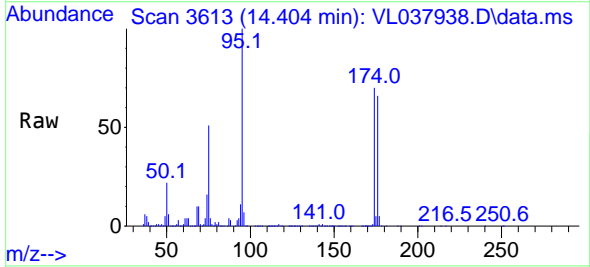
Tgt Ion: 83 Resp: 3648  
 Ion Ratio Lower Upper  
 83 100  
 131 12.0 4.8 14.4  
 85 62.5 32.5 97.5

Manual Integrations  
 APPROVED

Reviewed By :Semsettin Yesilyurt 11/05/2021  
 Supervised By :Mahesh Dadoda 11/10/2021



#68  
 1-Bromo-4-Fluorobenzene  
 Concen: 10.564 ppbv  
 RT: 14.404 min Scan# 3613  
 Delta R.T. -0.003 min  
 Lab File: VL037938.D  
 Acq: 1 Nov 2021 11:53



Tgt Ion: 95 Resp: 2961019  
 Ion Ratio Lower Upper  
 95 100  
 174 73.0 58.3 87.5  
 175 5.8 4.6 6.8

