

Data Path : Z:\voasrv\HPCHEM1\MSVOA_L\Data\VL110121\
 Data File : VL037951.D
 Acq On : 1 Nov 2021 23:32
 Operator : SY/AP
 Sample : M4426-03DL 10X
 Misc : 400mL/MSVOA_L
 ALS Vial : 1 Sample Multiplier: 1

Instrument :
 MSVOA_L
 ClientSampleId :
 OA1DL

Manual Integrations
 APPROVED

Reviewed By :Semsettin Yesilyurt 11/05/2021
 Supervised By :Mahesh Dadoda 11/10/2021

Quant Time: Nov 02 06:08:31 2021
 Quant Method : Z:\VOASRV\HPCHEM1\MSVOA_L\METHODS\VL110121AIR.M
 Quant Title : AIR ANALYSIS BY METHOD T0-15 Instrument: MSVOA_L Tue Nov 02 06:08:31 2021
 QLast Update : Tue Nov 02 05:54:07 2021
 Response via : Initial Calibration

Compound	R.T.	QIon	Response	Conc	Units	Dev(Min)	Qvalue
Internal Standards							
1) Bromochloromethane	5.655	49	1461883	10.000	ppbv	0.00	
33) 1,4-Difluorobenzene	7.160	114	4271961	10.000	ppbv	-0.01	
55) Chlorobenzene-d5	12.063	117	3714484	10.000	ppbv	-0.02	
System Monitoring Compounds							
68) 1-Bromo-4-Fluorobenzene	14.394	95	2539081	9.404	ppbv	-0.01	
Spiked Amount	10.000	Range	65 - 135	Recovery	=	94.000%	
Target Compounds							
9) Propene	3.018	41	18414m	0.189	ppbv		
13) Ethanol	3.616	45	24315m	2.470	ppbv		
15) Acetone	3.861	43	142316m	1.178	ppbv		
19) Isopropyl Alcohol	3.996	45	20277m	0.262	ppbv		
20) Methylene Chloride	4.340	84	30237m	0.456	ppbv		
26) Hexane	5.671	57	17083m	0.100	ppbv		
53) Toluene	9.793	91	47505m	0.127	ppbv		

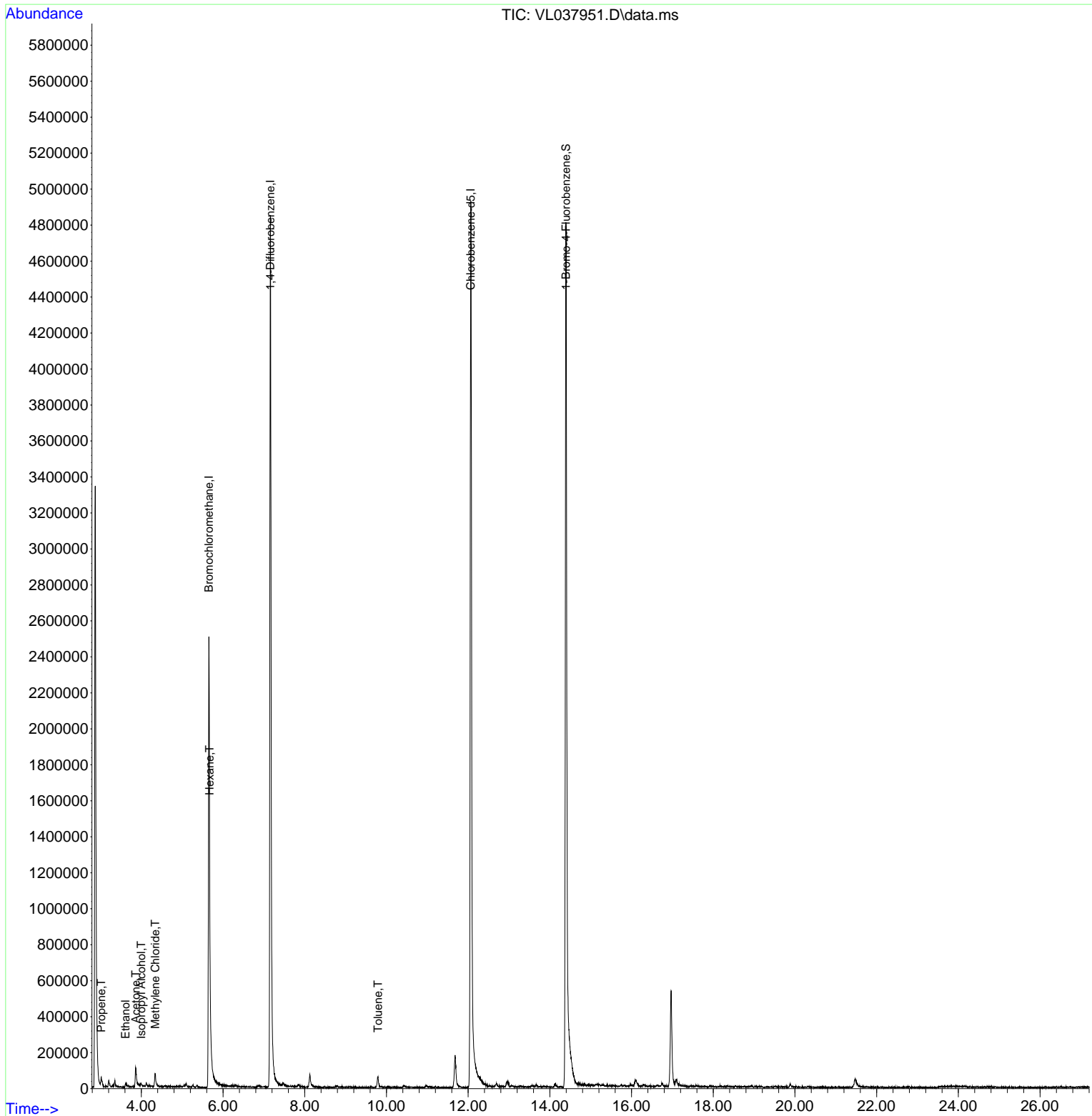
(#) = qualifier out of range (m) = manual integration (+) = signals summed

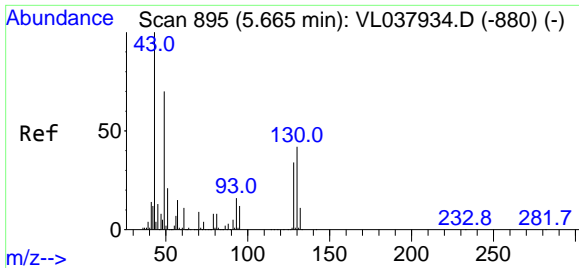
Data Path : Z:\voasrv\HPCHEM1\MSVOA_L\Data\VL110121\
 Data File : VL037951.D
 Acq On : 1 Nov 2021 23:32
 Operator : SY/AP
 Sample : M4426-03DL 10X
 Misc : 400mL/MSVOA_L
 ALS Vial : 1 Sample Multiplier: 1

Instrument :
 MSVOA_L
ClientSampleId :
 OA1DL

Quant Time: Nov 02 06:08:31 2021
 Quant Method : Z:\VOASRV\HPCHEM1\MSVOA_L\METHODS\VL110121AIR.M
 Quant Title : AIR ANALYSIS BY METHOD TO-15 Instrument: MSVOA_LTue Nov
 QLast Update : Tue Nov 02 05:54:07 2021
 Response via : Initial Calibration

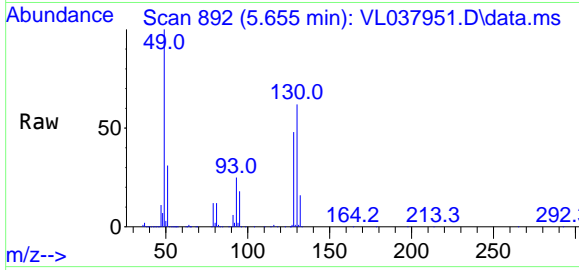
Manual Integrations
APPROVED
 Reviewed By :Semsettin Yesilyurt 11/05/2021
 Supervised By :Mahesh Dadoda 11/10/2021





#1
 Bromochloromethane
 Concen: 10.000 ppbv
 RT: 5.655 min Scan# 895
 Delta R.T. -0.010 min
 Lab File: VL037951.D
 Acq: 1 Nov 2021 23:32

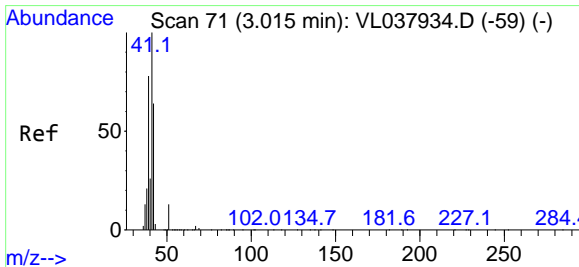
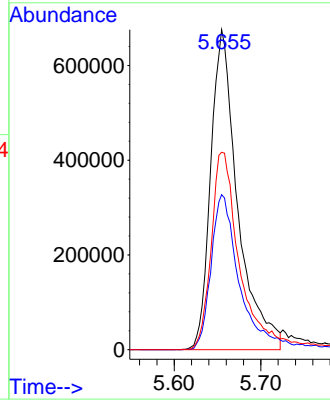
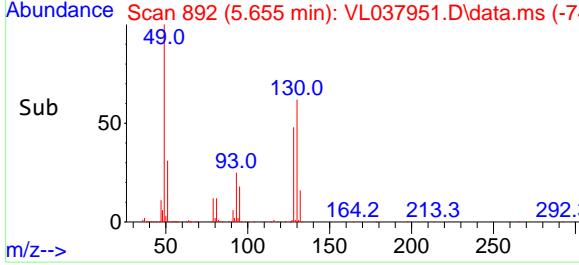
Instrument : MSVOA_L
 Client Sample Id : OA1DL



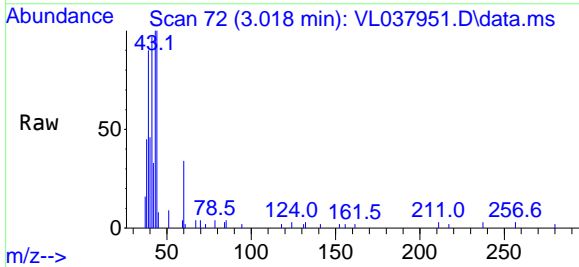
Tgt Ion: 49 Resp: 146188
 Ion Ratio Lower Upper
 49 100
 128 53.8 27.0 81.0
 130 69.3 33.4 100.2

Manual Integrations
 APPROVED

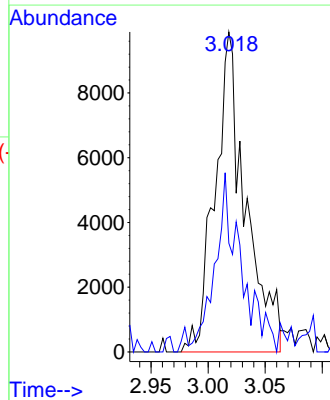
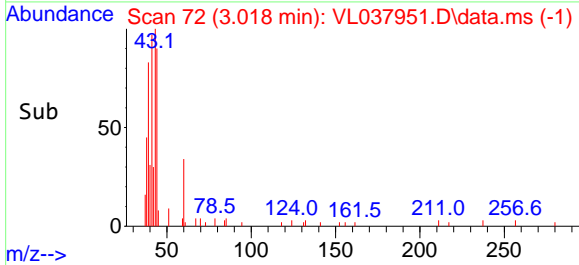
Reviewed By :Semsettin Yesilyurt 11/05/2021
 Supervised By :Mahesh Dadoda 11/10/2021

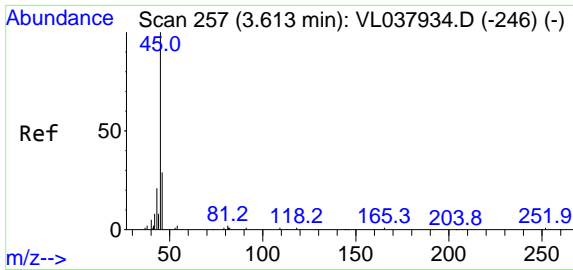


#9
 Propene
 Concen: 0.189 ppbv m
 RT: 3.018 min Scan# 72
 Delta R.T. 0.003 min
 Lab File: VL037951.D
 Acq: 1 Nov 2021 23:32



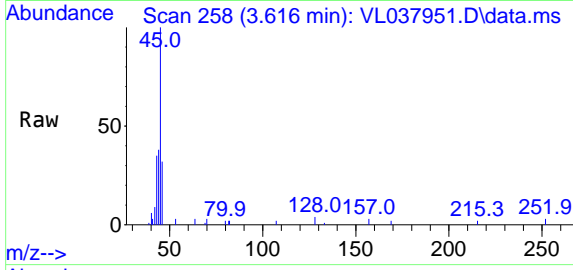
Tgt Ion: 41 Resp: 18414
 Ion Ratio Lower Upper
 41 100
 42 52.1 57.6 86.4#





#13
 Ethanol
 Concen: 2.470 ppbv m
 RT: 3.616 min Scan# 21
 Delta R.T. 0.003 min
 Lab File: VL037951.D
 Acq: 1 Nov 2021 23:32

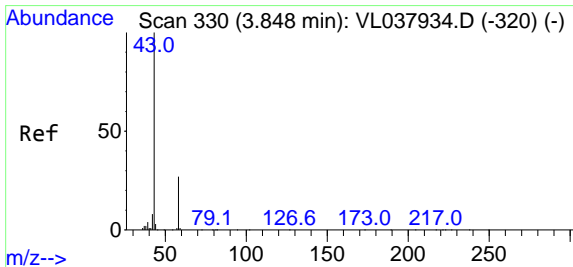
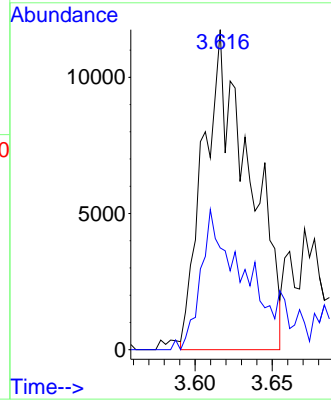
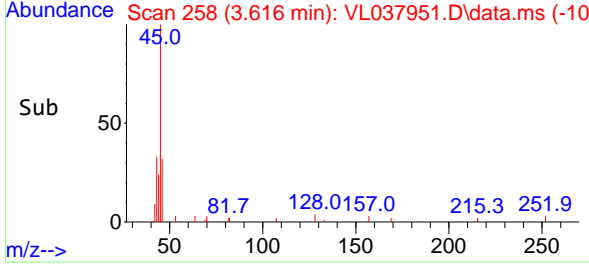
Instrument : MSVOA_L
 ClientSampleId : OA1DL



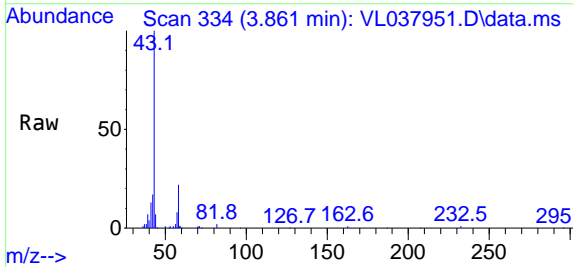
Tgt Ion: 45 Resp: 2431
 Ion Ratio Lower Upper
 45 100
 46 51.6 17.4 69.8

Manual Integrations
 APPROVED

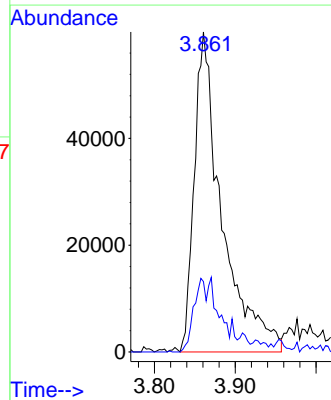
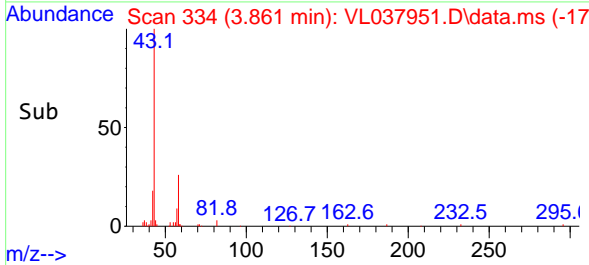
Reviewed By :Semsettin Yesilyurt 11/05/2021
 Supervised By :Mahesh Dadoda 11/10/2021

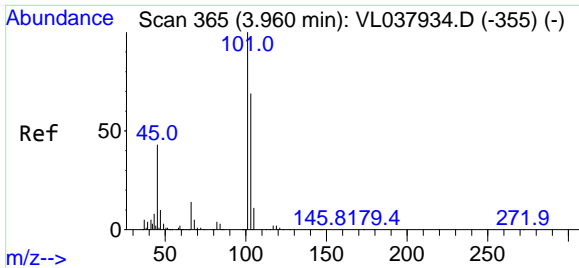


#15
 Acetone
 Concen: 1.178 ppbv m
 RT: 3.861 min Scan# 334
 Delta R.T. 0.013 min
 Lab File: VL037951.D
 Acq: 1 Nov 2021 23:32



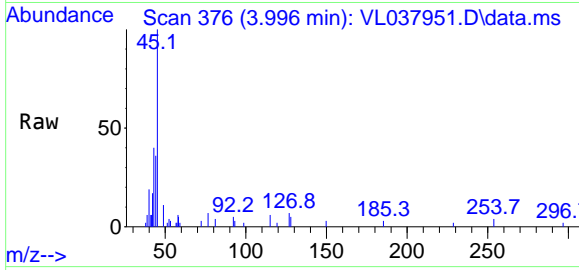
Tgt Ion: 43 Resp: 142316
 Ion Ratio Lower Upper
 43 100
 58 0.0 23.3 34.9#





#19
 Isopropyl Alcohol
 Concen: 0.262 ppbv m
 RT: 3.996 min Scan# 31
 Delta R.T. 0.035 min
 Lab File: VL037951.D
 Acq: 1 Nov 2021 23:32

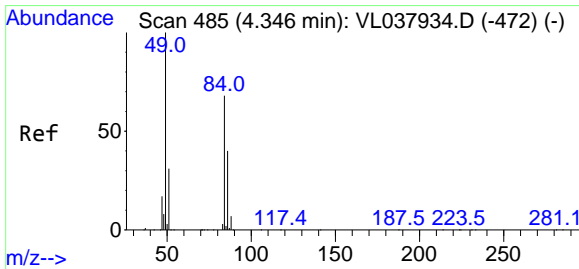
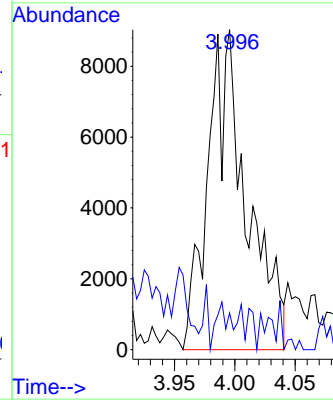
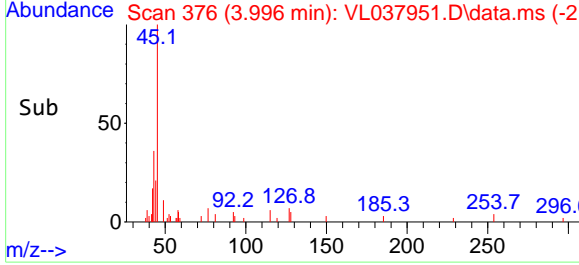
Instrument : MSVOA_L
 ClientSampleId : OA1DL



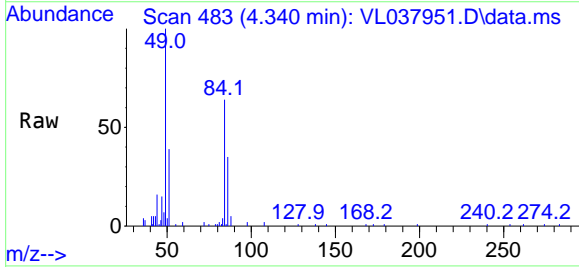
Tgt Ion: 45 Resp: 2027
 Ion Ratio Lower Upper
 45 100
 58 8.2 4.0 6.0

Manual Integrations
 APPROVED

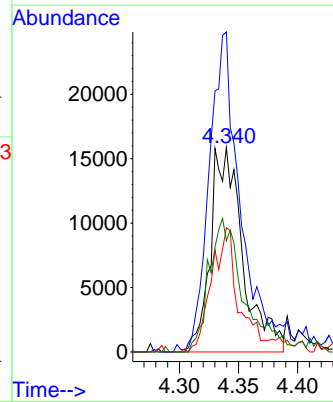
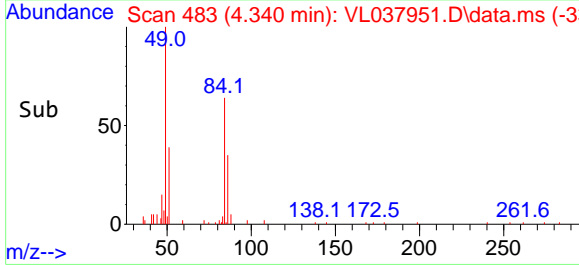
Reviewed By :Semsettin Yesilyurt 11/05/2021
 Supervised By :Mahesh Dadoda 11/10/2021

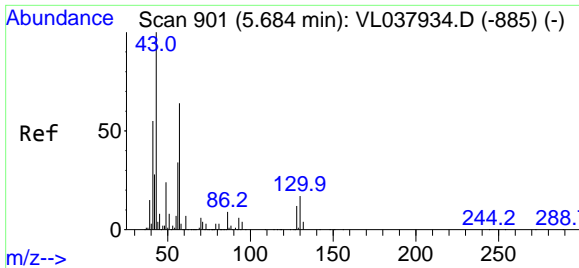


#20
 Methylene Chloride
 Concen: 0.456 ppbv m
 RT: 4.340 min Scan# 483
 Delta R.T. -0.007 min
 Lab File: VL037951.D
 Acq: 1 Nov 2021 23:32



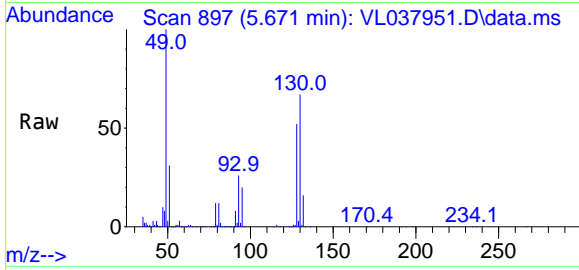
Tgt Ion: 84 Resp: 30237
 Ion Ratio Lower Upper
 84 100
 49 156.7 117.5 176.3
 51 60.9 35.9 53.9#
 86 54.4 47.3 70.9





#26
 Hexane
 Concen: 0.100 ppbv m
 RT: 5.671 min Scan# 897
 Delta R.T. -0.013 min
 Lab File: VL037951.D
 Acq: 1 Nov 2021 23:32

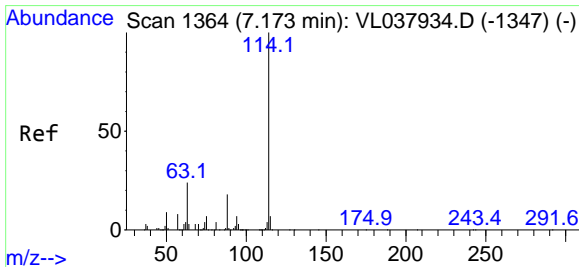
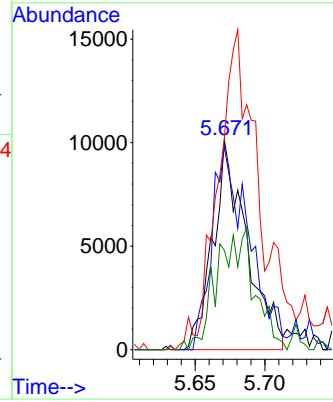
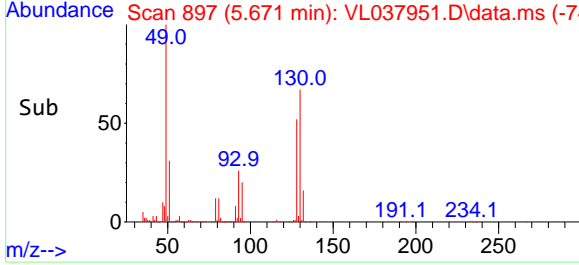
Instrument :
 MSVOA_L
 ClientSampleId :
 OA1DL



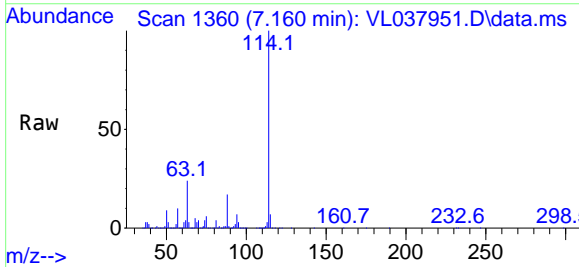
Tgt Ion: 57 Resp: 17083
 Ion Ratio Lower Upper
 57 100
 41 114.1 71.0 106.6
 43 0.0 173.0 259.6
 56 0.0 43.6 65.4#

Manual Integrations
 APPROVED

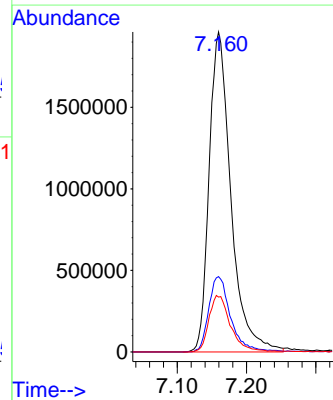
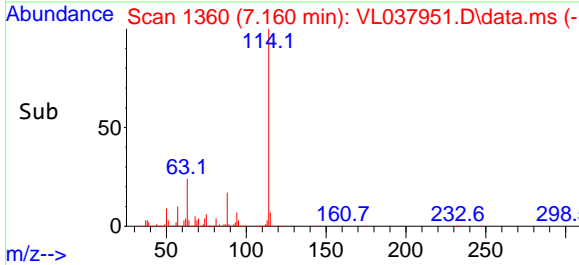
Reviewed By :Semsettin Yesilyurt 11/05/2021
 Supervised By :Mahesh Dadoda 11/10/2021

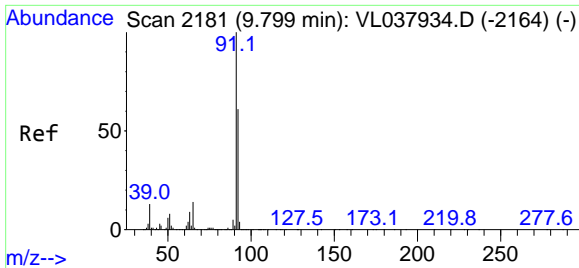


#33
 1,4-Difluorobenzene
 Concen: 10.000 ppbv
 RT: 7.160 min Scan# 1360
 Delta R.T. -0.013 min
 Lab File: VL037951.D
 Acq: 1 Nov 2021 23:32



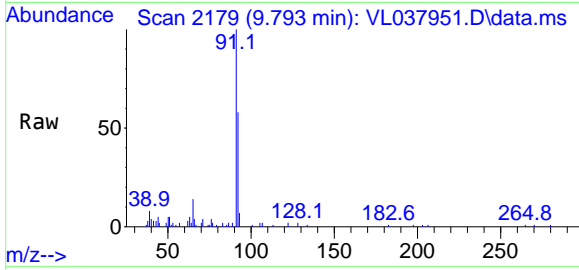
Tgt Ion:114 Resp: 4271961
 Ion Ratio Lower Upper
 114 100
 63 24.1 19.4 29.0
 88 17.9 14.2 21.4





#53
 Toluene
 Concen: 0.127 ppbv m
 RT: 9.793 min Scan# 2181
 Delta R.T. -0.007 min
 Lab File: VL037951.D
 Acq: 1 Nov 2021 23:32

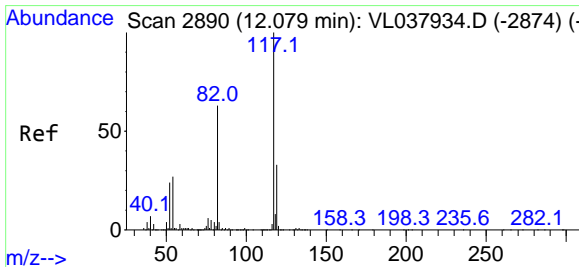
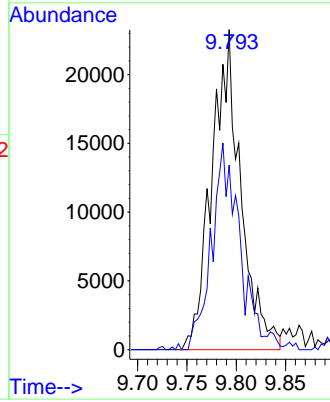
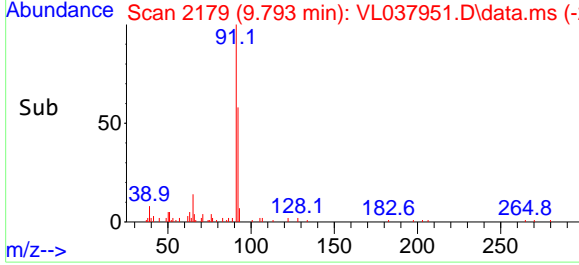
Instrument : MSVOA_L
 ClientSampleId : OA1DL



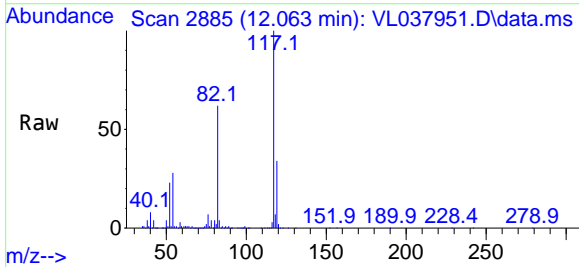
Tgt Ion: 91 Resp: 47500
 Ion Ratio Lower Upper
 91 100
 92 0.0 48.2 72.4

Manual Integrations
 APPROVED

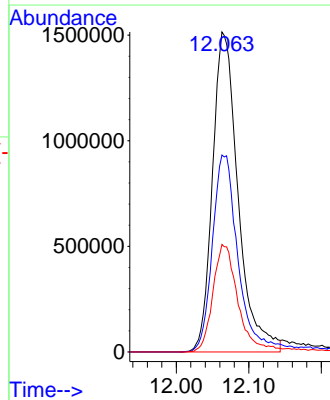
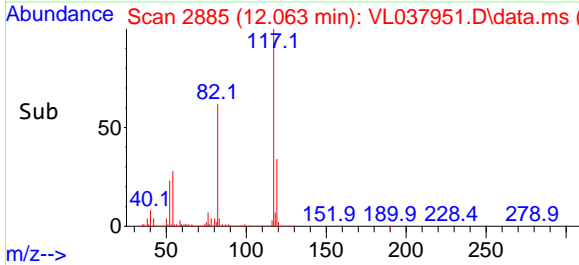
Reviewed By :Semsettin Yesilyurt 11/05/2021
 Supervised By :Mahesh Dadoda 11/10/2021

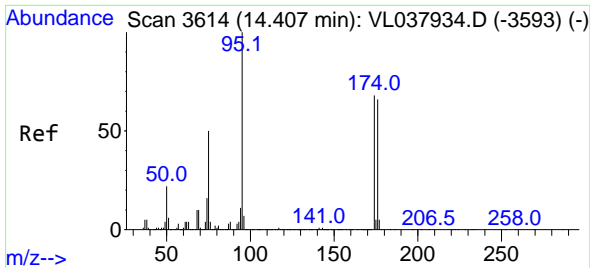


#55
 Chlorobenzene-d5
 Concen: 10.000 ppbv
 RT: 12.063 min Scan# 2885
 Delta R.T. -0.016 min
 Lab File: VL037951.D
 Acq: 1 Nov 2021 23:32



Tgt Ion:117 Resp: 3714484
 Ion Ratio Lower Upper
 117 100
 82 65.3 51.0 76.6
 119 33.9 26.9 40.3





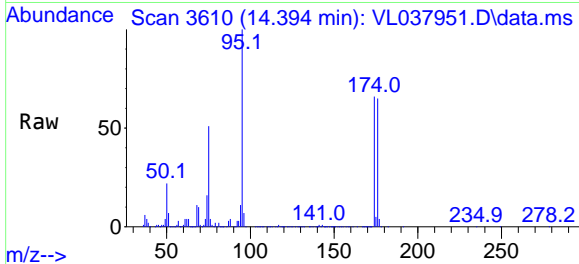
#68
 1-Bromo-4-Fluorobenzene
 Concen: 9.404 ppbv
 RT: 14.394 min Scan# 30
 Delta R.T. -0.013 min
 Lab File: VL037951.D
 Acq: 1 Nov 2021 23:32

Instrument :

MSVOA_L

ClientSampleId :

OA1DL



Tgt Ion: 95 Resp: 253908
 Ion Ratio Lower Upper
 95 100
 174 79.3 58.3 87.5
 175 5.9 4.6 6.8

Manual Integrations

APPROVED

Reviewed By :Semsettin Yesilyurt 11/05/2021
 Supervised By :Mahesh Dadoda 11/10/2021

