

Data Path : Z:\VOASRV\HPCHEM1\MSVOA L\DATA\VL111820\
 Data File : VL035991.D
 Acq On : 19 Nov 2020 2:40
 Operator : SY/AP
 Sample : VIBLK
 Misc : 400ml/MSVOA L
 ALS Vial : 1 Sample Multiplier: 1

Instrument :
 MSVOA_L
ClientSampled :
 VIBLK

Manual Integrations
APPROVED
 MMDadoda
 11/20/2020 12:28:24 PM

Quant Time: Nov 19 09:32:47 2020
 Quant Method : Z:\VOASRV\HPCHEM1\MSVOA L\METHODS\VL110320AIR.M
 Quant Title : AIR ANALYSIS BY METHOD TO-15 Instrument: MSVOA_LWed Nov 0
 QLast Update : Wed Nov 04 02:40:06 2020
 Response via : Initial Calibration

Internal Standards	R.T.	QIon	Response	Conc	Units	Dev(Min)
1) Bromochloromethane	5.63	49	1035133	10.00	ppbv	-0.04
33) 1,4-Difluorobenzene	7.13	114	3587098	10.00	ppbv	-0.05
55) Chlorobenzene-d5	12.04	117	3338834	10.00	ppbv	-0.05

System Monitoring Compounds
 68) 1-Bromo-4-Fluorobenzene 14.37 95 2473416 10.43 ppbv -0.06
 Spiked Amount 10.000 Range 65 - 135 Recovery = 104.30%

Target Compounds	R.T.	QIon	Response	Conc	Units	Ovalue
13) Ethanol	3.59	45	5014m	0.509	ppbv	
15) Acetone	3.84	43	32563m	0.294	ppbv	
20) Methylene Chloride	4.30	84	63139	0.810	ppbv	94
26) Hexane	5.65	57	20012m	0.166	ppbv	
52) Tetrachloroethene	11.18	164	132985	1.053	ppbv	97

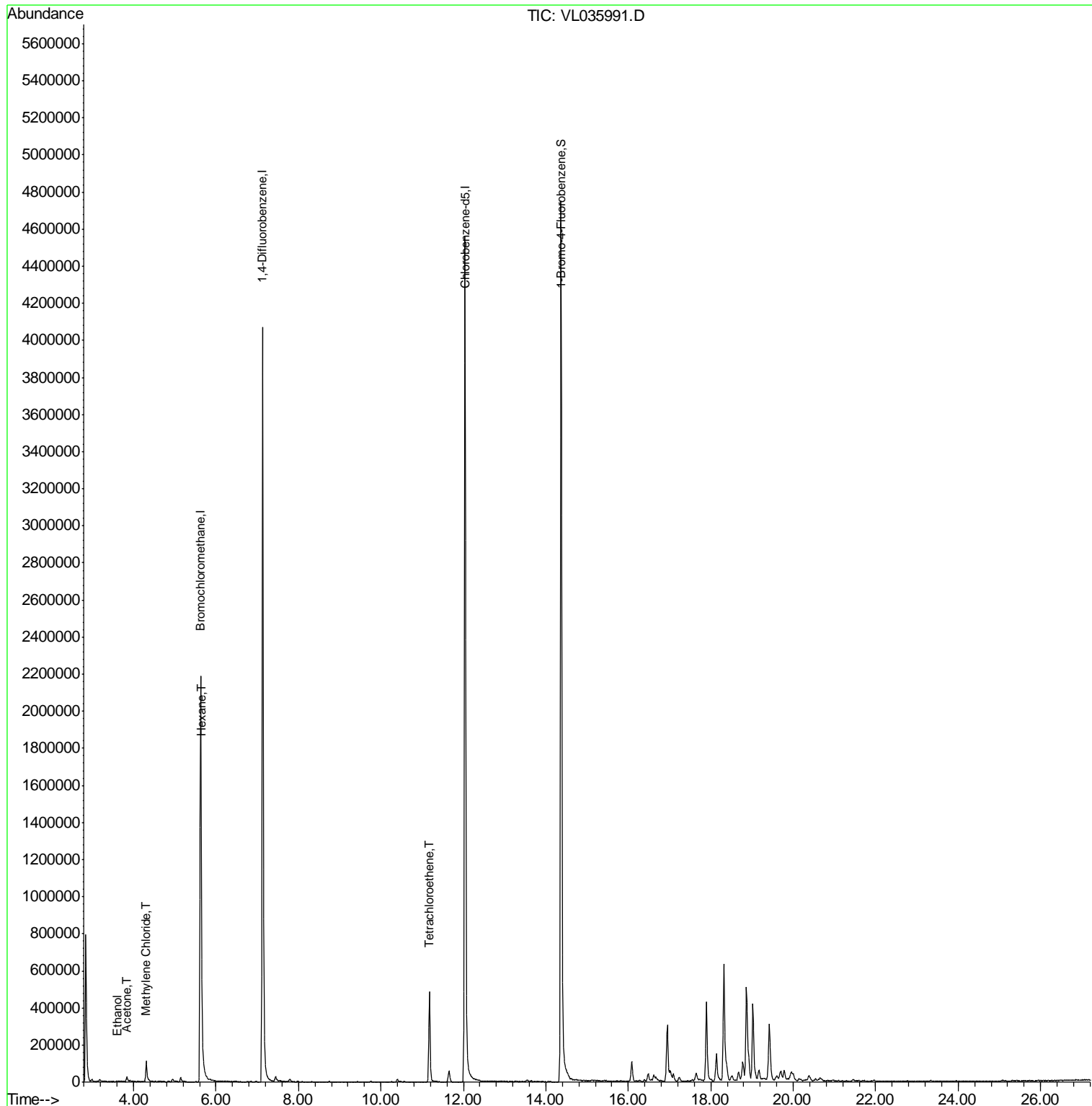
(#) = qualifier out of range (m) = manual integration (+) = signals summed

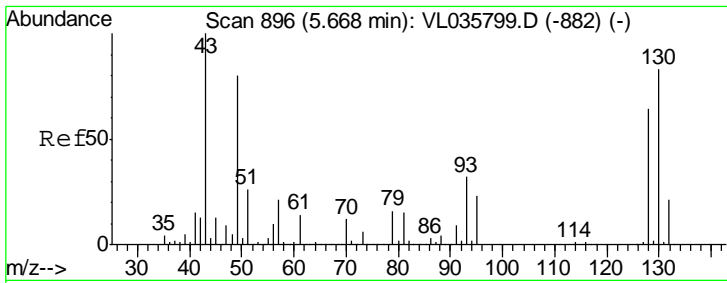
Data Path : Z:\VOASRV\HPCHEM1\MSVOA L\DATA\VL111820\
 Data File : VL035991.D
 Acq On : 19 Nov 2020 2:40
 Operator : SY/AP
 Sample : VIBLK
 Misc : 400ml/MSVOA L
 ALS Vial : 1 Sample Multiplier: 1

Instrument :
 MSVOA_L
 ClientSampleId :
 VIBLK

Manual Integrations
APPROVED
 MMDadoda
 11/20/2020 12:28:24 PM

Quant Time: Nov 19 09:32:47 2020
 Quant Method : Z:\VOASRV\HPCHEM1\MSVOA L\METHODS\VL110320AIR.M
 Quant Title : AIR ANALYSIS BY METHOD TO-15 Instrument: MSVOA_L Wed Nov
 QLast Update : Wed Nov 04 02:40:06 2020
 Response via : Initial Calibration





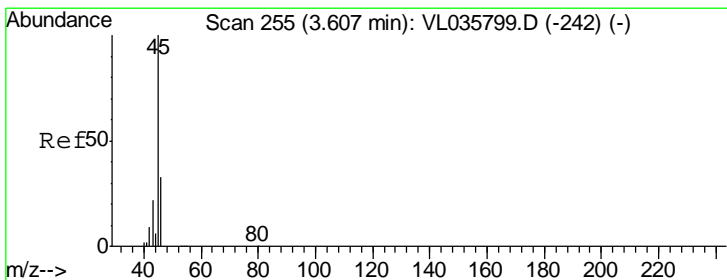
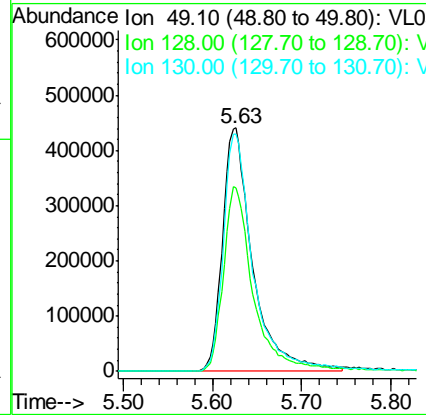
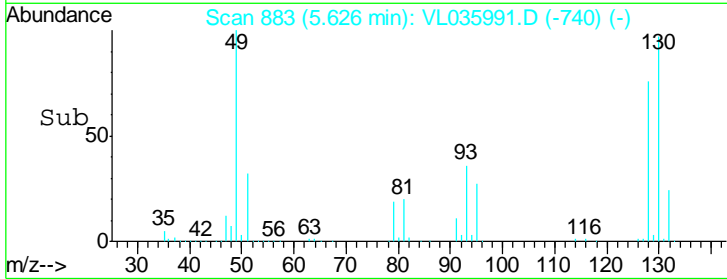
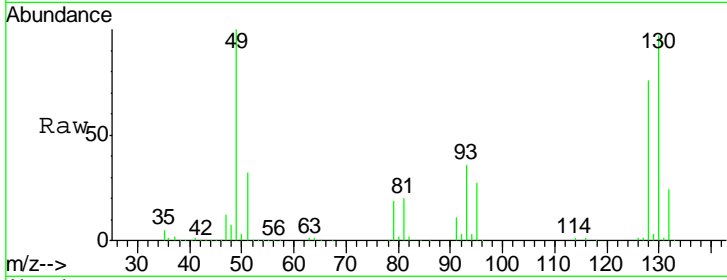
#1
 Bromochloromethane
 Concen: 10.000 ppbv
 RT: 5.63 min Scan# 883
 Delta R.T. -0.04 min
 Lab File: VL035991.D
 Acq: 19 Nov 2020 2:40

Instrument :
 MSVOA_L
ClientSampled :
 VIBLK

Tgt Ion: 49 Resp: 1035133

Ion	Ratio	Lower	Upper
49	100		
128	76.1	41.5	124.6
130	99.2	53.7	161.1

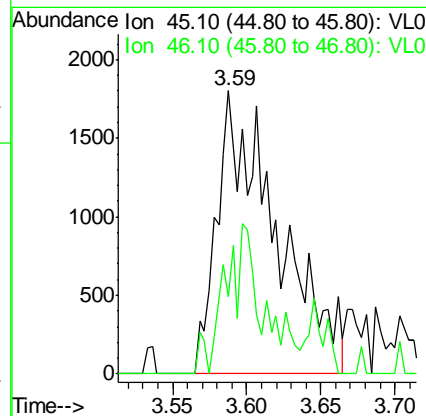
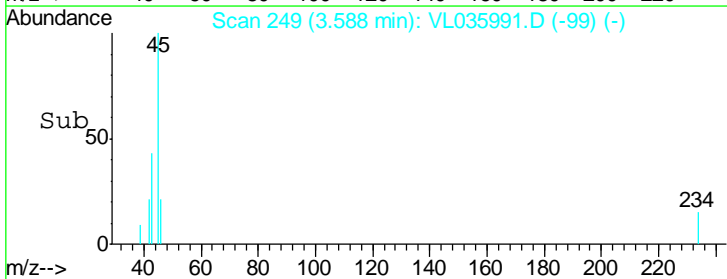
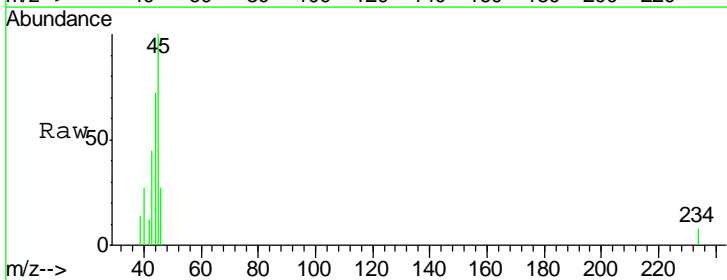
Manual Integrations
APPROVED
 MMDadoda
 11/20/2020 12:28:24 PM

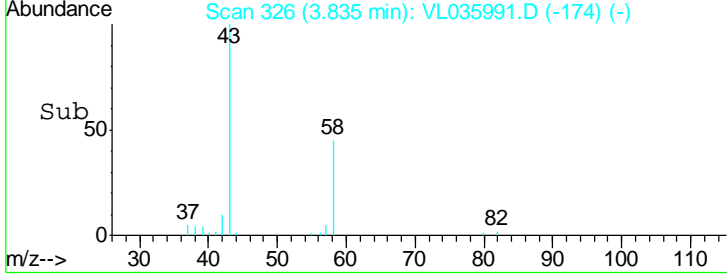
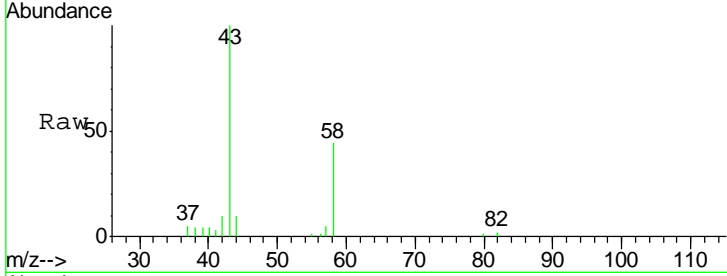
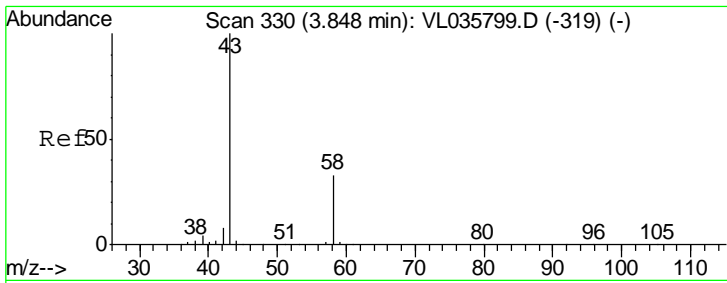


#13
 Ethanol
 Concen: 0.509 ppbv m
 RT: 3.59 min Scan# 249
 Delta R.T. -0.02 min
 Lab File: VL035991.D
 Acq: 19 Nov 2020 2:40

Tgt Ion: 45 Resp: 5014

Ion	Ratio	Lower	Upper
45	100		
46	0.0	16.1	64.5#



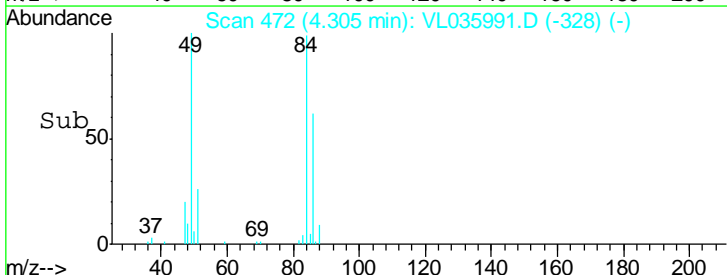
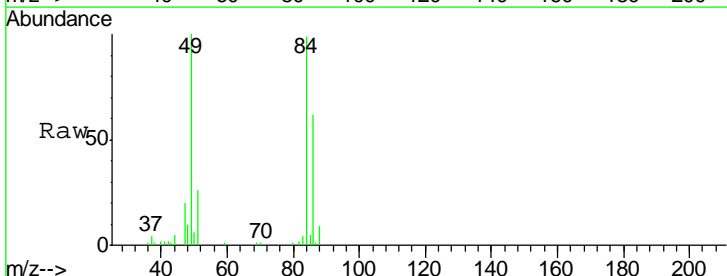
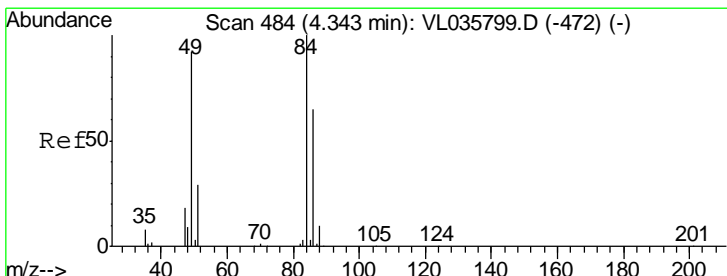
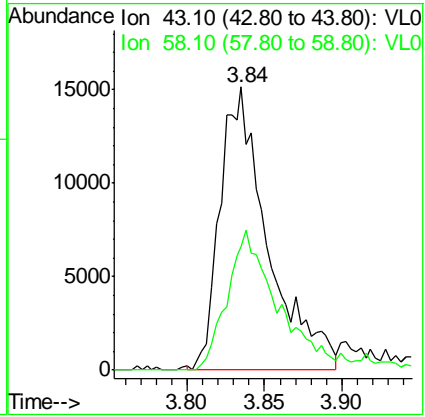


#15
 Acetone
 Concen: 0.294 ppbv m
 RT: 3.84 min Scan# 326
 Delta R.T. -0.01 min
 Lab File: VL035991.D
 Acq: 19 Nov 2020 2:40

Tgt Ion: 43 Resp: 32563
 Ion Ratio Lower Upper
 43 100
 58 0.0 27.5 41.3#

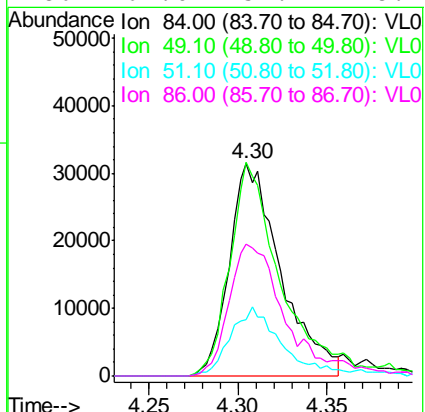
Instrument : MSVOA_L
 ClientSampled : VIBLK

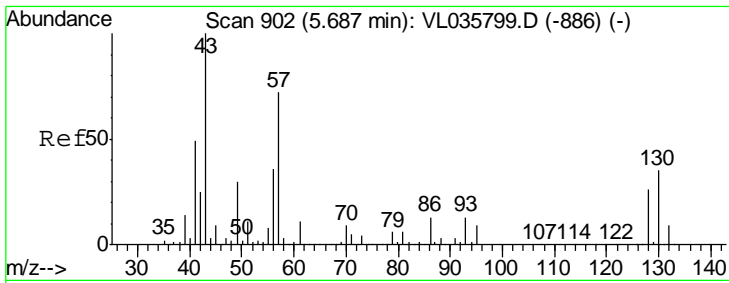
Manual Integrations APPROVED
 MMDadoda
 11/20/2020 12:28:24 PM



#20
 Methylene Chloride
 Concen: 0.810 ppbv
 RT: 4.30 min Scan# 472
 Delta R.T. -0.04 min
 Lab File: VL035991.D
 Acq: 19 Nov 2020 2:40

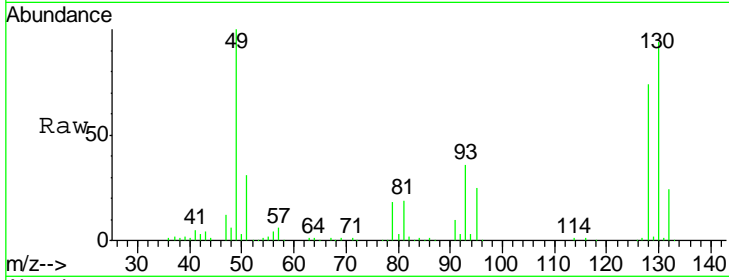
Tgt Ion: 84 Resp: 63139
 Ion Ratio Lower Upper
 84 100
 49 100.8 73.8 110.8
 51 26.7 23.0 34.4
 86 62.0 52.1 78.1





#26
 Hexane
 Concen: 0.166 ppbv m
 RT: 5.65 min Scan# 889
 Delta R.T. -0.04 min
 Lab File: VL035991.D
 Acq: 19 Nov 2020 2:40

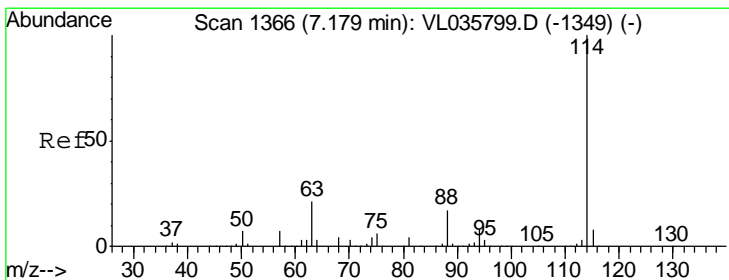
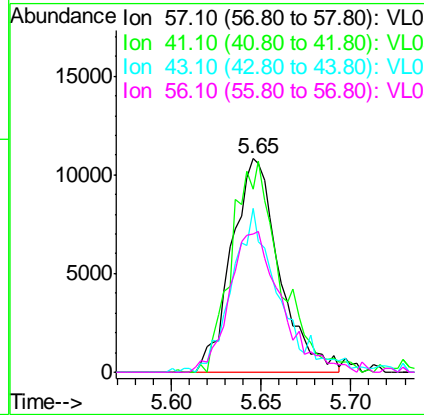
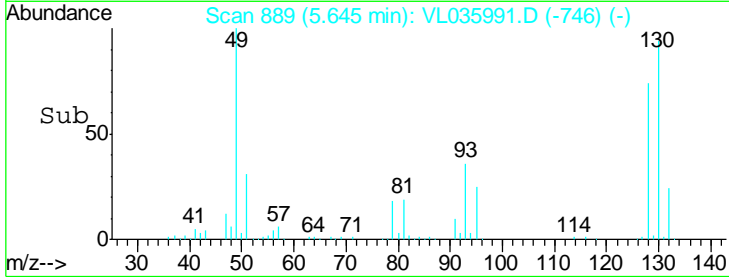
Instrument :
 MSVOA_L
ClientSampled :
 VIBLK



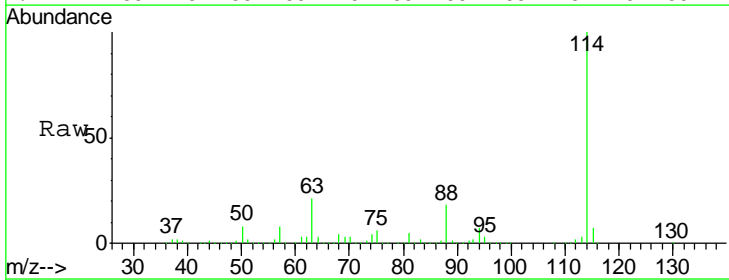
Tgt Ion: 57 Resp: 20012

Ion	Ratio	Lower	Upper
57	100		
41	102.0	58.9	88.3#
43	75.6	150.2	225.2#
56	73.0	42.4	63.6#

Manual Integrations
APPROVED
 MMDadoda
 11/20/2020 12:28:24 PM

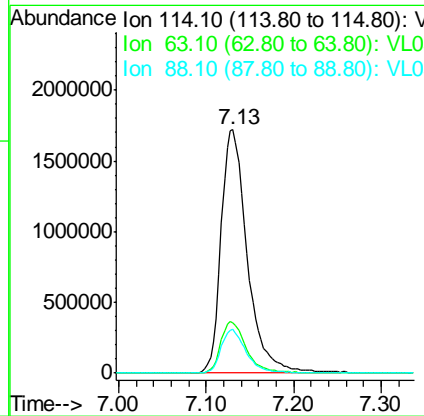
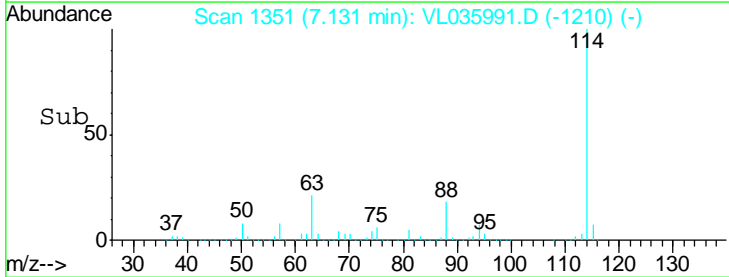


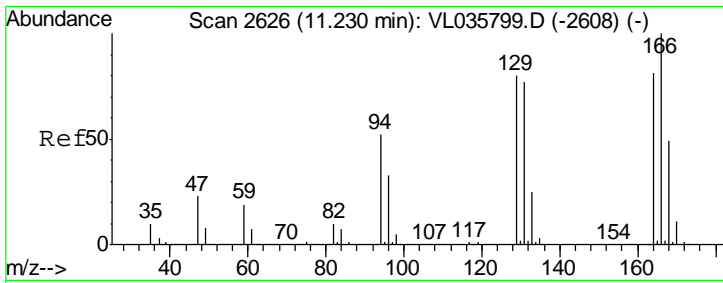
#33
 1,4-Difluorobenzene
 Concen: 10.000 ppbv
 RT: 7.13 min Scan# 1351
 Delta R.T. -0.05 min
 Lab File: VL035991.D
 Acq: 19 Nov 2020 2:40



Tgt Ion: 114 Resp: 3587098

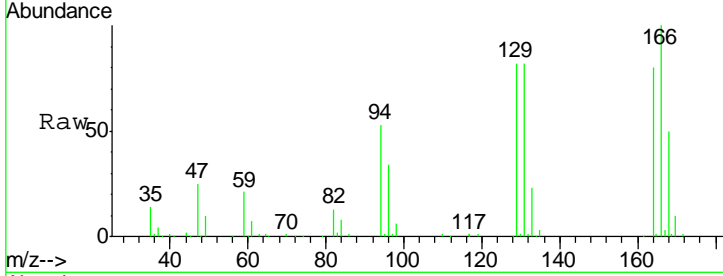
Ion	Ratio	Lower	Upper
114	100		
63	21.0	16.1	24.1
88	17.3	13.7	20.5





#52
 Tetrachloroethene
 Concen: 1.053 ppbv
 RT: 11.18 min Scan# 2611
 Delta R.T. -0.05 min
 Lab File: VL035991.D
 Acq: 19 Nov 2020 2:40

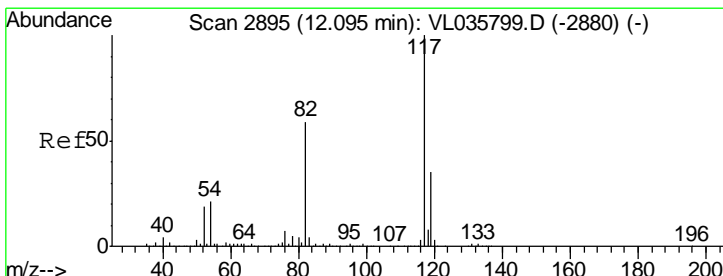
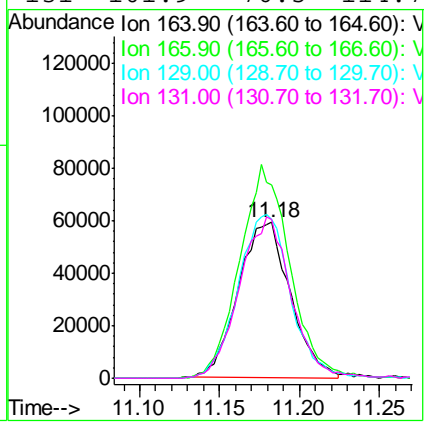
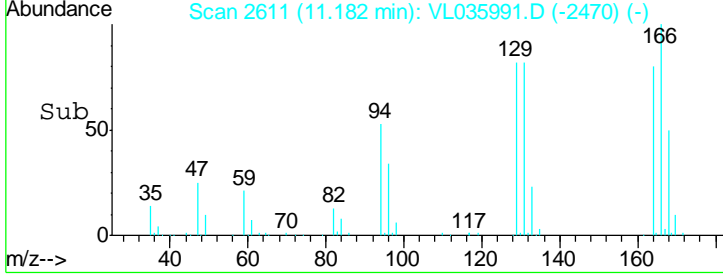
Instrument : MSVOA_L
 ClientSampled : VIBLK



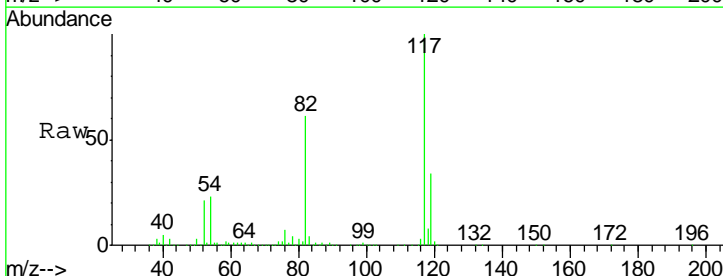
Tgt Ion: 164 Resp: 132985

Ion	Ratio	Lower	Upper
164	100		
166	124.6	99.3	148.9
129	101.8	79.3	118.9
131	101.9	76.5	114.7

Manual Integrations
APPROVED
 MMDadoda
 11/20/2020 12:28:24 PM

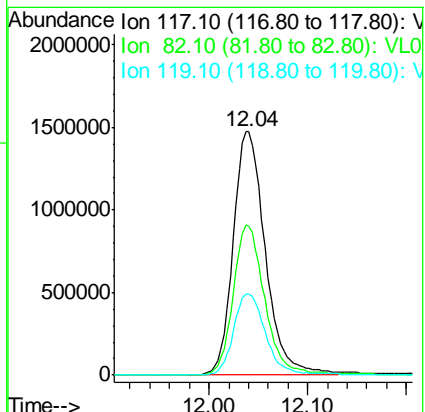
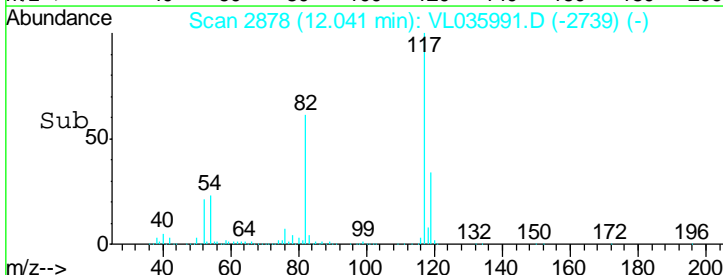


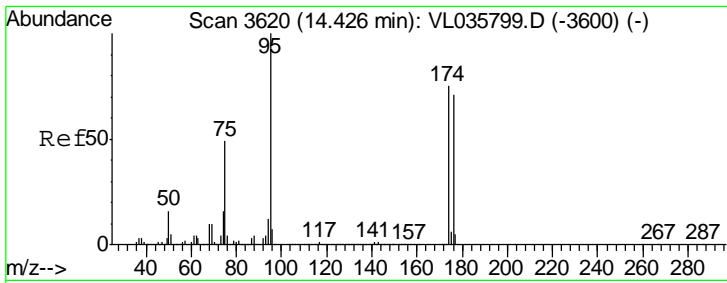
#55
 Chlorobenzene-d5
 Concen: 10.000 ppbv
 RT: 12.04 min Scan# 2878
 Delta R.T. -0.05 min
 Lab File: VL035991.D
 Acq: 19 Nov 2020 2:40



Tgt Ion: 117 Resp: 3338834

Ion	Ratio	Lower	Upper
117	100		
82	62.1	50.6	76.0
119	34.0	52.6	78.8#





#68
 1-Bromo-4-Fluorobenzene
 Concen: 10.427 ppbv
 RT: 14.37 min Scan# 3602
 Delta R.T. -0.06 min
 Lab File: VL035991.D
 Acq: 19 Nov 2020 2:40

Instrument :
 MSVOA_L
ClientSampled :
 VIBLK

Tot Ion: 95 Resp: 2473416

Ion	Ratio	Lower	Upper
95	100		
174	71.4	59.8	89.6
175	4.9	4.3	6.5

Manual Integrations
APPROVED
 MMDadoda
 11/20/2020 12:28:24 PM

